

Historic, Archive Document

Do not assume content reflects current scientific knowledge, policies, or practices.



62.13


 1003
 U.S. Department of Agriculture
 LIBRARY
 SPRING 1903

ELBRIDGE E. WHEELER

SEEDSMAN

1131 to 1135 Main Street
and 5 to 19 Elm Street

BRIDGEPORT, CONN.

Wholesale List of Vegetable Seeds for Market Gardeners

In this condensed Price List we offer all Wheeler's Reliable Seeds at much lower prices than in our regular Retail Catalogue. It is for large buyers only—men who plant for profit, or those who get up clubs. Small orders from private planters can only be filled at regular prices, quoted in our Retail Catalogue.

We could not afford to fill small orders at these rates, but we recognize the justice of giving to market gardeners, and those who make their living by growing seeds, lower prices than to those who grow simply for their own amusement. Market gardeners may, therefore, send small additional orders at any time, to be filled at prices herein quoted. We make a specialty of Market Gardeners' trade, and have built up a large business with discriminating growers who want only the best.

Our seeds have earned the reputation of being *reliable*, which reputation we jealously protect by offering only the best *tested* seeds—those which we know to be good. Such perfect confidence have we in our seeds, that we warrant them to the full extent of the purchase money, and agree to refill any order free, or refund the amount paid for the same, should it be proved that the seeds were not true, pure and of high germinating power. This should assure even the doubtful that our seeds are reliable, for there can be neither honor nor profit to us in selling inferior stock.

Our prices will be found to be rock-bottom, for the best quality.

IMPORTANT NOTICE.—Prices quoted in this list are net. We deliver free to express or freight offices in Bridgeport, the purchaser to pay all other transportation costs. We make no charge for packages, with the exception of two-bushel cloth bags, which are charged at cost, 15 cents each. When ordered by mail, postage must be added at the rate of 8 cents per pound. For Peas and Beans add at the rate of 15 cents per quart, and for Corn at the rate of 10 cents per quart.

All seeds are furnished in 5-cent packets at the rate of 8 for 25 cents. Half-pounds will be supplied at pound rates, half-bushels at bushel rates, and half-pecks at peck rates.

TERMS: Cash with Order.

SEND ALL ORDERS AND REMITTANCES TO

ELBRIDGE E. WHEELER, Seedsman,

1131 to 1135 Main Street }
and 5 to 19 Elm Street } BRIDGEPORT, CONN.



WHEELER'S STANDARD VEGETABLE SEEDS

SPECIAL WHOLESALE PRICE LIST

For Market Gardeners, Truckers and Farmers' Clubs

For full description of all varieties consult our large retail Catalogue

ARTICHOKE

	Pkt.	Oz.	¼ Lb.
French Globe.....	\$0 10	\$0 25	\$0 75

ASPARAGUS

	Oz.	¼ Lb.	Lb.
Barr's Mammoth.....	\$0 05	\$0 15	\$0 40
Columbian Mammoth White....	05	15	40
Conover's Colossal.....	05	15	40
Palmetto	05	15	40

BEANS

Dwarf Wax Pod or Butter Varieties

	Qt.	Pk.	Bush.
Challenge	\$0 25	\$1 75	\$6 50
Currie's Rust-proof.....	25	1 75	6 50
Flageolet Wax.....	25	1 75	6 50
Golden-eyed Wax.....	25	1 75	6 50
Improved Golden Wax.....	25	1 75	6 50
Refugee Wax.....	25	1 75	6 50
Valentine Wax.....	25	1 75	6 50
Wardwell's Kidney Wax.....	25	1 75	6 50
White Wax.....	25	1 75	6 50
Yosemite Mammoth Wax.....	25	1 75	6 50

Dwarf or Bush, Green-Podded

	Qt.	Pk.	Bush.
Stringless Green Podded.....	\$0 25	\$1 50	\$4 75
Dwarf Horticultural.....	25	1 50	4 75
Early Mohawk.....	25	1 25	4 50
Improved Extra-early Valentine...	25	1 25	4 50
Kidney, Large.....	25	1 50	4 75
Long Yellow Six Weeks.....	25	1 50	4 75
Marrow	15	1 00	3 50
Marrow Pea.....	10	75	3 00
Refugee, Extra-early.....	25	1 50	4 75
Refugee, or Thousand-to-One.....	25	1 25	4 50

Pole or Running Beans

	Qt.	Pk.	Bush.
Dutch Case Knife.....	\$0 25	\$1 75	\$6 50
German Black Wax.....	25	1 75	6 50
Horticultural, or Speckled Cranberry	25	1 75	6 50
King Horticultural.....	25	1 75	6 50
Lazy Wife.....	25	1 75	6 50
Mont d'Or, or Golden Cluster.....	25	1 75	6 50
Old Homestead.....	25	1 75	6 50
Scarlet Runner.....	25	1 75	6 50
White Dutch Runner.....	25	1 75	6 50

Dwarf or Bush Limas

	Qt.	Pk.	Bush.
Burpee's Bush.....	\$0 25	\$1 75	\$6 50
Dreer's Bush.....	25	1 75	6 50
Henderson's Bush.....	25	1 75	6 50
Small Lima, or Sieva.....	25	1 75	6 50

Pole Lima Beans

	Qt.	Pk.	Bush.
Challenger	\$0 25	\$1 75	\$6 50
Dreer's Improved.....	25	1 75	6 50
Early Jersey.....	25	1 75	6 50
King of the Garden.....	25	1 75	6 50
Large White, Selected, Seed.....	25	1 75	6 50

BEETS

	Oz.	¼ Lb.	Lb.
Wheeler's Early Blood Turnip....	\$0 06	\$0 15	\$0 45
Bassano	05	10	35
Bastian's Early Turnip.....	05	10	35
Columbia	06	15	50
Crosby's Egyptian.....	05	10	35
Detroit Dark Red.....	05	15	45
Dewing's Early Blood Turnip....	05	10	35
Eclipse	06	15	45
Edmand's Blood Turnip.....	05	15	40
Egyptian	05	12	40
Electric	05	12	40
Half-long Blood.....	06	12	40
Long Smooth Blood.....	05	10	35
Silver, or Swiss Chard.....	05	12	40

SUGAR BEETS AND MANGEL-WURZELS

	Lb.
Giant Yellow Intermediate Mangel.....	\$0 20
Golden Tankard Mangel.....	20
Lane's Imperial.....	20
Long Yellow Mangel.....	20
Mammoth Long Red.....	20
Orange Globe Mangel.....	20
Red Globe Mangel.....	20
White French Sugar.....	20
Yellow Globe Mangel.....	20
Improved Klein Wanzleblin.....	20

All the above kinds, 5 lbs. or over at 18c. per lb.

BORECOLE. See Kale.

BROCCOLI

	Oz.	¼ Lb.	Lb.
Early Purple Cape.....	\$0 25	\$0 80	\$3 00
Early White Cape.....	20	75	2 75

BRUSSELS SPROUTS

	Oz.	¼ Lb.	Lb.
Improved Half-dwarf.....	\$0 10	\$0 40	\$1 50
Improved Dwarf.....	10	45	1 75

CAULIFLOWER

	Oz.	¼ Lb.	Lb.
Autumn Giant.....	\$0 40	\$1 30	\$4 50
Extra-early Erfurt.....	1 00	4 00	15 00
Extra Early Paris.....	40	1 50	4 75
Improved Early Snowball.....	1 70	5 50	20 00
Large Late Algiers.....	65	1 85	7 00
Lenormand's Short Stem.....	55	1 40	5 25

CHERVIL

	Oz.	¼ Lb.	Lb.
Curled	\$0 05	\$0 12	\$0 35

CHICORY

	Oz.	¼ Lb.	Lb.
Large-rooted Magdeberg.....	\$0 05	\$0 18	\$0 60

All of our seeds are tested. We send out only seeds we know to be good

COLLARDS

	Oz.	¼ Lb.	Lb.
True Georgia.....	\$0 10	\$0 20	\$0 75

CORN SALAD, or FETTICUS

	Oz.	¼ Lb.	Lb.
Large-seeded, Large Round-leaved.....	\$0 05	\$0 15	\$0 40

CABBAGE

First Early Varieties

	Oz.	¼ Lb.	Lb.
Wheeler's Selected Extra Early			
Jersey Wakefield.....	\$0 20	\$0 60	\$2 00
Early Etampes.....	10	30	1 00
Early York.....	10	30	1 00
Express, Extra-early.....	10	35	1 10
Charleston Wakefield.....	18	50	1 75
Large Early York.....	10	30	1 00

Second Early Cabbage

	Oz.	¼ Lb.	Lb.
All Seasons.....	\$0 15	\$0 45	\$1 50
All-head Early.....	15	50	1 65
Early Flat Dutch.....	12	40	1 40
Early Winnigstadt.....	10	35	1 25
Fottler's Improved Brunswick.....	15	40	1 45
Improved Early Summer.....	15	50	1 60
Improved Succession.....	15	50	1 65

Late, or Winter Varieties

	Oz.	¼ Lb.	Lb.
Wheeler's Superior Large Late			
Flat Dutch.....	\$0 18	\$0 55	\$2 00
Autumn King.....	18	55	2 00
Danish Ballhead.....	20	65	2 40
Louisville Drumhead.....	15	40	1 40
Premium Flat Dutch.....	15	50	1 60
Large Late Drumhead.....	10	35	1 25
Surehead.....	12	40	1 50

Red Varieties

	Oz.	¼ Lb.	Lb.
Early Blood-Red Erfurt.....	\$0 15	\$0 45	\$1 50
Mammoth Rock Red.....	18	50	1 75
Improved Red Dutch.....	15	40	1 40
Garfield.....	15	50	1 60

Savoy Cabbage

	Oz.	¼ Lb.	Lb.
Early Dwarf.....	\$0 18	\$0 50	\$1 75
Wheeler's Perfection Drumhead			
Savoy.....	20	55	1 85

CELERY

	Oz.	¼ Lb.	Lb.
Boston Market.....	\$0 15	\$0 40	\$1 20
Crawford Half-dwarf.....	10	35	1 25
Giant Pascal.....	10	35	1 20
Giant White Solid.....	10	35	1 20
Golden Heart Dwarf.....	10	35	1 25
New Golden Self-blanching American Seed.....	20	65	2 25
New Golden Self-blanching French Seed.....	35	1 25	4 00
Heartwell Perfection.....	10	35	1 25
Improved White Plume.....	12	40	1 25
Kalamazoo.....	10	35	1 25
New Rose.....	15	50	1 60
Pink Plume.....	15	50	1 50
Schumacher.....	12	40	1 20
Golden Rose.....	20	70	2 40

CELERIAC

(Turnip-Rooted Celery)

Erfurt Giant.....	\$0 10	\$0 35	\$1 25
Large Smooth Prague.....	10	35	1 25

CARROTS

	Oz.	¼ Lb.	Lb.
Danvers Half-long.....	\$0 05	\$0 12	\$0 45
Early Chantenay.....	07	15	50
Early French Forcing.....	07	15	50
Early Scarlet Horn.....	07	15	50
Early Half-long Carentan.....	07	15	50
New Intermediate.....	07	15	50
Long Orange Improved.....	07	15	50
White Belgian.....			40
Oxheart, or Guerande.....	07	15	50

CORN, Sugar or Sweet

Early Varieties

	Pk.	Bush
Metropolitan.....	\$0 95	\$3 50
Cory (White Cob).....	95	3 50
Early Crosby.....	95	3 50
Extra-early Minnesota.....	95	3 50

Medium Varieties

	Pk.	Bush.
Cosmopolitan.....	\$0 95	\$3 50
Black Mexican.....	95	3 50
Early Mammoth.....	95	3 50
Moore's Early Concord.....	95	3 50
Pee and Kay.....	95	3 50
Perry's Hybrid.....	95	3 50
Stabler's Early.....	95	3 50

Late, or Main Crop Sweet Corn

	Pk.	Bush.
Wheeler's Improved Stowell's Evergreen.....	\$1 00	\$4 00
Country Gentleman.....	95	3 50
Egyptian.....	95	3 50
Hickox Improved.....	95	3 50
Mammoth.....	95	3 50
Stowell's Evergreen.....	95	3 50

Field Corn. See page 8.

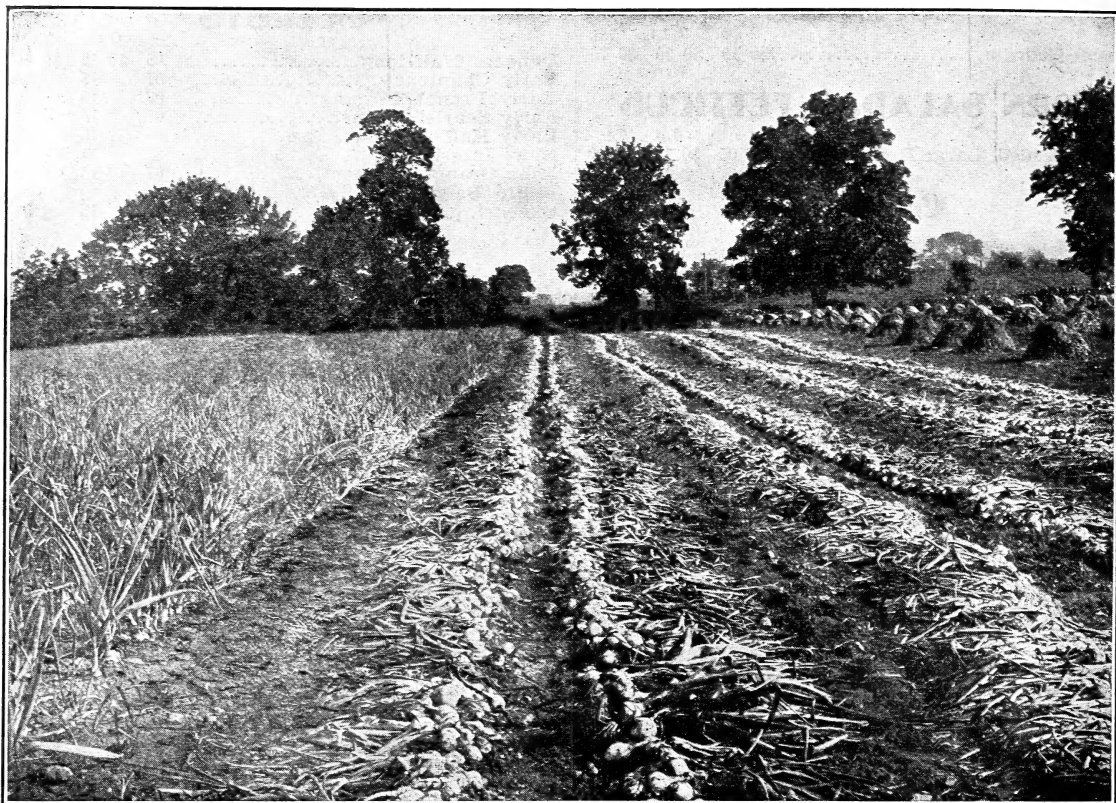
Popcorn

	Qt.	Pk.
Queen's Golden.....	\$0 25	\$1 50
White Rice.....	20	1 10

CUCUMBERS

	Oz.	¼ Lb.	Lb.
Arlington White Spine.....	\$0 15	\$0 50	\$2 00
Boston Pickling.....	15	50	2 00
Cool and Crisp.....	15	50	2 00
Early Cluster.....	15	50	2 00
Early Frame, or Short Green.....	15	50	2 00
Early Russian.....	15	50	2 00
Extra-early Green Prolific.....	15	50	2 00
Extra-long White Spine.....	15	50	2 00
Giant Pera.....	15	50	2 00
Improved Long Green.....	15	50	2 00
Wheeler's Improved White Spine..	15	50	2 00
Jersey Pickling.....	15	50	2 00
Livingston's Evergreen.....	15	50	2 00
Nichol's Medium Green.....	15	50	2 00
White Pearl.....	15	50	2 00
New Cumberland.....	20	65	
New Early Cyclone.....	20	65	

With every planter, especially the market gardener, it is not the original cost of seeds that counts, but what he gets for the money paid. "Wheeler's Seeds are Quality Seeds," and produce profitable results.



Reproduction of photograph of part of an 8-acre field of Southport White Globe Onions, taken by ourselves at Southport, Conn.

The Leading
ONIONS
North, South,
East
and West

OUR GREAT SPECIALTY
Southport
Globe Onion Seed

We Are
GROWERS
of This
Famous Onion
Seed

SOUTHPORT, THE HOME OF THE GLOBE ONION, IS BUT FIVE MILES FROM BRIDGEPORT.

**Wheeler's Genuine Southport-Grown Globe Onion Seed
is Superior to Any on the Market.**

THE SOUTHPORT GLOBE ONIONS are admitted to be the onion of the future. They are the handsomest, most **ATTRACTIVE IN APPEARANCE**, being perfectly globe-shaped, with clear, brilliant skins, of uniform size, large, clean, plump and solid. They are enormous and early yielders. They are most **PROFITABLE TO GROW**, as they occupy no more space in the row than the flat varieties, but **MEASURE** and **WEIGH MORE**. They always bring **HIGHER PRICES** than other varieties. Another of their points of excellence is that they do not have the long, wasteful and detrimental neck and bottom so characteristic of many Western varieties.

Wheeler's Southport-grown Globe Onion Seed is the best possible to grow. Only the **LARGEST** and **FINEST** bulbs are used to raise this seed. Only **EXPERTS** in onion seed have the handling of the crops.

We are right in the heart of the most noted onion growing district in the world. Southport, the home of the Globe Onion, is but five miles from Bridgeport. Here undivided attention has long been given to its production and improvement; until, by constant selection and care, **WHEELER'S** true Southport Globe Onion stands unrivaled.

EVERY POUND of our onion seed is raised in this famous section, and we know that for **PURITY** and **VITALITY** it cannot be surpassed. **NO OTHER CROP** depends so entirely upon the seed for its value than the onion. **GOOD SEED IS IMPERATIVE**. A few dollars saved in the purchase of cheap onion seed may result in the loss of hundreds of dollars,

INFERIOR SEED IS DEAR AT ANY PRICE. Do not infer from these remarks about **CHEAP** seed that our price is high. Our price is as low as good, honest seed can be grown for. We invite comparison of our prices with those of any other reliable seed house. **WE GROW OUR OWN SEED** and **SUPPLY IT DIRECT TO THE PLANTER, ENSURING THE BEST SEED, TRUE TO NAME, AT FIRST COST.**

THE THREE LARGEST AND FINEST

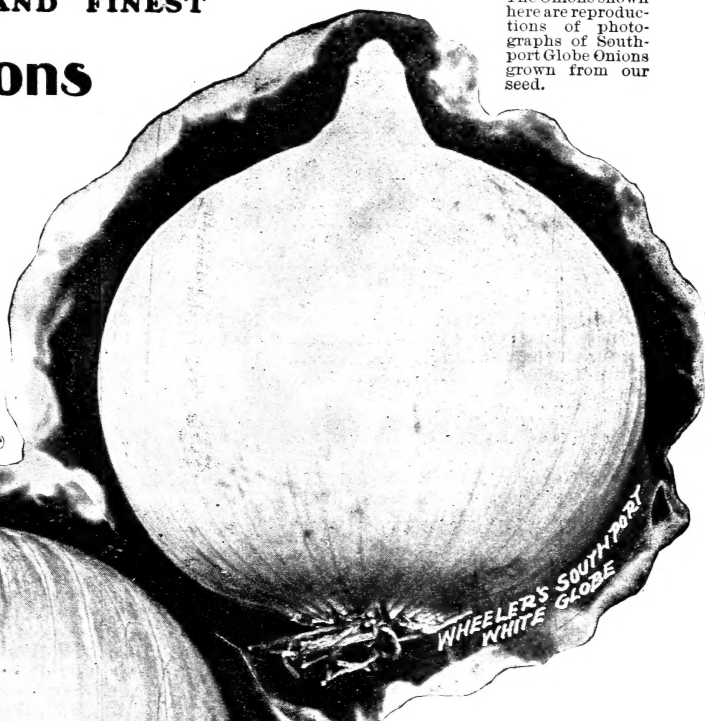
American Onions

The Southport White, Red and Yellow Globes. Sure Croppers, Enormous Yielders, Long Keepers. Universally acknowledged the best in the world. Wheeler's genuine Southport-grown seed is a thoroughbred strain of matchless quality.

Wheeler's Southport White Globe*

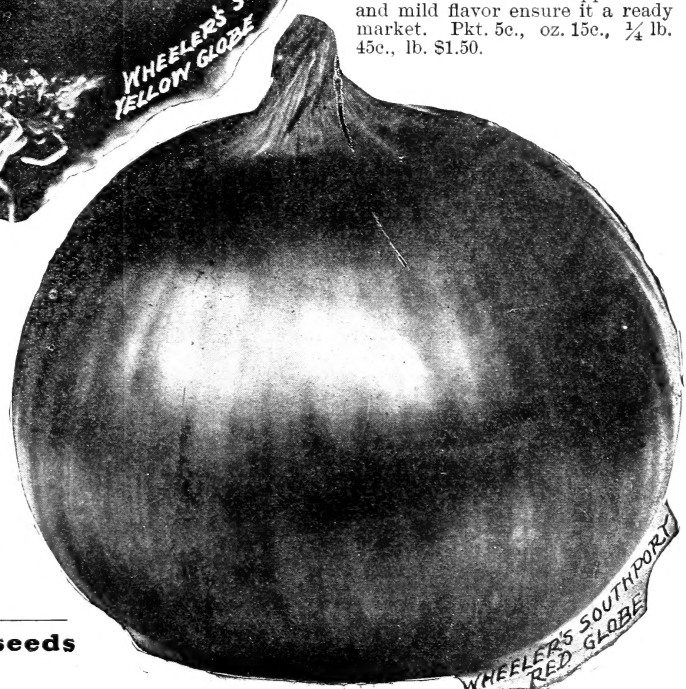
The handsomest Onion grown. A beautiful silvery white and perfectly globe-shaped onion, of large and uniform size, commanding the highest prices in the New York market. We have known

The Onions shown here are reproductions of photographs of Southport Globe Onions grown from our seed.



Wheeler's Southport Yellow Globe*

The best large Yellow Globe Onion. Produces large perfectly globe-shaped bulbs of the same size, handsome form and excellent qualities as the White Globe, except in color, which is a delicate straw color. Its attractive appearance and mild flavor ensure it a ready market. Pkt. 5c., oz. 15c., 1/4 lb. 45c., lb. \$1.50.



Had we the space we could fill pages with enthusiastic reports from large growers praising Wheeler's Southport Onion Seed.

the Southport White Globe to be in demand at \$10 per barrel, when other varieties were selling for one-fourth of this amount. Its flesh is firm, fine grained, and of mild, pleasant flavor. Pkt. 5c., oz. 20c., 1/4 lb. 55c., lb. \$2.

Wheeler's Southport Red Globe*

The finest red sort in cultivation. Of the same large size and perfect form as the two preceding varieties. The color is an extra deep rich red. A heavy cropper, tender and mild. It is very profitable, always bringing the highest market prices. Pkt. 5c., oz. 15c., 1/4 lb. 45c., lb. \$1.50.

**We handle but one grade of seeds
The BEST.**

CRESS, or PEPPER GRASS

	Oz.	¼ Lb.	Lb.
Curled, or Peppergrass.....	\$0 05	\$0 10	\$0 30
True Water Cress.....	25	80	2 75

EGG PLANT

	Oz.	¼ Lb.	Lb.
Black Pekin.....	\$0 20	\$0 75	\$2 00
Early Dwarf Purple.....	20	75	2 25
Improved New York Spineless....	25	80	2 50
Long Purple.....	15	65	1 75

ENDIVE

	Oz.	¼ Lb.	Lb.
Broad-leaved Batavian.....	\$0 10	\$0 30	\$1 00
French Moss Curled.....	10	35	1 10
Green Curled.....	10	30	1 00
White Curled.....	10	30	1 00

KALE, or BORECOLE

	Oz.	¼ Lb.	Lb.
Dwarf German Brown Curled.....	\$0 10	\$0 25	\$0 85
Dwarf German or Green Curled			
Scotch.....	08	20	65
Improved Siberian.....	05	15	45

KOHLRABI

	Oz.	¼ Lb.	Lb.
Early Purple Vienna.....	\$0 15	\$0 50	\$1 75
Early White Vienna.....	15	50	1 75
Large Green, or White.....	10	30	1 00

LEEKS

	Oz.	¼ Lb.	Lb.
Broad American Flag.....	\$0 10	\$0 30	\$1 00
Large Carentan.....	10	30	1 00

LETTUCE**Head Varieties**

	Oz.	¼ Lb.	Lb.
Wheeler's Wonder.....	\$0 10	\$0 25	\$0 85
All-Year-Round.....	10	20	75
Deacon, or San Francisco Market..	07	20	60
Big Boston.....	07	20	70
Black-seeded Tennis Ball.....	07	20	70
New Iceberg.....	10	25	75
Boston Market.....	07	20	70
Brown Dutch.....	07	20	70
Golden Queen.....	07	20	70
White Summer Cabbage.....	10	25	75
Mammoth Black-seeded Butter....	07	20	70
Mignonette.....	07	20	70
Improved New York.....	07	20	70
Salamander.....	10	25	85
Yellow-seeded Butter.....	07	20	70
Improved Hanson.....	10	25	80

Curled, or Loose-Leaved Lettuce

	Oz.	¼ Lb.	Lb.
Black-seeded Simpson.....	\$0 07	\$0 20	\$0 70
Early Curled Simpson.....	07	20	70
Grand Rapids.....	10	25	85
Tomhannock.....	10	25	85

Cos Varieties

	Oz.	¼ Lb.	Lb.
Trianon.....	\$0 10	\$0 30	\$1 00
White Paris.....	07	20	70

MELONS, MUSK

	Oz.	¼ Lb.	Lb.
Long Island Beauty.....	\$0 15	\$0 50	\$1 50
Banquet, sold out.			
Melrose.....	10	20	60
Early Nutmeg, sold out.			
Extra-early Hackensack.....	10	30	1 00
Jenny Lind.....	10	25	85
Long Banana, sold out.			
Miller's Cream (Red-fleshed Os- age).....	10	30	1 00
Montreal Green Nutmeg.....	10	35	1 25
New Emerald Gem.....	15	50	1 50
Paul Rose.....	10	25	85
Princess, sold out.			
Rocky Ford, or Netted Gem.....	10	25	85
Perfected Delmonico.....	10	25	85

MELONS, WATER

	Oz.	¼ Lb.	Lb.
McIver's Sugar, sold out.			
Black Spanish.....	\$0 07	\$0 15	\$0 50
Cole's Early.....	07	15	45
Cuban Queen.....	07	15	45
Dixie.....	07	15	45
Florida Favorite.....	07	15	50
Green and Gold, sold out.			
Girardeau's New Triumph.....	07	15	45
Hungarian Honey.....	07	15	50
Ice Cream.....	07	15	45
Jordan's Gray Monarch.....	07	15	45
Kolb's Gem.....	07	15	40
Mountain Sweet.....	07	15	45
Pride of Georgia.....	07	15	45
Seminole.....	07	15	45
Sweetheart.....	07	15	45

MUSTARD

	Oz.	¼ Lb.	Lb.
Brown or Black.....	\$0 05	\$0 10	\$0 25
New Chinese.....	06	15	50
Southern Giant Curled.....	06	15	50
White London.....	05	10	25

ONIONS**True Southport**

	Oz.	¼ Lb.	Lb.
Extra-early Red Flat.....	\$0 08	\$0 25	\$0 85
Large Red Wethersfield.....	08	25	85
Prize-taker.....	10	30	1 00

Southport Red Globe, Southport White Globe,
Southport Yellow Globe, see pages 4 and 5.

	Oz.	¼ Lb.	Lb.
Yellow Globe Danvers.....	\$0 08	\$0 25	\$0 85
White Portugal, or Silverskin....	15	40	1 50
Australian Brown.....	08	25	85

Foreign Onions

	Oz.	¼ Lb.	Lb.
Giant Red Rocca.....	\$0 10	\$0 35	\$1 25
Large White Italian Tripoli.....	10	35	1 25
Early White Queen.....	15	45	1 75

Onion Sets

White.....	\$3 00	bush.
Yellow.....	2 50	bush.
Yellow Multiplier.....	2 50	bush.

Be Sure and Read "Important Notice" on Front Cover of this Price List.

OKRA, or GUMBO

	Oz.	¼ Lb.	Lb.
Mammoth or Long Green.....	\$0 05	\$0 15	\$0 40
Dwarf Green Prolific.....	05	12	35
White Velvet.....	05	15	40
Lady Finger.....	05	15	45

PARSNIPS

	Oz.	¼ Lb.	Lb.
Improved Guernsey.....	\$0 05	\$0 15	\$0 35
Hollow Crown.....	05	12	35
Long Smooth.....	05	12	35
Round	05	15	40

PARSLEY

	Oz.	¼ Lb.	Lb.
Champion Moss Curled.....	\$0 07	\$0 15	\$0 45
Wheeler's Emerald Dwarf, Extra Curled	08	15	50
Fern Leaf.....	07	15	50
Fine Double Curled.....	07	15	45
Large-rooted Hamburg.....	07	15	45
Plain Leaf.....	07	15	40

PEAS

Extra-early Varieties

	Qt.	Pk.	Bush.
Wheeler's Improved Extra Early Alaska	\$0 25	\$1 25	\$4 75
American Wonder.....	25	1 50	6 00
First and Best.....	25	1 40	5 00
Improved Daniel O'Rourke.....	25	1 40	5 00
Little Gem (McLean's).....	25	1 50	6 00
Nott's Excelsior.....	25	1 50	6 00
Premium Gem.....	25	1 50	6 00
Rural New-Yorker.....	25	1 40	5 00

Second Early Peas

	Qt.	Pk.	Bush.
Abundance	\$0 25	\$1 40	\$5 00
Heroine	25	1 25	4 75
Horsford's Market-garden.....	25	1 40	5 00
McLean's Advancer.....	25	1 40	5 00
New Eclipse, sold out.			
Shropshire Hero.....	25	1 40	5 00
Yorkshire Hero.....	25	1 25	4 75

Late, or Main Crop Varieties

	Qt.	Pk.	Bush.
American Champion.....	\$0 25	\$1 50	\$6 00
Black-eyed Marrowfat.....	20	85	3 00
Bliss' Everbearing.....	25	1 35	4 75
Champion of England.....	25	1 20	4 00
Juno	25	1 25	4 75
Pride of the Market.....	25	1 40	5 00
Improved Stratagem	25	1 50	6 00
Telephone	25	1 50	5 50
White Marrowfat.....	20	85	3 00

PEPPERS

	Oz.	¼ Lb.	Lb.
Red Cluster.....	\$0 20	\$0 60	\$2 00
Large Bell, or Bull Nose.....	18	55	1 75
Long Red Cayenne.....	20	60	2 00
Golden Queen.....	18	55	1 75
Procopp's Giant.....	20	60	2 00
Red Chili.....	20	60	2 00
Ruby King.....	20	60	2 00
Spanish Mammoth.....	20	60	2 00
Sweet Mountain, or Mammoth....	18	55	1 75
Golden Dawn.....	20	60	2 00

SEED POTATOES

All varieties \$3.25 per bbl., 165 lbs.; \$1.20 per bush.

Early Varieties

Beauty of Hebron.	Early Rose.
Early Norther.	Early Vermont.
Early Maine.	New Queen.
Early Ohio.	The Bovee.

Medium and Late Varieties

Bliss' Triumph Red.	Rural New-Yorker No. 2.
Burbank's Seedling.	Sir Walter Raleigh.
Carman No. 3.	White Elephant.
Great Divide.	White Star.

PUMPKINS

	Oz.	¼ Lb.	Lb.
Quaker Pie	\$0 10	\$0 30	\$1 00
Red Etampes	10	35	1 25
Connecticut Field.....	05	10	25
Japanese Pie, sold out.			
Jonathan (Large White Cushaw)..	07	15	45
King of Mammoths.....	10	30	
Large Cheese.....	07	15	40
Small Sugar.....	07	15	45
Tennessee Sweet Potato, sold out.			
White Cushaw, or Winter Crook-neck	10	15	50
Golden Oblong.....	10	20	65

RADISHES

	Oz.	¼ Lb.	Lb.
New Scarlet Globe.....	\$0 05	\$0 15	\$0 40
California Mammoth White Winter	05	15	45
Chartier, or Shepherd.....	05	15	45
Earliest White, or White Olive....	05	15	45
Early Round Deep Scarlet.....	05	15	40
Early Round Scarlet, White Tip...	05	15	40
Early White Turnip, or Box.....	05	15	45
New French Breakfast.....	05	15	50
Half-long Deep Scarlet.....	05	15	45
Long Brightest Scarlet.....	05	15	45
Long Scarlet Short Top.....	05	15	40
Long White Vienna, or Lady Finger	05	15	45
Early Round Deep Scarlet forcing.	05	15	40
Early Round Scarlet, White Tip forcing	05	15	40
Olive-shaped Scarlet.....	05	15	45
Round Black Spanish.....	05	15	45
White Strasburg.....	05	15	40
White Chinese, or New Celestial..	05	15	45
Wood's Early Frame.....	05	15	45
Yellow Summer.....	05	15	40
China Rose, or Scarlet.....	05	15	40

RHUBARB

	Oz.	¼ Lb.	Lb.
Victoria	\$0 10	\$0 30	\$1 00

SALSIFY, or OYSTER PLANT

	Oz.	¼ Lb.	Lb.
Mammoth Sandwich Island.....	\$0 10	\$0 25	\$0 90

SPINACH

	Oz.	¼ Lb.	Lb.
Improved Round-leaved.....	\$0 15		
Long Standing Enkhuizen.....			15
Long Standing Prickly.....			15
Savoy-leaved Bloomsdale.....			15
Victoria			15
Viroflay, Broad-leaved.....			15
Prickly, or Winter.....			15

5 lbs. or over, 12½c. per lb.

SQUASHES

	Oz.	¼ Lb.	Lb.
Vegetable Marrow.....	\$0 10	\$0 20	\$0 60
Boston Marrow.....	10	25	75
Canada Crookneck.....	10	20	50
Delicata	10	20	50
Early Prolific Marrow.....	10	25	75
Essex Mybrid, sold out.			
Fordhook, sold out.			
Giant Summer Crookneck.....	10	20	60
Golden Custard.....	10	20	55
Golden Summer Crookneck.....	10	25	75
True Hubbard.....	10	25	85
Long Island White Bush, sold out.			
Mammoth Chili.....	10	30	1 00
Sibley, or Pike's Peak, sold out.			
The Faxon.....	10	15	50
Winter Crookneck.....	10	15	50
Yellow Bush.....	10	15	50
New Warded Hubbard.....	10	25	90
Golden Hubbard.....	10	25	85
Mammoth Whale.....	15	45	1 50

TOBACCO

	Oz.	¼ Lb.	Lb.
Connecticut Seed Leaf.....	\$0 10	\$0 35	\$1 25
Havana	25	90	3 00

When you buy Wheeler's Tested Seeds you may rely upon getting absolutely the highest quality seeds that can be grown

TOMATOES

	Oz.	¼ Lb.	Lb.
Wheeler's Peerless Tomato.....	\$0 25	\$0 85	\$3 25
Acme	15	50	1 75
Atlantic Prize.....	15	50	1 75
Crimson Cushion.....	35	1 25	4 00
Dwarf Aristocrat.....	15	50	1 75
Dwarf Champion.....	20	75	2 50
Early Ruby, sold out.			
Fordhook First.....	20	75	2 50
Golden Queen.....	20	60	2 00
Dwarf Champion, sold out.			
Livingston's Beauty.....	15	45	1 70
New Buckeye State.....	15	50	1 75
Livingston's Stone.....	15	45	1 70
Mikado	15	50	1 75
Ponderosa	25	1 00	3 75
Trophy	15	45	1 70
Livingston's Perfection.....	15	45	1 70
Spark's Earliana.....	20	75	2 50
New Magnus.....	30	85	3 25
New Quarter Century.....	50	1 75	

All Seeds are furnished in 5c. packets, which are furnished to Market Gardeners at the rate of eight for 25c.

TURNIPS

	Oz.	¼ Lb.	Lb.
Scarlet Kashmir.....	\$0 07	\$0 15	\$0 50
Cow Horn, White.....	05	12	35
Early Purple-top Milan.....	07	15	40
Early Snowball.....	07	15	40
Early White Globe.....	07	15	40
Yellow Stone.....	07	15	40
Extra-early Milan, White.....	07	15	50
Golden Ball.....	05	12	35
New American White Egg.....	05	12	35
Pomeranian White Globe.....	05	12	35
Purple-top Strap-leaved.....	05	12	35
Purple-top White Globe.....	05	15	40
White Strap-leaved.....	05	15	40
Yellow Aberdeen.....	05	12	35
Yellow Globe.....	05	12	35
Half-long Red Top.....	05	15	40

Improved Rutabaga

	Oz.	¼ Lb.	Lb.
Improved American.....	\$0 05	\$0 12	\$0 35
Laing's Improved.....	05	12	35
Long Island.....	05	12	35
New Monarch, or Elephant.....	05	12	35
Sweet German.....	05	12	35

WHEELER'S SELECTED FARM SEEDS**FIELD CORN**

The following varieties are the most desirable kinds. They were all raised in the North especially for seed, have all been well cured and are true to name.

Field Corn

	Pk	Bush.
Eight-rowed Yellow Canada (Flint)....	\$0 35	\$1 25
Improved Sanford, or White Flint.....	35	1 25
Leaming Improved.....	35	1 25
Longfellow (Yellow Flint).....	35	1 25
Wheeler's Improved Queen of the Prairie, or Pride of the North (Dent).....	35	1 25

Fodder Corn

	Pk.	Bush.
Evergreen Sweet Fodder.....	\$0 55	\$2 00
Southern White Horsetooth.....	30	1 00

Write For Prices

WINTER WHEAT

60 lbs. to bush.

Clawson, or Seneca.	Rochester Red.
Red Mediterranean.	All kinds \$1.50 bush.

SPRING WHEAT

We make a specialty of Spring Wheat.
Blue Stem. Scotch Fife.
Both kinds, \$1.50 bush.

SPRING BARLEY

48 lb. to bush. 2 bush. to acre.
Imperial Six-rowed, \$1.25 bush.
Vermont Champion, \$1.25 bush.

BUCKWHEAT

48 lb. to bush. 1 bush. to acre.
Japanese, \$1.00 bush. Silver Hull, \$1.00 bush.

RYE

56 lbs. to bush. 1 to 1½ bush. to acre.
Spring Rye, \$1.50 bush. Winter Rye, \$1.00 bush.

SEED OATS

32 lbs. to bush. 2 to 3 bush. to acre.
Prices of Oats on application.
Wheeler's Welcome, 55c. bush.

CLOVERS AND GRASS SEEDS

The value of these seeds fluctuates greatly, and any price we might quote at the time this catalogue is printed would be misleading. We therefore omit prices. When ready to buy, write us for prices, stating varieties and quantities wanted, and we will promptly furnish quotations at lowest market rates.

All our clover and grass seeds are of the crop of 1902. They are strictly the finest grade the market affords; pure and free from weed seeds, and of highest germinating power.

CLOVERS

- Alfalfa, or Lucerne.** 60 lb. to bush. Sow 15 to 25 lbs. per acre, according to soil.
- Alsike, or Hybrid Clover.** 60 lbs. to bush. 6 to 12 lbs. per acre.
- Bokhara Clover.** 60 lbs. to bush.
- Crimson or Scarlet Clover.** 60 lbs. to bush. Sow ½ bushel to the acre.
- Red Clover Medium.** 60 lbs. to bush. Sow 20 lbs. to the acre.
- Red Clover Mammoth.** 60 lbs. to bush. 15 to 20 lbs. to the acre.
- White Clover.** 60 lbs. to bush.

GRASS SEEDS

- Awnless Brome Grass (Bromus Inermis).** 14 lbs. to bush. 20 lbs. to acre.

- English Rye Grass (Lolium Perenne).** 24 lbs. to bush. 60 lbs. to acre.
- Hungarian Grass (Panicum Germanicum).** 48 lbs. to bush. A valuable forage plant. 1 bush. to acre.
- Kentucky Blue Grass (Poa Pratensis).** 14 lbs. to bush. Sow 2 bushels to the acre.
- Meadow Fescue (Festuca Pratensis).** 22 lbs. to bush.
- Meadow Foxtail (Alopecurus Pratensis).** 7 lbs. to bush.
- Orchard Grass (Dactylis Glomerata).** 14 lbs. to bush. 3 bush. to acre.
- Red Top Grass (Agrostis Vulgaris).** 32 lbs. to bush. Sow 1½ to 3 bush. to acre.
- Rhode Island Bent Grass (Agrostis Canina).** 14 lbs. to bush.
- Sweet Vernal Grass (Anthoxanthum Odoratum).** True perennial. 10 lbs. to bush. 2 to 5 lbs. to acre.
- Timothy (Phleum Pratensis).** 45 lbs. to bush. Sow ½ bush. to the acre.
- Wood Meadow Grass (Poa Nemoralis).** 14 lbs. to bush. Sow 28 bush. to acre.

Wheeler's Reliable Seeds Yield Profitable Crops.