

Historic, Archive Document

Do not assume content reflects current scientific knowledge, policies, or practices.

62.11

1904(?)

1904(?)

LIBRARY
RECEIVED
U.S. Department of Agriculture

CATALOGUE

OF



The
Denver Seed and Floral
Company

1551 Champa Street

Denver, Colorado

To Our Friends and Patrons:

Several years ago Mr. Arthur L. Mitchell started the Mitchell Seed Store and built up a nice business by his painstaking and careful management. On his death the business was purchased by Mr. Moses Liverman and continued under the same name until Mr. Liverman's death on December 31, 1903, when the business was bought by The Denver Seed and Floral Co., with Mr. Frank E. Smith as manager.

Mr. Smith is a seedsman of 15 years practical experience and recognizes the importance of quality above everything else in the seed business. You may safely trust any and all orders to us, and in placing them with us you can always depend upon it that we will select plants or seeds, birds or anything in our line fully up to the value of money sent, placing yourself in the same position as though you had selected them personally. We treat each and every order received, large or small, as though it were the only order in the house.

SEEDS *for* WESTERN CLIMATE AND CONDITIONS

Thousands make the mistake each year of ordering seeds, plants and bulbs from Eastern or Southern Catalogues—varieties not adapted to the West. We catalogue only such varieties as we have found by actual experience to be thoroughly adapted to the soil and climatic conditions of the West. We have found that many things which do splendidly in the East are absolute failures here, and consequently for your own good we advise our Denver seeds.

MARKET GARDENERS

We issue a special price list to parties who follow gardening for a living and will gladly send it on request. We are making a specialty of this trade, as Denver gardeners can testify, and will be glad to have you give us a trial.

CUT FLOWERS

We have also added this department to our business and can supply at a moment's notice, by mail or express, flowers, plants and decorations for all occasions. We devote special attention to bouquets and design work and our wedding and funeral designs are unexcelled and at as low prices as good work can be done. Hoping to hear from you, we are,

Yours very truly,

The Denver Seed and Floral Co.

Denver Seed & Floral Co.'s

DESCRIPTIVE LIST OF

Reliable Seeds

WE DELIVER FREE to any postoffice, at prices quoted in this catalogue, all vegetable and flower seeds in packets, ounce and $\frac{1}{4}$ -pound. The purchaser must add 8 cents per pound (if to go by mail) for $\frac{1}{2}$ -pound and over on bulk seeds. A package of seeds or bulbs weighing 4 pounds or less can go by mail at 8 cents per pound. All 5-cent packets, 50 cents per dozen; 10-cent packets, \$1.00 per dozen.

ASPARAGUS

One ounce for sixty feet of drill. Sow early in spring in drills two inches deep, rows one foot apart. At one or two years transplant with crowns of roots six inches below the surface, to permanent beds made rich with plenty of manure.

Colossal—The standard variety. The shoots are of the largest size; very productive and of the best quality.....
.....Pkt. 5c; 1 oz. 10c; $\frac{1}{4}$ lb. 20c; 1 lb. 50c

The Palmetto—Earlier; more prolific....
.....Pkt. 5c; 1 oz. 10c; $\frac{1}{4}$ lb. 20c; 1 lb. 50c

ASPARAGUS ROOTS.

Palmetto—Strong roots; two years old.
.....25c doz.; \$1 per 100; \$7.50 per 1,000

BEANS

DWARF OR BUSH.

Two pounds to one hundred feet in drills. A succession of sowings can be made as soon as danger from frost is over until July. Plant in drills about two inches deep, eighteen inches apart. The seeds should be planted about two inches apart.

GREEN PODDED VARIETIES.

Extra Early Red Valentine—(Best Improved Round Pod Strain.) One of the very best snap-shorts; round, fleshy pods, which mature quickly and are of first-rate quality.
.....Pkt. 5c; $\frac{1}{2}$ lb. 10c; 1 lb. 15c; 2 lbs. 25c

The New Stringless Green Pod—Absolutely stringless; enormously productive.

The pods are straight and well filled with beans of excellent flavor. The earliest of all green-podded beans, requiring only twenty-eight days from germination and continues bearing longer than most varieties.....

.....Pkt. 5c; $\frac{1}{2}$ lb. 10c; 1 lb. 15c; 2 lbs. 25c

Long Yellow Six Weeks—An early snap-short variety, producing edible pods thirty days after germination; very bushy. Beans long kidney-shaped, pods long flat.....

.....Pkt. 5c; lb. 15c; 2 lbs. 25c

Early Mohawk—One of the earliest and hardiest and one of the few that can endure a slight frost. Is very erect and productive and makes an excellent market garden sort.
.....Pkt. 5c; lb. 15c; 2 lbs. 25c

WAX PODDED VARIETIES.

Black Wax—Pods yellow, fleshy, tender and stringless; a favorite snap bean wherever known; beans black when ripe....

.....Pkt. 5c; $\frac{1}{2}$ lb. 10c; 1 lb. 15c; 2 lbs. 25c

Golden Wax—One of the very best dwarf beans known; ten days earlier than other varieties; pods large, long, brittle, entirely stringless, rich golden color, buttery flavor, while as a shell bean for winter use it has few or no superiors.....

.....Pkt. 5c; $\frac{1}{2}$ lb. 10c; 1 lb. 15c; 2 lbs. 25c

Crystal White Wax—The long, round pods are greenish white, transparent, entirely stringless, crisp, tender and very slow to harden.....Pkt. 5c; $\frac{1}{2}$ lb. 10c; 1 lb. 15c

Wardwell's Early Kidney Wax—One of the earliest, hardiest and most productive of all Wax Beans. Is almost entirely free from rust and spots. The pods are long and showy, very tender, stringless, of excellent quality.....

.....Pkt. 5c; $\frac{1}{2}$ lb. 10c; 1 lb. 15c; 2 lbs. 25c

BUSH LIMA BEANS.

Burpee's Bush Lima—A bush form of the true large-Lima. Plants uniformly dwarf, bearing very abundantly.....

.....Pkt. 5c; ½ lb. 10c; 1 lb. 15c

Henderson's Bush Lima—Seed smaller, earlier and more prolific.....

.....Pkt. 5c; ½ lb. 10c; 1 lb. 15c

POLE OR RUNNING BEANS.

Plant in hills three feet apart, three or four beans to hill, and place poles for the vines to climb.

King of the Garden or Large Pole Lima—

A great favorite with market gardeners on account of its large pods and its productiveness.....Pkt. 5c; 1 lb. 15c; 2 lbs. 25c

Lazy Wife—This sort is popular in many localities. As its name indicates, a handful of choice, stringless pods at a single grab. The pods are broad, thick, very fleshy and entirely stringless, and possess a rich buttery flavor when cooked. The beans are white and make a very good dry bean for winter use; may be grown either on poles or on corn.....Pkt. 5c; 1 lb. 15c; 2 lbs. 25c

Cut Short or Corn Hill—The old reliable corn-hill bean. There are no new varieties that surpass this. Beans oblong, white, usually covered with dark spots.....

.....Pkt. 5c; 1 lb. 15c; 2 lbs. 25c

BEETS

Eclipse.

One ounce to fifty feet of drill; five to six pounds to the acre. Sow in drills fifteen inches apart, one and one-half inches deep. As the plants grow, thin to six inches in the row; if thinning is neglected the young plants make excellent greens.

Extra Early Egyptian—Earliest beet in cultivation; staple market sort; dark blood red...Pkt. 5c; 1 oz. 10c; ¼ lb. 15c; 1 lb. 50c

Crosby's Improved Egyptian—An improved strain of the Egyptian Beet, specially recommended as an extra early sort; it is much thicker than the original strain, of better color and quality, besides being smoother

....Pkt. 5c; 1 oz. 10c; ¼ lb. 20c; 1 lb. 50c

Eclipse—Has become exceedingly popular, and is one of the earliest sorts. It possesses all the qualities requisite in a first-class beet, and is of a uniform, globular shape. The roots are a bright, glossy red, fine-grained and delicious.....

....Pkt. 5c; 1 oz. 10c; ¼ lb. 20c; 1 lb. 50c

Edmund's Blood Turnip—Handsome; turnip-shaped; skin-deep blood red; flesh dark and sweet; good, marketable size; matures early..Pkt. 5c; 1 oz. 10c; ¼ lb. 20c; 1 lb. 50c

Swiss Chard or Silver Beet—Greens for boiling are always acceptable. Spinach can not always be had, and often is tough and stringy. The Silver Beet, on the other hand, is in season from early spring until autumn frost, and is infinitely superior as a vegetable to Spinach, Turnip tops, or other greens. Its culture is precisely the same as for the ordinary table beet.....

....Pkt. 5c; 1 oz. 10c; ¼ lb. 20c; 1 lb. 50c

FREE—GIVEN AWAY!

The Best Thing Out—Landreth's new book of 200 pages, 999 questions and answers on gardening subjects. The information it contains is valuable beyond comparison. Contains most useful records of practical experience in the field. To purchasers of vegetable seeds to the amount of \$5 and over we will present one of these valuable books.

Mangel Wurzels and Sugar Beets—The value of these for stock feeding cannot be overestimated. Five to six pounds of seeds are required per acre.

Golden Tankard—A very valuable variety of fine form and very sweet flavor; bright yellow in color.....

.....1 lb. 30c; 5 lbs. or more at 25c

Mammoth Long Red Mangel Wurzel—

.....1 lb. 30c; 5 lbs. at 25c

Silesian Sugar—This form of beet, of which sugar is made, is rapidly growing in favor in this country as a most valuable winter food for stock of all descriptions. Fifteen to twenty tons can be grown to the

acre under favorable conditions.....
1 lb. 35c; 5 lbs. at 30c

BORECOLE OR KALE.

Sown in autumn for sprouts.....
Pkt. 5c; 1 oz. 10c; ¼ lb. 25c

BROCCOLI.

Growth and habit like cauliflower.....
Pkt. 10c; 1 oz. 40c

BRUSSELS SPROUTS.

A variety of the cabbage family.....
Pkt. 5c; 1 oz. 20c

CAULIFLOWER.

One-half ounce of seeds sows 100 yards of row and gives about 2,000 plants. Treatment same as cabbage, except requiring extra rich soil and frequent watering, especially when heading.

Cauliflower Plants ready May 1st....
Doz. 15c; 100 \$1.00; 1,000 \$7.00

Early Snowball—A variety of widest celebrity by reason of its reliable productiveness, flavor and keeping qualities. No stock of seed under any name, or at any price, is better than the strain here offered.
Pkts. 10c and 25c; 1 oz. \$3.00

Large Late Algiers—One of the best late varieties.....Pkt. 10c; 1 oz. \$1.00

CARROTS.

Three ounces of seed to 100 yards of row, four pounds to acre. Drill in rows of fifteen inches for hand culture, or two and a half feet for field culture, and when two inches high thin to four inches apart.

Early French Forcing—Stump-rooted, about two inches in length; popular forcing variety.....
Pkt. 5c; 1 oz. 10c; ¼ lb. 25c; 1 lb. 75c

Chantenay—One of the most perfect and uniform in shape, smooth, heavy yielder and of fine table qualities. It grows five or six inches long; is fine in texture and easily dug; the flesh is of a beautiful deep orange, tender and of excellent flavor. One of the very best for table and market use.....
Pkt. 5c; oz. 10c; lb. 65c

Improved Danvers Half-Long—The top is small, color a rich shade of orange, shape handsome and smooth, quality the very best. It is equally valuable to grow for feeding stock, being well adapted to all soils....
Pkt. 5c; 1 oz. 10c; ¼ lb. 20c; 1 lb. 65c

Ox-Heart or Guerande—Top shaped; color orange red; tender, flavor excellent....
Pkt. 5c; 1 oz. 10c; ¼ lb. 20c; 1 lb. 50c

Long Orange—Pkt. 5c; 1 oz. 10c; 1 lb. 50c

Large Yellow Belgian—For feeding stock; a heavy yielder.....
Pkt. 5c; 1 oz. 10c; ¼ lb. 20c; 1 lb. 40c

CABBAGE

One ounce will produce 1,500 to 2,000 plants. For early use sow seeds of the early sorts in hotbeds or boxes in February or March; transplant when the weather will permit. Sow seeds of winter sorts early in May. Early varieties may be transplanted from eighteen inches to two feet apart each way, and the late sorts from two and one-half to three and one-half feet, varying with size. Cabbage requires good soil and plenty of water.

CABBAGE PLANTS.

Ready April 1st. We have all the popular early and late varieties.....
Per doz. 10c; 100 50c; 1,000 \$4.00

Early Winningstadt—One of the surest headers grown; cone-shaped and remarkably hard and solid; desirable for both early and late; exceedingly good keeper. The best cabbage for the West. Used by all our market gardeners.....
 ..Pkt. 5c; 1 oz. 15c; ¼ lb. 40c; 1 lb. \$1.50

Select Very Early Jersey Wakefield—The most widely cultivated of the early cabbages. Short-stemmed, head cone-shaped.....
 ..Pkt. 5c; 1 oz. 15c; ¼ lb. 40c; 1 lb. \$1.50

Early Dwarf Flat Dutch.....
 ..Pkt. 5c; 1 oz. 15c; ¼ lb. 40c; 1 lb. \$1.50

Hollander or Danish Ballhead Cabbage—This distinct variety has become very popular, both on account of its uniformity in heading and from the character of the heads, which are extremely hard and solid. For planting late in the spring for a fall crop for winter use this has few equals, as it seems able to withstand drought and succeed in poor soil better than our American sorts. The growth is usually tall with stout stalks; heads round in form, eight to ten inches in diameter, and very solid; few outer leaves and these folded closely about the heads. The heads keep excellently through the winter when buried, coming out quite solid in the spring.....
 ..Pkt. 5c; 1 oz. 20c; ¼ lb. 60c; 1 lb. \$2.00

Surehead—Produces large, round, flattened heads, of the Flat Dutch type, and is remarkable for its certainty to head. It is the very best cabbage for main crops. It is uniform, very hard, firm and fine in texture, and ordinarily weighs from ten to fifteen pounds each. It is very sweet flavored, has scarcely any loose leaves, keeps well, is good for shipping, and is just the variety and quality to suit market gardeners, farmers and all lovers of good cabbage.....
Pkt. 5c; oz. 15c; ¼ lb. 40c; 1 lb. \$1.50

Premium Large Late Flat Dutch—.....
 ..Pkt. 5c; 1 oz. 15c; ¼ lb. 40c; 1 lb. \$1.50

Red Dutch Early—Used in pickling; head large and flat. color red to purple.....
Pkt. 5c; 1 oz. 20c

CELERY

Golden Self-Bleaching—A general favorite with Denver gardeners. The appearance of the plant is beautiful—compact growth and straight, vigorous stalks, crisp and of delicious flavor. The heart is large, solid and of a beautiful rich, golden yellow color.
Pkt. 5c; 1 oz. 25c; ¼ lb. 75c



Giant Pascal.

Giant Pascal—One of the best for winter use. Has the rich, nutty flavor peculiar to the Golden Self-Blanching; stringless, heart rich, bright yellow. It blanches very easily and is the best keeper of any variety.....
Pkt. 5c; 1 oz. 20c; ¼ lb. 50c

White Plume—Very early and extensively grown for market.....
Pkt. 5c; 1 oz. 20c; ¼ lb. 60c

Celeriac or Turnip-Rooted—A variety forming a large, solid root of edible character.....Pkt. 5c; 1 oz. 20c

CUCUMBERS

Two or three pounds of seed to an acre. Plant eight seeds to the hill, four to six feet apart, one-half inch deep, soon as weather is settled and warm, hoe often, and when out of danger from insects, thin to four plants to the hill. June is time to sow for pickling.

Early Frame or Short Green—Vines are very vigorous and productive; fruit straight, smaller at each end; crisp, tender flesh; excellent for pickles.....
Pkt. 5c; 1 oz. 15c; 1 lb. \$1.75

Boston Pickling, or Early Green Prolific.

Jersey Pickling.

Chicago Pickling.

The favorite pickling sorts in their several localities.

Denver gardeners prefer the Boston Pickling.....Pkt. 5c; 1 oz. 15c; 1 lb. \$1.75

White Spine Improved—A favorite for slicing and marketing; six to eight inches long, two to three inches in diameter; handsome fruit, light green, with a few white spines; flesh crisp, fine flavor; largely grown for forcing....Pkt. 5c; 1 oz. 15c; 1 lb. \$1.75

Thornburn Ever-Bearing—Small size, early and enormously productive.....
Pkt. 5c; 1 oz. 15c; 1 lb. \$1.75

Improved Long Green—Fruit long and crisp; good for pickling and market....
Pkt. 5c; 1 oz. 15c; 1 lb. \$1.75

New Japanese Climbing Cucumber—Is the best addition to our list in a long time, especially for a small garden, as a row ten or fifteen feet long, grown on chicken wire, or any support about six feet high, will supply an ordinary family....Pkt. 5c; 1 oz. 15c

CORN

SWEET OR SUGAR.

Extra Early Adams—Not true sugar; the earliest corn grown; ready for use in sixty days; height of stalk, three to four feet; can be planted earlier than the sugar varieties.
Pkt. 5c; ½ lb. 10c; 1 lb. 15c; 2 lbs. 25c

Early White Cory—The earliest in cultivation; the ears are fair-sized; quality very fine..Pkt. 5c; ½ lb. 10c; 1 lb. 15c; 2 lbs. 25c

Early Mammoth White Cory—A decided improvement over both the popular White and Red Cory. The ears are twelve-rowed, fully twice the size of the old Cory, white-cobbed and covered with very large, white grains of extra quality.....
 ..Pkt. 5c; ½ lb. 10c; 1 lb. 15c; 2 lbs. 25c

Extra Early Minnesota—One of the desirable early sorts; very productive and of excellent quality; rather dwarf habit.....

..Pkt. 5c; 1/2 lb. 10c; 1 lb. 15c; 2 lbs. 25c

Perry's Hybrid—A very fine early twelve-rowed variety, fully as early as Minnesota, and ears much larger; dwarf in habit; sweet and tender

..Pkt. 5c; 1/2 lb. 10c; 1 lb. 15c; 2 lbs. 25c

Country Gentleman—Late; ears large; of delicious quality; very productive.....

..Pkt. 5c; 1/2 lb. 10c; 1 lb. 15c; 2 lbs. 25c

Stowell's Evergreen—Used more generally than any other variety; one of the latest; sweet

..Pkt. 5c; 1/2 lb. 10c; 1 lb. 15c; 2 lbs. 25c

Black Mexican—Kernels bluish black; highly prized for table use; very sweet and delicious

..Pkt. 5c; 1/2 lb. 10c; 1 lb. 15c; 2 lbs. 25c

POP CORN.

White Pearl—.....Pkt. 5c; 1 lb. 15c

White Rice—.....Pkt. 5c; 1 lb. 15c

Queen's Golden—.....Pkt. 5c; 1 lb. 15c

CRESS, OR PEPPERGRASS.

A well-known salad plant. Sow rather thickly in shallow drills about ten inches apart at intervals during the season; can be used alone or mixed with mustard or lettuce.

Double Curled—The best variety.....

.....Pkt. 5c; 1 oz. 10c

Water Cress—Should be sown near the edge of a running stream. A perennial aquatic.....

.....Pkt. 5c; 1 oz. 40c

CHIVES.

Belongs to the onion family; used for flavoring soups and salads.....

.....Roots, per bunch, 15c; two for 25c

Corn Salad or Fetticus—Pkt. 5c; 1 oz. 10c

EGG PLANT.

Sow seeds in February in hotbeds or in boxes in the house; transplant to two and one-half feet each way in good soil after all danger from frost.

New York Improved—...Pkt. 5c; 1 oz. 35c

Thornless—Large round purple.....

.....Pkt. 5c; 1 oz. 40c

ENDIVE.

Green Curled—A desirable salad when blanched.....

.....Pkt. 5c; 1 oz. 10c

White Curled—A delicate variety of white tint

.....Pkt. 5c; 1 oz. 10c

GARLIC.

The Garlic is the most pungent of all the onion family. It is much used in the south

of Europe. The root or bulb is composed of many small bulbs called "cloves," which are planted in the spring six to eight inches apart and in August the tops will die, when the bulbs are ready to gather. They do best in light, rich soil. Large bulbs, lb. 30c; 3 lbs. for 80c, postpaid. Small bulblets, 40c per lb., postpaid. Write for prices on large lots.

GOURDS.

Mixed Varieties—Nest Egg, Dipper, Dish-cloth, Hercules Club, orange and green and yellow striped. Pkt. 5c each; mixed, 1 oz. 35c

KOHL RABI.

Early White Vienna—...Pkt. 5c; 1 oz. 20c

LEEK.

London Flag—Hardy and of good quality

.....Pkt. 5c; 1 oz. 15c

LETTUCE



For successive crops, sowing may be made in the open ground as early as the spring opens, and continuing until July. Always thin out well, or the plants will not be strong. When wanted as a cut salad sow the seed thickly in rows or broadcast.

CURLED OR LOOSE LEAVED VARIETIES.

Black-Seeded Simpson—Grown more than any other variety for Denver market. Leaves are very large and form a compact mass rather than a distinct head; not quick to wilt; color, light green; much liked by market gardeners for forcing.....

.....Pkt. 5c; oz. 10c; lb. 80c

Simpson's Early Curled—One of the best early sorts for market or family use. All the leaves tend to produce a large, loose head. Leaves beautifully crimped, dark green, very tender and crisp. Recommended for general cultivation.....

.....Pkt. 5c; oz. 10c; lb. 80c

Grand Rapids Forcing Lettuce—It is of superior quality and beautiful appearance; a strong grower. It is also desirable for early sowing in open ground.....

.....Pkt. 5c; oz. 10c; lb. 80c

Cos—Vigorous, always heading, under the severest sun; remarkably fine. It should be in every garden....Pkt. 5c; 1 oz. 15c; lb. 80c

CABBAGE OR HEADING VARIETIES.

Denver Market Lettuce—New, distinct variety, good for forcing or open ground; forms large, solid heads of a good, light green color. The leaves are beautifully marked and blistered (like the Savoy Cabbage).Pkt. 5c; 1 oz. 15c; ¼ lb. 25c; 1 lb. 80c

Hanson—(Improved Hard Heading Stock.) We can recommend this as one of the very best; heads green outside and white within; grows to a remarkable size, very solid and is deliciously sweet, crisp and tender. It withstands the hot sun.....

.....Pkt. 5c; 1 oz. 15c; 1 lb. 80c

Early Prize Head—It forms a mammoth head and remains tender and crisp throughout the season; is prompt to head, but slow to seed, of superior flavor and very hard. The leaves are very large, crimped, bright green tinged with brownish, red on edge..

.....Pkt. 5c; oz. 10c; lb. 80c

California Cream Butter—Solid heads of good size; medium early and slow to go to seed.....Pkt. 5c; 1 oz. 10c; lb. 80c

MELONS

MUSKMELONS.

One ounce for sixty hills, two or three pounds per acre; hills three to six feet apart each way; mix well in each hill before planting two shovelfuls of thoroughly rotted manure.

Rocky Ford—(True stock.) A cantaloupe of great celebrity grown at Rocky Ford, Colorado. Small in size, but of very superior flavor, rind well ribbed, flesh green with a line of gold just beneath the skin..

..Pkts. 5c and 10c; per oz. 15c; 1 lb. \$1.00

Emerald Gem—Small, extra early; smooth-ribbed, dark green skin and orange flesh, very sweet.....Pkt. 5c; 1 oz. 10c; 1 lb. 60c

Osage or **Miller's Cream**—Cocoanut shaped; yellow flesh, light green, netted skin..Pkt. 5c; 1 oz. 10c; ¼ lb. 20c; 1 lb. 60c

The Banquet—The flesh is a dark, rich salmon color, uniformly thick, and of granulated character; perfectly round shape. The skin is not ribbed, but is densely netted over its entire surface....Pkt. 5c; oz. 10c; lb. 60c

Hackensack, or Turk's Cap—This is a favorite New York market variety. Fruits are

of good size, round, heavily ribbed and netted; hardy and productive, with thick, firm, green flesh, of excellent flavor. Pkt. 5c; oz. 10c; lb. 60c.

WATERMELONS.

One ounce for thirty hills, four to five pounds per acre. Treatment same as for muskmelons, only hills should be six to eight feet apart, eight seeds to the hill, and thin to best three plants.

Rocky Ford—One of the best; medium long, dark skin, with white seed, and light red flesh, and of a most delicious flavor..

....Pkt. 5c; 1 oz. 10c; ¼ lb. 25c; 1 lb. 80c

Kleckley Sweet—An improved strain of the Rocky Ford. Large oblong melon, twenty inches in length by ten to twelve inches in diameter, somewhat tapering at the ends. The skin is dark green, flesh bright scarlet, ripening close to the skin, the rind being only about one-half inch in thickness. Seeds white, lying close to the rind, leaving a large solid heart which does not crack open when ripe. The scarlet flesh is sweet and sugary and is of such texture that it leaves no strings of pulp whatever in eating.....Pkt. 5c; oz. 10c; lb. 80c

Ice Cream—Flesh red and solid, crisp and delicious flavor; form oblong, seeds white

.....Pkt. 5c; 1 oz. 10c; 1 lb. 60c

Seminole—Very early, and desirable in every way.....Pkt. 5c; 1 oz. 10c; 1 lb. 60c

Black Diamond—Grows the largest melons and more of them than any melon we have. Average weight is about 80 lbs.; color almost black; good shipper; very like the Kolb Gem.....Pkt. 5c; oz. 10c; lb. 60c.

Kolb Gem—Vines of medium size, but remarkably vigorous and healthy. Fruit of the largest size, round or slightly oval, marked with irregular mottled stripes of dark and very light green in sharp contrast, which gives it a bright and attractive appearance. Flesh bright red, extending to within half an inch of the rind; always solid, very firm, a little coarse, but sweet and tender; an excellent keeper.....

.....Pkt. 5c; oz. 10c; lb. 60c

MUSHROOM SPAWN

Mushrooms may be grown in a warm cellar or shed in winter, or in the open air in summer. Take partially dry, fresh horse manure and lay it in a heap to ferment; turn and mix well every few days; and when well and equally fermented, which will be in from ten to fifteen days, it may be made into a bed four feet wide and about two feet deep, mixing it well together, and beating or treading it firmly. As soon as the temperature of the bed falls from seventy-five to fifty degrees, the spawn may be inserted in pieces about the size of a wal-

nut about two inches deep and six inches apart. Cover with loamy soil about two inches deep, and beat it down evenly and firmly. Finish off with a covering of clean straw or hay, about a foot thick to protect from heavy rains. Water, when necessary, with lukewarm water, and expect mushrooms in from four to six weeks. They can also be raised in pots, boxes, or, in fact, anything capable of keeping the material together, and placed in a cellar, closet, greenhouse, or graperly.

French Spawn—.....3-lb. box 65c
 English Miltrack Spawn—.....Lb. 20c

MUSTARD.

White English—Best for salads or medicinal purposes
Pkt. 5c; 1 oz. 10c; ¼ lb. 20c; 1 lb. 50c

Southern Giant Curled—The true curled-leaf variety so popular in the South for planting in the fall to furnish an early spring salad.....Pkt. 5c; oz. 10c; ¼ lb. 25c; lb. 75c

NASTURTIUM.

Nasturtiums of all varieties are useful for furnishing tender seed-pods which make delicious pickles. The seeds for pickling should be gathered while green and with a portion of the stem attached. Pick them over and place in a jar until filled; then cover them with cider vinegar, which has been brought to the boil and is still warm, to keep for winter use.

Tall Mixed—Pkt. 5c; oz. 10c; 2 oz. 15c; ¼ lb. 25c; lb. 70c, postpaid.

ONIONS

Sow in rich, sandy soil, in drills one foot apart, as soon as the ground can be worked in spring. Thin to three or four inches, using the rake and hoe frequently to keep down the weeds.

Extra Early Red—Deep red in color; flat, medium size; good yielder and an excellent keeper

Pkt. 5c; 1 oz. 15c; 1 lb. \$1.00; 10 lbs. \$8.50

Extra Fine Large Red Wethersfield Onion—This is the most popular standard variety for winter market in many northern states. It is not an early ripening sort, as it continues in growth throughout the season, and consequently makes very large onions. Continued selection of bulbs planted for seed gives us a small-necked sure-ripening strain, entirely free from scallions or thick-necks. Though well flattened, the solid onions are thick through, as shown in the photograph thick through. This onion, shown natural

size, weighed exactly six ounces. The outer skin is a deep rich purplish red, smooth and glossy; flesh white, lightly tinged with pinkish rose. The magnificent large solid onions are nearly as mild in flavor as many varieties with skin of lighter coloring. Its splendid keeping qualities make it easy to hold crops for late winter markets.....

Pkt. 5c; 1 oz. 15c; 1 lb. \$1.00; 10 lbs. \$8.50

Yellow Globe Danvers—Popular in Denver markets; an excellent variety; mild flavor and very productive; ripens early and a good keeper.....Pkt. 5c; 1 oz. 15c; 1 lb. \$1.00

Yellow Flat Danvers—A flat form, of good keeping qualities.....
Pkt. 5c; 1 oz. 15c; 1 lb. \$1.00

The Prize Taker or Yellow Globe SpanishPkt. 5c; 1 oz. 15c; 1 lb. \$1.00

Australian Brown Onion—A new, medium-sized, wonderfully hard and solid variety of onion, and one which is quite attractive for the market, both in form and color. They are extremely early in ripening, and produce a crop of fine bulbs which are very uniform in size. Color is a peculiarly clear amber-brown, quite distinct from any other variety. In keeping qualities it exceeds any other variety known to us.....
Pkt. 5c; 1 oz. 15c; 1 lb. \$1.00



Extra Early Barletta.

Extra Early Barletta—A small, white, Italian sort; the earliest of all, and best for picklingPkt. 5c;

1 oz. 20c; 2 oz. 35c; ¼ lb. 65c; 1 lb. \$2.25

Mammoth Silver King—The skin is a beautiful silvery white; the flesh is snowy white, and of a particularly mild and pleasant flavor; matures early and is of uniformly large size.....

...Pkt. 5c; 1 oz. 20c; ¼ lb. 50c; 1 lb. \$1.75

Silver Skin—The early, flat, white variety; used for an early onion; its mild flavor makes it especially desirable.....
.....Pkt. 5c; 1 oz. 15c; 1 lb. \$2.00

CHOICE ONION SETS

for early green onions.

Yellow Onion Sets—.....Qt. 15c; bu. \$2.50

Red Onion Sets—.....Qt. 15c; bu. \$2.50

White Onion Sets—.....Qt. 15c; bu. \$3.00

White English Multiplier—.....Qt. 20c

OKRA, OR GUMBO.

One ounce will plant one hundred hills. The long pods, when young, are used in soups, stews, etc. It is of the easiest culture and grows freely, bearing abundantly in any garden. Sow seed in open ground after all danger from frost is over.

White Velvet—Superior flavor and tenderness..Pkt. 5c; 1 oz. 10c; ¼ lb. 20c; 1 lb. 60c

Long Green Pod—.....
.....Pkt. 5c; 1 oz. 10c; ¼ lb. 20c; 1 lb. 60c

PARSLEY.

Used for garnishing and seasoning soups, meats, etc. Sow thickly early in April, in rows one foot apart and one-half inch deep; thin out the plants to stand six inches apart in the rows. The seed is slow of germination, taking from three to four weeks to make its appearance. To assist its coming up quicker, soak the seed a few hours in warm water, or sprout in damp earth and sow when it swells or bursts. For winter use, protect in a frame or light cellar.

Extra Curled Dwarf or Emerald Parsley—This is a most beautiful and valuable variety; the moss-like leaves, of a handsome, bright green color, are finely crimped and curled. For garnishing no variety is more attractive.....Pkt. 5c; 1 oz. 15c; ¼ lb. 30c

Turnip-Rooted, or Hamburg—The edible portion is the fleshy root, which resembles a small parsnip, and is highly esteemed for flavoring soups, stews, etc.....
.....Pkt. 5c; 1 oz. 15c; ¼ lb. 25c

PARSNIPS.

Three ounces of seed to 100 yards of row; eight pounds to the acre. The parsnip is a delicious table vegetable, and is famous in some districts as a food for swine. Sow in shallow drills in good ground, deeply dug; cover the seeds lightly. When the plants are up two or three inches, thin them to stand four inches asunder. Yield 300 to 700 bushels. They are improved by frost, and it is usual to take up in the fall a certain quantity for winter use, leaving the rest in the ground until spring for use.

Hollow Crown—The best bred and hand-somest parsnip to be found. It is half long,

wedge-shaped, hollow crowned and very broad at the shoulders, easily taken out of the ground, and producing more tons to the acre than the longer and slimmer varieties.....Pkt. 5c; 1 oz. 10c; 1 lb. 50c

PUMPKIN.

Culture in the same manner as melons and cucumbers. Avoid planting them near other vines.

Large Cheese—Flat; one of the best varieties for family use.....
.....Pkt. 5c; 1 oz. 10c; 1 lb. 50c

Mammoth Tours, or Jumbo.....
.....Pkt. 5c; 1 oz. 10c; ¼ lb. 30c; 1 lb. 60c

Tennessee Sweet Potato—Bell-shaped; thick, white flesh; fine for pies.....
.....Pkt. 5c; ¼ lb. 20c; 1 lb. 60c

Early Sugar—Fine grained, sweet and prolific...Pkt. 5c; 1 oz. 10c; ¼ lb. 20c; 1 lb. 60c

Connecticut Field—Largely grown for feeding stock.....
.....Pkt. 5c; 1 oz. 10c; ¼ lb. 15c; 1 lb. 40c

PEAS

In drills, one pound for thirty-five feet, seventy-five to ninety-five pounds for an acre. The pea will endure cold, frosty weather without harm, and may therefore be sown very early in the spring. Sow the dwarf varieties, that do not grow over fifteen inches high, in rows two feet apart; those varieties that attain the height of two or three feet, in rows three feet apart, and the latest four feet apart. The dwarf varieties should be liberally manured; the tall sorts will run too much to vine if too freely manured; bush the tall kinds when six inches high.

EXTRA EARLY AND MEDIUM PEAS.

Alaska—This is a blue pea, the earliest on the list, most popular with Denver gardeners for first planting; pods of dark green color, well filled, often seven to nine peas to the pod, of good flavor; height, two feet..
..Pkt. 5c; 1 lb. 15c; 2 lbs. 25c; 10 lbs. \$1.00

THOMAS LAXTON PEA.

A new variety of large-podded pea. The plant is a very hardy and strong grower, producing extra large size pods in abundance. The quality is delicious, and cannot be surpassed by any other variety. The "Thomas Laxton" will mature nearly as early as any of the extra early smooth Peas, and being a wrinkled sort is much sweeter. When this variety is thoroughly introduced it will command equal attention with "Gradus," which has been the leading variety for several years past.....
.....Pkt. 5c; 1 lb. 25c; 10 lbs. \$1.75

Gradus, or Prosperity—This fine, extra early combines the finest quality with extreme earliness, and is also very productive. It is very hardy, and can be planted fully as early as the smooth peas; grows vigorous and healthy; vines 3 feet in height, and is very prolific, bearing pods fully as large as Telephone. The color of the shelled peas is a beautiful light green, which color they retain after being cooked; the quality and flavor is delicious, and the peas remain tender and sweet for a long time. Pkt. 5c; lb. 25c; 10 lbs. \$2.00

Chelsea Pea—It grows about 15 inches in height and is of compact, short-jointed habit, thus requiring no brushing or staking. The pods are remarkably handsome, being gracefully curved and much longer than any other early dwarf kind. They are well filled, each containing 8 to 10 good-sized wrinkled peas of exquisite quality, which, when cooked, are rich, sugary, and of marrowlike flavor Pkt. 5c; lb. 25c

First and Best—The best-flavored extra early pea offered. It is a smooth, white pea, very prolific and profitable to market gardeners. . . . Pkts. 5c and 10c; 1 lb. 15c; 2 lbs. 25c

American Wonder—Height, twelve inches; the most popular of all the early dwarf wrinkled sorts. Pkts. 5c and 10c; 1 lb. 15c; 2 lbs. 25c

Nott's Excelsior—One of the best of recent introduction; an improvement on American wonder, being more vigorous and prolific, with larger pods and more peas; height, one foot Pkts. 5c and 10c; 1 lb. 15c; 2 lbs. 25c

Carter's New Daisy Pea—Height, sixteen inches. A new second-early or main crop variety, of dwarf growth and wonderful productivity; the pods average from five to five and one-half inches in length, well filled, with seven to nine very large peas of excellent flavor. Pkt. 10c; 1 lb. 20c; 2 lbs. 35c

Heroine—A medium early green wrinkled pea; and one of the best recent introduction; large, curved, showy pods; an immense cropper; peas of finest quality; height two to two and one-half feet. Pkts. 5c and 10c; 1 lb. 15c; 2 lbs. 25c

Yorkshire Hero, or Dwarf Champion—Two to three feet; a very popular variety; prolific and fine flavor; seed green and wrinkled Pkts. 5c and 10c; 1 lb. 15c; 2 lbs. 25c; 10 lbs. \$1.00

McLean's Little Gem—Height 14 inches; an early green wrinkled variety; excellent quality; one of the very best for family use Pkt. 5c; lb. 15c; 2 lbs. 25c

Everbearing—A first-class pea for summer and autumn use; pods 3 to 4 inches long,

and contain 6 to 8 peas of a rich flavor; very sweet and tender; 2 feet. Pkt. 5c; lb. 15c; 2 lbs. 25c

Abundance—Pods containing 6 to 8 large wrinkled peas of excellent quality. It ripens about one week after the earliest kinds. A feature of this variety is its remarkable tendency to branch out at the roots, and for this reason the seed should be planted thinly; height 1½ feet. Pkt. 5c; lb. 15c; 2 lbs. 25c

LATE SORTS.

Improved Stratagem—All the good qualities of the old Stratagem are highly developed; vine medium height, but very stocky, and bearing an abundance of large, handsome pods; one of the best peas now on the market for those who want large showy pods and peas without any sacrifice in quality. Pkt. 5c; lb. 15c; 2 lbs. 25c

Telephone—A tall wrinkled marrow, very productive and of the best quality, with long pods containing from 7 to 10 very fine flavored peas; height about 4 feet. Pkt. 5c; lb. 15c; 2 lbs. 25c

Champion of England—A standard sort; popular in all markets; productive, high flavor; seeds wrinkled; 5 feet high. Pkt. 5c; lb. 15c; 2 lbs. 25c

Large White Marrowfat—A favorite sort; grows about 6 feet high. Pkt. 5c; lb. 15c; 10 lbs. 75c

Black-Eyed Marrowfat—A favorite variety; grows about 5 feet high. Pkt. 5c; lb. 15c; 10 lbs. 75c

PEPPER.

Should be started in hotbeds and transplanted to open ground when weather is favorable, in warm, mellow soil, in rows eighteen inches apart.

Sweet Spanish—Large, mild; used for salad and pickling. Pkt. 5c; ½ oz. 15c; 1 oz. 25c

Large Bell or Bull Nose—Large and of mild flavor. Pkt. 5c; ½ oz. 15c; 1 oz. 25c

Cayenne—Fruit three inches in length and slender; very hot. Pkt. 5c; 1 oz. 25c

Celestial—A Chinese pepper. At first the fruit is yellow, and when fully matured becomes a deep scarlet. Pkt. 5c; ½ oz. 15c; 1 oz. 25c

RADISHES

One ounce for one hundred feet of drill. Thrives best in a light, sandy loam. For a successive supply sow from middle of March to September, at intervals of two or three weeks. For an early supply sow in hotbeds

in February; ventilate well or they will run to leaves.

Early Scarlet, White Tipped, Turnip Rooted—Very attractive, quick-growing variety Pkt. 5c; 1 oz. 10c; ¼ lb. 20c; 1 lb. 60c



Early Scarlet White Tip Turnip Radish.

Non Plus Ultra—This is one of the finest forcing radishes introduced, and has already taken a leading place with our market gardeners. It will mature in 18 to 20 days, and owing to the extremely small tops can be sown very thickly. The roots are round, with a scarlet-colored skin, the flesh white, very crisp and tender. Pkt. 5c; 1 oz. 10c; 1 lb. 60c

Rosy Gem—Similar to Scarlet Turnip, White Tip. Its shape is perfectly globular, with rich, deep scarlet top, blending into pure white at the bottom; exceedingly tender; desirable for either the market or home garden Pkt. 5c; 1 oz. 10c; ¼ lb. 20c; 1 lb. 60c

Early Scarlet Turnip—A standard early turnip variety, of quick growth. Pkt. 5c; 1 oz. 10c; 1 lb. 60c

French Breakfast—Very quick growth; oval form, bright scarlet, white tip. Pkt. 5c; 1 oz. 10c; ¼ lb. 20c; 1 lb. 60c

Long Scarlet, Short Top—..... Pkt. 5c; 1 oz. 10c; ¼ lb. 20c; 1 lb. 60c

Long White Lady Finger, or Vienna—Very beautiful in shape; skin and flesh are pure white. Pkt. 5c; 1 oz. 10c; ¼ lb. 20c; 1 lb. 60c

Chartier, or Long Rose—(Second Early.) A thick, solid variety; in color the greater length of the root is scarlet and pink, while the point and bottom portions are white. Pkt. 5c; 1 oz. 10c; ¼ lb. 20c; 1 lb. 60c

Cincinnati Market—(Glass Radish.) A selected strain of the Long Scarlet, growing

to slightly larger size, fully as early and darker in coloring. Pkt. 5c; 1 oz. 10c; ¼ lb. 20c; 1 lb. 60c

White Strasburg—Desirable summer variety; large and stands heat well. Pkt. 5c; 1 oz. 10c; ¼ lb. 20c; 1 lb. 60c

Chinese Rose Winter—Bright rose color, white flesh; excellent for winter use. Pkt. 5c; 1 oz. 10c; ¼ lb. 20c; 1 lb. 60c

Round Black Spanish—A winter radish, cultivated in autumn and keeping like a potato in good condition for months after harvesting Pkt. 5c; 1 oz. 10c; ¼ lb. 20c; 1 lb. 60c

RHUBARB.

The richer the soil and the deeper stirred the better. In the fall, trench a piece of ground and manure it well; then transplant the young plants into it three feet apart each way; cover with leaves or litter the first winter, and give a dressing of coarse manure every fall.

Victoria Giant—..... Pkt. 5c; 1 oz. 15c; ¼ lb. 50c

Rhubarb Roots—Strong roots, 15c each; \$1.50 per doz.; large quantity special price.

SALSIFY, OR OYSTER PLANT.

One ounce to 100 feet of drill. Sow early in spring, in drills twelve inches apart, one inch deep, and thin to six inches in the row; cultivate as for parsnips.

Mammoth Sandwich Island—This is the best variety grown; pure white and double the size of the common. Pkt. 5c; 1 oz. 15c; ¼ lb. 40c; 1 lb. \$1.50

SQUASH

Bush varieties, one ounce for fifty hills; running varieties, one ounce for twenty hills; four to five pounds to acre.

Summer Crookneck—Best summer squash; very early and productive; orange yellow Pkt. 5c; 1 oz. 10c; 1 lb. \$1.00

White Bush Scalloped—Early, flat, pure white, a favorite early sort. Pkt. 5c; 1 oz. 10c; 1 lb. \$1.00

New Giant, or Mammoth Summer Crookneck. This new squash is not only earlier than the common variety, but grows uniformly to twice the size, frequently over two feet long. Pkt. 5c; 1 oz. 10c; 1 lb. \$1.00

FALL AND WINTER SORTS.

Hubbard—The best winter squash. Pkt. 5c; 1 oz. 10c; 1 lb. \$1.25



WHITE BUSH SCALLOPED.

Golden Hubbard Squash—This is a very distinct sort of the shape and general character of the Hubbard, but a little smaller; earlier to mature and of a rich orange red color, instead of the dark olive green of the old Hubbard, while the flesh is a little deeper colored and fully as good quality.....

.....Pkt. 5c; 1 oz. 10c; 1 lb. \$1.25

Boston Marrow—Oval, bright orange; flesh yellow and fine.....

.....Pkt. 5c; 1 oz. 10c; 1 lb. \$1.00

Mammoth Chili—This is the "Jumbo" of the squash family. The quality is good and very nutritious. Pkt. 5c; 1 oz. 10c; 1 lb. \$1.00

Fordhook—Early, sweet and dry.....

.....Pkt. 5c; 1 oz. 10c

SPINACH.

One ounce for 100 feet of drill; ten pounds per acre. Very easily managed, requiring but little culture. The main crop is sown in September, and it is sometimes covered with straw in exposed places during the winter, which prevents it being cut with frost. For summer use it may be sown at intervals of two or three weeks from March to August. It is best when grown in rich soil.

New Victoria—Best of all new sorts for spring planting.....

....Pkt. 5c; 1 oz. 10c; ½ lb. 15c; 1 lb. 20c

Bloomsdale, or Norfolk Savoy-Leaved—Best for fall planting; curled and wrinkled, like a Savoy cabbage. It produces nearly twice the weight of crops as the ordinary sorts; hardiest of all the varieties of spinach... Pkt. 5c; 1 oz. 10c; ½ lb. 15c; 1 lb. 20c

Thick-Leaved Round Seed — Produces large, thick, dark green leaves, somewhat crumpled, and possesses the valuable quality of standing a long time.....

.....Pkt. 5c; 1 oz. 10c; 1 lb. 20c

Ever Ready—As early as any other sort

and continues in cutting condition three weeks longer than the latest.....

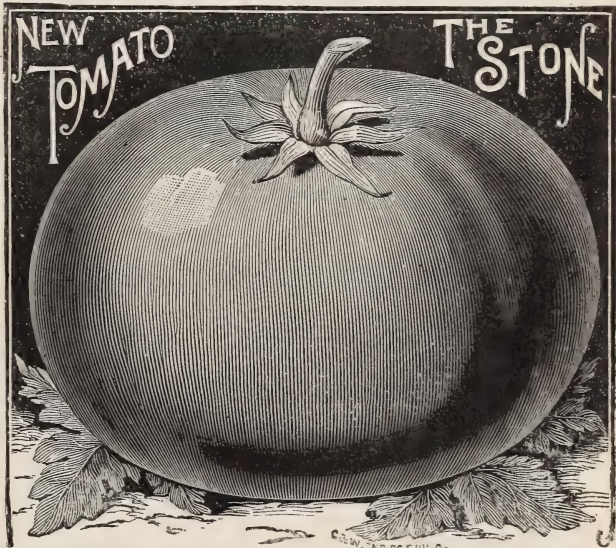
.....Pkt. 5c; 1 oz. 10c; 1 lb. 20c

SUNFLOWER.

Mammoth Russian—.....Pkt. 5c; 1 lb. 10c

TOMATO

One ounce for 1,500 plants; one quarter pound to transplant for an acre; sow in hot-beds during March; when the plants have four leaves, transplant into shallow boxes, setting them four or five inches apart; give plenty of air, and endeavor to secure a vigorous but steady and healthy growth, so that at time of setting in the open ground they will be strong and stocky; set out of doors as soon as danger from severe frost is over; transplant carefully and cultivate well as long as the vines will permit. The fruit is improved in quality if the vines are tied to a trellis or to stakes.



Beauty—The most popular tomato in Denver markets. Rich glossy crimson, with a slight purple tinge; grows in clusters of four to five; is of large size, very smooth and solid. Pkt. 5c; 1 oz. 20c; ¼ lb. 60c; 1 lb. \$2.00

Dwarf Champion—An early and distinct variety, medium in size, plant of dwarf and compact growth.....

..Pkt. 5c; 1 oz. 20c; ¼ lb. 65c; 1 lb. \$2.25

Perfection—Early, regular and productive red

...Pkt. 5c; 1 oz. 20c; ¼ lb. 60c; 1 lb. \$2.00

Favorite—Large, smooth, productive and a good shipper.....

...Pkt. 5c; 1 oz. 20c; ¼ lb. 60c; 1 lb. \$2.00

- Acme—Medium red, smooth and good.
...Pkt. 5c; 1 oz. 20c; ¼ lb. 60c; 1 lb. \$2.00
- Stone—Very large, perfectly smooth; fine bright scarlet.
...Pkt. 5c; 1 oz. 20c; ¼ lb. 60c; 1 lb. \$2.00
- Golden Queen—The best yellow tomato on the list; very smooth and good size.
.....Pkt. 5c; 1 oz. 30c
- Pear-Shaped Yellow—For preserves.
.....Pkt. 5c; 1 oz. 30c

TURNIPS

One ounce for 150 feet of drill; two pounds in drill for an acre. Commence sowing the early varieties in April, in drills from twelve to fifteen inches apart, and thin out early to six or nine inches in the rows. For a succession, sow at intervals of a fortnight, until the last week in July, from which time until the end of August sowing may be made for the fall and main crop.

Early White Egg—Most popular in Denver markets. A quick grower; perfectly smooth and nearly egg-shaped; pure white; firm and solid; grows about half out of the ground; small top and rough leaves; flesh very sweet and delicious.
.....Pkt. 5c; 1 oz. 10c; ¼ lb. 20c; 1 lb. 50c

Early White Flat Dutch (Strap-Leaf)—An early white-fleshed variety, of quick growth, mild flavor.
.....Pkt. 5c; oz. 10c; ¼ lb. 20c; lb. 50c

Extra Early Purple-Top Milan—Handsome appearance, somewhat flattened, white with purple top, flesh snow-white, fine-grained and delicate flavor.
.....Pkt. 5c; oz. 10c; ¼ lb. 25c; lb. 75c

Purple Top Strap Leaf—Very early; quick growing, fine flavor, and one of the most generally grown for main crop.
.....Pkt. 5c; 1 oz. 10c; 1 lb. 50c

Yellow Aberdeen, or Scotch Yellow—This is a highly approved cattle turnip attaining a large size.
.....Pkt. 5c; 1 oz. 10c; ¼ lb. 20c; 1 lb. 50c

RUTA-BAGA.

Skirving's Purple Top—Standard sort; a first rate variety for table or stock.
....Pkt. 5c; 1 oz. 10c; ¼ lb. 20c; 1 lb. 50c

SWEET, POT AND MEDIC- INAL HERBS

Culture—Herbs delight in a rich, mellow soil. Sow seeds early in spring in shallow drills, 1 foot apart; when up a few inches thin out to proper distance, or transplant.

They should be cut on a dry day just before they come into full blossom, tied in bunches and hung up or spread thinly on a floor where they can dry quickly.

- Anise.....Pkt. 5c; oz. 10c
- Balm.....Pkt. 5c; oz. 30c
- Basil, Sweet.....Pkt. 5c; oz. 20c
- Bene.....Pkt. 5c; oz. 10c
- Boneset.....Pkt. 10c; oz. 60c
- Borage.....Pkt. 5c; oz. 10c
- Caraway.....Pkt. 5c; oz. 10c
- Castor Oil Bean.....Pkt. 5c; oz. 15c
- Catnip.....Pkt. 10c; oz. 50c
- Coriander.....Pkt. 5c; oz. 10c
- Cumin.....Pkt. 5c; oz. 15c
- Dill.....Pkt. 5c; oz. 10c; ¼ lb. 25c
- Fennel, Sweet.....Pkt. 5c; oz. 10c
- Horehound.....Pkt. 5c; oz. 25c
- Lavender.....Pkt. 5c; oz. 20c
- Pennyroyal.....Pkt. 10c; oz. 75c
- Peppermint.....Pkt. 25c
- Rosemary.....Pkt. 5c; oz. 35c
- Rue.....Pkt. 5c; oz. 15c
- Saffron.....Pkt. 5c; oz. 10c
- Sage.....Pkt. 5c; oz. 15c; ¼ lb. 50c
- Savory, Summer.....Pkt. 5c; oz. 15c
- Savory, Winter.....Pkt. 5c; oz. 10c
- Sweet Marjoram (American).....
.....Pkt. 5c; oz. 30c; ¼ lb. \$1.00
- Sweet Marjoram (Imported).....
.....Pkt. 5c; oz. 20c; ¼ lb. 50c
- Tansy.....Pkt. 5c; oz. 30c
- Tarragon—Plants only, see offer below.
- Thyme, Broad-leaved English.....
.....Pkt. 10c; oz. 40c; ¼ lb. \$1.25
- Thyme, French Summer.....
.....Pkt. 5c; oz. 35c; ¼ lb. \$1.00
- Wormwood.....Pkt. 5c; oz. 30c

VEGETABLE PLANTS AND ROOTS

We grow large quantities of Vegetable Plants and Roots, and can supply all the varieties listed below in their proper season.

Plants of Cabbage, Cauliflower, Egg Plants, Pepper, Sweet Potato and Tomato, by mail, 15c per 100 extra.

Asparagus—Palmetto, strong roots, two years old.
20c per doz.; \$1.00 per 100; \$7.50 per 1,000

Cabbage Plants—Ready after April 1...
.....10c per doz.; 50c per 100

We grow all early and late varieties. Please specify in ordering what variety you wish. This also applies to all kinds of vegetable plants.

Cauliflower Plants (Hotbed) — Ready April 15.....15c per dozen; \$1.00 per 100

Celery Plants—Ready June 15.75c per 100

Chives—For flavoring.....
15c per clump; \$1.50 per doz.

Egg Plants—Ready in May and June (hot-house growth).....40c per doz.
 In 4-inch pots.....75c per doz.

Mint Roots.....10c and 15c per clump

Pepper Plants—Ready in May and June
15c per doz.; \$1.00 per 100

Rhubarb Roots—Strong roots, 15c each;
 \$1.50 per doz. Special price on large quantities.

Sweet Potato Plants—Ready in May and June. We are prepared for any large contract. Yellow Jersey, yellow Nansemond and red Nansemond.15c per doz.; 50c per 100

Tomato Plants—Ready in May and June; extra fine.....25c per doz.; \$2.00 per 100

Strawberry Plants—Ready in April and May; also September. \$1.00 per 100; large quantities special price.

MARKET GARDENERS

PLEASE NOTE—SEEDS BY EXPRESS C. O. D.

Market gardeners, as a rule, use larger quantities of Seeds, and are, therefore, entitled to lower prices than the ordinary planter. It is difficult to get at a uniform discount from prices in the catalogue, but a special price will be given on all purchases to market gardeners and those buying in large quantities. Such prices will corre-

spond very nearly to those issued by any reliable seed house. The seeds we here offer are intended to be only the best and true to name, and of good germinating qualities. Mail orders are solicited, which will have the best and prompt attention.

Ask for market gardeners' price list.

We are very desirous of making a specialty of all new varieties of vegetables of merit which are especially adapted to Colorado and the West, and would deem it a great favor if you will send us samples of seed of various vegetables or flowers which you have found to be especially good. We will catalogue these with your name attached, in our next issue, so people may correspond with you, and, by this interchange of ideas, we hope to have in the West only the very best and choicest vegetables and flowers obtainable. We already rank first in a great many things—let us rank first in this.



View of State Capitol Grounds, Denver, Showing the Beautiful Results from Using

OUR CAPITOL LAWN GRASS SEED

Sow Capitol Lawn Grass Seed and obtain a grassy carpet of unrivaled emerald in six weeks' time. It is the purest, cleanest, heaviest Lawn Grass Seed offered—no waiting six months for a lawn. The magnificent lawn around the State Capitol building was produced in six weeks' time with Capitol Lawn Seed, and no lawn in this locality is more universally admired. Also many of the finest lawns of Denver and surrounding cities testify to the quality of the seed sold under this brand.

Capitol Lawn Grass Seed is a special mixture composed of grasses which are adapted for the purpose of producing a lawn quickly; one which will stand abuse and retain that rich, green color and velvety appearance throughout the entire summer and fall.

In making up this mixture we are extremely careful to use only the very best quality seed, which has been thoroughly cleaned, the light seed and chaff having been blown out, thus securing a strictly high-grade mixture, and seed that will grow.

Quantity Required—A pound of this seed will sow a space ten by fifteen feet, or say 150 square feet. One pound goes one-third farther in seeding than blue grass alone, and a successful lawn is more certain.

Capitol Lawn Grass—No White Clover
1 lb. 25c; 5 lbs. \$1.00

Capitol Lawn Grass—Mixed with White Clover.....1 lb. 25c; 5 lbs. \$1.00
Kentucky Blue Grass—Fancy clean.....
1 lb. 20c; 6 lbs \$1.00
Kentucky Blue Grass—Choice.....
1 lb. 15c; 8 lbs. \$1.00
White Clover.....
 ..1 lb. 25c; larger quantities, special rates

HOW TO MAKE A GOOD LAWN.

Nothing adds more beauty and comfort to the home and surroundings than a well-made lawn. To accomplish this, three things are absolutely necessary—the proper preparation of the ground, the right kind of lawn seed, and careful and faithful watering.

First do the rough grading, and get the proper slope or level throughout; this is a very important part, as when once seeded the grade can not be changed. The ground must be well plowed or dug and harrowed or raked to secure thorough pulverization.

Unless the soil is already properly enriched, a liberal coat of old, fine manure or other fertilizer should be applied; this can be done before spading or plowing, or it can be done after; if the latter, care should be taken to mix it well with the soil to the depth of four to six inches with a fork or rake; avoid any straw or fresh manure, as it will do more harm than good.

Now make the ground as even and fine as possible. The condition of the ground to properly receive the seed can be bettered by rolling with a lawn roller or packing down firmly with a board one by two feet, nailed from the under side to a stick five feet long.

Sow by hand, carefully and evenly, of Capitol Lawn Grass Seed, one pound to 150 square feet; less can be used but it does not pay, as this amount insures a good, thick mat of grass, choking out the weeds and making a better protection to itself, also a quicker showing. Give the ground a light raking in order to cover the seed. Care should be taken not to cover the seed too deep, as by very slight covering a larger percentage of it will grow. Now put on a top dressing of old, fine manure to the depth of about one-half inch, pack down firmly with the roller or board, and the ground is ready to receive the water. Great care must be exercised in watering, using only a fine spray, as a stream of any force from the hose nozzle on a newly-made lawn will do much damage, making holes and bare spots in the lawn. Keep the ground constantly moist until the grass has made a good showing.

A lawn can be successfully made any time from April 1 to October 1; the quickest results are obtained through the hot months. Frequent rolling, making the soil more solid, is advantageous in producing a good lawn. If at any time the grass appears to need fertilizing, Odorless Lawn Fertilizer is a first-class article, easily and quickly applied, is lasting, and contains no weed seeds.

A WORD ABOUT COMMERCIAL FERTILIZERS FOR LAWNS.

We would never advise the use of stable or barnyard manures. These are rich in nutriment, it is true, but they are not only unsightly when spread over the surface of the lawn, but they are sure to fill the soil with all kinds of weeds, which, once introduced, are always difficult, and often impossible, to get rid of. Prevention is worth a pound of cure, and it will be found much easier to

keep weeds out of the lawn than it is to get rid of them when once established there. A chemical fertilizer does away with all danger of this kind, and is, besides, much more prompt and reliable in action.

Many in the market are worthless. They are simply made to sell. Some are good if used by persons having had experience with them, but in the hands of amateurs they often bring about unsatisfactory results. Others are reliable under all conditions, and one of the very best of these is our Evergreen Fertilizer. It produces a prompt effect. It brings about a healthy development, and is permanent in its results, because it is a real food, not simply a stimulant, as so many so-called "Fertilizers" are, whose use is followed by a reaction, which leaves the lawn in a deplorable condition.

FARM AND FIELD SEEDS

Space and the early issuance of this catalogue does not permit of permanent prices or particularly full descriptions. We carry in stock everything that one wants to plant on a farm and nothing except the choicest quality of everything.

OATS.

White Russian,
Lincoln,
Winter Turf.

RYE.

Spring Rye,
Fall or Winter.

WHEAT.

Spring,
Winter.

BARLEY.

Scotch,
Mansury,
Beardless.

SPELTZ

CORN

Pride of the North—
90 days,
White Australia,
Swadley,
Improved Leaming,
Colo. Yellow Dent.

CLOVERS.

Alfalfa,
Red Clover,
Mammoth Red,
Alsycy,
Crimson,
White.

Our prices to customers purchasing in 100 lb. or bag lots are as low as other's wholesale prices, quality considered. We would like to have you verify this by making a request for them when you get ready to plant. We want to convince you.



Makes Flowers Flourish

Flowers are like people. Their health depends upon their food. It must be *nourishing*, but not too rich to force growth and cause reaction. The one chemically correct flower food for house plants is

Walker's Excelsior Brand.

It has no odor whatever, and can be used dry or dissolved in water for sprinkling. Use it and your flowers will flourish and their health will last.

Small size (feeds 25 plants 6 months), 25c.; large size (enough for a year), 50c. Sent prepaid anywhere. With each package we send FREE the book, "How to Make the Window Garden a Success."

FOR HOUSE PLANTS.

SELECT LIST OF High-Grade Flower Seeds

The Most Popular Varieties and Such as are Best
Adapted to Western Climate and Conditions

WE DELIVER FREE to any postoffice, at prices quoted in this catalogue, all vegetable and flower seeds in packets, ounce and $\frac{1}{4}$ -pound. The purchaser must add 8 cents per pound (if to go by mail) for $\frac{1}{2}$ -pound and over on bulk seeds. A package of seeds or bulbs weighing four pounds or less can go by mail at 8 cents per pound. All 5-cent packets, 50 cents per dozen; 10-cent packets, \$1.00 per dozen.

ANTIRRHINUM, or SNAPDRAGON.

Hardy perennial; flowers from seed the first season; an old garden favorite with odd-shaped flowers, and pretty, spotted throats, deliciously fragrant; one of the most showy border plants, of easiest culture—the tall sorts yielding an abundance of fine cut flowers, while the dwarf sorts make the prettiest edgings.

- Tall Sorts—Two feet; mixed colors..... Pkt. 5c
- Dwarf Sorts—One foot; mixed colors.... Pkt. 5c
- New Tall Giant White..... Pkt. 10c
- New Tall Giant Yellow Queen..... Pkt. 10c
- New Tall Giant Bright Scarlet..... Pkt. 5c
- New Tall Giant Niobe, Garnet, White Throat—Very fine..... Pkt. 10c
- Mixed—The above four giant varieties. Pkt. 10c
- Queen of the North—..... Pkt. 5c

AQUILEGIA, OR COLUMBINE.

Very handsome, ornamental, hardy perennial plants, growing one to three feet high; of easy cultivation and bearing in profusion large flowers of novel shape and in great variety of color.

- Mixed Colors—Single and double.. Pkt. 5c
- Golden Spurred—(Chrysantha.) Beautiful long yellow-spurred flowers..... Pkt. 5c
- White Spurred—(Chrysantha alba.) Beautiful snow-white, with long spurs... Pkt. 10c
- Aquilegia Coerulea—(Rocky Mountain Columbine.) Two feet. Undoubtedly the best of Columbines. Flowers immense, with blue sepals, white petals, long spurs and bright yellow stamens; is adopted as the Colorado state flower..... Pkt. 10c

For Columbine Roots see Hardy Perennials.

PAEONY FLOWERED PERFECTION ASTERS.

A very favorite type. Thrifty upright plants; large, fine flowers, with long incurved petals. The Florists' Aster, and one of the finest..... Pkt. 10c

VICTORIA ASTERS.

A magnificent race of Asters. The colors include many delicate and some gorgeous shades; flowers very double and four inches across, and from twenty to thirty in a single plant; fifteen to eighteen inches high..... Pkt. 10c

COMET OR PLUME ASTERS.

A very beautiful and distinct class, with long curled and twisted petals formed into a loose yet dense half globe, resembling the Japanese Chrysanthemum..... Pkt. 10c

GERMAN QUILLED ASTER.

Flowers composed of tube or quill-shaped petals. Very beautiful, with a great variety of colors.

- German Quilled—(Betteridge's Prize). Mixed Pkt. 5c
- German Quilled—Pure white..... Pkt. 5c

NEW OSTRICH FEATHER ASTER.

The new Ostrich Feather Asters are a new type, with long, wavy, twisted feathery petals, like the wavy beautiful feathers of the ostrich. They are a very valuable addition to the decorative class of Asters. Flowers frequently measure four inches across, in long, thin, wiry stems. Price, mixed colors, Pkt. 15c

CROWN ASTER.

The center of each flower is white, surrounded by a broad margin of color, such as crimson, rose, violet, etc.; flowers large and freely produced; height 18 inches to 2 feet. Pkt. 10c; 3 pkts. 25c



NEW YELLOW ASTER.

A Yellow Aster is at last at our disposal. It is a double flower in the form of a perfect ball; the quills are close together, and of the brightest sulphur-yellow. The flowers are borne upon long, erect stems, excellent for cutting.....Pkt. 10c; 3 pkts. for 25c

QUEEN OF THE MARKET ASTER.

The earliest Aster known, two to three weeks ahead of most of the other sorts, of dwarf branching habit, very double flowers, valuable for cutting. A favorite Florist's Aster for early market. Mixed.....Pkt. 10c

NEW BRANCHING ASTERS.

The new Branching Aster is quite different in several respects from any Aster known. The branching habit is accompanied with great vigor of growth and profusion of bloom. The flowers are of extraordinary size and exceedingly graceful, and are borne erect on very long stems.

White Branching Aster.....Pkt. 10c
 Crimson Branching Aster.....Pkt. 10c
 Shell Pink Branching Aster.....Pkt. 10c
 Finest Mixed Branching Aster.....Pkt. 10c

ALYSSUM.

These flower profusely throughout the season, thriving in flower garden, window boxes, vases, etc.; also well adapted for ribbon lines and edgings; very fragrant annual.

Tom Thumb Sweet Alyssum—One of the finest plants for edgings and low beds, flowering in unparalleled profusion for months; height, six inches.....Pkt. 5c; ¼ oz. 15c (Enough for a row forty feet long.)

"Carpet of Snow"—(Compactum procumbens.) Pure white; grows only two to three inches high and flowers profusely; in fact, it is a perfect carpet of snow throughout the season.....Pkt. 10c; ¼ oz. 20c

Sweet White—One foot. Pkt. 5c; ¼ oz. 15c (Enough for a row forty feet long.)

Ageratum "Blue Perfection"—This sterling novelty is the darkest colored of all the large flowering Ageratums. Dwarf, compact growth, making it a valuable plant for beds or borders. Its color is a deep amethyst blue and has nothing of the faded-out appearance of the old-style Ageratum.....Pkt. 10c

BEGONIA.

Tuberous Rooted—Single; mixed colors.Pkt. 15c



BALSAM.

Double Camellia Flowered—One of the finest strains for either amateur or florist use. Colors mixed.....Pkt. 5c

BELLIS.

Double Daisy—The well-known Daisy, much improved.

Longfellow—Large pink.....Pkt. 10c

Giant Snowball—Unusually large, very double, pure white.....Pkt. 10c

Double Mixed.....Pkt. 10c

CHRYSANTHEMUMS.

Single Annual Varieties—Summer-blooming plants of compact growth and thrifty habit, 12 to 18 inches high, producing quantities of large, single flowers, two inches across. Colors, crimson, gold, maroon, white, etc.; mixed.....Pkt. 5c

Double Annual Varieties—Bushy, thrifty plants, about one foot high; very effective for summer flower beds, pot culture, and for cut flowers; mixed.....Pkt. 5c

Inodorum Plenissimum—Double white flowersPkt. 10c

Latifolium, or Maximum—The great white "Moon Penny Daisy;" one of our finest hardy perennials.....Pkt. 10c

CALENDULA.

(Pot Marigold)

Pure Gold—A magnificent variety of pure golden yellow, large, double flowers, borne profusely until frost.....Pkt. 5c

Ponge Double—White.....Pkt. 5c

CENTAUREA.

(Bachelor's Button)

Cyanus—(Bluet, Ragged Sailor, Corn Flower, Blue Bottle.) A very old favorite garden annual, flowering freely in almost any situation; height, two to three feet; they are largely used for cut flowers. Mixed colorsPkt. 5c

Cyanus—BluePkt. 5c

Cyanus—New double mixed. Large size and filled up to the center with florets; many novel colors.....Pkt. 10c

Very handsome plants, which grow 18 to 24 inches high and produce large flowers of the sweetest fragrance; being produced on long, stiff stems, the flowers are most admirably adapted for bouquets, vases, etc.; as easily grown as a Bachelor's Button, to which family it belongs.

Centaurea Margaret—New, large flowering, white.....Pkt. 10c

Centaurea Mariae—Sulphur yellow, tipped rose.....Pkt. 10c

Centaurea Odorata—Reddish lavender.Pkt. 10c

Centaurea Suaveolem—Yellow Sweet SultanPkt. 10c

Centaurea—Mixed colors.....Pkt. 10c

WHITE-LEAVED CENTAUREAS, OR DUSTY MILLER.

C. Candidissima—Round, compact plants, silvery white leaves, valuable for ribbon bedding; one foot.....Pkt. 10c

C. Gymnocarpa—One of the best ribbon plants, white foliage; 1½ feet.....Pkt. 10c

CANDYTUFT.

Large Flowering Rose—Immense umbels of exquisite rosy, flesh-colored flowers.... Pkt. 10c

Empress—A beautiful pure white variety bearing candelabra-shaped branches, each producing a large truss of flowers, presenting a perfect pyramid of bloom throughout the summer.....Pkt. 10c

Crimson—Very beautiful.....Pkt. 5c

Rocket—Pure white, in large trusses.... Pkt. 5c

Mixed—All colors.....Pkt. 5c

TOM THUMB CANDYTUFT.

Bushy little plants only 4 to 6 inches high; splendid for edgings.

Tom Thumb—White.....Pkt. 5c

Tom Thumb—Purple.....Pkt. 5c

Tom Thumb—Rose.....Pkt. 5c

Tom Thumb—Mixed colors.....Pkt. 5c

COBEA SCANDENS.

Elegant, rapid-growing climber, 20 feet high; can be grown in the greenhouse or conservatory, or in the garden in summer, where, from their luxuriance, they are particularly desirable for covering arbors, walls, etc. Flowers large and bell-shaped.

Blue.....Pkt. 10c

CANARY BIRD VINE.

A rapid-growing summer climbing annual, growing 10 to 15 feet high. It will cover trellis work in the most graceful manner, producing hundreds of its pretty, fringed, bright yellow flowers, which resemble a canary bird with expanded wings....Pkt. 5c

CYPRESS VINE.

Pretty climber with star-shaped flowers; mixed colors.....Pkt. 5c

CALLIOPSIS, OR COREOPSIS.

Showy and beautiful, free-flowering annuals, blooming all summer and excellent for cutting and massing; very popular and should be in every garden.

Golden Wave—(Drummondii.) Large, rich golden-yellow flowers with chestnut-brown centers, produced in great abundance.... Pkt. 5c

Tinctoria—Golden-yellow with garnet eye.....Pkt. 5c

Nigra Speciosa—Rich crimson.....Pkt. 5c

Mixed—All the choice kinds.....Pkt. 5c

Tom Thumb Mixed—Height 1 foot.Pkt. 5c

COREOPSIS HARDY PERENNIAL.

Most of the showy annuals formerly known by this name are now called Calliopsis, while most of the perennial species are still left in this genus. The perennial kinds are quite hardy, the taller sorts requiring plenty of room. They are very free flowering, showy, and should have a prominent position. They are valuable also for cutting, as the closer the blooms are cut the more they flower. They are propagated by division of the roots or from seed.

Coreopsis Harvest Moon—Greatly improved variety; large, deep yellow flowers, with broad, over-lapping petals.....Pkt. 10c

CANTERBURY BELLS.



Canterbury Bells.

Single Mixed—Rose, blue, white, etc.... Pkt. 5c

Double Mixed—Rose, blue, white, etc.... Pkt. 5c

"CUP AND SAUCER."

One of the most beautiful plants when in bloom that can be imagined. The bells, of beautiful colors, average three inches in length, and the saucers, three to four inches across, resembling in shape somewhat a cup and saucer.

Cup and Saucer—Mixed.....Pkt. 5c

Cup and Saucer, Rosa—Beautiful rose color.....Pkt. 10c

CELOSIA, OR COCKSCOMB.

Very popular annuals of the easiest culture, producing large, ornamental, comblike heads; not only are they highly prized for summer flower beds, but they make fine pot plants.

Glasgow Prize—Very dwarf; immense crimson combs; 1 foot.....Pkt. 5c

COSMOS.

Mammoth Perfection—For cutting for bouquets and vases this is one of the finest flowers grown; the long stems and feathery foliage lend themselves to graceful arrangements. The plants, five to six feet high, are one mass of feathery, green foliage, gemmed with flowers of white, pink or crimson, enlivening the garden long after more tender flowers have succumbed to early frost.

- Mammoth Perfection**—Mixed colors..... Pkt. 10c
- White Pearl**—Beautiful snow white..... Pkt. 10c
- Pink**..... Pkt. 10c
- Delicate Shade of Pink**..... Pkt. 10c



Early Blooming Cosmos.

Early Summer Flowering—This new strain of early-flowering Cosmos begins to bloom scatteringly in June, the quantity increasing gradually until August, and from that time until frost the plants are a mass of flowers. The plants are dwarfer than the late-flowering Cosmos, forming compact bushes only four feet high. The colors are white, crimson and pink; only in mixture..... Pkt. 10c

CONVOLVULUS MAJOR.

(Morning Glory.)

The old-fashioned Morning Glory, as easy to grow as any weed. Brilliant, beautiful flowers of every shade of white, blue, pink, scarlet and variegated. The standard vine of every flower grower.

- Mixed**—Many beautiful colors..... Pkt. 5c

"Imperial Japanese" Morning Glory—Not a success in Colorado. Pkt., mixed colors, 15c

Convolvulus Minor, or Bush Morning Glories. These should more justly be called Everblooming Morning Glories, for they are covered with flowers from June until late in fall Pkt. 5c

For other varieties, see Ipomoea.

SPECIAL CLUB OFFER.

To anyone getting up a club, with order and remittance, to the amount of \$5.00 in seeds in packets, oz. or ¼ lb. we will send free of charge \$1.00 in seeds of your selection in packets, oz. or ¼ lb., and prepay all postage; or for club and remittance to amount of \$2.50, 50c of your own selection and postage prepaid.

CARNATION.

Finest Double Mixed—Hardy garden or greenhouse carnation; does not bloom the first year..... Pkt. 25c

"Marguerite" Carnations—A magnificent class that are, without exception, the most abundant bloomers of all the "Pinks." The flowers are of brilliant colors, ranging through many beautiful shades of reds, pinks, white, variegations, etc. They bloom in about four months from seeds.... Pkt. 10c

CANNAS.

Mixed varieties of large-flowering French Cannas Pkt. 10c

Mixed—(Old Types.) Many varieties.. Pkt. 5c; 1 oz. 25c

Coccinea Indica—(Scarlet-fruited, Ivy-leaved climber.) A handsome climber of the gourd species, with beautiful, smooth, glossy, Ivy-like leaves, contrasting with the fine, snow-white, bell-shaped flowers and brilliant carmine fruit; 10 feet..... Pkt. 10c

DIANTHUS, OR PINKS.



Dianthus, or Pinks.

The family of "Pinks" are unrivaled for brilliancy and rich variety of color; the plants are bushy, of symmetrical form;

blooming so profusely as to almost uninterruptedly cover the plants until late in autumn, rendering them one of the most beautiful and satisfactory of all annuals for summer flower gardens. Height, about 1 foot.

DOUBLE ANNUAL DIANTHUS.

- Single and Double—Mixed colors..Pkt. 5c
- Chinensis—fl. pl., mixed colors; double China or Indian Pink; one foot.....Pkt. 5c
- Heddewigii—fl. pl., mixed colors; double Japan Pink, large flowers; fringed..Pkt. 5c
- Snowball—Double white fringed flowers; very fine.....Pkt. 10c

HARDY PERENNIAL DIANTHUS OR PINKS.

Highly valued for the great beauty and fragrance of their flowers. These make splendid bushy plants, from 1 to 2 feet high, unrivaled for permanent beds and borders.

Double Mixed—(Double Hardy Garden Pink.) Large fringed flowers.....Pkt. 5c

SEE OUR LIST OF
POULTRY SUPPLIES

DELPHINIUM, OR HARDY LARKSPUR.

Handsome and well-known hardy perennials, with splendid flowers and curiously cut leaves; for permanent beds and borders they are indispensable.

Pillar of Beauty—(D. formosum coelestinum.) An unusually pretty color—a delicate azure or sky blue, so bright and pretty a shade that it has to be seen to be appreciatedPkt. 10c

Formosum—Bright blue, white center.....Pkt. 5c

Finest Mixed Single Hybrids.....Pkt. 5c

For annual varieties, see Larkspurs, page 23.

DAHLIA.

DOUBLE VARIETIES.

Although perennial, these will flower freely the same season from seed, producing large, double flowers of perfect form, and of rich colors and markings in greatest variety; indispensable for garden decoration; 4 to 6 feet.

Choice Double Mixed—Many colors....Pkt. 10c

Pompones—Double mixed; small floweringPkt. 10c

Cactus Dahlia—Mixed colors; double flowers of distinct and remarkable appear-

ance, the petals being quilled and curved loosely and gracefully arranged in large double oval heads of bloom; the seed offered will produce many beautiful varieties, including several colors; worthy of extended cultivation.....Pkt. 10c

SINGLE VARIETIES.

From their grace and beauty are much used for cut flowers; handsome bedding plants, flowering in great profusion in a large variety of color; seed sown in spring will produce plants that bloom from August until frost; 2 to 4 feet.

Single Large Flowering—Mixed Selfs and Striped. Many colors; many striped and spottedPkt. 5c

ESCHSCHOLTZIA.

(California Poppies.)

Showy summer flowering annuals, of the easiest culture, forming nice bushy plants, 1 foot high, which produce in wondrous profusion large saucer-shaped flowers of striking brilliancy; one of our finest garden plants.



Eschscholtzia.

SINGLE VARIETIES.

California—Sulphur, with orange centerPkt. 5c

Mandarin—Flowers bright scarlet; inner side rich orangePkt. 5c

Rose Cardinal—Rich rosy purple, extremely beautifulPkt. 10c

Finest MixedPkt. 5c

Double Mixed—Colors.....Pkt. 3c

FOUR-O'CLOCK.

(Mirabilis.)

Good old-fashioned flower; fragrant, easy to grow and hundreds of blossoms.

Mixed—All colors.....Pkt. 5c; 1 oz. 25c

EVERLASTING OR STRAW FLOWER.

Six varieties. These can be cut in the bud state, dried and used in winter bouquets.

Acroclinium, Helichrysum, Amobium, Rhodanthe, Globe Amaranth, Xeranthemum..
.....5c each; 6 for 25c

GAILLARDIA.

Exceedingly beautiful annuals, making very showy plants, 1 to 2 feet high, for the flower garden. Grown in masses they are especially effective; large flowers, two or three inches across, produced from early summer until frost; unrivaled for cutting.

Single Mixed Varieties.....Pkt. 5c

Lorenziana, or Double Flowering—Large round heads composed of 30 to 50 flowers, of orange, claret, amaranth, sulphur, etc..
.....Pkt. 5c

James Kelway—(Perennial.) The most beautiful variety grown; immense flowers, often 5½ inches across, of dazzling crimson scarlet, with narrow gold edge. It is a hardy perennial variety, flowering abundantly until frost. A grand garden plant, 2 feet high by 2 feet through.....Pkt. 15c

GERANIUM.

Single Mixed—They flower from seed the first season.....Pkt. 10c

ORNAMENTAL GOURDS.

Rapid growing, interesting annual climbers, with ornamental foliage and singularly shaped fruit; 15 to 20 feet.

Fine Mixed.....Oz. 40c; pkt. 5c

The following are handsome climbers, with delicately cut foliage; white, fringe-like flowers and pretty small fruits, some of them highly colored.

Momordica Balsamine—(Balsam Apple.)
.....Pkt. 5c

Momordica Charantia—(Balsam Pear.)
.....Pkt. 5c

GYPSOPHILA PANICULATA.

(Or Baby's Breath.)

Perennial; white; fine for cutting; most valuable for bouquet making, either green or dried; should be in every garden.Pkt. 5c

HOLLYHOCKS.

A superb collection. Grand summer and autumn flowering plants, bearing long spikes of double flowers, 3 to 4 inches across. Hardy biennial, 5 to 8 feet high.



- Double Maroon.....Pkt. 10c
- Double White.....Pkt. 10c
- Double Pink.....Pkt. 10c
- Double Yellow.....Pkt. 10c
- Double Crimson.....Pkt. 10c
- Extra Choice Mixed.....Pkt. 10c

Mammoth Fringed "Allegheny"—An entirely new departure which has much to commend it. The mammoth flowers are wonderfully formed of loosely arranged fringed petals, which look as if made from finest China silk, and when cut are hardly recognizable as a Hollyhock, having none of the formality of the ordinary type. The color varies from the palest shrimp-pink to deep red. The plants are of majestic growth, sending up spikes 6 to 7 feet high, and are of a strong constitution, not being troubled with the disease so prevalent among Hollyhocks.....Pkt. 10c

HELIOTROPE.



Lemoine's Giant—Hybrid. These are grand

improvements. The clusters of bloom are immense; many measure 6 inches across; deliciously fragrant; colors, lavender, white, purple, etc.Pkt. 10c

HUMULUS JAPONICUS.

(Jap. Hop.)

Probably the most rapid climber grown, in three or four weeks' time attaining a height of 20 to 30 feet; resembling the common hop, but being an annual, attains full perfection the first season. The foliage is luxuriant, making a dense covering.Pkt. 5c

New Japanese Variegated Hop—A strikingly beautiful variety of the above. The leaves of rich green are blotched and marked with white and gray.Pkt. 10c; 3 pkts. 25c

IPOMOMEAS.

The Moon Flower—White-seeded. Not very great success in northern Colorado, unless started very early inside in pots.Pkt. 10c

"Heavenly Blue"—Does well in Colorado climate. Flowers 4 to 5 inches across, in large clusters, of light blue with a yellow throat. It is also a splendid conservatory climber.Pkt. 10c

LOBELIA.

These are indispensable plants, with trailing branches 6 to 9 inches long; flowers of charming blue; for hanging over vases and baskets.

LOBELIA—ERINUS VARIETIES.

Gracilis—Light blue; slender trailing stems.Pkt. 5c

COMPACTA VARIETIES.

Little, round, compact plants, 4 to 6 inches high; splendid for edgings, beds and ribbon gardening.

White Gem—Pure white.Pkt. 10c

Crystal Palace—Dark blue; the finest for bedding.Pkt. 10c

PERENNIAL LOBELIAS.

A hardy perennial variety, with spikes of splendid shades of rose, red, lilac, purple, etc.; in bloom from July to October; 2 feet.Pkt. 15c

LARKSPUR.

Popular annuals for summer garden decoration; the splendid flowers are of varied colors and are borne on long spikes, blooming within a few weeks' time.

Giant Rocket—A much improved type, the

flowers being larger than the old varieties, very double, and the colors very beautiful.

Mixed Colors.....Pkt. 10c

MYOSOTIS.

(Forget-Me-Not.)

Bushy plants, 6 to 12 inches high, bearing clusters of lovely small flowers. They are perennials and hardy enough to remain in the open ground, excepting in very cold latitudes, where they should be well protected. If sown early in the house they will flower the first season.

Myosotis-Palustris — Hardy perennial; large flowering; dark blue.Pkt. 10c

MIGNONETTE.



Mignonette—Defiance.

This deliciously fragrant flowering plant is the most popular annual grown. Mignonette does best in as cool a situation as possible; when exposed to the full force of the summer heat it begins to form seeds, sometimes before the spikes are fully grown.

Large Flowering—The common, sweet Mignonette.Pkt. 5c; ¼ oz. 25c

Machet—A dwarf, French variety, with broad spikes of very fragrant reddish flowers; one of the best varieties for either garden or pot culture.Pkt. 5c; ¼ oz. 20c

New Golden Machet—Distinct new variety of the above, of the same compact and robust habit, but differing from the type by

its massive spikes of golden-yellow blossoms.....Pkt. 10c; ¼ oz. 25c

Allen's Defiance—Magnificent, even in the open ground. Its full, round spikes, when grown under favorable conditions in the greenhouse, are of a gigantic size, measuring from 12 to 15 inches long, with individual flowers of enormous size and of an intensely rich perfume....Pkt. 10c; ¼ oz. 25c

Golden Queen—Golden-yellow flowers; dense dwarf growth.....Pkt. 5c; ½ oz. 15c; 1 oz. 25c

Red Victoria—A very fine, distinct, profuse-flowering variety of dwarf, branching habit, bearing large and compact trusses of deep red flowers, very fragrant..Pkt. 10c

Bird's Mammoth—Largest variety grown; under proper cultivation the spikes average 12 to 15 inches long; are very full and exceedingly fragrant; it is not only a splendid Mignonette for garden culture, but for greenhouse and pot culture.....Pkt. 10c; ¼ oz. 25c

MARIGOLD.

These annuals are old favorites in our gardens, but have been greatly improved recently in size and doubleness of flowers. They are very effective for groups and masses.

DOUBLE AFRICAN MARIGOLDS.

Double African Mixed—Yellow and orange; 2 feet.....Pkt. 5c

Eldorado—Immense flowers, 10 to 14 inches around; exceedingly double; primrose, lemon, orange and golden shades; 3 feetPkt. 5c

DOUBLE FRENCH MARIGOLDS.

Double French Mixed—One foot....Pkt. 5c

NEW FRENCH MARIGOLDS.

Legion of Honor "Little Brownie"—One of the prettiest and handsomest of the Marigolds. The plants grow 9 inches high, are insect and drouth proof, and will bloom from the middle of summer until late in the fall. The flowers are of a rich golden-yellow, marked with velvety brown; splendid for border or pot plant.....Pkt. 5c

MIMULUS.

New Mammoth Mixed—A magnificent strain of enormous size; 1 foot.....Pkt. 10c

Moschatus—(Musk Plant.) One-half foot; foliage emits a strong, musky perfume; yellowPkt. 10c

NASTURTIUMS

TOM THUMB VARIETIES.

The improved Dwarf or Tom Thumb Nasturtiums are unrivaled in beauty and effect. When planted in poor soil they flower most profusely and remain long in bloom.



Dwarf Nasturtiums.

Mixed—Many sorts.....Pkt. 5c and 10c; 1 oz. 15c

Golden King—Grand flowers; 3 inches across; deep golden-yellow and maroon blotchesPkt. 5c

Aurora—Salmon, rose (mottled bluish white), garnet blotches.....Pkt. 5c

Gem—Sulphur, spotted maroon....Pkt. 5c

Pearl—WhitePkt. 5c

Beauty—Striped yellow and red...Pkt. 5c

Prince Henry—Creamy white, spotted and tipped dark scarlet.....Pkt. 5c

King Theodore—Dark scarlet maroon; dark foliage.....Pkt. 5c

Empress of India—Brilliant crimson, dark foliage; very effective.....Pkt. 5c

Chameleon—Peculiarly marked with crimson, bronze and golden-yellow.....Pkt. 5c

A Special Mixture of the above eight named sorts.....Pkt. 10c; 1 oz. 25c

TALL OR CLIMBING NASTURTIUMS.

Beautiful and luxuriant annual climbers, for trellises and arbors; of easiest culture, bearing their gorgeous flowers in profusion until killed by frost; 6 to 10 feet.

Mixed—Contains many beautiful sorts...Pkts. 5c and 10c; 1 oz. 15c

Tall Rose—A fine shade.....Pkt. 5c

King Theodore—Velvety dark crimson, dark foliagePkt. 5c

Yellow, Spotted Crimson.....Pkt. 5c

- Lemon-YellowPkt. 5c
- Pearl—Creamy white.....Pkt. 5c
- Purple—Rich shade of purple violet.....
.....Pkt. 5c
- Straw—Striped scarlet.....Pkt. 5c
- Vesuvius—Brilliant, fiery rose.....Pkt. 5c
- Scarlet—Glowing vermilion.....Pkt. 5c
- Chocolate—Unique color.....Pkt. 5c
- Special Mixture of the above ten sorts
Tall Nasturtiums, all first-class.....
.....Pkt. 10c; 1 oz. 25c

NICOTIANA AFFINIS.

(Ornamental Flowering Tobacco.)

An annual with sweet-scented pure white, star-shaped flowers, 3 inches across, blooming continually; height, 2 to 3 feet....Pkt. 5c

NIGELLA.

Or "Love in a Mist."

Damascena—Double mixed. Pretty annuals, known as "Love in a Mist," "Devil in a Bush," etc.; foliage feathery, in which large, double, charming blue or white flowers are set; 1 to 2 feet high.....Pkt. 5c

OXALIS.

Pretty little half-trailing annuals, for hanging baskets and vases; flowering in profusion.

Mixed Colors—..... Pkt. 10c



Pansies.

PANSIES

GIANT FLOWERS, UNIQUE COLORS, SPLENDID VARIETY.

Pansies require good, rich soil, and plenty of moisture. They do best here on the east side of the house or any partially shaded place. Remove all seed pods and dry blossoms, and a succession of lovely blooms can be had from spring until late in the fall. Seed can be sown early in the house in shallow boxes or in open ground as soon as it can be worked, and transplanted again when large enough to handle.

Our Superb Mixture—These magnificent Pansies, for gorgeous colors and markings, are the finest giant flowering varieties in cultivation. They include the French and

VARIOUS NAMED PANSIES.

- King of the Blacks—.....Pkt. 5c
- Snow Queen—Pure white.....Pkt. 5c
- Rex—Solid deep purple.....Pkt. 5c
- Bronze—Golden bronzePkt. 5c
- Pure Yellow—.....Pkt. 5c
- Blood Red—Velvety.....Pkt. 10c
- Cardinal—A rich brown scarlet, the brightest red Pansy grown; the three lower petals are marbled with a large dark blotch....
..... Pkt. 10c

Lord Beaconsfield—Deep purple violet, shading off to a white hue; prettiest blue on the list; the seed we offer of this is the improved and more expensive stock. What is prettier than an entire bed of this lovely variety? Try it.....Pkt. 10c

GIANT TRIMARDEAU PANSIES.

These are remarkably large Pansies, which, for size of flowers and robust growth, eclipse by all odds any known strain.

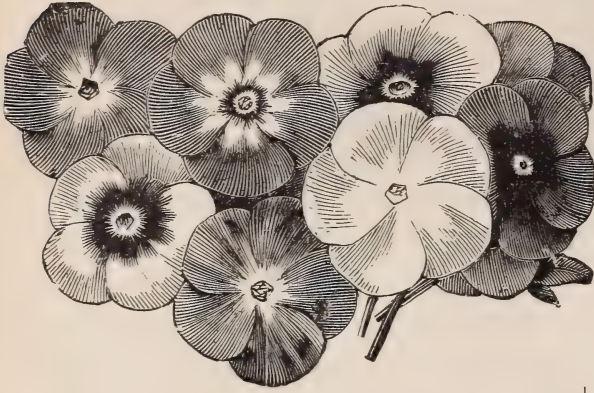
Mixed Colors—.....Pkt. 15c

PETUNIAS.

Few, if any, plants are more deservedly popular than these for bedding purposes, greenhouse or window culture, producing showy flowers in profusion. Although perennial, they flower in a few weeks from the seed.

SINGLE VARIETIES.

- Fine Mixed—Many beautiful colors and combinationsPkt. 5c
- Striped and Blotched—In splendid mixturePkt. 10c
- Large Single Hybrid—Fringed. Flowers average four to five inches across, of innumerable shades, colors and markings, all beautifully fringedPkt. 25c
- Fancy Fringed Double Petunias—Revelation of beauty of form and color. They em-



Phlox Drummond.

brace a wide range of colors and combinations, including delicate mauve, porcelain blue, white, garnet and velvet shades. The delicate blue and white flowers are particularly noteworthy.....Pkt. 25c
 German Show Pansies, the Royal Prize Pansies, the Butterfly and Improved Giant Trimardeau, the rich-stained Bugnot or Highland Pansies, an assortment sure to please, and the very best mixture we have to offer. Liberal pkt. 20c; half-size pkt. 10c; large pkt. of about 500 seeds 40c.

German Finest Mixed—A splendid mixture for bedding purposes, including many of the best colors in proper proportions; thrifty, free-blooming varieties.....Pkt. 10c

PHLOX DRUMMONDI.

There can be no stronger proof of the value and beauty of Phlox than the extent to which it is grown. For beds and massing nothing can surpass these beautiful annuals. They produce immense trusses of large, brilliant flowers of numberless hues throughout the summer; 1½ feet high.

Phlox D.—Good mixture.....Pkt. 5c

Good Mixture—For a low price; this is good value, as it contains many beautiful colors and some of the fancy show varieties, and just as free blooming as any....Pkt. 5c

LARGE FLOWERING PHLOX.

An improved strain with extra large, perfectly round flowers, with petals overlapping each other.

Brilliant Scarlet—.....Pkt. 10c

Pure White—.....Pkt. 10c

Crimson with White Eye—.....Pkt. 10c

Large Flowering—Mixed colors...Pkt. 10c

Dwarf Phlox—These form little, round, compact bushes about six inches high, thickly studded with flowers; splendid for beds, edging and pot culture.

Pure White—.....Pkt. 10c

Rosy Salmon—Rosy carmine eye.Pkt. 10c

Brilliant Scarlet—.....Pkt. 10c

Dwarf—Mixed colorsPkt. 10c
Improved Star Phlox—Pure stock and much improved in size; choice colors, mixedPkt. 5c

HARDY PERENNIAL PHLOX.

Magnificent, hardy, flowering plants, growing into strong bushes from two to three feet high, bearing immense heads of large, waxy flowers of lovely shades of color.

Large Flowering Hybrids—Mixed.Pkt. 15c

POPPIES



Tulip Poppies.

It may be safely said that no other flower produces a more brilliant display of colors and abundance of blooms than the improved Poppies we now offer. New developments are annually taking place, both among the annuals and perennials. Seed should be sown early, where they are to stand, as they are not easily transplanted.

SINGLE ANNUAL POPPIES.

Mixed Single—Many beautiful and snowy colors.....Pkt. 5c; 1 oz. 25c

English Scarlet—The common field Poppy of Britain.....Pkt. 5c

Fire Dragon—Flowers four inches across, of brilliant scarlet, with black spots margined white.....Pkt. 5c

Armenian Tulip Poppies — (Glaucum.) Plants 12 to 14 inches high, each producing fifty to sixty vivid scarlet flowers. The two outer petals form a saucer, surrounding two erect petals, giving a very unique and handsome appearance of scarlet tulips..Pkt. 10c

New Giant Yellow Tulip Poppy—This new variety is one of the most showy and satisfactory. The plants, by the middle of July, are covered with their large buttercup, yellow, Poppy-like blossoms, and continue to bloom until frost; height, two feet; quite bushy, with beautiful feathery glaucous foliagePkt. 10c

Shirley—Single and semi-double. The colors range from purest white through pinks of all shades to glowing scarlet without black; some are red with white edges, and others veined and streaked and flaked from the center out in the most charming confusion. In mixed colors. Pkt. 5c; large pkt. 25c

DOUBLE ANNUAL POPPIES.

Peony Flowered—A magnificent class; immense double flowers, in form resembling Peonies; pure white.....Pkt. 5c

Chamois Rose—.....Pkt. 5c

Mixed, Many Colors—.....Pkt. 5c

Double French Ranunculus Flowered Poppies—Mixed colors. Exceedingly beautiful double flowers, about two inches across, of every imaginable shade, color and variegation; very profuse and continuous blooming; height, two feet.....Pkt. 5c; large pkt. 25c

Double Carnation Flowered—A magnificent class of large globular flowers, often a foot in circumference; of the greatest variety of colors. The petals are finely slashed and fringed. Plants 2½ feet high. Mixed colorsPkt. 5c

Golden Gate Poppies—Recall to mind every color you have seen in Poppies, then imagine every conceivable combination of colors—striped, blotched, edged and bordered, on both single, semi-double and double flowers, and you will have but a faint idea of the wondrously varied beauty of the new Golden Gate Poppies.....Pkt. 10c

HARDY PERENNIAL POPPIES.

New Oriental Hybrids—Containing charming new colors—pink, blotched purple, blood red, blotched black, glowing scarlet, reddish orange, salmon, etc.; hardy perennials. Mixed colorsPkt. 10c

Oriental Scarlet—.....Pkt. 10c

Iceland Poppies—Although hardy perennials, these Poppies bloom the first season from spring-sown seed. The fragrant, elegant, satin-like flowers are produced from the beginning of June to October. The flowers last quite a week if cut as soon as open. Mixed, many colors.....Pkt. 10c

For a Large Poppy Bed—A general mixture is here offered of all varieties here listed suitable to plant together; enough for a bed 10 feet by 100 feet.....50c

DO NOT SEND EAST FOR SEEDS.

Our stock is more complete and larger than ever of High-Grade Flower and Vegetable Seeds, Bulbs, Roots and Garden Supplies. Can save you money.

PORTULACA.

In brilliancy and beauty of color Portu-

lacas are unrivaled. They delight in sunny situations, where they rapidly carpet the ground.

Finest Single—Mixed. In great variety; large flowers of most brilliant colors..... Pkt. 5c; 1 oz. 40c

Double Mixed—Unsurpassed for brilliancy and beauty. From first-class seed over one-half of the plants will produce magnificent double flowers; these can be transplanted eight inches apart as soon as they bloom, thus making the entire bed of double flowers.....Pkt. 10c; ¼ oz. 75c

**SEE OUR LIST OF
POULTRY SUPPLIES**

PYRETHRUM.

Hardy Pyrethrum—Height 2 feet. A valuable perennial plant, producing the most beautiful Daisy-like flowers on long stems, of bright colors, such as rose, flesh-pink, white, crimson, etc., the cut blooms lasting nearly a week.

Single Large Flowering—Mixed..Pkt. 10c

Pyrethrum Aureum—(Golden Feather.) Yellow foliage plant used for edging. Pkt. 5c

HARDY PRIMROSES.

These are among the best of the early spring blossoming plants. With a slight protection they will stand the winter, but do better if protected by a cold frame.

Japonica—(Japanese Primrose.) Bright and showy flowers, borne in whorls on stems 6 to 9 inches long; mixed colors..Pkt. 10c

Vulgaris—The common yellow English Primrose; flowers fragrant and of a light canary-yellow color.....Pkt. 10c

SCABIOSA, OR MOURNING BRIDE.

The "Mourning Bride" of our old gardens, but much improved in size, color and doubleness; colors white, carmine, lilac, maroon, etc.; excellent for bouquets.

Dwarf—MixedPkt. 5c

Tall Mixed—Height 2 feet.....Pkt. 5c

SALPIGLOSSIS.

Salpiglossis—Large Flowering Mixed...Pkt. 5c



Salpiglossis—Emperor.

NEW SALPIGLOSSIS EMPEROR.

This new variety forms only one leading stem and bears on its summit a veritable bouquet of the most beautiful flowers, each one richly veined with gold and much larger than the finest of the grandiflora type. (See cut.).....Pkt. 10c

SWEET WILLIAM.

As now improved they make matchless border plants with heads of bloom of great size and wonderful beauty; should be in every garden. Height 1½ feet.

Perfection—Single, mixed.....Pkt. 5c

Perfection—Double, mixed.....Pkt. 10c

STOCKS, OR GILLIFLOWERS.

Large Flowering Ten Weeks' Stock.

This magnificent strain is without a rival for open ground planting, attaining a height of 2½ feet. The spikes of bloom are very long and the individual flowers are enormous in size and very double.

Rosy Morn—Delicate rosy flesh...Pkt. 10c

Mount Blanc—Purest white.....Pkt. 10c

Grand Rouge—Brilliant crimson..Pkt. 10c

Blue Bells—Pretty shade of blue.Pkt. 10c

Princess May—Large double flowers of the most excellent shape and of the most exquisite yellow, extremely early flowering, in fact the first Ten Weeks' Stock to bloom.

.....Pkt. 10c

Cut and Come Again—About 2 feet high. It produces from spring to late fall pure white beautifully shaped double flowers. It throws out numbers of side blossoms, each of which bears a cluster of blossoms, and the oftener they are cut the better they seem to like it.....Pkt. 10c

Colossal Stocks—Mixed colors....Pkt. 10c

RICINUS—CASTOR OIL PLANT.

Large, luxuriant, rapid-growing foliage; annual, with palm-like leaves, much used for sub-tropical effect on the lawn or for center of beds. Ricinus can also be grown successfully in pots, and in this way are very desirable for porch or for house plant in the winter.

Ricinus—(Gibsoni Coccineas.) Height 6 feet. Stalks and leaves of a bright, metallic bronze color; fruit crimson. Finest mixed varietiesPkt. 5c

Zanzibarensis—Have gigantic leaves, and the great size of the plants surpass any other variety. Four varieties in mixture...
.....Pkt. 5c

SUNFLOWER.

(Helianthus.)

Stately growing annuals, with immense golden-yellow flowers; effective for garden decoration.

H. Californicus—Extra large and very double. Height 6 feet. The most desirable of all annual sunflowers.....Pkt. 5c

Globosus Fistulosus—Height 6 feet. Flowers immense, from 12 to 15 inches in diameter; globular and extremely double.....
.....Pkt. 5c; 1 oz. 15c

Mammoth Russian—The giant among Sunflowers; immense single heads, full of seeds.
..... Pkt. 5c

SWEET PEAS FOR 1904

HEADQUARTERS FOR CALIFORNIA GROWN SEED. NO BETTER COLLECTION TO BE HAD

The most popular named sorts—new varieties and splendid mixtures. Our stock was grown under contract by a special grower of Sweet Pea seed in California, where the best is now obtained for the trade the country over.

SPECIAL NOTICE

Only the cream of the Sweet Peas are offered in the following list. There are too many varieties on the market—several hundred—many of them are duplicates under different names, and many not desirable. By careful study and comparison

we have selected only the handsomest, largest flowering and freest blooming of the different shades of pink, red, lavender, etc.; also the variegated and striped combinations and have culled out until we have a collection to offer that will surely please anyone. Will say to those who have been accustomed to sending away for their seeds we are prepared to supply you as well and save you money.

HOW TO PLANT.

First dig a trench about 16 inches deep, 12 inches wide, fill in 6 inches with old, fine manure, then 6 inches good soil; plant the seed about 1 oz. to 8 feet, and cover 3 inches.

Our Evergreen L. and Garden Fertilizer can be used in place of old fine manure. Mix it thoroughly with the soil. See Fertilizers.

All 5c pkts. 50c per dozen; 6 for 25c.

All 10c pkts. \$1 per dozen; 3 for 25c.

WHITE VARIETIES.

Blanche Burpee—Eckford's Giant White. The flowers are pure white, mostly four on a stem, of extra large size and good substance.....Pkt. 5c; 1 oz. 10c

The Bride—Large, white; one of the best. Black seeds.....Pkt. 5c; 1 oz. 10c

Emily Henderson—White; early; splendid sort.....Pkt. 5c; 1 oz. 10c

The seed of White Sweet Peas, except The Bride, seem to be more delicate than other varieties and does not always come up well, especially if planted very early; would advise planting thicker

PINK AND WHITE VARIETIES.

Blanche Ferry—Rose, pink, standards; white wings tinged with pink.Pkt. 5c; 1 oz. 10c

Extra Early Blanche Ferry—Same as above, except about two weeks earlier, and vines not quite so tall.Pkt. 5c; 1 oz. 10c

Earliest of All—New; pink and white; same as Extra Early Blanche Ferry, but the earliest to bloom of any Sweet Pea on the market.....Pkt. 5c; 1 oz. 10c

PINK VARIETIES.

Blushing Beauty—Very fine, delicate flesh pink, hooded form.....Pkt. 5c; 1 oz. 10c

Lovely—Soft shell pink; truly most "lovely".....Pkt. 5c; 1 oz. 10c

Katherine Tracy—Color, a soft shade of pink, precisely the same shade in wings and standards; perfect in form, exquisitely beautiful in color.Pkt. 5c; 1 oz. 10c

Prima Donna—A beautiful shade of soft pink.....Pkt. 5c; 1 oz. 10c

Royal Rose—Deep rosy pink.....Pkt. 5c; 1 oz. 10c

Prince of Wales—Bright rose pink, large and superior in every way.Pkt. 5c; 1 oz. 10c

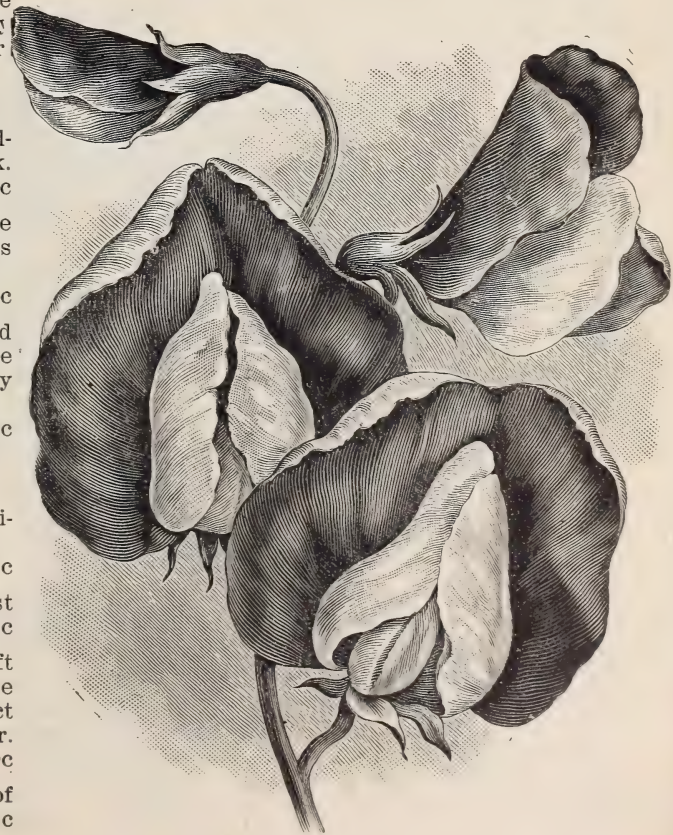
Venus—Light salmon, suffused with buff, distinct and charming shade.....Pkt. 5c; 1 oz. 10c

Lady Penzance—The standard is a beautiful laced pink, touching orange, while the wings are a darker and purer pink. Truly a superb flower, of large size, exquisite color, very striking and distinct..Pkt. 5c; 1 oz. 10c

Lady Mary Curry—Bright orange-pink, very bright and showy, and the best of this shade.....Pkt. 5c; 1 oz. 10c

STRIPED AND VARIEGATED PINK VARIETIES.

Gray Friar—This is decidedly gray in color, unlike any other Sweet Pea in cultivation. The flowers are very large and of fine hooded form, while the light gray color makes a most distinct and pretty effect, both



on the vines and as cut flowers.....
Pkt. 5c; 1 oz. 10c

Mrs. Jos. Chamberlain—One of the largest and handsomest of the striped varieties; white ground, heavily striped and flaked with bright rose.....Pkt. 5c; 1 oz. 10c

Aurora—Gigantic expanded shell-formed flowers; striped orange rose on white.....
Pkt. 5c; 1 oz. 10c

America—Bright cardinal and white stripe.....Pkt. 5c; 1 oz. 10c

BLUE AND LAVENDER VARIETIES.

Captain of the Blues—Of large, expanded form; standard purple-mauve; wings lighter, shading to pale blue; not so dull as some others; a pretty blue and a noble flower..
Pkt. 5c; 1 oz. 10c

Navy Blue—New and distinct; largest size; deep violet blue; the only sweet pea that is of a true blue color.....
Pkt. 5c; 1 oz. 10c

Countess of Radnor—Large flowers of pure light lavender.....Pkt. 5c; 1 oz. 10c

New Countess—An improved Countess of Radnor, in which is eliminated the reddish cast in standard, the flowers being a clear light lavender. The shade is very attractive when seen in a large bouquet composed solely of this variety.

Emily Eckford—Rosy purple standard and bluish purple wings, changing to almost blue when open a day; quite distinct and very pretty.....Pkt. 5c; 1 oz. 10c

Dorothy Tennant—Very large, round, shell-formed flower of rosy heliotrope, deepening as the flowers age.....Pkt. 5c; 1 oz. 10c

Countess Cadogan—The large flowers, when first opening, resemble those of Captain of the Blues, but soon change to a light bluish purple in standard and clear blue in wings. The color effect is that of a bright blue; very attractive in shade and of finest form
Pkt. 5c; 1 oz. 10c; ¼ lb. 25c; 1 lb. 75c

MAROON.

Stanley—A magnificent large flower; standard rich mahogany brown; wings garnet maroon.....Pkt. 5c; 1 oz. 10c

Black Knight—Very deep maroon; somewhat deeper than Stanley..Pkt. 5c; 1 oz. 10c

Shahzada—Noticeable for its size, form and abundance of blooms; color, rich, dark maroon, with a shade of purple.....
Pkt. 5c; 1 oz. 10c

Othello—Deep, glossy maroon, a color not before attained; it is of first-class form, of splendid size and substance; a very free bloomer.....Pkt. 5c; 1 oz. 10c

RED VARIETIES.

Firefly—An intense glowing crimson scarlet; large flower; a profuse bloomer.....
Pkt. 5c; oz. 10c

Mars—Bright, fiery crimson, deepening with age; a large, expanded flower.....
Pkt. 5c; 1 oz. 10c

Salopian—Pure cardinal; the best type of this shade; is a shade deeper than Mars or Firefly, which commends it in addition to its fine form.....Pkt. 5c; 1 oz. 10c

Cardinal—The deepest crimson.....
Pkt. 5c; oz. 10c

YELLOW VARIETIES.

Mrs. Eckford—A large flower of charming primrose yellow.....Pkt. 5c; 1 oz. 10c

Primrose—Pale primrose yellow, novel and distinct.....Pkt. 5c; 1 oz. 10c

Stella Morse—Primrose yellow, tinged with bluish pink, well formed, graceful flowers; has become very popular.....
Pkt. 5c; 1 oz. 10c

SWEET PEAS IN MIXTURE.

Good Mixed—A great variety of colors, free flowering and good value.....
 ..1 oz. 5c; ¼ lb. 15c; ½ lb. 25c; 1 lb. 40c

Choice Large Flowering—Mixed; contains many named sorts and hybrids; large flowering varieties.....Pkt. 5c;
 1 oz. 10c; ¼ lb. 20c; ½ lb. 35c; 1 lb. 60c

Mixed New Giant Hybrids—This is a first-class mixture of large flowering sorts, prepared from a well-studied and carefully arranged formula, and contains many new and very best varieties grown.....Pkt. 5c;
 1 oz. 10c; ¼ lb. 25c; ½ lb. 40c; 1 lb. 75c

OUR SPECIAL MIXTURE.

No better mixture than this is offered by any seed house. It is made up in proper proportions to best please from the following thirteen varieties which are the cream of all the above-named sorts. You get the best from the entire list and know the varieties you are to have, thus making a very select mixture sure to please. Remember that thirteen best varieties in mixture is far superior to fifty or seventy-five, as in the latter you are sure to get many inferior colors not desirable; besides, if you wish to select large bunches of flowers of one shade, you can better do so from our Special Mixture of the following thirteen varieties only:

Blanche Burpee—Eckford's Giant, white.

Blanche Ferry—Best pink and white.

Earliest of All—New pink and white.

Butterfly Improved—Light with blue edge.

Gray Friar—Decidedly gray; fine.

Navy Blue—Largest size, deep violet blue.

Countess of Radnor—Pure light lavender.

- Black Knight—Very deep maroon.
- Salopian—Pure cardinal; fine.
- Lady Mary Curry—Bright orange pink.
- Prince of Wales—Bright rose pink.
- Katherine Tracy—Light or shell-pink.
- Stella Morse—Charming primrose yellow.
Pkts. 5c and 10c; 1 oz. 15c; 2 oz. 20c; ¼
lb. 35c; ½ lb. 65c.....1 lb. \$1.25

Do not be deceived by special offers of sweet peas by some seedsmen. Packets containing 10 seeds, 12 seeds, 24 seeds.

Our Special Mixture here offered is much better than many collections, as you get in a 5c packet, about seventy-five seeds from thirteen best varieties in the entire list of named sorts. 10-cent packages contain about 200 seeds; 15-cent packages about 400 seeds.

DOUBLE SWEET PEAS.

- Double White—Very clear white.....
.....Pkt. 5c; 1 oz. 10c
- Double Boreatton—A deep maroon.....
.....Pkt. 5c; 1 oz. 10c
- Double Mixed—One-half dozen varieties
.....Pkt. 5c; 1 oz. 10c

CUPID SWEET PEAS.

- New Dwarf—White; height 6 inches; a novelty; fine for edgings, low beds and for pot culture.....Pkt. 5c; 1 oz. 15c
- Pink Cupid—.....Pkt. 5c; 1 oz. 15c

PERENNIAL PEAS.

(Lathyrus Latifolius.)

- Hardy climber, growing 6 to 8 ft.; of easy culture.
- Crimson—.....Pkt. 5c; 1 oz. 20c
- Pink Beauty—.....Pkt. 5c; 1 oz. 20c

VERBENAS

- New Mammoth Verbenas—Largest and best of all. For garden beds or massing the Verbena is unrivaled. Flowers are of the most brilliant colors, blooming continually from spring until late in the autumn.
- New Mammoth Verbena—In splendid mixturePkt. 10c
- Pure White.....Pkt. 10c
- Bright Scarlet.....Pkt. 10c
- BluePkt. 10c
- StripedPkt. 10c
- Fine Mixed—A very good strain...Pkt. 5c



New Mammoth Verbena.

WILD CUCUMBER

Very rapid climber; grows in any soil; 20 to 30 feet high; desirable for covering porches, arbors, etc.....Pkt. 5c; 1 oz. 25c

Wild cucumber seeds, if planted after the hard frosts have passed, should first be cut out at the germ end to the white and soaked 24 hours, then they will germinate quickly.

ZINNIAS



LARGE FLOWERING DWARF DOUBLE ZINNIAS.

For gorgeous summer and autumn display there is nothing that can equal in effectiveness the improved dwarf, compact-growing, large-flowering Zinnias; growing only 2 feet high and bearing flowers of immense size, perfectly double, showing no center, and as perfect in form as Dahlias.

- Double White.....Pkt. 5c
- Double Scarlet.....Pkt. 5c
- Double Orange.....Pkt. 5c
- Double Canary—.....Pkt. 5c
- Jacqueminot—Rich, deep, velvety crimson, exactly the shade of the famous "Jack" RosePkt. 10c
- Dwarf Double Mixed.....Pkt. 5c
- Zebra Zinnias—Mixed colors.....Pkt. 10c

PALMS AND FERNS

Latania—Broad leaf palm, or Chinese Fan Palm; very popular variety; prices, most popular sizes, each.....\$1.00, \$1.50, \$3.00



Kentia.

Kentia—Is one of the hardiest of "Palms" and most desirable as a house plant; leaves narrow; price on most popular sizes, each\$1.00, \$1.50, \$3.00

Cocus—A beautiful feathery-leaved little palm; just the thing for the dining table; each.....75c to \$1.50

Boston Fern—(*Nephrolepis Bostoniensis*.) One of the most useful and ornamental of the "Sword Ferns." It is now grown by the thousand for the market in all the large cities, and is steadily increasing in popularity. In well-grown specimens the fronds attain a length of six or seven feet, like plumes arching over in every direction, in a most graceful manner. This beautiful fern is excellent for outside planting in shady borders. It is a very fine plant for hanging pots or baskets on the piazza in summer and conservatory or window in winter; price15c to \$1.50

JAPANESE GLOBE FERN.

A unique and handsome ornament for the greenhouse, conservatory or living-room window. The Japanese prepare this by fastening the rhizomes (creeping stems) of *Davallia Bullata* around a ball of moss while in a dormant condition. When wanted to

grow they need only be immersed in water and hung up, immersing them again at required intervals. The stock we offer is second-year growth, not the freshly made-up stock.

Freshly gathered and made-up stock presents a cleaner and fresher appearance without any breaks in the surface, having never been subjected to handling in growing the balls. The results of the first season's

growth, however, are far from satisfactory, especially to the amateur, as there is no established root system, and consequently many failures in starting the balls to grow. The balls which have been grown in Japan for us one season have a well-established root system, the roots having penetrated the moss and every ball should come out satisfactory even in the hands of more unskilled amateur growers; price.....
.....1st size 50c; 2nd size 75c

Spring and Summer Bulbs and Tubers

DAHLIAS.

MRS. WINTERS.

"Colorado City, Colo."

"Mrs. Winters is the best white Dahlia I have seen. It has never shown an open center with me, and the outer petals are always fresh, and well preserved."

"A. F. BISHOP."



One-fourth Natural Size.

THE GRANDEST OF ALL WHITE DAHLIAS.

"Hillsboro, O."

"Your Dahlias all proved to be extra fine, especially Mrs. Winters. Everyone who saw the blooms thought they were immense and perfect in every particular."

"Mrs. J. A. LEMON."

This from the grower:

"In offering this Dahlia, I believe I am introducing the best White Dahlia yet pro-

duced. The claim is a large one, but I believe its merits will justify the claim. * * I originated it three years ago, and have watched it carefully, and have yet to see the first imperfect flower. Its color is a pure waxy white, which shows no tint or variation even in the strongest sunlight. It blooms very freely, producing flowers from 5 to 7 inches in diameter, with beautifully pointed petals. * * * Another good quality is that it never shows an open center. The plant grows to a height of 3 feet, and is of a rather spreading habit, and in type belongs to the cactus section, but the petals, although pointed, are rather broad."

The above are our introductory notes of 2 years ago. And now after another year's trial we find no reason to modify, but rather to increase its praise.

It is still the grandest of all white Dahlias. 25 cents each.

DOUBLE DAHLIAS.

Large-Flowering and Fancy Varieties, from the W. W. Wilmore celebrated Dahlia Farm; the cream of the entire list, carefully selected while the plants were in bloom; all choice, true to name and sure to please. Plant about May 1. Place the bulb on its side, 5 inches below the surface, 2 or 3 feet apart. The soil should be rich and the plants thoroughly cultivated by stirring the soil frequently with hoe or fork until blooms appear. Water freely.

CHOICE BULBS—Started, 15c each, \$1.50 per dozen, except where noted; one-half dozen at dozen rates. If by mail, add 15c per dozen postage.

Cactus and Decorative Varieties

Strong Tubers. Price, 15c each; \$1.50 per doz.

	Ft. High, Approximate
Black Prince —(Decorative.) Very large; dark velvety maroon.....	4
Cinderella —(Cactus.) Petals long and pointed and quite regular in outline; color, dark purple maroon; a very early and free bloomer	3
Countess of Pembroke —(Cactus.) Soft lilac, shaded to lavender.....	3
Denver —(Decorative.) Pure yellow; reverse of petals shaded orange bronze....	3
Earl of Pembroke —(Cactus.) Deep purple maroon; fine form.....	3
Grand Mogul —(Decorative.) Bright scarlet tipped and streaked pure white....	4
Germania Norva —(Decorative.) Color, bright pink; petals heavily serrated. (See light flower on trade mark).....	3
Gloriosa —(Cactus.) Bright scarlet, long curved petals; one of the best.....	4
Henry Patrick —(Decorative.) Pure white; flowers are very large and pure in color	6
John Ellitch —(Decorative.) One of the grandest of Dahlias; deepest red; very long stem.....	6
Jennie Pearse —A lovely yellow Cactus of medium size, petals long and regular, curving forward; early and free.....	3
Lyndhurst —(Decorative.) Scarlet or vermilion; a noble flower.....	4
Lucile —(Decorative.) A remarkably free bloomer, so much so that the whole plant appears one mass of pure sulphur yellow	3
Lady Penzance —(Cactus.) Purest yellow, fine form, stems short.....	3
Mrs. Barnes —(Cactus.) A beautiful primrose color; flower well formed and a free bloomer; stems rather short for cut-	

	Ft. High, Approximate
ting	4
Myrtle —(Decorative.) Very free flowering, of medium size; color, vivid scarlet..	4



Mrs. Peart —(Cactus.) One of the grandest of all Cactus Dahlias; color, a delicate creamy white	3
Mrs. Linder —This new decorative Dahlia we consider one of my best; its color is a beautiful creamy white, shading to bluish pink; of perfect outline.....	4
Nymphaea —(Decorative.) A pale pink flower of medium size; very valuable for cutting purposes.....	3
Curay —(Decorative.) Deep blood red; flower very large and rather loosely constructed; stems very long.....	4
Prince of Orange —(Cactus.) A beautiful true Cactus form; in color a blending of apricot, orange and bronze; very free.....	3

Show and Fancy Varieties

Strong Tubers. Price, 15c each; \$1.50 per doz.

	Ft. High, Approximate
Annie Moore —A fine variegated flower of medium size; color, a beautiful combination of cherry, pink and white.....	3
A. D. Livoni —Rich pink; finely formed; a very handsome flower.....	3
Bon Maza —(Uncertainty.) An old Dahlia, but one of the best; white ground, streaked and marbled in a curious manner with bright red.....	4
Bon Ton —A fine ball-shaped flower of a deep garnet red; sometimes tipped and	

	Ft. High, Approximate
streaked with white; an extra fine Dahlia.	4
Floral Park Jewel —Rich purple red, tipped and striped with white; sometimes solid color; very early and free.....	3
Frank Smith —Rich dark maroon; generally tipped with pure white, shaded into pink; one of the best.....	5
Glori de Lyon —Pure white; the largest white Dahlia in cultivation; almost round as a ball.....	3

Ft. High Approximate

Ignacio—A remarkably healthy, strong-growing plant, with long stems and large, full flowers; a deep, clear red. 4

John Forbes—Fawn color, striped maroon; very large and free, possessing all the properties of a first-class flower. 3

Kate Haslam—A beautiful, soft pink; petals beautifully quilled. 3

Kaiser Wilhelm—One of the grandest flowers in cultivation; of immense size and perfect form; deep yellow, tipped and shaded with cherry red. 4

Lady Mildmay—A very beautiful flower; white ground shaded to pale lilac; very large and full; a free bloomer. 3

Miss Dodd—Purest yellow; of exquisite form and color; a remarkably handsome flower 3

Orine Emerson—A very handsome flower; borne on long stems; color, rich, dazzling red, shaded light cherry red. 3

Orange King—Golden orange, shaded ochre; stem long and good form. 5

Princess Mathilda—Pure white. 2½

Prince Bismarck—Purple lake; a most pleasing color; very fine form; one of the best 3

Purple Gem—Rich royal purple, clear

Ft. High, Approximate

and constant; this variety is a decided improvement over the old varieties; a first-class flower.

Penelope—White ground shading to pale lavender 3

Red Bird—Deep garnet red; fine for cutting 3

Snowdrift—A well-formed pure white flower, with long stems. 3

St. Elmo—Dark purple; long stem and fine flower 5

Snow—A beautiful, pure white, long stems, excellent for cutting. 4

The Cardinal—Deep cardinal red; stem long; fine for cutting. 4

Veridiflora—Introduced from England, and is a natural curiosity; its flowers are as green as the foliage, and are produced in profusion; for designing or decorative work with other colors it has no equal; plant dwarf and compact; an early bloomer 2½

Special Offer—For two dollars, we will send a choice collection in fifteen separate varieties, our choice from the foregoing lists, including red, scarlet, white, yellow, variegated, etc.; all good varieties; prepaid for \$2.00.

Pompon or Bouquet List

Price, 15c each; \$1.50 per doz.

Ft. High, Approximate

Catherine—Bright yellow; good form and stem 3

Cameliaflora—Pure white; a perfectly formed flower of medium size. 3

Comet—A pompon of rare attraction, producing an abundance of small ball-like flowers, in order ranging from deep red to white 3½

Daybreak—Rosy purple 3

Eli Milard—Blush white; quite small and well rounded; a prolific bloomer. . . . 3

Hedwig Polwiz—Very free; color, red and white 3

Lilian—Very small; primrose shaded to pink 2½

Isabel—Vermilion; very fine. 4

Little Prince—Quite small; widely varied in color from deepest red to pinkish white 3

Little Rex—Rosy pink; long stems; fine for cutting. 4

Lottie Eckford—Pale pink ground, streaked and mottled with red. 4

Ft. High, Approximate

Midget—Pink shaded crimson; fine form 3

Purity—Pure white; well rounded and full; a prolific bloomer. 3

White Aster (Guiding Star)—Pure white; excellent for cutting; petals fringed 4

LILIES.

Well-known sorts which any one can grow. The following are hardy and suitable for outside culture:

Lily Candidum—Pure white garden or Easter lily. Each 10c; 3 for 25c

Lily Auratum, or Gold Banded. Each 20c

Lily Speciosum Album—Pure white. Each 20c

Lily Speciosum Roseum—White spotted rose Each 20c

Lily Tigrinum Double—(Tiger Lily). Each 10c; 3 for 25c

Lily of the Valley—Very sweet and graceful; one dozen, 50c; large clumps, which give the best results. Each 50c

TUBEROSES.



Excelsior Pearl.

This is a special selection of the most dwarf-double and full-flowered spikes; first size bulbs, 5c each; 6 for 25c; 40c per doz.; on dozen rates, if by mail, add 10c per doz.

Mam. Bulbs—These are very large, strong bulbs5c each; doz. 60c

GLADIOLUS.

If wanted by mail, add 10c per dozen for postage.

Fine Mixture of Choice Colors.....
.....4 for 10c; 1 doz. 25c; 50 for 75c

Extra Fine Mixture — Select bulbs of choice colors.3 for 10c; 1 doz. 35c; 50 for \$1

Lamoine's Hybrid, or Butterfly Gladiolus—mixed colors.....Each 5c; 1 doz. 50c

Red and Scarlet—Varieties mixed.....
.....1 doz. 40c

White and Light—Colors mixed.1 doz. 40c

Pink—Varieties mixed.....1 doz. 40c

Yellow—Varieties mixed.....1 doz. 50c

New Giant Gladiolus—Enormous flowers, with gorgeous colors and marvelous markings.....10c each; 3 for 25c; 75c per doz.

EVER-BLOOMING CANNAS.

A choice collection of the best large flowering varieties. One of the grandest of plants, both in foliage and blooms, and they continue in bloom until frost. Price choice bulbs, 10c each; per doz. \$1, except where noted.

Alphonse Bouvier—6 feet; green foliage; color, bright crimson; flowers large; a grand red.

Florence Vaughan—The highest type of Canna flower, the petals being remarkably wide, rounded at the ends, of good substance, and flower very large. Though thickly dotted with bright red, its general effect in the flower beds is a rich orange-yellow; the foliage is green, splendid broad leaves; 4 feet.

Madam Crozy—4 feet; immense flower heads of the deepest vermilion, gold bordered; petals very wide and broadly rounded; foliage green; this variety has done more than any other to give Cannas their present great popularity.

Paul Marquant—4½ feet; green foliage, strong flower spikes; extra large flower of a deep salmon color, smoothly shaded orange; petals are wide.

Queen Charlotte—3½ feet; the famous German seedling; rich crimson scarlet, with wide gold border on every petal; broad green leaves; it is a profuse bloomer; one of the best.

J. D. Cabos—4¾ feet; leaves purplish green, stalks numerous, flowers large and round; color, exceedingly distinct apricot; its marked and novel color attracts much attention.

Egandale—4 feet; purple foliage; strong, compact flower spikes; color, currant red; the finest bedding Canna of its color.

Austria—Very large foliage, grand spikes of large canary yellow flowers, spotted with brownish red.....15c each; 2 for 25c

Italia—Large foliage, deep green, bordered white; very large Iris-shaped flowers, bright red, bordered with golden-yellow; belongs to what is called the orchid-flowered section.

.....15c each; 2 for 25c

Paeonies

Fine, hardy plants, rivaling the rose in perfection of bloom, color and fragrance. They are at home in any climate or soil, but thrive best in a deep, rich, well-drained loam. They make a gorgeous display planted in beds, on the lawn, or planted singly along a walk or herbaceous border. The paeony is perfectly hardy and generally able to care for itself, but it does not follow that they enjoy neglect. Give them ample room in which to grow, keeping them free from weeds and grass and they will amply repay all the care given. A word to beginners. Don't be alarmed when you see your newly set paeonies begin to turn brown in July and appear to be quite dead by August. This is natural and they will be on hand again in the spring.

The following varieties embrace a wide range of color and will be found very satisfactory.

Prices, except where noted, 25c each; \$2.50 per doz.

Albiflora—A grand old Paeony; pure white; very large and fragrant.

Early Rose—An early pink variety; blooms right after the Old Red; the flowers are large and in clusters.

Duke of Wellington—Ivory white with creamy white center; very large.

Festiva Maxima—A rare variety of great beauty; exceedingly showy and of large size. Flowers perfectly double; pure, snowy white-tipped or flaked with small crimson spots at center; petals fine as summer silk; finest white in cultivation.....
.....Each 50c; \$5.00 per doz.

Humei—A pink Paeony; very full and double; very large and showy; one of the latest in bloom. It wants to be mulched heavily in order to bring its flowers into perfection.

Pottsi—Dark purple red; very long stem; medium quality.

Golden Centre—This is not a large Paeony, but is a very good one; pure white, pale yellow center.

Late Rose—Similar to Early Rose, only it blooms later in the season. It is a fine rose-scented flower.

Lady Lenora Bramwell—Very large and sweet; silver rose.

Officinalis Rubra (Old Red)—Flowers of a bright scarlet crimson, quite double and globular; very early, rare and fine.

Rosea Superba—Fine, full rosy pink; extra choice flower; very free bloomer.

Hardy Perennial Roots and Plants

NEW HARDY PHLOX.

Most desirable hardy perennials, flowering abundantly from June until late in the autumn. The immense flower heads often measure from seven to nine inches across.

Pure White—Small clumps.....15c

Red—Very free.....15c

White—With pink eye.....15c

Light Lavender—Choice.....15c

Salmon Pink.....15c

Purple—Very free bloomer.....15c

The above six for 75 cents.

IRIS KAEMPFERI, OR JAPAN IRIS.

The flowers are of the largest size and of the most beautiful shades. They are perfectly hardy and flower in great profusion during June and July.

In assorted colors....20c each, or 6 for \$1.00

German Iris—Assorted colors.....
.....10c; 3 for 25c

Delphinium-Formosum — (Hardy Larkspur.) One of the handsomest and most popular; has long spikes of bright blue flowers.....Clumps, each, 25c

Hardy Pyrethrum—Single, large flowering; several shades of pink and red; daisy-like flower; very desirable.Clumps, each 25c

Hardy Gaillardia—James Kelway. The most beautiful variety grown; immense flowers, often five and one-half inches across, of dazzling crimson scarlet, with narrow gold edge. It is a hardy perennial variety, flowering abundantly until frost. A grand garden plant; two feet high by two feet through..
.....Clumps, each, 25c

Lychnis—Large flower heads; bright scarlet.....Each, 20c

Hardy Coreopsis—A handsome perennial; the flowers are golden-yellow, which are freely borne from June till frost; they are fine for cutting.....Clumps, each, 25c

HARDY PERENNIAL POPPY.

Oriental Scarlet—A charming plant, producing numerous leafy stems about four feet high, which are covered with deep crimson flowers with black blotch on each petal; in small pots, 15c each.....
Strong clumps, each, 25c to 35c

Iceland Poppy—In colors of white, yellow and scarlet; hardy perennial and bloom freely through the summer; height one foot15c each; 2 for 25c

Aquilegia Coerulea—(Rocky Mountain Columbine.) Colorado state flower; in small pots, 10c; strong 2-year-old roots that will bloom freely first year, 25c.

Yellow Columbine—Strong roots.....25c
 Any of the above, clumps, 25c each; 5 for \$1.00.

Hollyhocks—Strong plants, all double, in red, white, pink, yellow and maroon.....
15c; 6 for 75c

NEW DOUBLE RUDBECKIA 'GOLDEN GLOW.'

A glorious new plant that ought to have a place in every garden; of fine habit, vigorous growth, with early, continuous and immense blooming qualities; excellent, also, for cut-flower purposes; a large vase filled with these bright yellow flowers is a beautiful sight; height, six feet; and is perfectly hardy.....Each, 15c; 4 for 50c

Dielytra—(Bleeding Heart.) Strong root.Each, 25c



Dielytra.

Hardy Garden Pinks—Double flowers, assorted rich colors and possessed of the true clove scent; strong clumps....15c; 6 for 75c

Clematis Recta—A fine variety of shrubby habit, growing about 3 feet high with handsome pure white flowers in very large, showy clusters, and fine for cutting; very effective25c

Gypsophila Paniculata, or Baby's Breath—Perennial; white; fine for cutting; most valuable for bouquet making, either green or dried; should be in every garden; small plants10c

Canterbury Bells—Biennial. "Cup and Saucer." One of the most beautiful plants when in bloom that can be imagined. The bells, of beautiful colors, average 3 inches in length, and the saucers 3 to 4 inches across, resembling in shape somewhat a cup and saucer.....15c; 2 for 25c

Sweet William.....10c; 3 for 25c

HARDY FLOWERING SHRUBS.

Hydrangea Paniculata Grandiflora—One of the finest hardy shrubs in cultivation, the flowers, which are borne in dense pyramidal panicles in the greatest profusion, are white when they first open, but gradually change to rose color and remain in good condition for weeks; fine bush plant; height about 2 feetEach 35c

Spireas Anthony Waterer—A valuable and distinct variety; it outshines all other spireas in brilliancy of color, being of a bright crimson; it is of dwarf dense growth, 24 inches; blooms all summer and fall; strong plant.....Each 35c

Spirea Van Houttii—(Bridal Wreath.) The grandest of all the white spireas; it is a beautiful ornament for the lawn at any season, but when in flower it is a complete fountain of white bloom, the foliage hardly showing.....Each 35c

Syringa—Common white, fragrant.....
Each 35c

Lilacs—Purple Persian.....
Each 25c, 50c, 75c, \$1.00

Lilac—WhiteEach 50c, 75c

SnowballEach 35c, 50c, 75c

Flowering Almond—Double rose..Each 35c

Bush Honeysuckle—Tartarian, forms a high bush with rose colored flowers; blooms in June and July.....Each 35c

Hardy Vines and Climbers

CLEMATIS.

Jackmanii Superba—Deep violet purple; fine 2-year-old plants.....Each 75c

Henryii—A pure white; large flowers; fine 2-year-old plants.....Each 75c

Paniculata—One of the most beautiful of our hardy fall-blooming vines; flowers are pure white, very fragrant; borne in large clusters

Strong 2-year-old plants, 40c each; 2 for 75c

Virginia Creeper—Our common Woodbine. This is almost indispensable in Colorado, as it is one of the easiest to grow and perfectly hardy.... Strong roots, each, 15c, 25c and 35c

Cinnamon Vine—A rapid climber, suitable for porch or window; bulbs remain in ground permanently and the vine grows stronger each year. We can not recommend this too highly for this western climate, as it is not troubled with insects and worms and holds its foliage fresh and green until killed by frost, and seems perfectly hardy.....

.....Strong roots 10c; 3 for 25c

Monthly Fragrant Honeysuckle—Flowers bright red with yellow and buff markings at end of tube.....Strong plants 35c and 50c

Hall's Japan Honeysuckle—Pure white, flowers changing to yellow; very free blooming and fragrant.... Strong plants 35c and 50c

Bignonia Radicans—(Trumpet Creeper.)

Rich orange scarlet; an exceedingly handsome vine.....35c

ANNUAL CLIMBERS.

Madeira Vine—A rapid climber, suitable for porch or window; grown in shade or sun. Flowers small, white. The bulbs should be taken up in the fall and stored in the cellar

.....1 bulb 5c; 6 for 25c

Cobaea Scandens—A beautiful climber for porch. This will also grow in a shady place; well started plants in pots..Each 15c and 25c

CANARY BIRD VINE.

A rapid-growing summer climbing annual; growing 10 to 15 feet high. It will cover trellis work in the most graceful manner, producing hundreds of its pretty, fringed bright yellow flowers, which resemble a canary bird with expanded wings.....

.....Strong plants in pots, 15c

Moonflower Grandiflora—At night and during dull days the plants are covered with an abundance of large, pure white, fragrant flowers.....

...Well started plants in pots 15c and 25c

Ipomoea-Learii—Blue dawn flower; a tender perennial; useful climber for porch or walls; flowers pure sky blue, produced in the greatest profusion from midsummer until fall.....Each 15c and 25c

Geraniums

Price for plants in two and a half-inch pots, 15c each; \$1.50 a dozen; available to March 1. After that date, from three to four-inch pots, 20c each; \$2.00 per dozen. If desired by mail, postage must be added for the plants, for two and a half-inch pots, 10c per dozen; three and four-inch pots, 15c per dozen.

Fleur Poitevine—Extra large single flowers; brilliant rosy carmine, marked and striped with pure white, center orange scarlet.....Each 20c; doz. \$2.00

Mountain of Snow—Very ornamental for bedding; vivid green, heavily marked with white; price.....Each 20c; doz. \$2.00

S. A. NUTT—The best crimson bedding Geranium. This, the finest of dark crimson geraniums, has now taken the lead as a bedding variety, being used in the largest parks and public grounds of the country in preference to all others. Its dense, compact growth, profuse blooming qualities and sun-proof constitution combined gives it the

prominence as a bedder it has attained. As a pot plant it cannot be excelled, as it does not make the long, straggly growth so many other Geraniums do in the winter. We sell many thousands of these for borders and large beds.

Double Pink Geranium, Jean Viaud—Very large, slightly semi-double blooms, borne in large trusses well above the foliage; individual floret large; color, bright rosy pink with distinct white blotch in the center; habit dwarf, compact, very vigorous and exceptionally free blooming; price.....

.....Each 20c; doz. \$2.00

Sam Sloan—Velvety crimson; immense trusses. The most popular Geranium on the Denver markets to-day..Each 20c; doz. \$2.00

Madame Salorii—A grand little variety, with leaves from one to two inches in diameter; center of leaves rich olive green, with broad margins of pure white; plant very dwarf, growing in dense round masses.....

.....Each 20c; doz. \$2.00

ROSES

A Select List of Most Popular Hardy Hybrid Perpetual Varieties. All Stock Shipped Under This Head is Two-Year-Old Stock and Will Bloom First Year



vigorous grower and persistent bloomer; one of the best in this class.....Each 35c

Baron de Bonstetten—Still the leading dark Rose; a splendid shade of dark red, changing to velvety maroon. It blooms very freely and makes a fine shaped bush.....
.....Each 35c

Coquette des Blancches—One of the best white Roses of its class; fine form, pure white, with beautiful, shell-shaped petals; very suitable for cemetery planting. Each 35c

Coquette des Alps—One of the finest pure white Hybrid Perpetuals; large, full, finely formed flower; color, pure white, sometimes faintly tinged with pale blush; profuse bloomerEach 35c

Clio—The finest flesh-colored Hybrid Perpetual. The flowers are simply perfection in form, with fine, broad petals, and are beautiful at all stages of development, from the small bud to the full open flower; color delicate satin blush, with a light shading of rosy pink at the center; very free blooming and strong, healthy grower.....Each 35c

Mrs. J. H. Laing—A grand, free blooming Hybrid Perpetual, with fine flowers of soft, delicate pink, with satin cast.....Each 35c

Magna Charta—A general favorite, prized on account of its strong, upright growth and bright healthy foliage, as well as for its magnificent bloom. The color is beautiful bright pink, suffused with carmine.....Each 35c

Madame Plantier—The iron-clad white cemetery Rose. This is the old standby and is unequaled where a hardy white Rose is needed. It bears thousands of beautiful, snow-white, fragrant Roses. It is hardy as an oak.....Each 35c

Paul Neyron—The largest flowered in cultivation and one of the most prolific bloomers; color, deep clear rose, very fresh and attractive. The plant is an exceptionally good grower, making straight shoots 4 to 5 feet high in one season, each shoot tipped with an immense flower, often 5 inches in diameter. We always recommend Paul Neyron when a good, hardy pink or rose-colored Rose is desired.....Each 35c

General Jacqueminot—Too well known to require lengthy description. It still holds first place among the dark red Roses and is one of the most satisfactory to grow; a rich crimson scarlet, simply a mass of bloom when at its best.....Each 35c

"American Beauty"—A hardy rose of the largest size, having the ever-blooming qualities of the Tea Rose, with the delicious odor of the Damask Rose, consequently equally valuable for winter or summer flowering. In color it is a deep, brilliant rosy carmine, shaded toward the center with rich carmine-crimsonEach 35c

Anna de Diesbach—Brilliant rose color, with long, pointed buds and large, perfectly formed blossoms; delightfully fragrant; a

HARDY CLIMBING ROSES.

Yellow Rambler—Climber.....Each 35c

Crimson Rambler—Without doubt the greatest acquisition of a lifetime. The sale of this Rose in all sizes for a single season

reaches enormous numbers, yet the supply is scarcely equal to the demand. It is perfectly hardy; has never killed back in the slightest degree on our home place, where the mercury frequently registers twenty degrees below zero. Very vigorous in growth, often making shoots 10 to 12 feet long in one season, with canes one-half inch in diameter. May be grown in any position, pegged down to the ground in beds, trained to porch pillars, the side of a building or on trellises. Its flowers are glowing crimson, produced in

large panicles, many of which have measured as large as 9 inches long and 7 inches across, covering the plant from the ground to the tips... Strong two-year-old plants, 35c

Queen of the Prairies—Flowers are very large and of peculiar globular form. A bright rosy red, changing to lighter as the flower opens; of very strong, rapid growth
..... Each 35c

Prairie Queen—Climber; bright rosy red, frequently white striped..... Each 35c

HYBRID TEAS



Enchantress—This variety belongs among the leaders. It blooms with astonishing freedom, bearing its large, globular, double flowers in immense clusters. It is as free blooming as any Rose in our collection. The color is creamy white, slightly tinted with buff in the center. Of vigorous growth, fine foliage and highly valuable, both in pots for late autumn and winter blooming as well as for general planting in open ground during the summer Each 25c

Mrs. Robert Garret—(Hybrid Tea.) A beautiful large Rose of exquisite shape, finish and blending of colors. The flowers are very large and on strong stems, clothed with clean, heavy foliage and strong spines. The buds are long and pointed in shape, and open up beautifully into a full, rounded flower. In shape of bud and half-open flower it very much resembles *Souvenir du President Carnot*, being very much larger, color a glowing shell pink, very deep in the center; the fragrance is delicate and pleasing. Each 25c

Helene Cambier—This lovely coppery yellow Hybrid Tea ever-blooming Rose will fill a long-felt want, from the fact that everybody has been looking and longing for a good yellow Rose that combines vigorous hardiness with rich color and free-blooming qualities. This *Helene Cambier* does. It is a new Rose of French origin, destined, we believe, to find a prominent place among the highest grade ever-blooming Roses, both for summer and winter blooming. The growth is free and vigorous, very free blooming, flowers of splendid substance and a delightful shade of deep, rich, coppery yellow. In extreme heat comes a deep amber color. The buds are full and firm, lasting a long time when cut. As the flowers expand the center of the rose discloses depths of golden yellow, with light orange tints, while the older petals lessen to lemon yellow, giving a combination of tints and tones unequaled in their beauty. Without question this is a charming Rose for the garden..... Each 25c

Kaiserin Augusta Victoria—This is one of the grandest of all Roses. It is a strong, vigorous grower, producing buds and flowers of enormous size; color pure white. We have no hesitancy in saying that this Rose is unequaled by any other variety of its color. It is a grand winter bloomer, and is largely forced for cut flowers. A grand garden Rose on account of its vigorous growth and hardiness Each 25c

Madame Abel Chatenay—(Hybrid Tea.) **Forcing Rose.** The celebrated Rose which the Washington, D. C., society people have used almost exclusively during the past season in their social events. This is a wonderfully strong, healthy growing variety, with rich, bright foliage. A grand bedding rose, as it is a profuse and continuous bloomer. Flowers large and full, petals recurved and of a beautiful creamy rose, shaded with rose vermilion and tinged with salmon. The base of the petals is very highly colored, being a combination of the foregoing shades strongly accentuated. This will undoubtedly make a fine garden Rose because of its substance and hardness. The flowers are borne on long stems so that it is exceedingly well adapted for vases or cut flowersEach 25c

La France—No variety can surpass it in delicate coloring—silvery rose shades, with pink. It has a satin sheen over all its petals. It is universally regarded as the most useful of Roses, for it is hardy beyond question. It blooms continuously. .Each 25c

Souvenir of Wootton—Color velvety red, equal to Jacqueminot. It is a double Rose, and is good in bud, half open, or fully expanded; full, open flowers, frequently six inches in diameter; a most excellent roseEach 25c

Caroline Testout—Clear, bright Rose; large, double, beautiful and attractive.Each 25c

Aurora—(Tea.) The flower resembles in shape a high-built Chrysanthemum. The color is light pink. A very pleasing shade. This is a grand variety; fine for outdoor cultureEach 25c

Gruss an Teplitz, or Greeting of Teplitz—(Hybrid Tea.) As a bedding Rose this is one of the finest and most useful varieties ever sent out. Many of our customers who bought it the past spring are realizing its value and singing its praises. It will take rank with *Hermosa* or *Souper*. The color is brightest scarlet, shading to deep, rich, velvety crimson. It is very fragrant. The freest grower and most profuse bloomer of any ever-bloomer. The mass of color produced is wonderful, and the foliage is extremely beautiful, all the younger growth being a bronzy plum color. A queen among scarlet bedders. It is a perfect sheet of richest crimson scarlet all summer. Each 25c

Helen Gould, or Baldwin—(Hybrid Tea.) This is probably the most beautiful and satisfactory Rose for general planting ever introduced in America. It has proved itself to be the strongest-growing, freest-blooming, largest-flowering and hardiest Rose in existence. It is a better Rose for general planting than *American Beauty*—the dream and hope of every Rose grower for years past. The flowers are full and perfectly double, the

buds beautifully made, long and pointed. The color is a warm, rosy crimson, like the color of a ripe red watermelon. It is as hardy as *La France*, and one of the best, if not the very best, Roses for winter bloomingEach 25c

Lady Battersea—(Hybrid Tea.) This variety has long, pointed buds of the largest size, and very striking in form. The color is bright cherry crimson, often approaching the shade of *Liberty*. The stems are stiff and extremely long; a vigorous grower and free in bloom; early in the season the flowers are not very double, but on strong plants the blooms are well filled. An unusually promising bedderEach 25c

Winnie Davis—(Hybrid Tea.) This excellent Rose was raised from seed, being a cross between the famous *Empress Augusta Victoria* and the well known *Belle Siebrecht*. The color is apricot pink, shading to a flesh tint at the base of petals; buds oblong and well formed; when fully expanded resembles a sunburst, most peculiar and most strikingly beautiful. Its habits are vigorous and robust, very free blooming, each eye producing flowers; foliage leathery, reddish green, glossy and very large; also has the disposition of throwing up vigorous shoots from the roots, producing three to eight blooms; its peculiar fragrance like luscious apricots. For the Middle and Southern states we claim the *Winnie Davis* to be an acquisition second to none introduced in recent yearsEach 25c

Burbank—A perfectly hardy, new, ever-blooming Rose. This lovely Rose was raised by Mr. Luther Burbank, of California, known the world over as the "Wizard of Horticulture." The color is described as cherry crimson—it is, in other words, the very deepest and brightest pink Rose in cultivation. It is peculiarly adapted for both outdoor planting or for blooming in pots in the house during the winter. It is a strong, vigorous grower, making well rounded bushy plants. The Burbank Rose is perfectly hardy, and will stand our most severe weather. The Burbank is, without doubt, the freest-flowering Rose in cultivation. It commences to bloom when only a few inches high, and blooms throughout the season until stopped by freezing weather. The flowers are double, three inches across. The whole flower is most pleasing in its rich beauty, and is delightfully fragrant.Each 25c

Admiral Dewey—(Hybrid Tea.) In color this is among the most beautiful of pink Roses, a delicate daybreak blush, clear and distinct and very captivating; nothing weak or washy in color. It is a sport from *Madame Caroline Testout*, is more vigorous in habit and a very free bloomer. Like *Testout*, the flowers are very perfect in form, a little lacking in fullness when fully ex-

panded, forces finely and is very fragrant; a fine cold weather Rose of enormous size..

.....Each 25c

Andre Schwartz—"Ever-Blooming Jack." Since its introduction this Rose has been known as the "True Tea Jacqueminot" because of its striking resemblance to that famous variety. The flowers are beautifully made, being large, full and of excellent substance. The color is brilliant, glowing scarlet, passing to rich crimson, very bright and strikingly beautiful. It is a strong, sturdy grower and a constant and profuse bloomer. It cannot be surpassed in open ground...

.....Each 25c

Hermosa—(Bonbon.) An old favorite. It is always in bloom and always beautiful. The flowers are cupped, finely formed and full; color the most pleasing shade of pink, soft, but deep. The best market Rose grown

.....Each 25c

Duchess of Albany—(Hybrid Tea.) A deep, sweet pink in color, not shaded, but what is called a solid color. Ladies prefer it on ac-

count of its beautiful color to any other Rose for personal adornment, as it shows up against either light or dark dress goods to a charming advantage.....Each 25c

Caroline Marniesse—A grand bedding Rose. A hardy Rose introduced in 1849 that is always in bloom. As a bedding Rose this variety has no equal. It is literally a continuous bloomer. When other Roses show only scattering blossoms, or none at all, the rows of Caroline Marniesse are a perfect mass of flowers. The blossoms are bluish white, small, but full, and borne in very pretty clusters. The bush is low-growing, about eighteen to twenty-four inches, and especially adapted for a border. It is entirely hardy, having withstood, unprotected, a temperature of twenty-five degrees below zero without the least injury.....Each 25c

Champion of the World—It is quite hardy, and possesses that delicious, old-fashioned rose fragrance so much sought after in an ever-blooming variety. For a pot Rose, it has no equal.....Each 25c



CUT FLOWERS

Roses—In Roses we carry every known Rose that is fit for cutting. You need never be afraid of sending as an open order for a dozen or a thousand. We will take care of you and at the lowest possible price ruling at that date. Roses usually cost from \$1.00 to \$1.50 per dozen, with a shade higher for longer stems, and are also higher at Easter and Christmas, long-stemmed American Beauties sometimes selling at \$1.00 each.

Carnations—Here again we have everything the market affords. You have but to mention it. We've got it. Prices, according to season and quality, are from 50c to \$1.50 per dozen.

Design Work—In making funeral, wedding or decorative designs a great deal depends on the artist. In ordering simply say what you want and what you want to pay for it; for instance, a 12-inch wreath for \$4.00, a pillow 10x14 for \$6.00, etc. All we solicit is a trial. We know we can please you.

INSECTICIDES

Whale Oil Soap—Death to plant insects especially for Palms, Rubbers, etc.; it also cleans the foliage and prevents insects...

.....Pkts. 5c and 10c; 1 lb. 20c

Tobacco Dust—Dampen the plant and dust it on; destroys aphid or common plant lice, fleas, beetles, etc.; also splendid fertilizer and preventive for insects in the ground and around roots...Pkt. 10c; 1 lb. 15c; 2 lbs. 25c

Tobacco and Sulphur Insecticide and Fertilizer should be applied when the foliage is wet; destroys rose bugs, lice, cut worms, etc.....Trial pkt. 10c; large pkt. 25c

Nikoteen—An economical and powerful nicotine extract. One part to 600 of water is sufficiently strong to kill all insects except scale, for which use 1 part to 400 of water.....Pint \$1.50; 1/8 pint 25c

Persian Insect Powder—For roaches, ants, fleas, etc.....1/4 lb. 20c; 1/2 lb. 30c

Pinner's Tobacco Soap—For insects, parasites and their eggs, infesting plants and animals.....Small pkt. 10c; per lb. 40c

Paris Green—Used dry or if liquid 1 lb. to 200 gallons of water.....

.....1/4 lb. box 15c; 1 lb. 40c

London Purple—More soluble in water; use same proportion; one of the best insecticides for spraying trees, shrubs, rose bushes, etc...Put up in pkts 10c, 15c and 20c

Kerosene Emulsion—A good general insecticide. Use 1 lb. whale oil soap, 2 quarts water, 1 gallon kerosene; mix thoroughly and dilute with 20 gallons water.

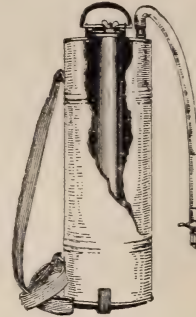
Fir Tree Oil—Destroys all plant insects without injuring the plant. Dilute 1 pint with 20 gallons of water.....

.....1 pint can 75c; 1/2 pint bottle 15c

SPRAYS

"AUTO-SPRAY."

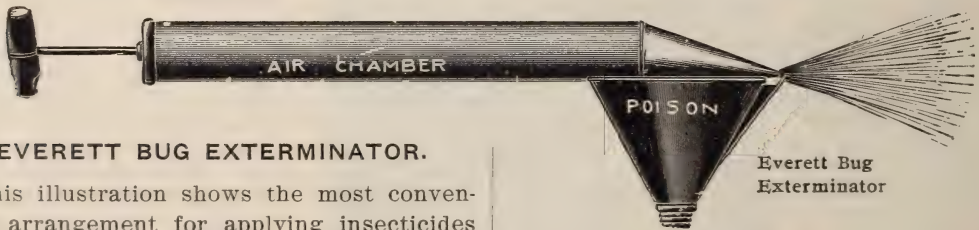
SELF-OPERATING OR AUTOMATIC.



The climax of all sprayers. The illustration here shows the construction. Eight to ten strokes of the plunger in air chamber will compress enough air to discharge the entire contents and make a continuous spray for nine minutes; operates very easily; can be carried by shoulder strap or rest upon the ground; is suitable for spraying all kinds of plants, vines, trees, and the vegetable garden. Weight, empty, 7 lbs.; weight, filled, 30 lbs., capacity, 4 gallons. Price, galvanized iron reservoir, \$5.00; with solid copper reservoir\$6.50

For spraying tall trees we furnish extension piping in 24-inch length, each fitted with brass couplings...30c for each length

The "Perfect Success" is the same as the "Success," except that the foot-rest has an adjustable bucket and bail clamp, enabling the user to carry the bucket and pump in one hand. Has the hose wire wound next to pump. Price, without bucket.....\$4.25



EVERETT BUG EXTERMINATOR.

This illustration shows the most convenient arrangement for applying insecticides on all kinds of plants, vines and low trees; it works very easily and no waste of the liquid. The formation of the can allows all the material to be sprayed out when operated upward in trees or bushes as well as downward; this is a great advantage. It can be used for spraying poultry houses or animals or in the greenhouse. It is the

simplest, cheapest, the lightest machine on the market for exterminating insects....

.....Price, \$1.00

Powder Gun—Small but very handy...15c

Rubber Sprinklers—For cut flowers and plants. Small, 75c; medium, 85c; large, \$1.00; angling top.....\$1.00

Powder Sifter on long handle.....50c

Imported and Domestic Birds

HARTZ MOUNTAIN CANARIES.

These we make a specialty of. They are considered the most satisfactory bird for the people. They are bred in Germany, high up among the Hartz mountains, and are famous for their clear, beautiful, pure song. There is no comparison between these and the common American "screeching" canary,



whose choppy notes are at times almost ear-splitting. The music of the Hartz Mountain birds is a restful melody, and they endear themselves by their cheery song, bright plumage and active ways. Being raised in the mountainous region, they are more hardy than any other bird, perfectly happy in the cage, and considered the most satisfactory and best bird in the world.

Imported Hartz Mountain Canaries—Choicest male birds, each \$3.00. Second grade birds, each \$2.50. Choicest crested heads, or top knots, each \$3.50. Females for breeding, \$1.50.

Domestic Canaries—(When in stock.)...

.....Females \$1; males \$2 and \$2.50

ST. ANDREASBERG ROLLER CANARIES.

These birds are raised in the world-renowned town of St. Andreasberg, Germany, and are without doubt the finest songsters in the world. They are taken from the nest into the training room, where they listen continually for about six months to English larks, nightingales, musical instruments, etc., and as a consequence their tones are sweet, round and full, consisting of delightful bell notes, low water bubble, charming flute notes, and long, silvery trills and whistling. They are an ideal bird. Price, each, \$6.

Red Bird or Cardinal—.....

.....Male, \$3; female, \$1.50

European Goldfinch—.....Male, \$3

Java Sparrows—White.....Per pair, \$4

Java Sparrows—Gray.....Per pair, \$2.50
Chinese Strawberry Birds—...Per pair, \$3
Japanese Robin—.....Each, \$5
Australian Shell Paroquets, or Love Birds.
Per pair, \$5

OTHER BIRDS.

At certain seasons of the year will have in stock such birds as there is a demand for. Please ask or write for prices.

Mail orders solicited.

PARROTS



MEXICAN DOUBLE YELLOW HEAD.

This is the most popular and most generally satisfactory of all species of parrots. If the teaching of these birds begin when they are young, they learn to talk quite readily and become very fluent. If you desire a really good parrot, purchase a young, hand-raised Double Yellow Head. They are the most satisfactory. Price, \$5 to \$50, according to season. From January to June these parrots are scarce and usually sell at somewhat higher prices. Ask for quotations.

MEXICAN RED HEAD PARROT.

This small parrot may well be called the pet of the parrot family. He is a very quiet, gentle bird, about the size of the Cuban, but is always tame and easily handled by any-

one, and there is much pleasure in training them. They are considered about equal to the Cuban parrots in talking ability and are not so noisy. Some of them become excellent whistlers and singers. They are by far the most satisfactory of all low-priced parrots. Color green, with a bright red spot on head. Price \$8 each. From January to June they usually sell at \$10 each, owing to their scarcity.

- Cuban Parrots—Usually...\$4.00 to \$10.00
- Panama Parrots—Usually..10.00 to 25.00
- Single Yellow Heads—Usually.....:
- 5.00 to 15.00
- Amazon Parrots—Usually.. 5.00 to 15.00

BIRD SEED AND FOODS

Do not injure your bird's song by feeding the common low-grade mixed seed usually sold in stores—the cheapest quality obtainable, often old, hard and musty. The canary seed is apt to be the poorest grade of Dutch seed, instead of Sicily. The Rape is simply wild mustard. The seed here offered is put up fresh every few weeks; the cost is so little that it will pay you to feed only the best.

FOR THE CANARY.

Our Superior Mixed Bird Seed, for fine singing canaries. This seed in quality is the very best obtainable; fresh, plump, thoroughly cleaned and no waste.....

-1 lb. 10c; 3 lbs. 25c
- Sicily Canary—The best to be had and re-cleaned.....1 lb. 10c; 3 lbs. 25c
- German Summer Rape—.....
-1 lb. 10c; 3 lbs. 25c
- Russian Hemp—.....1 lb. 10c; 3 lbs. 25c
-1 lb. 10c; 3 lbs. 25c
- Sand or Gravel—.....3-lb. pkg. 10c
- Cuttle Bone—.....5c; oz. 10c
- Bird Tonic—.....Per bottle 25c
- Song Restorer—.....¼-lb. box 15c
- Pepper Pods—.....Pkg. 5c
- Dried and Ground Carrots—.....Box 25c
- Insect Powder—.....Pkg. 10c
- Book on Care of Canaries and other birds, 140 pages25c

FOR THE MOCKING BIRD.

- Meal Worms—.....Per 100, 40c
- Ants' Eggs—.....Per oz. 10c
- Superior Prepared Food for mocking birds and all other soft-bill birds.....
-1 lb. 35c; ½ lb. 20c; ¼ lb. 10c
- Dried and Ground Carrots—..Per box, 25c

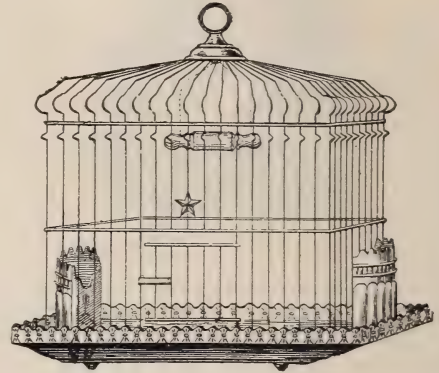
FOR THE PARROT.

- Sunflower Seed—.....1 lb. 10c; 3 lbs. 25c
- Mixed Parrot Seed—..1 lb. 10c; 3 lbs. 25c
- Sand or Gravel—.....3 lbs. 10c
- Parrot Biscuit—.....Per box, 20c
- Tonic—.....Per bottle, 25c
- Pepper Pods—.....Per pkg. 10c

FOR OTHER BIRDS.

- Mixed Seed for Red Birds—.....1 lb. 15c
- Mixed Seed for Chinese Strawberry Bird—.....1 lb. 15c
- Mixed Seed for Java Sparrows—..1 lb. 15c

BIRD CAGES AND SUPPLIES.



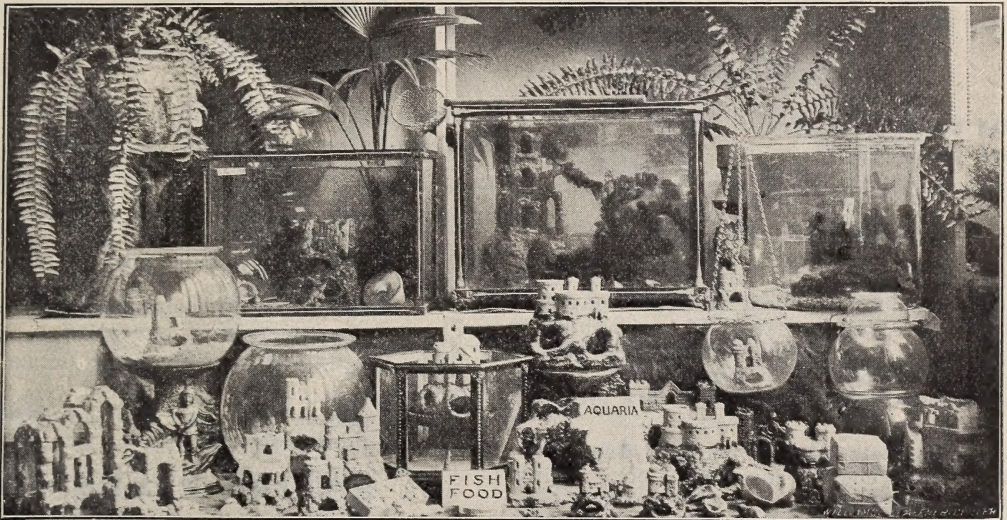
- Brass Cages—Best selling styles, ranging in price price\$1.00
-\$1.50, \$1.75, \$2.00, \$2.50, \$2.75, \$3.00, \$3.25
- Close Wire Brass Cages—For small Finches. \$2.25
- Mocking Bird Cages—.....
-\$2.00, \$3.00, \$3.50 and \$4.00
- Parrot Cages—.....
- Parrot Cages—.....\$2.00
-\$3.50, \$4.50, \$5.00, \$6.00, \$8.00 and \$10.00
- Squirrel Cages—Tin and wire, with revolving wheel\$3.00
- Breeding Cages—.....\$2.00 to \$4.00
- Brass Fenders—To keep seed from being scattered15c
- Brass Wire Cloth, 3½ inches wide, for making fenders, with clasps to fasten.....
-Per foot, 20c
- Seed Cups—Many styles of seed and water cups10c, 2 for 15c
- Dainty Cups—For feeding birds dainties..
-5c, 10c, 15c
- Canary Bath Dishes, opal glass.....10c
- Mocking Bird Bath Dishes, quite large...25c
- Bird Cage Hooks, various styles.....
-15c, 20c, 30c, 35c
- Bird Cage Spring, made of brass wire.....5c

- Bird Cage Spring, double brass wire.....15c
- Perches, of various length.....5c
- Perches, various lengths, brass tips.....10c
- Bird Nesting.....Per pkg. 5c
- Wire Nest10c
- Wire Nest, with swivel.....10c
- Insect Powder Bellows.....15c
- Food Holder, fastens between wires of cage.
..... 10c

BEAUTIFUL SEA SHELLS.

Every one likes to have a few of those beautiful parlor ornaments to place on the mantel or brackets, and but few know where to obtain them. I carry a stock of very nice specimens, ranging in price from 5c to \$1.75 each. A beautiful collection of small shells.....Pint 75c; ½ pint 40c

Gold Fish and Aquaria



A well-regulated aquarium adds an elegance to any place and is one of the most desirable ornaments for the parlor, library, sitting room or dining room. Children especially are always delighted with the gold fish and enjoy watching them day by day. They have been found of great interest in the school room and in the kindergarten.

GOLD FISH.

Prices, each, 15c, 25c and 35c.

Universal favorites; originally imported from China, but now bred extensively in the United States.

All Gold—Beautiful golden-red color.

Oriole Fish—Beautifully variegated, golden red and clear black; sometimes the black markings are very curious and attractive.

Pearl Fish—Clear, pearly white, or variegated white and red.

Silver Fish—An uncolored Gold Fish of dull, silvery color, but makes a nice contrast among gold fishes.

Gorgeous or Comet Fish—A greatly ad-

mired variety of the Gold Fish, with very long, graceful fins and tail; when the fish turns in the water the head and tail nearly meet.....Each 50c and 75c

Fantail Fish—These are very popular on account of their V-shape or fantails, which are long and graceful, sometimes as long as the body; the fins are also long. If you want fish which will be specially showy, buy a few of these.....Each 75c

Tadpoles—These are desirable as scavengers for the aquaria, as they consume the decaying matter and help to keep the water pureEach 10c

Snails—A few of these in the aquarium will help to keep the glass clean.....
.....5c; 3 for 10c

SUPPLIES.

Prepared Fish Food—A white wafer put up in boxes, which is the best and safest food for fish.....10c

Imported Natural Fish Food—In powder form; keeps fish in good health and color.
.....Per tin box, 10c

Directions how to care for Gold Fish free.

Beautiful Small Shells, for bottom of aquarium.....Pkg. 5c and 10c

Mica Crystal Grit, for bottom of aquarium; better than sand.....Pkt. 5c and 10c

Aquarium Castles and Ornaments—Many attractive styles
.....20c, 25c, 35c, 50c, 75c, \$1 and \$1.50

Aquaria Moss—This is the most valuable of all plants for the aquaria, as well as the prettiest. Per stem, 5c; 3 for 10c; original bunches of 10 stems, 25c.

Fish Nets on long handle.....25c

GLASS GLOBES.

Glass Globes, 2-qt.....\$.40
Glass Globes, 3-qt..... .50

Glass Globes, 6-qt..... 1.00
Glass Globes, 8-qt..... 1.50
Glass Globes, 12-qt..... 2.00
Glass Globes, 4 gals..... 3.00
Glass Globes on glass foot, 1½ gals.... 1.75
Glass Globes on glass foot, 2 gals..... 2.50
Glass Globes on glass foot, 3 gals..... 3.00

Square Aquarium, iron frame, French plate glass; the very best made.

8 x 14½, 5-gallon\$4.00
10 x 16, 8-gallon 6.00
12 x 19, 14-gallon10.00

Various other styles not listed.

The Aquaria—A complete book on the care and breeding of Gold Fish....Price, 15c

RAFFIA WORK.

The use of Raffia is now taught in most Public Schools as well as Kindergartens, both public and private. The possibilities are great and the uses are now beyond the experimental age, the practicability being very remunerative, likewise a very pleasant vocation.

Hats, Baskets, Mats, Placques, Bags, Portiers, Screens, Hammocks, etc., being among the articles that are ingeniously constructed with this remarkably strong fibre, which comes in long strands.

"Raphia" is the name given it in Madagascar, where it is gathered from a long-leaved palm. The natural color is a creamy white, which is a permanent color. The Natural comes in hard twisted braids. We have contracts with importers whereby we secure No. 1 grade,—it costs more and is well worth the difference. The Colored comes in tied skeins. At present we have twelve colors.

- | | |
|-------------------|-------------------|
| No. 1. Dark Red. | No. 7. Orange. |
| " 2. Irish Green. | " 8. Jet Black. |
| " 3. Olive Green. | " 9. Old Gold. |
| " 4. Pink. | " 10. Yellow. |
| " 5. Navy Blue. | " 11. Indian Red. |
| " 6. Seal Brown. | " 12. Purple. |

PRICES.

Natural. Per bunch of about 3 ounces.\$0.10
Per half pound..... .20
Per one pound..... .30
In original skeins at 25 cents per pound.

Colored. Per bunch of about 2 ounces,
one color\$0.10
Per one-fourth pound, one
color25
Per one-half pound, one color. .40
Per one pound, one color.... .75

If by mail, add one cent per ounce for postage.

Large lots to teachers and professional weavers at special prices.

RATTAN REEDS.

These are the imported Reeds from China and Japan. Their usefulness in the work with Raffia is very prominent. We now carry a stock in sizes from No. 1 (the smallest) to No. 6.

No.	Per ozs. pkg.	size.	
		¼ lb. of one	1 lb. of one
1\$0.10	\$0.35	\$1.25
210	.30	1.00
310	.30	1.00
410	.25	.80
520	.65
620	.60

If by mail, add 2 cents per ounce, 5 cents per ¼ pound and 16 cents per pound package.

NEEDLES.

NEEDLES.

We carry the following sizes of Tapestry Needles for use with Raffia: 1½ inches long, 1¾ inches long, 2 inches long. Both blunt and pointed. 1¾ blunt always sent unless otherwise ordered.

Six needles for 5 cents. A bunch of 25 for 15 cents, post paid.

FERTILIZERS

THE WALKER FERTILIZER CO.
CLIFTON SPRINGS, NY



**WALKER'S
EXCELSIOR BRAND**
A SOLUBLE FOOD FOR HOUSE PLANTS

Makes Flowers Flourish

Flowers are like people. Their health depends upon their food. It must be *nutritious*, but not too rich to grow and cause reaction. The one chemically correct flower food for house plants is

Walker's Excelsior Brand.

It has no odor whatever, and can be used dry or dissolved in water for sprinkling. Use it and your flowers will flourish and their health will last.

Small size (feeds 25 plants 6 months), 25c. ; large size (enough for a year), 50c. Sent pre-paid anywhere. With each package we send FREE the book, "How to Make the Window Garden a Success."

Our Odorless Lawn and Garden Fertilizer, manufactured expressly for our trade under our own formula; scientifically constructed. We can vouch for its containing all the constituents required to produce a luxuriant growth in lawns, gardens, flower beds and plants in general. Splendid for new lawns or in renewing old lawns and for mixing with the soil for Sweet Peas. It is odorless and not disagreeable to handle. It is free from weed seeds, which is one of the greatest objections to manures. It gives very quick results and is lasting; can be applied at any time during the year from March to October.

For lawns apply 1 lb. to 25 square feet; for gardens and flower beds apply 1 lb. to 6 square feet; for mixing with potting soil use 1 lb. to 25 lbs. soil; for Sweet Peas mix in the trench about 1 lb. to 4 feet of row.

Price, 5 lbs. 25c; 10 lbs. 40c; 25 lbs. 75c; 50 lbs. \$1.25; 100 lbs. \$2.00
\$2.00 of this is equal as a fertilizer to \$3.00 worth of old fine manure.

Bone Fertilizer, or Blood and Bone, is excellent for lawns, shrubbery, vines, plants and all vegetable growth.

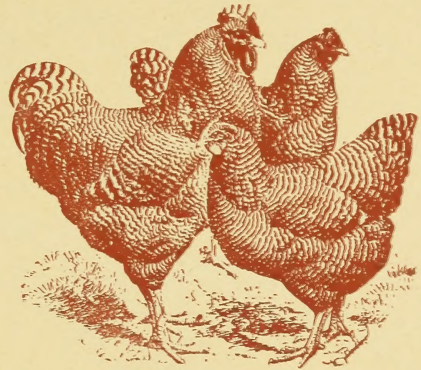
For the Lawn—Spread 1 lb. to 40 square feet, and water freely at once; this will wash the fertilizer into the roots of the grass.

For Plants of all kinds apply on the surface a little more freely, stirring it well into the soil, and the water will wash it down to

the roots. 5 lbs. 25c; 10 lbs 40c; 25 lbs. 75c; 50 lbs. \$1.25; 100 lbs. \$2.00

Pure Bone Meal, ground fine, gives quick results and lasting. 1 lb. 10c; 2 lbs. 15c; 4 lbs. 25c; 100 lbs. \$2.50

POULTRY SUPPLIES



REMEDIES.

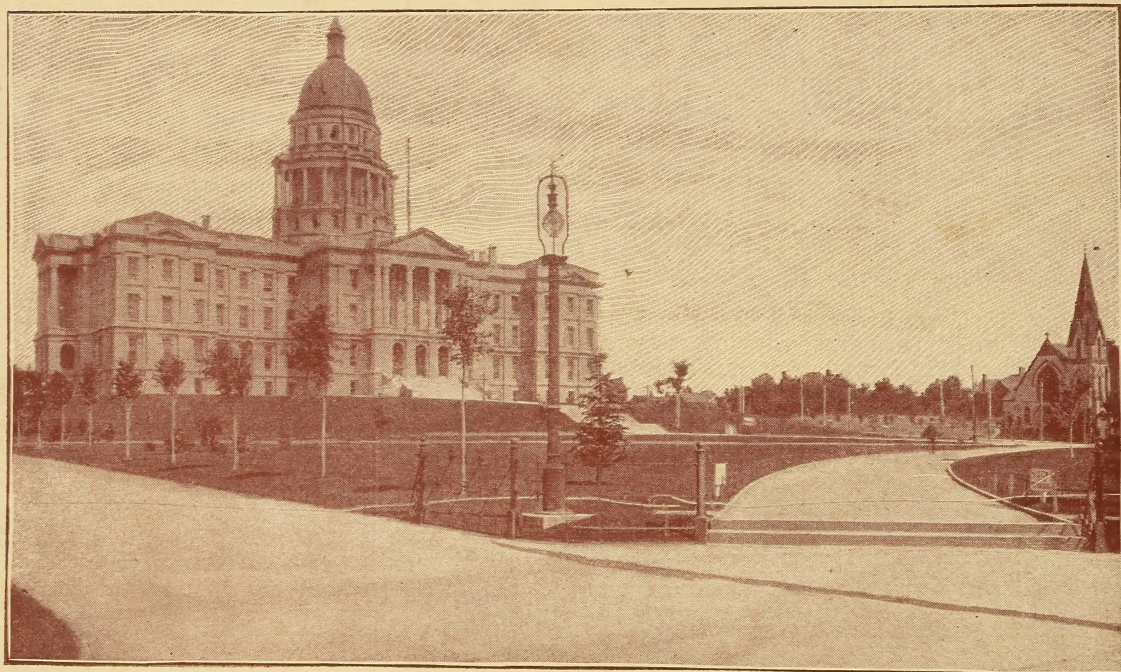
- Pratt's Poultry Food—.....
.....26 oz. 25c; 5 lbs. 60c; 12-lb. bag \$1.25
- Sturtevant's Egg Maker—.....
.....Trial size 10c; 2 lbs. 25c; 4½ lbs. 50c
- Poultry Cure—Sample size 10c; medium size 25c; large size 50c.
- Sturtevant's Roup Pills—.....
.....50-pill size 25c; 125-pill size 50c
- Mythe Snuffle Cure—.....
.....1 oz. bottle 35c; by mail 40c
- Ground Oil Cake—.....
.....Lb. 5c; 8 lbs. 25c; 25 lbs. 50c
- Lee's Lice Killer—.....
1 qt. can 30c; ½ gal. can 50c; 1 gal. can 75c
- Creo Carbo—A concentrated liquid lice killer2-qt. can 50c
- Thanolice—A fine powder.....
.....Trial 10c; medium size 25c
- Thanolice Eggs—.....10c; 2 for 15c
- Nicto Napto—A great lice killer.....
.....Regular size 25c
- Lambert's Death to Lice—.....
.....48 oz. size 50c; 15 oz. 25c
- Medicated Meal—.....Per pkg. 25c
- Crushed Oyster Shell—10 lbs. 30c; 25 lbs. 50c; 50 lbs. \$1.00; 100-lb. sack \$1.75.
- Mica Crystal Grit—10 lbs. 30c; 25 lbs. 50c; 50 lbs. 90c; 100-lb. sack \$1.50.
- Red Granite Grit—10 lbs. 20c; 25 lbs. 40c; 50 lbs. 65c; 100-lb. sack \$1.00.
- Millet Seed—.....10 lbs. 25c; 25 lbs. 50c
- Chick Mixture No. 2—Consists of all small seeds suitable to brooder chicks.
- Stoneware Drinking Fountains—½ gal. 30c; 1 gal. 40c; 2 gal. 55c; in two parts, ½ gal. 25c.

Our Capitol Lawn Mixture
and Evergreen Fertilizer

MADE THE BEAUTIFUL LAWNS AT

THE CAPITOL GROUNDS

A CUT OF WHICH WE SHOW BELOW



MIXED AND PUT UP ONLY BY

The

Denver Seed and Floral Co.

1551 Champa Street, Denver, Colo.