

Historic, archived document

Do not assume content reflects current scientific knowledge, policies, or practices.

62.35

1904

LIBRARY
RECEIVED
221
U.S. Department of Agriculture

DESCRIPTIVE CATALOGUE. MAINE SEED POTATOES.

OK

1880



1904

CARTER & COREY,

PRESQUE ISLE,

Aroostook Co., MAINE.

NEW YORK OFFICE,
305 Washington Street.

Copyrighted by Carter & Corey, 1904.

MAINE.--THE HOME OF THE POTATO.



A FIELD OF POTATOES IN MAINE.

The above picture shows how our Potatoes look when growing. No blight or disease.
Notice the vigorous vines.

BUSINESS ESTABLISHED 1880.

CARTER & COREY,
GROWERS OF SEED POTATOES.
PRESQUE ISLE, AROOSTOOK Co., MAINE.

Will name prices on car lots of 200 Eleven Peck Sacks delivered to any R. R. Station in the U. S.

TERMS :—On Car Lots, Sight Draft attached to Bill of Lading—Examination permitted. All car lots shipped direct from Maine. Less than car lots, will be delivered and shipped from New York. No charge for drayage. Cash must accompany all orders, for which Certificate of Sale will be sent and goods will be shipped at any time. Buyers of less than car lots pay freight from New York only.

PRICES SENT ON APPLICATION.

When writing for prices, state variety, and number of sacks desired and time of shipment. Also give R. R. Station, and by which line you want shipment made.

All our Potatoes are put up in strong sacks holding 11 Pecks or $2\frac{3}{4}$ bushels—165 pounds net.



One of our Storage Houses at Presque Isle, 160x40 feet. Capacity 15,000 barrels.

HOW OUR SEED IS PUT UP.

The engraving on Page No. 6 shows the manner of packing, assorting and bagging potatoes, in which we take the utmost care. Potatoes carry as well in sacks as in barrels, but some prefer the latter. We can barrel them for 25 cents per barrel, extra.

All our stock is perfect, smooth, free from scab or disease of any kind and true to name.

We guarantee arrival at destination free from frost in good order. The different varieties are not mixed, as is generally the case, when bought on street markets from farmers who do not raise potatoes for seed, and by buyers who do not expect to sell a customer the second time.

All our potatoes are put in our Storage Houses in September and October, before cold weather sets in, and are stored at a proper low and even temperature, until loaded into cars, which run close to the side of our Storage Houses. (See cut on opposite page.)

PRICES SENT ON APPLICATION.

A SOLID TRAIN OF POTATOES.

Read what the papers say. From Star-Herald, Presque Isle, Me., March, 1903.

and Mrs.

Face

Mr. Gordon.

—Praise Ye the Lord
Arranged from Lambillotte
Choir.

The collection amounted to \$16.20.

A Solid Train Load of Potatoes.

There rolled out of the B. & A. R. R. yard of this village to-day (Thursday) an entire train load of potatoes, consisting of 16 cars. The potatoes were shipped by Carter & Corey, the well known seed firm, and their billing point is Long Island, N. Y.

The loading of the cars was begun Tuesday noon under the direction of Mr. Corey, who looks after the firm's interests here, and the work was finished Thursday forenoon. During this time 3,500 barrels were transferred from the firm's store houses to the cars, and there necessarily had to be some hustling. The train is accompanied by three firemen, who will remain with it until the potatoes reach their destination.

We have always understood that Long Island farmers discriminate closely in the quality of the seed potatoes they plant, as they want early varieties and large yielders, and they certainly show good judgment in dealing with Carter & Corey, as they have the reputation of putting up as good stock as any firm in Maine.

This potato train we refer to will bear placards on each side of every car, reading as follows: "This car is loaded with potatoes from Carter & Corey, Presque Isle, Maine, growers and shippers of Aroostook County, Maine, seed potatoes," and it will be a novel and attractive sight on the way to its destination, which, in due course of transit, it should reach in about a week.

Star-Herald Voting Contest.

owing to the small-pox epidemic and bad weather of February, has been held in a short time.

convince, ...
farmer's testimonials.

C. F. Parsons, General Agent 1.

Crouseville, Maine, Jan.

Mr. C. F. Parsons,

Spragues Mill, Maine.

Dear Sir: After having thoroughly examined the Evans' Potato Planter years on our farm, we find it the best work and the most economical same length of time and requiring less work of man and horses of a kind on the market. Also find it very profitable. I have sold the Evans' Planter in the following towns for three years: Burn, Mapleton, Castle Hill, Masardis, and have yet to hear of a customer dissatisfied with the planter. While on the other hand I have received many letters praising it. To the man who purchases a potato planter, a thorough trial of the Evans' will convince you that it is better than all other planters and is the best.

Yours very truly,

H. H. Easler, Cro

C. F. Parsons,

Sprague's Mill.

Dear Sir: I have sold the Evans' for the past three years and in all respects, all that you can desire.

Yours truly,

W.

Houlton,

A. C. Evans Mfg.

Springfield, Vt.

Gentlemen:

During the past year over one half a cent and am pleased to give you a cent.

corner
and officer
ing upon him
eapon, is com-
fearless piece of
v in jail await-

was a very faith-
member of the
is much lament-
s. He leaves a
ren, for whose
ted.

Sunday School

Act S. S. Con-
v of last week in
was a very inter-
esting. The morn-
to an able address
Lee, of the Cong'l
on the Relation of
An Earnest ad-
the afternoon by
the Real Need of
how to meet it,
ulton, deliver-
on The Book
mer, of Maple-
subject Why
hemselves in
McKay gave
be subject.

lected for
A. Elliot;
for Belle

We speak from experience when we say that it is a mistake
To cut your seed a long time before using.
To allow the fertilizer to touch the seed pieces.
To allow the seed pieces to remain in the sun uncovered.
To plant seed grown from any section but the far north.
To plant less than four barrels per acre.
To expect a good crop from small seed pieces.
To plant potatoes without thoroughly pulverizing the soil.
To buy your seed from any but reliable seedsmen.

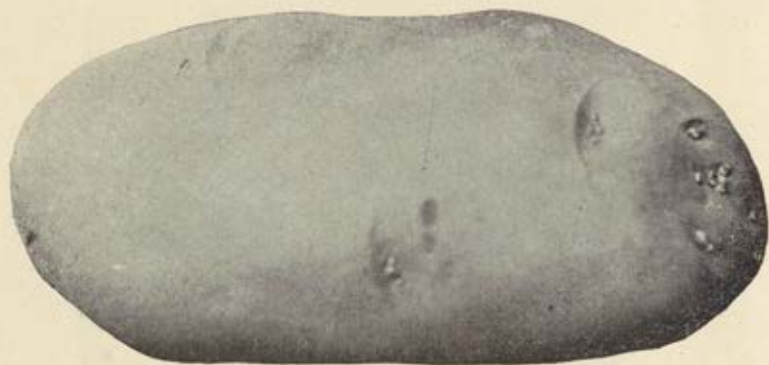
POTATOES GROWN ON MUCK LAND

are much preferred by market gardeners for seed, never failing to produce a perfect stand.
We have several varieties grown on muck soil. Write us if you are interested in them.

The half tone Engravings of Potatoes are copyrighted and are reproductions from Photographs of our potatoes, taken in the Spring, and were allowed to sprout some, to make the eyes prominent.



Our method of Packing, Assorting and Bagging Potatoes for Shipment. (Taken from life.)



✓ **MAGGIE MURPHY**—Medium Early, Pink Tint. Enormous Yielder. We can hardly keep pace with the demand. Cooks mealy, Never fails to please.



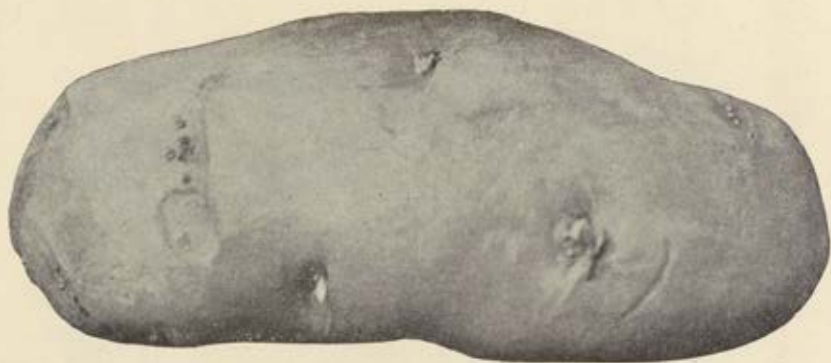
✓ **CLARK'S PRIDE**—Extra Early. A new potato introduced in 1894. Very early, blight proof, clear white in color, big yielder, strong vigorous vines, smooth skin. A fine keeper, good cooker.



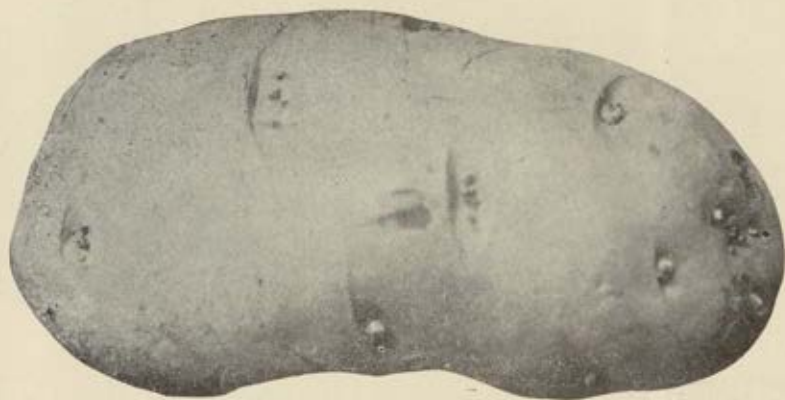
✓ **PRIDE OF THE SOUTH** or White Bliss, very early—exactly the same as Red Bliss Triumph, described later, excepting that it is white instead of red. Seldom rots. A great favorite in the South.



✓ **EMPIRE STATE.**—Late, white, long and smooth. A very large yielder. Keeps late in the season. Good for cellar.



✓ **EARLY FORTUNE.**—Very early. Resembles Rose so strongly that it is often taken for it. The pure seed is hard to obtain, but we have grown it for years, and know it to be pure.



✓ **BOVEE**—Extra early. White with pinkish cast. Cooks snow white. A tremendous favorite for the past three years. Our stock is guaranteed to be absolutely pure.



EARLY HARVEST.—Very early, long in shape, smooth pure white skin. Good keeper.
Can be depended upon every time.



✓ I. X. L.—Early, pink cast on skin. One of the Rose family. A great yielder. Handsome shape. Often yields over one hundred barrels to the acre.



SIR WALTER RALEIGH.—Late. Nearly round. Pure white, Very heavy vines, strong and vigorous. Fine shipping qualities. A fine potato for cellar. Introduced by Mr. E. S. Carman, Editor of the Rural New Yorker.



✓ **STATE OF MAINE.**—Medium early. Pure white. Cooks fine. Vines hardy and strong.
A great potato for the Middle States. Liked by all. Seldom rots.



EARLY EUREKA.—Early, nearly round, flesh clear white. Has only been introduced a few years. Our stock is limited.

18



✓ **RED ROSE.**—Late. A very hardy potato, heavy foliage. ~~Cooks pure white.~~
Particularly desirable for the South, where it is a great favorite. Fine shipping
qualities.



✓ **CARMAN No. 1.**—Medium early. Strongly resembles the Green Mountain. Large yielder. Good keeper. Named after Mr. E. S. Carman, Editor of Rural New Yorker. A pronounced favorite.



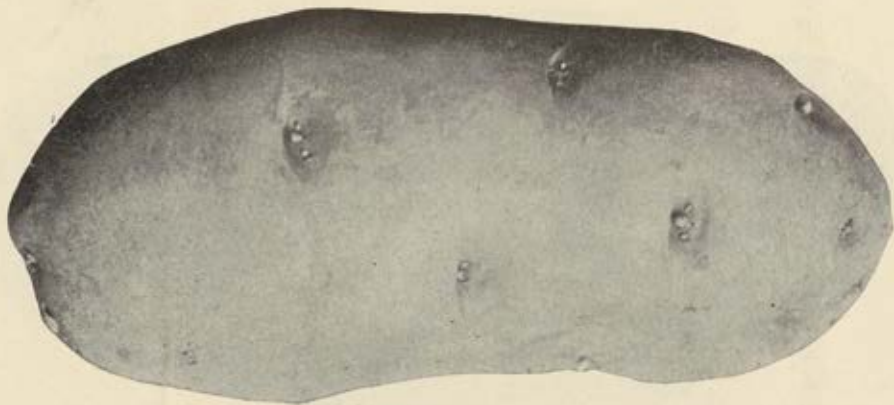
✓ **AMERICAN WONDER.**—Medium early. Very handsome, smooth, long, white. Splendid keeper, never known to rot. Cooks mealy. Particularly good for the latitude of the Middle States. A coming favorite. We have it pure.



↙ **EARLY OHIO.**—Extra early, in fact the earliest potato on the market. Color slightly on the red. A great favorite with market gardeners.



✓ GREEN MOUNTAIN.—Medium early. Too well known to need description. Known
from the Atlantic to the Pacific.



✓ **BEAUTY OF HEBRON.**—Early. It has been for many years a standard. Cooking qualities are not surpassed by any other variety.



✓ **WHITE ROSE.**—Early. Skin white. Smooth eyes. Cooks mealy. Much sought after by those who want late keepers.



NEW QUEEN.—Very early. Pink skin. One of the old reliables. Our stock is pure and can be depended upon.



ENSIGN BAGLEY.—Early. White. There has been a great demand for this potato. Many different kinds have been substituted for it by those who do not have it, but we have it pure.



✓ **CARMAN No. 3.**—Late. One of the best late varieties. Very productive. Regular in shape. Heavy strong vines, thick foliage. Splendid cooker. Good for the cellar as it keeps late.



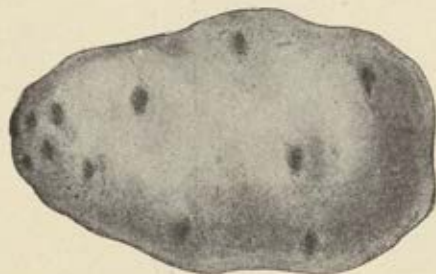
✓ **RED BLISS** or **BLISS TRIUMPH**.—Known the world over as being extra early. Good yielder and keeper. Hardly ever rots. A great favorite in the South.



HOULTON EARLY ROSE.—The old reliable Early. Very hard to get pure, but we have grown it for a number of years and know our stock is absolutely pure.



IRISH COBBLER.—Extra Early. Everyone knows how this potato originated, so we will not repeat it, but it is one of the earliest handsomest largest yielders on the list. Pure white. A good all-around potato. Our stock is absolutely pure.



EARLY CARWELL.—Very early. Introduced by us two years ago and is a great success. Shape resembles Early Rose. Cooks snow white. Especially adapted for garden and market gardeners who want an early variety.



AMERICAN GIANT.—Medium early. Long white. Enormous yielder. Does well in Middle States. Very hardy. Never known to rot in Maine. Fine shipper, especially to the tropics. Not so desirable for table use as some other variety, but sought after by those who want large crops.



EARLY NORTHER.—Early. Identical in shape to the Early Rose. Yields heaviest of any of the Rose family. Our seed of this variety is absolutely pure and unmixed. Cooking qualities cannot be surpassed.



DELAWARE.—Medium early. White. Cooks fine and mealy. A little earlier than the Green Mountain. Smooth skin. A handsome potato.

REFERENCES:
MERCHANTS TRUST AND BANKING
Co., PRESQUE ISLE, ME.

We Use
HARRIS POTATO CYPRUS
& ECONOMY CODE.

CARTER & COREY, GROWERS OF MAINE POTATOES

NEW YORK OFFICE:
8-12 JAY STREET

SEED and TABLE STOCK

FILE NO. _____

PRESQUE ISLE, ME., Oct. 29/04. 190

United States Dept. of Agriculture,
Washington, D. C..

Dear Sirs:-

We have your favor of the 17th, saying you wish to extend your variety collection of Irish potatoes and we enclose one of our catalogues herewith. On the inside back cover of which, you will find a list of varieties.

If you need any of them we will ship you any quantity you want at the rate of two cents per lb..

Yours truly,

CARTER & COREY.

MAINE POTATOES

MAINE POTATOES

GROWERS OF MAINE POTATOES SEED and TABLE STOCK

Oct. 23/06

Dear Sirs,

FILE NO.

United States Dept. of Agriculture
Washington, D. C.

Dear Sirs:-

We have your letter of the 10th inst. regarding
your variety collection of Maine potatoes and
catalogues herewith. In the catalogue you will find
a list of varieties.

If you need any of them we will ship you any quantity you
want at the rate of two cents per bushel.

Very truly,
Carter & Corey

DELAWARE - Medium early White
Maine Mountain & other varieties
Carter & Corey



SIX WEEKS.—Extra early, and desirable for those who want an early potato. Its yield is always good, and is a favorite generally.



BURPEES EXTRA EARLY.—Early and very productive. White with pink cast. A great favorite with those that like a mealy snow white cooker.