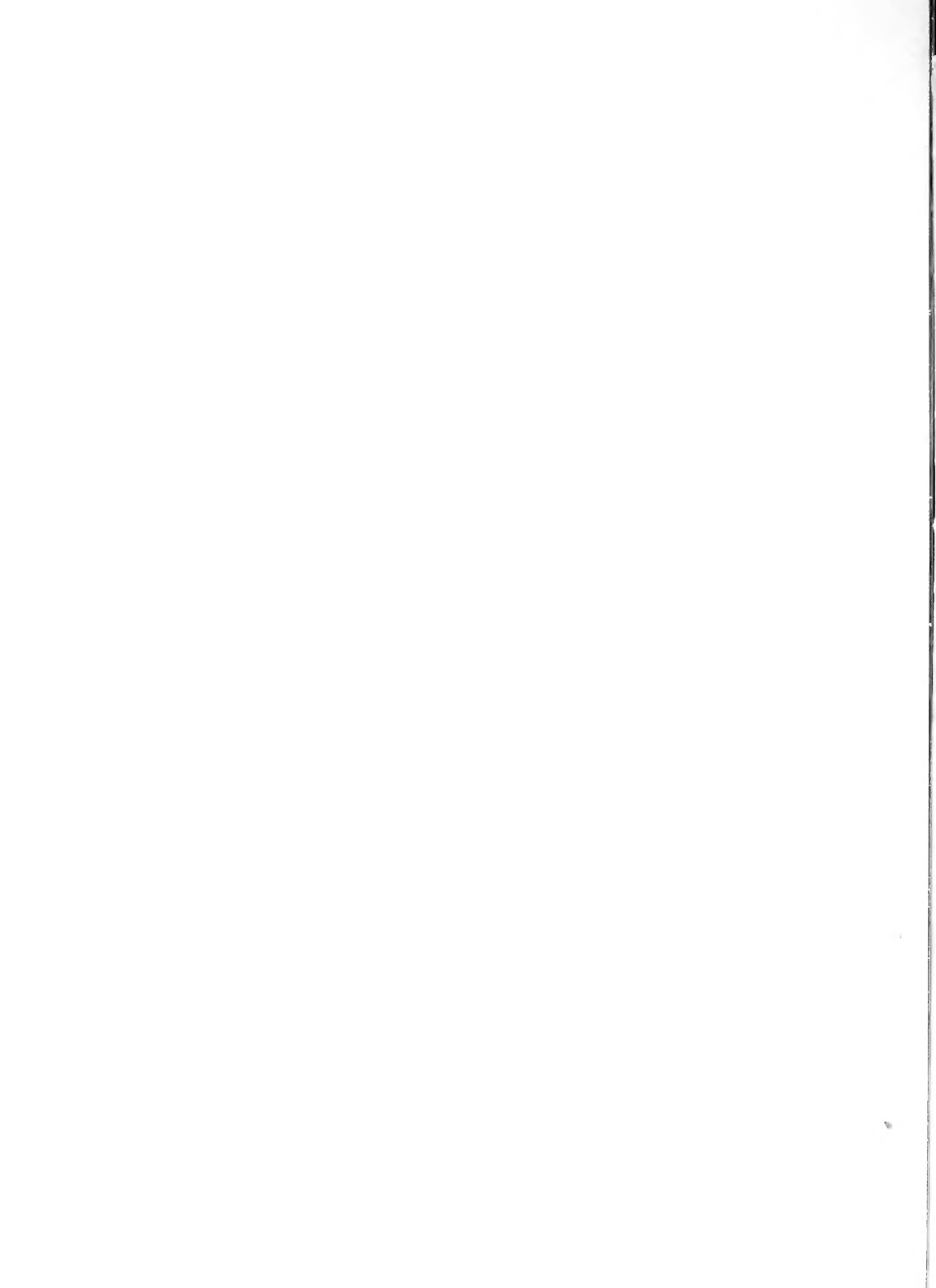


## **Historic, Archive Document**

Do not assume content reflects current scientific knowledge, policies, or practices.



1904  
62-73  
FROM NOW UNTIL

**JULY 1st, NOT LATER**



LIBRARY,  
U. S. Department of Agriculture,  
Washington, D. C.

HERE is no more useful garden material than what is known as Dutch Bulbs—Hyacinths, Tulips, Narcissi, Crocuses, etc. They give, for a small outlay of time and money, an abundance of flowers in the house from December until April, and in the garden from almost before the snow is off the ground in the spring until the middle of May. These bulbs are grown almost exclusively in Holland, and in enormous quantities,

where they are sold at very low prices. Usually they pass through the hands of two dealers, and more than double in price before reaching the retail buyer in America.

By ordering from us *now*, instead of waiting to buy from the local dealer in the fall, you save from 25 to 50 per cent in cost, get a superior quality of bulbs not usually to be obtained at any price in this country, and have a much larger list of varieties to select from. Our orders are selected and packed in Holland, and are delivered to our customers in the original packages immediately upon their arrival from Holland, perfectly fresh and in the best possible condition.

If you wish to take advantage of our very *low prices*, we must have your order *not later than July 1st*, as we import bulbs to order only. They need not be paid for until after delivery, but, if you have had no account with us, please send reference with your order.

Attention is directed to the extremely low prices quoted for fine named Narcissi. These prices will permit of their being used in quantities for bedding or naturalizing.

The prices quoted on the following pages are very low, but if you wish to buy a large lot of bulbs, fifty dollars' worth or more, send us your list for estimate, and we may be able to make still lower prices.

## ELLIOTT NURSERY COMPANY

J. WILKINSON ELLIOTT, *President*

*Nurserymen*

*Horticultural Buyers' Agents*

### TELEPHONES

22 Grant (City Office)

No. 1, Colfax Station  
(Nurseries and Experimental Grounds)

GERMAN NATIONAL BANK BLDG.

PITTSBURG, PA.

# Terms of Payment, Etc.

## PLEASE READ BEFORE ORDERING

**HYACINTHS, TULIPS, CROCUSES, Etc.**—The prices quoted in this list on all **Dutch Bulbs**, Bermuda Lilies and Roman Hyacinths are for advance orders, which must reach us not later than July 1, 1904. To make these very low prices, which are, in many instances, lower than **American Wholesale Prices**, we must have our orders in advance, as we cannot take any risk of having stock remain unsold on our hands. The bulbs will be delivered at the proper season, and need not be paid for until after delivery. Prices quoted include the 25 per cent duty and all charges except freight or expressage from Pittsburgh.

**TIME OF DELIVERY.**—Bermuda Lilies arrive in August; Roman Hyacinths, Freesias, Candidum Lilies, the latter part of August or early in September; Dutch bulbs, Hyacinths, Tulips, etc., about October 1 to 10. In ordering, please state whether you wish bulbs shipped as they arrive, or all in one shipment, about October 1 to 10. Dutch bulbs may be sent safely by freight, but we advise shipping bulbs or plants that arrive in November, by express. In absence of instructions we will send all bulbs in one shipment, except Japanese Lilies and Lily-of-the-valley, which will be shipped upon arrival in October and November. Some dealers make a point of offering Dutch Bulbs for sale very early in the fall, which often necessitates the shipping of bulbs from Holland before they are properly ripened—a frequent cause of failure to bloom. We do not usually try to deliver Dutch bulbs before October 1, which is quite early enough; and last fall, on account of the wet season in Holland, we did not make delivery until two weeks later than this.

**SHIPPING INSTRUCTIONS.**—Please send full shipping instructions. State whether goods are to be shipped by freight or express, and by what route. In the absence of instructions, we will ship by whatever method and route we think best.

**TERMS OF PAYMENT.**—Our terms of payment are invariably cash on delivery, which does not mean that we ship C. O. D., as we will not do so under any circumstances. We deliver the goods and mail bills at the same time, and expect payment within a few days. People unknown to us will please send references with their orders. Those who wish to send cash in advance with their orders will be allowed a discount of five per cent from the prices quoted on this list on all orders received before July 1, 1904.

**GUARANTEES.**—We guarantee all trees, shrubs, plants and bulbs furnished by us to be first-class, true to name and delivered in good condition when shipped by express. Stock is shipped by freight at purchaser's risk, and customers must make claim on railroad companies for any loss caused by delay.

We do not guarantee stock to grow, or results in any way. No complaint will be entertained that is not made immediately upon receipt of stock.

There are so many causes for failure over which we have no control that we can assume no responsibility after stock is delivered in good order. Poor soil, unfavorable weather, ignorant or careless culture, all contribute to failure, and all are beyond our control.

**EARLY ORDERS.**—The earlier orders are given the better we can have them filled. Some of our customers are now giving us orders to be delivered next spring. Our representative usually sails for Europe early in July, and personally selects the stock for all import orders received by July 1.

**CLUB ORDERS.**—No smaller quantities will be supplied than those quoted in the list, except that six bulbs will be furnished at dozen price, fifty at hundred price and five hundred at thousand price; but it is suggested, where these quantities are too large, that two or three friends or neighbors could combine their orders with advantage, and save transportation charges.

**SPECIAL IMPORT ORDERS.**—Special orders will be taken to import from Europe anything desired in trees, shrubs or plants. For this service we charge a commission of 25 per cent, but as we buy everything from the growers at lowest wholesale prices, customers can depend on getting the stock for less money than it can be obtained in any other way. Our knowledge of nursery stock and our experience in importing will save our customers from any mistakes in bringing over stock not suited to our climate, or stock that can be bought to better advantage on this side.

**PLEASE NOTICE** the date of delivery and the limit of time for receiving orders for the different classes of stock. Often orders are sent us too late in the season to be filled.

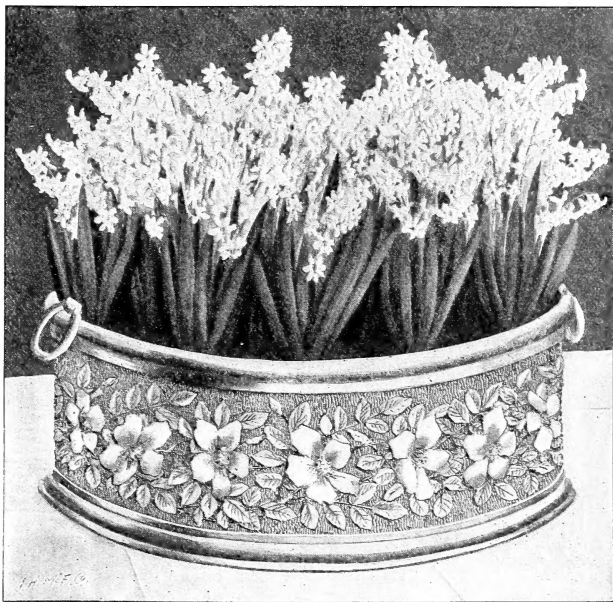
**EXPERIMENTAL GROUNDS.**—For our own information and for the benefit of our customers, we have established experimental grounds where all promising novelties are tested. We also grow all varieties of trees, shrubs and hardy plants generally in the trade, so that we can have full information as to their respective merits.

# Flowers for the House from Christmas until Easter

It is possible to have an abundant supply of flowers in the house from Christmas until Easter, and with no greater facilities than are to be had in every dwelling house, and at comparatively small cost. Both Roman and Dutch Hyacinths can be bloomed in the winter with certain and satisfactory results. Roman Hyacinths can be had in bloom by Christmas or earlier, and are the most satisfactory bulbs that can be grown for winter flowers. They come into bloom quickly, and it is almost impossible to fail with them. The most delightful way to use them is to plant a quantity in a fern dish, jardinière or other receptacle suitable for using for a centerpiece for the dining table. Fern dishes are made in a variety of styles, and cost from \$2 or \$3 up to \$25 or \$30 for heavy silver plated ones such as are made by the Gorham Manufacturing Company. The bulbs are not planted directly in the fern dish, but in a zinc pan, which is made to fit inside of the fern dish. Extra zinc pans can be had, and when Roman Hyacinths are to be grown, from six to twelve extra pans should be used. The Roman Hyacinth should be planted in the pans in the fall, from September 1 until the last of November, at intervals of two weeks.

The soil used should be light and rich, one-third good soil, one-third sand, and one-third thoroughly rotted manure, and the bulbs planted thickly, so that they almost touch. As soon as planted, they should be well watered and then set away in the coolest part of the cellar, and not near the furnace or any fire heat. If the cellar is a light one, the bulbs should be covered with boxes, canvas, or anything that is convenient to keep them dark. If the soil gets dry it can be watered, but not oftener than once in two weeks. Roman Hyacinths may be brought into the light and heat about December 1, and will be in bloom in about two weeks. After bringing into the living-room they should be freely watered. By bringing a pan or more of bulbs from the cellar every ten days, a succession of flowers for the table can be had all winter and spring. A centerpiece of growing Roman or Dutch Hyacinths makes the most beautiful table decoration that can be obtained, does not cost one-fifth as much as cut-flowers, and will last in perfect beauty for ten days or more, while cut-flowers are often faded before a dinner is over. The pans for growing Roman Hyacinths can be from 3 to 5 inches deep, but pans for Dutch Hyacinths should not be less than 4 inches deep. **Do not attempt to force cheap mixed Hyacinths; the results will not be satisfactory.**

Roman Hyacinths have small single white, pink or blue flowers. They bloom profusely, having from four to



FERN DISH OF WHITE ROMAN HYACINTHS.

six spikes to each bulb, are very low-priced, and are the easiest bulbs to bloom in the house. The white variety is the earliest, most beautiful and satisfactory one to grow. By Dutch Hyacinths are meant the large-flowered varieties, which everybody knows. The single varieties are the only ones to grow in the house, and are much more beautiful than the double sorts. Dutch Hyacinths should be treated in the same manner as Roman Hyacinths, except that the bulbs should not be brought out of the cellar before February 1. Single Early Tulips and Narcissi (Daffodils) can also be bloomed successfully in the house, if not attempted too early. They can be bloomed in March, and a splendid display of them can be readily had for Easter. They should not be brought from the cellar until March 1. The following varieties of Narcissi are the most satisfactory for blooming in the house: Bicolor Empress, Emperor, Incomparabilis Alba Stella, Von Sion, Poeticus, Ornatus, Barri Conspicuous, Golden Spur, Princeps, Paper White, and all varieties of Polyanthus Narcissi. Almost every house contains flower pots, jardinières, etc., that might be utilized for growing bulbs. Zinc pans or bowls to fit inside of them can be made by any tinner, and the choicest ware thus used without injury.

## Collections of Bulbs Suitable for the House

Prices of Dutch and Roman Hyacinths will be found elsewhere in this list, but I shall be pleased to make up collections suitable for the house at \$2.50, \$5, \$10, \$15, \$20 and \$25 each. These collections can be relied upon to be entirely satisfactory, both as to quality and price.

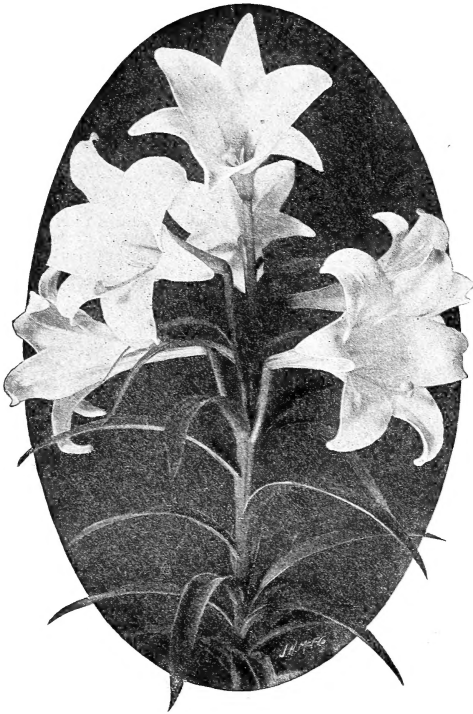


ZINC PAN FOR FERN DISH.



ROMAN HYACINTHS IN POTS.

ORDER BULBS NOT LATER THAN JULY 1



LILIIUM HARRISII.

**Lilium Harrisii. True Bermuda Easter Lilies**

(READY IN AUGUST)

It is impossible to obtain Bermuda Lily bulbs that are entirely free from disease. We get the best bulbs obtainable, but cannot guarantee results

This Lily is now so well known that it needs no description. It is undoubtedly one of the most popular flowers ever used for forcing. The bulbs we supply are of the highest quality obtainable, and are perfectly true, and not mixed with *Lilium longiflorum*. It cannot be grown outdoors unless extremely well protected in winter. If a Lily of this character is desired for outdoor planting, *L. longiflorum* should be used.

Prices for orders booked before July 1:

	Per doz.	100
Bulbs 5 to 7 inches in circumference.....	\$1 00	\$6 00
Bulbs 7 to 9 inches in circumference.....	2 00	14 00
Bulbs 9 to 11 inches in circumference.....	4 00	25 00

**Lilium Candidum**

	Per doz.	100
Selected French bulbs, field-grown.....	\$1 25	\$9 00
American bulbs, selected.....	1 50	10 00

**Roman Hyacinths. (Ready about September 1)**

Prices for orders booked before July 1:

	Per doz.	100
White. Selected, 12 to 15 centimeters .....	\$0 65	\$4 50
" Extra-selected, 13 to 15 centimeters.....	75	5 00
Pink .....	70	5 00
Blue .....	55	4 00

**Lily-of-the-Valley. (Ready latter part of November)**

Prices for orders booked before July 1:

	Per 100	1,000
Extra selected German pips .....	\$2 00	\$12 50

These pips are excellent for establishing plantations outdoors as well as for forcing.

**Freesia refracta alba**

This charming flower is one of the most satisfactory bulbs that can be forced. It is certain to flower either in the conservatory or house.

	Per doz.	100	1,000
Large bulbs.....	\$0 20	\$1 00	\$7 00
Mammoth bulbs.....	35	2 00	15 00

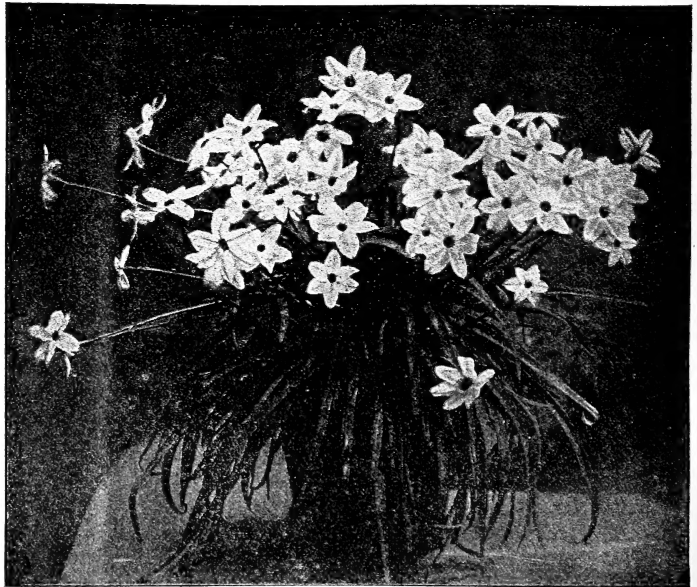
**Milla uniflora**

TRITELEIA

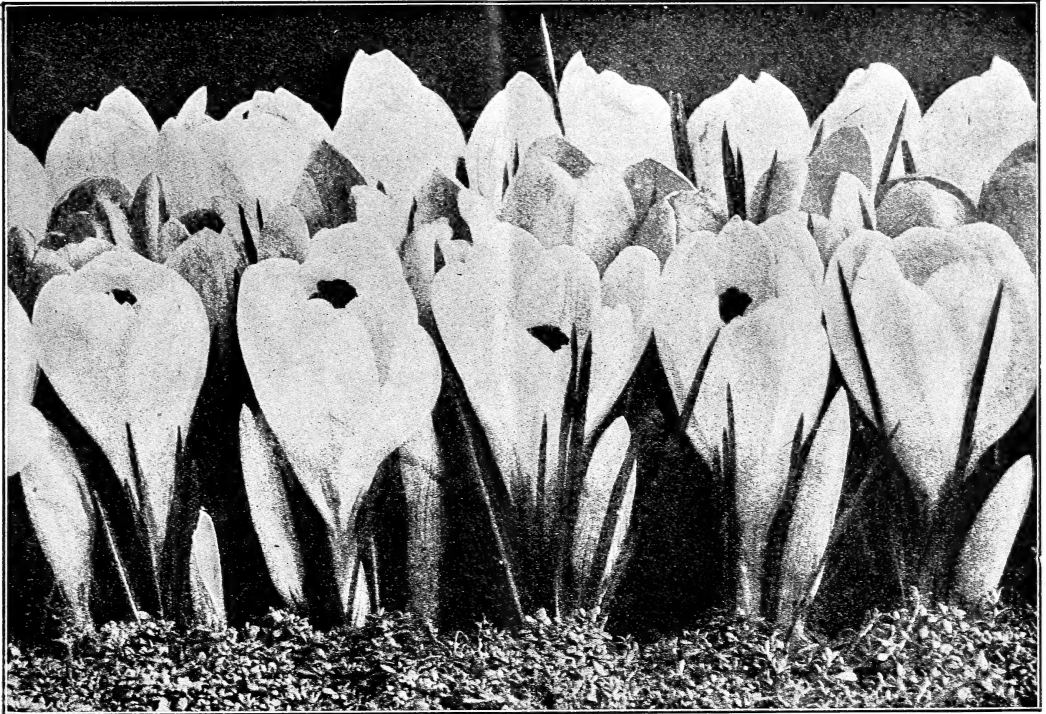
This charming spring-flowering bulb is almost unknown in this country, but I know of nothing lovelier. I first saw it in the garden of Mr. Charles A. Dana, "Dosoris," Long Island, and was delighted, as I am sure every one will be that tries it. It likes rather a moist soil and should be planted where it can remain permanently. It can also be bloomed in the house with the same treatment as hyacinths. For this purpose several bulbs should be planted in a 6- or 7-inch pot.

**Uniflora.** Charming white, star-like flowers, with beautiful foliage which covers the ground like a carpet. One of the choicest hardy bulbs. Should be used freely in every garden. 20 cts. per doz., 75 cts. per 100, \$5 per 1,000.

**Uniflora violacea.** Same as above, with violet flowers. 25 cts. per doz., \$1 per 100, \$5 per 1,000.



MILLA UNIFLORA GROWN IN A POT.



LARGE-FLOWERED CROCUSES.

## CROCUSES IN THE GRASS

There is no reason why everybody, even if the possessor of only the smallest strip of grass, should not have it filled with Crocuses. The cost is but a trifle, and once planted they are no further trouble, and bloom beautifully year after year and do not interfere with the mowing or care of the lawn; but grass should not be mown for two weeks after flowering of Crocuses, and it does not need mowing earlier than this. They should be planted in the fall and set from 1 to 2 inches below the surface of the ground; they can be planted with a narrow trowel or stiff-bladed knife. Mowing the grass in the spring after the Crocuses are done blooming will not injure them in the least.

The Crocus is the first flower to bloom in the spring, and it is no unusual sight to see the ground covered with snow and the Crocus in bloom at the same time. They are entirely hardy, do not deteriorate, and may be left undisturbed for years. It is a good thing to plant tulip and hyacinth beds full of them, as they bloom and are out of the way before the other bulbs flower.

Carpet-beds with designs worked out with Crocus are very effective in early spring. Crocuses should be planted 1½ to 2 inches apart, and for this purpose Mixed Crocuses should never be used.

My advice would always be to plant Named Crocuses; they are very superior to Mixed sorts.

### SELECT NAMED CROCUS

Prices quoted are for orders booked by July 1, 1904. Not less than 50 of a kind will be supplied

	Per 100	1,000
Albion. Striped blue and white	\$0 70	\$5 75
Baron von Brunow. Dark blue	65	5 75
Caroline Chisholm. Pure white	70	5 75
Cloth of Gold. First size; golden, striped brown	45	4 00
Cloth of Silver. First size; white, violet-striped	65	5 50
Grand Lilac. Lilac; very early and very fine	80	7 00
Grootvorst. White and violet	60	5 50
Ida Pfeiffer. Striped	55	4 75
King of the Blues. Dark purple	75	6 50
King of the Whites. Large; snow-white; splendid new variety	85	7 75
La Majesteuse. Striped	60	5 00
Lord Fielding. Striped	60	5 25
Mont Blanc. White; best	65	5 75
Mad. Mina. Light blue, striped; very early; extra fine	65	5 75
Ne Plus Ultra. Blue, white border	65	5 50
Prince Albert. Blue	65	5 75
Queen Victoria. White	65	6 25
Sativus. Very interesting, as the stamens of the flowers are the well-known saffron	1 75	12 00

	Per 100	1,000
Scotch. Earliest of all	\$1 75	\$12 00
Sir Walter Scott. Striped; finest	60	5 00
Sir John Franklin. Large; dark purple	75	6 25
Speciosus. The only true blue Crocus; autumn-flowering. A most beautiful variety	4 00	
Xerxes. Lilac; extra large	80	6 75

### CROCUS IN SEPARATE COLORS

	Per 100	1,000
Purple. One variety	\$0 45	\$4 00
White. One variety	45	4 00
Striped. One variety	45	4 00
Large Yellow. Mammoth bulbs, first size	85	7 50
“ “ Second size (usually sold as Mammoth)	65	5 75
“ “ Third size	45	3 50

### MIXED CROCUS

White	40	3 50
Blue	40	3 50
Striped	40	3 50
All Colors	35	2 75



BED OF WHITE HYACINTHS, PLANTED WITH BEDDING HYACINTHS IN SEPARATE COLORS.

# HYACINTHS

All prices on Hyacinths are for orders booked by July 1. Ready about October 1

## MIXED HYACINTHS

Mixed Hyacinths should never be used for house or greenhouse culture.

### SINGLE

	Each	Per doz.	100
Red and Dark Red	\$0 07	\$0 65	\$4 00
Pink	07	70	4 50
Blush White	07	65	4 50
Pure White	08	70	4 50
Dark Blue and Purple	07	70	4 50
Light Blue	07	70	4 50
Yellow	08	80	6 00
All Colors, Mixed	.500 for \$17.	05	55

### DOUBLE

Red and Pink	08	75	5 00
White	08	85	5 50
Blue and Purple	07	70	5 00
Yellow	08	75	6 00
All Colors, Mixed	07	70	4 50

## BEDDING HYACINTHS

Separate varieties without names. These are superior in quality to mixed Hyacinths, and very satisfactory for bedding, as uniformity in color and height can be had by their use.

### SINGLE

	Per doz.	100
Dark Red	\$0 85	\$5 25
Pink	85	5 25
Pure White	1 00	6 50
Blush White	90	5 75
Dark Blue	85	5 25
Light Blue	85	5 25
Yellow	1 00	6 50

## BEDDING HYACINTHS, DOUBLE

	Per doz.	100
Dark Red	\$0 85	\$5 75
Pink	85	5 75
Pure White	1 00	6 50
Blush White	1 00	6 50
Dark Blue	1 00	6 00
Light Blue	1 00	6 00
Yellow	1 00	6 00

## SECOND-SIZED NAMED HYACINTHS

These second sized Hyacinths will be found fine for forcing, and are highly recommended for those who desire extra good bulbs for bedding. They embrace the leading named sorts of this list, are larger bulbs than those sold as mixed, and strictly true to name and color, thus giving exact shades wanted.

	Per doz.	100	1,000
Single	\$1 00	\$6 00	\$58 00
Double	1 00	6 00	58 00

## EXHIBITION HYACINTHS

This class comprises extra fine bulbs, the finest grown, and will be sent with each name, color and shade separate and marked. It is a fact well known to importers of bulbs that few of the **very finest Hyacinths** of Holland find their way to this country, as they are chiefly marketed in Germany and England, at very high prices, for the use of wealthy amateurs. These Hyacinths are commended to those who wish the very finest quality for exhibition or for the decoration of the conservatory. They embrace the most magnificent colors and choicest varieties of Show Hyacinths, both single and double.

Price, 25 cts. each, \$2.50 per doz., \$18 per 100

## HYACINTHS IN COLLECTIONS FOR EXHIBITION

	Per 100
25 choicest named sorts, single or double	\$18 00
100 " " " " " "	16 00



## SINGLE SMALL HYACINTHS FOR FORCING

These single Hyacinths, planted on arrival from Holland, may be had in flower early in January. The bulbs and flowers of these small Hyacinths are about the same size as Roman Hyacinths, but much stronger, and the bells are larger, while they do not cost half the price of Romans. Only those varieties which produce the fine flowers and force easily are selected for this purpose. They may be planted like tulips, in pots or boxes close together. Last season I sold large quantities, and my customers inform me that they are a great acquisition to succeed the Roman Hyacinths, blooming from January till April.

	Per doz.	100		Per doz.	100
Dark Red.....	\$0 40	\$2 50	Dark Blue.....	\$0 40	\$2 50
Pink.....	40	2 50	Light Blue.....	45	2 75
Pure White.....	45	3 00	All Colors, Mixed.....	40	2 35
Cream White.....	45	2 75			

## Single Named Hyacinths

To secure the 100 price on named Hyacinths, not less than 25 bulbs of a variety can be ordered

### SINGLE DARK RED

	Each	Per doz.	100
Amy. Bright carmine; fine spike.....	\$0 15	\$1 50	\$9 50
Cosmos. Dark rose; large spike.....	15	1 50	10 00
Fiance Royal. Bright rose; large truss.....	15	1 50	9 25
General Pelissier. Deep scarlet; early; extra fine.....	12	1 30	8 50
Gertrude. Red; large, fine spike.....	12	1 20	8 50
Homerus. Earliest of all reds.....	15	1 50	9 25
Howard. Rich scarlet; fine spike; very early.....	35	3 50	25 00
Josephine. Brilliant scarlet, changing to orange..	12	1 20	8 50
Lord Macaulay. Very fine bright red; extra large spikes; one of the best.....	15	1 40	9 25
Prima Donna. Lustrous color.....	25	2 50	16 00
Queen Mary. Earliest of all; new.....	30	3 00	20 00
Queen Victoria Alexandra. Dark carmine.....	15	1 50	9 25
Reine Des Jacinthes. Fine bright scarlet, and one of the best.....	15	1 50	9 25
Robert Steiger. Deep crimson.....	10	1 10	8 00
Roi des Belges. Extra fine; bright scarlet, and extra large spike.....	10	1 10	8 00
Veronica. Fine dark red.....	15	1 50	9 25
Ven Schiller. Deep rosy carmine; large spikes...	12	1 30	9 25

### SINGLE ROSE

Baron von Thuyll. Very fine pink; extra large spike.....	12	1 10	7 50
Carlyle. Soft rose, carmine-striped; very large truss.....	35	3 25	21 00
Cavaignac. Extra fine salmon-pink; distinct and splendid color; large, full spike.....	20	2 25	13 75
Charles Dickens. The best pink; extra large spike.....	15	1 50	10 50
Gigantea. Blush; splendid truss.....	12	1 25	8 40
Grand Vainqueur. Fine pink; tall spike; very early.....	13	1 35	9 25
Le Prophete. Pink; large spike.....	12	1 25	8 50
Lord Percy. Fine soft rose; new.....	30	3 00	18 00
Lord Wellington. Pink.....	12	1 30	8 25
Madam Hodson. Pink, car- mine-striped.....	\$0 12	\$1 25	\$8 50
Moreno. Very fine pink; extra large spike; very early; splendid sort.....	16	1 75	10 50
Norma. Satiny pink.....	14	1 50	9 00
Rosea Maxima. Early, deli- cate rose.....	12	1 25	8 50
Sultan's Favorite. Blush- pink.....	14	1 50	9 00

### SINGLE DARK BLUE

	Each	Per doz.	100
Argus. Blue, white eye; extra.....	\$0 16	\$1 75	\$11 50
Baron von Thuyll. Large truss.....	12	1 30	8 50
Bleu Mourant. Distinct color; extra.....	12	1 30	8 50
Charles Dickens. Porce- lain-blue; large; extra fine.....	15	1 50	10 50
General Havelock. Dark blue; fine truss; splen- did.....	25	2 15	14 40
King of the Blues. Splen- did; finest dark blue....	12	1 30	8 50

### SINGLE DARK BLUE HYACINTHS, continued

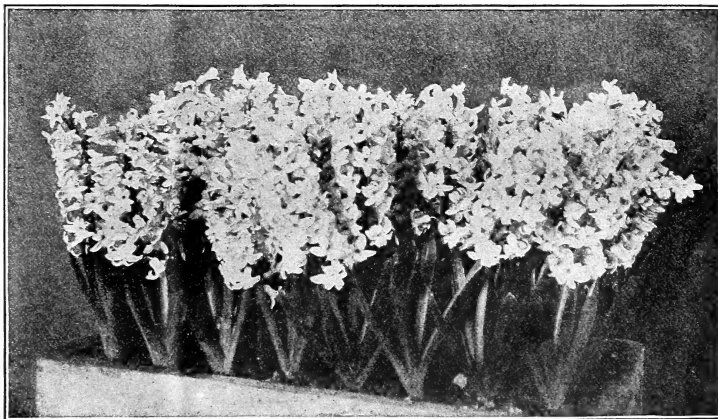
	Each	Per doz.	100
Leopold II. Fine blue; large truss; splendid flower.....	\$0 15	\$1 50	\$9 50
Marie. Rich purple and indigo; enormous spike.....	12	1 30	8 50
Masterpiece. Superb; nearest to black.....	30	3 00	20 00
Mimosa. Bluish purple; splendid.....	15	1 50	10 50
Pieneman. Dark porcelain-blue; very large truss and bulb.....	12	1 30	8 50
William the First. Large spike; early.....	18	1 75	10 75

### SINGLE LIGHT BLUE

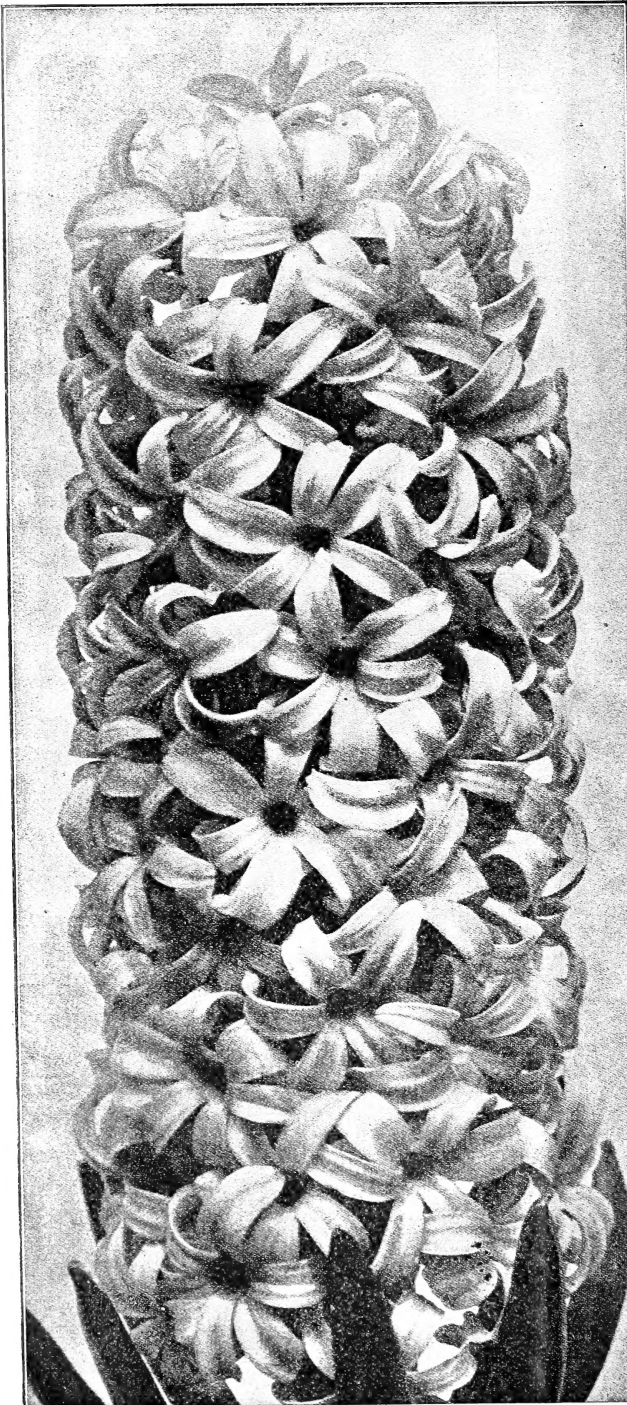
Blondin. Silvery, tinged blue; fine truss.....	13	1 30	8 50
Captain Boyton. Azure-blue; large spike.....	17	2 00	11 75
Czar Peter. Porcelain-lilac; grand spike.....	27	3 00	19 00
Enchantress. Clear light blue; one of the finest blues; extra fine spike. An exhibition variety.....	30	3 50	20 00
Grand Lilas. Azure-blue; perfect spike.....	15	1 50	10 50
Grand Maitre. Very large spike.....	12	1 30	8 50
La Peyrouse. Clear blue.....	12	1 10	7 50
Leonidas. Splendid large truss.....	15	1 40	9 25
Lord Byron. Azure-blue; very large spike.....	20	2 00	12 75
Lord Derby. One of the very finest.....	23	2 50	14 50
Lord Palmerston. Light blue, white eye.....	15	1 60	10 50
Princess Mary of Cambridge. Splendid large truss.....	70	7 00	50 00
Queen of the Blues. Light blue, with silvery ap- pearance; extra fine.....	15	1 50	10 50
Regulus. Light blue, with dark stripes.....	13	1 40	8 50

### SINGLE WHITE

Alba superbissima. Extra pure white.....	15	1 60	10 25
Albertine. Pure white; early; large spike; extra fine.....	15	1 50	9 50



CZAR PETER HYACINTHS.



## SINGLE WHITE HYACINTHS, continued

	Each	Per doz.	100
<b>Baroness von Thuyll.</b> Early, pure white.....	\$0 13	\$1 25	\$8 50
<b>Blanchard.</b> Pure white; very large spike.....	17	1 75	12 50
<b>Blancheur A. Merveille.</b> Pure white; fine spike.....	14	1 60	12 00
<b>British Queen.</b> Pure white; new; extra fine.....	20	2 25	12 50
<b>Crown Princess.</b> Pure white; fine, early.	20	2 00	12 00
<b>Grande Blanche.</b> Blush white; large bells and large spikes.....	15	1 50	9 50
<b>Grandeur a Merveille.</b> Rosy blush.....	13	1 25	8 50
<b>La Franchise.</b> Waxy white; large bells.	15	1 50	9 25
<b>La Grandesse.</b> Purest white; extra fine.	20	2 25	13 25
<b>La Neige.</b> Superb; very early; large truss.....	25	2 25	15 00
<b>Leviathan.</b> Beautiful blush; large bells and spike; a most distinct and charming variety.....	15	1 60	10 25
<b>L'Innocence.</b> Fine white; extra fine and large truss.....	18	1 75	11 50
<b>Mad. Vanderhoop.</b> Pure white; splendid.	15	1 65	10 25
<b>Mammoth.</b> Blush white.....	20	2 00	12 00
<b>Mary Stuart.</b> Fine, pure white.....	20	2 00	12 50
<b>Mina.</b> Pure white; fine spike.....	18	1 75	11 75
<b>Mont Blanc.</b> Fine pure white; grand spike.....	25	2 40	14 75
<b>Mr. Plimsol.</b> Ivory-white; large bells and truss.....	15	1 50	9 50
<b>Paix de l'Europe.</b> Very fine; snow white; very large truss.....	13	1 25	8 50
<b>Pavillon Blanc.</b> Pure white.....	20	2 00	11 35
<b>Queen Victoria.</b> Pure white.....	20	2 00	12 50
<b>Seraphine.</b> Blush white; large spike..	15	1 50	9 50
<b>Voltaire.</b> Creamy white.....	13	1 30	8 50

## SINGLE YELLOW

<b>Alida Jacoba.</b> Bright yellow.....	17	1 85	11 50
<b>Australian Gold.</b> Golden yellow; fine spike.....	25	2 25	14 50
<b>Bird of Paradise.</b> Fine dark yellow; splendid truss.....	22	2 50	14 25
<b>Hermann.</b> Orange-yellow.....	15	1 50	10 00
<b>Ida.</b> Citron-yellow; large spike; one of the finest yellows in cultivation.....	20	2 10	14 50
<b>King of Holland.</b> Orange-yellow.....	16	1 80	12 50
<b>King of the Yellows.</b> Fine bright yellow; grand spike.....	20	2 00	13 50
<b>La Citroniere.</b> Bright citron-yellow; fine spike.....	20	2 00	11 75
<b>La Pluie d'Or.</b> Pale yellow.....	14	1 39	9 25
<b>MacMahon.</b> Deep golden yellow; large spike.....	20	2 00	13 75
<b>Obelisk.</b> Splendid pure yellow; one of the best.....	23	2 40	14 50

## SINGLE VIOLET AND LILAC

	Each	Per doz.	100
<b>Charles Dickens.</b> Large dark lilac; splendid.....	\$0 25	\$2 40	\$15 00
<b>Distinction.</b> Splendid maroon; new....	60	6 00	39 00
<b>Haydn.</b> Brilliant dark plum.....	18	2 00	12 00
<b>Jeschko.</b> Lilac, striped with violet-red.	18	2 00	12 00
<b>Lord Mayo.</b> Rich purple blue with white eye.....	25	2 50	15 00
<b>Punch.</b> Clear violet; fine, new.....	25	2 50	20 00
<b>Sir Edward Landseer.</b> Dark violet.....	20	2 00	12 75
<b>Sir Henry Havelock.</b> Plum or purple-violet; fine truss.....	35	3 50	21 00
<b>Tollens.</b> Purple-violet.....	18	1 75	11 25

LORD BYRON. Character of flower produced by our first-sized Named Hyacinths.

## Double Named Hyacinths

Double Named Hyacinths are inferior to the Single varieties in every respect

### DOUBLE DARK RED

	Each	Per doz.	100
<b>Bouquet Tendre.</b> Large truss.....	\$0 16	\$1 80	\$11 50
<b>Noble par Merite.</b> Splendid truss ..	14	1 30	8 50
<b>Princess Royal.</b> Fine dark center ..	13	1 45	9 00
<b>Regina Victoria.</b> Dark rose .....	16	1 75	11 50

### DOUBLE ROSE

<b>Bouquet Royal.</b> Rosy salmon .....	14	1 30	8 40
<b>Grootvorst.</b> Fine rose; good truss.	14	1 30	8 25
<b>Lord Wellington.</b> Best double pink.	20	2 00	13 50
<b>Princess Alexandra.</b> Pink; semi-double .....	18	1 75	11 25

### DOUBLE DARK BLUE

<b>Garrick.</b> Lilac-blue; splendid .....	12	1 35	8 50
<b>Lord Wellington.</b> Striped lilac.....	15	1 75	11 25
<b>Prince Albert.</b> Dark blue .....	16	1 75	11 25
<b>Prince of Saxe Weimar.</b> Semi-double.	16	1 75	10 50

### DOUBLE LIGHT BLUE

<b>Blocksberg.</b> Extra fine truss .....	16	1 75	10 50
<b>Charles Dickens.</b> Light blue; extra large spike .....	15	1 45	8 40
<b>Mignon de Dryhout.</b> Semi-double..	15	1 45	8 75
<b>Rembrandt.</b> Splendid; very late ..	15	1 40	8 75

### DOUBLE WHITE

<b>Anna Maria.</b> Purple center .....	16	1 55	10 50
<b>Bouquet Royal.</b> Pure white.....	15	1 50	9 50
<b>La Tour d'Auvergne.</b> Pure white; large truss.....	15	1 50	9 75
<b>La Virginite.</b> Rosy center.....	14	1 20	8 20

### DOUBLE YELLOW

<b>Bouquet d'Orange</b> .....	16	1 75	11 50
<b>Goethe.</b> Splendid pale yellow .....	15	1 50	10 00
<b>Ophir d'Or.</b> Reddish purple center.	17	1 60	10 50
<b>William III.</b> Extra fine apricot.....	17	1 60	11 25

## Azalea Indica

Buyers  
mens sho

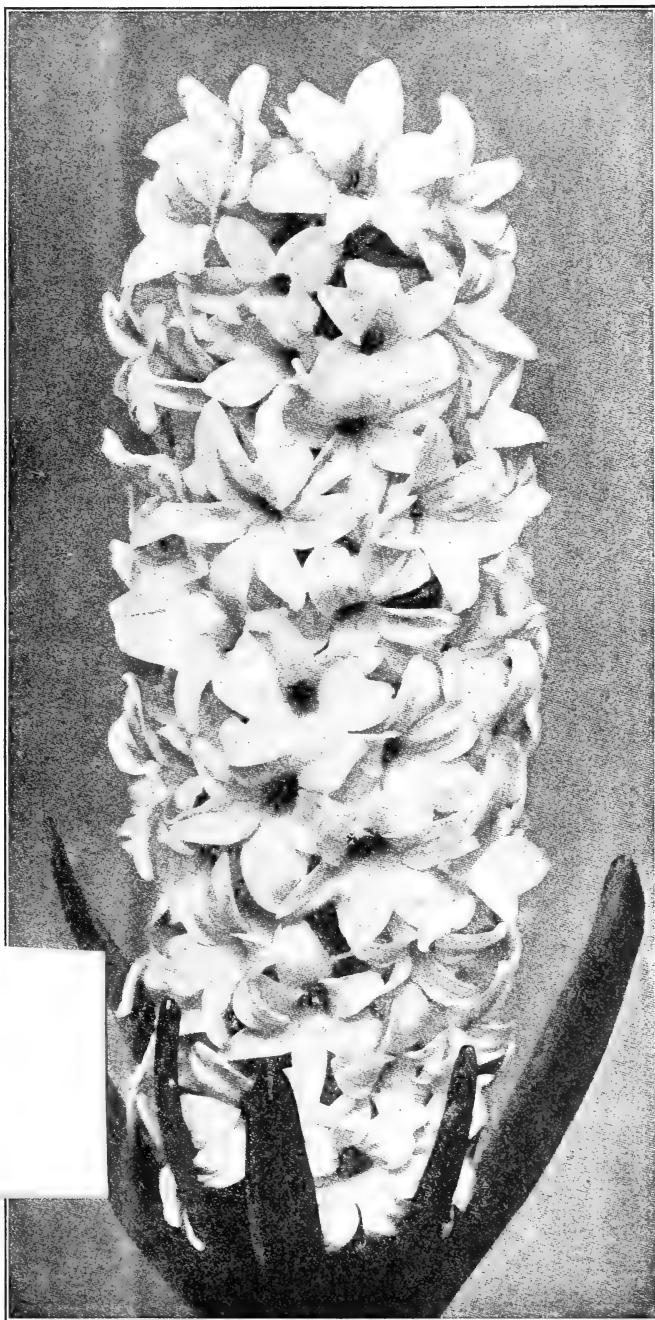
Strong p  
across  
Strong p  
across  
Strong p  
across  
Strong p  
across

These prices hold good until October 1

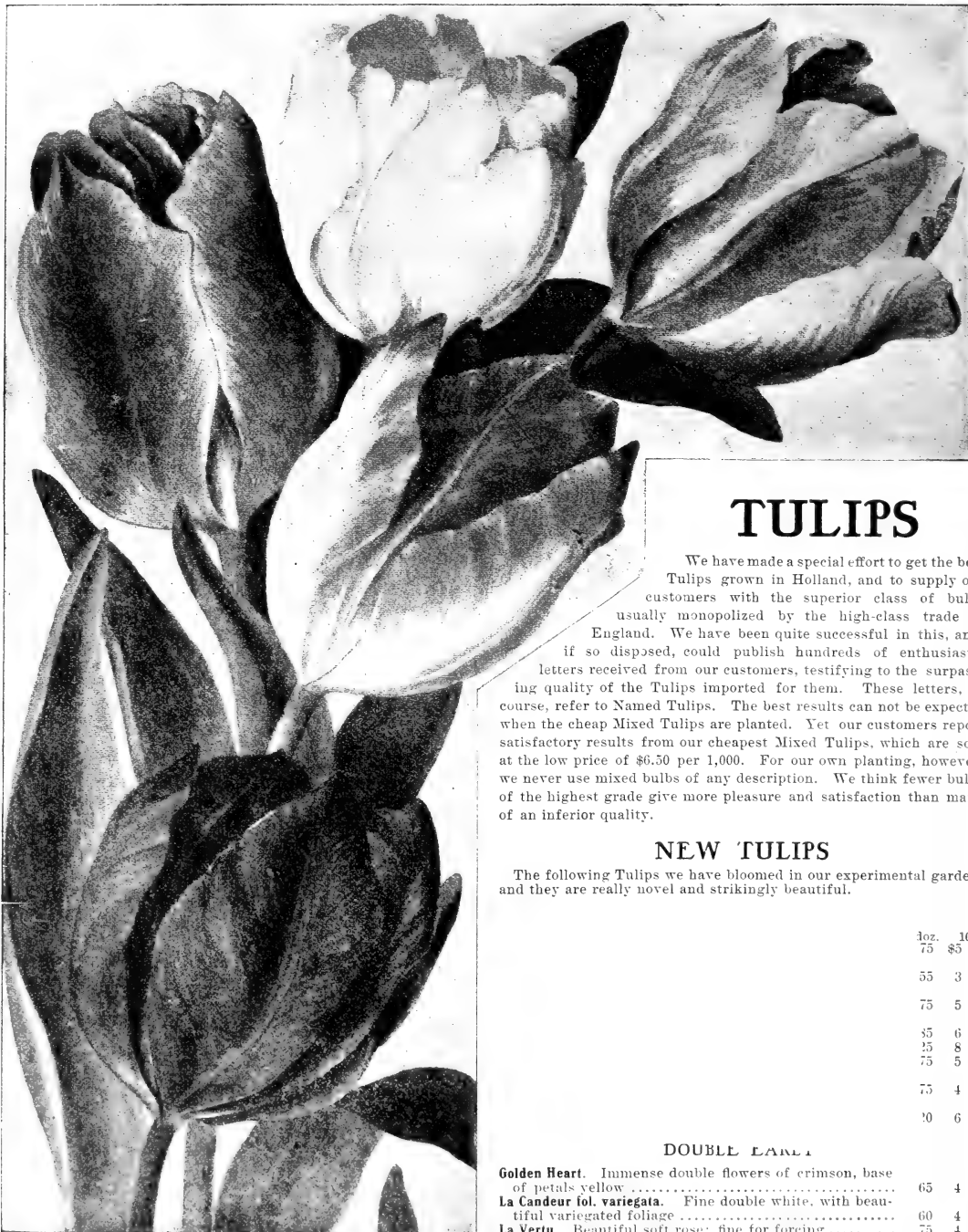
Large specimen plants from \$3 to \$10 each and upward.

Delivery will be made early in November, as soon as importations are received.

We can supply all the best sorts. Azaleas furnished by us have given unqualified satisfaction.



LA GRANDESE. Character of flower produced by our first-sized named bulbs.



SINGLE EARLY TULIPS

## TULIPS

We have made a special effort to get the best Tulips grown in Holland, and to supply our customers with the superior class of bulbs usually monopolized by the high-class trade in England. We have been quite successful in this, and, if so disposed, could publish hundreds of enthusiastic letters received from our customers, testifying to the surpassing quality of the Tulips imported for them. These letters, of course, refer to Named Tulips. The best results can not be expected when the cheap Mixed Tulips are planted. Yet our customers report satisfactory results from our cheapest Mixed Tulips, which are sold at the low price of \$6.50 per 1,000. For our own planting, however, we never use mixed bulbs of any description. We think fewer bulbs of the highest grade give more pleasure and satisfaction than many of an inferior quality.

### NEW TULIPS

The following Tulips we have bloomed in our experimental garden, and they are really novel and strikingly beautiful.

10z.	100
75	\$5 00
55	3 50
75	5 00
55	6 00
25	8 00
75	5 00
75	4 00
70	6 50

### DOUBLE EARLY

<b>Golden Heart.</b> Immense double flowers of crimson, base of petals yellow .....	65	4 00
<b>La Candeur fol. variegata.</b> Fine double white, with beautiful variegated foliage .....	60	4 00
<b>La Vertu.</b> Beautiful soft rose; fine for forcing .....	75	4 00
<b>Prince of Wales.</b> Immense dark crimson flower .....	65	4 50
<b>Vuurback.</b> Scarlet; often produces two flowers on a stalk .....	75	5 00

*Special and*

**TULIPS IN MIXTURE**

Prices quoted are for orders booked by July 1, 19  
quoted for 10,000

- Fine Single Mixed.** Quality superior to that general
- Extra Fine Single Mixed.** Extra selected.....
- Fine Double Mixed.** Quality superior to that general
- Extra Fine Double Mixed.** Extra selected.....
- Extra Fine Late Double Mixed**.....

**SINGLE NAMED EARLY**

If best results are desired, Named Tulips should  
Tulips are not recommended, although the mixtures  
are very superior to those usually sent out.

The letters A, B and C indicate the proportion  
varieties if planted outdoors. A and B may be  
bedding purposes, but those marked C are like  
preceding names show the height of growth  
marked F after the name are the best for forcing  
greenhouse.

Prices quoted are for orders booked by July 1

burg, Pa.

	Per doz.	100	1,000
1. Same flower as the famous de ma Fille," but much .....	\$0 60	\$4 00	@29 50
ntel (Velvet Gem). Purple, yellow.....	40	2 50	
Deep scarlet edge, with bright .....	30	2 00	15 00
fold and scarlet; superb.....	35	2 25	
rorum. Brilliant scarlet; fine , and one of the grandest for .....	50	3 50	27 00
e. Blue and white feathered; .....	25	1 50	12 50
ure white; a splendid bed- Used with Rex Rubrorum ling designs, it makes a fine .....	25	1 50	12 50
m. The best double violet; .....	70	5 00	
a Fille. White, striped with .....	40	2 70	20 00
it pink; very early; splendid and forcing.....	45	3 25	25 25
Purple-maroon.....	30	1 75	12 75
cate pink; extra fine; large .....each, 16 cts...	1 75	10 00	
Reinhold			

## MISCELLANEOUS TULIPS

Late Tulips are but little known in this country, yet they are extremely beautiful and striking, and come into bloom in May, after all other Tulips are over. Many are the original wild varieties, and, if planted where they can remain permanently, will improve year after year. Our experience has been that permanent plantations of Tulips should not be watered after flowering. They seem to do much better if allowed to take their chances with the weather, and we know of a lot of single early Tulips planted in a bed in a farm field where they have never been watered or cultivated in any way, not even the weeds and grass removed, yet they thrive and bloom splendidly year after year. We wish to call especial attention to Gesneriana Tulip. Without exception, it is the most effective Tulip that can be planted outdoors. A bed of it will always attract the greatest admiration and enthusiasm.

	Per doz.	100	1,000
<b>Gesneriana.</b> The tallest, largest flowers and showiest of all Tulips for bedding out in masses. It deserves to be largely grown. Height, 18 to 24 inches. Flowers of enormous size, on long, graceful stems, and the most durable of all Tulips, as it holds its beautiful color and keeps perfect for a long time, flowering in May. Color, rich crimson-scarlet, with glittering blue-black center. This is the Tulip that attracted so much attention on the grounds of James McKay, Esq., at Shadyside. Our bulbs are guaranteed the true scarlet variety, and not the inferior purplish kind, that is not worth planting.....	\$0 30	\$1 85	\$14 00
<b>Golden Crown</b> (Yellow Gesneriana). Yellow, slightly edged with red; a splendid sort; similar to Gesneriana; fine for bedding.....	25	1 25	10 00
<b>Late Double.</b> Fine mixed; very showy large flowers.....	20	1 25	10 00

### LATE SHOW TULIPS

	Per doz.	100	1,000
<b>Bizarres.</b> Red, on yellow ground. Choicest mixed varieties.....	\$0 30	\$2 00	\$12 75
100 bulbs, in 25 named varieties, \$3.50.			
<b>Breeders.</b> Self-colored.....	45	3 00	
<b>Bybloems.</b> Red on white ground. Choicest mixed.....	\$0 40	\$2 75	
100 bulbs, in 25 named varieties, \$4.			
<b>Roses.</b> Red, on white ground. Choicest mixed varieties.....	40	2 75	
<b>Violettes.</b> Violet, on white ground. Choicest mixed.....	40	2 75	

The Bizarres, Bybloems, Roses and Violettes are the Tulips of the famous Tulip mania of Europe, when Tulips sold as high as \$1,000 each, and entire communities were involved in the speculation. They are very interesting and beautiful.

### MAY-FLOWERING TULIPS

	Per doz.	100	1,000
<b>Blushing Bride.</b> Beautiful rose-pink, slightly shaded white; fine form. A most superb and distinct variety.....	\$0 60	\$3 50	\$21 00
<b>Bouton d'Or</b> (Ida). Deep golden yellow; of great value for outdoor cutting.....	35	2 00	15 00
<b>Bridesmaid.</b> Brilliant scarlet, striped pure white; distinct and very beautiful.....	40	2 50	17 00
<b>Ciusiana.</b> The Lady Tulip. Red... ..	1 25		
<b>Darwin.</b> A new race of Tulips of remarkable beauty and brilliancy of coloring. Fine mixed. 100 bulbs, in 25 named varieties, \$4.50.	50	3 50	
<b>Eichleri</b> (Julia). Orange-red..... each, 85 cts....			
<b>Elegans.</b> A grand Tulip. Very showy, rich crimson-scarlet; large flower.....	2 00	14 00	

### MAY-FLOWERING TULIPS, continued

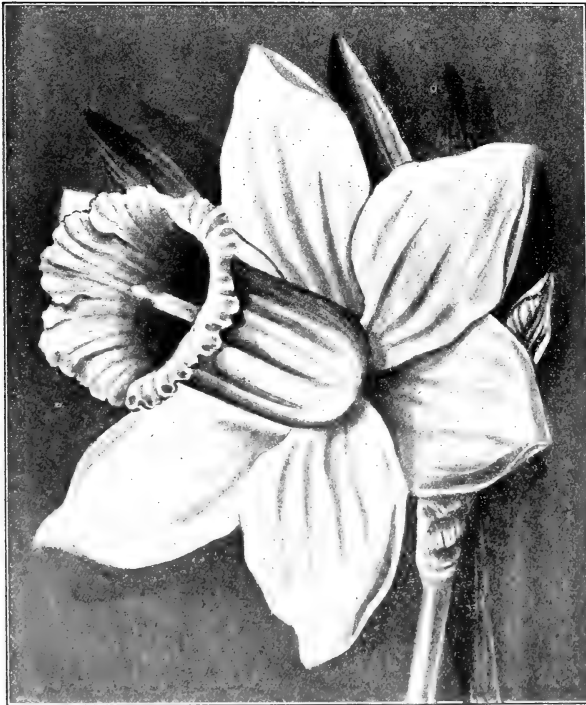
	Per doz.	100	1,000
<b>Florentine.</b> Sweet-scented; yellow.....	\$0 45	\$2 50	
<b>Greigi.</b> Odd and beautiful.....each, 15 cts....	1 50	10 25	
<b>Haageri.</b> Red, with black center.....	85		
<b>Kaufmanniana.</b> White; large; early.....each, 35c....	3 50		
<b>Late White Swan.</b> A grand, pure white, late-flowering Tulip.....	65	4 25	
<b>Linifolia.</b> New; brilliant scarlet.....each, 60 cts....			
<b>Maculata.</b> Carmine, black center.....	60	3 25	
<b>May Blossom.</b> Pure white, slightly striped and variegated with red. A grand flower.....	75	5 00	
<b>Oculus Solis.</b> Novel, beautiful variety; dazzling scarlet.....	1 00	7 50	
<b>Ostrowskiana.</b> New; scarlet.....	1 00	7 00	
<b>Persica.</b> A fragrant yellow.....	1 50		
<b>Picotee, or Maiden's Blush.</b> An elegant, long-shaped, clear white flower; the petals, which are pointed and elegantly reflexed, are beautifully margined and penciled on edges with bright pink.....	60	3 50	\$25 50
<b>Retroflexa.</b> Clear yellow.....	1 25	9 00	
<b>Variegated-leaved.</b> Assorted, single or double... ..	1 00	7 00	
<b>Viridiflora.</b> Green.....	1 50	9 00	



LATE SHOW TULIPS. From the English Flower Garden.



NARCISSUS BICOLOR EMPRESS, NATURALIZED IN THE GRASS.  
From "The Garden."



NARCISSUS, EMPEROR

## Narcissus

The Narcissi or Daffodils are undoubtedly the most beautiful, interesting and useful of all spring-flowering bulbs. The flowers have a very great diversity of form, more so than any other family, and they are exquisitely graceful and charming. One of their most desirable qualities is that they are a permanent addition to the garden, and, planted in good soil, they increase in size and beauty year after year.

A majority of the varieties are of the easiest culture, and many can be naturalized in the grass, in open woods or orchards and allowed to take care of themselves. For this purpose many varieties are so inexpensive that they can be used by the thousand. It must always be remembered, when Daffodils are planted in the grass, that it must not be cut until the foliage of the Daffodils ripens, about July 1. The illustration shows how beautiful Daffodils are when naturalized. The Daffodils are all fine for cut-flowers, either for forcing or for growing outdoors; and, at the low prices at which many of them can be had, there is no reason why they should not be grown by the hundred and thousand.

We take great pleasure in making a substantial reduction in price for some of the finest varieties, also in offering many of the rarer kinds from England not before obtainable in this country.

### Narcissus Emperor

This is the largest and finest deep yellow trumpet-flowered Daffodil in cultivation, and is really superb, both in foliage and flower. A few years ago it was selling at \$25 per 100, and last year I sold it at what was considered a very low price, \$7 per 100, but a contract made in Holland this year enables me to offer fine bulbs at the following prices: 65 cts. per doz., \$4 per 100, \$36 per 1,000.



### Narcissus, Bicolor Empress

This may be considered rather a high-priced Daffodil for planting in the grass, but the effect produced is so lovely and it is so hardy and vigorous and increases so rapidly that nothing can be planted that will be more satisfactory, and as we control the best stock of it in Holland we can make a specially low price in spite of the 25 per cent duty now levied on bulbs. If planted in orchards, meadows or any place where the grass is not mown by a lawn-mower, these Daffodils will increase in quantity and beauty year after year. Where they are planted the grass must not be mown before the middle of June, so that the bulbs may have time to ripen before the tops are cut off. Price, \$4 per 100, \$36 per 1,000. See illustration on opposite page.

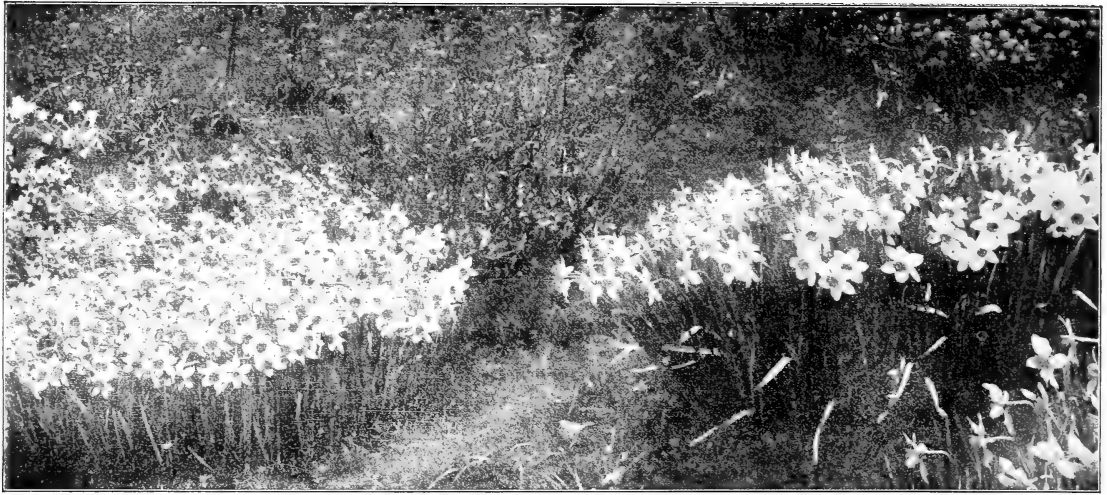
### DOUBLE NARCISSUS

	Per doz.	100	1,000
<b>Alba plena odorata.</b> Double Poeticus. Pure white, resembling a Gardenia, sweet-scented; fine for outdoors or for forcing.....	\$0 18	\$1 10	\$9 50
<b>Albus aureus.</b> Yellow and white.....	1 75	12 00	
<b>Incomparabilis fl. pl.</b> Butter and Eggs. Full double flowers of rich yellow.....	20	1 25	10 00
<b>Incomparabilis pallidus plenus.</b> An improved variety of the common double Incomparabilis, with large double primrose flowers.....	35	2 50	15 00
<b>Jonquils.</b> Double; sweet-scented.....	40	2 50	20 00
	1 75	13 00	

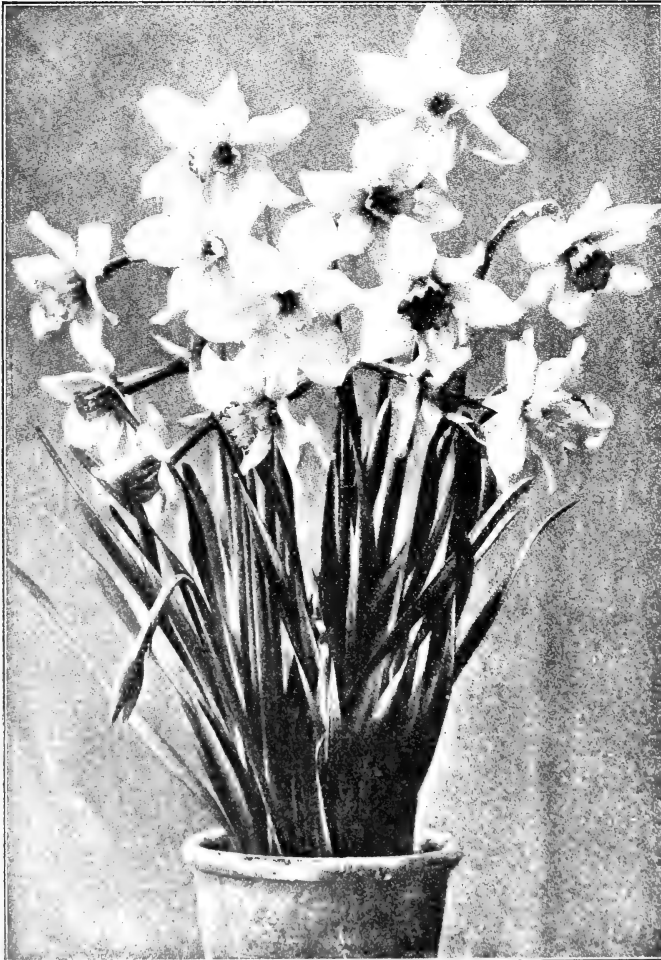
	Per doz.	100	1,000
<b>Bicolor Empress.</b> Pure white perianth, with yellow trumpet; extra large, superb flower. This variety is an improved Bicolor Horsfieldi, and entirely free from disease.....	\$0 60	\$4 00	\$36 00
<b>Bicolor Horsfieldi.</b> King of Daffodils. Very large flowers, with pure white perianth and rich yellow trumpet; strikingly beautiful; fine for outdoors or for forcing. A popular sort, but decays badly in the packages. We will import it at purchaser's risk only. We advise ordering Empress instead.....	60	4 00	
<b>Bicolor grandis.</b> White perianth, with yellow trumpet; more dwarf and a little later than Empress.....	60	3 50	25 00
<b>Bicolor maximus (Grandee).</b> Extra large dwarf and later; very fine.....	60	3 75	28 00
<b>Bicolor Victoria.</b> A novelty of striking beauty. Extra large flower.....	1 25	8 00	
<b>Biflorus.</b> White, yellow crown; two flowers per stem; fine for naturalizing.....	20	1 35	12 00
<b>Bifrons.</b> Brilliant yellow dwarf.....	85	5 00	
<b>Bulbocodium.</b> Hoop Petticoat Narcissus. Rich golden yellow; fine and curious.....	85	6 50	
<b>Bulbocodium citrinum.</b> Primrose yellow.....	85	6 00	
<b>Bulbocodium monophyllum (Clusi).</b> Pure white flowers.....	85	6 00	



NARCISSUS POETICUS ORNATUS. (Bloomed in the house.)



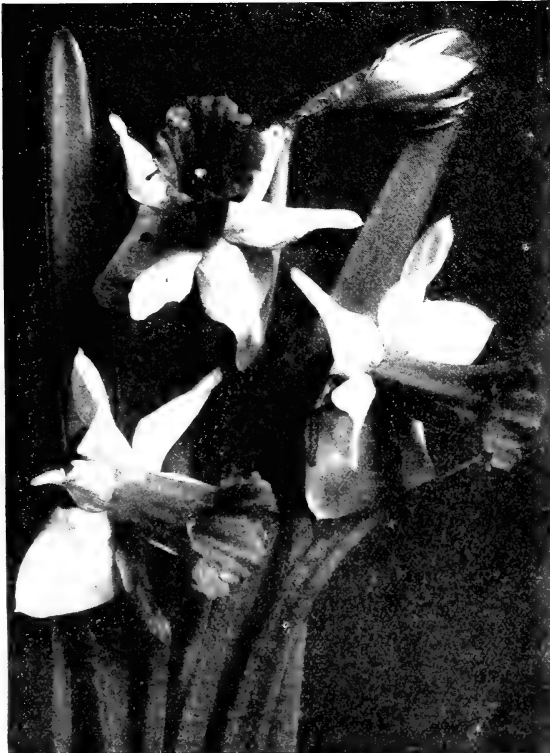
NARCISSUS BARRI CONSPICUUS, NATURALIZED.  
From "The Garden."



INCOMPARABILIS ALBA STELLA.



NARCISSUS, GOLDEN SPUR. (See page 16.)



NARCISSUS EMPRESS. (See page 15.)

## NARCISSI

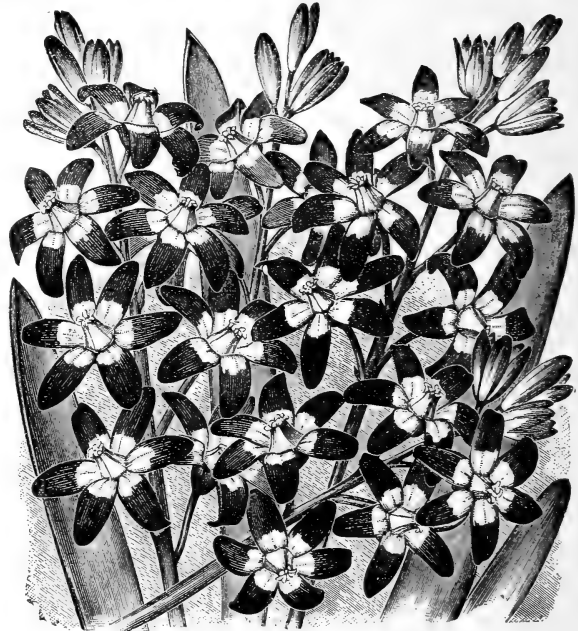
We presume that for every Narcissus bulb planted there are one hundred tulips or hyacinths. That this is a great mistake, any one really familiar with their old-time merits must admit. They lack the brilliancy of color of the tulips, but greatly surpass them in variety, delicacy and gracefulness of form, and one never becomes tired of their soft, beautiful colors. The great point in their favor is that they are permanent additions to the garden. All they ask is that they be allowed to remain undisturbed, and they will increase in size and beauty year after year, and many varieties are perfectly at home naturalized in the grass, provided the grass is not cut before their tops have time to ripen. This is not true of hyacinths and tulips, which, unless planted under the most favorable conditions, must be planted every year to have in perfection.

# Miscellaneous Bulbs and Plants

Prices for orders received before July 1, 1904, for fall delivery

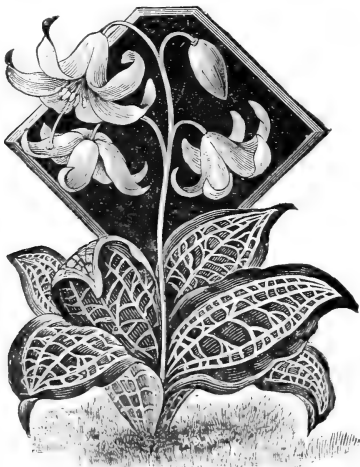
Prices on any bulbs not offered in this Catalogue will be furnished on application

	Per doz.	100	1,000
<b>ALLIUM azureum.</b> Blue.....	\$0 50	\$3 00	
<b>Hermitti grandiflorum.</b> Pinkish white.....	20	1 25	
<b>Moly Luteum.</b> Yellow.....	15	75	\$6 00
<b>Neapolitanum.</b> Pure white; fine.....	18	1 25	7 00
<b>ALSTROEMERIA Chilensis.</b> Ready in October. Seedlings, mixed.....	75	3 65	
<b>ANEMONE coronaria—</b>			
Double, Large Scarlet.....	30	2 00	15 00
Double, Blue.....	35	2 50	16 00
Double, Mixed.....	30	1 75	12 00
100 bulbs in 10 fine named varieties.....		2 00	
100 bulbs in 25 named varieties.....		3 00	
Single, "The Bride." White.....	25	1 25	10 00
Single, Scarlet.....	20	1 50	10 00
Single, Mixed.....	20	1 00	6 25
<b>CHIONODOXA Alleni.</b> New. Very large.....	35	2 00	
<b>Gigantea.</b> New. A great acquisition, differing from all others of this family by its unusually large flowers of lovely lilac-blue, with conspicuous white center. Is thoroughly hardy and a perfect gem for spring decoration in masses in the garden, and when grown in pots for winter-flowering it is beautifully effective.....	25	1 60	10 50
<b>Lucillae</b> (Glory of the Snow).....	25	1 60	12 00
<b>Sardensis</b> .....	25	1 60	12 00
<b>CROWN IMPERIAL, Aurora.</b> Red.....	2 50		
<b>Lutea.</b> Yellow.....	2 25		
<b>Rubra folia aurea variegata.</b> Golden variegated foliage.....	2 00		
<b>Rubra maxima.</b> .....	4 50		
<b>Fine Mixed</b> .....	1 40	8 00	
<b>ERYTHRONIUM Americacum</b> (Dog's-tooth Violet). Extremely beautiful and fine for naturalizing.....	1 00	7 00	
<b>Large-flowering, Mixed</b> .....	30	2 00	16 00
<b>FRITILLARIA aurea.</b> New. Yellow, spotted; extra fine.....	85	5 00	
<b>Meleagris.</b> Fine mixed seedlings.....	40	2 40	16 00



CHIONODOXA LUCILLE.

	Per doz.	100	1,000
<b>GALANTHUS Elwesii</b> (New Giant Snowdrop).....	\$0 20	\$1 00	\$8 00
<b>Nivalis</b> (Single Snowdrop).....	15	1 00	8 25
<b>Nivalis</b> (Double Snowdrop).....	30	2 00	12 50
<b>Plicatus</b> (Crimean Snowdrop).....	1 00	6 75	
<b>GLADIOLUS Colvillei alba,</b> "The Bride." True. Very popular in England for forcing.....	25	1 40	9 00
<b>IRIS, Anglica</b> (English Iris). 100 roots in 20 named varieties.....		4 75	
<b>Anglica, Mont Blanc.</b> Pure white; large and fine. This is the variety grown so largely in England for cut-flowers.....	60	4 00	26 00
<b>Anglica, Fine Mixed</b> .....	35	2 75	19 00
<b>Germanica</b> (German Iris). American-grown. In 25 named varieties.....	1 00	5 00	
<b>Germanica, "Silver King."</b> A most beautiful variety; of silvery white color.....	1 00	5 00	
<b>Hispanica</b> (Spanish Iris). 100 roots in 20 named varieties.....		2 00	
<b>Hispanica, Blanche Fleur.</b> Pure white. The best white Spanish Iris.....	25	1 25	6 50
<b>Hispanica, Chrysolora.</b> The best yellow, and the variety so largely grown for Covent Garden Market in London.....	25	1 00	6 50
<b>Hispanica, Count of Nassau.</b> The finest dark blue..	25	1 25	10 00
<b>Hispanica, Louise.</b> Beautiful shade of light blue..	25	1 25	9 00
<b>Hispanica, Fine Mixed</b> .....	15	50	3 00
<b>Iberica</b> (Rhizomatous). Very fine.....	1 50	10 00	
<b>Kaempferi, Mixed</b> (Japan Iris). American-grown..	1 25	6 00	
In 30 named varieties.....	1 75	10 00	
<b>Lortetti.</b> Pale creamy pink, with brown spots; extra fine.....		each, \$1.25.	12 00



ERYTHRONIUM AMERICANUM.

MISCELLANEOUS BULBS AND PLANTS, continued

	Per doz.	100
<b>FRIS, Pavonia</b> (Peacock Iris). Pure white, with blue blotch.....	\$0 30	\$1 50
<b>Persica</b> . Sky-blue, with yellow streaks; blooms very early in spring.....	2 00	12 00
<b>Reticulata</b> . Deep violet, blotched with yellow.....	3 25	19 00
<b>Robinsonia</b> . Not hardy. Pure white, flowering in three or four years after planting, and growing 6 feet high.....		
<b>Rosenbachiana</b> . Dwarf; splendid grayish blue, with yellow spot on the lower petals of the flowers; blooms in March.....	each, \$1.25	\$2.00
<b>Sibirica</b> . American-grown. White and blue.....	75	5 00
<b>Susiana</b> (Rhizomatous). Extra fine, large, flamed; very curious; not hardy.....	2 35	11 50

	Per doz.	100	1,000
<b>SCILLA campanulata alba</b> . White.....	\$0 40	\$2 75	
<b>Campanulata caerulea</b> . Blue.....	25	1 50	
<b>Campanulata rosea</b> . Pink.....	40	2 75	
<b>Hyacinthoides</b> . Fine blue.....	30	1 50	\$11 00
<b>Peruviana caerulea</b> (Cuban Lily). Blue.....	1 60	10 00	
<b>Sibirica</b> . Finest sky-blue. One of the loveliest spring flowers; it has a color almost as deep as the sky itself. It is quite hardy, and flowers outdoors at the same time as Snowdrops, in front of which it has a charming effect. It is fine for planting in the grass. If planted in pots and kept indoors, it may be had in bloom as early as Christmas. Its bright blue color makes it suitable for any decoration.....	25	1 60	13 00
<b>SPARAXIS tricolor</b> . Fine mixed.....	20	75	4 00

**IXIAS**. These are extremely beautiful, fine for forcing and growing outdoors; not quite hardy, but can be grown in the garden with a little protection. 100 bulbs in 25 varieties. \$2 per 100.

**Viridiflora**. Green, black eye; extra. 85c. per doz., \$6 per 100.

**Mixed**. Very fine mixture. 15 cts. per doz., 60 cts. per 100.

**LACHENALIAS, Mixed**. \$1.25 per doz., \$8 per 100.

**LEUCOJUM aestivum** (Summer Snowflake). 35c. per doz., \$2.50 per 100.

**Vernum** (Snowflake). 30c. per doz., \$1.75 per 100, \$11 per 1,000.

**MUSCARI botryoides album** (White Grape Hyacinth). 20 cts. per doz., \$1.20 per 100, \$7.50 per 1,000.

**Botryoides caeruleum** (Blue Grape Hyacinth). 15 cts. per doz., 70 cts. per 100, \$4.25 per 1,000.

**Botryoides carneum** (Pink Grape Hyacinth). Beautiful novelty. \$1.40 per doz., \$8 per 100.

**Botryoides pallidum grandiflorum**. Pearl-blue. \$1.75 per doz., \$9 per 100.

**Conicum**. Dark blue. 40c. per doz., \$2.75 per 100.

**Moschatus major** (Musk Hyacinth). Grayish yellow; very fragrant. \$3.50 per doz.

**ORNITHOGALUM Arabicum**. \$1 per doz., \$5 per 100.

**Umbellatum** (Star of Bethlehem). Lovely, and fine for naturalizing. 15 cts. per doz., 75 cts. per 100, \$5 per 1,000.

**RANUNCULUS, French**. 100 in 25 varieties. \$2 per 100.

**French, Fine Mixture**. 20 cts. per doz., \$1.20 per 100, \$6 per 1,000.

**Persian**. 100 in 25 varieties. \$2 per 100.

**Persian, Fine Mixture**. 20c. per doz., 65 cts. per 100, \$5 per 1,000.

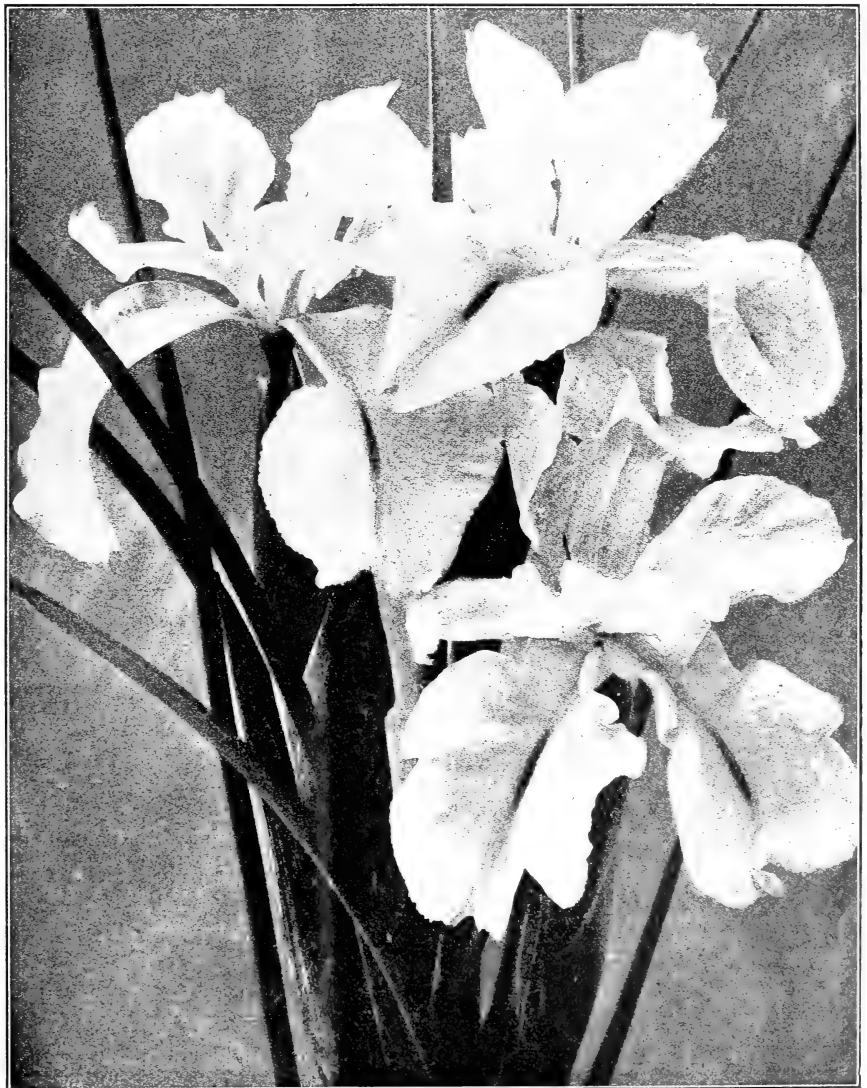
**Turban**. Deep scarlet. 20c. per doz., \$1.10 per 100, \$6.75 per 1,000.

**Turban, Grootvorst**. Bright scarlet. 20 cts. per doz., \$1 per 100, \$7 per 1,000.

**Turban, Hercules**. Pure white. 45 cts. per doz., \$2.75 per 100.

**Turban, viridiflora**. Crimson and yellow. 25 cts. per doz., \$1.25 per 100.

**Turban, Fine Mixed**. 25 cts. per doz., \$1.50 per 100, \$9.50 per 1,000.



IRIS ANGLICA. (See preceding page.)

# Spring-flowering Bulbs

*From "Garden and Forest"*

This is the season of the year when the catalogues of the Dutch bulb growers should be carefully studied, and when people should determine what bulbs they will plant for the decoration of their gardens in spring, and where and in what manner they should be planted. The bulbs need not be placed in the ground until October, but it is well, in all that relates to the garden, to take time by the forelock, and not to put off the planning of planting operations until the planting time actually comes.

The cultivation of hardy spring-flowering bulbs is one of the most delightful, as it is one of the most satisfactory, of all forms of gardening. Many of the plants classed under this head yield flowers which no inhabitant of the tropics can excel in delicate charm or gorgeous splendor. No plants are more easily cultivated, and none give so much pleasure for the small amount of money which they cost. Many of them increase and multiply without care beyond the first planting, and, once established, go on flowering year after year almost indefinitely. There is a charm in these early spring flowers, appearing among the melting snows, the first indication that the long winter has come to an end, which each year grows stronger and stronger, and which no other feeling inspired by the contemplation of nature's workings ever quite resembles. Men tire of the most splendid orchids of the tropics, of the masses of color which modern horticulture spreads over the Chinese azaleas, of all the garden show and gorgeousness of these later days; but who has ever tired of a snowdrop or a daffodil in early spring?

There is a much larger variety of hardy spring-flowering bulbous plants than is usually met with in American gardens, which, by a proper selection, may be made gay or interesting with them from March until July, or from the time when the earliest snowdrops and

crocus appear until the blooming of the so-called Spanish and English irises in midsummer. Many new species and varieties of the crocus have been introduced into gardens of late years, and the blooming period of the plants of this genus has, in this way, been materially prolonged. Among scillas there are many charming flowers blooming in succession during six or seven weeks. The number of different narcissi which can now be grown is almost endless. The attention which has been bestowed upon these plants of late years in England, by botanists and by gardeners, is one of the most interesting phases of modern horticulture. It has resulted in the reintroduction of many species of narcissi long lost to gardens, and the production of many new hybrids of more than passing interest and value. The tulip and hyacinth are too well known to need mention here, except to call attention to the fact that many of the species of tulip (late-flowering tulips) which have been described at different times in the columns of this journal exceed in beauty, as they certainly do in interest, those of the more familiar garden races. They should find place in every garden, with quantities of narcissi and scillas, alliums and snowdrops, snowflakes and crocuses, fritillarias and dog's-tooth violets, ornithogalums and lilies-of-the-valley. There never was a garden in which there were too many of these plants, or in which some corner could not have been found which might have been made more attractive by their presence.

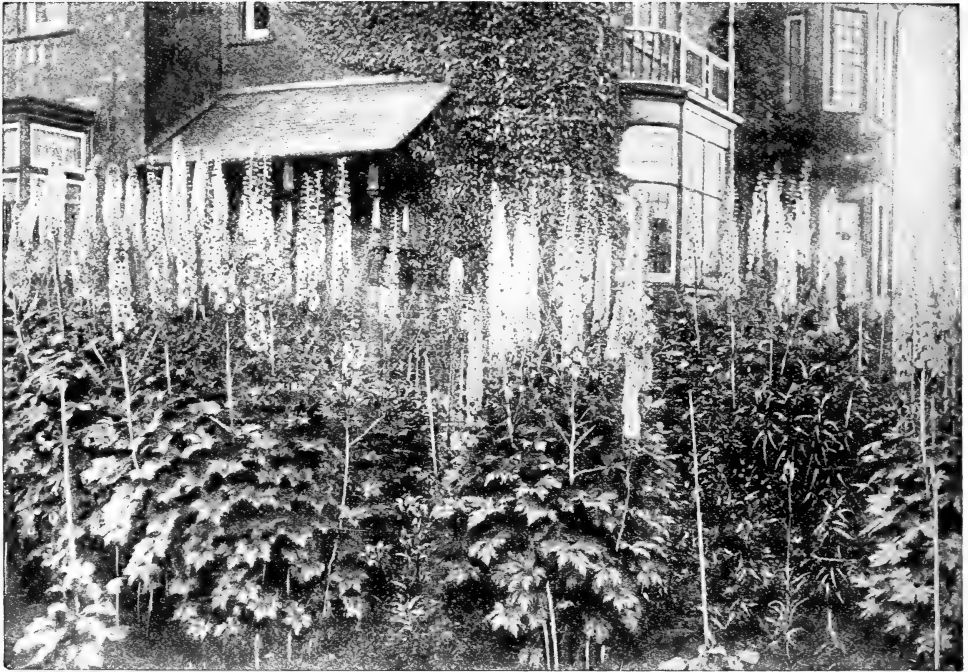


SNOWDROPS CLUSTERING AROUND A TREE TRUNK.—From English "Country Life."

All bulbous plants, however, cannot be satisfactorily used in this way. A garden tulip or a garden hyacinth planted in the grass appears as much out of place as a dock in a trim parterre; but all the narcissi look better in the grass than in a border, especially the Poet's narcissus and the jonquil. Crocuses are more attractive when planted in this way than in formal beds or as edgings, although they harmonize less perfectly with their surroundings than scillas, all of which look their best when allowed to run wild. Many bulbs last longer and increase more rapidly when left to themselves in this way than when planted in borders, from which it is often necessary to remove them. It is essential, however, that all these plants should be allowed to thoroughly mature and ripen their foliage. They cannot, therefore, be planted in grass which is cut early in the season; and even if this were not the case, such plants, springing from closely cut turf, look less at home and less natural than when they grow among tall grasses or the wild plants which are found along the borders of woods or on rocky banks. These bulbous plants delight almost universally in deep, rich soil, and, if they are to be naturalized, and are expected to flower year after year, and to increase, it should be provided for them when the bulbs are first planted. If this is done, no further care or attention need ever be paid to them, and every year, when they bloom, the fortunate possessor of a garden in which such plants thrive will rejoice with a new and ever-increasing joy.



NARCISSUS POETICUS BORDERING A WOODLAND WALK



TALL ENGLISH DELPHINIUMS (From photograph)

## Tall English Delphiniums

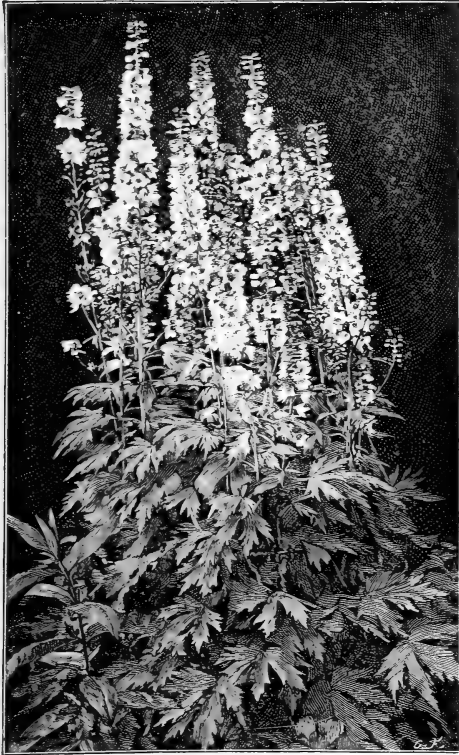
I am tempted to say that the Improved English Delphiniums are the most beautiful hardy plants in cultivation, but I am also tempted to say this of a score of other things, and, of course, it is impossible to say which is the most beautiful of hardy plants, for they have such an immense variety of beauty that the wonder grows that people continue to plant bedding plants by the million, which have little or no beauty, are an annual expense, and cost quite as much as hardy plants whose first cost is their only cost, and which increase in size, in beauty, and often in quantity year after year. These Delphiniums may not be the most beautiful hardy plants, but they are among the most beautiful, and nothing can be more distinct and satisfactory. They are stately and picturesque, some varieties growing 8 feet high in rich soil; they have immense spikes of most beautiful flowers of every imaginable shade of blue, and their season is a long one; in fact, they will bloom from spring till fall if properly treated.

Hitherto it has been impossible to get satisfactory varieties and plants of English Delphiniums; in fact, no nursery in this country has had a satisfactory general stock of hardy plants, and I have had the greatest difficulty in getting the plants specified for my landscape gardening work, as this class of plants is extremely difficult to import. The difficulty became so great and my work was so hampered by the lack of plants to carry it out that I persuaded one of the most capable horticulturists in this country to start a hardy-plant nursery, and guaranteed the financial results. It is the intention to make this nursery a model of its kind, and grow everything in hardy plants worthy of culture, and to send out nothing but well-grown plants packed in the most careful manner. The Delphiniums described on next page are one of the offerings of this nursery (The Springdale Nursery).

**CULTURE OF DELPHINIUMS.**—The culture of Delphiniums is exceedingly simple, and the results out of all proportion to the slight amount of care necessary. They thrive in almost any position, and may be planted at any time of the year, provided that in summer the plants are not too forward, and that they be well watered if the weather be dry. The soil may be a rich, friable loam, which suits them finely; but any soil, even hot and sandy, if well watered and manured, will give excellent results. Dig deeply—trenching is better—add plenty of well-rotted manure, and plant about 2½ feet apart. Placed in lines, as a background to a border, or in groups of, say, three plants at intervals, the effect of the Delphinium is exceedingly fine. They look well in beds also, arranged at the same distance apart each way. They are grand grown in masses of large groups of separate colors, and may be associated with shrubs to great advantage, succeeding by their robustness well in shrubberies. A succession of flowers may be expected from spring to early autumn, especially if the spikes which have done flowering early be cut down to the ground; fresh growth will then be produced, which will give blossom. Copious watering in summer will be attended by increased size of spike and flower; in fact, in seasons of prolonged drought water is absolutely a necessity on many soils if the varieties are to exhibit themselves in their true size and beauty of flower and spike. Top-dressing is greatly recommended on certain soils, instead of the bare surface of the ground being left exposed to the sun. Some of the neater dwarf alpine and other hardy plants may be utilized to plant between and around Delphiniums. Coal ashes strewn over the crowns will protect the plants from slugs through winter and spring. As we have intimated, any garden soil suits the Delphiniums; it is, however, necessary to secure sorts such as are offered below, in order to obtain an effect superior to that afforded by the old smaller-flowered varieties. No amount of liberal treatment will cause the smaller-flowered kinds of a few years back to develop into the gorgeous hybrids of today.

"The Delphiniums were the first thing that attracted my attention, for they were just at their best and there was just about one acre of them. They made such a sight as I shall not soon forget, so vast was the quantity in bloom, so grand the spikes, and so rich and varied the different shades of blue. Although I have been a grower of these lovely hardy border plants for some twenty years, I was not prepared to see so much improvement in color, and was much struck with the intensity of the shade in many varieties as compared with the old *Bella Donna*. The varieties which have a shade of bronze in the center are also very fine, the contrast between the bronze center and the deep blue exterior being very striking. But the shades of color in many of the newer sorts almost baffle description, and I shall not attempt it. It is in the doubles and semi-doubles that the greatest advancement has been made, and many of them are truly lovely. They are much larger and more compact than the old doubles of the *Ranunculoides* type, and consequently are much more valuable for ordinary garden adornment. The





SPECIMEN PLANT OF IMPROVED ENGLISH DELPHINIUMS.

TALL ENGLISH DELPHINIUMS, continued

light blue flowers with the large white eyes are very striking, and of this section Britannia is, I think, the very best Delphinium I ever saw. . . . The Delphiniums do not receive any special treatment here, being simply planted on a strong loamy soil in an open position. Some few were tied to stakes, but the majority do not require it, being so dwarf in comparison with the old sorts. This dwarfness of habit is a great gain, and the greater portion of the plants were not more than 4 to 5 feet high, yet carried immense spikes of large bloom."—*The Gardening World*.

SPECIAL OFFER OF IMPROVED ENGLISH DELPHINIUMS

I want everyone who receives this price-list to try these Improved English Delphiniums, and to that end offer them at extremely low prices. I guarantee that they will give unqualified satisfaction in every instance, and will be a revelation of beauty to most people.

	Per doz.	100
<b>Fine Mixed English</b> , grown from seed of Kelway's famous named sorts . . . . .	\$1 50	\$10 00
<b>English</b> , in separate colors, grown from Kelway's newest named sorts . . . . .	2 00	13 00
<b>Selected Varieties</b> , selected from thousands of seedlings grown from Kelway's choicest named sorts . . . . .	3 00	20 00
<b>Extra Selected Varieties</b> . . . . . each, 50 cts. . . . .	5 00	
<b>White Varieties</b> . Not recommended . . . . . each, \$1.50. . . . .		

Delphinium formosum

In the Perennial Delphiniums or Larkspurs we have one of the most beautiful and useful families in hardy plants. The old *Delphinium formosum* is one of the few hardy plants which have been pretty generally offered by the plant trade; yet it is comparatively unknown, although few things can be planted that will give more satisfaction, whether the object is decorative effect in the garden or flowers for cutting for the house. Messrs. J. H. Small & Sons, the leading florists of New York and Washington, have made quite a hit with it as a novelty in cut-flowers. The flowers are intense deep blue, perhaps the most brilliant blue to be found in flowers freely produced in long spikes; blooms in June and July and continues a long time in bloom, and if the plants are cut back after flowering will bloom a second time in the fall. The plants grow to 4 or 5 feet in height, and if planted in masses about 2 feet apart will produce a splendid effect. 15 cts. each, \$1.25 per doz., \$8 per 100.

Delphinium formosum coelestinum

This rare and scarce Delphinium has all the good qualities of the well-known Formosum, but instead of dark blue flowers produces great spikes of exquisite light blue bloom, the loveliest shade of blue in the floral world. I have always treasured this Delphinium in my garden, but could never get enough stock of it to offer. This season I have secured three thousand plants, which I can offer at reasonable prices. 20 cts. each, \$2 per doz., \$12 per 100.

Gardening Books and Papers

I am sorry to say it, but there is at present no gardening paper published in America worthy of consideration. For a few years we had an excellent paper, well suited to the needs of our country. Its editor was able and enthusiastic, and had the business management been as intelligent as the editorial the success of the paper would have been unqualified; but the editor was allowed to resign and the paper dropped into the uninteresting rut occupied by its contemporaries. This is preliminary to recommending the English Paper, **The Garden**, which is beyond question the best gardening paper published in the world. It is a weekly, well edited, well printed, and freely illustrated with pictures made in the best gardens in England. Each number also contains a fine colored plate of flowers of some fine tree, shrub, plant or bulb, so that it is really a cheap paper at \$4.50 per year. I will be glad to forward subscriptions to the London office for my customers. Since the above was written a new magazine entitled **Country Life in America** has been published by Doubleday, Page & Co., of New York, and edited by that high authority, Prof. L. H. Bailey, of Cornell University. This is hardly a gardening magazine, but considerable space is devoted to gardening matters, and it is altogether the most beautiful and interesting magazine that I find on my library table. This magazine has been run on a liberal scale, the publishers believing that there is ample field for a magazine appealing to the better class of country-lovers. I am glad to say that their experience has borne out this hope, and the magazine has prospered so that it now has a regular circulation of above 50,000 copies. Its continuation on its present scale should be a satisfaction to every country-lover and every person connected with the country. The price is \$3.00 a year, it is printed on coated paper, most superbly illustrated, and in every way worth what the publishers charge. An English paper that gives me a great deal of pleasure is **Country Life**. It is a 32-page weekly, exclusive of advertisements, and is beautifully printed and illustrated. It treats of all pursuits and sports of country life, but is especially interesting on account of its illustrated descriptions of English country places, one of which it publishes each week, showing house, gardens and lawns. My attention was called to this paper recently by one of my clients, and I was so well pleased with it that I bought all the back numbers as well as subscribing. The price for American subscriptions is \$10.00 per year. I will forward subscriptions if desired.

The best book on gardening ever published, and worth more than all other books on gardening and landscape gardening, is Wm. Robinson's **The English Flower Garden**, now in its eighth edition. Whatever success I have made as a landscape gardener I owe to the inspiration of this book. It not only teaches good gardening, but, what is quite as important, condemns bad, giving reasons that are convincing for both. This book has done more to improve the gardening in England than all other influences combined, and I wish it were in my power to secure its reading by all thoughtful, intelligent people in this country. The book is very comprehensive, treating of the arrangement of various styles of gardens, and contains descriptions of almost every tree, shrub, plant and bulb of value used in ornamental gardening. It is profusely illustrated by the best English artists with pictures made in hundreds of English gardens. The price is \$6.00. It may be ordered from any bookseller, or I will forward it on receipt of the price.

A delightful book recently published in England is **Wood and Garden**, by Miss Jekyll. The book hasn't much to say about culture, but is full of good suggestions for arrangement, and the illustrations, from photographs made by the author, are a delight, and should do much toward the banishment of ugly and inartistic gardens. It is charmingly written by an enthusiastic amateur, and should be read and owned by every lover of a good garden as well as by those who know nothing of the pleasures of a garden. The book can be obtained through any bookseller. A later book written by Miss Jekyll, **Wall and Water Gardens**, tells most interestingly of two of the most fascinating phases of gardening. The pictures are superb and should do much to improve the gardens of England and America. Still another book by Miss Jekyll is **Lilies for English Gardens**. A friend complains that he finds no good lily illustrations. Well, he will find them here, and the best and most exhaustive work on lilies yet written.

## Hardy Perennial Phloxes

The beauty and usefulness of these grand border plants give to them a deservedly first place among hardy plants. For cutting, their large trusses go a long way in floral decorations. In color they range from pure white to the richest crimson and purple, and from soft rose and salmon to bright coral-red, all having a delicate fragrance. **Perennial Phloxes** succeed in almost any soil enriched with manure, but are much benefited by a mulching of decomposed manure in spring, and in hot weather an occasional soaking of water. If the first spike of bloom is removed as soon as over and the plant given a good soaking of water, they will produce a second supply of flowers, thus continuing the display until late in autumn. These later blooms are often finer than the first.

The following varieties are a selection made by me in France, Germany, Holland and England, and include all the very best of the new and old varieties.

**Field-grown plants ready for fall delivery, except where noted, 15 cts. each, \$1.50 per doz., \$10 per 100**

**Aurore.** Brilliant orange-crimson, bright crimson eye; a very showy variety.

**Adonis.** China-rose, large carmine eye.

**Argon.** Light purple, shaded white; very distinct. 25 cts.

**Athis.** Tall; salmon. The tallest-growing of all Phloxes.

**Bacchante.** Crimson, with carmine eye; dwarf and very bushy; full-flowering.

**Beranger.** Rosy white, suffused gray; very delicate shade.

**Berenice.** Pure white; dwarf and bushy. A lovely sort. 25 cts.

**Boule de Feu.** Bright rosy red, dark center.

**Captain Wilhelmy.** Dark crimson.

**Charlotte Saison.** White, richly shaded with purple-rose; extra tall.

**Coquelicot.** Orange-scarlet, center purple; magnificent color for bedding. The most brilliant Phlox yet produced.

**Comet.** Rich dark crimson; the richest colored of all Phloxes. 25c.

**Eclairer.** Bright purplish rose, light center; enormous flowers.

**Embracement.** Salmon-scarlet; extra fine.

**Esperance.** Pale mauve, fine white eye; extra fine.

**Eugene Danzanvilliers.** Light lilac, large white eye; immense trusses.

**Ferdinand Cortez.** Bronzy copper; distinct and fine.

**Fiancée.** The best white; enormous pyramidal spike. 25 cts.

**Frau Ilona Von Barczay-Waldeck.** Pure snow-white; very large. 25c.

**Frau S. Buchner.** Salmon-pink; large and fine.

**Gartendirector A. Medin.** Bright lilac-carmine, flamed with white, white eye.

**Georges Bruant.** Carmine, with large white eye.

**General Breart.** Blush white, with large crimson eye; 2½ feet high.

**Gloire d'Orleans.** White, rosy purple center; variegated foliage.

**Henri Murger.** Purest white, with deep rose center; large, handsome truss; 1¾ feet high. 25 cts.

**H. O. Niger.** Pure white, large crimson eye.

**Kossuth.** Deep rose.

**Liberte.** Lovely soft cerise-salmon; large, branching spikes; extra fine. 25 cts.

**La Neige.** Pure white.

**La Candeur.** Pure white.

**Lothair.** Crimson.

**Le Mahdi.** Steel blue; very intense color. An award of merit for this variety August, 1899.

**Le Siecle.** Rose, white eye; distinct.

**Le Soleil.** Lovely soft rose-pink, with white center; a charming color; extra fine; 2 feet high. 25 cts.

**Marquis de Breteuil.** Bright pink, light center; very fine; 1½ feet high.

**Miss Lingard.** The best Phlox in cultivation. It produces immense heads of beautiful white flowers in June, and blooms again in September and October. Splendid foliage and habit and free from attacks of red spider.

**Miss Cook.** White, pink eye; early.

**Madame Pope Carpenter.** White.

**N. Smith.** Dark crimson.

**Obergartner Wetteg.** Light rose; center lighter, with red eye.

**Orientale.** Rosy mauve, white center; fine trusses of large flowers.

**Pearl.** Pure white; very late.

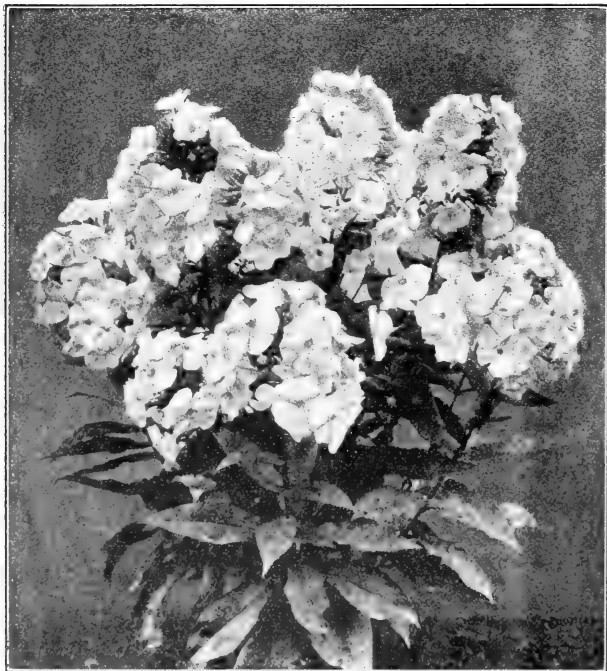
**Pantheon.** Salmon-rose; a splendid variety.

**Richard Wallace.** White, pink eye.

**Schlossgartner Reichenauer.** Pure white.

**Splendens.** Brilliant glowing crimson; flowers small, but color rich; 2½ feet high.

**Undulata variegata.** Variegated foliage.



PERENNIAL PHLOXES.

## NEW PHLOXES

The following Phloxes were raised on my own grounds, and I can commend them as being distinct and fine. Field-grown plants ready for fall delivery.

**25 cts. each, \$2.50 per doz.**

**DANSKE DANDRIDGE.** Light purple, large star-shaped white center, sometimes mottled purple and white; a distinct and lovely variety.

**CHESWICK.** Salmon, bright crimson center.

**SPRINGDALE.** Deep pink, dark center; fine.

**MARGARET ELLIOTT.** White, red center; extra large panicles; very showy.

**JEAN.** Deep pink, large bright red eye; very distinct.

**ROSALIE.** White, blush center; delicate and distinct.

**DEFIANCE.** Bright deep red, almost as bright as Coquelicot and much better habit.

**MARGARET SLACK.** Bright pink, red center; dwarf and bushy; loose panicles; very free-flowering.

## JAPANESE IRIS

Some years ago a set of Japanese Iris (*I. Kämpferi*) were sent to us from Japan to test, which were said to be identical with the collection in the Royal Gardens. We cannot vouch for this statement, as we have never been in Japan, but we have never seen another collection in America or Europe that would equal it in any way. The collection contained many colors and varieties we had never seen before, and the flowers were of remarkable size and beauty. When these Irises were in bloom they excited the greatest admiration and enthusiasm, and it was hard to convince people that these unique and exquisitely beautiful flowers were as hardy as apple trees, and as easily grown as potatoes. They will thrive in any good garden soil, but if the soil is made very rich and deep, and flooded with water for a month before and during their blooming season, they will produce flowers of a wonderful size, sometimes 10 to 12 inches across. These Irises should be planted in full exposure to the sun.

As the Japanese names are unintelligible and impossible to remember, we have renamed this collection.

Since the above collection was received we have annually added to it the newest varieties from Japan and new varieties selected from thousands of seedlings grown on our own grounds, until we now have what is unquestionably the finest and most complete collection of Japanese Irises in the world.

### PRICES OF JAPANESE IRIS

**Choicest named varieties**, selected from the best varieties received from Japan. 35 cts. each, \$3.50 per doz., \$6.50 for 25, \$20 per 100.

**American-grown, in 25 named varieties.** \$1.75 per doz., \$10 per 100.

**American-grown, Fine Mixed.** \$1.25 per doz., \$6 per 100, \$50 per 1,000.

## OXALIS

These are profuse bloomers, and very attractive in the house or conservatory during the winter. Plant 3 or 4 bulbs in a pot; the pot should be kept near the glass to prevent the foliage from growing too long.

**Bermuda Buttercup.** Greatly improved selection from *Oxalis Cernua*, grown in the congenial soil and climate of Bermuda until the bulbs have attained great strength, producing plants and flowers larger and more luxuriant than the common variety. It is one of the finest of winter-flowering plants for pot culture, of strong, luxuriant growth; one bulb is sufficient for a 6-inch pot. The great profusion of bloom produced in uninterrupted abundance for weeks is astonishing. The flowers are of the purest bright buttercup yellow.

**Bowiei.** Brilliant rose.

**Hirta.** Rose-colored.

**White** (*Multiflora alba*).

**Price of any of the above, 3 cts. each, 25 cts. per doz., \$1.50 per 100**

**Mixed**, containing a large number of varieties. 3 for 5 cts., 15 cts. per doz., \$1 per 100.

## POMPONE CHRYSANTHEMUMS

These are the small-flowered Chrysanthemums of the old-fashioned gardens, and bloom in October and November after almost all flowers are gone. They are showy in the garden and effective as cut-flowers, and, being perfectly hardy and of easiest culture, can be successfully grown in any garden. We offer a fine collection of the best varieties, ranging from white to deep crimson. 15 cts. each, \$1.50 per doz., \$10 per 100.

## LARGE-FLOWERED CHRYSANTHEMUMS

I have collected from farm gardens some of the old-fashioned Chrysanthemums which are really hardy and which bloom in October and November, after all other outdoor flowers are gone. I have seen these Chrysanthemums in bloom when the snow was on the ground, and old established beds of them are wonderfully showy. They grow 3 to 4 feet high, and when in bloom are a perfect mass of flowers. I offer three large-flowered varieties—White, Pink and Yellow. 15 cts. each, \$1.50 per doz., \$10 per 100.



GROUP OF JAPANESE IRIS.

## LIATRIS PYCNOSTACHYA

The popular name of this striking plant is Kansas Gay Feather. Nothing can be planted that will attract more attention on account of a very unusual appearance, but it is very beautiful as well as odd. It blooms in midsummer and throws up long, narrow spikes of rich purple flowers which last a long time. A peculiarity of this plant is its great attraction for butterflies. 15 cts. each, \$1.50 per doz., \$9 per 100.

## FOXGLOVE. (*Digitalis*)

In England the Foxglove grows wild, but, notwithstanding this, it is a great garden favorite, as it well deserves to be. For stately and picturesque beauty it is not to be surpassed, and planted in masses in the garden among shrubs or naturalized on the edge of woods, in the orchard or along brooks, it is extremely effective and satisfactory. Strictly speaking, it is a biennial, but as it renews itself from self-sown seed, it may be treated as a perennial. Mr. Falconer has naturalized thousands of Foxgloves in Schenley Park, and nothing he has planted attracts more attention and admiration. Planted in the fall, Foxgloves will bloom well the following season. 15 cts. each, \$1.25 per doz., \$8 per 100.



OLD SPECIMEN PLANT OF TREE PEONY. From the "English Flower Garden."

## Japanese Tree Peonies

Last spring I was invited by one of my customers to see a collection of fifty Japanese Tree Peonies in bloom that I had imported for him from Japan three years before, and if I could write a description that would give any idea of their beauty the Japanese growers would not be able to supply one-tenth of the demand for plants. I don't wonder that the Japs have a special holiday for visiting the Peony gardens; but I do wonder that we Americans, who boast of our education and refinement, should be content with the poor and commonplace bedding plants usually seen in our gardens, when such superb floral creations as Japanese Tree Peonies are to be had at a small cost. I have said this before, but the truth is so important to a lover of a garden and is so little known or heeded that I must keep on repeating it. The first cost of a fine hardy plant like a Tree Peony is its only cost, and it increases in size and beauty year after year, so that a plant that may have cost only fifty cents when purchased may become one in a few years that one would hesitate to accept twenty-five dollars for. Such a plant is the Tree Peony. I have seen one that had sixty-six open flowers on it at one time, and read a description of another that had over five hundred blooms in one season. Now, when it is considered that the blooms range from eight to twelve inches across and are of the richest and most lovely shades of coloring imaginable, it can be understood what a floral wonder a Japanese Tree Peony may grow into. But one does not need to wait years for enjoyment of these flowers—a majority of the plants will bloom the first season planted, and in the second season will produce from two to five flowers each. The flowers range in color from pure white to the darkest shade of purple, including all shades of scarlet, crimson, pink, some in solid colors, some curiously striped or marked. The shades of pink are the softest and most lovely imaginable.

These Tree Peonies must not be confused with common herbaceous Peonies, which are so popular; instead of dying to the ground every year they make a hard wooded growth and in time become quite large shrubs.

"The Tree Peony is one of the noblest plants available for the garden; it is quite hardy and flourishes under the simplest treatment. The smallest shrub will flower in the most astonishing manner, bearing blossoms the size of dinner plates, and the plant increases annually in size until one plant becomes a veritable bank of living flowers. The Tree Peony is valuable for isolation on lawns and for borders and in nooks backed by conifers or other shrubs. Any soil suits it, and any position. It will repay those who afford it good treatment in the form of well-trenched soil and well-rotted manure, and occasional top-dressings; but it should remain undisturbed as much as possible and be allowed to mature its shoots, which year by year add to the size of the plant until it becomes the grandest object in the garden. Watering well before and during flowering greatly assists in the production of large, shapely blooms, and where mild weather in the spring has brought on very early buds, protection of some kind should be given from late frosts. The plant is absolutely hardy, but where it has been induced by a mild winter to put forth early flowers, the buds get an occasional 'nip.' Flowering season: May and early in June."

I have a set of Japanese water-color drawings of these Peonies, which will be sent for examination on receipt of twenty-five cents to cover postage. These drawings must be returned, but if Peonies are ordered the amount sent for postage will be allowed on the price of the Peonies.

**Fine blooming plants in 25 choice varieties, \$1 each, \$10 per dozen; extra selected blooming plants in 25 choice varieties, \$1.50 each, \$15 per dozen**

Tree Peonies are imported to order only. They do not always arrive in time for fall delivery, and in this event will be stored and delivered early in the spring.

Named Varieties of Tree Peonies are grafted on a common single sort. Care must be taken to remove all suckers below the graft or they will choke the choice variety out in a few years.

## HERBACEOUS PEONIES

I am glad that this good old-fashioned flower is becoming popular again, and if there were nothing to be obtained but the few old-fashioned sorts once seen in every garden their popularity would be well deserved; but nothing has been improved more than the Peony, and the English and Japanese growers have given us varieties that are really superb. Many of them are equal in form and coloring to the finest roses, and some are sweet-scented. Their hardiness, ease of culture and the great size and plentifulness of bloom make them extremely desirable and effective in the garden or on the lawn. They are most effective when planted in large masses of separate colors. I have made arrangements for supplying my customers with the best Peonies obtainable in America, Europe and Japan, and at the lowest prices consistent with the highest quality.

### JAPANESE PEONIES

	Per doz.	100	Each	Per doz.
<b>Double and Semi-Double.</b> In 25 varieties. These are really very choice and distinct from varieties grown in this country, and will give the greatest satisfaction. At the price, nothing so fine can be obtained. .ea., 60c..	\$6 00	\$45 00		
<b>August Miellez.</b> Large flowers, in clusters; clear lilac and purple, center chamois and lilac .....	\$0 40		\$4 00	
<b>Baron J. Rothschild.</b> Outside petals rose, center salmon; sweet.....	35		3 50	
<b>Bayard.</b> Beautiful clear brilliant violet.....	50		5 00	

**Single.** In 25 varieties. The finest Single Peonies undoubtedly come from Japan. They are equal or superior to single sorts coming from Europe, costing three times as much. 70 cts. each, \$7.50 per doz., \$55 per 100.

### CHOICE NAMED PEONIES

**Abel Carriere.** Good-shaped flowers, anemone-fawn, amaranth-violet. 35c. each, \$3.50 per doz.

**Agida.** Brilliant red; very free-flowering. 35 cts. each, \$3.50 per doz.

**Alba sulfurea.** Very full, grand, globular flower; beautiful shape, pure white, center sulphur-yellow; extra fine. \$1.50 each.

**Alexander Dumas.** Grand flowers in clusters; very full, beautiful rose, often mixed with white and salmon. 75c. each, \$8.50 per doz.

**Alexandriana.** Very large, full flower; lovely rose, shaded white and salmon. \$1 each.

**Alfred de Musset.** Grand flower; carnation-white, shaded pale salmon, rose center; extra fine. \$1 each, \$10 per doz.

**Alice Crousse.** Large flower; lively rose, center soft rose and salmon; very beautiful. 60 cts. each, \$6 per doz.

**Amabilis grandiflora.** White, very large, fringed petals; fine, sweet. 50 cts. each, \$5 per doz.

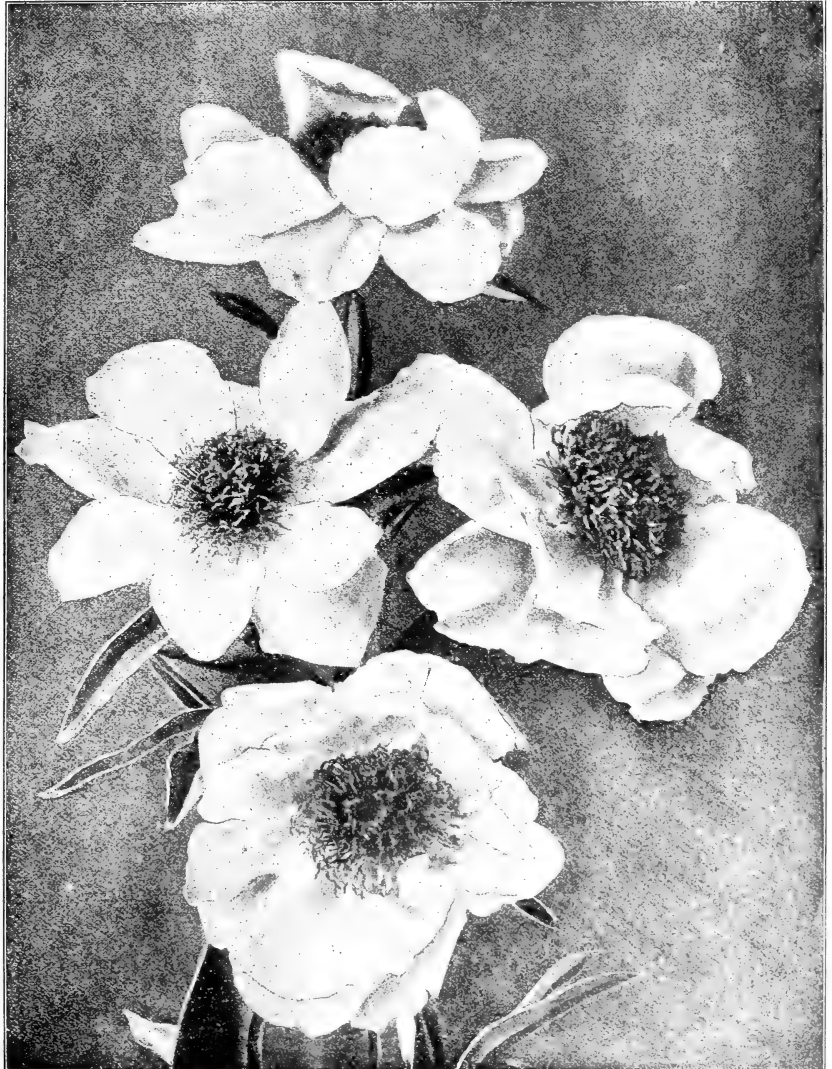
**Armand Rousseau.** Very pretty flower of perfect cup-form; petals rounded off very regularly, those of the center fringed and mixed with golden stamens, of clear purple-carmine color; brilliant silvery reflex; bold appearance. Dwarf plant, early blooming; very fine. \$1.50 each.

**Armandine Mechin.** Large flowers in clusters; very brilliant clear amaranth. 60 cts. each, \$6 per doz.

**Arthemise.** Large flowers; lovely soft rose and salmon; very beautiful. \$1 each.

**Asa Gray.** Large, full flower, imbricated, beautiful form; carnation-salmon, powdered with carmine-lilac. \$1.50 each.

**August Lemoinnier.** Large anemone-formed flower; lively purple-violet; brilliant. 50c. ea.



SINGLE JAPANESE PEONIES



DOUBLE HERBACEOUS PEONIES

## CHOICE NAMED PEONIES, continued

	Each	Per doz.		Each	Per doz.
<b>Belle Donsienne.</b> Large, very full, imbricated flowers; carnation and chamois, chance streak of carmine.....	\$1	25	<b>Daubenton.</b> Compactly curled anemone-formed flower, lilac-purple rose, white edge; very beautiful .....	\$0	50 \$5 00
<b>Bicolor, Mad. Guerin.</b> Fine red, rosy center .....	40	\$4 00	<b>Decaisne.</b> Large, convex flowers, very full, lively violet-red.....	50	5 00
<b>Blushing Bride.</b> Light rose .....	50	5 00	<b>Delachii.</b> Large, cup-shaped flower, deep amaranth, late-flowering; fine.....	35	3 50
<b>Buyckii.</b> Large, globular flower; lovely rose, center salmon-rose with silver reflex; extra fine.....	1	00	<b>Descartes.</b> Very large flower; brilliant clear amaranth .....	50	5 00
<b>Cameron.</b> Brilliant purple-violet, shaded with velvet tints; late-flowering; extra .....	1	00 10 00	<b>Doyenne d'Enghein.</b> Violet-rose and carmine .....	30	3 00
<b>Candida flore pleno.</b> Dark red, rosy white center; extra fine.....	1	25 12 00	<b>Dr. Boissduval.</b> Bright rose.....	30	3 00
<b>Candidissima.</b> Beautiful anemone-formed flower, very full, clear sulphur-yellow, with green heart; extra .....	60	6 00	<b>Dr. Bretonneau (Verdier).</b> Large, globular flower; large rose petals and clear white; beautiful .....	40	4 00
<b>Carnea alba.</b> Large flower, clear carnation, center white shaded yellow; beautiful.....	75	8 00	<b>Dr. Corat.</b> Rosy purple; fine .....	30	3 00
<b>Carnea elegans.</b> Fine flower of perfect form; large petals, clear carnation with satin reflex mixed with small yellow petals, very fresh coloring; fine .....	75	8 00	<b>Duc de Cazes.</b> Large petals of lively carmine-red, center petals rose and salmon .....	35	3 50
<b>Caroline Allain.</b> Beautiful blush, center sulphur, tipped white.....	30	3 00	<b>Duchesse de Nemours (Verdier).</b> Rose-pink; very large, double, sweet, one of the best.....	75	7 50
<b>Chinensis alba.</b> Pure white .....	30	3 00	<b>Duchesse de Nemours (Calot).</b> Very beautiful cup-shaped flower, sulphur-white with greenish reflex, pretty bud..	1	00 10 00
<b>Comte de Paris.</b> Rose-color, center salmon-yellow, crested with large petals of lovely rose; very beautiful variety .....	35	3 50	<b>Duchesse d'Orleans.</b> Beautiful carmine, rose center intermixed with salmon ligules.....	35	3 50
<b>Corona.</b> Light rose, white center.....	40	4 00	<b>Dugueslin.</b> Rosy carmine .....	40	4 00
<b>Couronne d'Or (Golden Crown).</b> Large imbricated white flower, yellow reflex with stripes of carmine and golden stamens; extra fine.....	1	25	<b>Duke of Wellington.</b> White, with yellow center .....	30	3 00
<b>Crown of Roses.</b> Dark rose, soft rose center .....	60	6 00	<b>Eclatant.</b> Bright carmine; large flower .....	35	3 50
<b>Curiosity.</b> Large petals of clear violet-red, those of the center transformed into golden ligules; very pretty variety .....	50	5 00	<b>Edel Kanig.</b> Deep rose .....	25	2 50
			<b>Edulis.</b> Dark red; late.....	40	4 00
			<b>Edulis alba.</b> Large white flower, with some stains of carmine in the center; very pretty variety .....	35	3 50
			<b>Edulis superba.</b> Very large flower of perfect shape; beautiful brilliant tinted violet mixed with whitish ligules; silver reflex .....	60	6 00
			<b>Epicurie.</b> Fine, soft rose; beautiful.....	50	5 00

	Each	Per doz.
<b>Eugene Verdier.</b> Large, cup-shaped flower, flesh-pink, shaded yellow and salmon, very fresh coloring; extra fine.....	\$2	00
<b>Faust.</b> Pretty anemone flower; color tender lilac, center petals very narrow, flesh shaded with clear salmon; very handsome variety.....	40	\$4 00
<b>Felix Crousse.</b> Large, anemone-shaped flower of perfect form; very brilliant red.....	75	8 00
<b>Festiva alba.</b> Pure white, center carmine-spotted.....	30	3 00
<b>Festiva maxima.</b> Very large, pure white flower, with some blood-red stains in center; tall stalks, beautiful foliage, and very free-flowering. One of the very best white Peonies in cultivation.....	75	8 00
<b>Floral Treasurer.</b> Soft rose; ligules buff, with tufts of rose petals in center; distinct and fine.....	50	5 00
<b>Formosa.</b> Pretty convex flower; sulphur-white, stig-mates lively red; very beautiful variety.....	35	3 50
<b>Fragrans rosea.</b> Sweet-scented, pink variety.....	25	2 50
<b>Fragrantissima.</b> Violet and rose-color; very sweet.....	40	4 00
<b>Francis Ortelgal.</b> Dark purple-crimson; very large, fine, double and sweet.....	1 00	10 00
<b>Fulgida.</b> Very dark crimson; good.....	30	3 00
<b>Geldolf.</b> Soft red; extra fine.....	40	4 00
<b>Georges Cuvier.</b> Purple-lilac flowers, silver border.....	35	3 50
<b>Globosa.</b> Flesh-pink, chamois center.....	30	3 00
<b>Gloire de Cheneceaux.</b> Large, full flowers in clusters, beautiful satiny rose, lightened with white; very late-flowering.....	60	6 00
<b>Golden Harvest.</b> Nearest approach to yellow.....	35	3 50
<b>Grandiflora nivea.</b> Very large, pure white flower, shaded with sulphur, lovely rose and salmon, with some stains of carmine; a variety of perfect loveliness.....	2 50	
<b>Grandiflora rosea.</b> Very large, full convex flower, rose and salmon mixed; beautiful.....	40	4 00
<b>Grethen.</b> White and rose, with yellow center.....	40	4 00
<b>Henri Behrens.</b> Deep rose; large flowers.....	55	3 50
<b>Hon. B. F. Jones.</b> Silvery white, with the center a mass of short sulphur-white petaloids, producing the effect of a fine water-lily. One of the loveliest varieties in cultivation.....	2 50	
<b>Humei rosea.</b> A splendid old sort, with deep rose flowers; one of the latest to bloom.....per 100, \$14..	25	2 50
<b>Insignis.</b> Brilliant carmine, 30 cts. each, \$3 per doz.		
<b>Isabel Karlitzky.</b> Large; delicate rose. 25 cts. each, \$2.50 per doz.		
<b>J. B. Bendather.</b> Clear violet-red. 40 cts. each, \$4 per doz.		
<b>Jean d'Arc.</b> Large flower of soft rose, sulphur-white and lively rose, center stained carmine, lovely flesh coloring. \$1 each, \$10 per doz.		
<b>Jeramus.</b> Pink, yellow center. 50 cts. each, \$5 per doz.		
<b>Jupiter.</b> Dark red. 50c. each, \$5 per doz.		
<b>King of Roses.</b> Deep rose; sweet-scented. 50 cts. each, \$5 per doz.		
<b>La Coquette.</b> Large flower of perfect shape, lively beautiful rose, center flesh-pink, salmon and carmine, one of the finest. \$1 each, \$10 per doz.		
<b>La Tulipe.</b> Very large, globular flower, rosy white center, outside of the flower lively carmine, center striped deep carmine; extra fine. 75 cts. each, \$8 per doz.		

	Each	Per doz.
<b>Lady Bramwell.</b> Silvery rose; very fragrant.....	\$0 50	\$5 00
<b>L'Innocence.</b> White, rosy outer petals.....	40	4 00
<b>Louis Van Houtte.</b> Large flower of lively violet-red; very brilliant; a very beautiful variety.....	60	6 00
<b>M. Chevreul.</b> Large, imbricated flowers, very full; beautiful lilac, shaded pink; very fresh coloring.....	60	6 00
<b>M. Courant.</b> Blush-pink, center lemon-yellow.....	25	2 50
<b>M. Hippolyte Delille.</b> Large flower, carmine-rose, tinted rose-lilac.....	35	3 50
<b>M. Molnier.</b> Large flowers; pink, with lighter center...	25	2 50
<b>M. Pasteur.</b> Beautiful lively china-pink, lightened with lilac reflex; extra.....	50	5 00
<b>M. Pierre Dessert.</b> Enormous imbricated full flower, very brilliant deep amaranth, velvety violet reflex.....	75	
<b>Madam Patti.</b> Violet, with rose and yellow center.....	75	7 50
<b>Mademoiselle Leoni Calot.</b> Soft pink; extra fine.....	40	4 00
<b>Magnifica.</b> Soft rose, center sulphur edged carmine; dwarf plant; extra fine.....	60	6 00
<b>Maiden Blush.</b> White and light rose; beautiful.....	40	4 00
<b>Marie Lemoine.</b> Delicate flesh, changing to white.....	35	3 50
<b>Mathilde Mechin.</b> Very pretty anemone flower, compact, ball-shaped, perfect form, carnation-pink mixed with small salmon petals.....	1 00	
<b>Meissonier.</b> Very large, double flower with large petals of brilliant purple-amaranth; very beautiful.....	75	8 00
<b>Mlle. Renee Dessert.</b> Very large flowers in clusters; beautiful lilac with silvery violet reflex; extra.....	1 00	10 00
<b>Mme. Aug. Petereau.</b> Large, full flower, beautiful lively satiny pink, silvery reflex on the edge; late variety...	40	4 00
<b>Mme. Barillet-Deschamps.</b> Large flower of perfect shape, very soft rose edged white, shaded with tints of lively pink, silvery reflex.....	1 00	
<b>Mme. Bigot.</b> Large, extra double flower, clear china-rose washed with white, shaded salmon-rose; a beautiful variety.....	50	5 00
<b>Mme. Buquet.</b> Black velvety amaranth, very deep color; extra fine.....	75	8 00
<b>Mme. Calot.</b> Large, peony-shaped flower; very double, carnation-white tinted yellow.....	1 00	10 00
<b>Mme. Chaumy.</b> Large flowers in clusters; rose-shaded, large silvery border; very late variety.....	35	3 50



PEONY BORDER (From English "Country Life")

## CHOICE NAMED PEONIES, continued

	Each	Per doz.		Each	Per doz.
<b>Mme. de Verneville.</b> Very pretty anemone flower, very full; collar of large petals, those of the center very close; carnation-white and sulphur, sometimes carmine; extra .....	\$1 00	\$10 00	<b>Tenuifolia flore pleno.</b> Deeply cut, fringe-like foliage; flowers bright scarlet-crimson; rare and fine .....	\$0 50	\$5 00
<b>Mme. de Vatry.</b> Very large flower of perfect shape, color clear carnation, sulphur-white center with carmine stripes; extra fine variety .....	1 50		<b>Triomphe de l'Exposition de Lille.</b> Large, imbricated flower, soft carnation-pink, with white reflex, carmine center; very fresh coloring .....	50	5 00
<b>Mme. Ducl.</b> Very large, globular flower, extra full and perfect shape, silvery salmon-pink .....	85	9 00	<b>Triomphe du Nord.</b> Violet-rose, lilac shade .....	30	3 00
<b>Mme. Emile Galle.</b> Large, cup-shaped, imbricated flower, soft lilac, center yellowish white, fresh coloring; extra fine .....	1 50		<b>Triumphans Gandavensis.</b> Very pretty rosy white flower, shaded with chamois; dwarf plant .....	1 00	
<b>Model of Perfection.</b> Beautiful soft pink .....	50	5 00	<b>Van Dyck.</b> Large flower; color very fresh salmon-pink, center tinted with salmon and chamois; extra fine .....	75	8 00
<b>Modeste Guerin.</b> Broad flower; outside rose, center pink .....	30	3 00	<b>Victoire Modeste.</b> Large flowers of violet-rose, center petals marked with large salmon lines .....	75	
<b>Mont Blanc.</b> Pure white .....	40	4 00	<b>Virgo Maria.</b> Large flower of good shape, dull white .....	75	
<b>Ne Plus Ultra.</b> Very large flower of good shape, fresh and lively pink .....	30	3 00	<b>Washington.</b> Clear red, center soft salmon-pink; beautiful variety .....	50	5 00
<b>New Giant.</b> An extremely large and showy pink variety .....	30	3 00	<b>White Perfection.</b> Largest, pure white; beautiful .....	75	7 50
<b>Nobilissima.</b> Fine bright dark rose .....	35	3 50	<b>White Queen.</b> Pure white; extra large .....	50	5 00
<b>Noemie Demay.</b> White convex flower, slightly marked with carnation and occasionally carmine; early-flowering; dwarf plant .....	75		<b>Whitleyi.</b> White; large and sweet .....	45	4 50
<b>Officialis alba (Old Double White).</b> Blush white; early-flowering .....	50	5 00	<b>Wilhelmina.</b> Fine soft rose; extra large .....	75	7 50
<b>Officialis rosea (Old Double Rose).</b> Rich bright shining rose; very early .....	35	3 50			
<b>Old Double Crimson.</b> This fine old Peony is very effective when planted in masses; one of the earliest to bloom .....	35	3 50			
<b>Palassi.</b> Light rose, blush center .....	40	4 00			
<b>Perfection.</b> Outside petals rose-lilac, inside purple and salmon; sweet .....	50	5 00			
<b>Philomele.</b> Soft satiny rose-color, center composed of saffron-yellow ligules tufted lively red; an elegant flower of remarkable freshness .....	1 25	12 00			
<b>Phrynee.</b> White, center light yellow, blotched red; extra .....	75	8 00			
<b>Pius IX.</b> Dark red purple; semi-double .....	30	3 00			
<b>Plenissima rosea superba.</b> Very full convex flower, beautiful pink and salmon .....	35	3 50			
<b>Pottsi.</b> Dark purple; sometimes semi-double .....	30	3 00			
<b>Preciosa Nova.</b> Blush-pink, center shading to white .....	25	2 50			
<b>Prince de Salm Dyck.</b> Lovely lilac, chamois center, tufted lilac .....	50	5 00			
<b>Prince Imperial.</b> Very large flowers; shining purple-scarlet; very beautiful .....	50	5 00			
<b>Princess Galitzen.</b> Soft carnation, very narrow center, petals of sulphur-yellow; extra fine .....	1 00				
<b>Purpurea.</b> Dark glowing purple .....	35	3 50			
<b>Queen of the Whites.</b> Extra large; pure white; very beautiful .....	1 00	10 00			
<b>R. H. Boggs.</b> Crimson outer petals, with flesh-white center; distinct and fine .....	50	5 00			
<b>Reine des Francais.</b> Collar carnation-pink, white center, shaded yellow .....	75				
<b>Rosalinde.</b> White, with light rose; extra beautiful .....	1 00	10 00			
<b>Rose d'Amour.</b> Large flower of very soft carnation-pink; very fresh color; fine .....	1 25				
<b>Rosea plena.</b> Double pink .....	20	2 00			
<b>Rubra superba.</b> Semi-double; crimson-maroon .....	30	3 00			
<b>Rubra triumphans.</b> Rich brilliant glowing crimson flowers .....	35	3 50			
<b>Snowball.</b> Pure white .....	50	5 00			
<b>Solfaterre.</b> Collar of large pure white petals, those of the center narrow and sulphur-yellow; one of the best .....	1 00				
<b>Souvenir de l'Exposition Universelle.</b> Very large, imbricated flower of perfect form, rich cerise; very brilliant flowers in clusters .....	75	8 00			
<b>Souvenir du Docteur Bretonneau.</b> Large flowers in clusters, lively cerise-red, lightly shaded clear amaranth, golden stamens, brilliant coloring of grand effect .....	75	8 00			
<b>Spectator.</b> Fine large red .....	40	4 00			
<b>Starlight.</b> Deep pink, light center .....	40	4 00			
<b>Sweetheart.</b> Red and white, with rose center .....	50	5 00			
<b>Tennifolia.</b> Same as following variety, but with beautiful single flowers .....	40	4 00			

## KELWAY PEONIES

Kelway & Son are the most famous growers of Peonies in the world, and the following varieties are what they consider the very best of their new varieties. These Peonies are imported to order only, and orders must be received not later than October 1 for fall delivery or May 1 for spring delivery. Prices include duty and all charges.

	Each	Per doz.
<b>Agnes Mary Kelway.</b> Light rose guard petals, yellow petals, with a rose tuft; extra fine. First-class Certificate, R. B. S. ....	\$1 00	
<b>Alonzo.</b> Deep crimson. First-class Certificate, R. H. S. ....	2 00	
<b>Bunch of Perfume.</b> A full double flower, of a vivid rich rose-color, exceedingly sweet-scented. First-class Certificate, 1900. ....	4 00	
<b>Baroness Schroeder.</b> Lovely flesh pink. First-class Certificate, R. B. S. ....	2 00	
<b>Cyclops.</b> Purple-crimson. First-class Certificate, R. B. S. ....	1 00	
<b>Dr. Bonavia.</b> Lovely pink, paling at the edge of the petals; large flowers, showing golden anthers; very sweet-scented ...	3 00	
<b>Duchess of Teck.</b> An excellent variety, large and of good form, attractively colored, creamy white and bright pink. First-class Certificate, R. B. S. Award of Merit, R. H. S. ....	2 00	
<b>Duke of Cambridge.</b> A very handsome bright crimson flower; a superb variety; the very best of its color. ....	2 60	
<b>Duke of Clarence.</b> Cream, slightly flushed pink. First-class Certificate, R. B. S. ....	2 00	
<b>Duke of Devonshire.</b> "A large variety of deep rose-color, with large outer guard petals and dense center."— <i>Journal of Horticulture</i> . "Duke of Devonshire is a fine large double variety, with deep rose guard petals and a mass of small inner petals of the same color."— <i>Gardeners' Magazine</i> . Award of Merit, R. H. S. ....	3 00	
<b>Ella Christine Kelway.</b> Beautiful soft lavender-flesh color, enclosed in a large guard petal; very large and full and of perfect form, very sweetly perfumed. "Ella Christine Kelway, a very handsome herbaceous kind with white blossoms faintly tinted with salmon-pink. The variety is remarkable for its fullness and the great solidity of the blooms."— <i>The Garden</i> . Award of Merit, R. H. S., June 14, 1898. ....	4 00	
<b>Cavalleria Rusticana.</b> Very full, dark purple-crimson. First class Certificate, R. B. S. ....	2 00	
<b>Glory of Somerset.</b> Soft pink, large, beautiful. First-class Certificate, R. H. S. ....	3 00	
<b>Harpasus.</b> Pure white .....	1 00	
<b>Joan Seaton.</b> Double, bright cherry-rose, each petal edged with a lighter color; rose-shaped flower, showing anthers amongst the petals; nicely scented. Certificate of Merit, R. B. S., 1897. ....	3 00	
<b>Kelway's Queen.</b> Flesh-pink; a most delicate and lovely sort, and very sweet. First-class Certificate, R. B. S. ....	2 00	
<b>Lady Alexander Macduff.</b> Lovely French white; one of the grandest Peonies existing; tall and robust, and very highly perfumed; scarce. First-class Certificate, R. B. S. ....	4 00	
<b>Lady Beresford.</b> The petals are tipped with carmine; very sweet. "A large-flowered variety of a soft bluish-pink shade, delicate and beautiful; a very fine habited strong plant."— <i>The Garden</i> . "Lady Beresford is a huge white flower, with a tinge of buff at the base of the broad soft segments; a magnificent bloom."— <i>Gardeners' Magazine</i> . Award of Merit, R. H. S. ....	3 00	
<b>Lady Derby.</b> Flesh-colored, lovely .....	1 00	
<b>Lady Carrington.</b> Flesh very fine, sweet-smelling. First-class Certificate, R. H. S. ....	2 00	





SINGLE HERBACEOUS PEONIES

	Each
<b>KELWAY PEONIES, continued</b>	
<b>Lady Curzon.</b> White guard petals, with a bunch of cream-colored petals in the center, a faint blush tint pervading the whole flower; large, very sweetly perfumed. Award of Merit, R. H. S., June 5, 1900 .....	\$4 00
<b>Lady Gwendolin Cecil.</b> A very delicate lavender-flesh; a beautiful flower; late-flowering. First-class Certificate, R. B. S. ....	3 00
<b>Langport Queen.</b> Of a beautiful rosy blush color, suffused with pink; very fine .....	2 00
<b>Leonard Kelway.</b> Pink guard petals, enclosing a convex cushion of cream-colored petals finished off by a pink crest. First-class Certificate, 1900 .....	4 00
<b>Limosel.</b> Very bright, clear, light lilac-rose; very large flower; full double, with a broad guard petal and narrower petals in the center, sweet-scented. Certificate of Merit, R. B. S. 1897 .....	3 00
<b>Lottie Collins.</b> Deep purple; early-flowering. Award of Merit, R. H. S. ....	2 00
<b>Lyde.</b> Rose-color center tinted pink; distinct and extra fine. First-class Certificate, R. H. S. ....	2 00
<b>Maria Kelway.</b> Very fine; blush guard petals, yellow petaloids, bush tuft, sweet-scented. First-class Certificate, R. H. S. ....	2 00
<b>Miss Brice.</b> Rose guard petals, yellow and rose petaloids, rose tuft. First-class Certificate, R. H. S. ....	2 00
<b>Miss Salway.</b> White guard petals, sulphur center; very fine. First-class Certificate, R. H. S., and Certificate of Merit, R. B. S. ....	2 00
<b>Moonbeam.</b> Large white, tufted in the center. Award of Merit, R. H. S. ....	2 00
<b>Mountebank.</b> Pink guard petals, lemon-colored narrow petaloids in the center; sweet-scented. First-class Certificate, R. B. S. ....	2 00
<b>Mr. Manning.</b> Deep glowing crimson. Certificate of Merit, R. B. S. ....	2 00
<b>Mrs. Stubbs.</b> Delicate flesh-colored guard petals, with a white center to a very beautiful flower; fragrant .....	3 00
<b>Paderewski.</b> Bright pink; very sweet-smelling. First-class certificate, R. B. S. ....	2 00
<b>Prince George.</b> Fine purple. First-class Certificate, R. B. S. ....	2 00
<b>Princess Dhuleep Singh</b> (New Imperial Peony). An exceedingly beautiful variety. A beautiful pink with a mass of golden anthers in the center. Very large and of great substance. ....	4 00
<b>Princess May.</b> "A beautiful variety, large, of good form, and of a pleasing cream-color."— <i>Gardeners' Magazine</i> . "Of charming beauty."— <i>The Garden</i> . Award of Merit, R. H. S. ....	2 00
<b>Prince of Wales.</b> Soft lilac-rose, very large flower. First-class Certificate, R. B. S. ....	2 00

	Each
<b>Sainfoin.</b> Fragrant. "The most striking of all; the flowers very full, large and brilliant; self-rose."— <i>The Garden</i> . First-class Certificate, R. B. S. Award of Merit, R. H. S. ....	\$2 00
<b>Sir T. J. Lipton.</b> Large flower, with golden stamens appearing in the center of bright rosy crimson petals. "A huge double, bright rosy carmine flower of great merit."— <i>Gardening World</i> . Certificate of Merit, R. B. S., 1897 .....	3 00
<b>Summer Day.</b> Creamy white. Certificate of Merit, R. B. S. ....	3 00
<b>Venus.</b> Flesh-pink, with shades of salmon; most delicate; a beautiful colored plate of this variety has appeared in <i>The Garden</i> .....	3 00

SINGLE VARIETIES

<b>Amiable.</b> Cherry-rose, large. First-class Certificate, R. B. S. ....	2 00
<b>Argus.</b> Bright rose. First-class Certificate, R. H. S., Manchester. ....	1 30
<b>Autumnus.</b> Purple. First-class Certificate, R. H. S., Manchester; First-class Certificate, R. B. S. ....	1 30
<b>Bridesmaid.</b> Single; white .....	3 00
<b>Dorothy.</b> Delicate pink; very charming .....	2 00
<b>Duchess of Sutherland.</b> Large, flesh-pink; a lovely flower .....	3 00
<b>Fairy.</b> Rosy white .....	2 00
<b>Felix Holt.</b> Pink .....	2 00
<b>Hesperus.</b> Bright pink. First-class Certificate, R. H. S., Manchester .....	1 30
<b>Lady Lilian Ogle.</b> Blush-white .....	2 00
<b>Lady Wimborne.</b> Fine pearly blush-pink .....	2 00
<b>Pride.</b> Rich crimson; a most striking flower .....	2 00
<b>Queen of May.</b> French white .....	2 00
<b>Stanley.</b> A gorgeous variety of the richest and deepest maroon-crimson, with pure gold-color stamens. First-class Certificate, R. B. S., and Award of Merit, R. H. S. ....	3 00
<b>The Czar.</b> Deep purple-crimson .....	1 30
<b>Tinted Venus.</b> Bright pink. First-class Certificate, R. B. S. ....	2 00
<b>Viscount Cross.</b> Deep cherry-red. "A charming single variety, of a bright cherry hue."— <i>Gardening World</i> . First-class Certificate, R. B. S. ....	2 00

**INCARVILLEA DELAVAYI** (Hardy Gloxinia)

A new hardy tuberous-rooted plant, and one of the choicest perennial plants introduced in recent years. It produces large, gloxinia-like rose-colored flowers, which last in perfection a long time; these are produced in clusters on stems 18 inches high; should be protected with a covering of leaves during the winter. 25c. each, \$2.50 per doz.

# Special Offer of Ornamental Flowering Shrubs

SHIPPED FROM STATION NEAR PITTSBURG

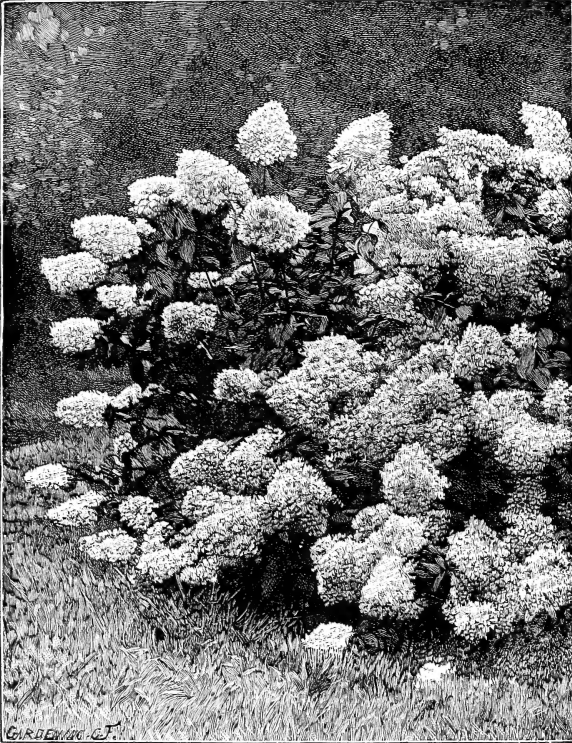
I want to encourage the planting of shrubs. To be effective they should be planted in masses, but when dealers or nurserymen ask fifty cents each for easily-grown shrubs there is not much encouragement

to plant them freely. I have made arrangements by which I can supply my customers with well-grown shrubs in the best varieties at the extremely low prices quoted below, but in every instance the selection of varieties must be left to me; however, in ordering, if it is stated that certain shrubs are not wanted they will not be sent. I guarantee these shrubs to be satisfactory in both quality and variety.

**SPECIAL OFFER A.**—50 shrubs in fine assortment of 15 varieties, \$7.

**SPECIAL OFFER B.**—100 shrubs in fine assortment of 20 varieties, \$12.

**MY GENERAL CATALOGUE**, containing full price list of Trees and Shrubs, will be sent free on request



GROUP OF HARDY HYDRANGEAS ON LAWN.  
From "The English Flower Garden."

## Low Prices for Hydrangeas

SHIPPED FROM STATION NEAR PITTSBURG

Prices good until stock is exhausted. Fall or spring delivery. No more popular plant or shrub has ever been sent out than *Hydrangea paniculata grandiflora*, and I take great pleasure in offering my customers a large stock of splendid vigorous plants at such extremely low prices that it will enable them to plant this effective shrub in quantity.

People who have only seen this Hydrangea grown singly as specimens have no conception of how beautiful and effective it is when planted in masses. They are planted in this way at Newport, R. I., which is famous for its fine gardens, and almost as famous for its Hydrangeas. These Hydrangeas can be planted in connection with other shrubbery or in isolated beds, in the same manner as cannas, caladiums or other strong-growing bedding plants. They are perfectly hardy, and once planted they are a permanent addition to the lawn or garden. When grown in beds or groups they should be planted about two feet apart in very rich soil, which should be liberally enriched annually with rotten stable manure, and in the early spring, before they commence to grow, cut back so as to leave only two or three inches of the new growth of the previous season; if extremely large flowers are desired, cut out some of the weakest shoots after growth has commenced. Treated in this manner they will produce enormous panicles of flowers, and the beds will be a solid mass of bloom. They bloom profusely the same season planted. Try them. You will find them more than satisfactory.

	Per 25	50	100
<i>Paniculata grandiflora</i> , 12 to 18 inches .....	\$2 50	\$4 00	\$6 00
<i>Paniculata grandiflora</i> , 24 to 30 inches .....	4 00	7 00	13 00
<i>Paniculata grandiflora</i> , 3 feet, extra large and bushy.....	5 00	8 50	16 00

All of the above will bloom the first year, and are superior to the stock commonly retailed at 25 cts. to \$1 each. It is suggested that when smaller quantities are wanted two or three club together in ordering.  
For prices on smaller quantities, see list of Hardy Shrubs.

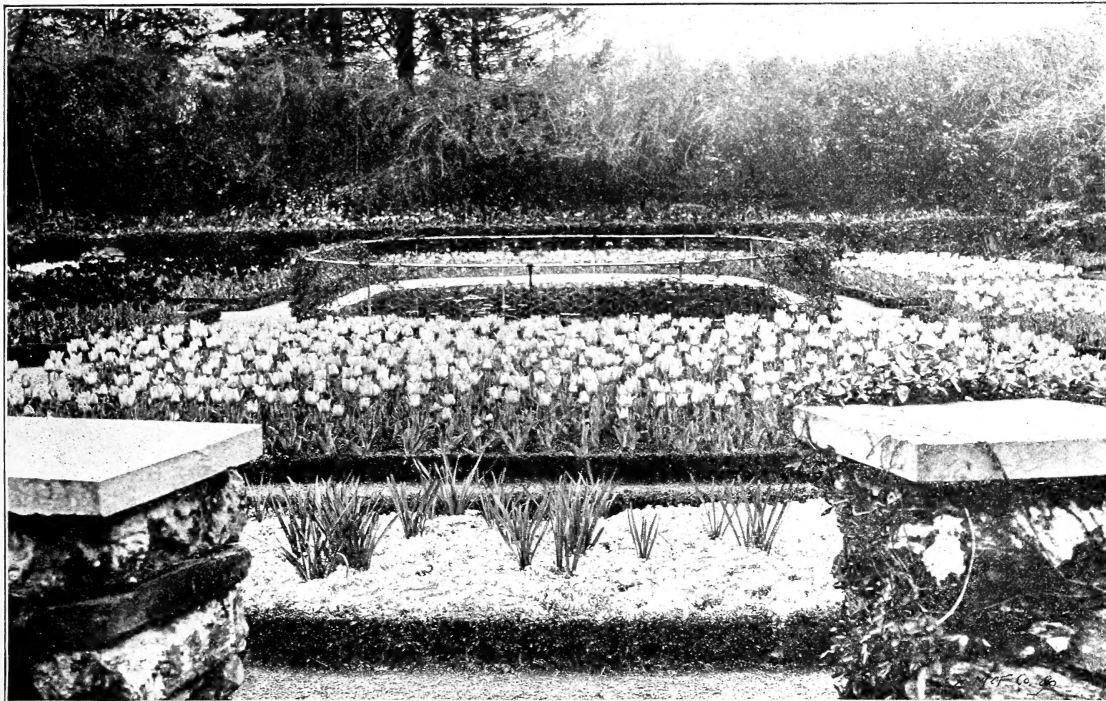
## Grass Seed for Lawns

I can supply the very best quality of Mixed Lawn Grass Seed for \$2.50 per bushel. This is exactly the same quality of seed that usually sold for \$5 per bushel as Central Park mixture, or under some other fancy name. Grass seed weighs only 14 pounds per bushel, and can be shipped inexpensively by express. I do not supply less than one-half bushel. Special prices quoted for large quantities. Grass seed is sold by weight, 14 pounds for a bushel, but 14 pounds of clean grass seed will not fill a bushel. Grass seed can be sown advantageously in the fall, preferably in September.

**PRICES: \$1.50 per 1-2 bushel, \$2.50 per bushel  
10 bushels at \$2.25 per bushel**

Small quantities shipped from here; large quantities from Cincinnati.





TULIPS AND PHLOX SUBULATA.

### CREEPING PHLOXES

The Creeping Phloxes are among the most charming of hardy plants. They cover the ground with a mat of evergreen foliage at all times, and during the month of May make the most beautiful carpet of white, purple or pink flowers. The bloom is so dense that the foliage is entirely hidden. These Phloxes bloom again in the fall, but not so freely. They are very useful for border edging, rockwork or covering bare banks, and for covering graves. Planted in large masses nothing can be more effective.

	Per doz.	100	1,000
<b>Subulata, Pink</b> .....	\$1 00	\$7 00	\$50 00
“ <b>Alba, White</b> .....	1 00	7 00	50 00
“ <b>“Model.”</b> Finest of all Creeping Phloxes, bright pink .....	1 00	6 00	45 00
“ <b>The Bride, White, red center</b> .....	1 25	8 00	60 00
“ <b>Atropurpurea, Deep rosy purple</b> .....	1 25	8 00	60 00
<b>Repens.</b> A beautiful native variety growing about 8 inches high, with beautiful purplish pink flowers. Spreads rapidly; fine for growing in shady places or in the woods; also does well in the full exposure to the sun .....	1 25	8 00	

### HOLLYHOCKS

Have you ever noticed that painters choose single Hollyhocks as subjects for floral painting oftener than any other flower? I suppose the reason for this is that artists have a keener appreciation of beauty than other people and recognize that the common, and I fear

sometimes despised, Single Hollyhock is one of the most stately, picturesque and beautiful plants in the world. Nothing can be more effective than a large group or mass of single Hollyhocks, and once planted they will literally take care of themselves, even if planted in the grass. I know of patches that have not been cultivated or disturbed in any way for twenty years. Notwithstanding their great beauty and usefulness, Single Hollyhocks are not offered for sale by any nurseryman in America, and the seed is not to be had from any seedsman. I am determined to have Single Hollyhocks for my landscape gardening work, so I collected seed from old-fashioned (they will soon be new-fashioned) gardens and had thousands of plants grown for my customers. Some people think Double Hollyhocks are more beautiful than Single. They are mistaken; although the doubles are beautiful, but inclined to be top-heavy, often need staking and are liable to disease. Hollyhocks planted in the fall will bloom well the following summer.

	Per doz.	100
<b>Best Large-flowered, Single.</b> All colors mixed .....	\$1 25	\$7 00
<b>Best Large-flowered, Single.</b> In separate colors .....	1 50	9 00
<b>Best Double Grown, Chater's Famous Strain.</b> In separate colors: white, sulphur-yellow, scarlet, rose, Isabel color, salmon-rose, crimson, golden yellow, dark crim- son, cherry-red and peach .....	1 50	10 00
<b>New Allegheny.</b> Immense semi-double flowers, with fringed edges; very beautiful .....	2 00	
<b>New Single Japanese.</b> Dark red, white edge; said to be very fine .....	2 00	
<b>Ficifolia</b> (The Fig-leaved Hollyhock). With bright yellow flowers .....	2 50	
<b>Primrose Queen.</b> A splendid addition; large, bright single primrose-yellow flowers .....	2 50	

### Special Offers of Hardy Plants in Variety

The following very low prices are for the purpose of equalizing stocks of Hardy Plants. They will be of the best and most desirable varieties and the plants of the best quality, but in every instance the selection of varieties is to be made by us. However, as before stated, if purchasers will name the things they have or don't wish, these will not be included in the selection.

<b>OFFER NO. 1.</b> 25 first-class plants in variety for .....	\$2 50
<b>OFFER NO. 2.</b> 50 first-class plants in variety for .....	4 00
<b>OFFER NO. 3.</b> 100 first-class plants in varied assortment of best species and varieties for .....	7 00
<b>OFFER NO. 4.</b> 500, same as above, but in larger variety, for .....	30 00
<b>OFFER NO. 5.</b> 1,000, same as above, but in much larger variety, for .....	55 00

Our General Catalogue, containing complete list of Hardy Plants, with descriptions and prices, will be sent free on request

# A PLEA FOR HARDY PLANTS

By J. WILKINSON ELLIOTT

TENDER plants predominate in so many modern gardens that lovers of flowers should be grateful to Mr. J. Wilkinson Elliott for bringing forth an argument, in the shape of a sensible and practical book, in favor of our native asters, lilies, hollyhocks and other hardy plants. This book is sure to appeal to all garden makers.

## PRESS COMMENTS

"Certainly one of the most sensible as well as beautifully illustrated nature books that the season has to offer."—*Chicago Record-Herald*.

"Such a book is an inspiration to the inert land-owner, and has real help to offer the energetic one."—*Farm, Field and Fireside*.

"An irresistible combination of sensible suggestions and splendid illustrations."—*Los Angeles Herald*.

"The price is incredibly small considering the mechanical perfection of the book."—*Nashville American*.

"Should be in the hands of every owner of a country place."—*The Argonaut*.

PRACTICAL AND WELL ILLUSTRATED. PRICE, NET, \$1.60

DOUBLEDAY, PAGE & COMPANY, Publishers, 34 Union Square, New York

## SPECIAL OFFER

WE should like very much to have every one of our customers receive a copy of the book advertised above, and with this end in view we have made arrangements with the publishers by which we can supply our customers with it at a nominal price. With orders for trees, shrubs, plants or bulbs amounting to two dollars or more, a copy of the book bound in boards may be added for seventy-five cents, or bound in paper for thirty-five cents, but only one copy can be ordered at these prices: or every one who sends to us a subscription to that splendidly illustrated magazine, "Country Life in America," will receive a copy of the book, "A Plea for Hardy Plants," free of cost; or, in other words, the magazine and the book will be sent for the price of the magazine alone, which is three dollars per year.

ELLIOTT NURSERY COMPANY



## LANDSCAPE GARDENING

THE majority of American suburban grounds are laid out and planted without the aid of professional advice. The result is almost always unsatisfactory, although often the expenditure would have secured most beautiful results if directed by skilled advice. I do landscape gardening—do it for people of exacting taste, to whom I refer. I make the plans, with estimates, purchase the stock necessary and superintend the work. I do any one or all these things, satisfactorily as to results, moderately as to cost. For small grounds I can make satisfactory plans if furnished with a plat drawn to scale. For large grounds, and where extensive improvements are desired, a personal visit would be necessary and can be arranged for on reasonable terms. I can make no plans during the month of April.

J. WILKINSON ELLIOTT

LANDSCAPE ARCHITECT