

Historic, Archive Document

Do not assume content reflects current scientific knowledge, policies, or practices.



NUMBER 53

U.S. Department of Agriculture
Washington, D. C.
AUTUMN 1904

SPECIALTIES

Choice Hardy
TREES, SHRUBS
ROSES, HERBACEOUS
PLANTS, BULBS, ETC

FALL PLANTING



FREDERICK W. KELSEY
150 Broadway, New York

Cable Address: KELLENWOOD, New York



Autumn 1904.

Preface.

THIS ABRIDGED CATALOGUE includes only a partial list of the finer Trees and Hardy Plants; Street Trees; collections of the best Shrubs, Roses, the finest hardy Azaleas, Rhododendrons; trained Fruit Trees; Foreign Grape Vines, etc. **For more complete lists**, descriptions, etc., see General Catalogue No. 52, for 1904.

THE NURSERY BUSINESS is rapidly growing in importance, and under my present methods of selection and distribution, the best stock in this country and abroad is furnished in far greater variety than is possible in "picking out" the material in any one Nursery or from several Nurseries. With my system of direct importations from carefully selected stock in the leading Nurseries in Europe, and contracts for growing and special selection with a great many of the best growers of hardy stock in this country, almost every variety of trees and hardy plants of reliable quality and condition is furnished at **LOWEST CURRENT PRICES**, and on large lists.

THE QUALITY of all stock is of first consideration. Much care is exercised in having all material properly grown and transplanted, and the digging and packing done under the most approved methods to insure, in both long and short distance shipments, the arrival of the stock in perfect condition.

SAMPLES provide an efficient and inexpensive way of judging of the quality and value of stock, and where furnished with the customary proposal are more reliable than the much more costly methods of looking over the same material in nursery rows. Samples are submitted or inspection invited where there is question as to the quality of stock desired.

SPECIALTIES. STREET, AVENUE and LAWN TREES; JAPANESE MAPLES; SPECIMEN EVERGREENS, many times transplanted and moved with ball; TRAINED TREES for FORMAL GARDENS; THE FINEST HARDY AZALEAS, and the strictly reliable "iron-clad hardy" RHODODENDRONS—beautiful plants with buds for immediate effect; special collections of the best hardy DECIDUOUS SHRUBS; the finest STANDARD SHRUBS; HEDGE PLANTS, all sizes and varieties; special collections of the best hardy ROSES; ROSA RUGOSA; HARDY HERBACEOUS PLANTS; HARDY BULBS; TRAINED FRUIT TREES for fruit house and gardens; FOREIGN GRAPE VINES; and the best grade of GRASS SEED.

SHIPMENTS are made when the stock is in best condition for removal, usually during March and April in spring; October and November in autumn.

PRICES are of F. O. B. New York, and stock is forwarded under the low Trunk Line classification rates; or if by express at 20% discount from schedule express rates. On stock furnished at special net prices and in carload lots, freight charges follow from point of shipment. **PACKING**—There is no charge for labor and cost of packing excepting the customary charge of the actual cost of boxes or bales necessary in protecting the stock in the best possible condition.

AUTUMN PLANTING. Fall planting in many places is desirable. There is more time to do the work properly. The tree or shrub is in condition for immediate growth in spring. Nearly all deciduous trees and shrubs can be advantageously shipped and transplanted in autumn; also JAPANESE MAPLES, RHODODENDRONS and HARDY AZALEAS, LILIES, HERBACEOUS PLANTS, and HARDY ROSES in the open ground, EVERGREENS as a rule are better moved in the spring.

LANDSCAPE PLANS. In the proper treatment of all ornamental grounds carefully considered landscape plans are as important as are architects' plans in building construction; and grievous mistakes—costly to remedy in future—are thus not infrequently avoided. The best results usually obtain where competent men are employed for this work. While conversant with the best examples of landscape treatment in this country and in Europe, no pretense is made of being a Landscape Architect; but I am always glad to advise regarding competent specialists for this work and these improvements, without charge, and when desired arrange for landscape work with the furnishing of requisite planting material at reasonable cost.

GARDENERS' POSITIONS. I have always on my books a list of competent head-gardeners and assistant gardeners, such as can be recommended as reliable and trustworthy for filling these positions satisfactorily. There is no charge for registering or for this service; the pleasure or satisfaction from a country estate depending as it does so largely upon loyal, competent service in the gardening department.

FRED'K W. KELSEY.

150 Broadway, New York.

SEPTEMBER, 1904.

TELEPHONE: 1169 Cortlandt.

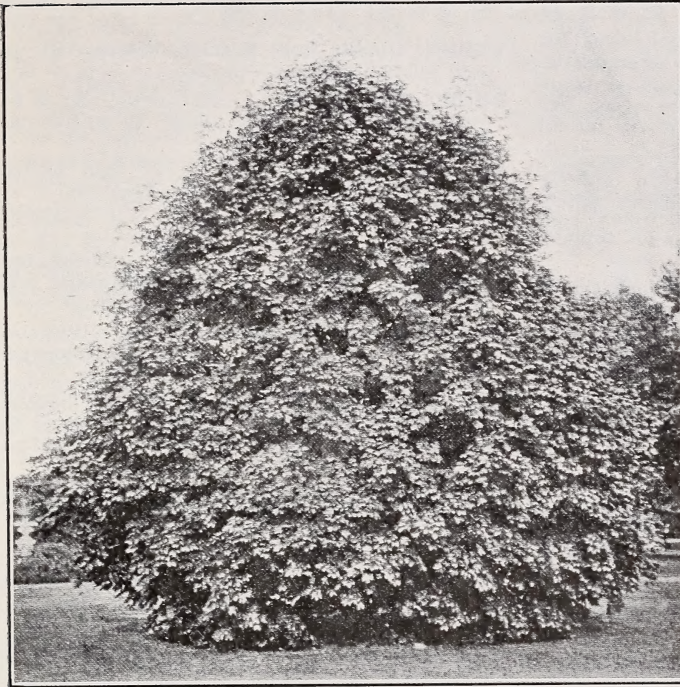
CABLE ADDRESS: "Kellenwood, New York."

Deciduous Shade Trees.

THE FOLLOWING are a few of the desirable Ornamental and Shade Trees I am furnishing this season, of exceptional value for the sizes and grades offered.

All are nursery grown and properly transplanted. Extra sizes of many varieties can be supplied in quantity; also small sizes per thousand, for transplanting, at special low prices. Particulars on application. For more complete list of varieties and description, see Catalogue No. 52, for 1904.

- AILANTHUS glandulosa.** A rapid-growing hardy tree. Long pinnate foliage; valuable for tropical effects. 50 cts. to \$1.
- ALDER, European.** ALNUS GLUTINOSA. Very rapid grower. 35 cts. to \$1; \$20 to \$50 per 100. Smaller, \$50 to \$100 per 1,000.
- ALDER, Imperial Cut-leaved.** Deeply cut leaves. Fine for the lawn. \$1 to \$1.50. Low rates per 100.
- AMELANCHIER Botryapium.** The American JUNE BERRY or SHAD BLOW. Beautiful white flowers in April, followed by purplish fruit in June. 50 cts.; \$3 to \$5 per dozen.
- ASH, American White.** 25 cts. to \$1.75.
- ASH, Aucuba-leaved.** FRAXINUS AUCUBÆFOLIA. Gold-blotched leaves. Effective in contrast. 50 cts. to \$1.50.
- ASH, Gold-barked.** F. AUREA. Yellow bark; fine. \$1.
- BAY TREES.** See SWEET BAY TREES, page 9.
- BEECH, European.** FAGUS SYLVATICA. Makes a good hedge. \$25 to \$50 per 100. Smaller \$50, \$75 and \$100, and upwards, per 1,000.
- BEECH, Fern-leaved.** F. HETEROPHYLLA. Beautiful foliage. \$1 to \$2.
- BEECH, Purple-leaved.** F. PURPUREA. The darkest purple. 75 cts. to \$1.50 each; \$40 to \$100 per 100. Smaller, \$25 per 100.
- BEECH, Weeping.** FAGUS PENDULA. Three to four feet and upwards, 75 cts. to \$2.50 each. Smaller trees, \$50 per 100.
- BIRCH, Cut-leaved Weeping.** Fine cut foliage. White bark. 75 cts. to \$5 each.
- BIRCH, European White Weeping.** BETULA ALBA. Very low rates per 100 and 1,000. All sizes.
- BIRCH, Paper or Canoe Birch.** B. PAPYRACEA. Low rates in quantity for all sizes.
- BUTTERNUT.** JUGLANS CINEREA. A fine native tree; attains large size; Ailanthus-like foliage. 50 and 75 cts.; \$3 to \$6 per dozen.
- CATALPA Bungei.** Standards; straight stems; compact, round heads; large, glossy foliage. Fine for formal planting. \$15 to \$25 per dozen.
- CATALPA, Golden.** CATALPA AUREA VARIEGATA. \$1 each; \$9 per dozen.
- CATALPA, Speciosa.** Very hardy; rapid growth. Very desirable, and largely used for street and avenue planting. \$10 to \$50 per 100. Low rates per 100 and per 1,000.
- CATALPA, Syringæfolia.** The common Catalpa indigenous in the South. \$4 to \$6 per dozen. Low rates per 100.
- CELTIS or Nettle Tree.** A fine native small tree; light shiny green foliage. \$4 to \$6 per dozen.
- CHERRY, Double Flowering.** CERASUS ALBA PLENA: A mass of beautiful white flowers in May. 50 cts. to \$1.
- CHERRY, Japan Weeping Rose-flowering.** C. ROSEA PENDULA. New Japanese variety; double rose-colored flowers. One of the finest small ornamental trees. Pendulous habit. A perfect mass of rose-colored flowers, very early in spring. \$15 and \$20 per dozen.
- CHESTNUT, American.** CASTANEA AMERICANA. Fine trees of all sizes. \$25 to \$75 per 100.
- CHESTNUT, Paragon.** Sweet fruit, much larger than our common American Chestnut. Comes into bearing soon after transplanting. \$1 to \$2.
- CHESTNUT, Spanish.** C. VESCA. Large nuts, of fine quality. \$4 to \$6 per dozen.
- CRAB APPLE, Bechtel's Flowering.** PYRUS ANGUSTIFOLIA. A beautiful flowering tree, BLOSSOMS LIKE SMALL ROSES in great profusion in early spring. New and rare. \$10 and \$15 per dozen.
- CRAB APPLE, Parkman's Flowering.** P. HALLEANA. Masses of beautiful carmine flowers in spring; rich glossy foliage. Very fine. \$6 to \$10 per dozen.
- DOGWOOD, White-flowering.** CORNUS FLORIDA. 35 cts. to \$1.50 each. Special prices in quantity.
- ELM, American.** ULMUS AMERICANA. Fine stock. All sizes up to 4-inch caliper. Prices per 100 and 1,000 on application.
- ELM, Camperdown Weeping.** Two or three years' head; fine. \$10 and \$15 per dozen. Low rates per 100.
- ELM, English.** U. CAMPESTRIS. Different sizes. \$30 to \$75 per 100; 4 to 6 feet, \$10 per 100; \$75 per 1,000.
- ELM, Huntingdon, Superba, Scotch, Dovai.** Good trees for street or park planting. 50 cts. to \$1.50; \$25 to \$75 per 100.
- HORSE CHESTNUT, Red-flowering.** ÆSCULUS RUBICUNDA. Fine. \$1 to \$2. A few fine specimens.
- HORSE CHESTNUT, White.** A. HIPPOCASTANUM 50 cts. to \$1. Prices in quantity on application.
- HORNBEAM.** CARPINUS. A fine tree. Also used for hedges. \$20 and \$30 per 100.
- HONEY LOCUST.** GLEDITSCHIA. Beautiful foliage, large sharp thorns. A fine tree. Also desirable hedge plant for defensive planting. Low rates in quantity.



SCHWEDLER'S MAPLE.

um, Rubrum, Ornatum; Nigrum, Palmatum, etc.—and choice new kinds. Different sizes, \$1 to \$2.50 each. Case collections of the best plants for grouping or planting in beds, 25 and 50 plants per case, \$30 to \$100 per case, according to size. For varieties, descriptions, etc., see Catalogue No. 50, pages 6 and 7.

MAPLE, New Purple-leaved.

A. PLATANOIDES ATROPURPUREA. Foliage and leaf stalks a distinct maroon red and REDDISH PURPLE COLOR in mid-summer. Very fine and hardy. \$1 to \$2 each, \$10 to \$20 per dozen.

MAPLE, Norway. **A. PLATANOIDES.** The best street tree. All sizes, up to 4-inch caliper, at low rates. \$25 to \$500 per 100. Special prices for different sizes on application.

MAPLE, Reitenbachii. Fine crimson. \$1 to \$2.

MAPLE, Scarlet. **A. RUBRUM.** \$6 and \$8 per dozen. 3 to 5 feet, \$10 per 100.

MAPLE, Schwedlerii. Leaves red or crimson; very fine, \$1. Low rates per 100.

MAPLE, Silver-leaved. **A. DASYCARPUM.** Extra sizes, \$30 to \$50 per 100. Smaller, \$10 to \$25 per 100; low rates per 1,000.

MAPLE, Sugar. **A. SACCHARINUM.** All sizes, up to 3-inch caliper. \$25 to \$400 per 100.

MAPLE, Sycamore. **A. PSEUDO-PLATANUS.** All sizes at low rates in quantity.

MAPLE, Wier's Cut-leaved. **A. WIERI LACINATUM.** Delicately cut leaves, graceful habit. 50 to 75 cts.; low rates per 100.

MOUNTAIN ASH. **PYRUS** or **SORBUS.** Fine trees, of EUROPEAN, OAK-LEAVED and WEEPING varieties. Different sizes, from \$10 per 100 upwards.

MULBERRY, Downing's White, Russian, and other varieties. Good stock of different sizes. \$15 to \$40 per 100.

MULBERRY, Weeping. **MORUS PENDULA.** Of perfect umbrella form. \$1 and \$1.50.

OAK, American White, Burr or Mossy Cup Oak, Chestnut Oak, Willow-leaved Oak, Pin Oak, Q. PALUSTRIS, Pyramidal Oak, English, Red, Q. RUBRA, Scarlet, Turkey, Q. CERRIS, and other varieties in small sizes at reasonable prices.

OAK, Golden. **QUERCUS AUREA.** One of the most beautiful colored foliage trees. Thick bright golden foliage. \$1 to \$2.

OAK, Purple. **Q. ATROPURPUREA.** Dark, rich colored purple leaves. \$2.

POPLAR, Bolleana. Resembles LOMBARDY. Similar, compact, upright growth. Glossy green foliage, silver white underneath. Fine. \$4 to \$6 per dozen.

JUDAS TREE. **CERCIS CANADENSIS.** Per 100 and 1,000 at low rates.

JUDAS TREE, Japan. **C. JAPONICA.** One of the finest dwarf flowering trees. \$20 to \$40 per 100.

LARCH, American. **LARIX AMERICANA.** Fine seedlings. 2 to 5 feet. \$25 to \$50 per 1,000.

LARCH, European. **L. EUROPEA.** Fine transplanted trees of this beautiful tree. \$20 to \$35 per 100.

LABURNUM or Golden Chain. **CYTISSUS LABURNUM.** Fine trees. \$20 to \$40 per 100.

LIQUIDAMBAR. **LIQUIDAMBER STYRACIFLUA.** The Native SWEET GUM tree. Beautiful star-shaped leaves, turning a vivid crimson in autumn. \$5 and \$7.50 per dozen. Special per 100.

LINDEN, American. **TILIA AMERICANA.** All sizes for street planting. \$25 to \$75 per 100. A limited number of large specimens.

LINDEN, European. **T. EUROPAEA.** Fine trees; different sizes, at low rates in quantity.

LINDEN, White-Leaved. **T. ALBA.** Dark green foliage, clear white underneath. Fine. \$5 to \$10 per dozen.

MAPLE, Ash-leaved or Box Elder. **ACER NEGUNDO.** Fine trees. \$15 to \$25 per 100. Special prices in quantity.

MAPLE, Japanese. **A. JAPONICA.** The best specimens and collections of very fine plants. **All the hardiest and best red and crimson-leaved varieties—Atropurpureum, Sanguine-**

POPLAR, Carolina. *POPULUS*. Rapid growth, large foliage, hardy, transplants easily in almost any soil or location. Largely used for street planting where immediate effect is desired. Fine stock, 4 to 6 feet up to 18 or 20 feet, at very low rates; per 100 and 1,000. \$10 per 100 and upwards. Special prices for all sizes in quantity on application.

POPLAR, Lombardy. *P. FASTIGIATA*. The upright growing variety, very fine for landscape effects, and as background for other plantings. \$3 to \$6 per dozen. Special prices on application.

PAULOWNIA. Rapid growth, immense leaves, fine for tropical effects. \$9 per dozen.

PLATANUS. The *PLANE* tree. Fine for street planting. \$6 to \$10 per dozen. A limited number of large sizes.

SALISBURIA or Maiden Hair. *SALISBURIA ADIANTIFOLIA*. Fine fanlike foliage, rare. \$10 per dozen.

THORN, Cocks spur Thorn. *CRATÆGUS CRUGALLI*. \$3 to \$5 per dozen. Low rates per 100.

THORN, Double Red, Scarlet, White. *C.* 50 and 75 cts. Low rates per 100.

THORN, Hawthorn. *C. OXYCANTHA*. \$3 to \$5 per dozen. Fine hedge plant \$5 to \$10 per 100.

WALNUT. *JUGLANS NIGRA*. The well known Black Walnut, 50 cts.; \$20 to \$40 per 100.

WALNUT, Japan. *J. JAPONICA*. A desirable novelty. Nuts produced in clusters of 15 to 20 on a stem; very large size. Flavor sweet, like butternut; fine quality. Tree hardy and productive. \$1 to \$2; \$10 to \$20 per dozen.

WILLOW, Common Weeping. *SALIX BABYLONICA*. Fine trees. 50 cts. each; \$15 to \$40 per 100.

WILLOW, Laurel-leaved. *S. LAURIFOLIA*. Shining, rich leaves; rapid growth. \$3 to \$5 per dozen. Low rates per 100.

TREES OF LARGE SIZE FOR IMMEDIATE EFFECT.

Maples, Elms, Lindens, Horse Chestnuts, Planes, Poplars and most deciduous trees can be put out with perfect safety in autumn. Silver-leaved or soft Maples, Magnolias and Tulip Trees are, however, better in spring.

As a rule, the medium sizes of these larger trees are preferable; those 10 to 12, 12 to 15, or 15 to 18 feet making better specimens after a few years than the extra large sizes.

Prices and particulars on application for large trees of the following, of different sizes:

**American Elm,
Ash-leaved Maple,
Carolina Poplar,
Catalpa,
Cut-leaved Birch,**

**European Ash,
European Linden,
Lombardy Poplar,
Norway Maple,
Oriental Plane,**

**Silver-leaved Maple,
Sugar Maple,
Weir's Cut-leaved Maple,
White Birch,
White-flowering Horse Chestnut.**

Smaller sizes of the above and others at lowest rates per 100 and 1,000. Particulars and prices on application.

NATIVE TREES write for list and particulars of best native varieties at low prices.

Young Trees for Nursery Planting.

For parks and all other public institutions or private estates, where future planting is required, these small trees are very desirable in point of economy; largely increasing in value every year.

From 4,000 to 6,000 can be advantageously planted per acre, with the rows 4 to 6 feet apart.

YOUNG DECIDUOUS TREES.

The following are the varieties recommended for this purpose, which I supply in nice transplanted stock of different sizes, at the low net prices quoted:

**Beech,
Birch,
Common Ash,
Hornbeam,**

**Elms,
Lindens,
Mountain Ash,
Maples,**

**Oaks,
Poplars,
Sycamore or Plane,
White Horse Chestnut.**

Willows.

Prices: 2 to 4 and 4 to 6 feet, \$50, \$75 and \$100 per 1,000.

I am well pleased with my purchase, and will not hesitate to give you my trade in the future.
Highlands, N. J.

F. H. M.

SMALL EVERGREEN TREES.

Good transplanted stock of the following and other varieties can be supplied by the 100 or 1,000, and smaller sizes of such as the ARBOR VITÆS, AUSTRIAN PINE, NORWAY SPRUCE, SCOTCH FIR, SCOTCH PINE, WHITE PINE, etc., by the 10,000 on specially favorable terms.

Prices for the following kinds, 12 to 18, 18 to 24, and 24 to 30 inches, \$40, \$60, \$75 and \$100 per 1,000 net, according to size and variety:

American Arbor Vitæ,	White Pine,	Hemlock Spruce,	Scotch Fir,
Siberian Arbor Vitæ,	Mountain Pine,	Norway Spruce,	Trailing Juniper,
Austrian Pine,	Douglas Spruce,	White Spruce,	English Yew.

Choice Hardy Evergreens,

Of the following rare and choice kinds, as also for the common ARBOR VITÆS, SPRUCES, etc., I can make very favorable prices for fine transplanted, well-rooted, well-furnished stock, both in fine specimens and in quantity per 100 and per 1,000. Orders booked for shipment now or at proper time in spring. Most evergreens succeed best transplanted in spring.

For more complete list of Evergreens, description, etc., and list of Choice Evergreens in Trained Specimens, see full catalogue, No. 52, for 1904.

ARBOR VITÆ, American, Siberian. Fine hedge plants, of different sizes. 12 to 18 inches up to 5 and 6 feet; special low prices per 100 and 1,000. \$5 and upwards per 100.

CEDRUS Atlantica Glauca. New and very choice; medium size, compact growth; fine, delicate leaves of a most beautiful glaucous steel-blue tint; color equal to the finest of the Colorado Blue Spruce. Has proved hardy at Newport. \$2.50 to \$5 each.

CEDRUS, Cedar of Lebanon. CEDRUS LIBANI. Vigorous spreading branches, with large, dark green foliage; young growth tender. Choice, \$1 to \$2 each. Low rates per 100.

CEDRUS, Deodar Cedar. C. DEODARA. Graceful foliage of a light silvery or glaucous-green. One of the most beautiful and satisfactory Evergreens; not entirely hardy north of Philadelphia. \$1 to \$2 each. Low rates per 100.

HEMLOCK. ABIES CANADENSIS. Very fine hedge plants. 12 to 18 inches up to 4 and 5 feet; at low rates per 100 and 1,000 on application.

JUNIPER, Golden. J. AUREA PROSTRATA. Spreading Golden Juniper. Hardy and fine. 12 to 18 inches high, by 2 to 3 feet diameter. \$10 to \$15 per dozen.

JUNIPER, Trailing. J. PROSTRATA. A very hardy variety. Adapted to almost any soil or location. Low-spreading habit, rich foliage. Fine for massing or rock work. Well-furnished, well-rooted plants in quantity at low rates. Particulars on application.

PINE, Austrian, Scotch, White. Good transplanted stock of these leading hardy varieties. Extra, 50 cts. to \$1 each; \$10 to \$25 per 100. Smaller, \$25 to \$75 per 1,000. Prices and particulars on application.

RETINOSPORA. Good specimens of *Filifera*, *Golden*, *Plumosa*, *Pisifera* and *Squarosa*. 75 cts. to \$1.50 each. Fine plants, 18 to 24 inches and 2 to 3 feet and upwards, \$25 to \$50 per 100.

SCIADOPITYS Verticillata. UMBRELLA PINE. A very odd and unique tree. Longer leaves

than those on other Coniferæ, shining green above and a line of white underneath. The horizontal branches and peculiar growth of the leaves in parasol-like whorls gives this variety a very distinct individuality. \$2 and \$3 each. **A few extra specimens, specially grown in baskets, up to 8 or 9 feet.** Prices on application.

SILVER FIR. PICEA. **Concolor.** The finest of the Rocky Mountain Firs. 1 to 2 feet and 2 to 3 feet. Nice transplanted stock, \$40, \$75 and \$100 per 100. Extra specimens, \$2.50 to \$5 each.

SILVER FIR, Cephalonian, Siberian, Silician, Nordmanniana. Fine young specimens of all these choice varieties, \$1.50 to \$2.50, according to size. Low rates per 100 for young transplanted stock, 1 to 3 feet.

SPRUCE, Colorado Blue. PICEA PUNGENS. The "true blues" of this variety are generally admitted to be the most strikingly beautiful of all the hardy Coniferæ. The trees are easily grown, transplant successfully, and are hardy everywhere; the steel-blue color that gives this variety its peculiar charm is still rare. Always a marked object in lawns or landscape. Fine, transplanted specimen trees of the real blue color, 18 inches to 6 or 8 feet, \$1.50 to \$125 each. Seedlings, not selected color, at low rates per 100. Prices and particulars on application.

SPRUCE, Douglas. Good transplanted stock of this valuable tree, 1 to 2 and 2 to 3 feet, \$15 to \$30 per 100.

SPRUCE, Norway. Fine specimens; all sizes from 18 to 24 inches to 6 feet and larger at low rates per 100. Nice transplanted, small sizes, for hedges, at special low prices per 1,000.

YEW. TAXUS. **Golden, English, Erect, Irish,** and others. 50 cts. to \$1 each. Low rates per 100. **Fine specimens of English Yew 2 to 3 feet broad at base and 5 feet high, and of the Irish Yew 2 to 3 feet broad and 6 feet high,** several times transplanted. Particulars on request. See also TRAINED SPECIMENS FOR FORMAL GARDENS, General Catalogue No. 50, for 1903.

All the plants arrived in good order and now appear to be doing well. I enclose my check to your order for amount of enclosed invoice, \$75.75.
Providence, R. I.

H. G. R.

Fine Hardy Shrubs.

PARTICULAR ATTENTION is called to the SPECIAL COLLECTION OF SHRUBS, on page 9; also to the following complete assortment, including Evergreen Shrubs, all of which are now offered at very low prices for first-grade stock.

SMALL SIZES for transplanting can be supplied at special prices per 100 and 1,000. Particulars on application.

OF TRAINED SPECIMENS for formal gardening, many desirable trimmed Evergreens and Deciduous Shrubs can be supplied at reasonable prices. See TRAINED SPECIMENS FOR FORMAL PLANTING, General Catalogue No. 50, for 1903. Also specimens for single or group planting. Particulars and prices on application. For more complete list of varieties, descriptions, etc., see General Catalogue No. 52, for 1904.

ANDROMEDA Floribunda. One of the choicest Evergreen Shrubs. Dwarf, compact habit; small, dark green foliage; pure white Lily-of-the-Valley-like flowers; perfectly hardy. Fine bushy plants. \$12 to \$20 per dozen; \$50 to \$100 per 100.

ANDROMEDA Leucothæ or Catesbæi. One of the finest American Shrubs; bright red twigs; bell shape, Lily-of-the-Valley-like flowers. \$8 to \$15 per 100.

ARALIA. Good plants of the Japonica, Pentaphylla and Spinosa varieties. \$2.50 to \$5 per dozen. Low rates per 100.

AZALEA Amœna. One of the most beautiful and valuable of low-growing shrubs. Very hardy, dwarf and compact, bushy habit and easily transplanted. Leaves thickly set on the branches, of fine, rich color, turning to a beautiful reddish brown or crimson in autumn and remaining on all winter. Flowers bright rosy red, and so profuse in May as to give the shrubs the appearance of a solid mass of bloom. \$8 to \$20 per dozen. Extra, \$20 per dozen.

AZALEA Ghent and Pontica. The best collections of these beautiful shrubs obtainable, made up of the best hardy varieties. Flowers in great profusion in spring, literally covering the branches. These plants remove with a ball and mass of fibrous roots, thus avoiding any risk in transplanting. Selected, well-budded plants, \$10 and \$15 per dozen; extra, \$20 per dozen; \$50, \$75 and \$100 per 100. **Extra specimens, 2 to 3 feet, 50 to 70 buds, very fine, \$1.25 per 100. Special.**

AZALEA Mollis. Perfectly hardy in most situations; also valuable for forcing; flowering early in profusion. Flowers very large, of various colors, in red, orange, primrose and yellow. The blooms appear on the ends of the branches, as with Rhododendrons. Very effective



DEUTZIA LEMOINEI.
(See page 7.)

in beds and masses, or in borders. Selected well-budded plants, extra, \$10 and \$15 per dozen; \$35, \$50 to \$100 per 100.

AZALEA. Extra Exposition specimens. A limited stock of beautiful plants, 60 to 80 buds each; very fine for immediate effect. \$1.50 per 100.

AZALEA Mollis Standards. Fine specimens grown in tree form, on stout stems. Fine flowering heads, full of buds that will bloom nicely first season. A desirable novelty. \$15 to \$25 per dozen.

ALTHÆA. ROSE OF SHARON. Fine plants of the best single and double sorts. Low rates per 100.

ALTHÆA Standard. New and beautiful shrubs, grown in tree form, with fine heads, on 3 to 4 feet stems. Good young specimens. Very fine. \$1 to \$2 each; \$10 to \$18 per dozen.

ALMOND, Amygdalis. Double Red. Double White. \$3 and \$4 per dozen. Low rates per 100.

BERBERRY Thunbergii. Compact habit, bright foliage in autumn and red berries. Appropriately called "the finest shrub." Fine plants. \$3 to \$5 per dozen. Low rates per 100.

BERBERRY, Common American, European, Purple-leaved. Very fine plants. \$2 and \$3 per dozen; \$5 to \$15 per 100.

- BAY TREE.** *LAURUS NOBILIS.* Fine specimens. See SWEET BAY TREES, page 9.
- BACCHARIS Halimifolia.** Dark green foliage. White Seed Pods. \$2 and \$3 per dozen. Low rates per 100.
- BOX, Common Tree.** Fine, bushy plants. \$15 to \$30 per 100; smaller, \$10 per 100.
- BOX, Dwarf.** I have sent out thousands of yards of this "old-fashioned" edging plant, the stock giving excellent satisfaction. \$30 to \$40 per 100 yards.
- CALYCANTHUS.** Fine plants. \$2 per dozen; \$5 to 10 per 100.
- CITRUS Trifoliata.** Hardy Orange. Very fine; 2 to 4 feet. \$5 to \$15 per 100.
- CARYOPTERIS Mastacanthus.** Beautiful blue Spiræa; blue fragrant flowers in autumn. \$3 and \$4 per dozen.
- COTONEASTER Microphylla.** Trailing habit; fine dark foliage; bright berries in the autumn. \$2 and \$3 per dozen. Low rates per 1,000.
- CORNUS, Red-branched and Variegated-leaved.** \$10 to \$20 per 100.
- CHIONANTHUS, or White Fringe.** Large, rich foliage; fine. 30 to 50 cts. each; \$3 per dozen; \$12 to \$20 per 100.
- CLETHRA Alnifolia.** \$5 to \$10 per 100.
- CRATÆGUS Pyracantha, Evergreen Thorn.** One of the finest hedge plants. Special prices on application.
- CYDONIA, or Japan Quince, Scarlet, White.** Fine, bushy plants of different sizes for hedge or lawn planting. Fine stock; 18 in. to 4 ft. \$8 to \$30 per 100.
- DEUTZIA Gracilis.** Low rates per 100.
- DEUTZIA Crenata,** and other leading kinds. 25 cts. each. Low rates per 100 and 1,000.
- DEUTZIA Le Moinei.** One of the best. Fine plants from \$12 per 100 up. See page 6.
- DESMODIUM.** Rose and purple flowers until frost; fine. 50 cts. \$20 and upwards per 100.
- DIRCA Palustris.** Low bushy habit. Yellow flowers. \$3 per dozen. Low rates per 100.
- ELDER, Cut-leaved.** *SAMBUCUS.* 35 cts. each. Low rates per 100.
- ELDER, Golden.** Valuable for color contrast. \$3 to \$5 per dozen; \$8 to \$20 per 100.
- EUONYMUS.** Fine stock. Low rates per 1,000.
- EUONYMUS Radicans.** See page 11.
- EUONYMUS Radicans Variegata.** See page 11.
- ELÆAGNUS Argentea.** Erect growth, silvery foliage. 35 cts. each; \$12 to \$20 per 100.
- ELÆAGNUS Longipes.** \$3 and \$4 per dozen. Low rates per 100.
- FILBERT, Purple-leaved.** Large dark red leaves all summer. Fine plants. 50 cts. each; \$25 to \$35 per 100.
- FORSYTHIA Fortunei.** \$3 per dozen. Low rates per 100.
- FORSYTHIA Viridissima.** Fine plants. \$8 to \$20 per 100. Low price per 1,000.
- GENISTA Scoparia.** The SCOTCH BROOM. Very valuable for seashore planting. \$5 to \$10 per 100. Special rates in quantity.
- HAMAMELIS Virginica.** Yellow flowers. Blooms late. \$3 per dozen. Low rates per 100.
- HONEYSUCKLE.** *LONICERA.* **White, Red and Pink-flowering.** Fine stock. \$8 to \$20 per 100. Low rates per 1,000.
- HYDRANGEA Paniculata Grandiflora.** One of the most popular and valuable shrubs. Immense panicles of pure white heart-shaped flowers in August, turning to a delicate pink, and remaining until late in autumn. Fine plants. 25 to 50 cts. each; \$10 to \$30 per 100. Low rates per 1,000.
- HYDRANGEA Paniculata Grandiflora. Standard.** Nice specimens grown in tree form, about 5 feet, well furnished heads, rare, and very desirable for beds and borders. \$10 to \$15 per doz.
- HYPERICUM Aureum.** Large yellow flowers from July to October. Fine. 50 cts. each; \$3 to \$5 per dozen.
- HYPERICUM Calycinum.** Low-spreading habit, completely covering the ground under trees or in shady situations. \$20 per 100.
- HYPERICUM Kalmianum or St. John's Wort.** \$3 to \$5 per dozen. Low rates in quantity.
- ITEA Virginica.** \$2 and \$3 per dozen. Low rates per 100.
- LAUREL.** Fine plants of the English Laurel; bushy, several times transplanted. \$20 to \$40 per 100.
- LAUREL, Kalmia Angustifolia.** Red flowers. Low rates per 100 and 1,000.
- LAUREL, Kalmia Glauca.** Very effective for mass planting. \$2 and \$3 per dozen; \$10 to \$20 per 100.
- LAUREL, Kalmia Latifolia.** The beautiful Mountain Laurel. Nursery-grown plants are as easily transplanted as any other hardy shrub. Can be transplanted in the autumn with perfect safety, or will enter orders for spring shipment as desired. Soil and treatment required similar to the Rhododendrons. Fine specimen plants for immediate effect from 2 or 3 feet high up to 4 to 6 feet in height and of nearly same diameter, well-furnished and well-budded, with large balls, are furnished in carload lots at exceptional rates. See General Catalogue No. 50 for 1903, and write for prices and particulars. Fine, well-budded nursery-grown plants, several times transplanted, with ball, from 9 to 12 inches up, from \$6 to \$20 per dozen, and at special prices per 100 and 1,000. A limited number of large specimens at special prices. Selected native plants, well-budded, 1 to 2 feet, 2 to 3 feet, and larger, \$10 per 100 and upwards. Special price per 1,000 on application.
- KERRIA Japonica and Variegata.** Beautiful golden globular-shaped flowers. Fine plants \$3 and \$4 per dozen. Low rates per 100.
- LILAC, Common Purple, Common White.** Fine plants; different sizes. \$10 to \$20 per 100. Smaller plants, low rates per 1,000. Best named, new and rare varieties. Fine plants. \$5 to \$10 per dozen. Special prices per 100 and for choice collections.
- LILAC, Japonica Alba.** Flowers in immense pure white trusses. Fine stock of this grand variety. \$5 to \$10 per dozen.

MAHONIA Aquifolium. Large, shining, purplish green prickly leaves. Special prices per 100 and 1,000.

MYRICA Cerifera. The well-known Bayberry or Wax Myrtle. Spreading, bushy habit; rich foliage; white berries in autumn. \$3 per dozen. Low rates in quantity.

PHILADELPHUS, SYRINGA. The common sweet SYRINGA; 25 to 50 cts. each; \$8 to \$20 per 100. Very low rates per 1,000.

PHILADELPHUS, Golde. Compact habit; foliage bright yellow; fragrant white flowers. Fine. 50 cts. each; \$3 to \$5 per dozen. Special low rates per 100.

PHILADELPHUS, Speciosa, Grandiflora and other best sorts. Fine plants, \$3 per dozen; \$8 to \$20 per 100.

PURPLE Fringe. RHUS COTINUS. "Smoke Tree." 35 cts. \$10 to \$20 per 100.

PRUNUS Pissardii. Leaves constant crimson or maroon red the entire season. Fine plants, \$3 to \$5 per dozen. \$10 to \$25 per 100.

PRIVET, California. One of the best and most popular hedge plants. Fine plants of all sizes from \$15 per 1,000 up. Special prices in quantity.

PRIVET, Common European. A valuable hedge plant, and for groups, screens or borders. Very compact habit; different sizes. Low rates per 100 and 1,000.

PRIVET, Standard. Fine plants grown in tree form and used like LAURUS NOBILIS (Bay Trees), for formal gardening or decoration. Good young specimens on 3 to 5 feet stems, \$5 to \$10 per dozen. Also extra specimens. Prices and particulars on application. See General Catalogue No. 50 for 1903.

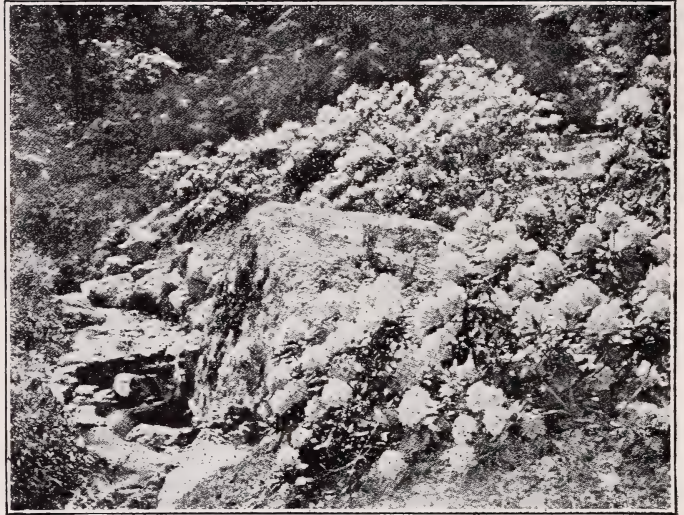
PEONIES, Upright or Tree. Enormous showy flowers. Best hardy varieties, \$1 to \$2.

RHODOTYPUS kerrioides. Large, dark, plicate foliage and single pure white flowers.

RHAMNUS or Buckthorn. Good plants for ornamental planting or for hedge. \$2 to \$4 per dozen; 10 and \$15 per 100.

RHODODENDRONS. Best hardy named varieties. For many years these fine hardy Rhododendrons have been one of my leading specialties. All my plants are well grown, several times transplanted, bushy, well budded, well furnished and are only of the "iron clad" tested varieties that with ordinary treatment will succeed anywhere in the central and northern States.

THE CASE COLLECTIONS of 25, 50 and 100 plants, each case as furnished heretofore, can be relied upon to give excellent satisfaction. The assortment of varieties and colors is made with the view of obtaining the best effects for the number



HARDY NAMED RHODODENDRONS.

of plants in each case. These cases of 25, 50 and 100 plants are furnished uniformly at the wholesale price, or hundred price, as quoted.

PRICES: Bushy, well budded plants, several times transplanted with ball, 15 to 20 in. \$12 per dozen, \$75 per 100; 18 to 20 in., \$15 per dozen, \$100 per 100; selected plants, 18 to 24 in., \$18 per dozen, \$125 per 100; selected extra size plants, 2 to 3 feet, \$18 to \$25 per dozen.

FOR LIST of varieties, etc., see General Catalogue No. 52 for 1904.

RHODODENDRONS. Best Hardy Seedlings. Fine colors; good, bushy, transplanted plants with buds, from \$40 to \$100 per 100. Special prices per 1,000 for best named kinds of Seedlings, on application.

RHODODENDRON maximum. ROSE BAY or GREAT LAUREL. The native species found so abundantly in the Eastern and Central Southern States. Very large, bold and handsome foliage; white and rose-colored flowers in midsummer; blooms later than other Rhododendrons. Selected plants, 1 to 2 and 2 to 3 feet, \$25 to \$75 per 100. Low rates in quantity.

Also fine selected specimens from 2 to 3 feet up to 8 to 10 feet in height, and of corresponding diameter, are furnished in carload lots at special prices. These plants are all grown in the open; bushy, well furnished to the ground, and are dug and packed with large solid balls, being quite different from the poorly furnished plants from the woods sent out by many firms. See Special Circular, also General Catalogue No. 50 for 1903, for further information and prices.

RHODODENDRON Ponticum. Half-hardy. Suitable for planting in California or the Southern States. Bushy and well-budded plants, 1 to 3 feet, \$25 to \$75 per 100. For further description of all varieties of Rhododendrons see General Catalogue No. 52 for 1904.

SEA BUCKTHORN, Hippophæ. Very valuable for seashore planting.

SPIRÆA, Bumaldi. Similar to Waterer. Rose-colored flowers in mid-summer. Very fine. \$3 and \$4 per dozen; \$10 to \$20 per 100.

SPIRÆA, Crenata, Douglassii, Eximia, Fortuni, Lance-leaved, Robusta and other leading kinds. \$2 and \$3 per dozen; \$6 to \$20 per 100.

SPIRÆA, Golden-leaved. A very fine effective shrub for groups. Special low rates per 100 and 1,000.

SPIRÆA, Prunifolia, or Bridal Wreath. 35 cts. each. Low rates per 100 and 1,000.

SPIRÆA, Thunbergii. 25 cts. each; \$8 to \$20 per 100; very low rates per 1,000.

SPIRÆA, Tomentosa alba. New white. Similar growth and foliage to the pink tomentosa. \$3 per dozen.

SPIRÆA, Van Houtteii. One of the finest hardy flowering shrubs. 35 cts.; \$8 to \$20 per 100.

SPIRÆA, Waterer. Bright crimson flowers. Hardy. New and fine. \$3 to \$5 per dozen; \$10 to \$20 per 100.

SNOWBERRY. SYMPHORICARPUS. **Racemosa** and **Vulgaris.** \$3 per dozen. Low rates per 100 and 1,000.

SWEET BAY TREE. LAURUS NOBILIS. Fine **Standards,** with straight stems and solid heads. 18 inches to 8 feet or more in diameter. Well-

shaped **Pyramids,** 3 to 10 feet and upwards in height. Special quotations, with particulars, sizes, etc., on application. See General Catalogue No. 52 for 1904.

TAMARIX. Strong plants, 25 cts. each; \$6 to \$20 per 100.

VIBURNUM, Lantana-leaved, Common Snowball, Rugosum, etc. Fine plants. 25 to 50 cts. each; \$8 to \$20 per 100. Very low rates per 1,000.

VIBURNUM, Plicatum. Beautiful Japan Snowball. 25 to 75 cts. each. Low rates per 100.

VIBURNUM, Standard. Good specimens grown in tree form of both the Common Snowball (*V. OPULUS STERILIS*) and the beautiful Japan Snowball (*V. PLICATUM*). Stout stems, 3 to 4 feet. Well branched heads for early flowering in desirable novelties. Fine for beds and borders used as a background to low-growing shrubs and herbaceous borders. \$10 and \$15 per dozen.

WEIGELA, Amabilis, White-flowering, Rubra, Rosea, Variegated-leaved. \$3 and \$4 per dozen; \$8 to \$20 per 100

XANTHOCERAS. A magnificent hardy flowering shrub. 75 cts. each; \$4 to \$6 per dozen.

XANTHORHIZA. Low spreading habit; fine for massing. \$2 and \$3 per dozen.

YUCCA, Filamentosa. ADAM'S NEEDLE. Fine plants. \$3 to \$4 per dozen; \$10 to \$20 per 100.

SPECIAL COLLECTIONS OF HARDY SHRUBS.

The following collections comprise the best hardy varieties, both in flower and foliage, and give a succession of bloom from the CEDONIAS, FORSYTHIAS and LILACS, in April, to the HYDRANGEAS, HIBISCUS, etc., in late autumn. ALL ARE PERFECTLY HARDY, NICELY BRANCHED AND ROOTED, AND OF THE BEST SIZES FOR IMMEDIATE EFFECT.

- No. 1. 50 Choice Shrubs, in 20 to 25 leading varieties... \$10.00; extra, \$12.50
- No. 2. 100 " " 25 to 30 " " 20.00; " 25.00
- No. 3. 100 " " general assortment..... 12.00; " 18.00

These collections have given excellent satisfaction to the many country estates, where I have supplied them for a number of years past.

I have also this season very fine EXTRA SIZE SHRUBS of the leading hardy varieties, bushy, 4 to 7 feet, suitable for immediate effect for screens, etc. Prices and particulars on application.

SMALL TRANSPLANTING SHRUBS.

Leading varieties: BERBERRIES, CORNUS, CYDONIA (Japanese Quince), DEUTZIAS, FORSYTHIAS, ELDERS, HYDRANGEAS, LILACS, MAHONIA, PHILADELPHUS (Syringa), PRIVET, SPIRÆAS, VIBURNUM (Snowball), WEIGELAS, etc. I furnish in GOOD ASSORTMENT, MY SELECTION, at \$50 to \$100 per 100, according to size.

NATIVE SHRUBS. Can furnish large selection of best varieties. Fine for rough planting. Write for prices and particulars.

Best Hedge Plants.

THE FOLLOWING COMPRISE the best of the hedge plants, both Deciduous and Evergreen. All are fine, well rooted and properly transplanted.

For further information and additional varieties see General Catalogue No. 52 for 1904.

Buckthorn (Rhamnus),	Cydonia (Japan Quince),	Arbor Vitæ , American and Siberian
California Privet ,	Honey Locust ,	Box (Buxus),
Common Privet ,	Lilac ,	Hemlock ,
Cratægus Pyracantha (Evergreen Thorn),	Osage Orange ,	Norway Spruce .
	Rosa Rugosa ,	

Fine Plants, Different Sizes. Special prices per 100 and 1,000 on application.

Climbing Vines and Trailing Shrubs.

OF THE HARDY VINES the following list embrace those most desirable. Many other varieties can be furnished. The Ampelopsis, Honeysuckle and Clematis are especially fine.

For further information and other varieties see General Catalogue No. 52 for 1904.

- ACTINIDIA polygama.** From Japan. Fine and rare. 75 cts each; \$5 and \$7.50 per dozen.
- AMPELOPSIS Englemanni.** Glossy foliage, crimson in autumn; very fine. 50 cts each; \$5 per dozen.
- AMPELOPSIS, Quinquefolia, AMERICAN IVY** or VIRGINIA CREEPER. 35 cts. each; \$10 to \$20 per 100.
- AMPELOPSIS Veitchii.** Fine plants. \$3 to \$6 per dozen, Low rates per 100 and 1,000.
- ARISTOLOCHIA Sippo, or DUTCHMAN'S PIPE.** Leaves 8 to 12 inches in diameter. Curious pipe-shaped yellowish-brown flowers; rapid growth. \$5 per dozen. Low rates per 100.
- CELASTRUS Scandens.** Strong vines, \$3 per dozen. Low rates per 100.
- CLEMATIS, Baron Veillard.** New and distinct. Flowers satiny pink or rose color; remain in perfection for weeks. Hardy and a profuse bloomer. \$1 and \$1.50 each; \$10 per dozen.
- CLEMATIS, Coccinea, Flammula, Virginiana.** 25 to 50 cts. each. Low rates per 100 and 1,000.
- CLEMATIS, Henryi, Jackmanni,** and other varieties. Strong plants. 50 cts to \$1 each. Low rates per 100.
- CLEMATIS, Madame Edouard Andre.** A grand new variety of the Jackmanni type. Vine vigorous and hardy. Flowers large, vivid crimson, and produced in great abundance. The first fine crimson variety of the large free flowering Clematis yet introduced. Should be in every collection. Fine plants \$1 and \$1.50 each; \$10 and \$15 per dozen.
- CLEMATIS, Paniculata.** Rapid growth; large dark, shining green leaves; delicate, fragrant white star-shaped flowers in large panicles, followed by seed-pods of bronzy tint; perfectly hardy. \$2 to \$5 per dozen. Low rates per 100 and 1,000.
- HONEYSUCKLE, LONICERA, Common Woodbine, Golden-leaved, Scarlet Trumpet.** Fine plants. \$3 per dozen. Low rates per 1,000.
- HONEYSUCKLE, Hall's Japan Evergreen.** One of the finest of all climbing shrubs. Very hardy. Profuse bloomer all summer. Very fine stock. \$2 and \$3 per dozen; \$10 to \$20 per 100; \$50 per 1,000.
- IVY, HEDERA, English, Giant, Irish Variegated.** \$3 and \$4 per dozen. Low rates per 1,000.
- JASMINE, Yellow-flowering, White.** Fine plants, \$3.50 per dozen.
- LYCIUM Chinensis, or Matrimony Vine.** Strong vines, \$3 and \$4 per dozen; \$8 to \$15 per 100.
- SILK VINE, PERILOCA.** Very hardy, rapid-growing vine, suitable for covering trees, etc. \$3 per dozen; \$10 per 100 for strong vines.
- TRUMPET Flower, TECOMA or BIGNONIA.** 25 and 35 cts. each; \$2 and \$3 per dozen. Low rates per 1,000.
- WISTARIA, Chinese, Magnifica, White-flowering.** 50 cts. each; \$5 per dozen. Low rates per 100.
- WISTARIA, Purple.** Fine plants, \$3 to \$6 per dozen. Special prices in quantity.

TRAILING VINES FOR COVERING GROUND IN SHADED PLACES.

THE FOLLOWING are the best of the Hardy Trailing Vines with creeping habit, for covering bare spots under trees and shaded places. All are easily and successfully grown. \$2 and \$3 per dozen.

For More Complete List see General Catalogue No. 52 for 1904.

Special low prices per 100 and 1,000 on application.

EPIGÆA Repens. GROUND LAUREL, TRAILING ARBUTIS, or MAYFLOWER OF NEW ENGLAND. Evergreen heart-shaped leaves; rose-colored flowers early in spring.

EUONYMUS Radicans. Hardy evergreen vine of clinging habit like the Ivy. Much slower growth. Low prices in quantity.

EUONYMUS Radicans Variegata. Trailing vine, with clinging tendrils. Variegated small leaves. Fine.

HERNIARIA Glabra. Dense green foliage, changing to a bronzy crimson in autumn; forms a solid covering.

MITCHELLA Repens. Shining, round leaves, often variegated with white. \$5 per 100. Special prices per 1,000.

LYSIMACHIA Nummularia. MONEYWORT. Small, round leaves; close, spreading habit.

NEPETA Glechoma. GROUND IVY. Of compact growth, and has a solid mat of pretty green foliage. \$3 to \$5 per 100; \$10 to \$20 per 1,000.

VERONICA Crecæoides. Grows but a few inches high; flowers bright blue, in spikes, in early summer.

VINCA Minor. COMMON PERIWINKLE or BLUE MYRTLE. Evergreen verdure and blue flowers. \$2.50 to \$5 per 100; \$20 to \$30 per 1,000.

Hardy Herbaceous Plants.

Nursery Grown.

THE GENERAL APPRECIATION and increased demand of late for "old-fashioned gardens," bring largely into use the more free flowering and effective herbaceous plants. In formal gardening they are indispensable, and most desirable in every border or flower garden, not only for the showy bloom all through the season, but for cut flowers as well.

THE FOLLOWING are only a few of the many herbaceous perennials I am furnishing, of excellent quality, at lowest prices. Estimates for particular kinds and quantities, or for planting a garden complete, given on request; also suggestions for arrangements for effective planting, without charge.

For More Complete List, see General Catalogue No. 52 for 1904.

Low prices per 100 and 1,000 on the following:

ACHILLEA. YARROW. Best varieties; fine. \$2 and \$3 per dozen. Low rates per 100.

ANEMONE, Japonica, Alba and Rosea. Bloom from August to November. Beautiful white or rose flowers in profusion. Very fine. \$3 per dozen. Special price per 100.

ARUNDO, Donax and Variegata. \$3 to \$5 per dozen. Low rates per 100 and 1,000.

ASTERS. Fine plants of the large, splendid varieties. \$2 and \$3 per dozen.

AQUILEGIA. COLUMBINE. Beautiful varieties; fine plants. \$3 and \$4 per dozen.

ASTILBE Japonica. JAPAN SPIRÆA. Fine. \$2 and \$3 per dozen.

BEGONIAS, Tuberosus-Rooted. Best single and double. \$2 and \$3 per dozen.

CAMPANULA. BLUE BELLS or BELL FLOWER. Best varieties. \$2 and \$3 per dozen.

CONVALLARIA. LILY-OF-THE-VALLEY. Strong, hardy clumps. \$4 per dozen; \$15 to \$25 per 100. For Forcing Pips, see page 13.

DAHLIAS. Special collections of the finest single and double varieties; very fine. \$3 and \$4 per dozen. Low rates per 100.

DELPHINIUM. LARKSPUR. Leading kinds. \$2 and \$3 per dozen.

DICENTRA. BLEEDING HEART. Low rates per 100.

DIGITALIS. FOX GLOVE. \$3 per dozen.

DIANTHUS. HARDY PINK. \$2 and \$3 per dozen.

ERIANTHUS Ravennæ. GRASS. Hardy and fine. \$3 per dozen; \$10 to \$20 per 100.

EULALIA Japonica var. Zebrina. Fine. \$10 to \$20 per 100.

FUNKIA. PLANTAIN LILY. \$2 and \$3 per dozen.

GAILLARDIA. BLANKET FLOWER. Very showy. \$2.50 per dozen.

HELIANTHUS. SUNFLOWER. Showy kinds.

HIBISCUS Moscheutos, and other best sorts.

HOLLYHOCKS. Choice selection of the FINEST DOUBLE VARIETIES. Strong flowering roots, \$3 to \$5 per dozen. Low rates per 100.

HEMEROCALLIS. DAY LILY. \$2.50 per dozen.

IRIS Germanica. Strong flowering roots, \$2 per dozen; extra, \$2.50 per dozen; \$8 to \$15 per 100.

IRIS Kämpferi. BEAUTIFUL JAPAN IRIS. Perfectly hardy and easily grown. Flowers extra large, 6 to 8 inches in diameter, in various tints of purple, lavender, blue, shaded with yellow and straw color, etc. In beds or borders these plants give a mass of bloom for several weeks in summer. SPECIAL COLLECTION OF THE FINEST

- PREMIUM VARIETIES. STRONG FLOWERING CLUMPS.** \$5 per dozen; \$35 per 100. This is the finest stock obtainable here or in Japan. Good mixtures, strong clumps, \$10 to \$20 per 100.
- LIATRIS. BLAZING STAR.** \$2.50 per dozen.
- LILIUM. LILIES.** See page 12.
- LOBELIA. CARDINAL FLOWER.** Fine.
- MALVA. MALLOW. FINE.** \$2.50 per dozen.
- PAPAVER. POPPY.** Very showy. \$3 per dozen.
- PÆONIES.** Fine flowering roots of the best hardy kinds. White, Red, Scarlet, Pink, etc., including the large flowering Chinese varieties. Special low price per 1,000. \$3 to \$5 per dozen; \$12 to \$25 per 100.
- PÆONY *Tenuifolium.*** Large carmine, crimson; single flower; fine feathery foliage; very fine. \$5 per dozen.
- PHLOX.** Beautiful free-blooming upright border plants. Many varieties. Fine. \$2 and \$3 per dozen. Low prices per 100.
- NATIVE HERBACEOUS PLANTS.** Very effective for mass planting. Large assortment of varieties. Write for prices and particulars.
- PHLOX. *Subulata,* or *Moss Pink.*** Form a beautiful carpet of verdure; white flowers.
- PRIMULA. PRIMROSE.** \$2 and \$3 per dozen.
- PYRETHRUM. FEVERFEW.** Fine. \$2 and \$3 per dozen.
- RANUNCULUS. BUTTERCUP.** \$2.50 per dozen.
- RUDBECKIA *Laciniata fl. pl.*** The finest hardy Rudbeckia; rich foliage and mass of beautiful golden-yellow flowers. Fine stock. \$5 to \$10 per 100. Low rates per 1,000.
- SOLIDAGO. GOLDEN ROD.** Very showy. \$2 per dozen.
- SPIRÆA. MEADOW SWEET.** Very beautiful.
- SEDUM. STONE CROP.** \$2 per dozen.
- TRITOMA. POKER PLANT.** Immense spikes of crimson flowers. \$2 and \$3 per dozen.
- VINCA. PERIWINKLE.** See page 11.
- VIOLA. SWEET VIOLET.** Best varieties. \$2 and \$3 per dozen.

Choice Hardy Bulbs.

LILIES. Hardy lilies bloom in MIDSUMMER when few flowers are out. They are very effective planted in beds by themselves or in BEDS of RHODODENDRONS, or in beds or borders of other hardy shrubs.

COLLECTIONS OF THE BEST VARIETIES OF HARDY LILIES FOR OUTSIDE PLANTING, SELECTED BULBS, AS FOLLOWS:

100. Full Collection.	All fine flowering Bulbs,	\$20.00
50. Half	“ “ “ “	12.00
25. Quarter	“ “ “ “	7.00

OTHER CHOICE HARDY LILIES, all of the best varieties, \$2.50 per dozen and upwards. Special low prices per 100. Send for quotations.

For a complete list of Hardy Lilies, with description, etc., see page 61, Catalogue No. 52 for 1904.

BULBS FOR LAWN AND OUTSIDE PLANTING.

SPECIAL LOW PRICES FOR THE FOLLOWING PER 1,000. FOR FORCING BULBS, SEE PAGE 13.

- CROCUS, Best Named,** \$1 per 100, extra, \$1.50 per 100. **Mixed,** 75 cts. per 100.
- HYACINTHS, Best Named Single and Double.** The finest varieties. \$1.50 to \$2.50 per dozen. Prices per 100 on application.
- HYACINTHS, Best Mixed for Bedding or Forcing.** Selected in colors; fine. \$5 to \$8 per 100.
- HYACINTHS, Early Roman White.** Selected and extra bulbs. \$1 and \$1.50 per dozen.
- HYACINTHS, Roman, Blush Rose, Dark Rose, Blue, White Italian.** \$1 per dozen; \$5 per 100.
- TULIPS, Choicest Named, Single and Double.** Selected. \$5 per 100; fine bulbs at very low rates per 1,000. **Parrot Tulips.** Fine named. \$3 per 100.
- TULIPS, Fine Mixed in Colors, for Bedding or for Forcing.** \$2 per 100; extra, \$3 per 100. Special low rates per 1,000 on application.
- NARCISSUS, Von Sion, Double White, Double Yellow, Poeticus,** etc. Selected bulbs for outside planting. \$2.50 and \$3.50 per 100.
- NARCISSUS, Yellow Trumpet, Paper White,** and other best kinds for forcing. \$2.50 to \$5 per 100.
- ANEMONES.** Fine. \$5 per 100. **Crown Imperials.** Selected. \$3 to \$5 per dozen. **Snow-drops.** \$2 per 100; extra, \$3 per 100. **Jonquils.** \$3 per 100. **Oxalis,** \$3 per 100. **Scillas,** \$3 and \$4 per 100.

The two Bay Trees shipped by you were received by me yesterday in extremely good condition, and I am very much pleased with them.
Kansas City, Mo.

C. W. H.

Forcing Plants and Bulbs.

AZALEA Indica. Of these beautiful flower-plants I make direct importations of TRAINED SPECIMENS of different sizes and the choicest named varieties of brilliant colors. They can be sent with safety at any time during the autumn and early winter for blooming the coming season. My plants are carefully selected with COMPACT TRAINED HEADS, so that when they flower they are a SOLID MASS OF BLOOM on an almost uniform even surface, and produce a very beautiful effect. Specimen plants, 1 to 2 feet diameter of head, \$10 to \$25 per dozen. Smaller plants, \$35, \$50 to \$100 per 100. Particulars as to sizes, prices, etc., on application.

AZALEA Mollis. Bushy, compact plants, full of buds. Specially grown and of the best plants for forcing. \$5 and \$7.50 per dozen. Low prices per 100.

HYACINTHS, Narcissus, Tulips, Etc. See "Choice Hardy Bulbs," page 12.

LILY-OF-THE-VALLEY. Best Berlin pips, extra 3 years. \$2 per 100. Special prices per 1,000.

LILACS. Fine plants; full of buds; specially grown for forcing. Leading varieties, \$7.50 and \$10 per dozen. Price per 100 on application.

BERMUDA Easter Lily, LILIIUM HARRISII. Selected and extra bulbs, 8 to 9 and 9 to 12 inches in circumference, \$12.50 to \$25 per 100. Smaller, good bulbs, \$5 to \$10 per 100.

CANDIDUM Lily. Selected and extra size bulbs. \$1 and \$1.50 per dozen; \$10 and \$15 per 100.

LONGIFLORUM Lily. 7 to 9 and 9 to 12 inch extra bulbs, \$2 and \$3 per dozen; \$15 to \$25 per 100. Smaller, good bulbs, \$7 and \$10 per 100.

FREESIA Refracta alba. \$2 and \$3 per 100; \$15 to \$25 per 1,000, according to size.

SPIRÆA Japonica. Large clumps. \$1.50 per dozen; \$10 per 100. Low rates per 1,000.

RHODODENDRONS. Selected, bushy, well-budded plants of best kinds for forcing. \$9 to \$15 per dozen; extra, \$18 to \$25 per dozen; \$75 to \$150 per 100. Particulars on application.

ROSES for Forcing. See "Choice Roses" and List of Varieties below; also Catalogue No. 52 for 1904.

Choice Roses.

FINE ROSES are one of my leading specialties; BUDDED OR OWN ROOT PLANTS, per 100 and 1,000 at low prices. Also EXTRA FINE STANDARD ROSES.

THE HYBRID PERPETUALS are hardy, and, as a rule, the most satisfactory for outside planting. ALL ROSES require rich soil and liberal treatment. Close pruning is important. Good mulching in autumn is desirable.

I OFFER THIS AUTUMN remarkably fine HARDY ROSES, HYBRID PERPETUALS, strong ONE and TWO-YEAR PLANTS, BUDDED OF ON ROOTS FOR PLANTING OUTSIDE. Also, fine pot-grown plants of the best kinds—HYBRID PERPETUAL, TEAS, ETC., FOR FORCING.

THE FOLLOWING are a few of the leading varieties.

For more complete lists, descriptions, etc., see Catalogue No. 52 for 1904.

BEST HYBRID PERPETUAL ROSES.

Abel Carriere, Alfred Colomb, American Beauty, Anna de Diesbach, Baroness Rothschild, Baron de Bonstettin, Baronne Prevost, Clio (rosy pink), Coquette des Alpes, Charles LeFebvre, Countess of Oxford, Dinsmore (fine crimson), Duke of Edinburgh, Earl of Dufferin (magnificent dark velvety crimson), Etienne Levet, Eugene Verdier, Francois Levet, Francois Michelon, Fisher Holmes, Gen. Jacqueminot, Gen. Washington, Helen Keller (bright satin rose), Jubilee (pure red), John Hopper, Jules Margottin, La France, La Reine, Louis Van Houtte, Marchioness of Dufferin, Mad. Gabriel Luizet, Mad. Plantier, Mabel

Morrison, Marguerite de St. Armande, Marchioness of Lorne (new; large, beautiful carmine; fine), Magna Charta, Margaret Dickinson (superb white), Marie Bauman, Mrs. Crawford (deep rosy pink), Marshall P. Wilder, Merveille de Lion, Marchioness of Londonderry (extra large, fine white), Mrs. J. Laing, Madame Plantier, Paul Neyron, Persian Yellow, Pierre Notting, Prince Camille de Rohan, Sir Roland Hill (fine, dark purple), Ulrich Brunner, (see page 14), Victor Verdier, Xavier Alibo, and others. STRONG, FINE TWO-YEAR PLANTS, \$3 to \$6 per dozen; \$15 to \$35 per 100. Smaller plants, \$10 and \$15 per 100. Special prices per 1,000.

ROSES FOR FORCING.

Leading kinds, American Beauty, Belle Siebrecht, Bennett, Bridesmaid, Bride, Bon Silene, Mermet, Duchess of Albany, Golden Gate, Gontier, Hermosa, Kaiserin Augusta Victoria, La France, La Marque, Mrs. Pier-

pont Morgan, Mad. Cusin, Malmaison, Mad. Watteville, Maman Cochet, Mme. Hoste, Marechal Niel, Meteor, President Carnot, Niphotos, Perles, Souv. d'un Ami, Clothilde Soupert, Testout, Sunset, etc. From 2½, 3

and 4 inch pots, and larger. \$10 to \$20 per 100. Also the best Hybrid Perpetuals, **Jacqueminot**, **Mrs. Laing**, **Paul Neyron**, **Magna Charta**, etc. Special prices on large orders.

CLIMBING ROSES.

CRIMSON RAMBLER (a grand variety), **Yellow Rambler**, **Empress of China**, **Baltimore Belle**, **Gem of the Prairies**, **Jules Margottin**, **Mrs. Hovey**, **Queen of the Prairies**, etc. Strong, fine plants. \$3 to \$5 per dozen. Special prices per 100.

OTHER DESIRABLE ROSES.

AGRIPPINA, **Dawson**, **Harrison's Yellow**, **Cabbage Rose**, and other special varieties. \$3 and \$4 per dozen; \$15 to \$25 per 100.

MADAME GEORGES BRUANT. Flowers pure white; dark, rugosa-like foliage; very hardy.

MOSS ROSES, **Crested**, **Gracillie**, **Blanche Moreau**, **Common Moss**, **Madame Edward Ory**, **Salet**, etc. Strong plants. \$4 to \$6 per dozen. Special prices per 100.

ROSA MULTIFLORA JAPONICA. Fine. \$2.50 per dozen; \$10 per 100.

ROSA RUGOSA. One of the most desirable. Especially fine for mass or hedge planting, Fine plants of both **Alba** and **Rubra** \$3 to \$5 per dozen. \$10 to \$20 per 100. Low rates in quantity.

ROSA SETIGERA. Low rates per 100.

STANDARD, or **Tree Roses**. Very fine plants. Best hardy varieties, 75 cts. and \$1 each; \$6 to



ULRICH BRUNNER.
(See page 13.)

\$10 per dozen; extra home-grown plants, \$1.50 each; \$15 per dozen. EXTRA SPECIMENS, EXPOSITION STANDARD ROSES, PLANTS WITH EXTRA STEMS ABOUT 1-INCH CALIPER.

SWEET BRIER. **ROSA RUBIGINOSA**. The best of Penzance hybrids; also the old **English Sweet Brier**. \$3 to \$5 per dozen; \$25 to \$75 per 1,000.

ROSA WICHURAIANA. Very rapid growth. Very fine for covering ground, steep banks, etc., where grass fails. \$3 to \$5 per dozen; \$10 to \$20 per 100. Special prices per 1,000.

SPECIAL COLLECTIONS OF THE BEST HARDY ROSES.

These collections are made up of the choicest and most desirable kinds for outside beds or borders. The plants are dormant, mostly on own roots, of large size, and selected for immediate flowering, with ordinary treatment, the first season.

Collection of 50 Best Hardy Roses, \$12.00; extra, \$15.00.

Collection of 100 Best Hardy Roses, \$20.00; extra, \$25.00.

Smaller Plants, \$10 and \$15 per 100; best varieties, as above, and in Catalogue No. 52 for 1904.

Choice Fruits.

Autumn is favorable to the planting of nearly all hardy fruits. The **Apples**, **Pears**, **Cherries**, **Plums**, **Quinces** and **Small Fruits** offered are the best quality and strictly reliable. Extra or bearing sizes of many varieties can be supplied of extra fine trees this season, AT LOWEST PRICES.

TRAINED FRUIT TREES FOR FRUIT HOUSES OR GARDENS.

For a number of years I have made this branch of the business a specialty, and have supplied the trees and Exotic grapevines for many of the best Fruit Houses in the country. With direct importations, I have exceptional facilities for furnishing **Espaliers**, **Cordons**, **Fan Trained**, **Horizontal Trained** trees of different sizes and best varieties for forcing or outside planting in any quantities desired and at reasonable prices. Prices and particulars on application.

For List of Varieties of the leading Fruits, descriptions, etc., see Catalogue No. 50 for 1903. Where large orders per 100 or 1,000 are required. SPECIAL LOW PRICES will be given.

APPLES, **Standard** or **Dwarf**. Selected trees of all leading sorts. Very fine this autumn. **Summer**, **Autumn** and **Winter**. \$3 to \$5 per dozen; extra, fruiting sizes, \$9 to \$18 per dozen. Low prices per 1,000.

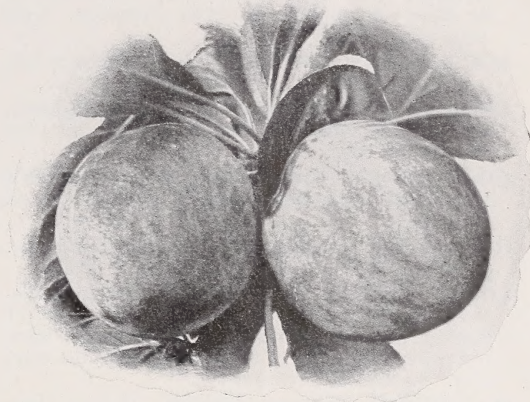
NECTARINES. Leading kinds for forcing or growing outside at reasonable prices.

QUINCES. Best kinds for market or garden, \$4 to \$6 per dozen. Low rates per 100.

PEACHES. For Fruit Houses, Peaches should

always be grown on plum stocks. Fine trees of the best kinds, for this purpose, also fine trained specimens, my own importations, \$10 to \$30 per dozen. **For outside planting**, selected trees, leading sorts, \$3 to \$5 per dozen. Very low rates per 100 and 1,000.

BLACK GRAPES, Champion, Concord, Creveling, Eaton, Eumelan, Hartford, Mills, etc.



BURBANK PLUMS.

RED GRAPES, Agawam, Brighton, Catawba, Delaware, Gærtner, Iona, Meyer, Poughkeepsie Red, Rochester, Salem, Ulster, Prolific.

WHITE GRAPES, Green Mountain, Empire State, Diamond, Duchess, Hayes, Geneva, Jessica, Lady Washington, Martha, Niagara, Pocklington, Prentiss, Rebecca, Winchell.

PEARS. Splendid trees of all sizes and best varieties. **Standards**, 50 cts. each; \$5 per dozen; extra, \$10 to \$15 per dozen. **Dwarfs**, 40 cts. each; \$4 per dozen; extra fruiting sizes, \$15 to \$25 per dozen. Low rates for leading kinds per 100 or 1,000.

PLUMS. Very fine stock of all leading kinds, 50 cts. each; \$5 per dozen; extra, \$6 to \$10 per dozen. Special prices in quantity.

CHERRIES. Fine trees of the best standard kinds; **large, sweet and sour varieties.** \$5 to \$10 per dozen; extra, \$12 to \$18 per dozen. Very low prices per 1,000.

APRICOTS. For fruit houses and outside planting at reasonable rates.

FIGS. Best varieties, well furnished and well rooted plants, 50 cts. each; extra, \$1. Imported Smyrna varieties at special low rates per 1,000. Prices and particulars on application.

OLIVES. Well rooted young trees or cuttings, per 100 or 1,000 at reasonable prices.

BEST HARDY GRAPES. Full assortment of leading kinds. Strong vines for early bearing, 25 to 50 cts.; \$1.00 per dozen. Low rates in quantity.

FOREIGN VINES FOR GRAPERIES.

For obtaining satisfactory results in vineries, the importance of obtaining vigorous, healthy, well rooted and properly grown vines should not be overlooked, whether for planting or extra fruiting size for immediate bearing. My fine imported English-grown vines are unsurpassed, and invariably give satisfaction.

Leading kinds for both hot and cold graperies, \$1.50 each; \$15 per dozen. Selected and extra, \$2 and \$2.50 each. Extra fruiting vines, the best obtainable, \$5 each; \$50 per dozen. Orders for these Foreign Vines should be sent as early as possible. C. G. for Cold Grapery; H. G. for Hot Grapery.

BLACK or PURPLE VARIETIES. BARBAROSA (H. G.), BLACK FRONTIGNAN (H. G.), BLACK HAMBURG (H. or C. G.), GROS COLMAN (H. or C. G.), LADY DOWNS (C. H. G.), MUSCAT, HAMBURG (H. or C. G.),

RED VARIETIES. FRONTIGNAN (C. G.), RED CHASSELAS (C. G.)

WHITE VARIETIES. BUCKLAND SWEETWATER (C. G.), CANNON HALL MUSCAT (H. G.), DUKE OF BUCCLEUCH (H. G.), FOSTER'S SEEDLING (C. G.), GOLDEN CHAMPION (H. G.), GOLDEN HAMBURG (C. G.), MUSCAT OF ALEXANDRIA (H. G.), ROYAL MUSCADINE (C. G.), SYRIAN (H. G.), and others.

See also Catalogue No. 52 for 1904.

Small Fruits.

Very fine stock of the following, the best of the Small Fruits, at very low prices.

Many other varieties as described in Catalogue No. 50, can be supplied, of excellent quality at lowest rates.

BLACKBERRIES, Ancient Briton, Agawam, Dorchester, Early King, Eldorado, Erie, Lawton, Kittatiny, Thornless, Snyder, Taylor, Wilson's Iceberg. New variety white

berries and others, 50 cts. to \$1 per dozen. Low rates in quantity.

DEWBERRY. Trailing Blackberry. Ripens before other blackberries.

CURRANTS. Fay's Prolific. Largest and best red currants. **Black English, Champion, Cherry, North Star, Versailles, Victoria, Prince Albert, Red Dutch, White Grape Wilder.** New red currant; fine. Selected two or three year plants. \$1 to \$2 per dozen. Low rates per 100 and 1,000.

GOOSEBERRY. Columbus. New, of largest size and finest quality. Very productive; fine.

GOOSEBERRY. America, Downing, Houghton, Red Jacket, Smith's, etc. \$1 per dozen. Low rates per 1,000.

GOOSEBERRY, Crown Bob, White, Smith's Improved, etc. Best English varieties. \$2.50 per dozen.

GOOSEBERRY, Industry. Extra large and fine. \$1.50 per dozen. Special prices per 1,000.

LOGAN BERRY. A new hybrid or cross between a Blackberry and Raspberry. Fruit similar in form and size to Blackberry, dark red color. Raspberry flavor. A desirable novelty. \$3 and \$4 per dozen.

MAYBERRY, Japanese Golden. Golden berries; early in May; large fruit. \$4 per dozen.

RASPBERRIES. CHAMPLAIN, very hardy, large, and one of the best yellow raspberries; **COLUMBIAN,** very large, hardy, enormously productive, one of the best red varieties; **CLARKE,**

FASTOLF, FONTENAY, FRANCONIA, HERSTINE, BRINKLE'S ORANGE; SUPERLATIVE, the best foreign red; **GOLDEN QUEEN, CUTHBERT, EUREKA GREGG, KANSAS LOUDEN, MARLBORO,** very fine red; **MILLER,** new early red; **OHIO, SHAFFER'S COLOSSAL.**

The above and other desirable varieties, 50 cts. to \$1 per dozen. Low rates per 100 and 1,000.

STRAWBERRIES. To ensure a good crop the following season, POT PLANTS SHOULD BE PUT OUT IN ADVANCE. These are in every way preferable to layer plants, and are now generally used for garden planting as for forcing. There is little or no risk in transplanting these pot-grown plants, and the early fruiting makes them most desirable and in general demand.

STRAWBERRIES, Best Early Varieties. **GLADSTONE,** very large and early; **EXCELSIOR, MICHAEL'S EARLY, PARKER EARLY, BEDER WOOD, HAVERLAND.**

STRAWBERRIES, Best Mid-Season Varieties. **BUBACH, SHARPLESS, WM. BELT, MCKINKEY, NICK OHMER.**

STRAWBERRIES, Late Varieties. **BRANDY-WINE,** large, fine quality; **DOWNING, MARSHALL, MICHIGAN.** Fine, pot-grown plants, \$3 to \$5 per 100; layer plants, \$1 to \$2 per 100.

Esculent Roots.

ASPARAGUS.

Very fine, 2 and 3 years, \$2 per 100; \$10 to \$15 per 1,000. **Extra Size, for Forcing,** \$3 to \$5 per 100. Best kinds: **CONOVER'S COLOSSAL, MAMMOTH, MOORE'S CROSSBRED, PALMETTO.**

RHUBARB.

Fine strong roots of best varieties, \$2 per dozen; low rates per 100. **BRABANT, COLOSSAL, EARLY CRIMSON, EARLY SCARLET, GIANT VICTORIA, etc.**

Lawn Grass Seed.

The seed here quoted may be relied upon as being of the highest grade, and to give satisfaction. For New Lawn, 4 to 6 bushels per acre. Renovating Old Lawns, 1 to 2 bushels per acre.

PRICE, EXTRA CHOICE LAWN SEED, THE VERY BEST, \$4.50 per bushel, 15 lbs.

CHOICE LAWN GRASS SEEDS, first quality, "CENTRAL PARK MIXTURE," \$3.50 per bushel, 15 lbs.

SPECIAL QUOTATIONS FOR LARGE QUANTITIES UPON APPLICATION.

For further particulars see General Catalogue No. 52 for 1904.

You are an old acquaintance of mine in the sense that more than twenty years ago you furnished trees and shrubs to Mt. Hope, which are to-day an ornament to the grounds and an evidence of your good judgment in the recommending of new and rare introductions.

Mattapan, Mass.

J. H. M.





HEDGE OF HARDY BOXWOOD MANY YEARS OLD AT ST. JAMES, L. I.