

Historic, Archive Document

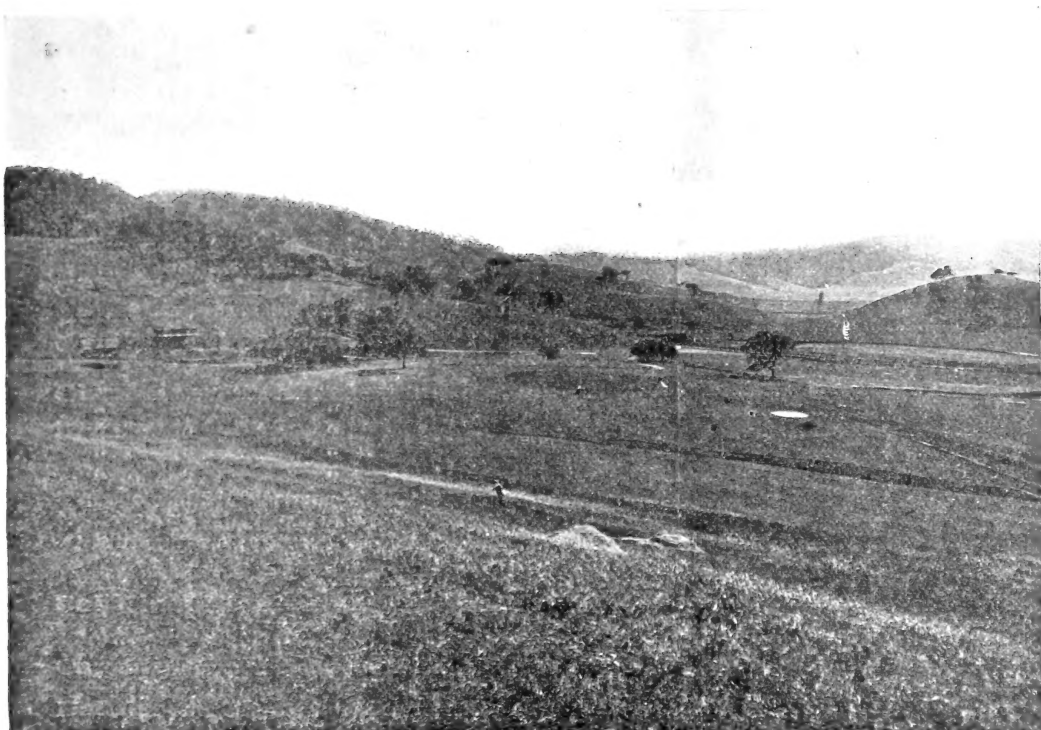
Do not assume content reflects current scientific knowledge, policies, or practices.

CLOVENA NURSERIES.

"HOME OF THE PANSY."

CLOVENA GRASS SEED FOR ALL PURPOSES.

GRASS SEEDS FOR GOLF LINKS AND
PUTTING GREENS AT MODERATE PRICES.



VIEW OF GOLF LINKS IN SOUTHERN CALIFORNIA.

CLOVENA.—Extra heavy, clean tested Seed, weighing 20 lbs. to the measured bushel and grows 80 to 85 per cent. Composed of the finest grasses for making Lawns, Putting Greens, renovating old sod, etc. Produces, under favorable conditions, permanent, elastic and resistant velvet turf of emerald green in six to eight weeks.

CLEAN GRASS SEED OF EVERY DESCRIPTION A SPECIALTY.

Have made Grasses a Study for 25 years, and are prepared to make up BLENDS for any Locality or Situation.

Correspondence Solicited and Estimates Cheerfully Given.

CLOVENA GRASS SEED.

Sow American grasses on American soil; that is, grasses that are either indigenous to our climates or those kinds that have been acclimated and are grown and seeded here.

With the era of close cropped turfs on lawns and grass plots, came the discovery that in the vast expanse of this continent of varied climes, several native grasses grew that produced the ideal permanent sod required for lawns.

With improved machinery, clean, heavy seed can be furnished, one bushel of which will weigh more and go further than three when the seed is encased in the chaff.

In the mysteries of "mixtures" much foul stuff often finds a dumping place, in the way of objectionable stocks, containing weed seeds, or of low germination, and surpluses of undesirable kinds.

It is necessary to use more caution in the purchase of grass than of any other seed, as its appearance counts for little. To ascertain the germinating power, usually means the risk of a season's growth. It cannot be sprouted for percentage like grain—conditions of temperature and moisture are not easily made artificially, such as abound in nature in early Spring. All our selected grass seeds are tested as to purity and germination, by sample, at Zürich, Switzerland, the most reliable source for such data.

We can furnish seeds that weigh from 14 to 32 lbs. to the measured bushel, with germinating power from 20 to 85%. With this information at hand, supply can easily be computed to cover requirements. We will esteem it a pleasure to prescribe as to kinds, quality and quantity required when full information is given as to needs—character of soil, situation and purpose. We offer the following grades, which cover a majority of uses:

CLOVENA.—Extra heavy, clean, tested seed, weighs 20 lbs. to the bushel, and 80 to 85% grows. Composed of the finest grasses for making lawns, putting greens, tennis courts, cricket grounds, renovating spots in old lawns, etc. Superior for exposed situations, producing, under favorable conditions, permanent, elastic and resistant velvet turf of emerald green in six to eight weeks. For first-class work, sow four bushels (80 lbs.) to the acre; and good results can be obtained with three bushels. Price, quart, 20 cents; peck, \$1.25; bushel, \$4.00.

MANHATTAN.—First-class mixture for all around purposes, 60 to 65% grows, it is free from weed seed, and weighs 15 lbs. to the bushel; requires five to six bushels to the acre. Price, quart, 15 cents; peck, 85 cents; bushel, \$2.50.

CENTRAL PARK.—A good mixture, that grows 50 to 60%, weighs 15 lbs. to the bushel, and requires from six to seven bushels to the acre. Price, quart, 12 cents; peck, 75 cents; bushel, \$2.00.

GOLF LINK GRASSES for outlying grounds, free from weeds, heavy, clean seed, which weighs 20 or more lbs. to the bushel, and grows 60 to 70%. Price, 100 lbs, \$10.00.

Full directions how to prepare and sow the lawn furnished with each package.

NEW YORK MARKET GARDENERS' ASSOCIATION,

P. O. Box 2341, New York.

Cable Address: "Newmarden, New York."

CLOVENA NURSERIES:

Richmond Borough,
New York City.

Telephone, 112m West Brighton.

OFFICE:

39 & 41 Cortlandt St.,
Manhattan Borough, New York City.

Telephone, 3667 Cortlandt.