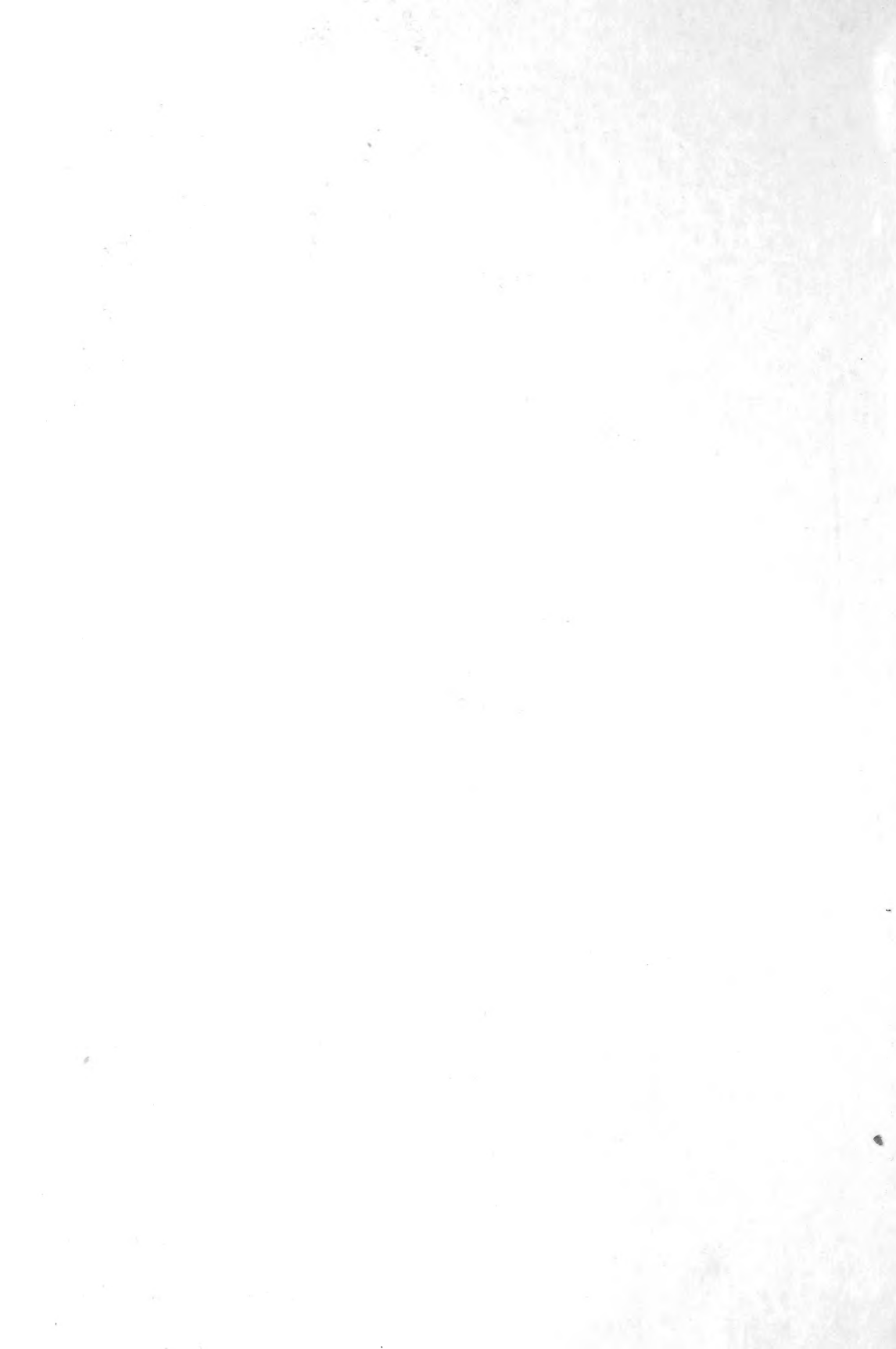


## **Historic, Archive Document**

Do not assume content reflects current scientific knowledge, policies, or practices.



6273

J. FRANKLIN MEEHAN, Pres't  
S. MENDELSON MEEHAN, Vice-Pres't  
THOMAS B. MEEHAN, Sec. & Treas.

Founded 1854 by THOMAS MEEHAN  
Incorporated 1902  
CAPITAL STOCK, \$100,000.00  
300 ACRES

SPRING LIBRARY,  
U. S. Department of Agriculture  
Washington, D. C.

# Wholesale Trade List

1854 A RECORD OF FIFTY YEARS 1904

[COPY OF CERTIFICATE]

**THE COMMONWEALTH OF PENNSYLVANIA**  
DEPARTMENT OF AGRICULTURE

**Certificate of Inspection of Nursery Stock No. 298.**

This is to certify that the stock in the nursery of THOMAS MEEHAN & SONS, INC., of Dreshertown County of Montgomery, State of Pennsylvania, was duly examined in compliance with the provisions of the Act of Legislature of Pennsylvania, approved the 10th day of June, A. D., 1901, and it was found to be apparently free from San Jose Scale and other dangerously injurious insect pest or pests.

This Certificate expires July 31, 1904.  
Dated Harrisburg, Pa., August 11, 1903.

GEO. C. BUTZ, Inspector.

*A. B. Critchfield,*  
Secretary of Agriculture.

Our nurseries have been carefully inspected and no trace of scale or other injurious insects found. For the benefit of customers, however, who wish stock fumigated, we have erected a fumigating house, and when requested to do so will fumigate shipments before packing.

This will be done, however, entirely at the risk of the purchaser.

THIS CATALOGUE TAKES PLACE OF ALL THE PREVIOUS ISSUES

**Thomas Meehan & Sons, Inc.**  
NURSERYMEN AND TREE SEEDSMEN  
Wholesale Department  
Dreshertown, Montgomery Co., Penna.

# Important! Please Read!

**CUSTOMERS** are requested to state the mode of conveyance by which they desire their trees forwarded. When no route is named we forward to the best of our judgment; but in no case do we assume any responsibility after the goods are shipped, unless for our own mistakes.

**TERMS CASH**, on or before delivery to express or railroad agents, unless by special arrangement.

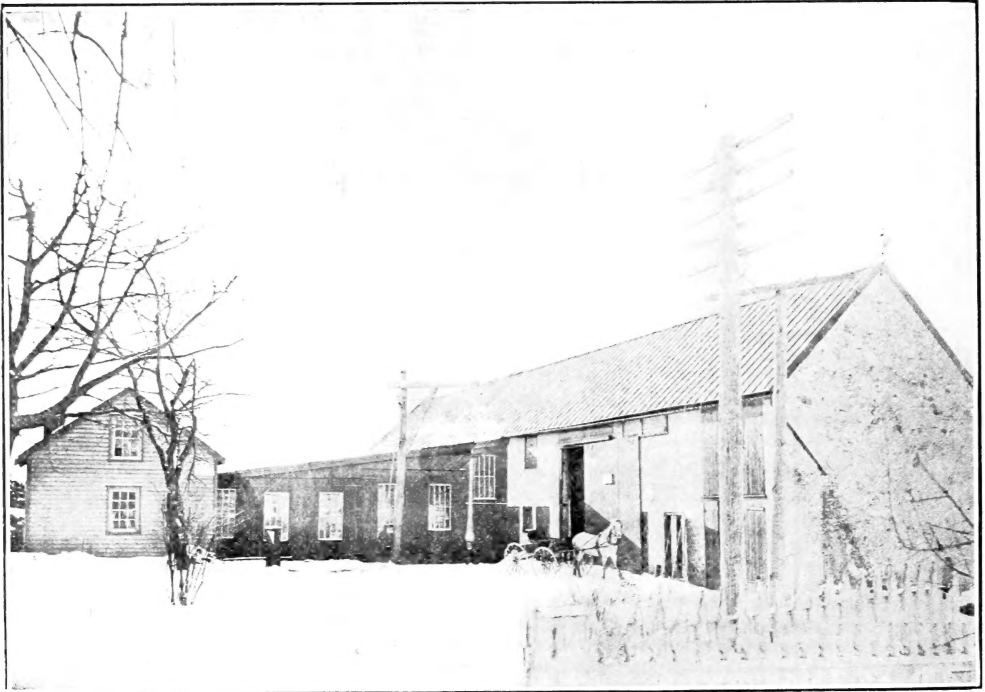
**TWO HUNDRED AND FIFTY**, twenty-five and five will be furnished at the thousand, hundred and ten rates respectively.

**PACKING CHARGED EXTRA**, but only sufficient to cover cost of time and material.

**Post-Office Orders payable at Dreshertown, Montgomery Co., Pa.  
Telegraph Office, Ambler, Pa.**

**VISITORS** are always welcome and should take train at the Reading Terminal, 12th and Market Streets, Philadelphia, for **Camp Hill Station**, or at Broad Street Station, Pennsylvania R. R., for **Fort Hill Station**. Be sure that the train you take stops at these stations.

**NOTICE.**—It is necessary that you should **Telephone** us (26 Fort Washington) in advance of your coming, so that we can send a carriage to the station for you. Our office is  $2\frac{1}{2}$  miles from either station.



**PACKING AND STORAGE HOUSES, WHOLESALE DEPARTMENT, DRESHERTOWN, PA.**  
All packing is done under cover. Freight station and siding near packing house.



OFFICE OF WHOLESALE DEPARTMENT, DRESHERTOWN, PA.

The entire building is occupied as offices. Packing and Storage Houses in the rear.

## DECIDUOUS TREES.

“Trans.” signifies the stock has been once or more transplanted.

“Seed.” that it is still in Seedling Beds.

		Per 10	Per 100	Per 1000
<b>Acer campestre, English Cork Maple, heavy, 5 ft. trans.</b>		\$3 50		
“ colchicum rubrum	1 ft. trans.	1 00		
“ “ “	6 ft. trans.	3 50		
“ dasycarpum, <b>Silver Maple,</b>	1 to 2 ft. seed.	35	\$ 0 50	\$ 4 00
“ “ “ “	4 to 6 ft. trans.	1 25	10 00	90 00
“ “ “ “	6 to 8 ft. trans.	1 50	12 00	100 00
“ “ “ “	8 to 10 ft. trans.	1 75	15 00	125 00
“ “ “ “	10 to 12 ft. trans.	3 00	25 00	
“ “ “ “	“ 3 to 4 in. diam., 15 to 18 ft. trans.	30 00	300 00	
<p>⚠ The 15 to 18 ft. trees are extra selected specimens, transplanted and set wide apart in rows, permitting the heads to develop into fine, shapely trees. They have perfectly straight stems, and an abundance of strong, fibrous roots. This is exceptionally fine stock for use where selected and well-developed trees are required for immediate effect.</p>				
“ Weir's <b>Cut-leaf,</b>	6 to 7 ft. trans.	2 50	20 00	
“ “ “	8 to 10 ft., 1¼ to 1½ in.	3 00	25 00	
“ “ “	10 to 12 ft., 1½ to 2 in.	4 00	35 00	

		Per 10	Per 100	Per 1000
<b>Acer Negundo, Ash-leaved Maple. Box Elder,</b>	1 to 2 ft. seed.	\$0 25	\$0 50	\$3 50
" " " " " " " "	3 to 5 ft. seed.	35	65	5 00
" " " " " " " "	6 to 8 ft. trans.	1 50	12 00	100 00
" " " " " " " "	8 to 10 ft. trans.	2 00	15 00	125 00
" " " " " " " "	10 to 12 ft. trans.	2 50	18 00	150 00
" " " " " " " "	12 to 14 ft. trans.	3 00	25 00	

☞ We have a very large stock of Ash-leaved Maples. They are fine trees, too.

" <b>platanoides, Norway Maple,</b>	15 to 24 in. seed.	25	1 50	10 00
" " " " " " " "	4 to 5 ft. trans.	1 75	15 00	125 00
" " " " " " " "	5 to 6 ft. trans.	2 00	18 00	150 00
" " " " " " " "	7 to 9 ft. trans.	3 00	25 00	
" " " " " " " "	1¼ to 1¾ in. diam., 10 to 12 ft. trans.	4 00	40 00	
" " " " " " " "	3 to 3½ in. dia. 12 to 15 ft. trans. spec.	30 00		

☞ The 12 to 15 ft., 3 to 3½ in. specimen trees were recently transplanted and set in rows 6 by 8 feet apart. They have well-developed heads, perfectly straight trunks and are heavily rooted. They are especially desirable where selected specimen trees are required for immediate effect.

" <b>Schwedlerii, Purple-leaved Norway</b>	7 to 9 ft. trans.	5 00	45 00	
" " " " " " " "	8 to 10 ft. trans.	6 00	55 00	
" " " " " " " "	10 to 12 ft. trans.	6 50		

☞ Our stock of Schwedler's Purple-leaved Maple is fine, transplanted, good roots; straight stems.

" <b>pseudo-platanus, Sycamore Maple,</b>	10 to 15 in. seed.	35	65	5 00
" " " " " " " "	4 to 5 ft. trans.	1 25	10 00	90 00
" " " " " " " "	5 to 6 ft. trans.	1 50	12 00	100 00
" <b>rubrum, Red or Scarlet Maple,</b>	8 to 12 in. seed.	35	1 00	8 00
" <b>saccharinum, Sugar or Rock Maple,</b>	12 to 18 in. seed.	35	1 25	10 00
" " " " " " " "	2 to 2½ ft. seed.	40	2 25	20 00
" " " " " " " "	4 to 6 ft. trans.	1 75	15 00	
" " " " " " " "	8 to 10 ft. trans.	2 50	20 00	
" " " " " " " "	1¼ to 1¾ in. calliper	3 00		
" " " " " " " "	1½ to 1¾ in., 12 to 14 ft.	3 50	35 00	
" " " " " " " "	1¾ to 2 in., 12 to 14 ft.	5 00	50 00	
" " " " " " " "	2 to 2½ in., 14 to 16 ft.	10 00	100 00	

☞ There are no finer trees of Sugar Maples in the country than those we offer. They are well-rooted, of good shape, and have straight, healthy trunks.

" " <b>nigrum, Black Sugar Maple,</b>	6 to 8 ft. trans.	1 75	15 00	
" " " " " " " "	10 to 12 ft. trans.	3 50		
" <b>spicatum, Mountain Maple,</b>	3 to 4 ft. trans.	2 50		
" " " " " " " "	4 to 6 ft. trans.	3 50		
" <b>Tataricum, Tartarian,</b>	2½ to 3 ft. trans.	2 50		
" " <b>Ginnale,</b>	18 to 24 in. seed.	35	2 50	
" " " " " " " "	2 to 3 ft. trans.	1 75	15 00	125 00
" " " " " " " "	3 to 4 ft. trans.	2 00	18 00	150 00

☞ The Acer Ginnale is a good dwarf bushy variety; excellent for massing. Leaves beautiful color in fall.

## JAPANESE MAPLES.

☞ Note that some of our Japanese Maples are pot-grown. This makes transplanting almost certain of success. They can be shipped, in the summer if required.

<b>Acer Japonicum aureum, Golden-leaved,</b>	1 to 2 ft. from pots	\$15 00		
" <b>polymorphum, Green-leaved,</b>	4 to 5 ft. bushy	30 00		
" " <b>atropurpureum, Blood-leaved,</b>	2 to 3 ft. trans.	12 50		
" " <b>ampelopsilobum,</b>	5 ft heavy trans.	30 00		
" " <b>cristatum, Fern-leaved,</b>	18 to 24 in. from pots	12 50		
" " <b>dissectum atropurpureum,</b>	} 18 to 24 in. from pots	12 50		
" " <b>Purple Cut-leaf</b>				
" " " " " " " "	3 to 4 ft. spec. from tubs	25 00		
" " <b>sanguineum, Blood-leaved</b>	2 to 3 ft. trans.	12 50		
" " <b>reticulatum,</b>	18 to 24 in. from pots	12 50		

AMERICAN GARDENING COMPANY

136 LIBERTY STREET, NEW YORK

*Enclosed find \$1.50 for which send me American Gardening for  
one year, beginning.....*

*Name.....*

*P. O. Address.....*

T. M. & S.

*State.....*

—READ THE NEW—

# AMERICAN GARDENING

It is just the paper you need to keep you posted on everything new in the line of new fruits, trees, plants and general horticultural and gardening matters.

It is practical, interesting and instructive on all matters pertaining to this subject and its several departments contain information that must be of valuable use to you.

It contains sixteen pages, numerous half-tone illustrations, and is issued once a week — fifty-two copies per year. There is no other paper like it. Can you afford to do without it?

From some of the information gleaned from its pages you will probably save many times the subscription price. Fill up this subscription blank at once and mail it with check or post office money order to

AMERICAN GARDENING CO. (Incorporated)

*Liberal terms offered to Canvassers  
Sample copies free*

*136 Liberty Street, New York*



		Per 10	Per 100	Per 1000
<b>Aesculus glabra, Ohio Buckeye.</b>	4 to 5 in. seed.	\$0 35	\$1 50	\$10 00
" " " "	5 to 6 ft.	2 50		
" hippocastaneum, <b>Eu. Horse-Chestnut,</b>	5 in. seed	25	75	6 00
" " " "	1 to 2 ft. trans.	1 00	8 00	
" " " "	2½ to 3 ft.	1 50	12 00	
" " " "	4 ft.	2 50		
" " alba fl. pl. Double White,	6 to 8 ft. trans.	4 00		
" " rubro fl. pl.	8 to 9 ft. trans.	12 50		
<b>Ailanthus glandulosa,</b>	4 ft.	1 00	7 00	
" " female,	3 to 5 ft. trans.	2 00		
<b>Acacia Julibrissin (Albizzia)</b>	8 to 10 in. seed	50	3 00	
<b>Alnus glutinosa, European Alder,</b>	3 to 4 ft. seed.	35	2 00	
" incana	4 to 6 ft. trans.	1 25	10 00	
" " "	6 to 8 ft. trans.	1 75	15 00	
" " "	8 to 10 ft. trans.	2 00	18 00	
" " "	1½ to 1¾ in. calliper	3 00	25 00	
" serrulata extra heavy clumps,	3 to 4 ft. trans.	1 75	15 00	
<b>Amelanchier</b> (see shrubs, page 11).				
<b>Amygdalus Persica, Double White Peach,</b>	4 to 6 ft.	2 50		
" " " Pink "	4 to 6 ft.	2 50		
" " " Red "	4 to 6 ft.	2 50		
<b>Andromeda.</b> (See page 11.)				
<b>Aralia.</b> (See shrubs, page 12.)				
<b>Betula alba, European White Birch,</b>	2 to 2½ ft. seed	35	1 25	8 00
" " " "	18 to 24 in. trans.	1 00		
" " " "	2 to 2½ ft. trans.	1 25		
" " " "	5 to 6 ft. trans.	1 75	15 00	
" " " "	6 to 7 ft. trans.	1 80	18 00	125 00
" " " "	7 to 8 ft. trans.	2 00	20 00	150 00
" " " "	9 to 10 ft. trans.	2 50	25 00	200 00
" " " "	10 to 12 ft. trans.	3 50		
" " <b>Cut-leaf Weeping Birch</b>	5 ft.	6 50		
" " " "	6 to 7 ft.	7 50		
" " <b>Youngii, Young's Weeping,</b>	4 ft. trans.	4 00		
" " <b>purpurea, Purple-leaved,</b>	1½ to 2½ ft. trans.	3 00		
" <b>lenta, Sweet Birch,</b>	18 to 24 in. trans.	1 25	10 00	
" " " "	5 to 6 ft. trans.	3 00	25 00	
" <b>Intea, Yellow Birch,</b>	5 to 6 ft. trans.	2 50		
" " " "	9 to 10 ft. trans.	3 00		
" " " "	10 to 12 ft. trans.	3 50	30 00	
" " " "	12 to 13 ft. trans.	4 00	35 00	
" <b>papyracea, Paper Birch,</b>	3 to 4 ft. trans.	2 00	18 00	
" <b>rubra (nigra) Red or Water Birch,</b>	5 to 6 in. seed.	35	1 50	8 00
" " " " " "	12 to 18 in. seed.	40	1 60	10 00
" " " " " "	3 ft. trans.	1 50	12 00	
" " " " " "	6 to 9 ft. trans.	2 50	20 00	
" " " " " "	heavy, 10 to 15 ft.	4 00		
" " " " " "	¾ in. diam. 15 to 18 ft. tr.	7 50		

**Our Birches are very fine, low-branched and symmetrical shape. The European White Birches are especially good and the prices are low.**

<b>Broussonetia papyrifera, Paper Mulberry,</b>	2 to 3 ft. trans.	85		
" <b>Kaempferia, Japanese</b>	5 ft. trans.	1 50		
<b>Carpinus Americanus, Am. Hornbeam,</b>	1 to 2 ft. trans.	1 25	10 00	80 00
" " " "	2 to 3 ft. trans.	1 50	12 00	
" " " "	3 to 4 ft. trans.	2 00	18 00	
" <b>Betulus, Eu. Hornbeam,</b>	2 to 2½ ft. trans.	1 25	10 00	
" " " "	3 to 4 ft. trans.	1 75	15 00	
<b>Carya alba, Shellbark Hickory,</b>	6 in. seed.	35	1 50	10 00
" <b>amara, Bitternut,</b>	10 to 12 in. seed.	35	1 00	8 00
" " " "	4 to 5 ft.	1 00		
" <b>microcarpa.</b>	4 to 5 ft.	1 00		

		Per 10	Per 100	Per 1000
<b>Carya</b> olivæformis, <b>Pecan</b> ,	4 in. seed.	\$0 25	\$1 00	
" " "	2 to 2½ ft. seed.	85	5 00	
" porcina, <b>Pignut</b> ,	18 to 24 in. seed.	50		
" sulcata, <b>Western Shellbark</b> ,	3 to 4 ft.	1 00		
" tomentosa.	6 in. seed.	25		
" " "	18 to 24 in. seed.	35		
<b>Castanea</b> Americana, <b>Am. Chestnut</b> ,	4 to 5 ft. trans.	1 50	15 00	\$125 00
" pumila, <b>Chinquapin</b> ,	12 to 15 in. trans.	1 50		
" " "	3 ft. trans.	2 50		
" vesca, <b>Spanish Chestnut</b> ,	6 to 7 ft.	3 00		
" Japonica, <b>Japanese</b>	6 to 8 ft. trans.	5 00		
" Paragon	5 to 6 ft. trans.	5 00		
<b>Catalpa</b> bignonioides, <b>Eastern Catalpa</b> ,	3 ft. seed.	35	75	6 00
" " "	6 to 7 ft. trans.	1 50		
" aurea, <b>Golden-leaved</b> ,	3 ft. trans.	1 50		
" Bungeii, standards,	1 year heads	7 50		
" " nana, <b>Dwarf Catalpa</b> ,	12 to 15 in. trans.	1 75	15 00	

☞ The *Catalpa Bungeii nana* is grafted at the ground instead of on 6 feet stems as is usual with the standard form. This makes a round, bushy form, very attractive and useful for planting where a low, round, formal bush is required.

" Kämpferi, <b>Japanese</b> ,	7 to 8 ft. trans.	2 00		
" " "	10 to 12 ft. trans.	3 00		
" speciosa, <b>Western Catalpa</b> ,	8 to 12 in. seed.	25	50	3 00
" " " "	12 to 24 in. seed.	35	60	3 50
" " " "	3 to 5 ft. trans.	1 25	10 00	90 00
" " " "	5 to 6 ft. trans.	1 50	13 00	
" " " "	10 to 12 ft. trans.	2 00	18 00	150 00
" " " "	12 to 14 ft. trans.	3 00		
" Tea's Hybrid, "	8 to 12 in. seed.	25	50	4 00
<b>Celtis</b> occidentalis, <b>Nettle, or Hackberry</b> ,	12 to 18 in. seed.	35	1 00	
" " " "	3 to 4 ft. trans.	1 25	10 00	
" " " "	6 to 9 ft. trans.	2 50	20 00	
" pumila, <b>Dwarf Nettle</b> ,	2 to 3 ft. seed.	50		
" " " "	5 to 6 ft.	1 00		
" sinensis, <b>Chinese</b> ,	2 to 2½ ft. seed.	1 00		
<b>Cerasus</b> avium alba plena, double white,	3 to 4 ft. trans.	2 00		
" " " "	4 to 5 ft. trans.	2 50		
" " " "	5 to 6 ft. trans.	3 00		
" ranunculæflora, "	3 to 4 ft. trans.	1 80	17 00	
" " " "	4 to 5 ft. trans.	2 00		

☞ This is the best double white flowering cherry.

" rosea pendula, Japanese Rose fl'd weeping,	2 year head	6 00		
" " " " " "	3 year head	7 50		
" Sieboldi rubra plena, double pink	4 to 5 ft. trans.	2 50		
" " " " " "	5 to 6 ft. trans.	3 00		
" Sinensis fl. pla., Chinese double white	3 to 4 ft. trans.	2 00	18 00	
" " " " " "	4 to 5 ft. trans.	2 50		
" " " " " "	5 to 6 ft. trans.	3 00		
" rosea pendula, weeping flower'g cherry,	6 ft. 1 year head	5 00		
" " " " " "	2 year head	7 50		
" Pennsylvanicum,	18 to 24 in. seed.	35	2 00	
" pumila, <b>Sand Cherry</b> ,	12 to 18 in.	75	5 00	
" Padus, <b>Eu. Bird Cherry</b> ,	12 to 24 in. seed.	35	1 50	15 00
" " " " " "	18 to 24 in. trans.	75	5 00	
" serotina, <b>Am. Bird Cherry</b> ,	4 to 5 ft. trans.	1 25	10 00	
" " " " " "	5 to 6 ft. trans.	1 50	12 00	100 00
" " " " " "	3 to 4 ft. seed.	50	3 00	
" Virginiana	8 to 12 in. seed.	35	2 00	
" " " " " "	3 to 4 ft. trans.	1 50		

		Per 10	Per 100	Per 1000
<b>Cercis Canadensis, Judas or Red Bud,</b>	1 to 2 ft. trans.	\$1 00	\$8 00	\$ 60 00
" " " "	2 to 3 ft. trans.	1 50	12 00	100 00
" " " "	3 to 4 ft. trans.	1 75	15 00	125 00
" " " "	4 to 5 ft. trans.	2 50	20 00	150 00
" " " "	4 to 6 ft. hvy. trans.	3 00		
" Japonica, <b>Japanese Judas,</b>	2 to 2½ ft. trans.	1 25	10 00	80 60
" " " "	2½ to 3½ ft. heavy	2 00		

42- We believe we have the largest stock of both the American and Japanese Judas in the country. All transplanted plants are bushy; the larger sizes are especially heavy.

<b>Cladrastis tinctoria, Yellow Wood,</b>	5 to 6 ft. trans.	4 00		
<b>Cornus florida, White Florida Dogwood,</b>	18 to 24 in. trans.	1 25	10 00	
" " " "	2 to 2½ ft. trans.	1 50	12 00	
" " " "	2½ to 3 ft. trans.	2 00	18 00	
" " " "	3 to 4 ft. trans.	3 00	25 00	
" " " "	4 to 4½ ft. trans.	3 50	30 00	
" " " "	6 to 7 ft. tr. spec.	15 00		

43- The specimen Dogwoods are extra fine, heavy plants, they have been several times transplanted and set wide apart in nursery rows so as to allow ample room to develop. The other sizes offered are also very bushy and well-rooted. We have a large stock of all grades.

" florida pendula, <b>Weeping Dogwood,</b>	3 to 3½ ft. trans.	3 50	30 00	
" rubra, <b>Red-flowering</b>	2 to 3 ft. trans.	3 50		

**Crataegus.** (See Shrubs page 14.)

<b>Cytissus Laburnum, Laburnum,</b>	2 to 3 ft. trans.	85	7 00	
" " " "	4 to 5 ft. trans.	1 25	10 00	
" " " "	5 to 7 ft. trans.	1 75	15 00	

<b>Dimorphanthus Mandshurica (Aralia.)</b>	1 ft. trans.	1 25	10 00	
" " " "	3 to 4 ft. trans.	1 75		

<b>Diospyrus Virginiana, Am. Persimmon</b>	6 to 8 in. seed.	25	1 00	6 00
" " " "	18 to 24 in seed.	35	1 50	
" " " "	3 to 4 ft. trans.	1 50	12 00	100 00
" " " "	5 to 6 ft. trans.	2 00	15 00	
" " " "	6 to 7 ft. trans.	2 50		

<b>Fagus ferruginea, American Beech,</b>	2 to 3 ft. trans.	3 50	30 00	
" " " "	4 to 5 ft. trans.	4 00	35 00	
" " " "	5 to 6 ft. trans.	5 00		
" " " "	6 to 7 ft. trans.	7 50		

44- These American Beech are good, bushy plants.

" sylvatica, <b>European Beech,</b>	1½ to 2½ ft. trans.	1 00	8 00	70 00
" " " "	3 to 4 ft. tr. bushy	2 00	18 00	150 00
" " " "	4 to 5 ft. tr. heavy	3 00	25 00	200 00
" " " "	6 to 7 ft. tr. heavy	4 00	35 00	

45- The European Beech are very bushy.

" " heterophylla, <b>Cut-leaved,</b>	1 ft. trans.	1 50		
" " pendula, <b>Weeping Beech,</b>	1 ft. trans.	1 50	12 00	
" " " "	4 to 5 ft. trans.	5 00		
" " " "	5 to 6 ft. trans.	6 00		
" " " "	6 to 8 ft. trans.	7 50		
" " <b>Rivers' Blood-leaf,</b>	1½ ft. trans.	1 50	12 00	
" " " "	4 to 6 ft. trans.	4 50		
" " " "	6 to 8 ft. trans.	5 50		
" " " "	8 to 10 ft. trans.	8 50		

46- Our Rivers' Beech were transplanted and cut back close last year. They have good fibrous roots but the tops are not heavy. They are in good condition for moving again.

		Per 10	Per 100	Per 1000
<b>Fraxinus Americana, Am. White Ash</b>	12 to 18 in. seed.	\$0 25	\$0 75	\$ 5 00
" " "	3 to 4 ft. trans.	1 25	10 00	80 00
" " "	5 to 7 ft. trans.	1 50	12 00	100 00
" " "	7 to 8 ft. trans.	1 75	15 00	
" " "	8 to 10 ft. trans.	2 50	20 00	
" " "	12 to 14 ft. trans.	3 00	25 00	
" " "	12 ft. specimens	30 00		
<b>Excelsior, English Ash,</b>	8 to 10 ft. trans.	2 50	20 00	
" " "	10 to 12 ft. trans.	3 00		
" " "	12 to 15 ft. trans.	3 50		
" " <b>aurea, Golden Bark,</b>	3 to 4 ft. trans.	2 50		
" " "	6 to 8 ft. trans.	3 50		
" " <b>aucubæfolia, Spotted-leaved,</b>	3 to 5 ft. trans.	2 50		
" " "	6 ft. trans.	3 50		
" " "	10 to 12 ft. trans.	4 00		
" " <b>heterophylla, Cut-l'v'd Ash,</b>	7 to 8 ft.	3 50		
" <b>Ornus, Flowering Ash,</b>	8 to 12 in. seed.	35	2 00	
" " "	6 ft. trans.	2 50	20 00	
" " "	7 to 8 ft. trans.	3 00	25 00	
" " "	9 ft. trans.	3 50		

☞ The Flowering Ash is a very attractive small-sized tree.

" <b>platycarpa,</b>	2 to 2½ ft. seed.	35	1 00	8 00
" <b>pubescens,</b>	8 to 12 in. seed.	35	1 00	
" <b>quadrangulata, Blue Ash,</b>	6 in. seed.	35	1 00	
" " "	4 to 5 ft. trans.	1 75	15 00	
" " "	5 to 6 ft. trans.	2 00	18 00	
" " "	7 to 8 ft. trans.	3 00	25 00	
" " "	9 ft. trans.	3 50		

☞ This is one of the finest of all native Ash trees.

" <b>viridis, Green Ash,</b>	5 to 6 in. seed.	35	75	6 00
" " "	4 to 5 ft. seed.	75	5 00	
" " "	4 ft. trans.	1 25	10 00	80 00
" " "	8 to 10 ft. trans.	2 50	20 00	
<b>Gleditschia triacanthos, Honey Locust,</b>	8 to 10 in. seed.	25	35	2 50
" " "	5 to 6 ft. trans.	1 50		

<b>Gymnocladus Canadensis, Ky. Coffee,</b>	6 to 12 in. seed.	35	1 00	6 00
" " "	18 to 24 in. seed.	50	1 50	8 00
" " "	4 to 5 ft. trans.	2 00	15 00	125 00
" " "	5 to 7 ft. trans.	2 50	20 00	
" " "	8 to 10 ft. trans.	3 50		

☞ One of the best ornamental trees for Park or Cemetery planting.

<b>Juglans cineria, Butternut,</b>	2 to 3 ft. seed.	35		
" " "	4 to 5 ft. trans.	1 75	15 00	
" <b>nigra, Black Walnut,</b>	1 to 2 ft. seed.	35	2 00	
" " "	3 to 4 ft. seed.	50	3 00	
" <b>regia, English Walnut,</b>	4 to 6 in. seed.	35	1 75	15 00
" " "	12 to 15 in. seed.	40	2 25	20 00
<b>Koelreuteria paniculata, Varnish Tree,</b>	2 to 3 ft. seed.	35	2 50	12 00
<b>Larix Europæa, European Larch,</b>	2 to 2½ ft. trans.	1 25	10 00	
" " "	10 to 12 ft. trans.	3 50		
" <b>Leptolepis,</b>	8 to 10 in. seed.	75		
<b>Laurus Benzoin, Spice Bush,</b>	1½ to 2½ ft. trans.	1 25	10 00	
" " "	1 ft. trans.	85	7 00	60 00
" " "	4 to 6 ft. specimen	10 00		

☞ The 4 to 6 ft. plants are large, bushy specimens, several times transplanted and set sufficiently wide in the rows to allow each plant to develop into a specimen. These are extra fine large, bushy shrubs for immediate effect.

<b>Laurus Sassafras, Sassafras,</b>	2½ to 3 ft. trans.	2 50		
" " "	3 to 4 ft. trans.	3 50		

		Per 10	Per 100	Per 1000
<b>Liquidambar styraciflua, Sweet Gum,</b>	6 to 10 in. seed.	\$0 35	\$2 00	\$12 00
" " "	3 to 4 ft. trans.	2 00	18 00	
" " "	4 to 5 ft. trans.	2 50	20 00	
" " "	5 to 6 ft. trans.	3 50	30 00	

It is not generally known that Liquidambar when grown from seeds collected in the South is not hardy here in the North. Our stock is produced from large trees growing on our grounds and is perfectly hardy.

<b>Liriodendron tulipifera, Tulip Tree,</b>	3 to 4 ft. trans.	2 00	18 00	
" " "	4 to 5 ft. trans.	2 50	20 00	
<b>Maclura aurantiaca, Osage Orange,</b>	18 to 24 in. trans. 2 yr.	35	75	4 00
<b>Magnolia Alexandrina, Chinese pink,</b>	3 to 4 ft. with ball	12 50		
" glauca, <b>Swamp White,</b>	18 to 24 in. trans.	3 50	30 00	
" Lenei, large purple,	3 to 4 ft., with ball,	12 50		
" Kobus.	18 to 24 in. seed.	75	5 00	
" "	1 to 2 ft. trans.	2 50		
" speciosa, early pink,	3 to 4 ft., with ball	12 50		
" stellata (Halleana),	2½ to 3 ft. trans., with ball,	17 50	165 00	
" tripetala, <b>Umbrella Tree,</b>	6 to 8 ft. trans.	3 50		

The only safe way to transplant the Chinese Magnolias is to handle them with a ball of earth. Every plant we send out will be dug with a ball and the ball sewed in burlap. It makes them cost a little more, but you will have no losses. Our plants are strong and bushy. The Stellata are strong, bushy plants, well set with flower buds.

<b>Morus alba, White Mulberry,</b>	8 to 12 in. seed.	25	75	5 00
" " "	12 to 18 in. seed.	35	1 00	6 00
" " "	2½ to 3 ft. seed.	50	2 00	10 00
" " "	5 to 6 ft. trans.	1 50	12 00	
" " "	6 to 7 ft. trans.	1 75	15 00	
" Tartarica, <b>Russian Mulberry,</b>	3 to 4 ft. trans.	1 25	10 00	80 00
" " "	5 to 6 ft. trans.	1 50	12 00	100 00
" Hick's Ever-bearing,	6 to 7 ft. trans.	3 50		
" "	3 to 5 ft. trans.	3 50		

**Ostrya Virginica, Iron-wood,**

**Negundo aceroides,—See Acer Negundo, page 2.**

**Paulownia imperialis, Empress Tree,** 12 to 18 in. 50 4 00

" " " 4 to 5 ft. trans. 2 50 20 00

**Phellodendron amurense,** 3 to 5 ft. trans. 3 00 25 00

**Photinia villosa,** 1 to 2 ft. trans. 75 6 00 50 00

" " " 2 to 2½ ft. trans. 1 00 9 00 80 00

The Photinia is really a large-sized shrub attaining a maximum height of 15 to 20 feet. It has rich coral berries in the fall and the foliage turns a brilliant yellow, red and crimson. Valuable for general mass planting. See cut page 8.

**Planeri Kiaki,** 3 to 5 ft. trans. 2 50

**Platanus occidentalis, Am. Buttonwood,** 6 to 8 ft. trans. 2 50

" " " " 8 to 10 ft. trans. 3 50

" " " " 10 to 12 ft. trans. 4 00

" orientalis, **Eu. Sycamore or Plane,** 4 to 6 ft. trans. 3 00 25 00

" " " " 6 to 8 ft. trans. 3 50 30 00

" " " " 8 to 10 ft. trans. 4 00 35 00

" " " " 1½ to 1¾ in., 10 to 12 ft. trans. 7 50 75 00

**Populus Bolleana, Pyramidal Silver Poplar,** 1 to 2 ft. 40 3 00 25 00

" " " " 18 to 24 in. trans. 1 25 10 00

" " " " 5 to 6 ft. trans. 2 50 20 00

" " " " 6 to 9 ft. trans. 3 50 30 00

" " " " 1½ to 1¾ in. diam. 5 00

" " " " 1¼ to 2½ in. diam. 7 50

" fastigiata, **Lombardy Poplar.** 5 to 6 ft. trans. 2 00 18 00

" " " " 10 to 12 ft., 1½ to 2 in. diam. 3 00 25 00

" monilifera, **Carolina Poplar,** 4 to 5 ft. trans. 1 00 8 00

" " " " 5 to 6 ft. trans. 1 25 10 00

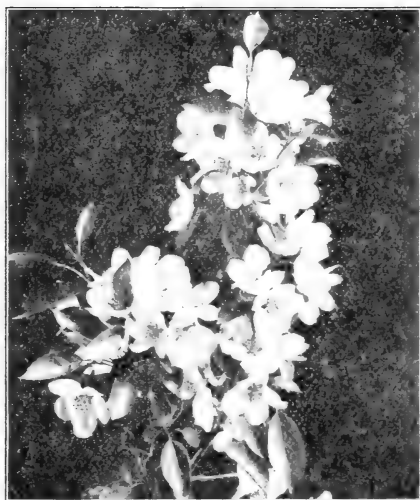
" " " " 6 to 7 ft. trans. 1 50 12 00

" " " " 12 ft., 1½ to 1¾ in. diam. 3 00 25 00

" Van Geerti, **Golden-leaved Poplar,** 3 to 3½ ft. trans. 2 00

" tremuloides pendula, weeping, 6 to 7 ft. trans. 4 00

	Per 10	Per 100	Per 1000
<b>Prunus Pissardi, Purple-leaved Plum,</b>	2 to 3 ft. trans.	\$1 00	\$ 8 00
“ “ “ “	3 to 4 ft. trans.	1 50	13 00
See also Cerasus page 4.			
<b>Ptelea trifoliata, Hop Tree,</b>	6 to 8 in. seed.	35	1 00
“ “ “ “	3 to 4 ft. seed.	50	2 00
“ “ “ “	3 to 4 ft. trans.	1 00	8 00
“ “ “ “	5 to 6 ft. trans.	1 25	10 00
“ “ aurea, <b>Golden Hop,</b>	2 to 3 ft. trans.	1 50	12 00
“ “ “ “	3 to 4 ft. trans.	2 00	15 00



**PYRUS BACCATA,**  
NATIVE FLOWERING APPLE.

This is the wild native apple so conspicuous in spring when covered with its masses of small white flowers. They are pure white, single, and extremely fragrant. In the fall the tree is loaded with small red and yellow apples about the size of a heart cherry, and are very ornamental in their character. It is largely used in parks, cemeteries and large private grounds both as single specimens and in masses.

### PHOTINIA VILLOSA.

Few small-growing trees attract the eye as does this one. It is not only striking in its appearance in the spring when in bloom, but in the fall its foliage turns to bright crimson, red and yellow colors. After the leaves fall the masses of bright coral berries remain on the tree long into the fall and winter. It is a tree that should be largely planted. For prices see page 7.



<b>Pyrus aucuparia, Mountain Ash,</b>	3 to 4 ft. trans.	1 25	10 00	
“ “ “ “	8 ft. trans.	2 00		
“ baccata, <b>Native Apple,</b>	2 to 3 ft. trans.	85	7 00	50 00
“ “ “ “	3 to 4 ft. trans.	1 00	8 00	
“ <b>Bechtel's Double Flowering,</b>	1½ to 2 ft. trans.	2 00		
“ “ “ “	2 to 3 ft. trans.	2 50		
“ “ “ “	3 to 4 ft. trans.	3 00	25 00	
“ “ “ “	4 to 5 ft. trans.	3 50	30 00	
<b>These are especially strong, bushy, well-rooted trees.</b>				
“ floribunda,	4 to 6 ft. trans.	3 50	30 00	
“ “ atrosanguinea,	4 to 6 ft. trans.	3 50	30 00	
“ Toringo (Yellow Fruit)	3 to 4 ft. trans.	2 00		
“ Parkmanni (Halliana),	2 to 3 ft. trans.	3 50		

		Per 10	Per 100	Per 1000
<b>Quercus alba, White Oak,</b>	3 to 4 ft. trans.	\$5 00	\$40 00	
" "	4 to 5 ft. trans.	6 50	60 00	
" <b>Bannisteri, Scrub Oak,</b>	4 to 8 in. seed.	35	2 00	\$12 00
" <b>bicolor, Swamp White Oak,</b>	5 to 6 ft. trans.	5 00		
" " " " " "	8 to 10 ft. trans.	7 50		
" " " " " " heavy,	10 to 15 ft. trans.	12 50		
" <b>cerris, Turkey Oak,</b>	10 to 15 in. seed.	35	2 00	
" " " " " "	3 to 4 ft. trans.	4 00	30 00	
" " " " " "	5 to 7 ft. trans.	5 00		
" " " " " "	9 to 10 ft. trans.	10 00		
" <b>coccinea, Scarlet Oak,</b>	6 to 8 in. seed.	35	2 00	15 00
" " " " " "	10 to 18 in. seed.	40	3 00	20 00
" " " " " "	3 to 4 ft. trans.	3 50	30 00	
" " " " " "	4 to 5 ft. trans.	5 00	40 00	
" " " " " "	9 to 10 ft. trans.	10 00	90 00	
" " " " " "	10 to 12 ft. trans.	12 50	100 00	
<b>⚡ The 10 to 12 feet Scarlet Oaks are fine trees for street or avenue planting.</b>				
" <b>imbricaria, Laurel-leaved Oak,</b>	5 to 7 ft. trans.	10 00		
" <b>lyrata, Lyre-leaved Oak,</b>	6 to 7 ft. seed.	3 50		
" <b>macrocarpa, Mossy Cup or Burr Oak,</b>	4 to 5 ft. trans.	5 00	40 00	
" " " " " " "	5 to 6 ft. trans.	6 00	50 00	
" " " " " " "	8 to 9 ft. trans.	10 00		
" <b>palustris, Pin Oak,</b>	8 to 12 in. seed.	35	2 00	10 00
" " " " " "	1½ to 2½ ft. seed.	40	2 50	15 00
" " " " " "	2 to 3 ft. seed.	50	3 00	20 00
" " " " " "	3 to 4 ft. trans.	3 00	25 00	200 00
" " " " " "	4 to 5 ft. trans.	3 50	30 00	250 00
" " " " " "	5 to 6 ft. trans.	4 00	35 00	300 00
" " " " " "	6 to 7 ft. trans.	4 50	40 00	350 00
" " " " " "	7 to 8 ft. trans.	6 50	50 00	400 00
" " " " " "	8 to 10 ft. trans.	7 50	60 00	500 00
" " " " " "	10 to 12 ft. trans.	10 00	90 00	800 00
" " " " " " 1¾ to 2 in. calliper,	12 to 14 ft. trans.	12 50	100 00	
" " " " " " 2 to 2¼ in. "	12 to 14 ft. trans.	20 00		
<b>⚡ We have the largest stock of Pin Oaks in the country. Indeed, we are headquarters for all Oaks. The larger-sized trees are especially adapted for street and avenue planting. See illustration of avenue of Pin Oaks last page of cover.</b>				
" <b>palustri-imbricaria,</b>	10 to 12 in. seed.	85	6 00	
" <b>Phellos, Willow Oak,</b>	2½ to 3 ft. trans.	3 00	25 00	
" " " " " "	3 to 4 ft. trans.	4 00	35 00	
" " " " " "	4 to 5 ft. trans.	5 00	40 00	300 00
" " " " " "	5 to 6 ft. trans.	6 00	50 00	
" " " " " "	6 to 7 ft. trans.	7 50	60 00	
" " " " " "	8 to 10 ft. trans.	12 50		
<b>⚡ A fine tree and quite uncommon in the North.</b>				
" <b>Prinus, Rock Chestnut Oak,</b>	4 to 8 in. seed.	35	2 00	10 00
" " " " " "	2½ to 3 ft. trans.	2 50	20 00	
" " " " " "	4 to 5 ft. trans.	5 00	40 00	350 00
" <b>robur, English Oak,</b>	8 to 10 in. seed.	35	1 50	10 00
" " " " " "	1 to 2 ft. seed.	50	2 00	12 00
" " " " " "	2 to 3 ft. trans.	2 00	15 00	
" " " " " "	4 to 5 ft. trans.	5 00	40 00	
" " " " " "	8 to 10 ft. trans.	6 50		
" <b>rubra, Red Oak,</b>	6 to 15 in. seed.	35	2 00	15 00
" " " " " "	4 to 5 ft. trans.	5 00	40 00	
" " " " " "	5 to 6 ft. trans.	6 00	50 00	
" " " " " "	6 to 8 ft. trans.	7 50	60 00	500 00
" " " " " "	10 to 12 ft. trans.	10 00		
" " " " " "	12 to 14 ft. trans.	17 50		
" <b>tinctoria, Black Oak,</b>	8 in. seed.	25	1 50	8 00
" " " " " "	10 to 18 in. seed.	35	2 00	10 00
" " " " " "	1 to 2 ft. seed.	50	2 50	12 00
" " " " " "	2 to 3 ft. trans.	3 00	25 00	

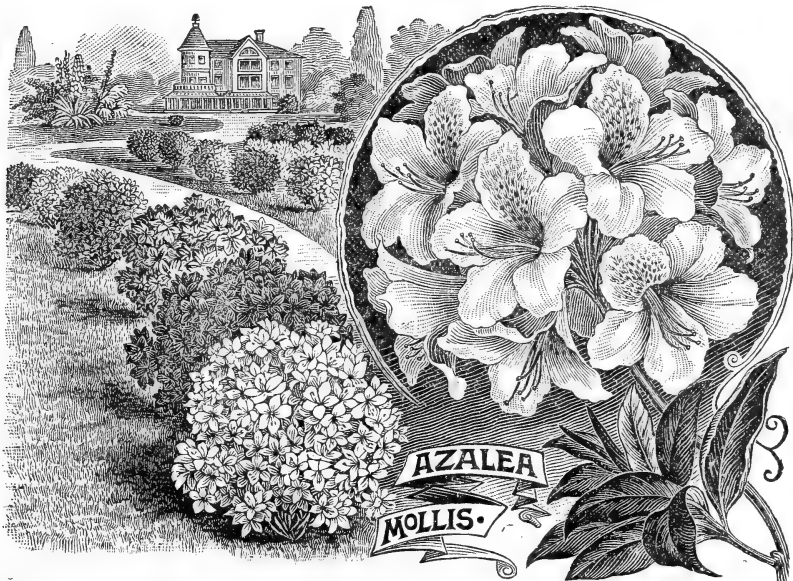
		Per 10	Per 100	Per 1000	
<b>Quercus tinctoria, Black Oak,</b>	3 to 4 ft. trans.	\$3 50	\$30 00		
“ “ “ “	5 to 6 ft. trans.	6 00	50 00		
“ “ “ “	8 to 9 ft. trans.	7 50			
“ <b>Texana,</b>	3 to 4 ft. trans.	4 00			
“ “ “ “	5 to 6 ft. trans.	7 50			
“ <b>obtusiloba, Post Oak</b>	5 to 6 ft. trans.	6 00			
“ “ “ “	6 to 8 ft. trans.	7 50			
<b>Robinia hispida rosea, Pink Locust,</b>	1 to 2 ft.	60	5 00		
“ “ “ “	2 ft. trans.	1 25	10 00		
“ <b>pseud-acacia, Yellow Locust,</b>	4 to 5 ft.	1 00	8 00		
<b>Salisburia adiantifolia, Cingko, Maiden Hair,</b>	6 to 10 in. seed.	35	1 50	\$10 00	
“ “ “ “	4 to 5 ft. trans.	2 00	18 00		
“ “ “ “	5 to 6 ft. trans.	2 50	20 00		
“ “ “ “	6 to 7 ft. trans.	3 50	25 00		
“ “ “ “	8 to 9 ft. trans.	4 00	35 00		
It is not generally known that the leaves of the <b>Salisburia</b> are never attacked by worms or other insects. Also, that it will grow in the heart of cities where very few trees will thrive.					
<b>Salix aurea pendula, Weeping Golden-barked,</b>	5 to 7 ft. trans.	1 50	12 00		
“ “ “ “	6 to 8 ft. trans.	1 75	15 00		
“ “ “ “	7 to 9 ft. trans.	2 00	18 00		
“ <b>Babylonica, Weeping Willow,</b>	5 to 6 ft. trans.	1 75	15 00		
“ <b>caprea, Pussy Willow,</b>	6 to 7 ft. trans.	1 50	12 00		
“ <b>Japonica,</b>	4 ft. trans.	1 50			
“ “ “ “	8 to 10 ft. trans.	3 50	30 00		
“ <b>pentandra, Laurel-leaved</b>	1 to 2 ft. 1 year	35	1 25	10 00	
“ “ “ “	3 to 4 ft. trans.	85	7 00	60 00	
“ “ “ “	4 to 5 ft. trans.	1 25	10 00	80 00	
“ “ “ “	5 to 6 ft. trans.	1 75	15 00	125 00	
“ <b>regalis (alba), White-leaved</b>	5 ft. trans.	1 75			
“ “ “ “	6 to 8 ft. trans.	2 00	18 00		
“ <b>Britzensis, Red-barked</b>	5 to 6 ft. trans.	1 75	15 00		
“ “ “ “	6 to 8 ft. trans.	2 00	18 00		
“ “ “ “	12 to 15 in. trans.	1 50	12 00		
<b>Sophora Japonica,</b>	5 to 6 in. seed.	35	2 00	10 00	
“ “ “ “					
<b>Sorbus. Mt. Ash,—See Pyrus, page 8.</b>					
<b>Styrax Japonica,</b>	bushy,	2 to 3 ft. trans.	1 75		
“ “ “ “		3 to 4 ft. trans.	2 50		
<b>Taxodium districhium, Deciduous Cypress,</b>	5 to 6 in. seed.	35	2 00	12 00	
“ “ “ “	8 to 12 in. seed.	40	2 50	15 00	
“ “ “ “	3 ft. trans.	2 50			
<b>Tilia Americana,</b>	<b>American Linden,</b>	3 to 4 ft. trans.	1 50	12 00	
“ “ “ “	“ “ “ “	5 to 6 ft. trans.	2 00		
“ <b>Europæa, European Linden,</b>	6 to 8 ft. trans.	2 50			
“ <b>plataphylla, Eu. Broad-leaved Linden,</b>	5 to 7 ft. trans.	2 50	20 00		
“ “ “ “	“ “ “ “	8 ft. trans.	3 50	30 00	
<b>Ulmus Americana,</b>	<b>American Elm,</b>	1 to 2 ft. seed.	35	1 00	5 00
“ “ “ “	“ “ “ “	1½ to 2½ ft. seed.	40	1 25	6 00
“ “ “ “	“ “ “ “	2 to 3 ft. seed.	50	1 50	8 00
“ “ “ “	“ “ “ “	5 to 6 ft. trans.	1 50	12 00	100 00
“ “ “ “	“ “ “ “	7 to 8 ft. trans.	1 75	15 00	125 00
“ “ “ “	“ “ “ “	8 to 10 ft. trans.	2 00	18 00	150 00
“ “ “ “	“ “ “ “	10 to 12 ft. trans.	3 00	25 00	
“ <b>campestris, English,</b>	“ “ “ “	2 to 3 ft. trans.	1 50	12 00	
“ “ “ “	“ “ “ “	5 to 6 ft. trans.	2 50		
“ <b>Camperdown Weeping Elm, extra strong,</b>	1 year head.	6 00			
“ <b>crassifolia,</b>	18 to 24 in. trans.	1 50	12 00		
“ <b>Huntingdon,</b>	8 ft. trans.	3 50			
“ <b>latifolia, Scotch Elm,</b>	2 to 3 ft. trans.	1 25			
“ <b>purpurea, Purple-leaved</b>	“ “ “ “	6 to 7 ft. trans.	3 50		
“ <b>racemosa, Cork</b>	“ “ “ “	3 to 4 ft. trans.	2 00	15 00	
<b>Zanthoxylon piperitum, Prickly Ash,</b>	5 to 6 in. seed.	50	3 00		
“ “ “ “	2 to 3 ft. trans.	2 50	20 00		



## DECIDUOUS SHRUBS.

“Trans.” indicates that the plant has been once or more transplanted.  
 “Seed.” that it is still in seedling beds, not transplanted.

		Per 10	Per 100	Per 1000
<b>Ainus serrulata,</b>	extra heavy, 3 to 4 ft. trans.	\$1 75	\$15 00	
<b>Amelanchier</b>	<b>alnifolia nana, Dwf. Juneberry,</b> 12 to 18 in. bushy	1 00	8 00	
“	“ “ “ “ “ 2 ft. trans.	1 50	12 00	
“	botryapium, <b>Juneberry,</b> 12 to 18 in. bushy.	1 00	8 00	
“	rotundifolia, “ 18 in. trans. bushy	1 25	10 00	
“	vulgaris, “ 2 to 2½ ft. trans.	1 00	8 00	
“	“ “ “ “ “ 3 to 4 ft. trans.	1 75	15 00	
<b>Amorpha canescens, Indigo Shrub,</b>	5 to 6 in. seed.	25	75	\$6 00
“	“ “ “ “ “ 12 to 18 in. trans.	85	7 00	
“	“ “ “ “ “ 2 to 2½ ft. trans.	1 00	8 00	
<b>One of the best small-sized Shrubs for late summer flowering.</b>				
“	fruticosa, 18 to 24 in. seed.	35	1 50	8 00
<b>Amygdalus nana, double white Almond,</b>	2 to 3 ft. trans.	1 50		
“	“ double pink “ 2 to 3 ft. trans.	1 50		
<b>Andromeda</b>	calyculata 6 to 10 in. trans.	1 75	15 00	
“	Catesbaei, 1 ft. trans.	1 75	15 00	
“	Mariana, 8 to 15 in. trans.	1 50	12 00	
“	nitida, 10 to 18 in. trans.	1 75	15 00	
“	polifolia, 12 to 18 in. trans.	1 75	15 00	



Our stock of Azalea Mollis and Pontica is very large and fine. The plants were all transplanted last spring and will now dig with a ball. They are very bushy plants and, being well set with flower buds, they will make a very effective planting. The price indicates the bushiness of the plant as well as the height.

The Mollis are mostly in shades of red and yellow, but the Ponticas are in all colors.

		Per 10	Per 100	Per 1000
<b>Aralia Japonica,</b>	18 to 24 in. trans.	\$1 75	\$15 00	
" "	2 to 3 ft. trans.	2 00	18 00	
" pentaphylla,	18 to 24 in. trans.	1 00	8 00	
" "	2 to 2½ ft. trans.	1 25	10 00	
" spinosa, <b>Hercules Club,</b>	1 to 2 ft. trans.	1 00	8 00	
" " " "	3 to 4 ft. trans.	1 50	12 00	
<b>☞ The Aralias are especially useful for massing and the character of the foliage creates a tropical effect. The large heads of yellowish-white flowers in August are quite conspicuous.</b>				
<b>Aronia.</b>	See <i>Pyrus arbutifolia</i> , page 17.			
<b>Azalea amœna, Evergreen Azalea,</b>	10 in. bushy from pots	4 00	35 00	
<b>☞ We call especial attention to our large stock of Azalea amœna, one of the finest small-sized evergreen shrubs in cultivation. It does not transplant very freely when dug from the open ground, hence we grow ours all in pots, and when shipping them they are packed so that the ball is not broken. This is a distinct advantage to the planter.</b>				
" arborescens,	12 to 15 in. trans. heavy	2 50		
" calendulacea (lutea),	8 to 12 in. trans.	1 75		
" Mollis, clumps,	1 to 1½ ft.	2 50	25 00	
" " "	18 in. trans.	4 00	37 00	
" " "	2 ft. trans.	12 50	115 00	
" " "	3 ft.	15 00		
" Pontica ( <b>Chent</b> ),	1 to 1½ ft.	4 00	40 00	
" " "	18 in. trans.	5 00	50 00	
" " "	18 to 24 in.	7 50	75 00	
" " "	2½ to 3 ft.	12 50		
" Vaseyii (Rhododendron),	8 to 12 in. trans.	2 00		
<b>Baccharis halimifolia,</b>	2 to 2½ ft. trans.	1 00	8 00	
" "	2½ to 3 ft. trans.	1 50	12 00	
" "	3 to 4 ft. trans.	1 75		
<b>Berberis purpurea, Purple Barberry,</b>	1 to 1½ ft. seed.	25	1 50	\$12 00
" " " "	18 to 24 in. trans.	90		
" " " "	2 to 3 ft. trans.	1 25	10 00	
" Thunbergii, <b>Japanese Barberry,</b>	18 to 24 in. trans.	1 50	12 00	
" " " "	2 to 2½ ft. trans.	1 75	15 00	
" " " "	2½ ft. trans.	2 00	17 00	
" vulgaris, <b>Green Barberry,</b>	6 to 10 in. seed.	25	75	6 00
" " " "	2 to 2½ ft. trans.	1 00	8 00	
" " " "	2 ft. trans.	1 00	8 00	
<b>Buddleia curviflora,</b>	18 to 24 in. trans.	1 00	8 00	
" intermedia,	18 to 24 in. trans.	1 25		
<b>Callicarpa Japonica,</b>	18 to 24 in. trans.	1 25		
" purpurea,	2½ to 3 ft. trans.	1 00		
<b>Calycanthus floridus, Sweet Shrub,</b>	6 to 12 in. seed.	25	1 00	
" " " "	12 to 18 in. seed.	40	3 00	
" " " "	2 to 2½ ft. trans.	1 25	10 00	
<b>Caragana arborescens, Siberian Pea,</b>	8 to 12 in. seed.	35	1 00	
" " " "	2 to 3 ft. trans.	1 00	8 00	
" " " "	3 to 4 ft. trans.	1 25	10 00	
<b>☞ A fine, hardy shrub for planting in Canada and the Northwest.</b>				
<b>Carpinus Americanus, American Hornbeam</b>	1 to 2 ft. trans.	1 25	10 00	80 00
" " " "	2 to 3 ft. trans.	1 50	12 00	
" " " "	3 to 4 ft. trans.	1 75	15 00	
" Betulus, <b>European Hornbeam,</b>	2 to 2½ ft. trans.	1 00	8 00	
" " " "	3 to 4 ft. trans.	1 25	10 00	
<b>Caryopteris Mastacanthos,</b>	12 to 18 in. trans.	1 25	10 00	
<b>Cassia Marylandica,</b>	1 yr. seed.	25	75	5 00
" " " "	3 yr. seed.	75	5 00	
<b>Ceanothus Americanus, New Jersey Tea,</b>	12 to 15 in. trans.	85	8 00	
" " " "	18 to 24 in. trans.	1 00	9 00	
" " " "	2 to 3 ft. trans.	1 50	12 00	

		Per 10	Per 100	Per 1000
<b>Cephalanthus occidentalis</b> , Button-bush,	5 to 6 in. seed.	\$0 35	\$1 00	\$7 00
" "	2 to 3 ft. trans.	1 00	8 00	

☞ Especially good for planting in swamps or low ground. It will thrive even when water stands around the roots.

<b>Cercis Canadensis</b> , Red Bud or Judas,	1 to 2 ft. trans.	1 00	8 00	50 00
" " " "	2 to 3 ft. trans.	1 50	12 00	100 00
" " " "	3 to 4 ft. trans.	1 75	15 00	125 00
" " " "	4 to 5 ft. trans.	2 50	20 00	150 00
" " " "	4 to 6 ft., hvy., trans.	3 00		
" Japonica, Japanese	2 to 2½ ft. trans.	1 25	10 00	80 00
<b>Chionanthus Virginica</b> , White Fringe,	12 to 18 in. trans.	85	7 00	60 00
" " " "	18 to 24 in. trans.	1 00	8 00	
" " " "	2 to 2½ ft. trans.	1 50	12 00	
" " " "	5 to 6 ft. trans. specimens	10 00		

☞ These are all bushy plants.

<b>Clethra alnifolia</b> , Sweet Pepper Bush,	1 ft. seed.	40	3 00	25 00
" " " "	1½ to 2 ft. trans.	85	7 00	
" " " "	2 to 2½ ft. trans.	1 00	8 00	
<b>Colutea arborescens</b> ,	4 to 5 ft. trans.	1 00		
<b>Corchorus Japonica</b> (Kerria), Single,	2 to 3 ft. trans.	1 00	9 00	
" " " " variegata	15 to 18 in. trans.	1 00	9 00	
<b>Cornus alba</b> , Red-twigged Dogwood,	12 to 15 in. seed.	25	1 25	10 00
" " " " " "	1 to 2 ft. trans.	80	7 00	60 00
" " " " " "	2½ to 3 ft. trans.	1 00	8 00	
" " " " " "	3 ft. trans.	1 25	10 00	
" alternifolia, Blue Dogwood,	2 to 3 ft. trans.	1 00	8 00	
" " " " " "	3 to 4 ft. trans.	1 25		
" " " " " "	8 to 10 in. seed.	35	1 00	7 00
" circinata,	2 to 3 ft. trans.	1 25	11 00	
" florida, White-flowered Dogwood,	18 to 24 in. trans.	1 25	10 00	
" " " " " "	2 to 2½ ft. trans.	1 50	12 00	
" " " " " "	2½ to 3 ft. trans.	2 00	18 00	
" " " " " "	3 to 4 ft. trans.	3 00	25 00	
" " " " " "	4 to 4½ ft. trans.	3 50	30 00	
" " " " " "	6 to 7 ft. trans. spec.	15 00		
" pendula Weeping Dogwood,	3 to 3½ ft. trans.	3 50	30 00	
" glabrata,	2½ to 3 ft. trans.	1 25		
" Mas. Cornelian Cherry,	12 to 15 in. seed.	35	1 75	15 00
" " " " " "	18 to 24 in. trans.	85	7 00	60 00
" " " " " "	2½ to 3 ft. trans.	90	8 00	
" " " " " "	3 to 4 ft. trans.	1 25	10 00	
" " " " " "	4 to 5 ft. trans.	1 50		

☞ A good large-growing shrub for mass planting.

" paniculata,	2 to 3 ft. trans.	1 25	10 00	
" sanguinea, English Dogwood,	12 to 18 in. seed.	25	1 25	10 00
" " " " " "	8 to 12 in. trans.	60	5 00	
" " " " " "	2 to 2½ ft. trans.	1 00	8 00	
" " " " " "	3 to 4 ft. trans.	1 50	12 00	
" sericea, Silky	3 to 4 ft. trans.	1 00	8 00	
" " " " " "	4 to 5 ft. trans.	1 25	10 00	
" " " " " "	5 to 6 ft. trans.	1 50	12 00	
" stolonifera lutea, Yellow-barked,	12 to 18 in. trans.	75	6 00	
" " " " " "	2 to 2½ ft. trans.	1 50	12 00	
<b>Cotoneaster Simondsii</b> ,	15 to 18 in. trans.	85		
" Wheelerii,	8 to 12 in. trans.	75		
<b>Corylus Americana</b> , American Hazel,	2½ to 3 ft. trans.	1 25		
" avellana, European Hazel, heavy,	3 to 4 ft. trans.	1 25	10 00	
" " " " " heavy,	5 to 6 ft. trans.	1 50	12 00	
" purpurea, Purple-leaved Filbert,	2 year layers	50	4 00	30 00
" " " " " "	12 to 18 in. trans.	1 50		
" " " " " "	2 to 2½ ft. trans.	1 75		

		Per 10	Per 100	Per 1000
<b>Crataegus coccinea, White Thorn,</b>	8 to 12 in. seed.	\$0 35	\$2 00	\$15 00
" " " "	18 to 24 in. seed.	40	2 50	20 00
" " " "	2 to 2½ ft. seed.	50	3 00	25 00
" " " "	2 to 3 ft. trans.	1 00	8 00	75 00
" " " "	3 to 4 ft. trans.	1 50	12 00	100 00
" " " "	4 to 5 ft. trans.	2 50	20 00	
" " " "	5 to 6 ft. trans.	3 50	30 00	
" <b>cordata, Washington Thorn,</b>	3 to 4 ft. trans.	2 50	20 00	
" " " "	4 to 5 ft. trans.	3 00	25 00	
" " " "	5 to 6 ft. trans.	4 00		
" " " "	6 to 7 ft. trans.	5 00		
" <b>crus-galli, Cockspur Thorn,</b>	8 to 12 in. seed.	35	2 00	15 00
" " " "	18 to 24 in. seed.	40	2 50	20 00
" " " "	8 to 10 in. trans.	85	7 00	60 00
" " " "	2 to 3 ft. trans.	1 00	8 00	75 00
" " " "	3 to 4 ft. trans.	1 50	12 00	100 00
" " " "	4 to 5 ft. trans.	2 50	20 00	150 00
" " " "	5 to 6 ft. trans.	3 50	30 00	
" " " "	7 ft. trans.	4 00		
" <b>oxycantha, English Hawthorn,</b>	1 to 2 ft. trans.	75	6 00	50 00
" " " "	2½ to 3 ft. trans.	1 00	8 00	70 00
" " " "	3 to 4 ft. trans.	1 25	10 00	90 00
" " " "	5 ft. trans.	1 50	12 00	
" " <b>Double White</b>	4 to 5 ft. trans.	3 00		
" " <b>Paul's Scarlet</b>	4 to 5 ft. trans.	3 00		

**We have the largest stock of native Crataegus in the country. They are all good, bushy plants—excepting the seedlings—and, having been recently transplanted, they are well rooted.**

<b>Cytisus Laburnum, Laburnum,</b>	2 to 3 ft. trans.	85	7 00	
" " " "	4 to 5 ft. trans.	1 25	10 00	
" " " "	5 to 7 ft. trans.	1 75	15 00	
<b>Daphne Mezereum, White,</b>	15 to 18 in. trans.	1 25	10 00	
<b>Desmodium penduliflorum, Pink,</b>	3 in pots	1 50	15 00	
<b>Deutzia candidissima, White,</b>	12 to 15 in.	35	1 75	15 00
" " " "	2 ft. trans.	85	7 50	60 00
" " " "	3 to 4 ft. trans., heavy	1 00	8 00	
" " " "	4 to 5 ft. trans.	1 25	10 00	
" " <b>plena, Double White,</b>	3 ft., heavy, trans.	1 00	8 00	
" <b>crenata, Single White,</b>	heavy, 3 to 4 ft.	1 00	8 00	75 00
" " <b>Double White,</b>	3 to 4 ft. trans.	1 00	8 00	
" " " "	4 to 5 ft. trans.	1 25	10 00	
" " <b>Double Pink,</b>	12 to 15 in.	35	1 75	15 00
" " " "	12 to 18 in. trans.	75	6 00	55 00
" " " "	2 to 3 ft. trans.	85	7 50	60 00
" " " "	3 ft. trans., heavy	1 25		
" " " "	heavy, 4 to 5 ft. trans.	1 50		
" <b>Fortunii, White,</b>	2 to 2½ ft. trans.	85	7 50	60 00
" " " "	3 ft. trans., bushy	1 00	8 00	
" <b>gracilis, White,</b>	bushy, 10 to 12 in. trans.	85	7 00	
" " " "	" 12 to 15 in. trans.	90	8 00	
" <b>Lemoinei, White,</b>	1 ft.	35	1 75	15 00
" " " "	12 to 18 in. trans.	85	7 00	
" " " "	2 ft. trans.	1 50	10 00	
" " <b>compacta,</b>	12 to 18 in. trans.	85	7 00	
" <b>Pride of Rochester, Double Pink,</b>	12 to 15 in.	35	1 75	15 00
" " " "	18 in. trans.	85	7 50	60 00
" " " "	3 to 3½ ft. trans.	1 00	8 00	
" <b>scabra, Single White,</b>	12 to 15 in.	35	1 75	15 00
" " " "	2 to 3 ft. trans.	85	7 50	60 00
" " " "	heavy, 3 to 4 ft. trans.	1 00	8 00	
" <b>Sieboldii,</b>	3 to 4 ft. trans.	1 00		

			Per 10	Per 100	Per 1000
<b>Deutzia</b>	Wateri, Single White,	3 to 4 ft. trans.	\$1 00		
"	"	4 to 5 ft. bushy	1 25	\$10 00	
"	Wellsii,	3 to 4 ft. bushy	1 00		
<b>Diervilla</b>	trifida,	18 to 24 in. trans.	1 25	10 00	
<b>Dimorphanthus</b>	Mandshurica (Aralia),	1 to 2 ft. trans.	1 25	10 00	
"	"	3 to 4 ft. trans.	2 00		
<b>Elæagnus</b>	angustifolia (true),	2 to 2½ ft. trans.	1 25	10 00	
"	longipes,	10 to 15 in. seed.	50	3 00	
"	"	12 to 18 in. trans.	1 50	12 00	
"	parvifolius, <b>Silver Thorn</b> , heavy,	2 to 3 ft. trans.	1 25	10 00	
"	" extra heavy,	3 ft. trans.	1 50	12 00	
"	umbellatus, female,	2 to 2½ ft. trans.	1 00	8 00	
"	"	3 to 4 ft. trans.	1 50		
<b>Euonymus</b>	Americanus, Am. <b>Burning Bush</b> ,	6 to 8 in. trans.	50	4 00	
"	"	2 to 3 ft. trans.	1 25	10 00	
"	alatus,	3 in. seed.	40	3 00	
"	Europeus, <b>Eu. Burning Bush</b>	6 to 8 in. seed.	25	2 00	
"	"	12 to 18 in. seed.	35	2 50	\$12 00
"	"	2 to 2½ ft. seed.	50	3 00	
"	"	18 to 24 in. trans.	85	7 00	
"	Sieboldianus, Evergreen,	10 to 15 in. trans.	1 50		
<b>Exochordia</b>	grandiflora, <b>Pearl Bush</b> ,	1½ to 2 ft. trans.	1 25		
"	"	3 to 4 ft. trans.	2 00	17 00	
<b>Forsythea</b>	Fortunii, <b>Golden Bell</b> ,	2 to 2½ ft. trans.	85	7 00	60 00
"	"	3 to 4 ft. trans.	90	8 00	70 00
"	suspensa,	2½ to 3 ft. trans.	90	8 00	
"	viridissima,	12 to 18 in. trans.	75	6 00	50 00
"	"	2½ ft. trans.	85	7 00	
"	"	3 to 4 ft. trans.	1 25	10 00	
"	variegata,	3 ft. trans.	1 25		
<b>Cenista</b>	scoparia, <b>Scotch Broom</b> ,	2 to 3 ft. trans.	1 25	10 00	
<b>Malesia</b>	diptera,	2 to 3 ft.	1 00	8 00	
"	"	8 to 10 in. seed.	50	3 00	
"	tetraptera, <b>Silver Bell</b> ,	heavy, 3 to 4 ft. trans.	1 25	10 00	
"	"	heavy, 4 to 5 ft. trans.	1 50	12 00	
<b>Hamamelis</b>	Virginica, <b>Wych-hazel</b> ,	6 in. seed.	35	2 00	12 00
"	"	1 to 2 ft. trans.	1 00	10 00	80 00
<b>Hibiscus</b> ,	Double White, <b>Althæa</b> ,	18 in. trans.	75	6 00	
"	"	2 to 3 ft. trans.	85	7 00	
"	Red,	18 in. trans.	75	6 00	
"	"	2 ft. trans.	85		
"	Lilac,	18 in. trans.	75	6 00	
"	totus albus, Single White,	12 to 18 in. trans.	85		
"	Single Pink,	18 to 24 in. trans.	75		
"	"	12 to 18 in. trans.	50		
"	Lilac,	18 to 24 in. trans.	75	6 00	
"	Red,	18 in. trans.	75	6 00	
"	variegata,	12 to 18 in. trans.	85	7 00	
<b>Hippophæa</b>	rhamnoides, <b>Sea Buckthorn</b> ,	1 ft. trans.	75	6 00	
"	"	18 to 24 in. trans.	1 00	8 00	
<b>Hydrangea</b>	arborescens,	12 to 18 in. seed.	60	5 00	
"	Hortensia,	8 to 10 in. trans.	3 50		
"	Japonica,	6 to 8 in. bushy, trans.	3 50		
"	Otaksa,	8 to 12 in. bushy	3 50		
"	"	8 to 12 stems, 15 to 18 in. with ball	6 50		
"	Thomas Hogg,	12 to 18 in. bushy.	4 00		
"	paniculata, single,	18 to 24 in. trans.	90	8 00	
"	"	3 ft. trans.	1 25	10 00	
"	paniculata grandiflora,	1 ft. trans.	65	6 00	50 00
"	"	1½ to 2 ft. trans.	85	7 00	
"	"	2 to 2½ ft. trans.	90	8 00	75 00
"	"	2½ to 3 ft. trans.	1 00	9 00	85 00
"	"	3 to 4 ft. lvy. trans.	1 50	15 00	

		Per 10	Per 100	Per 1000
<b>Hydrangea</b>	<i>quercifolia</i> ,	1 ft. bushy, trans.	\$3 50	
"	<i>radiata</i> ,	2 to 3 ft. trans.	1 25	
<b>Hypericum</b>	<i>aureum</i> , St. John's Wort,	12 to 18 in. trans.	90	\$8 00
"	"	18 to 24 in. trans.	1 00	9 00
"	<i>densiflorum</i> ,	1 to 2 ft. trans.	1 00	8 00
"	"	18 to 24 in. trans.	1 25	10 00
"	<i>Moserianum</i> ,	15 in. trans.	1 25	
"	<i>patulum</i> ,	18 to 24 in. trans.	1 50	
"	<i>prolificum</i> ,	2½ to 3 ft. trans.	1 50	12 00
<b>Ilex</b>	<i>decidua</i> ,	6 to 12 in. trans.	1 00	8 00
"	<i>monticola</i> ,	12 to 18 in. trans.	1 50	12 00
<b>Itea</b>	<i>Virginica</i>	2½ to 3 ft. heavy	2 50	22 00
<b>Kerria</b>	—See Corchorus, page 13.			
<b>Laurus</b>	<i>Benzoin</i> .—See <i>Lindera</i> , below.			
	<i>Sassafras</i> .—See <i>Sassafras</i> , page 18.			
<b>Leiophyllum</b>	<i>buxifolium</i> ,	12 to 15 in. trans.	1 75	15 00
<b>Leucothæ</b>	<i>Catesbæi</i> ,	1 ft. trans.	1 75	15 00

## LIGUSTRUM OVALIFOLIUM (California Privet).

As usual, we have a very large stock of this valuable hedge plant. Our 1 to 2 feet 1 year plants have one, two and three stems per plant; the 2 to 2½ feet run 3 to 5 stems per plant; the sizes above these are all very bushy, and the entire stock is well rooted. Our sales of Privet increase each year. Sales last year aggregated 200,000 plants. We are recognized as headquarters for this plant.

<b>Ligustrum</b>	<i>amurense</i> , Amoor Privet	12 to 15 in.	35	2 00	\$16 00
"	<i>ibota</i> (True)	18 to 24 in. trans.	75	6 00	
"	" "	2 to 2½ ft. trans.	1 00	8 00	
"	" "	3 to 3½ ft. trans.	1 25	10 00	
"	" "	4 ft. trans.	1 50		
"	<i>ovalifolium</i> , <b>California Privet</b> ,	1 to 2 ft. 1 year	25	2 00	15 00
"	" "	2 year, 2 to 2½ ft. trans.	30	2 50	20 00
"	" "	2 to 3 ft.	35	2 75	25 00
"	" "	2½ ft. heavy, trans.	65	4 00	30 00
"	" "	heavy, 3 to 4 ft. trans.	75	5 00	40 00
"	<i>Regelianum</i> ,	12 to 18 in. trans.	75	6 00	
"	<i>vulgare</i> . <b>Common Privet</b> ,	1 to 2 ft.	35	2 00	
<b>Lindera</b>	<i>Benzoin</i> , <b>Spice Bush</b> ,	1 ft. trans.	85	8 00	75 00
"	" "	1½ to 2½ ft. trans.	1 25	10 00	
"	" "	4 to 6 ft. spec.	10 00		
<b>Lonicera</b>	<i>fragrantissima</i> , <b>Bush Honeysuckle</b>	18 to 24 in. trans.	75	6 00	
"	" "	2 to 2½ ft. trans.	1 00	8 00	70 00
"	<i>Morrowii</i> ,	2 to 3 ft. trans.	1 25	10 00	
"	<i>tartarica</i> red-berried,	18 in. trans.	85	7 00	
"	" white-berried,	2 ft. trans.	85	7 00	
"	" "	3 to 3½ ft. trans.	1 00		
"	<i>grandiflora</i> , pink flowered,	12 to 15 in.	35	2 00	18 00
"	" "	18 to 24 in. trans.	85	7 00	60 00
"	" "	2 to 2½ ft. trans.	1 00	8 00	70 00
<b>Paliurus</b>	<i>aculeatus</i> ,	12 to 18 in. seed.	1 00	8 00	
<b>Philadelphus</b>	<i>aureus</i> , <b>Golden-leaved</b> ,	12 to 15 in. trans.	1 00		
"	<i>flora plena</i> , double white,	18 in. trans.	85	7 00	
"	<i>coronarius</i> , <b>Mock Orange</b> ,	1 ft.	35	2 50	20 00
"	" "	18 to 24 in. trans.	85	7 00	60 00
"	" "	3 to 4 ft. trans.	1 25	10 00	
"	<i>grandiflorus</i> , <b>Large flowered</b> ,	1 to 2 ft.	35	1 50	12 00
"	" "	2 to 3 ft. trans.	1 00	8 00	70 00
"	" "	3 to 4 ft. trans.	1 25	10 00	
"	<i>Lemoinei</i> ,	1 ft.	35	1 75	15 00
"	" "	12 to 15 in. trans.	75	6 00	
"	" <i>erecta</i>	18 to 24 in. trans.	75	6 00	
"	<i>nanus</i> , <b>Dwarf Mock Orange</b> ,	18 in. trans.	85	7 00	
"	<i>Zeyherii</i> ,	18 to 24 in. trans.	85	7 00	

		Per 10	Per 100	Per 1000
<b>Photinia villosa</b>	1 to 2 ft. trans.	\$0 75	\$8 00	\$50 00
" "	2 to 2½ ft. trans.	1 00	9 00	80 00
<b>Potentilla fruticosa, Shrubby Cinquefoil,</b>	1½ to 2½ ft. trans.	1 00		
<b>Prinos glaber, Ink-berry,</b>	8 to 15 in. trans.	2 50		
<b>Prunus Americana, Beach Plum,</b>	18 to 24 in. seed.	50	4 00	
" "	4 to 5 ft. trans.	1 25	10 00	
" <b>Pissardi, Purple-leaved Plum,</b>	2 to 3 ft. trans.	1 00	8 00	
" "	3 to 4 ft. trans.	1 50	13 00	
" <b>triloba, Double Flowering Plum,</b>	3 to 4 ft. trans.	1 50		
" <b>pumila,</b>	2 to 3 ft. trans.	1 25		
<b>Ptelea trifoliata, Hop Tree,</b>	6 to 8 in. seed.	35	1 00	8 00
" "	3 to 4 ft. seed.	50	2 00	12 00
" "	3 to 4 ft. trans.	1 00	8 00	
" "	5 to 6 ft. trans.	1 25	10 00	80 00
" <b>aurea, Golden Hop,</b>	2 to 3 ft. trans.	1 50	12 00	
" "	3 to 4 ft. trans.	2 00	15 00	
<b>Pyrus arbutifolia (Aronia) Choke-berry,</b>	2 to 2½ ft. heavy bushy,	1 00	8 00	
" "	3 to 4 ft. bushy,	1 50		
<b>⚠ This is very fine, bushy stock.</b>				
" <b>Japonica, red, Japanese Quince,</b>	12 to 18 in. trans.	75	6 00	
<b>Rhamnus catharticus, Common Buckthorn,</b>	1 to 2 ft. trans.	50	4 00	30 00
" "	2½ to 3 ft.	60	5 00	
" "	4 to 5 ft. trans.	35	7 00	
" "	5 to 6 ft. trans.	1 00	8 00	
" <b>crenulata,</b>	2 to 3 ft.	90	8 00	
" <b>frangula,</b>	3 to 4 ft. trans.	90	8 00	
<b>Rhodora canadensis,</b>	12 to 15 in. trans.	5 00		
<b>Rhodotyus kerrioides,</b>	6 to 10 in. seed.	35	1 00	8 00
" "	18 to 24 in. seed.	50	3 00	15 00
<b>Rhus aromatica, Sweet Sumach,</b>	1 to 2 ft. trans.	1 25	10 00	90 00
" "	2 to 3 ft. trans.	1 50	12 00	
" "	3 to 3½ ft. trans.	1 75		
" <b>copallina, Shining Sumach,</b>	12 to 18 in. trans.	1 00	8 00	
" "	2 to 2½ ft. trans.	1 25	10 00	
" "	2½ to 3 ft. trans.	1 50	12 00	
<b>⚠ Note our large stock of Rhus copallina. They are fine plants.</b>				
" <b>cotinus, Mist or Smoke Tree,</b>	15 to 24 in. seed.	35	1 50	12 00
" "	1 to 2 ft. trans.	65	5 00	
" "	3 to 4 ft. trans.	1 00	8 00	
" "	4 to 5 ft. trans.	1 25	10 00	
" "	5 to 7 ft. trans.	1 50	12 00	
" <b>glabra, Smooth Sumach,</b>	1 to 2 ft. trans.	85	7 00	
" <b>laciniata, Cut-leaved Sumach,</b>	12 to 15 in. trans.	1 00	8 00	
" <b>typhina, Stag's Horn Sumach,</b>	2½ to 3 ft. trans.	75	6 00	
" "	5 to 6 ft. trans.	85	7 00	
" <b>laciniata,</b>	1 ft. trans.	2 00		
" "	2 to 3 ft. trans.	2 50		
<b>Ribes aureum, Yellow Flowering Currant,</b>	1 to 2 ft.	35	1 50	12 00
" "	2 to 2½ ft. trans.	85	7 00	65 00
" "	2½ ft. trans.	90	8 00	
" "	3 ft. trans.	1 25		
" <b>Cynosbati,</b>	2 to 2½ ft. trans.	1 25		
" <b>floridum, Missouri Black Currant,</b>	3 to 4 ft. trans.	1 25	10 00	
" <b>Gordonianum, Pink-flowering</b>	3 ft. trans.	90	8 00	
" <b>sanguineum, Red-flowering</b>	2 ft. trans.	1 25	10 00	
" "	2 to 3 ft. seed.	40	3 00	25 00
<b>Robinia hispida, Rosa Acacia, Pink,</b>	1 to 2 ft.	60	5 00	
" "	2 ft. trans.	1 25	10 00	

		Per 10	Per 100	Per 1000
<b>Rosa</b>	<i>blanda</i> ,	12 to 18 in. trans.	\$0 85	\$7 00
"	" <i>Carolina</i> ,	12 to 15 in. seed.	35	2 00
"	" "	3 to 4 ft. seed.	50	3 00
"	" "	18 to 24 in. trans.	85	7 00
"	" <i>lucida alba</i> ,	1 ft. trans.	2 50	
"	" <i>multiflora Japonica</i> ,	6 to 10 in. seed.	35	2 00
"	" "	18 to 24 in. trans.	90	8 00
"	" "	3 to 4 ft. trans.	1 25	10 00
"	" <i>rubiginosa Sweet Brier</i> ,	6 in. 2 yr. seed.	25	1 25
"	" "	12 to 15 in. trans.	90	8 00
"	" <i>rugosa, Pink</i> ,	8 to 12 in. seed.	35	2 00
"	" " bushy,	12 to 18 in. trans.	1 00	8 00
"	" " <i>alba, White</i> ,	" 2 to 2½ ft.	1 00	9 00
"	" " <i>Mme. Bruant, double white</i>		1 80	
"	" <i>setigera, Prairie Rose</i> ,	10 to 18 in. seed.	35	2 00
"	" " "	3 ft. seed.	40	2 50
"	" " "	18 to 24 in. trans.	90	8 00
"	" " "	4 to 5 ft. trans.	1 25	10 00

All our Roses are transplanted, bushy plants. These native Roses are excellent for mass planting, and by mixing the sorts a continuous flowering effect can be produced.

### CLIMBING AND CREEPING ROSES.

<b>Rosa</b>	<i>Crimson Rambler</i> ,	18 in.	1 50	12 00
"	" "	3 to 4 ft., strong	2 00	18 00
"	" " Tree form,		5 00	
"	" <i>Baltimore Belle</i> ,	18 in.	1 00	8 00
"	" <i>Mme. Plantier</i> ,	5 in. pots.	2 50	
"	" <i>White Rambler</i> ,	18 in.	1 50	12 00
"	" " "	5 in. pots.	2 50	
"	" " "	6 in. pots.	3 50	
"	" <i>Wichuraiana</i> ,	3 to 4 ft., strong	1 00	8 00
"	" " <i>Gardenia</i> ,	7 in. pots.	3 50	35 00
"	" " <i>Universal Favorite</i> ,	7 in. pots.	3 50	35 00
"	" " <i>Jersey Beauty</i> ,	7 in. pots.	3 50	
"	" " <i>South Orange Perfection</i> ,	7 in. pots.	3 50	35 00
<b>Rubus</b>	<i>vitifolius</i> ,	3 ft. trans.	1 25	
<b>Sambucus</b>	<i>aurea, Golden Elder</i> ,	3 to 4 ft. trans.	1 00	
"	" <i>Canadensis, Elderberry</i> ,	12 to 18 in.	50	4 00
"	" " "	3 to 4 ft. trans.	85	6 00
"	" " "	4 to 6 ft. trans.	1 00	8 00
"	" <i>nigra, European Elderberry</i> ,	3 to 5 ft. trans.	90	8 00
"	" " "	6 to 7 ft. trans.	1 25	10 00
"	" " <i>laciniata, Cut-leaved</i> ,	1 to 2 ft. seed.	35	2 00
"	" " "	1½ to 2½ ft. trans.	85	7 00
"	" " "	3 ft. trans.	90	8 00
"	" <i>racemosa, Red-berried Elder</i> ,	2 to 3 ft. trans.	90	8 00
"	" " "	3 to 4 ft. trans.	1 00	9 00
<b>Sophora</b>	<i>Japonica</i> ,	12 to 15 in. trans.	1 50	12 00
"	" "	5 to 6 in. seed.	35	2 00
<b>Sassafras</b>	<i>officinale, Sassafras</i>	2½ to 3 ft. trans.	2 50	
"	" " "	3 to 4 ft. trans.	3 50	
<b>Spiræa</b>	<i>Anthony Waterer, Pink, dwarf</i> ,	6 in.	35	2 00
"	" " "	8 to 12 in. trans.	1 00	8 00
"	" " "	18 to 24 in., heavy	1 25	10 00
"	" <i>arguta, White</i> ,	18 in. trans.	90	8 00
"	" " "	2 to 2½ ft. trans.	1 25	10 00
"	" <i>Billardi, Pink</i> ,	2 to 2½ ft. trans.	85	7 00
"	" " "	2½ to 3 ft. trans.	90	8 00
"	" " "	3 ft. trans.	1 00	9 00
"	" " heavy,	3½ to 4 ft. trans.	1 25	10 00
"	" <i>Bumalda</i> ,	6 to 8 in. trans.	85	7 00
"	" " heavy,	2 to 2½ ft. trans.	1 00	9 00



		Per 10	Per 100	Per 1000
<b>Spiræa</b>	<b>callosa, Pink,</b>	1 ft. trans.	\$0 75	\$6 00
"	"	heavy, 3 ft. trans.	90	8 00
"	"	heavy, 3 to 3½ ft. trans.	1 00	9 00
"	<b>alba, Dwarf, White,</b>	6 in.	35	1 75
"	"	8 in. trans., clumps	75	6 00
"	"	1 ft. trans. heavy.	90	8 00
"	<b>superba,</b>	1 ft. trans.	85	7 00
"	"	2 to 2½ ft. heavy.	90	8 00
"	<b>carpinæfolia, White,</b>	3 to 4 ft. heavy.	1 00	8 00
"	"	4 ft. heavy.	1 25	10 00
"	<b>Douglassi rosea,</b>	12 to 15 in. trans.	75	6 00
"	"	heavy, 2 to 3 ft. trans.	90	8 00
"	<b>opulifolia, White,</b>	2½ to 3 ft.	85	7 90
"	<b>auræa, Golden-leaved,</b>	1 to 2 ft.	35	2 50
"	"	4 to 5 ft. trans.	1 00	8 00
"	<b>paniculata rosea, Pink,</b>	15 to 18 in. trans.	75	6 00
"	<b>prunifolia, Bridal Wreath,</b>	3 to 4 ft. trans.	1 25	10 00
"	<b>Reevesii, Double,</b>	12 to 15 in.	35	1 50
"	<b>Single White,</b>	12 to 15 in. seed.	35	1 50
"	"	12 to 18 in. trans.	75	6 00
"	"	2 ft. trans.	85	7 00
"	"	3 ft. trans.	90	8 00
"	<b>Regeliana, Deep-pink,</b>	3 to 4 ft. trans.	1 00	
"	<b>salicifolia, White,</b>	3 ft. trans.	90	8 00
"	<b>Thunbergii, White,</b>	6 to 8 in.	35	1 75
"	"	1 ft. trans.	75	6 00
"	"	heavy, 18 to 24 in. trans.	90	8 00
"	"	2½ to 3 ft. trans.	1 25	10 00
"	<b>tomentosa, Pink,</b>	18 to 24 in. trans.	75	6 00
"	"	2½ ft. trans.	90	8 00
"	<b>Van Houttei, White,</b>	12 to 15 in.	35	1 50
"	"	2 to 2½ ft. trans.	85	7 00
"	"	2 to 3 ft. trans.	90	8 00
"	"	3 ft. trans.	1 50	12 00

Our Spiræa Van Houttei are good, bushy plants.

<b>Stephanandra</b>	<b>flexuosa,</b>	2½ to 3 ft. trans.	1 25	10 00
"	"	3 to 3½ ft. trans.	1 50	12 00
<b>Staphylea</b>	<b>colchica,</b>	8 to 12 in. trans.	1 25	
"	<b>trifoliata,</b>	4 to 5 in. seed.	35	2 00
"	"	12 to 18 in. seed.	40	3 00
<b>Styrax</b>	<b>Japonica,</b>	bushy, 2 to 3 ft. trans.	1 75	
"	"	3 to 4 ft. trans.	2 50	
<b>Symphoricarpus</b>	<b>racemosus, White Snow'ly,</b>	12 to 18 in.	35	1 50
"	"	1 to 2 ft. trans.	75	6 00
"	"	2½ ft. trans.	90	8 00
"	"	3 to 4 ft. trans.	1 25	10 00
"	<b>vulgaris, Red Currant,</b>	12 to 18 in.	35	1 50
"	"	18 in. trans.	75	6 50
"	"	2 ft. trans.	85	7 00
"	"	2 to 3 ft. trans.	90	8 00
<b>Syringa</b>	<b>Persica, Rothomagensis, Red Persian,</b>	1 to 2 ft.	35	2 00
"	"	12 to 18 in. trans.	85	7 00
"	"	18 to 24 in. trans.	90	8 00
"	<b>Josikæ,</b>	8 in. trans.	90	8 00
"	<b>vulgaris, Common Purple Lilac,</b>	8 to 15 in.	25	1 25
"	"	1 to 2 ft. trans.	75	6 00
"	"	2 to 2½ ft. trans.	1 00	8 00
"	<b>alba, Common White Lilac,</b>	8 to 15 in.	40	3 00
"	"	12 to 15 in. trans.	75	6 00
"	"	18 to 24 in. trans.	85	7 00
"	"	2 to 2½ ft. trans.	1 00	9 00
"	"	3 ft. trans.	1 50	

## NEW LILACS—WHITE, RED AND PURPLE, SINGLE AND DOUBLE.

These are the best sorts of the new French Lilacs. Our plants are especially fine and strong.

		Per 10	Per 100	Per 1000
<b>Syringa</b>	<i>alba grandiflora</i> , Single White,	8 to 15 in. trans.	\$0 90	
"	<i>Belle de Nancy</i> , Double Rose,	8 to 15 in. trans.	90	
"	" " " "	3 to 4 ft.	3 00	\$25 00
"	Chas. X, Reddish Purple,	6 to 10 in. trans.	90	
"	Emily Lemoine, Double Rosy Lilac,	6 to 10 in. trans.	90	
"	Frau Dammann, " "	3 to 4 ft.	3 00	25 00
"	Ludwig Spaeth, Purplish Red,	6 to 10 in. trans.	90	
"	" " " "	3 to 4 ft.	3 00	25 00
"	Mme. Abel Chatney, Double White,	10 to 15 in. trans.	90	
"	" " " "	3 to 4 ft.	3 00	25 00
"	Mme. Legraye, Single White,	6 to 12 in. trans.	90	
"	Mme. Lemoine, Double White,	8 to 12 in. trans.	90	
"	Prest. Grey, Double Blue,	6 to 12 in. trans.	90	
"	" " " "	3 to 4 ft.	3 00	25 00
"	Senator Volland, Single Rosy Red,	2 to 3 ft. trans.	2 50	
<b>Tamarix</b>	<i>Africana</i> ,	2 to 2½ ft.	75	6 00
"	" " " "	4 ft. trans.	90	8 00
"	<i>gallica</i> ,	2 to 3 ft. trans.	75	6 00
"	" " " "	3 to 4 ft. trans.	90	8 00
"	<i>Indica</i> ,	2 to 3 ft. trans.	75	6 00
"	" " " "	3 to 5 ft. trans.	90	8 00
"	<i>Japonica plumosa</i> ,	2 to 2½ ft. trans.	75	6 00
"	" " " "	2½ to 3 ft. trans.	90	8 00
"	<i>Odessana</i> ,	3 ft. trans.	1 00	9 00
"	<i>tetrandra purpurea</i> ,	2 to 3 ft. trans.	75	6 00
<b>Viburnum</b>	<i>cassinoides</i> ,	1 ft. trans.	1 25	10 00
"	" " " "	1½ to 2 ft. trans.	1 75	15 00
"	<i>dentatum</i> ,	12 to 18 in. trans.	1 25	10 00
"	<i>Japonicum</i> (Sieboldianum),	1 to 1½ ft. trans.	1 50	12 00
"	" " " "	18 to 24 in. trans.	1 75	15 00
"	" " " "	2 to 2½ ft. trans.	2 00	18 00
"	" " " "	3 to 3½ ft. trans.	3 00	
"	<i>lantana</i> , <b>Hobble Bush</b> ,	1 ft. seed.	25	1 25
"	" " " "	12 to 15 in. seed.	35	1 50
"	" " " "	10 to 18 in. trans.	75	6 00
"	" " " "	2 to 3 ft. trans.	90	8 00
"	" " " "	3 to 4 ft. trans.	1 00	9 00
"	" " " "	4 to 6 ft. trans.	1 50	
<b>These are bushy plants.</b>				
"	<i>lentago</i> , <b>Hobble Bush</b> ,	8 to 12 in. trans.	1 25	10 00
"	" " " "	1 to 2 ft. trans.	1 75	15 00
"	<i>Molle</i> ,	18 to 24 in. seed.	35	2 50
"	" " " "	18 to 24 in. trans.	1 50	12 00
"	" " " "	2 to 2½ ft. trans.	1 75	
"	<i>nudum</i> ,	2 to 3 ft. trans.	1 75	15 00
"	<i>opulus sterilis</i> , <b>Common Snowball</b> ,	12 to 18 in. trans.	85	7 00
"	" " " "	1 ft.	35	2 50
"	" " " "	2½ to 3 ft. trans.	1 25	10 00
"	" " " "	4 ft.	1 50	12 00
"	<i>oxycoccus</i> ( <i>opulus</i> ) <b>High Bush Cranberry</b> ,	8 to 12 in. trans.	75	6 00
"	" " " "	18 to 24 in. trans.	85	
"	<i>opulus nanus</i> , <b>Dwarf</b> ,	8 to 10 in. trans.	90	8 00
"	<i>plicatum</i> , <b>Japanese Snowball</b> (True),	12 to 18 in. trans.	1 00	10 00
"	" " " "	2 ft. trans.	1 50	
"	<i>prunifolium</i> <b>Sheep-berry</b> ,	2 to 3 ft. trans.	1 50	12 00
"	<i>Sieboldianum</i> . (See <i>Japonicum</i> ).			
"	<i>tomentosum</i> ,	12 to 18 in. trans.	1 00	9 00
"	" " " "	2½ to 3 ft. trans.	1 00	9 00
"	" " " "	3 to 3½ ft. trans.	1 50	12 00

		Per 10	Per 100	Per 1000
<b>Vitex</b>	<b>Agnus castus, Blue,</b>	5 to 6 in. seed.	\$0 35	\$2 00
"	<b>incisa,</b>	5 to 6 in. seed.	35	2 00
<b>Weigela</b>	<b>amabilis, Light Pink,</b>	3 to 3½ ft. trans.	1 60	9 00
"	" " heavy,	4 to 5 ft. trans.	1 25	10 00
"	<b>arborea versicolor, Light Pink, heavy,</b>	4 to 5 ft. trans.	1 25	10 60
"	<b>candida, White,</b>	2½ to 3 ft. trans.	1 00	9 00
"	<b>Desboisii, Dark Pink,</b>	1 ft. trans.	85	
"	<b>nana variegata,</b>	18 in. trans.	1 00	9 00
"	" " heavy,	3 ft. trans.	1 25	11 00
"	<b>rosea, Rose,</b>	2 to 2½ ft. trans.	1 00	9 00
"	" " heavy,	2 to 3 ft. trans.	1 25	
<b>Zanthorhiza</b>	<b>apiifolia,</b>	8 to 15 in. trans.	1 00	9 00
<b>Zanthoxylon</b>	<b>piperitum,</b>	2 to 3 ft. trans.	2 50	20 00

## EVERGREENS.

All of our evergreens have been once or more transplanted. The larger sizes several times, and the choice varieties we move in a period not exceeding two years. These choice varieties are all dug with a ball of earth and the ball sewed in a mat. This makes transplanting almost an assured success. Our evergreens should not be confused with the low-priced plants frequently offered. We move them constantly in order to secure a good root growth, and they are less liable to loss when shipped.

		Per 10	Per 100	Per 1000
<b>Abies</b>	<b>Canadensis</b>	12 to 18 in. trans.	\$2 50	\$20 00
"	<b>excelsa, Norway Spruce,</b>	12 to 15 in. trans.	1 25	10 00
"	" " <b>inverta, Weeping Spruce,</b>	2½ to 3 ft. trans.	2 50	
"	" " " " " "	16 to 20 in. trans.	10 00	
"	" " " " " "	2 to 2½ ft. trans.	15 00	
"	" " <b>pyramidalis, Pyramidal Spruce,</b>	4 to 5 ft. trans.	15 00	
"	" " " " " "	6 ft specimen	35 00	
"	" " <b>Wale's Weeping,</b>	2 to 2½ ft. trans.	12 50	
"	" " " "	4 to 5 ft. trans.	20 00	
"	<b>Douglasi, Douglas Spruce,</b>	2 to 2½ ft. trans.	7 50	
"	" " " "	2½ to 3 ft. trans.	12 50	
"	<b>nigra, Black Spruce</b>	3 to 4 ft. trans.	12 50	
"	<b>nigra, Doumei,</b>	18 in. trans.	10 00	
<b>Andromeda</b>	<b>calyculata,</b>	6 to 10 in. trans.	1 75	15 00
"	<b>Catesbaei,</b>	1 ft. trans.	1 75	15 00
"	<b>polifolia,</b>	12 to 18 in. trans.	1 75	15 00
<b>Azalea</b>	<b>amœna,</b>	bushy, from pots, 10 in.	4 00	35 00

We have a large stock of *Azalea amœna* and grow them in pots because there is practically no danger of loss in transplanting when handled in this way.

<b>Biota</b>	<b>orientalis, Chinese Arbor Vitæ,</b>	6 to 8 in. seed.	35	2 00	\$12 00
"	" " " "	12 to 18 in. trans.	1 50		
"	" " " "	2 to 3 ft. trans.	2 50		
"	<b>elegantissima, Rollinson's Golden,</b>	6 to 12 in. trans.	1 25		
"	" " " "	2½ to 3 ft. trans.	3 50		
<b>Buxus</b>	<b>arborescens, Tree Box,</b>	heavy, 2½ to 3 ft. trans.	6 00		
"	" " " "	10 to 12 in. trans.	2 50		
"	" " " "	18 to 24 in. trans.	5 60		
"	" " " "	3 to 4 ft. trans.	12 50	115 00	
"	<b>arborescens (pyramids),</b>	3 to 3½ ft. trans.	17 50	150 00	
"	<b>Haudsworthii,</b>	18 in. high by 18 in. broad	15 00		
"	" " " "	2 to 3 ft. trans.	15 00		
"	" " (pyramids),	3 to 3½ ft. trans.	17 50		
"	<b>Japonica aurea, Golden, pyramids,</b>	3 ft. trans.	15 00		
"	" " " " " "	3 to 4 ft. trans.	20 00		
"	<b>rotundifolia</b>	4 to 4½ ft.	20 00		

		Per 10	Per 100	Per 1000
<b>Buxus sempervirens, for edging,</b>	8 to 10 in.	\$2 00	\$18 00	
" " "	10 to 12 in.	2 50	20 00	
" " "	18 in. high, 2 ft. broad	25 00		
" " "	18 in. high, 2½ ft. broad	30 00		
" " "	18 in. high, 3 ft. broad	40 00		
" " "	4 ft. untrimmed	25 00		
" <i>suffruticosa</i> , <b>Box edging,</b>	4 to 6 in.	50	5 00	\$50 00
<b>Calluna vulgaris, Heath,</b>	From 5-in. pots	3 00	25 00	
<b>Cedrus Atlantica glauca, Mt. Atlas Cedar,</b>	2½ ft., 6-in. pots	15 00		
<b>Cupressus Lawsoniana, Lawson's Cypress,</b>	12 to 18 in. trans.	2 00	15 00	
" " <i>Allumi</i> , <b>Blue Cypress,</b>	2 ft. trans.	10 00	90 00	
" " " "	5 to 6 ft. trans.	25 00		
<b>Daphne cneorum,</b>	extra bushy plants	5 00		
<b>Erica carnea, a beautiful pink Heath,</b>	4 in. clumps	2 50	20 00	
" <i>stricta</i> ,	From 5-in. pots	3 00	25 00	
" <i>vagans capitata</i> , <b>Scotch Heath,</b>	From 5-in. pots	3 00	25 00	
<b>Euonymus Sieboldiana,</b>	10 to 15 in. trans.	1 50		
<b>Ilex opaca, American Holly,</b>	6 to 12 in. trans.	2 50	20 00	
" <i>monticola</i> ,	12 to 18 in. trans.	1 50	12 00	
<b>Juniperus communis alpina, Low Juniper,</b>	12 to 15 in. broad	2 50	20 00	
" " "	2 to 3 ft. broad	3 50	25 00	
" " <i>aurea</i> , <b>Douglas' Golden,</b>	12 to 18 in. broad	4 00	35 00	
" <i>Hibernica</i> , <b>Irish Juniper,</b>	2 to 2½ ft. trans.	2 50	20 00	
" <i>Japonica aurea</i> , <b>Golden,</b>	2 to 2½ ft. trans.	10 00		
" " " "	3 to 4 ft. trans.	25 00		
" " " "	4 to 5 ft. trans.	35 00		
" " <i>alba variegata</i>	12 to 18 in. bushy	3 00	25 00	
" <i>sinensis argentea variegata</i>	3 ft. trans.	15 00		
" " " "	4 to 5 ft. trans.	25 00		
" " <i>alba spica</i>	4 to 5 ft. trans.	30 00		
" <i>communis prostrata</i> ,	10 to 18 in. broad	2 50	20 00	
" " " "	18 to 24 in. broad	3 00	25 00	
" <i>Virginiana</i> , Upright form, <b>Red Cedar,</b>	2 to 3 ft. trans.	2 00	15 00	
" " <i>glauca</i> , <b>Blue Cedar</b>	3 to 3½ ft. trans.	13 50		
" " " "	5 ft. specimens	20 00		
" <i>suecica compacta</i> ,	8 to 12 in.	2 00	15 00	
" <i>Waukegan</i> , trailing,	1 ft. broad	2 50		
" " " "	18 to 24 in., broad	3 00	25 00	
<b>Kalmia angustifolia,</b>	18 in. with ball	5 50	50 00	
" " "	18 to 24 in. clumps	7 50	65 00	
" <i>latifolia</i> , <b>Laurel,</b>	12 to 18 in.	5 00	45 00	
" " " "	18 in.	6 50	60 00	
" " " "	18 to 24 in. bushy	7 50		
" " " "	2 to 2½ ft. specimens	15 00	125 00	
<b>Leiophyllum buxifolium,</b>	12 to 15 in. trans.	1 75	15 00	
<b>Leucothoe Catesbaei,</b>	1 ft. trans.	1 75	15 00	
<b>Mahonia aquifolia,</b>	10 to 12 in. trans.	75	6 00	50 00
" <i>Japonica</i> ,	10 to 15 in. trans.	85	7 00	
<b>Picea Balsamea, Balsam Fir,</b>	1 ft. trans.	1 25	10 00	
" <i>concolor</i> ,	2 to 3 ft. trans.	17 50		
" <i>Englemanni</i> ,	18 to 24 in. trans.	1 50		
" <i>pectinata</i> , <b>European Silver Fir,</b>	1 ft. trans.	1 25	10 00	
" <i>Nordmanniana</i> , <b>Nordmann's Fir,</b>	1 ft. trans., heavy	5 00	40 00	
" " " "	2 ft. trans.	7 50	60 00	
" <i>pungens glauca</i> , <b>Col. Blue Spruce,</b>	2 to 2½ ft. trans.	15 00		
" " <i>Kosteriana glauca</i> , <b>Extra Blue,</b>	18 in. trans.	20 00		
" " " "	2 to 2½ ft.	25 00		
<b>Pinus Austriaca, Austrian Pine,</b>	12 to 15 in. trans.	1 00	8 00	
" " " "	18 in. trans.	1 25	10 00	
" <i>cembra</i> , <b>Swiss Stone Pine,</b>	6 to 8 in. trans.	5 00		
" " " "	2 to 2½ ft. trans.	10 00		
" " " "	4 ft. trans.	12 50	100 00	
" " " "	4 to 4½ ft. specimens	20 00		

		Per 10	Per 100	Per 1000
<b>Pinus</b>	<b>excelsa, Himalayan Pine,</b>	2 to 2½ ft.	\$ 7 50	
"	Massoniana,	3 to 4 ft. trans.	10 00	
"	strobis, <b>White Pine.</b>	8 to 12 in. seed.	35	\$ 2 00
"	" " "	2 ft.	2 50	20 00
"	sylvestris, <b>Scotch Pine,</b>	1 ft. trans.	1 00	8 00
"	" " "	2 ft. trans.	1 75	15 00
<b>Retinispora</b>	<b>filifera</b>	5 to 6 ft. specimen	40 00	
"	" aurea, golden	18 in. trans.	15 00	
"	obtusa,	3 to 4 ft. trans.	12 50	115 00
"	" "	4 to 5 ft. trans.	15 00	
"	" "	6 ft. specimens	50 00	
"	" compacta	12 to 15 in. trans.	3 00	25 00
"	" magnifica	4 ft. trans.	20 00	
"	pisifera,	3 to 4 ft. trans.	12 50	
"	" "	4 to 5 ft. trans.	15 00	
"	" "	5 to 6 ft. trans.	17 50	
"	" "	6 to 7 ft. specimens	25 00	
"	" aurea, golden	3 to 4 ft. trans.	12 50	
"	" "	5½ to 6 ft. specimens	50 00	
"	plumosa,	18 to 24 in. trans.	3 00	25 00
"	" "	3 to 4 ft. trans.	12 50	
"	" "	6 to 6½ ft. 4 ft. dia.	60 00	
"	" "	8 ft. specimens	80 00	
"	" aurea, golden	18 in. bushy	3 00	25 00
"	" "	3 to 4 ft.	12 50	
"	" "	4 ft. specimens	25 00	
"	" "	5 to 6 ft. specimens	50 00	
"	" "	7 ft. specimens	60 00	
"	" sulfurea, golden	5½ ft. specimens	40 00	
"	squarrosa, silver	3 to 4 ft.	12 50	
"	" "	4½ ft. by 2½ ft. broad	25 00	



Specimen Rhododendron. Large bushy plants, transplanted last spring. Each plant dug with a ball.

<b>Rhododendron</b>	<b>punctatum,</b>	1 ft. trans.	1 75	15 00
"	Hybrids, assorted colors,	18 to 24 in. 8 to 16 buds	8 50	80 00
"	" " " "	2 to 2½ ft., 12 to 20 buds	13 50	125 00
"	" " " "	2 to 3 ft., 12 to 20 buds	14 50	185 00
"	" " " "	2 to 2½ ft. diam. 2 to 3 ft. tall	20 00	

			Per 10	Per 100	Per 1000
<b>Rhododendron</b>	Hybrids, assorted colors,	2½ ft. diam., 3 ft. tall	\$30 00		
"	"	"	35 00		
"	"	"	15 00		
<b>Taxus</b>	<i>baccata aurea</i> ,	2½ to 3 ft.	15 00		
"	<i>erecta</i> ,	5 ft. specimens.	40 00		
"	"	<i>overneyder</i>	4 to 5 ft.	20 00	
"	"	<i>pendula</i> , <b>Weeping Yew</b> ,	2 to 2½ ft. trans.	12 50	
"	"	"	2½ to 3 ft. trans.	15 00	
"	<i>cuspidata</i> , <b>Japanese Yew</b> ,	"	1 ft., broad	15 00	
"	"	"	2 ft. high, 18 in. broad	25 00	
"	<i>Hibernica</i> , <b>Irish Yew</b> ,	"	2 to 2½ ft. trans.	12 50	
"	"	"	2½ to 3 ft. trans.	15 00	
"	"	"	4 ft. specimens. trans.	25 00	
"	"	<i>aurea</i> , <b>Golden Yew</b> ,	15 to 24 in. trans.	12 50	
"	"	"	2 to 2½ ft.	13 50	
"	"	"	heavy, 2½ to 3 ft. trans.	25 00	
"	"	<i>variegata</i> ,	18 to 24 in. trans.	12 50	
<b>Thuja</b>	<i>occidentalis</i> , <b>American Arbor-Vitæ</b> ,	"	6 to 12 in. trans.	85	\$6 00
"	"	"	with ball, 3 to 4 ft. trans.	10 00	75 00
"	"	"	"	4 to 5 ft. trans.	12 50
"	"	"	"	5 to 6 ft. trans.	15 00
"	"	<i>globosa</i>	8 to 10 in. bushy	2 25	20 00
"	"	"	15 to 18 in. hvy	5 00	
"	<i>pyramidalis</i> , <b>Pyramidal</b> ,	"	18 to 24 in. trans.	1 75	15 00
"	"	"	2 to 2½ ft. trans.	2 50	20 00
"	"	"	with ball, 3 to 4 ft. trans.	10 00	75 00
"	"	"	"	4 to 5 ft. trans.	12 50
"	"	"	"	5 to 6 ft. trans.	15 00

These American and Pyramidal Arbor-Vitæ are extra fine plants, several times sheared and transplanted. They will be dug with a ball and the ball sewed in burlap, insuring success in transplanting. If customers do not care to have them with a ball, they will be supplied at 10c. per tree less than prices quoted, but this will not be done unless expressly stated in the order.

<b>Thuja</b>	<i>occidentalis</i> Hoveyii, Globe,	heavy,	12 to 15 in. trans.	2 50	
"	"	"	15 to 18 in.	3 00	25 00
"	"	Geo. Peabody, <b>Golden</b> ,	6 to 10 in. trans.	2 00	
"	"	"	3 to 4 ft. trans.	13 50	
"	"	"	7 ft. specimens	40 00	
"	"	Meehanii, <b>Golden-tipped</b> ,	6 to 10 in. trans.	2 00	
"	"	<i>spiralis</i> ,	6 to 8 in. trans.	1 75	15 00
"	"	<i>Vervæneana</i> , <b>Golden variegated</b> ,	2½ ft. trans.	10 00	
"	"	"	3 to 3½ ft. trans.	12 50	
"	"	Victoria, <b>Silver-tipped</b> ,	3 to 4 ft. trans.	12 50	
<b>Tsuga</b>	<i>canadensis</i> , <b>Hemlock Spruce</b> ,	"	12 to 18 in. trans.	2 50	20 00
<b>Yucca</b>	<i>angustifolia</i> ,	"	2 yr., seedlings	35	2 00
"	"	"	3 yr., seedlings	40	3 00
"	<i>filamentosa</i> ,	"	1 yr., seedlings	25	1 00
"	"	"	2 yr., seedlings	35	2 00
"	"	"	4 yr., transplanted	90	7 00
"	"	"	5 yr., transplanted	1 25	10 00

## The Nursery Book A Complete Guide to the Propagation of Trees, Shrubs, Evergreens, etc.

BY PROF. W. L. BAILEY

A standard work of reference simply essential to every nurseryman. Reprinted for the sixth time. It is thoroughly practical and describes fully and clearly the processes of budding, grafting, seed-sowing, etc., as well as many other important items of nursery work, with convenient indexes, etc.

The Nursery List (an alphabetical catalogue of about 1,500 plants, with directions for their multiplication), is especially valuable.

Sixth Edition, \$1 00. 365 pages. 162 Illustrations

## VINES AND CLIMBERS.

		Per 10	Per 100	Per 1000
<b>Actinidia</b> arguta,	18 to 24 in. trans.	\$1 50		
" "	from 5 in. pots	2 50	\$25 00	
<b>Akebia</b> quinata,	1 ft. trans.	75		
" "	from 5 in. pots	2 50	25 00	
" "	from 6 in. pots	3 50	35 00	
<b>Ampelopsis</b> Englemanni,	2 year	50	2 50	\$20 00
" "	1 to 2 ft. trans.	85		
" "	<b>Veitchii, Japan. or Boston Ivy,</b> 1 year seed.	25	1 25	10 00
" "	" " 3 year trans. strong	1 25	10 00	
" "	<b>Virginica (Quinquefolia), Vir. Creeper,</b> 1 year seed.	25	1 25	10 00
" "	" " 2 year seed.	50	2 50	20 00
<b>Aristolochia</b> Siphon, <b>Dutchman's Pipe,</b>	6 in. pots	3 50		
" "	7 in. pots	5 00		
" "	2 to 3 ft. trans.	2 50		
<b>Bignonia</b> capreolata, <b>Ever'n Trumpet Vine,</b>	from 5 in. pots	3 50		
" "	1 year seed.	25	1 25	10 00
" "	radicans, <b>Trumpet Creeper,</b> 3 yr. 1 to 2 ft.	35	1 75	15 00
" "	" " 12 to 18 in.	50	4 00	30 00
" "	" " 2 ft.	60	5 00	40 00
" "	5 in. pots	2 50	25 00	
<b>Celastris</b> articulatus, <b>Jap. Staff Vine,</b>	8 to 12 in.	65	5 00	
" "	3 ft. trans.	1 00	8 00	
" "	scandens, <b>Staff Vine,</b> 1 year	65	5 00	
" "	" " 1 to 2 ft.	85	7 00	
<b>Clematis</b> paniculata,	2 years	65	5 00	40 00
" "	3 years	75	6 00	50 00
" "	5 in. pots	2 50	25 00	
" "	7 in. pots	3 50	35 00	
" "	<b>Virginiana, Virgin's Bower,</b> 1 year	65	7 00	
" "	" " 2 years	1 00	8 00	
" "	Hybrids, assorted, as follows, 2 years	2 50	22 00	
	Duchess of Edinburg, double White.	Henryii, White.		
	Gen'l Grant,	Jackmanni, purple,		
	Lanuginosa candida, White.	Mme. Edward Andre, Red.		
	Mme. Baron Villard.			
<b>Decumaria</b> barbara,	4 in. pots	2 50		
<b>Dioscorea</b> batatas, <b>Chinese Yam,</b>	3 in. pots	1 50		
<b>Euonymus</b> radicans, Green-leaved,	6 to 8 in.	1 00	8 00	
" "	4 in pots	2 00	20 00	
<b>Celsemium</b> sempervirens, Carolina Jessamine,	5 in pots	2 50	25 00	
<b>Hedera</b> Helix, <b>English Ivy,</b>	5 in. pots	2 50	25 00	
<b>Jasminum</b> nudiflorum, Yellow Jessamine,	5 in. pots	2 50	25 00	
" "	officinale,	5 in. pots	2 50	25 00
<b>Lonicera</b> Belgica, <b>Belgian Honeysuckle,</b>	12 to 18 in.	90		
" "	brachypoda, <b>Evergreen</b> " 5 in. pots	2 50	25 00	
" "	" " aurea reticulata, <b>Golden-l'd,</b> 18 in. trans.	90	8 00	70 00
" "	" " " 5 in. pots	2 50	25 00	
" "	<b>Halleana, Hall's Honeysuckle,</b> 5 in. pots.	2 50	25 00	
" "	" " " strong 3 years.	75	7 00	
" "	<b>Japonica, Japanese</b> " 18 to 24 in. trans.	90	8 00	
" "	sinensis purpurea, <b>Chinese</b> " 5 in. pots.	2 50	25 00	
<b>Lycium</b> chinensis, <b>Matrimony Vine,</b>	3 to 4 ft. heavy,	85	7 00	
" "	6 in. pots.	2 50		
<b>Menispermum</b> canadensis, <b>Moon Seed,</b>	12 to 18 in.	65	5 00	
<b>Passiflora</b> incarnata, <b>Passion Vine,</b>	4 in pots.	2 50	20 00	

		Per 10	Per 100	Per 1000
<b>Vitis</b> æstivalis, <b>Wild Grape</b> ,	12 to 18 in.	\$0 50	\$4 00	
“ cordifolia, “	1 year	25	1 50	\$10 00
“ heterophylla variegata,	1 year	35	2 00	12 00
“ “ “ “	5 in. pots.	2 50	25 00	
“ labrusca, <b>Wild Grape</b> ,	12 to 18 in.	50	4 00	
<b>Wistaria</b> frutescens, <b>American Glycine</b> ,	18 to 24 in.	50	4 00	
“ “ “ “	2 to 3 ft.	75		
“ “ “ “	5 in. pots	2 50		
“ magnifica.	12 to 18 in.	50	4 00	30 00
“ “ “ “	5 in. pots	2 50		
“ sinensis, <b>Chinese Blue Wistaria</b> ,	6 to 12 in.	35	2 00	12 00
“ “ “ “	18 in.	65	5 00	
“ “ “ “ <b>White</b>	5 in. pots	2 50	25 00	

## HARDY HERBACEOUS PERENNIALS. HARDY GRASSES AND FERNS.

		Per 10	Per 100
<b>Achillea</b> millefolium roseum, deep rose, July and August,		\$0 80	\$6 00
“ Ptarmica plena, pure white, double, July,		75	6 00
“ taygetea, canary yellow, summer,		1 00	8 00
“ tomentosa, golden yellow, July,		75	5 00
<b>Agrostemma</b> coronaria, crimson, June,		90	8 00
<b>Ajuga</b> genevensis, blue, May,		75	6 00
“ reptans,		75	6 00
<b>Alyssum</b> argenteum, yellow, May,		80	7 00
“ saxatile compactum, golden yellow, May,		75	6 00
<b>Anemone</b> Japonica alba, white, fall,		75	6 00
“ “ elegans, fall,		80	7 00
“ “ rosea, rose, fall,		75	6 00
“ “ rubra, red, fall,		80	7 00
“ “ Whirlwind, white, semi-double, fall,		80	7 00
“ Virginiana, white, July,		70	6 00
<b>Anthemis</b> tinctoria, yellow, July,		70	6 00
“ pallida, white, July,		80	7 00
<b>Anthericum</b> liliastrum, white, summer,		70	6 00
<b>Aquilegia</b> Chrysantha, yellow, June,		70	6 00
“ flabellata nana alba, large white, June,		1 00	10 00
“ vulgaris, blue and purple, June,		70	6 00
“ “ alba fl. pl., double, June,		1 00	9 00
<b>Armeria</b> alpina, deep rose, May,		70	6 00
“ maritima, pink, dwarf, May,		70	6 00
<b>Artemisia</b> pontica, silver foliage,		50	4 00
<b>Aster</b> alpina, bright purple, June and July,		1 00	8 00
“ “ alba, white, July,		2 00	15 00
“ “ superba, bright purple, June and July,		1 50	12 00
“ amethystinus, large pale blue, September,		80	7 00
“ longiflorus “Lady Trevellyn,” white, September,		80	7 00
“ Novæ Angliæ, pink, September and October,		70	6 00
“ Novi Belgi “Purity,” light blue, September,		80	6 00
“ “ “Robert Parker,” lavender, September,		80	6 00
“ “ “Top Sawyer,” lavender, September,		80	6 00
“ “ “White Queen,” white, September,		90	7 00
“ oblongifolius, lavender blue, September and October,		60	5 00
“ pyramidalis hybridus, lavender, September,		60	5 00
“ Tataricus, light purple, late fall,		75	7 00
“ Tradescanti, white, October,		60	5 00
“ turbinalis, mauve, October,		1 00	9 00



	Per 10	Per 100
<b>Begonia</b> Evansiana, handsome foliage.	\$1 00	\$9 00
<b>Belamcanda</b> chinensis, red orange, June to September,	75	6 00
<b>Bellis</b> perennis, pink, April, May,	50	4 00
"    white, "    "	50	4 00
<b>Betonica</b> officinalis, pinkish purple, July,	1 00	8 00
<b>Bocconia</b> cordata, buff, June to August,	1 00	8 00
<b>Boltonia</b> glastifolia, white, August and September,	75	6 00
"    latisquama, pale pink, August and September,	90	7 00
<b>Brunella</b> grandiflora, purple, summer,	75	6 00
<b>Campanula</b> carpatica alba, white, summer,	1 00	8 00
"    glomerata, blue, summer,	1 00	8 00
"    latifolia macrantha, blue, July,	75	6 00
"    pyramidalis, summer,	1 00	8 00
"    "    white, summer,	1 00	8 00
<b>Centaurea</b> macrocephala, yellow, July,	80	6 00
"    nigra variegata, golden yellow, variegated foliage.	80	6 00
<b>Chelone</b> Lyoni, rosy purple, August and September,	80	6 00
<b>Chrysanthemums</b> , "Hardy Pompoms." assorted varieties, fall, 2 in. pots	50	4 00

List of varieties of Pompon Chrysanthemums. The finest collection in the United States; attracting greatest interest at the fall exhibition of the Chrysanthemum Exhibition of the Pennsylvania Horticultural Society:

Name.	Color.	Size.
Autumn Queen,	Pink.	
Anna Mary,	Salmon pink, very light.	Tall.
Agalia,	Light yellow, shaded deep orange.	Tall.
Bedonia,	Mixture of garnet and white.	Dwarf.
Bridesmaid,	Light pink, dark edge.	Medium.
Bob,	Delicate pink.	Dwarf.
Blushing Bride,	Early, light pink.	Medium.
Brown Bessie,	Beautiful, small brown.	Medium.
Garrastion,	Orange yellow.	Medium.
Climax,	Deep rosy pink.	Medium.
Chivvea,	White, tinted with pink.	
Captivation,	Rosy pink, shaded yellow.	Tall.
Drim Drim,	Smallest, bright orange.	
Dinizulu,	Rosy lake, very fine.	Tall.
Eugene Laueolet,	Yellow, tipped with red.	Tall.
Eleganta,	Deep pink, tipped and edged silver.	Tall.
Eagle d'Or,	Good clear yellow.	Tall.
Edna,	Clear glowing pink.	Dwarf.
Fairy Queen,	Beautiful com. pink and yellow.	
Fire ball,	Yellow, tipped crimson.	Medium.
Fremy,	Terra-cota.	Medium.
Flora,	Golden yellow.	Dwarf.
Golden Fleece,	Large golden yellow.	
Golden Mme. Martha,	Clear orange yellow.	Tall.
Globe d'Or,	Clear, yellow, bushy.	Dwarf.
Golden Pheasant,	Small, orange yellow.	
Golden Standard,	Deep golden yellow.	Tall.
Gold Nugget,	Chrome yellow and bronze.	Dwarf.
Goldfinch,	Magnificent; gold, shaded crimson.	Tall.
Grandeur,	Deep yellow, shading crimson maroon.	
Grace Darling,	Dark red.	
Ivanhoe,	Beautiful light pink.	Dwarf.
Julia Lagrave,	Deep red.	Tall.
Jersey Beauty,	Small golden yellow.	Tall.
Jack,	Exquisite rose pink.	Medium.
Kadar,	Clear magenta.	Dwarf.
Labanah,	Pale primrose pink.	Tall.
L'Ami Conderschlerdt,	Small sulphur white.	Dwarf.
La Favorite,	Rose pink, white.	Medium.

Name	Color.	Size.
Little Pet,	Claret, perfect form.	Tall.
Ladysmith,	Rosy lake, tinged salmon.	Tall.
Maid of Kent,	White one of the best.	Tall.
Maid of Honor,	Deep rose.	
Martin's White,	Creamy white, good form.	Tall.
Mr. Kanauf,	A beautiful shade of pink.	
Mr. Schmidt,	Very deep yellow and red.	
Mrs. Vincent,	Large, purple rose.	Tall.
Mrs. Snyder,	Clear yellow, large.	
Model.	White.	Tall.
Model of Perfection,		
Mrs. Wheeler,	Pink, quilled centre.	
Naomi,	Soft rose.	Medium.
Nellie Bly,	Light pinkish lilac.	Tall.
Nellie Rainford,	Orange salmon tipped red.	Dwarf.
Princess Louise,	Yellow overlaid with tawny red.	Medium.
President,	Deep violet rose.	Tall.
Prince of Wales,	Magnificent, pure white.	Tall.
Psyche,	Pale pink and white.	Medium.
Prince Victor,	Brownish red.	Tall.
Queen of Bul,	Beautiful brown rose.	Tall.
Regulus,	Very deep purplish red.	Tall.
Rosinante,	Blush, shaded sulphur.	Medium.
Rosamond,	Purplish white.	
Rhode,	White, pink shading.	Medium.
Richard Franklyn,	Large, rosy carmine, edged white.	
Sheshur,	Bright chrome yellow and amber, dwarf.	
St. Illoria,*	Silver pink, very large.	
Strathmeath,	Clear pink.	Tall.
Snowflake,	Pure white.	Medium.
Souer Melanie,	Fine, pure white.	Small, tall.
Tisri,	Large, deep pink.	
Tiber,	Garnet, overlaid with bronze.	Dwarf.
Thalia,	Small white.	Medium.
Titus,	Small white.	Dwarf.
Thomas Long,	Light pink, tipped white.	Dwarf.
Victor,	Claret color.	Tall.
Yellow Queen,	Grand golden bronze, shaded old gold.	Medium.
Jardin des Plantes,	White.	Medium.

	Per 10	Per 100
<b>Chrysanthemum</b> nipponicum, white, September and October, . . . . .	\$1 00	\$8 00
<b>Clematis</b> Davidiana, blue, August and September, . . . . .	1 00	8 00
"    recta, white, June, . . . . .	1 00	9 00
<b>Convallaria</b> majalis (Lily of the Valley), white, . . . . .	40	3 00
<b>Coreopsis</b> lanceolata grandiflora, golden yellow, summer, . . . . .	60	5 00
"    "    rosea, rose, September and October, . . . . .	50	4 00
"    "    senifolia, yellow, July and August, . . . . .	60	5 00
<b>Delphinium</b> chinense, Chinese Larkspur, blue and white, June to August, . . . . .	1 00	9 00
"    "    album, white, June to August, . . . . .	1 25	10 00
"    "    elatum, blue and purple, June to August, . . . . .	1 00	8 00
"    "    formosum, indigo blue, June to August, . . . . .	1 00	8 00
<b>Dianthus</b> plumarius, single, Scotch pink, May and June, . . . . .	1 00	8 00
"    "    "Her Majesty," double white, " " . . . . .	1 00	8 00
"    "    "Lord Lyon," deep pink, " " . . . . .	1 00	8 00
"    "    "May," pink, fringed petals, " " . . . . .	1 00	8 00
"    "    variabilis, white, maroon marked, " " . . . . .	1 00	8 00
<b>Dicentra</b> spectabilis, Pink, May, . . . . .	80	6 00
<b>Digitalis</b> grandiflora, yellow, June to July, . . . . .	90	8 00
"    "    monstrosa, . . . . .	75	6 00
"    "    purpurea, . . . . .	75	6 00
"    "    white . . . . .	75	6 00

	Per 10	Per 100
<b>Doronicum</b> plantagineum excelsum, yellow, April and May, . . . . .	\$1 00	\$9 00
<b>Echinacea</b> purpurea, pink, July, . . . . .	1 25	10 00
<b>Eranthis</b> hyemalis, yellow, March and April, . . . . .	2 00	15 00
<b>Erigeron</b> aurantiaca, . . . . .	1 00	8 00
"    speciosus, lavender, summer, . . . . .	80	6 00
<b>Eryngium</b> planum, bright blue, June, . . . . .	80	6 00
<b>Eupatorium</b> celestinum, deep blue, September, . . . . .	1 00	8 00
<b>Euphorbia</b> corollata, white, July and August, . . . . .	1 00	8 00
<b>Funkia</b> Fortunii, pale blue, July, . . . . .	80	7 00
"    Japonica, pure white, September, . . . . .	1 00	8 00
"    lancefolia, blue, August, . . . . .	75	6 00
"    ovata, lilac, August, . . . . .	1 00	8 00
<b>Caillardia</b> grandiflora, newest hybrids, gold and brown, summer, . . . . .	75	6 00
"    "    superba, gold and brown, summer, . . . . .	75	6 00
<b>Geranium</b> sanguineum, deep rose, June to September, . . . . .	1 00	7 00
<b>Gnaphalium</b> Leontopodium, "Edelweiss," silvery foliage and flowers, . . . . .	1 00	9 00
<b>Cypripedium</b> paniculata, white, July and August, . . . . .	1 00	8 00
<b>Helenium</b> autumnale superbum, clear yellow, August, . . . . .	80	6 00
"    Bigelovii, yellow, August, . . . . .	1 00	9 00
"    grandicephalum striatum, yellow, striped with brown, August, . . . . .	75	6 00
"    Hoopesii, orange yellow, June, . . . . .	1 75	11 00
<b>Helianthus</b> decapetalus multiflorus plenus, double yellow, summer, . . . . .	1 00	9 00
"    "    anemonaeflora, yellow, July, . . . . .	1 50	12 00
"    "    doronocoides, yellow, July and August, . . . . .	75	6 00
"    "    giganteus, yellow, August to September, . . . . .	75	6 00
"    "    grosse-serratus, yellow, September, . . . . .	75	6 00
"    "    laetiflorus, yellow, August to September, . . . . .	75	6 00
"    "    mollis, yellow, August, . . . . .	60	5 00
"    "    orgyalis, yellow, September and October, . . . . .	75	6 00
"    "    rigidus, "Miss Melish," Sept. and Oct., yellow brown centre, . . . . .	75	6 00
<b>Heliopsis</b> Pitcheriana, orange, mid-summer, . . . . .	80	7 00
<b>Hemerocallis</b> flava, lemon yellow, June, . . . . .	80	6 00
"    "    fulva, bronze, August, . . . . .	75	6 00
"    "    "    fl. pl. "Kwanco," double, August, . . . . .	80	6 00
"    "    graminea, yellow, summer, . . . . .	80	7 00
"    "    rutilans, orange, summer, . . . . .	1 00	8 00
"    "    Thurbergii, lemon yellow, July and August, . . . . .	1 00	8 00
<b>Heuchera</b> sanguinea, crimson, June and July, . . . . . 4 in. pots	1 00	8 00
<b>Hibiscus</b> moscheutos, white, August, . . . . . 2 yr. strong	1 00	9 00
<b>Hieracium</b> stolonifera, yellow, June, . . . . .	40	3 00
<b>Hollyhocks</b> , Allegheny, . . . . .	1 20	8 00
"    "    Double, apple blossom, . . . . .	1 50	10 00
"    "    "    carmine, . . . . .	1 20	8 00
"    "    "    chamois on violet ground, . . . . .	1 20	8 00
"    "    "    light amaranth, . . . . .	1 20	8 00
"    "    "    pale sulphur yellow, . . . . .	1 50	10 00
"    "    "    rose, . . . . .	1 25	8 00
"    "    "    white, . . . . .	1 25	8 00
"    "    "    yellow on violet ground, . . . . .	1 50	10 00
"    "    Single, mixed, . . . . .	1 00	8 00
<b>Iberis</b> semperflorens superbum, large white flowering, spring, . . . . .	1 00	8 00
"    "    sempervirens, evergreen, spring, . . . . .	80	6 00
"    "    Tenoreana, spring, . . . . .	1 00	8 00
<b>Inula</b> helenium, Elecampagne, yellow, July . . . . .	1 00	8 00
<b>Iris</b> Cengialti, deep lavender, . . . . .	80	6 00
"    "    cuprea, copper color, May, . . . . .	80	6 00
"    "    Florentina, white, May, . . . . .	60	4 00
"    "    Germanica, assorted, named, May and June, . . . . .	60	4 00
"    "    graminea, blue, May, . . . . .	60	5 00
"    "    lavigata (Kämpferi), mixed, July, . . . . .	80	6 00
"    "    "    assorted, named, July, . . . . .	1 50	12 00
"    "    "    pallida Dalmatica, light blue, June, . . . . .	1 25	8 00
"    "    "    spectabilis, blue, June, . . . . .	1 00	8 00

		Per 10	Per 100
<b>Iris</b>	pseud-acorus, yellow, June. . . . .	\$0 80	\$5 00
"	pumila, rich blue, early spring, . . . . .	60	5 00
"	Sibirica, blue, June, . . . . .	60	5 00
"	" white, June, . . . . .	60	5 00
"	" " Orientale, indigo blue, June, . . . . .	75	5 00
"	stenophylla, blue, June, . . . . .	1 00	7 00
"	tectorum, lavender, May, . . . . .	1 25	9 00
<b>Lamium</b>	purpureum variegatum, pink, May, . . . . .	50	4 00
<b>Lathyrus</b>	grandiflorus, pink, summer, . . . . .	1 50	
<b>Lavendula</b>	vera, lavender, July, . . . . . 2 in. pots	70	6 00
<b>Liatrus</b>	scariosa, purple, September, . . . . .	70	6 00
<b>Lilium</b>	aurantum, Golden banded lily of Japan . . . . . 5 in. pots	2 00	15 00
"	candidum, Annunciation lily, . . . . . 5 in. pots	1 00	8 00
"	longiflorum . . . . . 5 in. pots	2 00	15 00
"	speciosum, album . . . . . 5 in. pots	2 00	15 00
"	" roseum . . . . . 5 in. pots	2 00	15 00
"	tigrinum splendens, Tiger Lily, orange, spotted black, August, . . . . .	60	5 00
<b>Linum</b>	perenne, azure blue and white flowers, June, . . . . . 2 in. pots	50	4 00
<b>Lobelia</b>	cardinalis, bright red, August, . . . . . 4 in. pots	75	5 00
<b>Lotus</b>	corniculatus, yellow, summer and fall, . . . . .	75	6 00
<b>Lychnis</b>	chalcedonica, scarlet, July, . . . . .	1 00	8 00
"	flos-Jovis, scarlet, May, . . . . .	75	6 00
"	viscaria splendens, red, July, . . . . .	50	4 00
<b>Lysimachis</b>	clethroides, white, July to September, . . . . .	75	5 00
"	verticillata, white, July, . . . . .	75	5 00
"	vulgaris, yellow, August, . . . . .	75	5 00
<b>Lythrum</b>	roseum superbum, rose, August and September, . . . . .	1 00	7 00
<b>Monarda</b>	didyma, bright scarlet, " " " " . . . . .	1 00	7 00
"	splendens, " " " " . . . . .	1 25	8 00
"	purpurea, purple, August, . . . . .	1 00	9 00
<b>Montebretia</b>	crococsmiflora, . . . . .	50	4 00
<b>Oenothera</b>	Missouriensis, lemon yellow, summer, . . . . .	1 25	8 00
"	speciosa, large white, June and July, . . . . .	1 00	7 00
"	Youngi, pale yellow, . . . . .	1 00	7 00
<b>Opuntia</b>	Rafinesquii, yellow, . . . . .	60	5 00
"	" Greenii, yellow, . . . . .	60	5 00
<b>Pachysandra</b>	terminalis, evergreen, . . . . .	75	5 00
<b>Pæonia</b>	officinalis, early crimson, . . . . .	2 50	20 00
"	" alba, early white, . . . . .	2 50	20 00
"	" rosea, flesh pink, . . . . .	2 50	20 00
"	sinensis, assorted, named, . . . . .	2 00	15 00
<b>Papaver</b>	nudicaule, white, . . . . . 3 in. pots	1 00	8 00
"	" yellow, summer, . . . . . 3 in. pots	1 00	6 00
"	" orange, " . . . . . 3 in. pots	1 00	6 00
"	Orientele, shades of scarlet, June, . . . . .	1 00	8 00
<b>Passiflora</b>	incarnata, light blue, August and September, . . . . .	2 00	15 00
<b>Pentstemon</b>	diffusus, blue, June, . . . . .	1 00	8 00
"	Digitalis, white, July and August. . . . .	1 00	8 00
<b>Phlox</b>	amœna, pink, May, . . . . . 3 in. pots	80	6 00
"	decussata, assorted varieties named, summer, . . . . .	80	7 00
"	subulata alba, moss pink, white, May, . . . . .	70	5 00
"	" rosea, rose, May, . . . . .	70	5 00
"	" Sadie, lavender, May, . . . . .	80	5 00
<b>Physostegia</b>	denticulata, lilac white, July and August, . . . . .	70	6 00
"	Virginica, lilac, July and August, . . . . .	1 00	8 00
<b>Platycodon</b>	grandiflora, blue, July and August, . . . . .	1 00	7 00
"	fl. pl., July and August, . . . . .	1 25	8 00
"	Mariesii, blue, dwarf, July and August, . . . . .	1 00	7 00
<b>Plumbago</b>	Larpenæ, bright blue, August to October, . . . . . 3 in. pots	1 00	6 00
<b>Polemonium</b>	reptans, blue, May, . . . . .	80	6 00
"	Richardsonii, blue, May, . . . . .	80	6 00
<b>Potentilla</b>	hybrida, yellow and red, June, . . . . .	1 50	12 00
<b>Polygonum</b>	cuspidatum, white, August, . . . . .	1 00	6 00

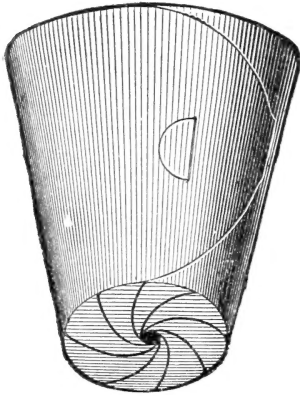
		Per 10	Per 100
<b>Primula</b> suaveolens, yellow, May, . . . . .	4 in. pots	\$1 00	\$7 00
<b>Pyrethrum</b> roseum, shades of pink and red, May and June, . . . . .		1 00	6 00
" uliginosum, white, July and August, . . . . .		1 00	7 00
<b>Ranunculus</b> acris fl. pl., yellow, May and June, . . . . .		70	5 00
<b>Rudbeckia</b> fulgida, golden yellow, July and August, . . . . .		70	6 00
" "Golden Glow," yellow, August and September, . . . . .		70	4 00
" maxima, yellow and brown, July and August, . . . . .		1 00	6 00
<b>Ruta</b> graveolens, yellow, summer, . . . . .		1 00	8 00
<b>Salvia</b> argentea, silvery foliage, . . . . .		1 00	8 00
<b>Santolina</b> incana, silvery foliage, . . . . .		60	4 00
<b>Saponaria</b> officinalis fl. pl., pinkish white, August and September, . . . . .		60	4 00
<b>Saxifraga</b> crassifolia, pink, early spring, . . . . .		60	4 00
<b>Sedum</b> album, white, August and September, . . . . .		75	5 00
" Hispanicum, pinkish, August, . . . . .		1 00	8 00
" hybridum, pink, August and September, . . . . .		80	6 00
" purpureum, dark red foliage, . . . . .		1 00	7 00
" sexangulare, Love-entangle, yellow, July and August, . . . . .		60	4 00
" spectabile, pink, August and September, . . . . .		1 00	8 00
" Telephium, pink, August and September, . . . . .		1 00	8 00
<b>Sempervivum</b> ruthenicum, pink, July, . . . . .		30	2 00
" tectorum, House-leek, . . . . .		30	2 00
" Verloti, . . . . .		30	2 00
<b>Sidalcea</b> malvæflora, pink, June and July, . . . . .		1 00	8 00
<b>Spiræa</b> Filipendula fl. pl., cream white flowers, May and June, . . . . .		80	6 00
" multiflora compacta, white, May and June, . . . . .		1 00	8 00
" ulmaria alba plena, double white, June and July, . . . . .		1 00	6 00
<b>Stachys</b> lanata, pink flowers, July . . . . .		75	5 00
<b>Statice</b> latifolia, lavender, August, . . . . .		1 00	6 00
<b>Stokesia</b> cyanea, purple, July to September, . . . . .		1 00	8 00
<b>Thalictrum</b> aquilegifolium roseum, rose, June, . . . . .		1 00	6 00
<b>Thermopsis</b> Caroliniana, yellow, May and June, . . . . .		70	5 00
<b>Thymus</b> serpyllum, Thyme, . . . . .		75	6 00
<b>Tradescantia</b> Virginica, alba, white, summer, . . . . .		1 00	8 00
<b>Tritoma</b> uvaria Tuckii, . . . . .		1 00	8 00
" "Pfitzerii coral, July to frost, . . . . .		1 00	8 00
<b>Veronica</b> candida, silvery foliage, blue flowers, June and July, . . . . .		1 50	12 00
" circæoides, blue, June, . . . . .		1 00	8 00
" Hendersonii, blue, August, . . . . .		1 00	8 00
" montana, blue, June and July, . . . . .		1 00	8 00
" spicata nana, blue, June and July, . . . . .		80	6 00
<b>Viola</b> Californian, blue, spring, . . . . .		1 00	8 00

## HARDY FERNS.

<b>Adiantum</b> pedatum, . . . . .		75	5 00
<b>Aspidium</b> acrostichoides, . . . . .		75	5 00
" marginale, . . . . .		75	5 00
" spinulosum, . . . . .		75	5 00
" Thelyptera, . . . . .		75	5 00
<b>Onoclea</b> sensibilis, . . . . .		75	5 00
" Struthcopteris, . . . . .		75	5 00
<b>Osmunda</b> cinnamomea, . . . . .		1 00	8 00
" Claytoniana, . . . . .		1 00	8 00
" regalis, . . . . .		1 00	8 00
<b>Polypodium</b> hexagonopterum, . . . . .		75	5 00
" vulgare, . . . . .		75	5 00
<b>Pteris</b> aquilina, . . . . .		75	5 00

## HARDY GRASSES.

<b>Calamagrostis</b> stricta variegata, . . . . .		80	6 00
<b>Erianthus</b> ravenna, . . . . .	5 in. pots	1 00	8 00
<b>Eulalia</b> Japonica, . . . . .		1 50	10 00
" gracillima, . . . . .		1 50	12 00
" " variegata, . . . . .		2 00	15 00
" zebrina, . . . . .		1 50	12 00



## Neponset Flower Pots

**UNBREAKABLE, LIGHT, ECONOMICAL**

Plants and Cuttings packed for shipment in our Neponset Flower Pots have a better protection than when wrapped in papers.

A great saving in freight is made over clay pots, weighing only one-tenth as much and no breakage. Made from the celebrated Neponset paper, which is absolutely waterproof. They are so constructed as to give ample drainage and allow plenty of air to the roots of the plant.

Send for sample and prices on seven different sizes, and compare with clay pots.

Size	Per 100	Per 1000	Weight	Per 1000 pots	Size	Per 100	Per 1000	Weight	Per 1000 pots
2 1/4 ...	\$0 25	\$2 20	20	pounds	4 ...	\$0 80	\$6 90	38	pounds
2 1/2 ...	30	2 40	23	"	5 ...	1 20	10 35	56	"
3 ...	45	3 90	33	"	6 ...	1 65	14 55	74	"
3 1/2 ...	60	5 15	44	"					

## TREE LABELS. Painted and Wired.

Discount 10 per cent. for a lot of ten thousand ordered and shipped at one time. The 3 1/2 inch are sold in packages of one thousand in a package. The 6 inch are in packages of one hundred. No less than a full package sold. These prices supersede previous quotations.

3 1/2 inch, notched, iron wired, painted.....	<b>\$1.00</b>	<b>per 1000</b>
3 1/2 " " " copper wired, painted.....	<b>1.25</b>	"
6 " " " painted, but not wired.....	<b>2.35</b>	"
6 " " " not painted or wired.....	<b>1.75</b>	"

### Tree and Shrub Seeds.

We issue a special catalogue of these. It will be mailed on application.

## Read "The National Nurseryman,"

**The Official Journal of the American Association of Nurserymen.**

A monthly Trade Publication devoted exclusively to the interests of the Growers and Dealers in Nursery Stock. For ten years it has recorded the news of the Trade exclusively.

Newspapers, magazines and periodicals of many kinds come to the business man's desk, but life is short and time is money. The journal that starts right in at the first page and deals directly and exclusively to the last page with the NURSERY BUSINESS is the one that richly repays the reading

Ten years ago nurserymen were dependent upon agricultural and a few horticultural publications for an occasional mention of a nursery item of news. Now they have their own trade journal thoroughly covering the field. Information in a single issue *has often proved of greater value than a year's subscription.*

Subscription price, \$1.00 per year.

**The National Nurseryman Publishing Company, Incorporated,**

205 Cox Building, Rochester, N. Y.

# RED ★ STAR RAFFIA

**BEST QUALITY**  
**LONG, WHITE STRANDS**  
**EXTRA STRENGTH**

There may be lower prices offered, but you will save money by buying THE BEST QUALITY. Ours is ALL ONE BRAND. And it is all alike. Beware of promiscuous brands at low prices.

WE ARE HEADQUARTERS and supply Raffia to nearly all the prominent nurserymen in the United States and Canada.

### IMMEDIATE SHIPMENT.

1 lb. (postpaid, 30c.)	15 cents per lb.
25 lbs.	12 " "
50 lbs.	11 " "
100 lbs.	10 " "
1 bale (about 225 lbs.)	9¼ " "
2 bales	9 " "
5 bales	Prices on application

## REGISTERING TREE CALIPER

Capable of measuring a tree from 1/8 inch up to 4 inches caliper. Can be adjusted to any size within this capacity. Nickel-plated.

**Postpaid for 75 cents**

## Pruning Shears Budding and Pruning Knives

The shears and knives offered, excepting the "Empire," are the celebrated "Maher & Grosh" make, which is sufficient guarantee of their excellence. No better knives are made. All blades are guaranteed "razor steel" and have been thoroughly tested.

Bear in mind, our prices are for the goods POSTPAID at your risk. If you wish them by registered mail add eight cents to your order.

### PRICES INCLUDE POSTAGE

Pruning Knife "A," . . . 75c. each, 6 for \$3.75

This is the best light-weight pruning knife on the market, and is suited to all general work. Ebony handle.

Pruning Knife "B," . . . 85c. each, 6 for \$4.75

Round handle, steel cap on end. Strong blade. Made for nurserymen who want a strong tool and keen edge. Blade oil tempered. The strongest pruning knife made.

The "Empire" Budding Knife, 80c. each, 6 for \$4.50

We warrant it. This is the finest budding knife on the market. Made expressly for us, and we warrant every knife to be first-class. Blade closes. Best razor steel. All ivory handle, tapered at end for raising the bark. If you want a good, durable budding knife, buy the "Empire."

Budding Knife "C," . . . 25c. each, 6 for \$1.30

Stationary blade. High temper, equal to any razor.

Budding Knife "D," . . . 35c. each, 6 for \$2.00

Cocoa handle, razor steel. Blade closes. The end of the handle is tapered to form a wedge for raising the bark.

Pruning Shears "E," . . . 75c. each, 6 for \$3.90

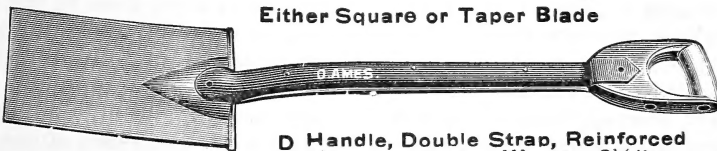
These are A No. 1 in quality and are the kind in general use

Pruning Shears "F," . . . \$1.00 each, 6 for \$5.75

This is a forged steel pruner, patent spring of wonderfully easy but powerful working capacity. There is not a stronger or better pruning shear on the market. It will out-wear two of any other style. The best is the cheapest in the end.

## THE BEST NURSERY SPADE.

SEND  
YOUR  
ORDER  
NOW



Either Square or Taper Blade

DON'T  
LEAVE IT  
TOO  
LATE

D Handle, Double Strap, Reinforced  
Nursery Spade. Weight, 9¼ lbs.

We have experimented with a number of different makes of nursery spades, but find this to be the strongest, best and most durable on the market. We have been using this spade for a number of years and it will stand more hard work than any other make. It is strapped full length of handle both back and front, and half way up it has double straps, strengthening it in what otherwise would be its weakest parts. When ordering state if straight or taper blade is wanted.

Price, \$1.75 each; \$20.00 per dozen.



AVENUE OF PIN OAKS IN FAIRMOUNT PARK, PHILADELPHIA, PLANTED IN 1876  
THIS IS CONSIDERED ONE OF THE FINEST AVENUES IN THE PARK