

Historic, archived document

Do not assume content reflects current scientific knowledge, policies, or practices.

PLANTS FROM
OUR PRICES REASONABLE. OUR SEEDS GROW.

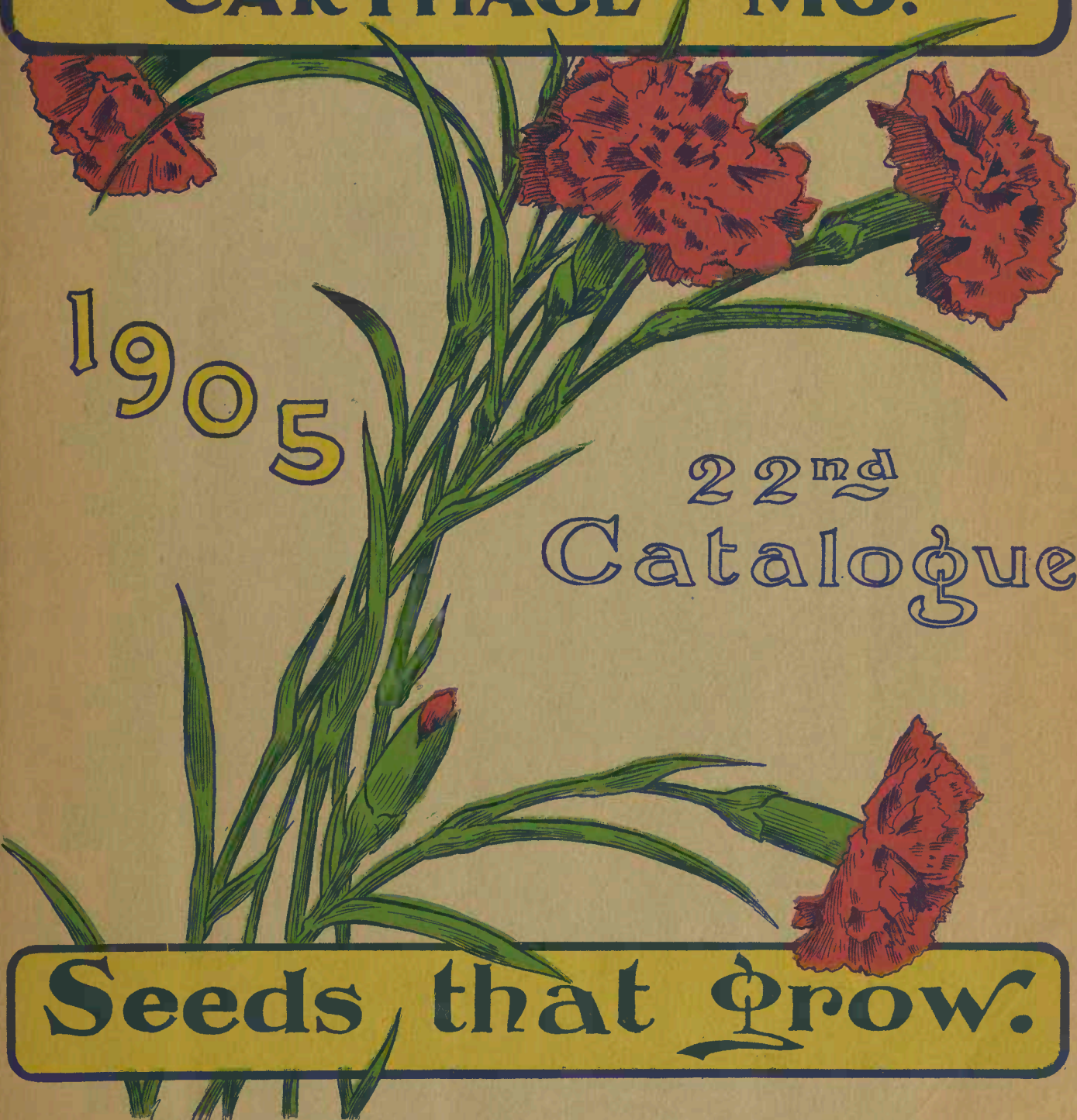
AVAILABLE SEEDS

LEARCHIAS SEED CO.
CARTHAGE Mo.

1905

22nd
Catalogue

Seeds that grow.



Read
This!

IMPORTANT TO WHOEVER
RECEIVES OUR CATALOG.

Our catalogue contains about all the best varieties of vegetable and flower seeds generally used. We save hundreds of dollars by conforming our stocks of seeds to this truth, as it saves the enormous expense of a large catalogue that gives no greater benefit, but confuses the customer in his selection of seeds on account of the great number of names, in many cases, representing one single variety of seed. The above is written from long study and experience. The purchaser has to pay for large expensive catalogues in the prices of seeds quoted in such issues.

We are using the common-sense plan. We catalogue only the best varieties, under their original names; thus we reduce greatly our catalogue expense and give that benefit to our customers in low prices. Showy pictures do not improve the quality of seeds, neither do they make them produce better. These are plain facts for good thinkers. Our prices and the quality of our seeds will convince our customers of the truth. Let us hear from you with liberal orders as a proof of good judgment. We will profit by your trade, you will profit with our seeds.

Respectfully,

L. E. ARCHIAS SEED CO.

How to Order. OUR TERMS. READ CAREFULLY. CASH WITH ORDER. No Goods Sent C. O. D. unless one-half the cost is remitted with order. Goods cannot be sent C. O. D. by freight.

FREE DELIVERY TO ANY POSTOFFICE IN THE UNITED STATES.

Postage Free.—We send all seeds by the packet, ounce or pound, or fraction thereof, postpaid by mail, on receipt of price given in catalogue; except for heavy seeds, such as Peas, Beans and Corn, for which add 15c per quart and 8c per pint to prepay postage.

Always Use the Order Sheet and Envelope sent with the catalogue, when possible. Write plainly, keep a copy of your order and be sure to sign your name plainly, postoffice, county and state, EVERY TIME YOU WRITE TO US. We will furnish extra envelopes and order sheets on application.

How to Send Money.—By express, draft, registered letter or postoffice money order. We will also receive clean 1c and 2c stamps, when other methods of sending money are not available.

We Sell half pound or over at pound rates; half bushel at bushel rates. In ordering half bushels or over up to two bushels, add 15c extra to pay for new seamless bags. Purchaser must also pay express or freight charges on bushel lots or fractions thereof.

We Guarantee All Shipments of seeds, bulbs, plants, implements, etc., shall reach the purchaser safely and in good condition, when sent by mail or express.

We Double Test all seeds, both as to vitality and purity, and we can conscientiously recommend ARCHIAS' NORTHERN GROWN TESTED SEEDS AS STRICTLY RELIABLE.

If You are a Market Gardener, send for Gardeners' and Planters' Price List.

FREE SEEDS and DISCOUNTS FOR LARGE ORDERS
BULK GARDEN SEED DISCOUNT.

On orders amounting to \$5.00, deduct 10 per cent.

On orders amounting to \$10.00, deduct 12 per cent.

On orders amounting to \$15.00, deduct 15 per cent.

Providing you use the prices given in this book and do not include any Grass Seed, Potatoes, Onion Sets, etc., on which we only give lowest net prices at time catalogue is issued.

Packet and Ounce Seed Discount.

For 25c we will send 30c worth of seeds in packets or ounces. For 50c we will send 65c worth of seeds in packets or ounces. For \$1.00 we will send \$1.30 worth of seeds in packets or ounces. For \$2.00 we will send \$2.65 worth of seeds in packets or ounces.

In taking advantage of our packet and ounce discounts, no larger quantity than packet or ounces of any kind can be included.

Free Seed.—In addition to the above liberal discounts, we make a rule of throwing in extra packets where liberal orders are sent in. Our packets are all well filled.

Our establishment occupies 20,000 square feet of floor space. Our shipping facilities are first-class.

Our Small Seed Department has been thoroughly remodeled and is up-to-date. Our office has also been enlarged and is one of the finest in the land.

Our business has grown in the last twenty-two years until now we stand among the largest and oldest houses west of the Mississippi river.

We employ only skilled labor in handling our seeds, bulbs and plants, thus insuring correct filling of orders, as well as prompt shipments.

OUR WARRANTY.—While we exercise great care in testing our seeds and having them reliable and true to name, we give no warranty, express or implied, and will not hold ourselves responsible for any failure thereof.

L. E. ARCHIAS SEED CO
113-115 Main St. CARTHAGE, MO.



OUR TRADE MARK. (ADOPTED 1901.)

OWING TO OUR GREATLY INCREASED TRADE and for the protection of our customers, we have adopted the Trade Mark shown here. See that this Trade Mark is properly stamped or printed on all tags and packages sent out by us.

UNIVERSAL IS THE BEST ALL-PURPOSE DUST SPRAYER

For orchards, vineyards, gardens, flowers, cotton, poultry, etc. Light and easily operated, like a bagpipe. Adjustable to throw a mere trace or a large volume; supplied with an automatic positive feed and stirrer; a nozzle to throw over the highest fruit trees. More effective and cheaper than Liquid Spray. Full directions: How to spray, what to spray and when to spray, with each Dust Sprayer.
PRICE—Universal Dust Sprayer.....\$10.



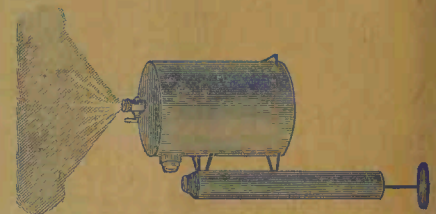
Gardeners' Dust Sprayer.....\$5

UTICA SPRAYERS.

The only Sprayer that has stood the test. Every Sprayer guaranteed satisfactory or money refunded. 100,000 now in use.

The Utica Blizzard Sprayer (High Pressure Compressed Air.)

The handiest and easiest Sprayer made for spraying Fruit Trees, Tobacco, Potatoes, Poultry Houses, Whitewash, etc. Holds 1 gallon. No. 35, galv. iron, \$2.00.



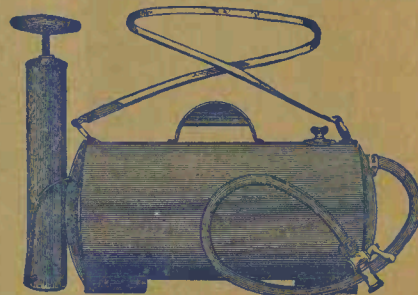
THE FAULTLESS SPRAYER.

—Made in brass and tin. Throws a spray as fine as mist. For spraying small fruits, vegetables, hen houses, horses, cattle, etc. Can use any poison in it. Kills all kinds of insects, thorough and economical. No home should be without one.
PRICE:

Tin \$0.75
Brass 1.25

Utica High Pressure Single Tank.

No. 3 galvanized iron tanks holds three gallons.
Price \$4.50



ALL THE UTICA SPRAYERS are operated by COMPRESSED AIR; their principles are thoroughly practical, and they are strong and durable. Special descriptive circulars mailed on application.

THE UTICA DOUBLE CYLINDER (High Pressure Compressed Air.)

Holds 4 gallons. Price \$5.50. No. 40 made of the best galvanized iron.



VEGETABLE SEEDS

of Special Merit. New and Choice



Archias' New Crimson Beauty.

A mammoth tomato of striking smoothness and beauty, color a rich glossy crimson; it is the largest cropper of any crimson variety known, and is very early for so large a tomato; it ripens fully as early as New Stone; flesh unusually firm, almost solid; 12 large fruits are sometimes borne in one single cluster, making a most strikingly beautiful sight; in flavor it has no equal; free growth and easy culture; does not rot nor crack; ripens full up to stem; keeps long; does best on trellis or tall stakes. Don't fail to add this tomato to your seed order. Pkt., 10c; 3 pkts., 25c; ½ oz., 25c; oz., 40c; ¼ lb., \$1.50.

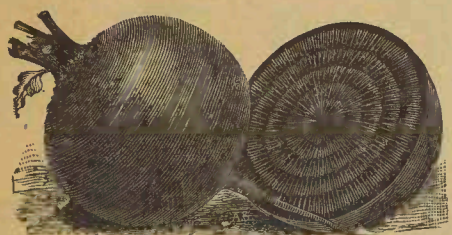


NEW SUNPROOF CABBAGE.

Certainly the best, most hardy, heat-resisting second early cabbage of all recent new and valuable introductions; very near as early as the Early Jersey Wakefield, producing heads sometimes reaching the enormous weight of 14 to 20 pounds; heads rather flat and very compact; cooks unusually tender and sweet; excellent flavor. Heads of this new cabbage when ready for use have but few loose outside leaves. Just the thing the family and market gardener have been looking for. Price, liberal pkt., 10c; oz., 35c; ¼ lb., \$1.00, postpaid. Don't fail to add this to your order.

Monte Cristo or Kleckley Sweet Watermelon

Where sweetness combined with large size is desired this variety will surely please, as it not only produces melons above the medium size, but has that crisp, sugary flavor so much desired in a watermelon. The vines are of vigorous growth, and produce a large crop of melons, which are of good size, oval shape, skin dark green and somewhat mottled. The rind is thin, thus making it undesirable as a variety to ship long distances, but sufficiently tough to stand carrying to nearby markets. The heart is large and solid and flavor all that could be desired. Pkt., 5c; oz., 10c; ¼ lb., 25c; lb., 80c.



New Crimson Globe Beet

This Beet is remarkable for its smooth skin and fine shape. We have been growing it on our trial grounds for several years, and could not help noting its many desirable qualities. It is a second early variety, does not grow large and coarse, the matured beets being medium in size and rather oblong in shape. The flesh and skin are both very dark and quality fine, being sweet and tender. The tops are small and dark in color. We are confident that this beet will please all who plant it. Pkt., 5c; oz., 10c; ¼ lb., 25c; lb., 90c.

Dreers Improved Pole Lima

A very superior early variety, of excellent quality and great productiveness. This variety is without doubt the best for private gardens, and will shell out more quarts of beans to the bushel of pods than any other Lima Bean, and the quality is much better than all others. The beans are thick through and cook rich and mealy. This variety will yield a full crop under conditions that would cause other varieties to blast. Pkt., 10c; pt., 20c (postpaid, 28c); qt., 35c (postpaid, 50c); 4 qts., \$1.25; peck, \$2.00, by express.

New Mastodin Lettuce.

Most wonderful type of Lettuce ever introduced, in its enormous size, quality, productiveness and general appearance. It forms solid, white heads, sometimes reaching the enormous weight of three to five pounds; exceedingly tender, crisp and sweet; beyond any doubt the most valuable addition to the Lettuce family ever introduced. All should have a packet of this new wonderful lettuce. Pkt., 5c; oz., 15c; ¼ lb., 50c; ½ lb., 75c; postpaid. Mastodon Lettuce made a big hit last year. Don't fail to try it.

Queen of the Garden Lettuce.

If you want an early, crisp, sweet, tender lettuce, this splendid variety will more than delight you. It is the first lettuce in spring and remains a long time in its tender, sweet condition; it withstands hot sun; light green colors; grow rather tall; somewhat resembles the Simpson varieties, but very much superior. Pkt., 10c; oz., 20c; ¼ lb., 70c.

May Queen.

The seed sprout quickly, and make the most remarkably rapid growth, maturing peas ready for the table in 38 days after germination. Very productive, easy to pick, pods good size. Peas of exceedingly fine flavor, tender and sweet; height 20 inches; does well with or without sticking. Pkt., 10c; pt., 25c; qt., 40c; peck, \$2.50, by express. 8c a pint and 15c a quart extra if wanted by mail.

FIRST OF ALL RADISH.

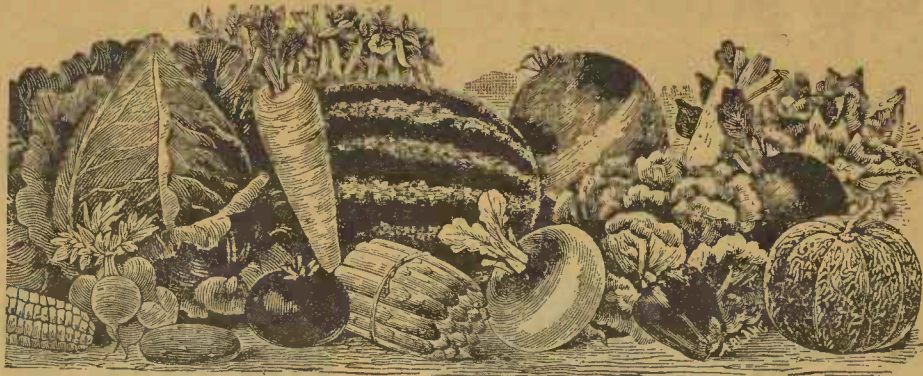
A beautiful half-long Radish of very early maturity. The color is rich deep scarlet, size medium, making it very dainty. The tops are small, roots grow uniform in size and shape, tapering to a fine point. The quality is fine, being delightfully crisp and juicy. We know of no half-long radish that will equal this new variety. Pkt., 10c; oz., 15c; ¼ lb., 40c; lb., \$1.25.



New Scarlet Globe Radish.

Those who like the crisp little red Radishes that come so early will be pleased with this variety. The Radishes grow globular in shape, and are of a most brilliant scarlet color. It will stand considerable heat; it is a quick grower, and the quality is fine, being crisp and tender. It is by far the best variety of recent introduction. It is an extremely valuable and desirable sort for planting in the home garden and for market gardeners' use. Pkt. 5c; oz. 10c; ¼ lb. 30c; lb. \$1.00.

We Offer one liberal package of each of the ten splendid varieties on this page, postpaid to any address, for 60c; or customer's choice of any five varieties on this page for 35c, postpaid.



Popular Varieties of Archias' Standard Northern-Grown Vegetable Seeds. TESTED AND SURE to Grow

Artichokes. Large Improved White Jerusalem; see Field Seeds, page 18

ASPARAGUS.



COLUMBIAN MAMMOTH WHITE—Shoots of the largest size, clear white, without the process of bleaching; superior in flavor and tenderness. Price, per oz., 10c; ¼ lb., 25c; 1 lb., 75c.

PALMETTO—Introduced by John Nix, Esq. He claims for it earliness, great yield, evenness of growth and superior quality. Oz., 10c; ¼ lb., 20c; 1 lb., 60c.

CONOVER'S COLOSSAL—One of the best varieties grown. Oz., 10c; ¼ lb., 20c; 1 lb., 60c.

ASPARAGUS ROOTS—See Plants and Roots, page 15.

BEANS.

SOME VARIETIES OF BEANS ARE SCARCER this year than ever before, especially wax podded varieties. We pay postage on all 10c pkts of Beans, Peas and Corns; otherwise add 8c a pt. and 15c a qt. to prices given on Peas and Beans to prepay postage.

BUSH BEANS—Green Podded Varieties.

BURPEE'S STRINGLESS GREEN POD BUSH BEANS GET MORE POPULAR EVERY YEAR.

The earliest of all green-podded bush beans. The only absolutely stringless green-podded bean in the market. The pod is round, full and larger and straighter than that of the Red Valentine. In quality it is superior to most other bush beans; of great value to the market gardener and canner, bears a long time and don't get tough. Pkt., 10c; pt., 15c; qt., 25c; pk., \$1.50; if by mail, add postage as above mentioned.

IMPROVED EARLY RED VALENTINE, ROUND POD—Productive. One of the most popular green-podded beans known and stands to-day without a superior; always acceptable in private or market gardens. Pkt., 10c; pt., 15c; qt., 20c; pk., \$1.10.

LONG EARLY YELLOW SIX WEEKS—Well known, long green pod; productive. Pkt., 10c; pt., 15c; qt., 20c; pk., \$1.25.

BEST VARIETIES FOR SHELLING.

WHITE MARROWFAT—Exclusively a shelling bean; exceedingly productive; cook mealy and tender; bean large. Pkt., 10c; pt., 15c; qt., 20c; pk., \$1.10.

CALIFORNIA BRANCH OR PROLIFIC TREE—A valuable variety for field culture. Twenty inches high, stiff, upright branches; often yields forty-five bushels to the acre. The bean closely resembles the white navy. Per pkt., 10c; pt., 15c; qt., 20c; pk., \$1.25; bu., \$4.00.

MEDIUM NAVY—Pt., 10c; qt., 15c; pk., 80c; bu., \$3.00.

SMALL NAVY—Pt., 10c; qt., 15c; pk., 80c; bu., \$3.00.

Wax-Podded Varieties

Archias' Superior Black Wax Bush Bean.

A DECIDED IMPROVEMENT on the common Black Wax bush bean, the result of careful selection. The plants are of good size and vigorous growth, free from runners; yields remarkable quantities of bright, waxy yellow pods of uniform size, stringless, excellent flavor and unusually early. Pkg., 10c; pt., 20c; qt., 35c; pk., \$1.75.

IMPROVED DWARF GERMAN WAX—(Black Seed.) A popular variety of unusual good merit; color of pod, waxy yellow; tender, productive. Pkt., 10c; pt., 15c; qt., 25c; pk., \$1.50.

NEW PENCIL-POD WAX—Pods long and straight, similar to a pencil; color, rich yellow; exceedingly hardy, productive, early and tender, one of the leading wax beans. Pkt., 10c;

pt., 20c; qt., 35c; pk., \$2.00.

CURRIE'S RUSTPROOF WAX—It has been claimed that this variety is absolutely rustproof, and we have found it like the

Detroit Wax, as nearly rustproof as any good wax-podded bean can be. Vine very vigorous, hardy and productive. In season the same time as Kidney Wax. Extensively used by truckers. Pkt., 10c; pt., 15c; qt., 25c; pk., \$1.50; bu., \$5.50.

Davis Kidney White Wax Beans.

The Bean for Market Gardeners and Canners.

Extraordinary productivity, extreme hardness and superior shipping qualities. It is the best WHITE seeded Wax Bean, of handsome appearance and sells well in market. The pods are long, straight, waxy white; always full of large plump beans. Being pure white, with no eye, it is just what the bean canner have been looking for. It is so productive that the vines are absolutely a mass of pods. It holds its pods well up from the ground. An excellent shell bean when dry. Pkt., 10c; pt., 15c; qt., 30c; pk., \$1.60.



Wardwell's Kidney Wax Beans.

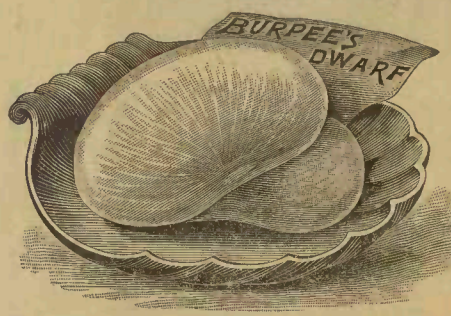
The vines of this variety are very large, strong-growing and vigorous, yielding a large crop of long, nearly straight, handsome, very white and wax-like pods. They ripen about with the Golden Wax. The best for market gardeners. Pkt., 10c; pt., 15c; qt., 30c; pk., \$1.65; bu., \$6.00.

IMPROVED RUSTPROOF GOLDEN WAX—This improved strain is destined to supercede the well-known Golden Wax, which it has greatly outyielded in repeated comparative trials. The straight, handsome pods are thicker through, superior in quality and are claimed by the originator to be absolutely rustproof. Per pkt., 10c; pt., 15c; qt., 25c; pk., \$1.50.

TWO GRAND BUSH LIMAS.

Burpee's Bush Lima.

Grows 18 to 20 inches high, each bush bearing from 50 to 200 handsome, large pods, well filled with very large beans, which are identical in size and luscious flavor with the well-known Pole Lima. Pkt., 10c; pt., 15c; qt., 25c; pk., \$1.50.



Henderson's Bush Lima

The true bush Lima. Grows in compact bush form, from 15 to 18 inches in height, and produces enormous crops, two weeks earlier than any of the climbing Limas, and produces a continuous crop until frost. A very small patch will keep a family supplied with this splendid vegetable. Try it. Pkt., 10c; pt., 15c; qt., 25c; pk., \$1.50.



We all want our money's worth. Archias Seeds meet this demand in prices, quality and quantity.

POLE BEANS Archias Improved Kentucky Wonder.



Here we are! Just what you have been looking for! This we regard as far ahead of any green pole bean. In our trial grounds it was fit for the table on August 1, which was at least 10 days earlier than other green sorts. It is enormously productive, the pods hanging in great clusters from top to bottom of pole. It is entirely stringless, and the pods are a silvery green color. The pods, though large, cook tender and melting. Per pkt., 10c; pt., 15c; qt., 25c; pk., \$1.50.

SOUTHERN PROLIFIC.

Growth rapid, matures in 90 days; highly esteemed in the South; pods brittle and tender. Pkt., 10c; pt., 15c; qt., 25c; pk., \$1.50.

WHITE DUTCH OR CASE KNIFE.

Snaps well when young, excellent for shell beans for winter use, yields well. Pkt., 10c; pt., 15c; qt., 25c; pk., \$1.50.

SCARLET RUNNER.

A great favorite, producing great clusters of beautiful scarlet flowers; a rapid grower, grown for its ornamental qualities. Pkt., 10c; pt., 20c; qt., 35c.

LAZY WIFE'S.

This new pole bean has become immensely popular. We presume it derives its name from its immense productiveness, making it very easy to gather a dish, and from the ease with which they are cooked. The pods are of a medium dark green color, are produced in great abundance, and measure

ARCHIAS' KENTUCKY WONDER.

from 4 1/2 to 6 inches in length; they are broad, thick, very fleshy, and entirely stringless. The pods retain their rich, tender and stringless qualities until nearly ripe, make excellent winter shell beans; vines are covered all summer with clusters of handsome pods. **Most highly recommended.** Pkt., 10c; pt., 15c; qt., 25c; pk., \$1.50; bu., \$5.50.

EARLY GOLDEN CLUSTER WAX POLE.—Begins to bear early in July and continues until frost. Six to 8 inches long, borne in clusters of 3 to 6, and of a beautiful golden yellow color. Pkt., 10c; pt., 15c; qt., 25c; pk., \$1.50.

CUT SHORT RED SPECKLED.—(Oval Seeded.) Good cornfield variety, good cropper, reliable, popular. The bean our grandmothers used to grow. Pkt., 10c; pt., 15c; qt., 25c; pk., \$1.50.

POLE LIMA BEANS.

KING OF THE GARDEN LIMA.—A very large sort, considered the most productive of the Limas. Pkt., 10c; pt., 15c; qt., 25c; pk., \$1.50.

DREER'S IMPROVED LIMA.—See page 2.

LARGE WHITE LIMA OR BUTTER.—Most universally grown, both for market and private use. Pkt., 10c; pt., 15c; qt., 25c; pk., \$1.50.

HORTICULTURAL CRANBERRY.—Beans round, oval, speckled; a popular variety, equally serviceable in the green state or when shelled. Pkt., 10c; pt., 15c; qt., 25c; pk., \$1.50.

CHOICE TABLE BEETS.

EDMOND'S EARLY BLOOD TURNIP.

The best sort for general crop. In quality one of the finest. Oz., 10c; 1/4 lb., 20c; 1 lb., 50c.

BEET ECLIPSE.

Has become exceedingly popular for its extreme earliness, possessing all the qualities requisite to a first-class beet. The roots are a bright glossy red, fine grained and delicious. Oz., 10c; 1/4 lb., 20c; 1 lb., 50c.

CRIMSON GLOBE BEET.

A decided novelty in the beet line. See novelties, page 2.

ARCHIAS A SELECT TABLE BEETS



Crosby's Egyptian.

An improved strain of the Egyptian beet. It is much thicker than the original strain, quite as early, of better color and quality; besides being smoother. Oz., 10c; 1/4 lb., 20c; 1 lb., 50c.

EARLY BLOOD RED TURNIP

The old reliable well known variety; best for family use. Oz., 10c; 1/4 lb., 20c; 1 lb., 45c.

EXTRA EARLY EGYPTIAN TURNIP.

Very early, deep crimson color; turnip shape, small top, tender and sweet. Oz., 10c; 1/4 lb., 20c; 1 lb., 50c.

EXTRA EARLY BASSANO.

Flesh white, circled with bright pink, of good flavor, shape somewhat resembling Early Egyptian. Oz., 10c; 1/4 lb., 20c; 1 lb., 50c.

ARCHIAS IMPROVED BLOOD TURNIP.

Fine turnip; form very symmetrical in shape and free from any fibrous roots. Flesh deep blood red, very tender and sweet; grows uniformly to a good size; early and, when sown late, desirable for winter. Oz., 10c; 1/4 lb., 20c; 1 lb., 60c.

DEWING'S EARLY BLOOD TURNIP.

An excellent blood turnip variety; about a week earlier than the Blood Turnip; deep blood red color, fine form and excellent flavor. Oz., 10c; 1/4 lb., 20c; 1 lb., 50c.

LONG BLOOD RED.

Used both for table and stock; resists drouth well; deep red, very sweet, keeps well during winter. Try it. Oz., 10c; 1/4 lb., 15c; 1 lb., 45c.

SUGAR AND STOCK BEETS FOR STOCK FEEDING.



\$ IN THEIR CULTURE

Farmers Read This.

STOCK BEETS are fast coming to the front in the Southwest as a safe and economical food for cattle, sheep and hogs, and even for horses. If farmers would feed more Stock Beets and less corn or other grain, their stock would be healthier and their profits far greater, since 15 to 20 tons of Beets can be grown to the acre, in spite of drouths. The Beets are rich in fatty matter, and all that is required to keep them is to hole them up in the field like turnips. Stock Beets are a healthy food and but little grain need be fed with them.

Special Prices to parties raising large quantities of Beets for stock.

More feed can be raised on one acre of Stock Beets than on 5 to 7 acres of corn and no more labor is required than on corn. Why cultivate five times as much land than is necessary? Send us 30 cents and receive Gregory's Book on Beet, Carrot and Turnip Culture, postpaid.

VILMORIN'S WHITE SUGAR.

Good for making sugar and for stock feeding; hardy and productive sort. Oz., 5c; 1/4 lb., 15c; 1 lb., 35c; 5 lbs. by express, \$1.25.

ARCHIAS' MAMMOTH LONG RED MANGEL.

A productive variety, used for cattle feeding. Eighty tons have been raised to the acre. Oz., 5c; 1/4 lb., 15c; 1 lb., 35c; 5 lbs., by express, \$1.25.

Golden Tankard Mangel Wurzel.

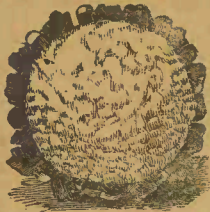
One of the best types of stock beets. Rich, golden stemmed; admits of close cultivation; rich in sugar and enormously productive. It is a beauty. Try it. Oz., 5c; 1/4 lb., 15c; 1 lb., 35c; 5 lbs. by express, \$1.25.



LAZY WIFE'S.



CAULIFLOWER



EXTRA EARLY DWARF ERFURT.
The favorite German variety. Dwarf habit; compact growth; short outside leaves; can be planted twenty inches apart. Pkt., 10c; large pkt., 25c; ¼ oz., 75c; oz., \$2.50.

SELECT EARLY SNOWBALL.
An extremely early dwarf variety, producing magnificent white heads of fine quality. Well adapted to hotbed or open ground culture. Pkt., 10c; large pkt., 25c; ¼ oz., 75c; oz., \$2.50.

We do not carry cheap Cauliflower Seed, as they are worthless.



Our Cabbage Seeds are Carefully Selected, and none in our lists will fail to give perfect satisfaction with proper treatment.

For early cabbage sow in hotbeds during February or March. Transplant as soon as ground is ready. When plants are large enough set in rows two feet apart, twenty inches apart, in rows. Sow late varieties first part of July. Ground should be deeply dug and well manured in the fall to insure best results in cabbage raising, and same preparation repeated in early spring. Plant late cabbage 2½ feet apart each way.

Our Cabbage Seeds are all the famous Long Island grown stock, not cheap, imported seed.

Use about two table-spoonfuls Armour's No. 356 Fertilizer as top dressing for each plant, one week after setting, in addition to well manured ground, your cabbage will always be earlier, larger and firmer. No. 356 costs only \$1.75 per 100 lbs. Produces many times its cost.

ARCHIAS' NEW EXTRA EARLY.

Earliest cabbage known. This new and very early cabbage while not as large as the Jersey Wakefield, is several days earlier, and for a first early variety cannot be excelled. It resembles the Etampes in character and appearance, having solid, compact heads of conical form, of yellowish-green color, very dwarf and very uniform. Desirable as a quick-forcing sort. Oz., 20c; ¼ lb., 60c; 1 lb., \$2.00.

EXTRA EARLY EXPRESS.

A very early sort, producing medium-sized heads, sharply pointed. Oz., 15c; ¼ lb., 40c; 1 lb., \$1.50.

SELECT EARLY JERSEY WAKEFIELD.

(True American-grown.) Very early; a remarkable sure header of good quality; one of the most profitable sorts. Oz., 20c; ¼ lb., 60c; 1 lb., \$2.00.

EARLY YORK—An old, popular variety. Oz., 15c; ¼ lb., 40c.

SECOND EARLY VARIETIES

SELECT EARLY WINNINGSTADT.

Cone-shaped heads, hard, desirable for early and late crop; quality is fine, very popular. Oz., 15c; ¼ lb., 40c; 1 lb., \$1.50.

THE CHARLESTON OR LARGE JERSEY WAKEFIELD.

This famous variety has all the fine qualities of the Early Jersey Wakefield; it produces heads of a much larger size, but is two weeks later. Oz., 20c; ¼ lb., 50c; 1 lb., \$2.00.

HENDERSON'S EARLY SPRING.

Earliest flathead, small size, heads 6 to 8 inches across, stalk very short, excellent quality. Oz., 20c; ¼ lb., 65c; 1 lb., \$2.00.

EARLY DWARF FLAT DUTCH.

An excellent variety, with flat, solid heads, of fine flavor; stands the heat well. Oz., 15c; ¼ lb., 50c; 1 lb., \$1.75.

New Summer Sunproof—See page 1.

TRUE ALL SEASONS.

Good second early variety; reliable header; has large, solid seeds, and is one of the largest of medium early varieties. Very popular. Try it. Oz., 20c; ¼ lb., 50c; 1 lb., \$1.75.

HENDERSON'S EARLY SUMMER, SELECT.

True American-grown. This variety is deservedly popular with market gardeners. It forms large, solid round, compact heads of excellent quality. The heads average over double the size of the Jersey Wakefield, while it matures only 10 or 11 days later. It grows well, making excellent heads where late varieties of cabbage do not succeed; it resists heat. Oz., 20c; ¼ lb., 60c; 1 lb., \$2.00.



BURPEE'S ALL HEAD EARLY.

Among the largest of the second early varieties. All-the-year-round cabbage. Oz., 20c; ¼ lb., 60c; 1 lb., \$2.00.

EARLY DRUMHEAD—Round, flat; one of the largest among the early sorts, best seed. Oz., 20c; ¼ lb., 60c; 1 lb., \$1.75.

SELECT LATE VARIETIES.

ARCHIAS' IMPROVED LARGE LATE FLAT DUTCH CABBAGE.

A superior strain of the Late Flat Dutch Cabbage, grown expressly for us. This variety will never fail to give entire satisfaction to the grower; its growth is uniform, producing heads of immense size and unusual solidity. Oz., 20c; ¼ lb., 60c; 1 lb., \$2.00.

DANISH BALL HEAD OR HOLLAND CABBAGE.

(Best Long Island.) The variety known as Ball Head has been selected and perfected for more than fifty years by the Danish gardeners. They prize it so highly they grow it almost exclusively for winter cabbage, and annually export large quantities to London and other ports. It will stand long journeys and keep far into the spring, and is of most rich and mild taste. Heads round as a ball, of good size, solid and very fine grained; of extremely delicate cooking quality. Oz., 20c; ¼ lb., 60c; 1 lb., \$2.00.

PREMIUM LARGE LATE FLAT DUTCH—A very select quality of late cabbage. A popular variety where late cabbage is grown. The seed from this variety is raised from well selected heads, large and solid; a sure header. Oz., 15c; ¼ lb., 50c; 1 lb., \$1.75.

MAMMOTH MARBLEHEAD—The largest cabbage in cultivation; head grows to an enormous size, compact and hard. Oz., 15c; ¼ lb., 50c; 1 lb., \$1.75.

BURPEE'S SURE HEAD.

(True.) A very reliable header; large, round, flattened head of the Flat Dutch type; a good keeper and shipper; exceedingly popular. Oz., 20c; ¼ lb., 60c; 1 lb., \$2.00.

LARGE LATE AMERICAN DRUMHEAD.

Heads large, round and compact; good for fall and winter use; a splendid kraut cabbage; very popular. Oz., 15c; ¼ lb., 50c; 1 lb., \$1.75.

MAMMOTH LATE RED ROCK—This variety is for pickling; of a deep purple color. Oz., 20c; ¼ lb., 60c.

COLLARDS—A species of cabbage very popular in the Southern states. Oz., 15c.

Don't spend your time and money on "Cheap Cabbage Seed," quoted in some catalogues as the best. Our prices are as low as the best American-grown seed can be sold for.

CARROTS.

EACH 5 CENTS PER PACKET.

Succeeds best in very rich, sandy soil. Three ounces of seed to 100 yards of drill. Large croppers; fine for stock or table; easily raised.

EXTRA EARLY FRENCH FORCING—An excellent forcing variety, very tender, fine flavor, small size.

DANVER'S HALF LONG SCARLET—A rich orange red variety; very smooth and handsome, producing very large crop. An excellent market variety. Oz., 10c; ¼ lb., 25c; 1 lb., 75c.

EARLY SCARLET HORN—(Blunt Root.) Recommended both for family and market gardeners; fine flavor. Oz., 10c; ¼ lb., 25c; 1 lb., 75c.

IMPROVED LONG ORANGE—A large red carrot; popular variety for winter use; of fine flavor; carrots keep well pitted. Oz., 10c; ¼ lb., 20c; 1 lb., 65c.

STOCK CARROTS.

LARGE YELLOW BELGIAN—Root pure white, with small top. It will grow to a very large size; flesh rather coarse; is raised exclusively for stock. Oz., 10c; ¼ lb., 20c; 1 lb., 60c; 5 lbs. by express for \$1.50.

ANY VARIETY 5c PER PKT.

Do not plant Cucumber seed before danger of frost has passed, as the plants are very tender and the least frost will damage or kill them. Plant in hills or rows 4 feet apart, drop 10 to 15 seeds to each hill. Make soil very rich. For pickles plant from May 1st to middle of July.

IMPROVED EXTRA LONG GREEN TURKEY.

An extra fine variety; grows very long; productive for early and late crops; excellent for pickles. Oz., 10c; ¼ lb., 30c; 1 lb., \$1.00.

ARLINGTON WHITE SPINE.

In the vicinity of Boston this is the favorite sort for slicing. Oz., 10c; ¼ lb., 30c; 1 lb., \$1.00.

COY'S "CUMBERLAND."

This is a distinct new pickling cucumber, obtained by crossing the White Spine and Paris Pickling. It combines the good qualities of both parents. The fruits are borne in abundance. They are straight and symmetrical, and, like the Paris Pickling, set with fine spines over the entire surface, excepting only at the extreme stem end. The flesh is firm, crisp and tender. Per pkt., 5c; oz., 15c; ¼ lb., 50c; 1 lb., \$1.50, postpaid.

EARLY FRAME.

Early sort for table use or pickles; size medium, handsome and straight. Oz., 10c; ¼ lb., 30c; 1 lb., \$1.00.

IMPROVED EARLY WHITE SPINE.

(Very Productive.) For table use, slicing or pickling. Oz., 10c; ¼ lb., 50c; 1 lb., \$1.50.

EARLY CLUSTER.

Early, short and prickly; bears in clusters. Oz., 10c; ¼ lb., 30c; 1 lb., \$1.00.

BURPEE'S WHITE WONDER—The cucumbers are thickly set throughout the length of the vine and are remarkably uniform in color, shape and size. Oz., 10c; ¼ lb., 30c; 1 lb., \$1.00.

CUCUMBERS.



CUCUMBERS—Continued.

LIVINGSTON'S EVERGREEN CUCUMBER.

Quite distinct from the Evergreen White Spine. More nearly resembles Niphol's Medium Green; equally as smooth and handsome, but does not turn yellow quickly when exposed for sale. It is early, of strong, vigorous growth, withstanding drouth, and is very prolific, bearing abundantly until frost. It possesses every qualification of a perfect pickle sort. Oz., 10c; ¼ lb., 30c; 1 lb., \$1.00.



Gherkin or Burr. Oval shaped and prickly; for pickling only. Oz. 15c

NEW JAPANESE CLIMBING.

Vines are extra strong and foliage much more vigorous than other kinds, and being a climbing sort can be grown on trellises, fences, etc., saving valuable space in small gardens. It is very prolific, from 40 to 60 cucumbers having been counted on a single plant; fruit cylindrical, about 10 inches long, thick and fine flavor. Oz., 10c; ¼ lb., \$1.00.



NEW JAPANESE CLIMBING CUCUMBER

IMPROVED GREEN PROLIFIC CUCUMBER—Here we have a cucumber that will please everyone. It is easy to cultivate, both late and early; very productive, in fact literally covering the ground with its fruit; fruit is green in color; shape long; excellent for pickling or slicing. Oz., 10c; ¼ lb., 30c; 1 lb., \$1.00.

THORBURN'S EVERBEARING—Small sized, very early and very enormously productive and valuable as a pickler. Oz., 10c; ¼ lb., 30c; 1 lb., \$1.00.

CHICAGO OR WESTERFIELD PICKLING—Very popular with Chicago market gardeners and extensively grown in that vicinity. Fruit medium length, pointed at each end, with very large and prominent spines; color deep green. Oz., 10c; ¼ lb., 30c; 1 lb., \$1.00.

OUR SEEDS

are grown for us in the North, East and West by the most reputable and popular seed specialists of America. Beware of many varieties introduced under new names in flashy colored catalogues and others that are offered at "cheap" prices.

CELERY.

LARGE PACKETS, ANY VARIETY, 5 CENTS.

We supply many large growers with our superior Celery Seed.

CELERY PLANTS—See Vegetable Plants and Roots. Page 15.

CULTURE—Celery can be successfully grown with but little labor in any good garden soil, if plenty of well rotted manure or high grade fertilizer is used. It delights, however, in low, moist, rich bottom land, or well drained muck soil. It is usually grown as a second crop, and irrigated in dry weather through trenches left between rows.

GOLDEN SELF BLANCHING—The ribs are perfectly solid, crisp, brittle and delicious of flavor, surpassed by no other variety, while it has the decided merit of being self blanching to a remarkable degree. Oz., 30c; ¼ lb., \$1.00; 1 lb., \$3.50.

DWARF GOLDEN HEART

—It is solid and an excellent keeper; fine, nutty flavor. When blanched the heart, which is large and full, is of a light yellow. Oz., 15c; ¼ lb., 40c; 1 lb., \$1.50.

BOSTON MARKET

—A favorite variety. Remarkable for its tender, crisp and succulent stems and its mild flavor. Oz., 15c; ¼ lb., 40c; 1 lb., \$1.50.

WHITE PLUME

—Early. The stock and heart are white, so that by drawing the dirt up to it the process of bleaching is easy and complete. Leaves silvery white, fine flavor, solid and crisp. Oz., 20c; ¼ lb., 60c; 1 lb., \$2.00.

GIANT WHITE SOLID

—Fine large size, tall and of stiff growth. Oz., 15c; ¼ lb., 40c; 1 lb., \$1.50.

SOUP CELERY

—For flavoring only. Oz., 5c; ¼ lb., 15c; 1 lb., 40c.

Celeriac or Turnip-Rooted makes an excellent salad. Oz., 15c.

IMPROVED GIANT PASCHAL.

A mammoth silver stalked variety, of French origin; rapidly growing in favor because of its weighty productiveness and consequent profitableness. Oz., 15c; ¼ lb., 50c; 1 lb., \$1.50.



Garden or Sweet Corn. Choice Eastern Grown that

WILL GROW.

If corn is sent by mail, add 5 cents a pint and 10 cents a quart to prices given to prepay postage. Express and Freight charges to be paid by purchaser.

Liberal pkgs., any variety Sweet Corn, postpaid 10c.

EXTRA EARLY RED CORY—Will produce good ears for boiling in fifty-two days from planting. It has a larger kernel than the Marblehead. Pt., 10c; qt., 20c; pk., 80c.

EXTRA EARLY ADAMS—The hardest and earliest variety for table use, but not a sweet corn; white grain and short ear; stalks 3 to 4 feet high. Pt., 10c; qt., 15c; pk., 75c; bu., \$3.00.

ADAMS' LARGE EARLY—White, a very early market variety, ears good size, stalk 6 or 7 feet high. Pt., 10c; qt., 20c; pk., 85c; bu., \$3.00.

STOWELL'S EVERGREEN

—(Selected.) Used more than any other variety. Very sweet, late, remaining a long time in boiling condition, very productive, having very large ears; a favorite with market gardeners and canners. Pt., 10c; qt., 15c; pk., 90c; bu., \$3.50.

EXTRA EARLY MINNESOTA

—Sugar or Sweet; an extremely early variety; very desirable and productive; dwarf habit. Pt., 15c; qt., 20c; pk., \$1.00; bu., \$3.50.

PERRY'S HYBRID

—A stand ard early variety; kernels tinged with pink when ripe; cob pink as a rule, but sometimes white. Pt., 15c; qt., 20c; pk., \$1.00; bu., \$3.50.

COUNTRY GENTLEMAN

—A short stalked, productive sort, frequently producing three ears to the plant; ear large for so small a stalk; grain narrow and very deep, after form of shoe peg; highly recommended. Pt., 15c; qt., 25c; pk., \$1.25.



BLACK MEXICAN—The sweetest and most desirable corn for family use. It is very tender, grains black. Pkg., pt., qt.

WHITE MEXICAN—Same as Black Mexican, only grains are white. Pkg., pt., qt.

MAMMOTH EVERGREEN—This produces the largest ear of any, a single ear sometimes weighing two or three pounds. It ripens a little later than the Stowells, with larger cobs. Pt., 10c; qt., 20c; pk., \$1.00.

CLARK COUNTY CHAMPION—Getting more popular each year as a market garden and family garden corn; matures few days later than Adams' Large Early; quite similar in appearance, but the ears are longer and the grain narrower and deeper; a fine variety. Pt., 10c; qt., 20c; pk., 75c.

FIELD CORN—See Field Seeds. Pages 16 and 17. Our 10-cent packets of Peas, Beans and Corn are three times as large as ordinary 5-cent packets.

Chickory.

LARGE ROOTED OR COFFEE—The dried roots of this are much used in Europe as a substitute for coffee. Oz., 10c; ¼ lb., 25c; 1 lb., 65c.

Cress.

CURLED OR PEPPER GRASS—Common and well-known; per oz., 10c.

BROAD-LEAVED CRESS—A good variety, with large fleshy leaves; a winter variety; sow in spring or fall. Per oz., 15c.

WATER CRESS—Leaves very tender and highly flavored. Oz., 25c.

Egg Plant.

NEW YORK IMPROVED LARGE PURPLE—The best variety in cultivation being early and productive. Oz., 25c; ¼ lb., 75c.

Endive.

Bleached by tying together and excluding from light like celery.

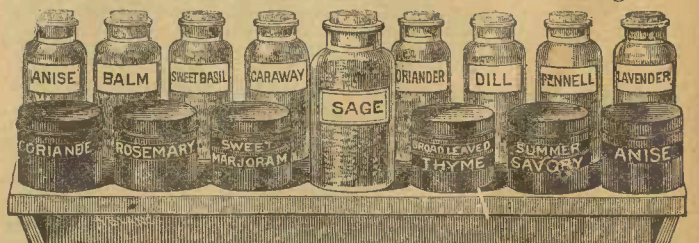
GREEN CURLED—Crisp, dark green leaves; the hardest. Oz., 15c; ¼ lb., 40c.

WHITE CURLED—Leaves pale green. Oz., 15c; ¼ lb., 40c.

Garlic.

Greatly used in flavoring sausage, soups, etc. Lb., 30c. No seeds, only sets or cloves.

Horse Radish Roots.—See Plants and Roots Page 15.



Herbs.

ALL HERBS 5c PER PKT.

Every kitchen garden should have a few herbs. They are easily grown and are always pleasant and desirable for flavoring,

HERBS—Continued.

perfuming and medicinal purposes. Varieties marked with star are perennial.

Anise	Ounce	10c	*Horehound	Ounce	35c
*Balm		5c	Marjoram		25c
Basil		20c	Savory		20c
Borage		30c	*Thyme		15c
*Caraway		10c	*Fennel		15c
Corriander		10c	*Lavender		25c
Dill		10c	*Sage		15c

Hale, or Borecole.

DWARF GERMAN GREENS—Sow in autumn for sprouts or greens; desirable in every garden; height 6 inches. Oz., 10c; ¼ lb., 25c; 1 lb., 75c.

KOHL RABI, or Turnip Rooted Cabbage.

KOHL RABI OR TURNIP ROOTED CABBAGE—The part used is the turnip-looking part, which is cooked like turnips, but is much superior to them, being flavored like the cabbage.

EARLY WHITE VIENNA—The earliest and best for forcing. Oz., 20c.

PURPLE—Best for outdoor culture. Oz., 20c.

LEEK.

LONDON OR FLAG—A hardy species of onion. Sow in drills or broadcast. When 6 inches high, transplant into rows 1 foot apart, 4 inches deep. 4 inches apart in rows. Mostly used in soup. Oz., 15c.



LETTUCE.

Our Lettuce Seed is unexcelled, being finest California grown. For early cutting sow in beds in March and thin out as needed. If heading varieties, sow seed 6 to 8 inches apart in rows.

DENVER MARKET

An early variety, either for forcing or open ground. Large, solid heads, of good light green color, and is very slow to go to seed. The leaves are crisp and tender and of excellent flavor. The shape of the head resembles somewhat the "Hanson," but is more oblong. Oz., 10c; ¼ lb., 25c; 1 lb., 75c.



BURPEE'S ICEBERG—There is no handsomer or more solid cabbage Lettuce in cultivation. Large curly leaves on the outside; solid white heads inside; outer leaves a light, bright green. Heads well in spring or summer and always tender and sweet. Oz., 15c; ¼ lb., 40c; lb., \$1.20.

GRAND RAPIDS—As a lettuce for green house forcing, this variety undoubtedly stands at the head of the list, being of quick growth, little liable to rot, and standing for some days after being fit to cut. The plant is upright and forms a loose head or cluster of large, light yellowish green leaves, slightly crimped and blistered and rather thin. It will stand shipping long distances better than most sorts. Pkt., 5c; oz., 10c; ¼ lb., 25c; lb., 75c.

WHITE CABBAGE—An excellent heading variety; quality very good, popular variety. Oz., 10c; ¼ lb., 25c; lb., 75c.

EARLY CURLED SIMPSON—The old and well-known white seeded early variety. Oz., 10c; ¼ lb., 25c; lb., 75c.

BLACK SEEDED SIMPSON—The standard sort for early spring sowing and for growing under glass; open, tender, crisp, does not head. Oz., 10c; ¼ lb., 25c; lb., 75c.

PRIZE HEAD OR SATISFACTION—Large hard heads and fine flavor; resists heat; slow to run to seed; leaves large, crimped and tinted, with brownish red on edges. Oz., 10c; ¼ lb., 25c; lb., 75c.

EARLY CURLED SILESIAN—Rather loose heads; leaves large light; popular variety. Oz., 10c; ¼ lb., 25c; lb., 75c.

TENNIS BALL—(Black seeded)—One of the earliest varieties; heads compact, with few outside leaves. Oz., 10c; ¼ lb., 25c; lb., 75c.

NEW YORK MARKET—A very useful and valuable variety, forming large and solid heads, often weighing 3 to 4 pounds. Oz., 10c; ¼ lb., 30c; lb., \$1.00.

True Improved Hanson

Forms very large, firm heads, resembling a cabbage, which are deliciously sweet, crisp and tender; heads green outside and white within. For outside culture unexcelled. It is one of the best heat-resisting sorts. Oz., 10c; ¼ lb., 25c; 1 lb., 75c.



GOLDEN STONEHEAD.

A new variety, imported from Germany; a second early, producing large solid heads. Oz., 15c; ¼ lb., 40c; 1 lb., \$1.00.

MUSTARD

WHITE. Best for salad. Oz 10c, ¼ lb 15c. 1 lb 40c.

Brown or Black. Stronger than white. Oz 10c, ¼ lb 15c, 1 lb 40c.

SOUTHERN GIANT RUFFLED OR CURLED.

Highly esteemed for salad, leave very large. Oz 10c, ¼ lb 25c, 1 lb 75c.



Archias' High Grade Watermelon Seeds.

Truckers wanting large quantities of Melon Seed will please send for our list to Truckers. We have a large Truckers' trade in Melon Seeds on account of the fine quality of melons they produce and earliness in maturity. Our prices will satisfy all.

OUR NEW AND STANDARD VARIETIES OF MELONS ARE grown by thousands of the leading gardeners and truckers.

CULTURE—Plant middle of spring in hills 8 feet apart; 8 to 10 seed in hill, 1-inch deep. When up, thin to three best plants. Hoe often until they bloom, then hill up; cultivate between hills. **Our Melon Seed is from well Selected Melons.** One ounce of seed for thirty hills, two to three pounds for an acre. **USE SLUG SHOT TO DRIVE OFF MELON BUGS.**

NOTE—All seeds in this Catalogue by packet, ounce or pound, sent postpaid, on receipt of prices given.



Black Diamond Watermelon

The Black Diamond is not excelled in its excellent shipping qualities.

All the praise of high quality bestowed on the Sweetheart can be repeated of this melon, but its prominent point of merit is its extreme size. No melon ever yet produced anything like as uniformly large fruit, or approached it in **productiveness.** Melons weighing from 75 to 90 lbs. are frequent. It is the most prolific Watermelon ever raised. Color, rich dark green, almost black. Of uniform symmetrical shape; roundish to bluntly oval, and this similarity of shape running through the whole field. The habit of the vine is extremely vigorous. Oz., 10c; ¼ lb., 20c; 1 lb., 60c; 5 lbs. or over, by express, 40c/lb.

60c; 5 lbs. or over, by express, 40c/lb.



Ferry's Sweetheart Watermelon.

Of uniformly large size and fine quality; vine vigorous and productive; ripening its fruit early. Fruit large oval, very heavy; uniformly mottled light and very light green. Rind thin, but firm; flesh bright red, firm, solid, but very tender, melting and sweet. Fruit remains in condition for use longer than any other sort. This variety has no superior as a melon to ship to distant markets. Attractive in appearance; readily sold. Oz., 10c; ¼ lb., 20c; 1 lb., 60c, postpaid; 5 lbs. or over, 40c per lb. by express.

MONTE CRISTO OR KLECKLEY'S SWEET—See page 1, novelties.

WATERMELONS—Continued.

AMERICAN QUEEN WATERMELON.

Do you grow melons for market? If so, you must have the American Queen. This Wonderful New Melon was originated by Mr. Nash, the famous Indiana watermelon grower. Grows to an immense size, of excellent quality. The rind is thin but tough, making it an excellent shipper. Color a light green; flesh bright red. Very sweet and juicy, but never stringy. The vines are vigorous growers, and prolific bearers, commencing to bear early and continuing until frost; frequently weighs 75 to 80 pounds. Postpaid, oz., 10c; ¼ lb., 25c; lb., 75c; 5 lbs. or over, 50c per lb., by express.

McIVOR'S WONDERFUL SUGAR—Of Southern origin. One of the very best in cultivation, most attractive appearance, luscious, sweet and juicy. Oblong in shape, attains great size and weight, the rind showing broad stripes of light and dark green. flesh rosy pink, solid and stringless from rind to core. Crisp and delicious. A grand sort. Pkt., 5c; oz., 10c; ¼ lb., 25c; lb., 80c.

JONES' JUMBO WATERMELON.

The color of the skin is solid green and the flesh is very bright red, particularly sweet, juicy and melting. It grows to a large size, sometimes attaining a weight of 80 pounds, with plenty of them at 40 and 60 pounds. It is one of the best shipping sorts. Oz., 10c; ¼ lb., 20c; lb., 60c, postpaid.

DUKE JONES—Oz., 10c; ¼ lb., 20c; lb., 60c.

KOLB'S GEM WATERMELON—This variety is more largely grown by Southern shippers than any other. Rind thin, very tough, standing handling and shipping long distance without breakage. The flesh is of bright red and of excellent flavor. Oz., ¼ lb., 15c; lb., 45c; postpaid, 5 lbs. or over by express, 30c lb.

CUBAN QUEEN.

A melon of mammoth size, reaching to 60 lbs. in weight; red flesh, dark seed; very showy and good keepers. Oz., 10c; ¼ lb., 20c; 1 lb., 50c, postpaid; 4 or over by express, 30c lb.

MAMMOTH IRON CLAD—Very large; well known. Oz., 10c; ¼ lb., 20c; lb., 60c; 5 lbs. or over by express, 40c lb.

PRIDE OF GEORGIA—Rind dark green, shape nearly oval, ridged like an orange; flesh rich scarlet, sweet and crisp; large size; good shipper. Oz., 10c; ¼ lb., 20c; 1 lb., 60c, postpaid.

GEORGIA RATTLESNAKE—A favorite melon in the Southern states. Shape long, light rind and striped; flesh red; seed light; good cropper. Oz., 10c; ¼ lb., 20c; 1 lb., 60c, postpaid; 5 lbs. or over by express, 40c lb.

PHINNEY'S IMPROVED EARLY—The first to ripen; long in shape; flesh deep red, a first-class melon. Oz., 10c; ¼ lb., 20c; 1 lb., 50c, postpaid.

ARCHIAS' IMPROVED DARK ICING—This is an improvement on the well-known reliable type of Dark Icing. It is of round form and white seeded. This fine melon can scarcely be praised too highly on account of its solidity, thin rind, luscious sugary flavor. Our seed has been selected with unusual care. Oz., 10c; ¼ lb., 20c; 1 lb., 50c; 5 lbs. or over, by express, 40c lb.

LIGHT ICING OR ICE RIND—Fine flavor and good size, with thin rind. Oz., 10c; ¼ lb., 20c; 1 lb., 60c.

MOUNTAIN SWEET—An old standard variety; size large, flavor good, dark rind, long. Oz., 10c; ¼ lb., 20c; 1 lb., 60c, postpaid.

FORDHOOK EARLY—An extra early melon of large size. The form is nearly round, average weight 35 lbs. The rind is tough; the outer color is uniform, medium green; seeds are white; the flesh is bright red and very sweet. Oz., 10c; ¼ lb., 25c; 1 lb., 75c; by express 3 lbs. or over, 60c per lb.



Improved Long Dixie.

A decided improvement over the original Dixie.

This watermelon possesses the rich, luscious flavor of the old Mountain Sweet, united with the excellent shipping character of the Kolb's Gem. The form is considerably longer than the Kolb's Gem, while the skin is a dark green in color and beautifully striped; the flesh is of an intense, deep bright scarlet, very sweet, tender and juicy; it is a heavy setter of fruit, being strong and vigorous of growth. Oz., 10c; ¼ lb., 20c; 1 lb., 60c; 5 lbs. or over by express, 40c per lb.

PEERLESS—A very popular variety, early; flesh solid bright red; very cropper. Oz., 10c; ¼ lb., 20c; 1 lb., 60c.

GRAY MONARCH OR LONG WHITE ICING—Frequently attaining a weight of 90 lbs. and over; the skin is a mottled color, shape long, flesh bright crimson; a fine shipper. Oz., 10c; ¼ lb., 20c; 1 lb., 50c, postpaid; 5 lbs. or over by express, 40c lb.

BLACK SPANISH—Oz., 10c; ¼ lb., 20c; 1 lb., 60c, postpaid; 5 lbs. or over by express, 40c lb.

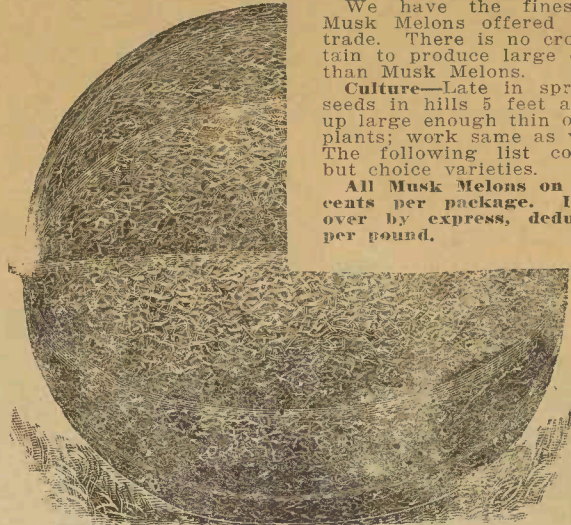
KLECKLEY'S SWEETS WATERMELON—See page 1.

All seeds in this catalogue by pkt., oz. or pound sent postpaid on receipt of prices given, except where noted.

TAKE NOTE.—IN COMPARING OUR PRICES WITH OTHERS, please remember that we pay the postage, and if seed is ordered by freight or express at the expense of the purchaser, 10 cents per lb. may be deducted, where discounts are not already mentioned.

MUSK MELONS.

We make a Specialty of high grade Musk Melon Seed for Market Gardeners and Truckers. Write for Market Gardeners Wholesale Price List.



Livingston's New Tip Top.

We have the finest strain of Musk Melons offered by the seed trade. There is no crop more certain to produce large cash returns than Musk Melons.

Culture—Late in spring drop 12 seeds in hills 5 feet apart. When up large enough thin out to 3 or 4 plants; work same as watermelons. The following list contains none but choice varieties.

All Musk Melons on this page, 5 cents per package. If 3 lbs. or over by express, deduct 10 cents per pound.

TIP TOP IN QUALITY, IN APPEARANCE, IN PRODUCTIVENESS, IN NAME.

It attracts attention at first sight. Gardeners tell us that their customers soon learn to pick them out, and will have no other. It stands at the very Tip Top for Quality. The universal testimony of every one using the Tip Top is that every fruit produced, whether big or little, early or late in the season is a good one—sweet, juicy, of finest flavor, yellow fleshed, eatable to the very outside coating. In productiveness it is unexcelled, being a very strong grower. Oz., 10c; ¼ lb., 25c; 1 lb., 90c.

TRUE ROCKY FORD CANTELOUPE.

An improved strain of the Netted Gem type, which has been grown on a very large scale in Rocky Ford, Colorado. The most popular sort on the market, and commands higher prices than any other variety, the shape being oval and the average length about five inches. Very sweet and most delicately flavored, with exceedingly fine and smooth grained flesh of light green color. Oz., 10c; ¼ lb., 25c; 1 lb., 90c, postpaid; 5 lbs. or over by express, 75c lb.



Burpee's Netted Gem.

BURPEE'S NETTED GEM, TRUE.
The best early melon grown. Shipped into every market of note. Small size, but of exquisite flavor. Green flesh. Oz., 10c; ¼ lb., 25c; 1 lb., 75c, postpaid; 5 lbs. by express, \$3.00.

Emerald Gem.

Is about the size of the Netted Gem, perfectly smooth, and a very deep emerald green color, the flesh is salmon color very thick and juicy; ripens early and is very productive. Oz., 15c; ¼ lb., 40c; 1 lb., \$1.25.



MONTREAL.

A favorite, fruit nearly round; very showy; flat at the poles; skin netted and green; grows very large, often reaching 20 lbs.; flesh thick, of good flavor; very sweet. Oz., 10c; ¼ lb., 30c; lb., \$1.00.

PROLIFIC NETTED NUTMEG—Skin dark green, finely netted; flesh greenish yellow; very sweet. Oz., 10c; ¼ lb., 30c; 1 lb., \$1.00.

IMPROVED EXTRA EARLY HACKENSACK—This valuable variety is ready for market fully ten days ahead of the Hackensack. The melons are of good size, weighing from 5 to 10 lbs. each. Oz., 10c; ¼ lb., 30c; 1 lb., \$1.00.

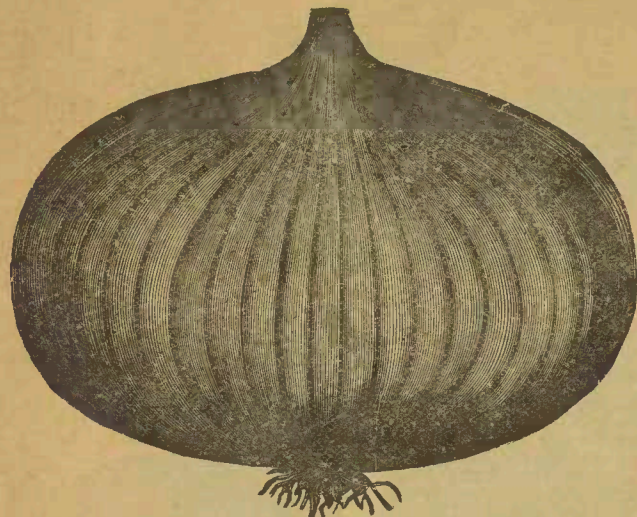
OSAGE OR MILLER CREAM—Ranks high as a market melon; the flesh rich salmon color, sweet and melting; very thick, almost solid; seed cavity remarkably small. Oz., 10c; ¼ lb., 30c; 1 lb., \$1.00.

TURK'S CAP OR LARGE HACKENSACK—Of large size, delicious flavor, round ends flat; very productive. Try it. Oz., 10c; ¼ lb., 30c; 1 lb., \$1.00.



Our Onion Seeds have a National Reputation. They never fail to produce large crops of Fine Onions of superior flavor. They are not to be classed with the cheap, inferior seed quoted in some catalogues under high colors. The price of our Onion Seed will be found as low as good seed can possibly be sold for. Onions are a paying crop when good seed is procured and proper culture given. All Seeds by packet, ounce or pound sent postpaid at prices given. Liberal pkts any variety Onion Seeds, 5c.

We pay postage on onion and other seeds by pkt., oz. or pound on receipt of prices given.



True Large Red Wethersfield Onion.

This is one of our greatest specialties. It is the grandest Red Onion grown. There is no sort equal to it in yield, in keeping qualities, in flavor and for market. In every section of America it is a great success. It is a remarkable keeper and an enormous yielder. Oz., 10c; ¼ lb., 25c; 1 lb., 80c; postpaid, 3 lbs. or over by express, 75c.

AUSTRALIAN BROWN—New, long keeper; early; flat, fine quality; distinct color. Oz., 10c; ¼ lb., 30c; 1 lb., 90c; postpaid, 3 lbs. or over by express, 80c lb.

EXTRA EARLY BARILETTA OR WHITE QUEEN. The very earliest onion in cultivation; pure white, very mild and delicate flavor; for table use and pickling it is most valuable. Oz., 15c; ¼ lb., 50c; 1 lb., \$1.50.

Southport Large White Globe.

This variety yields abundantly, produces handsome globe shaped bulbs; the flesh is firm, fine grained, of mild flavor, keeps well, and in many respects superior to the ordinary silver skin onion. Oz., 15c; ¼ lb., 45c; 1 lb., \$1.50; postpaid, 3 lbs. or over by express, \$1.40 lb.



Finest Danver Yellow Globe.

THE ONION THAT KEEPS.

A favorite variety of bright straw color; an excellent keeper and a great yielder. Raised with great success in the southern and western states. We know of no better onion for sure profit to the onion raiser. Oz., 10c; ¼ lb., 25c; 1 lb., 80c; postpaid, 5 lbs. or over by express, 70c per lb.

Silver Skin or White Portugal.

An early, white, flat onion, of mild flavor, favorite variety. Oz., 15c; ¼ lb., 50c; 1 lb., \$1.60.

Select Onion Sets From Seed.

All Our Sets raised from seeds of best quality and sets are screened through ¼-inch mesh, making them of fine uniform size. No charge for packing.

	By Mail per qt.	By Express or Freight qt.	pk.	bu.
Red Bottoms.....	25c	15c	60c	\$2.00
White Bottoms.....	25c	15c	70c	2.50
White Globe Bottoms.....	25c	15c	80c	2.50
Yellow Globe Bottoms.....	20c	10c	60c	2.00
Red Top or Button Sets.....	25c	15c	75c	2.50

True Giant Prize Taker Onion.

THE ONION THAT SELLS

AMERICAN GROWN SEED—This handsome variety is a splendid type of Spanish fancy onions which are annually imported

into the United States by Spain and sold in our large cities at from 25c to 50c each, and even higher. The onions grown here quite rival the imported ones in great beauty and enormous size, weighing in many cases from 3 to 3 ¼ lbs. each. The outside skin is of a rich yellow color, while the flesh is white, globe shape and so sweet, mild and tender that they can be eaten like an apple. Oz., 15c; ¼ lb., 30c; 1 lb., \$1.15, postpaid; 3 lbs. or over by express, \$3.00 per lb.

SOUTHPORT RED GLOBE.

This is a very handsome variety and is deserving of general cultivation. Matures quite early, grows to a large size; skin deep red, flesh fine grained, mild and tender. Oz., 15c; ¼ lb., 30c; 1 lb., \$1.00, postpaid; 3 lbs. or over by express, \$1.00.

EXTRA EARLY PEARL—(Silver White Aetna, "Bloomsdale.") A very fine and very early variety. Large, round flattened with a delicate pure white skin; very mild in flavor. Oz., 15c; ¼ lb., 50c; 1 lb., \$1.50.

TRUE WHITE MAMMOTH SILVER KING.

An excellent type of the Italian varieties. The average diameter of this onion under good culture is 6 to 7 inches; attractive shape, with silver white skin; very mild and of excellent flavor. Try it. Oz., 15c; ¼ lb., 40c; 1 lb., \$1.40, postpaid; 3 lbs. or over by express, \$1.30 per lb.

Get one of our Drills and Garden Cultivators to plant and cultivate your onion crop; they make onion growing easy and save ¼ of the labor. See page 19 of catalogue.



Pumpkins

When warm weather has come, plant in hills 12 feet apart. If planted in corn field, leave out one or two rows of corn for each row of pumpkins.

We pay postage on all seeds in this catalogue by pkt., oz or lb.

Sure to yield good crop where most other varieties fail. It is always a prize winner at every fair and exhibition. The flesh is of a bright golden color, very fine grained, excellent quality, and not withstanding its enormous size, is one of the best pie and table Pumpkins grown. A splendid keeper; valuable for stock feeding purposes. Our seeds are saved from select specimens. Oz., 10c; ¼ lb., 20c; 1 lb., 60c.

CASHAW, CROOK NECK.

Very prolific heavy weight, frequently weighs 60 lbs.; cream color. Oz., 10c; ¼ lb., 20c; 1 lb., 60c.

LARGE CHEESE.

Excellent variety for cooking; light yellow; flesh sweet, brittle and thick; excellent keeper. Oz., 10c; ¼ lb., 20c; 1 lb., 60c, postpaid.

KENTUCKY FIELD—One of the best for field culture in corn; fine for stock for winter feeding; grows very large; keeps well; thick flesh. Oz., 10c; ¼ lb., 20c; 1 lb., 50c, postpaid.

TENNESSEE SWEET POTATO PUMPKIN—Excellent for pies; pear shaped; medium size; flesh and skin creamy white; fine grain, sweet and delicious; first rate keeper. Oz., 10c; ¼ lb., 25c; 1 lb., 80c.

JAPANESE PIE—The flesh is very thick, solid, unusually fine grained, dry and sweet, resembling sweet potatoes in taste. They ripen early and keep well. The seeds are very curiously marked. Oz., 10c; ¼ lb., 25c; 1 lb., 80c.

MAMMOTH TOURS—Grows to an immense size, often weighing over 100 pounds. Oz., 10c; ¼ lb., 25c; 1 lb., 75c.

OKRA.

Pods used for flavoring soup. Very healthy and easily grown. Plant in hills two inches deep, two or three feet apart, in rows. Price of each of the following varieties is: Oz., 10c; ¼ lb., 20c; 1 lb., 60c. **Prolific and Dwarf; Long White Velvet; Long Green Pod; Dwarf Prolific, Short Pod.**

MUSHROOM SPAWN—May be grown in any dark room or cellar where the temperature can be kept at from 50 to 60 degrees.

ENGLISH—This variety comes in bricks of 1 pound each; 1b. bricks 25c prepaid; not prepaid, 15c.

PARSLEY

Leaves used for flavoring soups.

FINE CURLED—Pkt., 5c; oz., 10c; ¼ lb., 20c.

MOSS CURLED—Pkt., 5c; oz., 10c; ¼ lb., 25c.



Archias Tested Seeds are profitable to the Market Gardeners, Farmers and Truckers. They Grow.

Archias Select Northern Grown Garden Peas

Prices given on Peas hold good when sent by mail or express at purchaser's expense. Add 8 cents a pint and 15 cents a quart extra for postage on Peas and Beans if by mail. LIBERAL PACKAGES of any variety Garden Peas postpaid, 10c.



ARCHIAS Improved Extra Early

The Quickest
Pea on Record.

As to earliness, uniformity in ripening and productiveness, this pea leads them all, and is the production of years of careful selection; it ripens in about forty days, grows a b o u t eighteen inches high, pods well filled and of good quality. Best for market gardeners. Pt., 15c; qt., 25c; pk., \$1.25; bu., \$4.50.

Our Peas are Northern Grown and carefully Selected and Hand Picked.

NOTT'S EXCELSIOR PEAS—By far the earliest dwarf wrinkled peas ever introduced surpassing American Wonder in yield, quality and vigor of growth. The pods are large and filled solidly with peas of the most delicious flavor imaginable. Twelve inches high. Pt., 15c; qt., 25c; pk., \$1.75; bu., \$6.00.

FIRST AND BEST, EXTRA QUALITY—Our strain of first and best peas is absolutely pure, fresh and of the earliest type. Pt., 15c; qt., 25c; pk., \$1.25; bu., \$4.00.

LANDRETH'S EXTRA EARLY—A well established variety. Matures in forty-five days from germination; very productive; height eighteen to twenty-four inches. Pt., 15c; qt., 30c; pk., \$1.45; bu., \$4.50.

AMERICAN WONDER—One of the earliest wrinkled sorts, about nine inches high; very productive and sweet. Pt., 15c; qt., 25c; pk., \$1.65; bu., \$6.00.

BLISS' EVERBEARING—Height of vine two feet, pods three to four inches long, peas very large, quality very fine, its growth is of a branching character. Pt., 15c; qt., 25c; pk., \$1.25; bu., \$4.50.

HORSFORD'S MARKET GARDEN.

Similar to Abundance, but a week earlier; very productive and of good quality.

TELEPHONE—Of excellent sugary flavor, vines very strong; the pods are of large size, with 6 or 7 large delicious peas; height, four feet. Pt., 15c; qt., 25c; pk., \$1.50; bu., \$5.00.

EARLY MAY OR FAME—An old popular family variety, seeds white; height 30 inches. Pt., 15c; qt., 25c; pk., \$1.45.

McLEAN'S ADVANCER—A fine standard sort, of excellent quality. The canners' pea and the market gardeners' second stand by; 18 inches high. Pt., 15c; qt., 25c; pk., \$1.25; bu., \$4.25.

McLEAN'S LITTLE GEM—Seeds green, wrinkled, height, 1 foot; second early, very prolific, excellent flavor, fine for family garden. Pt., 15c; qt., 25c; pk., \$1.50; bu., \$6.00.

STRATAGEM—A splendid pea for main crop. Vines vigorous, branching, stiff and exceedingly productive. This variety is very popular with the Chicago market gardeners. In quality it is unsurpassed, the pods are large, of a beautiful color. Pt., 15c; qt., 25c; pk., \$1.50; bu., \$5.00.

ALASKA—The earliest blue pea, very uniform in growth. It can be carried long distance without losing color, which quality combined with its earliness and uniformity of ripening makes it a most desirable early pea for market gardeners and shippers; height two feet. Pt., 15c; qt., 25c; pk., \$1.25; bu., \$4.00.

CHAMPION OF ENGLAND—Very rich, wrinkled, fine flavor, long, large pods, height four feet. Pt., 15c; qt., 25c; pk., \$1.10; bu., \$4.00.

LARGE WHITE MARROWFAT—Fine for canning, requiring much space, should be stuck with brush; matures for table eighty days after germinating, three to four feet high. Try it. Pt., 10c; qt., 20c; pk., 80c; bu., \$2.75.

TALL GREY SUGAR—An edible podded variety of good quality; it is very productive; the peas are eaten shelled also and are very sweet. Pt., 15c; qt., 30c.



Little Gem Pea

Our 10c packages of Peas, Beans and Corn are 3 times as large as ordinary 5c pkgs.

All seeds by pkt., ounce or pound postpaid at prices given.

Select Parsnip

Spade the soil deep and sow in shallow drills 15 inches apart early in spring in rich soil. Hoe often and deep.

THE BEST PARSNIP THAT GROWS.

SUGAR OR CUP.

(Hollow Crown.) Best in cultivation; long white, smooth, tender and sweet. Oz., 10c; ¼ lb., 15c; 1 lb., 45c.

PEPPER

Sow early in hot beds or boxes or in open ground late in spring. When four inches high transplant in rows 20 inches apart and 18 inches apart in rows.

NEW RUBY KING—Wonderful yielders; peppers grow from 4 to 6 inches long by 3 to 4 inches in diameter of striking red, mild flavor, very desirable for mangoes, salads, etc. Oz., 20c; ¼ lb., 60c; 1 lb., \$2.00.

PROCOPP'S GIANT—Justly called the Goliath of the pepper family, large size, measuring from 8 to 9 inches long, flesh, ½-inch thick, mild flavor. Oz., 20c; ¼ lb., 50c.

BELL OR BULL NOSE—Large, red, early, productive, mild flavor, fine for pickles, stuffed and mixed. Oz., 20c; ¼ lb., 50c.

Our 10c packages of Peas, Beans and Corn are three times as large as ordinary 5c pkgs.



GOLDEN DAWN—Large, yellow and productive. Oz., 20c; ¼ lb., 60c.

CELESTIAL—One of the most prolific of peppers; the pods are borne upright, are conical in shape, vary in color from creamy white when unripe to brilliant scarlet when ready for picking; fine for culinary or decorative purposes. Oz., 25c.

CAYENNE—Very hot, long and slim; good for seasoning. Oz., 20c; ¼ lb., 60c.

CHERRY—Round small, good bearer; fine for fancy pickles. Oz., 25c.

TRUE SMALL CHILI—Very hot for pepper sauce. Oz., 25c.

FINEST MIXED PEPPER—A mixture of the above, which you will find very desirable for pickles, mangoes, relishes, etc. Oz., 20c.



All pkts. of seed in this catalogue 5c, except where noted. All our pkts. contain liberal quantities and we pay the postage.

Archias Selected Radish Seed Grown from Selected TRANSPLANTED ROOTS.



White Turnip. Scarlet Erfurt Turnip. White Tip Scarlet.

Sow in drills one foot apart as early as ground will permit, in rich, mellow soil. Sow every two weeks for succession.

OUR RADISH SEED IS FROM THE BEST GROWERS. Market gardeners will have no other once they try them.

REMEMBER—If you have a small patch of ground, no matter how small, there is no way in which you can get as much satisfaction out of it as by growing lettuce, radishes, etc. Their greatest value consists in being fresh and crisp.

RADISH—Continued.

First of all—See page 1.

New Scarlet Globe—See page 1.

EARLY WHITE TURNIP—Similar in shape to scarlet turnip and quite as early; oz., 10c; ¼ lb., 15c; 1 lb., 50c.

EARLY DEEP SCARLET ERFURT TURNIP—Round, crisp, tender, very attractive, good market variety. Oz., 10c; ¼ lb., 20c; 1 lb., 60c.

EARLY SCARLET TURNIP, WHITE TIP—An early variety of handsome appearance, round, deep scarlet, tipped white; the favorite for forcing or outdoor planting. Per oz., 10c; ¼ lb., 20c; 1 lb., 60c.

PHILADELPHIA WHITE BOX—An early turnip radish, with remarkably short top, rapid growth, perfect turnip shape, extra fine quality. Oz., 10c; ¼ lb., 20c; 1 lb., 60c.

NEW WHITE ICICLE.

So named, being brittle, pure white and transparent, making this new radish most tempting and attractive in appearance. Roots ready for market or table about 20 days after seed is sown; 4 to 5 inches long, with short leaves. This radish will be a great prize for market gardeners, as it will sell readily at a good price. No radish ever produced will equal this new variety for forcing. Don't fail to get it. Price, pkt., 5c; oz., 10c; ¼ lb., 20c; 1 lb., 60c, postpaid.

MARKET GARDENERS' EARLY LONG SCARLET RADISH.

This is a radish with every quality essential to perfection. It is of unusual quick growth, brittle, tender and sweet. The earliest of all long varieties. Pkt., 5c; oz., 10c; ¼ lb., 20c; 1 lb., 60c.

LONG SCARLET SHORT TOP.
A favorite with market gardeners; long, early, crisp and brittle. Very straight. Oz., 10c; ¼ lb., 20c; 1 lb., 60c.

CHARTIER OR SHEPHERD.
Exceedingly handsome, deep crimson color at the top, blending off to white at the bottom. Very tender and remains so for a long time after attaining its growth. Important to the market gardener. Oz., 10c; ¼ lb., 20c; 1 lb., 60c.

FRENCH BREAKFAST—(White tipped.) Quick growth, brittle and crisp; oval form, bright scarlet, handsome. Oz., 10c; ¼ lb., 20c; 1 lb., 60c.

WOOD'S EARLY FRAME—A long red radish, not quite as long as the Long Scarlet, exceedingly small top, most excellent for forcing. Oz., 10c; ¼ lb., 15c; 1 lb., 55c.

LONG WHITE STRASBURG—Flesh pure white, tender, grows quick, leading summer variety for family and market gardeners; very fine. Oz., 10c; ¼ lb., 20c; 1 lb., 60c.

MIXED EARLY RADISH SEED—A select mixture of the most desirable early sorts. Oz., 10c; ¼ lb., 20c; 1 lb., 50c.

GOLDEN GLOBE—Excellent for summer, large, russet color, fine grain, tender and of excellent favor. Oz., 10c; ¼ lb., 20c; 1 lb., 60c.

NEW BRIGHTEST LONG SCARLET—Also called Cardinal. A valuable new radish, strikingly beautiful appearance. In shape it is very regular, smooth, and similar to the Long Scarlet, but shorter; the skin is of a fiery scarlet, the brightest color of any radish, the tail or root slightly tipped with white. It is extraordinarily early, maturing in 20 to 25 days. Pkt., 5c; oz., 10c; ¼ lb., 20c; 1 lb., 60c.

WHITE VIENNA OR LADY FINGER—Early, pure white, long, 1 lb. 60c.

We pay the postage on all seeds priced in this catalogue by pkg., oz. or lb. If sent by express at purchaser's expense, deduct 8c per lb. from our pound prices.

WINTER VARIETIES.

LONG BLACK SPANISH—A very large winter variety, skin black, flesh pure white, very hardy and a good keeper; sow them with your turnips. Oz., 10c; ¼ lb., 20c; 1 lb., 60c.

ROSE COLORED CHINA WINTER—Very popular with market gardeners; form conical; very smooth, bright rose color, large size. Oz., 10c; ¼ lb., 20c; 1 lb., 60c.

CALIFORNIA WHITE MAMMOTH—Eight to twelve inches long, and about 2½ inches thick; flesh white, solid and tender; a very good fall variety. Oz., 10c; ¼ lb., 25c; 1 lb., 70c.

MARKET GARDENERS
Who use large quantities of seed will please write for our Market Gardeners' Price List.

RHUBARB OR PIE PLANT.
Sow in drills one foot apart early in spring. In the fall or next spring transplant three feet apart in deeply dug, very rich soil. Excellent for pies and tarts.

LINNEAUS—Large and tender, very fine. Oz., 15c; ¼ lb., 50c; 1 lb., \$1.50.

MYATT'S VICTORIA—Very large, popular variety. Oz., 15c; ¼ lb., 50c; 1 lb., \$1.50.

FRUIT AND TREE SEED.

PEAR SEED—Oz., 20c; 1 lb., \$1.25.

MAHALEB CHERRY PITTS—60c per lb.

MULBERRY—Oz., 20c; 1 lb., \$2.00.

APPLE SEED—40c lb., \$2.00 per peck.
OSAGE ORANGE SEED—40c lb.; pk., \$2.00.
SUGAR MAPLE—Oz., 15c; 1 lb., \$2.00.

Special prices given to nurseymen on large lots. Prices subject to variation.

SALSIFY OR OYSTER PLANT.

Sow early in spring in drills 15 inches apart and thin to 2 inches apart. Cultivate like carrots or parsnips. Its taste is similar to oysters when cooked, hence the name. Gather in fall for winter use.

LONG WHITE—Oz., 10c; ¼ lb., 30c; 1 lb., \$1.00.

MAMMOTH SANDWICH ISLAND—From the Sandwich Islands; double the size of Long White, and is superior in quality. Oz., 10c; ¼ lb., 35c; 1 lb., \$1.25.

SPINACH.

LONG STANDING—Can be cut longer than any other sort. Oz., 10c; ¼ lb., 15c; 1 lb., 30c.

BLOOMSDALE SAVORY—Leaves thick, large and fleshy. Oz., 10c; ¼ lb., 15c; 1 lb., 30c.

VICTORIA—Extra rich green color; best for spring. Oz., 10c; ¼ lb., 15c; 1 lb., 30c.

SUNFLOWER.

MAMMOTH RUSSIAN SUNFLOWER—Seed is one of the best egg producing foods known for poultry. It can be planted anytime until July and brings a large crop. It is just what you need to fill up the vacant spots in your garden where the soil is not easily cultivated. Pkt., 5c; 1 lb., 15c, postpaid; 5 lbs. or over, by express at purchaser's expense, 4c per lb.

GERMAN COFFEE BERRY. Coffee at 1c 1b

The berries ripen in about four months from the time of planting and produces a crop of from 20 to 30 bushels to the acre, and are as easily grown as beans; when roasted and ground it closely resembles coffee and tastes quite similar. Some mix half and half with coffee and claim it is superior. Pkt., 10c; 3 pkts., 25c; 1 lb., 25c, postpaid.

OUR LIBRARY OF UP-TO-DATE

STANDARD RURAL BOOKS on Agriculture, Horticulture and Live Stock. Any one of this splendid list of books sent postpaid on receipt of prices given. We make special low prices to parties wanting a number of volumes at once. Please write.

Asparagus, 174 pages, cloth.....	\$0.50
Left Overs Made Palatable, 200 pages, cloth.....	1.00
Modern House Plans for Everybody, 243 pages, cloth.....	1.00
The Dogs of Great Britain, America and Other Countries, 370 pages.....	1.50
Soiling Crops and the Silo, 364 pages, 5x7, cloth.....	1.50
Our Farm of Four Acres and the Money We Made by It, 126 pages.....	.30
Bookkeeping for Farmers.....	.25
Alfalfa, Its Uses, Growth, Feeding, Value. Illustrated, 146 pages.....	.50
Cabbage, Cauliflower, by C. L. Allen, 126 pages, 5x7, cloth..	.50
Sweet Potato Culture, 86 pages, 5x7, cloth.....	.50
Tobacco Culture.....	.25
Mushrooms, How to Grow Them, 170 pages, cloth.....	1.00
Onions, How to Raise Them Profitably.....	.20
The Peanut Plant; Its Cultivation and Uses.....	.50
Money in the Garden, 268 pages, cloth.....	1.00
The New Rhubarb Culture, 130 pages.....	.50
Broom Corn and Brooms, 59 pages.....	.50
Bulbs and Tuberos Rooted Plants, 312 pages, cloth.....	1.50
The Practical Fruit Grower, 128 pages.....	.50
Strawberry Culture, Cloth.....	.25
Small Fruit Culturist, 298 pages, cloth.....	1.00
Practical Forestry, 300 pages, cloth.....	1.50
Animal Breeding, 405 pages, cloth.....	1.50
The New Egg Farm, 331 pages, cloth.....	1.00
Canary Birds, 110 pages.....	.50
Money in Poultry, Record Book, 54 pages.....	.25
Bee Keeping Explained, Mysteries of, Quinby.....	1.00

Address all orders to L. E. Archias Seed Co., Carthage, Mo.

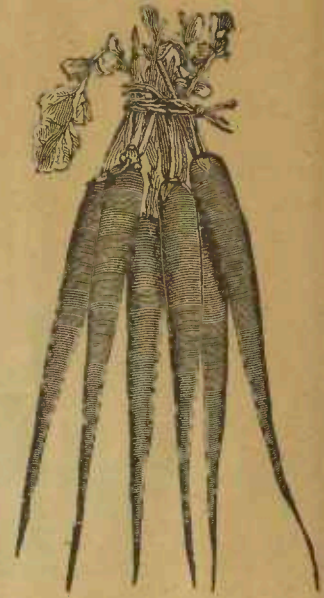
This List of Books are all practical and valuable and among the highest class of literature, and one or more of them should be in every household.

Archias HIGH GRADE Tomatoes.

LIVINGSTON'S BUCKEYE STATE—A mammoth growing tomato of smooth form and extra quality. The largest fruited variety yet introduced. It is unquestionably the heaviest cropper known. The tomatoes are borne in immense clusters of four to eight large fruits, and occasionally ten large fruits have been found in a single cluster. It matures with the Livingston's Stone. In solidity and meatiness it has no equal; in desirable quality none surpass it. The color is much the same as Livingston's Beauty, but of a much darker and richer shade, and this, together with its very large size and clear cut outlines making it very showy and striking when displayed for sale. Oz., 20c; ¼ lb., 60c; 1 lb., \$2.00.

TRUE ATLANTIC PRIZE—We do not hesitate to pronounce it the largest, smoothest, best flavored and brightest colored earliest Tomato. Vine medium size, with few leaves, very hardy, bearing the fruit low down on the stem and in enormous clusters, which ripen altogether. Oz., 15c; ¼ lb., 40c; 1 lb., \$1.50.

NEW DWARF STONE—Originated by Livingston, the Tomato Man. Habit of vine similar to Dwarf Champion, fruit twice as large as Dwarf Champion, matures fully as early and is strik-



TOMATOES—Continued.

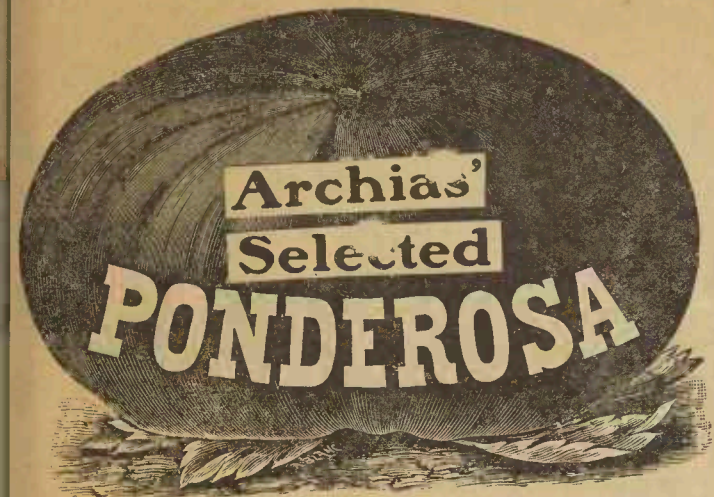
ingly beautiful in appearance, ripens full up to stem. The most valuable addition to the Tomato family yet known. Pkt., 15c; 2 pkts., 25c; ½ oz., 30c; oz., 50c; ¼ lb., \$1.50.

EARLY ACME—Medium size, deep crimson in color and of excellent flavor. Oz., 15c; ¼ lb., 50c; lb., \$1.75.

LIVINGSTON'S BEAUTY—Its beauty, size, shape, perfection, color, flavor, durability and productiveness making it desirable for all purposes, very large, free from rot. Oz., 15c; ¼ lb., 50c; lb., \$1.75.

DWARF CHAMPION—An early and distinct variety, coming rapidly to maturity, medium in size, plant of dwarf and compact growth, one of the best. Oz., 25; ¼ lb., 75c; lb., \$2.50.

LIVINGSTON'S PERFECTION—Large and very early; color blood red, smooth, flesh thick, excellent for canning. Oz., 15c; ¼ lb., 50c; lb., \$1.75.



PONDEROSA.
This monster tomato is all meat; a handsome variety, being uniformly large, of dark, rich, crimson color and a delicious sub-acid flavor; should be in every garden. Pkt., 5c and 10c; ½ oz., 20c; oz., 30c; ¼ lb., \$1.00; lb., \$3.25.

IMPROVED RED TROPHY—Very early, large, smooth and solid. Oz., 20c; ¼ lb., 60c; lb., \$2.00.

LIVINGSTON'S STONE—Excellent canning factory variety. Per oz., 20c; ¼ lb., 75c; lb., \$2.50.

GOLDEN QUEEN—Yellow flesh and skin, large round and smooth. Oz., 25c; ¼ lb., 75c.

A WONDERFUL TOMATO, THE MANSFIELD MAMMOTH TREE TOMATO.

The greatest Tomato of the age. Fruit of mammoth size, flesh very thick, excellent flavor, ripens well up to the stem, color dark red, tough skin. It bears well throughout the entire summer, holding its large size during severe drouth while all other varieties are dried up. It continues to bear fruit with greatest vigor until killed by frost. Shape round and smooth. The yield of this tomato is simply enormous, one bushel having been picked off a single plant in one picking. It is the only genuine tomato of its kind now existing. Price, 10c per pkt., 3 pkts. 25c; oz., 30c; by mail postpaid, ¼ lb., \$1.00.

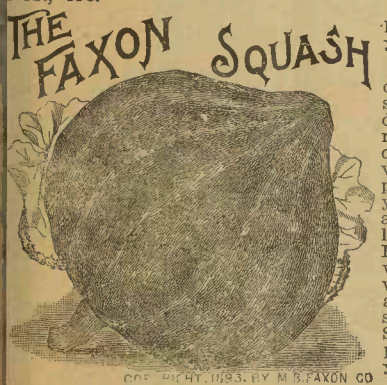
PEAR SHAPED YELLOW—For preserving. There is no preserves equal to tomato preserves.

SQUASH SEED.

SQUASH. All varieties, 5c pkt. Sow middle of spring in hills, bush varieties 4 feet apart; drop 6 to 8 seeds in a hill; soil must be deeply dug and rich.

EARLY WHITE BUSH OR PATTY-PAN SCALLOPED—Light cream color; large size. Oz., 10c; ¼ lb., 20c; 1 lb., 60c.

GOLDEN SUMMER CROOK-NECK—Quite an early and productive variety; warty, yellow and of good quality. Oz., 10c; ¼ lb., 20c; 1 lb., 45c.



Don't fail to add this excellent and wonderful Squash to your order.

Flesh deep orange yellow, cavity very small and few seeds. It is sweet and very dry, and for squash pie it must be tried to be appreciated. The ripe squashes vary in color, some being pale yellow, with still paler yellow stripes, while others are green, mottled and faintly striped with lighter green. It is of superior quality, without regard to size and whether it is ripe or green, and may be used either as a summer or winter squash. Specimens have been kept in perfect condition for a whole year after maturing. Oz., 10c; ¼ lb., 25c; 1 lb., 75c.

VEGETABLE MARROW—A famous English sort; flesh white, soft and of rich flavor, plant 8 feet apart. Oz., 10c; ¼ lb., 20c; lb., 60c.

MAMMOTH CHILI—The largest of all Squashes, often attaining a weight of 200 lbs. without losing its fine shape and good quality. The flesh is very thick, of a bright orange color, a good keeper. Oz., 15c; ¼ lb., 50c.

BOSTON MARROW—One of the best for fall and winter, form ovate pointed, rind thin, bright orange, flesh deep orange, finely grained and excellent flavor. Oz., 10c; ¼ lb., 25c; lb., 75c.

CHICAGO WARTED HUBBARD.
For fall and winter use. Good in any climate; hard skin; a good keeper; sweet and rich. Oz., 10c; ¼ lb., 25c; 1 lb., 75c.

NEW GOLDEN HUBBARD.
The heavily warted skin is of a rich orange-yellow, turning to deep salmon-red when ripened. It is equally as productive and fine in quality as the Original Hubbard Squash. Per pkt., 5c; oz., 15c; ¼ lb., 35c; 1 lb., \$1.25.

FORDHOOK SQUASH—Fine for family use or market gardeners; medium size, flesh dry and sweet; early and good cropper. Oz., 10c; ¼ lb., 35c; 1 lb., \$1.25.

Archias Selected Seed Irish Potatoes.

NORTHERN AND EASTERN GROWN.

Save freight and avoid fancy prices by giving us your order. We absolutely guarantee our Potatoes to be the choicest Eastern and Northern stock grown. Prices on Potatoes are subject to changes. Write for special prices, naming quantity and kinds wanted. Do not class our pure seed Potatoes with common stock sold by commission houses, etc. Express and freight charges paid by purchaser. No extra charge for barrels.

NEW EARLY SIX WEEKS.
Well known early variety; seedling of Early Ohio; earlier and larger and of fine quality. Pk., 40c; bu., \$1.25; 11 pk. bbl., \$3.25.

OHIO JUNIOR.
A choice selection of Ohio. The skin is dark rose color; shape uniform; cooks mealy and dry. Pk., 40c; bu., \$1.25; 11 pk. bbl., \$3.25.

EARLY OHIO.
(Best Red River Stock.)
Our stock of this popular variety is remarkably choice. Pk., 40c; bu., \$1.25; 11 pk. bbl., \$3.25.

NEW BLISS TRIUMPH OR IMPROVED BERMUDA.
When dug, this variety is known to have literally covered the field with fine uniform size Potatoes.

This beautiful variety combines the wonderful productiveness of the Peerless with all the good qualities of the Early Rose, is much more productive and matures its crop at least a week in advance of the Early Rose. Tubers are of medium size, round and uniform in shape, with but a very few small ones; eyes slightly depressed; color a beautiful light red; one of the best extra early market varieties. Pk., 40c; bu., \$1.25; 11 pk., \$3.25.

BURBANKS.
One of the most prolific of the late sorts. Pk., 40c; bu., \$1.25.

MICHIGAN EARLY ROSE.
Ours is the true stock. Pk., 40c; bu., \$1.25; 11 pk. bbl., \$3.25.

BEAUTY OF HEBRON—Somewhat resembles the Early Rose in appearance, but larger and very early; sometimes quality of this fine variety is better than Early Rose. It is unusually productive and keeps well. Pk., 40c; bu., \$1.40; 11 pk., bbl., \$3.50. This variety is scarce.

WHITE STAR—Long, large, smooth, productive; excellent second early variety; scarce. Pk., 40c; bu., \$1.25; 11 pk. bbl., \$3.25.

MAMMOTH PEARL—Potatoes very large, rather flat and oval, few eyes, smooth and attractive; boils white and mealy. Pk., 40c; bu., \$1.25; 11 pk. bbl., \$3.25.

PEERLESS—Well known, smooth, second early variety. Pk., 40c; bu., \$1.25; 11 pk. bbl., \$3.25.

MARKET GARDENERS
Who use large quantities of seed will please write for our Market Gardeners' Price List.

SEED SWEET POTATOES.
Carefully packed in barrels or crates. Prices furnished on application in bedding season. Potatoes shipped at owner's risk of rotting and freezing. Varieties: Red Nansemond, Yellow Yam, Yellow Nansemond, Southern Queen, Red Spanish, Early Golden or Strasburg, Jersey Yellow, Red Bermuda.

SLUG SHOT. Rids the garden of insects.
ARMOUR'S SPECIAL VEGETABLE FERTILIZERS FOR POTATOES.

Lead in producing excellent crops of Irish Potatoes when applied properly. Try a bag or a ton on your Potato and other vegetable crops this spring. You will be surprised at the results and your profits. See page 19

TURNIPS---NORTHERN GROWN.

Liberal package any variety Turnip, 5c, postpaid.

For spring crop sow as early as ground can be worked and none but early varieties. For fall crop sow middle of summer. From 1 to 2 lbs. of seed are required to sow an acre. Our Turnip Seed have always given the best result wherever tried. We pay postage on all seeds by pkt., oz. or lb. Deduct the rate of 8c per lb. from prices given if seeds are sent by express.

EXTRA EARLY RED TOP MILAN—The earliest in cultivation; the bulb is flat, of medium size, smooth, with purple top; flesh white, firm and of the finest quality. Oz., 10c; ¼ lb., 20c; 1 lb., 60c.



TURNIPS—Continued.

EARLY SNOWBALL—Is medium size, pure white and early, of excellent quality. In our market it is much admired. Pkt., 5c; oz., 10c; ¼ lb., 20c; lb., 50c.
EARLY FLAT DUTCH—White, flat, very early, good cropper, standard variety. Oz., 10c; ¼ lb., 15c; lb., 45c.
COW HORN—A very sweet, large cropper, long. Oz., 10c; ¼ lb., 15c; 1 lb., 45c.
AMBER GLOBE—Globe shaped, amber color and sweet. Oz., 10c; ¼ lb., 15c; lb., 45c.
EARLY FLAT RED OR PURPLE TOP—Strap leaved, excellent cropper, very early; a popular variety. Pkt., 5c; oz., 10c; ¼ lb., 15c; lb., 45c.
SNOW WHITE GLOBE—Very large, globe shaped, fine for stock. Oz., 10c; ¼ lb., 20c; lb., 50c.
EARLY WHITE EGG—Egg shaped, a quick grower, flesh solid and sweet, excellent for table. Oz., 10c; ¼ lb., 20c; lb., 50c.
POMERANIAN WHITE GLOBE—Good for table and stock. Oz., 10c; ¼ lb., 15c; lb., 45c.
AMERICAN YELLOW PURPLE TOP RUTABAGA—Very hardy and productive, flesh yellow, solid, sweet and fine flavored; equally good for stock and table use. Oz., 10c; ¼ lb., 20c; lb., 50c.
SEVEN TOP—For greens only, stands the winter well. Oz., 10c; ¼ lb., 20c; lb., 50c.

Our prices this year will be found very low considering that many varieties of seeds are higher. We have spared no pains or expense to procure the best of everything. A comparison with other catalogues will give us your order.

TOBACCO.

Liberal package any variety Tobacco Seed, 5c, postpaid.
BEST VIRGINIA GROWN SEED.
 Our Tobacco Seeds are fresh and pure.
WRAPPING AND SMOKING
PENNSYLVANIA—Long, broad leaf, similar to Connecticut. Oz., 20c; ¼ lb., 60c.
HAVANA—Small, smoking variety. Oz., 25c.
MAMMOTH CONNECTICUT—Leaf very large. Oz., 20c; ¼ lb., 60c.
SHIPPING AND FINE CUT
GOLD LEAF—Similar to Yellow Pryor. Oz., 25c; ¼ lb., 65c.
KENTUCKY BURLEY—Popular variety. Oz., 25c; ¼ lb., 65c.
RAGLAND'S IMPROVED WHITE BURLEY—Fine for manufacturing. Oz., 25c; ¼ lb., 75c.



YELLOW PRYOR—Popular variety; heavy plug and smoking. Oz., 20c; ¼ lb., 65c.
YELLOW ORONOKO—Favorite Virginia variety. Oz., 25c; ¼ lb., 75c.
ONE SUCKER—A large heavy tobacco for shipping purposes and, as its name indicates, only bears one growth of suckers. Oz., 25c; ¼ lb., 75c.

PEA NUTS OR GROUND PEAS.

Six to eight quarts of shelled nuts to acre. The Peanut does best in light, sandy soil, tolerably rich. They should be planted in April, after ground is warm, in rows three and a half feet and two feet apart in the row. Drop two or three good peas to each hill, cover about two inches. They are good producers and tops make excellent feed.
ALL GARDEN SEEDS 5c PER PKT., EXCEPT WHERE NOTED.

VIRGINIA WHITE—Popular. Pkt., 10c; 1 lb., 25c, postpaid; 5 lbs. or over by express, 12½c per lb.
TENNESSEE RED—Longer than Virginia; very productive; of upright growth. Pkt., 10c; 1 lb., 25c, postpaid; 5 lbs. or over by express, 12c per lb.
RED SPANISH—Very small and productive; used extensively for salted peanuts. Pkt., 10c; 1 lb., 25c, postpaid; 5 lbs. or over by express, 15c per lb.

RED SPANISH—Shelled. Lb. 35c, postpaid; 5 lbs. or over by express, 20c per lb.

SPECIAL NOTICE.
 As we make a specialty of Tomato, Pea and other seeds for canning factories and market gardeners, we would be pleased to figure with them on their wants. Prices reasonable, quality the best. Our seeds compete successfully with seeds from any source. You can depend on them.



We are the largest BEE SUPPLY HOUSE in the southwest. We sell at Factory Prices.

Market Gardeners who use large quantities of seeds will please write for Gardeners price lists.

Archias' Select List of Flower Seeds, Annuals and Perennials.

FLOWER SEED DISCOUNT. CUSTOMER'S CHOICE. For 25c we will send 40c worth of flower seeds, postpaid. For 50c we will send 80c worth of flower seeds, postpaid. For \$1.00 we will send \$1.50 worth of flower seeds.

postpaid. These discounts are extremely liberal. No one should be without a nice lot of flowers. All Flower Seeds on this page 5c per Packet, postpaid, except where noted.



IMPERIAL JAPANESE MORNING GLORIES.

These grand new Morning Glories from Japan are remarkable for the large size and exquisite colors. Of strong, robust growth, grow quickly to a height of 20 to 30 feet. They are of innumerable shades of blue, white, yellow, gray, slate, copper, brown, bronze, almost black and many other odd shades not found in any other flower. Pkt., 5c; oz., 20c.
MORNING GLORY—Mixture of many colors. Pkt., 5c; oz., 10c.
CANDY TUFT—Favorite, showy annuals for beds and edgings. White, crimson and mixed colors.
CANTERBURY BELLS—Fine mixed, popular favorite.
CHRYSANTHEMUM—Double flowering, fine mixed.
CHRYSANTHEMUM—Single flowering, fine mixed.

COSMOS.

COSMOS—Flowers beautiful, foliage attractive in autumn until frost. Colors,

mixed, 5c; pure white, 5c; pink, 5c.
COXCOMB—Japanese mixed.
CYPRESS VINE—Delicate foliage and graceful flowers for trellises. White, Scarlet and Mixed colors.
COSMOS—Giant Perfection. Mixed, pkt., 10c.
CARNATION—Marguerite mixed. Pkt., 10c.

PINKS.

PINK DIANTHUS—Beautiful flowers which bloom from seed the first season. Bloom profusely from July until frost.
PINK HEDDEWIGIL (Japan Pink)—Fine double mixed.
CHINA PINKS—Double mixed.
DAHLIA—Blooms from seed the first season. Single mixed.
DAHLIA—Double mixed. Pkt., 10c.
DIGITALIS—Fine mixed Fox Glove. We pay postage on all flower seeds. See head of page.

CASTOR BEANS.

NEW ZANZIBAR CASTOR BEAN—The most tropical appearing and ornamental castor bean yet introduced. Leaves two to three feet across. Sure to please all. Fine for grouping in lawns or in back yards. Mixed. Oz., 15c.



PHLOX DRUMMONDII.

FINE MIXED—All colors.
DRUMMONDII—Grandiflora mixed. Pkt., 10c.

COCCINEA—Brilliant scarlet. Pkt., 10c.
SPLENDENS—Dwarf, brilliant blood red. Pkt., 10c.
ALBA—Pure white. Pkt., 10c.
DWARF—Mixed colors.
STAR OF QUEDLINBURG—Mixed colors, 10c.

PETUNIA.

SINGLE BLOTCHED AND STRIPED Per pkt., 10c. Single fine mixed colors.
DOUGLE MIXED—Large flowering. Pkt., 25c.
STOCKS, DWARF GERMAN—Ten weeks, mixed, popular.
SWEET WILLIAM—As now improved, this popular flower makes a matchless border plant. Mixed.
ALYSSUM SWEET—Sweet scented.
ALYSSUM, LITTLE GEM. Similar to Sweet Alyssum, but more compact.
AMARANTHUS—Tri-colored Joseph's Coat; Salicifolus Fountain Plant, 16c.
ANTIRRHINUM (Snap Dragon)—Dwarf varieties. Mixed.

ASTERS.

Popular garden favorites. By sowing a succession of seed, flowers can be had throughout the season.
ARCHIAS' NEW VICTORIA.
 The finest of all Asters. Bloom abundant and the colors are constant and striking. Packet of any one color, or all colors mixed, 10c, postpaid, or 5 pkts for 40c, postpaid. Colors, pure white, dark scarlet, peach blossom, pink, purple, blue.
ASTER—Archias' Paeony Flavored Perfection. Mixed. Pkt., 10c.
ASTER—Archias' German mixed.
ASTER—Archias' China mixed.
ASTERS—Semples' Branching. Mixed. Pkt., 10c.
ASTERS—Comet. Very fine; all colors. Mixed.
BALSAM—Camellia flowered, double mixed.
BALSAM—White. Pkt., 10c.
BALSAM—Spotted. Pkt., 10c.
BALSAM—Fine double mixed.
BACHELOR'S BUTTON or Corn Flower—Large flowering.

Flower Seeds—Continued.

CALLIOPSIS—Fine mixed, rich and striking.
CANNA—Crozy's. Fine mixed.



NASTURTIUMS.

Among the most beautiful flowers; their rich color and free blooming qualities making them invaluable. The dwarf sorts are fine for bedding or massing; the tall for covering rocks, trellises or fences. They thrive on poor soil.

LOBB'S NASTURTIUM.

These constitute, without doubt, some of the finest of our annual climbers; they are as easily grown as the common Tall Nasturtium, which they far surpass in remarkable brilliancy of their flowers and also in height of vines and rapidity of growth.

Many colors, mixed, packet, 5c; 1/2 oz., 0c; oz., 15c.

DWARF NASTURTIUMS.

- AURORA**—Salmon, rose and blush. Oz., 5c.
- BEAUTY**—Yellow, flushed vermilion. Oz., 15c.
- PEARL**—Creamy white. Oz., 15c.
- GOLDEN KING**—Clear yellow. Oz., 15c.
- KING THEODORE**—Velvety black. Oz., 5c.
- EMPERESS OF INDIA**—Dark leaves, crimson flowers. Oz., 15c.
- KING OF TOM THUMBS**—Light crimson. Oz., 15c.
- Bronze Curled**—New bronze. Oz., 5c.

- CATELL'S CRIMSON**—Very showy. Oz., 15c.
 - DWARF VARIETIES**—Mixed. Oz., 10c.
 - TALL NASTURTIUMS.**
 - TALL PEARL**—Creamy white. Oz., 15c.
 - SPIT FIRE**—Brilliant scarlet. Oz., 15c.
 - DUNNETT'S ORANGE**—Deep orange. Oz., 15c.
 - TALL BRIGHT ROSE**—Very brilliant. Oz., 15c.
 - TALL VARIETIES**—Mixed. Oz., 10c.
- Send 50c and select Flower Seeds to amount of 75 cents. Send \$1.00 and select \$1.50 worth. We pay the postage.
- NEW FRENCH NASTURTIUM, "CHAMELEON."**

This new Nasturtium is a most remarkable advance in this brilliant family. We find that in richness and variety of color it surpasses any other strain, and is also unique in bearing flowers of quite distinct coloring on one and the same plant—some clear, deep crimson, others blotched on light ground and others beautifully mottled. This characteristic as well as the wonderful richness of the unusual markings, has been fixed in both the tall and dwarf forms, and we recommend both strains heartily to every grower of even the smallest garden.

We furnish both Tall and Dwarf separately. Pkt., 5c; 1/2 oz., 15c; 1 oz., 25c.

POPPY.

- PEONY**—Flowered, double mixed.
- CARNATION FLOWERED**—Very gay, brilliant flowers.
- ARCHIAS' EXTRA FANCY**—Single mixed colors.
- SHIRLEY**—Mixed colors.
- ICELAND POPPY (Perennial).**

The delicate, fragrant flowers are exceedingly beautiful, and with their long stems are well suited for cutting. The plants are perfectly hardy, easily cultivated, and the lovely white, yellow and orange-red flowers are in bloom from early summer until fall. Hardy perennial, blooming the first year from seed. Pkt., 10c.

PORTULACCA OR ROSE MOSS.

- PORTULACCA**—Double rose, flowered, mixed. Pkt., 10c.
- PORTULACCA**—Fine, single mixed, for edgings and beds.

GOURDS.

- HERCULES CLUB.**
- ORANGE**—Mock Orange.
- SUGAR TROUGH**—Often used for buckets.

- DISH CLOTH** or Chinese Sponge (Luffa).
- NEST EGG**—Excellent for nest eggs.
- GLOBE AMARANTH**—Favorite everlasting flower.
- FORGET-ME-NOT**—True blue. Myosotis Alpestris).
- HELIOSYRIS**—Double, fine mixed, everlasting flowers.
- HOLLYHOCK**—Double mixed. 10c.
- LOBELIA**—Mixed colors.
- NIGELIA**—(Love in a mist), curious seed pods.
- MARIGOLD**—Double French.
- MARIGOLD**—Double African.
- MARVEL OF PERU**—Four O'Clock, old favorite, mixed colors.

MIGNONETTE.

- MACHET**—Sweet scented, compact growth.
- GOLDEN QUEEN.**
- LARGE FLOWERED.**

MOON FLOWER.

- MOON FLOWER**—White, black seed.
- MOON FLOWER**—Pink.
- Large White**—White seed. Pkt., 10c.



PANSIES.

These produce a profusion of bright flowers; they prefer a moist, shady situation. Our collection of Pansies cannot be surpassed for brilliancy of color and profusion of bloom.

- SNOW QUEEN**—Satiny white. Pkt., 10c.
- EMPEROR WILLIAM**—Large, dark blue. Pkt., 10c.
- FAUST BLACK**—Fine. Pkt., 10c.
- GIANT YELLOW**—New, black eye. Pkt., 15c.
- ODIER**—A strain of three and five-blotched Show Pansies, unsurpassed for shape, marking and rich color. Pkt., 10c.
- GIANT TRIMARDEAU**—Mixed, entirely distinct large flowers, splendid colors. Pkt., 10c.
- NEW GIANT**—Extra select. Pkt., 10c.
- GOOD MIXED**—Pkt., 5c.
- GERMAN LINE**—Mixed. Pkt., 5c.

GENERAL LIST OF SWEET PEAS.

PRICES: All named varieties Sweet Peas on this page postpaid to any address. Pkt., 5c; oz., 10c; 2 oz., 15c; 1/4 lb., 20c; 1 lb., 60c. Fine Mixed, oz., 10c; 1/4 lb., 20c; 1 lb., 50c, postpaid. One ounce of Sweet Peas will sow 10 to 15 feet of drill. All Flower Seeds 5c pkt., postpaid, except when noted.

Archias' Improved 1905 Gilt Edge Mixture.

EVERYTHING NEW FINER THAN EVER.

This mixture comprises some of all of the varieties described in the following list and so mixed that the bright colors will prevail. Only the very newest sorts and only such as we know from experience will give satisfaction in your garden. No better mixture can be bought. Our Gilt Edge Mixed Sweet Peas are popular in all parts of the United States. Price, oz., 10c; 1/4 lb., 25c; 1 lb., 75c. postpaid.

- JANET SCOTT**—Bright pink and buff.
- JEANNIE GORDON**—Rose and primrose.
- KING EDWARD VII**—Bright red.
- LADY GRISEL HAMILTON**—Lavender.
- LORD ROSEBERRY**—Magenta rose.
- LOTTIE ECKFORD**—White, shaded lilac and blue.
- LOVELY**—Deep pinkshaded to light pink.
- MISS WILMOTT**—Large orange pink.
- MRS. WALTER BRIGHT**—Rose purple.
- NAVY BLUE**—Indigoblue and violet.
- OTHELLO**—Deep maroon.
- PRIMA DONNA**—Pink.
- PRINCE OF WALES**—Rose crimson.
- ROYAL ROSE**—Crimson pink shaded light pink.
- STELLA MORSE**—Buff, tinted pink.

One paper each of above 25 varieties, 75c, postpaid. This collection is one of the finest ever offered, being the cream of over 100 varieties. Two collections for \$1.50, or 15 pkts; choice of above 25 varieties for 50c, postpaid.

- ECKFORD'S LARGE FLOWERING MIXTURE**—New hybrids, extra fine, very showy, mixed.
- FINE MIXED**—All colors. Oz., 10c; 1/4 lb., 20c; 1 lb., 60c.
- FINEST MIXTURE OF LIGHT COLORS**—Embracing many new varieties. Oz., 10c; 1/4 lb., 25c; 1 lb., 75c.

We place the Value of Sweet Peas on their merits, not on their names. New names do not add beauty.

SUNFLOWERS.

- GIANT RUSSIAN**—Flowers 20 inches across.

VERBENA.

- Fine Mixed Colors.**
- HENDERSON'S NEW MAMMOTH**—Mixed, per pkt., 10c.
- FORDHOOK MAMMOTH MIXED**—Flowers very large, finest variety of colors. Per pkt., 10c.
- DWARF ZINNIAS**—Fine double mixed, all colors.



There are no better Sweet Peas than these we offer, either in variety or quality, and our prices are as low as the best can be had for.

- ADMIRATION**—Pink mauve.
- AGNES JOHNSON**—Light pink shaded and buff.
- AURORA**—Orange rose and white striped.
- COUNTESS OF CADOGAN**—Lilac and blue.
- COUNTESS OF LATHOM**—Cream pink.
- DAINTY**—White with pink edge.
- DOROTHY ECKFORD**—White.
- GOLDEN ROSE**—Light primrose striped light pink.
- HON. F. BOUVERIE**—Deep pink shading to light pink.
- HON. MRS. E. KENYON**—Large primrose.

FLOWER SEEDS—Continued.

Wild Flower Garden Mixture.

These mixed flower seeds embrace more than a hundred varieties of such easy growing and pretty flowers as are suitable for forming a wild flower garden. They are very useful for woodland walks, roadsides, railroad embankments and for sowing along sides of fences and along any untidy, bare spots. Per pkt., 5c; per oz., 20c; ¼ lb., 65c. Each package of Wild Flower Garden Mixture is a source of pleasant surprises; you never know what will bloom next.

Why Not Have Home Grown Lemons?

THE WONDERFUL NEW LEMON.

PONDEROSA.



Nothing that has ever been brought to our notice in the plant line has caused half the commotion that this wonderful Lemon has. It is a true ever-bearing variety. On a plant 6 feet high no less than 89 of these ponderous lemons were growing at one time. It was a beautiful sight to see. The tree was blooming and at the same time had fruit in all stages of development, from the size of a pea up to the ripe fruit, showing it to be a true ever-bearer. Fruit has been taken from this tree weighing over 4 pounds. The lemons have very thin rind for such large fruit. It is the juiciest of all lemons, makes delicious lemonade, and for culinary purposes cannot be excelled. It is not uncommon to make 12 lemon pies from 1 lemon. Everybody can grow their own lemons. It will fruit freely the second year. Thrifty young plants 15c each, two for 25c. Strong 1-year-old young plants, many of which will fruit this year, 60c each, two for \$1. These will bloom and fruit within the year. Extra strong plants, about 2½ feet high, to bloom and fruit at once, \$1.50 each. By mail or express prepaid to any address on receipt of price.

SWEET PEAS.

* Our Sweet Peas are the finest California grown. They lead in beauty and freedom of growth, and are not surpassed by any. For **Twenty-five Cents** we send, postpaid, one packet each of the **Five Cupids** and one packet of **Gilt Edge Mixture**. Don't fail to add them to your order. These **Five Cupids** are a beautiful sight.

SWEET PEA CULTURE.

Bloom freely all summer and autumn if flowers are cut and not allowed to seed. Their pretty colors and delightful perfume make them charming flowers. Seed should be planted 4 to 6 inches deep, in rich soil. Cover an inch or two at a time until trench is filled, trellis with spool wire poultry netting.

If you have never raised Sweet Peas you are losing some of the most gratifying moments of your life.

DWARF WHITE CUPID—Blossom pure waxy white, of unequalled substance and size, 5 inches high, bearing blossoms very near the end of the stem. It is a wonderfully free bloomer; commences flowering in May and continues until October. Price, per pkt., 5c; oz., 10c.

STELLA MORSE CUPID—Rich primrose, flushed pink; a most beautiful variety.

PINK CUPID—A new dwarf Sweet Pea offered this year, said to produce larger and finer blossoms than its companion, the White Cupid. Our seed is direct from the grower and is genuine. Price, per pkt., 5c; oz., 10c; postpaid.

ALICE ECKFORD CUPID—The standards are a rich, creamy white, suffused or blended with a delicate shading of soft flesh-pink; the wings are silvery white, with a faint pink flush in the central portion. Pkt., 5c; oz., 10c.

FIREFLY CUPID. Flowers good size, rich glowing scarlet and rose plants, literally covered with blooms, giving a most pleasing and gorgeously beautiful appearance. Pkt., 10c; oz., 15c, postpaid.

Cupid Sweet Peas are excellent for border of Flower Beds. We pay postage on all seeds in this catalogue by pkt., oz. or lb.

Our plants are all of hardy, strong growth, and will live when transplanted.

All orders must be accompanied by **CASH** to insure prompt attention. No plants sent C. O. D. Vegetable Plants ready for shipment March 1 to July 1, each year.

All plants are well packed and delivered to our Express Office. Packing free.

RAFFIA—For tying, Indian work, etc. We import our Raffia, and have only the best. 3-oz. pkg., 10c, postpaid; lb., 41c, postpaid. Not postpaid, lb., 25c; 5 lbs., 20c per lb. We carry only the natural.

REEDS—Nos. 1, 2 and 3; 6c oz, 4 oz. 20c; 8 oz. 40c, postpaid.

5 Superb Cupids



1905. L. E. Archias Seed Co.'s List of Select Roses. 1905.



Most Popular New and Old Varieties.

WE GUARANTEE THE SAFE ARRIVAL OF ALL ROSES and other Plants by Express or Mail.

OUR PRICES on following list of Roses are, except where otherwise noted:

TWO-YEAR-OLD—Each, 25c; doz., \$2.50; by express, at purchaser's expense.

ORDER EARLY—As some of these varieties are usually sold out before planting season is over, our season of delivery is from March 1st to May 1st.

2-year-old Roses 5c each extra if sent by mail.

THIS COLLECTION

Of four beautiful 2-year-old Roses, the cream of over 200 varieties, embracing colors of crimson, pink, white and coppery yellow, well worth \$2.00. Our price, delivered to any part of the U. S. by mail or express, for \$1.25.

HELEN GOULD.

The dream and the hope of every lover of roses for years past. Flowers full and double, long and pointed; color warm rosy crimson, hardy, fragrant and free bloomer. Most satisfactory rose in America. **Two-year-old plants 50c each.**

PINK MAMAN COCHET.

THE QUEEN OF ALL GARDEN ROSES. Buds beautifully formed and pointed; very large, being 2½ inches long; perfectly double; clear rich pink, changing to silvery rose. Perfectly hardy everywhere. **Two-year-old plants 40c each.**

MRS. ROBERT PEARY.

Flowers extra large, full, deep and double; buds long and pointed, which is remarkable for a climbing rose; color, pure ivory white; delicious fragrance; in bloom continuously the first year; rapid grower and perfectly hardy. Price, 2-year-old plants 40c each.

MADemoiselle FRANCISKA KRUEGER.

A more beautiful and serviceable rose never existed than this. In its shading of deep copper yellow it stands distinct from all others; flowers symmetrical, good size, free bloomer. **Two-year-old plants, 25c each.**

AMERICAN BEAUTY—Large, red, rich flowers, of delicious rose odor. Strong 2-year-old plants, 40c each.

ROU SALINE—Very popular, tea fragrance; color crimson rose.

AMERICAN BELLE—A pink sport from American Beauty; a deep, clear, pink, fragrant like the Beauty; a worthy companion of American Beauty; among ballroom beauties, the American Belle leads. Price, 2-year-old plants, 50c each.

CHAMPION OF THE WORLD—New, perpetual bloomer, delightful rose fragrance, double, deep rose pink color.

LA FRANCE—Silvery rose, shaded with satiny pink, constant bloomer, vigorous grower, a most beautiful rose in bud or when open, exceedingly fragrant.

MME. CAMILE—Rosy flesh color, free bloomer; a beautiful rose.

MADAME WELSH—Extra fine, very large and double, beautiful buds of soft pale yellow, inner petals of glowing orange and copper. Once seen, never forgotten.

LOUIS PHILLIPE—Rich, dark velvety crimson, free bloomer, beautiful.

MARIE GUILLOT—Pure snow white, splendid for outdoor culture, full, double, tea scented; a delightful rose.

CORNELIA COOK—Clear snow white, fine shape.

CROWN PRINCESS VICTORIA OR WHITE MALMAISON—New, pure waxy white, beautiful when open, being very open.

FLOWER SEED—Continued.

CATHERINE MERMET—Beautiful clear flesh color long pointed buds.
DUCHESSE DE BRABANT—Color soft light rose, with heavy shades of amber and salmon, profuse bloomer.
DUCHESSE OF ALBANY OR RED LAFRANCE—Vigorous grower, large flowers, deep even pink, a profuse bloomer, fine bud.
PERLES DES JARDIN—Canary or golden yellow, flowers large and beautifully formed in every stage of development; a beautiful and popular variety.
HERMOSA—An old favorite, always in bloom, beautiful, color soft deep pink.
ISABELLE SPRUNT—A canary yellow, free bloomer; large, beautiful, fragrant buds; strong grower.
MADAME JOSEPH SCHWARTZ—Good bedder, white beautifully flushed with pink.
PAPA GONIER—Blossoms large, long, carmine crimson, well known.
PIERRE GUILLOT—Bright, dazzling, crimson flowers; very double, full and fragrant.
THE QUEEN—Pure snow white; good, finely formed buds; very fragrant; splendid for open ground.
THE BRIDE—A popular and lovely pure white rose; fragrant and of fine form.

We can furnish other roses not mentioned in this list. Bring or mail us the names of those you want for prices.

After trying all the "Cheap Collection Roses" offered in various catalogues, which usually results in disappointment, try our big, two-year-old, first-class roses, and receive the only genuine satisfaction you ever had.

PLAIN FACTS.

This list of Roses is selected especially for Carthage and vicinity, and will also give perfect satisfaction in other localities; the result of careful observation. NO GUESS WORK. They are perfectly free from disease of every kind, being strong and healthy. Our 2-year-old roses are equal or superior to the 2-year-old roses priced at 40c to 50c each by other houses, and are not to be classed with the plants that are received in small mail or express packages. Neither are they roses that have been doomed to death during winter and sold off at most any price to get rid of them in spring.

OUR ROSES will bloom profusely the first season.
NEW AND POPULAR HARDY HYBRID PERPETUAL ROSES.

PAUL NEYRON—Deep shining rose, largest rose extant, free bloomer, 2-year-old, 30c each.
DINSMORE—Flowers large, of dazzling scarlet crimson, of rich, spicy fragrance; always in bloom; 2-year-old, 30c each.
GENERAL JACQUEMINOT—Rich, velvety crimson; beautiful in bud or open, 2-year-old, 30c each.

POPULAR CLIMBING ROSES

CRIMSON RAMBLER—Hardy climber. A finer climber cannot be found. Grows 10 feet in one season; flowers are brightest crimson; bloom in trusses from 30 to 40 fine flowers, remaining fresh many days. Two-year-old plants, extra strong, 40c each.

YELLOW RAMBLER (Aglaia)—The flowers are borne in immense clusters, after the same manner as the Crimson Rambler, often as many as 150 blossoms in a bunch, and the trusses have the same handsome pyramidal shape as those of the Crimson Rambler. The color is a decided yellow. Two-year-old, 40c each.

WHITE RAMBLER—Same as Crimson Rambler, only color is pure white. Two-year-old is 40c each. The three 2-year-old Ramblers 1.00.

BALTIMORE BELLE—Pale blush variegated rapid climber. Two-year-old, 40c.

QUEEN OF THE PRAIRIE—Large rosy red flowers, rapid grower. Two-year-old, 40c.

MARY WASHINGTON—New, hardy, a lovely white climber; blooms from June until frost. Stems long; rose double; a truly beautiful and historic rose. 1-year-old 20c each, large 2-year-old 40c each.

Four 2 Year Old Beautiful Soupert Roses 90c, or any one for 25c.

Five cents each extra if by mail.
CLOTHILDE SOUPERT—Pearly white with carmine rose center; a polyantha tea, beautiful in bud or when open; always in bloom from early spring until freezing weather. Should be in every collection.

MOSELLA (Yellow Soupert)—A beautiful satisfactory rose, free, continuous bloomer, producing great clusters and on single stems, flowers as large as the best Tea Rose; double perfect shape; color white tint on yellow ground, becoming golden in center. Plant dwarf bushy habit.

PINK SOUPERT—Free bloomer, bright to deep pink, sometimes producing light pink flowers suffused with lilac; hardy.

SILVER WHITE SOUPERT (Leonia Osterieth)—Buds large size, full and deliciously fragrant. Free bloomer, an excellent budder.

12 SELECT CARNATIONS.

Only Supplied in Collection of 12.

For Only 75c. All Strictly Popular.

THOMAS CARTLEDGE—Rich peach pink.

ABUNDANCE—Deep salmon rose.
HELEN KELLER—Striped, white, scarlet and carmine.
ALASKA—A spotless waxy white.
FRED DORNER—Large double scarlet.
MAD ALBERTINA—Light flesh and pink.
PORTIA—Brilliant scarlet.
TIDAL WAVE—Deep rosy pink.
LIZZIE MCGOWAN—Immense pure white.
DAY BREAK—Delicate shade of pink.
IAGO—Brilliant velvety deep crimson
CRIMSON SPORT—Deep crimson.

CHRYSANTHEMUMS.

Fifteen well selected, up-to-date, varieties, all for \$1.00.

MOON FLOWERS.

TRUE AND EVERBLOOMING—White, each 10c, 3 for 25c; doz., 75c.
BLUE MOON FLOWERS (Ipomea Learii), or Heavenly Blue—Each, 10c, 3 for 25c.

VERBENA.

12 Strong Plants, good assortment, 75c.

VIOLET.

SINGLE VIOLET—Very sweet; each, 5c; doz., 50c.
NEW MAMMOTH CALIFORNIA—Each, 10c; doz., 75c.
DOUBLE MARIE LOUISE—Each, 10c; doz., 75c.

FOUR LEADING CLEMATIS.

RED, WHITE, BLUE AND FEATHERED WHITE.

DUCHESSE OF EDINBURG—This is without doubt the best of the double whites, very free flowering and fragrant. Strong 2-year old plants, postpaid, 50c.

JACKMANI—Flowers four to six inches in diameter, intense violet purple with a rich velvety appearance, and distinctly veined, in bloom many weeks. Strong 2-year-old plants, postpaid, 50c.

KERMISENUS RUBRA—This beautiful Clematis is much sought after; color, bright, rosy-red. Entirely distinct from any other sort. A persistent bloomer and strong grower with large flowers. A grand variety. Two-year-old roots, postpaid, 50c.

CLEMATIS PANCULATA (Japanese Virgin's Bower)—The Japanese sweet scented Clematis, one of the most beautiful of our hardy flowering vines. Flowers pure white and feathery. Leaves bright glossy green, rapid grower, blooms quickly, climbs any height desired, strong plants; 20c each, postpaid.

The above 4 beautiful hardy Clematis for \$1.50, postpaid, or by express, formerly sold for \$2.25 the collection. Don't miss this chance. Why pay agents \$1.00 apiece when you get four for \$1.50, and better plants.

SELECT SUMMER FLOWERING BULBS AND ROOTS.

CANNAS.

6 UP-TO-DATE Varieties.

They are not new, but they are the best.

Italia, Austria, Chas. Henderson, Florence Vaughan, Madame Crozy and Paul Marquat. One strong root each of the above six varieties for only 75c, postpaid. There are no new or old varieties that will excel this collection of six Cannas. The finest selection for private gardens or public grounds. One of any of the above varieties for 15c postpaid.

OUR NATIONAL MIXED GLADIOLUS.

At the very low prices every one should have a bed of our fine Mixed Gladiolus. The mixtures are made up of the best named varieties. First size, all colors, mixed, including many named kinds, doz., 35c, postpaid; 100 \$1.50, by express.

Second size, all colors mixed, fine mixture, doz., 30c, postpaid, 100 \$1.25.

Caladium Esculentum.

(ELEPHANT EARS.)

MEDIUM Size Roots, 15c, by mail 20c.

LARGE Size Roots, 20c, by mail, 25c.

EXTRA LARGE Size Roots 25c, by mail 35c.

CINAMON VINE—10c each, 3 for 25c.

DAHLIAS.

Best Double Varieties, Red White, Purple, Yellow and variegated. 20c each, postpaid; \$1.50 per dozen, by express.

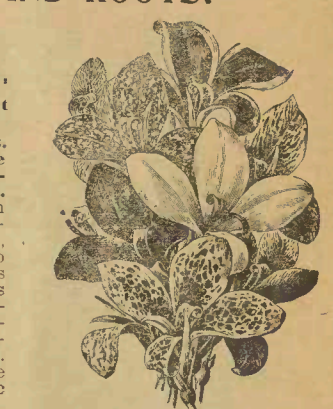
PUNKIA OR WHITE DAY LILY. Fifteen to 25c each, postpaid.

MADEIRA VINE ROOTS.

Each, 5c, 6 for 25c; per dozen, 40c.

TUBE ROSES.

DOUBLE DWARF EXELSIOR PEARL—Grows only 24 inches high. Flowers are imbricated like double Camelia; very large and fragrant. Extra Sized Bulbs, each, 10c; per dozen, 60c, postpaid; per 100, \$2.50.



Caladium (Elephant Ears.)

Vegetable Plants and Roots.

All plants are well packed and delivered to our Express Office. Packing free.

All orders must be accompanied by CASH to insure prompt

Vegetable Plants and Roots—Continued.

attention. No plants sent C. O. D. Vegetable plants ready for shipment from March 1 to July 1 each year.

Our plants are all of hardy, strong growth, and will live when transplanted.

Transplanted Tomatoe Plants.

VARIETIES—Livingston's Beauty, Perfection, Paragon, Trophy, Acme, Dwarf Champion, Atlantic Prize, Mammoth Tree, Buckeye State, New Stone, Honor Bright.

Price, doz., 10c; 50 for 40c; 100 for 65c; 1,000 for \$5.00.

Cauliflower Plants.

SNOWBALL AND EXTRA EARLY ERFURT—15c doz., 50 for 50c, 100 for 75c.

Cabbage Plants.

EARLY VARIETIES—Select Early Jersey Wakefield, Earl Dwarf Flat Dutch, Henderson's Early Summer, Early Express, Winningstadt.

LATE VARIETIES—Premium Flat Dutch, Large Drumhead, Mammoth Marblehead, Surehead.

Price of Transplanted Plants of the above varieties, doz., 10c; 50 for 40c, 100 for 60c, 1000 for \$5.00.

Sweet Potato Plants.

Twenty-five cents per 100; \$2.00 per 1000; in lots of 3000 and upward, \$1.75 per 1000. Discounts on large lots furnished to dealers and farmers on application. **VARIETIES**—Yellow Yam, Yellow Nansemond, Early Golden or Strasburg, Early Jersey, Southern Queen, Red Spanish or Nigger Choker, Red Bermuda, New Vineless Yam.

CELERY PLANTS—Field Grown and Transplanted—VARIETIES—Dwarf Golden Heart, Giant Paschal, Giant White Solid, White Plume, Golden Self Blanching. Price, 40c per 100; \$3.00 per 1000; 2000 or more \$2.50 per 1000. Ready in June.

PEPPER PLANTS—VARIETIES—Ruby King, Golden Dawn, Cayenne, Celestial, Procopp's Giant, Cherry. Price, 10c per doz., 35c for 50, 60c per 100. Ready in May.

SAGE—Broad Leaf, 25c per doz. Strong plants. Ready June 1st.

HORSE RADISH SETS—Doz., 10c, 75c per 100, \$5.00 per 1000.

RHUBARB PLANTS—Mammoth Victoria Large root, 10c, 3 for 25c, doz. 75c.

ASPARAGUS ROOTS—Colossal. Best 1-year-old, 75c per 100, \$4.00 per 1000. Colossal, 2-year-old, \$1.00 per 100.

PENCILLARIA.

A forage plant of some note which is being highly recommended by some houses. Grows very tall of stooling and branching habit, has long cat tail like heads or seed spikes, foliage rather profuse. We have the original stock. Price, oz., 10c; ¼ lb., 15c; lb., 50c, postpaid.

Armour's Fertilizer will more than double your profits on corn. See our prices on page 20.



Archias Selected Field Corn.

OUR SPECIALTY FOR 22 YEARS.

We make it an invariable rule to test our Seed Corn carefully before sending it out. Our Seed Corns are grown for us by leading specialists and originators.

Terms on all field and Grass Seeds.

TERMS, CASH with order. Prices subject to fluctuations. Two-bushel seamless sacks 18 cents each extra. Burlap sacks 10 cents each extra. **Express or Freight Charges** always to be paid by purchaser. **If corn is wanted by mail, please add 15c per quart to prices given.**

Everybody should start out right with their corn crops.

Our Middle Northern Seed Corns will start you right. They are not grown too far north. The wise farmer fully understands the importance of securing good seed corn. Our **SEED CORNS** are famous for their productiveness.

Good Seed Corn cannot be bought or supplied for the price of a common market article. That extra quarter or half dollar you pay on the price of Seed Corn is money saved.

Improved Mortgage Lifter.

EARLIEST CORN KNOWN.

A **YELLOW** variety of Corn. It is grown all over the corn-growing belt, from Michigan to Texas. Reliability is stamped on every feature of this corn. Yields 80 to 100 bushels per acre of the finest, deep grained Yellow Corn imaginable. The Mortgage Lifter Corn is bound to please. You will produce a rich harvest that will help pay



off the mortgages. The grain is very deep, on a small cob, ears medium size. 70 lbs. of the dry corn on the ear of our seed shelled 62 lbs. of corn, leaving only 8 lbs. of cobs. Price, qt., 15c; pk., 50c; bu., \$1.50; 2 bu., \$2.75. Sacked free.

We carry all kinds of Bee keepers supplies at factory prices. Order early. Catalogue free.

IOWA GOLD MINE—A popular yellow dent corn, originated in Iowa. It has very long grains and very small red cob. Matures in about 95 days and has given fine satisfaction throughout the corn belt. Our seed was grown from original stock. Qt., 10c; pk., 40c; bu., \$1.25; 2 bu., \$2.25. Sacked free.

BURPEE'S IMPROVED GOLDEN BEAUTY CORN—The productiveness of the Golden Beauty is due to the economical shape of the corn and the fact that a large proportion of the stalks produce two fine ears. It is the largest grained and handsomest Yellow Corn we have ever seen. Our true strain of Golden Beauty will yield from 60 to 100 bushels to the acre any ordinary season, and will yield a fair crop of beautiful golden yellow corn in the extreme dry seasons when most other varieties have totally failed. Failure is unknown with our improved Golden Beauty. Qt., 10c; pk., 40c; bu., \$1.00; 2 bu., \$2.00. Sacked free.

IOWA SILVER MINE—A deep grain corn, pearly white, semi-flint, matures in 95 and 100 days; cob small and white; a most reliable field variety. Qt., 10c; pk., 40c; bu., \$1.25; 2 bu., \$2.25. Sacked free.

LARGE YELLOW DENT—A medium early corn, medium size cob, deep grains, ears large and well filled to the end, vigorous grower, stands drought well, exceedingly productive, corn of rich yellow color. This variety has a record of 150 bu. of fine corn to the acre. Qt., 10c; pk., 40c; bu., \$1.25; 2 bu., \$2.25. Sack free.

THE LEAMING YELLOW—A yellow dent variety, very small cob, with a deep long grain of a rich golden color, matures in 90 days, and will, if planted by the first of June, under ordinary culture, ripen by September 1st. Very productive, yielding from 90 to 100 bu. to the acre. Qt., 10c, postpaid; pk., 40c; bu., \$1.25; 2 bu., \$2.60. Sacked free.

ST. CHARLES WHITE—An old well known variety, early and productive; ears of ordinary size, plump and well filled; grain very white. Qt., 10c; pk., 40c; bu., \$1.25; 2 bu., \$2.25. Sacked free.

HICKORY KING—This new white field corn is distinct from all other varieties. It has a very long and wide white grain; produces two to three ears per stalk; cob very small. It is a good field corn and matures in 110 days. Qt., 15c; pk., 50c; bu., \$1.50; 2 bu., \$2.85. Sacked free.

CHAMPION WHITE PEARL—(100 days.) The stalk is short and thick, the ears grow from 8 to 12 inches in length, the grains are very deep, two grains will more than span the cob. By a test 70 ears weighed 87 pounds. It makes a superior quality of corn meal. We recommend it highly. Qt., 10c; pk., 40c; bu., \$1.25; 2 bu., \$2.25. Sacked free.

HOLT'S STRAWBERRY—The largest yielding corn in cultivation. Medium early in maturity and a most valuable corn. It is a white corn, but some of the ears come red and strawberry striped, hence its name. Qt., 15c; pk., 50c; bu., \$1.75.

SNOW WHITE DENT.

Is the purest white corn on earth, hence the finest milling corn. A drought beater by two or three weeks deep, broad, square grains; wonderfully productive; large ears; sure cropper. You can't miss a crop with this splendid variety. **Your money back** if you are not entirely pleased. Qt., 15c; pk., 50c; bu., \$1.50.

Seed Pop Corn, Shelled.

We pay postage on packets and pounds.

MAPLEDALE WHITE PEARL—Common market variety. Pkt., 10c; lb., 20c, postpaid.

IMPROVED WHITE RICE—Handsome and productive, ears larger than old variety. Sometimes called Shoe Peg Corn. Pkg., 10c; lb., 20c, postpaid.

QUEEN'S GOLDEN—Bright, golden color; large ears and very productive; pops very large; popular variety. Pkt., 10c; lb., 20c; postpaid.

Five lbs. or over, by express, 8c per lb. for any variety Pop Corn above named, shelled or in ears.



BROOM CORN.

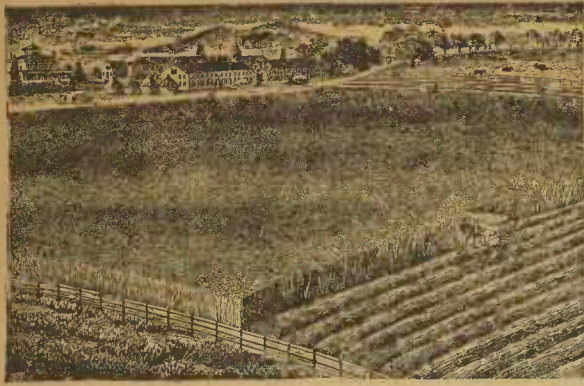
IMPROVED MISSOURI EVERGREEN—Long straight straw. Pk., 40c; bu., \$1.35. By mail, lb., 15c.

EARLY JAPANESE DWARF—Reliable and profitable variety, fine stiff straw. Pk., 45c; bu., \$1.50. By mail, lb., 15c.

THE OKLAHOMA DWARF BROOM CORN.

is a great yielder, one of our growers there reporting several instances of one ton to three acres of fine, long brush. It is of robust and vigorous growth and early maturity. Resists drought better than any other variety. Seed can be allowed to ripen on brush without damage to the latter, which does away with much of the danger of heating when seed is stripped too green. If cut at once after brush is pulled the stalks make excellent fodder and are relished by stock. Our seed is Oklahoma grown, by experienced growers, and we can offer it with full confidence in its purity and vitality. Prices: Per lb., postpaid, 15c; by freight or express, office here, pk., 50c; bu., \$1.75; 100 lbs., \$3.00.

Write Us for prices on Grass and Clover Seeds
WE CAN SAVE YOU MONEY.



GRASS AND CLOVER SEED.

Successful Grass Growing means wealth to the farmer. Archias' Seeds give the success. For quantity of grass and clover seed to acre, see page 21. Prices subject to market changes.

Terms, Cash with Order. Two-bushel seamless sacks, 18c each extra. Strong 2-bu. burlap sacks, 10c each extra. Express or freight charges always to be paid by purchaser. **Prices given are for choice Seed.**

ALFALFA OR LUCERNE CLOVER.

We wish we could impress on our Southern farmers the great value of this wonderful Clover. It grows during dry weather better than any other crop, on account of its deep rooting quality. Have the land well prepared and sow from 15 to 20 pounds per acre. We would advise cutting once the first season. The second season it can be cut three or four times. It lasts from eight to ten years and longer. Thrives best on a soil well drained, deep and rich, although it seems to be thriving well on almost all kinds of soil. The sun must have free access to Alfalfa, and the ground should be rolling to enable the water to pass off readily, for a wet subsoil is fatal to the plant. Sow in February, March and April; also in the fall, September and October. Seeds weigh 60 pounds per bushel. We make a specialty of choice Alfalfa Seed. Price, postage paid, lb., 25c; by express or freight, lb., 15c; pk., \$2.10; bu., \$8.00. Sacks free.

Special prices on Alfalfa in lots of two or more bushels.

BOKHARA CLOVER OR SWEET CLOVER.

Tall growing, white flowered variety; excellent for bee food, for which it is almost exclusively used. Sow 10 lbs. per acre. Price, lb., 25c, postpaid; pk., \$2.25, by express.

WHITE DUTCH CLOVER. Fine for pasture; mixed with blue grass it furnishes fine grazing for sheep and cows; also good for honey bees. Lb., postpaid, 30c; pk., \$2.25; bu., \$8.50.

ALSIKE OR SWEDISH CLOVER. Very hardy and stands drought well. Lb., 30c, postpaid; pk., \$2.25; bu., \$8.50.

MEDIUM RED CLOVER. Well known standard variety; 60 lbs. to bushel. Lb., 25c, postpaid; pk., \$2.50; bu., \$8.50.

MAMMOTH OR SAPING. Sometimes called English Clover. Grows very fast and tall; principally used for fertilizer; 60 lbs. to bushel. Lb., 30c, postpaid; pk., \$2.50.

GRASS SEED.

TIMOTHY.

For hay and grazing: Lb., 20c, postpaid; pk., 40c; bu., \$1.50, postpaid.

FANCY RED TOP.

Seed free from chaff. Valuable for hay, also for grazing. Does best on moist land. Per lb., postpaid, 25c; 25 lbs., \$2.00.

FANCY RED TOP—\$7.50 per 100 lbs.; special.

ORCHARD GRASS.

A valuable variety for meadows and pastures; very early for grazing in the spring; stands drought well; blooms with Red Clover, and makes with it a heavy hay crop of fine quality; best in orchards; 30c lb., postpaid; pk., 50c; bu., \$1.85.

RHODE ISLAND BENT GRASS.

Valuable for lawns, being tough and succeeds well where blue grass fails. Lb., postpaid, 35c; 10 lbs., \$2.00.

KENTUCKY BLUE GRASS (June Grass).

A very valuable pasture and lawn grass. Perennial. Is sensitive to good treatment, and will often drive out most other grasses. Sow 30 lbs. per acre for pasture, and 60 to 80 lbs. to acre for lawns, or 1 lb. to each 20 square feet. Extra fancy. Postpaid, 25c lb; bu., \$1.25.

JOHNSON GRASS.—Postpaid, 25c lb.; 10 lbs., \$1.25.

ENGLISH BLUE GRASS.

A very nutritious and valuable grass for meadows and permanent pastures; also for orchards; growth similar to Orchard Grass and fully as hardy; the demand for this variety is rapidly increasing; 25 lbs. per acre. Postpaid, 20c lb.; 10 lbs., 80c; 100 lbs., \$6.00.

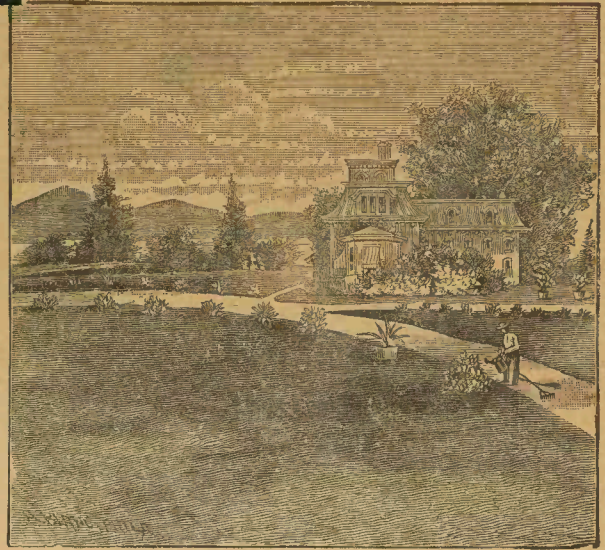
BERMUDA GRASS SEED.

A hardy Southern grass; withstands the hottest and driest seasons; started from seeds or sets. Per lb., postpaid, 75c.

HUNGARIAN GRASS.—Fine for hay; cultivate same as millet. Pk., 40c.

Ask for Special Prices on all kinds of Clover and Grass Seeds by the 100 pounds or bushel.

Special mixtures for meadows and pastures made up as required.



Archias Emerald Lawn Grass.

BEST MIXTURE FOR A BEAUTIFUL EVERGREEN LAWN.

Is a mixture of such grasses as will withstand the heat and dry weather of our summers. The soil should be put in good condition before sowing and the lawn kept free from weeds the first season. The quantity of seed required is one pound to every 20 feet square. One lb., 30c, postpaid; 10 lbs., \$1.50; 25 lbs., \$3.25; 100 lbs., \$10.00, by freight or express.

Archias Iron Clad Lawn Mixture.

SOMETHING NEW.—Makes a beautiful, velvety green lawn when all other mixtures fail; stands most severe drought. This mixture is being sown now on many of the finest lawn plats, and in many prominent parks and public places with great success. One pound of seed to every 20 feet square. **Price, per lb., 26c; 10 lbs., \$1.60; 25 lbs., \$3.75; 100 lbs., \$12.50; lb., postpaid, 30c.** When you have failed with all other lawn grass, you will succeed with Archias' Iron Clad Lawn Mixture.

ARCHIAS' PERMANENT PASTURE MIXTURE.

Finest mixture of Grass Seed and Clover for hay and permanent pasture. Adapted to different soils. Sow 20 to 25 lbs. to acre 25c per lb., postpaid; 10 lbs., \$1.25; 25 lbs., \$2.50; 100 lbs., \$9.00, by express or freight.

Special Prices on any kind of grass seed to Farmers and Stockmen.

Armour's Lawn Fertilizers.

Are acknowledged superior in producing beautiful velvety, green growth of grass.

KAFFIR CORN

Has come to stay as a forage plant. It is a sure cropper, grown for its grain. It yields more than corn and will succeed where corn fails. Can be used for every purpose that corn is valued. All stock is fond of it and thrive on it. It has no equal as a poultry food; a wonderful and cheap egg producer. The white variety is the most productive. Kaffir corn is absolutely drought proof.

During a recent trip through the arid and semi-arid parts of the West clear into Old Mexico, by our Mr. L. E. Archias, he made particular inquiries into the uses and growth of Kaffir Corn. He found it their staple article for stock and poultry food, and in many cases it is used by the people as food. He found stock and poultry in a splendid, thriving condition, and their only grain food was Kaffir Corn.

WHITE.

Most productive. Per lb., postpaid, 15c; 10 lbs., 25c; 25 lbs., 50c; 50 lbs., 80c.

RED.

Similar to white, but not so productive. Lb., postpaid, 15c; 10 lbs., 25c; 25 lbs., 50c; 50 lbs., 95c; 100 lbs., \$1.75. Sack free.

NEW MICHIGAN AMBER.

One of the latest improved varieties of Sorghum; certainly without an equal. It matures early and makes a syrup equal to the famous gold drip molasses. One lb., 15c, postpaid; pk. 50c; bu., \$1.50.

EARLY AMBER.

Bu., \$1.25; lb., postpaid, 15c.

EARLY ORANGE.—Pk., 40c; bu., \$1.00.

CANE SEED FOR FODDER.—For fodder sow about 50 to 100 pounds broad cast to the acre; yields ten to twelve tons to the acre. Price, bu., \$1.00. Price varies.

Archias Miscellaneous Farm Seeds.



Miscellaneous Farm Seeds, continued.

STOCK PEAS.
 Add 8c per pound if by mail.
WHITE BLACK EYE—10c lb.; pk., 60c; bu., \$2.00.
COW OR CLAY—10c lb.; pk., 60c; bu., \$1.75.
LARGE WHITE BLACK EYE OR DIXIE—Lb., 25c, postpaid; pk., \$1.00.
WHIP-POOR-WILL—Brown speckled pea, bush variety; 10c lb.; pk., 60c; bu., \$2.00.
BLACK PEAS—10c lb.; pk., 60c; bu., \$2.00.
WHITE CANADA FIELD PEAS—Sow two bushels to the acre, or, if with oats, one bushel of each. By freight or express. Write for prices, as prices are subject to market change.
NEW ERA STOCK PEA—The earliest of all. Makes a crop of peas in six to eight weeks. Fine forage. Price on application. Pk., 65c; bu., \$2.25; lb., 10c.
SOJA BEANS—Lb., 10c; pk., 50c.
 Write for prices on Stock Peas per bushel, as prices fluctuate.
 Stock Peas are solving the problem as reliable food and fertilizer of the present age.

SEED FLAX.

We exercise great care in thoroughly cleansing our seed of noxious weeds. We probably understate the truth when we say that fully one-tenth part of the flax crop is deducted by buyers as an allowance for weed seeds. Foul seed are the most relentless mortgage on the farm. Pk., 50c; bu., \$1.50. Write for prices on larger lots.

DWARF ESSEX RAPE.

DWARF ESSEX RAPE OF THE TRUE BIENNIAL VARIETY is considered indispensable by the sheep and cattle farmers of Great Britain, and is fast coming into use in this country on account of its rapid growth, being ready to feed in ten weeks from sowing, and producing 25 to 30 tons of green forage to the acre. It grows to a height of 3 feet and covers the surface so densely as to smother out all weeds and to kill quack and other objectionable grasses. It can be sown all through the season, being perfectly hardy; withstands drought and will produce a crop in any soil by sowing broadcast at the rate of five pounds to the acre, or in drills or rows two feet apart, at the rate of 3 pounds per acre. While unequaled as a pasture for sheep, as a fattening food for all cattle, calves or pigs, it is without a rival in point of cheapness, furnishing succulent food from May to December. Pkt., 10c; lb., 25c; 3 lbs., 60c, postpaid; by express or freight, lb., 15c; 10 lbs., 80c; 25 lbs., \$1.75; 50 lbs., \$3.00; 100 lbs. \$5.50.



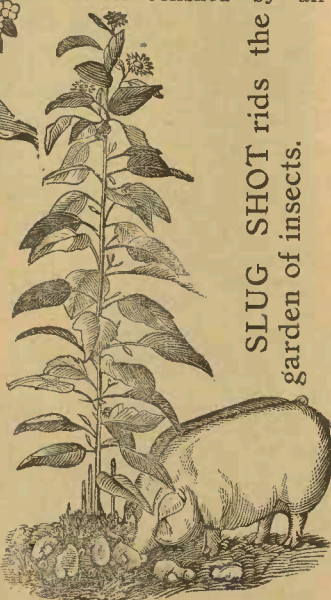
VICTORIA RAPE—Same price as Dwarf Essex Rape.
NEW JAPANESE BUCKWHEAT.

This is the most productive of all Buckwheat; a week earlier than Silver Hull, and the yield is nearly double. The kernels are twice as large as any other variety and of a rich color. Best for bees. Pk., 40c; bu., \$1.25; lb., 20c, by mail.



TEOSINTE.

(Reana Luxurians.) This gigantic Grammea will furnish a continuous daily supply of most nutritious green food for horses and all kinds of cattle all through the summer. It also makes splendid dry fodder, yielding enormously and being more nutritious and better relished by all



SLUG SHOT rids the garden of insects.

stock than corn fodder. In appearance it somewhat resembles Indian Corn, but the leaves are much larger and broader and the stocks contain sweeter sap. It stools out enormously after being cut. Sow in May or June, at the rate of 3 lbs. per acre in drills 4 feet apart. Pkt., 5c; oz., 10c; ¼ lb., 25c; lb., 80c.

Large Improved White Jerusalem.

Very productive, does best in light, rich soil; yields five to eight hundred bushels to the acre. Every farmer who raises hogs should have a patch of them, especially in a prairie country, where mast is scarce. Keeps the hogs healthy, and is a good preventative of hog cholera and kindred diseases. Also good for cattle and horses. Makes cows give a good flow of milk. Plant six to eight bushels

per acre; cultivate like potatoes. By express or freight at purchaser's expense, pk., 35c; bu., \$1.25; 2 bu., \$2.25. Sacks free.

CASTOR BEANS.

Largely grown in our state, and have paid well for the last few years. Will do well on any good corn land. One bushel plants fifteen acres. Pk. 50c; 1 lb. by mail, 20c; bu., \$1.75.

SEED RYE.

CHOICE WHITE—Pk., 30c; bu., \$1.10; by express or freight.

SEED OATS.

RED RUSTPROOF OR TEXAS RED. A hardy oats, supposed to be more free from rust than any other variety. Sample pkt. 10c, postpaid; bu., 60c.
COMMON—Red, Gray, Black and White, at market prices.
 Write for special prices on large lots Seed Oats

We are agents for Higginsville Bee Keepers Supplies of all kinds. Large stock on hand all the time. We sell at Factory Prices and save you the freight. Give us your order early.

HORSE CULTIVATORS, GARDEN TOOLS, Etc

PLANET JR. No. 25, COMBINED HILL AND DRILL SEEDER AND DOUBLE WHEEL HOE, \$13.00.

PLANET JR. No. 1, COMBINED DRILL.
 As a seed drill it does the work perfectly. Has a pair of rakes, a pair pair of hoes, three reversible cultivator teeth and a large garden plow All the blades are oil-tempered and polished steel. Price, \$9.00.

PLANET JR. No. 4. Hill Dropping Seed Drill, Hoe, Cultivator, Rake and Plow.
 Sows either in hill or continuous rows. Price, complete, \$10.00. Price, as drill only, \$8.00.

PLANET JR. No. 12, DOUBLE WHEEL HOE.
 Has a pair of rakes, a pair of hoes, four cultivator teeth and a pair of plows. The wheels are adjustable in height, and the arch is 14 inches high, thus enabling the operator to work both sides of the row at once. Leaf guards (detachable) with each machine. Price, \$6.50.

PLANET JR. No. 2, DRILL SEEDER.
 Hopper holds 2 quarts. Price, \$7.00.

PLANET JR. No. 16, SINGLE WHEEL HOE.
 Cultivator, Rake and Plow Combined. Has one pair of garden rakes, one pair of long hoes, three reversible cultivator teeth, a large garden plow, leaf guards and broadfaced wheel. All for \$5.50, boxed.

PLANET JR. No. 8, HORSE HOE AND CULTIVATOR.
 Complete, new, 81 pounds, \$8.00.

PLANET JR. No. 7, HORSE HOE AND CULTIVATOR.
 With lever wheel, 78 pounds, \$7.50.

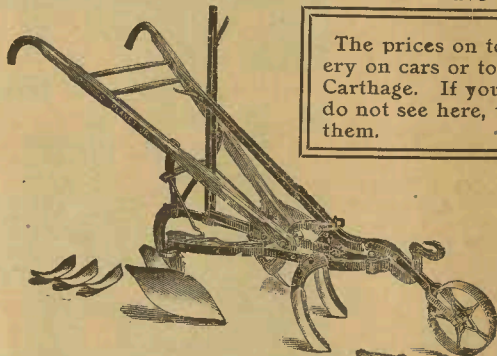
PLANET JR. No. 4, HORSE HOE AND CULTIVATOR.
 With wheel, 64 pounds, \$6.00.

PLANET JR. 12-TOOTH STRAWBERRY CULTIVATOR, PULVERIZER AND HARROW COMBINED—Complete, \$8.00.

Complete "Planet Jr." Catalogue, describing horse, hoe and hand machines, sent on application.

NOTICE.

Space will not permit illustrating and describing all of the Planet Jr. Tools, but we will gladly send a fully illustrated catalogue to any who desire it, and we can supply promptly anything ordered. Planet Jr. goods are standard machines—the best. Combine your seed and tool orders and save freight.



The prices on tools include delivery on cars or to express office in Carthage. If you want tools you do not see here, write to us about them.

Peerless 5-Tooth Horse Cultivator.

Expanding lever, lever wheel, horse hoe attachments, complete, reversible cultivator steels. Price, \$8.00. Equal to any \$8 cultivator on the market;

warranted best malleable steel. No wear out to it.

PEERLESS 5-TOOTH HORSE CULTIVATOR.

With lever, without wheels and horse hoe attachments, \$4.80.

TRIX 5-TOOTH HORSE CULTIVATOR.

For light cultivating. \$3.00.

PEERLESS 14-TOOTH STEEL FRAME HARROW.

Adjusting lever and finely tempered steel points, \$4.50. Indispensable for keeping soil loose or pulverizing. Without lever, \$4.00.

The Canfield Chicken Feed Saver.

Keeps chickens from spoiling and wasting feed with their dirty feet, etc. The Feed Saver saves many times its cost each year. Enables you to tell how much feed your chickens need, holds whole grain as well as soft feed, can be hung up when not in use, can be kept clean, no chasing and fighting over feed.
 Size of Trough. With space for Weight. Price
 6 1/2 x 30 inches. 20 birds. About 8 lbs. \$1.00
 6 1/2 x 46 inches. 35 birds. About 10 lbs. 1.25
 Can furnish galvanized trough in place of wood for 25c extra.
 Not costly to ship. It is folded together.
 You can't afford to do without one or two.



PATENT AGITATOR

Myers' Buket Brass Spray Pump.

With Agitator complete, with Hose Combination, Fine and Coarse Spray and Solid Stream Nozzle. Price, complete, \$3.00. Same pump supplied with foot brace, same price.

NEVER BREAKS OR FAILS TO DO GOOD WORK

BLACK HAWK CORN Sheller.

Most complete, durable and rapid hand sheller made.

Matthew's New Universal Model Gem Seed Drill.

Latest improvement. Price, boxed, drill only \$6.25.

Columbia Seeder.

This is a corker, latest out. Price, \$1.50 packed ready to ship. 100,000 sold last season.

The Cyclone.

A seeder which differs from the above-mentioned kind in construction, but does about the same work. It is a cheaper machine and a good one. Each, \$1.50.

The Chicago Fiddle Bow.

The Fiddle Bow Seeders are much used, give excellent satisfaction and are low in price. Sows all kinds of grass and grain, millet and clover. Each, \$1.25.

National Hand Broadcast Seeder.

Most up-to-date seeder known. Center feed, continuous whirl horizontal cast. Price, \$1.60, by express or freight.

Two Up-to-Date Garden Cultivators.

DIAMOND DOUBLE WHEEL GARDEN CULTIVATOR.

This is similar to above. Has six cultivator teeth, two hoes, two plows and two leaf guards. It has a high arm and is worth \$5.50; our price, \$4.50. With rakes, 40 cents extra.

DIAMOND SINGLE WHEEL CULTIVATOR.

Has five cultivator teeth, two plows and two hoes. Worth \$4.50; our price, \$3.75. With rakes, 40 cents extra.

These two garden cultivators are in greater demand than any other style of cultivator we have ever handled; we never have enough to go around. We have never advertised them extensively; they have advertised themselves, on account of their peculiar construction, durability, up-to-date-ness and low price. No one who gardens should be without one or both of them. They are first class in every respect, and the best garden cultivators on the market.

Leading Corn Planter

Eagle Hand Corn Planter, \$1.25 each. The most practical and durable hand planter in use.

De LAVAL CREAM SEPARATORS.

"BABY" No. 1. Price delivered, \$100.00. We are agents for the famous De Laval Cream Separators. Three-fourths of the separators now in use are the De Laval. Catalogue of separators mailed on application.

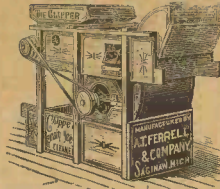


EXCELSIOR HAND WEEDER.

Price 15c. By Mail 25c.

HAZELTON HAND WEEDER.

Sold Steel. Price 25c. By Mail 35c.



Clipper Fan Mill No. 1.

Will clean all kinds of seed and grain faster and better than any other mill on earth. Price, \$22.00.

STEEL GARDEN TROWELS.

6-inch 10 cents
By mail 15 cents
7-inch 20 cents
By mail 25 cents

Redick's Mole Trap Hand Garden Fork

REDICK'S MOLE TRAP will catch while you wait. Easy set. Worth \$1.00; our price, 80c.

HAND GARDEN FORK—About 10 inches long, with 3 stout prongs for loosening soil, 20c each.



HAND SEED SOWER.

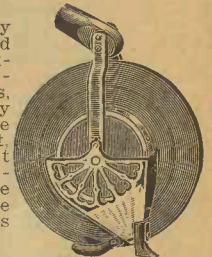
CAHOON SEEDER.

For sowing, wheat, oats, rye, buck-wheat, grass seeds, etc. The best machine in the market. The grain is held in a light sheet iron hopper, surrounded by a bag; will hold a bushel of seed. This is suspended by a strap from the operator's neck and held in position by a strap around the waist. The seed is thrown from 8 to 20 feet each side. Price, \$3.25, boxed, on cars here.

The EUREKA SEED DRILL.

FOR KITCHEN GARDEN AND HOT BED.

This little handy garden drill is designed only for small plats of ground, hot beds, etc., and of course is not expected to be used for extensive planting like the large drills. Customers ordering same will please remember this, and that for such a low price a drill of any size could not be offered. However, for the purpose it is intended, it fills the bill all right, and we feel confident our customers will not be disappointed in placing orders for this valuable little drill. You can get close up to the sides of your hot bed with this drill and save the annoyance of filling in by hand the ends of rows as occurs with other machines. Price, each, \$1.00.



Western Garden Seed Drill.

Similar to a one-horse corn drill; reduced in size to suit garden seeds and is operated by hand. Drills all kinds of seeds and marks the next row at same time. Guaranteed to do perfect work or money refunded. There is no better drill made. Weight 45 lbs. Best on the market. Worth \$8.00. Our Price \$6.50.

Fertilizers, Potting Soils, Etc.

ARMOURS RELIABLE FERTILIZERS.

AMMONIATED DISSOLVED BONE AND POTASH

For fall and spring fertilizing, has no equal for oats, potatoes, melons, etc. 100 lbs., \$1.25; ton, \$23.50.

PURE FINE GROUND BONE—50 lbs., \$1.00; 100 lbs., \$1.65; 200 lbs., \$3.00.

POTATO FERTILIZER No. 386 WITH POTASH—50 lbs., \$1.00; 100 lbs., \$1.75; 200 lbs., \$3.25.

COMPLETE VEGETABLE AND FRUIT FERTILIZER—50 lbs., \$1.00; 100 lbs., \$1.50; 200 lbs., \$2.75.

Analysis of any of the above fertilizers furnished on application.

Send for circular and prices of fertilizers in large quantities.

PURE BONE MEAL for roses, pot plants, lawns and florists' use. It is ground fine and contains but little odor. One lb., 5c; 10 lbs., 30c; 50 lbs., \$1.00; 100 lbs., \$1.75; 200 lbs., \$3.25.

POTTING SOIL.

Ready for use, 20c per peck. Highly fertile; will give new vigor to old plants used as top dressing as well as for potting.

Archias Excelsior Lawn Fertilizer

Has no equal for producing a fine even growth of grass. It also produces an excellent effect on flowers and vegetables. It is very strong and a little goes a long way. Once try it, always use it. Apply to lawns in fall or spring. Directions how to apply and make a lawn mailed free with fertilizer. Five pounds required to each 20 feet square. Price, 5 lbs., 25c; 25 lbs., 75c; 100 lbs., \$2.50.

ARMOUR'S LAWN FERTILIZER.

A pure and strong animal fertilizer, especially adapted for lawns; gives out no offensive odor; produces a most beautiful velvety green growth of grass. Five lbs., 25c; 25 lbs., 75c; 100 lbs., \$2.50.

Order a Supply of Poultry and Stock Foodsto be Shipped with your seed order and save freight on both.

Archias Poultry & Stock Supplies

- PRATTS POULTRY FOOD, in 25c and 60c pkgs. and 12 lb. bags, \$1.25.
- PRATTS STOCK FOOD in 50c pkgs., 12-lb bags 75c, 12-lb pails 85c, 25 lb. pails \$1.60.
- PRATTS ANIMAL REGULATOR, in 25 and 50c pkgs.

International Stock and Poultry Foods.

- International Poultry Food.....25c, 50c and \$1.00 pkgs.
- International Stock Food.....25c and 50c pkgs.
- International Stock Food.....25-lb. pails, \$3.50
- International Stock Food.....100-lb. bbls., \$14.00
- International Worm Powder.....50c pkg.
- International Heave Cure.....50c pkg.
- International Honey of Tar Foot Remedy.....50c can
- International Silver Pine Healing Oil.....25c and 50c bottles
- International Pheno Chloro.....25c and 50c cans
- International Harness Soap.....25c box
- International Gall Cure.....25c and 50c boxes
- International Louse Killer.....25c boxes

Fleck's Poultry and Stock Foods.

KAFFIR CORN

Is found to be rich, healthful and egg-producing food; excellent for all kinds of fowls; goes much further than corn or wheat as a food, thus adding greatly to its cheapness. Many leading poultry men are using it with great success. CRACKED, for small chicks and laying hens, \$1.50 per 100 lbs., sacked. Much cheaper than corn. A great and healthful egg and flesh producer. Special prices on large quantities on application.

ARMOUR'S GRANULATED BONE

Is about the size of wheat and can be fed like any other food in grain; about one handful to every five fowls daily or every other day. In either manner it furnishes a valuable food for poultry at all seasons of the year. Price, 6 lbs., 25c; 25 lbs., 75c; 100 lbs., \$2.50.

ARMOUR'S FINE GROUND BONE.

Well dried and ground, clean and free from fat. For mixing once a day with soft feed this is unsurpassed. Laying hens and young chickens whose digestive powers are not so strong are much benefitted by this, especially during the winter months or where closely confined in yards. Price, 6 lbs., 25c; 25 lbs., 75c; 100 lbs., \$2.50.

ARMOUR'S FINE GROUND DRIED BLOOD.

Rich in egg-making constituents and will increase yield of eggs in winter time if fed regularly to the hens. It contains 85 per cent protein. An invaluable tonic and assistant to poultry in moulting season. Is a particularly useful food for show birds, for it gives a beautiful luster to the feathers. Five lbs., 25c; 10 lbs., 40c; 25 lbs., 90c; 100 lbs., \$3.50.

ARMOUR'S MEAT MEAL

Is a concentrated food, containing 60 to 65 per cent of protein; about as fine as corn chop; our meat meal is pure. Five lbs., 25c; 10 lbs., 35c; 25 lbs., 75c; 100 lbs., \$2.50.

WHAT'S THE USE TO KEEP CHICKENS THAT DON'T LAY? Archias' Egg Producing Chicken Foods produce golden results. Every bag guaranteed. Try them at once. Why not have eggs all the time. Feeding our Foods is Economy.

FEED ARCHIAS' PEERLESS CHICK FOOD.

This food is composed of various rich grains and medical ingredients. A great body builder and egg producer; for small chicks as well as grown fowls. Price, 25 lbs., 50c; 50 lbs., 80c; 100 lbs., \$1.50.

ARCHIAS' SPECIAL EGG FOOD

Eight-lb. pkg., 50c; 25 lbs., \$1.25; 50 lbs., \$2.00; 100 lbs., \$3.50. Archias' Special Egg Food is a highly condensed food and is intended to mix with grain foods or mashies. It contains a very high percentage of protein and other natural and essential ingredients for perfect egg production. It is also a powerful tonic. Full directions with each package or bag.

ARCHIAS' EGG AND CHICKEN FOOD

is used by hundreds of successful poultry raisers all over the land. One customer writes us from Kansas: "I have been using your Chick Food and Special Egg Food for over a year. I lost but few small chicks last spring and they grew rapidly. I am never without plenty of eggs to sell, and am selling all my eggs for 25c per dozen now. My chicks have been profitable since feeding your foods, while my neighbors have selling their chickens because they don't pay for their feed. Please send me 500 lbs. Archias' Special Egg Food, 500 lbs Archias' Peerless Chick Food and 300 lbs. Crushed Oyster Shell." We have many other letters like this.

ALFALFA MEAL—Coarse ground, a fine conditioner for all kinds of stock mixed with other food, very rich in protein, \$2.00 per 100 lbs. Sacked.

ALFALFA MEAL—Ground extra fine, similar to above, but especially for Poultry; an excellent conditioner and egg producer; mixed with other food, superior to ordinary cut clover. Price, \$2.25 per 100 lbs., sacked.

OPAL NEST EGGS—Best made; last forever. Two for 5c, 6 for 15c, 25c dozen.

BUCKWHEAT—10 lbs., 35c; 50 lbs., \$1.25; 100 lbs., \$2.25.

CUT CLOVER HAY.

Clover hay, cut fine and fed hot in the morning makes a most desirable feed for winter and early spring. A sure egg producer. Lb., 10c; 5 lbs., 30c; 10 lbs., 50c; 50 lbs., \$1.50; 100 lbs., \$2.50.

SUNFLOWER SEED,

Fed either whole or ground, to poultry, is one of the healthiest fat and egg-producing foods known. It is also a very important food for horses and blooded animals of all kinds. Mixed with their foods. Sunflower Seed is a laxative, regulator and flesh producer of the highest order, and as an egg-producing food it has few equals and no superior. It goes very far as a food, being very rich in vegetable oil. Ten lbs., 50c; 25 lbs., \$1.00; 50 lbs., \$1.75; 100 lbs., \$2.75. Special prices on 500 to 1000-lb. lots on application.

MICA CRYSTAL GRIT.

Per 100-lb. bag, \$1.25.

Price List of Improved Aluminum "Stay There" Ear Markers.

Do Not Rust or Corrode. Leading Stockmen Use Them. The following prices are for markers lettered, with name and address, and numbered to order. An extra charge of 5 to 10 cents each will be made for markers lettered with animals names, according to number ordered.

	Cattle Size	Hog and Sheep Size
12 Ear Markers.....	\$ 1.00	\$ 0.75
25 Ear Markers.....	1.50	1.25
50 Ear Markers.....	2.50	2.00
100 Ear Markers.....	4.25	3.50
200 Ear Markers.....	8.25	6.75
300 Ear Markers.....	12.25	10.00
400 Ear Markers.....	15.75	13.25
500 Ear Markers.....	19.00	16.00
1000 Ear Markers.....	35.00	30.00
Combined punch and set.....		1.50

Above Prices Include Free Delivery.

CRUSHED SHELL.

Manufactured from good clean shells. Poultry men should use it. Five lbs., 15c; 10 lbs., 20c; 25 lbs., 35c; 100 lbs., 75c.

PEARL GRIT.

Made from pearl shell and highly endorsed. Advantages gained by the use of it. It acts as a grit and prevents cholera; it keeps the poultry healthy; it makes hens lay more; it prevents soft shells. Price, 5 lbs., 15c; 10 lbs., 25c; 25 lbs., 40c; 100 lbs., \$1.00.

PURE GROUND FLAX.

For poultry and stock. It is better than Oil Cake Meal and goes four times as far. Five lbs. 25c; 10 lbs., 40c; 25 lbs., 90c; 100 lbs., \$3.00.

BIRD SEED.

Recleaned, fresh and sweet. Don't give your birds rancid and musty seeds. If wanted to be sent by mail, add 10c per lb. for bird seed, and 30c per can for mocking bird food, to prepay postage.

- Special Mixed Bird Seed.....10c per lb., 3 lbs. 25c
- Canary Seed.....10c per lb., 3 lbs. 25c
- Hemp Seed (used largely for birds and parrots.....10c per lb., 3 lbs. 25c
- Russian Sunflower Seed.....10c per lb., 4 lbs. 25c
- Rhuc's Mocking Bird Food.....35c per can
- Rape Seed.....10c per lb., 3 lbs. for 25c
- Recleaned Millet for Birds.....5c per lb.
- Cattle Fish Bone.....5c per oz.

ARCHIAS' ORIENTAL BUG DEATH POWDER.

Thousands are using it, with entirely satisfactory results. This powder is certain death to ALL insects under any circumstances, and entirely harmless to the youngest chick or tenderest house plant. It is invaluable for use on setting hens in their nests and on young chicks. Use it freely and success is sure. Lice cost the poultry men more than ALL OTHER sources of loss; this especially is true among young chicks. Oriental Bug Death is also invaluable for destroying all kinds of insects in the vegetable and flower garden. Price, 1-lb box, 25c; 3-lb box, 50c; 3 50c boxes, \$1.25. Full directions with each box.

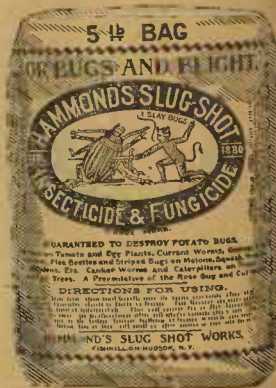
CHOLERINE, FOR THE POULTRY PEN. 50 CENTS A BOTTLE.

At the price of poultry and eggs, no poultry raiser can afford to do without this valuable remedy and preventative. Price, per bottle, 50c; gallon, \$2.50. Sprayer free with each bottle. Cholierine makes it impossible for disease or lice to thrive. Positively guaranteed or money refunded. See Cholierine ad on back inside cover page. We are Agents for this valuable remedy. Positive Cure for Cholera, Roup, Gapes, etc. Every poultry raiser should have a bottle on hand all the time. Full directions with each bottle.

HAMMOND'S SLUG SHOT.

Guaranteed to destroy potato bugs and those on tomato and egg plants, currant worms, cabbage lice and worms, fleas, beetles and striped bugs on melons, turnips, beets, onions, etc.; also a preventative of the rose bug and cut worm. Use in the morning while the dew is on by dusting from a thin muslin bag. It is especially destructive to cabbage worms. Slug Shot not only acts as an insect destroyer, but it will be found to be an excellent fertilizer. It contains nothing injurious to domestic animals, nor is it hurtful to the person applying it. Price, per lb., 10c; 5 lbs., 40c; 10 lbs., 60c. Price for larger quantities furnished. Add 16c per lb. for postage if wanted by mail.

WHALE OIL SOAP. A safe and sure insecticide for destroying insects and eggs of the plant scale and mealy bug, commonly found on ferns and palms, also other tropical plants. Oz., 5c; 1/4 lb., 10c; 1 lb., 35c, by mail, postpaid.



Clark's Sure Thing Cattle Fly Killer Oil

The best compound for keeping flies off of horses and cattle and killing lice on hens, cattle, etc. Was sold with big success last season, and is pronounced by the trade who handled it superior to any other. Positively guaranteed as represented or money refunded. Price, 1 gal. screw top cans, 75c; 5 gals. in jugs, packed, 65c gal. Fly Killer packed and delivered free on board cars at above prices. Order quick. It is well worth \$1.00 per gallon and usually sold at that price. Prevents and cures tick bites. Order a gallon sent with your seed order.



CHAMPION LEG BAND.

Made of aluminum, can be adjusted to any size leg, don't come off, all numbered, more generally in use than any other leg band. Price, 12, 15c; 25, 30c; 50, 50c; 100, 80c, postpaid.



15 Egg Size, each, 20c., dozen

absolutely costs a little more than you customers.

BACKS. ... cost in an hour, 75c by express. ORDER ONE N

USEFUL TABLES.

Average Quantity of Seeds Sown to an Acre.

IN DRILLS.

Dwarf Beans	1 1/4 bushels
Early Peas	1 1/4 "
Narrowfat Peas	1 1/4 "
Beets	4 to 5 pounds
Carrots	2 to 3 "
Onions	4 to 5 "
Onions for Sets	50 to 60 "
Onion Sets	300 to 350 "
Potatoes (cut tubers)	10 bushels
Parsnips	4 to 5 pounds
Radishes	6 to 8 "
Catnabagas	1 to 1 1/4 "
Spinach	10 to 12 "
Salsify	6 to 8 "
Turnips	1 to 1 1/4 "

IN HILLS.

Pole Beans	12 to 15 pounds
Cucumbers	2 to 3 "
Muskmelons	2 to 3 "
Watermelons	3 to 5 "
Pumpkin	5 to 6 "
Squash	4 to 5 "

Quantity of Seeds Required for a Given Number of Plants.

Asparagus	1 oz 500 plants
Cabbage	1 oz 2000 "
Cauliflower	1 oz 2000 "
Celery	1 oz 2600 "
Leek	1 oz 1500 "
Endive	1 oz 3000 "
Egg Plant	1 oz 1000 "
Lettuce	1 oz 3000 "
Pepper	1 oz 1000 "
Tomato	1 oz 1500 "
Sage	1 oz 1000 "
Rhubarb	1 oz 500 "

Quantity of Seeds Required for a Given Number of Hills.

Pole Beans	1 qt to 50 hills
Corn	1 qt to 200 "
Cucumber	1 oz to 125 "
Watermelon	1 oz to 30-40 "
Muskmelon	1 oz to 50-75 "
Pumpkin	1 oz to 20-30 "
Squash	1 oz to 60-80 "

Quantity of Seed Required for a Given Length of Drill.

Asparagus	1 oz to 60 feet of drill
Beet	1 oz to 50 "
Bean, Dwarf	1 qt to 100 "
Carrot	1 oz to 100 "

Endive	1 oz to 100 feet of drill
Okra	1 oz to 40 "
Onion	1 oz to 100 "
Onion Sets	1 qt to 30 "
Parsley	1 oz to 125 "
Parsnips	1 oz to 150 "
Peas	1 qt to 100 "
Radishes	1 oz to 75 "
Salsify	1 oz to 70 "
Spinach	1 oz to 75 "
Turnip	1 oz to 150 "

Table Showing the Amount of Seed Necessary for an Acre, and the No. of Pounds to the Bushel.

	No. Lbs. to Bu.	No. Lbs. to Acre
Red Clover	.60	10 to 15
White Dutch Clover	.60	5 to 8
Alfalfa	.60	20 to 30
Esparssette	.24	40 to 45
Alsike Clover	.60	5 to 8
Timothy	.45	10 to 15
Hungarian	.48	24 to 36
Millet	.50	25 to 50
Red Top	.14	14 to 20
Orchard Grass	.14	14 to 28
Kentucky Blue Grass	.14	28 to 42
Johnson Grass	.25	20 to 40
Hemp	.44	30 to 60
Flax	.56	28 to 24

Buckwheat	50	25 to 50
English Blue Grass	24	12 to 18
Oats	32	32 to 64
Barley	48	60 to 96
Field Corn	56	8 to 10
Sweet Corn	46 to 50	60 to 12
Rye	56	72 to 80
Wheat	60	60 to 90
Sugar Cane	50	6 to 8
Sugar Cane, broadcast	50	50 to 75
Peas, field or stock	60	30 to 60

Table Showing the No. of Plants or Trees to the Acre of Given Distance.

Dist. Apart.	No. Trees.
1 foot	43,500
1 1/4 feet	19,360
2 "	10,800
2 1/2 "	9,960
3 "	4,840
4 "	2,720
5 "	1,720
6 "	1,210
9 "	567
12 "	302
17 "	193
18 "	184
21 "	98
24 "	75
27 "	59
30 "	40

CARTHAGE NATIONAL BANK,

CARTHAGE, MO.

CAPITAL STOCK AND CASH SURPLUS, \$125,000.00

DIRECTORS:

S. A. Stuckey, President, Oscar Wells, Cashier, Robt. Moore, Vice-President.
J. D. Perkins, G. W. Koontz, D. R. Goucher, Geo. Brown.

PRATTS POULTRY FOOD

of PHILADELPHIA



The Original Stock and Poultry Foods of America.
Sold in 50,000 Towns and in Use Over 30 Years. The Greatest of Animal & Poultry Regulators.

We Are Imitated, Copied and Followed, but Never Equaled.

For Horses. It is a mild, stimulative, digestive tonic that builds up run-down horses, restores the appetite, regulates the bowels and blood, produces perfect digestion, prevents colic, hide-bound, heaves and worms, and makes the coat glossy.

For Dairy Cows. It increases the flow of milk, produces more butter, prevents and cures slinking of calves, and makes a cow robust and healthy. It makes calves sturdy and grow quickly.

For Hogs. Cures and prevents hog cholera and all hog diseases. Makes young pigs grow and keeps them healthy. It's the greatest hog remedy known.

Sheep thrive and are free from diseases that gets Pratts Food.

Pratts Poultry Food produces eggs, cures cholera, makes chickens grow and free from all diseases. No poultry keeper can afford to do without it.

HORSES, CATTLE, SHEEP, HOGS AND POULTRY Fatten so quickly that their meat is far more juicy and tender, as well as a saving in time, labor and money. Never buy broken packages of Pratts Food.

Pratts Veterinary Remedies.

Pratts Veterinary Colic Cure. One dose cures the worst case of colic.
Pratts Veterinary Liniment for Horses. Quick, safe and sure for rheumatism, lameness, sprains, bruises, etc.

Pratts Specially Prepared Worm Powder. Drives all kinds of worms out of horses, cattle, hogs and sheep in a few days.

Pratts Veterinary Healing Ointment or Gall Cure. Healing and soothing for harness galls and cuts. Cures mange, scratches, etc. Cures while you are working your horses.

Pratts Lice Killer. Means no more lice on your poultry. Immediate relief and permanent remedy for poultry lice.

Pratts Healing Ointment. This is a gall cure for horses; in fact, it heals and cures all sorts of sores, wounds, bruises, scratches, cuts, burns, etc.

Pratts Heave, Cough and Cold Cure. This marvelous remedy has been used and endorsed for many years by the most prominent veterinary surgeons.

Pratts Peerless Hoof Ointment cures all diseases of the feet. Will grow a new hoof quicker than any other remedy.

Pratts Harness Soap. The most economical harness soap on the market. Will last longer than any similar soap sold.

Pratts Hog Cholera Cure. Hog Cholera, that terrible scourge that carries away pen after pen of hogs, destroying in a few days the profits and labor of months.

Pratts Cow Tonic is specially prepared for curing the peculiar diseases of cows only. It is a pure vegetable tonic, and will prevent and cure slinking of calves, milk fever, indigestion, liver and kidney troubles.

Pratts Purely Vegetable Condition Powder. This remedy has been especially compounded to produce quick results.

Pratts Calf Tonic. Calves can positively be raised with big profit if Pratts Calf Tonic is used.

Pratts Prepared Fever Powder. This remedy should be kept on hand in every stable. Many valuable horses have been saved by the prompt use of Pratts Prepared Fever Powder. Pratts Prepared Fever Powder instantly stops the fever.

Pratts Distemper and Pink Eye Cure. A positive remedy for distemper and pink eye.

Pratts Liquid Lice Cure. The quickest and strongest liquid for destroying all poultry vermin. Simply spray it on the roosts, nests and throughout the poultry house.

Pratts Powdered Lice Killer. To be applied directly on the fowl. Kills lice in shorter time than any other preparation on the market.

If you are not already using Pratts Veterinary Remedies, do so now. They are no experiment. They are used throughout the civilized world and endorsed everywhere.

Write for a free copy of a 64-page book about live stock and poultry. Full of valuable and interesting information.

Pratts Food Co., Philadelphia, Pa.

Order a Supply of Poultry and Stock Foodsto be Shipped with your seed order and save freight on both.

Price List of Improved Almir
Do Not Rust or Corrode.
The following prices are
and address, and numbered to
10 cents each will be made for
names, according to number order

Archias Poultry & Stock Supplies

PRATTS POULTRY FOOD, in 25c and 60c pkgs. and 12 lb. b.

PRATTS STOCK
25 lb. pa

JANUARY

S	M	T	W	T	F	S
1	2	3	4	5	6	7
8	9	10	11	12	13	14
15	16	17	18	19	20	21
22	23	24	25	26	27	28
29	30	31				

FEBRUARY

		1	2	3	4
	5	6	7	8	9
12	13	14	15	16	17
19	20	21	22	23	24
26	27	28			

MARCH

			1	2	3	4
5	6	7	8	9	10	11
12	13	14	15	16	17	18
19	20	21	22	23	24	25
26	27	28	29	30	31	

APRIL

S	M	T	W	T	F	S
						1
2	3	4	5	6	7	8
9	10	11	12	13	14	15
16	17	18	19	20	21	22
23	24	25	26	27	28	29
30						

MAY

	1	2	3	4	5	6
	7	8	9	10	11	12
14	15	16	17	18	19	20
21	22	23	24	25	26	27
28	29	30	31			

JUNE

			1	2	3
4	5	6	7	8	9
11	12	13	14	15	16
18	19	20	21	22	23
25	26	27	28	29	30

12 Ear Markers.....
35 Ear Markers.....

S	M	T	W	T	F	S
						1
2	3	4	5	6	7	8
9	10	11	12	13	14	15
16	17	18	19	20	21	22
23	24	25	26	27	28	29
30	31					

AUGUST

		1	2	3	4	5
	6	7	8	9	10	11
13	14	15	16	17	18	19
20	21	22	23	24	25	26
27	28	29	30	31		

SEPTEMBER

					1	2
3	4	5	6	7	8	9
10	11	12	13	14	15	16
17	18	19	20	21	22	23
24	25	26	27	28	29	30

OCTOBER

S	M	T	W	T	F	S
1	2	3	4	5	6	7
8	9	10	11	12	13	14
15	16	17	18	19	20	21
22	23	24	25	26	27	28
29	30	31				

NOVEMBER

		1	2	3	4
	5	6	7	8	9
12	13	14	15	16	17
19	20	21	22	23	24
26	27	28	29	30	

DECEMBER

					1	2
3	4	5	6	7	8	9
10	11	12	13	14	15	16
17	18	19	20	21	22	23
24	25	26	27	28	29	30
31						

OFFICERS AND DIRECTORS.

Wm. E. Brinkerhoff, President.
Horace H. Harding.
James Luke.

Joseph Herrin, Vice-President.
Ben B. Allen, Byron A. Ash.
Herbert H. Beckwith.

Ernest B. Jacobs, Cashier.
Geo. W. Lawrence.
Chas. W. Rinehart.

FIRST NATIONAL BANK,

CARTHAGE, - - - MISSOURI.

Capital.....\$100,000 | Surplus.....\$50,000

We have a record covering more than 20 years of careful, conservative and safe business methods. The interests of our patrons are carefully guarded and promptly served. We solicit all or a portion of your account, and can assure you of courteous treatment and the faithful discharge of any business intrusted to our care.



WHY WASTE TIME AND LABOR RAISING PART OF A CROP?

A Very Small Outlay Per Acre will Insure an Increase of One-Third or One-Half in Your Crops. Learn About It.

ARMOUR'S ANIMAL FERTILIZERS

Applied in quantities of 100 lbs. per acre will work wonders. You can tell the difference between the fertilized crop and those which are not, as far as you can see. Armour's Fertilizers are all made under direct supervision of a graduate chemist, and are guaranteed fully up to the analysis registered with the State Chemist. Try It on Corn in Spring; Try It on Wheat in Fall.

TRUCKERS. Do you know that Armour's No. 386 Fertilizer will not only increase the quantity but improve the quality of your crops? Fertilized vegetables mature earlier, which enables you to sell them on the best market.

POULTRY FOOD. Armour manufactures a full line and guarantees all to be the most highly concentrated on the market. Use Dried Blood for making hens lay; use Meat Meal for fattening all kinds of poultry; keep Ground Bone where the fowls can get it, and you will have strong, healthy birds. When you buy Armour's Poultry Foods you do not pay for drugs and filler, but get straight blood, bone and flesh scraps, rich in protein and bone phosphate of lime.

For descriptive pamphlets, address,

ARMOUR PACKING CO.,

Or L. E. Archias Seed Co., Carthage, Mo.

KANSAS CITY, U. S. A.