

# **Historic, Archive Document**

Do not assume content reflects current scientific knowledge, policies, or practices.



62.73

U. S. Department of Agriculture  
RECEIVED  
JUN 15 1905



# Burpee's

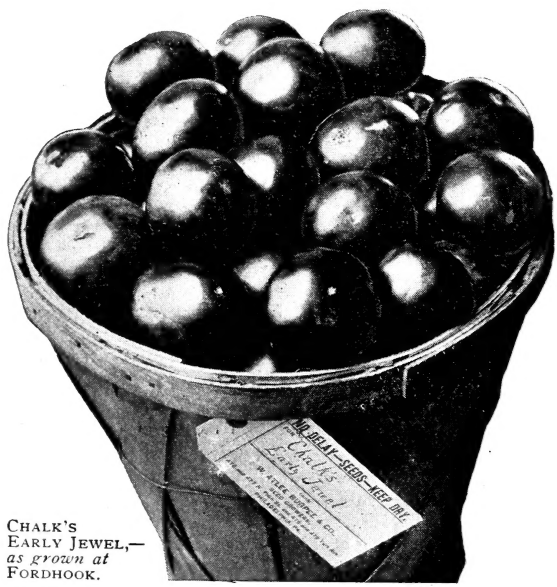


ADVANCE PRICES FOR 1905

## VEGETABLE SEEDS AND SWEET PEAS

Including Choice

### Novelties and Specialties

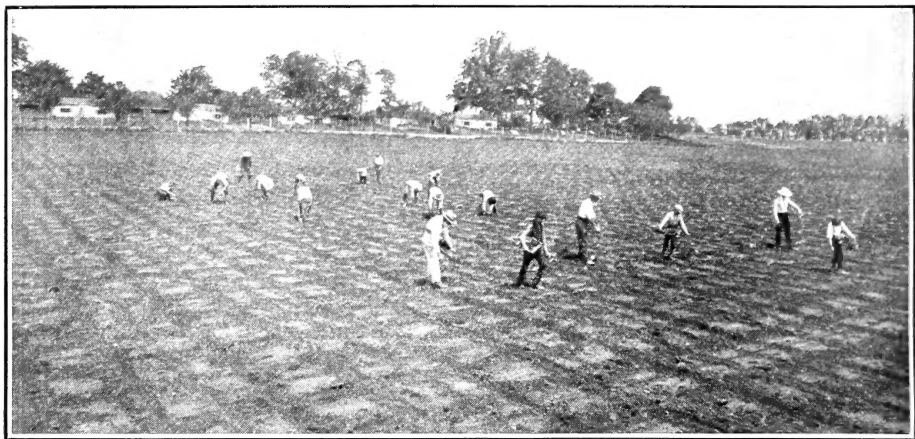


CHALK'S  
EARLY JEWEL,—  
as grown at  
FORDHOOK.

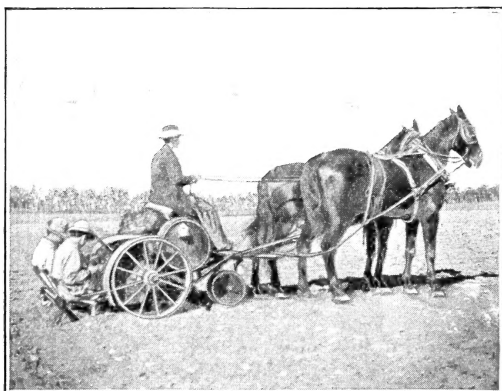
## W. ATLEE BURPEE & Co.

475 and 477 North Fifth St.  
476 and 478 York Ave.  
PHILADELPHIA, PA.  
FORDHOOK FARMS, BUCKS COUNTY, PA.





TOMATO SEED is one of the special crops on our FORDHOOK FARMS.




The illustration above was engraved from a photograph, taken June 4, 1904. It shows eighteen men and boys setting out one of the fields at FORDHOOK FARMS with plants of our popular *Matchless Tomato*.


In cases of extreme dry weather we plant by machines, one of which is shown in the small photograph herewith.

### MORE THAN THREE HUNDRED FIELD TRIALS OF TOMATOES!

At FORDHOOK, the past season, besides our growing crops, we had no less than *three hundred and fifteen* distinct sample rows, under separate numbers, in our Trial Grounds. This complete trial embraced not only all standard and many so-called "new" varieties, but also *different stocks* of the leading Tomatoes. We must *know* the comparative merits of our own and other stocks, as otherwise we could not honestly claim that FORDHOOK-GROWN TOMATO SEED is *the best on the market to-day!*

**Terms of Credit.**—To regular customers and well-known houses of established credit, all bills bought from this catalogue are due June 1st, without regard to date of purchase.

 Bills purchased **on special quotations**, made by letter or telegram, are *net* sixty days from date of invoice, or subject to a discount of one and a half per cent, for cash within ten days of date of invoice.

 Unknown correspondents desiring credit are requested to give satisfactory reference in Philadelphia or New York.

**Cash Discount.**—We allow a discount of **Five Per Cent.** on orders accompanied by a cash remittance, and also on all bills (at catalogue prices) paid within ten days from date of invoice.

**The Prices Quoted** are those ruling at this date. We expect to adhere to them until the issue of our January catalogue, except where important changes compel us to advance or reduce our prices, when we shall be governed by the market. **10 lbs. and more will be supplied at the rates per 100 lbs.:** ½ lb and ½ bushel at pound and bushel rates; but *smaller quantities will be charged at a higher rate.*

**NO CHARGE for Packing or Cartage.**—Bags and boxes are charged *at Cost.* After delivering to forwarders in **good order** (as shown by Bill of Lading) our responsibility ceases. **Insurance** will be effected only when so directed.

**SEALED PACKAGES.**—We make no charge for sealing **pounds, pecks, or bushels**, but, at the low bulk prices quoted therein, we shall charge for putting up in smaller sealed packages, when so ordered, as follows:

**In Ounces.**—One cent per ounce; 50 cts. per 100 ounces.

**In Quarter-Pounds, Pints, and Quarts.**—Two cents for each package.

**In Two-Quarts and Four-Quarts.**—A charge of three cents per package.

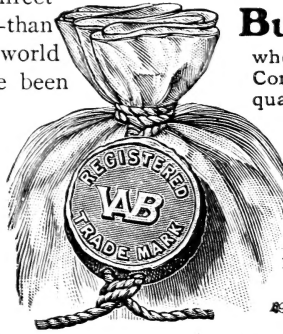
**W. ATLEE BURPEE & CO., PHILADELPHIA.**

# Advance Prices,—for Merchants only.—of “The Best Seeds that Grow!”

The vitality (that is, percentage of growth) can be easily tested before planting, but no one living can tell from an examination of the seeds themselves whether they are of a high-grade strain or the veriest rubbish.

It is necessary, therefore, that every planter must trust some seedsman. The fact that more planters order direct from us,—year after year,—than from any other firm in the world shows that Burpee's Seeds have been proved trustworthy.

Nowhere else in America is there expended so much time and money in “proving stocks” as at our famous FORDHOOK FARMS, in Bucks County, while at no other warehouse is greater care exercised in handling seeds than in the new Burpee Building, Philadelphia.



## **Burpee's Seeds,**

whether Peas, Beans, Sweet Corn, or Farm Seeds,—or a quantity of small Garden Seeds,

**Every Sack is Sealed**  
with our  
**Registered Trade Mark**  
on a **Leaden Seal.**

Inside each sack is the label printed with name of variety and  
**Dated 1905.**

A Tag outside shows what each sack contains.

Competition with us is always on the line of quality. The best it is possible to produce is our aim each season, and by continued selection we are constantly making improvements. This we could not do if we regarded chiefly cost of production, which is generally the prime consideration in growing commercial seeds—considered quite “good enough” for general use!

**At Wholesale** —as well as at retail—we are “A Mail-Order House” *exclusively.* We never send out travelers to solicit orders. As a consequence, however, we are careful to *attend promptly* to inquiries by *mail or telegram.* In large lots on many varieties, this season, we are prepared to quote **special prices** upon request.

*It pays to order early.* Should any varieties be quoted lower in our general Trade List, to be issued, as usual, January 1st, we shall give advantage of such reductions on all booked orders. Some prices are likely to advance,—thus You have everything to gain by placing your order early.

Sincerely yours,

Seed Gardens and Trial Grounds at Fordhook Farms, Bucks County, Penna.

**BURPEE, PHILADELPHIA,** {is sufficient address  
for letters or telegrams

# Telegraphic Cipher (or Cable Code)

## FOR WEIGHTS AND MEASURES.

The telegraphic cipher word for quantities must always precede the cipher words for seed, but if the same quantity of several varieties is ordered, the cipher word meaning that quantity need be placed only before the first. For example :

**Arad Navy, Purity, Benares, Calliope, Chalice, Malmo Balcony**, would mean, ship at once, cheapest route, ten pounds each NAVY BLUE and SADIE BURPEE SWEET PEAS (white-seeded), twenty-five pounds each BURPEE'S ALLHEAD EARLY CABBAGE and OXHEART CARROT, and ten bushels BURPEE'S STRINGLESS GREEN-POD BEANS.

Our customers will find this a very inexpensive way of wiring their orders, but we must caution them that care be taken in writing out the messages, as we cannot hold ourselves responsible for errors arising from incomplete messages or incorrect translation.

**IMPORTANT.**—This telegraphic cipher must be used **ONLY** on orders by telegraph or cable, and never in written orders sent by mail.

OUNCES.		POUNDS.		BUSHELS.		BUSHELS.	
Quantity.		Quantity.		Quantity.		Quantity.	
$\frac{1}{8}$	Abomey	70	Calicut	$\frac{1}{4}$	Lassa	120	Sinde
$\frac{1}{4}$	Aden	75	Cambay	$\frac{1}{2}$	Lavoro	125	Sinope
$\frac{1}{2}$	Adige	80	Candia	$\frac{3}{4}$	Leitrim	150	Socotra
$\frac{3}{4}$	Adour	85	Capua	1	Lerida	155	Sonora
1	Adria	90	Canbul	2	Levant	160	Steubien
2	Aix	95	Cebu	3	Luca	165	Sunda
3	Akerman	100	Cefalu	4	Lucia	170	Surat
		105	Celebes	5	Luzon	175	Tagus
		110	Cenis	6	Macao	180	Tahiti
		115	Cerigo	7	Machias	185	Teviot
		120	Cheraw	8	Malaren	190	Thanet
		125	Coango	9	Malden	195	Tiber
		130	Colousa	10	Malmo	200	Tokay
		135	Comorin	11	Malwah	250	Tonkin
1	Alem	140	Comoro	12	Mamel	300	Torbay
2	Altoof	145	Congo	13	Menai	350	Tunis
3	Amoy	150	Cracow	14	Mersey	400	Vendee
4	Anam	155	Creey	15	Miace	450	Wener
5	Angola	160	Culross	16	Mocha	500	Yazoo
6	Angus	165	Culvert	17	Morea	600	Yemen
7	Anholt	170	Delft	18	Mosul		
8	Anjou	175	Derne	19	Mursuk		
9	Anspach	180	Dinan	20	Muscate		
10	Arad	185	Doubs	21	Mysore		
11	Arcot	190	Drin	22	Namur		
12	Arden	200	Dwina	23	Neckar		
13	Armagh	225	Edisto	24	Neesho		
14	Arpino	250	Falster	25	Neuse		
15	Artois	275	Faroe	26	Neva		
16	Asaph	300	Ferney	27	Nipon		
17	Assam	350	Frio	28	Ozark		
18	Athlone	400	Frische	29	Padang		
19	Ava	450	Funen	30	Parana		
20	Azof	500	Garda	35	Pavia		
21	Bahia	550	Gila	40	Pelew		
22	Balize	600	Gizeh	45	Pruth		
23	Balkan	650	Gondar	50	Reigate		
24	Barita	700	Grisons	55	Rideau		
25	Benares	750	Guarda	60	Saco		
26	Bern	800	Hecla	65	Sagon		
27	Bexar	850	Herat	70	Salado		
28	Bingen	900	Hoogly	75	Samana		
29	Bogota	950	Hythe	80	Santee		
30	Bona	1000	Ivica	85	Saone		
35	Bootan	1200	Ivry	90	Sava		
40	Brazos	1500	Jaffa	95	Scheldt		
45	Brecon	2000	Japura	100	Severn		
50	Breda	3000	Labia	105	Sevr		
55	Brisen	4000	Laccine	110	Shiraz		
60	Bruck	5000	Lagria	115	Simplon		
65	Caen						

PACKETS.	
Number.	
50	Amberg
75	Ancona
100	Andes
150	Andro
200	Angers
300	Aragon
400	Arbe
500	Arnhem
600	Ascoli
700	Astorga
800	Autun
900	Avella
1000	Averno
1250	Avlona
1500	Balbec
2000	Bantam

OUNCES.	
Number.	
50	Caldas
75	Canara
100	Cardiff
150	Carnatic
200	Cashel
250	Caspian
300	Castine
400	Castro
500	Cavery
1000	Cervera

Our Cable Address is BURPEE, Philadelphia.

# BURPEE, Philadelphia,

Is Our Registered Cable Address.

All foreign customers are requested to advise us of their **shortest cable address**. Customers in America who wish to telegraph will also, occasionally, find it useful to use the following additional code. Please note the **code-words** below that would be used in our **reply**, either by cable or telegram.

## FOR OFFERS AND INQUIRIES.

CODE-WORD.	TRANSLATION.
<i>Daubling</i> .....	Telegraph your lowest prices for .....
<i>Dean</i> .....	Mail your lowest prices for .....
<i>Decoy</i> .....	Mail your lowest prices for ....., and send samples.
<i>Defend</i> .....	Telegraph when goods can be shipped.
<i>Defender</i> .....	Advise immediately by mail how soon goods will be shipped.
<i>Deform</i> .....	Can you offer for acceptance by mail .....
<i>Deject</i> .....	Can you offer any .....? If so, telegraph prices.
<i>Delude</i> .....	Can you offer any .....? If so, mail prices.
<i>Derange</i> .....	Telegraph quantities you can offer of following, with prices.
<i>Descend</i> .....	State by letter quantities you can offer of following, with prices.

## Code-words that will be used in OUR ANSWERS.

<i>Dab</i> .....	{ In reply to your telegram, we quote for immediate acceptance upon our usual terms for special quotations the varieties named below, provided they are unsold upon receipt of your order.
<i>Dacite</i> .....	We accept your order for .....
<i>Dagger</i> .....	We accept your order for ....., and shall ship at once.
<i>Dainty</i> .....	We accept your order for ....., and shall ship as directed.
<i>Damsel</i> .....	We offer you for immediate acceptance, subject to being unsold.
<i>Dance</i> .....	We accept your offer and shall ship as directed.
<i>Dapper</i> .....	Cannot accept your order for .....
<i>Dapple</i> .....	{ Part of your order went forward by freight on ..... expect to ship balance .....
<i>Darby</i> .....	{ Part of your order went forward by express on ..... expect to ship balance .....
<i>Dardanus</i> .....	Please repeat your message, it is not clear.

## Code for positive ORDERS.

<i>Dargie</i> .....	Send immediately by <i>express</i> following seeds at catalogue prices.
<i>Darken</i> .....	Send immediately by <i>freight</i> following seeds at catalogue prices.
<i>Darnel</i> .....	Send immediately by <i>mail</i> following seeds at catalogue prices.
<i>Dare</i> .....	Send immediately the following by <i>freight</i> , per special quotations.
<i>Dared</i> .....	Send immediately by <i>express</i> the following, per special quotations.
<i>Darling</i> .....	Send immediately by <i>mail</i> the following, per special quotations.
<i>Dasher</i> .....	{ Send at once following .....; let the other seeds follow as quickly as possible.
<i>Dashing</i> .....	{ Have you shipped our order? If not, increase if possible our order for ..... to ..... pounds (bushels).
<i>Datary</i> .....	{ Send ..... immediately by express. Let balance of order follow by freight.
<i>Dation</i> .....	Duplicate our last order.

**Foreign Orders** are invoiced at the **lowest prices** prevailing upon **date of shipment**. In no case (except on Potatoes and farm seeds, subject to fluctuations) will prices be charged higher than quoted herein, while in **case of decline** in any lines our foreign customers (who, of course, cannot be kept so well posted in the value of American seeds) will receive full advantage of any **lower prices** that we may be quoting. Our export trade is increasing every year, and dealers, even in the most distant countries, who intrust their orders to us, can rely upon the same close attention and equally the **most favorable prices** that we are making at the same time, for the same quality and quantity, to American seedsmen.

# Burpee's Vegetable Seeds.

TEN POUNDS OR MORE WILL BE CHARGED AT 100-POUND RATES.

☞ This list cancels all previous quotations. Orders are binding only when accepted. On varieties which are in extremely short supply we shall refuse orders after we have sold quantities allowed for our wholesale trade.

☞ It is always advantageous to place your orders early, as sometimes disappointments occur through delay. Please use telegraph cipher only for telegraphic or cable orders.

☞ A Telegraphic Cipher (or Cable Code) is attached to each variety, by which orders can be wired at little expense,—using also our code for weights and measures as given on page 2. For example:

**Darken Pelew Balcony** would mean: Send immediately, by fast freight, forty bushels of BURPEE'S STRINGLESS GREEN-POD BEANS at catalogue price.

**Dargie Arad Cage** would mean: Send immediately, by express, ten pounds of best select JERSEY WAKEFIELD CABBAGE at catalogue price.

**Darnel Amoy Lantern** would mean: Send immediately, by mail, three pounds of seed of BIG BOSTON LETTUCE.

Telegrams should be addressed,

**W. ATLEE BURPEE & CO., Philadelphia.**

**Our Cable Address is: BURPEE, Philadelphia.**

## ARTICHOKE.

	Tel. Cipher.	Per lb.	Per 100 lbs.
Large Green Globe.....	<i>Abaft</i> .....	\$1 90	
New Early Violet Campania .....	<i>Abase</i> .....	2 00	

## ASPARAGUS.

<b>Barr's Mammoth</b> .....	<i>Abbey</i> .....	30	\$25 00
<b>Columbian Mammoth White</b> .....	<i>Adduce</i> .....	35	30 00
<b>Conover's Colossal</b> .....	<i>Adept</i> .....	25	22 00
<b>Palmetto</b> .....	<i>Adipose</i> .....	28	25 00

☞ Asparagus Roots will be quoted by letter at any time.

## BEANS,—Dwarf, Bush, or Snap,—Green-Podded.

	Tel. Cipher.	Per bush.	Ten bush. or more at
Early Mohawk.....	<i>Babble</i> .....	\$3 50	\$3 25
<b>Extra Early RED VALENTINE</b> (Finest Improved Round-Pod Strain).....	<i>Bacon</i> .....	4 00	3 75
Refugee, or 1000 to 1.....	<i>Badge</i> .....	4 00	3 75
<b>Extra Early Refugee</b> .....	<i>Badger</i> .....	4 00	3 75
Early Yellow Six Weeks.....	<i>Baffler</i> .....	3 75	3 50
Round Yellow Six Weeks.....	<i>Bailiff</i> .....	3 75	3 60
<b>Burpee's STRINGLESS GREEN-POD</b> .....	<i>Balcony</i> .....	6 00	5 75
<b>Blue-Podded Butter</b> .....	<i>Bandit</i> .....	5 50	
<b>New "Giant Stringless" Green-Pod</b> .....	<i>Bang</i> .....	6 00	5 75



## BUSH BEANS,—Wax-Podded Varieties.

	Tel. Cipher.	Per bush.	Ten bush. or more at
Burpee's Perfection Wax.....	<i>Bangle</i> .....	\$6 50	\$6 25
Burpee's SADDLEBACK Wax.....	<i>Banish</i> .....	8 00	
Dwarf German Black Wax.....	<i>Barked</i> .....	5 75	5 50
Burpee's BRITTLE WAX.....	<i>Banishing</i> .....	10 00	
New "PENCIL-POD" Black Wax.....	<i>Barnet</i> .....	6 25	6 00
New Prolific Black Wax.....	<i>Barrack</i> .....	6 00	5 75
Golden-Eyed Wax.....	<i>Basque</i> .....	5 75	5 50
Golden Wax.....	<i>Batten</i> .....	6 25	6 00
Improved Rust-Proof Golden Wax.....	<i>Bayonet</i> .....	6 25	6 00
Refugee Wax.....	<i>Beast</i> .....	6 25	6 00
Crystal White Wax.....	<i>Beastly</i> .....	6 50	
Keeney's Rustless Golden Wax.....	<i>Beaver</i> .....	5 75	5 50
Wardwell's Kidney Wax.....	<i>Beckon</i> .....	7 00	6 75
Davis' White Wax.....	<i>Bedlam</i> .....	6 50	6 25
Currie's Rust-Proof Golden Wax.....	<i>Beech</i> .....	5 75	5 50

## BUSH BEANS,—Varieties for Shelled Beans.

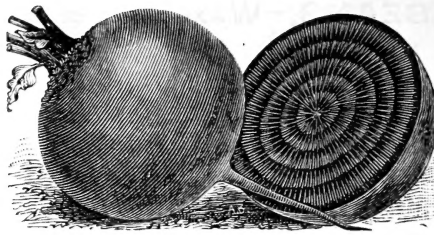
	Tel. Cipher.	Per bush.	Ten bush. or more at
Goddard, or Boston Favorite.....	<i>Bench</i> .....	\$4 00	\$3 75
Dwarf Horticultural.....	<i>Benchman</i> .....	4 25	4 00
White Marrowfat.....	<i>Besiege</i> .....	3 00	
BURPEE'S BUSH LIMA.....	<i>Bib</i> .....	5 75	5 50
"    "    Quar.-Century Strain.....	<i>Biceps</i> .....	6 00	5 75
Henderson's Bush Lima.....	<i>Bilge</i> .....	5 50	5 25
Wood's Prolific Bush Lima.....	<i>Billet</i> .....	5 50	5 25
Thorburn, or Dreer's Bush Lima.....	<i>Billow</i> .....	5 75	5 50

## POLE BEANS,—Varieties for Shell Beans.

White Dutch Case Knife.....	<i>Blower</i> .....	5 25	5 00
Scarlet Runner.....	<i>Blub</i> .....	6 00	
Dreer's Improved, or Challenger.....	<i>Blubber</i> .....	5 50	5 25
Extra Early Lima (Jersey).....	<i>Board</i> .....	5 25	5 00
Seibert's Large Early Lima.....	<i>Boarder</i> .....	5 75	5 50
King of the Garden.....	<i>Bobbin</i> .....	5 50	5 25
Large White (extra size).....	<i>Bodice</i> .....	5 25	5 00
Livingston's Early Dawn.....	<i>Bolster</i> .....	5 25	5 00
Small Lima, Carolina, or Sieva.....	<i>Bolstered</i> .....	5 25	5 00

## POLE BEANS,—Green- and Wax-Podded.

White Creaseback, or Best of All.....	<i>Bland</i> .....	5 00	4 75
Horticultural, Cranberry, or Wren's Egg.....	<i>Blare</i> .....	5 00	4 75
Worcester Mammoth Horticultural.....	<i>Blarney</i> .....	5 00	4 75
Golden Carmine Horticultural.....	<i>Blash</i> .....	7 00	
Lazy Wife's.....	<i>Blaster</i> .....	5 00	4 75
Speckled Cut-Short, or Corn Hill.....	<i>Blasting</i> .....	4 50	4 25
Old Homestead (Kentucky Wonder).....	<i>Blazon</i> .....	5 50	5 25
Burpee's Sunshine Wax.....	<i>Bleat</i> .....	6 25	6 00
Early Golden Cluster Wax.....	<i>Blemish</i> .....	6 25	6 00



ECLIPSE BEET.

## GARDEN BEETS.

NOTE.—Ten pounds or more are invoiced at the rate per 100 pounds.

	Tel. Cipher.	Per lb.	Per 100 lbs.
Extra Early Egyptian Turnip.....	<i>Bombard</i> .....	\$0 30	\$25 00
Crosby's Egyptian.....	<i>Bonify</i> .....	35	30 00
Burpee's Extra Early Turnip.....	<i>Bonnet</i> .....	30	25 00
Bastian's Extra Early Red Turnip.....	<i>Booze</i> .....	25	20 00
The Lentz.....	<i>Borer</i> .....	30	25 00
Crimson Globe.....	<i>Boring</i> .....	40	35 00
Early Model ( <i>New</i> ).....	<i>Bornite</i> .....	75	70 00
Early Bassano.....	<i>Botcher</i> .....	22	20 00
Edmand's Early Turnip.....	<i>Bounce</i> .....	30	25 00
Eclipse.....	<i>Bow</i> .....	30	28 00
Detroit Dark Red.....	<i>Bowser</i> .....	30	25 00
Burpee's Columbia.....	<i>Brace</i> .....	35	30 00
Covent Garden.....	<i>Bracket</i> .....	25	22 00
True Dark Stinson (Burpee).....	<i>Brag</i> .....	30	28 00
Burpee's Improved Blood Turnip.....	<i>Braid</i> .....	30	25 00
Bastian's Half-Long Blood-Red.....	<i>Brass</i> .....	28	25 00
Early Blood-Red Turnip.....	<i>Brattle</i> .....	28	25 00
Queen of the Blacks.....	<i>Bravado</i> .....	25	22 00
Dewing's Improved Blood Turnip.....	<i>Bravo</i> .....	30	27 00
Long Smooth Blood-Red.....	<i>Break</i> .....	25	22 00
Early Yellow Turnip.....	<i>Brent</i> .....	50	
Swiss Chard, or Silver Beet.....	<i>Brevet</i> .....	25	22 00

## SUGAR BEETS and MANGELS.

Improved Wanzleben Sugar.....	<i>Brick</i> .....	12	10 00
Lane's Improved Imperial Sugar.....	<i>Bridal</i> .....	12	10 00
New Danish Sugar (Burpee).....	<i>Brigade</i> .....	16	14 00
New Red-Top Sugar.....	<i>Brindle</i> .....	12	10 00
Golden Giant Intermediate.....	<i>Brine</i> .....	12	10 00
Golden Tankard Yellow-Fleshed.....	<i>Broaden</i> .....	12	10 00
Mammoth Prize Long Red.....	<i>Brutal</i> .....	12	10 00
Giant Half-Sugar Mangel.....	<i>Bucket</i> .....	14	12 00
Red Globe.....	<i>Buckle</i> .....	12	10 00
Champion Yellow, or Orange Globe.....	<i>Builder</i> .....	12	10 00

## BRUSSELS SPROUTS.

Paris Market.....	<i>Burnish</i> .....	1 00	90 00
Perfection.....	<i>Buxom</i> .....	1 00	90 00

## CABBAGE,—Early and Second-Early.

NOTE.—Ten pounds or more are invoiced at 100-pound rates.

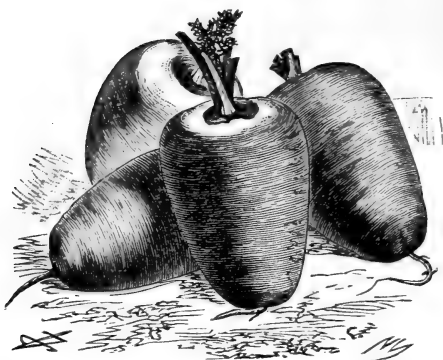
	Tel. Cipher.	Per lb.	Per 100 lbs.
Early Etampes .....	<i>Cabin</i> .....	\$0 90	\$80 00
Early Express (extra early).....	<i>Cackle</i> .....	1 00	90 00
Early Dwarf York.....	<i>Cadence</i> .....	90	80 00
Large Early York.....	<i>Cadet</i> .....	90	80 00
Early Jersey Wakefield ( <i>extra American</i> ).....	<i>Cage</i> .....	1 25	110 00
Early Jersey Wakefield (Best Imported).....	<i>Caged</i> .....	90	75 00
Large Wakefield, or Charleston.....	<i>Calf</i> .....	1 25	110 00
Charleston Wakefield (Imported).....	<i>Calfat</i> .....	90	75 00
Early Winnigstadt ( <i>superb strain</i> ).....	<i>Calico</i> .....	90	80 00
Burpee's New "Early Baseball" .....	<i>Callipers</i> .....	2 00	175 00
Burpee's ALLHEAD EARLY.....	<i>Calliope</i> .....	1 40	125 00
Burpee's "Early Stonehead" .....	<i>Callous</i> .....	1 60	150 00
Early Dwarf Flat Dutch.....	<i>Camber</i> .....	1 00	90 00
Maule's First Early, or "Eureka".....	<i>Cambrel</i> .....	1 40	125 00
Henderson's Early Spring .....	<i>Camp</i> .....	1 40	125 00
Henderson's Early Summer (Imported).....	<i>Canopy</i> .....	90	75 00
All Seasons.....	<i>Canteen</i> .....	1 25	110 00
Fottler's Brunswick (extra fine).....	<i>Cap</i> .....	1 10	100 00
Henderson's Succession.....	<i>Capsize</i> .....	1 25	110 00

## CABBAGE,—Winter Varieties.

Acme Flat Dutch.....	<i>Capture</i> .....	1 00	90 00
Large Late Flat Dutch.....	<i>Caravan</i> .....	80	70 00
Burpee's Superior Premium Flat Dutch.....	<i>Carbon</i> .....	1 00	90 00
Burpee's LATE STONEHEAD.....	<i>Carder</i> .....	1 50	140 00
Burpee's Safe Crop.....	<i>Cardiac</i> .....	1 00	90 00
Burpee's SUREHEAD .....	<i>Carding</i> .....	1 25	110 00
Large Late Drumhead ( <i>American grown</i> ).....	<i>Caraffe</i> .....	1 00	90 00
Large Late Drumhead .....	<i>Careen</i> .....	80	70 00
Burpee's SHORT-STEM Drumhead .....	<i>Carnal</i> .....	1 25	110 00
Danish BALLHEAD (gr'n in Denmark).....	<i>Carpel</i> .....	1 60	150 00
Danish Ballhead, or Hollander.....	<i>Carved</i> .....	1 25	110 00
Burpee's DANISH ROUNDHEAD .....	<i>Carving</i> .....	1 85	175 00
The Lupton.....	<i>Cascade</i> .....	1 00	90 00
Autumn King, or World-Beater .....	<i>Cass</i> .....	1 25	110 00
Marblehead Mammoth.....	<i>Cassino</i> .....	90	80 00
Stone-Mason Marblehead.....	<i>Castile</i> .....	90	80 00
Perfection Drumhead Savoy.....	<i>Caw</i> .....	90	80 00
Drumhead Savoy (Imported).....	<i>Caved</i> .....	70	65 00
Large Red Drumhead.....	<i>Celtic</i> .....	1 00	90 00
Mammoth Rock Red.....	<i>Ceruse</i> .....	1 10	100 00
Early Blood-Red Erfurt.....	<i>Cestrum</i> .....	90	75 00

## CARROTS,—for Cattle Feeding.

Improved Short White ( <i>extra fine</i> ).....	<i>Chatty</i> .....	25	22 00
Large White Belgian.....	<i>Chay</i> .....	25	22 00
Large Yellow Belgian.....	<i>Checker</i> .....	30	25 00
Large White Vosges (a fine strain).....	<i>Cheered</i> .....	25	22 00
Long Red Altringham.....	<i>Chess</i> .....	25	22 00



BURPEE'S OXHEART CARROT.

## GARDEN CARROTS.

NOTE.—Ten pounds or more are invoiced at 100-pound rates.

	Tel. Cipher.	Per lb.	Per 100 lbs.
Early Very Short Scarlet, or Golden Ball.....	<i>Chaise</i> .....	\$0 55	\$50 00
Short Horn, or Early Scarlet Horn.....	<i>Chalder</i> .....	45	40 00
Oxheart, or Guerande.....	<i>Chalice</i> .....	45	40 00
Half-Long Luc.....	<i>Chalk</i> .....	40	35 00
Danvers Half-Long Orange.....	<i>Champ</i> .....	40	35 00
Chantenay, or Model.....	<i>Chanter</i> .....	45	40 00
Half-Long Scarlet Stump-Rooted.....	<i>Chantress</i> .....	40	35 00
Improved Long Orange.....	<i>Chapel</i> .....	35	30 00
Saint Vallery, or New Intermediate.....	<i>Char</i> .....	35	30 00
New Meaux.....	<i>Charmer</i> .....	40	35 00
Coreless Long Red.....	<i>Chart</i> .....	40	35 00
Long Yellow Stump-Rooted.....	<i>Chasm</i> .....	40	35 00

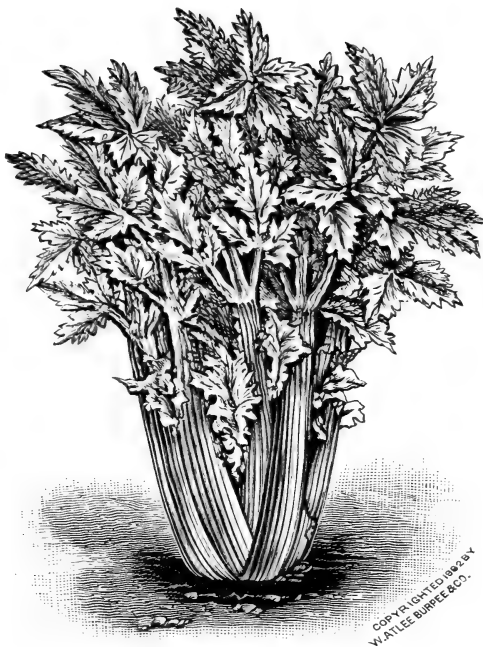
**Our Carrot Seed** is all *French grown*, and this fact should be borne in mind when you compare prices. France produces the best Carrot seed; the roots are transplanted, enabling a proper selection, true to type.

## CAULIFLOWER.

	Tel. Cipher.	Per oz.	Per lb.
Burpee's BEST-EARLY.....	<i>Chide</i> .....	\$1 75	\$24 00
Early Snowball.....	<i>Chigon</i> .....	1 60	22 00
Burpee's New "DRY-WEATHER,".....	<i>Chilled</i> .....	2 00	28 00
Extra Early Dwarf Erfurt ( <i>true</i> ).....	<i>Chime</i> .....	60	9 00
Extra Early Dwarf Erfurt (extra selected).....	<i>Chinch</i> .....	1 25	18 00
Extra Early Paris.....	<i>Chintz</i> .....	60	6 00
Le Normand's Short Stem.....	<i>Chippy</i> .....	50	5 50
Veitch's Autumn Giant.....	<i>Chisel</i> .....	25	2 50
Algiers.....	<i>Children</i> .....	50	5 50

## CELERY,—Early Self-Blanching Varieties.

	Tel. Cipher.	Per lb.	Per 100 lbs.
GOLDEN SELF-BLANCHING (Amer.).....	<i>Chloral</i> .....	\$2 50	\$225 00
GOLDEN SELF-BLANCHING (French).....	<i>Chock</i> .....	2 90	260 00
GOLDEN ROSE (Rose-Ribbed Paris).....	<i>Choir</i> .....	2 10	200 00
WHITE PLUME ( <i>finest strain</i> ).....	<i>Chopper</i> .....	1 25	110 00
Livingston's Snow-White.....	<i>Choquette</i> .....	1 10	100 00



NEW "WINTER QUEEN" CELERY.

### CELERY,—Long-Keeping Winter Varieties.

	Tel. Cipher.	Per lb.	Per 100 lbs.
Boston Market.....	<i>Chowder</i> .....	\$0 75	\$70 00
Giant White Solid .....	<i>Chrism</i> .....	75	70 00
GIANT PASCAL .....	<i>Chronic</i> .....	75	70 00
Perfection Heartwell.....	<i>Chuckle</i> .....	90	80 00
Evans' Triumph.....	<i>Chum</i> .....	75	70 00
Michell's Far Superior.....	<i>Chummy</i> .....	1 25	110 00
WINTER QUEEN .....	<i>Chunk</i> .....	1 50	125 00
Cooper's Cutting .....	<i>Churlish</i> .....	60	55 00
Crawford's Half-Dwarf .....	<i>Churl</i> .....	70	65 00
Cremona .....	<i>Chunner</i> .....	1 00	90 00
Dwarf Golden Heart.....	<i>Chute</i> .....	75	70 00
Imperial Large-Ribbed (Kalamazoo)...	<i>Cider</i> .....	75	70 00
Large-Ribbed Red.....	<i>Cingle</i> .....	90	80 00
Celeriac, or Turnip-Rooted Celery.....	<i>Circuit</i> .....	75	70 00
Celeriac, Giant Smooth Prague.....	<i>Circuitous</i> ..	1 00	90 00
Old Seed for flavoring (Soup Celery)....	<i>Circus</i> .....	10	8 00

### CHICORY.

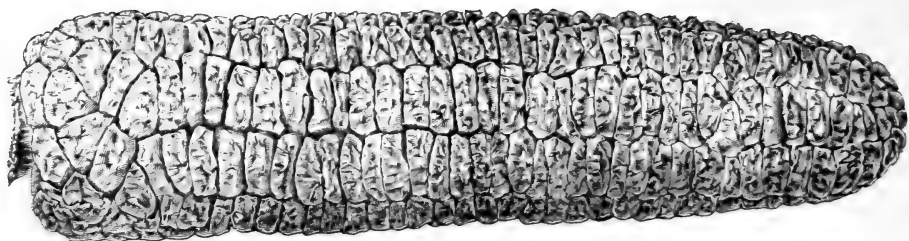
Large-Rooted, or Coffee.....	<i>Cistern</i> .....	45	40 00
------------------------------	----------------------	----	-------

### COLLARDS.

Georgia, or Southern.....	<i>Citing</i> .....	45	40 00
North Carolina Short Stem.....	<i>Citizen</i> .....	50	45 00

### CORN SALAD, or VETTICOST.

Large Round-Leaved (large seed).....	<i>Citrate</i> .....	28	25 00
--------------------------------------	----------------------	----	-------



EARLY FORDHOOK SWEET CORN,—from a Photograph, reduced in size.

## SWEET CORN,—Early Varieties.

	Tel. Cipher.	Per bush., shelled.	Ten bush. or more at
Extra Early Adams, or Burlington.....	<i>Civic</i> .....	\$2 25	\$2 00
Adams Early .....	<i>Civilize</i> .....	2 25	2 00
“Dreadnaught” Early Adams (Burpee)..	<i>Citrus</i> .....	2 25	2 00
First of All.....	<i>Civilly</i> .....	3 75	3 50
Earliest SHEFFIELD (Burpee) .....	<i>Clabber</i> .....	4 50	4 25
Early FORDHOOK (Burpee).....	<i>Clacky</i> .....	4 25	4 00
Burpee’s Early COSMOPOLITAN .....	<i>Clad</i> .....	4 50	4 25
Henderson’s Metropolitan.....	<i>Cladome</i> .....	4 25	4 00
Extra Early Cory (Red Cob) .....	<i>Claggy</i> .....	3 25	3 00
Large White-Cob Cory.....	<i>Clamor</i> .....	3 25	3 00
Early Minnesota.....	<i>Clapped</i> .....	3 00	2 75
Crosby’s Early Twelve-Rowed.....	<i>Clarion</i> .....	3 25	3 00
Burpee’s “Golden Bantam” .....	<i>Clarionet</i> .....	4 75	4 50
Stabler’s Extra Early .....	<i>Classic</i> .....	3 25	3 00
Early Champion.....	<i>Classical</i> .....	3 50	3 25
Shaker’s Early .....	<i>Clause</i> .....	3 50	3 25
Early Mammoth .....	<i>Clawed</i> .....	3 25	3 00
Kendel’s Early Giant .....	<i>Clay</i> .....	3 50	3 25

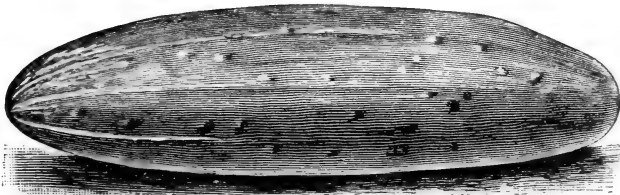
## SWEET CORN,—Main-Crop Varieties.

Country Gentleman .....	<i>Cleave</i> .....	3 50	3 25
Potter’s Excelsior .....	<i>Cleft</i> .....	3 25	3 00
Perry’s Hybrid .....	<i>Clement</i> .....	3 25	3 00
Black Mexican .....	<i>Clinic</i> .....	3 25	3 00
Stabler’s Pedigree.....	<i>Clinker</i> .....	3 50	3 25
Early Evergreen .....	<i>Clive</i> .....	3 00	2 75
Burpee’s WHITE EVERGREEN.....	<i>Cliveden</i> .....	4 00	3 75
Stowell’s EVERGREEN ( <i>ex. fine strain</i> )..	<i>Cloak</i> .....	3 00	2 75
Mammoth Late.....	<i>Cloddy</i> .....	3 25	3 00
Egyptian, or Washington Market.....	<i>Cloom</i> .....	3 25	3 00

*We shall be pleased to quote prices on Field and Pop Corn on application.*

## CRESS.

	Tel. Cipher.	Per lb.	Per 100 lbs.
Fine Curled (Pepper Grass).....	<i>Combat</i> .....	\$0 22	\$18 00
Water Cress.....	<i>Command</i> .....	2 00	



FORDHOOK FAMOUS CUCUMBER,—from a Photograph reduced in size.

**CUCUMBER,—Earliest Varieties.**

	Tel. Cipher.	Per lb.	Per 100 lbs.
Early Russian.....	<i>Commute</i> .....	\$0 65	\$60 00
Early Green Cluster.....	<i>Compass</i> .....	65	60 00
Early Frame, or Early Short Green.....	<i>Complex</i> .....	65	60 00
Thorburn's Everbearing.....	<i>Compute</i> .....	75	70 00
Early Green Prolific, or Boston Pickling.....	<i>Conceit</i> .....	65	60 00
Cool and Crisp.....	<i>Concert</i> .....	65	60 00

**CUCUMBER,—Strains of White Spine.**

Early White Spine.....	<i>Concha</i> .....	65	60 00
New Extra Early White Spine.....	<i>Concrede</i> .....	65	60 00
Improved Early White Spine or Arlington.....	<i>Condemn</i> .....	65	60 00
FORDHOOK FAMOUS.....	<i>Conduct</i> .....	1 25	100 00
FORDHOOK WHITE SPINE (Burpee).....	<i>Cone</i> .....	65	60 00
New Century.....	<i>Confab</i> .....	65	60 00
Peerless White Spine.....	<i>Confide</i> .....	65	60 00
Extra Long, or Evergreen White Spine.....	<i>Confuse</i> .....	65	60 00

**CUCUMBER,—Other Varieties.**

FORDHOOK PICKLING (Burpee).....	<i>Congeal</i> .....	65	60 00
CUMBERLAND.....	<i>Congestion</i> ..	75	70 00
LONDON LONG GREEN.....	<i>Coniferous</i> ..	65	60 00
The Emerald.....	<i>Conject</i> .....	75	70 00
Livingston's Evergreen.....	<i>Connex</i> .....	65	60 00
Paris Pickling.....	<i>Conrey</i> .....	75	65 00
Burpee's Giant Pera.....	<i>Consult</i> .....	1 00	90 00
Japanese Climbing.....	<i>Coop</i> .....	65	60 00
Burpee's White Pearl.....	<i>Copart</i> .....	70	
Burpee's White Wonder.....	<i>Copper</i> .....	65	60 00
West India Gherkin.....	<i>Cordon</i> .....	90	80 00
Serpent, or Snake.....	<i>Cork</i> .....	1 00	

If in need of a large quantity of Cucumber Seed, please ask for Special Prices,—stating varieties and quantities required.

**DANDELION.**

Improved Large-Leaved.....	<i>Dandy</i> .....	3 50	
----------------------------	--------------------	------	--

**EGG PLANT.**

New York Improved Large Purple.....	<i>Ebony</i> .....	2 75	250 00
Fordhook Improved Spineless.....	<i>Eddy</i> .....	2 85	265 00
Burpee's Black Beauty (oz. 30 cts.).....	<i>Edge</i> .....	3 75	350 00
White,—“The Pearl”.....	<i>Edict</i> .....	2 00	190 00
Early Long Purple.....	<i>Egg</i> .....	1 40	125 00
Extra Early Dwarf Round Purple.....	<i>Elder</i> .....	1 40	125 00

## ENDIVE.

NOTE.—Ten pounds or more are invoiced at 100-pound rates.

	Tel. Cipher.	Per lb.	Per 100 lbs.
Green Curled.....	<i>Emane</i> .....	\$0 65	\$60 00
White Curled.....	<i>Encore</i> .....	65	60 00
Giant Green Fringed, or "Oyster".....	<i>Encored</i> .....	70	65 00
Broad-Leaved Batavian.....	<i>Ephod</i> .....	65	60 00

## KALE, or BORECOLE.

Dwarf Siberian.....	<i>Keat</i> .....	35	30 00
Dwarf German (Dwarf Curled Scotch).....	<i>Keck</i> .....	45	40 00
Dwarf Purple.....	<i>Kecksy</i> .....	45	40 00
Mosbach Curled, Winter Kale.....	<i>Kedge</i> .....	45	40 00
Tall Green Curled Scotch.....	<i>Keech</i> .....	50	45 00

## KOHL-RABI, or Turnip-Rooted Cabbage.

Early White Vienna.....	<i>Keel</i> .....	1 40	125 00
Early Purple Vienna.....	<i>King</i> .....	1 40	125 00
Green or White.....	<i>Knag</i> .....	75	70 00

## LEEK.

Broad London Flag.....	<i>Label</i> .....	65	60 00
Large American Flag.....	<i>Labor</i> .....	65	60 00
Long Mezieres.....	<i>Laboring</i> .....	1 00	90 00
Monstrous Carentan.....	<i>Lace</i> .....	90	80 00

## LETTUCE,—Earliest and Forcing Varieties.

White-Seeded Tennis Ball.....	<i>Lackey</i> .....	50	45 00
Black-Seeded Tennis Ball.....	<i>Lade</i> .....	50	45 00
<b>Black-Seeded Butter</b> .....	<i>Lame</i> .....	55	50 00
Yellow-Seeded Butter.....	<i>Lamp</i> .....	50	45 00
<b>Precocity, w. s.</b> .....	<i>Lampers</i> .....	80	75 00
<b>Miniature, or Density, w. s.</b> .....	<i>Lampoon</i> .....	75	70 00
<b>Wheeler's Tom Thumb, b. s.</b> .....	<i>Lance</i> .....	50	45 00
<b>Stonehead Golden Yellow (true), w. s.</b> .....	<i>Lank</i> .....	55	50 00
<b>BIG BOSTON, w. s.</b> .....	<i>Lantern</i> .....	60	55 00
<b>Unrivaled (Improved Big Boston), w. s.</b> .....	<i>Lapped</i> .....	65	60 00
<b>Early Paris Market Forcing, b. s.</b> .....	<i>Larboard</i> .....	80	75 00
<b>Matador, w. s.</b> .....	<i>Larceny</i> .....	80	75 00
<b>Hittinger's Belmont, w. s.</b> .....	<i>Larch</i> .....	50	45 00
<b>Detroit Market Gardeners' Forcing, w. s.</b> .....	<i>Larder</i> .....	50	45 00
<b>Salamander, b. s.</b> .....	<i>Lark</i> .....	50	45 00
<b>Mignonette, b. s.</b> .....	<i>Lath</i> .....	55	50 00
<b>Passion (Black-Seeded Forcing)</b> .....	<i>Lather</i> .....	50	45 00
<b>Mammoth Black-Seeded Butter</b> .....	<i>Lattice</i> .....	60	55 00
<b>Grand Rapids, b. s.</b> .....	<i>Launch</i> .....	50	45 00
<b>Early Speckled Dutch Butterhead, w. s.</b> .....	<i>Lax</i> .....	50	45 00
<b>Golden Queen (Early Egg), w. s.</b> .....	<i>League</i> .....	60	55 00
<b>Reichner's White Butter Forcing, w. s.</b> .....	<i>Leaper</i> .....	50	45 00
<b>Tilton's White Star, w. s.</b> .....	<i>Leash</i> .....	50	45 00



## LETTUCE,—Cutting Varieties.

NOTE.—Ten pounds or more will be invoiced at 100-pound rates.

	Tel. Cipher.	Per lb.	Per 100 lbs.
Early Curled Silesia, <i>w. s.</i> .....	<i>Leer</i> .....	\$0 45	\$40 00
Early Curled Simpson, <i>w. s.</i> .....	<i>Lentor</i> .....	45	40 00
Black-Seeded Simpson.....	<i>Lesson</i> .....	50	45 00
Livingston's Bon-Ton, <i>b. s.</i> .....	<i>Lessoning</i> ....	60	55 00
The Morse, <i>w. s.</i> (Burpee).....	<i>Lest</i> .....	55	50 00
Burpee's Tomhannock, <i>w. s.</i> .....	<i>Level</i> .....	50	45 00
Onondaga, <i>w. s.</i> .....	<i>Levity</i> .....	50	45 00
The Lancaster, <i>w. s.</i> (Burpee).....	<i>Lichen</i> .....	60	55 00
Boston Curled, <i>b. s.</i> .....	<i>Lift</i> .....	55	50 00
Green Fringed, <i>w. s.</i> .....	<i>Like</i> .....	55	50 00

## LETTUCE,—Crisp-Head Varieties.

New York, or "Wonderful," <i>w. s.</i> .....	<i>Libretto</i> .....	55	50 00
Denver Market, <i>w. s.</i> .....	<i>Limb</i> .....	50	45 00
HANSON (best hard-heading stock), <i>w. s.</i>	<i>Linger</i> .....	50	45 00
Crisp-as-Ice, <i>b. s.</i> .....	<i>Lingering</i> ...	50	45 00
Burpee's "Giant Glacier," <i>b. s.</i> .....	<i>Lining</i> .....	70	65 00
Burpee's Brittle Ice, <i>w. s.</i> .....	<i>Linkage</i> .....	1 40	125 00
ICEBERG, <i>w. s.</i> (Burpee).....	<i>Linnet</i> .....	55	50 00
Giant Iceberg, <i>w. s.</i> (Burpee).....	<i>Linoleum</i> ....	1 00	90 00

## LETTUCE,—"Butterhead" Varieties.

Burpee's Butterhead, <i>w. s.</i> .....	<i>Liver</i> .....	1 25	110 00
Burpee's Silver Ball, <i>w. s.</i> .....	<i>Livery</i> .....	55	50 00
Philadelphia Early White Cabbage, <i>w. s.</i>	<i>Livid</i> .....	45	40 00
Early Prize Head, or Brown Cabbage, <i>w. s.</i>	<i>Lizard</i> .....	45	40 00
Gold Nugget, <i>w. s.</i> (Burpee).....	<i>Loaf</i> .....	55	50 00
Market Gardeners' Private Stock, <i>b. s.</i> .....	<i>Loafer</i> .....	45	40 00
Deacon, or San Francisco Market, <i>w. s.</i> ...	<i>Lobby</i> .....	50	45 00
Nansen, or North Pole, <i>w. s.</i> .....	<i>Lobe</i> .....	65	60 00
Continuity, <i>b. s.</i> .....	<i>Loftier</i> .....	65	60 00
Thickhead Yellow, <i>w. s.</i> .....	<i>Lofty</i> .....	55	50 00
California Cream-Butter, <i>b. s.</i> (Burpee)...	<i>Logic</i> .....	50	45 00
Thorburn's Maximum, <i>b. s.</i> (also called "Immensity").....	<i>Logician</i> .....	50	45 00
Burpee's Hardhead, <i>w. s.</i> .....	<i>Loiter</i> .....	55	50 00
Blonde Blockhead, <i>w. s.</i> .....	<i>Loom</i> .....	55	50 00

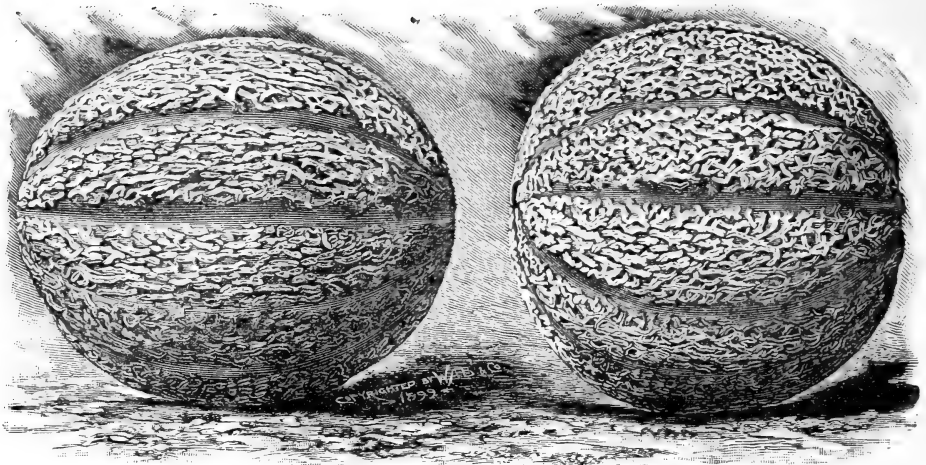
## LETTUCE,—Cos, or "Celery" Varieties.

Dwarf White-Heart Cos, <i>w. s.</i> .....	<i>Lore</i> .....	60	55 00
Giant White Cos, <i>w. s.</i> .....	<i>Lounge</i> .....	60	55 00
Paris White Cos (Romaine), <i>w. s.</i> .....	<i>Loyal</i> .....	55	50 00
Express, or Eclipse.....	<i>Lozenge</i> .....	80	70 00



BURPEE'S SEEDS GROW and are famous  
for the Uniform Excellence of their Products





Two Specimens of BURPEE'S NETTED GEMS,—engraved from a Photograph.

### MELON—MUSK,—Green-Fleshed Varieties.

NOTE.—Ten pounds or more will be invoiced at 100-pound rates.

	Tel. Cipher.	Per lb.	Per 100 lbs.
Burpee's NETTED GEM (Rocky Ford).	<i>Maggot</i> .....	\$0 50	\$45 00
Rose Gem.....	<i>Magnate</i> .....	50	45 00
Early Jenny Lind.....	<i>Magnify</i> .....	50	45 00
New Jersey Improved Button Strain of Jenny Lind.....	<i>Magnitude</i> ..	75	70 00
Norfolk "Button" Strain of Jenny Lind	<i>Maggie</i> .....	60	55 00
Hackensack, or Turk's Cap.....	<i>Malady</i> .....	65	60 00
Extra Early Hackensack.....	<i>Malice</i> .....	65	60 00
Burpee's MELROSE.....	<i>Malign</i> .....	60	55 00
MONTREAL Green Nutmeg (Burpee)...	<i>Manna</i> .....	85	80 00
Long Island Beauty.....	<i>Mantel</i> .....	1 00	90 00
Superior.....	<i>Maple</i> .....	65	60 00
Burpee's CHAMPION MARKET ( <i>true</i> ).	<i>Marl</i> .....	75	70 00
Burpee's Bay View.....	<i>Marry</i> .....	60	55 00
Acme, or Baltimore.....	<i>Mash</i> .....	60	55 00
Boston Mango.....	<i>Mattock</i> .....	50	45 00

### MELON—MUSK,—Salmon-Fleshed Varieties.

EMERALD GEM (Burpee's).....	<i>Mavis</i> .....	1 40	125 00
Miller's Cream, or Osage.....	<i>Maw</i> .....	65	60 00
GOLDEN EAGLE (Burpee's).....	<i>Mead</i> .....	75	70 00
PAUL ROSE, or Petoskey.....	<i>Meager</i> .....	65	60 00
Ferry's New Defender.....	<i>Meekest</i> .....	65	60 00
Tip Top Nutmeg.....	<i>Menial</i> .....	70	65 00
Kinsman Queen.....	<i>Mercer</i> .....	45	40 00

## MELON—WATER.

	Tel. Cipher.	Per lb.	Per 100 lbs.
FORDHOOK EARLY (Burpee).....	<i>Mimic</i> .....	\$0 50	\$45 00
Cole's Early .....	<i>Minish</i> .....	35	30 00
Phinney's Early.....	<i>Minx</i> .....	30	25 00
Burpee's CUBAN QUEEN.....	<i>Mirage</i> .....	32	28 00
Burpee's Mammoth IRONCLAD .....	<i>Mirror</i> .....	35	30 00
Gray Monarch, or Long White Icing.....	<i>Mirth</i> .....	40	35 00
DARK ICING, or ICE RIND .....	<i>Miser</i> .....	35	30 00
Round Light Icing .....	<i>Miserable</i> .....	35	30 00
Ice Cream ( <i>true</i> , white seed) .....	<i>Mitre</i> .....	30	25 00
Mammoth SANTIAGO (Burpee).....	<i>Miry</i> .....	75	70 00
KLECKLEY SWEETS (Burpee) .....	<i>Mizzen</i> .....	50	45 00
"SWEETS" grown by Kleckley.....	<i>Mode</i> .....	70	65 00
Burpee's HALBERT HONEY.....	<i>Modeling</i> .....	65	60 00
Blue Gem, or ICEBERG.....	<i>Modeste</i> .....	32	28 00
Kolb's Gem.....	<i>Modish</i> .....	30	25 00
DIXIE (Selected).....	<i>Mogul</i> .....	32	28 00
Duke Jones. ....	<i>Molar</i> .....	32	28 00
McIVER SUGAR.....	<i>Molten</i> .....	45	40 00
Pride of Georgia.....	<i>Moment</i> .....	35	30 00
Sweet Heart.....	<i>Mongrel</i> .....	35	30 00
The Jones.....	<i>Mope</i> .....	32	28 00
Florida Favorite.....	<i>Morbid</i> .....	35	30 00
Girardeau's New Favorite .....	<i>Morsel</i> .....	35	30 00
Girardeau's New Triumph .....	<i>Mortar</i> .....	35	30 00
Mountain Sweet .....	<i>Mortise</i> .....	32	28 00
Burpee's Hungarian Honey.....	<i>Mosaic</i> .....	50	
Black Spanish .....	<i>Moth</i> .....	35	30 00
Alabama Sweets.....	<i>Motive</i> .....	45	40 00
Seminole .....	<i>Moulder</i> .....	40	35 00
Striped Gypsy, or Georgia Rattlesnake.....	<i>Mug</i> .....	45	40 00
Colorado Preserving Melon.....	<i>Mural</i> .....	50	45 00

## MUSTARD.

Fordhook Fancy.....	<i>Myrrh</i> .....	65	60 00
Black or Brown.....	<i>Myth</i> .....	15	10 00
White .....	<i>Mythol</i> .....	15	10 00
New Chinese.....	<i>Myxine</i> .....	40	35 00
Southern Giant Curled.....	<i>Myxon</i> .....	35	30 00

## NASTURTIIUM, or INDIAN CRESS.

Dwarf Tom Thumb, Mixed.....	<i>Nail</i> .....	35	30 00
Tall, Mixed .....	<i>Neat</i> .....	28	22 00

See page 30 for general list of Nasturtiums.

## OKRA, or GUMBO.

Dwarf Prolific, or Density .....	<i>Oaken</i> .....	25	20 00
New Lady Finger.....	<i>Oar</i> .....	30	25 00
White Velvet.....	<i>Oasis</i> .....	25	20 00
N. J. Perfected Perkins' Long Pod.....	<i>Obduct</i> .....	35	30 00
Kleckley's Favorite.....	<i>Obdure</i> .....	65	60 00

## ONIONS,—American Red Varieties.

NOTE.—Ten pounds or more will be invoiced at 100-pound rates.

	Tel. Cipher.	Per lb.	Per 100 lbs.
Extra Early Red .....	<i>Occult</i> .....	\$0 70	\$65 00
Large Red Wethersfield.....	<i>Octagon</i> .....	70	65 00
Large Red Globe (Southport Red Globe)	<i>Octave</i> .....	80	75 00

## ONIONS,—American White Varieties.

Philadelphia Silverskin (for sets) .....	<i>Ode</i> .....	1 25	110 00
White Silverskin, or White Portugal....	<i>Odious</i> .....	1 25	110 00
Southport Large White Globe.....	<i>Oint</i> .....	1 40	125 00
Extra Early White Pearl.....	<i>Omega</i> .....	1 25	110 00

## ONION,—Distinct Color.

Australian Brown (Burpee).....	<i>Omen</i> .....	60	55 00
Pink Prize-Taker (Burpee). .....	<i>Omentum</i> ....	85	75 00

## ONIONS,—American Yellow Varieties.

Yellow Danvers.....	<i>Obelisk</i> .....	60	55 00
Yellow Globe Danvers.....	<i>Obit</i> .....	65	60 00
Michigan or Ohio Yellow Globe.....	<i>Obligate</i> .....	65	60 00
Yellow Dutch, or Strasburg .....	<i>Oblige</i> .....	60	55 00
Southport Yellow Globe.....	<i>Oblique</i> .....	75	70 00
Prize-Taker (Best American Grown)....	<i>Occident</i> .....	80	75 00
Extra Early Australian Yellow Globe....	<i>Occlude</i> .....	70	65 00

## ONIONS,—Italian Varieties.

Earliest White Queen.....	<i>Onyx</i> .....	1 25	110 00
Extra Early Barletta.....	<i>Opal</i> .....	1 25	110 00
Giant Rocca of Naples.....	<i>Opine</i> .....	70	65 00
Giant White Italian Tripoli.....	<i>Organic</i> .....	1 00	90 00
Mammoth Silver King (Burpee).....	<i>Orion</i> .....	1 00	90 00
Mammoth Pompeii (Burpee).....	<i>Oust</i> .....	75	65 00
Red Victoria (Amer. Grown) (Burpee)..	<i>Oven</i> .....	80	75 00
White Victoria (Amer. Grown) (Burpee)	<i>Ox</i> .....	1 40	125 00
Gigantic Gibraltar (Burpee).....	<i>Oxen</i> .....	1 40	125 00

## PARSLEY.

Plain or Single.....	<i>Pacer</i> .....	25	20 00
Finest Double Curled .....	<i>Pactum</i> .....	30	25 00
Extra Dark Moss Curled .....	<i>Padded</i> .....	30	25 00
Fern-Leaved .....	<i>Padrone</i> .....	35	30 00
Extra Curled Dwarf (Emerald).....	<i>Pagan</i> .....	30	25 00
Turnip-Rooted, or Hamburg.....	<i>Pugent</i> .....	30	25 00

## PARSNIP.

Early Short Round French .....	<i>Painter</i> .....	25	20 00
Improved Guernsey .....	<i>Palate</i> .....	20	18 00
Long Smooth, or Hollow Crown.....	<i>Palaver</i> .....	20	18 00

## PEAS,—Small Round Extra Earlys.

	Tel. Cipher.	Per bush.	Ten bush. or more at
Burpee's Extra Early .....	<i>Pale</i> .....	\$3 10	\$3 00
"BURPEE'S BEST" Extra Early .....	<i>Pallium</i> .....	3 25	3 10
New "Prolific" Extra Early .....	<i>Pallor</i> .....	3 40	3 25
First and Best .....	<i>Palmate</i> .....	3 00	2 75
Philadelphia Extra Early .....	<i>Palsy</i> .....	3 00	2 75
Improved Daniel O'Rourke.....	<i>Palter</i> .....	3 00	2 75
ALASKA, or Laxton's Earliest of All....	<i>Pamper</i> .....	2 75	2 50

## PEAS,—Extra Early Wrinkled.

Nott's Excelsior.....	<i>Pandar</i> .....	6 25	6 00
William Hurst .....	<i>Pane</i> .....	5 75	5 50
AMERICAN WONDER.....	<i>Panicle</i> .....	5 75	5 50
Extra Early Premium Gem .....	<i>Panoply</i> .....	5 25	5 00
Surprise, or Eclipse.....	<i>Panther</i> .....	5 75	5 50
GRADUS (Prosperity) .....	<i>Papal</i> .....	8 50	8 00
Thomas Laxton.....	<i>Papist</i> .....	8 50	8 00

## PEAS,—Second Early and Main Crop.

Admiral.....	<i>Parable</i> .....	3 25	3 00
Alderman .....	<i>Parch</i> .....	5 50	5 25
Bliss's Abundance .....	<i>Parental</i> .....	3 50	3 25
Bliss's Everbearing.....	<i>Parish</i> .....	3 50	3 25
Boston Unrivald .....	<i>Parole</i> .....	5 50	5 25
Burpee's PROFUSION .....	<i>Parrot</i> .....	6 50	
Burpee's QUALITY .....	<i>Parry</i> .....		<i>Crop failed.</i>
Burpee's QUANTITY.....	<i>Parson</i> .....	5 25	5 00
British Wonder.....	<i>Parsonage</i> .....	6 00	5 75
Carter's DAISY.....	<i>Passade</i> .....	6 00	5 75
Champion of England.....	<i>Passion</i> .....	3 25	3 00
Yorkshire Hero.....	<i>Passing</i> .....	3 50	3 25
Duke of Albany.....	<i>Pastel</i> .....	5 25	5 00
Hurst's RELIANCE.....	<i>Pathetic</i> .....	4 50	4 25
HEROINE .....	<i>Pathos</i> .....	4 25	4 00
Horsford's Market Garden .....	<i>Patriot</i> .....	3 25	3 00
Kelvedonian .....	<i>Patriotism</i> .....	5 25	5 00
Improved Senator .....	<i>Pauper</i> .....	6 25	6 00
Improved PRIDE OF THE MARKET.....	<i>Pawn</i> .....	4 50	4 25
Laxton's Evolution .....	<i>Pearl</i> .....	6 25	
McLean's Advancer.....	<i>Pectize</i> .....	3 50	3 25
Shropshire Hero .....	<i>Pedal</i> .....	4 00	3 75
Improved STRATAGEM.....	<i>Peep</i> .....	7 00	6 75
Telephone .....	<i>Pelican</i> .....	5 00	4 75
Long Island Mammoth (Telegraph).....	<i>Pellet</i> .....	4 25	4 00
Black-Eye Marrowfat ( <i>Hand-picked</i> ).....	<i>Pelter</i> .....	2 00	1 90
Dwarf White Marrowfat ( <i>Hand-picked</i> ).....	<i>Penance</i> .....	2 00	1 90
Dwarf Sugar (Purple Blossom).....	<i>Pendle</i> .....	5 50	
Mammoth Melting Sugar .....	<i>Pencil</i> .....	6 00	

## PEPPER,—Small and Hot.

	Tel. Cipher.	Per lb.	Per 100 lbs.
Bird's-Eye, or Creole.....	<i>Pennant</i> .....	\$1 50	
Celestial .....	<i>Pensive</i> .....	1 60	\$150 00
Coral Gem Bouquet .....	<i>Peon</i> .....	2 25	
Mikado (Burpee).....	<i>People</i> .....	2 25	
Kaleidoscope .....	<i>Peptic</i> .....	1 60	
Long Red Cayenne ( <i>true</i> ) .....	<i>Percale</i> .....	1 40	130 00
Red Chili ( <i>true</i> ).....	<i>Perfume</i> .....	1 50	140 00
Tabasco ( <i>true McIlhenny strain</i> ) .....	<i>Perfuse</i> .....	3 75	
Red Cluster.....	<i>Periwig</i> .....	1 50	140 00
Fancy Wrinkled, Mixed.....	<i>Pernia</i> .....	1 75	150 00

## PEPPER,—Large and Mild.

Large Bell, or Bull-Nose (Improved).....	<i>Perse</i> .....	1 10	100 00
Sweet Mountain, or Mammoth.....	<i>Pertly</i> .....	1 25	110 00
Burpee's RUBY KING.....	<i>Perturb</i> .....	1 50	140 00
CHINESE GIANT (oz. 35 cts.) .....	<i>Pervade</i> .....	4 00	375 00
Spanish Monstrous.....	<i>Pervert</i> .....	1 25	110 00
Red Squash, or Tomato-Shaped.....	<i>Pilgrim</i> .....	1 40	125 00
Dwarf Early Red Squash.....	<i>Pilot</i> .....	1 40	125 00
Red Etna (Burpee).....	<i>Pique</i> .....	1 75	
Procopp's Giant .....	<i>Piston</i> .....	1 50	
Elephant's Trunk.....	<i>Plait</i> .....	1 50	
Black Nubian (Burpee) .....	<i>Plasm</i> .....	1 50	
Golden Dawn.....	<i>Plight</i> .....	1 50	
Golden Queen .....	<i>Plunge</i> .....	1 50	
Burpee's Golden King .....	<i>Plush</i> .....	2 00	
Burpee's Golden Upright.....	<i>Poke</i> .....	1 50	

## SEED POTATOES.

Prices vary with the market. We do not attempt to quote in this advance list, but shall give *offers for immediate acceptance* by mail.

## PUMPKIN.

Small Sugar.....	<i>Prog</i> .....	40	35 00
White Cushaw, or Crookneck.....	<i>Prolate</i> .....	40	35 00
Green Striped Cushaw.....	<i>Probation</i> .....	40	35 00
Improved Large Field ( <i>Big Tom</i> ).....	<i>Promote</i> .....	18	15 00
Large Cheese.....	<i>Prone</i> .....	35	30 00
Burpee's Golden Oblong .....	<i>Prosal</i> .....	45	40 00
Burpee's Quaker Pie .....	<i>Proud</i> .....	60	55 00
Globe Mammoth .....	<i>Prowess</i> .....	1 40	
Genuine Mammoth, or True Potiron (Jumbo, or King of the Mammoths).....	<i>Provost</i> .....	1 00	90 00
Winter Luxury.....	<i>Pulley</i> .....	45	40 00
New Japanese.....	<i>Punch</i> .....	50	45 00

## RADISH,—Early Turnip - Shaped.

NOTE.—Ten pounds or more will be invoiced at 100-pound rates.

	Tel. Cipher.	Per lb.	Per 100 lbs.
Burpee's EARLIEST (Scarlet Button).....	<i>Rabbit</i>	\$0 45	\$40 00
Burpee's HAILSTONE.....	<i>Racer</i>	45	40 00
Crimson Giant Globe .....	<i>Racing</i>	60	55 00
Early Round Dark Red .....	<i>Radiate</i>	30	25 00
Vick's Scarlet Globe.....	<i>Radiator</i>	40	35 00
Extra Early Scarlet Turnip.....	<i>Rafter</i>	25	22 00
Golden Dresden (Burpee).....	<i>Raisin</i>	35	30 00
New LEAFLESS.....	<i>Ramage</i>	75	70 00
New Triumph .....	<i>Rammer</i>	60	55 00
Ruby-Pearl (Burpee).....	<i>Rampart</i>	40	35 00
Scarlet Turnip, White Tip.....	<i>Ransom</i>	30	25 00
Early White Turnip.....	<i>Rasp</i>	35	30 00
Philadelphia White Box .....	<i>Rattan</i>	35	30 00

## RADISH,—Early Olive-Shaped.

New EARLIEST WHITE (Burpee).....	<i>Rebel</i>	45	40 00
Earliest Carmine Olive.....	<i>Rebuke</i>	40	35 00
Early White Olive-Shaped.....	<i>Recited</i>	35	30 00
French Breakfast .....	<i>Recluse</i>	35	30 00
New BRIGHT BREAKFAST.....	<i>Rector</i>	38	34 00
Burpee's Surprise.....	<i>Reed</i>	38	34 00
Scarlet Olive-Shaped.....	<i>Refract</i>	30	25 00

## RADISH,—Early Long Varieties.

Early Long Scarlet, Short Top.....	<i>Refute</i>	25	22 00
Cincinnati Market, or "Glass" .....	<i>Regent</i>	30	28 00
Wood's Early Frame.....	<i>Remedy</i>	30	25 00
New White ICICLE (Eiszapfen) .....	<i>Remorse</i>	45	40 00
Half-Long Deep Scarlet, or Paris Beauty.....	<i>Renard</i>	30	28 00
LONG CARDINAL (Brightest Scarlet).....	<i>Repast</i>	30	25 00

## RADISH,—Summer Varieties.

CHARTIERS, or Shepherd (Improved).....	<i>Reptile</i>	30	25 00
Long White VIENNA (Lady Finger).....	<i>Retort</i>	30	25 00
White STRASBURG .....	<i>Ribald</i>	30	25 00
Large White Globe.....	<i>Rimple</i>	35	30 00
Golden Globe, or Yellow Turnip .....	<i>Rivet</i>	30	25 00
Giant White Stuttgart .....	<i>Rock</i>	30	25 00

## RADISH,—Winter Varieties.

New WHITE CHINESE (Celestial).....	<i>Rudely</i>	45	40 00
Burpee's OSAKA .....	<i>Rudder</i>	45	40 00
California Mammoth White Winter.....	<i>Runnel</i>	30	25 00
Chinese Rose (Scarlet Chinese).....	<i>Runt</i>	30	25 00
Round Scarlet China.....	<i>Runter</i>	35	30 00
Long Black Spanish.....	<i>Rustler</i>	28	25 00
Long White Spanish.....	<i>Rute</i>	28	25 00
Round Black Spanish.....	<i>Rutile</i>	28	25 00

## RHUBARB, or PIE PLANT.

NOTE.—Ten pounds or more are invoiced at 100-pound rates.

	Tel. Cipher.	Per lb.	Per 100 lbs.
Myatt's Victoria.....	<i>Ruttish</i> .....	\$0 80	\$75 00

## SALSIFY, or VEGETABLE OYSTER.

Long White French.....	<i>Sabre</i> .....	60	55 00
Sandwich Island Mammoth.....	<i>Saddle</i> .....	80	75 00

## SPINACH.

Long-Standing Prickly.....	<i>Sally</i> .....	15	12 00
New Long-Standing (Enkhuizen).....	<i>Sandal</i> .....	15	12 00
Norfolk Savoy-Leaved (Bloomsdale).....	<i>Sash</i> .....	20	15 00
New VICTORIA (Burpee).....	<i>Satire</i> .....	15	12 00
Prickly, or Winter.....	<i>Saturn</i> .....	15	12 00
Thick-Leaved Round.....	<i>Saxon</i> .....	15	12 00
New Zealand (Tetragonia expansa).....	<i>Scald</i> .....	45	40 00

## SQUASH,—Summer Varieties.

Early White Bush Scalloped.....	<i>Season</i> .....	40	35 00
New Mammoth White Bush Scalloped.....	<i>Seat</i> .....	45	40 00
Dreer's Extra Early Jersey Bush.....	<i>Secede</i> .....	40	35 00
Early Yellow Bush Scalloped.....	<i>Secret</i> .....	40	35 00
Mammoth Yellow Bush.....	<i>Sedate</i> .....	45	40 00
Golden Summer Crookneck.....	<i>Sedge</i> .....	40	35 00
New Giant Summer Crookneck.....	<i>Self</i> .....	45	40 00
White Summer Crookneck.....	<i>Senior</i> .....	40	35 00
Cocozelle Bush.....	<i>Septic</i> .....	50	45 00

## SQUASH,—Winter Varieties.

FORDHOOK (Burpee).....	<i>Sermon</i> .....	70	65 00
BUSH FORDHOOK (Burpee).....	<i>Sermonize</i> .....	75	65 00
Boston Marrow.....	<i>Serpent</i> .....	50	45 00
HUBBARD.....	<i>Shaft</i> .....	65	60 00
Chicago Warty Hubbard.....	<i>Sharp</i> .....	65	60 00
RED, or GOLDEN HUBBARD.....	<i>Sheaf</i> .....	85	80 00
Brazil Sugar.....	<i>Shingle</i> .....	45	40 00
Essex Hybrid.....	<i>Shone</i> .....	65	60 00
Gregory's Golden Bronze.....	<i>Shopper</i> .....	75	70 00
Pike's Peak, or Sibley.....	<i>Shell</i> .....	65	60 00
Livingston's Pie.....	<i>Shred</i> .....	45	40 00
The Faxon.....	<i>Shuttle</i> .....	40	38 00
Mammoth Chili.....	<i>Singe</i> .....	1 25	100 00
Mammoth Whale.....	<i>Singing</i> .....	1 00	90 00
Delicata.....	<i>Skate</i> .....	50	45 00



## TOMATO,—Large Bright Red Varieties.

NOTE.—Ten pounds or more are invoiced at 100-pound rates.

	Tel. Cipher.	Per lb.	Per 100 lbs.
The MATCHLESS (Burpee).....	<i>Tabby</i> .....	\$1 75	\$160 00
MATCHLESS (grown at Fordhook).....	<i>Table</i> .....	2 50	225 00
Livingston's Favorite.....	<i>Tablet</i> .....	1 40	125 00
Livingston's Perfection.....	<i>Tackle</i> .....	1 40	125 00
Paragon.....	<i>Tactics</i> .....	1 40	125 00
QUARTER-CENTURY (Burpee).....	<i>Tactile</i> .....	2 50	225 00
Quarter-Century (grown at Fordhook).....	<i>Tactless</i> .....	3 00	275 00
Burpee's New NOBLE.....	<i>Tatter</i> .....	2 25	200 00
Extra Early Advance.....	<i>Talent</i> .....	1 50	140 00
Chalk's EARLY JEWEL.....	<i>Tales</i> .....	3 50	325 00
Chalk's Early Jewel (grown at Fordhook).....	<i>Talisman</i> .....	5 50	500 00
Sparks' EARLIANA ( <i>a superb strain</i> ).....	<i>Tallow</i> .....	3 50	325 00
Sparks' EARLIANA (Western grown).....	<i>Tallyho</i> .....	2 50	225 00
Atlantic Prize.....	<i>Talmud</i> .....	1 60	150 00
Nolte's Earliest.....	<i>Talmudist</i> .....	2 00	175 00
Burpee's COMBINATION.....	<i>Tamper</i> .....	1 75	160 00
"Success".....	<i>Tamarind</i> .....	1 75	160 00
Dwarf Aristocrat.....	<i>Taper</i> .....	1 90	180 00
Maule's "Enormous".....	<i>Tar</i> .....	2 25	200 00
Improved MAYFLOWER.....	<i>Tassel</i> .....	1 60	150 00
Sutton's Best of All.....	<i>Taste</i> .....	1 90	175 00
Stone.....	<i>Tend</i> .....	1 40	125 00
Dwarf Stone.....	<i>Tennis</i> .....	3 00	275 00
Kansas Standard.....	<i>Terrier</i> .....	2 25	200 00
Trophy.....	<i>Thrilled</i> .....	1 40	125 00
Livingston's Royal Red.....	<i>Throne</i> .....	1 40	125 00
Honor Bright.....	<i>Tick</i> .....	1 50	140 00

## TOMATO,—Large Purple-Fruited Varieties.

FORDHOOK FIRST (Burpee).....	<i>Tiger</i> .....	2 25	200 00
FORDHOOK FANCY (Burpee).....	<i>Tinge</i> .....	1 75	160 00
TRUCKER'S FAVORITE.....	<i>Tippet</i> .....	2 50	225 00
Trucker's Favorite (grown at Fordhook).....	<i>Tipple</i> .....	4 00	385 00
The Turner Hybrid (Mikado) (Burpee).....	<i>Tirade</i> .....	1 75	160 00
Acme.....	<i>Tire</i> .....	1 40	125 00
Imperial.....	<i>Toast</i> .....	1 60	150 00
Livingston's MAGNUS.....	<i>Toddy</i> .....	1 50	140 00
Essex Early Hybrid.....	<i>Tontine</i> .....	1 50	140 00
Burpee's Climax.....	<i>Torrent</i> .....	1 50	140 00
Dwarf Champion.....	<i>Transfix</i> .....	1 90	180 00
Livingston's Beauty.....	<i>Tread</i> .....	1 50	140 00
Buckeye State.....	<i>Treble</i> .....	1 60	150 00
PONDEROSA (No. 400).....	<i>Tress</i> .....	2 50	240 00

## TOMATO,—Large Yellow Varieties.

Dwarf GOLDEN CHAMPION (Burpee).....	<i>Trick</i> .....	1 75	165 00
Golden Queen (Sunrise).....	<i>Trident</i> .....	1 50	

## TOMATO,—Small-Fruited Varieties.

	Tel. Cipher.	Per lb.
<b>The Peach</b> .....	<i>Trout</i> .....	\$1 50
Small Round Yellow.....	<i>Troy</i> .....	1 50
Yellow Plum-Shaped.....	<i>Trudge</i> .....	1 50
<b>Pear-Shaped Yellow</b> .....	<i>Tube</i> .....	1 75
<b>Pear-Shaped Red</b> .....	<i>Tucket</i> .....	1 50
Red Cherry.....	<i>Tuft</i> .....	1 50
<b>Burbank Preserving (Burpee)</b> .....	<i>Tudor</i> .....	2 00
Strawberry, or Winter Cherry.....	<i>Tug</i> .....	2 00

## TURNIP,—White-Fleshed.

NOTE.—Ten pounds or more will be supplied at 100-pound rates.

	Tel. Cipher.	Per lb.	Per 100 lbs.
<b>Early White Flat Dutch Strap-Leaved</b> .....	<i>Tula</i> .....	\$0 22	\$20 00
<b>Early Red- or Purple-Top Strap-Leaved</b> .....	<i>Tumble</i> .....	22	20 00
<b>Extra Early White Milan</b> .....	<i>Tumbrel</i> .....	50	45 00
<b>Extra Early Purple-Top Milan</b> .....	<i>Tumor</i> .....	40	35 00
<b>Red-Top White Globe</b> .....	<i>Tumult</i> .....	22	20 00
<b>White Globe Strap-Leaved</b> .....	<i>Tuner</i> .....	20	18 00
<b>White Egg</b> .....	<i>Tunnel</i> .....	25	22 00
<b>Sweet German, or Long White French</b> .....	<i>Turban</i> .....	22	20 00
Long White, or Cowhorn.....	<i>Turgid</i> .....	28	25 00
<b>Half-Long Red-Top</b> .....	<i>Turin</i> .....	20	18 00
<b>Scarlet Kashmir</b> .....	<i>Turk</i> .....	25	22 00
<b>White Hardy Winter</b> .....	<i>Turret</i> .....	30	25 00
Pomeranian White Globe.....	<i>Turtle</i> .....	20	18 00
Jersey Navet ( <i>true</i> ).....	<i>Tusk</i> .....	30	25 00
<b>Seven-Top</b> .....	<i>Tussock</i> .....	25	22 00

## TURNIP,—Yellow-Fleshed.

<b>Large Yellow, or Amber Globe</b> .....	<i>Tutor</i> .....	25	22 00
<b>Petrowski</b> .....	<i>Tuyere</i> .....	35	30 00
<b>Yellow Aberdeen</b> .....	<i>Twaddle</i> .....	22	20 00
<b>Golden Ball, or Orange Jelly</b> .....	<i>Twang</i> .....	22	20 00

## RUTA BAGA, or SWEDISH TURNIP.

<b>Burpee's Improved Purple-Top Yellow</b> .....	<i>Tweed</i> .....	22	20 00
<b>Burpee's Neckless</b> .....	<i>Tweezer</i> .....	28	24 00
<b>Imperial Hardy Purple Top</b> .....	<i>Twig</i> .....	20	17 00
<b>Burpee's Breadstone</b> .....	<i>Twist</i> .....	40	35 00
<b>MONARCH, or Elephant</b> .....	<i>Twitch</i> .....	18	16 00
<b>Large White</b> .....	<i>Twitter</i> .....	20	18 00

## CHOICEST FLOWER SEEDS.


We make a specialty of the **Choicest Flower Seeds** which we grow extensively, both at FORDHOOK FARMS and with our private growers in America. We have **extra fine stocks**, particularly of ASTERS,—BALSAMS,—BEGONIAS,—COLEUS,—COSMOS,—GLOXINIAS,—Giant Hybrid HELIOTROPE,—MIGNONETTE,—Tall and Dwarf NASTURTIUMS,—PANSIES,—PETUNIAS,—PHLOX DRUMMONDII,—SALVIA SPLENDENS, and VERBENA. We shall be pleased to quote **Special Prices** upon receipt of list of your requirements, stating varieties and quantities. Or you can send **an open order**, in full confidence that prices will be moderate for quality of seed,—in no case higher than quoted in our last January catalogue.

# Choice Strains of Tall Sweet Peas,—

Including all the desirable varieties—both new and old.

 Special Low Prices. 

We are acknowledged as **AMERICAN HEADQUARTERS** for Sweet Peas.

 We should refer to our Retail Catalogue for full descriptions of **NOVELTIES** not specially described herein, and should suggest that with the present widespread interest in Sweet Peas it will pay seedsmen generally to offer more of the **NEW SORTS**, as the margin of profit—between retail and these special prices—is greater than on standard varieties.

 We are not bound by these prices after December, and for quantities only so far as engaged. When our general Wholesale Catalogue is issued in January, probably many varieties will be advanced.

	Telegraph Code or Cipher.	Per lb.
* <b>Admiration (Burpee's)</b> . Delicate shade of rosy lavender, . . . .	<i>Admiration</i>	\$0 28
<b>Adonis</b> . Rose and carmine; small flowers, . . . . .	<i>Jab</i>	17
* <b>Agnes Johnston</b> . Bright rose-pink, shaded with cream; a broad fully expanded flower of good size. (Per 100 lbs. \$65.00). . . . .	<i>Agnes</i>	70
<b>America</b> . The brightest blood-red striped, . . . . .	<i>Jacamar</i>	20
<b>American Queen (Burpee's)</b> . Standard salmon-red; wings deep rose, . . . . .	<i>Jacare</i>	30
* <b>American Seedlings (Burpee's)</b> . (Per 100 lbs. \$22.50), . . . . .	<i>Jacana</i>	25
* <b>Apple Blossom</b> . Bright rose and pink. (Per 100 lbs. \$16.50), . . . . .	<i>Jacent</i>	18
* <b>Aurora (Burpee's)</b> . Flaked orange-salmon; largest striped, . . . . .	<i>Jacinth</i>	20
* <b>Black Knight</b> . Deep maroon; self-colored, . . . . .	<i>Jack</i>	20
* <b>Blanche Burpee</b> . Eckford's large pure white. (Per 100 lbs. \$18.00), . . . . .	<i>Jacket</i>	20
<b>Blanche Ferry</b> . The popular pink and white. (Per 100 lbs. \$16.50), . . . . .	<i>Jackman</i>	18
<b>Blanche Ferry,—Extra Early</b> . Ten days earlier. (Per 100 lbs. \$18), . . . . .	<i>Jacobin</i>	20
* <b>Blushing Beauty</b> . Very fine; delicate pink; hooded form, . . . . .	<i>Jactancy</i>	18
<b>Boreatton</b> . Very dark maroon; self-colored, . . . . .	<i>Jactation</i>	22
<b>Bride of Niagara</b> . A fine semi-double form of pink and white, . . . . .	<i>Jaculus</i>	30
* <b>Brilliant</b> . A bright scarlet; does not burn. (Per 100 lbs. \$20.00), . . . . .	<i>Jade</i>	22
<b>Bronze King</b> . Standard terra-cotta; wings ivory-white, . . . . .	<i>Jadish</i>	18
* <b>Burpee's New Countess</b> . The best lavender. (Per 100 lbs. \$22.50), . . . . .	<i>Jager</i>	25
<b>Burpee's Earliest Sunbeams</b> . <i>Crop short;—packets only</i> , . . . . .	<i>Sunbeams</i>	
<b>Burpee's Earliest of All</b> . (Per 100 lbs. \$22.50), . . . . .	<i>Earliest</i>	25
<b>Burpee's Earliest of All—Gould's Extreme Early "Selection,"</b> . . . . .	<i>Jaganat</i>	60
<b>Butterfly</b> . White, laced with lavender; notched standard, . . . . .	<i>Jail</i>	18
<b>California</b> . Large hooded flowers; soft flesh-pink, . . . . .	<i>Jainison</i>	17
* <b>Calypso</b> . Magenta and mauve, . . . . .	<i>Calypso</i>	20
<b>Captain Clark</b> . White and lavender; streaked carmine, . . . . .	<i>Jalap</i>	16
* <b>Captain of the Blues</b> . Standard light maroon; wings light purple, . . . . .	<i>Jalousie</i>	20
* <b>Captivation</b> . Beautiful light magenta or claret color, . . . . .	<i>Jalpaite</i>	20
<b>Carmen Sylva</b> . Purplish carmine and lavender, shaded rose, . . . . .	<i>Jam</i>	17
* <b>Celestial</b> . Delicate azure-blue. (Per 100 lbs. \$18.00), . . . . .	<i>Jamadar</i>	20
* <b>Chancellor</b> . Bright shade of orange-pink, . . . . .	<i>Chancellor</i>	18
<b>Coccinea</b> . A beautiful cerise; self-colored. (Per 100 lbs. \$22.50), . . . . .	<i>Coccinea</i>	25
* <b>Colonist</b> . Soft lilac overlaid with rose, . . . . .	<i>Colonist</i>	20
* <b>Coquette</b> . Primrose-yellow, shaded pale lavender. (100 lbs. \$18.00), . . . . .	<i>Jamana</i>	20
* <b>Countess Cadogan</b> . Reddish-mauve standard; wings violet-blue, . . . . .	<i>Cadogan</i>	25
* <b>Countess of Lathom</b> . Charming delicate pink self, . . . . .	<i>Lathom</i>	25
* <b>Countess of Powis</b> . Orange, suffused with light purple, . . . . .	<i>Jangler</i>	20
* <b>Countess of Radnor</b> . Pale mauve or lavender, . . . . .	<i>Janitor</i>	18
* <b>Countess of Shrewsbury</b> . Rose standard; white wings, . . . . .	<i>Janitress</i>	20
* <b>Crown Jewel</b> . Primrose ground, veined with violet-rose, . . . . .	<i>Jannock</i>	20
<b>Crown Princess of Prussia</b> . Flesh-colored and salmon-buff . . . . .	<i>Jansenist</i>	18

\* Varieties marked with an asterisk (\*) produce flowers of finest form and largest size.

## SWEET PEAS,—Continued.

	Telegraph Code or Cipher.	Per lb.
* <b>Dainty</b> (Burpee's). "White with pink edge." (Per 100 lbs. \$60.00),	<i>Dainty</i> . . .	\$0 65
* <b>Dolly Varden</b> (Burpee's). Purple-magenta, shaded white, . . .	<i>Japan</i> . . .	18
* <b>Dorothy Eckford</b> . Pure white; of finest substance. (100 lbs. \$55.00),	<i>Dorothy</i> . . .	60
* <b>Dorothy Tennant</b> . Deep rosy mauve; beautiful, . . . . .	<i>Jape</i> . . . . .	18
* <b>Duchess of Edinburgh</b> . Scarlet and crimson; small flowers, . .	<i>Japhetic</i> . . . . .	18
* <b>Duchess of Sutherland</b> . Pearl-white, suffused light pink, . . .	<i>Japonic</i> . . . . .	20
* <b>Duchess of Westminster</b> . A new apricot-pink, . . . . .	<i>Japper</i> . . . . .	25
* <b>Duchess of York</b> . White, suffused with light pink, . . . . .	<i>Jappo</i> . . . . .	20
* <b>Duke of Clarence</b> . A brilliant shade of rosy claret, . . . . .	<i>Jar</i> . . . . .	20
* <b>Duke of Sutherland</b> . Deep claret and indigo-blue, . . . . .	<i>Duke</i> . . . . .	20
* <b>Duke of Westminster</b> . Standard rosy maroon; wings violet-purple,	<i>Jarring</i> . . . . .	22
Eliza Eckford. Standard rose; wings striped with rose, . . . . .	<i>Jargle</i> . . . . .	20
* <b>Emily Eckford</b> . Standard reddish mauve; wings blue, . . . . .	<i>Jargon</i> . . . . .	20
Emily Henderson. White; blooms early. (Per 100 lbs. \$18.00),	<i>Jarosite</i> . . . . .	20
* <b>Fascination</b> . New magenta-mauve, . . . . .	<i>Fascination</i> . . . . .	25
* <b>Fashion</b> (Burpee's). A beautiful shade of cerise-pink, . . . . .	<i>Fashion</i> . . . . .	18
* <b>Firefly</b> . A deep brilliant scarlet; truly a fiery shade, . . . . .	<i>Jasmine</i> . . . . .	20
* <b>Gaiety</b> . Lively stripes of bright crimson on white, . . . . .	<i>Jasperry</i> . . . . .	20
* <b>George Gordon</b> . "Reddish crimson-lake standard, rosy-purple wings,"	<i>Jaspoid</i> . . . . .	25
<b>Golden Gate</b> (Burpee's). Pinkish mauve and lavender; upright	<i>Jatropa</i> . . . . .	22
wings, . . . . .		
* <b>Golden Rose</b> (Burpee's). Primrose-yellow, striped with rosy pink.	<i>Jaunt</i> . . . . .	50
(Per 100 lbs. \$45.00), . . . . .		
* <b>Gorgeous</b> (Burpee's). Salmon-orange. (Per 100 lbs. \$20.00),	<i>Gorgeous</i> . . . . .	22
* <b>Gracie Greenwood</b> . Soft cream, shaded delicate pink. (Per 100	<i>Gracie</i> . . . . .	30
lbs. \$27.50), . . . . .		
* <b>Gray Friar</b> (Burpee's). Beautiful watered purple on white ground,	<i>Jaunder</i> . . . . .	20
<b>Her Majesty</b> . Bold flowers of a most beautiful rose color, . . . . .	<i>Jaup</i> . . . . .	20
* <b>Hon. F. Bouverie</b> . Standard flesh-pink; wings rosy buff, . . . . .	<i>Bouverie</i> . . . . .	20
* <b>Hon. Mrs. E. Kenyon</b> . Eckford's latest primrose-colored, . . . . .	<i>Jauperine</i> . . . . .	25
<b>Imperial Blue</b> . Blue, shaded mauve, . . . . .	<i>Jazel</i> . . . . .	17
<b>Indigo King</b> . Maroon, nearly indigo, . . . . .	<i>Jazerant</i> . . . . .	16
* <b>Janet Scott</b> (Burpee's). A beautiful shade of deep pink. (Per	<i>Jean</i> . . . . .	80
100 lbs. \$75.00), . . . . .		
* <b>Jeanie Gordon</b> . Bright rose, shaded cream, . . . . .	<i>Jebel</i> . . . . .	30
<b>Josephine White</b> . New early-flowering white. (100 lbs. \$27.50),	<i>Jebusite</i> . . . . .	30
* <b>Juanita, or Striped Celestial</b> . White, striped lavender, . . . . .	<i>Jeel</i> . . . . .	17
* <b>Katherine Tracy</b> . Soft but brilliant pink, . . . . .	<i>Jehad</i> . . . . .	30
* <b>King Edward VII</b> . Bright crimson self-color; enormous size. (Per	<i>Edward</i> . . . . .	70
100 lbs. \$60.00), . . . . .		
<b>Lady Beaconsfield</b> . Salmon-pink; wings primrose, . . . . .	<i>Jejune</i> . . . . .	18
* <b>Lady Grisel Hamilton</b> . Pale lavender-blue. (Per 100 lbs. \$25.00),	<i>Grisel</i> . . . . .	28
* <b>Lady Mary Currie</b> . Orange-pink, shaded rosy lilac, . . . . .	<i>Mary</i> . . . . .	20
* <b>Lady M. Ormsby-Gore</b> . "Pale buff overlaid with delicate pink,"	<i>Jemmy</i> . . . . .	24
* <b>Lady Nina Balfour</b> . Most delicate mauve. (Per 100 lbs. \$20.00),	<i>Jenite</i> . . . . .	22
* <b>Lady Penzance</b> . Standard orange-pink; wings pure pink, . . . . .	<i>Jentling</i> . . . . .	18
* <b>Lady Skelmersdale</b> . Pale rose-pink standard; wings white, suffused	<i>Jennet</i> . . . . .	22
with lavender, . . . . .		
* <b>Little Dorrit</b> . Pink standard; white wings, . . . . .	<i>Jerboa</i> . . . . .	20
* <b>Lord Kenyon</b> . Rose-magenta self. (Per 100 lbs. \$22.50), . . . . .	<i>Jereed</i> . . . . .	25
* <b>Lord Roseberry</b> . "A self-colored rosy magenta," . . . . .	<i>Jerfar</i> . . . . .	35
* <b>Lottie Eckford</b> . White, suffused with lavender-blue, . . . . .	<i>Jeremiad</i> . . . . .	18
* <b>Lottie Hutchins</b> (Burpee's). Cream, flaked with pink, . . . . .	<i>Jerk</i> . . . . .	18

\*The varieties marked with an asterisk (\*) produce flowers of good substance and largest size—being of the true *grandiflora* type.

## SWEET PEAS,—Continued.

	Telegraph Code or Cipher.	Per lb.
* <b>Lovely.</b> Soft shell-pink. Truly most "lovely," . . . . .	<i>Jersey</i> . . . . .	\$0 25
* <b>Maid of Honor (Burpee's).</b> White, edged with blue, . . . . .	<i>Jetems</i> . . . . .	20
* <b>Majestic.</b> Rich deep rose-pink self. (Per 100 lbs. \$25.00), . . . . .	<i>Majestic</i> . . . . .	28
* <b>Mars.</b> Eckford's large bright scarlet. (Per 100 lbs. \$22.50), . . . . .	<i>Jetsam</i> . . . . .	25
* <b>Meteor.</b> Standard bright orange-salmon; wings pink veined, . . . . .	<i>Jetty</i> . . . . .	17
* <b>Mikado.</b> Cerise ground, veined with white stripes, . . . . .	<i>Jeudemots</i> . . . . .	18
* <b>Miss Willmott.</b> Of enormous size; deep orange-pink. (100 lbs. \$25). . . . .	<i>Jibe</i> . . . . .	28
* <b>Modesty (Burpee's).</b> Most delicate shade of pink, . . . . .	<i>Jiblet</i> . . . . .	20
* <b>Monarch.</b> Deep bronzy maroon and dark blue, . . . . .	<i>Jigger</i> . . . . .	18
<b>Mont Blanc.</b> Earliest white; <i>new</i> . (Per 100 lbs. \$22.50), . . . . .	<i>Jill</i> . . . . .	25
* <b>Mrs. Dugdale.</b> A large beautiful deep rose. (Per 100 lbs. \$20.00), . . . . .	<i>Dugdale</i> . . . . .	22
* <b>Mrs. Eckford.</b> Beautifully shaded primrose-yellow, . . . . .	<i>Jimpy</i> . . . . .	20
* <b>Mrs. Fitzgerald.</b> Cream, flushed rose, . . . . .	<i>Fitzgerald</i> . . . . .	18
* <b>Mrs. Jos. Chamberlain.</b> Striped bright rose on white, . . . . .	<i>Jinn</i> . . . . .	20
<b>Mrs. Sankey.</b> Flowers white; seeds black, . . . . .	<i>Jink</i> . . . . .	20
* <b>Mrs. Walter Wright.</b> Standard mauve; wings a bluish shade. (Per 100 lbs. \$50.00), . . . . .	<i>Jirkinet</i> . . . . .	60
* <b>Navy Blue (Burpee's).</b> Largest size; deep violet-blue, . . . . .	<i>Navy</i> . . . . .	20
<b>Oddity (Burpee's).</b> Peculiar pale carmine and bright rose, . . . . .	<i>Joar</i> . . . . .	20
<b>Orange Prince.</b> Standard orange-salmon; wings bright pink, . . . . .	<i>Jobation</i> . . . . .	17
* <b>Oregonia.</b> Silvery-white ground, watered rosy carmine, . . . . .	<i>Oregonia</i> . . . . .	17
* <b>Oriental (Burpee's).</b> Suffused bright orange-salmon, . . . . .	<i>Joblot</i> . . . . .	18
* <b>Othello.</b> Deep glossy maroon. (Per 100 lbs. \$20.00), . . . . .	<i>Othello</i> . . . . .	22
<b>Ovid.</b> Rose-pink, margined with deeper rose, . . . . .	<i>Jocantry</i> . . . . .	20
* <b>Pink Friar (Burpee's).</b> Carmine-rose, suffused on silvery white, . . . . .	<i>Jocular</i> . . . . .	20
<b>Pink Snapdragon (Burpee's).</b> A very pleasing pink shade, . . . . .	<i>Jocund</i> . . . . .	45
* <b>Prima Donna.</b> A most lovely shade of soft pink. (Per 100 lbs. \$20.00), . . . . .	<i>Jogelour</i> . . . . .	22
<b>Primrose.</b> Pale primrose-yellow, . . . . .	<i>Jogge</i> . . . . .	18
* <b>Prince Edward of York.</b> Standard scarlet; wings deep rose, . . . . .	<i>Joinant</i> . . . . .	20
* <b>Prince of Wales.</b> Bright rose; self-colored, . . . . .	<i>Joiner</i> . . . . .	22
<b>Princess Beatrice.</b> A popular rosy pink, . . . . .	<i>Joist</i> . . . . .	18
<b>Princess May.</b> Light lavender; flowers small, . . . . .	<i>Joltyte</i> . . . . .	20
* <b>Princess of Wales.</b> Striped mauve on white ground, . . . . .	<i>Jolting</i> . . . . .	18
<b>Princess Victoria.</b> Standard scarlet; wings rosy mauve, . . . . .	<i>Jombre</i> . . . . .	18
<b>Purple Snapdragon.</b> <i>New.</i> A purple Red Riding-Hood, . . . . .	<i>Jonathan</i> . . . . .	60
<b>Purple-Striped.</b> Old and undesirable, . . . . .	<i>Jondla</i> . . . . .	18
<b>Queen of the Isles.</b> White stripes on bright crimson-scarlet, . . . . .	<i>Jooming</i> . . . . .	20
* <b>Queen Victoria.</b> Primrose, overlaid with faint purple, . . . . .	<i>Joram</i> . . . . .	18
* <b>Ramona (Burpee's).</b> White, daintily splashed with pale pink, . . . . .	<i>Jostle</i> . . . . .	18
<b>Red Riding-Hood.</b> Rosy pink; standard overlaps wings, . . . . .	<i>Jotter</i> . . . . .	18
<b>Rising Sun.</b> Orange and rose, shaded carmine, . . . . .	<i>Jounce</i> . . . . .	18
* <b>Royal Robe.</b> Standard delicate pink; wings blush-pink, . . . . .	<i>Journal</i> . . . . .	20
* <b>Royal Rose.</b> Deep rosy pink. (Per 100 lbs. \$20.00), . . . . .	<i>Journey</i> . . . . .	22
* <b>Sadie Burpee,—Black-seeded (Eckford's).</b> (100 lbs. \$20.00), . . . . .	<i>Puritan</i> . . . . .	22
* <b>Sadie Burpee,—White seeded (Eckford's).</b> (100 lbs. \$20.00), . . . . .	<i>Purity</i> . . . . .	22
* <b>Salopian.</b> The best scarlet, excepting new "Sunproof," . . . . .	<i>Jovial</i> . . . . .	22
* <b>Sunproof Salopian (Burpee's).</b> One of the best scarlet sweet peas, . . . . .	<i>Jowl</i> . . . . .	24
<b>Salvation Lassie (Burpee's).</b> Deep rose; standard curiously curved, . . . . .	<i>Joviality</i> . . . . .	30
<b>Scarlet Striped.</b> One of the oldest varieties, . . . . .	<i>Jowler</i> . . . . .	17
* <b>Senator.</b> Bright brown and chocolate, striped, . . . . .	<i>Joyance</i> . . . . .	18
* <b>Sensation (Burpee's).</b> White, suffused with faint blush, . . . . .	<i>Juba</i> . . . . .	18
* <b>Shahzada.</b> Dark maroon, shaded purple, . . . . .	<i>Jubitar</i> . . . . .	20

\*The varieties marked with an asterisk (\*) produce flowers of good substance and largest size—being of the true *grandiflora* type.

## SWEET PEAS;—Continued.

	Telegraph Code or Cipher.	Per lb.
Snapdragon (Burpee's). A white Red Riding-Hood, . . . . .	<i>Jubilee</i> . . . . .	\$0 20
* Stanley. Rich dark maroon, . . . . .	<i>Judica</i> . . . . .	18
* Stella Morse (Burpee's). Rich primrose, flushed pink, . . . . .	<i>Judicial</i> . . . . .	18
* Sue Earl (Burpee's). Primrose, edged with mauve. (100 lbs. \$35.00)	<i>Judith</i> . . . . .	40
* Triumph. Standard orange-pink; wings white, flushed purple, . . . . .	<i>Julifom</i> . . . . .	20
* Venus. Lovely salmon-buff, shaded rosy pink. (Per 100 lbs. \$18.00)	<i>Jumart</i> . . . . .	20
Vesuvius. Violet, with dull crimson spots, . . . . .	<i>Jumbling</i> . . . . .	18
Violet Queen. Standard mauve; wings light violet, . . . . .	<i>Jument</i> . . . . .	18
* Waverly. Standard rosy claret; wings light blue, . . . . .	<i>Jumper</i> . . . . .	18
* Wawona (Burpee's). Heliotrope, striped with white, . . . . .	<i>Juncago</i> . . . . .	18
White. The old pure white; notched at top of standard, . . . . .	<i>Junction</i> . . . . .	18
White Snapdragon (Burpee's). Flowers snow-white, . . . . .	<i>Juneberry</i> . . . . .	30
* White Wonder (Burpee's). Double-stemmed many-flowered white, . . . . .	<i>Junk</i> . . . . .	40

\* Varieties marked with an asterisk (\*) produce flowers of finest form and largest size.

## MIXTURES OF SWEET PEAS.

	Telegraph Code or Cipher.	Per lb.	Per 100 lbs.
Common Mixed, . . . . .	<i>Juncus</i> . . . . .	\$0 10	\$8 50
Good Mixed, . . . . .	<i>Jundie</i> . . . . .	15	12 00
Special Trial Grounds Mixture, . . . . .	<i>Junger</i> . . . . .	20	18 00
Eckford's New Mixed, . . . . .	<i>Jungle</i> . . . . .	15	12 50
Light Shades, Mixed, . . . . .	<i>Junior</i> . . . . .	15	12 50
Fordhook Fancy-Flaked, Mixed, . . . . .	<i>Juniper</i> . . . . .	30	25 00
Eckford's Up-to-Date, Mixed, . . . . .	<i>Jutay</i> . . . . .	30	25 00
Burpee's "Best Mixed" New Giant Sweet Peas, . . . . .	<i>Jute</i> . . . . .	32	27 50
Burpee's Best Mixed. <i>Unequaled for 1905,</i> . . . . .	<i>Justice</i> . . . . .	1 00	90 00
Burpee's American Seedlings, . . . . .	<i>Jacana</i> . . . . .	25	22 50
Burpee's Snapdragons, Mixed, . . . . .	<i>Jupart</i> . . . . .	35	30 00

✉ Write for special prices on thousand-pound lots in mixture.

## DOUBLE SWEET PEAS. From most carefully selected stock seed, saved only from the best plants bearing double flowers, we offer the following varieties:

Apple Blossom,	White,	Captain of the Blues,	Senator,
Butterfly,	Waverly,	Bride of Niagara,	Splendor.
Duke of Clarence,	Boreatton,		

Each of the above DOUBLE SWEET PEAS, 30 cts. per lb.  
Ten Mixed DOUBLE SWEET PEAS (Cable word—*Xerxes*), 25 cts. per lb.; \$22.50 per 100 lbs.

**"Proved by Test."** Unless you should order some variety that we do not catalogue and instruct that we get it for you (when we shall send it at your risk,—in its original package), you may be absolutely sure that you will receive from us only such stocks of strictly high-grade seeds as have been proved absolutely **"Best by Test."**

Many seedsmen have much to say about tested seeds, but unfortunately with most dealers this applies only to blotter tests for vitality. Our tests for vitality are *soil* tests. While necessary that *seeds grow*, it is of prime importance that they shall be of choicest selected strains, such as can be relied upon to produce products **"true to type."** This can be learned only by thorough field trials. No other seedsmen in America make so many or such complete trials as are conducted annually at our famous FORDHOOK FARMS.

# The "Burpee Novelties" in Sweet Peas

**Janet Scott.** Received Award of Merit from the National Sweet Pea Society of England, in July, 1901, at the Great Crystal Gate-shaped wings. This might almost be called a new shade of deep pink with Golden-Gate-shaped wings. The unusual size of the wings in connection with the large substantial hooded standard give the flowers an appearance of enormous size. The flowers are considerably deeper and richer in color than the favorite Katherine Tracy, while unlike that variety they are generally borne three on a stem. Per lb. 85 cts.; in lots of 10 lbs. or more at 80 cts. per lb.

**Burpee's "Dainty."** This unique new Sweet Pea has created quite a furore in England as well as in America. Flowers are of the largest size and splendid substance, while they are borne three and four, set well at the end of long stout stems. The beautifully formed flowers, upon first opening, appear to be white, but quickly change to "white with pink edge,"—making a most charming contrast,—there is more pink on the edges of standard than on edges of wings. Per lb. 75 cts.; in lots of 10 lbs. or more at 70 cts. per lb.

**Sue Earl.** The standard is primrose, with mauve at edges; wings almost pure primrose, with only a suggestion of light mauve. The last blossom produced at top of stem always remains of a clear primrose color, while the other flowers become later of a deep mauve,—making a most charming contrast. The flowers are uniformly of large size and hooded form, borne three on a long stem. Per lb. 45 cts.; in lots of 10 lbs. or more at 40 cts. per lb.

**Burpee's "Golden-Rose."** Received Award of Merit from the National Sweet Pea Society of England, when exhibited at The Royal Aquarium, London, in July, 1902. One of the most attractive and distinct Tall Sweet Peas that we have ever had the pleasure of presenting. The flowers are extra large in size, of fine open form, with standard gracefully fluted. The ground color is a clear primrose-yellow, beautifully flushed with rosy pink,—making a color combination previously unknown, which is most attractive. Per lb. 45 cts.; 10 lbs. or more at 40 cts. per lb.

Burpee's  
New Pink.  
JANET SCOTT.—  
from a Photograph.  
Electro, \$1.50.

## Burpee's Earliest SUNBEAMS.

**Burpee's Sunbeams** might be described as a primrose "Mont Blanc!" This one statement will make it eagerly sought for by commercial florists, as with the famous Burpee's Earliest of All it now gives a third color in this distinct class of extreme-early Sweet Peas for forcing. It is equally desirable also for early spring flowering in the open ground, particularly in sections where the later sorts are apt to be cut off by extreme summer heat.

The flowers are of a rich primrose color, and generally borne three on a stem; stems strong and of good length for cutting. The plant is comparatively dwarf growing,—exactly of same habit as Mont Blanc, of which it is a duplicate except in color.

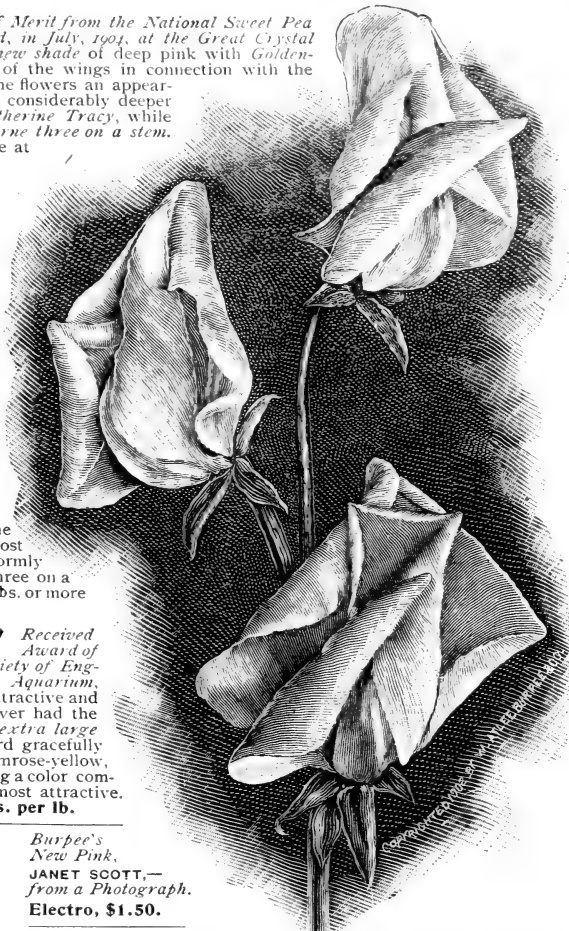
Packets only. 90 cts. per dozen; \$6.00 per 100 pkts.

## WHITE WONDER.

The flowers are pure white, uniformly of the largest size, and are borne six to eight and frequently as many as ten to twelve large flowers on a long stout stem. The stems are frequently double; that is, two stems seem to be united in growth throughout their entire length. The flowers are well placed near top of stem and generally all facing one way. The vines bloom profusely, being of unusual vigor, as is shown from the fact that about half the flowers have double standards. See prices,—in price-list.



"SUNBEAMS."  
Electro, 75 cts.



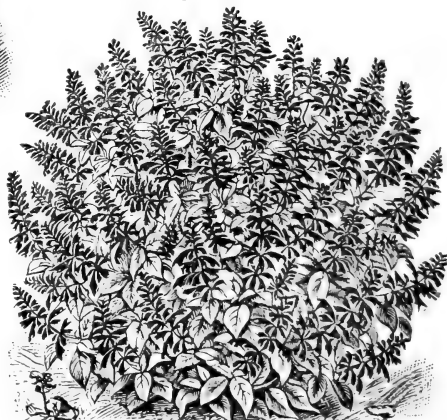
# The "Eckford Novelties" in Sweet Peas.

2963 **Dorothy Eckford.** *See illustration from a photograph.* "So much has been written and said of this grand new white that already it must be familiar to a great number of lovers of this glorious flower. The First-Class Certificate of the N. S. S., and of the Shropshire Horticultural Society, stamps it at once as the grandest pure white yet seen. In addition to its pureness it is a grand giant flower, also robust in growth and stem, with no tendency whatever to tinge or go pink; the plant is very short jointed, and grows an enormous mass of bloom." **Per lb. 70 cts.**; in lots of 10 lbs. or more at **65 cts. per lb.**

3034 **King Edward VII.** "This is a lovely intense bright crimson self, with a slightly hooded yet prominent standard; a true giant-flowered variety, with strong stems and growth, with no inclination to burn in the sun. A fine decorative and show variety, much brighter than either *Mars* or *Salopian*." **Per lb. 75 cts.**; in lots of 10 lbs. or more at **70 cts. per lb.**

3009 **Agnes Johnston.** "A bright standard, shaded cream; wings cream, slightly flushed with the same bright rose-pink as the standard; a broad, fully expanded flower, of good size and splendid substance. Of strong growth and constitution." **Per lb. 75 cts.**; in lots of 10 lbs. or more at **70 cts. per lb.**

3016 **Mrs. Walter Wright.** "A fine giant-flowered variety with large standard and wings, the former slightly hooded, yet broad and deep, the wings being jauntily curled at the apex, and extending about half-way down. In color the standard is a beautiful shade of mauve, clear and bright, while the wings are a bright cerulean blue, slightly shaded with the mauve color of the standard. A most attractive flower,—grand for decorative work, and also for exhibition." **Per lb. 60 cts.**; in lots of 10 lbs. or more at **55 cts. per lb.**



A Single Plant of *SALVIA SPLENDENS*.

## SALVIA SPLENDENS.

We are the largest growers of *Salvia Splendens* in America,—and this probably means in the world! Having had an abundant crop the past season, we offer our choicest *Fordhook-grown Seed* at the special price of **\$12.00 per lb.**

Kindly ask for prices,—stating varieties and quantities required. We are prepared, also, to quote special prices on many other Flower Seeds, which, while not produced at *FORDHOOK*, are grown elsewhere in America by our contract growers from our finest stock seed.

W. ATLEE BURPEE & Co.,  
SEED GROWERS, PHILADELPHIA.

Electrotype, \$2.00.

## Among Other Special FLOWER SEEDS

produced at *FORDHOOK FARMS*, and upon which we are prepared to make *Growers' Prices* to our friends in the trade, are:

- BALSAMS,—in variety.
- BEGONIAS,—Fibrous-rooted.
- BEGONIAS,—Tuberous-rooted.
- CELOSIA.
- COLEUS,—in variety.
- DOLICHOS,—"Daylight" and "Darkness."
- ESCHSCHOLTZIA.
- GLOXINIAS.
- HELIOTROPE,—Lemoine's Giant Hybrids.
- KÖCHIA,—the true "Ball of Fire."
- MARIGOLDS.
- MIGNONETTE.
- PETUNIAS,—in variety.
- PHLOX DRUMMONDII,—Grandiflora.
- POPIES.
- SALVIA SPLENDENS.
- SUNFLOWER.
- ZINNIA.

Kindly ask for prices,—stating varieties and quantities required. We are prepared, also, to quote special prices on many other Flower Seeds, which, while not produced at *FORDHOOK*, are grown elsewhere in America by our contract growers from our finest stock seed.

COPYRIGHTED 1903  
BY WATLEE BURPEE & CO



# New Race of Burpee's Bush Sweet Peas.

The plants are erect, fifteen to eighteen inches high when in full flower, but branching freely so that the close bushes are frequently fifteen inches and more in diameter, composed of short erect branches with abundant light-green foliage. The flowers, while not so large, are of as fine form and beautiful coloring as the tall varieties. As the stems of flowers can be cut with some of the neat attractive foliage, they are most desirable for bunching in bouquets and for floral decorations.

## BUSH SWEET PEAS.

	Telegraph Code or Cipher.	Per lb.
<b>Blanche Burpee.</b> Flowers two-thirds size of tall variety, . . . . .	<i>Fabella</i>	\$0 45
<b>Blanche Ferry.</b> Bears the popular pink and white flowers, . . . . .	<i>Faber</i>	35
<b>Dorothy Tennant.</b> Handsome rose-purple self, . . . . .	<i>Fabian</i>	55
<b>Firefly.</b> As brilliant a scarlet as the tall Firefly, . . . . .	<i>Fabric</i>	1 00
<b>Gaiety.</b> White, striped crimson, . . . . .	<i>Fabulize</i>	1 00
<b>Gray Friar.</b> The original "Bush Sweet Pea," . . . . .	<i>Facade</i>	35
<b>Her Majesty.</b> Beautifully hooded flowers, . . . . .	<i>Faction</i>	45
<b>Lady Mary Currie.</b> One of the Best Bush Sweet Peas, . . . . .	<i>Farmer</i>	65
<b>Lottie Eckford.</b> Flowers nearly as large as tall variety, . . . . .	<i>Farrow</i>	50
<b>Monarch.</b> Rich dark flowers; contrast finely with foliage, . . . . .	<i>Feather</i>	30
<b>Prima Donna.</b> A decided acquisition to this grand new race, . . . . .	<i>Fever</i>	45
<b>Royal Rose.</b> Beautiful large hooded flowers, . . . . .	<i>Film</i>	60
<b>Sadie Burpee (b. s.).</b> Flowers smaller than tall variety, . . . . .	<i>Filter</i>	1 00
<b>Senator.</b> A perfect reproduction of the tall variety, . . . . .	<i>Flag</i>	35
<b>Finest Mixed.</b> Contains many new varieties, . . . . .	<i>Fuzzy</i>	40

## Burpee's Dwarf CUPID Sweet Peas.

A new and entirely distinct race of Sweet Peas, first introduced by us in 1895, differing as widely as possible from the usual tall vine-like growth, being of low very compact-spreading form. Plants are seldom more than six inches in height and form a dense mat of richest green foliage fifteen inches or more in diameter. The flowers are fully equal in size to those of the tall-growing varieties, but are placed closely together, generally three or four at the top of a stout stiff stem, seemingly poised just above the surface of the dark-green foliage. The stems branch freely with close joints, and are thickly set with dark-green leaves.

## CUPID SWEET PEAS.

	Telegraph Code or Cipher.	Per lb.
<b>Alice Eckford.</b> Standard silvery white, shaded rose; wings white, . . . . .	<i>Habble</i>	\$0 35
<b>America.</b> Bright blood-red stripings on silvery-white ground, . . . . .	<i>Habit</i>	35
<b>Apple Blossom.</b> Flowers very large and beautifully hooded, . . . . .	<i>Hackney</i>	35
<b>Boreatton.</b> A very richly colored variety, . . . . .	<i>Haddock</i>	35
<b>Bridesmaid.</b> Very deep pink, almost self-colored, . . . . .	<i>Halcyon</i>	55
<b>Burpee's Beauty.</b> Standard rose pink; wings suffused rosy carmine, . . . . .	<i>Halibut</i>	35
<b>Captain of the Blues.</b> Very nearly deep blue in color, . . . . .	<i>Halloo</i>	40
<b>Chamberlain.</b> Truly "Giant-flowered," . . . . .	<i>Halyard</i>	45
<b>Countess of Radnor.</b> Flowers larger than tall <i>Countess</i> , . . . . .	<i>Ham</i>	35
<b>Enchantress.</b> Rose-pink on rich cream ground, . . . . .	<i>Harden</i>	60
<b>Extra Early Blanche Ferry.</b> Ten days earlier than Pink Cupid, . . . . .	<i>Harm</i>	35
<b>Firefly.</b> The effect is a dazzling scarlet, . . . . .	<i>Hash</i>	35
<b>Her Majesty.</b> A pleasing shade of deep rosy crimson, . . . . .	<i>Hazel</i>	35
<b>Lady Mary Currie.</b> Rich orange-tinted variety, . . . . .	<i>Headfast</i>	1 25
<b>Lottie Eckford.</b> Silvery white, edged with purple-lavender, . . . . .	<i>Headless</i>	40
<b>Mauve Queen.</b> Deep pinkish mauve on primrose ground, . . . . .	<i>Heel</i>	60
<b>Pink.</b> Has pink and white flowers of the Blanche Ferry type, . . . . .	<i>Herbage</i>	30
<b>Prima Donna.</b> A most beautiful blush pink, . . . . .	<i>Herbalism</i>	1 25
<b>Primrose.</b> Flowers identical with the tall Primrose, . . . . .	<i>Hercules</i>	35
<b>Prince of Wales.</b> A self-colored deep rose, . . . . .	<i>Heretic</i>	1 25
<b>Royalty.</b> The finest self-colored pink, . . . . .	<i>Hessian</i>	40
<b>Sadie Burpee (b. s.).</b> More vigorous than White Cupid, . . . . .	<i>Hetty</i>	65
<b>Salopian.</b> The best scarlet color in Cupid Sweet Peas, . . . . .	<i>Hillock</i>	1 25
<b>Stella Morse.</b> In color identical with tall Stella Morse, . . . . .	<i>Hitting</i>	40
<b>White.</b> The original variety. (Per 100 lbs. \$30.00), . . . . .	<i>Honey</i>	35
<b>Cupids Mixed.</b> Includes many varieties not yet listed. (10 lbs. at 35 cts. per lb), . . . . .	<i>Hymn</i>	40

# NASTURTIUMS,—Dwarf, Tall, and Lobbianum.

## DWARF TOM THUMB NASTURTIUMS.

( <i>Tropæolum Majus Nanum.</i> )	Per lb.
Aurora, . . . . .	\$0 50
Beauty, . . . . .	50
Bronze-Colored, . . . . .	50
Cattell's Crimson, . . . . .	60
Chameleon, . . . . .	45
Cloth of Gold, . . . . .	60
Cœruleum Roseum, . . . . .	50
Compact Lustrous, . . . . .	60
Crystal Palace Gem, . . . . .	50
Deep Scarlet, . . . . .	50
Dwarf French Chameleon, . . . . .	60
Empress of India, . . . . .	50
General Jacqueminot, . . . . .	70
Golden King, . . . . .	50
Golden Queen, . . . . .	70
King of Tom Thumbs, . . . . .	60
King Theodore, . . . . .	60
Lady Bird, . . . . .	60
Pearl, . . . . .	50
Prince Henry, . . . . .	50
Rose, . . . . .	80
Ruby King, . . . . .	50
Scarlet, . . . . .	50
Scheuerianum Coccineum, . . . . .	50
Spotted King, . . . . .	50
Vesuvius, . . . . .	60
Yellow, . . . . .	50
Choice Mixed, . . . . . (Per 100 lbs., \$30.00)	35
Burpee's New "Gorgeous" Mixture, . . . . .	60
Nasturtium, Liliput, Mixed, . . . . .	50
" " Othello, . . . . .	1 00

## TALL NASTURTIUMS.

( <i>Tropæolum Majus.</i> )	
Atropurpureum, . . . . .	45
Burpee's Butterfly, . . . . .	80
Caprice (Burpee), . . . . .	80
Cæsus (Burpee) (New), . . . . .	80
Dark Crimson, . . . . .	50
Dunnett's Orange, . . . . .	45
Edward Otto, . . . . .	40
Flammeum, . . . . .	50
French Chameleon, . . . . .	50
Golden-Leaved Scarlet, . . . . .	50
Heinemanni, . . . . .	50
Jupiter (New), . . . . .	50
King Theodore, . . . . .	50
Luteum, . . . . .	40
Midnight (Burpee), . . . . .	70
Moonlight (Burpee), . . . . .	60
Pearl, . . . . .	45
Prince Henry, . . . . .	45
Regelianum, . . . . .	45
Salmon Queen, . . . . .	50
Scarlet, . . . . .	40
Scheuerianum, . . . . .	45

## TALL NASTURTIUMS,—CONTINUED.

	Per lb.
Scheuerianum Coccineum, . . . . .	\$0 45
Schillingii, . . . . .	40
Striped, . . . . .	45
Sunlight (Burpee), . . . . .	50
Twilight (Burpee), . . . . .	75
Von Moltke, . . . . .	45
Yellow, . . . . .	45
Mixed, . . . . . (Per 100 lbs., \$22.00)	28
Fordhook Favorite Mixture, . . . . .	60
Burpee's Giant-Flowered, Mixed, . . . . .	90

## LOBB'S NASTURTIUMS.

( <i>Tropæolum Lobbianum.</i> )	
Asa Gray, . . . . .	60
Atropurpurea, . . . . .	60
Aureum, . . . . .	65
Brilliant, . . . . .	60
Cardinal, . . . . .	60
Caroline Schmidt, . . . . .	60
Chaixianum, . . . . .	60
Crown Prince of Prussia, . . . . .	60
Crystal Palace, . . . . .	60
Defiance, . . . . .	60
Duc de Vivence, . . . . .	70
Firefly, . . . . .	60
Flammeum Grandiflorum, . . . . .	60
Fulgens, . . . . .	60
Giant of Battles, . . . . .	60
Gold-Garnet, . . . . .	90
Golden Queen, . . . . .	70
Hookeri, . . . . .	70
King of the Blacks, . . . . .	60
Kotschianum Multiflorum, . . . . .	60
Lili Schmidt, . . . . .	60
Lucifer, . . . . .	80
Marguerite, . . . . .	60
Mercier Lacombe, . . . . .	60
Monsieur Colmet, . . . . .	70
Napoleon III, . . . . .	70
Primrose, . . . . .	60
Princess Victoria Louise, . . . . .	80
Rudolph Virchow, . . . . .	90
Queen Victoria, . . . . .	70
Spitfire, . . . . .	60
Triumph de Gand, . . . . .	70
Triumph d'Hyeres, . . . . .	80
Triumph du Prado, . . . . .	70
Finest Mixed, . . . . . (Per 100 lbs., \$35.00)	40
Nasturtium, Burpee's "Hotspur Harlequin" . . . . .	85
Nasturtium Hemisphericum, . . . . .	45
Nasturtium, Hybrids of Madame Gunter, . . . . .	
(Per 100 lbs., \$35.00)	40
Nasturtium, Ivy-Leaved, Original, . . . . .	1 00
Flamingo, . . . . .	2 25
Fordhook-Fancy, . . . . .	2 25
Golden Gem, . . . . .	2 25
Nasturtium, Trailing Tom Pouce, . . . . .	60

**Nasturtiums** are now among the most popular annual flowers and afford so much pleasure during the better part of the year that there is no doubt as to their rivaling *Sweet Peas* in popular favor. For years we have been improving NASTURTIUMS and have had the pleasure of introducing several distinct new varieties of surpassing beauty.

If you desire to please your flower-loving customers, offer the coming season with your other seeds a generous assortment of NASTURTIUMS.

# Burpee's New "Ivy-Leaved" Nasturtiums.

Now First Offered to the Trade.

This new race of Nasturtiums is one of the most distinct novelties that has been offered for years, and yet will succeed anywhere and under the most widely different conditions. They will prove especially desirable as pot bloomers or for planting as trailing plants in window boxes, vases, hanging-baskets, etc., as well as in the flower-bed or as a border row along the garden walks and on the lawn.

Not only is the foliage distinct in its sharp-lobed or pointed outline and light veining like that of the hardy *English Ivy*, but the flowers are a marked departure from the form of those of the common Nasturtium, the petals being quite narrow and set on a very slender foot-stalk, giving the flowers an open star-like effect which is both striking and effective. Last year we showed the three new varieties of this most distinct type,—painted from nature at FORDHOOK FARMS,—they were then introduced only at retail.

**Golden Gem.** This variety has light green foliage of medium size, slightly lobed and heavily veined. It makes a moderately strong running growth and flowers profusely. The flowers are of medium size, self-colored in a rich golden shade of orange-yellow. The face of the lower petals is about one-half inch wide and lacinated at the outer edge, and finely fringed where they are joined to the slender foot-stalks. The two upper petals are more slender and flare upward. The calyx and short spur are also golden yellow. Per lb. \$2.25; 5 lbs. at \$2.00 per lb.

**Flamingo.** This variety has rich dark green leaves heavily veined, and shows the ivy-like foliage in marked resemblance to that of the *English Ivy*. The flowers are a rich orange-scarlet,—fully justifying the name FLAMINGO. The lower petals are somewhat broader than those of the *Golden Queen*, being three-fourths of an inch across and slightly toothed at the outer edges. They are set on a very slender foot-stalk which holds them well out from the calyx, and the two upper petals are marked with fine brown lines in the throat. The calyx and long spur are golden yellow, and the whole flower has an open or butterfly effect. The flowers have quite long stems which hold them well above the foliage. Per lb. \$2.25; 5 lbs. at \$2.00 per lb.

**Fordhook Fancy.** See illustration herewith. The ground color of the open star-like petals is generally golden yellow with a rich velvety carmine blotch on each of the three lower petals where they join the slender foot-stalk; in the two upper petals there is a bold and effective stripe of brownish carmine extending from the inner throat portion well out on the flaring face of the petal. In other flowers the ground color is a light primrose or straw-yellow with blotches and stripes of a rosy carmine, and these spread into a diffused rosy tint, often covering almost the entire face of the petal. The foliage is a light green, distinctly lobed and veined,—"Ivy-like." Per lb. \$2.25; 5 lbs. or more at \$2.00 per lb.



Electro.  
\$1.00.

IVY-LEAVED,—FORDHOOK FANCY.



Electro, \$1.00.

Bedding PETUNIA,—

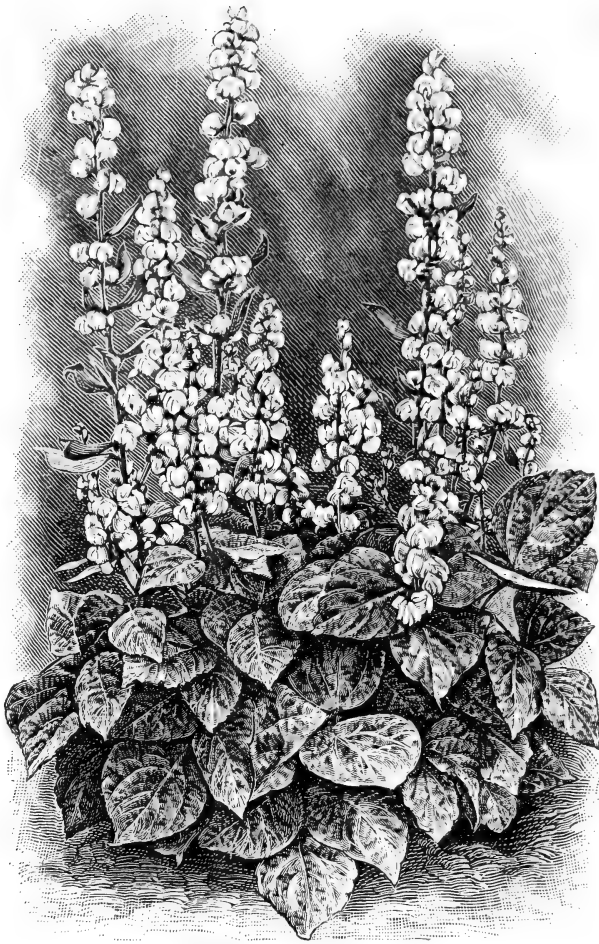
## Burpee's "BABY-BLUE."

This distinct and wonderfully free-blooming Petunia originated at Fordhook.

Owing to its dwarf compact growth it is one of the most satisfactory plants to grow in solid masses, or to plant as a border around the beds of other plants. It begins to bloom when only a few inches in height and flowers profusely until the plants are killed by frost late in the fall.

The flowers measure from one to one and a half inches across, and are a soft reddish purple in color when examined closely, but when seen en masse in the strong sunlight from a little distance appear a lovely blue. The small pure white throat shows as a small white circle in the center of the flower, but this is so small that it does not affect the solidly blue coloring,—except on close examination. The small very dark green leaves form an admirable background for the flowers. Per oz. \$1.25.

Electro  
supplied  
Free  
to firms who  
catalogue  
this unique  
novelty,—and  
sell seed in  
our sealed  
packets  
only.



One Plant of BURPEE'S BUSH DOLICHOS,—reproduced from a Photograph.

# Burpee's Bush Dolichos.

The first BUSH Dolichos ever obtained,—the Most Unique Novelty for many a year.

Obtained by us from Japan, this remarkably attractive novelty comes always entirely true to the very distinct bush habit of growth,—see illustration from a photograph. Those who have grown our Daylight Dolichos can readily imagine the extremely attractive appearance of these compact bushes surrounded by the enormous spikes of pure white flowers which are succeeded by large creamy-white pods.

The plants proper average only ten inches in height with large bean-like leaves, but the magnificent flower spikes grow from ten to fifteen inches above the foliage. The flowers are snowy white, about one inch across, and resemble those of the flowering pea.

When topmost flowers are fully opened, the silvery pods begin to form at the bottom of the spikes. The pods measure two inches in length and are nearly an inch in breadth, slightly curved, with thick creamy-white skin of velvety texture.

**Burpee's Bush Dolichos** makes a most showy plant when grown singly or interspersed with other plants. It can be raised easily from seed planted in the open ground after danger of frost is past. Growing always in compact bush form it does not require the space nor the supports needed for the running type and has the advantage of flowering much earlier in the season. Per pkt. 25 cts.; 5 pkts. for \$1.00. Wholesale, \$1.50 per dozen; \$11.00 per 100 pkts. Half-size pkts., per pkt. 15 cts. Wholesale, 90 cts. per dozen; \$6.00 per 100 pkts.

# Bush Bean,—Burpee's "BRITTLE WAX."

The earliest of all Wax Beans! Of such superb quality it might well be called "Best of All!" The bushes are remarkably hardy and **extremely prolific** while the handsome fleshy pods are *entirely stringless* and of the finest quality. The prize bush, grown in Canada, bore **167 pods**,—counted by ourselves. Even at the present high prices we are sure it will pay to plant **Burpee's Brittle Wax**, rather than wait until the seed becomes more plentiful. We are sure that those who plant it this season—whether for family use or market—will appreciate its **unequaled merits** as thoroughly as do the originators and ourselves. The seed was sold last year only at retail,—and is now first offered to the trade.

Wholesale: **\$10.00 per bushel.**

## Remarks of the Originator who is an Expert on Beans.

"This bean is a half-brother to *Round-Pod Kidney Wax*, also a half-brother to *Pencil-Pod Black Wax*. They both have *Round-Pod Refugee* blood in them, and from this parent they get the *long, straight, handsome, round, pulpy pod*, together with  *vigor and productiveness*. These latter characteristics, although very important, are painfully lacking in some other wax sorts. This bean is *entirely stringless*, of a rich yellow color; quality is *exceptionally fine*. The plant is vigorous and productive, and we hardly know

*how this bean could be improved. We think the fact of this bean having quite a little Black-Eyed Wax blood in it ought to make it a little earlier than the Round-Pod Kidney Wax or the Pencil-Pod Black Wax."*



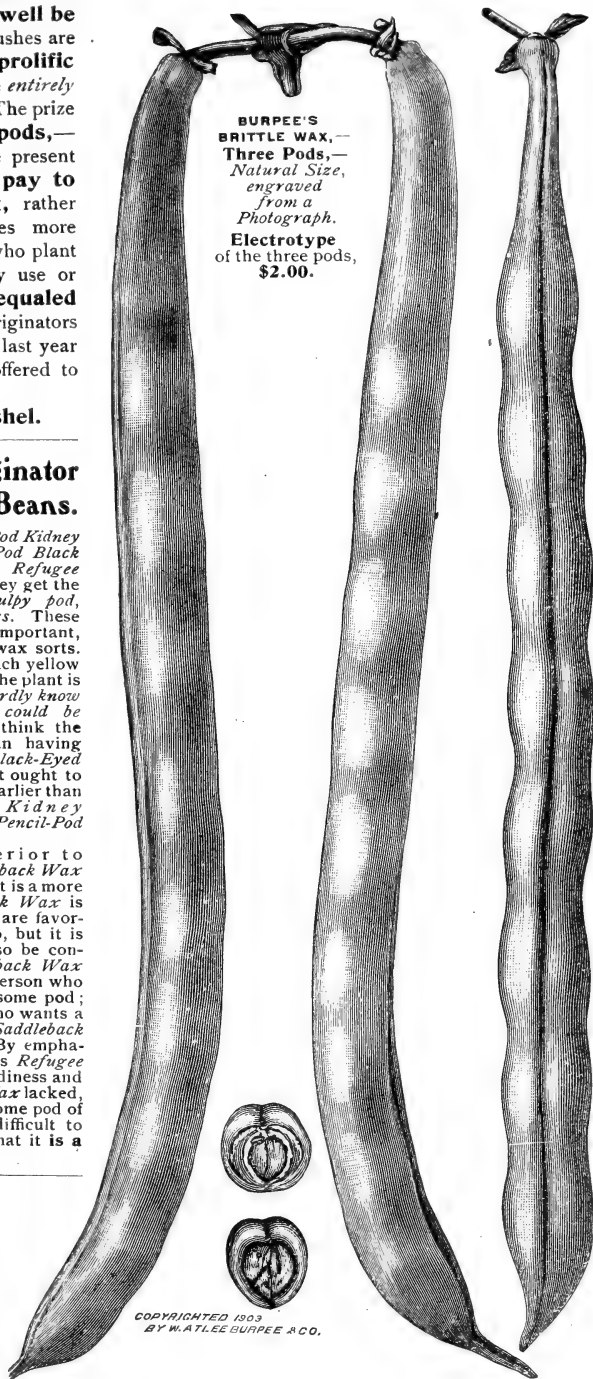
"It is superior to *Burpee's Saddleback Wax* in this respect: it is a more

certain cropper. *Burpee's Saddleback Wax* is a fine bean, and when the conditions are favorable it gives a very satisfactory crop, but it is not so robust in habit. It would also be considered superior to *Burpee's Saddleback Wax* and to *Round-Pod Kidney Wax* by a person who wants a slender, long, straight, handsome pod; while, on the other hand, a person who wants a large pod would consider *Burpee's Saddleback Wax* preferable to this new Wax. By emphasizing the fact that this new Wax has *Refugee* blood in it, thereby acquiring the hardiness and vigor which the original *Black-Eyed Wax* lacked, and giving it the long straight handsome pod of the *Refugee* parent, it will not be difficult to explain to most of your customers that it is a **great improvement.**"

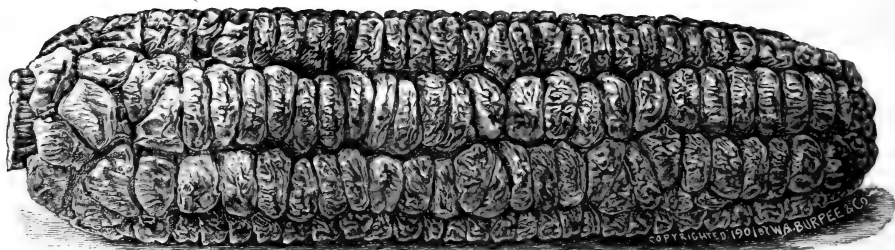
## "What Many Others Say."

Under this heading we could easily occupy a number of pages with *most enthusiastic reports*,—did space permit,—and had we sufficient seed to fill resulting orders! Unfortunately the crops of **BRITTLE WAX** (in common with crops of all other high-bred wax beans) were extremely short again the past season, and while we hope to be able to accept **early orders** (in limited quantities) we reserve the right to withdraw this offer at any time.

**BURPEE'S  
BRITTLE WAX,—  
Three Pods,—  
Natural Size,  
engraved  
from a  
Photograph.  
Electrotype  
of the three pods,  
\$2.00.**



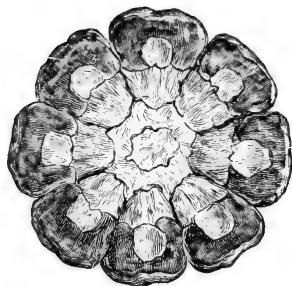
COPYRIGHTED 1903  
BY WATLEE BURPEE & CO.



BURPEE'S NEW EARLY "GOLDEN BANTAM" SWEET CORN,—from a Photograph. Electrotypes, \$1.00.

## Early Sweet Corn,—Burpee's "GOLDEN BANTAM."

Now first offered to the Trade.



BURPEE'S GOLDEN BANTAM,—  
Section of an Ear.  
Electro, 40 cts.

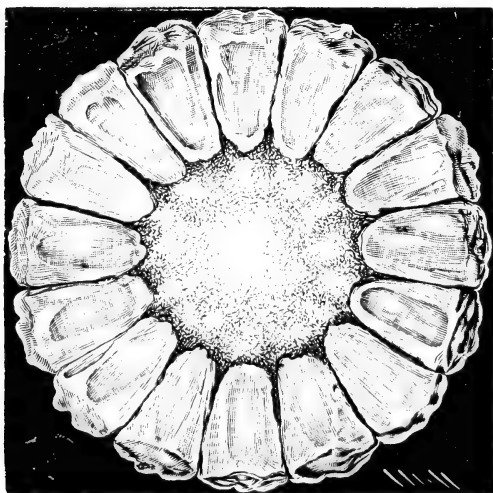
Of extreme hardness, this can be planted earlier than any other true sweet corn, and will then produce the earliest supply of ears for the table. Planted later it does not develop quite so quickly as *Early Fordhook* or *Cory*, but is vastly superior in rich sweet flavor. It is especially adapted to the cool summer weather of New England, where, by repeated plantings, BURPEE'S GOLDEN BANTAM alone will furnish a constant supply of the finest ears throughout the season.

The stalks grow from three and a half to four feet in height and produce one to two good ears on each stalk. The ears are about six inches in length, completely filled with eight rows of golden-yellow grains, extending to the rounded tip. These grains, when ears are ready for use, are a bright golden yellow. The flavor is exceptionally rich and sugary, "the sweetest of all."

Per bushel \$4.75; in lots of 10 bushels or more at \$4.50 per bushel.

## For Reports

from growers,—see our Retail Catalogues of 1903, 1904, and 1905.



BURPEE'S NEW "WHITE EVERGREEN" SWEET CORN,—  
Section of an Ear. Electrotypes, \$1.00.

## 333 Burpee's White Evergreen is absolutely unequalled!

First introduced exclusively by us, this grand new type has given unqualified satisfaction. We could fill many pages with most enthusiastic letters from private planters and market gardeners.

## An Impartial Opinion from a Recognized "Editor-Expert."

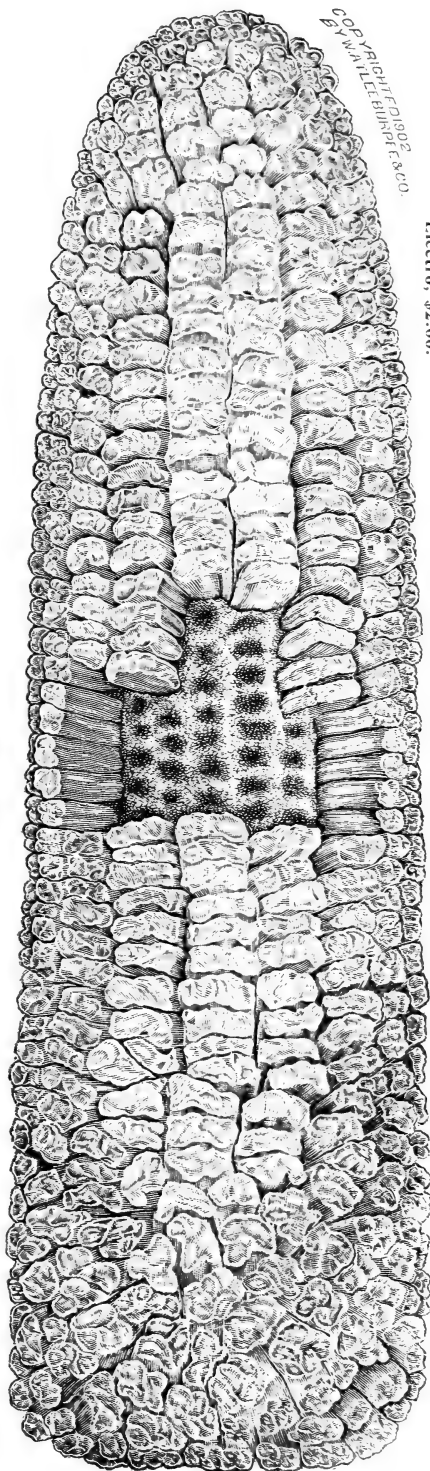
**White Evergreen.** W. ATLEE BURPEE & Co., Philadelphia, Pa. A great improvement, by long and careful selection, on *Stowell's Evergreen* as now cultivated. The attempt has been made to get a strain having light-green silk and tassels. . . . The cob and kernels are at all stages of edibility beautifully white. They are of the most pronounced "Evergreen" type. The getting rid of the amber tint so prominent in many strains of sweet corn passing for *Stowell's Evergreen* is a great gain, as it fits this variety for extensive use in canneries. The quality has been so improved by critical selection that it must rank among the very best of the large sugar corns. The plant is robust, with heavy broad foliage and frequently bears two large ears. For serving on the cob they are rather large, but afford an unlimited supply of excellent green corn for all other culinary purposes. As with the parent variety, the young ears remain in the edible state a long time, and when two or more ears are produced on a stalk they come on in succession, thus considerably lengthening the season for a given planting. We have found nothing better for a main-crop sugar corn.—From THE RURAL NEW YORKER, New York, Nov. 28, 1903.

# Sweet Corn,—Burpee's WHITE EVERGREEN.

The most valuable Sweet Corn ever introduced! It is a high-bred ideal type of *Stowell's Evergreen*, so long known as the finest main-crop corn,—only it is **PURE WHITE!** From one pure white-grained ear, accidentally discovered years ago, it has been developed by careful work, only the finest white-eared product being saved and selected each season. All the good points of a superb strain of the original *Stowell's Evergreen* have been not only retained but intensified. The quality has been so improved that we now have in **Burpee's WHITE EVERGREEN the finest Sweet Corn in the world!** The stalks are of strong vigorous growth, six to seven feet high. The ears are very large and average large; they are uniformly well filled to the tip (as shown in the illustration from a photograph), with long slender grains of the purest whiteness and most delicious sweet flavor. Market gardeners, canners, and all lovers of sugar corn have been long looking for a white sweet corn as good as *Stowell's*. They can now have *Stowell's*, only it is **WHITE,—sweet and tender, of the very finest quality.** When in the green state both cob and grains are **WHITE AS SNOW.** Our Advance Wholesale Price is—**\$4.00 per bushel.**



Electro, \$1.25.



COPYRIGHT 1902  
BY WALTER ELLIOTT & CO.

Electro, \$2.00.

# 393 Extra Long (White Spine) Cucumber, Burpee's "FORDHOOK FAMOUS." ©

The finest flavored of all,—most beautiful and best long green Cucumber! Vines produce an enormous crop, being of unusually vigorous growth, with large thick heavy leaves which withstand the attacks of insects. Perfectly smooth and very dark green, the handsome fruits measure twelve to eighteen inches long; they are always straight—*never turn yellow*, and are very solid. The flesh is a greenish white, firm, crisp, and of most delicious flavor. The flesh is unusually thick and seed space extremely small;—it seems to be "*all flesh and no seeds!*" "FORDHOOK FAMOUS" is so **absolutely unequalled** that we can safely predict that it *will soon supersede all other types of the popular Long Green.*

Gardeners everywhere will want this **most handsome of all table cucumbers**, both because they will bring an *extra price* on market, are of the *white spine* type,—long retaining their *dark green color*,—and because the vigorous vines are so *wonderfully prolific.*

**\$1.25 per lb.;** 10 lbs. or more at **\$1.00 per lb.**

Gardeners everywhere will want this **most handsome of all table cucumbers**, both because they will bring an *extra price* on market, are of the *white spine* type,—long retaining their *dark green color*,—and because the vigorous vines are so *wonderfully prolific.*

**\$1.25 per lb.;** 10 lbs. or more at **\$1.00 per lb.**



**Fordhook Famous**

was "created" by MR. A. McINNIS, an experienced Scotch seed grower of Ontario, Canada, who, after selling us his crop, with exclusive right of introduction, wrote under date of February 13, 1901: "My new cucumber is certainly *very fine*—from twelve to seventeen inches long—*very smooth and even size.* Very productive and first-class for table use. I have sold them here on our markets at 50 cents per dozen when good White Spine would not bring 20 cts. It is about seven years since the cross was made by myself. The cross was *White Spine* and *Noa's Forcing*,—the latter a very beautiful cucumber, one of the best flavored that I have tasted, from which my new one has taken very much the same flavor."

Our friend, Mr. E. L. Coy, of Washington County, New York, is well known as the most experienced grower of cucumbers in America. To insure against failure of our own crop, we sent a few pounds of stock seed to Mr. Coy to plant for us, and asked him to state plainly his opinion of this new cucumber. Mr. Coy, September 4, 1901, writes: "The fruits are long, slim, and **very uniform.** When of pickle size were **very dark green** and handsome. **They are longer, smoother, and finer than the London Long Green, which is saying a great deal.**"

Those who know Mr. Coy will value this endorsement; he has been growing cucumbers extensively for more than fifty years. Again, under date of September 23, 1901,

**E. L. Coy writes:** "**Skin very deep green,** while the fruit is young; white when it is ripe; flesh greenish white, **firm, and unusually crisp.** The plant is a strong grower, leaf large and of a deep green color. The fruit is long (twelve to seventeen inches), smooth, slim, and very uniform. Owing to its large thick heavy leaf, it *withstood the attacks of insects* much better than any other;—**great hardiness and vigor.**"

**Fordhook Famous** is crisp and tender for a long time even after taken from the vines,—therefore one of the best for market. It is immensely productive, *beautiful in color*, symmetrical in form, none better, earlier than *White Spine* and double the size. It is unsurpassed for pickling, whether large or small.—So writes MR. C. F. BARBER, Auburn, N. Y.



# Burpee's New "Brittle-Ice" Lettuce

**Very Large, Extremely Crisp, Hard-heading, and Extra Long-standing**

**Now First Offered to the Trade.**

Electro,  
\$1.25.



Plants grow twelve inches across and make large closely folded heads fully eight inches across. The large outer leaves are a light green and grow closely about the head. The large heads are slightly flattened at the top and closely folded, so that the interior leaves are blanched to a pure white and are always crisp and brittle.

While essentially a midsummer variety, this new lettuce is desirable also for early spring planting or for fall use. The heads remain in a fine condition for table use much longer than will the smaller heads of the earlier sorts. Wholesale: **Per lb. \$1.40**; 10 lbs. or more at **\$1.25 per lb.**

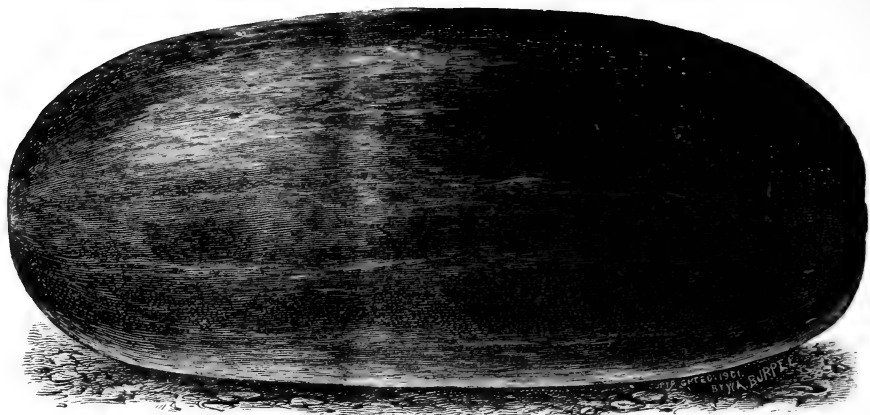
## New Mammoth Lettuce,—Burpee's BUTTERHEAD.

This is an extra large firm-heading white Cabbage Lettuce. The superb solid heads are equally valuable for summer use on the home table or for market. The plants attain a diameter of twelve inches across, and the outer leaves grow well up around the large globular heads. The outer leaves are very broad, smoothly rounded, and of a light-green color. Heads are extra large, well rounded, six to seven inches across. The inner leaves, curled like a fine Savoy cabbage, are blanched to a beautiful white, of rich buttery flavor; they are particularly crisp and delicate to the taste. **\$1.25 per lb.**; 10 lbs. or more at **\$1.10 per lb.**

BURPEE'S BUTTERHEAD.  
Engraved from  
a Photograph.

Electro,  
\$1.50.





BURPEE'S NEW "HALBERT HONEY" WATERMELON,—from a Photograph.

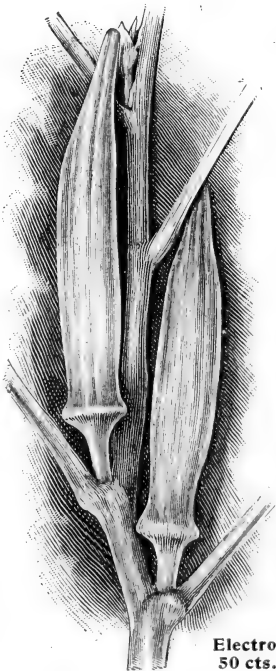
## Burpee's "Halbert Honey" Watermelon.

The finest of all Watermelons for the home garden and choice trade in local markets! HALBERT HONEY fully equals the *Kleckley Sweets* in superb luscious flavor, and has fruits more even and regular in outline, with a darker, richer colored skin, making it more attractive in appearance. The vines are of strong vigorous growth and set fruits very freely, — four or five large melons are frequently seen clustered closely together. The vines grow quickly, so that they will ripen choice fruits even in the Northern States if planted in a good location; farther south, two plantings may be made, one for summer and one for fall use. The melons average eighteen to twenty inches long and are full or bluntly rounded at both ends. The skin is a dark glossy green. The flesh is a beautiful crimson, the rich coloring and luscious quality extending to a clearly defined line where it joins the thin white rind. The seed is white and comparatively small.

Per lb. 65 cts.; in lots of 10 lbs. or more at 60 cts. per lb.

### Lettuce,— GIANT Iceberg.

Equally as crisp, with heads larger in size and slightly later, this is of the same fine quality for summer use as our original Iceberg. In fact, at FORDHOOK FARMS it was *even better* late in the season, as well as larger. We distributed thousands of sample packets and have received so many enthusiastic reports that we must catalogue this new GIANT ICEBERG, to supply the demand that is sure to result. We have not space to publish an illustration, and hence would refer to the illustration in Retail Catalogue of our original Iceberg, which has been for years so popular. This NEW GIANT is *exactly similar*,—only the heads are considerably larger in size and require more time in which to develop. Per lb. \$1.00; 10 lbs. or more at 90 cts. per lb.



### New Okra,— Kleckley's Favorite.

This is the finest white-podded Okra,—greatly superior to the *White Velvet*. The plants are of uniform growth, two and a half to three feet in height, sturdy and robust, close-jointed with ample foliage, and bear smooth white pods at each leaf-joint,—as shown in illustration from a photograph.

The pods average six inches in length by one and a quarter inches in diameter at the bottom, carrying the thickness well throughout the length. At the upper end of the pod or tapering point, the sides are slightly flattened or ridged as in the *White Velvet*, but the lower and thicker portion is distinctly round and smooth.

The young pods when ready for use are *exceptionally tender and fleshy*. They have a rich consistency, quite as distinct and superior in their way as the fine quality of the famous *Kleckley Sweets Watermelon*, which was also first introduced by us. Our friend Mr. KLECKLEY is an enthusiastic gardener and takes great pride in developing these specialties and maintaining them at the highest possible standard.

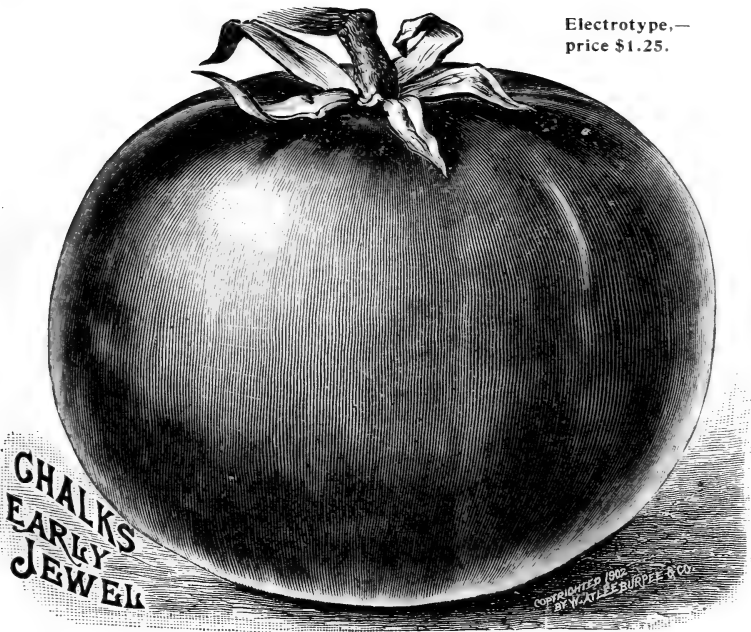
The seed now offered was saved for us by Mr. Kleckley and can be had only in sealed packages bearing our Registered Trade Mark. Per lb. 65 cts.; 10 lbs. or more at 60 cts. per lb.

### ELECTROTYPES: Conditions of Sale.

**Note.** We do not, as a rule, sell electrotypes, and these electrotypes are sold only to those who purchase their supplies from us, and with the distinct understanding that they shall be used to illustrate only the varieties for which they have been engraved.

Electro,  
50 cts.

Electrotype.—  
price \$1.25.



## New Tomato,—Chalk's Early Jewel.

See Impartial Testimonials in Retail Catalogue.

**The largest, smoothest, and finest flavored extra-early Tomato in cultivation!**

Within a week to ten days as early as the famous *Sparks' Earliana*, it is even a heavier cropper, with tomatoes of larger size and sweeter flavor, while its more robust growth makes it a surer cropper in the warm Southern States. The foliage does not blight when the sun shines hotly after a heavy rain, as is sometimes the case with *Earliana* on the Delaware Peninsula and farther south.

**Chalk's Early Jewel.** Originated within twenty miles of FORDHOOK FARMS by our friend, MR. JAMES CHALK, of Montgomery County, who has continued for seventeen years his selection to establish *hardiness* and *extreme earliness*. Of compact growth, the plants are *fairly loaded with fruit*,—both early and throughout the season. The tomatoes are uniformly of good size,—seventy-five will fill a five-eighths bushel basket.

The large handsome fruits are *very solid* and *deep through*, being almost round or ball-shaped. An average specimen, as shown in our illustration [see above], will measure three and a half inches across by nearly three inches in depth from stem to blossom end. Color *brightest scarlet*, ripening right up to the stem without any cracks or green core. The foliage is rather open, admitting the sunlight to the center of each plant, so that all the fruits are thoroughly ripened; but the leaves are dark green and not inclined to curl as in most other extreme-early varieties. The thick flesh is bright scarlet, very solid, with comparatively few seeds, and of *fine sweet flavor*; skin thin but sufficiently strong to make it a good shipper.

**Seed Grown at Fordhook** from James Chalk's stock and carefully selected by ourselves: Per lb. \$5.50; 5 lbs. at \$5.25 per lb.; 10 lbs. or more at \$5.00 per lb.

**Chalk's Jewel** Seed produced on contract by our private growers in *Pennsylvania and New Jersey*, whose crops we have inspected carefully during growth, and whose seed is *strictly first-class*.—else we should not offer it! Per lb. \$3.50; in lots of 10 lbs. or more at \$3.25 per lb.

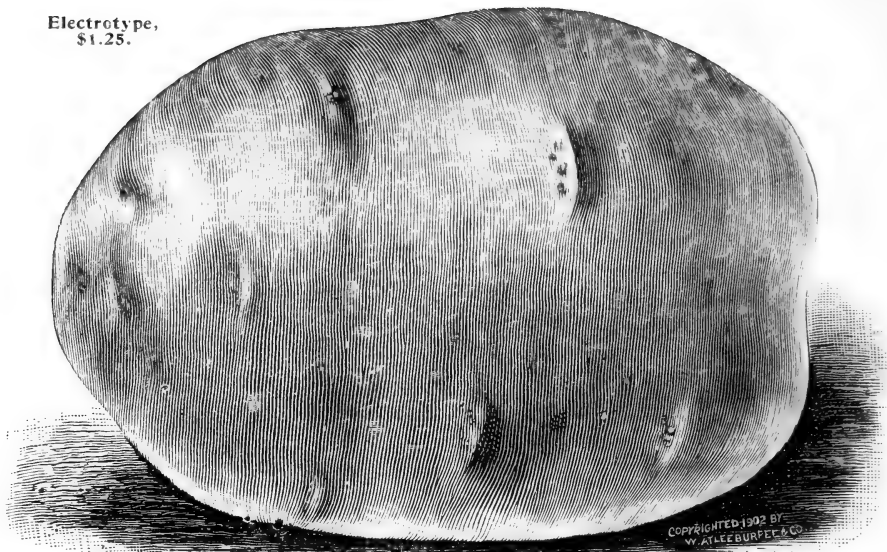
## You should Catalogue SPARKS' EARLIANA Tomato,— Most Famous of All "Extreme-Early" Tomatoes.

**Sparks' Earliana.** Choicest seed of our own growing in its "South Jersey Home" and in Bucks County, Pa.,—this strain is the *Best on the market to-day*. Per lb. \$3.50; 10 lbs. or more at \$3.25 per lb.

**Sparks' Earliana.** WESTERN-GROWN SEED from our own stock seed,—and really *first-class*, being quite equal to the seed generally used. Per lb. \$2.50; 10 lbs. or more at \$2.25 per lb.

Special Prices on larger quantities upon application.

Electrotype,  
\$1.25.

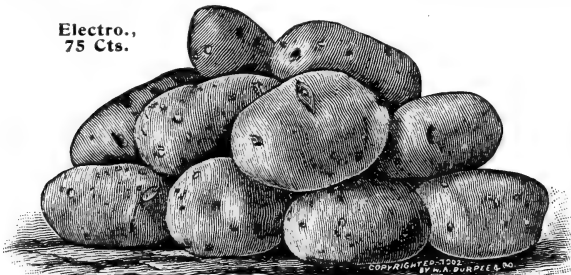


A Single Tuber of VERMONT GOLD COIN POTATO,—from a Photograph.

## New Potato,—VERMONT GOLD COIN.

The hardest, most vigorous in growth, most productive, and the best in table quality of all potatoes, it has proved to be absolutely unequalled for main crop! The vines are strong, with exceptionally luxuriant deep green foliage, making a healthy growth when other varieties are cut down by blight. The tubers are all of good size and lie closely together in the hill. While the vigorous growth and great productiveness will commend the VERMONT

Electro.,  
75 Cts.



NEW VERMONT GOLD COIN POTATOES,—from a Photograph.

This pile was the product of one hill which produced seventeen large tubers weighing  $8\frac{1}{2}$  lbs.,—more than one-eighth of a bushel!

nature. The eyes are small and there is but little waste in paring. The skin is thin, smooth, and glossy, of a light golden tint, having just sufficient coloring to distinguish it from the white-skinned varieties. The flesh is fine grained, of a pure pearly whiteness, and cooks to a dry floury whiteness. Unlike most of the main-crop or late sorts which need to be well dried out before they will cook properly, these new VERMONT "GOLD COINS," even when freshly dug, cook dry and mealy. Its vigorous growth and great productiveness make it the most profitable variety for the planter, and its great solidity, smooth regular form, and unequalled table quality will make it the most popular and quickest selling on market.

Price, \$5.00 per barrel (cable-word—**Potential**).

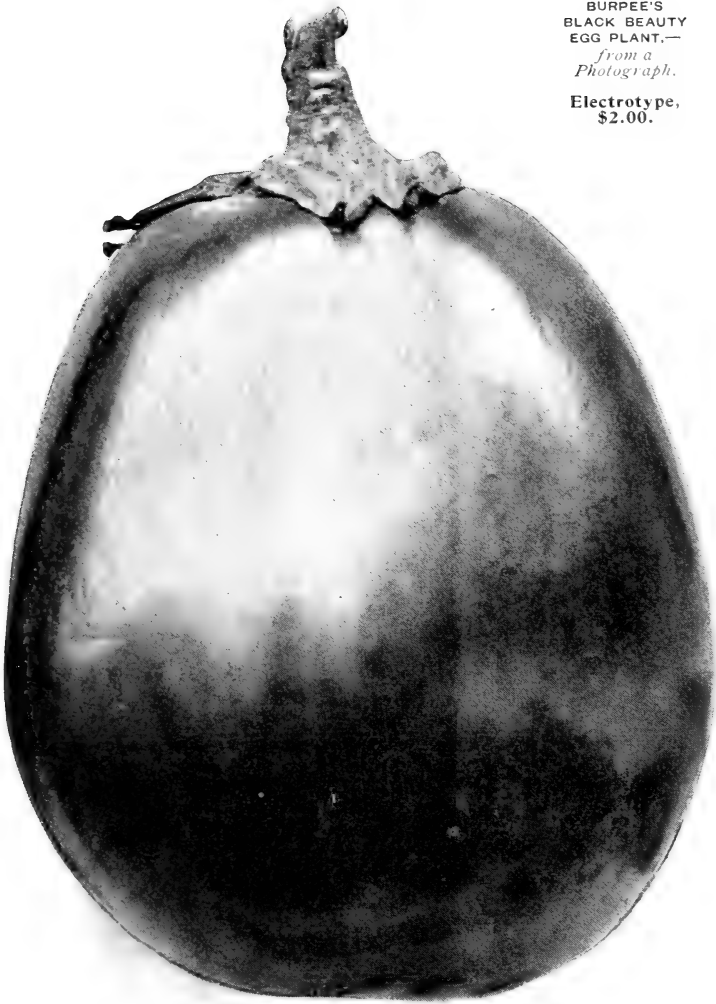
**In the New Gold Coin we "Now Have the Very Best Potato in Existence,"—so writes E. L. Coy.**

"I am more and more satisfied that you now have in GOLD COIN the very best potato in existence. I have a barrel of them here from my brother and they are away ahead of anything we have had on our table of any variety from Maine or anywhere else. VERMONT GOLD COIN will soon be a household word among lovers of good potatoes."—E. L. COY, November 14, 1902.



BURPEE'S  
BLACK BEAUTY  
EGG PLANT.—  
*from a  
Photograph.*

Electrotype,  
\$2.00.



## Egg Plant,—Burpee's "Black Beauty."

**The earliest and best of all large-fruited Egg Plants!** It is valuable alike to the private planter and the extensive grower for market. BLACK BEAUTY produces fruits *fully as large* and ready for use **ten days to two weeks earlier** than the "*Fordhook Spineless*" or *New York Improved Purple*. The plants branch freely near the ground, and grow in well-rounded bushes. The grand large fruits are thick,—of most attractive form, as shown in the illustration. The skin is a **rich lustrous purplish black**,—*the satin gloss and rich coloring adding greatly to the beauty of these "eggs."* This intensely brilliant coloring is *uniform over the whole fruit* and does not fade or change to a lighter color at the blossom end. The calyx is bright green, contrasting finely with the dark satin skin of the fruit, and is *entirely free from spines or thorns*.

The fruits set most freely and *develop remarkably quickly*, so that the entire crop can be gathered before there is any danger of frost, while of the *New York Improved Purple* many fruits do not reach full size before they are destroyed by frost. We are sure that truckers generally will make their main planting of BURPEE'S "BLACK BEAUTY" as soon as they learn its unusual value. Special wholesale for 1905: **Per lb. \$3.75**; in lots of 10 lbs. or more, **\$3.50 per lb.**





**PLEASE NOTE,—  
Error in Prices of  
New Sweet Peas,  
on pages 27 and 28.**

**These will be invoiced, of course, at  
the lower prices, quoted in complete alpha-  
betical list on pages 23 to 26.**

**Wholesale Department.**

**W. ATLEE BURPEE & CO.,**

**SEED WAREHOUSES,**

**Nos. 475 and 477 North Fifth Street,**

**Nos. 476 and 478 York Avenue,**

**LOCK BOX 1626**

**PHILADELPHIA, PA.**

PLEASE NOTE—

Index in front of

New Sewal Pass

on pages 27 and 28

is twice with revised

the lower pages and the

edition has on pages 23 and 24



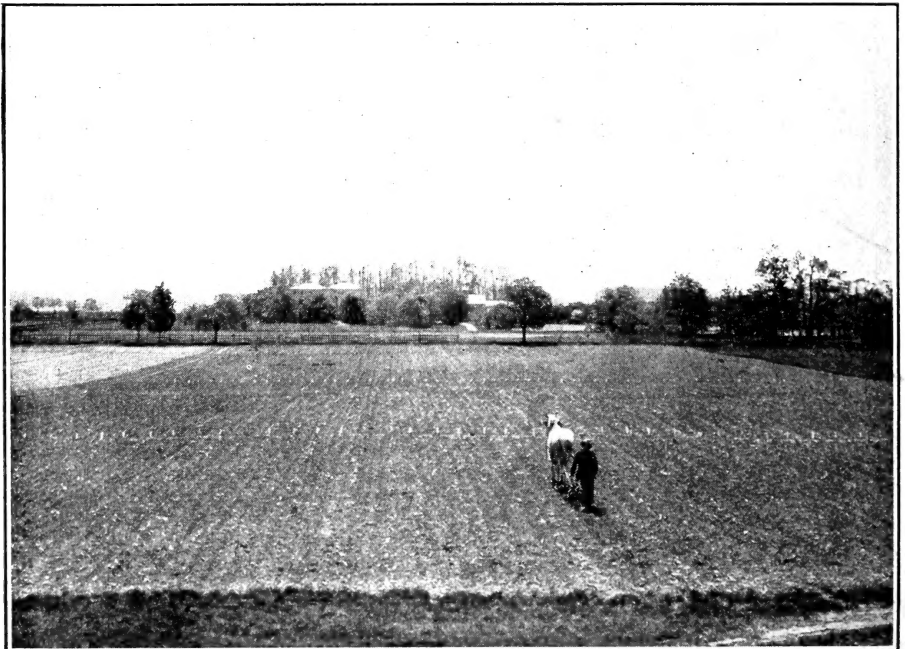


# Two Views at FORDHOOK FARMS

*From photographs taken of Trial Grounds in the spring of 1904. Many other views would be necessary to give an adequate idea of the work at our famous FORDHOOK FARMS,—the largest Trial Grounds in America.*



*A part of the main section of Miscellaneous Trials on "The First Fordhook Farm." The young plants are just large enough to permit hand-hoeing and the first use of the wheel hoes.*



*Early Cabbage Trials on "The Second Fordhook Farm." Every year we make two plantings of Cabbage seed for field trials,—one in February for early, another in June for the late trials.*