

Historic, Archive Document

Do not assume content reflects current scientific knowledge, policies, or practices.

1904-5—Fall and Spring

WHOLESALE TRADE PRICES

Kelsey's Hardy American Plants


The largest stock in the world of the true Native *Rhododendron catawbiense*, *R. maximum*, *Kalmia latifolia*, and indigenous *Azaleas*. Nearly 100 acres of native plants

GROWN AT

Highlands Nursery, Kawana, N. C. (3,800 feet elevation) and Salem, Mass.

HARLAN P. KELSEY, Prop., Beacon Bldg., BOSTON, MASS.

Cable Address, KELMONT—BOSTON.

 Always address Boston Office.

Terms, etc.

Terms are cash or satisfactory reference from unknown parties. Accounts due 1st of each month, unless by special arrangement.

Shipments usually direct from Highlands Nursery, from Pineola, N. C., freight station. Present freight rate to New York, Boston and Philadelphia points, 96½ cents per 100 pounds. Special express rates connecting with Norfolk steamers. Rates from our Rhododendron fields in Pennsylvania and from Nursery in Salem, Mass., on request.

Packing charged at cost only; our export shipments reach the most remote countries in perfect condition.

Send foreign remittances by Postal Money Order, drawn on Boston, Mass., postoffice or by New York or Boston Exchange. An American dollar equals 4 shillings, 4 marks or 5 francs.

Claims must be made on receipt of goods. All shipments travel at consignee's risk.

Shipping begins in August, when we send out large Rhododendrons, Kalmias and other Evergreens, and Bulbs and Herbaceous Plants; general stock going out in October and November, and in spring, from about March 1 to May 15. Give shipping instructions, unless you wish to leave it to us. We use our best judgment, but assume no risk.

A Certificate of Inspection is sent out with every shipment.

Strictly hardy stock only is offered in this catalog, unless specially noted.

We publish a beautifully illustrated descriptive catalog and a unique Rhododendron booklet. Please write for them.

We make low prices on any list of nursery stock desired, and are glad to estimate.



R. maximum

R. catawbiense

R. punctatum

Photograph showing comparative sizes and shapes of our best three species of American Rhododendrons. All are perfectly hardy in latitude of Quebec. One-half to one-third natural size.

The True RHODODENDRON CATAWBIENSE

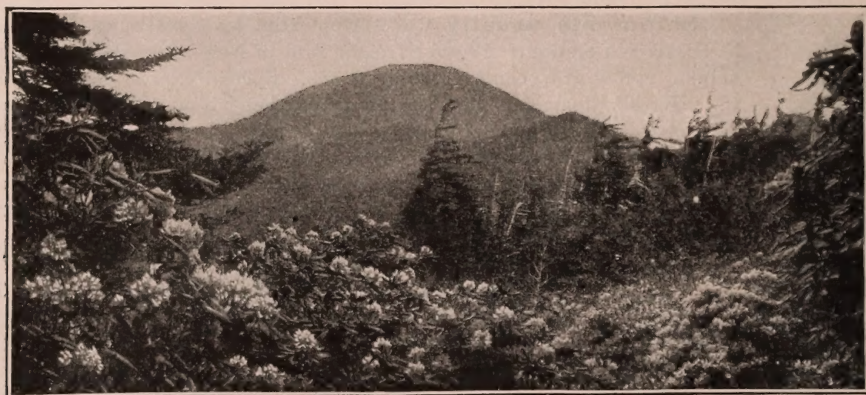
Carolina Rhododendron

IT is with great pleasure we offer for the first time in America or abroad a complete stock of the rare *Rhododendron catawbiense* (true species), in sizes from small plants to large clumps. Do not confuse this with the common so-called "catawbiense seedlings" imported from Europe, which is in reality a half-hardy, poor-flowered hybrid with little catawbiense blood in it. The true species grows only in the highest Southern Alleghany mountains, and is the **finest of all Rhododendrons**, considering its extreme hardiness, color of flower, and remarkable texture of foliage, which is a deep shiny green, far superior to that of the better known *Rhododendron maximum*.

For massing and producing a broad-leaved evergreen effect, there is no plant equal to it in the latitude of the northern United States, where strictly hardy plants must necessarily be used. Unlike *R. maximum*, it is a **free bloomer**, the large trusses being a **bright red-purple** color, in marked contrast to the **muddy purple** of the common half-hardy hybrid noted above. All plants offered below are **heavy clumps**. Packing is done in **boxes**, or the larger sizes in **crates**, and is charged at cost. These clumps often have 30 to 50 stems, and are bushy to the ground. We offer both collected and transplanted clumps.

For use as a finished edging for *Rhododendron maximum* and *Kalmia* plantations, the value of *R. catawbiense* cannot be over-estimated.

We have magnificent fields for collecting this grand Rhododendron, with reasonable freight rates. Parks, cemeteries and nurserymen should write us for special prices in car lots.



Rhododendron catawbiense in the Carolina mountains, at 4,000 feet elevation

PRICES OF RHODODENDRON CATAWBIENSE

Most clumps over 1 foot are heavily budded

NURSERY-GROWN

Bushy plants with balls and extra furnished, diameter of clumps corresponding to height

	Per 10	100	1,000
3 to 6 inches.....	\$0 60	\$4 50	\$30 00
6 to 9 inches.....	1 00	8 00	70 00
9 to 12 inches.....	1 50	12 00	100 00
Clumps, 6 to 9 inches.....	2 00	18 00	
Clumps, 9 to 12 inches.....	3 50	25 00	
Clumps, 1 to 1½ feet.....	5 00	40 00	
Clumps, 1½ to 2 feet.....	11 00	90 00	
Clumps, 2 to 3 feet.....	20 00	150 00	
Clumps, 3 to 4 feet.....	35 00	300 00	

Some extra clumps, 3 to 5 feet high, at \$4 to \$15 each. These prices are for stock growing at nursery in N. C. Quotations will be made specially on Rhododendrons growing in nursery in Salem, Mass.

COLLECTED

All bushy clumps with fine balls, diameter corresponding to height

	Per 10	100	1,000
1 to 1½ feet.....	\$3 00	\$25 00	\$210 00
1½ to 2 feet.....	6 00	50 00	420 00
2 to 2½ feet.....	9 00	70 00	600 00
2½ to 3 feet.....	15 00	120 00	950 00
3 to 4 feet.....	25 00	225 00	1,800 00
4 to 5 feet.....	40 00	350 00	

We offer some large clumps with fine bushy tops, thin-foliaged at bottom, for use in center of large masses, 3 to 6 feet high, at 75 cts. to \$10 each, both nursery-grown and collected.

Do not compare the many-stemmed clumps offered above with the single-stemmed "bushy" half-hardy Rhododendrons offered by importers. There is no comparison

Rhododendron maximum

THE GREAT AMERICAN ROSE BAY

and Kalmia latifolia

THE MOUNTAIN LAUREL

PERFECTLY HARDY IN THE LATITUDE OF QUEBEC

THE use of large native *Rhododendron maximum* and *Kalmia latifolia* for producing immediate, finished, broad-leaved, evergreen effects is so well established as to scarcely need comment. There is no other possible way to obtain the results to be had by the use of these magnificent hardy evergreens. We sell both collected and nursery-grown clumps in any quantity. Our facilities and long experience are approached by none, and the quality of stock we handle cannot be duplicated. We have over 100,000 *Rhododendrons* and *Kalmias* growing in our Nurseries, fine bushy plants with balls.

Our nursery-grown stock is in Kawana and Salem, while we collect car-load lots from special sources in the **Pennsylvania** and **Carolina Mountains**. Prices per car-load of *Rhododendron maximum* vary with size and grade.

For mass effects, planting the large clumps in the backgrounds, we recommend using a mixed grade, say 2½ to 8 feet high, at **\$90.00 per car f. o. b.** Extra selection at **\$110.00 to \$140.00 per car**, according to size and grade.

KALMIA LATIFOLIA by car-load **\$100.00 to \$160.00 f. o. b.**, according to size and grade. Freight rate from our Pennsylvania fields to Boston, New York, Philadelphia, Buffalo and similar points is from \$20.00 to \$40.00 per car. Number of plants to the car varies from forty or fifty to several hundred, according to size and grade.

It is always best to have us make a special estimate where large quantities are desired, and it is cheaper and more satisfactory to buy by the plant, and have cars packed to the utmost limit.



Rhododendron maximum

PRICES BY THE PLANT

RHODODENDRON MAXIMUM

All are bushy and with balls, and the larger clumps usually budded and all well furnished, diameter corresponding well to height.

NURSERY-GROWN

	Per 10	100	1,000
3 to 6 in.....	\$0 40	\$2 50	\$18 00
6 to 12 in.....	75	5 00	40 00
1 to 1½ ft.....	1 75	12 50	100 00
1½ to 2 ft.....	3 00	20 00	180 00
Clumps, 9 to 12 in.....	3 00	20 00	
Clumps, 1 to 1½ ft.....	3 50	30 00	
Clumps, 1½ to 2 ft.....	7 00	60 00	
Clumps, 2 to 3 ft.....	12 50	115 00	
Clumps, 3 to 3½ ft.....	30 00	250 00	

Some extra clumps, 3 to 6 ft., at \$3.50 to \$10.00 each. These prices are for stock growing at Nursery in North Carolina. Prices for stock growing in Nursery in Salem, Mass., on request.

COLLECTED CLUMPS

	Per 10	100	1,000
1 to 1½ ft.....	\$2 75	\$20 00	\$160 00
1½ to 2 ft.....	4 00	35 00	300 00
2 to 3 ft.....	9 00	70 00	500 00
3 to 4 ft.....	17 00	140 00	1,000 00
4 to 5 ft.....	30 00	200 00	1,600 00
5 to 6 ft.....	50 00	400 00	

Some magnificent clumps, 4 to 6 feet, perfect specimens, from \$6.00 to \$15.00 each. If you want something extra, we have it.

KALMIA LATIFOLIA

All are well furnished and bushy and lift with fine balls, the larger clumps usually budded. Diameter corresponds well to height.

NURSERY-GROWN

	Per 10	100	1,000
3 to 6 in.....	\$0 40	\$2 50	\$18 00
6 to 9 in.....	75	5 00	35 00
9 to 12 in.....	1 00	7 00	55 00
1 to 1½ ft.....	1 75	12 50	100 00
1½ to 2 ft.....	3 00	20 00	180 00
Clumps, 9 to 12 in.....	3 00	20 00	
Clumps, 1 to 1½ ft.....	4 50	40 00	
Clumps, 1½ to 2 ft.....	8 00	75 00	
Clumps, 2 to 3 ft.....	20 00	150 00	

COLLECTED

	Per 10	100	1,000
1 to 1½ ft.....	\$2 75	\$20 00	\$160 00
1½ to 2 ft.....	4 00	35 00	300 00
2 to 2½ ft.....	8 00	60 00	450 00
2½ to 3 ft.....	12 00	85 00	600 00

Larger clumps, five specimens, can be supplied at \$2.00 to \$8.00 each.

RHODODENDRON PUNCTATUM

The smallest Alleghanian species, and very rare. A graceful shrub, with rose blossoms borne in greatest profusion in June. Beautiful for rocky slopes and cliffs, as it stands exposure unusually well. One of the finest specimens ever introduced.

	Per 10	100
3 to 6 in.....	\$0 60	\$5 00
6 to 9 in.....	1 25	10 00
9 to 12 in.....	2 00	18 00
Clumps, 9 to 12 in... only.	4 00	30 00
Clumps, 1 to 1½ ft..)	8 00	

How to Make a Successful Rhododendron Bed



Large Rhododendrons growing at Highlands Nursery. From photograph.

(Small plants are grown under lath shade.)

By this we mean a place for the proper reception of Rhododendrons, Azaleas, Kalmias, Leucothoes, Andromedas, Galax and other ericaceous plants that require special treatment to make them thrive permanently. They are all **surface feeders**, requiring cool, moist loam to draw nourishment from.

WHERE POSSIBLE, choose a NORTHERN EXPOSURE with shade (it is often a winter sun on the frozen leaves that kills Rhododendrons), and good drainage. Where moisture can be had, excavate 2 feet, filling in with equal parts of good leaf-mold or other decayed vegetable matter and rich loam, with a tenth sharp sand, and plenty of *well-rotted* stable manure. In limestone soil, excavate 3 feet deep and 5 feet from the border of the planting, and water with rain- or cistern water if possible.

Keep the bed heavily mulched, using forest leaves, spent tan, old hay, etc., letting this covering decay from year to year, to give a continual supply of the mold and humus essential to successful growth.

In extensive plantations, use clumps preferably, choosing the most favorable location, with proper soil and drainage, giving the right care after planting as before indicated.

The essentials for successful Rhododendron culture are given above, and, if carried out, they are grown as easily and surely as Roses or Hydrangeas.

We are always glad to give advice on this subject.

Hardy Ground - Covering and other Plants specially recommended for the Rhododendron Bed

Leucothoe catesbæi	Taxus minor	Epigæa repens	Trilliums in variety
Galax aphylla	Vinca minor	Ferns in variety	Bicuculla eximea
Andromeda polifolia	Pieris (andromeda) floribunda	Carex fraseri	Cypripediums in variety
Dendrium prostratum		Lilium superbum	Viola in variety
Mitchella repens	Oxycoccus macrocarpus	Lilium grayi	Convallaria majalis
Kalmia angustifolia	Phlox, dwarf varieties	Lilium canadense	

FOR PRICES OF THESE, SEE FOLLOWING PAGES

Hardy American Trees, Deciduous

S.—Seedlings. Col.—Collected Plants. All other stock in this catalogue strong transplanted

ACER

negundo , Box Elder—	10	100	1,000
1 to 2 ft.....	\$0 50	\$3 00	
2 to 4 ft.....	75	5 00	
pennsylvanicum , Striped Maple. 6 to 12 in.....	40	3 00	\$25 00
1 to 2 ft.....	75	5 00	40 00
2 to 3 ft.....	1 00	8 00	
rubrum , Scarlet M.—			
12 in.....	40	2 00	
1 to 2 ft.....	60	3 00	
2 to 3 ft.....	1 00	7 00	
3 to 4 ft.....	1 50	10 00	
4 to 5 ft.....	2 00	18 00	
saccharum , Sugar M.—			
1 to 2 ft.....	40	3 00	20 00
2 to 3 ft.....	75	5 00	
spicatum , Mountain M.—			
3 to 6 in. S.....	20	1 00	8 00
6 to 12 in. S.....	25	1 50	12 00
6 to 12 in.....	30	2 50	20 00
1 to 2 ft.....	75	5 00	40 00
2 to 3 ft.....	1 00	8 00	
3 to 4 ft.....	1 50		

ÆSCULUS

octandra , Yellow Buckeye—			
6 to 12 in.....	35	3 00	
1 to 2 ft.....	50	4 00	

AMELANCHIER

botryapium , Shad-bush—			
6 to 12 in.....	50	4 00	35 00
1 to 2 ft.....	75	6 00	50 00
2 to 3 ft.....	1 00	8 00	
3 to 4 ft.....	1 50		
4 to 5 ft.....	2 00		

BETULA

lenta , Sweet Birch. 1 to 2 ft.	40	3 00	25 00
2 to 4 ft.....	60	5 00	40 00
4 to 6 ft.....	1 25	10 00	
6 to 8 ft.....	2 00	15 00	
lutea , Yellow B. 1 to 2 ft. . .	40	3 00	20 00
2 to 4 ft.....	60	5 00	40 00
4 to 5 ft.....	1 00	8 00	
6 to 8 ft.....	2 00		
nigra , River B. 1 to 2 ft....	1 00	5 00	40 00
2 to 4 ft.....	1 25	7 00	60 00
4 to 6 ft.....	2 00	14 00	
papyrifera , Canoe B.—			
2 to 4 ft.....	1 50	12 00	
4 to 6 ft.....	2 00	18 00	
6 to 8 ft.....	3 50		
8 to 10 ft.....	5 00		

CARPINUS

caroliniana , Water Beech—			
6 to 12 in.....	40	3 00	25 00
1 to 2 ft.....	75	5 00	40 00
2 to 3 ft.....	1 25	8 00	60 00
3 to 4 ft.....	2 00	12 00	

CASTANEA

dentata , Am. Chestnut—			
6 to 12 in. S.....	40	1 50	10 00
1 to 2 ft.....	50	2 50	
2 to 3 ft.....	1 00	6 00	
3 to 4 ft.....	1 50	10 00	
4 to 5 ft.....	2 00		

CASTANEA pumila , Chinkapin. 3 to 6 in. S.....	10	100	1,000
	\$0 75	\$5 00	

CATALPA

speciosa , Western Catalpa—			
6 to 12 in.....	30	1 50	\$10 00
1 to 2 ft.....	50	1 75	15 00
2 to 3 ft.....	75	3 00	25 00

CELTIS

occidentalis , Hackberry—			
6 to 12 in.....	1 00		

CERCIS

canadensis , Red-Bud—			
1 to 3 in. S.....	25	1 50	10 00
1 to 2 ft.....	75		

CLADRSTIS

lutea , Kentucky Yellow			
Wood. 1 to 2 ft.....	1 00	8 00	
2 to 3 ft.....	1 50		

CORNUS

alternifolia , Swamp Dog-wood. 6 to 12 in.....	40	2 00	
1 to 2 ft.....	75	5 00	
2 to 3 ft.....	1 25	8 00	
3 to 4 ft.....	2 00		
florida , Flowering D.—			
12 to 18 in. S.....	75	5 00	
1 to 2 ft.....	1 00		
2 to 3 ft.....	1 50		

DIOSPYROS

virginiana , Persimmon—			
6 to 12 in.....	75	4 00	

FAGUS

americana , Beech—			
3 to 6 in. S.....	30	1 50	10 00
6 to 12 in.....	60	4 50	35 00
1 to 2 ft.....	75	6 00	

FRAXINUS

americana , White Ash—			
1 to 2 ft.....	40	3 00	
2 to 4 ft.....	60	5 00	
lanceolata , Green A.—			
1 to 2 ft.....	75	4 00	30 00
2 to 4 ft.....	1 00	6 00	
nigra , Black A. 4 to 6 ft....	2 00		
oregona . 6 to 12 in. S.....	75	5 00	
pubescens . 1 to 2 ft.....	1 00	7 00	

GYMNOCLADUS

dioica , Ky. Coffee Tree—			
6 to 12 in.....	50	3 00	
1 to 2 ft.....	75		
2 to 4 ft.....	1 00	8 00	

HICKORIA

minima , Bitternut—			
6 to 12 in.....	1 00	8 00	

ILEX

monticola , Mountain Holly—			
6 to 12 in.....	50	3 00	
1 to 2 ft.....	75	5 00	
2 to 3 ft.....	1 00	8 00	
3 to 4 ft.....	1 50	12 00	
4 to 6 ft.....	2 00		

The largest and best of the deciduous Hollies. Grows 15 to 20 feet high.

COLLECTED PLANTS

This is a Catalog of nursery-grown plants, *unless specially noted*, but many can be supplied in strong, collected stock when desired.

Our facilities are unapproached elsewhere for collecting the best stock at a low cost, and an experience of 20 years and well-trained collectors enable us to assure buyers that orders for "collected" plants will receive the same attention and care as though we intended planting the stock ourselves. We do not recommend the extensive use of collected stock and cannot guarantee it in any instance, excepting large evergreen *clumps*, such as Rhododendrons, etc.

KELSEY'S HARDY AMERICAN PLANTS, HIGHLANDS NURSERY

Hardy American Trees, Deciduous, continued

	10	100	1,000		10	100	1,000
JUGLANS				PTELEA			
<i>cinera</i> , Butternut. 1 to 2 ft.	\$0 75	\$4 00		<i>trifoliata</i> , Hop Tree—			
LARIX				6 to 12 in.	\$0 75	\$4 00	
<i>laricina</i> , American Larch—				1 to 2 ft.	1 00	6 00	
6 to 12 in.	60	4 50	\$35 00	2 to 3 ft.	1 25	8 00	
1 to 2 ft.	75	6 00		3 to 4 ft.	1 50	10 00	
LIQUIDAMBAR				QUERCUS			
<i>styraciflua</i> , Sweet Gum—				<i>cerris</i> . 6 to 12 in.	1 00		
6 to 12 in.	50	3 00		12 to 18 in.	1 50		
1 to 2 ft.	75	4 00		<i>coccinea</i> , Scarlet Oak—			
2 to 3 ft.	1 25			6 to 12 in.	75	5 00	30 00
LIRODENDRON				1 to 2 ft.	1 25	7 00	60 00
<i>tulipifera</i> , Tulip Tree—				2 to 3 ft.	1 50		
1 to 2 ft.	50	2 00		<i>laurifolia</i> , Laurel O.—			
3 to 4 ft.	75			6 to 12 in.	1 50		
4 to 6 ft.	1 00			<i>macrocarpa</i> , Bur O.—			
MAGNOLIA				6 to 12 in.	75		
<i>acuminata</i> , Cucumber Tree—				1 to 2 ft.	1 25		
6 to 12 in.	60			2 to 3 ft.	1 75		
<i>fraseri</i> , Fraser's M.—				<i>palustris</i> , Pin O. 6 to 12 in.	1 00	6 00	
6 to 12 in.	75	5 00		1 to 2 ft.	1 50	10 00	80 00
1 to 2 ft.	1 25			<i>prinus</i> , Chestnut O.—			
<i>macrophylla</i> . 6 in.	3 00			1 to 2 ft.	1 00		
<i>tripetala</i> , Umbrella Tree—				<i>rubra</i> , Red O. 6 to 12 in.	60	5 00	30 00
3 to 6 in. S.	40	2 50	15 00	1 to 2 ft.	1 00	7 00	50 00
6 to 12 in.	60	4 00		2 to 3 ft.	1 50	10 00	90 00
1 to 2 ft.	1 00	7 00		3 to 4 ft.	2 00		
2 to 3 ft.	1 50			RHAMNUS			
MALUS				<i>caroliniana</i> , Buckthorn—			
<i>coronaria</i> , Wild Crab—				1 to 2 ft.	75	4 00	
6 to 12 in.	1 50	10 00		RHUS			
1 to 2 ft.	2 00	18 00		<i>cotinoides</i> . 1 to 2 ft.	6 00		
MOHRODENDRON				2 to 3 ft.	9 00		
<i>diptera</i> , Snowdrop. 9 to 18 in.	1 00	10 00		3 to 4 ft.	15 00		
<i>carolinum</i> , Silver Bell—				A very rare Smoke Tree, with rich glossy foliage			
6 to 12 in.	1 00	8 00		ROBINIA			
1 to 2 ft.	1 50	10 00		<i>pseudacacia</i> , Yellow Locust,			
2 to 3 ft.	2 00			1 to 2 ft. S.	50	3 00	
NYSSA				2 to 4 ft.	75		
<i>multiflora</i> . 6 to 12 in.	1 00			SORBUS (Pyrus)			
OSTRYA				<i>americana</i> , Am. Mt. Ash—			
<i>virginiana</i> , Iron-wood—				6 to 12 in.	75	6 00	
6 to 12 in.	75	5 00		1 to 2 ft.	1 25	10 00	
1 to 2 ft.	1 00	7 00		2 to 3 ft.	1 75	14 00	
2 to 3 ft.	1 50			3 to 4 ft.	2 50	18 00	
OXYDENDRUM				TAXODIUM			
<i>arboreum</i> , Tree Andromeda—				<i>distichum</i> , So. Cypress—			
6 to 12 in.	75	5 00	30 00	1 to 2 ft.	1 50		
1 to 2 ft.	1 00	7 00	50 00	2 to 3 ft.	2 50		
2 to 3 ft.	1 75			3 to 4 ft.	3 00		
POPULUS				TILIA			
<i>grandidentata</i> . 1 to 2 ft.	75			<i>americana</i> , Am. Linden—			
<i>tremuloides</i> . 2 to 3 ft.	1 50			6 to 12 in.	50	4 00	
3 to 4 ft.	2 00			1 to 2 ft.	75		
PRUNUS				<i>heterophylla</i> , White Bass-wood. 6 to 12 in.	75	5 00	
<i>pennsylvanica</i> —				1 to 2 ft.	1 25		
1 to 2 ft. Col.	40	2 00	8 00	ULMUS			
<i>serotina</i> , Black Cherry—				<i>americana</i> , American Elm—			
2 to 4 ft.	75	4 00		4 to 6 ft.	1 25	10 00	
4 to 6 ft.	1 50	8 00		6 to 8 ft.	2 50		

Hardy American Conifers and Evergreen Trees

	10	100	1,000		10	100	1,000
ABIES				JUNIPERUS			
<i>balsamea</i> , Balsam Fir—				<i>communis</i> , Juniper—			
6 to 12 in.	\$1 00			6 to 12 in.	\$0 60	\$4 00	
<i>concolor</i> . 6 to 12 in.	2 00	\$15 00		1 to 2 ft.	1 00	7 00	
<i>fraseri</i> , Fraser's F.—				<i>virginiana</i> , Red Cedar—			
6 to 12 in.	50	3 00	\$20 00	6 to 12 in.	60	5 00	
1 to 2 ft.	75	5 00	40 00	1 to 2 ft.	1 00		
2 to 3 ft.	1 50	12 00		MAGNOLIA			
3 to 4 ft.	3 50			<i>foetida (grandiflora)</i> , Great So. M. Prices on request.			
ILEX				<i>glauca</i> , Sweet Bay—			
<i>opaca</i> , American Holly—				6 to 12 in.	1 00		
3 to 6 in.	1 00	6 00		12 to 18 in.	2 00		
6 to 12 in.	1 50	12 00	100 00	<i>glauca thompsoniana</i> —			
12 to 18 in.	2 00	15 00		6 to 9 in.	1 00	7 00	

Always address correspondence to Boston office

Hardy American Conifers and Evergreen Trees, continued

PICEA	10	100	1,000
canadensis, White Spruce—			
6 to 12 in.....	\$0 75	\$6 00	\$40 00
1 to 2 ft.....	1 00	9 00	
mariana, Black S.—			
6 to 12 in.....	40	3 00	20 00
1 to 2 ft.....	75		
2 to 3 ft.....	1 00	6 00	
3 to 4 ft.....	1 50	8 00	
4 to 5 ft.....	2 00	12 00	
pungens, Colorado Blue—			
6 to 12 in.....	3 00	20 00	
12 to 18 in.....	4 00	35 00	
1 to 2 ft.....	7 50		
rubra, Red S. 18 to 24 in.....	1 50		
PINUS			
contorta (banksiana),			
Twisted Pine. 1 to 2 ft..	75	5 00	40 00
2 to 3 ft.....	1 00	7 00	65 00
flexilis, Limber P.—			
6 to 9 in.....	1 50	10 00	
pungens, Table Mt. P.—			
1 to 2 ft.....	2 00		
2 to 3 ft.....	3 00		
strobus, White P. 6 to 12 in.	75	5 00	35 00
1 to 2 ft.....	1 50	10 00	80 00
2 to 3 ft.....	2 00	15 00	
PSEUDOTSUCA			
taxifolia, Douglas Spruce—			
3 to 6 in.....	50	3 00	20 00
6 to 12 in.....	1 00	8 00	

THUJA	10	100	1,000
occidentalis, Arborvitae—			
6 to 12 in.....	\$0 30	\$2 00	\$15 00
1 to 2 ft.....	50	4 00	30 00
2 to 3 ft.....	75	6 00	
3 to 4 ft.....	1 50		

TSUGA	10	100	1,000
canadensis, Hemlock—			
3 to 6 in.....	25	2 00	15 00
6 to 12 in.....	40	3 50	30 00
12 to 18 in.....	1 00	8 00	60 00
18 to 24 in.....	1 75	16 00	125 00
2 to 3 ft.....	3 00	25 00	
3 to 4 ft.....	4 50	40 00	
4 to 5 ft.....	7 00		
caroliniana, Carolina H.—			
6 to 12 in.....	1 50	12 00	110 00
12 to 18 in.....	2 50	20 00	
18 to 24 in.....	4 00	30 00	
Sizes 2 to 6 ft..\$1 to \$8 ea.			

This grand new Hemlock, introduced by us, possesses a distinct pyramidal growth, and attains a height of 40 to 50 feet. Its dense, dark foliage and graceful habit are approached only by some of the finer Japanese Hemlocks, which it somewhat resembles. Some fine specimens are now to be seen in the Arnold Arboretum, Boston, being the first plants of this Hemlock ever sent out, and supplied by us to Prof. C. S. Sargent, Director, in 1884.

Hardy Native Deciduous Shrubs

ADELIA	10	100	1,000
acuminata. 2 ft.....	\$1 00	\$8 00	
ALNUS			
alnobetula, Alpine Alder—			
1 to 2 ft.....	2 00	12 00	
2 to 3 ft.....	3 00	20 00	
3 to 4 ft.....	4 50	30 00	
4 to 6 ft.....	6 00	40 00	
The most beautiful of the Alders.			
rugosa, Smooth A.—			
6 to 12 in.....	1 00	5 00	
1 to 2 ft.....	1 50	10 00	
2 to 3 ft.....	2 50		
AMORPHA			
fruticosa, False Indigo—			
6 to 12 in. S.....	25	75	\$3 00
1 to 2 ft. S.....	40	1 50	
herbacea, Southern I.—			
1 to 2 ft.....	1 00		
ARALIA			
spinosa, Hercules' Club—			
6 to 12 in.....	1 00	8 00	
1 to 2 ft.....	2 00	15 00	
2 to 4 ft.....	2 50		
ARONIA (Pyrus)			
arbutifolia. 6 to 12 in.....	75	4 00	
1 to 2 ft.....	1 00	7 00	
2 to 4 ft.....	1 50		
3 to 4 ft.....	2 50		
melanocarpa. 1 to 2 ft.....	1 00		
nigra. 6 to 12 in.....	50	4 00	25 00
1 to 2 ft.....	75	6 00	40 00
2 to 3 ft. Cls.....	1 50	12 00	
ASCYRUM			
hypericoides, St. Andrew's			
Cross. 6 to 12 in.....	1 00		

NATIVE AZALEAS
(Strictly Hardy)

The American Azaleas are among the choicest of all ornamentals, exotic or native, and were but rarely seen in cultivation before being disseminated by Highlands Nursery. Large masses of the "Great Flame-colored Azalea," *A. lutea*, when seen in flower, present the most gorgeous effects, the shadings varying from deep crimson to a bright sulphur yellow, and its complete hardiness is unquestionable. The foliage of *A. arborescens* is the finest of all the Azaleas, remaining a clear, shiny green throughout the summer, a characteristic not usual with this family. The large, white, sweet-scented flowers appear the last of all the Azaleas, and the numerous pink-tipped stamens protruding give a most beautiful effect. *A. vaseyi* is one of the finest introductions of late years; the flowers, appearing before the foliage in April in the greatest profusion, are white to deep pink; attains a height of 12 to 15 feet. *A. nudiflora* (deep pink) and *A. viscosa* (white) are pretty, dwarfier varieties for the under shrubbery and for mass planting.

AZALEA	10	100	1,000
arborescens, Fragrant White			
Azalea. 6 to 12 in.....	\$2 00	\$15 00	\$125 00
12 to 18 in.....	3 00	25 00	200 00
18 to 24 in. Cl.....	6 00	50 00	
arborescens rosea—			
Small plants.....	\$3 each..		
lutea (calendulacea),			
Great Flame A.			
6 to 12 in.....	1 00	6 00	45 00
12 to 18 in.....	1 50	12 00	90 00
18 to 24 in.....	2 50	20 00	175 00
2 to 3 ft. Cls.....	4 50	35 00	
3 to 4 ft. Cls.....	15 00		

HARDY STOCK ONLY!

The location of HIGHLANDS NURSERY, at the summit of the Blue Ridge, in western North Carolina, 3,800 feet among the clouds, and under the shadow of the great Grandfather Mountain (the highest peak in the Blue Ridge range), insures long, cool summers and cold winters, producing a perfectly hardy stock—a most important point with northern planters. Ten to 15 degrees below is not unusual, and occasionally the thermometer registers 20 degrees or more below zero.

KELSEY'S HARDY AMERICAN PLANTS, HIGHLANDS NURSERY

Hardy Native Deciduous Shrubs, continued

	10	100	1,000		10	100	1,000
AZALEA				CORNUS			
<i>nudiflora</i> , Pinxter Flower—				<i>amonum (sericea)</i> , Silky			
6 to 12 in.	\$1 25	\$8 00	\$70 00	Cornel. 3 to 6 in. S.....	\$0 40	\$1 50	\$6 00
12 to 18 in.	2 00	15 00		6 to 12 in.	60	2 00	10 00
18 to 24 in.	3 00			6 to 12 in.	75	5 00	
<i>vaseyi</i> , Southern A.—				1 to 2 ft.	75	4 00	25 00
6 to 12 in.	1 25	9 00	80 00	2 to 3 ft.	1 00	6 00	
12 to 18 in.	1 75	15 00		3 to 4 ft.	2 00	12 00	
18 to 24 in.	4 00			<i>paniculata</i> , Panicleed C.—			
<i>viscosa</i> , Early White A.—				1 to 2 ft.	1 50	10 00	
6 to 12 in.	1 00	6 00	40 00	<i>stolonifera</i> . 1 to 2 ft.	1 00	7 00	
12 to 18 in.	1 25	9 00		2 to 3 ft.	1 50	12 00	
BENZOIN				CORYLUS			
<i>benzoin</i> , Spice Bush—				<i>americana</i> , Hazel Nut—			
6 to 12 in.	75	4 00	30 00	6 to 12 in.	40	2 50	20 00
1 to 2 ft.	1 00	8 00		1 to 2 ft.	60	4 00	30 00
BACCHARIS				2 to 3 ft.	1 00	8 00	
<i>halimifolia</i> , Groundsel—				3 to 4 ft.	1 50		
6 to 12 in.	1 00	8 00		<i>rostrata</i> , Beaked H. N.—			
BERBERIS				6 to 12 in.	50		
<i>amurensis</i> . 6 to 12 in.	2 00			1 to 2 ft.	1 00	6 00	45 00
<i>aquifolium (repens)</i> —				CRATÆCUS			
2 to 4 in.	2 00	15 00		<i>coccinea</i> , Scarlet Thorn—			
<i>canadensis</i> , American B.—				6 to 12 in.	75	6 00	
6 to 12 in.	50	3 00		<i>cordata</i> , Washington T.—			
1 to 2 ft.	75	5 00		1 to 2 ft.	1 00	8 00	
<i>thunbergii</i> , Japanese B.—				<i>crus-galli</i> , Cockspur T.—			
6 to 12 in.	40	3 50	30 00	6 to 12 in.	75	5 00	
1 to 2 ft.	1 00	7 00	60 00	1 to 2 ft.	1 00	9 00	
<i>vulgaris</i> , Common B.—				<i>punctata</i> , Large-fruited T.—			
6 to 12 in.	50	4 00		6 to 12 in.	75	5 00	40 00
1 to 2 ft.	1 00			1 to 2 ft.	1 00	8 00	
BUTNERIA (Calycanthus) —				DECODON			
<i>fertilis</i> . 1 to 2 ft. Cls.	60			<i>verticillatus</i> . Strong.	1 00	7 00	
2 to 3 ft. Cls.	1 00	8 00		DIERVILLA			
3 to 4 ft. Cls.	2 00			<i>diervilla (trifida)</i> . 6 to 12 in.	75	6 00	
<i>florida</i> . 6 to 12 in.	50	2 00	15 00	<i>rivularis</i> . 6 to 12 in. S.	1 50		
1 to 2 ft. S.	50	2 00	10 00	<i>sessilifolia</i> . 1 to 2 ft.	75	6 00	40 00
1 to 2 ft.	75	3 00	20 00	2 to 3 ft. Cls.	1 25	10 00	80 00
2 to 3 ft. S.	75	3 00	15 00	EUONYMUS			
2 to 3 ft. Cls.	2 00			<i>americanus</i> , Strawberry			
<i>glauca</i> . 6 to 12 in. S.	50	2 00		Bush. 6 to 12 in.	50	4 00	
CALICARPA				1 to 2 ft.	1 00	8 00	
<i>americana</i> , French Mul-				GAYLUSSACIA			
berry. 6 to 12 in.	1 00			<i>resinosa</i> . 6 to 12 in.	75	4 00	
CALYCANTHUS . See <i>Butneria</i> .				<i>ursina</i> , Buckberry—			
CEANOTHUS				6 to 12 in.	1 00		
<i>americana</i> , Jersey Tea—				12 to 18 in.	2 00		
6 to 12 in.	1 50	12 00		HAMAMELIS			
12 to 18 in. Cls.	2 00	18 00	125 00	<i>virginica</i> , Witch Hazel—			
18 to 24 in. Cls.	3 00			1 to 2 ft.	1 00	6 00	
CEPHALANTHUS				2 to 3 ft.	2 00	12 00	
<i>occidentalis</i> , Button Bush—				3 to 4 ft.	3 00	20 00	
1 to 2 ft.	1 50			HYDRANGEA			
CHIONANTHUS				<i>arborescens</i> , Smooth Hy-			
<i>virginica</i> , White Fringe—				drangea. 1 to 2 ft.	60	4 00	
6 to 12 in. S.	50	2 50	18 00	2 to 3 ft. Cls.	1 50		
6 to 12 in.	75	4 00		<i>quercifolia</i> . 1 ft.	3 50		
1 to 2 ft.	1 00	8 00	50 00	<i>paniculata</i> . 1 to 2 ft. Cls.	1 50		
2 to 3 ft.	2 00	15 00		2 to 3 ft.	2 00		
3 to 4 ft.	3 50			<i>radiata</i> , Silver H. 6 to 12 in.	75	5 00	
CLETHRA				1 to 2 ft.	1 50	12 00	
<i>acuminata</i> , Southern Pepper				1 to 2 ft. Cls.	2 00		
Bush. 1 to 2 ft.	60	4 00		ILEX			
2 to 3 ft.	1 00	7 00		<i>decidua</i> , Meadow Holly—			
3 to 4 ft.	1 50	12 00		3 to 6 in. S.	40	3 00	
4 to 6 ft.	2 00			<i>verticillata</i> , Winter Berry—			
<i>alnifolia</i> . 6 to 12 in.	50	4 00	20 00	6 to 12 in.	75	5 00	
1 to 2 ft. Cls.	1 00	7 00	60 00	1 to 2 ft.	1 00	7 00	60 00
2 to 3 ft. Cls.	2 00	16 00		2 to 3 ft.	1 75	15 00	
CLIFTONIA				ILICIOIDES			
<i>ligustrina</i> . 6 to 12 in.	2 00			<i>mucronata</i> , Mountain Holly—			
COMPTONIA				6 to 12 in.	1 00		
<i>peregrina</i> , Sweet Fern—				ITEA			
6 to 12 in.	50	3 00		<i>virginica</i> . 6 to 12 in.	75	5 00	
1 to 2 ft.	75	4 00	35 00	12 to 18 in.	1 50	10 00	
CORNUS				LIGUSTRUM			
<i>alba (sanguinea)</i> . 1 to 2 ft.	60	3 00		<i>lbota</i> . 6 to 12 in.	40	2 00	12 00
2 to 3 ft.	1 00			1 to 2 ft.	60	3 00	20 00
				<i>regelianum</i> . 6 to 12 in.	40	2 00	12 00

KAWANA, NORTH CAROLINA AND BOSTON, MASSACHUSETTS

Hardy Native Deciduous Shrubs, continued

	10	100	1,000
MENZIESIA			
<i>pilosa</i> . 6 to 12 in.....	\$1 00	\$7 00	
1 to 2 ft.....	1 50	10 00	
MYRICA			
<i>cerifera</i> . 1 to 3 in. S.....	40	2 00	\$10 00
3 to 6 in. S.....	60	3 00	18 00
6 to 12 in.....	75	5 00	
<i>gale</i> . 18 to 24 in.....	1 25		
PIERIS (Andromeda)			
<i>mariana</i> . 6 to 12 in.....	1 00	8 00	75 00
12 to 18 in.....	1 75	12 00	
POTENTILLA			
<i>fruticosa</i> . 1 to 2 ft. Cls... 1 00			
2 to 3 ft. Cls.....	2 00		
PRUNUS			
<i>maritima</i> , Beach Plum—			
6 to 12 in.....	75	5 00	
1 to 2 ft.....	1 00	8 00	
<i>pumila</i> , Sand Cherry—			
1 to 2 ft.....	1 50	10 00	
2 to 3 ft.....	2 00		
RHODORA			
<i>canadensis</i> , Rhodora—			
1 yr.; 6 to 12 in.....	1 00	8 00	
RHUS			
<i>aromatica</i> , Fragrant Sumac—			
3 to 6 in. S.....	75	5 00	
6 to 12 in.....	1 50		
2 to 3 ft.....	2 00		
<i>copallina</i> , Scarlet S.—			
6 to 12 in.....	50	3 50	
1 to 2 ft.....	75	5 00	
2 to 3 ft.....	1 00	9 00	
3 to 4 ft.....	1 50		
<i>glabra</i> , Smooth S. 1 to 2 ft. 1 00 6 00			
2 to 3 ft.....	1 50	10 00	
3 to 5 ft.....	2 00	15 00	
<i>hirta (typhina)</i> , Staghorn S.—			
2 to 4 ft.....	1 00	7 00	
4 to 6 ft.....	2 00		
RIBES			
<i>cynosbati</i> , Wild Gooseberry—			
1 to 2 ft.....	1 50	10 00	
<i>prostratum</i> . 1 to 3 ft..... 1 50 12 00			
<i>rotundifolium</i> . 1 to 2 ft.... 1 25			
ROBINIA			
<i>hispida</i> , Moss Locust—			
6 to 12 in.....	50	3 00	
1 to 2 ft.....	75	5 00	
2 to 3 ft.....	1 00	8 00	
<i>rosea</i> . 1 to 2 ft..... 1 00			
<i>kelseyi</i> . 6 to 12 in..... 3 00			
1 to 2 ft..... 4 00			
<i>viscosa</i> . 1 to 2 ft..... 75 5 00			
2 to 3 ft..... 1 25 8 00			
3 to 4 ft..... 2 00			
ROSA			
<i>arkansana</i> . 3 to 6 in. S... 75 6 00			
<i>blanda</i> , Meadow Rose—			
6 to 12 in..... 75 4 00			
1 to 2 ft..... 1 00 6 00 50 00			
<i>carolina</i> . 6 to 12 in. 30 1 50 12 00			
1 to 2 ft..... 60 3 00 20 00			
2 to 3 ft..... 75 5 00			
<i>humilis lucida</i> , Pasture R.—			
6 to 12 in..... 60 4 00 20 00			
<i>lucida alba</i> . 1 to 2 ft..... 2 00			
<i>nitida</i> . 6 to 12 in..... 1 00 7 00			
1 to 2 ft..... 1 50 12 00			
<i>nutkana</i> , Wasatch R.—			
1 to 2 ft..... 2 50			
<i>rubiginosa</i> , Sweetbrier—			
6 to 12 in..... 75 4 00			
1 to 2 ft..... 1 00 8 00			
<i>rugosa</i> . 1 to 2 ft..... 1 50 10 00			
<i>rugosa alba</i> . 2 to 2½ ft. Cls. 2 50			
<i>setigera</i> , Prairie R. 1 to 2 ft. 1 00 7 00			
2 to 3 ft..... 1 50 10 00 90 00			
<i>woodsii</i> , Woods' R. 6 to 12 in. 3 00			
RUBUS			
<i>nutkanus</i> , Salmon Berry—			
1 to 2 ft..... \$2 00			
6 to 12 in..... 3 00			
<i>odoratus</i> , Flowering Rasp- berry. 6 to 12 in..... 50 \$2 00			
1 to 2 ft..... 75 3 00 \$20 00			
SALIX			
<i>cordata</i> . 6 to 12 in..... 1 50			
<i>sericea</i> , Silky Willow—			
1 to 2 ft..... 1 50			
SAMBUCUS			
<i>canadensis</i> . 1 to 2 ft. Col. 40 3 00 20 00			
<i>pubens</i> . 6 to 12 in..... 75			
1 to 2 ft..... 1 00 7 00			
SPIRÆA			
<i>salicifolia</i> , Meadow Sweet—			
2 to 3 ft. Cls..... 50 3 00			
3 to 4 ft. Cls..... 75 5 00 30 00			
4 to 6 ft. Cls..... 1 00 8 00			
<i>tomentosa</i> , Steeple Bush—			
6 to 12 in..... 1 00			
STAPHYLEA			
<i>trifolia</i> . 1 to 2 ft..... 1 00 7 00			
STUARTIA			
<i>pentagyna</i> , Am. Camellia—			
6 to 9 in. 60 4 00 30 00			
9 to 12 in. 1 00 8 00			
1 to 2 ft..... 1 75 15 00 125 00			
2 to 3 ft..... 3 50 30 00			
3 to 4 ft..... 5 00			
The finest and only large stock existing of this rare, beautiful shrub.			
SYMPHORICARPUS			
<i>racemosus</i> . 1 to 2 ft..... 75 5 00			
2 to 3 ft..... 1 00 7 00			
2 to 2½ ft. Cls. 1 50 10 00			
<i>symporicarpus (vulgaris)</i> —			
1 to 2 ft..... 75 5 00			
VACCINIUM			
<i>erythrocarpon</i> , Rare—			
6 to 12 in. 1 00 8 00			
<i>hirsutum</i> , Rare. 6 to 12 in. 2 00 15 00			
<i>pallidum</i> , Mountain Blue- berry. 6 to 12 in. 1 00 7 00			
12 to 18 in. 1 50 10 00			
<i>stamineum</i> , Deerberry—			
6 to 12 in. 1 00 6 00			
12 to 18 in. 1 50 10 00			
VIBURNUM			
<i>acerifolium</i> . 1 to 2 ft. 1 00 7 00 60 00			
2 to 3 ft..... 1 75 12 00			
3 to 4 ft..... 3 00			
<i>alinifolium</i> . 6 to 12 in. 1 00 8 00			
1 to 2 ft..... 1 75 15 00			
<i>cassinoides</i> . 6 to 12 in. 75 5 00 40 00			
1 to 2 ft..... 1 50 12 00 80 00			
2 to 3 ft..... 2 50			
<i>dentatum</i> . 1 to 2 ft..... 1 50 12 00			
2 to 3 ft..... 2 00			
3 to 4 ft..... 2 50 18 00			
4 to 5 ft. Cls. 3 50			
<i>numm.</i> 6 to 12 in. 1 00			
1 to 2 ft..... 1 50 12 00			
2 to 3 ft..... 2 00			
<i>prunifolium</i> . 6 to 12 in. 1 00 8 00			
1 to 2 ft..... 2 00 15 00			
2 to 3 ft..... 2 75			
XANTHORRHIZA			
<i>apifolia</i> . 3 to 6 in. 50 3 00 18 00			
6 to 12 in. 1 00 6 00 45 00			
12 to 18 in. 1 50 10 00			
Exceptionally fine undershrub for shady and moist situations.			
XANTHOXYLUM			
<i>americanum</i> , Prickly Ash—			
6 to 12 in. 2 00			
XOLISMA (Andromeda)			
<i>ligustrina</i> , Privet Androm- eda. 6 to 12 in. 75 5 00			
1 to 2 ft..... 1 00 7 00			
1 to 2 ft. Cls..... 1 75 12 00			

Hardy American Evergreen Shrubs

ANDROMEDA	10	100	1,000
<i>pollifolia</i> , Wild Rosemary—			
6 to 12 in.....	\$0 75	\$5 00	\$40 00
12 to 18 in. Cls.....	2 00		
CHAMÆDAPHNE (Cassandra)			
<i>calyculata</i> , 6 to 12 in.....	75	5 00	
12 to 18 in. Cls.....	1 25	10 00	
DENDRUM (Leiophyllum)			
<i>buxifolium</i> , Sand Myrtle—			
6 to 12 in. Cls.....	50	5 00	
12 to 18 in. Cls.....	1 00		
<i>prostratum</i> , Mt. Heath—			
3 to 6 in.....	1 00	6 00	50 00
3 to 6 in. Cls.....	1 50	9 00	80 00
6 in. Heavy cls.....	2 50		
GALAX			
<i>aphylla</i> . See under "Ground-Covering Plants," page 11.			
HYPERICUM			
<i>aureum</i> , 6 to 12 in. S.....	50	4 00	18 00
1 to 2 ft.....	1 00	8 00	
HYPERICUM			
<i>buckleyi</i> , Clumps.....	1 75	12 00	
<i>densiflorum</i> , 6 to 12 in. S.	30	1 00	8 00
1 to 2 ft. S.....	50	2 00	15 00
1 to 2 ft.....	75	4 00	30 00
2 to 3 ft.....	1 00	6 00	40 00
<i>prolificum</i> , 6 to 12 in.....	60	3 00	
1 to 2 ft.....	75	5 00	
2 to 3 ft.....	1 50		
ILEX			
<i>glabra</i> , Inkberry, 6 to 12 in.	1 50	12 00	
12 to 18 in.....	2 00		
JUNIPERUS			
<i>sabina</i> , 6 to 12 in.....	3 00		

KALMIA	10	100	1,000
<i>angustifolia</i> , 6 to 12 in.....	\$0 50	\$4 00	
12 to 18 in.....	1 00	8 00	
<i>glauca</i> , 3 to 6 in.....	60	5 00	
6 to 12 in.....	1 50		
<i>latifolia</i> , Mountain Laurel.			
See page 3.			

LEDUM			
<i>groenlandicum</i> , 6 to 12 in..	1 00	8 00	

LEUCOTHOË CATESBÆI

(Catesby's Leucothoe)

Few, if any, evergreen shrubs of the broad-leaved sort have the grace and elegance of this one. The thick, shining leaves are evenly disposed on long, recurved branches, along which the dense racemes of white bell-shaped flowers hang. As an undershrub, or for banks of streams, or for finishing the borders of rhododendron and other evergreen planting, it is without a rival. The "sprays" make beautiful winter decorations indoors, turning a rich bronze in fall or winter.

	10	100	1,000
3 to 6 inches.....	\$0 40	\$3 00	\$20 00
6 to 12 inches.....	75	5 00	40 00
12 to 18 inches. Medium...	1 00	7 00	60 00
12 to 18 inches. Clumps...	1 25	10 00	
18 to 24 inches. Clumps...	2 50	20 00	

Collected clumps by the carload at special prices.

RHODODENDRONS. For special information and prices of Rhododendrons and *Kalmia latifolia*, see pages 2 and 3.

TAXUS

minor (canadensis), American Yew. 6 to 12 in. \$1.50 for 10, \$12 per 100.

Hardy Native Vines and Climbers

Many plants here offered are of special merit for ground covering, and where needed in large quantities will be supplied at very low prices. *Parthenocissus (Ampelopsis) engelmanni*, *Lonicera halliana*, *L. flava*, *Polygonum cilinode*, *Celastrus scandens*, *Rubus hispida* and *Vitis species* are particularly recommended. In soils adapted to its growth (peaty or loamy, and preferably moist), *Galax aphylla* makes a hardy evergreen undershrub covering of lasting beauty, being a rich green in summer and coloring vivid bronze tints in autumn and winter, an effect which must be seen to be appreciated.

AMPELOPSIS. See Parthenocissus.			
BIGNONIA	10	100	1,000
<i>crucigera</i> , Cross Vine—			
6 to 9 in. Stg.	\$0 50	\$3 00	\$20 00
CEBATHA (Cocculus)			
<i>carolina</i> , 6 to 12 in.....	50	3 00	
CELASTRUS			
<i>scandens</i> , Bitter Sweet—			
1 to 2 ft.	75	5 00	40 00
2 to 3 ft.	1 00	7 00	60 00
CLEMATIS			
<i>coccinea</i> , Scarlet C.....	1 75	12 00	
<i>crispa</i> , Purple C.	1 50	12 00	
<i>paniculata</i> (not native)—			
3 yrs.	2 00		
<i>scottii</i> , Western C.	3 00		
<i>virginiana</i> , Tr.; heavy....	75	4 00	25 00
We supply thousands of this beautiful vine every year. Strong collected plants, \$12 per 1,000.			
DIOSCOREA			
<i>villosa</i>	50	4 00	
CELSEMIUM			
<i>sempervirens</i> , Yellow Jasmine. Price on request.			
HUMULUS			
<i>lupulus</i> , Hop Vine (not native).....	75	5 00	

LONICERA	10	100	1,000
<i>dioica</i> , 1 to 2 ft.	\$1 50	\$10 00	
2 to 3 ft.	2 00	15 00	
<i>flava</i> , Stg.	1 50	10 00	
<i>japonica</i> , var. <i>halliana</i> —			
Heavy. 3 yrs.	50	4 00	\$30 00
MENISPERMUM			
<i>canadense</i>	50	4 00	
PARTHENOCISSUS (Ampelopsis)			
<i>engelmanni</i> . This is the clinging form of the well-known Virginia Creeper, and was introduced by us several seasons ago. The leaves are much thinner and smaller than in the ordinary variety, and the whole plant lacks the coarseness that characterizes <i>A. quinquefolia</i> , and it clings to walls like the ivy. The fall coloring is exceedingly brilliant, and in every way it is vastly superior to the common form, which is not used where the new variety is known and can be had. It is the only clinging vine that will successfully withstand the severe climate of the extreme Northwest in Iowa and the Dakotas. A fine stock ready for fall delivery.			
	10	100	1,000
1 year, transplanted	\$0 40	\$2 50	\$18 00
2 years, transplanted	75	5 00	35 00
Heaviest	1 00	7 00	
<i>quinquefolia</i> , Va. Creeper ..	1 00		
<i>vitacea</i> , 3 to 6 in. S.....	1 00	10 00	

Hardy Native Vines and Creepers, continued

PASSIFLORA	10	100	1,000
<i>incarnata</i> , a hardy Passion-flower			\$1 50
POLYGONUM			
<i>ellinode</i> , Fringed Blindweed. Highlands Nursery introduction.	50	\$3 50	\$20 00
TECOMA			
<i>radicans</i> , Scarlet Trumpet Creeper. Stg.....	40	3 00	
VITIS			
<i>aestivalis</i> , Summer Grape—			
6 to 12 in.....	1	25	
1 to 2-ft.....	2	00	

VITIS	10	100	1,000
<i>cordifolia</i> , Frost Grape—			
3 to 6 in. S.....	\$0 75	\$3 00	\$25 00
6 to 12 in. S.....	1 00	5 00	
1 to 2 ft.....	1 50		
<i>indivisa</i> , Cut-leaved Grape—			
1 to 2 ft.....	3 00		
<i>labrusca</i> , Fox Grape—			
3 to 6 in. S.....	50	2 00	10 00
6 to 12 in. S.....	1 00	3 00	25 00
1 to 2 ft.....	1 75		
<i>monticola</i> , 4 to 12 in. S.....	1 00		
<i>vulpina</i> , Sweet-scented Grape. 6 to 12 in.	1 50	12 00	
WISTARIA			
<i>frutescens</i> , 1 to 2 ft.	1 00		
2 to 3 ft.....	1 50		

Hardy Ground-Covering Plants

GALAX APHYLLA

(Galax, or Coltsfoot)

A low ground-covering evergreen with heart-shaped crenate-toothed leaves of striking beauty. The white flowers are borne on a scape 12 to 18 inches high. The thick leaves turn brilliant shades of bronze, red and crimson in autumn, remaining so through the winter. We introduced the leaf to the florists' trade for decorating purposes, and they are now used by millions. A remarkable ground-covering plant, particularly for use in the rhododendron bed.

Established clumps.....	10	100	1,000
Collected clumps.....	\$1 00	\$6 00	\$40 00
Collected plants, single, will be supplied at \$10 per 1,000, but we recommend planting only clumps.	75	3 00	20 00

EPICÆA			
<i>repens</i> , Trailing Arbutus—	10	100	1,000
Established clumps.....	\$2 00	\$15 00	

GAULTHERIA			
<i>procumbens</i> , Clumps.....	1 00	7 00	
Col. clumps.....	50	3 00	\$18 00

GLECHOMA			
<i>hederacea</i>	30	1 50	8 00

HOUSTONIA			
<i>serpyllifolia</i> , Bluets. Col. clumps.....	50	3 00	18 00

LYCOPODIUM	10	100	1,000
<i>clavatum</i> , Col. clumps....	\$0 40	\$2 00	\$15 00
<i>complanatum</i> , Col. clumps.	40	2 00	15 00
<i>lucidulum</i> , Col. clumps....	40	2 00	15 00
<i>obscurum</i> , Col. clumps....	40	2 00	15 00

MITCHELLA			
<i>repens</i> , Col. clumps.....	75	4 00	30 00

PHLOX			
<i>reptans</i> , Trailing Phlox. Col.	50	3 00	15 00
<i>subulata</i> , Clumps.....	75	5 00	
<i>subulata alba</i> , Clumps....	1 25	10 00	

RUBUS			
<i>canadensis</i> , Dewberry—			
1 to 2 ft. Heavy.....	50	4 00	
<i>cuneifolius</i> , Sand Black-berry. 6 to 12 in.....	2 00		
<i>deliciosus</i> , Canon B.—			
6 to 12 in.....	2 50		
<i>hispidus</i> , Running B.....	30	2 00	
<i>laciniatus</i> , Cut-leaved B.—			
6 to 12 in.....	75		
1 to 2 ft.....	1 50	12 00	

VERONICA			
<i>officinalis</i> , Col. clumps....	50	3 00	
<i>serpyllifolia</i> , Col. clumps..	50	3 00	

VINCA			
<i>minor</i> , Periwinkle—			
Strong plants.....	50	4 00	20 00
Clumps.....	75	5 00	40 00
<i>minor alba</i> , White P.....	1 00	6 00	



Biocuculla eximia along the Rhododendron Bed



Xanthorrhiza apiifolia as an edging for *Kalmias*

Always address correspondence to Boston office

HARDY NATIVE FERNS

	10	100	1,000		10	100	1,000
Adiantum pedatum , Maidenhair Fern. Clumps.....	\$1 00	\$6 00	\$45 00	Dryopteris cristata clintoniana , Clinton's Shield Fern.....	\$1 50		
Asplenium angustifolium , Narrow-leaved Spleenwort.....	1 00	8 00		marginalis , Shield Fern.....	75	\$5 00	
platyneuron , Ebony Spleenwort.....	1 00	8 00		nevadense , Strong.....	3 00		
filix-fœmina , Lady Fern.....	75	5 00		novaboracensis	1 00	8 00	
novaboracensis	1 00			rigidum	3 50		
thelypteroides , Silvery Spleenwort.....	1 00	8 00		spinulosa	75	5 00	
trichomanes , Maidenhair Spleenwort.....	1 00	8 00		spinulosa intermedia	1 00	6 00	
Botrychium dissectum , Cut-leaved Grape Fern.....	75	5 00		thelypteris	1 50		
lunaria , Moonwort.....	1 00			Lygodium palmatum , Climbing Fern.....	1 00	8 00	
virginianum , Virginia Grape Fern.....	60	4 00		Oncoclea sensibilis	1 00	5 00	
Camptosorus rhizophyllus , Walking Fern.....	75	5 00		Osmunda cinnamomea , Cinnamon Fern.....	1 00	6 00	
Cystopteris fragilis	1 50	10 00		claytoniana	1 00	5 00	\$40 00
DICKSONIA PUNCTILOBULA , Hay-scented Fern. Cls.....	50	2 00	15 00	regalis , Royal Fern.....	1 00	5 00	
Dryopteris acrostichoides , Dagger Fern.....	75	5 00		Pellaea atropurpurea	1 50		
				Phegopteris hexagonoptera , Beech Fern.....	1 00	5 00	
				Polypodium vulgare , Col. clumps.....	50	3 00	15 00
				Pteris aquilina , Brake.....	50	3 00	
				Woodsia obtusa	1 75	12 00	
				Woodwardia areolata	2 00	12 00	

We collect a good variety of hardy native Ferns for park and cemetery planting, including the following:

Adiantum pedatum,
Dryopteris acrostichoides
Dryopteris marginalis

Dryopteris spinulosa,
Dicksonia punctilobula,
Oncoclea sensibilis,

Osmunda, in 3 vars.,
Polypodium vulgare,
Pteris aquilina.

This list can be collected to order at \$12 per 1,000, excepting the **Osmundas**, which are very heavy, at \$20 per 1,000. Only strong clumps will be sent.

HARDY INSECTIVOROUS, AQUATIC AND BOG PLANTS

	10	100	1,000		10	100	1,000
Acorus calamus , Sweet Flag.....	\$1 00	\$5 00		Castalea odorata rosea , Pink Cape Cod Water-Lily.....	\$5 00		
Aster puniceus , Col.....	50	3 00	\$12 00	Chelone glabra , White Turtle-head.....	1 00	\$5 00	
Castalea (Nymphæa) brakeleyi rosea Each, \$3..				lyoni	1 00	5 00	
odorata	1 00	5 00		CHRYSAMPHORA (Darlingtonia) CALIFORNICA , California Pitcher Plant.....	4 00		
				Cicuta maculata , Water Hemlock.....	1 00	5 00	
				DIONÆA MUSCIPULA , Venus' Fly-trap. Quite hardy.....	1 00	5 00	\$40 00
				HELONIAS BULLATA , Clumps.....	75	5 00	35 00
				IRIS pseudacorus , Yellow Flag... 1 50			
				versicolor , Large Blue Flag. Cls. 75		5 00	
				Nuphar advena	1 50		
				Nelumbium luteum	3 00		
				NYPHÆA (Nuphar) SAGITTÆ-FOLIA , Yellow Water-Lily.....	4 00		
				Orontium aquaticum , Golden Club.....	1 00	7 00	
				Oxycoccus macrocarpus , American Cranberry. Clumps.....	50	4 00	25 00
				Col.	20	1 00	6 00
				Pontederia cordata , Pickerel Weed.....	1 00	6 00	
				Sagittaria latifolia , Arrow-Head..	30	1 50	7 00



Sarracenia drummondii

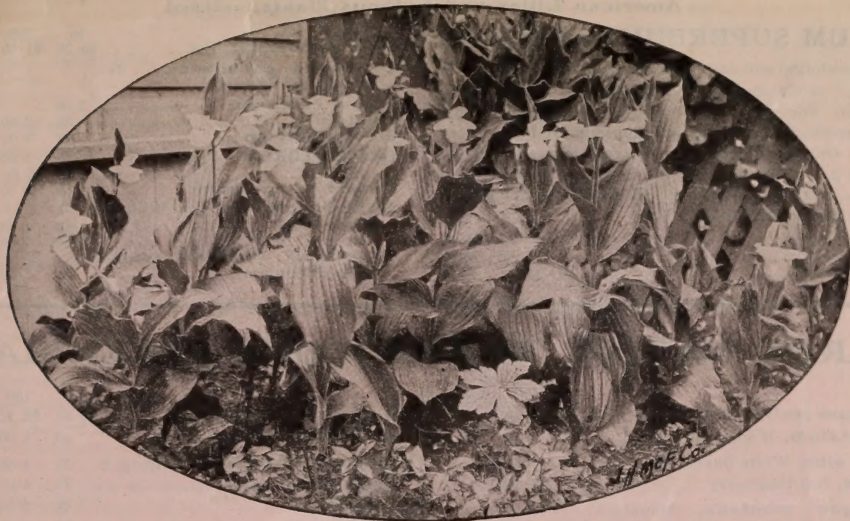
SARRACENIAS

Pitcher Plant, or Trumpet Leaf

	10	100
Sarracenia catesbæi , New species.....	\$2 00	\$12 00
drummondii	2 00	12 00
flava , Strong.....	1 25	8 00
minor (variolaris)	1 50	10 00
psittacina	2 00	12 00
purpurea	1 00	6 00
rubra	1 50	10 00

	10	100
Sparganium ramosum , Bur Reed.....	\$0 75	\$5 00
Typha latifolia , Broad-Leaved Cat-Tail... 1 00		

Always Address Correspondence to Boston Office



Cyripedium reginae in cultivation

HARDY NATIVE TERRESTRIAL ORCHIDS

CYPRIPEDIUM REGINÆ (spectabile)

White and Pink Ladies' Slipper

We offer an exceptional stock of this, the finest of all American Terrestrial Orchids, at low rates for advance orders.

	10	100	1,000
1 to 3 crowns.....	\$1 50	\$12 50	
3 to 6 crowns.....	2 50	20 00	
6 to 9 crowns.....	3 50	30 00	
9 to 12 crowns.....	5 00	40 00	

	10	100	1,000
Cyripedium acaule , Moecasin			
Flower.....	\$0 75	\$5 00	\$40 00
Small.....	50	3 00	20 00
candidum , Small White Ladies' Slipper.....	3 00		

	10	100	1,000
Cyripedium hirsutum (pubescens). Strong.....	\$0 75	\$5 00	\$40 00
Small.....	50	3 00	
montana , Fragrant Ladies' Slipper.....	3 00		
parviflorum , Small Yellow Ladies' Slipper.....	2 00		
Habenaria ciliaris , Yellow-fringed Orchis.....	75	5 00	
hookeriana , Hooker's Orchis.....	75	6 00	
psycodes , Purple-fringed Orchis.....	1 50	10 00	
Limodorum (Calopogon) tuberosum , Grass Pink.....	1 00	5 00	40 00
Orchis spectabilis , Showy Orchis.....	1 50	12 50	
Peramium (Goodyera) pubescens , Rattlesnake Plantain. Col.....	1 50		
repens . Col.....	1 50		

AMERICAN LILIES AND BULBOUS PLANTS

	10	100	1,000
Allium cernuum	\$1 00	\$7 00	
triccoccum	75		
Arisæma triphyllum	50	3 00	
BICUCULLA EXIMIA , Cls.....	1 00	7 00	
Chrosperma (Amianthium) muscaetoxicum	50	3 00	\$20 00
Convallaria majalis	50	2 00	15 00
Erythronium americana . Col.....	25	1 50	8 00
Lilium canadense	75	5 00	35 00
carolinianum	1 00	8 00	
atesbæi , Southern Red Lily. Small bulbs.....	1 00	7 00	

LILIUM GRAYI (Gray's, or Bell Lily)

Introduction of Highlands Nursery. See cut on front cover. Beautiful spotted, bell-shaped, reddish brown flowers; very distinct and showy. A fine stock ready for delivery.

	10	100	1,000
First size.....	\$2 00	\$12 50	\$80 00
Second size.....	1 00	7 00	50 00
1 year.....	50	3 00	18 00

	10	100
Lilium pardalinum	\$2 00	\$15 00
philadelphicum	1 00	
puberulum (humboldtii).....	2 00	



Lilium grayi

KELSEY'S HARDY AMERICAN PLANTS, HIGHLANDS NURSERY

American Lilies and Bulbous Plants, continued

LILIUM SUPERBUM (Turk's Cap Lily)

No description will do justice to this magnificent American Lily. A clump of them is literally a blaze of scarlet and gold. For years we have made the growing of this Lily a specialty, and send out thousands of bulbs every season. Our stock this season is very fine, and we are offering it at a low price for the benefit of large planters and those wishing to catalog it. **Of special use for planting in rhododendron beds.**

	10	100	1,000
First size.....	\$1 00	\$5 00	\$40 00
Second size.....	50	3 00	25 00
Third size.....	30	1 50	13 00

<i>Oxalis acetosella</i> , Col.....	10	100	1,000
	\$0 25	\$1 50	\$8 00
<i>Sanguinaria canadensis</i> , See Herbaceous Perennials.			
<i>Trillium cernuum</i>	2 00		
<i>erectum</i>	30	2 00	18 00
<i>erectum album</i>	40	3 00	
GRANDIFLORUM Small.....	20	1 00	7 00
Strong.....	40	2 00	15 00
<i>sessile californicum</i>	1 50	10 00	
STYLOSUM , Nodding Trillium.			
Rare, Small.....	60	3 00	20 00
Strong.....	1 50	5 00	35 00
<i>undulatum (erythrocarpum)</i> , Painted Trillium.....	50	2 50	18 00

HARDY NATIVE HERBACEOUS PERENNIALS

	10	100	1,000
<i>Aconitum reclinatum</i>	\$1 25	\$10 00	
<i>uncinatum</i> , Wild Monk's Hood...	75	5 00	
<i>Actæa alba</i> , White Baneberry.....	50	3 00	
<i>rubra</i> , Red Baneberry.....	1 50	12 00	
<i>Adoogon montana</i> , Mountain Dandelion.....	1 00	7 00	
<i>Amsonia amsonia</i>	1 00	6 00	
<i>Angelica curtisii</i>	50	3 00	\$15 00
<i>Aquilegia canadensis</i> , Wild Columbine. Clumps.....	1 00	7 00	
<i>Apocynum androsæmifolium</i> , Honey Bloom.....	1 00		
<i>Aralia nudicaulis</i> , Sarsaparilla....	50	3 00	
<i>racemosa</i> , Am. Spikenard. Strong clumps.....	75	4 00	
<i>Archangelica hirsuta</i>	60	4 00	
<i>Artemisia gracilis</i>	2 50		
<i>Aruncus (Spiræa) aruncus</i>	1 00	8 00	
<i>Asarum canadense</i>	1 50		
<i>macranthum</i>	1 00	7 00	
<i>Asclepias incarnata</i>	1 50		
Strong S.....	75	4 00	20 00
<i>tuberosa</i> , Butterfly Weed.....	1 00		
Strong S.....	75	5 00	
<i>Aster cordifolius</i>	50	3 00	
<i>novæ-angliæ</i> . Clumps.....	1 00	10 00	
<i>punicus</i> (see Bog Plants).....			
<i>mixture</i> . Col.....	50	2 00	10 00
<i>Astilbe decandra</i>	1 00	6 00	
<i>Baptisia australis</i> , Blue Indigo. Clumps.....	1 50	12 00	
<i>tinctoria</i> , Yellow Indigo.....	75	3 00	
<i>Bidens (Coreopsis) trichosperma</i>	75		
<i>Brunella vulgaris</i> . Col.....	50	2 00	
<i>Campanula divaricata</i> . Carolina Harebell.....	1 00	7 00	
<i>Capnodice sempervirens</i> . Col... 1 00			
<i>Carex fraseri</i> . Strong.....	1 00	5 00	
<i>Cassia marylandica</i> . Strong....	75	4 00	20 00
Seedling.....	50	2 00	10 00
<i>Castilleja coccinea</i> , Painted Cup. 1 50			
<i>Caulophyllum thalictroides</i>	60	4 00	
<i>Collinsonia canadensis</i> , Horse Balm.....	50	3 00	
CHAMÆLIRIUM LUTEUM , Blazing Star.....	1 00	6 00	
<i>Cimicifuga americana</i>	60	3 00	25 00
<i>racemosa</i>	60	3 00	25 00

	10	100	1,000
<i>Clintonia borealis</i> , Yellow C.....	\$0 50	\$3 00	
<i>umbellulata</i> , White C.....	50	3 00	
<i>Coreopsis lanceolata</i> . Strong S.	25	1 50	\$12 00
<i>major (senifolia)</i>	75 4 00		
<i>roseus</i>	1 00	6 00	
<i>verticillata</i>	75 4 00		
<i>Cornus canadensis</i>	1 00	6 00	
<i>Corydalis glauca</i> . Col.....	50	2 00	
<i>Diphylleia cymosa</i>	1 00	7 00	
<i>Disporum lanuginosum</i>	1 00	6 00	
<i>Eupatorium ageratoides</i>	30	2 00	12 00
<i>perfoliatum</i>	50 3 00		
<i>purpureum</i>	50	3 00	25 00
<i>Euphorbia corollata</i>	75 4 00		
GALAX APHYLLA . See Ground-covering Plants.			
GENTIANA ANDREWSII	60	3 00	
<i>Geranium maculatum</i>	50	3 00	
<i>Geum radiatum</i>	1 00		
<i>Grindelia squarrosa</i> . Strong.....	75	5 00	
<i>Helenium autumnale</i> . Col. cls... 50	3 00	25 00	
<i>Helianthus strumosus</i>	75	3 00	20 00
<i>Hepatica acuta</i>	40	3 00	
<i>hepatica (triloba)</i>	75 5 00		
HEUCHERA AMERICANA	75	5 00	40 00
<i>pubescens</i>	75 5 00		
<i>sanguinea</i> , Coral Bells.....	2 00	15 00	
<i>villosa</i>	60		
<i>Hibiscus, Crimson Eye</i> . Strong.. 75	5 00		
<i>moscheutos</i> , Strong.....	50	4 00	
<i>Rose-Pink</i> . Strong.....	1 00	7 00	
<i>moscheutos, Crimson Eye and Rose-pink</i> . Strong S. Mixed.. 50	4 00		
<i>Houstonia purpurea</i> . Col. cls... 50	3 00		
<i>Iris cristata</i> . Strong col..... 50	2 00	10 00	
Clumps.....	75	4 00	30 00
<i>missouriensis</i>	3 00		
<i>verna</i> , Dwarf Iris.....	1 00	6 00	
Strong Col.....	50	2 00	
<i>Lacinaria (Liatris) pycnostachya</i> 1 00	6 00		
<i>scariosa</i>	1 00 6 00		
S. 1 yr.....	50	3 00	20 00
<i>spicata</i>	1 00		
<i>spicata pumila</i> . Very showy mountain var.....	1 00	6 00	
<i>Leptandra (Veronica) virginica</i> .. 1 00			
<i>Lewisia rediviva</i>	3 00		
<i>Leucocrinum montanum</i> , Sand Lily.....	2 00	15 00	

Always Address Correspondence to Boston Office

HARDY NATIVE HERBACEOUS PERENNIALS, continued

	10	100	1,000
Lobelia cardinalis , Cardinal			
Flower.....	\$0 50	\$4 00	
syphilitica , Blue.....	75	5 00	
Melanthium virginicum	1 00		
Mertensia virginica , Blue Bells... 1 00	8 00		
Mimulus ringens . Col. cls.....	50	2 00	\$12 00
MONARDA DIDYMA	1 00	6 00	
Panax (Aralia) quinquefolium , Ginseng. Price on application. Also special circular.			
PARONYCHIA ARGYROCOMA	1 00		
Phlox maculata	75	5 00	
<i>subulata</i> . See under Creepers.			
Physostegia virginiana	75	6 00	
<i>virginiana</i> , var. <i>alba</i>	1 00	7 00	
Podophyllum peltatum	50	2 00	18 00
Polygonatum biflorum	60	3 00	
<i>commutatum</i> , Solomon's Seal. Strong.....	75	5 00	
PORTERANTHUS (Gillenia) STIP- ULATUS	1 00	5 00	
Potentilla tridentata . Clumps.....	1 00	7 00	
Pyrola rotundifolia	75	5 00	
SANGUINARIA CANADENSIS , Bloodroot.....	50	3 00	15 00
All large orders should be placed early. We usually pack in dry earth.			
SAXIFRAGA MICHAUXII . Beauti- ful new Saxifrage.....	1 00	5 00	30 00
<i>micranthidifolia</i>	75	4 00	
Scrophularia marylandica	75		
Sedum telephoides	1 00	7 00	
<i>ternatum</i>	50	3 00	

SHORTIA GALACIFOLIA

The beautiful and rare Shortia introduced by us. A fine stock of strong, established plants on hand.

	10	100
First size. Clumps.....	\$3 00	
Second size.....	1 50	\$10 00
1 year, transplanted.....	75	5 00

	10	100	1,000
Silene stellata , Starry Campion... \$0 60	\$4 00		
<i>virginica</i> , Fire Pink.....	1 00	8 00	
Solidago canadensis	75	5 00	
<i>odora</i> , Sweet Goldenrod. Strong S.	75	5 00	
<i>in variety</i> . Col.....	50	2 00	\$10 00
<i>virgaurea</i> , Goldenrod. Clumps....	75	4 00	
Spigelia marylandica	1 50	10 00	
Steironema quadriflorum	1 00		
<i>ciliatum</i> , Fringed Loosestrife.....	75	4 00	
Stenanthium angustifolium	1 50		
ROBUSTUM . One of the best new perennials with large showy pani- cles of pure white.....	1 00	5 00	
Strong.....	1 75	12 00	
Heavy.....	2 50	20 00	
Thalictrum dioicum	60	3 00	

THERMOPSIS CAROLINIANA .			
Strong S.....	\$0 75	\$5 00	\$35 00
Strong.....	1 25	10 00	
Therofon aconitifolium . S.....	40	2 00	
Strong.....	75	5 00	
Tradescantia pilosa	75	5 00	
<i>virginiana</i> , Spiderwort.....	75	5 00	
Trautvetteria carolinensis	50	4 00	
Triosteum perfoliatum	75		
Unifolium canadense	50	4 00	
Uvularia perfoliata , Bellwort....	50	3 00	15 00
<i>sessilifolia</i> . Clumps.....	1 00		
Vagneria (Smilacena) racemosa . 75	4 00		
Veratrum viride , Hellebore.....	75	4 00	
Veronia noveboracensis . Col. clumps.....	75	4 00	
Viola blanda	75		
<i>canadensis</i>	75	4 00	
<i>cucullata</i> , Blue Violet. Clumps..	50	3 00	15 00
<i>cucullata nana</i>	75	4 00	
<i>hastata</i> , Yellow Violet.....	50	3 00	
<i>lanceolata</i>	75		
<i>palmaria</i> , Early Blue Violet.....	75	4 00	
<i>pedata</i> , Bird's-Foot Violet.....	75	5 00	35 00
PEDATA , var. BICOLOR	2 00	15 00	
<i>rotundifolia</i>	50	3 00	
<i>sheltonii</i>	2 00		
Yucca filamentosa	75	5 00	
<i>flaccida</i> . Clumps.....	75	6 00	50 00
Medium.....	40	2 00	15 00
<i>glauca (angustifolia)</i> . Clumps. 4 00			
1 year, S.....	1 00	5 00	
Zerophyllum asphodeloides . Single.....	50	3 00	
Strong clumps.....	1 00		
Zigadenus leimanthoides	1 50	12 00	



Sanguinaria canadensis

HARDY CACTI

	10	100		10	100
Echinocactus simpsoni , Hedge-Hog					
Cactus.....	\$2 00			\$1 50	
Opuntia arenaria	2 50			2 00	\$15 00
<i>camanchia</i>	2 00			2 00	
Opuntia fragilis				2 00	
<i>mesacantha macrorhiza</i>				2 00	
<i>refinesquii cymochilla</i>				2 00	
<i>refinesquii greenii</i>				2 00	



Kalmia latifolia in full bloom



Trusses of *Rhododendron catawbiense* (true species) at Highlands Nursery,
Kawana, North Carolina (3,800 feet elevation)



A small corner of Highlands Nursery in the high Carolina mountains

Always Address Correspondence to Boston Office