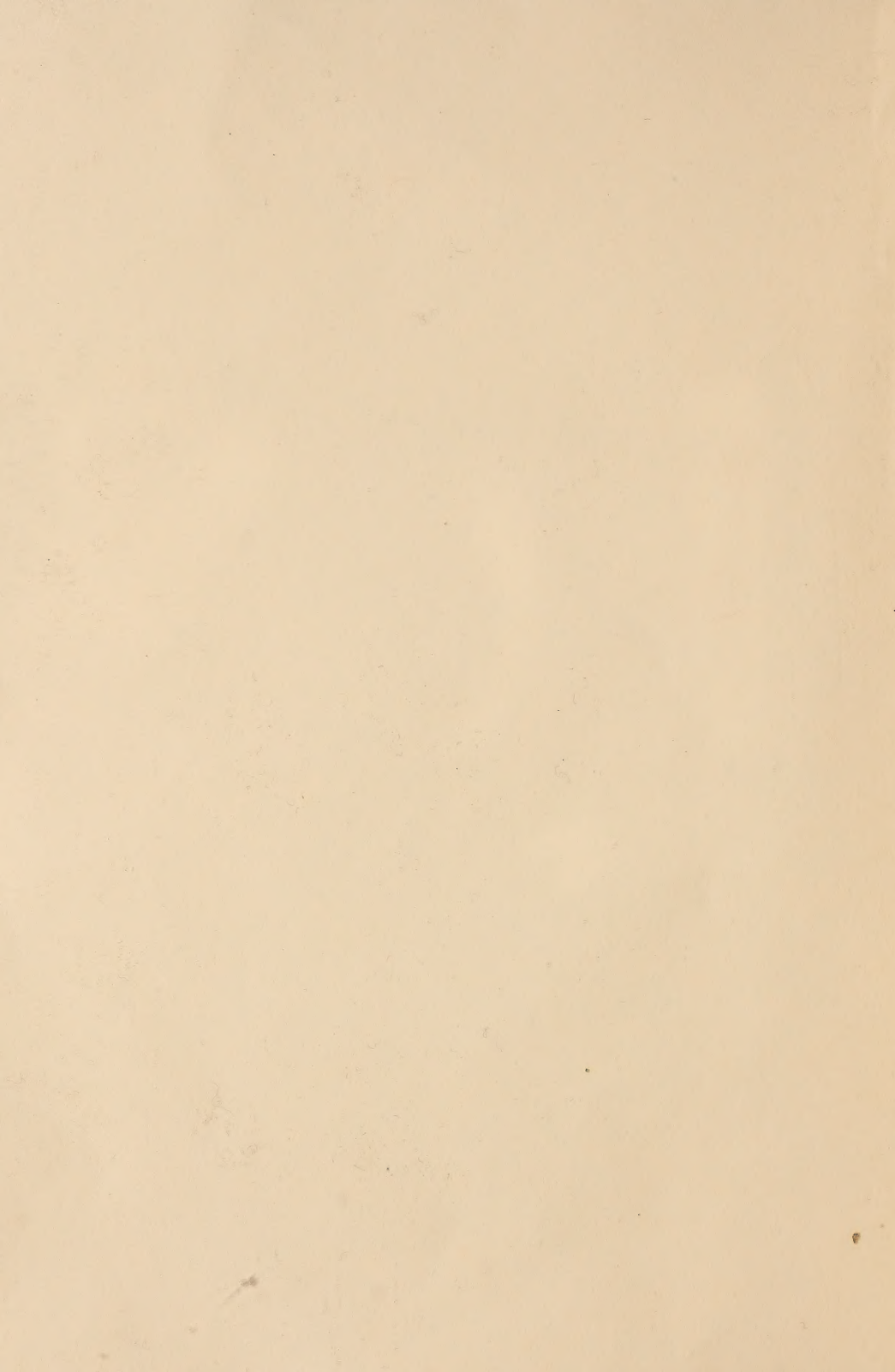


Historic, Archive Document

Do not assume content reflects current scientific knowledge, policies, or practices.



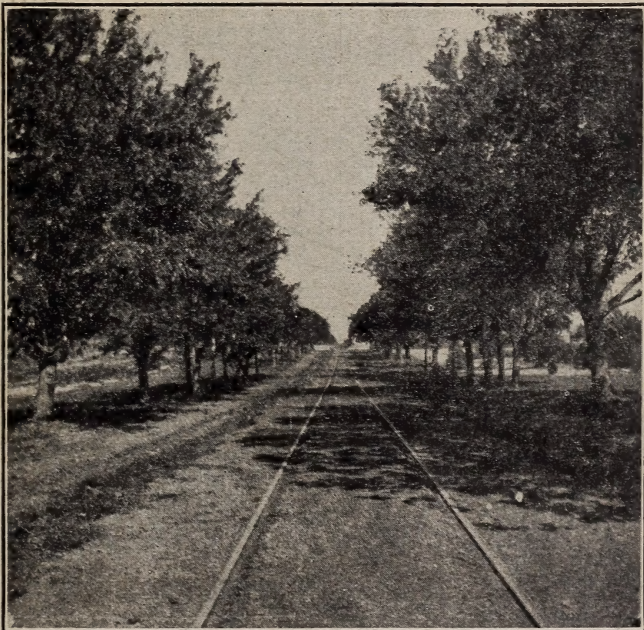
6283 1900

THE LIBRARY,
U.S. Department of Agriculture,
Washington, D.C.

MUNSON NURSERIES

AND

TREE PLANTERS' HAND-BOOK



MIRICK AVENUE ENTRANCE TO THE NURSERIES
DENISON AND SHERMAN ELECTRIC RAILWAY PASSING THROUGH THE GROUNDS
LOOKING TOWARDS DENISON

1904

T. V. MUNSON & SON
DENISON, TEXAS

1905

HORTICULTURAL INFORMATION

So many of our customers write us for horticultural information (which we have ever most gladly given by letter, until the questions have become too numerous for us to longer thus answer), that we have, after careful examination, selected the following list of works of most approved authorship, and arranged to mail direct to those ordering, at publishers' prices given below.

These books answer your questions in the best manner. This catalogue also contains a vast amount of information, and, if carefully studied, will answer a large number of questions. If, however, neither the Catalogue nor the books cover your questions, we will gladly answer them, provided \$1 is sent to cover time, gathering information, etc. To customers sending cash orders, we will make no charge to answer their questions. In writing questions, put them on separate paper and distinct from the order.

Nearly every one of these books is profusely illustrated.

American Grape Growing and Wine Making. Prof. Geo. Husmann, revised.....	\$1 50
American Fruit Culturist. J. J. Thomas. The standard work.....	2 50
Bailey's Field Notes on Apple Culture. Many excellent suggestions.....	75
Bailey's Principles of Fruit Growing. The best work of the kind.....	1 25
Fungi and Fungicides. Prof. C. M. Weed. All about the treatment of plant diseases.....	1 00
Grape Culturist. A. S. Fuller. A well-known standard work.....	1 50
Fertilizers. E. B. Voorhees, Director, N. J. Agr. Experiment Station.....	1 00
Harris' Talk on Manures. Treating the entire subject in a practical way....	1 50
Henderson's Practical Floriculture. The leading work of this class.....	1 50
Insects and Insecticides. Prof. C. M. Weed. The best method of fighting insects	1 50
Irrigation Farming. Lute Wilcox. Best book on the subject. Profusely illustrated.....	1 50
Market Gardening and Farm Notes. Landreth. Well adapted to the South....	1 00
Landscape Gardening. Prof. F. A. Waugh. How to lay out and plant your grounds	50
Pecan Culture for Western Texas. 54 pages, illustrated. E. E. Risien.....	1 00
Plums and Plum Culture. Prof. F. A. Waugh. Highly illustrated. Superb....	1 50
Principles of Plant Culture. Prof. E. S. Goff. Everyone should understand....	1 00
Oemler's Gardening for the South. Treating of vegetables and fruits.....	1 50
Small Fruit Culturist. A. S. Fuller. Covering all classes of small fruits....	1 50
Strawberry Culturist. A. S. Fuller. Excellent little work.....	25

Address: **T. V. MUNSON & SON**, Denison, Texas.

CARE OF TREES ON ARRIVAL

Be careful, in unpacking, to note everything, and immediately "heel-in" in moist soil till planted, or plant at once! Never allow the roots to dry, or failure will most likely result. If the stock is received in a frozen condition, place the bales or boxes in a dark cellar or bury in earth till thawed out.

PREPARATION OF THE TREE FOR PLANTING

Before planting remove all broken and extra long roots with a sharp knife, cutting from below outward, not from above downward. One-year-old peach or apple trees should be cut back to a naked stem $1\frac{1}{2}$ to 2 feet high; leave no side branches. Two-year-old trees should have their branches cut back to their half length or more, the lower less than those above; cutting in shorter as you go upward, and leaving the leader the longest. Plant as deep as the trees stood in the nursery row, excepting dwarf pears and cherries, which should be planted sufficiently deep to cover the stock from two to three inches.

PLANTING THE TREE

The ground should be thoroughly plowed and subsoiled at least fifteen inches deep. If to be set in land which cannot be plowed, dig holes not less than eighteen inches deep and three feet across. Then fill up with rich, mellow earth, but no fresh manure, to such a point that the tree set thereon will stand the same depth in soil, when the hole is filled, as it stood in the nursery row. Lean the tree to the south considerably and fill in among the roots carefully with mellow soil, and when completely covered an inch or two press the soil firmly down with the foot, after which level up the hole with loose soil, which should not be tramped. If the soil is dry, pour in a bucketful or two of water before filling the hole, and when settled away level up with loose soil. Keep the soil thoroughly pulverized about the tree, and free from weeds during the growing season. Do not water through the summertime by pouring water on top of the ground, but dig trenches around the tree and fill with water every evening until ground is thoroughly saturated below the roots; then no more watering will be needed for two weeks. Partial surface watering kills more trees than it saves. Water only in drouth, when trees show need of it.

For more detailed information on this subject and on future care of the trees, we respectfully refer you to American Fruit Culturist or Bailey's Principles of Fruit Culture, found in the list of books named above.

INTRODUCTORY

To Our Customers:

THE FOLLOWING CAREFUL, TRUTHFUL DESCRIPTIONS are of far more value in making successful selections than would be the grandest set of pictures that could be executed. Therefore, study the descriptions, and preserve this Catalogue, for it will be found a most valuable horticultural work of reference. Our methods of propagation are those pursued by the largest, most intelligent and most successful planters of commercial orchards.

THOSE VARIETIES THROUGHOUT THE CATALOGUE, outside our special list of Grapes, preceded by (*) were introduced by us after careful testing, and we are proud of them. They are generally making excellent records, and some have become recognized standards.

IN SOME CASES varieties heretofore included in our Catalogue are omitted. Some of these are dropped, as others included are better for the same season, and of some we have no stock to offer this year; such may be inserted when we again have stock of them. Please do not order varieties not named in this Catalogue.

WHILE WE HAVE A REPUTATION FOR MAKING A SPECIALTY OF GRAPES, we have by no means neglected other departments or classes of fruits in our line of business. All have had the same vigilant care in testing, selecting and propagation, so that we will be found up with the times in all things.

IN OUR EXPERIMENTAL DEPARTMENT we systematically test all new, very promising varieties as they come out, and ourselves originate numerous varieties of grapes, plums, persimmons, etc. By carefully combining the best strains, and testing for a series of years in various localities, we from time to time introduce those proving superior to others in cultivation of the same season.

PLANTERS FOR MARKET PURPOSES. We have long made a specialty of supplying those who plant largely for market, and have given splendid satisfaction, as many large orchards, vineyards and small fruit plantations in all parts of the country attest. To such parties we will make very low prices on specified lists made out from the Catalogue, either delivered on cars at Denison, or at purchaser's railway depot, but we cannot make lower prices than those named in Catalogue on quantities found priced in the Catalogue, or for any order for less than \$20. (See page 2, "How to Use Our Scale of Prices.")

CAUTION.—We employ no traveling agents. Those claiming to be our traveling agents are frauds, and should be shunned. We have learned of a number of such operators, and have advertised them for the protection of planters. We never could see any benefit to the planter to be importuned by oily-tongued "agents," out of planting season, with highly exaggerated pictures, samples and deceptive speech, into giving orders at two to four times the prices that the same or better varieties can be ordered direct from reliable, reputable and responsible nurseries, and whose carefully prepared catalogues enable one to order far more intelligently and profitably; hence we prefer **direct** dealing.

TELEPHONE connection, local and long distance.

Address:

**T. V. MUNSON & SON,
Denison, Texas.**

TERMS, CONDITIONS, SHIPPING, ETC.

Before ordering be sure to read the following, to avoid delays and confusion.

1. CASH (by Draft, Money Order or Registered Letter) with order will secure prompt filling. No goods shipped unless **cash** or **satisfactory security** accompanies the order. If personal checks are sent, include 15 cents for collection, which amount they cost us. Orders held until personal checks are collected. Time, risk and expense saved by remitting by postal or express order or bank draft. Please use order sheet in Catalogue.

2. TO SECURE GOODS NOT WANTED SENT AT ONCE, send one-half the cost with the order. No reserve will be made otherwise. **Goods will be shipped "C. O. D."** only when one-half payment is sent with order, or satisfactory proof of reliability is furnished.

3. OUR RESPONSIBILITY CEASES after delivery, according to the prices and specifications on next page, under "We Prepay Freight" and "Prices," except for mistakes in filling, which must be reported **immediately** after receipt of goods, to admit of adjustment. A double system of checking is employed in putting up orders, so that mistakes are rare, and sometimes customers complain of an error and afterwards find it was their own mistake.

4. EVERY CARE IS TAKEN to secure safe and prompt transportation. **Goods are carefully** packed in moss or straw, well baled or boxed.

5. IT IS ALWAYS BETTER TO SHIP BY EXPRESS, unless the amount of stock is large. Nursery stock goes by express at especially low rates.

6. GIVE EXPLICIT DIRECTIONS FOR SHIPMENT.—When such are not given we shall use our best judgment in selecting a route, but will not be responsible for loss thereby, excepting on goods on which we prepay freight. See "We Prepay Freight." Shipping facilities in every direction from Denison are excellent, on the M., K. & T., T. & P., H. & T. C. and "Frisco" railroads, and all connecting lines.

GANO. Vigorous, prolific, bright red, large; good, market. This variety is similar in every way to the Ben Davis, but of a rich red all over; very valuable. Renamed by some, "Black Ben Davis."

TEXAS RED. One of the most highly esteemed apples in East Texas. Large, striped; fine; excellent keeper.

ARKANSAS BLACK. Vigorous abundant; dark red, medium; excellent market; seedling of Winesap.

KINNAIRD. Strong, spreading tree, prolific; red, large; a superb Southern winter apple; the best of all Winesap seedlings.

WALKER LATE. Large, roundish, slightly flattened; more or less bright striped all over; ripens a month later than Ben Davis and a much better keeper; of extra fine quality; a noble and a very valuable market apple.

YORK IMPERIAL. Large, red, productive; fine market.

SHIRLEY. (Texan.) Vigorous, prolific; striped, medium; excellent.

ARKANSAS. (Mammoth Black Twig.) A splendid, large, dark red Arkansas apple. A fine Winesap seedling.

YATES. Very vigorous, prolific; striped, small; cider or dessert; keeps very late; best quality.

CRAB APPLES

PRICE, 2c more per tree than apples in all cases

WHITNEY. Vigorous, prolific; striped, large; cider, jelly, preserves.

HYSLOP. Vigorous, prolific; crimson, large; ornamental, preserves.

PEARS

Plant 18 feet apart each way, requiring 135 trees per acre. Pears root very deeply, and succeed on almost any soil if kept free from blight. Except Le Conte and Bartlett, the varieties named below are freest from blight.

PRICES—Unless Otherwise Noted

	Each	Per 12	Per 100
Packed and on cars at Denison.....	\$0 25	\$2 50	\$18 00
Packed and prepaid to your depot.....	30	3 00	20 00

Prepaid prices are for orders of not less than \$5.00, and only to places named in paragraph 17, page 2, which please fully read.

IN ORDER OF RIPENING

***LEXINGTON.** Tree very healthy, but of a dwarfish habit, grown on pear root, and inclined to bear at two to four years of age. Fruit is about the same size, shape and color as Bartlett, but earlier by two weeks, and of about equal quality. Very promising. \$1 each.

WILDER. Medium pyriform, pale yellow, shaded dark russet red; flesh pale yellow, fine grained, tender, sub-acid, juicy. Very successful in Texas.

HOWELL. On pear; prolific; yellow, large; best, table, market.

SECKEL. On pear; prolific; brown.

BARTLETT. On pear; prolific; yellow, large; fine, table, market.

BROWN BEURRE. Large, brown; firm; best quality, hardy.

SUPERFINE. Large, yellow, fine quality. Little or no blight.

ANGOULEME. (Duchesse.) On pear pale yellow; very large; good, market.

GARBER. Similar to Keiffer; but a month earlier.

ANJOU. On pear; brown blush, medium; fine, table. Ripe just before Keiffer.

KEIFFER. On own roots; very vigorous, prolific; yellow; very large; an excellent pear for canning; rarely blights or fails to bear.

QUINCES

Plant 10 to 12 feet apart each way. Quinces need very rich, deep, well-drained soil; they are better for careful culture.

PRICES

	Each	Per 12	Per 100
Packed and on cars at Denison.....	\$0 20	\$2 00	\$12 00
Packed and prepaid to your depot.....	25	2 50	13 50

MEECH. Very fine and prolific; none better in growth or quality of fruit.

APRICOTS

Plant 18 feet apart each way, requiring 135 trees per acre. Succeed best in limestone soils; bloom very early in spring. Should be treated like peaches. Very successful in most parts of the West, on high ground.

PRICES

	Each	Per 12
Packed and on cars at Denison.....	\$0 20	\$2 00
Packed and prepaid to your depot.....	25	2 50

Prepaid prices are for orders of not less than \$5.00, and only to places named in paragraph 17, page 2, which please fully read.

ROYAL. Early; large, excellent; one of the very best.

MOORPARK. Medium, large, excellent.

PEACH. Slightly larger than Moorpark; roundish; yellow orange, with

brownish orange cheek; rich, juicy and highly flavored. Ripens with Moorpark.

CLUSTER. This valuable variety is claimed to have never missed bearing any season since its introduction. Originated in Texas from seed of Russian Apricot.

CHERRIES

Plant 18 feet apart each way, requiring 135 trees per acre. Require very best drought-resisting soil.

PRICES

	Each	Per 12
Packed and on cars at Denison.....	\$0 25	\$2 50
Packed and prepaid to your depot.....	30	3 00

Prepaid prices are for orders of not less than \$5.00, and only to places named in paragraph 17, page 2, which please fully read.

EARLY RICHMOND. An old, popular, reliable variety; very productive.

BALDWIN. New. From Kansas. Does finely in the dry West and Southwest.

ENGLISH MORELLO. Similar to Early Richmond; later.

MONTEMORENCY. Large, round, bright red, acid. Tree hardy and bears early. Good market variety and fine for preserving.

PEACHES

Plant 18 feet apart each way, requiring 135 trees per acre. Thrive best on high, well-drained, sandy loam, with clay subsoil, but do well in black lands.

IN ORDER OF RIPENING

Each "ripening" extends over a period of 10 to 15 days, and embraces white and yellow-fleshed free and cling varieties, where possible. Nearly all the varieties have been critically tested by us along with numerous other kinds, in four successive test orchards, planted and fruited within the past 28 years in different soils and situations. Not a variety is included which has not been tested by experienced and critical orchardists and pronounced valuable for the particular purpose and sections for which it is recommended. Desirable qualities in tree, as well as fruit, have been considered.

Those varieties followed by the letter **a** only are recommended for amateur or family planting. In size and quality of fruit they are usually the very finest, but not prolific or firm enough, or of the right season for a profitable planting, except in very favorable localities. Those followed by **c** are recommended for canning; those followed by **e** are recommended for evaporating; those followed by **m** are recommended for marketing fresh; those followed by **c e m** will make an excellent "all purpose" variety.

The letters following the description of each variety refer to the comparative size of the flower. The letter **s** indicates small flowers; **m** medium flowers; **l** large flowers, and **vl** very large flowers. As a rule the large-flowered varieties are the surest fruited. The varieties named throughout this list, however, are all good bearers.

While some of the following list do not succeed in the Gulf regions, the following have been found to do well there: Mamie Ross, Family Favorite, Elberta, Bequett Free, Texas King, Carman, Ray, Superb and Bequett Cling. The entire list succeeds well in all other parts of the Southwest.

☞ We challenge the world to excel this list of Peaches.

PRICES—Except where noted

	3 to 4 feet			4 to 6 feet		
	Each	Per 12	Per 100	Each	Per 12	Per 100
Packed and on cars at Denison	\$0 10	\$1 00	\$6 00	\$0 15	\$1 50	\$8 00
Packed and prepaid to your depot . .	15	1 25	8 00	20	1 85	11 00

Prepaid prices are for orders of not less than \$5.00, and only to places named in paragraph 17, page 2, which please fully read. Higher-priced varieties include prepayment if in prepaid orders.

I

Ripening at Denison May 20 to June 10
VICTOR. m. Regarded as earlier, better and finer than the Sneed.

SNEED. m. Earlier, larger and better than Alexander; less inclined to rot. l.

ALEXANDER. m. Well-known old standard; extra early. l.

STROUT. A peach resembling the Alexander, but not quite so large; a perfect freestone, firmer flesh, free from rot, and a sure bearer. The flesh streaked with red, often pronounced blood color.

DEWEY. The best early yellow freestone, ripens little earlier than Triumph. Very little subject to rot.

TRIUMPH. m a. Large, yellow freestone, mostly covered with red; most attractive extra early peach yet produced. Will certainly become very popular as a market fruit.

II

RAY. m a. Origin in East Texas. Of Mamie Ross type; but with more color and less attacked by rot. Equally large as Mamie Ross, to which we consider it a superior peach.

MAMIE ROSS. a m. Very large; bluish; white flesh, semi-cling, prolific; very valuable. l.

HYNES' SURPRISE. m. True freestone when ripe; resists rot better than Hale's Early, which it resembles. l.

***BISHOP.** m. Very large, crimson, white flesh, free; a very valuable market sort, sure and prolific. m.

CARMAN. c m. Origin in Limestone County, Texas. Large, of fine appearance and quality, firm, free from rot, highly praised, best of its season. l.

TEXAS KING. From East Texas. A peach of Mamie Ross type of better quality. The hardiest in bud of any variety recorded, making it a very sure bearer. Fully as large and well colored as Carman. l.

***CHEROKEE.** A white freestone, with red cheek; free from worms and rot; of exceedingly fine quality; sure, has borne in seasons when all other varieties failed.

III

Ripening at Denison June 10 to July 10

HYNDS' YELLOW. m c. Medium to

large size, yellow, free, of very fine flavor. Sure and abundant. Ripens with Mt. Rose and takes place of Yellow St. John. A very valuable yellow variety and splendid shipper to precede Elberta. m.

GENERAL TAYLOR. a m. Large, flesh blood red, crimson all over; cling of Indian Blood type; productive. m.

MOUNTAIN ROSE. c e m. Large round; white flesh; red cheek; free. s.

IV

***FAMILY FAVORITE.** m e c. Large; white flesh, red cheek; free, sure, prolific; seedling of Chinese Cling. This is making a most favorable record everywhere. Better than Thurber. m.

FOSTER. a e c m. Earlier and finer quality than Early Crawford; very handsome. More certain cropper. Inferior to Elberta in every way excepting quality, to which it is very superior. s.

V

Ripening at Denison July 5 to 20

GEN. LEE. a m. Seedling of Chinese Cling, but earlier and more prolific; better; white, cling. vl.

ELBERTA. m c e. Very large; yellow, red cheek; free, firm, sure, prolific; best of all. For vigor, certainty and abundant bearing, this variety has no superior; for fine appearance, good shipping qualities and ready selling, for canning and evaporating, it stands without a peer. Dispenses with Crawford. m.

***MUNSON CLING.** Selected seedling of Elberta among hundreds grown from select seed. Equally large with Elberta, more spherical, with a short beak. Firm, yellow flesh of finest quality. Surface mostly covered with bright red, very handsome. An immensely superior variety to Chilow. Ripens with Elberta. This fills the place with those desiring a cling to match the Elberta, so often asked for. \$1 each, \$6 per dozen.

CHILOW. m c e. Very large yellow cling, without blush, of the finest quality. A Chinese Cling seedling. vl.

***SUPERB.** m c e. Seedling of Early Rivers, crossed with Mountain Rose. Pure freestone; white flesh, red cheek; large and showy; a very prolific and profitable peach; finest quality. Supercedes the Old Mixon Free. This peach is

making a record where others fail as a certain bearer, and valuable market variety. 1.

CHINESE CLING. a. Largest size; oblong; greenish cream, faint blush. 1.

VI

Ripening at Denison July 20 to Aug. 10

MUNSON FREE. Selected variety from among several hundred Elberta seedlings, grown from selected seed. The fruit is still larger than the Elberta; eighty specimens filled a bushel; more highly colored, more oblong and of better quality, flesh yellow. Equally prolific and hardy in bearing. Ripens about a week later than Elberta. Very firm; fine for shipping. m. \$1 each, \$6 per dozen.

SYLPHIDE. m c. Cling; large, white flesh, red cheek; prolific, sure; seedling of Chinese Cling, than which it is more prolific and of better quality. 1.

BEQUETT FREE. m c e. Largest size; white flesh, red cheek; productive, firm, superb; possesses Chinese blood; a sure bearer. s.

ORANGE. c m. Large, clear, yellow cling, sweet, rich, juicy, prolific. m.

STUMP. m c e. Large, white flesh; red cheek; free; reliable. s.

BEQUETT CLING. c m. Very large; white flesh, red cheek; productive, fine; as large as Chinese Cling, and possesses some Chinese blood. Supersedes the Old Mixon Cling. s.

VII.

Ripening at Denison August 10 to 25.

***BLANCHARD.** Originated with C. C. F. Blanchard of Runnels County, Texas. Cling, very large, about same as Chinese Cling, white with rich red cheek, firm; splendid shipper and quality unexcelled. Having seen and eaten this peach, we know it to be of the finest in cultivation, and its late season makes it very desirable, as it comes when there are no other very fine peaches ripening. \$1 each.

***TIEBOUT.** Originated with V. J. Tiebout of Ellis County, Texas. Free, largest size, rich orange yellow with dark red cheek covering one half; flesh of the finest quality, firm, buttery; a splendid shipper; seed small. This makes a splendid mate for the Blanchard. They are two of the finest peaches known to us. In size they class with the Elberta and are sure to take high rank when better known. Hundreds of new peaches are brought to our attention for testing, but

rarely do we find any to fill a new place in our superb list. The very fact that we permit these to enter our list is their highest praise. \$1 each.

***COLUMBIA.** c e m. Large, dull orange-yellow, mottled with red; free; sure, of rich buttery quality. 1.

CROTHERS. m e c. Large, white flesh, red cheek; best, productive, superior to Ward's Late. m.

***RAISIN.** a m. Of the Indian Cling type, crossed with Heath. Dull white, splashed with red; large, juicy, prolific; splendid. The finest in quality of any cling known to us. 1.

VIII

RINGGOLD. c m. A greatly improved seedling of Heath Cling; superb white, sweet. s.

***CRIMSON BEAUTY.** m c. Very large; white flesh, crimson surface; cling; prolific. 1.

SALWAY. c e m. Large, yellow freestone; red cheek. Very valuable market peach. s.

IX

Ripening at Denison September 10 to 25.

HENRIETTA. m c. Very large, cling; yellow, crimson cheek; sure. Valuable late market. s.

***BONANZA.** c e m. Very large; white flesh; red cheek; free; prolific, vigorous. m.

***DULCE.** Originated in the yard of B. C. Murray of Denison, Texas, and named for his daughter. The same description of the Tiebout (which see in ripening VII), but ripening a month later. We have frequently seen the fruit and eaten of it and know it to be without an equal for its season. So far it has always ripened out perfectly and in quality is unexcelled. It gives us great satisfaction to introduce these three remarkable peaches, viz.: Blanchard, Tiebout and Dulce. \$1 each.

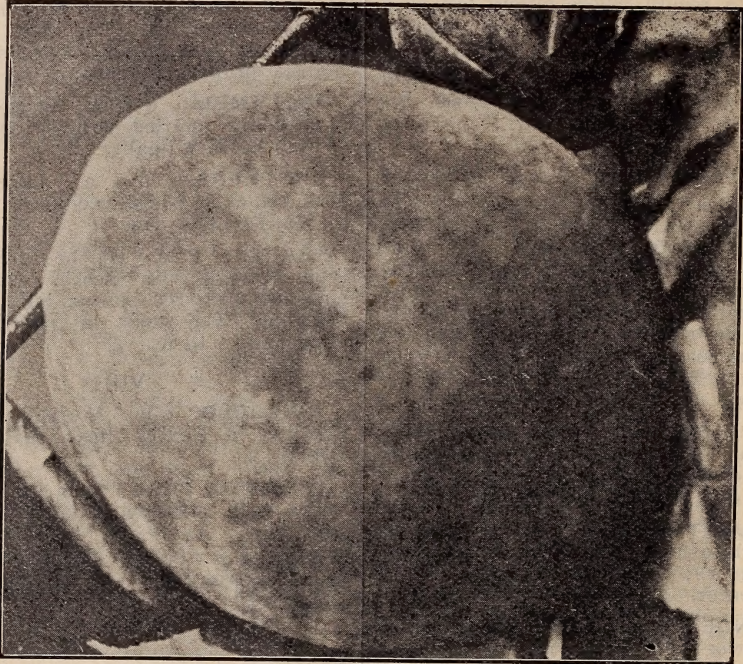
X

Ripening at Denison Into October.

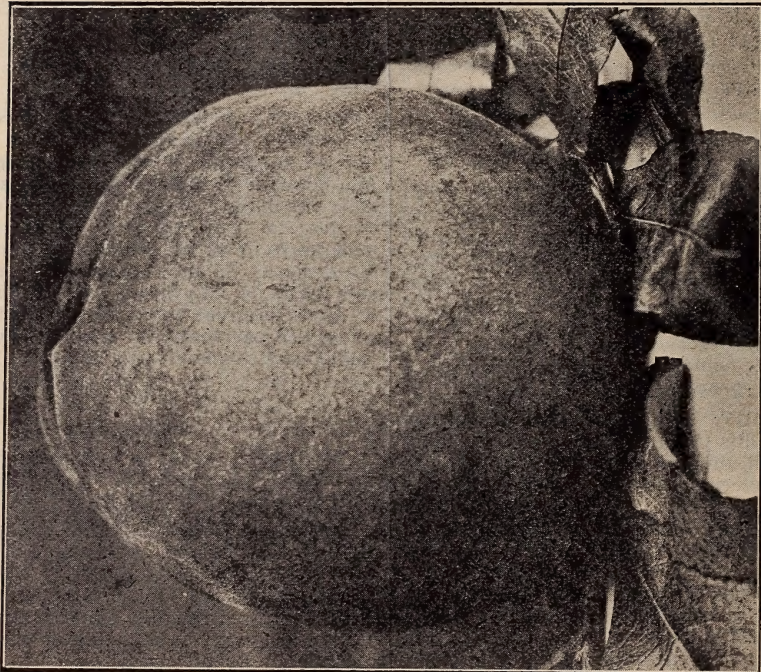
***BARNES.** a m. A fine, very late yellow cling of Indian type. Originated in Bell County, Texas, by Barnes Parker. 1.

***BELL OCTOBER.** c e m. Large, rich yellow, red cheek; freestone; of finest quality. Origin, Denton County, Texas. s.

***SUCCESS.** e c m. Prolific, sure; latest yellow, freestone, large, excellent. Originated with us and offered with confidence in its merits. 1.



MUNSON FREE—See page 7



MUNSON CLING—See page 6

PLUMS

We pride ourselves on this list as being the most valuable and best arranged ever offered for sale.

Plant 18 feet apart each way, requiring 135 trees per acre. Succeed on thinner land than the peach, with more clay, and thrive where the peach will. Varieties of each class generally stand in order of ripening. The list of varieties described below is arranged according to specific character. See the list at end of plums given in order of ripening to help customers in making selections. All succeed well nearly everywhere. The cream of hundreds tested.

Read Plums and Plum Culture (Waugh), \$1.50.

PRICES—Except where noted

Higher priced varieties go in prepaid orders without extra cost.

	Each	Per 12	Per 100
Packed and on cars at Denison.....	\$0 25	\$2 00	\$12 00
Packed and prepaid to your depot.....	30	2 40	15 00

Prepaid prices are for orders of not less than \$5, and only to places named in paragraph 17, page 2, which please fully read.

JAPANESE VARIETIES AND THEIR HYBRIDS

(*Prunus Triflora.*)

RED JUNE. Large size, slightly conical; solid, dark red color, with yellow flesh; ripens early; sure bearer; very valuable for market.

GONZALES. Fruit very large, meaty, of a brilliant red; finest of flavor; good shipper and keeper. Tree very strong and immensely productive. Very valuable.

CHALCO. Hybrid of Simon with Burbank, by Luther Burbank. Tree thrifty, upright, prolific; fruit large, flattened, red tomato color; meaty, firm; stone nearly free, small; quality extra, high flavor, similar to Simon.

ABUNDANCE (Botan). Vigorous, upright; large, purple, good; very prolific, sure; best of all Japan varieties.

BURBANK. Very vigorous, spreading; very large, purple; profitable.

NORMAND (Yeddo). We have fruited this several years by the side of the Georgeson, or Mikado, which has been given as a synonym, but find it distinct and a far better plum than the Georgeson; in fact, one of the very best of the Japan varieties. Tree stocky, vase-shaped in growth; exceedingly prolific; fruit very large, golden, broad, heart-shaped; meaty, firm, sweet, rich flavor; stone small, nearly free. Ripe just before Chabot.

SATSUMA. Large to very large; dark purple skin, flesh and juice; very firm, splendid for market and preserving. Blooms very early and ripens after the Burbank. Highly adapted for Western Texas.

CHABOT. (Douglas, Hytankayo.) A strong, upright tree; fruit very large, crimson, with white bloom; excellent, prolific, valuable.

WICKSON. One of Burbank's most remarkable hybrids, between Kelsey and Simon Plum; very large, heart-shaped; dark crimson; firm, of finest quality. Bloom very early. Nothing finer in appearance or quality is known among plums.

WILD GOOSE TYPE OF THE CHICKASAW CLASS

(*P. Hortulana*—BAILEY)

Bloom early to medium.

MILTON. Wild Goose, crossed with some American variety. Better than Wild Goose, equally as large; handsome and productive; red; excellent. Very early, although it blooms late. Persistent to the tree after ripening. Free from curculio and rot.

CLIFFORD. Seedling of Wild Goose. Tree vigorous, spreading with somewhat weeping habit; productive; fruit large, slightly necked, bright red with white dots; meaty, rich pineapple flavor; very handsome and profitable. Ripe just before Whitaker. Sells at the highest price.

AMERICA. A hybrid of the Robinson with the Abundance, by Luther Burbank in 1898. Tree very thrifty, symmetrical, spreading; fruit medium to large, bright golden ground with pink cheek, dotted white; flesh firm; stone medium to large, cling. Considered one of Burbank's best productions. Very valuable.

WHITAKER. Improvement in tree and fruit on Wild Goose, of which it is a seedling, which it resembles very much. A much more certain fruiter.

THE SOUTHERN GROUP OF THE AMERICANA CLASS. LATE SOUTHERN PLUMS

WARD OCTOBER RED. A wild hybrid found in Clay County, Texas, by Robert Ward. Tree very vigorous, spreading; exceedingly hardy in enduring climatic changes; very prolific. It is of a dark, bright red; meaty; of most excellent

quality, with small stone. Never bothered by rot or curculio. Ripens in Northern Texas in September and October, a month and more after all other varieties are gone, and the latest of all known plums. Exceedingly valuable throughout the South. Entirely distinct in blood from all other plums in cultivation. Price, \$1 each.

THE FOREGOING VARIETIES NAMED IN ORDER OF RIPENING

Beginning in May, Ending in October.

Red June, Milton, Clifford, Gonzales, Abundance, America, Whitaker, Burbank, Satsuma, Normand, Chabot, Wickson, Ward October Red.

MULBERRIES

Plant 20 to 25 feet apart, requiring 109 trees per acre. Flourish in any soil or situation.

PRICES

	3 to 4 ft.			4 to 6 ft.			6 to 8 ft.		
	Each	Per 12	Per 100	Each	Per 12	Per 100	Each	Per 12	Per 100
Packed and on cars at Denison	\$0 12	\$1 00	\$7 00	\$0 15	\$1 50	\$10 00	\$0 20	\$2 00	\$15 00
Packed and prepaid	15	1 25	9 00	20	2 00	13 00	25	2 50	20 00

HICKS EVERBEARING. Profuse bearer of fruit for three months; fine grower for shade; the best of all trees for the fowl yard, as the fowls greedily eat the berries.

VICTORIA. One of the best Russian Mulberries yet produced; very fine.

MUNSON. One of the largest, most prolific and best mulberries of the Russian class. Originated by us, selected from among thousands of varieties grown from seed. The branches in fruit look like ropes of big berries.

See non-fruiting Mulberry under Shade Trees, page 27.

BLACKBERRIES

Plant 2 feet apart in rows, rows 7 feet apart, requiring 3,112 plants per acre. Succeed everywhere. Read Fuller's Small Fruit Culturist. Price, \$1.50.

PRICES

The prices following each variety include prepayment if in orders of not less than \$5.00. If prepayment is not desired, then deduct 15 cents from the dozen rate, 50 cents from the hundred rate, and \$2.00 from the thousand rate.

IN SUCCESSION

SORSBY MAY. A blackberry larger than Early Harvest, and of better quality, and ripens about a week earlier. Very productive and a good shipper; very valuable on account of its extreme earliness. Price, 75c per 12; \$3 per 100.

DALLAS. Very vigorous, drooping, thorny, productive; large, fine. This is proving to be a very valuable market variety. 50c per 12; \$2 per 100; \$10 per 1,000.

ROBISON. Very vigorous, upright, prolific, uniformly very large; of best quality. Sells at the highest market price. Originated by Willard Robison, at Cisco, Texas. It has fruited here for a number of years, and has proven itself one of the most valuable varieties in cultivation. It endures the climatic hardships most excellently. Price, 75c per 12; \$2.50 per 100; \$15 per 1,000.

DEWBERRIES

MAYES. (Syn. Mayes' Hybrid, Austin's Improved, Austin-Mayes.) This originated at Pilot Point, Texas; we have the genuine. It is exceedingly large, fine and early; prolific. 10c each; 50c per 12; \$2.50 per 100; \$12 per 1,000, prepaid; or 40c per 12; \$2 per 100; \$10 per 1,000, not prepaid.

SERVICE BERRY

SUCCESS. Berry half inch in diameter, dark purple or black, meaty, delicious, borne profusely in clusters. Shrub about three feet high. Much resembles the Blueberry or Huckleberry. Very successful in the South. Ripe in May. Price, 10c each; 75c per 12; \$5 per 100, f. o. b.; or 12c each; \$1 per 12; \$6 per 100, prepaid.

RASPBERRIES

Plant 3 feet apart in rows, rows 5 feet apart, requiring 2,994 plants per acre. Need best drouth-resisting soil, on eastern or northern slope.

PRICES—Except where noted

	Each	Per 12	Per 100
Packed and on cars at Denison.....	\$0 10	\$0 50	\$3 00
Packed and prepaid to your depot.....	12	60	3 50

BLACK CAPS

DIXIE. Discovered as a native in Alabama by J. M. Cochran, by whom it was brought to Texas, named and introduced as "hardy as any blackberry vine." We have found this claim to be true by several years' testing. It is the earliest raspberry yet tried by us. It is very prolific, of good medium size. 75c per doz.; \$4 per 100.

CUMBERLAND. New, very large, very prolific and very successful here. 75c per doz.; \$4 per 100.

KANSAS. A very large, excellent-fruited black-cap; one of the best for a dry, hot climate.

PALMER. This comparatively new variety is considered the largest and best of the early black-caps.

RED VARIETIES

CARDINAL. Very vigorous and prolific, dark red, very large. Originated in Kansas. Succeeding very well here.

HAYMAKER. New, exceedingly large, bright red, finest quality, enormously productive; succeeding here. \$1 per doz.

STRAWBERRIES

Plant 16 inches apart in rows, rows 3½ feet apart, requiring 9,000 plants per acre. Deep, loamy, sandy soil, with subsoil, is preferable. Read Fuller's Strawberry Culturist. Price, 25c.

PRICES—Except Parker Earle and Challenge, which note

	Per 12	Per 100	Per 1,000
Packed and on cars at Denison.....	\$0 25	\$0 50	\$3 50
Packed and prepaid to your depot.....	35	75	5 00

Our plants are not like those handled by many growers—weak, old and mixed—but young, vigorous and pure. The very best varieties by actual test for the Southwest. Handled in the very best manner. We test nearly all varieties of any promise as they come out. The following are the cream for this climate:

MICHEL EARLY. Earliest of all; large, vigorous, perfect flower, a fine pollinator for other kinds.

LADY THOMPSON. Large, even size; good color, early and productive; good shipper; fine flavor; strong, healthy; perfect flower.

CRESCENT. Early, prolific; bright; excellent market; pistillate; needs Michel Early to fertilize it.

WOOLVERTON. Uniformly as large as the Bubach, much more prolific and quite early. One of the best varieties tried here.

SPLENDID. Perfect flower; vigorous and very prolific; large, round, bright red, handsome berry; firm.

BUBACH No. 5. Large, handsome; valuable; very successful here; pistillate; needs Splendid or Parker Earle to pollinate it.

CHALLENGE. Uniformly very large, bright red; firm and prolific. Very vigorous, hardy plant. So far has given great promise as a very valuable market berry. Flowers perfect. 50c per doz.; \$2.50 per 100.

***PARKER EARLE.** Still leads every other variety in productiveness; plant robust, free from disease, stooling heavily and renewing itself sufficiently by strong runners. It is a model in make-up and endures the extremes in heat and cold remarkably well. Berry regular, uniformly large, conical, with a neck; glossy scarlet-crimson; ripens all over; flesh firm, crimson; no hollow core; flowers perfect. Stands at the head as a market and home berry. Price, f. o. b. at Denison, 25c per 12; 75c per 100; \$4 per 1,000. Price, prepaid, 40c per 12; \$1 per 100; \$6 per 1,000. We have the best strain.

JAPANESE PERSIMMON

This remarkable fruit does well all through the South. These are grown from seeds of several of the finest Japan varieties that have all proved hardy and prolific here. Many that we have fruited of these seedlings have always been hardy, large, good and prolific, and give better satisfaction than grafted trees. We have never known a seedling Japan Persimmon to fail to bear.

	Each	Per 12
Packed f. o. b. cars at Denison.....	\$0 20	\$2 00
Prepaid	25	2 50

AMERICAN HONEY PERSIMMON

We have a tree of the native Persimmon found wild, bearing profusely of large, clear honey-colored fruit of finest quality, preferred by all to even the finest Japanese kinds. The tree was moved into our grounds among the Japan varieties, and continues to fruit abundantly. It has few small seeds in comparison with most varieties. All things considered, it is the finest Persimmon known to us. We annually grow some trees from seeds of this. About one-half of the seedling American Persimmons bear fruit, the others are male; hence in filling orders we put in two trees for every one ordered.

	Each	Per 12	Per 100
Packed f. o. b. cars at Denison.....	\$0 10	\$0 90	\$7 50
Prepaid	10	1 00	8 00

KAWAKAMI. A hybrid of best American and Japanese varieties produced by us. Tree hardy as far north as Illinois. Fruit two, to two and one-half inches in diameter, of best quality. A few trees grafted on native persimmon, \$1.00 each.

SOUTHERN MUSCADINES

Succeed in deep, rich soil throughout the South; require much trellis room. Plant 16 feet apart in vineyard rows; prune early after leaves fall.

THOMAS. Very large, black; good wine.

SCUPPERNONG. Large, brownish yellow; good wine.

The above varieties, 15c each; \$1.50 per 12, f. o. b. at Denison; 16c each; \$1.60 per 12, prepaid.

MALE MUSCADINES. If planted near the former two, renders them very fruitful anywhere in the South. Without such pollinators planted nearby they are unfruitful. 25c each, prepaid. One male vine is sufficient for six or eight bearing vines.

The two varieties following are hybrids of the well-known Scuppernong Grape. They are very vigorous, prolific, excellent in quality and larger in clusters than any of the Muscadine varieties heretofore known. They are absolutely free from rot and mildew, and will succeed anywhere in the Southern States and California. Like the Scuppernong, they require male vine flowering at the same time, growing near, to render them fruitful.

Price, per vine, prepaid, \$1 each; \$8 per 12, f. o. b., or prepaid.

LA SALLE. Very large berry, black; thin skin; tender pulp for this class of grapes; quality equal to or better than Scuppernong. Ripens the earliest of any of this class.

SAN JACINTO. Similar in berry and

cluster to La Salle, the cluster being from two to three times the size of Scuppernong cluster; the quality is still better than La Salle. Ripens one to two weeks later than Scuppernong. Exceedingly prolific.

WE LEAD ALL
COMPETITORS IN THIS
FIELD

GRAPES

The Grapes have constantly been the most certain and profitable of any Fruits that we have grown.

Plant 8 feet apart in rows, rows 9 feet apart; requiring 605 vines per acre.

Read: American Grape Growing and Wine Making, \$1.50. Fuller's Grape Culturist, \$1.50. Weed's Fungi and Fungicides, \$1.

STANDARD LIST—Named in order of ripening

Have a large stock of finest quality. This list contains the best and most successful; have tested all these, with hundreds of others. Flowers perfect, and will bear alone unless otherwise noted; when pistillate, they need a perfect-flowered kind planted near. With irrigation in West Texas and westward all varieties in the list succeed. East of the 100th meridian the Bordeaux mixture spray will enable many varieties to succeed that without it fail on account of rot and mildew. In most regions all varieties do better if treated with Bordeaux spray.

By repeated comparison, it is certainly established that yearling grape vines, as we grow them, outclass No. 1 Northern-grown 2-year-olds, and our 2-year-olds are so strong that, if planted early, say from November to February, they are capable of bearing, without injury, several clusters the first year. Hence our prices are much cheaper than they appear to be by comparison with others' prices. A weak grape vine is not worth planting at any price.

PRICES

Remember that the prepaid prices are for orders of \$5 or over, and within the states named on page 2 of body of Catalogue, paragraphs 17, 18 and 19.

DESCRIPTION	Packed f. o. b. Denison			Packed prepaid to your depot		
	Each	Doz.	100	Each	Doz.	100
MOORE EARLY. Very large, black; good market. Texas northward.....	\$0 10	\$0 75	\$5 00	\$0 10	\$0 85	\$6 00
GREEN MOUNTAIN. New; above medium, white; prolific good. Texas northward.....	15	1 50	10 00	20	1 75	10 75
McPIKE. Vine very vigorous and prolific. Very much resembles the Concord, its grandparent; cluster and berry larger than Concord, firmer, more persistent to cluster.....	15	1 50	20	1 75
CAMPBELL EARLY. Is superior in every respect to Concord, and ripens a week earlier. Best production of G. W. Campbell, of Ohio. Ripens evenly, persistent to cluster.....	25	2 00	30	2 25
MOORE DIAMOND. One of the finest white American grapes. Texas north.....	15	1 50	8 00	20	1 70	8 75
IVES. Medium, black; fair market, wine; free from disease. Texas north.....	10	75	4 00	12	85	4 75
PERKINS. Large, pink; fair market, prolific, healthy. Texas northward.....	10	75	4 00	12	85	4 75
BRIGHTON. Large, red; fine table, market, wine; pistillate. Northward.....	10	75	4 00	12	85	4 75
DELAWARE. Small, very fine; table and market; little or no rot; successful.....	10	75	4 00	12	85	4 50
NORFOLK. New; large, red; fine table and market; wine. Texas northward.....	10	1 00	5 00	12	1 10	6 00
RED GIANT. A variety produced in Pennsylvania. Cluster, medium, compact; berry immensely large, one to one and one-quarter inches in diameter; color dark red; skin thick and tough; pulp rather tender, sweet and of agreeable flavor, possessing the characteristic of Labrusca muskiness. Vine vigorous, healthy and prolific. Ives or Perkins are good pollinators for it, as it does not pollinate itself.....	50	4 00	30 00	50	4 15	31 00
LINDLEY. Large, red; very good table and market; pistillate flower. Northward.....	10	75	4 00	12	85	4 75
NIAGARA. Large white; very good table, market; successful	10	75	5 00	12	85	6 00
CONCORD. Large, black; table, market; well known. Texas northward.....	10	75	3 00	12	85	3 75
CATAWBA. Cluster and berry large, dark red; juicy, sprightly, fine; fine for market, table and wine.....	10	75	4 00	12	85	4 75
JEFFERSON. Large, red berry, large cluster; best table, market. Texas north.....	10	1 00	8 00	12	1 10	8 75
TRIUMPH (Campbell's). Very large, white; best table. Texas to Missouri.....	10	1 00	8 00	12	1 10	8 75
GOETHE. Very large, pink; fine table; North Tex. to Mo.	10	75	4 00	12	85	4 75
NORTON (Cynthiana). Small, black; fine red wine. All Southern States.....	10	1 00	6 00	12	1 10	6 75
JACQUEZ (Black Spanish, Le Noir, "Blue French"). Small, large cluster, black; red wine. Succeeds well in all Southwest Texas.....	10	1 00	6 00	12	1 10	6 75
HERBEMONT (McKee, Bots, "Brown French"). Small, large cluster, purple; finest quality, table, wine; best old grape in Southwest Texas.....	10	1 00	6 00	12	1 10	6 75

THE CREAM OF THE MUNSON GRAPES

THE BEST THIRTY-NINE SELECTED OUT OF SEVENTY-FIVE THOUSAND VARIETIES PRODUCED BY T. V. MUNSON IN TWENTY-FIVE YEARS

In the following list the varieties are named in their alphabetical order, and not in the order of ripening, as in the Standard List; however, the time of ripening is stated with each variety, and in comparison with other well-known varieties. All the varieties in this list will be found on page 19 at end of descriptions named in the order of ripening.

As these varieties become more and more extensively planted, cultivated and tested throughout the country, their great value becomes more apparent and better known, and nothing but praise is given them, and they are now rapidly taking the place of the better old varieties. With these varieties we have held the field in market against all comers while the old standard varieties were in season, and we have had the field entirely to ourselves with the later varieties after the standard varieties were all gone—two months or more here.

All the varieties possessing Post Oak blood, in order to get best results in cropping, should be treated the same as Herbemont, that is, plant wide apart, as much as twelve to sixteen feet in the rows, and have long arm pruning. They do especially well upon the Munson Canopy Trellis, mentioned in Husmann's American Grape Growing, page 64. Distance apart to plant and kind of pruning required for best results are mentioned with each variety.

PRICES

Remember that the prepaid prices are for orders of \$5 or over, and within the states named on page 2 of body of Catalogue, paragraphs 17, 18 and 19.

VARIETIES (Described on pages 15 to 19.)	Packed f. o. b. Denison			Packed prepaid to your depot		
	Each	Doz.	100	Each	Doz.	100
Albania	\$1 00	\$8 00	\$60 00	\$1 00	\$8 00	\$60 00
Atoka	30	3 00	20 00	35	3 25	21 00
Amberbonte	75	6 00	40 00	75	6 00	40 00
America	20	1 00	8 00	25	1 25	9 00
Amethyst	75	6 00	40 00	75	6 00	40 00
Augustina	75	6 00	40 00	75	6 00	40 00
Bailey	30	3 25	25 00	35	3 50	26 00
Beacon	20	1 50	10 00	25	1 75	11 00
Ben Hur	1 00	9 00	65 00	1 00	9 00	65 00
Blondin	1 00	8 00	60 00	1 00	8 00	60 00
Brilliant	20	1 25	8 00	25	1 50	9 00
Captain	1 00	12 00	100 00	1 00	12 00	100 00
Carman	20	1 25	9 00	25	1 50	10 00
Champanel	25	2 00	15 00	30	2 25	16 00
Cloeta	75	6 00	40 00	75	6 00	40 00
Extra	30	3 25	25 00	35	3 50	26 00
Fern Munson	20	1 50	10 00	25	1 75	11 00
Gold Coin	25	2 50	20 00	30	2 75	21 00
Headlight	75	5 00	35 00	75	6 00	36 00
Hermann Jaeger	20	1 50	10 00	25	1 75	11 00
Hidalgo	75	6 00	40 00	75	6 00	40 00
Husmann	1 00	12 00	90 00	1 00	12 00	90 00
Kiowa	30	3 00	18 00	35	3 25	19 00
Lukfata	25	2 00	15 00	30	2 25	16 00
Manito	30	3 00	20 00	35	3 25	21 00
Manson	1 00	8 00	60 00	1 00	8 00	60 00
Marguerite	30	3 00	20 00	35	3 25	21 00
Mericaudel	1 00	8 00	60 00	1 00	8 00	60 00
Muench	20	1 50	12 00	25	1 75	13 00
Presly	15	1 00	7 00	20	1 25	8 00
Rommel	20	1 25	9 00	25	1 50	10 00
R. W. Munson	20	1 50	10 00	25	1 75	11 00
Sheruah	75	6 00	40 00	75	6 00	40 00
Valhallah	75	6 00	40 00	75	6 00	40 00
Wetumka	30	3 25	25 00	35	3 50	26 00
Wapanuka	30	3 25	25 00	35	3 50	26 00
Wine King	75	6 00	40 00	75	6 00	40 00
Xenia	75	6 00	40 00	75	6 00	40 00
Xinta	30	3 00	20 00	35	3 25	21 00

DESCRIPTIONS—See prices on page 14

ALBANIA. Parentage—Fost Oak x Norton x Herbemont. Cluster large to very large, shouldered; berry medium, translucent white; skin thin and tough; pulp very tender and juicy, sprightly, with Herbemont character, but sweeter; very vigorous and prolific; uses, late market, table and white wine. Late, ripening with Fern, will remain on until frost; the latest white grape in cultivation.

ATOKA. (America x Delaware.) Growth vigorous. Clusters large, slightly conical to nearly cylindrical, often with short shoulder, fairly compact. Berries persistent, small to medium, globular, dark purplish red, with little bloom; skin thin and sufficiently tough, never cracks; pulp juicy, tender, very sprightly and agreeable when ripened, easily freeing the seeds; rich both in sugar and in acid; quality pure and fine, sells readily in the market and gives satisfaction. Resists disease and climatic changes excellently. Adapted South and North. 10 to 12 feet apart. Long arm pruning.

AMERBONTE. Hybrid of America with Herbemont. Cluster very large; berry small to medium, larger than Herbemont; color clear, dark red, beautiful; thin, tough skin; tender, melting pulp, juicy and fine quality; vigorous and prolific. Far more resistant to diseases than Herbemont. Ripe with Herbemont. A much more valuable grape. Hardy as far north as St. Louis. 12 to 14 feet apart.

AMERICA. (Seedling of Jaeger, No. 70.) Growth very strong. Clusters conical, sufficiently compact. Berries very persistent, medium size, globular, black with little bloom, and scattering dotted jet black with white speck in center of dots; skin thin and tender, but does not crack; pulp melting, juicy, easily freeing the slender seeds; when fully ripe very rich in sugar, having measured as high as 120 degrees on Oeschle's scale, which is higher than Delaware ever gets; also rich in agreeable acid; possesses a very distinct, peculiar flavor, much liked by some; not "foxy," making a good combination market and wine grape. A very good port wine has been made from it without 'fortifying.' Ripens at Denison, Texas, July 20th to August 1st, a little after Concord, and always evenly. Very prolific with long arm pruning and when pollinized by other varieties, as it does not thoroughly pollenize itself. Beacon is a good mate. Endures the severest drouth with ease. Has passed through 27 degrees below zero without damage. Not attacked by mildew, rot or leaf folder, and has given excellent results in California as a resistant graft stock for Vinifera

varieties. Adapted South and North. Plant 12 to 14 feet apart.

AMETHYST. Parentage—Delago x Brilliant. Cluster medium; berry large, clear red, with delicate bloom; skin thin and tough; pulp tender, quality the best. Uses, market, table, white wine. Medium season, with Concord. Plant 8 feet apart, short arm.

AUGUSTINA. Combination of Delaware, Goethe, Brilliant. Cluster large; berry very large, translucent carmine red, very handsome; skin thin and tough; pulp meaty, tender and juicy, quality the best, with very delicious characteristic flavor. Good grower, very prolific. Table, market, white wine. Season very late, after Catawba. Plant 8 feet, short arm pruning.

BAILEY. (Big Berry Post-Oak x Triumph.) Growth strong. Clusters large to very large, cylindrical or often branched, generally compact. Berries persistent, large, black, with little bloom; skin thin and tough, never cracking; pulp meaty, but not tough, juicy, sprightly, of pure very good quality, considerably above Concord; seeds readily parting from pulp. Ripe July 10 to 30. A valuable market grape, easily superseding Concord, especially in South-Central and Southwest Texas, where it has done remarkably well. Plant 10 to 12 feet apart; medium to long pruning.

BEACON. (Big Berry Post-Oak x Concord.) Growth medium in South Texas, becoming stronger in North Texas to very strong in Missouri. Very prolific, of large cylindrical clusters, often shouldered, moderately compact. Berries as large or larger than Concord, black, with rather heavy white bloom, hang to cluster about equally well with Concord, but not so well as Bailey; skin a little tougher than Concord, never cracks; pulp rather more tender than Concord, very juicy, sprightly and of a very similar flavor to Concord, rather more agreeable; seeds readily leave the pulp. Ripe here July 15 to 25. The vines have continuously borne very heavily and endured the climatic hardships well in Texas and in Missouri and Illinois, passing 27 degrees below zero at Palmyra, Missouri, in the grounds of Dr. Jaudon, and bore heavily the following season. Adapted South and North. Dr. B. A. Jaudon says that Beacon and Fern are the best two grapes in cultivation for his region, near Quincy, Ill. Plant 8 to 10 feet apart.

BEN HUR. Parentage a combination of Post Oak grape with Norton and Herbemont. Vine very vigorous, very prolific,

free from rot and mildew; cluster large; berry little under medium, black, persistent; pulp very tender, juicy, sprightly, sweet. We consider this one of the most valuable of American wine grapes. Those who like the Le Noir grape will like this, as it has all the good qualities of the Le Noir without its tendency to rot or mildew. Medium to long arm pruning. 10 feet apart.

BLONDIN. Combination of Ten-Dollar-Prize-Post-Oak, Norton Virginia and Heribmont. Cluster large, compact, shouldered; berry medium, white translucent; skin very thin and tough; pulp very tender, juicy, sprightly, quality excellent, nearly best. Very vigorous, prolific. Late, with Triumph and Catawba in season. Very valuable as a late market and white wine grape. 10 feet, medium pruning.

BRILLIANT. (Lindley x Delaware.) Growth strong. Vine endures winters anywhere up to 15 degrees below zero. Endures Texas climate well. Clusters large, cylindrical, or somewhat conical, often shouldered, open to compact. Berries large, globular, light to dark red, translucent, with a thin bloom, very handsome when well ripened; skin thin, rather tender, but seldom cracks; pulp meaty, yet very tender, melting and delicious, usually preferred for table and eating fresh to Delaware, with which it outells 5 to 10 cents per eight-pound basket in the markets where it is known. Seeds readily part from the pulp. Ripens just before the Delaware and yields on an average fully twice as much. It ships about equally well, or better than Concord. Its foliage is less attacked by mildew than Delaware, and spraying with Bordeaux mixture will entirely prevent this. Endures heat and drouth fairly well, much better than Concord. Making a fine record in Georgia, as well as in Texas. Adapted South and North. Fine reports of it from New York. 8 feet, short arm pruning.

CAPTAIN. Parentage—America crossed with R. W. Munson. See description of these. Cluster very large; long cylindrical, reaching ten to twelve inches; berry large, black with white bloom; skin thin; ships well; pulp tender, freeing seeds easily, quality nearly best, much better than Concord. Exceedingly vigorous and prolific. Uses, market, table, red wine. Medium season. 10 to 12 feet, medium pruning.

CARMAN. (Post-Oak No. 1 x Triumph.) Growth vigorous; foliage never attacked by leaf-folder or mildew; very prolific. Cluster large to very large, have reached two pounds in rare instances,

shouldered or branched, conical, very compact. Berries persistent, medium, globular, black with thin bloom; skin thin and tough, never cracking; pulp meaty, firm, yet tender when fully ripe, of pure, rich quality, much superior to Concord; seeds easily leaving the pulp. Vines now 17 years old have borne 14 heavy crops, show no signs of decline. Has always been one of the most profitable varieties with us and greatly praised in many sections of the South as far north as 40 degrees latitude. Ripe one to three weeks after Concord is gone. Will hang on the vines many days after becoming ripe without deteriorating. Plant 10 to 12 feet apart. Medium pruning.

CHAMPANEL. (V. Champini x Worden.) Growth rampant, exceedingly resistant to heat and drouth, growing well in limy black soils. Clusters large, conical, with long peduncle, rather open. Berries globular, large, black, with white bloom, persistent; skin thin, tough; pulp tender, juicy, very sprightly, acid unless well ripened, then quite agreeable; seeds rather large, easily leaving the pulp. Ripe about with Concord, which it resembles very much in cluster and berry. Does well in any soil, but valuable for black waxy lands of the South, where few other varieties will grow. Ripens evenly and not given to cracking or dropping as is the Concord or Worden in the South. 10 to 12 feet. Long arm pruning.

CLOETA. Probably the best of all American black grapes. Parentage—America x R. W. Munson. Cluster large, berry large, black, handsome; skin thin, handles well; pulp tender, juicy, sprightly, far better quality than Concord. Vine very vigorous and prolific. Uses, market, table, red wine. Medium late, just after Concord. 10 to 14 feet, long pruning.

EXTRA. (Big Berry Post-Oak x Triumph.) Growth strong; cluster oblong to cylindrical, sometimes shouldered, moderately compact. Berries persistent, globular, medium to large, dark purple to black, with moderate bloom; skin thin, tough, never cracks; pulp tender, juicy, sprightly, agreeable, sweet; seeds easily parting from the pulp. Ripe July 25 to August 10. Does well in South Texas. 10 to 12 feet, long pruning.

FERN MUNSON. (Post-Oak No. 1 x Catawba.) Growth very strong. Cluster medium to large with long peduncles. Berries globular, medium to large, very persistent; very dark purplish red to nearly black; skin thin, tough; pulp firm, but not tough; very juicy, sprightly, with very agreeable Catawba flavor when fully ripe; seeds leave the pulp readily. Ripens

very late in August or early in September, and hangs on until frost if desired, becoming excellent in quality and giving full satisfaction in market. Very profitable, as it ripens when all old varieties are gone. Free from black rot. Has endured 27 degrees below zero and has borne well the following season. It endures drouth excellently. Adapted for the South and North to latitude 40 degrees. 10 to 14 feet, long pruning.

GOLD COIN. (Norton x Martha.) Growth medium. Clusters medium or above, ovate shouldered, proper degree of compactness. Always sets a crop of well-

HEADLIGHT. This remarkable variety, produced in 1895, is a combination of Delaware and Lindley. The cut is from a photograph, exact life-size, of a cluster which had remained on the vines through July, a month after it was fully ripe, and shows the size, form of cluster and berry and the remarkable keeping qualities of this variety. The berry is very persistent to the cluster, clear, translucent red, covered with a thin white bloom, and is very handsome. The skin is thin and tough, the pulp tender, melting and juicy, sprightly highly flavored, very sweet, of the very best quality; seeds few; vine vigorous, healthy, prolific; the foliage is but little attacked by mildew, the fruit rarely ever attacked by rot. It will outyield and out-sell Delaware by a large per cent, and is the earliest grape known to us. As a money-making market and table grape we consider this the most valuable among very early varieties that has ever been produced. 8 feet. Short arm pruning.

HERMANN JAEGER. (Post-Oak No. 1 x Herbemont.) Growth very strong, endures the Texas climate well. Clusters large to very large, shouldered, conical, very compact; peduncle short. Berries small to medium, black, persistent; skin thin, tough, does not crack; pulp tender, very juicy, easily freeing the seeds. Quality better than Concord. A profitable market and table grape. Ripens a week later than Concord. Not attacked to any extent by mildew, rot or leaf-folder. Valuable in Southwest Texas especially, and successful throughout the South. 10 to 12 feet, long arm.

HIDALGO. A combination of Delaware, Goethe and Lindley. Cluster large; berry large, yellowish white; skin thin and tough; pulp tender and melting, quality best; uses, table, market, white wine. Early, handsome, delicious. 8 feet, short arm pruning.

HUSMANN. (Armlong x Perry.) Combination of \$10 Prize and No. 2 Post-Oak grapes, with Black Eagle and Herbemont. Growth vigorous, endures Texas climate well. Clusters very large, long, cylindrical, sometimes shouldered, on medium peduncles, compact. Berries medium size, globular, black, persistent; skin thin, delicate, yet tough; pulp melting, very juicy, sprightly, of high, pure flavor. More satisfactory by far as a market and table grape than Herbemont, and excellent for red wine. Very prolific, even on short arms. Ripens with Herbemont and belongs to same range of country. 10 feet.

filled clusters; peduncle medium to long. Berries large, globular, yellowish when fully ripe, persistent; skin thin, tough, never cracks, and rarely attacked by rot; pulp about same consistency as Concord, very juicy and exceedingly sweet; retains a little of the Martha flavor; liked by most persons. Very handsome in the basket and markets excellently; has always been very profitable. Ripens with Catawba, endures all extremes of Climate well. Favorable reports of it from all parts of the South, and as far north as 40 degrees latitude. 8 to 10 feet. Medium arms.

KIOWA. (Jaeger 43 x Herbemont.) Growth very strong and healthy. Cluster large, cylindrical, shouldered, and sometimes branched; peduncle of medium length. Berries small to medium, a good size larger than the Herbemont; juice red. Rarely touched by rot. A good market and an excellent wine grape. Ripens after Herbemont a week. Requires wide planting and long pruning. 12 to 14 feet. Adapted for the South.

LUKFATA. (V. Champini x Moore Early.) Growth strong. Endures heat, drouth and cold remarkably well. Succeeds in black, limy soils. Not injured by mildew. Cluster medium, ovate, sometimes shouldered, compact; berries globular, large, persistent; does not crack; pulp about same as Moore Early, more juicy and very sweet and agreeable. Ripens early and evenly. Sells in the market as well or better than Concord, and ships far better. Little attacked by rot. A good market and a fair table grape. Flowers have reflexed stamens, hence it must be grown near some variety with erect stamens flowering at same time, such as Ives; then it bears well. Plant 10 to 12 feet apart. Give long pruning.

MANITO. (America x Brilliant.) Growth very similar to America, endures extremes of climate very well. Clusters long cylindrical, rather open, with long peduncle; flowers perfect, bears well alone, very prolific; berries medium, globular, persistent, dark purple, with white specks; very distinct and unique in ap-

pearance; skin thin and tough; pulp very tender, juicy, sweet and agreeable, parting from the seeds with ease. Ripens very early, about with Moore Early, packs beautifully and ships excellently. A very profitable market grape, also a good wine grape. Adapted for general North and South. 8 to 10 feet, medium arms.

At World's Fair, St. Louis, 1904, the Manito scored 98 points, the highest of any grape scored up to that time.

MANSON. An exceedingly valuable white grape. A hybrid of R. W. Munson with Gold Coin, produced in 1899. Vigorous and productive; clusters large, berry above medium, of yellow color; skin thin and tough; pulp tender, quality excellent. Ripens late, with Triumph.

MARGUERITE. Post-Oak No. 2 x Herbemont.) Growth very strong, not attacked by mildew, endures Texas climate perfectly. Clusters medium, cylindrical, shouldered with short peduncle, compact. Berries a good size larger than Herbemont, globular, dark purple, persistent; skin thin and tough, never cracks; pulp tender, juicy, sprightly, about equal to Herbemont. Ripens some three weeks later than Herbemont and hangs on through October and sells well in the market. It makes a fine white wine. A shy bearer on short arm pruning, but on long arms it bears heavily. Succeeds everywhere in the South. A splendid arbor grape, 14 to 16 feet.

MERICADEL. A hybrid of America with Delaware, produced in 1898. Vine very vigorous and very productive; cluster large, berry medium, purple, very persistent to cluster; skin thin and tough; pulp tender and meaty, of very best quality; fine for table and market. Ripens late, just after Concord.

MUENCH. A hybrid of Neosho (a Missouri Post-Oak grape found by H. Jaeger) and Herbemont. Vine very vigorous and free from all diseases; cluster large to very large; berries above medium, purplish black; pulp very tender and meaty, of fine quality. Sells readily in the market, also fine for table. Well adapted to the South. Ripens very late, after Herbemont. Plant 10 feet, long arm pruning.

PRESLY. (Elvira x Champion.) Growth medium, resists mildew and rot well; clusters ovate, shouldered, compact, with short peduncle; berries small to medium, a shade larger than Delaware, slightly ovate, moderately persistent, at first light red, becoming dark when fully ripe, handsome as Delaware when packed in baskets; skin thin, tough, does not crack;

pulp tender, moderately juicy, fair quality, much better than Champion. Ripe with or before Champion, and a profitable first early market grape. Endures the climate better than Ives, but belongs further north to be fully at home. 8 feet, short arm pruning.

ROMMEL. (Elvira and Triumph.) Growth medium, endures climate better than Concord. Requires short pruning, prolific. Slightly attacked by mildew in wet, sultry seasons, but less so than Delaware. Clusters medium to small, ovate or cylindrical, often shouldered, compact, peduncle short. Berries large, globular, persistent, greenish yellow when fully ripe; skin very thin and delicate, but rarely cracks on the vine; too tender for long shipment; carries well 50 to 100 miles; very profitable for a home market grape, as it is always in demand on account of its most agreeable and fine eating qualities. Pulp melting and perfectly delicious when well ripened, but acid when under-ripe. Fruit rarely or not at all attacked by rot. Ripe just before Concord. Adapted for the North and South. 8 feet.

R. W. MUNSON. (Big Berry Post-Oak x Triumph.) Growth strong. Clusters medium to large, cylindrical, often shouldered, peduncle medium. Berries, when well grown, medium to large, globular, persistent, black without bloom; skin never cracks; pulp tender, juicy and of a very good quality, better than Concord or Beacon. Ripe just before Concord. Gives good satisfaction on market. Bears heavily on long pruning and when pollinated by other erect-stamened varieties flowering at same time, its own pollen not being fully adequate, although its flowers are perfect. Concord and Brilliant good pollinators for it. Ships well, 10 to 12 feet apart. A. M. Bowman, of Salem, Va., after fruiting this variety, pronounces it the best American grape in vine and fruit.

SHERUAH. A close competitor with Cloeta. Parentage—America x R. W. Munson. Cluster very large; berry large, black and handsome; skin thin and tough; pulp tender, juicy, delicious. Vine vigorous and prolific. Uses, table, red wine. Medium late season.

VALHALLAH. A hybrid of Elvira and Brilliant; that is, one-fourth Mustang, one-fourth Elvira, one-fourth Lindley and one-fourth Delaware. A very vigorous drought-enduring, prolific vine, well suited for black lands and will endure Missouri winters. Cluster medium; berry large, bright clear red; thin, tough skin; tender, juicy pulp of quality nearly equal-

ing Brilliant. Hangs on perfectly; never cracks or rots. Ripens about with Concord. 8 to 10 feet. Medium pruning.

WETUMKA. (Elvira x Herbemont x Gold Coin.) Growth medium, healthy, withstands mildew and rot well. Clusters medium to large, ovate, sometimes shouldered; peduncle medium. Berries large, globular, persistent, yellowish green; skin never cracks; pulp juicy, tender, freeing the seeds easily; quality better than Niagara. Ripe late after Concord is off. Bears heavily on short arms. A profitable market and table grape and will make an excellent white wine. 8 feet. Adapted for the South, and same range of Gold Coin.

WAPANUKA. (Rommel x Brilliant.) Growth medium to strong, equal with Concord, less attacked by mildew than Brilliant. Cluster medium to large, cylindrical, shouldered, properly compact; peduncle short to medium. Berries large, five-eighths to seven-eighths inch in diameter, globular, persistent, rich yellowish white translucent; skin very thin and delicate, yet seldom cracks, and handles better than Rommel. Ripe about with Delaware. Far superior to Niagara and Green Mountain. For nearby market, and table grape there is no other variety superior, if equal, to it. Very prolific, requires short pruning. Succeeds well North and South. Undoubtedly one of the best, if not the best, table and eating grape produced in the United States. 8 feet.

WINE KING. A hybrid of Winona and America. Winona is a pure seedling of Norton Virginia, and quite an improve-

ment on that celebrated variety, hence Wine King is a thoroughbred pure American blood of the finest wine properties and large enough in berry and cluster to make a good market grape. It has been sold in the market and gives excellent satisfaction. Produced in 1898. Cluster large, berry medium, black, very persistent. Skin thin, never cracks; pulp tender and juicy, rich and sprightly, intensely red juice. Seeds small. Very vigorous, prolific; free from all diseases. Will succeed from the Gulf to Michigan. Ripens just before Norton Virginia. Supersedes Hopkins and Norton Virginia. 10 to 12 feet. Long arm.

XENIA. Parentage—Delaware, Goethe and Triumph. Clusters medium, compact, very large, white; skin thin and tough; pulp meaty, tender, sprightly, highly flavored, best. Good grower, prolific. Very late, with Fern or just before. 8 feet. Short arm.

XLNTA. (America x R. W. Munson.) Growth strong. Clusters large, cylindrical, shouldered with medium peduncle, fairly compact, unless not well pollenized, then loose; flowers have reflex stamens and perfect-flowering kinds should be planted near, such as Brilliant, Delaware or Gold Coin. Berries medium to large, globular, persistent, black with little bloom; skin thin, never cracks; pulp meaty, tender and of a very agreeable, sprightly quality. Ripe with or later than Concord. Very prolific on medium to long pruning; an excellent market and wine grape. Endures climatic extremes well. 10 feet. Adapted throughout the South and North to the Ohio River.

ORDER OF RIPENING OF THE MUNSON GRADES

Described on pages 15 to 19

This arrangement is given to aid customers in making selections.

The dates given are for Red River region of North Texas, Northern Alabama and South Carolina.

June 25th to July 1st, as early or earlier than Champion: Headlight, Presly.

July 5th to 10th, about with Moore Early: Manito, Brilliant, Wapanuka, Lukfata, Hidalgo.

July 10th to 15th, about with Ives and Delaware: R. W. Munson, Rommel, Beacon, Cloeta, Captain.

July 15th to 25th, about with Concord: Champanel, Amethyst, Sheruah, Mericadel, Hermann Jaeger, Valhalla, Extra.

July 25th to August 5th, about with Triumph and Catawba: Carman, America, Bailey, Xlnta, Atoka, Manson, Wetumka, Gold Coin, Blondin, Wine King, Augustina.

August 5th to 15th, about with Herbemont: Xenia, Husmann, Kiowa, Amerbonte, Muench, Ben Hur.

August 15th to September 1st, later than any old varieties: Albania.

In September, hanging until October: Fern and Marguerite.

EUROPEAN (VINIFERA) VARIETIES

Plant 8 feet apart in rows, with rows 9 feet apart, requiring 605 vines per acre

Read Fungi and Fungicides, \$1.00.

PRICES

	Each	Per 12	Per 100
Packed on cars at Denison.....	\$0 10	\$1 00	\$7 00
Packed and prepaid to your depot.....	12	1 15	8 00

Prepaid prices are for orders of not less than \$5, and to the places named in paragraph 17, page 2, which please read fully.

These succeed in far South and West Texas, especially with irrigation, equally as well as in California, but fail entirely in Central and East Texas, owing to phylloxera, rot, mildew, etc.; but by grafting on resistant roots and spraying with Bordeaux mixture, succeed in all but extreme North Texas, and with winter protection can be fruited there.

We have in our vineyard, on sandy soil, the following list, growing and fruiting successfully, selected from among a large number of the finest French, Spanish, Hungarian, Italian, Sicilian and Persian varieties. Some are of recent importation. We have no grafted vines for sale, but can supply cuttings of the best resistant stocks for the South and California by mail at \$2 per 100. We also offer rooted graft stocks, which see below.

CALABRIAN. (Italian.) Of muscat type; vigorous, healthy; cluster very large, compound; berry large, roundish, yellowish, meaty, juicy, fine; table, market, raisin.

FEHER SZAGOS. (Hungarian.) Very vigorous, healthy; Persian type; cluster very large; berry cylindrical, ellipsoidal, curved like Cornichon; white, meaty, very fine; table, market, raisin.

FLAME TOKAY. A very vigorous prolific; large cluster and very large berry; bright pink; very meaty and firm. Fine quality when fully ripe. A famous commercial variety for long shipments.

GRIESA (DE PIEMONTE). (Italian.) Vigorous, healthy; cluster very large, compound; berry large, purplish black, meaty, juicy, very fine; table, market, white wine.

MALAGA. (Spanish.) Vigorous and

healthy; cluster very large; berry large, meaty, ovate, white; table, market, raisin.

PERLE OF ANVERS. Large compound clusters; very large yellowish white berries of highest quality. Late.

QUAGLIANO. (Sicilian.) Vigorous; prolific; cluster large; berry large, round, grayish purple, meaty, juicy, fine, late; table, market.

SAUVIGNON JAUNE. (French.) Vigorous, healthy; cluster large, compact; berry medium, yellow, meaty, tender, early; table, white wine.

SWEETWATER. Very early; large cluster; medium berry, beautiful pearly yellowish white. Very prolific. Of good quality.

VERDELHO. (French.) Vigorous, healthy; cluster large; berry large, ovate, yellowish, meaty, juicy; table, market.

RESISTANT GRAFT STOCKS FOR GRAPES

To meet the demand of some of our customers for good Stocks, resistant to phylloxera, on which to graft more delicate varieties of Grapes, especially the Vinfeferas, which thereby can be made very successful in many parts of the South, especially in Southwestern Texas, we have grown a small stock of the most approved well-tested species and varieties, which we offer at the following prices:

PRICES

	Each	Per 12	Per 100	Per 1000
Packed f. o. b. cars at Denison.....	\$0 10	\$0 75	\$5 00	\$25 00
Packed and prepaid to your depot.....	11	1 00	6 00	30 00

VITIS DOANIANA. From the Panhandle of Texas. Several named varieties.

VITIS LONGII. Of the Red River region of North Texas. Variety Australis.

VALENCIA. Most vigorous, easy rooting, very resistant variety of Vitis Bourquinana or "Southern Aestivals." A better stock than LeNoir.

VITIS CHAMPINI. Adapted for very hot, dry climate and very limy soils, although does well in any soil. Perfectly resistant and free from all diseases. Exceedingly deep-rooting. Can supply plants in thousand lots if wanted. Can also supply cuttings of this species at \$10 per 1,000 for 12-inch (three or more eyes) cuttings.

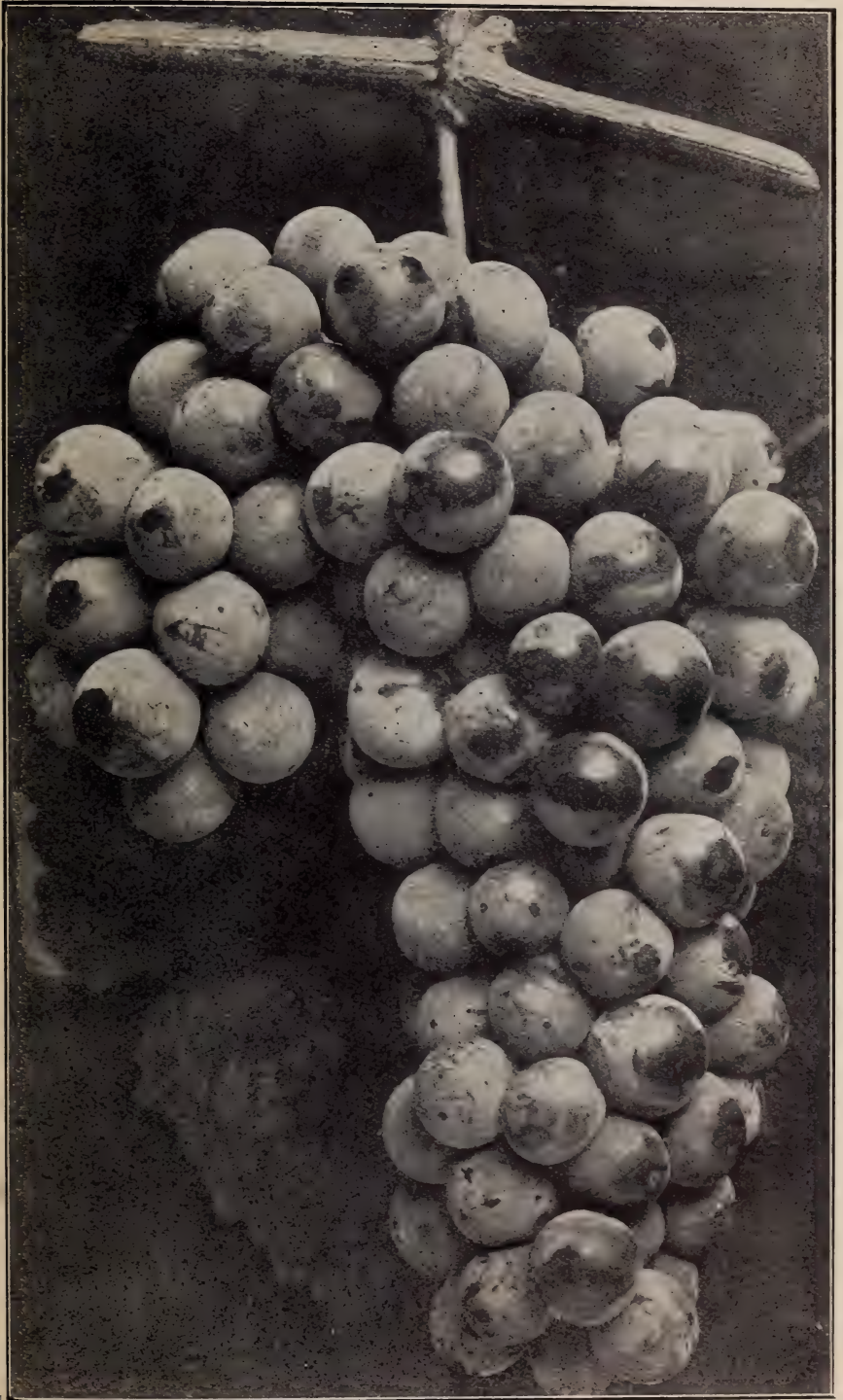
All are especially adapted to the Southern States and California. The **Doaniana** is especially recommended for limy and black soils, while it does well in any soil. The **Longii** is better adapted to sandy soils. Having been engaged for years in supplying vineyardists in France and California with resistant graft stocks for various soils, we understand this matter well, and have spent much time in selecting and producing the above varieties, which we recommend with great confidence. They all grow well from cuttings, and a few vines planted out will soon produce cuttings enough to supply any demand. We produce these only for purpose of introduction, and don't propose to go largely into the graft stock business again.

We have growing in same soil, with same culture, side by side with the above named graft stocks, the most celebrated graft stocks selected and offered for sale by French vineyardists, namely: Riparia Gloire de Montpellier, Riparia Ramon, Riparia x Rupestris 101-14, Riparia x Rupestris 3309, Rupestris du Lot or St. George, Rupestris Ganzin, Rupestris Martin and many others. In every case the varieties we offer are more vigorous, root equally well or better, are fully resistant to phylloxera, and take and carry the graft well, so that there may be no hesitancy in using these stocks in the soils and situations for which they are recommended.

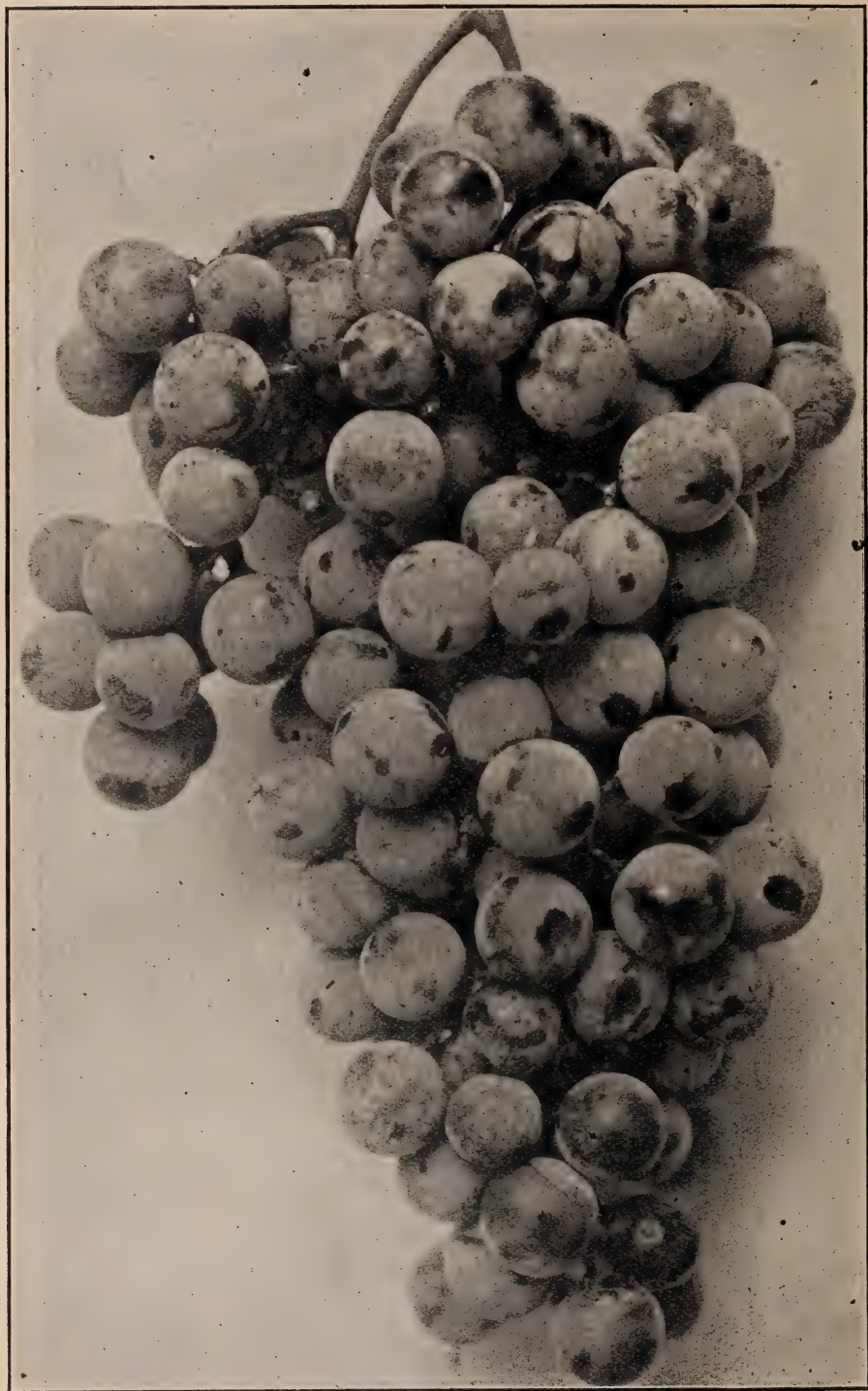
DOMEGRANATE

SPANISH RUBY. This is a fruiting variety, and probably the finest in cultivation. Fruit 2 to 3 inches in diameter, containing within the rind numerous sprightly, juicy berries. Succeeds everywhere within 300 miles of the Gulf.

	Each	Per 12
Packed f. o. b. cars at Denison.....	\$0 40	\$3 50
Prepaid	50	4 00

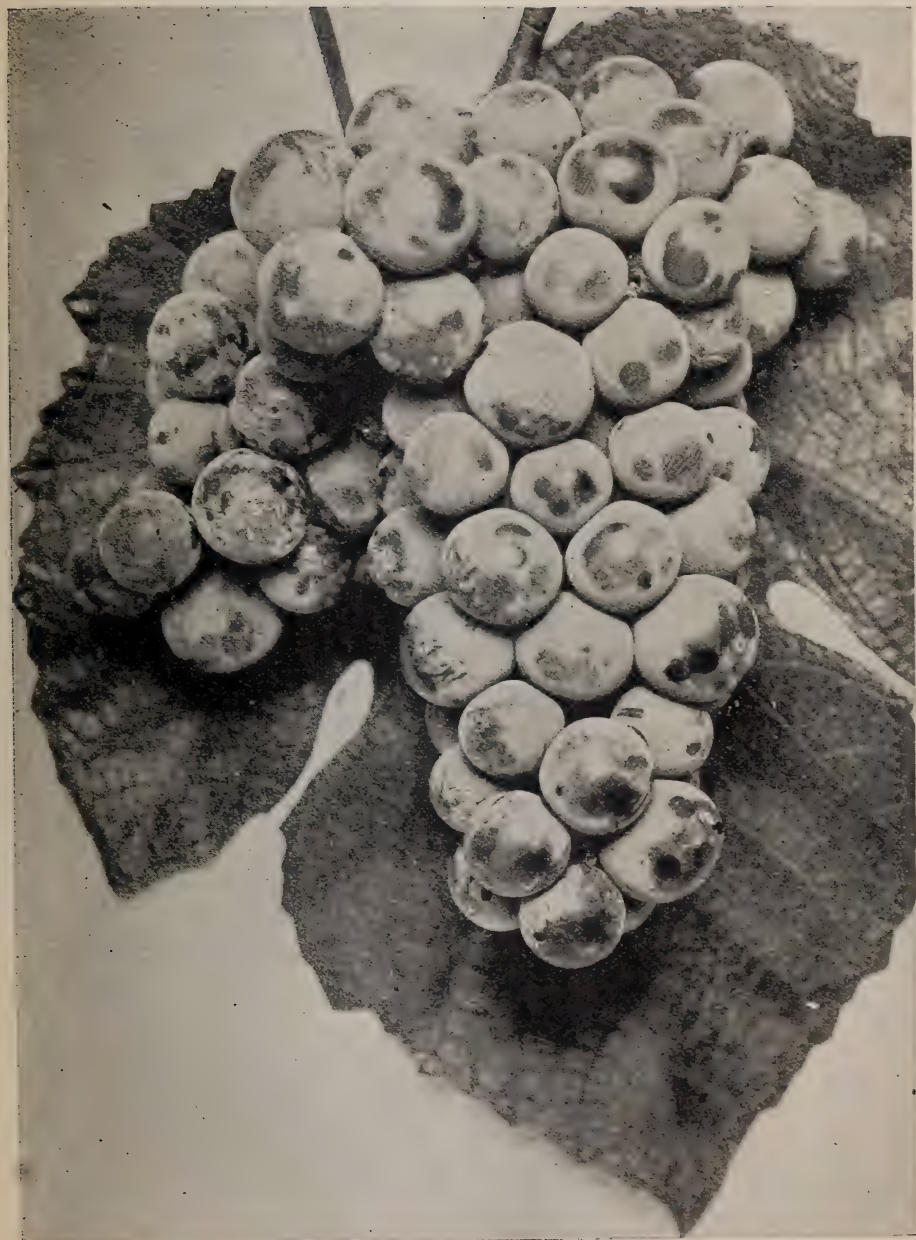


BLONDIN—See page 16



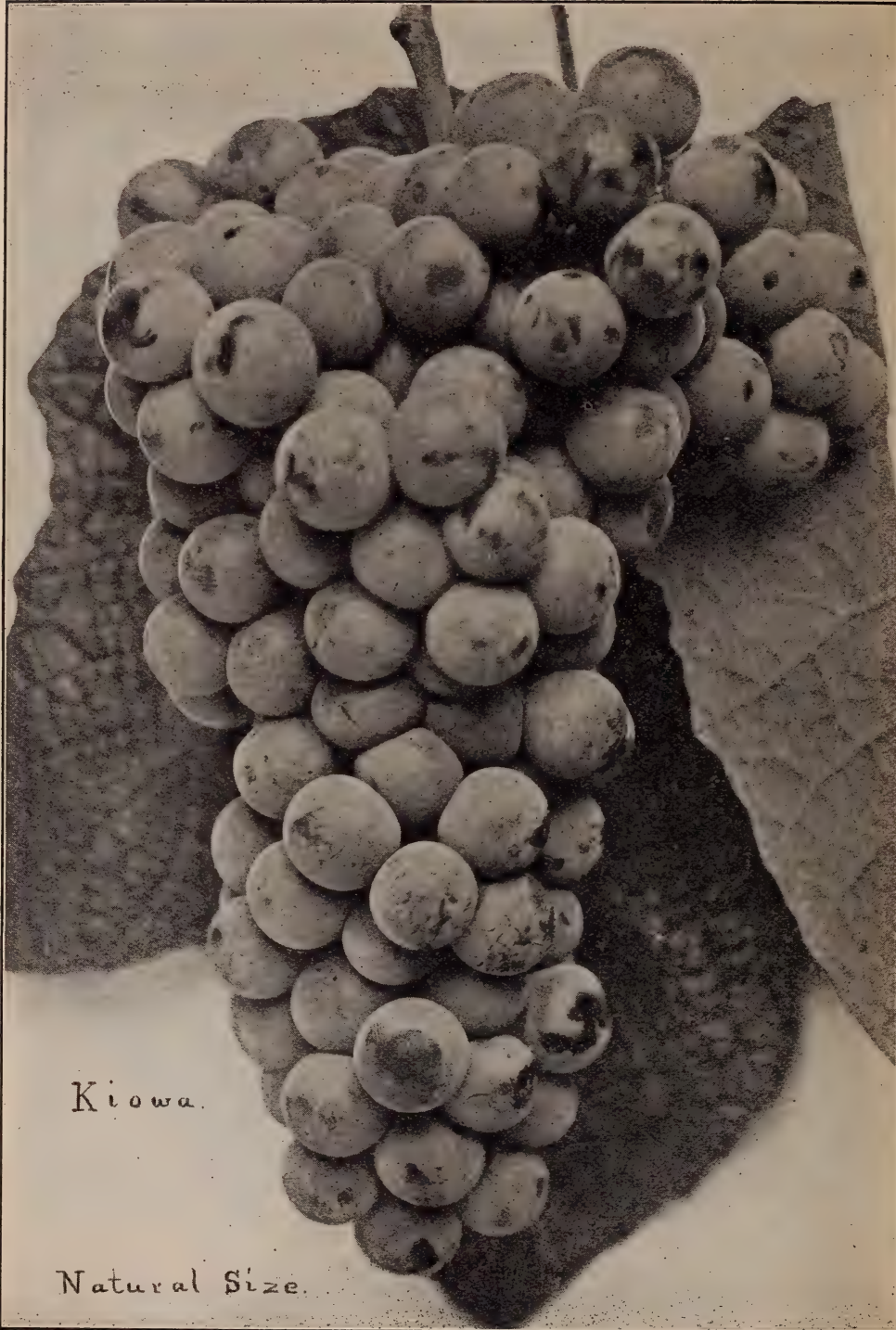
FERN MUNSON—See page 16

Hybrid of Texas Post-Oak Grape with Catawba. Ripe at Denison, Texas, all through September.
Black. Best quality.



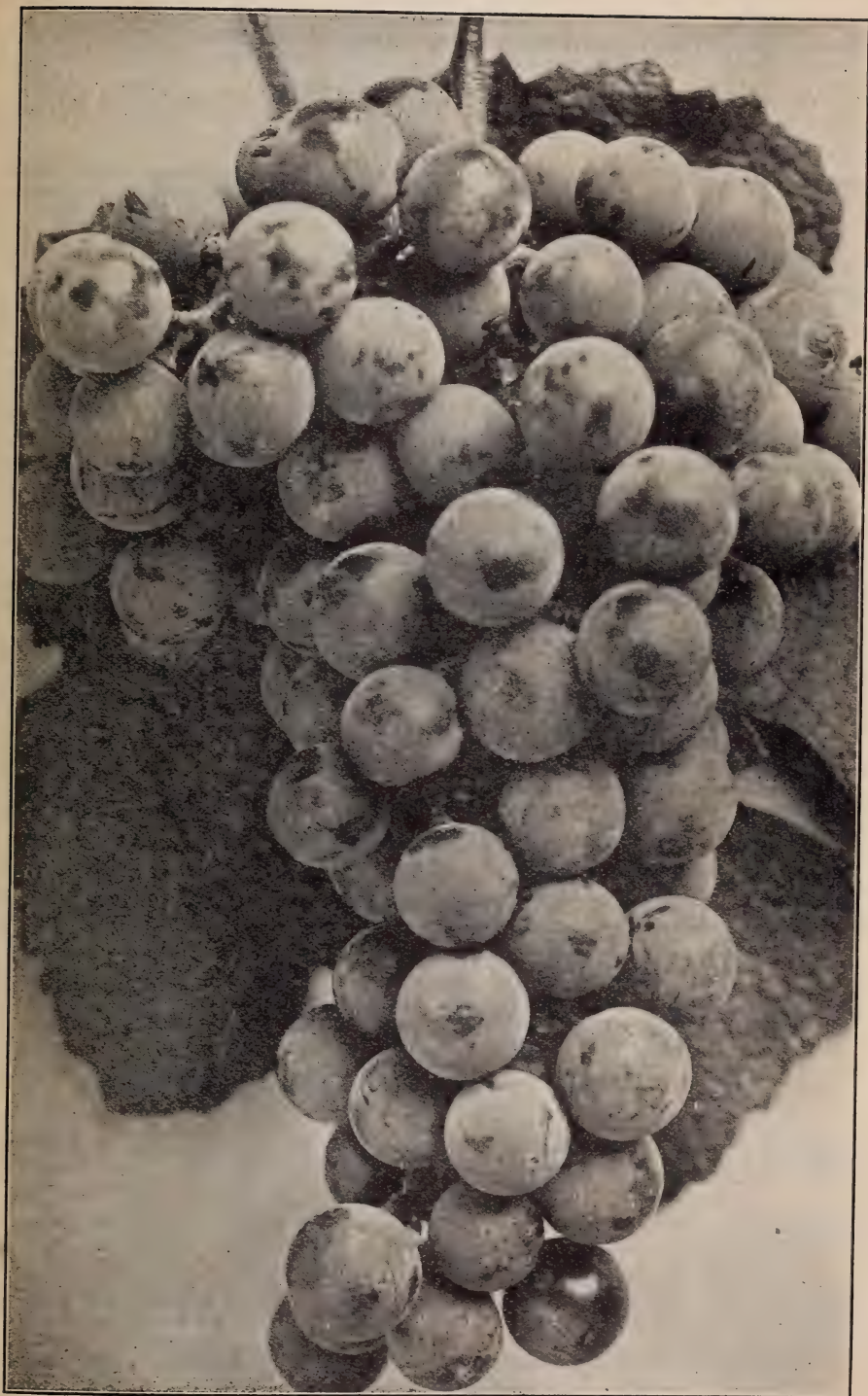
HEADLIGHT—See page 17

First variety of Grapes to be exhibited from Texas at World's Fair, St. Louis, 1904.
Exhibit made June 26, 1904.



Kiowa.

Natural Size.



R. W. MUNSON—See page 18

Combination of Texas Post-Oak Grape with Concord and Muscat. Ripens just before Concord, and of much better quality. Black.

HEDGING PLANTS

PRICES

DESCRIPTION	F. O. B. Denison			Prepaid, if in orders of not less than \$5.00		
	Each	Doz.	100	Each	Doz.	100
CALIFORNIA PRIVET. One of the most popular; used for screening or hedging purposes around yards and lawns; also splendid for single specimens. Nearly evergreen.						
1 year, 2 feet -----	\$0 10	\$0 75	\$4 00	\$0 15	\$1 00	\$5 00
2 years, 3 to 4 feet -----	15	1 25	6 00	20	1 50	8 00
AMOUR PRIVET: A hardier species and more truly evergreen than the California. Makes a very dense, handsome hedge and stands shearing remarkably well. Blooms beautiful spikes of white flowers.						
1 year, 2 feet -----	10	1 00	6 00	15	1 40	7 00
2 years, 3 feet -----	15	1 50	8 00	20	2 00	10 00
HARDY ORANGE. (Citrus Trifoliata.) This has proven by test here one of the most beautiful and efficient hedges known. In three years will turn stock. Does not sprout. As tap roots go straight down, does not exhaust soil any great distance away. Has proven perfectly hardy at 15° below zero. In spring is full of beautiful white flowers and full of yellow fruit in fall. It is easily transplanted. 2 years, 1 to 2 feet -----	10	75	4 00	15	1 00	5 50

SHADE AND ORNAMENTAL TREES

Your chief happiness lies in the growing ornaments surrounding your home. Such ornaments refine and purify. Neglect them not.

Plant 20 to 25 feet on sidewalks; 25 to 30 feet apart in yards and parks.

Read Waugh's Practical Landscape Gardening. Price, 50c.

PRICES—Unless Otherwise Noted

	4 to 6 feet			6 to 8 feet		
	Each	12	100	Each	12	100
Packed f. o. b. cars at Denison -----	\$0 15	\$1 25	\$10 00	\$0 20	\$1 75	\$15 00
Packed and prepaid to your depot -----	20	1 75	12 00	25	3 00	20 00
	8 to 10 feet			10 to 14 feet		
	Each	12	100	Each	12	100
Packed f. o. b. cars at Denison -----	\$0 25	\$2 50	\$20 00	\$0 35	\$4 00	\$30 00
Packed and prepaid to your depot -----	35	4 00	27 00	50	5 50	40 00

AMERICAN ELM. Large-leaf elm, healthy, quick growth, long-lived. A desirable shade tree in every way. Sizes from 4 to 12 feet.

BLACK LOCUST. (Sweet Locust.) A splendid dry climate shade, ornamental or grove tree. Every prairie farm should have a grove of this for shade and fence posts. 4 to 12 feet.

DOGWOOD. Large, white flowering. This most beautiful large shrub or small tree, native of the timbered sections of Eastern Texas, has remained greatly neglected by those who decorate their grounds with trees and shrubs. The cause of this is probably the difficulty of transplanting the trees direct from the woods. The nursery-grown trees are

readily transplanted. There are few trees more striking and lovely than the Dogwood in spring with its large profuse snow-white flowers, and its bright scarlet berries in fall and winter, besides the tree is very pretty as a spreading shade tree. Sizes 2 to 5 feet.

MAPLE—Soft or Silver. The best; a favorite; quick, handsome, beautiful scarlet in fall. Have a fine stock. Can make low prices on large orders. All sizes up to 14 feet.

SYCAMORE. Quick, hardy, long-lived, no disease. 4 to 14 feet.

THURROW WILLOW. A beautiful weeping tree, healthy, quick growth. Will succeed well on uplands. Price, 25c

each, \$2.50 per 12, f. o. b.; 30c each, \$3 per 12, prepaid.

VITUS AGNUS-CASTUS INCISA (Mint Tree). A remarkable perpetual-flowering small tree; hardy throughout the South, producing innumerable spikes of rich blue, highly-scented, mint-like flowers, much liked by bees. The leaves are divided like a hand, into five to seven finger-like leaflets. 50c each, prepaid; 40c, f. o. b.

YELLOW POPLAR (Tulip Tree). 4 to 8 feet.

MALE RUSSIAN MULBERRY. Non-fruited. An excellent round-headed shade tree, well adapted for street planting. Sizes 3 to 10 feet.

FLOWERING SHRUBS

PRICES

Prepaid prices throughout the catalogue are scaled for orders of \$5 or more.
See page 2 of body of catalogue.

DESCRIPTION	Packed f. o. b. Denison		Packed and prepaid	
	Each	Doz.	Each	Doz.
ALTHEA, DOUBLE WHITE. (Rose of Sharon.) Upright, large, double flowers; blooms in midsummer.....	\$0 25	\$2 50	\$0 30	\$3 00
ALMOND, DOUBLE FLOWERING. Pink; low, roundish, covered with flowers early in season.....	25	2 50	30	3 00
CRAPE-MYRTLE. Imperial Pink and Crimson; splendid summer bloomers, grow to be large shrubs; hardy as far north as Kansas.....	25	2 25	30	2 75
CRAPE-MYRTLE. White; a little more spreading in habit than the pink or crimson; fine summer bloomer.....	35	4 00	40	4 50
DEUTZIA CRENATA. Upright shrub; easy to grow and transplant; double pink, blooms early.....	15	1 50	20	1 75
DEUTZIA WATSONII. (Syn. Pride of Rochester.) Very double, pure white, profuse; finest of all deutzias; upright growth.....	15	1 50	20	1 75
BUSH HONEYSUCKLE. Upright after second year; very fragrant; blooms early in February, the first among out-door shrubs. Bush remains bright green all summer.....	15	1 50	20	1 80
FLOWERING WILLOW, so-called (<i>Chilopsis Saligna</i>). A fine tree-like shrub, blooming profusely from spring on all through the summer, even in the hottest weather. Flowers tubular, 1 to 2 inches long; very desirable for large yards. Have white, purple and pink.....	25	2 50	30	3 00
LILAC. Varieties: DeMorley, Prince Notger, Rothinger; a large cluster of small flowerlets. Quite fragrant.....	20	2 00	25	2 25
PHILADELPHUS. (Syringa, Mock Orange of the North.) Blooms early, very pretty pure white flowers, profuse, sweet; upright shrub.....	15	1 50	20	1 80
PYRUS JAPONICA. (Scarlet or Japan Quince, Devil's Fire.) A gorgeous sight of fiery red flowers very early in spring; in full bloom before leaves come out. Fine for single specimen, screen or hedge.....	15	1 50	20	1 80
POMEGRANATE. Double Scarlet and Double Salmon; large waxy-like, beautiful flower. Half hardy in North Texas; large in Texas south of Tyler, Hempstead and Austin.....	20	2 00	25	2 50
SPIREA BILLARDII. Upright shrub; rose-pink colored spikes; very pretty and effective in bouquets; profuse, blooms most of summer.....	15	1 50	20	1 75
SPIREA REEVESII. (Bridal Wreath.) Large round clusters of pure white double flowers that nearly cover the plant; blooms in early spring. More desirable than the Snowball shrub.....	25	2 25	30	2 75

PERENNIALS—For Bedding PRICES

	Each	Per 12
Packed f. o. b.....	\$0 10	\$1 00
Packed and prepaid.....	12	1 25

CANNAS

(Plant in April)

PRESIDENT McKINLEY. Dwarf. Fiery deep crimson scarlet.

BEAUTE POITEVINE. Medium; bright crimson scarlet.

SECRETARY CHEBANNE. Medium. Pinkish salmon.

ROBERT CHRISTIE. Above medium. Reddish salmon, somewhat penciled.

Mlle. BERAT. Clear pinkish crimson. Tall, strong grower.

COUNT DE BOUCHARD. Tall, bright yellow lemon, blotched on inside crimson.

J. D. CABOS. Tall, purple foliage. Salmon.

YELLOW CROZY. Light yellow lemon, slightly specked in throat.

(Also can supply 12 other varieties.)

IRIS

The following list of English and German Iris are the very best out of a large list we have tested.

CHALCEDONY. Outer petals purplish violet, streaked; inner petals lavender-pale purple; medium size flowers 4 to 5 inches. Late, profuse, good grower.

L'ELEGANTE. Outer petals dark violet, inner petals pale lavender, blotched

with violet; large, 5 to 6 inches. Very vigorous, profuse, medium to late. Very attractive, showy.

LEONIDAS. Outer petals dark violet, inner petals violet. Darkest of all. Fair grower, late.

MARJOLIN. Outer petals streaked maroon, inner petals clear bright lemon yellow. Very late, good grower, profuse. Very showy, valuable.

TRIFLORA. Outer petals violet, inner petals lavender; large; very vigorous, profuse.

THYSPE. Outer petals purplish, inner petals pale purplish yellow; medium size; vigorous.

VICTOR LE NOIR. Outer petals velvety violet, inner petals white; large. Very attractive, showy; vigorous; late.

VICTORIA. Outer petals white, bordered with lavender penciling. Strong grower; earliest of all.

OTHER PERENNIALS

ZEBRA GRASS. The prettiest and most enduring of all grasses. Cross-striped with thin lines of white. Makes soft plumes in fall.

PAMPAS GRASS. A strong growing grass, producing fine white plumes for winter decoration.

ORNAMENTAL VINES PRICES

	Each	Per 12	Per 100
Packed and f. o. b. Denison.....	\$0 20	\$2 25	\$15 00
Packed and prepaid.....	25	2 50	17 00

CLIMBING ROSES. See list under Roses.

HONEYSUCKLES. Monthly Sweet—buff, profuse, perpetual bloomer.

YELLOW TRUMPET. Yellow, hardy, good climber.

HALLS. White in opening, becoming buff. Very profuse, perpetual from early spring until fall; evergreen.

TRUMPET CREEPER. A stout,

woody, handsome vine, with compound leaves and perpetual, waxy, large, tubular orange flowers in clusters; fine to ornament outhouses, tree bodies, etc., as it climbs by aerial roots.

WISTARIA. American purple. Hardy; fine for arbors, porch screens, etc. Profuse in early spring.

WISTARIA—White. Strong twining vine; blooms in drooping spikes, making a very beautiful mate for the purple.

EVERGREENS

PRICES

Prepaid prices are for orders of \$5 or more. See page 2. Have only the sizes mentioned for each variety.

DESCRIPTION	F. O. B. Denison			Packed and Prepaid		
	Each	Doz.	100	Each	Doz.	100
CONE-BEARING CLASS						
ARBORVITAE. Golden Compacta, round, beautiful in form and color.						
6 to 12 inches.....	\$0 15	\$1 50	\$10 00	\$0 20	\$1 80	\$13 00
1 to 2 feet.....	25	2 50	20 00	35	3 00	25 00
2 to 3 feet.....	40	4 00	30 00	50	5 00	35 00
ARBORVITAE. Golden Compacta, upright or pyramidal. Another beautiful form.						
6 to 12 inches.....	15	1 50	10 00	20	1 80	13 00
1 to 2 feet.....	25	2 50	20 00	35	3 00	25 00
2 to 3 feet.....	40	4 00	30 00	50	5 00	35 00
ARBORVITAE. Chinese, dark green, more rapid grower than the Golden.						
6 to 12 inches.....	10	1 00	8 00	15	1 30	11 00
1 to 2 feet.....	20	1 75	12 00	25	2 00	16 00
2 to 3 feet.....	35	3 00	20 00	40	4 00	25 00
AUSTRIAN PINE. Most beautiful of all pines for ornamental planting, perfectly adapted to the climate. Makes a fine appearing tree.						
2 to 3 feet.....	40	4 00	35 00	50	5 00	40 00
CEDRUS DEODORA. From the Himalayan Mountains, bluish green, branches spreading and feathery. Very successful and desirable.						
2 to 3 feet.....	40	4 00	75	8 00
JUNIPER. Trailing Tamarix-leaved, low, spreading, very hardy, fine for single specimen.						
1 foot.....	25	2 50	30	3 00
JUNIPER, RED CEDAR. One of our best native evergreens. Of rapid growth.						
6 to 12 inches.....	15	1 50	12 00	20	2 00	15 00
1 to 2 feet.....	25	2 25	16 00	30	2 75	20 00
2 to 3 feet.....	40	3 50	25 00	75	5 00	35 00
ROSEDALE HYBRID. A true hybrid of the Retinospora and the Golden Arborvitae. Resembles the Golden Arborvitae in shape and the Retinospora in color and texture, except that it has a soft touch. One of the most satisfactory evergreens.						
6 to 12 inches.....	15	1 50	12 00	20	2 00	15 00
1 to 2 feet.....	25	2 25	18 00	30	3 00	22 00
2 to 3 feet, choice.....	40	4 00	30 00	50	5 00	35 00
BROAD-LEAVED CLASS						
EVERGREEN TREE BOX. A splendid, perfectly hardy evergreen shrub; excellent for cemetery planting and for ornamental screens and hedges. Valuable to plant along narrow walks and in small beds, as it is a very slow grower.						
6 inches to 1 foot.....	15	1 50	10 00	20	1 75	12 00
EUONYMUS JAPONICA. Resembles the Tree Box in appearance, only grows faster and has larger leaves. Suitable for lining walks, planting in clumps, or as single specimens. Have two varieties: The solid green and the variegated white and green leaf.						
6 inches to 1 foot.....	15	1 25	10 00	20	1 50	12 00
MAGNOLIA GRANDIFLORA. The grandest of all evergreens and flowering trees. Has large, glossy, bright green leaves. Succeeds throughout Texas and Indian Territory, as well as in other Southern states. By clipping off all but a few of the tip leaves when taken up, and treated as in our handling, they are readily transplanted. We do not clip the leaves off unless so instructed.						
6 to 12 inches.....	15	1 50	12 00	20	2 00	15 00
1 to 2 feet.....	25	2 50	18 00	30	3 00	20 00
2 to 3 feet.....	40	4 00	30 00	50	5 00	35 00
3 to 4 feet.....	60	6 00	45 00	75	8 00	55 00

ROSES

Read Henderson's Practical Floriculture. Price, \$1.50

PRICES—Except Varieties otherwise noted

	Each	Per 12
Packed and f. o. b. Denison.....	\$0 20	\$2 00
Packed and prepaid to your depot.....	25	2 50

STRONG, OPEN GROUND, TWO-YEAR PLANTS

The following list includes the most superb varieties, both old and new. The plants are thrifty and vigorous, growing in open ground.

All these have been in bloom throughout the season, and we know them to be strictly pure and true to name and description. Our roses always give the best of satisfaction.

EVERBLOOMING WHITE AND BLUSH

BRIDE. Strong, healthy, large, double, fine bud; delicate carmine blush.

CLOTHILDE SOUPERT. Vigorous, profuse bloomer, with medium, very full, white flowers with pink center.

THE QUEEN. Pure snow-white; sweet and fragrant; petals are thick; makes fine buds on long stems; good grower.

KAISERIN AUGUSTA VICTORIA. Pure white, fragrant; fine buds and flowers on long stems; profuse; strong grower.

WHITE COCHET. Identical in shape and habit with that splendid pink rose, Maman Cochet, except the color is white, changing to blush.

BUFF AND YELLOW

PERLE DES JARDINS. A fine, rich yellow. Flower very double and fragrant. Pretty bud.

ETOILE DE LYON. Rich, yellow, full, fragrant, pretty; profuse all summer, during hottest weather; good grower.

PINK

BRIDESMAID. Sport of the Catherine Mermet; bright pink, beautiful bud; free bloomer.

CATHERINE MERMET. Vigorous, large, full; bright flesh color; very sweet, long, handsome bud.

LA FRANCE. Strong, upright, very large, full; delicate pink, sweet, profuse.

DUCHESS OF ALBANY. Habit of plant, shape and size of flower similar to that of La France, but more profuse and of deeper pink.

FRANCESKA KRUGER. Fine rich pink, creamy towards center; slightly penciled with deeper pink on outer petals. Healthy plant, great bloomer.

MAMAN COCHET. Rose or pink, shaded with salmon; profuse, fine bud and flower; strong grower; a very superior rose; one of the best for out-door planting in Texas, also excellent for cut flowers.

SCARLET AND CRIMSON

AMERICAN BEAUTY. Crimson, fine, 50 cents each, \$5.50 per dozen, f. o. b.; 55 cents each, \$5.75 per dozen, prepaid.

METEOR. Large; clear, rich, dark crimson; profuse; strong grower, full.

PIERRE GUILLOT. A rival of American Beauty in beautiful crimson flowers, and a freer bloomer.

HARDY CLIMBERS

TENNESSEE BELLE. Good climber; medium, full; blush; in clusters; profuse in spring.

CRIMSON RAMBLER. One of the finest climbers; magnificent trusses of deep crimson flowers; makes a fine show as a climber and profuse bloomer.

CLIMBING PAUL NEYRON. Large flower, pink; constant. A superb variety, a fine companion for the next variety.

CLIMBING AUGUSTA VICTORIA. Most beautiful white bud, and flower equaling in beauty the bush Kaiserine Augusta Victoria; constant.

CLIMBING METEOR. A deep, double crimson climber. Constant in flower.

... INDEX ...

	Page
Horticultural Information.....	2d cover
A Small Library of the most Useful Horticultural Books.....	2d cover
Terms, Conditions, Shipping, etc.....	1-2
Prices, How to Use Our Scale.....	2
Apples	3
Crab Apples	4
Pears	4
Quinces	4
Apricots	5
Cherries	5
Peaches	5-7
Plums	9-10
Mulberries	10
Blackberries	10
Dewberries	11
Raspberries	11
Strawberries	11
Service Berry	11
Grapes—	
Standard Varieties	13
Munson Varieties	14 to 19
Southern Muscadines	12
Vinifera Varieties	19-20
New Creations in American Grapes	14 to 19
A New Departure in Grape Hybrids, La Salle and San Jacinto	12
Resistant Graft Stock for Grapes	20
Japanese Persimmons	12
American Honey Persimmons.....	12
Pomegranate	20
Hedging Plants	26
Shade and Ornamental Trees	26
Flowering Shrubs	27
Ornamental Vines	28
Roses	30
Perennials	28
Evergreens—Cone-bearing and Broad-leaved	29
Order Sheet	31-32

Pot Plants, Cut Flowers, Floral Designs

The Munson Green Houses, Will B. Munson, Proprietor, can supply in their proper season such plants as

Asparagus Spregerii,
Asparagus Plumosa,
Begonias,
Carnations,
Coleus,
Cannas,
Chrysanthemums,
Fuchsia.

A list of such plants mailed free.

Ferns in Assortment,
Geraniums,
Heliotropes,
Ageratum,
Pansy Plants,
Poinsettias,
Palms,
Tritomas, Etc.

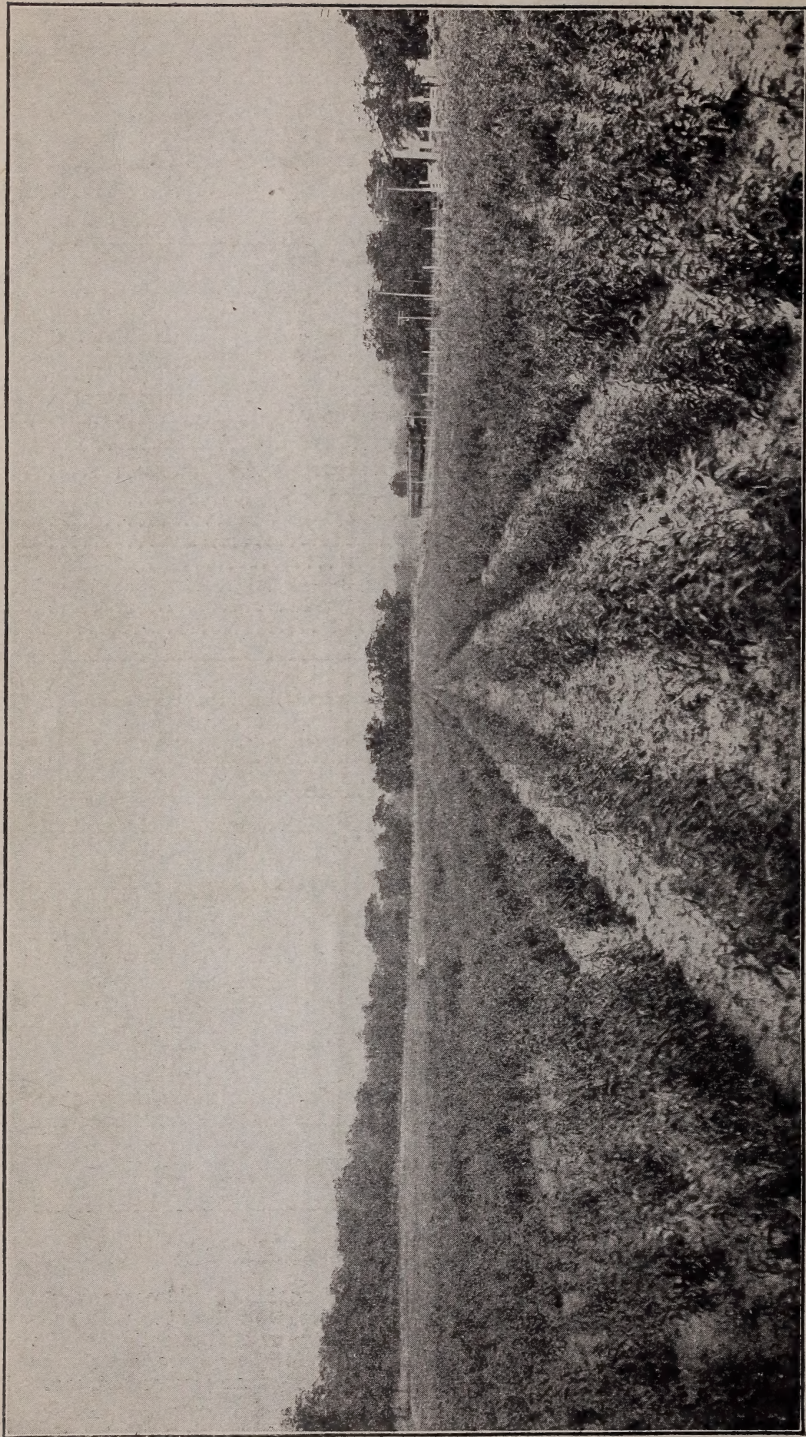
Can also supply Cut Flowers, Funeral and other floral designs at any time. Prices of designs from \$1.00 to \$30.00, according to pattern, size, etc. Phone and mail orders will have prompt attention. ADDRESS

WILL B. MUNSON, Denison, Texas

Addresses of Home Improvers Paid for

If you will send us with your order the names and postoffice addresses of six of your neighbors who own and are improving their homes, we will put in with your order, if as much as \$2 or over, articles from our list, of your own selection, to the amount of 25 cents. For 12 such addresses, when order is \$3 or more, articles to the amount of 50 cents. This order does not extend to more than twelve addresses from one customer. ADDRESS

T. V. MUNSON & SON, Denison, Texas



A SAMPLE BLOCK IN THE MUNSON NURSERIES. BLOCK OF 150,000 PEACH TREES, PHOTOGRAPHED IN MAY, 1904
(H. & T. C. RY PASSENGER TRAIN IN DISTANCE)

No San Jose Scale has ever been known in our grounds or in our section of country, and, knowing well the Scale at sight, we hereby certify that all our stock is entirely free from this pernicious insect. There is required in Texas no inspection of nursery stock, hence we give this certificate, and guarantee our stock free from Scale.

T. V. MUNSON & SON.