

## **Historic, Archive Document**

Do not assume content reflects current scientific knowledge, policies, or practices.



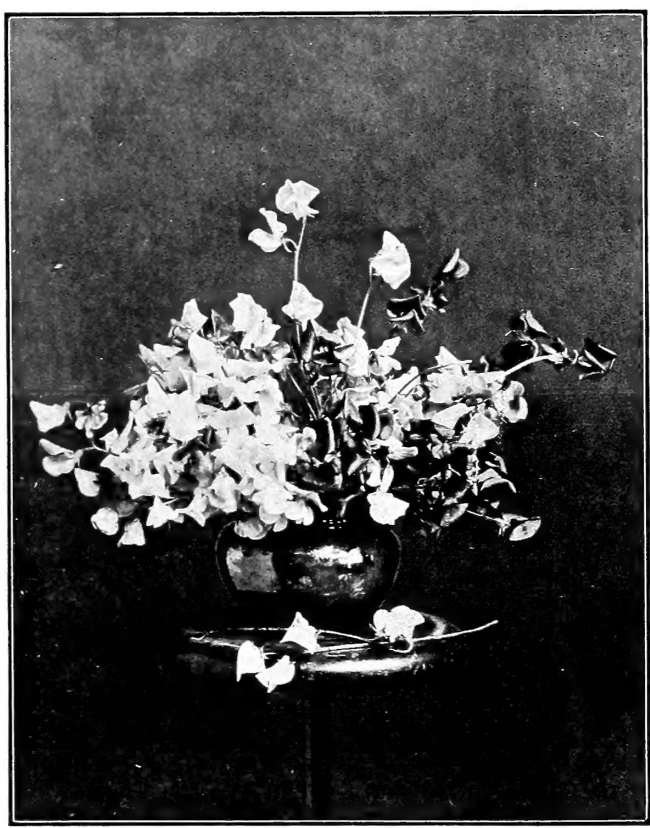
Mot 62,67

U.S. DEPT. OF AGRICULTURE  
LIBRARY  
D. C.

THE

WALTER MOTT  
SEED AND BULB  
COMPANY

JAMESTOWN  
N.Y.



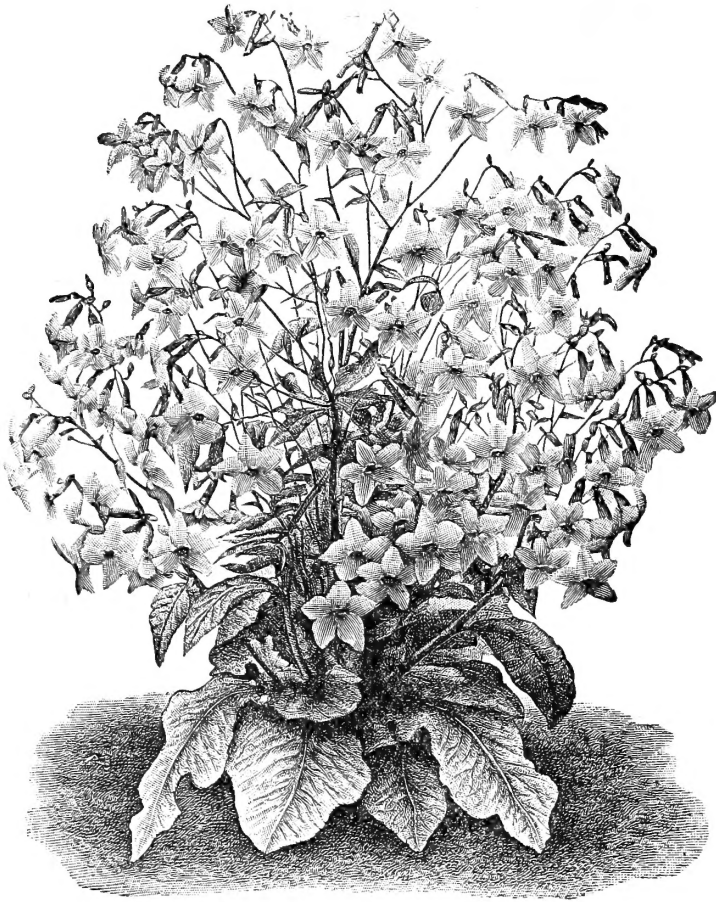
SPRING  
1905

CATALOGUE OF HIGH GRADE SEEDS.

# Grand Flower Seed Novelty for 1905

## NICOTIANA SANDERAE

(*Carmine Tuberose-flowered Tobacco*)



**NICOTIANA SANDERAE**

Plant Showing Bushy Habit and Floriferousness Reproduced from a Photo.

This beautiful hybrid *Nicotiana* was raised in England and has been exhibited this season at the Temple show and elsewhere and in every case has been spoken of as the most strikingly beautiful plants of the year. The originators describe it as forming bushy, much branched plants 2 feet high, laden with flowers from base to summit—literally ablaze with most handsome carmine-red fragrant blossoms, thousands of which are produced on a single plant. In form the flower resembles *Nicotiana Affinis*, but having a short stout tube, and unlike that variety does not close up in the day time but remains open all day, the fragrance, while not so powerful as *Nicotiana Affinis*, is decidedly delicious.

It is as easy to grow as a *Petunia*. If started indoors in early spring and planted out in May it gives a continuous display of blooms all summer and autumn. It can

also be sown in the open ground when the weather becomes warm. Our own representative has seen the plants this summer and speaks very highly of this valuable novelty which is undoubtedly destined for universal use. Per pkt., 25 cts.

---

## A Beautiful Hardy Perennial

Easily Grown from Seed

# STOKESIA CYANEA

(*Corn Flower Aster*)

This beautiful native hardy plant is not yet quite so well known as it should and deserves to be. No garden large or small, should be without it. As a single specimen or group in the hardy border it makes for itself a place that cannot be filled by any other hardy plant, while for beds or masses of any size it ranks with the *Phlox*, *Pæony* and *Iris*. It is of the easiest culture, blooming the first year from seed, and succeeding in any open sunny position. The plants grow from 18 to 24 inches high and begin flowering in July, continuing without interruption till late in October to produce their handsome lavender blue centauria-like blossoms which are highly valuable for cutting, supplying a shade of color not overly plentiful at any season of the year. Per pkt., 10 cts.

# MOTT'S CATALOG

*OF*

# High Grade Seeds, Bulbs, Etc.

FOR GARDEN AND FARM



We take pleasure in presenting this book on our fourth business anniversary, taking encouragement from the fact that our business has advanced] beyond our most sanguine expectations.

It will be our earnest effort to continue as in the past, to use the utmost care, both in selection of stocks and execution of commands.

At the same time it will be understood that we do not hold ourselves responsible for any disappointments that may arise from failure of any stocks to be true to name, that do not mature or fail to germinate.

We pay charges on all orders amounting to Five Dollars, and in any case add liberal extras to partly cover cost of transportation.

Please use our order sheet, giving name and address plainly.

Always at your service.

Respectfully,

WALTER MOTT SEED & BULB CO.

SPRING—1905

Jamestown, New York

108-110 East Second Street

# New Vegetables

## Bean "Golden Carmine"

Of this splendid introduction the introducer reports as follows:

"In this new strain we have a wonderfully robust grower, a week to ten days earlier than Worcester Horticultural Pole. In comparison, the pods are equally as large, stringless, bright golden color when very young. As the pods approach full size, they are mottled and streaked with an unusually bright carmine color on the bright golden, which gives the pods (when ready for market) a strikingly beautiful and attractive appearance. This, together with its productiveness, will make it the most desirable strain of this well known and popular bean.

"We are much pleased to report the crop we are growing on our farm this year and other places where we are having it grown, as far as we are able to learn, are free from rust, which is an exception this season to wax beans of this class." (See illustration).  
 ½ pt. 15 cts., pt. 25 cts., qt. 40 cts.

## Pea "New Dwarf Champion"

In offering this new pea, we are filling a long wanted demand.

A pea with all the merits of the well known and reliable Champion of England, being hardy and excellent quality, but less vine, larger pods and more of them.

In this pea we have a hardy, robust and vigorous grower, productive of handsome dark green pods of good size and in great abundance, and the quality is unsurpassed.

Height of vine about 26 inches.

Season coming in after the Little Gem.

For a reliable staple market variety we believe it will fill a long needed want.

Another season's trial adds further proof to the merits of this new pea, being a sure and abundant cropper, and quality the best. (See illustration on opposite page).  
 ½ pt. 15 cts., pt. 25 cts., qt. 40 cts.

## Pea "Sunrise"

As its name denotes, this is the earliest of the wrinkled sorts, fully as early as the smooth varieties, to which it is far superior in quality. The vines grow about two feet high and are enormously productive, bearing many pods. ½ pt. 15 cts., pt. 25 cts., qt. 25 cts.

## Pea "Thomas Laxton"

A new variety of large-podded Pea. The plant is a very hardy and strong grower, producing extra large size pods in abundance. The quality is delicious, and cannot be surpassed by any other variety. The "Thomas Laxton" will mature nearly as early as any of the extra early smooth Peas, and being a wrinkled sort is much sweeter. When this variety is thoroughly introduced it will command equal attention with "Gradus." ½ pt. 15 cts., pt. 25 cts., qt. 40 cts.

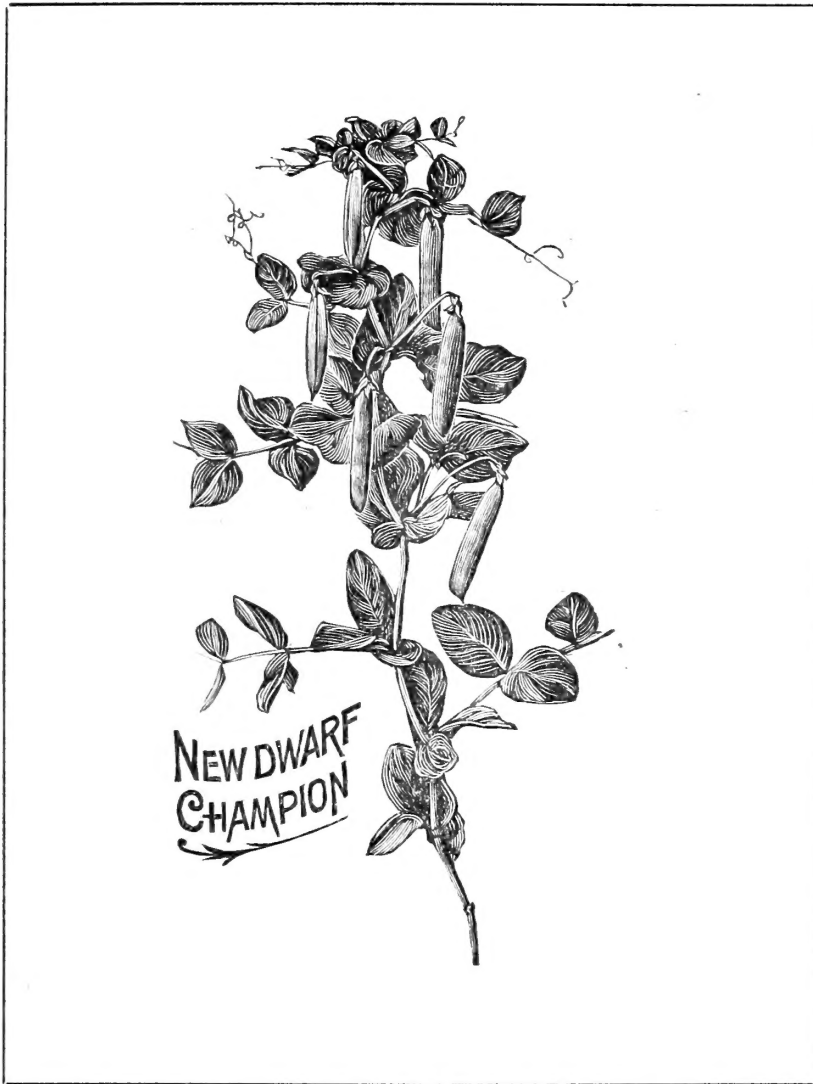


EXACT SIZE GOLDEN CARMINE

*Pea "Gradus or Prosperity"*

Too much cannot be said in favor of this grand variety which combines the finest quality with extreme earliness, and is also very productive. It is very hardy, and can be planted fully as early as the smooth peas; grows vigorous and healthy; vines 3 feet in height, and is very prolific, bearing pods fully as large as Telephone. The color of the shelled peas is a beautiful light green, which color they retain after being cooked; the quality and flavor is delicious, and the peas remain tender and sweet for a long time.

J. M. Dowd, one of our most successful market gardeners, says: "Book my order for one bushel of Gradus, it is the most profitable pea I ever marketed in my many years of experience." (See illustration on back of cover). ½ pt. 15 cts., pt. 25 cts., qt. 40 cts.

*Potato "Early Market"*

This grand Potato is the result of careful study, being a decided improvement upon the earliest six-weeks variety. It is a heavy cropper and splendid cooker. Flesh white and floury. Peck 50 cts., bushel \$1.50.

# Vegetable Seeds

**Our Vegetable Seeds are obtained from the most reliable growers, tested and we believe true to name.**

## Asparagus

One ounce will sow a drill 50 feet.

|  | Pkt.   | Oz.    | ¼ Lb.  |
|--|--------|--------|--------|
| Columbian Mammoth White. Shoots pure white and require no artificial blanching; brings a higher price in market than any other sort..... | \$0 05 | \$0 15 | \$0 30 |
| Conover's Colossal. The best known and one of the most desirable sorts.....  | 05     | 10     | 25     |
| Carr's Mammoth. Earlier and nearly twice as large as Conover's Colossal, also a strong grower and very productive.....                   | 05     | 10     | 25     |
| Palmetto. Shoots are very large and light green; also tender and very desirable for the market and home garden.....                      | 05     | 15     | 30     |

### ASPARAGUS ROOTS.

A saving of one to two years is effected by planting roots.

|                              | 100    | 1,000  |
|------------------------------|--------|--------|
| Columbian Mammoth White..... | \$0 90 | \$5 50 |
| Conover's Colossal.....      | 75     | 4 50   |
| Palmetto.....                | 90     | 5 50   |

## Beans

One quart will plant a drill 100 feet.

### BUTTER OR WAX SORTS—DWARF VARIETIES.

|  | Pt.    | Qt.    | ½ Pk.  | Pk.    |
|--|--------|--------|--------|--------|
| Currie's Rustproof Wax. Pods long, flat and straight; very prolific and rust proof; black seed.....                                | \$0 15 | \$0 25 | \$0 90 | \$1 50 |
| Davis' White Kidney Wax. Pods remarkably long, straight and of a handsome waxy white color; enormously productive. Seed white..... | 15     | 25     | 90     | 1 50   |
| Flageolet Wax, Scarlet. Beans bright red; pods very long, flat and tapering  | 15     | 25     | 90     | 1 50   |
| Golden Wax. Very popular; round pods; a well-known standard sort.....  | 15     | 25     | 90     | 1 50   |

### Kidney Wax.

(Wardwell's).  
Extra early, purely wax pods; long, flat and remarkably free from rust...

|    |    |    |      |
|----|----|----|------|
| 15 | 25 | 90 | 1 50 |
|----|----|----|------|

Pencil Pod Black Wax. It is an improvement on the Prolife Bl'ck Wax, hardier & more prolific. Pods are long, pencil-like, very tender and brittle. In color they are a rich dark yellow, much more attractive than Prolife Wax. It also remains in good picking condition for a long season.....

|    |    |    |      |
|----|----|----|------|
| 15 | 25 | 90 | 1 50 |
|----|----|----|------|

Yosemite Mammoth Wax. A giant among Beans. The pods frequently reaching a length of from 8 to 10 inches, are of great thickness and solidity.....

|    |    |      |      |
|----|----|------|------|
| 20 | 30 | 1 00 | 1 75 |
|----|----|------|------|

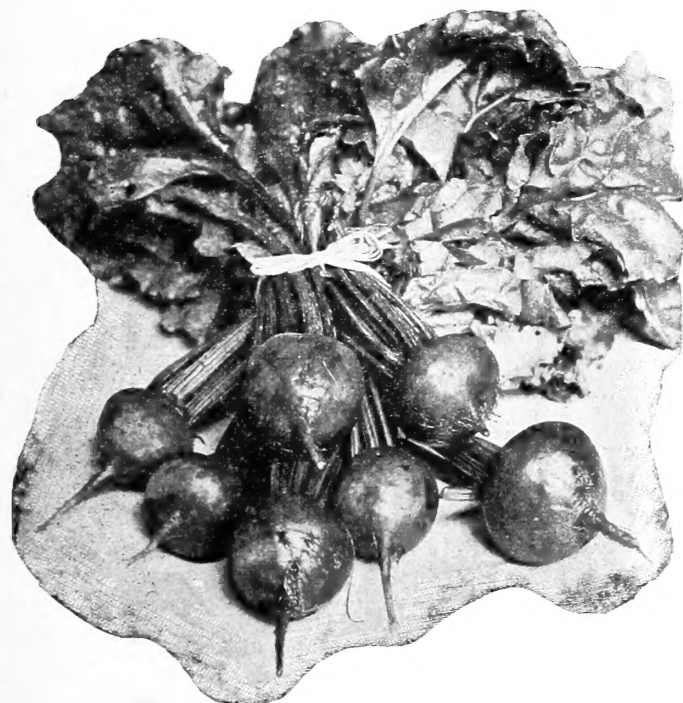


Bean—Pencil Pod Black Wax



**GREEN PODDED VARIETIES.**

|  | Pt.    | Qt.    | ½ Pk.  | Pk.    |
|--|--------|--------|--------|--------|
| Burpee's Stringless Green Pod. In this variety we offer the finest green, pod stringless Bean it has ever been our pleasure to see growing. It is the earliest of the green-podded sorts, and produces large and handsome pods, some of which measured fully six inches in length. The plants are very productive, bearing profusely the beautiful green pods, which are perfectly round, very fleshy and entirely stringless..... | \$0 15 | \$0 25 | \$0 90 | \$1 50 |
| Improved Royal White or Kidney. Excellent for shelling green or baking when ripe .....   | 10     | 15     | 50     | 80     |
| Large White Marrow. Good either for shelling when green or for baking when ripe.....   | 15     | 25     | 90     | 1 50   |
| Long Yellow Six-weeks. Pods flat and green; a leading market sort.....   | 15     | 25     | 90     | 1 50   |
| Red Kidney. Red Seed.....  | 10     | 15     | 50     | 80     |
| Bush Lima, Burpee's. Beans as large as Pole Limas; perfectly dwarf and very productive.....  | 15     | 25     | 90     | 1 50   |
| Bush Lima, Dreer's New Wonder. (New). An improvement on Burpee's Bush Lima.....  | 15     | 25     | 90     | 1 50   |
| Bush Lima, Henderson's. Beans smaller than Burpee's or Dreer's, but very early and enormously productive.....  | 15     | 25     | 90     | 1 50   |
| Horticultural Dwarf. Late and productive; pods showy; great favorite in New England.....   | 15     | 25     | 90     | 1 50   |
| <b>POLE OR RUNNING VARIETIES.</b>  |        |        |        |        |
| Horticultural or Cranberry. Showy and excellent either as snap or shell bean or for cooking dry.....   | 15     | 25     | 90     | 1 50   |
| Kentucky Wonder. Fine green pod sort; early and productive; entirely stringless.....   | 15     | 25     | 90     | 1 50   |
| Lima, Dreer's Improved. Beans thicker and sweeter than Large Lima.....   | 15     | 25     | 90     | 1 50   |
| " King of the Garden. Heavy cropper; bean and pod very large.....  | 15     | 25     | 90     | 1 50   |
| " Siebert's Early. Earliest of all.....  | 15     | 25     | 90     | 1 50   |
| White Dutch Case Knife. Pods long, green and flat; fine for shelling.....  | 15     | 25     | 90     | 1 50   |
| <b>WAX POD—POLE BEAN.</b>  |        |        |        |        |
| Golden Cluster. For a number of years past this has been a leading variety of Wax Pole Beans. It bears profusely long golden-yellow pods in clusters of 3 to 6 from bottom to top of pole, and continues in bearing from the middle of July till the vines are cut by frost. For market purposes it excels all others.....   | 15     | 25     | 90     | 1 50   |
| Golden Carmine. (See list of Novelties).   |        |        |        |        |



Beet—Our Improved Egyptian

second early; good also for winter use..... 10 20 50  
 Swiss Chard, Silver or Sea Kale. Grown exclusively for its leaves. The middle of the leaf can be used and served like asparagus, the rest of the leaf like spinach. 10 20 50

**Beet**

One ounce will sow a drill 50 feet.

**TABLE VARIETIES.**

|   | Oz.    | ¼ Lb.  | Lb.    |
|---|--------|--------|--------|
| Bassano, Early Flat. An early tender variety; color light red.....  | \$0 10 | \$0 20 | \$0 50 |
| Crosby's Egyptian. The best for early market; as early as the original strain of Egyptian, is thicker and less inclined to push up a woody neck as it advances in growth..... | 10     | 20     | 50     |
| Detroit Blood Red. Round, skin dark red, flesh light red; very sweet.....   | 10     | 20     | 50     |
| Eclipse Blood Turnip. Very early, round, smooth and dark red. Has a very small top and is one of the best for market.....   | 10     | 20     | 50     |
| Half Long Blood. An excellent half long   |        |        |        |

MANGEL WURZEL AND SUGARBEETS.

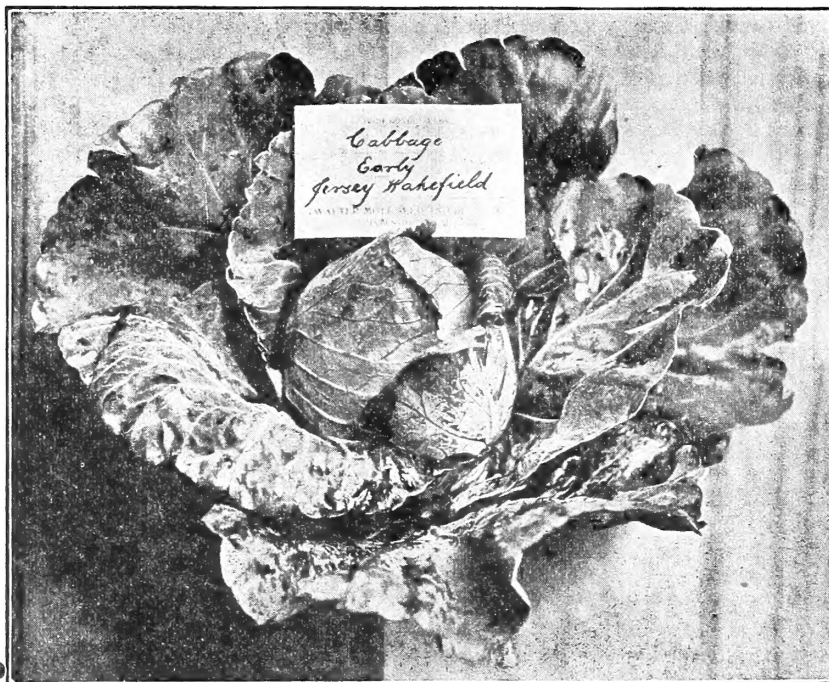
|  | Oz. | ¼ Lb. | Lb. |
|--|-----|-------|-----|
| Champion Yellow Globe. The best yellow globe, heavy yielder, splendid keeper                                     |     | 10    | 30  |
| Golden Tankard. Bright yellow; large, sweet and very productive; fine for cattle and sheep.....                  |     | 10    | 30  |
| Long Red Mammoth Prize. Attains enormous size, producing thirty to fifty tons to the acre; quality superior..... |     | 10    | 30  |
| Sugar, Klein Wanzleben. Largest yielding and best variety for sugar making.....                                  |     | 10    | 30  |

**Brussels Sprouts**

Species of cabbage; cultivation the same.

|   |        |        |
|---|--------|--------|
| Dwarf Improved. Produces excellent, compact sprouts; very sure cropper..... | Pkt.   | Oz.    |
|   | \$0 05 | \$0 25 |

**Cabbage**



|  | Pkt.   | Oz.    | ¼ Lb.  |
|--|--------|--------|--------|
| Selected Early Jersey Wakefield. The most widely known and popular early variety; heads cone shape and very solid.....   | \$0 05 | \$0 30 | \$1 00 |
| Early Spring. New extra early, round flat heads with few outer leaves which permits planting close.....  | 05     | 25     | 75     |
| Early Winningstadt. A standard second early sort, very hard heads.....   | 05     | 20     | 50     |
| Henderson's Early Summer. Heads large, round and very compact; ten days later than Early Jersey Wakefield; one of the earliest large heading varieties.....  | 05     | 25     | 75     |
| Henderson's Succession. One of the best of cabbages; heads very large and somewhat flat; ten days later than Early Summer.....   | 05     | 25     | 75     |
| All Seasons. Heads very deep; can be planted for early or late crop; a splendid keeper; about as early as early summer, forming much larger heads.....   | 05     | 25     | 75     |
| Charleston Large Wakefield. About one week later than Early Jersey Wakefield, but the heads are fully one-half larger; will not burst when ripe like most early sorts, and can be left standing in the field some time without damage..... | 05     | 25     | 75     |
| Early Flat Dutch. Earlier and heads smaller than Late Flat Dutch; a good second early, sure header, weighing ten or twelve pounds.....   | 05     | 20     | 50     |



Cabbage—Danish Ball Head

Danish Ball Head (Hollander). This extra hard-heading variety of Cabbage originated in Denmark. It is the medium-sized, hard white Cabbage that is received from abroad during the early spring months, and even after the long journey arrives in splendid condition. It is a Medium or late variety, but is used mostly as a winter cabbage.....

Excelsior Late Flat Dutch. A very valuable late variety for main winter crop.....

Large Late Drumhead. Heads large, flat and

|                                   | Pkt.   | Oz.    | ¼ Lb.  |  |
|-----------------------------------|--------|--------|--------|--|
| Danish Ball Head (Hollander)..... | \$0 05 | \$0 30 | \$1 00 |  |
| Excelsior Late Flat Dutch.....    | 05     | 25     | 75     |  |
| Large Late Drumhead.....          | 05     | 25     | 75     |  |
| Red Rock.....                     | 05     | 25     | 75     |  |
| Surehead.....                     | 05     | 25     | 75     |  |
| Savoy Early Dwarf Ulm.....        | 05     | 25     | 75     |  |
| Savoy Perfection Drumhead.....    | 05     | 25     | 75     |  |

solid; and a good keeper.....

Red Rock. The largest and surest heading red cabbage.....

Surehead. All head and always sure to head. This is the finest late cabbage; the best market variety; fine keeper.....

Savoy Early Dwarf Ulm. Small, round, deep green heads; very early.....

Savoy Perfection Drumhead. This is the best of the Savoy; heads large with crisp, wrinkled leaves.....

**Carrot**



Carrot—Danver's Half Long

One ounce will sow a drill 100 feet. 3 to 4 lbs. to the acre.

|  | Pkt.   | Oz.    | ¼ Lb.  | Lb.    |
|--|--------|--------|--------|--------|
| Chantenay Half Long. Stump rooted; broad, thick shoulder; heavy cropper..... | \$0 05 | \$0 15 | \$0 25 | \$0 75 |

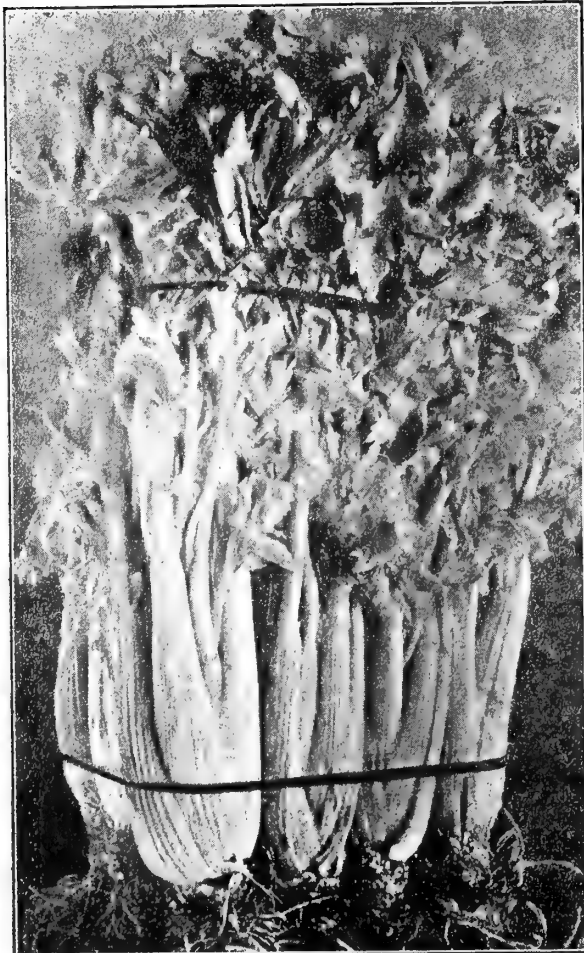
|   | Pkt.   | Oz.    | ¼ Lb.  | Lb.    |
|---|--------|--------|--------|--------|
| Danver's Half Long. One of the heaviest croppers; roots dark orange color, eight to ten inches in length, thick, and ending in a somewhat abrupt point; first class.....  | \$0 05 | \$0 15 | \$0 25 | \$0 75 |
| Early forcing. Half long, bright scarlet, crisp, grows almost without core.....   | 05     | 15     | 50     |        |
| Early Scarlet Horn. A very popular sort, quick growing; deep orange in color; blunt rooted; six to eight inches in length.....  | 05     | 15     | 25     | 75     |
| Half Long Stump Nantes. Roots eight to ten inches in length thick shoulder; deep orange and good cropper.....   | 05     | 15     | 25     | 75     |
| Improved Long Orange. The best known and most largely cultivated of any carrot; excellent for stock or table use; roots deep orange, twelve to fifteen inches long.....   | 05     | 15     | 25     | 75     |
| Large white Belgian. The large white Belgian carrot is considered one of the most profitable varieties for feeding stock. Crops raised at the New Hampshire agricultural experiment station have yielded nine tons, 880 pounds to the acre..... | 05     | 10     | 15     | 50     |
| Oxheart or Guerande. Roots short and very thick and intermediate between Scarlet Horn and Chantenay; color deep orange; fine grained and sweet; easily dug.....   | 05     | 15     | 25     | 75     |

**Cauliflower**

|  | Pkt.   | ¼ Oz.  |
|--|--------|--------|
| Extra Selected Dwarf Early Erfurt. The finest strain of the Eufurt Cauliflower, almost as early as the Snowball; grows about fifteen inches high, producing very solid, pure white heads of the very finest quality; seldom fails to form a good sized head..... | \$0 20 | \$0 90 |
| Henderson's Early Snowball. This is undoubtedly the finest early variety ever introduced; it is the earliest and produces beautiful snow-white heads of the most delicious flavor.....   | 20     | 90     |

**Celery**

One ounce will produce about two thousand plants.



Celery—Golden Self-Blanching

|   | Pkt.   | ¼ Oz.  | Oz.    |
|---|--------|--------|--------|
| Dwarf Golden Self-Blanching. This sort is without doubt the finest early celery in cultivation. It is perfectly solid, of a fine nutty flavor, attains a good size, and when blanched is of a handsome golden yellow..... | \$0 05 | \$0 10 | \$0 25 |
| Giant Pascal. The largest variety grown, is also the best keeper; of fine nutty flavor and very easily blanched, deservedly popular for fall and winter use.  | 05     | 10     | 25     |
| Improved White Plume. A well known and perhaps the most popular variety of Celery; very early, ornamental and of a quality surpassed by none.....   | 05     | 10     | 25     |
| Pink Plume. (New). Practically identical with Improved White Plume, but with added merit of the stalks being suffused with pink.....  | 05     | 10     | 25     |
| Soup Celery. Seeds for flavoring soups, pickles, etc.....   |        |        | 10     |

**Celeriac (Turnip-Rooted Celery)**

Large Smooth Prague. An improved form of turnip-rooted celery; round, smooth roots with very few side roots. This is the largest variety and one of the very best.....

|        |        |        |
|--------|--------|--------|
| Pkt.   | ¼ Oz.  | Oz.    |
| \$0 05 | \$0 10 | \$0 25 |

**Chervil**

Curled. Used for flavoring soups and salads and has a strong flavor and perfume

|    |    |
|----|----|
| 05 | 15 |
|----|----|

**Corn (Sweet or Sugar).**

EARLY VARIETIES.

Kendall's Giant. Rapidly coming into favor on account of its large size and extreme earliness.....

|        |        |        |
|--------|--------|--------|
| Pt.    | Qt.    | ½ pk   |
| \$0 15 | \$0 25 | \$0 75 |
| 20     | 30     | 1 00   |

Premo. Claimed to be the earliest sweet corn.....

Crosby. An old and popular variety, twelve and sometimes fourteen rowed; grain thick and sweet; finest market sort.....

|    |    |    |
|----|----|----|
| 15 | 25 | 75 |
| 15 | 25 | 75 |

Minnesota. Deservedly popular either for market, gardeners or private families

Black Mexican. One of the sweetest and best varieties; grains black when ripe, but when in condition for the table cooked, remarkably white.....

|    |    |    |
|----|----|----|
| 15 | 25 | 75 |
| 15 | 25 | 75 |

Perry's Hybrid. Large, twelve-rowed ears; a little later than Minnesota.....

LATE VARIETIES.

Country Gentlemen. Entirely distinct; cob small, with deep pearly white kernels.

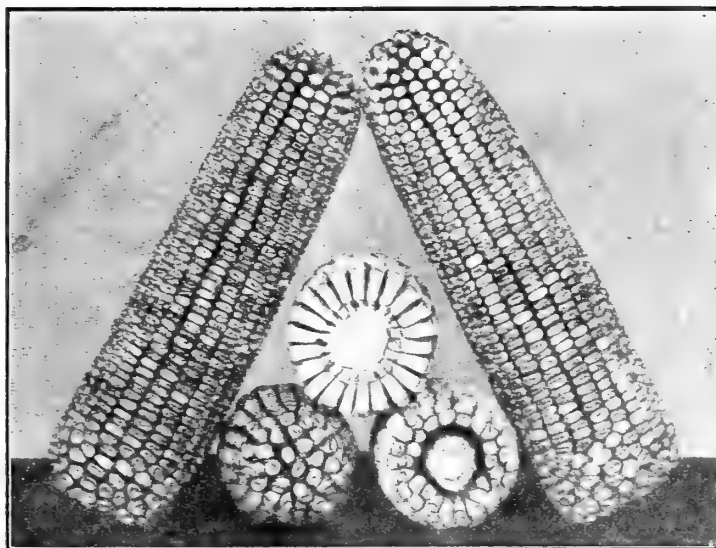
|    |    |    |
|----|----|----|
| 15 | 25 | 75 |
|----|----|----|

Mammoth Sugar. The largest and latest variety; ears of immense size, grains large and broad, and quality of the best.....

|    |    |    |
|----|----|----|
| 15 | 25 | 75 |
|----|----|----|

Stowell's Evergreen. The standard for quality and the best known variety; a favorite alike with canners and market men; remains a long time in condition suitable for boiling.....

|    |    |    |
|----|----|----|
| 15 | 20 | 60 |
|----|----|----|



Corn—Select Leaming

FIELD CORN—FODDER VARIETIES.

King of the Earlies. In growth very similar to Pride of the North, but has matured with us full two weeks earlier; we offer a choice sample of home grown seed.

Australian Extra Early. The hardiest known variety, will thrive at an altitude of 6,000 feet, where the climate is always too cold for ordinary corn. A great drouth resister, will produce crops when other sorts fail, used largely in the South for green corn or roasting ears. (Growers description).

White Cap Yellow Dent. A well known and standard sort, an immense yielder both in stalk and ear; we offer a choice sample of home grown seed.

Pride of the North and Early Leaming. Standard and popular kinds.

Southern White Sweet. Makes the strongest growth and causes the largest flow of milk found in any corn, fully equal to Stowell's Evergreen.

FLINT VARIETIES.

Early Dutton. A standard yellow flint corn; we offer a carefully selected sample of home grown seed.

Sanford. A white flint that grows to an immense size; considered by New England farmers to be the best corn for fodder.

Prices quoted on application.

We are headquarters for Field Corn and Field Seeds of every description.

**Corn Salad**

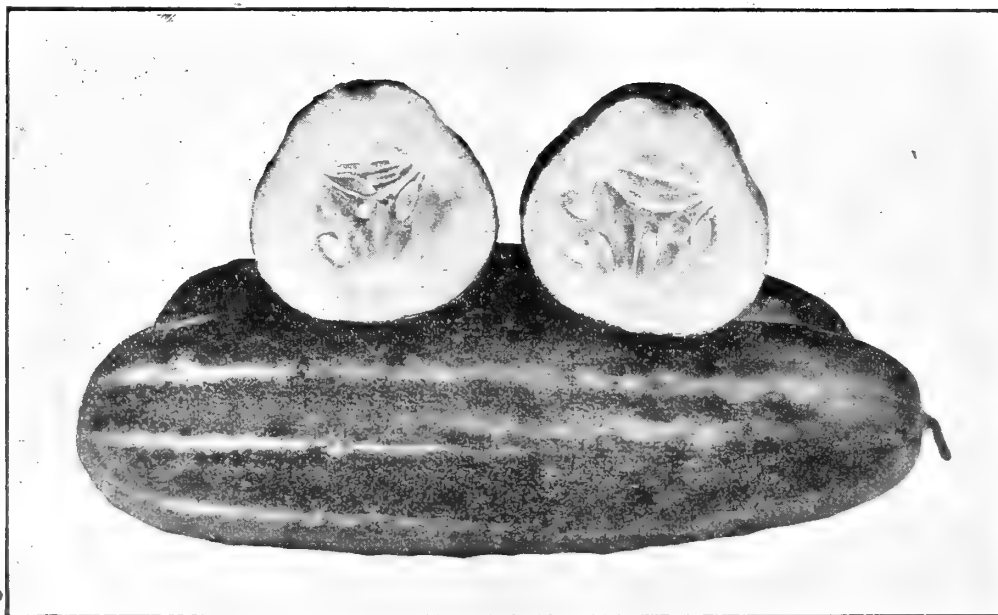
|                         |        |        |
|-------------------------|--------|--------|
| Large Seeded Dutch..... | Pkt.   | Oz.    |
|                         | \$0 05 | \$0 15 |

**Cress or Peppergrass**

|  |        |        |
|--|--------|--------|
| Extra Curled. A small plant having a fine pungent flavor and used as a salad; may be cut two or three times.....   | Pkt.   | Oz.    |
| True Water Cress. Grows along the banks of ponds and streams and is easily introduced; wholly unlike Extra Curled; leaves are quite large and thick..... | \$0 05 | \$0 10 |
|  | 05     | 10     |

**Cucumber**

One Ounce will plant 50 hills. 2 lbs. to an acre.



Cucumber—Bismarck

|  |        |        |        |
|--|--------|--------|--------|
| Bismarck. (Ferry). This is considered to be the finest cucumber for general purposes.....  | Pkt.   | Oz.    | ¼ Lb.  |
| Boston Pickling. Fruit short, smooth and pointed at each end; bright green and a great yielder; one of the best for pickling.....  | \$0 05 | \$0 20 | \$0 60 |
| Cool and Crisp. This new cucumber is said to be the earliest of all pickling varieties, and is one of the finest for slicing.....  | 05     | 20     | 60     |
| Cumberland. A cross of Parisian Pickle and Peerless White Spine. The vines are of strong, vigorous growth and very productive. The fruits, which are of handsome appearance, grow to a desirable size, very straight, solid and crisp. The color is a rich pea-green, and flavor very fine. Thomas Russell, Forest Ave., Jamestown, a Market Gardener of wide experience says, "This is the most profitable cucumber I ever grew"..... | 05     | 20     | 60     |
| Long Green Improved. Fine for pickling when small, good for table use when about half grown.....   | 05     | 20     | 60     |
| White Spine, Arlington Improved. One of the finest for forcing and one of the most perfect in shape, size, color and quality.....  | 05     | 20     | 60     |

**Dandelion**

|  |    |    |
|--|----|----|
| Improved Thick Leaved. An immense improvement on the common dandelion, both in size, thickness of leaves and fine flavor, being far less bitter. | 05 | 40 |
|--|----|----|

**Egg Plant**

One ounce will produce about one thousand plants.

|   |    |    |    |
|---|----|----|----|
| Early Long Purple. Earlier and hardier than Round Purple and will succeed farther north; fruit from six to eight inches long..... | 05 | 20 | 75 |
| New York Improved Purple. The leading market variety and undoubtedly the best for size, quality and productiveness.....           | 05 | 35 | 90 |

**Endive**

One ounce will sow a row 150 feet.

|   | Pkt.   | Oz.    | ¼ Lb.  |
|---|--------|--------|--------|
| Broad Leaved Batavian. Heads large, leaves broad and thick, used for flavoring soups; inner leaves make a fine salad..... | \$0 05 | \$0 20 | \$0 50 |
| Green Curled Winter. Excellent winter sort.....   | 05     | 20     | 50     |
| Moss Curled. Grows more compact than Green Curled and leaves are finer cut.   | 05     | 20     | 50     |

**Kale**

One Ounce of seed will sow a drill 200 feet.

|  |    |    |    |
|--|----|----|----|
| Dwarf Green Curled Scotch. Rarely exceeding eighteen inches in height, but spreading out under good cultivation to three feet in diameter; leaves beautifully curled and bright green..... | 05 | 10 | 25 |
| Tall Green Curled Scotch. Grows about two feet high; leaves dark green, curled and wrinkled; very hardy and is improved by a light frost.....  | 05 | 10 | 25 |

**Kohl Rabi**

One ounce of seed will sow a drill 150 feet.

|   |    |    |    |
|---|----|----|----|
| Early White Vienna. Best for general table use; flesh tender and white..... | 05 | 25 | 75 |
| Purple Vienna. A little later than white; color bluish purple.....          | 05 | 25 | 75 |

**Lettuce**



*Lettuce, Salamander*

|  | Pkt.   | Oz.    | ¼ Lb.  |
|--|--------|--------|--------|
| Big Boston. Desirable for either forcing in cold frames or open ground planting; always produces large, solid salable heads.....                         | \$0 05 | \$0 20 | \$0 50 |
| Boston Market. One of the best for forcing under glass, as well as for outside use; forms fair-sized heads, edge of leaves slightly tinged with red..... | 05     | 20     | 50     |
| Brown Dutch. Large leaves, thick, green, tinged with brown; forms large, solid heads; exceedingly hardy.....   | 05     | 20     | 50     |
| Grand Rapids. As a forcing and shipping Lettuce this undoubtedly stands at the head; beautiful in appearance.....  | 05     | 20     | 50     |
| Hanson Improved. Always sure to make large, handsome heads of excellent quality; outer leaves green with light veins, inner leaves white.....            | 05     | 20     | 50     |
| Prize Head Early. Leaves green and red, very thin, crisp and tender; one of the best for private use.....  | 05     | 20     | 50     |
| Salamander. Fine compact heads, which resist summer heat admirably.....  | 05     | 20     | 50     |
| Sensation. Remarkable for forming close, hard heads, even in an early stage of growth; color yellowish-green, quality very fine crisp and tender.....    | 05     | 20     | 50     |
| Silesia. Early curled, very early and tender, leaves yellowish-green.....  | 05     | 20     | 50     |
| Simpson Early Curled. (White Seed). A leading early sort, for forcing or open ground.....  | 05     | 20     | 50     |

|   | Pkt.   | Oz.    | ¼ Lb   |
|---|--------|--------|--------|
| Tennis Ball. (Black Seeded). Popular for open ground, heads handsome, crisp and tender.....   | \$0 05 | \$0 20 | \$0 50 |
| Trianon Self-Closing Cos. This is the favorite class of Lettuce in Europe and is the finest of its class.....   | 05     | 20     | 50     |
| Wonderful. The large white heads resemble cabbage in their solidity, and frequently weigh two and three pounds each. The quality is superb, being crisp, rich and tender. It withstands the heat well, making a fine variety for all seasons..... | 05     | 20     | 50     |

### Leek

One ounce of seed will sow a drill 100 feet.

|  |    |    |    |
|--|----|----|----|
| Large London Flag. The oldest and best known and most largely grown variety. | 05 | 20 | 50 |
| Musselburg. (Scotch Champion). Hardy sort; leaves fan-shaped and dark green  | 05 | 20 | 50 |

### Melon--Musk Varieties

One ounce will plant 50 hills.

|   |    |    |    |
|---|----|----|----|
| Banana Cantaloupe. Shaped somewhat as name indicates; grows from two to two and one half feet in length; flesh deep salmon of good quality. It is a favorite owing to the odd appearance.....                                   | 05 | 15 | 35 |
| Burpee's or Golden Netted Gem. One of the Finest varieties for hotels and restaurants; shape nearly round; color dark green and thickly netted; flesh light green and very delicious; very early.....                           | 05 | 15 | 35 |
| Emerald Gem. One of the very earliest varieties; fruit small, skin deep emerald green, flesh a handsome salmon color and very thick, flavor most delicious....  | 05 | 15 | 35 |
| Hackensack, extra Early Improved. A selection from and an improvement on the old Hackensack, similar in shape and appearance; nearly as large and fully ten days earlier; one of the finest for gardeners; quality perfect..... | 05 | 15 | 35 |
| Jenny Lind. An extra early, small, green fleshed melon of very fine flavor; round and flattened at the ends.....  | 05 | 15 | 35 |
| Montreal Market. Similar in shape and general appearance to Montreal Nutmeg; grows large and is a favorite with market gardeners.....   | 05 | 15 | 35 |
| Rocky Ford. (New). An improved and oblong form of the Netted Gem; a most excellent green fleshed sort.....  | 05 | 15 | 35 |

### Melon--Water Sorts

One ounce will plant 30 hills.

|   |    |    |    |
|---|----|----|----|
| Cole's Early. Very hardy, a sure cropper, and extremely delicate in texture of flesh. Medium size, nearly round in shape, flesh dark red, rind green striped with lighter shades.....   | 05 | 15 | 35 |
| Dixie. A cross between Kolb Gem and Mountain Sweet, surpassing the former as a shipper and the latter in its luscious sweetness and delightful flavor; very large, productive and handsome.....   | 05 | 15 | 35 |
| Jumbo or Jones. One of the finest of Melons; shape round to oblong; rind green with faint lighter colored stripes; flesh deep red, surpassing most other varieties in flavor; one of the best for shipping. Average weight 40 to 60 lbs.; have been known to weigh 80lbs..... | 05 | 15 | 35 |
| Mammoth Ironclad. Oblong in shape; rind dark green mottled with lighter green, flesh bright red, firm and sugary; heart very large. Grows to weigh 60 to 70 lbs., grand shipper.....  | 05 | 15 | 35 |
| Mountain Sweet. An old variety but still the standard of excellence for quality; fruit long and very dark green.....  | 05 | 15 | 35 |
| Sweet-Heart. (New). Globular in shape; skin very bright, mottled green; flesh bright red, firm and heavy, but exceedingly sweet.....  | 05 | 15 | 35 |

### Mustard

One ounce will sow a drill 80 feet.

|  |    |    |  |
|--|----|----|--|
| White London. Fine for salads and for Spinach; leaves light green..... | 05 | 15 |  |
|--|----|----|--|

### Okra or Gumbo

|  |    |    |    |
|--|----|----|----|
| Extra Early Dwarf. (Green Pods). Very early and productive.....              | 05 | 10 | 20 |
| Early Dwarf White. (White Pods). Pods extra long, very thick and fleshy..... | 05 | 10 | 20 |



**Onion**



Onion—Yellow Globe Danvers

One ounce will sow a drill 100 feet. 5 to 6 lbs. to the acre.

|  | Pkt.   | Oz.    | ¼ Lb.  |
|--|--------|--------|--------|
| Large Red Wethersfield. It is of the finest form, skin deep purplish red, flesh purplish white, much finer grained than many of the red sorts. Immense crops of this onion are grown each season.....  | \$0 05 | \$0 15 | \$0 50 |
| Prizetaker. Bright straw color; large globe-shaped; always uniform, productive, mild flavored and of the best quality. F. W. Gordon, Oak Hill, says, "I can sell more of this one kind than all other yellow onions combined.".....  | 05     | 15     | 50     |
| White Pickling. We believe this to be the earliest and most rapid growing of all the small extra early varieties. As a pickling onion it excels all others, owing to its pearl white skin and handsome shape; for bunching it cannot be equaled....  | 05     | 15     | 50     |
| Southport Large Red Globe. Onions large and handsome, globe-shape and color a purplish crimson. This is a good keeper and always realizes high prices.....   | 05     | 15     | 50     |
| Southport White Globe. A large globe-shaped onion; firm, fine grained, of mild flavor; keeps well. This is one of the handsomest onions grown, of beautiful shape, clear, white skin, and commands the highest market price.....   | 05     | 15     | 50     |
| Southport Yellow Globe. Like the well known White Globe, except in color of skin. This is more perfectly globe-shape than the Globe Danvers, but not so early; an excellent keeper, a heavy cropper, handsome in appearance and of large size.....   | 05     | 15     | 50     |
| White Portugal or Silverskin. A large, flat white onion of mild and pleasant flavor; hard and fine grained and a good keeper. More extensively grown for sets than any other white variety and is also largely grown for pickling.....   | 05     | 15     | 50     |
| Yellow Globe Danvers. Undoubtedly the best known and most popular of all onions; the earliest yellow variety; is entirely free from stiff necks; globular in shape, has a small top. It is the most productive, producing as high as 1,000 bushels per acre, and will average on good soil with proper culture 700 to 800 bushels..... | 05     | 15     | 40     |
| Giant Red Garganus. Very large size, often weighing four to five pounds; one of the finest of the Italian varieties; skin a delicate red, flesh nearly white and fine grained, and of very mild flavor.....  | 05     | 15     | 50     |
| Giant White Garganus. Similar in most respects to Red Garganus, but is white-skinned, white fleshed and somewhat milder.....   | 05     | 15     | 50     |
| Mammoth Silver King. This is truly a mammoth onion, averaging fifteen to twenty-two inches in circumference, and weighing from three to four pounds each. They are flat, of a pure, silvery-white skin and flesh, and most remarkably mild flavored.....   | 05     | 15     | 50     |

**Onion Sets**

Yellow Erie and Silverskin. Qt. 25 cts. postpaid.

**Parsley**

|   |    |    |  |
|---|----|----|--|
| Emerald Dwarf Extra Curled. Leaves finely cut, very curly and bright green; desirable for either the home or market garden..... | 05 | 15 |  |
| Fine Double Curled. A standard variety, plants bear an abundance of finely curled leaves; very ornamental.....                  | 05 | 15 |  |

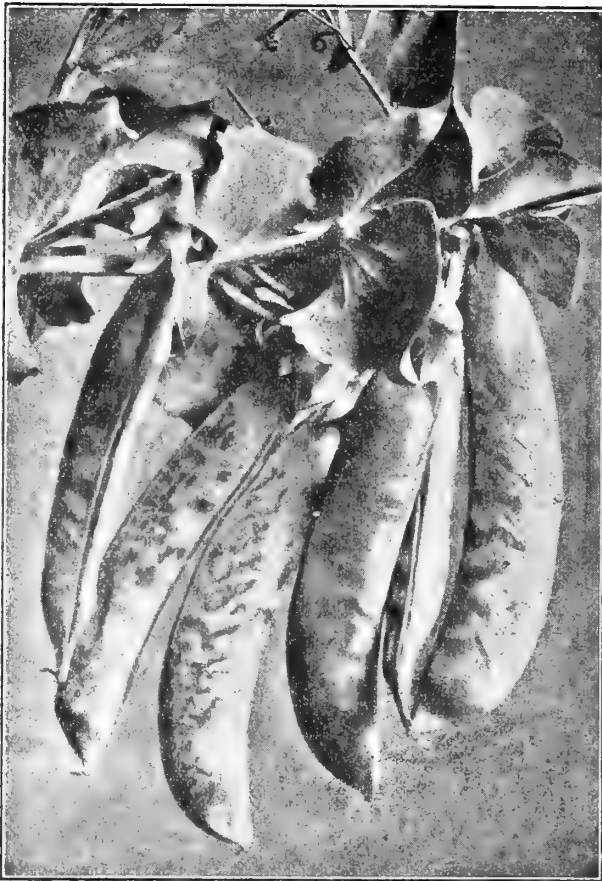
**Parsnip**

One ounce for drill 200 feet. 5 lbs. to the acre.

|   |    |    |    |
|---|----|----|----|
| Guernsey. Roots not quite so large as Hollow Crown, but are of greater diameter more easily gathered.....   | 05 | 10 | 20 |
| Large Sugar or Hollow Crowned. Considered the best for general culture. The market gardener's favorite..... | 05 | 10 | 20 |

**Peas**

One quart will plant 100 feet drill.



Telephone Peas

**EXTRA EARLY DWARF VARIETIES.**

|   | Pt.    | Qt.     | ½ Pk.  | Pk.    |
|---|--------|---------|--------|--------|
| Bliss American Wonder. Earliest dwarf wrinkled sort. Height 1½ ft.....  | \$0 15 | \$0 25  | \$0 90 | \$1 50 |
| Nott's Excelsior. Very early; pods always well filled; finest quality. Height 1¼ft.   | 15     | 25      | 90     | 1 50   |
| McLean's Little Gem. Very early prolific, and delicious flavor. Height 1¼ ft.....   | 15     | 25      | 90     | 1 50   |
| Thos. Laxton. (See list of novelties).  |        |         |        |        |
| New Dwarf Champion. (See list of novelties).  |        |         |        |        |
| <b>EXTRA EARLY VARIETIES NOT DWARF</b>  |        |         |        |        |
| Alaska. The earliest blue pea. Height 2½ft.   | 10     | 20      | 75     | 1 25   |
| Eclipse. (New). Very early and of excellent quality. 2 ft.....  | 15     | 25      | 90     | 1 50   |
| Gradus. (Prosperity). New. Large wrinkled peas, with pods as large as Telephone and early as First and Best. Height 3 ft..... |        | ½Pt. 15 | Pt. 25 | Qt. 40 |
| <b>SECONDEARLY VARIETIES.</b>   |        |         |        |        |

|   | Pt. | Qt. | ½Pk. | Pk.  |
|---|-----|-----|------|------|
| Numerous well filled pods. Height 2 ft.....   | 15  | 25  | 90   | 1 50 |
| Bliss Everbearing. A long time in bearing; peas large, pods long. Height 2 ft.  |     |     |      |      |
| Otto Diehl, West Oak Hill, says, "I picked heavy pickings of this fine variety continually until Sept. 10th; last picking was equal in flavor to the first. | 15  | 25  | 90   | 1 50 |
| Dwarf Telephone. (Carter's Daisy). Excellent new variety; large well-filled pods; peas of fine flavor. Height 1½ ft.....                                    | 15  | 25  | 90   | 1 50 |
| Horseford's Market Garden. Very prolific; pods packed with peas of a delicious, sweet flavor. Height 2½ ft .....  | 15  | 25  | 90   | 1 50 |
| Shropshire Hero. A valuable New variety of the Stratagem type. Height 2½ft.   | 15  | 25  | 90   | 1 50 |
| Telephone (Selected). Pods very large, filled with immense peas of first class quality; one of the finest yet introduced. Height 4½ ft.....                 | 15  | 25  | 90   | 1 50 |
| Yorkshire Hero. A splendid large marrow pea; abundant bearer; fine quality always a favorite. Height 2½ ft.....   | 15  | 25  | 90   | 1 50 |
| <b>LATE VARIETIES FOR GENERAL CROP.</b>   |     |     |      |      |
| Canada Field. Seeds small, white; for field culture only; largely used for sowing among oats. Height 3 ft. Per Peck 75 cts., bush. \$2.00.                  |     |     |      |      |
| Champion of England. One of the richest, best flavored peas; well known and popular. Height 5 ft.....   | 15  | 25  | 90   | 1 50 |
| Marrowfat, Black-Eyed. Height 5 ft.....   | 10  | 20  | 75   | 1 25 |
| Marrowfat, Large White, Height 4 ft.....  | 10  | 20  | 75   | 1 25 |
| Stratagem Improved. A fine sort for the market gardener, being a great improvement on the old variety. Height 2 ft.....                                     | 15  | 25  | 90   | 1 50 |

**Pepper**

|   | Pkt.   | Oz.    |
|---|--------|--------|
| Celestial. (New). When growing, peppers are a creamy-yellow color, turning to a deep scarlet when ripe.....         | \$0 05 | \$0 25 |
| Large Bell or Bull Nose. A favorite pickling sort; is early, large, mild and thick skinned; color red.....          | 05     | 25     |
| Long Red Cayenne. A small, long, bright red sort; very productive; extremely strong and pungent.....                | 05     | 25     |
| Procopp's Giant. The Goliath of all the pepper family; flesh thick and pleasant.....                                | 05     | 25     |
| Red Chili. Very small, bright red; cone shaped, one of the hottest.....   | 05     | 25     |
| Ruby King. The best and most profitable mild red pepper for market or family use; sweet and mild; largest size..... | 05     | 25     |

### Potatoes

Early Market. (See list of novelties).  
 Cambridge Early Rose. It is earlier and the tubers larger than the old and popular Early Rose, and under ordinary field culture will yield 250 to 300 bushels to the acre.  
 Early Beauty of Hebron. Very rapid and vigorous grower, ripening a week ahead of Early Rose, which it resembles, but far exceeds in productiveness.  
 Early Maine. Earlier than the Early Rose, a better cropper and of the finest quality.  
 Early Ohio. Now widely known and deservedly one of the most popular sorts. It has the advantage of being fit for use and sale even before fully ripe. A few days earlier than the Early Rose, and similar in color and habit of growth. Quality dry and mealy.  
 Early Six Weeks. UNDOUBTEDLY THE EARLIEST POTATO GROWN; similar to early Ohio in every respect, but claimed by the originator to be earlier than this standard, well-known sort. WE RECOMMEND THIS FOR FIRST EARLY PLANTING. Our stock is home-grown.  
 Rural New Yorker No 2. A well known favorite of excellent quality and immensely productive. Sure to give satisfaction.  
 Prices on application.

### Pumpkin

|  | Pkt.   | Oz.    | ¼ Lb.  |
|--|--------|--------|--------|
| Connecticut Field. Extensively used throughout New England and New York state for field culture; is generally planted in with corn. Per oz. 5 cts., lb. 20 cts.                                      |        |        |        |
| Japanese Pie. Flesh very thick, fine grained and sweet; fine for pies; seeds are sculptured like Chinese letters.....  | \$0 05 | \$0 15 | \$0 30 |
| Golden Cushaw or Crookneck. Grows very large and resembles in shape winter Crookneck squash.....   | 05     | 15     | 30     |
| Large Tours or Mammoth. Grows to enormous size, has weighed as high as 200 pounds, frequently weighs 100 to 150 pounds; used mainly for feeding stock. Rather oblong in shape, very large seeds..... | 05     | 15     | 30     |
| Large Cheese or Kentucky Field. Flat and round like a cheese, skin deep orange, flesh somewhat lighter; one of the best for pies.....  | 05     | 15     | 30     |
| Sweet or Sugar. A small, round and very prolific variety; skin and flesh deep yellow; very fine grained. The pie pumpkin of New England.....   | 05     | 15     | 30     |
| Tennessee Sweet Potato. One of the very best for cooking purposes. Nearly pear-shaped with neck slightly crooked; skin and flesh creamy-white, slightly striped with green.....                      | 05     | 15     | 30     |
| Winter Luxury. Round golden yellow, closely netted like a musk melon; excellent for pies, very productive.....   | 05     | 15     | 30     |

### Radish



Radish—Rosy Gem

|  |    |    |    |
|--|----|----|----|
| Turnip, Rosy Gem. Fine for forcing or open culture; perfect globe-shape, deep scarlet on top, blending into white at the bottom; very fine. Chas. Forbes, Levant, reports, "A grand radish, sells at sight, perfectly solid and crisp, rapid grower..... | 05 | 10 | 25 |
| Turnip, Early Scarlet. Very early; bright scarlet skin; flesh firm and crisp.....  | 05 | 10 | 25 |
| Scarlet China. Good for winter or summer.....  | 05 | 10 | 25 |
| French Breakfast. Pink color, olive shape, white tipped; popular everywhere...   | 05 | 10 | 25 |

|  | Pkt.   | Oz.    | ¼ Lb.  |
|--|--------|--------|--------|
| Scarlet Globe. One of the very earliest; equally good for forcing or open culture in spring and early summer; color beautiful scarlet; crisp, juicy and tender.    | \$0 05 | \$0 10 | \$0 25 |
| Long Cincinnati Market. An improved strain of the Long Scarlet Short Top.  | 05     | 10     | 25     |
| Long Chartier or Shepard. Very handsome, tender and crisp, does not become pithy or hollow. A deep crimson at the top and shading off the white at the bottom..... | 05     | 10     | 25     |
| White Strasburg, roots long and tapering; skin and flesh pure white, firm, brittle and tender, retaining these qualities even when the roots have become old.....  | 05     | 10     | 25     |
| Icicle. Beautiful transparent white, small tops allowing close planting; very crisp and brittle.....   | 05     | 10     | 25     |



FALL OR WINTER VARIETIES.

|   |    |    |    |
|---|----|----|----|
| Long Black Spanish. Long, black; flesh white and slightly pungent; one of the latest and hardiest.....  | 05 | 10 | 25 |
| Rose China Winter. Bright rose-colored skin; flesh white and quality excellent; one of the best for fall and winter use.....  | 05 | 10 | 20 |
| White Chinese or New Celestial. Ready for use when three inches long and continues until nearly six inches long, making it almost an all-season's radish. Flesh firm, solid and pure white..... | 05 | 10 | 20 |

*Rhubarb or Pie Plant*

|  |    |    |  |
|--|----|----|--|
| Myatt's Linneus Giant. Early and very fine; leaves and stalks of immense size. | 10 | 30 |  |
| Myatt's Victoria. Later than Linneus, but equally large and desirable.....     | 10 | 30 |  |
| Strong roots of these varieties \$1.50 per doz. \$7.00 per 100.                |    |    |  |

*Salsify or Vegetable Oyster*

|   |    |    |    |
|---|----|----|----|
| Mammoth Sandwich Island. Roots three times the size of ordinary salsify and of more agreeable flavor. Pure white..... | 05 | 15 | 40 |
|---|----|----|----|

**Spinach**

|  | PKT.   | OZ.    | ¼ LB.  |
|--|--------|--------|--------|
| Bloomsdale Savoy Leaved. Leaves curled and crinkled like a Savoy cabbage; hardiest and most productive sort..... | \$0 05 | \$0 10 | \$0 15 |
| Long Standing Thick Leaved. Stands longest before running to seed; dark green.....                               | 05     | 10     | 15     |
| Victoria. Fine for spring sowing, a little later than Long Standing; color dark green.....                       | 05     | 10     | 15     |

**Squash**



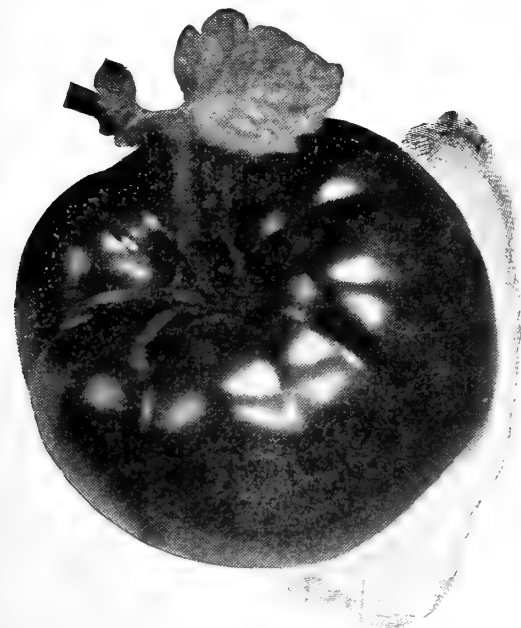
Summer Crookneck Squash

|   |    |    |    |
|---|----|----|----|
| Boston Marrow. Fine fall variety, oval bright orange; flesh yellow and firm; best for pies and also for canning ..... | 05 | 15 | 25 |
| Early White Bush Scolloped. Standard summer variety; good for home or market .....                                    | 05 | 15 | 25 |
| Giant Summer Crookneck. Double the size of the ordinary Crookneck and very warty, but similar in other respects.....  | 05 | 15 | 25 |
| Golden Summer Crookneck. The standard summer variety; small crookneck, skin bright yellow; early and productive.....  | 05 | 15 | 25 |
| Golden Custard. Mammoth strain of the Golden Bush; flesh golden yellow, of fine quality.....                          | 05 | 15 | 25 |
| Improved Hubbard. The well known and standard late variety; our strain is excellent.....                              | 05 | 15 | 25 |
| Vegetable Marrow. Summer and fall variety growing about nine inches long; outside yellow, flesh white.....            | 05 | 15 | 25 |
| Winter Crookneck. Yellow skin; a well known old fashioned variety.....  | 05 | 15 | 25 |

**Tobacco**

|  |    |    |  |
|--|----|----|--|
| Connecticut Seed Leaf. A popular sort used for cigar wrappers..... | 05 | 25 |  |
| Fine Havana. Finest strain of imported seed.....                   | 05 | 25 |  |

**Tomato**



New Dwarf Stone Tomato

|  |    |    |    |
|--|----|----|----|
| Acme Early. Well known; early, smooth and ripens evenly; color purplish red.....   | 05 | 15 | 50 |
| Atlantic Prize. One of the earliest; smooth, solid and bright red.....   | 05 | 15 | 50 |
| Beauty. (Livingston). Large, smooth, pinkish red; thick flesh, regular form.....   | 05 | 20 | 50 |
| Dwarf Champion. Distinct in foliage and habits of growth, being compact and upright; fruit smooth, early and purplish red .....        | 05 | 15 | 50 |
| Early Ruby. A new red tomato, extra early and of great size; similar to Perfection, but much earlier.....                              | 05 | 15 | 50 |
| Earlina. (New). Claimed to be the earliest; large, smooth, red; very prolific.....   | 10 | 25 | 75 |
| Lorillard. Very early, smooth, bright red.....   | 05 | 15 | 50 |
| Magnus. An improvement on Acme and Beauty; which it resembles in color, but is more solid than either; very early and productive ..... | 05 | 15 | 50 |

|   | Pkt.   | Oz.    | ¼ Lb.  |  |
|---|--------|--------|--------|--|
| New Dwarf Stone. Double the size of Dwarf Champion, the largest dwarf in existence; it has proved highly satisfactory the past season.....        | \$0 10 | \$0 25 | \$0 75 |  |
| Ponderosa. Very large, solid and of good flavor; specimens have been grown to weigh four pounds; bright red, very few seeds.....                  | 10     | 20     | 75     |  |
| Stone. A great favorite with canners. Vine vigorous and productive. Fruit round, very large, very deep in color and astonishingly productive..... | 05     | 15     | 50     |  |
| Trophy. Very solid and good in every way; bright red color; a standard late sort  | 05     | 15     | 50     |  |
| Yellow Plum. Fine flavored; much esteemed for preserves.....  | 05     | 15     | 50     |  |

**Turnip**

|  | Pkt.   | Oz.    | ¼ Lb.  | Lb.    |
|--|--------|--------|--------|--------|
| Burpee's Bread Stone. Top shaped; flesh perfectly white, very hard and firm, fine grained and sweet. For fall and winter use.....  | \$0 05 | \$0 10 | \$0 20 | \$0 50 |
| James W. Chambers, Oak Hill says, "I have grown this variety since its first introduction and want nothing better. From 10c worth of seed I raised 60 bushels."  |        |        |        |        |
| Early Snowball. A pure, snow-white, round as a ball, medium size and fine quality; very early.....   | 05     | 10     | 20     | 50     |
| Extra Early Purple Top Milan. Earliest in cultivation and a splendid variety. Bulb white, flat, of medium size, with a bright purple top, one of the sweetest and finest flavored of summer sorts.....   | 05     | 10     | 20     | 50     |
| Pomeranian Large White Globe. A large globe-shaped white variety: in good soil will grow to weigh twelve or fifteen pounds. Used mainly for feeding stock.....   | 05     | 10     | 20     | 50     |
| Red or Purple Top Strap Leaved. The most widely cultivated and best known variety. Used largely for sowing broadcast among corn and potatoes. It is round and flat, white on the bottom and a reddish purple above ground; a very thick grower. Though used mainly for stock feeding, it is one of the finest table varieties..... | 05     | 10     | 20     | 50     |
| Red Top White Globe. Quite similar to Purple Top Strap Leaf excepting in shape, being almost a perfect globe, and grows very large; immense cropper.....   | 05     | 10     | 20     | 50     |
| Yellow Aberdeen. (Purple Top). Bulbs round and flat, deep reddish purple on top and pale yellow on the bottom; flesh pale yellow, fine flavored.....   | 05     | 10     | 20     | 50     |
| Yellow Globe. A splendid sort for general crop; grows to a large size, a good keeper, with bright yellow flesh.....  | 05     | 10     | 20     | 50     |

**Ruta Baga**

|   |    |    |    |    |
|---|----|----|----|----|
| Budlong White Rock. An American Ruta Baga, earlier and rounder than any other.....  | 05 | 10 | 20 | 50 |
| Champion Purple Top Swede. The best of English yellow fleshed Swedes. Skin purple above ground and bright orange below, bulb globular in shape, flesh bright yellow, very firm and of fine quality..... | 05 | 10 | 20 | 50 |
| Improved American Purple Top. This strain is of American origin, bred to smaller top and short neck. Bulbs are of great size, yellow fleshed and purple crown; one of the most desirable varieties..... | 05 | 10 | 20 | 50 |
| White Swede or Russian. A superior white skinned and white fleshed variety very sweet and desirable for table or stock.....   | 05 | 10 | 20 | 50 |

**Herbs**

POT, SWEET AND MEDICINAL.

PER PKT.

|  |        |
|--|--------|
| Dill, used for flavoring pickles.....  | \$0 05 |
| Lavender. Leaves very fragrant.....  | 05     |
| Sage. A highly aromatic herb; most useful of all .....   | 05     |
| Summer Savory.....   | 05     |
| Sweet Marjoram. Used as seasoning.....   | 05     |
| Charles McLouth, Palmyra, N. Y., under date of July 25, 1904, says: "The seed I had from you a while since, turned out well." OUR SEDS GROW. |        |

# Select List of Flower Seeds

**Turning from the practical to the ornamental, we offer in the succeeding pages a choice assortment of Flora's Favorites which will appeal to all lovers of the beautiful.**

## Aster (Half hardy annual)

This family is so prominent among our finest autumn annuals that special effort has been given to its improvement, with most gratifying results. Its splendid double flowers are now displayed in a perfect luxury of colors and their variety of form is surpassing. When given plenty of water and rich soil, Asters can also be grown into beautiful pot plants.

**Dwarf Chrysanthemum-Flowered.** The plants grow only about 10 or 12 inches high, but the flowers are large and double like Chrysanthemums.

**Victoria.** Plants of this magnificent race bear from 10 to 20 fine beautifully reflexed flowers in an elegant pyramid about 18 inches high. The best sort for pot culture.

**Comet.** This, the most artistic-flowered of all the Asters; has become a fixed type in which specialists are continually developing some new strain. The outer petals are wavyly reflexed, centering in a whorl of shorter curled and twisted ones, forming flowers of extraordinary size and beauty.

**Queen of the Market.** The best early Aster, usually in full bloom two weeks before most other sorts begin to blossom. Of graceful, spreading habit. Height, 1½ feet.

**Truffaut's Paeony Perfection.** A handsome Aster that grows stiffly erect and about 18 inches tall. The class is remarkable for the brilliant colors of its great incurved flowers.

**Semple's Branching.** This vigorous type forms broad, handsome bushes, covered with large, long-stemmed and long-petaled flowers that are graceful and feathery in effect.

**Vick's Branching, white.** **Day Break,** the earliest and finest pink. **Ostrich Plume,** pure white, rose. **Mignon,** pure white. All varieties pkt. 05 cts., large pkt. 10 cts. Colors; shell pink, white, crimson, lavender, purple and mixed.

## Ageratum

Though ordinarily used in bedding and borders in contrast with such plants as Geraniums, Perillas, Amaranthus, etc., the white and blue sorts are all exceedingly attractive when mingled with Alyssum, Candytuft and similar plants. They grow well almost anywhere.

|   | Per Oz. | Per Pkt. |
|---|---------|----------|
| Imperial Dwarf Blue. Extra neat; 9 in.; fine for edgings.....           | \$0 60  | \$0 05   |
| Imperial Dwarf White. Pretty for contrast; 9 in.; fine for edgings..... | 60      | 05       |
| Cope's Pet. Lovely azure blue; 6 in.; the best variety for bedding..... | 60      | 05       |



Aster—Semple's Blanching

## *Alyssum*

For borders, baskets, pots, rockwork and for cutting; we recommend a liberal use of this dainty little flower. In borders sow thickly so as to form masses, and quite early in spring or even the previous autumn. For winter bloom sow late in August, and thin the seedlings to about a dozen for a good-sized basket. Cut back after the first flowers fade, and others will come.

|   | Per Oz. | Per Pkt. |
|---|---------|----------|
| Sweet. Fragrant white flowers all summer.....                       | \$0 35  | \$0 05   |
| Little Gem. Pretty trailer; fine for edgings; very floriferous..... | 40      | 05       |

## *Amaranthus*

Strong growing, highly ornamental plants. The tricolor varieties are very valuable for bedding, having elegant ornamental foliage, variegated crimson, yellow and green; also well adapted for growing in pots. For best results sow in hotbed in April and transplant to, open at end of May.

|                                       | Per pkt., | \$0 10 |
|---------------------------------------|-----------|--------|
| Salicifolius. Purple.....             | " "       | 05     |
| Tricolor. (Joseph's Coat). Mixed..... | " "       | 05     |
| Tricolor Splendens. Very fine.....    | " "       | 05     |

## *Acroclinium*

Exceedingly graceful plants, with everlasting flowers, much used for winter decorations. Flower-heads should be gathered when young, if to be preserved.

|                    | Per pkt., | 05 |
|--------------------|-----------|----|
| Single, Mixed..... | " "       | 05 |
| Double, Mixed..... | " "       | 05 |

## *Achillea*

One of the best hardy white perennials, grows about 2 feet high and from spring until frost is covered with head of purest, white double flowers; a grand plant for cemetery decoration.

|                          |           |        |
|--------------------------|-----------|--------|
| Parmica flore pleno..... | Per pkt., | \$0 10 |
|--------------------------|-----------|--------|

## *Ampelosis (Japanese or Boston Ivy)*

Veitchii. A hardy perennial climber with olive green leaves, which turn to scarlet in the autumn. The best and most popular climber for covering brick or stone walls.....

Per pkt. \$0 10

## *Antirrhinum (Snapdragon)*

The Snapdragon is one of our finest border plants, flowering the first year as annuals. Its bright colored, curiously formed flowers always excite interest, and among the newer sorts are flowers of a great variety of colors and markings, some of wonderful brilliancy, others soft and pleasingly shaded, and still others with a velvety appearance. Their rich spikes are beautiful for cutting, and keep fresh a long time. From seed sown in the open ground plants will bloom in July and August. For early flowers sow under glass in February or March and transplant into beds of warm, dry soil moderately enriched. If protected by a cold frame, or even a mulch of leaves, the plants will winter over and bloom early the following year. Now, however, most perennials and biennials which bloom the first year, and of which any particular display is desired, are treated like annuals and sown every year. The Snapdragon blooms freely and continually until frost. Average height 1½ feet.

|  |           |        |
|--|-----------|--------|
| Queen of the North, finest white, excellent for cutting..... | Per pkt., | \$0 10 |
| Giant White.....   | " "       | 05     |
| Giant Scarlet.....   | " "       | 05     |
| Giant Yellow.....  | " "       | 05     |
| Yellow, striped red.....                                     | " "       | 05     |
| Tall, Mixed.....   | " "       | 05     |
| Dwarf, Mixed.....  | " "       | 05     |

## *Aquilegia (Columbine)*

A most desirable border plant in all its many varieties. It forms large clumps, blooms early, long and abundantly, is quite hardy. Sow seed in the open ground in spring, preferably where the plants are to grow, and thin to about a foot apart. They may also be sown in the fall for flowering the following season. They thrive well with ordinary culture.



|                    |           |        |
|--------------------|-----------|--------|
| Single, Mixed..... | Per pkt., | \$0 05 |
| Double, ".....     | " "       | 05     |

**Balloon Vine**

A rapid growing annual climber; succeeds best in high soil and warm situation; flowers white, seed vessels look like miniature balloons. Price per oz. 20 cts., per pkt. 5 cts.



Balsam

**Balsam**

This plant is a quick, sure grower and from seed sown in the open ground in May soon form handsome bushes thickly massed with rose-like flowers.

|   | Per Oz. | Per Pkt. |
|---|---------|----------|
| Double White. Perfection.....   | \$1 00  | \$0 05   |
| " Bright Scarlet.....   | 1 00    | 05       |
| " Rose.....   | 1 00    | 05       |
| Camellia-Flowered. Flowers of extraordinary size, double and full-centered, with reflexed petals. The most elegant of all Balsams, mixed..... | 75      | 05       |

**Begonia**

Fine for growing in pots; being perfect in habit with very handsome foliage. Both Vernon and v. grandiflora are excellent for borders.

|  |           |        |
|--|-----------|--------|
| Vernon. Bright orange carmine flowers, deep, red foliage.....                    | Per pkt., | \$0 10 |
| " Grandiflora, a large flowering form of Vernon; being almost twice the size " " | " "       | 10     |

**Bellis Perennis (Double Daisy)**

|  |           |        |
|--|-----------|--------|
| Double White.....  | Per pkt., | \$0 10 |
| Longfellow. Double red.....                                  | " "       | 10     |
| Snowball. Very fine double white; excellent for cutting..... | " "       | 10     |
| Finest mixed.....  | " "       | 05     |

**Brachycome**

Free flowering dwarf growing annual; covered during a greater part of the summer with a profusion of pretty blue or white flowers; suitable for edgings, small beds or pot culture.

|            |           |        |
|------------|-----------|--------|
| Mixed..... | Per pkt., | \$0 05 |
|------------|-----------|--------|

**Browallia**

|   |           |        |
|---|-----------|--------|
| Elegant greenhouse annual; fine for cutting. Speciosa major; lovely blue..... | Per pkt., | \$0 10 |
|---|-----------|--------|

**Calceolaria**

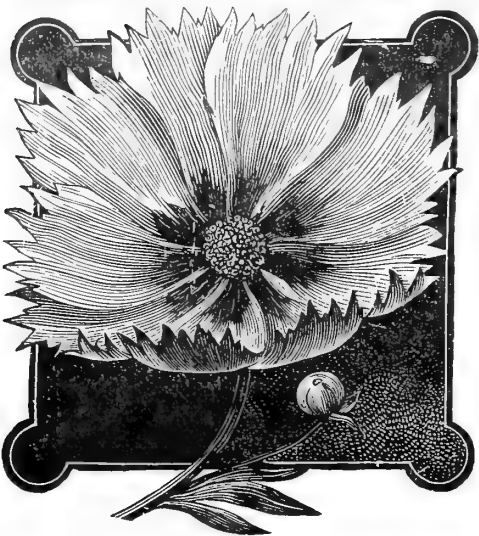
Splendid greenhouse plants, with flowers beautifully striped, blotched and variegated.

|                          |           |        |
|--------------------------|-----------|--------|
| Rugosa, (shrubby).....   | Per pkt., | \$0 50 |
| Trigina, or Spotted..... | " "       | 25     |
| Hybrida grandiflora..... | " "       | 25     |
| Mixed.....               | " "       | 25     |

**Calendula (Pot Marigold)**

Hardy annuals about a foot high. The seed may be sown in the open ground quite early in the spring, and the plants will be in bloom early in summer, and continue until late in the autumn. The flowers exhibit every shade of yellow from ivory to deep orange, are produced in great profusion, and are strongly effective in beds, borders or backgrounds.

|   | Per Oz. | Per Pkt. |
|---|---------|----------|
| Meteor. Creamy center, edged with orange; especially attractive.....                  | \$0 25  | \$0 05   |
| Prince of Orange. Glittering orange and yellow; very vivid flowered.....              | 25      | 05       |
| Pure Gold. A grand variety with double extra large flowers of a pure golden yellow... | 25      | 05       |



Calliopsis-Golden Wave

**Calliopsis**

(Tassel Flower, or Florist's Paint Brush). An annual of easy culture, with tassel-shaped flowers; blooms from June to September; fine for borders.

Golden-yellow and scarlet mixed. Per oz. 30 cts., per pkt. 5 cts.

**Calliopsis**

Sow in the open ground in spring, and in thinning or transplanting give the plants plenty of room to spread.

|   |           |        |
|---|-----------|--------|
| Golden wave. Large rich golden flowers, with chestnut-brown centers, produced in great abundance..... | Per pkt., | \$0 05 |
| Myra speciosa; rich crimson.....  | " "       | 05     |
| Pure Yellow. Grandiflora; large flowers.....  | " "       | 05     |
| of rich yellow.....   | " "       | 05     |
| Mixed.....  | " "       | 05     |

**Campanula (Canterbury Bells)**

These fine old plants are rich in color, profuse in bloom, and of easy culture. Transplant in spring 18 to 20 inches apart, in beds where they are to bloom. If sown early in good soil they will bloom early the next year.

|   |         |          |
|---|---------|----------|
| Carpatica. Deep blue; 6 in. For rockeries, borders, beds and edgings..... | Per Oz. | Per Pkt. |
| " Alba. Flowers white; 6 in.....  | \$0 50  | \$0 05   |
|   | 60      | 05       |

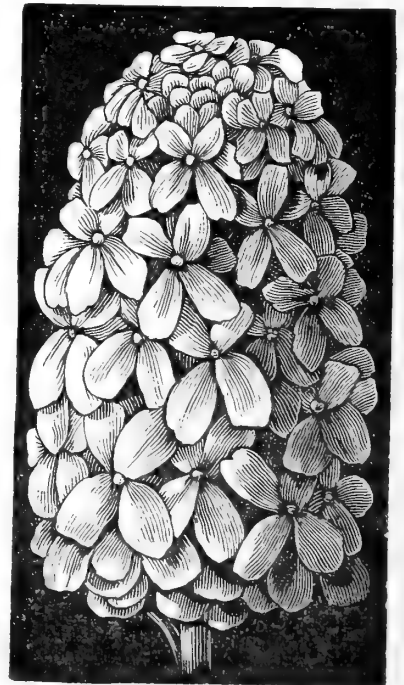
**Canary Bird Vine (Tropaeolum Canariense)**

A beautiful rapid annual climber, the charming little canary-colored blossoms bearing a fancied resemblance to a bird with its wings half expanded. Per oz. 40 cts., per pkt. 5 cts.

**Candytuft**

The Candytufts are among our best white flowers for edgings, for bedding or massing, for rockeries and for cutting. Several of the varieties are fragrant, and all are profuse in bloom. Sow out-doors in April where they are to bloom, and thin well when the plants grow about an inch. Sow again in a month, and late in July for fall flowers. September sowings will give winter-blooming plants. The soil should be rich and the plants well watered. They make many branches, and if some are pruned away the flowers will be larger.

|   |         |          |
|---|---------|----------|
| Empress. A complete mass of pure white flowers, born in a pyramid of bloom..... | Per Oz. | Per Pkt. |
| Queen of Italy. New, rosy white, very dwarf, fine.....                          | \$0 40  | \$0 10   |
| White Rocket; of candelabra form; very popular..                                | 25      | 05       |
| Carminia. Bright carmine.....   | 25      | 05       |
| Mixed.....  | 25      | 05       |



Candytuft—Empress

**Carnation**

Marguerite Carnations are an extra vigorous race especially adapted for outdoor culture. They are very neat in habit, and remarkable for their rich profusion of flowers, produced in five months from sowing. For masses of bloom few plants are finer; and for pots, also, their neat habit makes them very suitable. Grown as annuals, from seed sown every spring, they are most satisfactory.

|                                      |           |        |
|--------------------------------------|-----------|--------|
| White, Crimson, Scarlet, Purple..... | Per pkt., | \$0 10 |
| Giant Mixed.....                     | " "       | 10     |

**BORDER CARNATIONS**

|  |           |        |
|--|-----------|--------|
| Early Dwarf Vienna. Fine for garden culture and for cutting; 1 ft..... | Per pkt., | \$0 10 |
|--|-----------|--------|

**Castor Oil Bean (*Ricinus*)**

Picturesquely showy and imposing, the *Ricinus* gives to the garden magnificent semi-tropical effects, and may be used in a variety of ways. Grown as a specimen, it makes a perfect pyramid of gigantic leaves; a dozen plants in a large bed show a glorious mound of glistening colors and may be admired from a long distance; planted thickly it soon forms a handsome screen or hedge; the lower growing, dark-leaved sorts are beautiful for dotting here and there among Cannas, scarlet Geraniums, etc. Tall varieties grow from 8 to 10 feet high, with leaves several feet across and beautifully lobed. Half-hardy annuals.

|  | Per Oz. | Per Pkt. |
|--|---------|----------|
| Borboniensis. Violet; 10 ft.....   | \$0 15  | \$0 05   |
| Gibsoni. Violet-bronze; 5 ft.....  |         | 05       |
| Cambodgensis. Leaves glistening red-maroon; nearly black; 5 ft.....  | 40      | 05       |
| Zanzibariensis. Surpasses all in size and beauty of colors, which include glaucous-green, coppery brown, metallic red, brownish purple, red-maroon and bronze; 8 to 10 ft... | 50      | 05       |
| Mixed.....   | 15      | 05       |

**Celosia (*Cockscomb*)**

We prize and plant the Cockscombs as an odd and picturesque decorative feature of the garden. The bright red and crimson varieties are most effective. The dwarf varieties make novel and attractive borders; the tall ones form striking groups. Transplanting into rich soil about the time the combs begin to form makes these flower-heads much larger. They are bright from midsummer until frost.

|   |           |        |
|---|-----------|--------|
| Empress, Dwarf Crimson. Combs immense and vivid; foliage dark; 9 in.....                    | Per pkt., | \$0 10 |
| Glasgow Prize. Dark leaves and crimson combs; 1 ft.....                                     | " "       | 10     |
| Thompsonii magnifica, a great improvement on the feathered varieties, brilliant colors..... | " "       | 10     |
| Cristata, extra fine strain.....  | " "       | 10     |
| Spicata.....  | " "       | 05     |
| Dwarf Mixed.....  | " "       | 05     |

**Centaurea (*Cornflower*)**

*C. cyanus* is also known as "Blue Bottle," "Ragged Sailor," "Kaiser Blumen," and sometimes as "Batchelor's Button." These are bright-flowered plants of hardiest nature and simplest culture, yet esteemed among the most attractive and graceful of all the old fashioned flowers. When placed in water the flowers increase in size.

|  |                 |        |           |        |
|--|-----------------|--------|-----------|--------|
| Candidissima, Silver-leaved. These are used for borders or edgings and thrive any where height 1 foot; half-hardy.....               | Per 1,000 seeds | \$1 00 | Per pkt., | \$0 10 |
| Gymnocarpa, Silver-leaved.....   | Per oz.         | 80     | " "       | 10     |
| Imprialis, Mixed. New; very large-flowered. These flowers flower finest in full sun and thin soil. Sow in open ground in spring..... |                 |        | " "       | 10     |
| Cyanus (Blue Cornflower). Sow plentifully in large, irregular beds, 1½ ft. per oz  | " "             | 30     | " "       | 05     |
| Cyanus, Emper or William. Rich dark blue; 1½ ft.....   | " "             | 30     | " "       | 05     |
| " Mixed .....  | " "             | 25     | " "       | 05     |

**Cineraria**

Among the most ornamental and useful of greenhouse plants; very beautiful and showy, the colors being distinct and bright.

|  |           |        |
|--|-----------|--------|
| Grandiflora, prize varieties, dwarf, finest colors, mixed..... | Per pkt., | \$0 25 |
| " " " tall, " " " .....  | " "       | 25     |

**Coboea**

A climber of rapid growth; valuable for covering trellises, arbors, etc., will cling to any rough surface.

|  |           |        |
|--|-----------|--------|
| Scandens. Large bell-shaped; purple flowers..... | Per pkt., | \$0 10 |
| " Alba; pure white.....                          | " "       | 10     |

**Coreopsis**

Lanceolata grandiflora. One of the finest of hardy plants with large, showy, bright yellow flowers, produced in great abundance from June till frost, grand for cut flowers.....Per pkt., \$0 05

**Convolvulus (Morning Glory)**

Major climbing, finest mixed, per oz. 15 cts., per pkt. 5 cts.

**Cosmos**

A strong tall-growing annual, its bold flowers have yet an exquisite daintiness and airiness, heightened in effect by their foliage setting of feathery green. It is most effective when planted in broad masses, or long back ground borders against evergreens or fences at some little distance from the house and the garden walks. From seed started early in the house the plants will be 3 or 4 feet high by September, and tossing into the air a perfect storm of bright-colored, daisy-like flowers. Sowing the seed late and in poor soil will dwarf the plants.

|  |           |        |
|--|-----------|--------|
| Giant Fancy. Flowers often 5 inches wide, and with the petals beautifully fringed... | Per pkt., | \$0 05 |
| “ “ White.....   | “ “       | 05     |
| “ “ Red. Deep and dark.....  | “ “       | 05     |
| “ “ Pink. Bright clear shades.....   | “ “       | 05     |
| “ “ Mixed. All shades from pure white to deep crimson.....                           | “ “       | 05     |
| Early flowering, mixed colors.....   | “ “       | 05     |

**Cyclamen**

Sow the seed in small boxes or seed pans, in a compost of well-rotted manure, leaf-mould and sand. Cover lightly with moss, which remove after the seed germinates. Prick out into small pots when the plants have two leaves. The plants flower in 10 or 12 months from time of sowing.

|  |                      |           |        |
|--|----------------------|-----------|--------|
| Persicum giganteum Album, white.....           | Per 100 seeds \$1 50 | Per pkt., | \$0 25 |
| “ “ Atropurpureum, dark red.....               | “ “ “ 1 50           | “ “       | 25     |
| “ “ Superbum, white and rose.....              | “ “ “ 1 50           | “ “       | 25     |
| “ “ Roseum, bright rose.....                   | “ “ “ 1 50           | “ “       | 25     |
| “ “ Mixed.....                                 | “ “ “ 1 50           | “ “       | 25     |
| “ “ Papilio (Butterfly). Ten seeds in pkt..... | “ “ “                | “ “       | 25     |

**Cyperus (Chinese Umbrella Plant)**

Alternifolius, green.....Per pkt., \$0 10

**Cypress Vine**

A tender annual, with fine cut leaves; small star-shaped flowers.

Scarlet, White and Mixed.....Per oz. 30 cts., Per pkt., \$0 05

**Dahlia**

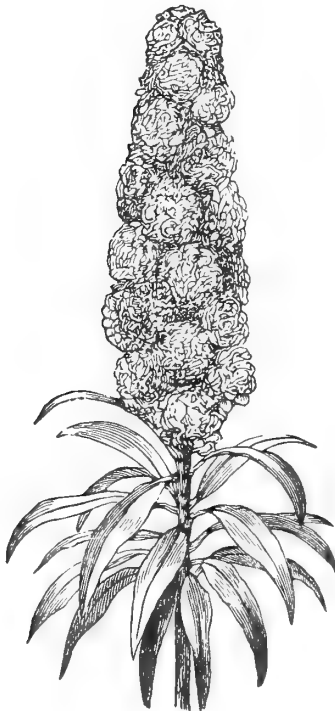
|                                     |           |        |
|-------------------------------------|-----------|--------|
| Double, large flowering, mixed..... | Per pkt., | \$0 10 |
| Single, “ “ “ .....                 | “ “       | 05     |

**Delphinium (Larkspur)**

In variety and beauty of its blue tints, which are as numerous as they are charming, no other plant can equal the Delphinium. The brilliant flowers can be seen from a long distance and are strongly effective in beds or masses, in borders, shrubberies, or in combination with white lilies. Ordinarily the tall sorts are planted among shrubbery, or as a background for dwarfs, which are favorites for bedding.

Perennial Varieties. These are usually taller than the annuals, requiring more space between the plants. If sown very early in spring nearly all will bloom the first season. The foliage is clean and pretty; habit strong and neat; flower-spikes long and dazzling.

|  |        |
|--|--------|
| Formosum. Brilliant blue, with white center; especially fine and attractive; 3 ft. Per oz. 75 cts. Per pkt., | \$0 05 |
| Hybridum, fl. pl. Finest double sorts in choice colors; annual varieties, a superb mixture; 3 ft. “ “        | 05     |
| Dwarf Rocket (annual).....   | “ “ 05 |
| Tall Stock fl'ds. “ Fine, mixed.....   | “ “ 05 |



Delphinium



Dianthus

### Dianthus

In this large and greatly varied genus are some of our most beautiful and best-loved flowers, unsurpassable for color and fragrance. They are hardy biennials that bloom finely the first season, remaining green all winter and blooming the next year also, if lightly protected. Old plants flower the earliest, but as young ones give the largest, finest flowers, sowings are made every year. Seed can be sown under glass in spring, or in open sheltered bed. The seedlings are easily transplanted and should stand 8 to 12 inches apart; dwarf ones about 6 inches. If especially large, brilliant flowers are desired; a bed of well-mixed turfy loam, leaf-mould and well-decayed manure be prepared for them. Average height, 1 ft.

|  |                 |                  |
|--|-----------------|------------------|
| Chinensis. Double; mixed. All best colors.....   | Per oz. 40 cts. | Per pkt., \$0 05 |
| Imperialis; single; mixed "  | 40 cts.         | " " 05           |
| Plumarius. fl. pl. (Sweet May Pinks). These are the fine, fragrant perennials of old-time gardens, still reckoned among the most beautiful of all pinks for massing and cutting. All colors mixed..... |                 | " " 10           |

|   |                 |        |
|---|-----------------|--------|
| Heddewigii. (Japan Pink). Annuals. Usually large edged, striped and ringed. Single mixed..... | Per oz. 75 cts. | " " 05 |
| Single mixed.....   | " " 75 cts.     | " " 05 |

### Didiscus

Cœrulea. This pretty annual is not as popular as it should be. Its exquisite flowers of pale lavender are greatly admired. Plant grows about 18 inches high. Price per pkt. 5 cts.

### Digitalis (Foxglove)

The tall stems of the Foxgloves are particularly handsome when seen growing among shrubbery, or in bold masses along walks or drives. Used as a background for lower plants they are also very fine. Often the spikes are two or three feet long and thickly strung with scores of showy, thimble-shaped flowers. Seed may be sown outdoors in spring and the seedlings transplanted where they are to grow, or preferably in a cold frame, where they make extra-strong plants, that will flower in magnificent spikes the next season. They are most satisfactory when treated as biennials, sowing the seed every year in rich, deep soil and partial shade. Average height, 2 to 3 feet. Easily cultivated. When the center spike begins to fade it should be cut out and the side shoots will, in consequence, grow more vigorously.

|  |                 |                  |
|--|-----------------|------------------|
| Gloxinifolia. This is a very handsome strain, with long, thick spikes of large flowers in a beautiful variety of colors. The name refers to the gloxinia-like spotted throats of the class. Finest colors mixed..... | Per oz. 30 cts. | Per pkt., \$0 05 |
|--|-----------------|------------------|

### Dolichos (Hyacinth Bean)

|  |                  |
|--|------------------|
| Lablab, rapid growing and free flowering; good for screens; mixed..... | Per pkt., \$0 05 |
|--|------------------|

### Dracoena

Fine foliaged plants of a deep green color, adapted for vases, etc.

|                                      |                  |
|--------------------------------------|------------------|
| Australis, wide-leaved variety.....  | Per pkt., \$0 10 |
| Indivisa, narrow-leaved variety..... | " " 10           |

### Echinocystis Lobata (Wild Cucumber Vine)

|   |                  |
|---|------------------|
| One of the quickest growing vines with which we are familiar, splendid for covering trellises, old fences, etc..... | Per pkt., \$0 05 |
|---|------------------|

***Eschscholtzia (California Poppy)***

An annual incomparably bright and rich in its pure tints of yellow and orange. The plants average about a foot in height, have beautiful silvery foliage, and produce their poppy-like flowers quite lavishly. They are effective when grown in beds of considerable size, over which the seed may be sown broadcast thinly and lightly raked in.

Californica. Finest mixed.....Per pkt., \$0 05

***Euphorbia (Mexican Fire Plant)***

Heterophylla. Very pretty leaves; showy. Fine new carmine variety.....Per pkt., \$0 05  
 Variiegata..... " " 05

***Gaillardia***

Showy and free bloomers. They are good bedders; very beautiful; fine for boquets, and should be more generally cultivated. They do best in a good, light soil and in an open sunny situation.

Lorenziana. Double mixed.....Per pkt., \$0 05  
 Grandiflora. Golden..... " " 05  
 Single mixed..... " " 05

***Globe Amaranth***

The Globe Amaranths are among the most popular of the everlastings. Their round heads of flowers are also called "Batchelors' Buttons." An old favorite for winter boquets. The best soil is a mixture of sandy loam, stable manure and some silver sand.

Mixed, all colors.....Per pkt., \$0 05

***Gourds, Ornamental***

Excellent for covering verandas or trellis-work, and for training over arbors, fences, etc. Of very rapid growth, with curious fruits and highly ornamental foliage. Cultivate the same as melons or squashes.

Mock Orange.....Per pkt., \$0 05  
 Egg-Shaped..... " " 05  
 Pear-Shaped..... " " 05  
 Hercules' Club..... " " 05  
 Sugar Trough..... " " 05  
 Bottle-Shaped..... " " 05  
 Dipper..... " " 05  
 Dish-Cloth..... " " 05  
 Mixed..... " " 05

***Grevillea (Silk Oak)***

Robusta. Elegant, graceful foliage plant.....Per oz., 75 cts, Per pkt., \$0 10

***Helianthus (Sunflower)***

Very stately decorative plants with great masses of yellow flowers. A few plants of the tall sorts can be placed here and there throughout the grounds with telling effect; it is the gardener's art to know or to locate them. Their golden yellow disks are like sunbursts among the shrubbery, and for backgrounds and screens nothing could be finer. Their long stems and wonderful lasting qualities also make them valuable as cut flowers. Like the Eucalytus, they are said to be good for absorbing the miasma of low grounds. Plant the seed in the open garden in spring; and thin the plants to stand 3 or 4 feet apart. The height of the different varieties vary greatly; all those below are hardy annuals.

Cucumerifolius (Miniature Sunflower). Of pyramidal growth; covered with hundreds of bright orange, small, single flowers; 3 ft..... Per pkt., \$0 05  
 Cucumerifolius, Stella. New, handsome, large-flowered primrose-yellow..... " " 05  
 Globulus fistulosus. Flowers large double of a rich saffron color, 6 ft..... " " 05  
 Nanus. fl. pl. (Cloth of Gold). Dwarf Double orange flowered; 4 ft..... " " 05  
 Single Russian; Giant-flowered; 5 to 8 ft., also useful for poultry..... Per oz. 10c. " " 05  
 Double White Miniature. A new double white sort. A certain proportion of the seedlings produce semi-double flowers, which are as desirable as the completely double form. In habit of growth and profusion of flower it is identical to the well-known single variety..... " " 10

**Heliotrope**



Heliotrope

These well-known greenhouse and bedding favorites are highly valued for their scented flowers. They should have light, rich soil.

Lemoine's Giant, mixed.....Per pkt., \$0 10

**Heuchera**

Sanguinea. One of the finest hardy perennials, flowers of a rich, bright crimson; leaves light green and slightly hairy; excellent for cutting. Price.....Per pkt., \$0 05

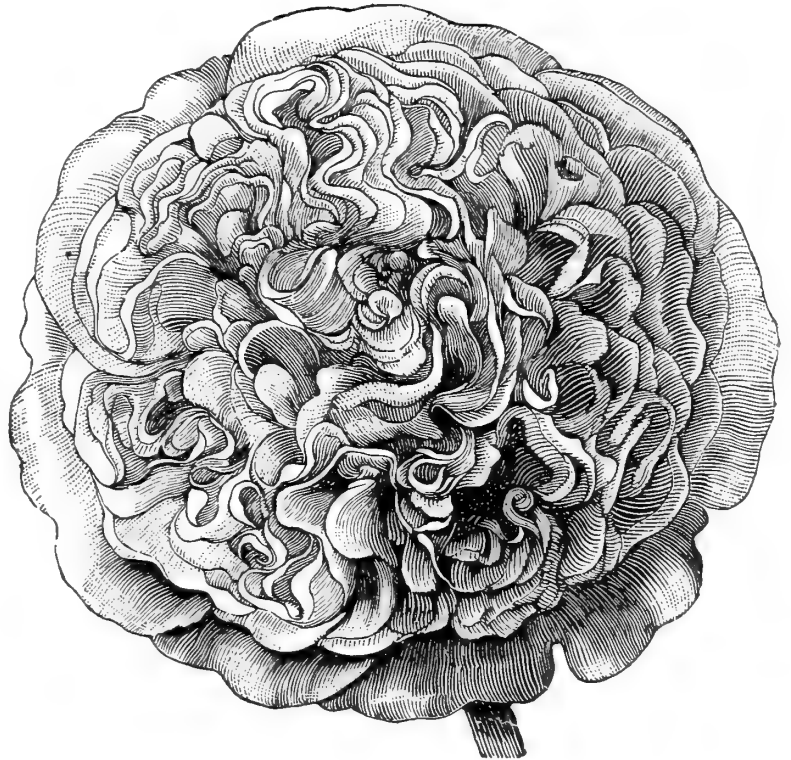
**Helichrysum (Everlastings)**

Greatly admired for their beauty. The flowers are large and the colors bright. They are highly prized for winter boquets. Flowers intended for drying should be gathered when partly unfolded, and suspended with their heads downward in a cool shed. Succeed best in rich, loamy soil.

Monstrosum. Double, mixed.....Per pkt., \$0 05

**Hollyhocks**

These stately old-fashioned perennials are most striking when seen in groups or long rows against evergreen hedges, shrubbery, etc., and in their turn, form a very fine background for plants of lower growth. Their color-variety is wonderful, ranging from pure white through almost every conceivable shade of yellow, red and rose to ashen-gray and almost black. Although hollyhocks are very permanent and hardy for the first winter it is advisable to sow seed every year, as the flowers on young, vigorous plants are much finer than on old ones. Sowing should be made in April or May, and not later than June to flower the next year. In final transplanting give each seedling a foot or more space each way for development. Average height, 4 feet.



Hollyhock

|   |           |        |
|---|-----------|--------|
| Double, White.....                      | Per pkt., | \$0 10 |
| “ Yellow.....                           | “ “       | 10     |
| “ Crimson.....                          | “ “       | 10     |
| “ Pink.....                             | “ “       | 10     |
| Alleghany Semi-double, pink shades..... | “ “       | 10     |
| Chater's Mixed.....                     | “ “       | 05     |

**Humulus (Japan Hop Vine)**

|   |          |        |
|---|----------|--------|
| Japonicus. Green.....                       | Per pkt. | \$0 05 |
| Variegata. Beautiful variegated leaves..... | “ “      | 10     |

**Hunnemannia fumarifolius**

Giant Yellow Tulip Poppy, or bush Eschscholtzia.....Per pkt., \$0 05

**Ipomoea**

Of all our climbers for garden and greenhouse, these are the quickest and most luxuriant in growth, carrying to great height a splendid curtain of leafage, studded, as summer heat comes on, with large,

satiny blooms of lovely colors. Ipomoea grows so easily from annual sowings that it is no longer thought necessary to winter over roots or young cutting plants under glass. The large, honey seeds of some varieties should be soaked in hot water before planting. For early flowers sow in hotbeds or pots and boxes under glass, and transplant to rich, deep soil in summer quarters as soon as danger of frost is over, when sowings may also be made in the open ground. We have nothing finer for porches, screens, trellises, etc.

|   |                 |           |        |
|---|-----------------|-----------|--------|
| Mexicana grandiflora alba. The great white Moonflower; 15 ft.....   | Per oz. 75 cts. | Per pkt., | \$0 10 |
| Grandiflora; all colors mixed.....  | " " 25 "        | " "       | 05     |
| Imperial Japanese Morning Glory. This race is now celebrated everywhere for extraordinary beauty. The vines are wonderfully vigorous, growing rapidly to a height of 30 or 40 feet, and their foliage is spangled with hundreds of large and lovely flowers, beautifully fringed and of rainbow hues..... | " " 50 "        | " "       | 10     |

***Labendula Spica (Lavender)***

|   |                 |           |        |
|---|-----------------|-----------|--------|
| A well-known, sweet scented hardy perennial... .. | Per oz. 15 cts. | Per pkt., | \$0 05 |
|---|-----------------|-----------|--------|

***Lantana***

|  |           |        |
|--|-----------|--------|
| Rapid growing plants, forming small, bushy shrubs. Fine mixed..... | Per pkt., | \$0 05 |
|--|-----------|--------|

***Linaria Cymbalaria (Kenilworth Ivy)***

Snapdragon-shaped flowers; desirable for edging and very good for rockwork.

|                           |           |        |
|---------------------------|-----------|--------|
| Flowers violet color..... | Per pkt., | \$0 05 |
|---------------------------|-----------|--------|

***Lobelia***

These are charming little plants that bloom very thickly from the seed and continue gay with flowers all through the season. For beds, edgings, baskets and pots we have nothing better; their exceedingly clear, cherry colors and generous bloom, make them welcome anywhere. Sow outdoors in early spring, where the plants are to grow, and thin moderately; or transplant several inches apart in rich, open soil. Some stimulent given when they are in bloom greatly improves the flowers. Almost all are also good winter conservatory plants of trailing habit. The perennial or tall varieties are handsome, showy plants, found quite effective for backgrounds and grouping.

|  |           |        |
|--|-----------|--------|
| Crystal Palace compacta. Dark blue; for bedding; 6 in..... | Per pkt., | \$0 10 |
| Emperor William. Light blue.....                           | " "       | 10     |
| Heterophylla Major. Beautiful sky-blue with white eye..... | " "       | 10     |
| Speciosa. Blue trailing. Fine for baskets.....             | " "       | 10     |

***Lophospermum***

|   |           |        |
|---|-----------|--------|
| Scandens. A very ornamental climber with trumpet-shaped flowers of rosy purple color..... | Per pkt., | \$0 10 |
|---|-----------|--------|

***Lychnis***

A beautiful little hardy perennial.

|   |          |        |
|---|----------|--------|
| Haageana hybrids; mixed colors, brilliant, orange, scarlet, crimson, etc..... | Per pkt. | \$0 05 |
|---|----------|--------|

***Marigold***

These, like the Calendulas, are valuable because they light the garden with such a grand glitter of yellow far into the frosts of autumn. The dwarf varieties make a fine border for taller sorts, and both are effective when planted in groups or in garden borders. Hardy annuals. Average height, 1½ to 2 feet.



Marigold



|  |                 |           |        |
|--|-----------------|-----------|--------|
| African. Stronger in growth and larger in flower than the French varieties. The dwarf sorts grow only about 18 inches high and bloom earlier than tall ones. Easily grown, but do not plant or sow out doors while there is danger of frost. Flowers lemon-yellow, double..... | Per oz. 50 cts. | Per pkt., | \$0 05 |
| African Eldorado. Large, quilled, perfectly double, brilliant shades of yellow.....  | Per oz. 60 cts  | “ “       | 05     |
| African. Pride of the Garden. Extra large, double flowers of richest yellow, dwarf and neat.....   | .....           | “ “       | 10     |
| French. These dwarf, stocky little plants yield an amazing number of charmingly conventional, orange-colored little blossoms, 1 ft.....  | Per oz. 50 cts. | “ “       | 05     |
| French. Legion of Honor. Single golden yellow blooms, marked with velvety red, very dwarf.....   | .....           | “ “       | 10     |
| Dwarf Mixed, Double.....   | Per oz. 50 cts. | “ “       | 05     |

**Marvel of Peru**

Also called “Four O’clocks” because they open their blossoms at that hour in the afternoon. Handsome free flowering, sweet scented, blossoms variegated, striped and various colors.

|            |          |        |
|------------|----------|--------|
| Mixed..... | Per pkt. | \$0 05 |
|------------|----------|--------|

**Matricaria**

|   |           |        |
|---|-----------|--------|
| Capensis fl. pl. the pretty and neat little Feverfew, flowers double white..... | Per pkt., | \$0 05 |
|---|-----------|--------|

**Maurandya**

Beautiful, rapid, slender-growing climbers, blooming profusely until late in the autumn; also fine for the conservatory or green house; if desired for the house take up before the approach of frost. A half-hardy perennial, flowering the first season if sown early; 10 feet.

|                                 |           |        |
|---------------------------------|-----------|--------|
| Barclayana, blue and white..... | Per pkt., | \$0 10 |
| Mixed.....                      | “ “       | 05     |

**Mesembryanthemum (Ice Plant)**

|   |           |        |
|---|-----------|--------|
| Dwarf trailing plants of great beauty, blooming the whole summer, thriving best in a dry, loamy or sandy soil, requiring a warm, sunny situation; half hardy annuals; 6 inches..... | Per pkt., | \$0 05 |
|---|-----------|--------|

**Mignonette**

Every in or out-door garden must have Mignonette in plentiful supply. The seed can be sown at any time, and if successive sowings are made, its fragrant, modest colored flowers may be gathered outdoors until November. Sow in pots or boxes under glass in February or March and thin or pot off the seedlings to make good plants for bedding out about April 15. Sow outdoors in rows about April 1, again regularly at intervals or about three weeks till August, a row or two at a time for succession. The July sowing will make good winter flowering plants. Average height, 1 ft.



Myosotis

|   |                 |        |
|---|-----------------|--------|
| Defiance. Full round spikes of great length; very fragrant and fine for cutting; 1½ ft..... | Per pkt.,       | \$0 10 |
| Grandiflora. Large flowers.....   | Per oz. 40 cts. | “ “ 05 |
| Machet Dwarf. Deep red 9 in.....  | “ “ 60 “        | “ “ 10 |
| Miles’ Spiral. 1 ft.....  | “ “ 40 “        | “ “ 05 |
| Victoria. Compact, rich brilliant red.....  | “ “ 60 “        | “ “ 10 |

**Mimosa Pudica**

|                      |           |        |
|----------------------|-----------|--------|
| Sensitive Plant..... | Per pkt., | \$0 05 |
|----------------------|-----------|--------|

**Mimulus**

|                              |           |        |
|------------------------------|-----------|--------|
| Moschatus. (Musk Plant)..... | Per pkt., | \$0 05 |
|------------------------------|-----------|--------|

**Myosotis**

|                       |           |        |
|-----------------------|-----------|--------|
| (For-get-me-not)..... | Per pkt., | \$0 05 |
|-----------------------|-----------|--------|



Nasturtium

### Nasturtium

*Little need be said of this deservedly popular flower, it being so well known to all lovers of flowers. Our stock embraces the finest colors and variety.*

Cut shows first prize, won by Frank H. George, 9 Crescent street, Jamestown, N. Y., in our competitive class held in July last year.

#### Dwarf or Tom Thumb Varieties

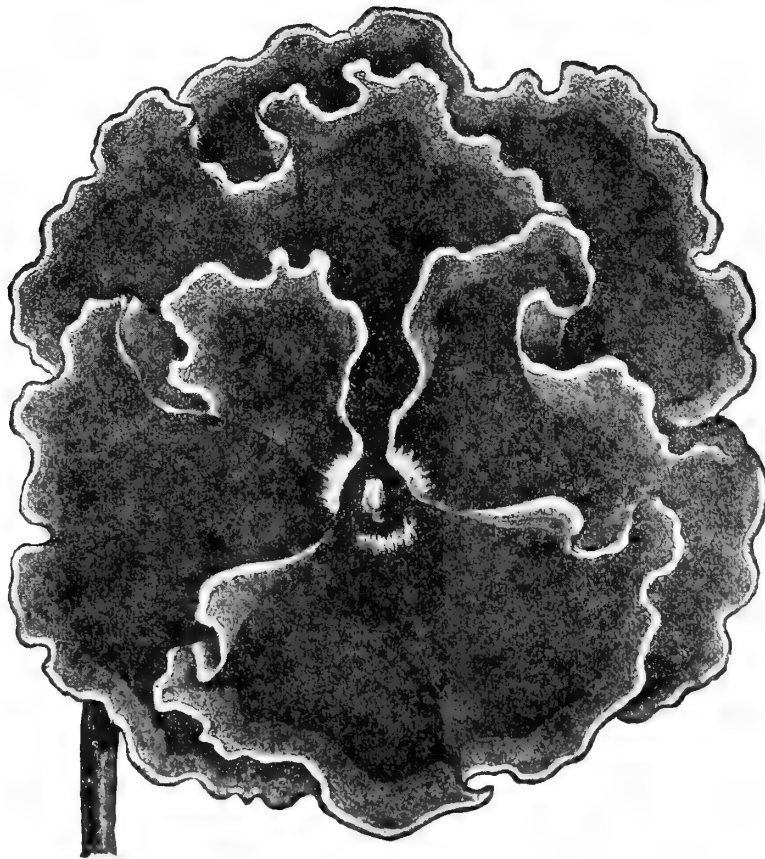
|                                     |           |         |          |        |
|-------------------------------------|-----------|---------|----------|--------|
| Beauty. Yellow and Scarlet.....     | Per oz.   | 20 cts. | Per pkt. | \$0 05 |
| Golden King. Yellow.....            | " "       | 20 "    | " "      | 05     |
| Coccineum. Scarlet.....             | " "       | 20 "    | " "      | 05     |
| King Theodore. Darkest Crimson..... | " "       | 20 "    | " "      | 05     |
| Pearl. Whitish.....                 | " "       | 20 "    | " "      | 05     |
| All colors, mixed.....              | Per ¼ lb. | 25 cts. | " "      |        |

#### Tall or Climbing Nasturtiums

|                                     |           |         |           |        |
|-------------------------------------|-----------|---------|-----------|--------|
| Dunnetts. Orange.....               | Per oz.   | 20 cts. | Per pkt., | \$0 05 |
| Chameleon. New, fine.....           | " "       | 20 "    | " "       | 05     |
| King Theodore. Darkest Crimson..... | " "       | 20 "    | " "       | 05     |
| Pearl. Whitish.....                 | " "       | 20 "    | " "       | 05     |
| All colors, mixed.....              | per ¼ lb. | 25 cts. | " "       |        |

### Pansy

The pansy is a plant that we all delight to grow in plentiful supply for flowers all the year. Early sowings give the finest flowers.



Pansy

|   |  |                  |
|---|--|------------------|
| New Giant.....  | } for description see list of novelties. |                  |
| “ “ Pretiosa.....   |  |                  |
| Trimardeau Giant. This strain has remarkably large flowers, carried well above their leaves, and generally marked with large blotches, the plants are extra vigorous and compact. Finest mixture..... |  | Per pkt., \$0 10 |
| Our High Grade mixture containing a selection of the most beautiful colors and markings. Flowers of fine texture.....   |  |                  |
| Giant Dark Blue.....  |  | Per pkt., \$0 15 |
| “ Emperor William, Cornflower blue, very showy.....   |  | “ “ 10           |
| “ Lord Beaconsfield, purple violet, upper petals white.....   |  | “ “ 10           |
| “ Snowflake.....  |  | “ “ 10           |
| “ Yellow with dark eye.....   |  | “ “ 10           |
| Our special selection of assorted colors, a first-class mixture.....  |  | “ “ 05           |

E. K. Carpenter, 327 Foote Ave., says: "From a packet of your special 'High Grade' mixture, one plant made extraordinary growth, producing during the months of July and August, by actual count more than six hundred blossoms; the flowers were large and of dark velvet color.

### Petunia

Sow in hotbed, cold frame, or in boxes of fine soil in the sunny windows of a warm room in April or May, and transplant about a foot apart in garden beds. Seed of the double varieties has not so much vitality as that of single sorts and needs a little more care in watering to be sure of germination. We have no better plants than the Petunias for beds and masses, borders, window-boxes, baskets and vases. They will grow in almost any soil and bloom profusely through long droughts. The newer varieties are of brilliant colors.



Petunia—Single Fringed

|  |           |        |
|--|-----------|--------|
| Howard's Star. Most beautiful of the single varieties, the center of the flowers being ragged with a fine pointed star of bluish pink on a maroon ground.....  | Per pkt., | \$0 15 |
| Striped and blotched. Flowers of fine form measuring 4 or more inches across. Our strain consists of the finest varieties only.....  | Per pkt., | \$0 15 |
| Hybrida, nana multiflora, splendid variety for bedding.....  | “ “       | 15     |
| Our finest mixture.....  | “ “       | 10     |
| Double Large-flowering. Our seed will produce flowers large, fragrant, elegantly formed and beautiful either for house, garden or conservatory. The Double Petunias are great favorites for pot culture in ordinary windows. Flowers are large and much be-ruffled, very choice..... | Per pkt., | \$0 25 |
| Snowball. A grand pure white; extremely double, extra large flower.....  | “ “       | 25     |

### Phlox

The annual Phloxes are dazzling in effect, particularly so when sown in masses or ribbon beds

of contrasting colors. Few flowers are so easy to grow from seed, so pretty and compact in habit, so quick to bloom, or give such a brilliant display of color for so little cost and care. There are a few desirable colors beyond their range, and if given good soil and plenty of water they furnish a long supply of delicate flowers for cutting. For pot culture, as trainers, and as an undergrowth for tall, bare stemmed plants they are also valuable.

|  |           |        |
|--|-----------|--------|
| Grandiflora (tall growing variety). White with purple eye, pure white, pink, crimson, purple or mixed..... | Per pkt., | \$0 05 |
| Drummondii, nana Compacta, (dwarf growing variety) finest mixture.....                                     | “ “       | 05     |
| Star of Queölinburg. Star-shaped, many colors.....   | “ “       | 05     |
| Decussata (perennial Phlox), a choice assortment of colors.....  | “ “       | 05     |

### Poppy

No other flower so bold and brilliant has the same grace of stem, airiness of poise and delicacy of tissue. For beds and borders with a background of green, there is nothing finer, some sorts are admirable for naturalizing in open wooded grounds, others, like the Shirley, are beautiful for cutting. Sow

thinly, covering very lightly, as the seed is quite small, and thin the plants to stand about a foot apart. The best plants are those sown from early sowings while the earth is cool and moist.

Annual Varieties. This section includes double and single flowers of greatly varying sizes, self-colored, and daintily edged. All are easily cultivated and greatly admired. Average height, 3 feet.

|  |           |        |
|--|-----------|--------|
| Double Carnation-flowered. Very double, fringed, colors dazzling, Per oz., 20 cts.   | Per pkt., | \$0 05 |
| " Pæony-flowered. Large, handsome flowers of many colors " " 20 "  | " "       | 05     |
| Single-flowered Glaucum (Tulip Poppy). Striking, tulip-shaped flowers of intensely brilliant scarlet; dwarf.....Per oz., 10 cts.   | " "       | 05     |
| Shirley. These charming Poppies are single or semi-double. The range of color, extending from pure white through the most delicate shade of pale pink, rose and carmine to deepest crimson, is so varied that scarcely two are alike, while, many are delicately edged and striped. The blooms if cut while young, will stand for several days without drooping.....Per oz., 30 cts. | " "       | 05     |
| Miss Sherwood. A beautiful, single Pæony-flowered variety, a combination of rare delicacy producing flowers of pure white with satiny-rose foliage, very strong.   | " "       | 10     |
| Mixed Iceland Varieties, a fine collection of the class of perennial Poppy about 12 inches in height, bearing yellow, white or orange-scarlet flowers in endless profusion, and most useful for cutting.....   | " "       | 05     |

## Portulaca

This charming little annual is unrivaled for brilliancy among plants of low growth, and the happy faculty of flourishing under almost all conditions, though hot sun and a light sandy soil suits it best. Nothing is prettier for beds, edgings, rockwork, and for filling up irregular spaces or unexpected gaps in flower beds. As an undergrowth for taller plants it is also valuable.

|                               |           |        |
|-------------------------------|-----------|--------|
| Single, all colors mixed..... | Per pkt., | \$0 05 |
| Double, all colors mixed..... | " "       | 10     |

## Primula

This deservedly popular plant is so widely known as to require but little description. The varieties listed are adapted for house culture.

|  |           |        |
|--|-----------|--------|
| Sinensis (Chinese Primrose). Rose white with pink eye, pure white, crimson, blue | Per pkt., | \$0 25 |
| " Finest mixed.....  | " "       | 15     |
| " Fern-leaved mixed.....   | " "       | 15     |
| " Forbesii (Baby Primrose).....  | " "       | 10     |
| " Obconica grandiflora.....  | " "       | 10     |

## Pyrethrum

The varieties offered are well adapted for edging purposes.

|                                    |           |        |
|------------------------------------|-----------|--------|
| Aureum, golden yellow foliage..... | Per pkt., | \$0 05 |
| Selaginoides hybridum.....         | " "       | 05     |

## Salpiglossis

One of the greatest favorites among annuals, being easy of culture producing beautiful orchid-like flowers in great profusion from early summer until late in the fall.

|                             |           |        |
|-----------------------------|-----------|--------|
| Large flowering, mixed..... | Per pkt., | \$0 05 |
|-----------------------------|-----------|--------|

## Salvia or Scarlet Sage

The Salvia is a standard bedding plant that keeps the garden bright with color until late in autumn. For pot culture, for cutting, for borders, and for forming bushy, hedge-like lines in the garden it is very valuable. Sow seed in window-boxes or frames, in March or April, and set the plants out doors after danger of frost is past, or sow out doors in May. The plants grow and bloom profusely in any light, rich soil. Both the tender and hardy perennial sorts bloom the first year and all are treated as annuals.

|  |           |        |
|--|-----------|--------|
| Bonfire. The most dazzling of scarlets and finest flowerings of this interesting class, very dwarf.....  | Per pkt., | \$0 05 |
| "Silverspot." A striking new variety, with rich green leaves elegantly spotted with yellow. The intense bright scarlet flowers are large and lavishly borne, the habit of the plant is neat and compact..... | " "       | 05     |
| Splendens, the original scarlet sage, very free flowering and of brilliant color.....  | " "       | 05     |

### Scabiosa

Commonly known as the "Mourning Bride," a showy border plant with beautifully variegated flowers. It succeeds in ordinary garden soil.

|                                    |           |        |
|------------------------------------|-----------|--------|
| Dwarf, large flowering, mixed..... | Per pkt., | \$0 05 |
| Double Snowball.....               | " "       | 05     |
| Tall double, mixed.....            | " "       | 05     |

### Schizanthus

A class of elegant and free-blooming annuals.

|                                   |           |        |
|-----------------------------------|-----------|--------|
| Finest mixture of all colors..... | Per pkt., | \$0 05 |
|-----------------------------------|-----------|--------|

### Smilax

|  |               |           |        |
|--|---------------|-----------|--------|
| For table and house decoration. Fine for florists..... | Per oz., 15c. | Per pkt., | \$0 05 |
|--|---------------|-----------|--------|

### Solanum Capsicastrum (Jerusalem Cherry)

This is a very useful pot plant for winter decoration. It is of dwarf, branching habit; leaves small and oval-shaped, bearing in the greatest profusion bright scarlet globular berries. Very ornamental; 1 foot.....

|  |           |        |
|--|-----------|--------|
|  | Per pkt., | \$0 05 |
|--|-----------|--------|

### Stevia Serrata

|  |           |        |
|--|-----------|--------|
| A pretty annual, flowers white, excellent for boquets..... | Per pkt., | \$0 05 |
|--|-----------|--------|

### Stocks

A race of valuable annuals popularly known as the "Gillyflower." Very free flowering and sweet scented.

|  |           |        |
|--|-----------|--------|
| German Ten-week. These are the favorite half-hardy annual; white, rose, purple, blue, lilac..... | Per pkt., | \$0 10 |
| All colors mixed.....  | " "       | 05     |
| Princess Alice, (Cut and come again) Pure white.....   | " "       | 10     |
| <b>Brompton</b> , Empress Elizabeth. Splendid carmine-rose, dwarf, for pots and groups..         | " "       | 10     |

### Sweet Peas

A deep, rich moist soil is best suited to Sweet Peas. They are usually grown in double rows, with a wire trellis, or a row of brush between. For each double row make the drills about five inches deep and nine or ten inches apart. Sow plentifully, covering about two inches deep, and by degrees, as the vines grow up, fill the trenches with soil. Spring sowings should be made just as early as the ground can be prepared.

**Cut shows first prize awarded to Mrs. E. W. Jones, Celoron, N. Y., in our competitive class held in July last year.**

Mrs. Mary Baker, Groton, N. Y., writing says: "I had some of your mixed Sweet Peas, they were such beautiful color and variety that I wish to get some more."

America. Bright blood-red striped, very distinct.

Apple Blossom. Bright Pink and blush, beautifully shaded.

Aurora. Flowers extra large, standard and wings flaked and striped bright orange-salmon on white ground.

Black Knight. Deep maroon self-color.



Sweet Peas

- Blanche Burpee. Superb, pure white, immense size, perfect form.  
 Blanche Ferry, Extra Early. Pink and white, ten days earlier than the ordinary sort.  
 Captain of the Blues. Bright purple and pale blue.  
 Celestial. Pale lavender.  
 Countess of Radnor. Standard delicate lavender, wings dark mauve, lovely.  
 Dorothy Tennant. Standard rosy mauve, wings bluish mauve.  
 Duke of Clarence. Rosy Claret, self-colored flowers, extra large.  
 Earliest of All. Blossoms like Extra Early Blanche Ferry, but earlier.  
 Eliza Eckford. White, shaded and edged with light pink on standard.  
 Emily Henderson. Splendid pure white, good for forcing.  
 Firefly, bright scarlet.  
 Gorgeous. Standard erect, richly suffused with deep salmon-orange, wings large, heavily shaded of deeper shade, coloring intensely brilliant.  
 Gray Friar. A charming variety, heavily shaded with watered purple markings on creamy-white ground.  
 Her Majesty. Large, finely hooded flowers of soft rose, deep and glowing.  
 Katherinè Tracy. Soft brilliant pink, one of the best.  
 Lady Mary Currie. A beautiful bright crimson-orange, large flower, very showy.  
 Lady Nina Balfour. A lovely shade of pearl-gray.  
 Lady Grisel Hamilton. Flowers of best hooded form and large size, color light lavender shading, very dainty in effect.  
 Lottie Eckford. Rose and white, edged with blue.  
 Lottie Hutchins. Pale primrose, striped with light pink.  
 Lovely. Deep rose at base of standard and wings, shaded to pale pink and bluish at edges.  
 Mars. Bright crimson-scarlet wings, fiery scarlet standard.  
 Mrs. Eckford. White, delicately shaded with primrose.  
 Mrs. Jos. Chamberlain. Rose striped on white, both standard wings very large.  
 Mrs. Sankey. Pure white, black seeded.  
 Mont Blanc. The earliest of all, large, pure white.  
 Navy Blue. Bluish purple standard, navy blue wings. New and distinct, very blue, the best dark blue yet introduced.  
 Prima Donna. Light blush pink, very beautiful, large flower.  
 Prince of Wales. Fine bright rose, self-colored.  
 Romona. Very large flowers, creamy white, shaded pale pink.  
 Royal Rose. Fine deep rose-colored.  
 Sadie Burpee, White Seed. The largest pure white Sweet Pea.  
 Senator. Standard maroon and violet, wings violet and indigo, both striped with white.  
 Shahzada. Dark maroon, shaded purple.  
 Stella Morse. Primrose, flushed pink, very beautiful.

All the above named varieties 10 cts. per oz. ¼ lb. 25 cts. ½ lb. 50 cts. Lb. 75 cts.

Our Special Mixture, of all colors.....Per oz. 5 cts. Per ¼ lb. 15cts. Per ½ lb. 25 cts. Per lb. 40 cts.

***Dwarf Cupid Sweet Peas***

An entirely distinct race of Sweet Peas, growing only about 6 inches high. Of very compact neat bushy habit, and with flowers as large and as fragrant as those of tall sorts. Excellent for pots borders or masses.

|  |          |        |
|--|----------|--------|
| White. Large pure white flowers, very floriferous .....        | Per oz., | \$0 10 |
| Alice Eckford. Cream tinged cerise standards, white wings..... | “ “      | 10     |
| Beauty. White, shaded and edged light pink.....                | “ “      | 10     |
| Firefly. Dazzling scarlet.....                                 | “ “      | 10     |

***Sweet William***

A splendid old-fashioned plant, producing its large heads of beautifully colored sweet-scented flowers in great abundance. It is a hardy perennial, easily grown and flowering the second year from seed.

|                   |           |        |
|-------------------|-----------|--------|
| Mixed Single..... | Per pkt., | \$0 05 |
| “ Double.....     | “ “       | 05     |

### *Thunbergia*

Very ornamental climbers and abundant bloomers. They are also very effective as bedding plants if a little pains be taken with them.

Orange, white and mixed.....Per pkt., \$0 05

### *Verbena*

A well-known bedding plant of many colors; flowering from early summer until frost. Our strain is the mammoth kind.

Separate colors, white, scarlet, pink, purple or striped. Pkt. 10 cts. All colors mixed Per pkt., \$0 05

LEMON VERBENA.

An attractive greenhouse shrub, grown for the delightful citron scent of its light green leaves. It is easily grown from seed and becomes quite tall with age, but it is usually pruned back to a pretty bush form.....Per pkt., \$0 10

### *Vinca*

Fine for conservatory, parlor windows and borders or beds; very attractive.

|                           |           |        |
|---------------------------|-----------|--------|
| Rose.....                 | Per pkt., | \$0 10 |
| Pure White.....           | “ “       | 10     |
| White, with pink eye..... | “ “       | 10     |
| All colors, mixed.....    | “ “       | 05     |

### *Zinnia*

Few flowers are so easily grown from seed sown in the open ground, or bloom so abundantly and continuously through the entire season as this hardy annual. Marvelous improvements have been wrought in the newer strains. During the month of August Zinnias are almost incomparably bright. We recommend a free use of them for groups, beds, borders, garden lines and summer hedges. Sow seed in the open ground early in spring. Average height, 1½ to 2 feet.

Dwarf Double. These are of more compact and neater habit than the tall varieties, with flowers quite as handsome.

TALL VARIETIES.

|                    |           |        |
|--------------------|-----------|--------|
| Snowball.....      | Per pkt., | \$0 05 |
| Orange.....        | “ “       | 05     |
| Scarlet.....       | “ “       | 05     |
| Zebra Striped..... | “ “       | 05     |
| Pomponne.....      | “ “       | 05     |
| Mixed.....         | “ “       | 05     |

DWARF VARIETIES.

|                  |           |        |
|------------------|-----------|--------|
| Jacquiminot..... | Per pkt., | \$0 05 |
| Mixed.....       | “ “       | 05     |

## *Summer Flowering Bulbs*

Mrs. E. Skellie, North East, Pa., writes: "Bulbs purchased from you last year, gave splendid satisfaction."

### *Gladiolus*

Gladioli are very easily grown. Any good soil suits them. Plant, as soon as all danger from frost is past, 3 inches deep and 7 or 8 inches apart. By planting at intervals up to the first of July these fine flowers can be had in bloom all through the summer and fall—the later to flower being the best. Very effective in beds, in masses or mixed with other plants. The cut flowers keep in water for a long time. About the end of October, when the leaves begin to wither, the bulb should be taken up, dried in the open air, and then stored in a dry place from frost for planting next spring.

|   | Per Doz. | Per 100 |
|---|----------|---------|
| Varieties of Red and Scarlet.....   | \$0 25   | \$1 25  |
| White and Light, Standard selection.....  | 35       | 2 25    |
| Pure White.....   | 35       | 2 25    |
| Striped and Variegated.....   | 35       | 2 25    |
| Pink.....   | 35       | 2 25    |
| Yellow and Orange.....  | 35       | 2 25    |
| Groff's New Hybrids. This splendid new strain of hybrid seedlings embraces thousands of varieties of the largest size and greatest diversity of colors, including slate blues, smooky and sooty combinations, in great variety. Mixed hybrid seedlings, first selection, large bulbs..... | 50       | 3 00    |

***Caladium esculentum***

|                         |              |                  |
|-------------------------|--------------|------------------|
| Large size bulbs.....   | Each, \$0 15 | Per doz., \$1 25 |
| Smaller size bulbs..... | " 10         | " " 1 00         |

***Cannas***

The following list embraces the very best of this popular class of bedding plants, our list is confined to one color of each variety.

Alphonse Bouvier, the best tall crimson. A strong grower with bright green foliage. 6 feet.

Austria. Pure canary yellow; fine large open flowers, with but few traces of reddish brown dots in the center of the two inside petals.

Black Beauty. Large massive foliage of the richest bronzy purple color shaded with black. Where foliage effect alone is desired, nothing richer can be found.

Chas. Henderson. Bright crimson. 3 feet. Foliage green.

Florence Vaughn. One of the finest yellow spotted varieties. Bright golden yellow, spotted red foliage rich green. 4 feet.

Madam Crozy. Bright crimson-scarlet, bordered with golden yellow. 4 feet. Foliage bright green, and very massive.

President McKinley. Brilliant crimson with scarlet shading. 3 feet. Foliage deep green with chocolate margin.

Queen Charlotte. The finest gilt-edged variety. Bluish-green foliage; large flowers of a rich scarlet-crimson, broadly banded with canary-yellow. 3 feet.

Souvenir d'Antoine Crozy. Very fine gilt-edge variety; flowers large, intense crimson, bordered with golden yellow. 3 feet. Strong roots, each 15 cts.; doz. \$1.00.

***Dahlías***

Single and Double in separate colors. Yellow, red, red and yellow, pink and white, strong roots, each 10 cts. Per doz. \$1.00.

***Lilies***

For stateliness of habit, beauty of form and variety of coloring, the Lily is without a rival among bulbous plants. Many of the species are delightfully fragrant. Though they may nearly all be called hardy, it is well to protect them against frost in winter by a covering of ashes or litter. They are easily grown, and require little care. They do best in a light, well-drained soil. Some peat or leaf-mould may be used to advantage. They all prefer a partial shade, and the taller sorts must have protection from high winds. Many of the stronger-growing kinds are well adapted for planting among shrubs.

|   |              |             |
|---|--------------|-------------|
| Auratum (Golden-Banded Lily). The grandest of all hardy Lilies; flowers white, spotted with maroon, having a bright yellow band through each petal..... | Each 10 cts. | Doz. \$1 00 |
| Longiflorum. Large, pure white, trumpet-shaped flower.....  | " 10 "       | " " 1 00    |
| Speciosum album. Beautiful pure white flower of large size.....   | " 10 "       | " " 1 00    |
| Speciosum rubrum. White, shaded rose and spotted deep red.....  | " 10 "       | " " 1 00    |



# LAWN GRASS SEED



JAMES PRENDERGAST LIBRARY  
Lawn Sown with our Chautauqua Lawn Mixture

**Our Chautauqua Lawn Mixture**, is composed of permanent grasses that make a finer and thicker turf the older they become, yet give a rich green sward in three or four weeks from time of sowing. Sow at the rate of 4 to 5 bushels to the acre (15 lbs. to the bushel). Per qt. 20c.;  $\frac{1}{2}$  pk. 65c.; pk. \$1.00; bu. \$3.50.

**Our Evergreen Mixture for Shady Spots.** A mixture of grasses that thrive in shaded situations, under trees, or close to walls where there is little sun. Price, per qt. 20c.; pk. \$1.25; bu. of 20 lbs. \$4.50.

We guarantee our seeds will do what we claim, providing conditions of soil and elements are favorable.

***We are headquarters in Chautauqua County for Farm Seeds of all kinds. Special Market Prices quoted on application.***

## Raffia

For Basket and Hat making. White, 2 ozs. 5c.; 25c. lb.

Colors—Red, blue, brown, yellow, green, black, 5c. oz.; 75c. lb.

## Fertilizers

**SUCCESS FERTILIZER.** A complete fertilizer for general use, odorless. 10 lbs. 25 cts.; 50 lbs. \$1.00.

**PULVERIZED SHEEP MANURE.** Acknowledged to be the leading fertilizer for all purposes. Per 10 pounds, 25 cents.

**PURE BONE MEAL**, for permanent results. The finest permanent fertilizer for lawns. Perfectly odorless. 10 pounds, 25 cents; 50 pounds, \$1.00.

**NITRATE OF SODA.** Per five pounds, 25 cents.

**CANADA WOOD ASHES.** A splendid fall fertilizer for lawns. 25 pounds, 50 cents. 100 lb. bags, \$1.50.

**HIGH-GRADE PLANT FOOD.** Especially prepared by us. Per package, 10 cents.

## Feed Department

***We carry large stocks of stock and poultry foods of all kinds. Pratt's Celebrated Patented Foods in use over 30 years.***

## Bird Seeds, Etc.

Best Sicily, Canary, Hemp, Maw, Blue Poppy, Millet, White French, Rape, German, Vetches for Pigeons, Sunflower seed for Parrots.

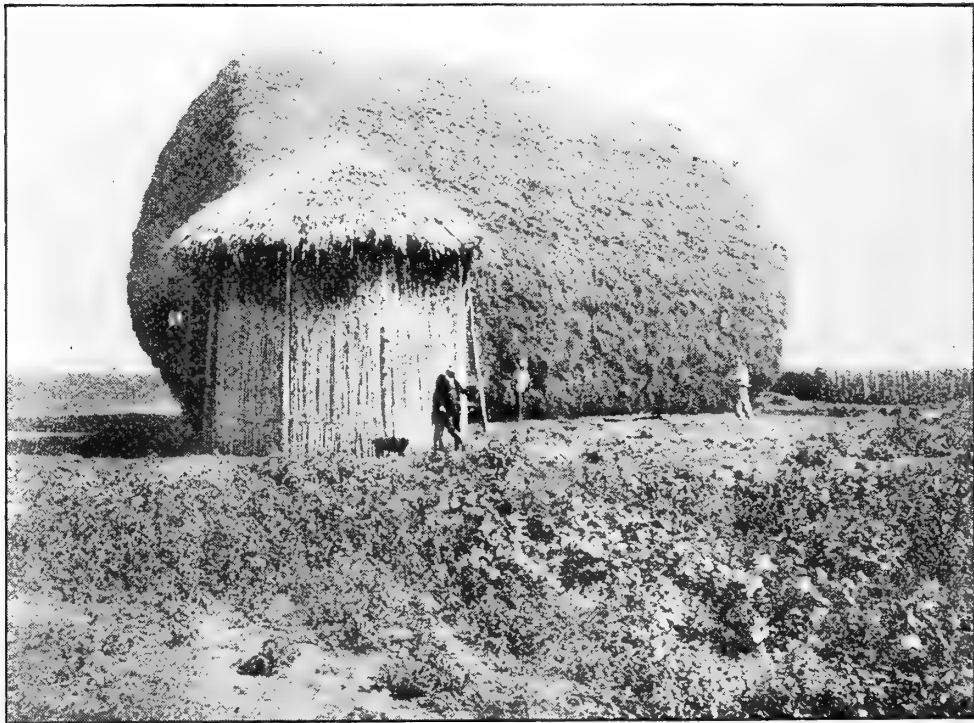
***Our Special Mixture for Canaries, per lb. 10c, 3 lbs. 25c.***

Cuttle Fish Bone, 5 cents each.

Gravel for Cages, per qt. 15 cents, pt. 10 cents.

# Valuable Tables

## Weight per bushel of Various Seeds and Grains.



STACK OF ALFALFA

| <b>Clovers</b>          |    | Lbs. Per Bu.                |
|-------------------------|----|-----------------------------|
| Alfalfa.....            | 60 | Red Top Fancy.....32        |
| Alsike.....             | 60 | Rhode Island Bent.....12    |
| Common Red.....         | 60 | Sheep's Fescue.....12       |
| Crimson.....            | 60 | Sweet Vernal.....11         |
| Mammoth or Sapling..... | 60 | Timothy.....44              |
| White Dutch.....        | 60 |                             |
| <b>Grasses</b>          |    | <b>Miscellaneous</b>        |
| Brome Grass.....        | 10 | Barley.....48               |
| Bermuda Grass.....      | 15 | Beans.....60                |
| Creeping Bent.....      | 12 | Broom Corn.....46           |
| Meadow Fescue.....      | 14 | Buckwheat.....48            |
| Italian Rye.....        | 18 | Corn, Sweet, Shelled.....48 |
| Kentucky Blue.....      | 14 | "    Field, Shelled.....56  |
| Orchard.....            | 14 | "    Kaffir.....50          |
| Perennial Rye.....      | 14 | "    Popcorn.....56         |
| Red Top Chaff.....      | 14 | Flax.....56                 |
|                         |    | Hungarian.....48            |
|                         |    | Millet.....50               |

**Miscellaneous**

|                           | Lbs. Per Bu. |
|---------------------------|--------------|
| Oats.....                 | 32           |
| Peas, Cow or Field.....   | 60           |
| Potatoes, Irish.....      | 60           |
| Potatoes, Sweet . . . . . | 50           |
| Rape, Dwarf Essex.....    | 50           |
| Rye.....                  | 56           |
| Sorghum or Cane.....      | 50           |
| Sunflower.....            | 28           |
| Turnips.....              | 58           |
| Vetches.....              | 60           |
| Wheat.....                | 60           |

**Seeds Required to Sow an Acre of Ground**

|                         | Lbs.     |
|-------------------------|----------|
| Alfalfa.....            | 15 to 20 |
| Alsike.....             | 6 to 8   |
| Common Red.....         | 10 to 12 |
| Crimson.....            | 10 to 15 |
| Mammoth or Sapling..... | 10 to 12 |
| White Dutch.....        | 6 to 8   |

**Grasses**

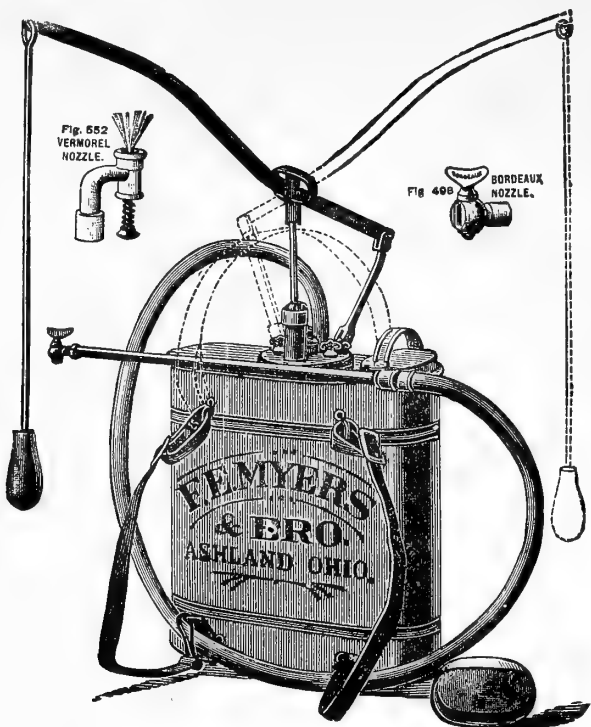
|                        | Lbs.     |
|------------------------|----------|
| Brome Grass.....       | 35 to 40 |
| Bermuda Grass.....     | 15       |
| Creeping Bent.....     | 20 to 30 |
| Meadow Fescue.....     | 35 to 40 |
| Italian Rye.....       | 50 to 55 |
| Kentucky Blue.....     | 30 to 40 |
| Orchard.....           | 30 to 35 |
| Perennial Rye.....     | 60 to 65 |
| Red Top, Chaff.....    | 40 to 50 |
| Red Top, Fancy.....    | 10 to 12 |
| Rhode Island Bent..... | 25 to 40 |
| Sheep Fescue.....      | 25 to 30 |
| Sweet Vernal.....      | 3 to 5   |
| Timothy.....           | 15 to 20 |

**Seeds Required to Produce a Given Number of Plants and Sow an Acre of Ground**

**Miscellaneous**

|                                     |              |
|-------------------------------------|--------------|
| Barley.....                         | 2 to 2½ bu.  |
| Beans, Dwarf.....                   | 1 to 1½ "    |
| " Pole.....                         | ½ to ¾ "     |
| " Soja.....                         | ¾ to 1 "     |
| Beet, Garden.....                   | 8 to 10 lbs. |
| " Mangel for Stock.....             | 5 to 6 "     |
| Buckwheat.....                      | ¾ to 1 bu.   |
| Cabbage (1 oz. to 1500 plants)..... | ½ lb.        |

|  |               |
|--|---------------|
| Carrot, garden(1 oz. to 100 ft. drill).....    | 2½ to 3lbs.   |
| Carrot, for stock (1 oz. to 50 ft. drill)..... | 2 lbs.        |
| Cauliflower (1 oz. to 1,500 plants).....       | ½ lb.         |
| Celery(1 oz. to 500 plants).....               | 3 ozs.        |
| Corn, Sweet (1 qt. to 300 hills).....          | 8 qts.        |
| " Field.....                                   | 8 "           |
| " Kaffir, broadcast.....                       | 15 lbs.       |
| " Kaffir, in drills.....                       | 5 "           |
| " Popcorn.....                                 | 2 qts.        |
| " Sweet Fodder.....                            | 2 to 3 bu.    |
| " Salad (1 oz. to 20 sq. ft.).....             | 6 lbs.        |
| Cucumber (1 oz. to 50 hills).....              | 2 "           |
| Egg Plant (1 oz. to 1,500 plants).....         | 3 to 4 ozs.   |
| Endive (1 oz. to 250 ft. drill).....           | 3½ lbs.       |
| Flax, broadcast.....                           | ¾ to 1 bu.    |
| Gourds (1 oz. to 25 hills).....                | 2½ lbs.       |
| Hungarian.....                                 | 1 bu.         |
| Kale or borecole(1 oz. to 100 yds. drill)..... | ¼ lb.         |
| Kohl Rabi (1 oz. to 200 ft. drill).....        | 3 to 4 lbs.   |
| Leek (1 oz. to 250 ft. drill).....             | 3 to 4 "      |
| Lettuce (1 oz. to 200 ft. drill).....          | 3 "           |
| Martynia (1 oz. to 50 ft. drill).....          | 8 to 10 "     |
| Millet.....                                    | 1 bu.         |
| Melon, Musk (1 oz. to 60 hills).....           | 2 to 3 lbs.   |
| " Water (1 oz. to 25 hills).....               | 3 to 4 "      |
| Nasturtium (1 oz. to 50 ft. drill).....        | 10 to 12 "    |
| Oats, broadcast.....                           | 2½ to 3 bu.   |
| Okra (1 oz. to 50 ft. drill).....              | 10 lbs.       |
| Onion (1 oz. to 100 ft. drill).....            | 6 "           |
| Parsley (1 oz. to 150 ft. drill).....          | 5 "           |
| Parsnip (1 oz. to 200 ft. drill).....          | 5 to 6 "      |
| Peas, Garden (1 qt. to 100 ft. drill).....     | 1½ bu.        |
| " Cow.....                                     | 1½ to 1¾ "    |
| " Canada Field.....                            | 2 to 3 "      |
| Pepper (1 oz. to 1,500 plants).....            | 3 to 4 ozs.   |
| Potatoes, Irish.....                           | 8 to 10 bu.   |
| Pumpkin (1 oz. to 300 hills).....              | 3 to 4 lbs.   |
| Rape, Dwarf Essex.....                         | 6 to 8 "      |
| Rye.....                                       | 1½ to 2 bu.   |
| Salsify (1 oz. to 50 ft. drill).....           | 8 lbs.        |
| Sorghum or Cane, broadcast.....                | 1 to 1½ bu.   |
| " drilled.....                                 | ¾ to 1 "      |
| Spinach (1 oz. to 100 ft. drill).....          | 10 to 12 lbs. |
| Squash, Summer (1 oz. to 40 hills).....        | 2 to 3 "      |
| " Winter ( 1 oz. to 10 hills).....             | 3 to 4 "      |
| Sunflower, drilled.....                        | 10 to 12 "    |
| Tomato (1 oz. to 2,000 plants).....            | 4 ozs.        |
| Turnip (1 oz. to 150 ft. drill).....           | 1 to 1½ lbs.  |
| Wheat.....                                     | 1½ to 2 "     |



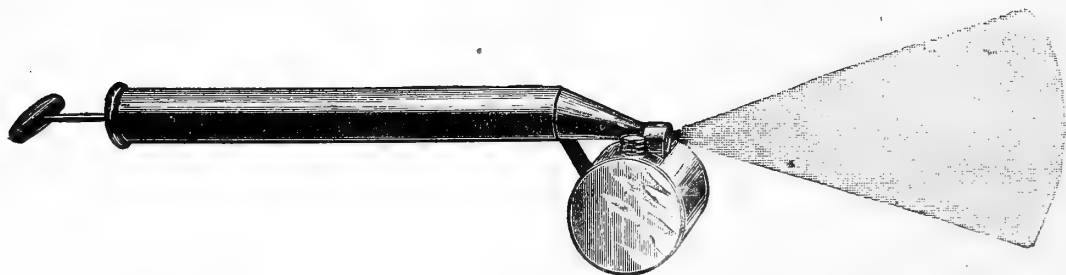
No. 547—Knapsack Spray Pump.

# The Myers' Knapsack Spray Pump

This is the only knapsack pump on the market with an agitator and brass ball valves. It makes a convenient outfit with which from four to six acres of vines can be covered in one day.

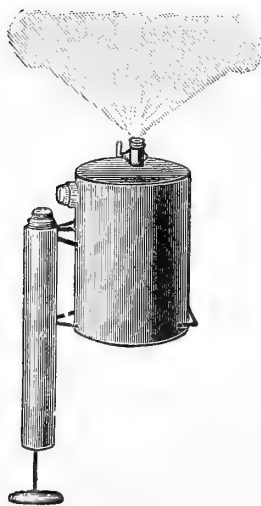
PRICE - - \$10.00

## MYERS' FAULTLESS SPRAYER



Myers' Faultless Sprayer, all tin - - -  
 Myers' Faultless Sprayer, all brass - - -

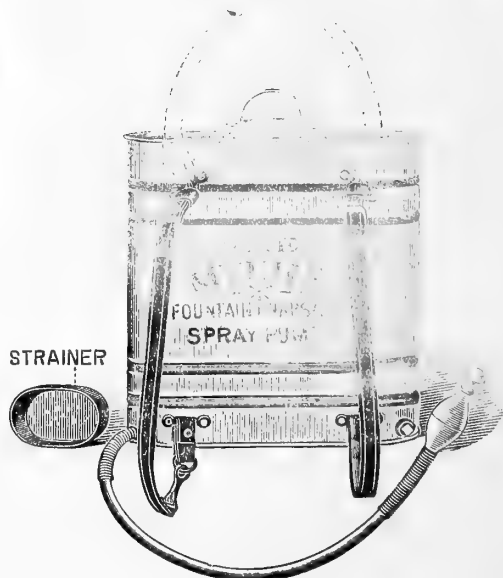
50c EACH  
 75c EACH



Blizzard Sprayer.

## THE MYERS' FOUNTAIN SPRAY PUMP

For Spraying Potatoes, Trees and Vines with Paris Green, London Purple or Bordeaux Mixture. Holds 5 gallons, weighs 52 pounds when full. All working parts are brass.



No. 599—Fountain Spray Pump.

PRICE - \$1.75      PRICE - \$5.00

# THE NO. 6 "IRON AGE"

Combined Double and Single Wheel Hoe, Hill and Drill Seeder.

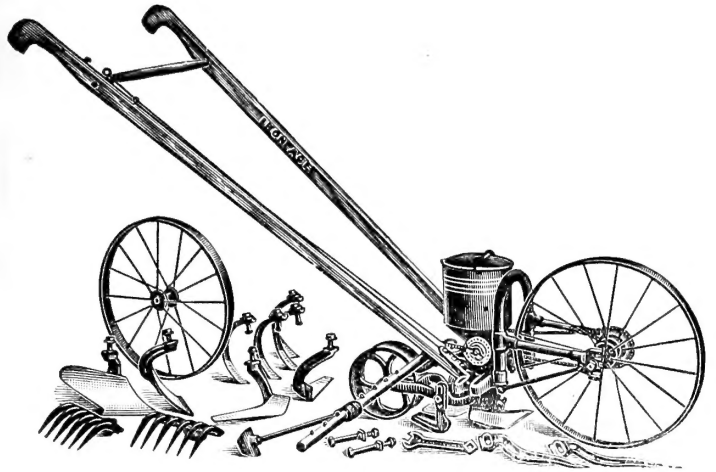
Price, - - \$11.00

No. 14, No. 6 Combined Hill and Drill Seeder (side hoes and teeth only)

Price - - \$9.50

No. 7, Hill and Drill Seeder only

Price, - - \$8.00



No. 6.—"Iron Age" Combined Hill and Drill Seeder.

## Combined Double Wheel Hoes and Seed Drills.

Prior to the introduction of our famous Combined Wheel Hoes and Seed Drills, combined tools were regarded by many as impracticable, owing to the time and knowledge required to change from one form to the other, to say nothing of the advantages lost over those of the separate implement.

The simplicity and completeness of the "IRON AGE" combined implements in all their forms make their use practical, even with the busiest gardeners.

From Seed Drills these tools can be converted into Wheel Hoes, either Single or Double, it requiring but about three minutes to change to Double Wheel Hoes, and about two minutes to Single Wheel Hoes, by an experienced operator. T. Greiner, a practical gardener and a well-known writer on garden subjects writes as follows:

"I have used the 'IRON AGE' Combined Double Wheel Hoe and Seed Drill for three seasons, and I can truthfully say that it has made the task of sowing seeds (which always falls upon me personally) a veritable pleasure.

I do not know of any weak point in this machine; at present I use no other make of garden drill. I used to be very pronounced in favor of single tools, for the reasons that in the combined tools one wore out two tools at a time and had to waste much time in making the changes from Drill to Wheel Hoe and vice versa. The 'IRON AGE' meets these objections quite successfully, the former fully, the latter to a great extent. When the Wheel Hoe is wanted, the Drill part is taken entirely off and the change made in a minimum of time."

We show in cut above our No. 6 "Iron Age" Combined Double Wheel Hoe, Hill and Drill Seeder, being the same as our well-known No. 4 Drill, with the addition of a hill dropping device.

The completeness of the tool and the universal satisfaction it has given places it first among our list of garden implements. Combined in this tool, as will be further explained, there are three distinct and thoroughly practical tools, a Hill and Drill Seeder, a Double Wheel Hoe and a Single Wheel Hoe.

### Hill and Drill Seeder

**The Wheel** is made of steel, 16 inches high; of steel to obtain lightness, and at the same time strength; 16 inches high in order to run easy, without giving to the inequalities of the soil as a low wheel will do. The tire is 1 1/4 inches wide.

**The Frame** is made of pipe, coupled to malleable castings; of pipe to again secure lightness and a frame of such shape and strength to make it practically unbreakable.

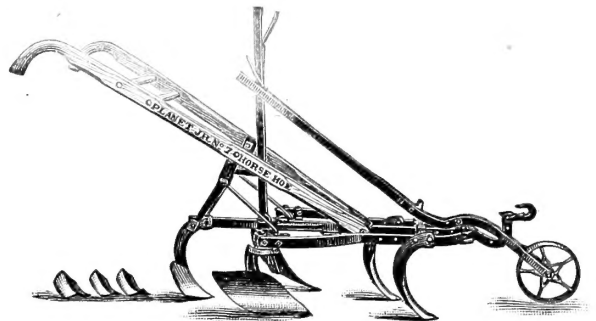
**The Seed Sowing Device**—In designing our Seed-Sowing Device we have kept in view simplicity of construction, convenience of adjustment and perfection of work.



Seeder in Operation.

The No. 6 "IRON AGE" Horse Hoe and Cultivator.

Price, as in Cut, with Furrow-Closing Attachment, **\$8.50**. Without Furrow-Closing Attachment, **\$7.25**.





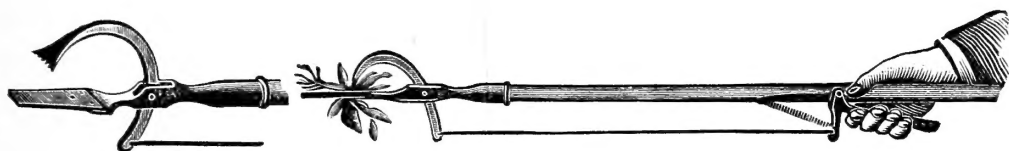
# EXTRACTING THE ROOT.

IT'S EASY

WITH A

## Eureka Lawn Weeder

NO MORE BROKEN BACKS!



*The Eureka Lawn Weeder*

THIS DEVICE GETS AT  
THE ROOT OF THE EVIL  
AND REMOVES IT BODILY.

The curved edge of blade enters and loosens the soil; pressure on the lever then causes the toothed jaw to grasp the plant and a slight pull suffices to dislodge same without disturbing the surrounding sod.

PRICE, - - - 65c

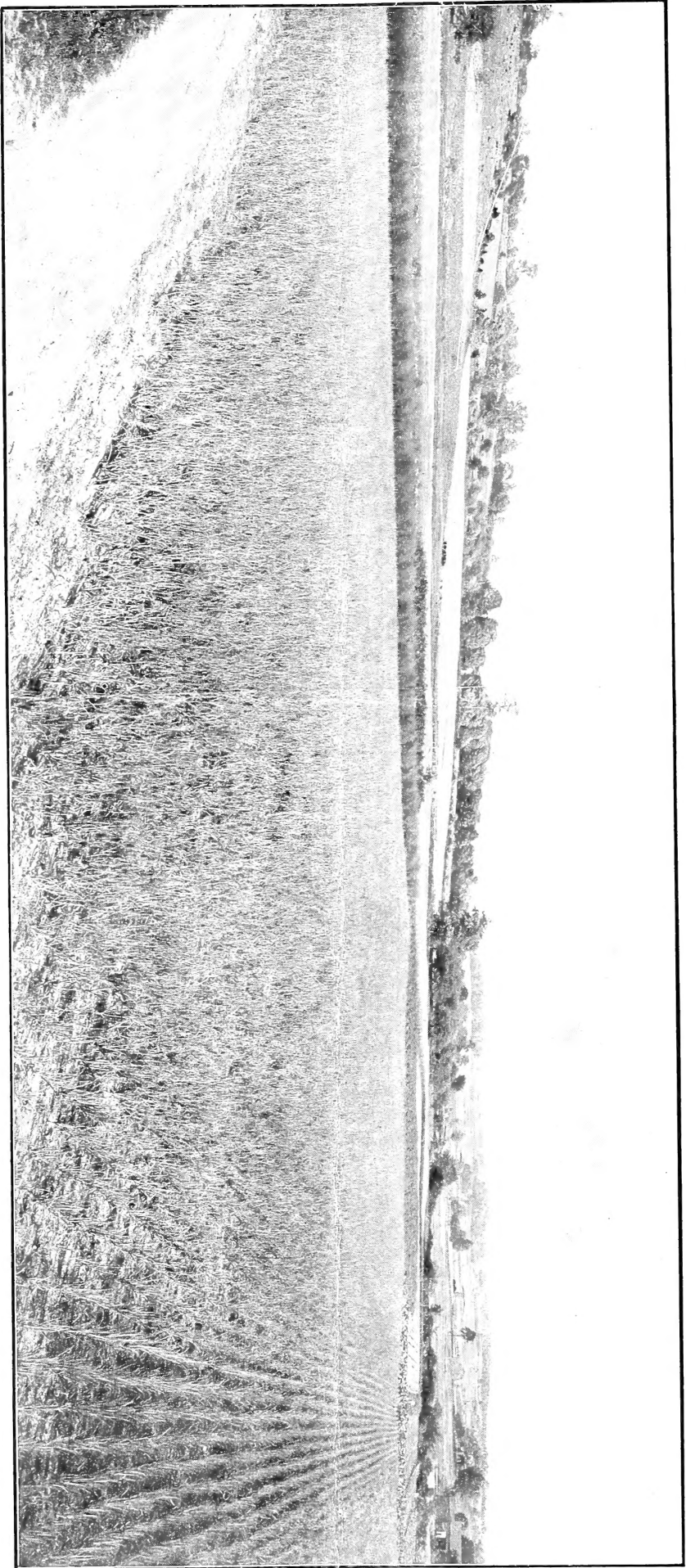
AWARDED SILVER MEDAL  
UNIVERSAL EXPOSITION, ST. LOUIS, 1904

We are  
Headquarters  
for  
POULTRY  
SUPPLIES  
of all kinds.



• TRADE MARK REGISTERED •

Pratt's  
Celebrated  
Stock Food  
in use over  
thirty years.



Partial View of a  
JAMESTOWN MARKET GARDEN  
F. W. GORDON, Proprietor

THE WILLIAM KOEHL COMPANY, JAMESTOWN, N. Y.