

Historic, Archive Document

Do not assume content reflects current scientific knowledge, policies, or practices.

ESTABLISHED 1852.
INCORPORATED 1890.

W. E. ROSSNEY, President.
SIDNEY TUTTLE, Vice-President.

PHOENIX TREES HAVE BEEN TESTED FOR FIFTY YEARS

FALL
of 1905

NUMBER 2
94th EDITION

To the
Trade Only

OFFICE

Our offices are located at Normal (one mile north of Bloomington) on our nurseries and packing grounds, east end of Fourth St., and three blocks southeast of the Normal Passenger Depot, junction Illinois Central R.R. and Chicago & Alton R. R. Bloomington and Normal are also connected by Electric Street Railway. Ten-minute service.

WHOLESALE
CATALOGUE

OF

FRUIT AND ORNAMENTAL TREES,
SHRUBS, SMALL FRUITS, HEDGE
PLANTS, ROSES, BULBS, HER-
BACEOUS PLANTS, ETC., ETC.

OF THE

PHOENIX
NURSERY
COMPANY

BLOOMINGTON
ILLINOIS

P.O. BOX 625
GREENHOUSES 1215 NORTH PARK St.

Central Union (Long Distance) Telephone, No. 398 R.
Home Telephone No. 119

600 ACRES

13 GREENHOUSES

FALL, 1905.

TO THE TRADE. We take pleasure in presenting the ninety-fourth edition of our Trade List, covering the stock we have to offer for shipment, Fall, 1905. The stock offered herein has been carefully grown, and is all young and thrifty, and will be properly dug and graded to the highest standard. We also desire to call special attention to the extent and completeness of our stock, both in Fruit and Ornamental departments.

With our large storage cellars and packing houses, and system of water-works, distributing water to all parts of our packing grounds, we feel that our facilities for the careful and proper handling of nursery stock are very complete.

Our nurseries have been properly inspected by the State Entomologist, as will be seen by his certificate on page 21 of this catalogue.

Our shipping facilities are unexcelled. Bloomington being an important railroad center, we are able to forward promptly to all sections. With the Illinois Central R. R., Chicago & Alton R. R., Lake Erie & Western R. R., and the C. C. C. & St. L. R. R. (Big Four), and their branches, we have direct communication with Chicago, St. Louis, Cincinnati, Kansas City, Indianapolis, Dubuque, Cairo and LaFayette by daily freight trains without transfer. On account of our unusual facilities we are also enabled to obtain very low freight rates to all points.

We exercise the greatest care to have all articles true to name.

PHOENIX NURSERY COMPANY.

TERMS AND CONDITIONS.

Terms of Payment—Cash, satisfactory security, or references before shipment of stock. All orders to be sent by express, "C. O. D." must be accompanied by ONE-FOURTH THE AMOUNT IN CASH.

Remit by Postal or Express Money Orders, Bank Drafts on New York, Chicago or St. Louis, payable to order of PHOENIX NURSERY COMPANY, or currency by express prepaid.

Orders and Conditions of Sale—Please order EARLY, with order legible and separate from body of letter, with name of Postoffice, County and State, and how you wish packages directed on the ORDER.

Long specified lists are subject to special prices. Needed specifications as to age, size, style, etc., state on the order, to save the time of referring to previous correspondence.

Particular varieties named in order furnished as far as practicable. Orders forbidding substitution we fill so far only as we can supply the sorts specified.

Prices—At the prices quoted herein, 5 will be furnished at ten rates, 25 at hundred rates, and 250 at thousand rates.

Prices herein quoted are limited to the fall of 1905, and are subject to change without notice.

Packing—Prices do not include packing. Packing carefully done in boxes, mostly, sometimes in bales or parcels, for which we charge moderately; for large boxes, 8 or 9 feet by 2½, three of which usually hold 1,000 to 6-foot apple—\$2.50 each, and in proportion for larger or smaller boxes. NO CHARGE FOR DELIVERING AT RAILROAD, EXPRESS, OR POSTOFFICE HERE. On lots by mail, postage and packing extra. Trees per carload, when loaded in bulk in box cars, no additional charge for loading and packing in car. When flat cars are used and boarded up, we charge for additional labor, lumber and material used.

Shipping—Our regular fall packing season ordinarily opens about October 1st and continues into December.

We prefer parties ordering should indicate the route by which they wish stock sent. In absence of particular directions, we forward to the best of our judgment; but in no case do we assume any responsibility after consignment to purchaser, unless for our own mistakes. When losses occur by detention en route, claims should be made on the carriers immediately.

It is our custom, when sufficient time is given, to obtain through Freight or Express Rates on all Shipments.

FRUIT DEPARTMENT.

Except mentioned, prices are for first-class stock.

	10	100	1000
APPLE—STANDARD , 3 to 4 feet,	\$0.50	\$ 3.00	\$25.00
" " 4 to 5 feet, 1/2 to 3/4 inch,60	4.00	35.00
" " 5 to 6 feet, 3/4 to 1 inch,75	5.00	40.00
" " 5 to 7 feet, 3/4 inch and up,	1.00	6.00	50.00
WINTER BANANA —This valuable, new variety originated on the farm of D. M. Flory, Cass Co., Ind., and was introduced by us several years since. Fruit large, unusually handsome. Quality excellent, of exquisite flavor and a good keeper. Tree a strong grower, very hardy and a prolific bearer, 3 to 4 feet,			
" " 4 to 5 feet, 1/2 to 3/4 inch,	1.00	7.00
" " 5 to 6 feet, 3/4 to 1 inch,	1.25	9.00
" " 5 to 7 feet, 3/4 to 1 inch,	1.50	12.00
" " 5 to 7 feet, 3/4 inch and up,	1.75	14.00
MASON'S ORANGE —The strongest grower we have yet seen, fruit unsurpassed, large, golden yellow, late keeper, 4 to 5 feet,			
" " 5 to 6 feet,	1.00	8.00
" " 5 to 6 feet,	1.25	10.00
" " 5 to 7 feet,	1.50	12.00
CRAB , 3 to 4 feet,50	3.00	25.00
" " 4 to 5 feet, 1/2 to 3/4 inch,60	5.00	40.00
" " 5 to 6 feet, 3/4 to 1 inch,75	6.00	50.00
" " 5 to 7 feet, 3/4 inch and up,	1.00	8.00	65.00
BISMARCK —The wonderful dwarf apple. Bears at a very early age, unusually productive, fruit large, late keeper, 2 years, 2 to 3 feet			
" " 3 to 4 feet,	1.50	12.00
" " 3 to 4 feet,	1.75	15.00
DWARF —Duchess of Oldenburg, Grimes Golden Pippin, Wealthy, Yellow Transparent, 2 to 3 feet			
" " 3 to 4 feet,	1.50	12.00
" " 3 to 4 feet,	1.75	15.00

Leading Sorts of Standard Apple Trees.

THE VARIETIES IN HEAVY TYPE WE HAVE IN LARGE SUPPLY.

Summer—Astrachan Red, Benoni, Caroline Red June, Duchess of Oldenburg, Early Harvest, Early Pennock, Early Red Streak, Early Pound Royal, Kirkbridge White, Sops of Wine, Sweet June, Yellow May, Yellow Horse, Yellow Transparent, etc.

Autumn—Alexander, Autumn Strawberry, Bailey's Sweet, Buckingham or Fall Queen, Carter's Blue, Clarks Orange, Colvert, Chenango Strawberry, Fall Stripe, Fall Wine Sap, Fameuse, Fulton, Gravenstein, Haas Queen, Hubbardson's Nonesuch, Jersey Sweet, Maiden Blush, Porter, Rambo, Ramsdell's Sweet, Wealthy, etc.

Winter—Aiken, Arkansas Black, Baldwin, Ben Davis, Belleflower Yellow, Carhouse or Little Romanite, Clayton, Delaware Red Winter, Detroit Red, Dyer, English Golden Russet, Esopus Spitzenburg, Fallowater, Flora Bell, GRIMES' GOLDEN PIPPIN, Gano, Huntsman's Favorite, Hibernal, Hawley, Ingram, Isham's Sweet, Iowa Blush, Janet, Jonathan, King of Tompkin's Co., Limber Twig, Longfield, Longworth Red Streak, Lansingburg, Mann, Milam, Minkler, Missouri Pippin, Missouri Superior, McMahon's White, Mammoth Black Twig, Newtown Pippin, NORTHWESTERN GREENING, Northern Spy, Price's Sweet, Pewaukee, Rhode Island Greening, Rock Pippin, Roman Stem, Seek-no-Further, Salome, St. Lawrence, Smith's Cider, Stark, Swaar, Sutton Beauty, Talman Sweet, Utter's Large Red, Va. Greening, Walbridge, Walter Pease, White Pippin, Willow Twig, Wine Sap, Wolf River, York Imperial, etc.

Crab—Gen. Grant, Gideon's No. 4, Hyslop, Northfield Beauty, Quaker Beauty, Red Siberian, Tetofsky, Whitney's No. 20, etc.

PEAR.

	10	100	1000
PEAR—STANDARD —Extra quality, 5 to 7 feet, 3/4 inch and up, leading varieties,	\$1.75	\$15.00	\$125.00
" " First quality, 5 to 6 feet, 3/4 to 1 inch, leading varieties,	1.50	12.00	100.00
" " 4 to 5 feet, branched, nice trees,	1.25	10.00	90.00
" " LINCOLN , 5 to 7 feet, 3/4 inch and up,	2.50	20.00
" " 4 to 6 feet, 3/4 to 1 inch,	2.00	15.00
" " KEIFFER'S HYBRID , extra quality, 5 to 7 feet, 3/4 inch and up,	1.75	12 50	100.00
" " First quality, 5 to 6 feet, 3/4 to 1 inch,	1.50	10.00	90.00
" " Medium, 4 to 5 feet, 1/2 to 3/4 inch,	1.25	9.00	75.00
" " Branched, 3 to 4 feet,80	6.00

PEAR—Continued.

	10	100	1000
PEAR—STANDARD—LONG WORTH'S NO. 1, 5 to 7 feet, (See description below).....	\$1.75	\$15.00	\$125.00
“ “ “ 5 to 6 feet.....	1.50	12.50	100.00
“ “ “ 4 to 5 feet.....	1.25	10.00	90.00
“ “ “ 3 to 4 feet, branched.....	1.00	8.00
“ “ ROSSNEY, 5 to 7 feet, first class, $\frac{3}{4}$ inch and up.....	3.00	25.00
“ “ “ 4 to 6 feet, $\frac{3}{8}$ to $\frac{3}{4}$ inch (See description below).....	2.50	20.00

The Following are Our Leading Sorts of Standard Pears:

BARTLETT, BEURRE D'ANJOU, BUFFUM, CLAPP'S FAVORITE, DUCHESS D'ANGOULEME, EARLY HARVEST, FLEMISH BEAUTY, GARBER'S HYBRID, GOODALE, HOWELL, KEIFFER'S HYBRID, KOONCE, LOUISE BONNE D'JERSEY, LAWRENCE, LE CONTE, LINCOLN CORELESS, MT. VERNON, RUTTER, SHELDON, SECKEL, SMITH'S HYBRID, TYSON, VERMONT BEAUTY, VICAR OF WINKFIELD, WILDER'S EARLY, Etc.

PEAR—DWARF.

	10	100	1000
3 to 4 feet, 11-16 inch and all up, leading varieties.....	\$1.00	\$8.00	\$75.00

The Following are Our Leading Sorts of Dwarf Pears:

BEURRE D'ANJOU, CLAPP'S FAVORITE, DUCHESS D'ANGOULEME, EARLY HARVEST, FLEMISH BEAUTY, GARBER, HOWELL, KEIFFER'S HYBRID, LOUISE BONNE D'JERSEY, SECKEL, TYSON, VICAR OF WINKFIELD, Etc.

ROSSNEY PEAR.

The best and handsomest pear yet produced. Hardy and productive. Ripens two weeks after Bartlett. Strong grower. Luther Burbank, the most noted horticulturist of the age, says under date of October 5, 1895: "The samples of Rossney Pear arrived in due season. The large size, handsome form, and creamy yellow skin with crimson blush gives the fruit a tempting appearance; and the tender, creamy flesh, of just the right texture, with no hard spots and an unusually small core, with its superior flavor makes it about the best pear so far seen. If the tree is vigorous, healthy and productive, would prefer it to any other, even the standards, Bartlett or Seckel." For history, description and colored plate of Rossney Pear, see page 402, Yearbook of the Department of Agriculture, 1904. See price above.

LONGWORTH'S No. 1 PEAR.

The Pear for the Northwest.

This is a very hardy Seedling Pear which originated at Dubuque, Iowa, and was grown from seed some forty years since by the veteran nurseryman and horticulturist, Wm. Longworth. The tree is a strong, upright grower, entirely FREE FROM BLIGHT, and an enormous and annual bearer. Fruit, medium to large, nearly round; skin yellow with warm blush on the sunny side; flesh rather coarse, juicy, sugary, good flavor. Ripens from first to middle of September.

Having thoroughly tested this variety, we have no hesitancy in recommending it to the public for general planting. This pear has withstood our severest winters without the slightest injury, while other varieties were frozen to the ground. Being free from blight and EXTREMELY HARDY, it is a very desirable variety, and should be planted largely. See price above.

PLUM—American Varieties.

	10	100	1000
PLUM—On Plum, 6 to 7 feet, 1 in and up.....	\$2.50	\$18.00	\$150.00
“ “ “ 5 to 7 feet, $\frac{3}{4}$ in. and up.....	2.00	15.00	125.00
“ “ “ 4 to 6 feet, $\frac{3}{8}$ to $\frac{3}{4}$ in.....	1.50	12.50	100.00
“ “ “ 3 to 4 feet, $\frac{3}{8}$ to $\frac{3}{4}$ inch.....	1.00	8.00	70.00
“ “ “ 3 to 4 feet, mostly branched.....	.75	6.00	50.00

American Varieties.

CHENEY, DE SOTO, FOREST GARDEN, HAWKEYE, POTTAWATTOMIE, ROBINSON, WILD GOOSE, WOLF and WYANT.

PLUM—European and Japanese Varieties.

	10	100	1000
PLUM—On Plum. 5 to 7 feet, $\frac{3}{4}$ inch and up.....	\$2.50	\$18.00	\$160.00
4 to 6 feet, $\frac{3}{8}$ to $\frac{3}{4}$ inch.....	2.00	14.00	125.00
3 to 4 feet, $\frac{3}{8}$ to $\frac{3}{4}$ inch.....	1.50	10.00	90.00
3 to 4 feet, branched.....	1.00	8.00	70.00

Leading Sorts of European and Japan Plums:

ABUNDANCE, AMERICA, BOTAN, BRADSHAW, BURBANK, CHALCO, CLIMAX, GERMAN PRUNE, LOMBARD, RED JUNE, SATSUMA, SHROPSHIRE DAMSON, SULTAN, TATGE, WICKSON, Etc.

CHERRY.

	10	100	1000
CHERRY —6 to 7 feet, 1 inch and up, very fine	\$2.50	\$20.00	\$180.00
" 5 to 6 feet, $\frac{3}{8}$ inch and up, 2 years	2.00	17.00	150.00
" 4 to 5 feet, $\frac{5}{8}$ to $\frac{1}{2}$ inch, 2 years	1.50	14.00	125.00
" 3 to 4 feet, branched, $\frac{1}{2}$ to $\frac{3}{8}$ inch, 2 years	1.00	9.00	80.00
" 2 to 3 feet, branched	.80	6.00	50.00
BRUSLER BRAUN. New, fruit large as Montmorency, very late, color dark red, short, stout grower, hardy and prolific. 5 to 6 feet	5.00	40.00
" 4 to 5 feet	4.00	30.00

Leading Sorts of Cherry:

Sour Varieties—Baldwin, Early Richmond, English Morello, Belle de Choisey, Reine Hortense, Montmorency, Olivet, Wragg, Northwest, Dye House, etc.

We have an unusually fine lot of Early Richmond Cherry.

PEACH.

	10	100	1000
PEACH —4 to 6 feet, $\frac{3}{8}$ inch and up, 1 year	\$1.00	\$ 7.00	\$60.00
" 3 to 4 feet, $\frac{7}{8}$ to $\frac{5}{8}$ inch, 1 year	.80	6.00	40.00
" 2 to 3 feet, mostly branched	.50	4.00	30.00

Leading Sorts of Peaches from Our List:

Alexander, Amsden, Beer's Smock, Bokara No. 3, Champion, Chinese Cling, Crosby, Early Barnard, Early Canada, Early Crawford, Elberta, Fitzgerald, Foster, Globe, Gold Drop, Gov. Garland, Greensboro, Heath Cling, Hill's Chili, Late Crawford, Lemon Cling, Marshall's Late, Mountain Rose, Muir, Old Mixon Cling, Old Mixon Free, Salway, Shoemaker, Sneed, Stump The World, Susquehanna, Triumph, Wager, Wheatland, Wonderful, Worlds Fair.

	10	100
APRICOT —Russian and European, 4 to 6 feet	\$1.50	\$14.00

Varieties of Apricots: Superba, Early Golden, Moorpark and Royal.

Russian varieties: Alexis and Catherine.

	2.00	18.00
QUINCE —Orange, Champion and Meeches' Prolific, 2 to 3 feet	2.00	18.00
" " " " 3 to 4 feet	2.25	20.00

MISCELLANEOUS.

	10	100	1000
ALMOND —Hard-shell, 4 to 6 feet	\$1.25	\$10.00
" " " " 3 to 4 feet	1.00	8.00
" Soft-shell, 4 to 6 feet	1.50	12.00
" " " " 3 to 4 feet	1.00	8.00

DEWBERRY — LUCRETIA. Best of all Dewberries. The most valuable small fruit introduced in many years, 1 year	.30	2.00	\$10.00
" LUCRETIA, 2 years	.35	2.50	14.00

JUNE BERRY — DWARF, Shad bush. Edible fruit 2 to 3 feet	.75	6.00
" 18 to 24 inches	.60	5.00

MULBERRY —Downing's Everbearing and Hicks, 4 to 6 feet	2.50	22.00
" White, transplanted, 3 to 4 feet	.60	5.00
" " " " 4 to 6 feet	.90	7.00
" " " " 6 to 8 feet	1.25	9.00
" American Black, transplanted, 3 to 4 feet	1.00	8.00
" " " " 4 to 6 feet	1.25	10.00

MULBERRY —Russian, seedlings 18 to 24 inches	.50	3.50
" " " " 12 to 18 "	.40	2.50
" " " " 9 to 12 "	.30	2.00
" transplanted 3 to 4 feet	.60	5.00
" " " " 4 to 6 feet	.90	7.00
" " " " 6 to 8 feet	1.25	9.00
" " " " 8 to 10 feet	1.50	12.00

PAWPAW —4 to 6 feet	1.00	9.00
PERSIMMON —Native, 4 to 6 feet, transplanted	1.25	10.00
HUCKLEBERRY —Well known, hardy and productive, 2 to 3 feet	.50	4.00	30.00

GOOSEBERRIES.

Magnificent stock of strong young plants.

	10	100	1000
Downing's Seedling—2 years, strong plants.....	\$ 0.75	\$ 6.00	\$50 00
Crown Bob and White Smith—Choice English, 2 years.....	1.25	12.00
Cluster—2 years.....	.75	6.00
Houghton—2 years.....	.75	6.00
Industry—New, English sort, large size, hardy, prolific, 2 years.....	1.25	12.00
Pearl—New, from Canada, free from mildew, large, very prolific. Strong grower, 2 years.....	.75	7.00
Red Jacket—(Josselyn) The best American red variety yet produced. Fruit large and of good quality, free from mildew, 2 years.....	.75	6.00

CURRANTS.

	10	100	1000
Black Naples—The old reliable black, 2 years.....	\$ 0.50	\$ 3.00	\$ 20.00
Cherry—2 years, reliable, well known, red.....	.50	3.00
Fay's Prolific—2 years, red, surpasses all other varieties in general good qualities.....	.50	3.00	20.00
Knight's Large Red—1 year extra strong.....	.25	2.00	15.00
“ “ “ 2 years extra strong.....	.30	2.50	18.00
Lee's Prolific—Black, very desirable, 2 years.....	.50	3.00	20.00
London Market—Red, very prolific, now being planted very largely by fruit growers, 2 years.....	.30	2.50	18.00
North Star—2 years, red.....	.30	2.50	20.00
Red Dutch—1 year, well known, red variety.....	.25	2.00	15.00
“ “ “ 2 years.....	.30	2.50	18.00
Versaillaise—1 year, popular red variety.....	.30	2.50	20.00
“ “ “ 2 years.....	.40	3.00	25.00
Victoria—Excellent red variety, productive, 1 year.....	.25	2.00	15.00
“ “ “ 2 years.....	.30	2.50	18.00
White Dutch—2 years.....	.30	2.50	20.00
White Grape—1 year, very popular white variety.....	.40	3.00
“ “ “ 2 years.....	.50	4.00

BLACKBERRIES.

	10	100	1000
Mersereau—grown from root cuttings.....	\$ 0.25	\$ 2.00	\$ 15.00
Snyder—grown from root cuttings, strong plants.....	.15	1.25	8.00
Early Harvest—grown from root cuttings.....	.15	1.00	8.00
Taylor's Prolific—grown from root cuttings.....	.15	1.25	10.00
Stone's Hardy—grown from root cuttings.....	.20	1.50	12.00
Eldorado—grown from root cuttings.....	.25	2.00	16.00
LaGrange—We are the first to offer this New Blackberry. We consider this the best Blackberry yet produced. Fruit immense in size, no hard core. Most productive, hardy, strong grower. Each 30c.....	3.00	25.00

DEWBERRIES.

	10	100	1000
Lucretia Dewberry—Best of all.....	\$ 0.30	\$ 2.00	\$ 10.00

STRAWBERRIES.

40c per 100; \$2.50 per 1000.

Brandywine—This is the handsomest berry grown. Fancy market variety of fine rich flavor and large size. It is dark red to the center. (Staminate)

Bennett—Good grower and plant maker; size medium, color very dark red when fully ripe, productive. Quality good; season early to late. (Pistillate)

Empress—Plant large and vigorous. Color dark red, beautiful form; very large, conical. Season late. (Staminate)

Haviland Seedling—Said to be the earliest large berry yet produced. (Staminate)

Miller—Plant healthy and strong, makes a fair number of runners. Fruit large and beautiful; bright red in color, and of excellent flavor. Shape roundish conical. (Staminate)

Sample—A vigorous grower, productive; berries medium to large in size; bright blood red. Quality fair. Season late. (Pistillate)

STRAWBERRIES—Continued.

Senator Dunlap—Introduced 1900, by Rev. J. R. Reasoner, Champaign county, Illinois; is in bearing here and has given the greatest satisfaction as to hardiness, productiveness and quality; blossoms perfect; fruit generally large, bright or slightly dark red, very glossy, firm, a splendid keeper and shipper, and one of the best canning berries; of the Warfield type. (Staminate)

Uncle Jim or Dornau—Plant large and healthy. Berry large, deep red, solid and of good quality; conical in shape, late season. (Staminate)

Warfield's No. 2—Most highly esteemed for its large, uniform size and good shipping qualities. (Pistillate)

RASPBERRIES.

	100	1000
Black Diamond —From Michigan 1901. Strong grower and hardy. Berry medium. Very sweet. Highly recommended.	\$1.00	\$ 6.00
Cuthbert —One of the best, most profitable berries for general planting; upright, very hardy, prolific; fruit brilliant red, juicy, excellent quality.	.50	3.50
Columbian —New—Deep purplish red, sweet and highly flavored; extra strong canes, wonderfully productive. Berry large.	1.00	7.50
Cumberland —The best black raspberry yet introduced. Berry larger than Gregg. Very firm and a good shipper. Unusually productive. Hardy and a strong grower. Ripens with Gregg.	1.00	7.50
Cardinal —New—Red; wonderfully productive. Season rather late. Berries large and firm. Strong grower. Strong tips.	1.00	9.00
Eureka —Very early and productive; fruit large, strong grower. Hardy; an excellent market variety.	1.00	6.00
Gregg —RELIABLE, hardy, the very largest and most productive Black Cap.	1.00	6.00
Kansas —Ripens just after Souhegan; berry as large or larger than the Gregg. Very vigorous and productive; tips.	1.00	6.00
Nemaha —Black Cap, very hardy, ripens with Gregg and resembles it in fruit.	1.00	6.00
Older —Very hardy, vigorous and productive. Berries sweet and rich, of large size; jet black; ripens before Gregg.	1.00	6.00
Shaffer's Colossal —Purple, large, very productive; tips.	1.00	9.00
Souhegan —Early, Black Cap, very productive.	1.00	6.00
Turner —Upright, almost thornless, vigorous, red, bears 125 to 150 bushels to the acre.	.50	3.50

GRAPES.

Our Grape Vines will be graded to the highest standard.

We have an unusually large and fine stock of grapes this season.

	10	100
Agawam —(Rogers No. 15) Old reliable, large, red, one of the very best, 2 years.	\$0.40	\$3.50
Blood's Black —Very early, 2 years.	.90	8.00
Brighton —Hardy productive, exquisite flavor, resembling Catawba in color, 2 years.	.60	5.00
Campbell's Early —New, hardy and vigorous, very prolific, berry large, flavor rich and sweet. Flesh firm but tender. Very early; 2 years.	1.00	9.00
Catawba —Late red, 2 years.	.40	3.00
Champion or Talman —Early black, 2 years.	.50	4.00
Clinton —2 years.	.40	3.50
Concord —2 years. Per thousand \$20.00.	.30	2.50
Cottage —Seedling of Concord. Sweeter and earlier; 2 years.	.50	4.00
Delaware —2 years.	.60	5.00
Elvira —White, productive, 2 years.	.40	3.50
Empire State —White, 2 years.	.60	5.00
Eaton —A large, showy black grape; ripens before Concord, 2 years.	1.00	9.00
Hartford Prolific —2 years.	.60	5.00
Isabella —Black, very late, 2 years.	.60	5.00
Ives' Seedling —Early, 2 years.	.40	3.00
Janesville —Very early, hardy, productive, 2 years.	.90	8.00
Jefferson —New red, very productive, hardy and vigorous, 2 years.	.80	7.00
Lindley —(Rogers No. 9) Very large, one of Roger's best, lighter in color than Agawam; 2 years.	.50	4.00
Martha —White Concord, 2 years.	.50	4.00
Merrimac —(Rogers No. 19) One of Rogers' best black grapes; 2 years.	.60	5.00
Moore's Early —Bunch large, berry round, black, very early, ripens 10 days before Hartford Prolific, 2 years.	.50	4.00
Moore's Diamond —White, well known, 2 years.	.50	4.00

GRAPES—Continued.

	10	100
Moyer —A red grape from Canada; resembles the Delaware, but better and earlier; said to be three weeks earlier than Concord, very hardy; 2 years.....	\$0.50	\$4.00
Niagara —Most popular white, 2 years.....	.50	4.00
Norton's Virginia —Arbor and wine grape, 2 years.....	.90	8.00
Perkins —White or bronze, 2 years.....	.90	8.00
Pocklington —Golden, very prolific; bunch very large; an excellent market variety; 2 years..	.50	4.00
Prentiss —White, 2 years.....	.90	8.00
Salem —(Rogers No. 53) Berry large, round, coppery red; bunch large and compact; one of the very best; hardy and productive; 2 years.....	.70	6.00
Vergennes —New, amber, hardy, vigorous, productive; 2 years.....	.60	5.00
Wilder —(Rogers No. 4) Black, an excellent market variety on account of its large size and beauty; ripens with Concord; hardy and productive; 2 years.....	.70	6.00
Worden —Better than Concord, 2 years.....	.50	4.00
Wyoming Red —Best early red, double size of Delaware, ripens a week to 10 days in advance of Concord; 2 years.....	.60	5.00
Woodruff Red —Strong and vigorous grower, very large and handsome, hardy; 2 years.....	.80	7.00

GARDEN ROOTS.

	100	1000
Asparagus —Columbian Mammoth White, 1 year.....	\$0.40	\$2.00
“ Conover's Colossal, 1 year.....	.40	2.00
“ “ “ 2 years.....	.50	3.00
“ Palmetto, 1 year.....	.40	2.00
“ “ 2 years.....	.75	4.00
“ Starkey's Mammoth Prolific, 1 year.....	.50	3.50
Rhubarb —Pie or Vinegar Plant, strong roots, Linnæus , 2 years.....	3.00	20.00
“ “ “ “ Victoria , 2 years.....	3.00	20.00
Horseradish —2 years.....	1.00	5.00


STOCKS, HEDGE PLANTS, CUTTINGS, ETC.

	10	100	1000	10,000
Apple Seedlings —1 year, first-class, 3-16 inch and up.....	\$0.75	\$ 4.50	\$40.00	
“ “ 1 “ second-class, 2-16 to 3-16 inch.....	.50	2.75	25.00	
Cherry —Mahaleb, 1 year, 5 to 8 millimeters.....	1.50	10.00		
Pear —French, 1 year, first-class, 7 to 12 millimeters.....	1.50	10.00		
Plum —Myrabolan, 5 to 7 millimeters.....	1.50	10.00		
Peach Seedlings —1 year, first class.....	.75	5.00		
Berberry —Thunbergii, transplanted, 12 to 18 inches.....	\$0.80	7.00	60.00	
“ “ “ 18 to 24 inches.....	1.00	9.00	80.00	
“ Purple Leaved, “ 18 to 24 inches.....	.75	6.00		
“ “ “ “ 2 to 3 feet.....	1.00	8.00		
Buckthorn —Frangula; hardy hedge plant, 4 to 5 feet, transplanted, bushy.....	.60	5.00		
“ “ “ “ 5 to 6 feet, “ “.....	.75	7.00		
Privet —English or Common. The only hardy variety.....				
“ “ “ 18 to 24 inches, well branched.....	.40	3.00	25.00	
“ “ “ 2 to 3 feet, well branched.....	.50	4.00	30.00	
“ “ “ 3 to 4 feet, very bushy.....	.60	5.00	40.00	
“ “ “ 4 to 6 feet, bushy.....	.75	6.00		
Osage Orange Hedge Plant —1 year, first-class.....	.35	2.00	18.00	
Poplar —Cuttings; Balm of Gilead, Cottonwood, Lombardy and Carolina.....		2.00		
Honey Locust —1 year, strong.....	.50	4.00		
Black Locust —1 year, 9 to 12 inches.....	.30	2.00		
“ “ 1 year, 12 to 18 inches.....	.50	2.50		
“ “ 1 year, 18 to 24 inches.....	.60	3.50		
“ “ 1 year, 2 to 3 feet.....	.75	4.50		

ROOT GRAFTS—[Order Early.]


 Largest Stock and Assortment.

Our Season for Making Root Grafts Closes March 15.

Root Grafts are Cions and Roots grafted and tied together, ready for planting in nursery rows. Orders for special lists of sorts  **PLEASE SEND EARLY**, with one-fourth cash with order, balance before shipment. This is very important to secure best grafts and your selection of sorts, as we take special care in cutting and putting up cions for early orders. *Please don't forget this.* No extra charge for packing. Even 50's or 100's of each sort will be put up at the following prices. For smaller or broken lists, prices will be given on application.

PRICES INCLUDE PACKING.

	1000	10,000
Apple —Price of assortments.....	\$ 4.50	\$40.00
“ On whole roots. Price of assortments.....	6.00	55.00
Pear —On whole roots. “ “	15.00	125.00
“ “ Longworth No. 1.....	20.00

 We do not recommend the planting of Prune, Plum, and Cherry root grafts. They succeed best from buds.

EVERGREENS.

All Nursery Grown, Transplanted and Root Pruned.

	10	100	1000
Arbor Vita —American or White Cedar, 18 to 24 inches, transplanted.....	\$1.25	\$ 10.00
“ “ “ “ “ “ “ “ 2 to 3 feet.....	1.50	12.00
“ “ Globosa , 12 to 18 inches, transplanted.....	1.00	8.00
“ “ Orientalis , (Chinese), 12 to 18 inches, transplanted.....	.75	6.00
“ “ “ “ 18 to 24 inches transplanted.....	1.00	8.00
“ “ “ “ 2 to 3 feet,.....	1.50	12.00
“ “ Plicata , 9 to 12 inches, transplanted.....	.75	6.00
“ “ “ “ 12 to 18 inches.....	1.00	8.00
“ “ “ “ 18 to 24 inches.....	1.25	10.00
“ “ “ “ 2 to 3 feet.....	1.50
“ “ Pyramidal , 12 to 18 inches, transplanted.....	1.25	10.00
“ “ “ “ 18 to 24 inches,.....	1.50	12.00
“ “ “ “ 2 to 3 feet.....	2.00	15.00
“ “ Siberian , 12 to 18 inches,.....	1.50	12.00
“ “ “ “ 18 to 24 inches,.....	2.00	15.00
“ “ “ “ 2 to 3 feet.....	2.50	20.00
“ “ Vervaeana , 12 to 18 inches, transplanted.....	1.00
“ “ “ “ 18 to 24 inches,.....	1.25
Balsam Fir —18 to 24 inches, transplanted.....	2.00	15.00
“ “ “ “ 2 to 3 feet.....	2.50	20.00
Box Dwarf —For edging 4 to 6 inches.....	.50	4.00
Hemlock —18 to 24 inches, transplanted.....	1.75	15.00
Juniper —IRISH hardy, 18 to 24 inches } very fine. }.....	1.75	15.00
“ “ “ “ 2 to 3 feet.....	2.25	18.00
“ “ TRAILING OR PROSTRATE , hardy, beautiful for low clumps, border or rock work, 18 to 24 inches.....	2.50
“ “ SAVIN —18 to 24 inches, extra good bushy plants.....	2.00
“ “ “ “ 2 to 3 feet,.....	2.25	18.00
Mahonia-Aquafolia —HOLLY, very beautiful, shining green leaves and red berries, 12 to 18 inches, stocky.....	1.50	12.00
“ “ “ “ 18 to 24 inches.....	2.00	15.00
Pine —AUSTRIAN, 9 to 12 inches, seedlings, extra well rooted.....	1.00	8.00
“ “ “ “ 12 to 18 inches, “ “ “ “.....	1.50	12.00
“ “ “ “ 18 to 24 inches, “ “ very stocky.....	2.00	15.00
“ “ “ “ 2 to 3 feet, transplanted, “ “ “ “.....	1.50	10.00	90.00
“ “ “ “ 3 to 4 feet “ “ “ “.....	2.00	12.00	100.00
“ “ “ “ 4 to 6 feet “ “ “ “.....	2.25	15.00
“ “ SCOTCH , 12 to 18 inches, seedlings, extra well rooted.....	1.50	10.00
“ “ “ “ 18 to 24 inches “ “ “ “.....	2.00	12.00
“ “ “ “ 2 to 3 feet “ “ “ “.....	2.50	18.00
“ “ “ “ 18 to 24 inches, transplanted.....	1.25	8.00	60.00

EVERGREENS—Continued.

	10	100	1000
Pine—SCOTCH, 2 to 3 feet, transplanted	\$1.50	\$10.00	\$80.00
“ “ 3 to 4 feet “	1.75	12.00
“ “ 4 to 6 feet “	2.00	15.00
“ WHITE, 18 to 24 inches, “	2.00	15.00
“ “ 2 to 3 feet, “	2.25	18.00
Rhododendron—Grafted sorts, very fine plants, set with buds, 18 to 24 inches	10.00
Spruce—NORWAY, 9 to 12 inches, transplanted, unusually large and very fine stock.50	3.00	25.00
“ “ 12 to 18 inches, “75	5.00	40.00
“ “ 18 to 24 inches, “	1.00	8.00	60.00
“ “ 2 to 3 feet, “	1.75	15.00
“ “ 3 to 4 feet, “	2.00	18.00
“ COLORADO BLUE, 12 to 18 inches, transplanted	5.00
“ “ “ 18 to 24 inches, “	7.50

ORNAMENTAL TREES.

All Nursery-grown. For planting and shipping we usually shorten in very tall tops.

	10	100	1000
Ailanthus—3 to 4 feet, transplanted	\$ 0.80	\$ 5.00
“ 4 to 6 feet, “90	7.00
“ 6 to 8 feet.....	1.00	9.00
“ 8 to 10 feet.....	1.25	10.00
Ash—WHITE, 3 to 4 feet, transplanted40	3.00	\$20.00
“ “ 4 to 6 feet, “60	5.00	40.00
“ “ 6 to 8 feet, “	1.25	10.00	80.00
“ “ 8 to 10 feet, “	2.00	18.00	150.00
“ “ 10 to 12 feet, “	2.50	20.00
“ EUROPEAN, 6 to 8 feet, transplanted	2.00	15.00
“ “ 8 to 10 feet, “	2.50	20.00
“ “ 10 to 12 feet, “	2.75	25.00
“ BLACK, 10 to 12 feet, “	2.50
Alder—EUROPEAN, 5 to 6 feet, transplanted	1.25	10.00
“ “ 6 to 8 feet, “	1.50	12.00
“ “ 8 to 10 feet, “	2.00	15.00
“ “ 10 to 12 feet, 1½ to 1¾ in. stem	2.50	20.00
“ “ 12 to 14 feet, 2 inch stem	3.00	25.00
“ “ 15 to 18 feet, 2½ inch stem	4.00
	} Very desirable ornamental and shade tree, extra fine stock		
Beech—PURPLE-LEAVED, 4 to 5 feet, transplanted	7.50	70.00
Birch—EUROPEAN WHITE, 3 to 4 feet. “	1.75	15.00
“ “ 4 to 6 feet, “	2.25	20.00
“ “ 6 to 8 feet, “	2.75	25.00
“ “ 8 to 10 feet, “	4.00	35.00
“ YELLOW, 4 to 6 feet, “	2.00
Black Walnut—1 year, 12 to 18 inches, seedlings	1.00	7.50
“ “ 1 year, 18 to 24 inches “	1.25	9.00
“ “ 3 to 4 feet, transplanted.....	.50	4.00	30.00
“ “ 4 to 6 feet, “75	5.00
“ “ 6 to 8 feet, “	1.25	8.00
Box Elder—See Maple, Ash-leaved
Buckeye—4 to 6 feet, transplanted	3.00
Butternut—3 to 4 feet, transplanted, stocky	1.00	8.00
“ “ 4 to 6 feet, “	1.50	12.00
“ “ 6 to 8 feet, “	2.00	15.00
Chestnut—AMERICAN SWEET, 3 to 4 feet, transplanted	1.00	9.00
“ “ “ 4 to 5 feet, “	1.50	12.00
“ “ “ 5 to 6 feet, “	2.00	15.00
Catalpa—SPECIOSA, 12 to 18 inches, seedlings50	2.50
“ “ “ 18 to 24 inches, “60	3.50
“ “ “ 4 to 6 feet, transplanted, very stocky.....	.60	5.00	40.00
“ “ “ 6 to 8 feet, “80	7.00
“ “ “ 8 to 10 feet, “	1.50	19.00

ORNAMENTAL TREES—Continued.

	10	100	1000
Catalpa —JAPAN, 12 to 18 inches, seedlings		\$0.50	\$ 2.50
“ “ 4 to 6 feet, transplanted.....	\$0.60	5.00
“ “ 6 to 8 feet, “80	7.00
Cherry —WILD BLACK, 2 year, 18 to 24 inch seedlings50	3.50
“ “ 2 to 3 feet		1.00	5.00
“ “ 3 to 4 feet, transplanted.....		2.00	18.00
“ “ 4 to 6 feet, “50	4.00
“ “ 6 to 8 feet, “75	6.00
“ “ 8 to 10 feet, “	1.00	8.00
Crab —BECHTEL'S DOUBLE FLOWERING, 3 to 4 feet.....	3.50	30.00
Elm —AMERICAN WHITE, 9 to 12 inches, seedlings.....		.40	2.00
“ “ 12 to 18 “50	2.50
“ “ 4 to 6 feet, transplanted.....	1.00	8.00	70.00
“ “ 6 to 8 feet, “	1.50	12.00	100.00
“ “ 8 to 10 feet “	2.00	16.00	150.00
“ “ 10 to 12 feet, “ 1½ to 1½ inch stem	3.00	25.00	200.00
“ “ 12 to 14 feet, “ 2 inch stem	4.00	35.00
“ “ 12 to 14 feet, “ 2½ inch stem	5.00	40.00
“ “ 12 to 14 feet, “ 2½ to 3 inch stem	6.00	50.00
“ ENGLISH AND SCOTCH, 4 to 6 feet, transplanted	1.50	12.00
“ “ 6 to 8 feet, “	2.00	18.00
“ “ 8 to 10 feet, “	3.00	25.00
“ “ 10 to 12 feet, “	3.50	30.00
“ “ 12 to 14 feet, 2 inch	5.00
“ “ 12 to 14 feet, 3 inch stem.....	6.50
English Walnut —18 to 24 inches, transplanted.....	2.50	20.00
“ “ 2 to 3 feet, “	3.00	25.00
Hackberry —NETTLE TREE, 4 to 6 feet, transplanted.....	2.00	15.00
“ “ 6 to 8 feet, “	2.50	20.00
“ “ 8 to 10 feet, “	3.00	25.00
“ “ 10 to 12 feet, “	3.50	30.00
“ “ 12 to 14 feet, 2 inch stems.....	5.00
Hop Tree —Shrubby Trefoil, 4 to 6 feet, transplanted..	1.00
“ “ 6 to 8 feet, “	1.50
“ “ 8 to 10 feet, “	2.00
Horse Chestnut —5 to 6 feet, transplanted, stocky.....	5.00	40.00
Judas Tree —or RED BUD, 3 to 4 feet, transplanted.....	1.50	10.00
“ “ 4 to 6 feet, “	2.50
“ “ 6 to 8 feet, “	3.00
“ “ 8 to 10 feet, “	3.50
Juneberry —DWARF—SHAD-BUSH. (See miscellaneous fruits).....
Kentucky Coffee —Hardy in Wisconsin, 2 to 3 feet, transplanted60	5.00
“ “ 3 to 4 feet, “80	7.00
“ “ 4 to 6 feet, “	1.00
“ “ 6 to 8 feet, “	1.50
Larch —EUROPEAN, 12 to 18 inches, transplanted.....	.60	4.00
“ “ 18 to 24 inches, “75	6.00
“ “ 2 to 3 feet, “	1.00	8.00
Linden —AMERICAN, 4 to 6 feet, transplanted.....	2.00	15.00
“ “ 6 to 8 feet, “	2.50	20.00
“ EUROPEAN, 4 to 6 feet, stocky “	2.00	15.00
“ “ 6 to 8 feet, “	2.50	20.00
“ “ 8 to 10 feet, “	3.00	25.00
“ “ 10 to 12 feet, “	3.50	30.00
“ BROAD-LEAVED, 4 to 6 feet. “	2.00	15.00
“ “ 6 to 8 feet, “	2.50	20.00
“ “ 8 to 10 feet, “	3.00	25.00
Magnolia —ACUMINATA, 4 to 5 feet, transplanted.....	4.00	35.00
“ SOULANGEANA, 2 to 3 feet, “	6.00
“ “ 3 to 4 feet, “	7.00

ORNAIMENTAL TREES—Continued.

	10	100	1000
Maple—ASH-LEAVED (Box Elder), Seedlings, 1 year, per 10,000, \$15.00	\$0.40	\$2.00
“ “ “ “ 4 to 6 feet, transplanted.....	\$0.50	3.00	20.00
“ “ “ “ 6 to 8 feet, “ “ “ “	Nice young stock } .75	4.00	35.00
“ “ “ “ 8 to 10 feet, “ “ “ “	“ “ “ “ } .90	6.00	50.00
“ “ “ “ 10 to 12 feet, “ “ “ “	“ “ “ “ } 1.00	8.00	75.00
“ “ “ “ 12 to 14 feet, 2 to 2½ inch stem.....	4.00	30.00
“ “ “ “ 14 to 16 feet, 2½ to 3 inch stem.....	5.00	40.00
“ NORWAY , very desirable, 4 to 6 feet, transplanted.....	3.00	25.00
“ “ “ “ 6 to 8 feet, “ “ “ “	3.50	30.00
“ “ “ “ 8 to 10 feet, “ “ “ “	6.00	50.00
“ SILVER-LEAVED , soft or white, 4 to 6 feet, transplanted.....	.40	3.00	25.00
“ “ “ “ 6 to 8 feet, “ “ “ “	.60	5.00	40.00
“ “ “ “ 8 to 10 feet, “ “ “ “	1.25	10.00	80.00
“ “ “ “ 10 to 12 feet, “ “ “ “	2.00	15.00
“ “ “ “ 12 to 15 feet, “ “ 2½ inch stem.....	5.00	40.00
“ “ “ “ 15 to 18 feet, “ “ 3 inch stem.....	6.00	50.00
“ “ “ “ 16 to 18 feet, “ “ 4 inch stem.....	7.00	60.00
“ SUGAR , 6 to 8 feet, transplanted.....	2.50	20.00
“ “ 8 to 10 feet, “ “ “ “	3.50	30.00
“ “ 10 to 12 feet, “ “ 1½ to 1¾ inches.....	4.00	35.00
“ “ 12 to 14 feet, “ “ 2 inch stem.....	5.00	40.00
“ “ 14 to 16 feet, 2 to 2½ inch stems, transplanted	6.00	50.00
“ “ 14 to 16 feet, 2½ to 3 inch stems “ “	8.00	75.00
“ “ 16 to 18 feet, 3 inch stems, transplanted.....	12.50
“ WIER'S CUT-LEAVED , 4 to 6 feet, transplanted.....	1.50	12.00
“ “ “ “ 6 to 8 feet, “ “ “ “	2.00	15.00
“ “ “ “ 8 to 10 feet, “ “ “ “	2.50	20.00
“ “ “ “ 10 to 12 feet, “ “ “ “	3.00	25.00
“ “ “ “ 14 to 16 feet, “ “ 2 inch stems.....	4.00	35.00
Mountain Ash—OAK-LEAVED , 3 to 4 feet, transplanted.....	1.25	10.00
“ “ “ “ 4 to 6 feet, “ “ “ “	1.75	15.00
“ “ “ “ 6 to 8 feet, “ “ “ “	2.00	18.00
“ “ EUROPEAN , 4 to 6 feet, transplanted.....	1.50	12.00
“ “ “ “ 6 to 8 feet, “ “ “ “	2.00	15.00
“ “ “ “ 8 to 10 feet, “ “ “ “	2.50
Oak—PIN (Palustris), 4 to 6 feet, transplanted.....	2.50
“ ENGLISH ROYAL , 3 to 4 feet, transplanted.....	1.50	12.00
“ “ “ “ 4 to 6 feet, “ “ “ “	2.00	18.00
“ “ “ “ 6 to 8 feet, “ “ “ “	2.50	22.50
“ “ “ “ 8 to 10 feet, “ “ “ “	3.00	25.00
Peach—DOUBLE-FLOWERING , pink and white, 4 to 6 feet.....	1.50	12.00
Pecan—Native , hardy, most delicious nut, 3 to 4 feet, transplanted.....	2.25	20.00
Plum—PRUNUS PISSARDI , purple leaved, very ornamental, 3 to 4 feet, on plum...	1.25	10.00
Poplar—BALM OF GILEAD (Balsam) 4 to 6 feet.....	.50	4.00
“ “ “ “ 6 to 8 feet... } very fine } .75	6.00
“ “ “ “ 8 to 10 feet... } and stocky } 1.00	8.00
“ “ “ “ 10 to 12 feet... } } 1.50	12.00
“ CAROLINA , 4 to 6 feet.....	.50	4.00	30.00
“ “ 6 to 8 feet.....	.60	5.00	40.00
“ “ 8 to 10 feet, 1 to 1¼ inch stem.....	1.00	8.00	70.00
“ “ 10 to 12 feet, 1¼ to 1½ inch stem.....	1.50	10.00	90.00
“ “ 12 feet, 2 inch stem.....	3.00	25.00
“ “ 12 to 14 feet, 3 inch stem.....	3.50	30.00
Our Carolina Poplars are very fine and stocky, with well formed heads.			
“ LOMBARDY , 4 to 6 feet.....	.60	5.00	40.00
“ “ 6 to 8 feet.....	.90	7.00	50.00
“ “ 8 to 10 feet.....	1.00	8.00
“ “ 10 to 12 feet.....	1.50	12.00
“ “ 12 to 14 feet, 2 inch stems.....	2.50	20.00
“ SILVER-LEAVED , 4 to 6 feet.....	1.00	9.00	75.00
“ “ 6 to 8 feet.....	1.50	12.00	100.00

ORNAMENTAL SHRUBS—Continued.

	10	100
Koeleruteria —PANICULATA, very showy large panicles of golden yellow flowers in July and August. 2 to 3 feet.....	\$1.25
Lilac —Purple, strong plants, 18 to 24 inches, per 1000, \$40.00.....	.60	\$ 5.00
“ “ 2 to 3 feet, per 1,000, \$50.00.....	.75	6.00
“ “ 3 to 4 feet, per 1,000, \$75.00.....	1.00	9.00
“ “ 4 to 5 feet.....	1.25	10.00
“ “ 2 to 3 feet, clumps, extra heavy.....	1.50	12.00
“ “ 3 to 4 feet, “ “ “.....	1.75	15.00
“ “ Persian, 3 to 4 feet.....	1.50	12.00
“ White, 2 to 3 feet, per 1,000 \$60.00.....	.90	7.00
“ “ 3 to 4 feet, per 1,000 \$80.00.....	1.25	10.00
“ “ 4 to 5 feet.....	1.50	12.00
“ “ 5 to 6 feet, tree form.....	2.00	15.00
“ “ Persian, 3 to 4 feet.....	1.50	12.00
“ GRANDIFLORA ALBA, 2 to 3 feet.....	1.50
“ JOSIKAE, 3 to 4 feet.....	1.50
“ HYACINTHAFLORUS, 3 to 4 feet.....	1.50
Privet —See Hedge Plants, page 8.		
Purple Fringe or Smoke Tree —3 to 4 feet, fine stock.....	1.00	9.00
“ “ “ 4 to 6 feet.....	1.50	12.00
Plum —PRUNUS TRILOBA, double flowering, 2 to 3 feet.....	1.00	8.00
“ “ “ 3 to 4 feet.....	1.25	10.00
Quince —JAPAN SCARLET, in variety, 18 to 24 inches.....	.60	5.00
“ “ “ 2 to 3 feet, per 1,000 \$60.00.....	.90	7.00
Rhodotypus —KERRIOIDES, handsome foliage and single white flowers in May, 3 to 4 ft.....	1.25
Snowball —18 to 24 inches, per 1,000 \$35.00.....	.60	4.00
“ 2 to 3 feet, per 1,000 \$50.00.....	.90	6.00
“ 3 to 4 feet, per 1,000, \$75.00.....	1.25	9.00
“ 2 to 3 feet, clumps.....	1.50	12.00
“ 3 to 4 feet, “ “ “.....	2.00	15.00
An excellent stock		
Snowberry —(SYMPHORICARPUS) RACEMOSUS, red, 18 to 24 inches.....	.50	4.00
“ “ “ 2 to 3 feet.....	.90	7.00
“ “ “ 3 to 4 feet.....	1.25	10.00
“ “ “ white, 2 to 3 feet.....	.90	7.00
“ “ “ 3 to 4 feet.....	1.25	10.00
Spirea —BILLARDII, SEMPERFLORENS, 2 to 3 feet.....	.90	7.00
“ “ “ 3 to 4 feet.....	1.25	9.00
“ PRUNIFOLIA, 2 to 3 feet.....	1.25	10.00
“ ANTHONY WATERER. New, dwarf, very beautiful; flowers dark crimson, very profuse, 2 years.....	1.25	10.00
“ THUNBERGII, New, dwarf, white, flowering early in spring; 2 to 3 feet.....	1.25	10.00
“ VAN HOUTEII, 2 to 3 feet, very fine.....	1.00	8.00
“ “ 3 to 4 feet, very fine.....	1.25	10.00
Syringa —(MOCK ORANGE), CORONARIUS, DIANTHIFLORUS, AND LEMOINEI, 2 to 3 feet.....	1.00	8.00
“ GRANDIFLORA, 3 to 4 feet.....	1.25	10.00
“ AUREA, 2 to 3 feet.....	1.25	10.00
Tamarix —AFRICAN, pink flowers, popular, 3 to 4 feet.....	1.00	8.00
“ “ 4 to 6 feet.....	1.25	10.00
“ INDICA, dark green foliage, 4 to 6 feet.....	1.50	12.00
Tree Cranberry —2 to 3 feet.....	1.25
“ “ 3 to 4 feet.....	1.50
Weigella —ROSEA, CANDIDA, ALBA, GROENEWEGENII, STELZNERII, 2 to 3 feet.....	1.00	8.00
“ 3 to 4 feet.....	1.25	10.00
“ VARIEGATED (dwarf), 18 to 24 inches.....	1.25	10.00
“ “ “ 2 to 3 feet.....	1.50
“ SPECTABILIS. New, yellow flowering, almost evergreen, 3 to 4 feet.....	1.00	8.00
Yucca —FILAMENTOSA, 2 years, transplanted, very fine, per 1000, \$20.00.....	.40	3.00
“ “ 3 years, “ “ “ per 1000, \$25.00.....	.50	4.00
“ “ 4 years, “ “ “.....	.60	5.00

HARDY VINES AND CREEPERS.

If wanted by mail add 10 cents to price for each to pay postage.

	10	100
Akebia Quinata —Hardy, climbing shrub, with fine foliage and dark purple flowers, 2 years, strong plants.....	\$1.25	
Ampelopsis — VIRGINIA CREEPER or American Ivy, vigorous, beautiful, an extra fine stock, 2 years.....	1.25	\$10.00
“ VEITCHII , hardy, clinging to the smoothest surface; colors finely in autumn to a bright red; most beautiful climber—2 years, from open ground.....	1.25	10.00
Aristolochia Sipo — DUTCHMAN'S PIPE , 2 years.....	3.50	30.00
Bignonia — RADICAN'S GRANDIFLORA , TRUMPET CREEPER, 2 years.....	1.25	10.00
Celastrous or Staff Tree — BITTER SWEET , 2 years.....	1.25	
Clematis —See below:		
Honeysuckle — ALBERTI AND HALLEYANA , strong plants, 2 years.....	1.00	8.00
“ JAPAN , gold-leaved, Aurea Reticulata, 3 years.....	1.00	8.00
“ MONTHLY FRAGRANT , and JAPAN WOODBINE —2 years.....	1.25	10.00
Periploca Graeca — SILK VINE , beautiful climber, 2 years.....	1.75	15.00
Wistaria — GLYCINE , AMERICAN, superb purple flowers, hardy, 2 and 3 years.....	1.00	8.00
“ SINENSIS , Chinese, blue, very strong grower, 2 years.....	1.50	12.00
“ FRUTESCENS , flowers pale blue, in short clusters, 2 years.....	1.25	10.00

CLEMATIS.

All Hardy. Field Grown. On own roots. An unusually fine stock of strong plants.



CLEMATIS JACKMANII.

	10	100
Duchess of Edinburgh —Double white, of vigorous habit, free bloomer, very fragrant, strong plants, dormant, 2 years.....	\$2.50	\$20.00
Flamula —Sweet scented. Produces large clusters of small white flowers. Most fragrant of all Clematis. Dormant, 2 years.....	1.25	10.00
Henryii —New, and one of the best perpetual hybrids, of robust habit, and very free bloomer. The flowers are large, white, and very showy. Strong plants, dormant, 2 years....	2.50	20.00
Jackmanii —Deep violet purple, flowers produced in masses; one of the best, especially for bedding, strong plants from open ground, 2 years..	2.50	20.00
Jackmanii Alba —It has all the characteristics of the Jackmanii, being free blooming and as vigorous. The flowers are nearly pure white, and make a fine contrast when planted near Jackmanii. 2 years; strong plants from open ground.....	3.00	
Madam Baron Veillard —The flowers are a satiny lavender pink; very desirable and distinct; strong grower 2 years.....	2.50	20.00
Madam Edouard Andre —A new French variety, entirely distinct and most novel. The nearest approach to a bright red yet produced. The plant is a strong, vigorous grower, being a hybrid of the popular Jackmanii variety, which it resembles in freedom of bloom, strong, vigorous growth, shape and size of flowers. 2 years; strong plants from open ground.....	2.50	20.00
Paniculata —A strong, vigorous grower; very free flowering. Pure white. Unusually fragrant. 2 years. Dormant.....	1.25	10.00
Ramona —A strong, rampant grower and very hardy. Free and perpetual bloomer; flowers large, color, a deep sky blue; 2 years; strong plants from open ground.....	2.50	20.00

CLEMATIS—Continued.

Star of India —A very showy, very free flowering sort, with large flowers, first of a reddish plum color, changing to a violet purple, with turkey red bar in the center of each flower leaf. A distinct variety of great merit. July to October. 2 years.....	\$3.00
Virgin's Bower —Common white flowering. 2 years. Dormant.....	1.00	\$8.00
“ “ “ “ 4 years. Dormant. Extra strong.....	1.25	10.00
Viticella —Common purple. 2 years. Dormant.....	1.00	8.00
“ “ “ “ 4 years. Dormant. Extra strong.....	1.25	10.00

ROSES—HARDY AND TENDER.

Purchaser's selections gladly allowed, as far as practicable, without extra charge.

50 AT 100 RATES. NOT LESS THAN 5 OF A VARIETY.

OUR ROSES are all of *our own growing* either on their *own roots* or budded.

We cannot afford to fill orders for less than \$1.00 at the prices named herein.

ROSES—Dormant.

HYBRID PERPETUAL—*On own roots*—Leading, hardy varieties; dormant; from the open ground; 2 years, strong..... 10 100 \$1.50 \$12.00

Anton Mouton,	Fanny Petzold,	Louis Odier,
Antoine Verdier,	Gen. Jacqueminot,	Madam Masson,
Baron de Maynard,	Gustave Pigareau,	Madam Alfred Carriere,
Belle Normandy,	Jean Lelivere,	Mary Washington,
Beauty of Waltham,	John Keynes,	Magna Charta,
Coquette des Alps,	Jules Margottin,	Paul Neyron,
Coquette des Blancies,	Lady Helen Stewart,	William Chesbrough,
Enfant Mt. Carmel,	La Reine,	

HYBRID PERPETUAL—Budded, strong plants, from open ground. 10 100 1000
Leading varieties as follows..... \$1.50 \$12.00 \$100.00

Alfred Colomb,	Gen. Jacqueminot,	Marshall P. Wilder,
Anna de Diesbach,	John Hopper,	Mrs. John Laing,
Baron de Bonstettin,	Mad. Gabriel Luizet,	Paul Neyron,
Eugene Furst,	Magna Charta,	Tom Wood,
Francois Levet,	Margaret Dickson,	Ulrich Bruner.

MOSS—2 years, hardy varieties, from open ground, dormant..... 10 100 \$1.50 \$12.00

Countess de Murinais,	Princess Adelaide,	Salet,
Crested,	Perp. White Moss,	Capt. John Ingram,
Luxembourg,	Red Moss,	Henry Martin.

CLIMBING—2 years, dormant. Anna Maria, Baltimore Bell, Prairie Queen, Seven Sisters, 10 100
Pink Rambler, Yellow Rambler, Empress of China, White Rambler..... \$1.25 \$10.00

CLIMBING—DOROTHY PERKINS—2 years, dormant..... 1.25 10.00
“ **CLOTHILDE SOUPERT**—2 years, dormant..... 2.00 15.00
“ From 4-inch pots..... 2.00 15.00

CRIMSON RAMBLER—A grand rose from Japan. Dormant, 2 years, 1st grade..... 1.50 12.00

MADAM PLANTIER—2 years, dormant..... 1.25 10.00

ROSA RUGOSA, white, 2 years, dormant..... 1.50 12.00

WICHURIANA—2 years, dormant..... 1.25 10.00

TREE ROSES—Choice varieties, first-class..... 6.00 50.00

ROSES—From Pots—Continued.

	10	100
MONTHLY—Including Tea, China, Noisette, and Bourbon , on own roots, 2 years strong, from 4-inch pots.....	\$1.50	\$12.00
“ From 2½-inch pots.....	.40	3.50
Balduin,		
Bride,		
Bridesmaid,		
Champion of the World,		
Clothilde Soupert,		
Dr. Grill,		
Duchess de Brabant,		
Gruss au Teplitz,		
Hermosa,		
Kaiserin Augusta Victoria,		
Mad. Emily Charin,		
Maman Cochet,		
Maria Guillot,		
Marechal Neil,		
Mosella,		
Mrs. DeGraw,		
Queen's Scarlet,		
Safrano,		
Souvenir de Malmaison,		
White La France.		

HARDY HERBACEOUS FLOWERING PLANTS.

The following assortment embraces the most desirable kinds and varieties, and in great demand for permanent planting. They are all showy, beautiful plants, of easy cultivation.

Anemone Whirlwind —A new, semi-double form of <i>Anemone Japonica Alba</i> . The flowers, which are 2¼ to 3 inches across, have several rows of pure white sepals, and the advantage of lasting much longer than the single varieties.....	10	100	\$ 0.90	\$ 8.00
Achillea —THE PEARL. Double, white.....			.70	6.00
Aster —MICHAELMAS DAISIES. Assorted varieties. Indispensable for fall blooming.....			.70	6.00
Aquilegia —COLUMBINE, assorted.....			.90	8.00
Arabis —ALPINA. Very early, white flowers; splendid for borders and rock work.....			.50	4.00
Cinnamon Vine —Climbing, very handsome, rapid grower.....			.40	3.00
Coreopsis Lanceolata —A hardy perennial that should be planted in every garden. The flowers are clear bright yellow, very attractive. A profuse bloomer and perfectly hardy. Thrives in almost any situation. Invaluable for summer cut flowers. Strong clumps, 2 years.....			.60	5.00
Delphinium —FORMOSUM—Blue Larkspur.....			1.25	10.00
“ PUMILUM ALBUM. Dwarf, white.....			1.25	10.00
Dielytra Spectabilis —BLEEDING HEART. An excellent stock.....			.80	7.00
Dianthus —HARDY PINKS, assorted. 2 and 3 years.....			.90	8.00
“ BARBATUS. The well known Sweet William.....			.90	8.00
Digitalis —PURPUREA. Fox Glove.....			.70	6.00
Eulalia Japonica Variegata —ORNAMENTAL GRASS. Leaves striped green and white.....			.90	8.00
“ <i>Japonica Zebrina</i> —New zebra striped grass.....			.90	8.00
“ <i>Gracillima Univitata</i> —Narrow green leaves with a silvery-white midrib.....			.90	8.00
Funkia —DAY LILY, white, blue, and variegated.....			.90	8.00
Gaillardia Grandiflora —This is considered one of the most beautiful and desirable plants in cultivation, beginning to bloom in June; they continue one mass of bloom the entire season. Base of petals are scarlet crimson, bordered golden yellow. A most beautiful combination.....			.90	8.00
Helianthus Maximilian —An elegant specie, the latest bloomer of its class, as well as one of the latest of all flowers. Clear yellow, from 3 to 5 inches across, with several rows of petals. Center full. Handsome in bud and flower. Height 8 feet.....			.90	8.00
Heliopsis —PITCHERIANA. Very valuable for cut flowers, resembling Sun Flowers, but covering a longer season of bloom and earliest in summer. A new form with dwarf habit, giving a succession of deep orange yellow flowers, from June to October. 3 feet.....			.70	6.00
Heuchera —SANGUINEA, Alum Root. One of the very few red flowering, hardy perennials. Flowers in graceful spikes. Very profuse.....			.90	8.00
“ SANGUINEA, Alba. White flowering; splendid for cut flowers.....			.50	4.00
Hemerocallis —ORANGE DAY LILY. Strong roots.....			.50	4.00
“ “ “ “ } Large Stock }.....			.70	6.00
Hollyhock —Double, white, yellow, pink, red, sulphur and maroon.....			1.00	8.00
“ Single, mixed colors.....			.60	5.00

HARDY HERBACEOUS FLOWERING PLANTS—Continued.

Hibiscus —CRIMSON EYE. The stems and wood are deep red, and foliage is beautifully veined. Flowers immense. Color a clear snow white, with a brilliant crimson eye	10	100
“ MOSCHEUTOS. Flowers 6 inches in diameter; of a light rosey red color with darker eye	\$1.25	\$10.00
Iberis —SEMPERVIRENS. Hardy Candytuft, evergreen. Beautiful white flowers early in spring	.90	8.00
Iris —GERMANICA. German Iris, assorted	.70	6.00
“ KAEMPFERI. Japan Iris, named	.50	4.00
Lychnis —HAAGEANA. Broad heads of showy flowers, varying from orange red to richest crimson	.90	8.00
Pæonies —See page 20.	.70	6.00
Pardanthus —CHINENSIS. (Blackberry Lily.) Easily grown in ordinary garden soil, 4 feet, June to September. Showy orange-red flowers, spotted with purplish brown spots	.60	5.00
Pyrethrum Uliginosum —This is considered by many the finest autumn flowering plant we have, growing four feet high, and covered with a profusion of large white flowers. Resembles the Paris Daisy in form of flowers. Very useful for fall cutting; August to frost	.70	6.00
Phlox —HARDY PERENNIAL. The improvement made in this beautiful class of plants the past few years is perhaps more marked than in any other section of the Hardy Herbaceous family. Perfectly hardy everywhere. We have the following named varieties: <i>From open ground; strong plants.</i> ALCESTE—Very beautiful large flowers, white, shaded lilac; enormous bluish violet center. Good. Almost identical with Duqueslin and Gloria	.60	5.00
AMOR—Pure pink, center light flesh pink. Dwarf grower, forming round compact heads	.80	7.00
COQUELICOT—Large flowers, bright orange, center purple; a very bright color. We consider this the best variety of its color and among the very best yet produced. Habit dwarf. Very vigorous	1.25	10.00
CROSS OF HONOR—Light lilac, each petal regularly striped with white; very attractive. Medium sized flowers	.50	4.00
DUQUESLIN—Flowers large and perfect, bluish violet, shading to white at edges; crimson eye. Very striking	.70	6.00
ESCLAIRMONDE—Flowers large and perfect, bluish violet, with lighter shading and dark center	.60	5.00
HOFGAERTNER DECKER—Magenta rose, very free	.50	4.00
JAMES MAGNUS—White with crimson eye	.70	6.00
JEANNE D'ARC—Large, compact trusses; flowers extra size and pure white. One of the best bloomers	.70	6.00
JEAN LIABAUD—Light rose, crimson center; habit dwarf. Very desirable.	.70	6.00
LUMINEUX—Extra large flowers pink, shaded magenta, crimson center	.80	7.00
MOLIER—Salmon, flushed rose	.80	7.00
MIXED VARIETIES—2 years from open ground, per 1000, \$35.00	.50	4.00
Rudbeckia Double —“GOLDEN GLOW.” A plant of fine habit, vigorous growth, with early continuous and immense blooming qualities; the stems are long, and often carry a dozen flowers furnished with most beautiful foliage. Strong roots, per 1000, \$25 00	.35	3.00
Shasta Daisy. Probably the most popular new hardy plant, and is sure to become a favorite, for cut flower purposes. This Daisy is a production of Luther Burbank, and is the result of crossing our native field Daisy with a choice European variety. The flowers are borne singly on stems about 12 inches long, and are a clear glistening white, from 3 to 4 inches in diameter. The plant blooms continually through the summer and fall, and is perfectly hardy without any protection. From open ground	1.00	8.00
Vinca —MINOR; Common Periwinkle or Myrtle, well known	.50	4.00
Veronica —Amethystica, lavender blue. Augustifolia, white. Very desirable border plants	.90	8.00
Yucca Filamentosa —SPANISH BAYONET; 4 feet; June and July. Foliage evergreen and somewhat resembling the Century plant in habit of growth. The flower spikes are many branched and the flowers are borne in huge panicles above the sword shaped foliage. Large, white, waxy blooms. 1 year roots	.25	2.00
2 year roots	.35	3.00
3 year roots	.50	4.00
4 year roots	.60	5.00

HERBACEOUS PAEONIES.

We have an unusually fine stock of the following named varieties.

Price: Strong roots, 2 and 3 eyes, per 10, \$1.50; per 100, \$12.00.

Alba Plena —Rosy white, pure white center.	L'Elegante —Light rose bordered with creamy white.
Augusta Miellez —Light rose.	Mons. Rousselon —Rose center; salmon.
Bicolor —Pink; center yellowish white.	Notaire Lafond —Lilac rose.
Bicolor Lemoine —Flesh; center yellow; spotted purple.	Princess Mathilde —Lively wine red.
Camille Callot —Dark rose.	Potsi Plena —Dark red.
De Jussieu —Light rose; center almost white.	Rubicunda Alba Marginata —Dark violet rose.
Dr. Bretonneau —Rose with lilac.	Rosea —Pink.
Formosa Rosea —Light rose.	Reevesii —Rosey pink.
Faust —Salmon rose.	Rubens —Dark carmine.
Fragrans —Fine rose, very large, fragrant.	Tricolor Grandiflora —Rose; center yellowish.
Grandiflora Rosea —Rose.	Taglioli —Rose.
Hericartiana —Violet; rose center; salmon.	Victor Paquet —Rose color.
Gen. Cavaignac —Lilac rose.	

TENDER BULBS AND TUBERS.

	10	100
Canna —New dwarf flowering. Standard varieties. Dry roots.....	\$0.40	\$3.00
“ Emil Wieland. (New.) See below.		
Caladium Esculentum —Strong bulbs70	6.00
Dahlias —Assorted varieties, dry roots. We have a fine collection of varieties.....	.80	7.00
Gladiolus —Mixed, all colors.....	.40	3.00
“ Colors separate.....	.50	4.50
“ Leading varieties, named.....	1.00	8.00
Maderia Vine —Strong bulbs.....	.30	2.00
Tuberose —PEARL and DOUBLE, first-class bulbs.....	.30	2.00

The New Canna “EMIL WIELAND.”

Originated in Switzerland. A cross between the Crozy and Orchid type, combining the splendid qualities of the first with the immense size and shape of the second. As beautiful as the country it comes from, bearing its giant flowering trusses of orange scarlet flowers without interruption from June until October. A magnificent grower and excellent bedder. Height 3 to 3½ feet. Foliage a clear glossy green. No lover of flowers should be without this star of giant flowering Cannas. It is the best Canna we have yet seen. We are the first to offer this splendid new Canna, having bought it direct from the originator. Dry roots.....per 10, \$0.75; per 100, \$6.00

HARDY BULBS.

For Fall Planting. Our Bulbs are all First Quality.

	10	100
Hyacinths —Dutch, for bedding or forcing. First quality, separate colors, single red, rose, white, blue and yellow.....	\$0.60	\$5.00
“ Same as above, double.....	.60	5.00
Tulips —Fine, named, double and single.....	.25	2.00
“ Mixed, double and single.....	.20	1.50
“ Separate colors, double and single.....	.20	1.75
Crocus —Named colors, blue, white, yellow and striped..... per 1000, \$4.00	.10	.50
Crown Imperials —Mixed varieties.....	1.00	8.00
Freesia, Refracta Alba —White flowering, fragrant.....	.20	1.50
Narcissus —Chinese Sacred Lily.....	.90	7.00
“ Double, yellow, Von Sion.....	.40	3.50

HARDY BULBS—Continued.

	10	100
Jonquils—Double.....	\$0.20	\$ 1.50
“ Single.....	.15	1.00
Lilium—AURATUM, gold banded; strong bulbs	1.25	10.00
“ CANDIDUM (Old White Lily) pure white, very fragrant.....	1.25	10.00
“ SPECIOSUM RUBRUM, blush with crimson spots	1.25	10.00
“ “ ROSEUM, rose spotted	1.25	10.00
“ TIGRINUM (Tiger Lily), orange red, spotted.....	1.00	7.00
“ “ SPLENDENS, later, larger, the plant taller.....	1.00	7.00
“ “ FLORA PLENA, Double Flowering.....	1.00	8.00
“ HARRISH (Bermuda Easter Lily), white first-class bulbs, 7 to 9 inches.....	1.50	15.00
Lily of the Valley—CONVALARIA MAJALIS, choice, favorite, exquisitely fragrant, perfectly hardy, clumps.....	1.25	10.00

PLATE BOOKS.

COLORED PLATES OF FRUITS AND FLOWERS.—List and Prices on Application.

NURSERYMEN'S REQUISITES.

Articles not found in the following list will be priced on application.

Box Clamp—For packing tree boxes.....	\$ 7.00
Dibbles—Planting, each.....	1.00
Hoes—Each75
Hoop Iron—For strapping boxes—ready for use—per pound12
Knives—Grafting; common; postpaid, each50
“ Budding; each.....	.75
Labels—Judson's—Tree; pierced, 4-inch, wired, 20c per hundred; 1000, \$1.50; unwired, per 1000.....	.60
“ Pot; per 100060
Moss—Per 100 lbs.....	1.00
Oil Paper—For mailing plants, per 100 sheets	2.00
Order Book—25 orders and 25 perforated duplicate sheets, postpaid, 25c; per 10.....	2.00
Shears—Pruning, each.....	1.00
Spades—AMES', each, \$1.50; per dozen.....	17.00
Tags—Shipping; printed to order; size 5 by 2½; per 1000.....	2.50
“ “ “ “ “ 6½ by 3¼; per 1000.....	4.00
Trowels—Garden; each.....	.35
Thread—Grafting; per lb.....	.40
“ “ Waxed, ready for use, sufficient to wrap 20,000 grafts.....	2.00
Wax—Grafting; per lb.....	.45
Wire—Brass, for labels; per lb., cut ready for use.....	.60

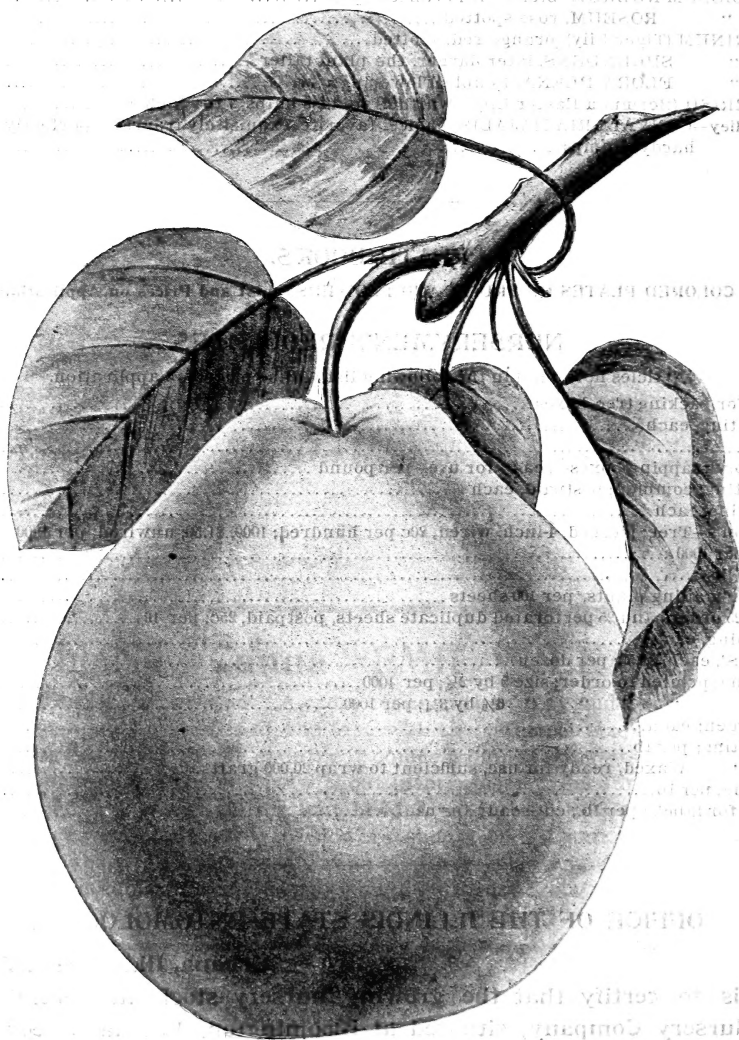
OFFICE OF THE ILLINOIS STATE ENTOMOLOGIST.

Urbana, Ill., August 7, 1905.

This is to certify that the growing nursery stock and premises of the Phoenix Nursery Company, situated at Bloomington, Ill., have been inspected by Mr. E. P. Taylor, a duly appointed inspector of this office, according to the provisions of an Act to prevent the introduction and spread in Illinois of the San Jose Scale and other dangerous insects and contagious diseases of fruits, approved and in force April 11, 1899, and that no indications have been found of the presence of the San Jose Scale or other dangerous insect or plant disease. This certificate applies only to the condition of this nursery for the period ending June 1, 1906.

(Copy.)

S. A. FORBES, State Entomologist.



LONGWORTH'S NO. 1 PEAR

We have an unusually fine and large stock of this Pear. See page 4.

This is to certify that the above named Pear is the property of the Phoenix Nursery Company, and is the only one of the kind raised in the State of California. It is a fine, large, and early ripening variety, and is well adapted for the market. It is the only one of the kind raised in the State of California, and is the only one of the kind raised in the State of California.

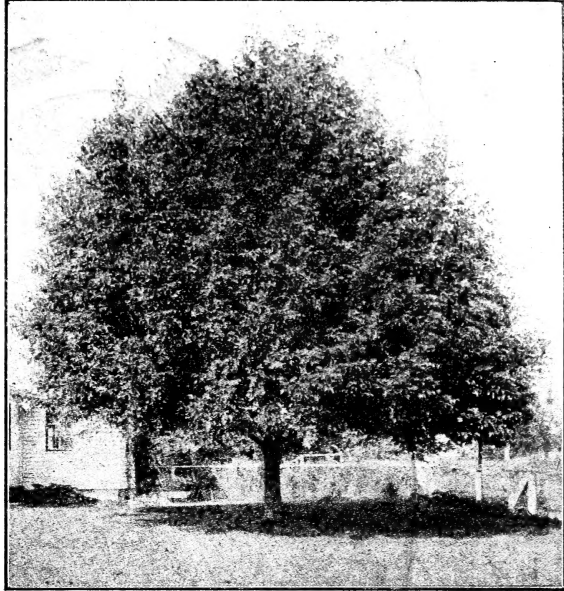
San Jose State and other institutions, and is well adapted for the market. It is the only one of the kind raised in the State of California, and is the only one of the kind raised in the State of California.

June 1, 1900.



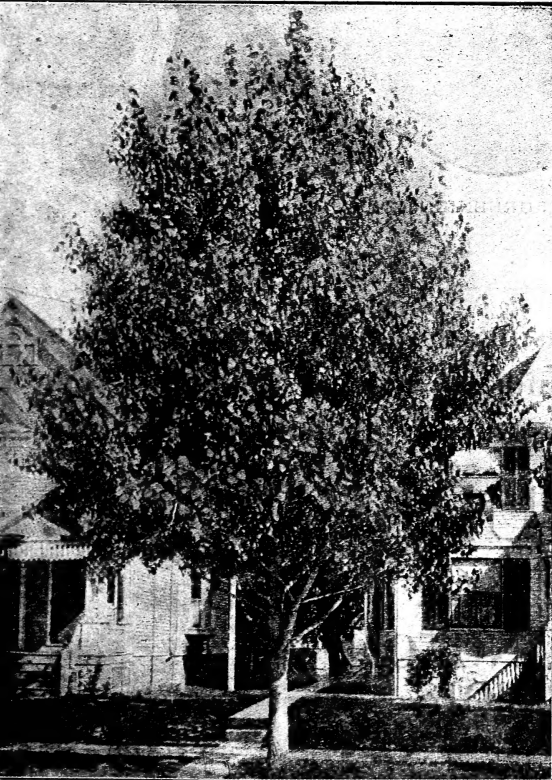
MAPLE, WEIRS CUT LEAVED.

Our stock of this variety is large and fine.



MAPLE ASH LEAVED. (Box Elder.)

Maple Ash Leaved, very large and fine stock.



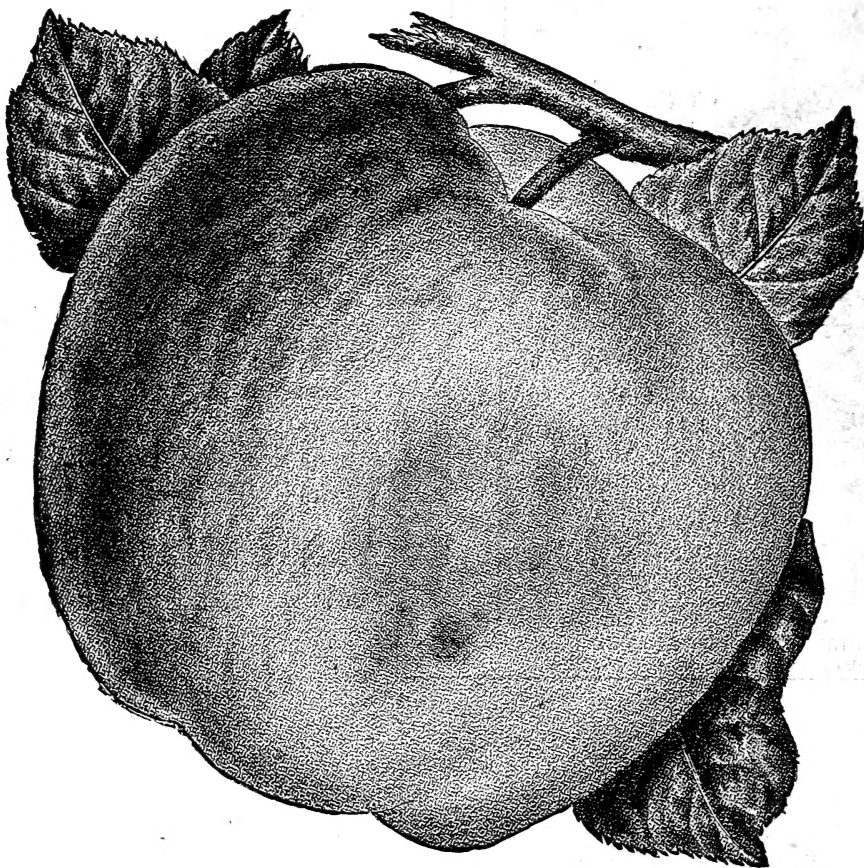
POPLAR CAROLINA.

We have an unusually fine stock of well grown trees of this very popular variety.



BERBERRY THUNBERGII.

We have a nice lot of this popular shrub.



NORTHWESTERN GREENING APPLE.

We have a large and fine stock of this variety.

Owing to parties here using a name similar to ours, the mails are sometimes confused, and we would ask our patrons when writing or telegraphing us to address plainly.

PHOENIX NURSERY CO.

P. O. Box 625

**BLOOMINGTON,
ILLINOIS**