

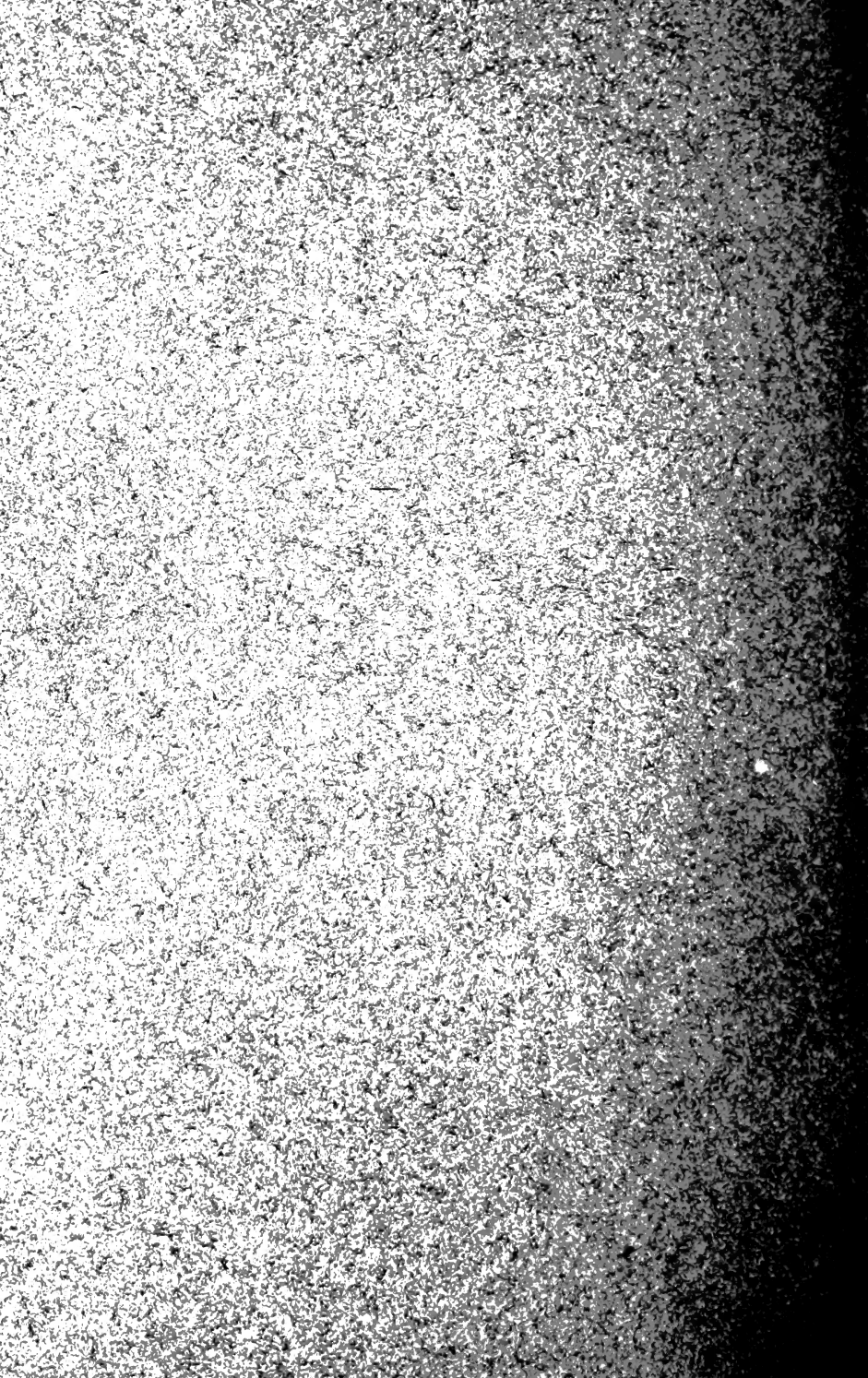
Historic, Archive Document

Do not assume content reflects current scientific knowledge, policies, or practices.

1905 TRADE LIST

**Old Colony
Nursery**

**T. R. WATSON
PLYMOUTH, MASSACHUSETTS**



1905 TRADE LIST

Old Colony
Nursery

T. R. WATSON

PLYMOUTH, MASSACHUSETTS

CANCELS ALL PREVIOUS LISTS.

SPRING TRADE LISTS, 1905.

1840 **Old Colony Nursery** 1905

T. R. Watson

Plymouth, Massachusetts

Prices of this list net and subject to stock not being sold.

GUARANTEE.—We take the greatest pains to have every plant marked true to name. Any plant incorrectly marked will be promptly replaced, or money returned. We do not guarantee any more than the original cost of the plant.

We can not guarantee plants to live, at the prices of this catalogue. We send out young, thrifty plants, which should live if properly planted and cared for.

Delivery of all packages to freight or express free.

We do not pay either freight or express.

All plants at the risk of the purchaser after they are delivered to the public carrier.

Please say, whether you will have your order sent by freight or by express.

Meeting dates: Where sufficient notice is given, weather permitting, plants will be shipped on a given date.

Please give date on which you want them shipped, and not the date on which you want them to arrive.

No man living can tell how long it will take a freight package to reach any point in the country, at a moment's notice.

On orders received before the middle of March, the schedule time of freight will be ascertained, if desired.

Express packages arrive in Boston on day of shipment.

Express packages arrive in New York on following day.

Freight packages arrive in Boston the day after shipment.

Freight packages due to arrive in New York the day after shipment.

TERMS.—Cash with order or satisfactory references, except where parties are known.

Bills of regular customers become due June 1st for Spring shipments; January 1st for Fall shipments.

Packing: Boxes from 10 cents to 50 cents; bales from 50 cents to \$1.00; cases 2x2x4 ft., \$1.00; 2x2x6 ft., \$1.25; 2x2x8 ft., \$1.50; larger cases from \$1.75 to \$3.00.

DECIDUOUS TREES AND SHRUBS.

Fifty at the rate for 100.

Five at the rate for 10.

Less than five at the rate for ten, where the price is twenty-five cents or over.

Less than five, add five cents each to rate for ten, where the rate for ten is less than twenty-five cents.

Prices subject to stock not being sold.

		PER 10	PER 100
50	<i>Acer dasycarpum</i> , Silver Maple	10 to 12 ft.	2.50
50	<i>Acer dasycarpum</i> , var. <i>Wieri laciniatum</i>	10 to 12 ft.	4.00
100	<i>Acer palmatum</i> , Japanese Maple (type)	3 to 4 ft.	2.00
10	<i>Acer palmatum atropurpureum</i>	4 ft.	10.00
25	<i>Acer Perinsylvanicum (striatum)</i>	4 to 6 ft.	2.50
100	<i>Acer platinoides</i>	8 to 10 ft.	3.00
100	<i>Acer Pseudo-Platanus</i> , Sycamore Maple	4 to 5 ft.	2.00
200	<i>Acer Pseudo-Platanus</i>	3 to 4 ft.	1.25
50	<i>Acer Pseudo-Platanus atropurpureum</i>	4 to 5 ft.	2.00
100	<i>Acer Pseudo-Platanus atropurpureum</i>	2 to 3 ft.	1.00
100	<i>Acer saccharinum</i> , Sugar Maple	9 to 10 ft.	3.00
500	<i>Acer saccharinum</i>	6 to 8 ft.	2.00
100	<i>Acer Schwedleri</i>	3 to 4 ft.	3.00
100	<i>Acer Tartaricum</i> , var. <i>Ginnala</i>	4 to 5 ft.	1.75
25	<i>Æsculus Hippocastaneum</i> , heavy	9 to 10 ft.	10.00
50	<i>Æsculus Hippocastaneum</i> , rubra	5 to 6 ft.	5.00
25	<i>Æsculus Hippocastaneum</i> , dble. white	3 to 4 ft.	2.00
50	<i>Æsculus macrostachya</i>	2 ft. up	3.00
50	<i>Alnus glutinosa</i>	5 to 6 ft.	1.00
300	<i>Alnus incana</i> , cut back to	7 to 8 ft.	1.25
50	<i>Amelanchier Canadensis</i>	3 to 4 ft.	1.25
200	<i>Amelanchier Canadensis</i>	2 to 3 ft.	1.00
40	<i>Amelanchier Canadensis rotundifolia</i>	1 to 2 ft.	1.25
100	<i>Amorpha fruticosa</i>	6 to 7 ft.	1.50
30	<i>Andromeda arborea</i>	2 to 3 ft.	2.00
50	<i>Andromeda Mariana</i>	2 to 3 ft.	2.50
10	<i>Andromeda polifolia</i>		4.00
100	<i>Andromeda racemosa</i>	15 to 24 in.	1.50
200	<i>Aralia pentaphylla</i>	30 to 40 in.	1.20
25	<i>Aralia spinosa</i>	4 to 5 ft.	2.00
50	<i>Aralia spinosa</i>	2 to 3 ft.	1.20
30	<i>Azalea calendulacea</i>	2 to 3 ft.	5.00
100	<i>Azalea mollis</i>	15 in.	3.00
50	<i>Azalea Ghent Hybrids</i> , in var.	18 to 24 in.	6.00
150	<i>Azalea Vaseyi</i>	10 to 12 in.	2.50

		PER 10	PER 100
20	<i>Azalea viscosum</i>	18 to 24 in.	2.50
500	<i>Azalea viscosum</i>	12 to 15 in.	2.00 15.00
400	<i>Baccharis halimifolia</i>	2 to 3 ft.	1.25 10.00
100	<i>Berberis Cretica</i>	2 to 3 ft.	.75 6.00
500	<i>Berberis Cretica</i>	18 to 24 in.	.60 5.00
500	<i>Berberis Sinensis</i>	18 in.	1.00 8.00
500	<i>Berberis Sinensis</i>	12 in.	.75 6.00
500	<i>Berberis Thunbergii</i>	18 to 24 in.	1.00 8.00
1000	<i>Berberis Thunbergii</i>	8 to 12 in.	.60 6.00
200	<i>Berberis vulgaris</i>	18 to 24 in.	.50 4.00
300	<i>Berberis vulgaris</i>	10 to 12 in.	.40 3.00
200	<i>Berberis vulgaris purpurea</i>	18 to 24 in.	.60 5.00
100	<i>Betula alba</i>	6 to 8 ft.	2.00 18.00
300	<i>Betula alba</i>	4 to 5 ft.	1.25 10.00
25	<i>Betula alba, var. laciniata</i>	5 to 6 ft.	3.00
50	<i>Betula lutea</i>	8 to 10 ft.	2.50
200	<i>Betula nigra</i>	5 to 6 ft.	1.25 10.00
500	<i>Betula nigra</i>	2 to 3 ft.	1.00 8.00
1000	<i>Betula nigra</i>	1 to 2 ft.	.75 5.00
200	<i>Betula papyrifera</i>	5 to 7 ft.	1.75 15.00
100	<i>Betula papyrifera</i>	4 to 5 ft.	1.25 10.00
100	<i>Betula populifolia</i>	7 to 8 ft.	2.50 20.00
200	<i>Betula populifolia</i>	5 to 7 ft.	1.25 10.00
100	<i>Calycanthus floridus</i>	2 to 3 ft.	1.25 10.00
200	<i>Calycanthus floridus</i>	12 to 18 in.	.75 6.00
200	<i>Caragana arborescens</i>	3 to 4 ft.	1.25 10.00
50	<i>Carpinus betulus</i>	3 to 4 ft.	2.00 18.00
1000	<i>Carpinus betulus, col. seedlings</i>	4 to 6 in.	1.00
25	<i>Carya amara</i>	2 to 4 ft.	1.50
50	<i>Castanea sativa, American Chestnut</i>	6 to 7 ft.	2.50 20.00
20	<i>Castanea pumila, Chinquapin</i>	2 ft.	2.50
100	<i>Catalpa speciosa</i>	5 to 6 ft.	1.50 12.00
800	<i>Ceanothus Americanus</i>	2 ft.	1.25 10.00
50	<i>Celtis occidentalis</i>	5 ft.	1.50 12.00
20	<i>Cercidiphyllum Japonicum</i>	4 to 5 ft.	4.00
100	<i>Cercis Canadensis</i>	4 to 5 ft.	1.25 10.00
25	<i>Chionanthus Virginica</i>	2 to 3 ft.	2.00
100	<i>Cladrastis tinctoria</i>	4 ft.	2.00 18.00
	<i>Clethra alnifolia, col., single stem</i>		4.00
20	<i>Cornus alternifolia</i>	3 to 4 ft.	1.50
100	<i>Cornus circinata</i>	2 to 3 ft.	1.50 10.00
50	<i>Cornus florida</i>	5 to 6 ft.	1.75 15.00
500	<i>Cornus florida</i>	2 to 3 ft.	1.25 10.00
50	<i>Cornus florida rubra</i>	3 ft.	6.00
30	<i>Cornus mas</i>	2 to 3 ft.	1.50

		PER 10	PER 100
200	<i>Cornus paniculata</i>	18 to 24 in.	1.75 15.00
500	<i>Cornus paniculata</i>	1 to 2 ft.	1.00 8.00
100	<i>Cornus sanguinea</i>	3 to 4 ft.	1.00 8.00
100	<i>Cornus sericea</i>	4 to 5 ft.	1.25 10.00
300	<i>Cornus stolonifera</i> , var. <i>Siberica</i>	3 to 4 ft.	1.25 10.00
100	<i>Cornus stolonifera</i> , var. <i>aurea</i>	2 to 3 ft.	2.00 18.00
50	<i>Cornus stolonifera</i> , var. <i>elegantissima</i>	2 to 3 ft.	1.50
100	<i>Cotoneaster Simonsii</i>	2 to 3 ft.	1.25 10.00
250	<i>Cratægus aprica</i>	2 to 3 ft.	1.25 10.00
500	<i>Cratægus Arnoldiana</i>	2 to 3 ft.	1.25 10.00
100	<i>Cratægus Carieri</i>	2 to 3 ft.	1.25 10.00
100	<i>Cratægus coccinea</i>	3 to 4 ft.	1.25 10.00
10	<i>Cratægus cordata</i>	2 to 4 ft.	2.00
500	<i>Cratægus Crus-galli</i> , cut back	2 to 3 ft.	1.25 10.00
300	<i>Cratægus Crus-galli</i> , cut back	1 to 2 ft.	1.00 8.00
20	<i>Cratægus elliptica</i>	2 to 3 ft.	2.00
200	<i>Cratægus lobata</i>	2 to 3 ft.	1.25 10.00
300	<i>Cratægus mollis</i>	2 to 3 ft.	1.00 8.00
50	<i>Cratægus Oxycantha</i>	2 to 3 ft.	1.00 8.00
20	<i>Cratægus Oxycantha</i> , double scarlet	4 to 5 ft.	3.00
20	<i>Cratægus Oxycantha</i> , double pink	4 to 5 ft.	3.00
20	<i>Cratægus Oxycantha</i> , double white	3 to 4 ft.	3.00
50	<i>Cratægus viridis</i>	2 ft.	1.25 10.00
50	<i>Cytisus scoparius</i>	2 to 3 ft.	1.25 10.00
500	<i>Cytisus scoparius</i>	8 to 12 in.	.60 5.00
25	<i>Deutzia gracilis</i>	2 to 3 ft.	1.25
50	<i>Deutzia scabra</i> , dble. rose	2 to 3 ft.	.75 6.50
300	<i>Deutzia scabra</i> , dble. white,	3 to 4 ft.	.75 6.50
300	<i>Deutzia scabra</i> , Fortunei, single white	3 to 4 ft.	.75 6.50
300	<i>Deutzia scabra</i> , Pride of Rochester	3 to 4 ft.	.75 6.50
300	<i>Deutzia Wellsii</i>	3 to 4 ft.	.75 6.50
200	<i>Diervilla florida</i>	3 to 4 ft.	2.00 15.00
20	<i>Diervilla amabilis</i>	3 to 4 ft.	2.00
20	<i>Diervilla variegata</i>	2 to 3 ft.	2.50
200	<i>Eleagnus hortensis</i> , Bohemian Olive	6 to 8 ft.	2.50 20.00
200	<i>Eleagnus hortensis</i> , Bohemian Olive	4 to 5 ft.	1.25 10.00
50	<i>Eleagnus longipes</i>	2 to 3 ft.	1.00
25	<i>Eleagnus umbellatus</i>	2 to 3 ft.	1.00
10	<i>Euonymus Americanus</i>	2 to 3 ft.	1.50
50	<i>Euonymus Bungeanus</i>	3 to 4 ft.	2.00
25	<i>Euonymus Europæus</i>	3 to 4 ft.	1.75
50	<i>Exochorda grandiflora</i>	3 to 4 ft.	2.50
75	<i>Fagus sylvatica</i>	6 to 7 ft.	3.00 25.00
1000	<i>Fagus sylvatica</i> , col. seedlings	6 to 10 in.	1.00
10	<i>Fagus sylvatica</i> , var. Fern-leaved	3 to 4 ft.	10.00

		PER 10	PER 100
10	<i>Fagus sylvatica</i> , var. weeping	5 to 6 ft.	10.00
25	<i>Fagus sylvatica</i> <i>purpurea</i> , Rivers	3 to 4 ft.	5.00
300	<i>Forsythia Fortunei</i>	3 to 4 ft.	1.25 10.00
200	<i>Forsythia Fortunei</i>	2 to 3 ft.	1.00 8.00
100	<i>Forsythia intermedia</i>	3 to 4 ft.	1.25 10.00
200	<i>Forsythia suspensa</i>	5 to 6 ft.	1.25 10.00
1200	<i>Forsythia suspensa</i>	2 to 3 ft.	.75 6.00
75	<i>Fraxinus Americana</i>	9 to 10 ft.	2.50 20.00
100	<i>Fraxinus sambucifolia</i>	2 to 3 ft.	1.00 8.00
25	<i>Genista tinctoria</i>	2 to 3 ft.	1.00
50	<i>Ginkgo biloba</i>	5 to 7 ft.	2.50
25	<i>Gymnocladus Canadensis</i>	3 to 5 ft.	2.00
40	<i>Halesia tetraptera</i>	4 to 5 ft.	1.50
500	<i>Hamamelis Virginiana</i>	4 to 5 ft.	1.50 12.00
200	<i>Hibiscus Syriacus</i> , <i>Althæa</i>	2 to 4 ft.	1.50 10.00
	<i>Ardens</i>	<i>Grandiflora superba</i>	
	<i>Coclestis</i>	<i>Lady Stanley</i>	
	<i>Duchess de Brabant</i>	<i>Pulcherrima</i>	
200	<i>Hibiscus Syriacus</i>	18 to 24 in.	1.00 8.00
	<i>Boule de Feu</i>	<i>Pompon Rouge</i>	
	<i>Compte de Hainet</i>	<i>Tortus Albus</i>	
	<i>Jean d'Arc</i>		
300	<i>Hippophae rhamnoides</i>	4 to 5 ft.	1.25 10.00
50	<i>Hydrangea paniculata</i>	3 to 4 ft.	1.25 10.00
200	<i>Hydrangea paniculata grandiflora</i>	3 to 4 ft.	2.00 15.00
200	<i>Hydrangea paniculata grandiflora</i>	2 to 3 ft.	1.25 10.00
25	<i>Hydrangea</i> , Thomas Hogg	12 to 18 in.	2.00
25	<i>Hydrangea vestita</i>	2 to 3 ft.	2.00
100	<i>Hypericum aureum</i>	18 to 24 in.	2.00 15.00
25	<i>Hypericum prolificum</i>	2 to 3 ft.	1.00
20	<i>Ilex opaca</i>	1 to 2 ft.	2.00
10	<i>Ilex verticillata</i> , clumps	3 ft.	10.00
50	<i>Ilex verticillata</i>	2 to 3 ft.	1.50
1000	<i>Ilex verticillata</i>	8 to 12 in.	.75 6.00
100	<i>Juglans cinerea</i> , Butternut	5 to 6 ft.	1.50 12.00
75	<i>Kerria Japonica</i> , single yellow	2 ft.	1.00 8.00
100	<i>Kerria Japonica</i> , dble.	2 to 3 ft.	1.20 10.00
100	<i>Kœlreuteria paniculata</i>	4 to 5 ft.	1.75 15.00
100	<i>Laburnum vulgare</i>	4 to 6 ft.	2.00 15.00
25	<i>Larix Europæa</i>	2 to 3 ft.	2.00
20	<i>Leucothoë Catesbaei</i>	1 to 2 ft.	4.00
200	<i>Ligustrum Ibota</i> , cut back and trans.	3 to 4 ft.	1.25 10.00
400	<i>Ligustrum Ibota</i>	2 to 3 ft.	1.00 8.00
1000	<i>Ligustrum Ibota</i>	1 to 2 ft.	.75 6.00
1000	<i>Ligustrum ovalifolium</i> , California privet	3 to 4 ft.	.75 4.00
1000	<i>Ligustrum ovalifolium</i>	2 to 3 ft.	.75 3.00

		PER 10	PER 100
1000	<i>Ligustrum ovalifolium</i>	18 to 24 in.	2.00
100	<i>Ligustrum Reglianum</i>	2 to 3 ft.	1.25 10.00
500	<i>Ligustrum Reglianum</i>	18 to 24 in.	.75 6.00
50	<i>Lindera benzoin</i>	2 ft.	1.50
25	<i>Liquidamber Styraciflua</i>	4 to 5 ft.	2.50
50	<i>Liriodendron Tulipifera</i> , Tulip Tree	6 to 8 ft.	2.50
150	<i>Lonicera Alberti</i>	1 to 2 ft.	1.00 8.00
200	<i>Lonicera Bella candida</i>	3 to 4 ft.	1.00 8.00
200	<i>Lonicera Bella candida</i> , 1 yr.	2 to 3 ft.	.75 5.00
20	<i>Lonicera chrysantha</i>	3 to 4 ft.	2.00
300	<i>Lonicera Korolkowii</i>	3 to 4 ft.	1.25 10.00
50	<i>Lonicera Morrowi</i>	3 ft.	1.25 10.00
1000	<i>Lonicera Morrowi</i> , 1 yr.	2 ft. up	.75 6.00
100	<i>Lonicera Ruprechtiana</i>	3 to 4 ft.	1.25 10.00
500	<i>Lonicera Ruprechtiana</i> , 1 yr.	2 to 3 ft.	.75 6.00
30	<i>Magnolia acuminata</i>	6 to 8 ft.	3.00
50	<i>Magnolia acuminata</i>	2 to 3 ft.	1.50
25	<i>Magnolia Soulangeana</i>	3 to 4 ft.	10.00
25	<i>Magnolia speciosa</i>	3 to 4 ft.	10.00
10	<i>Magnolia stellata</i> (Haleana)	2 ft.	10.00
25	<i>Magnolia tripetala</i>	6 to 8 ft.	3.00
20	<i>Nyssa sylvatica</i>	2 to 3 ft.	3.00
100	<i>Pæonia arborea</i> in variety, 3 yrs.		10.00
200	<i>Philadelphus coronarius</i>	3 to 4 ft.	1.25 10.00
200	<i>Philadelphus grandiflorus</i>	3 to 4 ft.	1.25 10.00
50	<i>Physocarpus opulifolia</i>	4 to 5 ft.	1.00 8.00
200	<i>Physocarpus opulifolia aurea</i>	3 to 4 ft.	1.25 10.00
50	<i>Platanus occidentalis</i> , American Plane	7 to 8 ft.	2.00
100	<i>Platanus occidentalis</i>	5 to 6 ft.	1.75 15.00
100	<i>Populus balsamifera</i>	4 to 5 ft.	.75 6.00
25	<i>Populus monolifera</i> , Carolina Poplar	10 to 12 ft.	2.50
200	<i>Populus monolifera</i>	5 to 6 ft.	1.00 8.00
100	<i>Populus monolifera</i>	4 to 5 ft.	.75 5.00
10	<i>Populus nigra</i> var. <i>Italica</i> , Lombardy Poplar	15 ft.	3.50
100	<i>Populus nigra</i> , var. <i>Italica</i>	9 to 10 ft.	2.50 20.00
400	<i>Populus nigra</i> , var. <i>Italica</i>	4 to 5 ft.	.75 5.00
100	<i>Prunus Americana</i>	4 to 6 ft.	2.00 15.00
50	<i>Prunus Americana</i> var. <i>nigra</i>	3 to 4 ft.	1.25
100	<i>Prunus avium</i> fl. pl. (dble. fl. cherry) white	4 to 5 ft.	3.00 25.00
10	<i>Prunus avium</i> fl. pl. rose	5 to 6 ft.	4.00
5	<i>Prunus avium</i> fl. pl. Anthony Waterer	12 ft.	15.00
8	<i>Prunus Avium</i> fl. pl. Anthony Waterer	5 to 6 ft.	5.00
50	<i>Prunus Besseyi</i>	3 to 4 ft.	1.25 10.00
50	<i>Prunus Japonica</i> (Almond) white dble.	2 to 3 ft.	3.00
50	<i>Prunus Japonica</i> (Almond) rose dble.	2 to 3 ft.	3.00

		PER 10	PER 100
200	<i>Prunus maritima</i>	18 to 24 in	1.25 10.00
10	<i>Prunus Pissardi</i>	5 to 7 ft.	3.00
100	<i>Prunus Pissardi</i>	4 to 5 ft.	1.75 15.00
100	<i>Prunus padus</i>	4 to 5 ft.	1.25 10.00
25	<i>Prunus pendula</i> fl. rosea (weeping cherry)	4 to 5 ft.	10.00
100	<i>Prunus pumila</i>	3 to 4 ft.	1.25 10.00
20	<i>Prunus triloba</i> fl. pl.	3 to 4 ft.	3.00
8	<i>Prunus tomentosa</i>	3 ft.	6.00
5	<i>Pterostyrax hispida</i>	4 to 5 ft.	10.00
30	<i>Pyrus Americana</i>	4 to 6 ft.	2.00
20	<i>Pyrus Aucuparia</i>	8 to 10 ft.	2.50
10	<i>Pyrus coronaria</i>	5 ft.	2.50
20	<i>Pyrus floribunda</i>	5 ft.	2.50
20	<i>Pyrus floribunda atrosanguinea</i>	4 to 5 ft.	2.50
10	<i>Pyrus floribunda Parkmanii</i> , fl. pl.	3 ft.	2.50
25	<i>Pyrus spectabile</i> fl. pl. alba	3 to 4 ft.	2.50
10	<i>Pyrus spectabile</i> fl. pl. rosea	2 to 3 ft.	1.50
500	<i>Pyrus Japonica</i> , mixed colors	3 to 4 ft.	1.00 8.00
500	<i>Pyrus Japonica</i> , mixed colors	2 to 3 ft.	.75 6.00
100	<i>Pyrus Japonica</i> , Japan Pear, Maulei	2 ft. up	2.00 15.00
100	<i>Pyrus Japonica</i> , Japan Pear, white	2 to 3 ft.	2.00 15.00
10	<i>Pyrus Japonica pigmæa</i>	2 ft.	3.00
100	<i>Pyrus Japonica umbilicata rosea</i>	3 ft.	2.50
500	<i>Quercus coccinea</i> , trans.	12 to 18 in.	.75 6.00
100	<i>Quercus palustris</i>	4 to 5 ft.	3.00 25.00
200	<i>Quercus palustris</i>	3 to 4 ft.	2.00 15.00
200	<i>Quercus palustris</i>	2 to 3 ft.	1.00 8.00
50	<i>Quercus prinus</i>	3 to 4 ft.	2.00
25	<i>Quercus robur</i>	8 to 10 ft.	5.00
200	<i>Quercus rubra</i>	4 to 5 ft.	2.00 15.00
500	<i>Quercus rubra</i>	2 to 3 ft.	1.00 8.00
200	<i>Rhamnus catharticus</i>	4 to 5 ft.	.60 5.00
50	<i>Rhamnus frangula</i>	3 to 4 ft.	.60 5.00
100	<i>Rhamnus frangula</i>	2 to 3 ft.	.50 4.00
100	<i>Rhododendrons</i> , English Hybrids in var.	18 to 36 in.	15.00
50	<i>Rhododendrons</i> , Dutch Hybrids, fine plants	18 to 24 in.	10.00
100	<i>Rhodotypos kerrioides</i>	3 to 4 ft.	1.25 10.00
100	<i>Rhus aromatica</i>	2 ft.	1.25 10.00
10	<i>Rhus copallina</i>	18 to 24 in.	1.00
100	<i>Rhus copallina</i>	1 to 2 ft.	.75 6.00
500	<i>Rhus typhina</i> , 1 yr. from root	3 to 4 ft.	1.25 10.00
200	<i>Rhus glabra</i>	2 to 3 ft.	1.00 8.00
25	<i>Rhus glabra laciniata</i>	18 to 24 in.	2.00
300	<i>Ribes aureum</i>	3 to 4 ft.	1.00 8.00
25	<i>Ribes Gordonianum</i>	2 to 3 ft.	1.25

		PER 10	PER 100
1000 Rosa blanda	18 to 30 in.	.75	6.00
500 Rosa Carolina	18 to 24 in.	.75	6.00
200 Rosa Crimson Rambler, strong	2 ft.	1.50	12.00
200 Rosa, Dawson Rose, pink rambler	3 ft. up	1.50	12.00
800 Rosa lucida	18 to 24 in.	.75	6.00
500 Rosa lucida	1 ft.	.60	4.00
200 Rosa lucida alba, 1 yr.	12 to 18 ft.	1.25	10.00
2000 Rosa, Hybrid Perpetual in following var.,	2 yr.	1.75	15.00
Abel Carriere, velvety crimson.	Jules Magottin, bright rose.		
Alfred Colomb, carmine.	La France, silvery rose.		
American Beauty, red.	Magna Charta, pink.		
Br. de Bonstette, rich maroon.	Mme. Gabriel Luizet, soft rose.		
Baron de Rothschild, light rose.	Margaret Dickson, white.		
Captain Christy, delicate rose.	M. P. Wilder, carmine, red.		
Celine Forestier, light yellow.	Mrs. John Laing, pink.		
Coquette des Alpes, white.	Monsieur Boncenne, dark red.		
Fisher Holmes, dark red.	Paul Neyron, dark rose.		
Gen. Jacqueminot, dark red.	Harrison Yellow.		
General Washington, crimson.	Persian Yellow.		
Gloire Lyonnaise, light yellow.	P. C. de Rohan, deep crimson.		
John Hopper, bright rose.	Ulrich Brunner, cherry red.		
100 Rosa multiflora,	2 to 3 ft.	1.20	10.00
200 Rosa Mme. Plantier, cut to 30 in.		1.20	10.00
100 Rosa Baltimore Belle, cut to 30 in.		1.20	10.00
100 Rosa Prairie Queen, cut to 30 in.		1.20	10.00
400 Rosa rubiginosa, Sweet Brier	2 to 3 ft.	1.00	8.00
150 Rosa rubrifolia	3 to 4 ft.	1.25	10.00
200 Rosa rugosa, seedlings	2 to 3 ft.	1.50	12.00
500 Rosa rugosa	18 to 24 in.	1.75	15.00
500 Rosa rugosa alba	18 to 24 in.	1.75	15.00
200 Rosa setigera	3 to 4 ft.	1.00	8.00
100 Rosa spinosissima 2 yrs., 4 varieties		2.50	
200 Rosa Wichuriana, cut back to 24 in.		1.25	10.00
200 Salix alba	3 to 5 ft.	.60	5.00
100 Salix Britzensis	4 to 5 ft.	1.25	10.00
400 Salix Britzensis, 1 yr.	3 to 4 ft.	.75	5.00
300 Salix pentandra	4 to 6 ft.	1.25	10.00
300 Salix pentandra, 1 yr.	3 to 4 ft.	.75	5.00
25 Salix myrtifolia	1 to 2 ft.	1.50	
100 Salix rosmarinifolia	4 to 5 ft.	1.00	8.00
50 Sambucus Canadensis	4 to 5 ft.	1.25	10.00
500 Sambucus Canadensis	2 to 3 ft.	.75	6.00
200 Sambucus Canadensis var. aurea	3 to 4 ft.	1.25	10.00

		PER 10	PER 100
500 Sambucus Canadensis var. aurea	2 to 3 ft.	1.00	8.00
50 Spiræa Anthony Waterer	10 to 12 in.	1.00	8.00
100 Spiræa arguta multiflora	3 to 4 ft.	1.25	12.00
200 Spiræa Billardii	4 to 5 ft.	1.00	8.00
50 Spiræa Bumalda	2 ft.	1.25	10.00
25 Spiræa Cantoniensis fl. pl. (Reevesianna)	3 to 4 ft.	1.25	
100 Spiræa discolor, var. ariæfolia	3 to 4 ft.	1.25	10.00
100 Spiræa Japonica (callosa) red	2 to 3 ft.	1.00	8.00
24 Spiræa prunifolia fl. pl.	3 to 4 ft.	1.25	10.00
300 Spiræa Thunbergii	2 ft.	1.00	8.00
800 Spiræa Van Houttei	3 ft.	1.50	12.00
300 Stephanandra flexuosa	2 to 3 ft.	1.25	10.00
1000 Symphoricarpos racemosa	3 to 4 ft.	.60	5.00
500 Symphoricarpos vulgaris	2 to 3 ft.	.60	5.00
500 Symphoricarpos vulgaris, 1 yr.	24 in.	.50	4.00
500 Symphoricarpos vulgaris, 1 yr.	18 in.	.30	3.00
50 Syringa Japonica, Tree Lilac	2 to 3 ft.	2.50	
100 Syringa Josikæa	3 to 4 ft.	1.25	10.00
100 Syringa Pekinensis	2 to 3 ft.	3.00	
50 Syringa Persica Saugeana	4 to 5 ft.	1.75	15.00
50 Syringa Persica Saugeana alba	4 to 5 ft.	1.75	15.00
50 Syringa Persica Rothamagensis	4 to 5 ft.	1.75	15.00
50 Syringa villosa	2 to 3 ft.	3.00	
100 Syringa villosa	2 ft.	2.50	
50 Syringa vulgaris (clumps) heavy	3 to 4 ft.	10.00	
50 Syringa vulgaris	3 to 4 ft.	1.25	10.00
500 Syringa vulgaris	18 in.	1.00	8.00
100 Syringa vulgaris alba	3 to 4 ft.	1.25	10.00
100 Syringa vulgaris alba	2 to 3 ft.	1.00	8.00
500 Syringa vulgaris in following named var., grafted on Syringa, stocky plants from 12 to 24 in., according to variety, 3 yr.		2.00	15.00
Alba grandiflora.	Mathieu de Dombasle (double).		
Alexandre von Humboldt (double).	Maxime Cornu (double).		
Alphonse Lavalley (double).	President Carnot (double).		
Bertha Dammann.	Senator Volland (double).		
Charles X.	Souvenir de L. Späth.		
Lemoinei flore pleno (double).	Virginite (double).		
Marie Legraye.			
50 Syringa vulgaris, Hybrids in var. on own roots	2 ft.	1.00 each	
40 Taxodium distichium	4 to 5 ft.	4.00	
200 Tilia Americana	5 to 6 ft.	2.00	18.00
100 Tilia Americana	3 to 4 ft.	1.00	8.00
50 Tilia Europæa	5 to 6 ft.	2.50	
100 Tilia Europæa	4 to 5 ft.	1.75	15.00

		PER 10	PER 100
10	<i>Ulmus Americana</i> , 2 in. caliper	12 to 15 ft.	10.00
100	<i>Ulmus Americana</i> , 1 in. caliper	9 to 12 ft.	3.00 25.00
100	<i>Ulmus Americana</i>	5 to 7 ft.	1.75 15.00
30	<i>Viburnum cassinoides</i>	2 to 3 ft.	1.25
500	<i>Viburnum cassinoides</i>	12 in.	1.75 15.00
200	<i>Viburnum dentatum</i>	2 to 3 ft.	2.00 18.00
300	<i>Viburnum Lantana</i>	3 ft.	1.50 10.00
50	<i>Viburnum lentago</i>	3 to 4 ft.	1.75 15.00
500	<i>Viburnum lentago</i>	2 to 3 ft.	1.00 8.00
500	<i>Viburnum lentago</i>	12 to 18 in.	.75 6.00
500	<i>Viburnum molle</i>	2 ft. up	1.00 8.00
500	<i>Viburnum molle</i>	10 to 12 in.	.75 6.00
1000	<i>Viburnum molle</i> , seed bed		3.00
100	<i>Viburnum opulus</i>	2 to 3 ft.	2.00 18.00
1000	<i>Viburnum opulus</i>	6 to 12 in.	.75 5.00
500	<i>Viburnum opulus</i> seed bed		3.00
200	<i>Viburnum opulus sterilis</i>	3 to 4 ft.	2.00 15.00
10	<i>Viburnum plicatum</i>	2 ft.	2.50
50	<i>Viburnum tomentosum</i>	2 ft.	2.50
1000	<i>Viburnum venosum</i> , seed bed	10 to 12 in.	3.00
25	<i>Xanthoceras sorbifolia</i>	8 to 12 in.	3.00
200	<i>Xanthorrhiza apiifolia</i>		.75 6.00
200	<i>Yucca filamentosa</i>		1.00 8.00

VINES AND CLIMBERS.

		PER 10	PER 100
100	<i>Actinidia arguta</i>		2.50
100	<i>Akebia quinata</i>		2.50
200	<i>Ampelopsis quinquefolia</i> , strong, cut back		1.00 8.00
500	<i>Ampelopsis quinquefolia</i> , strong, 1 yr. fine		.75 6.00
500	<i>Ampelopsis Englemanni</i> , strong		1.00 8.00
100	<i>Ampelopsis Vetchii</i> , four years, trans. '03		1.25 12.00
500	<i>Ampelopsis Vetchii</i> , strong		1.00 8.00
500	<i>Ampelopsis Vetchii</i>		.75 6.00
500	<i>Apios tuberosa</i>		.50 4.00
50	<i>Arctostaphylos Urva-Ursi</i> , 3 years,		2.00
100	<i>Arctostaphylos Urva-Ursi</i> , 2 1-2 in. pots,		.75 6.00
50	<i>Aristolochia siphon</i>	6 to 8 ft.	6.00
50	<i>Aristolochia siphon</i>	2 to 4 ft.	4.00
500	<i>Bignonia radicans</i> , strong		.75 6.00
400	<i>Celastrus paniculata</i>	3 to 4 ft.	1.25 10.00
200	<i>Celastrus scandens</i> ,	2 to 3 ft.	1.20 10.00
200	<i>Clematis angustifolia</i>	2 yr.	1.25 10.00
200	<i>Clematis apiifolia</i> , strong		1.25 10.00
50	<i>Clematis coccinea</i>		2.50

		PER 10	PER 100
100 Clematis Jackmanii		4.00	
50 Clematis Henryi		4.00	
700 Clematis Mongolica, 2 yr.		1.25	10.00
500 Clematis paniculata, 2 yr.		1.00	8.00
200 Clematis Virginiana		1.25	10.00
100 Ipomæa pandurata		1.25	10.00
200 Lonicera Alberti	1 to 2 ft.	1.00	8.00
1500 Lonicera Japonica, 2 yr. from layers		.75	6.00
300 Lonicera Japonica, Halleana, 2 yr.		1.25	10.00
100 Lonicera, sempervirens (Scarlet Trumpet)		1.50	
500 Vinca minor, 1 yr. from layers, single white, fine,		.60	4.00
1500 Vinca minor, dble. blue, fine,		.60	4.00
100 Vitis heterophylla	2 to 3 ft.	1.00	8.00
200 Wistaria frutescens, strong	3 to 4 ft.	.75	6.00
50 Wistaria multijuga, strong		2.50	
50 Wistaria multijuga alba, strong		3.00	

EVERGREENS

		PER 10	PER 100
All twice transplanted.			
The larger sizes three and four times transplanted.			
50 Abies balsamea	2 to 3 ft.	2.25	
15 Abies concolor	18 to 24 in.	5.00	
200 Abies concolor	12 to 18 in.	2.50	20.00
25 Abies pectinata	12 in.	2.00	
50 Buxus sempervirens, pyramids 3 ft. \$1.25 each			
50 Buxus sempervirens, pyramids 2 ft. \$1.00 each			
50 Buxus sempervirens, standards 2 ft. stem, 12 in. crown \$1.25 each			
1000 Buxus sempervirens	1 ft.	2.00	18.00
1000 Buxus sempervirens	5 to 6 in.	1.00	8.00
25 Chamæcyparis pisifera	18 to 24 in.	2.50	
10 Chamæcyparis pisifera aurea	12 to 18 in.	2.50	
25 Chamæcyparis plumosa	2 ft.	2.50	
10 Chamæcyparis plumosa	12 in.	2.50	
10 Chamæcyparis squarrosa	18 in.	2.50	
50 Juniperus communis, large		2.50	
50 Juniperus communis, 1 ft. diameter		2.00	
50 Juniperus communis, small		1.50	
10 Juniperus Dahurica	3 ft.	5.00	
50 Juniperus Dahurica	12 to 18 in.	1.50	
100 Juniperus Dahurica	6 to 12 in.	1.00	
10 Juniperus Hibernica	2 to 3 ft.	4.00	
300 Juniperus Virginiana	2 ft.	1.20	10.00
1000 Juniperus Virginiana	12 to 18 in.	1.00	8.00
100 Picea excelsa, (Norway Spruce)	2 ft.	2.25	20.00

		PER 10	PER 100
200	<i>Picea excelsa</i>	12 in.	1.00 8.00
100	<i>Picea pungens</i> (green)	18 in.	2.25 20.00
200	<i>Picea pungens</i> (green)	12 to 18 in.	2.00 15.00
100	<i>Picea pungens</i> (blue seedlings)	18 in.	7.50
100	<i>Picea pungens</i> (blue seedlings)	10 to 12 in.	4.00
20	<i>Picea pungens</i> Koster Blue	\$1.00 to \$1.50 each.	
100	<i>Pinus Austriaca</i>	18 to 24 in.	2.00
100	<i>Pinus Austriaca</i>	12 to 18 in.	1.50
200	<i>Pinus Mugho</i>	6 to 10 in.	1.00 8.00
100	<i>Pinus resinosa</i>	20 to 24 in.	2.00
100	<i>Pinus resinosa</i>	12 to 18 in.	1.50
100	<i>Pinus Strobus</i> (White Pine)	30 to 36 in.	2.00 18.00
100	<i>Pinus Strobus</i> (White Pine)	20 to 30 in.	1.60 15.00
100	<i>Pinus Strobus</i> (White Pine)	18 to 24 in.	1.20 10.00
100	<i>Pinus sylvestris</i> , Scotch Pine	2 ft.	2.00 15.00
200	<i>Pinus sylvestris</i> , Scotch Pine	15 to 18 in.	1.00 8.00
200	<i>Pseudotsuga Douglassi</i>	18 in up	1.60 15.00
200	<i>Pseudotsuga Douglassi</i>	12 to 18 in.	1.25 10.00
5	<i>Taxus baccata</i>	3 ft.	12.50
5	<i>Taxus cuspidata</i>	\$1.00 each.	
200	<i>Thuja Siberica</i>	6 to 12 in.	1.50 10.00
100	<i>Tsuga Canadensis</i>	18 to 24 in.	2.00 18.00
200	<i>Tsuga Canadensis</i>	10 to 12 in.	1.20 10.00

HERBACEOUS PERENNIALS.

		PER 10	PER 100
100	<i>Achillea serrata</i> , The Pearl	.75	6.00
200	<i>Agrostemna coronaria</i>	.60	5.00
500	<i>Alyssum saxatile</i> , Gold Dust	.75	6.00
500	<i>Anthemis tinctoria</i>	.50	4.00
500	<i>Aquilegia</i> , Columbines in variety	1.00	8.00
100	<i>Arabis alpina</i>	1.00	8.00
100	<i>Arundinaria Japonica</i>	.75	6.00
500	<i>Asclepias tuberosa</i> , 2 yrs.	.60	5.00
500	<i>Aster Novæ-Angliæ purpurea</i>	.60	5.00
500	<i>Aster Novæ-Angliæ</i> , var. <i>rosea</i>	.60	5.00
500	<i>Astilbe Japonica</i> , clumps	.50	4.00
1000	<i>Campanula medium</i> , Canterbury Bells, colors marked	1.00	8.00
1000	<i>Campanula medium</i> , Calycanthema, colors marked	1.00	8.00
500	<i>Coreopsis grandiflora</i>	.60	5.00
2000	<i>Delphinium elatum</i> , Hybrid Larkspur	1.00	8.00
1000	<i>Delphinium grandiflorum</i> , Chinese Larkspur	1.00	8.00
200	<i>Dianthus barbatus</i> , Swt. Williams	1.00	8.00
200	<i>Dicentra spectabilis</i> , Bleeding Heart	1.00	8.00
100	<i>Dictamnus Fraxinella</i> , red and white	1.50	

	PER 10	PER 100
500 <i>Digitalis purpurea</i> , Foxglove in variety	1.00	8.00
100 <i>Epimedium</i> , red and yellow	1.00	8.00
100 <i>Erigeron speciosum</i>	1.00	8.00
100 <i>Funkia lancefolia</i>	1.00	8.00
100 <i>Funkia ovata</i>	1.00	8.00
100 <i>Funkia ovata marginata</i>	1.00	8.00
100 <i>Funkia Sieboldiana</i>	1.25	10.00
500 <i>Gaillardia grandiflora</i>	.60	5.00
500 <i>Gypsophila paniculata</i>	.80	6.00
500 <i>Helenium autumnale</i>	.60	5.00
500 <i>Helianthus multiflorus</i> , single	.60	5.00
1000 <i>Helianthus Maximilianus</i>	.60	5.00
500 <i>Hemerocallis flava</i>	.60	5.00
5000 <i>Hemerocallis fulva</i>	.60	5.00
<i>Hemerocallis fulva</i> \$20.00 per 1000.		
500 <i>Hibiscus Moscheutos</i> , 2 yrs.	.60	5.00
200 <i>Iberis Gibraltica</i> , Hardy Candytuft	1.00	8.00
200 <i>Iberis sempervirens</i>	1.00	8.00
300 <i>Iris Germanica</i> , colors seperate	.75	6.00
300 <i>Iris</i> , Japan or Kæmphers, colors seperate	.75	6.00
300 <i>Lathyrus latifolius</i> , rose, heavy	.75	6.00
100 <i>Lathyrus latifolius</i> , white	1.00	8.00
500 <i>Liatris scariosa</i>	.75	5.00
200 <i>Lupinus polyphyllus</i>	.75	6.00
<i>Lysimachia clethroides</i> , single stems	.50	4.00
500 <i>Lysimachia nummularia</i>	.50	4.00
300 <i>Mertensia Virginiana</i> , Lung-wort	1.00	8.00
2000 <i>Mitchella repens</i> , Partridge Berry sod	.60	5.00
500 <i>Monarda didyma</i>	1.00	8.00
100 <i>Orobis vernus</i>	1.00	8.00
500 <i>Phlox paniculata</i> , best recent varieties	1.25	10.00
100 <i>Platycodon grandiflora</i> , blue	1.00	8.00
500 <i>Polygonum amplexicaule</i>	.75	6.00
500 <i>Polygonum cuspidatum</i>	.75	6.00
200 <i>Rudbeckia laciniata</i>	.75	6.00
500 <i>Rudbeckia Golden Glow</i>	.60	5.00
200 <i>Rudbeckia maxima</i>	.60	5.00
500 <i>Rudbeckia speciosa</i>	.60	5.00
500 <i>Sabbatia chloroides</i>	.60	5.00
1000 <i>Solidago</i> , Golden Rod, names not known	.50	4.00
500 <i>Spiræa Filipendula</i>	.50	4.00
100 <i>Spiræa palmata rosea</i>	1.00	8.00
200 <i>Spiræa palmata</i> , var. <i>elegans</i> white	1.00	8.00
100 <i>Spiræa Ulmaria</i> , dble. white	1.00	7.00
100 <i>Vernonia Novaboracensis</i>	1.00	8.00



