

Historic, Archive Document

Do not assume content reflects current scientific knowledge, policies, or practices.

65m

17



Comal Springs Nursery

Season 1905-1906

OTTO LOCKE, Proprietor
New Braunfels, Comal County, Texas

Please Read Carefully Before Ordering

WHEN ORDERING write your order plainly on the order sheet found in this catalogue, and make perfectly clear what is wanted.

FILLING. Orders are filled as soon after reception as possible. Should at the time the order is received, the supply of a certain variety be exhausted, and no substitution be allowed, the order will be filled only as far as assortment allows.

MISTAKES are made by us as well as by anybody else, but we always cheerfully correct them if they are reported.

PACKING. We bear all cost of packing; we pack in the very best manner, and all goods packed by us can safely be sent all over the American continent. Good packing pays us and pays our customers. Everything is labeled.

SHIPPING. We deliver all goods free of charge at the freight or express office of New Braunfels; after that they are out of our hands, beyond our control, and we are not responsible for any mishaps that may occur to them on the road. Please always state plainly to what point you wish the goods to be shipped, and whether you wish them sent by freight or express. We would, however, advise everybody to order by express, as in many cases it is cheaper than freight, and, besides, express takes only from one to four days, while freight takes from one to three weeks to reach you, and stock may suffer if it is on the road too long.

TRANSPORTATION CHARGES are not paid by us, but we put trees and plants in free of charge to about cover the amount you pay for expressage. If, however, customers wish to get the goods laid down at their nearest express office prepaid, we will gladly send them that way, provided 20 per cent of the total amount of the order is added to the same when the order does not call for more than \$5 worth of stock; 15 per cent to orders from \$5 to \$10; 10 per cent to orders amounting to more than \$10.

TERMS: INVARIABLY CASH WITH ORDER. No plants sent C. O. D. Our prices are too low to allow any deviation from this rule.

SHIPPING SEASON begins November 1 and extends to March 15.

NO AGENTS. Please notice that we have no agents to call on you and solicit your orders. This book is our sole agent.

GUARANTY. We exercise the utmost care to prevent errors, and sell our stock only with the express understanding that, should a mistake occur and any variety prove untrue to label, we will, upon proper proof thereof, refund the money paid or refill the order free, but for no sum greater than that originally received.

DISCOUNT. We allow a reasonable per cent on large orders, and for planting in church, school or graveyards, and in city parks. Write for low rates if stock is desired for such purpose.

BEST ASSORTMENT is most successfully secured by leaving the selection, in part at least, to us. We have had years of experience in testing the different varieties, but we desire everyone to have his or her choice as near as possible.

EVERGREENS, ORNAMENTAL AND FLOWERING SHRUBS. We have the largest stock and finest assortment in the South and can please everybody.

WONDER TREES. We do not handle any such as "Tree Blackberries, Never-failing Almonds or Apricots, California Seedling Peach at \$1 each," and other such frauds. It is the province of the traveling tree peddler to supply these rare novelties; they claim exclusive rights to such trade, and we grant their claims.

1905—SEASON—1906

297
INDEXED

COMAL
SPRINGS
NURSERY

OTTO LOCKE, Prop., New Braunfels, Texas

To Our Patrons

o o o o



WITH this, the twentieth edition of our new Catalogue, we gratefully acknowledge the liberal and increasing patronage bestowed upon our firm the past twenty years. It is a long time if devoted entirely to the nursery business; but in this long period I have won the friendship and patronage of thousands. I have assisted in making many a home happy by supplying the owner with trees, shrubs, etc.

My twenty years of hard work has not been in vain as I have greatly pushed the fruit industry in Texas and Mexico.

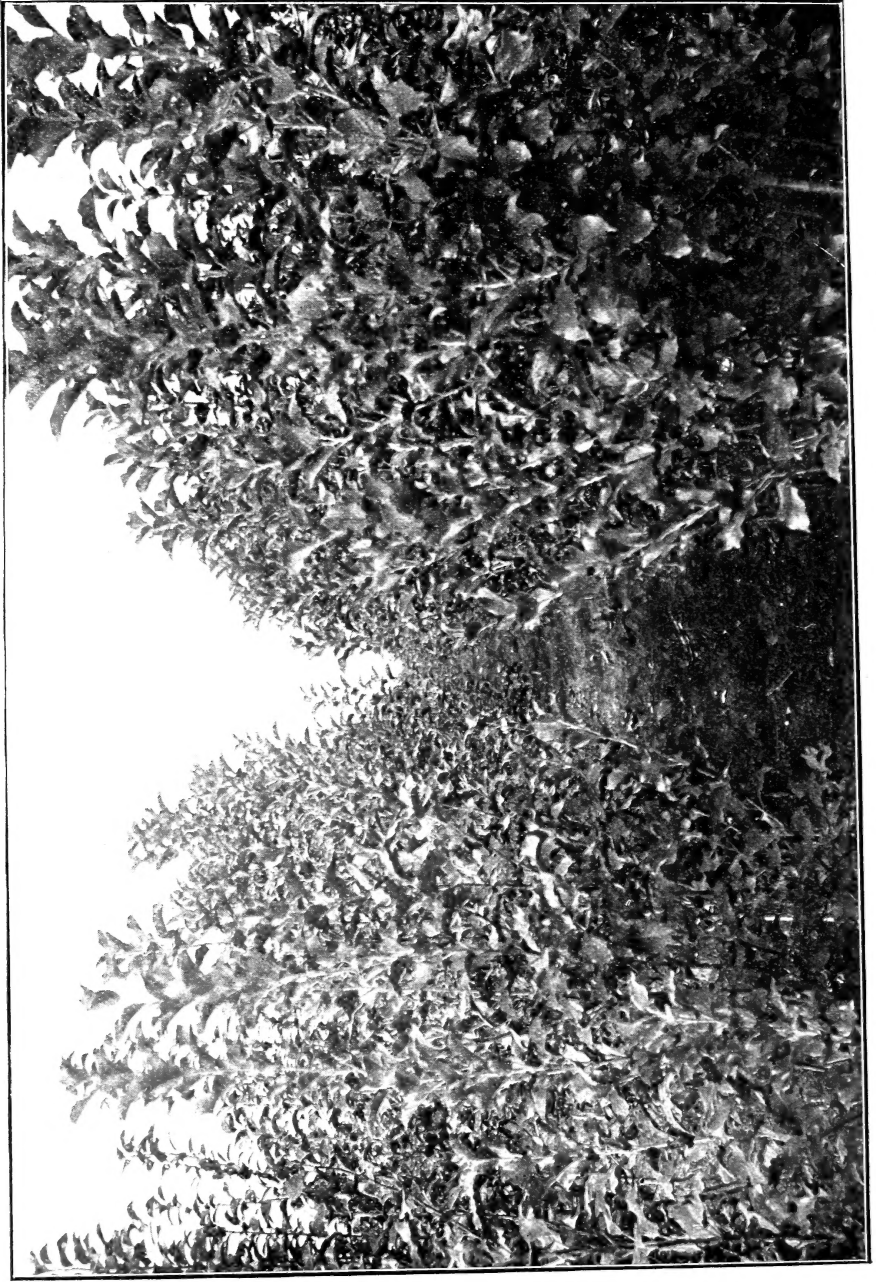
My son, Herman Locke, having entered as partner in the Comal Springs Nursery, we are able to serve the large and increasing trade in the same prompt, liberal, old way as I have done the last twenty years. The season has been very favorable for the growing of all kinds of nursery stock, enabling us to again supply our customers with nice, vigorous nursery stock. We have also enlarged our nursery considerably to meet the ever increasing business.

Now, I wish to express my heartiest thanks to all who have aided us with their faithful support in building up our present horticultural establishment.

Yours truly,

OTTO LOCKE.

INDEXED



OUR TWO-YEAR-OLD APPLE TREES FOR WINTER TRADE 1905-1906



Fruit Trees

Apples

Prices: Strong, 4 to 6 feet, grafted on whole roots, 15 cents; \$10 per 100.
Extra large selected trees and new varieties 25 cents each.
\$2.50 per dozen, \$15 per 100.

The apple is not very profitably grown in Southern and Western Texas. There are few varieties that grow, and only certain localities where these succeed. The latter are in the mountainous regions of Texas and Mexico. The best results are obtained on heavy clay soil. Light or sandy soil must be manured before apples can successfully be grown on same. The apple we grow in our state has a very fine aromatic flavor, more so than that grown in the North, and people who think that their soil may be adapted to its culture should experiment with a few trees. Trees grown in the North should, however, never be planted; they will never prove a success.

The following is a collection of those that I have found worthy of planting in the South:

Der Apfel ist nicht sehr profitabel in Süd- und West-Texas und sind es nur wenige Sorten, die gedeihen. Auf den Gebirgshöhen und Lande mit reichem Lehmboden bringt der Apfelbaum die reichsten Ernten. Ist der Boden leicht und sandig, so sollte tüchtig gedüngt werden. Der Apfel, der in unserem Klima gezogen wird, hat ein sehr reiches Aroma und ist als Tafel-Obst beliebt. Bäume, die aus dem Norden stammen, sollten niemals gepflanzt werden, da sie nie gedeihen.

Folgende sind die besten Sorten für den Süden :

RED JUNE. Medium to large, oblong, dark red, crisp, sometimes almost mealy tender, highly flavored. Ripe June 5, and sometimes until July.

RED ASTRACHAN. Large size, crimson and yellow, juicy, crisp, valuable for cooking; tree a fine grower and very prolific. June 1 to July 15.

YELLOW TRANSPARENT. Russian variety, medium, pale yellow, early.

YELLOW HORSE. Known throughout the South as the best all-purpose summer apple, large, yellow, sometimes with red blush, firm, splendid for cooking, eating and drying. August 15.

LADY FINGER. Large, oblong, nearly covered with carmine, ripens in September.

WEALTHY. Large red, subacid; productive; ripens late summer. A very good smooth apple and very productive; bears young.

KINNARD'S CHOICE. Fruit medium, mostly covered with a dark red, flesh yellow, tender, juicy and aromatic; very hardy and productive.

WINESAP. Tree a strong grower and productive, fruit of medium size, red flesh, crisp, juicy, high flavored, valuable for table, market or cider. Ripe in October.

YORK IMPERIAL. Large size, shaded with crimson; one of the finest apples; ripens in September.

BLACK TWIG. Tree upright grower, fruit like Winesap, but one-fourth larger.

RAMBO. Medium, yellowish white, streaked with pale yellow and red; tender, rich and subacid; very productive; October apple.

BEN DAVIS. Everyone has seen this apple, as it is sold by grocers in fall and winter; large, red and yellow striped, subacid, valuable. October.

POUND ROYAL. Large greenish yellow, late July. We consider this one of the best and most reliable apples of its season.

HERSHAL COX. A new winter apple from Tennessee; fruit and tree resemble Ben Davis, but fruit smaller, better quality and better keeper.

SIMMONS' RED. Good size, color red, not a deep red but a little yellowish; sometimes striped; quality good. Ripens in September and is very productive.

JONATHAN. Red and yellow, medium size; very productive as a winter apple.

BISMARCK. This most valuable New Zealand apple was introduced only a few years ago, and the popularity it is now enjoying is proof enough of its great value. It not only possesses high quality, but the tree is very hardy; just the apple for our climate. 25 cents each.

BALDWIN. Large, roundish, dark red, fine flavor, subacid, crisp and juicy.

YATES. Small size, color red, covered with white specks, quality fairly good; tree bears young and abundantly and holds its fruit unusually well. We consider this one of the very best late apples.

NEW APPLES.

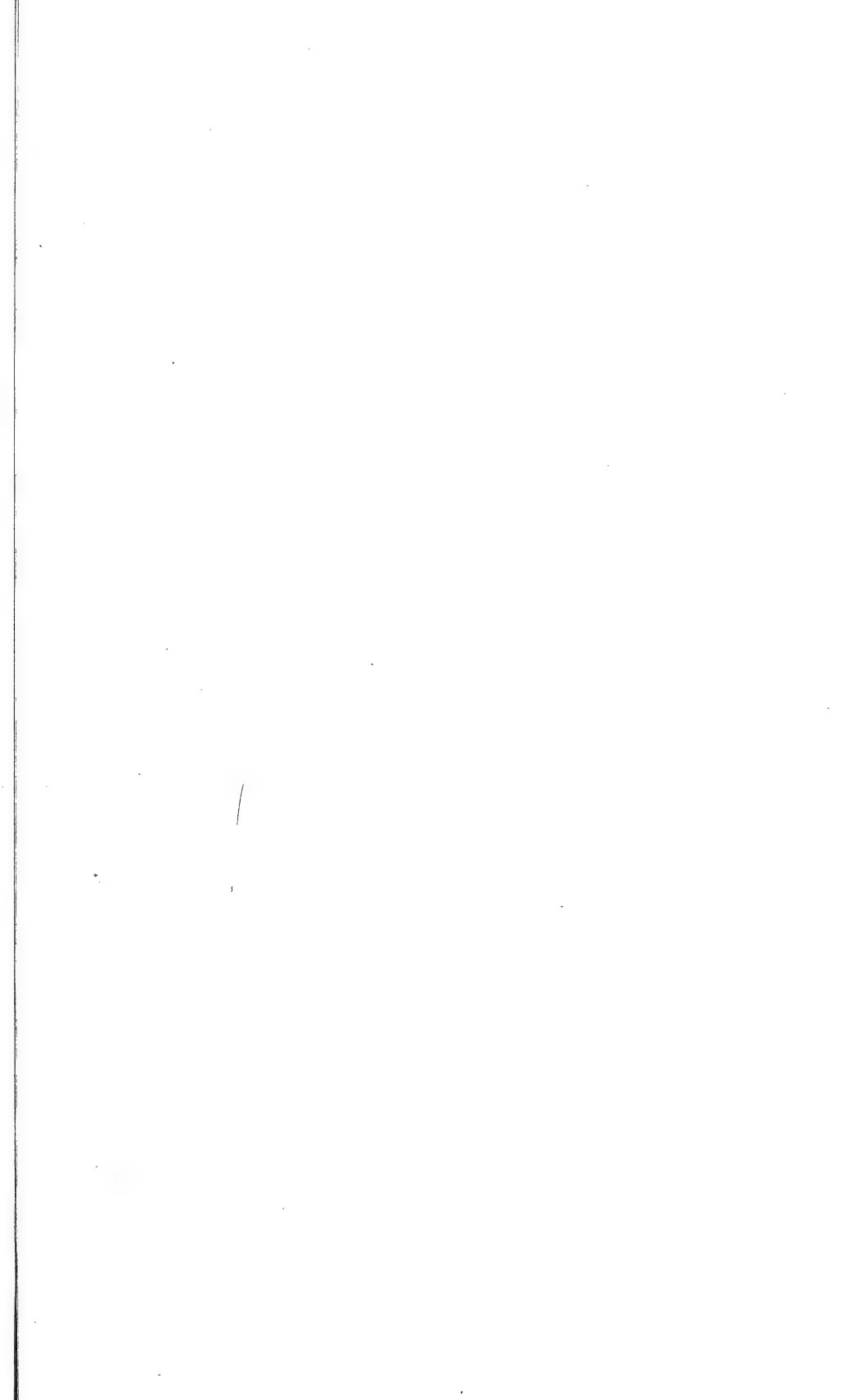
SWITZERLAND. This new Swiss apple has been brought over from Switzerland, by an old German who planted the tree below San Antonio, Texas, where the first tree fruited the second year after transplanting, in 1899. Since first bearing it matured a fine crop of apples annually, and this year the tree had several bushels. The apples are greenish, with red stripes, making a fine market variety; of a fine flavor and good keeping qualities; the tree is rather dwarf, with very large green leaves, is therefore very hardy and just the right apple for our country. This is the first year we offer one-year-old trees from grafts cut from the original tree. 4 to 5 feet trees, 50 cents.

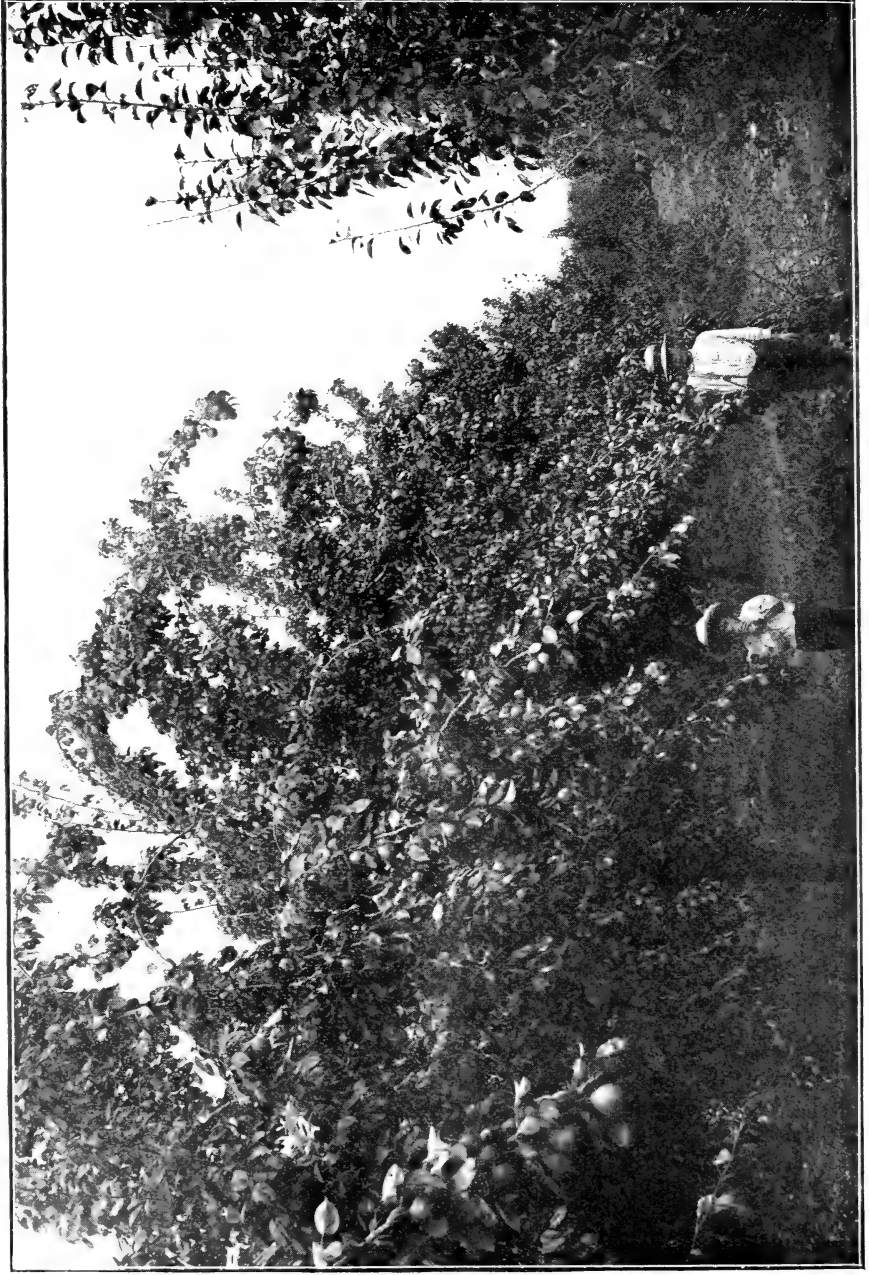
HEIDEMEYER. Imported about 1850 from Stuttgart, Germany. Roundish, conical, color golden yellow, flesh yellowish, juicy, aromatic, rich quality, very good to best. Season August, bears heavy crop every year; is one of the best apples for Southwest Texas. One year old, 15 cents; 2 years old, 25 cents.

SMITH, CARRINGTON, BLOOMFIELD AND STRINGSTOWN. Three new good Australian apples; we have them fruiting for three years; they bear young and are well adapted to Texas climate; they are all summer apples, ripening in July and August; medium size, solid and of good quality; in two colors, one greenish, and two red; changing to yellow when fully ripe. Trees one year, strong, 4 to 5 feet, 50 cents.

PETER. Another good new apple, size medium, color red, very productive and of the very best quality. 4 to 5 feet, 35 cents.

BECKER. This is the only apple that has given satisfactory results in the coast country and does very well here. The tree is a strong, straight upright grower, with very large foliage; bears young and is very productive as a summer apple, ripening in July; color is yellow, with red stripes; flesh well flavored. Trees 4 to 5 feet, 35 cents.





LECONTE PEAR TREES IN BEARING IN THE COMAL SPRINGS NURSERY ORCHARD

Crab Apples

Price, two-year-old trees, 15 cents each.

This pretty little apple is especially adapted for preserves and is always sure to bring a good crop.

Dieser schöne, kleine Apfel ist als Preserve sehr beliebt und bringt immer sichere, reiche Ernten. Der Baum wächst schnell und kräftig.

HYSLOP. Ornamental as well as useful. Vigorously growing tree, produces in great abundance crimson apples. Fruit good for preserves.

TRANSCENDANT. (Siberian). An attractive yellow color, splashed and striped with red; bears very young, annual crops thereafter. We value it highly for preserves. Buds and blossoms exquisitely beautiful. Ripens in July.

WHITNEY NO. 20. This is the best of all crab apples as far as the quality of fruit is concerned, fruit is of good size, very sweet and aromatic. Tree upright grower and very regular bearer, and succeeds remarkably well with me. Color of fruit yellow, with heavy crimson stripes. 20 cents each.

Pears

In order of ripening. Two-year-old trees, 25 cents each; \$2.50 per dozen, \$20 per 100. Extra large and new varieties, 6 to 7 feet, 50 cents.

The pear is the most profitable fruit we know of. After a tree has once begun to bear, it will bear regularly every year. The tree is very long-lived if it has a favorable locality where it can send its roots deep into the ground for a supply of moisture; for this reason pear trees should only be planted where the subsoil is rich and deep.

The soil most adapted to pear culture is rich loam, which contains a good supply of humus. Sandy soil with clay subsoil is also good if well manured. Pear trees should, however, never be planted on soil where roots of cotton and potatoes rot, as such soil has the same effect upon pear trees.

The following are the best varieties:

Die Birne ist die profitabelste von allen hier bekannten Obstarten, da sie immer sichere Ernten bringt. Die Wurzel des Birnbaumes geht tief in das Erdreich hinein und dort, wo guter, tiefer Untergrund ist und die Wurzel genügend Feuchtigkeit findet, erreicht der Baum ein hohes Alter und bringt sichere, reiche Ernten. Eine gute, reife Birne wird fast von einem Jeden anderem Obst vorgezogen. Man pflanze aber keinen Birnbaum auf Boden, wo Wurzelfäule (root rot) ist, dort stirbt der Birnbaum ab. Die Birne gedeiht am besten auf humusreichem, schwarzem oder Lehmboden; doch auf Sandboden mit Lehm-Untergrund wird sie mit dem allerbesten Erfolg gezogen. Folgende sind die besten Sorten:

KÖNCE. Very early, of the very best quality, does not rot at the core. The fruit is of a straw color with red cheeks and brown dots. Tree of vigorous growth, healthy and very hardy in bud and bloom, so that late frosts will not kill the blossoms.

EARLY HARVEST. Fruit medium to large, skin pale yellow, with blush next to the sun, flesh white, tender, sweet; one of the best of its season. July.

CLAPP'S FAVORITE. Prolific, red cheek, large, excellent, one of the best table pears.

SUMMER BEAUTY. First raised in 1873, and introduced in 1893 by us. This pear is the finest fruit and the surest bearer of all varieties that ever have been tested so far South. The trees have not failed to produce heavy crops every year since 1880. It is a vigorous, symmetrical grower and late bloomer, so that spring frosts will not injure it. The fruit is very large and handsome, of yellow color with a bright red cheek, flavor sweet, sugary, rich,

aromatic and pleasant, excellent quality, always grows in clusters of from three to five. One of the rarest and most productive pears in cultivation. Ripening the end of July. Price of well rooted, one-year-old trees 50 cents each, \$2.50 per dozen.

PERFECTION. Our new introduction. This is the second season we offer trees of this splendid new pear. The pear has no rival in productiveness and the fine shape, size and quality aid to make it one of the best pears ever introduced. Fruit is of large size, often in clusters of four to five pears; very sweet and melting, ripens middle of July to August. The tree does not bear as young as Kieffer or LeConte, but after five or six years old it bears regularly, as it blooms very late there is no danger of losing crop by late frosts. The original tree is loaded with fruit this year. Color is yellow with red cheeks, very showy. Every fruit grower should add a few trees to his orchard of this variety. Trees 5 to 6 feet, 50 cents.

FLEMISH BEAUTY. Medium, beautiful, juicy, melting, rich and firm; does well here; color greenish yellow, with bright red cheeks.

HOWELL. Large waxen yellow, with red cheeks, rich, buttery, sweet and perfumed, strong grower, productive and valuable.

SMITH'S HYBRID. Is one of our best pears. We consider it better than LeConte in quality, and being earlier it brings a better price in market. The fruit is larger than LeConte.

LeCONTE. Of remarkable vigor and beauty of growth. The fruit is bell-shaped, of a rich, creamy yellow when ripe; very smooth and fine looking, and a good shipper.

BARTLETT. Standard and dwarf. Everyone is acquainted with this large yellow pear. Fruit is very rich, and highly aromatic—the reason why this pear can always be sold while others may be refused. Tree grows dense and of even and conical shape.



KATY PEAR

KATY. New. This tree originated with Mr. J. F. Leyendecker, Frelsburg, Texas, and is about ten years old, 15 feet high, and has produced regular crops ever since it began to bear, six years ago. It has neither been pruned nor cultivated since it was two years old. It is evidently a chance seedling of LeConte, and has been so declared by the Department of Agriculture at Washington, D. C. It resists blight as well as Kieffer. My young trees are as thrifty and vigorous growers as LeConte; leaves are a little smaller and more pointed. Fruit resembles LeConte in size, shape and color; in quality it is more acid or vinous, but very juicy, and comes in just after LeConte. Price, 50 cents each.

HARDENPONT'S WINTER. Fruit large, pear-shaped, light yellow with white specks; very juicy, melting, very delicate, of a sweet wine flavor. One of the oldest European varieties. Tree of dwarf growth. Price, 50 cents.

DUCHESS. Standard and dwarf; pale yellow; very large; has a peculiar taste, for which many people prefer it to other varieties.

KIEFFER HYBRID. Called by many the "Queen of Pears." Fruit large to very large, skin yellow, with a brilliant vermilion cheek, flesh brittle, very juicy, with a marked musky aroma. Tree very vigorous and very prolific. Considered the best all-around pear.

MAGNOLIA. A distinct variety of the Oriental type, introduced by the Georgia nurseries. The bark of the tree is very dark, covered with white specks. Fruit also very large, brown color. Ripens before Kieffer. Price, 50 cents each.

GARBER HYBRID. Oriental strain, like the Smith's, fruit resembles the Kieffer in size, shape and color, ripe three weeks before.

Quinces

25 cents each; \$2.50 per dozen.

The Quince likes a rich, deep, moist and at the same time loose soil, and requires careful cultivation. The fruit is only used in a cooked state and it is a great favorite with the housewife, owing to its rich aroma, which makes it fit for all kinds of preserves and jellies.

Die Quitte liebt einen sehr reichen, tiefen, losen Boden und gebraucht eine sorgfältige Kultur. Die Frucht wird nur gekocht genossen, da sie roh hart und holzig ist. Sie ist bei der Hausfrau sehr beliebt, da sie ein feines Aroma hat und wird beim Einkochen von anderem Obst verwendet, da sie demselben einen feinen Geschmack giebt.

ORANGE. Large, roundish, bright golden yellow, cooks tender, and is of excellent flavor. Valuable for preserves and flavoring, very productive; one of the most popular and extensively cultivated of old varieties. Ripens in October.

CHAMPION. Fruit very large, fair and handsome. Tree very productive, bears when young, flesh cooks as tender as the apple, flavor very delicate, imparting an exquisite taste and odor to any fruit with which it is cooked.

MEECH'S. A vigorous grower and immensely productive. The fruit is large, orange yellow, of great beauty and delightful fragrance. Excellent for cooking.

Pecans

“**DAISY.**” Takes the first place of all the commercial nuts; it is not only the largest paper shell in existence, but is well filled, of a fine, sweet flavor; a regular bearer and a beautiful shade tree. The original tree has not failed to bear a good crop since it first began in 1894. Pecan trees are becoming more popular every year, as they are found to succeed on all deep soil, even in black prairie land. It makes a fine cool shade, is long-lived and has a hard wood; therefore does not break as easily as most all other shade trees. One budded tree on your place will improve your property a hundred dollars; therefore make the good investment and plant one or two trees of the “Daisy” pecan every year. This is the first time that we offer budded and grafted trees of the wonderful nut at the following low prices: 3 to 4 feet, branched, \$1.50; per dozen, \$15.00; 2 to 3 feet straight, \$1.00; per dozen, \$10.00. Our trees have the full taproot and we guarantee them to grow. Seedlings one year, 25 cents; per dozen, \$2.50.

“**BELLE.**” Medium, ovate; shell and partition thin; kernel well filled, easily taken out whole; quality very good; desirable variety. 3 to 4 feet, \$1.00 each.

“**COLUMBIAN.**” Said to be the largest of all the varieties. Oblong, ovoid; shell slightly thick; kernel solid and thick, very sweet and highly flavored. Price, 3 to 4 feet trees, \$1.00 each.

MAJOR RUSSELL. Large, oblong, shell and partition thin; kernel plump and full; quality good. This is the best nut grown on the famous Russell Plantation at Olustee, Fla. Price, 3 to 4 feet trees, \$1.00.

PAN-AMERICAN. Size medium to large; oblong, ovoid; shell thick; partitions thin; quality good; best keeper; meat can be taken out whole. Price, 3 to 4 feet trees, \$1.00.

PRIDE OF THE COAST. Description the same as Columbian. Price \$1.00.

STUART. One of the oldest of the named varieties; but somewhat short; ovoid in shape; shell thin; partitions somewhat corky; kernel plump; quality very good. 3 to 4 feet, \$1.00.

VAN DEMAN. A large nut averaging from 45 to 50 nuts per pound; oblong in form; shell quite thin; quality good; tree a vigorous grower; prolific bearer. Price, 3 to 4 feet trees, \$1.00.

Japan Walnuts

WALNUT (Cordiformis). Nuts medium size thin shell; if cracked longitudinally kernel can be removed entire. Meat is of good quality; tree is a very vigorous grower and forms a fine head. Perfectly hardy. We consider it the best of all walnuts. 2 years, 2 to 3 feet, 50 cents each.

JUGLANS SIBOLDIANA. A native of the mountains of Japan. Extremely hardy and vigorous grower. Three-year-old trees have produced nuts, Wonderfully productive. Meat sweet and of best quality. 50 cents each; trees 2 to 3 feet.

Almonds

Two-year-old trees, 25 cents each; one-year-old trees, 20 cents each.

The almond succeeds in Western Texas, Arizona, New and Old Mexico and California, where irrigation is practicable. As the tree blooms very early the crops are often destroyed by late frosts.

Die Mandel gedeiht mit Bewässerung in West-Texas, Mexiko, Arizona und Californien. Da sie sehr früh blüht, so wird die Ernte häufig durch Spät-Fröste zerstört.

SULTANA. Large kernels, soft shells. Tree is strong, upright grower and it is one of the best.

Apricots

In order of ripening, 25 cents each; \$2.50 per dozen. Two-year-old trees, extra large, 35 cents each; \$3.50 per dozen.

The apricot is one of those fruits that do fairly well on limestone soil; a rich, heavy soil, however, is preferred. As the apricot blooms early, it should not be planted extensively in localities visited by late frosts. The fruit is much beloved for its rich and aromatic flavor, and the apricot should be represented by a few trees, at least, in every garden. The culture is about the same as that of the peach.

Die Aprikose gedeiht gut auf Kalkboden; auch liebt sie einen mehr festen als losen Boden. Sie blüht früh und ist die Ernte nicht immer sicher, da sie oft durch Spätfröste zerstört wird. Es ist die erste Frucht, die reift und von einem köstlichen Aroma. Ein Jeder sollte einige Bäume dieser lieblichen Frucht anpflanzen. Der Baum sollte wie ein Pfirsichbaum behandelt werden.

ROYAL. Fruit large, oval; color of skin dull yellow, tinted with red on the sunny side; flesh pale orange color, firm, juicy, rich and vinous free-stone. Ripens end of June.

MEYER'S EARLY. Ripens early in May, is of medium size and of white color.

EUREKA. Very early, large, fine and prolific.

BLENDHEIM. Russian, large, golden yellow with a red cheek, good quality; bears well.

MOORPARK. Large, excellent, an old favorite and one of the best bearers. This is the best of all apricots.

Cherries

35 cents each; \$3.50 per dozen.

The cherry succeeds well on the elevated plateaus of Texas, New Mexico, Arizona, California and Mexico. We should, however, not recommend its planting in the lowlands.

The following varieties have proved the most successful in the South:

Die Kirſche gedeiht auf reichem Boden der Hohezüge von Texas, Mexiko und Californien; trägt aber ſehr ſelten in den Niederungen von Süd- und Weſt-Texas. Folgende Sorten ſind die profitabelſten:

EARLY RICHMOND. Medium, red, juicy, rich, acid; one of the most valuable cherries for this climate.

LARGE MONTMORENCY. Fruit very large, color red, flavor acid.

OSTHEIMER. (Russian.) Slender grower, very hardy, of good size and quality, productive. June.

ENGLISH MORELLA. Similar to Early Richmond, but later.

Nectarines

25 cents each.

The nectarine is a fruit similar to a peach, but it has a smooth skin like that of a plum. It is successfully grown in some parts of Texas, Mexico and California.

Die Nectarine iſt eine Frucht der Pfirſich ähnlich, doch mit glatter Schale wie die Pflaume. Gedeiht gut in Texas, Theilen von Mexiko und Californien.

HONEY. Originated in our nursery and named after its parent, the Honey peach. It is the only prolific nectarine we have so far grown here, and fruit is of very good quality; it is as large as the Honey peach, just as sweet, and ripens beginning of July; color of fruit is yellow with blush cheeks, flesh very tender and white. One-year-old trees, 25 cents each.

BOSTON. Large, deep yellow, with a bright blush and mottling of red, sweet and a peculiar pleasant flavor. Freestone.

VICTORIA. Medium, purple, brown cheek.

Figs

20 cents each; \$15 per hundred.

We might almost say there is no tree which so abundantly repays its owner for the little trouble it requires than the fig. From June to October ripe fruit may be had almost daily from the same tree, provided there is enough moisture to constantly keep the tree growing during this time.

The best place for a fig tree is near a well or a spring, or any other place where there is always a plentiful supply of water. During extreme cold weather figs sometimes freeze to the ground, but they sprout from the roots again in the spring. This however, happens only every 10 or 15 years, if only the hardiest varieties are planted.

Wohl keine Obſtart bringt hier im Süden ſo reiche Ernten als die Feige. Von Juni biß Ende Oktober kann man täglich reife Früchte von einem Feigen-

baum pflücken, wenn er genügend Feuchtigkeit hat um beständig wachsen zu können. Die Feige sollte an Brunnen, Quellen oder dort, wo der Boden beständig feucht ist, angepflanzt werden. Es kommt vor, daß die Feigenbäume in strengen Wintern bis auf den Boden abfrieren, sie treiben aber im Frühjahr immer wieder von neuem aus den Wurzeln.

GREEN ISCHIA. Green, medium size, of excellent quality.

MAGNOLIA. Large, rich fruit, yellowish white. Hardy here. Small one-year plants bear fruit first summer.

BROWN TURKEY. Medium, brown, very sweet and excellent; very prolific and hardy. The most reliable fig for open field culture.

CELESTIAL. Small, pale violet, with bloom; very sweet, prolific and hardy.

MISSION. (New.) Very large, pyriform, apert, very obtuse neck and stock very short. Ribs distinct, but not much elevated; eye medium, open, skin amber, with violet tint, almost blue; pulp amber; must have rich moist soil to do well. 4 to 5 feet, 25 cents each.

Peaches

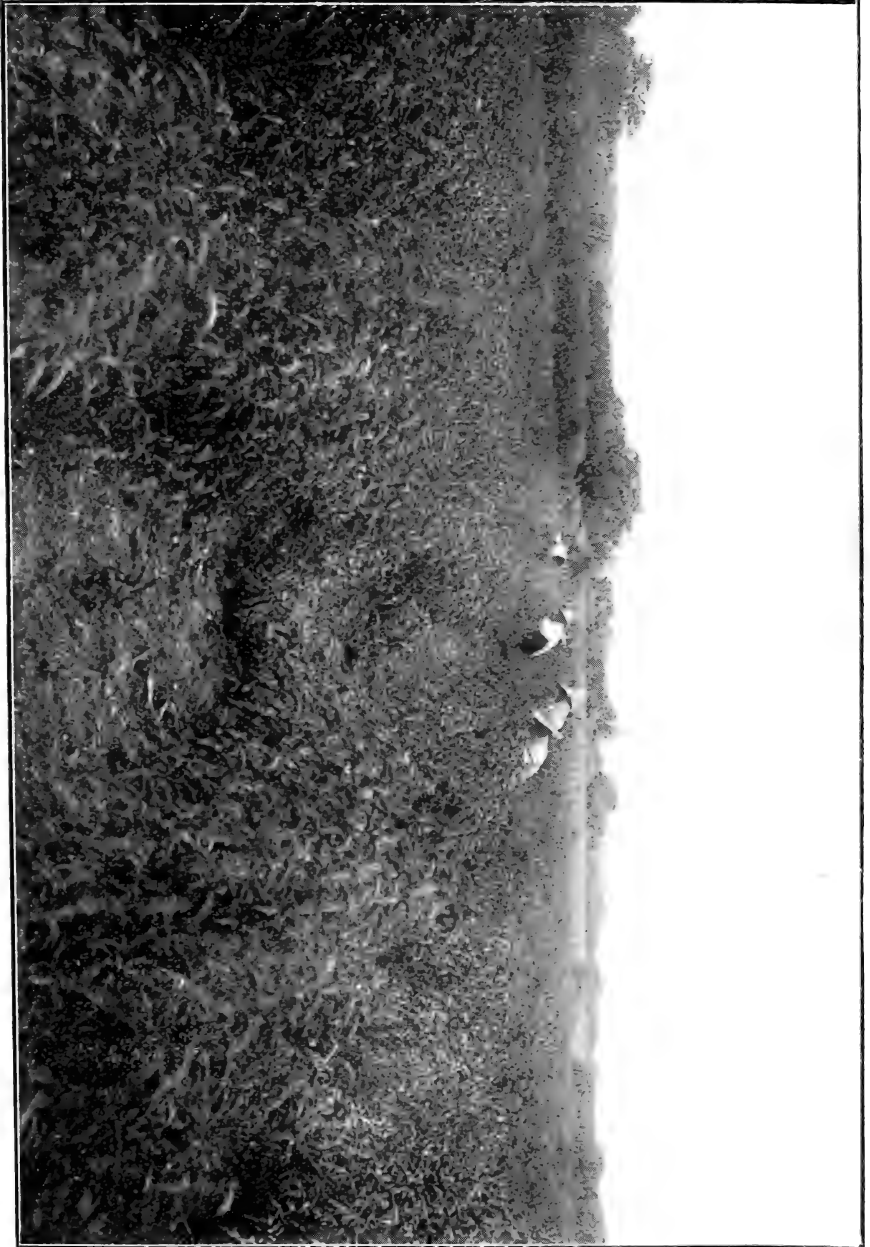
In order of ripening. 4 to 6 feet, 15 cents each; \$10 per 100, except where noted. Extra large, selected trees, 25 cents each.

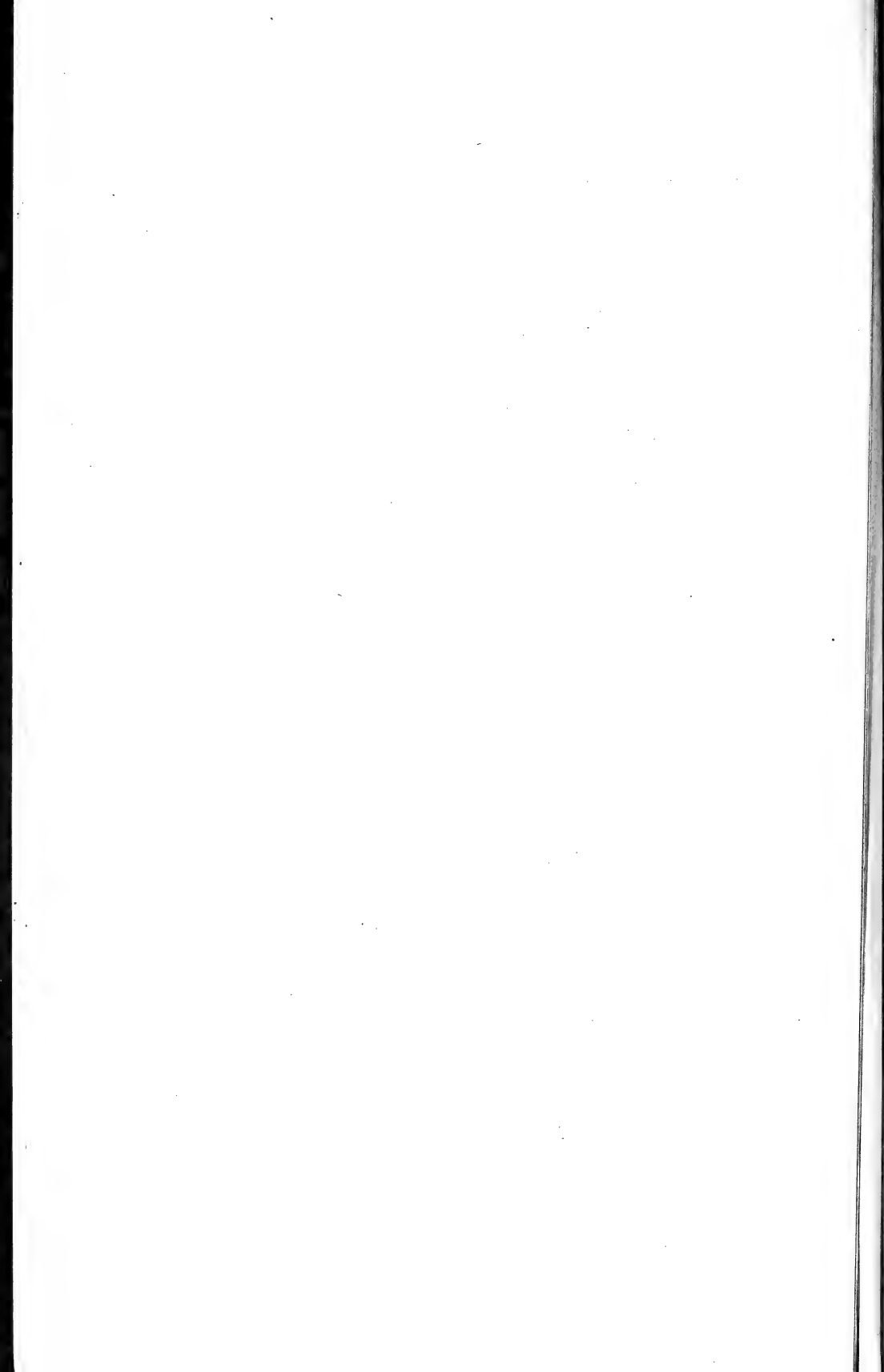
The peach is probably more extensively cultivated in our country than any other fruit, and it well deserves its popularity among the American people, as there is nothing that excels a luscious, red-ripe peach. There has, however, been much complaint of late that the finer varieties do not bear enough in Texas. People attribute this to the drouth, yet the failure in most cases is due to the ignorance of the people. The traveling tree agents from other states introduce new varieties every year that are in most cases not at all adapted to our climate. Therefore, never buy a tree unless you know that it is grown by a reliable nurseryman in your own State. West Texas is a dry country, but nevertheless good peaches can be raised, and plenty of them, provided the proper varieties are planted.

The peach succeeds in almost any soil, but it prefers sandy soil with red clay subsoil to any other. The following varieties are all thoroughly tested by me, and I consider them the best collection that can be made for our climate. They are selected from 400 different varieties, and as each variety has a ripening period of from ten to fifteen days, peaches may be had at all time from the middle of May until November. I have arranged them in order of ripening for the convenience of the buyer.

Die Pfirsich ist die am meisten hier angepflanzte Obstart und das mit Recht, denn nichts geht über eine gute, reife, saftige Pfirsich. Leider wird die letzten Jahre so viel geklagt, daß die Bäume keine Früchte tragen, zum Theil wird wohl die Trockenheit Schuld haben, aber die größte Schuld liegt daran, daß durch die Baum-Agenten Bäume massenhaft in den Markt gebracht werden, die im Norden oder Californien gezogen wurden; solche Bäume wachsen sehr gut aber bringen höchst selten Frucht, deshalb pflanzt niemals Pfirsichbäume, wenn ihr nicht bestimmt wißt, daß Sie im Süden gezogen sind. Die hier folgenden Sorten sind die besten aus nahe 400 Sorten, welche ich die letzten 20 Jahre hindurch versucht habe. Jede Sorte hat eine Reifezeit von 10 bis 15 Tagen und in dieser Liste sind alle Sorten enthalten, die von Mitte Mai bis November reifen. Der Pfirsichbaum gedeiht auf fast jedem Boden, am besten auf Sandboden mit rothem Lehm als Untergrund.

BUDDING 45,000 PEACH TREES IN, THE COMAL SPRINGS NURSEERY





I. Ripening Here from May 20 to June 10.

VICTOR. My young trees bore their fourth crop this season and I am highly pleased with the fruit, which is round in shape, and of beautiful color. Flesh is white, crisp and very juicy and is very prolific.

SNEED. Ripe 10 days before Alexander, of Chinese type. Tree of vigorous growth and drooping habit.

GREENSBORO. Earlier and larger than Alexander, fine flavor and attractive appearance.

DWARF JAPAN BLOOD. Tree of dwarf habit, surest bearer of all the early peaches; fruit is large, pointed, red cheek and end, and sometimes blood red flesh.

ALEXANDER. Good quality, high color, flesh greenish white. Best bearing May peach.

TRIUMPH. "The earliest yellow peach in the world." A perfect yellow freestone, of excellent quality. Ripens after Alexander. A good keeper; very prolific. Two-year-old trees bore half bushel each.

CARMAN. The best Texas seedling peach; size very large and of finest flavor, ripening after Alexander; vigorous, prolific.

BOKARA. The hardiest peach known. It is of fine quality and a good bearer. Does remarkably well here.

HONEY. The sweetest of all peaches we have, and about the best bearer. Late frosts have never killed the young fruit here. Color is attractive and it always sells easily. Honey is about the best peach for general planting we have in the South and the Gulf coast.

ARP BEAUTY. A rival to Elberta; character, size, color and quality the same, and ripens two to three weeks earlier. The value of this as a market and family peach will be easily seen, and no other statement will be necessary to place it at the head of good new peaches. 25 cents each.

II. Ripening June 5 to 20.

EARLY RIVERS. Large, light straw color, with a pink cheek; flesh juicy and melting, with a rich flavor. One of the beautiful early peaches. Freestone.

SOUTHERN EARLY. This is the largest of all early peaches; good quality, very prolific, sweet and juicy.

PEARSON. Similar to Mamie Ross. A perfect freestone, ripe before Mamie Ross. It is hardy, prolific and a very valuable new peach.

MAMIE ROSS. A seedling of Chinese Cling. Fruit very large, white, nearly covered with a delicate carmine; flesh white, juicy and of good quality; a regular and prolific bearer.

RIEHL NO. 2. This new peach attracted my attention at the World's Fair at St. Louis. Among thousands of peaches this one was the most beautiful; in color, shape, size and flavor it can not be excelled. The tree originated from seed, fruiting for the first time in 1904. The fruit is about the size of a large Elberta, form similar to "Greensboro;" has a beautiful white color, with red cheeks to the sunny side; the meat is tender and juicy, of a fine peach flavor. Ripening beginning of June, this new peach will be in good demand on the market. I offer trees, for the first time, from buds taken from the original tree. Price, one-year trees, \$1.00 each.

JUNE ROSE. A large peach with a red cheek and white flesh. Very juicy and well flavored; the latest bloomer of all peaches.

ROGERS. Extra large, red cheek, juicy, aromatic, sure bearer. A seedling of Chinese Cling, and one of our best peaches.

YELLOW MYSTERY. Yellow freestone, early, a good bearer.

GEORGE THE 4TH. Large, flesh white, red cheek, productive, a good freestone.

HUSTED EARLY. Large size, in shape roundish, skin smooth and of light yellow color, with a beautiful red cheek on the sunny side. Flesh light cream color, flavor rich and delicious, melting, juicy and vinous.

BISHOP. A very large crimson peach with white flesh. It is a good bearer.

AURORA. Very large, globular, red cheeks to the sunny side, juicy and of good flavor, bears well. A fine new peach; freestone.

CLEVELAND FREE. A seedling of Thurber. Fruit large, creamy white, red cheek, juicy, rich and excellent.

LADY INGOLD. Very large, oblong, dark orange yellow, juicy and rich. One of the best yellow freestones.

III. Ripening June 20 to July 15.

MOUNTAIN ROSE. Large, round, white flesh, red cheek, free.

PALLAS. Large, flesh white, melting, with a rich, vinous aroma, profuse annual bearer, as sweet as a Honey peach.

GEN. R. E. LEE. Cling, similar to Chinese Cling, but earlier and more prolific.

EARLY BELL. (New.) Very large, skin white, with red cheeks; flesh white, firm and excellent flavor; tree a rapid grower and very prolific; a seedling of Chinese Cling.

CHAMPION. Very large peach, highly flavored and beautifully colored, flesh white and skin white with red cheek, small pit and thick flesh. One of the best peaches.

CROSBY. Medium, fine rich yellow color, with streaks and shades of carmine; very prolific.

HERO. A splendid variety for canning purposes. The tree grows to very large size, and produces beautifully colored, white fleshed, juicy, clingstone peaches in great abundance, sure to bear every year.

BELLE OF GEORGIA. (New.) Very large, white freestone, of excellent flavor. Trees grow and bear well; fruit a very good shipper.

IV. Ripening July 15 to August 10.

CARPENTER'S CLING. Large, white, with a tinge of red, sweet, juicy, very productive.

ELBERTA. The peach that everyone knows. A large yellow freestone, red next to pit. The peach for the market.

OLD MIXON FREE. Large, greenish white, with red cheek; flesh white, juicy and of good flavor. Ripening in July.

COMAL CLING. The best, largest and finest yellow clingstone. The original tree was found growing behind an old house at one of my neighbors' 20 years ago. Fruit very large, dark yellow with dark red cheeks to the sunny side; flesh yellow, juicy and sweet; trees growing to a large size; leaves very large; a regular bearer. Ripens July 1 to 16.

OLD MIXON CLING. The juiciest and best flavored white clingstone peach; of very large size and best bearing qualities.

CHILLOW. A large yellow peach, like Elberta, but a clingstone; originated near Austin; a good bearer and shipper.

THURBER. Very large, white flesh, red cheek, sure productive.

LEMON CLING. Large yellow, sure bearer and highly flavored.

INDIAN BLOOD. Large, dark claret, with red veins, downy; flesh a deep red, very juicy, vinous and refreshing. August; clingstone.

EVERBEARING. Originator says: "The fruit begins to ripen about the 15th of July, and continues to ripen until the 15th of September. Blooms at intervals, consequently no danger of frost killing entire crop of fruit." 25 cents each.

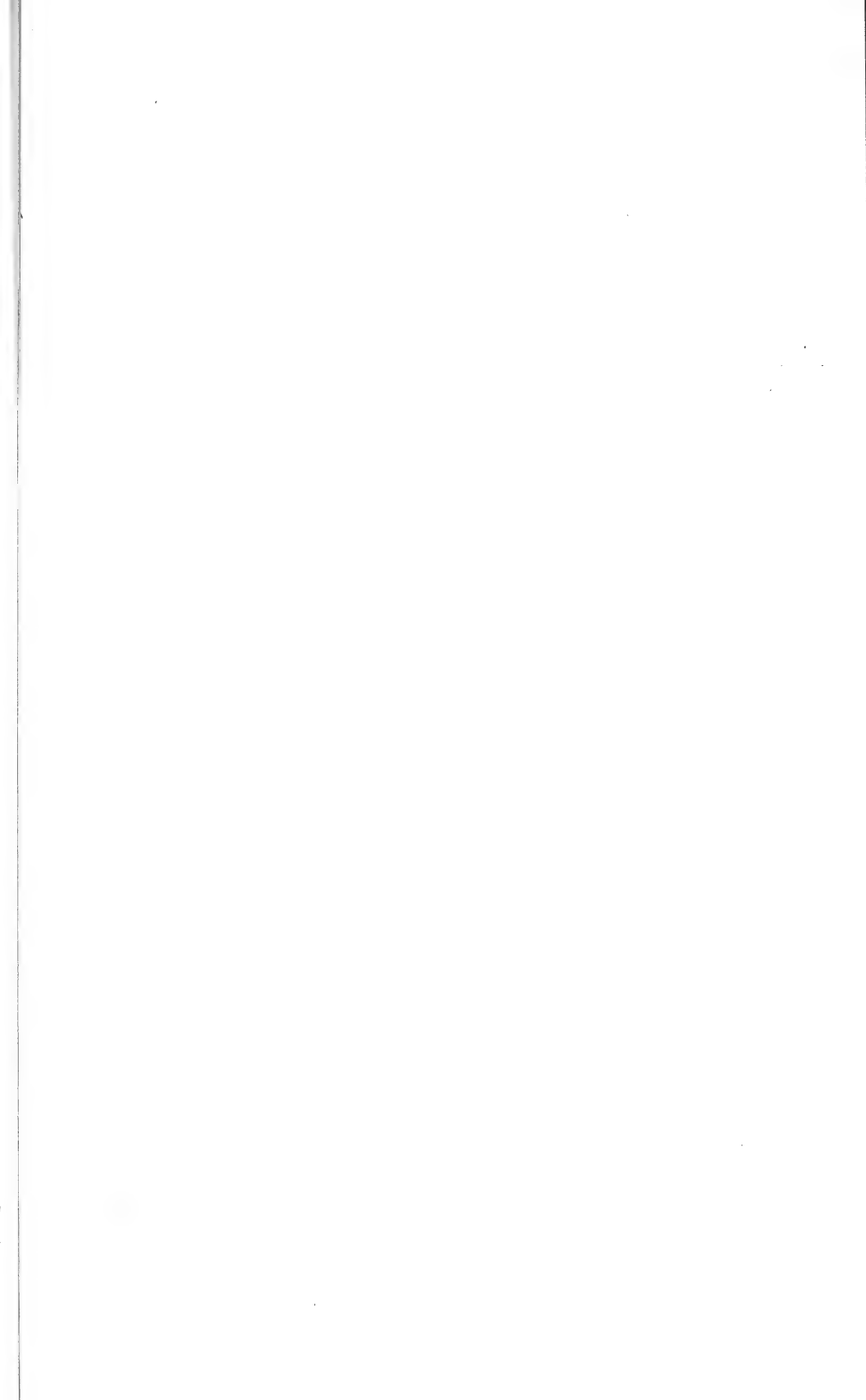
V. Ripening August 10 to September 1.

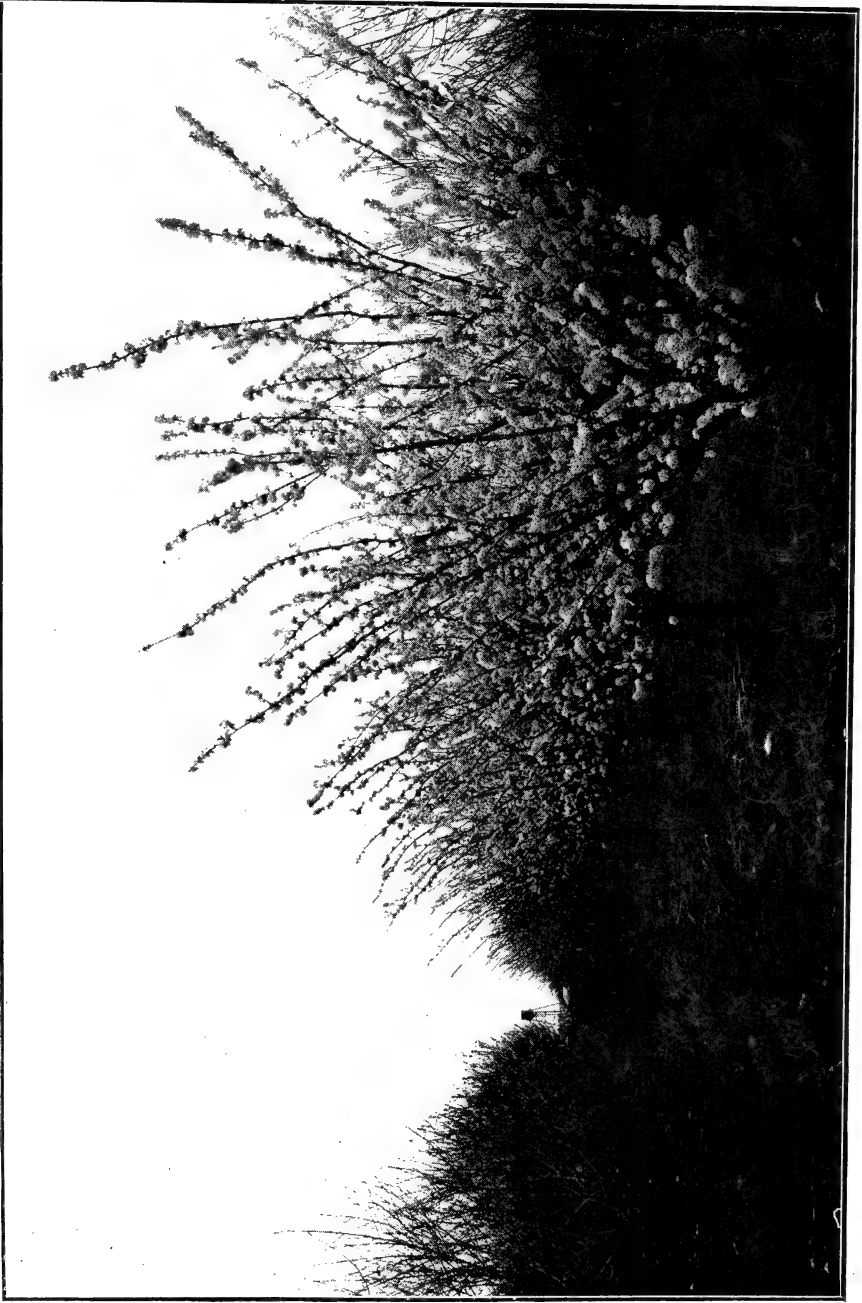
SNOW CLING. One of the best peaches for canning; size medium, flesh clear, creamy white throughout; juicy, melting, sweet and sprightly flavor; enormous bearer.

MATTHEWS' BEAUTY. A large, new, yellow peach of the Smock strain, but of extra good quality; very showy and a valuable shipper.

INDIAN FREE. Very productive and of excellent quality. One real good late peach.

WARD'S LATE. Large, globular, white with red cheeks; very good, prolific.





PLUM ORCHARD IN FULL BLOOM AT THE COMAL SPRINGS NURSERY

VI. Ripening September 1 to October 1.

LEMON FREE. Light yellow flesh, melting, a large late peach; prolific.

CARUTH. Yellow freestone; very prolific, hardy and good quality.

STUMP THE WORLD. Very large, white with bright cheek; flesh white, juicy and of good flavor. A fine market peach.

HEATH WHITE. Large, oval, with sharp apex; skin creamy white, juicy, sweet and good aroma. A very popular clingstone. September.

VII. Ripening Into October.

OCTOBER INDIAN. Of medium size and with red cheek. Very hardy and good bearer.

HENRIETTA. The best late clingstone. Very large, yellow, crimson cheek; a regular bearer.

WONDERFUL. A remarkably fine late yellow freestone.

LEOPARD. One of the latest peaches known. In 1889 I had fresh fruit at Christmas. Tree looks very healthy and is long-lived. The fruit is large and round; flesh white and brittle.

NOVEMBER. This is the latest of all peaches; ripe in November; good freestone. Has been grown near New Braunfels for the last 50 years.

COMMON SEEDLINGS. Extra strong; 5 cents each; \$4 per 100.

JUNE BUDDED PEACHES. We have a large stock of June budded peach trees on hand, all of the leading varieties at the low price of 10 cents each or \$7.00 per hundred. I can recommend these trees especially to large planters; they are well rooted, as a June budded peach tree has not yet lost its fibre roots. They are fast growers and can be easily grown into a shapely tree. As such stock is very light, the transportation charges are very low.

Plums

In order of ripening. 4 to 6 feet, 20 cents each; \$2.25 per doz.; \$18 per 100.

Extra large two-year-old selected trees and some new plums, 25 cents each. Two to three years, bearing age trees, well headed, 50 cents each; \$5 per dozen.

There is no fruit tree that bears such an abundance of fruit at so early an age as does the plum. Many varieties bear the first year after planting, and for this single reason should be most extensively planted. A plum tree requires very little care, but for the fact that it produces its fruit in such great abundance the tree does not live very long, and new trees ought to be planted every year to always have an abundance of this useful fruit. The American or Chickasaw varieties are mostly used for preserves and jellies, while the Japanese varieties are for the table.

Rich loam with gravel subsoil is the best soil for plum culture, while sandy soil is almost as good if manured.

The following is the best collection for the South, and cannot be excelled by any:

Es giebt keinen anderen Obstbaum, der schon so jung nach dem Verpflanzen Früchte hervorbringt, als der Pflaumenbaum. Von manchen Sorten sind schon einjährige Bäume mit Früchten beladen. Dieser Obstbaum sollte hier mehr angepflanzt werden, da er ja wenig Kultur verlangt und eine der dankbarsten Obstarten ist. Die amerikanischen Sorten eignen sich besonders gut zum Einkochen und die japanischen sind als Tafel-Obst sehr beliebt. Da der Pflaumenbaum in unserem Klima so überreich trägt, ist seine Lebensdauer kurz und sollte man jedes Jahr einige Bäume anpflanzen, um immer gesunde, tragende Bäume zu haben. Reicher Lehmboden sagt den Pflaumen am besten zu. Folgende Auswahl von Sorten ist die allerbeste für den Süden und Westen und kann nicht übertroffen werden.

FIRST. A combination cross of Hawkeye, Hammer, Milton, Wyant and Burbank. It is the earliest of all plums, and also the largest, handsomest and most productive of all early plums. It blooms late and ripens in an incredibly short time after blooming. Tree never fails to produce all it can hold. Price, trees 4 to 5 feet, 50 cents each.

MCCARTNEY. Originated in Texas, larger than Wild Goose, 14 days earlier, egg-shaped, golden yellow color, enormous bearer. This is the best yellow plum.

SHIRO. A combination of Robinson, Myrobolan and Wickson. Rank grower, enormously productive; fruit will keep a month, and is so transparent the pit can be seen through the flesh; apple-shaped; the earliest of all Japanese plums.

COMBINATION. An extremely handsome, large, early, light crimson plum of the very best quality; flesh straw color, extremely sweet, with a very pronounced pineapple flavor. If the best judges may be trusted, Combination has never been equalled in quality. The bark, leaves and fruit are unique. 35 cents each.

TRANSPARENT. One of the best yellow Chickasaw plums. Tree is very productive and sure every year. The fruit is so transparent that you can almost see the pit through the skin, and is very delicious.

CLIMAX. A cross of Simoni and Botan. Very large, and so fragrant a whole house is perfumed with a single fruit. Mr. Burbank says: "Productive as Burbank, several times as large, two or three weeks earlier and very much more nicely colored; the most wonderful plum ever grown and one that will change the whole business of early fruit shipping." A shy bearer with me.

YELLOW JAPAN. One of the earliest Japanese plums. It is a heavy and regular bearer; color a clear yellow; fruit heart-shaped, of good size, very sweet and firm. Ripens end of May and beginning of June.

MARIANA. Vigorous, red, medium, good bearer, very fine for a shade tree; 15 cents each, \$10 per 100; 6 to 7 feet, well branched, 25 cents each.

BARTLETT. A cross between Simoni and Delaware. Said to have exactly the quality, flavor and fragrance of the Bartlett Pear. Fruit turns deep crimson when fully ripe; light, salmon-colored flesh.

GONZALES. A cross between the American and Japan plum. The fruit is larger than a Botan., it is sweet and juicy and will keep for a week after ripening. The tree is a good grower and is very prolific. It ripens the middle of June.

WILD GOOSE. Chickasaw, vigorous, red, large, very good, abundant when fertilized.

EL PASO. C. Medium size; roundish; red; fair quality; one of the heaviest bearers I have; ripens from first of July to middle of August. Every family should have it. Seems to belong south of I. & G. N. R. R.

HALE. Tree good grower, fruit very large, beautifully colored, of best quality, ripe June. Does well in poor soil.

AMERICA. A seedling of Robinson crossed with Botan. The most beautiful of all plum trees in appearance. It is of large size, a little above the average size of Japanese plums, and larger than the popular American varieties. Flesh of a light yellow color, moderately firm and very delicious. Ripens two or three weeks earlier than Burbank. Exceedingly prolific.

LONE STAR. Trees grows very round and spreading; bears red plums of medium to large size, which are very juicy and sweet.

SWEET BOTAN. Japanese, one of the finest older varieties, which is too popular to need long description.

WICKSON. Japanese, tree grows in vase form, sturdy and upright. The fruit is evenly distributed all over the tree. It changes to white when about half grown, and remains so until a few days before ripening, when it changes to a glowing carmine. Small stone, the flesh is of fine texture, firm, sugary and delicious, and will keep two weeks after ripening. A fine, rare plum.

SULTAN. Japanese. Very large, purplish red, flesh red, very sweet, juicy, and one of the best red plums.

MIKADO. A very large plum of greenish yellow color, nearly round, very little suture, a rapid grower, more so than any other. This is the most remarkable of all plums for its enormous size, beauty and good quality.

WASSU. This is a valuable new plum. The growth of the tree, size of fruit and productiveness are the same as in Burbank, but the fruit is much sweeter and has a fine flavor. Ripens a few days before Burbank.

BURBANK. Japanese named after the introducer of this and most of the other good plums. The best bearing variety we have. When fully ripe, the fruit is deliciously sweet.

EXCELSIOR. Fruit medium, sweet, juicy, melting; color reddish purple; a good plum and very productive.

EVERBEARING. This is certainly a fine plum. The fruit is small, but deliciously flavored and very sweet, and is produced in great abundance. Should be gathered under the tree (not picked off) every morning. Begins to ripen about the middle of June and continues to about the middle of August, the last fruit being just as good as the first. 25 cents each.

BEST OF ALL. Introduced by Mr. Munson, who produced it by crossing Miner and Abundance. He says it flowers very late and is a sure and prolific bearer. Fruit medium to large, round, red, rich, firm, meaty, of best quality. 35 cent each.

SATSUMA. A very large and well flavored plum with blood-red flesh; skin blueish red; pit is very small; tree grows very large and old, and is a very good bearer.

ROBINSON. Tree spreading and round in shape. About the most productive of all. The fruit is of medium size and often colors up two weeks before it can be gathered. Has to be soft before edible. Robinson has stood droughts better than any other with me.

KELSEY'S JAPAN. Vigorous, greenish yellow, very large, excellent, prolific, sweetest of all plums, early bloomer.

RED OCTOBER PLUM. The latest plum. A new plum. Doubtless a cross with out Wild Goose; not as large as Wild Goose but more meaty. It is a very good keeper, and has a wonderful entietic flavor. 35 cents each.

JUNE BUDDED PLUMS. Best varieties, at 12-1-2 cents each, or \$10.00 per 100.

Mulberries

6 to 8 feet, 25 cents each; \$2.50 per dozen.

As a shade tree for the chicken yard the mulberry is about the best tree to be had. Chickens eat the fruit as soon as it drops from the tree. The finer varieties are also eaten by children. The tree grows very quickly and is easily transplanted.

Als Schattenbaum und für den Hühnerhof kann der Maulbeerbaum nicht übertroffen werden, da die Hühner die Frucht gerne fressen. Kinder lieben die Früchte sehr. Der Baum wächst schnell und ist leicht zu verpflanzen.

HICKS' EVERBEARING. Profuse, ripens 3 months, fine grower for shade and the best of all trees for the fowl yard.

RUSSIAN. Unquestionably the best as a shade tree. The tree is very hardy and long-lived, and grows rapidly to a beautiful round shape. The fruit is small and does not drop from the tree when ripe; some trees do not produce fruit at all. It is very much sought for street planting, for the shining leaves stand the dust well. 4 and 5 feet, 15 cents; 6 to 7 feet, 25 cents.

ENGLISH. A very quick-growing mulberry, with very large and well shaped leaves. The fruit is very large and of a black color. Stem is very straight and can be topped at almost any desired height. 1 year, 6 feet, 15 cents each; \$1.50 per doz.; 2 year, 7 to 8 feet, 25 cents each; \$2.50 per doz.

Japan Persimmons

(*Diospyros Kaki*.) A fruit from the Orient that has come to stay. The growing of this fruit in the South, both for the market and home consumption, is no longer an experiment. It has proven itself adapted to the whole cotton belt, and is becoming quite popular on the Northern fruit markets.

Trees on the native persimmon will grow on any soil in the South, but are not long-lived in wet, low places; high, well-drained, sandy soil suits them best, and they will do better on very poor land than any other kind of fruit tree. They are especially suited for planting in old peach orchards, as the old peach trees become worthless, or to replant the land after a peach orchard has been destroyed.

Fruit should be shipped just before it begins to soften, and directions how to eat it should be printed on wraps to be used with each fruit, and dealers instructed to display only ripe fruit.

Price of JAPANESE PERSIMMONS ON NATIVE PERSIMMON ROOT, 35 cents each or \$3.50 per dozen.

Die japanesische Persimone ist die süßeste aller Früchte und erst im Herbst, nachdem sie einen kleinen Frost bekommen hat, genießbar. Der Baum wächst langsam und ist mehr strauchartig, trägt aber sehr jung und reichlich. Der Baum ist etwas schwierig umzupflanzen, da er nur eine Pfahlwurzel hat, auch wird das Holz oft im Frühjahr nach der Steigung des Saftes durch Spätfroste getötet.

DIA DIA MARU. The tree of rather open growth, with distinct light foliage, fruit medium size, shape flat like a tomato, slightly four-sided, flesh white, quality very fine.

HACHIYA. Very large, oblong, conical, with sharp point, very showy, diameter 3-2 inches longitudinally and 3 inches transversely, color of skin reddish yellow, with occasional dark spots or blotches and rings at apex; flesh dark yellow, some seed, astringent until fully ripe, then very good. Tree vigorous and very shapely.

HYAKUME. Large to very large, varying from roundish oblong to roundish oblate, but always somewhat flattened at both ends, generally slightly depressed at the point opposite the stem, nearly always marked with rings and veins at the apex, skin light buffish yellow, flesh dark brown, sweet, crisp and meaty, not astringent, good while still hard, a good keeper, one of the best market sort. Tree of good growth and sure bearer.

TRIUMPH. Origin near Sanford, in Orange county, Florida, from seed from Japan. Its quality is of the best, size medium, tomato-shaped, color of skin dark red, handsome and showy, flesh yellow with but few seeds. It is very productive, the fruit of a single tree having been sold for \$17.00. Ripe in October and holds on the tree until January.

TANE-NASHI. Very large, roundish, conical, pointed, very smooth and symmetrical, color of skin light yellow, changing to bright red at full maturity, flesh yellow, generally seedless, astringent until fully ripe, then one of the best.

TSURU. Longest in proportion to its size of all the varieties, slender, pointed, diameter 3-4 inches longitudinally and 2-8 inches transversely; color of skin bright red, flesh orange colored, with dark coloring in immediate vicinity of seed, which are very few, very astringent until ripe, and one of the latest to ripen, a good keeper and of good quality when full ripe. Tree a heavy bearer.

YEDDO-ICHI. Large, oblate, very smooth in outline, with a slight depression at the end opposite the stem, color of skin a darker red than most varieties. The flesh is a dark brown color, verging into purple, and is quite seedy. In quality it is one of the best, being exceedingly rich and sweet, and, like the Hyakume, is good to eat while yet hard. Tree is heavy bearer and very thrifty.

YEMON. Large, flat, tomato-shaped, somewhat four-sided, diameter 2 1/2 inches longitudinally and 3 inches transversely, very smooth and regular in outline, skin bright orange yellow, flesh yellow, generally seedless, quality very fine. Tree rather an open grower, with distinct foliage of light shade.

Pomegranates

The pomegranate seems to have been created especially for our dry climate. It succeeds in any soil and bears regularly an abundance of the most refreshing fruit.

Little trouble is required for its culture. It is always free from all diseases, and grows in any deserted corner of the garden where no other fruit succeeds. The fruit is very sweet and refreshing, and ripens during August and September.

Der Granat = Apfel scheint speziell für unser heißes, trockenes Klima geschaffen zu sein, da er auch in der größten Dürre-Periode noch wächst; auch ist er frei von jeder Krankheit und Ungeziefen. Er trägt reich, die Früchte sind groß, wenn reif, sehr süß und von erfrischendem Wohlgeschmack. Reifezeit: August und September.

OLD FAVORITE. Is the best of all the fruiting pomegranate. I call it Old Favorite because it has been grown here at New Braunfels for at least 50 years, and it has proven to be far superior to all the other fruiting kinds which were introduced later. The fruit is the very largest, and refreshing and sweet. The tree or shrub, is extremely hardy, and has glossy green leaves. Flowers are large and crimson in color. 25 cents each, \$2.00 per dozen.

Oranges

SATSUMA. (Seedless.) It is the hardiest of all the orange family; color reddish yellow; ripens early; can stand 8 degrees lower than any other variety of orange. Price 1-year grafted tree, 2 to 3 feet, 50 cents.

DUGOT. Next to Satsuma in hardiness; a good variety for Southern Texas. Price, 50 cents each.

KUMQUATS. Imported from Japan; can stand more cold than the Asiatic orange. Fruits in clusters; fine and much sought for jams, preserves and pickles. Especially adapted for planting in tubs. Budded trees, 2 to 3 feet, 50 cents.

OTAHEITE. This orange is a very valuable one for pot culture. Produces a wonderful profusion of beautiful white flowers. Fruit about one-half the size of an ordinary orange. In 4-inch pots, 50 cents.

Lemons

THE "NEW WONDER" LEMON is a true everbearing variety. On a plant six feet high, not less than 90 lemons were growing at a single time. Fruit has been taken from this tree weighing 4 pounds. It is not uncommon to make twelve lemon pies from one lemon. Will fruit freely the second year. Price, 4-inch pot plants, 50 cents.

GENOA. A variety imported into California from Genoa, Italy. It is an early bearer and in favorable seasons produces fruit almost the entire year. Fruit is of best quality; a profitable market lemon. In pots, 50 cents each.



Grapes and Berry Plants

Grapes—Standard List

In succession. Finest quality. This list contains the best and most successful. 10 cents each, \$5 per 100, except where noted.

The grape thrives in almost any soil and is successfully grown all over the South. With but little skill and labor it brings abundant crops every year. The following are the best Southern varieties:

Die Weintraube gedeiht fast in jedem Boden und in jeder Gegend des Südens, mit etwas Mühe und Arbeit bringt sie reiche Ernten. Folgende sind gute Sorten:

EARLY OHIO. Said to be the earliest black grape. Bunches large, compact and shouldered; berries of medium size and adhere firmly to the stem; foliage thick, leathery and healthy; very productive sort. 20 cents each.

MOORE'S EARLY. Very large, black, good market.

MOORE'S DIAMOND. One of the finest American grapes.

LUTIE. Berries large, beautiful lilac color, of superior flavor and unusually free from rot; a very desirable grape. 15 cents.

WORDEN. Very large, black, good market; improved Concord.

NIAGARA. Large, white, very good table and market grape.

MARTHA. Large, white, table, market.

CONCORD. Large, black, table, market.

JACQUEZ. (Black Spanish, Le Noir, Blue French), small, large cluster, black, red wine. 2 years, 10 cents; \$8 per 100.

HERBEMONT. (McKee, Bottsi, Brown French), small, large cluster, purple, finest quality, table wine; best old grape in Southwest Texas. 10 cents; \$8 per 100.

Muscadine Varieties.

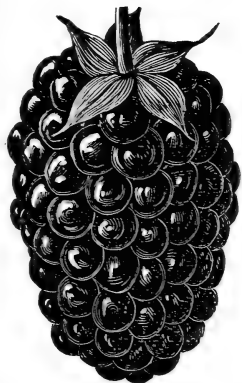
SCUPPERNONG. Clusters of two to six; berries large, round and of bronze color; skin thin, free from rot. 25 cents each.

THOMAS. Bunches seldom exceed eight or ten berries; color reddish purple; pulp sweet, tender, vinous, quality equal or superior to any of the muscadine type. Ripens the middle of August. 25 cents each.

EDEN. Berry very large, black with delicate Thomas flavor; twelve to fifteen berries in a cluster; it is a profuse bearer, making an excellent brown wine resembling cherry. The Eden fills a long-felt want as a late table grape. 25 cents each.

Dewberries and Blackberries

In Succession.



The blackberry is not so successfully cultivated in our part of the State as it is in North Texas, but the Mayes Dewberry reaches its greatest perfection here. It produces fruit of enormous size, of good flavor and in great abundance. Every lover of berries ought to have it.

Die Brombeere gedeiht hier nicht so gut wie im nördlichen Texas, aber die Thaubere (Mayes Dewberry) erreicht hier ihre größte Vollkommenheit. Sie bringt erstaunlich reiche Ernten von riesengroßen Früchten. Jeder Beerentliebhaber sollte davon pflanzen.

MAYE'S DEWBERRY. (Like cut), new, very large, early, glossy black, highly flavored; it roots deep, is very prolific and never fails. Price 50 cents per dozen, \$2.50 per 100.

GUADALOUPE. For several years I have been gathering and cultivating our wild native dewberries, and find among them some very valuable berries. Guadalupe is one of my collection and the best of them. It cannot be surpassed by any berry in productiveness and extreme earliness. The berries are large, oblong, sweet and of the darkest color when fully ripe. They are very showy, and as they ripen early they are very salable and bring the best price. This is without doubt the biggest money-maker in small fruits. I picked two gallons from a two-year-old bush and find ready sale at 10 cents per quart. The plant is very vigorous and makes long canes, spreads rapidly and makes many new runners for transplanting. Price, 15 cents each, \$1.50 per dozen.

ROGERS. Fine flavor, large size, wonderful yield. You need the Rogers in your home garden. You can't afford to do without it in your commercial garden. The berry is large, oblong, very firm and possesses a very fine flavor. Stands drought well. Ripens here the early part of April and a month before Mayes. Its shipping qualities are far ahead of any dew or blackberry in cultivation. After each crop of dewberries the old vines may be pulled or cut out and burned. An application of fertilizer, barnyard or commercial, in the fall or winter, will cause the vines to produce larger berries and a heavier crop. Price 50 cents per dozen, \$2.50 per hundred.

WHITE DEWBERRY. Ripe 14 days before Mayes, a good, sweet berry. 50 cents per dozen.

DALLAS. (Blackberry), very vigorous, drooping, thorny, productive, large, fine. 50 cents per dozen, \$2.50 per 100, \$10.00 per 1000.

Strawberries

25 cents per 12, \$1 per 100, \$3 per 1000.

To grow strawberries with success irrigation is required in Western Texas, but where water may be had plentifully, it is very valuable, being about the first fruit in spring.



Die Erdbeere kann in West-Texas und anderen trockenen Gegenden nur mit Hülfe von Bewässerung gezogen werden, ist aber dann profitabel und das erste Obst, das reift.

MICHEL'S EARLY. Earliest of all; large, vigorous, perfect flower, a fine pollinator for other kinds.

HOFFMAN. An extra early berry for the South, very large and brilliantly colored.

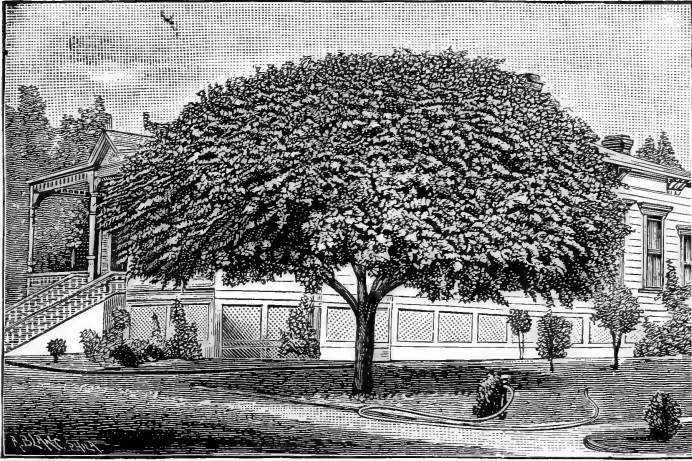
LADY THOMPSON. Very large, good shipper and prolific bearer; one of the best of the many varieties of strawberries.

EXCELSIOR. A very reliable and early berry and a sure bearer. It has the advantage over other berries, considered early, that it can be picked and sold out of the way, and always catches the best price. The plant growth of Excelsior is exceedingly healthy and vigorous, thriving on all kinds of soil, even on the poorest. Its color is a most attractive red; no white tips or spots, but solid red.

NEWMAN. We have what is known as the improved Newman. The great productiveness, good size, fine color and very great firmness gives it high value here for shipment to Northern markets.

KLONDIKE. The plant is exceedingly vigorous, seems to be absolutely rust proof, and as near drought proof as a variety can be. Every berry is firm and brilliantly colored. This makes it the greatest and safest money-maker. On good or well manured soil it is simply wonderful. 50 cents per dozen, \$2.00 per 100, \$5.00 per 1000.





Shade and Ornamental Trees

6 feet, 25 cents; 8 feet, 35 cents; 8 to 10 feet, 50 cents.

All shade trees are nursery grown, are straight and have splendid roots.

The physical welfare of yourself and those that you hold dear is greatly advantaged by these trees and plants which surround your home. What a deserted impression does a splendid house make if not a tree or plant is near, and what a pleasant feeling comes to you if you see a small hut surrounded by beautiful shade and ornamental trees. What a comfort does a single shade tree afford the farmer when, after he comes home from his toil in the field, he can recline under the same and take his afternoon nap.

Therefore, plant shade and ornamental trees around your house and you will be repaid for your trouble in many different ways.

Deine Zufriedenheit, Gesundheit und Wohlergehen liegt im Anpflanzen von Schatten- und Zierbäumen um Deine Wohnung und im Hofe. Was für einen öden und ungemüthlichen Eindruck macht das aller schönste Haus, wenn kein grüner Baum oder Strauch zu sehen ist und was für einen einladenden und erfrischenden Eindruck macht schon die kleinste Hütte, wenn sie von Schattenbäumen umgeben und ein Zier- oder Blumengarten davor zu finden ist, deshalb pflanzt Schattenbäume, Ziersträucher und Blumen, ihr werdet reichlich belohnt durch den Genuß, welchen ihr daran findet.

PYRAMIDAL ARBOR VITAE will make a large, fine evergreen shade tree, quick-growing easily transplanted. Trimmed, with straight stem, 3 to 5 feet, 25 cents; untrimmed, 2 to 3 feet, 15 cents each.

LIGUSTRUM JAPONICUM makes a splendid evergreen shade tree; leaves dark green, pointed, 2 by 2 1-2 inches long; produces large bunches of creamy white flowers, followed in autumn by purple berries. Price of trees, well trimmed, 3 to 4 feet, 25 cents; 6 to 7 feet, 50 cents each; \$5.00 per dozen.

BOX ELDER. A quick-growing, hardy, shade tree, a native of Texas; prefers a wet, deep soil. Price, 3 to 4 feet, straight, 15 cents each.

BUCKEYE. Growth and leaves are similar to the Japan Walnut; thrives best on a deep soil. Will grow anywhere where a pecan tree grows. 3 to 4 feet trees 25 cents.

CAROLINA POPLAR. A rapid growing native shade tree; is very largely planted as a street and avenue tree, and is very popular. 5 to 6 feet, 25 cents each.

CATALPA (Teas). A very pretty and extremely hardy shade tree. The leaves are 6 to 10 inches across; tree produces large clusters of very beautiful yellow flowers in spring. Price, 4 to 5 feet trees, 25 cents each.

KAEMPFERI (Japan Hybrid). Character of tree same as above. Flowers small, light yellow, orange-yellow center, dotted dark violet. Blooms in June and July. Price, 1-year trees 4 to 5 feet 25 cents each.

HONEY LOCUST. A quick-growing shade tree; hard wood; leaves small, but make a good shade. Price, 4 to 5 feet, branched, 25 cents.

YUDAS TREE, or RED BUD. A very long-lived shade tree; very hard wood; large round leaves, making a dense shade. It is not a quick grower; the first tree to bloom in spring; has very pretty red flowers, which last about a week. Price, 3 to 4 feet trees, 25 cents each.

AMERICAN ASH. A tree which is particularly well adapted to this latitude; makes quick growth and forms nice tops; leaves are a lively green color. 6 to 8 feet trees, 25 cents each; 1 year, 3 to 5 feet, 15 cents; \$1.50 per dozen.

COTTONWOOD, a delightful, quick-growing shade tree, one year 3 to 5 feet, at 15c; \$1.50 per dozen.

LILIODENDRON TULIPIFERA, TULIP TREE, one of the grandest of our native trees, of tall pyramidal growth, with broad, glossy, fiddle-shaped leaves and beautiful tulip-like flowers. 3 feet, 25 cents.

PAULONIA IMPERIALIS. (Empress tree.) A rapid growing tree, with immense leaves, and in early spring bears large penicles of light blue, very fragrant flowers; an excellent shade tree. Transplanted, 6 to 8 feet, 50 cents each.

RHUS COTINUS, PURPLE FRINGE. A beautiful tree, much admired for its long feathery flower stalks, which gives the tree the appearance of being covered with a cloud of smoke. 25 cents each.

RHUS CORIARIA. A very ornamental, quick-growing tree. 25 cents each.

STERCULIA PLATANAFOLIA, (Japan Varnish Tree), a very hardy and at the same time very beautiful shade tree. It is particularly adapted to this climate, but not very well known. The stem is always straight and smooth and has the same color as the leaves, which is a beautiful light green. The leaves are from 6 to 10 inches across. Tree produces a spreading and dense top and grows to a very large size. A tree of fancy appearance, but stands as much drought as a hackberry. 4 to 6 feet, 50 cents;

SYCAMORE, a lofty white spreading tree, heart-shaped leaves, valuable for its handsome foliage and free growth. 25 cents each.

WEeping WILLOW, a grand old tree for the cemetery and for the lawn. Should be planted in deep, rich soil, where it is constantly moist. 25 cents each.

UMBRELLA CHINA, a native of Harris Co., and now widely known over the State. It is the finest and quickest-growing of all shade trees. I think I have the largest stock of them in Texas. 8 to 10 feet, branched, 50 cents; 5 to 6 feet, 25 cents; 3 to 5 feet, not branched, 15 cents each, \$10.00 per 100.

POPLARS

PROPULUS ALBA, the white poplar. A quick-growing ornamental tree. 5 to 6 feet, 25 cents each.

POPULUS BOLLEANA, the pyramidal silver poplar. Does well here. 5 to 6 feet, 25 cents each.

POPULUS NIVEA, silver-leaved poplar. 5 to 6 feet, 25 cents each.

POPULUS PYRAMIDALIS, Italian poplar. A rapid-growing tree. 6 to 8 feet, 25 cents each.

All the poplars are very easy to transplant and quick-growing.

Shrubs

All the following shrubs have been tested for years, and found to be especially adapted to the South. I have a splendid stock of fine plants for this year's trade.

Alle die folgenden sind seit Jahren hier versucht und als die besten für unser Klima gefunden worden. Ich habe einen großen Vorrath davon und starke, kräftige Pflanzen.

ALTHEAS

Grafted on hardy stock.

One of the best hardy, flowering shrubs that we know of, and most especially adapted to West Texas, for the reason that it blooms during the entire summer, even then when monthly roses and other everblooming flowers are not in bloom. The flowers are not in the least affected by the hot sun in July and August, but are just as beautiful then as they are in the cooler months. Price of strong plants, 25 cents each, \$2.50 for 12; smaller 15 cents each.

ALTHEAS ROSEA (Seedlings). Mixed, all colors, from best seed, strong plants, 3 to 4 feet, 10 cents each, or \$7 per 100.

COLESTIS, sky blue color, single 25 cents each.

DUKE OF BRABANT, violet blue, single, 25 cents each.

ELEGANTISSIMA, flesh colored, sometimes white, double, 25 cents each.

BANNER, double striped, white, pink and red, very beautiful sort.

DOUBLE RED ALTHEA, the old double red, which produces the prettiest and largest flowers of all. It is one of the most desirable, and most profusely blooming. 20 cents each.

JEANNE de ARC. Flowers medium, pure white, double, opens well.

LADY STANLEY. Flowers small but very double, white, striped red.

LEOPOLDII, very beautiful and rare kind, the color being pink and the flower double. 25 cents each.

LUCY. Double red, large flowers.

MECHAN'S DOUBLE WHITE, pure white flowers, with large, fiery centers.

PULCHERIMA. Beautiful, large double white flowers, with a red center. Edges of flowers pink.

TOTA ALBA, single, pure, nearly white; dwarf habit; earliest of all Altheas to bloom and bloom freely. Don't overlook this sort, because it is single, it is very desirable.

PEARL. Flowers pink, with deep red center.

CRAPE MYRTLES

The Crape Myrtle has reached such a high degree of popularity that there is hardly a flower garden without a few of these lovely flowering shrubs. They are lately being used for hedges, which produces the most striking effect, and such a hedge is admired by all who see it. The first flowers appear early in May, and from then until frost the plant is continuously a mass of flowers. Price of strong plants, 2 to 3 feet, 25 cents; 3 to 4 feet, 35 cents each.

PINK, the earliest of all Crape Myrtles to bloom. Tree is of a rather dwarfish habit, but produces more flowers in one season than any of the others.

CRIMSON, grows to a good sized tree and is almost always in bloom. The flowers are of a very rich crimson color.

PURPLE, the largest of all; produces very pretty purple flowers in great clusters.

WHITE, always rare. The largest Crape Myrtle, is a very profuse bloomer, but slow grower. 35 cents each.

SYRINGA—Lilacs

All grafted stock —extra fine.

ALBA, large, pure white flowers, produced in large clusters. 25 cents each.

PERSIA BLANCHE, of tall growth, long slender limbs, flowers white. 25 cents each.

PERSIA ROSEA, growth same as above and flowers of rose color. 25 cents each.

PURPLE LILAC, a well-known favorite. 15 cents each.

SPIREA

SPIREA VAN HOUTTEI, a splendid new garden shrub and one of the most beautiful of all. Immense bloomer of snow white flowers. 25 cents each.

NEW JAPANESE BLUE SPIREA (*Coryopteris Mastacanthus*), this is a new hardy blue-flowering shrub, and very handsome and desirable in every way, makes a neat compact bush two feet high, begins to bloom in July or August and continues loaded with lovely sky-blue flowers till it freezes. Very sweet and the best blue flowering garden shrub we know. Plants, two years old, extra strong, 35 cents each; extra large, 50 cents each.

PHILADELPHUS. (*Syringa* or *Mock Orange*.) Vigorous growing shrubs, with large, handsome foliage and beautiful flowers, produced in great profusion in early spring. Should be in every collection. (*Grandiflorus* and *Boule d' Argent*.) 3 to 4 feet, 25 cents each.

CYDONIA (*Pyrus Japonica*). Japan Quince. These are about the first spring blooming shrubs, flowers frequently appearing by the first of January. Some produce medium sized fruit, which makes fine jelly. 2 to 3 feet, branched, 25 cents each.

CALYCANTHUS PROECOX, or *Sweet Shrub*. A beautiful Japanese shrub. Flowers yellowish white; very fragrant; produced in great abundance early in January and lasts for about four weeks. 3 to 4 feet, 50 cents each.

Broad-leaved Evergreens

These are easily transplanted and grow very rapidly; therefore they should never be overlooked when ordering. You will always have a vacant place for a few. All the leaves should, however, be cut off before planting, otherwise they often fail to grow.

Folgendes sind die allerbesten Sorten und sollten nicht übersehen werden. Sie sind leicht und sicher zu verpflanzen, nur sollte alles Laub beim Verpflanzen abgeschnitten werden, sonst vertrocknen sie häufig.

BUXUS ARBOREA, OR **ENGLISH TREE BOX**, succeeds almost everywhere. It is of rather slow growth compared with other evergreens, but remarkable for its longevity, and finally gets to be 10 to 12 feet high. Strong bushes, 25 cents each; small plants for hedges, \$6 per 100. The *Buxus* makes the finest evergreen hedge.

JAPAN MEDLAR, tree of medium height, with long, glossy leaves, which are evergreen, flowers white in spikes and produced in winter, fruit of the size of a wild goose plum, round or oblong, bright yellow and produced in clusters, subacid and refreshing, maturity from end of February to April. 35 cents.

CALIFORNIA PRIVET, splendid for specimens, screens or hedges. 2 to 3 feet, 10 cents; for hedging, \$2.50 per 100. Have large stock.

MAGNOLIA GRANDIFLORA, its large, shining green foliage, accompanied in summer with large, fragrant, milky-white flowers, places it pre-eminently above all ornamental trees. This as well as all other evergreens should be handled and planted very carefully, as they are extremely sensi-

tive to injury from drying. Their roots should never be allowed to get dry when out of the ground. In planting, the soil should be pressed firmly about the roots with the foot. Neither should they be planted with the roots curled in shallow holes. 3 to 4 feet, 50 cents; 5 to 6 feet, 75 cents each.

CAPE JASMINE. Flowers large, white, fragrant; foliage rich, glossy. Price, large plants, 40 cents each.

EUONYMUS JAPONICUS, one of the fastest growing evergreen shrubs, suitable for either hedge or single specimen; can be greatly improved by cutting back to induce bushy form. No evergreen has such a bright, dark green color in winter as this. For quick results this excels. Fine strong plants, 20 cents; \$2 per 12. For hedges it is very fine, \$10 per 100.

EUONYMUS JAP. AUREA. With yellow markings on foliage. 25 cents each.

EUONYMUS JAPAN VARIEGATA. Variegated variety, conspicuously margined with white and constant in its coloring. 25 cents each.

PITTIOSPORUM TOBIRA, the finest of all evergreen shrubs, well adapted for trimming, grows round and compact. 50 cents each.

LEUCOPHYLLUM TEXANUM

A native of the dry regions of our State, where it is found growing among cliffs and rocks. It is a plant of rare beauty; in fact, one of the most beautiful shrubs in existence, but owing to the great difficulty of starting young plants, it has never been grown in nurseries. I have for many years tried to find some means of starting young plants in pots, and have now found a way of growing this plant. The young plants I offer to my customers in small pots, and will be sent with the pot, which is broken before setting. This is the only sure way of transplanting, and I guarantee every plant to grow which is thus treated.

The plant grows round and dense; attains height of six feet and same width. Foliage is a beautiful silvery gray color, which is, however, hidden when plant is in full bloom. The purplish red flowers are half an inch across, with golden dots on inside, and are produced in such numbers every two weeks that the plant looks from a distance as if loaded with ripe fruit. It is an evergreen as well as an everblooming plant. Stands drought better than any other shrub, but thrives in moist soil best.

Price of plants in 8-inch pots (with pot), and guarantee that plant will grow, \$1.00 each; field grown, 3 feet, 50 cents each.

ROSMARINUS OFFICINALIS. (Rosemary or Old Man.) This old favorite is very effective for a border or for planting in clumps. Strong plants. 25 cents each, \$2.00 per dozen.

YUCCA FILAMENTOSA. (An evergreen.) This plant is an object of beauty the year round. The leaves are two feet long, bristling out at all angles with sharp points; flower stalk stout; 4 to 5 feet high, with 100 to 200 bell-shaped creamy white blossoms hanging from branching arms. Perfectly hardy, and lives to a great age. Two-year plants, 10 cents each.

Cone-bearing Evergreens

We do not think we exaggerate when we say that we have the largest stock of the cone-bearing evergreens in the State. We have in fact almost overstocked ourselves with them, and can afford to sell extra fine plants at a very low price. We grow all and only such varieties as succeed in Texas. Sizes are from 1 foot up to 5 feet, and the prices, as you will notice, are lower than those of any other nursery, taking in consideration the quality of the plants.

Ich glaube nicht zu viel zu sagen, wenn ich behaupte, dieses Jahr den größten Vorrath und die feinsten Exemplare von immergrünen Nadelhölzern in Texas zu haben. Ich habe alle Arten, welche hier gedeihen und alle Größen von einem Fuß an bis zu sieben Fuß Höhe und wird mein Preis niedriger sein, als irgendwo anders für Waaren derselben Güte.

TRUE BERCKMANS. BIOTA AUREA NANA, a new Golden Arbor Vitae of a dwarf and compact habit, perfect gem for small gardens or cemetery lots, will not grow higher than 6 to 8 feet. 15 to 20 inches high, 50 cents; 24 to 30 inches, 75 cents each.

GOLDEN ARBOR VITAE. This is the handsomest and most compact of the Arbor Vitae, green, with a beautiful golden tint. True grafted trees, 2 to 4 feet, 50 cents each.

CHINESE ARBOR VITAE, dark green, vigorous, hardy, desirable, 3 to 5 feet, 25 cents each; small, 15 cents each; \$10 per 100.

GOLDEN PYRAMIDALIS ARBOR VITAE like the Golden, but grows tall and slender. A very ornamental sort. Do not confuse this with Cupressus Pyramidalis. Three feet, 50 cents each.

ROSEDALE ARBOR VITAE, very compact growth, with sugar loaf form of the Golden Arbor Vitae, but with fine, cedarlike foliage of a bluish cast. Makes a beautiful ornament; perfectly hardy and of vigorous growth; the most beautiful of all Arbor Vitae. 2 to 3 feet, 50 cents; extra large fine plants, 75 cents each.

COMPACTA ARBOR VITAE, a compact growing Arbor Vitae, of a lively dark green color and of globular shape. 2 to 4 feet, 50 cents. Very fine stock.

CEDRUS DEODORA. This is the great cedar of the Himalayas. It succeeds anywhere in the South, and attains a great size and age; the short needles are a bluish green; has a fine form and grows moderately fast. 20 to 24 inches, 50 cents each.

RED CEDAR, one of the finest evergreens, which grows on almost any soil, and which requires much less water and care than the Arbor Vitae. Will acquire any particular shape or size if properly trimmed. Trimmed to pyramidal (or conical) form, 2 to 4 feet, 50 cents each.

CUPRESSUS PYRAMIDALIS. This is a beautiful, tall, columnar evergreen, does well in Texas, a little tender in far North, 2 to 3 feet, 50 cents each; pot grown, 2 to 3 feet, with guarantee to grow, 75 cents each.

CUPRESSUS HORIZONTALIS, like above, of rapid growth, but branches spreading. 2 to 3 feet, 25 cents.



Strong field grown, 1 year, 25 cents each, \$2.50 per dozen, except where otherwise noted; 2-year-old, extra strong, 35 cents each, \$3.50 per doz.

Of all the flowers which man has taken in his care the rose has reached the highest degree of popularity. She is the queen of flowers, the flower of the poets, and will always be the dearest of flowers to the lovers of the beautiful.

While wild roses are met with in almost every country, the cultivation of the rose began probably at the same time when the civilization of man began, and with the cultivation of man that of the rose has kept pace, being now at the same height of development as is humanity.

Of the many thousands of varieties which have for centuries been introduced by the hybridizers those of each succeeding century show a marked improvement over those of the foregoing. Of the roses which were considered the best only a century ago very few are grown today.

Many hundreds of different varieties have been tried on our grounds, and of all only such are described in the following list which in our judgment are the very best for outdoor planting.

Fortunately we live in a climate where even the tender roses stand the winter without cover, and any of the roses in this catalogue may be planted outdoors.

Plant your roses in an open place, never try to grow roses in the shade of trees. The plants you receive from us are grown by the latest methods of cultivation, which we practice together with a means of accumulating power and strength in the young plants, and which is just the opposite from forcing roses in greenhouses for bloom. Do not set out your roses the way you get them, but trim off at least one-half of the wood. Slow-growing sorts should be trimmed more severely than the quick-growing varieties.

Mein Vorrath an Rosen ist der größte in Texas und die Auswahl der Sorten ist die reichste.

Meine Rosen sind starke, im freien Felde gewachsene Büsche, die den ganzen Sommer hindurch geblüht haben und sind ja nicht mit den im Norden in Treibhäusern gezogenen, fingerlangen Topf-Pflanzen zu verwechseln. Diese Rosen, welche ich hier offerire, werden von Anderen zu 50 bis 75 Cents angeboten. Folgende Liste enthält die besten und allerfeinsten Rosen, welche es giebt und kann keine bessere Auswahl getroffen werden:

CRIMSON AND RED

ADMIRAL SCHLEY. Magnificent Hybrid Tea Rose, with flowers as finely formed as Meteor or Liberty. Deliciously fragrant, and in color a beautiful deep crimson. A strong grower and free bloomer and a variety that should be grown in the home of every American citizen.

AMERICAN BEAUTY, hardy rose, of largest size, having the everblooming qualities of the tea rose, with the delicious odor of the Damask or Moss Rose. In color it is a brilliant red, shading to a rich carmine crimson. The flowers are borne on long, stiff stems, hence a splendid rose for cutting. 2-year, extra large, 50 cents each.

ANDREW SCHWARTZ. A new, distinct and beautiful dark crimson velvet.

BALDWIN, a new Hybrid Tea rose. About the best crimson outdoor bedding rose we now have. It is very strong-growing and healthy, and produces very large and double roses of a glowing carmine color, which are as sweet as a June Rose.

DAVID PRADEL. Its habit is perfection, of strong growth, upright growth, with clean and healthy foliage. A very free bloomer, with large, fragrant flowers; color an exquisite blending of lilac and rose, with a delicate and rich crimson center. An exceptionally fine rose; price, one year old bushes, at 50 cents.

DR. CAZENEUVE, flowers large, nicely formed; dark velvety crimson in color, like Jean Liaubaud; one of the finest of dark hybrid teas. 35 cents each.

GEN. JACQUEMINOT. A rich velvety crimson, changing to scarlet crimson. A magnificent rose equally beautiful in the bud and open. This is the best known of the Hybrid perpetuals and is without a rival in richness of color and fragrance. Very hardy.

GRUSS AN TEPLITZ. We unhesitatingly say that for bedding, no rose we offer will compare with Gruss an Teplitz. It is a perfect sheet of rich crimson-scarlet all summer. When we say that we know of no rose that has such bright colors in it as this variety, we are stating facts. The nearest we can describe is that it is the richest velvety crimson overlaid with the brightest penetrating scarlet.

JUBILEE stands pre-eminently in the lead of the many dark Hybrid Perpetuals. In it are combined all the qualities that make a perfect rose; vigorous growth, perfectly formed flowers and great freedom of bloom.

MADAME CHARLES WOOD, a true perpetual bloomer. The flowers are extra large, very double and full and quite fragrant. Color is a bright fiery scarlet, passing to fine, rosy crimson, elegantly shaded with maroon.

METEOR, a velvety red ever-bloomer of the deepest glowing crimson, as fine as a Hybrid. Flowers very double and petals slightly recurving. A beautiful open rose.

RED HERMOSA. New Bourbon. This is an exact counterpart of the old Hermosa except in color, which is a brilliant red. It possesses all the good qualities of pink Hermosa, and its color will add an elegant and valuable sort to our list of varieties for pot culture, for the home or for the market. 35 cents each.

PINK

BON SILENE. (Tea.) An old-time favorite that everybody knows. Strong grower, fine buds, color crimson rose, forces well.

BRIDESMAID, the pink sport of Catherine Mermet. It is a stronger grower than its parents, has a handsome foliage, and the flowers are a much livelier pink. The most popular pink rose ever introduced.

THE BURBANK, raised by Mr. Luther Burbank of California, known the world over as the "Wizard of Horticulture." The color is cherry-crimson; it is, in other words, the very deepest and brightest pink rose in cultivation. One of the freest bloomers and perfectly hardy.

CATHERINE MERMET. This is a fine pink rose, a good grower and bloomer; one of the best pink roses for outdoor culture.

CLARA WATSON, a beautiful rose of large size, very fragrant and fine form; color salmon pink, blended with blush pink on outer edge of petals, shading to yellow in center. Strong grower and profuse bloomer.

CHAMPION OF THE WORLD, a remarkable new sort, which combines the most desirable qualities. It is a perpetual bloomer, summer and winter. The flowers, which are produced in the greatest profusion, are perfectly double and of perfect shape; they are of a deep rosy pink and delightfully fragrant.

CONTE AMEDE DE FORAS (Tea). Has long finely formed buds, opening into very large flowers. Color is new and beautiful; the shade of pink found only in "Killarney" deepening on the outer petals to pinkish copper, with center of peach pink. This is the grandest of the parti-colored section.

DUCHESS OF ALBANY, red La France; very large, deep pink, full and highly perfumed.

HERMOSA, the best pink bedder. The freest and most perpetual bloomer in existence.

LA FRANCE, perhaps no rose is better known or more highly valued for a garden rose than La France. It is a Hybrid Tea, very beautiful form and color; an early and constant bloomer, producing a wonderful profusion of buds and flowers all through the growing season. It is exceedingly sweet and handsome, and altogether one of the loveliest and most desirable roses one can plant. The color is a delicate shade of peach blossom, changing to amber rose, elegantly tinged with crimson.

MADAM CROCHET. A magnificent pink rose of the Mermet type. The grandest of outdoor bedders in pink, making an enormous growth in one season. Color very bright rose, with shading of yellow in center.

MALMAISON. This is certainly one of the choicest, and as a rose for general cultivation unsurpassed. The color is a beautiful rich, creamy flesh, with a rose center; flowers very large, perfectly double and deliciously fragrant; a strictly first-class rose in every respect.

MME. ELI LAMBERT. The flowers are extra large, very full and double; color is a rich pink on outside petals, as well as on tips of inside petals; the rest of the petals are white, gradually changing to yellow at the base of petals. A vigorous and healthy grower.

MAD TESTOUT. One of the best of the new roses, of the LaFrance type, but clear pink, large free bloomer. A great favorite where known.

MADAME DE VATREY. The Creole beauty, one of the brightest roses. It is the very best rose for general outdoor planting. It makes big, clean buds and opens well, showing the large double flowers to great advantage. The color is deep red, changing to peach pink, with broad shell-like petals; bright and beautiful; in every respect a fine rose.

MME. VERMOREL. Pure Tea. Color rose and golden copper, shading to deep red in the center; has a very large, round bud, opening into an extremely beautiful open flower. Foliage and habit of the best. One of the finest new roses in the fancy color class. 35 cents each.

MRS. B. R. CANNT (new), a fine garden variety of even salmon shade; rose round and full, the form of a good H. P. A very free grower and free bloomer. It flowers as freely and continually as a China rose. It is specially fine in autumn.

MME. MINA BARBANSON (new H. T.), this rose is very beautiful, its strong branching habit being admirable; each side shoot brings a perfect flower on a stiff stem; never shows a weak neck. The upper surface of each petal is shell pink, the reverse soft rose, very free and fragrant.

PAUL NEYRON, deep pink very large and extra fine rose and very free bloomer. A rose without thorns.

SILVER KING. Hybrid Tea. This new rose is a beauty indeed. The bud and flower are of the largest size when fully expanded, cup-shaped, full and double, but the petals are so arranged as not to crowd each other. The color is a clear shell pink, resembling the soft pink seen in sea shells. It is very fragrant. A true everbloomer and hardy everywhere. This is the grandest of all light pink roses.

SOUVENIR DE JEANNE CABAUD, a beautiful rose of most exquisite color. It is very large and full, and its chief beauty is in its open state, when its appearance is that of a pink rose set in a yellow one. I have a large stock of this rose.

STRIPED MALMASON. A striped sport from old Sov. de Malmason. Color a creamy white with rose center, reverse of the petals striped violet and light rose.

PRESIDENT CARNOT. The flowers are large, full and double, exquisitely shaped, with heavy, thick, well-shaped petals. The buds are wonderfully beautiful—long and pointed like Niphetos—perfection in every line. The color is a new, delicate rosy blush, shaded a trifle deep at center of flower. Fragrance delicious; strong grower and free bloomer.

VISCOUNTESS FOLKENSTONE. Hybrid Tea. A very strong grower with strong heavy foliage. The flower is delicately tinted flesh, almost white and lustrous as satin. When full blown it is like a white Peony. We had flowers of this variety measuring 4 inches in diameter. It is a true ever-bloomer and everybody should have it in his garden.

YELLOW

ALLIANCE FRANCO RUSSE (Tea), flowers bright yellow, shading to salmon at the center; bright and pleasing; has a strong upright stem and long bud; vigorous and hardy and a free and continuous bloomer. Very full and double. 40 cents each.

ETOILE De LYON, many new varieties of yellow roses have been introduced since this was a novelty, but none combine more good qualities than this grand old sulphur-yellow rose. Buds are of beautiful shape and flower is very full.

FRANZ DEEGEN (Seedling of Kaiserin), this beautiful Hy. Tea Rose is a fine grower, having dark leathery foliage and the good habit of throwing up numerous heavy canes, each one crowned by a glorious flower of large size, composed of large petals; the outer petals are of about the color of Perle, the inner petals a good orange shade, very deep and rich. It is a constant bloomer, opening its buds freely; a strong healthy grower, not subject to mildew. 35 cents each.

FRANCISKA KRUEGER, a strikingly distinct and handsome rose. One of the very best for open culture. The flowers are deeply shaded copper yellow in color and are of large size. Always in bloom.

GEN. R. E. LEE. Color deep orange yellow. Colors up best in cloudy weather. When well done it is a very rich rose.

HELENE GAMBRIER, this lovely coppery-yellow, Hy. Tea, ever-blooming rose will fill a long-felt want from the fact that everybody has been looking and longing for a good yellow rose that combines vigorous hardiness with rich color and free blooming qualities. This Helene Gambrier does. Flowers are of a delightful shade of deep, rich coppery-yellow.

MADAME MARGOTTIN. An old favorite. Flowers very large. Color dark citron yellow, bright red center, a strong grower and remarkably fine rose in every way.

MARG. DE QUERHOENT. A new Tea rose, long pointed bud on stiff stem. The color is a beautiful china rose, copper salmon and golden yellow; free bloomer; superb. 35 cents each.

MADAME HONORE DEFRESNO. A golden yellow rose. Golden yellow is a color not often found in roses. This superb variety is valuable because of its large, full, double flowers, which are pure golden yellow, and its freedom of bloom and its strong, healthy growth in open ground. Really one of the sweetest and best roses. 35 cents each.

PERLE DES JARDINS, golden yellow; large, double, free bloomer; the finest yellow rose in cultivation.

SUNRISE, has a long and very beautiful bud, but is equally beautiful when fully open. The color cannot be called yellow, but it is nearer yellow than anything else. The inside of the petals is yellow and the outside copper-

colored. It shows great freedom of bloom here, and the plants are very healthy and quick growing. 35 cents each.

SUNSET, a well-known tea rose of large size, double, fragrant, and in color a most remarkable shade of rich golden amber, elegantly tinged and shaded with dark ruddy copper. Great bloomer.

YELLOW COCHET, or Madame Derepas Matrat. Tea. A pure Tea rose, very free growing and hardy in character. It throws up fine strong stems, crowned by solitary buds of grand size. The color is a good sulphur yellow; blooms very large, perfectly double; splendid form and freely produced. It has every quality necessary to make it the ideal yellow bedder, ranking with the white and pink Cochets in value as a summer rose. 35 cents each.

WHITE

COQUETTE DE ALPS, a lovely, pure white rose. Very full and free in flower, erect growth and delicious fragrance.

CLOTHILDE SOUPERT, profusely blooming perfect little rose of pearl white color with beautiful pink center. The flower is very double and lasts long.

FRANCES E. WILLARD. The beautiful new white rose. It has gigantic flowers, is pure white, and a very fine rose for cut flowers; it is born on long stems similar to American Beauty. Price 50 cents each.

KAISERIN AUGUSTA VICTORIA. This is one of the grandest of all roses. It is a strong, vigorous grower, producing buds and flowers of enormous size. Color pure ivory white. We have no hesitancy in saying that this rose is unequalled by any other in its color. A grand garden rose on account of its vigorous growth and hardiness.

MARIE GUILLOT, moderate grower, white, large, very full, none finer.

SNOW FLAKE, one of the most beautiful white roses I have ever grown. The flowers are not very large, but always open to perfection. A very quick growing variety, and one that produces a tremendous amount of flowers the year round.

THE BRIDE. This is decidedly the most beautiful white Tea rose. It is a sprout from Catherine Mermet, with which it is identical in growth and shape of flowers. The flowers are very large and double, on long, stiff stems, of fine texture and substance, and last a long time after being cut. Makes one of the best varieties for corsage wear or bouquets. During extremely hot weather it becomes a pinkish white, at other times a beautiful pure white.

THE QUEEN, a most charming tea rose, pure, snowy white. The flowers are very beautiful in form and always open up fully. Has fine formed buds and is exquisitely sweet.

WHITE COCHET. The charming new white Tea rose. Another new American rose. Its habit is exceedingly strong and upright, like its parent, Madam Cochet. It possesses the same large, beautiful, healthy foliage, and it is a most profuse and constant bloomer. The flowers are of enormous size, round and full, pure, clear, snowy and white throughout, and are delicately Tea scented. It is without doubt the largest white rose, both in bud and flower. 35 cents each.

WHITE MALMAISON. Crown Princess Victoria, Bourbon. (New.) The color is of pure waxy snow white, and sometimes has a lemon tint, and to those who desire a fine double flower when fully expanded; this will meet your wants, as it is beautiful when full blown. Resembles that grand old rose "Malmason" in shape and fullness.

CLIMBERS

BALTIMORE BELLE. Pale blush, variegated carmine, rose and white, very double; flowers in large clusters.

CLIMBING BRIDESMAID. The flowers are simple Bridesmaid. Clear dark pink; in bud they are superb beyond anything we have ever seen. This is one of the most valuable additions to the climbing Tea roses made in recent years.

CLIMBING KAISERIN AUGUSTA VICTORIA, flowers same as the Kaiserin, which is too generally known to require description here. Stout canes, very quickly cover verandas, etc. Always in bloom.

CLIMBING PAUL NEYRON, a grand new rose. Paul Neyron has always been known as the largest rose extant. In climbing Paul Neyron we have this large size, coupled with its bright, fresh pink color in which that rose excels; and it is also a true perpetual bloomer.

CLIMBING MALMAISON. This rose is the exact counterpart in foliage and flower of the old *Suv. de Malmaison*, but it is a rampant climber. See description of *Suv. de Malmaison*.

CLIMBING MARIE GUILLOT. It is one of the most rapid growers, small plants making growth of ten feet in one season. The color is pure snow white, sometimes faintly ringed towards the center with pale yellow. Very hardy and a free bloomer. Price 50 cents.

CLIMBING METEOR, is of strong, vigorous habit of growth, producing in great profusion throughout the season magnificently formed buds and flowers which in color are of a dark velvety crimson, the equal of any rose in cultivation, and possibly more glowing than its illustrious parent.

CLIMBING PERLE DES JARDINS, a sport from *Perle des Jardins*, the most popular of all yellow tea roses. Climbing *Perle* is a strong, vigorous, climbing Tea, with beautiful large, double golden yellow flowers; larger and brighter than *Perle*.

CLIMBING SOUPERT, Clothilde Soupert is one of the most popular roses grown, filling a place all its own, and for which there is no substitute. The climbing Soupert has the same free vigorous habit and strong constitution; it is extremely hardy, withstanding zero weather and producing its fine clusters in profusion. This promises to prove the most valuable climbing sprout of any ever-blooming rose.

CLOTH OF GOLD, clear, golden yellow, large, very full and double, highly fragrant, a very fine climbing rose.

LA MARQUE, purest white, a splendid climber and the freest and finest for winter blooming; has to be trimmed and trained well.

MARECHAL NIEL beautiful deep yellow, very large, full, globular form, sweet, free bloomer; the finest climbing rose. Budded upon *Manetti*. 2 years, 50 cents; own roots, 25 cents each.

MARY WASHINGTON, a hardy, perpetual blooming climber, producing large, double, snow white blossoms in great profusion from spring until frost. It is a sweet and most valuable sort.

PINK PERLE, a splendid variety, with double pearl pink blossoms, when open crimson in bud; foliage leathery and glossy, and very nearly ever-green. The finest wichuraiana Hy. yet produced.

MRS. GUNNEL. Soft, rosy blush, becoming almost white; large clusters; very double.

PRAIRIE QUEEN. The flowers are very large and of a peculiar globular form. Bright rosy-red, changing to lighter as the flower opens; very strong, rapid growth.

PHILADELPHIA RAMBLER. This differs from the crimson rambler in three important points. The color is deep and more intense, the flowers are perfectly double to the center, very durable and of fine substance. The blooms are almost entirely free from the faded look often found in crimson rambler. It is very free in both growth and bloom, and will be found a splendid addition to the crimson rambler section.

REINE MARIA HENRIETTA, a strong-growing climber, making a great pillar rose. Flowers full and well formed; rich brilliant crimson. A fine companion of *Marechal Niel*.

SEVEN SISTERS. Flowers in large clusters, varies in color from white to crimson.

WILLIAM ALLEN RICHARDSON. The coloring of this rose is simply exquisite. The base and back of petals are a bright yellow, the center highly colored, with glowing copper and rose, first-class climber.

PRIDE OF WASHINGTON. Brilliant amaranth, shaded rose center; large clusters; very double.

Climbing, Clinging and Creeping Plants

These long-lived plants are the most popular and best for the South to cover arbors, galleries, old trees, etc., in a very short time.

Diese ausdauernden Kletter - Pflanzen sind die beliebtesten und besten für den Süden und eignen sich besonders für Lauben, Verandas und für Ueber-ranken von alten Bäumen, Zäunen zc.

ANTIGONUM LEPTOPHUS (Queen's Wreath), a splendid plant from Central Mexico, producing rose-colored flowers in racines two feet long. The profusion of bloom is such as to give the resemblance of roses at a distance, hence its name, "Rose de Montana," or Mountain Rose. Will live out in the winter anywhere in the South. The vines are killed by frost, but it quickly shoots up in the spring and develops its flowers from May until frost. This is one of the most lovely vines. Bulbs 15 cents each.

AMPELOPSIS QUINQUEFOLIA. (Virginia Creeper.) A very robust climber, large, pointed foliage; very desirable for arbors.

AMPELOPSIS VEITCHII (Boston Ivy), this plant resembles very much our ivy, but grows very rapidly, covering a large wall in one season. The foliage is small, neat and blood-red color in fall. 25 cents each.

HEDERA DENTA, dentate-leaved ivy. 25 cents each.

HEDERA HIBERNICA, (Irish Ivy). 25 cents each.

TRUMPET CREEPER, a clinging vine of rampant growth; clings to wood or stone walls or trees; very hardy; produces clusters of long trumpet-shaped orange-scarlet flowers from early spring to late fall. 15 cents each.

CHINESE MATRIMONY VINE, when trained is a most vigorous and desirable hardy climber. It sends out numerous side branches, so that it covers a great space in a short time, and every new vine is at once covered with bright purple flowers, which are succeeded by brilliant scarlet berries nearly an inch long. The contrast between the dark-green foliage and shining scarlet fruit is beautiful. 15 cents each.

CLEMATIS PANICULATA, one of the most beautiful of our hardy climbing vines. The flowers are pure white, and are borne in great panicles or clusters of bloom, fairly cover the plant so that it is a mass or sheet of fleecy white. The fragrance is delicious, resembling the English Hawthorne Blossoms, and so subtle and penetrating that a large plant in bloom fills the air with exquisite fragrance. 25 cents each.

POLYGONUM MULTIFLORUM, splendid, fast growing in the South, ever-green, rich flowering, white grapes. 25 cents each.

VINCA HARRISEMII (trailing), two shades of green and gold, strong plants. 15 cents each, \$1.50 per dozen.

VINCA EVERGREEN (trailing), dark-green. 15 cents each, \$1.50 per dozen.

VITIS. (Trailing Grape.) A very strong climber; will cover a porch or arbor in one season; makes long vines, like a wild grape; leaves are thicker and more pointed. The best vine for quick shade. Price 25 cents each.

WISTERIA SINENSIS (Chinese Wisteria), a quick-growing climber, producing long racemes of purple flowers. 25 cents each.

WISTERIA FRUTESCENS (American Wisteria), a vine which covers porch in very short time and is covered in spring with large clusters of blue flowers. 15 cents each.

WISTERIA (Sinensis Alba), flowers borne in long, drooping clusters of pure white color, very elegant. Strong 2-year plants. 40 cents each.

HONEYSUCKLES

EVERGREEN, the quickest-growing of all. It produces very large bunches of flowers, which open white and turn deep yellow. A bunch looks as if it was composed of flowers from two different plants. Extra large, 25 cents; smaller, 15 cents each.

FUCHSIA FLOWERED, a new perpetual-flowering, weeping Honeysuckle. Its flowers are long and trumpet-shaped, beautiful coral red, borne in large clusters and drooping like a Fuchsia. It is a strong, rapid grower, with beautiful leaves. 25 cents each.

HALLEANA. One of the finest honeysuckles grown. Blooms from May till November; is always evergreen and one of the most fragrant; flowers white, changing to yellow. 25 cents each.

JAPAN GOLDEN HONEYSUCKLE, a beautiful evergreen vine with a dark-green foliage, netted and mottled with gold, flowers white and very desirable. The leaves change to dark-green and purple in winter. 25 cents each.

VARIEGATA. Marvelously effective. The large green leaves are striped light yellow, making it the finest thing we know of for corsage bouquets and floral baskets. A unique vine; new. Price 25 cents each.

Ornamental Grasses

No garden is complete without a few of these beautiful grasses. They are so easily transplanted and grow with so little care that everybody can afford to have them. The beautiful plumes they produce keep for years, if cut at the right time and properly dried.



Kein Garten ist vollständig, in welchem diese schönen Ziergräser fehlen und da sie so leicht zu verpflanzen sind und fast gar keine Pflege beanspruchen, so sollte ein Jeder einige pflanzen, da ja auch die Blüten so beliebt für Sträuße und Vasen sind und wenn gut getrocknet, Jahre lang halten.

EULALIA JAPONICA ZEBRINA, (Zebra Grass), bright green blades with yellow bars across them, grows to a height of five to six feet, produces fine, lace-like plumes which last for years if cut when fresh. Perfectly hardy. 15 cents each.

EULALIA JAPONICA VARIEGATA, a variegated hardy grass from Japan. In appearance it somewhat resembles the Ribbon Grass while in a young

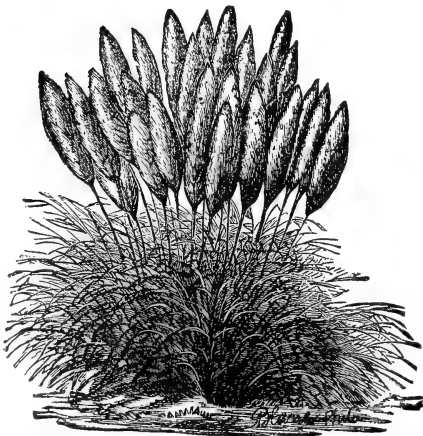
state. It forms compact clumps, six feet —in diameter; its flower stalks are very graceful and numerous. 25 cents each.

EULALIA UNIVITTATAE, plumes silvery white, produced upon very long stems; blooms early, a graceful new variety 4 to 5 feet. 15 cents each.

GYNERIUM ELEGANS, very hardy and graceful, with elegant little plumes, 2 or 3 feet. 15 cents each.

GYNERIUM ARGENTUM (Pampas Grass), enormous bunches of long, handsome, dark-green blades, producing long stalks of silver-white plumes 5 to 6 feet. 25 cents each.

GY. ROI DES ROSES, plumes very compact, of delicate rose color, very fine blooming and compact growing. New variety, 5 to 6 feet. 25 cents each.



LEMON GRASS, came from Malabar, where, as in many other parts of the world, the tea made from it is a favorite beverage. A delightful perfume is extracted from the leaves. Highly valued for its medicinal properties and sweet fragrance, height 2 to 3 feet, large clumps. 25 cents each.

Cannas

Dry, divided roots, the best to transplant. 15 cents each; \$1.50 per dozen, except where noted.

This is one of the most thankful of flowers. It produces its flowers from spring until the frost kills the top of the plant, and in such different and exquisite colors that nobody can help admiring them. The plant needs plenty of watering, and can only be had where there is a plentiful supply of same.



Dieses ist eine der dankbarsten Blumen, da sie vom Frühjahr bis zum Herbst, wenn der Frost ihren Wuchs endet, blüht und zwar in solch frischen, leuchtenden Farben, daß einem ein blühendes Canna-Beet große Freude bereitet. Diese Pflanze gebraucht viel Wasser und kann nur gezogen werden, wo solches zur Verfügung steht.

ALPHONSE EOUVIER. In color this is the most intensely brilliant crimson yet introduced, and it is undoubtedly the best bedding variety for planting in masses. The foliage is rich green; the plant is of strong, robust habit.

AUSTRIA (new), the gorgeous new orchid, flowered canna, a hybrid with "Canna Flaccida" as one parent; flowers of immense size, 5 to 6 inches across. Color, golden yellow.

BURBANK (new). The flowers are of immense size, spreading fully seven inches. Form is semi-double. Color, a rich canary-yellow, with spots of deep, fine crimson toward the inner part of the lower petals. The leaves are of rich green, somewhat of the appearance of large rubber-tree leaves.

CHICAGO. Clear vermilion scarlet, flowers large and nearly flat, forming large heads of bloom. 20 cents each.

BUTTERCUP. The finest yellow canna; an early and constant bloomer. Large, beautifully formed flowers in fine, large, handsome trusses. Color rich golden yellow, suggesting in its rich color the wild buttercups in the fields. Always shows up bright and clear. Price 25 cents each.

MT. BLANC. Grand new everblooming white canna; produces its large white flowers on long stems well above the foliage. It blooms early and profusely the whole season until stopped by freezing. Foliage is a beautiful glossy green, very large and handsome. It is a very vigorous variety and will produce from 20 to 30 flower stalks in one season. 60 cents each, two for \$1.00.

NIAGARA. New crimson and gold canna. Among the multitudes of new cannas Niagara stands pre-eminent. Great handsome trusses, color deep rich crimson, with a wide, irregular border of deep golden yellow; brighter, deeper and richer than any of this class. Price 25 cents.

FLORENCE VAUGHAN, flowers very large and broad, yellow-spotted, bright scarlet; free bloomer and strong habit. This is one of the best varieties in cultivation.

ROSEMAWR. The grandest pink canna. Its enormous masses of flowers and exquisite color attract immediate attention. The color is bright rosy

pink, elegantly modeled with rose and shaded rich golden yellow at the throat. Flowers are more large with well rounded petals; very durable. Price 25 cents each.

PENNSYLVANIA, one of the best of the Italian hybrids, with flowers 6 1-2 inches in diameter, produced with remarkable freedom in many branches and panicles of intense vermilion scarlet overlaid with an orange scarlet sheen. Rich, massive, deep green foliage, 6 to 7 feet, 20 cents each.

TARRYTOWN. The finest of all cannas; no variety approaches it for display. Its peculiar value lies in the earliness with which it blooms, the abundance of flowers produced and the length of time they remain after opening. The flowers are an exceedingly brilliant carmine-crimson, have decidedly more substance than any other variety and last for an unusually long time. Price 25 cents each.

WM. BOFINGER, large, broad, massive foliage of bright green and rich scarlet flowers overlaid with glowing orange scarlet, a color that can be seen as far as the eye will carry. One of the brightest and most attractive colors we have seen. The plant is of strong habit, growing about 5 feet high, very free flowering and decided acquisition. 25 cents each.

Gladiolus

The gladiolus blooms only once, and although its beauty only lasts a short time, it is beloved by everybody who knows it. The flowers are borne on spikes 2 to 3 feet long, and bloom in succession for about 8 to 14 days, the lower flowers blooming first. To have a continuance of bloom the bulbs ought to be planted at intervals every two weeks, from March first until the end of May. My bulbs are extra large, well matured and taken only from the finest varieties.

Bulbs extra large, 1 1-2 inches in diameter, of the finest varieties that money can buy, 5 cents each; 50 cents per dozen; \$2.50 per 100.



Die Gladiolus blüht nur einmal, doch ist die Blüthe eine wahre Pracht, da jeder Stengel eine andere Farbe oder Schattirung hervorbringt. Um lange Zeit von diesen prächtigen Blumen zu haben, sollte man Knollen im März, April und Mai pflanzen. Meine Knollen sind groß und gesund und die feinste Mischung die zu haben ist.

Try a hundred of my extra large and extra fine bulbs, and have the grandest flowers you ever saw of all colors, **Yellow, Crimson, Buff, Salmon, Lemon, Pink, Rose, White, Maroon, Cherry, Scarlet** and in fact all oddly marked sorts that one can think of.

TUBEROSES, in tender beauty and delicious fragrance; this lovely flower has no equal. It is easy to grow and quick and sure to bloom. I have the three best varieties, **Dwarf, Excelsior, Pearl, Orange Flowered** and **New Variegated** leaved. 5 cents each, 50 cents per dozen, \$2.50 per 100.

TRITOMA EVERBLOOMING, the greatest bedding plant ever introduced, surpassing the finest cannas for attractiveness and brilliancy, equal to the gladiolus as a cut flower and blooms incessantly from June until December. Plants are hardy in open ground. Strong roots. 15 cents each, \$1.50 per dozen.

Flowering Plants

CACTUS DAHLIA, another beautiful perennial of great magnificence, raising its brilliantly colored flowers on lofty stems. We have only the very latest European varieties, and a mixture of all the different colors. 10 cents per bulb, \$1.00 per dozen. Colors, pink and crimson.

PAEONIES, magnificent, hardy plants, almost rivaling the rose in brilliancy of color and perfection of bloom. They thrive in almost any soil or situation. 25 cents per bulb.

HARDY GARDEN PINKS, very hardy variety of pinks used for fringing flower beds. They are very sweet scented and of various colors. 5 cents each, 50 cents per dozen.

Carnations

The Carnation excels all other flowers, the rose alone excepted. If planted in the open ground it will bloom all summer, and if taken out and brought indoors at the approach of cold weather, it will bloom in winter.

I have grown very strong plants in the open field, which were well hardened, and which have bloomed here.

MIXED COLORS (Seedlings), grown from the very best Italian seeds. 5 cents each, 35 cents per dozen.

CARNATIONS, in named varieties, crimson, red, white, pink and variegated of the most popular varieties. 15 cents each \$1.50 per dozen.

Violets

5 cents each, 50 cents per dozen.

PRINCESS OF WALES. New single violet. This violet is far ahead of any violet known. Of wonderfully free flowering; with stems from 10 to 12 inches long; large green leaves of a thick leathery texture. The grand single flowers of a true violet color that does not fade, are of round symmetrical form, almost as large as pansies, and of the richest and most delicate fragrance.

CALIFORNIA. New giant flowering violet. Single flowers of the deepest blue and purple and borne on stems 8 to 12 inches long. Can be worn nicely as a corsage bouquet—a difficulty that is overcome in comparison with the other sorts.

SWANLEY WHITE. Of all the white violets this is the best, either for pot culture in the house or bedded out. In pots it grows luxuriantly and is loaded with flowers. It is not an uncommon sight to see as many as fifty large flowers open at once, presenting a beautiful sight, their delicious perfume filling a whole room.

LADY CAMPBELL. This is by far the best double blue violet grown, deliciously fragrant and very prolific. The growth of the plant is vigorous and healthy. Valuable either in pots or planted out. A charming contrast with the white variety, Swanley White.

Pansies

GIANT FLOWERING PANSIES, (*Viola Tricolor Maxima*). I have imported the finest mixed pansy seed that I could get in Europe, and have very strong plants to offer of the same at 15 cents per dozen, \$1.00 per 100.

We have a large stock of Pansies and Carnation Plants.

Flower Seeds

All the flower seeds that I offer are guaranteed to be fresh and of the very highest standard quality. These seeds have been imported by myself from Italy (except those where otherwise stated) and I tested them as soon as they arrived here.

- BALSAMS**, improved rose, extra double. 10 cents per package.
DIANTHUS CHINENSIS, Chinese pinks, very best mixed, 5 cents per package.
DAHLIA VARIABILIS, double mixed. 10 cents per package.
DELPHINIUM (Larkspur). Best mixed. Per package, 10 cents.
MARGARET CARNATIONS, dwarf mixed, brilliant colors. 10 cents per package.
COXCOMB, best mixed. 5 cents per package.
IMPOMEA (Japan Morning Glory). Mixed. Per package, 10 cents.
IMPOMEA (Grandiflora). Mixture. Per package, 5 cents.
MARIGOLD. African mixed, dwarf double. Per package, 5 cents.
MIGNONETTE. Mixed. Per package, 5 cents. a
OXALIS (Torpaeoloides). Per package, 10 cents.
POPPY. Mixed, best single and double. Per package, 5 cents.
PHLOX DRUMMONDII, best mixed. 5 cents per package.
CYPRESS VINE, a most beautiful climber, with delicate dark green, feathery foliage, and an abundance of bright, star-shaped, scarlet and white blossoms. 5 cents per package. (Home grown.)
VERBENAS, giant flowered. 5 cents per package.
WINTER STOCKS, mixture of all colors. 10 cents per package.
ZINNIAS, all colors, mixed. 5 cents per package.

VEGETABLE SEEDS

TOMATO, LEICESTER'S PROLIFIC. I have found this quality to be the best bearer of all the large-fruited tomatoes. The quality of the fruit is the very best. Color is very attractive. 10 cents per package.

TOMATE (President Roosevelt). The earliest, best and most productive of all the round, smooth, large tomatoes existing. Upon several years' trial we found the new tomato, "President Roosevelt," the earliest best smooth tomato up to now existing. It is immensely productive nearly all meat, having very little seed; firm and of very mild flavor. The growth of the plant is very vigorous, 5 to 6 feet high; the foliage large. The bright scarlet solid fruits weigh on an average one pound each; in clusters, 4 to 8. Package 25 cents each.

CUCUMBER PRINCE, a cucumber which is nearly all flesh, and of excellent quality; never gets bitter. Smooth and round and easy to peel. 10 cents per package.

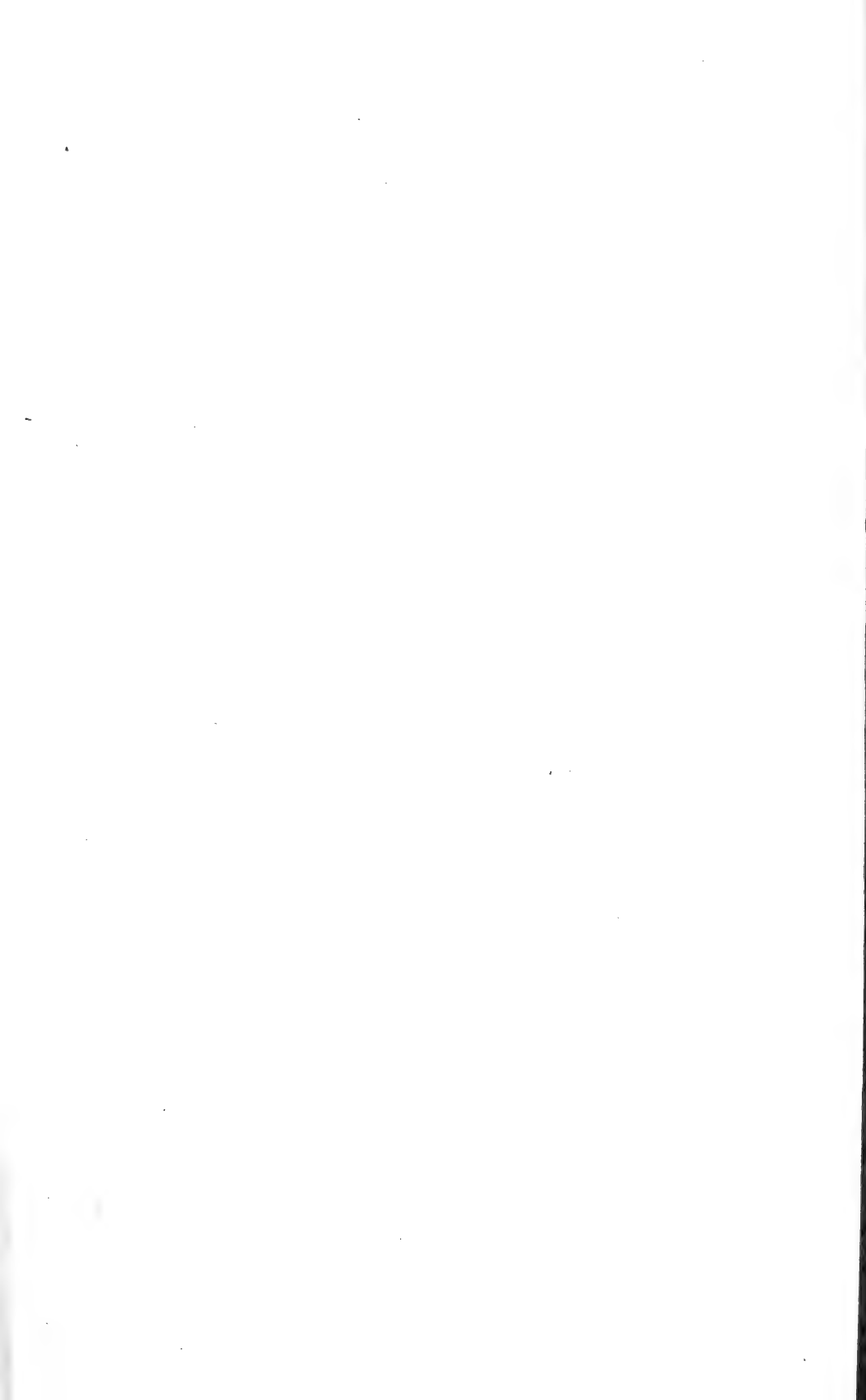
CUCUMBER SEED. (Improved Early White Spine.) An excellent variety for table use; early; grows uniformly straight and smooth; light green with white spines; tender and excellent flavor. One of the most popular. Packet 5 cents, oz. 15 cents, \$1.50 per pound.

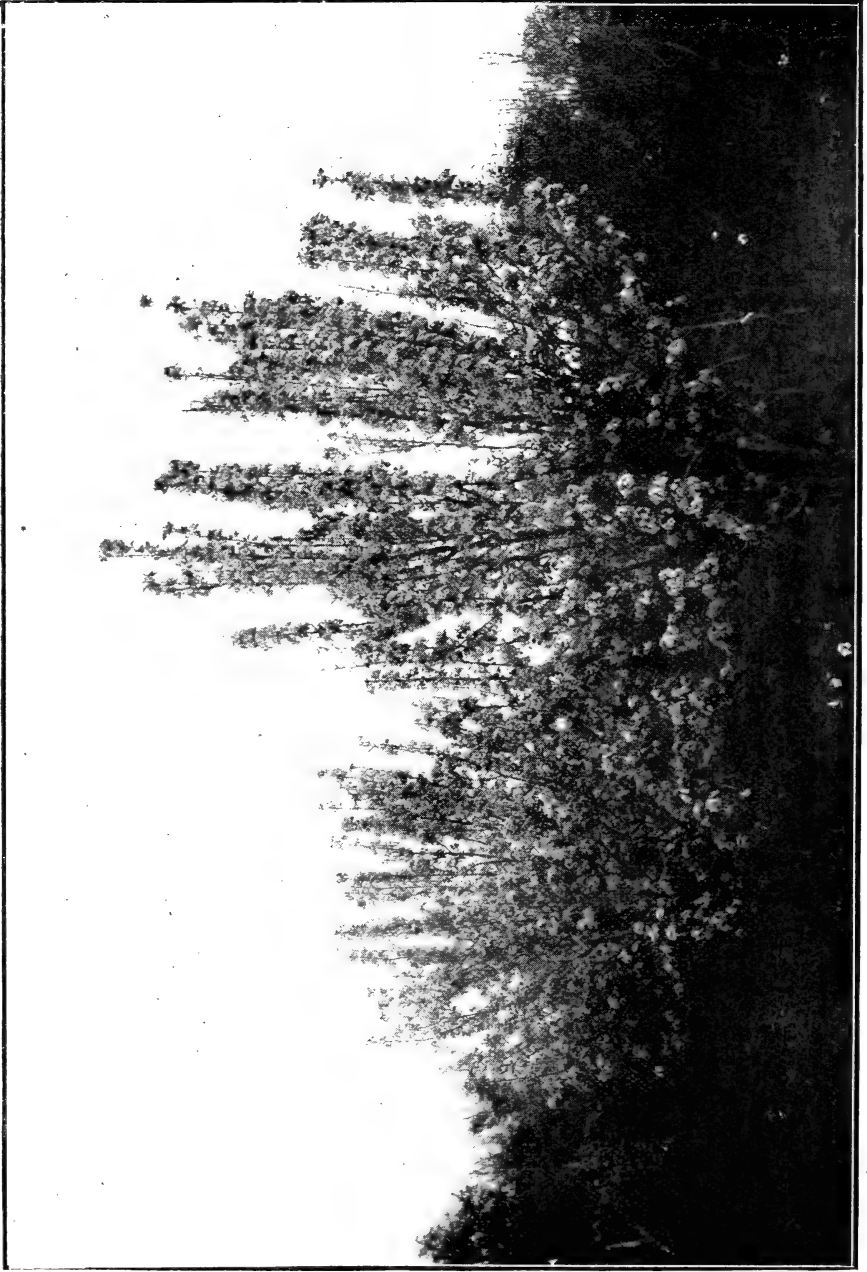
WATERMELON SEEDS

HOLBERT HONEY, is the sweetest and finest of all melons. In quality it is simply delicious, sugary and of a fruity flavor, peculiar to itself. Entirely devoid of all fibrous substances, the sweet flesh melting away in the mouth like honey. The hardy vines are wonderfully prolific. It is very early and the best melon I have ever tasted. 10 cents per package, 25 cents per ounce. Home grown 15 cents per ounce, \$1.00 per pound.

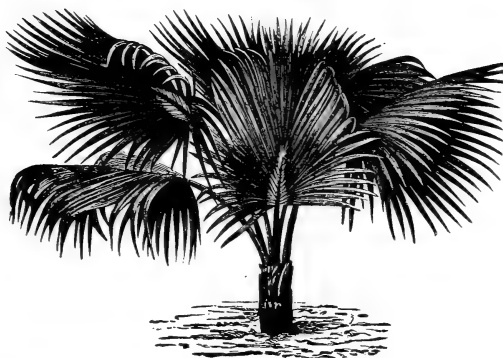
SEED CORN

MEXICAN JUNE CORN. This corn will bring good crop if planted at any time from April to middle of July. It stands our hot, dry summer well, and the seed I offer is grown by me and adapted to our climate, and will bring the best results. \$1.50 per bushel.





SMITH'S HYBRID PEAR TREES IN BLOOM IN THE ORCHARD OF THE COMAL SPRINGS NURSERY



Greenhouse Department

Palms, Ferns, Etc.

Owing to the growing popularity of Palms, we have this season added a complete assortment of them to our nursery trade. They are all grown in pots and can therefore be forwarded the whole year. Measure is from top of pot to top of plant in its natural position.

ARECA LUTESCENS. One of the most beautiful and valuable palms, foliage graceful, bright green with rich golden stems. Price, 8 to 12 inch, 40 cents each; 12 to 18 inch, 75 cents each.

COCOS WEDDELIANA. A most elegant species, adapted for decorations of all sorts. Dwarf and very attractive, shows character when young. Nice plants, 75 cents each.

CYCAS REVULATA. The so-called sago Palm. Perfectly hardy in the South. Has a large number of beautiful pinate, dark green leaves, which uncurl from the top when growing, like ostrich feathers. Splendid plants. 10 to 12 inch, \$1.00 each; 12 to 18 inch, \$1.50 each; larger specimens, \$2.00 and \$3.00 each.

KENTIA BELMOREANA. One of the most valuable house palms grown. Elegant pinate leaves. 8 to 10 inch, showing character, 50 cents each; larger plants, \$1.00 each.

KENTIA FORSTERIANA. The umbrella palm. A grand palm for decorative uses with dark green foliage. Prices same as preceding.

LATANIA BERBONICA... The well-known Chinese fan palm. This is more largely grown as a house palm than any other variety. 12 to 15 inches, 50 cents each; 18 to 24 inches, 75 cents each.

PHOENIX RECLINATA. This is a magnificent species, especially adapted for growth in pots. The drooping leaves are dark green in color and the plant is of easy growth. 4 inch pots, 50 cents each; larger specimens, 75 cents each.

SABAL PALMETTO. The famed cabbage Palmetto. This forms a tall tree, with a large head of fan leaves. This tree can be grown all over the South and is very hardy here. Very decorative for yard planting. One year, 25 cents each; 2 year, with character, 35 cents each.

SEAFORTHIA ELEGANS. A most graceful plant, eminently adapted for decorative uses. Well known everywhere for its feathery elegance and pretty character. The pinate leaves are 2 to 3 feet in length, dark green and perfectly smooth. One foot plants, 50 cents each; 2 foot, \$1.00 each.

WASHINGTONIA PICHARDIIA PELIFERA. The hardiest of the Washingtonia type, quick grower, similar to Washingtonia Felifera in leaf, but more erect. Large plants, weight 10 to 15 pounds, 2 to 3 feet, \$2.00 each; smaller sizes, \$1.50 and \$1.00 each.

FERNS

ADIANTUM. (Maiden hair), *Cuneatum*, the most generally known, quadripinnate foliage. Very fine for any purpose. 25 cents each.

BLECHNUM OCCIDENTALE. A handsome dwarf species, with pointed leaves rooting from runners. Very easily grown and is very desirable. 25 cents each.

LOMARIA GIBBA. A handsome large fern, extremely neat character, forms a trunk. Nice large plants, 50 cents.

NEPHROLEPSIS. *Cordata Compacta.* (Sword fern.) Stocky and dwarf; very fine; dark green leaves. 25 cents each.

N. PIERSONII. The great new plant so much talked about lately. Splendid fronds giving a magnificent appearance. As hardy as Boston fern. 50 cents each.

N. WITTBOLDI. A stocky plant said to be a sport of the Boston fern. Is equally as hardy as the Boston and has broad waxy fronds. 50 cents each.

DECORATIVE PLANTS

ASPARAGUS PLUMOSUS. A very fine, fern-leaved, climbing plant, particularly nice for bouquet work. It is a splendid pot plant and may be kept in a bushy shape for a long time. Nice young plants, 50 cents each.

PANADUS UTILIS. The well-known "Screw Pine," so called from the screw-like arrangement of the leaves around the stalks. Leaves green, with small red spines along the edges. 50 and 75 cents each.

FICUS ELASTICA. Rubber tree. A valuable rubber producing tree, with magnificent broad leaves and red sheaf leaths. Is well known as a decorative plant for apartments, and is of easy growth. Price, \$1.00 each.

NERUM. Oleander. We have them in the following colors. Double red, pink, double white and double yellow. Nice plants, 40 cents each.

AUCARIA EXCELSA. Norfolk Island pine. This beautiful plant is well adapted to house culture and is almost indispensable as a decorative plant. The dark green branches are arranged in symmetrical whorls, producing a very unique and graceful appearance. 8 to 12 inches, \$1.75 each.

CHRYSANTHEMUMS

Including all of the very best named varieties, in all colors. 10 cents each, \$1.00 per dozen.

GERANIUMS

Double and single, named varieties, all colors. Price same as preceding.

FOR THOSE WHO IRRIGATE

Those who irrigate should plant fruit trees extensively. Not alone the fruit crop can be saved by irrigating the trees at the right time, but the fruit will also develop better and is therefore more salable and brings the best price.

As we are aware, most failures in fruit growing are due to long droughts in early spring and summer, and by supplying the trees with the necessary water at the right time the best results are obtained. Irrigators can successfully plant 2 to 3-year-old trees and thus save several years growing. If fruit is grown for market it is advisable not to plant too many varieties, but as many of the most productive ones as possible.

PRUNING SHEARS, Wiss, hand made. These are the best Pruning Shears made. No. 109, 9 inches long, \$2.25 each; No. 110, 10 inches long, \$2.50 each.

PROPER DISTANCES OF PLANTING

Peach, Apricots, Nectarines	12 to 16 feet each way
Plums, Cherries	10 to 15 feet each way
Pears	18 to 20 feet each way
Persimmons	10 to 12 feet each way
Apples	16 to 20 feet each way
Grapes	6 to 8 feet each way
Dewberries and Blackberries, rows 4 to 6 feet apart, 2 feet in row.	

NUMBER OF TREES OR PLANTS TO THE ACRE

Distance apart.	No. of Trees.
3x3 feet	4,840
6x6 feet	1,210
8x8 feet	680
10x10 feet	435
12x12 feet	302
15x15 feet	193
16x16 feet	170
18x18 feet	134
20x20 feet	108
25x25 feet	69

Below I describe a few insecticides for destroying insects, rots, San Jose Scale and all contagious diseases. I have been using these insecticides for many years and can cheerfully recommend them to all of my customers who have had trouble in their orchards and farms by insects and plant diseases.

Birds are getting less and less every year and insects more and more, and it has become necessary to destroy them by spraying.

The price for insecticides is f. o. b. New Braunfels, Texas, and is just what it cost us.

PRICES ON BOWKER'S GERMO-INSECTICIDES

BOXAL, a combined insecticide and fungicide for use on potatoes, kills bugs and beetles and prevents blight and rot; takes the place of Paris green

and Bordeaux mixture, and is superior to both. Sticks to the vines throughout the season. 5 pound can, 60 cents.

PYROX, a combined insecticide and fungicide, for use on fruit trees, shrubs and vines. Kills leaf and fruit eating insects and prevents scab, rot, mildew, etc. Superior to Bordeaux and Paris green, safer and more effective. Sticks to and works all the time. 5 pound can, 90 cents.

BODO, a valuable remedy for rot, rust, blight and fungus diseases in general; of great strength and much superior to home-made Bordeaux mixture. Ready for use when needed. 5 pound can, 60 cents.

DISPARENE, the most powerful remedy for all leaf-eating insects; will not injure foliage, and adheres throughout the season. 2 pound can, 60 cents.

TREE SOAP, a sure remedy for the San Jose Scale and all other scales or lice on plants or trees. Contains caustic potash. 5 pound can, 60 cents.

INSECT EMULSION, a clean and cheap remedy for lice, house plants or animals. 1-quart can, 60 cents.

BODLIME, prevents moths, caterpillars and other insects from ascending trees. A substitute for printer's ink. 5 pound can, 90 cents.

If large quantities are desired will furnish prices on application.



Testimonials

The following are voluntary testimonials from a few of our customers. If the reader is not yet acquainted with our business methods, good packing and care exercised in filling orders to the entire satisfaction of purchaser, he can get such information from these testimonials. As the persons who wrote them can tell you, they have not been requested by us, but are received annually in large numbers. We will be pleased to furnish full addresses of the writers to all who wish to place an order with us, and who desire some information from responsible persons who have planted our trees.

Palentine, Texas, April 25, 1905.

Mr. Otto Locke, New Braunfels, Texas.

Dear Sir:—I am pleased to advise you that the sixteen rose bushes I bought from you in January are all in full bloom; not one died and I am well pleased with them.

Yours respectfully,

MRS. C. A. B.

Laredo, Texas, April 19, 1905.

Mr. Otto Locke, New Braunfels, Texas.

Dear Sir:—Some time ago I sent you an order for trees, ferns and roses. I received all in good condition. Thanking you kindly for the roses, which are doing so nicely, I remain,

Respectfully,

MRS. A. McD.

San Antonio, Texas, March 21, 1905.

Mr. Otto Locke, New Braunfels, Texas.

Dear Sir:—I beg to acknowledge receipt of the trees, which are very satisfactory, and to thank you for your prompt attention to this matter.

Yours truly,

N. T.

CONVENT AND ACADEMY OF THE INCARNATE WORD,
BRACKENRIDGE VILLA.

San Antonio, Texas, February 14, 1905.

Mr. Otto Locke, New Braunfels, Texas.

Dear Sir:—The evergreens and shrubs were received a few days ago in good condition. We are well pleased with them, as also with the fruit trees shipped some time back. Many thanks for the extras.

Very respectfully yours,

REV. F. S.

Lockhart, Texas, February 20, 1905.

Mr. Otto Locke, New Braunfels, Texas.

Dear Friend:—Please accept my thanks for the nice lot of trees and shrubs, and also premiums you have sent. I am so well satisfied with my purchase that you may ship some more, as per enclosed order. You may rest assured that I will always put in a good word for the Comal Springs Nursery to my friends. With best wishes,

Your friend,

W. P.

San Antonio, Texas, February 8, 1905.

Mr. Otto Locke, New Braunfels, Texas:

Trees were received in good order a few days ago. Many thanks for the extras. Part of the trees were for a friend, and if any of the trees fail to grow it is certainly our fault, as they are very vigorous.

Yours respectfully,

ED. S.

El Paso, Texas, February 6, 1905.

Mr. Otto Locke.

Dear Sir:—I received my trees in excellent condition, and am very well pleased with them. I thank you for the prompt attention to my order, also for the extras. I will recommend your nursery to my friends and send you another order in a few days.

Respectfully yours,

E. J. B.

Del Rio, Texas, December 3, 1904.

Mr. Otto Locke, New Braunfels, Texas.

Dear Sir:—Please find enclosed check to balance account. Trees came to hand in first-class condition and all are planted.

Yours respectfully,

B. A. B.

Seguin, Texas, January 29, 1905.

Mr. Otto Locke, New Braunfels, Texas.

Dear Sir:—I wish to let you know that the trees which I received from you last year grew nicely. I am well pleased with them. Out of the forty-five trees I planted, I lost only one. I will recommend your nursery to all my friends.

Respectfully yours,

L. A. W.

Eagle Pass, Texas.

Mr. Otto Locke, New Braunfels, Texas.

Dear Sir:—The rose bushes and evergreens you sent me are fine. Will give you another order soon.

Sincerely,

MRS. L. D.

San Antonio, Texas, January 19, 1905.

Mr. Otto Locke.

Dear Sir:—Trees arrived in splendid condition. Many thanks for the extra plants. The trees I got from you last year are all doing well. Be sure I will recommend your nursery to my friends.

Yours sincerely,

MRS. T. J. S.

Moore, Texas, January 21, 1905.

Mr. Otto Locke, New Braunfels, Texas.

Dear Sir:—I received trees, etc., all O. K. and am very much pleased with them. Also accept my sincerest thanks for extras which you included in order.

Sincerely yours,

MRS. A. B.

San Antonio, Texas, January 17, 1905.

Mr. Otto Locke, New Braunfels, Texas.

Dear Sir:—I received the trees in good condition, and have them all planted. They are much better than I had expected. I thank you for the extra trees, and recommend your nursery to all my relatives and friends.

Yours respectfully,

E. B. S.

Gregory, Texas, January 21, 1905.

Mr. Otto Locke, New Braunfels, Texas.

Dear Sir:—The trees came in splendid order, and I am much pleased with them. Accept my thanks for the extras. Yours truly,

A. C. P.

Yorktown, Texas, January 10, 1905.

Mr. Otto Locke, New Braunfels, Texas.

Dear Sir:—Trees and dewberries received. Accept our thanks for prompt shipment, also for the extra trees. Respectfully,

MRS. W. W., Jr.

Del Rio, Texas.

Mr. Otto Locke:

The fruit trees I received of you last year are all growing and are as large as three-year-old trees of my neighbors, who bought their trees from other nurseries. Ship today's order soon, and oblige.

Respectfully,

MRS. J. K. P.

San Antonio, Texas, December 6, 1904.

Mr. Otto Locke, Prop. Comal Springs Nursery,
New Braunfels, Texas.

Dear Sir:—We are in receipt of your favor of the 4th inst., and in reply, beg to inform you that the shipment of trees for our parks arrived in good condition, and same are perfectly satisfactory.

Yours truly,

L. S. B. ASS'N.

Per H. B., Manager.

Corpus Christi, Texas, February 2, 1905.

Dear Sir:—Received my trees today. I am very much pleased with them. Many thanks for the extra plants. I am recommending your nursery here.

Yours truly,

MRS. CHAS. A. M.

Cline, Texas, November 22, 1904.

Mr. Otto Locke.

Dear Sir:—I received the roses and palms in good order, and am much obliged for the pilon.

Yours respectfully,

MRS. F. V.

Devine, Texas, January 17, 1905.

Mr. Otto Locke, New Braunfels, Texas.

Dear Sir:—The trees were received in fine condition; they are fine trees and I am well pleased with them. I shall recommend your nursery to all my friends and neighbors all I can. Many thanks for the extra ones.

Very respectfully,

J. J. W.

Campbellton, Texas, December 22, 1904.

Mr. Otto Locke, New Braunfels, Texas.

Dear Sir:—The goods received yesterday in first-class condition. Many thanks for your promptness, and extra plants. Respectfully,

C. T. T.

Batesville, Texas, November 24, 1905.

Mr. Otto Locke, New Braunfels, Texas.

Dear Sir:—The roses came all right and I consider them very fine plants. Accept my thanks for the arbor vitæ *gratis*. The fruit trees bought of you two years ago have made a very fine growth, and are all doing well. I will speak a good word for you whenever I can, as I am well pleased with your treatment.

Yours truly,

R. I. E.

Nordheim, Texas, December 22, 1904.

Mr. Otto Locke, New Braunfels, Texas.

Dear Sir:—I received the trees ordered from you in good condition—they were well packed and all nice trees. Many thanks for the extras. I will recommend your nursery to my friends.

Yours truly,

G. F.

Uvalde, Texas, December 12, 1904.

Mr. Otto Locke, New Braunfels, Texas.

Dear Sir:—Enclosed please find order for fruit trees. Last year I ordered some trees from you when I lived in Sabinal; I was well pleased and the trees did well. I now live in Uvalde and am improving a new home. I think your trees are better adapted to this country than trees from any other nursery. I got some trees from Northern nurseries; they all failed and cost so much more. I recommend your trees to everyone thinking of planting nursery stock.

Yours truly,

T. C. B.

Kenedy, Texas, May 12, 1905.

Mr. Otto Locke, New Braunfels, Texas.

Dear Sir:—The roses I bought of your nursery are all doing well and I did not lose a single plant; they are all blooming, and I thank you for the nice selection.

Yours very truly,

MISS D. B.

Lampasas, Texas, March 15, 1905.

Otto Locke, New Braunfels, Texas.

Dear Sir:—Enclosed please find money order for \$31.50, in payment of invoice. I wish to thank you for the nice stock, the good packing and the prompt shipment.

Yours truly,

F. M.

Runge, Texas, January 17, 1905.

Mr. Otto Locke, New Braunfels, Texas.

Dear Sir:—I am in receipt of your shipment of apple trees and evergreens, and to say "I am well pleased with them" does not half express it. I will do all I can for you in advertising your nursery.

Yours very truly,

R. C. T.

San Antonio, Texas, December 1, 1904.

Mr. Otto Locke, New Braunfels, Texas.

Dear Sir:—The trees ordered came promptly and in excellent condition. Accept my thanks for the arbor vitæ *gratis*. If anyone I know of wants to plant trees, I will recommend the Comal Springs Nursery to them.

Yours truly,

MRS. G. A. D.

Elmendorf, Texas, February 3, 1905.

Mr. Otto Locke:

Please send me the following plants by express * * All roses I received from you two years ago are doing nicely. I never saw roses bloom so profusely.

MRS. J. G. S.

San Antonio, Texas, March 11, 1905.

Mr. Otto Locke, New Braunfels, Texas.

Dear Sir:—The trees received in good condition, and I am very much pleased with them. I thank you for the extra ones—you are very generous. The trees are fine and well worth their price; so much so, that I will recommend you whenever I can.

Yours truly,

MRS. A. G. T.

San Antonio, Texas, February 25, 1905.

Mr. Otto Locke, New Braunfels, Texas.

Dear Sir:—The trees were received in good condition, and herewith enclosed you will find check for the attached invoice. Please accept our most sincere thanks for the arbor vitæ which you so kindly send us *gratis*. Respectfully yours,

A. of O. L. of T. L.

San Antonio, Texas, September 29, 1904.

Mr. Otto Locke, New Braunfels, Texas.

Dear Sir:—I must thank you for the fine fruit trees you sent us last year; they are all growing nicely, and also the roses are in full bloom—the handsomest roses I ever saw. I wish you success, and will recommend your business to all my friends.

Yours very truly,

MRS. E. K.

San Marcos, Texas, March 14, 1905.

Mr. Otto Locke, New Braunfels, Texas.

Dear Mr. Locke:—The trees came in perfect condition, and it afforded my husband and myself great pleasure to plant them on our grounds; they are very satisfactory and I feel sure that they will all live. Allow me to thank you for the extra trees you send us. Wishing you success, I beg to remain,

Yours very truly,

MRS. T. K.

C. Porfirio Diaz, Mexico, March 7, 1905.

Mr. Otto Locke, New Braunfels, Texas.

Dear Sir:—Enclosed please find my check to balance account, of which please acknowledge receipt. Please send me a catalogue, as many of my friends want to send for trees after seeing those you sent me.

Yours very truly,

D. G. G.

Cotulla, Texas, February 26, 1905.

Mr. Otto Locke, New Braunfels, Texas.

Dear Sir:—Enclosed please find money order, for which please send me the following plants * * * I was well pleased with my last order; many thanks for the extra ones.

Yours respectfully,

MRS. R. A. G.

Yorktown, Texas, February 9, 1905.

Mr. Otto Locke, New Braunfels, Texas.

Dear Sir:— The orange trees and dewberries came in good condition and I planted them at once. I am well pleased with the first shipment of fruit trees; they were large and thrifty, and well packed.

Yours very truly,

F. B.

Corpus Christi, Texas, February 8, 1905.

Mr. Otto Locke, New Braunfels, Texas.

Dear Sir:— The plants have been duly received and we are well pleased with them. Many thanks for the extras. I have loaned my catalogue out and you will get more orders from here. Very truly yours,

C. G. H. von B.

Palestine, Texas, February 6, 1905.

Mr. Otto Locke, New Braunfels, Texas.

Dear Sir:—I received my trees and was well pleased with them.

Yours very truly,

MRS. N. R. W.

Atascosa, Texas, December 3, 1904.

Mr. Otto Locke, New Braunfels, Texas.

Dear Sir:—I wish to let you know that the trees have arrived in good condition, and I enclose check for same. Thanking you for the extra plants, I remain,

Yours very truly,

J. F. W. M.

Beaumont, Texas, December 7, 1904.

Mr. Otto Locke, New Braunfels, Texas.

Dear Sir:—I herewith enclose postal order for \$—, amount of your two bills. Have just opened the plants— they are in fine condition and I am more than pleased with them. Shall want some more plants later, and will recommend your nursery to all my friends. Thank you for the fine extra roses.

Yours very truly,

J. G. B.

San Antonio, Texas, January 19, 1905.

Mr. Otto Locke, New Braunfels, Texas.

Dear Sir:— Enclosed please find check for the trees you sent us. They arrived safe and in fine condition; are very satisfactory. Thanking you for your good selection and *gratis*, I beg to remain, Your truly,

H. R. S.

D'Hanis, Texas, February 3, 1905.

Mr. Otto Locke, New Braunfels, Texas.

Dear Sir:— The roses you sent us last year are doing fine and are admired by all who see them, especially the Am. Beauties, which bloomed wonderfully.

Yours truly,

MRS. M. K.

Comfort, Texas, January 19, 1905.

Mr. Otto Locke, New Braunfels, Texas.

Dear Sir:— The trees arrived in good condition, and it is the finest lot of trees I ever bought. I thank you very much for the extra ones.

Yours very truly,

P. I.

El Paso, Texas, January 1, 1905.

Mr. Otto Locke, New Braunfels, Texas.

Dear Sir:—The trees arrived safe and I am well pleased with them. Many thanks for promptness. I have handed your catalogue to several neighbors and have recommended your nursery to them.

Yours truly, MRS. A. S.

San Antonio, Texas, January 10, 1905.

Mr. Otto Locke, New Braunfels, Texas.

Dear Sir:—The trees arrived in excellent condition and are very satisfactory. Many thanks for the nice trees. Please send your catalogue to the following addresses, * * * and oblige. Yours very truly,

MISS L. C. B.

Seguin, Texas, January 9, 1905.

Mr. Otto Locke, New Braunfels, Texas.

Dear Sir:—Enclosed please find check to balance account. Trees came in splendid condition. Many thanks for arbor vitæ.

Yours truly, T. B.

Eagle Pass, Texas, January 21, 1905.

Mr. Otto Locke, New Braunfels, Texas.

Dear Sir:—I have received the trees in good order; many thanks for the extra ones. I will recommend your nursery to my friends. I have been buying from another nursery, but it seems they send them too dry—they will not grow.

Yours truly, J. B.

San Antonio, Texas, January 13, 1905.

Mr. Otto Locke, New Braunfels, Texas.

Friend Otto:—The trees and roses arrived all O. K., and wish to assure you that I am more than pleased with them. I thank you for the good assortment.

Your friend, R. W. H.

Nordheim, Texas, February 1, 1905.

Mr. Otto Locke, New Braunfels, Texas.

Dear Sir:—My assortment of plants from your nursery was received today. The plants had nice roots and they show up well in every respect. Kindly accept my sincere thanks for the additional *gratis*.

Yours respectfully, C. W. G.

D'Hanis, Texas, February 5, 1905.

Mr. Otto Locke, New Braunfels, Texas.

Dear Sir:—Enclosed please find order for seeds. The trees received in good shape. They are certainly nice trees. With many thanks for your prompt shipment, I remain,

Yours very truly, A. E. N.

Katemcy, Texas, December 16, 1904.

Mr. Otto Locke, New Braunfels, Texas.

Dear Sir:—I received the bill of trees in the best possible shape, and was more than pleased with them. Many thanks for the nice *gratis*, and for the prompt attention. I herewith send you another order for trees.

Yours truly, L. F. D.

Austin, Texas, December 28, 1904.

Mr. Otto Locke, New Braunfels, Texas.

Dear Sir:—The trees arrived in splendid condition.

Very truly yours, G. V. L.

Zequisse.

Rhineland, Knox County, 17. April 1905.

Herrn Otto Locke, Neu-Braunfels, Texas.

Die Bäume, die ich von Ihnen kaufte, kamen gut an und wuchsen alle gut an. Ich habe in den letzten vier Jahren von verschiedenen Baumschulen gekauft, jedoch nur mit Locke's Bäume Erfolg gehabt. Werde in Zukunft keine andere mehr kaufen. Ich empfehle Ihre Bäume Jedem der Bäume pflanzt.
Achtungsvoll

F. F.

Jowa Park, Texas, 16. März 1905.

Herrn Otto Locke, Neu-Braunfels, Texas.

Werther Freund! — Die Bäume erhalten und verpflanzt. Besten Dank für gute Waare.
Dein Freund

E. E. G.

Yorktown, Texas, 2. Januar 1905.

Herrn Otto Locke, Neu-Braunfels.

Anbei schicke Post-Anweisung für die gesandten Bäume. Dieselben kamen hier so wohl verpackt und so wohl erhalten an und da dieselben sofort gepflanzt wurden, so hege ich keinen Zweifel, daß sie gut gedeihen werden. Nochmals meine Anerkennung über die Frische der Bäume und deren Verpackung ausdrückend.
Achtungsvoll Ihr

B. R. B.

Marwell, Texas, 30. Januar 1905.

Herrn Otto Locke, Neu-Braunfels.

Werther Herr! — Habe Ihre generöse Sendung erhalten; recht herzlichen Dank. Werde Ihre Baumschule bestens empfehlen, doch ist das in der hiesigen Gegend kaum mehr nöthig. Ihr Geschäft ist nämlich allgemein bekannt und geachtet. Ich bin erst kurze Zeit hier, habe aber schon viel Anerkennendes über dasselbe gehört.
Herzlich grüßend Ihr

Rev. G. S. I.

Sealy, Texas, 27. Februar 1905.

Herrn Otto Locke, Neu-Braunfels.

Werther Herr! — Ich habe die Bäume sofort nach Empfang der Karte erhalten und sofort gepflanzt. Die Bäume kamen in bester Verpackung hier an und waren ungewöhnlich schöne Exemplare, namentlich die Magnolias. Mit der Versicherung, Ihre Baumschule bei passender Gelegenheit zu empfehlen, zeichnet
Achtungsvoll

Carl T.

Yorktown, Texas, 22. Januar 1905.

Werther Herr Locke! — Habe Bäume und Rosen in bester Ordnung erhalten. Jeder ist gut zufrieden damit. Meinen besten Dank für Zugabe.
Achtungsvoll

Mrs. A. B.

Giddings, Texas, 23. Januar 1905.

Werther Herr Locke! — Die bestellten Rosen etc. habe ich erhalten. Das ist freilich etwas anderes als die fingerlangen Rosen, wie nördliche Gärtner sie zu versenden pflegen. Besten Dank für die reiche Zugabe. Mit freundlichem Gruß bis auf weiteres.

W. M.

Cat Springs, Texas, 16. November 1904.

Geehrter Herr Locke! — Herzlichen Dank für die mir zugefandten schönen Bäume. Sie sind zu aller Zufriedenheit ausgefallen, auch danke ich Ihnen für die gratis gesandten Pflanzen. Werde Sie bestens empfehlen, wo immer sich eine Gelegenheit bietet.

Achtungsvoll

E. A.

Meiberville, Texas, 5. Dezember 1905.

Werther Herr Locke! — Die mir gesandten Bäume sind wohlbehalten hier angelangt. Wir hatten gerade Gelegenheit Vergleiche anzustellen, da eine andere Baumschule hier ablieferte. Die Bäume kamen ohne Wurzelbedeckung wie Feuerholz hier an; scheinen schon eine weite Reise gemacht zu haben. Ihre Bäume hingegen waren sorgfältig verpackt und ausgezeichnete Waare, so daß alle Käufer sehr zufrieden sind und sich im kommenden Jahre viele neue Kunden melden werden. Mit besten Grüßen bin ich Ihr ergebener

P. G. R.

Ellinger, Texas, 20. Februar 1905.

Werther Herr Locke! — Für die mich in jeder Weise völlig befriedigende Sendung von Obstbäumen und Rosen möchte ich Ihnen hiermit besten Dank sagen; ebenso im Namen der Gemeinde für die schönen Lebensbäume, welche Sie für die Kirche schickten. Gerne werde ich mich bei Bedarf wieder an Sie wenden und auch Ihr Geschäft weiter empfehlen. Mit freundlichem Gruß

R. H.

Salttillo, Mexiko, 20. Februar 1905.

Herrn Otto Locke, Neu-Braunfels.

Ihre letzte Sendung Bäume ist ausgezeichnet ausgefallen und hoffe damit ein gutes Resultat zu erzielen.

Freundschaftlich

A. G.

St. Bernard, Alabama, 14. Dezember 1904.

Herrn Otto Locke, Neu-Braunfels.

Werther Herr! — Die Magnoliabäume, die ich bei Ihnen bestellt, habe ich richtig erhalten. Es sind sehr schöne junge Bäume und ich bin mit denselben auch sehr zufrieden. Mit herzlichem Dank für Ihre Gütigkeit.

Achtungsvoll

Fr. A., O. S. B., St. Bernard College.

Lytle, Texas, 2. April 1905.

Herrn Otto Locke, Neu-Braunfels.

Werther Herr! — Ich theile Ihnen mit, daß ich die bestellten Bäume erhalten habe, auch sage ich Ihnen meinen besten Dank für die Extra-Bäume, welche Sie mitgeschickt haben. Alle Pfirsich- und Pflaumenbäume, welche Sie mir in 1902 sandten, hingen in 1904 voller Frucht. Ich bin sehr zufrieden mit den Bäumen.

Achtungsvoll

E. Z.

Doatum, Texas, 9. Februar 1905.

Werther Herr Locke! — Ihre Bäume sind sehr gut verpackt angekommen, wie die zwei Jahre zuvor. Ich werde Ihre Baumschule weiter empfehlen.
Achtungsvoll T. S.

Weimar, Texas, 5. Februar 1905.

Werther Herr Locke! — Für die so schnell und gut ausgeführte Bestellung von Obstbäume sage ich hiermit meinen herzlichsten Dank. Ich bin sehr zufrieden damit. Empfehlung nicht nöthig, da Otto Locke hier bekannt ist, alle Käufer zufrieden zu stellen.
Achtungsvoll

Ferd. S.

Marble Falls, Texas, 11. Januar 1905.

Werther Herr Locke! — Wir freuen uns über die kräftigen und gesunden Rosen, die Sie uns sandten. Ganz gewiß werden wir Ihr Geschäft weiter empfehlen.
Achtungsvoll

Frieda H. F.

Palestine, Texas, 12 August 1904.

Geehrter Herr Locke! — Erhielt heute die bestellten Bäume zc. wohlbehalten und sage meinen besten Dank für Ihre reelle Bedienung. Mit besten Dank, achtungsvoll

Mrs. G. A. von D.

Bellville, Texas.

Werther Herr Locke! — Bitte schicken Sie mir die bestellten Bäume. Alle früher von Ihnen bezogenen Bäume thuen sehr gut.
Achtungsvoll

F. S.

Dorktown, Texas.

Werther Herr Locke! — Die Bäume, die Sie mir im letzten Jahre sandten sind sehr gut gewachsen und bin sehr zufrieden damit. So bestelle ich wieder eine Sendung.
Achtungsvoll

H. G. G.

Walling, Texas, 18. Dezember 1905.

Werther Herr! — Die Bäume habe ich richtig erhalten und bin sehr zufrieden damit. Es sind alles Prachtbäume. Ich werde Ihre Bäume empfehlen, wo ich nur kann. Sie sind mir letztes Jahr empfohlen worden und so werde ich Sie weiter empfehlen, welches ich mit gutem Gewissen thun kann. Hiermit nehmen Sie meinen besten Dank, auch für die Extra-Bäume. Es zeichnet
Achtungsvoll

F. S.

Cat Springs, Texas. 26. November 1904.

Werther Herr! — Habe die Bäume in bester Verfassung erhalten. Meinen besten Dank für Extra-Zugabe.
Achtungsvoll

M. H. D.

San Buenaventura, Texas, 20. Februar 1905.

Werther Herr! — Die Bäume habe ich in sehr gutem Zustande erhalten. Es sind alles ausgesucht schöne Bäume und danke ich bestens, ebenfalls für Extra-Beilage. Nächstes Jahr werde ich mich wieder an Sie wenden.
Achtungsvoll

M. T.

Gonzales, Texas, 1905.

Geehrter Herr Locke! — Ich will Sie hiermit benachrichtigen, daß die Bäume in bester Verfassung angekommen sind und meinem Wunsche entsprechend. Werde Sie meinen Nachbarn und in dieser Umgegend bestens empfehlen. Diese Qualität Bäume empfiehlt sich selbst in Gonzales County.

Achtungsvoll

H. G.

Joakum, Texas.

Werther Herr Locke! — Die Bäume und Ziersiräucher, die Sie mir vor 2 Jahren schickten, sowie die letztjährigen, gedeihen vortrefflich und sind wir gut zufrieden damit. Beiliegende Bestellung für Bäume zc.

Achtungsvoll

T. S.

Smith Alp, Texas, 9. Januar 1905.

Geehrter Herr! — Uebersende Ihnen hiermit nochmals eine Order. Die letzte Sendung ist in sehr gutem Zustand hier angekommen und meine Nachbarn sind sehr zufrieden mit den schönen Bäumen. Mit Gruß

Achtungsvoll

F. H.

Hallettsville, Texas, November 1904.

Geehrter Herr Locke! — Die Bäume in sehr gutem Zustand erhalten und danke Ihnen für prompte Bedienung.

Achtungsvoll

F. U.

Sealy, Texas, 12. März 1905.

Werther Herr Locke! — Ich habe die schönen großen Arbor Vitaes und Obstbäume erhalten und sage Ihnen herzlichen Dank dafür. Gebe Ihnen die Versicherung, daß Sie an mir ein nicht unbedeutendes Advertising Medium haben, denn ich werde Ihre Bäume weiter empfehlen. Mit Gruß und Achtung

Ihr

L. H.

Plano, Texas, 5. Januar 1905.

Herrn Otto Locke, Neu-Braunfels.

Werther Herr! — Ihre Bäume in bestem Zustande erhalten; besten Dank und schicken Sie mir bitte noch nachstehende Bestellung.

Achtungsvoll

J. W. F. H.

Anson, Texas, 29. November 1905.

Werther Herr Locke! — Ich habe Ihre Sendung Bäume in besten Zustand erhalten; war vollkommen zufrieden gestellt. Ich habe die Bäume mit der größten Vorsicht gepflanzt und hoffe noch mehr Geschäfte mit Ihnen zu machen, da ich nächstes Jahr eine größere Bestellung einsenden werde. Mit Gruß

Achtungsvoll

J. H.

Loyal Valley, Texas, 20. März 1905.

Herrn Otto Locke, Neu-Braunfels.

Werther Herr! — Ich habe die Sträucher seinerzeit richtig erhalten. Bin sehr zufrieden mit der Sendung und werde mich bemühen Ihr Geschäft weiter zu empfehlen.

Achtungsvoll

T. H.

Dallas, Texas, 21. November 1904.

Werther Herr! — Ich habe die Bäume und Sträucher erhalten und bin mehr wie zufrieden damit. Werde die Bäume empfehlen wo ich nur kann und besten Dank für die prachtvolle Zugabe und Katalog.

Achtungsvoll

C. F.

Rose Hill, 9. Januar 1905.

Herrn Otto Locke, Neu-Braunfels.

Werther Herr! — Bäume wohlverpackt angekommen. Aber so schöne Bäume hätte ich nicht erwartet und die Extra-Zugabe, wofür meinen besten Dank. Die Waare zeigt das Sie Ihre Sache gründlich verstehen und es freut mich sehr, daß wir einmal einen tüchtigen Baumzüchter im Staate haben. Nochmals meinen besten Dank; werde Sie wo immer ich kann, aufs beste empfehlen. Mit Gruß

G. S.

Vockhart, Texas, 16. März 1905.

Werther Herr Locke! — Für die Sendung vom letzten Herbst meinen besten Dank. Es ist doch ein himmelweiter Unterschied Ihre und die Bäume anderer Baumschulen. Wenn ich die Ruthen ansehe, die meine Nachbarn von anderen Baumschulen bekommen haben, so sieht man erst recht den Werth ihrer schönen Bäume etc. In der Zukunft werden Sie wohl immer mehr Kundenschaft hier bekommen, denn die Leute sehen doch bald ein, daß Sie von Ihnen am vortheilhaftesten kaufen können.

Achtungsvoll

F. R. S.

Friedrichsburg, Texas, 14. Januar 1905.

Herrn Otto Locke, Neu-Braunfels.

Werther Herr! — Ihre Sendung Nadelhölzer erhalten; dieselben kamen in sehr gutem Zustand hier an und danke ich herzlich für Zugabe.

Achtungsvoll

J. K.



THE UNIVERSITY OF CHICAGO

PHYSICS DEPARTMENT

PHYSICS 309

PROBLEM SET 1

1998

PHYSICS 309

1998

1998

1998

1998

1998

1998

1998

1998

An meine deutschen Kunden.

Ich habe die große Genugthuung, Ihnen hiermit meinen zwanzigsten Katalog zu überreichen. Zwei Jahrzehnte ist eine lange Zeit im Baumgeschäft. In dieser langen Zeit habe ich mir Tausende von Freunden und Gönnern erworben; habe Manchen einen dazu geholfen, sich einen Obstgarten anzulegen und habe auch ein wenig dazu beigetragen, die Obstkultur in Texas und Mexiko zu fördern und so ist meine zwanzig Jahre lange Arbeit nicht ganz umsonst gewesen. Da mein Sohn Hermann Locke als Theilhaber in der Comal Springs Nursery eingetreten ist, so werden wir im Stande sein unsere, sich immer mehrende Kunden so prompt und gut zu bedienen, wie in den verfloßnen zwanzig Jahren.

Ein sehr günstiges Jahr setzt uns in den Stand unsere Kunden wieder mit schönen, kräftigen Baumschul-Artikeln zu bedienen. Auch haben wir unsere Baumschule bedeutend vergrößert.

Nun noch meinen herzlichsten Dank an alle meine Kunden für die freundliche Unterstützung und Empfehlung, welche Sie mir zukommen ließen und dazu beitrugen mein Geschäft zu der jetzigen Blüthe zu verhelfen.

Benutzt beiliegenden Bestellzettel und vergesset nicht die genaue Post-Adresse sowie den Ort, wohin die Bäume gesandt werden sollen, anzugeben.

Der volle Betrag muß jeder Bestellung beigefügt werden; es werden keine Sendungen C. O. D. erfolgen. Auch bezahle ich keine Transportationskosten, wie so viele meiner Kollegen thun, doch lege ich bei jeder Bestellung so viel **gratis** bei, um die Expres-Kosten zu decken.

Wer größere Anpflanzungen machen will oder bei Anpflanzungen für öffentliche Parks, Schulen, Kirchen etc. werde ich speziell niedrige Preise machen.

Alle Bäume, die aus meiner Baumschule bezogen werden, sind so verpackt, daß sie eine längere Reise überstehen können ohne Schaden zu leiden.

Mein Vorrath an aller Art Baumschul = Artikeln ist dieses Jahr überaus reichhaltig und alles gesund und kräftig, so daß ein Jeder mit meiner Waare zufrieden sein wird.

Alle meine deutschen Kunden empfehle ich noch besonders die einzig deutsche Ackerbauschrift des Südens „F e l d u n d F l u r,“ Dallas, Texas, sowie folgende deutsche Wochenblätter:

- „Freie Presse für Texas,“ San Antonio, Texas.
- „Katholische Rundschau,“ San Antonio, Texas.
- „Texas Banner,“ San Antonio, Texas.
- „Texas Vorwärts,“ Austin, Texas.
- „Deutsche Rundschau,“ Cuero, Texas.
- „Bellville Wochenblatt,“ Bellville, Texas.
- „La Grange Deutsche Zeitung,“ La Grange, Texas.
- „Seguiner Deutsche Zeitung,“ Seguin, Texas.
- „Friedrichsburger Wochenblatt,“ Friedrichsburg, Texas.
- „Waco Post,“ Waco, Texas.

Achtungsvoll

Otto Locke.

EXPRESS RATES

For the convenience of our customers, we have obtained the correct express rates on trees (100 lbs.) to some of the stations to which we are making our principal shipments. The rates given below are on 100 lbs. and it is easy to determine how much your bundle should cost you, and if you think that the rate the agent charges you is incorrect, be sure and have him figure it out. Tell him to take Merchandise Rates, and if the shipment was forwarded only by one company, the correct rate on trees is 20 per cent less than merchandise. If the trees went over two different companies each company figures at 20 per cent less than Merchandise Rates, and allows additional 10 per cent on what is left; thus, if two companies forwarded your bundle, and the Merchandise Rate from here to your station is \$1.00, the correct rate on trees is 72 cents.

Artesia	80	El Campo	\$1 22	Moore	3 55
Alpine	1 58	Edna	1 22	Mineola	1 40
Abline	1 85	Elgin	70	Milano Junction	70
Austin	40	Fayetteville	70	Meridian	1 26
Alice	1 08	Flatomia	86	Merksl	1 85
Alvin	1 08	Floresville	83	Marlin	85
Brookshire	85	Ft. Worth	1 15	New Ulm	70
Bastrop	55	Franklin	85	O'Quinn	60
Bartlett	80	Goldthwaite	1 35	Pecos	2 30
Beeville	88	Giddings	77	Palestine	1 00
Boerne	63	Gonzales	63	Pearsall	60
Big Springs	2 05	Georgetown	55	Reedville	35
Burton	86	Goliad	95	Red Rock	40
Brenham	90	Haymond	1 58	Rosanky	45
Belleville	1 08	Hondo City	72	Rosenberg	1 09
Ballinger	1 53	Hallettsville	1 04	Round Rock	60
Buda	35	Harwood	72	Rockdale	70
Belton	85	Hempstead	1 00	Runge	77
Burnett	77	Hockley	1 08	San Marcos	30
Coupland	70	Hillsboro	1 00	Smithville	50
Cat Springs	70	Houston	85	Sealy	40
Comfort	72	Hearne	80	Seguin	63
Converse	59	Karnes City	72	Sweetwater	2 05
Colorado	2 05	Kenedy	72	San Angelo	1 67
Coleman	1 53	Kerrville	77	Schulenburg	95
Copperas Cove	1 13	Kingsbury	68	Sweet Home	95
Comanche	1 67	Kyle	35	Sublime	1 08
Columbus	95	Kingsland	66	Shiner	72
Cuero	95	Lockhart	35	Sabinal	77
Cline	95	LaGrange	80	Spoofford	1 04
Comstock	1 22	Lacoste	63	San Antonio	35
Cotulla	70	Luling	72	Sanderson	1 58
Carmine	81	Lampasas	1 17	San Diego	1 40
Corpus Christi	1 08	Lozier	1 35	Sweden	1 26
Cisco	1 40	Leon	85	Skidmore	95
Calvert	85	Lytle	45	Stockdale	63
Cleburne	1 15	Laredo	85	Sierra Blanca	2 00
Cactus	85	Lexington	90	Temple	85
Del Rio	1 08	Lott	95	Terrell	1 20
Dale	40	Langtry	1 22	Taber	1 40
D'Hanis	72	Ledbetter	81	Thorndale	60
Dunlay	63	Llano	90	Uvalde	86
Devine	45	Lancaster	1 15	Viva	59
Dilley	70	Maxwell	35	Von Ormy	40
Dallas	1 15	Marfa	1 76	West Point	55
Driscoll	1 08	Marion	63	Waco	85
Elmendorf	59	Midland	2 30	Welfare	68
Eastland	1 80	Marble Falls	86	Weimar	95
Eagle Pass	1 08	McDade	68	Waller	1 08
Eagle Lake	1 03	Millet	70	Whitesboro	1 40
El Paso	2 15	Mullen	1 40	Yorktown	86
Engle	86	Moulton	1 08	Yoakum	95
Encinal	85	Muldoon	1 08		