

## **Historic, Archive Document**

**Do not assume content reflects current scientific knowledge, policies, or practices.**



62.23

1906

# Hardy Trees

# Shrubs

and

# Vines

U. S. DEPARTMENT OF AGRICULTURE,  
WASHINGTON, D. C.



1906

Swain Nelson & Sons Co.  
Chicago

Hardy Trees  
Shrubs  
and  
Vines



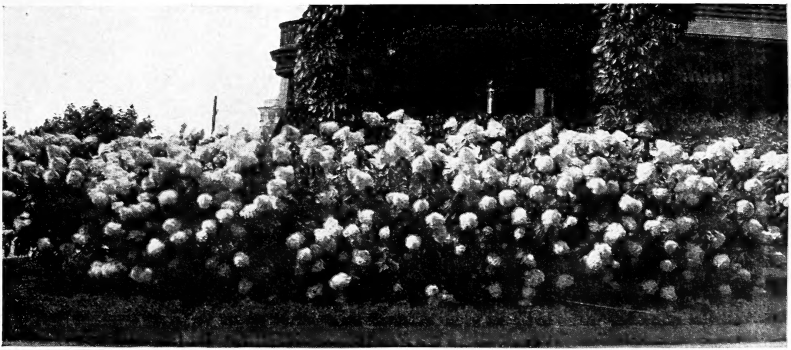
Swain Nelson & Sons Co.  
Chicago



WHOLESALE CATALOGUE  
AND PRICE LIST

SWAIN NELSON & SONS  
COMPANY

NURSERMEN AND  
LANDSCAPE GARDENERS



Hardy Trees, Shrubs, Roses  
Evergreens, Vines, Fruits  
and Herbaceous Perennials

Nurseries: Glen View, Illinois  
Telephones: Glen View 214 and 223  
Seventeen Miles from Chicago  
on C. M. & St. P. Ry.

Pittsburgh Office  
First National Bank Building  
Bell 'Phone: 2705 L. Gran  
Pittsburgh, Pa.

Telephone Central 2608

940, 941 AND 942 MARQUETTE BUILDING  
DEARBORN AND ADAMS STREETS  
CHICAGO



Six-inch Elm Trees at Glen View.

# SWAIN NELSON & SONS COMPANY GLEN VIEW NURSERIES



It is with pleasure that we present this illustrated catalogue of trees, shrubs, evergreens and hardy plants growing in our nurseries in Glen View, Illinois.

In writing the descriptions of our trees and shrubs we have avoided the use of technical terms, giving briefly the striking characteristics of the plants and indicating the uses for which they are especially adapted.

A visit to our nurseries is the best possible means of enabling intending purchasers to judge for themselves of the merits of the trees and plants we offer. Our nurseries are easily accessible, being one-fourth of a mile west of Glen View station, forty-five minutes from Chicago, on the Chicago, Milwaukee & St. Paul Railroad. If a visit to the nurseries is not possible, the illustrations of this catalogue will convey an idea of the vigor and shapeliness of the stock, the distance between the rows, giving ample room for perfect development, and the high state of cultivation maintained.

Our nurseries occupy 100 acres of rich rolling farm land. They are kept thoroughly fertilized with manure and are cultivated during the entire growing season. Our aim is to produce only the very highest quality of nursery stock rather than stock to sell cheaply.

A duly appointed inspector from the office of the State Entomologist makes an inspection of our nurseries annually, and certifies that the growing nursery stock on the premises is free from the presence of San Jose scale or other dangerous insect or plant disease. For the text of the certificate issued by the State Entomologist, see page 83.

We offer exceptionally large sizes which can be depended upon for producing immediate effects. It is our intention to supply this stock at the lowest price consistent with the quality and size of the plants offered.

The prices quoted in the following pages are F. O. B. cars at Glen View. We will furnish fifty plants at hundred rates, five at ten rates, and single plants will be charged for at twenty per cent. advance over ten rates.

No charge will be made for packing, except the actual cost of the material used, and carload lots will be packed free of charge.

For a reasonable additional charge we will plant and warrant the trees and shrubs ordered from us. We will design the scheme of planting, arranging the groups of trees and shrubs so as to secure harmonious effects and to produce pleasing contrasts of color and form. We will send our expert gardeners to prepare the ground for planting, and to plant the trees and shrubs in a correct and scientific manner.

We desire to express to our patrons a grateful appreciation for their confidence and trade, and solicit their future orders.

SWAIN NELSON & SONS COMPANY.

# DIRECTIONS FOR PRUNING AND PLANTING



THE first essential to successful planting is a thorough preparation of the ground, either by deep trenching or by digging large holes, refilling them with good fertile soil, and having them well drained.

The second essential is the selection of well grown trees, free from any blemish or weakness, and with an abundance of fibrous roots. Granted the above conditions large trees may be transplanted as successfully as small ones, and they will produce shade and ornament at once, instead of many years later, as is the case with ordinary nursery trees.

Before setting the tree all bruised or broken roots should be cut back to the sound wood with a sharp knife. The tops should be pruned in proportion to the roots that have been cut.

Our trees usually need very little pruning and our shrubs none at all.

The tree should be set not more than three inches deeper than it stood in the nursery, as indicated by the soil mark on the trunk. The roots should be spread out in their natural positions, and as the fine soil is covered over them it should be tamped down solid and rammed between the roots, making sure that no air spaces are left under the tree.

To obtain the best results it is necessary to give the tree good care for a year or two after planting. When the warm weather sets in the tree should be mulched, that is, fresh manure, about four inches thick, should be spread around the tree to hold the moisture in the earth. When the weather becomes very dry the tree should be watered frequently and the soil about it kept loose by hoeing, as in a corn field.

To the repeated inquiry as to the best time and method of pruning deciduous trees and shrubs, it may be answered, that no single rule can be laid down that will apply to all cases. Shrubs, like trees, are pruned for different purposes, and what is good practice in one case may be ruinous in another. A tree for the lawn requires different treatment from an avenue tree, and the rule for pruning an apple tree to induce an abundant yield of the best fruit would not apply to another tree where shade or ornament is desired.

For general purposes, therefore, neither trees nor shrubs should ever be cut back so far as to impair their vigor; nor should they be pruned so as to destroy their natural outlines. They should rather have the weak shoots thinned out and their strong ones pruned cautiously so as to develop their best form.

Shrubs like *Spiræa Van Houttei*, which bloom early on wood of the previous year, where it is desired to secure abundant flowers, should not be pruned in autumn or early Spring but immediately after the blooming season.

Shrubs that bloom late on wood of the current year, such as hydrangeas, roses, etc., should be pruned after the leaves fall in autumn or before they start in early spring.



"A tree, undoubtedly, is one of the most beautiful objects in nature. Airy and delicate in its youth, luxuriant and majestic in its prime, venerable and picturesque in its old age, it constitutes in its various forms, sizes, and developments, the greatest charm and beauty of the earth in all countries.

"By the judicious employment of trees in the embellishment of a residence, we may effect the greatest alterations and improvements within the scope of landscape gardening.

"Buildings which are tame, or even mean in appearance, may be made interesting, and often picturesque, by a proper disposition of trees. Walks and roads, which otherwise would be but simple ways of approach, may, by an elegant arrangement of trees on their margins, become the most interesting and pleasing portions of the residence."  
 A. J. DOWNING.

Per 10      Per 100

*Acer dasycarpum.* SILVER MAPLE.

The most rapid-growing of the Maples. It is of great value where immediate shade is required. The foliage is light green.

4	inch diam.	transplanted	.	.	35.00	
3½	"	"	"	.	30.00	
3	"	"	"	.	20.00	
2½	"	"	"	.	15.00	
2	"	"	"	.	10.00	75.00

*var. Wierii.* CUT-LEAVED MAPLE.

A cut-leaved variety of the above.

3	inch diam.	transplanted	.	.	35.00	
2½	"	"	"	.	25.00	
2	"	"	"	.	17.50	150.00

*Ginnala.*

A miniature Siberian Maple with deeply notched leaves which color in the fall.

5	feet	transplanted	.	.	10.00	
4	"	"	.	.	6.00	
3	"	"	.	.	5.00	



# TREES

GLEN VIEW NURSERIES



Per 10      Per 100

## *Acer negundo.*

### BOX ELDER, or ASH-LEAVED MAPLE.

A native tree of medium size and rapid growth. It thrives in all soils, even in very dry localities.

4	inch diam. transplanted . . . . .	35.00	
3½	“ “ “ . . . . .	30.00	
3	“ “ “ . . . . .	20.00	
2½	“ “ “ . . . . .	15.00	
2	“ “ “ . . . . .	10.00	75.00

## *platanoides.* NORWAY MAPLE.

A large handsome tree of compact habit and dark green foliage. One of the best trees for street or lawn.

5	inch diam. transplanted . . . . .	100.00	
4½	“ “ “ . . . . .	87.50	
4	“ “ “ . . . . .	75.00	
3½	“ “ “ . . . . .	60.00	
3	“ “ “ . . . . .	42.50	375.00
2½	“ “ “ . . . . .	27.50	225.00
2	“ “ “ . . . . .	20.00	150.00

## *var. Schwedleri.*

### PURPLE NORWAY MAPLE.

A purple-leaved variety of the above, of great value for ornamental planting. Its young foliage is at first almost crimson, turning later to a dark purple.

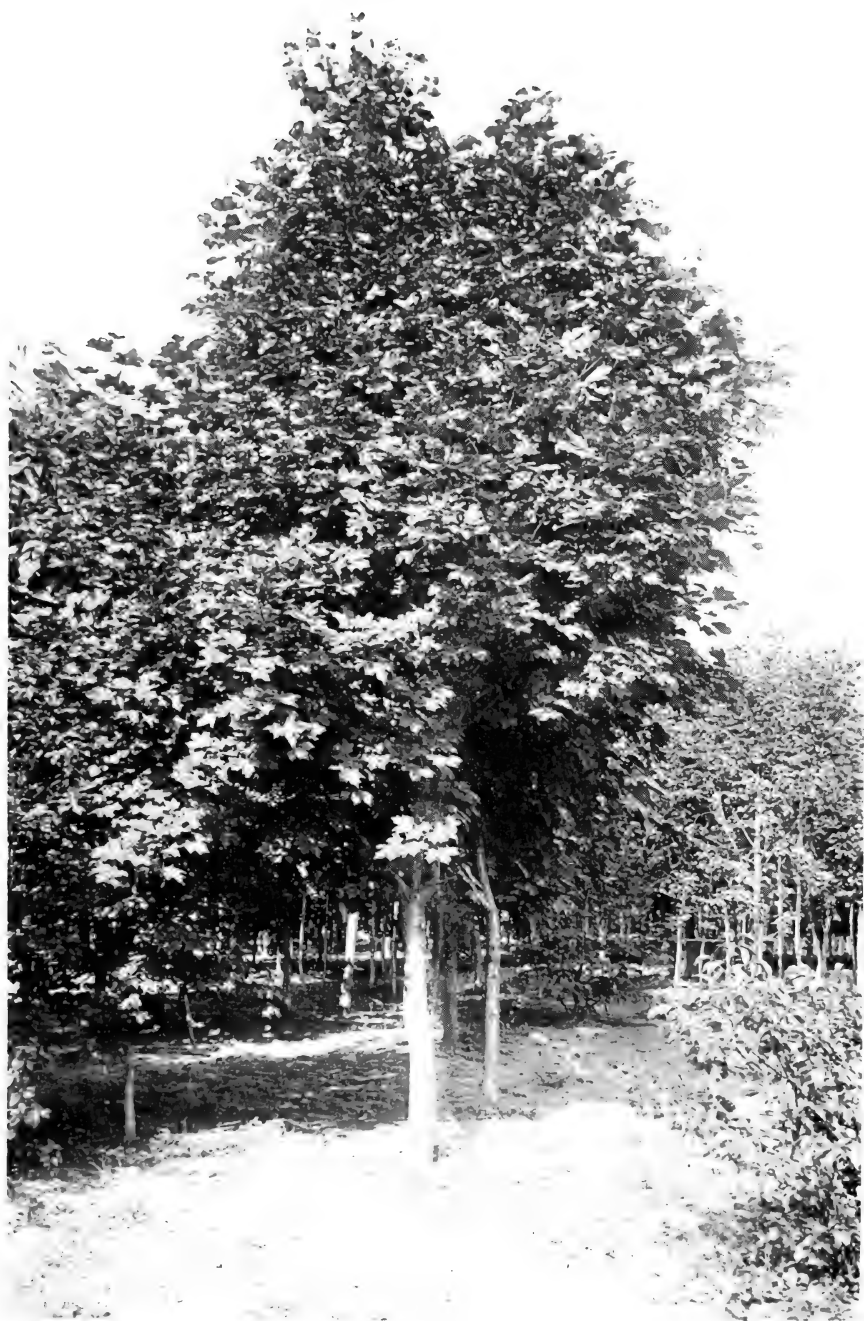
4	inch diam. transplanted . . . . .	120.00	
3½	“ “ “ . . . . .	90.00	
3	“ “ “ . . . . .	60.00	
2½	“ “ “ . . . . .	45.00	
2	“ “ “ . . . . .	30.00	

## *saccharinum.* SUGAR MAPLE.

An upright tree of dense growth, excellent for shade and for avenue planting. The leaves turn yellow and scarlet in the autumn.

3	inch diam. transplanted . . . . .	40.00	
2½	“ “ “ . . . . .	30.00	
2	“ “ “ . . . . .	20.00	





The beautiful Norway Maple is acknowledged to be one of the most valuable shade trees in America. It thrives in both city and country environment. The specimen shown above is a fair example of the splendid trees we can furnish in this desirable variety.

Everyone admires the sight of fruit trees in blossom, but few realize that every tree produces some form of bloom. In most cases the flowers are so inconspicuous they scarcely attract attention, but there are a few ornamental flowering trees which bear most beautiful blossoms followed by fruits whose form and color add much that is attractive in the fall landscape.

The earliest of these trees to blossom is the Red Bud which flowers in May, others blooming in the same month are the double-flowering Crab Apples and Plums, the Horse Chestnuts and the Bird and Wild Cherries. Those which flower in June are the Mountain Ash, the Thorns, the Locusts and the Catalpas.



*Cercis Canadensis.* Judas Tree or Red Bud.

The Red Bud is a low growing tree with a flat spreading head, hardy as far north as Canada and as far south as Virginia. It has something of the habit of the apple tree, and in early spring, when it is covered from its trunk to the tips of its leafless branches with small rose-colored pea-like blossoms, it is truly a sight to inspire the admiration and wonder even of one accustomed to observe the marvels of plant life.

The origin of the name Judas Tree is to be found in the legend which tells how this tree, glowing red in the spring time, was said to blush because Judas hanged himself upon it.



Per 10      Per 100

***Æsculus Hippocastanum.* HORSE CHESTNUT.**

A well-known tree, handsome in foliage and flower. It is one of the first to expand its leaves in the spring.

3	inch diam. transplanted . . . . .	42.50
2 1/2	" " " " . . . . .	27.50
2	" " " " . . . . .	20.00

***Ailanthus glandulosa.* TREE OF HEAVEN.**

A very useful tree for tropical effects because of its immense leaves. It is very fast-growing and does well even in poor soil.

8	feet transplanted . . . . .	5.00	40.00
---	-----------------------------	------	-------

***Alnus glutinosa.* EUROPEAN ALDER.**

A rapid-growing moisture-loving tree, bearing interesting pendent catkins in the spring.

3	inch diam. transplanted . . . . .	25.00
2 1/2	" " " " . . . . .	20.00
2	" " " " . . . . .	15.00

***var. imperialis laciniata.*  
CUT-LEAVED ALDER.**

A very graceful tree with deeply cut leaves.

6	feet transplanted . . . . .	12.50
5	" " " " . . . . .	8.50

***Aralia.* See Shrubs.**

***Betula alba pendula.*  
CUT-LEAVED WEEPING BIRCH.**

A very popular tree of elegant form with deeply toothed leaves, drooping branches and white bark.

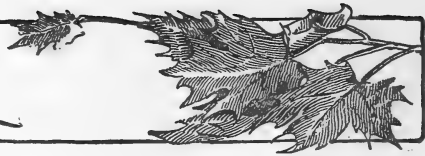
10	feet transplanted . . . . .	22.50
8	" " " " . . . . .	17.50
6	" " " " . . . . .	12.00

***var. atropurpurea.*  
A tree similar to the above, but with purple foliage.**

8	feet transplanted . . . . .	17.50
6	" " " " . . . . .	12.50

# TREES

GLEN VIEW NURSERIES



Per 10      Per 100

*Betula lenta.* SWEET or BLACK BIRCH.

A rapid-growing tree with broad leaves and dark brown spicy bark.

4	inch diam.	transplanted	.	.	60.00	
3½	"	"	"	"	40.00	
3	"	"	"	"	25.00	

*papyrifera.* PAPER or CANOE BIRCH.

One of the finest trees of the genus, with large leaves and beautiful white bark.

3	inch diam.	transplanted	.	.	15.00	
2½	"	"	"	"	9.00	
2	"	"	"	"	6.00	

*Catalpa Kaempferi.* JAPANESE CATALPA.

A variety similar to *Catalpa speciosa*, but smaller and two weeks later in blooming. The long seed-pods remain on the tree through the winter, imparting to it a picturesque appearance.

3	inch diam.	transplanted	.	.	20.00	
2½	"	"	"	"	15.00	
2	"	"	"	"	10.00	75.00

*speciosa.* NATIVE CATALPA.

A rapid-growing native tree with large leaves and panicles of loose trumpet-shaped flowers which are white spotted with purple.

4	inch diam.	transplanted	.	.	30.00	
3½	"	"	"	"	22.50	
3	"	"	"	"	15.00	125.00
2½	"	"	"	"	9.00	75.00
2	"	"	"	"	6.00	45.00

*Celtis occidentalis.* HACKBERRY.

The foliage of this tree is similar to that of the Elm, but the leaves are thinner. The bark is gray spotted with white.

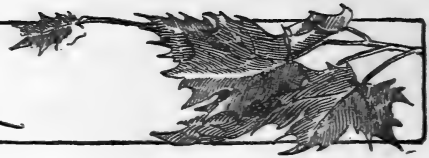
10	feet	transplanted	.	.	10.00	
8	"	"	"	"	9.00	
6	"	"	"	"	6.00	

*Cerasus.* See *Prunus.*



# TREES

GLEN VIEW NURSERIES



Per 10      Per 100

## *Gingko biloba.* MAIDENHAIR TREE.

A tree of Japanese origin interesting on account of its curious leaves.

10 feet transplanted . . . .	22.50	
8 " " " . . . .	17.50	
6 " " " . . . .	12.50	100.00
5 " " " . . . .	8.50	60.00

## *Gleditsia triacanthos.* HONEY LOCUST.

The foliage of this tree is delicate and very ornamental. It is of great value where only a small amount of shade is desired.

4 inch diam. transplanted . .	75.00	
3 1/2 " " " " . . . .	60.00	
3 " " " " . . . .	42.50	375.00
2 1/2 " " " " . . . .	27.00	225.00
2 " " " " . . . .	20.00	150.00

## *Juglans nigra.* BLACK WALNUT.

This is one of the largest trees of our native forests. It is slow in growth and when mature presents a very fine appearance.

10 feet transplanted . . . .	22.50	
8 " " " " . . . .	17.50	
6 " " " " . . . .	12.50	100.00

## *Larix decidua.* EUROPEAN LARCH.

A deciduous tree with needle-shaped leaves and small cones. It bears a very close resemblance to an Evergreen, but has the advantage of producing no shade during the cold winter months.

10 feet transplanted . . . .	9.00	
6 " " " " . . . .	5.00	40.00
5 " " " " . . . .	4.00	30.00

## *Morus alba var. Tatarica.*

### RUSSIAN MULBERRY.

A tree of medium height with smooth shining foliage. The fruit varies in color from pink to black.

6 feet transplanted . . . .	9.00	75.00
5 " " " " . . . .	6.50	40.00
4 " " " " . . . .	4.00	25.00





Per 10      Per 100

*Morus alba var. Tatarica pendula.*

**TEAS' WEEPING MULBERRY.**

A variation of the above grafted on a tall stem. With its slender shoots drooping to the ground it produces a very pleasing effect.

5	year heads transplanted . . .	50.00	
3	" " " . . .	30.00	
2	" " " . . .	15.00	

*Populus alba var. Bolleana.*

**BOLLEANA POPLAR.**

A silver-leaved tree resembling the Lombardy Poplar in its habit of growth.

3	inch diam. transplanted . . .	35.00	
2½	" " " . . .	25.00	
2	" " " . . .	17.50	150.00

*balsamifera.* **BALM OF GILEAD.**

A tree with a luxuriant growth of large glossy leaves which it holds well into the autumn.

3	inch diam. transplanted . . .	17.50	160.00
2½	" " " . . .	13.50	125.00
2	" " " . . .	7.00	65.00

*deltoides var. Carolinensis.*

**CAROLINA POPLAR.**

A tree of rapid growth, especially desirable for planting in large cities, where it thrives notwithstanding the presence of gas in the soil and smoke in the air.

6	inch diam. transplanted . . .	100.00	
5½	" " " . . .	80.00	
5	" " " . . .	70.00	
4½	" " " . . .	50.00	
4	" " " . . .	35.00	
3½	" " " . . .	25.00	
3	" " " . . .	17.50	160.00
2½	" " " . . .	13.50	125.00
2	" " " . . .	7.00	65.00

# TREES

GLEN VIEW NURSERIES



Per 10      Per 100

## *Populus nigra var. Italica.*

### LOMBARDY POPLAR.

A tall slender tree of rapid growth resembling a church spire in form.

3	inch diam. transplanted . . . . .	20.00	
2 1/2	" " " . . . . .	15.00	
2	" " " . . . . .	10.00	

## *Prunus Americana.* WILD PLUM.

Our native wild plum. It blooms profusely in early spring.

5	feet transplanted . . . . .	6.00	50.00
4	" " " . . . . .	5.00	35.00

## *maritima.* BEACH PLUM.

A shrub-like tree. It is attractive at all seasons, but especially so while in bloom early in the spring, when it suggests a drift of snow.

4	feet transplanted . . . . .	6.00	50.00
3	" " " . . . . .	5.00	35.00

## *padus.* EUROPEAN BIRD CHERRY.

A medium-sized tree with a profusion of long spikes of very fragrant white flowers.

10	feet transplanted . . . . .	9.00	75.00
8	" " " . . . . .	6.00	50.00
6	" " " . . . . .	5.00	40.00

## *Pissardi.* PURPLE-LEAVED PLUM.

One of the best of the purple-leaved trees. It retains its beautiful color throughout the summer and fall.

8	feet transplanted . . . . .	17.50	
6	" " " . . . . .	12.50	
5	" " " . . . . .	8.50	

## *pumila.* SAND PLUM.

It is covered with white flowers in early spring and in summer laden with edible fruit. Very useful for planting in sandy soil.

4	feet transplanted . . . . .	6.00	50.00
3	" " " . . . . .	5.00	35.00



Per 10      Per 100

*Prunus serotina.* WILD BLACK CHERRY.

This species is the common native Wild Cherry. It bears clusters of shining black fruit and the leaves are tinted in the fall.

3	inch diam.	transplanted	.	.	25.00	
2½	"	"	"	.	20.00	
2	"	"	"	.	15.00	

*Virginiana.* CHOKE CHERRY.

This variety blooms a week earlier than the European Bird Cherry, which it resembles very closely.

10	feet	transplanted	.	.	9.00	75.00
8	"	"	.	.	6.00	50.00
6	"	"	.	.	5.00	40.00

*Pyrus aucuparia.*

EUROPEAN MOUNTAIN ASH.

A very decorative tree with fine foliage and pyramidal shape. During the latter part of the summer it is laden with orange-colored berries.

3	inch diam.	transplanted	.	.	35.00	
2½	"	"	"	.	25.00	
2	"	"	"	.	17.50	150.00

*var. quercifolia.*

OAK-LEAVED MOUNTAIN ASH.

A variety similar to the above with leaves resembling those of the Oak.

3	inch diam.	transplanted	.	.	35.00	
2½	"	"	"	.	25.00	
2	"	"	"	.	17.50	

*coronaria.* WILD CRAB APPLE.

The flowers of this species exhale a delightful fragrance, exceeding that of any other crab apple.

6	feet	transplanted	.	.	17.50	
5	"	"	.	.	10.00	

# TREES

GLEN VIEW NURSERIES



*Pyrus floribunda.* FLOWERING CRAB.

A small tree bearing rose-colored blossoms early in spring. No tree in our nursery is more admired when in bloom.

8 feet transplanted specimens . . . . .	50.00	
6 " " " " . . . . .	30.00	
5 " " " " . . . . .	15.00	

Per 10 Per 100

*floribunda var. atrosanguinea.*

CRIMSON FLOWERING CRAB.

It is like the above, excepting the bloom, which is clear crimson.

8 feet transplanted specimens . . . . .	50.00	
6 " " " " . . . . .	30.00	
5 " " " " . . . . .	15.00	

*Ioensis var. Bechtel.*

DOUBLE FLOWERING CRAB APPLE.

A graceful tree, nearly covered in early spring with large delicate pink flowers, each blossom resembling a rose.

8 feet transplanted specimens . . . . .	50.00	
6 " " " " . . . . .	30.00	
5 " " " " . . . . .	15.00	

*Quercus bicolor.* SWAMP WHITE OAK.

A tall symmetrical tree with shining dark green leaves.

8 feet transplanted . . . . .	17.50	
6 " " . . . . .	12.50	100.00
5 " " . . . . .	8.50	60.00

*palustris.* PIN OAK.

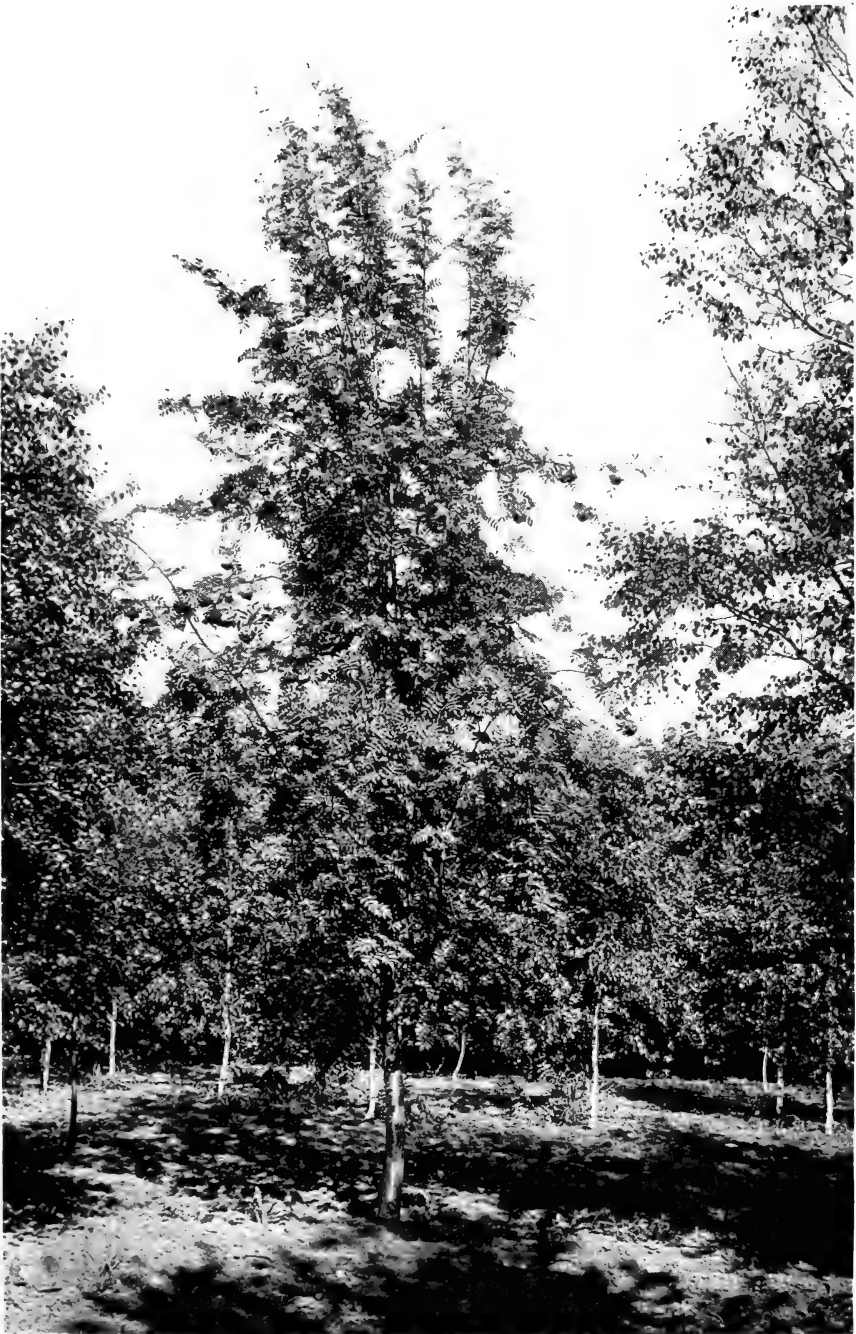
A tree of handsome appearance with deeply indented leaves.

8 feet transplanted . . . . .	17.50	
6 " " . . . . .	12.50	100.00
5 " " . . . . .	8.50	60.00

*rubra.* RED OAK.

One of the most majestic of our native Oaks, valuable for its brilliant coloring in the fall.

8 feet transplanted . . . . .	17.50	
6 " " . . . . .	12.50	100.00
5 " " . . . . .	8.50	60.00



The Mountain Ash with its delicate foliage and bright red berries, is a most beautiful tree. It occupies but little space, and is, therefore, especially valuable for planting in small areas.

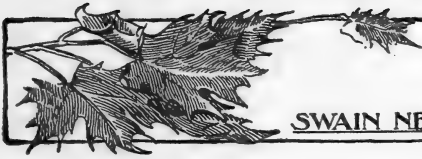


### Teas' Weeping Mulberry

This is to-day the most popular of all the weeping trees—a chance seedling of the Russian Mulberry originally discovered on the grounds of John C. Teas of Carthage, Mo., about 1883.

Its wealth of shiny foliage flowing gracefully to the ground, and its compact neat appearance, give it a special value where a single specimen is desired.





# TREES

SWAIN NELSON & SONS COMPANY

Per 10      Per 100

## *Robinia pseud-acacia.* LOCUST.

A rapid-growing tree with feathery foliage, valuable because it thrives in dry soil where other trees fail.

8 feet transplanted . . . . .	5.00	40.00
6 " " . . . . .	4.00	30.00
5 " " . . . . .	3.00	20.00

## *Salisburia adiantifolia.* See *Ginkgo*.

## *Salix alba var. regalis.*

### SILVER-LEAVED WILLOW.

A dense-growing tree with silvery foliage, excellent for contrast with other trees.

6 feet transplanted . . . . .	5.00	40.00
5 " " . . . . .	4.00	30.00

## *Babylonica.* WEEPING WILLOW.

This is the well-known common Weeping Willow. Its habit of growth is remarkably pendulous, the drooping effect being heightened by its long thin leaves.

3 inch diam. transplanted . . . . .	20.00	
2 1/2 " " " " . . . . .	15.00	
2 " " " " . . . . .	10.00	75.00

## *var. annularis.* CURLED WILLOW.

A variety somewhat like the above. The leaves have a peculiar spiral shape.

8 feet transplanted . . . . .	6.00	50.00
6 " " . . . . .	5.00	40.00

## *var. dolorosa.*

### WISCONSIN WEEPING WILLOW.

A native tree of low growth resembling the common Weeping Willow.

8 feet transplanted . . . . .	5.00	40.00
6 " " . . . . .	4.00	30.00
5 " " . . . . .	3.00	20.00

## *caprea.* PUSSY WILLOW.

A familiar tree, covered in early spring with soft silky catkins.

8 feet transplanted . . . . .	5.00	40.00
6 " " . . . . .	4.00	30.00
5 " " . . . . .	3.00	20.00

# TREES

GLEN VIEW NURSERIES



	Per 10	Per 100
<i>Salix cerulea.</i>		
A Willow with a bluish bark.		
8 feet transplanted . . . . .	6.00	50.00
6 " " . . . . .	5.00	40.00
5 " " . . . . .	4.00	30.00
<i>elegantissima.</i> THURLOW'S WEeping WILLOW.		
A graceful tree, smaller than the Babylonica, and with finer foliage.		
10 feet transplanted . . . . .	9.00	75.00
8 " " . . . . .	6.00	50.00
<i>pentandra.</i> LAUREL-LEAVED WILLOW.		
A dense-growing tree with broad polished leaves that give to the whole plant a singular shining appearance.		
3 inch diam. transplanted . . . . .	20.00	
2½ " " " . . . . .	15.00	
2 " " " . . . . .	10.00	75.00
<i>purpurea.</i> PURPLE OSIER.		
A tree of very graceful and pendulous habit.		
8 feet transplanted . . . . .	5.00	40.00
6 " " . . . . .	4.00	30.00
5 " " . . . . .	3.00	20.00
<i>rosmarinifolia.</i> ROSEMARY WILLOW.		
A very decorative shrub-like tree with long narrow silky leaves.		
6 feet transplanted . . . . .	9.00	
5 " " . . . . .	6.50	
4 " " . . . . .	4.00	
3 " " . . . . .	3.00	
<i>Uralensis.</i>		
A Siberian Willow of very attractive appear- ance.		
8 feet transplanted . . . . .	5.00	40.00
6 " " . . . . .	4.00	30.00
5 " " . . . . .	3.00	20.00



SWAIN NELSON & SONS COMPANY

Per 10      Per 100

*Salix vitellina var. aurea.*

A tree of very striking appearance in winter on account of its bright yellow bark.

8 feet transplanted . . . . .	5.00	40.00
6 " " . . . . .	4.00	30.00
5 " " . . . . .	3.00	20.00

*var. Britzensis.*

Another variety of striking appearance in winter. The bark is reddish yellow.

8 feet transplanted . . . . .	5.00	40.00
6 " " . . . . .	4.00	30.00
5 " " . . . . .	3.00	20.00

*var. glauca.*

The bark of this variety is of a bluish color.

6 feet transplanted . . . . .	5.00
5 " " . . . . .	4.00

*Tilia Americana.*

AMERICAN LINDEN or BASSWOOD.

An excellent shade tree of large size and rapid growth, with light green foliage and fragrant yellow flowers.

4 inch diam. transplanted . . . . .	60.00	525.00
3½ " " " . . . . .	40.00	375.00
3 " " " . . . . .	25.00	225.00
2½ " " " . . . . .	20.00	150.00
2 " " " . . . . .	15.00	100.00

*platyphyllos.* EUROPEAN LINDEN.

An upright tree of fine proportions and rapid growth.

4 inch diam. transplanted . . . . .	60.00
3½ " " " . . . . .	40.00
3 " " " . . . . .	25.00
2½ " " " . . . . .	20.00
2 " " " . . . . .	15.00

*spectabilis.*

A rapid-growing European variety of handsome appearance.

2 inch diam. transplanted . . . . .	25.00
-------------------------------------	-------

# TREES

GLEN VIEW NURSERIES



Per 10 Per 100

## *Ulmus Americana.* AMERICAN ELM.

One of the most beautiful and characteristic trees of this climate. Its lofty growth, majestic proportions and graceful outline make it a favorite tree both for shade and avenue planting.

6	inch diam. transplanted	.	.	125.00	
5½	" " "	.	.	110.00	
5	" " "	.	.	90.00	800.00
4½	" " "	.	.	75.00	650.00
4	" " "	.	.	60.00	525.00
3½	" " "	.	.	40.00	375.00
3	" " "	.	.	25.00	225.00
2½	" " "	.	.	20.00	150.00
2	" " "	.	.	15.00	100.00

## *campestris.* ENGLISH ELM.

A tree of large size and handsome appearance. It has smaller leaves than the American Elm and its habit is less drooping.

4	inch diam. transplanted	.	.	60.00	525.00
3½	" " "	.	.	40.00	375.00
3	" " "	.	.	25.00	225.00
2½	" " "	.	.	20.00	150.00
2	" " "	.	.	15.00	100.00

## *Huntingdon.*

A rapid-growing variety with smooth bark and broad leaves.

3	inch diam. transplanted	.	.	30.00	
2½	" " "	.	.	20.00	150.00
2	" " "	.	.	15.00	100.00

## *Montana var. pendula.*

### CAMPERDOWN WEEPING ELM.

A beautiful drooping tree grafted on a tall standard. Its spreading branches have an umbrella-like appearance. It may be trained to form an arbor.

5	year heads transplanted	.	.	50.00	
3	" " "	.	.	30.00	
2	" " "	.	.	15.00	

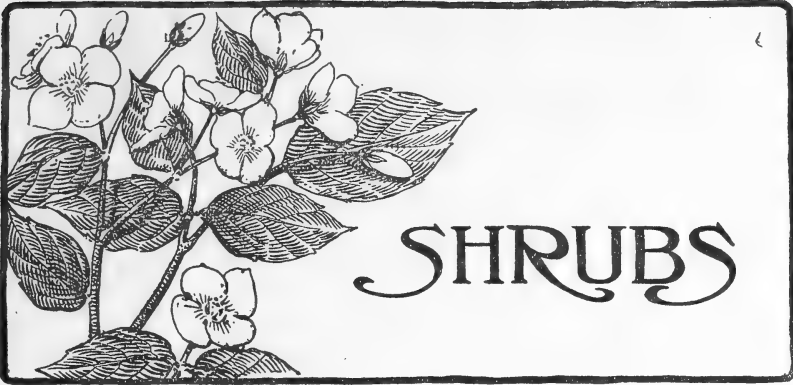


The American Elm is the model avenue tree and is equally valuable for lawn planting. We devote more acreage to the cultivation of Elms than to any other tree.



A typical block of hardy shrubs at Glen View. In the center of the picture is the Japanese Barberry, the most useful of all low growing shrubs,





In the adornment of any grounds shrubs are indispensable. They may be planted singly or in mass. When planted singly they should never be dotted around the lawn, but should stand near the margins; if planted in mass, they may serve as a substitute for a fence, or, if grouped at the margins of a lawn, the scene may be changed from the commonplace to one of exquisite beauty.

Shrubs combine so wide a range of foliage, flower and berry, that a judicious selection will secure a sequence of attractions from earliest spring, with its dainty blossoms and delicate tracery of fresh young foliage, till late in autumn, with its bright ripe berries and gorgeous colored foliage. Even in winter they cheer the landscape by the lively hues of their bark, producing color notes that are all the gayer for the somber tones prevailing in the surrounding landscape.

*Amelanchier Botryapium.* JUNE-BERRY. Per 10      Per 100

A shrub bearing pure white flowers in the spring. The leaves and flower-stalks have a whitish woolly appearance when young.

5 feet transplanted . . . . .	6.50	40.00
4 " " . . . . .	4.00	25.00
3 " " . . . . .	3.00	20.00

*vulgaris.* EUROPEAN JUNE-BERRY.

This variety blooms in early summer. The flowers are white and the leaves color beautifully in the fall.

5 feet transplanted . . . . .	6.50	40.00
4 " " . . . . .	4.00	25.00
3 " " . . . . .	3.00	20.00

*Amorpha fruticosa.* FALSE INDIGO.

A handsome shrub suitable for planting in dry soils. It has light green feathery foliage and violet-colored flowers.

5 feet transplanted . . . . .	6.50	40.00
4 " " . . . . .	4.00	25.00
3 " " . . . . .	3.00	20.00

*Amygdalus nana.* FLOWERING ALMOND.

A shrub blooming in early spring. The flowers are double and are either pink or white in color.

4 feet transplanted . . . . .	6.00	
3 " " . . . . .	5.00	

# SHRUBS

GLEN VIEW NURSERIES



Per 10 Per 100

*Aralia Maximowiczii.*

A very ornamental thorny shrub of striking sub-tropical appearance.

8 feet transplanted . . . . .	17.50	
6 " " " . . . . .	12.50	

*pentaphylla.* FIVE-LEAVED ARALIA.

A graceful shrub with arching branches and bright green shining leaves. It is useful in lawn planting.

5 feet transplanted . . . . .	10.00	
4 " " " . . . . .	6.00	
3 " " " . . . . .	5.00	

*spinosa.* HERCULES CLUB.

A large shrub of semi-tropical appearance with a very prickly stem. It bears immense clusters of white flowers in July.

6 feet transplanted . . . . .	7.50	
5 " " " . . . . .	5.00	
4 " " " . . . . .	3.50	

*Berberis aquifolia.* MAHONIA.

A shrub with broad shining leaves of a deep green color. The young shoots are of a rosy hue and the foliage colors beautifully in the autumn. It is hardy in sheltered positions.

18 inch transplanted . . . . .	7.50	
12 " " " . . . . .	4.00	

*ilicifolia.* HOLLY-LEAVED BARBERRY.

The thick spiny evergreen leaves of this species give it a very close resemblance to the Holly.

2½ feet transplanted . . . . .	7.50	
2 " " " . . . . .	6.00	

*Thunbergii.* JAPANESE BARBERRY.

A dwarf shrub with fine dense foliage, beautiful on the lawn and excellent for low hedges. Its tinted leaves and bright red berries produce a brilliant effect in the autumn.

3 feet transplanted . . . . .	7.50	60.00
2½ " " " . . . . .	6.00	45.00
2 " " " . . . . .	4.50	35.00
1½ " " " . . . . .	3.00	20.00



# SHRUBS

SWAIN NELSON & SONS COMPANY

Per 10    Per 100

## *Berberis vulgaris.* BARBERRY.

A prickly shrub of erect growth with attractive yellow flowers and deep red fruit.

5 feet transplanted . . . .	10.00	60.00
4 " " . . . .	6.00	40.00
3 " " . . . .	4.00	35.00

## *vulgaris atropurpurea.*

### PURPLE-LEAVED BARBERRY.

A variety similar to the above, but with leaves of a rich purple color which is retained throughout the season. It is useful in foliage effects.

5 feet transplanted . . . .	10.00	60.00
4 " " . . . .	6.00	40.00
3 " " . . . .	4.00	35.00

## *Calycanthus floridus.*

### SWEET-SCENTED SHRUB.

A shrub with handsome foliage and fragrant flowers of a deep brownish red color. It blooms all summer.

4 feet transplanted . . . .	6.00	40.00
3 " " . . . .	5.00	35.00

## *Caragana arborescens.*

### SIBERIAN PEA TREE.

An ornamental shrub with small light green leaves and yellow flowers very much like those of the Pea.

5 feet transplanted . . . .	6.50	
4 " " . . . .	4.00	
3 " " . . . .	3.00	

## *Cassia Marylandica.* WILD SENNA.

A shrub-like perennial attractive for its beautiful finely-cut leaves and its yellow flowers.

3 feet transplanted . . . .	3.00	20.00
-----------------------------	------	-------

## *Cephalanthus occidentalis.* BUTTON BUSH.

A tall native shrub with glossy foliage and white flowers growing in ball-like heads.

# SHRUBS

GLEN VIEW NURSERIES



	Per 10	Per 100
<i>Cephalanthus occidentalis</i> (continued).		
5 feet transplanted . . . .	10.00	
4 " " . . . .	6.00	
3 " " . . . .	5.00	
<i>Cercis Canadensis</i> . RED BUD.		
The foliage is a rich green and the new shoots have a soft reddish tinge. Before the leaves appear in spring the shrub bears a cloud of pink blossoms.		
6 feet transplanted . . . .	17.50	
5 " " . . . .	10.00	
4 " " . . . .	6.00	
<i>Chionanthus virginica</i> . WHITE FRINGE.		
A shrub of large size with dark green leaves and attractive white fringe-like blossoms.		
4 feet transplanted . . . .	6.00	
3 " " . . . .	5.00	
2½ " " . . . .	4.00	
<i>Clethra alnifolia</i> . SWEET PEPPER BUSH.		
A shrub bearing spikes of fragrant white flowers in early August.		
3 feet transplanted . . . .	5.00	
2½ " " . . . .	4.00	
<i>Corchorus Japonicus variegatus</i> .		
JAPANESE GLOBE-FLOWER.		
A dwarf shrub valuable for its variegated leaves and abundant golden globe-like flowers.		
2½ feet transplanted . . . .	6.00	
2 " " . . . .	4.50	
<i>Cornus alba var. Sibirica</i> .		
SIBERIAN RED DOGWOOD.		
A large shrub with drooping branches bearing white flowers in early June. The brilliant red color of its bark makes it very striking and attractive in winter. All the Dogwoods are useful because they lend a cheerful color to the winter landscape.		



# SHRUBS

SWAIN NELSON & SONS COMPANY

Per 10      Per 100

*Cornus alba var. Sibirica* (continued).

6 feet transplanted . . . . .	9.00	75.00
5 " " . . . . .	6.50	40.00
4 " " . . . . .	4.00	25.00
3 " " . . . . .	2.50	15.00

*var. Sibirica elegantissima.*

A variegated form of the above.

3 feet transplanted . . . . .	7.50
2½ " " . . . . .	6.00
2 " " . . . . .	4.50

*alternifolia.* BLUE DOGWOOD.

A large shrub with creamy-white flowers and fruit of a deep blue color.

5 feet transplanted . . . . .	10.00
4 " " . . . . .	6.00
3 " " . . . . .	5.00

*circinata.* GREEN DOGWOOD.

The flowers of this species are white. The yellowish green bark is very striking in winter.

4 feet transplanted . . . . .	6.00
3 " " . . . . .	5.00
2½ " " . . . . .	4.00

*Mas.* CORNELIAN CHERRY.

A shrub bearing a profusion of pretty yellow flowers before the leaves appear in spring. The bright red berries are highly ornamental.

6 feet transplanted . . . . .	9.00
5 " " . . . . .	6.50
4 " " . . . . .	4.00
3 " " . . . . .	3.00

*paniculata.* GRAY DOGWOOD.

An upright species with pure white flowers. Its twigs have a grayish tinge.

5 feet transplanted . . . . .	10.00
4 " " . . . . .	6.00
3 " " . . . . .	3.50

# SHRUBS

GLEN VIEW NURSERIES



Per 10 Per 100

## *Cornus sericea.* SILKY DOGWOOD.

A decorative native shrub blooming late in the season and bearing blue berries in October. Its red bark is of a more subdued tint than that of the *Sibirica*.

5 feet transplanted	.	.	.	6.50	40.00
4 " "	.	.	.	4.00	25.00
3 " "	.	.	.	3.00	20.00

## *stolonifera.*

A native shrub similar to the *Sibirica*. Its bark is of a fine crimson hue.

6 feet transplanted	.	.	.	9.00	75.00
5 " "	.	.	.	6.50	40.00
4 " "	.	.	.	4.00	25.00
3 " "	.	.	.	2.50	15.00

## *stolonifera var. aurea.*

### GOLDEN BARKED DOGWOOD.

5 feet transplanted	.	.	.	9.00	
4 " "	.	.	.	6.50	
3 " "	.	.	.	4.00	

## *Corylus avellana.* EUROPEAN HAZEL.

A European shrub with dense foliage of a dark green color. It is more attractive than our native Hazel.

5 feet transplanted	.	.	.	5.00	
4 " "	.	.	.	3.50	
3 " "	.	.	.	2.50	15.00

## *Merville de Bolwiller.*

An ornamental Filbert of vigorous habit, valuable for its rich foliage.

5 feet transplanted	.	.	.	10.00	
4 " "	.	.	.	6.00	
3 " "	.	.	.	5.00	

## *Crataegus coccinea.* SCARLET THORN.

The earliest Thorn to bloom. The white flowers are followed by large scarlet fruit. The Thorns are all very valuable in landscape planting.

6 feet transplanted	.	.	.	17.50	
5 " "	.	.	.	10.00	60.00



# SHRUBS

SWAIN NELSON & SONS COMPANY

	Per 10	Per 100
<i>Crataegus coccinea</i> (continued).		
4 feet transplanted . . . . .	6.00	40.00
3 " " . . . . .	5.00	35.00

*Crus-galli*. COCKSPUR THORN.

A shrub with thick glossy leaves which are retained until late in the fall. The flowers are white with a tinge of red and are followed by scarlet edible fruit.

6 feet transplanted . . . . .	17.50	
5 " " . . . . .	10.00	60.00
4 " " . . . . .	6.00	40.00
3 " " . . . . .	5.00	35.00

*Ozycantha*.

ENGLISH HAWTHORN or MAY.

A tall dense-growing shrub with thorny branches and pure white flowers.

6 feet transplanted . . . . .	17.50	
5 " " . . . . .	10.00	

*Cydonia Japonica*. JAPAN QUINCE.

A handsome shrub of low dense habit with dark glossy leaves. The flowers are a bright scarlet and are very attractive.

4 feet transplanted . . . . .	6.00	40.00
3 " " . . . . .	5.00	35.00
2½ " " . . . . .	4.00	25.00

*var. alba*. JAPAN QUINCE.

A variety similar to the above with white or pale pink blossoms.

4 feet transplanted . . . . .	6.00	
3 " " . . . . .	5.00	
2½ " " . . . . .	4.00	

*var. Gaujardi*. JAPAN QUINCE.

A variety with orange-colored flowers.

4 feet transplanted . . . . .	6.00	
3 " " . . . . .	5.00	
2½ " " . . . . .	4.00	

# SHRUBS

GLEN VIEW NURSERIES



Per 10      Per 100

## *Cydonia Japonica var. umbilicata.*

The flowers of this variety are of an attractive rose-red color.

4 feet transplanted . . . . .	6.00	
3 " " " . . . . .	5.00	
2½ " " " . . . . .	4.00	

## *Maulei.*

A very desirable hardy sort with an abundance of orange-red blossoms.

4 feet transplanted . . . . .	6.00	
3 " " " . . . . .	5.00	
2½ " " " . . . . .	4.00	

## *Cytisus nigricans.*

A low shrub with slender branches and persistent yellow flowers.

2 feet transplanted . . . . .	3.50	20.00
-------------------------------	------	-------

## *Deutzia gracilis.*

### JAPANESE SNOW FLOWER.

A dwarf shrub with a profusion of attractive white flowers which appear in May.

2½ feet transplanted . . . . .	3.00	20.00
2 " " " . . . . .	2.50	15.00

## *Lemoinei.*

A very desirable species with broad panicles of pure white flowers.

2½ feet transplanted . . . . .	6.00	
2 " " " . . . . .	4.50	

## *scabra.*

A dwarf shrub with white bell-shaped flowers. The leaves are very rough on the under side.

5 feet transplanted . . . . .	5.00	35.00
4 " " " . . . . .	3.50	22.50
3 " " " . . . . .	2.50	15.00

## *var. Pride of Rochester.*

An early-blooming variety with large double white flowers.

5 feet transplanted . . . . .	5.00	
4 " " " . . . . .	3.50	
3 " " " . . . . .	2.50	





# SHRUBS

SWAIN NELSON & SONS COMPANY

Per 10      Per 100

## *Deutzia scabra var. Watereri.*

A new form with beautiful double white blossoms.

5 feet transplanted	. . .	5.00	
4 " "	. . .	3.50	
3 " "	. . .	2.50	

## *var. Wellsii.*

This variety also bears double white flowers.

5 feet transplanted	. . .	5.00	
4 " "	. . .	3.50	
3 " "	. . .	2.50	

## *Diervilla sessilifolia.*

A native shrub of spreading habit and arching branches, suitable for wild plantations. The flowers are yellow and appear during June and July.

4 feet transplanted	. . .	6.00	
3 " "	. . .	5.00	
2½ " "	. . .	4.00	25.00

## *trifida.*

A species with much the same habit as the above, but of smaller size and earlier in blooming.

2 feet transplanted	. . .	4.50	30.00
1½ " "	. . .	3.50	20.00

## *rosea.* See *Weigela.*

## *Eleagnus angustifolia.* OLEASTER.

A highly ornamental shrub with handsome silvery foliage and decorative fruit.

5 feet transplanted	. . .	10.00	
4 " "	. . .	6.00	
3 " "	. . .	5.00	

## *edulis.*

An attractive shrub with reddish-brown twigs and scarlet fruit.

3 feet transplanted	. . .	5.00	
---------------------	-------	------	--

# SHRUBS

GLEN VIEW NURSERIES



Per 10 Per 100

*Euonymus alatus.*

**JAPANESE STRAWBERRY TREE.**

A Japanese shrub with curious quadrangular corky branches. The leaves color magnificently in the autumn.

5 feet transplanted . . .	25.00
4 " " . . .	15.00
3 " " . . .	10.00

*atropurpureus.*

**BURNING BUSH or WAHOO.**

A broad-leaved native shrub bearing a profusion of crimson seed-pods in the fall.

6 feet transplanted . . .	9.00
5 " " . . .	6.50
4 " " . . .	4.00
3 " " . . .	3.00

*Bungeanus.*

A hardy shrub or small tree, with handsome bright green foliage and a profusion of bright colored seed-pods in the fall.

5 feet transplanted . . .	10.00
4 " " . . .	6.00

*Europæus.* **SPINDLE TREE.**

A tall-growing shrub bearing attractive fruit of a strawberry-red color.

6 feet transplanted . . .	9.00	75.00
5 " " . . .	6.50	40.00
4 " " . . .	4.00	25.00
3 " " . . .	2.50	20.00

*Exochorda grandiflora.* **PEARL BUSH.**

A beautiful shrub of Chinese origin. It is covered in May with large clusters of white starry flowers.

5 feet transplanted . . .	6.50
4 " " . . .	4.00
3 " " . . .	3.00



# SHRUBS

SWAIN NELSON & SONS COMPANY

Per 10      Per 100

## *Forsythia Fortunei.* GOLDEN BELL.

A large upright spreading shrub with bright golden-yellow flowers. All the Forsythias have yellow blossoms. They are vigorous in growth, free-flowering and bloom very early, at a time when flowers are scarce.

6 feet transplanted	.	.	.	7.50	
5 " "	.	.	.	5.00	35.00
4 " "	.	.	.	3.50	22.50
3 " "	.	.	.	2.50	15.00

### *intermedia.*

A hybrid variety similar to the *Fortunei*, but lower in growth and later in blooming.

5 feet transplanted	.	.	.	6.50	40.00
4 " "	.	.	.	4.00	25.00
3 " "	.	.	.	3.00	20.00

## *suspensa.* WEeping GOLDEN BELL.

A low trailing shrub with slender branches and trumpet-shaped flowers.

6 feet transplanted	.	.	.	7.50	
5 " "	.	.	.	5.00	35.00
4 " "	.	.	.	3.50	22.50

### *viridissima.*

An erect shrub with stiff green stems and blossoms of a lighter yellow than those of the other species.

5 feet transplanted	.	.	.	5.00	35.00
4 " "	.	.	.	3.50	22.50
3 " "	.	.	.	2.50	15.00

## *Genista tinctoria.* DYER'S GREENWEED.

An erect shrub with attractive clusters of yellow flowers.

3 feet transplanted	.	.	.	5.00	
---------------------	---	---	---	------	--

## *Hamamelis Virginiana.* WITCH HAZEL.

A large native shrub with somewhat downy leaves. The flowers appear after the leaves have fallen in the autumn.

# SHRUBS

GLEN VIEW NURSERIES



## *Hamamelis Virginiana* (continued).

	Per 10	Per 100
6 feet transplanted . . . .	17.50	
5 " " . . . .	10.00	60.00
4 " " . . . .	6.00	40.00
3 " " . . . .	5.00	35.00

## *Hippophae rhamnoides*. SEA BUCKTHORN.

A very effective shrub of irregular shape with silvery gray foliage and orange-colored fruit.

5 feet transplanted . . . .	6.50	40.00
4 " " . . . .	4.00	25.00
3 " " . . . .	3.00	20.00

## *Hydrangea paniculata*.

A broad-spreading shrub of vigorous habit bearing large terminal panicles of creamy white flowers.

5 feet transplanted . . . .	6.50	
4 " " . . . .	4.00	25.00
3 " " . . . .	3.00	20.00

## *var. grandiflora*. HARDY HYDRANGEA.

A well-known shrub with immense heads of creamy white blossoms. It is one of the most valuable of the autumn-blooming plants.

7 years transplanted . . . .	6.50	
5 " " . . . .	4.00	25.00
3 feet " " . . . .	3.00	20.00

## *var. tardiva*.

This variety is similar to the above, but it blooms later in the season.

4 feet transplanted . . . .	6.00	
3 " " . . . .	5.00	

## *Hypericum aureum*. ST. JOHN'S WORT.

A native shrub of low growth bearing large golden-yellow flowers. It remains in bloom for a number of weeks.

3 feet transplanted . . . .	5.00	
2½ " " . . . .	4.00	

## *Ilex verticillata*. WINTERBERRY.

A native shrub of medium size. It derives its name from the fact that its crimson berries remain on the bush all winter.



# SHRUBS

SWAIN NELSON & SONS COMPANY

Per 10      Per 100

*Ilex verticillata* (continued).

4 feet transplanted . . . . .	6.00
3 " " . . . . .	5.00
2½ " " . . . . .	4.00

*Ligustrum Amurense*. AMOOR PRIVET.

A very tall hardy half-evergreen shrub of Chinese origin with glossy dark leaves.

6 feet transplanted . . . . .	7.50
5 " " . . . . .	5.00
4 " " . . . . .	3.50
3 " " . . . . .	2.50

*Ibota var. Regelianum*.

A dense low-growing form similar to the above species.

3 feet transplanted . . . . .	7.50
2½ " " . . . . .	6.00
2 " " . . . . .	4.50

*vulgare*. PRIVET.

A very hardy narrow-leaved species bearing spikes of white flowers followed by black berries.

5 feet transplanted . . . . .	5.00	35.00
4 " " . . . . .	3.50	22.50
3 " " . . . . .	2.50	15.00

*var. glaucum marginatum*.

WHITE-EDGED PRIVET.

This shrub differs from the common Privet in having leaves edged with white in an ornamental manner.

5 feet transplanted . . . . .	5.00	
4 " " . . . . .	3.50	22.50
3 " " . . . . .	2.50	15.00

*Lonicera Alberti*. DWARF BUSH HONEYSUCKLE.

A very pretty low shrub with slender drooping branches and delicate foliage of a fine bluish tint. The flowers which appear in July and August are very fragrant.

1½ feet transplanted . . . . .	3.00	25.00
--------------------------------	------	-------

# SHRUBS

GLEN VIEW NURSERIES



Per 10      Per 100

## *Lonicera caerulea.*

### BUSH HONEYSUCKLE.

A shrub of spreading habit bearing bluish-colored berries. All the upright or bush Honeysuckles are vigorous shrubs and are suited to almost any soil or exposure. They are valuable for shrubberies and for their profusion of flowers and bright-colored fruit.

5 feet transplanted	. . .	5.00	
4 " "	. . .	3.50	22.50
3 " "	. . .	2.50	15.00

## *Ledebouri.*

A new type with brownish-red flowers.

4 feet transplanted	. . .	3.50	
3 " "	. . .	2.50	

## *Morrowi.*

A vigorous broad-spreading shrub of luxuriant growth with yellow blossoms and rich amber-colored fruit.

6 feet transplanted	. . .	7.50	50.00
5 " "	. . .	5.00	35.00
4 " "	. . .	3.50	22.50
3 " "	. . .	2.50	15.00

## *orientalis.*

A variety with excellent foliage. The flowers are cream-colored.

6 feet transplanted	. . .	7.50	50.00
5 " "	. . .	5.00	35.00
4 " "	. . .	3.50	22.50
3 " "	. . .	2.50	15.00

## *Ruprechtiana.*

A new variety with pure white flowers and red berries.

4 feet transplanted	. . .	5.00	
3 " "	. . .	3.50	25.00

## *Tatarica.*

A Honeysuckle with very fragrant pink and white flowers. The berries are yellow.



# SHRUBS

SWAIN NELSON & SONS COMPANY

	Per 10	Per 100
<i>Lonicera Tatarica</i> (continued).		
6 feet transplanted . . . .	7.50	50.00
5 " " . . . .	5.00	35.00
4 " " . . . .	3.50	22.50
3 " " . . . .	2.00	12.00
<i>var. bella albida.</i>		
A new hybrid with beautiful white blossoms.		
4 feet transplanted . . . .	5.00	
3 " " . . . .	3.50	
<i>var. bella rosea.</i>		
A variety similar to the above but with pink flowers.		
4 feet transplanted . . . .	5.00	
3 " " . . . .	3.50	
<i>var. grandiflora rubra.</i>		
A shrub with very large pink flowers, which appear in early summer.		
6 feet transplanted . . . .	7.50	
5 " " . . . .	5.00	35.00
4 " " . . . .	3.50	22.50
<i>xylosteum.</i>		
A native species with handsome cream-colored flowers followed by crimson fruit.		
6 feet transplanted . . . .	7.50	
5 " " . . . .	5.00	35.00
4 " " . . . .	3.50	22.50
<i>Lycium Barbarum.</i>		
A shrub with long slender trailing branches. The leaves retain their green color until late in the fall, contrasting well with the bright red fruit.		
5 feet transplanted . . . .	5.00	35.00
4 " " . . . .	3.50	22.50
3 " " . . . .	2.50	15.00
<i>Chinense.</i> MATRIMONY VINE.		
A luxuriant trailing species of Chinese origin, with a profusion of gorgeous scarlet berries.		
5 feet transplanted . . . .	5.00	35.00
4 " " . . . .	3.50	22.50
3 " " . . . .	1.50	10.00

# SHRUBS

GLEN VIEW NURSERIES



Per 10      Per 100

*Morus alba var. Tatarica.*

**RUSSIAN MULBERRY.**

A shrub of medium size with smooth shining leaves and black fruit.

6 feet transplanted . . . .	9.00	75.00
5 " " . . . .	6.50	40.00
4 " " . . . .	4.00	25.00
3 " " . . . .	2.00	18.00

*Philadelphus coronarius.*

**SYRINGA or MOCK ORANGE.**

An early-blooming shrub of medium height and rapid growth. The members of the genus *Philadelphus* are all rapid-growing. Their fragrant white flowers with yellow centers bear some resemblance to orange blossoms. They vary greatly in size and habit of growth and are extremely ornamental.

6 feet transplanted . . . .	7.50	
5 " " . . . .	5.00	35.00
4 " " . . . .	3.50	22.50
3 " " . . . .	2.50	15.00

*var. aureus.*

A dense low-growing shrub with clear golden-yellow leaves. The plant retains its bright color throughout the summer. It is one of the best golden-leaved shrubs.

3 feet transplanted . . . .	7.50	
2½ " " . . . .	6.00	
2 " " . . . .	4.50	
1½ " " . . . .	3.50	

*dianthiflorus.*

**DOUBLE-FLOWERED MOCK ORANGE.**

A dwarf species with double cream-colored flowers.

4 feet transplanted . . . .	6.00	40.00
3 " " . . . .	5.00	35.00
2½ " " . . . .	4.00	25.00

*grandiflorus.*

**LARGE-FLOWERED MOCK ORANGE.**

A tall shrub with very large single white blossoms.





# SHRUBS

SWAIN NELSON & SONS COMPANY

	Per 10	Per 100
<i>Philadelphus grandiflorus</i> (continued).		
6 feet transplanted . . . . .	7.50	
5 " " . . . . .	5.00	35.00
4 " " . . . . .	3.50	22.50
3 " " . . . . .	2.50	15.00

*Lemoinei.*

A charming variety of erect habit, bearing double yellowish-white flowers in great profusion.

4 feet transplanted . . . . .	6.00	
3 " " . . . . .	5.00	
2½ " " . . . . .	4.00	

*var. Gerbe de Neige.*

The name "Garment of Snow" refers to the abundance of pure white blossoms which this species bears.

3 feet transplanted . . . . .	7.50	
2½ " " . . . . .	6.00	
2 " " . . . . .	4.50	
1½ " " . . . . .	3.50	

*nivalis.*

A *Syringa* with large white flowers varying from the type in having a white center.

5 feet transplanted . . . . .	10.00	
4 " " . . . . .	6.00	40.00
3 " " . . . . .	5.00	35.00

*speciosus.*

A shrub of medium height with showy white flowers.

6 feet transplanted . . . . .	9.00	
5 " " . . . . .	6.50	40.00
4 " " . . . . .	4.00	25.00
3 " " . . . . .	3.00	20.00

*Zeyheri.*

This species has small leaves and very large odorless flowers.

5 feet transplanted . . . . .	10.00	
4 " " . . . . .	6.00	
3 " " . . . . .	5.00	

# SHRUBS

GLEN VIEW NURSERIES



Per 10      Per 100

## *Physocarpus opulifolius.*

### NINE-BARK SPIREA.

A large native shrub of vigorous growth with wide-spreading branches, broad leaves and clusters of white flowers followed by attractive red seed-pods.

6 feet transplanted	. . .	7.50	50.00
5 " "	. . .	4.00	30.00
4 " "	. . .	2.00	12.00
3 " "	. . .	1.20	8.00

### *var. aureus.*

A golden-leaved variety, useful for strong color effects.

6 feet transplanted	. . .	7.50	50.00
5 " "	. . .	4.00	30.00
4 " "	. . .	2.00	12.00
3 " "	. . .	1.50	8.00

## *Potentilla fruticosa.*

### SHRUBBY CINQUEFOIL.

A medium-sized shrub of somewhat spreading habit, with small star-like yellow flowers. It blooms throughout the summer.

4 feet transplanted	. . .	4.00	25.00
3 " "	. . .	3.00	20.00

## *Prunus Pissardi.*

### PURPLE-LEAVED PLUM.

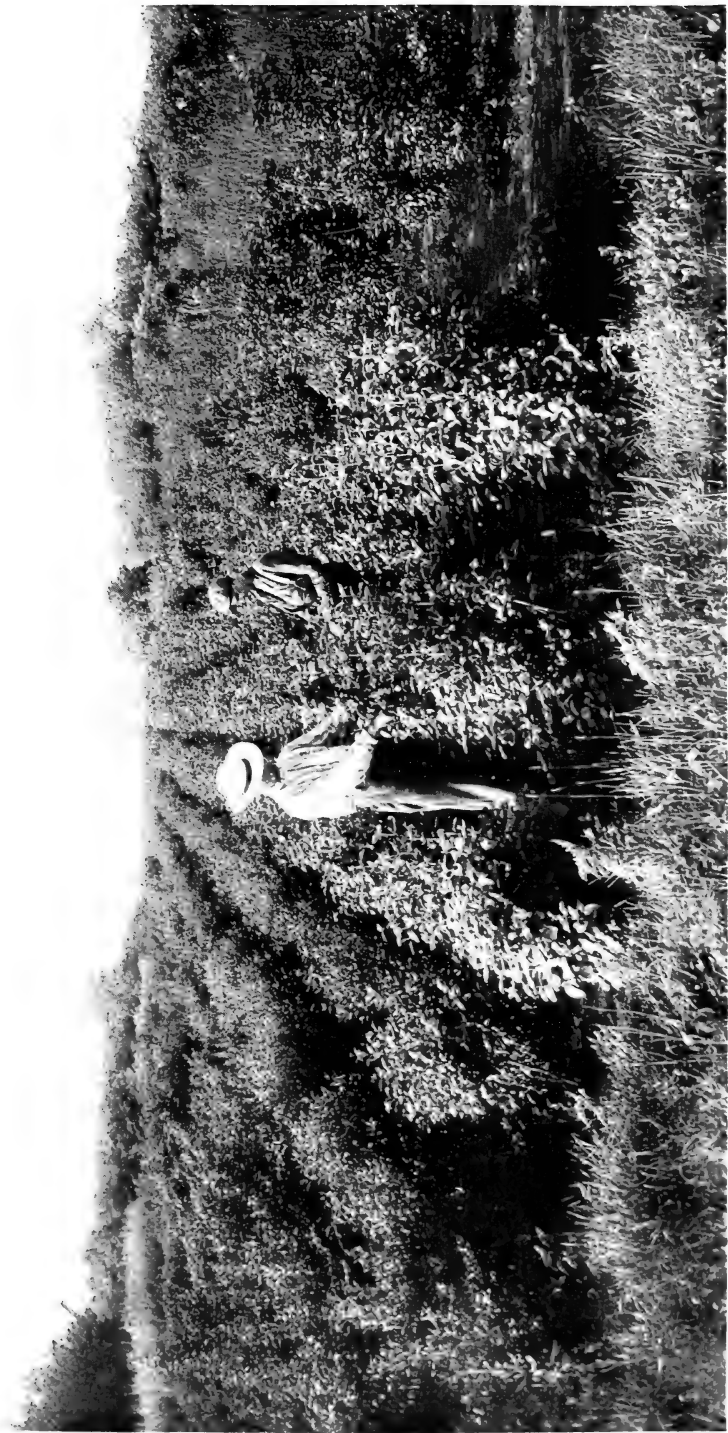
This shrub is the finest of all the purple-leaved plants. It retains its bright color until late in the fall.

8 feet transplanted	. . .	17.50	
6 " "	. . .	12.50	
5 " "	. . .	8.50	

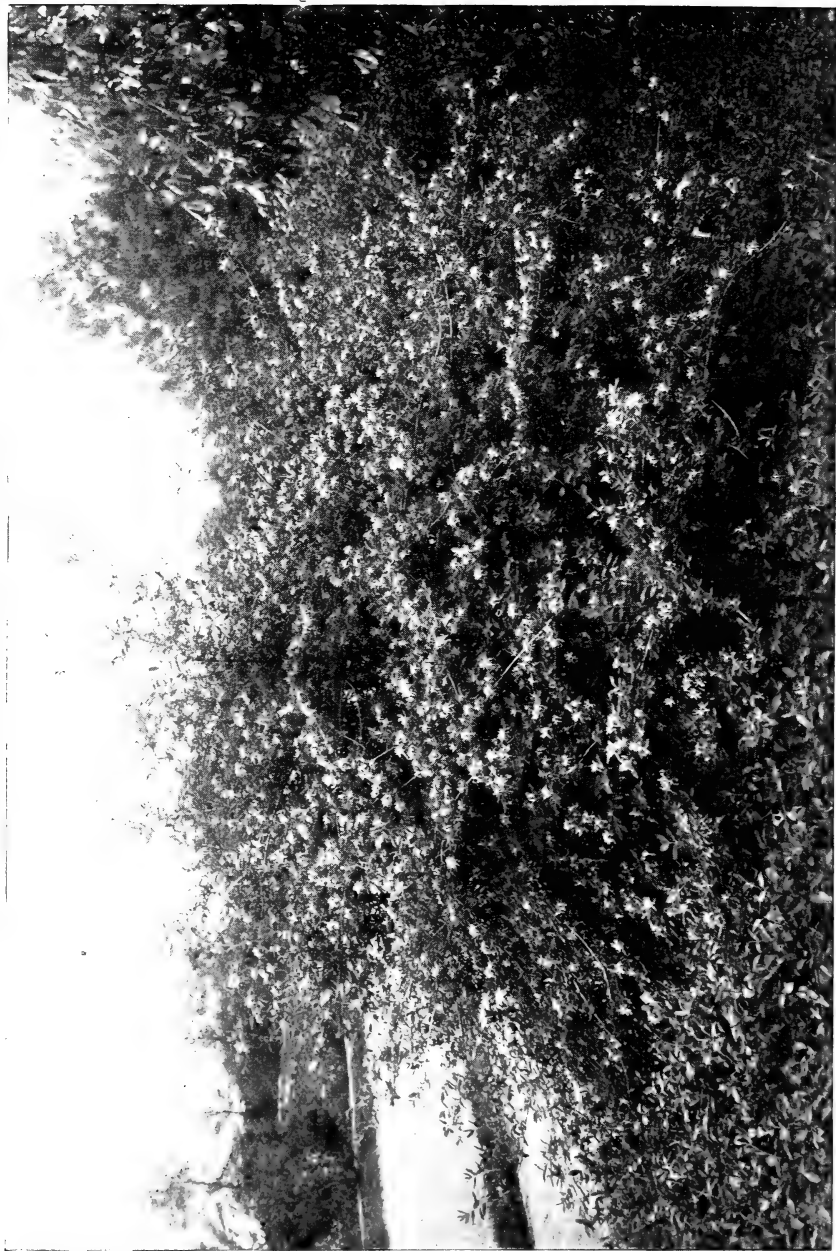
## *triloba.* DOUBLE-FLOWERED PLUM.

A fine vigorous shrub of Chinese origin. Before the leaves appear in the spring the branches are covered with large rose-like flowers of a delicate pink color.

6 feet transplanted	. . .	17.50	
5 " "	. . .	10.00	60.00



A Section of *Viburnums* at Glen View.



Morrow's Bush Honey-suckle is a most attractive shrub. Its flowers are handsome and its berries are abundant and extremely decorative. One of its best features is the graceful outline of a finely grown specimen where the branches bend outward and downward to the ground.



# SHRUBS

SWAIN NELSON & SONS COMPANY

Per 10      Per 100

*Ptelia trifoliata.*

**HOP TREE or WAFER ASH.**

A large shrub of rapid growth bearing clusters of winged fruit closely resembling hops.

6 feet transplanted	.	.	.	7.50	
5 " " "	.	.	.	5.00	35.00
4 " " "	.	.	.	3.50	22.50

*var. aurea.*

**GOLDEN-LEAVED HOP TREE.**

A variety similar to the above with handsome golden leaves.

6 feet transplanted	.	.	.	17.50	
5 " " "	.	.	.	10.00	
4 " " "	.	.	.	6.00	
3 " " "	.	.	.	5.00	
2½ " " "	.	.	.	4.00	

*Pyrus arbutifolia.* **CHOKEBERRY.**

A rapid-growing native shrub bearing a profusion of small white blossoms followed by red berries. The leaves are brilliantly tinted in autumn.

5 feet transplanted	.	.	.	6.50	
4 " " "	.	.	.	4.00	25.00
3 " " "	.	.	.	3.00	20.00

*nigra.* **BLACK CHOKEBERRY.**

This species differs from the above in having black berries.

5 feet transplanted	.	.	.	6.50	
4 " " "	.	.	.	4.00	25.00
3 " " "	.	.	.	3.00	20.00

*Japonica.* See *Cydonia.*

*Rhamnus alpina.* **BUCKTHORN.**

A robust shrub of medium size bearing large leaves of a handsome dark green color.

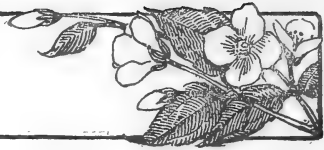
8 feet transplanted	.	.	.	17.50	
6 " " "	.	.	.	12.50	

*cathartica.* **COMMON BUCKTHORN.**

A large shrub with dark foliage, white flowers and small black fruit.

# SHRUBS

GLEN VIEW NURSERIES



	Per 10	Per 100
<i>Rhamnus cathartica</i> (continued).		
6 feet transplanted . . . . .	7.50	
5 " " . . . . .	5.00	35.00
4 " " . . . . .	3.50	22.50
3 " " . . . . .	2.00	10.00

*frangula*. ALDER BUCKTHORN.

A valuable and decorative species of erect habit, with glossy leaves and black berries. Its long black branches speckled with white are very attractive in winter.

6 feet transplanted . . . . .	7.50	
5 " " . . . . .	5.00	35.00
4 " " . . . . .	3.50	22.50
3 " " . . . . .	2.00	10.00

*Imeritina*.

A variety remarkable for its foliage. The leaves are dark in color and sometimes reach a length of nine inches. They assume a rich bronze tint when full grown.

4 feet transplanted . . . . .	10.00	
3 " " . . . . .	6.50	

*Purshiana*.

A rare shrub, valuable for its long dark leaves and red berries which turn to black in the fall.

2½ feet transplanted . . . . .	6.00	
--------------------------------	------	--

*Rhodotypos kerrioides*. WHITE KERRIA.

A Japanese shrub of dense growth with rich green foliage and pure white blossoms. It remains in bloom for several weeks.

5 feet transplanted . . . . .	6.50	
4 " " . . . . .	4.00	25.00
3 " " . . . . .	3.00	20.00

*Rhus aromatica*. FRAGRANT SUMACH.

A low spreading bush bearing dense spikes of yellowish flowers before the leaves appear in spring. The foliage exhales a pleasant fragrance and is brilliantly tinted with scarlet in the fall.

2½ feet transplanted . . . . .	6.00	
2 " " . . . . .	4.50	
1½ " " . . . . .	3.50	



# SHRUBS

SWAIN NELSON & SONS COMPANY

Per 10      Per 100

## *Rhus copallina.* DWARF SUMACH.

A fine late-blooming variety with handsome white flowers and glossy leaves which turn a vivid red in the autumn. It is a very desirable shrub for planting either singly or in mass.

3 feet transplanted . . . . .	7.50	
2 $\frac{1}{2}$ " " . . . . .	6.00	
2 " " . . . . .	4.50	35.00

## *Coriaria.* EUROPEAN SUMACH.

A variety similar to the Stag-horn Sumach but of lower growth. Its foliage is a gorgeous mass of color in the fall.

6 feet transplanted . . . . .	7.50	
5 " " . . . . .	5.00	35.00
4 " " . . . . .	3.50	22.50

## *cotinoides.* CHITTAM-WOOD.

A rare shrub resembling the Smoke-tree. Its leaves are of a rich green color with a touch of pink, and they assume most brilliant tints in the autumn.

3 feet transplanted . . . . .	10.00	
2 " " . . . . .	7.50	

## *Cotinus.*

### PURPLE FRINGE or SMOKE TREE

A European species with panicles of misty-looking thread-like flowers which appear in midsummer and make the shrub seem at a distance as if enveloped in a cloud of smoke.

6 feet transplanted . . . . .	7.50	
5 " " . . . . .	5.00	35.00
4 " " . . . . .	3.50	22.50

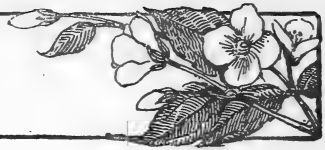
## *glabra.* SMOOTH SUMACH.

A shrub with immense light-green leaves and handsome spikes of dark-red velvety fruit. Like all the Sumachs, it is valuable for its bright autumnal colors.

6 feet transplanted . . . . .	7.50	50.00
5 " " . . . . .	3.50	30.00
4 " " . . . . .	2.50	20.00

# SHRUBS

GLEN VIEW NURSERIES



Per 10      Per 100

*Rhus glabra* var. *laciniata*.

CUT-LEAVED SUMACH.

A striking plant with deeply cut leaves resembling ferns.

4 feet transplanted . . . .	6.00	
3 " " " . . . .	5.00	35.00
2 1/2 " " " . . . .	4.00	25.00

*Osbeckii*.

A beautiful Chinese shrub of large size with very ornamental foliage.

6 feet transplanted . . . .	17.50	
-----------------------------	-------	--

*typhina*. STAG-HORN SUMACH.

A tall species bearing scarlet fruit. The branches are covered with hairy down like a stag's horn.

8 feet transplanted . . . .	6.00	50.00
6 " " " . . . .	5.00	40.00
5 " " " . . . .	4.00	30.00

var. *laciniata*. FERN-LEAVED SUMACH.

A very decorative cut-leaved form of the above.

3 feet transplanted . . . .	7.50	
2 1/2 " " " . . . .	6.00	
2 " " " . . . .	4.50	

*Ribes alpinum*. MOUNTAIN CURRANT.

An attractive shrub with fragrant golden-yellow flowers and deep scarlet fruit.

4 feet transplanted . . . .	3.50	
3 " " " . . . .	2.50	

*Cynosbati*. WILD GOOSEBERRY.

A native species useful for wild effects.

4 feet transplanted . . . .	4.00	
3 " " " . . . .	3.00	20.00

*floridum*. AMERICAN BLACK CURRANT.

A variety with fragrant yellow flowers and edible black fruit.

6 feet transplanted . . . .	7.50	
5 " " " . . . .	5.00	35.00
4 " " " . . . .	3.50	22.50
3 " " " . . . .	2.50	15.00





# SHRUBS

GLEN VIEW NURSERIES



	Per 10	Per 100
<i>Rosa nitida.</i>		
A low shrub with small shining foliage and showy brilliant red flowers. The most highly colored of all wild roses.		
3 years transplanted . . . . .	3.50	30.00
<i>Rosa repens.</i>		
A low trailing shrub with white flowers and attractive fruit, which remains red throughout the entire winter.		
3 years transplanted . . . . .	3.50	30.00
<i>rubiginosa.</i> SWEETBRIER.		
A well-known species attractive both in flower and fruit. The leaves and flowers exhale a delightful fragrance.		
5 feet transplanted . . . . .	5.00	35.00
4 " " . . . . .	3.50	22.50
3 " " . . . . .	2.50	15.00
2 " " . . . . .	2.00	10.00
<i>rugosa.</i> RAMANAS ROSE.		
An attractive bush with large dark-green leaves differing from those of the ordinary Rose. It blooms throughout the summer and in the autumn bears large deep-red fruit.		
4 feet transplanted . . . . .	7.50	
3 " " . . . . .	5.00	35.00
2 1/2 " " . . . . .	4.00	30.00
2 " " . . . . .	3.00	20.00
<i>var. alba.</i>		
Like the above but with white blossoms.		
2 1/2 feet transplanted . . . . .	7.50	
2 " " . . . . .	6.00	
1 1/2 " " . . . . .	4.50	
<i>setigera.</i> MICHIGAN or PRAIRIE ROSE.		
A species bearing beautiful large single flowers of a deep rose color.		
5 feet transplanted . . . . .	6.50	
4 " " . . . . .	4.00	
3 " " . . . . .	3.00	
Roses: Briar, Climbing, Hybrid Perpetual and Rambler. See page 56.		



# SHRUBS

SWAIN NELSON & SONS COMPANY

Per 10      Per 100

## *Rubus odoratus.* FLOWERING RASPBERRY.

A handsome shrub with broad leaves resembling those of the Grape and large reddish-purple flowers. It remains in bloom all summer.

5 feet transplanted	.	.	.	5.00	25.00
4 " " "	.	.	.	3.50	22.50
3 " " "	.	.	.	2.50	15.00

## *Sambucus Canadensis.* COMMON ELDER.

A rapid-growing native shrub bearing immense flat heads of fragrant white flowers. Edible berries appear in the fall.

6 feet transplanted	.	.	.	7.50	
5 " " "	.	.	.	5.00	35.00
4 " " "	.	.	.	3.50	22.50
3 " " "	.	.	.	2.50	12.00

### *var. aurea.* GOLDEN ELDER.

A very desirable golden-leaved shrub which retains its color throughout the season.

5 feet transplanted	.	.	.	6.50	40.00
4 " " "	.	.	.	4.00	25.00
3 " " "	.	.	.	3.00	20.00

### *var. fructo lutea.*

A variety like the Common Elder with fruit of a yellow color.

4 feet transplanted	.	.	.	4.00	
3 " " "	.	.	.	3.00	

### *racemosa.*

An Elder bearing ornamental heads of white flowers followed by dense clusters of bright crimson berries.

5 feet transplanted	.	.	.	6.50	
4 " " "	.	.	.	4.00	
3 " " "	.	.	.	3.00	

## *Shepherdia Canadensis.* BUFFALO BERRY.

A highly ornamental shrub with handsome silvery foliage and decorative fruit of a yellowish-red color.

5 feet transplanted	.	.	.	10.00	
4 " " "	.	.	.	6.00	
3 " " "	.	.	.	5.00	

# SHRUBS

GLEN VIEW NURSERIES



Per 10      Per 100

## *Spiræa arguta.*

One of the finest of the early-blooming shrubs. A low-growing species with pure white flowers, small dark-green leaves and graceful habit. The Spireas are all graceful plants of medium size and marked variability in flower and leaf. Their elegant appearance, easy culture, long blooming-season and ready adaptability to all soils make them an indispensable class of shrubs.

4 feet transplanted . . . .	6.00	40.00
3 " " " " " "	5.00	35.00
2½ " " " " " "	4.00	25.00
2 " " " " " "	2.00	15.00

## *Billardi.*

A variety bearing spikes of attractive rose-pink blossoms.

5 feet transplanted . . . .	5.00	35.00
4 " " " " " "	3.50	22.50
3 " " " " " "	2.50	15.00

## *Bumalda.*

This species also has pink flowers. The plant blooms all summer.

3 feet transplanted . . . .	5.00	35.00
2½ " " " " " "	4.00	25.00
2 " " " " " "	1.50	8.00

## *Bumalda var. Anthony Waterer.*

Another long-blooming Spirea. The flowers are of a deep crimson color.

3 feet transplanted . . . .	7.50	
2 " " " " " "	4.50	35.00
1½ " " " " " "	3.50	25.00

## *callosa.*

A shrub with large flat panicles of light pink blossoms.

4 feet transplanted . . . .	4.00	25.00
3 " " " " " "	3.00	20.00

## *var. alba.*

A white-flowered variety of the above with a very low habit of growth.

1 foot transplanted . . . .	7.50	
-----------------------------	------	--

*opulifolia.* See *Physocarpus.*



# SHRUBS

SWAIN NELSON & SONS COMPANY

Per 10      Per 100

## *Spiraea prunifolia.* BRIDAL-WREATH SPIREA.

A handsome early-flowering species with shining dark-green leaves and abundant double white blossoms.

5 feet transplanted . . . . .	6.50	
4 " " . . . . .	4.00	25.00
3 " " . . . . .	3.00	20.00

## *salicifolia.* MEADOW SWEET.

A native shrub bearing willow-like leaves and white flowers.

5 feet transplanted . . . . .	5.00	35.00
4 " " . . . . .	3.50	22.50
3 " " . . . . .	2.50	15.00

## *sorbifolia.* ASH-LEAVED SPIREA.

A rapid-growing shrub with fern-like leaves and large heads of white flowers.

5 feet transplanted . . . . .	10.00	
4 " " . . . . .	6.00	
3 " " . . . . .	5.00	

## *Thunbergi.*

A species with graceful slender arching branches, light green feathery foliage and pure white flowers. It blooms early in May.

3 feet transplanted . . . . .	5.00	
2 1/2 " " . . . . .	4.00	25.00

## *tomentosa.* HARDHACK.

A shrub with dense panicles of pink blossoms which appear in midsummer.

2 1/2 feet transplanted . . . . .	6.00	
2 " " . . . . .	4.50	
1 1/2 " " . . . . .	3.50	

## *var. alba.*

Similar to the above but with flowers of a white color.

2 1/2 feet transplanted . . . . .	6.00	
2 " " . . . . .	4.50	
1 1/2 " " . . . . .	3.50	





# SHRUBS

SWAIN NELSON & SONS COMPANY

Per 10      Per 100

*Syringa Chinensis.* Syn. *Rothomagensis.*

## ROUEN LILAC.

A tall shrub with delicate foliage and graceful outline bearing flowers of a dark reddish-purple tint.

5 feet transplanted . . . . .	10.00	60.00
4 " " . . . . .	6.00	40.00
3 " " . . . . .	5.00	35.00

*Japonica.* JAPAN TREE LILAC.

The latest to bloom. Its white flowers borne in large clusters contrast strongly with its dark green foliage.

5 feet transplanted . . . . .	15.00	
4 " " . . . . .	10.00	
3 " " . . . . .	6.50	50.00

*Persica.* PERSIAN LILAC.

A very handsome and desirable shrub similar to the Rouen Lilac. Its flowers are of a light purple color and are borne in great profusion.

5 feet transplanted . . . . .	15.00	
4 " " . . . . .	10.00	
3 " " . . . . .	6.50	50.00

*villosa.*

A valuable Japanese Lilac bearing large clusters of fragrant pale pink blossoms. It blooms two weeks later than the common species.

5 feet transplanted . . . . .	15.00	
4 " " . . . . .	10.00	

*vulgaris.* COMMON PURPLE LILAC.

This species is the old-fashioned Garden Lilac. It is a vigorous free-growing plant, blooming about the middle of May. Its bushy habit makes it admirably suited for hedge-planting.

5 feet transplanted . . . . .	10.00	60.00
4 " " . . . . .	6.00	40.00
3 " " . . . . .	5.00	35.00
2 " " . . . . .	2.00	18.00

*var. alba.* COMMON WHITE LILAC.

A variety differing from the above in having white flowers.

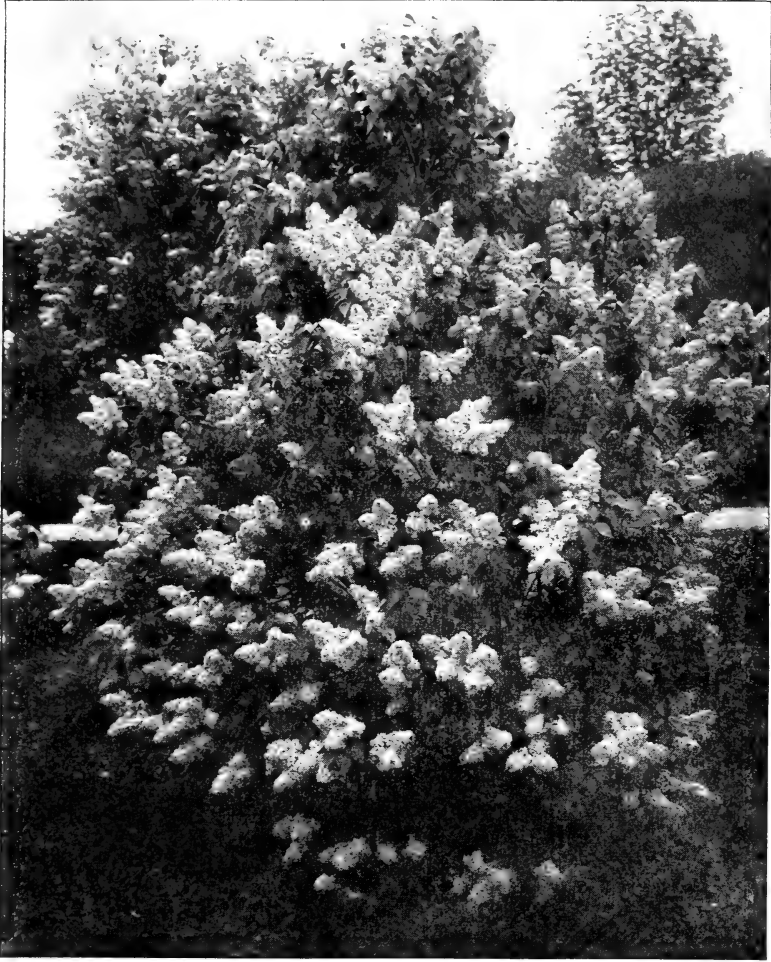
# SHRUBS

GLEN VIEW NURSERIES



	Per 10	Per 100
<i>Syringa vulgaris var. alba</i> (continued).		
6 feet transplanted . . . . .	17.50	
5 " " . . . . .	10.00	60.00
4 " " . . . . .	6.00	40.00
3 " " . . . . .	5.00	35.00
 <i>var. Alphonse Lavalle.</i>		
A variety bearing beautiful double flowers of a rare blue color.		
5 feet transplanted . . . . .	15.00	
4 " " . . . . .	10.00	
3 " " . . . . .	6.50	
 <i>var. Bertha Dammann.</i>		
This form bears larger clusters of white flowers than any other Lilac in cultivation.		
5 feet transplanted . . . . .	15.00	
4 " " . . . . .	10.00	
 <i>var. Charles X.</i>		
A rapid-growing kind with large loose clusters of deep purple flowers.		
5 feet transplanted . . . . .	15.00	
4 " " . . . . .	10.00	
3 " " . . . . .	6.50	
 <i>var. La Tour d'Auvergne.</i>		
A Lilac with large and very double flowers of a beautiful violet hue.		
5 feet transplanted . . . . .	15.00	
4 " " . . . . .	10.00	
 <i>var. Madame Lemoine.</i>		
A handsome plant with immense leaves and fine double white flowers.		
5 feet transplanted . . . . .	15.00	
4 " " . . . . .	10.00	
3 " " . . . . .	6.50	
 <i>var. Marie Legraye.</i>		
A dwarf variety with attractive white flowers.		
5 feet transplanted . . . . .	15.00	
4 " " . . . . .	10.00	
3 " " . . . . .	6.50	





Hybrid Lilac Charles X.

The revival of old fashioned flowers and the return to favor of the old fashioned garden has contributed greatly to the increased popularity of the lilac. With a wealth of associated memories it now bids fair to retain its place as a garden favorite for many generations to come.

There are many hybrids of this fine shrub differing from each other principally in their flowers, some single, some double and others semi-double, varying in color from deep rose to blush and white, and from violet or purple to a clear pure blue. Several sorts are delightfully fragrant and all possess such exquisite beauty as to entitle them to a place in every garden.



### *Spiræa Arguta*

For grace, delicacy and exquisite beauty, the cultivated garden spireas are unsurpassed among shrubs.

The *Spiræa Arguta* is the first to bloom. Its stems are graceful and its leaves delicate and feathery. When in flower as portrayed in the above picture it is clothed in white from crown to tip.

The *Spiræa Prunifolia* or Bridal Wreath has long been a garden favorite. Its branches though slender are straight and stiff. It blooms early and small double, white flowers are abundant upon the stem. The bush is extremely effective amid its companions.

The *Spiræa Van Houttei* is universally acknowledged to be the best of all spireas. In bloom it has been likened to a great white fountain. It also possesses a remarkable beauty of form which wins admiration for it even after the flowering season has passed.



# SHRUBS

SWAIN NELSON & SONS COMPANY

Per 10      Per 100

## *Syringa vulgaris* var. *Mathieu d'Dombasle*.

A splendid variety with reddish flowers in trusses nearly a foot long.

5 feet transplanted . . . . .	15.00	
4 " " . . . . .	10.00	
3 " " . . . . .	6.50	

## var. *Souvenir de L. Spath*.

A Lilac bearing large clusters of fine dark purple-red flowers.

5 feet transplanted . . . . .	15.00	
4 " " . . . . .	10.00	
3 " " . . . . .	6.50	

## var. *rubra insignis*.

This form has dark red buds which change to a beautiful lilac shade when full-blown.

5 feet transplanted . . . . .	15.00	
4 " " . . . . .	10.00	

## *Tamarix Gallica*.

A shrub with fine feathery foliage, giving the plant an evergreen appearance. The flowers are very numerous and are of a delicate pink color.

5 feet transplanted . . . . .	10.00	
4 " " . . . . .	6.00	
3 " " . . . . .	5.00	35.00

## *Indica*.

This species bears rose-colored blossoms. It blooms in August, two months later than the *Gallica*.

5 feet transplanted . . . . .	10.00	
4 " " . . . . .	6.00	
3 " " . . . . .	5.00	35.00

## *juniperina*. Syn. *Japonica Plumosa*.

### PLUMED TAMARISK.

A variety with plume-like branches, unusually beautiful in color and form. It bears pale pink flowers in August.

4 feet transplanted . . . . .	10.00	80.00
3 " " . . . . .	6.50	50.00

# SHRUBS

GLEN VIEW NURSERIES



*Tamarix Odessana var. Amurensis.*

Per 10      Per 100

The flowers of this species occur in large clusters. They are borne from July to September.

5 feet transplanted . . . . .	10.00	60.00
4 " " . . . . .	6.00	40.00

*parviflora. Syn. Africana.*

A shrub with long branches of a feathery nature and light pink flowers. It blooms in May.

4 feet transplanted . . . . .	6.00	40.00
3 " " . . . . .	5.00	35.00
2½ " " . . . . .	4.00	25.00

*Viburnum acerifolium. DOCKMACKIE.*

A low-growing native shrub with Maple-like leaves which turn to a dark purple color in the fall. The blossoms are white and occur in flat heads followed by clusters of bright red berries.

4 feet transplanted . . . . .	6.00	40.00
3 " " . . . . .	5.00	35.00
2½ " " . . . . .	4.00	25.00

*cassinoides. WITHE-ROD.*

A native plant of medium size and glossy foliage. It bears yellowish-white flowers in June and in fall is covered with black berries.

3 feet transplanted . . . . .	7.50
2½ " " . . . . .	6.00
2 " " . . . . .	4.50

*dentatum. ARROW-WOOD.*

A tall upright bushy shrub with curiously cut leaves and white flowers. It bears fine steel-blue berries in the autumn.

4 feet transplanted . . . . .	6.00	40.00
3 " " . . . . .	5.00	35.00

*Lantana. WAYFARING TREE.*

A tall European shrub with velvety leaves, white flowers and fruit of a red color, turning later to black.

6 feet transplanted . . . . .	17.50	
5 " " . . . . .	10.00	60.00
4 " " . . . . .	6.00	40.00
3 " " . . . . .	5.00	35.00



The Golden Elder which occupies the center of this view in our nursery, is extremely effective amid the surrounding green. It is used extensively in landscape planting to brighten dark places with its golden glow.



### Viburnum Dentatum.

The viburnums are a remarkable group of ornamental shrubs which when known are appreciated with a favor that grows with acquaintance. Hardy in growth, excellent in foliage, flower and fruit, they are in every particular adapted to lawn and park decoration.

All the viburnums are of excellent habit with handsome fresh green foliage which in fall is changed into bronze and purple and later brightens into red or orange. Their white flowers are borne in clusters followed by panicles of ornamental fruit which in ripening display most exquisite gradations of color and often cling to the bush through the winter.



# SHRUBS

SWAIN NELSON & SONS COMPANY

Per 10      Per 100

## *Viburnum Lentago.* SHEEP-BERRY.

A tall native species bearing light green glossy foliage and fragrant creamy-white blossoms.

5 feet transplanted . . . .	10.00	
4 " " . . . .	6.00	
3 " " . . . .	5.00	

### *molle.*

A native plant resembling the Arrow-wood but with broader leaves and larger fruit. It is late in blooming.

3 feet transplanted . . . .	7.50	
2 " " . . . .	4.50	

## *nudum.* WITHE-ROD.

A tall native variety with handsome glossy foliage and yellowish-white flowers. The berries are of a fine black color.

5 feet transplanted . . . .	10.00	
4 " " . . . .	6.00	
3 " " . . . .	5.00	
1½ " " . . . .	3.50	25.00

## *Opulus. Syn. Oxycoccus.*

### BUSH CRANBERRY.

A medium-sized native shrub bearing large flat heads of white flowers followed by brilliant scarlet fruit. It is one of the best shrubs for general planting.

6 feet transplanted . . . .	17.50	
5 " " . . . .	10.00	60.00
4 " " . . . .	6.00	40.00
3 " " . . . .	3.50	30.00

## *var. sterile.* SNOWBALL.

An old garden favorite. Its globes of white flowers appear about Decoration Day and are very ornamental.

6 feet transplanted . . . .	9.00	75.00
5 " " . . . .	6.50	40.00
4 " " . . . .	4.00	25.00
3 " " . . . .	2.50	18.00

# SHRUBS

GLEN VIEW NURSERIES ~



*Viburnum prunifolium.* BLACK HAW.

Per 10      Per 100

A tall native shrub with small oval leaves, white flowers and black fruit.

4 feet transplanted . . .	6.00	
3 " " . . .	5.00	
2½ " " . . .	4.00	

*pubescens.*

A handsome species of compact habit, with flowers somewhat larger than those of the dentatum.

5 feet transplanted . . .	10.00	
4 " " . . .	6.00	

*Sieboldianum.*

A vigorous variety conspicuous for its dark green, shiny leaves. Like the Way-faring Tree, its red fruit becomes bluish-black late in the fall.

3 feet transplanted . . .	10.00	
---------------------------	-------	--

*tomentosum.*

A strong native shrub of medium growth and spreading habit, with dark green leaves and white flowers in great profusion.

3 feet transplanted . . .	7.50	
2½ " " . . .	6.00	

*Weigela amabilis.* *Syn. rosea.*

A handsome spring-blooming shrub with beautiful rose-colored flowers. The Weigelas are of large size and symmetrical outline and are among the finest of the Japanese flowering shrubs.

6 feet transplanted . . .	9.00	75.00
5 " " . . .	6.50	40.00
4 " " . . .	4.00	25.00
3 " " . . .	3.00	20.00

*florida var. candida.*

A variety differing from the above in having white flowers.

4 feet transplanted . . .	6.00	40.00
3 " " . . .	5.00	35.00

*hybrida var. Eva Bathke.*

A free-blooming hybrid with beautiful crimson flowers.





# SHRUBS

SWAIN NELSON & SONS COMPANY

Per 10      Per 100

*Weigela hybrida* var. *Eva Rathke* (continued).

3	feet transplanted	.	.	.	7.50	
2½	"	"	.	.	6.00	
2	"	"	.	.	4.50	

var. *hortensis rubra*.

It is more erect than the above, grows rapidly and its flowers are deep crimson.

4	feet transplanted	.	.	.	6.00	40.00
3	"	"	.	.	5.00	35.00

var. *Van Houttei*.

Similar to *amabilis* but with flowers of a darker color.

4	feet transplanted	.	.	.	6.00	40.00
3	"	"	.	.	5.00	35.00
2½	"	"	.	.	4.00	25.00

*Xanthoxylum Americanum*. PRICKLY ASH

A large shrub with strong brown spines, fine aromatic foliage and handsome red fruit.

6	feet transplanted	.	.	.	17.50	
5	"	"	.	.	10.00	60.00
4	"	"	.	.	6.00	40.00
3	"	"	.	.	5.00	35.00
2½	"	"	.	.	4.00	25.00





"It is inexpressible how much evergreen trees add to the beauty of a country residence in winter. At that season, when, during three or four months, the landscape is bleak and covered with snow, these noble trees, properly intermingled with the groups in view from the window, or those surrounding the house, give an appearance of verdure and life to the scene which cheats winter of half its dreariness. In exposed quarters, also, and in all windy and bleak situations, groups of evergreens form the most effectual shelter at all seasons of the year."

A. J. DOWNING.

*Abies concolor.* SILVER FIR. Each      Per 10

A beautiful Colorado species with long and comparatively broad leaves of a bluish tinge when young, becoming pale green with age.

5 feet transplanted . . . . .	6.00	50.00
4 " " " . . . . .	4.00	35.00
3 " " " . . . . .	2.50	20.00

*Juniperus Hibernica.* IRISH JUNIPER.

A fine Evergreen of columnar form with handsome green foliage.

3 feet transplanted . . . . .	2.00
-------------------------------	------

*Virginiana.* RED CEDAR.

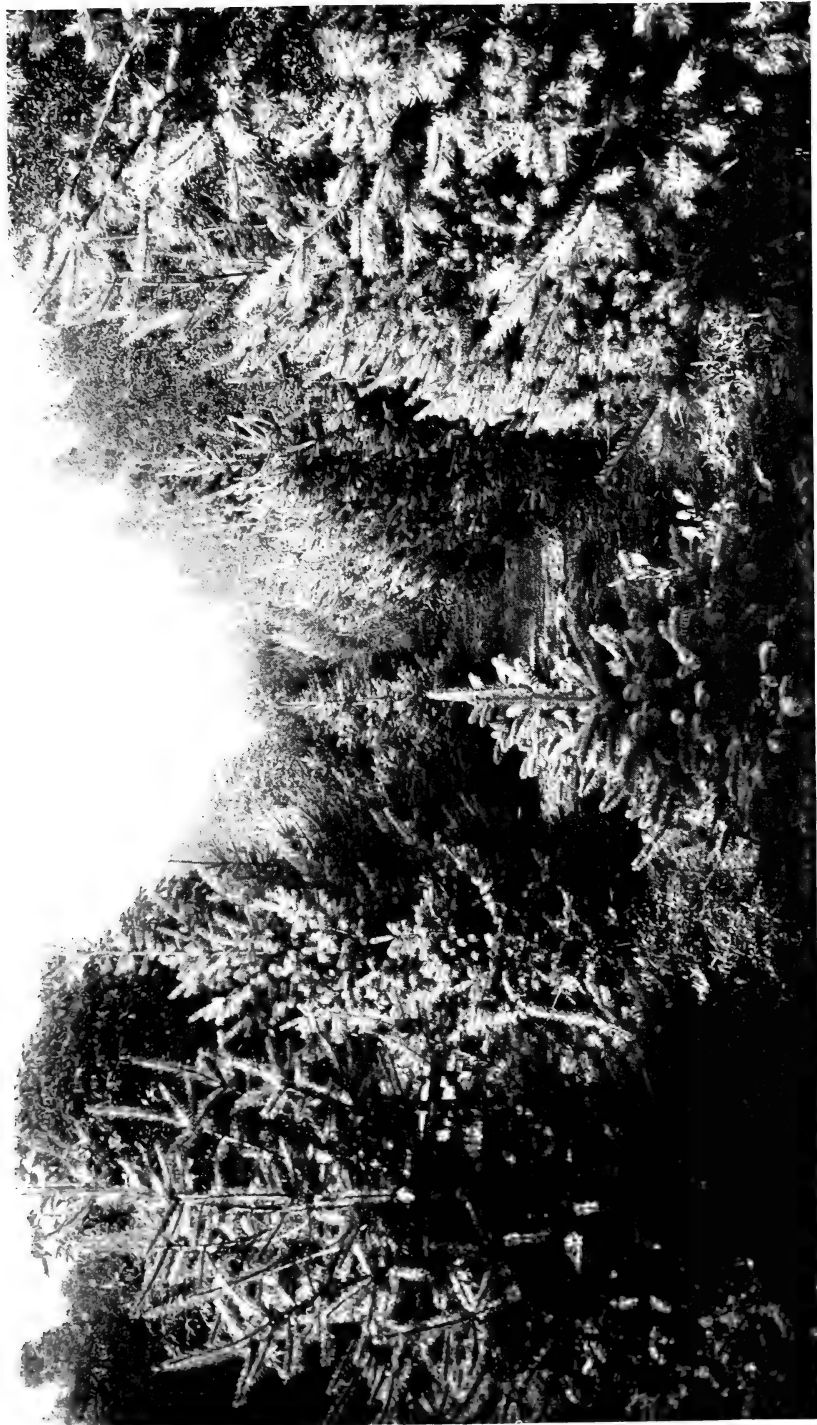
A well-known native tree of small size and vigorous growth with characteristic foliage of a dark green color.

6 feet transplanted . . . . .	6.00	50.00
4 " " " . . . . .	2.00	15.00
3 " " " . . . . .	1.25	9.00

*Picea alba.* WHITE SPRUCE.

A native tree of pyramidal form and compact habit with attractive light green leaves. It bears some resemblance to the Norway Spruce.

5 feet transplanted . . . . .	6.00	50.00
4 " " " . . . . .	4.00	35.00
3 " " " . . . . .	2.50	20.00
2 " " " . . . . .	1.50	10.00



Among the Evergreens shown above are the Silver Fir, the Blue Colorado Spruce and the Douglas Spruce, each distinguished for unusual merit. Our evergreens have been frequently transplanted and are well supplied with roots and therefore large specimens may be moved with safety.

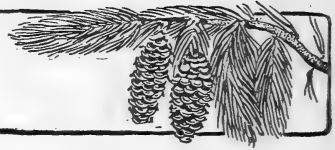


These elm trees are about 8 inches in diameter and had been transplanted two years previous to the time the picture was taken. They have the graceful pendulous branches and luxurious foliage for which the Elm is so much admired.



# EVERGREENS

GLEN VIEW NURSERIES



Each Per 10

## *Pinus Strobus.* AMERICAN WHITE PINE.

The most valuable of our native Pines. It is a tall straight tree of handsome appearance, with long needles of a delicate bluish green color.

4 feet transplanted	.	.	.	2.25	20.00
3 " "	.	.	.	1.25	10.00
2 " "	.	.	.	.75	5.00

## *Pseudo-tsuga Douglasii.* DOUGLAS SPRUCE.

A large pyramidal Colorado Spruce of rapid growth bearing bluish-green needles. As its name signifies, it is somewhat like the Hemlock.

6 feet transplanted	.	.	.	5.00	45.00
5 " "	.	.	.	3.50	30.00
4 " "	.	.	.	2.50	20.00

## *Thuja occidentalis.*

### AMERICAN ARBOR VITÆ.

A tall slender-growing native Cedar of decidedly ornamental appearance, with peculiar characteristic foliage.

6 feet transplanted	.	.	.	3.50	30.00
5 " "	.	.	.	2.25	20.00
4 " "	.	.	.	1.25	9.00
3 " "	.	.	.	.75	5.00
2½ " "	.	.	.	.50	4.00

## *Tsuga Canadensis.* HEMLOCK SPRUCE.

A remarkably graceful and elegant native tree with drooping branches and delicate dark foliage. It can be kept in dense form if pruned and is therefore well adapted for hedges.

2 feet transplanted	.	.	.	1.00	8.50
1 " "	.	.	.	.60	5.00





The rose is too well known to need special commendation. The picture suggested to the mind by the word "Rose" is usually that of a double flower; this is because the rose was the first of all flowers to be cultivated in its double form.

In formal gardens the selection of roses is generally confined to the double or hybrid sorts. They are valuable as garden flowers by reason of their long season of blooming, and their exquisite beauty both of color and form.

The single roses, however, ought not to be neglected. Their simple sweet-scented blossoms and handsome foliage fit them to associate on equal terms with the more pretentious shrubs in the garden.

- |                                                                                                                                |        |
|--------------------------------------------------------------------------------------------------------------------------------|--------|
|                                                                                                                                | Per 10 |
| <b>BRIARS</b> . . . . .                                                                                                        | 4.00   |
| <b>HARRISON YELLOW.</b>                                                                                                        |        |
| A golden-yellow semi-double Rose of medium size.                                                                               |        |
| <b>PERSIAN YELLOW.</b>                                                                                                         |        |
| A small bright yellow nearly full Rose.                                                                                        |        |
| <b>SWEET BRIAR.</b> See Shrubs.                                                                                                |        |
| <b>CLIMBING ROSES</b> . . . . .                                                                                                | 4.00   |
| <b>CRIMSON RAMBLER.</b>                                                                                                        |        |
| A wonderfully prolific climber of vigorous habit and rapid growth, with abundant clusters of bright crimson semi-double roses. |        |
| <b>BALTIMORE BELLE.</b>                                                                                                        |        |
| A fine compact Rose of pale blush color, becoming nearly white.                                                                |        |
| <b>QUEEN OF THE PRAIRIES.</b>                                                                                                  |        |
| A bright red Rose, often striped with white.                                                                                   |        |
| <b>YELLOW RAMBLER.</b>                                                                                                         |        |
| A vigorous free-blooming variety with clusters of large slightly fragrant blossoms, yellow in bud but white when fully open.   |        |
| <b>HYBRID PERPETUAL ROSES.</b>                                                                                                 | 4.00   |
| <b>ALFRED COLOMB.</b>                                                                                                          |        |
| A very large brilliant crimson Rose of fine form and great fragrance.                                                          |        |
| <b>ANNE DE DIESBACH.</b>                                                                                                       |        |
| A hardy Rose with large fragrant flowers of a beautiful shade of carmine. Valuable for forcing.                                |        |
| <b>BARONESS ROTHSCHILD.</b>                                                                                                    |        |
| A late-blooming Rose of symmetrical cupped shape and light pink color.                                                         |        |

# HARDY ROSES

SWAIN NELSON & SONS COMPANY



Per 10

## HYBRID PERPETUAL ROSES

(continued) . . . . .

4.00

### CAPTAIN HAYWARD.

A free-flowering variety with bright crimson blossoms of large size.

### DUKE OF EDINBURGH.

A seedling of General Jacqueminot, with bright crimson blossoms of large size.

### FISHER HOLMES.

A moderately full Rose of a deep glowing crimson color and a fine imbricated form.

### GENERAL JACQUEMINOT.

A very hardy Rose with fragrant crimson blossoms, not full but large and effective.

### JOHN HOPPER.

A large full bright Rose with a carmine center.

### MAGNA CHARTA.

A full globular fragrant Rose of a pink color suffused with carmine.

### MARGARET DICKSON.

A variety with fine dark green foliage and blossoms of magnificent form and white color tinted with pink in the center.

### MARSHALL P. WILDER.

An excellent long-blooming Rose with well-formed fragrant blossoms of a cherry-carmine hue.

### MRS. JOHN LAING.

A valuable variety for forcing, with very fragrant finely formed soft pink blossoms of large size.

### MRS. CRAWFORD.

A vigorous free-flowering Rose with deep rosy-pink blossoms, the outer petals shaded with pale flesh and white at the base.

### PAUL NEYRON.

A variety desirable as a garden Rose. The flowers are a deep shade of pink and are very plentiful.

### ULRICH BRUNNER.

A very effective Rose of brilliant cherry-red color. The blossoms are finely formed and are carried well upon the plant.

### RUGOSA ROSES. See Shrubs.





	Per 10
<i>Actinidia arguta.</i>	
A rapid-growing Japanese vine with large leaves and white purple-centered flowers.	
Strong plants . . . . .	7.50
<i>Akebia quinata.</i>	
A handsome vine with clover-like leaves and fragrant plum-colored blossoms.	
4-year plants . . . . .	5.00
<i>Ampelopsis aconitifolia.</i>	
A Chinese creeper of slender growth, with attractive deeply-indent-ed leaves something like those of the Grape.	
Strong plants . . . . .	7.50
<i>quinquefolia.</i> VIRGINIA CREEPER.	
A well-known climber with luxuriant glossy foliage which is beautifully tinted in the fall.	
4 year plants . . . . .	5.00
2 " " heavy . . . . .	2.00
<i>var. Engelmanni.</i>	
An excellent variety bearing a very close resemblance to the above.	
Strong plants . . . . .	2.50
<i>Veitchii.</i> JAPANESE or BOSTON IVY.	
The most valuable of the self-climbing vines. It clings readily to stone or wood and is of rapid growth. The fresh green foliage and deep blue berries give the plant a very attractive appearance.	
4 year plants, heavy . . . . .	3.50
2 " " " " . . . . .	2.00

# VINES

SWAIN NELSON & SONS COMPANY



Per 10

*Aristolochia Siph.* DUTCHMAN'S PIPE.

A rapid-growing native climber with very large heart-shaped leaves and curious yellowish-brown flowers resembling an old-fashioned pipe.

4 to 6 feet . . . . . 5.00

*Celastrus articulatus.* STAFF VINE.

A very ornamental vine similar to the native Bittersweet.

3-year plants . . . . . 3.50

*scandens.* BITTERSWEET.

A native climber with handsome glossy leaves and bright red fruit which is retained throughout the winter.

6 feet, heavy . . . . . 5.00

3 to 5 feet . . . . . 3.50

*Clematis paniculata.*

A Japanese species of great value. It is of rapid and vigorous growth and during the latter part of August produces immense masses of fragrant white star-shaped blossoms. The clusters of seeds are unusually attractive.

6 feet, heavy . . . . . 5.00

2 year plants . . . . . 2.00

*Lonicera brachypoda.*

A Japanese Honeysuckle with dense purplish-green foliage and fragrant yellow flowers.

4 year plants . . . . . 3.00

2 " " . . . . . 2.00

*Periclymenum var. Belgica.* DUTCH HONEYSUCKLE.

A rapid growing vine having showy flowers, which are red outside and yellow within.

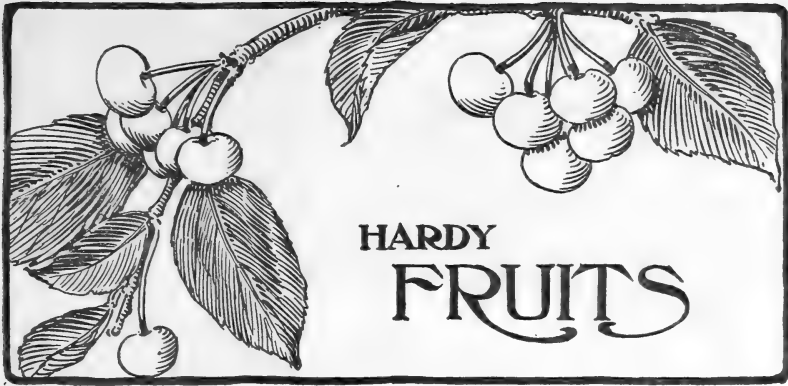
3 year plants . . . . . 3.50

*Sullivanti.* MINNESOTA HONEYSUCKLE.

A native climbing species bearing yellow trumpet-shaped flowers in July, followed by clusters of handsome scarlet berries which are retained throughout the fall.

6 feet . . . . . 5.00

*Lycium Chinense.* See Shrubs.



## HARDY FRUITS

Each                  Per 10

### APPLE TREES.

2 inch diam. transplanted	1.50	11.00
1 " " " "	1.00	7.50

### SUMMER APPLES.

#### DUCHESS OF OLDENBURG.

Large juicy fruit of a pale-green color deeply streaked with red. The tree begins to bear when young and continues to produce annually.

#### RED ASTRACHAN.

A popular Apple of medium size and deep crimson color overspread with a thick bloom. The pulp is juicy and rather acid.

### FALL APPLES.

#### GRIME'S GOLDEN PIPPIN.

A medium-sized Apple with crisp juicy flesh and yellow skin dotted with gray.

#### WEALTHY.

An early and prolific variety with deep red fruit. It is popular wherever known. We can also supply fine large specimens of this tree at \$2.00 each.

### WINTER APPLES.

#### GANO.

A red Apple of fine flavor and excellent keeping qualities.

#### JONATHAN.

An Apple of medium size with red and yellow skin and tender juicy pulp of a rich flavor.

#### PEWAUKEE.

A rather large Apple with a red and yellow skin and yellowish juicy pulp. Fine large trees can also be supplied at \$2.00 each.

#### WINE SAP.

A large deep-red variety with firm crisp flesh.





	Per 10
<b>BLACKBERRIES</b> . . .	<b>1.50</b>
<i>RATHBURN.</i> —An extra-large berry of good quality and jet black color. The bush suckers very little.	
<i>SNYDER.</i> —A medium-sized berry of very sweet flavor.	
<i>WILSON JUNIOR.</i> —An early-bearing variety with large luscious fruit.	
<b>CURRANTS</b> . . .	<b>2.50</b>
<i>CHERRY.</i> —The largest of all the red Currants. The berries are rather tart and the clusters short.	
<i>FAY'S PROLIFIC.</i> —A red variety with longer clusters and less acid flavor than the above.	
<i>RED DUTCH.</i> —A prolific bearer. The fruit is small and of good quality.	
<i>WHITE GRAPE.</i> —An excellent table variety with large sweet or mildly acid fruit.	
<b>GOOSEBERRIES</b> . . .	<b>3.50</b>
<i>DOWNING.</i> —The largest of our native Gooseberries. The fruit is pale green and very sweet.	
<i>INDUSTRY.</i> —An English variety bearing very large dark red fruit of the best quality.	
<i>RED JACKET.</i> —This variety is mildew-proof and very prolific. The fruit is smooth, bright red in color and of excellent quality.	
<b>RASPBERRIES</b> . . .	<b>1.50</b>
<i>BLACK KANSAS.</i> —This is the best black-capped Raspberry. The fruit is large, firm and of a fine jet black color. The flavor is unsurpassed.	
<i>COLUMBIAN.</i> —A vigorous productive Raspberry with large red fruit of good quality. The plant propagates from the tip.	
<i>CUTHBERT.</i> —A variety with large firm dark-crimson berries of excellent flavor.	
<b>GRAPES</b> . . .	<b>3.50</b>
<i>BRIGHTON.</i> <i>CONCORD.</i> <i>NIAGARA.</i>	
<i>POCKLINGTON.</i> <i>WORDEN.</i>	



	Season	Height	Color	Per 10
<i>Achillea Ptarmica.</i>				
THE PEARL . . .	Summer	1-2 ft.	white	1.50
<i>Achillea millefolium roseum</i>	Summer	1 ft.	crimson	2.50
<i>Agrostemma Flos Jovis.</i>				
JUPITER'S FLOWER . . .	June	2 ft.	pink	2.50
<i>Anemone Japonica var.</i>				
WHIRLWIND . . .	Autumn	3-4 ft.	white	2.50
<i>Anemone Pennsylvanica.</i>				
WINDFLOWER . . .	Summer	1-2 ft.	white	2.50
<i>Aquilegia Canadensis.</i>				
WILD COLUMBINE . . .	June	2 ft.	red	2.50
<i>Arabis albida.</i> ROCK-CRESS	Spring	6 in.	white	2.50
<i>Artemisia abrotanum.</i>				
SOUTHERNWOOD . . .		3-5 ft.	yellow	2.00
<i>Asclepias tuberosa.</i>				
BUTTERFLY-WEED . . .	Summer	2-3 ft.	yellow	2.50
<i>Bocconia cordata.</i>				
PLUME POPPY . . .	Summer	4 ft.	pink	2.50
<i>Boltonia latiscuama.</i>				
FALSE CHAMOMILE . . .	Autumn	4-6 ft.	blue	2.50
<i>Campanula Carpatica.</i>				
BELL-FLOWER . . .	Summer	9 in.	blue	2.50
<i>Campanula Carpatica alba.</i>				
BELL-FLOWER . . .	Summer	9 in.	white	2.50



## HERBACEOUS PERENNIALS

SWAIN NELSON & SONS COMPANY

	Season	Height	Color	Per 10
<i>Centaurea macrocephala</i> . . .	July	3 ft.	yellow	2.50
<i>Chrysanthemum coccineum</i> . ( <i>Pyrethrum roseum</i> ) . . .	Summer	2 ft.	all colors	3.50
<i>Chrysanthemum maximum</i> SHASTA DAISY . . .	Summer	3 ft.	white	3.50
<i>Convallaria majalis</i> . LILY-OF-THE-VALLEY	Spring	6 in.	white	1.50
<i>Coreopsis lanceolata</i> . TICKSEED . . .	Summer	2-3 ft.	yellow	2.50
<i>Delphinium Chinense</i> . SIBERIAN LARKSPUR	Summer	2-3 ft.	blue to white	2.50
<i>Delphinium formosum</i> . LARKSPUR . . .	Summer	1-3 ft.	sky-blue	2.50
<i>Delphinium hybridum</i> . KELWAY'S SELECTION	Summer	2-3 ft.	blue to white	4.00
<i>Dianthus barbatus</i> . SWEET WILLIAM . . .	Summer	1-2 ft.	crimson to white	2.50
<i>Dielytra spectabilis</i> . BLEEDING HEART . . .	Spring	1-2 ft.	rosy red	3.00
<i>Digitalis ambigua</i> . FOXGLOVE . . .	Summer	2-3 ft.	yellow	2.50
<i>Erianthus Ravenna</i> . PLUME GRASS . . .	October	4-7 ft.	purple	2.50
<i>Eulalia gracillima</i> . ORNAMENTAL GRASS		4-5 ft.		2.00
<i>Eulalia Zebrina</i> . STRIPED GRASS . . .		4-5 ft.		2.50
<i>Eupatorium ageratoides</i> . WHITE SNAKEROOT . . .	Summer	2-3 ft.	white	2.50
<i>Funkia Sieboldiana</i> DAY LILY . . .	August	2-3 ft.	lavender	3.50

# HERBACEOUS PERENNIALS

GLEN VIEW NURSERIES



	Season	Height	Color	Per 10
<i>Gaillardia aristata.</i>				
BLANKET-FLOWER .	Summer	2-3 ft.	yellow	1.50
<i>Gypsophila paniculata.</i>				
BABY'S BREATH .	Summer	2-3 ft.	white	1.50
<i>Helianthus multiflorus.</i>				
SUNFLOWER . .	Summer	5-6 ft.	yellow	1.50
<i>Heliopsis laevis.</i> OX-EYE .	Summer	3-5 ft.	yellow	2.50
<i>Hemerocallis flava.</i>				
LEMON LILY . .	June	1-2 ft.	yellow	1.50
<i>Hemerocallis Thunbergii</i> .	July	1-2 ft.	yellow	2.50
<i>Hibiscus militaris.</i>				
CRIMSON EYE . .	Summer	4-6 ft.	white	2.50
<i>Iris Germanica.</i>				
FLEUR DE LIS . .	May	3 ft.	all colors	2.50
<i>Iris laevigata.</i>				
JAPAN IRIS . .	July	2-3 ft.	all colors	3.50
<i>Linum Austriacum.</i>				
AUSTRIAN FLAX .	Summer	1-2 ft.	pale blue	2.50
<i>Lychnis Chalcedonica.</i>				
MALTESE CROSS .	June	2-3 ft.	white or scarlet	2.50
<i>Lychnis viscaria.</i>				
RAGGED ROBIN . .	May	1 ft.	pink	2.50
<i>Lythrum salicaria.</i> . .	July	3-4 ft.	purple	2.50
<i>Malva moschata.</i>				
MUSK MALLOW . .	Summer	2 ft.	rose	2.50
<i>Mentha viridis.</i> SPEARMINT	Summer	1-2 ft.	purple	2.00
<i>Monarda didyma.</i>				
OSWEGO BALM . .	Summer	2-3 ft.	cardinal	2.50
<i>Pardanthus Chinensis.</i>				
LEOPARD FLOWER .	Summer	2-3 ft.	orange spotted red	2.50





The Peony is one of the most satisfactory herbaceous plants. This queen of garden flowers never fails to produce a wealth of blossoms, nearly all of which are fragrant, colors varying from deepest crimson to pure white. It rivals the rose in brilliancy of color and perfection of bloom. The flowers of some of the newer sorts attain gigantic proportions, often measuring seven or eight inches in diameter, with stems two and one-half to three feet in length and sufficiently strong to support the blooms. These flowers make magnificent bouquets for indoor decorations.

### NAMED VARIETIES.

#### DELICATISSIMA.

A vigorous plant with very fragrant, delicate clear pink flowers.

#### FESTIVA MAXIMA.

The favorite white for many years. It is early and fragrant, and bears immense snow white blooms, having occasional carmine splashes.

#### GOLDEN HARVEST.

A very attractive variety producing creamy pink flowers which exhale a delicate odor.

#### LOUIS VAN HOUTE.

The flowers are velvety purple, very dark and exceptionally large and desirable.

#### MONT BLANC.

This is an early bloomer following directly after Festiva Maxima. Its flowers are white with lemon center and possess a lasting fragrance.

#### POTSII ALBA.

This sort blooms very freely. Its flowers, at first delicate pink, change to pure white.

#### QUEEN VICTORIA.

One of the best varieties for cut flowers. Its bloom is large and compact, and pure white with creamy center.

#### SULPHURIA.

The flowers are white, tinted yellow, large and fine; the deepest yellow of any peony.

1 year old plants . . . . .	\$0.75 each
2 year old plants . . . . .	1.25 each
Large clumps . . . . .	2.50 each

### OFFICINALIS SECTION.

This is the old-fashioned garden peony and comes into bloom earlier than the named sorts described above. Deep crimson, pink and white.

1 year old plants . . . . .	\$0.25 each
2 year old plants . . . . .	.50 each
Large clumps . . . . .	1.50 each

# HERBACEOUS PERENNIALS

GLEN VIEW NURSERIES



## HYBRID PERENNIAL PHLOX.

### PHLOX PANICULATA (DECUSSATA).

The Hardy Phlox is now classed among the best plants producing late summer and autumn flowers. These flowers have been developed within the last few years from comparatively small size and dull colors to great cone-shaped masses displaying brilliant color tints both striking and novel. We list below ten of our best varieties.

COQUELICOT.	Bright vermilion, purple center.
CZARINA.	Pure white, early.
ECLAIREUR.	Deep carmine-rose, center lighter, often spotted white.
EMBARRASSMENT.	Very deep rose pink; flower very compact.
F. G. VON LASSBURG.	Pure white; vigorous grower.
LE MAHDI.	Bright purple; the richest of this class.
LE SOLEIL.	Brilliant China rose, rose center.
MATADOR.	Bright orange red.
ORNAMENT.	Bright pink.
RICHARD WALLACE.	White, with violet center.

2 year old plants	. . . . .	\$0.25 each
Large clumps	. . . . .	.50 each

### Phlox subulata Nelsoni. MOSS PINK.

### Phlox subulata rosea. MOSS PINK.

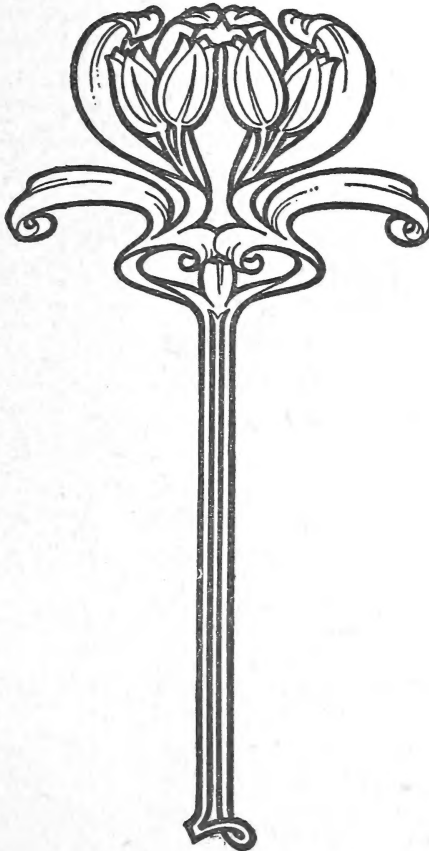
2 year old plants	. . . . .	\$0.25 each
Large clumps	. . . . .	.50 each

<i>Polygonum sacchalinese.</i>				Per 10
MOUNTAIN FLEECE .	Summer	10 ft.	white	\$2.50
<i>Porteranthus stipulatus</i>	. Summer	2 ft.	pink	2.50
<i>Pyrethrum uliginosum.</i>				
GIANT DAISY .	. Fall	2-3 ft.	white	1.50
<i>Rudbeckia laciniata.</i>				
GOLDEN GLOW .	. Summer	6 ft.	yellow	1.50
<i>Sedum Aizoon.</i>				
STONE CROP .	. August	1 ft.	yellow	1.50
<i>Sylphium perfoliatum.</i>				
CUP PLANT	Summer	6 ft.	yellow	2.50
<i>Vinca minor.</i>				
BLUE MYRTLE .	Summer trailing		blue	2.50
<i>Yucca filamentosa.</i>				
ADAM'S NEEDLE .	July	6 ft.	white	5.00

## Certificate from the State Entomologist

This is to certify that the growing nursery stock and premises of the Swain Nelson and Sons Company, situated at Glen View Station, Chicago, Illinois, have been inspected by Mr. S. W. Foster, a duly appointed inspector of this office, according to the provisions of an "*Act to prevent the introduction and spread in Illinois of the San Jose scale and other dangerous insects and contagious diseases of fruits,*" approved and in force April 11, 1899, and that no indications have been found of the presence of the San Jose scale or other dangerous insect or plant disease.

S. A. FORBES,  
State Entomologist.



# INDEX.

GLEN VIEW NURSERIES



## OF ENGLISH NAMES.

	Page.		Page.		Page.
Acacia	49	Globe flower	28	Pearl (The)	78
Adams needle	82	Golden bell	35	Peony	81
Alder	9	Golden glow	32	Perennials	78
Almond (flowering)	25	Gooseberry	77	Phlox	82
Apple	75	Grape	77	Pine	69-70
Aralia	26	Grass (Ornamental)	79	Plum	14-42
Arbor Vita	70	Hackberry	10	Plume poppy	78
Arrow-wood	60-62	Hard hack	53	Poplar	13
Ash	11	Haw (Black)	64	Prickly ash	65
Baby's breath	80	Hawthorn	31	Privet	37
Balm of Gilead	13	Hazel	30	Purple fringe	47
Barberry	24-26-27	Hemlock	70	Ragged robin	80
Basswood	21	Hercules club	26	Raspberry	77
Bell flower	78	Honey locust	12	Red bud	8-11
Birch	9-10	Honeysuckle	37-38-39-44-74	Rock-cress	78
Bittersweet	74	Hop tree	45	Rose	49-50-71-72
Blackberry	77	Horse chestnut	9	Sheepberry	63
Bladder nut	54	Hydrangea	1-36	Shrubs	25
Blanket flower	80	Ivy (Boston)	73	Smoke-tree	47
Bleeding heart	79	Japan quince	31-32	Snow ball	63
Box elder	6	Judas tree	8-11	Snow-berry	54
Buckthorn	45-46	June berry	25	Snow flower	32
Buckthorn (Sea)	36	Juniper	66	Southern wood	78
Buffalo-berry	51	Jupiter's flower	78	Spearmint	80
Burning bush	34	Katsura	11	Spindle tree	34
Butterfly weed	78	Kerria	46	Spiraea	42-52-53-54-58
Button bush	27	Larch	12	Spruce	66-67-70
Catalpa	10	Larkspur	79	St. John's wort	36
Cedar	66	Lemon lily	80	Staff vine	74
Chamomile (False)	78	Leopard flower	80	Stone crop	82
Cherry	14-15-76	Lilac	55-56-57-59	Strawberry tree	34
Chittam-wood	47	Lily of the valley	79	Sunflower	80
Choke-berry	45	Linden	21	Sweetbrier	50
Cinquefoil	42	Locust	19	Sweet pepper bush	28
Clematis	74	Mahonia	26	Sweet-scented shrub	27
Columbine	78	Maidenhair tree	12	Sweet William	79
Coral-berry	54	Maltese cross	80	Syringa	40
Cornelian cherry	29	Maple	5-6-7	Tamarisk	59-60
Crab apple	15-16-76	Matrimony vine	39	Thorn	30-31
Cranberry (Bush)	63	Meadow sweet	53	Tickseed	79
Crimson eye	80	Mock orange	40-41	Trees	5
Cup plant	82	Mountain ash	15-17	Tree of Heaven	9
Currant	48-77	Mountain fleece	82	Vines	73
Daisy	79-82	Moss pink	82	Virginia creeper	73
Day lily	79	Mulberry	12-13-18-40	Wafer ash	45
Dockmackie	60	Musk mallow	80	Wahoo	34
Dogwood	28-29-30	Myrtle	82	Walnut	12
Dutchman's pipe	74	Ninebark	42	Wayfaring tree	60
Dyer's greenweed	35	Oak	16	White fringe	23
Elder	51-61	Oleaster	33	White snakeroot	79
Elm	2-22-23	Osier	20-29	Wild senna	27
Evergreens	66	Oswego balm	80	Willow	19-20-21
False indigo	25	Ox-eye	80	Wind flower	78
Fir (Silver)	66-67	Pea-tree	27	Winterberry	36
Flax (Austrian)	80	Pear	76	Witch hazel	35
Fleur de lis	80	Pearl bush	34	Witherod	63
Foxglove	79				
Fruit (Small)	77				
Fruit trees	76				



