

Historic, Archive Document

Do not assume content reflects current scientific knowledge, policies, or practices.

SCHLEGEL & FOTTLER CO.

BULBS

PLANTS

LIBRARY
U.S. Department of Agriculture,
Washington, D. C.

AUTUMN
1906

26 AND 27 S. MARKET ST.
BOSTON, MASS.



Franklin Park Lawn Seed

OUR SPECIALTY

Trade Mark Registered

The mixture of grass seeds we sell under this name is made from the identical formula used by Park Commissioners of the city of Boston in their work of laying out the beautiful lawns and terraces which add such a charm to our new parks.

The Franklin Park Mixture gives a fine, smooth, velvety sward within a very few weeks after sowing. It is composed of clean seed of the finest and most desirable permanent grasses known, and it contains no chaff nor fowl seeds. Weight per bushel, about 32 pounds.

The very great demand for this lawn seed has necessitated our having the name "Franklin Park" registered as a trade mark, in order to protect ourselves from imitators.

September and October are the most favorable months for sowing.

We put this seed up in packages—all of which bear our name—containing quantities as follows:

64 lbs., sufficient for one acre	\$15 00
32 lbs., sufficient for one-half acre	7 50
16 lbs., sufficient for one-quarter acre	4 00
Price per pound	30

FINEST ENGLISH MIXTURE

This mixture, made from our own formula, we have sold for many years, and it has given very general satisfaction. Weight per bus., 16 lbs. Per ½-lb. (1 qt.) 20 cts.; per lb. (2 qts.) 35 cts.; per bus. (16 lbs.) \$4.

SEEDS FOR GOLF LINKS

A special mixture for fair greens. Per bus., \$4.

A carefully prepared combination of grasses, for sowing on Putting Greens, to produce a dense, close sward. Per bus., \$5.

SEEDS FOR SHADED LAWNS

Fine grasses, especially selected for locations partially shaded by buildings or trees. Per qt. 30 cts.; per pk., \$1.75; per bus., \$6.

Add 8 cts. per lb. to prices of all grasses if wanted by mail

SCHLEGEL & FOTTLER CO., BOSTON

26 AND 27 SOUTH MARKET ST.

DATE _____ 190__

Name _____

Street _____

Town _____ State _____

Conveyance _____

Gardener's Name _____

Amount Enclosed, \$ _____

(State whether Cash, Draft, P. O. Order, Express Money Order or Stamps.)

(If goods are wanted by express, C. O. D., 25 per cent of the amount must accompany the order.)

Filled by _____ Date _____

Checked by _____ Date _____

Date Shipped _____

ORDER NO. _____

DATE BILLED _____

LEDGER FOLIO _____

The Schlegel & Fottler Co. give no warranty, express or implied, as to description, quality, productiveness, or any other matter of any seeds, bulbs or plants they send out, and will not be in any way responsible for the crop. If the purchaser does not accept the goods on these terms, they are at once to be returned.

QUALITY
THE FIRST REQUISITE

QUANTITY

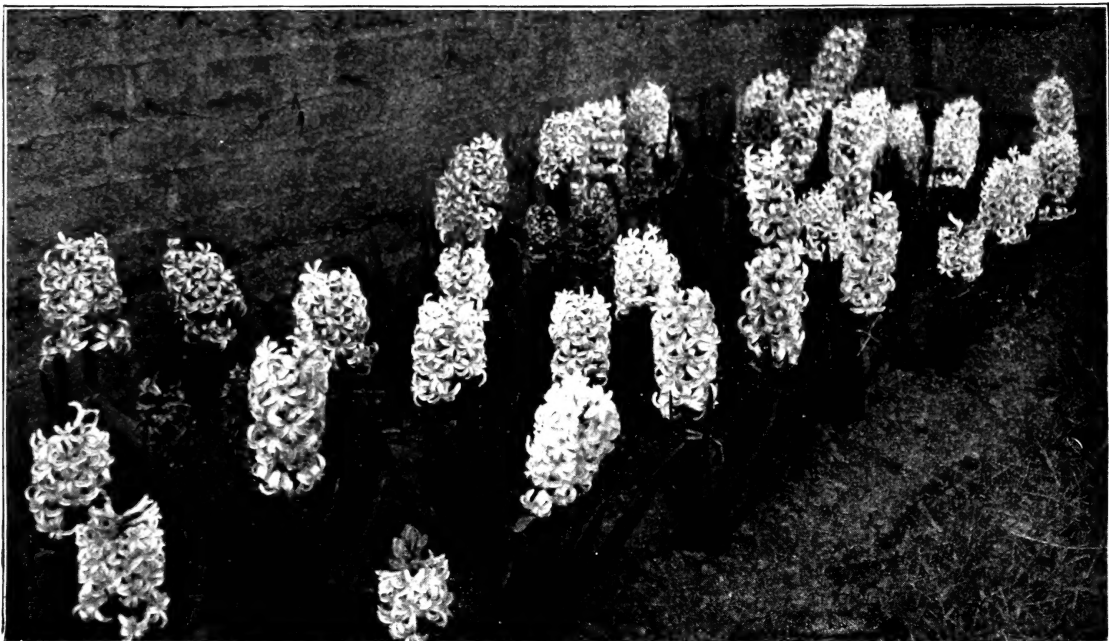
ARTICLE

PRICE

DOLLARS

CENTS

ected,
ne wat
ght an



HYACINTHS

Garden Culture.—The bulbs may be planted from September to December in any good, well-drained garden soil, which, however, should be well enriched and dug at least 18 inches deep. They should be set 6 inches apart and 4 to 6 inches deep. Before the ground freezes cover the beds with leaves or other good litter to keep out the frost. The covering can be kept in place by wire netting or boughs, and should gradually be removed upon approach of warm weather in spring. The bulbs should be left until the foliage turns yellow, when they may be lifted, dried off, and kept in a dry cool place for replanting.

Culture in Pots.—Select solid, heavy bulbs and plant as early as possible, using a 4 or 5-inch pot for a single bulb. Fill the pots with a light, rich potting soil, and have the top of the bulb just below the surface, give a good watering and set away in a cool place, covering them with about 5 inches of sand or coal ashes. This prevents the bulb from rising while the roots are growing, and keeps them quite moist. In about eight weeks they may be taken to the room in which they are to flower. By bringing in a few pots at a time about two weeks apart a succession of bloom may be had.

Culture in Glasses.—The single varieties are best adapted for glass culture, and the best named sorts should be selected. Use soft water for filling the glasses, and allow the bottom of the bulb to just come in contact with the water. Keep in a dark, cool place until the roots are about 6 inches long, when they may be brought into light and warmth to bloom. Add water occasionally as it evaporates, and the nearer they can be kept to a temperature of 60 degrees F. the better will be the results.

CHOICE UNNAMED HYACINTHS

These are made up of varieties selected for beds and borders, or for forcing for cut-flowers, and are of such superior quality as to be entirely satisfactory to florists, who use large quantities of them.

If desired by mail, add 15 cts. per dozen for postage

SINGLE VARIETIES

	Each	Doz.	100
Dark Red	\$0 06	\$0 60	\$4 00
Rose and Pink	06	60	4 00
Pure White	06	60	4 00
Dark Blue	06	60	4 00
Light Blue	06	60	4 00
Yellow	06	60	4 00
Mixed. All the above colors .	06	60	4 00

DOUBLE VARIETIES

	Each	Doz.	100
Dark Red	\$0 06	\$0 60	\$4 00
Rose and Pink	06	60	4 00
Pure White	06	60	4 00
Dark Blue	06	60	4 00
Light Blue	06	60	4 00
Yellow	06	60	4 00
Mixed. All the above colors .	06	60	4 00



SINGLE BLUE HYACINTH, JOHAN

TOP-ROOT HYACINTHS

Extra large bulbs of varieties which produce immense spikes of large bells. 25 cts. each, \$2.50 per doz., \$18 per 100

SINGLE RED SHADES

- | | |
|--|--|
| Cardinal Wiseman. Bright rose. | Koh-i-noor. Bright pink; semi-double. |
| Charles Dickens. Delicate rosy pink. | Moreno. Extra fine pink. |
| Garibaldi. Glowing crimson; extra large truss; early. | Novelty. New. Beautiful pink. |
| | Rosea Maxima. Delicate rose. |

SINGLE WHITE SHADES

- | | |
|---|--|
| Blancheur a Merveille. Pure white. | Mad. Vanderhoop. Splendid white. |
| La Grandesse. Pure white. | Mr. Plimsoll. Ivory white. |
| L'Innocence. Snow-white. | Mont Blanc. Pure white. Very large and early. |

SINGLE BLUE SHADES

- | | |
|--|---|
| Grand Lilas. Silvery lilac. | Lord Balfour. Purplish violet. |
| Johan. Splendid light blue. | Marie. Dark purplish blue. |
| King of Blues. Rich, dark blue. | Potgieter. Extra light blue. |
| Lord Derby. Light porcelain. | Sir Wm. Mansfield. Purplish mauve. |

SINGLE YELLOW SHADES

- | | |
|--|-------------------------------------|
| Ida. Pure yellow. | Obelisque. Fine deep yellow. |
| King of Yellows. Bright yellow. | |

EXHIBITION HYACINTHS

Selected bulbs of best varieties for exhibition and house culture in earth or water. Sent by mail at following prices:

SINGLE RED, ROSE AND PINK

	Each	Doz.
Cardinal Wiseman. Bright rose; large truss	\$0 20	\$2 00
Charles Dickens. Delicate rosy pink; fine spike	15	1 50
Fabiola. Pink, carmine-striped; extra. truss; early	15	1 50
Garibaldi. Brilliant crimson; large spike	20	2 00
Gen. Pelissier. Deep crimson; early.	15	1 50
Gertrude. Bright rosy pink; large spike	15	1 50
Gigantea. Light pink; large truss	15	1 50
Jacques. Delicate pink; very large spike	20	2 00

SINGLE RED, ROSE AND PINK, continued

	Each	Doz.
Lord Macaulay. Bright rosy carmine; large spike	\$0 15	\$1 50
Moreno. Lively pink; large truss	15	1 50
Norma. Fine waxy pink; early	15	1 50
Novelty (S. & F.). New. Beautiful pink; extra fine spike	25	2 50
Pink Perfection. Delicate pink; distinct	25	2 50
Robert Steiger. Bright deep crimson.	15	1 50
Roi des Belges. Dark scarlet; fine	15	1 50
Rosea Maxima. Rosy blush; large	20	2 00
Von Schiller. Deep pink, striped with crimson; large truss	15	1 50

DOUBLE RED, ROSE AND PINK HYACINTHS

	Each	Doz.
Bouquet Tendre (Waterloo). Carmine-rose	\$0 15	\$1 50
Bouquet Royal. Rosy salmon; large truss	15	1 50
Grootvorst. Blush pink; good truss	15	1 50
Koh-i-noor. Dark rose; immense spike	20	2 00
Noble par Merite. Deep rose; large truss	10	1 00

SINGLE PURE WHITE AND BLUSH

	Each	Doz.
Alba superbissima. Pure white; fine truss	\$0 15	\$1 50
Anna. Large truss, waxy white bells	20	2 00
Baroness van Thuyll. Pure white; extra truss	15	1 50
Blancheur a Merveille. Pure white; extra	20	2 00
British Queen. Extra fine white	20	2 00
Grandeur a Merveille. Blush white; large	15	1 50
La Belle Blanchisseuse. Snow-white	15	1 50
La Franchise. Waxy white; large	15	1 50
La Grandesse. Purest white; extra	15	1 50
L'Innocence. Snow-white; large truss	15	1 50
Leviathan. Waxy bluish; large truss	20	2 00
Mina. Pure white; large bells	15	1 50
Mad. Vanderhoop. Splendid white; early	15	1 50
Mont Blanc. Pure white; very large	20	2 00
Mr. Plimsoll. Ivory-white; large	20	2 00
Paix de l'Europe. Pure white; fine truss	15	1 50
Snowball. Pure white; large bells	20	2 00
Voltaire. Creamy white; fine spike	15	1 50

DOUBLE PURE WHITE AND BLUSH

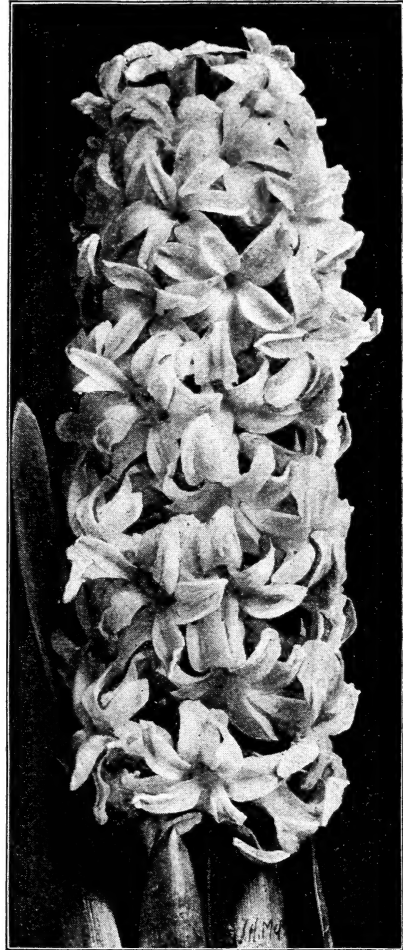
	Each	Doz.
Bouquet Royal. Pure white; good truss	\$0 15	\$1 50
Duchess of Bedford. Pure white; fine	15	1 50
Isabella. Blush white; splendid large spike	20	2 00
La Tour d'Auvergne. Pure white; early	15	1 50
La Virginite. Blush; large truss	15	1 50

SINGLE BLUE, PURPLE AND VIOLET

	Each	Doz.
Baron van Thuyll. Dark blue; fine truss	\$0 10	\$1 00
Capt. Boynton. Sky-blue; large spike	20	2 00
Charles Dickens. Light blue; large truss	15	1 50
Czar Peter. Porcelain-blue; extra fine	20	2 00
Grand Lilas. Silvery lilac; large bells	20	2 00
Grand Maitre. Deep porcelain; fine spike	15	1 50
Haydn. Lilac-mauve; fine spike	20	2 00
Johan. Splendid light blue; large truss	20	2 00
King of the Blues. Rich dark blue; large truss	15	1 50
La Peyrouse. Clear porcelain-blue	15	1 50
Lord Balfour. Reddish violet; large spike	20	2 00
Lord Derby. Pale porcelain; large truss	20	2 00
Marie. Rich dark blue; fine spike	15	1 50

SINGLE BLUE, PURPLE AND VIOLET, continued

	Each	Doz.
Pieneman. Dark porcelain; large bells; extra	\$0 15	\$1 50
Priestly. Deep porcelain-blue	20	2 00
Potgieter. Extra; light blue	20	2 00
Queen of Blues. Sky-blue; fine spike	20	2 00
Scholte. Light blue; immense spikes	20	2 00
Sir Wm. Mansfield. Purplish mauve	20	2 00



SINGLE WHITE HYACINTH, ANNA

DOUBLE LIGHT AND DARK BLUE

	Each	Doz.
Bloksberg. Bright porcelain; large truss	\$0 15	\$1 50
Charles Dickens. Clear deep blue; fine truss	15	1 50
Garrick. Lilac-blue; splendid	15	1 50
Delicata. Pale blue; good spike	20	2 00
Lord Wellington. Dark blue; fine spike	15	1 50

SINGLE YELLOW

Bird of Paradise. Pure bright yellow; large truss	Each \$0 20	Doz. \$2 00
Ida. One of the best pure yellows	20	2 00
King of Yellows. Golden yellow; large truss	20	2 00
L'Or d'Australie. Pure yellow; large spike	20	2 00
Obelisque. Pure deep yellow; large truss	25	2 50

SINGLE YELLOW, continued

Yellow Hammer. Golden; beautiful spike	Each \$0 30	Doz. \$3 00
---	-------------	-------------

DOUBLE YELLOW

Bouquet d'Orange. Orange-salmon	Each \$0 15	Doz. \$1 50
Goethe. Splendid light yellow	20	2 00
Jaune Supreme. Rich deep yellow; early	20	2 00

NAMED BEDDING OR FORCING HYACINTHS

Large, solid bulbs especially adapted for planting in beds or forcing in pans, enabling one to secure the exact color effect desired. The large, full spikes will give splendid satisfaction.

- Bright Red**
- Pink**
- Crimson**

- Rose**
- Blush White**
- Pure White**

- Dark Blue**
- Light Blue**
- Porcelain Blue**

10 cts. each, \$1 per doz., \$6 per 100. If desired by mail, add 20 cts. per dozen for postage

MINIATURE, OR DUTCH ROMAN HYACINTHS

These may be planted close together in pots or boxes, also in beds in the open ground with charming effect.

- Dark Red**
- Dark Blue**

- Rose and Pink**
- Light Blue**

- Pure White**
- All Colors Mixed**

5 cts. each, 40 cts. per doz., \$2.50 per 100. If desired by mail, add 10 cts. per dozen for postage

EARLY ROMAN HYACINTHS

A charming class specially adapted for forcing and house culture, each bulb producing several graceful spikes of delicately perfumed flowers. They may be had in bloom from November to spring, by early and successive plantings and treating as recommended for Hyacinths on page 1. Bulbs may be planted close together, and in pots and pans of six or more bulbs are very effective.

If desired by mail, add 10 cts. per dozen for postage

	Each	Doz.	100	1,000
White Romans. Extra size	\$0 06	\$0 70	\$5 00	\$45 00
“ “ Mammoth	10	1 00	6 00	55 00
Light Blue Romans. Extra size	05	50	3 75	32 00
Pink Romans. Extra size	05	50	3 75	32 00
White Italian, or Parisian. Extra size. A little later in flowering than the Roman, and have larger spikes; very fragrant	05	50	3 75	32 00

GRAPE, MUSK AND FEATHERED HYACINTHS

Very pretty for permanent beds, clumps or edging. They should be planted in groups of a dozen or more, and being perfectly hardy will soon spread. Fine for partially shaded places, and when grown in pots for winter flowering are pretty and interesting.

	Doz.	100	1,000
Blue Grape. Small, round blue bells	\$0 12	\$0 60	\$4 00
White Grape. Like preceding, except in color	15	85	8 00
Musk. Purplish color, with an odor of musk each, 25 cts.	2 50		
Feathered. Plume-like spike of violet color	25	1 50	



WHITE ROMAN HYACINTHS



MAMMOTH-FLOWERING CROCUS

CROCUS

MAMMOTH-FLOWERING NAMED VARIETIES

These are large selected bulbs of the best varieties, and are noted for the immense size and quantity of their flowers and richness of color. **The small, cheap bulbs we do not handle, as they fail to give satisfaction.**

One of our earliest spring flowers, brilliant and universally admired, occupying a prominent place in every garden. They thrive in any soil or situation, but to be had in highest perfection they should be grown in a deep, rich, sandy loam and a sunny location. Plant two or three inches apart and three inches deep. **Best results are obtained from early planting.**

WHITE VARIETIES

	Doz.	100	1,000
Caroline Chisholm. Pure white; extra	\$0 12	\$0 75	\$6 00
Mammoth. Very large white	12	75	6 00
Mont Blanc. Largest pure white	12	75	6 00
King of the Whites. Large pure white	12	75	6 00

STRIPED AND VARIEGATED VARIETIES

	Doz.	100	1,000
Albion. Dark violet, striped	\$0 12	\$0 75	\$6 00
La Majesteuse. Lilac striped	12	75	6 00
Madam Mina. Light blue, striped.	12	75	6 00
Sir Walter Scott. White, purple-striped	12	75	6 00

BLUE AND PURPLE VARIETIES

	Doz.	100	1,000
Baron Von Brunow. Dark blue; fine	\$0 12	\$0 75	\$6 00
King William. Deep purple; extra	12	75	6 00
Lilacea. Fine; light blue	12	75	6 00
Purpurea grandiflora. Large purple	12	75	6 00

YELLOW VARIETIES

	Doz.	100	1,000
Cloth of Gold. Golden yellow, striped with bronze	\$0 10	\$0 60	\$5 00
Mammoth Yellow. Large golden yellow	12	75	6 00

MAMMOTH MIXTURE

Mixture of all the finest sorts. 12 cts. per doz., 75 cts. per 100, \$6 per 1,000.

Tulips and Hyacinths got from you last fall were the best ever seen in this vicinity.—W. H. SAWTELL.

TULIPS

Universal favorites and always attractive from the beauty, brilliancy and variety of color, which make them one of the most popular flowers for early spring display in the garden, or for winter flowering in house and conservatory. They are extremely hardy, and of easy culture in any good garden soil, seldom failing to give the greatest satisfaction. Clumps of double and single sorts planted together among the shrubs and perennials will give a longer season of bloom than if either were planted alone. The bulbs should be set 3 to 4 inches deep and 4 to 6 inches apart. Culture as recommended for Hyacinths, page 1.

All Tulips sent by mail at the dozen price

SINGLE EARLY-FLOWERING MIXED TULIPS

Fottler's Prize-Winner Mixture. For variety of color, size and brilliancy this mixture is unsurpassed, being made up from named sorts which flower together and grow about the same height	Doz.	100	1,000
	\$0 30	\$2 00	\$18 00
Selected Mixture. A first-class mixture and equal to the best sent out by many	20	1 25	10 00
Superfine Mixture. As imported from Holland	15	1 00	7 00

SINGLE EARLY-FLOWERING NAMED TULIPS

Selected Bulbs of Best Varieties for Forcing and Bedding

	Doz.	100	1,000
Artus. Bright scarlet	\$0 25	\$1 75	\$15 00
Bacchus. Rich dark crimson	35	2 50	20 00
Belle Alliance (Waterloo). Brilliant deep scarlet; large	50	3 00	28 00
Bride of Haarlem. White, cherry striped	1 00	7 00	60 00
Brutus. Orange-crimson	25	1 75	15 00
Canary Bird. Rich golden	25	1 75	15 00
Cardinal's Hat. Dark red	25	1 50	12 00

Cerise Grisdelin. Cherry, white edge	Doz.	100	1,000
	\$0 60	\$4 00	\$35 00
Chrysolora. Large pure yellow.	25	1 50	12 00
Cottage Maid. Rosy pink, white shaded	25	1 75	12 00
Couleur Cardinal. Crimson-scarlet; fine	60	4 50	40 00
Crimson King. Brilliant crimson.	30	2 25	17 00
Duchess of Parma. Orange, yellow edge	25	1 50	12 00
Dusart. Dark scarlet; large cup.	50	3 50	30 00
Eleonore. Violet, white edge	30	2 00	16 00
Fabiola. Rosy violet, white-striped	35	2 50	20 00
Goldfinch. Pure yellow; sweet.	35	2 50	20 00
Grace Darling. Dark nasturtium-red; extra	I 50	10 00	
Jagt van Delft. Fine white	25	1 25	10 00
Joost van Vondel. Cherry; white-feathered	30	2 00	18 00
Joost van Vondel, White. Largest pure white	75	5 00	40 00
Keizerskroon. Deep crimson, yellow edge	35	2 50	20 00
King of Yellows. Pure deep yellow; extra	35	2 50	20 00
La Reine. White, tinted rose	25	1 25	10 00
Le Matelas. Silvery rose, shading to white	I 00	6 00	
L'Immaculee. Pure white	25	1 25	10 00
Maas. Largest dazzling scarlet	85	6 00	
Moucheron. Deep blood-red	75	5 00	
Mon Tresor. Rich yellow	40	2 75	22 00
Ophir d'Or. Largest pure yellow.	35	2 25	18 00
Pottebakker, Scarlet. Large	40	2 75	22 00
" White. Finest pure white	30	2 25	18 00
" Yellow. Large; pure yellow	40	3 00	25 00
" Yellow, Red-striped	35	2 50	18 00
Pink Beauty. Extra rosy pink	I 75	12 00	
Princess Marianne. Rosy white	30	2 00	16 00



GOLDFINCH TULIPS

SINGLE EARLY-FLOWERING NAMED TULIPS, continued

Prince of Austria. Orange-scarlet; extra	Doz.	100	1,000	Standard Gold. Scarlet, golden-striped	Doz.	100	1,000
	\$0 60	\$4 00	\$32 00		\$0 60	\$4 50	\$40 00
Proserpine. Rich, carmine-rose	60	4 00	32 00	Stanley. Rich rosy carmine . .	55	4 00	35 00
Purple Crown. Dark crimson.	35	2 50	20 00	Thomas Moore. Orange . . .	30	2 00	16 00
Queen of the Netherlands. Excellent satiny pink	2 50	16 00		Van der Neer. Rich violet . .	40	3 00	25 00
Queen of Violets. Rich violet.	50	3 50	30 00	Van Goyen. Bright rosy pink.	35	2 50	20 00
Rose Grisdelin. Bright pink.	30	2 00	16 00	Vermilion Brilliant. Rich vermilion	75	5 00	42 00
Rose Luisante. Large, deep rose; beautiful	75	5 00	45 00	Vesuvius. Bright scarlet . . .	75	5 00	45 00
Rose Tendre. Delicate rose . .	30	2 25	20 00	Wapen Van Leiden. White, rose-striped	30	2 00	16 00
Rosamundi Huikman. Rose . .	25	1 50	11 00	White Hawk. Large white . .	40	2 75	24 00
Sir Thomas Lipton. Large; deep scarlet	65	5 00	45 00	Wouwerman. Rich claret-purple	50	3 50	30 00
Standard Silver. White, crimson-striped	40	2 75	25 00	Yellow Prince. Bright yellow.	25	1 50	12 00

SINGLE EARLY-FLOWERING TULIPS IN DISTINCT COLORS

Selected varieties for color effect in Beds, Borders and Massing

Crimson	Doz.	100	1,000	Scarlet	Doz.	100	1,000	White	Doz.	100	1,000
	\$0 30	\$2 50	\$20 00	Red and Yellow	\$0 50	\$3 00	\$28 00	Yellow	\$0 30	\$2 00	\$16 00
Rose	35	2 50	20 00	Red and White	35	2 50	20 00	Pink	25	1 50	12 00
Rich Dark Red	35	2 50	20 00		40	2 75	25 00		30	2 00	16 00

SINGLE EARLY DWARF DUC VAN THOL TULIPS

Very early and especially valuable for forcing or pot culture. Height, 6 to 7 inches.

Crimson. Brilliant	Doz.	100	1,000	Scarlet. Rich dazzling color . .	Doz.	100	1,000
	\$0 30	\$1 75	\$12 00		\$0 30	\$2 25	\$16 00
Gold-striped	30	2 00	16 00	Vermilion	30	2 00	15 00
Red and Yellow	30	2 00	16 00	White	40	3 00	22 00
Rose	50	3 50	28 00	Yellow	50	4 00	35 00

DOUBLE EARLY-FLOWERING TULIPS IN MIXTURE

Fottler's Prize-Winner Mixture. Made up from named sorts and is unsurpassed	Doz.	100	1,000
	\$0 30	\$2 00	\$15 00
Selected Mixture. A special mixture of great variety and color	20	1 25	10 00
Superfine Mixture. As imported	15	1 00	7 50

DOUBLE EARLY-FLOWERING NAMED TULIPS

These are very effective in beds, borders or clumps planted among the shrubbery. The flowers are very large, of brilliant and varied colors, lasting much longer in bloom than the single sorts.

Alba Maxima. Large pure white.	Doz.	100	1,000	Murillo. Soft pink; extra . . .	Doz.	100	1,000
	\$0 30	\$2 00	\$16 00		\$0 50	\$3 25	\$26 00
Crown of Gold. Yellow, shaded orange	60	4 00	36 00	Parmesiano. Beautiful rose . .	80	6 00	
Crown of Roses. Deep rose . .	75	5 00	45 00	Prince of Wales. Brilliant, deep scarlet	60	4 00	35 00
Duke of York. Carmine, white-bordered	25	1 50	12 00	Purple Crown. Dark red . . .	30	2 25	18 00
Gloria Solis. Red, yellow border.	30	2 00	16 00	Raphael. Superb, delicate rose.	1 00	8 00	
Helianthus. Dark crimson, yellow edge	35	2 50	20 00	Rex Rubrorum. Fine scarlet . .	30	2 25	18 00
Imperator Rubrorum. Scarlet.	60	4 00	35 00	Rose d'Amour. Splendid pink . .	80	6 00	
Lady Grandison. Deep scarlet.	35	2 25	18 00	Rosine. Splendid dark pink . .	35	2 50	20 00
La Candeur. Pure white	30	2 00	16 00	Rubra Maxima. Large crimson-scarlet	50	4 00	35 00
Le Matador. Scarlet and crimson	50	3 50	30 00	Salvator Rosa. Rose and white.	85	6 50	
Le Blason. Rose and white . .	30	2 00	16 00	Tournesol. Scarlet, yellow edge.	40	2 75	22 00
Lord Beaconsfield. Satiny carmine-pink; beautiful	1 50	10 00		Tournesol, Yellow. Deep yellow	60	4 00	30 00
				Velvet Gem. Velvety carmine . .	40	3 00	25 00

DOUBLE LATE-FLOWERING NAMED TULIPS

These later-flowering sorts are usually in bloom from middle of May until after Memorial Day.

Belle Alliance. Violet, red and white	Doz.	100	1,000				
	\$0 35	\$2 50	\$20 00				
Bleu Celeste. Purplish violet-blue	35	2 50	20 00				
Hercules. White and cherry; striped	50	4 00	35 00				
Paeony, Gold. Golden, red-striped	35	2 50	20 00				
					Doz.	100	1,000
Paeony, Red. Brilliant red	\$0 25	\$1 75	\$14 00				
Yellow Rose. Large golden yellow	25	1 50	12 00				
Mariage de Ma Fille. White, striped with crimson; magnificent flower	40	3 00	25 00				

PARROT, or DRAGON TULIPS

These are very attractive for the large size of the flowers, singular and picturesque forms, brilliant and varied colors, and the curiously fringed or cut petals. They are extremely showy in flower beds, blooming between the early and the late sorts.

Admiral of Constantinople. Large red	Doz.	100	1,000				
	\$0 25	\$1 75	\$14 00				
Cafe Brun. Brown and yellow	25	1 75	14 00				
Cramoie Brilliant. Beautiful deep crimson	35	2 50	20 00				
Lutea Major. Bright yellow	25	1 75	14 00				
					Doz.	100	1,000
Markgraff. Scarlet and yellow	\$0 40	\$3 00	\$25 00				
Perfecta. Yellow, red-striped	25	1 75	14 00				
Superfine Mixture. Splendid mixture of great variety and color; large bulbs	25	1 50	12 00				

SINGLE LATE, or MAY-FLOWERING COTTAGE GARDEN TULIPS

The following Tulips differ from the early-flowering sorts in their taller growth, later bloom, large and beautifully formed flowers of magnificent colors, with delicate markings and featherings. Excellent for bedding purposes, and, being at their best late in May, are extensively used for decorating on Memorial Day.

Bizarres, Finest Mixed. Yellow ground, feathered with crimson, purple, etc.	Doz.	100	1,000				
	\$0 20	\$1 25	\$10 00				
Byblooms, Roses. White ground, striped and variegated with all shades of red	25	1 75	14 00				
" Violets. White ground, striped and variegated with all shades of blue	25	1 75	14 00				
Bridesmaid. Violet, red-striped; fine	25	1 75	14 00				
Florentina Odorata. Tall, yellow, sweet-scented	25	1 75	14 00				
Gesneriana Major. Dazzling scarlet, with blue-black center; very large	30	2 00	16 00				
" Alba Oculata (Rosalind). Large, rich crimson, white center	30	2 00	16 00				
Golden Beauty (Bouton d'Or, or Ida). Deep golden yellow; large	30	1 75	14 00				
" Crown (Yellow Crown). Large pointed yellow petals, edged with crimson	25	1 25	10 00				
Greigii. Large, brilliant orange-scarlet, with a yellow and black center; spotted foliage	1 50	10 00					
Isabella (York and Lancaster). Carmine-rose, shaded with white	40	2 75	22 00				
La Merveille. Orange-salmon; grand flower	50	3 50	30 00				
Nigrette. Very dark; almost black	30	2 00	16 00				
Parisian White. Pure white changing to rose; lovely flower	50	3 50	30 00				
" Yellow. Lovely clear yellow	50	3 50	30 00				
Picotee (Maiden's Blush). White recurved petals, margined with bright rose	35	2 75	22 00				
Summer Beauty. Deep rose, flaked with white and crimson	1 00	8 00					
Virginalis. White edged with rose; blue center	35	2 75	22 00				
White Swan. Large pure white; egg-shaped flower	35	2 50	20 00				

NEW DARWIN TULIPS—SINGLE LATE, or MAY-FLOWERING

A recently introduced and most beautiful race of the self-colored or Breeder type. The flowers are very large, of symmetrical form, and are borne on tall, strong stems, often two feet high. They by far surpass in colors and brilliancy anything before known in Tulips. The colors are so glowing and bright that in the sunlight the effect is fairly dazzling. They include almost every conceivable color and shade.

Asa Gray. Deep carmine	Doz.	100					
	\$0 75	\$5 00					
Dream. Soft lilac; large	60	4 00					
Edmee (Beauty). Vivid rosy pink	1 00	7 00					
Europe (Salmon King). Fiery salmon-scarlet	1 00	7 00					
Giovanni. Beautiful carmine-rose	75	5 00					
Glow. Glowing vermilion	1 00	7 00					
Loveliness. Satiny rose, shaded blush	80	6 00					
					Doz.	100	
Mrs. Potter Palmer. Shining purple	\$1 00	\$7 00					
Olga. White and lilac	60	4 00					
Roxane. Bright rosy lilac	75	5 00					
The Sultan. Deep maroon; very showy	75	5 00					
White Queen. White, shading to pink	1 00	7 00					
Finest Mixed. In great variety of colors per 1,000, \$20	35	2 50					

NARCISSUS, or DAFFODILS

In the front rank of popularity is placed this most beautiful and fragrant of our flowering bulbs, doing well in almost all soils and situations—among the grass, under trees, and in shady borders. Once planted they need no further attention, as they multiply and give larger and finer results each year. For house culture they are equally desirable and should be treated as recommended for hyacinths. They are perfectly hardy, except the Polyanthus varieties, and these, with a good covering to exclude the frost, will give larger and better flowers than when grown inside.

If by mail, add 10 cts. per dozen for postage

DOUBLE NARCISSUS, or DAFFODILS

- Alba plena odorata** (Double Poeticus). Large, double, pure white. 20 cts. per doz., \$1 per 100, \$7 per 1,000.
- Incomparable** (Butter and Eggs). Large, double; yellow, with orange center. 25 cts. per doz., \$1.50 per 100, \$10 per 1,000.
- Orange Phoenix** (Eggs and Bacon). Beautiful double white, orange center. 30 cts. per doz., \$1.50 per 100, \$12 per 1,000.
- Silver Phoenix** (Codlins and Cream). Large, double, creamy white flowers. 75 cts. per doz., \$3.50 per 100, \$30 per 1,000.
- Von Sion** (Telamonius plenus). The famous "Old Double Yellow Daffodil." Rich golden yellow. Selected double-nose bulbs, 50 cts. per doz., \$3 per 100, \$25 per 1,000. Selected single-nose bulbs, 35 cts. per doz., \$2 per 100, \$16 per 1,000.



SINGLE PHENIX NARCISSUS

HOOP PETTICOAT NARCISSUS

A distinct, free-flowering dwarf type. Perfectly hardy and exceedingly pretty for pot culture or edges, each bulb giving from six to twelve blossoms.

Sent by mail at dozen price

Bulbocodium. Rich golden yellow	Each	Doz.	100
" monophyllum (Clusii). Pure snow-white; very early	\$0 10	\$0 85	\$5 50
	10	1 00	6 00

LARGE TRUMPET NARCISSUS

If by mail, add 12 cts. per dozen for postage

	Doz.	100	1,000
Albicans (Great Spanish Daffodil). Pure white, with large primrose trumpet	\$0 60	\$3 00	\$25 00
Ard Righ (Irish King). Very large and early; rich deep yellow	75	5 00	40 00
Bicolor Empress. Magnificent large pure white flower, with golden yellow trumpet	70	4 00	32 00
" Grandee maximus. Large yellow trumpet, pure white petals; late	30	1 75	14 00
" Horsfieldi. Very large flowers of pure white, with rich yellow trumpet	40	2 75	22 00
" Victoria. Creamy white, with rich yellow trumpet; splendid for forcing	75	5 00	40 00
Emperor. Large, rich yellow trumpet, light yellow petals; one of the best	40	2 75	22 00
Golden Spur. Extra large, bold, rich yellow flowers; one of the finest	50	3 50	30 00
Henry Irving. Rich golden yellow, with large, beautifully frilled trumpet	40	2 75	22 00
Madam de Graaff. Largest and finest of the White Trumpet Daffodils; excellent for forcing each, 85 cts.	9 00		
Moschatus (Silver Trumpet). Large, silvery white; one of the best	60	4 00	35 00
Obvallaris (Tenby Daffodil). Rich yellow; very early, and of fine form	35	2 50	20 00
Princeps. Large flowers, with light yellow petals and deep yellow trumpet	25	1 50	12 00

LARGE TRUMPET NARCISSUS, continued

	Doz.	100	1,000
Rugilobus. Grand variety; a facsimile of Emperor, but a little smaller and earlier . . .	\$0 35	\$2 50	\$18 00
Telamonius (Spurius; Single Von Sion). Fine yellow, with golden trumpet; excellent for forcing	25	1 75	15 00
Trumpet Major. Flowers large, and of a uniform deep golden color	25	1 75	15 00
Trumpet Maximus. A grand, deep golden yellow flower, large deeply fluted trumpet	75	5 00	40 00
Mixed Trumpet Varieties	40	2 50	20 00



GOLDEN SPUR NARCISSUS

MEDIUM TRUMPET NARCISSUS

If by mail, add 10 cts. per dozen for postage

	Doz.	100	1,000
Barri Conspicuus. Large, clear yellow; cup richly stained with scarlet	\$0 20	\$1 25	\$10 00
Incomparabilis. Sulphury yellow, with deep yellow trumpet	20	1 25	10 00
Incomparabilis Cynosure. Large, primrose-yellow; cup crowned with orange-scarlet	20	1 25	10 00
Incomparabilis Figaro. Sulphur-yellow, with large orange cup	20	1 25	10 00
Incomparabilis Queen Bess. Pure white, with large, clear yellow cup	35	2 50	18 00
Incomparabilis Sir Watkin (The Giant Chalice Flower). Immense flower of a rich primrose, with golden trumpet	35	2 50	20 00
Incomparabilis Stella. Large pure white, star-shaped flowers, with yellow cup	20	1 00	7 00
Leedsii. Fine white, with lemon cup	20	1 00	7 00
Leedsii amabilis. Silvery white, with long light yellow cup	25	1 75	15 00
Leedsii Queen of England. Large, pure white, lemon cup	30	2 00	16 00
Leedsii Mrs. Langtry. Pure white, with yellow-edged cup; distinct and beautiful	30	2 00	16 00
Nelsoni major. Large, creamy white, with broad, fluted, golden yellow cup	85	6 00	
Triandus albus (Angel's Tears, or Cyclamen-flowered). Beautiful white-flowered variety	75	4 50	

SHORT-CUPPED NARCISSUS

If by mail, add 10 cts. per dozen for postage

	Doz.	100	1,000
Biflorus. Twin flowers on one stem; pure white, with yellow cup	\$0 20	\$1 00	\$8 00
Burbidgei. Pure white, with scarlet-edged cup; very early	20	1 00	8 00
Poeticus (Pheasant's Eye, or Poet's). Pure white, with orange cup edged with crimson.	15	65	4 50
Poeticus grandiflorus. Very large, pure white; cup suffused with crimson; early	1 25	8 00	
Poeticus ornatus. Large, pure white; cup yellow, edged with scarlet; early	20	1 00	7 50
Poeticus poetarum. Large, pure white, with broad orange-scarlet crown	40	1 50	12 00
Single Mixed Varieties. A mixture of all sorts of single-flowered Narcissus	40	1 50	10 00

SCHLEGEL & FOTTLER CO.

Gentlemen:—The bulbs obtained from you last fall were certainly the finest I have ever grown. At this spring's exhibition of the Massachusetts Horticultural Society I received fourteen (14) first prizes and six (6) second prizes, and am well pleased.

Yours truly
MARTIN SULLIVAN, gardener to Wm. Whitman, Esq.

Brookline, Mass., June 4, 1906.

POLYANTHUS NARCISSUS

Sent by mail at single bulb prices

Beautiful, free-flowering, sweet-scented flowers of easiest culture, bearing tall spikes of bloom with from six to twenty flowers each. Suitable for house culture in earth or water.

	Each	Doz.	100
Bathurst. Dark yellow; large and fine	\$0 07	\$0 75	\$4 50
Bazelman Major. Large white flower, yellow cup, fine truss	15	1 50	10 00
Double Roman. White, deep yellow cup; early	04	30	1 50
Gloriosa. Pure white, deep orange cup; large	06	60	4 00
Grand Monarque. Pure white, lemon cup	06	60	4 00
Grand Soleil d'Or. Dark yellow, orange cup	06	60	4 00
Her Majesty. Pure white, yellow cup; large flower	06	60	4 00
Jaune Supreme. Fine primrose-yellow	06	60	4 00
Newton. Clear yellow, orange cup; large	07	75	4 50
Paper White Grandiflora. Improved large-flowered form; snow-white . 1,000, \$15	05	40	2 00
Staten General. Large; fine white, orange cup	06	60	4 00
White Pearl. Entirely white; large	06	60	4 00
Yellow Varieties. Fine sorts in mixture	04	30	2 00
All Colors Mixed	04	30	2 00

NARCISSUS JONQUILLA, OR JONQUILS

Very popular for their charming and delightfully fragrant flowers. Desirable for house culture or planting in the open ground for early flowers.

	Doz.	100	1,000
Campernelle. Very large; rich yellow	\$0 15	\$0 85	\$6 00
Double Sweet-scented. Deep golden yellow	25	1 75	12 00
Rugulosus. The largest flowering Jonquil; pure yellow and very fragrant	20	1 00	7 00
Single Sweet-scented. Rich golden yellow	15	85	6 00
Silver Jonquil (Tenuior). Pale silvery yellow flowers, one to three on a stem	75	5 00	

CHINESE SACRED, OR ORIENTAL NARCISSUS

If desired by mail, add 5 cents each for postage

The Chinese Sacred Lily (*Narcissus Orientalis*) is of easy culture and readily brought into bloom when grown in water. Shallow dishes are used in which the bulbs are placed with enough fancy pebbles to hold them upright when in bloom. The flowers are mostly white with yellow or orange centers and very fragrant.

Large Bulbs, 10 cts. each, 3 for 25 cts., \$1 per doz.; original baskets of thirty bulbs, \$1.75 per basket.

Miscellaneous Bulbs

ACIDANTHERA BICOLOR

Most valuable of all the Cape bulbs for beauty and fragrance of the flowers. They grow about two feet high, with graceful flower-stalks, each stalk having from four to eight beautiful creamy white flowers with a purple-maroon blotch at the base of the petals. They may be forced in winter like gladiolus, but better results will be had by planting in the open ground about June 1, when they bloom freely during August and September. The bulbs must be kept very warm through the winter. 15 cts. each, \$1.50 per doz.

AGAPANTHUS (African Lily)

Splendid ornamental plants for growing in pots or tubs for the lawn or piazza, bearing large clusters of flowers on long stalks, opening in succession for a long period during summer and autumn. They are rapid growers and gross feeders. Plenty of water should be given during growth and they should not be allowed to become rootbound.

Umbellatus. Bright blue. 25 cts. each, \$2.50 per doz.; by mail, 35 cts. each.

ACHIMENES

One of the finest summer-blooming plants for house or conservatory, giving handsome flowers of many charming shades and colors. Ready in January.

Mixed Varieties, 10 cts. each, \$1 per doz., \$6 per 100.

ALLIUM

Bulbous plants, with showy flowers in large clusters; excellent for pot culture and borders.

Azureum. Deep azure-blue; hardy Doz. 100
\$0 60 \$4 00

Giant Neapolitanum. A splendid winter-flowering or forcing variety, with immense clusters of large snow-white flowers, lasting a long time after being cut; hardy . . . per 1,000, \$7 . 15 1 00

Moly (Aureum). Large clusters of golden yellow flowers; hardy 15 75

Ostrowskianum. Large umbels of purplish red flowers 25 1 50

AMARYLLIS

These are the best suited for pot culture, and when established they should bloom every year; after blooming they make their growth and should have occasional waterings with liquid manure till about September, when they should be allowed to rest and given very little water. A soil composed of loam, leaf-mould and sand should be used and good drainage given.

Aulica platypetala. Large, handsome flowers of a glowing crimson, tipped with green; fine winter bloomer . . .	Each	Doz.	
			\$0 75 \$7 50
Belladonna Major. Silvery white, flushed rose; beautiful and fragrant . . .	15	1 50	
Equestris. Bright light scarlet with white throat and white stripes about half way up the petals . . .	25	2 50	
Formosissima (Jacobean Lily). Brilliant dark crimson . . .	15	1 50	
Johnsoni. Fine red, with white stripe through each petal . . .	50	5 00	
Vallota purpurea (Scarborough Lily). Rich bright scarlet flowers in a cluster, blooming in summer and autumn; this is the variety so much seen growing in tubs on lawns . . .	30	3 00	
Vittata Hybrids. Large-flowered varieties with striped petals . . .	50	5 00	
Zephyranthes rosea (Fairy Lily). Beautiful rose-pink . . . per 100, \$2 .	05	40	

ANEMONE (Windflower)

Very handsome spring-flowering plants, with double and single flowers of bright and beautiful colors; they succeed best outside when protected from frost; a



ANEMONE JAPONICA

rich, sandy loam with good drainage is necessary. Roots should be planted 3 inches deep and 5 or 6 inches apart. Anemones make splendid pot-plants if kept in a cool place and water withheld until they commence their growth, when they may be given more warmth and water enough to keep them moist.

Fulgens. Rich, dazzling scarlet; most brilliant and graceful; single . . .	Doz.	100	
	\$0 50	\$3 00	
Double Mixed. Extremely handsome double-flowered varieties . . .	25	1 50	
“ Ceres. White, rose center . . .	30	2 00	
“ Hamlet. Light blue . . .	30	2 00	
“ King of Scarlets. Bright scarlet; very large . . .	30	2 00	
“ King of Violets. Dark violet. . .	30	2 00	
Single Mixed (Giant French Poppy-flowered). Beautiful poppy-like blossoms in great variety of colors . . .	20	1 00	
“ Blue . . .	20	1 00	
“ Brilliant Scarlet . . .	20	1 00	
“ White (The Bride) . . .	20	1 00	
St. Brigid (Irish Strain). Large, handsome, single and semi-double flowers in choice colors . . .	50	3 00	

ANEMONE JAPONICA

(Japan Anemone)

One of the most beautiful garden flowers, giving a profusion of bloom from September to November, and for a mass in the flower garden is unsurpassed for autumn decoration. They attain a height of two or three feet, and are covered with bloom. In a well-drained sheltered situation they succeed best. Home-grown roots, ready in October.

Alba (Honorine Jobert). Large, single; pure white, with yellow center . . .	Each	Doz.	
	\$0 20	\$2 00	
Rosea. Large rosy pink . . .	20	2 00	
Whirlwind. Double; pure white, with yellow center . . .	20	2 00	
Queen Charlotte. Very large, beautiful pink; semi-double flowers . . .	20	2 00	

ANOMATHECA CRUENTA

Remarkable for the brilliancy and profusion of its flowers, which are crimson-scarlet, and produced in succession on slender stems from May to September. Fine for window-boxes and pot culture. 20 cts. per doz., \$1 per 100. Ready in November.

ANTHERICUM

Splendid and showy perennial plants, with spikes of lily-like flowers, very desirable for cutting, and perfectly hardy. Home-grown roots. Ready in October.

Liliago (St. Bernard's Lily). Pure white, 1½ to 2 ft. high . . .	Each	Doz.	
	\$0 15	\$1 50	
Liliastrum major (St. Bruno's Lily). Large, pure white, 2 ft. high . . .	25	2 50	

BABIANA

Cape bulbs, excellent for house culture, growing 6 to 9 inches high, with foliage of the darkest green and showy spikes of flowers of the richest colors.

Mixed Varieties. Finest colors. 25 cts. per doz., \$1.50 per 100.

BULBOCODIUM (Meadow Saffron)

One of the earliest spring flowers, with masses of rich colored blossoms; beautiful for clumps or borders.

Vernum. Rich, rosy purple. 10 cts. each, \$1 per doz., \$7 per 100.

CALLA LILIES (Richardia)

An old favorite and too well known to need any description; the only requisites for successful culture are rich soil and plenty of water when growing. By allowing them to rest through the summer an abundance of bloom may be had the following winter.

Elliottiana. Clear, deep canary-yel. Each low; the best yellow variety \$0 75 \$7 50

Godfrey. A great improvement on the old varieties. The plant is dwarf and stocky, growing from 1 ft. to 18 inches high, and a perpetual bloomer, pure white and very fragrant. Young plants from 3-in. pots, which will commence blooming in September 30 3 00

Hastata. Light yellow flowers; otherwise like the white Calla 25 2 50

Little Gem. Miniature white Calla, 9 to 12 inches high, free-flowering and about half the size of the common Calla 15 1 50

Pearl of Stuttgart. New dwarf variety of sterling merit; flowers of good size and fine form; very free-flowering and will produce bloom on very small plants 25 2 50

Spotted Leaf. Deep green foliage, spotted with white; flowers pure white. 10 1 00

White Calla, or Lily of the Nile. An old favorite, and too well known to require any description. Large bulbs 20 1 75
Mammoth bulbs 25 2 50

Black (Arum sanctum). From the Holy Land, resembling in habit and foliage the white Calla; flowers of a rich blackish purple and very large 20 2 00

CALOCHORTUS

These are the **Butterfly Tulips**, or **Mariposa Lilies** of California. The flowers are of good size and of the richest and most brilliant colors, and are highly recommended for growing in coldframes or planting in the open border in spring.

Finest Varieties Mixed. 40 cts. per doz., \$2.50 per 100.



CHIONODOXA GIGANTEA

CAMASSIA ESCULENTA

Handsome, hardy spring-flowering bulbs, with spikes of beautiful blue star-like flowers, resembling some of the Scillas. 1 to 1½ ft. high. 25 cts. per doz., \$1.50 per 100.

CHIONODOXA (Glory of the Snow)

One of the most effective spring flowers for clumps or edgings, blooming with the snowdrops and lasting a long time in perfection. They will succeed well in any good garden soil and are admirable for pot culture inside.

Gigantea. Large, soft laven- Doz. 100 1,000
der, white centers \$0 20 \$1 25 \$10 00

Luciliae. Brilliant sky-blue, with white centers 20 1 25 10 00

Sardensis. Intense deep gen- tian blue 20 1 25 10 00

CYCLAMEN PERSICUM

One of the most beautiful and best adapted plants for winter blooming in the house or greenhouse, growing readily and flowering freely for a long period. The foliage, being handsomely mottled, is very ornamental. Bulbs should be planted in a coarse, light rich soil, always bearing in mind that they do best with the bulbs wholly above the soil. After flowering, the pots should be plunged in a shady, sheltered place until October, when they should be repotted.

Each Doz.
Giganteum album. Large, pure white. \$0 25 \$2 50

“ **roseum.** Large, fine bright rose 25 2 50

“ **rubrum.** Large, deep red. 25 2 50

Seedlings in Pots. Grown from English seed of the finest named varieties. 25 2 50



FREESIA REFRACTA ALBA

COLCHICUM

(Autumn-flowering Crocus)

Handsome hardy plants, very showy and effective in clumps, producing fine clusters of very large, beautiful flowers in September or October, followed by the foliage the next spring.

	Each	Doz.	100
Autumnale major. Large, single, rosy purple	\$0 08	\$0 75	\$5 00
Autumnale album. Large single white	08	75	5 00
Autumnale plenum. Double, rosy purple	08	75	5 00
Autumnale, Mixed. Large flowers of many shades	06	60	4 50
Agrippinum. Large rosy lilac.	15	1 25	10 00

ERANTHIS HYEMALIS

(Winter Aconite)

One of the earliest and most hardy of spring flowers, throwing up its pretty yellow flowers before the snow disappears, and continuing in flower several weeks. 20 cts. per doz., \$1.25 per 100, \$8 per 1,000.

DAY LILIES

This is one of the most useful families we have for the decoration of the flower border. Thoroughly hardy, a true perennial, and will succeed in almost any soil or situation; they form handsome tufts of leaves and clusters of lily-like flowers of great substance, deliciously scented and exceedingly useful for cutting. **Home-grown. Ready in October.**

If desired by mail, add 8 cts. each, for postage

Funkia grandiflora. Large, pure white flowers, and broad light green foliage	Each	Doz.	
			\$0 20 \$2 00
Funkia variegata. Lilac flowers and handsomely variegated green and white foliage		25	2 00
Hemerocallis aurantiaca major. Very large, deep orange-yellow trumpet-shaped flowers		50	5 00
Hemerocallis flava. Golden yellow; very fragrant; fine for cutting		15	1 50
Hemerocallis Thunbergi. Bright yellow; quite distinct from Flava, and much later in bloom		15	1 50

ERYTHRONIUM

(Dog's-tooth Violet)

Hardy bulbous plants, with broad spotted and marbled foliage and lily-like recurved flowers, very early in spring. Planted in clumps they are very effective.

	Each	Doz.	100
Rose, White, Violet. color		\$0 20	\$1 25
Mixed. Large-flowering sorts.		20	1 25

FREESIA

One of the most beautiful and popular flowers for pot culture in the house or conservatory. They are very valuable for cutting, being peculiarly graceful and possessed of a sweet, delicate perfume. They force easily, and may be had in bloom from Christmas through the winter by planting six or eight bulbs in a 4- or 5-inch pot, keeping in a cool, light place, and bringing in at intervals.

	Doz.	100	1,000
Refracta alba odorata. Pure white; large bulbs	\$0 25	\$1 50	\$12 00
Mammoth bulbs	35	2 00	18 00
Leichtlini major. Pure yellow	25	1 50	12 00

FRITILLARIA IMPERIALIS

(Crown Imperial)

Showy and stately hardy border plants, which should be in every collection, growing about three feet high, bearing an umbel of bell-shaped flowers on the top, over which is a crown of green leaves. Bulbs

FRITILLARIA IMPERIALIS, continued

should be planted two or three in a clump and six inches deep.

Crown-on-Crown. Several whorls of red flowers one above the other . . .	Each	Doz.
	\$0 25	\$2 50
Double Red	75	7 50
Double Yellow	75	7 50
Gold-striped Foliage. Red flowers .	35	3 50
Orange Brilliant. Fine orange-red .	40	4 00
Single Red	25	2 50
Single Yellow	40	4 00
Mixed Varieties	15	1 50

FRITILLARIA MELEAGRIS

(Checked Lily, or Guinea Hen Flower)

Beautiful dwarf spring-flowering plants for pots or borders, with exceedingly pretty bell-shaped flowers of various colors, beautifully mottled and marked.

	Doz.	100
Pure White	\$0 50	\$3 50
Mixed. Finest colors	30	1 75

GALTONIA (*Hyacinthus candicans*)

Hardy ornamental border plants with flower stems 3 to 4 feet high, bearing quantities of large, bell-shaped flowers. Ready in November.

Candicans. Large, white, hyacinth-like flowers. 5 cts. each, 30 cts. per doz., \$1.75 per 100; by mail, 15 cts. per doz. extra.

GLADIOLUS

Early-flowering and fine for pot culture, being largely grown by florists for cutting; also suitable for coldframes and the open border, if protected from frost, when they will bloom in May or June. Ready in November.

Blushing Bride. Pure white, with deep red spot on lower petals and broad blotch in the center	Doz.	100
	\$0 40	\$3 00
Peach Blossom. Beautiful pink	75	5 00
Colvillei alba (The Bride). Purest white; very compact and valuable for forcing	25	1 50
Colvillei rosea. Delicate soft rose; beautiful	30	1 75

HELLEBORUS NIGER

(Christmas Rose)

Beautiful, early spring-flowering hardy plants; if grown in the house or in frames the pure white flowers may be had in great profusion from December through the winter months. 50 cts. each, \$5 per doz.

HEPATICA

A well-known group of early spring-flowering plants, and if planted in a suitable position will stand for ten or fifteen years, improving in beauty every season.

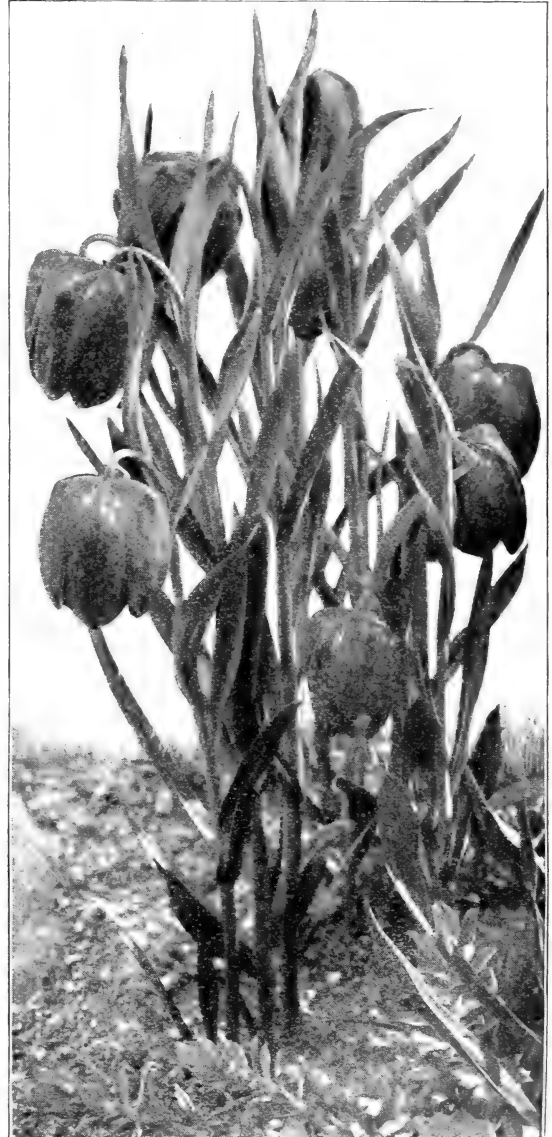
	Each	Doz.
Acutiloba. Pure white and pink flowers.	\$0 20	\$2 00
Triloba. Flowers white, red and purple.	15	1 50

GLOXINIA RECTA

Magnificent for house culture, producing in great profusion beautiful flowers of the richest and most beautiful colors. They succeed best in sandy loam and peat, and require a moist heat. After blooming, dry off gradually, let the bulb remain in the pot without water, and keep in a warm place until they show signs of starting again. Bulbs ready in January.

Separate Colors: Red, White, Blue Each Doz.
and Spotted. Large bulbs \$0 15 \$1 25

Mixed Varieties. Finest shades and colors 15 1 25



FRITILLARIA MELEAGRIS

IRIS (Fleur-de-lis)

The Iris is a very extensive and beautiful family for beds, borders and pot culture. They are mostly hardy spring-blooming plants, very free-flowering, with large, handsome, rich and varied colored flowers; of easy culture, thriving in any good garden soil. Plant 3 inches deep from September to December.

Histrio. Early; bright blue, blotched with yellow	Each	Doz.	
	\$0 20	\$2 00	
Juncea. Fine golden yellow	15	1 50	
Reticulata. Dark blue; earliest of all Iris; sweet-scented	15	1 50	
Susiana (Mourning Lily). Immense grayish flowers, netted with very dark lines	20	2 00	

IRIS ANGLICA (English Iris)

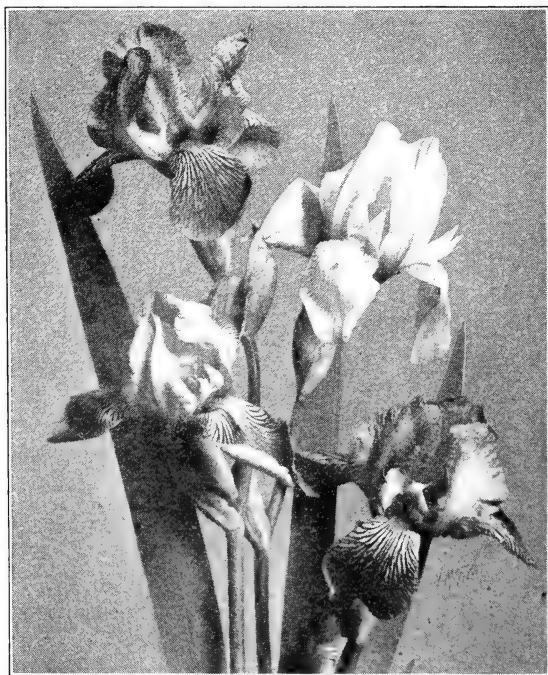
Large handsome flowers of rich and varied colors. Perfectly hardy in the garden, also fine for forcing.

Mont Blanc. Large, pure white; excellent	Each	Doz.	100
	\$0 05	\$0 50	\$3 50
Mixed Varieties. Finest colors.	05	30	2 00

IRIS HISPANICA (Spanish Iris)

These are very early and well adapted for pot culture or forcing for cut-flowers in winter. The fragrant orchid-like flowers are very beautiful and rich in colors. They are of simplest culture in the garden succeeding in almost any soil or position, but require some protection in cold latitudes.

	Doz.	100
Alex. von Humboldt. Fine clear blue.	\$0 20	\$1 00
Belle Chinoise. Golden yellow	20	1 00
British Queen. Large pure white; extra.	20	1 00
Mixed Varieties. Finest colors	10	50



IRIS GERMANICA

IRIS GERMANICA German Iris

These are perfectly hardy and remarkably rich and beautiful in color and form. Of easiest culture and thrive in ordinary garden soil, blooming profusely in May and June. Very effective when grouped upon the lawn or planted in moist situations. Very fragrant and fine for cutting.

25 cts. each, \$2.50 per doz., \$15 per 100, by express

(S signifies standards or erect petals; F, falls or drooping petals.)

Albert Victor. S, soft blue; F, lavender; flowers very large and highly scented.

Aurea. Rich chrome-yellow; the finest of the yellows.

Bronze Beauty. S, bronze; F, velvety crimson.

Cordelia. S, rosy lilac; F, purplish crimson and white.

Duchesse de Nemours. Purple, with white edges; showy.

Flavescens. Light primrose-yellow; very large and fine.

Florentina. Large pure white; very early and fragrant.

Hector. Yellow, suffused with dark purple.

Hericart de Thury. S, yellow; F, purple; fine.

Kharput. S, rich blue; F, violet-purple; very large size and splendid flower.

L'Innocence. Pure white, slightly reticulated with purple and orange.

Mad. Chereau. White, edged and beautifully feathered with violet; one of the most distinct.

Pallida Speciosa. Purplish violet; very distinct; robust and free-flowering.

Queen of May. Attractive and distinct shade of soft rose-lilac, almost a pink; fine.

Mixed Varieties. Unnamed, but fine varieties. 15 cts. each, \$1.50 per doz.

IRIS KAEMPFERI (Japan Iris)

One of the most beautiful of our summer-flowering plants, both in its robust, free-blooming habit and in the superb loveliness of the immense flowers. These differ from the other Irises in having the blossoms broad and flat. They grow best in moist, rich, deep soil. Ready in October.

25 cts. each, \$2.50 per doz., \$15 per 100, by express. If desired by mail, add 5 cts. each for postage

Babylon. Single; reddish purple, very rich color; extra large flower.

Blue Bird. Single; deep velvet-blue.

Blue Danube. Double; deep indigo blue, violet shading, yellow center.

Blue Jay. Double; sky-blue, distinct white lines on each petal.

Chameleon. Double; dark reddish pink, striped and mottled white.

Charmer. Double; azure-blue, light center.

Eclipse. Double; self-color of reddish purple; fine.

Helene von Sieboldt. Single; deep pink, white lines.

IRIS KAEMPFERI, continued

- J. C. Vaughan.** Double; pure white; large and fine
- Maltese.** Single; lavender shaded purple, purple center.
- Malmaison.** Double; light ground heavily veined with blue and rich violet-purple crown; excellent.
- Oscar.** Single; dark red-purple, changing to a very light color.
- Othello.** Double; deep rich purple, lighter toward the center.
- Porcelain Sceptre.** Single; bluish white, pink center.
- Pyramid.** Double; lilac-blue, veined white.
- Robert Craig.** Double; ash-gray, with violet veins; large.
- Turban.** Double; light pink, violet shaded, purple center.
- Venus.** Single; pure white.
- Double and Single Varieties Mixed.** Unnamed, but showy sorts. 15c. each, \$1.50 per doz.

IXIAS

These are among the most graceful and beautiful winter-flowering bulbs. The colors are rich and varied, the center differing in color from other parts of the flower. Plant twelve bulbs in a 6-inch pot and set in a cool place; water sparingly until some growth is made, then remove to warmer quarters to bloom.

- Crateroides Major.** Brilliant scarlet; grand for cutting . . . Doz. 100 \$0 50 \$3 00
- Viridiflora.** Green, with black center 50 3 00
- Wonder** (Rosea plena). Soft rose. 30 2 00
- Mixed Varieties.** All colors. 15 60

LACHENALIAS

A family of Cape bulbs of easy culture in the house. They have beautiful pendent flowers and spotted foliage. Pot early in sandy soil, and grow in cool situation until well rooted, then remove to a warmer situation, and they will bloom through the winter.

- Nelsoni.** Beautiful golden yellow flowers Each Doz. \$0 40 \$4 00
- Tricolor.** Spotted yellow flowers, margined with green and red; very pretty. 25 2 50
- Mixed Varieties.** Finest sorts 20 2 00

LEUCOJUM

Hardy bulbs, with fragrant white flowers on stems 12 to 18 inches high. They resemble the snowdrop, but are much larger and about a month later.

- Vernum** (Spring Snowflake). White, tipped with green. 25 cts. per doz., \$1.50 per 100.

LILIUM HARRISII

(Bermuda Easter Lily)

One of the best for house culture. The flowers are trumpet-shaped, pure waxy white and delightfully fragrant. Bulbs should be potted in a rich soil, using 3½- to 6-inch pots, according to size of bulb, and the



LILIUM HARRISII

pots plunged in a coldframe or kept in a cool place, to get a strong root-growth before the top starts; when well rooted and started a few inches, shift into larger pots, setting the bulb considerably deeper. By bringing them in at intervals a succession of bloom may be had throughout the winter.

	Each	Doz.	100
Mammoth Bulbs	\$0 30	\$3 50	\$25 00
Extra Size Bulbs	15	1 75	12 00
First Size Bulbs	10	1 00	6 50

LILIUM LONGIFLORUM

BERMUDA-GROWN BULBS

Snow-white, fragrant, trumpet-shaped Lily, blooming later than *Lilium Harrisii*.

Mammoth Bulbs. 9 to 11 in. circumference	Each \$0 30	Doz. \$3 50	100 \$25 00
Extra Size Bulbs. 7 to 9 in. circumference	15	1 75	12 00
First Size Bulbs. 5 to 7 in. circumference	10	1 00	6 50

JAPAN-GROWN BULBS

Selected Size Bulbs. 9 to 10 in. circumference	Each \$0 20	Doz. \$1 75	100 \$12 00
Extra Size Bulbs. 7 to 9 in. circumference	15	1 00	6 00

LILIES

In the bulb garden Lilies rank first in importance, and for general effect they have no rivals. Bulbs should be planted 6 inches deep as soon as they can be obtained after ripening, some being ready in August, while others are not ready till October or November. They thrive best in a well-drained, deep, loamy soil, made

rich with thoroughly rotted cow or sheep manure, and an inch of clean sand placed under and over the bulbs when setting; manure should not come in contact with the bulbs, as it causes decay. Top-dressing is the better way to enrich the soil after the bulbs are once established. The beds should be well covered in the fall with any good litter that will exclude the frost.

All varieties of Lily Bulbs sent by mail at price of single bulbs

Lilium auratum (Golden-Rayed Lily of Japan). Large pure white flowers with crimson spots and a golden band through the center of each petal; 2 to 4 feet high. July to October. Large bulbs. 20 cts. each, \$2 per doz., \$12 per 100.

L. auratum platyphyllum. Like preceding, but with larger flowers and foliage. 30 cts. each, \$3 per doz., \$20 per 100.

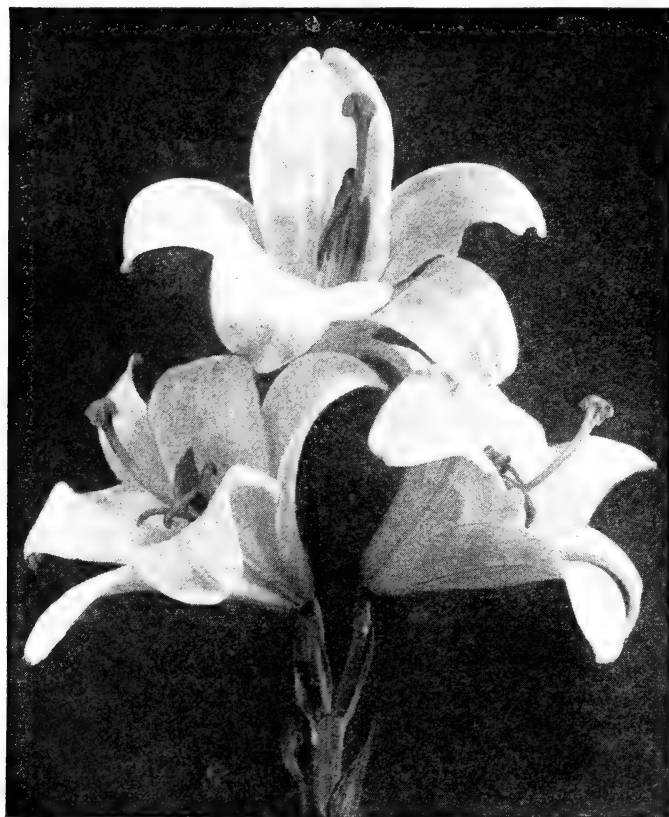
L. auratum pictum. White, with rose spots and broad yellow and crimson band from base to tip of each petal. 30 cts. each, \$3 per doz., \$20 per 100.

L. auratum vittatum rubrum. Pure white, crimson spots and broad crimson bands; large and showy. 75 cts. each, \$7.50 per doz., \$50 per 100.

L. auratum Wittei. Pure white, with wide golden band; no spots. 75 cts. each, \$7.50 per doz., \$50 per 100.

L. Batemanniae. Clear, bright apricot color; 3 to 4 feet. July and August. 15 cts. each, \$1.50 per doz., \$10 per 100.

L. Brownii. Trumpet-shaped; ivory white inside and purplish brown outside; 2 to 3 feet. June and July. 60 cts. each, \$6 per doz., \$40 per 100.



LILIUM CANDIDUM

- | | Each | Doz. | 100 |
|---|--------|--------|--------|
| L. Canadense flavum . Bright yellow, spotted with brown; 2 to 4 feet. June and July. | \$0 15 | \$1 25 | \$8 00 |
| L. Canadense rubrum . Bright crimson, with dark spots; 2 to 4 feet. June and July. | 25 | 2 50 | 15 00 |
| L. candidum . Well-known snow-white fragrant garden Lily; 4 feet. June and July. | 15 | 1 50 | 8 00 |
| L. Chalcedonicum . Vermilion-red; turban-shaped flowers; 3 to 4 feet. June and July. | 50 | 5 00 | 36 00 |
| L. concolor . Crimson, star-shaped flowers, slightly spotted; 1 to 2 feet. June. | 20 | 2 00 | 15 00 |
| L. elegans atrosanguineum . Rich blood-red, spotted; 1½ feet. July. | 20 | 2 00 | 15 00 |
| L. excelsum . Fine light yellow; beautiful and fragrant; 4 to 5 feet. June and July. | 65 | 7 00 | 50 00 |
| L. Hansoni . Large; dark yellow, with maroon spots; 2 to 4 feet. June. | 65 | 7 00 | 50 00 |
| L. Krameri . Light pink; very fragrant and beautiful; 3 feet. July. | 20 | 2 00 | 15 00 |
| L. pomponicum rubrum . Intense scarlet; 2 to 3 feet. June and July. | 20 | 2 00 | 15 00 |
| L. speciosum (Lancifolium). Well known as Japan Lilies, and one of the most popular garden varieties, growing 2 to 4 feet high and blooming in August. | 20 | 2 00 | 12 00 |
| L. speciosum album . Large, fragrant, pure white. | 20 | 2 00 | 12 00 |
| L. speciosum Melpomene . White, shaded with rich blood-crimson, heavily spotted. | 20 | 2 00 | 12 00 |
| L. speciosum rubrum, or roseum . White, shaded and spotted rosy crimson; fragrant. | 20 | 2 00 | 12 00 |
| L. superbum . Orange-red, spotted; 4 to 6 feet. July. | 15 | 1 25 | 8 00 |
| L. tenuifolium (Coral Lily). Brilliant scarlet; very early; 1 to 2 feet. May and June. | 20 | 2 00 | 15 00 |
| L. tigrinum splendens (Tiger Lily). Orange-red, spotted with black; 4 feet. August. | 10 | 75 | 5 00 |
| L. tigrinum flore pleno (Double-flowering Tiger Lily). Four feet. August. | 10 | 75 | 5 00 |
| L. umbellatum, Mixed . Large cup-shaped flowers of brilliant colors; 2 to 3 feet. June. | 10 | 1 00 | 6 00 |
| L. Wallacei . Vermilion-orange, spotted with maroon; 2 to 3 feet. August. | 15 | 1 25 | 8 00 |

LILY-OF-THE-VALLEY (Convallaria)

One of the most useful and charming of our spring flowers. The pure white, delicately scented, bell-shaped blossoms are very useful for cutting, and a favorite of every one. A partially shaded situation suits them best.

Perfection Berlin, First Selection. The finest grade of pips possible. They are the earliest, largest and best for forcing. 35 cts. per doz., \$2.50 per 100, \$18 per 1,000.

Strong Imported Clumps. Containing many flowering pips for outdoor planting. 30 cts. each, \$3 per doz., \$20 per 100, by express only.

NERINE (Guernsey Lilies)

The most popular of the Amaryllis family, as it is the earliest and most certain to bloom after being potted. The flower stems, 1½ to 2 feet high, are surmounted with brilliant, glistening lily-like flowers.

	Each	Doz.
Sarniensis. Rich salmon-red	\$0 30	\$3 00
Fothergilli major. Glistening vermillion-scarlet; superb	75	7 50



LILY-OF-THE-VALLEY



MONTBRETIA

MONTBRETIA

A very desirable plant for the garden, with brilliant flowers, resembling gladiolus. It is not hardy and should be planted in coldframes, or kept in dry sand, away from frost, till spring, when it will bloom from July to frost. Ready in November.

Crocsmiaeflora. Brilliant orange, tinted scarlet	Doz.	100	1,000
	\$0 20	\$1 00	\$6 00
Etoile de Feu (Star of Fire). Vermillion, yellow center	30	2 00	15 00
Gerbe d'Or (Golden Sheaf). Bright yellow	25	1 25	8 00
Germania. New large-flowered variety; flowers over 3 inches across, of a rich glowing orange-scarlet, with a blood-red throat	15 cts. each	1 30	10 00
Pottsii grandiflora. Brilliant yellow, red flush	25	1 75	10 00
Rayon d'Or (Sunbeam). Rich yellow, brown spotted	20	1 25	8 00
Rosea. Salmon-rose	25	1 75	15 00
Transcendant. Golden yellow, red outside	25	1 75	10 00

OXALIS

Very beautiful winter and spring-flowering bulbs, particularly adapted to pot and window culture. Plant three or four bulbs in a 5-inch pot, using a fine sandy loam. They grow and bloom best in a rather cool, partly shaded situation.

Bowiei. Mammoth bulbs; large; bright rosy crimson	Three	Doz.	100
	\$0 10	\$0 25	\$1 75
Cernua (Buttercup). Mammoth bulbs; large; bright yellow	10	25	1 75
Floribunda. Fine rose color; very free-flowering. Ready in November	10	35	2 50
Grand Duchess. A splendid variety about 6 inches high, with flowers 2 inches across, produced in profusion through the winter months up to April or May, when the bulbs go to rest. In three colors: white, rose and lavender. Each color	10	25	1 75

ORNITHOGALUM

(Star of Bethlehem)

Arabicum. Handsome variety with large heads of pure white star-shaped flowers, having a black blotch in the center. They have a distinct aromatic odor, are of easy culture and largely grown for window decoration. 5 cts. each, 40 cts. per doz., \$2.50 per 100.

Umbellatum. Hardy sort, with clusters of white, star-shaped flowers. 2 cts. each, 15 cts. per doz., \$1 per 100.

PAEONIES

These have become indispensable in every garden. They are all hardy and admirably adapted to our northern climate, growing in almost all situations, and even flourishing under shade trees. Ready in October.

Except where noted, 50 cts. each, by express

Achille. Light, flesh-colored pink, fading to bluish white. A very fine variety. Strong in habit and fragrant.

Atrosanguinea. Full, broad bloom; color vivid carmine. One of the best dark varieties.

Beaute Francaise. An older sort, but always one of the best. Distinct pink, finely shaped, the blooms shading to lilac at the center.

Edulis superba. Clear flesh-pink, tinged with carmine. Fine for cutting, and in every way a superb Pæony.

Festiva maxima. The most popular of all white varieties and quite scarce. Enormous double blooms snow-white, center petals flaked with crimson; stems long and vigorous; flowers early. 75 cts.

Grandiflora nivea. Massive white blossoms, strong stems and one of the best.

Humei carpea. Pale rosy flesh, the color most distinct; superb flower and very fragrant.

La Tulipe. Peculiar flesh-pink, shading to ivory-white, with center petals tipped with crimson. Large flower, strong stem, erect, fragrant. 75c.

Marie Lemoine. Delicate china pink, shading to ivory-white; very early and fragrant. Splendid flower.

Officinalis rubra. The old-fashioned deep blood-red Pæony of repute in every old-time garden, and one of the best yet. No more effective or satisfactory Pæony is grown.

Pulcherrima. Yellow and salmon, and distinct in this color; strong and well-shaped flower.

Souv. d'Exposition Universelle. Deep cherry-pink, anemone-shaped; bloom very large and fragrant; late in flower.

Single-flowering. Named varieties. 50 cts. each, \$5 per doz.

JAPANESE TREE PAEONIES

These form, in time, shrubs 5 or 6 feet high. The size and colors are surprising, many of the flowers measuring 12 inches across. 75 cts. each \$8 per doz.

PANCRATIUM MARITIMUM

Amaryliss-like bulbs, with large umbels of fragrant snowy white flowers, suitable for house culture in pots. Should be grown in light loam and leaf-mold, and allowed a season to rest. Ready in November. 15 cts. each, \$1.50 per doz.



PÆONIA, FESTIVA MAXIMA

RANUNCULUS

Handsome flowers of fine form, very brilliant and attractive colors. They require a little heavier soil and more moisture than anemones, otherwise treated the same. They are very readily grown.

Giant French Mixed. Large, double flowers, in great variety of colors	Doz.	100	1,000
	\$o 10	\$o 60	\$4 00
Persian Double Mixed. Rose-shaped flowers, in finest colors.	15	75	5 00
Turban, Double Mixed. Peony-formed flowers in brilliant colors	15	75	6 00
“ grandiflora. Double deep crimson	25	1 50	12 00
“ Grootvorst. Double striped	25	1 75	12 00
“ Hercules. Double pure white	30	2 00	15 00
“ Merveilleuse. Double golden yellow	25	1 50	12 00
“ Romano. Double bright scarlet	25	1 50	12 00



SPIRÆA JAPONICA

SCILLA

Very early-flowering bulbs, doing well in ordinary soil, producing fine graceful spikes of bell-shaped flowers. Very showy and attractive as pot-plants, and require about the same treatment as Hyacinths.

Sibirica. Spikes of intense blue flowers, very early, blooming outside with the snowdrops and crocus. Extra large bulbs	Doz.	100	1,000
	\$o 25	\$1 50	\$12 00
“ alba. Pure white	35	2 50	20 00
Nutans coerulea (Hyacinthoides). A very beautiful hardy species with long, graceful spikes of blue flowers. Common in English woods	25	1 50	12 00
“ alba. Pure white	25	1 50	12 00
“ rosea. Finerose color	25	1 50	12 00

SNOWDROPS

The Snowdrop is the first of all flowers to herald the approach of spring. They flourish well in any soil, and bloom best if not transplanted oftener than once every three years. Being dwarf, they should be set near the edge of walks, where in connection with scilla and crocus they show to great advantage. They also flourish well in sand or moss, in pots or baskets. They should be planted 2 inches deep.

Double-flowering	Doz.	100	1,000
	\$o 25	\$1 50	\$12 00
Single-flowering	15	1 00	7 50
Giant-flowering. Flowers very large	15	1 00	7 50

SPIRÆA (Astilbe)

Splendid plants for forcing in the greenhouse or conservatory, where they produce beautiful sprays of flowers during February and March; they are perfectly hardy, and when planted outside flower in June. The dark green foliage resembles some of our well-known ferns. Ready in November.

If desired by mail, add 10 cts. each for postage

Astilboides floribunda. A dwarf, early and very free bloomer; the large, feathery plumes are of the purest white.	Each	Doz.	100
	\$o 10	\$1 00	\$6 00
Blondine. Very compact grower with erect, broad, bushy heads of white flowers; extra fine	15	1 50	8 00
Gladstone. Large spikes of pure white flowers; one of the best.	20	2 00	15 00
Japonica. Silvery white flowers; fine for forcing	10	1 00	5 00
Japonica compacta multiflora (grandiflora). Compact-growing variety. The silvery white flowers are much larger and more freely produced than the preceding	10	1 00	6 00

SPARAXIS

One of the most graceful and beautiful half-hardy bulbs, with large and handsome flowers of the brightest colors and shades, and are fine for growing in pots. They are closely allied to the ixia, and require the same treatment.

Mixed Varieties. 10 cts. per doz., 60 cts. per 100, \$4.50 per 1,000.



SINGLE VIOLETS

TRILLIUM GRANDIFLORUM

(Wood Lily, or Wake Robin)

A magnificent plant with fine white flowers, changing to rose. It requires a moist situation, doing well among shrubbery if not too dry. Ready in October. 15 cts. each, \$1 per doz.

TRITELEIA

A perfect little gem for either pot culture or the open border. It grows well in almost any soil, each bulb producing a number of star-shaped flowers of good substance. Half a dozen bulbs should be planted in a 4- or 5-inch pot. In the garden a good covering with litter is necessary.

	Doz.	100
Uniflora. Delicate light blue	\$0 15	\$0 75
Violacea. Fine violet-blue	15	75

TRITONIA

	Doz.	100
Aurea. Golden yellow	\$0 40	\$2 50

Mixed Colors. Free-blooming bulbs, well suited for pot culture. Plant in a light, rich loam, about six or eight bulbs in a 6-inch pot. Give a cool airy situation, and an abundance of bloom will be the result 25 1 75

TROPAEOLUM

Beautiful and graceful climbing plants for the conservatory or window-garden, producing in the early spring months richly colored flowers. They can be grown in pots and trained over trellises, or as a bracket plant in the window.

Jarrattii (Tricolor). Scarlet, yellow and black. 15 cts. each, \$1.25 per doz.

VIOLETS

By express only

We offer strong plants specially grown for winter blooming.

Princess of Wales. Giant single, deep violet, fragrant flowers	Each	Doz.	100
	\$0 15	\$1 25	\$10 00

Campbell. Double flowers, lighter in color than the preceding. One of the best for winter growing; fragrant	15	1 25	10 00
--	----	------	-------

WATSONIA

One of the finest of Cape bulbs, with long, graceful spikes of beautiful gladiolus-like flowers in brilliant colors. Very desirable for planting out or forcing in the greenhouse.

Ardernei. Large pure white; the finest of all the varieties. 75 cts. each, \$8 per doz.

Finest Mixed. In great variety. 15 cts. each, \$1.50 per doz.

HYACINTH GLASSES

Directions for growing Hyacinths in glasses will be found on page 1, and the ease and success in flowering bulbs in this way add greatly to the popularity of not only Hyacinths, but Narcissi.

Tall, or Belgian Pattern. 15c. each, \$1.50 per doz.

Low, or Tye Pattern. 15 cts. each, \$1.75 per doz.



TALL HYACINTH GLASS

JAPANESE FERN BALL

A Japanese novelty composed of roots of the Davallia (Japanese Island Fern) and Sphagnum Moss, so constructed as to send out its beautiful green fronds from all points; they are rapid growers and make a handsome ornament for house or conservatory. In starting them into growth they should be placed in water until saturated, then suspended wherever desired. Repeat every two or three days until growth is started, after which sprinkle as required. They may also be cut in halves and grown in flat dishes. They may be allowed to dry up at any time, set away, and started again when desired. Ready for delivery in December or January. 35 cts. each, \$4 per doz. By mail, 50 cts. each.



JAPANESE FERN BALL

MUSHROOM SPAWN

American Pure Culture

Mushrooms are propagated from spawn, and the selection of spawn is as important to the mushroom grower as the selection of seed is to the farmer, the gardener or the fruit-grower.

The pure culture method of raising spawn was discovered by Dr. Duggar in 1903. Since that time extensive tests have been made, and a company was formed with a view of producing it in commercial quantities. A few thousand bricks were placed on the market last year and used by our best and most progressive growers. We have yet to hear from a single one who will return to the old-fashioned spawn at any price. Some growers were so surprised at their success with the new spawn that they carefully concealed it from their neighbors and suggested that the production of pure culture spawn be curtailed, fearing that by its general use Mushrooms would become too plentiful and consequently too cheap.

This objection is not well founded, however, for the improvement in the quality and flavor of the Mushroom will stimulate the demand to the same extent that the demand for fruit has been increased since the grafting process has displaced seed planting.



AMERICAN-GROWN MUSHROOMS

Lambert's Pure Culture Spawn—

Each	
1 or more bricks .	\$0 25
25 or more bricks .	18
100 or more bricks .	15

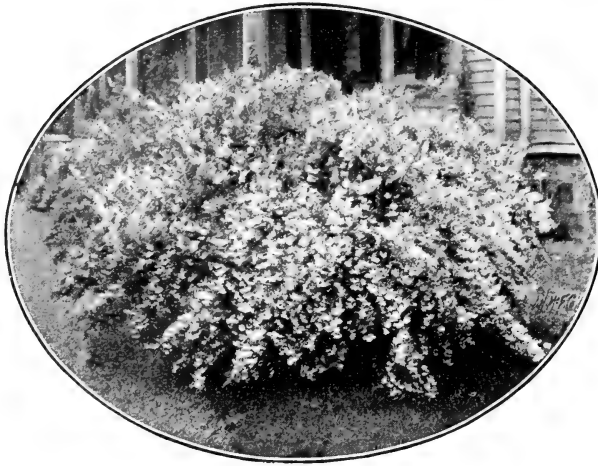
English Mushroom Spawn.

15c. per lb.,
\$1 for 8 lbs., \$2.50 for
25 lbs., \$9 per 100 lbs.;
by mail, 25c. per lb.

The following works on the Mushroom will be mailed postpaid on receipt of price. Both are excellent authorities and give plain and full directions: MUSHROOM CULTURE, by Robinson, 50 cts. HOW TO GROW MUSHROOMS, by Wm. Falconer, \$1.

Flowering and Ornamental Hardy Shrubs

This class of plants does more for our gardens and grounds, to make them look attractive and homelike, than all other classes combined. It gives us beautiful foliage of many kinds, flowers from April to November, and clothes the lawn with that abundance of branches and leafage which is so necessary to any feeling of seclusion or privacy in our home grounds.



DEUTZIA GRACILIS

	Each
ALMOND, Double Pink. Very double, small pink flowers. May	\$0 50
Double White. Like preceding, with white flowers. May	50
ALTHEA, Double and Single. Handsome hollyhock-like flowers in colors of red, purple and white. September	35
Variiegated Foliage. Leaves marked with yellow; flowers double, purple. September...	50
ANDROMEDA racemosa. Bright red twigs, with drooping racemes of lily-of-the-valley-like flowers. May	50
AZALEA, Ghent. Best named sorts, with rich and varied colors. June	1 50
Mollis. More dwarf and larger flowered than preceding. June	\$1 and
Mollis. Unnamed seedlings; many fine colors. June	75 cts. and 1 00
BERBERIS Thunbergii (Japan Barberry). Beautiful, tinted foliage in the autumn. June.	25
Vulgaris (European Barberry). Pendulous clusters of red berries. June	25
BERBERIS vulgaris purpurea. Deep purple foliage all summer. June	25
CALYCANTHUS floridus (Spice Bush). Deep chocolate-colored flowers of pineapple fragrance. June to Sept.	35
CARYOPTERIS Mastacanthus (Blue Spirea). Rich lavender-blue flowers all summer	35
CHIONANTHUS Virginica (White Fringe). Delicate, fringe-like, white flowers. May	50
CLETHRA alnifolia (Sweet Pepper Bush). Upright spikes of fragrant white flowers. July to September	35
CORCHORUS Japonica fl. pl. (Kerria). Brilliant, double, orange-yellow flowers. June and July	35
CORNUS florida. Large, white-flowering Dogwood May	50
Florida rubra. Large, deep rose-colored flowers. May	1 50
CYDONIA Japonica (Japan Quince). Large, deep scarlet flowers, followed by large fruit	35
DAPHNE Cneorum. Evergreen trailer, with fragrant pink flowers all summer	50
DEUTZIA crenata fl. pl. Double white flowers, tinged with rose. June	35
Crenata alba fl. pl. Double pure white flowers. June	35
Gracilis. Round, dense bush, covered with snow-white flowers. June	35
Lemoinei, New. Erect panicles of large, snow-white flowers. June	35
ELAEAGNUS longipes. Ornamental and edible-fruited shrub from Japan. July	35
EUONYMUS Americanus (Strawberry Bush). Deep scarlet berries. June	35
Atropurpureus (Burning Bush). Purple flowers in clusters, and scarlet fruit	50
EXOCHORDA grandiflora. Chinese shrub, with numerous clusters of pure white, stary flowers. May	50
FORSYTHIA Fortunei (Golden Bell). Pendulous, trumpet-shaped, golden yellow flowers. April	35
Suspensa (Weeping Golden Bell). Weeping habit and showy yellow flowers. April	35
Viridissima. Stiffer and bush-like habit. Blooming in May	35
HAWTHORN, Paul's Double Scarlet. Brilliant carmine flowers; best double Thorn. May	1 00
Double White. Fine contrast to the preceding. May	1 00
HYDRANGEA nivea. Large, flat heads of white flowers, and heart-shaped leaves. July	35
Paniculata. Thickly studded with heads of single white flowers. September	35
Paniculata grandiflora. Immense, cone-shaped heads of white flowers, turning later to shades of pink and red. July to October	25 cts. and 50
We offer plants of this sort trained in tree form. July to October	75
ILEX verticillata (Black Alder). Glossy dark green foliage and bright crimson berries. The berries remain all winter	35
LILAC, Common Purple. An old favorite; fragrant, purple flowers. May	35
Common White. Like preceding, with fragrant white flowers	35
Charles X. Magnificent clusters of dark red flowers in great profusion	75
Dr. Lindley. Very dense clusters of violet-red; one of the finest	75
Frau Bertha Dammann. Producing the largest clusters of pure white flowers	75
Louis Van Houtte. Huge clusters of fine, bright red flowers	75
Ludwig Spath. Very large, and of a splendid dark purple-red	75
Leon Simon. Very large, double, bluish crimson; the buds are coral-red	75
Mad. Lemoine. Grand, double white variety, with large foliage	75

HARDY SHRUBS, continued

LILAC, President Grevy. Immense spikes of double cobalt-blue flowers, with rosy edges	Each	\$0 75
Persian. Light purple; more open habit and branches more slender and drooping than other sorts	50	
Persian White. Pure white form of the above	50	
LONICERA Tatarica (Bush Honeysuckle). Profusion of sweet-scented pink flowers	35	
Tatarica alba. Pure white-flowered sort of the preceding. May	35	
Morrowii. Yellow flowers, followed by rich crimson fruit. All summer	35	
MAGNOLIA conspicua. Covered with masses of snow-white, lily-like flowers. May	2 50	
Glauca (Sweet Bay). Beautiful native, with glossy leaves and fragrant white flowers. June	1 50	
Lennei. Large, deep purple, cup-shaped flowers; excellent. April	2 50	
Soulangeana. Large flowers, pink outside and white inside; fragrant. April	2 50	
Stellata. Fragrant, double, pure white, with a rosy flush. April	2 00	
MOUNTAIN LAUREL (<i>Kalmia latifolia</i>). Glossy evergreen foliage and clusters of pink and white flowers. June	2 ft., \$1; 2½ ft.,	1 50
PRIVET, California (Lignstrum). Broad, oval-shaped leaves, white flowers; fine for hedge. July	35	
European. Valuable hedge plant, with showy white flowers; very hardy. June	35	
European, Variegated Foliage. Pretty green and white foliage. June	35	
Ibota (Japan). Dark, oval foliage, and racemes of white, fragrant flowers	35	
PHILADELPHUS coronarius (Syringa, or Mock Orange). Pure white, fragrant flowers, in clusters. June	35	
Coronarius, Golden Foliage. One of the best golden foliage shrubs. June	35	
Avalanche. Low-growing shrub, with weeping branches and pure white, fragrant flowers. June	75	
Lemoinei, Mont Blanc. Attaining 5 feet in height, with erect branches entirely covered with large, fragrant flowers	50	
PRUNUS Pissardi (Purple-leaved Plum). Bright purple foliage through the season	50	
Triloba (Double-flowering Plum). Double, pink flowers, like small roses. May	50	
PYRUS angustifolia (Bechtel's Double-flowering Crab). Large, double flowers of a beautiful pink color; highly fragrant and resemble pink roses. May	1 50	
Malus Parkmanii (Tea Rose-flowering Crab). Long, rich carmine buds. May	\$1 and	1 50
RHODODENDRONS, Hardest Hybrids. Fine collection of the best named sorts	\$1.50 to	3 00
Hybrid Seedlings. Embracing many colors, but unnamed	75	
RIBES aureum (Flowering Currant). Early yellow flowers in showy racemes	35	
RUBUS odorata (Flowering Raspberry). Large, fragrant, reddish purple flowers all summer	35	
SAMBUCUS nigra aurea (Golden Elder). A large, golden-leaved shrub	35	
SPIRAEA, Anthony Waterer. Low-growing, with flat heads of brilliant red flowers all summer	35	
Opulifolia aurea (Golden Spiraea). One of the best yellow-leaved shrubs; flowers white. June	35	
Prunifolia fl. pl. (Bridal Wreath). Double, pure white flowers. May	35	
Thunbergii. Low-growing, rounded form, with abundance of white flowers. May	35	
Van Houttei. Graceful, rounded form, covered with pure white flowers. June	35	
SYMPHORICARPUS racemosus (Snowberry). Small pink flowers and large white berries that remain throughout the winter. July	35	
VIBURNUM Opulus (High-bush Cranberry). Cymes of white flowers in June, and bright scarlet berries late into winter	35	
Opulus sterilis (Common Snowball). Large, pendent balls, snow-white. May	35	
Plicatum (Japan Snowball). Considered superior to the preceding in foliage, which is plicated, and flower, which is larger and whiter. May	50 cts. and	1 00
Tomentosum. Single form of the preceding, with massive cymes of bloom late in the summer	50	
WEIGELA candida. Tubular white flowers all summer	35	
Eva Rathke. Large, deep crimson; flowers from June till frost	35	
Floribunda. Deep crimson flowers, freely produced. June	35	
Rosea. Fine rose-color variety. June	35	
Rosea nana variegata. Silvery variegated leaves and pinkish white flowers. June	35	

HEDGE PLANTS

ACACIA, or Honey Locust. 1 to 2 feet	100	LILAC, Common. 1 to 2 feet	100
2 to 3 feet	\$5 00	3 to 4 feet	\$15 00
ARBORVITAE, American. 1 to 1½ feet	10 00	PRIVET, California. 1 to 2 feet	6 00
1½ to 2 feet	15 00	2 to 3 feet	8 00
BARBERRY, Japanese, or Thunberg's—		Common. 2 to 3 feet	8 00
1 to 1½ feet	15 00	Ibota. 1 to 2 feet	15 00
Common. 1 to 1½ feet	12 00	SPIRAEA, Golden. 2 to 3 feet	15 00
Purple. 1 to 1½ feet	15 00	Thunbergii. 2 feet	18 00
HAWTHORN, English. 1 to 2 feet	10 00	Van Houttei. 2 to 3 feet	20 00
HEMLOCK. 1½ to 2 feet	35 00	SPRUCE, Norway. 1½ to 2 feet	20 00
JAPANESE QUINCE (<i>Cydonia</i>). 1 to 2 feet	12 00		

Select List of Hardy Perennial Plants

We would recommend those who have never undertaken the culture of Hardy Plants to commence with a few varieties most easily grown, and gradually increase their collections from season to season, and, our word for it, it will lead to a confession that there is nothing in the way of bedding-out or ribbon gardening which can compare in any way to the beauty and refined charm of this class of plants. We can furnish a good selection of Hardy Plants, which may be expected to give successional bloom throughout the spring, summer and fall months, and, if the choice is left to us, will take special care to select such varieties as afford the most satisfactory results.

Any sorts not listed can be furnished at lowest prices

	Each
ACHILLEA, The Pearl. Double pure white. June to September.....	18 in.\$0 15
ACONITUM autumnale (Monkshood). Deep blue. October.....	4 ft. 15
Napellus. Dark blue. June.....	4 ft. 15
ADONIS vernalis. Clear yellow. May.....	1 ft. 15
AGROSTEMMA coronaria. Bright crimson. June to August.....	2 ft. 15
ALYSSUM saxatile. Yellow. May.....	6 in. 15
ANEMONE Japonica alba. Pure white, with yellow center. September and October.....	3 ft. 20
Japonica rosea. Fine rose color. September and October.....	3 ft. 20
Japonica, Queen Charlotte. Large, beautiful pink, semi-double flowers.....	3 ft. 20
Japonica, Whirlwind. Semi-double; pure white. September and October.....	3 ft. 20
ANTHEMIS Kelwayi (Hardy Golden Marguerite). Deep yellow; fine. June to August.....	2 to 3 ft. 15
ANTHERICUM Liliastrum Major. Pure white, lily-shaped flowers; fragrant. June and July.....	2 ft. 25
AQUILEGIA (Columbine). Several fine colors. April to August.....	1 to 3 ft. 15
ARMERIA (Thrift). Pink- and white-flowered varieties. June.....	9 in. 15
ASCLEPIAS tuberosa. Brilliant orange. June and July.....	2½ ft. 15
ASPHODELUS luteus (Asphodel). Strong spikes of fragrant yellow flowers. June and July.....	3 ft. 20
ASTER roseus. Fine rose color. August and September.....	3 ft. 20
Novae-Angliae. Dark purple. September.....	4 ft. 15
BAPTISIA australis. Long racemes of dark blue flowers. July.....	2 ft. 15
BOLTONIA asteroides. Single, white aster-like flowers; fine. October.....	4 to 5 ft. 15
Latisquama. Clear lavender-lilac. August and September.....	4 to 5 ft. 15
CAMPANULA, Assorted. In great variety. June and July.....	1 to 3 ft. 15
CHRYSANTHEMUM, Double Pink, White, Yellow, and Bronze Red. September.....	2 ft. 15
CLEMATIS Davidiana. Porcelain-blue; fragrant. August and September.....	4 ft. 20
COREOPSIS grandiflora. Large; deep yellow. July to October.....	2 ft. 15
DAY LILY, -Funkia grandiflora. Large, pure white. July to September.....	2 ft. 20
Funkia variegata. Variegated foliage.....	2 ft. 25
Hemerocallis aurantiaca major. Brilliant orange-yellow; 5 inches across. May and June.....	3 ft. 50
Hemerocallis flava. Golden yellow; fragrant. May and June.....	3 ft. 15
Hemerocallis Thunbergii. Bright yellow. June and July.....	3 ft. 15
DELPHINIUM formosum (Larkspur). Deep blue. June.....	3 ft. 15
Formosum coelestinum. Porcelain-blue. June.....	3 ft. 15
Hybrid Seedlings. All colors. June and July.....	2 to 3 ft. 15
DESMODIUM penduliflorum (Sweet Pea Shrub). Bright rosy carmine. September.....	4 ft. 25
DIANTHUS barbatus (Sweet William). Fine colors. June.....	\$1.50 per doz. 1 ft. 15
Plumarius (Hardy Clove Pinks). Fragrant flowers of various colors. June and July.....	1 ft. 20
DICENTRA spectabilis (Bleeding Heart). Pink and white. May to July.....	2 ft. 15
DICTAMNUS Fraxinella (Gas Plant). Rosy pink. June and July.....	2½ ft. 25
DORONICUM plantagineum excelsum. Beautiful golden yellow flowers, 3 inches across; in flower the whole season.....	2 ft. 25
ECHINACEA purpurea. Large; rosy purple. August and September.....	4 ft. 20
EUPATORIUM ageratoides (Thoroughwort). Panicles of small white flowers. July to September.....	3 ft. 15
EUPHORBIA corollata. Pure white; fine for cutting; July.....	3 ft. 15



PHLOX DECUSSATA (PERENNIAL PHLOX)

HARDY PERENNIALS, continued

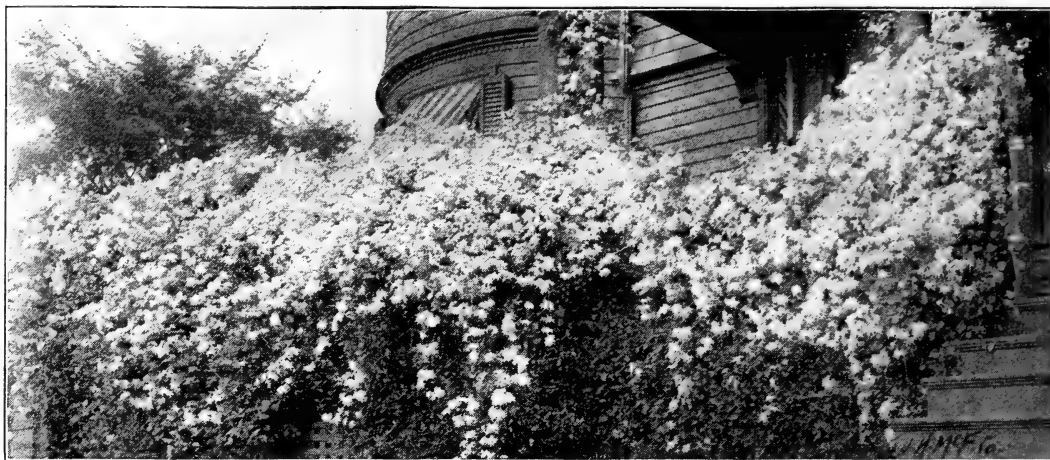
	Each
GAILLARDIA. Choice sorts; fine for cutting; showy colors. June to October.....	2 ft. \$0 15
GYPSOPHILA paniculata (Infant's Breath). Fine white flowers. July and August.....	2 ft. 20
HELENIUM autumnale. Immense heads of deep yellow flowers. September.....	6 ft. 15
Grandicephalum striatum. Intense orange, striped and blotched with crimson.....	4 ft. 15
HELIANTHUS (Sunflower). Hardy, single-flowering sorts. August and September.....	5 to 10 ft. 15
Multiflorus fl. pl. Double, deep yellow, dahlia-like flowers.....	4 ft. 15
HELLEBORUS (Christmas Rose). Several fine sorts. November to January.....	1 ft. 50
HELIOPSIS Pitcheriana (Ox eye) Deep orange-yellow; blooms all summer.....	3 ft. 15
HEUCHERA sanguinea. Bright crimson; nice for cutting. Summer.....	1 to 1½ ft. 15
HIBISCUS Moscheutos. Light rose; large. September.....	4 ft. 15
HOLLYHOCKS, Prize-winner Strain. Finest double varieties.....	\$2 per doz., \$12 per 100.. 20
Finest Single Varieties	\$2 per doz., \$12 per 100.. 20
IBERIS sempervirens (Evergreen Candytuft). Pure white. June.....	6 in. 15
LATHYRUS latifolius (Everlasting Pea). Bright red flowers on long stems. July and August.....	7 ft. 25
Latifolius albus. Pure white.....	25
LAVANDULA vera (Sweet Lavender). Very fragrant bluish flowers. July and August.....	1½ ft. 15
LIATRIS pycnostachya (Blazing Star). Showy spikes of rosy purple flowers. July to September.....	4 ft. 15
LOBELIA cardinalis (Cardinal Flower). Intense scarlet; long spikes. August.....	3 ft. 15
LYCHNIS viscaria splendens plena. Large, double, bright rose. June and July.....	1½ ft. 20
MONARDA didyma. Showy heads of brilliant scarlet flowers throughout the summer.....	3 ft. 15
PAEONIES. Various colors and shades. See Summer-flowering Bulbs and Tubers.....	50
PENTSTEMONS. Long spikes of showy flowers. June and July.....	2 to 3 ft. 25
PHLOX decussata (Perennial Phlox). One of the most popular garden plants; blooming from midsummer until frost.....	\$1.50 per doz., 3 ft. 15
Subulata (Moss Pink). Pink flowers during April and May.....	6 in. 15
Subulata alba. Pure white.....	15
PLATYCODON (Bell Flower). Large deep blue and pure white. July to September.....	2 ft. 15
POPPY, Oriental. Large, crimson-scarlet, with black blotch. June.....	3 ft. 20
Nudicaule (Iceland Poppy). Several colors. All summer.....	1 ft. 15
PYRETHRUM, Double Hybrids. Rich and varied colors. June and July.....	2 ft. 25
RUDBECKIA, Golden Glow. Graceful plant, covered with very double, deep yellow flowers as large as small asters. July to September.....	6 to 8 ft. 15
SPIRAEA Japonica. Feathery spikes of pure white flowers. June and July.....	2 ft. 20
Astilboides floribunda. Feathery white flowers; excellent. June and July.....	2 ft. 25
Palmata. Large heads of deep crimson flowers. June to August.....	3 ft. 25
YUCCA filamentosa (Adam's Needle). Sword-like foliage, and long spikes of cream-white, cup-shaped flowers. June.....	25 cts. and 50

Sorts not listed can be furnished at market prices

Hardy Climbing Plants and Flowering Vines

Embracing the most beautiful sorts of vines and creepers, suitable for training or climbing on verandas, trellises, walls, fences, etc.

	Each
ACTINIDIA polygama. Oval, glossy leaves and clusters of fragrant flowers.....	\$0 50
AKEBIA quinata. Clover-like leaves and fragrant, velvety, purple flowers.....	25
AMPELOPSIS quinquefolia (Virginia Creeper). Rapid climber.....	25
Engelmanni. A creeper that clings to stone or wood as tightly as English Ivy.....	35
Tricolor, or Vitis heterophylla (Variegated Grape). Pretty vine with pink, white and green marbled foliage..	50
Veitchii (Japanese Ivy). Very fine for covering walls, rocks, etc. \$2 and \$2.50 per doz., \$12 to \$20 per 100, 20c. and	25
ARISTOLOCHIA Siphon (Dutchman's Pipe). Heart-shaped leaves; the flowers resemble a pipe.....	75
BIGNONIA radicans (Trumpet Flower). Large, trumpet-shaped, orange and red flowers.....	25
CELASTRUM scandens (Roxbury Wax-work). Glossy leaves and clusters of orange-erimson fruit, which remain on all winter.....	25
CLEMATIS paniculata. A first-class decorative vine, with glossy, dark green foliage, and covered in the latter part of the summer with a perfect cloud of star-like white flowers, which are so fragrant that the delicious odor can be detected at a long distance.....	25 cts. and 50
Henry. One of the best whites; very large flowers.....	75
Jackmanni superba. Large violet-purple; free bloomer.....	75
Jackmanni alba. Large white flowers; free bloomer.....	75
Mme. Andre. Large carmine-red flowers; very free bloomer.....	75
Mme. Baron Veillard. Very large, soft pink flowers, from midsummer until frost.....	75
DOLICHOS Japonicus (Kudzu Vine). Fast grower, with immense leaves and racemes of rosy purple, pea-shaped flowers.....	25
EUNYMIUS radicans. An evergreen, glossy-leaved vine, valuable for covering wood, to which it clings.....	25
Radicans variegata. Foliage variegated with white, yellow and pink.....	25



CLEMATIS PANICULATA (See page 27)

HARDY CLIMBING PLANTS AND FLOWERING VINES, continued

HONEYSUCKLE, Belgian, or Dutch Monthly. Red and yellow fragrant flowers all summer	Each. \$0 35
Hall's Japan. Fragrant yellow and cream-colored flowers all summer	25
Golden Variegated. Green and gold variegated foliage; variety of preceding	25
Scarlet Trumpet. Clusters of tubular scarlet flowers all summer	35
HOP VINE. Vigorous and quick-growing twiner for covering arbors, etc.	25
PERIPLOCA Graeca (Silk Vine). Glossy green leaves and small purple flowers	35
WISTARIA Sinensis (Chinese Wistaria). Long, pendulous clusters of pale blue flowers	75
Sinensis alba. White-flowered variety of the preceding	1 00

Sorts not specified in this list can be furnished at lowest prices

ROSES

HARDY HYBRID PERPETUALS

The Rose is the one plant that needs no praise and little comment. Every one knows the Rose, and no garden is ever satisfactory without its Rose-bed. The secret of success is simply this: Throw out the soil 2 feet deep, and put in any kind of manure 1 foot deep, incorporate it with earth a little, and then cover it with 4 inches or more of soil, then plant the Rose bushes firmly, and fill up with good soil. Roses should be planted very deep, except in very clayey soils.

The Rose-bed should be in the full sun, if possible, and the surface be left a little hollow, so that water may be put on in summer and settle to the roots. Such beds will be full of healthy bushes and glorious blossoms.

Strong, 2-year-old, dormant plants, 30 cts. each, \$3 per doz., by express only

Alfred Colomb. Bright carmine-crimson, large and full.
American Beauty. Very fragrant, deep rose.
Anne de Diesbach. Large, clear bright carmine.
Baroness Rothschild. Rich satiny pink; excellent.
Baron de Bonstettin. Dark red, almost black; large.
Boule de Neige. Pure white, medium size.
Caroline de Sansal. Clear rose, darker in center.
Captain Christy. Deep flesh color, long bloomer.
Charles Lefebvre. Brilliant velvety crimson; fine.
Clio. Flesh-color, rich pink center.
Countess of Oxford. Large, carmine-red.
Countess of Roseberry. Reddish salmon, splendid.
Coquette des Blanches. Pure white, very free.
Crimson Bedder. Scarlet-crimson, free bloomer.
Dr. Andre. Brilliant red, large and imbricated.
Duchess of Bedford. Fiery crimson, perfect form.
Duke of Albany. Velvety crimson, turning black.

Dupuy Jamain. Bright cherry, large and free.
Earl of Dufferin. Large velvety crimson.
Emily Laxton. Rich brilliant rose, large.
Etienne Levet. Fine carmine-red, few thorns.
Eugenie Verdier. Silvery pink, exquisite.
Fisher Holmes. Deep brilliant crimson.
Francois Michelson. Deep carmine-rose, extra.
Frau Karl Druschki. The finest white garden Rose ever introduced. 50 cts. each.
General Jacqueminot. Brilliant scarlet-crimson.
Gloire de Margottin. Brilliant scarlet, free.
Helen Keller. Large, brilliant rosy cerise, distinct and fragrant. 50 cts. each.
Jeannie Dickson. Rosy pink, lighter edge.
John Hopper. Large, rosy crimson; free.
LaFrance. Beautiful silvery peach, excellent.
Lady Helen Stewart. Bright crimson-scarlet.
Louis Van Houtte. Dark velvety crimson.
Mad. Gabriel Luizet. Beautiful satiny pink.
Magna Charta. Bright pink and carmine.
Marchioness of Dufferin. Large, rosy pink.
Marchioness of Londonderry. Ivory white.
Margaret Dickson. Finest white hybrid.
Maurice Bernardin. Large, vermilion-red.
Merveille de Lyon. Pure white, shaded rose.
Mrs. John Laing. Beautiful soft pink, large.
Mrs. Sharman Crawford. Deep pink, shaded.
Paul Neyron. Immense deep pink.
Prince Camille de Rohan. Crimson-maroon.
Queen of Queens. Pink with blush edges.
Reynolds Hole. Rich maroon, scarlet flush.
Ulrich Brunner. Large, bright cherry-red.
Victor Verdier. Large, showy, rosy carmine.
White Baroness. Pure white, large and full.
Xavier Olibo. Velvety black, shaded scarlet.

HARDY CLIMBING ROSES

- Baltimore Belle.** Pale blush, nearly white. 50 cts. each.
Crimson Rambler. Immense clusters of double, deepest crimson flowers. 25 and 50 cts. each.
Dawson. Double, deep pink, in clusters. 30 cts. each.
Dorothy Perkins. New variety, with numerous clusters of double, fragrant flowers, a striking shade of shell-pink. 35 cts. each.
Empress of China. Fragrant bright pink flowers produced during the summer. 50 cts. each.
Gem of Prairie. Large, flat, double red. 50 cts. each.
Multiflora. Small, single, white, in clusters. 30 cts. each.
Paul's Carmine Pillar. Large, single, brilliant carmine. 50 cts. each.
Setigera. Large, single, rose color. 35 cts. each.
White Rambler. White, double, in clusters. 25c. each.
Yellow Rambler. Double, light yellow, in clusters. 25c.

MISCELLANEOUS HARDY ROSES

Strong plants, 50 cts. each

- Austrian, Harrison's Yellow.** Clear yellow.
Austrian, Capucine. Single, orange-scarlet.
Austrian, Persian Yellow. Double rich yellow.
Baby Rambler. The dwarf ever-blooming Crimson Rambler; forms a compact bush about 2 feet high, with large trusses of bright crimson flowers from early spring until frost.
Mme. Georges Bruant. Pure white, ever-blooming and beautiful foliage.
Rugosa. Large, single, deep red flowers all summer, followed by large, brilliant red fruit. The handsome, thick foliage is not troubled by insects.
Rugosa alba. White variety of preceding.
Soleil d'Or. A cross between Persian Yellow and Hybrid Perpetual; flowers are large and full, varying in color from gold and orange to reddish gold shaded with nasturtium red.
Sweetbrier, Hybrids. Single and semi-double flowers in a variety of colors and fragrant foliage.
Wichuraiana. A rapid grower of trailing habit, with single, pure white, fragrant flowers and handsome, glossy green foliage; largely used in Franklin Park.



CAPTAIN CHRISTY ROSE

HARDY MOSS ROSES

These require close pruning and strong rich soil for best results. Strong plants, 50 cts. each.

ORNAMENTAL TREES

ASH (*Fraxinus*)—

- Cut-leaf.** 8 to 10 ft., \$1 each.
Golden-barked. 10 ft., \$1 each.
Mountain. 10 ft., \$1 each.
White (*F. alba*). 8 ft., 50 cts. each; 10 ft. \$1 each.

BIRCH (*Betula*)—

- Black (*B. lenta*).** 7 to 8 ft., 75 cts. each.
Canoe (*B. papyracea*). 8 ft., 75 cts. each; 10 ft., \$1 ea.
Cut-leaved Weeping. 7 to 8 ft., \$1 each.
Purple-leaf. 6 to 7 ft., 75 cts. each.
Red (*B. nigra*). 7 to 8 ft., 75 cts. each.
White (*B. alba*). 7 ft., 75 cts. each.
Yellow (*B. lutea*). 7 ft., 75 cts. each.

BEECH (*Fagus*)—

- American (*F. ferruginea*).** 5 ft., \$1.25 each.
Fern-leaved. 4 ft., \$1.50 each; 5 ft., \$2.
Rivers' Purple. 3 to 4 ft., 75c. each; 5 to 6 ft., \$1.50.

CATALPA—

- Speciosa.** 7 to 8 ft., 50 cts. each.
Speciosa aurea. Dwarf, with golden foliage. 6 to 7 ft., 75 cts. each.

ELM (*Ulmus*)—

- American.** 6 to 7 ft., 50 cts. each; 9 to 10 ft., \$1.
English (*U. campestris*). 7 to 8 ft., 75 cts. each.

LINDEN (*Tilia*)—

- American (Basswood).** 7 to 8 ft., \$1 each.
European. 7 to 8 ft., \$1 each.

MAPLE (*Acer*)—

- English, or Cork-barked (*A. campestre*).** 7 ft., 75c.
Norway (*A. platanoides*). 6 to 8 ft., 50 cts. each; 8 to 10 ft., 75 cts.; 10 to 12 ft., \$1.25.
Red, or Scarlet (*A. rubrum*). 8 ft., \$1.25 each.
Silver (*A. dasycarpum*). 9 to 10 ft., 50 cts. each.
Sugar, or Rock (*A. saccharinum*). 8 ft., 50 cts. each; 9 to 10 ft., 75 cts.; 10 to 12 ft., \$1.

OAK (*Quercus*)—

- English Royal (*Q. Robur*).** 5 to 6 ft., 75 cts. each.
Mossy Cup (*Q. macrocarpa*). 5 to 6 ft., \$1.25 each.
Pin (*Q. palustris*). 6 ft., \$1 each.
Scarlet (*Q. coccinea*). 4 ft., 50 cts. each; 7 ft., \$1.
White (*Q. alba*). 4 ft., 75 cts. each.

POPLAR (*Populus*)—

- Aspen (*P. tremula*).** 7 ft., 50 cts. each.
Bolleana. Pyramidal habit. 8 ft., \$1 each.
Carolina, or Cottonwood. 8 to 10 ft., 50 cts. each; 10 to 12 ft., 75 cts.
Golden. 8 ft., 75 cts. each.
Lombardy. 6 to 8 ft., 50 cts. each; 10 to 12 ft., 75 cts.

SMALL FRUITS

BLACKBERRIES

To keep a Blackberry bed in good productive condition, the old, weak and dead wood should be cut out every season, to give strength to the young shoots for the next year's bearing. In spring the weakest suckers should be removed, leaving five or six of the strongest in each hill; the ground should be spaded and a top-dressing of manure given. Rows 5 feet apart and plants 4 feet apart in the rows.

\$1 per doz., \$5 per 100

Agawam. Sweet, medium size. Early.
Eldorado. Extra fine and very hardy; large, sweet berry.
Erie. One of the best; large and productive. Early.
Kittatinny. Large; one of the best. Medium.
Lawton. Large, sweet, fine. Late.
Snyder. Medium size; very fine. Medium.
Wachusett. Fair size, good quality. Comparatively free from thorns. Medium.
Wilson, Jr. Large, excellent. Early.

CURRANTS

\$1 per doz., except where noted

Black Naples. Large, black; for preserves.
Cherry. Large, red; popular sort.
Fay's Prolific. Largest and finest red. \$1.50 per doz.
Red Cross. Excellent quality, good size and very prolific.
Versaillese. Large, red; excellent.
White Grape. Very large, white.

GOOSEBERRIES

Industry. An English variety, with large dark red fruit, free from mildew. \$2 per doz.
Red Jacket. An American variety with large ruby-red fruit; fine flavor and free from mildew. \$2 per doz.
Pearl. Prolific sort; free from mildew. The fruit is large; light green and of fine quality. \$1.50 per doz.
Downing. Whitish green; prolific. \$1.25 per doz.



POT-GROWN STRAWBERRY PLANTS

The Strawberry will grow in any good garden soil where the ground has been thoroughly prepared. For family use we recommend planting them in double rows, 1 foot apart each way and 5 feet between the double rows, allowing sufficient number of runners to grow into the wide passage to cover about 1½ feet on each side; all the rest should be pinched off. It is advisable to cover the plants in winter with litter, which should be removed as soon as the plants commence to grow in spring.

Our pot-grown Strawberry plants are well-rooted, healthy plants, ready for shipment in August, and by setting them any time during August or September, a fine crop of fruit may be had the next season.

\$3 per 100

Brandywine. Large, glossy crimson; solid and fine flavor. Medium.
Commonwealth. The fruit is very large, symmetrical, and of a rich glossy color, with dark red flesh nearly as dark as Marshall. A great cropper, and a week later than Sample, which has been the standard late variety.
Glen Mary. One of the most productive; very large, highly colored, firm, excellent flavor. Medium.
Marshall. Large, rich, crimson, and fine flavor. Medium.
Minute Man. Very productive; long season sort. Medium to very late.
Sample. P. Very large, bright scarlet; handsome form, fine quality, very prolific. Late.
Success. The earliest large berry we know of, and, although early, it holds out well through the Strawberry season; the berries are of large, globular form, slightly conical, and of a light bright scarlet, the flavor being mild, sweet and rich.

GRAPES

35 cts. each, except where noted

BLACK

Concord. Large, always reliable. Medium.
Eaton. Very large; new. Medium.
Hartford. Large and productive. Early.
Mills. Very large berry and clusters; rich flavor. Medium. 50 cts. each.
Moore's Early. Large, fine quality. Early.
Wilder (Rogers' No. 4). Very large. Medium.
Worden. Large, excellent quality. Early.

RED

Brighton. Large, best quality. Early.
Delaware. Small, delicious. Late.
Iona. One of the finest table Grapes; high flavor and long keeper. Late.
Vergennes. Large, splendid. Medium.

WHITE

Empire State. Tender. Medium.
Green Mountain. One of the best. Early.
Moore's Diamond. Large, excellent. Early.
Niagara. Large and productive. Medium.

RASPBERRIES

Treat and cultivate as recommended for Blackberries

\$1 per doz.

Clarke. Large red, firm; one of the best.
Cuthbert. Medium to large; red, sweet.
Marlboro. Popular red sort; early and hardy.
Shaffer's Colossal. Large, purplish red; fine.
Loudon. Very prolific; one of the hardiest and best red sorts.
Golden Queen. Large, yellow, firm; fine quality.

Garden Requisites, Greenhouse Supplies, Etc.

Boxes for Cut-Flowers. These are made of strawboard with lock corners and are easily and quickly put together. We keep the following sizes in stock; others can be furnished at short notice.



CUT-FLOWER BOX

No.	Length	Width	Depth	100
1	15 inches	5 inches	3 inches	\$1 80
2	21 "	5 "	3 "	2 50
3	24 "	5 "	3 "	2 75
4	18 "	6 "	3 1/2 "	3 00
5	21 "	7 "	3 1/2 "	3 50
6	24 "	8 "	4 "	4 50
7	28 "	8 "	5 "	6 00
8	35 "	8 "	5 "	7 50

Burning Brands. For marking tools, etc. Six letters or less, \$1.50; each additional letter, 25 cts.

Carnation Support, Model Extension. Made of heavy steel wire. \$3 per 100.

Carnation Support, Excelsior. Made of galvanized wire, strong and durable. In two sizes. 13 in., \$1 per 100, \$4.50 per 500, \$8 per 1,000; 20 in., \$1.25 per 100, \$5.50 per 500 \$10 per 1,000.

Cotton Wadding. For florists' use. In large sheets, 5 cts. each, 50 cts. per doz.

Fern Pans and Saucers. These pans are made thin and strong, and the saucers very shallow. The pans are especially adapted for linings to porcelain and silver fern pans. Dimensions given are outside measurements.

Size	Pans		Saucers	
	Doz.	100	Doz.	100
4 x 1 1/4 in.	\$0 35	\$2 00	\$0 20	\$1 20
4 3/4 x 2 1/4 "	45	2 65	30	1 55
5 1/2 x 2 1/4 "	60	3 35	35	2 00
6 1/4 x 2 1/2 "	70	4 00	45	2 35
7 x 2 1/2 "	85	4 65	50	2 65
8 x 3 1/4 "	1 20	6 65	75	4 00
9 x 3 3/4 "	1 44	8 00	95	5 35
10 x 4 "	1 68	9 35	1 20	6 50

Flower Pots, Standard. Measurement from inside to inside. Width and depth equal.

Inches	Doz.	100	Inches	Doz.	100
2	\$0 10	\$0 60	6	\$0 72	\$4 00
2 1/2	15	80	6 1/2	84	5 50
3	20	1 00	7	96	6 65
3 1/2	24	1 15	8	1 32	9 00
4	30	1 60	9	1 68	13 25
4 1/2	36	2 00	10	2 40	17 50
5	48	2 75	11	3 60	22 00
5 1/2	60	3 35	12	4 80	32 00

Saucers, Standard—

Inches	Doz.	100
3 1/2	\$0 15	\$0 95
4	20	1 20
4 1/2	25	1 35
5	30	1 50
5 1/2	35	1 75
6	40	2 00
6 1/2	45	2 50
7	50	2 75
8	60	4 00
9	75	5 25
10	1 00	6 50
11	1 32	8 00
12	1 80	10 00



STANDARD FLOWER POT

Bulb, or Seed Pans—Square

Inches	Each	Doz.
6 x 6	\$0 25	\$2 50
8 x 8	30	3 00
10 x 10 x 2 1/2	40	4 00
12 x 12 x 4	50	5 00

Round

Inches	Each	Doz.
6	\$0 07	\$0 72
8	10	96
10	16	1 75
12	30	3 00
14	60	6 00

Hyacinth Pots. 3 1/2 x 6 inches, 75 cts. per doz., \$5.50 per 100; 5 x 7 inches, 95 cts. per doz., \$6.50 per 100.

Fibre Rolling Stands. Will save floors, carpets, rugs, because heavy plants can be shoved around from place to place as easily as a light table. Four small sizes with separate stands; two larger sizes with the ball-bearing casters attached direct to the shallow dish.

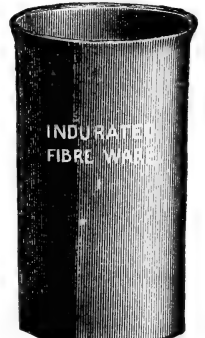
Outside diameter about	Will take pot of diameter at bottom	Casters	Each	Doz.
12 inches	10 inches	3	\$0 60	\$6 00
14 "	11 "	3	70	7 20
16 "	13 "	4	85	9 00
18 "	15 "	4	1 00	10 00
20 "	17 "	4	1 25	12 00
22 "	20 "	5	1 50	15 00

Fibre Parlor Plant Tub. Is a new specialty, lighter, cleaner, dryer, and in every way better than the old-fashioned wood tub. It never shrinks or leaks.

Diameter at Top	Each	Doz.
12 1/2 inches	\$1 00	\$9 00
13 1/2 inches	1 25	12 00

Fibre Vases, Especially Designed for Cut-Flowers.

Made of Indurated Fibre Ware, extremely light in weight, but so tough that they will stand more use and misuse than any other material used for similar purposes. Have neither seams, joints nor hoops. Always sweet, clean and dry.

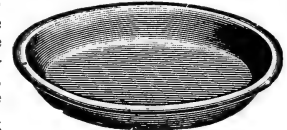


FLORISTS' VASE

Diameter	Depth	Order	No.	Each	Doz.
In. Inside	In. Inside				
8	13	0...	\$0 50	\$4 80	
5 1/2	10	1...	40	4 20	
4 1/2	9	2...	35	3 60	
4	6	3...	30	3 00	
3	4 1/2	4...	25	2 40	
9	22	00...	85	9 00	
5 1/2	18	11...	50	4 80	
4 1/2	15	22...	45	4 20	
4	12	33...	40	3 60	
3	9	44...	35	3 00	
9	29	000...	1 75	18 00	

Fibre Flower-Pot Saucers.

Far cheaper in the end than earthenware, are not porous, and will protect woodwork, tables, etc., on which plants are to stand.



FIBRE FLOWER-POT SAUCER

4-inch	Each	Doz.	14-inch	Each	Doz.
5 "	\$0 08	\$0 90			
5 "	09	1 00			
6 "	10	1 10			
7 "	11	1 20			
8 "	12	1 30	14-inch	\$0 20	\$2 00
9 "	13	1 35	16 "	35	3 75
10 "	14	1 40	18 "	40	4 20
12 "	16	1 75	20 "	60	6 25
			22 "	75	7 25

Flower-Pot Hanger, Krick's Perfect. No. 1 will fit from 3 1/2- to 5-inch pots. 30 cts. per doz.

No. 2 will fit from 5- to 8-inch pots. 40 cts. per doz.

No. 3 will fit from 8- to 12-inch pots. 50 cts. per doz.

Fruit Picker, Heavy Wire. Can be attached to pole of any length. 35 cts. each.

Fumigator, Perfection. The neatest, most durable and most practical fumigator ever offered. No. 1 holds one peck of stems, \$3; No. 2 holds 1/2-bushel of stems, \$3.50; No. 3 holds 3/4-bushel of stems, \$4; No. 5 holds 1 1/4 bushel of stems, \$5.50.

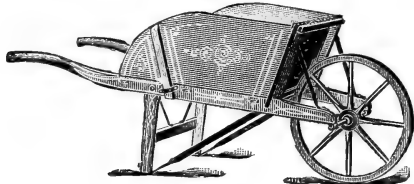
Garden Rollers. Suitable for rolling walks and lawns. These rollers are weighted, the weights serving to balance the handle.

3 Sections, each	Length	Diameter	Weight	Each
	7 1/2 in.	15 in.	175 lbs.	\$9 50
2 "	12 "	20 "	300 "	15 00
1 "	20 "	20 "	250 "	13 00
2 "	12 "	24 "	400 "	20 00
1 "	12 "	28 "	275 "	14 25
2 "	12 "	28 "	550 "	26 50

GARDEN REQUISITES, GREENHOUSE SUPPLIES, ETC., continued

Garden Wheelbarrows, Ames. No. 2, \$3.60; No. 3, \$3.80; No. 4, \$4; No. 5, \$4.70.

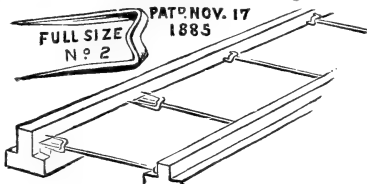
Garden Wheelbarrows, Syracuse. The frame is made of well-seasoned ash, with three cross-bars, mortised into the handles. The bottom boards are set into the rear crossbar, which prevents splitting at the ends. Strongly braced



GARDEN WHEELBARROW

throughout. Handles, legs and wheel are painted red, sides and front olive; handsomely striped. Medium size, with 3-inch tired steel wheel, \$4; large size, with 3-inch tired steel wheel, \$4.25.

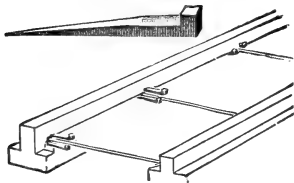
Glaziers' Points, Peerless. Will stop glass from sliding. Made of steel wire and galvanized. No rights and lefts. Can be used on either side of the bar. 60 cts. per box of 1,000; by mail, 75 cts. Pincers for driving, 40 cts.; by mail, 50 cts.



PEERLESS GLAZING POINT

Glaziers' Points, Siebert's. Made of zinc; they will not rust.

Made in two sizes, $\frac{3}{8}$ and $\frac{1}{2}$ in. long. Each size, 40 cts. per lb.



SIEBERT'S GLAZING POINT

Having a flat face, it throws the water straight ahead and does not spread it too much. It is made of brass, strongly put together. 65 cts. each.

Nozzle, The "Deming-Vermorel" Spray. Simple in construction and throws a finer spray than any nozzle in use. $\frac{1}{4}$ -inch pipe, \$1; reducer for $\frac{3}{4}$ -inch connection, 25 cts.

Hose Nozzle, New Boston. Will throw a coarse or fine spray, or a large or small stream. Small, 50 cts. each; by mail, 60 cts. Large, 75 cts.; by mail, 90 cts.

Hose Nozzle, Greenhouse Spraying. Made of heavy brass. For $\frac{3}{4}$ -in. hose, 3-in. face, 50 cts.; 4-in. face, \$1; shut-off connection, 50 cts.

Hose Nozzle, Child's Rain Maker. So constructed that the spray will reach the under side of the leaves. 35 cts. each; by mail, 45 cts.

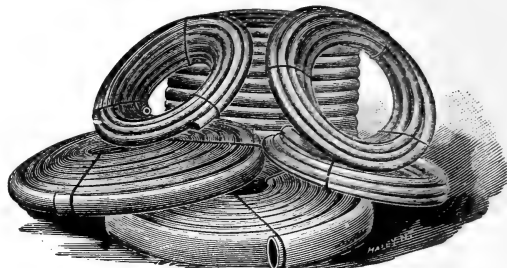
Hose Nozzle, Fairy. Will throw either a spray or single stream. 75 cts. each.

Nozzle, Bordeaux Spray. \$1 each; with reducer for $\frac{3}{4}$ in. hose, \$1.25.

Hose Menders, Hudson's. Boxes containing 6 menders, 20 wires and 1 plier, 50 cts.; by mail, 65 cts. Menders for $\frac{1}{2}$ in. hose, 30 cts. per doz.; by mail, 35 cts. Menders for $\frac{3}{4}$ in. hose, 40 cts. per doz.; by mail, 45 cts. Pliers, 30 cts. each; by mail, 35c. Wires, 15c. per doz.

Hose Menders, Cooper's. A simple, practical mender made of heavy brass, which will not wear or rust out; requires no wires or pliers to adjust it. 10c. each, 3 for 25 cts., 75 cts. per doz.

Hose Reel, All Iron. Light, strong, durable. No. 10, for 100 ft., \$3; No. 20, for 150 ft., \$3.50; No. 30, for 400 ft., \$5



RUBBER HOSE

Hose, Rubber. The hose we offer is of the best manufacture. We keep no second grade. S. & F. Co.'s Samson, $\frac{1}{2}$ in., 7-ply, 14c. per ft.; $\frac{3}{4}$ in., 7-ply, 16c. per ft.

Jardinieres, Oak. Handsome and durable. In these goods the oak is selected to show the quartered grain, stained dark and finished with luster surface. The hoops and handles are of brass, highly polished and lacquered. Inside of tubs is painted a rich, dark red.



OAK JARDINIERE

No.	Inside Top Diameter	Inside Depth	Each
75	7	4 $\frac{1}{4}$...	\$2 50
77	7	6 $\frac{3}{4}$...	2 90
85	8	5 $\frac{1}{4}$...	3 00
88	8	7 $\frac{3}{4}$...	3 25
96	9 $\frac{1}{4}$	5 $\frac{3}{4}$...	3 60
99	9 $\frac{1}{4}$	9	3 50
119	11	9	3 85
1111	11	11	4 50
1212	12	12	6 00

Labels, Wood. For plants, trees, etc.

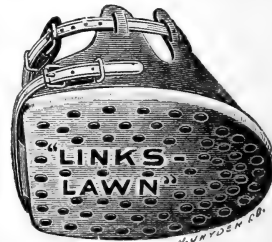
		100	1,000	1,000
4 in. Pot Label	\$0 15	\$0 50	\$0 70
4 $\frac{1}{2}$ " " "	15	60	80
5 " " "	15	70	95
6 " " "	15	90	1 20
8 " Garden Label	40	3 00	3 70
10 " " " Narrow	45	4 00	4 80
12 " " "	60	5 00	6 00
3 $\frac{1}{2}$ " Tree Label	15	50	55
3 $\frac{1}{2}$ " " " (Iron Wired)	15	80	1 00
3 $\frac{1}{2}$ " " " (Copper Wired)	20	1 00	1 20

Labels, Zinc Garden. No. 7, 2 $\frac{3}{4}$ x $\frac{1}{2}$ in., with hole for wire. 75 cts. per 100. Pointed No. 4, 5 x 1 in. \$1 per 100. No. 15, 4 $\frac{3}{4}$ x $\frac{3}{4}$ in., 75 cts. per 100.

Labels, Zinc Garden. With wire rod galvanized, 18 inches long, to which is attached a zinc label. Complete, \$4.50 per 100.

Labels, Copper. Made of copper and copper-wired, indestructible and always legible. No. 1, 3 $\frac{1}{2}$ x $\frac{3}{4}$ in., 75c. per 100. No. 2, 5 x 1 $\frac{1}{2}$ in., \$1.25 per 100.

Links Lawn Boots. For use on lawns to prevent injury to the sod by the horse's feet. We believe this is the best boot ever offered. The toe is rolling, the bottoms waterproofed, hardened and steel riveted inside and out. Quickly and easily adjusted. No. 2, inside width, 5 $\frac{1}{2}$ inch; No. 4, 6 $\frac{1}{2}$ inch; No. 6, 7 inch. \$9 either size, per set of four.



Machines, Glazing. \$1.25 each.

Mole Traps, English. 35 cts. Reddick. 75 cts.

Mats, Hotbeds, Straw. Made by hand from the best rye straw, and in the most thorough manner. Size, 6 x 6 ft. \$1.50 each. Special sizes made to order.

GARDEN REQUISITES, GREENHOUSE SUPPLIES, ETC., continued

Mats, Hotbed, Palmer. 76 x 76 inches. No. 1, made of burlap, wool-filled and quilted. \$1.25 each. No. 2, made with burlap on one side and duck on the other, wool-filled and quilted, same as No. 1. \$1.50 each.

Mats, Singapore Fiber. These are heavier than straw mats, but are said to be more durable. \$2 each.

Paper, White, Waxed. Sheets 14 x 18 inches, lb. 30c., ream about 7 lbs. \$1.50; sheets 24 x 36 in., lb. 30 cts.

Paper, Green, Waxed. Sheets 12 x 18 inches, lb. 30c., ream about 7 lbs. \$1.50.

Paper, White Tissue. Sheets 20 x 30 inches, lb. 15 cts., ream about 7 lbs. \$1.

Paper, Light Brown Tissue. Sheets 20 x 30 inches, lb. 12 cts., ream about 7 lbs. 75 cts.

Paper, White Wrapping. Sheets 20 x 26-inches, lb, 10 cts., ream about 40 lbs. \$3.

Plant Sprinkler, Tyrian. The bulb is made of soft rubber, the top of hard rubber with detachable screw-cap. Large, 75c. each; medium, 60c. each; small, 50c. each; by mail, 10c. additional for either size.

Plant Sprinkler, Scollay's Valvular. Made of rubber, with flat bottom, and a detachable brass top, finely perforated. \$1 each; by mail, \$1.10.

Plant Sprinkler, Scollay's Angle. Same as the preceding, but with an angular neck, thus admitting of sprinkling the under side of the foliage with ease. \$1 each; by mail, \$1.10.

Plant Tubs, Oak. Natural wood finish, with three strong hoops and good handles, and without feet. Measurements are from outside. Each

No. 1.	12 in. in diameter by 11 in. deep	\$1 15
No. 2.	14 in. in diameter by 12 in. deep	1 25
No. 3.	16 in. in diameter by 13 in. deep	1 75
No. 4.	18 in. in diameter by 15 in. deep	2 00
No. 5.	20 in. in diameter by 17 in. deep	2 25
No. 6.	24 in. in diameter by 20 in. deep	2 50
No. 7.	26 in. in diameter by 22 in. deep	3 00

Plant Tubs, Cedar. Painted green, with drop handles.

	DIAMETER		HEIGHT		Each
	Outside	Inside	Outside	Inside	
No. 1.	28 in.	25 in.	22 in.	20 in.	\$5 00
No. 2.	26 "	23 "	20 "	18 "	4 50
No. 3.	24 "	21 "	18 "	16 "	3 75
No. 4.	22 "	19½ "	17 "	15 "	3 25
No. 5.	20 "	17¾ "	16 "	14 "	2 70
No. 6.	18 "	15¾ "	15 "	13¾ "	2 20
No. 7.	16½ "	14½ "	14 "	12½ "	1 85
No. 8.	15½ "	14 "	13 "	11½ "	1 60
No. 9.	14 "	12½ "	12 "	10¾ "	1 35
No. 10.	12 "	10 "	9¾ "	8½ "	1 15

Plant Protecting Cloth for Hotbeds. Valuable for covering hotbeds and frames in spring instead of glass, and for throwing over bedding plants at night in fall; for chrysanthemum houses, etc. Medium grade, 10 cts. per yd.; by the piece, about 60 yds., 9 cts. per yd.

Pump, Auto Spray. Convenient, durable and efficient. Useful with Bordeaux and all solutions, also in applying cold water paints or whitewash. No continuous pumping, as in the case of the Knapsack Sprayer. A few strokes of plunger compresses enough air to cover a quarter acre of potatoes or similar crop. The operator simply holds the nozzle. A practical machine for potatoes, small fruits, poultry houses, greenhouses, etc. Diameter, 7 inches; height, 2 feet; capacity, 4 gallons; weight empty, 7 lbs., loaded, 39 lbs. No. 1,



AUTO SPRAY PUMP

Pump, Auto Spray, continued brass tank, \$6. No. 1, galvanized tank, \$4.50. With "Auto-Pop," or automatic valve, \$1 additional. Extension pipe, brass, 2-ft. length, 35 cts. each; elbow, extension brass, 35 cts. each. Torch, \$1.

Pump, "Success" Garden and Spray. An excellent pump for use in gardens, greenhouses, etc. It is furnished with Bordeaux nozzle, which throws a solid stream, fine or double spray, adjustable. \$4 each.

Pump, Johnson's Champion Force. It is made in a very durable manner, and cannot easily get out of order. The pump has a sprinkler, straight-stream nozzle and rubber hose attached. \$4.50 each.

Pump, Myers' Spray. Made of brass. Will throw a fine mist or coarse, as desired. For spraying trees, an 8-foot extension is furnished for 60 cts. extra. \$4 each.

Pump, Kinney's Atomizer. For use in greenhouses to distribute liquid fertilizer or to mix or temper hot and cold water under water pressure. \$1.50 ea.

Putty, Twemlow's Old English Glazing. Semi-liquid and elastic. A superior article for bedding glass in sash or for filling cracks or seams in roof joints or frames. It is used in machine or bulb. 1, 2 and 3 gallons, \$1.25 per gal.; 5 and 10 gallons, \$1.20 per gal.

Putty Bulb, Rubber. For glazing greenhouse sash. \$1 each; by mail, \$1.10.

Pruner, Waters' Tree. With 6-ft. pole, 85 cts.; 8-ft. pole, \$1; 10-ft. pole, \$1.15; 12-ft. pole, \$1.25; 14-ft. pole, \$1.35; 16-ft. pole, \$1.45; extra blades, 20 cts. each, \$2 per doz.

Pruner, Telephone, Tree. Can be used on a pole of any length and operated with a cord. Sold without handles. \$1 each; extra blades, 30 cts.; springs, 25 cts.

Raffia. The best material for tying, being very soft, pliable and strong. 20 cts. per lb.

Sash for Hotbeds. These are well made from thoroughly seasoned lumber, and glazed with double thick glass. Frame, 1½ inch, 3 x 6 feet, \$2.80 each; 1¾ inch, 3 x 6 feet, \$3 each.

Sieves, Wire. For sifting loam, gravel, etc. Any size mesh, \$1 each.

Shears, S. & F. Co.'s Pruning. 8-in., \$1.25; 9-in., \$1.50; 10-in., \$1.75.

Sprayer, Tennent's. These machines have glass receptacles, therefore will not rust or corrode. Small size for house use, 50c.; large size, holds about one quart, 75c.

Sprayer, Blizzard, High Pressure. After filling three-fourths full and pumping ten strokes of air, a continuous mist-like spray is thrown,

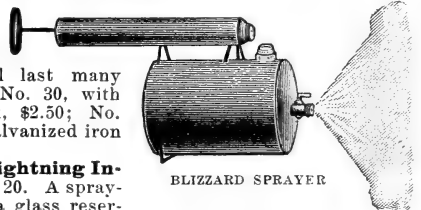
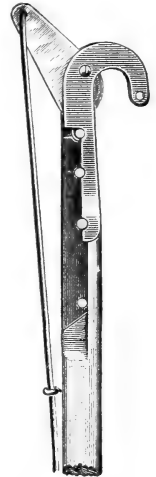
which will last many minutes. No. 30, with brass tank, \$2.50; No. 35, with galvanized iron tank, \$2.

Sprayer, Lightning Insect. No. 20. A sprayer having a glass reservoir. Does not rust. 75 cts. each.

Sprayer, Lightning Insect. No. 1. Made of heavy tin. Makes a fine, mist-like spray. 50 cts. each.

Spraying Outfit, Barrel, Cart and Pump. Complete, including cart, barrel and double-acting perfect barrel spray pump, with 1-inch suction pipe, strainer, two pieces ½-inch discharge hose, each 5 feet long, two graduated Vermorel nozzles and jet agitator. \$22.50.

Stakes, Cane. 6 to 7 ft. long. \$1 per 100, \$7 per 1,000.



BLIZZARD SPRAYER

GARDEN REQUISITES, GREENHOUSE SUPPLIES, ETC., continued

Stakes, Garden. For house, greenhouse, conservatory and light garden work where plants require support. Painted green.

Light Round Stakes			
Feet	Doz.	100	Feet
1½	\$0 17	\$1 00	3½
2	28	1 70	4
2½	39	2 40	5
3	51	3 20	

Heavy Round Stakes			
Feet	Doz.	100	Feet
3	\$0 75	\$4 85	5
4	1 10	6 50	6

Square Stakes			
Feet	Doz.	100	Feet
1½	\$0 15	\$1 00	4
2	24	1 50	5
2½	30	2 00	6
3	48	3 50	6, extra heavy
3½	55	4 00	

Stakes, Square. Unpainted, made of hard wood and neatly finished.

	100	1,000
27 inches long	\$0 30	\$2 50
36 " "	40	3 50
48 " "	50	4 50

Stakes, Wire Rose. 3 ft., \$1.25 per 100; 4 ft., \$1.50 per 100; 5 ft., \$1.75 per 100; 6 ft., \$2 per 100.

Syringes, Brass, Garden and Greenhouse. We offer a variety of patterns for horticultural purposes.

- No. 2. 13½ in. long, 1⅜ in. diameter, with one stream and two spray roses. \$4.75 each.
- No. 7. 18 in. long, 1½ in. diameter, one stream and two spray roses, with knuckle-joint turning in all directions. \$8 each.
- No. H. 18 in. long, 1½ in. diameter. \$2.50 each.
- No. G. 16 in. long, 1½ in. diameter; one spray and one stream rose; side attachment and fixed elbow joint. \$4.25 each.
- L Angle. 16 in. long, 1⅞ in. diameter; one spray rose. \$3.50 each.

Thermometers, Wilder's. Japanned tin case, convex scale. 6 in., 35 cts. each; 8 in., 40 cts.; 10 in., 50 cts.; 12 in., 65 cts.

- Wilder's.** Japanned tin case, heavy. 8 in., 60 cts. each; 10 in., 70 cts.; 12 in., \$1.
- Wilder's Fancy.** Each from \$1.25 upward.
- Wilder's Hotbed.** Boxwood, brass-tipped. \$1.75 each.
- Self-Registering.** Oxidized metal scale. 8 in., \$2.50 ea.

Truck, Combined Water Barrel, Leaf Rack, Hand Cart, Sprinkler

The barrel can be easily detached from truck either full or empty.

Truck and Barrel. 2½ in. tire, \$9.50; 3½ in. tire, \$10.50. Extra attachments can be furnished, if desired, as follows: Hand cart box, \$3; leaf rack, \$5; sprinkler attachment for barrel, \$3.25; extra barrel with trunnions, \$2.65; extra barrel trunnions 40 cts.

Watering Pots. Made extra strong of double thick tin, carefully braced and painted. 4-qt., 75 cts. each; 6-qt., 87 cts.; 8-qt., \$1; 10-qt., \$1.25; 12-qt., \$1.50.

Watering Pots, Galvanized Iron. The best florists' watering pot made for strength, durability and neatness. Made from best quality iron; the top and back handles riveted on; an iron band on the bottom; the spout riveted, and a brace around it riveted to the body, and galvanized after it is made. A coarse and fine copper-faced rose with each pot.

	Each
6 quarts, spout 21 inches long	\$1 75
8 " " " 23 " "	2 00
10 " " " 25 " "	2 25
12 " " " 25 " "	2 75

Watering Pots. With long spouts, tin. 2-qt., 50 cts. each; 3-qt., 60 cts.; 4-qt., 65 cts.

Watering Pots, French. Made of galvanized iron; oval in shape, with brass handle and long spout; one fine and one coarse copper-faced rose with each. 6-qt., \$2.25 each, 8-qt., \$2.50; 10 qt., \$2.75.

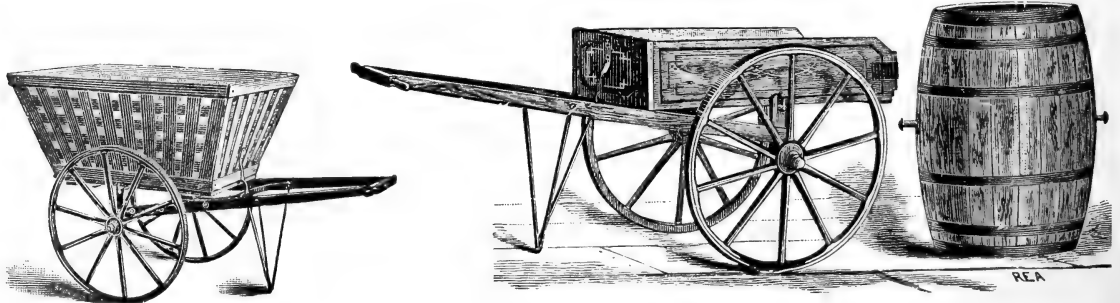
Watering Pots, Manure. With extra large spouts, to allow a free flow of the thick liquid. \$2.75 each.



Lehman's Carriage Heaters and Coal

- No. 5. 14 in. long, polished plated metal ends, not covered. \$2.50.
- No. 5B. 14 in. long, polish plated metal ends, covered with Brussels carpet. \$3.
- No. 3. 14 in. long, polished brass ends, not covered. \$3.75.
- No. 3B. 14 in. long, polished brass ends, covered with Brussels carpet. \$4.25.
- No. 10. 14 in. long, 16 in. wide and 10 in. high, containing 3 drawers. \$7.25.
- Queen No. 1. White metal ends, not covered. \$2.50.
- Queen No. 1C. White metal ends, covered with carriage carpet. \$3.
- Queen No. 2. Polished brass ends, not covered. \$2.75.
- Queen No. 2C. Polished brass ends, covered with carriage carpet. \$3.25.

Coal. In boxes of one dozen full-sized bricks. 75 cts.; in cases of 100 full-sized bricks, \$6.



COMBINED LEAF-RACK, HAND-CART AND WATER BARREL

Peat, Leaf-Mold, Etc.

Rotted Fibrous Peat. Very fine and light. For use in potting plants this is invaluable. Price, $\frac{1}{2}$ pk., 20 cts.; pk., 30 cts.; bu., \$1; bbl. \$2.

Silver Sand. For mixing with potting soil and for propagating. Pk., 50 cts.; bu., \$1.50.

Leaf-Mold. Exceedingly useful for potting material. Price, $\frac{1}{2}$ pk., 20 cts.; pk. 30 cts.; bu., \$1; bbl., \$2.

Prepared Potting Soil. Specially prepared with peat, leaf-mold, loam, sand, and a sufficient quantity of fertilizers. Price, $\frac{1}{2}$ pk., 20 cts.; pk., 30 cts.; bu., \$1; bbl., \$2.

Moss, Sphagnum. For florists' use. Best quality. Price, bu., 75 cts.; bbl., \$1.50.

Orchid Peat, or Fern Root. Bu., \$1.50; bbl., \$2.75.

INSECT EXTERMINATORS

Ant Exterminator. Q. R. S. For the destruction of ants in lawns and pleasure grounds. In three sizes. 25 cts., 50 cts. and 75 cts. each, postpaid.

Aphis Punk, Nikoteen. Destroys green fly, thrip, etc., in greenhouses. Pkg., 60 cts.; case, \$6.50.

Bug Death. A non-poisonous powder. It is sure death to all plant-eating pests. 1-lb. pkg., 15 cts.; 3-lb. pkg., 35 cts.; 5-lb. pkg., 50 cts.; 12 $\frac{1}{2}$ -lb. pkg., \$1.

Cattle Comfort. Protects cattle and horses from flies. A sure and harmless preventive, easily applied with a sprayer. Qt., 50 cts.; gal., \$1.25.

California Wash, Concentrated, Lion Brand (lime, sulphur and salt). For the destruction of San José scale, etc. Add 20 to 40 gallons hot water to each gallon of mixture. Qt., 40 cts.; gal., \$1.

Flour of Tobacco and Sulphur. Will prevent and cure mildew on grape-vines and rose bushes. Lb., 10 cts.; 5-lb. pkg., 40 cts.; 10-lb. pkg., 75 cts.

Fir-Tree Oil. For destroying all insects and parasites that infest fruit trees, plants and animals. Small bottles, 25c.; $\frac{1}{2}$ pt., 50c.; pt., 75c.; qt., \$1.25; 2 qts., \$2.25.

Gipsy Moth Cresote. For the destruction of the eggs of gipsy moth. Qt., 20 cts.; gal., 50 cts.; in barrels at 40 cts. per gallon.

Gishurst Compound. Box, 60 cts.

Hellebore, White Powdered. For the destruction of rose slugs and currant worms. Very effectual. $\frac{1}{2}$ -lb. pkg., 15 cts.; 1-lb. pkg., 30 cts.

Kerosene Emulsion, Concentrated, Lion Brand. Especially valuable for the destruction of the green and black fly, scale, woolly aphis and all sucking insects. Qt., 40 cts.; gal., \$1; 5 gals., \$4.50.

Lemon Oil. A cheap, safe and effectual insecticide. Dilute with water 30 to 50 parts. $\frac{1}{2}$ pt., 25 cts.; pt., 40 cts.; qt., 75 cts.; 2 qts., \$1.25; gal., \$2.

London Purple. Lb., 20 cts.

Morrill's Tree-Ink. 2-lb. cans, each, 30 cts.; 3-lb., 45 cts.; 5-lb., 60 cts.; 10-lb., \$1.10; 20-lb., \$2; 28-lb., \$2.80; 125-lb. kegs, per lb., 9 cts.

Nicotinic Fumigating Compound. For killing all kinds of insects on plants in greenhouses and frames. Sold in cans as follows: Gal., \$18; No. 1, one pint, sufficient for 32,000 cubic feet of space, \$2.50; No. 2, $\frac{1}{2}$ pt., \$1.25; No. 3, 4 oz., 70 cts. Fumigators, 50 cts. each, consisting of three parts,—the pan, wire frame and lamp.

"Nico-Fume" Tobacco Paper. (Registered.) For fumigating greenhouses. "Nico-Fume" is positively the strongest Tobacco Paper on the market. Packed in special friction-top tins, and is sold as follows: 24 sheets, 75 cts.; 144 sheets, \$3.50; 288 sheets, \$6.50.

Nico-Fume Liquid. A nicotine solution of exceptional purity. Does not stain nor injure blooms nor leave a disagreeable odor. $\frac{1}{4}$ pt., 50c.; pt., \$1.50; $\frac{1}{2}$ gal., \$5.50; gal., \$10.50.

Nikoteen. A liquid to be used in spraying or vaporizing. Pt. bottles, \$1.50 each; 5 for \$7.

Persian Insect Powder. $\frac{1}{2}$ lb., 25 cts.; lb., 50 cts.

Paris Green. Strictly pure. Lb., 30 cts.

Richard's X L All, Vaporizing Compound. A safe, cheap, effectual material for the destruction of insects in greenhouses. Costs 25 cents per 1,000 cubic feet. Bottle, sufficient for 20,000 cubic feet, \$4.50; sufficient for 40,000 cubic feet, \$8. Vaporizing fumigator for same (Richard's), \$1.10.

Richard's X L All, Liquid Insecticide. Destroys mealy bug, red spider, etc. Pt., 65 cts.; qt., \$1; $\frac{1}{2}$ gal., \$1.75.

Slug Shot, Hammond's. Destroys insects injurious to house and garden plants, vegetables and fruit of all kinds. Directions for use on each package. 1-lb. carton, each, 12 cts.; 5-lb. pkg., 25 cts.; 10-lb. pkg., 50 cts.; 100-lb. pkg., \$4.50.

Soap, Sulpho-Tobacco. 3-oz. pkg. 10 cts.; mailed postpaid, 13 cts.; per doz. \$1; $\frac{1}{2}$ -lb. pkg., 20 cts.; mailed postpaid, 28 cts.; per doz. \$2.

Soap, Whale Oil. Excellent for destroying insects on plants, trees, vines, etc. Lb. pkg., 15 cts.; 2-lb., 25 cts.; 5-lb., 50 cts.; 10-lb., 90 cts.; 100-lb., \$8.50.

Tobacco Dust. Lb., 10 cts.; 5 lbs., 20c.; 100 lbs., \$2.50.

Tobacco Extract, "Rose Leaf." A concentrated extract, for use in greenhouses. Can be used by vaporizing or applying on the pipes with a brush. Diluted with water it can also be applied with a syringe. Qt., 50 cts.; gal., \$1.50; 5 gals., \$5.

Tobacco Stems. For fumigating. Valuable also when used as a mulch for rose beds. Small quantities, per lb., 5 cts.; in barrels, per lb., 3 cts.; large bales or cases, per lb., 2 cts.

Tree Tanglefoot. A safeguard for trees, shrubs, etc., against the gipsy moth and canker worm. It should be applied before the foliage appears; a continuous band 2 inches in width and one-sixteenth to $\frac{1}{8}$ inch in thickness being put around the trunk of the trees three or four feet from the ground. It is perfectly harmless to the trunk and remains sticky during hot, cold and wet weather. Lb., 25 cts. in 1-, 4-, 10- and 25-lb. pkgs.

Herbicide. A most effectual weed-killer. It completely destroys all weeds wherever applied, and its effect on the ground is such that no more will grow for at least two years. One gallon mixed with 20 gallons of water will cover an area of from 60 to 80 square yards, and will effectually destroy all vegetable growth. Full directions for use with each package. Qt., 50 cts.; gal., \$1.50; 2-gal. kegs, \$2.75.

"Imp" Soap Spray. The base is a pure soap. It contains vegetable poisons, harmless to plants, but peculiarly effective against red spider on fruits, etc., the rhododendron fly, rose bug and other insect pests on fruits, flowers and foliage. It sticks, but can be easily washed off before marketing. One gallon (can) makes 12 gallons of spraying liquid. Qt., 50 cts.; gal., \$1.50; 5 gals., \$6; 10 gals., \$10.

"Imp" Worm and Ant Destroyer. A poisonous liquid, absolutely harmless to grass. One gallon makes 120 gallons of spraying-liquid. Upon spraying the ground worms and ants immediately rise to the surface. They are raked off and burned. Astonishingly effective on golf-greens, lawns and flower-borders. Qt., 75 cts.; gal., \$2; 10 gals., \$20.

Remedies for Fungus, Mildew, Etc.

Ammoniated Solution of Copper. A liquid fungicide, ready for use. Dilute at the rate of 1 quart to 25 gallons of water, and spray lightly. Qt., \$1; gal., \$2; kegs and bbls., \$1.75 and \$1.50 per gal.

Bordeaux Mixture. Lion Brand. One gallon will make 50 gallons by the addition of 49 gallons of water. One gal. patent cans, \$1; 1 qt. patent cans, 40 cts.

INSECT EXTERMINATORS, continued

Flowers of Sulphur. Prevents mildew on grape-vines, bushes, etc. Lb., 8 cts.; 5 lbs., 25 cts.

Grape Dust. For destroying mildew on grape-vines and trees affected with mould, mildew or rust-mites. 5 lb. pkg., 35 cts.

Bordeaux Mixture with Paris Green. Lion Brand. A combination which, in addition to preventing blight, mildew, etc., will kill potato bugs and all leaf-eating insects. Qt., 50 cts.; gal., \$1.25.

FERTILIZERS

PRICES SUBJECT TO CHANGE.

Pure Sheep Manure. We offer an exceptionally pure lot of this excellent fertilizer. It is a pure, natural manure and the most nutritious food for plants. Its effect is immediate, much more lasting and healthful than guano or any other manure. It is the best of all manures for mixing with the soil for greenhouse plants. It makes the richest, safest and quickest liquid manure, rivaling guano, without any deleterious effects. For flower or vegetable gardens, and as top-dressing for lawns, it is unequalled. Price, 6-qt. pkg., 25 cts.; 25-lb. bag, 75 cts.; 50-lb. bag, \$1.25; 100-lb. bag, \$2; ton, \$35.

Imperial Plant-Food Chemicals. Rich in phosphates, nitrogen and potash, the well-known essentials of plant life, combined in the best proportions ascertained from years of careful experimenting. They are entirely free from objectionable odor, and are particularly valuable for flower fanciers and horticulturists, for use in potted and garden soils, lawns and grass-plots. We offer the "Chemicals" in dry form as follows:—

When diluted and ready for use,	Price
Packages Containing	making
11 oz.	50 gallons.....\$0 25
55 oz.	250 gallons..... 1 00
7 lbs.	500 gallons..... 1 60
20 lbs.	1,500 gallons..... 4 00
50 lbs.	3,400 gallons..... 8 00
100 lbs.	7,200 gallons.....14 00

Directions with each package.

This material is over three times as strong in actual plant-food as any other commercial fertilizer.

A similar mixture designed for lawn and golf greens, and used by all the best golf clubs, is sold in the same sized packages, and at prices as above.

Clay's Fertilizer. A safe and reliable preparation. In great favor with successful gardeners in England. Prices: $\frac{1}{2}$ -cwt. (14 lbs.), \$1.25; $\frac{1}{4}$ -cwt. (28 lbs.), \$2.25; $\frac{1}{2}$ -cwt. (56 lbs.), \$4; 1-cwt. (112 lbs.), \$7.

Thomson's Vine, Plant and Vegetable Manure. A safe and reliable food and stimulant for every fruit-bearing plant, also for foliage and flowering plants and vegetables of all descriptions. Prices: $\frac{1}{2}$ -cwt. (14 lbs.), \$1.25; $\frac{1}{4}$ -cwt. (28 lbs.), \$2.25; $\frac{1}{2}$ -cwt. (56 lbs.), \$4; 1-cwt. (112 lbs.), \$7.

Thomson's Special Chrysanthemum Manure. Entirely soluble and very powerful, especially suitable for top-dressing chrysanthemums and similar plants. It is meant to be used as an additional stimulant during the growing season. A heaped dessert-spoon full will be sufficient for a 10-inch pot, sprinkled over the surface of the soil, and watered in with tepid water. This may be given three times during the growing season. Price, lb., 25 cts.; 7 lbs., \$1.25; 14 lbs., \$2.25; 28 lbs., \$4; 56 lbs., \$7.

Phosphate of Potash "Imp." Granulated crystals, water-soluble. A pure crystallized chemical, containing no nitrogen. Entirely soluble in cold water. Extremely rich in phosphoric acid and potash; therefore best used to force bloom and fruit, in conjunction with natural manures, which mainly supply the nitrogen for foliage growth. Analysis: Available phosphoric acid, 50 per cent; available soluble potash, 33 per cent. Price, 10 lbs., \$3; 25 lbs., \$6; 50 lbs., \$11; 100 lbs., \$21; over 100 lbs., \$20 per 100 lbs.

Phosphate of Ammonia "Imp." Granulated crystals, water-soluble. A pure, crystallized chemical, entirely soluble in cold water. The only fertilizing chemical known that contains phosphoric acid in water-soluble form combined with ammonia only. Analysis: Nitrogen,

Phosphate of Ammonia "Imp.," continued

11.9, per cent;—ammonia, 15 per cent; available phosphoric acid, 60.5 per cent. Price, 10 lbs., \$2.50; 25 lbs., \$5.50.

Swift's Lowell Animal Fertilizer. A Complete Manure for all Crops. This brand is an unsurpassed all-round fertilizer, and we confidently recommend it as an unequalled crop-producer for general crops. 50-lb. bag, \$1; 100-lb. bag, \$1.75; ton, \$32.

Lawn and Garden Dressing, S. & F. Co.'s. An odorless fertilizer, especially prepared for us, entirely from chemicals, and designed for top-dressing lawns. It is quick and lasting in its effects, and produces a thick, velvety sward. Trial bags for 1,000 sq. ft., 50 cts.; trial bags for 2,500 sq. ft., \$1; 50-lb. bags for 5,000 sq. ft., \$1.75; 100-lb. bags for $\frac{1}{4}$ acre, \$2.75.

Hill and Drill Phosphate, Bowker's. A general fertilizer. Price, 50-lb. bag, \$1; 100-lb. bag, \$1.75.

Bone, Fine Ground. Our Ground Bone is warranted free from adulterations of any kind, and is made from the very best cattle bones, carefully selected, and ground to a condition of uniform fineness. Price, 5 lbs., 25 cts.; 10 lbs., 40 cts.; 25 lbs., 75 cts.; 100-lb. bags, \$1.75; ton, \$30.

Bone, Pure Flour of. Ground very fine. An excellent fertilizer for pot-plants or beds where an immediate effect is desired. Excellent for roses. Price, 5 lbs., 25 cts.; 50 lbs., \$1.25; 100 lbs., \$2.

Bone Meal, Pure. For cattle and poultry. 100 lbs., \$2.50; ton, \$40.

Bone, Inch or Crushed. Very valuable for preparing soil for grape-vines, etc. 100-lb. bags, \$2.25; ton, \$34.

Ammoniated Food for Flowers, Bowker's. A dressing made expressly for plants grown in the house, garden or conservatory. Price, No. 1, 15 cts.; No. 2, 25 cts. If ordered by mail, add 10 cts. for No. 1, and 20 cts. for No. 2 for postage.

Charcoal, crushed or broken. Bu., 60 cts.; bbl., \$1.25.

Cotton Seed Meal, 100 lbs., \$2; ton, \$32.

Stockbridge Special Manure. For Potatoes, Corn and Grain, Small Fruits, Vegetables, Root Crops, Asparagus, Top Dressing Grass and Seeding Down Grass. Price, 100-lb. bags, \$2; ton, \$38.

Bone Black, Dissolved. Containing 16 to 18 per cent soluble and available phosphoric acid. Price, 100 lbs., \$1.50; ton, \$25.

Double Sulphate of Potash and Magnesia. 48 to 52 per cent sulphate of potash, 35 to 40 per cent sulphate of magnesia. Price, 10 lbs., 40 cts.; 100 lbs., \$2; ton, \$35.

Kainit. 23 to 25 per cent sulphate and muriate of potash; 12 to 13 per cent actual potash. 100 lbs., \$1.25; ton, \$15.

Muriate of Potash. 80 to 85 per cent. Price, 10 lbs., 50 cts.; 100 lbs., \$2.75; ton, \$45.

Nitrate of Soda. 95 to 98 per cent purity. Price, 10 lbs., 50 cts.; 100 lbs., \$3; ton, \$53.

Sulphate of Ammonia. (Best.) White or Gray. 24 $\frac{1}{2}$ to 25 $\frac{1}{4}$ per cent ammonia. Price, 10 lbs., 60 cts.; 100 lbs., \$4.

Salt. Used as a top-dressing for lawns and asparagus beds. Price, 100 lbs., 75 cts.; ton, \$10.

Soot, Imported Scotch. 100 lbs., \$2.50.

Unleached Hardwood Ashes. One of the best fertilizers for lawns; also excellent for all kinds of garden or farm crops. 100-lb. bag, \$1.25; ton in bags, \$16; bbl. (200 lbs.), \$2; ton, in bbls., \$18. In carload lots (in bulk), prices on application.

Land Plaster, or Ground Gypsum. Valuable as an absorbent, disinfectant and insecticide. 5 lbs., 15 cts.; 25 lbs., 50 cts.; barrel, \$1.75; ton, \$9.

Our Bulbs are of the very highest quality, imported direct from the best growers in England, France and Holland. No better are sold in this country.

Remittances may be made at our risk by draft, money order, American Express Co.'s money order, cash by express, or registered letter. Postage stamps may be sent for small amounts.

Address, etc.—Purchasers will please be particular in **plainly** signing their **Name**, **Postoffice**, **County** and **State**, and mention mode of conveyance, whether by **Mail**, **Express** or **Freight**.

Order Sheet.—In ordering, please use the order sheet which we send with each catalogue—other order sheets will be furnished, if desired.

Non-warranty.—Although our Seeds, Bulbs and Plants are grown for us by experienced growers, in localities best suited for their development, and we take great care to supply only such stock as will under proper conditions produce satisfactory results, we still give no warranty as to quality, description or productiveness of any of the Seeds, Bulbs or Plants we send out, and will not be in any way responsible for the crop. Every order received for articles named in this Catalogue will be executed on these conditions only. If the purchaser does not accept the goods on these terms they must be at once returned. It must, however, be evident to all that it is to our best interest to send out only such stock as will not only grow but prove true to name and description.

JOHN FOTTLER, Jr., President
 JOS. M. GLEASON, Treasurer
 ARTHUR F. BARNEY, Secretary

SCHLEGEL & FOTTLER CO.

Index

BULBS, ROOTS, PLANTS, ETC.

Page	Page	Page	Page
Acidanthera..... 11	Crown Imperial.....14, 15	Iris..... 16	Roses.....28, 29
Achimenes..... 11	Cyclamen..... 13	Ixias..... 17	Scilla..... 21
Agapanthus..... 11	Day Lilies..... 14	Lachenalias..... 17	Shrubs, Hardy.....24, 25
Allium..... 11	Eranthis..... 14	Leucorum..... 17	Snowdrops..... 21
Amaryllis..... 12	Erythronium..... 14	Lilies, Easter..... 17	Sparaxis..... 21
Anemone..... 12	Fern Ball..... 23	" Varieties.....17, 18	Spiræa..... 21
Anomatheca..... 12	Freesia..... 14	Lily-of-the-Valley..... 19	Strawberry Plants..... 30
Anthericum..... 12	Fritillaria.....14, 15	Montbretia..... 19	Trees..... 29
Babiana..... 13	Fruits, Small..... 30	Mushroom Spawn..... 23	Trillium..... 22
Bulbocodium..... 13	Galtonia..... 15	Narcissus.....9-11	Triteleia..... 22
Calla Lilies..... 13	Gladiolus..... 15	Nerine..... 19	Tritonia..... 22
Calochortus..... 13	Gloxinia..... 15	Oxalis..... 20	Tropeolum..... 22
Camassia..... 13	Hedge Plants..... 25	Ornithogalum..... 20	Tulips..... 6-8
Chinese Sacred Lily..... 11	Helleborus..... 15	Perennials, Hardy.....26-27	Vines, Hardy.....27, 28
Chionodoxa..... 13	Hepatica..... 15	Peonies..... 20	Violets..... 22
Colchicum..... 14	Hyacinths.....1-4	Pancratium..... 20	Watsonia..... 22
Crocus..... 5	" Roman..... 4	Ranunculus..... 21	Winter Aconite..... 14

SUNDRIES

Page	Page	Page	Page
Boxes for Cut-flowers... 31	Glaziers' Points.....32	Mole Traps..... 32	Rolling Stands..... 31
Burning Brands..... 31	Glazing Machine.....32	Paper..... 33	Sash for Hotbeds..... 33
Carnation Supports..... 31	Grass Seed for Lawns, etc..... 2d cover page	Plant Cloth..... 33	Shears, Pruning, etc.... 33
Carriage Heaters..... 34	Hose..... 32	Plant Tubs..... 33	Sprayers..... 33
Cotton Wadding..... 31	Hose Nozzles and Men- ders..... 32	Plant Sprinklers..... 33	Stakes..... 33, 34
Fern Pans and Saucers... 31	Hyacinth Glasses..... 22	Potting Materials..... 35	Syringes..... 34
Fertilizers..... 36	Insect Exterminators... 35	Pruners..... 33	Thermometers..... 34
Fibre Saucers..... 31	Jardinières, Oak..... 32	Pumps..... 33	Truck, Combined..... 34
Flower Pots and Saucers... 31	Labels..... 32	Putty, Twemlow's..... 33	Vases, Fibre..... 31
Fumigators..... 31	Lawn Boots..... 32	Putty Bulb..... 33	Watering Pots..... 34
Flower Pot Hangers..... 31	Mats for Hotbeds.... 32, 33	Raffia..... 33	Wheelbarrows..... 32
Fruit Pickers..... 31		Remedies for Fungus Mildew.....35, 36	Wire Sieves..... 33
Garden Rollers..... 31			

SCHLEGEL & FOTTLER CO.

26 AND 27 S. MARKET ST.
BOSTON, MASS.

