

## **Historic, Archive Document**

Do not assume content reflects current scientific knowledge, policies, or practices.



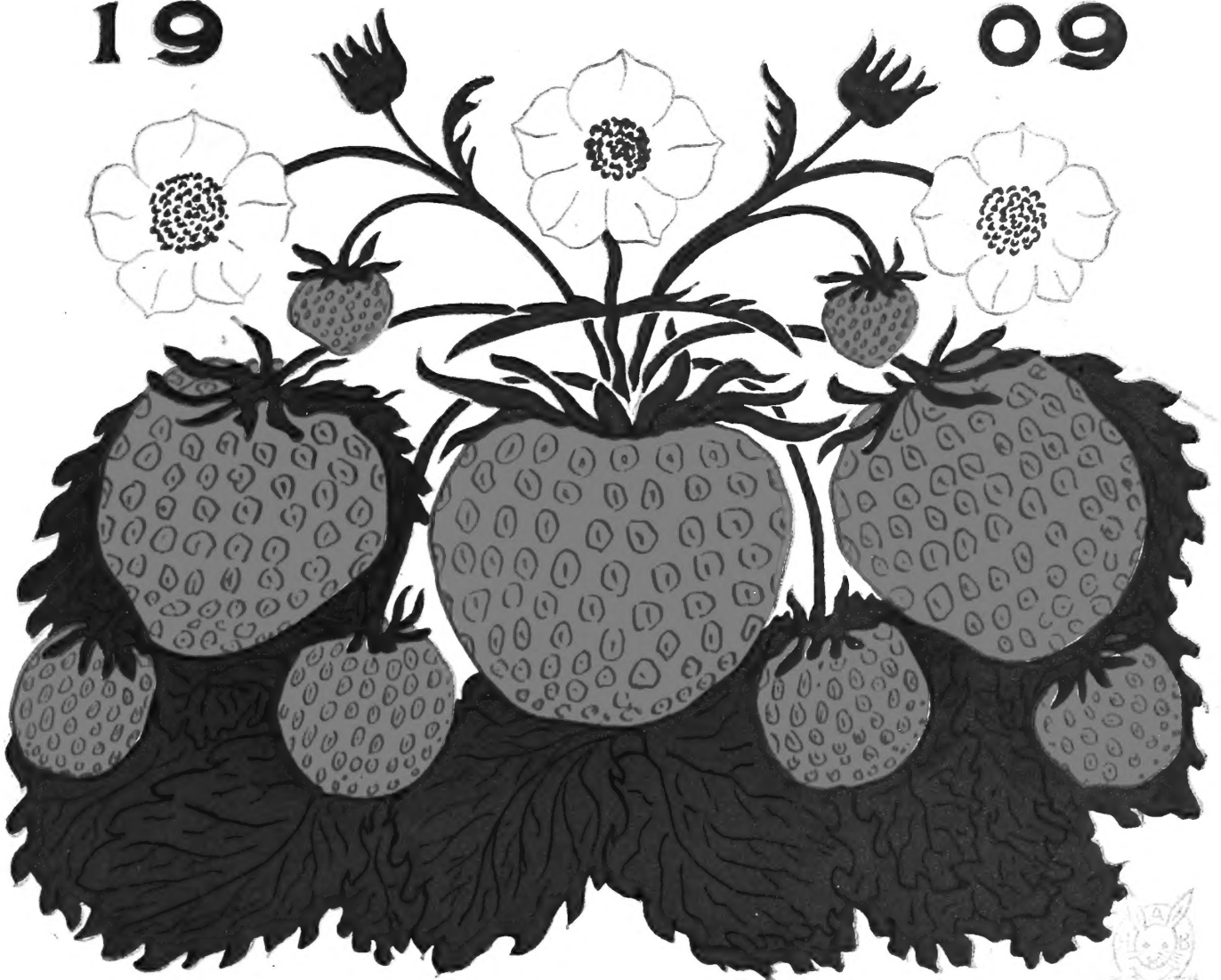
6261  
JUN 2 1909  
BODDINGTON'S

U. S. DEPARTMENT OF AGRICULTURE,  
WASHINGTON, D. C.

# MID-SUMMER GARDEN GUIDE

19

09



# Pot-grown Strawberry Plants

READY FOR DELIVERY ABOUT JULY 15, 1909

POT-GROWN STRAWBERRY PLANTS PLANTED IN THE FALL WILL GIVE A FULL CROP THE FOLLOWING SEASON



Perfect Flower



Imperfect Flower

**CULTURE.**—Strawberries require rich, well-tilled soil; the plants should be set 15 inches apart, in rows 2 feet apart; 100 plants will plant 4 rows, 30 feet long. Firm the plants well in the soil, keep thoroughly cultivated and cut off all runners. In the middle of December cover the beds to a depth of 3 inches with salt, meadow hay, straw or leaves. In April, as soon as the plants show an indication of growth, push the covering away from the plants to allow them to come up through. This "mulching" protects the plants from the cold in winter and the heat in summer, keeps the fruit clean, and prevents the growth of weeds.

**PERFECT AND PISTILLATE STRAWBERRIES.** The blossoms of Strawberries are either staminate (perfect-flowering) or are destitute of stamens and are termed pistillate (imperfect-flowering). Pistillate varieties must have a row of some perfect-flowering sort, flowering at the same time, planted every 9 or 12 feet apart among them, or, better yet, every third or fourth plant in the row, to pollinize their blossoms. When properly pollinized, the pistillate varieties are usually the most prolific. Those marked P are perfect.

## The Grand New Strawberry, BARRYMORE (P.)

The Barrymore Strawberry was awarded at the Massachusetts Horticultural Show, 1908, a Silver medal and three first premiums over all other varieties exhibited. Sex, staminate; quality, excellent; size, large; season, medium; shape, conical, regular; color, rich dark crimson, glossy; flesh red.

Price, 25 cts. each, \$2.50 per doz., \$20 per 100

## General List of Pot-grown Strawberry Plants

**August Luther.** This variety is very popular not only with berry growers, but also in the family garden; it has a host of friends and succeeds everywhere. The berries are of good size, firm and lots of them. Extra-early.

**Beder Wood.** Always on hand with a big crop of most beautiful crimson berries of extra high quality, lying in windrows all around the plant. Medium early.

**Brandywine.** Large, roundish, conical, glossy crimson, firm and solid; of fine aromatic flavor. Plant vigorous and productive; succeeds on any soil. Midseason to late.

**Bubach.** (P.) A very large berry of dark color. Productive; of fair flavor. Largely grown for market. Midseason.

**Clyde.** Very regular, bright scarlet berries; large, and of excellent flavor, firm, and a good shipper. Plant remarkably healthy, vigorous and productive. Season early.

**Excelsior.** Perfectly reliable as its tall, thick foliage protects the bloom from danger of frosts; and this is one good point for such an extra-early variety.

**Gandy.** One of the very best later varieties. It is a strong, compact grower, with large, bright, glossy crimson fruit, very uniform in shape; flesh firm and of the finest flavor.

**Glen Mary.** Large, bright, glossy crimson, of fine flavor. Plant strong and healthy, very prolific, and on good soil the berries are large to the end of the season. Early.

**Hunn.** (P.) A late variety, very productive, large size, uniform shape, dark crimson, firm flesh of the finest flavor. A strong grower and the latest sort grown.

**Jessie.** Very productive; fruit large, light crimson in color, firm, and flavor of the best. Early.

**Marshall.** Large, dark crimson; good. Plant luxuriant, but needs rich soil and careful culture. Midseason.

**New Home.** As late and large as Gandy, fruit a bright red color, uniformly large size. A good keeper and shipper.

**New York.** The berries are very large, ripening midseason. Color dark scarlet, changing to crimson when fully ripe; colors all over at once; quality first-class.

**Nick Ohmer.** For market, for home use or for exhibition, this is probably the greatest berry ever offered. It is a healthy, vigorous grower, and of great productiveness. The fruit is of mammoth size, beautiful in form and color, and of excellent quality.

**Oom Paul.** One of the largest so far introduced, and very firm for such a large berry. The plant is thrifty and open-growing, with glossy dark green foliage and will stand shipping with any of the very large varieties.

**President.** (P.) Almost round, very uniform in shape, borne in large clusters; flesh solid; color rich crimson; strong grower; exceedingly productive and continues bearing till end of season.

**Sample.** (P.) Fruit large, round and dark crimson in color, and of good quality. Late.

**Schofield.** Loved by everybody on account of its enormous size, bright red color, and rich aromatic flavor peculiar to itself. The plant is very large with an extra broad, thick leaf. Early to late.

**Sharpless.** Demand rich, strong soil. Plant large and vigorous; berries very large, irregular in shape, crimson, moderately firm and of good quality. Midseason.

**Uncle Jim.** A very valuable midseason variety of large size and wonderful productiveness; bright red color and finest quality.

**Wm. Belt.** The berries are as large as Bubach, more uniform in shape, just as productive, and the color is perfect.

Any of the above varieties, 40 cts. per doz., \$3 per 100, \$27.50 per 1,000. Special prices given on large quantities

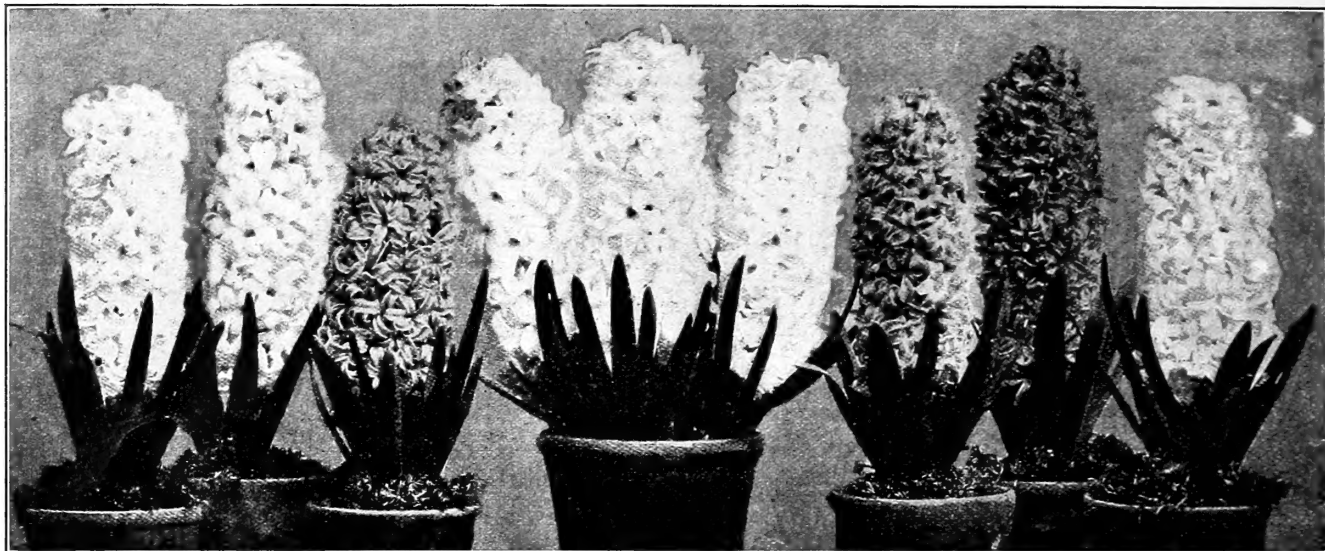
## BEST STRAWBERRIES TO PLANT

Notwithstanding the care we take to include only varieties of sterling merit in our catalogue, the amateur finds difficulty in making a selection that will produce a bountiful supply of the finest fruit from the beginning to the end of the season. Hence the following collection, in our judgment, based on actual experience, combines in the highest degree the qualities which strawberries should have.

EARLY—Marshall, Clyde. MIDSEASON—Nick Ohmer, Sharpless. LATE—Brandywine, Gandy

3	each of the above	SIX SUPERB STRAWBERRIES,	18	pot-grown plants	.....	\$1 00
6	" " " " " "	" " " " " "	"	36	" " " " " "	1 75
12	" " " " " "	" " " " " "	"	72	" " " " " "	3 00
25	" " " " " "	" " " " " "	"	150	" " " " " "	5 50
50	" " " " " "	" " " " " "	"	300	" " " " " "	10 00





## Boddington's Extra-Selected Named Dutch Hyacinths

### CULTURAL DIRECTIONS

**HYACINTHS IN POTS.**—It is important in the pot culture of Hyacinths to have rich, light soil. If the bulbs are to be potted singly, pots 5 inches in diameter are the proper size. Cover the hole in the pot with a piece of broken pot, and over this place a layer of moss, which will keep the soil from clogging the drainage thus provided. Break off any offsets which appear at the base of the bulbs, and, in potting, place each bulb so that its top shall be half an inch below the surface of the soil and an inch below the rim of the pot. The soil should be of usual natural moisture, and should be pressed moderately firm. The filled pots may be placed in a coldframe where there is protection from frost or in the coolest part of the cellar, and well watered. An excellent plan is to place them on a bed of moist sifted coal ashes, covering the pots to a depth of 6 inches with the same material. When well rooted, which will be in about ten weeks, the bulbs may be brought indoors and forced. For the first two or three weeks they should be kept in a temperature not exceeding 50 degrees. **Success in forcing depends much on their having strong roots before being brought to the light.** The top grows rapidly, and unless the roots are started much in advance they are unable to nourish the plant, and failure results.

Hyacinths for early use may be potted in September or October. When desired for late use, it is better to pot them in October and keep them in a coldframe or cellar above freezing until it is desired to force them into bloom. To obtain dwarf foliage and fine flower-spikes, Hyacinths, when being forced, should have plenty of manure-water and fresh air, and should have as much light as possible. The blooms last much longer if shaded from the sun after they show color.

**HYACINTHS IN GLASSES.**—The single varieties are, with a few exceptions, best adapted to this mode of culture. They produce finer flower-spikes than the double. Fill the glass with clear soft water, so as nearly to touch the base of the bulb, putting a small piece of charcoal in each glass to keep the water pure and afford some nourishment. The filled glasses should be placed in a dry, cool, dark place, and kept there until the roots almost touch the bottom of the glass, when they may be exposed gradually to the light. If the water in the glasses becomes foul or diminished, replace it with fresh water at about the same temperature as the atmosphere in which the bulbs are growing; otherwise it need not be changed. When well started, the bulbs should have plenty of light and air, without drafts, in order that the best development and brilliancy of color may be obtained. **Intending purchasers can rely upon all bulbs of Hyacinths being thoroughly ripened, fully up to specified size and "quality," and true to name.**

## Boddington's Extra-selected "Top-root," or Exhibition Named Dutch Hyacinths in a General Selection

The term "top-root" is a Holland phrase, and is used to distinguish the size of the Hyacinth bulb from the first size; in fact, they are the largest bulbs selected after harvesting the crop, and are the "pick of the market." These bulbs are excellent for exhibition purposes, to grow singly in pots or Hyacinth glasses.

	Each	Doz.	100
<b>Boddington's Extra-selected "Top-root," or Exhibition Named Dutch Hyacinths in a General Selection, Double or Single</b> .....	\$0 20	\$2 00	\$15 00
<b>Boddington's Extra-selected Strictly First Size Named Dutch Hyacinths, in a General Selection</b> ....	15	1 50	10 00
<b>Boddington's Extra-selected Strictly Second Size Named Dutch Hyacinths, in a General Selection</b> ....	10	1 00	7 50

### SINGLE WHITE AND TINTED

	Extra selected 1st size bulbs		Extra selected 2d size bulbs	
	Doz.	100	Doz.	100
<b>Albertina.</b> Pure white; very fine.....	\$1 50	\$10 00	\$1 00	\$6 50
<b>Baroness Van Thuyll.</b> Pure white, large truss.....	1 50	10 00	1 00	6 50
<b>British Queen.</b> Very fine, pure white.....	1 50	10 00	1 00	6 50
<b>Grandeur a Merveille.</b> Finest blush white, immense truss.....	1 25	9 50	1 00	6 75
<b>Grande Blanche.</b> Blush white, very large bells; excellent truss.....	1 25	9 50	1 00	6 75
<b>General Vetter.</b> A grand white variety.....	1 25	9 50	1 00	6 75
<b>L'Innocence.</b> Pure white, extra large.....	1 75	12 00	1 25	8 00
<b>La Grandesse.</b> Finest pure white, large bells.....	1 75	12 00	1 25	8 00
<b>Mr. Plimsoll.</b> Ivory-white fine bells; very showy.....	1 50	10 00	1 00	6 50
<b>Mme. Van der Hoop.</b> Pure white, large truss; dwarf; late.....	1 75	12 00	1 25	8 00

For Second Size Hyacinths, add 12 cts. per doz.; First Size Hyacinths, 18 cts. per doz., for postage

**Remember** YOU MAY DEDUCT 10 PER CENT FROM THIS CATALOGUE OF BULBS WHEN CASH ACCOMPANIES THE ORDER PRIOR AND UP TO SEPTEMBER 1, 1906

FIRST AND SECOND SIZE NAMED DUTCH HYACINTHS, continued

SINGLE RED, ROSE AND PINK

	Extra selected 1st size bulbs		Extra selected 2d size bulbs	
	Doz.	100	Doz.	100
<b>Cardinal Wiseman.</b> Bright rose, large flower.....	\$1 50	\$10 00	\$1 00	\$6 50
<b>Charles Dickens.</b> Fine rose; large spike; extra.....	1 75	12 00	1 20	8 00
<b>General Pelissier.</b> Deep crimson; fine truss; early.....	1 50	10 00	1 00	6 50
<b>Gertrude.</b> Rosy pink; compact truss.....	1 50	10 00	1 00	6 50
<b>Gigantea.</b> Blush-rose; large; close truss.....	1 50	10 00	1 00	6 50
<b>Garibaldi.</b> Glossy crimson; good truss; very early.....	2 00	13 00	1 25	9 00
<b>Jacques.</b> Delicate pink, very large spike.....	1 50	10 00	1 00	6 50
<b>Moreno.</b> Waxy pink; large bells and truss.....	1 75	12 00	1 20	8 00
<b>Ornament Rose.</b> Light rose, superb flower.....	1 50	10 00	1 00	6 50
<b>Rosea Maxima.</b> Lovely pink, grand bloom.....	1 25	9 50	1 00	6 75
<b>Robert Steiger.</b> Deep crimson; large truss.....	1 75	11 00	1 15	7 00
<b>Roi des Belges.</b> Fine deep red.....	1 50	10 00	1 00	6 50

SINGLE BLUE AND PURPLE

<b>Charles Dickens.</b> Porcelain-blue, shaded purple; large spike.....	1 50	10 00	1 00	6 50
<b>Czar Peter.</b> Large porcelain-blue, lighter center; grand truss.....	1 75	12 00	1 20	8 00
<b>Grand Maitre.</b> Deep porcelain-blue; large truss and bulb; extra.....	1 60	11 00	1 15	7 00
<b>Johan.</b> Pale blue-gray, large bells, splendid compact spike. New.....	1 75	12 00	1 20	8 00
<b>King of the Blues.</b> Rich dark blue; splendid, well-finished truss.....	1 60	11 00	1 15	7 00
<b>La Peyrouse.</b> Clear porcelain-blue.....	1 50	10 00	1 00	6 50
<b>Leonidas.</b> Bright blue; early.....	1 50	10 00	1 00	6 50
<b>Marie.</b> Deep blue; large truss and bulb.....	1 50	10 00	1 00	6 50
<b>Pieneman.</b> Blue; large broad truss.....	1 50	10 00	1 00	6 50
<b>Potgieter.</b> Light blue; excellent variety.....	1 50	10 00	1 00	6 50
<b>Queen of the Blues.</b> Porcelain sky blue; very large bells and fine spike.....	1 60	11 00	1 15	7 00
<b>Regulus.</b> Porcelain-blue; large bells.....	1 60	11 00	1 15	7 00

SINGLE YELLOW AND ORANGE

<b>Ida.</b> Pure light yellow; large truss; early.....	1 60	11 00	1 15	7 00
<b>King of the Yellows.</b> Pure deep yellow; large truss.....	1 60	11 00	1 15	7 00
<b>Sonora.</b> Nankeen-yellow; fine.....	1 50	10 00	1 00	6 50
<b>Yellow Hammer.</b> Golden yellow, the finest single of its color.....	1 75	12 00	1 20	8 00

DOUBLE WHITE AND TINTED

<b>Bouquet Royal.</b> Pure white, yellow center; good truss.....	1 60	11 00	1 15	7 00
<b>Isabella.</b> Blush white; large bells; very fine.....	1 60	11 00	1 15	7 00
<b>La Tour d'Auvergne.</b> Pure white; good bells; large truss; extra.....	1 60	11 00	1 15	7 00
<b>La Virginite.</b> Blush-white; large bells; fine spike.....	1 50	10 00	1 00	6 50
<b>Prince of Waterloo.</b> Pure white; fine truss; large bells.....	1 60	11 00	1 15	7 00

DOUBLE RED, ROSE AND PINK

<b>Bouquet Royal.</b> Rose, dark center; good spike.....	1 50	10 00	1 00	6 50
<b>Chestnut Flower.</b> Rose; large truss; very beautiful.....	1 75	12 00	1 20	8 00
<b>Le Grand Concurrent.</b> Beautiful pale rose; large bells and truss; extra.....	1 60	11 00	1 15	7 00
<b>Lord Wellington.</b> Delicate rosy blush; large bells and truss; one of the best.....	1 50	10 00	1 00	6 50
<b>Princess Louise.</b> Deep red; large flower.....	1 75	12 00	1 20	8 00

DOUBLE BLUE AND PURPLE

<b>Blocksberg.</b> Pale porcelain-blue; grand.....	1 50	10 00	1 00	6 50
<b>Garrick.</b> Bright blue; very large bells.....	1 50	10 00	1 00	6 50
<b>General Kohler.</b> Bright blue; extra fine; an excellent variety.....	1 50	10 00	1 00	6 50
<b>Van Speyk.</b> Light blue; large bells and truss.....	1 50	10 00	1 00	6 50

DOUBLE YELLOW

<b>Goethe.</b> Light yellow; large bells; fine spike.....	1 50	10 00	1 00	6 50
<b>Jaune Supreme.</b> Deep yellow, salmon tinted.....	1 50	10 00	1 00	6 50
<b>William III.</b> Fine yellow, large and early.....	1 50	10 00	1 00	6 50

For Second Size Hyacinths add 12 cts. per doz.; First Size Hyacinths, add 18 cts. per doz., by mail

**Remember**

You may deduct 10 per cent from this Catalogue on Bulbs when cash accompanies the order prior and up to September 1, 1909.

# BODDINGTON'S BRILLIANT TULIPS

FOR BEDDING OR FORCING (FIRST SIZE BULBS ONLY)

There is one important difference between Hyacinths and Tulips. Under similar treatment most Hyacinths flower about the same time, while Tulips come into bloom at successive periods. The divergence has frequently been the source of much disappointment, for in a bed (or even a vase or pot) planted with different Tulips, one variety may be overblown before others show their colors. For brilliant bedding effects, solid masses of color are to be preferred, especially for design bedding.

For cultural directions under glass, see Hyacinths, page 2. The treatment to be followed is exactly the same. Tulips for bedding should be planted about 6 inches apart and about 4 inches deep, reckoning from the tops of the bulbs.

The figures following the varieties indicate earliness in flowering; No. 1 being the earliest; No. 2 following; No. 3 being still a little later, but coming into bloom before the No. 2's are out. The height is indicated by "D" for dwarf, "M" for medium and "T" for tall.

## Single Scarlet and Crimson

	Doz.	100	1,000
<b>Artus.</b> 3 D. Dark scarlet.....	\$o 35	\$1 75	\$15 00
<b>Belle Alliance.</b> 3 M. Scarlet; good bedder or forcer.....	50	3 25	30 00
<b>Brutus.</b> 2 M. Orange-crimson; good forcer...	25	1 75	16 00
<b>Cardinal's Hat.</b> 2 M. Dark red.....	25	1 50	12 00
<b>Couleur Cardinal.</b> 3 T. Crimson-scarlet; very brilliant.....	40	3 00	28 00
<b>Cramoisie Brilliant.</b> 3 M. Bright scarlet; fine for forcing.....	40	2 75	25 00
<b>Crimson King.</b> 3 M. Crimson; showy bedder.	35	2 25	20 00

## SINGLE SCARLET AND CRIMSON, continued

	Doz.	100	1,000
<b>Duc van Thol.</b> 1 D. Scarlet; very early....	\$o 35	\$2 25	\$21 00
" " " 1 D. Crimson; very early....	25	1 40	12 00
<b>Pottebakker, Scarlet.</b> 2 M. Bright scarlet; good forcer and bedder; very fine.....	40	2 75	26 00
<b>Rembrandt.</b> 1 M. Fine scarlet; early.....	50	3 25	30 00
<b>Sir Thomas Lipton.</b> 2 M. Beautiful brilliant scarlet; very fine bedder.	75	6 00	
<b>Vermilion Brilliant.</b> 3 M. Bright scarlet and vermilion; excellent for pots; showy bedder..	65	4 75	45 00
<b>Boddington's "Quality" Single Red.</b> 3 M. For forcing or bedding.....	20	1 25	10 00



Bed of Boddington's Brilliant Tulips

## Single White

	Doz.	100	1,000
<b>Duc van Thol.</b> 1 D. White; very early.....	\$o 40	\$2 25	\$21 00
<b>Joost von Vondel (true).</b> 3 M. Pure white; an excellent and consistent forcer.....	75	5 00	
<b>La Reine.</b> 3 M. White, slightly rose shaded; good forcer and bedder.....	20	1 25	12 00
<b>La Reine.</b> 3 M. Extra fancy bulbs.	30	1 75	15 00
<b>L'Immaculee.</b> 3 M. Pure white; good forcer; early.....	15	1 00	8 00
<b>Pottebakker, White.</b> 2 M. Pure white; large, showy flower; splendid for forcing.....	30	1 75	15 00
<b>White Hawk (true).</b> 1 M. Very large; fine pure white; early.....	40	2 75	25 00
<b>Washington.</b> 2 M. Silvery white; fine bedder and forcer.....	25	1 50	14 00
<b>Boddington's "Quality" Single White Tulips.</b> 3 M. For forcing and bedding.....	20	1 25	10 00

## Single Pink and Rose

	Doz.	100	1,000
<b>Couleur Ponceau.</b> 2 M. Rich cerise; very fine.....	\$o 20	\$1 25	\$10 00
<b>Cottage Maid.</b> 3 M. Rosy pink, white striped.....	25	1 50	12 00
<b>Duc van Thol.</b> 1 D. Rose; very early.....	35	2 25	22 00
<b>Pink Beauty (Novelty).</b> 2 M. A lovely Tulip, deep glowing rose with bold snowy white flush on outer petals, center white and yellow.....	1 25	10 00	
<b>Proserpine.</b> 2 M. Large and handsome; rich silky rose; early forcer.....	60	4 25	40 00
<b>Rose Grisdelin.</b> 3 D. Delicate pink, tinged white; good forcer; very fine.....	30	2 00	18 00
<b>Rose Luisante.</b> 3 M. Deep pink; a high-class showy variety.....	50	3 75	34 00
<b>Rosamundi (Huikman).</b> 3 M. Bright pink, feathered white; very large flowers.....	25	1 25	10 00
<b>Van Gooyen.</b> 3 M. Rosy white; good early forcer.....	35	2 00	18 00
<b>Boddington's "Quality" Single Pink Tulips.</b> 3 M. For forcing or bedding.....	20	1 25	10 00

If Tulips are wanted by mail, add at the rate of 5 cts. per doz. for postage



**Single Yellow Tulips**

	Doz.	100	1,000
<b>Bizard Verdict.</b> 2 M. Orange-yellow and brown.....	\$0 20	\$1 00	\$8 00
<b>Canary Bird.</b> 3 T. Clear yellow; early.....	30	1 25	10 00
<b>Chrysolara.</b> 3 M. Pure yellow; handsome flower.....	25	1 25	10 00
<b>Duc van Thol.</b> 1 D. Yellow; very early.....	40	2 75	25 00
<b>Golden Queen.</b> 3 T. The most beautiful yellow Tulip; flower pure yellow, very large and of very graceful globular form.	1 00	7 50	
<b>King of the Yellows.</b> 3 T. Deep golden yellow.....	25	1 50	14 00
<b>Mon Tresor.</b> 2 M. Pure yellow; large cup; handsome; good forcer ...	40	2 25	20 00
<b>Ophir d'Or.</b> 3 M. Rich golden yellow; a handsome bedding Tulip ...	25	1 25	11 00
<b>Pottebakker, Yellow.</b> 2 M. Large; pure yellow.....	40	2 75	26 00
<b>Yellow Prince.</b> 3 M. Pure yellow; good for bedding or forcing.....	20	1 25	10 00
<b>Boddington's "Quality" Single Yellow Tulips.</b> 3 M. For forcing or bedding.....	20	1 25	10 00

**Single Striped, Margined and Oddly Colored**

	Doz.	100	1,000
<b>Duchesse de Parma.</b> 3 T. Orange-red, yellow shaded; large flower.	\$0 30	\$1 75	\$16 00
<b>Duc van Thol.</b> 1 T. Red and yellow.....	25	1 50	13 00
<b>Joost von Vondel.</b> 1 M. Cherry-red, white feathered; large flower...	30	2 00	19 00
<b>Keizerkroon.</b> 3 T. Red, with broad yellow edge; large and effective.	30	2 00	18 00
<b>Keizerkroon.</b> 3 T. Fancy bulbs.....	40	2 75	25 00
<b>Pottebakker.</b> Yellow, red-tinged.....	25	1 50	14 00
<b>Princess Marianna.</b> 3 T. Large white, slightly red striped.....	25	1 50	12 00
<b>Prince of Austria.</b> 3 T. Orange-vermilion; large; fine for forcing...	40	2 50	23 00
<b>Standard, or Royal Silver</b> 3 M. White and crimson; very effective.	40	2 50	22 00
<b>Thomas Moore.</b> 3 T. Apricot-orange; fine for variety.....	20	1 50	13 00
<b>Wouverman.</b> 3 M. Purple-violet; large flowers.....	60	4 50	40 00
<b>Boddington's "Quality" Single Striped Tulips.</b> 3 M. For forcing or bedding.....	20	1 25	10 00

**BODDINGTON'S "QUALITY" DOUBLE NAMED TULIPS (All First Size Bulbs Only)**

**Double Pink**

	Doz.	100	1,000
<b>Couronne des Roses</b> (Crown of Roses). 2 M. Delicate rose; a beautiful variety.....	\$0 65	\$5 00	\$48 00
<b>Murillo.</b> 2 M. Magnificent blush white; flowers are large and early.	40	3 00	28 00
<b>Murillo.</b> 2 M. Fancy bulbs.....	50	3 25	30 00
<b>Salvator Rosa.</b> 2 M. Beautiful deep rose, striped white.....	50	3 25	30 00
<b>Boddington's "Quality" Double Pink Tulips.</b> 3 M. For forcing or bedding.....	35	2 00	15 00

**Double Red**

	Doz.	100	1,000
<b>Duke of York.</b> 3 M. Brilliant red, dark eye...\$0 15	\$1 00	\$9 00	
<b>Imperator rubrorum.</b> 2 M. Handsome scarlet; showy and lasting.....	50	3 75	35 00
<b>La Virtue.</b> 3 M. Pale red; grand variety.....	35	2 25	20 00
<b>Rex rubrorum.</b> 3 M. Bright scarlet; showy and very effective for bedding.....	35	2 25	20 00
<b>Rubra Maxima.</b> 2 M. Dazzling scarlet.....	40	2 25	22 00
<b>Boddington's "Quality" Double Red Tulips.</b> 3 M. For forcing or bedding.....	35	2 00	15 00

**Double Yellow**

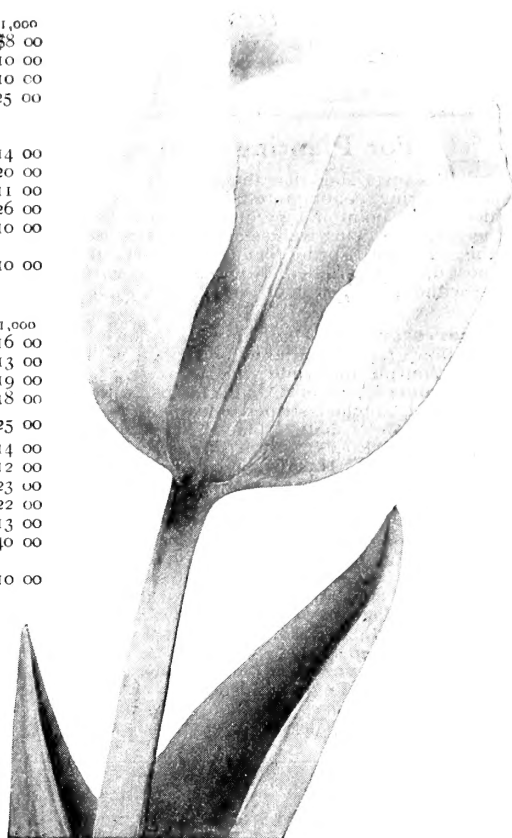
	Doz.	100	1,000
<b>Yellow Rose.</b> 3 M. Late; pure yellow.....	\$0 15	\$1 00	\$8 00
<b>Couronne d'Or.</b> (Crown of Gold). 2 M. Yellow, tinged with old gold; one of the finest for forcing, either for pots or pans ..	40	2 75	25 00
<b>Paeony, Gold.</b> 3 M. Golden yellow; late.....	20	1 50	14 00
<b>Tournesol, Yellow.</b> 2 D. One of the grandest double yellows.....	40	2 75	26 00
<b>Boddington's "Quality" Double Yellow Tulips.</b> 3 M. For forcing or bedding.....	35	2 00	15 00

**Double White**

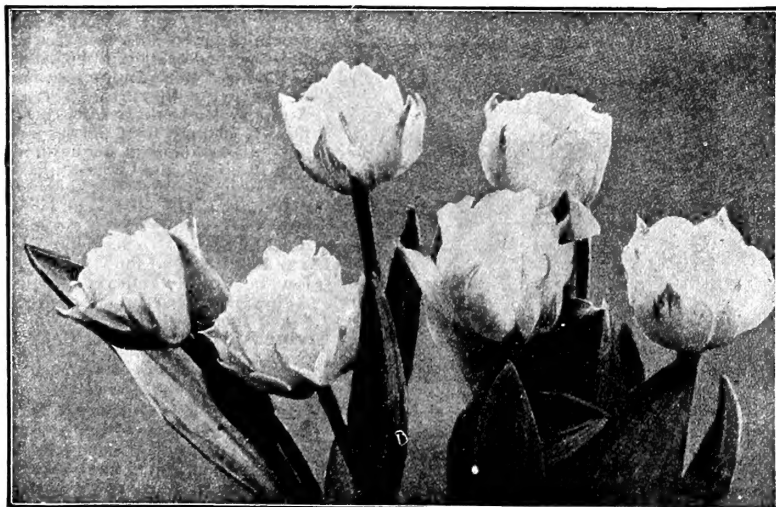
<b>Alba Maxima.</b> 2 D. The finest double white. 30 cts. per doz., \$1.75 per 100, \$15 per 1,000.
<b>Blanche Hative.</b> 2 M. A superb white; early. 40 cts. per doz., \$2.75 per 100, \$25 per 1,000.
<b>La Candeur.</b> 3 M. Pure white. 35 cts. per doz., \$2 per 100, \$18 per 1,000.
<b>Lord Beaconsfield</b> (Novelty). 3 M. Deep rose; a grand variety. 75 cts. per doz., \$5 50 per 100.
<b>Rose Blanche.</b> 3 M. White; does not show the green edge. 20 cts. per doz., \$1.25 per 100, \$10 per 1,000.
<b>Boddington's "Quality" Double White Tulips.</b> 3 M. For forcing or bedding. 35 cts. per doz., \$2 per 100, \$15 per 1,000.

**Double Striped and Oddly Colored**

<b>Admiral Kingsberger.</b> 3 M. Brown and yellow; distinct. 25 cts. per doz., \$1.75 per 100, \$16 per 1,000.
<b>Duc van Thol.</b> 1 D. Red and yellow; very early and dwarf. 15 cts. per doz., \$1 per 100, \$7.50 per 1,000.
<b>Gloria Solis.</b> 2 M. A handsome flower; bronze-red, with yellow border; extra large. 25 cts. per doz., \$1.75 per 100, \$16 per 1,000.
<b>Mariage de Ma Fille.</b> 3 T. White and red striped, 50 cts. per doz., \$2.75 per 100, \$25 per 1,000.
<b>Tournesol.</b> 2 D. Red and yellow; good forcer and early. 40 cts. per doz., \$2.50 per 100, \$22.50 per 1,000.



Single Tulip, Golden Queen



Double Tulip, Murillo

# BODDINGTON'S "QUALITY"

## SINGLE LATE OR MAY-FLOWERING TULIPS

**For Planting Among Herbaceous Plants and Formal Borders of Shrubbery, etc.**

It is surprising that these grand Tulips have not been more largely planted. As an early display they are magnificent in their beauty and coloring, coming into flower, as they do, from **May 15 to the first week in June**, according to the season, and are most useful from a decorative point of view, after the early-flowering Tulips are past. The colors are various, as described in the following varieties, and their height, after being well established, reaches nearly three feet in some types. After planting, they need not be disturbed for years, and fill in the space until spring plants can be set out in beds. There are many more beautiful late-flowering Tulips, but the following are a few of the most distinct varieties. No pretentious garden, or public park where flowers are grown extensively under appropriate surroundings, should be without a selection of them, for they afford immense enjoyment to large numbers of people, as we know from experience.

	Doz.	100	1,000		Doz.	100	1,000
<b>Bizarre Tulips.</b> Handsome, rich flowers, with yellow ground, feathered or striped with crimson, purple and white; finest mixed.....	\$0 15	\$1 00	\$8 00				
<b>Bybloems</b> (Violets). Late Tulips, with white ground, blotched, striped or feathered with lilac, purple, violet, blue or black; finest mixed.....	15	1 00	10 00				
<b>Bybloems</b> (Roses). Superfine mixed.....	20	1 25	12 00				
<b>Bouton d'Or.</b> Has deep clear yellow, globular, medium-sized blossoms, with curious black-anthered stamens.....	20	1 25	12 00				
<b>Darwins.</b> Very large flowers of good shape, on tall, strong stems; for brilliancy of color they surpass any other Tulip; they include every known shade, from the lightest tint to the brightest hue; finest mixed (For named varieties, see page 7).....	20	1 25	12 00				
<b>Bridesmaid.</b> A beautiful reddish violet, delicately striped.....	20	1 25	12 00				
<b>Beauty of America.</b> Pale yellow, passing to white; exceedingly handsome.....	20	1 25	12 00				
<b>Elegans.</b> Crimson-vermilion, long pointed reflexing petals, pale yellow center.....	40	2 75	25 00				
<b>Isabella, or Shandon Bells.</b> This also is one of those varieties of which a description fails to give a correct idea of its beauty. The petals are a rose color flushed or flaked with white when they first open, and after two or three days it changes to a suffused deep rose and red color. Remains longer in bloom than many others, and stands well when cut.....	\$0 25	\$1 50	\$14 00				
<b>La Merveille.</b> A magnificent variety with very large sweet-scented blossoms. Salmon-rose overlaid with orange-red. A grand border variety..	30	2 00	18 00				
<b>Gesneriana spathulata, or major.</b> This variety has long been in cultivation. The beautifully curved flowers are brilliant scarlet, with a bluish black center, on tall stems. A large group of this Tulip massed by itself looks very striking. There are a number of forms of this Tulip lately sent out, and a few of them are very high-priced, but hardly any of them excel the type in genuine beauty.....	35	1 75	15 00				
<b>Gesneriana macrospila.</b> Crimson-scarlet, black and yellow center.....	30	1 25	10 00				
<b>Golden Crown.</b> Is a showy and attractive variety, with a rich deep yellow color, and the petals edged and tinged with red. It blooms about the same time as Gesneriana major. 20 cts. per doz., \$1.25 per 100, \$12 per 1,000.							
<b>Golden Eagle.</b> Is a showy and attractive variety, with a rich deep yellow color, and the petals edged and tinged with red. It blooms about the same time as Gesneriana major. It forms a pleasing combination with the latter, and when grouped so that they meet in curving lines they give a fine color effect. 20c. per doz., \$1.25 per 100, \$12 per 1,000.							
<b>Maiden's Blush, or Picotee.</b> Clear white, margined on the edge with pink. The flower is beautifully curved, but it is somewhat difficult to give a correct idea of the color. When it opens, the petals are white and margined or penciled with pink to cerise. After two or three days the flowers change to a deep rose, and, unless one is acquainted with it, it would not be recognized as the same Tulip. It stands remarkably well when cut, and gracefully arranged. 20 cts. per doz., \$1.25 per 100, \$12 per 1,000.							
<b>Mrs. Moon.</b> The finest late yellow, beautifully reflexed petals. A charming variety. \$1 per doz., \$8 per 100.							
<b>Striped Beauty.</b> Rose flaked, deep crimson and white, immensely pretty. 75 cts per doz., \$5 per 100.							
<b>Boddington's "Quality" Superfine Mixture May-flowering Tulips,</b> for acclimating and for planting in herbaceous or shrubbery borders. 25c. per doz., \$1.25 per 100, \$10 per 1,000.							



Single Late May-flowering or Decoration Day Tulips

# BODDINGTON'S "QUALITY" BEDDING TULIPS

## Darwin Tulips (to name)

Darwin Tulips are among the most varied and beautiful of all the late Tulips. Planted in the herbaceous border they make a great show in late May and June. Flowers are large and borne upon tall, erect stems. To secure the best effect, plant 5 to 20 bulbs in a group.

	Each	Doz.	100
<b>Ant. Roozen.</b> Large-flowering; rosy pink.....	\$0 10	\$0 75	\$5 50
<b>Bronze Queen.</b> Extra large flower; light yellow.	10	1 00	8 00
<b>CLARA BUTT.</b> Beautiful soft rosy pink.....	10	75	5 50
<b>Dream.</b> Soft lilac.....	05	40	3 00
<b>Europe.</b> Fiery salmon-scarlet, white center; very distinct.....	05	50	4 00
<b>Farncombe Sanders.</b> Fiery scarlet.....	10	85	6 50
<b>GLOW.</b> Brilliant glowing vermilion, center blue, margined white.....	05	40	3 00
<b>King Harold.</b> Purple-red; very unique.....	10	75	5 50
<b>Loveliness.</b> Soft rosy carmine; exquisite color.	05	40	3 00
<b>Margaret (Gretchen).</b> Beautiful globular flower, outside blush, inside soft blush-rose.....	05	40	3 00
<b>Mrs. Krelage.</b> Large flower, soft rose, margined blush; very beautiful.....	05	40	3 00
<b>Painted Lady.</b> Creamy white.....	05	40	3 00
<b>Pride of Haarlem.</b> Rose, with blue base; flowers of great size and fine form.....	05	40	3 00
<b>Psyche.</b> Soft rose; enormous flower.....	15	1 50	10 00

**Rev. Ewbank.** Vivid heliotrope-lilac, slightly bordered. 5 cts. each, 50 cts. per doz., \$3.50 per 100.

**THE SULTAN.** Maroon-black; very showy. 5 cts. each, 30c. per doz., \$2 per 100.

**Velvet King.** Shining purple; enormous flowers. 5 cts. each, 40 cts. per doz., \$3 per 100.

**WHITE QUEEN.** White, passing to pink. 5 cts. each, 50 cts. per doz., \$4 per 100.

**Mixed.** All colors, in splendid variety. 20 cts. per doz., \$1.25 per 100, \$12 per 1,000.

## Boddington's Collections of Darwin Tulips

- 1 each of the above 18 sorts, \$1.
- 3 each of the above 18 sorts, 54 in all, \$2.75.
- 6 each of the above 18 sorts, 108 in all, \$5.50.
- 12 each of the above 18 sorts, 216 in all, \$10.

## Boddington's Inimitable Mixed Bedding Tulips to Color

The following mixed Tulips to color contain a superior mixture, but are not to be compared with the named varieties. They do not flower at the same time, but make an excellent show; varied and pretty.

**Single Yellow, Red, Rose or White** (separate), 15 cts. per doz., \$1 per 100, \$9 per 1,000.

If Tulips are wanted by mail, add at the rate of 5 cts. per doz. for postage

## Boddington's "Quality" Superfine Mixed Tulips

**SINGLE.** This mixture is made up of equal proportions of the best bedding Tulips, comprising a variation of color and shades that makes them very effective when massed in beds. 15 cts. per doz., \$1 per 100, \$8 per 1,000.

**DOUBLE.** This mixture comprises only the best bedding varieties in equal proportion and contains a splendid assortment of showy colors. 25 cts. per doz., \$1.50 per 100, \$12 per 1,000.

## Boddington's Fine Mixed Double Tulips

An excellent mixture for outdoor planting. 20 cts. per doz., \$1.25 per 100, \$10 per 1,000.

## Boddington's Fine Mixed Single Tulips

A mixture of good bedding Tulips for planting. 15 cts. per doz., \$1 per 100, \$7.50 per 1,000.

## Parrot, or Dragon Tulips

These Tulips are of immense size and are rightly named, and present occasional shades and markings that are truly marvelous. They are well worth growing in borders for the interest their showy flowers afford.

**Admiral de Constantinople.** Large; red, yellow edge. 15 cts. per doz., \$1 per 100, \$9 per 1,000.

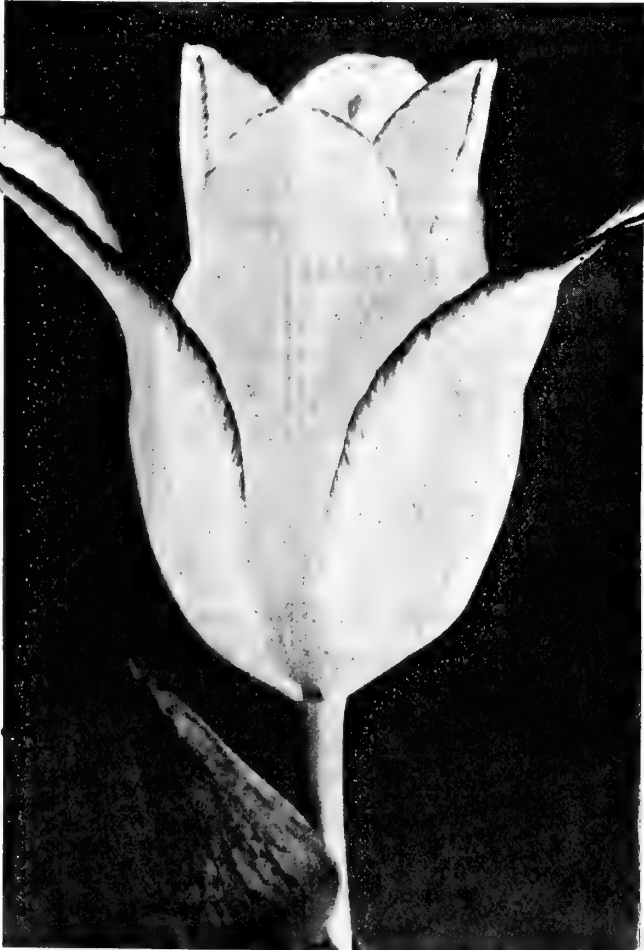
**Cramoisie Brilliant.** Rich blood-crimson, with bluish markings. 15 cts. per doz., \$1 per 100, \$9 per 1,000.

**Couleur Cafe.** 15 cts. per doz., \$1.25 per 100, \$12 per 1,000.

**Lutea major.** Large; showy yellow. 15 cts. per doz., \$1 per 100, \$9 per 1,000.

**Markgraaf von Baden.** Red and yellow, orange inside; very showy. 25 cts. per doz., \$1.50 per 100, \$13 per 1,000.

**Perfecta.** Yellow, striped red. 20 cts. per doz., \$1.25 per 100, \$11 per 1,000.



Maiden's Blush, or Picotee Tulip (See page 6)

## Boddington's "Quality" Superfine Mixed Parrot Tulips

15 cts. per doz., \$1 per 100, \$8 per 1,000

100 Parrot Tulips in 5 choice varieties for \$1.25.

50 Parrot Tulips in 5 choice varieties for 75 cts.

25 Parrot Tulips in 5 choice varieties for 40 cts.

12 Parrot Tulips in 4 choice varieties for 25 cts.

## Tulipa Greigi

An exceptionally handsome and distinct early-flowering Tulip. The beautifully formed flowers are of large size and of a gorgeous orange-scarlet color, so brilliant as to at once attract the attention. The plant is quite ornamental on account of its broad, spotted foliage, very choice. 15c. each, \$1 per doz., \$8 per 100.

# Narcissi and Daffodils

Narcissi and Daffodils are among the earliest-flowering bulbs, and are alike useful for cut-flowers and decorative purposes. The most useful for early forcing is the well-known Paper White Narcissus varieties Grandiflora and Multiflora. They are pure white, chaste and beautiful, and are borne on long stems, sometimes as many as fifteen to a stem.

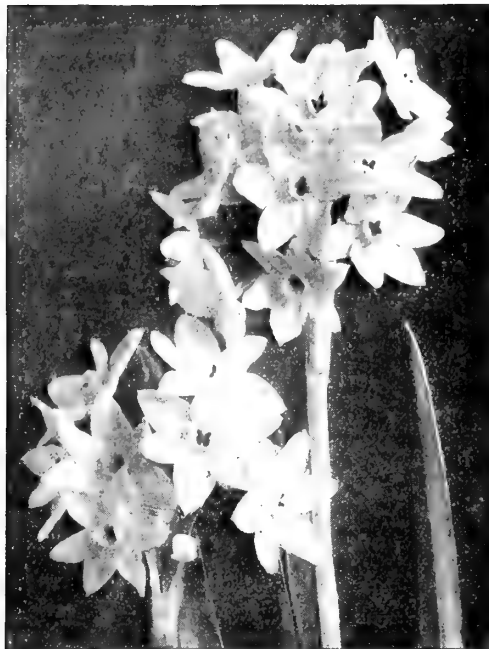
**CULTURAL DIRECTIONS.**—Plant bulbs in shallow pans or boxes, about 2 inches apart, and store in cellar or shed till thoroughly rooted. Do not allow frost to reach them. If wanted for Christmas, bring into the light about the second week in November, and after that successively (about a month to six weeks), and you will have Narcissus in bloom till nearly Easter. For general cultivation of Narcissus under glass, see Hyacinths, page 2.

**Paper White Narcissus** can also be grown in water with pebbles in shallow dishes and bowls, the same as the Sacred Chinese Narcissus

## Paper White Narcissi

**Grandiflora.** Well-known; large bulbs. 40 cts. per doz., \$2 per 100, \$15 per 1,000.

**Grandiflora multiflora.** A great improvement over Grandiflora; vigorous grower with fine spike, which carries larger trusses, and in greater abundance than the old varieties. 50 cts. per doz., \$2.50 per 100, \$20 per 1,000.



Narcissus, Paper White Grandiflora Multiflora

## Polyanthus Narcissi, or Nosegay Daffodils

<b>Double Roman.</b> Large trusses of white flowers, with double yellow cup; very early and excellent forcer.....	Doz.	100	1,000
	\$0 15	\$1 00	\$8 00
<b>Grand Soleil d'Or.</b> Dark yellow; orange cup; splendid bedder.	30	2 00	15 00
<b>Grand Monarque.</b> Large, white flowers, with yellow cup; an old favorite.....	30	2 00	15 00
<b>Grand Primo.</b> Beautiful white; citron cup.....	30	2 00	15 00
<b>States General.</b> Large white flowers, borne very profusely...	30	2 00	15 00

If wanted by mail, add 10 cts. per doz. for postage on Paper Whites and Polyanthus Narcissi

## Double Narcissi, or True Daffodils

<b>Von Sion</b> (True Double Daffodil). Specially selected top-root extra double-nosed mother bulbs.....	Doz.	100	1,000
	\$0 75	\$6 00	\$50 00
Large selected double-nosed mother bulbs.....	65	4 50	40 00

Large selected double-nosed bulbs. 50 cts. per doz., \$3 per 100, \$27.50 per 1,000.

Extra first size bulbs. 40 cts. per doz., \$2.50 per 100, \$20 per 1,000.

First size bulbs. 25c. per doz., \$1.50 per 100, \$12.50 per 1,000.

**Alba plena odorata** (Gardenia-flowered Daffodil). Double snow-white flowers; very sweet-scented; late-flowering. 20 cts. per doz., \$1 per 100, \$9 per 1,000.

**Incomparabilis fl. pl.** (Butter and Eggs). Rich yellow and white; double; good forcer or for outside. 25c. per doz., \$1.25 per 100, \$10 per 1,000.

**Orange Phoenix** (Bacon and Eggs). Beautiful white and orange Narcissus. 25 cts. per doz., \$1.75 per 100, \$15 per 1,000.

**Sulphur, or Silver Phoenix** (Codlins and Cream). Creamy white, with pale sulphur center. 40 cts. per doz., \$3 per 100, \$28 per 1,000.

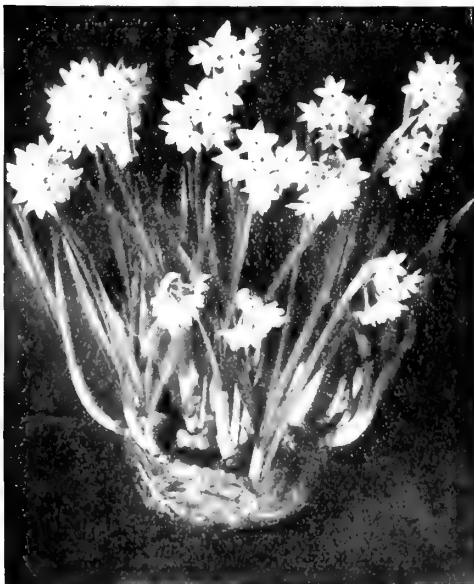
**Boddington's Incomparable Double Mixture.** Grand for bedding or naturalizing. 20 cts. per doz., \$1 per 100, \$8 per 1,000.

If wanted by mail, add 8 cts. per doz. for postage on Double Daffodils

## CHINESE SACRED NARCISSUS

(Joss Flower, or Oriental New Year's Lily)

These may be grown in pots, but are more interesting and very satisfactory in bowls partially filled with pebbles and water. Flowers mostly white with yellow cups; very fragrant. Extra selected bulbs, 10c. each, \$1 per doz. By mail, add 5c. each for postage.



Paper White Narcissi, as grown in a bowl



Double Daffodil, Von Sion

# SINGLE TRUMPET NARCISSI

The commercial florists have been foremost to give the Narcissi or Daffodils the attention due them. They have learned how easily and successfully these lovely flowers may be forced into bloom during winter, and how fascinating and lasting are the blossoms. They may be planted in pots or bulb pans 6 inches or more in diameter, several bulbs in each, according to size. Treat in the same manner as hyacinths.

## Giant Trumpet Narcissi

<b>Albicans.</b> Perianth white: trumpet primrose, passing to white.....	Each \$0 05	Doz. \$0 30	100 \$2 00	1,000 \$19 00
<b>Ard Righ</b> (Irish King). Perianth full yellow, trumpet deep yellow; one of the grandest varieties of the Ajax type; bicolor.....	05	40	2 50	
<b>Emperor.</b> The best single Narcissi; pure golden yellow, of very large size, with immense trumpet. Mother bulbs..	05	35	2 25	22 00
Extra mother bulbs.....	10	50	3 00	28 00
<b>Empress.</b> Pure white perianth, with rich yellow trumpet; a splendid variety. Mother bulbs.....	05	35	2 25	20 00
Extra mother bulbs.....	10	40	3 00	28 00
<b>Glory of Leiden.</b> An immense yellow trumpet variety; a grand acquisition.....	25	2 75	17 50	
<b>Golden Spur.</b> Deep yellow perianth and trumpet; very large; equally good as a forcer and for garden. Mother bulbs.	05	50	3 25	30 00
Extra mother bulbs.....	10	50	4 00	37 00
<b>Henry Irving.</b> Magnificent flowers of the richest yellow, trumpet beautifully frilled.....	05	40	2 50	23 00
<b>Horsfieldii.</b> Pure white, with yellow trumpet; the largest flower of its class and very early.....	05	25	1 50	14 00
<b>Madame de Graaff.</b> Perianth pure white, trumpet pale primrose; one of the most beautiful and distinct varieties.....	50	5 00	40 00	
<b>Obvallaris.</b> Perianth and trumpet yellow.....	05	30	2 00	
<b>Princeps.</b> Early; sulphur trumpet, white perianth; a popular forcing variety.....	05	15	1 00	8 00
Extra mother bulbs.....	05	25	1 25	12 00
<b>Sir Watkin.</b> Perianth sulphur, cup yellow, tinted bright orange; gigantic flower.....	05	40	2 25	21 00
<b>Trumpet major.</b> Large flower, pure golden yellow, the best for early forcing.....	05	15	1 25	12 00
<b>Victoria.</b> A grand bicolor trumpet variety, considered by many superior to Horsfieldii. Creamy white perianth; yellow trumpet. Mother bulbs.....	05	40	3 25	30 00
Extra mother bulbs.....	10	60	4 50	40 00
<b>VON SION, Single.</b> Fine yellow trumpet.....	05	30	2 00	18 00



Giant Trumpet Narcissus (type)

## COLLECTIONS OF GIANT TRUMPET NARCISSI

1 each of 12 varieties, 12 bulbs.....	\$0 60
3 " " " " 36 ".....	1 40
6 " " " " 72 ".....	2 50
12 " " " " 144 ".....	4 50
25 " " " " 300 ".....	8 50

If wanted by mail, add 10 cts. per doz. for postage on large Trumpet Narcissi. Mother bulbs, 15 cts. per doz.

## Chalice Cup, or Star Narcissi

	Doz.	100	1,000
<b>Barri Conspicuus.</b> Large, soft yellow perianth; short cup, edged orange-scarlet.....	\$0 20	\$1 25	\$10 00
<b>Incomparabilis Stella.</b> Large white perianth; yellow cup.....	15	1 00	7 50
<b>Incomparabilis Cynosure.</b> Primrose perianth, changing to white; cup stained orange.....	15	1 00	9 00
<b>Incomparabilis Figaro.</b> Perianth primrose-sulphur; cup bordered orange-red.....	15	1 00	9 00
<b>Leedsii, Mrs. Langtry.</b> Broad white perianth and large white cup; edged bright yellow....	10	75	5 50
<b>Leedsii, Queen of England.</b> Beautiful large flowers with fine fringed citron-yellow cup....	10	75	5 50

If wanted by mail, add 6 cts. per doz. for postage

## Poet's Narcissi

<b>Poeticus</b> (Pheasant's Eye, or Poet's Narcissus). Mother bulbs.....	Doz. \$0 15	100 \$0 75	1,000 \$5 50
<b>Poeticus Ornatus.</b> An improved Poeticus; pure white perianth, distinct red crown....	15	1 00	8 00
Mother bulbs.....	20	1 25	10 00

If wanted by mail, add 6 cts. per doz. for postage

## Hoop Petticoat Narcissi

<b>Bulbocodium citrinus.</b> Yellow.....	Each \$0 05	Doz. \$0 50	100 \$3 25
<b>Bulbocodium monophyllum.</b> The pure white Hoop Petticoat.....	10	60	4 75

If wanted by mail, add 6 cts. per doz. for postage

## Single Narcissus, Christmas Trumpet Major

(French-grown)

These bulbs arrive at the same time as the Romans and Paper whites, and, if treated in the same manner, can be flowered for Christmas. A useful and novel flower for this season of the year. 50 cts. per doz., \$2 50 per 100, \$20 per 1,000.

If wanted by mail, add 6 cts. per doz. for postage

## Narcissus Jonquilla, or Jonquils

All of the Jonquils are prized for their graceful, golden, fragrant blossoms and the ease with which they may be grown. Half a dozen bulbs may be put in a 5-inch pot, and with the same treatment as recommended for Hyacinths (see page 2) a fine display can be had from January to April. Their cost is so trifling that liberal planting should be made outdoors. A clump of fifty or more bulbs put here and there among shrubbery or interspersed in the hardy border or naturalized in the grass, gives an indescribably rich effect in the early spring, while a vase of the cut blooms will fill a room with the rich, spicy perfume.

	Doz.	100	1,000
<b>Double Sweet-scented.</b> Fine deep yellow.....	\$0 30	\$2 25	\$20 00
<b>Single Sweet-scented.</b> Deep yellow .....	10	75	6 00
<b>Campanelle.</b> Large yellow.....	20	1 00	7 50
<b>Rugulosus.</b> Very fragrant; largest Jonquil.....	25	1 25	10 00

If wanted by mail, add 5 cts. per doz. for postage

## Narcissi and Daffodils

FOR NATURALIZING, BEDDING, ETC.

For producing brilliant masses of striking color in the mixed border, among shrubs, under trees, or for grouping in grass, the following varieties of Narcissi are unequaled, while they specially claim the attention of amateurs for their hardiness and accommodating qualities. Clumps should be grown in odd corners to furnish flowers for decorative purposes. When cut just as they begin to expand, the flowers develop their full beauty in water as perfectly, and retain their brightness for as long a period, as when allowed to remain on their own plants. Pansies, myosotis, scillas, and other low-growing plants and bulbs make lovely companions for these popular Narcissi.

### SINGLE, FOR NATURALIZING, ETC.

	Doz.	100	1,000
<b>Emperor.</b> Pure golden yellow; immense trumpet.	\$0 30	\$2 00	\$17 00
<b>Empress.</b> Pure white perianth, rich yellow trumpet.	30	2 00	16 00



Narcissus incomparabilis (type)

	Doz.	100	1,000
<b>Golden Spur.</b> Deep yellow perianth and trumpet...	\$0 40	\$2 25	\$20 00
<b>Henry Irving.</b> Magnificent flower of the richest yellow	40	2 50	23 00
<b>Horsfieldii.</b> Pure white, with yellow trumpet .....	25	1 50	14 00
<b>Princeps.</b> Early; sulphur trumpet, white perianth ..	15	1 00	8 00
<b>Poeticus</b> (Pheasant's Eye).....	15	75	5 50
<b>Poeticus Ornatus</b> .....	15	1 00	8 00
<b>Trumpet Major.</b> Pure golden yellow.....	15	1 25	12 00
<b>Incomparabilis Stella.</b> Large white perianth, yellow cup .....	15	1 00	7 50
<b>Incomparabilis Cynosure.</b> Primrose perianth, changing to white; cup stained orange-scarlet .....	15	1 00	9 00
<b>Incomparabilis Figaro.</b> Perianth sulphur, cup bordered orange-red .....	15	1 00	9 00
<b>Albicans.</b> Almost pure white; perianth white, primrose trumpet, passing to white .....	30	2 00	19 00
<b>Leedsii, Mrs. Langtry.</b> Free, broad white perianth and large white cup edged bright yellow .....	10	75	5 50
<b>Leedsii, Queen of England.</b> A pure white variety of the Leedsii type.....	10	75	5 50
<b>Von Sion (Single)</b> .....	30	2 00	18 00



Various types of Garden Narcissi and Daffodils

## BODDINGTON'S "QUALITY" MIXTURE OF SINGLE NARCISSI

Mixture does not contain the very cheapest sorts, and will be found very me. 20 cts. per doz., \$1 per 100, \$7.50 per 1,000.

If wanted by mail, add 5 cts. per doz. for postage on Mixed Narcissi

### DOUBLE NARCISSI, or DAFFODILS

For Naturalizing, Etc.

	Doz.	100	1,000
<b>Von Sion</b> (True Double Daffodil). First size flowering bulbs.....	\$0 20	\$1 50	\$12 50
<b>Alba plena odorata</b> (Gardenia-flowered Daffodil). Double snow-white flowers.....	20	1 00	9 00
<b>Incomparabilis fl. pl.</b> (Butter and Eggs). Rich yellow and white; very double.....	25	1 25	10 00
<b>Orange Phoenix</b> (Bacon and Eggs). Beautiful white and orange Narcissi.....	25	1 75	15 00
<b>Sulphur, or Silver Phoenix</b> (Codlins and Cream). Creamy white, with pale sulphur center.....	40	3 00	28 00
<b>Boddington's "Quality" Double Mixed</b> .....	20	1 00	8 00

Lilies for Growing and Forcing Under Glass, in the Greenhouse, Conservatory or Sunny Window



Lilium Harrisii (true)

# LILIES

Lilies should be potted immediately upon receipt if intended for growing in pots or for forcing. The soil should be rich, the pot well drained. The bulb should be set about half-way below the surface or rim of the pot and lightly covered with soil. After potting, give a thorough watering and set outside in a coldframe or shady situation; then cover with ashes or long straw. After they have stood from three weeks to a month, bring into the house, fill pot with soil and force gently. After showing buds, a higher temperature may be used.

## Lilium Harrisii, or True Bermuda Easter Lily

	Each	Doz.	100
5- to 7-inch bulbs .....	\$0 10	\$1 00	\$7 50
7- to 9- " " .....	20	2 00	14 00
9- to 11- " " .....	35	3 50	25 00
Monster bulbs .....	75	7 50	60 00

## Lilium Jamesii

A new Lily raised by Mr. R. H. James, of Bermuda, and is a cross between *Lilium Harrisii* and the Bermuda, *L. longiflorum*.

	Each	Doz.	100
5- to 7-inch bulbs .....	\$0 10	\$1 00	\$7 50
7- to 9- " " .....	25	2 50	14 00
9- to 11- " " .....	45	4 50	25 00

## Lilium Longiflorum Formosum

The wonderful new Easter Lily from the island of Formosa. Easy to grow and free from disease.

	Each	Doz.	100
6- to 8-inch bulbs .....	\$0 10	\$0 75	\$5 50
7- to 9- " " .....	15	1 25	10 00
9- to 10- " " .....	20	2 00	15 00

## Lilium Longiflorum Giganteum (Japan-grown)

This dark-stemmed variety flowers somewhat later than Multiflorum, but the flowers are of larger size, of great substance and perfect form. In great demand.

	Each	Doz.	100
6- to 8-inch bulbs .....	\$0 10	\$0 75	\$5 50
7- to 9- " " .....	15	1 50	10 00
9- to 10- " " .....	20	1 75	15 00

## Lilium Longiflorum Multiflorum (Japan-grown)

BODDINGTON'S EARLY, or EASTER-FLOWERING

Bulbs ready for delivery in October

	Each	Doz.	100
7- to 9-inch bulbs .....	\$0 10	\$1 00	\$7 50
9- to 10- " " .....	20	2 00	14 00
Monster bulbs .....	35	3 50	25 00

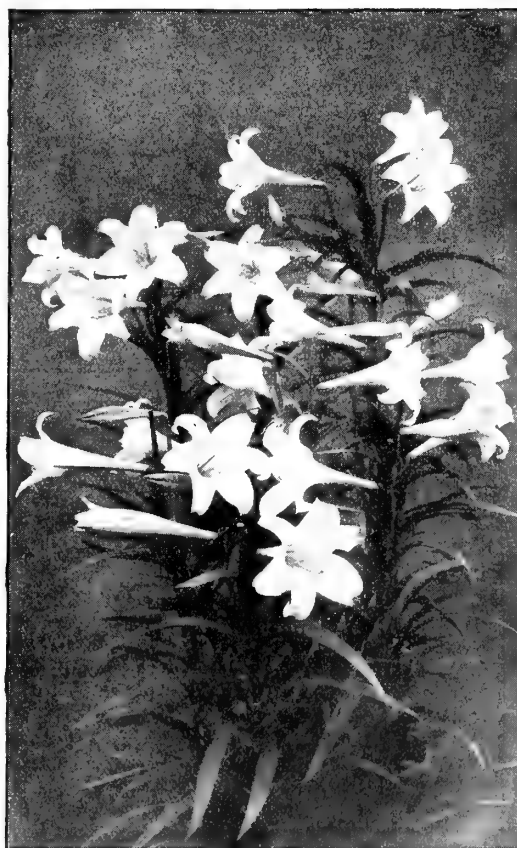
## Lilium Candidum (St. Joseph, or Annunciation Lily)

This is the old-fashioned garden Lily. It is perfectly hardy, blooming in the open ground in June. The many snow-white flowers, borne on a stem 3 to 4 feet high, make this Lily most effective. Very large bulbs, ready for delivery in September. 10 cts. each, \$1 per doz., \$7.50 per 100.

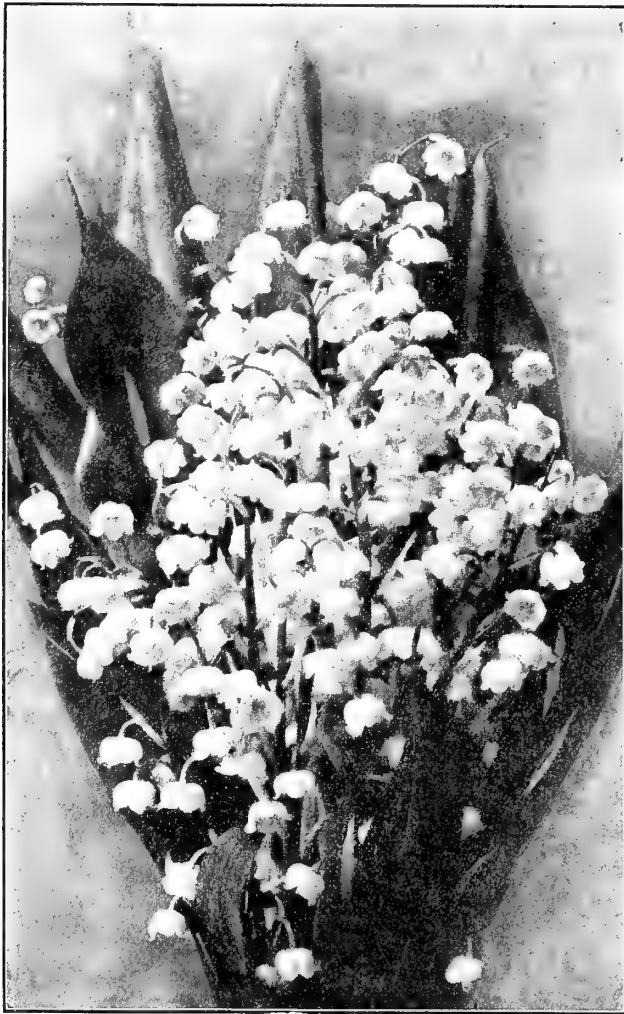
## Retarded Lilies from Cold Storage.

The forcing of cold storage Lilies is no longer an experiment. If you have not already grown some of these, we can refer you to hundreds of florists and gardeners who make a success of this method and have Lilies "all the year round," the same as Lily-of-the-Valley. *Lilium longiflorum giganteum* takes about two months to bloom from time of planting from cold storage, and *L. speciosum* about six months; so that Longiflorums wanted for Thanksgiving and Christmas should be planted about September 15 and Speciosum in July to August.

	Doz.	100
<b>Lilium longiflorum giganteum.</b> 7- to 9-inch bulbs .....	\$2 50	\$20 00
9- to 10-inch bulbs .....	3 50	25 00
<b>Lilium speciosum melpomene.</b> Rich crimson. 9- to 11-inch bulbs. 2 50	2 50	20 00
11- to 13-inch bulbs .....	4 50	35 00
<b>Lilium speciosum album.</b> Pure glistening white—		
9- to 11-inch bulbs .....	4 00	30 00
11-inch and over .....	6 00	45 00
<b>Lilium speciosum rubrum.</b> White ground, suffused and spotted pink. 9- to 11-inch bulbs .....	2 50	20 00
11-inch and over .....	4 00	30 00



Lilium longiflorum formosum



Boddington's "Quality" Lily-of-the-Valley

**Freesia Leichtlinii.** Primrose-yellow, with orange blotch on each petal. 25 cts. per doz., \$1.75 per 100, \$15 per 1,000.

**The Grand New Freesia, Purity**

A grand acquisition to the Freesias, and for the grower as a cut-flower or pot-plant, no one should be without a few bulbs of this delightful novelty. Flowers which are snowy white, of large size, are borne in great profusion on stems 2 to 2½ feet which grow upright and stiff; are excellent for cut-flower purposes. 50 cts. per doz., \$3.50 per 100, \$30 per 1,000; mammoth bulbs (very scarce), 75 cts. per doz., \$5 per 100, \$45 per 1,000.



Oxalis Buttercup

**Boddington's "Quality" Lily-of-the-Valley**

Lily-of-the-Valley is among the best known and most popular flowers, and is chaste and beautiful for all occasions. We make arrangements for only the best-ripened and matured three-year-old pips.

New crop Lily-of-the-Valley should always be frozen before forcing Boddington's "Wedding Bells" brand, being specially selected, is superior for first crop; will convince the most critical grower of its superiority over brands usually offered, for early forcing, the foliage and flower-spike being all that can be desired. \$2 per 100, \$17.50 per 1,000.

**Lily-of-the-Valley from Cold Storage**

We import large quantities of the best grade of Valley for forcing, which are put in cold storage immediately upon arrival and kept perfectly dormant. These pips can be shipped at any day of the year and can be brought into full flower in three weeks from time of planting without undue forcing, and with foliage. We recommend these for flowering before and up to Christmas. They should be potted or boxed as soon as received and be placed in a temperature of 55° or 60°. \$3 per 100, \$25 per 1,000.

**CALLA AETHIOPICA (CALLA LILY)**

Too well known to need description. We offer a very fine lot of dry roots, all with center shoots ready for forcing.

	Each	Doz.	100
4 inches in circumference.....	\$0 10	\$1 00	\$7 50
5 inches in circumference.....	15	1 50	10 00
6 inches in circumference.....	20	2 00	15 00
Monsters.....	45	4 50	25 00

**FREESIA REFRACTA ALBA**

Of all South African flowering bulbs, the Freesia is doubtless the best known and most esteemed. The gracefully branched, fragrant flowers are of long duration, and being freely produced, are profitable for commercial purposes, and satisfactory to amateurs. If planted early they may be had in bloom by Christmas. Plant eight or ten bulbs in a 6-inch bulb-pan, covering them one inch. The peculiar habit, its delicious perfume and great value for cutting, have made it immensely popular.

Large bulbs, 15 cts. per doz., \$1.25 per 100, \$10 per 1,000.

Mammoth selected bulbs, 25 cts. per doz., \$1.75 per 100, \$15 per 1,000.

Monster bulbs, 40 cts. per doz., \$2.50 per 100, \$20 per 1,000



The New Purity Freesia

**OXALIS**

Lovely little bulbous plants for hanging pots and baskets. The bulbs should be planted an inch deep, six or eight in a 5-inch pot. They need a sunny situation.

	Doz.	100
<b>Bermuda Buttercup.</b> Extra-sized bulbs...	\$0 30	\$2 00
<b>Bowiei.</b> Rosy crimson; fine flower.....	25	1 50
<b>Grand Duchess.</b> White.....	20	1 00
" " Pink.....	20	1 00
" " Lavender.....	20	1 00
<b>Lutea.</b> Single yellow.....	10	75
" Double.....	30	2 00
<b>Rosea.</b> Rose.....	15	80
<b>Versicolor.</b> Crimson and white.....	25	1 50
<b>Mixed, All Colors</b> .....	20	1 00



**SPIREA, or ASTILBE.** November delivery

**The New Pink Spirea, Peach Blossom.** A grand novelty. Color a delightful soft pink; very free-flowering; growing as freely as the white types. 40 cts. each \$4 per doz., \$30 per 100.

	Each	Doz.	100
<b>Queen Alexandra.</b> New pink Spirea .....	\$0 40	\$4 00	\$30 00
<b>Astilboides floribunda</b> .....	15	1 25	10 00
<b>Compacta multiflora</b> .....	15	1 25	10 00
<b>Gladstone</b> .....	20	2 00	16 00
<b>H. Witte</b> .....	20	2 00	12 00
<b>Japonica</b> .....	10	1 00	7 50
<b>Superba</b> .....	15	1 25	10 00
<b>Washington</b> .....	15	1 25	10 00

**GLADIOLUS COLVILLEI**

Delivery in October and November

	Doz.	100	1,000
<b>Blushing Bride</b> .....	\$0 25	\$1 25	\$10 00
<b>Colvillei alba</b> (The Bride) .....	15	1 00	7 50
<b>PEACH BLOSSOM.</b> A recent introduction and the most beautiful of the Colvillei type of Gladiolus. The color is a lovely soft pink, on the order of the Killarney rose .....	30	1 75	15 00
<b>QUEEN WILHELMINA.</b> Blush-white, with conspicuous blotches of cream, scarlet margin .....	50	2 75	25 00
<b>SAPPHO.</b> Large white, shaded pale lilac, with faint creamy blotches edged violet .....	20	1 25	10 00

**Miscellaneous Bulbs for Indoor Flowering**

<b>ALLIUM</b>	Doz.	100
<b>Neapolitanum</b> .....	\$0 15	\$1 00
<b>Luteum.</b> Yellow .....	20	1 00
<b>Roseum.</b> Pink .....	35	2 00
<b>Azureum.</b> Blue .....	60	4 50

<b>AMARYLLIS</b>	Each	Doz.
<b>Johnsoni</b> (Bermuda Spice Lily). Crimson, white stripe .....	\$0 40	\$3 50
<b>Formosissima</b> (Jacobæan Lily). Dark crimson .....	25	2 00
<b>Longifolia alba</b> .....	25	2 00
<b>rosea</b> .....	25	2 00
<b>Belladonna major</b> (Belladonna Lily). Flowers white, flushed and tipped deep rose .....	20	1 50
<b>Vittata Hybrids.</b> The finest race of Amaryllis in cultivation, colors varying from blush-white to crimson ...	1 25	12 00
<b>Valotta purpurea</b> (Scarborough Lily). Vivid scarlet .....	30	3 00
<b>Sternbergia lutea.</b> Flowers delicate yellow. 100, \$5 ..	10	75

**SPANISH IRIS** (*Iris Hispanica*). The true value of the Spanish Iris appears to have been overlooked in this country. The great diversity of color and their being equally adapted for forcing for winter blooming and for massing in beds for spring flowering make them one of the most useful bulbs to plant.

<b>Alexander von Humboldt.</b> Dark blue.	<b>Cajanus.</b> Deep golden yellow.
<b>Belle Chinoise.</b> Pure yellow.	<b>Chrysolora.</b> Pale yellow.
<b>Blanche Superbe.</b> Pure white.	<b>Darling.</b> Blue; very fine; early.
<b>Blanche Fleur.</b> White, with pale center.	<b>Louise.</b> Pale blue, slightly spotted, fine flower.
<b>British Queen.</b> Large white.	<b>Reconnaissance.</b> Bronze-orange; extra-fine.

	Doz.	100	1,000
Large selected bulbs in above ten named varieties .....	\$0 25	\$1 25	\$10 00
Boddington's choicest mixed, all colors .....	15	75	6 00

**NERINES.** These popular South African bulbous plants are among the most charming and most useful of all early winter-flowering plants. Coming into bloom as they do at a time when flowers of any real choiceness are scarce (October), we find that Nerines amply repay the little care and attention which they require.

	Each	Doz.	100
<b>Sarniensis</b> (Guernsey Lily). Bright crimson ..	\$0 25	\$2 50	\$20 00
<b>Corusea major.</b> Scarlet. (See illustration) ...	1 00	10 00	75 00
<b>Fothergilli major.</b> Vivid scarlet, a grand Nerine .....	1 00	10 00	75 00

<b>ANEMONE</b>	Doz.	100
<b>Coronaria, Single Blue.</b> A charming variety .....	\$0 25	\$1 50
<b>Coronaria, Single White</b> (The Bride). Pure white ...	25	1 50
<b>Single Scarlet.</b> Very brilliant .....	25	1 50
<b>Double Ceres.</b> White, shaded with rose .....	25	1 50
<b>Double Ceres, Rosetti.</b> Dark pink .....	25	1 50
<b>Double Ceres, King of the Scarlets.</b> Vermilion ..	35	2 00
<b>Fulgens.</b> Rich dazzling scarlet .....	35	2 50
<b>Boddington's Choice Single Mixed</b> .....	20	1 00
<b>Boddington's Choice Double Mixed</b> .....	30	1 25
<b>St. Brigid.</b> Beautiful Irish Anemone. Mixed .....	75	5 00
<b>BABIANA.</b> Mixed varieties, many elegant colors ....	35	2 25

**FEATHERED, GRAPE AND MUSK HYACINTHS.**

These Hyacinths will grow in any good garden soil and are admirably adapted for borders that are shaded by trees. They should be planted in large clumps and be allowed to remain several years undisturbed. They are all beautiful, the Feathered Hyacinth emphatically so. For delicacy of structure it has peculiar claims to our admiration, when presenting its feathery plumes, a foot or more in length, cut into curling threads of the most elegant tenuity.

	Doz.	100
<b>Muscaria plumosa.</b> Beautiful Feathered Hyacinth ..	\$0 15	\$1 00
<b>botryoides alba.</b> White Grape Hyacinth ..	15	1 00
<b>botryoides coerulea.</b> Light blue .....	15	75
<b>botryoides monstrosus.</b> Giant blue .....	25	1 25
<b>racemosum.</b> Blue starch Hyacinth .....	25	1 50
<b>moschatus major</b> (Musk Hyacinth). Grayish yellow; very fragrant .....	75	5 00

<b>IXIAS.</b> Magnificent Named Varieties. In ten grand sorts .....	75	5 00
<b>Choice Named Varieties.</b> In ten best sorts .....	25	1 50
<b>Fine Mixed Varieties</b> .....	15	75
<b>ORNITHOGALUM Arabicum</b> (Star of Bethlehem) ..	40	2 50

<b>SPARAXIS.</b> 10 Choice Named Varieties ...	25	1 50
<b>Choice Mixed Colors</b> .....	20	75



Nerine Corusea major



# Bulbs for Naturalizing and Acclimating in Lawns Meadows, Wild Gardens and Woodlands

**THE ART OF THE LANDSCAPE GARDENER.** In laying out and beautifying the home grounds, is to make the place Nature's garden all the year round, every month in the year. Some, however, overlook the fact of planting perennial bulbs, that is, hardy bulbs that will flower from year to year, multiply, and increase, so that they have the appearance of part of the landscape that has stood for years. To gain immediate effect, bulbs should be planted liberally. Beautiful and natural effects may be produced by planting many of the hardier kinds of spring-flowering bulbs in masses among trees, in the herbaceous border, or around and among clumps of shrubbery, or even in the edges of lawn or pasture. Only such bulbs as are perfectly hardy, and when once planted will flourish and increase from year to year without further care, should be employed.

The following varieties are among the hardiest and most attractive for naturalizing in this manner:

	Doz.	100	1 000
<b>CAMASSIA esculenta</b> (Indian Quamash) ...	\$0 25	\$1 50	
<b>Chionodoxa (Glory-of-the-Snow)</b>			
<b>Luciliae</b> .....	25	1 25	\$10 00
<b>Sardensis.</b> Intense deep blue .....	25	1 50	
<b>Gigantea.</b> Usually large flowers of lovely lilac-blue .....	35	2 00	

## Colchicums (Autumn Crocus)

July and August delivery

<b>Autumnale</b> (commonly called Meadow Safron). The rosy lilac blossoms appear from September to November .....	75	5 50	50 00
<b>Autumnale album.</b> A white variety of above. ....	1 50	10 50	100 00
<b>Autumnale plenum.</b> Double rose .....	1 00	7 00	65 00
<b>Autumnale, Mixed.</b> .....	50	3 75	35 00
<b>Montanum.</b> Rose to blush-white; 3 inches high; flowers in February. From Turkey .....	40	2 00	15 00
<b>Parkinsoni.</b> Peculiar checkered markings on violet-purple flowers. Petals reflexed. Flowers in October .....	40	2 00	15 00
<b>Speciosum.</b> Large rosy purple flowers appear in September .....	40	2 00	15 00

## Crown Imperials (*Fritillaria imperialis*)

	Doz.	100
<b>Eight Varieties, to name</b> .....	\$3 00	\$25 00
<b>Good Varieties, Mixed</b> .....	1 25	7 50
<b>FRITILLARIA Meleagris</b> (Snake's Head, or Guinea Hen Flower). An elegant species, growing from 10 to 18 inches high, bearing in spring curious drooping bell-shaped flowers .....	75	5 00
<b>ERANTHIS hyemalis</b> (Winter Aconite) .....	25	1 50

## Erythronium (Giant Dog's-Tooth Violet)

<b>Americanum.</b> Large cream-colored flowers with maroon band at base; leaves richly mottled .....	Doz.	100
<b>Dens canis.</b> Mixed varieties .....	\$0 50	\$2 50
	25	1 50

## Leucojum

	Doz.	100	1,000
<b>Vernum</b> (Spring Snowflake) .....	\$0 25	\$1 50	\$12 00
<b>Aestivum.</b> Snow-white, resembling snowdrop .....	25	1 50	12 00

## Lilium

<b>Canadense, Mixed</b> (Canadian Lily) .....	8 00	75 00
<b>Superbum</b> (Turk's-Cap Lily) .....	10 00	
<b>Candidum</b> (Annunciation Lily) .....	7 50	
<b>LILY-OF-THE-VALLEY.</b> Clumps. These will throw from 15 to 20 spikes of flowers .....	3 50	25 00
<b>NARCISSUS.</b> See pages 8 to 10.		
<b>ORNITHOGALUM umbellatum</b> .....	1 25	12 00

## Scilla

<b>Sibirica</b> (Blue Squill) .....	1 25	10 00
<b>Campanulata</b> (Bell-Flower Squill) .....	20	1 25
<b>Campanulata, Blue.</b> .....	1 25	10 00
<b>Campanulata, Rose.</b> .....	1 50	12 00
<b>Campanulata, White.</b> .....	1 50	12 00
<b>Campanulata, Mixed.</b> .....	1 00	8 00
<b>SNOWDROP, Single-flowering.</b> .....	75	5 00

## Trillium

	Each	Doz.	100
<b>Grandiflorum</b> (Great American Wood Lily). Perfectly hardy, growing and flowering profusely in partially shaded nooks about the lawn, under trees, etc. The flowers are large, of the finest white, changing in a few days to soft rose .....	\$0 10	\$0 75	\$6 00
<b>Erectum.</b> Purple wood lily; earliest to flower ..	10	75	6 00



*Narcissus poeticus* (Poet's Narcissus), Naturalized (see page 9)



Old-fashioned Gardening

# Hardy Perennial and Old-Fashioned Flowers

THAT CAN BE PRODUCED FROM SEED SOWN IN LATE SUMMER AND FALL

**Cultural Directions.**—Perennial seed sown in the late **summer** and **fall** will flower the following year—**spring, summer** or **fall**, according to the variety. The **seed** should be sown carefully, the same as any choice seed, in **well-drained pots**, or **shallow boxes** or **pans**. Soil should be light and fairly rich, with about one-eighth coarse sand added, after sowing cover lightly with well-sifted soil. When plants have become **large enough** to handle, “**prick out**” about 2 inches apart, more if you have the room, in shallow **boxes** or **frames**, and again when large enough; set out in the **open** in **well-prepared ground**. If this is done in the fall, the **young plants** should be **lightly covered** with leaves or short stable manure; this will act as a slight protection, and will be conducive to their thriftiness and **next season’s growth**.

**BODDINGTON’S QUALITY MIXTURE OF DWARF PERENNIAL SEEDS** for wild gardens and woodlands. Pkt. 25 cts., ½ oz. 75 cts., oz. \$1.30, ¼ lb. \$5.

**BODDINGTON’S QUALITY MIXTURE OF TALL PERENNIAL SEEDS** for wild gardens and woodlands. Pkt. 25 cts., ½ oz. 75 cts., oz. \$1.30, ¼ lb. \$5.

## GILIA CORONOPIFOLIA

One of the most beautiful biennials we have. This remarkable plant is unique from the fact that it has been lost to view for a number of years. This is surprising considering the beauty and general worth of this delightful plant. The flowers are borne in clusters and are of a bright shade of scarlet and most effective,—should be better known and extensively grown. They may be grown as pot plants and will flower well in 5- and 6-inch pots. The brilliant scarlet flowers make it a grand subject for decoration in the conservatory. **Pkt. 25 cts., \$1 for 5; large pkt. 50 cts., \$1.25 for 3.**

	Height feet	Color	Time of flowering	Price per pkt.		Height feet	Color	Time of flowering	Price per pkt.
<b>Acanthus</b> (Bear’s Breech) lati- folius .....	2	Purple	Aug.Sept.	\$0 05	<b>Adenophora</b> (Bellfl’r) Potaninii..	1½	Lt. blue	Jy-Sp. ¼ oz.	40c. \$0 10
mollis .....	1	Rose	Aug.Sept.	05	Potaninii alba .....	1½	White	Jly-Sep.	10
<b>Achillea</b> (Yarrow) ptarmica fl. pl., “The Pearl” .....	2	White	Ju. Jly.	½ oz. 75c. 25	<b>Adonis</b> (Ox-eye) autumnalis.....	1	Red	Fall	oz. 30c. 05
<b>Aconitum</b> (Monkshood, or Hel- met Flower) Napellus .....	3	Dk blue	Aug.Sep.	oz. 75c. 10	vernalis .....	¾	Yellow	June	05
Napellus flore albo .....	3	White	Aug.Sep.	10	<b>Agrostemma</b> (Rose Campion) coronaria (Mullein Pink).....	2½	Pink	June, Jly. oz.	30c. 05
Wilsoni .....	4	Blue	Sept.	50	coronaria atropurpurea.....	2½	Purple	June, Jly. oz.	30c. 05
pyrenaicum .....	3	Yellow	Aug.Sep.	10	coronaria bicolor .....	3	Pk. & wh.	June, Jly. oz.	30c. 05
<b>Actaea</b> (Baneberry) spicata .....	3	White	June	10	coronaria alba .....	3	White	June, Jly. oz.	30c. 05
					Flos-Jovis (Flower of Jove) .....	3	Dk. pink	June, Jly. oz.	30c. 05
					Flos-Jovis alba .....	3	White	June, Jly. oz.	30c. 05
					Mixed .....	2½	Various	June, Jly. oz.	25c. 05

HARDY PERENNIAL AND OLD-FASHIONED FLOWERS, continued

	Height feet	Color	Time of flowering	Price per pkt. \$o 10		Height feet	Color	Time of flowering	Price per pkt. \$o 10
<b>Ajuga</b> (Bugle Flower)					<b>Campanula</b>				
metallica crispa (creeping)...	½	Blue	May		Media, Single White .....	3	White	Sum.	oz. \$1. 05
<b>Alstroemeria</b> (Chilian Lily)					Media, Single Striped .....	3	Striped	Summer	oz. \$1. 05
Chilensis .....	2	Ro, wh, or.	July	¼ oz. 60c. 25	Media, Single Mixed .....	3	All colors	Summer	oz. 75c. 05
<b>Alyssum</b> argenteum .....	1	Yellow	June	½ oz. 25c. 10	Media, Rosy Carmine .....	3	Rose	Summer	25
saxatile .....	1	B. yellow	June	oz. 40c. 10	Media, Imperialis .....	3	Mixed	Summer	25
saxatile compactum (Basket of Gold) .....	1	Yellow	June	oz. 60c. 15	calycanthea (Cup and Saucer) 2		Blue	Summer	¼ oz. 60c. 10
<b>Anchusa</b> (Alkanet) Barrelieri ..	2	Dark blue	July	25	calycanthea alba .....	2	White	Summer	¼ oz. 60c. 10
Italica .....	2	Pale blue	July	10	calycanthea rosea .....	2	Bright rose	Summer	¼ oz. 60c. 10
Italica, Dropmore var. ....	2	Deep Blue	June, July	25	calycanthea, Mixed .....		Various	Summer	¼ oz. 40c. 05
<b>Anemone</b> (Windflower)					persicifolia grandiflora .....	3	Blue	June, July	15
apennina .....	½	Blue	Spring	25	persicifolia grandiflora alba ..	4	White	June, July	15
fulgens .....	1	Scarlet	Spring	50	persicifolia grandiflora Mær- heimii .....	3	Dbl., white	June, July	50
Honorine Joubert .....	3	Pure white	August	25	pyramidalis (Chimney Bell- flower) .....	5	Blue	Late sum.	oz. \$1. 05
St. Brigid .....	1	Mixed	Spring	15	pyramidalis alba .....	5	White	Late sum.	oz. \$1. 05
<b>Anthemium</b> (Marguerite) Kel- wayi .....	1½	Yellow	July	¼ oz. 25c. 10	pyramidalis compacta .....	5	Blue	Late summer	25
<b>Anthericum</b> (Hedge Flower)					pyramidalis compacta alba ..	5	White	Late summer	25
Liliago (St. Bernard's Lily) ...	2	White	May, June	oz. \$1. 10	<b>Cassia</b> (Wild Senna) lævigata. 3½		Yellow	July, Aug.	oz. 50c. 05
<b>Aquilegia</b> (Columbine)					Marylandica .....	3½	D'p yellow	July, Aug.	oz. 75c. 10
Californica hybrida .....	2	Mixed	May, Ju.	¼ oz. 60c. 10	<b>Catananche</b> cœrulea .....	1½	Pale violet	Summer	oz. 50c. 05
Canadensis (Canada Col.) .....	2	Yellow	Summer	¼ oz. 60c. 10	<b>Centaurea</b> (Cornflower)				
chrysantha .....	3	Canary	Summer	¼ oz. \$1. 10	montana carnea .....	2	Red	Summer	15
chrysantha grandiflora alba ..	3	White	Sum.	¼ oz. 60c. 10	sagittifolia (new) .....	3	Purple	Summer	50
cœrulea (Rocky Mt. Col.) .....	3	Pale blue	Sum.	½ oz. 75c. 25	montana .....	2	Blue	Summer	oz. 75c. 10
cœrulea fl. pl. ....	3	Blue	Summer	25	montana alba .....	2	White	Summer	10
glandulosa .....	2	Deep blue	Summer	½ oz. \$1 25	orientalis .....	2½	Pale yel.	Summer	05
Helenæ .....	3	Blue & wh.	Summer	25	Ruthenica .....	2½	Straw-col.	Summer	10
nivea grandiflora .....	2	Pure white	Summer	¼ oz. 15c. 05	<b>Cephalaria</b> (Round-Head)				
Rose Queen .....	3	Rose	Summer	25	alpina .....	6	Sul. yel.	July, August	10
Skinneri hybrida fl. pl. ....	3	Dbl. crim.	Summer	¼ oz. 30c. 10	<b>Cerastium tomentosum</b> .....	¾	White	Summer	25
Stuarti .....	2	Pale blue	Summer	50	<b>Chelone</b> (Turtle-Head)				
Erskine Park Hybrids .....	3	Mixed col.	Summer	oz. \$1. 15	barbata cocinea .....	2	Red	Summer	oz. 75c. 10
Sutton's Pink .....	2	Rose-pink	Summer	25	barbata Torreyi .....	3	Coral-red	Summer	oz. 75c. 10
<b>Arabis</b> (Rock Cress) alpina .....	¾	Pure white	Spring	¼ oz. 25c 10	Lyoniæ .....	2	Deep red	Late sum.	oz. 75c. 10
<b>Armeria</b> (Thrift) formosa .....	1	Rosy pink	Sp to fall	¼ oz. 25c. 10	<b>Cheiranthus Kewensis</b> .....	2	Various	Winter	25
formosa alba .....	1	White	Sp to fall	¼ oz. 25c. 10	<b>Chrysanthemum</b> (Moonpenny Daisy)				
<b>Artemisia</b> (Old Man) argentea ..	1	Silver fol.	Aug., Sept.	oz. 25c. 05	maximum, Shasta .....	1½	White	Summer	¼ oz. 50c. 10
<b>Asclepias</b> tuberosa .....	4	Orange	Aug., Sept.	10	maximum, Princesa Henry. 1½		White	Summer	¼ oz. 40c. 10
<b>Asperula</b> (Sweet Woodruff)					maximum, Triumph .....	2	Pure white	Summer	¼ oz. 40c. 10
odorata .....	1½	White	May	¼ oz. 25c. 05	maximum, King Edward VII. 2		Glist. white	Summer	¼ oz. 75c. 15
<b>Asphodelus</b> (King's Spear)					<b>Clematis</b> (Virgin's Bower)				
albus .....	3	White	Summer	½ oz. 75c. 10	coccinea .....	6	scarlet	Summer	10
luteus .....	3	Yellow	Summer	¼ oz. 50c. 10	crispa .....	6	Purple	Summer	25
<b>Aster</b> (Michaelmas Daisy)					Davidiana .....	5	Lilac	Summer	¼ oz. 50c. 15
alpinus speciosus .....	1	Dark blue	Fall	¼ oz. 50c. 10	Flammula .....	10	White	Summer	¼ oz. 25c. 10
alpinus superbus .....	1	Blue	Fall	¼ oz. 50c. 10	paniculata .....	10 to 30	White	Summer	¼ oz. 25c. 10
Bessarabicus .....	3	Violet	Fall	¼ oz. 75c. 15	<b>Coreopsis</b> Grandiflora .....	2	Rich yel.	Summer	oz. 75c. 10
niveus .....	3	White	Fall	¼ oz. 75c. 15	lanceolata .....	2	Yellow	Summer	¼ oz. 40c. 10
Novæ-Angliæ .....	4	Mixed	Fall	¼ oz. 75c. 15	<b>Corydalis</b> (Fumitory) nobilis ..	1	Yellow	May, June	10
Novi-Belgii .....	4	Blue	Fall	¼ oz. 75c. 15	<b>Cowslip</b> ( <i>Primula officinalis</i> ) ..	1	Yellow	Spring	10
Novi-Belgii, J. Wood .....	4	Dark blue	Fall	¼ oz. \$1. 25	<b>Cyclamen</b> (Hardy Species)				
Novi-Belgii, Purity .....	4	White	Fall	¼ oz. \$1. 25	Coum .....	¾	Rosy crim.	Spring	25
Pyramidalis hybridus .....	4	Blue	Fall	¼ oz. 50c. 10	Europæum .....	¾	Pur., white	Spring	25
Shortii .....	3	Lav.-blue	Fall	¼ oz. 75c. 15	Neapolitanum .....	¾	Red-pur.	Spring	25
subcœruleus .....	4	Pale helio.	Summer	¼ oz. \$1. 25	<b>Delphinium</b> (Larkspur)				
Townshendii .....	2	Lilac	Jul, Oct.	¼ oz. \$1. 25	elatum hybridum (Bee Lark- spur) .....	5	Blue	Summer	oz. 50c 05
<b>Astilbe</b> Davidii .....	4	Mauve	Sum.	¼ oz. \$1. 25	elatum celestinum .....	3	Light blue	Midsum.	oz. \$1. 10
<b>Aubrietia</b> (False Wall Cress)					formosum .....	2	Dark blue	Summer	oz. \$1. 10
deltoida grandiflora (trailing) ½		Purple	Early summer	25	formosum celestinum .....	2	Sky-blue	Summer	¼ oz. 75c. 10
Græca (trailing) .....	½	Purple	Early summer	15	nudicaule .....	1½	Oran-scar.	Summer	25
Leichtlinii .....	½	Rosy car.	Early summer	50	Chinense .....	3	Light blue	Midsum.	oz. 75c. 05
Mærheimii .....	½	Rose	Spring	50	Chinense album .....	3	White	Midsum.	oz. 75c. 05
<b>Auricula</b> , Alpine, Mixed .....	1	Various	Spring	25	B's Erskine Park Hybrids .....	5	Mixed	Sum.	5 pkts. \$1. 25
<b>Baptisia</b> Australis .....	2	Blue	Ju., Jul.	¼ oz. 15c. 05	Zalil (sulphureum) .....	2½	Yellow	Summer	25
<b>Bocconia</b> (Plume Poppy)					<b>Dictamnus</b> (Gas Plant, or Burn- ing Bush) Fraxinella .....	2	Rosy lilac	June, July	oz. 40c. 05
Japonica .....	4	White	Summer	¼ oz. 15c. 05	Fraxinella alba .....	2½	White	June, July	oz. 75c. 10
<b>Boltonia</b> (Chamomile)					<b>Digitalis</b> (Foxglove)				
asteroides .....	7	Flesh-color	Fall	10	gloxiniæflora alba .....	3	White	Summer	oz. 50c. 05
latisquama .....	6	Pink, lav.	Fall	¼ oz. 75c. 25	gloxiniæflora lilacina .....	3	Lilac	Summer	oz. 50c. 05
<b>Callirhoe</b> (Poppy Mallow)					gloxiniæflora purpurea .....	3	Purple	Summer	oz. 50c. 05
involuta .....	½	Crim., wh.	Summer	10	gloxiniæflora rosea .....	3	Rose	Summer	oz. 50c 05
<b>Campanula</b> (Bell Flower)					gloxiniæflora lutea .....	3	Yellow	Summer	oz. 50c. 05
carpatica compacta .....	¾	Blue	Summer	¼ oz. 25c. 05	gloxiniæflora. Mixed .....	3	Mixed	Summer	oz. 40c. 05
carpatica alba .....	¾	White	Summer	¼ oz. 25c. 05	lanata .....	2	Purplish	Summer	05
glomerata (Clust'd Bell Flo.) 1½		Deep blue	Ju.-Aug.	¼ oz. 40c. 10	purpurea monstrosa alba .....	3	White	Summer	oz. 75c. 10
lactifolia .....	2	Pale blue	Summer	25	purpurea monstrosa rubra .....	3	Red	Summer	oz. 75c. 10
Media (Canterbury Bells).					purpurea monstrosa rosea .....	3	Rose	Summer	oz. 75c. 10
Double White .....	3	White	Summer	¼ oz. 50c. 10	purpurea monstrosa, Mixed ..	3	Mixed	Summer	oz. 75c. 10
Media, Double Lavender .....	3	Lavender	Summer	¼ oz. 50c. 10	maculata Iveryana .....	3	Spotted	Summer	oz. \$1. 10
Media, Double Blue .....	3	Blue	Summer	¼ oz. 50c. 10	<b>Dodecatheon</b> (American Cowslip)				
Media, Double Rose .....	3	Rose	Summer	¼ oz. 50c. 10	Media .....	1	Red'h pur.	June	25
Media, Double Mixed .....	3	All colors	Summer	oz. \$1. 50. 05	<b>Doronicum</b> Caucasicum .....	3	Yellow	Spring	25
Media, Single Rose .....	3	Rose	Summer	oz. \$1. 05					
Media, Single Blue .....	3	Blue	Summer	oz. \$1. 05					

## HARDY PERENNIAL AND OLD-FASHIONED FLOWERS, continued

	Height feet	Color	Time of flowering	Price per pkt.		Height feet	Color	Time of flowering	Price per pat.
<b>Dracocephalum</b> (Dragon's Head). <i>Altaiense</i> .....	2	Blue	Summer	\$0 10	<b>Hollyhock</b>				
<b>Echinacea—Helianthus</b>					Chater's Lilac.....	6		Midsum. ½ oz.	50c. \$0 10
New Red Sunflower.....	4		August	25	Chater's Peach Blossom.....	6		Midsum. ½ oz.	50c. 10
<b>Echinops</b> Ritro (Globe Thistle). 3	Blue		Fall	oz. 50c. 10	Chater's Rose.....	6		Midsum. ½ oz.	50c. 10
<b>Epilobium</b> (Willow Herb)					Chater's Salmon.....	6		Midsum. ½ oz.	50c. 10
angustifolium.....	4 to 5	Purp.-rose	Summer	10	Chater's Scarlet.....	6		Midsum. ½ oz.	50c. 10
<b>Eremurus</b> Himalaicus.....	5	White	Summer	25	Chater's Snow-white.....	6		Midsum. ½ oz.	50c. 10
<b>Erigeron</b> (Orange Daisy)					Chater's Mixed.....	6		Midsum. ½ oz.	50c. 10
aurantiacus hybridus.....	1	Orange	Ey. sum.	¼ oz. 75c. 10	Allegheny Mixed.....	6		Midsum. oz.	\$1. 10
speciosus grandiflorus.....	2	Mixed	Early summer	25	Single Finest Mixed.....	6		Midsum. oz.	\$1. 10
<b>Erinus</b> alpinus.....	¼	Pur.-red	Spring	25	<b>Incarvillea</b> (Hardy Gloxinia)				
<b>Eryngium</b> (Sea Holly)					Delavayi.....	2	Pink	Midsum. ½ oz.	75c. 25
alpinum.....	2½	Pale blue	August	10	<b>Inula</b> grandiflora.....	2	Or. yellow	Summer	25
amethystinum.....	3	Amethyst	Summer	¼ oz. \$1 10	<b>Lavandula</b> (Lavender) vera.....	1½	Lavender	Midsum. oz.	60c. 05
maritimum.....	1½	White	August	10	<b>Lathyrus</b> (Everlasting Sweet Pea)				
planum.....	2½	Light blue	August	05	latifolius, Pink Beauty.....	10	Pink	Midsum. oz.	40c. 10
<b>Eupatorium</b> (Thoroughwort)					latifolius roseus.....	10	Rose	Midsum. oz.	40c. 10
ageratoides.....	3 to 4	White	Aug., Sept.	oz. \$1. 10	latifolius albus.....	10	White	Midsum. oz.	40c. 10
Fraseri.....	1	White	Late sum.	oz. \$1. 10	<b>Leontopodium</b> (Alpine Sunflower, or Edelweiss)				
<b>Funkia</b> (Plantain Lily)					alpinum.....	½	White	Midsummer	25
caerulea.....	2	Blue	Summer	10	<b>Liatris</b> (Blazing Star)				
cordata aureo-variegata.....	2	White	Summer	10	scariosa præcox.....	3½	Purple	July-September	10
ovata.....	2	Blue	Summer	10	spicata.....	2½	Purple	July-September	10
Sieboldi hybrids.....	2	Mixed	Summer	10	<b>Linum</b> (Flax) perenne.....	1½	Blue	July-September	10
<b>Gaillardia</b> (Blanket Flower)					<b>Lobelia</b> (Cardinal Flower)				
grandiflora vera.....	1½	Yellow	Summer	oz. 60c. 05	cardinalis.....	2	Fiery red	August, Sept.	25
grandiflora maxima.....	1½	Golden	Summer	oz. 75c. 05	cardinalis Nanseniana.....	2	Fiery red	August, Sept.	50
kermesina splendens.....	1½	Crimson	Summer	¼ oz. \$1. 10	fulgens, Best Hybrids.....	2	Various	August, Sept.	25
sulphurea oculata.....	1½	Yellow	Summer	oz. \$1. 25 10	fulgens, Queen Victoria.....	2	Scarlet	August, Sept.	25
Finest Mixed.....	1½	All colors	Summer	oz. 75c. 05	syphilitica.....	2	Blue	August, Sept.	15
Kelway's New Hy'ds, Mixed.....	1½	All colors	Sum.	5 pkts. \$1. 25	<b>Lupinus</b> (Lupine) arboreus.....	4	Yellow	June-September	10
<b>Galega</b> (Goat's Rue) officinalis. 3	Blue		Early sum.	oz. 40c. 05	arboreus, Snow Queen.....	4	White	June-Sept. oz.	\$1. 25 15
officinalis alba.....	3	White	Early sum.	oz. 75c. 05	Nootkatensis.....	5	Blue	June-September	25
officinalis rosea.....	3	Rose	Early sum.	oz. \$1. 10	polyphyllus.....	4	Blue	June-Sept. oz.	\$1. 25 05
<b>Gaura</b> Lindheimeri.....	3½	Rosy white	July-Sept.	oz. 30c. 05	polyphyllus roseus.....	4	Rose-pink	June-Sept. oz.	\$1. 75 15
<b>Gentiana</b> acaulis.....	1½	Blue	Ey. sum.	¼ oz. 75c. 10	polyphyllus, Mixed.....	4	Various	June-Sept. oz.	25c. 05
crenata (Fringed Gentian).....	1½	Blte	Early sum.	25	<b>Lychnis</b> (Campion) alpina.....	½	Rose	May, June	10
<b>Geranium</b> (Lady Pelargonium)					Chalcedonica.....	2½	Scarlet	May, June oz.	40c. 05
sanguineum.....	2	Deep pink	Early sum.	10	fulgens.....	2½	Red	My, Jun. ¼ oz.	40c. 10
<b>Geum</b> (Avens) coccineum.....	1½	Scarlet	Early sum.	oz. \$1. 10	Haageana.....	1	Or.-scarlet	My, Jun. ¼ oz.	25c. 10
coccineum atrosanguineum					Haageana fol. atropurpurea... 1	Or.-scarlet	My, Jun. ¼ oz.	25c. 10	
fl. pl.....	1½	Dbl. scar.	Ey. sum.	¼ oz. 50c. 10	viscaria splendens.....	1½	Deep pink	May, Jun. oz.	50c. 05
Heldreichii.....	1½	Orange	Early sum.	25	<b>Lysimachia</b> (Creeping Jenny)				
<b>Glaucium</b> Leiocarpum.....	1½	Or. scarlet	June-Aug.	25	Japonica.....		Yellow	Summer	10
<b>Gunnera</b> scabra.....	10	Or. foliage	Summer	25	<b>Lythrum</b> (Rose Loosestrife)				
scabra major.....	10	Or. foliage	Summer	25	roseum superbum.....	3½	Rose	July, Sept. oz.	30c. 05
<b>Gypsophila</b> (Baby's Breath)					salicaria.....	3½	Purple	July-Sept. oz.	30c. 05
acutifolia.....	2	White	July	oz. 50c. 05	<b>Malva</b> (Mallow) moschata.....	5	Crimson	July-Sept. oz.	\$1. 10
paniculata.....	2	White	Early sum.	oz. 50c. 05	moschata flora alba.....	5	White	July-Sept. oz.	\$1. 10
repens.....	1	White	Early sum.	05	<b>Meconosopsis</b> Cambrica.....	1	Yellow	Summer	10
<b>Harpalum</b> (Sunflower) rigidum. 4	Yellow		Late sum.	10	Cambrica fl. pl.....	1	Yellow	Summer	25
<b>Helenium</b> (Sneeze-wort)					Wallachii.....	4½	Pale blue	July, August	50
autumnale.....	6	Yellow	L. sum.	¼ oz. 30c. 05	integrifolia.....	3½	Yellow	Aug., September	50
autumnale superbum.....	6	Yellow	Late sum.	25	<b>Michauxia</b> campanuloides.....	4	White	June, July	50
Bigelovii.....	3	Yellow	Late sum.	25	<b>Mimulus</b> cardinalis.....	1½	Or. & Scar.	Summer	10
Bolanderi.....	2½	Yellow	Late sum.	25	cupreus, Orswce Bismarck... ½	Pur.-crim.	Summer	10	
Hoopesii.....	2½	Yellow	L. sum.	¼ oz. 30c. 05	<b>Monarda</b> (Oswego Tea, or Bee Balm) didyma.....	3	Crimson	Jul., Sep. ¼ oz.	25c. 05
<b>Helianthus</b> (Sunflower)					<b>Myosotidum</b> nobile.....	1½	Blu. & wh.	Spring	50
Maximiliani.....	10	Yellow	Late sum.	10	<b>Myosotis</b> (Forget-me-not)				
Perennial, Mixed.....	3 to 6	Various	June, Sept.	oz. 30c. 05	alpestris.....	½	Blue	Spring ¼ oz.	30c. 10
<b>Heliopsis</b> (Orange Flower)					alpestris, Eliza Fonrobert... ½	Sky-blue	Spring ¼ oz.	30c. 10	
Pitcheriana.....	3	Orange	Late sum.	oz. 75c. 10	alpestris, Victoria.....	½	Sky-blue	Spring ½ oz.	25c. 15
Pitcheriana semi-plena.....	2½	G. yellow	Summer	15	dissitiflora.....	½	Blue	Spring	10
<b>Hesperis</b> (Sweet Rocket)					palustris.....	½	Blue	Spring ½ oz.	25c. 15
matronalis, white.....	3 to 4	White	Midsum.	oz. 40c. 05	palustris grandiflora.....	½	Deep blue	Spring ½ oz.	30c. 15
matronalis, lilac.....	3 to 4	Lilac	Midsum.	oz. 50c. 05	semperflorens.....	1	Deep blue	Spg., aut. ½ oz.	30c. 15
matronalis nana candidissima. 2	White		Midsum.	oz. \$1. 25 10	Royal blue.....	1	Royal blue	Spring ½ oz.	50c. 15
<b>Heuchera</b> (Alum Root)					<b>Oenothera</b> (Evening Primrose)				
Brizoides.....	2	Reddish	Summer	15	Fraseri.....	1½	Yellow	Jun-Sep. ¼ oz.	50c. 10
hybrida grandiflora.....	2	Pink	Midsummer	25	fruticosa major.....	2	Gold. yel.	June-Aug. oz.	75c. 10
sanguinea.....	2	Coral-red	Midsummer	25	fruticosa Youngii.....	1½	Yellow	June-August	25
splendens.....	2	Deep red	Midsummer	25	Lamarckiana.....	2	Gold. yel.	June-Aug. oz.	25c. 05
<b>Hibiscus</b> (Marsh Mallow)					Missouriensis (macrocarpa) .. 1	Gold. yel.	Summer ½ oz.	30c. 15	
Africanus, Crimson Eye.....	4	Pure white	Midsum.	oz. 75c. 10	rosa Mexicana.....	1½	Pink	Summer oz.	75c. 05
Golden Bowl.....	5	Yellow	Midsum.	oz. 75c. 10	taraxacifolia alba.....	1½	White	Summer	10
moscheutos roseus.....	3	Rose	Midsum.	oz. 60c. 10	<b>Papaver</b> (Poppy)				
<b>Hypericum</b> (St. John's Wort)					alpinum, Mixed.....	1	Various	Summer	10
crenulatum majus.....	2	Yellow	Midsummer	10	bracteatum hybridum.....	2½	Red	Summer oz.	\$1. 10
<b>Hollyhock</b> (Mallow)					bracteatum Livermere.....	2½	Crimson	Summer ¼ oz.	50c. 10
Chater's Apple Blossom.....	6		Midsum.	½ oz. 50c. 10	involutum maximum.....	2½	Red	Summer oz.	50c. 05
Chater's Bright Pink.....	6		Midsum.	½ oz. 50c. 10	<b>Nudicaule</b> (Iceland Poppy)				
Chater's Blood-red.....	6		Midsum.	½ oz. 50c. 10	Mixed.....	1	Mix. colors	Summer oz.	\$1. 05
Chater's Canary-yellow.....	6		Midsum.	½ oz. 50c. 10	orientale, Blush Queen.....	3	Pink	Summer ½ oz.	40c. 10
Chater's Crimson.....	6		Midsum.	½ oz. 50c. 10	orientale, Brightness.....	3	Scarlet	Summer ¼ oz.	40c. 10
Chater's Golden Yellow.....	6		Midsum.	½ oz. 50c. 10					

HARDY PERENNIAL AND OLD-FASHIONED FLOWERS, continued

	Height feet	Color	Time of flowering	Price per pkt.		Height feet	Color	Time of flowering	Price per pkt.
<b>Papaver</b>					<b>Stachys</b> (Sea Lavender)				
orientale, Brilliant	3	Crimson	Sum.	¼ oz. 30c. \$0 10	incana hybrida nana	4 in.	Violet	June-Sept.	\$0 10
orientale, Colosseum. Brilliant deep scarlet; immense flow- ers, 7 to 7½ inches across					latifolia	2	Blue	June-September	10
orientale, Goliath	3	Crimson	Midsum.	¼ oz. 40c. 10	sinensis	2	Blue	June-September	10
orientale, Grand Mogul	3	Crimson	Midsum.	¼ oz. 60c. 10	Gmelini	2	Violet-blue	June-September	10
orientale, Mammoth. Bright scarlet flowers; borne on 4- foot stems					<b>Stokesia</b> cyanea (Hardy blue Aster)	2	Blue	Jul.-Oct.	¼ oz. 50c. 10
orientale, Parkmanni	3	Scarlet	Midsum.	¼ oz. 25c. 10	<b>Sweet William</b>				
orientale, Prince of Orange	3	Orange	Midsum.	¼ oz. 30c. 10	Boddington's Auricula-eyed	1½	Mixed	June-Sept.	oz. 75c. 05
orientale, Royal Scarlet	3	Scarlet	Midsum.	¼ oz. 60c. 10	Dark Crimson	1½		June-Sept.	oz. 75c. 05
orientale, Salmon Queen	3	Salmon	Midsum.	¼ oz. 40c. 10	Maroon	1½		June-Sept.	oz. 75c. 05
orientale, Trilby	3	Salmon	Midsum.	¼ oz. 35c. 10	Newport Pink	1½		June-September	15
<b>Pentstemon</b> (Beard Tongue)					Pure White	1½		June-Sept.	oz. 75c. 05
B's gloxinoides	3	Mixed	Jan.-Au.	3 pkts. \$1.25 50	Red	1½		June-Sept.	oz. 75c. 05
Digitalis	3	Pur.-white	June-Aug.	oz. 50c. 05	Scarlet	1½		June-Sept.	oz. 75c. 05
pubescens	3	Rosy pur.	June-August	10	Violet	1½		June-Sept.	oz. 75c. 05
Hartwigii grandiflorus	3	Mixed	June-August	25	Finest Mixed Single	1½		June-Sept.	oz. 30c. 05
<b>Phlox</b> (Flame-Flower)					Boddington's Giant Double Finest Mixed	1½		June-Sept.	oz. \$1.25. 10
decussata, newest hybrids	3	Mixed	June-August	25	Double Rose	1½		June-September	25
<b>Physalis</b> (Chinese Lantern Plant)					<b>Thalictrum</b> (Meadow Rue)				
Franchetti	2	Or.-scarlet	Fall	¼ oz. 30c. 10	adiantifolium	1½	Yellow	Summer	¼ oz. 30c. 10
<b>Physostegia</b> (False Dragon Head)					aquilegifolium	3	Purple	Summer	¼ oz. 30c. 10
speciosa	3½	Pink	Midsum.	¼ oz. 30c. 10	<b>Tradescantia</b> (Spiderwort)				
speciosa alba	3½	White	Midsum.	¼ oz. 40c. 10	Virginica	1	Blue	Summer	05
<b>Pink</b> (Clove Carnation)					<b>Tricyrtis</b> (Japanese Toad Lily)				
Mrs. Sinkins	1	White	Summer	50	hirta	1½	Spld pur.	Summer	10
Homer	1	Scarlet	Summer	50	<b>Trillium</b> sessile, var. Californi- cum	1½	White	Spring	05
<b>Platycodon</b> (Chinese Bell-flower)					<b>Tritoma</b> (Red-Hot Poker; Flame Flower). New sorts, mixed	4	Mixed	Summer	25
Mariesii	1	Blue	Jun.-Oct.	¼ oz. 25c. 10	<b>Trollius</b> (Globe Flower)				
Mariesii album	1	White	Jun.-Oct.	¼ oz. 30c. 10	Caucasicus (Golden Globe)	2	Yellow	Summer	¼ oz. 75c. 25
<b>Polemonium</b> (Jacob's Ladder)					Japonicus fl. pl.	2	Dbl. yel.	Summer	25
cœruleum album	1	White	June-Oct.	oz. 75c. 05	New Hybrids	2	Mixed	Summer	25
cœruleum grandiflorum	1	Deep blue	June-Oct.	oz. 50c. 05	<b>Tunica</b> (Tunica, or Coat Flower)				
Richardsonii	1	Sky-blue	June-July	oz. \$1. 10	saxifraga	½	Pale pur.	Summer	oz. 30c. 05
<b>Polyanthus</b> ( <i>Primula elatior</i> )					<b>Valeriana</b> (Spurred Flower)				
Blue	10 in.		Spring	50	coccinea	2	Scarlet	June-Oct.	oz. 30c. 05
English (selected strain)	10 in.	Mixed	Spring	½ oz. 30c. 10	montana	2	Pink	June-Oct.	¼ oz. \$1. 10
Gold-laced, extra choice	10 in.	Mixed	Spring	25	rubra	2	Red	June-Oct.	oz. 30c. 05
Giant White	1		Spring	½ oz. \$1. 25	rubra flora alba	2	White	June-Oct.	oz. 30c. 05
Giant Yellow	1		Spring	½ oz. \$1. 25	<b>Verbascum</b> (Mullein)				
Giant Crimson	1		Spring	25	Blattaria alba	4	White	July-September	05
Giant Mixed	1		Spring	½ oz. \$1. 25	Libani	4	Yellow	July-September	05
<b>Polyanthus—Primrose</b> (Bunch- flowered). Large-fl'd., Mixed	1	Various	Spring	25	Olympicum	6	Yellow	July-September	10
<b>Primrose</b> , Large-flowered	1	Various	Spring	25	phœnicum	1½	Purple	May, June	05
English ( <i>Primula vulgaris</i> )	1	Yellow	Spring	10	<b>Veronica</b> (Ironweed) candida	2	White	July-August	10
<b>Primula</b> cortusoides amœna (Sieboldi)	10 in.	Various	Spring	50	incana	1	Blue	July, August	10
denticulata	10 in.	Lavender	Spring	10	spicata	1½	Violet-blue	July-Aug.	oz. \$1. 10
denticulata alba	10 in.	White	Spring	10	<b>Viola</b> (Tufted Pansies)				
denticulata Cashmeriana	1	Deep vio.	Spring	10	cornuta alba	½	White	Spring	oz. \$2.50 10
frondosa	½	Lilac-pur.	Spring	10	cornuta Papilio	½	Lilac	Spring	oz. \$2.50 10
Japonica, Mixed	10 in.	Various	Spring	10	cornuta, Perfection	½	Blue	Spring	oz. \$2.50 10
rosea	10 in.	Rose	Spring	10	cornuta, White Perfection	½	White	Spring	oz. \$2.50 10
Sikkimensis	1½	Pale yel.	Spring	10	cornuta lutea	½	Yellow	Spring	oz. \$1. 10
Veitchi (new)	1	Yel. & Ro.	Spring	75	cornuta lutea splendens	½	Orange	Spring	oz. \$1.50 10
<b>Pyrethrum</b> roseum	2	Rose	Spring	¼ oz. 40c. 10	cornuta, Purple Queen	½	Purple	Spring	oz. \$2 50 10
Kelway's Hybrids, Single	2	Mixed	Spring	¼ oz. 35c. 10	cornuta, Mixed	½	Mixed	Spring	oz. \$2. 10
Kelway's Hybrids, Double	2	Mixed	Spring	25	odorata (Sweet Violet)	½	Blue	Spring	¼ oz. 75c. 10
uliginosum	3	White	Midsum.	¼ oz. 35c. 10	<b>SCOTCH, or TUFTED BEDDING PANSIES</b>				
<b>Romneya</b> (California Tree, or Matilija Poppy) Coulteri	5	White	Midsum.	¼ oz. 75c. 25	<b>Boddington's Choice Named Varieties</b>				
<b>Rudbeckia</b> (Cone-Flower)					Archie Grant. Rich royal purple	½ oz.,	\$2 00	50	
bicolor superba	2	Or.-yellow	July-Sept.	oz. 60c. 10	Ardwell Gem. Large ray-ess flower; primrose	"	2 00	50	
laciniata	3 to 3	Yellow	July-September	15	Bullion. Golden-yellow	"	2 50	1 00	
neumannii	3	Or.-yellow	Jul-Sep.	¼ oz. 75c. 15	John Querton. Deep lavender	"	2 00	50	
purpurea hybrida	5	Purple	Jul-Sep.	½ oz. 75c. 15	Marchioness. Pure white	"	2 00	50	
<b>Rocket</b> (Sweet)	1	White	Spring	oz. 30c 05	Rover. Lavender, flaked white	"	2 00	50	
<b>Salvia</b> argentea	3	White	June-Aug.	oz. 50c. 05	Mixed	"	1 50	25	
<b>Saponaria</b> (Soapwort)					<b>Wahlenbergia</b> (Japanese Bell- Flower) grandiflora	1½	Blue	Summer	oz. 75c. 10
ocymoides	¾	Rose	Midsum.	oz. 50c. 05	grandiflora alba	1½	White	Summer	oz. 75c. 10
<b>Saxifraga</b> (cordifolia)					grandiflora plena	1½	D. white	Summer	oz. \$1. 10
Megasia, large-flowering	1	Pink	Spring	25	grandiflora cœrulea plena	1½	Deep blue	Summer	oz. \$1. 10
<b>Scabiosa</b> caucasica (Hardy Blue Scabious)	2	Lavender	Summer	¼ oz. 75c. 10	grandiflora nana	1	Blue	Summer	oz. \$1. 10
Japonica	2	Lilac	Summer	½ oz. 50c 15	grandiflora nana alba	1	White	Summer	oz. \$1. 10
<b>Senecio</b> clivorum	3	Orange	July-September	25	<b>Wallflower</b> (Half-hardy)				
<b>Silphium</b> (Rosin Weed)					Single Fine Mixed	1½	Mixed	Summer	oz. 60c. 05
perfoliatum	6	Yellow	Fall	¼ oz. 75c. 10	Double Finest Mixed	1½	Mixed	Summer	10

ORNAMENTAL GRASSES

In 10 best varieties, per pkt. 10 cts.; collection, 10 varieties, 90 cts.



## Boddington's "Quality" Giant Pansies

Pansy seed to give the best flowering results in the spring should be sown during July and August, if you have not greenhouse facilities. Follow the cultural directions for sowing herbaceous seeds, given on page 16, this catalogue.

Our Giant Pansy Seed during the past season gave unprecedented satisfaction, and every order booked last year was duplicated and increased this year. All the testimonials received mentioned specially the high grade of flowers—color, form and size of the blossoms. This year, by adding improved types, intending customers can absolutely rely on a duplication of last season's success.

### BODDINGTON'S "CHALLENGE" PANSIES (All Giants)

This challenge mixture contains all the finest Giant strains of the leading Pansy specialists in the world—the Giant self colors, the Giant striped and margined, and the Giant blotched—all carefully mixed in proportion. **25 cts. per half-packet, 50 cts. per packet, \$2.50 per quarter-ounce, \$4.25 per half-ounce, \$8 per ounce.**

### BODDINGTON'S GIANT PANSIES TO COLOR NAMED VARIETIES MIXED

For our customers who desire special shades in Pansies, we take pleasure in offering the following mixed named varieties to color.

	½pkt.	Pkt.	¼oz.	½oz.	Oz.		½pkt.	Pkt.	¼oz.	½oz.	Oz.
<b>Light Shades</b> .....	\$0 15	\$0 25	\$1 50	\$2 75	\$5 00	<b>Bronze Shades</b> .....	\$0 15	\$0 25	\$1 50	\$2 75	\$5 00
<b>Dark Shades</b> .....	15	25	1 50	2 75	5 00	<b>Spotted Shades</b> .....	15	25	1 50	2 75	5 00
<b>Yellow Shades</b> .....	15	25	1 50	2 75	5 00	<b>Striped and Mottled</b> .....	15	25	1 50	2 75	5 00
<b>Blue Shades</b> .....	15	25	1 50	2 75	5 00						

### BODDINGTON'S NOVELTY PANSIES

<b>ADONIS.</b> Light blue, with white center.....	Pkt. \$0 25	<b>MAUVE QUEEN.</b> A delicate mauve Pansy, each of the lower three petals marked with a large blotch of distinct carmine... \$0 25
<b>ANDROMEDA.</b> Rosy, with lavender tint; a distinct type...	25	<b>PSYCHE.</b> Violet, bordered white; beautifully waved petals. 25
<b>BRIDESMAID.</b> Giant flowers of rosy white, setting off strikingly the dark blotches of the center. A unique bloom.....	50	<b>RUBY KING.</b> Superb crimson and red shades..... 25
<b>EMPEROR FRANCIS JOSEPH.</b> Pure white, violet spots 25		<b>SNOWFLAKE.</b> Pure white; immense flower..... 25
<b>PEACOCK.</b> A most beautiful vari-colored variety.....	25	<b>VULCAN.</b> Giant brilliant dark red, with five black blotches. 25

The above collection, one packet each of the 10 varieties, for \$2

### BODDINGTON'S "QUALITY" GIANT PANSIES

	Pkt.	¼oz.	Oz.		Pkt.	¼oz.	Oz.
<b>Boddington's "Challenge."</b> For description, see above .....	½pkt., 25 cts.	\$0 50	\$2 50	\$8 00	<b>Giant Orchidaeflora, or Orchid-flowered Pansy.</b> Contains many beautiful shades of gorgeous colors.....	\$0 50	\$2 50
<b>Giant Trimardeau.</b> Mammoth flowering and in a good range of color.....	25	1 00	3 00	<b>Giant Emperor William.</b> Ultramarine-blue..	25	1 00	\$3 00
<b>Giant Masterpiece</b> (Frilled Pansies). Petals beautifully waved. Exquisite colors.....	25	1 50	5 00	<b>Giant Golden Queen.</b> Bright yellow, no eye..	25	1 50	5 00
<b>Giant Cassiers'.</b> A fine strain of large flowers.	50	2 50	8 00	<b>Giant Golden Yellow.</b> Yellow, brown eye....	25	1 00	3 00
<b>Giant Bugnot's Stained.</b> Extra choice flowers, large and plenty of light colors.....	25	1 50	5 00	<b>Giant King of the Blacks</b> (Faust). Black... 25	1 00	3 00	
<b>Giant Mme. Perret.</b> Many fine shades of red.	25	1 25	4 00	<b>Giant President McKinley.</b> Golden yellow, large dark blotch .....	25	1 50	5 00
<b>Giant Fire King.</b> Brilliant red-yellow, with large brown eye .....	25	1 25	4 00	<b>Giant Prince Bismarck.</b> Yellowish bronze .	25	1 00	3 00
<b>Giant Lord Beaconsfield.</b> Deep purple-violet, top petals light blue.....	25	1 00	3 00	<b>Giant Pretiosa.</b> Crimson-rose, white margin..	50	1 75	6 00
<b>Giant Canary Bird.</b> A five-spotted yellow variety on yellow ground.....	25	1 50	5 00	<b>Giant Rosy Lilac.</b> .....	25	1 00	3 00
				<b>Giant Snow Queen.</b> White, center tinged yellow .....	25	1 00	3 00
				<b>Giant Striped</b> .....	25	1 00	3 00
				<b>Giant White.</b> Violet spot; the largest white... 25	1 00	3 00	
				<b>Giant Hydrangea Rose.</b> Very distinct.....	25	1 50	5 00



## "Quality" Christmas-Flowering Sweet Peas

### BODDINGTON'S EXTRA-EARLY CHRISTMAS WHITE SNOWBIRD.

An exceptionally early Sweet Pea for indoor flowering—will bloom six weeks after sowing. Color clear white, upon long stems; habit fairly dwarf, and of exceptionally free-flowering qualities. Without doubt, the finest early white for indoor planting. Pkt. 10 cts., oz. 25 cts., ¼ lb. 75 cts., ½ lb. \$1.25.

**BODDINGTON'S CHRISTMAS PINK.** This is the earliest and most profitable and useful Sweet Pea in cultivation, as by sowing the seed under glass in latter part of August, flowers can be cut from Thanksgiving on during the winter months. Pkt. 10 cts., oz. 15 cts., ¼ lb. 50 cts., ½ lb. 75 cts.

**BODDINGTON'S CHRISTMAS WHITE.** A companion to Christmas Pink. Just as free and profuse a bloomer. Pkt. 10 cts., oz. 15 cts., ¼ lb. 50 cts., ½ lb. 75 cts.

**CANARY.** Similar to the above, but flowers of an exceptionally good yellow. Pkt. 10 cts., oz. 15 cts., ¼ lb. 50 cts., ½ lb. 75 cts.

**FLAMINGO.** Color scarlet; free-flowering and early. Pkt. 25 cts., 5 pkts. for \$1.

**Christmas Meteor.** Scarlet; fine open red flower. Pkt. 25c., oz. 50c., ¼ lb. \$1.50.

**Christmas Captain.** Blue and purple. Pkt. 25 cts., oz. 50 cts., ¼ lb. \$1.50.

**Florence Denzer.** Pure white. Pkt. 10 cts., oz. 15 cts., ¼ lb. 50 cts.

**Greenbrook.** White, standard, slightly touched with lavender. Large orchid-flowering variety. Pkt. 35 cts., oz. \$1.

**Le Marquis.** This is the same color as Princess of Wales, violet; has very large flowers. Pkt. 25 cts., oz. 50 cts., ¼ lb. \$1.50.

**Miss Helen M. Gould.** White, open flower; standard, lilac, marbled. Pkt. 35 cts., oz. \$1.

**Miss Josey Reilly.** Lilac; very large flowers. Pkt. 25 cts., oz. 50 cts., ¼ lb. \$1.50.

**Mrs. E. Wild.** Carmine or dark pink. Pkt. 15 cts., oz. 30 cts., ¼ lb. \$1.

**Mrs. Alex. Wallace.** Lavender. Pkt. 15 cts., oz. 30 cts., ¼ lb. \$1.

**Mrs. Wm. Sim.** Salmon-pink. Pkt. 15 cts., oz. 30 cts., ¼ lb. \$1.

**Mrs. Geo. Lewis.** Large, pure white wavy flower. Pkt. 15 cts., oz. 50 cts.

**Mrs. W. W. Smalley.** Satiny pink. Pkt. 25 cts., oz. 50 cts., ¼ lb. \$1.50.

**Mrs. Hannan.** Deep rose-pink of a very pleasing shade; medium flower. Pkt. 35c., oz. \$1.

**Mrs. F. J. Dolansky.** Daybreak pink. Pkt. 25 cts., oz. 50 cts., ¼ lb. \$1.50.

**Mrs. Chas. H. Totty.** Sky-blue; late. Pkt. 25 cts., oz. 50 cts., ¼ lb. \$1.50.

**Watchung.** Pure white; height 6 feet. Pkt. 10c., oz. 30c., ¼ lb. \$1.

**Wm. J. Stewart.** Blue self. Pkt. 25 cts., oz. 50 cts., ¼ lb. \$1.50.

All these varieties produce quantities of flowers throughout the winter, with from two to five flowers on stems up to 25 inches in length, all growing over 5 feet high, and when well grown reaching the height of 10 feet.

## CINERARIA

**Boddington's Matchless Mixture** is a combination of the three most famous English strains, which we can recommend to those wishing to grow the best. Tall, ½pkt. 60 cts., pkt. \$1. Dwarf, ½pkt. 60 cts., pkt. \$1.

**Stellata** (Star-flowered Cineraria). Tall-growing; excellent as a single specimen for table decoration, or for grouping with splendid effects in corridors and conservatories. ½pkt. 60 cts., pkt. \$1.

## NEW GIANT SWEET SULTAN

(*Centaurea Imperialis*)

This is one of the best cut-flowers, and they are forced very extensively under glass by florists and gardeners through the winter months.

**GIGANTEA, Boddington's Giant Hybrids, Grand Mixture.** Pkt. 25 cts., ¼ oz. 35 cts.

**Boddington's Pure White.**

One of the best white flowers for cutting; large and sweet.

**Armida.** Very delicate color; pink, with white tinge.

**Iphigenia.** Delicate rose-lilac, white center.

**Favorita.** Brilliant rose.

Collection of above 10 varieties, 90 cts. Any of the above kinds, pkt. 10 cts., ¼ oz. 35 cts.

**Graziosa.** Intense dark lilac.

**Lilacina.** Lilac; very distinct.

**Purpurea.** Purple-rose.

**Rosea.** Deep rose.

**Splendens.** Brilliant dark purple.

**Variabilis.** White, marked purple, fading to rose.

## SCHIZANTHUS

**GRANDIFLORUS BODDINGTONII (Boddington's Select Hybrids).** This strain is superior to any of the Schizanthus in cultivation; the flowers are better shaped and the colors are more varied. In habit the plants are very bushy and the flowers are invaluable for cutting; unequalled as a pot-plant. Pkt. 75 cts.

**WISETONIENSIS.** The colors are varied, ranging from white, with yellow center, to pink, with brown center. Most useful as a winter plant, and should be given a place in every greenhouse. Pkt. 50 cts.



Boddington's Extra-Early Christmas White Sweet Pea, Snowbird

## ASPARAGUS

**Plumosus nanus.** \$1 per 100 seeds, 25 cts. per pkt.  
**Sprengeri.** 50 cts. per 100 seeds, 10 cts. per pkt.

## CANDYTUFT

	Pkt.	Oz.
<b>Boddington's Giant Hyacinth-flowered.</b> Large white; best for cut-flowers.....	\$0 25	\$2 00
<b>Empress.</b> (True.) Large white.....	10	50
<b>White Rocket</b> .....	05	30

## Boddington's Pot Myosotis

Forget-me-nots are delightful subjects for flowering indoors at Christmas time. Sown in July and August and potted on, the strain we offer produces fine flowering specimen plants. Pkt. 50 cts., 3 pkts. for \$1.25.

## Calceolaria Hybrida, Boddington's Perfection

The Calceolaria is an easily cultivated plant. July is the best month for sowing the seed. Saved by England's most famous specialist. Monster flowers of rich and varied colors. ½pkt. 60c., pkt. \$1.

## Celosia Thompsonii magnifica (Selected Strain)

(The Osrich Plume Cockscorn)

Sown in July and August makes grand plants for Christmas flowering

	Pkt.
<b>Celosia Thompsonii magnifica.</b> Crimson.....	\$0 50
" " " Pink.....	50
" " " Scarlet.....	50
" " " Golden yellow.....	50
" " " Superb mixture.....	25

## BELLIS PERENNIS (Double Daisy)

	Pkt.
<b>The Bride.</b> Grand Double white.....	\$0 25
<b>Longfellow.</b> Double pink.....	25
<b>Snowball.</b> Double white.....	25
<b>Boddington's Crimson King.</b> Magnificent crimson.....	25
<b>"Quality" Finest Mixed</b> .....	25

**MONSTROSUS ALBUS FL. PL. and ROSEUS FL. PL. Giant English Daisies.** (Novelty, '09.) For strength, robust growth and size of flowers these two new Giant Daisies excel all varieties hitherto disseminated. Each plant producing from 12 to 15 flowers, 2 to 3 inches in diameter. Pkt. 25c., 5 pkts. \$1, ¼ oz. \$1.

# BODDINGTON'S GIGANTIC CYCLAMEN

The seed of Cyclamen is often sown too early in the year; from the middle of August to the end of September is the best time. The seedlings should be grown on to the flowering stage without any check whatever. When grown cool the results are most satisfactory. Boddington's Gigantic Cyclamen are unequalled for size and quality of bloom. A magnificent strain of Cyclamen with flowers of extraordinary size and substance.

- Gigantic White Butterfly.** Pure white; immense flowers.
- Gigantic Snowflake.** The largest of all white Cyclamen.
- Gigantic Cherry-Red.** Most brilliant and effective.
- Gigantic Rose.** Immense flowers of a pleasing shade of light rose.
- Gigantic Pink.** Exquisite shade of soft pink.

**Gigantic Crimson.** Most striking color; under artificial light appears to be almost luminous.

**Gigantic Crimson and White.** A magnificent flower of the largest type.

**Gigantic Syringa Blue.** (New). A charming color.

**Gigantic Lilac.** A very pleasing color, lighting up well at night.

Any of the above varieties, pkt. 50 cts.; 100 seeds, \$2. Collection of 9 varieties as above, one packet each, \$4

**Gigantic Mixed.** A mixture of all the above varieties in proper proportion. Pkt. 50 cts., 100 seeds \$2.

**PRINCESS MAY.** A very pretty type of Cyclamen. Color pink, with suffused blotches of crimson at base of petals. Pkt. 50 cts., 100 seeds \$2.25.

**SALMON QUEEN.** Undoubtedly the most distinct and beautiful salmon color found in Cyclamen. Pkt. 50 cts., 100 seeds \$2.25.

**Salmonium splendens.** The finest salmon-pink variety. Pkt. 50c., 100 seeds \$2.25.

**Rococo.** The flowers, which are beautifully fringed, measures 5 inches in diameter. Pkt. 50 cts., 100 seeds \$2.25.

**Bush Hill Pioneer.** A beautiful new feathered Cyclamen in various colors. Pkt. 50 cts., 100 seeds \$2.25.

## Six Grand Novelty Cyclamens

**Peach Blossom.** An exceptionally handsome variety of an intense rose color. Pkt. 50 cts.

**Purple King.** The best of all crimson varieties and strikingly beautiful. Pkt. 50 cts.

**Phoenix.** Bright cherry-crimson flowers, freely produced. Pkt. 50 cts.

**Rose of Marienthal.** Soft shell-pink; a very pretty variety. Pkt. 50 cts.

**Salmon King.** One of the finest salmon varieties. Pkt. 50 cts.

**Vulcan.** The rich crimson color is very striking and contrasts admirably with the pure white of Butterfly. Pkt. 50 cts.

Collection of the preceding 6 Novelty Cyclamens for \$2.50

## CYCLAMEN, JAMES' NEW SWEET-SCENTED

A fragrant Cyclamen has been quite beyond expectation, nevertheless we have in this splendid novelty a variety having a particularly pleasant odor resembling that of the Honey Locust, or of the Lily-of-the-valley. The colors are pink, flesh-pink with carmine base and white. Pkt. 50 cts.

## MAJESTY MIGNONETTE

Greenhouse-Matured Seed

The grandest of all Mignonettes for indoor forcing. Easy to grow; strong constitution and throwing up a quantity of flower spikes which grow to an immense size. Half pkt. 60 cts., pkt. containing about 500 seeds, \$1.

## ANTIRRHINUM (Snapdragon)

Very popular for winter-flowering under glass.

	Pkt.	1/4oz.
<b>Giant Coral-Red</b> .....	\$0 10	\$0 25
" <b>Queen Victoria.</b> Pure white .....	10	25
" <b>Daybreak.</b> Pink .....	10	25
" <b>Brilliant.</b> Scarlet, yellow and white .....	10	25
" <b>Crescia.</b> Dark scarlet, white and yellow .....	10	25
" <b>Luteum.</b> Yellow .....	10	25
" <b>Firefly.</b> Scarlet .....	10	25
" <b>Fire King.</b> Scarlet, with orange .....	10	50
<b>Queen of the North.</b> White; medium height .....	10	50

## STOCKS, WINTER-FLOWERING

**QUEEN ALEXANDRA.** A splendid variety; flowers delicate rosy lilac, a tint of incomparable beauty. Pkt. 25 cts.

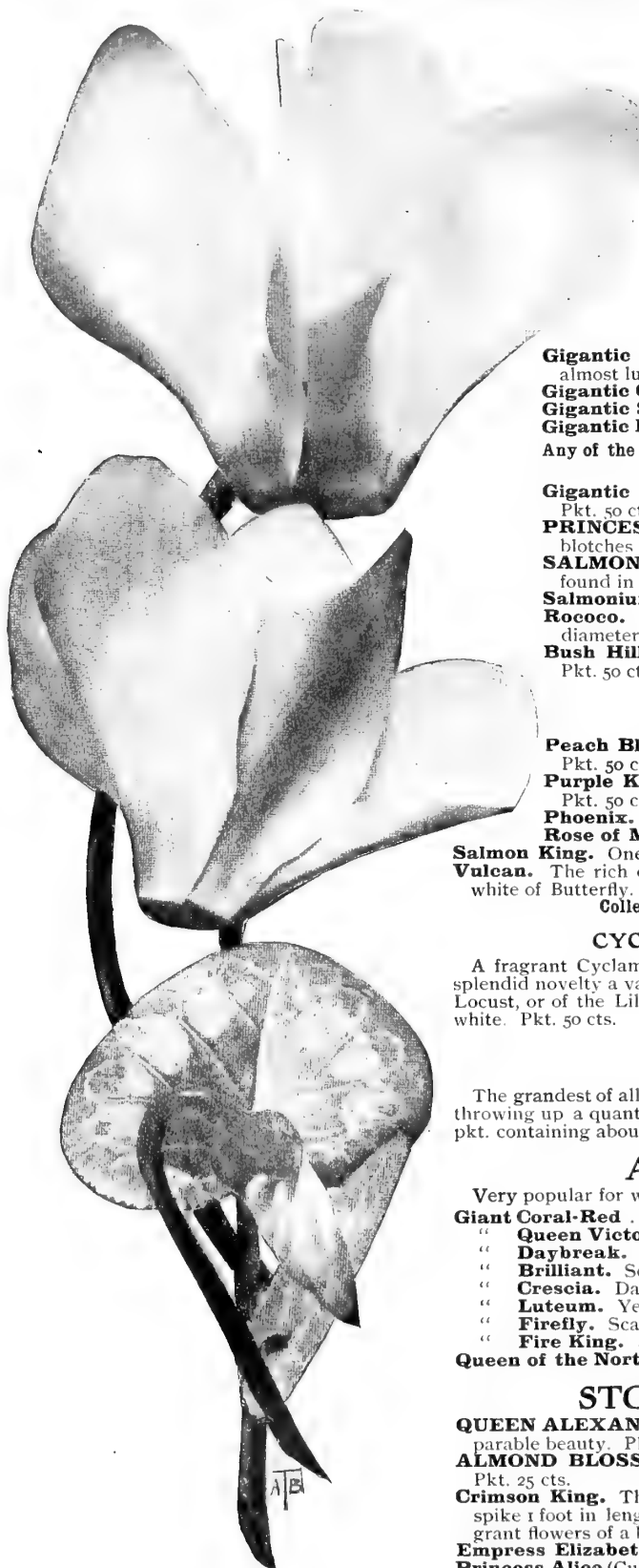
**ALMOND BLOSSOM.** White, shaded carmine, calling to mind an almond blossom. Pkt. 25 cts.

**Crimson King.** The plant attains a height of 2 to 2 1/2 feet and throws a gigantic flower-spike 1 foot in length, around which are a number of side shoots, covered with large, fragrant flowers of a brilliant fiery crimson. Pkt. 25 cts., 5 pkts. for \$1.

**Empress Elizabeth.** Bright carmine. Pkt. 50 cts.

**Princess Alice** (Cut-and-Come-Again). Pure white. Pkt. 25 cts., 1/4oz. \$1.

**Beauty of Nice.** Daybreak-pink. Pkt. 25 cts., 1/4oz. \$1.25.



Boddington's Gigantic Cyclamen

# GARDEN TOOLS, ETC.

## Stakes, Canes, Supports, Etc.

<b>Canes, Japanese Bamboo.</b> 5 to 6 feet, light.....	100	1,000	\$1 00	\$8 00
5 feet, extra heavy .....	1 75	15 00		
6 feet, extra heavy .....	2 25	20 00		
7 feet, extra heavy .....	2 75	25 00		
<b>Blake's Lever Clip.</b> For fastening rose and chrysanthemum wire stakes. A labor-saving device. Blake's Lever Clip is the "tie that binds." It binds the wire to the stakes. A failure is unknown. 1,000 \$1.40, box (500 in a box) 75 cts.				
<b>Carnation Supports, Model Extension—</b>				
Two-ring .....	Doz.	100	\$0 50	\$3 00
Three-ring .....	60	3 50		
<b>Dahlia Poles.</b> No. 22. Round, painted green, with long tapered round spear ends, both ends white; very strong.				
	Doz.	100		
3 feet .....	\$1 00	\$7 00	4 feet .....	\$1 50 \$10 00
3½ feet .....	1 25	9 00	5 feet .....	1 75 12 00
			6 feet .....	2 00 15 00
<b>Plant Stakes.</b> No. 11. Round, painted green.				
	Doz.	100		
2 feet .....	\$0 50	\$3 00	4 feet .....	1 25 9 00
3 feet .....	75	5 50	5 feet, extra heavy	1 50 10 50
			6 feet, extra heavy	2 25 18 00
<b>Galvanized Wire Rose Stakes.</b> No. 8 wire.				
	100	1,000		
3 feet .....	\$1 50	\$12 00	4½ feet .....	\$2 25 \$17 00
3½ feet .....	1 75	13 00	5 feet .....	2 50 19 00
4 feet .....	2 00	15 00	6 feet .....	3 00 23 00
				Each
<b>Shears, Hedge, Never-slip.</b> No. 8 .....				
				\$2 00
No. 9 .....				2 25
No. 10 .....				2 50

**Shears, Boddington's Model French Pruning.** Having been continually asked for a really good, strong practical Shear, we have decided this season to import from France a Shear that we shall in future call the Model. This is the best pruner ever offered; quality unequalled. Each

6¼-inch .....

7-inch .....

8½-inch .....

9½-inch .....

10¼-inch .....

By mail, 10 cts. each extra. Extra springs.....

**Hedge, English.** 8- to 11-inch blade. Four sizes.....



Boddington's Quality Hose

**Hose, Rubber, Boddington's "Quality."** Especially adapted for hard usage in greenhouses and on gravel walks.

¾-inch .....

**Electric Non-Kinkable.** The "Electric" is the best hose on the market. Made of pure rubber by a special process, does not crack or scale, and will not kink. We can supply in any length if advised at time of ordering. ¾-inch, per 25 ft., \$5.50; 50 ft., \$10; 100 ft., \$20.

**Hose Couplings, Brass.** ½-inch and ¾-inch 25 cts. each.

**Hose Menders, Cooper's.** ¾-inch. 10 cts. each, \$1 per doz.

We carry a full line of garden tools and supplies. See our Spring Garden Guide. Mailed free.

# INSECTICIDES, FUNGICIDES, ETC.

**Ant Destroyer.** ¼ lb. 30 cts., ½ lb. 40 cts.

**Bordeaux Mixture.** Dry, 1-lb. box 20 cts., 4 lbs. and over at 15 cts. per lb., 50-lb. keg \$6; liquid, qt. 40 cts., gal. \$1.25.

**Copper Solution, Ammoniated.** One quart of solution to 25 quarts of water. Qt. \$1.

**Caterpillar Lime.** 5-lb. can \$1.

**Edward's English Cyaniding Apparatus.** \$2.75 each; sodium cyanide, \$1.50 per lb.; glass measures, 50 cts.

**Fir Tree Oil.** Pt. 75 cts., qt. \$1.40, ½ gal. \$2.50, gal. \$4.25.

**Flour of Sulphur.** Lb. 10 cts., 10 lbs. 60 cts., 25 lbs. and over at 5 cts. per lb.

**Gishurst's Compound.** 50 cts. per box.

**Hammond's Grape Dust.** 5-lb. package 35 cts., 100-lb. keg \$5.50.

**Hammond's Slug Shot.** Lb. 10 cts., 5-lb. package 30 cts., 10-lb. package 50 cts., 100 lbs. \$4.50.

**Helibore, Powdered.** ½-lb. box 12 cts., 1-lb. box 20 cts., 2-lb. box 35 cts.

**Horicum.** 1 gallon makes 20 gallons for use. Qt. 40 cts., gal. \$1.25.

**Kil-O-Scale.** Gal. \$1.25, 2 gals. \$2.25, 5 gals. \$5, 10 gals. \$10, barrels and half-barrels at 85 cts. per gallon. To 1 gallon add 20 gallons of water.

**Lemon Oil.** Qt. 75 cts., ½ gal. \$1.25, gal. \$2.25, 5 gals. \$10.

**Little's Antipest.** Qt. 75 cts., ½ gal. can \$1, 1 gal. \$2.

**Nicotide.** Pt., sufficient for 32,000 cubic feet, \$2.50; gal. \$15. Fumigators for same, 75 cts. each.

**Nikoteen.** A thorough exterminator of insects. Pt. bottle \$1.50.

**Paris Green.** For the destruction of potato bugs Lb. 50 cts.

**Nico Fume.** Packed in tins, 24 sheets 75 cts., 144 sheets \$3.50, 288 sheets \$6.50.

**Nico Fume Liquid.** Pt. \$1.50, gal. \$10.50.

**Quassia Chips.** Lb. 15 cts., 2 lbs. for 25 cts.

**Scalecide.** For spraying trees, etc. Gal. \$1, 5 gals. \$3.25.

**Target Weed Destroyer.** Quart can sufficient to make 6 gallons of liquid, 50 cts.; gallon can, sufficient to make 25 gallons of liquid, \$1.50; 5-gallon keg, sufficient to make 125 gallons of liquid, \$5.

**Tobacco Dust.** 5 lbs. will fumigate a house 100 x 25 ft. Put up in 100-lb. bags for \$3, 500-lb. for \$12.50, or 10 cts. per lb.

**Tobacco Stems.** 100 lbs. \$1.75, 300 lbs. \$4.50.

**Whale Oil, or Fish Oil Soap.** Lb. 18 cts., 3-lb. box 40 cts.

**Wilson's Plant Oil.** ½ pt. cans 25 cts., pt. 40 cts., qt. 75 cts., 2 qts. \$1.25, gal. \$2, 5 gals. \$9.

**X. L. All Liquid Insecticide.** Qt. \$1, ½ gal. \$1.75, gal. \$3.50.

**X. L. All Vaporizing Compound.** Sufficient for 10,000 cubic ft., bottle \$2.25; 20,000 cubic ft., bottle \$4.50, gal. \$35. Vaporizing Lamp and Stand, complete, \$1.50.

# Thomson's Special Top-dressing for Chrysanthemums

A top-dressing of unusual merit, used almost exclusively in the British Isles and Europe by the leading Chrysanthemum growers and prize-winning exhibitors of the Chrysanthemum, and now being used by the leading growers in the United States and Canada. This manure is commanding large sales yearly. Price, 10 lbs. \$2, 25 lbs. \$4.50, 56 lbs. \$7.50, 112 lbs. \$14.

# FERTILIZERS

**Bone Meal (Pure Ground).** 10 lbs. 50 cts., 100 lbs. \$2.50, 200 lbs. \$4.50, ton \$40.

**Bone, Coarse Crushed.** 100 lbs. \$3, ton \$50.

**Blood and Bone.** 100 lbs. \$2.50, ton \$40.

**Canada Hard-Wood Ashes (Unleached).** 200 lbs. \$3, ton \$25.

**Clay's Fertilizer.** 56-lb. bag \$4, 112-lb. bag \$7.

**Cocoanut Fiber.** Bag of about 56 lbs. \$2.50.

**Guano, Ichthemlic.** 28 lbs. \$2.50, 56 lbs. \$4, 112 lbs. \$8.

**Nitrate of Soda.** 10 lbs. 50 cts., 100 lbs. \$3.75.

**Scotch Soot.** In 100-lb. bags only, \$5 per bag.

**Sheep Manure (Boddington's Red Seal Brand) Pulverized.** 5 lbs. 30 cts., 10 lbs. 50 cts., 100 lbs. \$2, ton \$35.

**Thomson's Vine, Plant and Vegetable Manure.** 28 lbs. \$2, 56 lbs. \$3.75, 112 lbs. \$7.

**"Valsang."** The 20th century horticultural fertilizer. A perfect plant-food for chrysanthemums, roses, carnations, grapes, tomatoes, cucumbers, or plant-life of any kind. 100 lbs. \$7, 56-lb. bag \$4, 28-lb. bag \$2.50.

**"Valsol."** A soluble plant fertilizer for the use of exhibitors, amateurs and others. Tins \$1.50.

# CONTENTS

## Boddington's Bulbs Bloom

"Quality" Bulbs		PAGE			PAGE		
Allium	13	Hyacinths	1-3, 13	Trillium	15	Myosotis	21
Amaryllis	13	Iris	13	Tulips	4-7	Pansies	20
Anemone	13	Ixia	13	<b>"Quality" Flower Seeds for</b>			
Babiana	13	Jonquils	10	<b>Indoor Sowing</b>			
Callas	12	Leucojum	15		PAGE	Sweet Peas	21
Camassia	15	Lilies	11, 15	Antirrhinum	22	Sweet Sultans	21
Chionodoxa	15	Lily-of-the-Valley	12	Bellis	21	HARDY PERENNIAL SEEDS ..	
Colchicum	15	Miscellaneous Bulbs	13	Calceolaria	21	16-19	
Crocus	14	Narcissi	8-10	Candytuft	21	<b>Miscellaneous</b>	
Crown Imperials	15	Nerines	13	Celosia	21	Fertilizers	23
Daffodils	8-10	Ornithogalum	13, 15	Cineraria	21	Garden Tools	23
Eranthis	15	Oxalis	12	Cyclamen	22	Insecticides and Fungicides	23
Erythronium	15	Scilla	15	Mignonette	22	Mushroom Spawn	see below
Freesia	12	Snowdrops	15				
Gladiolus	13	Sparaxis	13				
		Spiraea, or Astilbe	13				



Boddington's Quality Pure Culture Mushroom

## Boddington's "Quality" Pure Culture Mushroom Spawn

Champignonbrut    BLANC DE CHAMPIGNON    Seta

PRODUCES MUSHROOMS IN FOUR WEEKS SUPERIOR AS TO QUALITY AND SIZE, AND MORE SURELY THAN ANY OTHER SPAWN

Price of Boddington's Pure Culture Mushroom Spawn, per brick 30 cts., by mail 45 cts.; by express, 5 bricks \$1.50, 10 bricks \$2.50, 25 bricks \$5, 50 bricks \$9. CULTURAL DIRECTIONS FREE—IF REQUIRED

### ENGLISH MILLTRACK MUSHROOM SPAWN

Fresh from the most celebrated maker in England. Made in bricks. 10 lbs. will spawn 10 ft. square. 15c. per lb., \$1 for 8 lbs., \$10 for 100 lbs.

"HOW TO GROW MUSHROOMS" (Falconer). \$1 postpaid

# SPECIAL NOTICE



UPON all import orders for **Fall Bulbs** taken from this catalogue and mailed to us prior and up to September 1, we will allow a special discount of 10 per cent **when cash accompanies the order.** Prices upon goods other than Fall Bulbs are subject to 5 per cent discount when cash accompanies the order, except on Fertilizers, Insecticides and Sundries which are subject to no discount whatever, but are strictly net cash. To customers of approved credit, accounts are payable 30 days net from the date of invoice.

**ORDER EARLY.**—It is very important that you should send your orders as early as possible on receipt of this Catalogue. We aim to ship all orders the same or next day after receipt, but during the busy season it is almost impossible, hence the importance of ordering early.

## **N. B.—Months of the Year at Which the Different Bulbous Stocks Are Ready for Shipment and Delivery**

### **AUGUST**

Lilium Harrisii, Jamesii, Candidum; Freesia, Roman Hyacinths, Paper White Narcissi, White Callas, Buttercup Oxalis.

### **SEPTEMBER**

Hyacinths, Tulips and other Dutch Bulbs.

### **OCTOBER**

Lilium Longiflorum, Giganteum and other Lilies.

### **NOVEMBER**

Spiræa, Lily-of-the-Valley, Gladiolus Colvillei, etc.

**N. B.—Easter Sunday, 1910, is on March 27**

**WE NEVER SUBSTITUTE** without authority from our customers. As the season advances, however, some stocks "run out," and it is sometimes impossible to procure. If, however, you give us permission to substitute, please state so in your order, and we will use our knowledge and ability to send goods of equal merit, usefulness and value.

**C. O. D.** orders can be sent only by express. Such orders should be accompanied by a remittance in part payment to guarantee charges.

## **20 Per Cent Reduction in Express Rates**

Under the ruling of the leading express companies, Plants, Bulbs and Seeds, packed in closed boxes or baskets, will now be carried at the "GENERAL SPECIALS" rate. This rate means a reduction of 20 per cent from the regular merchandise rates to all points where no "General Specials" exists. To points where a "General Specials" rate is in force, the companies make a special reduction. Shipments weighing less than 100 pounds receive the benefit of the rate per 100 pounds, but the minimum charge is 35 cts. For instance, where the regular merchandise rate is \$4 per 100 pounds, a box of plants or bulbs weighing 100 pounds will be carried for \$3.20, a saving of 80 cts. on one shipment.

**CLUB ORDERS.**—No smaller quantities will be supplied than those quoted in the list, except that three bulbs will be furnished at dozen price, 25 at 100 price and 250 at 1,000 price; but it is suggested, where these quantities are too large, that two or three friends or neighbors could combine their orders with advantage and save transportation charges.

**NON-WARRANTY.**—We give no warranty, express or implied, as to description, quality, productiveness or any other matter of any seeds, bulbs or plants we send out, nor do we guarantee the successful flowering of seeds, bulbs or plants, or that the same will be free from disease. If not accepted on these terms, the goods must be returned at once, and any money that has been paid for same will be refunded. **ARTHUR T. BODDINGTON.**

**When comparing  
Prices, always compare the Quality, too**

**Our regular Fall Bulb Catalogue will be ready in September, with full description and cultural directions for all bulbs, etc.**



# Are You A Kanna Krank ?

If so you need the **best stock, true to name, the latest and most up-to-date varieties at reasonable price.** The following are **standard** and can be ordered **now** to be shipped **at your leisure**, avoiding di-appointment, which is exasperating. We are the **largest** handlers of **Cannas** in the **world**, our contract this year calling for a **half a million**. Again we say **order now and avoid disappointment.** Our **Cannas** are packed **250 in a box**; two can be "cleated" together and shipped as one. **One box of 250 sold at 1000 rate; it is cheaper for you to buy a box than 200 at 100 rate.**

## Red-flowering, Green Foliage

<b>Cannas</b>		Per doz.	100	1000
<b>A. Bouvier.</b> 5 ft. Dark crimson.....	\$0.35	\$2.25	\$20.00	
<b>Alice Roosevelt.</b> Deep crimson. 4 ft....	.50	3.50	30.00	
<b>Beaute Poitevine.</b> 3½ ft. Dark crimson	.35	2.25	20.00	
<b>Black Prince.</b> Intense dark velvety maroon; grows strong and erect, 3 to 4 ft.; fine dark red stems, and deep green leaves edged with purple ...	.50	2.75	25.00	
<b>Charles Henderson.</b> 4 ft. Bright crimson.....	.35	2.25	20.00	
<b>Crimson Bedder.</b> 3 ft. Intense scarlet.	.30	2.40	17.50	
<b>Duke of Marlborough.</b> 4½ ft. Dark crimson.....	.35	2.25	20.00	
<b>J.D. Eisele.</b> Brilliant vermillion-scarlet 5 ft.	.35	2.25	20.00	
<b>Explorateur Crampel.</b> Flowers deep rich crimson. 5½ ft.....	.30	1.75	15.00	
<b>Express.</b> Color scarlet crimson; the clusters are large and compact; foliage green. Dwarf habit, 2 to 2½ ft ...	.60	4.50	40.00	
<b>Flamingo.</b> 4½ ft. Intense and clear crimson.....	.30	2.00	17.50	
<b>Pres. McKinley.</b> Brilliant crimson with scarlet shading. Dwarf habit, growing only 2½ to 3 feet..	.35	2.25	20.00	

## Pink-flowering Cannas

<b>Cannas</b>		Per doz.	100	1000
<b>L. Patry.</b> Flowers of delicate rosy pink, standing well above the foliage. 4½ ft..	\$0.35	\$2.25	\$20.00	
<b>Luray.</b> Large, well-formed flowers of a very attractive rosy pink. 3 ft.....	.35	2.25	20.00	
<b>Louise.</b> A grand pink variety, somewhat similar to Mlle. Berat, much taller and very free-flowering.....	.45	3.50	25.00	
<b>Martha Washington.</b> The flowers are very large and frequently have 5 broad petals; the trusses are immense, and the color pure bright rose. Height, 2½ to 3 ft. 10c ea.	.75	5.00		
<b>Mlle. Berat.</b> 4½ ft. Rose-carmine.....	.35	2.25	20.00	
<b>Tennyson.</b> Large, heavy spike of flowers, of a very attractive rosy pink; green foliage; 5½ ft .....	.50	3.00		

## Orange-flowered Cannas

<b>Cannas</b>		Per doz.	100	1000
<b>President Cleveland.</b> Bright distinct orange-scarlet; 4 ft.....	\$0.35	\$2.25	\$20.00	

## Red, Gold-edged and Spotted

<b>Cannas</b>		Per doz.	100	1000
<b>Gladiator.</b> The flowers are bright yellow, thickly spotted with crimson, and bloom profusely. Heads are unusually large and borne on long, strong stalks, with tough, deep green foliage. A superb variety alone or in masses. Height, 4 ft.....	\$0.50	\$2.75	\$25.00	
<b>Cinnabar.</b> Its name indicates the color—cinnabar-red edged with distinct golden band; petals of flower very thick. 4½ ft.	.30	2.00	17.50	
<b>Queen Charlotte.</b> A grand Canna, with a distinct golden belt around each petal, the center brilliant orange-scarlet, with crimson tones. A stately habit, with fine foliage.....	.30	2.00	17.50	
<b>Mme. Crozy.</b> 5½ ft. Vermilion, with gold border.....	.35	2.25	20.00	
<b>Premier.</b> Brilliant, deep crimson-red, bordered yellow. 2½ ft.....	.30	2.00	17.50	
<b>Souv. de A. Crozy.</b> 4 ft. Crimson, with gold band....	.50	4.00	35.00	

## Yellow Shades

<b>Cannas</b>		Per doz.	100	1000
<b>Buttercup.</b> 3½ ft. Clear golden yellow..	\$0.40	\$2.75	\$25.00	
<b>Comte de Bouchard.</b> Rich golden yellow, spotted with red 4½ ft.....	.30	2.00	17.50	
<b>Florence Vaughan.</b> 5 feet. Yellow, spotted crimson..	.50	2.75	25.00	
<b>L. E. Bailey.</b> Rich yellow, dotted with red; a very rich and pleasing appearance. 4½ ft.....	.30	2.00	17.50	

## White and Cream Shades

<b>Cannas</b>		Per doz.	100	1000
<b>Alsace.</b> 3½ ft. Creamy white....	\$0.30	\$1.75	\$15.00	

## Bronze-leaved, Red-flowering

<b>Cannas</b>		Per doz.	100	1000
<b>Brandwine.</b> A healthy, vigorous grower of 4 to 5 feet. Makes a luxuriant growth of dark bronze foliage and a magnificent display of fine large flowers. Color is intense vinous red, beautifully mottled with deep crimson; two to three petals are sometimes narrowly edged with bright gold. Brandwine has foliage almost as dark as Black Beauty.....	\$0.50	\$4.00	\$35.00	
<b>Black Beauty.</b> True. 5 ft. Grand foliage .....	.60	4.50	40.00	
<b>David Harum.</b> 3½ ft. Vermilion-scarlet.	.50	2.75	25.00	
<b>Egandale.</b> 4 ft. Currant-red.....	.35	2.25	20.00	
<b>King Humbert.</b> In this grand Canna we have a combination of the highest type of flower, with the finest bronze foliage. Its flowers, which, under ordinary cultivation, will measure six inches in diameter, and which are produced in trusses of gigantic size are of a brilliant orange-scarlet with bright red markings, while the foliage is broad and massive and of a rich coppery bronze; bold and effective. 4 feet.....	1.00	8.00	75.00	
<b>Leonard Vaughan.</b> 4½ feet. Bright scarlet.....	.35	2.25	20.00	
<b>Musafolia.</b> This is one of the finest foliaged Cannas, with enormous musa-like leaves, 3 by 5 feet, of a dark green bronze-tinged color, the edges of the leaves being beautifully banded with bronze-purple.....	.35	2.25	20.00	
<b>Philadelphia.</b> A bright glowing red, very rich and velvety. Height 5 feet.....	.75	4.00	30.00	
<b>Papa Nardy.</b> Very large, rich carmine-red, with a purplish sheen; 4½ feet....	.30	2.00	17.50	
<b>Pillar of Fire.</b> The giant of its class, grows 6 to 7 feet high; flowers bright crimson-scarlet, borne in erect spikes like blazing torches; continuous bloomer, invaluable for center of beds, etc.....	.75	4.50	40.00	
<b>Robusta.</b> Height 6 to 8 feet, with immense foliage .....	.30	1.75	15.00	
<b>Shenandoah.</b> A splendid bronze-leaved variety, large salmon flowers, 6 feet.....	.30	1.75	15.00	

## Orchid-flowering Cannas.

<b>Cannas</b>		Per doz.	100	1000
<b>Allemania.</b> 4 to 5 feet. Green foliage. Scarlet and yellow.....	\$0.35	\$2.25	\$20.00	
<b>Austria.</b> Pure canary-yellow; an orchid-flowering type. 5 feet.....	.30	1.75	15.00	
<b>Italia.</b> 4½ ft. Green foliage. Red bordered yellow .....	.30	2.00	17.50	
<b>Kronus.</b> Rich golden yellow, with patches of bright red. 5 ft....	.30	1.75	15.00	
<b>Mrs. Kate Gray.</b> 6 feet. Green foliage. Scarlet and yellow.....	.30	2.00	17.50	
<b>Pennsylvania.</b> 5 feet. Green foliage. Deep scarlet.....	.35	2.25	20.00	

**CATALOGUE FREE.** We go through the block from 14th Street to 13th Street, but our address is still

**ARTHUR T. BODDINGTON, Seedsman, 342 W. 14th Street NEW YORK CITY**





SEED INTRODUCTION  
AND DISTRIBUTION.  
RECEIVED  
ANSWERED

# HARDY ROSES FOR DECORATION DAY

Now is the appointed time to pot up hybrid roses for Decoration day and spring sales—don't delay, the sooner the better. Our stock of hybrid roses was never finer; good two-year-old, low dudded, plump and dormant, in all the best florist varieties.

**REMEMBER, YOU MAY DEDUCT 5 PER CENT IF CASH ACCOMPANIES ORDER.**

## Hardy Hybrid Perpetual Roses

Price, 75c for bundle of 5 (of one variety), \$12 per 100, \$110 per 1000 (immediate delivery).

Abel Carriere. Crimson, bright center.  
Alfred Colomb. Carmine-crimson; a grand Rose.  
American Beauty.  
Anne de Diesbach. Bright carmine.  
Anna Alexieff. Rosy pink; large flower.  
Ball of Snow (Boule de Neige). Large, pure white.  
Baron de Bonstetten. Blackish crimson.  
Baroness Rothschild. An exquisite shade of satiny pink.  
Capt. Christy. Delicate flesh color, deepening to center.  
Cheshunt Hybrid. Red, shaded violet.  
Clio. Satin blush; very fine new sort.  
Coquette des Alpes. White, tinged with blush.  
Duke of Connaught. Large rosy crimson.  
Duke of Edinburgh. Bright vermilion.  
Duke of Teck. Bright crimson.  
Earl of Dufferin. Bright red; one of the best.  
Eugene Verdier. Superb flower; crimson-violet.  
Fisher Holmes. Finely shaped flowers; dark velvety crimson.  
Frau Karl Druschki. The finest white in existence.  
Gloire de Margottin. Dazzling red.  
Gen. Jacqueminot. Brilliant crimson; the popular Rose.  
Gen. Washington. Red, shaded crimson and carmine; large.  
Geant des Batailles. Deep, fiery crimson.  
John Hopper. Bright rose, with carmine center.  
La France. Peach-blossom pink.  
Mabel Morrison. Pure white, large, massive and perfect.  
Mme. Charles Wood. Bright carmine, full and free.  
Margaret Dickson. White, with pale flesh center.  
Marshall P. Wilder. Cherry-rose and carmine.  
Magna Charta. Dark pink; one of the easiest Roses to grow.  
Mme. Gabriel Luizet. Light, satiny pink; attractive sort.  
Mrs. John Laing. Rich, satiny pink; delicious fragrance.  
Paul Neyron. Flowers 5 inches across; lovely dark pink.  
Perle des Blanches. White.  
Persian Yellow. Hardy yellow Rose; best of its color.  
Prince Camille de Rohan. Dark crimson-maroon.  
Ulrich Brunner. Cherry-red; grand Rose; free.

For prices see above

## The Grand Pink Hybrid Rose, Mrs. Sharman Crawford

One of the finest Roses grown. Deep rosy pink, the outer petals shaded with pale flesh-color, white at base of petals, and distinct from all other Hybrid Perpetual Roses. 20c each, 85c for bundle of 5, \$15 per 100.

## Hardy Rose Soleil d'Or

Large, globular flowers, varying in color from gold and orange to reddish gold, shaded with nasturtium-red. Heavy, 2-year-old budded plants, 75c for bundle of 5, \$12 per 100.

## English Moss Roses

Assorted, White, Pink, Red. Large dormant plants, from open ground. 75c for 5, \$12 per 100.

## Standard, or Tree Roses

(Grafted on Rosa Canina or Rugosa Stock.) Large, well-grown, selected plants in the best and most serviceable varieties. 35c each, \$3.25 for 10, \$30 per 100.

## Sweet Briar

The good old English variety. 75c for 5, \$12 per 100.

## Baby Rambler Roses

**BABY DOROTHY.** The same in habit as Baby Rambler, but the color of the flowers is similar to Dorothy Perkins. This variety has created quite a sensation when exhibited at the English National Rose Society's and other shows. "Baby Dorothy," when planted out, flowers perpetually from spring until autumn. It makes an excellent pot plant for forcing. Price for strong, field-grown plants, \$1.50 for 5, \$25 per 100.  
**CATHERINE SEIMETH.** A very important novelty. A White Baby Rambler Rose, larger and better flowers than the type. White with yellowish center. It has the true rose perfume. \$1.25 for 5, \$20 per 100.  
**MRS. WM. H. CUTBUSH.** A grand acquisition to the Baby Rambler class. Color intense crimson, and exceptionally free-flowering. \$1.25 for 5, \$20 per 100.  
**MME. NORBERT LEVAVASSEUR (Baby Rambler).** Strong, field-grown plants, \$1.25 for 10, \$12 per 100.  
**THE TREE BABY RAMBLER. (Grown as a Standard.)** The popularity of the Baby Rambler has suggested the growing of it as a tree or standard. 35c each, \$3 for 10, \$30 per 100.  
**BABY DOROTHY. (Grown as a Standard.)** For description, see above. \$1.50 each, \$15 for 10.

## A Good Polyantha Rose, Perle des Rouges

A polyantha variety of unusual merit. Color velvety crimson, with reflex petals of bright cerise. 75c for 5, \$12 per 100.

## Ramblers and Other Climbing Roses

**CRIMSON RAMBLER.** American Grown. The only stock for forcing. Large heavy plants, two years old, mossed and packed in bundles of 10. 2 to 3 feet, \$1 for 10, \$7.50 per 100; 3 to 5 feet, \$1.25 for 10, \$10 per 100; 5 to 6 feet, \$1.75 for 10, \$15 per 100.  
**PHILADELPHIA RAMBLER.** Extra-fine, American-grown stock. 3 to 4 feet, \$1.75 for 10, \$15 per 100; 4 to 5 feet, \$2 for 10, \$18 per 100.  
**DOROTHY PERKINS.** Resembles the Crimson Rambler, except in color, which is a lovely shell-pink, holding a long time without fading. \$1.25 for 10, \$12 per 100.  
**TAUSENSCHON.** The new Rambler Rose. The name translated means a "thousand beauties." Color, beautiful rose, shading to pink. \$2.25 for 10, \$20 per 100.  
**LADY GAY.** A seedling from the popular Crimson Rambler, which it resembles in habit and general effect. The flowers are of a delicate cherry-pink color, which fades to soft white. Strong plants, field-grown, 4 to 5 feet, \$1.75 for 10, \$15 per 100; extra-strong, 6 to 7 feet, \$2.25 for 10, \$20 per 100.  
**WEDDING BELLS.** A seedling of the Crimson Rambler. The most floriferous Rose yet produced. The color is white with the upper half of the petals soft-pink. Fine for forcing. Perfectly hardy. Extra-strong, 3-year field-grown flowering plants, 4 to 5 feet. \$2.25 for 10, \$20 per 100.  
**CLIMBING HERMOSA.** A climbing type of this well-known Rose. 35c each, \$3.25 for 10, \$30 per 100.

## Well-known Climbers

Mme. Plantier. White.  
Baltimore Belle. Pale blush color.  
Prairie Queen. Red, changing to pink.  
Seven Sisters. Clear pink.  
75c for 5, \$12 per 100.  
White Rambler (Thalia)... } Similar to Crimson Rambler  
Pink Rambler (Euphrosyne)... } except in color.  
Yellow Rambler (Aglaiia)... }  
Extra strong 2-year-old plants, 75c for 5, \$12 per 100.

**ARTHUR T. BODDINGTON, Seedsman, 342 W. 14th Street  
NEW YORK CITY**





