

## **Historic, Archive Document**

Do not assume content reflects current scientific knowledge, policies, or practices.



1907 BOOK ON CORN 1907

# FUNK BROS. SEED & CO.

LARGEST  
SEED-CORN  
GROWERS  
IN  
THE WORLD



TRADE MARK

1824

1907

EIGHTY-THREE  
YEARS  
of *CORN GROWING*  
IN ILLINOIS

GENERAL OFFICES  
403 NORTH EAST ST.  
BLOOMINGTON, ILL.

# YOUR PROFIT

DIRECTED TO THOSE WHO ARE INTERESTED IN INCREASING THE NET RETURNS FROM THEIR PRESENT ACREAGE

---

---

**I**N THIS, OUR NEW BOOK ON CORN, we attempt to show you how by the use of HIGH YIELDING SEEDS, you may profit by our experience increase materially the vital feature of your year's work—THE NET PROFIT. The increasing importance of procuring more profit per acre is being forced on every farmer in the country on account of the ever increasing value of farms.

Aside from increasing the fertility of the soil, and better methods of cultivation, the only sure method of increasing your profit, is planting those varieties of seed that are known to produce an increase in your crop.

We have been growing these varieties for several years and KNOW, that by the use of High Yielding Seed, we have increased profit materially. Our one aim now is to draw your attention to this fact; impress it on you, and finally make you one of the Profit Takers by influencing you to try some of our seed.

We are co-operative in this way, that we want to share with you the profit that our experience has gained for us.

Our ambition also is not only to give you the Best Seed Crop but to gain for you the Largest Profit on your present acreage.

Our seed corn this year will have the most rigid inspection ever given in any commercial seed house. We will tell you HOW further

We may not sell as much as many other houses but we will give you the satisfaction of knowing that it is absolutely THE BEST IN THE WORLD.

That we intend that every man shall have a "square deal" is made certain by the fact that if the seeds are not in every way satisfactory they may be returned at our expense.

Do not read this book carelessly and then throw it aside. Study it carefully and then again, for there is a lesson in every page; a lesson that no farmer who expects to compete in the world's market can afford to miss.

Even if you are not convinced at first, let us convince you by further correspondence that we are speaking the truth and that we can increase YOUR PROFIT by the use of OUR SEEDS.

## FUNK BROS. SEED CO.

JANUARY FIRST, NINETEEN HUNDRED AND SEVEN

# Funk Bros. Seed Co.

## Price List 1907

---

---

PRICES ARE F.O.B. FUNKS GROVE, ILLINOIS  
FULL Remittance Must Accompany EACH Order

---

---

**W**HILE we exercise the greatest care to have our seeds pure, true, and reliable, we do not give any warranty, expressed or implied. If the seeds are not fully satisfactory they must be returned to us at once, at our expense, and money will be refunded.

(SEE SPECIAL NOTICE ON BACK OF THIS SHEET)

The shelled seed corn is raised in the same fields and from the same seed as the ear seed corn. The ear seed corn consists of the best five per cent from each field. The shelled seed corn consists of the next best five per cent.

### Price List of Pedigree Ear Corn

ANY OF THE FOLLOWING VARIETIES:

Gold Standard Leaming	}	1 peck - -	\$2.00
		1-2 bushel -	3.00
Boone County Special	}	1 to 5 bushels	5.00
		6 to 15 bushels	4.75
Funks Yellow Dent	}	16 to 50 bushels	4.50

---

---

CRATES FREE. WEIGHT 70lbs. NET PER BUSHEL

# Important Notice

---

---

Your Money Refunded if Seeds are  
Not Satisfactory. You Run No Risk

---

---

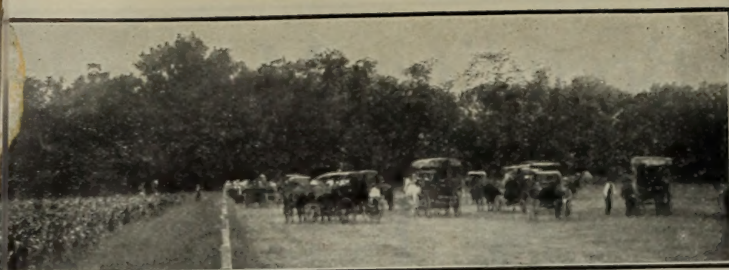
**P**REVIOUS to shipping, samples from each variety of corn, oats, and other seeds, are carefully tested for germination, but we do not give any guarantee, either expressed or implied. We request that our customers, UPON RECEIPT of seed corn and other seeds, will immediately open the crates, sacks, or packages, examine contents carefully and if not found ENTIRELY SATISFACTORY, re-pack and return the same to us in original packages at our expense and we will refund money paid for the same.

Our seeds are shipped with the understanding that you may have ten days after their arrival at your station, in which to make such tests as you desire. If within that time seeds are found unsatisfactory, they are to be returned to us at once, as explained above.

We cannot return money for any order that has been in your hands longer than ten days.

---

---



# OUR GUESTS

IT HAS ANNUALLY been our custom to entertain as our guests, at the Funk Farms, many of the distinguished and most prominent botanists and plant breeders of the scientific world. It has not only given us great pleasure to meet these men personally and to show them the work we are doing, but it is extremely gratifying to know that our work has attracted their attention and that they consider it worthy of their time and attention.

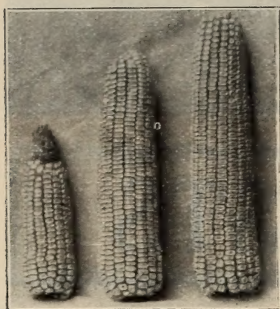
We have endeavored at all times to carry on our work on a truly scientific basis and to gain the first place among those who are making an effort to better the conditions that are now confronting the American Farmer.

These men who have come as our guests have gone away our staunchest friends, firmly convinced that the work we are doing in increasing the value of our farm crops is all that we have claimed and that **THE WORK IS NOT WHOLLY FOR OURSELVES, BUT IS FOR THE BENEFIT OF EVERY MAN WHO TILLS THE SOIL.**

Be Our Guests, Try Our Seed and be Convinced that the Work We Are Doing is for YOU as Well as for Ourselves



# Breeding Methods



ONE HILL,  
ORDINARY CORN FIELD

THE accompanying photograph was taken of three ears produced in a single hill of an ordinary field of corn.

The plants that produced these three different ears all had the same opportunity.

There are plants in nearly every corn field that produce at the rate of over 100 bushels per acre, and others that produce at the rate of 50 bushels per acre, and so on down until we come to the barren stalk

which produces nothing at all.

## WHY THE DIFFERENCE?

IT IS THE INHERENT TENDENCY OF EACH PLANT TO PRODUCE JUST WHAT IT DOES

No one can tell what the inherent tendency may be by examining an ear before planting.

HOW THEN CAN THE LARGE PRODUCING EARS BE IDENTIFIED?

## They Must be Tested

We have tested over 20,000 apparently fine ears in "single rows" to ascertain what they would produce.

The plots of ground or BREEDING BLOCKS where these tests are made are so situated as to prevent the pollen of other corn mixing with these breeding ears. Each mother ear is planted in a single row and a record kept of its performance as follows:

The germination is taken; The number of stalks and hills are counted before harvesting; The product is harvested, the ears counted and weighed; and the yield per acre is accurately figured. (If each hill produced one pound the rate of yield would be 50½ bushels per acre. If two pounds the rate would be 101 bushels, etc.) The average weight of ears is obtained; also the number of ears produced per stalk; Breeding ears for the next year are selected only from the eight or ten rows giving the greatest yield and largest average ear, combined with other good qualities described later.

This system if carried only to this point gives but ONE GOOD SIDE TO A PEDIGREE.

By the method above described we have found MOTHER EARS that gave magnificent yields, but to insure success this characteristic of YIELD MUST BE FIXED, so that it will be transmitted, or passed on, to succeeding generations. Then we can expect with some certainty that EARS PRODUCED BY THESE CHAMPION YIELDERS WILL IN TURN GIVE LARGE YIELDS.



HAND POLLINATING





TO DO THIS it is necessary to control the influence exerted by both Parents. That is, the mother ear must be a CHAMPION and the pollen which fertilizes her product must be FROM CHAMPION ROWS. In planting the blocks described above, of 80 to 100 rows, only one-half of the seed is used, the remaining one-half is left on the cob. Now of these 80 to 100 rows only ten of the largest yielders are selected AS CHAMPIONS. By our records we can, of course, identify the ears from which these champion rows are planted. Taking the remaining one-half of these champion ears the next year we again plant them in single rows in what we call "CHAMPION BLOCKS." In these blocks all of the Even Rows are COMPLETELY DETASSELED so as to receive pollen only from the Odd Rows. The detasseling is performed to prevent self fertilization or fertilization from related plants.

## The Prevention of Inbreeding

### SELF-FERTILIZATION OR CROSSING BETWEEN RELATED PLANTS

In regard to this feature of breeding, a word of explanation is not out of place. Corn is a wind or open fertilized plant. That is, the pollen from one stock blows to another, falling on the silks and fertilizing the grain there produced. This is a natural way for it to fertilize. By exhaustive experiments it has been proven that if the pollen from a certain stalk fertilizes the ear produced on that stalk, the inbred seed resulting is *impaired* in vigor and producing power, giving a much decreased yield. This occurrence it is impossible to prevent unless the stalk on which the breeding ear is produced is detasseled before the pollen flies from it. Breeding ears are selected only from the detasseled plants; ears from all other plants are discarded.

THE SIRE or fertilizing plant is not completely controlled even as yet. This is successfully done only by HAND POLLINATION. The young "shoots" of the detasseled plants are covered with bags before any silks appear and the tassels of the tasseled rows are likewise covered before any pollen is ripe. Then the pollen from fine individual sire plants is used to fertilize ears of the detasseled plants and a record is kept of all these individual "matings." Only one sire is used on each ear. Finally the large ears that have been fertilized from good sires (a plant producing a fine large ear) are planted in the BREEDING BLOCKS the next year.

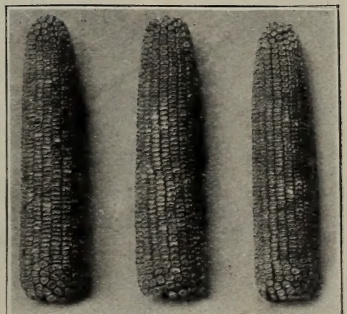
### This Completes the Good Pedigree on Both Sides.

The seed for the multiplying or increase plots is selected from the detasseled champion rows of these breeding blocks.

Breeding ears are selected only from stalks standing at harvest time. The "down corn" is all rejected. The ears produced on standing stalks are gathered separate and only these are used for breeding purposes. The percentage of standing corn of the ENTIRE ROW is recorded. If this percentage is low the ENTIRE ROW IS REJECTED.

### The Placement of Ears

If any ears occur too high or too low for convenient shucking they are discarded. If an entire row shows such an abnormal tendency, it is discarded in full.



FROM ONE HILL  
FUNKS HIGH YIELDING CORN



End View of Rows in Breeding Block Showing Vast Difference in Production of Foliage

## Growth, Foliage, Stalk

Notes are taken through the growing season on the vigor with which the corn starts and grows; upon the amount and quality of its foliage; and upon the construction of the stalk. If insufficient foliage, weakness of growth or improper construction of stalks, show abnormally in a row, no breeding ears are selected from it.

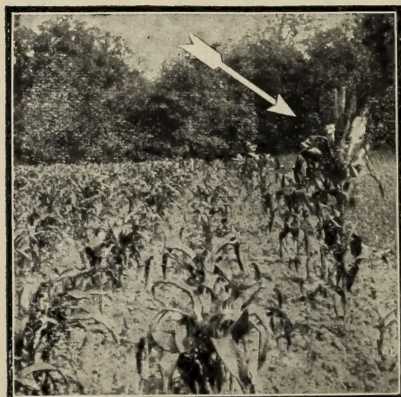
The Breeding corn for each succeeding year must be selected from one of the eight or ten champion yielding rows giving the greatest amount of corn per stalk. It is selected only from stalks standing up at harvest time and from rows of which the per cent of standing corn is the very highest. It cannot come from a row of insufficient vigor in germination, or deficient in vigor of growth, foliage or construction of stalks, nor from a row producing an abnormal number of suckers. It is selected only from the detasseled plants of these champion rows.

All of these qualifications must be met. The strain of corn failing in any of these qualities is definitely rejected.

## The Valuable Strains That Have "Made Good" in Breeding Blocks

are propagated in the Multiplying Plots for increasing the amount of seed for use in the general fields. These plots range from two to fifteen acres in size each plot representing a single family of corn that has annually proven its utility through the rigid tests of the Breeding Blocks. But these strains or families must again prove their merit in the Multiplying fields where several plots are in competition before they are selected as seed for the general fields from which our supply of seed corn is gathered.

In this way, and only in this way, it is possible to attain the best results in breeding corn—to individualize the strain and propagate it throughout its existence as seed with a traceable pedigree without mixture after its qualities are proven in the Breeding Block.

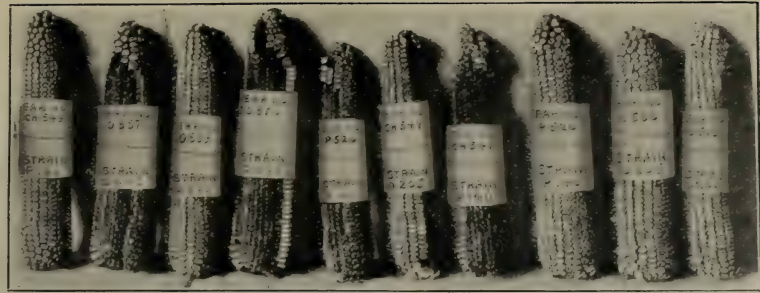


A Wonderful Row in a Hand Pollinated Block

# FUNKS YELLOW DENT.

THE ALL-PURPOSE CORN. DROUGHT AND WIND RESISTANT.  
THREE PEDIGREES OF THE GRANDEST CORN EVER KNOWN OR GROWN.

1902	1903	1904	1905	1906
Ear No. P0140 Yield 111 bu.	Ear No. P243 Yield 97 bu.	{ Ear No. P307, yield 117 bu. Ear No. P370, yield 125 bu.	{ Ear No. P402, yield 115 bu. Ear No. P435, yield 114 bu. Ear No. P439, yield 124 bu.	{ Ear No. Ch543, yield 96 bu. Ear No. P550, yield 99 bu. Ear No. P546, yield 82 bu.
Ear No. P0140 Yield 111 bu.	Ear No. P237 Yield 105 bu.	{ Ear No. P329, yield 104 bu.	{ Ear No. P403, yield 126 bu. Ear No. P409, yield 129 bu..	{ Ear No. Ch553, yield 119 bu. Ear No. P522, yield 91 bu. Ear No. P518, yield 95 bu. Ear No. P520, yield 104 bu.
	Ear No. 0225 Yield 145 bu.	{ Ear No. P392, yield 139 bu. Ear No. P387, yield 110 bu.	{ Ear No. P416, yield 119 bu. Ear No. P468, yield 118 bu.	{ Ear No. P506, yield 84 bu.. Ear No. Ch547, yield 152 bu. Ear No. Ch549, yield 153 bu.
		{ Ear No. P314, yield 123 bu. Ear No. P318, yield 122 bu.	{ Ear No. P442, yield 113 bu. Ear No. P446, yield 117 bu.	{ Ear No. P504, yield 92 bu.. Ear No. Ch551, yield 95 bu. Ear No. P546, yield 100 bu. Ear No. P548, yield 101 bu. Ear No. P524, yield 90 bu.
		{ Ear No. P318, yield 122 bu. Ear No. P462, yield 130 bu..		{ Ear No. P532, yield 92 bu. Ear No. P534, yield 86 bu. Ear No. P526, yield 103 bu. Ear No. P528, yield 92 bu.
		Av. Pro. .... 12.34% Av. Yield... 119 bu.	Av. Pro. .... 12.40% Av. Yield... 108 bu.	Av. Pro. .... 12.96% Av. Yield... 102.3 bu.



A Group of Performers which Yielded from 103 bushels to 153 bushels per acre. Selected as Champions for 1907 Block.

STRAIN P0140.—High Oil.



STRAIN No. 0205.—Oil.

Ear No. 0205  
Yield 122 bu.

1903 1904 1905 1906

Ear No. O376, yield 119 bu.	Ear No. P401, yield 118 bu.	Ear No. P547, yield 96 bu.	
Ear No. O351, yield 132 bu.	Ear No. O403, yield 130 bu.	Ear No. Ch509, yield 151 bu.	
	Ear No. O443, yield 128 bu.	Ear No. Ch511, yield 126 bu.	
Ear No. O323, yield 126 bu.	Ear No. O455, yield 121 bu.	Ear No. O562, yield 115 bu.	
	Ear No. O414, yield 120 bu.	Ear No. Ch521, yield 116 bu.	
	Ear No. O418, yield 127 bu.	Ear No. O557, yield 104 bu.	Ear No. O561, yield 122 bu.
		Ear No. O570, yield 120 bu.	Ear No. O529, yield 116 bu.
Ear No. O513, yield 103 bu.			
Ear No. O450, yield 134 bu.	Ear No. O440, yield 126 bu.	Ear No. O572, yield 125 bu.	
		Ear No. O559, yield 106 bu.	
		Ear No. O566, yield 110 bu.	
Ear No. O470, yield 125 bu.	Ear No. Ch554, yield 130 bu.	Ear No. O535, yield 103 bu.	
		Ear No. O527, yield 132 bu.	
		Ear No. Ch546, yield 151 bu.	
		Ear No. O575, yield 122 bu.	
		Ear No. O547, yield 106 bu.	
Ear No. O307, yield 114 bu.	Ear No. O444, yield 120 bu.	Ear No. O533, yield 120 bu.	
		Ear No. O521, yield 113 bu.	
		Ear No. O524, yield 140 bu.	
		Ear No. O525, yield 109 bu.	
		Ear No. Ch513, yield 126 bu.	
		Ear No. O503, yield 126 bu.	
		Ear No. O571, yield 114 bu.	
		Ear No. O531, yield 109 bu.	
		Ear No. O519, yield 108 bu.	

Ear No. O340, yield 116 bu.	Ear No. O457, yield 126 bu.	Ear No. O574, yield 135 bu.
	Ear No. Ch550, yield 157 bu.	Ear No. O536, yield 101 bu.
Ear No. O337, yield 115 bu.	Ear No. O463, yield 127 bu.	Ear No. Ch560, yield 123 bu.
	Ear No. O539, yield 123 bu.	Ear No. O543, yield 113 bu.
Ear No. O378, yield 114 bu.	Ear No. O465, yield 125 bu.	Ear No. O551, yield 111 bu.
		Ear No. O564, yield 106 bu.
Ear No. O339, yield 115 bu.	Ear No. O441, yield 122 bu.	Ear No. Ch544, yield 150 bu.
		Ear No. O501, yield 111 bu.
		Ear No. O581, yield 116 bu.
		Ear No. O583, yield 110 bu.
		Ear No. O585, yield 127 bu.
Ear No. O476, yield 124 bu.	Ear No. O589, yield 114 bu.	Ear No. O563, yield 111 bu.
		Ear No. Ch552, yield 157 bu.

Av. Oil ... 5.13%	Av. Oil ..... 5.64%	Av. Oil ..... 5.42%	Av. Oil ..... 5.63%
Av. Yield .. 122 bu.	Av. Yield ..... 118 bu.	Av. Yield ..... 118 bu.	Av. Yield ..... 119.8 bu.

Some Famous Dams or Mother Ears of Funks Yellow Dent. They Have Produced at the Rate of from 101 Bushels to 157 Bushels per Acre.



We sell you for \$5.00 per bushel seed corn that has cost us thousands of dollars and years of experience to produce in its present state of perfection. It is cheaper and better when it is from Funk Bros. Seed Co.

STRAIN No. Ph119.—Oil.

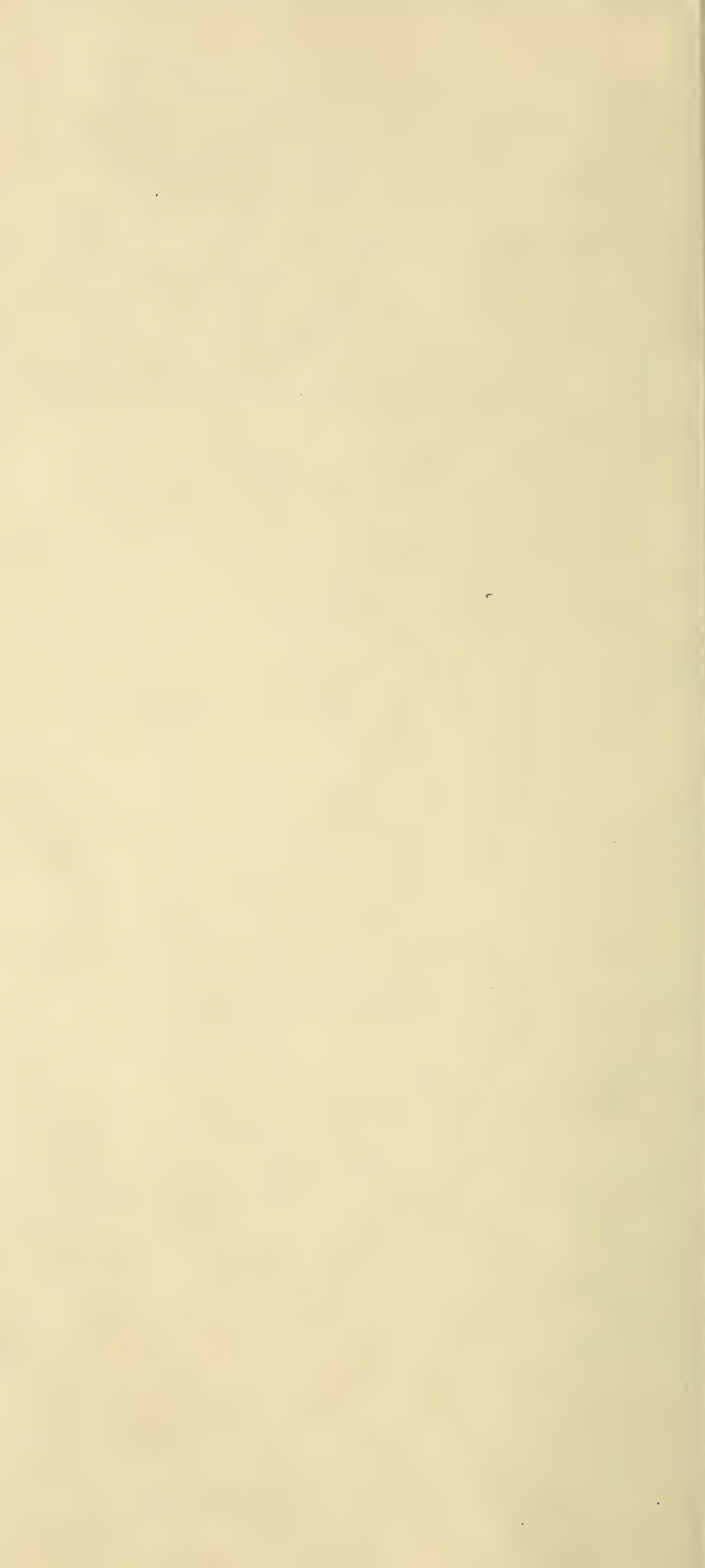
Ear No. Ph119  
Yield 145 bu.

Ear No. O221  
Yield 133 bu.

1902 1903 1904 1905 1906

Ear No. O331, yield 116 bu.	Ear No. O459, yield 122 bu.	Ear No. O518, yield 97 bu.
Ear No. O313, yield 105 bu.	Ear No. O404, yield 134 bu.	Ear No. Ch555, yield 126 bu.
		Ear No. Ch524, yield 122 bu.
Ear No. O319, yield 114 bu.	Ear No. O424, yield 123 bu.	Ear No. O594, yield 108 bu.
		Ear No. O586, yield 117 bu.
		Ear No. O512, yield 101 bu.
		Ear No. O548, yield 99 bu.
		Ear No. O532, yield 120 bu.
		Ear No. O522, yield 123 bu.
		Ear No. Ch510, yield 109 bu.

Av. Yield ... 145 bu.	Av. Yield ... 133 bu.	Av. Oil ..... 5.75%	Av. Oil ..... 5.92%	Av. Oil ..... 6.00%
		Av. Yield .. 105 bu.	Av. Yield ..... 117 bu.	Av. Yield ..... 112.2



# Gold Standard Leaming.

THE FEEDER'S GOLD MINE. MAKES CATTLE FAT WHEN PATENT FOODS FAIL.

# Funks Corn Did It.

1902		1903		1904		1905		1906	
STRAIN P208— Protein.									
			Ear No. O347, yield 129 bu.		Ear No. O476, yield 106 bu.		Ear No. O533, yield 113 bu.		Ear No. O509, yield 121 bu.
					Ear No. O468, yield 107 bu.		Ear No. O529, yield 137 bu.		Ear No. O515, yield 116 bu.
		Ear No. P208 Yield 95 bu.	Ear No. O368, yield 136 bu.		Ear No. O409, yield 103 bu.		Ear No. O503, yield 117 bu.		Ear No. O521, yield 111 bu.
			Ear No. P344, yield 94 bu.		Ear No. P433, yield 137 bu.		Ear No. Ch547, yield 123 bu.		Ear No. O531, yield 104 bu.
			Ear No. P329, yield 86 bu.		Ear No. P432, yield 112 bu.		Ear No. Ch536, yield 108 bu.		Ear No. O541, yield 117 bu.
		Av. Yield...95 bu.	Av. Yield..... 103 bu.		Av. Yield . . . . . 112 bu.		Av. Yield..... 115 bu.		
		1903	1904	1905	1906				

1903		1904		1905		1906	
STRAIN C130— Oil and Protein.							
		Ear No. O253 Yield 117 bu.	Ear No. P301, yield 92 bu.	Ear No. P452, yield 122 bu.	Ear No. P514, yield 119 bu.		
		Ear No. C130 Yield 88 bu.		Ear No. O406, yield 107 bu.	Ear No. O502, yield 113 bu.		
		Ear No. Ph280 Yield 103 bu.	Ear No. O359, yield 117 bu.	Ear No. O424, yield 104 bu.	Ear No. O548, yield 116 bu.		
					Ear No. O550, yield 101 bu.		
					Ear No. Ch510, yield 97 bu.		
					Ear No. Ch512, yield 97 bu.		
					Ear No. Ch518, yield 100 bu.		
					Ear No. Ch520, yield 99 bu.		
					Ear No. Ch522, yield 97 bu.		
	Av. Yield...88 bu.	Av. Yield..110 bu.	Av. Yield.....97 bu.	Av. Yield.....108 bu.	Av. Yield.....107 bu.		

Some High Yielding Dams of Gold Standard Leaming. Highest Yield 137 Bushels. Lowest Yield 110 Bushels.



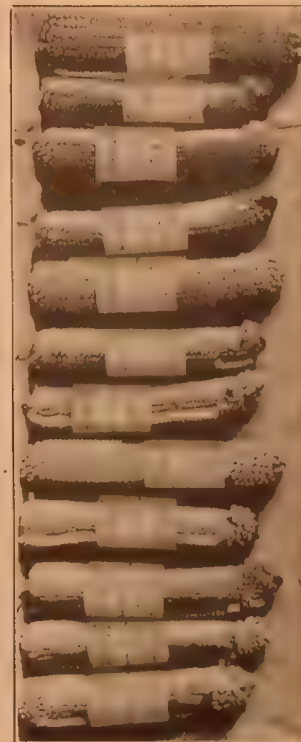
1903		1904		1905		1906	
STRAIN No. P201— Protein.							
			Ear No. P326, yield 117 bu.	Ear No. P442, yield 133 bu.	Ear No. Ch538, yield 121 bu.		
			Ear No. P380, yield 113 bu.	Ear No. C474, yield 102 bu.	Ear No. O542, yield 123.2 bu.		
				Ear No. P412, yield 105 bu.	Ear No. Ch503, yield 103 bu.		
		Ear No. P201 Yield 94 bu.	Ear No. P355, yield 112 bu.	Ear No. P428, yield 123 bu.	Ear No. P526, yield 129 bu.		
				Ear No. P480, yield 126 bu.	Ear No. Ch528, yield 115 bu.		
				Ear No. C455, yield 108 bu.	Ear No. Ch540, yield 118 bu.		
				Ear No. P518, yield 101 bu.	Ear No. Ch546, yield 126 bu.		
			Ear No. P365, yield 112 bu.	Ear No. P429, yield 130 bu.	Ear No. P520, yield 101 bu.		
		Av. Yield...94 bu.	Av. Yield..... 112 bu.	Av. Yield.....115 bu.	Av. Yield..... 115.4 bu.		

## Boone County Special

White Corn for Old Fields Records of Yielding Performance That Cannot be Duplicated by any Other Variety of White Corn. THE RECORD OF YIELD SHOWS THE PERFORMANCE IN THE FIELD

1902		1903		1904		1905		1906	
STRAIN No. Ph126— Oil and Protein.									
			Ear No. P317, yield 122 bu.	Ear No. P406, yield 109 bu.	Ear No. P512, yield 104 bu.				
			Ear No. P341, yield 125 bu.	Ear No. P407, yield 117 bu.	Ear No. P513, yield 116 bu.				
		Ear No. Ph126 Yield 107 bu.	Ear No. P204 Yield 104 bu.		Ear No. P583, yield 101 bu.				
					Ear No. Ch511, yield 143 bu.				
			Ear No. O316, yield 100 bu.	Ear No. P409, yield 108 bu.	Ear No. P518, yield 104 bu.				
					Ear No. P526, yield 107 bu.				
					Ear No. P532, yield 108 bu.				
					Ear No. Ch505, yield 151 bu.				
			Ear No. O302, yield 105 bu.	Ear No. O440, yield 105 bu.	Ear No. Ch540, yield 127 bu.				
	Av. Yield...107 bu.	Av. Protein...11%	Av. Protein.....13.88%	Av. Protein... 12.55%	Av. Yield . . . . . 118 bu.				
		Av. Yield...104 bu.	Av. Oil.....5.21%	Av. Oil..... 5.28%	Av. Protein.....13.05%				
			Av. Yield.....113 bu.	Av. Yield.....108 bu.					

Boone County Special Dams that Have Proven Their Merit by Yielding from 101 Bushels to 143 Bushels per Acre.





Boone County Special Mothers Whose Yields Run from 100 Bushels to 151 Bushels per Acre.

Year	Ear No.	Yield (bu.)
1902	Ear No. 0103	Yield 91 bu.
1903	Ear No. 0207	Yield 144 bu.
1904	Ear No. 0325	yield 102 bu.
1905	Ear No. 0441	yield 108 bu.
1906	Ear No. 0538	yield 100 bu.
1906	Ear No. 0540	yield 99 bu.
1906	Ear No. Ch537	yield 136 bu.
1906	Ear No. 0516	yield 104 bu.
1906	Ear No. 0576	yield 106 bu.
1906	Ear No. 0586	yield 106 bu.
1906	Ear No. Ch539	yield 135 bu.
1906	Ear No. 0534	yield 102 bu.
1906	Ear No. 0574	yield 96 bu.
1906	Ear No. 0578	yield 99 bu.
1906	Ear No. Ch541	yield 129 bu.
1906	Av. Oil	5.50%
1906	Av. Yield	119 bu.
1906	Av. Oil	5.20%
1906	Av. Yield	119 bu.
1906	Av. Oil	5.50%
1906	Av. Yield	107 bu.
1906	Ear No. P320	yield 100 bu.
1906	Ear No. P316	yield 96 bu.
1906	Ear No. P222	Yield 88 bu.
1906	Ear No. P227	Yield 101 bu.
1906	Av. Protein	13.75%
1906	Av. Yield	94.5 bu.
1906	Ear No. P519	yield 98 bu.
1906	Ear No. P521	yield 101 bu.
1906	Ear No. P541	yield 131 bu.
1906	Ear No. P577	yield 105 bu.
1906	Ear No. P571	yield 115 bu.
1906	Ear No. Ch529	yield 143 bu.
1906	Ear No. P560	yield 125 bu.
1906	Ear No. P580	yield 93 bu.
1906	Ear No. P582	yield 88 bu.
1906	Ear No. P584	yield 95 bu.
1906	Ear No. P587	yield 110 bu.
1906	Av. Protein	13.45%
1906	Av. Yield	109 bu.
1906	Av. Protein	12.90%
1906	Av. Yield	105 bu.

STRAIN No. 0103—Oil

STRAIN No. Ph135, Protein.





## Why Funk Bros. Seed Corn is the Best

---

---

**M**ANY seedsmen, and in fact anyone, can tell you that his seeds are the best but he cannot tell you WHY and neither can he prove his assertions. We can do both.

Funk Bros. Seed Corn is the Best, because it is

The corn showing the best performance record of high yielding quality.

For proof we refer you to our records on file at the University of Illinois showing the performance of registered ears in the breeding blocks for the past four years.

The corn that has shown by its adaptability to climatic changes that it can "make good."

Read the testimonials on pages 30 and 31.

The corn that is not bred for fancy show points but is bred to yield. Ask anyone who ever grew our corn.

The corn that is scientifically stored and cured.

Come and see for yourself the twelve seed houses built for the purpose of storing and curing seed corn properly.

The corn of high germinating power.

Our methods of testing are open to inspection to anyone who cares to come.

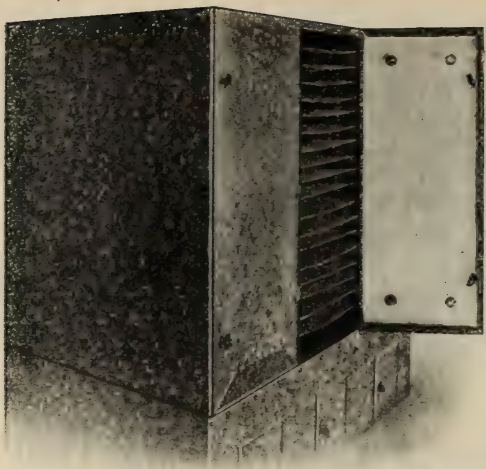
The corn for any purpose. The corn for the grain farmer.—Our shelling percentage is the highest.

The corn for the feeder.—Look at our record at the International Live Stock Show. Pages 18-19.

The corn for the dairyman. Ask any dairyman who has put it in his silo.

The corn for milling purposes. We have standing offers to take more than a car load a day of one variety alone, for milling purposes.

**WHEREVER YOU PLANT IT, IT YIELDS THE BEST**



Capacity 20,000 Samples

---

---

## Our Germination Test

---

---

THE MOST IMPORTANT FACTOR in SEED SELECTION IS THE QUESTION OF GERMINATION

---

---

**E**VERY per cent of vitality that is lacking in the seed you plant makes a difference of from one half to one bushel per acre in your yield. A loss of ten per cent in vitality means a loss of from five to ten bushels per acre or 30 to 60 bushels on the land planted with one bushel of seed corn.

To insure our customers against loss on this account, we have made arrangements to test every ear of seed corn that leaves our warehouse.

Our method is as follows: Taking six kernels from each ear of corn, we place them in the germinator in a space numbered to correspond with the number placed on the ear. After several days a count is made of these kernels placed in the germinator and when a sample shows kernels that are either WEAK or WORTHLESS the ear from which this sample was taken IS DISCARDED.

YOU CERTAINLY CANNOT AFFORD to germinate your seed corn procured from any other source, at the difference in price, when you figure the amount you will have to throw away.

You will have no throw outs from Funks Pedigree Ear Corn.

The cry of warning to every farmer in the country is, Test Your Seed Corn. Why not let us do it for you? It's CHEAPER and It's Better when it comes from us.

Suppose you buy a bushel of ear corn from some other source and test it yourself. Your throw outs amount to 40 to 50 per cent on account of WEAK or WORTHLESS ears. You have left a little over half a bushel which has cost you \$3.00, besides your time and trouble, or at THE RATE OF MORE THAN \$6.00 PER BUSHEL

---

---

Which is the cheapest in the long run? Is there any Question In Your Mind? There is none in ours

# A Great Book Free

## To Purchasers of our Pedigree Ear Corn

---

---

PROF. P. G. HOLDEN, of THE IOWA STATE COLLEGE HAS RECENTLY PUBLISHED A BOOK ENTITLED

# The A.B.C. of Corn Culture

**W**HICH treats of planting and cultivating, testing and grading, harvesting and storing, and in fact of everything connected with the corn crop. This is a book that no corn grower can afford to be without because it contains more information than can ordinarily be obtained in a lifetime of experience.

We have made special arrangements with the publishers of this book, and are going to give each purchaser of one bushel or over of our pedigree ear corn, one of these valuable books, FREE.

In this offer we also include FREE a year's subscription to the FARM NEWS, a paper devoted to the betterment of Agriculture in all of its branches.

Where can you get more value for your money? The education obtained from these two sources of information will be worth a hundred times the original outlay.



THE MORE YOU BECOME IN TOUCH WITH THE OUTSIDE WORLD AND THE THINGS THAT ARE BEING DONE BY THOSE INTERESTED IN THE WELFARE OF THE CORN GROWERS AS A WHOLE THE MORE FIRMLY YOU WILL BE CONVINCED THAT OUR WORK IS AT THE TOP OF THE LADDER AND EQUALLED BY NONE

# Funks Yellow Dent

THIS CORN IS BRED FROM J. L. REID'S YELLOW DENT AND UNDER OUR SELECTION AND METHODS OF BREEDING HAS IMPROVED WONDERFULLY, BOTH IN YIELD AND FEEDING VALUE

**T**HE ears are 8 to 11 inches long, 7 to 8 inches in circumference, 18 to 24 rows of kernels, each row containing 50 to 60 kernels. The cob is small and carries a large amount of corn, shelling 88 to 90 per cent grain. Medium early maturity, requiring from 110 to 120 days to fully mature. Stalks 8 to 12 feet high, heavy below the ear, making it **STORM RESISTANT**.

Funks Yellow Dent is a Great Drought Resister

WE HAVE BRED THIS CORN UP IN CHEMICAL CONTENT UNTIL IT APPROACHES A BALANCED RATION

---

**OUR GRAND CHAMPION CARLOAD  
OF FAT CATTLE AT  
INTERNATIONAL LIVE STOCK SHOW 1906  
WAS FED ON  
FUNKS PEDIGREE CORN**

This variety is unapproachable as a yielder, for by careful selection and elimination of barren stalks we have so improved it that a yield of over 100 bushels per acre can be grown on good soil carefully managed.



Its adaptability to any soil or climate makes it a corn of which has been said: "NO CORN GROWER WILL MAKE A MISTAKE IF HE PLANTS FUNKS YELLOW DENT"

SHELLED	{	1 to 5 bushels	- -	\$2.00 per bu.	} Bags free
		6 to 15 bushels	- -	\$1.85 per bu.	
		16 to 50 bushels	- -	\$1.75 per bu.	

SEE GREEN SHEET FOR PRICES ON EAR CORN

READ CAREFULLY THE  
**SPECIAL INDUCEMENTS**  
WE ARE MAKING YOU ON  
**FUNKS PEDIGREE EAR CORN**

---

---

**CAN YOU DUPLICATE the VALUE any PLACE  
IN THE WORLD? MOST CERTAINLY NOT**

**Funks Yellow Dent was the Best I Ever Saw**

The Funks Yellow Dent I got of you last year was the best I ever saw.

J. S. BUDD, Millbrook, Illinois

**Best Corn I Ever Raised**

I will say that the pedigreed corn, Funks Yellow Dent, sold to me last spring, did extra well considering the season and had we been fortunate enough to escape the storm of August 16th, it would have made the best corn I ever raised. I am more than pleased at results and can cheerfully recommend you to all who need a first class seed corn.

ALEX. HELBLING, Gridley, Illinois

**As a Drought Resister**

The corn I got of you did well, yielding about 62 bushels per acre. Many of my neighbors' corn of a different variety yielded about 40 bushels per acre so I have no kick coming on the corn. The season was very dry early and I have never seen corn stand drought better than Funks Yellow Dent. Had the season been more favorable would have had many bushels more per acre.

GEO. O. GREENE, Princeton, Illinois

**Made Money at \$5.00 per Bushel**

The Funks Yellow Dent did fine. The men I had hired to cut it said 80 bushels per acre. Pedigree corn about 20 bushels to acre more than my seed. The four bushels I got of you made me good money if I did give \$5.00 a bushel. I would not take three times that for mine. You men have been men of your word and if I can do you a favor I would like to some time.

NOBLE OLMSTED, Victoria, Illinois

**Has Bought 3 Years in Succession**

You asked me at one time to express myself as to the quality of your goods. If the fact of my buying my seed corn of you for three years in succession, is not proof that I consider your seed O. K. I will state that all the seed corn I have bought of you has proven satisfactory, coming good and strong and giving a yield much better than the corn on neighboring fields.

C. C. NORTON, Pres. 1st Nat'l. Bank, Corning, Iowa

**60 to 70 Bushels Per Acre**

From the Funks Yellow Dent seed corn I purchased of you last spring I raised the finest crop of corn that was in this neighborhood. While most of the corn made 35 to 40 bushels here in account of dry weather I raised from 60 to 70 bushels per acre from the seed purchased from you. I wish now that every bushel of corn I planted last spring had been Pure Bred Corn. The other seed I planted had three or four suckers on each hill while your corn had none. All my corn was blown down but that field planted with Funks Pure Bred seed. The stalk was strong enough to withstand the storm.

JAMES E. DONNELLY, Lexington, Illinois.





"A MARVELOUS LOT OF CATTLE"—A. P. TURNER, Pembridge, England, *Judge of Grade and Cross Bred Classes*

## OUR GRAND CHAMPION CAR-LOAD

WHICH WON OVER ALL COMPETITORS AT THE INTERNATIONAL LIVE STOCK SHOW  
WERE FED AND FATTENED ON

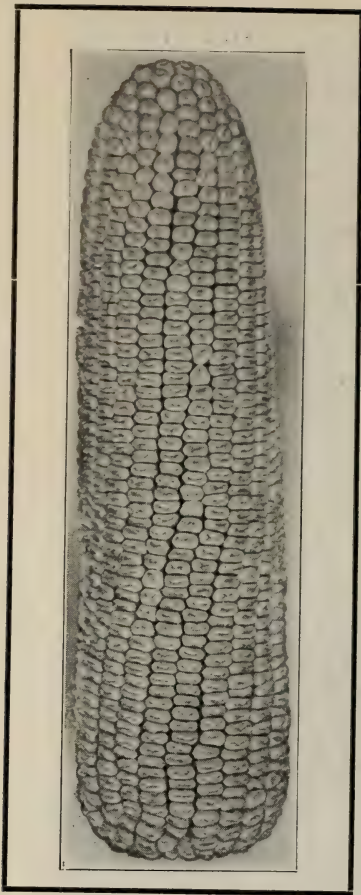
## FUNKS PEDIGREE CORN

The Funk load is one of the best I have ever seen. In my judgment they are the grandest load of the Show in every respect.—*Judge James Brown of Chicago.*

At the International Live Stock Shows of 1904, '05, '06, Funk Bros. Seed Company won thirty-five prizes on fat cattle. This we believe to be the record for any one firm, or individual.

WE HAVE ONLY ONE EXPLANATION FOR OUR SUCCESS

## FUNKS CORN DID IT



# Boone County Special

The Greatest Yield-  
ing Corn Known

**A** HIGHLY YIELDING white corn of extra large size, containing a large percentage of oil. Ears 8 to 11 inches long, 7½ to 8½ inches in circumference, containing 18 to 24 rows, weighing from

12 to 18 ounces. The cob is medium to large and pure white in color. Medium late maturity, adapted for any place south of the 41st parallel.

As a result of our breeding work with this variety we have reduced the number of weak and unproductive stalks to a minimum and increased the average size of ear to the maximum. Plant this variety and you will be surprised at the enormous yield you will receive.

**BOONE COUNTY SPECIAL HAS PROVED THAT IT IS THE CORN FOR ALL SOILS AND SEASONS**

From the day the stock seed was planted until it is placed in your hands it has had every care and attention to make it the Best Seed Corn.

Boone County Special is particularly adapted for milling purposes making a fine white meal suitable for any use.

SHELLED { <table style="display: inline-table; vertical-align: middle; margin-left: 10px;"> <tr> <td style="padding: 0 10px;">1 to 5 bushels</td> <td style="padding: 0 10px;">-</td> <td style="padding: 0 10px;">-</td> <td style="padding: 0 10px;">\$2.00 per bu.</td> <td rowspan="3" style="font-size: 3em; vertical-align: middle; padding: 0 10px;">}</td> <td rowspan="3" style="vertical-align: middle;">Bags free</td> </tr> <tr> <td style="padding: 0 10px;">6 to 15 bushels</td> <td style="padding: 0 10px;">-</td> <td style="padding: 0 10px;">-</td> <td style="padding: 0 10px;">\$1.85 per bu.</td> </tr> <tr> <td style="padding: 0 10px;">16 to 50 bushels</td> <td style="padding: 0 10px;">-</td> <td style="padding: 0 10px;">-</td> <td style="padding: 0 10px;">\$1.75 per bu.</td> </tr> </table>	1 to 5 bushels	-	-	\$2.00 per bu.	}	Bags free	6 to 15 bushels	-	-	\$1.85 per bu.	16 to 50 bushels	-	-	\$1.75 per bu.	SEE GREEN SHEET FOR PRICES ON EAR CORN
1 to 5 bushels	-	-	\$2.00 per bu.	}			Bags free								
6 to 15 bushels	-	-	\$1.85 per bu.												
16 to 50 bushels	-	-	\$1.75 per bu.												

**BOONE COUNTY SPECIAL IS BRED TO YIELD**  
 NO ONE ELSE CAN OFFER YOU CORN WITH THE WEIGHT OF PROOF BEHIND IT SUCH AS IS GIVEN IN OUR PERFORMANCE RECORDS BOONE COUNTY SPECIAL CAN PROVE TO YOU ALL THAT WE HAVE SAID OF IT IF YOU WILL GIVE IT A TRIAL IN YOUR FIELDS



DON'T OUR TESTIMONIALS PROVE TO YOU THE  
TRUTH OF THE STATEMENT THAT  
**CORN CAN BE TRANSFERRED**  
FROM ONE LOCALITY TO ANOTHER WITHOUT  
DETRIMENTAL EFFECTS ?

---

---

Read Pages 30 and 31

### It Surprised Him

In regard to my pedigreed seed corn, Boone County Special, I am very glad to report to you that it surely surprised me. It made more than 100 bushels per acre of fine quality. I am very much pleased with my investment for your seed corn.

V. L. DODGE, Kemper, Illinois.

### More than Native Corn

The Boone County Special I bought of you has been entirely satisfactory. Every farmer who bought this seed has made a better grade of corn and more to the acre than native corn. Besides, the husk is thin and easy to gather. Some of the parties told me it would pay every farmer in this country to throw away their native seed and pay \$4.00 per bushel for this Funk Bros. Corn to plant.

J. E. FARRINGTON, Anadarko, Oklahoma.

### Better than Home Grown Stock

We are able to state definitely that the Boone County Special was much better than corn from home grown stock. We made no definite measurements but it could plainly be seen.

W. H. HENDERS & SON, Greenfield, Tennessee.

### Boone County Did the Best

I bought 16 bushels of seed corn from you last spring, all of which was most satisfactory. The Boone County did the best. It is a magnificent corn and just fits in with our soil and climate. Seed from Strain 103 nearly doubled the yield of other seed of same variety making close to 100 bushels per acre while the best of the other was 60 bushels. I cheerfully recommend your Boone County Special to all Virginian farmers who have fertile fields for corn. All your seed corn shows the effect of breeding from the time it comes up until it matures.

N. S. HOPKINS, Gloucester, Virginia

### An Important Victory

I have tried a great many varieties of so called pure bred seed corn but find yours the best. In a test plot last year your Boone County and Yellow Dent showed their superiority over seven other popular varieties. As I have been trying for years to get the best corn suitable for this section of the Ohio valley, you may consider this an important victory. On exceedingly poor land, overflowing every spring, your Boone County made a yield of 51 bushels where other thoroughbred varieties have never made over 30 bushels.

C. S. KLINE, Elwell, West Virginia

### Increased the Yield

Your Boone County Special corn did exceedingly well under the conditions prevailing this season. The corn yielded more per acre than my own under similiar conditions. Well pleased with it. Hope to receive your catalogue for 1907.

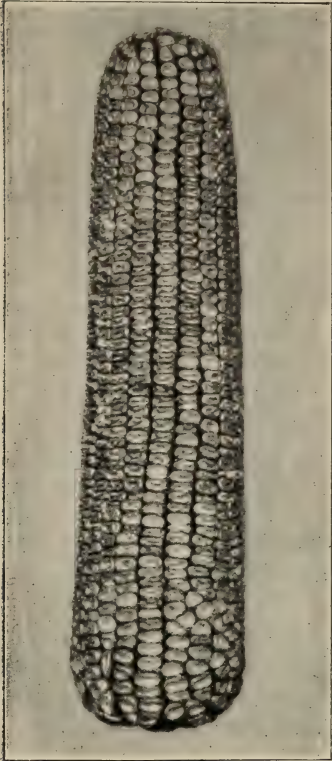
RACHEL CALDWELL, Coulterville, Illinois.

### 60 Bushels Per Acre

As to the Boone County Special seed corn bought of you last spring will say that while the season was very unsatisfactory, the corn did well, making about 60 bushels per acre. We are well satisfied with the results.

J. D. HUNSINGER, Springerton, Illinois.

# Gold Standard Leaming



Our Gold Standard Leaming is bred from the original J. S. Leaming corn, which was originated in 1826

The CORN FOR THE FEEDER  
The CORN FOR THE DAIRYMAN

**W**E have changed the general type of this variety, breeding it richer in color, longer in kernel, and somewhat rougher in seed coat. We have greatly increased its yielding capacity and have increased the oil and protein content until it has become an Ideal Feeders Corn.

The ears are from 8 to 11 inches long, 7½ to 8 inches in circumference, weighing from 12 to 17 ounces each. The stalks range from 9 to 12 feet in height, with many large, broad leaves, making it the **FINEST CORN FOR SILAGE**.

We furnished this variety for planting by the American Jersey Cattle Club, for filling silos for the Dairy Contests at the Louisiana Purchase Exposition.

What Better Proof of the Feeding Value of This Corn do You Want than Our Recent Record at the International Live Stock Show?

## FUNKS CORN DID IT

SHELLED	}	1 to 5 bushels	- -	\$2.00 per bu.	} Bags free
		6 to 15 bushels	- -	\$1.85 per bu.	
		16 to 50 bushels	- -	\$1.75 per bu.	

SEE GREEN SHEET FOR PRICES ON EAR CORN

READ WHAT OUR CUSTOMERS HAVE TO SAY and THEN PLACE AN ORDER for FUNKS GOLD STANDARD LEAMING

WE CAN PROVE THAT BUYING  
FUNKS PEDIGREE EAR CORN IS THE  
**BEST INVESTMENT**  
YOU CAN MAKE ON YOUR FARM

*The* INCREASED YIELD WILL MORE  
THAN PAY *the* DIFFERENCE IN PRICE

### Best for the Silo

I think the Leaming corn is the best for the silo in this section. It is best on account of having more stalk and foliage than native corn. A neighbor filled a hundred ton silo with six acres of the Leaming.

H. PERKINS, Warren, Connecticut.

### Best Seed Firm

I bought ten bushels of Leaming of you three years ago and only found one bad ear in the whole lot. I think you are the best seed firm I ever dealt with in every respect.

J. M. BRADSHAW, La Harpe, Illinois.

### More Corn to the Acre

Will say the pedigree Leaming corn I got of you averaged larger and more even sized ears; also more to the acre than any corn I had on my place.

IRA GREGORY, Lexington, Illinois.

### Lost \$200.00

The yield from your Leaming corn was about 55 bushels per acre while our other corn by the side of it yielded 45 to 50 bushels. The land we planted it on had 13 crops of corn raised on it. A neighbor's son planted 60 acres of sod and said he believed it would have been worth \$200.00 more if he had planted it in the Gold Standard Leaming.

S. C. HAWKINS, Palmyra, Illinois.

### 15 to 20 Bushels More Per Acre

I am well pleased with the results obtained from the Leaming corn this year as it yielded from 15 to 20 bushels more than the other corn that I had planted the majority of the crop with. The pedigreed corn made a yield of between 85 to 90 bushels and the other yielded 75 bushels per acre.

SAM MILLIGAN, Jr., Waveland, Indiana.

### Feels Fortunate in Having Bought Funks Seed

In regard to the corn purchased of you would say that everyone who saw the corn thought it equal to anything in the corn line they had ever seen, but a terrific storm got in its work and knocked about 20 to 40 bushels per acre off the crop. However, we filled a 200 ton silo off of about 15 acres and the other day I paid for husking about 400 bushels off a seven acre lot that was down so badly we could not cut it.

D. E. WILLIAMS, Columbus, Ohio

### Corn Pays, Although Crop was Damaged by Storm

Our corn this year grown for Ensilage from your Gold Standard Leaming pure bred seed corn was very satisfactory. The yield was much larger than either my farmer or myself had anticipated, filling our three silos and considerably over. When planting we put in an acreage expecting to fill two silos so you see the yield was at least one third greater than expected. I feel very fortunate in communicating with you last spring in connection with your selected seed for it certainly has proven a success in Southern New York, and my neighbors have already expressed their desire to place their order with mine next year.

H. C. WAY, Elmira, N. Y.

# Funks 90 Day

## The Earliest High Yielding Corn



**W**E HAVE been breeding this variety since 1892 and now offer it to you as a combination of EARLY MATURITY and HIGH YIELDING quality. This is a medium sized early Yellow Dent variety with deep grains and small cob.

For the past eight years it has averaged, with us, over 65 bushels per acre, general field run.

As a feeding corn it is invaluable, being sufficiently matured for that purpose by the first of September.

It will pay all feeders to plant part of their acreage to Funks 90 Day.

We find that it pays us to have new corn to feed early in the fall. We have it in Funks 90 Day.

For late planting in wet districts it has no equal as it is sure to make a crop.

Planted after June first it matures before frost.

In northern districts it can be grown either to full maturity or can be put away in the silo.

This corn makes the finest kind of silage.

Increase the milk production of your cows by feeding them on Funks 90 Day corn silage.



DON'T LET AN OTHER YEAR GO BY WITHOUT GIVING IT A TRIAL. YOU ARE LOSING MONEY EVERY SEASON YOU DO NOT GROW IT

SHELLED	{	1 to 5 bushels	- -	\$2.00 per bu.	} Bags free
		6 to 15 bushels	- -	\$1.85 per bu.	
		16 to 50 bushels	- -	\$1.75 per bu.	

### FUNKS 90 DAY MATURES THE QUICKEST and YIELDS the BEST

A HIGH GERMINATION IS WORTH  
500 CENTS ON THE DOLLAR

FUNK BROS. SEED CORN  
THE CORN WITH LIFE IN IT

### Funks Ninety Day Stands First

We enclose copy of one of our experiments where we used the Funks 90 Day corn which was sent to us last spring. These varieties were brought from a distance and planted upon the Marshall Co. Station to determine their value as compared with seed under like conditions.

		YIELD	STAND	SUCKERS	BARREN	SMUT
Funks 90 Day (Illinois)	- -	86.3	82.1	23.3	1.9	.7
Smith's 90 Day (Illinois)	- -	60.3	70.7	23.8	3.3	1.7
Farmers Interest (Iowa)	- -	71.6	70.7	8.7	2.	1.7

J. W. JONES, Asst. Farm Crops, Iowa Agr'l. Coll., Ames, Iowa.

### Cheaper and Better to Use Our Corn

The seed corn I purchased from you grows very much better than seed purchased from other sources. There seems to be vitality enough in your seed so that it will sprout and grow in very cold, wet weather, when ordinary seed will not even sprout. Last spring I let a man have a bushel of your corn. At the same time he purchased a bushel of seed elsewhere and planted the two lots on the same day. Your corn came up well and made a very heavy growth while not more than half the other sprouted at all. I am satisfied that it is much cheaper and better to use your corn than to depend upon the ordinary grades that we buy even though the corn is given to us. We use your corn largely for ensilage and always with success.

W. BARLOW DUNLAP, Amsterdam, N. Y.

### 80 Bushels Under Unfavorable Conditions

Under unfavorable conditions of drought a part of the ground planted with your seed yielded 80 bushels per acre. Had it been two weeks later in planting, yield would have been much more. I have used your seed corn for the last five years and have been getting better yields each year. 100 acres planted with seed from your farms will yield 70 bushels per acre which is good for this year. I wish you much success in this work.

J. HEBER SMITH, Cambridge, Illinois.

### 25 Per Cent Better Than Planting Ordinary Corn

We planted only seed raised from seed corn bought of you, last season, this year and from experience last year and the satisfactory results this year we estimate the yield both years is 25 per cent better than if ordinary corn had been planted, our crop this year being far ahead of anything I have seen in this country. The yield I consider only part of the gain from planting your seed as it has less faulty ears and is much sweeter, hence more feeding value and better liked by man or beast, making the best roasting ears I ever ate.

A. J. SWENSON, Swenson Bros. Ranch, Stamford, Texas

### 95 Bushels Per Acre

Regarding our crop of corn raised from your Funks 90 Day seed, will say that it was good, taking everything into consideration. Here is our report: Six acres corn planted May 24th, Funk Bros. 90 Day Seed, Yield 570 bushels, about 10 per cent soft, 20 tons fine fodder,

PERKINS BROS., Appleton, Wisconsin.



VISITORS INSPECTING BREEDING BLOCKS

# O A T S

**T**HE one crop which the Corn Belt farmer figures on as a losing one is that of Oats. In our general scheme of increasing the Net Profit on farm crops, oats have long held our attention, and have had along with corn, the greatest share of our endeavors to increase the yield per acre. The general method of procedure is nearly the same as that in our Corn Breeding Methods.

## Breeding Methods

The finest single plants are first selected as mother plants. The products of these are planted each in a single row, each row representing a single head. An absolutely accurate record is kept of YIELDING PERFORMANCE, STANDING ABILITY, SMUT RESISTANCE, STOOING, AND QUALITY OF BERRY. By this system it becomes possible to eliminate all undesirable strains, leaving only those which have shown by their performance, under normal conditions of the field, their right to survive and be passed along into the multiplying plots. An increase is effected in the multiplying plots and the resulting seed passed to the general field from whence it goes direct to the seed buyer.

This method has received the endorsement of the most eminent plant breeders in the country, as the most successful in permanently increasing the yield of self fertilized plants such as oats, wheat, barley, etc.

## Hybridizing

We are also making a great number of hybrids, that is, controlling and crossing different plants of different varieties. As oats are normally self fertilized, this work must necessarily be done by hand and involves a large expenditure of both time and money. However, the results we are obtaining prove that it is money well spent. As an instance of some of the resulting good obtained from hybridizing: Suppose we find in some one variety of oats a single good characteristic together with many bad ones, but in another variety we have all the good characteristics that are lacking in the first, but not the one good characteristic that is so prominent in the first. By crossing these two varieties we obtain a hybrid that has all of the good qualities of both and none of the bad. This is not simply an ideal theory but is a hard, practical fact that is being practiced every day, and which is bringing the best of results. The Seed Oats we offer are all grown upon the Funk Farms and



SOMETHING EXTRA GOOD

are entirely free from mustard and other noxious weed seed. We thoroughly fan and screen all Seed Oats that we send out, thus removing all dirt, light oats, and other foreign matter. We have the latest and most improved machinery for cleaning and screening oats.

## Treatment for Smut

All of our Stock Seed Oats are thoroughly treated with formaldehyde, which is an absolute preventative of Smut. This treatment is effective for two years.

## Variety Test

We have tested annually from 80 to 400 different, or so called different, varieties of oats, so that we may have for our selection, only the best. Many so called different varieties have proved to be identically the same under different names from different seed houses.

From among this immense number, we have selected and propagated several which we offer the public and which bear our strongest endorsement and which we believe to be the best yielding oats known, as proven by our breeding work and comparative test plots.

### SILVER MINE OATS

This variety has been one of our most consistent high yielders from year to year and we have no hesitancy in giving it our strongest recommendation.

Our customers have been unstinted in their praise of the merits of these oats both as to yield and quality. It produces a beautiful white berry, plump and of good length, making them extremely heavy.

You can make no mistake in buying this variety as it insures you having a most excellent crop.

### GREAT DAKOTA OATS

Great Dakota Oats are White, medium early maturing, ripening in the first half of July.

They are truly named GREAT for they are GREAT in every respect. GREAT Dakota Oats have three GREAT qualities, Yield, Weight and Stand-



SHOWING FIELD NOTES AND HYBRIDS

ing ability, and the Greatest of these three is Yield. Be assured that you will obtain the **GREATEST** amount of satisfaction from sowing this variety.

### BIG FOUR OATS

This is one of the standard varieties which has been under our care for years. We have increased the yield and bettered the quality until it can hardly be recognized as the old Big Four. The season of 1906 was one of the worst we have had for many years yet in spite of that fact we threshed from one field on the Funk Farms of 160 acres, 10428 bushels, 11 pounds, or over 65 bushels per acre. Big Four means **BIG Yield**.

### EARLY CHAMPION OATS

This is a well known variety of early oats which has "made good" as a high yielder.

It matures a week or ten days ahead of any other variety, thus escaping any possibility of hot winds which are a menace to later varieties. As a nurse crop to sow with grass seed, it has no equal.

It is the **CHAMPION** yielder of all early oats.

### RED TEXAS OATS

This variety is known as a rust proof and is very popular among southern farmers. One of its strongest characteristics is its standing ability. When other varieties have lodged completely, Red Texas has proved itself by standing erect.

In some markets a premium is paid for Red Texas over white oats.

#### PRICES ON ANY OF THE FOREGOING VARIETIES

1 to 10 bushels	-	70c, bags free	} Bushels 32 lbs. net. Special prices on larger quantities
11 to 20 bushels	-	65c, bags free	
21 to 99 bushels	-	60c, bags free	



# ALFALFA



**A**S A HAY CROP and for renewing old fields, Alfalfa is rapidly coming to the front. In the Corn Belt, where a few years ago it was thought impossible to raise this valuable crop, there are thousands of acres producing every year from three to four cuttings of the most nutritious hay, which for feeding purposes has no equal. We have no other hay crop which brings such large returns per acre. Where you raise two tons of clover hay you can raise four to six tons of alfalfa hay, due to its more rapid growth and more frequent cutting, with a greater value as a food. We offer for sale, a select lot of fancy Kansas grown Alfalfa seed of highest germinating quality, recleaned and free from noxious weeds.

As the price of all Clover Seeds is rapidly advancing, due to the shortage of the 1906 crop, we advise our customers to place their orders at once as the price

in the spring will probably be at a higher figure.

The best results have been obtained when sown broadcast in April or May, on good rich soil, about 20 pounds per acre, covered about one-half inch deep with light harrow. Fall seeding has also been a success with us, using a press wheat drill.

## WE QUOTE YOU SUBJECT TO MARKET CHANGES

20 pounds—sufficient for 1 acre	-	\$3.50
40 pounds	- - - -	7.00
1 bushel	- - - -	9.50

BAGS 20 CENTS EXTRA





# North and South

IT YIELDS  
FUNK BROS. PEDI

## Has Done Fine

The half bushel of Funks 90 Day Corn bought of you last spring has done fine. The yield I cannot tell until I husk although I have picked some seed and like it better than my own seed. It is ruer to type. Some neighbors estimate it from 70 to 75 bushels per acre.

H. L. SUGDEN, Burbank, South Dakota.

## Best Crop of Corn Ever Raised on Our Farm

In regard to the Seed corn I bought of you I must say I have the best crop of corn ever raised on our farm. The ears weigh as high as two pounds, and the stalks are from ten to fourteen feet high. I am more than satisfied with it.

JOHN E. JOHNSON, Glarus, Wisconsin

## Beats Everything

The Funks Yellow Dent corn beats everything that has ever been grown on the Morgan Farm and I, as well as Mr. Morgan, am well pleased with it. Many stalks have two good ears. The Great Dakota and Swedish oats gave good results.

CARL SEEGER, Morgan Farm, Beloit, Wisconsin.

## Better than His Native Corn

One of my customers came in and says your corn is lots better than his native corn.

W. E. REYNOLDS, Tuskegee, Alabama.

## Yielded More than I Expected

The Leaming seed corn I purchased of you last spring yielded more than I expected. What I have fed yielded 108 bushels per acre and the ten acres I planted with one bushel will make an average of not less than 110 to 112 bushels per acre, the largest yield in my county by at least 35 per cent. The Boone County I estimate to yield 80 to 90 bushels per acre. It was planted after and on soil not so good. Your Silver Mine oats make a yield twice as large as the seed oats bought at home. Your seed has certainly been a success in this section, Central Kentucky.

REED SPAULDING, Springfield, Kentucky.

## Better than Any I Ever Tried

I am highly pleased with the Boone Special corn. It yielded better than any corn I have ever tried and makes finer fodder, the blades being unusually long and fine in texture and the husks are also soft and silklike.

W. S. HALLOCK, Spring City, Tennessee.

## Double the Amount

The bushel of Boone County Special from your firm I distributed to six farmers and they all reported to me, notwithstanding the fact that on account of drought the corn crop was short, that your corn yielded double the amount per acre as compared with native Texas grown corn. All were well pleased with it.

MRS. JAMES W. BASS, Waco, Texas.

## Best in West Virginia

As to the seed corn I got from you we have just got through cutting up that corn and in shock ready to husk, but my men claim and say it is the best corn both white and yellow that they ever cut up or saw in West Virginia. I think it is fine and No. 1 corn. The best I ever seen. Much better than our native corn.

O. M. KANE, Mannington, West Virginia.

# East and West

## THE BEST GREED SEED CORN

## Sixteen Tons of Silage Per Acre

The Seed which we purchased from you last spring proved very satisfactory indeed. The corn was cut and put into the silo so we have no way of determining the yield of grain per acre but the corn gave us 16 tons of Silage per acre. It was well eared and thoroughly satisfactory.

L. S. CLINTON, Director Agr'l. Exp. Sta., Storrs, Connecticut.

## Germination was Perfect

I am wholly pleased with the results attained from Leaming corn I purchased from you. I think its germination is perfect. Was short on seed and bought both Leaming and Southern White from a large eastern firm and not over half of it grew. Our Leaming corn is all put into the Silo so do not know as to its yield in bushels. A neighbor has part of the seed I ordered and he and I have already planned to order from you next season.

LEWIS C. MUNN, Turners Falls, Massachusetts.

## This Year Beat The Record

We have used your corn for two years now but this year beat the record. More than three times as many ears as ever before.

C. H. WALKER, Supt. Farm, Chas. River, Massachusetts.

## Heaviest Yielding Corn Out

In regard to the seed corn I wish to say it is the greatest corn I have ever seen. It proved very rank, some of the stalks were sixteen feet tall and a good many stalks have two ears, well filled with from 14 to 24 rows on the ear. It is without doubt the heaviest yielding corn out.

EDWARD ANDERSON, Supt. Buena Vista Farm, Windsor, Vermont.

## An Increase of Twenty Bushels Per Acre

We planted the corn received from you and gathered a yield of 83 bushels per acre while that from our own seed in the same kind of ground and with same cultivation, yielded 63 bushels per acre.

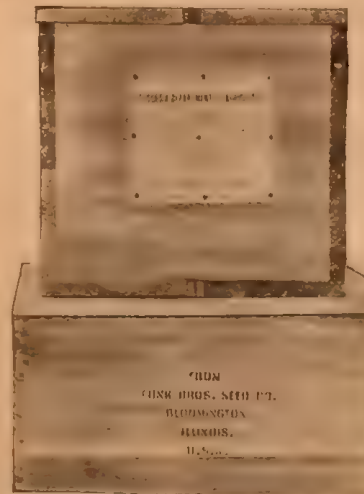
The corn is of excellent quality and all who have seen it think it perhaps the best corn they ever saw raised here. Our renters thought they had a most excellent corn of their own and were somewhat skeptical when your seed came as to its yielding ahead of their own, but after the trial the result is as above stated.

MARTIN & NURRE CANNING CO.,  
Blair, Nebraska.

## First Prize in One Hundred Entries

The Boone Co. Special corn you sent me ripened August first, one month before native corn. Took first premium on white corn at the big New State Fair held here at Muskegee this month and over one hundred different exhibitors. I wish you success in your efforts to build up pure seed corn, for unless we have pure seed we cannot raise good corn.

J. M. SMITH, Tahlequah, Indian Territory.



FROM ILLINGIS TO AFRICA



## RED CLOVER

**E**VERY FARMER in the corn belt knows the benefits to be derived from sowing Red Clover seed. For renewing old fields it stands first as to popularity among the leguminous crops. We make a specialty of Red Clover Seed. How many times you have sown clover and failed to get a stand. Did it ever strike you that your failure was due to the poor germination of the seed you sowed? Clover Seed improperly cured rapidly deteriorates in vitality. That is why we take special precaution to handle ours correctly. The germination of Funks Clover Seed is perfect. Did you ever sow Clover Seed obtained from an unreliable source and find the next year, that you had a fine crop of noxious weeds in your field? Funks Clover Seed is cleaned and re-cleaned and free from weed seeds. You may be able to buy elsewhere at a little cheaper price, but you may depend on it that the goods are not up to Funks standard.

### It Always Pays to Buy the Best

Better to buy Funks seeds and obtain the best than to purchase from unreliable sources and pollute your farm with weeds or fail altogether to get a stand. It isn't the first cost but the profit per acre that counts.

Except in a few favored sections, the clover seed crop was very short this season and prices have been advancing rapidly. We wish to urge you to place your order now before the market registers another new high figure.

WE QUOTE YOU SUBJECT TO MARKET CHANGES

20 pounds	-	-	\$3.50
40 pounds	-	-	7.00
60 pounds	-	-	9.50

BAGS 20 CENTS EXTRA

## DON'T DELAY TOO LONG

# TIMOTHY

**T**HE SAME difficulty is often experienced in timothy as in clover. That is, the uncertainty of obtaining a good stand when the source of your seed is either unknown or unreliable. This is due also to the same cause: lack of vitality and consequently low germination. OUR TIMOTHY has been thoroughly tested for germination and proved better than 95 per cent strong.

OUR TIMOTHY is also free from all weed seeds. Your timothy will be the best in your neighborhood if you buy your seed from us. There is nothing of more importance to you than that all seeds you sow or plant should be of the highest quality both as to freedom from weed seed and percentage of germination.

These are Our Strong Points.

## It Costs You Nothing to Have a Look

Before you buy from any other source let us submit you samples of our grass seeds. We are satisfied that after seeing our samples you will have nothing else. On our 25,000 acre farm we have a few horses and cattle to feed and you may depend on it we are raising nothing but the best and have nothing but the best to offer you.

WE QUOTE YOU, SUBJECT TO MARKET CHANGES, FRESH  
RE-CLEANED TIMOTHY SEED

9 pounds—sufficient for one acre	-	-	-	60c
18 pounds—sufficient for two acres	-	-	-	\$1.00
45 pounds, (1 bushel)—sufficient for five acres	-	-	-	2.40

BAGS 20 CENTS EXTRA



A SHORT CROP ON THE FUNK FARMS



## LIVE STOCK DEPT.

**T**HE LIVE STOCK DEPARTMENT of Funk Bros. Seed Company is up-to-date. No better evidence of the fact can we present, than our success at the International Stock Shows of recent years. No haphazard or old fashioned methods can today produce a Grand Champion. No breeder having profited by experience and observation along our line of industry will overlook the fact that the same principle holds true in others and so we emphasize that in our plant and animal breeding. We spare no pains to place our seeds, herds and flocks at the top. Since 1824 cattle, hogs, and sheep have been produced on the Funk Farms. Every year some of the very best specimens that years of study and careful breeding can produce, are being raised and fed on these farms.

### SHROPSHIRE SHEEP

Ewes, ewe lambs, rams, and ram lambs for sale. Our registered flock consists of imported rams and ewes of our own importation and foundation stock from the leading breeders of England, Canada and United States. Mansell, Minton, Cartwright, Gwynne, Gibson, Davison and other flocks represented. These sheep are kept in breeding condition. Our grade flocks consists of 2,000 head of high grade, mostly Shropshire type. We breed Shropshire because we believe

them to be the all purpose sheep.



### CHESTER WHITE HOGS

Our Chester-White herd consists of 75 selected sows, many of which are sired by and bred to State and World's Fair premium winning hogs. These hogs are prolific, all around meat producing animals, strong bone, good backs and excellent mothers. When crossed with any other breed they always produce market toppers.

Space does not permit, in a seed catalogue, to go into details of our work in live stock breeding. Those interested should visit our farms and personally inspect the stock we have to offer and we shall be pleased to afford every facility for such examination. We invite correspondence from those unable to visit us. Kindly state your wants plainly to avoid extra correspondence and delay.

OUR MOTTO—"IT PAYS TO BREED THE BEST."

Live Stock Dept., Funk Bros. Seed Co. Bloomington, Illinois









# Live Stock Department

## Keep Your Eye on the ANGUS

---

---

THE PROPER PURPOSE OF ALL BEEF CATTLE BREEDING IS TO PRODUCE GOOD BEEF. ITS HIGHEST PURPOSE IS THE PRODUCTION OF THE MOST BEEF OF THE BEST QUALITY IN THE LEAST TIME, WITH A GIVEN AMOUNT OF FEED AND CARE

**T**HE Angus come nearer meeting these purposes than any other cattle. They are especially well adapted to early and long feeding. Time is an important factor now in profitable feeding for beef, and none must be lost. The Angus will make beef from the day they are born to the day they are slaughtered, if you give them the proper feeds in sufficient quantity. You need not wait for them to grow up; they will make high class beef while they grow. You can feed them to twenty months and make of them finished, high-class beeves. If desirable, you can feed them to thirty months or longer and they will all the time be making fine beef, laying it on smoothly, without becoming over-fat or "patchy;" this is strongly characteristic of the breed and it is a most valuable trait.

They are the nearest ideal in form that have yet been developed, fine but good bone---small, neat head---no horns---short, shapely, rounded neck---deep, wide body---thick fleshed---well set short legs---beautiful black fine coat---small offal; these are all Angus features.

In the market and in the show Angus are easily leading all beef breeds. This is matter of record and common knowledge among cattle breeders and feeders. Funk Bros. Seed Company are at all times prepared to supply their customers and others with choice pure-bred and registered Angus breeding stock, of both sexes, at sensible prices.

---

---

WITH ONE OF the LARGEST and MOST CAREFULLY BRED HERDS in the WORLD to SELECT FROM, WE CAN FURNISH YOU GOOD ONES. All leading families represented

FUNKS TESTED  
SEED CORN

INSURES

HIGH  
GERMINATION



THE BEST

THAT

SCIENTIFIC METHODS  
CAN PRODUCE

“FUNKS CORN DID IT”