

Historic, Archive Document

Do not assume content reflects current scientific knowledge, policies, or practices.



62,23

peaches (type)

Twentieth Annual CATALOGUE & PRICE LIST

LIBRARY
JUL 29 1920
U.S. Department of Agriculture

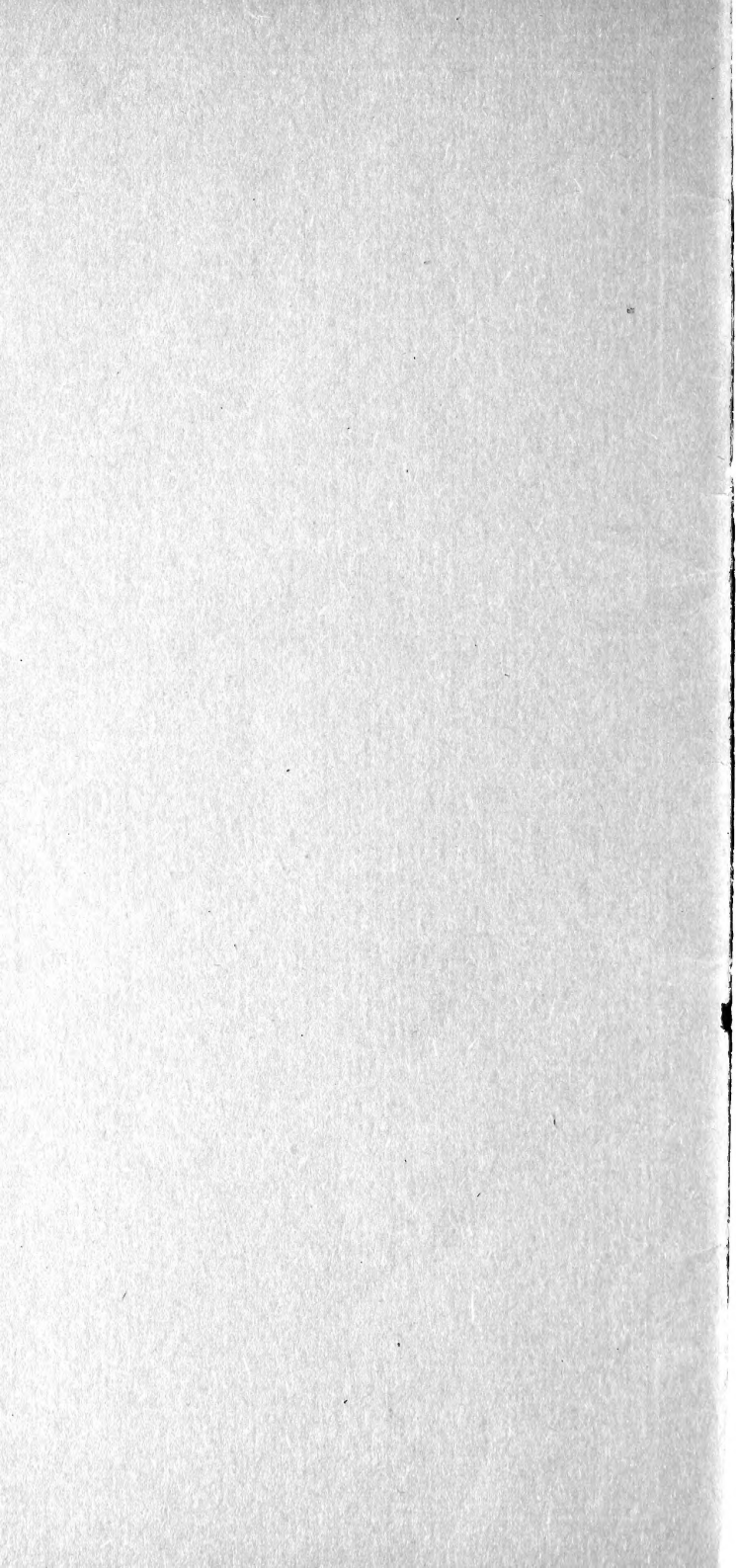


Home Nursery



1887-1907

IRVIN INGELS, Proprietor
LA FAYETTE, ILL.



Home Nursery

Lafayette, Illinois

(Stark County)

SPRING OF 1907

'PHONE LOCAL AND LONG DISTANCE



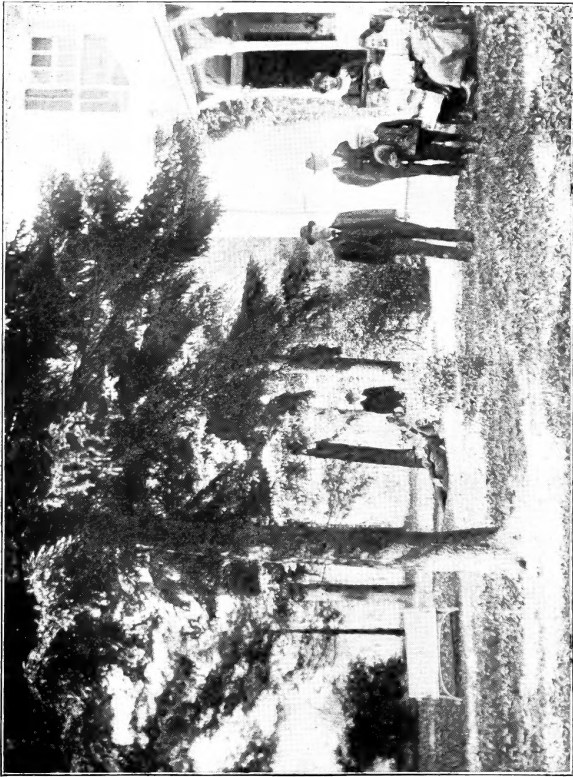
IRVIN INGELS, Proprietor

Grounds adjoining city on the North. Office and Residence
one-fourth mile North of the Railroad Depot

ESTABLISHED 1887

230 ACRES

NO AGENTS EMPLOYED. — When you buy trees of me you have no irresponsible tree peddlers to deal with, or tree agent commissions to pay: you deal direct with the nursery and get your trees from first hands. If our stock is not as represented you know where to find us. I am after your trade and bound to please. Nothing but first-class stock will be sent out. We believe the only way to build up any business is to deal honestly



PARTIAL VIEW OF RESIDENCE AND LAWN

Introduction

Introductory to this my 20th Annual Catalogue and price list I wish to say to the many customers that have patronized the Home Nursery the past twenty years some of whom have been yearly customers since we began growing trees for the market, that we are better able than ever to furnish stock that is well grown and absolutely true to label.

It is the most vital importance to the planter that he gets such kind as he orders, there being no way to tell to a certainty until trees come into bearing four or six years later. Those who have bought of parties of no established reputation or of irresponsible traveling agents will appreciate stock that is alive and true to label.

To those unacquainted with my method of doing business, would say we employ no agents, but sell direct to the planter, thus doing away with the middle man's profit. I give my personal attention to every important detail of the business thereby insuring to my customers entire satisfaction. We have endeavored to make this work more than a mere catalogue by giving valuable instructions as to best varieties and cultured directions.

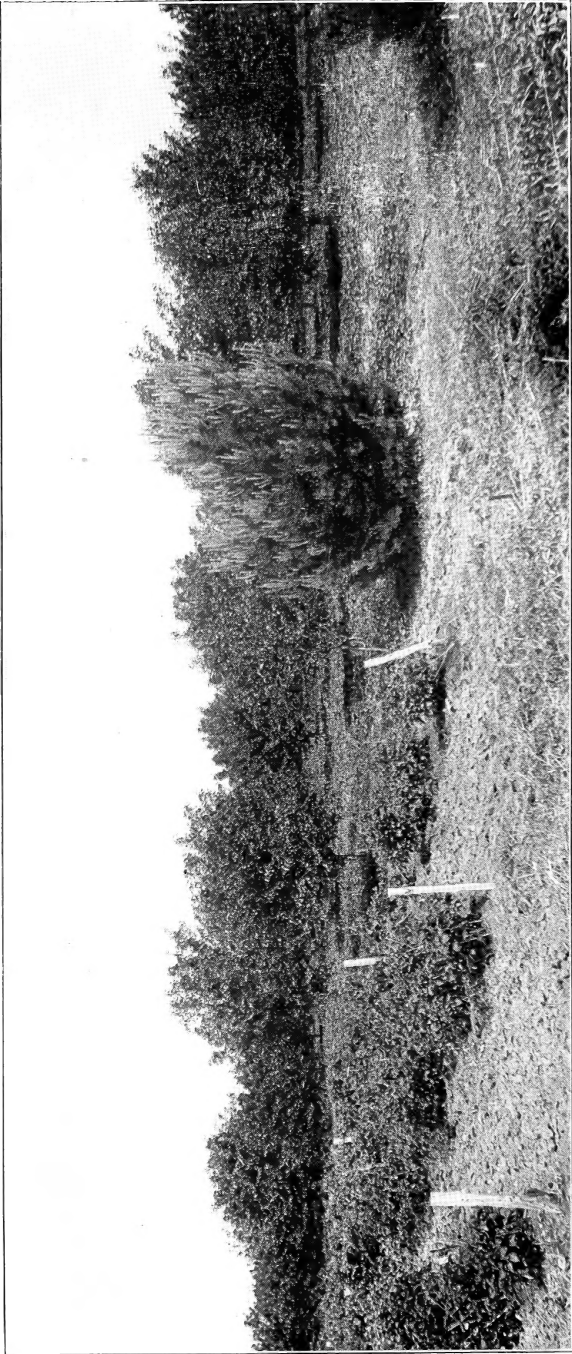
APPLES—With an experience covering over twenty years in propagating and growing apples for the market and home use we are in position to advise what varieties are best to plant in this particular region, having made the study of orcharding a specialty. What varieties we have to offer are of the very best and when the selection is left to me, will guarantee satisfaction.

PEACHES—We are propagating in large quantities and can supply in the best early and late leading varieties. Having large plantings of bearing trees to take buds from in propagating, we are able to insure trees true to name as we know just what we are growing.

SMALL FRUIT—We have a little over thirty acres devoted to the growing of small fruits for the market, this being an important branch of our business. Have tested all the leading old varieties and promising newer sorts and are propagating only the best.

EVERGREENS—These we have been growing for the market for twenty-five years and make a specialty of varieties suitable for wind-breaks or shelter belts, such as Arbor Vitæ, Spruce and Pines, which we have in large quantities and at very low prices.

Remember that when you buy trees of us you get them at first-hands, fresh dug properly labeled and carefully packed and if everything isn't O. K., you know where to find us.



ORCHARD SCENE ON HOME NURSERY GROUNDS

20TH ANNUAL CATALOG

Terms and Conditions

TERMS—CASH ON DELIVERY—Five will be furnished at 10, 50 at 100 and 500 at 1,000 rates. Stock that does not grow under proper treatment will be replaced at half price.

NO AGENTS EMPLOYED—We prefer to deal direct with the planter.

ORDERS BY MAIL—Special attention is given to mail orders, and all questions in regard to varieties, planting, cultivating, etc., will be promptly and cheerfully answered.

NO MONEY ASKED IN ADVANCE—When you receive your trees, and find them as ordered, the money for them will be due, and not before. We guarantee satisfaction, or no sale.

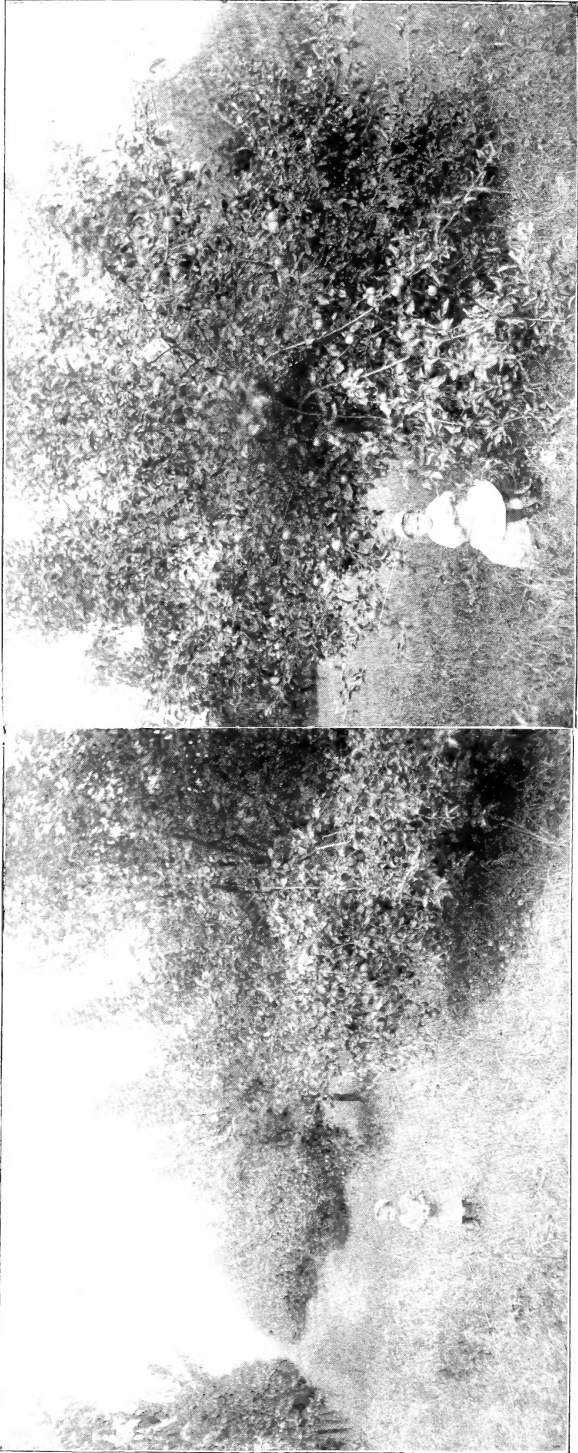
IF AFTER reasonable care has been bestowed, losses occur, it is my custom to replace such plants at one-half the regular catalogue price, or give equivalent value in other stock, but I do not insure their lives. Errors or omissions will always be cheerfully corrected, and if any plants prove to be not true to name and as represented, they will be replaced by others of correct kind and grade, without charge, or the price originally paid for them refunded.

CERTIFICATE OF HEALTH—Our grounds are annually inspected by the state entomologist, and we hold a certificate from him that there is no dangerous insect or contagious disease of fruits on our premises.

Am anxious that all the stock I sell shall live and flourish, and that all my patrons shall be fully satisfied with their purchase. If they are dissatisfied in any way I wish to be informed of the fact and allowed to do justice to them and myself.

All retail orders will be given my personal attention, which enables me to guarantee first class stock, carefully packed and true to label.

Dealers and those buying in large quantities please write for wholesale prices on any particular class of goods, as we grow many varieties of both fruit and ornamental trees for the wholesale trade.



VIEWS IN OUR 20 ACRE ORCHARD — FALL 1906
SHOWING TREES FULL OF APPLES
TWO YEAR OLD "CION" IN FOREGROUND

Apple Trees

Standard Trees, 5 to 7 feet high, 3 years old,
each, 25c; per 10, \$2.00; per 100,
\$18.00; per 1000, \$125.00.

NOTE—The following is not only a list of varieties we can furnish, but is what we *have* on hand of our own growing and that will be fresh dug, properly labeled and carefully packed. Where the selection of varieties is left to me, will give the very best assortment. Order early while list is complete.

In this latitude apples have the best color and flavor as well as the longest keeping qualities. A great many planters have been discouraged in growing apples from having planted undesirable kinds or varieties that were not suited or adapted to this section of the country.

The farmer that plants one or more acres to orchard does not give up the use of that much ground as he can raise almost as much of any of the farm or garden crops as he could if the trees were not there, at least until the trees come into bearing after which the orchard will afford considerable pasture.

Summer

Astrachan Red—Large, deep crimson, sub-acid.

Duchess of Oldenberg—Streaked with red, good sized, juicy, rich, sub-acid, very productive, early bearer.

Early Harvest—Straw color, tender, juicy, fine flavor.

Yellow Transparent—White, tender, and juicy tree, comes into bearing immediately.

Fall

Alexander—Very large, deep red, tree hardy.

Autumn Strawberry—Tender, juicy, sub-acid.

Fameuse or Snow—Deep crimson, flesh white.

Maiden's Blush—Large, beautiful, yellow with blush cheek, best quality.

Pound Sweet—Extra large, pale green, coarse grained, sweet, good flavor.

St. Lawrence—Large, round, streaked with red, good bearer, one of the best.

Summer Rambo—Medium, flat, striped, good quality.

Wealthy—Large, red, sub-acid, very juicy, bears young, immensely productive.

Wolf River—Extremely large and handsome, shaded and striped with red, early bearer, very hardy.

Winter

Arkansas Black—A remarkably large and handsome crimson-black apple, flesh yellow, juicy and delicious, keeping late February to April.

(See next Page.)



BUDGING APPLE TREES



BLOCK OF THREE YEAR OLD APPLE TREES

- Domnie**—Large, light yellow, striped, extra fine quality.
- Grimes Golden Pippin**—Good sized, yellow, of very best quality.
- Iowa Blush**—Medium size; finest tart. Tree extremely vigorous and hardy on the prairies; early and abundant bearer November to January.
- Jonathan**—Medium sized, dark red, extra fine quality.
- Mann**—Large, green, mild sub-acid.
- Minkler**—Large, greenish yellow, striped red, fine quality, good bearer.
- Missouri Pippin**—Medium sized, bright red, flesh white and firm, aromatic, early bearer.
- Milam**—Medium, dull red, splendid keeper, and of best quality.
- McMahon**—Originated in Wisconsin, large, white, sometimes striped pale red, flesh white, fine grained and tender.
- Northern Spy**—Large, striped, mild sub-acid, delicious flavor.
- Northwestern Greening**—Very hardy, yellow, of good size.
- Pewaukee**—Large, dull striped, red and yellow, sub-acid, aromatic flavor, tree very hardy.
- Rome Beauty**—Large, yellow shaded red, good quality.
- Roman Stem**—Medium sized, yellow lightly russeted, extra good quality.
- Salome**—Large, similar in color and flavor to Jeneting, tree hardy.
- Stark**—Large, striped, coarse, mild sub-acid, valuable as a keeper.
- Wine Sap**—Medium, large, dark red, crisp and juicy.
- Willow Twig**—A well known variety, large, striped, sub-acid, good keeper.

Pear Trees

NOTE—There used to be an old saying that “he who plants Pears, plants for his heirs.” The old varieties of Pears planted as standards required from ten to fifteen years to come into bearing. However now we have kinds that bear quite young, some even showing fruit in the nursery row, and bear abundantly two and three years after planting. Our list of sorts are only a few, but are most satisfactory for this particular region.

Standard Pears

- Kieffer**—Very large, handsome pear, keeps well into winter, early and abundant bearer. Each, 50c; per 10, \$4.00.
- Seckel**—Small, skin rich yellowish brown, the richest and highest flavored pear known. Each, 40c; per 10, \$3.50.

(See next Page.)



CHERRY ORCHARD WITH GRAPES PLANTED BETWEEN THE ROWS

Standard Pears—Concluded

Koonce—Medium to large, spicy, juicy, sweet, and good, season very early. Each 50c; per 10, \$4.00.

The above varieties in assortment at \$30.00 per 100.

Dwarf Pears

Dwarfs are grown on Quince stock, and should be planted deep. They come into bearing second year after planting and bear yearly.

Duchess de Angouleme—Large size, late fall. Each, 40c; per 10, \$3.50.

Seckel—For description see under Standard. Each 40c; per 10, \$3.50.

Cherry Trees

Two years old, first class, 5 to 6 feet, each, 40c; per 10, \$3.50.

NOTE—On account of its ripening early in June, the Cherry is one of the most popular tree fruits. The trees come into bearing soon after planting and bear annually, a very few trees producing all an ordinary family could use. The Early Richmond, still takes the lead and is a most valuable variety. An early and constant bearer. No one need be without this most excellent early fruit.

Dyehouse—A very early and sure bearer; ripens a week before early Richmond; very productive, color red.

Early Richmond—Large, bright red, most popular kind, very productive, bears soon after planting.

Montmorency—Large, red, very productive, ten days later than Early Richmond.

Peach Trees

First class, 5 to 7 feet. Each 25c; per 10, \$2.00; per 100, \$18.00; per 1,000 \$100.00

NOTE—The Peach is perhaps the most delicious fruit fresh from the tree and when canned retains its original flavor, making it one of the most desirable fruits. Some are discouraged in planting, owing to its being often killed in the bud by warm spell in the winter followed by low temperature. However we do not always have these conditions. The trees are easily grown and come into bearing immediately. Plant the trees and be sure of a crop when it comes.

(See next Page.)



PHOTOGRAPH OF PEACH ORCHARD ON HOME NURSERY GROUNDS; THE LARGEST IN THIS PART OF THE STATE. TREES THREE YEARS PLANTED

Peach Trees—Concluded

The following varieties are arranged in their order of ripening which extends from June into October, except as noted, all Free-stones.

- Alexander**—Medium to large, skin greenish white, shaded to rich red, flesh very juicy, cling stone, July 1.
- Foster**—Large, deep orange red, flesh yellow; very rich and juicy. Last of August.
- Old Mixon Free**—Large, pale yellow, deep red cheek, white flesh, tender, rich, good. September.
- Bokara**—Claimed to be the hardiest peach known, large, yellow, good quality.
- Early Crawford**—Large, yellow, an excellent quality.
- Late Crawford**—Same as Early, about three weeks later.
- Elberta**—Large, yellow, with red cheek hardy, prolific, one of the leading market sort.
- Crosby**—One of the hardiest, abundant bearer, yellow, fine quality.
- Stump**—Very large, white with red cheek.

Plums

Plums are of the easiest culture. The trees come into bearing soon after planting, and are annual bearers. There are three distinct classes that are grown here, viz:

NATIVE—Or those from our wild species found growing along streams everywhere.

EUROPEAN—These introduced from Europe, and called Tame or Domestic Plums, and

JAPANESE—A species recently introduced from Japan from which have sprung many excellent kinds. We are growing the most valuable varieties of the three different species.

Native Varieties Plums

5 to 7 feet, each, 35c; per 10, \$3.00.

De Sota—The fruit is of medium size dappled red and yellow, ripening in September, and is firm, sweet and juicy. The tree is hardy and productive. Good for general planting and market purposes.

Forest Garden—The fruit is very large and round, purplish red, mottled with yellow, juicy, sweet and rich. The tree is clean, healthy, vigorous and productive.

Hawkeye—The tree is hardy, thrifty and an annual bearer. The fruit is large, light in color, mottled with red, of superior quality, very firm and an excellent shipper. It ripens in September.

(See next Page.)



PUBLIC ROAD. TENANT HOUSE ON LEFT — RESIDENCE ON RIGHT

Plum Trees—Concluded

Wild Goose—Old and widely planted, variety large, light red, very early, season July 15.

Wolf—Free stone, large size, red, productive.

Japan Varieties Plums

Each 40c; per 10, \$3.50.

Abundance—Large, lemon yellow, oldest and best known sort.

Burbank—Very large, excellent quality, hardy tree, extremely productive.

Red June—Early ripening, medium large, red with yellow flesh, fine flavor.

Ogon—Bright golden yellow, one of the largest of the Japs; Free Stone.

Satsuma—Large, purplish crimson with blood red flesh, delicious flavor.

October Purple—A strong, vigorous grower, said to be one of the hardiest of the Japan varieties. Productive, of good quality, a large, round, late purple plum, especially recommended for late market.

NOTE—The Japan Plums are growing in favor each year on account of their large size and excellent flavor. The trees are extremely hardy and very prolific.

European Varieties Plums

Each, 40c; per 10, \$3.50.

German Prune—Large, dark purple, green flesh.

Green Gage—Very large, greenish, fine flavor.

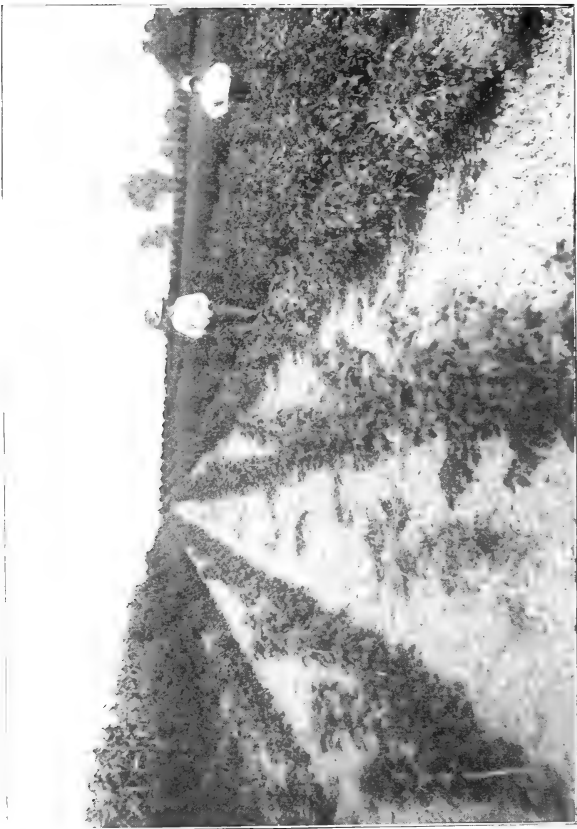
Damson—Fruit medium; juicy, rather tart; skin dark purple covered with thick blue bloom; fine for preserving; enormously productive. September.

Grapes

2 years old.

The Grape is the most wholesome of all fruits, and the most highly esteemed for its many uses. No part of the fruit garden yields a richer harvest than the vineyard. It can be grown by every one who has a garden, yard or a wall. It can be confined to a stake, bound to a trellis, trained over an arbor or extended until it covers a large tree or building and still it yields its graceful bunches of luscious bloom.

(See next Page.)



NURSERY ROWS

Grapes—Concluded

ing fruit, from July until November. The following varieties we have found to be the very best for this particular section.

- Agawan**—(Roger's No. 15) Old, reliable, large, red, one of the very best; ripens early. Each, 25c; per 10, \$2.00.
- Concord**—Well known standard variety, succeeds wherever grapes will grow, very prolific. Each, 15c; per 10, \$1.00; per 100, \$6.00.
- Moore's Early**—Very large, purple, exceedingly hardy, two weeks earlier than Concord. Each, 25c; per 10, \$2.00.
- Moore's Diamond**—The leading early white grape, vine like the Concord in growth, hardiness, and foliage. Each 30c; per 10, \$2.50.
- Niagara**—Large, greenish white, excellent quality. Each, 25c; per 10, \$2.00.
- Pocklington**—Golden yellow, very aromatic and sweet. Each 25c; per 10, \$2.00.
- Worden**—One of the best black grapes; berry and bunch large; very productive and hardy. Each, 20c; per 10, \$1.50.
-

Gooseberries

2 years old.

- Houghton**—(American variety), clear red when fully ripe, very prolific and profitable. Each, 15c; per 10, 75c.
- Downing**—(American variety), large, white, valuable. Each, 15c; per 10, \$1.00.
- Industry**—(English variety), inch to inch and one-fourth in diameter; free from mildew; the best English variety. Each, 25c.
-

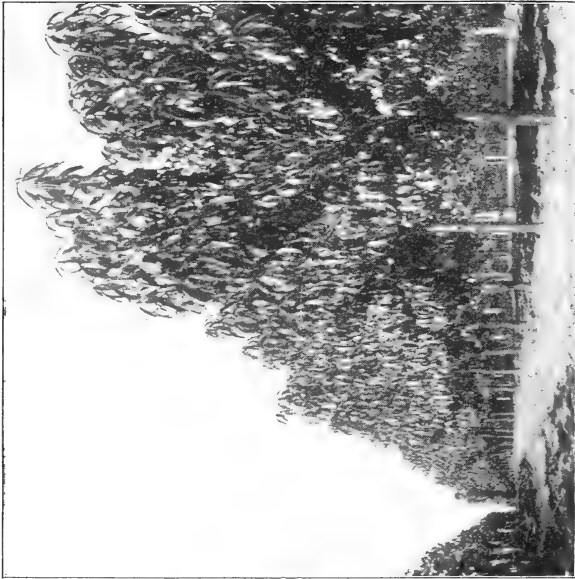
Currants

2 years old.

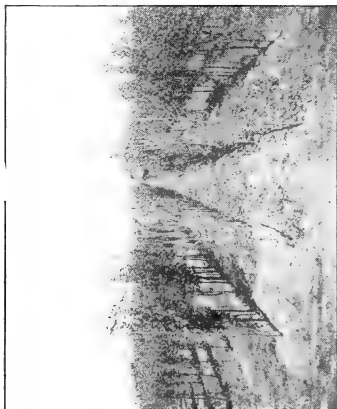
- Victoria**—Old and reliable sort. Each, 10c; per 10, 75c; per 100, \$5.00.
- White Grape**—Very prolific, mild flavor, large. Each, 10c; per 10, 75c.
- Fay's Prolific**—Heavy bearer, bright red, large size. Each, 15c; per 10, \$1.00.
- Cherry**—Very large, mild sub-acid. Each, 10; per 10, 75c.



AN EIGHTY ROD ROW OF KIEFFER PEAR TREES ON HOME NURSERY GROUNDS. TAKEN FROM A PHOTOGRAPH



PEACH ORCHARD



YOUNG APPLE TREES IN THE NURSERY ROW STRIPPING LEAVES PREPARATORY FOR FALL DIGGING. FROM A PHOTOGRAPH

Gooseberries and Currants

Like all other small fruits these need a rich soil to get best results. The worms that eat the foliage can be killed by sprinkling bushes with water to which Paris Green has been added at the rate of a teaspoonful to ten quarts of water. This should be done as soon as bushes leaf out and again in two weeks.

Some use powdered Hellebore, which is just as effective. The Gooseberry and Currants are the first fruits that can be used and in fact are the first fruits of the season. They can be gathered fresh from May until late in August. This is a fruit that will thrive anywhere and is valuable for pies, jellies, jams, and preserves.

Blackberries

If you want low, stocky bushes that will produce large berries, pinch the ends of the canes when they get two and a half to three feet high, and following spring cut the side branches back to eighteen inches in length. Cut out all suckers or sprouts that come up between the rows.

Snyder—Well known, valuable, early variety. Per 10, 25c; per 100, \$2.00.

Erie—Vigorous grower, large berry. Per 10, 50c; per 100, \$3.00.

Raspberries

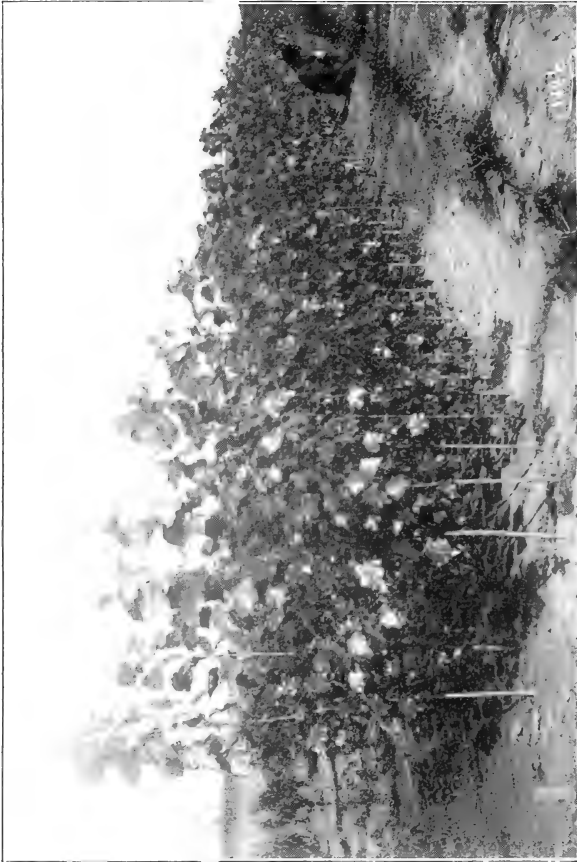
Gregg (Black Cap)—Well known, large, late variety. Per 10, 30c; per 100, \$2.50.

Palmer (Black Cap)—Very early, extra hardy, heavy bearer. Per 10, 30c; per 100, \$2.50; per 1,000, \$12.00.

Cumberland—A mammoth midseason black-cap that loads its stout, stocky canes with handsome fruit. Its great glossy berries outsell all others of their season, are firm enough to ship well, and of good quality. In hardiness and productiveness, among the best. Per 10, 50c; per 100, \$3.50.

Columbian—This variety ranks very near the top for amazing productiveness, vigor and the quality of its very large, dark red fruits. It is an improvement on Shaffer in color and firmness of berry, while retaining its delicious flavor. The bush is very hardy and grows to such great size that it requires extra room. Unexcelled for market and all culinary uses. Per 10, 75c; per 100, \$5.00.

(See next Page.)



CAROLINA POPLAR TREES EIGHT FEET HIGH — FIVE MONTHS AFTER CUTTINGS WERE PLANTED

Raspberries—Concluded

Golden Queen—Large, beautiful fruits of a pale amber color; firm and delicious. The canes are hardy, of strongest growth and wonderfully productive. A very superior dessert fruit. Succeeds in all sections. Per 10, 25c; per 100, \$2.00.

Miller's—Bright red color which it holds after picking. Stout, healthy, vigorous grower. Berries large, hold their size to end of season, round, bright red, core small; do not crumble; firmest and best shipper; rich fruity flavor. Commences to ripen with the earliest. Per 10, 30c; Per 100, \$2.50.

Cuthbert (Red)—Best of the reds, long season. Per 10, 30c; per 100, \$2.00.

Turner (Red)—Canes thornless, bright red berries. Per 10, 30c; per 100, \$2.00.

NOTE—The Raspberry being a native fruit and found growing wild along the edge of woods and in hedges as well as various other places, grows to perfection when given proper culture and training. In fact there is no native fruit that will give quicker or larger returns for the amount of time spent on it. We have over ten acres devoted to Raspberries and have been growing this excellent fruit for the market during the past 20 years and over. The above varieties are the best out of a long list that we have tested on our grounds. For a succession of fruit plant both early and late varieties.

Strawberries

First class plants. Per 10, 25c; per 100, \$1.00; per 1,000, \$8.00.

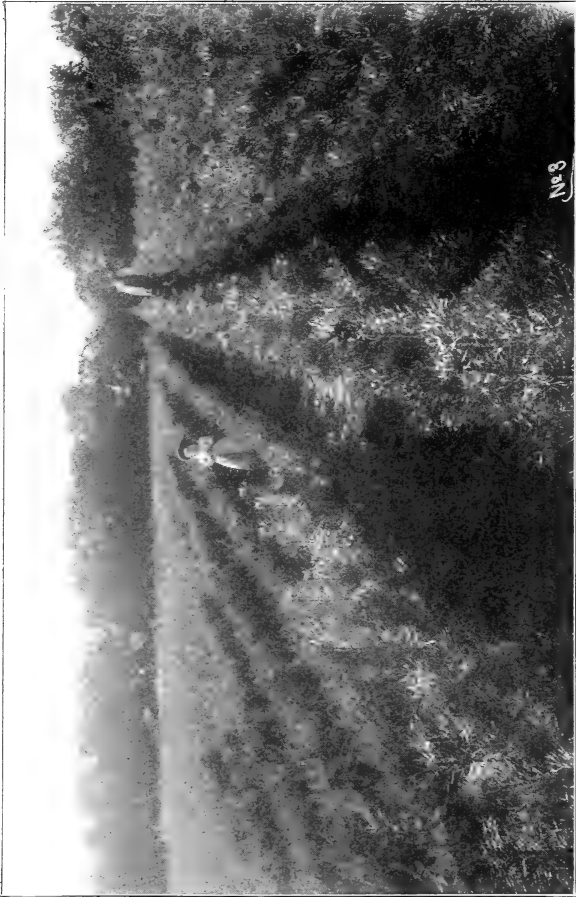
The following varieties will be found to be the best. Have made a specialty of strawberry culture for a number of years, and grow only the kinds we know to be good. When the selection of varieties is left to me, will give good assortment.

Male Varieties.	Female Varieties.
Dunlap.	Bubach.
Wm. Belt.	Sample.
Brandywine.	Haverland.
Gandy.	Lady Thompson.
Rough Rider.	Enormous.
Bederwood.	Parker Earle.

By planting both early and late varieties you can have fresh strawberries from four to five weeks in succession. They produce the most per acre and do it in less time after planting than any other fruit.

NOTE—Have given no description of strawberries, as they are *all good*. While one variety may produce better than another one year, it may not the next. Hence there is no one variety that is the best every year.

Owing to the variability of the pollen, it is a good rule to plant a number of kinds in one plantation. Also set early and late varieties to give a succession of fruit. In growing the plants we keep each variety properly labeled, so that our plants are true to name. They are grown on very strong land; are not to be compared with the small, sickly plants grown on sand and offered at a low price.



NORWAY SPRUCE ON THE LEFT ; SCOTCH PINE ON THE RIGHT

Ornamental Trees

Ash (White)—A rapid growing native tree of fine outline, excellent for avenues and parks.

Height, 10 to 12 ft.; each, 35c; per 10, \$3.00.

Elm (American White)—Makes a rapid growth, attains a large size with spreading top.

Height, 6 to 7 ft; each, 25c; per 10, \$2.00.

Height, 8 to 10 ft; each, 40c; per 10, \$3.50.

Height, 9 to 12 ft; each, 50c; per 10, \$4.00.

Hard Maple—Medium, slow growth, dense shade, round, spreading top, beautiful tree.

Height, 6 to 8 ft; each, 40c; per 10, \$3.50.

Height, 8 to 10 ft; each, 50c; per 10, \$4.50.

Height, 10 to 12 ft; each, 75c; per 10, \$5.00.

Soft Maple—Very rapid grower, makes a beautiful tree; while young should have the leading shoots cut back each year to prevent tree from becoming too large.

Height, 6 to 8 ft; each, 25c; per 10, \$2.00.

Poplar Carolina—A hardy native tree of exceedingly rapid growth, pyramidal in form, with large, glossy leaves, grows anywhere.

Height, 7 to 9 ft; each, 25c; per 10, \$2.00.

Height, 8 to 10 ft; each, 30c; per 10, \$2.50.

Height, 10 to 12 ft; each, 40c; per 10, \$3.50.

The above list of shade trees are all twice transplanted and have well shaped tops, and are far superior to trees dug from the timber.

We have special machinery for digging the large trees and they will be taken up with the least possible injury to the roots.

Ornamental Weeping Trees

Cut-leaved Birch—The most popular tree of its class, makes a tall, slender, yet vigorous growth, graceful drooping habit, silvery white bark and beautiful cut foliage.

Height, 6 to 7 feet; each, \$1.00.

Height, 8 to 10 feet; each, \$1.50.

Camperdown Elm—Weeping variety of Scotch Elm. The branches grow horizontally and downward in strangely crooked lines, never getting much higher than where grafted, usually about 6 feet high. Price, 3-year-old head, \$1.00.

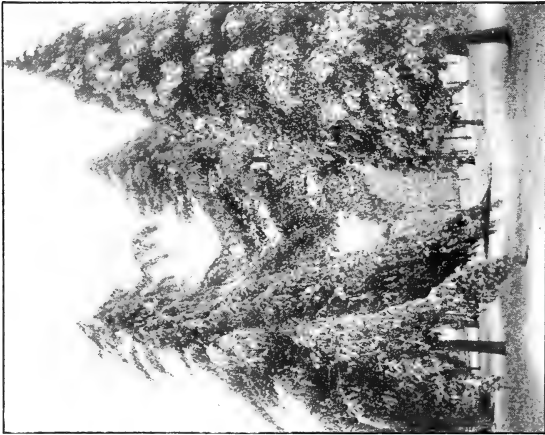
Kilmarnock Willow—Makes a fine umbrella-like head, with branches drooping gracefully. Each, 40c.

Mt. Ash—A fast growing, weeping tree, with tortuous spreading branches. Each, \$1.50.

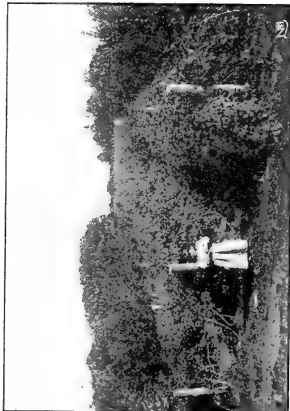
Tea's Mulberry—The most perfect weeping tree grown, does well in any situation, absolutely hardy and easily transplanted. Each, \$1.50.



HARDY HYDRANGIA



EVERGREENS
COVERED WITH SNOW AND SLEET



PALMER RASPBERRY
SHOWING GROWTH OF VINES

Miscellaneous

Rhubarb Linneas (Pie Plant)—Fine and tart. Each, 15c; per 10, \$1.00.

Asparagus, Conover's Colossal—Very large, tender. Per 10, 25c; per 100, \$1.50.

Osage Hedge—Plants one year old, first class. Per 100, 50c; per 1,000, \$3.00.

Berry Box Lumber at wholesale prices.

We buy Berry Boxes, Crates, Peach and Grape Baskets by the car load, and can furnish these at manufacturers' prices, saving you the freight.

SPECIAL NOTE—We are county agents for the Planet Junior Garden Tools. Those interested should send for our special Garden Tool Catalog.

Hardy Ornamental Shrubs

Berberry—Purple-leaved, fine for ornamental hedging. Height, 2 feet; each, 25c; per 10, \$1.50; per 100, \$10.00.

Calycanthus (Spicewood)—Flowers chocolate color, sweet scented. Each, 40c.

Hardy Hydrangia—Blooms from July until frost. The finest shrub for lawn or border yet introduced. Perfectly hardy and of easy culture. Price of blooming size plants, 18-inch, 40c each; 24-inch, 50c each.

Lilac—Blooms profusely in early spring, very fragrant. Each, 25c.

Pyrus Japonica (Burning Bush)—Flower red, very early. Each, 25c.

Snow Ball—Well known favorite shrub, great bloomer. Each, 25c.

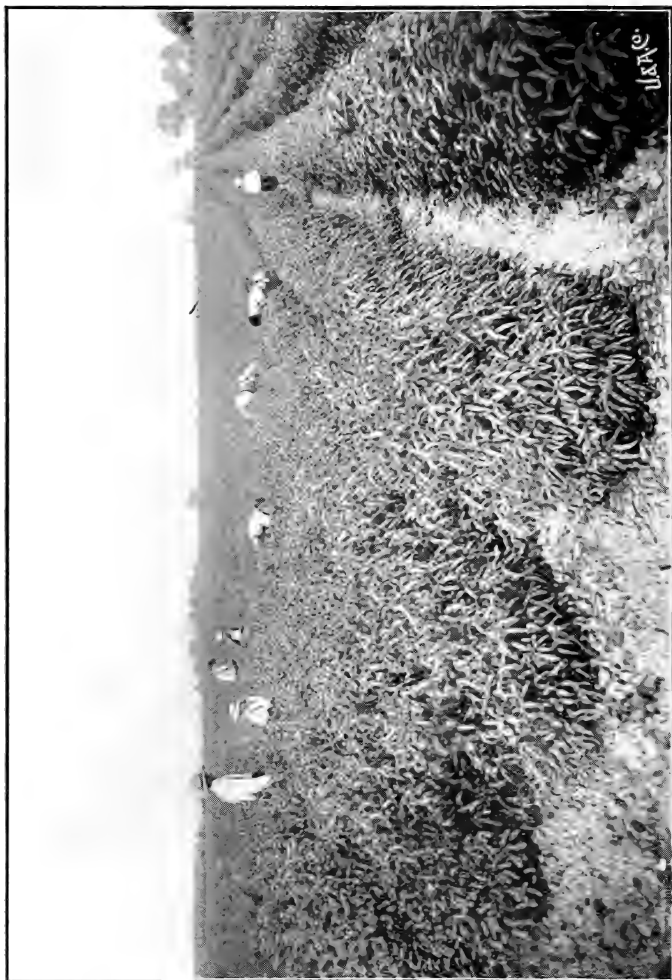
Spirea Van Houti—Best of the Spirea, bloom white. Each, 25c.

Syringa Grandiflora—Flowers white very fragrant. Each, 25c.

Weigelia Hendersoni—Pink, bloom in June and July so full as nearly hide the foliage, very desirable shrub. Each, 25c.

Bush Honeysuckle—Blooms in early spring with beautiful pink and white flowers followed by pure white berries making a very handsome plant the entire season, price, 25c.

NOTE—Please write for special prices in an assortment of shrubs for planting in masses.



PEACH SEEDLINGS. BUDDERS AT WORK IN PART OF LARGE FIELD IN HOME NURSERY

Hardy Climbing Plants

- American Ivy**—Excellent climber, beautiful autumn foliage. Each, 25c.
- Trumpet Vine**—Large trumpet-shaped flowers, vigorous grower. Each, 25c.
- Clematis Jackmani**—Large purple, blooms from July until frost, 3 years, each, 75c.
- Clematis Henryi**—White, an excellent bloomer. 3 years, each, \$1.00.
- Clematis Paniculata**—Very rapid growth, small white flower. Each, 50c.
- Honeysuckle Haliana**—Blooms all summer, very fragrant. Each, 35c.
- Honeysuckle Chinese Evergreen**—Good bloomer, holds foliage into winter. 3 years, each, 35c.
- Purple Wisteria**—Splendid hardy climber, flowers in large clusters, pale blue. Each, 35c.

NOTE.—The Jackmani Clematis should never be planted in a hot sunny situation. This is one cause of so many failing to grow this most valuable climber. It should have partial shade during heat of the day. A north or east exposure is preferable.

Hardy Roses

All strong plants 1½ to 3 feet high.

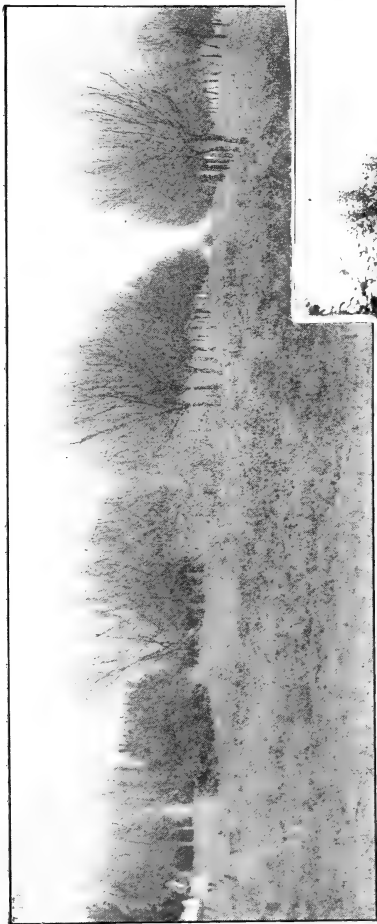
- Crimson Rambler**—Of recent introduction, proves to be extra hardy, free bloomer and strong grower, flowers are produced in clusters of 35 to 40 each; color, dark crimson, 2 to 3-foot plant, blooming size, each, 50c.
- Seven Sisters**—Flowers in clusters, opening a light rose color, changing to white, beautiful climber. Each, 25c.
- Prairie Queen**—Well known climber, bright, rosy red, foliage large. Each, 30c.
- Persian Yellow**—Double, bright yellow, a fine bloomer, each, 25c.
- Mad Plantier**—Double, bright yellow, white June rose. Each, 25c.
- Henry Martin**—Rich, glossy pink, tinged with crimson; large, globular flowers; full, sweet and finely mossed. Each, 40c.

Hybrid Perpetual Roses

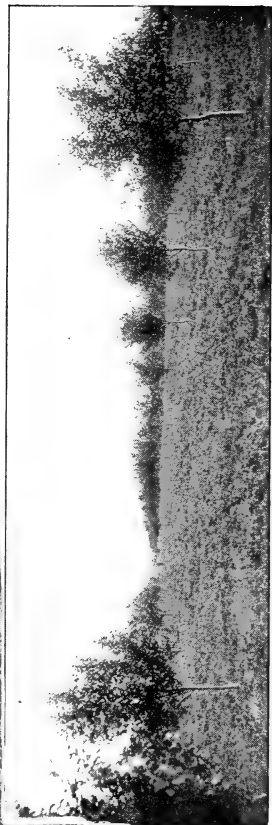
Each 35c; per 10, \$3.00.

- Gen. Jacqueminot**—Ever-flowering, brilliant, crimson, large, and of hardy habit.
- Paul Neyron**—Largest ever-blooming rose known, free bloomer, deep rose color.

(See next Page.)



ORCHARD, HOME NURSERY



YOUNG APPLE ORCHARD OF TWENTY ACRES, ROWS 80 RODS LONG, 32 FEET APART

Roses Concluded

Coquette des Alps—One of the finest pure white Hybrid Perpetuals; large, full, finely formed flower; color, pure white, sometimes faintly tinged with pale blush; profuse bloomer.

Anna de Diesbach—Brilliant rose color, with long, pointed buds and large, perfectly formed blossoms; delightfully fragrant. A vigorous grower and persistent bloomer. One of the best in this class.

Prince Camille de Rohan—Dark crimson changing to maroon.

NOTE—There are a great many different kinds and classes of Roses of more or less merit. What we have to offer are the most popular and desirable kinds.

Evergreens

(All twice transplanted).

American Arbor Vitæ—

Height	Each	Per 10	Per 100
12 to 15-inch.....	15c	\$1.00	\$ 6.00
2 to 3 feet.....	25c	2.25	20.00
3 to 4 feet.....	35c	3.00	22.50
4 to 5 feet.....	40c	3.50	25.00

The Arbor Vitæ is well adapted for either ornamental hedging or windbreaks. Rapid grower, perfectly hardy, native. Easily transplanted. For hedging, set 12 to 16 inches apart; windbreaks, 3 to 4 feet, in rows.

Norway Spruce—

Height	Each	Per 10	Per 100
18 to 24-inch.....	25c	\$2.00	\$12.00
2 to 3 feet.....	35c	3.00	

This is the big tree of Norway and more widely planted than any other for windbreaks and shelter belts. Of very rapid growth, easily transplanted.

Spruce, Colorado Blue—

Height	Each	Per 10
2 to 3 feet.....	35c	\$5.00
3 to 4 feet.....	50c	3.50

Variety of American Spruce from Colorado, a rapid grower, foliage a beautiful bluish green, sturdy, compact, dense growth. A very handsome tree for lawn or park. Will be the coming tree for shelter belts.

Scotch Pine—

Height	Each	Per 10	Per 100
12 to 18-inch.....	20c	\$1.50	\$ 8.00
18 to 24-inch.....	25c	2.00	12.00
2 to 3 feet.....	30c	2.50	15.00

The Scotch Pine is a very rapid growing, hardy variety of evergreen, with stout, erect shoots and silvery foliage. Easily transplanted, most valuable for windbreaks and shelter belts. Makes a nice lawn tree.

(See next Page.)



A TURN IN THE ROAD. VIEW FROM RESIDENCE IN WINTER

White Pine—

Height	Each	Per 10	Per 100
2 to 3 feet.....	35c	\$3.00	\$25.00
3 to 4 feet.....	40c	3.50	30.00
4 to 5 feet.....	50c	4.00	

The White Pine is the most ornamental of all our native pines, makes a very large and symmetrical tree. The most rapid grower of any of the ever-greens.

Red Cedar—

15 to 18-inch high....each, 25c; per 10, \$2.00

Pyramadalis Astor Vitae.

2 feet high.....each, 50c

NOTE—Remember you get your trees at first hands fresh dug and carefully packed.

Distances for Planting

	Rows Apart	Apart in Row
Apple	30 feet	20 feet
Pears	16 feet	12 feet
Plums	20 feet	16 feet
Peaches	16 feet	10 feet
Grapes	7 feet	6 feet
Raspberries	7 feet	3 feet
Blackberries	8 feet	2 feet
Gooseberries	6 feet	4 feet
Currants	6 feet	4 feet
Strawberries	3 feet	2 feet
Asparagus	3½ feet	2 feet

The above distances are for field culture and on good prairie land. On light soil plant closer.

What Depth to Plant

Trees should not be planted but very little deeper than they stood in the nursery row. Enough to allow for settling of soil. Roots too deep do not get warmth enough to induce early growth. Bear in mind always in planting roots of any kind that they need soil in close contact with them in order to draw nourishment.

All views shown in this catalog were taken on Home Nursery Grounds.



WHERE THE BOYS AND GIRLS SKATE



VIEW OF GROUNDS IN WINTER

