

## **Historic, Archive Document**

**Do not assume content reflects current scientific knowledge, policies, or practices.**

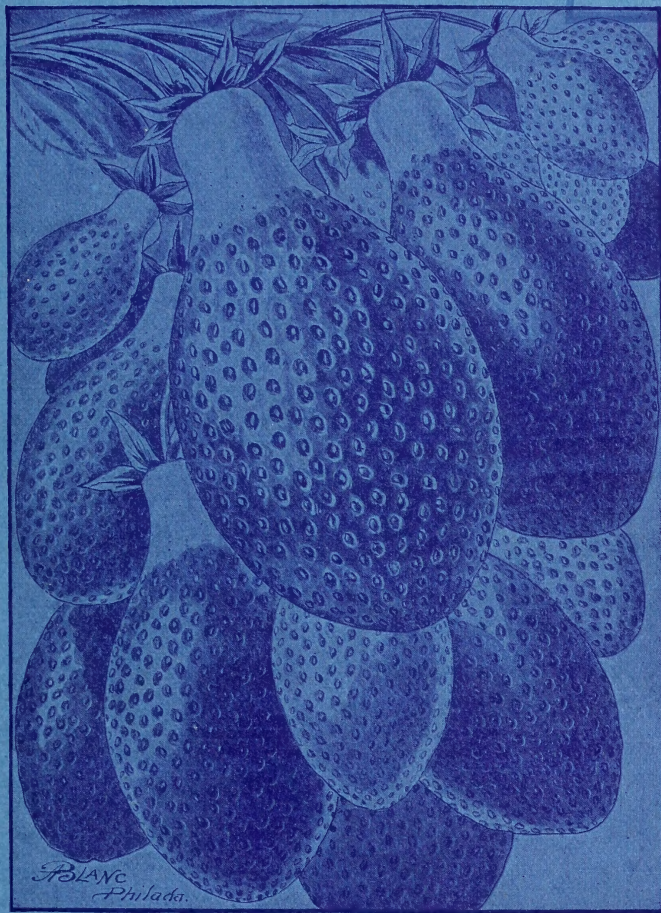




2.5  
1907  
LIBRARY RECEIVED JUL 2 1920 U.S. Department of Agriculture

# Kevitt's Mid-Summer Catalogue

Pot Grown and Layer  
Strawberry Plants.....



## KEVITT'S WONDER NEW CREATION

Nature's Wonderful Gift to Mankind.

TICE C. KEVITT, ATHENIA, N. J.

PASSAIC COUNTY.



## INFORMATION.

---

**Your Choice, Always.**--I will make you a good selection if you describe your soil. When orders cannot be filled to the letter may we send you other varieties? Say yes or no.

**Shipping Instructions.**--When no particular directions are given I use my best judgment, but in no case do I assume any responsibility. When loss or delay occurs claims should be immediately made upon express company.

**Terms, Cash,** or satisfactory security. I require at least one-fourth the price of the stock with the order, the balance to be paid on delivery. I will, with pleasure, give 30 days credit to customers who are well known to me if rated by the mercantile agencies; also on bankable note or on your own banker guarantee.

**The Prices** in this catalogue abrogate previous quotations. Prices affixed are for quantities specified, but half-dozen, fifty and five hundred of a variety will be supplied at dozen, hundred and thousand rates respectively, unless otherwise quoted.

**True to Name.**--All my beds are staked, showing the name of each variety. While I use every care to have all stock true to name and am sure that I am as successful as any one in the plant business, I will not be held responsible for any sum greater than the cost of the stock should any prove otherwise than as represented.

**Plants by Mail.**--Parties living at a distance from a railroad or express office often find it a convenience to have plants sent by mail. I guarantee plants to reach any part of United States in a perfect, fresh condition by mail.

**By Mail.**--I deliver to your door 12 plants or 1,000. All my plants are tied in bunches of 26 or 27, counts as 25.

**Remit** by money order, registered letter or draft. Postage stamps for fractional part of a dollar.

**Location** of my plant farm--12 miles from New York city, in the northern part of New Jersey. Trains every half hour from New York city. To reach our plant farm take Erie Railroad or D. L. & W. Railroad to Athenia, N. J.; only ten minutes' walk from depot.

**Samples** of my plants by mail for 10 cents, dug from the land of stumps; full of life; no failures; dug with a fork. I send roots with the plants.

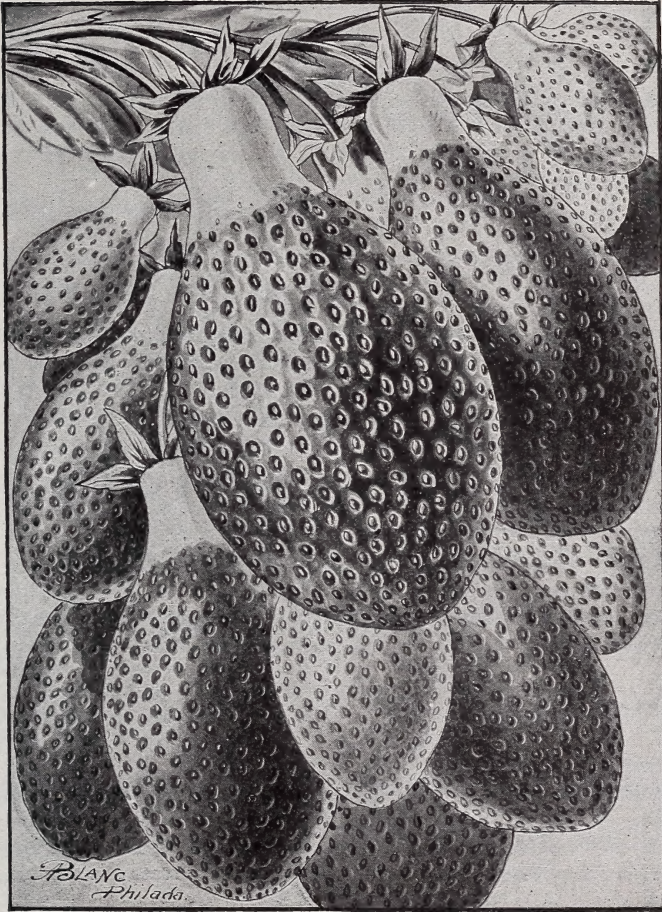
**If a New Beginner,** his best course is to start in a small way and grow in the business. The first season plant only 500 or 1,000 plants, increase your rows each season and plant varieties that are recommended by other growers or plant growers. Mulching for winter protection is a necessity, and good stable manure should be used. It prevents the escape of moisture at the time it is most needed. It also keeps the fruit clean.

**Perfect and Imperfect Flowers.**--It is important that the planter give careful attention to this point, imperfect varieties (I), must have perfect varieties (P) planted near them, say every 10th row.



# KEVITT'S WONDER.

NEW CREATION.



**Nature's Wonderful Gift** to mankind. The most distinctive and individual of all American strawberries. Unlike any other. This new type has never been dreamed of before. Nothing like it has ever been introduced of the pine varieties. The most perfect shape strawberry that nature has ever produced.

## THE RESULTS

**Of Sixteen Years Growing** seedling strawberries year after year. I have sown strawberry seed trying to improve on our long list by hybridizing a plant that possesses the power to produce fruit with a bright color, sweet sub-acid flavor, very few seeds; a berry parting freely from the calyx. It has taken sixteen years hard work to obtain this discovery. This new berry promises to bring about a revolution in berry culture.

## 1901

**I Sowed Seed** of the Parker Earl that was fertilized with Bubach No. 5, season of 1903. These seedlings, about 1,000 plants, all bore fruit. Out of this entire number only one plant showed a great improvement in the way of a distinct new strawberry, different from any other berry ever grown.

## WHEN

**This Plant Bore Fruit** and the perfect shape berries were ripe and visible, I was so surprised with my results that at first I hesitated to announce nature's wonderful gift. Nothing was said until the second year, when the original bore its heavy load of fruit. I have demonstrated to my own satisfaction that what I had worked out in accordance to a theory has proved practically beyond the shadow of doubt the greatest commercial strawberry of the age.

## A STRAWBERRY

**That Has Very Few Seeds.** A berry that contains no acid; a berry that has no stringy, hard core, a berry that is mild and sweet; of a delicious flavor.

## FOR

**A Number of Years** I have been trying hard to secure a strawberry that is perfect in every point. At last my hope became a realization in a new strawberry that is a wonder. You will shout the name in praise. You will 'phone the glad tidings to every person on the line, from Maine to California, what our little state has produced.

## DESCRIPTION

**Of This New Strawberry** which I have fruited now for three seasons. It ripens with Glen Mary; that is, it is a mid-season berry. Plants are very thrifty growers, with very dark green foliage; same shade as Bubach; very prolific; berries are a bright red.



very firm, of long shape, with a long neck. Last season single plants showed two to three strong fruit stalks and each stem produced ten to fourteen perfect shape berries. The illustration on front cover was drawn from nature. It is a perfect likeness of the berry as you will find it to ripen on your own vines. Last season the largest berries measured three inches long. It will be hailed with delight by consumers on account of its easy hulling qualities. It has a perfect flower.

**READ****CONTRACT**

**Under** which I am going to offer this new strawberry in order to realize a fair value for my years of labor.

**Only 2,000** transplanted plants will be offered this season. Three plants by mail for \$1.00.

Guaranteed to reach you early in September in a growing condition, and each plant will bear a full crop 1908.

**I Reserve** the right this season, in case I do not realize enough orders for this remarkable new strawberry, to return your money with interest after September 15, 1907.

---

**TICE C. KEVITT**

**Originator and Introducer**

**ATHENIA, NEW JERSEY.**

---

**500 Quarts STRAWBERRIES NEXT SEASON FROM 1000 GLEN MARY  
PLANTS IF SET OUT IN THE EARLY PART OF AUGUST.**

**RESULTS.**

From Mid-Summer Planting, Layer Plants Set Out in August.

I picked 7,000 Quarts of Strawberries the next season from 14,000 Glen Mary Plants. Visitors claimed a full quart to each plant. I claim each plant will yield a half quart. Get your soil good and rich and let me ship you in the early part of August 1,000 strong, young plants for \$8.00. Results next season, 500 quarts of berries. A sure way to invest your money on your own farm.





### SHOWING A FIELD OF GLEN MARY

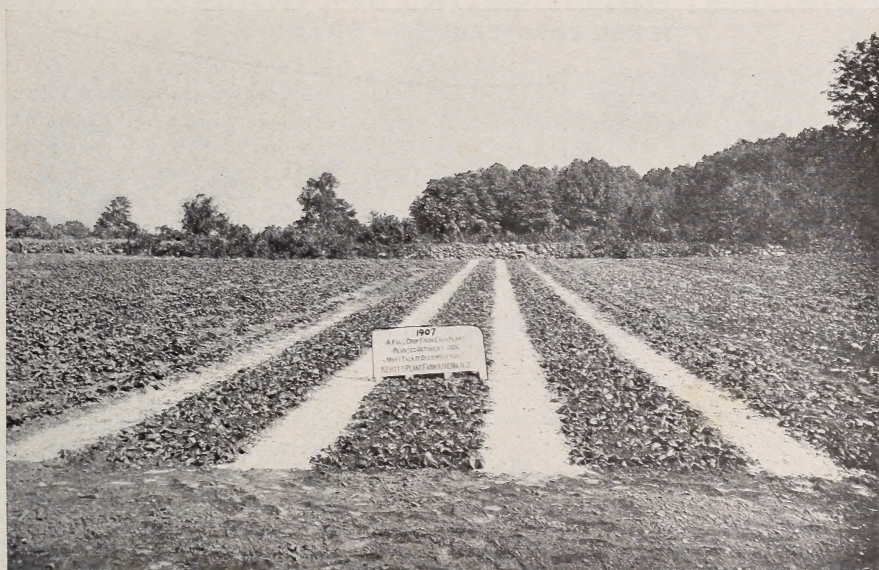
Strawberries built up every season for eleven years. Picking a full crop every season from the same soil. Acre after acre I am building up. Some of my built-up beds yield at the rate of twenty-one thousand quarts of strawberries and over per acre. I wish I could take you through these beds in June and show you if this is not a true fact. The only reason I can give why our built-up beds bear more fruit is, we destroy all fungous diseases, the strawberry crown-borer, the strawberry leaf-roller, the strawberry weevil, and the strawberry root-louse. Most of the strawberry insects hibernate in the strawberry fields during fall and winter. Early in May they emerge from the soil ever ready to weaken the growing plants in the spring. My method upsets the soil several times during the summer and no insect has the least chance to build a winter cell to hibernate in during fall or winter. After fruiting season is over, about July first, we destroy every plant in the beds except the original row where the plants were first set. We use a sharp hoe for this work. After all plants are cut out we rake them up and cart them out of the fields and burn them up so as to destroy all larva that may exist in the stems of the plants. After this work we have only one row of plants three and a half feet apart. Plants are left in the rows eight inches apart. The rows we cultivate very deep; the soil every week thus disturbing and killing many grubs pupae and recently formed beetles. August these same beds fill up again with young plants full of life and vigor. Retain the old bed with the same old plants and you have nothing but a mass of dead, wiry and decayed root, and the soil full of insects ready to attack the plants early in spring.

The proper time to build up is right after fruiting season. Cut out of the centre of the beds all plants with a sharp hoe, retaining in the original row one plant every six or eight inches apart; that is, retain the same original rows each season as near as possible. It seems to be natural for a strawberry plant to grow in the same soil year after year. Take the wild strawberry. Every year you can go to the same field and pick the wild berry growing in weeds and grass, bearing fruit every season in the same soil.





**Highest Award  
FOR MY PLANTS**  
at  
**Pan-American Exposition**



**View Showing Beds of Glen Mary.**

Set out as late as October, fall 1906. Each bed contains 500 plants set out in rows six inches apart. The beds are three feet wide and each bed is three feet apart. An acre planted by this method in October, 1907, will give the enormous yield of 10,000 quarts of strawberries 1908. The soil should be good and rich before planting.

LAMPETER, Lancaster, Pa., May 22, 1907.

MR. KEVITT,

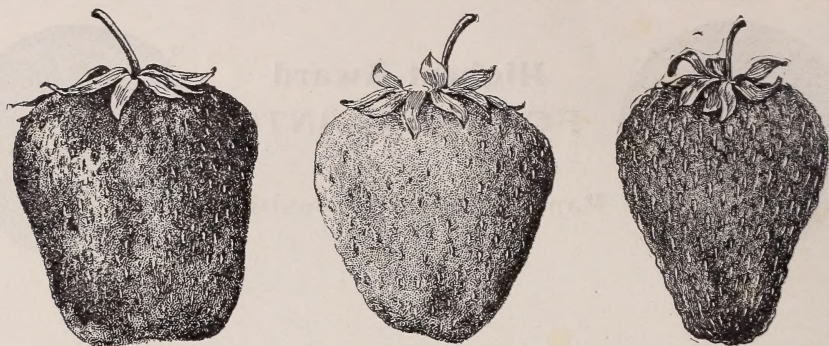
Dear Sir:—I received the twenty-five of your new sixteen quart crates today. Am very well pleased with them.

Yours truly,

ABRAHAM H. WITMEY.

LAMPETER, Pa.





## PRICE LIST OF POT-GROWN STRAWBERRY PLANTS.

### A Full Crop of Luscious Strawberries

Next season from each plant. Glen Mary will yield a quart to each plant if set out on rich soil August 15th. Be sure to cut off all runners this season so that the plants can store up fruit crowns for next season's crop. My potted plants will be well rooted in the pots by July 15th. My pot plants can be set out no matter how dry your soil is. Guarantee them to grow and bear a full crop 1908.

VIA EXPRESS ONLY.

	Per 12	Per 25	Per 50	Per 100	Per 1,000
Per. Glen Mary.....	\$0 50	\$0 75	\$1 25	\$2 00	\$15 00
Imp. Sample.....	50	75	1 25	2 00	15 00
Per. Oom Paul.....	50	75	1 25	2 00	15 00
Per. New York.....	50	75	1 25	2 00	15 00
Per. Climax.....	50	75	1 25	2 00	15 00
Per. Uncle Jim.....	50	75	1 25	2 00	15 00
Imp. General De Wet.....	50	75	1 25	2 00	15 00
Per. Marshall.....	50	75	1 25	2 00	15 00
Per. President.....	50	75	1 25	2 00	15 00
Per. New Home.....	50	75	1 25	2 00	15 00
Per. Abington.....	50	75	1 25	2 00	15 00
Per. Chesapeake.....	50	75	1 25	2 00	15 00
Per. Parker Earl.....	50	75	1 25	2 00	15 00
Per. Sharpless.....	50	75	1 25	2 00	15 00
Per. Gandy.....	50	75	1 25	2 00	15 00
Imp. Cardinal.....	50	75	1 25	2 00	15 00
Per. Jessie.....	50	75	1 25	2 00	15 00
Per. New Globe.....	50	75	1 25	2 00	15 00
Per. Meade.....	50	75	1 25	2 00	15 00
Per. Senator Dunlop.....	50	75	1 25	2 00	15 00
Per. Stevens Late.....	50	75	1 25	2 00	15 00
Per. William Belt.....	50	75	1 25	2 00	15 00
Per. Ridgeway.....	50	75	1 25	2 00	15 00
Per. North Star.....	50	75	1 25	2 00	15 00
Per. Hundred Dollar.....	50	75	1 25	2 00	15 00
Imp. Haverland.....	50	75	1 25	2 00	15 00
Per. Excelsior.....	50	75	1 25	2 00	15 00
Per. Almo.....	50	75	1 25	2 00	15 00
Per. Bismark.....	50	75	1 25	2 00	15 00
Imp. Warfield.....	50	75	1 25	2 00	15 00
Per. Good Luck.....	1 00	1 50	2 00	3 00	20 00
Per. North Jersey.....	1 00	1 50	2 00	3 00	20 00



## FOR THE HOME GARDEN.

The strawberry bed should be enclosed by netting while the plants are growing and bearing fruit. This is one reason why the home garden is often a failure, by not growing crops inside of netting.



VIEW OF A FIELD OF GLEN MARY.

Yielding over 20,000 quarts of strawberries per acre on my plant farm. Above field has been built up for eleven seasons.

## DESCRIPTION OF THE BEST VARIETIES

As fruited on my grounds. Those of the greatest value and most profitable to plant are : Glen Mary, Sample, William Belt, Climax, Sen. Dunlop, Oom Paul, Stevens (late) New York and Uncle Jim.

### **GLEN MARY,** (Semi-Perfect).

The most profitable one to grow. It will yield from five to twenty thousand quarts of strawberries per acre. For eleven seasons this great berry has outstripped all for size, color and productiveness. I must say, as long as I have grown and fruited all the old and new varieties of strawberries Glen Mary has shone like a meteor leading the way ; all these years towering above all as the most profitable one I have ever grown on my plant farm. The yield per acre is enormous. The berries are large, beautiful color, firm, and a very good shipping berry. Single plants set out in good, rich soil the early part of August will yield a quart of strawberries to each plant the next season. 5,000 plants for \$30.00.

---

### CLIMAX, (Perfect).

**Next to Glen Mary** as a money-maker; it will yield fully as many quarts to the acre. Last season the first shipment brought 14 cents per quart wholesale. Productiveness is simply immense. The foliage is a beautiful dark green; berries rich dark glossy red; ripens very early. Last season it proved to be ripe May 28th on my grounds. Plants make but few runners. Very often one string or runner will have only one plant. A remarkable feature of this berry, it stores up more fruit crown than any other variety, that is, the young plants last season, two-year-old single plants, yielded over one quart of fruit. Every plant set out in the early part of August will yield an enormous crop of fruit. In the matted rows it will yield more than ten thousand quarts to the acre. I have taken such an interest in Climax that I have planted over three acres to this variety as the best and most profitable early berry; one of the most reliable to plant. 2,000 plants for \$14.00.

---

### SAMPLE, (Imperfect).

**Plant This Variety** is my advice if you wish to pick from 10,000 to 15,000 quarts per acre. The Sample and Glen Mary bring me more money per acre than any other variety growing on my plant farm. I have fruited a good many kinds the past sixteen years. I must frankly admit that Sample, for productiveness, surpasses all others in value. In the Sample we have a very productive strawberry growing freely on every class of soil; the plants are healthy, strong growers; every plant forms a number of fruit crowns and three to five strong fruiting stalks; berries large to very large, pointed, globular, light bright red, moderately firm and good, ripens medium-late. I can not say enough of this all-round berry; yielding enormously everywhere. One of our berry growers in this county has cleared one thousand dollars from an acre. One thing is certain, if you once plant Sample you will plant it every time. This berry is right "up head" and is practically the one you should plant in your garden or field. 1,000 transplanted plants early part of August for \$8.00. Each plant will yield a full crop 1908, or I will refund your money. It proved to be entirely frost proof.

---

### WM. BELT, (Per.)

**The Best Flavored Strawberry** out of the entire list. The best for home garden or for fancy market. It bears enormous crops on fall set plants. It has yielded nearly a quart to each plant the next season. This berry is entirely frost proof.

---

### CHESAPEAKE, (Per.)

**As Late as Gandy**; more productive on lighter soils and equal to it in size; the plants are strong and vigorous; stems are strong, holding the fruit from the soil; entirely free from rust; this is one of our best late berries.

---

### ABINGTON, (Per.)

**This New Berry** deserves all the praise with which it was sent out. The plant is large, healthy and productive; it ripens with Glen Mary; is superior in color and flavor.



### COMMONWEALTH, (Per.)

**I Have** had this in bearing four seasons and find it a short, stocky grower; healthy and very prolific; it is very late in ripening and keeps long after being picked.

### GANDY, (Per.)

**The Old Standard** for a very late berry; noted for its large size; berries are of a bright red and very firm.

### MARSHALL, (Per.)

**One of the Best Flavored Berries** ever sent out; plant is large, healthy, productive; the berry is very large, nearly round. Marshall berries will bring better prices in the markets than any other berry on account of its dark rich color; it ripens Mid-Season.

### MEAD, (Per.)

**One of the Best Growers;** the plant is large and very stocky; the berry is of large size, glossy color, firm, and the plants are very productive.

### NEW HOME, (Per.)

**The Dry Berry;** the greatest shipping berry that I know of. I have fruited it now for three seasons. The berries are so dry they almost rattle like hickory nuts on the vines. Berries are a bright red and very firm. Plants are not very thrifty; fairly productive.

### OOM PAUL, (Perfect Flowering).

**The Grand Monster,** the largest strawberry.

This is the largest berry I have ever fruited. I. S. Palmer, of Stuyvesant, N.Y., is the originator. The first season we fruited Oom Paul we sold every box for 25c. each. One quart box was sold for ten dollars. Six berries filled the box. Although the Oom Paul has only recently been offered to the public, it is already famous. From flattering reports we receive from customers who bought plants from us, the berries are luscious and of immense size. They are very firm for so large a berry. In general, it is wedge shape, flesh dark red to the core, of delightful aroma, rich, juicy and luscious. The seeds are but slightly imbedded, which adds to its firmness. The color is of a rich, dark red, colors all over at once, and its large green calyx greatly adds to the attractiveness of the fruit. In pro-



PRESIDENT KRUGER,

duce, and its large green calyx greatly adds to the attractiveness of the fruit. In pro-

ductiveness the Oom Paul is truly a marvel, both in size and quantity. The splendid large berries are borne on stiff, stout stems, and ripen in succession for a long period from mid-season, holding up its size to the last berry, and every berry coming to maturity. The plants are vigorous, healthy and hardy, throwing out strong runners. The foliage is of the largest, which protects the choice berries from the sun scald.

### STEVENS-LATE CHAMPION, (Per.)

**Very Late in Ripening**; of the Gandy type in foliage and in fruit it will yield large crops of beautiful shape berries; a very profitable one to grow; plants are very healthy; I don't know of any berry that will prove to be as profitable as this one for a good late crop. Be sure this one is on your list; it will bring you more money than any other late variety; the only variety that is frost proof.

### NEW YORK, (Perfect)

**This Is the Only Variety** that I know of that does not require rich soil and should be planted on light soil; it seems to do best on a hillside; a light covering of manure in the fall is all it requires to bring an enormous crop of berries. I have fruited New York extensively each season as one of our best and most prolific; it should be grown in the narrow, matted rows for best results; the vines are very healthy and vigorous, making but few runners, throwing its strength and vigor into the magnificent berries. In form the berries are very handsome; color crimson; deliciously rich and melting. 1,000 transplanted plants early part of August for \$8.

## I AM A STRONG ADVOCATE OF MID-SUMMER AND FALL PLANTING.

So as to realize full value from the soil every year I wish our berry-growers to try this method of close planting in August, September or as late as October on very rich soil. 20,000 plant per acre. The yield will be over 10,000 quarts of strawberries the next season. Just think what this is at 5c per quart. \$500 per acre less than ten months from time of planting; to obtain above results the Glen Mary variety should be planted October 1st. 20,000 strong, rooted young plants, full of life for \$70.00.

LINWOOD, Maryland, March 30th, 1907.

Dear Sir:—I received your plants on the 27th in fine order, just as you sent them. The plants are very nice.

Yours obliging,

I. C. OTTO.

PORT RICHMOND, N. Y., April 5th, 1907.

MR. T. C. KEVITT,

Dear Sir:—The strawberry plants at hand arrived in fine condition. Thanks.

Yours respectfully,

WM. E. DECKER.





### Plants from the Land of Stumps.

**The Natural Soil** to grow strong, healthy strawberry plants. The roots hold more or less soil, fresh dug and shipped same day, sure to grow and bear a full crop 1908 or I will return your money.



## STRAWBERRY TRIMMER

TEN HILLS IN A MINUTE

**P**LACE the Trimmer over the plant, give a quick turn with the handle two or three times.

On a hedge row it will prevent runners in one plant from running into another plant. It will save half the work of cultivation and all trouble about runners.

PRICE FIVE DOLLARS.

## AUGUST PRICES

### FOR

## STRONG ROOTED LAYER PLANTS.

A Full Crop from Each Plant 1908.

### PRICES DURING AUGUST

of my young, vigorous-rooted layer strawberry plants. My experience for the past ten years, on my grounds, the layer plants are the best. A full crop next season. Invest \$8.00 and make \$50 the next year. This is a fact. A true one. Last winter I cut and cleared up a tract of timber land. From this virgin soil I am going to grow the finest, best and most vigorous lot of plants I have ever grown. The natural soil to grow good, healthy strawberry plants. Before you order let me send you a sample for 10 cents to pay postage.

### Ready--STRONG LAYER PLANTS FOR AUGUST.

	Per Doz. by Mail.	Per 100 by Express.	Per 1,000 by Express.
Per. Glen Mary. ....	\$0 25	\$1 00	\$8 00
Imp. Sample.....	25	1 00	8 00
Per. Oom Paul.....	25	1 00	8 00
Per. New York.....	25	1 00	8 00
Per. Climax.....	25	1 00	8 00
Per. Uncle Jim.....	25	1 00	8 00
Imp. General De Wet.....	25	1 00	8 00
Per. Brandywine.....	25	1 00	8 00
Per. Marshall .....	25	1 00	8 00
Per. President.....	25	1 00	8 00
Per. Sharpless.....	25	1 00	8 00
Per. Wm. Belt .....	25	1 00	8 00
Per. Lester Lovett.....	25	1 00	8 00
Per. Gandy ..	25	1 00	8 00
Per. Henderson Ruby .....	25	1 00	8 00
Per. Hunn.....	25	1 00	8 00
Per. Nic Ohmer .....	25	1 00	8 00
Per. Excelsior.....	25	1 00	8 00
Per. Dunlop.....	25	1 00	8 00
Imp. Haverland.....	25	1 00	8 00
Per. Beaver.....	25	1 00	8 00
Per. Stevens Late .....	25	1 00	8 00
Per. Abington .....	25	1 00	8 00
Per. Virginia.....	25	1 00	8 00
Per. New Home. ....	25	1 00	8 00
Per. Brunett.....	25	1 00	8 00
Per. Hundred Dollars.....	25	1 00	8 00
Per. New Globe.....	25	1 00	8 00
Per. Ridgway.....	25	1 00	8 00
Per. Wild Wonder.....	25	1 00	8 00
Per. Dixon.....	50	2 00	



**SEPTEMBER PRICES.**  
**FOR**  
**STRONG ROOTED LAYER PLANTS.**

A Full Crop from Each Plant 1908.

**Ready--STRONG LAYER PLANTS FOR SEPTEMBER.**

	Per Doz. by Mail.	Per 100 by Express.	Per 1,000 by Express.
Per. Glen Mary.....	\$0 25	\$1 00	\$7 00
Imp. Sample.....	25	1 00	7 00
Per. Oom Paul.....	25	1 00	7 00
Per. New York.....	25	1 00	7 00
Per. Climax.....	25	1 00	7 00
Per. Uncle Jim.....	25	1 00	7 00
Imp. General De Wet... ..	25	1 00	7 00
Per. Brandywine.....	25	1 00	7 00
Per. Marshall.....	25	1 00	7 00
Per. President.....	25	1 00	7 00
Per. Sharpless.....	25	1 00	7 00
Per. Wm. Belt .....	25	1 00	7 00
Per. Lester Lovett.....	25	1 00	7 00
Per. Gandy.....	25	1 00	7 00
Per. Henderson Ruby.....	25	1 00	7 00
Per. Hunn.....	25	1 00	7 00
Per. Nic Ohmer .....	25	1 00	7 00
Per. Excelsior.....	25	1 00	7 00
Per. Dunlop.....	25	1 00	7 00
Imp. Haverland.....	25	1 00	7 00
Per. Beaver.....	25	1 00	7 00
Per. Stevens Late.....	25	1 00	7 00
Per. Abington.....	25	1 00	7 00
Per. Virginia.....	25	1 00	7 00
Per. New Home.....	25	1 00	7 00
Per. Brunett.....	25	1 00	7 00
Per. Hundred Dollar.....	25	1 00	7 00
Per. New Globe.....	25	1 00	7 00
Per. Ridgeway.....	25	1 00	7 00
Per. Wild Wonder .....	25	1 00	7 00
Per. Dixon.....	50	1 50	

A full crop from these plants if set out before the 15th. Try it. Better than spring planting. Your money back if not as I claim, a full crop 1907.

ALPINE, Ind., March 11, 1907.

The plants you sent last October, 1906, they were all fine plants and started to grow nicely.

C. M. OGDEN.

# OCTOBER PRICES

## FOR

### STRONG ROOTED LAYER PLANTS.

A Full Crop from Each Plant 1908

#### Ready--STRONG LAYER PLANTS FOR OCTOBER.

	Per Doz. by Mail.	Per 100 by Express.	Per 1,000 by Express.
Per. Glen Mary.....	\$0 25	\$0 50	\$4 00
Imp. Sample.....	25	50	4 00
Per. Oom Paul.....	25	50	4 00
Per. New York.....	25	50	4 00
Per. Climax.....	25	50	4 00
Per. Uncle Jim.....	25	50	4 00
Imp. General De Wet.....	25	50	4 00
Per. Brandywine.....	25	50	4 00
Per. Marshall.....	25	50	4 00
Per. President.....	25	50	4 00
Per. Sharpless.....	25	50	4 00
Per. Wm. Belt.....	25	50	4 00
Per. Lester Lovett.....	25	50	4 00
Per. Gandy.....	25	50	4 00
Per. Henderson Ruby.....	25	50	4 00
Per. Hunn.....	25	50	4 00
Per. Nic Ohmer.....	25	50	4 00
Per. Excelsior.....	25	50	4 00
Per. Dunlop.....	25	50	4 00
Imp. Haverland.....	25	50	4 00
Per. Beaver.....	25	50	4 00
Per. Stevens Late.....	25	50	4 00
Per. Abington.....	25	50	4 00
Per. Virginia.....	25	50	4 00
Per. New Home.....	25	50	4 00
Per. Brunett.....	25	50	4 00
Per. Hundred Dollar.....	25	50	4 00
Per. New Globe.....	25	50	4 00
Per. Ridgeway.....	25	50	4 00
Per. Wild Wonder.....	25	50	4 00

ALPINE, Ind., April 4, 1907.

MR. T. C. KEVITT,  
Athenia, N. J.

Dear Sir:—I received my strawberry plants today and they are in the ground and I judge from the immense roots they had that they will lose no time in starting to grow; they are the finest plants I ever saw; they were in perfect condition; you forgot to put in the 12 Brandywine but your count on the others was so liberal that I received more plants than I bought.

C. M. OGDEN.





This photograph was taken Sept. 20th, 1905. The plant is my new seedling named "Autumn." It was set in the field the first week in June, 1905. Samuel Cooper.

---

### THE AUTUMN

Is a seedling of the Pan-American and is a genuine fall-bearing berry. Plants set in the spring with the fruit stems removed will crown up and bear fruit in August and will continue to bear until cold weather. It is a pistulate and requires Pan-American plants or some other fall-bearing staminate set with them to pollinize them. The fruit is medium size, dark red clear through and a fine shape and quality. The plant makes runners more freely than the Pan-American. It is a good grower with dark green foliage. If you try it, I think it will please you.

Price of Plants: 6, \$1.00; 12, \$2.00; 50, \$5.00; 100, \$10.00; sent prepaid by mail or express upon receipt of price.

---

### PAN-AMERICAN FOUND AT LAST.

A strawberry plant that produces a large and continuous crop of fine strawberries from August until winter. It fruits on new runners and old plants; is a strong grower that needs no petting. Pan-American strawberries picked in 1900 from ten plants set last of July, 1899, (old plants divided to single crowns after fruiting) 117 oz. from June 12th to 30th.

From 125 plants (including the above 10) of which 44 were set Oct. 1st, 1899, balance April 16th, 1900, blossoms kept off until July 1st (except the 10 mentioned above), were picked in August, 340 oz., September, 691 oz., October, 406 oz., November, 31 oz. Two rods of ground occupied. The ideal berry for the family garden.

Price of Plants: 4 pl. \$1.00; 6, \$1.25; 12, \$2.50; 50, \$7.50; 100, \$15.00. Sent prepaid by mail or express on receipt of price.

---

## RED RASPBERRIES.

**Ruby Red** (new). This hardy Raspberry is a native of New York State. It is a stocky dwarf bush with tough, leathery foliage, twigs free from all disease. Wonderfully productive, of medium to large light red berries of excellent quality. It begins to ripen before the late strawberries are gone and continues to bear for four weeks. 50 cts. per doz. by mail; \$1.00 per 100 by express; \$8.00 per 1,000.

---

## BLACKBERRIES.

**Ward.** It is the best family and market berry yet known. It makes hedge rows 6 feet wide. Across the whole outside is a continuous mass of berries, big, glossy, black fellows, sweet, tender and melting, with no hard core at the center. It yields at the rate of 160 bushels per acre. A perfect blackberry is the Ward. 12 strong plants by mail for \$1. \$3 per hundred.

---

## GOOSEBERRIES.

**Josselyn.** Red, most prolific and valuable; very large berry; quality the best; never mildews. 25 cts. each by mail. \$2 per doz.; \$8 per 100.

---

## CURRANT.

**Wilder.** One of the best; very productive of long bunches, with berries of largest size; bright, light red, medium, acid. 50 cts. per doz. by mail. \$3 per 100 by express.

---

## RHUBARB ROOTS.

A very profitable crop to grow. Every home garden should have a few hills. \$1 per doz. \$5 per 100.

---

MR. T. C. KEVITT,  
Athenia, N. J.

April 15, 1907.

Dear Sir:—I beg to acknowledge the receipt of strawberry plants which were handsome plants and arrived in the pink of condition.

A. R. ROSWELL.

STRATFORD, Conn.

---

WILLIAMSTOWN, Mass., May 9th, 1907.

Dear Sir:—The plants arrived in due season and are as nice a lot as I ever saw and I want to thank you again for the extra lot of Marshall, for you sent me more than expected.

Yours very respectfully,

CHARLES H. BROOKMAN.



---

## FALL GRAPE PLANTING

Twelve choice varieties, one of each kind by express for one dollar, or I will send a dozen of any you select from the list for one dollar.

**Brighton.**—A large bunch and berry, red, resembles Catawba, very fine, free grower and productive.

**Delaware.**—A small, red berry, compact bunches, very delicious, always brings the highest price in market, and always considered the best for home use. It has no superior in quality.

**Lindley.**—This is a fine red variety, very productive; especially recommended for home garden.

**Vergennes.**—This is a very popular dark red variety and one that should be in every garden.

**Niagara.**—Large, compact, greenish white, thin skin, very vigorous and hardy, fruit sweet and good.

**Diamond.**—Bunch and berry large, compact, greenish white, very juicy and fine quality.

**Pocklington.**—This is a white variety, with large shouldered compact bunches; ripens a week later than Niagara.

**Elvira.**—This is a white variety, very productive, and fine quality.

**Concord.**—An early black variety that does well wherever planted. Good size, good quality, and very productive.

**Moore's Early.**—This is a large, black variety, ripening a week earlier than Concord; berries large, good quality and very productive. This is especially valuable as an early variety.

**Worden.**—This is a valuable black variety, ripening before the Concord; berries large, of good quality and thin skin. It is perhaps one of the most popular black grapes grown.

**Wilder.**—Bunch and berry large, black, tender, rich, one of the finest; as vigorous and productive as Concord.

---

WILMORE, May 20, 1907.

Mr. T. C. KEVITT,

Dear Sir :—The plants came all right and were fine but after I set them out we had a very cold spell of weather and a great many of them froze. So if it is not too late please send me two collections No. 23, \$2.00. Apples and strawberries are in full bloom, but it will freeze so hard tonight it will kill them all.

LIZZIE W. EMIGH,

Wilmore, Pa.

## NUMBER OF PLANTS REQUIRED TO SET ONE ACRE.

DISTANCE.	PLANTS.	DISTANCE.	PLANTS.	DISTANCE.	PLANTS.	DISTANCE.	PLANTS.
1 by 1 foot,	43,560	4 by 3 feet,	3,630	6 by 3 feet,	2,420	7 by 5 feet,	1,224
2 by 1 foot,	21,780	4 by 4 feet,	2,722	6 by 4 feet,	1,815	7 by 6 feet,	1,037
2 by 2 feet,	10,890	5 by 1 foot,	8,712	6 by 5 feet,	1,452	7 by 7 feet,	888
3 by 1 foot,	14,520	5 by 2 feet,	4,356	6 by 6 feet,	1,210	8 by 3 feet,	1,815
3 by 2 feet,	7,260	5 by 3 feet,	2,904	7 by 1 foot,	6,232	8 by 4 feet,	1,361
3 by 3 feet,	4,840	5 by 4 feet,	2,178	7 by 2 feet,	3,111	8 by 5 feet,	1,089
4 by 1 foot,	10,890	5 by 5 feet,	1,742	7 by 3 feet,	2,074	8 by 6 feet,	905
4 by 2 feet,	5,445	6 by 1 foot,	7,206	7 by 4 feet,	1,555	8 by 7 feet,	777
		6 by 2 feet,	3,630			8 by 8 feet,	680

WAPELLO, Iowa, March 30th, 1907.

Dear Sir:—The exchanges are heavy from you to me but the plants I have had from you have been fine and have paid me well last season, the Glen Mary made me twice the money that Dunlop and New York did.

Yours truly,  
W. C. HERRICK.

GARDNER, Mass., May 6th, 1907.

TICE C. KEVITT,

Dear Sir:—I received your plants last Saturday and they are very satisfactory in every way and I hope next spring that I will be able to give you a larger order.

I am yours truly,  
A. A. GREENWOOD.

May 27, 1907.

MR. KEVITT,

Dear Sir:—I received my strawberries and raspberries in the best of shape as if they were just taken from the ground. The express agent telephoned to me as soon as they arrived. We were more than pleased with them. I thank you very much for the rose bush you sent me.

Yours respectfully,  
MRS. W. H. WYLLIE,  
New Britain, Conn.

KIRKLAND, Wash., April 1, 1907.

MR. T. C. KEVITT,

Dear Sir:—The plants arrived by today's mail and I must say I cannot speak too highly of the way in which they were packed. I never had plants come, even by express, in such fine condition. The count is more than generous. They are very large and well rooted. I shall try to give you a boost in our local horticultural paper. All strawberry growers should know where to get the most satisfactory service. I shall do this to show my gratitude.

Yours sincerely,  
JAS. REILY.

P. S.—I haven't counted them yet, but it looks as I say.

J. R.



## BETTER PRICES FOR YOUR STRAWBERRIES.



THE COMING STRAWBERRY CRATE.

**The Fruit Industry** has developed and grown from year to year until today it is one of the most important in the country; the method of marketing and market demands have changed from time to time.

**The Successful Fruit Grower** finds by experience that his profits are increased or decreased according to the kind and quality of package used, and that in order to make the greatest success, and realize the largest profits, his fruit must reach the markets and the consumer in good condition, and must present a neat and attractive appearance to the purchaser. The grower of fancy fruit especially, has found that this cannot always be done when the ordinary crate is used.

**Being a Large Grower** of fancy fruit I realize the importance of and demand for an improvement in crates.

**By Shipping Strawberries** in my new sixteen quart crate your fruit will look more tempting and will bring from one cent to two cents more per quart.

**The Small Package** always makes fruit sell better, it will secure better prices and will help increase the sale of your fruit. The appearance of the berries and the new crate is what pleases the eye and sells the fruit.

**I Was So Well Pleased** last season in shipping all my fruit in this sixteen quart crate, realizing two and three cents more per quart for my fruit, that I am manufacturing ten thousand crates for my own use the coming season. I wish I could make our berry growers realize how profitable this new crate will be for them to ship their choice fruit in.

**In Delivering Berries** to the customers the crates are convenient, as the entire package may be carried to the purchaser, who can thus select the quart or quarts that suit them best; very often, if the fruit looks tempting, they will buy four or six quarts, and will be better satisfied if you can show the entire crate of fruit.



### View of a Field of Glen Mary.

**Some Very Strong Reasons** why my new crate is superior to the old crate—with all its division slats crushing every box of fruit—holding only sixteen quarts, the fruit cools off very rapidly, which is very important where berries are crated at once.

**Better Ventilated Quarts** can be better filled. Prevents mashing or bruising fruit. Only one division slat. No fruit injured in transportation as the spring bottom prevents this.

**Fruit Can Be Better** displayed when on the market. Each quart or crate of fruit can easily be examined by purchaser.

**Neat and Attractive** in appearance; light yet substantial; not complicated; easy to make. Just the crate for growers of fancy fruit.

**You Are the Doctor.** It is up to you to realize better prices for your choice berries. If you try it in a small way the coming season, and you do not find it a success, I will return your money. Be sure to try it, anyway; freight is cheap.

**This New Crate** is a product of my own manufacture; is made from selected pine and basswood; the lid or cover is well made and strong.

**I Have Thoroughly Tested It** the past season in shipping berries to the New York markets. It stood the test. Fruit arrived in a perfect condition.



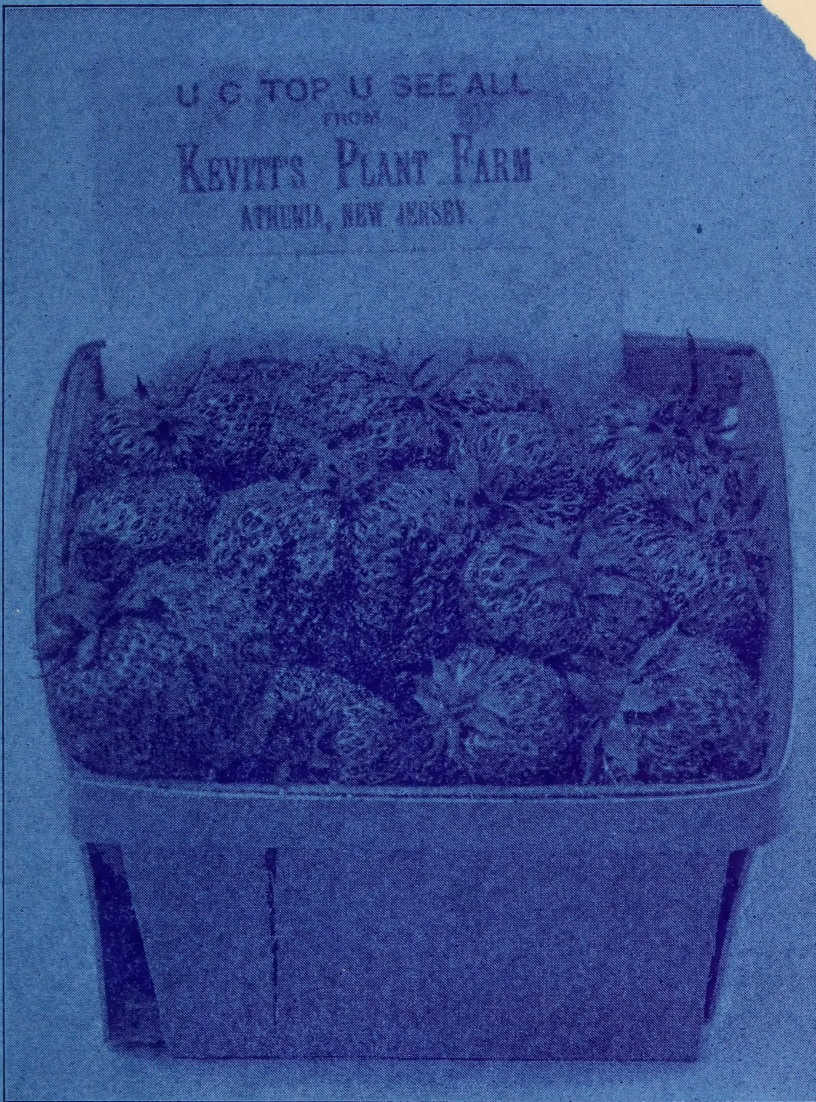
SEND FOR PRICE-LIST.











#### PLAN FOR ADVERTISING FANCY BERRIES.

The above figure shows a quart basket of Glen Mary Strawberries as grown by T. C. Kevitt, of New Jersey. He has been especially successful with this as a market variety. The label shown is a strip of parchment paper about eight inches long and four wide. It is laid on the bottom, the berries are piled on it, and the printed part sticks out. The idea is to guarantee that the fruit is honestly packed. Every berry in baskets bearing this label is picked by the stem and laid in the basket, not dropped in. But how is it possible to get the picking done in this way? Mr. Kevitt has found that for very choice berries, hiring the picking done at so much a quart is not satisfactory. He now hires by the day, giving \$2 for eight hours, with no deduction for time lost by showers. He pays a foreman \$3 per day to do nothing but inspect the work. He keeps on the move and holds the pickers strictly to their instructions. This seems like expensive business, but it puts up the berries in such shape that they can be depended upon. These berries are expected to wholesale at an average of 18 or 20 cents for the season, and it is quite probable that all that get here in good condition will, but they must be disposed of quickly and without much handling. A little shaking up removes the gilt-edge look and puts them in the same class as thousands of quarts of common fruit.—Rural New Yorker.

Send two-cent postage stamp for sample sheets of U C Top U See All.



