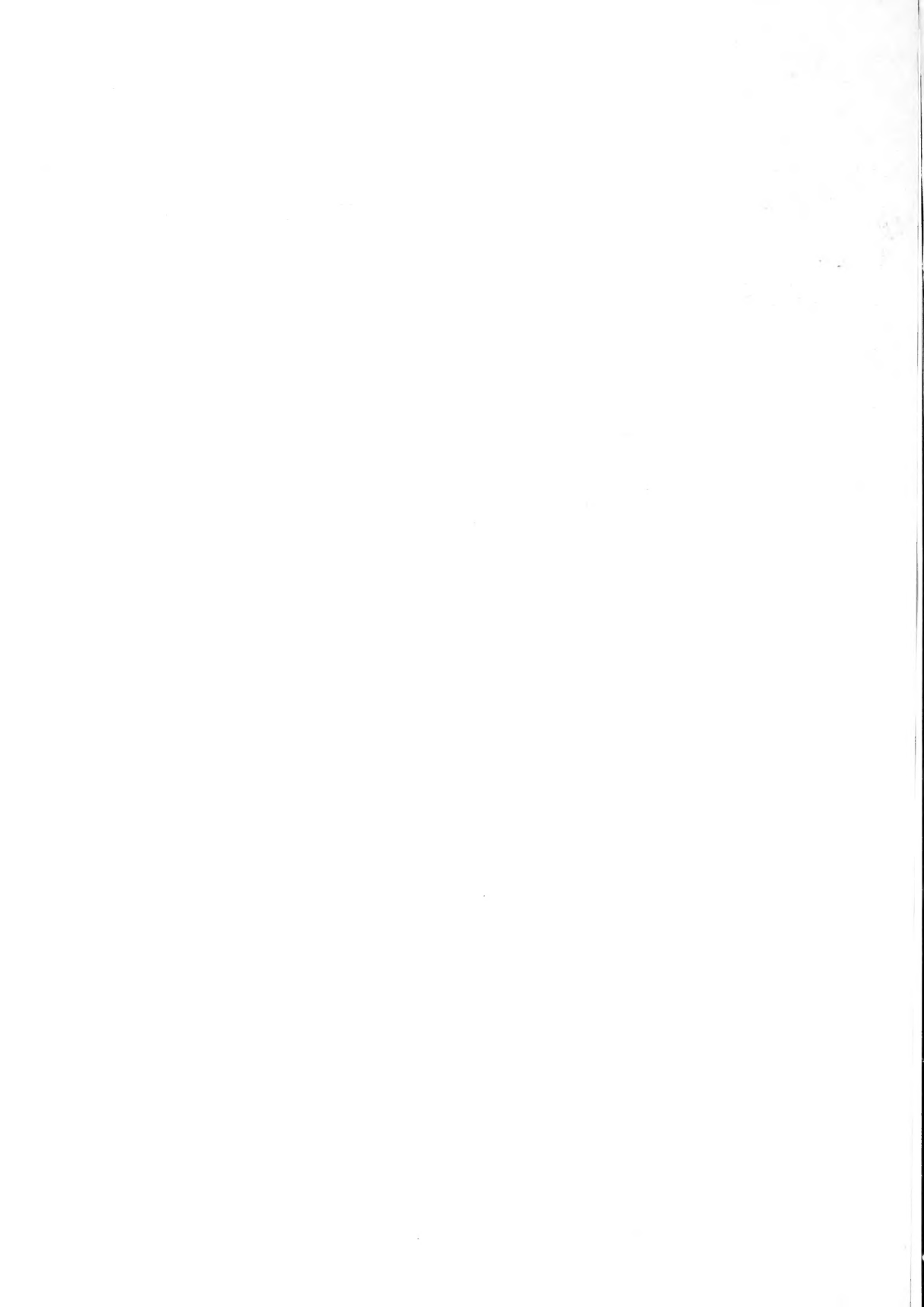


Historic, Archive Document

Do not assume content reflects current scientific knowledge, policies, or practices.



62.61

LIBRARY
RECEIVED
★ SEP 10 1920 ★
U. S. Department of Agriculture

SPRING, 1907

MOST EXTENSIVE GROWER IN AMERICA OF
GRAPE VINES

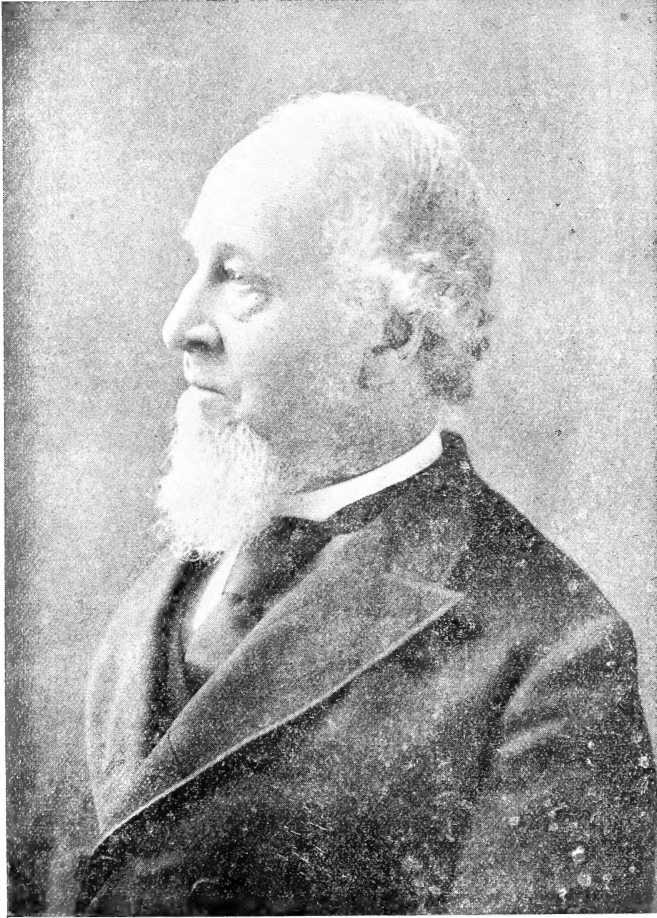
GEO. S. JOSSELYN,
Fredonia, New York.

At World's Fair, St. Louis, we were awarded the only Gold Medal to any individual or firm for out-of-door grown grapes. About 90 per cent. of our Exhibition was CAMPBELL'S EARLY Awarded the Gold Medal and a Silver Medal at the Pan-American Exposition.

OTHER SPECIALTIES
Currants and Gooseberries

Introducer of **CAMPBELL'S EARLY,**
The Best Grape. **JOSSELYN,** The
Best Gooseberry. **FAY,** The Best Currant

OVER A QUARTER OF A CENTURY WITH NO
CHANGE IN OWNERSHIP OR MANAGEMENT



GEO. W. CAMPBELL.

Departed this life July 15th, 1898. Wonderful as a propagator, artist and in mechanical skill, refined and a true gentleman in all his social and business life, a devoted husband and father, a steadfast faithful friend, beloved by all who knew him. Truly one of God's noblemen. We shall never see his like again.

TO OUR CORRESPONDENTS.

IN the year 1879, we commenced the Nursery business in a small way, Grape-Vines being our specialty. We afterwards added Small Fruits, but never found it advisable to grow other stock, because

our business increased year after year, until we became, as is well known, the largest growers of American Grape-Vines in the World. It is now an accepted fact that in all important occupations, specialists are most successful. An old Nurseryman recently complimented me by saying, "I always read your advertisements and circulars because there seems to be considerable individuality about them, something which cannot be copied by others." I replied that, having been in this business more than a quarter of a century if I was not able to furnish advertisements, etc. which could not be appropriated by any Nursery concern in its infancy I should feel very much like either not advertising at all or quitting the Nursery business altogether.

The trade in our specialties has for several years taxed the capacity of our entire plant to its utmost extent and we are entirely contented with the situation and have had no desire to go into additional Nursery business. We have found that most purchasers prefer their Grape-Vines and Small Fruits **DIRECT FROM THE GROWER**; and we decided, some years since, to sell stock of our own growing, exclusively and it is therefore unnecessary to say that it will be the cheapest and best way to order direct from us whatever you may desire of our products.

We winter all our salable Grape-Vines, Currants, Gooseberries and Blackberries in our large, frost-proof, stone cellars, which for convenience and capacity, excel all others in our State, used for such products.

And here let us emphasize the fact, that there is no use in leaving more than three buds upon a grape-vine prepared for planting. Never mind what the dealer says. If he delivers you a grape plant with a **LONG CANE**, claiming that it is a "fruiting vine," and really believes that all vines should **NOT** be cut back to two or three buds at planting-time, he does not understand the business. These long-top vines are generally from localities where a good-sized grape plant cannot be grown in any reasonable time. Our two-year vines have all been transplanted and by our method of planting and digging, we get nearly every particle of the roots. But the long-cane "fruiting vines" are left in the ground two, three or four years; the roots run all over the neighborhood and cannot be dug (except by hand, generally costing more than the price of the vine) without sadly mutilating the roots, leaving only aged stubs, about as destitute of fibre as a billiard ball, which the vendor offers with the offset of a **LONG CANE**. According to our experience, such vines cannot be given away to any intelligent vineyardist. We fully believe that not one grape-vine in twenty which is sold to amateurs, produces a good crop of first-quality fruit, because the top is not cut back sufficiently during the first two years of its life in the

garden. Many of our largest customers who buy our heaviest grades of grape-vines, now order the tops cut back to about six inches in length. THEY know that GOOD, LARGE ROOTS, NOT TOPS, are needed.

We have found, from long experience, that the room occupied in our vineyards by the following varieties, was generally more valuable than their company. And although they may be desirable in collections or in particular localities under certain favorable circumstances, we cannot recommend them for general culture. We have, therefore, eliminated most of them from our grounds and their descriptions from this Catalogue. And as we believe much better selections can be made from our list, we advise our customers that, for various reasons, the following are not generally desirable; viz., Amber, Antoinette, Allen's, Alvey, Arnold's, Beauty, Belinda, Black Defiance, Black Eagle, Black Pearl, Carlotta, Centennial, Challenge, Concord Chasselas, Concord Muscat, Conqueror, Creveling, Croton, Cunningham, Early Dawn, El Dorado, Elsinburgh, Essex, Faith, Golden Drop, Grein's Golden, Herbemont, Hermann, Highland, Irving, Imperial, Israella, Jewel, Louisiana, Mary, Maxatawney, Mills, Monroe, Montgomery, Naomi, Norfolk Muscat, Northern Muscadine, Norwood, Oneida, Oriental, Pearl, Poughkeepsie Red, Prentiss, Quassaic, Rebecca, Rochester, Rogers Nos. 2, 5, 8, 13, 30, 33, 34, 36, Secretary, Senasqua, Telegraph, Tokalon, Transparent, Triumph, Uhland, Victoria, Walter, Waverly, Wilding.

CARE OF STOCK RECEIVED FROM US.

Should the stock arrive in very cold weather, do not unpack but cover it up in a cool cellar where the frost will come out very gradually. Remember, it is not the FREEZING which hurts the plants but rapid thawing, with exposure to light, heat or air.

If weather will permit, the stock can be "heeled in" in some sheltered place, not too cold in Winter, nor warm in Spring or Autumn. The process of "heeling in" is to dig a trench large enough to hold the roots, then cover the roots with earth and in Winter the tops also, of vines and plants with straw or leaves. If there is no frost in the box, the best way is to unpack the plants within twenty-four hours after arrival; then remove all packing from the box, and without crowding the vines, lay them back in the box, neither too wet nor too dry, (just moist,) in a cellar of about forty degrees temperature.

GRAPES

Plant Grapes for vineyards, in rows nine feet apart and from six to eight feet apart in the row, according to the habit of growth of the variety. Dig holes about ten inches deep and large enough that the roots may be spread out naturally, without one root crossing another. In dry days, it is better not to have many holes dug ahead of the planting, as the earth will be moister if freshly dug. Put the finest

and best earth at bottom of hole and among the roots and the coarsest and poorest earth at top. While planting, care must be taken that the roots do not become dry. To prevent this, it is customary to carry them about the field in a bucket or tub partly filled with water, after the tops are cut back to two or three buds. Always give good cultivation and the first Autumn, cut back to four or six buds and cover the vine with earth. Uncover in Spring as soon as frost is out and after the buds start, leave only the two best buds and rub off all others as they appear. Let two canes grow the second year; they will probably get to be some five or eight feet long; if so, cut one of them back to three buds and the other to within four feet of the ground, to bear. This severe pruning in their early youth, together with good culture, will give them such a good send off, that they will ever after bear you bountiful crops of their luscious fruit. When five or six years old, from three to five canes may be left. Remember always to cut the old wood back, as it is the YOUNG WOOD only that bears fruit. Grape-Vines may be trained against buildings, fences or on stakes, trellises, etc. Wire trellises, about five to six feet high, are best for vineyards.

We now grow all our Grape Vines entirely out of doors from cuttings about $7\frac{1}{2}$ to 12 inches long. Many years of experience have demonstrated to us that Grape Vines grown from short cuttings or partly grown in greenhouse are not as valuable for vineyard or garden as from long cuttings all grown in open air.

DESCRIPTIVE LIST

In this List we have endeavored to give short descriptions, resulting from extended observations, which will prove of some value to patrons. To praise a grape and insist that it is just the grape for customers to invest in, because it succeeds in in one's own vineyard or to condemn it for reasons the reverse, only demonstrates inability or unwillingness to see beyond one's own garden fence. There is no grape on this or any other List, which thrives everywhere; neither do we know of one on this List, which has not its friends in some localities.

AGAWAM (Rogers No. 15)—One of the most reliable of the hybrid grapes. Bunches large, berries very large. Dark red. Ripens with or soon after Concord and is of peculiar, aromatic flavor.

AMBER QUEEN—Ripens last of August. Healthy and of good quality and flavor. Bunch large. Color purple. Not very desirable.

AMINIA (Rogers No. 39)—Productive, early, hardy, nearly black. Bunches large, healthy and compact. Desirable for market or home use.

AUGUST GIANT—Black. Bunches and berries large and somewhat oblong. Tender, rich and fine. Ripens in September.

BACCHUS—Black. Late. A seedling of Clinton, extremely hardy and vigorous. Table or wine grape. Productive. Bunch and berry medium. Makes a fine, dark-red wine of great body.

BARRY (Rogers No. 43)—Black. Bunch medium large, berry large, sweet and good; a very attractive grape. Vine healthy, hardy, strong grower. Season about with Concord.

BLACK DELAWARE OR NECTAR—Vine hardy and healthy. A seedling of Delaware and Concord. Black with blue bloom; ripens with Delaware. Quality fine.

BRIGHTON—Dark red. One of the most desirable of the early red grapes. Very large and handsome. Clusters, under favorable conditions, are more uniform than those of any other grape we know. Ripens soon after Hartford. Should be planted near by other varieties, as its blossoms do not always fertilize when alone. The quality of its fruit is best at early ripening.

BRILLIANT—A beautiful red grape which has been tested in various states, North and South, receiving high commendation. A strong grower, healthy and hardy. Color much resembles Delaware but bunches and berries are larger. Quality very good. Medium early.

CAMPBELL'S EARLY—See full description, page 12.

CATAWBA—Red. Well known. Late, of best quality but does not succeed in all localities.

CHAMPION—Black. Bunch of medium size, berry large, very vigorous and productive. One of the earliest grapes, somewhat similar to Hartford; desirable on account of its early ripening. Quality poor.

CLINTON—Black. Late. Desirable for wine or preserving. Bunch and berry small; very healthy and hardy. Fruit should hang on the vine until after first frost, to be thoroughly ripe.

CONCORD—This has been for many years the grape for the million. Bunch and berries large. Black, fair quality, medium early. Vine very healthy, hardy and productive. The most extensively planted grape in America.

COTTAGE—Similar to Concord but earlier and rather better in quality. Black, strong and vigorous.

CYNTHIANA—A Southern black wine grape, similar to Norton's. Late.

DELAWARE—Ripens before Concord. This has been considered by many, one of the best, if not the best, American grape. It does not succeed in all localities. Requires strong soil and

good culture. Light red, hardy; bunches and berries of medium size.

DIANA—Red. Ripens soon after Concord. Bunches medium and compact. Good grower, with peculiar flavor, much liked by some and disliked by others.

DRACUT AMBER—Pale red. Very early and productive. Bunch and berry large. Is quite foxy—valuable only for extreme North.

DUCHESS—Pale, greenish yellow. Tender, juicy, spicy. Excellent quality and good keeper. Ripens soon after Concord.

EARLY OHIO—Black. Very early. Does not crack or shell. This grape is gaining in favor as it grows older, which is entirely appropriate as it has in times past been unreasonably abused.

EARLY VICTOR—Black. Earlier, smaller, and better flavored than Concord. Is vigorous, healthy, hardy and productive.

EATON—Large size. Ripens about with Concord but not very hardy with us. Has chronic habit of clustering loosely and except for size of berry has little to recommend it. It has been on the market in the neighborhood of twenty years and we do not know today of a single vineyard of Eaton now growing for fruiting purposes.

ELVIRA—Of more value South than at the North. Pale green, late, very vigorous and productive. Bunch and berry medium and very compact. One of the best white wine grapes at the South.

EMPIRE STATE—White, of fine quality; medium early, vigorous and hardy, and is a good keeper. Not valuable in most localities.

ESTHER—White. Ripens a few days earlier than Concord. Larger than Niagara or Pocklington. Very showy and fine quality. About the best white grape on our grounds.

ETTA—White. Said to be an improvement on Elvira but is larger and a little later.

EUMELAN—Black, of best quality for table or wine. Generally a poor grower; not desirable for extensive planting but valuable for amateur culture. Early.

FRANCIS B. HAYES—Amber yellow. Pure native. Very early, hardy and prolific. Ripens seven to ten days before Concord.

GAERTNER (Rogers No. 14)—Red. Bunch and berry medium, early, healthy and excellent.

GENEVA—Yellow. Not a very strong grower. Healthy and hardy. Bunch medium; berry large, fair quality, which is improved by keeping. A little earlier than Concord.

GOETHE (Rogers No. 1)—Bunch large and rather loose. Berries very large, pale red. This grape, as compared with other Rogers' Hybrids, has more individual character of its own than any other. Excellent for table or for wine. Ripens with Catawba.

GREEN MOUNTAIN (or Winchell)—White, very early. Berries drop from the stem and it is not a good shipper. A fine grape for amateurs, however.

GREEN'S EARLY—New, white. Bunch and berry medium to large. Very early, quality fine. Very hardy with us.

HARTFORD—Black. Bunch and berry large. Sweet. Earlier than Concord. Strong grower, healthy, hardy and very productive. Should be picked as soon as ripe, or berries will drop from the stem. Quality poor.

HERBERT (Rogers No. 44)—Black, sweet, tender, delicious. Early and productive. One of the best of the Rogers'.

IONA—Red. A fine grape of very best quality. Ripens between Concord and Catawba. Is subject to mildew in some localities.

ISABELLA—Black. Late. A well known old variety, vigorous and productive. Not entirely hardy.

IVES—Black. A popular wine grape. Strong grower, productive. Succeeds everywhere except in extreme North. Late.

JANESVILLE—Early. Vigorous, strong grower. Black. Hardy and productive. Largely planted in the North.

JEFFERSON—Red. One of the best red grapes. A good grower, hardy and productive. Ripens little before Catawba.

JESSICA—White. One of the earliest; fine quality. Bunch and berry small.

LADY—Greenish yellow, very early. Bunch and berry medium large. Is healthy, hardy, productive and of good quality. One of the best early white grapes.

LADY WASHINGTON—White, vigorous and rapid grower. Bunch large to very large; flesh soft, sweet, tender and very good. Ripens soon after Concord.

LINDLEY (Rogers No. 9)—Red. Everything desirable as to quality for table or wine. Is a strong grower, healthy and hardy. Should be in every garden and is desirable for extensive planting. Early.

LUTIE—Red. Foxy, quality medium. Vigorous, productive. Ripens with Moore's Early. This grape seems to be much in favor at the South.

McPIKE—This grape with us has proved a dismal failure. In our opinion it should never have been introduced and we are glad that we never recommended it. We have pulled out and destroyed our acre of McPike Vines in vineyard. We do not grow it any more and have rejected it from our list.

MARTHA—White. One of the most popular of the old white grapes. Sweet, quality better than Concord. Fair grower, healthy and hardy. Medium early.

MASSASOIT (Rogers No. 3)—Red. Bunch and berries large. Without pulp, tender, sweet. Season same as Hart-

ford. Vigorous, healthy, hardy, productive; good quality. About the earliest of the Rogers' Hybrids.

MERRIMAC. (Rogers No. 19)—Black. Bunch medium, berry very large. Medium early; quality good; vigorous and productive.

MISSOURI RIESLING—A white wine grape; very hardy, healthy and productive. Ripens about ten days after Concord.

MONTEFIORE—Black, red wine grape. Bunch and berry small. Productive, vigorous and hardy.

MOORE'S DIAMOND—Color white. Bunch and berries large. Healthy, strong grower, hardy and where known is very popular. Quality excellent. Ripens with Delaware.

MOORE'S EARLY—Black and very valuable. Two to three weeks earlier than Concord. Bunch medium, berries larger than Concord. It has taken first prize at Massachusetts Horticultural Society for many years. Should be in every garden.

MOYER—Red. Resembles Delaware in appearance. Vigorous, healthy and hardy; very early. Of not very good quality and unproductive.

NIAGARA—White. Quality about like (and ripens soon after) Concord. Bunch and berry large; vigorous, productive, healthy and hardy.

NOAH—White. Healthy, vigorous and very productive. Highly recommended for table and wine. Late.

NORTON'S—Black. Bunch long, berry small. Ripens late. Vigorous, healthy, hardy and productive. A valuable wine grape.

PERKINS—Pale red. Bunch and berries medium. Ripens between Hartford and Concord. Is vigorous, healthy, hardy and productive.

POCKLINGTON—White. Very large and showy. Vine very hardy and vigorous. Bunch and berry large. Ripens about with Concord. Quality better than Concord.

PRENTISS—White. This grape, after being introduced, developed weakness which seemed to increase in subsequent years. We believe this grape is now generally regarded as a failure and we have rejected it from our list and vineyard.

REQUA—(Rogers No. 28)—Red. Bunch large, berry medium. Tolerably vigorous, early and productive. Sweet and good.

ROCKWOOD—Black. Ripens with Moore's Early. Large size, healthy, hardy, prolific and delicious in quality.

SALEM (Rogers No. 22 or 53)—Red. Bunch and berry very large. Healthy, hardy and vigorous. Early, good keeper, best quality for table or wine.

ULSTER PROLIFIC—Red. Early, of good quality and very productive. Inclined to overbear. If so, a part of the fruit should be picked before ripening.

VERGENNES—Red. Bunch and berry large, flavor rich. Medium early, a good keeper and a very promising grape. A little later than Concord.

WILDER—(Rogers No. 4)—Black. Bunch and berry large. Early, hardy, healthy and productive; good keeper, profitable and excellent quality. Ripens about with Concord.

WOODRUFF RED—Very large and handsome. Color red. Strong grower, very healthy and hardy. If not of the best quality, we have seen the fruit eaten and pronounced delicious by several good judges. A few days later than Concord.

WORDEN—Black. Bunch and berry large; fruit better than Concord, also earlier and larger. Vine vigorous, healthy, hardy and productive. Is very popular.

WYOMING RED—One of the earliest red grapes. Bunch and berry rather small. Vine healthy, hardy and moderately vigorous. Sweet and desirable.

CONDENSED PRICE LIST

FOR SPRING OF 1907.

GEO. S. JOSSELYN, FREDONIA, N. Y.

TO OUR CUSTOMERS:

Instead of making our Catalogue voluminous we have studied to have as few pages as possible, which will save time for our customers in finding the information they desire.

We offer the largest stock of Grape Vines in the World, and facilities for conducting this business EQUALED BY NO OTHER FIRM. Inspection of our stock, conveniences for doing this business, etc., will be conclusive to you that what we say is true. We commence packing in the Fall about October 1st. We store our Grape Vines in Winter, in cellars, for Winter shipment by mail or express, or by freight after March 1st. No orders for less than \$5.00 sent C. O. D. WE DO NOT SUBSTITUTE. We guarantee safe arrival in good condition, of vines and plants by mail.

Some nurserymen send small vines by mail and admit it. Many others mail small vines and don't admit it. The vines we send by mail are of our largest and very best, strictly first class in every respect. For those who mail small stock which is well known to the trade as "MAILING SIZE" about any small order would be profitable because the plants cost little and the postage on such plants is a small amount. We kindly remind our patrons that it does not pay us to sell our first class stock at prices herein in orders amounting to less than \$1.00.

Terms, CASH with order, by New York draft or post-office order, or express order on Fredonia, N. Y., which is also a foreign Money Order P. O. Registered letters at our risk. Please do not fail to plainly give name, Post Office, County, State, and when ordering, give shipping directions if you wish goods sent by special route. We will accept postage stamps, 1 and 2 cent, to the amount of \$5.00; other denominations to amount of \$1.00.

Please note that there is no charge for BOXING or PACKING anything on this list.

Each variety is carefully labeled, and packing done in the best manner.

Purchasers wishing plants sent C. O. D. will please enclose one-quarter the amount of bill with order.

Should any stock not prove true to name, we will either refund the purchase money for same, or replace with stock true to name free; and while we are exercising great care to prevent mixtures, the above is to be a condition on which all stock is delivered and we are not to be held liable for damages in addition to above amount.

We reserve the right, unless otherwise directed, to fill orders for one-year stock with two-years stock of same size. Also orders for two-years stock, with one-year stock of size ordered.

Stock not priced in this list we cannot furnish this season.

If you wish a large quantity of stock and will send us a list stating kinds, quantities, age and grade required, we will send you special prices.

THE SAN JOSE SCALE.

We have never had this pest on our grounds or premises. We believe the best way to manage this scale is to KEEP IT OUT and have used strenuous methods to accomplish this. We have observed that one easy way to acquire this scale is to exchange stock with "Tom, Dick and Harry" from anywhere and everywhere. We haven't made an exchange deal for stock in more than fifteen years and don't propose to begin.

Certificate of Inspection of Nursery Stock.

Every Consignment from us will be accompanied by a Certificate from our proper State Authorities stating it is free from all contagious disease or diseases or the San Jose Scale or other dangerously injurious pest or pests.

GRAPE-VINES.

WE PREPAY MAIL OR EXPRESS CHARGES AT SINGLE OR TEN RATES.

Five or more of different varieties if desired at ten rates. Will furnish 50 or more of different varieties if desired at 100 rates.

WE DO NOT PAY EXPRESS OR FREIGHT CHARGES AT 100 RATES.

One-year No. 2 vines, 70 per cent. of the price of one-year No. 1. Two-years No. 1½ vines, half way between prices of two-years No. 1 and one-year No. 1. Three-years No. 1 (including CAMPBELL'S EARLY) one-half additional to the price of two-years.

It may not be generally known to our customers that there is not, never was and probably never will be any uniform standard for grading grape vines. So there is as much difference in size of No. 1 vines as there is in the men who offer them.

DESCRIPTION.	FIRST CLASS VINES.					
	ONE YEAR NO. 1.			TWO YEARS NO. 1.		
	By Mail Postpaid.		Exp. or Frt.	By Mail Postpaid.		Exp. or Frt.
	EACH	10	100	EACH	10	100
AGAWAM—(Rogers 15)—Red, early, reliable..	\$.10	\$0 80	\$ 3 00	\$.12	\$1 00	\$ 4 00
AMBER QUEEN—Good quality, purple.....	25	2 00	15 00	30	2 50	20 00
AUGUST GIANT—Black, large, early.....	25	2 00	15 00	30	2 50	20 00
BACCHUS—Black, good.....	10	80	4 00	12	1 00	5 00
BARRY—(Rogers 43)—Black, early, hardy.....	14	1 20	7 00	16	1 50	9 00
BLACK DELAWARE OR NECTAR—Black, early	25	2 00	15 00	30	2 50	20 00
BRIGHTON—Dark red, very early.....	10	80	4 00	12	1 00	6 00
BRILLIANT—Medium early, red.....	25	2 00	15 00	30	2 50	20 00
CATAWBA—Red, well known, late, best quality	10	80	3 00	12	1 00	4 00
CAMPBELL'S EARLY—Black, early, large, best quality	14	1 20	8 00	16	1 50	12 00
CHAMPION—Black, very early.....	10	80	4 00	12	1 00	5 00
CLINTON—Black, late, hardy.....	10	80	3 00	12	1 00	4 00
CONCORD—Black, early, hardy, good.....	10	80	3 00	12	1 00	4 00
COTTAGE—Very early, black.....	10	80	3 00	12	1 00	4 00
CYNTHIANA—Black, Southern wine grape, late	14	1 20	7 00	16	1 50	9 00
DELAWARE—Red, early, hardy, sweet.....	10	80	4 00	12	1 00	5 00
DIANA—Red, late, good.....	10	80	4 00	12	1 00	5 00
DRACUT AMBER—Pale red, early, hardy, foxy	10	80	4 00	12	1 00	5 00
DUCHESS—White, best quality, rather late.....	12	1 00	5 00	14	1 20	7 00
EARLY OHIO—Black, early.....	14	1 20	7 00	16	1 50	9 00
EARLY VICTOR—Very early, black.....	12	1 00	5 00	14	1 20	7 00
EATON—Black, rather late.....	14	1 20	9 00	16	1 50	12 00
ELVIRA—White, late, wine grape.....	10	80	3 00	12	1 00	4 00
EMPIRE STATE—White, late.....	10	80	4 00	14	1 20	6 00
ESTHER—White, early, best quality.....	25	2 00	15 00	30	2 50	20 00
ETTA—White, late, good.....	12	1 00	5 00	14	1 20	7 00
EUMELAN—Black, rather early, good.....	12	1 00	5 00	14	1 20	7 00
FRANCIS B. HAYES—White, very early.....	12	1 00	5 00	14	1 20	7 00
GAERTNER (Rog. 14)—Early, red, best quality	14	1 20	7 00	16	1 50	9 00
GENEVA—White, early.....	25	2 50	15 00	30	2 50	20 00
GOETHE—(Rog. 1)—Red, rather late, excellent	20	1 50	10 00	25	2 00	15 00
GREEN MOUNTAIN—White, new, very early best quality.....	25	2 00	15 00	30	2 50	20 00
GREEN'S EARLY—White, early, new, good..	14	1 20	9 00	16	1 50	12 00
HARTFORD—Black, very early.....	10	80	4 00	12	1 00	5 00
HERBERT—(Rog. 44)—Black, large, early, good	14	1 20	7 00	16	1 50	9 00
IONA—Red, late, best quality.....	10	80	4 00	12	1 00	5 00
ISABELLA—Black, late.....	12	1 00	5 00	14	1 20	7 00
IVES—Black, late.....	10	80	3 00	12	1 00	4 00
JANESVILLE—Black, early.....	12	1 00	5 00	14	1 20	7 00
JEFFERSON—Red, late, valuable.....	14	1 20	7 00	16	1 50	9 00

GRAPE VINES.

DESCRIPTION.	FIRST CLASS VINES.					
	ONE YEAR No. 1.			TWO YEARS No. 1.		
	By Mail Postpaid		Exp. or Frt.	By Mail Postpaid.		Exp. or Frt.
	EACH	10	100	EACH	10	100
JESSICA—White, good, early.....	\$.14	\$1 20	\$ 7 00	\$.16	\$1 50	\$ 9 00
LADY—White, very early, best quality.....	12	1 00	5 00	16	1 20	7 00
LADY WASHINGTON—White, late, excellent	25	2 00	15 00	30	2 50	20 00
LINDLEY—(Rogers 9)—Red, early, good.....	10	80	3 00	12	1 00	4 00
LUTIE—Red, very early.....	14	1 20	7 00	16	1 50	9 00
MARTHA—White, early, good.....	10	80	4 00	12	1 00	5 00
MASSASOIT—(Rogers 3)—Red, early, good....	10	80	4 00	12	1 00	5 00
MERRIMAC—(Rog. 19)Black, early, large, good	12	1 00	5 00	14	1 20	7 00
MISSOURI RIESLING—White, wine grape, late	10	80	4 00	12	1 00	5 00
MONTEFIORE—Black, sweet, fine, rather late.	12	1 00	5 00	14	1 20	7 00
MOORE'S DIAMOND—White, excellent, early	10	80	3 00	12	1 00	4 00
MOORE'S EARLY—Black, very early, valuable	10	80	4 00	12	1 00	5 00
MOYER—Red, early.....	10	80	4 00	12	1 00	5 00
NIAGARA—White, very prolific, rather late....	10	80	3 00	12	1 00	4 00
NOAH—Late, white, wine grape.....	10	80	4 00	12	1 00	5 00
NORTON'S—Black, wine grape, late.....	14	1 20	7 00	16	1 50	9 00
PERKINS—Red, early.....	14	1 20	7 00	16	1 50	9 00
POCKLINGTON—White, valuable, early.....	10	80	4 00	12	1 00	5 00
ROCKWOOD—Black, early, large.....	25	2 00	15 00	30	2 50	20 00
REQUA—(Rogers 28)—Red, early.....	25	2 00	15 00	30	2 50	20 00
SALEM—Red, early, good.....	10	80	4 00	12	1 00	6 00
ULSTER PROLIFIC—Red, very prolific.....	14	1 20	7 00	16	1 50	9 00
VERGENNES—Red, medium early, rich.....	10	80	4 00	12	1 00	5 00
WILDER—(Rogers 4)—Black, early, good.....	10	80	4 00	12	1 00	6 00
WOODRUFF RED—Red, good, medium early.	12	1 00	5 00	14	1 20	7 00
WORDEN'S—Black, very early, good.....	10	80	4 00	12	1 00	5 00
WYOMING RED—Red, very early, sweet.....	10	80	4 00	12	1 00	6 00

SMALL FRUITS.

Terms by Mail, Express or Freight same as Grape Vines.

GOOSEBERRIES.

DESCRIPTION.	ONE YEAR No. 1.			TWO YEARS No. 1.		
	By Mail Postpaid		Exp. or Frt.	By Mail Postpaid		Exp. or Frt.
	EACH	10	100	EACH	10	100
	CHAUTAQUA.....	\$.25	\$2 00	\$15 00	\$.30	\$2 50
COLUMBUS.....	20	1 50	9 00	25	2 00	12 00
DOWNING.....	12	1 00	8 00	14	1 20	10 00
GOLDEN PROLIFIC.....	20	1 50	9 00	25	2 00	12 00
HOUGHTON.....	12	1 00	8 00	14	1 20	10 00
MOUNTAIN.....	12	1 00	8 00	14	1 20	10 00
JOSSELYN.....	20	1 50	9 00	25	2 00	12 00
PEARL.....	12	1 00	8 00	14	1 20	10 00
SMITH'S IMPROVED.....	12	1 00	8 00	14	1 20	10 00
TRIUMPH.....	20	1 50	9 00	25	2 00	12 00

CURRENTS.

	One Year, No. 1.			Two Years, No. 1.		
	By Mail Postpaid Each	Per 10	Frt. or Exp. Per 100	By Mail Postpaid Each	Per 10	Frt. or Exp. Per 100
BLACK CHAMPION.....	\$0 10	\$0 80	\$3 00	\$0 12	\$1 00	\$4 00
BLACK NAPLES.....	10	80	3 00	12	1 00	4 00
CHERRY.....	10	80	3 00	12	1 00	4 00
COMET (new) see note.....	25	2 00	15 00	30	2 50	20 00
FAY'S PROLIFIC.....	10	80	3 00	12	1 00	4 00
LEE'S PROLIFIC.....	10	80	3 00	12	1 00	4 00
LONDON MARKET.....	10	80	3 00	12	1 00	4 00
MOORE'S RUBY.....	10	80	3 00	12	1 00	4 00
NORTH STAR.....	10	80	3 00	12	1 00	4 00
PERFECTION.....	25	2 00	15 00	30	2 50	20 00
POMONA.....	10	80	4 00	12	1 00	5 00
PRINCE ALBERT.....	10	80	3 00	12	1 00	4 00
RED CROSS.....	10	80	4 00	12	1 00	5 00
RED DUTCH.....	10	80	3 00	12	1 00	4 00
VERSAILLES.....	10	80	3 00	12	1 00	4 00
VICTORIA.....	10	80	3 00	12	1 00	4 00
WHITE DUTCH.....	10	80	4 00	12	1 00	5 00
WHITE GRAPE.....	10	80	4 00	12	1 00	5 00
WHITE TRANSPARENT.....	10	80	4 00	12	1 00	5 00
WILDER.....	10	80	4 00	12	1 00	5 00

Although it is often stated that the originators of new fruits never get much benefit from their productions, it is safe to say here, that in this respect the success of Fay's Prolific is unparalleled, as up to this date I have paid to the heirs of the originator OVER FORTY TWO THOUSAND DOLLARS IN CASH as their share from my sales of Fay Currant plants. This is now the leading Currant, and its best recommendation is its enormous sale, constantly increasing. My stock of Fays is and always has been propagated from wood from original stock on the Fay Farm. I sell more of them than all other varieties combined, although I try to grow what I can sell of all kinds.

NOTE—Comet (new)—Our stock was imported by us from England, where it is claimed to be superior to all other Red Currants and has received unanimous vote for Reward of Merit by Royal Horticultural Society of England.

BLACK RASPBERRIES--No. 1 Plants.

		By Mail Postpaid Each	By Mail Postpaid Per 10	Exp. or Frt. Per 100
GREGG..... OHIO.....		\$0 08	\$0 50	\$1 50
SOUHEGAN..... TYLER.....		08	50	1 50
SHAFFER'S COLOSSAL (Purple).....		08	50	1 50
COLUMBIAN, New (Purple).....		10	80	2 00
CUMBERLAND..... KANSAS.....		10	80	2 00

RED RASPBERRIES--No. 1 Plants.

CUTHBERT..... MARLBORO..... MILLER.....	\$0 08	\$0 50	\$1 50
LOUDON.....	10	80	2 00
SUPERLATIVE.....	20	1 50	4 00
GOLDEN QUEEN, (Yellow).....	10	80	2 00

BLACKBERRIES--No. 1 Plants.

TAYLOR'S PROLIFIC... AGAWAM... WILSON'S EARLY...	\$0 10	\$0 80	\$2 00
ANCIENT BRITON... SNYDER... EARLY HARVEST.....	10	80	2 00
ERIE..... STONES HARDY..... WILSON JR.....	10	80	2 00
RATHBUN..... ELDORADO..... ICEBURG.....	15	1 20	4 00
LUCRETIA DEWBERRY..... KITTATINNY.....	10	80	2 00
BLOWERS (New).....	15	1 20	5 00

STRAWBERRIES--No. 1 Plants.

By express or freight at 100 or 1000 rates. Fifty of one kind at 100 rate. Four hundred of not more than 4 varieties at 1000 rates. These offers at 100 and 1000 rates are to go by freight or express, which charges are to be paid by the customer. If you wish Strawberries sent by mail at 100 rates, please add for postage 30 cents per 100. We believe that a selection from our list will give complete satisfaction. Our Strawberry list does not contain as many varieties as usual because we have discontinued growing all varieties which have proved unprofitable for fruiting with us.

All from new beds. Excellent plants in bundles of 50 with roots straight.

	Per 100	Per 1000		Per 100	Per 1000
CLIMAX.....	\$0 50	\$4 00	NEW YORK.....	\$0 50	\$4 00
EXCELSIOR.....	50	4 00	PRIDE OF CUMBERLAND	50	4 00
GLEN MARY.....	50	4 00	SAMPLE (P).....	50	4 00
JOHNSON'S EARLY....	50	4 00	SENATOR DUNLAP.....	50	4 00
NICK OHMER.....	50	4 00	WM. BELT.....	50	4 00

GOOSEBERRIES

The curse of Gooseberries is MILDEW. This mildew comes like a thief in the night and after it arrives, the damage is done and there is no use in trying to cure the plants; at least this is according to our experience. Some two or three years since, liver of sulphur was recommended as a preventive. We tried it faithfully but it was a complete failure and the experiment cost us more than \$50.00. There are many varieties of Gooseberries which thrive in England, etc.; but practical fruit growers have found, to their sad experience, that English Gooseberries and their seedlings are a failure in America. To avoid mildew and get a crop of Gooseberries, plant the Josselyn, which has never mildewed to our knowledge. The market for Gooseberries seems to be never half supplied and the demand for this fruit largely increases each year. The culture of Gooseberries should be nearly the same as for currants. Use white hellebore, to prevent or destroy worms, same as for Currants. When planted, the tops should be cut back nearly to the crown. In our soil we can grow stronger Gooseberry roots in one year, than can be done in most localities in two years. All that has been previously herein stated concerning the value of "tops and roots" in grape-vines, is likewise applicable to Gooseberries.

CHAUTAUQUA—Supposed to be a seedling of English type. Berries large. Color yellow.

COLUMBUS—A new variety, resembling Triumph. Said to have larger fruit than Industry. Yellow.

DOWNING—Large, best quality for home use and market. Pale green in color.

GOLDEN PROLIFIC—Berries large, color yellow. Supposed to be a seedling of some English variety.

HOUGHTON'S SEEDLING—Medium size, pale red. Quite sweet and enormously productive with us.

INDUSTRY—We have never met a man yet, who has planted this Gooseberry and succeeded with it. It mildews here badly, if it does not die before the mildew arrives. We consider this Gooseberry a failure.

JOSSELYN—Red. The most prolific and most valuable Gooseberry in

America; as large as the largest; berry smooth. Very hardy. Quality best and foliage best of any Gooseberry known. For ten years it has stood close to Triumph, Crown Bob, Whitesmith, Smith's Improved, Downing and more than a dozen other sorts; and while these others have all mildewed in leaf and fruit, mildew has never appeared on the Josselyn.

MOUNTAIN—Red. In many particulars it resembles Houghton but is decidedly an improvement on that variety.

PEARL—Pale green in color and resembles Downing in every respect. We are pleased with this Gooseberry on our grounds and although we do not consider it equal in general value to Josselyn, it has many good qualities.

SMITH'S IMPROVED—Large. Pale yellow. Excellent quality, moderately vigorous.

TRIUMPH—Color yellow. Fruit of enormous size. Great productiveness.

CURRANTS

Currants should be planted in good, very fertile soil, with liberal manuring and the tops should be cut back nearly to the crown, allowing only three or four canes to grow the first year. Plant in rows five or six feet apart, and three feet apart in the row. Prune more or less every year to get rid of the old wood and keep the bushes open. Currant worms should be vigilantly looked for in Spring and Summer. These worms can be destroyed by white hellebore, one ounce to three gallons of water applied with a sprinkling can. Be sure and use the remedy AS SOON AS OR BEFORE THE WORMS APPEAR. In our soil we can grow stronger Currant roots in one year than can be done in most localities in two years. All that has been previously stated concerning the value of "tops and roots" in Grape-vines, is likewise applicable to Currants.

BLACK CHAMPION—Black. The largest of the black currants. Is new here but much grown and valued in England.

BLACK NAPLES—The best old, black variety.

CHERRY—Red. The largest of all, except Fay's Prolific. Very popular in market and brings several cents more per quart than any other old variety. Although others may say that Cherry and Versailles are one and the same, we have both varieties pure and distinct, each with its peculiar characteristics.

COMET—New. Red. Our stock was imported by us from England, where it is claimed to be superior to all other Red Currants and has received unanimous vote for Reward of Merit by Royal Horticultural Society of England.

FAY'S PROLIFIC—This new Currant has greatly exceeded all expectations of the proprietor of this establishment, who is the introducer of Fay's Prolific, and who is often almost blamed by many in the trade who assert that we never claimed nearly enough for it. It is so good and succeeds so well in so many localities, that not only the introducer but also the heirs of the originator, have received quite a fortune from sales of the plants. That all other varieties of red Currants have been superseded by Fay's Prolific, seems to be a fact, and the constant increase in demand for

the plants is the best evidence of this. We have paid the heirs of Lincoln Fay, the originator, over **forty-two thousand dollars in cash** as their share from our sales of Fay's Prolific, in which we have much pride, as this is about the first instance where the originator has received anything like a decent compensation from the sales of a good, new fruit. That the Fay Currant is the standard red Currant seems to be true, as we sell more of them than all other Currants combined, and from other nurserymen we hear like experience. We frequently hear of some old or new Currant destined to supersede all others, especially the Fay. We have tried to keep posted and have carefully examined the fruit of all these so far as heard from. But, while in some ways desirable, not one of them, on account of size and appearance, will sell beside the Fay, in any city or country market. The ladies have reasons of their own for selecting and paying more per quart for the largest, most attractive and beautiful berries. We shall welcome a better Currant than the Fay at any time.

In addition to pruning the old wood liberally each year, about one-half of the **new wood** of the Fay should be clipped off each Autumn or Winter. Our original claim and description was:

Color, red. As compared with the Cherry Currant. "Fay's Prolific" is equal in size, better in flavor, much less acid, five times as prolific, and

from its peculiar stem, less expensive to pick. That spurious Fay plants have been sold, doubtless by the million, is not the fault of the introducer.

LEE'S PROLIFIC—Black. Prolific. One of the best.

LONDON MARKET—Red. Size, quality and time of ripening medium.

MOORE'S RUBY—Light red. Late, not very acid. Fine for table or family use.

NORTH STAR—Red. A rapid grower, very hardy and excellent quality. On our grounds the size of the fruit has never been large enough to compete with Fay's, Cherry or Victoria, but in Summer of 1895 we saw at a friend's, a block of North Star, which showed bunches and berries of very good size. Possibly our friend had more suitable soil than others for this particular variety and we were glad to see the North Star show up so well.

PERFECTION—New. Red. Said to be of great merit. Large size, great producer and in every respect a first-class Currant.

POMONA—Red. Early. Medium size. Fine quality, rather sweet. Very popular in Indiana.

PRESIDENT WILDER—Red. Rather large. Quality fine. Ripens in medium season.

PRINCE ALBERT—Red. Above medium in size and quality. Early in ripening.

RED CROSS—Red. Large, vigorous, sweet and fine in quality. Medium to late in ripening.

RED DUTCH—Very productive, and of good quality.

VERSAILLES—Red. Almost as large as Cherry, and very prolific.

VICTORIA—The latest red Currant and is of good quality and prolific.

WHITE DUTCH—Medium large. Sweet, fine flavor.

WHITE GRAPE—Fine quality, large and productive.

WHITE TRANSPARENT—This Currant is of French origin, obtained by us some years since from Benj. G. Smith, who has been for so many years treasurer of the American Pomological Society. We have never seen this currant mentioned in any Catalogue, but for **eleven years** the Massachusetts Horticultural Society has awarded Mr. Smith **first prize** for White Transparent as **best white Currant**. It has a distinct flavor, milder than White Dutch or White Grape. Larger than White Dutch, with longer bunches.

BLACKBERRIES

The Blackberry is naturally a stronger bush than the Raspberry and should be planted in rows eight feet apart and three feet in the row. They should also not be pinched off, until three and one-half feet high, nor should they be so closely pruned in Spring; otherwise their culture is the same. Where land is scarce, they may be planted three by five feet apart and tied up to stakes. When Blackberries are planted, tops should be cut nearly to the crown, allowing only three or four canes to grow the first year.

AGAWAM—Fruit of fair size, tender, sweet to the core. For home use it has no superior. Very healthy, hardy and productive.

ANCIENT BRITON—Pronounced by many to be the very best blackberry for family use. Medium in size and season.

BLOWERS—New. Large. Glossy

black and of fine quality. Early and long season for fruiting. Strong grower and hardy.

EARLY HARVEST—Earliest; hardy, very prolific.

ELDORADO—Large, sweet, delicious. Hardy and very productive. A very promising variety.

ERIE—Large, productive, vigorous, good quality and perfectly hardy.

KITTATINNY—Large, good; not quite hardy.

RATHBUN—Very large. Very hardy. Fruit brings higher prices than any other blackberry known. We consider this the most valuable of any blackberry.

SNYDER—Entirely hardy. Very prolific, early, sweet and can be relied on for a crop every year.

STONE'S HARDY—One of the hardiest. Sweet and productive. Well suited to a cold climate.

TAYLOR'S PROLIFIC—Seems to be

strong and entirely hardy with us. Fruit large; very productive and of good quality.

WILSON'S EARLY—Very large, early and good. Rather tender at the North.

WILSON, JR.—A seedling from Wilson. The original description was: "Larger, earlier and more productive than its parent." We consider it much like the Wilson.

DEWBERRY.

LUCRETIA—Large, very productive and attractive. Fine quality and flavor. Very early and seems very hardy.

STRAWBERRIES

The best time to plant Strawberries is in early Spring and on fertile, well manured land. If horses are to be used in cultivating, plant in rows three and one-half to four feet apart and one foot in the row; but for hand culture one by two feet will answer. Each bed should bear two crops. When Strawberries are planted if the ground is not wet we fill every hole full of water before the plant is inserted in the ground. If quantity of plants warrants we use a horse with barrels of water on a stone-boat. The following varieties have run out with us or have been superseded by newer and better kinds, therefore we do not offer any more Belmont, Beverly, Bidwell, Capt. Jack, Crawford, Cumberland, Ideal, Isabella, Jas. Vick, Jersey Queen, Kansas, Kentucky, Manchester, Marshall, Mary, May King, Miner's Prolific, Old Iron Clad, Parry, Princess, Windsor Chief and Wilson. The same Strawberry never fruits best two years in succession with us.

NOTE.—Those marked (P) are pistillate, "have blossoms imperfect," and should have a row of some staminate variety within fifteen feet, or they will usually produce imperfect fruit.

We have reduced our long list of Strawberries to the following varieties which we consider the very best. In many years of experience we have observed that the Strawberry bed needs new blood. So the new varieties in most cases succeed the best.

CLIMAX—Very early. Extra high quality. Very firm and productive.

EXCELSIOR—Extra early. One of the very best in quality and quantity of fruit. A good shipper.

GLEN MARY—Very vigorous, firm, enormously productive. A good family or market berry; medium early.

JOHNSON'S EARLY—Very early. Is the great market berry in the vicinity of New York. Never heard of its being affected with rust.

NEW YORK—Medium to late. Berries large and attractive. Very prolific, and long season.

NICK OHMER—Early to very late. Berries large and beautiful. Very popular and the demand for this variety is constantly increasing.

PRIDE OF CUMBERLAND—Ripens in mid season. Bright glossy red. Berries large, firm, good shipper and very productive.

SAMPLE (P)—Sample proved biggest berry and best cropper among two hundred varieties fruited by Prof. Maynard at Amherst Agricultural College, Mass. It has yielded at the rate of one hundred bushels per acre on an old bed. In former years with us it not only pro-

duced the best crop and largest berries in our collection but also brought more money per quart than any other variety.

SENATOR DUNLAP—Good size, bright red, firm, good keeper and

shipper, excellent quality, ripens early and continues.

WM. BELT—Medium season. Very large size. Good cropper. Brilliant glossy red. Quality good.

RASPBERRIES

Plant Raspberries in rows six to seven feet apart, and two and one-half to three feet apart in the row, and from two to five inches deep according to the nature of the soil. Prune canes back to one and one-half or two feet from the ground one year after planting. When new growth gets to be about two feet high, the second season, pinch off the tip ends; and when the laterals have grown a foot long, pinch again. This makes them stocky. In the Spring following, prune to a round-headed bush, clipping off about one-third of the wood. In this way, fine crops of large fruit may be grown, and the vigor of the bushes kept up. On sucker-sorts, leave four or five canes to the hill. All others must be hoed off, same as weeds. In small gardens the plants may be planted three by four feet apart, and the canes tied up to stakes. The canes should not be pinched until three feet high.

BLACK CAPS.

CUMBERLAND—Black. Large and one of the best. Strong grower and very productive.

GREGG—The largest and latest of all. Very strong grower, valuable, hardy and profitable.

KANSAS—Black. Berries large. Early and of best quality. Very productive and strong grower.

OHIO—Very early and productive.

PALMER—The earliest black cap. Berries good size and showy. Canes healthy and vigorous.

SOUHEGAN—Extremely early. Said to be "Iron-clad."

TYLER—One of the earliest. Promises well. Much like Souhegan.

RED RASPBERRIES.

COLUMBIAN (New)—Purple. Very vigorous grower; canes often ten to sixteen feet in length and more than one inch in diameter. Very hardy; fruit large and delicious for table or canning. Excellent shipper.

CUTHBERT—One of the most popular late varieties. Hardy, very large and productive. Bush a strong grower. Very desirable for home use and market.

GOLDEN QUEEN—Yellow. Large, hardy, good quality and beautiful fruit. Said to succeed in all sections and should be in every home garden.

LOUDON—Red. Of the earliest, and hangs to the last. Large size and solid. The **Rural New Yorker** says: "The Loudon is the coming market Raspberry."

MARLBORO—Strong grower and very productive. Is said to be earliest and best.

MILLER—Very early. Very productive. Fruit large, bright red, fine color. Excellent shipper.

SUPERLATIVE—A magnificent foreign red variety, very large, fine color, firm and best quality. All things considered we believe it to be the best Red Raspberry we have ever grown and commend it to those who desire the largest, handsomest and choicest fruit.

SHAFFER'S COLOSSAL—Late. Purple. Said to be "Largest in the World."

CAMPBELL'S EARLY GRAPE.

Planters of this grape will find herein some very important information on this subject.

Points of special merit in Campbell's Early Grape are:

A very strong, vigorous, hardy vine, with thick, healthy, mildew-resisting foliage and perfect, self-fertilizing blossoms; and bearing abundantly. Clusters very large, usually shouldered, compact and handsome without being unduly crowded. Berries large, nearly round, often an inch or more in diameter; black with light purple bloom; skin thin but very tenacious, bearing handling and shipping admirably. Flavor rich, sweet, slightly vinous; pure with no foxiness, coarseness or unpleasant acidity from the skin to the center. Flesh rather firm but tender and of equal consistency, parting easily from its few and small seeds. As more than one-third of the American people do not and will not swallow grape seeds, we consider this a strong point in favor of Campbell's Early and a matter of trade well worth earnest attention, for, as the late Prof. Lintner, New York State Entomologist, well said in his letter, previously published by us, "NO GRAPE SEEDS MAY BE SAFELY SWALLOWED." Its early ripening is at the same time with Moore's Early and at that time the quality of Campbell's Early is fully as good as Moore's Early. After that time the quality of Campbell's Early steadily improves for from two to six weeks so its season is not only very early but is also medium and late. In short you can pick them from early to late as you choose. Moore's Early, Worden, Concord, etc. will not stay on the vines in this way. Campbell's Early, with us, bears about three times the amount of fruit as does Moore's Early. It has very remarkable keeping qualities. In different years it has hung upon the vines in our own vineyard sound and perfect, for TEN WEEKS or more after ripening, with no tendency to shell off or fall from the stems. A few clusters were put in cold storage on September 15th and taken out the 15th of December, apparently as perfect as when stored and seeming as though they might have been kept in good condition until Spring. As a good keeper and shipper it is believed to be unequalled by any other American grape.

The real value of a new grape which has been on the market for ten or a dozen years is quite accurately shown by the demand for such variety for vineyard planting.

Campbell's Early vines are now being bought in large lots by careful, wide awake vineyardists who want a grape which will hang on the vines, will not crack and which will keep and can be marketed at advantageous times instead of having to be forced on the market on some special day to avoid cracking and shelling. These vineyardists want a grape which will bring profitable returns instead of possible losses and which will fill the bill for people who are able and willing to pay a better price for something better in quality than the common kinds of grapes.

We have never known a bud of Campbell's Early to be hurt by frost. In our own vineyard they have stood 18 degrees below zero without any injury.

Campbell's Early is inclined to overbear, so when this occurs THE BLOSSOMS (OR FRUIT WHEN SMALL) SHOULD BE THINNED OR THE VINE AND FRUIT WILL PROBABLY SUFFER THE FOLLOWING YEAR.

We have had unpleasant experience resulting from the overbearing of this grape the first fruiting year. It is a short jointed variety and in the first bearing year of our vineyard the crop was simply immense. The vines were heavily loaded with large, beautiful clusters and, feeling we had a larger crop than had ever been seen before on young vines, we invited the principal vineyardists in our vicinity to see for themselves our vineyard. The next year showed that the big crop had weakened the vines. They made very little growth of wood with bunches plenty but small and poorly filled. IN SHORT, THE ROOTS WERE NOT OLD ENOUGH AND CONSEQUENTLY NOT LARGE ENOUGH TO CARRY THE IMMENSE CROP OF THE PRECEDING YEAR.

We were at first considerably disheartened and were almost inclined to pull out and burn all the vines. Fortunately we did not do this, as we next season cut off

Campbell's Early Grape---Continued.

nearly all the blossoms, gave good cultivation and the next year we were able from this same vineyard to show at the PAN-AMERICAN bigger bunches and more of them than were shown of any other grape. The next year we had double the wood that we had the previous year. The vineyard is now in elegant condition, I do not know of a thriftier one.

We believe the usual practice of pruning Campbell's Early is to leave too much wood. On old vines we leave only 3 to 4 canes, each 12 to 18 inches long. We use 3 wires respectively 24 inches, 36 inches and 60 inches from the ground. We train from lower wire, tie to second wire and later in season tie new shoots to top wire.

We showed this grape at the World's Fair at St. Louis in 1904, and Pan-American Exhibition in a (to us) new method. We showed it in plates in the usual way and that those interested might have an opportunity to taste them, we put them in by the hundred baskets. Judging by the number of orders we have received from this way of showing and giving away of the fruit we conclude that we don't care to show fruit in future in any other way.

We do not show grapes at our Town, County or State Fairs but at such times our friends, not only of our own but of adjacent Towns, get the privilege of helping themselves to specimens from our six acre Campbell's Early vineyard, knowing that for size of bunch and berry, weight, beauty of cluster and deliciousness of fruit no other variety on our Grape Belt of over 30000 acres will make as good showing as Campbell's Early.

Medals, etc.

At World's Fair, St. Louis in year 1904 we were awarded the only gold medal given to any individual or firm for out of door grown grapes and about ninety per cent of our Exhibition was Campbell's Early.

We were awarded Gold Medal, Silver Medal and Diploma from the Pan-American Exhibition in 1901. Wilder Silver Medal in 1897 also Wilder Silver Medal in 1901 from American Pomological Society. Medal of Excellence from American Institute in 1897.

Campbell's Early has taken First Premiums too numerous to mention and when placed in competition with other varieties, and properly scored, there isn't another black grape in America which can stay in its company.

Josselyn Gooseberry.

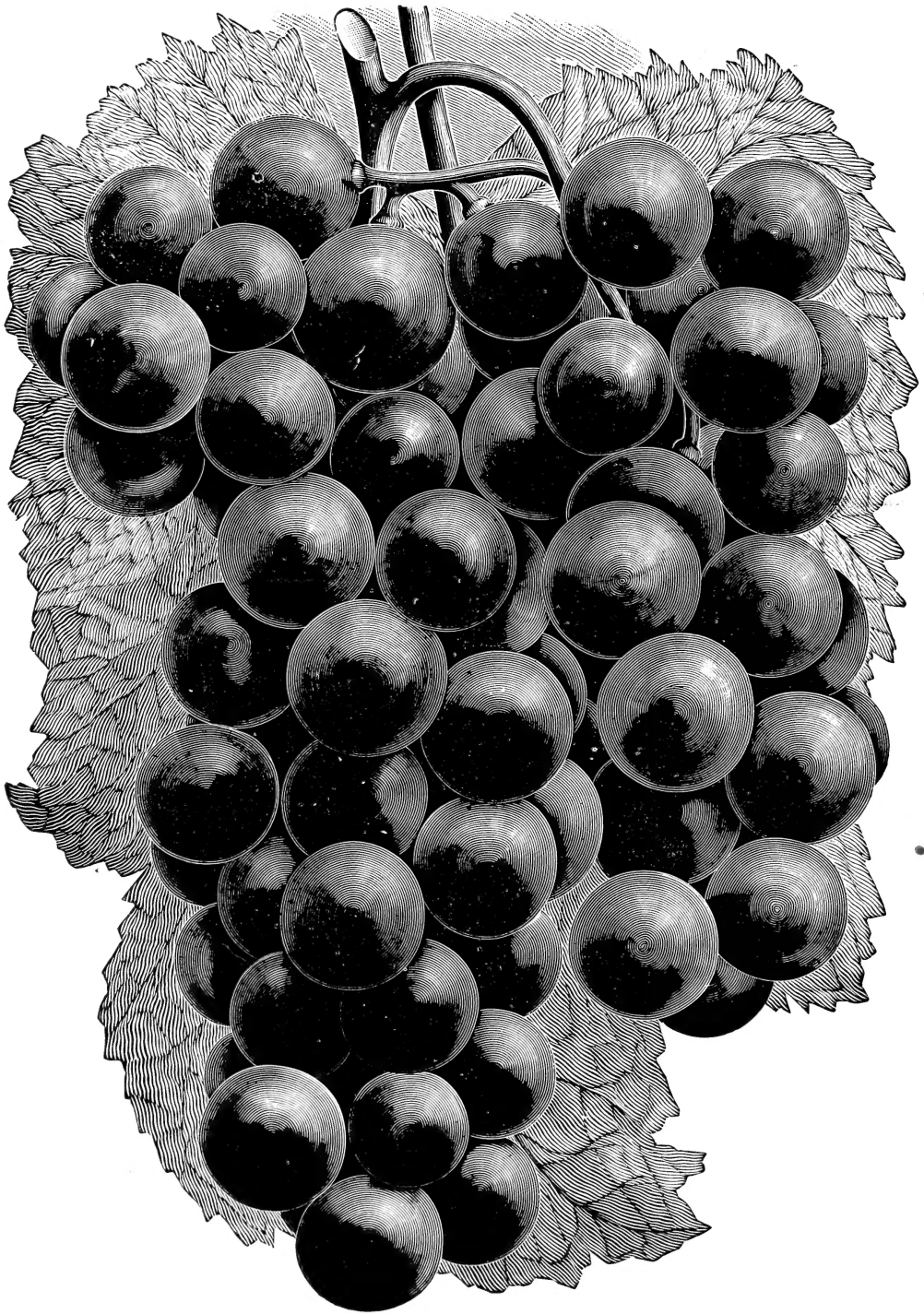
A Magnificent Success.

It Has No Rival.

If you have not this gooseberry you have not the best and most profitable one in the World. In recent years we have had no occasion to push the sale of the Josselyn. Although we devote several acres to the propagation of this gooseberry we are obliged every year to decline numerous orders for these plants on account of increase in demand being greater than our increase in production.

Testimonials.

We have usually printed a large number of testimonials from friends of these fruits. As we view the large number of new ones on hand which we have never printed we see we have not nearly enough room for them all. Our kind friends mostly like to see their good words in print after they have taken the trouble to write them, so as we cannot print them all we do not print any in this issue.



CAMPBELL'S EARLY

Photographed from Nature. Exact Size.