

Historic, Archive Document

Do not assume content reflects current scientific knowledge, policies, or practices.



U.S. Catalogue
Department of Agriculture
Washington, D.C.

1907

Seed Potatoes

GROWN
IN THE
COLD
NORTH
EAST

JERRARD'S



The George W. Jerrard Co.
Caribou, Maine

**Catalogue of Seed Potatoes from the George W. P. Jerrard Co.,
Caribou, Maine, for the year 1907.**

• We present you with our twenty-sixth Annual Seed Catalogue which contains a truthful description of our Northern grown Seed Potatoes.

All these years we have been catering to the most critical and exacting trade in the country. Our constant aim is and always has been to make the *highest quality* the *first* consideration and *next* to put our prices as low as good reliable seeds can be sold.

We have in these years been able to originate and introduce several of the leading varieties that are sought after by market gardeners and farmers everywhere. The New Queen, Early Harvest, Early Norther, Gem of Aroostook, Northern Beauty, *Early Surprise*, and this season the New Victor.

Seed men far and wide look to Aroostook Co. for the best seed, for here above all other sections the potatoes contain more stamen of force giving power, enabling them to throw out strong robust shoots which continue to grow strong and rank all through the season. This fact has prompted all leading seedsmen to look to Aroostook Co. for a supply of seed stock. But many planters and market gardeners have been disappointed with the results after a trial of the so called Aroostook Seed Potatoes purchased from *unreliable* parties. The trouble is they have not been able to get what they buy; For instance here in our markets the Beauty of Hebron, New Queen, White Elephant or late Hebron are known as Hebrons and are all dumped together and taken from the same bin. Carman No. 1, Rural New Yorker, Green Mountains, Delaware, Mill's Banner and several more of like character, some early and other late varieties go as Green Mountains. So when you order these varieties it is very uncertain what you will receive until digging.

See our method of maintaining the purity and quality of our seed and choose for yourself.

The way we select and maintain the purity of our Seed Stock. We grow largely our own Seed. If we are unable to grow as many as we need to supply our customers we furnish the seed, and place them out under contract to be grown for us by the most reliable farmers and we keep an eye on them all through the growing season. In order to keep our seed pure year after year, we grow each season on our home farm of 250 acres a sufficient number of acres to give us all the seed we require for our next years planting. These plots are carefully planted, each plot staked and numbered and a record made of each, so there could be no error if a stake should get removed.

They are carefully watched and their characteristics noted, and should any variety appear to have plants that look at all suspicious they are at once staked out and as they mature if they still do not resemble the original variety they are dug up and taken from the field, thus leaving the balance of the field pure and straight for our next year's planting. You will at once see this is expensive, requiring time and money, but it is the only way to maintain the standard of quality that we require for our trade.

We can say without fear of contradiction that we are the only Seed Farm in the County that follows this system.

Thus we can justly call our seed Pedigree Seed.

When any man or firm tries to sell you seed just as good as JERRARD'S for less money, keep these facts in view.

HOW TO SEND MONEY. Send money by post-office Money Order made payable at Caribou, or Bank Draft or Express Money Order. Or if none of these facilities are conveniently at hand it may be sent by registered Letter. Send stamps for sums less than one dollar. We warrant money to reach us safely when sent by either of the above named ways. Be sure to write your NAME and ADDRESS very plainly. We have no way of knowing your address unless you send it to us. We receive orders every year without name or state, then the sender kicks because he does not receive goods ordered.

We make our prices Net f. o. b. Caribou, Maine, without discount. Prices in this catalogue apply to orders of one to five barrels.

OUR SPECIAL LOW FREIGHT RATES from CARIBOU to BOSTON. Commencing the 10th of Mar. we run special through-cars over the railroads as far as Boston until April 5th. By this service we give our customers the lowest carload freight rates on all orders, large and small, as far as that point. We have an agent in Boston who takes the carloads in hand upon their arrival there, and sees to the safe delivery of each lot at its proper railroad station, steamboat landing or express office, to go on to its destination.

Freight from CARIBOU to BOSTON, MASS.

Per Barrel,.....	50 cts.	} This rate does not include transfer at Boston, which costs 25 cts., for Five Barrels or less; and 5 cts. for Each Barrel or Parcel over five.
Per Bushel,.....	25 cts.	

WE BEGIN TO SHIP SEED POTATOES to Southern and Middle Southern points the 10th of March and work Northward as fast as the season will permit.

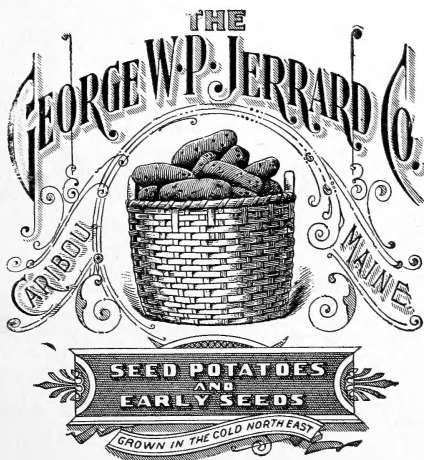
ALL POTATOES are packed in barrels, boxes or sacks, and every parcel bears our TRADE MARK label. For barreling we use tight new barrels of our own make, and fill them so they will not rattle. We shake them full, and then with a screw press put the head down where it belongs. **When desired** we will pack two kinds in a barrel without extra expense.

Barrels and sacks contain 165 pounds net. Potatoes ordered shipped in sacks 20 cts. per barrel less than catalogue quotations. While the cost in barrels is a little more, they reach our customers in a much nicer condition, as those in sacks are liable to get more or less bruised in transit. If your potatoes do not reach you in good condition, notify us at once. We send out nothing but fine, sound stock, yet a cold wave sometimes overtakes them on the way after leaving Boston, (we ship in warm cars to that point) and some of them get damaged by frost.

MONEY PROMPTLY REFUNDED. If we are sold out of any variety of seeds that are ordered, we will not substitute any other variety unless instructed to do so, but return the money paid without delay.

WE ARE NOT INFALLIBLE, mistakes will sometimes occur in spite of all we can do to prevent them. Please notify us of any error that may occur in filling orders and we will promptly and cheerfully correct them.

EXPRESS RATES are high and only pecks, pounds and packages should be ordered that way.



We do not ship Goods C. O. D.

We do not prepay freight beyond Boston.

We do not guarantee the Crop in any way.

The Geo. W. P. Jerrard Co.

Caribou, Maine.

EARLIEST

To

MATURE



Heaviest

Producer

Superior

Quality

THE EARLY SURPRISE.

This new variety offered by us for the first time in 1903, is worthy of your careful attention. It has been grown by us on our Seed Farms for six seasons, and for the past two seasons by hundreds of our most successful farmers and market gardeners throughout New England and the Middle West. Wherever it has been tested it has sustained the claims we have made for it.

It is the EARLIEST of the first Earlies. Seldom do we find so many good qualities combined in one potato. Here we have one that will produce more marketable potatoes per acre than any of the later kinds, and one of the very earliest to mature, enabling you to secure the earliest market when New Potatoes are in great demand and bringing the highest price, which makes it one of the best in all respects as an early variety for garden and field culture. The potatoes are pure white, with clear, smooth skin, nearly round. It is a vigorous, upright grower with medium sized top. The tubers grow of good size, and an unusual number in the hill. The seed of this variety starts very quickly, grows rapidly, and the young shoots are strong and healthy. One very important feature of this variety is that the tubers are very *fine quality* and will cook dry and mealy before they are fully grown, which is a valuable characteristic in a potato introduced for early market. In ripening it is more uniform than any other variety, every hill seems to ripen at the same time. Potatoes of this variety were planted April 30th; on June 9th, tubers were removed from some of the hills which weighed 8 oz. This is one of the varieties you should plant liberally of. A few dollars invested in well-selected seed is money well spent. Prices by freight—bbl., \$3.50; bush., \$1.75; pk., \$1.00. By mail, post-paid—1 lb., 35 cts.; 2 lbs., 60 cts.

The Geo. W. P. Jerrard Seed Co., Caribou, Me.

Dear Sir:—My Early Surprise potatoes were *planted April 30*, were in full bloom one week before the Early Norther. On *June 9*, I removed a tuber which weighed 8 oz. which cooked *dry and mealy*, July 12 the vines were entirely dried up and dead, and for fear of rot I dug them on August 25; and I had from *six small potatoes* 104 lbs. of as nice a lot of potatoes as you would wish to see. I do not think that you could find fifteen or twenty that would not be merchantable. I can not praise them too high.

Yours truly,

N. T. LESTER.

Mr. Jerrard,

Dear Sir:—I am very sorry I cannot send a larger order this year, and you remember that you sent me a pound (Early Surprise) and wanted me to try it. I find it the best potato I have got hold of, it ripened at least two weeks earlier than Early Fortune and nearly all large potatoes. (Early Fortune is a very early variety.)

Yours truly,

JAMES B. TRIPP, So. Middleboro, Mass.

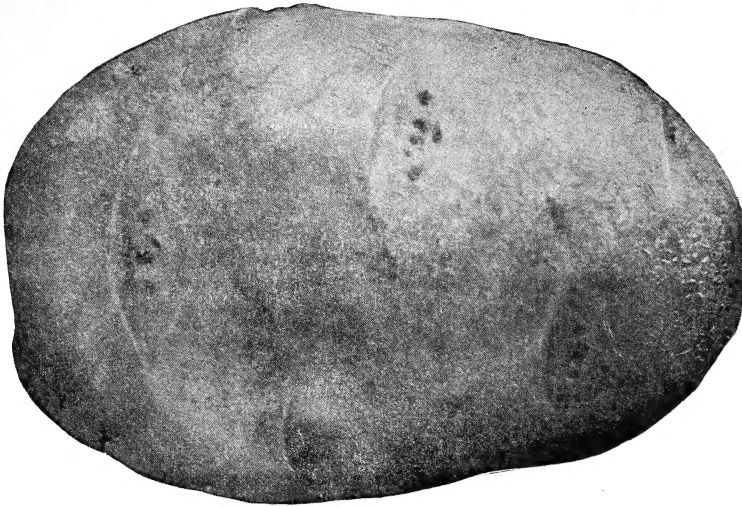
JAMES SAUNDERS of Ontario Co., N. Y., writes us under date of Sept. 29th, 1903: The Early Surprise that I had of you last spring gave excellent satisfaction, out of eight early varieties, they took the prize for earliness and were very large and even in size, no small ones.

THE GEO. W. P. JERRARD CO., CARIBOU, ME. Gentlemen:—Last spring I bought one peck of Early Surprise of you, planted them rather late, and had a very unfavorable season, yet they came up strong and even, ripened early, yielded well, did not rot, and are a good eating potato.

A. J. HAYNES, Montgomery Co., Pa.

G. W. JERRARD CO. Gentlemen:—Two pounds of Early Surprise received of you last May were planted by the side of Rural New Yorker No. 2 and proved to be a much better potato, yielding more potatoes from two pounds planted, run more even in size, all ripened at one time. They were a long ways ahead for earliness.

HARVEY LAING, Worcester Co., Mass.



New Victor.

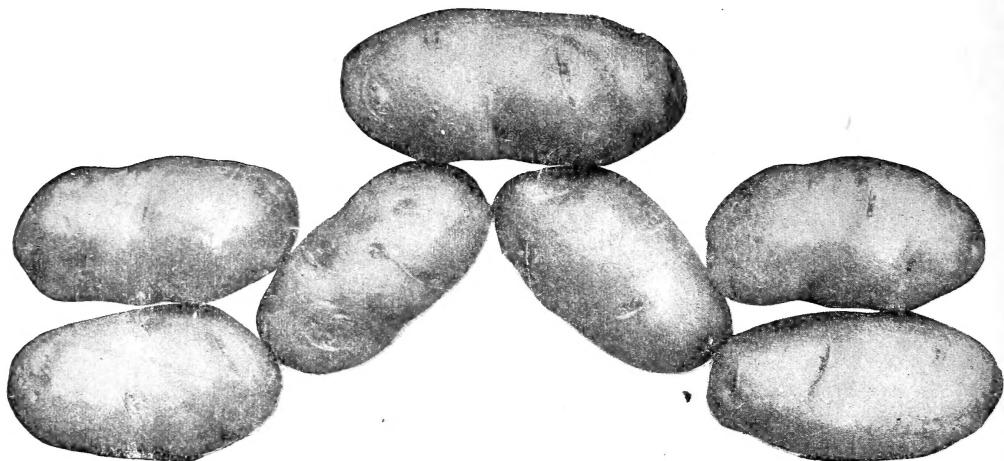
We introduce you this season to a new potato and hope you will take advantage of our liberal offer. The New victor is a pure white oval potato rather longer than the Green Mountain, eyes even with the surface, in fact some of the eyes are plump and full as shown in the cut which was made from a photograph. This potato as you no doubt notice is good shape so there is very little waste in paring. It is very starchy, cooks dry white and very floury. It is a very quick grower, the shoots are strong and stocky, tops large and branching with white blossoms. The potatoes lay close together in the hill, resembles the Early Harvest somewhat in looks but grows a heavier top and at present is a heavier yielder. For baking or any culinary purposes it cannot be excelled and as an early market potato it stands No. 1 being early, a good cropper, a good keeper, a good shipper and a good seller.

While we do not make the claim that this new potato will beat the record for yield and quality in all localities and under all conditions, we are confident that it will yield a surprisingly large crop of tubers free from hollow heart, that will be hard to excel in quality. Being a good healthy grower it withstands blight and rust better than many of the early varieties that have lighter tops.

You will certainly make no mistake if you include a few barrels of this variety in your order. Our stock of this New potato is not very extensive but as long as they last we will fill all orders in the order that they are received at the following prices.

By frt. per bbl. \$4.50, $\frac{1}{2}$ bbl. at \$2.25, the balance of the barrel to be filled with some other variety at catalogue prices.

1 pk. by express \$1.00, 1 lb. post-paid 35 cts., 2 lbs. 60 cts.



The Gem of Aroostook.

THIS MAIN CROP POTATO was introduced by us in 1898, and though sold for the excessively high price of ten dollars a bushel, was eagerly taken by the thousands of our customers who are in the front rank of the careful farmer of means, who have been buying their seed potatoes from us every year as regularly as our catalogue is sent out, many of them since the establishment of our business. From every part of the country come words of warmest commendation, of its unprecedented yields, its superb quality for table uses, its matchless beauty, and of its universally strong, vigorous, healthy, and sound habits of growth.

It is a SEEDLING from the world renowned NEW QUEEN, which we introduced so many years ago and now filled with the fire of youth, this matchless scion of illustrious parents stands out bold to the front, the embodiment of the sterling qualities which go to make up a perfect main crop potato for the world.

It is about one week later than its parent, is light flesh color, oval in shape; foliage medium green; plants strong, half upright, flowers medium size, white with yellow center. One of the soundest and best winter keepers ever grown by us. We can confidentially recommend the GEM OF THE AROOSTOOK as an all-round potato, and one that will please and stand by our customers for very many years, and we know our friends will be more than pleased with this Gem. It gives the largest yield of fine marketable potatoes.

Prices by Frt., bbl. \$3.10; bu. \$1.55; pk. \$1.00. By mail, Post-paid—lb. 35 cts.; 2 lbs. 50 cts.

TRUE SHAW, West Salisbury, N. H., writes: "From one potato of the GEM OF AROOSTOOK variety I raised 156 1-2 pounds. Almost an even flour barrel full. Who can beat it?"

S. ALDERMAN, Conn. "Harvested 100 bushels of nice potatoes from two bushels, planting of the "Gem of Aroostook."

WINFIELD S. FOSS, Chenango Co., N. Y. writes: "The Gem of Aroostook you kindly sent me last spring for trial delighted me with the most enormous yield I ever got from any kind. One plant yielded sixteen potatoes, which just tipped the scales at fourteen pounds."

MRS. JENNIE BLACK, Fillmore Co., Minn., writes: "We cut the beautiful Gem of Aroostook potato you sent us into twelve seeds, and planted them the last of May. October 16, my husband dug the twelve hills and got 118 pounds of the handsomest potatoes we ever saw. One plant yielded six monster tubers, which weighed 11 pounds, 2 ounces."

C. M. HAYNES, "The Gem of Aroostook I bought of you last spring are immense. I raised at the rate of 580 bushels per acre, while the average yield here is about 100 bushels."

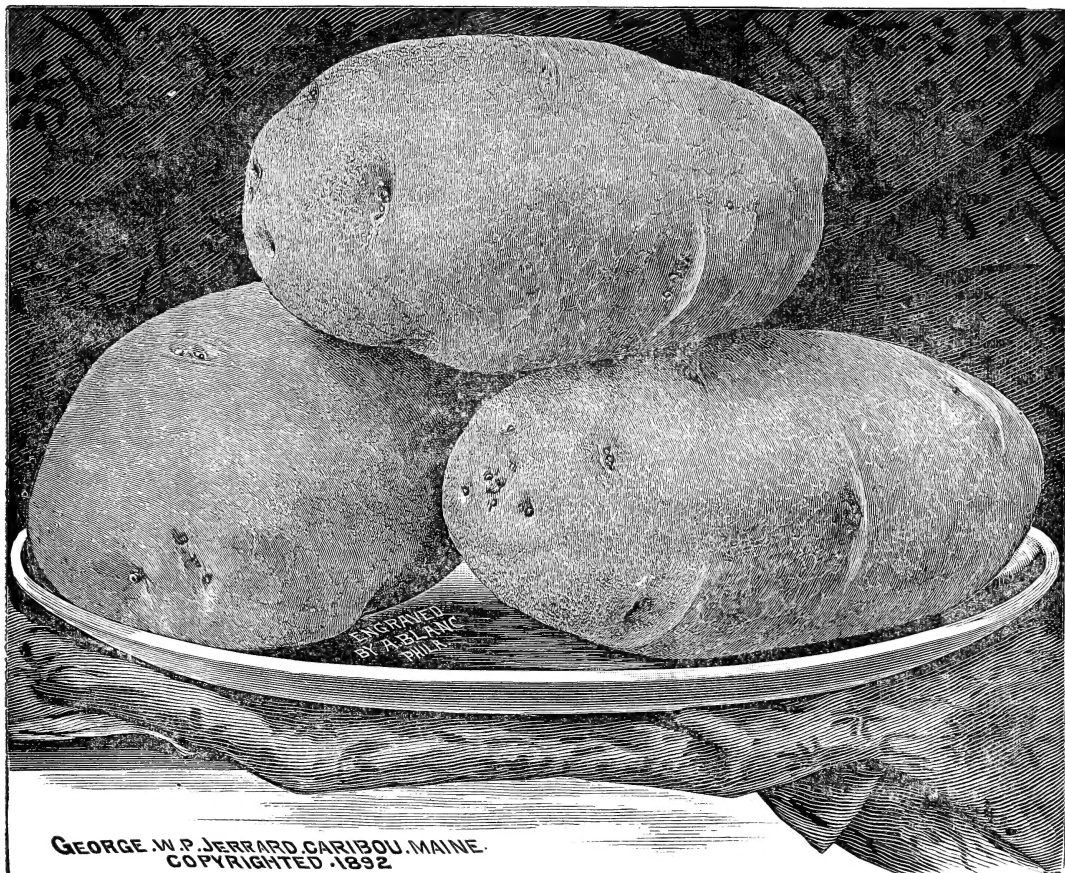
WOONSOCKET, R. I. Sept. 26, 1899.

THE GEO. W. P. JERRARD CO.,
Gentlemen:

Last spring I purchased one pk. "Gem of Aroostook" potatoes from you. They were planted on good strong soil, given ordinary cultivation and a fortnight ago I harvested 31 1-2 bushels. They astonished the native farmers and gardeners. Best of all the eating qualities are all that can be desired in an A No. 1 potato.

Very truly,

WM. T. HILL.



The Early Harvest.

The Early Harvest potato originated in the town of Kenduskeag, Penobscot County, Maine, and was introduced by us in 1893 as an **exceedingly** early white potato of **finest quality**. During the few years we have been selling it, we have sent it everywhere in America, and, in a small way all over the world, and in every state and clime it has pleased.

It is, in fact, a vigorous new seedling, full of life and strength, and proves not only one of the **very earliest** to mature, but it is a **large yielder** as well. A very strong point of superiority in the Early Harvest is that it bears shipping very early in the fall, when the weather is hot, better than any other kind, and arrives at destination, after long distance carrying almost as **bright** and **sound** as when **dug** out of the ground; so it is an exceptionally valuable potato for very early marketing, and a good one for home use. Color is white, usually showing a fine netting of the skin, which is an indication of fine quality; its cooking qualities are of the best, being white, dry, fine grained and very mealy. No potato stands higher in the estimation of practical market gardeners than the Early Harvest.

Prices by freight, bbl., \$3.00; bu., \$1.50; pk., \$1.00. By mail post-paid—lb. 30 cts., 2 lbs. 50 cts.

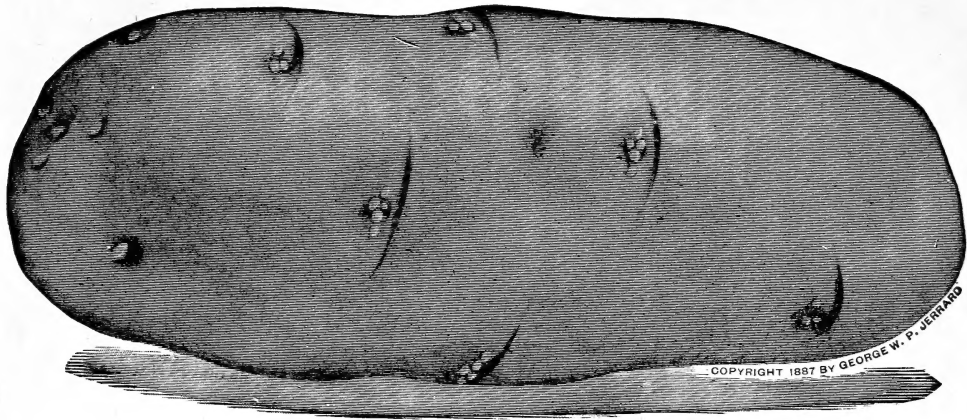
JOSEPH GILBERT, Middlesex Co., Mass., writes: "The three two-pound packages **Early Harvest** potatoes purchased from you last spring yielded a wonderfully early and very large crop, notwithstanding the severe drouth in this locality. From **less than half a peck** we harvested **nineteen bushels** of mostly extra large and **exceedingly** handsome potatoes."

I. W. JOHNSON, Litchfield Co., Conn., writes: "I planted **one pound** of your **Early Harvest** potatoes last spring. They got ripe very early, and at digging we got **one hundred and seventy-three pounds** very large potatoes."

AMES BRANDON, Madison Co., New York, writes: From two pounds planting Early Harvests I raised **two hundred and fifty-seven pounds** of mammoth potatoes."

G. C. WAKEFIELD, Bergen Co., New Jersey, writes: "The Early Harvest is the very earliest potato I have ever grown."

ROBERT H. NESBIT, Rose Hurst Farm, New Haven, Conn., writes: Oct. 19, 1901. "The fifty barrels of potatoes we received of you last spring, consisting of Early Harvest, New Queen and the Gem of Aroostook, **gave great satisfaction**. We had a fine crop for the season, about 3,000 bushels. While our **neighbors** were **waiting** for their early potatoes to grow we were **selling** our **Early Harvest** as fast as we could dig them, at \$1.50 per bushel. We shall give you a large order next year.



The New Queen.

No doubt many will receive our catalogue this season for the first time, and, for their benefit we will say that the New Queen was introduced by us in 1884 as the earliest potato in cultivation at that time. This was many years ago. During these years we have sold tens of thousands of barrels of them, which from the first seemed to surprise and delight every one who saw them.

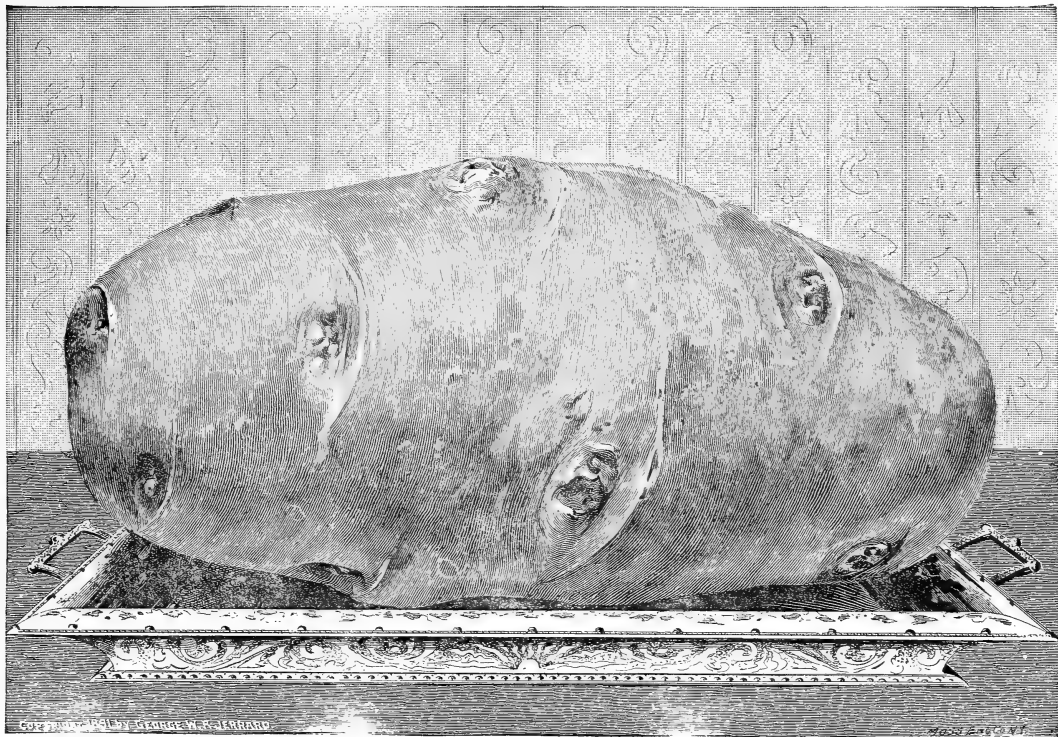
The New Queen was indeed a marvelous new potato and after these many years it is eagerly sought after by the best of farmers and market gardeners everywhere. The call is so great for this excellent early potato that many unscrupulous dealers are inclined to substitute later varieties which resemble the Queen in color and shape that it is always safer to buy of reliable growers of pure seed.

Prices by freight or express: Barrel, \$3.00; bu., \$1.50; pk., 75 cts. By mail, post-paid—1 lb., 30 cts.; 2 lbs., 50 cts.

ALFRED H. PELTON of Putnam Co., N. Y., writes: "The New Queen potatoes I bought of you last spring were the admiration of all who saw them. I had the first early potatoes in the market, and from one season's trial I consider them the best early potatoes I ever saw."

R. C. FOSTER, Vt., Jan. 25, 1902, writes: "The New Queen yielded at the rate of 350 bushels per acre, nice, large potatoes of the very best quality."

G. W. BLACKMAN, Clerk of Courts, Bradford Co., Pa., writes: "I am more than pleased with the New Queen. From the peck of seed I raised 14 bushels, and in quality they are superior to anything I have ever raised, and I have planted all the new kinds for years."



The Early Norther. (Introduced by us in 1892.)

During the years this potato has been before the public we have sold thousands of barrels of them, and every year sell more and more. This is because it is a very prolific yielder, of excellent quality for table uses, smooth, handsome, and a good keeper, and last but not least, it looks precisely like its illustrious parent, the famous old Early Rose, than which no potato was ever higher in the esteem of both the farmer and the consumer. Prices by freight—bbl., \$3.00; bu., \$1.50; pk., 75 cts. By mail, post-paid—1 lb., 30 cts.; 2 lbs., 50 cts.

Irish Cobbler.

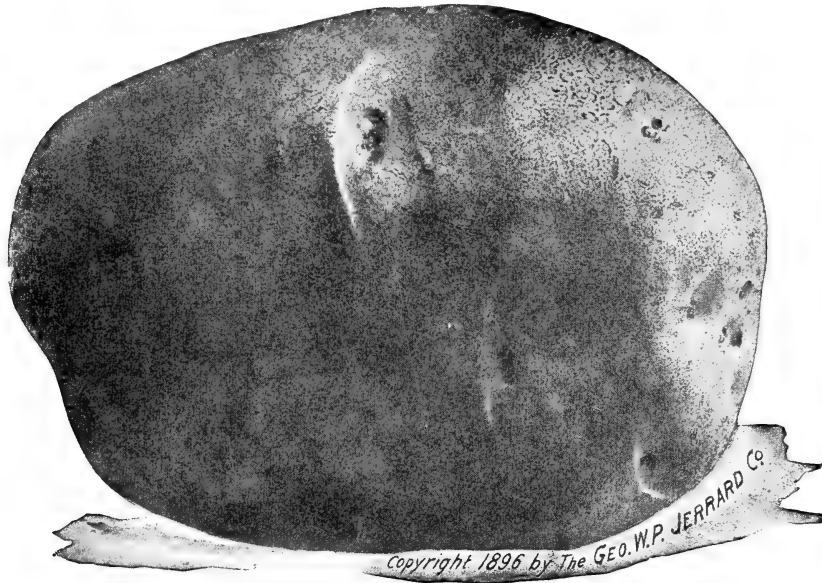
Great claims have been made for this potato. It is confidently asserted by some seedmen that it will outyield all other early kinds and is a close second to any of the later varieties. Quality the best; color a pure, creamy white; shape nearly round, and smooth. Foliage dark green; vines very stocky; withstands drouth remarkably well. In some sections it is fast taking the place of other early kinds. This is a variety you can plant liberally of and feel confident of a large crop very early, fine quality potatoes. Prices by freight—bbl., \$3.00; bu., \$1.50; pk., \$1.00. By mail, post-paid—1 lb., 30 cts.; 2 lbs., 50 cts.

J. S. FOWLER, Fresno Co., Cal., writes: "From the two three-lb. mail packages Early Norther seed potatoes I bought of you last spring, I harvested 412 lbs. of the most beautiful potatoes, many specimens nearly as large and long as my foot."

DAVID C. BENNETT, Kings Co. N. Y., writes acknowledging arrival of 20 bbls. of Early Norther potatoes: "If they do as well as the one barrel did last year, I shall not growl."

N. G. KILBORN, Douglass Co., Minn., writes: "This has been a very poor season for potatoes, but, nevertheless, from the one barrel Early Northers bought of you last spring, I harvested 147 bushels, and from the five barrels New Queen I got 510 bushels."

JAMES GRADY, Norfolk Co., Va., writes: "I raised 2,647 bushels of splendid Early Norther from the 40 barrels of seed which I planted on 13 acres."



Carman, No. 1.

A close rival of the Green Mountain. Originated by Mr. Elbert Carman, late editor of the Rural New Yorker. Has been very popular wherever grown. Shape round or globular, skin white, shallow eyes; not inclined to rot in field or cellar; of excellent quality. Late in ripening, but yields large crops of fine marketable potatoes. Price by freight—bbl., \$3.00; bu., \$1.50. By mail post-paid—1 lb., 30 cts.; 2 lbs. 50 cts.

Delaware.

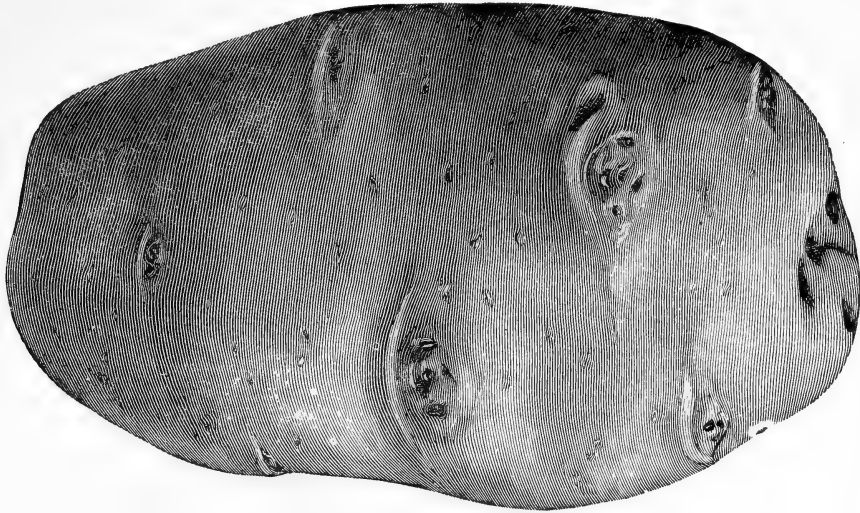
Succeeds well in all soils. A valuable combination of size, yield and quality. White throughout. Large, oval, good quality, good keeper. Prices by freight—bbl., \$3.00; bu. \$1.50.

Early Bovee.

An extra early variety, closely resembles the New Queen in shape and color, of good size, producing but few small tubers, and of best quality. Prices by freight—bbl., \$3.00; bu., \$1.50; pk., \$1.00. By mail, post-paid—1 lb., 30 cts.; 2 lbs., 50 cts.

Early Fortune.

Very early, light amber color, red at seed end. This is one of the best early potatoes. They are good shape, fine quality and exceedingly early. This is a superior potato and with us is a fine cropper. Prices by freight—bbl., \$3.00; bu., \$1.50; pk., 75 cts. By mail post-paid—1 lb., 30 cts.; 2 lbs., 50 cts.



Clark's Pride.

This potato in no way resembles Clark's No. 1. Several years ago Mr. Clark himself who lives in Aroostook valley close by the banks of the rolling waters of that famous river, presented us with a peck of this seed. Making the claims at the time that he originated the variety. We planted them and have continued to plant them ever since. At that time they were under development, to-day they are in their prime, and are a safe potato to plant, yielding very heavily when well cared for and are ready to market very early. Price by freight, per bbl. \$3.00; bu., \$1.50; pk., 75 cts.

Early Michigan.

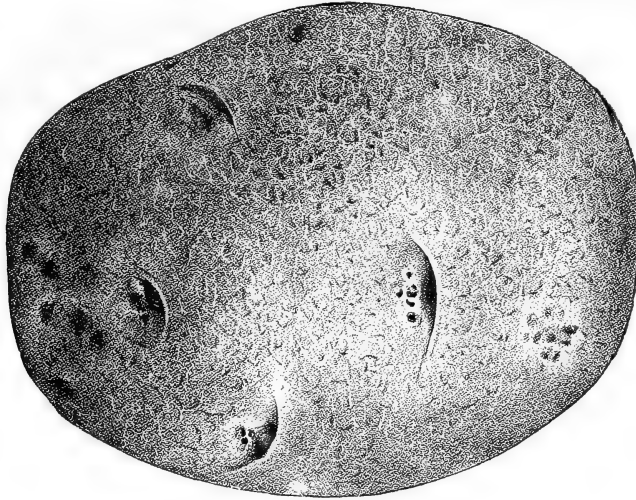
Resembles the Early Harvest and like it is an extra good yielder and fine quality. By freight or express, bbl., \$3.00; bu., \$1.50; pk., 75 cts. By mail, 1 lb., 30 cts; 2 lbs., 50 cts.

World's Fair.

Heavy yielder, good quality.

Manum's Enormous.

Late, tubers large, very white, producing bountiful crops of merchantable potatoes. Prices same as above.



The Green Mountain.

The Green Mountain Potato has proven a very valuable variety for late crops. It has been in our city markets as a table potato for several years, and when well grown has invariably brought an extra price over other kinds. It is a fair, white skinned potato of flat, oval form, very smooth and handsome. In the field it grows strong and rampant with large, healthy foliage. Its season of ripening is late, and we have found it not prone to decay either in the field or cellar. On the whole we are led by our experiences with the Green Mountain potato to pronounce it an excellent one for late crops.

Prices by freight—bbl., \$3.00; bush., \$1.50; pk., 75 cts. By mail post-paid—lb., 30 cts.; 2 lbs., 50 cts.

The Northern Beauty.

The Northern Beauty was originated by us on our experimental farm in 1894. During the spring of 1896 it was sent into every quarter of the United States and Canada. It has given such good results, producing enormous crops of smooth, handsome, light flesh colored tubers, that we do not hesitate to offer it to our customers as the best Rose variety introduced since the introduction of the renowned Early Norther by us in 1892. There is no Rose variety on the market to-day that is giving such universal satisfaction as the Northern Beauty.

It is of the Early Rose type, light flesh color, not quite so long, a little inclined to be flat, eyes quite even with the surface, an excellent shape for cooking for which purpose it has no superior among the Rose varieties. It is fully as early as the Old Early Rose, a more robust grower, of finer form, as you will see by the excellent engraving which was taken from a photograph.

Price by freight—bbl. \$3.00; bu. \$1.50; pk. \$1.00. By mail post-paid—1 lb. 30 cts.; 2 lbs. 50 cts.

I am very much pleased with the Northern Beauties, received from you last year.

W. H. CLARK, Michigar.

Dear Sirs: The Northern Beauty potatoes received from you last spring, were very handsome. After cooking a few, I was satisfied as to their extra good cooking qualities and at harvest time I was more than pleased with the large yield of smooth, handsome tubers, and believe them to be the finest potato I ever planted.

Respectfully yours,

JOHN LEIGHTON, Worcester, Mass.

JONAH G. THOMPSON, Cattaraugus Co., N. Y., writes Dec. 12, 1900:—
Gentlemen:—

From three pounds of Northern Beauty potatoes I procured of you last spring I raised seven bushels and nine pounds of large, smooth, solid and handsome tubers, very equal in size. Last season was very dry in this section, but the Northern Beauty pushed along with astonishing vigor and rapidity and the foliage kept up its dark, lively green color until the time of maturity. It is very productive, of very fine quality and extra early.



White Rose.

Carmen, No. 3. Is a roundish, white, handsome potato, a great yielder and of fine quality.

Mill's Banner. Medium late, slightly russett, produces good crop of handsome tubers.

Maule's Thoroughbred. Light flesh color; strong, thrifty grower, quite early; an abundant cropper, no small tubers and it is also a nice quality for table.

Prolific Rose. It is all its name indicates.

Rural New Yorker No. 2. Mid-season. Tubers smooth, large and white; quality and yield good, extra good.

Sir Walter Raleigh. Closely resembles the Rural New Yorker No. 2. A great yielder of uniform size tubers; practically no small ones, flesh white and of excellent quality.

Uncle Sam. A rank grower; produces abundant crops of large, white tubers, which cook dry and mealy; medium late.

White Rose. Rose shape, similar to Early Michigan, mid-season; growing in favor wherever it has been introduced.

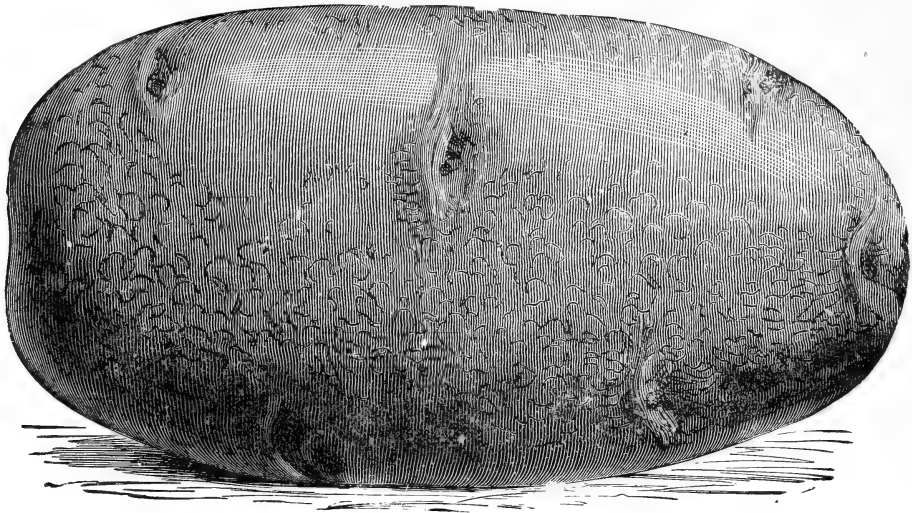
Early Roberts. Is oblong, skin white, a good yielder, of uniform sized tubers which cook dry and mealy and make a fine appearance.

Houlton Rose. Similar to the Early Rose.

Aroostook Pride. Smooth, early, resembles New Queen in shape and color.

Ensign Bagley. Introduced by S. D. Woodruff & Sons of Connecticut. Extra early, pure white, ripens about the same time as the New Queen and Clark's Pride.

Any of the above varieties by freight—per bbl., \$3.00; ½ bbl., \$1.65. By mail—1 lb. 35 cts.; 2 lbs., 50 cts.



The Dew Deep.

While this is not one of our own introduction it is one that we can fully recommend as being an extra good variety. It is spoken of by many as the earliest and best. We find it an excellent early potato.

It has quite a heavy top for so early a variety but the tubers are good size and cook dry and floury early in the season. It is pure white, eyes even with the surface, and is a good strong grower and yields a heavy crop ready to catch the early market. By freight—1 bbl., \$3.25; $\frac{1}{2}$ bbl., \$1.65.

The Vermont Gold Coin.

This is one of the best of "Aroostook's adopted potatoes" introduced by W. A. Burpee and sent to Aroostook County to bring out its best producing and eating qualities. It resembles the Green Mountain very much in shape and habit of growth, with this exception, the tops are not so stout and branching and the tubers mature several days earlier.

It is undoubtedly a very heavy cropper and has a reputation of being equally as good quality and a heavier yielder than that noted variety. This is one of the varieties that will do remarkably well under adverse circumstances. It is free from rot, a good keeper and as near blight proof as any potato on the market. By freight—bbl., \$3.25; $\frac{1}{2}$ bbl., \$1.65.

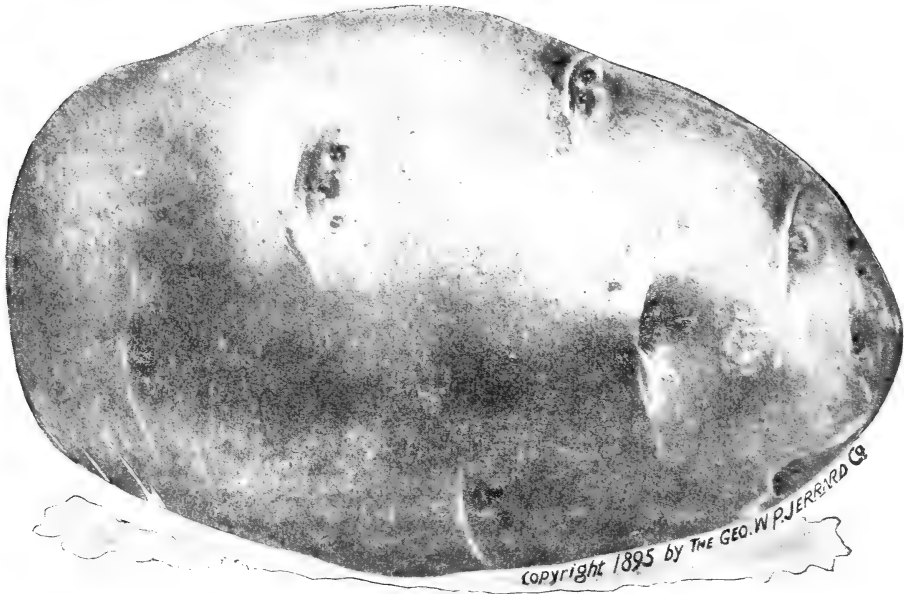
Spaulding Rose.

Color, light pink, oval, inclined to be a little flat, smooth, a very rank stout grower and will withstand blight and rust remarkably well. It is a week later than the Early Rose but a heavier cropper and a good keeper. By freight—bbl., \$3.25; $\frac{1}{2}$ bbl., \$1.65.

Early Ohio.

One of the EARLIEST potatoes on the market. Many market gardeners prefer this potato to any other for with GOOD CARE it will give excellent returns of very early potatoes of the finest quality.

They are Rose color, good shape, rather oval, not too long, eyes level with the surface, the flesh is white, dry and mealy, one of the very best for early markets, they will stand high cultivation better than many early potatoes. They are free from rot even when grown where a liberal application of barn dressing has been made. Prices by freight, bbl., \$3.00; bu., \$1.50; pk., 75 cts. By mail, post-paid—1 lb., 30 cts.; 2 lbs. 50 cts.



We offer the following New and standard varieties of potatoes. By freight per bbl. \$3.00; bushel, \$1.50. By mail post-paid 1 lb. 30 cts.; two lbs., 50 cts.

Every progressive farmer knows the importance of changing seed, it is always advisable to try new varieties. Some of the new varieties are more than likely to double your production with very little additional expense for Seed.

Pearl of Savoy. This well known potato, of the Early Rose type, came to us from the green hills of Vermont. Fine early potato.

White Elephant. Very late. In color and shape is an exact duplicate of the Beauty of Hebron. A very rank grower and prolific yielder.

Early Rose. Is too well known to need any description. We have a large and very fine stock of the old standard Rose.

Early Six Weeks. A new, extra early potato, introduced in 1892. It proves to be of fine quality for early use, and on this account is desirable to grow in a small way, at least for first early. Tubers are medium to large size, round oblong in shape, eyes mostly even with the surface, skin light pink.

IXL. Rose variety, ten days to two weeks later than the Early Norther, strong grower, and a good yielder and quality good.

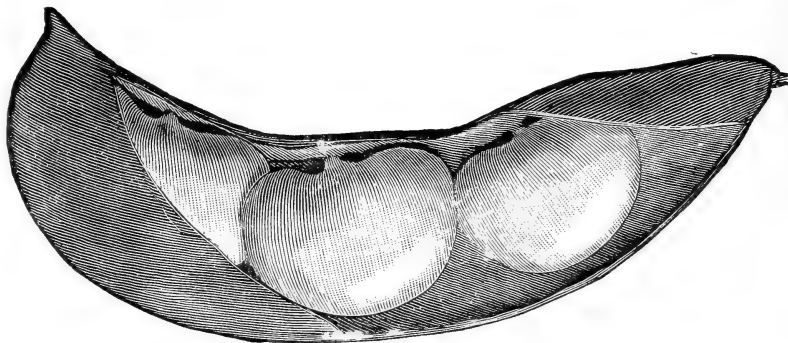
BEANS.

Early Aroostook Bean.

This beautiful white bean was introduced by us and it has proved unusually early, productive and good in every locality. It is the pioneer bean of Aroostook County. It yields immense crops of beautiful white beans, and when baked they possess that fine flavor which has made the kettle of baked beans which "my mother used to bake" so dear to every New Englander. Post-paid—pkt. 10 cts.; $\frac{1}{2}$ pt. 15 cts. 1 pt. 25 cts. 1 qt., 45 cts. Freight or express, pk., \$2.00; $\frac{1}{2}$ pk., \$1.00

Aroostook Bush Lima Beans.

Eight years ago we received three beans from a friend in this county who assured us they would ripen in this latitude. We had previously tried all of the first earlies offered by other seedsmen and they universally failed to mature. We carefully planted these three beans and they have not failed to ripen with us, so we feel now that we can justly offer the Earliest Bush Lima Beans in the world. This is a prize for those who appreciate the delicious Lima Bean and one that will ripen anywhere in the United States. Post-paid—pkt., 15 cts., $\frac{1}{2}$ pt., 22 cts., 1 qt., 70 cts. They are delicious for shelled beans and are excellent when baked.



AROOSTOOK BUSH LIMA BEANS

Improved Yellow Eye.

One of the best varieties for baking. Standard sort for field culture. Post-paid—pkt. 10 cts.; 1 qt., 45 cts., peck \$2.00.

Improved Early Sweet Corn. Eight Days Earlier Than Any Other.

The short, quick seasons of this cold north country, together with judicious selection of first ripening ears for seed, has worked unheard of earliness into this earliest of all sweet corns, until now it is sure to ripen in this country of cold, short seasons, which it should be borne in mind is one hundred and fifty miles farther north than the north line of the State of Vermont. Post-paid—pkt., 10 cts.; $\frac{1}{2}$ pt., 20 cts.; pt., 35 cts.; qt., 65 cts.

The New Jersey Experiment Station in 1904 in a field test of 75 varieties of sweet corn found our improved Corey to be the first to produce an ear fit for boiling.

Edmand's Early Beet. }

Eclipse Beet. }

Post-paid—pkt., 5 cts.; 1 oz., 10 cts.; $\frac{1}{4}$ lb., 15 cts.; 1 lb., 50 cts.

Long Green Cucumber. This is an old garden favorite.

Boston Pickling. A fine, early cucumber, especially desirable for pickling.

Early Russian Cucumber. This is the earliest. The plants are very productive, and fruit of excellent quality. Post-paid—pkt., 5 cts.; 1 oz., 15 cts.; $\frac{1}{4}$ lb., 35 cts.

Salamander Lettuce. This variety will thrive under adverse circumstances better than any other kind of lettuce we have found. Post-paid—pkt., 5 cts.; 1 oz., 15 cts.; $\frac{1}{4}$ lb., 35 cts.

New Iceberg Lettuce. There is no handsomer or more solid cabbage lettuce in cultivation. Post-paid—pkt., 5 cts.; 1 oz., 15 cts.; $\frac{1}{4}$ lb., 35 cts.

Improved Hanson Lettuce. Heads green outside and white within. Grow to a large size; very solid. Post-paid, pkt., 5 cts.; 1 oz. 15 cts.; $\frac{1}{4}$ lb., 30 cts.

The New Buckeye State. One of the largest kinds we have ever sold, large, smooth and purple. In solidity and meatiness it has no equal, while in luscious quality none can surpass it. Post-paid—pkt., 5 cts.; 1 oz., 25 cts.; $\frac{1}{4}$ lb., 60 cts.

Golden Oblong Pumpkin. They grow very uniform, from fifteen to twenty inches in length. The flesh is light yellow in color, of very rich, fine quality, and has been pronounced by lovers of pumpkin pies as the very best they have ever had for this purpose. Post-paid—pkt., 5 cts.; 1 oz., 10 cts.; $\frac{1}{4}$ lb., 30 cts.; 1 lb., 75 cts.

Small Sugar Pumpkin. It is a prolific yielder, very sugary and of fine quality. Post-paid—pkt., 5 cts.; 1 oz., 10 cts.; $\frac{1}{4}$ lb., 25 cts.; 1 lb., 75 cts.

Jerrard's Early Tomato. Of all early tomatoes this is the first. This is no dwarf but of good marketable size, grows very round and firm, color bright red, quality good. This is undoubtedly the very earliest tomato in cultivation. We can offer this extra early Northern tomato only in pkts. and ozs., this season. Pkt. 8 cts.; 1 oz., 30 cts.

Improved Long Island Ruta-Baga. This handsome Ruta-Baga originated on Long Island, New York, and is one of the largest growers that has ever been introduced. Post-paid—pkt., 5 cts.; 1 oz., 10 cts.; $\frac{1}{4}$ lb., 20 cts.; 1 lb., 50 cts.

Early Purple Top Munich Turnip. This is fully two weeks earlier than the common purple top variety which it resembles. Post-paid—pkt., 5 cts.; 1 oz., 10 cts.; $\frac{1}{4}$ lb., 20 cts.; 1 lb., 50 cts.

✓ **New Bright Breakfast Radish.** An improved type of the French Breakfast, with particularly small tops. Post-paid—pkt., 5 cts.; 1 oz., 10 cts.; $\frac{1}{4}$ lb., 20 cts.; 1 lb., 60 cts.

✓ **Improved Chartier Radish.** This is a beautiful scarlet, white-tipped radish of crisp, nice quality, and a very quick grower. Post-paid—Pkt., 5 cts.; 1 oz., 10 cts.; $\frac{1}{4}$ lb., 20 cts.; 1 lb., 60 cts.

Potatoes by the Pound.

For 60 cents we will forward you postpaid

2 lbs. Early Surprise potatoes,	.60
1 package Aroostook Lima bean	.10
1 package Delicious squash	.10

.80 cts. worth of Choice Seeds for

only 60 cents.

No. 1.

Collection of Vegetable Seeds for the Home Garden. Prices on this page are not subject to discounts given elsewhere.

30 PACKAGES POST-PAID FOR \$1.00.

Beans Kenney's Rustless Golden Wax	Musk Melon Montreal Market
Beans Wax Pod Yellow Eye	Parsnip Hollow Crown
Beets Eclipse	Peas Nott's Excelsior
Beets Edmand's Early	Peas Heroine
Cabbage All Head	Pumpkin Golden Oblong
Cabbage Late Flat Dutch	Radish Chartier
Carrot Danvers Half Long	Sage
Corn Improved Corey	Squash Hubbard
Cucumbers Boston Pickling	Squash Delicious
Cucumbers Long Green	Turnip Long Island
Cucumbers Early Russian	Tomato Fordhook First
Lettuce Hanson	Tomato Buckeye State
Lettuce Iceburg	Sweet Peas Mixed
Onions Yellow Globe Danvers	Dwarf Nasturtium Mixed
Water Melon Seminole	Pansy Mixture

Collection No. 2. For the Home Garden. 15 packages post paid for 50 cts.

Beans White Wax	Onion Yellow Globe Danvers
Beets Crosby's Early Egyptian	Pumpkin Golden Oblong
Cabbage All Head	Peas Nott's Excelsior
Carrot Chantenay	Radish French Breakfast
Corn Improved Corey	Squash Hubbard
Cucumber Boston Pickling	Tomato Buckeye State
Lettuce Hanson	Turnip Improved Long
Melon Musk Rocky Ford	Island Ruta Baga

SPECIAL NOTICE.

To any person receiving this price list that will send us the names of six good farmers who grow potatoes and 20 cts. in stamps we will send them by mail, prepaid, one pound of any variety of potato they may select from this list:

- or 1 package of the Aroostook Bush Lima Bean.
1 " Golden Oblong Pumpkin.
1 " Eclipse Beet.
1 " Hansen Lettuce.
1 " Sweet Peas Mixed.
1 " the Earliest Sweet Corn.

We make liberal discounts on all large orders from individuals, clubs or granges.

We are prepared to book orders for any amount of potatoes from one pound up to a carload.

PANSY.

Improved Fancy Show Blend. Where a grand, showy mixture is desired, covering the widest range of colors and variations in extra substance and perfect form, we recommend this as an ideal mixture that cannot be surpassed at double the price. Per pkt. 10 cents.

NASTURTIUM.

Dwarf Nasturtium. Fine shades and markings.
Mixed per pkt., 5 cts.; 1 oz., 10 cts.

SWEET PEAS.

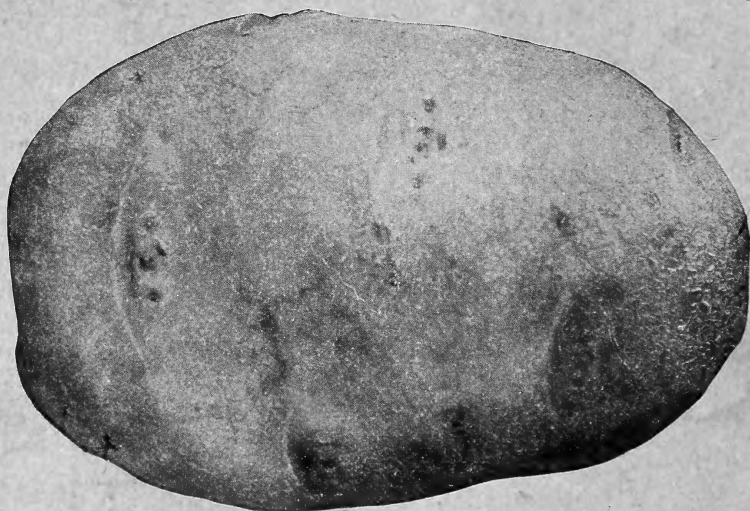
Light Pink Shades. Light to dark pink, giving a most charming effect.

White and Primrose Shades. This collection contains ten most delicate shades from pure white to light pink.

Jerrard's Gem Mixture. All colors and shades.
Any of the above separate shades or mixtures, post-paid—pkt., 5 cts.; oz., 10 cts.; $\frac{1}{4}$ lb., 20 cts.; 1 lb., 70 cts.; 6 packages for 25 cts.; four 1 oz. packages of any shade, 25 cts.



2 in
D



"NEW VICTOR". See description elsewhere.