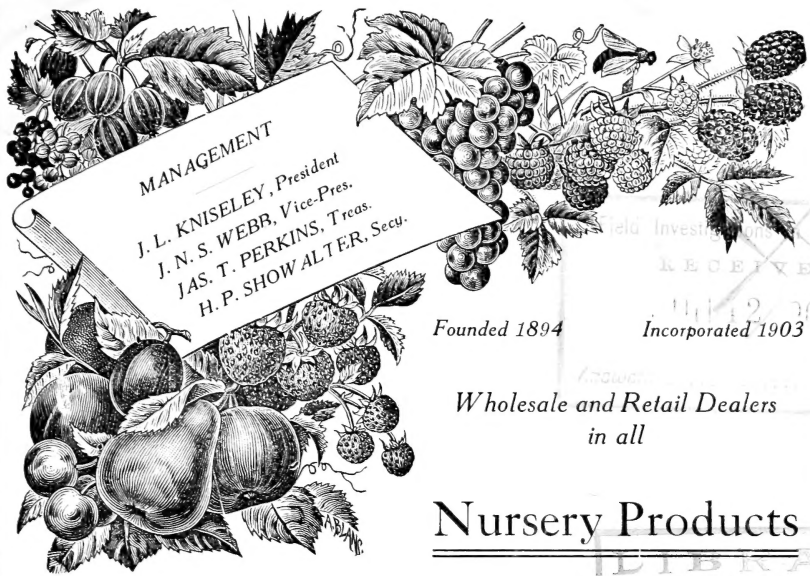


Historic, Archive Document

Do not assume content reflects current scientific knowledge, policies, or practices.



MANAGEMENT

J. L. KNISELEY, President
J. N. S. WEBB, Vice-Pres.
JAS. T. PERKINS, Treas.
H. P. SHOWALTER, Secy.

Founded 1894

Incorporated 1903

Wholesale and Retail Dealers
in all

Nursery Products

MUSKOGEE NURSERY COMPANY

CAPITAL \$20,000.00

MUSKOGEE, INDIAN TERRITORY

Price list of
Fruit and Ornamental Trees

WE GROW TREES THAT BEAR FRUIT

¶ Nursery adjoining the city on street car line. Can ship by three Express Companies, five Railroads and one Steamboat line.

OKLAHOMA
Territorial Board of Agriculture

OFFICIAL CERTIFICATE No. 8.

GUTHRIE, OKLA., August 29, 1906

TO WHOM IT MAY CONCERN :

This is to Certify, That in accordance with an Act of Assembly, approved March 13, 1905, the Nursery of Muskogee Nursery Company, at Muskogee, Indian Territory, was inspected on August 11, 1906, and the stock grown in said Nursery found apparently free from San Jose Scale and all other insects and diseases of a seriously injurious nature.

This certificate is to cover only stock grown in the above named Nursery, and becomes invalid after September 1, 1907.

JNO. F. NICHOLSON, Nursery Inspector.

REFERENCES:

FIRST NATIONAL BANK, BANK OF MUSKOGEE, or anybody who knows us in Muskogee, or anybody who has dealt with us, and all express companies doing business in Muskogee.

Muskogee Nursery Company
MUSKOGEE, IND. TER.

MUSKOGEE NURSERY COMPANY OF MUSKOGEE, I. T.

WE HAVE ONE OF THE

Largest assortments grown by any nursery in the Indian Territory and we believe the best and most perfect. We want you to try us and you will stay with and recommend us to others, after being well pleased. We pay the freight on \$10.00 orders and up. We want 5,000 new customers this year and, with our old ones, we will have live orchards, vineyards, fruit plantations and flower gardens in 10,000 places as living monuments telling of our fine fruits, shade and ornamental trees. Buy direct from an established nursery rather than from someone here today, there tomorrow and not "Johnny on the Spot" when you want him to "make good." We GUARANTEE ALL TREES to arrive in good condition, and, if they are delayed in shipping and damaged, we will do the fussing with the railroad, and see that you get your trees fresh and alive and all O. K.

All trees DUG FRESH, burlapped or boxed with care and plenty of moss, damp sawdust over the roots. As we use a tree digger you get better roots than when they are dug with a spade. Our trees are stocky, healthy and the best varieties that are adapted to the Central South. ORDER TODAY; don't wait until the rush is on. Get your order in early.

A SILENT SALESMAN is the best for you if you buy enough. In order to avoid the misrepresentations of agents, hotel bills, livery hire, collection expenses and losses from poor accounts,

DEAL DIRECT.

When you deal direct, you save one man's profit (the go-between). When you deal with the head firm you know who to go to, if things are not as you expected them. You send check or draft and do not have to send enough to cover losses. Many agents are dealers in a cheap way, that is, they buy job lots and sell them according to the kind you may want. Yet there are liable to be mistakes in varieties and, while we are always willing to correct errors, yet we will not be liable for a greater amount than the original cost if the tree is not true to name. We, however, take extra care to have every variety correct and are now budding from bearing trees that we know are O. K. We are trying to raise the standard and give you first-class trees and don't want you to judge our first grade and size by any but first-class stock. We are sure they will meet your expectations.

\$100.00 invested in fruit trees and well taken care of will bring greater returns than any other kind of growing crop.

One acre of strawberries brought us \$150.00 net.

One acre of blackberries brought us \$120.00 net.

One acre of Elberta peaches, in 1906, brought \$220 net.

One-half acre of raspberries brought us \$90.00 net.

Rhubarb will make you \$150.00 an acre.

Apples will make you a fortune.

Pears are splendid in the Territory and will make you \$3.00 a tree at four years from time set out.

Plums will bring \$200.00 an acre.

Less than one acre of grapes will make you—well, you just order some and try it.

\$10.00 invested in bulbs will keep your wife in GOOD HUMOR all summer. Don't you think it will pay?

Have some beauty roses in your yard.

LETTERS.

We write you the day your order is received and let you know that same has been booked and is correct or call your attention to any mistake you may have made. If you do not hear from us soon after sending an order, write us again as the first letter might have been mis-directed.

SHIPPING.

We notify you the same day we ship your goods so you can get them promptly.

PACKING.

We pack in strong, light boxes or bales and protect the roots well with damp straw and moss so when you receive them they are in good condition.

CLUB ORDERS.

If you do not want \$10.00 worth yourself, get some neighbor to order with you and we will give you the benefit by shipping all to you and paying the freight.

WE PAY FREIGHT ON \$10.00 ORDERS AND LARGER ONES, BUT NOT EXPRESS.

REFERENCE.

We refer you to anyone who has ever dealt with us. To anyone you may know in Muskogee. To the First National Bank of Muskogee, Ind. Ter.

Remember you get the low price by sending cash and not having to pay for bad debts, as we have cut out all credit orders. We will loan money on good security for parties wanting to put out a large orchard.

RAILROAD.

We can ship in nine different ways by railroad and express, on the Arkansas by steamboat.

LETTERS FROM PLEASED CUSTOMERS.

Sivels Bend, Texas, March 24, 1906.

Muskogee Nursery Co.,

Muskogee, Ind. Ter.,

Gentlemen: Trees received in good condition. I have them set out and they are all budding nicely.

(Signed)

J. F. GRISHAM.

**AMERICAN NATIONAL BANK,
C. S. Stocker, President.**

Stigler, I. T., Dec. 5, 1905.

Muskogee Nursery Co.,

Muskogee, Ind. Ter.,

Gentlemen: The Maple trees shipped me November 27th received all O. K. They were nice and fresh and good roots, perfectly satisfactory. I will take 50 more as nice large ones as the 30 are. Enclosed find check.

Yours truly,

(Signed)

C. S. STOCKER.

Yeager, Ind. Ter., Nov. 18, 1906.

Muskogee Nursery Co.,

Muskogee, Ind. Ter.,

Gentlemen: Enclosed find check for \$11.50 in payment of bill of trees shipped on the 15th. They arrived in good condition and are satisfactory.

Respectfully,

(Signed)

W. D. ARNOLD.

MUSKOGEE NURSERY CO., MUSKOGEE, I. T.

Panama, Ind. Ter., Aug. 16, 1906.

Muskogee Nursery Co.,
Muskogee, Ind. Ter.,

Gentlemen: Will you kindly send me your latest catalogue of both shade and fruit trees? I have misplaced your old one. Must have some more shade trees this fall. Never saw anything that would compare with the last order received from you.

(Signed)

Yours truly,
E. G. GOODNIGHT.
(Cashier of Bank of Panama.)

Okmulgee, Ind. Ter., April 15, 1906.

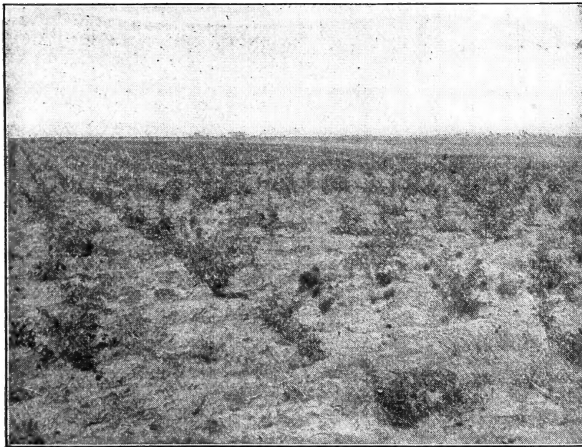
Muskogee Nursery Co.,
Muskogee, Ind. Ter.,

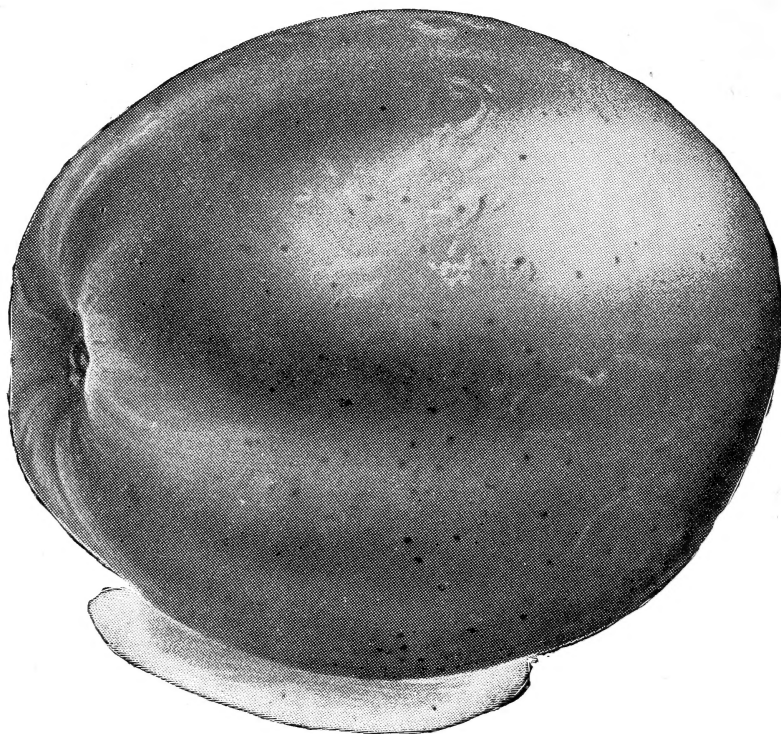
Gentlemen: Trees came today by express. You will find that you have one family here who will not hesitate to sound your praises on every occasion.

The pecan trees are certainly beauties and if they will live I would ont take \$25.00 each for them. You may send me 8 more maple 1 1-2 inch in diameter.

Very truly,

F. F. LAMB, (Editor).





FRUIT DEPARTMENT.

The first fruit of importance is the apple. Its period of ripening, unlike that of other fruits, extends nearly through the year. There is no farm crop which, on the average, will produce one-fourth as much income per acre as will a good apple orchard.

Apples are the standard fruit of every farm.

10 PER CENT DISCOUNT FOR CASH.

	each.	per ten.	per 100.	per 1,000.
4 to 5 ft	12c	\$1.00	\$ 8.00	\$ 60.00
4 to 6 ft	15c	1.30	12.00	80.00
5 to 7 ft	18c	1.50	14.00	100.00

Summer Varieties.

- Benonia.
- Early Harvest.
- Red June.
- Red Astrachan.
- Yellow Transparent.

Fall Varieties.

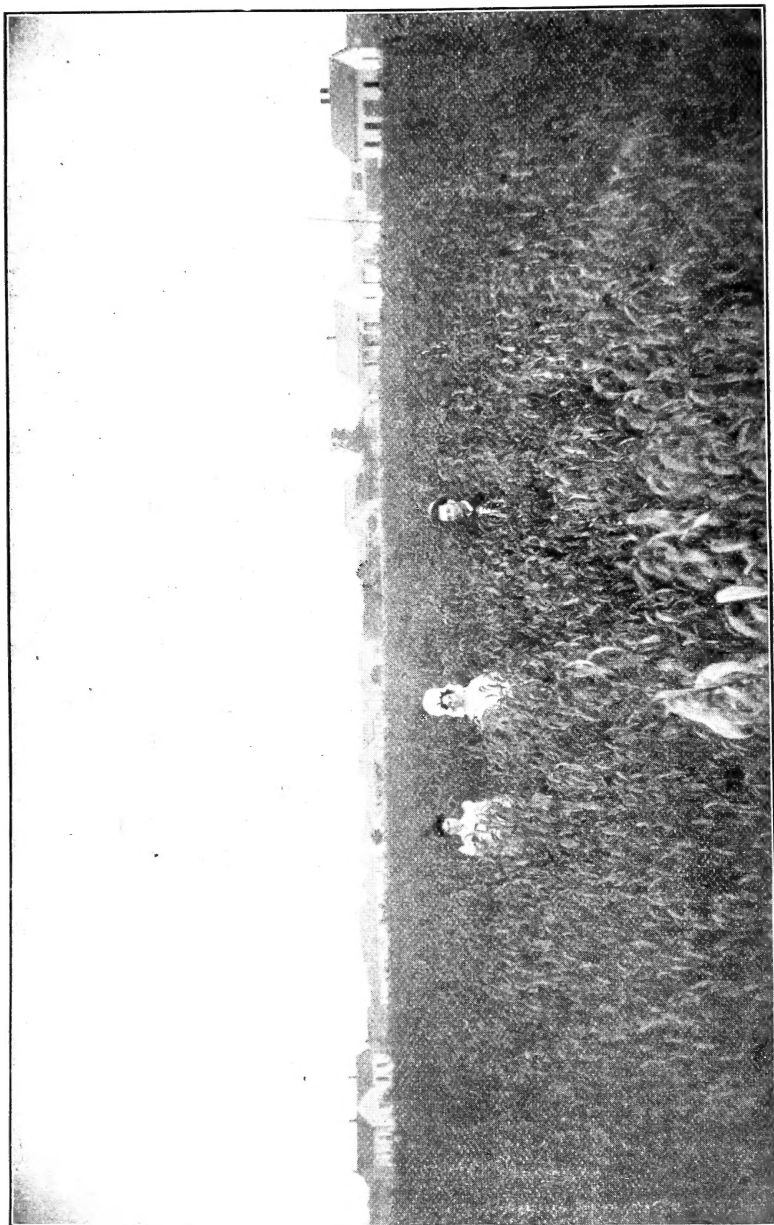
- Fall Pippin.
- Maiden Blush.
- Twenty Ounce.
- Wealthy.

Winter Varieties.

- Arkansas Black.
- Arkansas Beauty.
- Ben Davis.
- Delaware Red Winter.

DUCHESS.

- Grimes Golden.
- Gano.
- Jonathan.
- Mammoth B. Twig.
- Miss. Pippin.
- Wine Sap.
- Wolf River.



**A BLOCK OF ONE-YEAR-OLD BUDDED PEACHES THAT YET HAS
TWO MONTHS TO GROW.**

We are raising better trees than are usually sold, getting up more root, and burning more of the culls.

Last year we burned 50,000 apple and 65,000 peach trees. It is expensive, but the best is what we want for you and have no heeled over stock or culls.

MUSKOGEE NURSERY CO., MUSKOGEE, I. T.

PEACHES.

This is the home of the peach, here they grow to perfection.

The Elberta is raised more extensively than any other.

The ease with which peach trees may be cultivated, their comparatively free from disease, the SHORT PERIOD before they become PRODUCTIVE, with the immense demand for the fruit and the facility with which it may be marketed, makes peach growing extremely profitable.

To secure healthy, vigorous and fruitful trees, the ground must be kept clean and mellow. Here is a good place for wood ashes.

It should be remembered that peaches are all borne on new wood and this makes it necessary to prune the trees early to remove dead branches, and to let in light and air, and to keep the trees in good shape to produce fruit.

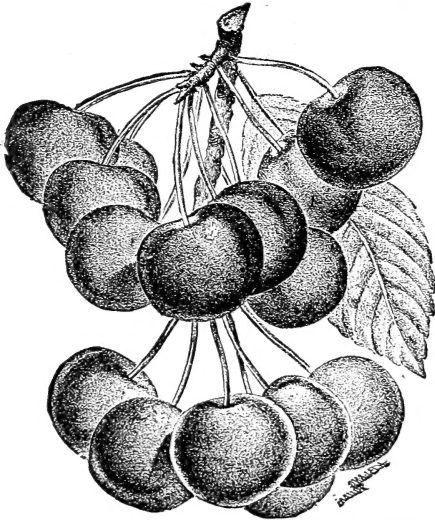
PRICE SAME AS APPLE, NO DISCOUNT.

We have the following well known budded varieties.

Early.	Late.
Admiral Dewey.	Belle of Georgia.
Alexander.	ELBERTA.
Arkansas Traveler.	Family Favorite.
Crawford.	Hily.
Carmon.	Heaths Cling.
Victor.	Indian Cling.
Mamie Ross.	Stump the World.
Sneed.	

CHAB APPLE AND APRICOTS.

4 to 5 ft., well branched.....	each. 20c	per 10. \$1.80
5 to 6 ft., well branched.....	each. 22c	per 10. 2.00



VARIETIES.

Crab Apples.

- Hyslop.
- Transcendent.
- Whitney.
- Red Siberian.

Apricots.

- Russian.
- American.
- English Morello.

CHERRIES.

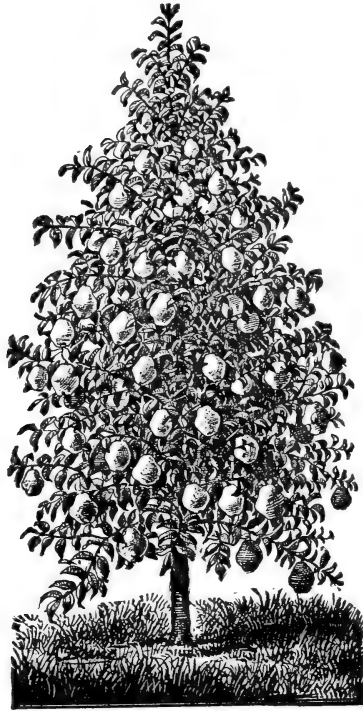
10 Per Cent Discount for Cash.

These must be planted on well drained soil. We have only the best sorts, the kind that bear annually and are of the finest quality. The cherry is a beautiful as well as useful tree and every yard should have a few. A cherry orchard will be very profitable.

	each.	Per 10.	Per 100.
3 to 4 ft., 2 yr.	36c	\$3.40	\$32.00
4 to 5 ft., 2 yr.	40c	3.80	35.00
4½ to 6 ft., 3 yr.	45c	4.00	38.00

VARIETIES.

- Early Richmond.
- Dye House.
- LARGE MONTMOREN Schmidt's Bigarrear.
- Napoleon Bigarrear.



STANDARD PEARS.

This country is the home of the Pear.

No fruit does any better and the market is never over supplied. The melting, juicy texture, the refined flavor and the delicate aroma of the pear, give it rank above all other fruits except the grape. These cost a little more to get started than apple but a ten acre orchard of Pear will bring \$2,000 to \$4,000 a year when in bearing. We have started a pear orchard of our own, so believe what we say. 10 per cent off for cash.

	each.	Per 10.	Per 100
4 to 5 ft., stocky.....	30c	\$2.70	\$25.00
5 to 7 ft.,	35c	3.00	27.00

Write for special price by the 1,000

VARIETIES.

- | | |
|-----------|----------------------|
| Bartlett. | Clapps Favorite. |
| Garber. | Duchess D'Angoulene. |
| Kieffer. | |

DWARF PEARS, 2c a tree less.

BUDEDDED PLUMS.

The plum, like the pear and other fine fruits, attains its greatest perfection on heavy soil. This favorite fruit can be grown in most parts of the United States successfully. They are splendid to grow in a poultry yard and the best always demand a good price.

10 Per Cent Off for Cash.

	Each.	Per 10.	Per 100.
4 to 5 ft., well branched.....	30c	\$2.70	\$25.00
5 to 6 ft., well branched.....	32c	3.00	28.00

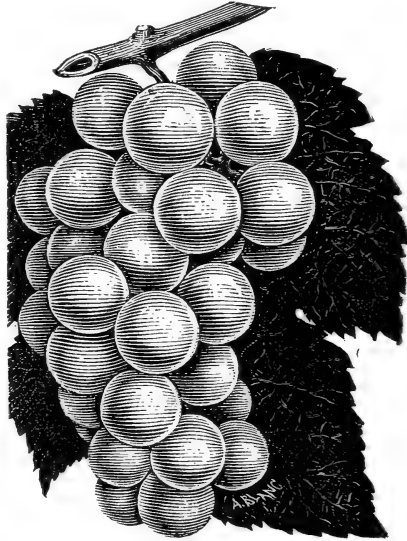
MUSKOGEE NURSERY CO., MUSKOGEE, I. T.

Native.
 Golden Beauty.
 Wild Goose.
 Pottawattomie.

Foreign.
 Damson.
 German Prune.
 Lombard.
SHIPPERS' PRIDE.
 Apricot Plum.

Japan.
ABUNDANCE.
 Burbank.
 Satsuma.
 Wickson.

Raising fruit appeals to the home loving people.



GRAPES.

The grape is the most healthful of all fruits, and the most highly esteemed for its many uses.

No other fruit can take its place. Everyone likes grape pies, grape jelly, grape jam, grape butter and grape juice. The vines grow too fast and must be pruned every year to get the large, graceful, luscious bunches.

SOIL must be well drained and a free exposure to the sun and air.

Like all other products our grapes are of the best quality, all vines are heavily rooted, thrifty and selected with care.

VARIETIES.

Black.
 Concord.
 Champion.
 Ives Seedling.
 Worden.
 Moor's Early.

Red.
 Agawan.
 Brighton.
 Brilliant.
 Delaware.

White.
 Diamond.
 Niagara.
 Pocklington.

	Price, each.	Per 10.	Per 100.
Black grapes	10c	\$0.80	\$ 7.00
Others	15c	1.20	10.00

CURRENTS.

Are among the best of berries. Nothing is so good for jelly. Our plants are large and well rooted.

VARIETIES.

North Star. Victoria. White Grape. Price, 20c each; \$1.50 for 10.

Asparagus is the earliest and finest of spring vegetables, is among the easiest to cultivated and most profitable. A bed once planted suffers no deterioration for years if it is properly attended to and well manured. 25 for 50c; or \$1.00 for 100.

MUSKOGEE NURSERY CO., MUSKOGEE, I. T.

DEWBERRIES.

Austin Improved, Lucretia, Mammoth; price, 10 for 80c; 100 for \$6.00.

HORSE RADISH.

Half a dozen plants should be in your garden. It does not taste like the bottled turnip when you get it fresh and grate it and cry over it.

5c each or 50c a dozen, very large roots.

"Careful labeling and count, secure packing and liberal grading is the watchword."

SMALL FRUITS.

RASPBERRIES.

Will flourish on any soil that will produce good corn and blackberries. Land should be rich, well cultivated and the old canes should be cut out and then they will bear EVERY YEAR. We have.

Cuthbert or Red Raspberry. Cumberland and Gregg or Black Raspberry.

10 for 80c, or \$6.00 a 100, and special low price by 1,000.

GOOSEBERRIES.

This berry is growing more popular every year. It comes at a time when the women are wanting something for pies, and at a time when the rest of the family are wanting pies. Every farm should have a dozen or more plants.

VARIETIES.

	Each.	Per 10.
Downing (yellow)	15c	\$1.00
Houghton (red)	15c	1.00



RHUBARB.

There is nothing better for early pies and fresh table sauce, continues long in use and is valuable for canning. Make the ground rich and deep and thus secure a more tender growth.

Fine large undivided roots.....12c each; \$1.00 for 10

Large divided roots 6c each; .50 for 10

Write for prices by the 100 and 1,000.

MULBERRIES.

These trees are necessary to every good orchard, the fruit comes early and ripens for two months. Birds will not bother other fruit if you have mulberries for them. The fruit is fine for pies and sauce. The foliage of the Russian is very heavy and is very desirable in the culture of silk worms.

3—MUSKOGEE NURSERY CO—9-28—TOOMER

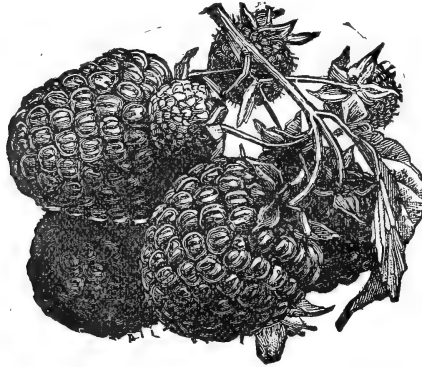
VARIETIES.

Downings everbearing, and Russian.....Price, 20c; \$1.80 for 10

We devote personal attention to every branch of our business. We aim to include in our assortment the best varieties in each class, for mar-

MUSKOGEE NURSERY CO., MUSKOGEE, I. T.

ket and family use, and persons ordering from us may rely upon our giving careful attention to their interests.



STRAWBERRIES.

Strawberries will succeed in any soil that is adapted to ordinary garden crops. Soil should be thoroughly prepared at a good depth. In winter a covering of leaves, straw or other litter will protect the plants. Remove the covering in the spring or settle it around the plants and it will keep the berries clean through the fruiting season.

The growing of strawberries is a real pleasure and for the amount of ground used one of the most profitable plants that can be planted. All weeds **MUST** be kept out of the berry patch. Do it right or don't do it at all.

Note: Those that are marked "imp." have imperfect flowers and must have a row of some perfect variety planted with them. "per."

We have taken great pains this year with our strawberry bed. All planted **NEW** and some growing crop such as horseradish or rhubarb growing between each variety. We have selected the varieties that are best for you in this climate.

A well kept acre of strawberries will bring you \$150 if you are near a market.

Our prices range from \$3.50 a 1,000 up, although we have some we could sell at \$2.50 a 1,000.

Per 100	\$1.00
Per 500	3.00
Per 1,000	5.50

VARIETIES.

Alamo.	Clyde.	Lady Thompson.	Tennessee Pro-
Arkansas Black.	Gandy "per"	Michels Early.	lific.
Buback No. 5.		Mrs. Mark Han-	Texas.
Brandywine.	Johnson.	na.	Warfield. "imp."
Crescent Imp'd.	Klondike.	Senator Dunlap.	

BLACKBERRIES.

We are in the home of the blackberry, where they grow wild, hence they grow to perfection through cultivation and it will be a profitable plant for your own use even if you do not raise them to sell. The following varieties have been selected by us after having grown them for the market for the last three years and our blackberries have netted us from \$100.00 to \$150.00 per acre.

VARIETIES.

Dallas, Kittatinnie, Missouri Mammoth, Snyder, Earl, Harvest.
 \$1 a dozen and \$8 a 100, except Earl Harvest, half price, \$4 a 100
 Write for special low price by the 1,000.

MUSKOGEE NURSERY CO., MUSKOGEE, I. T.

BULBS.

Get started right, buy bulbs for flowers.

All bulbs increase each year and if you take care of them will have several times as many next year without additional expense. This is



next to perpetual motion and will be a source of income instead of outlay for flowers each year. We have a complete line, among them 5,000 tube roses, including the famous Mexican flower, pure white, delightfully fragrant, never blights and each bulb grows several stalks.

2,000 GLADIOLUS.

Growth. Our varieties of Gladiolus are very strong, vigorous growers, being exceedingly rank with a dark healthy green foliage. They are tall, erect, often 3 to 4 feet tall with spikes of bloom often 2 feet in length. They branch freely, in most cases each stem producing two or three spikes, and flowers often 5 to 7 inches across. We have many colors, such as blues, crimson, pink, yellow, white, spotted and many different shades. This is one of the best for cut flowers, as they keep in full, bright bloom for a week to two weeks after cut and put in water.

A BED OF OUR GRAND MIXED GLADIOLI WILL PLEASE YOU.

Largest size, 75c a dozen; second size, 60c a dozen.

2,000 CANNAS.

Assorted colors and varieties. Grow four to six feet, and bloom ALL SUMMER. Each bulb produces a cluster of a dozen stocks.

You get more bloom for your money in these flowers than any other bulb or plant. Every yard should have a dozen or more bulbs planted in the early spring.

OUR FAITH IN THIS IS STRONG. We will refund the money to any who buy canna bulbs of us and are not well pleased after taking care of them by the middle of the summer. We know that they will more than please you.

DAHLIAS.

This is the first time these kind have been brought to the Territory in large numbers. They should be in every flower garden. \$1.00 will get you a beautiful bed of one dozen selected varieties; common 50c a dozen.

DOUBLE HERBACEOUS PEONIES.

Double red, 35c; Double pink, 40c; Double white, 50c; all three for \$1.00

Ten dollars invested in bulbs and roses will make your yard beautiful all summer.

CALADIUMS, OR ELEPHANT EARS.

Largest size bulbs 25c, 6 for \$1.00

MUSKOGEE NURSERY CO., MUSKOGEE, I. T.

Large bulbs20c, 6 for .90
 Average bulb15c, 6 for .60
 Fancy Caladiums, small leaf but variegated in many colors, same price.

ROSES.

Where the Sun Shines Brightest.

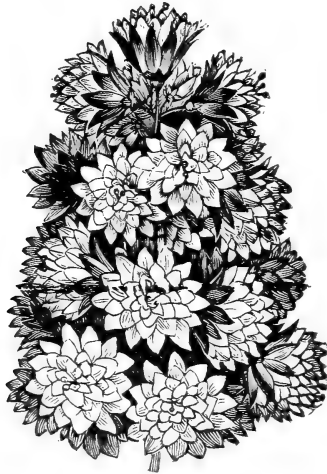
Roses grow best in good soil and warm sunshine.

The ground should be spaded to a depth of 18 inches and mixed with well rotted manure. Keep the soil loose to a depth of an inch or so every week by hoeing. Prune the top, cutting back the branches at least one-half and thinning out those that are too thick. The roots should also be trimmed before planting.

We have taken great pains to select our roses, not so much according to the name as the flower, and we can recommend the following varieties as such as will please you.

There is a big difference between green house and field grown roses. Field grown roses, strong plants.....35c each; \$3.00 a dozen
 Green house roses, from 2-inch pots.....15c each; \$1.25 a dozen

We have a few fine budded tree roses, 4 to 5 feet high, \$1.00 each.



VARIETIES OF ROSES.

- Champion of the World (pink).
- Clothilde Soupert (white).
- Gen. Robert E. Lee (yellow).
- Gen. Jacqueminot (red).
- Golden Gate (yellow).
- Helen Gould.
- La France (peach blossom).
- Paul Neyron (pink).
- Coquette Des Alps (white).
- Meteor (red).
- Maman Cochet (pink).
- Papa Gontier (red).
- Baltimore Belle.
- Crimson Rambler.
- Mary Washington.

American Beauty roses the finest and largest in the land, 50c each.

BABY RAMBLER ROSE.

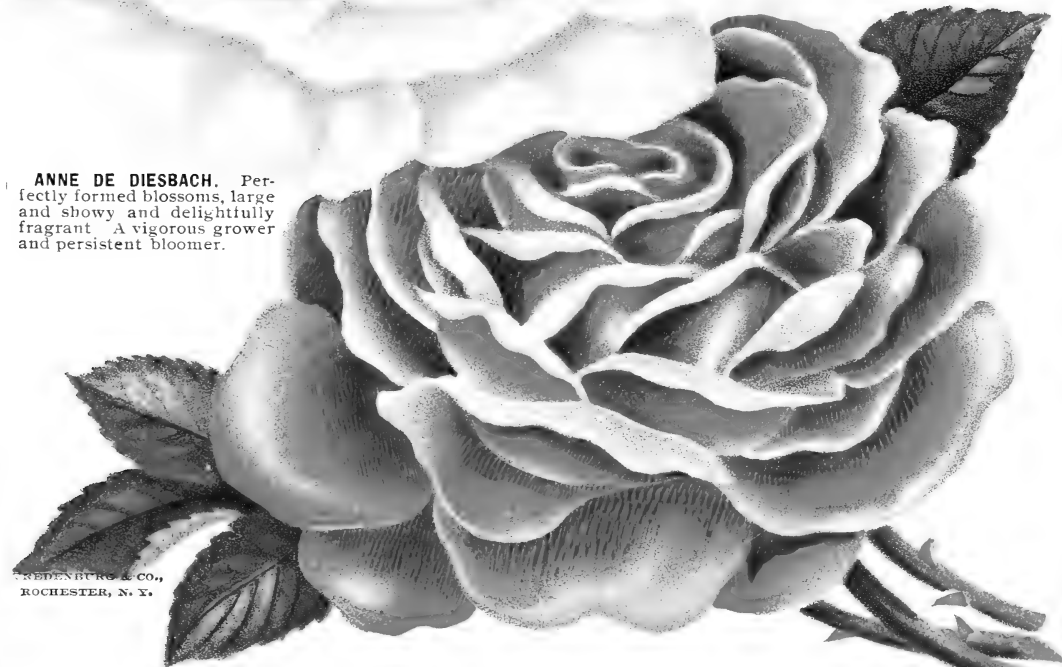
This is a novelty that is sure to please as it is always in bloom. Should plant four to six together so as to have a solid bed of blooming roses. This is the talk of America and Europe. 60c each and \$3.00 for 6.



LOUIS VAN HOUTTE. A finely formed and beautiful rose that has always retained its hold on popular favor. Exquisite.



ANNE DE DIESBACH. Perfectly formed blossoms, large and showy and delightfully fragrant. A vigorous grower and persistent bloomer.



FRANCOIS LEVET. Flower large and of fine form, on straight stiff stems. A splendid variety.

WEDENBURG & CO.,
ROCHESTER, N. Y.

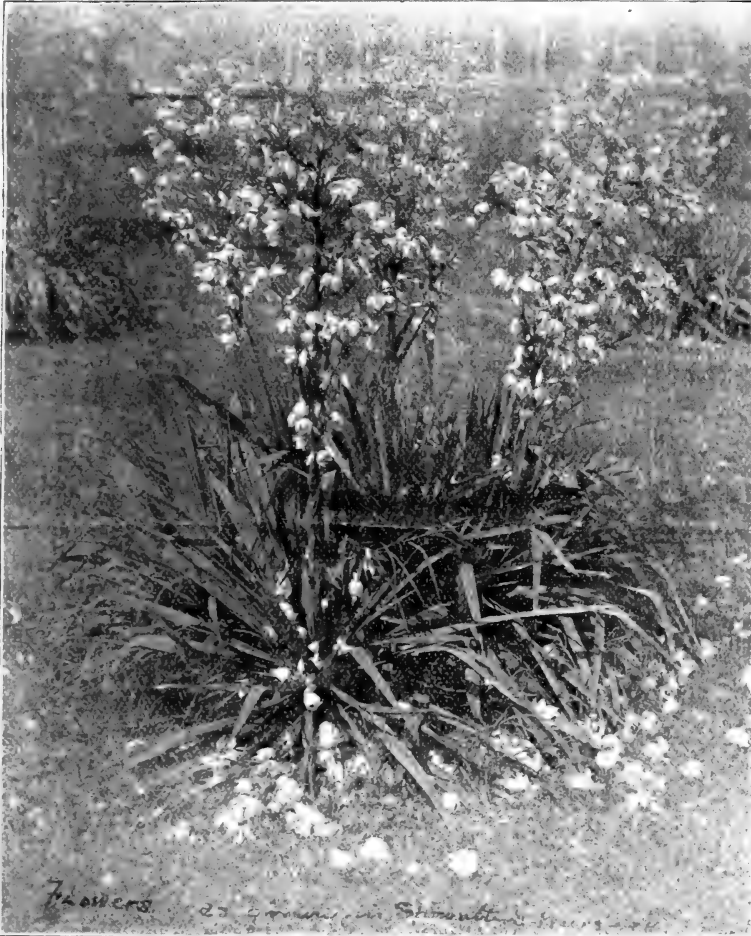


MUSKOGEE NURSERY CO., MUSKOGEE, I. T.

ORNAMENTAL SHRUBS.

We have the largest and finest line of shrubs and flowering plants grown by any nursery in the Territory.

HYDRANGEAS, a beautiful and healthy shrub with the largest flower of any tree that grows....50c each, 3 for \$1.00
 ALTHEA, double, red or white and mixed.....30c each, 4 for 1.00
 Lilac, white and purple (budded).....30c each, 4 for 1.00
 Purple Fringe50c each, 3 for 1.25



Honeysuckles10c each, 3 for .25
 Ampelosis40c each, 3 for 1.00
 Wegalia30c each, 3 for .75
 Snow Balls25c each, 4 for .75

Yucca, an interesting and tropical appearing plant, which will endure all kinds of climate, dry weather and rough treatment. It is an evergreen perennial, throwing up in the middle of the summer flower

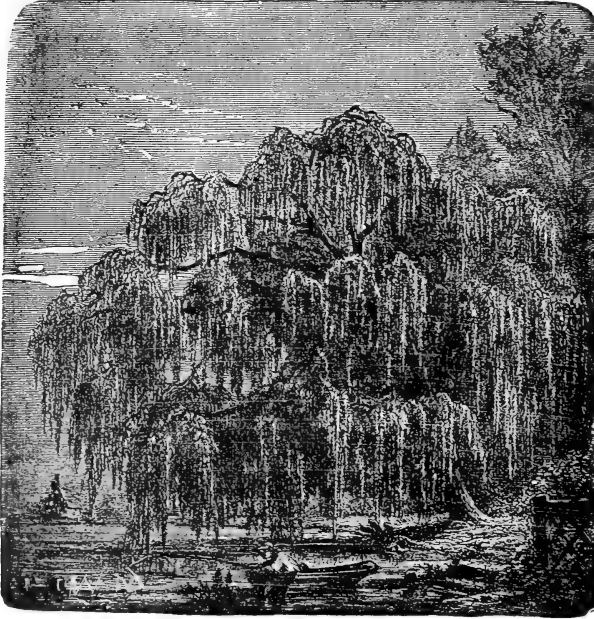
MUSKOGEE NURSERY CO., MUSKOGEE, I. T.

stalks three feet in height, bearing a profusion of creamy white, bell shaped blossoms. One of the most beautiful plants of the lawn.

Two year plants 40c each, 3 for \$1.00

Yucca Filamentosa.

This was taken from Showalter's Nursery, which is now consolidated with the Muskogee Nursery Co.



MAGNOLIAS.

This is the finest flowering tree in existence. We have the same as is on the south side of the Capitol building at Washington.

3 to 4 ft. \$1.50 each
 2 to 3 ft.75 each
 1 to 2 ft.50 each

CHINESE UMBRELLA.

These are an ornament to any fine yard.

Extra large trees \$1.00 each
 4 to 5 ft.75 each
 3 to 4 ft.25 each

BUNGI CATALPA.

Fine ones, 4 to 5 ft. \$0.75 each
 Weeping trees, large, 4 to 5 ft.75 each

EVERGREENS.

Red Cedar, 2 to 3 ft.	each.	For 10.
Scotch Pine60c	\$5.00
Irish Juniper50c	4.00
Arbor Vitae75c	6.00
White Pine50c	4.00
White Pine50c	4.00

SHADE TREES.

We have 50,000 straight, well branched shade trees from 8 to 15 feet in height. Some are an inch and one-half to two inches in diameter.

MUSKOGEE NURSERY CO., MUSKOGEE, I. T.

There is nothing that makes a place more homelike than plenty of shade.

We have Soft Maple, 10 to 14 ft., 1½ to 2 in. in diameter, at \$1.00.

	Each.	Per 10.	Per 100
Soft Maple, 10 to 14 ft., extra fine.....	75c	\$6.00	\$40.00
Soft Maple, 10 to 12 ft.....	40c	3.00	25.00

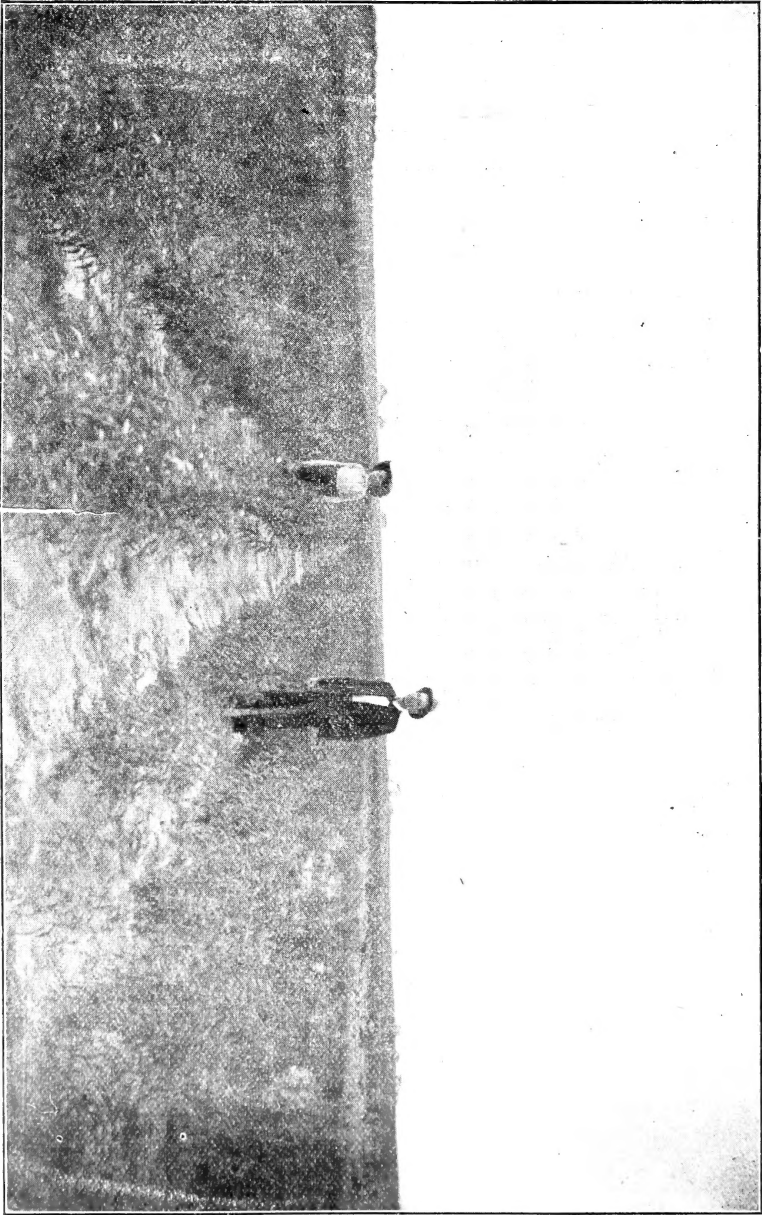


Catalpa Speciosa, 10 to 12 2ft.....	40c	3.00	25.00
Sycamore	40c	3.00	25.00
Black Locust	40c	3.00	25.00
American White Ash	40c	3.00	25.00
Box Elder	40c	3.00	25.00
Large Willow, 14 ft.....	75c	6.00	

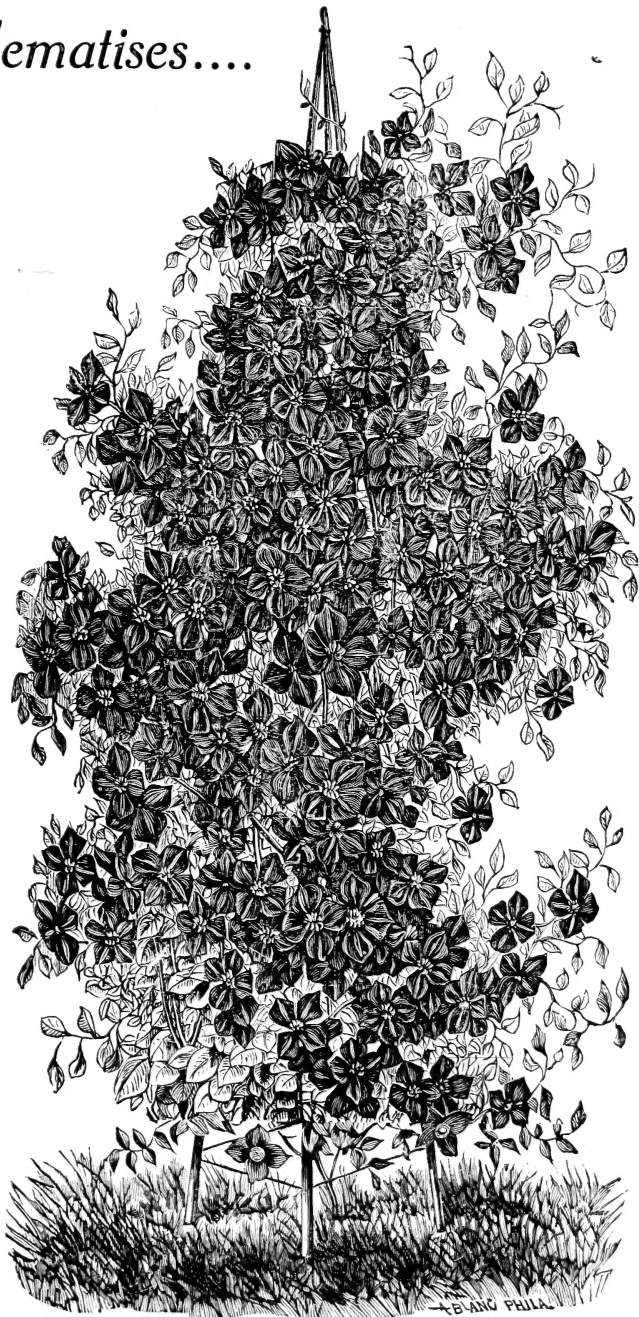
We will make special prices on two year old Catalpa, Ash, Maple, Box Elder, Chinese Umbrella as we have 100,000 and will give wholesale prices on them. ALSO SPECIAL PRICES on shade and fruit trees by the car.

Write us and you will be treated just as well as if in our nursery selecting the goods.

Our stock is fine and healthy. It is on the car line and easy of access adjoining the city on the northeast. Reference, First National Bank.



Clematises....



We have **1000 Imported Clematises**, the finest flowering vine that money can buy. They take the first place among vines.

Paniculata Clematis...Flowers are pure white and borne in large clusters, covering the entire plant with a perfect mass of white. It is delightfully fragrant, has very bright foliage and is very hardy.

CLEMATISES



CLEMATIS PANICULATA, one year after it was bought
from Muskogee Nursery Company of Muskogee, Ind. Ter.

35c Each \$3.50 per Dozen