

Historic, Archive Document

Do not assume content reflects
scientific knowledge, policies

62.11

1907(?)

Department of Agriculture
Washington, D.C.

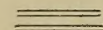
Colorado Wild Flower

SEED CATALOGUE



MRS. S. B. WALKER

Collector of Native Plants and Seeds from the Plains and
Mountains of Colorado.



ADDRESS

MRS. S. B. WALKER,
Sedalia, Colorado, U. S. A.
P. O. Box 11

Colorado Wild Flowers

SIGNALS

Along the Line of

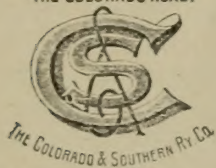


Manitou and Pike's Peak Route,
Cog Wheel Route.



Colorado Springs & Cripple
Creek District
The Short Line.

"THE COLORADO ROAD"



and
The Colorado & Southern

Also - seeds of of - and
Plants of 100 and 100

THE SEED.

The seed from the flowers named in these lists as well as later gatherings are collected from the best and finest specimens with the utmost care.

They are put up in packages carefully labeled, giving range of altitude, character of soil, color of blossoms, etc.

Ornamental shrubs, suited to cultivation, a specialty.

Plants, as well as seeds, are collected from the plains of Colorado at four thousand feet altitude to the peaks of the mountains at fourteen thousand feet. Flowers, ferns and grasses—choice and rare specimens for ornamental and scientific purposes—in stock; also New Mexico and Texas varieties collected on order.

As this list is intended for the use of Botanical Gardens, Landscape Gardeners, those Florists who make the introduction of novelties a specialty, and for large private grounds where seeds and plants receive careful and well-directed attention, more than for the ordinary retail trade, and as some varieties on list are subject to change, no prices will be quoted, but price per oz. or collection of packets will be furnished upon application or attached to this list. • While for amateurs and flower lovers who wish to acquaint themselves with the Colorado Flora, a uniform price of **Ten Cents Per Packet** will be made for those below timber-line, the quantity of seeds to be determined by the range of altitude and value of seeds.

Bulbs of *Calochortus* or Mariposa lily and the Tiger lily are furnished in place of seed, a limited supply of them being kept. Prices furnished on application.

It is with the hope that the beautiful varieties of flowers of which Colorado is so justly proud may find a place in the gardens, both foreign and American, that this catalogue is issued.

On account of space, only a few descriptions will be given.

Rubus deliciosus (shrub)—A magnificent shrub growing under cultivation six feet in height and three to five feet across. Large, snowy white flowers with golden center form profusely along its branches, making elegant sprays of bloom; delicately fragrant.

Ceanothus Ovatus (shrub)—Two or more feet high, bearing leaves of shining green and dense clusters of white blossoms; a very delicate shrub.

Philadelphus microphyllus (shrub)—Dwarf habit, slender, erect growth, fragrant white flowers.

Lepachys columnaris* and *pulcherrima—(Fairy Torch)—A beautiful flower, rays yellow with dashes of reddish brown with its column-like center bearing fragrant disk flowers.

Aconitum Columbianum—Stout, herbaceous, hardy, fine for fall blooming, dark purple, and white blossoms—plants three to six feet in height.

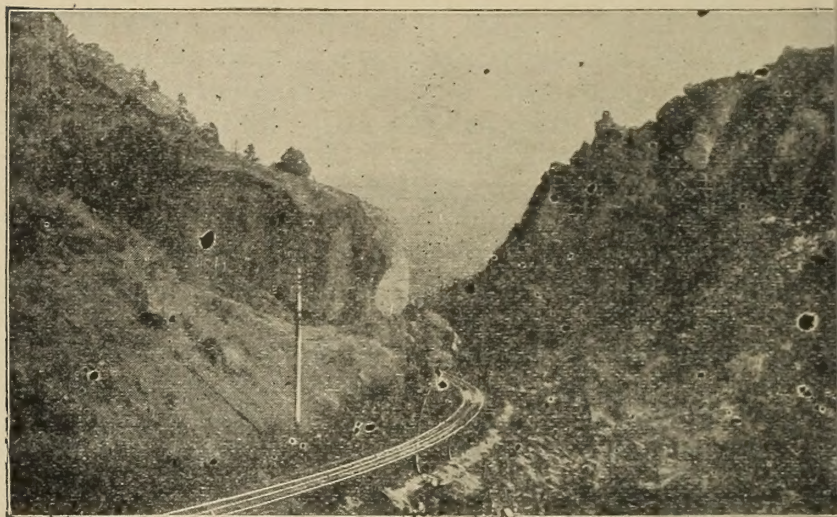
Sedum Stenopetalum—Low growing, fine for rock work, bearing trusses of brilliant yellow flowers, remaining in bloom a long time, standing drouth well.

Pentstemon—In sky blue, purple, rose and scarlet varieties.

Gaura coccinea (wild mignonette)—Very fragrant, branching, leafy, six to twelve inches high, bearing racemes of white and rose colored flowers turning to a deep scarlet; a beautiful and dainty plant.

Oenothera caespitosa—Bearing a large but delicate blossom, measuring four and one-half inches across; white, turning to a rose color—fragrant.

Aquilegia chrysantha—Two and a half feet high, making a bushy plant more than two feet across; blooming season lasting two months; golden yellow blossoms.



Anemone patens—A beautiful anemone for winter blooming; large blue and purplish blossoms with feathery seed pods succeeding bloom, little less attractive than the flowers.

Argemone platyceras—Large showy white flowers, gold center, four to six inches across, growing very large under cultivation.

Aquilegia coerulea (Rocky Mountain Columbine)—Broad flowers, three and four inches in

diameter, outer sepals and spurs deep blue, petals white, centers gold. A grand variety.

Mentzelia ornata—A grand variety, very large white blossom, opening at twilight, with gold-colored, tassel-like stamens; fragrant in evening.

The Pike's Peak region abounds in wild flora of astonishing variety and rare beauty. The large number of distinct and widely differing flowers found along the line of the Manitou & Pike's Peak Railway is accounted for by the great difference in altitude and atmospheric conditions between the two terminals of the road—a vertical mile and a half. Even on the Summit, the warmth of the glaring sun, obstructed only by a highly rarified atmosphere and reflected from great ledges of rocks, nourishes and matures some of the most delicate and exquisite specimens of the entire floral kingdom.

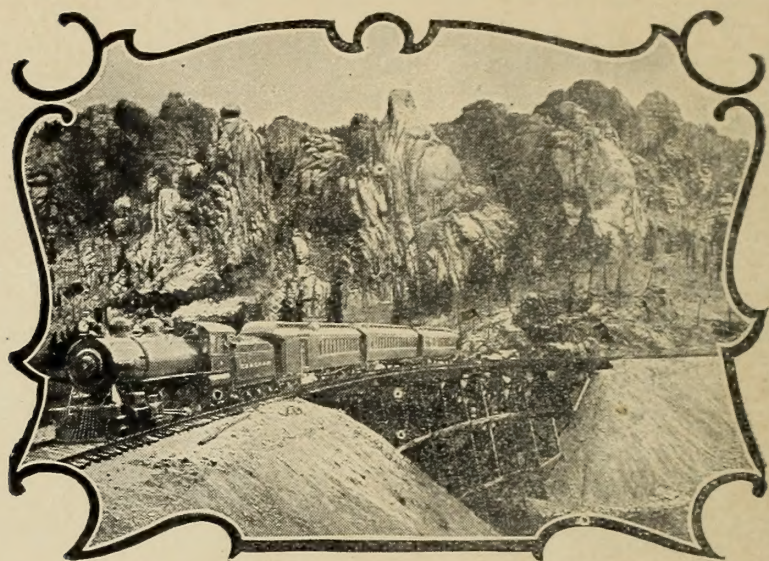
The flowers mentioned in the following list are mainly alpine varieties, but below timber line on Pike's Peak are found anemones, roses, mariposas, red lilies and columbines in abundance.

- | | |
|---------------------------------------|-------------------------------------|
| Anemone narcissiflora. | Dryas octopetala. |
| Ranunculus adoneus. | Geum Rossii. |
| Caltha leptosepala. | Saxifrage aizoides. |
| Trollius albiflous. | Saxifrage chrysantha. |
| Draba alpine. | Saxifrage nivalis. |
| Draba chrysantha. | Cymopterus alpinus. |
| Erysinum pumilum. | Anaphalis margaritacea |
| Viola paulustris (Violet). | (Everlasting). |
| Silene acaulis (Catcherfly). | Senecio aureus. |
| Arenaria biflora (Sandwort). | Primula Parryi. |
| Claytonia megarrhiza (Spring Beauty). | Gentiana frigida. |
| Trifolium Parryi. | Polemonium confertum. |
| Oxytropis multiceps. | Mertinsia alpina. |
| | Myosotis alpestris (Forget-me-not). |
| | Castillia pallida. |

25 CENTS PER PACKAGE.

O'er Canon and Crag to the Land of Gold via the Short Line.

The formal opening of The Colorado Springs & Cripple Creek District Railway, better known as "The Short Line," connecting the tourist center of Colorado Springs with the Cripple Creek District—The World's Greatest Gold Camp—by the shortest feasible route, was celebrated on April 8th, 1902, since which time its fame as a line of unparalleled scenic



CATHEDRAL PARK.

attraction and marvelous engineering achievement has spread to all parts of the country.

The ride of forty-five miles from Colorado Springs to Cripple Creek District is one continuous panorama of Nature's most gorgeous mountain and canon scenery, condensing, as it were, the glories of the world within the compass of a two and a half hours' trip. It starts

where the beauty begins, it chooses the most lovely spots as its pathway and seems to lead us to a very high mountain apart, whence we may behold the glories of the world.

Within the short distance of forty-five miles there is to be found an almost numberless variety of wild flowers. The sparkling stream along the route gives just the necessary moisture so essential to bring ferns to perfection and in consequence the ferns are much more abundant here than in many portions of Colorado. Gay red lilies, fairy mariposas, stately blue columbines, the saucy face of the sunflower and gleaming roses make charming signals along the line.

Flowers Along the Short Line.

- | | |
|-----------------------------------------------------|---------------------------------------------------|
| <i>Clematis ligusticifolia</i>
(Travelers' Joy). | <i>Prunus Virginiana</i> ,
(Choke Cherry). |
| <i>Clematis alpina</i> . | <i>Spiraea</i> var. S. |
| <i>Clematis verticillaris</i> . | <i>Physocarpus</i> var. S. |
| <i>Anemone patens</i> . | <i>Fraxinus nutkanus</i> . |
| <i>Anemone dichotoma</i> . | <i>Rubus deliciosus</i> S. |
| <i>Caltha leucopetalata</i> . | <i>Rubus strigosus</i> (Wild
Red Raspberry). |
| <i>Columbine</i> —Var. | <i>Geum triflorum</i> . |
| <i>Delphinium azureum</i> . | <i>Potentilla</i> var. |
| <i>Delphinium menziesii</i> . | <i>Rosa Sayi</i> . |
| <i>Aconitum columbianum</i>
(Monkshood). | <i>Rosa arkansana</i> . |
| <i>Berberis repens</i> . | <i>Solidago humilis</i> . |
| <i>Corydalis aurea</i> . | <i>Townsendia</i> var. |
| <i>Thaspi alpestre</i> . | <i>Aster</i> var. |
| <i>Violets</i> Var. | <i>Antennaria dioica</i> (Pink
Everlasting). |
| <i>Claytonia caroliniana</i>
(Spring Beauty). | <i>Rudbeckia hirta</i> . |
| <i>Flax lorenne</i> (Flax). | <i>Senecio</i> var. |
| <i>Ceanothus ovatus</i> S. | <i>Campanula uniflora</i> . |
| <i>Ceanothus Fendleri</i> . | <i>Campanula planiflora</i> . |
| <i>Angelopsis quinquefolia</i> . | <i>Arctostaphylos uva-ursi</i>
(Kinnikinnick). |
| <i>Saxifrage bronchialis</i> . | <i>Gentian humilis</i> . |
| <i>Saxifrage Jamesii</i> . | <i>Gentian Parryi</i> . |
| <i>Parnassus</i> var. | |

2.—Shrub.

Jamesia Americana S.
Ribes aurum S.
 (Flowering Currant).
Sedum stenopetalum.
Epilobium Spicatum.
Oenothera pinnatifida.
 (Evening Primrose).
Oenothera coronopifolia.
Oenothera caespitosa.
Gaura coccinea.
Menzelia albicaulis.
 (Evening Star).
Symphoricarpos S.
 (Snowdrop).
Galium triflorum.
Galium boreale.
Chrysopsis villosa.
 (Golden Aster).
Acer glabrum S.
 Lupine var.
Prunus chicasa S.
 (Chicasa Plum).

S.—Shrub.

Gila, pink, white, scar-
 let.
Polemonium var.
Mertensia Sibirica.
Pentstemon—scarlet,
 rose, purple.
Castilleia linariifolia
 (Painted Cup).
Abronia fragrans.
Polygonum.
Humulus Lupulus (Wild
 Hop).
Cypripedium Moccasin-
flower).
Iris Missouriensis.
Sisyrinchium (Blue-
 eyed Grass).
Lilium Philadelphicum
 (Tiger Lily).
Zygadenus elegans.
Adiantum capillus ven-
eris.
Cystopteris fragilis.

While "each thing in its place is best" and nothing can be more pleasing than the sight of the tiny blue alpine forget-me-not overshadowed by a huge granite boulder, and looking up from its grassy bed on Pike's far-famed Peak; still it is also beautiful when grown, as it easily can be, in the conservatory or the cold frame,—its blossoms quite a blue as when in native haunts, while it grows a little taller to make up for the distance it is from sky and wind-swept heights. All varieties of the columbine thrive under careful cultivation. The anemone used for forcing bloom in the winter window garden is very satisfactory and gives an abundance of blossoms. In making preparations for an extensive Wild Flower Garden, thought should always be given to the character of its native soil, which will greatly add to the success of the experiment.

Special orders for trade packets or seed by the ounce will be given careful attention by addressing MRS. S. B. WALKER, Sedalia, Colo.

The Beauty Spots of Colorado are along the Line of the Colorado & Southern.

In fact, we have a monopoly on the scenery and offer the best service between Denver, Colorado Springs and Pueblo. Six swell trains each way daily. No other line "just as good."

T. E. FISHER,
Gen'l Pass. Ag't, Denver, Colo.

The mountains are not the homes of all the beautiful flowers of Colorado. The plains and lesser hills as well have their full share, and where the Colorado & Southern threads its way along the plains and through chaparral valleys near the foothills in Eastern Colorado, New Mexico and Arizona, some of the most brilliant-hued flowers are found.

The magnificent crimson blossoms of the *Opuntia arborescens* or cane cactus, the large white argemone or prickly poppy, the red, white and pink blossoms of the graceful *gilia*, columbines and countless other beautiful flowers are in profusion.

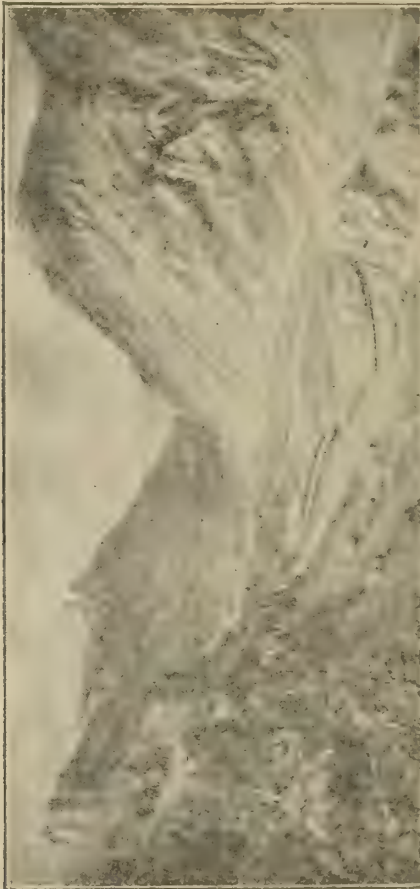
<i>Cleome integrifolia.</i>	<i>Opuntia Missouriensis.</i>
<i>Cleomella augustifolia.</i>	<i>Opuntia Rafinesquii.</i>
<i>Helianthemum cana-</i>	<i>Opuntia arborescens.</i>
<i>dense</i> (var. <i>Walkeræ</i>).	<i>Solidage</i> var. (Golden
<i>Liatris punctata.</i>	Rod).
<i>Mentzelia Ornata.</i>	<i>Eriogonum umbellatum.</i>
<i>Zinnia grandiflora.</i>	<i>Leucocrinum Montanum</i>
<i>Arnica alpina.</i>	(Sand Lily.
<i>Thermopsis rhomifolia.</i>	<i>Gaillardia</i> var.
<i>Thermopsis Montana.</i>	Gramineae, limited
<i>Petalostemon violaceus</i>	quantities.
(Prairie Clover).	<i>Gentiana</i> var.
<i>Petalostemon candidus.</i>	<i>Phlox</i> var.
<i>Geum strictum.</i>	<i>Mertensia lanceolata.</i>
<i>Mamillaria Missouriensis.</i>	<i>Castilleja integra.</i>
<i>Cereus</i> var.	(Painted Cup).
	<i>Scutellaria</i> —3 var.

Mirabilis multiflora
Four O'Clock).
Shepherdia argentea S.
Euphorbia marginata
(Snow on the Moun-
tain).
Yucca baccata.
Yucca Augustifolia.

Calo. hortus.
Verbesina Encloides.
Crotogeus Coccinea.
Mamillaria Vivipara.
Liatris squarrosa.
Mo California's Golden
Poppy and Gypsophila.

10 CENTS PER PACKAGE.

Seeds for sale at The Gallup Floral and
Seed Co., 819 16th St., Denver, Colo.



The Georgetown Loop
Colorado and Southern Railway.

Booke - - Seeds - - Plants

Mrs. Walker's "Colorado
Wild Flower Books" for
sale at Dealers in Colorado
Springs, Denver and Pueblo

25 Cents to \$3.00



"Flowers from Nature's
Garden" and "Colorado
Wild Flower Books" made
to order with appropriate
inscriptions, names, Etc.
upon application to

Mrs. S. B. Walker,
Sedalia Colorado.

Views of Western Scenery

We carry in stock the most complete line in the
United States. Call and see them or send for
catalogue. State agents for Detroit
Photographic Company
A. C. Photos.



Colorado Wild Flower Books
25c to \$10 Each.

The Kendrick
Book and Stationery Co.

The largest Book, Stationery, News and
Art Store in Colorado.

Corner 16 and Stout Sts.

DENVER. COLO.

Western Souvenirs

OF ALL KINDS.

Navajo Indian Blankets

Minerals Cut Stones

19 EAST PIKE'S PEAK AVENUE.

Colorado Springs.

Branch: Free Museum Garden of Gods

Charles H. Wyman.

A Curiosity Store Worth Visiting

Aiken's Museum

Colorado Springs

Game Heads and

Native Fur Rugs

Our Specialty.

Colorado Wild Flower Books.

The Best Taxidermist and Most Expert Furrier
In the west

12 E. Pike's Peak Ave.

Opposite Gazette Office.

PHELPS'

Dining Room and Bakery

Clean, Pure Food is Conducive to Health.

Right Living is the Finest Art.

Health is the Best Wealth.



Phone Main 560.

MISS M. W. BALLEW,

Proprietor.

109 to 111 E. Bijou St.,

Colorado Springs.

Colorado Springs, Colo.

STREET DIRECTORY

NORTHWARD

Pike's Peak Ave.	0
Kiowa St.....	100
Bijou & High St.	200
Platte Ave.....	300
Boulder St.....	400
St. Vrain St.....	500
Willamette Ave...	600
Monument St.....	700
Dale & Maple St.	800
Cache la Poudre..	900
Yampa St.....	1000
San Rafael St....	1100
Uintah St.....	1200
San Miguel St...	1300
Columbia St.....	1400
Buena Ventura...	1500
Caramillo St.....	1600
Del Norte St.....	1700
Espanola St.....	1800
Fontanero St.....	1900
Washington St...	2000
Jefferson St.....	2100
Madison St.....	2200
Monroe St.....	2300
Jackson St.....	2400
Van Buren St....	2500
Harrison St.....	2600

EASTWARD

Cascade Ave.....	0
Tejon St.....	100
Nevada Ave.....	200
Weber St.....	300
Wahsatch Ave...	400
Corona St.....	500
Royer St.....	600
El Paso	700
Prospect St.....	800
Institute St.....	900
Cedar St	1000
Willow St.....	1100
Hancock Ave....	1200

SOUTHWARD

Pike's Peak Ave.	0
Huerfano St. ...	100
Cucharas St.....	200
Vermijo Ave.....	300
Costilla St.....	400
Cimarron St.....	500
Moreno Ave.....	600
Rio Grande St...	700
Las Animas St..	800
Fountain St.....	900
Mill & Ft. Worth.	1000
Las Vegas.....	1100

WESTWARD

Cascade Ave.....	0
Sahwatch St.	100
Sierra Madre	200
Conejos or Pine..	300
Spruce	400
Walnut or Cooper	500
Chestnut	600
Seventh St.....	700
Eighth St.....	800
Ninth St.....	900
Limit St.....	900
Tenth St.....	1000
Eleventh St.....	1100
Twelfth St.....	1200
Thirteenth St....	1300
Fourteenth St....	1400
Fifteenth St.....	1500
Sixteenth St.....	1600
Seventeenth St...	1700
Eighteenth St....	1800
Nineteenth St....	1900
Twentieth St.....	2000
North from Colo. Av.	
Washington Ave.	100
Lincoln Ave.....	200
Park Ave.....	300
Rosita Ave.....	400
Elm St.....	500

**... Miller's ...
Curio Store**

**Everything in Western
SOUVINERS**

**Agate and Goldstone Novelties,
Genuine Mexican Drawn Work.
Burnt Leather and Post Cards.**

**116 E. Huerfano Street,
Colorado Springs.**



AQUILEGIA CÆRULEA--Rocky Mountain Columbine,
Colorado State Flower.