

Historic, Archive Document

Do not assume content reflects current scientific knowledge, policies, or practices.



6372

ANDORRA NURSERIES

Chestnut Hill
Philadelphia, Pa.

Price-List of
Specimen Trees
Shrubs & Roses
and Fruit

FALL : 1908

Canceling All Previous Lists

SPECIAL :

See Notes on pages 20, 64
and back cover

NEW INTRODUCTION
AND DISTRIBUTION.

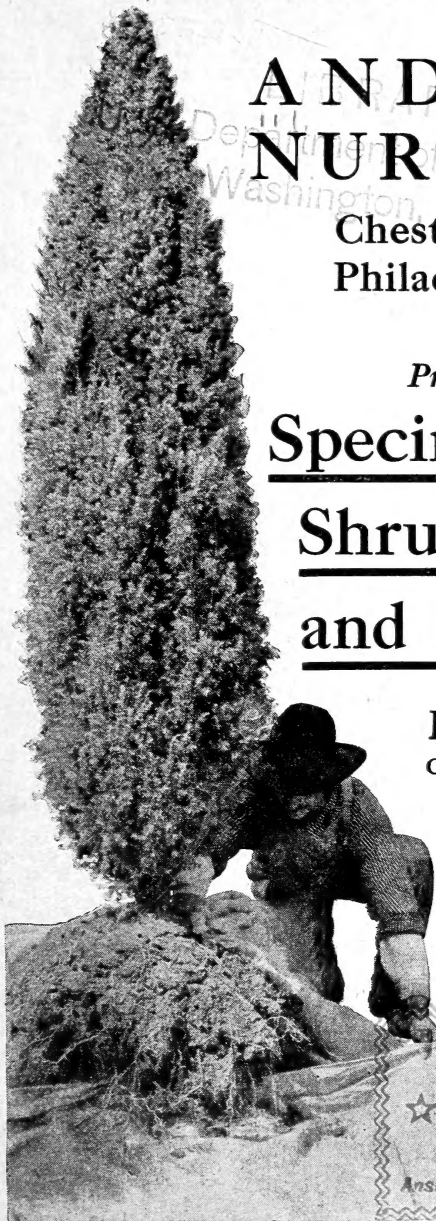


FEB 13 1909



RECEIVED

Answered.....



SUPERIOR FERTILIZERS

For the Lawn, Garden or Farm

(The Name ANDORRA guarantees the quality)

CANADA UNLEACHED HARD-WOOD ASHES (ANDORRA BRAND)

Are a complete fertilizer, replenishing worn-out soils, and, for the lawn or pasture, are economical and valuable. For the lawn, they are easy to handle, produce no offensive odors, are not unsightly, and, quickly leaching into the soil, the chemical properties are at once available for plant food.

Our ashes are selected only from the hard-wood districts of Canada, are carefully screened, and put in convenient packages. Apply at the rate of 1,000 to 1,500 lbs. per acre for top-dressing, or 2,000 to 2,500 lbs. for new lawns.

	50-lb. bag	100-lb. bag	200-lb. bbl.	Ton	Cars, 15 to 20 tons
F. O. B. cars.....	\$0 85	\$1 25	\$2 00	\$18 00	At special
By wagon.....	1 00	1 50	2 50	20 00	prices.

PREPARED LIME

Where soils, from constant applications of manure, are sour and need a fertilizer to sweeten them, lime is a valuable agent. It quickly puts the soil in condition to assimilate plant-food. It frees the potash, phosphoric acid and nitrogen already in the soil, and turns the nitrogen into the rich nitrates valuable for plant use.

Our prepared lime is fresh from the kilns, clean, well burnt, thoroughly decarbonized and especially prepared, so that it will go three times as far as the lump lime generally used, and is fine enough to run through a drill. Use 500 lbs. per acre.

	100-lb. bag	Ton	Cars, 12 to 25 tons
F. O. B. cars.....	\$1 00	\$11 00	\$9 per ton.
By wagon.....	1 25	13 00	

POTASH AND PREPARED LIME

Where potash is needed in addition to lime, this preparation will be found valuable. It contains 4% actual potash, equal to 8% of sulphate of potash, the prepared lime being used as a filler, and makes a valuable top-dresser for lawn, pasture, or grass lands. Apply at the rate of 500 lbs. per acre.

	100-lb. bag	Ton	Cars, 12 to 25 tons
F. O. B. cars.....	\$1 25	\$13 50	\$11 50 per ton.
By wagon.....	1 50	15 50	

PEAT We have on hand a stock of carefully selected peat, suitable for potting or planting Rhododendrons and shrubs that need such soil. Sack of about 100 lbs., \$1. In sacks, \$15 per ton.

SPHAGNUM MOSS

An excellent quality on hand. Large bales, \$2 each.

Andorra Nurseries

CHESTNUT HILL, PHILADELPHIA, PA.

OUR NURSERIES are extensive, covering six hundred acres, of which over three hundred are planted with trees and shrubs. They are easy of access, as Chestnut Hill is the terminus of branches of the Pennsylvania and the Philadelphia & Reading railroads, and the Chestnut Hill (City Line) trolley runs from the stations to within three minutes' walk of the Nurseries.

QUALITY.—The trees and shrubs offered are grown in open, unsheltered ground, in a very exposed situation, which insures their hardness, and on soil admirably adapted for forming **robust** plants having an abundance of roots. Special attention is called to the fact that our stock is grown a good distance apart in the rows, insuring heavier trees and shrubs than are generally offered.

SHIPPING SEASON opens about March 1 in the spring and August 15 in the fall.

INSPECTION AND FUMIGATION.—Our stock is regularly inspected and certificate will be sent with each shipment. Stock will be fumigated when requested or when the State laws require it.

TERMS AND CONDITIONS

ORDERS.—All orders are accepted subject to the following terms and conditions. Write plainly and give explicit directions as to address and mode of shipment.

STOCK SELECTED by customers at the Nurseries will be charged according to the value of the trees chosen.

QUANTITY.—Lots of 5 and 50 will be furnished at the 10 and 100 rates respectively.

PACKING.—All goods are thoroughly packed, thus avoiding risk, if delayed in transit. **Packing charges are made at actual cost.**

FORWARDING.—Shipments will be forwarded exactly as directed; but when without instructions, we will use our best judgment and forward by shortest and safest route. We recommend all herbaceous plants be shipped by express.

RISK.—All goods are at purchaser's risk after they are delivered to the forwarding companies and we receive their receipt for the shipment in good condition.

CLAIMS for damage while in transit must be made to the delivering company. Have delivering agent note the damaged condition on the freight bill and present your claim through him promptly.

GUARANTEE AND CLAIMS.—All goods are guaranteed true to name, full count, up to grade, and in good condition when shipped. Any plant proving untrue to name will be replaced. Claims to receive consideration must be made within **five days** after receipt of goods. **We give no guarantee of the life of stock.**

TERMS, CASH WITH ORDER, except to persons who satisfy us as to their responsibility.

Address all orders to

ANDORRA NURSERIES

WM. WARNER HARPER, Prop.

Local and Long
Distance Telephone

CHESTNUT HILL, PHILADELPHIA, PA.

Telegraphic Address

Cable Address

CHESTNUT HILL, PHILADELPHIA

"ANDORRA," PHILADELPHIA



Transplanting Norway Spruce

EVERGREEN TREES

	Each	10
ABIES balsamea. Balsam Fir. 2½ to 3 ft.....	\$1 50	\$10 00
3 to 3½ ft.	\$150 per 100..	2 00
4 to 5 ft.	\$200 per 100..	3 00
Canadensis. See <i>Tsuga Canadensis</i> .		
concolor. White Fir. 3 to 3½ ft.	3 50	
3½ to 4 ft.	5 00	40 00
4 to 4½ ft.	6 00	50 00
4½ to 5 ft.	♦ 7 50	
5 to 6 ft.	♦ \$10 to 12 50	
6 to 7 ft.	♦ \$12.50 to 15 00	
nobilis, var. glauca. Noble Silver Fir. 3 to 3½ ft....	3 50	
3½ to 4 ft.	4 50	
4 to 6 ft.	\$5 to 10 00	
Nordmanniana. Nordmann's Fir. 3 ft.	3 50	32 50
3 to 3½ ft.	4 50	42 50
3½ to 4 ft.	6 00	57 50
4 to 4½ ft. Specimens.....	♦ 7 50	70 00
4½ to 5 ft. Specimens.....	♦ 10 00	
5 to 5½ ft. Specimens.....	♦ 15 00	
6 to 12 ft. Fine specimens. Prices on application.		
pectinata. European Silver Fir. 4 to 5 ft.	2 50	20 00
5 to 6 ft.	3 00	27 50
6 to 7 ft.	♦ 4 00	35 00
Veitchii. Veitch's Silver Fir. 5 to 7 ft.	\$7.50 to 10 00	
BIOTA orientalis. Oriental Arborvitæ. 3 to 4 ft.	2 00	15 00
5 to 6 ft.	2 50	20 00
6 to 7 ft.	3 50	30 00
7 to 10 ft.	\$5 to 10 00	
orientalis, var. aurea. 2½ to 3 ft.	♦ 3 50	

PRICE-LIST FOR FALL OF 1908

5

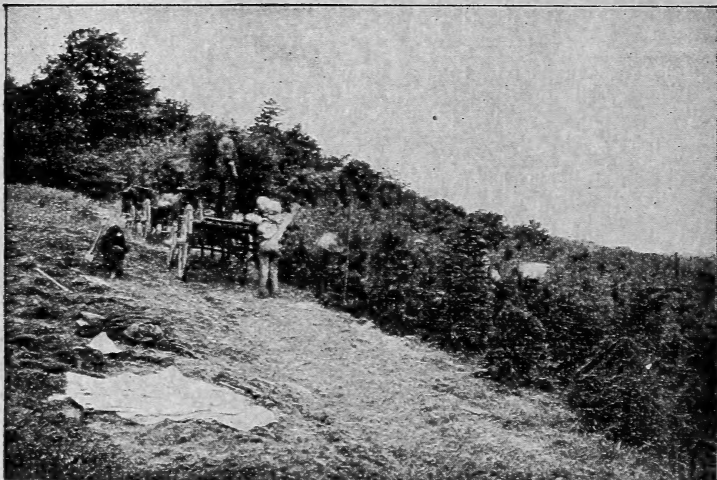
	Each	10
BIOTA orientalis, var. aurea nana. 15 to 18 in.....	\$2 00	
orientalis, var. aurea pyramidalis.		
3 to 4 ft.	3 50	
4 to 5 ft.	5 00	
5 to 7 ft.	\$5 to 7 50	
orientalis, var. compacta. Compact Chinese Arborvitæ.		
3 to 3½ ft.	3 50	\$30 00
3½ to 4 ft.	4 00	35 00
4 to 5 ft.	5 00	45 00
5 to 6 ft.	7 50	70 00
orientalis, var. conspicua. 4 to 5 ft.	5 00	
5 to 6 ft.	7 50	70 00
orientalis, var. elegantissima. Rollinson's Golden Arborvitæ. 3 to 3½ ft.	3 50	
3½ to 4 ft.	4 00	
4 to 6 ft.	\$5 to 7 50	
orientalis, var. filiformis; syn., Japonica. Thread-branched Arborvitæ. 2 to 2½ ft.	2 00	
3 to 3½ ft.	3 50	
4 to 5 ft.	\$6 to 7 50	
orientalis, var. semperaurescens. Ever-golden Arborvitæ. 2 to 2½ ft.	2 50	
2½ to 3 ft.	3 50	
CEDRUS Atlantica, var. glauca. Mt. Atlas Silver Cedar—		
4 to 5 ft.	3 50	32 50
5 to 6 ft.	4 50	42 50
6 to 7 ft.	6 00	55 00
7 to 8 ft.	7 50	70 00
Deodara. Deodar, or Indian Cedar. 3 to 3½ ft.	3 50	
5 to 6 ft.	5 00	
Libani, var. Sargenti pendula. 2½ to 3 ft.	3 00	
CEPHALOTAXUS Fortunei. Fortune's Yew. 2½ to 3 ft.	3 00	
4 to 4½ ft.	4 00	
5 to 6 ft. Very broad and heavy.	7 50	
pedunculata. 5 to 6 ft.	7 50	
CRYPTOMERIA Japonica elegans. 5 to 6 ft.	5 00	
6 to 7 ft.	7 50	
Japonica, var. Lobbi compacta. 3 to 3½ ft.	2 50	23 50
6 to 7 ft.	6 00	55 00
7 to 8 ft.	7 50	72 50
ILEX opaca. American Holly. 1 to 1½ ft.	1 50	13 50
1½ to 2 ft. Very heavy.	2 00	18 50
JUNIPERUS Canadensis. (Spreading) Canadian Juniper—		
12 to 15 in.	1 00	9 00
15 to 18 in.	1 50	12 50
18 to 24 in.	2 00	
Canadensis, var. aurea; syn., Douglasi. Douglas' Golden Juniper. 12 to 15 in.	1 00	8 50
15 to 18 in.	1 50	12 50
18 to 24 in. Heavy.	2 00	17 50
2 ft. Heavy.	2 50	20 00
2 x 2½ ft. Heavy.	3 50	32 50
3 x 3½ ft.	5 00	40 00
Canadensis, var. prostrata. Trailing Canadian Juniper. 12 to 18 in.	1 25	10 00
18 to 24 in.	2 00	17 50

ANDORRA NURSERIES

	Each	10
JUNIPERUS Chinensis. Chinese Juniper. 3 ft.	\$2 00	\$17 50
3½ to 4 ft.	3 50	32 50
4½ to 5 ft.	5 00	45 00
5 to 6 ft.	6 00	55 00
6 to 7 ft.	7 50	70 00
Chinensis, var. argentea marginata. A grand hardy variety. 2½ to 3 ft.	3 00	27 50
3½ to 4 ft.	4 50	42 50
4 to 4½ ft.	5 00	47 50
5 to 6 ft.	6 to 7 50	
6 to 8 ft. Specimens	\$7.50 to 15 00	
Chinensis, var. aurea. Golden Chinese Juniper—		
2½ to 3 ft.	2 50	
3 to 3½ ft.	3 50	
Chinensis, var. femina Reevesii. 3 to 3½ ft.	2 50	
Chinensis, var. Pfitzeriana. 3 ft.	3 00	
communis. Common Upright Juniper—		
2 to 2½ ft.	1 50	13 50
4 to 5 ft.	3 50	
5 to 6 ft.	5 00	
communis, var. Hibernica. Irish Juniper—		
3 to 4 ft.	1 50	
communis, var. oblonga. 4 to 5 ft.	3 50	
communis, var. Suecica. Swedish Juniper—		
2 to 2½ ft.	1 50	
4 to 5 ft.	3 50	
Fortunei. 2 to 2½ ft.	2 00	
3 to 3½ ft.	3 50	
Japonica. 2 to 2½ ft.	2 50	
3 to 3½ ft.	3 50	
Japonica, var. aurea. Golden Japan Juniper—		
1½ to 2 ft.	1 50	13 50
2 to 2½ ft.	2 50	22 50
2½ to 3 ft.	3 50	32 50
3 to 3½ ft.	4 00	37 50
3½ to 4 ft.	5 00	47 50
4 to 5 ft.	\$7.50 to 10 00	
5 to 5½ ft.	\$10 to 12 50	
recurva. 2 to 2½ ft.	2 50	22 50
recurva, var. squamata. Scaly-leaved—		
1½ to 2 ft.	2 00	18 50
2 to 2½ ft.	2 50	23 50
2½ to 3 ft.	3 50	32 50
rigida. 7 to 8 ft.	7 50	
Sabina. Savin Juniper. 12 to 15 in.	1 00	9 00
18 to 24 in.	2 00	18 50
2 to 2½ ft.	2 50	22 50
Sabina, var. aurea variegata. Savin's Golden Juniper. 1½ to 2 ft.	1 50	12 50
2 to 2½ ft.	3 50	32 50
Sabina, var. tamariscifolia. 15 to 18 in.	1 50	13 50
1½ to 2 ft.	2 00	18 50
2 to 2½ ft.	3 00	27 50
Virginiana. Red, or Virginia Cedar. 3 to 3½ ft.	1 50	13 50
3½ to 4 ft.	2 50	22 50
4½ to 5 ft.	3 50	32 50
5 to 8 ft.	\$4 to 7 50	

PRICE-LIST FOR FALL OF 1908

	Each	10
JUNIPERUS <i>Virginiana</i> , var. <i>glauca</i> . Blue Virginia Cedar—		
3 to 3½ ft. Extra heavy	2 50	
4 to 4½ ft. Extra heavy	3 50	32 50
5 to 6 ft. Extra heavy	6 00	55 00
6 to 8 ft.	\$7.50 to 10 00	
<i>Virginiana</i> , var. <i>Kosteri</i> (spreading)—		
15 to 18 in.	1 50	13 50
18 to 24 in.	2 50	23 50
2 to 2½ ft.	3 00	27 50
<i>Virginiana</i> , var. <i>Leei elegantissima</i> . Golden Vir- ginian Cedar—		
2½ to 3 ft.	2 50	20 00
3 to 3½ ft. Extra heavy	3 50	32 50
4½ to 5 ft. Extra heavy	5 00	
5 to 7 ft. Extra heavy	\$7.50 to 10 00	
<i>Virginiana</i> , var. <i>pendula</i> . 2½ to 3 ft.	2 50	22 50
<i>Virginiana</i> , var. <i>Schotti</i> . 3 to 3½ ft.	2 50	20 00
4 to 5 ft.	3 50	32 50
5 to 6 ft.	5 00	45 00
6 to 7 ft.	\$6 to 7 50	
PICEA <i>alba</i> . White Spruce. 2½ to 3 ft.	1 50	12 50
3 to 3½ ft.	2 50	20 00
3½ to 4 ft.	3 50	30 00
4 to 5 ft.	5 00	45 00
5 to 6 ft. Specimens	7 50	70 00
6 to 9 ft. Very fine specimens	\$7.50 to 15 00	
<i>Alcockiana</i> . Alcock's Spruce. 2½ to 3 ft.	3 50	
3 to 3½ ft.	5 00	
4 to 6 ft.	\$6 to 7 50	
<i>Engelmanni</i> . Engelmann's Spruce—		
4 to 7 ft.	\$5 to 10 00	
<i>excelsa</i> . Norway Spruce. 2½ to 3 ft.	1 00	9 00
3 to 3½ ft.	2 00	18 50
3½ to 4 ft.	2 50	22 50
4 to 4½ ft.	3 00	27 50
4½ to 5 ft.	3 50	32 50
5 to 6 ft. Specimens	5 00	45 00
6 to 7 ft. Specimens	6 00	57 50
7 to 12 ft. Specimens	\$7.50 to 15 00	
<i>excelsa</i> , var. <i>aurea</i> . Golden Norway Spruce. 5 to 5½ ft.	5 00	
<i>excelsa</i> , var. <i>inverta</i> . Weeping Norway Spruce—		
3 ft.	4 00	
4 ft.	\$5 to 6 00	
5 to 7 ft.	\$7.50 to 15 00	
<i>excelsa</i> , var. <i>Remonti</i> . 3 to 3½ ft.	3 50	32 50
<i>orientalis</i> . Eastern Spruce. 3 to 3½ ft.	3 50	32 50
3½ to 4 ft.	5 00	45 00
4½ to 5 ft.	\$7.50 to 10 00	
5 to 8 ft.	\$10 to \$20 00	
<i>pinsapo</i> . Spanish Fir. 2 to 2½ ft.	2 50	22 50
2½ to 3 ft.	3 50	32 50
<i>polita</i> . Tiger's Tail Spruce. 5 to 7 ft.	\$5 to 10 00	



Loading White Pines

	Each	10
PICEA pungens. Colorado Spruce. 2 to 2½ ft.....	♦ \$2 50	\$22 50
2½ to 3 ft.	♦ 3 00	27 50
3 to 3½ ft.	♦ 4 00	37 50
3½ to 4 ft.	♦ 5 00	45 00
4 to 5 ft.	♦ 7 50	
6 to 8 ft.	♦ \$7.50 to 15 00	
pungens, var. glauca. Blue Colorado Spruce—		
2 to 2½ ft.	♦ 3 00	28 00
2½ to 3 ft.	♦ 3 50	32 50
3 to 3½ ft.	♦ \$5 to 7 50	
3½ to 4 ft.	♦ \$7.50 to 10 00	
5 to 10 ft.	♦ \$12.50 to 35 00	
pungens, var. Kosteriana. Koster's Blue Colorado Spruce. 2 to 2½ ft.	♦ 3 50	32 50
2½ to 3 ft.	♦ \$5 to 7 50	
3 to 3½ ft.	♦ \$7.50 to 10 00	
3½ to 4 ft.	♦ \$10 to 12 50	
4 to 5 ft.	♦ \$12.50 to 15 00	
6 to 7 ft. Grand specimens	♦ \$15 to 35 00	
pungens, var. pendula. Weeping Blue Colorado Spruce—		
3½ to 4 ft. Fine specimens	♦ 10 00	
4 to 4½ ft. Fine specimens	♦ 15 00	
PINUS Austriaca. Austrian Pine. 2 to 2½ ft.	1 50	12 50
3½ to 4 ft.	2 50	20 00
4 to 4½ ft.	3 50	32 50
4½ to 5 ft.	5 00	47 50
5 to 8 ft.	\$6 to 12 50	
Cembra. Swiss Stone Pine. 2 to 2½ ft.	2 50	22 50
2½ to 3 ft.	3 50	32 50
3 to 3½ ft.	4 00	37 50
3½ to 4 ft.	5 00	47 50
4 to 4½ ft.	7 50	
5 to 6 ft.	♦ 10 00	

PRICE-LIST FOR FALL OF 1908

	Each	10
PINUS excelsa. Bhotan Pine. 2 to 2½ ft.....	\$1 50	\$13 50
2½ to 3 ft.	2 50	22 50
3 to 3½ ft.	3 50	32 50
4 to 4½ ft.	4 00	37 50
5 to 7 ft.	5 00	47 50
montana. Mountain Pine. 1½ to 2 ft.....	1 50	13 50
2 to 2½ ft.	2 00	17 50
Mughus. Dwarf Mountain Pine. 12 to 15 in.....	1 50	12 50
15 to 18 in.	2 00	17 50
18 in.	2 50	
ponderosa. Bull Pine. 4 to 5 ft.	3 50	32 50
5 to 6 ft.	4 00	37 50
rigida. Pitch Pine. 3 to 4 ft.....	3 50	32 50
4 to 7 ft.	\$4 to 7 50	
Strobus. White Pine. 15 to 18 in..... per 100, \$25..		
1½ to 2 ft.	50	4 00
2 to 2½ ft.	75	6 00
2½ to 3 ft.	1 00	8 50
3 to 3½ ft.	1 50	12 50
3½ to 4 ft.	2 00	17 50
4 to 4½ ft.	2 50	20 00
4½ to 5 ft.	3 50	27 50
5 to 6 ft.	4 00	32 50
6 to 7 ft.	5 00	
7 to 9 ft.	\$7.50 to 15 00	
The finest and best rooted stock in this country.		
sylvestris. Scotch Pine. 2 to 2½ ft.....	1 50	12 00
3 to 3½ ft.	2 50	22 50
4 to 5 ft.	3 50	32 50
5 to 6 ft.	4 00	37 50
6 to 8 ft.	\$5 to 7 50	
Tanyosho (Dwarf Japanese variety)—		
1½ to 2 ft.	3 50	
2 to 2½ ft.	5 00	
PODOCARPUS Japonica. Japanese Yew. 2 to 2½ ft.....	2 50	22 50
2½ to 3 ft.	3 50	32 50
PSEUDOTSUGA Douglasi. Douglas' Spruce. 3 to 4 ft.....	1 75	15 00
4 to 4½ ft.	2 50	22 50
4½ to 6 ft.	\$3.50 to 5 00	
RETINOSPORA ericoides. Heath-like Japan Cypress—		
3 to 3½ ft.	2 50	22 50
3½ to 4 ft.	3 50	32 50
filifera. Thread-branched Japan Cypress—		
2 to 2½ ft.	2 50	22 50
2½ to 3 ft.	3 50	32 50
3 to 3½ ft.	5 00	
3½ to 4 ft. Specimens.....	7 50	
4 to 8 ft. Specimens.....	\$10 to 20 00	
filifera, var. aurea. Golden Thread-branched Japan Cypress. 1 x 1½ ft.....		
2 x 2 ft.	3 50	
2 x 2½ ft.	5 00	
filifera, var. aurea variegata. Golden Variegated Thread-branched Japan Cypress.		
4 ft.	5 00	

	Each	10
RETINOSPORA leptoclada. Thuya-like Japan Cypress—		
2½ to 3 ft.	\$2 50	\$22 50
3 to 3½ ft.	3 00	27 50
3½ to 4 ft.	3 50	32 50
lycopodioides. Club-moss Japan Cypress—		
2½ ft.	2 50	
3 to 4 ft.	\$3.50 to	5 00
4 to 5 ft.	\$.50 to	7 50
obtusa. Obtuse-leaved Japan Cypress—		
2 to 2½ ft.	2 00	18 50
2½ to 3 ft.	2 50	22 50
3½ to 4 ft.	3 50	32 50
4½ to 5 ft.	5 00	47 50
5 to 8 ft.	\$.60 to	15 00
obtusa, var. compacta. Compact Obtuse-leaved Japan Cypress. 2 to 2½ ft.	2 50	22 50
2½ to 3 ft.	3 50	
obtusa, var. gracilis. Graceful Obtuse-leaved Japan Cypress. 2 to 2½ ft.	2 50	22 50
2½ to 3 ft.	3 50	32 50
3 to 3½ ft.	5 00	47 50
4 to 5 ft.	\$.75 to	10 00
obtusa, var. nana. Dwarf Obtuse-leaved Japan Cypress. 1 ft.	2 00	17 50
1½ ft.	2 50	22 50
2 ft.	3 00	27 50
2½ ft.	4 00	37 50
3 ft.	5 00	47 50
3½ ft.	6 00	55 00
4 to 5 ft. Specimens.	\$.75 to	15 00
obtusa, var. nana aurea. Dwarf Golden Obtuse-leaved Japan Cypress—		
1½ ft.	2 50	
4 to 4½ ft.	5 00	
4½ to 5 ft. Specimens.	\$.75 to	10 00
pisifera. Pea-fruited Japan Cypress. 2 to 2½ ft.	2 50	22 50
3 to 3½ ft.	3 50	32 50
4 to 4½ ft.	5 00	47 50
4½ to 5 ft.	6 00	55 00
5 to 6 ft.	7 50	70 00
6 to 7 ft. Specimens.	\$.75 to	12 50
pisifera, var. aurea. Golden Pea-fruited Japan Cypress. 1½ to 2 ft.	1 50	
2 to 2½ ft.	2 00	18 00
2½ to 3 ft.	3 00	27 50
3 to 3½ ft.	3 50	30 00
3½ to 4 ft.	4 00	37 50
4 to 4½ ft.	5 00	47 50
5 to 6 ft. Specimens.	\$.75 to	12 50
6 to 8 ft. Specimens.	\$12.50 to	15 00
plumosa. Plume-like Japan Cypress. 1½ ft.	1 00	9 00
1½ to 2 ft.	1 50	13 50
2 to 2½ ft.	2 50	22 50
2½ to 3 ft.	3 50	32 50
3 to 3½ ft.	4 00	37 50
3½ to 4 ft. Specimens.	\$.50 to	7 50
4 to 6 ft. Specimens.	\$.75 to	12 50

PRICE-LIST FOR FALL OF 1908

11

	Each	10
RETINOSPORA plumosa, var. argentea. 1½ to 2 ft.	\$1 00	\$9 00
2 to 2½ ft.	2 50	22 50
3 to 4 ft.	3 50	32 50
5 to 6 ft.	7 50	70 00
plumosa, var. aurea. Golden Plume-like		
Japan Cypress. 12 in.	50	4 00
12 to 18 in.	75	6 00
2 to 2½ ft.	2 50	22 50
2½ to 3 ft.	3 50	32 50
3 to 3½ ft.	4 00	
3½ to 4 ft. Specimens	5 00	
4 to 4½ ft. Specimens	6 to 7 50	
5 to 8 ft. Specimens	7.50 to 15 00	
plumosa, var. flavescens. 2½ to 3 ft.	3 50	
plumosa, var. sulphurea. 2½ to 3 ft.	3 50	
3 to 3½ ft.	5 00	
4 to 5 ft.	7 50	
squarrosa. Squarrose-leaved Japan Cypress—		
1½ to 2 ft.	1 50	13 50
2 to 2½ ft. Sheared; heavy	2 50	22 50
2½ to 3 ft. Sheared; heavy	3 50	30 00
3 to 3½ ft. Sheared; heavy	5 00	45 00
3½ to 4 ft. Heavy specimens	7 50	70 00
4 to 4½ ft. Heavy specimens	10 00	90 00
4½ to 5 ft. Heavy specimens.	\$12.50 to 15 00	
5 to 12 ft.	\$15 to 35 00	
This is excellent stock; exceptionally broad, bushy and low-branched.		
SCIADOPITYS verticillata. Umbrella Pine. 3 to 3½ ft.	4 00	
4 to 5 ft.	7.50 to 10 00	
5 to 6 ft.	15 to 20 00	
TAXUS Canadensis. Canadian Yew. 15 to 18 in.	1 50	13 50
Canadensis, var. aurea. Golden Canadian Yew—		
2 ft.	2 50	22 50
2½ ft.	3 50	32 50
3 ft.	5 00	47 50
3½ to 5 ft.	7.50 to 12 50	
baccata. English Yew. 1½ to 2 ft.	1 50	12 50
2 to 2½ ft.	2 00	17 50
2½ to 3 ft.	2 50	22 50
3 to 3½ ft.	3 50	32 50
3½ to 4 ft. Specimens	5 00	47 50
4 to 4½ ft. Specimens	7 50	
4½ to 6 ft. Specimens	7.50 to 15 00	
baccata, var. adpressa. Adpressed Yew. 3 to 3½ ft.	3 50	
baccata, var. aurea. Golden English Yew—		
2 to 2½ ft.	2 50	
2½ to 3 ft.	3 50	
baccata, var. Cheshuntensis. 3½ to 4 ft.	3 50	
baccata, var. Dovastoni. Dovaston's Yew—		
2 to 2½ ft.	2 75	25 00
2½ to 3 ft.	3 50	32 50
3 to 4 ft.	5 to 7 50	
5 to 6 ft. Specimens	10 to 15 00	
baccata, var. Dovastoni aurea. Dovaston's Golden Yew—		
3 to 3½ ft.	4 00	35 00
3½ to 4 ft. Specimens	5 to 12 50	
5 to 6 ft. Specimens	15 to 20 00	

	Each	10
TAXUS baccata, var. elegantissima. Elegant English Yew—		
3 to 3½ ft.	♦.. 4 00	
3½ to 4 ft.	♦.. \$5 to 7 50	
4 to 5 ft.	♦.. \$7.50 to 12 50	
baccata, var. erecta. Erect English Yew—		
2 to 2½ ft.	♦.. 2 50	20 00
2½ to 3 ft.	♦.. 3 50	
4 to 4½ ft.	♦.. \$5 to 7 50	
baccata, var. erecta aurea. Erect Golden English Yew—		
2 to 2½ ft.	♦.. 2 75	
baccata, var. erecta, Overeynder. (Form similar to Fastigiata.) 4 to 4½ ft.	♦.. 6 00	55 00
4½ to 5 ft.	♦.. 7 50	72 50
5 to 6 ft.	♦.. \$10 to 12 50	
baccata, var. fastigiata. Irish Yew. 1½ ft.	♦.. 1 50	13 50
3 ft.	♦.. 3 50	32 50
3½ ft.	♦.. 7 50	
4 to 6 ft. Specimens	♦.. \$10 to 15 00	
baccata, var. fastigiata aurea. Golden Irish Yew—		
2 ft.	♦.. 2 50	22 50
2½ ft.	♦.. 3 50	32 50
3½ to 4 ft.	♦.. \$7.50 to 10 00	
4 to 5 ft.	♦.. 10 to 15 00	
baccata, var. fruticosa lutea. Yellow-fruited English Yew. 4½ to 5 ft. Specimens	♦.. \$5 to 7 50	
baccata, var. gracilis pendula. 3 to 3½ ft.	♦.. 3 50	
4 to 5 ft. { NEW }	♦.. \$6 to 7 50	
5 to 6 ft. { NEW }	♦.. \$7.50 to 15 00	
baccata, var. Washingtoni aurea. Washington's Golden English Yew. 2 to 2½ ft.	♦.. 2 50	
2½ to 3 ft.	♦.. 3 50	
3 to 4 ft.	♦.. \$5 to 10 00	
cuspidata. Abrupt-leaved Japan Yew. 12 to 15 in.	♦.. 2 00	18 50
1½ ft.	♦.. 2 50	
2 ft.	♦.. 3 50	
2½ ft.	♦.. 5 00	
cuspidata, var. brevifolia. 12 to 15 in.	♦.. 2 00	18 50
1½ ft.	♦.. 2 50	
2 ft.	♦.. 3 50	
2½ ft.	♦.. 5 00	
cuspidata, var. capitata. 1½ ft.	♦.. 2 50	
2 ft.	♦.. 3 50	
2½ ft.	♦.. 5 00	
THUJOPSIS borealis; syn., Cupressus Nutkaensis. Yellow or Sitka Cypress—		
3 to 4 ft.	♦.. 3 50	32 50
5 to 7 ft. Specimens	♦.. \$10 to 15 00	
borealis, var. latifolia glauca. Glaucous Sitka Cypress. 3½ to 4 ft.	♦.. 3 50	32 50
4½ to 6 ft. Specimens	♦.. \$5 to 7 50	
borealis, var. pendula. Drooping Sitka Cypress—		
4 to 5 ft.	♦.. 3 00	
5 to 7 ft.	♦.. 4 00	37 50
Standishi. Standish's Sitka Cypress—		
8 to 9 ft. Specimens	♦.. 12 50	

PRICE-LIST FOR FALL OF 1908

	Each	10
THUYA occidentalis. American Arborvitæ—		
2½ to 3 ft.♦...per 100, \$60..	\$1 00	\$8 00
3 to 3½ ft.♦...per 100, \$75..	1 25	10 00
3½ to 4 ft.♦...per 100, \$100..	1 50	13 50
4 to 4½ ft.; very heavy	2 00	19 00
4½ to 5 ft.; very heavy	2 50	22 50
5 to 5½ ft.; very heavy	3 00	27 50
5½ to 6 ft.; very heavy	3 50	32 50
6 to 7 ft.; very heavy	4 00	37 50
7 to 8 ft.; very heavy	4 50	42 50
8 to 9 ft. Grand specimens.....♦..\$7.50 to	10 00	
10 to 11 ft. Grand specimens.....♦..\$10 to	15 00	
occidentalis, var. aurea. George Peabody's Arborvitæ—		
2½ to 3 ft.♦...per 100, \$60..	1 50	13 50
3 to 3½ ft.♦...per 100, \$75..	2 50	22 50
4 to 5 ft.♦...per 100, \$100..	4 00	37 50
5 to 6 ft.♦...per 100, \$125..	5 00	45 00
7 to 8 ft. Specimens.....♦..\$7.50 to	10 00	
8 to 10 ft. Specimens.....♦..\$10 to	15 00	
occidentalis, var. Douglasi. 3 to 3½ ft.♦...per 100, \$60..	3 00	27 50
3½ to 4 ft.♦...per 100, \$75..	3 50	32 50
4 to 5 ft.♦...per 100, \$100..	4 00	37 50
5 to 6 ft.♦...per 100, \$125..	5 00	45 00
6 to 7 ft.♦...per 100, \$150..	7 50	70 00
occidentalis, var. globosa. Globe Arborvitæ—		
15 to 18 in.♦...per 100, \$60..	1 50	13 50
18 to 24 in.♦...per 100, \$75..	2 50	22 50
occidentalis, var. Hoveyi. Hovey's Golden Arborvitæ—		
2 ft.♦...per 100, \$60..	1 50	13 50
2½ to 3 ft. Very heavy	2 50	22 50
3 to 3½ ft. Very heavy	3 50	32 50
occidentalis, var. Lobbi. Lobb's Arborvitæ. 4 to 4½ ft.♦...per 100, \$60..	3 00	27 50
4½ to 5 ft.♦...per 100, \$75..	4 50	42 50
occidentalis, var. Lobbi aurea. 4 to 5 ft.♦...per 100, \$60..	3 50	32 50
5 to 6 ft.♦...per 100, \$75..	4 50	42 50
occidentalis, var. pyramidalis. Pyramidal Arborvitæ—		
3 to 3½ ft.♦...per 100, \$60..	1 50	13 50
3½ to 4 ft.♦...per 100, \$75..	2 00	17 50
4 to 5 ft.♦...per 100, \$100..	2 50	22 50
5 to 6 ft.♦...per 100, \$125..	3 50	32 50
occidentalis, var. recurva nana. 2½ to 3 ft.♦...\$3.50 to	5 00	
occidentalis, var. Tom Thumb. 1 ft.♦...per 100, \$60..	1 50	
occidentalis, var. Vervaeneana. Vervæne's Arborvitæ—		
2½ to 3 ft.♦...per 100, \$60..	3 00	27 50
3 to 3½ ft.♦...per 100, \$75..	3 50	32 50
3½ to 4 ft.♦...per 100, \$100..	4 00	37 50
4½ to 5 ft.♦...per 100, \$125..	4 50	42 50
5 to 6 ft.♦...per 100, \$150..	5 00	47 50
6 to 7 ft. Specimens	8 00	
7 to 8 ft. Specimens	10 00	
8 to 9 ft. Specimens	15 00	
occidentalis, var. Wareana. Siberian Arborvitæ—		
2 to 2½ ft.♦...per 100, \$60..	2 50	22 50
3 to 3½ ft.♦...per 100, \$75..	3 50	32 50
4 ft.♦...per 100, \$100..	5 00	47 50
4½ ft.; very heavy	6 00	57 50
5 ft.; very heavy	7 50	72 50
5 to 5½ ft.; very heavy	7 50	
5½ to 6 ft.; very heavy	10 00	

	Each	10	
THUYA occidentalis , var. Wareana aurea . 2½ ft.....	\$2 50	\$22 50	
3½ to 4 ft.	3 00	28 00	
4½ to 5 ft.	4 50	42 50	
5 to 6 ft.	5 00	47 50	
TSUGA Canadensis . Hemlock. 1½ to 2 ft.....	75	4 00	
2 to 2½ ft. ...	1 00	7 50	
2½ to 3 ft. ...	} GRAND STOCK }	.per 100, \$90.. 1 25 10 00	
3 to 3½ ft.per 100, \$125.. 1 50 13 50
3½ to 4 ft.per 100, \$160.. 2 00 17 50
4 to 4½ ft.per 100, \$185.. 2 25 20 00
4½ to 5 ft. ...			2 50 22 50
5 to 5½ ft. ...			3 00 27 50
5½ to 6 ft. ...	3 50 32 50		
6 to 10 ft. Heavy specimens.....	\$4 to 15	00	
The finest and largest stock offered.			
Canadensis , var. Sargenti pendula . Weeping Hemlock—			
2 to 5 ft. Specimens.....	◆ \$3.50 to	15 00	
Caroliniana . Southern Hemlock. 3 to 3½ ft.....	◆	3 50	
6 to 7 ft. Specimens.....	◆	15 00	
Hookeriana . Alpine Hemlock. 2½ to 3 ft.....		2 50 22 50	
3 to 3½ ft.		3 00 27 50	
4 to 4½ ft.		4 00 37 50	
5 to 6 ft.	\$5 to	7 50	
Sieboldi . Japanese Hemlock. 4 to 5 ft.....	◆	3 50	



Showing fibrous roots of hemlock.



A Block of Box Bush and Evergreens.

EVERGREEN SHRUBS

	Each	10
ANDROMEDA <i>Catesbæi</i> . See <i>Leucothoë</i> .		
<i>floribunda</i> . 12 in.	♦ \$1 50	\$13 50
12 to 15 in.	♦ 1 75	16 00
2 to 2½ ft. Specimens	♦ \$10 to 15 00	
<i>Japonica</i> . 12 in.	♦ 1 25	10 00
12 to 15 in.	♦ 1 50	12 50
15 to 18 in.	♦ 2 00	18 50
AZALEA <i>amœna</i> . 12 to 15 in.	1 00	8 50
15 to 18 in. Bushy	1 50	12 50
1½ ft. Bushy	2 00	17 50
2 ft. Bushy	2 50	22 50
2½ ft. Specimens	3 50	
<i>amœna</i> , var. <i>Hinondigiro</i> . Bright carmine—		
8 to 10 in.	75	6 00
2 ft.	♦ 2 50	20 00
BUXUS <i>Japonica</i> ; syn., <i>Fortunei</i> . Japanese Box. 1 to 1½ ft.	1 50	12 50
1½ to 2 ft.	2 00	17 50
<i>Japonica</i> , var. <i>aurea</i> . Golden Japanese Box—		
12 to 15 in.	1 00	9 00
15 to 18 in.	1 50	12 50
1½ ft.	1 75	15 00
2 ft.	2 50	22 50
2½ ft.	3 50	32 50
<i>sempervirens</i> . Common Box. Ball-shaped—		
15x15 in.	♦ 2 00	
1½x1½ ft.	♦ 2 50	
2x2 ft.	♦ 3 50	

	Each	10
BUXUS sempervirens. 1 ft. Andorra-grown..per 100, \$40..	\$0 75	\$6 00
1½ ft.; light Andorra-grown..per 100, \$50..	1 00	7 50
2 ft.; Andorra-grown.....	1 50	13 50
2½ ft.; Andorra-grown.....	2 50	22 50
3 ft.; Andorra-grown. Specimens.♦..	4 50	40 00
3½ ft.; Andorra-grown. Specimens.♦..	6 00	54 00
4 ft.; Andorra-grown. Specimens.♦..	7 50	67 50
4½ ft.; Andorra-grown. Specimens.♦..	10 00	90 00
5 to 5½ ft.; Andorra-grown. Specimens	♦..\$12.50 to 25 00	
sempervirens. Pyramids—		
2½ ft.; Andorra-grown. Specimens	3 00	
3 ft.; Andorra-grown. Specimens	4 50	40 00
3½ ft.; Andorra-grown. Specimens	6 00	54 00
4 ft.; Andorra-grown. Specimens	7 50	70 00
4½ ft.; Andorra-grown. Specimens	10 00	90 00
5 ft.; Andorra-grown. Specimens	12 50	112 50
5½ ft.; Andorra-grown. Specimens	15 00	125 00
sempervirens. Standards—		
2 ft. stems, 18 in. head. Andorra-grown ..♦..	2 50	
2 to 2½ ft. stems, 22 to 24 in. head. Andorra-grown	3 50	
2 to 2½ ft. stems, 24 to 26 in. heads. Andorra-grown	7 50	
sempervirens, var. angustifolia. 12 to 18 in.....♦..	1 50	13 50
sempervirens, var. arborescens. Tall Tree Box—		
2½ to 3 ft.♦..	2 50	22 50
3 to 3½ ft.♦..	3 50	32 50
sempervirens, var. arborescens variegata. Variegated Tree Box. 3½ ft.♦..		
	3 50	32 50
sempervirens, var. argentea marginata. Silver-tipped Box. 1½ to 2 ft.♦..		
	1 50	13 50
sempervirens, var. decussata. 4½ to 5 ft.♦..		
	3 50	30 00
5 to 5½ ft.♦..	5 00	
sempervirens, var. Handsworthi. 2½ to 3 ft.♦..		
	2 50	22 50
3 to 3½ ft.♦..	3 50	32 50
sempervirens, var. Japonica; syn., latifolia—		
1 to 1½ ft.♦..	1 00	8 50
1½ to 2 ft.♦..	1 50	13 50
2 to 2½ ft.♦..	2 50	22 50
2½ to 3 ft.♦..	3 50	32 50
sempervirens, var. myrtifolia. Myrtle Leaf—		
3 to 3½ ft.♦..	4 50	42 50
4 to 5 ft.♦..	\$5.00 to 10 00	
sempervirens, var. suffruticosa. Dwarf Box Edging—		
3 to 4 in.....♦..per 100, \$5; per 1,000, \$40..		75
4 to 5 in.....♦..per 100, \$10; per 1,000, \$60..	25	1 50
6 to 7 in.....♦..per 100, \$15; per 1,000, \$90..	35	2 00
CERASUS Laurocerasus Caucasica. Caucasian Laurel—		
1 to 1½ ft.♦..	1 00	7 50
2 to 3 ft.♦..	2 50	22 50
3 to 3½ ft.♦..	3 50	32 50
Laurocerasus, var. Schipkaensis. 1 to 1½ ft.....♦..		
	1 50	10 00
1½ to 2 ft.♦..	2 00	17 50
CHAMÆDAPHNE calyculata. Leather Leaf—		
12 to 18 in.♦..per 100, \$35..	50	4 00
COTONEASTER microphylla. 12 in.♦..		
	75	6 00

PRICE-LIST FOR FALL OF 1908

17

	Each	10
CRATÆGUS <i>Pyracantha</i> . Evergreen Thorn. 12 in.....	\$0 75	\$6 00
<i>Pyracantha</i> , var. <i>Lelandi</i> . Leland's Evergreen Thorn. 1 ft.....	50	4 00
DAPHNE <i>Cneorum</i> . 8 to 12 in.....	1 00	9 50
EUONYMUS <i>radicans</i> and <i>variegata</i> . See Trailing Plants.		
<i>Japonica</i> . Japan Euonymus.		
1½ to 2 ft.	\$20 per 100..	50 3 50
<i>Japonica</i> , var. <i>aurea</i> . Golden-leaved Japan Euonymus. 1 to 1½ ft.....	per 100, \$20..	50 3 50
ILEX <i>Aquifolium</i> . Common English Holly—		
3 to 4 ft.	\$3.50 to	5 00
<i>crenata</i> . Japanese Holly. Box-leaved—		
1½ ft.	1 50	12 50
2 ft.	2 00	17 50
2½ ft.	3 50	32 50
3 ft.	5 00	40 00
<i>crenata</i> , var. <i>latifolia</i> . Broad-leaved Japanese Holly—		
2½ to 3 ft.	2 00	17 50
3 to 3½ ft.	2 50	22 50
3½ to 4 ft.	3 50	32 50
4 to 4½ ft.	5 00	47 50
<i>crenata</i> , var. <i>microphylla</i> . Small-leaved Japanese Holly—		
12 to 15 in. Bushy	per 100, \$50..	1 00 8 50
15 to 18 in. Bushy	per 100, \$30..	1 25 10 00
1½ to 2 ft. Bushy	per 100, \$100..	1 75 15 00
2 to 2½ ft.	2 50	22 50
3 to 3½ ft. Heavy specimens.....	\$5.00 to	6 00
4 to 5½ ft. Heavy specimens	\$7.50 to	12 50
KALMIA <i>latifolia</i> . Mountain Laurel. 2 ft.....	♦..	1 00 8 50
3 ft.	♦..	2 50 22 50
3 to 3½ ft.	♦..	3 00 27 50
1½ ft. Heavy clumps	♦..	1 50 12 50
2 ft. Heavy clumps	♦..	2 00 17 50
2½ ft. Heavy clumps	♦..	2 50 22 50
2½ to 3 ft. Heavy clumps	♦..	3 00 28 50
3 to 3½ ft. Heavy clumps	♦..	3 50 32 50
3½ to 4 ft. Heavy clumps	♦..	5 00
LAURELS . See <i>Cerasus Laurocerasus</i> .		
LEUCOTHOE <i>Catesbæi</i> . Drooping Andromeda—		
12 to 15 in. Clumps	1 00	8 50
15 to 18 in. Clumps	1 50	12 50
MAHONIA <i>Aquifolium</i> . Holly-leaved—		
12 to 15 in.	per 100, \$25..	50 4 00
15 to 18 in. Heavy	per 100, \$35..	75 7 00
18 to 24 in.	per 100, \$60..	1 00 9 00
24 to 30 in.	per 100, \$100..	1 50 13 50
<i>Japonica</i> . Japanese Mahonia—		
2 to 2½ ft.	♦..	2 00 18 50
3 to 3½ ft.	♦..	3 00 27 50
OSMANTHUS <i>ilicifolia</i> . 1½ to 2 ft.....	♦..	2 00 18 50
2 to 2½ ft.	♦..	2 50 22 50
2½ to 3 ft.	♦..	3 50 30 00
PHILLYREA <i>Vilmoriniana</i> . 2 to 2½ ft.	♦..	1 50 12 50



Rhododendrons at Andorra

RHODODENDRONS

HYBRID VARIETIES—ANDORRA GROWN!

RHODODENDRONS.	Catawbiense Hybrids Assorted.	Our selection of varieties—	Each	10
	1½ to 2 ft.	per 100, \$100..	\$1 50	\$12 50
	2 to 2½ ft.	per 100, \$175..	2 50	20 00
	Our stock of large, heavy plants, 3½ to 5 ft. in height, is unusually fine. Prices on application.			
	Abraham Lincoln.	Rosy crimson.		
	2 to 2½ ft.		2 50	22 50
	2½ to 3 ft.		3 50	30 00
	Album elegans.	White.		
	2 to 2½ ft.		2 00	17 50
	3 to 3½ ft.		3 50	30 00
	3½ to 4 ft.	\$3.50 to	5 00	
	4 to 5 ft.	\$5.00 to	7 50	
	Album grandiflorum.	White.	2 to 2½ ft..	2 00 17 50
	2½ to 3 ft.		3 00	27 50
	3½ to 5 ft.	\$3.50 to	7 50	
	Atrosanguineum.	Dark scarlet.	2½ ft..	3 50 32 50
	Betsy Parsons.	Reddish purple.		
	3 to 4 ft.	\$5.00 to	7 50	
	Blandyanum.	Rosy crimson.	1½ to 2 ft..	2 00 18 00
	2 to 2½ ft.		2 50	22 50
	2½ to 3 ft.	\$3.50 to	5 00	
	3 to 4 ft. Specimens		\$5 to 15	00

PRICE-LIST FOR FALL OF 1908

19

	Each	10
RHODODENDRONS, B. W. Elliott. Deep rose. 2 to 2½ ft.	\$2 00	\$17 50
3 to 3½ ft.	\$3.50 to	5 00
Caractacus. Purplish crimson. 1½ to 2 ft.	2 00	17 50
2 to 2½ ft.	2 50	22 50
2½ to 3 ft.	\$3.50 to	5 00
Charles Bagley. Bright red. 1½ ft.	2 00	17 50
Charles Dickens. Scarlet. 1½ to 2 ft.	2 00	18 00
Delicatissimum. White. 1½ to 2 ft.	1 50	13 50
2 to 2½ ft.	2 00	17 50
2½ to 3 ft.	3 50	32 50
3 to 3½ ft.	\$3.50 to	5 00
Duchess of Bedford. Crimson. 2 to 2½ ft.	2 50	22 50
2½ to 3 ft.	3 50	32 50
Everestianum. Rosy lilac. 2 ft.	2 50	22 50
2½ ft.	3 50	32 50
3 ft.	5 00	45 00
General Grant. Red. 1½ to 2 ft.	2 00	18 00
2 to 2½ ft.	2 50	22 50
Giganteum. Rosy crimson. 1½ ft.	1 50	13 50
2½ to 3 ft.	3 50	32 50
H. W. Sargent. Scarlet. 2 to 2½ ft.	2 50	
James Bateman. Scarlet. 1½ ft.	1 75	15 00
J. Marshall Brooks. Scarlet. 1½ to 2 ft.	2 00	17 50
2 to 2½ ft.	2 50	22 50
John Spencer. Rose. 1½ to 2 ft.	1 50	13 50
John Walter. Rich crimson. 1½ ft.	2 00	17 50
2 ft.	2 50	22 50
2½ ft.	3 50	32 50
John Waterer. Carmine. 1½ to 2 ft.	2 00	17 50
2 to 2½ ft.	3 00	27 50
Lady Armstrong. Pale rose. 1½ to 2 ft.	2 00	18 00
2 to 2½ ft.	2 50	22 50
Lady Clermont. Rosy scarlet.		
2½ to 3 ft.	3 50	32 50
3 to 4 ft.	\$5.00 to	7 50
Luciferum. Clear white. 2 to 2½ ft.	2 50	22 50
2½ to 3 ft.	\$3.50 to	5 00
3 to 4 ft.	\$5.00 to	7 50
Madam Carvalho. Clear white.		
2 to 2½ ft.	2 50	22 50
Michael Waterer. Scarlet-crimson.		
1½ to 2 ft.	2 00	17 50
2 to 2½ ft.	3 00	27 50
Minnie. White. 2½ to 3 ft.	2 50	22 50
3 to 3½ ft.	3 50	32 50
Mrs. John Clutton. White. 1½ to 2 ft.	2 00	17 50
2 to 2½ ft.	3 00	27 50
3 to 3½ ft.	\$3.50 to	5 00
Mrs. Milner. Crimson. 1½ ft.	2 00	18 00
1½ to 2 ft.	2 50	23 50
2 to 2½ ft.	3 00	27 50
Old Port. Plum. 1½ ft.	1 50	13 50
Parson's gloriosum. Blush. 1½ to 2 ft.	1 50	12 50
2 to 2½ ft.	1 75	15 00
2½ to 3 ft.	2 50	23 50
3 to 3½ ft.	3 50	32 50
4 to 5 ft.	\$5.00 to	7 50
Perspicum. 2½ to 3 ft.	3 50	32 50

	Each	10
RHODODENDRONS, Pictum. White. 2½ to 3 ft.....	\$2 50	
President Lincoln. 2½ to 3 ft.....	3 50	\$32 50
3 to 3½ ft.....	5 00	47 50
3½ to 4 ft.....	\$5.00 to	7 50
purpureum grandiflorum. Purple—		
2½ to 3 ft.....	3 50	32 50
roseum elegans. Good rose. 1½ to 2 ft..	2 00	17 50
2 to 2½ ft.....	2 50	22 50
2 to 2½ ft. Specimens	3 50	30 00
2½ to 3 ft. Specimens	5 00	47 50
3 to 4 ft. Specimens	\$7.50 to	15 00

NATIVE VARIETIES.—ANDORRA GROWN

RHODODENDRON Catawbiense. 2 to 2½ ft.....	\$1.50	\$12 50
2½ to 3 ft.....	2 50	22 50
3 to 3½ ft.....	3 50	32 50
3½ to 4 ft.....	\$3.50 to	7 50
Catawbiense grandiflora. 2 to 2½ ft.....	2 00	18 50
2½ to 3 ft.....	3 00	27 50
maximum. Great Laurel. 15 to 18 in....	1 00	7 50
1½ to 2 ft.....	1 25	11 00
2 to 2½ ft.....	2 00	17 50
2½ to 3 ft.....	3 50	25 00
3 to 4 ft.....	5 00	40 00
4 to 5 ft.....	7 50	60 00

We have an excellent stock of larger specimens; prices on application. Having good facilities for collecting *Rhododendron maximum*, we offer collected stock by the carload, in all sizes from 2 to 7 feet, at special prices. Write us.

DWARF VARIETIES.—ANDORRA GROWN

RHODODENDRON Hammondi. 1 ft.....	\$1.50	\$13 50
1½ ft.....	2 00	17 50
Hirsutum. 1 ft.....	1 50	13 50
myrtifolium. Myrtle-leaved. 1 to 1½ ft....	2 00	17 50
1½ to 2 ft.....	2 50	20 00
odoratum. Fragrant. 1 to 1½ ft.....	2 50	20 00
2½ ft.....	5 00	
punctatum. Dotted. 1 to 1½ ft.....	1 50	13 50
1½ to 2 ft.....	2 50	20 00
Wilsonianum. 1½ to 2 ft.....	2 50	20 00
YUCCA filamentosa. Adam's Needle. 3-yr.....	35	2 00
4-yr.....	50	3 00

DECIDUOUS TREES

Measurements are given as follows: Height is taken before digging, from the surface of the ground to the top branches where they round off to form the top; diameter of stem, or caliper, is taken above the collar.

	Each	10
ACER campestre. European Cork Maple. 4 to 5 ft.....	\$0 75	\$6 00
5 to 6 ft.....	1 00	8 50
7 to 8 ft.....	1 50	12 50
8 to 10 ft.....	1 75	15 00
colchicum, var. rubrum. Red Colchicum Maple—		
10 to 12 ft.; 2½-in. cal.....	1 75	15 00
12 to 14 ft.; 2¾ to 3-in. cal.....	3 50	32 50



End View of a Block of Norway Maples

	Each	10	100
ACER dasycarpum. Silver Maple—			
10 to 12 ft.; 1½ to 2 in.	\$1 00	\$8 50	
12 to 14 ft.; 2 to 2½ in.	1 50	12 50	
12 to 14 ft.; 2½ to 3 in.	2 00	15 00	\$125 00
12 to 14 ft.; 3 to 3½ in.	2 50	20 00	150 00
4 to 6 in. Specimens.	\$3.50 to 7 50		
A rapid grower for immediate effects.			
dasycarpum, var. Wierii laciniatum. Wier's Cut-leaved Silver Maple—			
10 to 12 ft.; 1½ to 2 in.	1 50	13 50	
12 to 14 ft.; 2½ in.	3 50	32 50	
Negundo. Ash-leaved Maple—			
8 to 10 ft.; 1½ to 2 in.	1 00	8 50	
10 to 12 ft.; 2 to 2½ in.	1 50	10 00	
12 to 14 ft.	2 00	17 50	
Pennsylvanicum. 6 to 7 ft.	1 50		
platanoides. Norway Maple—			
8 to 10 ft.; 1½ in.	1 00	8 50	75 00
10 to 12 ft.; 1¾ to 2 in.	1 50	12 50	100 00
10 to 12 ft.; 2 to 2½ in.	1 75	15 00	135 00
12 ft.; 2½ to 2¾ in.	2 00	17 50	160 00
12 to 14 ft.; 2¾ to 3 in.	2 50	22 50	175 00
12 to 14 ft.; 2¾ to 3 in.	3 00	27 50	225 00
14 to 16 ft.; 3¼ to 3½ in.	4 00	35 00	300 00
14 to 16 ft.; 3½ to 3¾ in.	4 50	42 50	375 00
14 to 16 ft.; 3¾ to 4 in.	5 00	47 50	400 00
14 to 16 ft.; 4 to 4¼ in.	7 50	72 50	700 00
14 to 16 ft.; 4¼ to 4½ in.	10 00	90 00	

SPECIMEN NORWAYS. 14 to 20 feet in height and 4½- to 10-in. caliper; clean, well headed. Prices on application.

	Each	10	100
ACER platanoides, var. purpurea. Schwedler's Purple			
Maple. 8 to 10 ft.; 1 $\frac{1}{4}$ to 2 in.	\$1 50	\$12 50	
10 to 12 ft.; 2 $\frac{1}{2}$ to 2 $\frac{3}{4}$ in.	3 00	27 50	
12 to 14 ft.; 2 $\frac{3}{4}$ to 3 in.	3 50	32 50	
14 to 16 ft.; 3 $\frac{1}{2}$ to 4 in.	\$5 to 7 50		
16 to 18 ft.; 5 to 6 in.	\$20 to 35 00		
18 to 20 ft.; 6 to 10 in.	\$35 to 75 00		
Broad-headed specimen trees.			
platanoides, var. Reitenbachii. Reitenbach's			
Purple Maple. 8 to 10 ft.	2 00	17 50	
pseudo-platanus. European Sycamore Maple—			
6 to 8 ft.	75	6 00	
8 to 10 ft.	1 50	12 50	
10 to 12 ft.; 2 to 2 $\frac{1}{2}$ in.	2 00	17 50	
12 to 14 ft.; 2 $\frac{1}{2}$ to 3 in.	2 50	22 50	
14 to 16 ft. Specimens.	\$3.50 to 7 50		
pseudo-platanus, var. purpurea. Purple Sycamore Maple. 10 to 12 ft.	1 50	12 50	
12 to 14 ft.; 2 $\frac{1}{2}$ in.	2 00	17 50	
12 to 14 ft.; 3 to 5 in.	\$3.50 to 15 00		
Broad-headed specimen trees.			
rubrum. Red or Scarlet Maple. 6 to 7 ft.	1 00	8 50	\$75 00
8 to 10 ft.	1 50	12 50	100 00
10 to 12 ft.; 2 to 2 $\frac{1}{4}$ in.	2 00	17 50	125 00
12 to 14 ft.; 2 $\frac{1}{2}$ to 3 $\frac{1}{2}$ in.	\$2.50 to 5 00		
saccharinum. Sugar Maple. 8 to 10 ft.	1 00	8 50	
10 to 12 ft.; 1 $\frac{1}{4}$ to 1 $\frac{1}{2}$ in.	1 25	10 00	75 00
10 to 12 ft.; 1 $\frac{1}{2}$ to 1 $\frac{3}{4}$ in.	1 50	12 50	100 00
12 to 14 ft.; 2 to 2 $\frac{1}{2}$ in.	2 50	20 00	150 00
12 to 14 ft.; 2 $\frac{1}{2}$ to 2 $\frac{3}{4}$ in.	3 50	32 00	250 00
12 to 14 ft.; 2 $\frac{3}{4}$ to 3 in.	4 00	37 50	
14 to 16 ft.; 3 to 3 $\frac{1}{2}$ in.	5 00	45 00	
14 to 16 ft.; 3 $\frac{1}{2}$ to 4 in.	\$7.50 to 35 00		
Specimen low-branched trees of heavy caliper and good tops. Prices on application.			
spicatum. Mountain Maple. 2 to 3 ft.	50	4 00	30 00
3 to 4 ft.	75	6 00	40 00
4 to 5 ft.	1 00	8 50	60 00
5 to 6 ft.	1 50	12 50	
Tataricum, var. Ginnala. Tartarian Maple—			
2 ft.	50	3 50	25 00
3 to 4 ft. Bushy.	75	6 50	35 00
4 to 5 ft. Bushy.	1 00	9 00	50 00
6 to 8 ft. Bushy.	1 25	10 00	60 00
Most brilliant of the fall-coloring trees. Superb for mass planting.			

JAPANESE MAPLES

ACER polymorphum. 3 to 4 ft.	1 50	13 50	
polymorphum, var. atropurpureum. Blood-leaved Japan Maple. 1 $\frac{1}{2}$ ft.	1 50	13 50	
2 to 2 $\frac{1}{2}$ ft.	\$2.50 to 5 00		
2 $\frac{1}{2}$ to 3 ft.	\$5 to 7 50		
3 to 5 ft. Specimens.	\$10 to 20 00		
These are beautiful, bushy, low-branched trees.			

PRICE-LIST FOR FALL OF 1908

ACER polymorphum, var. atropurpureum dissectum.	Each	10	100
' Weeping Cut-leaf Blood-leaved—			
1½ ft.....	◆..	\$1 50	\$13 50
2 to 2½ ft. Specimens.....	◆..	\$3.50 to 5 00	
polymorphum, var. aureum. Golden Japan			
Maple. 1½ ft.....	◆..	1 50	13 50
polymorphum, var. dissectum. Cut-leaf Weep-			
ing Japan Maple. 1½ ft.....	◆..	1 50	
2 to 2½ ft.....	◆..	\$2.50 to 7 50	
polymorphum, var. filicifolium. 2½ ft.....	◆..	2 50	
polymorphum, var. scopendifolium rubrum.			
2½ to 3 ft.....		\$3.50 to 5 00	
ÆSCULUS Hippocastanum. European Horse-chestnut—			
7 to 8 ft.		1 50	12 50
8 to 10 ft.; 2 in.....		2 00	17 50
10 to 12 ft.; 2½ in.....	◆..	2 50	22 50
10 to 12 ft.; 3 in.....	◆..	3 50	32 50
Specimens; 3¼ to 5 in. cal...		\$5 to 20 00	
Hippocastanum, var. alba flore pleno.			
Double White-Flowered Horse-			
Chestnut. 8 to 9 ft.; 1½ in...		2 00	
9 to 10 ft.; 2 in.....		2 50	22 50
10 to 11 ft.; 2½ in.....	◆..	3 50	32 50
11 to 12 ft.; 3 in.....	◆..	\$4 to 5 00	
Specimens; 3 to 5 in....		\$7.50 to 15 00	
Hippocastanum, var. Bujotii—			
10 to 12 ft.; 2½ to 3 in.....	◆..	2 50	22 50
10 to 12 ft.; 3 to 3½ in.....	◆..	3 50	32 50
Hippocastanum, var. rubicunda. Red-			
flowered Horse-Chestnut—			
8 to 10 ft.; 1½ in.....		1 75	16 00
10 ft.; 1¾ to 2 in.....		2 50	22 50
10 ft.; 2 to 2½ in.....		3 50	32 50
12 ft.; 3 to 4 in.....	◆..	\$4 to 12 50	
parviflora. See Shrubs.			
AILANTHUS glandulosa. Ailanthus, or Tree of			
Heaven. 10 to 12 ft.....		1 25	10 00
14 to 18 ft. Heavy.....		\$2.50 to 3 50	\$85 00
ALNUS glutinosa. European, or Black Alder—			
7 to 8 ft.		1 00	5 00
10 to 12 ft.		1 50	9 00
incana. 6 to 8 ft.		1 00	5 00
			35 00
AMELANCHIER Botryapium. Dwarf Juneberry. See			
Shrubs.			
ANDROMEDA. See Oxydendron.			
ARALIA. Chinese Angelica Tree—			
elata, var. foliis argentea marginata.			
6 to 8 ft.		1 00	9 00
8 to 10 ft.		1 50	13 50
Japonica. 4 to 5 ft.		75	6 00
6 to 8 ft.		1 00	8 00
8 to 10 ft.		1 50	12 50
pentaphylla; syn., Acanthopanax spinosa.			
See <i>Shrubs.</i>			
spinosa. 5 to 6 ft.		75	6 00
9 to 10 ft.		1 25	10 00

	Each	10	100
BETULA alba. European White Weeping Birch—			
8 to 10 ft.	\$1 25	\$10 00	
10 to 12 ft.; 1½ to 2 in.	2 00	17 50	
12 to 14 ft.; 2 to 2½ in.	2 50	22 50	
16 to 18 ft.; 3 to 4 in.	\$5 to 7 50		
alba, var. fastigiata. Pyramidal White Birch. 10 to 12 ft.	2 50		
12 to 14 ft.	3 50		
alba, var. laciniata pendula. Weeping Cut-leaved White Birch. 8 to 10 ft.	1 50		
lenta. Sweet Birch. 6 to 7 ft.	1 00	8 50	
lutea. Yellow Birch. 6 to 8 ft.	1 00	8 50	
14 to 16 ft.; specimens.	2 50	22 50	
papyrifera. Paper, or Canoe Birch—			
5 to 6 ft.	1 00	6 00	
8 to 10 ft.	1 25	10 00	
nigra; syn., rubra. Red Birch. 7 to 8 ft.	1 00	8 50	\$60 00
8 to 10 ft.	1 25	10 00	75 00
10 to 12 ft.	1 50	13 50	115 00
BROUSSONETIA papyrifera. Paper Mulberry—			
5 to 6 ft.	75	5 00	40 00
CARPINUS Americana; syn., Caroliniana. American Hornbeam. 3 to 4 ft.	60	5 00	30 00
4 to 5 ft. Bushy	1 00	7 50	50 00
5 to 6 ft. Bushy	1 50	10 00	75 00
6 to 7 ft. Bushy	2 00	13 50	85 00
7 to 9 ft. Bushy	2 50	20 00	150 00
9 to 10 ft. Bushy	3 50	27 50	
Betulus. European Hornbeam. 2 to 3 ft.	35	3 00	22 50
3 to 4 ft. Bushy	50	4 00	30 00
4 to 5 ft. Bushy	75	6 00	40 00
5 to 6 ft. Bushy	1 50	13 50	75 00
6 to 7 ft. Bushy	2 00	18 50	100 00
8 to 10 ft. Bushy	3 50	30 00	
Carya alba (Hickory). 8 to 10 ft.	1 50	12 50	
CASTANEA Americana. American Chestnut—			
5 to 6 ft.	75	5 00	40 00
7 to 8 ft.	1 00	7 50	50 00
8 to 9 ft.	1 25	9 00	60 00
9 to 10 ft.; 1½ to 2 in.	1 50	10 00	75 00
10 to 12 ft.; 2 to 2½ in.	1 75	12 50	100 00
12 to 14 ft.; 3 in.	2 00	17 50	150 00
Japanica. Japan Chestnut. 4 to 5 ft.	1 00	7 50	
vesca. Spanish Chestnut. 4 to 5 ft.	1 00	7 50	
CATALPA bignonioides. 8 to 10 ft.	1 00	6 00	
bignonioides, var. aurea. Golden Catalpa—			
4 to 5 ft.	1 00	7 50	
Bungei. Bunge's Catalpa. Standards. 7 ft.	3 50		
Kämpferi. Japanese Catalpa. 6 to 8 ft.	1 50	12 50	
speciosa. Western Catalpa. 6 to 8 ft.	1 00	7 50	
8 to 10 ft.; 1½ to 2 in.	1 50	13 50	
CEDRELA Sinensis. Chinese Cedrela—			
8 to 10 ft.	1 50		

PRICE-LIST FOR FALL OF 1908

25

	Each	10	100
CELTIS occidentalis. Nettle Tree. 6 to 7 ft.....	\$1 00	\$9 00	
7 to 8 ft.	1 25	10 00	\$75 00
8 to 10 ft.	1 50	12 50	90 00
CERASUS Padus. European Bird Cherry. 4 to 5 ft.	75	6 00	
serotina. Wild Black Cherry. 10 to 12 ft.	1 00	7 50	60 00
Avium, var. alba plena. Double White-flowering Cherry. 5 to 6 ft....	1 50	13 50	
Avium, var. rosea plena. Double Pink-flowering Cherry. 4 to 6 ft. .	1 50		
Avium, var. rosea pendula. Pink Weeping Japan Cherry. 6 ft.....	2 50		
Sieboldi, var. rubra plena. 4 to 5 ft....	1 50	12 50	
CERCIS Canadensis. Red Bud, American Judas—			
3 to 4 ft.	50	4 00	30 00
4 to 5 ft.	75	6 00	45 00
5 to 6 ft.	1 00	7 50	50 00
6 to 8 ft.	1 50	10 00	60 00
8 to 10 ft.	1 75	12 50	85 00
Japonica. See Shrubs.			
CERCIDIPHYLLUM Japonicum. 6 to 8 ft.....	2 00	17 50	
8 to 9 ft.	2 50	22 50	
9 to 10 ft.	3 50		
CLADRASTIS tinctoria (Virgilia lutea). Yellow Wood. 8 to 10 ft.....	1 00	9 00	75 00
10 to 12 ft.	1 50	13 50	100 00
CORNUS. See, also, Shrubs.			
florida. White Dogwood. 2 to 2½ ft.....	50	4 00	25 00
3½ to 4 ft.; very fine	1 00	7 50	
4 to 5 ft.; very fine	1 25	10 00	60 00
5 to 6 ft.; very fine	1 50	12 50	70 00
6 to 7 ft.; very fine	1 75	15 00	80 00
7 to 8 ft.; very fine	2 50	22 50	100 00
8 to 10 ft.; very fine	3 00	27 50	
Very low-branched, heavy stock.			
florida, var. fiore rubro. Red-flowered Dogwood. 3 to 3½ ft. Bushy.	1 75	15 00	
3½ to 4 ft. Bushy	2 00	18 50	
4 to 5 ft. Bushy	2 50	22 50	
6 to 8 ft. Bushy	5 00		
florida, var. pendula. Weeping Dogwood—			
5 to 6 ft. Rare	3 50		
6 to 7 ft. Rare	5 00		
7 to 10 ft. Rare	\$6 to 10 00		
One of the most beautiful of weeping trees, combining spring flowers, summer berries and brilliant autumn foliage.			
CRATÆGUS Carrieri. 2½ to 3 ft.	75	5 00	
3 to 4 ft.	1 00	7 50	
4 to 5 ft.	1 25	10 00	
coccinea. 3 to 3½ ft.	75	6 00	
4 to 5 ft.	1 00	7 50	
5 to 6 ft.	1 25	10 00	
cordata. Washington Thorn—			
3½ to 4 ft.	75	6 00	
4 to 5 ft.	1 00	8 50	
6 to 8 ft.; very heavy	2 50		

	Each	10	100
CRATÆGUS Crus-galli. Cocksaur Thorn—			
4 to 4½ ft.	\$0 75	\$6 00	\$35 00
5 to 6 ft.	1 00	7 50	50 00
6 to 8 ft. ♦	1 25	10 00	75 00
8 to 10 ft. ♦	1 50	13 50	85 00
mollis. Scarlet Haw. 5 to 6 ft.	1 00	7 50	
Oxyacantha. English Hawthorn—			
3 to 4 ft.	50	3 50	25 00
4 to 5 ft.	75	5 00	35 00
5 to 6 ft.	1 00	6 00	45 00
Oxyacantha, var. alba flore pleno. Double White Hawthorn. 4 to 6 ft.	1 00	9 00	
Oxyacantha, var. coccinea flore pleno. Paul's Double Scarlet—			
4 to 6 ft.	1 00	9 00	
10 to 12 ft. Standards ♦	3 00	25 00	
Oxyacantha, var. rosea flore pleno. Double Pink Hawthorn—			
4 to 5 ft.	1 00	9 00	
punctata. 4 to 5 ft.	75	5 00	35 00
CYTISUS Laburnum. Golden Chain. 3 to 4 ft.	50	4 00	
4 to 5 ft.	75	6 00	
DIOSPYROS Virginica. Persimmon. 6 to 8 ft.	1 00	8 50	
8 to 10 ft.	1 50		
FAGUS ferruginea. American Beech. 3 to 4 ft.	1 50	13 50	
4 to 5 ft.	2 00	17 50	
6 to 8 ft. ♦ \$3.50 to	5 00		
sylvatica. European Beech. 3 to 4 ft.	75	6 00	50 00
4 to 5 ft.	1 00	7 50	60 00
5 to 6 ft.	1 75	15 00	
6 to 7 ft.	3 50	32 50	
7 to 8 ft. \$3.50 to	5 00		
8 to 10 ft. Specimens \$5 to	15 00		
sylvatica, var. asplenifolia. Fern-like Beech—			
3 to 4 ft.	1 50		
sylvatica, var. pendula. Weeping Beech—			
6 to 8 ft.	3 50	32 50	
8 to 10 ft. \$5 to	7 50		
14 to 16 ft.; 2 to 3½ in. Specimens. \$15 to	25 00		
All recently transplanted.			
sylvatica, var. purpurea. Purple Beech—			
4 to 5 ft.	1 50	12 50	
5 to 6 ft.	2 50		
6 to 7 ft.	3 00		
7 to 8 ft.	3 50	32 50	
9 to 10 ft.	5 00	45 00	
11 to 12 ft.	7 50	70 00	
12 to 14 ft. Specimens \$10 to	35 00		
8 to 16 ft. Sheared specimens. \$10 to	35 00		
sylvatica, var. purpurea major. Large Leaf—			
3 to 4 ft.	1 50	12 50	
4 to 5 ft.	1 75	15 00	
5 to 6 ft.	2 50	22 50	
sylvatica, var. Riversi. Rivers' Blood-leaved Beech. 5 to 6 ft.	2 50		
6 to 8 ft. \$3.50 to	5 00		
10 to 14 ft. Specimens \$12.50 to	35 00		



An avenue of Sweet Gums (Liquidambar), at Andorra

	Each	10	100
FRAXINUS Americana. White Ash. 6 to 8 ft.....	\$1 00	\$7 50	\$50 00
8 to 10 ft.	1 25	10 00	75 00
10 to 12 ft.; 2 to 2½ in.	1 50	12 50	90 00
12 to 14 ft.; 2¾ to 2¾ in.	2 50	22 50	
14 to 16 ft.; 2¾ to 3 in.	3 00		
excelsior. European Ash—			
10 to 12 ft.	1 50	10 00	
3 to 3½ in. caliper	2 50	22 50	
Ornus. Flowering Ash—			
8 to 10 ft.	1 00	7 50	60 00
10 to 12 ft.; 2 in.	1 50	10 00	85 00
GLEDITSCHIA aquatica. Water Locust. 6 to 8 ft..	50	4 50	40 00
8 to 10 ft.	1 00	7 50	60 00
triacanthos. Honey Locust. 3 to 4 ft.	50	4 00	25 00
GLYPTOSTROBUS. See <i>Taxodium.</i>			
GYMNOCLADUS Canadensis. Kentucky Coffee Tree—			
6 to 7 ft.	1 00	7 50	
JUGLANS nigra. Black Walnut. 6 to 8 ft.	1 00	7 50	60 00
8 to 10 ft.	1 50	10 00	75 00
KÆLREUTERIA paniculata. Varnish Tree—			
5 to 6 ft.	1 50	12 50	
8 to 10 ft.	2 50	22 50	
LARIX Europæa. European Larch. 4 to 5 ft.....	1 00	6 00	
6 to 8 ft.	1 25	10 00	
8 to 10 ft.	1 50	13 50	85 00
leptolepis. Japanese Larch. 6 to 8 ft.....	1 00	7 50	
10 to 12 ft.	1 50	13 50	

	Each	10	100
LIQUIDAMBAR. Sweet Gum. 6 to 7 ft. Fine....	\$1 50	\$12 50	\$85 00
7 to 8 ft.; 2½ in. Fine....	2 50	22 50	
8 to 9 ft.; 3 to 3½ in. Fine....	3 50	32 50	
LIRIODENDRON Tulipifera. Tulip Tree. 6 to 7 ft..	1 00	8 50	
8 to 9 ft.; very heavy	1 50	10 00	
9 to 10 ft.; very heavy	1 75	16 50	
10 to 12 ft.; very heavy	2 00	17 50	
12 to 14 ft.; very heavy ..	2 50	22 50	
Tulipifera, var. fastigiata. A beautiful pyramidal form of the well-known Tulip tree.			
6 to 8 ft.....	2 00	18 50	
8 to 10 ft.....	2 50		
10 to 12 ft.....	3 50		
MAGNOLIA. Native Sorts—			
acuminata. Cucumber Tree. 6 to 8 ft.	1 00	9 00	
glauca. Sweet or Swamp Magnolia—			
2 to 2½ ft.....	1 50	13 50	
grandiflora. Evergreen Magnolia—			
2½ to 3 ft.....	2 50		
macrophylla. Great-leaved Magnolia—			
3 to 4 ft.....	2 50	22 50	
tripetala. Umbrella Tree. 5 to 6 ft..	75	6 00	
6 to 8 ft.....	1 00	8 50	
8 to 10 ft.....	1 25	9 00	
10 to 12 ft.....	1 50	12 50	
12 to 14 ft.....	2 00	18 50	
MAGNOLIA. Chinese Sorts—			
Alexandriana. 3 to 4 ft....	\$3.50 to 5 00		
6 to 7 ft.....	7 50		
conspicua. Pure white—			
2½ to 3 ft.....	2 50		
3 to 3½ ft.....	3 50		
Kobus. 2 to 2½ ft.....	1 50	13 50	
3 to 3½ ft.....	3 50	30 00	
Lennei Hybrid. Lenne's Magnolia—			
3 to 4 ft.....	\$2.50 to 3 50		
4 to 5 ft.....	\$3.50 to 5 00		
Specimens. 12 to 15 ft. Prices on application.			
Norbertiana Hybrid. Norbert's Magnolia—			
3 to 3½ ft.....	3 50		
purpurea; syn., obovata. Purple Magnolia—			
3 to 3½ ft.....	2 50	22 50	
4 to 5 ft.....	3 50	30 00	
Soulangeana Hybrid. Soulange's Magnolia—			
3 to 4 ft.....	2 50		
4 to 5 ft.....	3 50		
5 to 6 ft.....	\$5 to 7 50		
Larger specimens. Prices on application.			
speciosa. 4½ to 5 ft....	\$3.50 to 5 00		
stellata; syn., Halleana. Hall's Japanese Magnolia. 2 ft.....	2 50	22 50	
2½ ft.....	3 50	32 50	
3 to 4 ft. Specimens....	\$5 to 10 00		
superba alba. 4 to 5 ft....	\$3.50 to 5 00		
7 to 8 ft.....	\$7.50 to 10 00		



An avenue of "Andorra-grown" Oriental Planes. (See page 30)

		Each	10
MORUS alba.	White Mulberry. 8 to 10 ft.....	\$1 00	\$6 00
alba,	var. Tatarica alba. White-fruited Russian Mulberry. 6 ft.....	75	
alba.	var. Tatarica rubra. Red Russian Mulberry. 6 ft.....	75	
alba,	var. Tatarica pendula. Teas' Weeping Mul- berry. 2-yr. heads.....♦	2 50	
NEGUNDO. See <i>Acer</i> .			
NYASSA sylvatica.	Sour Gum. 4 to 4½ ft.....♦	1 50	13 50
OSTRYA Virginica (Ironwood).	2 to 3 ft.....	35	3 00
OXYDENDRUM arboreum; syn., Andromeda arborea.	Sorrel		
	Tree. 2 to 3 ft.....	1 00	9 00
	3 to 4 ft.....	1 50	13 50
	4 to 5 ft.....	2 00	18 50
	5 to 6 ft.....	2 50	22 50
	6 to 7 ft.....	3 00	27 50
	7 to 8 ft.....	3 50	
PARROTIA Persica.	Persian Iron Tree. 5 to 6 ft.....	1 50	
	10 to 12 ft.....	3 50	
PAULOWNIA imperialis.	10 to 12 ft.....	3 50	
PERSICA vulgaris, var. alba plena.	Double White-flowering Peach. 5 to 6 ft.....	1 00	9 00
vulgaris, var. sanguinea plena.	Double Red-flowering Peach. 4 to 5 ft.....	1 00	9 00
PHELLODENDRON Amurense.	Chinese Cork Tree—		
	8 to 10 ft.....	1 50	12 50
	10 to 12 ft.....	2 00	18 50

	Each	10	100
PLATANUS occidentalis. American Buttonwood—			
8 to 10 ft.	\$1 00	\$8 50	\$75 00
10 to 12 ft.; 1 $\frac{3}{4}$ to 2 in.	1 50	12 50	
12 to 14 ft.; 2 to 2 $\frac{1}{2}$ in.	2 00	18 50	
14 to 16 ft.; 3 to 3 $\frac{1}{2}$ in.	3 50	32 50	
orientalis. Oriental Plane, or European			
Buttonwood. 6 to 8 ft.	1 00	7 50	50 00
8 to 10 ft.; 1 $\frac{1}{4}$ to 1 $\frac{1}{2}$ in.	1 25	11 50	85 00
10 to 12 ft.; 1 $\frac{3}{8}$ to 1 $\frac{3}{4}$ in.	1 50	12 50	100 00
12 to 14 ft.; 1 $\frac{3}{4}$ to 2 in.	1 75	16 00	150 00
12 to 14 ft.; 2 $\frac{3}{8}$ to 3 in.	3 50	32 50	
14 ft.; 3 to 4 in. Specimens.	\$5 to 10 00		
POPULUS alba, var. Bolleana. Bolle's Poplar—			
8 to 10 ft.	1 50	13 50	
12 to 14 ft.	2 50	20 00	
16 to 18 ft.; 3 to 3 $\frac{1}{2}$ in.	3 50		
monilifera; syn., Carolinensis. Carolina			
Poplar. 10 to 12 ft.; 1 $\frac{1}{2}$ to 2 in.	1 00	9 00	
nigra, var. fastigiata. Lombardy Poplar—			
8 to 10 ft.	1 25	10 00	
10 to 12 ft.; 1 $\frac{1}{2}$ to 2 in.	1 50	13 50	125 00
12 to 14 ft.; 2 to 2 $\frac{1}{2}$ in.	2 00	18 50	150 00
14 to 16 ft.; 2 $\frac{3}{8}$ to 3 in.	3 00	27 50	
Transplanted several times.			
PRUNUS. See <i>Cerasus.</i>			
PTELEA trifoliata. Hop Tree. 4 to 6 ft.	35	3 00	20 00
6 to 7 ft.	50	4 50	25 00
7 to 9 ft.	75	5 00	40 00
trifoliata, var. aurea. Golden Hop Tree—			
4 to 5 ft.	35	3 00	20 00
5 to 6 ft.	50	4 50	25 00
PTEROSTYRAX hispidum (<i>Halesia hispida</i>).			
6 to 8 ft.	1 00	8 00	
8 to 10 ft.	1 50	12 50	
PYRUS. See, also, <i>Shrubs.</i>			
atrosanguinea. 3 to 4 ft.	1 00	8 50	
baccata. Siberian Flowering Crab Apple—			
4 to 5 ft.	75	6 00	
5 to 6 ft.	1 00	8 50	
coronaria. Sweet-scented Crab. 4 to 5 ft.	75	6 00	
floribunda. Flowering Crab. 3 $\frac{1}{2}$ to 4 ft.	1 00		
lœnsis, var. Bechtel. Bechtel's Double-			
flowering Crab. 3 to 4 ft.	1 50	12 50	
Parkmani; syn., Halliana. Parkman's Crab—			
3 to 4 ft.	75	6 00	
spectabilis. Chinese Double-flowering Crab—			
3 to 4 ft.	1 00	7 50	
spectabilis, var. alba flore pleno. Double			
Rose-flowering Crab. 3 to 4 ft.	1 00		
QUERCUS alba. White oak. 4 to 5 ft.	1 00	8 50	75 00
5 to 6 ft.	1 25	10 00	85 00
6 to 7 ft.	1 50	12 50	100 00
7 to 8 ft.	1 75	16 00	135 00
8 to 10 ft.	2 50	22 50	200 00
10 to 12 ft.	3 50	32 50	

PRICE-LIST FOR FALL OF 1908

31

	Each	10	100
QUERCUS bicolor. Swamp White Oak. 6 to 7 ft..	\$1 25	\$10 00	\$85 00
7 to 8 ft.	1 50	12 50	100 00
8 to 9 ft.	2 00	17 50	135 00
10 to 12 ft. Specimens....	\$3.50 to 5 00		
coccinea. Scarlet Oak. 6 to 7 ft.....	1 25	10 00	85 00
7 to 8 ft.	1 50	13 50	100 00
8 to 9 ft.; 1 $\frac{3}{4}$ to 2 in.	2 00	17 50	150 00
9 to 10 ft.; 2 to 2 $\frac{1}{4}$ in.	2 50	22 50	175 00
10 to 12 ft.; 2 $\frac{1}{2}$ to 2 $\frac{3}{4}$ in.	\$2.75 to 5 00		
imbricaria. Laurel Oak. 7 to 8 ft....	2 50	22 50	
8 to 10 ft.	3 50	32 50	
10 to 12 ft.; 2 to 2 $\frac{1}{2}$ in.	5 00		
macrocarpa. Mossy Cup Oak—			
8 to 9 ft.; 1 $\frac{1}{2}$ to 1 $\frac{3}{4}$ in.	2 00	17 50	
10 to 12 ft.	2 50	22 50	
12 to 14 ft. Specimens ...	\$3.50 to 5 00		
palustris. Pin Oak—			
6 to 7 ft. Low-branched	1 00	8 50	60 00
7 to 8 ft. Low-branched	1 25	10 00	70 00
8 to 9 ft.; 1 $\frac{1}{2}$ to 1 $\frac{3}{4}$ in. Low-branched	1 50	13 50	125 00
9 to 10 ft.; 1 $\frac{3}{4}$ to 2 in. Low-branched	2 00	17 50	135 00
10 to 12 ft.; 2 to 2 $\frac{1}{2}$ in. Low-branched	2 50	22 50	150 00
10 to 12 ft.; 2 $\frac{1}{4}$ to 3 in.	3 50	30 00	275 00
Extra heavy specimens. 3 $\frac{1}{2}$ to 4 $\frac{1}{2}$ in. cal., well-rooted and good tops,			
	\$7.50 to 15 00		
pedunculata, var. Concordia. Golden Oak—			
8 to 10 ft.	3 50	30 00	
Prinus. Rock Chestnut Oak. 7 to 8 ft..	1 25	10 00	
8 to 10 ft.	1 50	13 50	125 00
10 to 12 ft.; 2 to 2 $\frac{1}{4}$ in.	2 00	18 50	150 00
12 to 14 ft.; 2 $\frac{1}{2}$ to 2 $\frac{3}{4}$ in.	2 50	22 50	175 00
Excellent for street planting.			
Robur. English Oak. 6 to 8 ft.	1 00	8 50	
8 to 10 ft.	1 50	12 50	100 00
10 to 12 ft.; 2 to 2 $\frac{1}{4}$ in.	2 00	17 50	125 00
12 to 14 ft. ft.; 2 $\frac{1}{2}$ to 3 in.	2 50	22 50	200 00
Specimens. 3 $\frac{1}{2}$ to 4 $\frac{1}{2}$ in. cal.	\$3.50 to 10 00		
Robur, var. fastigiata. Pyramidal English Oak. 6 to 7 ft.	2 50		
7 to 8 ft.	3 50		
rubra. Red Oak. 5 to 6 ft.	75	7 00	65 00
6 to 7 ft.	1 00	9 00	85 00
7 to 8 ft.	1 50	13 50	110 00
8 to 10 ft.; 2 to 2 $\frac{1}{4}$ in.	2 00	17 50	150 00
10 to 12 ft.; 2 $\frac{1}{2}$ to 2 $\frac{3}{4}$ in.	3 00	27 50	
12 to 14 ft. Specimens....	\$3.50 to 10 00		
velutina, var. tinctoria. Black Oak—			
6 to 8 ft.	1 25	10 00	85 00
8 to 10 ft.; 1 $\frac{3}{4}$ to 2 in.	1 75	15 00	125 00
10 to 12 ft.; 2 to 2 $\frac{1}{4}$ in.	2 00	18 50	150 00
Specimens, 3 to 3 $\frac{1}{2}$ in.	3 00	27 50	
RHUS glabra. Smooth Sumac. 4 to 5 ft.	50	4 00	35 00
5 to 6 ft.	75	6 00	50 00
7 to 8 ft.	1 00	8 50	75 00
glabra, var. laciniata. Cut-leaved Sumac—			
2 to 3 ft.	75	6 00	
3 to 3 $\frac{1}{2}$ ft.	1 00	7 50	

	Each	10	100
RHUS Osbecki. 3 to 4 ft.	\$0 50	\$4 00	
5 to 6 ft.	75	6 00	
typhina. Staghorn Sumac. 3 to 4 ft.	35	3 00	\$15 00
5 to 6 ft.	50	4 00	30 00
6 to 8 ft.	75	6 00	50 00
8 to 10 ft.	1 00	8 50	
ROBINIA pseudacacia. 8 to 10 ft.	1 00	7 50	
pseudacacia, var. foliis aureis. Golden-leaved Locust. 6 to 8 ft.	1 00	7 50	
8 to 10 ft.	1 50		
SALISBURIA adiantifolia. Ginkgo, or Maidenhair			
Tree. 6 to 7 ft.	1 00	8 50	75 00
7 to 8 ft.	1 25	10 00	85 00
8 to 9 ft.	1 50	13 50	125 00
9 to 10 ft.	2 00	17 50	150 00
10 to 12 ft.	2 50	22 50	200 00
SALIX alba. White Willow. 6 to 7 ft.	75	5 00	35 00
Babylonica. Weeping Willow. 6 to 8 ft.	75	6 00	
10 to 12 ft. Heavy	2 50	22 50	
Babylonica, var. dolorosa. Wisconsin Weeping Willow. 7 to 8 ft.	1 00	7 50	
caprea. Pussey Willow. 3 to 4 ft.	50	4 00	35 00
incana. Rosemary Willow. 2 ft.	35	3 00	20 00
lutea. Golden Willow. 8 to 10 ft.	1 00	7 50	
10 to 12 ft.	1 50	10 00	
lutea, var. pendula. Golden Weeping Willow—			
8 to 10 ft.	1 50	10 00	
10 to 12 ft.	2 50		
12 to 14 ft.	\$3.50 to 5 00		
pentandra. Laurel Leaf Willow. 8 to 10 ft.	1 50	12 50	
regalis. 10 to 12 ft.	1 50	12 50	
viminalis. 2 to 3 ft.	35	3 00	20 00
vitellina, var. Britzensis. Salmon-barked Willow. 10 to 12 ft.	1 50	10 00	75 00
SOPHORA Japonica. Japanese Sophora—			
3 to 3½ ft.	1 00	8 50	
Japonica, var. pendula. Weeping Sophora—			
7 to 8 ft. Specimens.	\$3.50 to 5 00		
SORBUS Americana. American Mountain Ash—			
7 to 8 ft.	1 50	12 50	
aucuparia. European Mountain Ash—			
7 to 8 ft.	1 50	12 50	
aucuparia, var. fruticosa lutea. Yellow-fruited. 7 to 8 ft.	1 50	12 50	
aucuparia, var. quercifolia. Oak-leaved Mountain Ash. 8 to 10 ft.	1 50	12 50	
TAXODIUM distichum. Deciduous Cypress—			
3 to 4 ft.	1 00	8 50	
TILIA Americana. American Linden, or Basswood—			
8 to 10 ft.	1 50	12 50	
10 to 12 ft.; 2 to 2½ in.	2 00	17 50	
10 to 12 ft.; 2½ to 2¾ in.	2 50	22 50	
10 to 12 ft.; 2¾ to 3 in.	\$3.50 to 5 00		
12 to 14 ft.; 3 to 4 in.	\$5 to 10 00		

	Each	10
TILIA argentea; syn., tomentosa. Silver-leaved Linden—		
6 to 8 ft.	\$1 50	\$12 50
8 to 10 ft.; 2 $\frac{1}{4}$ to 2 $\frac{3}{4}$ in.	2 00	18 50
10 to 12 ft.; 2 $\frac{3}{8}$ to 2 $\frac{3}{4}$ in.	3 50	32 50
vulgaris; syn., Europæa. European Linden—		
8 to 10 ft.; 1 $\frac{1}{2}$ to 2 in.	1 50	12 50
10 to 12 ft.; 2 to 2 $\frac{1}{2}$ in.	2 50	22 50
12 to 14 ft.; 3 to 4 in.	\$3.50 to 7 50	
vulgaris, var. pyramidalis laciniata. Pyramidal Cut-leaf. 10 to 12 ft.	2 00	15 00
ULMUS Americana. American Elm—		
8 to 10 ft.	1 00	7 50
10 to 12 ft.	1 50	13 50
12 to 14 ft.; 2 to 2 $\frac{1}{4}$ in.	2 00	17 50
12 to 14 ft.; 2 $\frac{1}{2}$ to 2 $\frac{3}{4}$ in.	2 50	22 50
14 to 15 ft.; 3 to 4 $\frac{1}{2}$ in.	\$3.50 to 10 00	
campestris. English Elm. 8 to 10 ft.	1 50	13 50
10 to 12 ft.; 2 $\frac{1}{2}$ to 2 $\frac{3}{4}$ in.	2 50	22 50
12 to 14 ft.; 2 $\frac{3}{4}$ to 3 in.	3 50	32 50
Specimens	\$5. to 7 50	
campestris, var. latifolia; syn., major. Broad-leaved English Elm. 10 to 12 ft.; 2 to 2 $\frac{1}{2}$ in.	1 50	13 50
12 to 14 ft.; 2 $\frac{1}{2}$ to 2 $\frac{3}{4}$ in.	2 50	22 50
12 to 14 ft.; 2 $\frac{3}{4}$ in. to 3 in.	3 50	32 50
16 to 18 ft.; 3 to 4 in.	\$5 to 7 50	
campestris, var. Wheatley's (Cornish) Elm—		
10 to 12 ft.	2 50	22 50
12 to 14 ft.	3 50	32 50
scabra; syn., montana. Scotch, or Wych Elm—		
8 to 10 ft.; 1 $\frac{1}{2}$ to 2 in.	1 50	13 50
scabra, var. Huntingdoni. Huntingdon Elm—		
10 to 12 ft.; 2 to 2 $\frac{1}{4}$ in.	1 75	16 00
12 to 14 ft.; 2 $\frac{1}{4}$ to 2 $\frac{1}{2}$ in.	2 50	22 50
14 to 16 ft.; 3 to 3 $\frac{1}{4}$ in.	\$3.50 to 7 50	
scabra, var. pendula. Camperdown Elm—		
6 ft.	1 50	
scabra, var. purpurea. Purple Wych Elm—		
8 to 10 ft.	1 50	13 50
10 to 12 ft.	2 00	17 50
12 to 14 ft.; 3 to 3 $\frac{1}{2}$ in.	2 50	22 50

DECIDUOUS SHRUBS

	Each	10	100
ABELIA rupestris. 1 to 1 $\frac{1}{2}$ ft.	\$0 50	\$4 50	\$25 00
1 $\frac{1}{2}$ to 2 ft.	75	6 50	30 00
2 to 2 $\frac{1}{2}$ ft.	1 00	7 50	50 00
ACANTHOPANAX spinosa (Aralia pentaphylla)—			
3 to 4 ft.	35	3 00	20 00
4 to 6 ft. Heavy	50	4 00	30 00
ÆSCULUS parviflora; syn., Pavia macrostachya—			
1 $\frac{1}{2}$ ft.	1 00	8 50	75 00
2 ft.	1 50	13 50	100 00
ALTHEA. See <i>Hibiscus.</i>			
AMELANCHIER Botryapium. 2 $\frac{1}{2}$ to 3 ft.	35	3 00	25 00
3 to 4 ft.	50	4 00	30 00
4 to 5 ft.	75	5 00	40 00



Partial view of Nursery grounds from top of Main Nursery

	Each	10	100
AMORPHA canescens. .2 ft.	\$0 35	\$2 50	\$15 00
fragrans. 3 to 4 ft.	35	3 00	25 00
fruticosa. 2 to 3 ft.	25	2 00	15 00
3 to 4 ft.	35	3 00	20 00
4 to 5 ft.	50	4 00	25 00
AMYGDALUS (Almond). See <i>Prunus</i> .			

NATIVE AZALEAS.—Angorra Grown

Clean, bushy, transplanted stock

AZALEA		Each	10	100
arborescens.	Fragrant White Azalea—			
	12 to 15 in. Bushy	\$1 00	\$9 00	
	15 to 18 in. Bushy	1 50	13 50	\$125 00
	1½ to 2 ft. Bushy	2 00	18 50	150 00
	2 to 2½ ft. Bushy	2 50	22 50	
	2½ to 3 ft. Bushy	3 50	30 00	
calendulacea.	Flame Azalea. 12 to 15 in.	1 00	9 00	
	15 to 18 in. Bushy	1 50	13 50	125 00
	18 to 24 in. Bushy	1 75	15 00	135 00
	2 to 2½ ft. Bushy	2 50	22 50	175 00
Canadensis (Rhodora).	1 ft. Bushy	1 00	8 50	75 00
	1½ to 2 ft.	2 00	18 50	
nudiflora.	12 to 15 in.	1 00	9 00	
	15 to 18 in.	1 50	13 50	
	1½ to 2 ft. Bushy	1 75	15 00	135 00
	2 to 2½ ft. Bushy	2 50	22 50	
Vaseyi.	Southern Azalea. 12 to 15 in.	1 00	9 00	
	15 to 18 in.	1 50	13 50	
	1½ to 2 ft. Bushy	2 00	18 50	
	2 to 2½ ft. Bushy	2 50	22 50	175 00
	2½ to 3 ft. Bushy	3 50	30 00	250 00
viscosa.	White Azalea. 12 to 15 in.	1 00	9 00	
	15 to 18 in. Bushy	1 50	13 50	
	1½ to 2 ft. Bushy	2 00	18 50	

MOLLIS and GHENT AZALEAS

	Each	10	100
AZALEA mollis. 1½ ft.	\$1 25	\$10 00	\$90 00
2 ft. Bushy	1 50	13 50	125 00
2½ ft. Bushy	2 00	17 50	
All very heavy stock, lifting with good balls.			
Pontica (Ghent). 1½ ft. Named sorts....	1 25	10 00	90 00
2 ft. Bushy. Named sorts	1 50	12 50	120 00
2½ to 3 ft. Bushy	2 50	22 50	
3 to 3½ ft. Bushy	\$2.50 to 3 50		
Heavy stock, lifting with good balls.			
BACCHARIS halimifolia. Groundsel Shrub—			
3 to 4 ft.; heavy	50	4 00	25 00
5 to 6 ft.; heavy	75	6 00	30 00
Desirable for late bloom.			
BENZOIN odoriferum. Spice Bush. 2½ to 3 ft....	35	3 00	
3 to 3½ ft.	50	4 00	
3½ to 4 ft.	75	6 00	
BERBERIS (Barberry) Asiatica. 3 to 3½ ft....♦	75	6 00	50 00
<i>ilicifolia.</i> Holly-leaved. 15 to 18 in...	35	3 00	27 50
1½ to 2 ft.	50	4 00	35 00
2 to 2½ ft.	75	6 00	40 00
<i>Japonica</i> (not Mahonia). 2 to 2½ ft....	50	4 50	25 00
3 to 4 ft.	75	5 00	
<i>Sinensis.</i> Chinese Barberry. 2 to 2½ ft.	35	3 00	
2½ to 3 ft.; very heavy	50	4 00	
3 to 3½ ft.	75	6 00	
<i>Thunbergii.</i> 12 to 15 in.....	25	1 75	12 00
15 to 18 in.	35	2 50	15 00
1½ ft.; broad and very heavy.....	50	3 50	20 00
1½ to 2 ft.; broad and very heavy..	60	4 50	25 00
2½ ft.; broad and very heavy.....	75	6 00	45 00
3 to 3½ ft.; broad and very heavy..	1 00	7 50	
<i>vulgaris.</i> Common Barberry—			
1½ to 2 ft.	35	3 00	20 00
2 to 2½ ft.	50	3 50	25 00
<i>vulgaris, var. purpurea.</i> 2 to 2½ ft....	35	3 00	17 50
2½ to 3 ft.	50	3 50	25 00
3 to 3½ ft.	75	4 00	35 00
3½ to 4 ft.	1 00	6 00	50 00
CALLICARPA purpurea. Beauty Fruit. 2 to 2½ ft..	35	3 00	25 00
2½ to 3 ft.	50	4 50	35 00
3 to 4 ft.	75	6 00	45 00
CALYCANTHUS floridus. Allspice, or Sweet Shrub—			
2½ to 3 ft.	50	4 00	30 00
4 to 5 ft.	75	6 00	35 00
CARAGANA arborescens. Siberian Pea—			
1½ to 2 ft.	25	2 00	17 50
2 to 2½ ft.	35	3 00	25 00
2½ to 3 ft.	50	4 00	
CARYOPTERIS Mastacanthus. Blue Spirea—			
1½ to 2 ft.	35	2 50	15 00

	Each	10	100
CEANOTHUS Americanus. Jersey Tea. 1½ to 2 ft.	\$0 25	\$2 00	\$15 00
2 to 2½ ft.	35	3 00	20 00
2½ to 3 ft.	50	4 00	25 00
Americanus, var. Fendleri—			
1½ to 2 ft.	75	5 00	
CEPHALANTHUS occidentalis.			
3½ to 4 ft.	35	3 00	25 00
4 to 5 ft.	50	4 00	30 00
CERCIS. See, also, Deciduous Trees.			
Japonica. Japan Judas			
3 to 3½ ft.	75	6 00	
Exceptionally fine stock.			
CHIONANTHUS Virginica. White Fringe. 2 to 2½ ft.	35	3 00	
2½ to 3 ft. Bushy	50	4 50	40 00
3 to 4 ft. Bushy	75	7 00	50 00
4 to 5 ft. Bushy	1 00	8 50	75 00
5 to 6 ft.	1 50	13 50	100 00
CLETHRA alnifolia. Sweet Pepperbush—			
2 to 2½ ft.	35	2 50	17 50
2½ to 3 ft. Broad and bushy	50	3 00	25 00
3 to 3½ ft. Broad and bushy	60	4 00	
4 to 4½ ft. Bushy	75	6 00	
COLUTEA arborescens. Bladder Senna. 2 to 3 ft.	35	2 50	20 00
3 to 3½ ft.	50	4 00	25 00
4 to 5 ft.	75	6 00	30 00
COMPTONIA asplenifolia. Sweet Fern. 1½ to 2 ft.	35	3 00	25 00
2 to 2½ ft.	50	4 00	
CORCHORUS Japonicus. Single Globe Flower—			
2 to 2½ ft.	50	3 50	25 00
Japonicus, var. variegata. (Variegated Leaves)—			
2 to 2½ ft.	50	3 50	
CORNUS. See, also <i>Trees.</i>			
alba. Siberian Red-twigged Dogwood—			
2 to 2½ ft.	25	2 00	15 00
2½ to 3 ft.; very heavy	35	3 00	20 00
3 to 3½ ft.; very heavy	50	4 00	25 00
3½ to 4 ft.; very heavy	75	6 00	30 00
5 to 6 ft.	1 00	7 50	50 00
alba; syn., sibirica, var. aurea variegata—			
1½ to 2 ft.	50	4 00	
2 to 2½ ft.	75	5 00	
alba, var. elegantissima. Golden-leaved—			
2 to 3 ft.	35	3 00	25 00
3 to 4 ft.	75	6 00	
alternifolia.			
3 to 4 ft.	50	4 00	30 00
4 to 5 ft.	75	5 00	40 00
5 to 6 ft.	1 00	6 00	50 00
Mas. Cornelian Cherry. 1½ to 2 ft.	35	2 50	15 00
2 to 2½ ft.	50	3 50	20 00
2½ to 3 ft.	75	6 00	30 00
4½ to 5 ft.; very heavy	75	6 00	
5 to 6 ft.	1 00	7 50	
6 to 10 ft. Specimens	2 50		
paniculata.			
2 to 2½ ft.	35	3 00	
2½ to 3 ft.	50	4 00	
3 to 3½ ft.	75	6 00	

	Each	10	100
CORNUS sanguinea. European Osier Dogwood—			
2 to 2½ ft. Fine.....	\$0 25	\$2 00	\$15 00
3½ to 4 ft. Fine.....	35	3 00	25 00
4 to 5 ft. Fine.....	50	4 00	30 00
5 to 6 ft. Fine.....	75	5 00	35 00
sanguinea, var. elegantissima variegata—			
2½ to 3 ft.	50		
3 to 4 ft.	75		
sericea. Silky Dogwood. 3 to 3½ ft.	35	3 00	20 00
3½ to 4 ft.	50	4 00	30 00
4 to 5 ft.	75	6 00	35 00
6 to 7 ft.	1 00	7 50	50 00
stolonifera. Native Red Osier—			
2½ to 3 ft.	35	3 00	20 00
3 to 3½ ft.	50	4 00	25 00
3½ to 4 ft.	60	5 00	30 00
4 to 5 ft.	75	6 00	35 00
6 to 7 ft.	1 00	7 50	50 00
stolonifera, var. aurea. Golden-barked—			
2½ to 3 ft.	35	3 00	
3 to 3½ ft.	50	4 00	30 00
3½ to 4 ft.	75	5 00	35 00
CORYLUS Americana. American Hazel—			
2½ to 3 ft.	50	3 50	
CORYLUS Avellana, var. laciniata. Cut-leaved-Hazel—			
6 to 8 ft.	1 00	7 50	
maxima, var. purpurea. Purple Hazel—			
2 to 2½ ft.	35	3 00	20 00
4 to 5 ft.	50	4 50	40 00
COTONEASTER frigida, var. bacillaris—			
2 to 2½ ft.	35	3 00	20 00
4 to 4½ ft.	50	4 00	25 00
CRATÆGUS. see <i>Trees.</i>			
CYDONIA Japonica. Japan Quince. 1½ ft.	35	3 00	
CYTISUS scoparius. Scotch Broom. 4 to 5 ft.	50	4 50	30 00
DESMODIUM penduliflorum. See <i>Lespedeza Sieboldi.</i>			
DEUTZIA candidissima (Double White). 3 to 3½ ft.	35	3 00	20 00
3½ to 4 ft.	50	4 00	25 00
5 to 6 ft.	75	5 00	35 00
crenata. 3½ to 4 ft.	50	3 50	30 00
crenata, var. Pride of Rochester—			
3 to 3½ ft.	50	3 50	25 00
4 to 5 ft.	75	5 00	35 00
crenata, var. Waterer. 3 ft.	35	3 00	20 00
3½ to 4 ft.	50	3 50	25 00
4 to 5 ft.	60	4 00	30 00
5 to 6 ft.	75	6 00	35 00
crenata, var. Wellsi. 5 to 6 ft.	75	5 00	
6 to 8 ft.	1 00	7 50	
gracilis. Dwarf Deutzia. 12 to 15 in.	35	3 00	15 00
15 to 18 in.; very heavy.	50	4 00	25 00
18 to 24 in.	75	6 00	30 00
24 to 30 in.	1 00	7 50	40 00
gracilis, var. carminea. 15 to 18 in.	50	4 00	25 00
18 to 24 in.	75	6 00	30 00
24 to 30 in.	1 00	7 50	40 00

	Each	10	100
DEUTZIA gracilis , var. <i>rosea</i> . 1½ to 2 ft.....	\$0 50	\$4 00	\$25 00
2 to 2½ ft.	75	6 00	30 00
2½ to 3 ft.	1 00	7 50	35 00
Lemoinei . 2 to 2½ ft.; very heavy.....	35	3 00	20 00
4 to 5 ft.; heavy	75	6 00	40 00
Lemoinei , var. <i>compacta</i> . 1½ ft.....	25	2 00	12 50
2½ to 3 ft.	50	4 00	25 00
3 to 3½ ft.	75	5 00	35 00
4 to 5 ft.	1 00	7 50	50 00
parviflora . 2 to 2½ ft.....	50	4 00	
scabra . 3 to 3½ ft.	35	3 00	15 00
4 to 5 ft.	50	4 00	20 00
5 to 6 ft.	75	6 00	30 00
DIERVILLA (Weigela) florida , var. <i>amabilis</i> . 5 to 6 ft.	75	5 00	40 00
florida ; syn., <i>rosea</i> . 2½ to 3 ft.	35	2 50	15 00
3 to 4 ft.	50	4 00	20 00
4 to 5 ft.	75	5 00	30 00
florida , var. <i>candida</i> . 3 to 3½ ft.....	35	3 00	25 00
4 to 5 ft.	50	4 00	30 00
5 to 6 ft.	75	5 00	40 00
florida nana , var. <i>aurea variegata</i> —			
3 to 3½ ft.	50	4 00	30 00
florida , var. <i>Sieboldi alba</i> . 4 to 5 ft.	75	6 00	
floribunda Lavallei .			
3 to 3½ ft.	35	3 00	25 00
3½ to 4 ft.	50	4 00	30 00
5 to 6 ft.	75	6 00	40 00
Japonica (syn., <i>hortensis</i>), var. <i>floribunda</i> . 3 to 3½ ft.....	35	2 00	15 00
3½ to 4 ft.	50	4 00	25 00
5 to 6 ft.	75	5 00	30 00
Japonica , var. <i>Eva Rathke</i> . 2 to 2½ ft. ♦	35	3 00	20 00
2½ to 3 ft. ♦	50	3 50	25 00
4 to 5 ft. ♦	75	6 00	40 00
Japonica , var. <i>nivea</i> . White. 2½ to 3 ft.	50	4 00	
3½ to 4 ft.	75	5 00	
Japonica , var. <i>rubra</i> . 4 to 4½ ft.	75	6 00	30 00
5 to 6 ft.	1 00	7 50	40 00
Grœnewegeni . 3½ to 4 ft.....	50	4 00	30 00
4 to 5 ft.	75	6 00	40 00
Grœnewegeni , var. <i>Mad. Contourier</i> . (Hybrid). 3 to 3½ ft.....	35	3 00	25 00
3½ to 4 ft.	50	4 00	25 00
5 to 6 ft.	75	5 00	30 00
Grœnewegeni , var. <i>Steltzneri</i> . 3 to 3½ ft.	50	4 00	25 00
3½ to 4 ft.	60	5 00	30 00
5 to 6 ft.	1 00	7 50	50 00
Grœnewegeni , var. <i>Van Houttei</i> —			
3 to 3½ ft.	35	3 00	25 00
4 to 4½ ft.	50	4 00	35 00
5 to 6 ft.	75	6 00	40 00
Verschaffelti . 3 to 3½ ft.	35	3 00	25 00
4 to 5 ft.	50	4 00	35 00
5 to 7 ft.	1 00	7 50	
sessilifolia . 2 to 3 ft.	25	2 00	
3 to 3½ ft.	50	3 50	25 00
4 to 5 ft.	75	5 00	35 00
trifida . 2 to 2½ ft.	35	3 00	20 00

PRICE-LIST FOR FALL OF 1908

	Each	10	100
ELÆAGNUS angustifolia. Oleaster. 4 to 5 ft.....	\$0.35	\$3 00	
5 to 6 ft.	50	4 00	
6 to 8 ft.	75	6 00	
longipes; syn., edulis. Japanese Oleaster. 2 to 2½ ft.....	35	3 00	
2½ to 3 ft. Bushy.....	50	4 00	25 00
3 to 4 ft. Bushy.....	1 00	6 00	30 00
4 to 5 ft. Bushy.....	1 50	10 00	60 00
5 to 6 ft.	2 00	17 50	
parvifolia. 6 to 7 ft.....	1 00	7 50	
EUONYMUS alatus. Cork-barked. 2 to 2½ ft.♦..	1 25	10 00	
2½ to 3 ft.....♦..	1 50	13 50	
<p>Though little known, it is one of the most ornamental of flowering and fruiting shrubs. Berries are bright carmine.</p>			
Americana. Strawberry Bush—			
4 to 5 ft.	35	3 00	25 00
5 to 6 ft.	50	4 00	30 00
Europæus. Spindle Tree. 3 to 4 ft....	35	3 00	20 00
4 to 5 ft.	50	3 50	25 00
5 to 6 ft.	75	4 00	30 00
EXOCHORDA grandiflora. Pearl Bush. 2 to 2½ ft.	35	2 50	20 00
2½ to 3 ft.	50	4 00	30 00
5 to 6 ft.	75	4 00	35 00
FORSYTHIA (Golden Bell) Fortunei. 2½ ft.....	35	2 50	
3 to 4 ft.	50	3 50	25 00
4 to 5 ft.; very heavy	75	4 00	30 00
5 to 6 ft.	1 00	5 00	35 00
intermedia. 3 to 3½ ft.....	35	2 50	15 00
3½ to 4 ft.; very heavy	50	4 00	25 00
4 to 5 ft.	75	5 00	30 00
5 to 6 ft.	1 00	7 50	40 00
suspensa. 2 to 2½ ft.....	35	3 00	15 00
3 to 4 ft.	50	4 00	20 00
4 to 5 ft.	75	6 00	30 00
5 to 7 ft.; very heavy.....	1 00	7 50	50 00
viridissima. 2 to 3 ft.....	25	2 00	
3 to 4 ft.; very heavy; extra....	35	3 00	25 00
4 to 5 ft.; very heavy; extra....	50	4 00	30 00
5 to 6 ft.; very heavy; extra....	75	6 00	50 00
HALESIA tetraptera. 7 to 8 ft.....	1 00	8 50	
HAMAMELIS Japonica. Japanese Witch Hazel—			
3 to 3½ ft.....	50	4 00	
Virginiana. Witch Hazel. 2 to 2½ ft..	35	3 00	
3 to 4 ft.	50	4 00	30 00
4 to 5 ft.	75	6 00	50 00
5 to 6 ft.; heavy.....	1 00	7 50	60 00
HIBISCUS Syriacus. Althæa; Rose of Sharon—			
Boule de Feu. 3 to 3½ ft.....	50	4 00	20 00
Comte de Flandre. 2 to 3 ft.....	35	3 00	20 00
3 to 4 ft.	50	4 00	25 00
Jeanne d'Arc. 2 to 3 ft.....	35	3 00	20 00
3 to 4 ft.	50	4 00	25 00
Lady Stanley. 3 to 3½ ft.....	50	4 00	
4 to 5 ft.	75	5 00	
Leopoldi. 3 to 4 ft.....	50	4 00	25 00

	Each	10	100
HIBISCUS purpureus folis argentea marginata—			
2 to 2½ ft.	\$0 35	\$3 00	\$20 00
3 to 3½ ft.	50	4 00	25 00
totus albus. 1½ to 2 ft.	25	2 00	17 50
2 to 3 ft.	35	3 00	20 00
3 to 4 ft.	50	4 00	
HIPPOPHAE rhamnoides. See <i>Buckthorn—</i>			
2 to 2½ ft.	35	2 50	15 00
HYDRANGEA arborescens. 2½ to 3 ft.	75	5 00	35 00
Hortensis, var. Imperatrice Eugenie—			
1½ ft.; 4-in. pot.	75		
Hortensis, var. Otaska. 3-year.	75		
Hortensis, var. Japonica. 1 ft.	75		
paniculata. 2½ to 3 ft.	35	3 00	25 00
3½ to 4 ft.; very heavy	50	4 00	30 00
5 to 6 ft.; very heavy	75	6 00	
6 to 7 ft.; very heavy	1 00	7 50	
paniculata grandiflora. 2½ to 3 ft.	35	3 00	15 00
3 to 3½ ft.	50	4 00	25 00
3½ to 4 ft.	75	6 00	35 00
4 to 5 ft.; an extra heavy lot.	1 00	7 50	50 00
5 to 6 ft.; bushy	1 50	12 50	60 00
quercifolia. Oak-leaved—			
2 to 2½ ft.	1 00	7 50	50 00
HYPERICUM aureum. 2 to 2½ in.	35	3 00	25 00
calcinum. Aaron's Beard. 12 in.	35	3 00	15 00
hircinum. 1 to 1½ ft.	35	2 50	15 00
Moserianum hybridum. Gold-Flower—			
10 to 12 in.	35	2 50	15 00
prolificum. 2 to 2½ ft.	25	2 00	15 00
2½ to 3 ft.	35	3 00	20 00
3 to 3½ ft.	50	3 50	25 00
ILEX verticillata. Winter Berry. 1½ to 2 ft.	25	2 00	17 50
2 to 2½ ft.	35	3 00	25 00
3 to 3½ ft.	50	4 00	
ITEA Virginica. 1½ to 2 ft.	35	2 00	15 00
2 to 2½ ft.	50	3 00	25 00
2½ to 3 ft.	75	6 00	
JASMINUM nudiflorum. Yellow Jasmine—			
2 to 2½ ft.	35	3 00	20 00
officinale. Hardy White Jasmine—			
2 to 2½ ft.	35	3 00	20 00
KERRIA. See <i>Corchorus.</i>			
LESPEDEZA bicolor. 2½ to 3 ft.	35	2 50	20 00
3 to 4 ft.	50	4 00	25 00
Sieboldi; syn. Desmodium Japonicum—			
Heavy clumps	35	3 00	
Sieboldi, var. alba. Heavy clumps.	50	4 00	
LIGUSTRUM Amurense. Amoor Privet—			
2 to 3 ft.	35	2 50	
6 to 8 ft.	1 00	8 50	
ciliatum. Sold by many for <i>Ibota.</i>			
2 to 2½ ft.	25	1 50	15 00
2½ to 3 ft. Broad and heavy	35	2 50	20 00
3 to 3½ ft. Broad and heavy	50	3 50	25 00
3½ to 4 ft. Broad and heavy	60	4 00	30 00
4 to 5 ft. Broad and heavy	75	5 00	35 00

	Each	10	100
LIGUSTRUM Ibota. The true upright form—			
2 to 2½ ft.	\$0 25	\$2 00	\$15 00
2½ to 3 ft.	35	3 00	20 00
3 to 3½ ft.	50	3 50	30 00
5 to 6 ft. Heavy	75	6 00	50 00
Ibota, var. Regelianum. Regel's—			
2 to 2½ ft.	50	4 00	25 00
2½ to 3 ft.	75	6 00	30 00
4 to 4½ ft.	1 00	7 50	40 00
4½ to 5 ft.	1 25	10 00	75 00
media. 4 to 5 ft.	75	5 00	30 00
ovalifolium. California Privet—			
2 to 2½ ft.; bushy { 1,000, \$40♦ }	25	1 00	7 50
2½ to 3 ft.; bushy { 1,000, \$50♦ }	35	1 50	10 00
3 to 3½ ft.; bushy { 1,000, \$60♦ }	50	2 50	15 00
3½ to 4 ft.; bushy { 1,000, \$75♦ }	60	4 00	25 00
4 to 5 ft.; bushy	75	5 00	30 00
5 to 6 ft.; bushy	1 00	6 00	
Grand stock, all transplanted; a great deal of Privet offered by nurseries has never been trans- planted. Ours have all been. We find it gives better results.			
Sinensis. Chinese Privet. 4 to 5 ft.	50	4 00	
5 to 6 ft.; beautiful, bushy stock..	75	6 00	
6 to 8 ft.	1 00	7 50	
vulgaris. Common Privet. 2 to 2½ ft.	35	3 00	15 00
2½ to 3 ft.	50	4 00	20 00
LONICERA fragrantissima. Chinese Fragrant Bush			
Honeysuckle. 2 to 3 ft.	25	2 00	15 00
3 to 4 ft.	35	3 00	25 00
4 to 5 ft.; heavy	50	4 00	
5 to 6 ft.; heavy	75	6 00	



A portion of the propagating grounds at Andorra

	Each	10	100
LONICERA Morrowi. Japanese Bush Honeysuckle—			
2½ to 3 ft.	\$0 50	\$3 50	\$25 00
3½ to 4 ft.	75	5 00	35 00
4 to 5 ft.	1 00	6 00	40 00
Ruprechtiana. 2 to 3 ft.	50	3 50	20 00
3 to 4 ft.	75	6 00	
Standishi. Standish's Honeysuckle—			
3 to 4 ft.	75	6 00	
Tatarica, assorted. 3 to 3½ ft.	35	2 50	
3½ to 4 ft.	50	3 00	
5 to 6 ft.	75	5 00	
6 to 8 ft.; heavy	1 00	6 00	
Tatarica (rubra). 2½ to 3 ft.	50	3 50	25 00
5 to 6 ft.	75	6 00	
Tatarica, var. alba. 2 to 2½ ft.	35	3 00	
3 to 4 ft.	50	3 50	
4 to 5 ft.; heavy	1 00	8 50	
Tatarica, var. bella albida. 3 to 4 ft.	50	4 00	25 00
4 to 5 ft.	75	5 00	40 00
5 to 6 ft.	1 00	7 50	50 00
Tatarica, var. gracilis. 3 to 4 ft.	50	4 00	30 00
4 to 5 ft.	75	6 00	
Tatarica, var. Chrysanthera. 2 to 2½ ft.	35	3 00	
3 to 4 ft.	50	3 50	25 00
4 to 5 ft.	75	5 00	35 00
Tatarica, var. splendens. 2 to 2½ ft.	35	3 00	
3 to 4 ft.	50	4 00	
LYCIUM Chinense. Matrimony Vine. 2 to 2½ ft.	35	2 50	20 00
2½ to 3 ft.	50	4 00	25 00
MYRICA cerifera. Wax Myrtle. 1 to 1½ ft.	35	3 00	
2 to 2½ ft.	50	4 00	
cerifera, var. pumila. 1 to 1½ ft.	50	4 00	
PAVIA parviflora. See <i>Æsculus</i> , under Shrubs.			
PHILADELPHUS coronarius. Mock Orange—			
2 to 2½ ft.	35	3 00	20 00
3 to 4 ft.	50	4 00	25 00
4 to 5 ft.	75	6 00	
coronarius, var. aureus. Golden			
Mock Orange. 2½ to 3 ft.	50	4 00	
grandiflorus. 3 to 4 ft.	50	4 00	25 00
4 to 5 ft.	75	6 00	30 00
5 to 6 ft.	1 00	7 50	50 00
6 to 8 ft.	1 50	12 50	75 00
Lemoinei. (Hybrid). 2 to 2½ ft.	35	3 00	20 00
2½ to 3 ft.	50	4 00	25 00
Lemoinei, var. erectus. 2 to 3 ft.	35	3 00	20 00
3 to 3½ ft.	50	4 00	25 00
Mt. Blanc. 2 to 2½ ft.	50	3 50	25 00
Zeyheri, var. speciosissimus—			
4 to 5 ft.	50	4 00	30 00
5 to 6 ft.	75	6 00	50 00
POTENTILLA fruticosa. Shrubby Cinquefoil—			
2 to 2½ ft.	35	3 00	20 00
2½ to 3 ft.	50	3 50	25 00
3 to 3½ ft.	75	4 00	30 00
PRUNUS amygdalus communis. Flowering Almond—			
2 to 2½ ft.	75	5 00	
amygdalus communis, var. rosea. 2 to 2½ ft.	75	5 00	

PRICE-LIST FOR FALL OF 1908

43

	Each	10	100
PYRUS arbutifolia. Chokeberry. 2 to 3 ft.....	35	3 00	\$20 00
3½ to 4 ft.	50	4 00	25 00
4 to 5 ft.	75	5 00	30 00
RHAMNUS cathartica. Buckthorn. 3 to 4 ft.....	35	3 00	15 00
4 to 5 ft.	50	3 50	20 00
5 to 6 ft.	75	4 00	25 00
RHODOTYPUS kerrioides. White Kerria. 2 to 2½ ft.	25	2 00	15 00
2½ to 3 ft.	35	3 00	25 00
3½ to 4 ft.	50	4 00	30 00
4 to 4½ ft.	75	6 00	40 00
4½ to 5 ft.	1 00	7 50	50 00
RHUS aromatica. Fragrant Sumac. 2 to 2½ ft....	50	4 00	35 00
2½ to 3 ft.	75	6 00	40 00
3 to 3½ ft.	1 00	7 50	50 00
copallina. Shining Sumac. 2 to 2½ ft.....	35	3 00	20 00
2½ to 3 ft.	50	4 00	35 00
4 to 5 ft.	75	6 00	40 00
Cotinus. Mist, or Smoke Tree. 3 to 3½ ft..	35	3 00	25 00
3½ to 4 ft.	50	4 00	30 00
5 to 6 ft.	75	6 00	35 00
6 to 8 ft.	1 00	7 50	40 00
Cotinus, var. atropurpurea. Purple Mist—			
2½ to 3 ft.	50	4 00	35 00
3 to 3½ ft.	75	6 00	40 00
3½ to 4 ft.	1 00	7 50	
RIBES aureum. Golden Currant. 3 to 4 ft.....	35	3 00	17 50
4 to 5 ft.	50	4 00	20 00
Gordonianum. 2½ to 3 ft.....	35	3 00	20 00
3 to 4 ft.	50	4 00	30 00
sanguineum. 2 to 2½ ft.	35	3 00	
ROBINIA hispida. Rose Acacia. 2 to 2½ ft.....	25	2 00	
RUBUS Canadensis. 3 to 4 ft.	35	2 00	
odoratus. 2 to 2½ ft.	25	2 00	15 00
3 to 4 ft.	35	3 00	20 00
SAMBUCUS Canadensis. 2 to 3 ft.	25	1 50	10 00
Melanocarpus. 4 to 5 ft.	75	6 00	
nigra, var. aurea. Golden Elder—			
3 to 4 ft.	50	3 50	25 00
4 to 5 ft.	75	4 00	35 00
nigra, var. laciniata. Cut-leaved Elder—			
2½ to 3 ft.	35	3 00	20 00
3 to 4 ft.	50	4 00	30 00
racemosa. Red-fruited. 2 to 3 ft....	35	3 00	
3 to 4 ft.	50	4 00	
5 to 6 ft.	1 00	8 50	
SPIRÆA arguta. 2 to 2½ ft.	35	2 50	20 00
3 to 3½ ft.; heavy	50	3 50	25 00
Billardii. 3 to 3½ ft.....	35	3 00	20 00
4 to 4½ ft.	50	3 50	25 00
Bumalda. 2 ft.	35	3 00	
2½ ft.; heavy	50	4 00	
3 ft.	75	6 00	

	Each	10	100
SPIRÆA <i>Bumalda</i> , var. Anthony Waterer —			
1½ to 2 ft.	\$0 25	\$2 00	
2 to 2½ ft.; heavy	35	3 00	\$20 00
2½ to 3 ft.; heavy	50	4 00	30 00
3 to 3½ ft.; heavy	75	6 00	50 00
<i>callosa</i> . Fortune's <i>Spiræa</i> . 3 to 4 ft.	50	3 50	25 00
<i>callosa</i> , var. <i>alba</i> . 1½ to 2 ft.	35	3 00	20 00
2½ to 3 ft.	50	4 00	25 00
<i>crispifolia</i> ; syn., <i>bullata</i> . 12 to 15 in.	25	2 00	15 00
<i>Japonica</i> , var. Fortunei rosea . 2 to 3 ft.	50	3 50	
<i>Lindleyana</i> . 18 to 24 in.	35	3 00	
3 to 3½ ft.	50	3 50	25 00
<i>opulifolia</i> . 2 to 3 ft.	25	2 00	15 00
3 to 4 ft.	35	3 00	25 00
4 to 5 ft.	50	4 00	30 00
6 to 7 ft.; heavy	75	6 00	50 00
<i>opulifolia</i> , var. <i>aurea</i> . Golden-leaved—			
1½ to 2 ft.	25	2 00	15 00
3 to 4 ft.	50	4 00	25 00
4 to 5 ft.; heavy	75	6 00	30 00
<i>prunifolia flore pleno</i> . Bridal Wreath—			
2 to 3 ft.	35	3 00	
3 to 4 ft.; heavy	50	4 00	
<i>Reevesiana</i> . 2 to 2½ ft.	35	3 00	20 00
3 to 4 ft.	50	4 00	30 00
4 to 5 ft.	75	6 00	35 00
<i>rotundifolia</i> ; syn., <i>bracteata</i> . 3 to 4 ft.	75	5 00	
5 to 5½ ft.	1 00	7 50	
<i>sorbifolia</i> . 3 to 4 ft.	50	3 50	30 00
4 to 5 ft.	75	6 00	35 00
<i>Thunbergii</i> . Thunberg's <i>Spiræa</i> —			
2 to 2½ ft.	35	3 00	25 00
2½ to 3 ft.; very heavy	50	4 00	30 00
3½ to 4 ft.; very heavy	75	6 00	40 00
Van Houttei . 2 to 2½ ft.	35	3 00	15 00
2½ to 3 ft.	50	4 00	20 00
3 to 3½ ft.	75	6 00	30 00
4 to 5 ft.	1 00	7 50	40 00
5 to 6 ft.	1 50	10 00	50 00
STAPHYLEA <i>Colchica</i> . Bladder Nut. 2 to 3 ft.	35	3 00	
3 to 4 ft.	50	4 00	35 00
4 to 5 ft.	75	6 00	40 00
5 to 6 ft.	1 00	7 50	60 00
STEPHANANDRA <i>flexuosa</i> . 2 to 2½ ft.	35	3 00	25 00
2½ to 3 ft.; heavy	50	4 00	30 00
3 to 4 ft.	75	6 00	40 00
STYRAX <i>Japonica</i> . 2½ to 3 ft.	75	6 00	50 00
SYMPHORICARPUS <i>racemosus</i> . Snowberry—			
2 to 2½ ft.	35	3 00	20 00
2½ to 3 ft.	50	3 50	25 00
3 to 4 ft.	75	6 00	50 00
<i>vulgaris</i> . Coral Berry—			
2 to 3 ft.	35	3 00	20 00
3 to 3½ ft.	50	4 00	25 00
3½ to 4 ft.; heavy	75	6 00	30 00
4 to 5 ft.	1 00	7 00	40 00
SYRINGA <i>Chinensis</i> syn., Rothomagensis . Rouen			
Lilac. 1½ to 2 ft.	35	2 50	20 00
<i>Japonica</i> . 4 to 5 ft.	1 00	8 50	

PRICE-LIST FOR FALL OF 1908

45

	Each	10	100
SYRINGA Josikæa. 5 to 6 ft.	\$1 00	\$7 50	
Josikæa, var. eximia. 4 to 5 ft.	1 00	8 50	
Josikæa, var. H. Zabel. 2½ to 3 ft.	75	6 00	
Pekinensis. 2½ to 3 ft.	75		
Persica. 2 to 3 ft.	50	4 00	
Persica, var. alba. 2 to 2½ ft.	50	4 00	\$30 00
4 to 5 ft.	75	6 00	40 00
Persica, var. laciniata. 2 to 3 ft.	35	3 00	
3 to 4 ft.	50	4 00	
villosa. 3 to 4 ft.	75	6 00	40 00
villosa, var. Emodi. 4 to 5 ft.	1 00	8 50	
vulgaris. Common Lilac. 2½ to 3 ft.	35	3 00	
3 to 3½ ft.	50	4 00	
3½ to 4 ft.; very heavy	1 00	9 00	
4 to 4½ ft.; very heavy	2 50	22 50	
5 to 6 ft. ♦ \$2.50 to	3 50		
vulgaris alba. 2½ ft.	50	4 50	40 00
3 to 3½ ft.	75	6 00	
vulgaris, named varieties—			
alba grandiflora. Single, white—			
3 to 3½ ft.	75	6 00	50 00
Charles X. Single, reddish purple—			
2 to 2½ ft.	35	3 00	25 00
3 to 3½ ft.	75	6 00	50 00
3½ to 4 ft.	1 00	8 50	
Frau Bertha Dammann. Single, white—			
2 to 2½ ft.	50	4 00	
Gloire de Moulins. Single, rosy lilac—			
2 to 2½ ft.	1 00	9 00	
La Tour d'Auvergne. Double, violet-purple. 2 to 3 ft.	75	6 00	
Le Gaulois. Double, peach. 4½ to 5 ft.	1 50	13 50	
Lovaniensis. Single, pink. 3½ to 4 ft.	1 50	13 50	
Mad. Lemoine. Double, white. 2 to 2½ ft.	50	4 00	30 00
2½ to 3 ft.	75	6 00	40 00
3 to 4 ft.	1 50	12 50	
Marie LeGraye. Single, white. 2 to 2½ ft.	50	4 00	30 00
2½ to 3 ft.	75	6 00	40 00
3 to 3½ ft.	1 00	8 50	
Marc Micheli. Double, lilac-blue—			
5 to 6 ft.	1 50	13 50	
Michael Buchner. Double, pale lilac—			
1½ to 2 ft.	50	4 00	
2½ to 3 ft.	75	6 00	
3 to 3½ ft.	1 00	8 50	
3½ to 4 ft.	1 50	13 50	
Matthew de Dombasle. Double, mauve—			
2½ to 3 ft.	75	6 00	
3 to 3½ ft.	1 00	8 50	
President Carnot. Double, light lilac—			
2 to 2½ ft.	75	6 00	
President Loubet. Double, red—			
2 to 2½ ft.	1 00	9 00	
Rubra de Marley. Single, reddish purple—			
2 to 2½ ft.	50	4 00	30 00
3 to 3½ ft.	1 00	7 50	60 00
4 to 4½ ft.	1 50	12 50	
5 to 6 ft.	2 50	22 50	

	Each	10	100
SYRINGA Senator Volland. Double, red. 3 to 4 ft.	\$1 00	\$8 50	
Souvenir de Ludwig Spæth. Single red—			
3 to 3½ ft.	75	6 00	
3½ to 4 ft.	1 00	7 50	
4 to 4½ ft.	1 50	12 50	
Verschaffelt. Single, dark red—			
4 to 5 ft.	1 50	13 50	
TAMARIX Africana; syn., parviflora. 2½ to 3 ft.	35	3 00	\$17 50
3 to 4 ft.	50	4 00	20 00
4 to 5 ft.	75	6 00	30 00
6 to 7 ft.	1 00	7 50	35 00
Gallica. 3 to 4 ft.	35	3 00	20 00
4 to 5 ft.	50	4 00	25 00
Gallica, var. Indica. 3 to 4 ft.	50	4 00	25 00
5 to 6 ft.	75	6 00	35 00
Japonica plumosa. 2 to 3 ft.	35	3 00	20 00
3 to 4 ft.	50	4 00	25 00
VACCINIUM corymbosum. Swamp Huckleberry—			
3 to 3½ ft.	50	4 00	25 00
VIBURNUM acerifolium. 1½ ft.	25	1 75	15 00
1½ to 2 ft.	35	2 50	20 00
cassanoides. White Rod. 2 to 2½ ft.	35	3 00	20 00
2½ to 3 ft.	50	4 50	30 00
3 to 3½ ft.	75	6 00	35 00
4 to 4½ ft.	1 00	7 50	50 00
dentatum. Arrow-wood. 3 to 3½ ft.	50	4 00	25 00
3½ to 4 ft.	75	6 00	30 00
4 to 5 ft.; heavy	1 00	8 50	40 00
5 to 6 ft.	1 50	10 00	75 00
Lantana. Wayfaring Tree. 1½ to 2 ft.	25	2 00	17 50
3 to 3½ ft.	35	3 00	25 00
3½ to 4 ft.; heavy	50	4 00	30 00
4 to 5 ft.; heavy	75	6 00	35 00
5 to 6 ft.; very heavy	1 00	8 50	50 00
6 to 8 ft.; very heavy	1 50	13 50	75 00
Lentago. Sheep-berry. 2½ to 3 ft.	35	3 00	25 00
3 to 3½ ft.	50	4 00	30 00
4 to 5 ft.	75	6 00	40 00
5 to 6 ft.	1 00	7 50	60 00
molle. 3 to 3½ ft.	50	4 00	35 00
4 to 5 ft.	75	6 00	40 00
5 to 6 ft.	1 00	7 50	50 00
Opulus. High Cranberry Bush—			
1½ to 2 ft.	35	3 00	20 00
2 to 2½ ft.	50	3 50	30 00
3 to 4 ft. Fine	50	4 00	35 00
4 to 5 ft. Fine	75	6 00	50 00
5 to 6 ft. Fine	1 00	8 50	75 00
Opulus, var. sterile. Guelder Rose—			
2 to 3 ft.	35	3 00	15 00
3 to 3½ ft.	50	4 00	25 00
4 to 5 ft.	75	6 00	40 00
plicatum. Japanese Snowball—			
2½ to 3 ft.	75	5 00	
4 to 5 ft.	1 00	7 50	
5 to 6 ft.	1 50	12 50	

PRICE-LIST FOR FALL OF 1908

4

	Each	10	100
VIBURNUM plicatum , var. tomentosum . Single Japan			
Snowball. 4 to 5 ft.; extra fine.	\$0 50	\$4 50	\$30 00
5 to 6 ft. Specimens. Fine	1 00	6 00	50 00
6 to 8 ft. Specimens. Fine	2 00	17 50	100 00
A beautiful shrub, deserving extensive planting.			
prunifolium . Black Haw.—			
2 to 2½ ft.	35	3 00	
3 to 3½ ft.	50	4 00	35 00
3½ to 4 ft.	75	6 00	50 00
4 to 6 ft.	\$1 20	5 00	
Sieboldi . 2 to 2½ ft.	50	4 00	30 00
3 to 3½ ft.	75	6 00	35 00
3½ to 4 ft.	1 00	8 50	
VITEX Agnus-castus . Chaste Tree. 2 to 2½ ft.	35	3 00	20 00
XANTHOCERAS sorbifolia . 2 to 2½ ft.	50	4 00	
2½ to 3 ft.	75	6 00	
3 to 4 ft.	1 00	7 50	
XANTHORRIZA apiifolia . Shrub Yellow Root—			
8 to 10 in. In clumps	35	2 50	15 00
10 to 12 in. In clumps	50	3 50	20 00

REEDS and GRASSES

	Each	10	100
ARUNDO Donax . Clumps	\$0 50	\$3 50	
BAMBUSA Metake	50	3 50	
ELYMUS glaucus	25	1 50	\$12 50
ERIANTHUS Ravennæ	50	3 50	25 00
EULALIA Japonica , and vars. variegata , gracillima univittata , zebrina . Clumps	50	3 50	20 00
FESTUCA glauca . 3-in. pots	25	1 50	12 50
PHALARIS arundinacea , var. variegata . Ribbon Grass	25	1 50	12 50
UNIOLA latifolia	25	1 50	12 50

VINES, CLIMBING and TRAILING PLANTS

	Each	10
ACTINIDIA polygama . 5-in. pots	\$0 50	\$3 50
6-in. pots; heavy	1 00	7 50
AKEBIA quinata . From 4-in. pots	50	3 50
AMPELOPSIS quinquefolia . Virginia Creeper. 4-in. pots	35	3 00
3-year, field-grown; heavy	25	2 00
quinquefolia , var. Engelmanni . 5-in. pots; heavy	35	3 00
3-year, field-grown; heavy	25	2 00
tricuspidata ; syn., Veitchi . Japan, or Boston Ivy. 4-in. pots; heavy	35	3 00
2-year, field-grown; heavy. per 100, \$15.	25	2 00
ARISTOLOCHIA Sipho . Dutchman's Pipe Vine. 5-in. pots	75	6 00
6-in. pots	1 00	7 50
BIGNONIA grandiflora . 5-in. pots	35	3 00
2 to 3 ft.; field-grown	35	2 00
radicans . Scarlet Trumpet Vine. 5-in. pots	35	3 00
2 to 3 ft.; field-grown	25	2 00
CELASTRUS scandens . False Bitter-sweet—		
2 to 3 ft. per 100, \$15.	50	3 50
3 to 5 ft.; heavy; field-grown	75	6 00

	Each	10
CLEMATIS <i>coccinea</i> . 4-in. pots	\$0 35	\$3 00
Flammula . Sweet Clematis. 3-in. pots	75	6 00
graveolens ; syn., orientalis . 4-in. pots	35	3 00
Large-flowering varieties .— Fairy Queen , Gem , Henryi , Jackmani , Jackmani var. alba , Jeanne d'Arc , Duchess of Edinburgh , Ker- mesina , Lady Caroline Neville , Lilacina flori- bunda , Madame Van Houtte , Miss Bateman , President	50	4 00
paniculata . 2-year; heavy	30	2 50
5-in. pots; fine	50	3 50
DOLICHOS . See <i>Pueraria</i> .		
EUONYMUS radicans . 1 ft.; field-grown	per 100, \$10..	25 1 75
1½ to 2 ft.; field-grown	per 100, \$15..	35 2 50
HEDERA Helix . English Ivy. 4-in. pots	per 100, \$15..	25 2 00
JASMINUM . See <i>Deciduous Shrubs</i> .		
LATHYRUS latifolius . Everlasting Pea	35	2 50
LONICERA Japonica . Honeysuckle. 4 in. pots	35	2 50
3-year; field-grown	35	3 00
Japonica , var. brachypoda ; syn., flexuosa . Field-		
grown	35	3 00
Japonica , var. aurea reticulata . 4-in. pots	35	3 00
Japonica , var. Chinensis . Purplish green foliage—		
4-in. pots	25	2 00
Heavy field-grown	35	3 00
Japonica , var. Halleana . 4-in. pots	25	2 00
5-in. pots	35	3 00
3-year-old, field-grown	35	3 00
sempervirens , var. fuchsioides . Scarlet Trumpet—		
5-in. pots	50	3 50
PERIPLUCA Græca . Silk Vine. Field-grown	35	3 00
5-in. pots	50	4 00
6-in. pots	50	4 00
PUERARIA Thunbergiana ; syn., Dolichos Japonicus . Kudzu		
Vine. In pots	1 00	7 50
TECOMA . See <i>Bignonia</i> .		
VITIS æstivalis . Summer Grape. 5-in. pots	75	6 00
heterophylla , var. variegata . 5-in. pots	75	6 00
Labrusca . Fox Grape. 5-in. pots	50	4 00
WISTARIA Chinensis . Chinese Wistaria—		
2 to 3 ft.; field-grown	50	4 00
3 to 4 ft.; field-grown	75	6 00
4 to 6 ft.; field-grown	♦. \$1.50 to	2 50
Chinensis , var. alba . Field-grown	1 00	7 50
frutescens . 3 to 4 ft.	75	6 00
4 to 6 ft.	♦. \$1.50 to	2 50
magnifica . 5 to 6 ft.; field-grown	\$1.50 to	2 50
multijuga . 2 to 3 ft.; field-grown	50	4 00
3 to 4 ft.; field-grown	75	6 00
4 to 6 ft.; field-grown	\$1.50 to	2 50
multijuga , var. alba . Field-grown	75	6 00
3 to 4 ft.	1 00	7 50
4 to 6 ft.	\$1.50 to	2 50

FRUIT DEPARTMENT

	Each	10
APPLES, Summer —Early Harvest, Golden Sweet, Red Astrachan, Summer Rambo, Sweet Bough, Benoin, Yellow Transparent.		
Autumn —Fall Pippin, Gravenstein, Maiden's Blush, Smokehouse, Wealthy.		
Winter —Baldwin, Belle-fleur, Fallwater, King of Tompkins County, Northern Spy, Rhode Island Greening, Styman's Winesap, York Imperial.		
5 to 7 ft.; $\frac{3}{4}$ to 1 in. cal.	\$0 75	\$6 00
Crab —Hyslop, Large Red Siberian, Large Yellow Siberian, Transcendent. 5 to 7 ft.	75	6 00
CHERRIES, Sour (Dukes and Morellos) —early Richmond, Empress Eugenie, May Duke, Late Duke, Montmorency. 5 to 6 ft.	1 00	8 50
Large Sweet (Hearts and Bigarreaus) —Black Tartarian, Governor Wood, Napoleon Bigarreau, Schmidt's Bigarreau, Windsor. 5 to 6 ft.	1 00	8 50
NUTS, American Sweet Chestnut. See under <i>Deciduous Trees.</i>		
Spanish Chestnut. See under <i>Deciduous Trees.</i>		
Hybrid Chestnut. Paragon, Numbo. 4 to 5 ft.	1 50	12 50
Japan Chestnut. 3 to 4 ft.	1 00	
Walnut, Black. See <i>Juglans nigra</i> , under <i>Deciduous Trees.</i>		
PEACHES —Belle of Georgia, Fitzgerald, Fox's Seedling, Crawford's late, Elberta, Mountain Rose, Morris White, Oldmixon Free, Stump the World, Susquehanna, Troth's Early, Wheatland. 5 to 6 ft. per 100, \$20..	50	3 50
PEARS, Summer —Bartlett, Clapp's Favorite, Doyenne d'Ete.		
Autumn and Winter —Beurre d'Anjou, Buffum, Duchesse d'Angouleme, Howell, Kieffer's Hybrid, Lawrence, Rutter, Seckel, Sheldon, Worden-Seckel. 5 to 6 ft.	1 00	8 50
6 to 8 ft.	2 00	15 00
PLUMS, Japanese —Abundance, Burbank, Chabot, Satsuma. 5 to 6 ft.	1 00	7 50
European —Giant Prune, Imperial Gage, Lombard.		
QUINCES —Champion, Orange. 3 to 4 ft.	75	6 00

SMALL FRUITS

BLACKBERRIES —Eldorado, Erie, Kittatinny, Rathbun, Snyder, Wilson Junior. per 100, \$3..	50
CURRANTS, Red —Cherry, Fay's Prolific; White —White Grape; Black —Lee's Prolific.	25 2 00
GOOSEBERRIES, Red —Houghton, Industry; Green —Downing, Smith's Improved.	25 2 00
GRAPES, Black —Concord, Moore's Early, Warden; Red —Brighton, Catawba, Delaware; White —Green Mountain, Niagara, Pocklington. 2-year.	25 2 00
Extra heavy.	50 3 00
RASPBERRIES, Black —Gregg: Red —Cuthbert, Columbian Ruby; Yellow —Golden Queen, per 100, \$3..	50

STRAWBERRIES, Early —Bederwood, Marshall;	Each	10
Medium —Bubach, Glen Mary, Sharpless;		
Late —Brandywine, Gandy, Runners, per 100, \$2; per 1,000, \$7.50.		
Potted plants, per 100, \$3 to \$4.		

ESCULENT ROOTS

ASPARGUS —Barr's Mammoth. Per 100, \$1.50; per 1,000, \$7.50.
RHUBARB —Best varieties. Per 10, \$1.50; per 100, \$10.

ROSES

Potted, unless noted

	Each	10
AUSTRIAN BRIERS —Harrison's Yellow and Persian Yellow..	\$0 40	\$3 50
SWEETBRIER — <i>Rosa rubignosa</i>	40	3 50
HYBRIDS Penzance Briers —Amy Robsart, Anne of Geierstein, Brenda, Flora McIvor, Lady Penzance, Lord Penzance, Meg Merrilies, Minna	40	3 50
BUSH —Blanda, Carolina, canina, lucida, lucida var. alba, multiflora, nitida, rubrifolia, field-grown.....	35	3 00
CLIMBING —Baltimore Belle, The Dawson, Dorothy Perkins, Lady Gay, Prairie Queen	40	3 50
Setigera, Prairie Rose. 2 to 2½ ft.; field grown..	35	3 00
Ramblers —Crimson, White, Pink and Yellow, The Dawson (carmine)	40	3 50
EVERBLOOMING Hybrid Teas —Bessie Brown, creamy white; Betty, ruddy gold; Captain Christy, flesh; Caroline Testout, rose; Countess of Caledon, carmine; Duchesse of Albany, deep pink; Gladys Harkness, salmon-pink; Gruss an Teplitz, crimson; Kaiserine Auguste Victoria, primrose; Killarney, pink; La France, rose; Madame Ravary, yellow; Souvenir du President Carnot, flesh-rose; Viscountess Folkestone, creamy pink.	50	4 50
EVERBLOOMING, Miscellaneous —Clothilde Soupert (Polyantha), rosy white; etoile de Lyon (Tea), yellow; Francisca Kruger (Tea), yellow-peach; Francis Dubreuil (Tea), crimson; Harry Kirk, deep sulphur yellow; Maman Cochet (Tea), rosy white; Souvenir de la Malmaison (Bourbon), flesh; White Maman Cochet (Tea), white.....	50	4 50
HYBRID Perpetual —Alfred K. Williams, carmine-red; Baroness Rothschild, rose; Captain Hayward, carmine-crimson; Clio, flesh; Eugene Verdier, rose-flesh; Frau Karl Druschki, white; General Jacqueminot, scarlet; Lady Helen Stewart, crimson-scarlet; Louis Van Houtte, red-crimson; Magna Charta, rose; Madame Gabriel Luizet, silvery pink; Margaret Dickson, white; Mrs. R. G. Sharman-Crawford, rose-pink; Mrs. John Laing, pink; Paul Neyron, deep rose; Prince Camille de Rohan, deep crimson; Ulrich Brunner, cherry crimson.....	40	3 50
MOSS —Blanche Moreau, white; Crimson Globe, deep crimson; Zenobia, rose.....	40	3 50

RUGOSA ROSES

	Each	10	100
ROSA rugosa. 1½ to 2 ft.....	\$0.25	\$2 25	\$15 00
2 to 2½ ft.....	35	3 00	20 00
2½ to 3 ft.....	50	4 00	25 00
rugosa, var. alba. 1½ to 2 ft.....	50	4 00	25 00
rugosa Hybrids atropurpurea —Blanc Double de Coubert, Conrad F. Meyer, Madame Georges Bruant, Madam Charles Worth. Mrs. A. Waterer. Pot-grown.....	50	4 00	

WICHURAIANA ROSES

ROSA Wichuraiana. The Trailing Rose. 1 to 2 ft..	25	2 00	
2 to 3 ft. In 4-in. pots.....	35	3 00	25 00
Hybrids —Evergreen Gem, Gardenia, Manda's Triumph, Pink Roamer, South Orange Perfection, Universal Favorite. In pots.	50	3 50	
SINGLE ROSES, Dickson's Hybrids —New Irish Beauty, Irish Glory, Irish Modesty, Irish Brightness	75	6 00	
The set of 4 for \$2.75.			

HARDY HERBACEOUS PLANTS

	Each	10	100
ACHILLEA filipendulina (Noble Yarrow). July. Golden yellow. 2 ft.....	\$0 15	\$1 25	\$10 00
millefolium roseum (Rosy Milfoil). July to September. Pink. 1½ ft.....	15	1 25	
Ptarmica, The Pearl. All summer. White. 2 ft.	15	1 25	10 00
tomentosum (Woolly Yarrow). June, Yellow. 1 ft.	25	2 00	
ACONITUM Fischeri (Monkshood). September and October. Blue. 3 ft.....	35	2 50	15 00
Lycototum (Wolf's-bane). June to September. Yellow. 3 ft.	35	2 50	
ACANTHUS mollis (Bear's Breech). August and September. Rose. 3 ft.....	35	2 50	
AJUGA Genevensis. May. Bright blue. 6 in....	25	1 50	12 50
reptans rubra (Bugle). May. Purplish blue. 6 in.	25	1 50	12 50
ALTHÆA rosea (Hollyhock). July. Various colors. 4 to 6 ft.....	25	1 50	12 50
rosea, var. Allegheny Fringed	25	1 50	12 50
ALYSSUM rostratum. June and July. Golden Yellow. 1 ft.....	35	2 50	
saxatile compactum (Golden Tuft). May and June. Yellow. 1 ft.....	25	1 50	12 50
ANCHUSA Italica, var. Dropmore. New (Alkanet). May and June. Blue. 3 to 4 ft.....	75	6 00	
ANEMONE (Windflower) Japonica. September. Red. 2 to 3 ft.....	25	1 50	12 50
Japonica, var. alba. Fall. White. 2 to 3 ft...	25	1 50	12 50
Japonica, var. Queen Charlotte. Fall. Rose. 2 to 3 ft.....	25	2 00	15 00
Japonica, var. Lady Ardilaun. Fall. White. 2 to 3 ft.	25	2 00	15 00



Partial view of Herbaceous Plantations

	Each	10	100
ANEMONE Japonica , var. Whirlwind. Fall. Pure white. 2 to 3 ft.	\$0 25	\$2 00	\$15 00
Pennsylvanicum . June and July. White. 1 to 2 ft.	25	1 50	12 50
Pulsatilla (Pasque Flower). May. Violet-purple. 9 in.	25	1 50	12 50
sylvestris . May. Pure white. 1 to 1½ ft.	25	1 50	12 50
ANTHEMIS tinctoria (Chamomile). June to September. Golden Yellow. 2 ft.	25	1 50	10 00
AQUILEGIA baicalense . May to July. Blue and white. 18 in.	25	1 50	12 50
Canadensis . (Common Columbine). May to July. Scarlet and Yellow. 1 to 2 ft.	25	1 50	10 00
Chrysantha . May to August. Golden Yellow. 3 ft.	25	2 00	12 50
cærulea (Rocky Mountain Columbine). May to July. Blue. 18 in.	25	2 00	12 50
flabellata , var. nana alba . April to June. White. 1 ft.	25	2 00	
nivea grandiflora . April to June. White. 2 to 3 ft.	25	2 00	12 50
vulgaris fl. pl. May to July. White to blue. 1½ to 2 ft.	25	2 00	12 50
truncata . May and June. Scarlet, yellow-tipped. 2 ft.	25	2 00	12 50
ARABIS alpina (Rock Cross). April and May. White. 4 in.	25	1 50	10 00
alpina fl. pl. Double.	35	2 50	
ARENARIA montana , var. grandiflora (Sandwort). May and June. White. 6 in.	25	1 50	12 50

PRICE-LIST FOR FALL OF 1908

53

	Each	10	100
ARMERIA <i>maritima</i> , var. <i>alba</i> (Thrift). Summer. White. 9 in.	\$0 25	\$1 50	\$10 00
<i>maritima</i> , var. <i>splendens</i> . Summer Rose. 9 in.	25	1 50	12 50
ARTEMISIA <i>abrotanum</i> (Old Man). Silvery white foliage. 2 ft.	25	1 50	10 00
<i>Stelleriana</i> (Old Woman). Silvery foliage. 2 ft.	25	1 50	10 00
ASCLEPIAS <i>tuberosa</i> (Butterfly Weed). July and August. Orange. 2 ft.	25	1 50	10 00
ASTER <i>alpinus</i> . June and July. Purple. 9 in.	25	1 50	10 00
<i>Amellus elegans</i> . September and October. Blue. 1½ ft.	25	1 50	10 00
ASTER (Michælmass Daisy) <i>amethystinus</i> . September and October. Amethyst. 3 to 4 ft.	25	1 50	10 00
<i>grandiflorus</i> . October and November. Violet-blue. 2 ft.	35	2 50	20 00
<i>Lady Trevelyan</i> . September and October. White. 3 ft.	25	1 50	10 00
<i>Madonna</i> . September and October. White. 4 ft.	25	1 50	10 00
<i>Novæ Angliæ</i> . September and October. Purple. 4 ft.	25	1 50	10 00
<i>Novæ Angliæ</i> , var. <i>rubra</i> . September and October. Bright rose. 4 ft.	25	1 50	10 00
<i>ptarmicoides</i> . August and September. White. 1½ ft.	25	1 50	10 00
<i>Robert Parker</i> . September and October. Lavender. 4 ft.	25	1 50	10 00
<i>Tataricus</i> . October and November. Purple. 5 ft.	25	1 50	10 00
<i>Trinervius</i> . October and November. Violet-purple. 2½ ft.	25	1 50	10 00
<i>White Queen</i> . September and October. White. 4 ft.	25	1 50	10 00
ASTILBE <i>Japonica</i> (Spirea). June. White. 1½ ft.	25	1 50	10 00
ASTRANTIA <i>major</i> (Masterwort). June and July. Pale pink. 1 ft.	25	2 50	20 00
AUBRETIA <i>Hendersoni</i> (False Wall Cress). April. Purplish violet. 4 in.	25	1 50	12 50
BAPTISIA <i>australis</i> (False Indigo). June and July. Dark blue. 2 ft.	25	1 50	10 00
<i>tinctoria</i> . June and July. Bright yellow. 2 to 3 ft.	25	1 50	10 00
BELEMCANDA <i>Chinensis</i> ; syn., <i>Pardanthus</i> . June. Orange-red. 4 ft.	25	1 50	10 00
BELLIS <i>perennis</i> (English Daisy) May. White and pink. 6 to 8 in.	25	1 50	10 00
BETONICA . See <i>Stachys</i> .			
BOCCONIA <i>cordata</i> (Plume Poppy). July and August. White. 5 ft.	25	1 50	12 50
BOLTONIA <i>asterioides</i> (False Chamomile). August and September. White. 4 ft.	25	1 50	10 00
<i>latisquama</i> . August and September. Light lilac. 4 ft.	25	1 50	10 00
CALIMERIS <i>incisa</i> (Starwort). July to September. Light blue. 18 in.	25	1 50	10 00

	Each	10	100
CALLIRHOË involucrata (Poppy Mallow). All summer. Rosy crimson. 1 ft.....	\$0 25	\$1 50	\$10 00
CAMPANULA Carpatica (Carpathian Harebell). June to September. Blue. 9 in.....	25	1 50	10 00
Carpatica , var. alba . June to September. White. 9 in.....	25	1 50	10 00
Mørheimi . May to July. White. 2 to 2½ ft..	35	2 50	
persicifolia (Peach Bells). June and July. Blue. 18 in.....	25	1 50	10 00
persicifolia alba . June and July. White. 18 in..	25	1 50	10 00
pyramidalis (Chimney Bellflower). August and September. Blue. 2 ft.....	25	1 50	10 00
CENTAUREA montana (Perennial Cornflower). June and July. Dark purple. 1½ ft.....	25	1 50	
CERASTIUM tomentosum . June and July. White. 6 in.....	25	1 50	12 50
CERATOSTIGMA plumbaginoides (Plumbago). October and November. Blue. 6 in.....	25	2 00	15 00
CHELONE Lyoni (Turtlehead). August and September. Rose-purple. 2 ft.....	35	2 50	
obliqua , var. alba (Shell-flower). August and September. White. 2 ft.....	35	2 50	
CHRYSANTHEMUM leucanthemum hybridum (Shasta Daisies). Alaska, California, Westralia. All summer. White. 2 ft.....	35	2 50	15 00
maximum , var. Triumph (Moonpenny Daisy). July to October. White. 2 ft.....	25	1 50	12 50
Nipponicum . September and October. White. 2 ft.	35	2 50	
Pompon Varieties . Fall. All colors. 1½ to 2 ft.	25	1 50	10 00
Pompon Varieties, Heavy Stock	25	2 00	15 00
ulignosum . September. White. 2½ ft.....	25	1 50	10 00
CHRYSOGONUM Virginianum (Golden Joint). June. Yellow. 1 ft.....	25	1 50	12 50
CHRYSOPSIS villosa (Golden Aster). September. Yellow. 2 ft.....	25	2 00	15 00
CIMICIFUGA acerinum . August and September. White. 2½ ft.....	35	2 50	
Dahurica (Bugbane). August and September. White. 2 to 3 ft.....	35	2 50	15 00
racemosa (Snakeroot). July. White. 3 to 5 ft.	25	1 50	12 50
CINERARIA . See <i>Artemisia</i> .			
CLEMATIS crispa (Leather-flower). June to September. Lavender. 3 to 4 ft.....	25	1 50	12 50
Davidiana . August and September. Blue. Fragrant. 3 ft.....	25	1 50	12 50
recta . June to August. White. Fragrant. 2 to 3 ft.....	25	1 50	12 50
CONOCLINIUM cælestinum (Mist-flower). September and October. Deep blue. 18 in.....	25	1 50	12 50
CONVALLARIA majalis (Lily-of-the-Valley). May and June. White. 6 to 9 in.....	25	2 00	15 00
COREOPSIS lanceolata (Tickseed). June to October. Golden yellow. 2 ft.....	15	1 25	10 00
CORONILLA varia (Crown Vetch). June and October. Pink. 1 to 2 ft.....	25	1 50	12 50

PRICE-LIST FOR FALL OF 1908

55

	Each	10	100
DELPHINIUM Chinense (Larkspur). July to September. Blue. 1½ ft.....	\$0 25	\$1 50	\$10 00
Chinense , var. album . July to September. White. 1½ ft.	25	1 50	10 00
elatum (Bee Larkspur). June to August. Blue. 4 ft.....	25	1 50	10 00
formosum (Larkspur). June to September. Deep blue. 4 ft.....	25	1 50	10 00
DIANTHUS barbatus (Sweet William). May to July. Mixed colors. 1½ ft.	25	1 50	10 00
deltoides (Maiden Pink). June. Pink. 4 in..	25	1 50	10 00
latifolius . June. Red. 1 ft.....	25	1 50	10 00
plumarius (Hardy Pinks). May and June. 1 ft.	25	2 00	15 00
VARIETIES:			
Delicata . Rose, with fringed petals.			
Laura Wilmer . White, with maroon center.			
Her Majesty . White.			
Mrs. Sinkins . White.			
Stanislaus . Violet-rose, with crimson center.			
DICENTRA eximia (Seal-flower). June to August. Pink. 1 ft.....	25	1 50	10 00
spectabilis (Bleeding-heart). May and June. Pink. 2 to 3 ft.....	25	2 00	12 50
DICTAMNUS fraxinella (Gas Plant). June. Purple. 3 ft.....	35	2 50	15 00
fraxinella , var. alba . June. White. 3 ft.....	35	2 50	15 00
DIGITALIS ambigua (Foxglove). July and August. Pale yellow. 3 ft.	25	2 00	15 00
purpurea (Common Foxglove). June and July. Mixed colors. 4 to 5 ft.....	25	1 50	10 00
purpurea , var. gloxiniæflora . June and July. Mixed colors. 4 to 5 ft.....	25	1 50	10 00
DORONICUM Austriacum . April and May. Yellow. 2 ft.....	35	2 50	15 00
plantagineum , var. excelsum . April to June. Yellow. 2 ft.	35	2 50	15 00
ECHINACEA purpurea (Purple Cone-flower). July to September. Rosy purple. 3 ft.....	25	2 00	15 00
ERIGERON speciosus (Fleabane). June to August. Violet-blue. 1½ to 2 ft.....	25	2 00	15 00
ERYNGIUM amethystinum (Sea Holly). July to September. Amethyst-blue. 2 ft.....	35	2 50	
EUPATORIUM ageratoides (White Snakeroot). September and October. White. 3 ft.....	25	1 50	12 50
celestinum . Fall. Light blue. 2 ft.....	25	1 50	
EUPHORBIA corollata (Spurge). July to September. White. 1½ ft.....	25	1 50	12 50
FEVERFEW , Little Gem. June to October. White. 15 in.....	25	1 50	10 00
FUNKIA Fortunei (Day Lily). July to August. Blue. 1½ to 2 ft.....	25	1 50	12 50
ovata . July to August. Deep blue. 1½ to 2 ft.	25	1 50	12 50
subcordata , var. grandiflora . September. White. Fragrant. 2 ft.....	25	2 00	15 00
undulata , var. media picta variegata . July and August. Lilac. 1 ft.....	25	1 50	12 50

	Each	10	100
GAILLARDIA grandiflora (Blanket-flower). June to November. Yellow. 1½ ft.....	\$0 25	\$1 50	\$10 00
GALEGA officinalis (Goat's Rue). July and August. Blue. 2 ft.....	25	1 50	10 00
officinalis , var. alba . July and August. White. 2 ft.....	25	1 50	10 00
GERANIUM sanguineum (Cranesbill). June to September. Red. 1½ ft.....	25	1 50	
GEUM coccineum (Avens). June and July. Scarlet. 1½ ft.....	25	2 00	15 00
Heldrechi . June. Orange. 18 in.....	25	2 00	15 00
montanum . June and July. Yellow. 18 in...	25	2 00	15 00
GILLENIA trifoliata (Bowman's Root). Rose and white. July. 3 ft.....	35	2 50	
GYPSOPHILA paniculata (Baby's Breath). July. White. 2 to 3 ft.....	25	1 50	12 50
HELENIUM pumilum (Sneezewort). July to October. Yellow. 1½ ft.....	25	1 50	10 00
autumnale , var. superbum . July to October. Yellow. 4 ft.....	25	1 50	10 00
grandicephalum , var. striatum . August to October. Orange. 3 ft.....	25	2 00	15 00
Hoopesi . All summer. Orange-yellow. 2 ft..	25	2 00	15 00
HELIANTHUS (Perennial Sunflowers) giganteus . August to October. Pale yellow. 6 to 10 ft.	25	1 50	10 00
Maximiliana . September. Deep yellow. 6 to 8 ft.	25	1 50	10 00
mollis . September and October. Golden yellow. 4 ft.....	25	1 50	10 00
multiflorus fl. pl. July and August. Golden yellow. 4 ft.	25	1 50	10 00
orgyalis . September and October. Golden yellow. 6 ft.	25	1 50	10 00
rigidus . July to October. Golden yellow. 3 ft.	25	1 50	10 00
rigidus , var. Miss Mellish . September and October. Golden yellow. 6 ft.....	25	1 50	10 00
rigidus , var. Wolly Dodd . September. Deep yellow. 3 ft.	25	1 50	10 00
HELIOPSIS Pitcheriana . June to October. Orange-yellow. 3 ft.....	25	1 50	10 00
HELLEBORUS niger (Christmas Rose). March. White. 6 in.....	35	3 00	
niger , var. atrorubens . March. Purple. 9 in..	35	3 00	
HEMEROCALLIS Dumortieri (Yellow Day Lily). June and July. Orange-yellow. 2 ft.....	25	1 50	12 50
flava . June. Yellow. 2 ft.....	25	1 50	12 50
fulva (Tawny Day Lily). July and August. A tawny yellow. 2½ ft.....	25	1 50	12 50
fulva , var. Kwanso fl. pl. (Double Orange Lily). July and August. Coppery yellow. 2½ ft....	25	1 50	12 50
fulva , var. Thunbergii . August and September. Lemon-yellow. 2½ ft.	25	1 50	12 50
HEPATICA triloba (Liverleaf). April. White and blue. 6 in.	25	1 25	10 00
HEUCHERA sanguinea (Alumroot). June to September. Coral-red. 18 in.....	25	2 00	15 00
sanguinea , var. alba . June to September. White. 18 in.....	25	2 00	



A field of Japanese Iris at Andorra

	Each	10	100
HIBISCUS <i>militaris</i> . June to September. Buff-yellow.			
18 in.	\$0 25	\$2 00	
<i>Moscheutos</i> (Mallow). July to September.			
Rose. 5 ft.	25	1 50	\$10 00
<i>Moscheutos</i> , var. Crimson Eye . July to September.			
White. 5 ft.	25	1 50	10 00
HOLLYHOCKS . See <i>Althæa rosea</i> .			
IBERIS <i>sempervirens</i> (Candytuft). April and May.			
White. 6 in.	25	1 50	10 00
<i>corifolia</i> . April and May. White. 9 in.	25	1 50	10 00
INULA <i>Britannica</i> (Fleabane). July to September.			
Light yellow. 2 ft.	25	1 50	12 50
IRIS . For Special Descriptive Lists, consult Calendar of Hardy Perennials.			
<i>atroviolacea</i> . May. Dark violet. 2 to 2½ ft. .	35	3 00	
<i>cristata</i> . April and May. Light blue. 6 in. .	25	1 50	12 50
<i>Florentina</i> . May. Tinted white. Fragrant. 1½ ft. .	25	2 00	
<i>Germanica</i> . May. Named varieties. 1½ to 2½ ft. .	25	1 50	10 00
<i>lævigata</i> ; syn., <i>Kämpferi</i> (Japanese Iris). June and July. Our selection, all colors. 2½ to 4 ft. .	25	2 00	15 00
Customer's selection.	35	3 00	25 00
<i>Pallida</i> , var. <i>Dalmatica</i> . June. Light blue. 3 ft. .	35	3 00	25 00
<i>Pallida</i> , var. <i>speciosa</i> . June. Indigo-blue. 2 to 3 ft.	35	3 00	25 00
<i>Pseudacorus</i> . June. Yellow. 2 to 3 ft.	25	2 00	15 00
<i>pumila nova</i> . May. Various colors. 8 to 10 in. .	25	1 50	12 50
<i>Sibirica</i> . May and June. Bright blue. 1½ ft. .	25	1 50	10 00
<i>Sibirica</i> , var. <i>alba</i> . June. White. 2 ft. Rare.	35	3 00	25 00
<i>Sibirica</i> , var. <i>orientalis</i> . May. Deep blue. 1½ ft. .	25	1 50	10 00
<i>tectorum</i> . May. Bright lilac. 1 ft.	25	2 00	15 00

	Each	10	100
KNIPHOFIA aloides (Red-hot Poker). August and September. Crimson. 3 ft.....	\$0 25	\$1 50	\$12 50
obelisque . July and August. Saffron-yellow. 3 to 4 ft.....	35	2 50	15 00
Pfizerii (Flame Flower). July to October. Orange-scarlet. 3 to 4 ft.....	35	2 50	15 00
LATHYRUS latifolius , var. albus (Hardy White Pea). Summer. Climbing.....	25	2 00	
latifolius , var. roseus . Summer. Rose. Climbing.....	25	2 00	
latifolius , var. splendens . Summer. Climbing..	25	2 00	15 00
latifolius , var. Pink Beauty . Summer. Bright pink. Climbing.....	25	2 00	15 00
LAVENDULA spica (Lavender). 15 to 18 in.....	25	1 50	12 50
vera (Lavender). 15 to 18 in.....	25	1 50	12 50
LIATRIS graminifolia (Blazing Star). August and September. Rosy purple. 2 ft.....	25	1 50	12 50
pycnostachya (Kansas Gay Feather). September. Rosy purple. 4 to 5 ft.....	25	1 50	12 50
spicata (Gay Feather). August and September. Deep purple. 3 to 4 ft.....	25	1 50	12 50
LILIUM Canadense (Meadow Lily). July. Shades of yellow. 2 to 4 ft.....	25	1 50	12 50
Philadelphicum (Wood Lily). July and August. Orange-scarlet. 2 to 4 ft.....	25	2 00	15 00
speciosum , var. roseum (Japan Lily). July and August. Rosy white. 2 to 4 ft.....	25	2 00	15 00
tigrinum (Tiger Lily). August. Salmon-red. 3 to 4 ft.....	25	1 50	12 50
LINUM Austriacum (Austrian Flax). June to August. Bluish purple. 18 in.....	25	1 75	
perenne (Perennial Flax). June to September. Clear blue. 18 in.....	25	1 75	
LOBELIA cardinalis (Cardinal Flower). August and September. Scarlet. 2 to 3 ft.....	25	1 50	12 50
siphilitica (Blue Lobelia). August and September. Deep blue. 2 ft.....	25	1 50	
LYCHNIS Chalcedonica (London Pride). July to September. Vermilion. 2 to 3 ft.....	25	1 50	12 50
coronaria (Rose Campion). June and July. Crimson. 1½ to 2 ft.....	25	1 25	10 00
coronaria , var. alba . June and July. White. 1½ to 2 ft.....	25	1 25	10 00
Haageana . June and July. Orange-scarlet. 1½ ft.	25	1 50	
vespertina , var. alba plena (White Campion). May to September. White. 1 ft.....	25	1 50	12 50
viscaria (Catchfly). June and July. Red. 1½ ft.	25	1 50	12 50
viscaria , var. splendens . (German Catchfly). June and July. Pink. 15 in.....	25	1 50	12 50
LYSIMACHIA clethroides (Loosestrife). July to September. White. 1½ ft.....	25	1 25	10 00
nummularia (Moneywort). June to August. Yellow. Creeping.....	25	1 50	10 00
LYTHRUM roseum superbum (Rose Loosestrife). July to September. Rose. 3 ft.....	25	1 50	12 50
MERTENSIA pulmonarioides (Virginia Cowslip). May and June. Blue. 2 ft.....	25	1 50	10 00

PRICE-LIST FOR FALL OF 1908

59

	Each	10	100
MONARDA didyma (Oswego Tea). July and August. Scarlet. 2½ ft.	\$0 25	\$1 50	\$10 00
didyma , var. Cambridge Scarlet . July and August. Scarlet. 2 ft.	25	1 50	10 00
didyma var. splendens . July and August. Crimson-scarlet. 2 ft.	25	1 50	10 00
MYOSOTIS alpestris , var. Victoria . May and June. Light blue. 6 to 9 in.	25	1 50	10 00
palustris (Forget-me-not). May and June. Light blue. Spreading.	25	1 50	10 00
NEPETA glecoma , var. variegata (Ground Ivy). May. Purple. 6 in.	25	1 50	10 00
ENOTHERA fruticosa , var. major (Sundrops). July. Yellow. 1½ ft.	25	2 00	15 00
fruticosa , var. Youngi (Young's Primrose). June. Lemon. 1½ to 2 ft.	25	1 50	12 50
Frazeri . June. Rich yellow. 1½ ft.	25	2 00	15 00
Missouriensis (Large Evening Primrose). June and July. Yellow. 1 ft.	25	2 00	15 00
speciosa (White Primrose). June and July. White. 1½ ft.	25	1 50	10 00
OPHIOPOGON Jaburan , var. aureus variegatus (Snake's Beard). September. Blue. 6 in. ..	50	3 50	
PACHYSANDRA procumbens (Mountain Spurge). March to May. White or purple. Spreading.	25	1 50	12 50
terminalis . May and June. White. 8 in.	25	1 50	12 50
PÆONIA . See our Calendar of Hardy Perennials for Special List.			
Chinensis, Double Varieties . Our selection. May and June	35	3 00	25 00
Chinensis, Heavy Clumps . Our selection.	1 50	12 50	
Chinensis, Single Varieties . Our selection.	35	3 00	25 00
corallina . May. Single. Reddish purple.	35	3 00	25 00
Moutan (Tree Peony). May and June. Different colors	1 00	9 00	
officinalis , var. rubra plena . Early April. Double; deep crimson.	50	4 00	35 00
officinalis , var. rosea plena . Early April. Double; pink.	1 00	9 00	
tenuifolia . Early April. Single; deep maroon.	50	4 00	
tenuifolia , var. plena . Early April. Double; maroon	50	4 00	
triternata . April. Single. Bright red.	35	3 00	25 00
PAPAVER bracteatum . June. Blood-red. 4 ft.	25	2 00	12 50
nudicaule (Iceland Poppy). All summer. Many colors. 1 ft.	25	1 50	10 00
orientale (Oriental Poppy). June. Orange-scarlet. 2 ft.	25	2 00	12 50
PARDANTHUS . See <i>Belemcanda</i> .			
PENTSTEMON barbatus , var. Torreyi (Torrey's Beard Tongue). June to August. Scarlet. 3 to 4 ft.	25	1 50	10 00
grandiflorus . June to August. Purplish blue. 2 to 2½ ft.	25	2 00	15 00
lævigatus , var. Digitalis . July and August. White. 3 ft.	25	2 00	
ovatus . July and August. Purplish blue. 2 to 3 ft.	25	2 00	

	Each	10	100
PHLOX amœna. May. Bright pink. 3 to 4 in.....	\$0 25	\$1 50	\$10 00
Carolina. May and June. Rosy red. 1 ft....	25	1 50	
divaricata (Wild Sweet William). May and June. Lavender. 1 ft.....	25	1 50	12 50
paniculata ; syn., decussata (Perennial Phlox). See the Calendar of Hardy Perennials for Special List. All colors.....	25	2 00	15 00
subulata (Mountain Pink). May and June. Rose. Creeping.....	25	1 50	10 00
subulata , var. alba. May and June. White. Creeping.....	25	1 50	10 00
subulata , var. atropurpurea. May and June. Purple. Creeping.....	25	1 50	
subulata , var. lilacina. May. Lilac. Creeping..	25	1 50	12 50
subulata , var. Nelsoni. May and June. Pure white. Creeping.....	25	1 50	10 00
subulata , var. Model. May and June. Rosy white. Creeping.....	25	1 50	10 00
PHYSOSTEGIA Virginiana (False Dragonhead). August. Deep rose. 3 ft.....	25	1 50	
Virginiana , var. alba. August. White. 3 ft..	25	1 50	10 00
Virginiana , var. speciosa. August. Pink. 3 ft.	25	1 50	10 00
PLATYCODON grandiflorum (Balloon-flower). July. Blue. 1½ ft.....	25	1 50	
grandiflorum , var. album. July. White. 1½ ft.	25	1 50	
grandiflorum , var. Mariesi. June to October. Blue. 1 ft.....	25	1 50	12 50
POLEMONIUM cœruleum (Jacob's Ladder). May to July. Deep blue. 1½ ft.....	25	2 00	15 00
cœruleum , var. album. May to July. White. 1½ to 2 ft.....	25	2 00	
PRIMULA acaulis (Primrose). May. Yellow. 6 to 9 in.....	25	1 50	12 50
capitata (Primrose). Deep lilac. 9 in.....	25	1 50	12 50
suaveolens (Cowslip). May. Yellow and orange. 1 ft.....	25	1 50	12 50
veris (Polyanthus). May. Yellow and orange-crimson. 6 to 9 in.....	25	1 50	12 50
vulgaris (English Primrose). May. Yellow. 6 to 9 in.....	25	1 50	12 50
PYRETHRUM roseum (Feverfew). June and July. White, pink and red. 1½ to 2 ft.....	25	1 50	10 00
roseum fl. pl. Named varieties. 1½ to 2 ft....	35	3 00	
RANUNCULUS aconitifolius fl. pl. (Crow's-foot). June. White. 1½ to 2 ft.....	25	1 50	
acris fl. pl. (Yellow Bachelor's Buttons). June. Yellow. 2 ft.....	25	1 50	
repens (Double Buttercup). May to July. Yellow. 1 ft.....	25	1 50	10 00
ROSMARINUS officinalis (Rosemary). Scented foliage.....	25	1 50	
RUDBECKIA laciniata , var. Golden Glow. July to September. Yellow. 8 ft.....	25	1 25	10 00
Newmani. August and September. Yellow. 1½ ft.	25	1 50	10 00
nitida (Cone-flower). August and September. Pale yellow. 5 ft.....	25	1 50	10 00

PRICE-LIST FOR FALL OF 1908

61

	Each	10	100
SALVIA argentea. June. White, white foliage. 2 ft..	\$0 25	\$1 50	\$10 00
Caucasicum. July and August. Reddish purple.			
3 ft.	25	1 50	10 00
pratensis (Meadow-sage). June to September.			
Deep blue. 2 to 3 ft.....	25	1 50	10 00
SANGUINARIA Canadensis (Bloodroot). White.			
April. 6 in.....	25	1 50	10 00
SANTOLINA incana (Lavender Cotton). July.			
Deep yellow. 1 ft.....	25	1 50	10 00
SAXIFRAGA cordifolia (Rockfoil). April to June.			
Rosy purple. 15 in.....	25	2 00	15 00
SCABIOSA Caucasicca (Mourning Bride). Lavender-blue. June. 15 to 18 in.....	35	2 50	15 00
SEDUM acre (Golden Moss). May and June. Yellow. Spreading	25	1 25	10 00
album. July. White. 4 to 6 in.....	25	1 25	10 00
Rhodiola. August. Light pink. 1 ft.....	25	1 25	10 00
sexangulare (Stonecrop). June and July. Yellow. 6 in.....	25	1 25	10 00
spectabile (Brilliant Stonecrop). September and October. Rose. 12 to 15 in.....	25	2 00	15 00
spectabile, var. atropurpurea. September and October. Purplish crimson. 15 in.....	25	2 00	15 00
telephoides. July and August. Pink. 1 ft...	25	2 00	15 00
SENECIO clivorum. Summer. Yellow. 3 ft.....	35	2 50	15 00
pulcher (Groundsel). July to October. Rosy purple. 1½ to 2 ft.....	25	1 50	
SILENE Pennsylvanicum (Wild Pink). April and May. Rose or white. 9 in.....	25	1 25	10 00
SMILACINA racemosa (False Solomon's Seal). April. White. 1½ ft.....	25	1 50	
SPIRÆA (Goat's Beard, or Meadowsweet) aruncus. June and July. White. 4 to 5 ft.....	35	2 50	15 00
filipendula fl. pl. June and July. White. 2 ft.	25	1 50	12 50
lobata. July. Pink. 3 to 4 ft.....	25	2 00	15 00
palmata. June and July. Deep crimson. 2 ft.	25	2 00	15 00
palmata, var. elegans. June and July. White; crimson anthers. 3 ft.....	25	2 00	
Ulmaria. June and July. White. 3 ft.....	25	2 00	
venusta. June and July. Deep pink. Fragrant. 3 ft.....	25	2 00	
STACHYS Betonica; syn., Betonica rosea. July and August. Rose. 1 ft.....	25	1 50	12 50
STATICE Tatarica (Sea Lavender). June to August. Red. 15 to 18 in.....	25	1 50	10 00
latifolia (Great Sea Lavender). July and August. Deep blue. 2 ft.....	25	1 50	10 00
STOKESIA cyanea (Stokes' Aster). July to October. Lavender. 1½ ft.....	25	2 00	15 00
cyanea, var. alba. July to October. White. 1½ ft.....	50	3 50	
TANACETUM globiferum (Tansy). August. Golden yellow. 3 ft.....	25	1 50	10 00

	Each	10	100
THALICTRUM adiantifolium (Meadow Rue). June.			
Yellow. 18 in.	\$0 25	\$1 50	\$10 00
aquilegifolium (Feathered Columbine). June.			
White. 2 to 4 ft.	25	1 50	
polygamum (Tall Rue). June. White. 3 to 4 ft.	25	1 50	
purpurascens . June to August. Purple. 3 to 4 ft.	25	1 50	
THERMOPSIS Caroliniana . June. Yellow. 3 to 4 ft.	25	1 50	
mollis . May to July. Yellow. 2 to 3 ft.	25	1 50	
THYMUS montanus , var. coccineus (Scarlet Thyme). May. Bright red. 4 in.	25	1 50	
vulgaris (Common Thyme). May. Lilac. 1 to 2 ft.	25	1 25	
TRADESCANTIA Virginiana (Spiderwort). June to October. Purple. 2 ft.	25	1 50	12 50
Virginiana , var. alba . June and July. White. 2 ft.	25	1 50	12 50
TRILLIUM erectum (Wake Robin). March and April. Purple. 9 to 12 in.	25	1 50	
grandiflorum (Wood Lily). March and April. White. 9 to 12 in.	25	1 50	
TROLLIUS Europæus (Globe-flower). May to August. Yellow. 2 ft.	25	1 50	12 50
VALERIANA coccinea (Valerian). June to October. Reddish. 2 ft.	25	1 50	10 00
officinalis (Hardy Heliotrope). June and July. Rose-pink. 2 ft.	25	1 50	10 00
rubra . June to October. Red. 2 ft.	25	1 50	10 00
VERBASCUM Olympicum (Mullein). July to September. Yellow. 6 ft.	25	1 50	12 50
VERNONIA Arkansana (Ironweed). August to October. Red. 5 ft.	25	2 00	
Baldwini . August to October. Purple. 4 ft.	25	2 00	
VERONICA longifolia , var. rosea (Speedwell). July to October. Rose. 1½ ft.	25	1 50	
longifolia , var. subsessilis . August to November. Deep blue. 1½ to 2 ft.	25	2 00	15 00
rupestris (Rock Speedwell). June and July. Blue Spreading	25	1 50	10 00
spicata . June to September. Bright blue. 1½ ft.	25	1 50	10 00
Virginica . August to September. White. 4 ft.	25	1 50	10 00
VINCA minor (Periwinkle). May. Bright blue. Spreading	25	1 50	10 00
VIOLA pedata , var. bicolor (Bird's-foot Violet). May. Purple and White. 4 in.	25	1 50	12 50
Mixed	25	1 25	10 00

A CALENDAR OF PERENNIALS

This booklet, in a revised edition, with monthly lists, and special lists of Phlox, Iris, Peonies and Chrysanthemums, will be found valuable in arranging hardy gardens.

FERNS

- ADIANTUM pedatum** (Maidenhair Fern). 1 to 2 ft. Moist, shaded positions.
- ASPIDIUM acrostichoides** (Christmas Fern). 1 to 2 ft. Evergreen. Dry or moist soils in shady places.
- Felix-mas** (Male Fern). 2 ft. Semi-shaded positions, dry or moist soils.
- Goldianum**. 2 to 4 ft. Semi-shaded positions, dry or moist soils.
- marginale**. Evergreen. 1 to 2 ft. Shaded positions, dry or moist soils.
- ASPLENIUM Filix-fœmina** (Lady Fern). 2 to 3 ft. Open or shaded positions, in moist or dry soils.
- BOTRYCHIUM Virginianum** (Moonwort). 6 to 12 in. Shaded positions, moist or dry soils.
- DICKSONIA punctilobula** (Boulder Fern). 2 to 3 ft. For open positions; forms large plantations.
- ONOCLEA sensibilis** (Sensitive Fern). 1 to 2 ft. For open planting and wet soils.
- Struthiopteris** (Ostrich Fern). 2 to 4 ft. For open positions, dry or moist soils.
- OSMUNDA gracilis** (Flowering Fern). 2 to 4 ft. Open or shaded positions, and moist soils.
- Claytoniana**. 2 to 5 ft. For open plantings, dry or moist soils.
- cinnamomea** (Cinnamon Fern). 2 to 5 ft. For open or shaded positions, in wet soils.
- WOODSIA obtusa**. 6 to 12 in. Shady places, in moist soil.
- WOODWARDIA angustifolia** (Chain Fern). 1 ft. Open or shaded positions, in moist soils.
- The above varieties, 25 cts. each, \$2 per 10, \$15 per 100.
- The above collection, 15 varieties, \$3.
- 100 in 5 varieties, our selection, \$12.50.

HEDGE PLANTS

We shall be pleased to name special prices for plants in quantity for hedging purposes.

EVERGREEN TREES

	SEE PAGE		SEE PAGE
Biota orientalis	4	Thuja occidentalis	13
Picea excelsa	7	occidentalis Wareana	14
Retinospora plumosa	10	Tsuga Canadensis	14
Retinospora plumosa aurea	11		

DECIDUOUS TREES

Carpinus Americana	24	Cratægus Oxyacantha	26
Betulus	24	Fagus sylvatica	26
Cratægus Crus-galli	26		

EVERGREEN SHRUBS

Azalea amœna	15	Ilex crenata microphylla	17
Buxus sempervirens	15	Mahonia aquifolia	17
sempervirens suffruticosa	16	Japanica	17

DECIDUOUS SHRUBS

Acanthopanax spinosa	33	Hippophae rhamnoides	40
Berberis Thunbergi and vulgaris	35	Ligustrum Ibotâ, Regelianum,	
Elæagnus longipes	39	ovalifolium, vulgare	41
Forsythia viridissima	39	Lonicera Tatarica	42
Hibiscus Syriacus	39	Rhamnus cathartica	43

OUR CATALOGS

THE ANDORRA HANDBOOK. Planters who desire a complete descriptive list will be supplied with our Handbook of Trees and Plants for 50 cents, which will be credited upon their first purchase amounting to \$5.

ANDORRA'S HANDBOOK will serve as a standard guide, being up-to-date in nomenclature, and containing conservative descriptions of a vast list of trees and plants, with hints on planting, pruning and caring for them. It is illustrated and fully indexed.

PRICE-LISTS are issued semi-annually. Owing to our large output, and the changes in sizes of stock by reason of each season's growth, frequent revisions of the **PRICE-LIST** are necessary, to keep customers thoroughly posted on the stock we offer. You are always sure your order will be filled if you find the items in the current season's **PRICE-LIST**.

MORE SPECIALTIES, a booklet of 32 pages, describing and illustrating a large number of very choice things for the country home. A great help in deciding upon just the right thing to plant.

BEAUTIFUL LAWNS, BOOKLET No. 27. This little pamphlet treats of Lawn Fertilizing, and its eight pages should be carefully read by all interested in having a good lawn.

BOXWOOD, BOOKLET No. 28. For formal gardens and in connection with architectural effects, **BOXWOOD** is now absolutely necessary. This booklet shows the different forms we offer.

HINTS FOR SUCCESSFUL PLANTING, BOOKLET No. 30. Does not aim to cover every point that may arise, but it gives the principles in such a way that any one, by following its directions, can secure the best results.

A CALENDAR OF HARDY PERENNIALS, BOOKLET No. 33-26, with special lists of Iris, Phlox, Peonies and Chrysanthemums. This little booklet gives a complete list of Perennials, and shows in tabulated form their height, color, and months of bloom; invaluable to those planning herbaceous gardens.

MEASURING TREES AND SHRUBS

All trees and shrubs are measured as they stand in the Nursery before digging. In evergreen trees and in evergreen and deciduous shrubs the height is taken from the ground to the top of the plant.

Deciduous trees are measured from the ground to the top of the head, and the caliper or diameter of the trunk is taken above the collar. Measurements are expressed thus: 10 to 12 ft. (height), 2½ to 2¾ in. (caliper).

DEPARTMENTS

	PAGE
Fertilizers	2
General Instructions and Terms...	3
Evergreen Trees.....	4
Evergreen Shrubs.....	15
Deciduous Trees.....	20
Deciduous Shrubs.....	33
Reeds and Grasses.....	47

	PAGE
Vines and Climbing Plants.....	47
Fruit and Small Fruits.....	49, 50
Roses.....	50
Herbaceous Plants.....	51
Ferns.....	63
Hedge Plants.....	63
Catalogs.....	64

INDEX

	PAGE
Aaron's Beard.....	40
Abelia.....	33
Abies.....	4
Acanthus.....	51
Acanthopanax.....	33
Acer.....	20, 22
Achillea.....	51
Aconitum.....	51
Actinidia.....	47
Adam's Needle.....	20
Adiantum.....	63
Æsculus.....	23, 33
Ailanthus.....	23
Ajuga.....	51
Akebia.....	47
Alder.....	23
Allspice, or Sweet Shrub.....	35
Alnus.....	23
Althæa (see, also, Hi- biscus).....	39, 40, 51
Alum Root.....	56
Alyssum.....	51
Amelanchier.....	23, 33
Amorpha.....	34
Ampelopsis.....	47
Amygdalus. See Prunus.	
Anchusa.....	51
Andromeda (see, also, Oxydendrum).....	15, 23
Anemone.....	51, 52
Anthemis.....	52
Apples.....	49
Aquilegia.....	52
Arabis.....	52
Aralia.....	23
Arborvitæ.....	4, 5, 13
Arenaria.....	52
Aristolochia.....	57
Armeria.....	53
Aronia. See Pyrus.	
Arrow-wood.....	46
Artemesia.....	53
Arundo.....	47
Asclepias.....	53
Ash.....	27, 32
Asparagus.....	50
Aspidium.....	63
Asplenium.....	63
Aster.....	53
Astilbe.....	53
Astrantia.....	53
Aubrietia.....	53
Azalea.....	15, 34, 35

	PAGE
Baby's Breath.....	56
Baccharis.....	35
Bambusa.....	47
Baptisia.....	53
Barberry.....	35
Basswood.....	32-33
Beard Tongue.....	59
Bear's Breech.....	51
Beauty-fruit.....	35
Beech.....	26
Belemcanda.....	53
Bell-flower.....	54
Bellis.....	53
Benzoin.....	35
Berberis.....	35
Betonica. See Stachys.	
Betula.....	24
Bignonia.....	47
Balloon-flower.....	60
Biota.....	4-5
Birch.....	24
Bittersweet.....	47
Black Alder.....	23
Blackberries.....	49
Black Haw.....	47
Black Walnut.....	27
Bladder Nut.....	44
Bladder Senna.....	36
Blanket-flower.....	55
Blazing Star.....	58
Bleeding Heart.....	50
Blue Spirea.....	35
Bocconia.....	53
Boltonia.....	53
Botrychium.....	63
Box.....	15-16
Bridal Wreath.....	44
Broussonetia.....	24
Buckthorn.....	43
Butterfly Weed.....	53
Buttonwood.....	30
Buxus.....	15-16
Calimeris.....	53
Callicarpa.....	35
Callirhoe.....	54
Calycanthus.....	35
Campanula.....	54
Candytuft.....	57
Caragana.....	35
Cardinal-flower.....	58
Carpinus.....	24
Caryopteris.....	35
Castanea.....	24

	PAGE
Catalpa.....	24
Ceanothus.....	36
Cedar.....	5, 7
Cedrela.....	24
Cedrus.....	5
Celastrus.....	47
Celtis.....	25
Cephalanthus.....	36
Cephalotaxus.....	5
Cerastium.....	54
Cerasus.....	16, 25
Ceratostigma.....	54
Cercidiphyllum.....	25
Cercis.....	25, 36
Chamædaphne.....	16
Chamomile.....	52
Chaste Tree.....	47
Chelone.....	54
Cherries.....	49
Cherry.....	25
Chestnut.....	24, 49
Chinese Angelica Tree.....	23
Chinese Arborvitæ.....	5
Chinese Cork Tree.....	29
Chionanthus.....	36
Chokeberry.....	43
Christmas Rose.....	56
Chrysanthemum.....	54
Chrysogonum.....	54
Chrysopsis.....	54
Cimicifuga.....	54
Cineraria. See Arte- misia.....	
Cinquefoil.....	42
Cladrastris.....	25
Clematis.....	48, 54
Clethra.....	36
Columbine.....	52, 62
Colutea.....	36
Comptonia.....	36, 37
Cone-flower.....	55, 60
Conoclinium.....	54
Convallaria.....	54
Coral Berry.....	44
Corchorus.....	36
Coreopsis.....	54
Cornus.....	25, 36, 37
Corylus.....	37
Cotoneaster.....	16, 37
Crab Apples.....	30
Cranberry Bush.....	46
Cratægus.....	17, 25, 26
Cryptomeria.....	5
Cucumber Tree.....	28

	PAGE		PAGE		PAGE
Cupressus	12	Ginkgo	32	Kniphofia	58
Currant	43, 49	Gleditschia	27	Kœlreuteria	27
Cydonia	37	Globe-flower	36	Kudzu Vine	48
Cypress	9, 12, 32	Goat's Beard	61	Larch	27
Cytisu	27, 37	Gold-flower	40	Larix	27
Daisy	53	Golden Bell	39	Larkspur	54
Day Lily	55-56	Golden Chain	26	Lathyrus	48, 58
Daphne	17	Golden Tuft	51	Laurel	16-17
Deciduous Shrubs	33-47	Glyptostrob. See Taxodium.		Lavandula	58
Deciduous Trees	20-33	Gooseberries	49	Lavender	58
Delphinium	55	Grapes	48-49	Lavender-cotton	61
Desmodium. See Lespedeza	37	Groundsel Shrub	35, 61	Lespedeza	40
Deutzia	31, 38	Guelder Rose	46	Liatris	58
Dianthus	55	Gymnocladus	27	Ligustrum	40-41
Dicentra	55	Gypsophila	56	Lilac	44
Dicksonia	63	Halesia	39	Lillum	58
Dictamnus	55	Hamamelis	39	Lily-of-the-valley	54
Diervilla	38	Hardy Roses	50-51	Linden	32-33
Digitalis	55	Hawthorn	26	Linum	58
Diospyros	26	Hazel	37	Liquidambar	28
Dogwood	25, 36-37	Hedera	48	Liriodendron	28
Dolichos. See Pueraria.		Hedge Plants	63	Liver Leaf	56
Doronicum	55	Helenium	56	Lobelia	58
Dutchman's Pipe	47	Helianthus	56	Locust	27, 32
Echinacea	55	Heliopsis	56	London Pride	58
Elaeagnus	39	Helleborus	56	Lonicera	41, 42, 48
Elder	43	Hemerocallis, or Day Lily	56	Loosestrife	58
Elm	33	Hemlock	14	Lychnis	58
Elymus	47	Hepatica	56	Lycium	42
English Primrose	60	Herbaceous Plants	51-62	Lysimachia	58
English Ivy	48	Heuchera	56	Lythrum	58
Erianthus	47	Hibiscus	39, 40, 57	Maclura	28
Erigeron	55	High Cranberry Bush	46	Magnolia	28
Eryngium	55	Hippophae	40	Mahonia	17
Esculent Roots	50	Holly	17	Maidenhair Tree	32
Eulalia	47	Hollyhocks (see, also, Althæa)	51	Maple	20-23
Eunonymus	17, 39, 48	Honey Locust	27	Matrimony Vine	42
Eupatorium	55	Honeysuckle	41, 48	Meadow Rue	61
Euphorbia	55	Hop Tree	30	Meadow Sweet	61
Evening Primrose	59	Hornbeam	24	Mertensia	58
Evergreen Shrubs	15-20	Horse-chestnut	23	Mint-flower	54
Evergreen Thorn	17	Hydrangea	40	Mist, or Smoke Tree	43
Evergreen Trees	4-15	Hypericum	40	Mock Orange	42
Everlasting Pea	48	Iberis	57	Monarda	59
Exochorda	39	Ilex	5, 17, 40	Moneywort	58
Fagus	26	Inula	57	Moonshood	51
Ferns	63	Iris	57	Morus	29
Festuca	47	Iron Weed	62	Mountain Ash	32
Feverfew	55, 60	Itea	40	Mourning Bride	61
Fir	4	Jacob's Ladder	60	Mulberry	24, 29
Flame-flower	58	Japanese Maples	22-23	Myosotis	59
Flowering Almond	43	Japan, or Boston Ivy	27	Myrica	42
Flowering Crab	30	Japan Cypress	9	Negundo. See Acer Negundo.	
Forget-me-not	59	Japan Judas	36	Nepeta	59
Forsythia	39	Japan Quince	37	Nettle Tree	25
Foxgloves	55	Japanese Snowball	46	Nuts	49
Fox Grape	48	Jasmine	40	Nyssa	29
Fragrains	27	Jasminum	40	Oak	30-31
Fruit	49	Jersey Tea	36	Oenothera	59
Funkia	55	Judas Tree	25	Old Man	53
Gaillardia	56	Juglans	27	Old Woman	53
Galega	56	Juneberry	23	Oleaster	39
Gas Plant	55	Juniperus	5-6-7	Onoclea	63
Geranium	58	Kalmia	17	Ophiopogon	59
German Catchfly	56	Kentucky Coffee Tree	27	Oriental Plane	30
Geum	56	Kerria. See Corchorus	43	Oriental Poppy	59
Gillenia	56			Osage Orange	28
				Osmanthus	17

PRICE-LIST FOR FALL OF 1908

67

PAGE		PAGE		PAGE	
Osmunda	63	Ribbon Grass	47	Sweet Shrub	35
Oswego Tea, or Fra-		Ribes	43	Sycamore	30
grant Balm	59	Robinia	32, 43	Symphoricarpus	44
Oxydendrum	29	Rock Cress	52	Syringa	44
Pæonia	59	Rockfool	61	Tanacetum	61
Pachysandra	59	Rose Acacia	45	Tamarix	46
Papaver	59	Rose Campion	58	Taxodium	32
Pardanthus. See Bel-		Rosemary	60	Taxus	11-12
emcanda.		Rose of Sharon	39, 40	Tecoma. See Bignonia.	
Parrotia	29	Roses	50-51	Thalictrum	62
Paulownia	29	Rosmarinus	60	Thermopsis	62
Pavia. See Æsculus.		Rosy Milfoil	51	Thorn	25-26
Peaches	29, 49	Rubus	43	Thorn, Evergreen	17
Pearl Bush	39	Rudbeckia	60	Thrift	53
Pears	49	Rugosa Roses	51	Thuya	13-14
Pentstemon	59	Salisburla	32	Thujopsis	12
Periploca	48	Salix	32	Thymus	62
Periwinkle	62	Salvia	61	Tickseed	54
Persian Iron Tree	29	Sambucus	43	Tiger Lily	58
Persica	29	Sandwort	52	Tilia	32-33
Persimmon	26	Sanguinaria	61	Tradescantia	62
Phalaris	47	Santolina	61	Tree of Heaven	23
Phellodendron	29	Saxifraga	61	Trillium	62
Philadelphus	42	Scotch Broom	37	Trolius	62
Phillyrea	17	Scabiosa	61	Trumpet Vine	47
Phlox	60	Sciadopitys	11	Tsuga	14
Physostegia	60	Sea Buckthorn	40	Tulip Tree	28
Picea	7-8	Sea Holly	55	Ulmus	33
Pine	8-9, 11	Sea Lavender	61	Umbrella Tree	28
Pinks	60	Senecio	61	Vaccinium	46
Pinus	8-9	Sedum	61	Valeriana	62
Plane	30	Sheepsberry	46	Valerian	62
Platanus	30	Shrub Yellow Root	47	Varnish Tree	27
Platycodon	60	Shrubby Cinquefoil	42	Verbascum	62
Plumbago	54	Silene	61	Vernonia	62
Plums	49	Silk Vine	48	Veronica	62
Podocarpus	9	Small Fruits	49	Viburnum	46-47
Polemonium	60	Smilacina	61	Vinca	62
Poplar	30	Snakeroot	55	Vines and Climbing	
Populus	30	Snowball	46	Plants	47, 48
Poppy	53, 59	Snowberry	44	Viola	62
Potentilla	42	Sophora	32	Virgilia. See Cladras-	
Primrose	59-60	Sorbus	32	tris.	
Primula	60	Speedwell	62	Virginia Creeper	47
Privet	40-41	Spice Bush	35	Vitex	47
Prunus. See, also,		Spiderwort	62	Vitis	48
Cerasus	30, 42	Spindle Tree	39	Wax Myrtle	42
Pseudotsuga	9	Spiræa	43, 44, 53, 61	Wayfaring Tree	46
Ptelea	30	Spruce	7, 8, 9	Weigela	38
Pterostyrax	30	Stachys	61	White Fringe	36
Pueraria	48	Staphylea	44	White Rod	46
Purple Mist	43	Statice	61	Wolf's-bane	51
Pyrethrum	60	Stephanandra	45	Willow	32
Pyrus	30, 42	Stokesia	61	Windflower	51-52
Quercus	30, 31	Stokes' Aster	61	Winola	47
Quinces	37, 49	Stonecrop	61	Winter Berry	40
Ranunculus	60	Strawberries	50	Wistaria	48
Raspberries	50	Strawberry Bush	39	Witch Hazel	39
Red Bud, or Judas	25	Styrax	44	Woodsia	63
Reeds and Grasses	47	Sumac	31-32, 43	Woodwardia	63
Retinospora	9-11	Sunflower	56	Xanthoceras	47
Rhamus	43	Swamp Huckleberry	46	Xanthorrhiza	47
Rhododendron	18	Sweet Fern	36	Yarrow	51
Rhodotypus	43	Sweet Gum	28	Yellow Wood	25
Rhubarb	50	Sweet William	54, 60	Yew	5, 9, 11, 12
Rhus	31-32, 43	Sweet Pepper Bush	36	Yucca	20

Plant for Immediate Effect

Not for Future Generations

Start with large stock—it has taken years of special preparation to grow such Trees and Shrubs as we offer you.

We have done the long waiting—you can secure at once specimens that will give immediate and permanent results.

AS AN EXAMPLE

Note in this Price-List, page 21, Norway Maples, 14 to 20 ft. in height with trunks 4 to 10 in. in diameter. Specimen trees with broad tops and a system of fibrous roots that makes transplanting successful—trees that are sure to grow. Such trees simply “make your place.”

AN IMPORTANT POINT

These specimen Trees and Shrubs are Andorra-Grown—they are here at our Nurseries where you may inspect them and reserve such as suit your purpose.

ANDORRA-GROWN MEANS QUALITY
QUALITY IN TREES MEANS SUCCESSFUL PLANTING