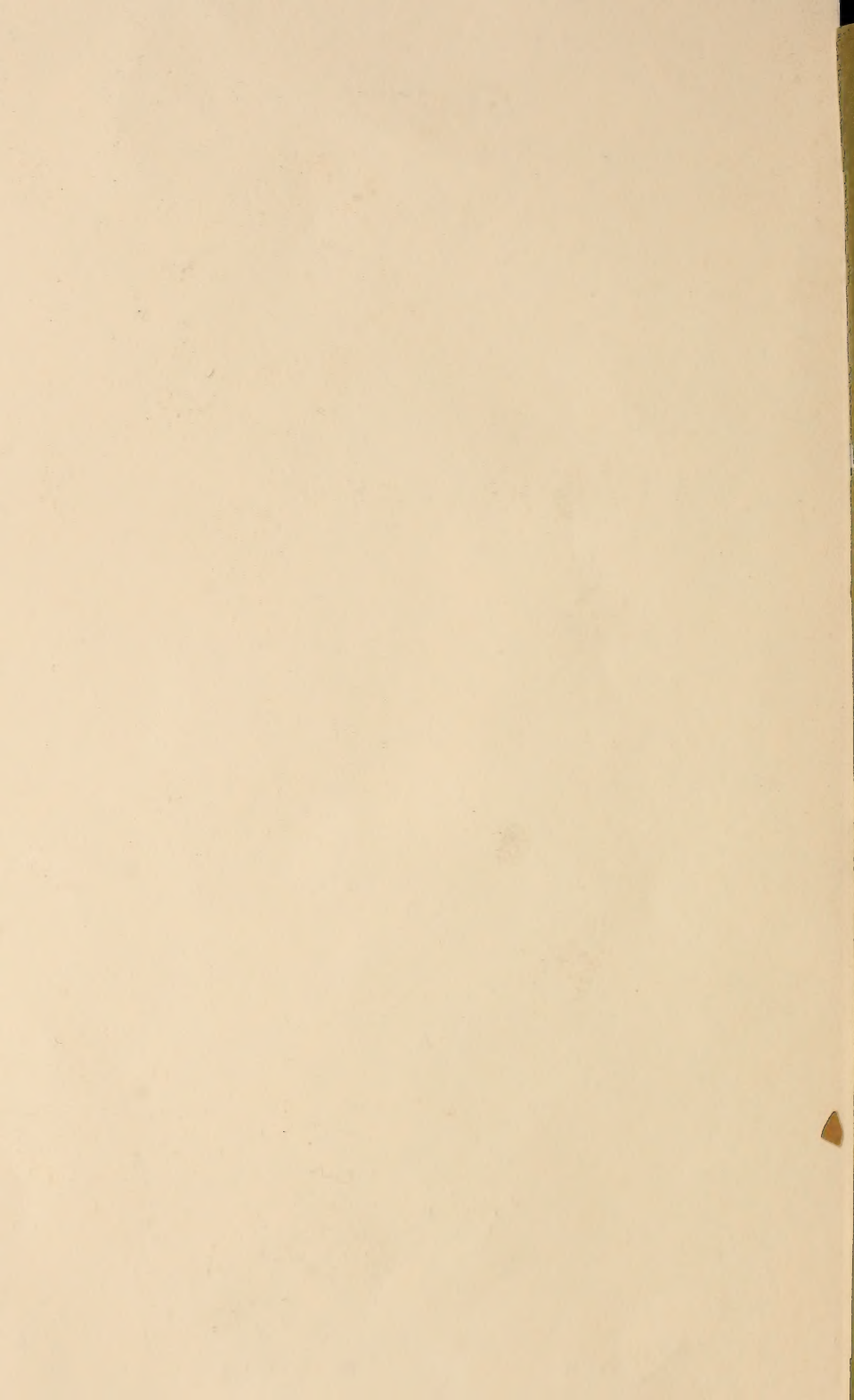


Historic, Archive Document

Do not assume content reflects current scientific knowledge, policies, or practices.



1907--SEASON--1908

LIBRARY
U.S. Department of Agriculture

Field Investigations in Pomology
RECORDED
OCT 21 1907
Showered

COMAL
SPRINGS
NURSERY

OTTO LOCKE, PROPRIETOR
NEW BRAUNFELS, COMAL CO., TEX.

PLEASE READ CAREFULLY BEFORE ORDERING

WHEN ORDERING write your order plainly on the order sheet found in this catalog, and make perfectly clear what is wanted.

FILLING. Orders are filled as soon after reception as possible. Should at the time the order is received the supply of a certain variety be exhausted, and no substitution be allowed, the order will be filled only as far as assortment allows.

MISTAKES are made by us as well as by anybody else, but we always cheerfully correct them if they are reported.

PACKING. We bear all cost of packing; we pack in the very best manner, and all goods packed by us can safely be sent all over the American continent. Good packing pays us and pays our customers. Everything is labeled.

SHIPPING. We deliver all goods free of charge at the freight or express office of New Braunfels; after that they are out of our hands, beyond our control, and we are not responsible for any mishaps that may occur to them on the road. Please always state plainly to what point you wish the goods to be shipped, and whether you wish them sent by freight or express. We would, however, advise everybody to order by express, as in many cases it is cheaper than freight, and, besides, express takes only from one to four days, while freight takes from one to three weeks to reach you, and stock may suffer if it is on the road too long.

TRANSPORTATION CHARGES are not paid by us, but we put trees and plants in free of charge to about cover the amount you pay for expressage. If, however, customers wish to get the goods laid down at their nearest express office prepaid, we will gladly send them that way, provided 20 per cent of the total amount of the order is added to the same when the order does not call for more than \$5 worth of stock; 15 per cent to orders from \$5 to \$10; 10 per cent to orders amounting to more than \$10.

TERMS: INVARIABLY CASH WITH ORDER. No plants sent C. O. D. Our prices are too low to allow any deviation from this rule.

SHIPPING SEASON begins November 1 and extends to March 15.

NO AGENTS. Please notice that we have no agents to call on you and solicit your orders. This book is our sole agent.

GUARANTY. We exercise the utmost care to prevent errors, and sell our stock only with the express understanding that, should a mistake occur, and any variety prove untrue to label, we will, upon proper proof thereof, refund the money paid or refill the order free, but for no sum greater than that originally received.

DISCOUNT. We allow a reasonable per cent on large orders, and for planting in church, school or graveyards, and in city parks. Write for low rates if stock is desired for such purpose.

BEST ASSORTMENT is most successfully secured by leaving the selection, in part at least, to us. We have had years of experience in testing the different varieties, but we desire everyone to have his or her choice as near as possible.

EVERGREENS, ORNAMENTAL AND FLOWERING SHRUBS. We have the largest stock and finest assortment in the South and can please everybody.

WONDER TREES. We do not handle any such as "Tree Blackberries, Never-Failing Almonds or Apricots, California Seedling Peach at \$1 each," and other such frauds. It is the province of the traveling tree peddler to supply these rare novelties; they claim exclusive right to such trade, and we grant their claims.

COMAL SPRINGS NURSERY, Otto Locke, Proprietor, New Braunfels, Texas.

COMAL SPRINGS NURSERY



SEASON 1907-1908



OTTO LOCKE, PROPRIETOR
NEW BRAUNFELS, COMAL CO., TEX.

GREETING.

It is gratifying to us and we take great pleasure in this opportunity to again thank our many patrons for their continued confidence during the past year. We solicit a careful examination of this, the twenty-second edition of our annual catalogue. To our customers, who for many years have planted and advertised for us the excellence of our trees and plants, we tender our sincere thanks and assurance, that in the future the same care will be exercised in filling their orders satisfactorily. Our aim will be to improve still further every department of our business and merit a continuation of old relations, as well as to form new ones.

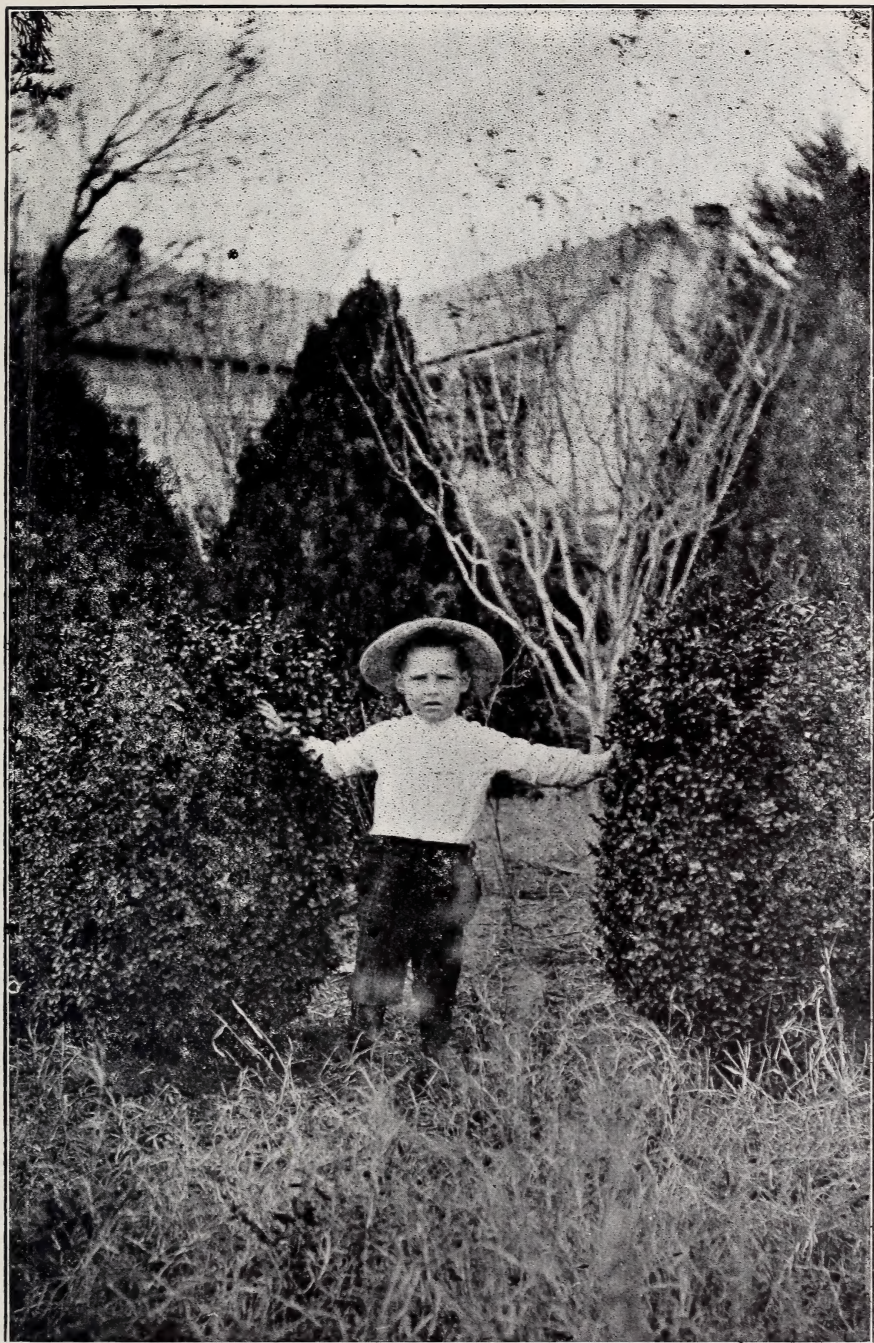
We do our very best to please our patrons, so that "once a customer" will remain "always a customer", and all orders, large or small, will have careful attention and be delivered in good condition. Mistakes, if made, will be cheerfully adjusted.

The proof of our continued increasing success rests materially in the fact, that it has been our constant endeavor to offer only those trees, plants and seeds which we feel will give entire satisfaction. Thus the planter recognizes the indisputable evidence of quality.

With kind regards and best wishes, I remain,

Very truly yours,

OTTO LOCKE.



Buxus Arborea in front; Biota Aurea Nana behind our Boy.



Fruit Trees

Apples

Prices: Strong, 4 to 6 feet, grafted on whole roots, 15 cents; \$10 per 100.

Extra large selected trees and new varieties, 25 cents each.

\$2.50 per dozen, \$20 per 100.

The apple is not very profitably grown in Southern and Western Texas. There are few varieties that grow, and only certain localities where these succeed. The latter are in the mountainous regions of Texas and Mexico. The best results are obtained on heavy clay soil. Light or sandy soil must be manured before apples can successfully be grown on same. The apple we grow in our state has a very fine aromatic flavor, more so than that grown in the North, and people who think that their soil may be adapted to its culture should experiment with a few trees. Trees grown in the North should, however, never be planted; they will never prove a success.

The following is a collection of those that I have found worthy of planting in the South.

Der Apfel ist nicht sehr profitabel in Süd- und West-Texas und es sind nur wenige Sorten, die gedeihen. Auf den Gebirgshöhen und auf Land mit reichem Lehmboden bringt der Apfelbaum die reichsten Ernten. Ist der Boden leicht und sandig, so sollte tüchtig gedüngt werden. Der Apfel, der in unserem Klima gezogen wird, hat ein sehr reiches Aroma und ist als Tafel-Obst beliebt. Bäume, die aus dem Norden stammen, sollten niemals gepflanzt werden, da sie nie gedeihen.

Folgende sind die besten Sorten für den Süden:

May. Color yellow, ripens before Early Harvest, transparent, quality very good for such an early apple; ripens in May.

Red June. Medium to large, oblong, dark red, crisp, sometimes almost mealy, tender, highly flavored. Ripe June 5, and sometimes until July.

Hackworth. A new apple from Alabama. Tree grows well here and bears very young. We consider it one of the best apples. Ripens for about a month, has a fine flavor and is a very good apple for home market; as large as Ben Davis, not quite so red, and ripens early in July. This variety should be in every apple orchard. Large trees, 2 years, 50 cents each, \$5.00 per 12.

Red Astrachan. Large size, crimson and yellow, juicy, crisp, valuable for cooking, tree a fine grower and very prolific. June 1 to July 15.

Yellow Transparent. Russian variety, medium, pale yellow, early.

Early Harvest. Size above medium; greenish, changing to yellow. One of the best apples; of fine quality. Abundant bearer. Ripens in June.

Yellow Horse. Known throughout the South as the best all-purpose summer apple, large, yellow, sometimes with red blush, firm, splendid for cooking, eating and drying. August 15.

Lady Finger. Large, oblong, nearly covered with carmine, ripens in September.

Wealthy. Large red, subacid; productive; ripens late summer. A very good smooth apple and very productive; bears young.

Kinnard's Choice. Fruit medium, mostly covered with a dark red, flesh yellow, tender, juicy and aromatic; very hardy and productive.

Winesap. Tree a strong grower and productive, fruit of medium size, red flesh, crisp, juicy, high flavored, valuable for table, market or cider. Ripe in October.

York Imperial. Large size, shaded with crimson; one of the finest apples; ripens in September.

Black Twig. Tree upright grower, fruit like Winesap, but one-fourth larger.

Ben Davis. Everyone has seen this apple, as it is sold by grocers in fall and winter; large, red and yellow striped, subacid, valuable. October.

Pound Royal. Large greenish yellow, late July. We consider this one of the best and most reliable apples of its season.

Hershal Cox. A new winter apple from Tennessee; fruit and tree resemble Ben Davis, but fruit smaller, better quality and better keeper.

Simmons' Red. Good size, color red, not a deep red, but a little yellowish; sometimes striped; quality good. Ripens in September and is very productive.

Jonathan. Red and yellow, medium size; very productive as a winter apple.

Bismarck. This most valuable New Zealand apple was introduced only a few years ago, and the popularity it is now enjoying is proof enough of its great value. It not only possesses high quality, but the tree is very hardy; just the apple for our climate. 25 cents each.

Yates. Small size, color red, covered with white specks, quality fairly good; tree bears young and abundantly and holds its fruit unusually well. We consider this one of the very best late apples.

New Apples

Switzerland. This new Swiss apple has been brought over from Switzerland by an old German, who planted the tree below San Antonio, Texas, where the first tree fruited the second year after transplanting, in 1899. Since first bearing, it matured a fine crop of apples annually, and this year the tree had several bushels. The apples are greenish, with red stripes, making a fine market variety; of a fine flavor and good keeping qualities; the tree is rather dwarf, with very large green leaves, is therefore very hardy and just the right apple for our country. We offer one-year-old trees from grafts cut from the original tree. Trees 4 to 5 feet, 50 cents.

Heidemeyer. Imported about 1850 from Stuttgart, Germany. Roundish, conical, color golden yellow, flesh yellowish, juicy, aromatic, rich quality, very good to best. Season- August, bears heavy crop every year; is one of the best apples for Southwest Texas. One year old, 15 cents; 2 years old, 25 cents.

Stringtown. This new Australian apple has been fruiting here for five years, is a fine, large, round summer apple, highly colored to the sunny side, of good quality; the trees bear young and are very good growers, having fruited in nursery the first year; ripens end of July. Trees two years old, 6 to 8 feet, 50 cents each.

Peter. Another good new apple, size medium, color red, very productive and of the very best quality. Ripens end of July. 4 to 5 feet, 35 cents.

Becker. This is the only apple that has given satisfactory results in the coast country and does very well here. The tree is a strong, straight, upright grower, with very large foliage; bears young and is very productive as a summer apple, ripening in July; color is yellow with red stripes; flesh well flavored. Trees 4 to 5 feet, 35 cents.

Crab Apples

Price, two-year-old trees 15, cents each.

This pretty apple is especially adapted for preserves and is always sure to bring a good crop.

Dieser schöne kleine Apfel ist zum Einmachen sehr beliebt und bringt immer sichere, reiche Ernten. Der Baum wächst schnell und kräftig.

Hyslop. Ornamental as well as useful. Vigorously growing tree, produces in great abundance crimson apples. Fruit good for preserves.

Transcendent. (Siberian.) An attractive yellow color, splashed and striped with red; bears very young, annual crops thereafter. We value it highly for preserves. Buds and blossoms exquisitely beautiful. Ripens in July.

Whitney No. 20. This is the best of all crab apples as far as the quality of fruit is concerned; fruit is of good size, very sweet and aromatic. Tree upright grower and very regular bearer, and succeeds remarkably well with me. Color of fruit yellow, with heavy crimson stripes. 20 cents each.

Pears

In order of ripening. Two-year-old trees, 25 cents each; \$2.50 per dozen, \$20 per 100. Extra large and new varieties, 6 to 7 feet, 50 cents.

The pear is the most profitable fruit we know of. After a tree has once begun to bear, it will bear regularly every year. The tree is very long-lived if it has a favorable locality, where it can send its roots deep into the ground for a supply of moisture; for this reason pear trees should only be planted where the subsoil is rich and deep.

The soil most adapted to pear culture is rich loam, which contains a good supply of humus. Sandy soil with clay subsoil is also good if well manured. Pear trees should, however, never be planted on soil where roots of cotton and potatoes rot, as such soil has the same effect upon pear trees. The following are the best varieties:

Die Birne ist die profitabelste von allen hier bekannten Obstarten, da sie immer sichere Ernten bringt. Die Wurzel des Birnbaumes geht tief in das Erdreich hinein und dort, wo guter, tiefer Untergrund ist und die Wurzel genügend Feuchtigkeit findet, erreicht der Baum ein hohes Alter und bringt sichere, reiche Ernten. Eine gute, reife Birne wird fast von einem jeden anderen Obst vorgezogen. Man pflanze aber keinen Birnbaum auf Boden, wo Wurzelfäule (root rot) ist, dort stirbt der Birnbaum ab. Die Birne gedeiht am besten auf humusreichem, schwarzem oder Lehmboden; doch auf Sandboden mit Lehm-Untergrund wird sie mit dem allerbesten Erfolg gezogen. Folgende sind die besten Sorten:

Konce. Very early, of the very best quality, does not rot at the core. The fruit is of a straw color with red cheeks and brown dots. Tree of vigorous growth, healthy and very hardy in bud and bloom, so that late frosts will not kill the blossoms.

Clapp's Favorite. Prolific, red cheek, large, excellent, one of the best table pears.

Summer Beauty. First raised in 1873, and introduced in 1893 by us. This pear is the finest fruit and the surest bearer of all varieties that ever have been tested so far south. The trees have not failed to produce heavy crops every year since 1880. It is a vigorous, symmetrical grower and late bloomer, so that spring frosts will not injure it. The fruit is very large and handsome, of yellow color with a bright red cheek, flavor sweet, sugary, rich, aromatic and pleasant, excellent quality, always grows in clusters of from three to five. One of the rarest and most productive pears in cultivation. Ripening the end of July. Price of well rooted, one-year-old trees 50 cents each, \$5.60 per dozen.

Perfection. Our new introduction. This is the second season we offer trees of this splendid new pear. The pear has no rival in productiveness and the fine shape, size and quality aid to make it one of the best pears ever introduced. Fruit is of large size, often in clusters of four to five pears; very sweet and melting, ripens middle of July to August. The tree does not bear as young as Keiffer or LeConte, but after five or six years old it bears regularly; as it blooms

very late there is no danger of losing crop by late frosts. The original tree is loaded with fruit this year. Color is yellow with red cheeks, very showy. Every fruit grower should add a few trees to his orchard of this variety. Trees 5 to 6 feet, 50 cents.

Flemish Beauty. Medium, beautiful, juicy, melting, rich and firm; does well here; color greenish yellow, with bright red cheeks.

Howell. Large waxen yellow, with red cheeks, rich, buttery, sweet and perfumed, strong grower, productive and valuable.

Smith's Hybrid. Is one of our best pears. We consider it better than LeConte in quality, and being earlier it brings a better price in market. The fruit is larger than LeConte.

LeConte. Of remarkable vigor and beauty of growth. The fruit is bell-shaped, of a rich, creamy yellow when ripe; very smooth and fine looking, and a good shipper.

Bartlett. Standard and dwarf. Everyone is acquainted with this large yellow pear. Fruit is very rich, and highly aromatic — the reason why this pear can always be sold while others may be refused. Tree grows dense and of even and conical shape.

Katy. New. This tree originated with Mr. J. F. Leyendecker, Frelsburg, Texas, and is about ten years old, 15 feet high, and has produced regular crops ever since it began to bear, six years ago. It has neither been pruned nor cultivated since it was two years old. It is evidently a chance seedling of LeConte, and has been so declared by the Department of Agriculture at Washington, D. C. It resists blight as well as Kieffer. My young trees are as thrifty and vigorous growers as LeConte; leaves are a little smaller and more pointed. Fruit resembles LeConte in size, shape and color; in quality it is more acid or vinous, but very juicy, and comes in just after LeConte. Price, 50 cents each.

Hardenpont's Winter. Fruit large, pear-shaped, light yellow with white



KATY PEAR

specks; very juicy, melting, very delicate, of a sweet wine flavor. One of the oldest European varieties. Tree of dwarf growth. Price, 50 cents.

Duchess. Standard and dwarf; pale yellow; very large; has a peculiar taste, for which many people prefer it to other varieties.

Kieffer Hybrid. Called by many the "Queen of Pears". Fruit large to very large, skin yellow, with a brilliant vermilion cheek, flesh brittle, very juicy, with a marked musky aroma. Tree very vigorous and very prolific. Considered the best all-around pear.

Garber Hybrid. Oriental strain, like the Smith's, fruit resembles the Kieffer in size, shape and color, ripe three weeks before.

Quinces

25 cents each; \$2.50 per dozen.

The Quince likes a rich, deep, moist and at the same time loose soil, and requires careful cultivation. The fruit is only used in a cooked state and it is a great favorite with the housewife, owing to its rich aroma, which makes it fit for all kinds of preserves and jellies.

Die Quitte liebt einen sehr reichen, tiefen, losen Boden und gebraucht eine sorgfältige Kultur. Die Frucht wird nur gekocht genossen, da sie roh hart und holzig ist. Sie ist bei der Hausfrau sehr beliebt, da sie ein feines Aroma hat und wird beim Einkochen von anderem Obst verwendet, da sie demselben einen feinen Geschmack giebt.

Orange. Large, roundish, bright golden yellow, cooks tender, and is of excellent flavor. Valuable for preserves and flavoring, very productive; one of the most popular and extensively cultivated of old varieties. Ripens in October.

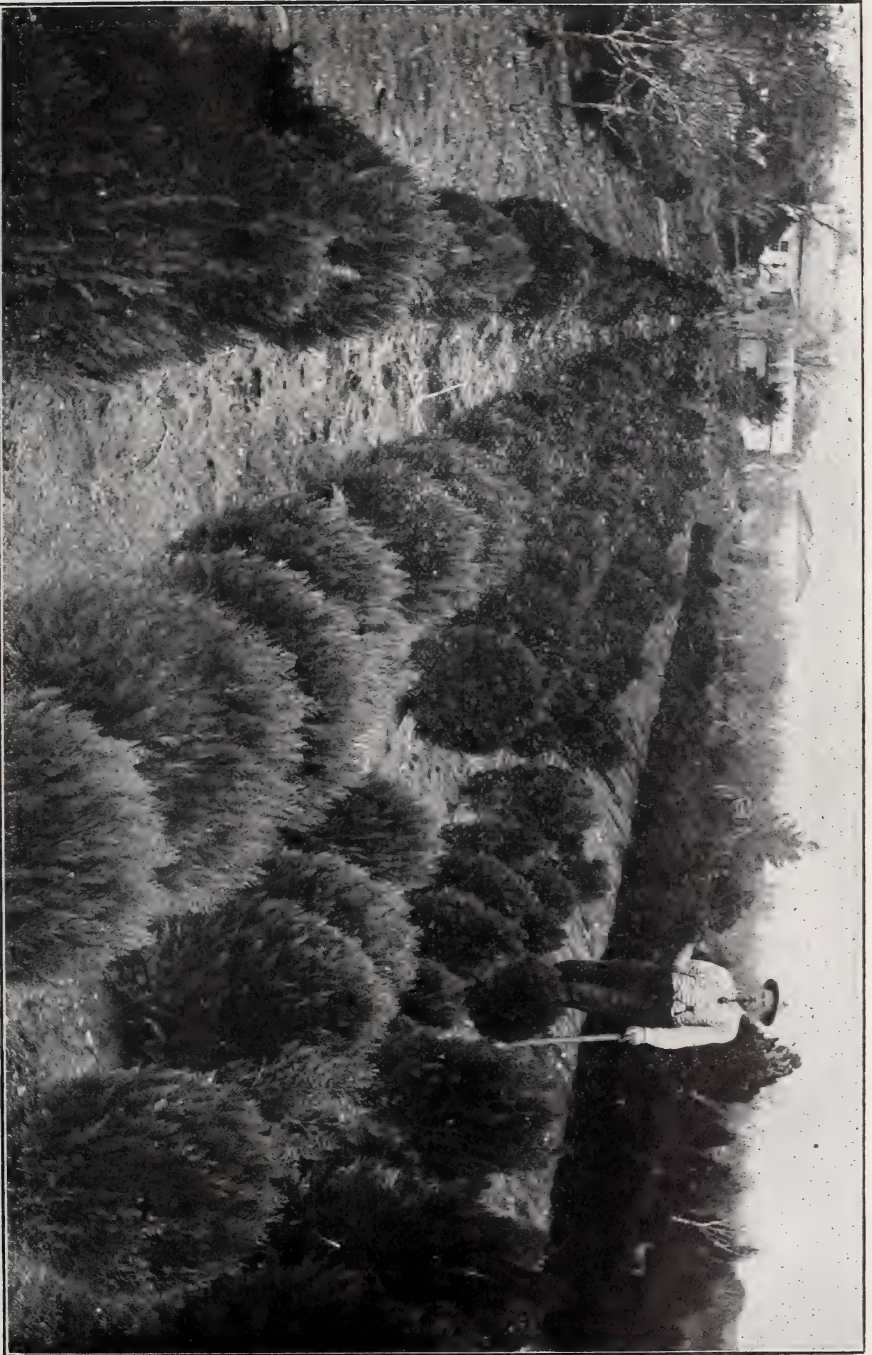
Champion. Fruit very large, fair and handsome. Tree very productive, bears when young, flesh cooks as tender as the apple, flavor very delicate, imparting an exquisite taste and odor to any fruit with which it is cooked.

Meech's. A vigorous grower and immensely productive. The fruit is large, orange yellow, of great beauty and delightful fragrance. Excellent for cooking.

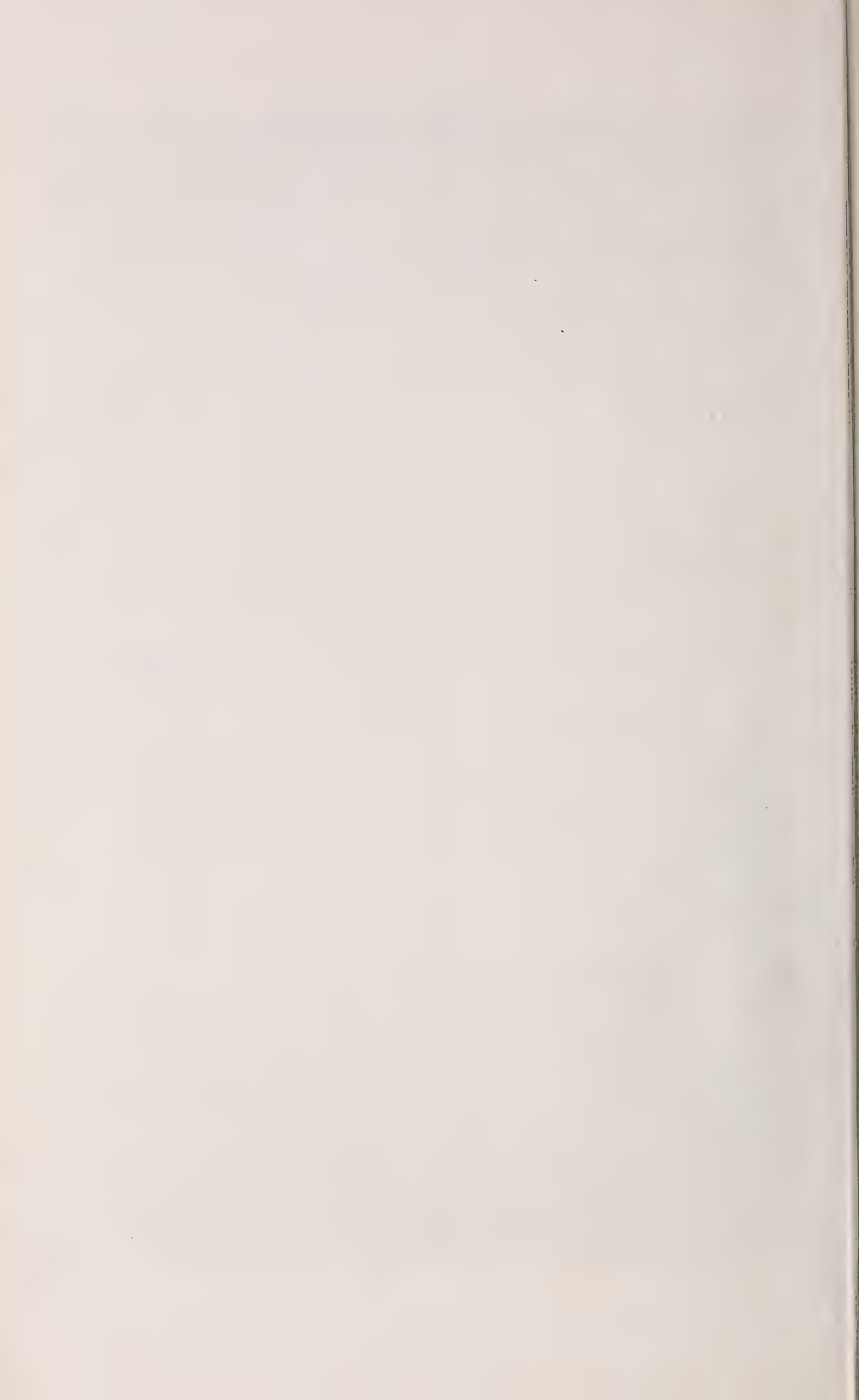


Pecans

"Daisy." Takes the first place of all the commercial nuts; it is not only the largest paper shell in existence, but it is well filled, of a fine, sweet flavor; a regular bearer and a beautiful shade tree. The



A small part of our seedling *Compacta Arbor Vitae*s.



original tree has not failed to bear a good crop since it first began in 1894. Pecan trees are becoming more popular every year, as they are found to succeed on all deep soil, even in black prairie land. It makes a fine cool shade, is long-lived and has a hard wood; therefore does not break as easily as most all other shade trees. One budded tree on your place will improve your property a hundred dollars; therefore make the good investment and plant one or two trees of the "Daisy" pecan every year. We offer budded and grafted trees of this wonderful nut at the following, low prices: 3 to 4 feet, branched, \$1.50, per dozen \$15.00; 1 to 2 feet, straight, \$1.00; per dozen, \$10.00. Our trees have the full taproot and will grow.

Bradley. This nut combines the largest number of good qualities in our list. It is well filled; rich and good flavor. It is large, oblong, shell thin. Partitions very thin, with no corky substance; kernel plump, rich and sweet, quality best. \$1.25 each.

"Columbian." Said to be the largest of all the varieties. Oblong, ovoid; shell slightly thick; kernel solid and thick, very sweet and highly flavored. Price, 2 to 3 feet trees, \$1.25 each.

Egg-Shell. Tree of Egg-Shell is a strong vigorous grower, of broadly spreading habit and an early and profuse bearer of large, medium thin-shelled nuts; form cylindrical, oval with broad rounded base and blunt quadrangular apex; cracking quality good, kernel brownish yellow, flavor pleasant, quality good.

Major Russell. Large, oblong; shell and partition thin; kernel plump and full; quality good. This is the best nut grown on the famous Russell plantation at Olustee, Fla. Price, 2 to 3 feet trees, \$1.25 each.

Money-Maker. Described by introducer as being of vigorous growth. Comes into bearing very early from buds or grafts; ripens its whole crop a month ahead of the main crop and bears more pecans than any other variety we have ever tried. The original tree has borne ten good crops in eleven years. The nut is large, round in shape and well filled. The meat is of good quality and comes out whole. At thirteen years old the original tree brought the owner a revenue of \$45.00.

Pan-American. Size medium to large; oblong, ovoid; shell thick; partitions thin; quality good; best keeper; meat can be taken out whole. Price, 2 to 3 feet trees, \$1.25 each.

Stuart. One of the oldest of the named varieties, but somewhat short; ovoid in shape; shell thin; partitions somewhat corky; kernel plump; quality very good. 2 to 3 feet, \$1.25 each.

San Saba. Another Texas pecan. Introduced by E. E. Resien of San Saba, Texas. A genuine paper shell, strictly a fancy type of the highest quality, easily crushed in the palm of the hand. The shell, which is little else than a film protecting the kernel, is easily pulled off with the tumb nail, leaving whole, clean meats of best quality. The introducer claims that the tree is a regular bearer and that three pounds of nuts give almost two pounds of meat, while with the common varieties it is almost the reverse.

Van Deman. A large nut averaging from 45 to 50 nuts per pound:

oblong in form; shell quite thin; quality good; tree a vigorous grower; prolific bearer. Price, 2 to 3 feet trees, \$1.25 each.

Japan Walnuts

Walnut (Cordiformis). Nuts medium size, thin shell; if cracked longitudinally kernel can be removed entire. Meat is of good quality; tree is a very vigorous grower and forms a fine head. Perfectly hardy. We consider it the best of all walnuts. 2 years, 2 to 3 feet, 50 cents each.

Juglans Sieboldiana. A native of the mountains of Japan. Extremely hardy and vigorous grower. Three-year-old trees have produced nuts. Wonderfully productive. Meat sweet and of best quality. 50 cents each; trees 2 to 3 feet.

Almonds

The almond succeeds in Western Texas, Arizona, New and Old Mexico and California, where irrigation is practicable. As the tree blooms very early, the crops are often destroyed by late frosts.

Die Mandel gedeiht mit Bewässerung in West-Texas, Mexiko, Arizona und Californien. Da sie sehr früh blüht, wird die Ernte häufig durch Spätfröste zerstört.

Sultana. Large kernels, soft shells. Tree is strong, upright grower and it is one of the best. 25 cents each, \$2.00 per dozen.

Apricots

In order of ripening; 25 cents each; \$2.50 per dozen.

The apricot is one of those fruits that do fairly well on limestone soil; a rich, heavy soil, however, is preferred. As the apricot blooms early, it should not be planted extensively in localities visited by late frosts. The fruit is much beloved for its rich and aromatic flavor, and the apricot should be represented by a few trees, at least, in every garden. The culture is about the same as that of the peach.

Die Aprikose gedeiht gut auf Kalkboden; auch liebt sie einen mehr festen als losen Boden. Sie blüht früh und die Ernte ist nicht immer sicher, da sie oft durch Spätfröste zerstört wird. Es ist die erste Frucht, die reift, und von einem köstlichen Aroma. Ein Jeder sollte einige Bäume dieser lieblichen Frucht anpflanzen. Der Baum sollte wie ein Pfirsichbaum behandelt werden.

Royal. Fruit large, oval; color of skin dull yellow, tinted with red on the sunny side; flesh pale orange color, firm, juicy, rich and vinous; freestone. Ripens end of June.

Meyer's Early. Ripens early in May, is of medium size and of white color.

Eureka. Very early, large, fine and prolific.

Blendheim. Russian, large, golden yellow with red cheek, good quality; bears well.

Moorpark. Large, excellent, an old favorite and one of the best bearers. This is the best of all apricots.

Cherries

35 cents each; \$3.50 per dozen.

The cherry succeeds well on the elevated plateaus of Texas, New Mexico, Arizona, California and Mexico. We should, however, not recommend its planting in the lowlands. The following varieties have proved the most successful in the South.

Die Kiriche gedeiht auf reichem Boden der Höhenzüge von Texas, Mexico und Californien, trägt aber sehr selten in den Niederungen von Süd und West Texas. Folgende Sorten sind die profitabelsten.

Early Richmond. Medium, red, juicy, rich, acid; one of the most valuable cherries for this climate.

Large Montmorency. Fruit very large, color red, flavor acid.

Ostheimer. (Russian.) Slender grower, very hardy, of good size and quality, productive. June.

English Morella. Similar to early Richmond, but later.

Nectarines

25 cents each.

The nectarine is a fruit similar to a peach, but it has a smooth skin like that of a plum. It is successfully grown in some parts of Texas, Mexico and California.

Die Nectarine ist eine der Kirsch ähnliche Frucht, doch mit glatter Schale, wie die Pflaume. Gedeiht in Texas, Theilen von Mexico und Californien.

Honey. Originated in our nursery and named after its parent, the Honey peach. It is the only prolific nectarine we have so far grown here, and fruit is of very good quality; it is as large as the Honey peach, just as sweet, and ripens beginning of July; color of fruit is yellow with blush cheeks, flesh very tender and white. One-year-old trees, 25 cents each.

Boston. Large, deep yellow, with bright blush and mottling of red, sweet and of peculiar pleasant flavor. Freestone.

Victoria. Medium, purple, brown cheek.

Figs

20 cents each; \$15 per hundred.

We might almost say there is no tree which so abundantly repays its owner for the little trouble it requires as the fig. From June to October ripe fruit may be had almost daily from the same tree, providing there is enough moisture to constantly keep the tree growing during this time.

The best place for a fig tree is near a well or a spring, or any other place where there is always a plentiful supply of water. During extreme cold weather figs sometimes freeze to the ground, but they sprout from the roots again in the spring. This, however, happens only every 10 or 15 years, if only the hardiest varieties are planted.

Wohl keine Obstart bringt hier im Süden so reiche Ernten als die Feige. Von Juni bis Ende Oktober kann man täglich reife Früchte von einem Feigenbaum pflücken, wenn er genügend Feuchtigkeit hat,

um beständig wachsen zu können. Die Feige sollte an Brunnen, Quellen oder dort, wo der Boden beständig feucht ist, angepflanzt werden. Es kommt vor, daß die Feigenbäume in strengen Wintern bis auf den Boden abfrieren, sie treiben aber immer wieder von neuem aus den Wurzeln.

Green Ischia. Green, medium size, of excellent quality.

Magnolia. Large, rich fruit, yellowish brown. Hardy here. Small one-year trees bear fruit first summer.

Brown Turkey. Medium, brown, very sweet and excellent; very prolific and hardy. The most reliable fig for open field culture.

Celestial. Small, pale violet, with bloom; very sweet, prolific and hardy.

Brunswick. Very large, bluish purple; a good variety for the South.

Peaches

In order of ripening. 4 to 6 feet, 15 cents each; \$10 per 100, except where noted. Extra large, 25 cents each; \$2.50 per dozen.

The peach is probably more extensively cultivated in our country than any other fruit, and it well deserves its popularity among the American people, as there is nothing that excels a luscious, red-ripe peach. There has, however, been much complaint of late, that the finer varieties do not bear enough in Texas. People attribute this to the drouht, yet the failure in most cases is due to the ignorance of the people. The traveling tree agents from other states introduce new varieties every year that are in most cases not at all adapted to our climate. Therefore, never buy a tree unless you know that it is grown by a reliable nurseryman in your own State. West Texas is a dry country, but nevertheless good peaches can be raised, and plenty of them, provided the proper varieties are planted.

The peach succeeds in almost any soil, but it prefers sand soil with red clay subsoil to any other. The following varieties are all thoroughly tested by me, and I consider them the best collection that can be made for our climate. They are selected from 400 different varieties, and, as each variety has a ripening period of from ten to fifteen days, peaches may be had at all time from the middle of May until November. I have arranged them in order of ripening for the convenience of the buyer.

Die Pfirsich ist die am meisten hier angepflanzte Obstart und das mit Recht, denn nichts geht über eine gute, reife, saftige Pfirsich. Leider wird die letzten Jahre so viel geklagt, daß die Bäume keine Früchte tragen; zum Theil wird wohl die Trockenheit Schuld haben, aber die größte Schuld liegt daran, daß durch die Baum-Agenten Bäume massenhaft in den Markt gebracht werden, die im Norden oder Californien gezogen wurden; solche Bäume wachsen sehr gut, aber bringen höchst selten Frucht; deshalb pflanzt niemals Pfirsichbäume, wenn ihr nicht bestimmt wißt, daß sie im Süden gezogen sind. Die hier folgenden Sorten sind die besten aus nahezu 400 Sorten, welche ich die letzten 20 Jahre hindurch versucht habe. Jede Sorte hat eine Reifezeit von 10 bis 15 Tagen und in dieser Liste sind alle Sorten

enthalten, die von Mitte Mai bis November reifen. Der Pfirsichbaum gedeiht auf fast jedem Boden, am besten auf Sandboden mit rothem Lehm als Untergrund.

I. Ripening Here from May 20 to June 10.

Victor. I am highly pleased with the fruit, which is round in shape and of beautiful color. Flesh is white, crisp and very juicy and tree is very prolific.

Greensboro. Earlier and larger than Alexander, fine flavor and attractive appearance.

Dwarf Japan Blood. Tree of dwarf habit, surest bearer of all the early peaches; fruit is large, pointed, red cheek and end, and some times blood-red flesh.

Alexander. Good quality, high color, flesh greenish white. Best bearing May peach.

Triumph. "The earliest yellow peach in the world." A perfect yellow freestone, of excellent quality. Ripens after Alexander. A good keeper; very prolific. Two-year-old trees bore half a bushel each.

Carman. The best Texas seedling peach; size very large and of finest flavor, ripening after Alexander; vigorous, prolific.

Bokara. The hardiest peach known. It is of fine quality and a good bearer. Does remarkably well here.

Honey. The sweetest of all peaches we have, and about the best bearer. Late frosts have never killed the young fruit here. Color is attractive and it always sells easily. Honey is about the best peach for general planting we have in the South and the Gulf coast.

Arp Beauty. A rival to Elberta; character, size, color and quality the same, and ripens two to three weeks earlier. The value of this as a market and family peach will be easily seen, and no other statement will be necessary to place it at the head of good new peaches.

II. Ripening June 5 to 20.

25 cents each.

Early Rivers. Large, light straw color, with a pink cheek; flesh juicy and melting, with a rich flavor. One of the most beautiful early peaches. Freestone.

Southern Early. This is the largest of all early peaches; good quality, very prolific, sweet and juicy.

Pearson. Similar to Mamie Ross. A perfect freestone, ripe before Mamie Ross. It is hardy, prolific and a very valuable new peach.

Mamie Ross. A seedling of Chinese Cling. Fruit very large, white, nearly covered with a delicate carmine; flesh white, juicy and of good quality; a regular and prolific bearer.

Riehl No. 2. This new peach attracted my attention at the Worlds Fair at St. Louis. Among thousands of peaches this one was the most beautiful; in color, shape, size and flavor it can not be excelled. The tree originated from seed, fruiting for the first time in 1904. The fruit is about the size of a large Elberta, form similar to "Greensboro"; has a beautiful white color, with red cheeks to the sunny side; the meat is tender and juicy, of a fine peach flavor. Ri-

pening beginning of June, this new peach will be in good demand on the market. Price, one-year trees, 50 cents each.

June Rose. A large peach with a red cheek and white flesh. Very juicy and well flavored; the latest bloomer of all peaches.

Roger. Extra large, red cheek, juicy, aromatic, sure bearer. A seedling of Chinese Cling and one of our best peaches.

Yellow Mystery. Yellow freestone, early, a good bearer.

George the Fourth. Large, flesh white, red cheek, productive, a good freestone.

Husted-Early. Large size, in shape roundish, skin smooth and of light yellow color, with a beautiful red cheek on the sunny side. Flesh light cream color, flavor rich and delicious, melting, juicy and vinous.

Bishop. A very large crimson peach with white flesh. It is a good bearer.

Aurora. Very large, globular, red cheek to the sunny side, juicy and of good flavor, bears well. A fine new peach; freestone.

Cleveland Free. A seedling of Thurber. Fruit large, creamy white, red cheek, juicy, rich and excellent.

Lady Ingold. Very large, oblong, dark orange yellow, juicy and rich. One of the best yellow freestones.

III. Ripening June 20 to July 15.

Mountain Rose. Large, round, white flesh, red cheek, tree

Pallas. Large, flesh white, melting, with a rich, vinous aroma, profuse annual bearer, as sweet as a Honey peach.

Gen. R. E. Lee. Cling, similar to Chinese Cling, but earlier and more prolific.

Early Bell. (New.) Very large, skin white, with red cheeks; flesh white, firm and excellent flavor; tree a rapid grower and very prolific; a seedling of Chinese Cling.

Champion. Very large peach, highly flavored and beautifully colored, flesh white and skin white with red cheek, small pit and thick flesh. One of the best peaches.

Crosby. Medium, fine rich yellow color, with streaks and shades of carmine; very prolific.

Dixie. A seedling from Elberta, larger, two weeks earlier and a better shipper. Fine flavor, beautiful color, yellow with pink cheeks. Tree is a fine grower and the best bearer in San Marcos, Texas, where it originated. A gentleman working in the Wood National Bank bought a peach many years ago, and it being of such fine flavor and large size, he planted the seed just back of the bank building, where it grew vigorously, and after bearing, everyone seeing it was astonished at the size and good color of the fruit, as well as at the productiveness of the tree. Mr. F. M. Johnson sent us the first buds and named it the "Dixie" peach. We saw the peach and examined it; and find it to be superior to Elberta in flavor. It is the finest peach that ever originated in Southwest Texas, and this is the first season we offer budded trees, 5 to 6 feet, branched, at \$1.00 each. We have only a few hundred trees and everyone wishing to

add one or more trees of this new peach to his orchard should send in his order soon.

Hero. A splendid variety for canning purposes. The tree grows to very large size and produces beautifully colored, white fleshed, juicy clingstone peaches in great abundance; sure to bear every year.

Belle of Georgia. (New.) Very large, white freestone, of excellent flavor. Trees grow and bear well; fruit a very good shipper

IV. Ripening July 15 to August 10.

Carpenter's Cling. Large, white, with a tinge of red, sweet, juicy, very productive.

Elberta. The peach that everyone knows. A large yellow freestone, red next to pit. The peach for the market.

Old Mixon Free. Large, greenish white, with red cheek; flesh white, juicy and of good flavor. Ripening in July.

Comal Cling. The best, largest and finest yellow clingstone. The original tree was found growing behind an old house at one of my neighbors' 20 years ago. Fruit very large, dark yellow, juicy and sweet; trees growing to a large size; leaves very large, a regular bearer. Ripens July 1 to 16.

Old Mixon Cling. The juiciest and best flavored white clingstone peach; of very large size and best bearing qualities.

Chillow. A large yellow peach, like Elberta, but a clingstone; originated near Austin; a good bearer and shipper.

Thurber. Very large, white flesh, red cheek, sure productive

Lemon Cling. Large yellow, sure bearer and highly flavored.

Indian Blood. Large, dark claret, with red veins, downy, flesh a deep red, very juicy, vinous and refreshing. August; clingstone.

Everbearing. Originator says: "The fruit begins to ripen about the 15th of July, and continues to ripen until the 15th of September. Blooms at intervals, consequently no danger of frost killing entire crop of fruit." 25 cents each.

V. Ripening August 10 to September 1.

Snow Cling. One of the best peaches for canning; size medium, flesh clear, creamy white throughout; juicy, melting, sweet and sprightly flavor; enormous bearer.

Matthews' Beauty. A large, new, yellow peach of the Smock strain, but of extra good quality; very showy and a valuable shipper.

Indian Free. Very productive and of excellent quality. One real good late peach.

Ward's Late. Large, globular, white with red cheeks; very good, prolific.

VI. Ripening September 1 to October 1.

Lemon Free. Light yellow flesh, melting, a large late peach; prolific.

Caruth. Yellow freestone, very prolific, hardy and good quality.

Stump the World. Very large, white with bright cheek; flesh white, juicy and of good flavor. A fine market peach.

Heath White. Large, oval, with sharp apex; skin creamy white, juicy, sweet and good aroma. A very popular clingstone. September.

VII. Ripening into October.

October Indian. Of medium size with red cheek. Very hardy and good bearer.

Henrietta. The best late clingstone. Very large, yellow, crimson cheek; a regular bearer.

Wonderful. A remarkably fine late yellow freestone.

Leopard. One of the latest peaches known. In 1889 I had fresh fruit at Christmas. Tree looks very healthy and is long-lived. The fruit is large and round; flesh white and brittle.

November. This is the latest of all peaches; ripens in November; very good freestone. Has been grown near New Braunfels for the last 50 years.

Common Seedlings. Extra strong; 5 cents each; \$4.00 per 100.

June Budded Peaches. We have a large stock of June budded peach trees on hand, at the low price of 10 cents each or \$7.00 per hundred. I can recommend these trees especially to large planters; they are well rooted, as a June budded peach tree has not yet lost its fibre roots. They are fast growers and can easily be grown into shapely trees. As such stock is very light, the transportation charges are very low.

Plums

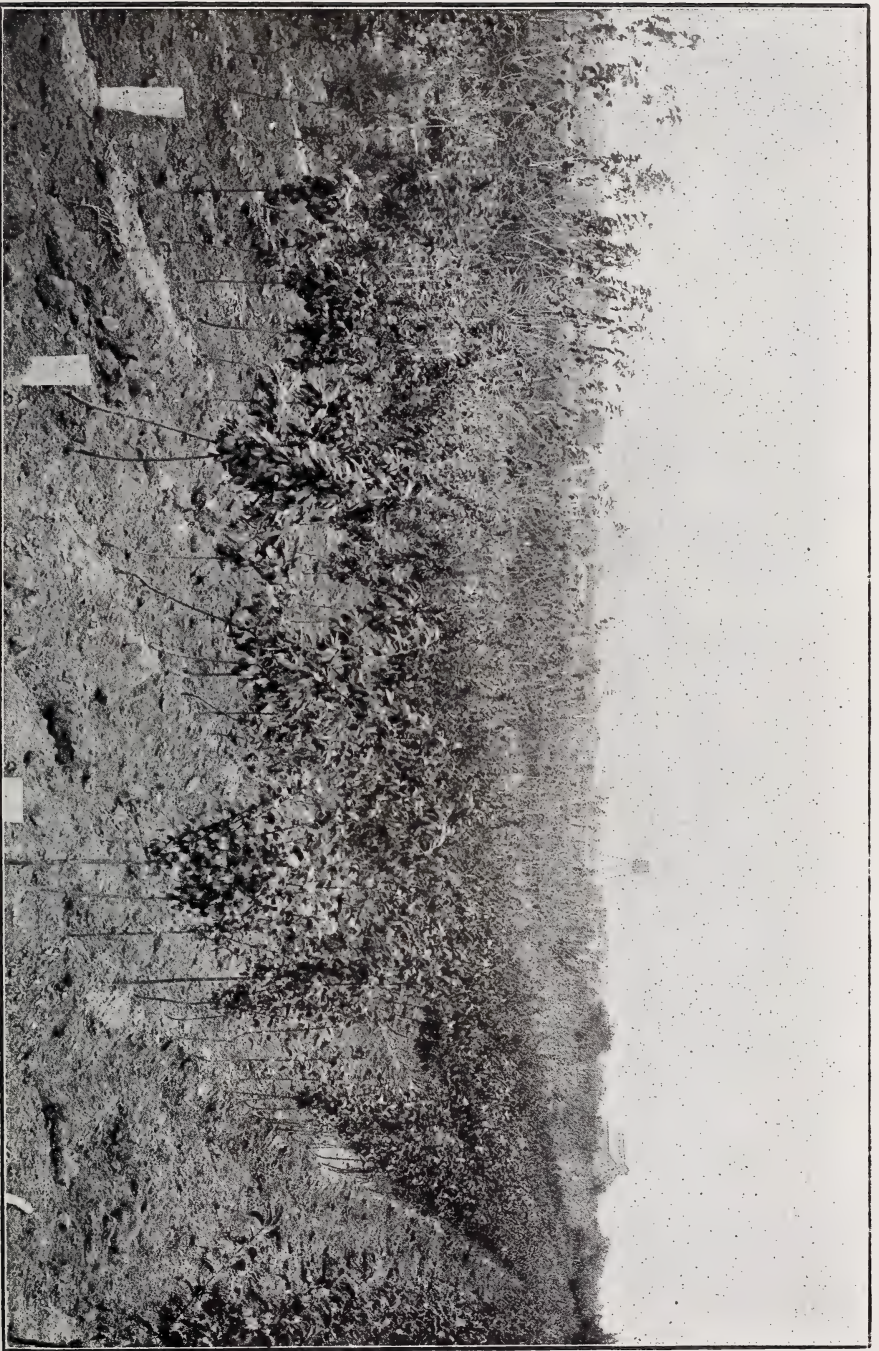
In order of ripening. 4 to 6 feet, 20 cents each; \$2.25 per dozen; \$18 per 100.

There is no fruit tree that bears such an abundance of fruit at so early an age as does the plum. Many varieties bear the first year after planting, and for this single reason should be most extensively planted. A plum tree requires very little care, but for the fact that it produces its fruit in such great abundance the tree does not live very long, and new trees ought to be planted every year to always have an abundance of this useful fruit. The American or Chickasaw varieties are mostly used for preserves and jellies, while the Japanese varieties are for the table.

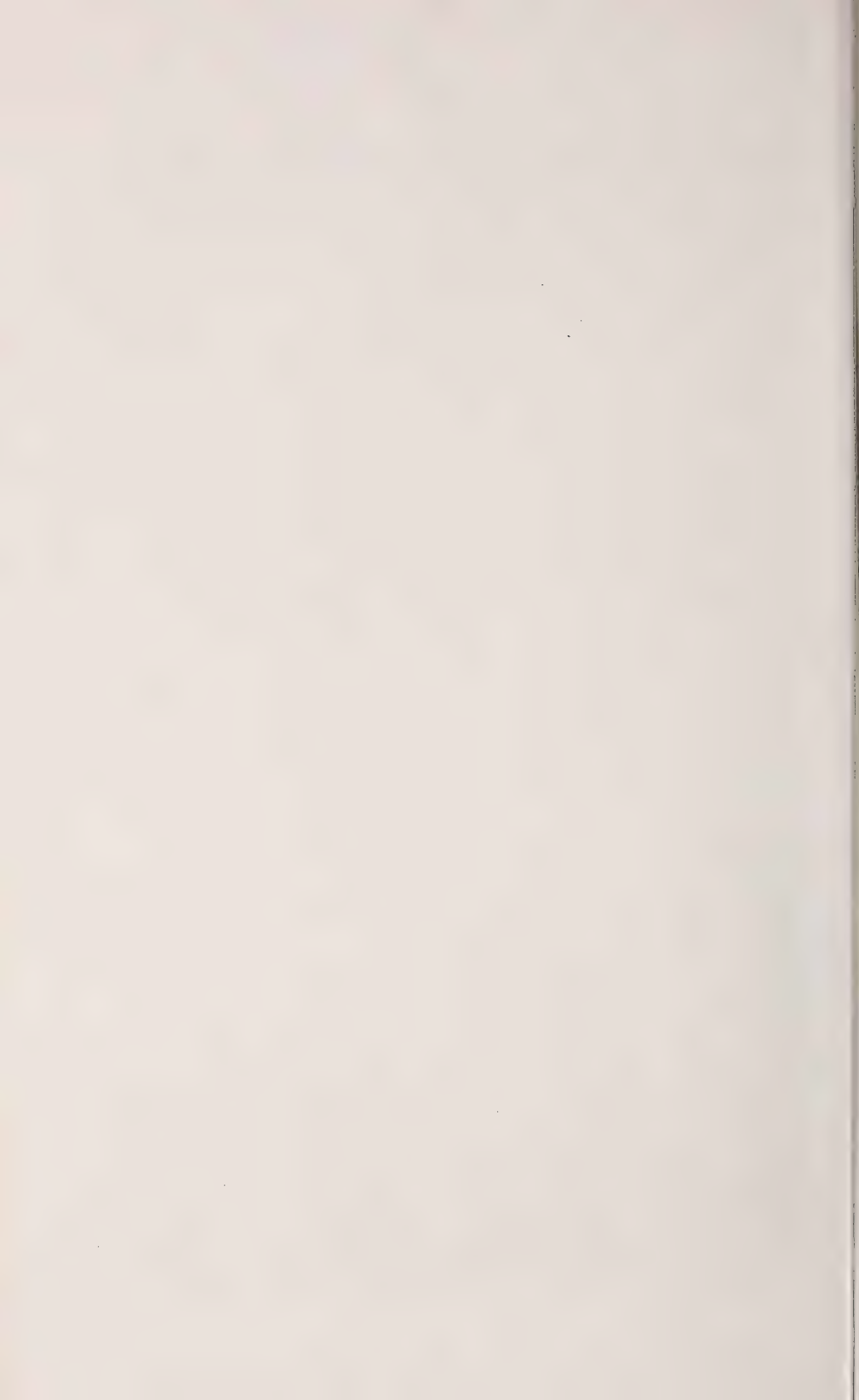
Rich loam with gravel subsoil is the best soil for plum culture, while sandy soil is almost as good if manured.

The following is the best collection for the South, and cannot be excelled by any.

Es giebt keinen anderen Obstbaum, der schon so jung nach dem Bepflanzen Früchte hervorbringt, wie der Pflaumenbaum. Von manchen Sorten sind schon einjährige Bäume mit Früchten beladen. Dieser Obstbaum sollte hier mehr angepflanzt werden, da er ja wenig Kultur verlangt und eine der dankbarsten Obstarten ist. Die amerikanischen Sorten eignen sich besonders gut zum Einkochen und die japanischen sind als Tafelobst sehr beliebt. Da der Pflaumenbaum in unserem Klima so überreich trägt, ist seine Lebensdauer kurz, und sollte man jedes Jahr einige Bäume anpflanzen, um immer gesunde, tragende Bäume zu haben. Reicher Lehmboden sagt den Pflaumen am besten zu. Folgende Auswahl von Sorten ist die allerbeste für den Süden und Westen und kann nicht übertroffen werden.



A Block of Japanese Plum Trees in Nursery Rows.



First. A combination cross of Hawkeye, Hammer, Milton, Wyant and Burbank. It is the earliest of all plums, and also the largest, handsomest and most productive of all early plums. It blooms late and ripens in an incredibly short time after blooming. Tree never fails to produce all it can hold. Price, 4 to 5 feet, 50 cents each.

McCartney. Originated in Texas, larger than Wild Goose, 14 days earlier, egg-shaped, golden yellow color, enormous bearer. This is the best yellow plum.

Shiro. A combination of Robinson, Myrobolan and Wickson. Rank grower, enormously productive; fruit will keep a month, and is so transparent the pit can be seen through the flesh; apple-shaped; the earliest of all Japanese plums.

Combination. An extremely handsome, large, early, light crimson plum of the very best quality; flesh straw color, extremely sweet, with a very pronounced pineapple flavor. If the best judges may be trusted, Combination has never been equalled in quality. The bark, leaves and fruit are unique. 35 cents each.

Transparent. One of the best yellow Chickasaw plums. Tree is very productive and sure every year. The fruit is so transparent that you can almost see the pit through the skin, and is very delicious.

Climax. A cross of Simoni and Botan. Very large, and so fragrant, a whole house is perfumed with a single fruit. Mr. Burbank says: "Productive as Burbank, several times as large, two or three weeks earlier and very much more nicely colored; the most wonderful plum ever grown and one that will change the whole business of early fruit shipping." A shy bearer with me.

Yellow Japan. One of the earliest Japanese plums. It is a heavy and regular bearer; color a clear yellow; fruit heart-shaped, of good size, very sweet and firm. Ripens end of May and beginning of June.

Mariana. Vigorous, red, medium, good bearer, very fine for a shade tree; 15 cents each, \$10 per 100; 6 to 7 feet, well branched, 25 cents each.

Bartlett. A cross between Simoni and Delaware. Said to have exactly the quality, flavor and fragrance of the Bartlett Pear. Fruit turns deep crimson when fully ripe; light, salmon-colored flesh.

Gonzales. A cross between the American and Japan plum. The fruit is larger than a Botan, it is sweet and juicy and will keep for a week after ripening. The tree is a good grower and is very prolific. It ripens the middle of June.

Wild Goose. Chickasaw, vigorous, red, large, very good, abundant when fertilized.

El Paso, C. Medium size; roundish; red; fair quality; one of the heaviest bearers I have; ripens from first of July to middle of August. Every family should have it. Seems to belong south of I. & G. N. R. R.

Hale. Tree good grower, fruit very large, beautifully colored, of best quality, ripe June. Does well in poor soil.

America. A seedling of Robinson crossed with Botan. The most beautiful of all plum trees in appearance. It is of large size, a little above the the average size of Japanese plums, and larger than the popular American varieties. Flesh of a light yellow color, moderately

firm and very delicious. Ripens two or three weeks earlier than Burbank. Exceedingly prolific.

Sweet Botan. Japanese, one of the finest older varieties, which is too popular to need long description.

Wickson. Japanese, tree grows in vase form, sturdy and upright. The fruit is evenly distributed all over the tree. It changes to white when about half grown, and remains so until a few days before ripening, when it changes to a glowing carmine. Small stone, the flesh is of fine texture, firm, sugary and delicious and will keep two weeks after ripening. A fine, rare plum.

Sultan. Japanese. Very large, purplish red, flesh red, very sweet, juicy, and one of the best red plums.

Mikado. A very large plum of greenish yellow color, nearly round, very little suture, a rapid grower, more so than any other. This is the most remarkable of all plums for its enormous size, beauty and good quality.

Wassu. This is a valuable new plum. The growth of the tree, size of fruit and productiveness are the same as in Burbank, but the fruit is much sweeter and has a fine flavor. Ripens a few days before Burbank.

Burbank. Japanese named after the introducer of this and most of the other good plums. The best bearing variety we have. When fully ripe, the fruit is deliciously sweet.

Excelsior. Fruit medium, sweet, juicy, melting; color reddish purple; a good plum and very productive.

Everbearing. This is certainly a fine plum. The fruit is small, but deliciously flavored and very sweet, and is produced in great abundance. Should be gathered under the tree (not picked off) every morning. Begins to ripen about the middle of June and continues to about the middle of August, the last fruit being just as good as the first. 25 cents each.

Best of All. Introduced by Mr. Munson, who produced it by crossing Miner and Abundance. He says it flowers very late and is a sure and prolific bearer. Fruit medium to large, round, red, rich, firm, meaty, of best quality. 35 cents each.

Satsuma. A very large and well flavored plum with blood-red flesh, skin blueish red; pit is very small; tree grows very large and old, and is a very good bearer.

Robinson. Tree spreading and round in shape. About the most productive of all. The fruit is of medium size and often colors up two weeks before it can be gathered. Has to be soft before edible. Robinson has stood droughts better than any other with me.

Kelsey's Japan. Vigorous, greenish yellow, very large, excellent, prolific, sweetest of all plums, early bloomer.

June-Budded Plums. Best varieties, at 12½ cents each, or \$10.00 per 100.

Mulberries

6 to 8 feet, 25 cents each; \$2.50 per dozen.

As a shade tree for the chicken yard the mulberry is about the best tree to be had. Chickens eat the fruit as soon as it drops from the

tree. The finer varieties are also eaten by children. The tree grows very quickly and is easily transplanted.

Als Schattenbaum und für den Hühnerhof laun der Maulbeerbaum nicht übertrieffen werden, da die Hühner die Frucht gerne fressen. Kinder lieben die Früchte sehr. Der Baum wächst schnell und ist leicht zu verpflanzen.

Hicks' Everbearing. Profuse, ripens 3 months, fine grower for shade and the best of all trees for the fowl yard. 25 cents each.

Russian. Unquestionably the best as a shade tree. The tree is very hardy and long-lived, and grows rapidly to a beautiful round shape. The fruit is small and does not drop from the tree when ripe; some trees do not produce fruit at all. It is very much sought for street planting, for the shining leaves stand the dust well. 4 and 5 feet, 15 cents; 6 to 7 feet, 25 cents.

English. A very quick-growing mulberry, with very large and well-shaped leaves. The fruit is very large and of a black color. Stem is very straight and can be topped at almost any desired height. 1 year, 6 feet, 15 cents each; \$1.50 per dozen; 2 year, 7 to 8 feet, 25 cents each; \$2.50 per dozen.

Japan Persimmons

(Diospyros Kaki.) A fruit from the Orient that has come to stay. The growing of this fruit in the South, both for the market and home consumption, is no longer an experiment. It has proven itself adapted to the whole cotton belt, and is becoming quite popular on the northern fruit markets.

Trees on the native persimmon will grow on any soil in the South, but are not long-lived in wet, low places; high, well-drained, sandy soil suits them best, and they will do better on very poor land than any other kind of fruit tree. They are especially suited for planting in old peach orchards, as the old peach trees become worthless, or to replant the land after a peach orchard has been destroyed.

Fruit should be shipped just before it begins to soften, and directions how to eat it should be printed on wraps to be used with each fruit, and dealers instructed to display only ripe fruit.

Price of JAPANESE PERSIMMONS ON NATIVE PERSIMMON ROOT, 35 cents each or \$3.50 per dozen.

Die japanische Persimone ist die süßste aller Früchte und erst im Herbst, nachdem sie einen kleinen Frost bekommen hat, genießbar. Der Baum wächst langsam und ist mehr strauchartig, trägt aber sehr jung und reichlich. Der Baum ist etwas schwierig anzupflanzen, da er nur eine Pfahlwurzel hat, auch wird das Holz oft im Frühjahr nach der Steigung des Saftes durch Spätfröste getödtet.

Dia Dia Maru. The tree of rather open growth, with distinct light foliage, fruit medium size, shape flat like a tomato, slightly four-sided, flesh white, quality very fine.

Hachiya. Very large, oblong, conical, with a sharp point, very showy, diameter $3\frac{1}{2}$ inches longitudinally, and 3 inches transversely, color of skin reddish yellow, with occasional dark spots or blotches

and rings at apex; flesh dark yellow, some seed, astringent until fully ripe, then very good. Tree vigorous and very shapely.

Hyakume. Large to very large, varying from roundish oblong to roundish oblate, but always somewhat flattened at both ends, generally slightly depressed at the point opposite the stem, nearly always marked with rings and veins at the apex, skin light buffish yellow, flesh dark brown, sweet, crisp and meaty, not astringent, good while still hard, a good keeper, one of the best market sorts. Tree of good growth and sure bearer.

Triumph. Originated near Sanford, in Orange county, Florida, from seed from Japan. Its quality is of the best, size medium, tomato-shaped, color of skin dark red, handsome and showy, flesh yellow with but few seeds. It is very productive, the fruit of a single tree having been sold for \$17.00. Ripe in October and holds on the tree until January.

Tane-Nashi. Very large, roundish, conical, pointed, very smooth and symmetrical, color of skin light yellow, changing to bright red at full maturity, flesh yellow, generally seedless, astringent until fully ripe, then one of the best.

Tsuru. Longest in proportion to its size of all the varieties, slender, pointed, diameter $3\frac{1}{4}$ inches longitudinally and $2\frac{3}{8}$ inches transversely; color of skin bright red, flesh orange-colored, with dark coloring in immediate vicinity of seed, which are very few; very astringent until ripe, and one of the latest to ripen, a good keeper and of good quality when fully ripe. Tree a heavy bearer.

Yeddo-Ichi. Large, oblate, very smooth in outline, with a slight depression at the end opposite the stem, color of skin a darker red than most varieties. The flesh is a dark brown color, verging into purple, and is quite seedy. In quality it is one of the best, being exceedingly rich and sweet, and, like the Hyakume, good to eat while yet hard. Tree is a heavy bearer and very thrifty.

Yemon. Large, flat, tomato-shaped, somewhat four-sided, diameter $2\frac{1}{2}$ inches longitudinally and 3 inches transversely, very smooth and regular in outline, skin bright orange yellow, flesh yellow, generally seedless, quality very fine. Tree rather an open grower, with distinct foliage of light shade.

Pomegranates

The pomegranate seems to have been created especially for our dry climate. It succeeds in any soil and bears regularly an abundance of the most refreshing fruit.

Little trouble is required for its culture. It is always free from all diseases, and grows in any deserted corner of the garden where no other fruit succeeds. The fruit is very sweet and refreshing, and ripens during August and September.

Der Granat-Apfel scheint speziell für unser heißes, trockenes Klima geschaffen zu sein, da er auch in der größten Dürre-Periode noch wächst; auch ist er frei von jeder Krankheit und Ungeziefer. Er trägt reich, die Früchte sind groß, wenn reif, sehr süß und von erfrischendem Wohlgeschmack. Reifezeit: August und September.

Old Favorite. Is the best of all the fruiting pomegranates. I call it Old Favorite because it has been grown here at New Braunfels for at least fifty years, and it has been proven to be far superior to all the other fruiting kinds which were introduced later. The fruit is the very largest, and refreshing and sweet. The tree, or shrub, is extremely hardy and has glossy green leaves. Flowers are large and crimson in color. 25 cents each, \$2.00 per dozen.

Oranges

Satsuma. (Seedless.) It is the hardiest of all the orange family; color reddish yellow; ripens early; can stand 8 degrees lower than any other variety of orange. Price 1-year grafted trees, 2 to 3 feet, 50 cents.

Dugot. Next to Satsuma in hardiness; a good variety for southern Texas. Price, 50 cents each.

Kumquat. Imported from Japan; can stand more cold than the Asiatic orange. Fruits in clusters; fine and much sought for jams, preserves and pickles. Especially adapted for planting in tubs. Budded trees, 2 to 3 feet, 50 cents.

Otaheite. This orange is a very valuable one for pot culture. Produces a wonderful profusion of beautiful white flowers. Fruit about one-half the size of an ordinary orange. In 4-inch pots, 50 cents.

Lemons

The "New Wonder" Lemon is a true everbearing variety. On a plant six feet high, not less than 90 lemons were growing at a single time. Fruit has been taken from this tree weighing 4 pounds. It is not uncommon to make twelve lemon pies from one lemon. Will fruit freely the second year. Price, 6-inch pot plants, 50 cents.

Genoa. A variety imported into California from Genoa, Italy. It is an early bearer and in favorable seasons produces fruit almost the entire year. Fruit is of best quality; a profitable market lemon. In pots, 50 cents each.



Grapes and Berry Plants

Grapes — Standard List

In succession. Finest quality. This list contains the best and most successful. 15 cents each, \$7.50 per 100, except where noted.

The grape thrives in almost any soil and is successfully grown all over the South. With but little skill and labor it brings abundant crops every year. The following are the best Southern varieties.

Die Weinraube gedeiht fast in jedem Boden und in jeder Gegend des Südens; mit etwas Mühe und Arbeit bringt sie reiche Ernten. Folgende sind gute Sorten.

Early Ohio. Said to be the earliest black grape. Bunches large, compact and shouldered; berries of medium size and adhere firmly to the stem; foliage thick, leathery and healthy, very productive sort. 20 cents each.

Moore's Early. Very large, black, good market.

Moore's Diamond. One of the finest American grapes.

Lutie. Berries large, beautiful lilac color, of superior flavor and unusually free from rot; a very desirable grape.

Worden. Very large, black, good market; improved Concord.

Niagara. Large, white, very good table and market grape

Martha. Large, white, table, market.

Concord. Large, black, table, market

Jacquez. (Black Spanish, Le Noir, Blue French), small, large cluster, black, red wine. 2 years, 15 cents; \$8 per 100.

Herbmont. (McKee, Bottsi, Brown French), small, large clusters, purple, finest quality, table wine; best old grape in Southwest Texas. 10 cents; \$8 per 100.

Muscadine Varieties.

Scuppernong. Clusters of two to six; berries large, round and of bronze color; skin thin, free from rot. 25 cents each.

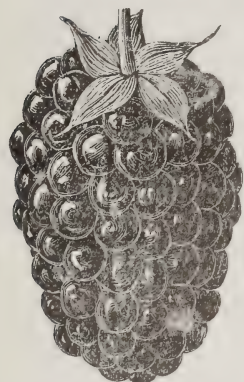
Thomas. Bunches seldom exceed eight or ten berries; color reddish purple; pulp sweet, tender, vinous, quality equal or superior to any of the muscadine type. Ripens the middle of August. 25 cents each.

Eden. Berry very large, black with delicate Thomas flavor;

twelve to fifteen berries in a cluster; it is a profuse bearer, making an excellent brown wine resembling cherry. The Eden fills a long-felt want as a late table grape. 25 cents each.

Dewberries and Blackberries

In Succession



The blackberry is not so successfully cultivated in our part of the State as it is in North Texas, but the Mayes Dewberry reaches its greatest perfection here. It produces fruit of enormous size, of good flavor and in great abundance. Every lover of berries ought to have it.

Die Brombeere gedeiht hier nicht so gut wie im nördlichen Texas, aber die Thaubere (Mayes Dewberry) erreicht hier ihre größte Vollkommenheit. Sie bringt erstaunlich reiche Ernten von riesengroßen Früchten. Jeder Beerenliebhaber sollte davon pflanzen.

Mayes' Dewberry. (Like cut.) New, very large, early, glossy black, highly flavored; it roots deep, is very prolific and never fails. Price 50 cents per dozen, \$2.50 per 100.

Chestnut. From Johnson County. Ripens early in May, productive, and extra fine quality. 50 cents per dozen, \$3.00 per 100.

Guadaloupe. For several years I have been gathering and cultivating our wild native dewberries, and find among them some very valuable berries. Guadaloupe is one of my collection and the best of them. It cannot be surpassed by any berry in productiveness and extreme earliness. The berries are large, oblong, sweet and of the darkest color when fully ripe. They are very showy, and as they ripen early, they are very saleable and bring the best price. This is without doubt the biggest money-maker in small fruits. I picked two gallons from a two-year-old bush and find ready sale at 10 cents per quart. The plant is very vigorous and makes long canes, spreads rapidly and makes many new runners for transplanting. Price, 15 cents each, \$1.50 per dozen.

Rogers. Fine flavor, large size, wonderful yield. You can't afford to do without it in your commercial garden. The berry is large, oblong, very firm and possesses a very fine flavor. Stands drought well. Ripens here the early part of April and a month before Mayes'. Its shipping qualities are far ahead of any dew or blackberry in cultivation. After each crop of dewberries the old vines may be pulled or cut out and burned. An application of fertilizer, barnyard or commercial, in the fall or winter, will cause the vines to produce larger berries and a heavier crop. Price 50 cents per dozen, \$2.50 per hundred.

White Dewberry. Ripe 14 days before Mayes, a good, sweet berry. 50 cents per dozen.

McDonald Berry. It is hard to decide whether this is a dewberry or blackberry. It bears in clusters like a blackberry, but tips like a dewberry. It grows on any soil, and is the most productive of all berries. Berries are large, juicy and of best quality. Strong plants 50 cents per dozen, \$3.00 per hundred.

Dallas. (Blackberry.) Very vigorous, drooping, thorny, productive, large, fine. 50 cents per dozen, \$2.50 per 100, \$10.00 per 1000.

Strawberries

25 cents per 12, \$1 per 100, \$3 per 1000.

To grow Strawberries with success irrigation is required in Western Texas, but where water may be had plentifully, it is very valuable, being about the first fruit in spring.

Die Erdbeere kann in West-Texas und anderen trockenen Gegenden nur mit Hilfe von Bewässerung gezogen werden, ist aber dann profitabel und das erste Obst, das reift.



Michel's Early. Earliest of all; large, vigorous, perfect flower, a fine pollinator for other kinds.

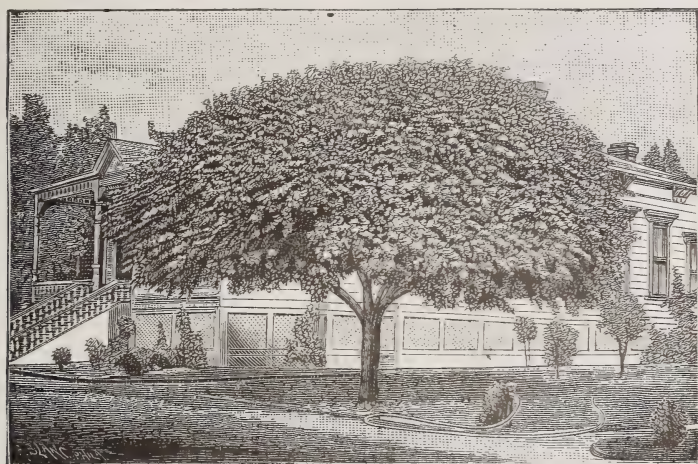
Hoffman. An extra early berry for the South, very large and brilliantly colored.

Lady Thompson. Very large, good shipper and prolific bearer; one of the best of the many varieties of strawberries.

Excelsior. A very reliable and early berry and a sure bearer. It has the advantage over other berries, considered early, that it can be picked and sold out of the way, and always catches the best price. The plant growth of Excelsior is exceedingly healthy and vigorous, thriving on all kinds of soil, even on the poorest. Its color is a most attractive red; no white tips or spots, but solid red.

Newman. We have what is known as the improved Newman. The great productiveness, good size, fine color and very great firmness give it high value here for shipment to northern markets.

Klondike. The plant is exceedingly vigorous, seems to be absolutely rust proof, and as near drought proof as a variety can be. Every berry is firm and brilliantly colored. This makes it the greatest and safest money-maker. On good or well manured soil it is simply wonderful. 50 cents per dozen, \$2.00 per 100, \$5.00 per 1000.



Shade and Ornamental Trees

6 feet, 25 cents; 8 feet, 35 cents; 8 to 10 feet, 50 cents.

All shade trees are nursery grown, are straight and have splendid roots.

The physical welfare of yourself and those that you hold dear is greatly advanced by these trees and plants which surround your home. What a deserted impression does a splendid house make if not a tree or plant is near, and what a pleasant feeling comes to you if you see a small hut surrounded by beautiful shade and ornamental trees. What a comfort does a single shade tree afford a farmer, when, after he comes home from his toil in the field, he can recline under the same and take his afternoon nap.

Therefore, plant shade and ornamental trees around your house and you will be repaid for your trouble in many different ways.

Deine Zufriedenheit, Gesundheit und Dein Wohlergehen liegt im Anpflanzen von Schatten- und Zierbäumen um Deine Wohnung und um im Hofe. Was für einen öden und ungemüthlichen Eindruck macht das aller schönste Haus, wenn kein grüner Baum oder Strauch zu sehen ist, und was für einen einladenden und erfrischenden Eindruck macht schon die kleinste Hütte, wenn sie von Schattenbäumen umgeben und ein Zier- und Blumengarten davor zu finden ist; deshalb pflanzt Schattenbäume, Ziersträucher und Blumen, ihr werdet reichlich belohnt durch den Genuß, welchen ihr daran findet.

American Elm. Long-limbed, fast-growing, is always admired; grows well on any ordinary soil. Price, 5 to 6 feet, branched, 25 cents each, \$2.50 per dozen.

Pyramidal Arbor Vitae will make a large, fine evergreen shade tree; quick-growing, easily transplanted. Trimmed, with straight stem, 3 to 5 feet, 25 cents; untrimmed, 2 to 3 feet, 15 cents each.

Ligustrum Japonicum makes a splendid evergreen shade tree; leaves dark green, pointed, 2 by 2½ inches long; produces large bunches of creamy white flowers, followed in autumn by purple berries. Price of trees, well trimmed, 3 to 4 feet, 35 cents; 5 to 6 feet, 50 cents each; \$5.00 per dozen.

Box Elder. A quick-growing, hardy shade tree, a native of Texas; prefers a wet, deep soil. Price, 4 to 6 feet, straight, 25 cents each.

Carolina Poplar. A rapid growing native shade tree; is very largely planted as a street and avenue tree, and is very popular. 6 to 8 feet, 25 cents each.

Catalpa (Teas). A very pretty and extremely hardy shade tree. The leaves are 6 to 10 inches across; tree produces large clusters of very beautiful yellow flowers in spring. Price, 5 to 6 feet trees, 25 cents each.

Catalpa Kaempferi (Japan Hybrid). Character of tree same as above. Flowers small, light yellow, orange-yellow center, dotted dark violet. Blooms in June and July. Price, one-year trees, 5 to 6 feet, 25 cents each.

Honey Locust. A quick-growing shade tree; hard wood; leaves small, but makes a good shade. Price, 4 to 5 feet, branched, 25 cents.

Judas Tree, or Redbud. A very long-lived shade tree; very hard wood; large round leaves, making a dense shade. It is not a quick grower; the first tree to bloom in spring; has very pretty red flowers, which last about a week. Price, 3 to 4 feet, 25 cents each.

American Ash. A tree which is particularly well adapted to this latitude; makes quick growth and forms nice tops; leaves are a lively green color. 8 to 10 feet trees, 25 cents each; 1 year, 3 to 5 feet, 15 cents; \$1.50 per dozen.

Liriodendron Tulipifera, Tulip Tree, one of the grandest of our native trees, of tall pyramidal growth, with broad, glossy, fiddle-shaped leaves and beautiful tulip-like flowers. 3 feet, 25 cents.

Paulownia Imperialis. (Empress Tree.) A rapid growing tree, with immense leaves, and in early spring bears large panicles of light blue, very fragrant flowers; an excellent shade tree. Transplanted, 4 to 5 feet, 50 cents each.

Rhus Cotinus, Purple Fringe. A beautiful tree, much admired for its long feathery flower stalks, which give the tree the appearance of being covered with a cloud of smoke. 25 cents each.

Sterculia Platanaefolia. (Japan Varnish Tree,) a very hardy and at the same time very beautiful shade tree. It is particularly adapted to this climate, but not very well known. The stem is always straight and smooth and has the same color as the leaves, which are a beautiful light green. The leaves are from 6 to 10 inches across. Tree produces a spreading and dense top and grows to a very large size. A tree of fancy appearance, but stands as much drought as a hackberry. 4 to 6 feet, 50 cents.

Sycamore, a lofty wide-spreading tree, heart-shaped leaves, valuable for its handsome foliage and free growth. 6 to 8 feet, 25 cents.

Weeping Willow, a grand old tree for the cemetery and for the lawn. Should be planted in deep, rich soil, where it is constantly moist. 25 cents each.

Umbrella China, a native of Harris County, and now widely known over the State. It is the finest and quickest-growing of all shade trees. I think I have the largest stock of them in Texas. 8 to 10 feet, branched, 50 cents; 5 to 6 feet, 25 cents; 3 to 5 feet, not branched, 15 cents each, \$10.00 per 100.

Populus Alba, the white poplar. A quick-growing ornamental tree, 5 to 6 feet, 25 cents each, \$2.00 per 12.

Shrubs

All the following shrubs have been tested for years, and found to be especially adapted to the South. I have a splendid stock of fine plants for this year's trade.

Alle die folgenden sind seit Jahren hier versucht und als die besten für unser Klima befunden worden. Ich habe einen großen Vorrath davon und starke, kräftige Pflanzen

Altheas

Grafted on hardy stock.

One of the best hardy flowering shrubs that we know of, and most especially adapted to West Texas, for the reason that it blooms during the entire summer, even then when monthly roses and other ever-blooming flowers are not in bloom. The flowers are not in the least affected by the hot sun in July and August, but are just as beautiful as they are in the cooler months. Price of strong plants, 25 cents each, \$2.50 for 12; smaller, 15 cents each.

Althea Rosea (Seedlings). Mixed, all colors, from best seed, strong plants, 3 to 4 feet, 10 cents each, or \$7 per 100.

Coelestis, sky blue color, single, 25 cents each.

Duke of Brabant, violet blue, single, 25 cents each.

Elegantissima, flesh colored, sometimes white, double, 25 cents each.

Banner, double striped, white, pink and red, very beautiful sort.

Double Red Althea, the old double red, which produces the prettiest and largest flowers of all. It is one of the most desirable, and most profusely blooming. 20 cents each.

Jeanne d'Arc. Flowers medium, pure white, double, opens well.

Lady Stanley. Flowers small but very double, white, striped red.

Leopold II, very beautiful and rare kind, the color being pink and the flower double. 25 cents each.

Lucy. Double red, large flowers.

Mechan's Double White. pure white flowers, with large, fiery centers.

Tota Alba, single, pure, nearly white; dwarf habit; earliest of all Altheas to bloom and bloom freely. Don't overlook this sort because it is single; it is very desirable.

Pearl. Flowers pink, with deep red center.

Crape Myrtles

The Crape Myrtle has reached such a high degree of popularity, that there is hardly a flower garden without a few of these lovely flowering shrubs. They are lately being used for hedges, which produce the most striking effect, and such a hedge is admired by all who see it. The first flowers appear early in May, and from then until frost the plant is continually a mass of flowers. Price of strong plants, 2 to 3 feet, 25 cents; 3 to 4 feet, 35 cents each.

Pink, the earliest of all Crape Myrtles to bloom. Tree is of a rather dwarfish habit, but produces more flowers in one season than any of the others.

Crimson, grows to a good sized tree, and is almost always in bloom. The flowers are of a very rich crimson color.

Purple, the largest of all; produces very pretty purple flowers in great clusters.

White, always rare. The largest Crape Myrtle, is a very profuse bloomer, but slow grower. 35 cents each.

Syringa—Lilacs

All grafted stock—extra fine.

Alba, large, pure white flowers, produced in large clusters. 25 cents each.

Persian, Blanche, of tall growth, long slender limbs, flowers white. 25 cents each.

Persian, Rosea, growth same as above, and flowers of rose color. 25 cents each.

Purple Lilac, a well-known favorite. 15 cents each.

Spirea

Spirea Van Houttei, a splendid new garden shrub, and one of the most beautiful of all. Immense bloomer with snow white flowers. 25 cents each.

New Japanese Blue Spirea (*Caryopteris Mastacanthus*). This is a new hardy blue-flowering shrub, and very handsome and desirable in every way, makes a neat compact bush two feet high, begins to bloom in July or August and continues loaded with lovely sky-blue flowers till it freezes. Very sweet, and the best flowering shrub we know. Plants two years old, extra large, 50 cents each.

Philadelphus (*Syringa* or Mock Orange). Vigorous growing shrubs, with large, handsome foliage and beautiful flowers, produced in great profusion in early spring. Should be in every collection. (*Grandiflorus* and *Boule d'Argent*.) 3 to 4 feet, 25 cents each.

Cydonia (*Pyrus Japonica*)—Japan Quince. These are about the first spring blooming shrubs, flowers frequently appearing by the first of January. Some produce medium sized fruit, which makes fine jelly. 2 to 3 feet, branched, 25 cents each.

Weigelia Candida, the best white Weigelia. Very fine light-green foliage and handsome pure snow-white flowers, borne in great profusion during the latter part of June, and continuing in bloom until autumn. Price 25 cents each.

Broad-Leaved Evergreens

These are easily transplanted and grow very rapidly; therefore they should never be overlooked when ordering. You will always have a vacant place for a few. All the leaves should, however, be cut off before planting, otherwise they often fail to grow.

Folgendes sind die allerbesten Sorten und sollten nicht übersehen werden. Sie sind leicht und sicher zu verpflanzen, nur sollte alles Laub beim Verpflanzen abgeschnitten werden, sonst vertrocknen sie häufig.

Buxus Arborea, or English Tree Box, succeeds almost everywhere. It is of rather slow growth compared with other evergreens, but remarkable for its longevity, and finally gets to be 10 to 12 feet high. Strong bushes, 25 cents each; small plants for hedges, \$6 per 100. The Buxus makes the finest evergreen hedge.

Japan Medlar, tree of medium height, with long glossy leaves which are evergreen, flowers white in spikes and produced in winter, fruit of the size of a wild goose plum, round or oblong, bright yellow and produced in clusters, subacid and refreshing, maturity from end of February to April. 35 cents.

California Privet, splendid for specimens, screens, hedges. 2 to 3 feet, 10 cents; for hedging, \$2.50 per 100. Have large stock.

Magnolia Grandiflora. Its large, shining green foliage, accompanied in summer with large, fragrant, milky-white flowers, places it pre-eminently above all ornamental trees. This, as well as all other evergreens, should be handled and planted very carefully, as they are extremely sensitive to injury from drying. Their roots should never be allowed to get dry when out of the ground. In planting, the soil should be pressed firmly about the roots with the foot. Neither should they be planted with the roots curled in shallow holes. 3 to 4 feet, 50 cents; 5 to 6 feet, \$1 each.

Cape Jasmine. Flowers large, white, fragrant; foliage rich, glossy. Price, large plants, 40 cents each, 2 for 75 cents.

Euonymus Japonica. One of the fastest growing evergreen shrubs, suitable for either hedge or single specimen; can be greatly improved by cutting back to induce bushy form. No evergreen has such a bright, dark-green color in winter as this. For quick results this excels. Fine strong plants, 20 cents; \$2 per dozen. For hedges it is very fine; \$10 per 100.

Euonymus Japonica Aurea. With yellow markings on foliage. 25 cents each.

Euonymus Japonica Variegata. Variegated variety, conspicuously margined with white and constant in its coloring. 25 cents each.

Pittosporum Tobira, the finest of all evergreen shrubs, well adapted for trimming, grows round and compact. 50 cents each.

Rosmarinus Officinalis (Rosemary, or Old Man). This old favorite is very effective for a border or planting in clumps. Strong plants, 25 cents each; \$2 per dozen. Have a large stock.

Yucca Filamentosa (an evergreen). This plant is an object of beauty the year round. The leaves are two feet long, bristling out at all angles with sharp points; flower stalk stout, 4 to 5 feet high, with

100 to 200 bell-shaped creamy white blossoms hanging from branching arms. Perfectly hardy and lives to a great age. Two-year plants, 10 cents each.

Cone-Bearing Evergreens

We do not think we exaggerate when we say that we have the largest stock of the cone-bearing evergreens in the State. We have, in fact, almost overstocked ourselves with them, and can afford to sell extra fine plants at a very low price. We grow all and only such varieties as succeed in Texas. Sizes are from 1 foot up to 5 feet, and the prices, as you will notice, are lower than those of any other nursery, taking into consideration the quality of the plants.

Ich glaube nicht zuviel zu sagen, wenn ich behaupte, dieses Jahr den größten Vorrath und die feinsten Exemplare von immergrünen Nadelhölzern in Texas zu haben. Ich habe alle Arten, welche hier gedeihen und alle Größen von einem Fuß bis zu sieben Fuß Höhe, und wird mein Preis niedrig sein, als irgendwo anders für Waare derselben Güte.

True Berckmans. Biota Aurea Nana. a new Golden Arbor Vitae of a dwarf and compact habit, a perfect gem for small gardens or cemetery lots, will not grow higher than 6 to 8 feet. 15 to 20 inches high, 50 cents; 24 to 30 inches, 75 cents each.

Golden Arbor Vitae. This is the handsomest and most compact of the Arbor Vitae, green, with a beautiful golden tint. True grafted trees, 2 to 3 feet, 50 cents each; 4 to 5 feet, 75 cents.

Chinese Arbor Vitae. Dark green, vigorous, hardy, desirable, 3 to 5 feet, 25 cents each; small, 15 cents each; \$10 per 100.

Golden Pyramidalis Arbor Vitae. Like the Golden, but grows tall and slender. A very ornamental sort. Do not confuse this with Cupressus Pyramidalis. Three feet, 50 cents each.

Rosedale Arbor Vitae, very compact growth, with sugar loaf form of the Golden Arbor Vitae, but with fine, cedar-like foliage of a bluish cast. Makes a beautiful ornament; perfectly hardy and of vigorous growth; the most beautiful of all Arbor Vitae. 2 to 3 feet, 50 cents; extra large, 4 to 5 feet, fine plants, 75 cents each.

Compacta Arbor Vitae, a compact growing Arbor Vitae, of a lively dark-green color and of globular shape. 2 to 3 feet, 50 cents; 4 feet, 75 cents. Very fine stock.

Red Cedar, one of the finest evergreens, which grows on almost any soil, and which requires much less water and care than the Arbor Vitae. Will acquire any particular shape or size if properly trimmed. Trimmed to pyramidal (or conical) form, 2 to 3 feet, 50 cents each.

Cupressus Pyramidalis. This is a beautiful, tall, columnar evergreen, does well in Texas, a little tender in far North. 2 to 3 feet, 50 cents each; pot grown, 2 to 3 feet, with guarantee to grow, 75 cents each.

Cupressus Horizontalis, like above, of rapid growth, but branches spreading. 2 to 4 feet, 25 cents.



Strong field-grown, one year, 25 cents each, \$2.50 per dozen, except where otherwise noted; 2-year-old, extra strong, 35 cents each, \$3.50 per dozen.

Of all the flowers which man has taken into his care, the rose has reached the highest degree of popularity. She is the queen of flowers, the flower of the poets, and will always be the dearest of flowers to the lovers of the beautiful.

While wild roses are met with in almost every country, the cultivation of the rose began probably at the same time when the cultivation of man began, and with the cultivation of man that of the rose has kept pace, being now at the same height of development as is humanity.

Of the many thousands of varieties which have for centuries been introduced by the hybridizers, those of each succeeding century show a marked improvement over those of the foregoing. Of the roses which were considered the best only a century ago, very few are grown to-day.

Many hundreds of different varieties have been tried on our grounds, and of all only such are described in the following list which, in our judgment, are the very best for outdoor planting.

Fortunately we live in a climate where even the tender roses stand the winter without cover, and any of the roses in this catalogue may be planted outdoors.

Plant your roses in an open place; never try to grow roses in the shade of trees. The plants you receive from us are grown by the latest methods of cultivation, which we practice together with a means of accumulating power and strength in the young plants, and which is just the opposite from forcing roses in greenhouses for bloom. Do not set out your roses the way you get them, but trim off at least one-half of the wood. Slow-growing sorts should be trimmed more severely than the quick-growing varieties.

Mein Vorrath an Rosen ist der größte in Texas und die Auswahl der Sorten ist die reichste.

Meine Rosen sind starke, im freien Felde gewachsene Büsche, die den ganzen Sommer hindurch geblüht haben, und sind ja nicht mit den im Norden in Treibhäusern gezogenen, fingerlangen Topfpflanzen zu verwechseln. Diese Rosen, welche ich hier offerire, werden von Anderen zu 50 bis 75 Cents angeboten. Folgende Liste enthält die besten und allerfeinsten Rosen, welche es giebt, und es kann keine bessere Auswahl getroffen werden.

Crimson and Red

Admiral Schley. Magnificent Hybrid Tea Rose, with flowers as finely formed as Meteor or Liberty. Deliciously fragrant, and in color a beautiful deep crimson. A strong grower and free bloomer, and a variety that should be grown in the home of every American citizen.

American Beauty, hardy rose, of largest size, having the everblooming qualities of the Tea Rose, with the delicious odor of the Damask or Moss Rose. In color it is a brilliant red, shading to a rich carmine crimson. The flowers are borne on long, stiff stems, hence a splendid rose for cutting. 2-year, extra large, 50 cents each. We have a large stock of strong plants. One year, 25 cents.

Anna de Diesbach. Brilliant crimson, shaded maroon; long pointed buds, full and sweet.

Captaine Soupa. A very vigorous grower; foliage dark green; flowers large and well-doubled, carried on stiff, firm stems; color bright, beautiful rose. Has the grandeur of form and size and strong growth of a fine hybrid perpetual. Price 35 cents each.

Baldwin, a new Hybrid Tea Rose. About the best crimson outdoor bedding rose we now have. It is very strong-growing and healthy, and produces very large and double roses of a glowing carmine color, which are as sweet as a June rose.

Chas. LeGrady, the new Tea Rose. Color is fine crimson red, richly shaded with darkest crimson.

Cherry-Ripe. An extraordinary free-flowering hybrid tea, branching in habit, vigorous and hardy, and as free as a tea rose. The flowers are medium in size, well formed, globular, light rosy crimson, almost the color of Alfred Colomb; as fragrant as American Beauty, which it much resembles in form. Every shoot produces a bloom; one of the most promising roses. Price 50 cents each.

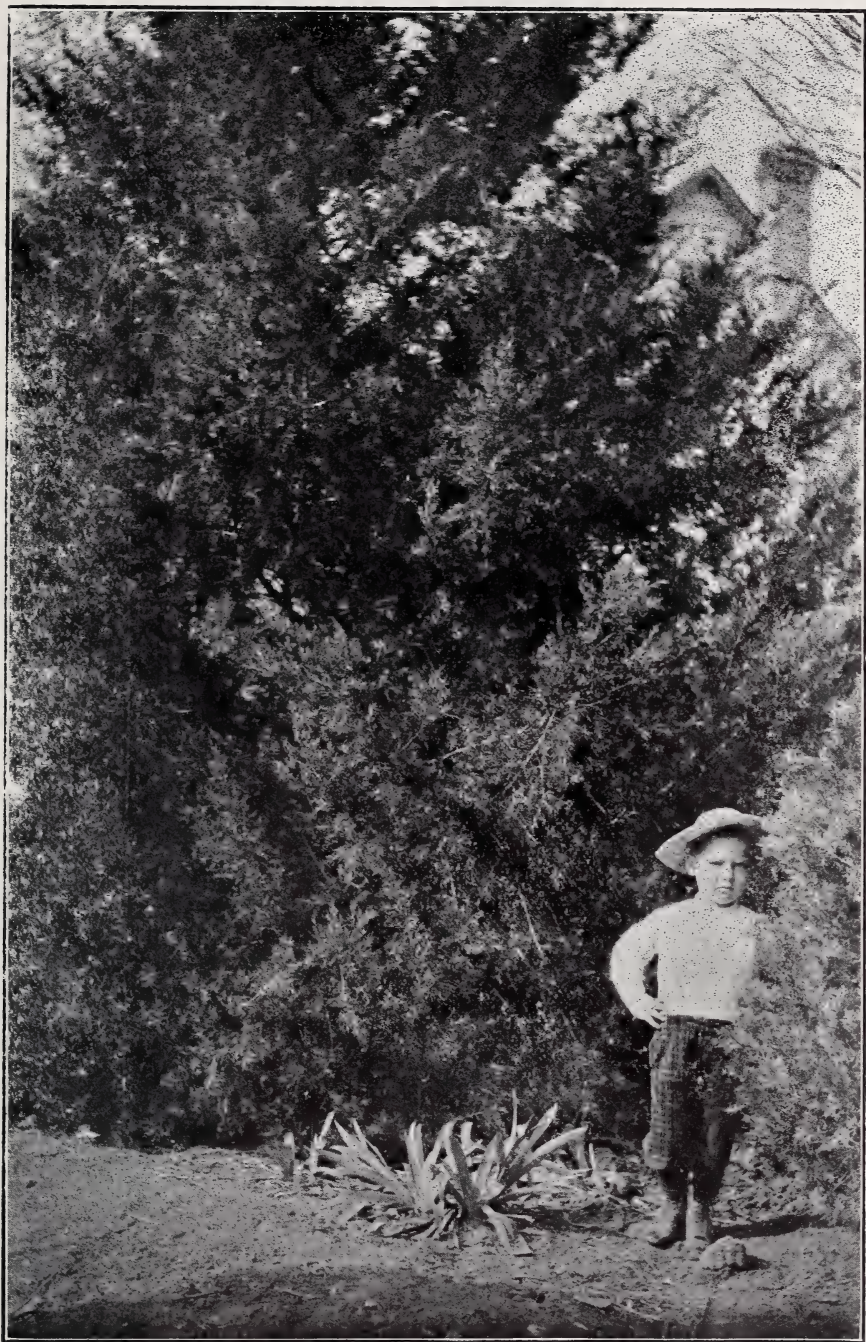
Christine de Neve. A splendid grower, making a large-sized bush, with bright, deep green foliage; a constant and very free bloomer. The flowers are well borne upon strong stems, and are usually large and handsome. The buds are long and finely pointed, and the color is a clear, rich maroon, or deep purplish red, passing to lake; center sometimes streaked with silvery white. Price 35 cents each.

Dr. Cazeneuve. Flowers large, nicely formed; dark velvety crimson, like Jeanne Liabaud; one of the finest Hybrid Teas.

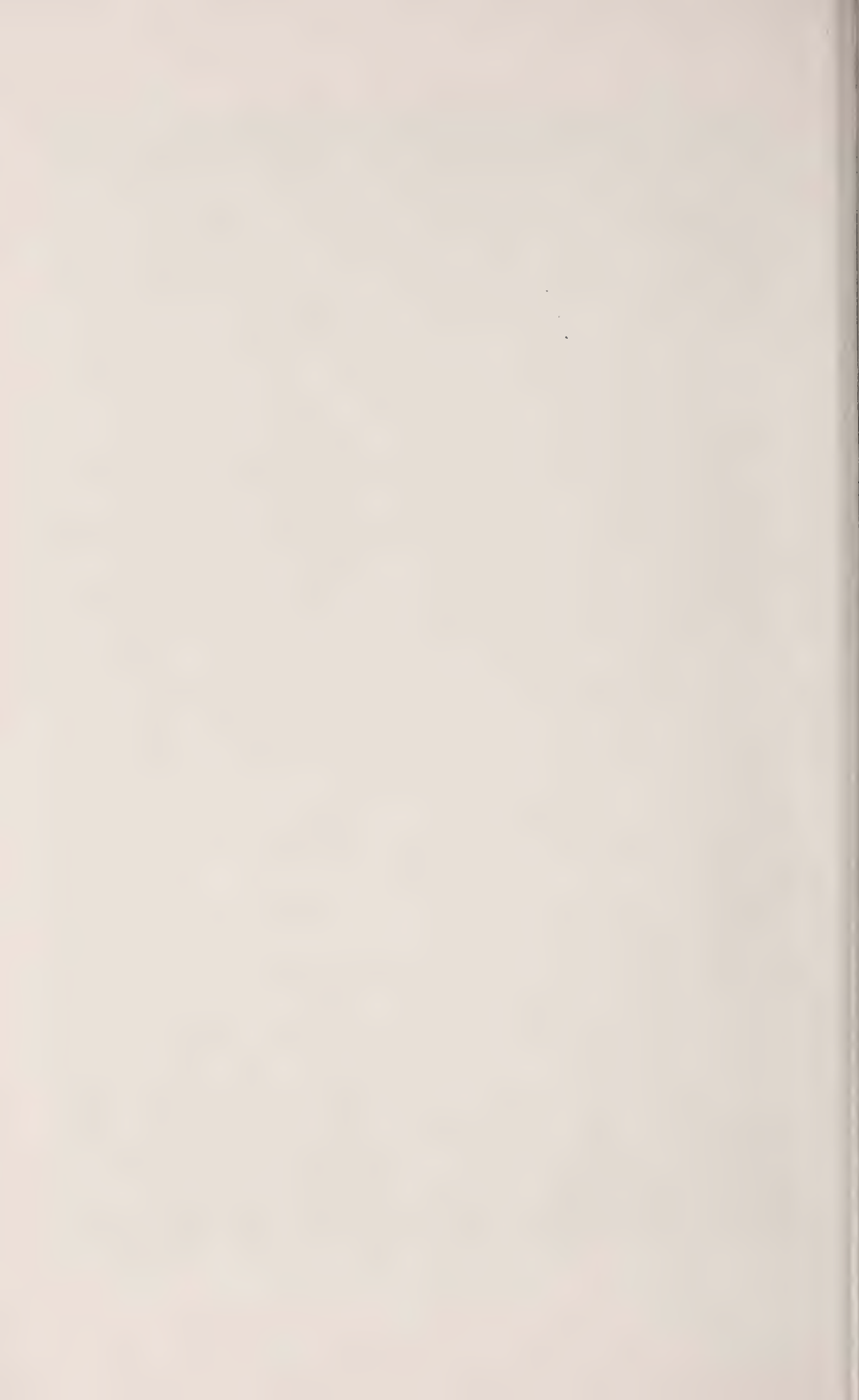
Freiherr von Marschall. A tea rose with long pointed buds; flower large and full, stems stiff and long; color dark carmine red. A very free and vigorous grower. Price 35 cents each.

Gen. Jacqueminot. A rich, velvety crimson, changing to scarlet crimson. A magnificent rose, equally beautiful in the bud and open. This is the best known of the Hybrid Perpetuals, and is without a rival in richness of color and fragrance. Very hardy.

General McArthur. A grand new everblooming crimson scarlet rose. In all the rose family we know of nothing that can compare with this in dazzling color, fragrance of flower and profusion of bloom. Is as fragrant as a rose can be, has good sized flowers, blooms continuously



8 year old Red Cedar.



the whole season through, and gives fine stems for cutting. It makes a strong, stately plant that may be depended upon for strong flower shoots. Price 50 cents each.

Gruss an Teplitz. We unhesitatingly say that for bedding, no rose we offer will compare with Gruss an Teplitz. It is a perfect sheet of rich crimson scarlet all summer. When we say that we know of no rose that has such bright colors in it as this variety, we are stating facts. The nearest we can describe it is, that it is the richest velvety crimson overlaid with the brightest penetrating scarlet.

J. B. Clark. The growth is strong and upright, very vigorous, making a large, handsome bush; foliage is broad and stout, bronzy green in young state, changing to dark green. Blooms are very large and beautifully formed; the petals, which are very smooth, are of great size and depth; flower very full and long, with high-pointed center. Color unique, being intense scarlet, shaded blackish crimson; strongly fragrant. Price 50 cents each.

Joseph Metral. Red tea rose of unusual merit. The flowers are large, very full and double, with thick regularly arranged petals. Color is red with velvety shadings; rich and very fragrant.

Jubilee stands pre-eminently in the lead of the many dark Hybrid Perpetuals. In it are combined all the qualities that make a perfect rose: vigorous growth, perfectly formed flowers and great freedom of bloom.

Lady Battersea. This variety has long pointed buds of the largest size and very striking in form. The color is bright crimson, often approaching the shade of Liberty; the stems are stiff and extremely long; a vigorous grower and free in bloom. Early in the season the flowers are not very double, but on strong plants the blooms are well filled. Price 35 cents each.

Madame Charles Wood, a true perpetual bloomer. The flowers are extra large, very double and full and quite fragrant. Color is a bright, fiery scarlet, passing to a fine rosy crimson, elegantly shaded with maroon.

Meteor, a velvety red everbloomer of the deepest glowing crimson, as fine as a Hybrid. Flowers very double and petals slightly recurving. A beautiful open rose.

Princess Sagan. Color rich velvety crimson, full and a very profuse bloomer.

Prince Camille de Rohan. This rose is always a prime favorite with everybody; the darkest crimson; bush has a strong, upright growth. A very popular rose.

Richmond. The best red rose yet produced; thrives under the same conditions that suit Bride and Maid. Easy to grow; of strong, free habit. Stem, foliage, color, all are ideal for quick opening, free flowering. A fragrant red rose of the Liberty type, but producing four fine buds to Liberty's one. Price 50 cents each.

Reine Margaret d'Italie. Of bushy growth, foliage dark green, buds long and pointed, flowers large and full, color glossy carmine scarlet lightened with vermilion; extremely free; very sweet. One of the

best novelties of recent years. especially as a red garden rose. Price 35 cents each.

Souvenir de Francois Gaulain. In growth it is strong and healthy, with large, handsome foliage that remains on the plants until the first frost comes. The color is unusually bright and indeed quite remarkable for a tea rose—rich, velvety crimson. The flowers are exceedingly fragrant, large, full and very double, possessing a depth that renders their color all the more striking; quite hardy. Price 35 cents each.

Ulrich Brunner. Rich crimson scarlet; broad, round, thick petals of good substance; highly perfumed. Very handsome and desirable.

Rosalind Orr English. Cherry scarlet, very free; bud long and pointed; a nice grower.

Pink

Bon Silene (Tea). An old-time favorite that everybody knows. Strong grower, fine buds, color crimson rose, forces well.

Bridesmaid, the pink sport of Catherine Mermet. It is a stronger grower than its parent, has handsome foliage and the flowers are a much livelier pink. The most popular pink rose ever introduced.

Burbank, raised by Mr. Luther Burbank of California, known the world over as the "Wizard of Horticulture." The color is cherry crimson; it is, in other words, the very deepest and brightest pink rose in cultivation. One of the freest bloomers and perfectly hardy.

Catherine Mermet. This is a fine pink rose; a good grower and bloomer; one of the best pink roses for outdoor culture.

Clara Watson, a beautiful rose of large size, very fragrant and fine form, color salmon pink, blended with blush pink on outer edge of petals, shading to yellow in center. Strong grower and profuse bloomer.

Clio. Vigorous growth; large, handsome foliage; flowers flesh-colored, shaded to center with rosy pink, very large, of fine globular form and freely produced. A grand addition. Price 35 cents each.

Champion of the World, a remarkable new sort; combines the most desirable qualities. It is a perpetual bloomer, summer and winter. The flowers, which are produced in the greatest profusion, are perfectly double and of perfect shape. They are of a deep rosy pink and delightfully fragrant.

Duchess of Albany, red La France; very large, deep pink, full and highly perfumed. One of the finest pink roses.

Duke de Brabant. Combines exquisite perfume, beautiful coloring, matchless profusion of flowers and foliage. Soft, light rose, with heavy shading of amber and salmon. Hardy.

Hermosa, the best pink bedder. The freest and most perpetual bloomer in existence.

Ideal. A sport from the famous La France, which it closely resembles in every way except color, which is a bright deep pink that does not become washed out even under the most unfavorable conditions. The plant is a strong, vigorous grower; very free flowering. Flowers of good size and deliciously scented, and we believe it will become even more popular than its famous parent. Price 35 cents each.

La France. Perhaps no rose is more highly known or more highly valued for a garden rose than La France. It is a Hybrid Tea of very beautiful form and color; an early and constant bloomer, producing a wonderful profusion of buds and flowers all through the growing season. It is exceedingly sweet and handsome, and altogether one of the loveliest and most desirable roses one can plant. The color is a delicate shade of peach blossom, changing to amber rose, elegantly tinged with crimson.

Mme. Eli Lambert. Flowers are extra large, very full and double. Color is a rich pink on outside petals, as well as on the tips of inside petals; the rest of the petals is white, gradually changing to yellow at the base. A vigorous and healthy grower.

Maman Cochet. A magnificent pink rose of the Mermet type. The grandest of outdoor bedders in pink, making an enormous growth in one season. Color very bright rose, with shading of yellow in center.

Malmaison. This is certainly one of the choicest, and as a rose for general cultivation is unsurpassed. The color is a beautiful rich, creamy flesh, with a rose center; flowers very large, perfectly double and deliciously fragrant; a strictly first-class rose in every respect.

Marie Van Houtte. In the open ground it is truly magnificent. The flowers are extra large, very double and full, and are deliciously scented; the color is a pale canary yellow, passing to rich creamy white shaded with rose. Grows strong and sturdily.

Mad. Testout. One of the best of the new roses, of the La France type, but clear pink, large, free bloomer. A great favorite where known.

Magna Charta. A strong favorite, prized on account of its strong, upright growth and bright, healthy foliage, as well as for its magnificent bloom. The color is a beautiful bright pink, suffused with carmine.

Mme. Vermorel. Pure Tea. Color rose and golden copper, shading to deep red in the center; has a very large, round bud, opening into an extremely beautiful open flower. Foliage and habit of the best. One of the finest new roses in the fancy color class. 35 cents each.

Paul Neyron, deep pink, very large and extra fine rose, and very free bloomer. A rose without thorns.

President Carnot. One of the most beautiful of the light-colored roses. White, with heart of pink; extra large, very strong grower; buds on long canes.

Silver King. Hybrid Tea. This new rose is a beauty indeed. The bud and flower are of the largest size when fully expanded, cup-shaped, full and double, but the petals are so arranged as not to crowd each other. The color is clear shell pink, resembling the soft pink seen in sea shells. It is very fragrant, a true everbloomer and hardy everywhere. This is the grandest of all light pink roses.

Souv. de C. Guillot. This is a rose of large size and very free; color varying from carmine red to orange red; bright and clear; very fragrant.

Vick's Caprice. This is the only hardy rose that has any variegation. It is a vigorous grower and bears large and fragrant flowers of a bright rose, distinctly striped with rich crimson.

Wellesley. This grand rose (Liberty crossed with Bridesmaid) retains the form of Liberty with the fullness of Bridesmaid, and in color is a beautiful shade of pink, the outside of the petals being bright and clear with a silvery reverse. It is a very vigorous, healthy grower, carrying the flowers on long, stiff stems, which are clothed with heavy, dark green foliage. It is remarkably free flowering, and possesses unusually fine keeping qualities. Lights up brilliantly under artificial light.

Wm. Askew. An exquisitely beautiful rose of bright carmine pink, and with the grandeur of American Beauty in form and foliage; free in bloom; extra fine. Price 35 cents each.

Yellow

Albert Hoffmann. Seedling of Maman Cochet; is a finely-formed, full rose of a beautiful mingling of light and deep shades of yellow, overlaid with pink.

Alliance Franco-Russe (Tea). Flowers bright yellow, shading to salmon at the center; bright and pleasing; has a strong, upright stem and long bud; vigorous and hardy and a free and continuous bloomer. Very full and double. 40 cents each.

Countess A. Thun. It is of immense size and of the most lovely and perfect form imaginable. Color a beautiful citron yellow with coppery and peach center, shading to orange salmon and silvery pink.

Coquette de Lyon (Yellow Hermosa). This is the most charming yellow tea rose, a grand grower, has elegant buds and is so free in flower as to be called Yellow Hermosa. This is the best blooming pure yellow rose in our catalog. It is a rose that will please all.

Etoile de Lyon. Many new varieties of yellow roses have been introduced since this was a novelty, but none combine more good qualities than this good old sulphur-yellow rose. Buds are of beautiful shape and flower is very full.

Franciska Krueger, a strikingly distinct and handsome rose. One of the very best for open culture. The flowers are deeply shaded copper-yellow in color and are of large size. Always in bloom.

Golden Gate. Recommended to everyone desiring large flowers, long stems and continuous bloom. The buds are long and pointed, opening out into a well-shaped flower of creamy white, delicately tinged with yellow and rose.

Helene Gambrier. This lovely copper-yellow Hybrid Tea ever-blooming rose will fill a long-felt want from the fact that everybody has been looking and longing for a good yellow rose that combines vigorous hardiness with rich color and free blooming qualities. This Helene Gambrier does. Flowers are of a delightful shade of deep, rich coppery yellow.

Media. This is the grandest of all yellow roses, and should be planted by everybody. Its flowers are of largest size, perfectly double to the center and of the most perfect shape, both in bud and blossom.

while its color is a rich, golden yellow, with decided sulphur tints. Media will not disappoint you. Price 35 cents each.

Mme. Jenny Gillemot. Buds long and pointed, deep saffron yellow; immense; opens very freely. A fine upright grower of branching habit; exquisitely beautiful, very large in size, but very long and pointed. Price 50 cents each.

Perle des Jardins, golden yellow, large, double, free bloomer; the finest yellow rose in cultivation.

Sunrise, has a long and very beautiful bud, but is equally beautiful when fully open. The color cannot be called yellow, but it is nearer yellow than anything else. The inside of the petals is yellow and the outside copper-colored. It shows great freedom of bloom here, and the plants are very healthy and quick growing. 35 cents each.

Souvenir de Pierre Notting. This is a beautiful rose, seedling of Marechal Niel and Maman Cochet, with beautiful, closely-set foliage and a strong, sturdy habit of growth. The bloom is very large, perfectly full, of elegant form, has a beautiful long bud. The colors are very bright, distinct and clear, and have no unpleasant tones—orange yellow, bordered in carmine rose.

Yellow Cochet, or Madame Derepas Matrat (Tea). A pure tea rose, very free growing and hardy in character. It throws up fine, strong stems, crowned by solitary buds of grand size. The color is a good sulphur yellow; blooms very large, perfectly double; splendid form and freely produced. It has every quality necessary to make it the ideal yellow bedder, ranking with the white and pink Cochets in value as a summer rose. 35 cents each.

White

Bessie Brown (New Rose). This rose is considered one of the finest of the roses of late introduction, and is well worthy the place it occupies among roses. It is of the Hybrid Tea class, and will stand frost if slightly protected. Blooms are of enormous size, of heavy substance and perfect in shape, lasting splendidly when cut. The color is snow-white, faintly flushed and tinged with pink. A fine, strong, free grower, producing long stems. Price 40 cents each.

Coquette des Alpes, a lovely, pure white rose. Very full and free in flower, erect growth and delicious fragrance.

Kaiserin Augusta Victoria. This is one of the grandest of all roses. It is a strong, vigorous grower, producing buds and flowers of enormous size. Color pure ivory white. We have no hesitancy in saying that this rose is unequalled by any other in its color. A grand garden rose on account of its vigorous growth and hardiness.

Marie Guillot, moderate grower; white, large, very full; none finer.

Marie Lambert. Extremely free-flowering, white tea of beautiful form and quite full. One of the best.

Snow-Flake, one of the most beautiful white roses I have ever grown. The flowers are not very large, but always open to perfection. A very quick-growing variety, and one that produces a tremendous amount of flowers the year round.

Sombreuil, grand old-time garden favorite, still unsurpassed; one of the hardiest.

The Bride. This is decidedly the most beautiful white tea rose. It is a sport from Catherine Mermet, with which it is identical in growth and shape of flowers. The flowers are very large and double, on long, stiff stems of fine texture and substance, and last a long time after being cut; makes one of the best varieties for corsage wear or bouquets. During extremely hot weather it becomes a pinkish white, at other times a beautiful pure white.

White Cochet. The charming new white tea rose. Another new American rose. Its habit is exceedingly strong and upright, like its parent, Maman Cochet. It possesses the same large, beautiful, healthy foliage, and it is a most profuse and constant bloomer. The flowers are of enormous size, round and full, pure, clear, snowy white throughout, and are delicately tea-scented. It is without doubt the largest white rose, both in bud and flower. 35 cents each.

White La France. This rose is identical with La France except in color, which is almost pure white. The shading in fawn it has only enhances its beauty. A grand rose.

White Malmaison. Crown Princess Victoria, Bourbon (New). The color is of pure waxy snow white, and sometimes has a lemon tint, and to those who desire a fine double flower when fully expanded, this will meet your wants, as it is beautiful when full-blown. Resembles that grand old rose "Malmaison" in shape and fulness.

Climbers

Baltimore Belle. Pale blush, variegated carmine, rose and white; very double; flowers in large clusters.

Climbing Bridesmaid. The flowers are simply Bridesmaid. Clear dark pink. In bud they are superb beyond anything we have ever seen. This is one of the most valuable additions to the climbing tea roses made in recent years.

Climbing Kaiserin Augusta Victoria. Flowers same as the Kaiserin, which is too generally known to require description here. Stout canes, very quickly covers verandas, etc. Always in bloom.

Climbing Marie Guillot. It is one of the most rapid growers, small plants making growth of ten feet in one season. The color is pure snow white, sometimes faintly tinged toward the center with pale yellow. Very hardy and a free bloomer. Price 50 cents.

Climbing Meteor, is of strong, vigorous habit of growth, producing in great profusion throughout the season magnificently formed buds and flowers which in color are of a dark velvety crimson, the equal of any rose in cultivation, and possibly more glowing than its illustrious parent.

Climbing Perle des Jardins, a sport from Perle des Jardins, the most popular of all yellow tea roses. Climbing Perle is a strong, vigorous, climbing tea, with beautiful, large, double, golden-yellow flowers; larger and brighter than Perle.

Cloth of Gold, clear golden yellow; large, very full and double; highly fragrant; a very fine climbing rose.

Dorothy Perkins. In general habit closely resembling Crimson Rambler, but of a beautiful shell pink, full and double, of an unusually large size for a cluster rose. The trusses are made up of from 30 to 40 flowers, and even more on the stronger branches. A decided acquisition.

Gainsborough. The best of all climbing roses. For beauty and size we place this among the first of the Hybrid Teas. It has the foliage of the old rose, Folkestone, its color being of delicate tinted pink, almost white. When in bloom it resembles a large open Peonia. You should add this valuable rose to your collection.

La Marque, purest white; a splendid climber and the freest and finest for winter blooming; has to be trimmed and trained well.

Marechal Niel, beautiful, deep yellow; very large, full, globular form; sweet, free bloomer; the finest climbing rose; budded upon Manetti. Two years, 50 cents; own roots, 25 cents each.

Mary Washington, a hardy, perpetual blooming climber, producing large, double, snow-white blossoms in great profusion from spring until frost. It is a sweet and most valuable sort.

Mad. Drit ut. The striped Reine Marie Henriette. As the name implies, this is a sport from the old favorite R. M. Henriette, with the splendid vigor and form of the mother rose, while beautifully striped, flamed and shaded in bright carmine over pale rose. The markings are very regular; a superb variety. Price 35 cents each.

Prairie Queen. The flowers are very large and of a peculiar globular form. Bright rosy red, changing to lighter as the flower opens; very strong, rapid growth.

Reine Marie Henriette, a strong growing climber, making a great pillar rose; flowers full and well formed; rich, brilliant crimson. A fine companion of Marechal Niel.

William Allen Richardson. The coloring of this rose is simply exquisite. The base and back of petals are a bright yellow, the center highly colored with glowing copper and rose; first-class climber.

Climbing, Clinging and Creeping Plants

These long-lived plants are the most popular and best for the South to cover arbors, galleries, old trees, etc., in a very short time.

Diese ausbauenden Kletterpflanzen sind die beliebtesten und besten für den Süden und eignen sich besonders für Lauben, Verandas und für Ueberranken von alten Bäumen, Zäunen etc.

Antigonum Leptophus (Queen's Wreath), a splendid plant from Central Mexico, producing rose-colored flowers in racemes two feet long. The profusion of bloom is such as to give the resemblance of roses at a distance, hence its name, "Rosa de Montana," or Mountain Rose. Will live out in the winter anywhere in the South. The vines are killed by frost, but it quickly shoots up in the spring and develops its flowers from May until frost. This is one of the most lovely vines. Bulbs 15 cents each.

Ampelopsis Veitchii (Boston Ivy). This plant resembles very much

our ivy, but grows very rapidly, covering a large wall in one season. The foliage is small and neat and blood-red color in fall. 25 cents each.

Ivy, Hardy English. The hardy evergreen vine that remains so all the year, making it one of the most valuable of all hardy vines. It is used in covering walls, and has become popular for covering graves, especially if in the shade, where grass will not succeed. Price 15 cents each.

Trumpet Creeper, a clinging vine of rampant growth; clings to wood or stone walls or trees; very hardy; produces clusters of long trumpet-shaped, orange-scarlet flowers from early spring to late fall. 15 cents each.

Chinese Matrimony Vine, when trained, is a most vigorous and desirable hardy climber. It sends out numerous side branches, so that it covers a great space in a short time, and every new vine is at once covered with bright purple flowers, which are succeeded by brilliant scarlet berries nearly an inch long. The contrast between the dark-green foliage and shining scarlet fruit is beautiful. 15 cents each.

Clematis Paniculata, one of the most beautiful of our hardy climbing vines. The flowers are pure white, and are borne in great panicles or clusters of bloom, which fairly cover the plant so that it is a mass or sheet of fleecy white. The fragrance is delicious, resembling the English Hawthorn blossoms, and so subtle and penetrating that a large plant in bloom fills the air with exquisite fragrance. 25 cents each.

Clematis Flammula, a strong climber, flowers singly on stems, large, trumpet-shaped; color light blue; a good bloomer.

Clematis Drummondii. Many varieties of Clematis grow wild in Texas. Among them this is the best. When in bloom the plant is covered with white flowers, which come in such profusion that it attracts attention along fences in the moonshine, being as white as cotton. Flowers are not fragrant. A rapid climber. Strong plants, 25 cents each.

Vinca Harrisonii (Trailing), two shades of green and gold; strong plants. 15 cents each; \$1.50 per dozen.

Vinca, Evergreen (Trailing), dark-green. 15 cents each; \$1.50 per dozen.

Vitis (Trailing Grape). A very strong climber; will cover a porch or arbor in one season; makes long vines like a wild grape; leaves are thicker and more pointed. The best vine for quick shade. Price 25 cents each.

Wisteria Sinensis (Chinese Wisteria), a quick growing climber, producing long racemes of purple flowers. 25 cents each.

Wisteria Frutescens (American Wisteria), a vine which covers a porch in very short time, and is covered in spring with large clusters of blue flowers. 15 cents each.

Wisteria (Sinensis Alba), flowers borne in long, drooping clusters of pure white color; very elegant. Strong 2-year plants, 40 cents each.

Honeysuckles

Evergreen, the quickest-growing of all. It produces very large bunches of flowers, which open white and turn deep yellow. A bunch looks as if it was composed of flowers from two different plants. Extra large, 25 cents; smaller, 15 cents each.

Crimson-Flowered, a fine crimson everblooming Honeysuckle, quick-growing and well-blooming. 25 cents each.

Fuchsia-Flowered, a new perpetual flowering, weeping Honeysuckle. Its flowers are long and trumpet-shaped, beautiful coral red, borne in large clusters and drooping like a Fuchsia. It is a strong, rapid grower, with beautiful leaves. 25 cents each.

Halleana. One of the finest Honeysuckles grown. Blooms from May till November; is always evergreen and one of the most fragrant; flowers white, changing to yellow. 25 cents each.

Japan Golden Honeysuckle, a beautiful evergreen vine with dark-green foliage, netted and mottled with gold, flowers white and very desirable. The leaves change to dark-green and purple in winter. 25 cents each.

Variiegata. Marvelously effective. The large green leaves are striped light yellow, making it the finest thing we know of for corsage bouquets and floral baskets. A unique vine; new. Price 25 cents each.

Ornamental Grasses

No garden is complete without a few of these beautiful grasses. They are so easily transplanted and grow with so little care that everybody can afford to have them. The beautiful plumes they produce keep for years if cut at the right time and properly dried.



Kein Garten ist vollständig, in welchem diese schönen Ziergräser fehlen und da sie so leicht zu verpflanzen sind und fast gar keine Pflege bedürfen, so sollte ein Jeder einige pflanzen, da ja auch die Blüthen so beliebt für Sträuße und Vasen sind und, wenn gut getrocknet, Jahre lang halten.

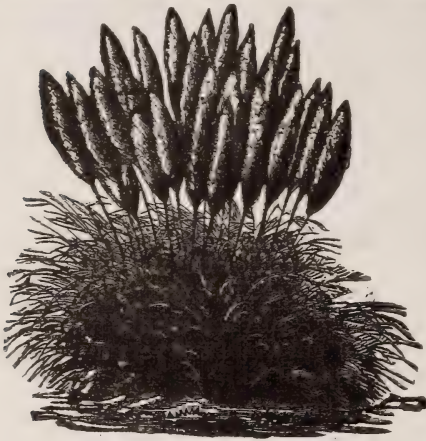
Eulalia Japonica Zebrina (Zebra Grass). Bright green blades with yellow bars across them; grows to a height of five to six feet; produces fine, lace-like plumes, which last for years if cut when fresh. Perfectly hardy. 15 cents each.

Eulalia Japonica Variiegata, a variegated, hardy grass from Japan. In appearance it somewhat resembles the Ribbon Grass while in a young state. It forms compact clumps six feet in diameter; its flower stalks are very graceful and numerous. 25 cents each.

Eulalia Univittata, plumes silvery white, produced upon very long stems; blooms early; a graceful new variety. 4 to 5 feet, 15 cents each.

Gynerium Elegans, very hardy and graceful, with elegant little plumes 2 or 3 feet. 15 cents each.

Gynerium Argenteum (Pampas Grass), enormous bunches of long, handsome, dark-green blades, producing long stalks of silver-white plumes, 5 to 6 feet. 25 cents each.



Gynerium Roi des Roses, plumes very compact, of delicate rose color, very fine blooming and compact growing; new variety, 5 to 6 feet. 25 cents each.

Lemon Grass, came from Malabar, where, as in many other parts of the world, the tea made from it is a favorite beverage. A delightful perfume is extracted from the leaves. Highly valued for its medicinal properties and sweet fragrance; height, 2 to 3 feet. Large clumps, 25 cents each.

Cannas

Dry, divided roots; the best to transplant. 15 cents each; \$1.50 per dozen, except where noted.

This is one of the most thankful of flowers. It produces its flowers from spring until frost kills the top of the plant, and in such different and exquisite colors that nobody can help admiring them. The plant needs plenty of watering, and can only be had where there is a plentiful supply of same.



Dieses ist eine der dankbarsten Blumen, da sie vom Frühjahr bis zum Herbst, wenn der Frost ihren Wuchs endet, blüht und zwar in solch frischen, leuchtenden Farben, daß einem ein blühendes Canna-Beet große Freude bereitet. Diese Pflanze gebraucht viel Wasser und kann nur gezogen werden, wo solches zur Verfügung steht.

Alphonse Bouvier. In color this is the most intensely brilliant crimson yet introduced, and it is undoubtedly the best bedding variety for planting in masses. The foliage is rich green; the plant is of strong, robust habit.

Alsace. The only white variety, the nearest approach to a pure white Canna yet introduced. Flowers at first are light sulphur yellow, changing to a rich creamy white.

Austria (new), the gorgeous new orchid-flowered Canna, a hybrid with "Canna Flaccida" as one parent; flowers of immense size, 5 to 6 inches across. Color golden yellow.

America. The first red-leaved *Canna* in the giant-flowered class. Height, 4 to 5 feet; foliage, fine glossy bronze, almost as if varnished; flowers extra large, deep orange, flamed and striped with a deeper shade.

Alemannia. An immense flower, orange, with bright yellow border spotted with orange. Distinct.

Black Prince. Large flowers of a vivid crimson color. It has a very compact, bushy growth of about three feet in height, making an exceptionally fine bedder.

Buttercup. The finest yellow *Canna*; an early and constant bloomer. Large, beautifully formed flowers in fine, large, handsome trusses. Color rich golden yellow, suggesting in its rich color the wild buttercups in the fields. Always shows up bright and clear. Price 25 cents each.

Mlle. Berat. This is a pink variety of French origin; entirely distinct from any other sort. It is much the darkest of all the pink *Cannas*, being dark carmine red. Heads of bloom are held very erect and well above the foliage. A showy, effective bedder. One of the finest introductions.

Martha Washington, the new pink *Canna*; the most showy and handsome of all pink *Cannas*. We ask particular attention to this new variety. The flowers are very large, having broad, well-rounded petals, frequently two inches across. The color is bright, rosy pink, elegantly mottled with rose, shaded rich golden yellow at throat. Your collection will not be complete without *Martha Washington*.

Florence Vaughan, flowers very large and broad, yellow, spotted bright scarlet; free bloomer and strong habit. This is one of the best varieties in cultivation.

Perseus, a new and attractive bronze-leaved *Canna*. The orchid-formed flowers are an intense orange scarlet, borne well above the foliage on a good stem. This is one of the best of the new bronze-leaved *Cannas*.

Banana (*Musa*)

Orinoco. The hardiest and commonest sort. Plant of large size with dark green leaves. Very robust and easily grown. Strong suckers, 50 cents each.

Flowering Plants

Gladiolus. Blooms only once, and although its beauty lasts only a short time, it is beloved by everybody who knows it. The flowers are borne on spikes 2 to 3 feet long, and bloom in succession for 8 to 14 days, the lower flowers blooming first. To have a continuance of bloom the bulbs ought to be planted at intervals of every two weeks from March first until the end of May. My bulbs are extra large, well matured and taken only from the finest varieties. Bulbs extra large, 1½ inches in diameter, of the finest varieties that money can buy, 5 cents each; 50 cents per dozen; \$2.50 per 100.

Die Gladiolus blüht nur einmal, doch ist die Blüthe eine wahre Pracht, da jeder Stengel eine andere Farbe oder Schattirung hervorbringt. Um lange Zeit von diesen prächtigen Blumen zu haben, sollte man Knollen im März, April und Mai pflanzen. Meine Knollen sind groß und gesund und die feinste Mischung, die zu haben ist.



Try a hundred of my extra large and extra fine bulbs, and have the grandest flowers you ever saw of all colors. Yellow, crimson, buff, salmon, lemon, pink, rose, white, maroon, cherry, scarlet and, in fact, all oddly marked sorts that one can think of.

Tuberoses. In tender beauty and delicious fragrance this lovely flower has no equal. It is easy to grow and quick and sure to bloom. I have the three best varieties—Dwarf Excelsior, Pearl, Orange-flowered New Variegated-Leaved. 5 cents each; 50 cents per dozen; \$2.50 per 100.

Mexican Tuberoses. Unlike any other variety, it has stiff, tall stems; flowers pure white, single, delightfully fragrant; bloom continuously from June till killed down by frost. Large bulbs, 10 cents each.

Tritoma, Everblooming, the greatest bedding plant ever introduced, surpassing the finest Cannas for attractiveness and brilliancy, equal to the Gladiolus as a cut flower, and blooms incessantly from June until December. Plants are hardy in open ground. Strong roots, 15 cents each; \$1.50 per dozen.

Dahlias

Another beautiful perennial of great magnificence, raising its brilliantly colored flowers on lofty stems. We have only the very latest varieties and a mixture of all the best colors. However, we have the colors in separate named varieties, and if they are wanted named we keep them separate. Strong bulbs, 15 cents each; \$1.50 per dozen.

Bronze Cactus. Flowers very large, very double; color light bronze.

C. W. Bruton. The finest of all yellow Dahlias; immense flowers on long stems; a very vigorous grower.

Germania. The largest of the Dahlia family; pale pink color; very double.

Snow. Dwarf; white flowers, double, on short stems.

Nymphaea. Color a light pink; opens well and is one of the best.

Peonies. Magnificent, hardy plants, almost rivaling the rose in brilliancy of color and perfection of bloom. They thrive in almost any soil or situation. We have the following colors: Yellow with pink center, white and pink, salmon red and rose yellow. 25 cents per bulb.

Hardy Garden Pinks. Very hardy variety of pinks used for fringing flower beds. They are very sweet-scented and of various colors. Varieties: Brunette, Albas Ford, Her Majesty and Essex Witch. 15 cents each; \$1.50 per dozen.

Carnations

The carnation excels all other flowers, the rose alone excepted. If planted in the open ground it will bloom all summer, and if taken out and brought indoors at the approach of cold weather, it will bloom in winter.

I have grown very strong plants in the open field which were well hardened, and which have bloomed here.

Mixed Colors (Seedlings), grown from the very best Italian seeds. 25 cents per dozen.

Carnations, in named varieties, crimson, red, white, pink and variegated, of the most popular varieties. 15 cents each; \$1.50 per dozen.

Violets

Five cents each; 50 cents per dozen, except where noted.

Princess of Wales (New single violet). This violet is far ahead of any violet known; is wonderfully free-flowering, with stems from 10 to 12 inches long; large green leaves of a thick leathery texture. The grand single flowers, of a true violet color that does not fade, are of round, symmetrical form, almost as large as pansies, and of the richest and most delicate fragrance.

California. New giant-flowering violet. Single flowers of the deepest blue and purple, and borne on stems 8 to 12 inches long. Can be worn nicely as a corsage bouquet— a difficulty that is overcome in comparison with the other sorts.

Swanley White. Of all the white violets this is the best, either for pot culture in the house or bedded out. In pots it grows luxuriantly and is loaded with flowers. It is not an uncommon sight to see as many as fifty large flowers open at once, presenting a beautiful sight, their delicious perfume filling a whole room. 10 cents each; \$1 per dozen.

Lady Campbell. This is by far the best double blue violet grown, deliciously fragrant and very prolific. The growth of the plant is vigorous and healthy. Valuable either in pots or planted out. A charming contrast with the white variety, Swanley White. 10 cents each; \$1 per dozen.

Pansies

Giant-Flowering Pansies (*Viola Tricolor Maxima*). I have imported the finest mixed pansy seed that I could get in Europe, and have very strong plants to offer at 15 cents per dozen; \$1 per 100.

We have a large stock of Pansies and Carnation Plants.

Flower Seeds

All the flower seeds that I offer are guaranteed to be fresh and of the very highest standard quality. These seeds have been imported by myself from Italy (except those where otherwise stated), and I tested them as soon as they arrived here.

Balsams, improved rose, extra double. 10 cents per package. (Home-grown.)

Dianthus Chinensis (Chinese Pinks). Very best mixed, 5 cents per package.

Dahlia Variabilis, double mixed. 10 cents per package.

Delphinium (Larkspur), best mixed. 10 cents per package.

Margaret Carnations, dwarf mixed, brilliant colors. 5 cents per package. (Home-grown.)

Coxcomb, best mixed. 5 cents per package.

Ipomoea (Japan Morning Glory), mixed. 10 cents per package.

Ipomoea Grandiflora, mixture. 5 cents per package.

Marigold, African mixed, dwarf double. 5 cents per package.

Mignonette, mixed. 5 cents per package.

Oxalis Tropaeoloides. 10 cents per package.

Pansy. The best mixture of giant-flowering kinds, all colors. Large packages, 15 cents each.

Poppy, mixed, best single and double. 5 cents per package.

Phlox Drummondii, best mixed. 5 cents per package.

Cypress Vine, a most beautiful climber, with delicate dark green, feathery foliage and an abundance of bright, star-shaped, scarlet and white blossoms. 5 cents per package. (Home-grown.)

Verbenas, giant-flowered. 5 cents per package.

Winter Stocks, mixture of all colors. 10 cents per package.

Zinnias, all colors mixed. 5 cents per package. (Home-grown.)

Vegetable Seeds

Tomato, Leicester's Prolific. I have found this variety to be the best bearer of all the large-fruited tomatoes. The quality of the fruit is the very best. Color is very attractive. 10 cents per package.

Tomato, President Roosevelt. The earliest, best and most productive of all the round, smooth, large tomatoes existing. Upon several years' trial we found the new tomato, "President Roosevelt," the earliest, best smooth tomato up to now existing. It is immensely productive, nearly all meat, having very little seed; firm and of very mild flavor. The growth of the plant is very vigorous, 5 to 6 feet high; the foliage large. The bright scarlet, solid fruits weigh on an average one pound each; in clusters of 4 to 8. Packages 15 cents each.

Cucumber, Sikkim. Green, long, extremely resistant; excellent for salad. Has been planted here for years, and is the best for the market and home garden. 20 cents per package.

Cucumber, Improved Early White Spine. An excellent variety for table use; early; grows uniformly straight and smooth; light green with white spines; tender and excellent flavor. One of the most popular. Packet, 5 cents; ounce, 15 cents; \$1.50 per pound.

Watermelon Seeds

Halbert Honey is the sweetest and finest of all melons. In quality it is simply delicious, sugary and of a fruity flavor peculiar to itself. Entirely devoid of all fibrous substances, the sweet flesh melting away

in the mouth like honey. The hardy vines are wonderfully prolific. It is very early and the best melon I have ever tasted. 10 cents per package; 25 cents per ounce. Home-grown, 15 cents per ounce; \$1 per pound.

Seed Corn

Mexican June Corn. This corn will bring a good crop if planted at any time from April to middle of July. It stands our hot, dry summer well, and the seed I offer is grown by me and adapted to our climate, and will bring the best results. \$1.50 per bushel.

Corn, the long-eared, soft white variety, with thin cobs and long grains; especially selected, at \$1.50 per bushel.



Greenhouse Department

Palms, Ferns, Etc.

Owing to the growing popularity of Palms, we have this season added a complete assortment of them to our nursery trade. They are all grown in pots, and can therefore be forwarded the whole year. Measure is from top of pot to top of plant in its natural position.

Areca Lutescens. One of the most beautiful and valuable palms; foliage graceful; bright green with rich golden stems. Price, 8 to 12 inches, 40 cents each; 12 to 18 inches, 75 cents each.

Cocos Weddeliana. A most elegant species, adapted for decorations of all sorts. Dwarf and very attractive; shows character when young. Nice plants, 75 cents each.

Cycas Revoluta. The so-called Sago Palm. Perfectly hardy in the South. Has a large number of beautiful pinnate, dark green leaves, which uncurl from the top when growing, like ostrich feathers; splendid plants. 10 to 12 inches, \$1 each; 12 to 18 inches, \$1.50 each; larger specimens, \$2 and \$3 each.

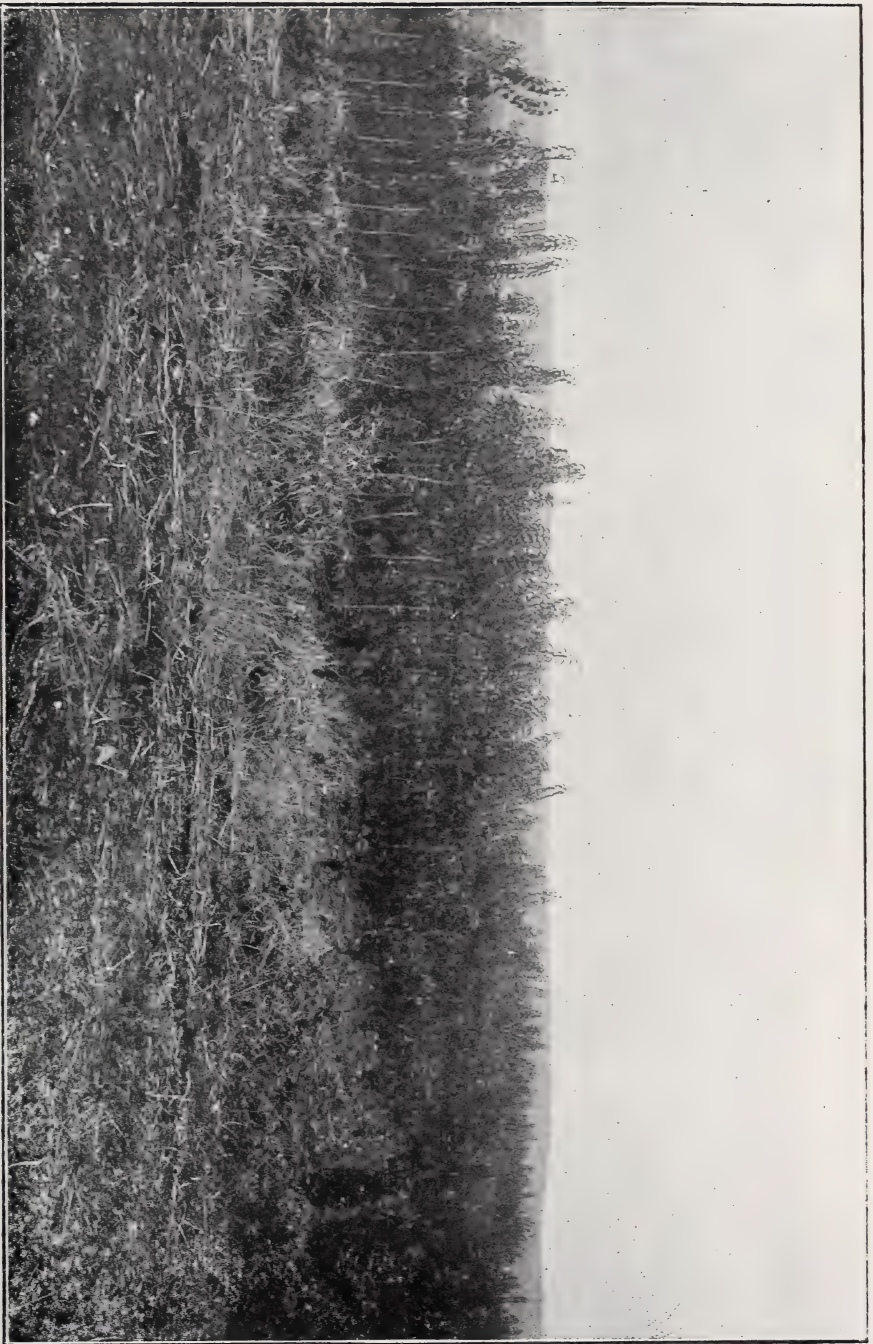
Kentia Belmoreana. One of the most valuable house palms grown. Elegant pinnate leaves. 8 to 20 inches, showing character, 50 cents each; larger plants, \$1 each.

Kentia Fosteriana. The Umbrella Palm. A grand palm for decorative uses, with dark green foliage. Prices same as preceding.

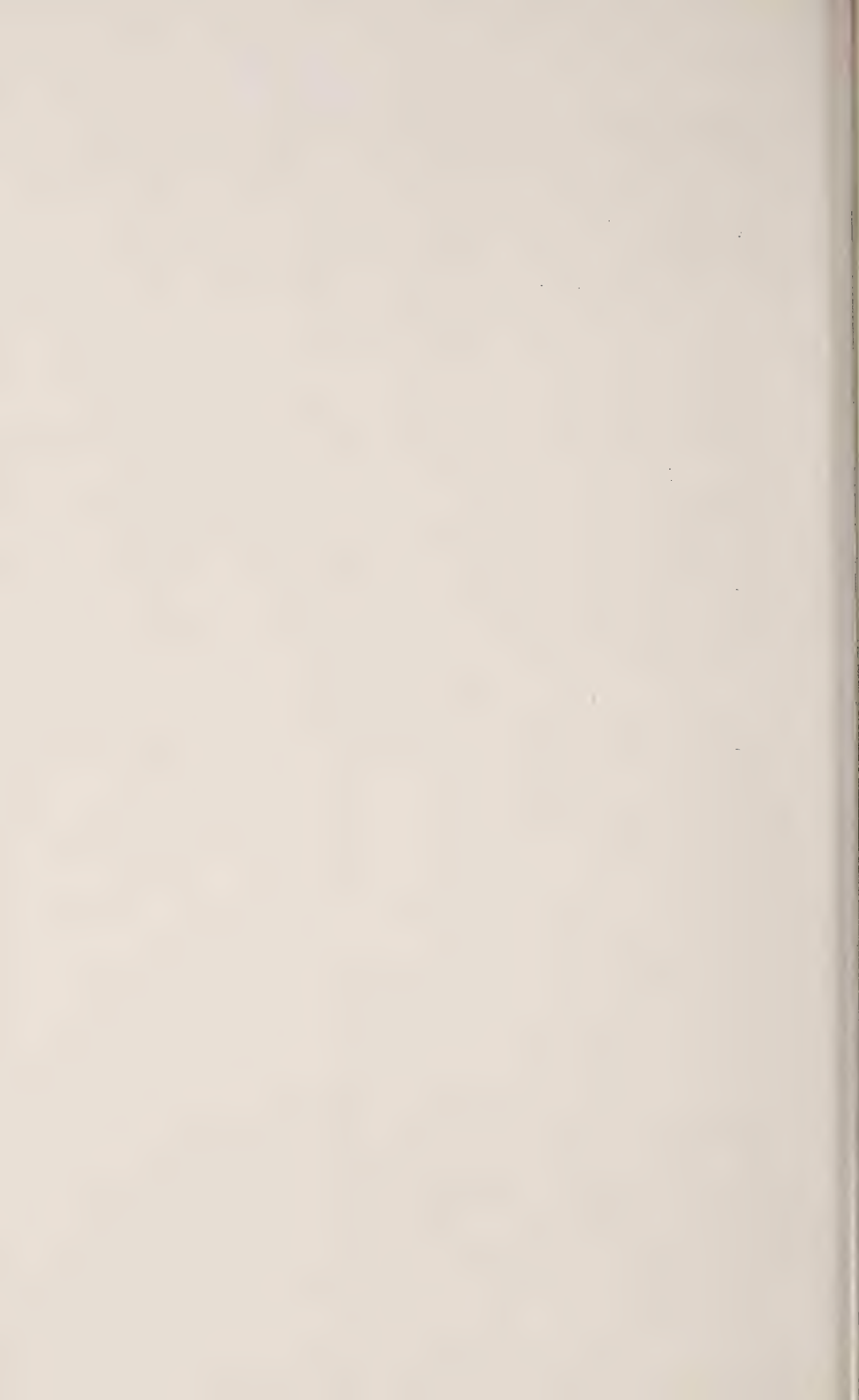
Latania Borbonica. The well-known Chinese Fan Palm. This is more largely grown as a house palm than any other variety. 12 to 15 inches, 50 cents each; 16 to 24 inches, 75 cents each.

Phoenix Reclinata. This is a magnificent species, especially adapted for growth in pots. The drooping leaves are dark green in color, and the plant is of easy growth. 4-inch pots, 50 cents each; larger specimens, 75 cents each.

Sabal Palmetto. The famed Cabbage Palmetto. This forms a tall tree with a large head of fan leaves. This tree can be grown all over the South and is very hardy here; very decorative for yard planting. One-year, 25 cents each; 4-year, 4 to 5 feet, with character, \$1.50 each.



A block of two-year-old *Ligustrum Japonicum* in our Nursery.



Seaforthia Elegans. A most graceful plant, eminently adapted for decorative uses. Well known everywhere for its feathery elegance and pretty character. The pinnate leaves are 2 to 3 feet in length, dark green and perfectly smooth. One-foot plants, 50 cents each; 2 foot, \$1 each.

Washingtonia (Prichardia) Filifera. The hardiest of the Washingtonia type; quick grower; similar to Washingtonia Filifera in leaf, but more erect. Large plants, weight 10 to 15 pounds, 2 to 3 feet, \$2 each; smaller sizes, \$1.50 and \$1 each; 1-year, 12 inches high, 25 cents each; \$2.50 per dozen; \$10 per 100.

Ferns

Adiantum (Maiden Hair). Cuneatum, the most generally known, quadrupinnate foliage. Very fine for any purpose. 25 cents each.

Blechnum Occidentale. A handsome dwarf species, with pointed leaves rooting from runners. Very easily grown and is very desirable. 25 cents each.

Nephrolepis Cordata Compacta (Sword Fern). Stocky and dwarf; very fine; dark green leaves. 25 cents each.

Nephrolepis Piersoni. The great new plant so much talked about lately; splendid fronds giving a magnificent appearance. As hardy as Boston fern. 50 cents each.

Nephrolepis Wittboldi. A stocky plant said to be a sport of the Boston fern. Is equally as hardy as the Boston, and has broad, waxy fronds. 50 cents each.

Decorative Plants

Asparagus Plumosus. A very fine, fern-leaved, climbing plant, particularly nice for bouquet work. It is a splendid pot plant, and may be kept in a bushy shape for a long time. Nice young plants, 50 cents each.

Ficus Elastica (Rubber Tree). A valuable rubber-producing tree, with magnificent broad leaves and red leaf sheaths. Is well known as a decorative plant for apartments, and is of easy growth. Price \$1 each.

Nerium (Oleander). We have them in the following colors: Double red, pink, double white and double yellow. Nice plants, 40 cents each.

Araucaria Excelsa (Norfolk Island Pine). This beautiful plant is well adapted to house culture, and is almost indispensable as a decorative plant. The dark green branches are arranged in symmetrical whorls, producing a very unique and graceful appearance. 8 to 12 inches, \$1.50 each.

Chrysanthemums

Including all of the very best named varieties of all colors. 10 cents each; \$1 per dozen. White, crimson, pink and yellow.

Geraniums

Double and single, named varieties, all colors. Price same as preceding.

FOR THOSE WHO IRRIGATE

Those who irrigate should plant fruit trees extensively. Not alone the fruit crop can be saved by irrigating the trees at the right time, but the fruit will also develop better, and is therefore more saleable and brings the best price.

As we are aware, most failures in fruit growing are due to long droughts in early spring and summer, and by supplying the trees with the necessary water at the right time the best results are obtained. Irrigators can successfully plant 2 to 3-year-old trees and thus save several years' growing. If fruit is grown for market it is advisable not to plant too many varieties, but as many of the most productive ones as possible.

Proper Distances of Planting

Peaches, Apricots, Nectarines.....	12 to 16 feet each way
Plums, Cherries	10 to 15 feet each way
Pears.....	18 to 20 feet each way
Persimmons.....	10 to 12 feet each way
Apples	16 to 20 feet each way
Grapes	6 to 8 feet each way
Dewberries, Blackberries, rows 4 to 6 feet apart, 2 feet in row	

Number of Trees or Plants to the Acre

Distance Apart	No. of Trees
3x3 feet.....	4,840
6x6 feet.....	1,210
8x8 feet.....	680
10x10 feet.....	435
12x12 feet.....	302
15x15 feet.....	193
16x16 feet.....	170
18x18 feet.....	134
20x20 feet.....	108
25x25 feet.....	69

Below I describe a few insecticides for destroying insects, rots, San Jose scale and all contagious diseases. I have been using these insecticides for many years, and can cheerfully recommend them to all of my customers who have had trouble in their orchards and farms by insects and plant diseases.

Birds are getting less and less every year and insects more and more, and it has become necessary to destroy them by spraying.

The price for insecticides is f. o. b. New Braunfels, Texas, and is just what they cost us.

Prices on Bowker's Germo-Insecticides

Boxal, a combined insecticide and fungicide for use on potatoes, kills bugs and prevents blight and rot, takes the place of Paris green and Bordeaux mixture, and is superior to both. Sticks to the vines throughout the season. 5 pound can, 75 cents.

Pyrox, a combined insecticide and fungicide for use on fruit trees, shrubs and vines, kills leaf and fruit-eating insects and prevents scab, rot, mildew, etc.; superior to Bordeaux and Paris green, safer and more effective. Sticks to and works all the time. 5-pound can, \$1.

Bodo, a valuable remedy for rot, rust, blight and fungous diseases in general; of great strength and much superior to home-made Bordeaux mixture. Ready for use when needed. 5-pound can, 75 cents.

Disparene, the most powerful remedy for all leaf-eating insects, will not injure foliage, and adheres throughout the season. 2-pound can, 75 cents.

Tree Soap, a sure remedy for the San Jose scale and all other scales or lice on plants or trees. Contains caustic potash. 5-pound can, 75 cents.

Insect Emulsion, a clean and cheap remedy for lice, house plants or animals. 1-quart can, 75 cents.

Bodlime. Prevents moths, caterpillars and other insects from ascending trees. A substitute for printer's ink. 5-pound can, \$1. If large quantities are desired, will furnish prices on application.

Superior Plant Food. Composed of the following ingredients: Nitrogen, ammonia, phosphoric acid, bone phosphate and potash. The above ingredients make our fertilizer the best on the market for house plants. Use our Plant Food as per directions, which are printed on each package, and you will grow strong and healthy plants. Weak, sickly-looking plants will make fine, new growth by feeding with our Plant Food. A spoonful every week is sufficient for any pot plant. Neatly put up in packages. Price: Large packages, 30 cents each; small packages, 20 cents each.

Pruning Shears, Wiss, hand-made. These are the best Pruning Shears made. No. 109, nine inches long, \$2.25 each.

CERTIFICATE OF NURSERY INSPECTION No. 556.

THIS IS TO CERTIFY, That I have examined the nursery stock of **COMAL SPRINGS NURSERY**, Otto Locke, Proprietor, New Braunfels, and find it apparently free from dangerous insects and dangerously contagious tree and plant diseases.

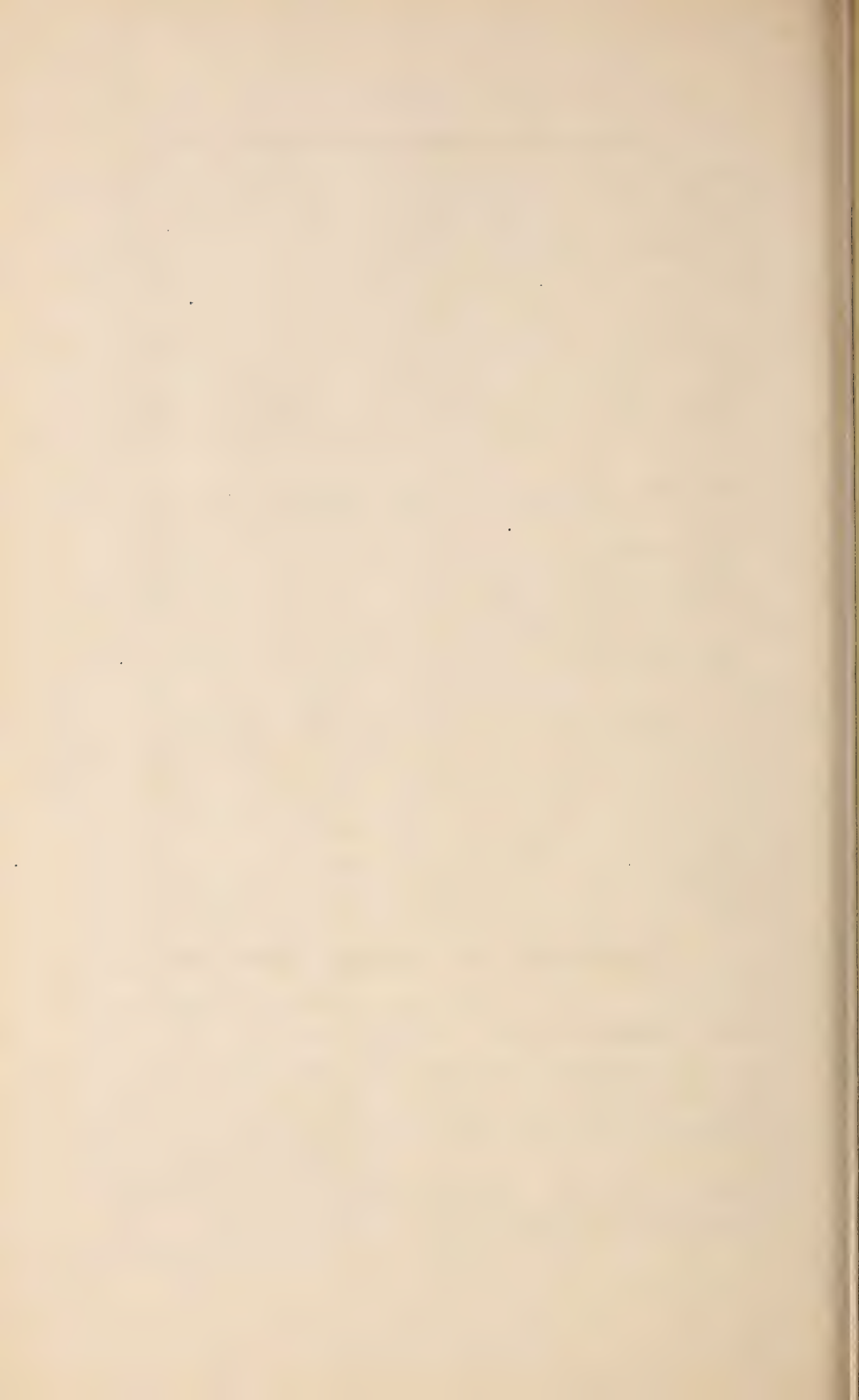
This certificate to be void after July 31, 1908.

SAM H. DIXON,

State Inspector of Nurseries and Orchards.

Houston, Texas, August 24, 1907.

Approved: R. T. MILNER, Commissioner.



Testimonials From Our Friends

We have received hundreds of letters of commendation and encouragement. A few extracts of such letters follow:

Waco, Texas, February 6, 1907.

Mr. Otto Locke, New Braunfels, Texas.

Dear Sir:—Enclosed please find check for those very fine roses. They were all sold the first day upon arrival, and I want more; such fine stock will always sell. Thanking you for prompt shipment and for the good stock, I beg to remain,

Respectfully yours,

J. D. MERCER.

Comstock, Texas, February 1, 1907.

Mr. Otto Locke, New Braunfels, Texas.

Dear Sir:—I write to thank you for the good fruit trees you have sent me each year, and am glad to see your business so improving with the country.

Yours truly,

ROBT. W. PROSSER.

Calzada Reforma, Mexico, April 19, 1907.

Mr. Otto Locke, New Braunfels, Texas.

Dear Sir:—For about ten years we have been purchasing nursery stock from you, and all the trees you sent us, especially the apples, gave the very best results. We wish to thank you again for the fine straight trees you shipped us this season, and herewith enclose our New York draft in payment for same. Wishing you further success, I remain,

Yours truly,

V'DA Y HIJOS DE LUIS DE LA ROSA. B.

San Antonio, Texas, March 20, 1907.

Comal Springs Nursery, New Braunfels, Texas.

Dear Sirs:—The trees, plants, etc., bought from you are all doing well, and next year we will order more.

Respectfully,

MRS. F. J. ALTGELT.

San Antonio, Texas, December 14, 1906.

Messrs. Otto Locke & Son, New Braunfels, Texas.

Dear Sirs:—Enclosed please find money order for the trees you sent us last week. We are much pleased with same. Many thanks for extras.

Yours truly,

MORRIS & CO.

Aransas Pass, Texas, February 5, 1907.

Mr. Otto Locke, New Braunfels, Texas.

Dear Sir:—The bundles of nursery stock reached me promptly; the plants are simply fine, and I am ever so much obliged to you for your gratis articles. Next season I will place a much larger order with you. Wishing you the success you surely deserve, I remain,

Yours respectfully,
W. H. EMERY.

San Marcos, Texas, March 14, 1907.

Mr. Otto Locke, New Braunfels, Texas.

Dear Sir:—Enclosed please find money order for amount of bill recently sent me. I thank you for prompt and good execution of my order.

Very truly and sincerely,

S. W. STANFIELD.

Boerne, Texas, February 4, 1907.

Mr. Otto Locke, New Braunfels, Texas.

Dear Sir:—The pear trees were received in good order. I appreciate the nice, large and healthy stock you sent me. Thanking you for the extras,

Yours respectfully,

ALVIN CARSTANJEN.

C. P. Diaz, Mexico, April 1, 1907.

Mr. Otto Locke, New Braunfels, Texas.

Dear Sir:—I enclose herewith check to balance account. The shipments have all arrived in good condition.

Yours truly,

SOL HARBURGER.

Laredo, Texas, December 6, 1906.

Mr. Otto Locke, New Braunfels, Texas.

Dear Sir:—Trees reached in good shape. Thank you very much for liberal count. I will recommend your nursery to my friends.

Yours truly,

R. L. PUSTER.

Ocean Springs, Miss., February 16, 1907.

Mr. Otto Locke, New Braunfels, Texas.

Dear Sir and Friend:—I beg to acknowledge receipt of the pecan scions, and also your letter. I am very thankful to you for the nice stock.

Yours,

C. FORKERT.

San Antonio, Texas, March 31, 1907.

Mr. Otto Locke, New Braunfels, Texas.

Dear Sir:—The magnolia trees arrived in good shape, and I can use some more. Please duplicate last order.

Yours truly,

P. D. HAUSER FLORAL CO.

Lockhart, Texas, November 30, 1906.

Mr. Otto Locke, New Braunfels, Texas.

Dear Sir:—This is to notify you that the plants have reached us safe and gave entire satisfaction.

Most respectfully,

SISTERS OF DIVINE PROVIDENCE.

Eagle Pass, Texas, February 25, 1907.

Mr. Otto Locke, New Braunfels, Texas.

Dear Sir:—Enclosed please find another order for more trees. The last lot arrived in good shape, and we thank you for the extras.

Yours truly,

L. DE BONA.

Cotulla, Texas, March 1, 1907.

Mr. Otto Locke, New Braunfels, Texas.

Dear Sir:—The mulberry trees came in good condition, and were such nice, large ones. Accept thanks for prompt attention.

Very truly,

J. D. MOTHERAL, M. D.

Palestine, Texas, February 8, 1907.

Mr. Otto Locke, New Braunfels, Texas.

Dear Sir:—Enclosed please find money order to cover shipment. Shrubs arrived in fine condition, and am well pleased.

Yours truly,

BEN TAUBERT.

Hondo, Texas, February 15, 1907.

Comal Springs Nursery, New Braunfels, Texas.

Dear Sirs:—Plants arrived in good shape. Many thanks for prompt attention.

Yours truly,

FLETCHER DAVIS.

I received the trees, and am very much pleased with them. They are the largest and finest I have seen. I thank you for the extra ones, which showed your great generosity.

Yours very truly,

REV. STERLING FISHER.

San Antonio, Texas, February 12, 1907.

Mr. Otto Locke, New Braunfels, Texas.

Dear Sir:—At the request of Mr. Stevens, we beg to hand you herewith postoffice money order, in payment for the trees you were kind enough to send him. Mr. Stevens is highly pleased with same, and desires to thank you for the kind interest manifested.

Yours very truly,

SAN ANTONIO BREWING ASS'N

Devine, Texas, February 2, 1907.

Mr. Otto Locke, New Braunfels, Texas.

Dear Sir:—Please find check to cover invoice for trees, which arrived in perfect condition.

Yours truly,

GEO. T. BRISCOE.

Alpine, Texas, February 28, 1907.

Mr. Otto Locke, New Braunfels, Texas.

Dear Friend:—Find money order for amount due you. Roses gave satisfaction.

Yours truly,

JOHN STILLWELL.

Rockdale, Texas, February 2, 1907.

Mr. Otto Locke, New Braunfels, Texas.

Dear Sir:—Please send me your catalog. The last order received in good condition, and it won't be long before I will send in another order.

Yours truly,

WM. J. LINKE.

Batesville, Texas, December 25, 1906.

Mr. Otto Locke, New Braunfels, Texas.

Dear Sir:— The package of trees and other things came all right yesterday. They were in good condition and I am very much obliged to you for the extras.

Yours truly,

R. I. ERSKINE.

Falfurias, Texas, February 25, 1907.

Mr. Otto Locke, New Braunfels, Texas.

My dear Sir:— I ordered too rose bushes from you in February and I wish to thank you for the selection you sent me. Every bush is doing beautifully, I could not wish them to grow any better.

Yours truly,

MRS. HART MUSSEY.

Corpus Christi, Texas, December 1, 1906.

Otto Locke Esq., New Braunfels, Texas.

Dear Sir:— I received the fruit trees and was highly pleased with them. The trees came in good condition and were well put up. You must have first class packers. Many thanks for the extras.

Yours sincerely,

HARRY POOL.

(Late of Ottawa, Canada.)

Eagle Pass, Texas, November 30, 1906.

Otto Locke, New Braunfels, Texas.

Dear Sir:— The trees ordered came in good condition. Accept our thanks for the red cedars you sent gratis. We will recommend your nursery whenever an opportunity presents itself.

Yours respectfully,

Sisters of Charity of the Incarnate Word.

San Antonio, Texas, March 4, 1907.

Mr. Otto Locke, New Braunfels, Texas.

Dear Sir:— Enclosed you will find my check to cover your invoice. The 100 pomegranates and other plants arrived in perfect condition and proved very satisfactory. I really did not expect such fine ones. Thanking you heartily for your prompt attention, I beg to remain,

Very truly yours,

C. H. MUELLER.

Kansas City, Mo., February 21, 1907.

Mr. Otto Locke, New Braunfels, Texas.

Dear Sir:— I enclose money order to cover your invoice. It gave me great pleasure to place the order with you. I always have the most kindly feelings towards my boyhood friends. With kindest regards I beg to remain,

Yours very truly,

ISSY LANDA.

Bastrop, Texas, February 10, 1907.

Mr. Otto Locke, New Braunfels, Texas.

Dear Sir:— The pansy plants you sent me last November are blooming finely; have not lost a single plant.

Yours truly,

A. J. ELZNER.

Uvalde, Texas, December 31, 1906.

Comal Springs Nursery, New Braunfels, Texas.

Dear Sirs:— My trees, shrubs etc., invoice No. 1237, came in on time, and everything was found to be in perfect condition and satisfactory. I thank you for your prompt and careful attention.

Yours very truly,

J. A. HOPE.

Beaumont, Texas, December 12, 1906.
Mr. Otto Locke, New Braunfels, Texas.

Dear Sir:— Have sent you several orders in the last three seasons for trees, shrubs and roses, all of which came to hand in fine condition. Your handling and packing is superb.

Yours truly,

J. G. BASS.

Juno, Texas; February 5, 1907.
Mr. Otto Locke, New Braunfels, Texas.

Kind Friend:— Herewith I enclose my check to pay for the trees you sent me; they arrived duly and gave entire satisfaction.

E. K. FAWCETT.

Tyler, Texas, January 29, 1907.
Mr. Otto Locke, New Braunfels, Texas.

Dear Sir:— I received the plants all O. K. Many thanks to you.

Yours truly,

BEN HUDNALL.

Falls City, Texas, February 6, 1907.
Mr. Otto Locke, New Braunfels, Texas.

Dear Sir:— The roses arrived in fine condition. Thank you for your kindness and the extras.

Yours truly,

MAMIE CAMPBELL.

Douglas, Arizona, January 23, 1907.
Comal Springs Nursery, New Braunfels, Texas.

Dear Sir:— Your shipment of trees received. I find both stock and packing most excellent and highly satisfactory, for which please accept my appreciation. Inclosed herewith please find money order for amount of bill.

Very truly,

MRS. J. A. LEWANDOWSKI.

Eagle Pass, Texas, January 29, 1907.
Mr. Otto Locke, New Braunfels, Texas.

Dear Sir:— Your trees received in good condition. Thanking you for your prompt attention, I remain,

Respectfully,

JOS. BATOT.

Hondo, Texas, March 22, 1907.
Mr. Otto Locke, New Braunfels, Texas.

Dear Sir:— The bill of trees received in good shape. Will send you another order next season. Many thanks for gratis.

Yours truly,

A. J. SWEARINGER.

Spofford, Texas, January 28, 1907.

Mr. Otto Locke, New Braunfels, Texas.

Dear Sir and Friend:—Trees came all right yesterday, and I found them in good condition.

Yours truly,

GUS BLACK.

San Antonio, Texas, December 23, 1906.

Mr. Otto Locke, New Braunfels, Texas.

Dear Sir:— I received the roses all O. K. and thank you very much for the extra plants.

Yours very truly,

MRS. G. ROTHFUSS.

Palestine, Texas, January 16, 1907.

Mr. Otto Locke, New Braunfels, Texas.

Dear Sir:— I send you an order for roses to-day and have decided it was best to leave color etc. to your best judgment and fair dealings, as you know your best for this place. Of roses from you last spring I have a "Baldwin" in bloom to-day that is magnificent; attracts people on the street. I did not lose a single one and all are blooming now. Pardon length of letter to a business firm, but I had to praise your good roses.

Respectfully,

MRS. M. B. BASS.

Corpus Christi, Texas, February 11, 1907.

Mr. Otto Locke, New Braunfels, Texas.

Dear Sir:— It gives me great pleasure to inform you that the palms gave entire satisfaction.

Respectfully,

MRS. F. M. FOX.

Victoria, Texas, March 5, 1907.

Mr. Otto Locke, New Braunfels, Texas.

Dear Sir:— The trees I received from your nursery gave satisfaction and I thank you for prompt shipment.

Yours truly,

JOSEPH STAFF.

San Antonio, Texas, March 10, 1907.

Mr. Otto Locke, New Braunfels, Texas.

Dear Sir:— Thank you very much for sending the trees ordered so promptly.

Yours very truly,

MRS. J. M. VALENZUELA.

Yorktown, Texas, December 24, 1906.

Mr. Otto Locke, New Braunfels, Texas.

Dear Sir:— The trees came in fine shape and am well pleased with them. Send me at once the enclosed order of trees, and oblige,

Yours truly,

FRED BUSCHICK.

February 25, 1907.

Mr. Otto Locke, New Braunfels, Texas.

Dear Sir:— I received my plants and trees to-day all O. K. Many thanks for the trees you sent gratis. They were in fine shape.

Yours very truly,

MRS. C. K. McDOWELL.

Corpus Christi, Texas, January 16, 1907.

Mr. Otto Locke, New Braunfels, Texas.

Dear Sir:— Everything came in first class condition. Many thanks for the extras. Thanking you for good selection, I remain,

Yours truly,

C. W. CROSSLEY

Yorktown, Texas, February 7, 1907.

Mr. Otto Locke, New Braunfels, Texas.

Dear Sir:— All trees I ordered from you the last few years I am well pleased with; they are all growing fine.

Respectfully,

H. G. GIPS.

Corpus Christi, Texas.

Mr. Otto Locke, New Braunfels, Texas.

Dear Sir:— Received arbor vitae in very fine condition, am well pleased. Will order from you when in need of plants again, also recommend your nursery to my friends.

Respectfully,

MRS. WM. BIGGIS.

Pearsall, Texas, January 9, 1907.

Mr. Otto Locke, New Braunfels, Texas.

Dear Sir:— I received my trees in excellent condition, and am more than pleased with them. Thanks for extra plants you included.

Sincerely yours,

J. C. NEILL.

Yorktown, Texas, December 25, 1906.

Mr. Otto Locke, New Braunfels, Texas.

Dear Sir:— The trees came in fine shape and am well pleased with them.

Yours truly,

FRED BUSCHICK.

Lockhart, Texas, February 12, 1907.

Mr. Otto Locke, New Braunfels, Texas.

Dear Sir:— I received the trees and roses in fine condition, was well pleased. Many thanks for the extra ones you sent gratis.

Yours truly,

MRS. ED. STARKE.

Maxwell, Texas, February 14, 1907.

Mr. Otto Locke, New Braunfels, Texas.

Dear Sir:— Enclosed please find check to cover invoice. Plants received in good condition.

Yours truly,

AUG. BEST.

Kerrville, Texas, December 18, 1906.

Mr. Otto Locke, New Braunfels, Texas.

Dear Sir:— The Daisy Pecan trees were received in good condition; I am well pleased with same.

Yours respectfully,

CHAS. MOSEL.

Houston, Texas, February 27, 1907.

Mr. Otto Locke, New Braunfels, Texas.

Dear Sir:—Received the Roses O. K. Am well pleased.

Yours truly,

P. L. KNOX.

Palestine, Texas, December 31, 1906.

Mr. Otto Locke, New Braunfels, Texas.

Dear Sir:—Roses and bulbs arrived in fine condition. Many thanks for favor.

Yours truly,

BEN TAUBERT.

Castroville, Texas, March 13, 1907.

Mr. Otto Locke, New Braunfels, Texas.

Dear Sir:—I received the trees and palms in fine condition. I am very much pleased with them. Many thanks for the extras. I will recommend your nursery to my friends.

Yours truly,

MISS IDA CONRAD.

Monterey, Mexico, December 21, 1906.

Mr. Otto Locke, New Braunfels, Texas.

Dear Sir:—Your shipment of trees and shrubs came in good order and gave perfect satisfaction.

Sincerely yours,

J. A. ROBERTSON.

Cometa, Texas, January 25, 1907.
Mr. Otto Locke, New Braunfels, Texas.

Dear Sir:— Trees arrived O. K. We are all very well pleased with them and will take good care of them, so they will be a profit to us and credit to you.

Yours truly,
B. H. ERSKINE.

Kerrville, Texas, December 8, 1906.
Mr. Otto Locke, New Braunfels, Texas.

Dear Sir:— Accept thanks for the fine lot of trees you sent me. I was well pleased. Your packing is up-to-date.

Yours truly,
LEE MOSTY.

Yorktown, Texas, January 26, 1907.
Mr. Otto Locke, New Braunfels, Texas.

Dear Sir:— The fruit trees sent me arrived yesterday in excellent condition. Accept thanks for trees you added to my list.

Yours truly,
JENS. C. BUCK.

Del Rio, Texas, January 26, 1907.
Mr. Otto Locke, New Braunfels, Texas.

Dear Sir:— Trees received in good order. I am pleased with your good selection.

Yours truly,
MRS. J. A. PRICE.

Montell, March 3, 1907.
Mr. Otto Locke, New Braunfels, Texas.

The plants arrived in excellent condition. I appreciate your liberality. Will refer my friends to your nursery.

MRS. GEO. BAYLOR.

Falfurias, Texas, January 24, 1907.
Mr. Otto Locke, New Braunfels, Texas.

Dear Sir:— The rose bushes arrived all right and they are fine. We were all delighted with them.

Yours truly,
MRS. JAMES GIBSON.

Aguas Calientes, February 21, 1907.
Mr. Otto Locke, New Braunfels, Texas.

Dear Sir:— Enclosed please find check for the roses you sent me. They reached in good condition and I am well pleased with the fine stock.

Yours very respectfully,
JUAN DOUGLAS.

Zeugnisse.

Lockhart, Texas, den 23. Januar 1907.

Herrn Otto Locke, New Braunsfels, Texas.

Werther Herr! Meinen besten Dank für die schönen Rosen und Extras. Die Qualität und Quantität war sicher eine Ueberraschung. Besten Dank!

Mrs. W. S. Vogel.

Marion, Texas, den 4. Mai 1907.

Werther Herr! Die Bäume sind in gutem Zustand angekommen. Meinen besten Dank für prompte Bedienung.

Achtungsvoll,

Mrs. B. Kossaeth.

Beeville, den 1. März 1907.

Mr. Otto Locke, New Braunsfels, Texas.

Sehr geehrter Herr! Meinen verbindlichsten Dank für die schnelle Sendung und die kräftigen schönen Rosenstöcke. Den Katalog, den Sie mir geschickt, habe ich schon ausgeliehen.

Achtungsvoll,

Mrs. H. L. Janssen.

West, den 7. Mai 1907.

Geehrter Herr Locke! Hierdurch möchte ich Sie wissen lassen, daß die Blumen und Korn gut angekommen sind. Besten Dank!

Achtungsvoll,

Marie Blankenstein.

D'Hanis, Texas, den 11. Februar 1907.

Herrn Otto Locke!

Die Bäume kamen in bester Ordnung und waren, wie immer, sehr schön; in der Verpackung kommt Ihnen Niemand gleich, darin sind Sie Allen über.

Mit besten Grüßen, Ihr ergebenster

F. Kothe.

San Antonio, Texas, den 1. Februar 1907.

Herrn Otto Locke, New Braunsfels, Texas.

Werther Herr! Alles in bester Verfassung angekommen; besten Dank für Zulage.

Achtungsvoll,

G. A. Duerler.

Plehevville, Texas, den 19. Dezember 1906.

Herrn Otto Locke, New Braunsfels, Texas.

Werther Herr Locke! Die letztjährigen Bäume, die Sie mir geschickt haben, sind trotz der großen Trockenheit sehr gut gewachsen. Ich bin sehr zufrieden und werde Jedem Ihre Baumschule empfehlen, der Bäume pflanzen will. Mit Gruß,

Achtungsvoll,

Adolph Vater.

Comfort, Texas, den März 21. 1907.

Herrn Otto Locke, New Braunsfels, Texas.

Werther Herr! Nehmen Sie, bitte, meinen besten Dank entgegen für die prompte Ausführung meiner Bestellung, besonders für die Extra-Beigaben. Ich war mit allem sehr zufrieden.

Mit achtungsvollem Gruße,

Rev. J. Muerdter

La Grange, Texas, den 7. Januar 1907.

Lieber Otto! Einliegend M. D. für die übersandten Obstbäume: dieselben sind Brachtexemplare und erstaunlich billig. Bitte schicke mir noch folgende Bäume.

Mit besten Wünschen, Dein Freund

G. A. Heilig.

Weimar, Texas, den 18. December 1906.

Geehrter Herr Locke! Die Sendung Bäume habe ich erhalten. Ich bin sehr zufrieden damit. Meine Nachbarn waren sehr erstaunt, so große Bäume zu sehen, und die Rosen, das sind wirklich schon Stöcke. Meinen besten Dank für die Gratis-Beilage!

Achtungsvoll,

Anton Berger.

Creedmore, den 6. Februar 1907.

Herrn Otto Locke, New Braunsfels, Texas.

Werther Herr! Ich habe die gesandten Bäume heute in Empfang genommen. Besten Dank für prompte und gute Bedienung.

Achtungsvoll,

Theo. S. Engelhardt.

Falls City, Texas, den 4. Februar 1907.

Herrn Otto Locke, New Braunsfels, Texas.

Werther Herr Locke! Die Bäume habe ich in sehr gutem Zustand erhalten. Die schönen Pflaumenbäume haben mir thatächlich eine große Freude bereitet. Bin mit dem Ganzen sehr zufrieden; da kann man wieder den großen Unterschied zwischen ihren Bäumen und denen anderer Baumschulen sehen. Ich werde Sie hier bestens empfehlen.

Mit Gruß, Ihr Freund

Afred Pfullmann.

Yorktown, den 6. Februar.

Herrn Otto Locke, New Braunfels, Texas.

Werther Herr! Ihr werthes Schreiben nebst Bäumen und Sträuchern empfangen, und sage für die Zusendung und Gratis-Beilage meinen herzlichsten Dank.

Achtungsvoll,

H. W. Gohmert.

San Antonio Texas, den 23. Januar 1907.

Herrn Otto Locke, New Braunfels, Texas.

Werther Herr! Besten Dank für die gesandten Waaren, welche uns sehr zufriedengestellt haben. Ebenso danke ich Ihnen für die „Frigidität“, mit welcher Sie dieselben gesandt.

Mit Gruß, Ihr

Emil Gottschalk.

New Fountain, Texas, den 10. December 1906.

Geehrter Herr Locke! Theile Ihnen kurz mit, daß die Bäume wohlbehalten angekommen. Für liberale Bedienung besten Dank.

Achtungsvoll,

Rev. A. Falkenberg.

Holland, Texas, den 24. Januar 1907.

Werther Herr Locke! Ich habe die Bäume empfangen und habe mich über die schönen Bäume sehr gefreut.

Mit freundlichem Gruß,

Julius Gersbach.

Rockdale, Texas, den 2. März 1907.

Herrn Otto Locke, New Braunfels, Texas.

Werther Herr! Bitte schicken Sie mir noch 4 Kisten „Plant Food“. Meine Pflanzen stehen prächtig, seit ich Ihr „Plant Food“ gebrauche.

Achtungsvoll,

Mrs. L. Diehl.

Nordheim, Texas, den 12. Januar 1907.

Herrn Otto Locke, New Braunfels, Texas.

Werther Herr! Hiermit Ihnen zur Nachricht, daß ich die Bäume in Zeit und in sehr gutem Zustande erhalten habe. Meinen verbindlichsten Dank für die von Ihnen „gratis“ gesandten Bäume.

Achtungsvoll,

D. Hudt.

Anson, Texas, den 3. Februar 1907.

Werther Herr Locke! Sendung Bäume habe ich im besten Zustand erhalten, bin vollkommen zufriedengestellt. Mit Gruß,

Achtungsvoll,

Joseph Horn.

Rockdale, Texas, den 22. Januar 1907.

Herrn Otto Locke, New Braunsfels, Texas.

Werther Herr! Bäume, Rosen und Sträucher sind in bester Ordnung angekommen. Sie werden bald wieder von mir hören. Mit Gruß,

Achtungsvoll,

E. Zeiske.

Lindsay, Texas, den 19. December 1907.

Herrn Otto Locke, New Braunsfels, Texas.

Werther Herr! Die Bäume sind in sehr gutem Zustand angekommen. Ich bin sehr zufrieden damit, besten Dank.

Achtungsvoll,

S. F. Bezner.

Rhineland, Texas, den 8. December 1906.

Herrn Otto Locke, New Braunsfels, Texas.

Werther Herr! Ich erhielt die bestellten Bäume in bester Ordnung. Besten Dank für Gratis-Beilage.

Achtungsvoll,

W. H. Steimal.

High Hill, Texas, den 3. Februar 1907.

Herrn Otto Locke, New Braunsfels Texas.

Werther Herr! Die von Ihnen prompt zugesandten Bäume und Sträucher kamen in gutem Zustande an. Besten Dank!

Achtungsvoll,

Rev. A. Gerlach.

COMAL SPRINGS NURSERY,

NEW BRAUNFELS,

OTTO LOCKE, Proprietor.

TEXAS.

THE UNIVERSITY OF CHICAGO

OLLO GOSKE, NEW BILBUKIA, TOSKT
 1900

THE UNIVERSITY OF CHICAGO

OLLO GOSKE, NEW BILBUKIA, TOSKT
 1900

An meine deutschen Kunden.

Hiermit überreichen wir Ihnen unseren 22. Katalog, und hoffen daß er Ihnen gefällt und Sie das eine oder das andere darin finden werden, was Sie zu pflanzen wünschen. Wir werden auch ferner darauf bestrebt sein, Ihre Aufträge prompt und gewissenhaft zu füllen, gerade so als wenn wir der Käufer wären und nicht Sie. Unser letztjähriger Erfolg war der größte, welchen wir je zu verzeichnen hatten, und dazu haben die Deutschen sehr viel beigetragen, wofür wir Ihnen hiermit unseren herzlichsten Dank aussprechen.

Benutzt beiliegenden Bestellzettel und vergesst nicht die genaue Post-Adresse, sowie den Ort, wohin die Bäume gesandt werden sollen, anzugeben.

Der volle Betrag muß jeder Bestellung beigefügt werden; es werden keine Sendungen C. O. D. erfolgen.. Auch bezahle ich keine Transportations-Kosten, wie so viele meiner Kollegen thun, doch lege ich bei jeder Bestellung so viel **gratis** bei, um die Expresß-Kosten zu decken.

Wer größere Anpflanzungen machen will oder bei Anpflanzungen für öffentliche Parks, Schulen, Kirchen etc. werde ich speciell niedrige Preise machen.

Alle Bäume, die aus meiner Baumschule bezogen werden, sind so verpackt, daß sie eine längere Reise überstehen können, ohne Schaden zu leiden.

Mein Vorrath an aller Art Baumschul-Artikeln ist dieses Jahr überaus reichhaltig und alles gesund und kräftig, so daß ein Jeder mit meiner Waare zufrieden sein wird.

Allen meinen deutschen Kunden empfehle ich noch besonders die einzige deutsche Ackerbauchrift des Südens „Feld und Flur,“ Dallas, Texas, sowie folgende deutschen Wochenblätter:

„Katholische Rundschau,“ San Antonio, Texas.

„Texas Banner,“ San Antonio, Texas.

„Texas Vorwärts,“ Austin, Texas.

„Deutsche Rundschau,“ Cuero, Texas.

„LaGrange Deutsche Zeitung,“ LaGrange, Texas.

„Seguiner Deutsche Zeitung,“ Seguin, Texas.

„Waco Post,“ Waco, Texas.

„Neu-Braunfelscher Zeitung,“ Neu-Braunfels, Texas.

Achtungsvoll

Otto Locke.

EXPRESS RATES

For the convenience of our customers, we have obtained the correct express rates on trees (100 pounds) to some of the stations to which we are making our principal shipments. The rates given below are on 100 pounds, and it is easy to determine how much your bundle should cost you, and if you think that the rate the agent charges you is incorrect, be sure and have him figure it out. Tell him to take Merchandise Rates, and, if the shipment was forwarded only by one company, the correct rate on trees is 20 per cent less than merchandise. If the trees went over two different companies, each company figures at 20 per cent less than Merchandise Rates and allows an additional 10 per cent on what is left; thus, if two companies forwarded your bundle, and the Merchandise Rate from here to your station is \$1, the correct rate on trees is 72 cents.

Artesia \$ 80	Dale \$ 40	Kingsland. . \$ 86	Rosanky . . . \$ 45
Alpine 1 58	D'Hanis . . . 72	Lockhart . . 35	Rosenberg . 1 08
Abilene 1 85	Dunlay 63	LaGrange. . 60	Round Rock 50
Austin 40	Devine 45	Lacoste . . . 63	Rockdale . . 70
Alice 1 08	Dilley 70	Luling 72	Runge 77
Alvin 1 08	Dallas 1 15	Lampasas. . 1 17	San Marcos 30
Brookshire . 85	Driscoll . . . 1 08	Lozier 1 35	Smithville . 50
Bastrop 55	Elmendorf . 59	Leon 35	Sealy 80
Bartlett 80	Eastland . . 1 80	Lytle 45	Seguin 63
Beeville 86	Eagle Pass . 1 08	Laredo 85	Sweetwater 2 05
Boerne 63	Eagle Lake . 1 08	Lexington . 90	San Angelo 1 67
Big Springs 2 05	El Paso . . . 2 15	Lott 95	Schulenberg 95
Burton 86	Engle 86	Langtry . . . 1 22	Sweet Home 95
Brenham . . . 90	Encinal . . . 85	Ledbetter . . 81	Sublime . . . 1 08
Belleville . . 1 08	El Campo . . 1 22	Llano 90	Shiner 72
Ballinger . . 1 53	Fdna 1 22	Lancaster . . 1 15	Sabinal 77
Buda 35	Elgin 70	Maxwell . . . 35	Spofford . . . 1 04
Belton 85	Fayetteville 70	Marfa 1 76	San Antonio 35
Burnett 77	Flatonia . . . 86	Marion 63	Sanderson . . 1 58
Coupland . . . 70	Floresville . 63	Midland . . . 2 30	San Diego . . 1 40
Cat Springs 70	Fort Worth 1 15	Marble Falls 86	Sweden 1 26
Comfort 72	Franklin . . . 85	McDade 68	Skidmore . . . 95
Converse . . . 59	Goldthwaite 1 35	Millett 70	Stockdale . . 63
Colorado . . . 2 05	Giddings . . . 77	Mullen 1 40	Sierra
Coleman . . . 1 53	Gonzales . . . 63	Moulton . . . 1 08	Blanca 2 00
Copperas	Georgetown 55	Muldoon . . . 1 08	Temple 85
Cove 1 13	Goliad 95	Moore 55	Terrell 1 40
Comanche . 1 67	Haymond . . 1 58	Mineola . . . 1 40	Taber 1 40
Columbus . . 95	Hondo City . 72	Milano	Thorndale . . 60
Cuero 95	Hallettsville 1 04	Junction 70	Uvalde 86
Cline 95	Harwood . . . 72	Meridian . . . 1 26	Viva 59
Comstock . . 1 22	Hempstead . 1 00	Merkel 1 85	Von Ormy . . 40
Cotulla 70	Hockley . . . 1 08	Marlin 85	West Point . 55
Carmine . . . 81	Hillsboro . . 1 00	New Ulm . . . 70	Waco 85
Corpus	Houston . . . 85	O'Quinn . . . 60	Welfare . . . 68
Christi . . 1 08	Hearne 80	Pecos 2 30	Weimar 95
Cisco 1 40	Karnes City 72	Palestine . . 1 00	Waller 1 08
Calvert 85	Kenedy 72	Pearsall . . . 60	Whitesboro 1 40
Cleburne . . . 1 15	Kerrville . . 77	Reedville . . . 35	Yorktown . . 86
Cactus 85	Kingsbury . 68	Red Rock . . . 40	Yoakum 95
Del Rio 1 08	Kyle 35		