

Historic, Archive Document

Do not assume content reflects current scientific knowledge, policies, or practices.

ESTABLISHED 1790

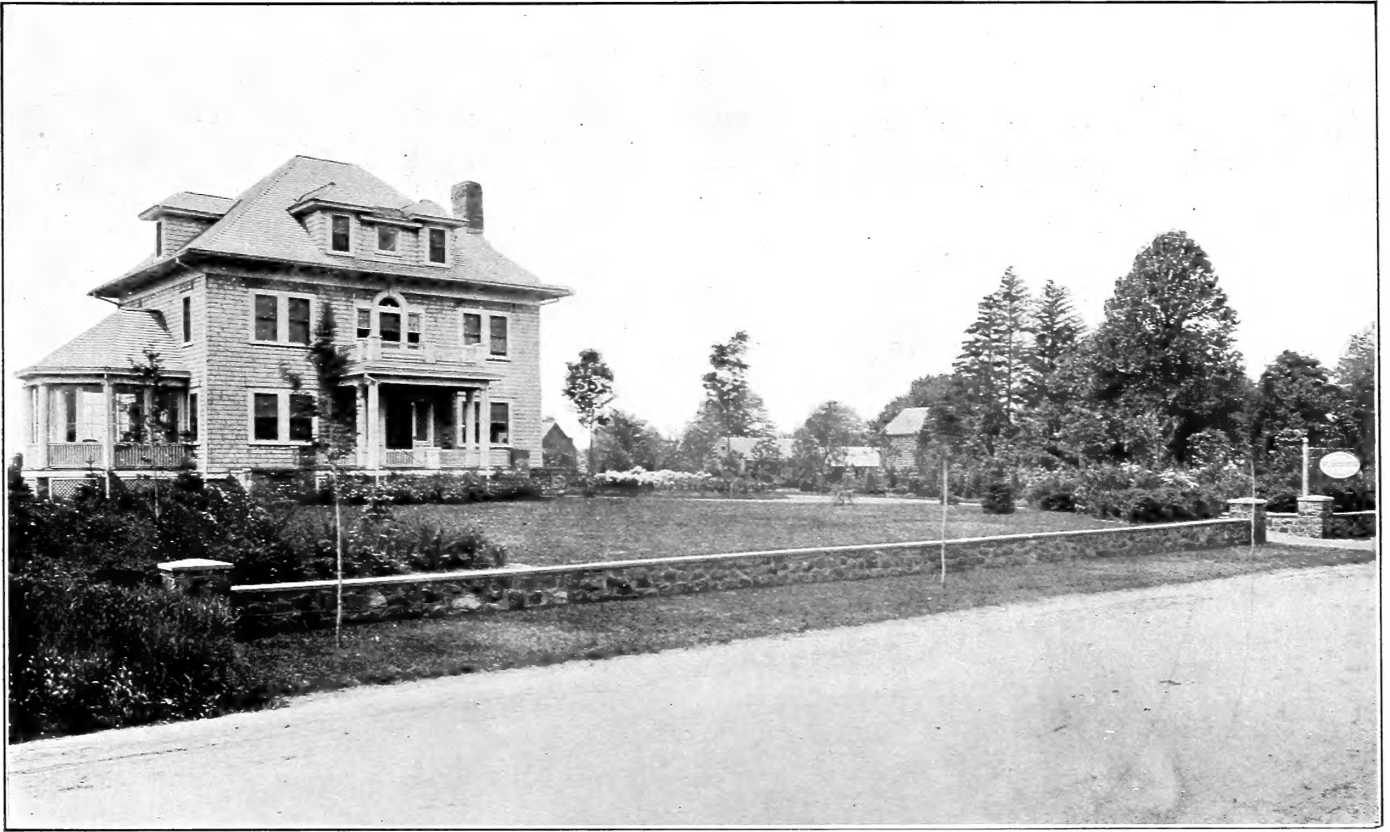
1908
LIBRARY
RECEIVED
★
U. S. Department of Agriculture.



PROPERTY OF THE
American Nursery Co.

Telephone 424 Flushing

**DESCRIPTIVE
CATALOGUE**



Broadway Entrance to the Bloodgood Nurseries, Flushing, N. Y.

PREFACE TO REVISED EDITION

In offering a new edition of our Catalog we tender thanks for past patronage, and to the limit of our deserving, solicit its continuance.

It is a common practice in writing a preface to laud unduly the particular nursery in question and inferentially disparage the quality and variety of stock offered by others. We do not pretend to have the largest nursery in America or to offer all the desirable products of the nursery art, but it is certain we will not, with knowledge, offer any useless rubbish.

Other nurseries have good stock and deal honestly with their patrons. In this respect there is no patent of nobility to any.

Granting so much concerning our limitations and others' abilities we may be pardoned for making some claims for the BLOODGOOD NURSERIES, the oldest continuing nursery in America, hoary not alone with age, but with honor. For the past two years it has been under new management and control and the years in question were the most prosperous in its history. We have, in the period named, moved our office and all our belongings to a new location where with improved facilities and entirely new land we propose to continue the business for our own and our patrons' mutual advantage.

We do not claim ours is the only good stock offered, or that our prices are the lowest, but it is certain, our location considered, none grow better or offer cheaper trees than ourselves. Being willing to accord merit to others in equal degree we expect to share with them the public patronage.

There is not in all America a locality where there exists a more extended native flora than on Long Island and Flushing, the oldest nursery center in the country, can show in addition a great variety of beautiful introduced trees and shrubs. Here may be seen fine specimens, that in their developed state show prospective planters what they may reasonably expect for their toil and effort. The Prince's and the Parsons', with the generations animated by their example, have left here the impress of their lives, and stamped indelibly, in verdant monuments, worthy examples for generations to come.

In this Catalog we have, to the limit of our ability, endeavored to classify and describe what we have to offer in such a manner that those desiring aid may be assisted in making judicious selections that will satisfy, not the present only, but the future as well. We have not sought the aid of the professional catalog maker but have endeavored to impress upon our work the stamp of our own character, confident that our past history and future performance will warrant public confidence and support.

It is most important when planning a home to do so intelligently. This is particularly true of anything so lasting as landscape adornment. A knowledge of the trees and plants used and their ultimate growth is essential to the best success. We will always, on request, render any assistance in our power. We are not civil engineers, however, and where the place is large and the grades are to be materially changed it is best to secure one. If desired we can provide or recommend competent persons for such service.

It is desirable that prospective purchasers see the stock offered, and to all such and all interested we extend a cordial invitation to visit the nurseries at any season.

To reach us from New York City, take the East 34th St. Ferry to Long Island City, thence by L. I. R. R. to Broadway (Flushing). This is our railroad station for all purposes. We are only ten miles from the City and ten minutes' walk from the station. In addition to the steam railway we have trolley lines to New York City and Brooklyn and also from Jamaica, from which point we are easily reached by people from the East and South of the Island. Visitors from Jamaica or New York City will get off at Flushing Cemetery, ten minutes' walk from our office. Five cents fare from either place.

BLOODGOOD NURSERIES



Office of the Bloodgood Nurseries, Flushing, N. Y.

BUSINESS NOTICE

At prices quoted in this catalog, all stock will be supplied f. o. b. here, but we cannot insure safe delivery of same, since it is beyond our control. Complaints for miscarriage and delay must be made to the transportation companies.

We warrant our stock true to name, and hold ourselves prepared, on proper proof, to replace any that may prove otherwise, or refund the original price paid. We, however, expressly disclaim any liability for consequential damages.

If errors or omissions occur we desire immediate notice, that we may correct them. The time to make complaints is on receipt of goods, not months afterward.

Explicit and plain shipping directions are requested. If omitted we will forward according to our best judgment.

We will substitute only by permission, and since it may frequently occur that a grade or variety is exhausted, we ask that our patrons in sending orders state if we may substitute, and to what extent.

Bills are payable June 1 and December 1 of each year, and to people we know such credit will be cheerfully given. Unknown correspondents must remit with order, or if the same is of considerable amount they may send references, but must understand this course will cause delay for investigation.

C. O. D. orders must be accompanied by a remittance in part as a guarantee.

Our location, between the ocean and Long Island Sound, gives us an equable and long season, and we can dig and ship trees usually from early March through April and May, and in Autumn, October, November and often well into December.

It is important that trees be in a dormant condition, not only where dug but where planted also. Our early and late seasons are therefore advantageous to customers.

Customers intending to make extensive plantings usually submit lists for estimates, and we commend and invite this practice.

We will make the best quotations possible under such circumstances, quality and character of stock offered considered. We urge that *quality* and *price* both have consideration. Do not sacrifice the first to the last. **Low prices and cheap prices are not identical.**

TRANSPLANTING HINTS

We especially desire to impress upon all interested the importance of using only good soil and using it abundantly in planting all trees.

If the grade is not changed and there exists good natural fertility, no special preparation is required. If the grade is changed we urge the absolute importance of excavating a large area of subsoil and filling in with good top soil. Do this a year in advance if possible, that the soil may become compact. If this cannot be done, firm well the soil as the new hole is filled. Many fallacies are current concerning planting, and one that you must excavate much larger holes than are needed for the spread of the roots. Make the holes large enough for the free introduction of the roots, but not larger, and be sure always in replacing the soil to tramp it firm. Be careful to put fine mold about the roots, but above all be sure it is in close contact. Broken and mutilated roots should be cut off smooth, that they may callous quickly, and from them new roots will issue.

Wet the roots before putting earth on them, that it may adhere closely. Plant in well-drained soil and at about the same depth as the tree or plant stood in the nursery. A tree is an organism as well as man and will not thrive with wet feet always.

We do not approve of indiscriminate and extensive pruning at any period of the tree's life, but if the roots are much shortened some pruning of the top is necessary to maintain a balance.

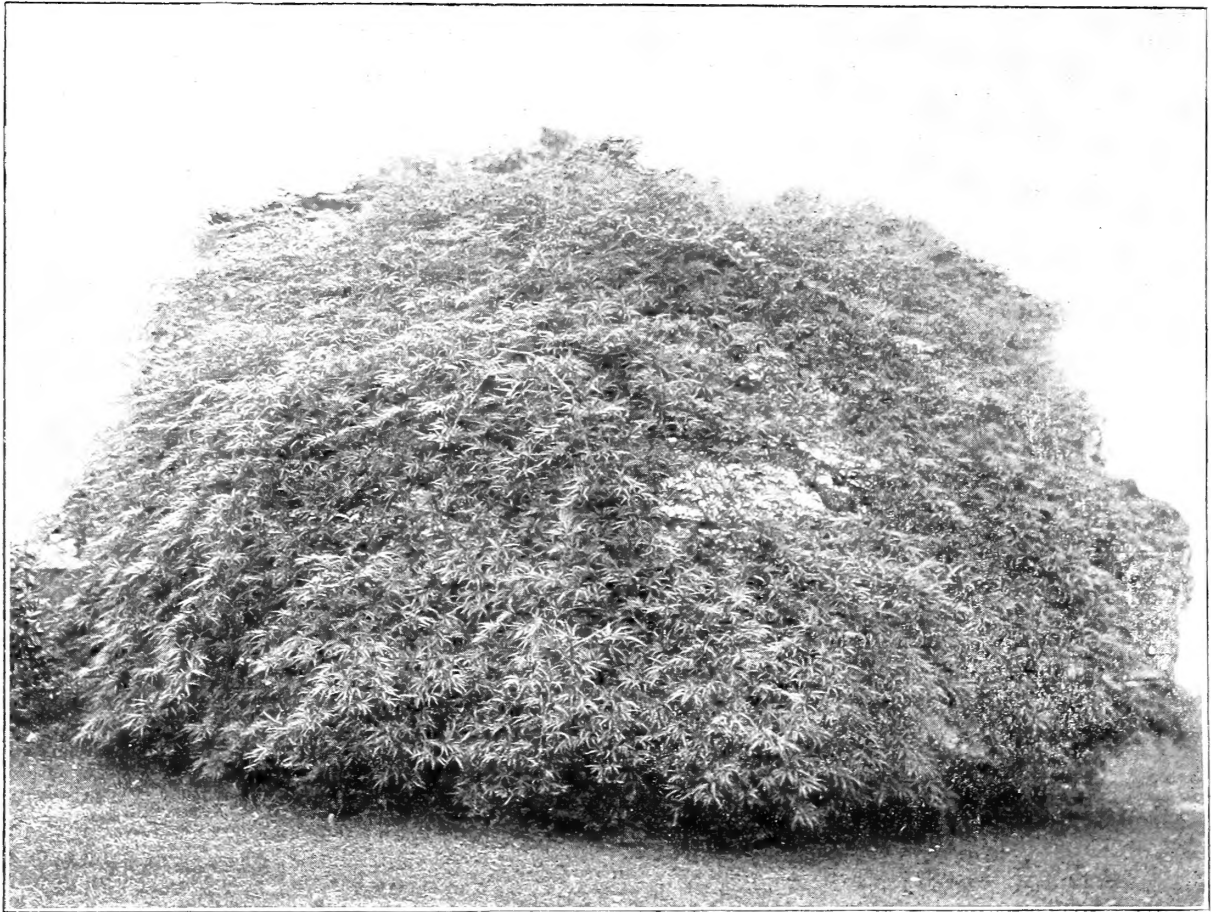
Cut to the trunk or a bud always, that you may not later have unsightly and dead spurs on the tree that delay the process of healing.

Mulch the surface after planting with anything that will conserve moisture, and for this purpose leave the surface of the soil loose and porous, applying in addition brush, straw or coarse manure. The latter is best, since by leaching it adds the element of fertility.

Planting evergreens is more difficult than planting deciduous trees, particularly if large, and extra care must be taken to keep the roots from becoming dry. Chances of success are much greater with small and medium sized trees, and choice and rare sorts should be moved with a ball of earth attached when possible. The safety of this practice very greatly counterbalances increased cost, and we strongly urge patrons to adopt it. A charge for such additional labor must be made, but we promise that it will be reasonable.



Packing Shed and Platform from which wagons are loaded—Bloodgood Nurseries



ACER POLYMORPHUM VAR. DISSECTUM ATROPURPUREUM. Cut-leaf Purple Japan Maple

ORNAMENTAL DEPARTMENT DECIDUOUS TREES

All the trees offered have been one or more times transplanted, are of standard commercial grade, shapely and well rooted.

Of many sorts large and specimen trees can be supplied: 2-3 and 4-inch caliber.

The prices quoted are for trees of the usual commercial size, ranging from 3 to 9 feet, according to species or variety. Larger trees can be supplied of most sorts at proportionate rates.

Figures after specific names indicate approximately the height of the trees when approaching maturity.

ACER. Maple.

- A. campestre**—English Cork Maple. 20 ft. A small round headed tree of neat habit and foliage, having a peculiar corky bark. Suitable for small places and ornamental groups. 50c. and 75c.
- A. colchicum rubrum**—Red Colchicum Maple. 20 ft. From Japan. Young growth of wood and foliage bright crimson. Medium size, round and elegant form. Distinct and beautiful. \$1.00.
- A. dasycarpum**—Silver Maple. 60 ft. Well known and popular. Of rapid growth; round, irregular form; leaves light green above, silvery beneath. Recommended for immediate effect. 75c. \$6 per 10.
- var. Wierii laciniatum**—Wier's Cut Leaf Maple. 50 ft. Leaves finely cut. Habit distinctly pendulous. An attractive and desirable tree. Will bear pruning; well adapted to small places. \$1.00.

Acer negundo—Box Elder. Ash Leaf Maple. 25 ft. A native tree with light green foliage and greenish colored smooth bark. Desirable for contrast and for its extreme hardness. 75c.

A. Pennsylvanicum—Striped Bark Maple. 25 ft. A rather small tree with large leaves and bark curiously striped green and white. Conspicuous in Winter. \$1.00.

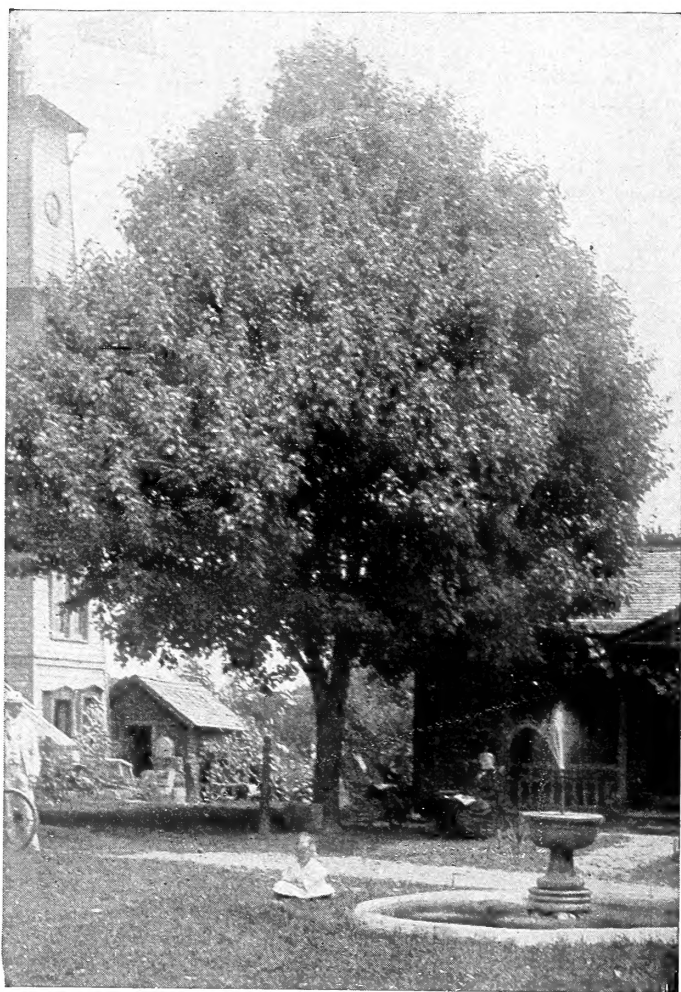
A. platanoides—Norway Maple. 40 ft. A large, round headed, handsome tree. Foliage dense and dark green, remaining on the tree until late in the Fall. Reliable everywhere, and especially valuable for street planting. 75c. to \$3.00.

var. globosa—10 ft. A dwarf form of the common Norway Maple. Grafted 7 ft. high it forms a dense round top, suitable for formal lines or single specimens. \$1.50.

Acer platanoides var. Reitenbachi—Reitenbach's Norway Maple. 30 ft. Purple leaved Norway Maple. Not as bright as Schwedleri in early Summer, but more constant. A valuable tree. \$1.00

var. Schwedleri—Purple Leaved Norway Maple. 35 ft. Bright crimson in early Spring, fading to dull purple in late Summer. Of vigorous habit, and for contrast desirable. \$1.00.

A. Pseudo-platanus—Sycamore Maple. 50 ft. A well known and, in some localities, a desirable tree; particularly valuable near the sea. Bark smooth, with large green leaves. 75c.



A. PLATANOIDES. Norway Maple

A. rubrum—Scarlet Maple. 40 ft. A fine native tree, thriving everywhere, but particularly in damp soil. Is much admired for its red blossoms in Spring and deep crimson foliage in Fall. \$1.00.

A. saccharum—Sugar Maple. 50 ft. A symmetrical, handsome tree for all purposes. Finely colored foliage in Autumn. Desirable everywhere. \$1.00.

A. spicatum—Mountain Maple. 15 ft. A shrubby tree bearing erect racemes of greenish yellow flowers. Suited to borders or small groups. 75c.

A. Tataricum var. Ginnale—Tartarian Maple. 12 ft. A shrubby tree with divided leaves. Good for grouping, or singly on small lawns or in angles. 75c.



A Specimen Weir's Cut Leaf Maple

JAPANESE MAPLES.

The Japan Maples are trees of dwarf habit, with very graceful and often deeply colored foliage. They may be treated as shrubs in masses, and for this reason we group them separately. There are a great many variations in these trees, but we select only the most pronounced, hardiest and best. Size of trees offered, 1½ to 2½ ft.

Acer Japonicum—5 ft. A slow growing tree with handsomely scalloped deep green leaves. \$1.50.

var. aureum—Golden Leaved. 10 ft. A rare and distinct variety. Foliage of pronounced golden color. Exquisitely beautiful. \$1.50.

A. polymorphum—Japan Maple. 15 ft. The parent type of most Japan Maples and a shrubby tree of very great merit. Of slow growth, dense habit, and deeply lobed foliage. The very best if natural green color is wanted. 75c. to \$1.50.

var. atropurpureum—Purple Leaf Maple. 10 ft. The most popular variety. Foliage of intense purple, and in early Spring especially beautiful. Is effective grown singly or in groups. Best. \$1.50.

var. dissectum—Green Cut Leaf Maple. 5 ft. The foliage of this and the next variety is indeed most handsome, the habit dwarf and pendulous. A lovely little tree. \$1.75.

var. dissectum atropurpureum—Cut Leaf Maple. 6 ft. A variety with deeply cut almost fern like foliage of dwarf and pendulous habit. Foliage green and purple, and tree hardy. \$1.75.

var. nigrum—6 ft. Foliage and branches of the darkest shade, almost black, more permanent than any other variety; habit erect. Rare and choice. \$1.50.

var. reticulatum—Reticulated Japan Maple. 6 ft. Expanding foliage, deep yellow, changing with advancing Summer to a yellowish tint, mixed with green. A delicate grower. Rare and choice. \$1.50.

var. versicolor—Various colored Japan Maple. 6 ft. Irregularly variegated with white, crimson and green. Distinct and attractive. \$2.00.



AESCULUS HIPPOCASTANUM

AESCULUS. Horse Chestnut

- A. hippocastanum**—European Horse Chestnut. 60 ft. Of rather slow growth, but ultimately attaining large size, and in good soil becomes a magnificent tree. Its large panicles of white flowers in May are its glory. An enduring and desirable tree. \$1.00, \$7.50 per 10.
- var. flore plena**—Double Flowering Horse Chestnut. 40 ft. Exactly like the type except that the flowers are double and in the fact that it bears no fruit. It is more desirable than the type for these reasons. \$1.50.
- var. rubicunda**—Red Flowering Horse Chestnut. 40 ft. Form more rounded than the white flowering, bearing large panicles of showy red flowers. A magnificent tree. \$1.00.
- var. rubra flore plena**—30 ft. This is a grafted tree bearing abundantly double red flowers. Not so strong a grower as the others. \$1.50.

AILANTHUS. Tree of Heaven

- A. glandulosa**—30 ft. A very rapid growing, open headed tree, with large, pinnate foliage of bright green color and tropical appearance. Will thrive under conditions fatal to most other trees, and is well adapted to planting in cities for the reason stated. Many of the very best authorities give it pre-eminence for the location named. 75c.

ALNUS. Alder

- A. glutinosa**—European Alder. 40 ft. A very rapid growing upright tree with wavy wedge shaped foliage. Will thrive in wet soil. 75c.

Alnus var. laciniata imperialis—Imperial Cut Leaf Alder—30 ft. A stately tree of graceful habit with large and deeply lacinated foliage. Unsurpassed as a lawn tree. \$1.25.

AMELANCHIER. Snowy Mespilus

- A. Botryapium**—20 ft. A desirable native tree, bearing in early Spring a profusion of white blossoms, followed later by purplish edible fruit. 50c.

AMYGDALUS. Flowering Peach

- A. Persica**—10 ft. Double crimson, rose and white, extremely handsome and showy, blooming in April. Grouped, the three colors are very effective. 35c.

ANDROMEDA. (Oxydendrum). Sorrel Tree

- A. arborea**—20 ft. A valuable medium sized tree or large shrub, bearing racemes of white flowers in mid-Summer. Autumn foliage a brilliant crimson and very showy. 75c, \$5.00 per 10.

ARALIA. Hercules' Club

- A. spinosa**—15 ft. Tree of small size, with very prickly stem and tropical appearance. Leaves pinnate. Immense panicles of white flowers in August. 50c.
- A. pentaphylla**—10 ft. A prickly shrub or small tree, with lustrous bright green foliage. 35c.

BENZOIN

- B. odoriferum**—Spicewood. 10 ft. Really a small shrubby tree. Very smooth, dark colored bark and dark green leaves. The whole plant is fragrant. The yellow flowers in early Spring, before the leaves appear, and the scarlet fruit in Summer, are highly ornamental. Desirable for shrubby backgrounds or along the borders of streams. 35c. \$2.50 per 10.



AMYGDALUS. Flowering Peach

BETULA. Birch

- B. alba**—White Birch. 40 ft. Of rapid and symmetrical growth; particularly effective in Winter on the border of a wood or evergreen belt. 75c. \$5.00 per 10.
- var. fastigiata**—Pyramidal White Birch. 40 ft. Like the preceding, except its habit, which is columnar shaped and attractive by contrast. \$1.00.
- var. laciniata**—Cut Leaved Weeping Birch. 40 ft. Of most graceful, pendent habit; slender, yet vigorous growth, and with the same characteristic white bark. Leaves finely cut. Deservedly popular. \$1.00, \$7.50 per 10.
- var. pendula Youngii**—15 ft. A tree of most grotesque and striking irregular form and of distinctly pendulous habit. Has the characteristic white bark. \$1.50.
- var. purpurea**—Purple Leaved Birch. 40 ft. This sort has purple leaves, and the bark, too, has in it a tint of the same color, making it desirable for contrasts. \$1.00.
- B. lenta**—Sweet Birch. 40 ft. Makes a large, shapely tree, with dark smooth bark of an aromatic odor and agreeable sweet flavor. 75c.
- B. lutea**—Yellow Birch. 45 ft. Sometimes confounded with *Lenta*, but quite distinct, its yellow bark alone identifying it. 75c.
- B. nigra**—Red Birch. 45 ft. Distinguished by its shaggy red bark. Does best in damp soil. Habit broadly pyramidal and foliage glossy. 75c.
- B. papyrifera**—Canoe or Paper Birch. 50 ft. A native of America and forms a large tree. Bark brilliant white, the leaves large and handsome. 75c.

CARPINUS

- C. Americana**—Hornbeam. 20 ft. A native species in growth quite similar to the beech, but the foliage is thinner and form more irregular. A very ornamental and useful tree. 75c.

CARYA. Hickory

- C. alba**—Shell Bark Hickory. 50 ft. Distinguished by its loose, shaggy bark. The nuts are thin shelled and of best quality. Enduring and valuable. 2 ft. high, 50c.

CASTANEA. Chestnut

- C. Americana**—American Chestnut. 50 ft. A most valuable tree for ornament and timber, and especially desirable for its nuts, which for sweetness surpass all others. Its season of bloom, about July 4th, makes it particularly desirable as an ornamental tree. 50c. \$4.00 per 10.
- C. crenata**—Japan Chestnut. 20 ft. Tree more dwarf than our native species. Bears abundantly when only a few years old. Nuts very large, but of inferior quality. Some improved varieties are being introduced. 75c. \$5.00 per 10.
- C. vesca**—Spanish Chestnut. 30 ft. A tree of large size, with wide spreading branches. Nuts much larger than our native species, but not of such good quality. 75c. \$5.00 per 10.
- var. Numbo**—25 ft. Improved variety of the Spanish, bearing larger and sweeter nuts. \$1.00.
- var. Paragon**—25 ft. Another improved variety, distinguished for its early bearing and sweeter nuts. \$1.00.

CATALPA

- C. bignonioides aurea variegata**—Golden Catalpa. 20 ft. A medium sized tree, of rapid growth, having large heart shaped leaves, which are of a beautiful golden color in Spring and early Summer. \$1.00.
- C. Bungei**—Dwarf Catalpa. 8 ft. Grafted 6 feet high it makes a round headed tree of much use in ornamental planting. \$1.50. (See also Shrubs.)
- C. Kämpferi**—Japanese Catalpa. 25 ft. A medium sized tree. The foliage somewhat different from the other varieties. It bears a yellowish white flower in Midsummer. \$1.00.
- C. Speciosa**—Western Catalpa. 40 ft. Of very rapid growth and tropical appearance. A most desirable tree for ornament, because of its abundant and attractive bloom in Midsummer. Timber valuable. 75c, \$5.00 per 10.



CATALPA BUNGEI

CERASUS. Cherry

- C. Avium alba plena**—Double Flowering Cherry. 30 ft. Large double white flowers produced in great abundance in early Spring. 50c.
- C. Japonica var. rosea pendula**—20 ft. A weeping form of Japanese origin. Grafted on tall stems the branches droop gracefully to the ground. In early May these branches are covered with rosy pink flowers. Very attractive and beautiful. Our trees are grafted at the ground and trained upright. The best form. \$1.50.
- C. ranunculiflora**—15 ft. An upright grower, bearing large white flowers resembling those of a ranunculus. Flowers several days later than the double white. \$1.00.
- C. Sieboldii alba plena**—Siebold's double flowering Cherry. 20 ft. Semi-double white flowers in June. 50c.
- C. Sieboldii rubra plena**—Siebold's double red flowering Cherry. 20 ft. Semi-double flowers, white tinged with red. 50c.

CERCIDIPHYLLUM. Katsura

- C. Japonicum**—30 ft. A Japan tree of large size in its own country, and of great promise here. Heart shaped leaves, dark green above and silvery below. Leaf stalks and veins have a purplish tint. Of handsome pyramidal growth. Prefers a damp soil. \$1.00.



CERCIS JAPONICA. Judas Tree

CERCIS. Judas Tree

- C. Canadensis**—American Judas. 20 ft. A small round headed tree, bearing an abundance of rosy pink flowers in early May before the leaves appear. Foliage heart shaped and shining green. 50c.
- C. Japonica**—Japan Judas. 10 ft. Of dwarf habit; usually only a large shrub, which is the best form. Flowers in early May of a deep rose color. Very conspicuous and desirable. 50c.

CLADRASTIS. Yellow Wood

- C. tinctoria**—25 ft. A beautiful American tree of globular form, bearing racemes of white sweet scented pea shaped flowers in June. Rare. \$1.00.

CORNUS. Dogwood

For other Species, see Shrubs.

- C. florida**—White Dogwood. 25 ft. A beautiful small sized native tree, bearing an abundance of white flowers in May, followed by scarlet fruit and brilliant crimson foliage in Autumn. 60c., \$5.00 per 10.
- var. pendula**—Weeping Dogwood. 12 ft. Foliage, flowers and fruit identical with the species, but of distinctly weeping habit. Recommended for cemeteries and small places. \$1.00.

- Cornus florida var. rubra**—Red Flowering Dogwood. 25 ft. Habit and character same as its parent, but bearing deep rose colored flowers of great beauty. Of recent introduction. Popular and valuable. \$1.00.

- C. Kousa**—18 ft. A small tree, native of China and Japan. Foliage more abundant and leaves narrower than our common Dogwood. Flowers creamy white, appearing after the leaves in June and contrasting finely with the green foliage. \$1.25.

CORYLUS. Hazel

- C. Avellana pendula**—Weeping Hazel. 10 ft. A small and true Hazel or Filbert of distinctly pendulous habit. Our trees are grafted at the ground and staked. \$1.00.

For other Corylus, see Shrubs.

CRATAEGUS. Thorn

- C. oxyacanthus**—English Hawthorn. 15 ft. A small growing, attractive tree, bearing in early May an abundance of white sweet scented flowers. Was formerly much used for hedges. It is the parent of the numerous double white, rose and scarlet varieties, of which, perhaps, Paul's Scarlet is the best. 50c.
- C. Double Pink, Double White and Double Scarlet**—75c.
- C. Crus-Galli**—Cockspur Thorn. 10 ft. A widely distributed native variety with very long and extremely sharp spines. Fruit abundant and bright red. Makes a good hedge. 50c.



CORNUS RUBRA. Red Flowering Dogwood.

FAGUS. Beech

We especially commend all the Beeches for lawn and ornamental planting, because of their great beauty and enduring character. When transplanting, be careful to prune severely and judiciously, leaving a good supply of strong, well developed buds. Beeches should be allowed to branch to the ground, and are in that shape the best deciduous trees for screens.

F. ferruginea—American Beech. 30 ft. A noble tree of large size and round spreading habit. Attractive at all times, but markedly so in Winter and early Spring on account of its light colored bark. \$1.00.

F. sylvatica—English Beech. 50 ft. Of more dense habit than the American, and without its light colored bark. Makes a handsome, long lived tree of sturdy and robust character. All the Beech family are especially desirable, and for lawn planting should be allowed to grow close to the ground. \$1.50.

var. heterophylla—Fern Leaf Beech. 25 ft. Leaves very much dissected and fern like. Habit dense and symmetrical. One of the very best forms. \$1.50.

var. pendula—Weeping Beech. 40 ft. Most unique in habit and form of all weeping trees, and where it has sufficient room for development, the best. Makes a large, handsome tree, conspicuous anywhere. \$1.50.

var. purpurea—Copper Beech. 40 ft. In character and habit like the English Beech. Foliage of copper color, and not so large as the Rivers. \$1.00.

var. purpurea pendula—Purple Leaf Weeping Beech. 40 ft. A recent acquisition of great merit. Similar in form and appearance to the Weeping Beech except in color of foliage which is deep purple. \$2.50.

var. Riversii—Rivers' Beech. 40 ft. Where a large and enduring tree of purple foliage is wanted, no mistake will be made in planting this. Needs full exposure to sunlight for best development and enduring color. \$1.50.



FAGUS SYLVATICA PENDULA. Weeping Beech

FRAXINUS. Ash

F. Americana—American Ash. 50 ft. A tree of rapid growth and large size. An excellent shade and ornamental tree. Valuable for timber and much superior to the European species. 75c. \$5.00 per 10.

var. acubæfolia—Acuba Leaf Ash. 30 ft. The leaves of this variety are golden blotched. The variegation is permanent and the tree is valuable for grouping with purple leaf trees. \$1.00.

var. glauca Dawsoni—Dawson's Ash. 30 ft. A new ash of erect, almost pyramidal form. Foliage has an exquisite bluish tint. Rare and beautiful. \$2.00.

F. quadrangulata—Blue Ash. 65 ft. A lofty and handsome tree, widely distributed through the central United States. Bark of the young shoots angular and winged. 75c. \$5.00 per 10.

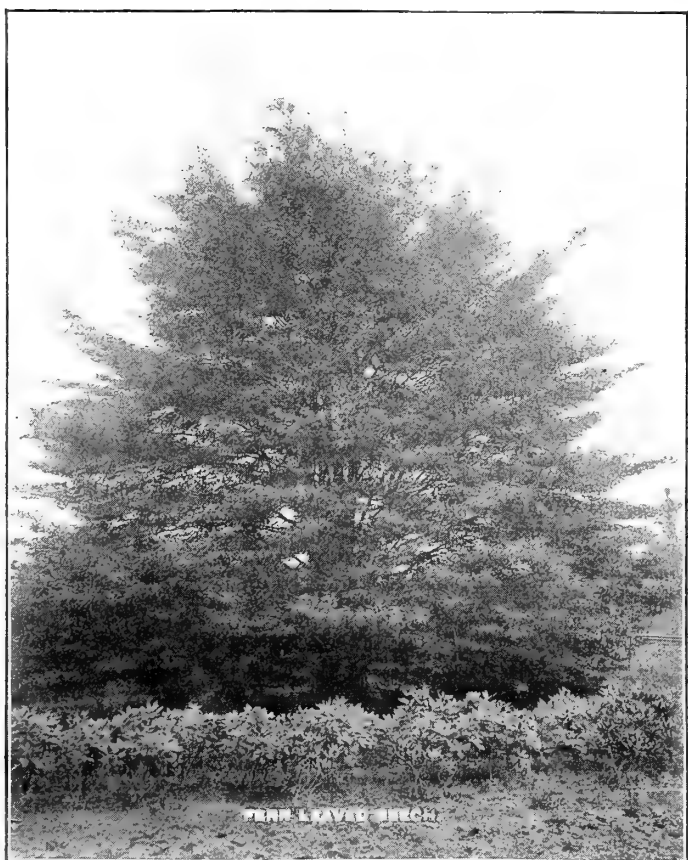
F. nigra—Black Ash. 65 ft. Another lofty and enduring tree, valuable, as indeed are nearly all the ashes, for their timber. 75c. \$5.00 per 10.

F. lanceolata—Green Ash. 50 ft. Indigenous in Eastern America. A good tree for avenues and streets. 75c. \$5.00 per 10.

F. excelsior—European Ash. 60 ft. A lofty and rapid growing tree with spreading head and pinnate foliage. Timber less valuable than the American species. 75c. \$5.00 per 10.

var. aurea—Gold Bark Ash. 20 ft. The bark is a bright yellow, very conspicuous in Winter. \$1.00.

F. ornus—European Flowering Ash. 40 ft. A native of the south of Europe, with greenish white fringe like flowers early in June, in large clusters at the end of the branches. \$1.00.



FERN LEAF BEECH.

GLEDITSCHIA

- G. triacanthos**—Three thorned or honey locust. 40 ft. A native tree with delicate foliage. 75c.
var. bujoti pendula—12 ft. Weeping Honey Locust. An elegant tree with drooping branches. Not entirely hardy. \$1.75.

GLYPTOSTROBUS. Chinese Cypress

- G. Sinensis**—A pyramidal, coniferous tree, in appearance somewhat resembling the deciduous cypress, but with distinct character. Rare and valuable. Suited for wet, low land. \$1.50.



KOELREUTERIA PANICULATA

GYMNOCLADUS. Kentucky Coffee

- G. Canadensis**—35 ft. A tree of spreading, open habit, with pinnate leaves of a shade not common. Will thrive near the sea. Picturesque and desirable. A tree of great vitality and suited for planting in cities. 75c.

HALESIA. Silver Bell

- H. tetraptera**—15 ft. A most interesting and desirable shrubby tree, bearing pendent bell shaped white flowers in May. 50c. \$3.00 per 10.

JUGLANS. Walnut

- J. nigra**—Black Walnut. 50 ft. A very large spreading tree, with pinnate foliage. Well known and valuable both for its nuts and timber, furnishing the well known walnut lumber of commerce. 50c.
J. regia—English Walnut. 30 ft. A spreading tree of attractive form when developed. The well known Madeira nut of commerce. Valuable. 50c.

KOELREUTERIA. Varnish Tree

- K. paniculata**—25 ft. An ornamental tree from China. Forms a flat spreading head, has large pinnate leaves, and in July produces immense panicles of orange yellow flowers. Desirable for its bloom and Autumnal color. \$1.00.

LABURNUM. Golden Chain.

- L. alpinum**—Scotch Laburnum. 20 ft. This variety is chiefly distinguished from the next by its later bloom and its longer and more slender racemes of golden yellow flowers. 50c.

Laburnum vulgare—Golden Chain. 20 ft. Distinguished for its lovely racemes of yellow flowers in May. Of thrifty habit and suitable for the background of shrubbery. 50c.

- L. vulgare pendula**—Weeping Laburnum. 10 ft. This produces very long, graceful branches, falling nearly to the ground, with racemes of rich golden flowers. \$2.00.

LARIX. European Larch

L. Europæa—50 ft. A pyramidal, coniferous tree, remarkable for its beautiful light green foliage in early Spring, expanding with the first warm days of the advancing season; for this reason it is best transplanted in Autumn. 50c.

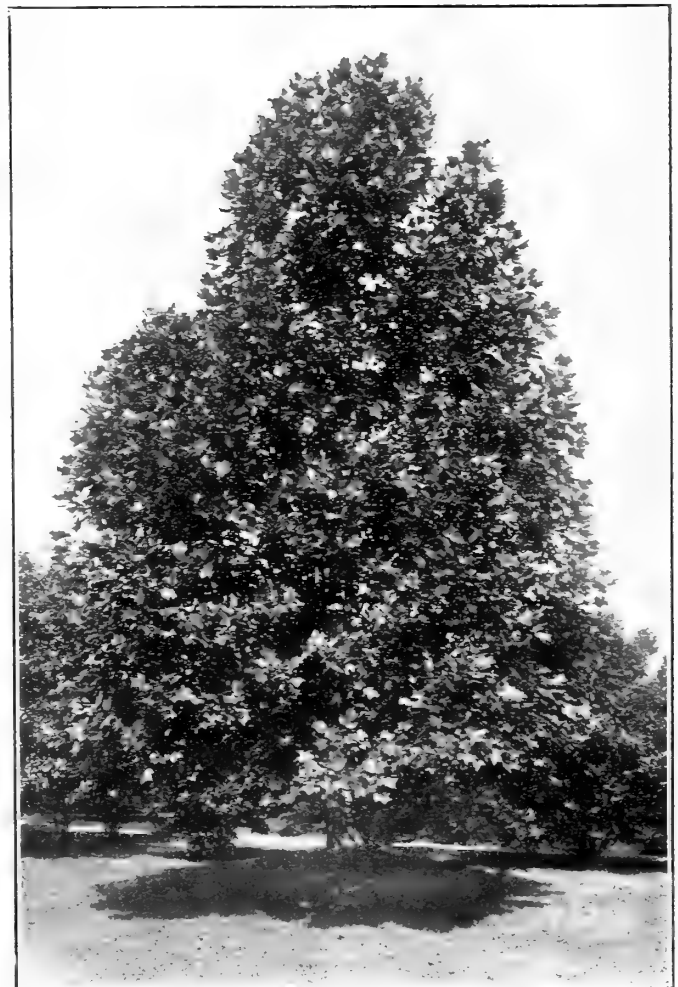
- L. Kaempferi**—Japan Golden Larch. 30 ft. The foliage when young is of light green, changing to a fine golden yellow in Autumn. \$1.00.

LIQUIDAMBAR. Sweet Gum

- L. styraciflua**—40 ft. A handsome tree, with star shaped leaves; desirable for its beautiful Fall coloring. Thrives in low, wet soil, although doing well in all locations, and of merit everywhere. Prune closely. \$1.00.

LIRIODENDRON. Tulip Tree

- L. tulipifera**—60 ft. One of our largest native trees, of rapid growth, with large, handsome green leaves; flowers in early June, tulip shape, greenish yellow, blotched with orange. Difficult to transplant, except of small size, which is therefore recommended. 75c. \$5.00 per 10.



LIRIODENDRON TULIPIFERA



MAGNOLIA SOULANGEANA

MAGNOLIA

The Magnolia is the most profuse blooming among the larger growing trees. Especially is this true of the Chinese and Japanese sorts. Are not easily transplanted and should be moved when quite small with balls of earth attached. Since most of them bloom when only a foot or two high, there will not be any long waiting for flowers. Transplant in Spring only and prune closely.

- M. acuminata**—Cucumber tree. 50 ft. One of the largest Magnolias, of very rapid growth, forming a pyramidal tree of much beauty; flowers yellowish white, expanding in latter May. America. \$1.00, \$7.50 per 10.
- M. conspicua**—Chinese White. 20 ft. Greatly esteemed for its abundant pure white flowers, expanding before the leaves in April. A large specimen is then worth going miles to see. China. \$2.50.
- M. Fraseri**—Ear Leaved Magnolia. 40 ft. A large tree of much beauty, bearing creamy white deliciously fragrant flowers in early May. Bears large rose colored seed pods in Autumn. America. \$1.50.
- M. glauca**—Sweet Bay. 15 feet. A small tree common in the swamps of New Jersey; nearly evergreen. Thrives very well on upland soil, and is esteemed for its delicate, white, sweet scented flowers, appearing in June and filling all the surrounding neighborhood with fragrance. America. \$1.50.
- M. hypoleuca**—40 ft. From Japan. A stately ornamental tree with large leaves. Good for avenues and streets. Flowers 7 to 8 in. in diameter. \$2.00.
- M. Lennei**—Lenne's Magnolia. 20 ft. A desirable sort because of its distinct color and abundant bloom. Usually it bears some flowers throughout the Summer. A hybrid species. \$1.50.

Magnolia macrophylla—25 ft. Makes a good sized round tree, particularly desirable for its immense leaves and large flowers. Rare and valuable. America. \$1.50.

M. Norbertiana—Norbert's Magnolia. 20 ft. Tree vigorous and of regular outline. Like *Soulangeana*, but blooms later. \$2.00.

M. parviflora—15 ft. From Japan. White, fragrant, globular, pendent flowers, with bright pink center. \$2.00.

M. purpurea—15 ft. A large shrub of vigorous stocky growth, and bearing in spring an abundance of purple flowers, and again in Autumn a few are expanded. Valuable for planting with shrubs. China. \$1.00.

M. stellata syn. Halleana—12 ft. A dwarf and valuable species; flowers white, semi-double; fragrant. The earliest blooming variety. Japan. \$1.50.

M. Soulangeana—20 ft. The best of all the flowering Magnolias; of more vigorous growth and most profuse bloom; flowers large, pink on outside of petals and white within, appearing a little later than *Conspicua*, and before the leaves. Some blooms can be found on a good sized specimen at any time during the Summer, and sometimes enough to be conspicuous. China. \$1.50.

M. tripetala—Umbrella Tree. 25 ft. A tree of medium size, with large, fresh green leaves, and large white flowers in latter May. The fruit pods of this and the other native Magnolias change to carmine in Autumn, and are a marked and beautiful feature. America. 75c.

MORUS. Mulberry

- M. alba var. Downing's Everbearing**—20 ft. Leaves larger than others of the species, and producing large black fruit in great abundance throughout nearly the entire Summer. 50c.
- var. Tatarica**—Russian Mulberry. 20 ft. More hardy than the others and bearing an abundance of black fruit. 50c.
- var. Tatarica pendula, Teas' Weeping**—7 ft. The best dwarf weeping tree; grafted 5 to 6 ft., the branches droop gracefully to the ground. Picturesque and beautiful. \$1.00.

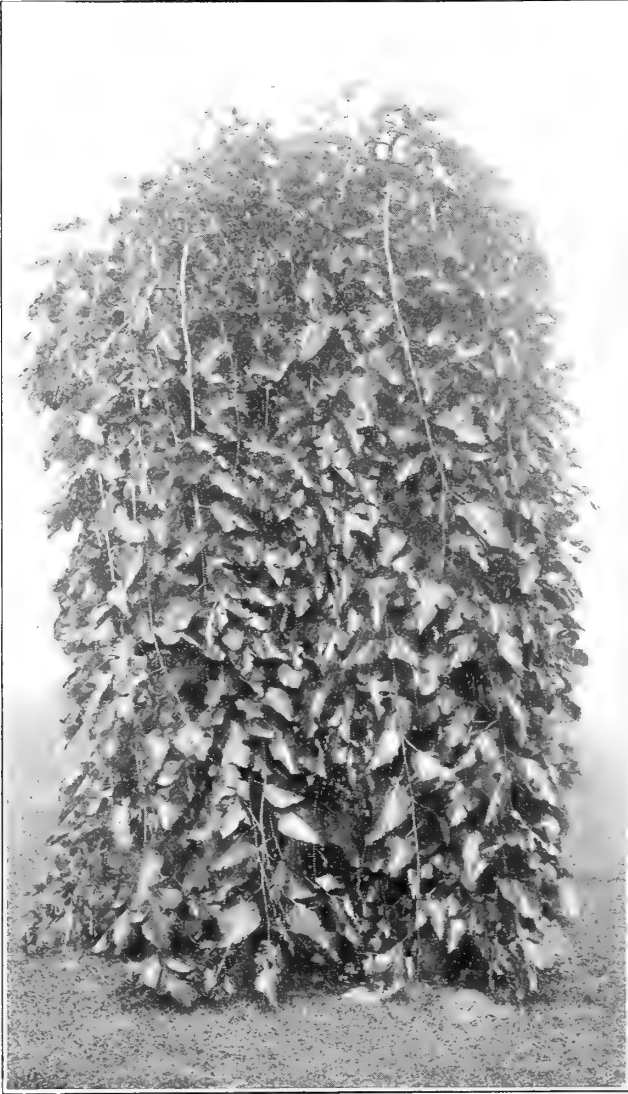
PAULOWNIA. Empress Tree

P. imperialis—30 ft. A tree with immense leaves and decidedly tropical appearance, bearing very large panicles of blue, trumpet-shaped, sweet-scented flowers in June. \$1.00.

PAVIA. Smooth Fruited Horse Chestnut.

- P. flava**—Ohio Buckeye. 30 ft. A fine native tree having pale green downy leaves and bearing yellow flowers. Forms a globular round head. \$1.00.
- P. rubra Whitleyi**—25 ft. Distinguished for its handsome foliage and brilliant red flowers. \$1.50.

For Dwarf Pavia, see Shrubs.



MORUS. Teas' Weeping Mulberry
See text, page 11

PHELLODENDRON. Chinese Cork Tree

P. amurense—30 ft. A tree of spreading habit; leaves pinnate; much resembling the ash; bears greenish white flowers in May and brown, nearly black berries in Autumn. \$1.00.

PLATANUS. Plane Tree, Sycamore

P. orientalis—Oriental Plane. 60 ft. A lofty, wide-spreading tree of rapid growth, much used in Europe for avenues in cities, and rapidly gaining popularity here for the same purpose. Bears transplanting well, is comparatively free from insect pests, and can be supplied in quantity at very moderate prices. \$1.00, \$7.50 per 10.

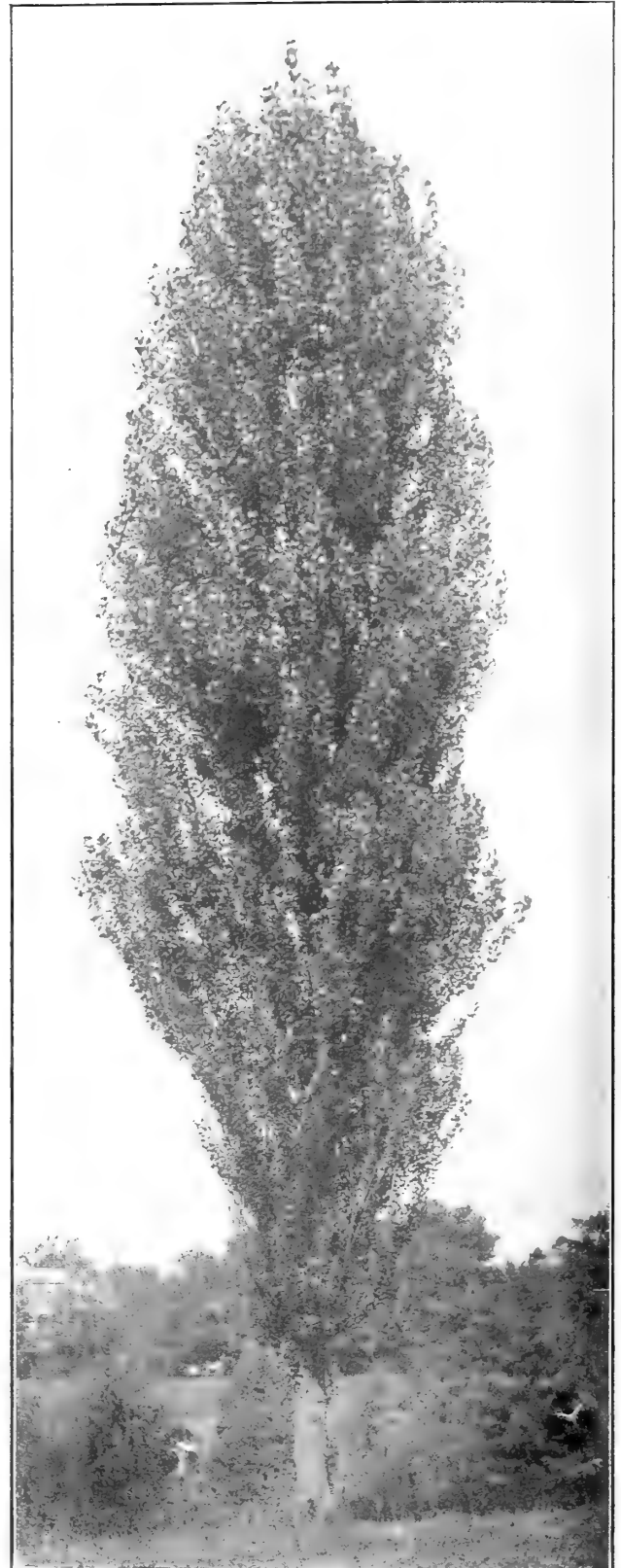
POPULUS. Poplar

P. alba—Silver Poplar. 40 ft. A rapid growing, conspicuous tree of great beauty on account of its foliage, which is abundant, dark green above and silvery beneath. Its one serious drawback is its tendency to sucker from the root. 50c. \$4.00 per 10.

var. Bolleana—30 ft. Of erect pyramidal growth; leaves with the same markings as the parent. A tree of distinct and striking character. 75c.

Populus fastigiata—Lombardy Poplar. 60 ft. Well known and when well developed a striking tree anywhere, and in certain situations invaluable. 75c. \$5.00 per 10.

P. monolifera—Carolina Poplar. 50 ft. Of strong, rapid growth, handsome green foliage, and while young of good habit and character, but is not an en-



POPULUS FASTIGIATA. Lombardy Poplar

POPULUS—Continued.

during tree; is much planted where quick effects are wanted. 75c. \$5.00 per 10.

var. Van Geertii—Golden Poplar. 30 ft. Foliage decidedly golden-tinted throughout the Summer, and useful for contrasts. \$1.00.

PTELEA. Hop Tree

P. trifoliata—12 ft. A small shrubby tree, bearing clusters of white flowers in June, followed by hop-like seeds in Autumn. 75c.

var. aurea—Golden Hop tree. 12 ft. Same as the above, but with golden-colored foliage. 75c.

PYRUS. Flowering Apple

Pyrus angustifolia—Bechtel's Flowering Crab. 15 ft. Tree of medium size, covered in early Spring with large double fragrant flowers of a delicate pink color. A desirable tree and certain to be popular wherever known. Blooms when quite young. \$1.00.

P. malus coronaria odorata—Fragrant Flowering Crab. 12 ft. A small growing tree bearing a profusion of pink blossoms about the middle of May. 75c.

var. Parkmanni—Parkman's Flowering Crab. 15 ft. The best flowering apple, bearing about May 1 an abundance of rosy pink flowers, in bunches, on long stems. The leaves are a shining green, long and narrow. A most lovely little tree at all times, but a sight of one in bloom will be long remembered. 75c.

PYRUS. Mountain Ash (See Sorbus)

QUERCUS. Oak

Possibly no other species of tree equals the Oak in all its characteristics; certainly none compare with it in enduring majesty. No tree is better suited for avenues on extensive places, and for this purpose it is steadily gaining ground in cities as well, though its complete adaptability is by no means established. The large growing sorts, given room for development, have no equals for lawns, and where natural conditions exist, no mistake will be made by planting them. Prune severely when transplanting.

Q. alba—White Oak. 60 ft. A noble and enduring tree of great beauty. Requires a large space for proper development. \$1.00 to \$2.00.

Quercus Cerris—Turkey Oak. 40 ft. Medium size; thick dense growth; foliage green until killed by frost. Very handsome and attractive. \$1.00.

Q. coccinea—Scarlet Oak. 50 ft. Makes a large shapely tree, especially attractive in Autumn, when the leaves change to a bright scarlet. \$2.00.

Q. macrocarpa—Mossy Cup Oak. 40 ft. A very beautiful tree, of massive open growth and large, heavy leaves. Acorns form in a mossy cup. \$1.00.

Q. palustris—Pin Oak. 40 ft. Perhaps the most beautiful of all the Oaks, but not the most enduring; leaves deep green and finely divided; grown singly, it should be allowed to branch to the ground. Makes a fine avenue tree. \$1.00 to \$2.00.

Q. phellos—Willow Oak. 40 ft. A tree of medium size and compact rather pyramidal form, leaves long and entire, like the Willow, and very persistent, adhering and retaining their green color until late in Autumn. \$1.00.

Q. prinus—Chestnut Oak. 30 ft. One of the finest species, resembling a chestnut tree. \$1.00.

Q. pedunculata—English Oak. 40 ft. Leaves long and much divided, retaining their green color until killed by heavy frosts; makes a round, symmetrical head, and will thrive near the sea. Planted close, makes a good hedge. \$1.00.

var. atropurpurea—Purple Oak. 20 ft. Similar to the preceding except the color of the foliage, which is dark and constant. Good for contrast. \$1.50.

var. concordia—Golden Oak. 25 ft. A rare sort, with golden yellow foliage in Spring and early Summer. Perhaps one of the best golden colored foliage trees extant. \$1.50.

var. pyramidalis—40 ft. Pyramidal Oak. Medium size and erect habit, like the Lombardy Poplar. \$1.00 to \$2.00.

RHUS, See shrubs.

ROBINIA. Locust

R. pseudacacia—Black or Yellow Locust. 50 ft. A native tree of large size and rapid growth. Leaves pinnate, of a lovely tint of green. The flowers, which are abundant, are borne on long pendulous racemes, and are white or yellowish in color and fragrant. Flowers in early June. 50c.



AN AVENUE OF PIN OAKS—QUERCUS PALUSTRIS

SALISBURIA. Maidenhair Tree

S. adiantifolia—40 ft. From Japan. Of large growth and columnar shape. Leaves of a light green and leathery texture, changing to yellow in Autumn. Has no insect enemies, and is winning popularity for city streets. \$1.00.

SALIX. Willow

S. Babylonica—Weeping Willow. 40 ft. A well known and particularly graceful tree; indispensable in all plantations. 50c.

S. caprea pendula—Kilmarnock Willow. 7 ft. The best known dwarf weeping tree and once very popular. The Weeping Mulberry, a better tree, is supplanting it. 50c.

S. elegantissima—Thurlow's Willow. 40 ft. Similar to but more upright growing than Babylonica. Is a better grower and a more hardy tree. 75c.

S. pentandra—Laurel-leaved. 25 ft. Foliage bright shining green, adherent until late Autumn. Should be allowed to branch to the ground. A valuable sea-shore tree. 50c.

S. rosmarinifolia—Rosemary Willow. 8 ft. Grafted five feet high, makes a handsome dwarf ornamental tree, with light green foliage and slender twigs. 75c.

S. vitellina aurea—Golden Willow. 25 ft. Bark of a bright golden color; especially attractive in Winter. 75c.

var. Britzensis—25 ft. Conspicuous in Winter when its red bark is most attractive. 75c.

SASSAFRAS

S. officinale—35 ft. A beautiful native tree, with oddly divided lustrous green foliage, changing to a rich yellow in Autumn. The whole tree, and especially the root, is highly aromatic. 75c.

SOPHORA

S. Japonica—25 ft. A tree quite rare and of distinct character, bearing abundant racemes of yellowish white flowers in August when almost no other tree is in bloom. Foliage good and abundant. Conspicuous in Winter because of its dark green bark. 75c.

SORBUS. Mountain Ash.

S. Aucuparia—European Mountain Ash. 25 ft. Handsome small tree, with pinnate foliage and bearing clusters of bright red berries in Fall. 75c.

var. pendula—Weeping Mountain Ash. 15 ft. Grafted 5 to 6 feet high, forms a spreading tree of much beauty. 75c.

var. quercifolia—Oak Leaved Mountain Ash. 20 ft. Habit pyramidal, with deeply lobed oak like leaves, green above and pubescent underneath. 75c.

TAXODIUM. Cypress

T. distichum—Deciduous Cypress. 50 ft. Of rapid pyramidal growth. Foliage delicate and graceful. Will thrive in wet soil, or will do well on upland. Furnishes the well known cypress lumber. 75c.

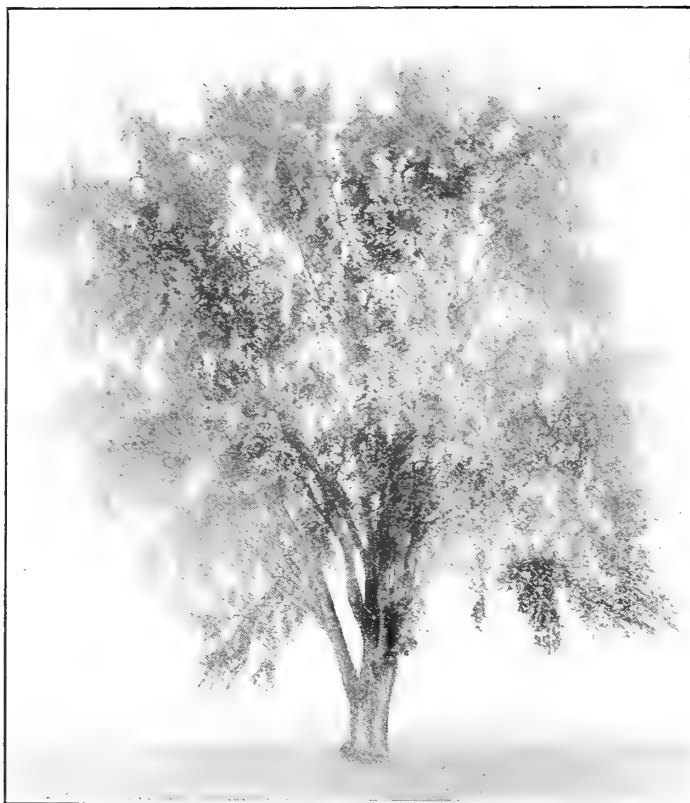
var. pendulum—Form and foliage like the preceding, but the stiff formal outline is transformed by its delicate pendent sprays into a veritable fountain of beauty. New and rare. \$2.00.

TILIA. Linden, or Lime

T. Americana—American Linden. 60 ft. A rapid growing native tree of large size. Large heart-shaped leaves and fragrant flowers. \$1.00. \$7.50 per 10.



AN AVENUE OF SALISBURIA ADIANTIFOLIA.



ULMUS AMERICANA. (Am. Elm)

Tilia Europaea—European Linden. 50 ft. Makes a compact, erect growth, but no so rapid or large as the American variety. Leaves smaller and flowers fragrant. \$1.00. \$7.50 per 10.

var. platyphyllos—Broad-Leaved European Linden. 50 ft. A tree growing about the same size as *T. Europaea*, but easily distinguished by its larger and rougher leaves, and is usually sold for European

Linden. The growth is more regular than the small leaved. \$1.00.

Tilia Europaea var. laciniata rubra—Red Cut-Leaved Linden. 25 ft. A beautiful and distinct variety. Leaves deeply and finely cut. Twigs bright red. \$1.50.
var. sulphurea—40 ft. A vigorous growing tree with bright yellow twigs; foliage darker than the common variety. \$1.00.

T. tomentosa—Silver Leaf Linden. 60 ft. A tree of large size and symmetrical habit. Leaves green above and silvery white beneath, giving the tree distinct character; leaves adherent until late Autumn. A valuable tree. \$1.50.

var. pendula—Weeping Linden. 40 ft. A fine, large weeping tree. Habit and appearance of foliage similar to *tomentosa*, but branches pendent and graceful. \$2.00.

ULMUS. Elm

U. Americana—American Elm. 60 ft. A large, lofty growing tree, the limbs of which droop in wide sweeping curves that are particularly attractive and graceful. The best avenue tree. It has fallen under a cloud in recent years because of the depredations of the elm beetle, but there are signs that this insect has nearly run its course. 75c. \$5.00 per 10.

U. Scabra—Scotch Elm. 60 ft. A fine spreading tree of rapid growth and attractive foliage. 75c.

var. Camperdownii—Camperdown Weeping Elm. 10 ft. Grafted 6 to 7 feet high this forms one of the most distinct and picturesque drooping trees. Growth luxuriant; leaves large, dark green and glossy. \$1.00 to \$2.00.

var. Damperi Wreidi—Golden Leaf Elm. 30 ft. A medium size tree with beautiful golden foliage in the Spring, fading during the Summer. A distinct novelty. \$1.50.

var. Huntingdoni—Huntington Elm. 50 ft. Of very erect habit and a rapid and vigorous grower. Bark clean and smooth. One of the best elms for any planting. \$1.50.



List of Trees for Avenue or Street Planting

Suitable also for the lawn where there is sufficient space. Described in their places in the Catalog.

DECIDUOUS TREES

- ACER DASycARPUM (Silver Maple).
 VAR. WIERII (Wier's Silver Maple).
 PLATANOIDES (Norway Maple).
 PSEUDO-PLATANUS (Sycamore Maple).
 RUBRUM (Red Maple).
 SACCHARUM (Sugar Maple).
 ÆSCULUS HIPPOCASTANUM (English Horse Chestnut).
 AILANTHUS GLANDULOSA (Ailanthus).
 CATALPA SPECIOSA (Catalpa).
 FRAXINUS AMERICANA (American White Ash).
 GYMNOCLADUS (Kentucky Coffee Tree).
 LIQUIDAMBAR STYRACIFLUA (Sweet Gum).
 LIRIODENDRON TULIPIFERA (Tulip Tree).
 MAGNOLIA ACUMINATA (Cucumber Tree).
 PLATANUS ORIENTALIS (Oriental Plane).
 POPULUS FASTIGIATA (Lombardy Poplar).
 MONILIFERA (Carolina Poplar).
 QUERCUS COCCINEA (Scarlet Oak).
 PALUSTRIS (Pin Oak).
 RUBRA (Red Oak).
 SALISBURIA ADIANTIFOLIA (Maidenhair).
 TILIA AMERICANA (American Linden).
 EUROPAEA (European Linden).
 PLATYPHYLLOS SULPHUREA (Lime Tree).
 TOMENTOSA (Silver Leaf Linden).
 ULMUS AMERICANA (American Elm).
 SCABRA (Scotch Elm).

WEEPING TREES

- ACER DASycARPUM WIERII (Wier's Maple).
 BETULA ALBA LACINIATA (Cut Leaved Birch).
 VAR. YOUNGII (Young's Weeping Birch).
 CERASUS ROSEA PENDULA (Weeping Cherry).
 CORNUS FLORIDA PENDULA (Weeping Dogwood).
 Dwarf.
 CORYLUS AVELLANA PENDULA (Weeping Hazel).
 FAGUS SYLVATICA PENDULA (Weeping Beech).
 VAR. PURPUREA PENDULA (Purple Weeping Beech).
 MORUS (Teas' Weeping Mulberry). Dwarf.
 SALIX BABYLONICA (Weeping Willow).
 CAPREA PENDULA (Kilmarnock Willow).
 SORBUS AUCUPARIA PENDULA (Weeping Mt. Ash).
 SYRINGA PEKINENSIS PENDULA (Weeping Lilac). See
 Shrubs.
 TAXODIUM DISTICHUM PENDULA (Deciduous Cypress).
 ULMUS SCABRA CAMPERDOWNI (Camperdown Elm).

FLOWERING AND ORNAMENTAL FRUITED TREES

- ÆSCULUS (Horse Chestnut).
 AMELANCHIER (Snowy Mespilus).
 AMYGDALUS (Peach). In variety.
 BENZOIN (Spicewood).
 CASTANEA. In variety.
 CATALPA (Indian Bean or Catalpa).
 CERASUS (Cherry). In variety.
 CERCIS (Judas).
 CLADRASTIS TINCTORIA (Yellow Wood).
 CORNUS (Dogwood).
 CRATAEGUS (Hawthorn). In variety.
 LABURNUM (Golden Chain).
 MAGNOLIA. In variety.
 PYRUS MALUS (Flowering Apple).
 ROBINIA (Locust).
 SORBUS AUCUPARIA (Mountain Ash).

TREES WITH COLORED FOLIAGE

- ACER PLATANOIDES REITENBACHI (Purple).
 VAR. SCHWEDLERI (Purple).
 JAPONICUM AUREUM (Yellow).
 POLYMORPHUM ATROPURPUREUM (Purple).
 VAR. ATROPUREUM DISSECTUM (Purple).
 VAR. SANGUINEUM (Red).
 BETULA ALBA PURPUREA (Purple).
 FAGUS SYLVATICA PURPUREA (Purple).
 VAR. RIVERSI (Deep Purple).
 QUERCUS PEDUNCULATA ATROPURPUREA (Purple).
 CONCORDIA (Golden).

TREES WITH BRIGHT-COLORED BARK IN WINTER

- ACER PENNSYLVANICUM.
 BETULA ALBA. In variety.
 SALIX VITELLINA AUREA.
 VAR. BRITZENSIS.
 TILIA. In variety.

DECIDUOUS SHRUBS

Pruning

The practice of indiscriminate pruning of shrubs in Winter should be discouraged since, by doing so, you will in most sorts cut away the flower bearing wood, and when the season of bloom is come suffer disappointment in consequence.

The early April, May and June shrubs are of this character, and what pruning they receive should be done after the period of bloom.

The late Summer and Fall blooming species bear flowers on wood of the same season's growth, and the more of this you have the greater the amount of bloom. Severe Winter pruning tends, for a time at least, to encourage strong new growth, though unquestionably it tends, too, to lower vitality and should not therefore be practiced continually.

Indeed, the object of pruning should be chiefly to accentuate the beauties of natural forms, which are always best, and should as much as possible be sought for. To this end thin judiciously and cut back sparingly, remembering to do this at the seasons and for the reasons stated. It is better in small places to use small and dwarf shrubs and allow free development, rather than the large-growing sorts that, to be kept within bounds, must suffer mutilation and disfigurement.

Figures after specific names indicate approximately the height of shrubs when approaching maturity.

AMYGDALUS. Flowering Almond

Amygdalus—Pink and white. 3 ft. The long shoots of this shrub are full of double rose-like blooms; very conspicuous and attractive. 35c.

ANDROMEDA

A. Mariana—3 ft. A beautiful species, bearing a profusion of white waxy flowers along the whole length of the shoots in early June. 35c. (For evergreen sorts see Evergreen Shrubs).

AZALEA

A. calendulacea—Flame Colored Azalea. 4 ft. Native of the southern Alleghenies. Blooms in latter part of May. Very showy. 50c.

A. mollis—Chinese Azalea. 3 ft. A most desirable and attractive dwarf shrub, bearing an abundance of large, bright red and yellow blossoms, and varying shades of same in May. In masses they are most gorgeous; entirely hardy. 75c. \$5.00 per 10.



AZALEA VISCOSA

Azalea nudiflora. Wood Honeysuckle. 4 ft. A common native shrub of great beauty, bearing a profusion of pink blossoms about the middle of May. 50c.

A. Pontica—Ghent Azalea. 4 ft. Better known than *Mollis*, but in no wise superior, except perhaps in affording a greater range of coloring, running from cream color through yellow and orange to scarlet. Suited for planting in the foreground of the *Rhododendron* bed. \$1.00. \$7.50 per 10.

A. Vaseyi, or *Rhododendron Vaseyi*—8 ft. A new plant from the southern Alleghenies now being introduced. Is entirely hardy, and bears in June a profusion of delicate pink flowers. Charms all who see it. \$1.00.

A. viscosa—Sweet Honeysuckle. 6 ft. Another neglected native shrub of great beauty; bears in latter June pure white, exceedingly fragrant flowers. 35c.

BACCHARIS

B. halimifolia—5 ft. A valuable shrub for the seashore, as it grows naturally near the sea. Blooms in late Summer. 35c.

BERBERIS. Barberry

B. illicifolia—Holly Leaf Barberry. 5 ft. Large dark green holly like leaves, adherent until well into the Winter. A desirable variety. 50c.

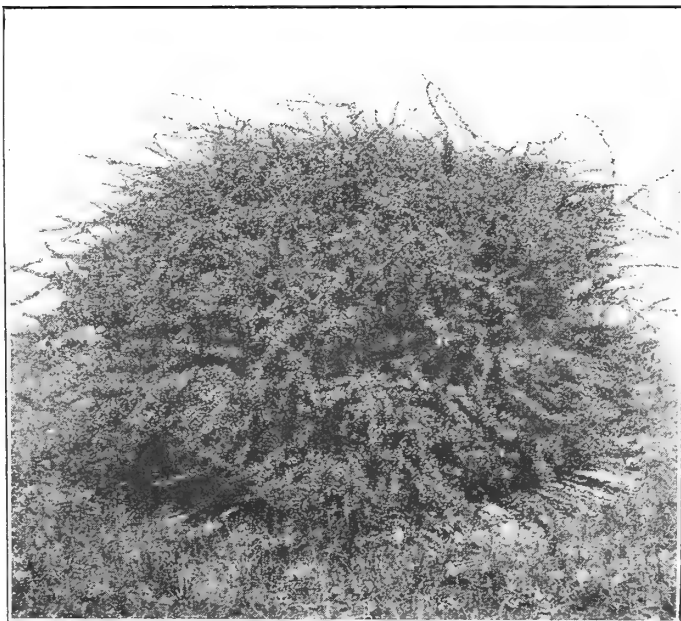
B. Thunbergii—Japanese Barberry. 4 ft. Of very dense, dwarf, spreading habit. Foliage neat and abundant, coloring gorgeously in Autumn. One of the very best shrubs extant; makes an excellent ornamental hedge. Scarlet fruit adherent nearly all Winter. 35c. \$2.50 per 10.

B. vulgaris—Common Barberry. 4 ft. Of erect growth and with prickly stems, bearing pretty yellow flowers in May. Fruit purplish red, abundant and adherent. Makes a good hedge. 35c. \$2.50 per 10.

B. vulgaris purpurea—4 ft. A desirable purple-leaved shrub of upright habit and prickly stem, bearing an abundance of yellow flowers in May and reddish purple fruit in Autumn. Adherent nearly all Winter. 35c. \$2.00 per 10.

CALLICARPA

C. purpurea—4 ft. A dwarf shrub, bearing small, light purple flowers in July, followed in Autumn by violet purple berries in great profusion and of striking beauty. 35c.



BERBERIS THUNBERGII. See page 17.

CALYCANTHUS. Sweet Shrub

C. floridus—Pineapple Shrub. 5 ft. Well known and prized for its brown, fragrant flowers in May; the whole plant is aromatic. 35c. \$3.00 per 10.

CARAGANA. Siberian Pea Tree

C. arborescens—4 ft. June. Showy, small yellow flowers. Dark green wood and neat foliage. 35c.

CARYOPTERIS. Blue Spirea

C. mastacanthus—2 ft. A new late blooming shrub, recently introduced as the Blue Spirea, which name is incorrect, as it does not belong to the Spirea family. It is, however, a most desirable novelty, bearing in the axil of each leaf a bunch of bright blue flowers. Flowers through September and October. Plant of dwarf habit. 35c. \$2.50 per 10.

CATALPA. Chinese Catalpa

C. Bungei—5 ft. A rapid growing, dense, round headed tree of dwarf character, with large heart-shaped leaves. As a shrub, conspicuous and effective. 50c. (See also Trees).

CEANOTHUS. Jersey Tea

C. Americanus—3 ft. A dwarf shrub, bearing a profusion of white flowers in panicles in June. Is especially suited for woodland borders. 25c. \$2.00 per 10.

CEPHALANTHUS

C. occidentalis—5 ft. A good sized native shrub, bearing globular heads of white flowers in July. Delights in a wet soil, but will thrive in upland. 25c. \$2.00 per 10.

CHIONANTHUS. White Fringe

C. Virginica—8 ft. Another very desirable large growing shrub, bearing racemes of fringe-like white flowers in latter May. Its purple fruit, too, is highly ornamental, as is also its deep lustrous green foliage. 50c. \$4.00 per 10.

CLETHRA. Sweet Pepper Bush

C. alnifolia—4 ft. A native shrub, bearing profusely, spikes of yellowish white, scented flowers in August. 35c. \$3.00 per 10.

COLUTEA. Bladder Senna

C. arborescens—5 ft. A large growing shrub, bearing yellow pea-shaped flowers in early June, followed by large, inflated seed pods. 35c. \$3.00 per 10.

COMPTONIA. Sweet Fern

C. asplenifolia—2 ft. A native shrub, with aromatic, fern-like foliage. Grows and thrives in poor dry soils and open woodlands. 35c.

CORCHORUS. Kerria

C. Japonica—Japan Corchorus. 3 ft. A slender, green-branched shrub, of spreading habit, with globular yellow flowers, blooming from June to October. 35c. \$3.00 per 10.

var. flore pleno—Double flowering Corchorus. 3 ft. A medium sized shrub, with double yellow flowers. July to October. 35c.

var. variegata—2 ft. A delicate twigged, dwarf shrub, with white and green variegated leaves and single pale yellow flowers. 25c. \$2.00 per 10.

CORNUS. Dogwood

Cornus alba—Red Twigged Dogwood. 5 ft. Flowers white, in June. It is valued chiefly for its blood red bark in Winter, and is highly ornamental and effective. To secure the vivid color the plant must be severely pruned; indeed, for this purpose it is best to cut it down annually in early Spring. 25c. \$2.00 per 10.

C. alternifolia—Blue Dogwood. 6 ft. Another native plant, quite distinct, which forms a large shrub or small tree. The peculiar arrangement of the branches gives the shrub a flattened aspect. The bark is greenish, striped with white; the fruit is deep blue. 35c. \$3.00 per 10.

C. mas—Cornelian Cherry. 12 ft. A large shrub or small tree, native of Europe, distinguished in very early Spring by its dense clusters of small yellow flowers, and in late Summer by large bright red fruit. Very conspicuous and attractive. 35c.

C. sanguinea variegata—White variegated Dogwood. 3 ft. Of dwarf habit and very conspicuous with its variegated foliage and blood red bark. 35c. \$3.00 per 10.

var. Spæthi aurea—Golden Leaved Dogwood. Similar to *C. sanguinea variegata*, except in this we have yellow instead of white variegation. The markings of both are constant during the Summer. 50c. \$4.00 per 10.

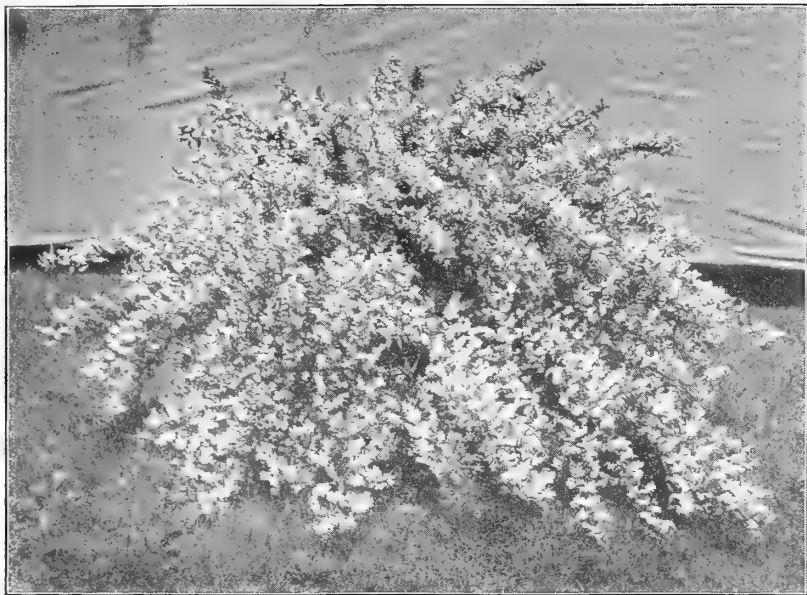
C. Sibirica—5 ft. This species does not differ greatly from *C. alba*. 35c. \$3.50 per 10.

C. stolonifera—Wild Red Ozier Dogwood. 5 ft. A native species, with smooth, slender branches, which are usually red in Winter. 35c. \$3.00 per 10. (For other Cornus see Deciduous Trees).

CORYLUS. Hazel Nut

C. Americana—American Hazel Nut. 6 ft. A large shrub, bearing small, sweet nuts. 35c. \$3.00 per 10.

C. Avellana—European Hazel Nut. 6 ft. 35c. \$3.00 per 10.



DEUTZIA GRACILIS

Corylus Avellana var. atropurpurea—Purple Hazel Nut. 6 ft. Leaves, when first expanded, a deep purple, fading as the season advances, to a lighter tint. Valuable for making color effects among large shrubs. 50c.

var. laciniata—Cut Leaf Filbert. 5 ft. A very ornamental shrub, with deeply cut foliage. 75c.

CYDONIA. Japan Quince

C. Japonica—4 ft. An old favorite. The plant in early Spring is enveloped in bloom of a rich deep color. Its only drawback is its liability to scale infestation. 25c. \$2.00 per 10.

DAPHNE

D. Genkwa—Japan Daphne. 2 ft. A beautiful, slender, upright growing shrub, with numerous long, downy twigs, which in early Spring, before the leaves appear, bear violet colored, fragrant tubular flowers. \$1.00.

D. Mezereum—2 ft. A beautiful and sweet scented flowering shrub. The pink flowers appear on the naked stems in the first warm days of Spring. 50c.

var. album—2 ft. White flowers. 50c.

DESMODIUM. See Lespedeza

DEUTZIA

An elegant species of strong, erect growing shrubs, except the dwarf sort, *D. gracilis*. They bear numerous elongated clusters of white and pinkish white flowers in May.

D. crenata candidissima—Double White Deutzia. 6 ft. Flowers very double and snow white. 35c. \$2.50 per 10.

var. fl. pl.—Double Pink Deutzia. 6 ft. Flowers double and distinctly marked on the outside of the petals with pink or red stripes. 35c. \$2.50 per 10.

var. Pride of Rochester—6 ft. Flowers a few days before the preceding. Is very double, floriferous, and the petals only faintly tinged with rose. 35c. \$2.50 per 10.

D. gracilis—3 ft. Of dwarf and bushy habit, bearing racemes of pure white drooping flowers. An elegant shrub. 25c. \$2.00 per 10.

D. Lemoinei—4 ft. White flower. A hybrid between *gracilis* and the tall-growing varieties. Dwarf habit. 35c.

Deutzia parviflora—5 ft. A native of Northern China. Of upright growth. Stems covered in June with creamy white flowers, in large corymbs. 50c.

D. scabra—5 ft. Single white flowers, bell shaped in small clusters. Foliage oval, rough underneath. Of dwarf habit. 35c.

DIERVILLA. Weigela

A very ornamental and popular class of shrubs, flowering in latter May and June, in pink, red and white. Adapted to all soils and nearly all locations. The last named species is native of America, the others being of north China origin and hybrids of same.

D. floribunda—5 ft. Crimson flowers, white stamens. Free blooming in the Spring and sparingly in late Summer. 35c. \$3.00 per 10.

var. Lavalleyi—5 ft. Plant of more vigorous growth and bearing smaller and deeper colored flowers. 35c. \$3.00 per 10.

D. florida, syn. rosea—4 ft. The first introduced Diervilla, well known and popular. The foliage and habit is good, the flowers often variable in color, pink, rose and nearly white flowers being often seen on the same bush. 35c. \$3.00 per 10.

var. amabilis—5 ft. Of more irregular form and somewhat pendent habit. A free and intermittent blooming variety. 35c. \$3.00 per 10.

var. candida—6 ft. A very strong and upright growing sort bearing pure white flowers. 35c. \$3.00 per 10.

var. variegata—5 ft. An excellent variegated leaf plant having abundant and enduring foliage. 35c. \$3.00 per 10.



DIERVILLA. WEIGELA

Diervilla hybrida, var. *Eva Rathke*—4 ft. Flowers crimson, making a striking contrast with the white stamens. A most profuse bloomer in Spring and again in late Autumn. A most desirable sort. 35c. \$3.00 per 10.

var. *Steltzerni*—5 ft. Flowers dark red; form upright. 35c.

var. *Van Houttei*—5 ft. A free blooming and strong growing sort, bearing carmine colored flowers. 35c.

D. sessilifolia—3 ft. A dwarf native shrub bearing terminal panicles of yellow flowers in June and at intervals throughout the Summer. 35c.

ELAEAGNUS. Silver Thorn

E. longipes—Silver Thorn. 5 ft. Of dwarf spreading habit. Leaves dark green above, silvery beneath; flowers yellow; fruit bright red, covered with small white dots. Fruit abundant and edible. Highly ornamental and recommended. 35c. \$3.00 per 10.

E. umbellata—6 ft. An irregular tall growing shrub with the foliage and fruit characteristic of the genus. In this variety the fruit ripens in late Autumn, is red in color and very showy. 50c.

EUONYMUS. Strawberry Tree

E. alatus—10 ft. Corky bark. Of dwarf compact habit. Leaves small, followed by red fruit in Autumn. This shrub is beautiful when the foliage turns to a bright red. 75c.

E. atropurpureus—Burning Bush or Wahoo. 12 ft. A tall growing shrub with deep purple flowers in June. Fruit scarlet in Autumn. Broad foliage. 50c.

E. Europaeus—European Burning Bush. 12 ft. A shrubby tree, well known and valued for its ornamental fruit, which is adherent nearly all Winter. 35c.



HIBISCUS SYRIACUS

EXOCHORDA

E. grandiflora—6 ft. A beautiful shrub, bearing racemes of large white flowers, covering the bush about the middle of May. Makes a good specimen shrub. 35c. \$3.00 per 10.

FORSYTHIA. Golden Bell

Forsythia intermedia—5 ft. Slender, erect, sometimes arching branches. Foliage resembles *Suspensa*; very floriferous. 35c.

F. suspensa—Weeping Forsythia. 5 ft. Growth more delicate and slender than the preceding, and habit more pendent. Graceful and beautiful. 35c. \$3.00 per 10.

var. *Fortunei*—Golden Bell. 5 ft. Bears golden yellow flowers in great abundance before the leaves expand in early Spring. Habit pendent and graceful. 35c. \$3.00 per 10.

F. viridissima—5 ft. Robust grower; habit straggling; flowers and bark of more intense color. 30c. \$2.50 per 10.

HAMAMELIS. Witch Hazel

H. Virginiana—8 ft. A curious and interesting shrub of large growth, bearing ribbons of bright yellow blossoms in late Autumn when the leaves are falling. Has large rounded leaves of a delicate golden green tint, changing to a full yellow in Autumn. 35c. \$3.00 per 10.

HIBISCUS. Rose of Sharon; Althea

H. Syriacus—8 ft. Well known and valuable shrubs for their abundant and continuous bloom through August and September. As they bloom on new wood only, must be trimmed in Winter. Flowers pink, purple, red and white, and in varying shades, single and double. We enumerate some of the best, but not all the sorts we grow. 25c. to 50c. \$2.00 to \$3.50 per 10, \$10.00 to \$20.00 per 100; tree form, 75c. to \$1.00 each.

var. *Amarinthe*—Dark double red.

var. *Boule de Feu*—Double red; strong grower.

var. *Compte de Hainault*—Double pink; beautiful.

var. *cœrulea*—Single blue; distinct and fine.

var. *elegantissima*—Double pink, shaded white.

var. *Joan of Arc*—Pure double white.

var. *Leopoldii*—Light pink.

var. *Ordens*—Double red.

var. *Pompon Rouge*—Double red.

var. *pulcherrima*—Double pink, dark center.

var. *totus albus*—Pure single white.

var. *variegata*—Double purple; variegated, foliage constant, and where such foliage is wanted the best plant for the purpose extant.

var. *variegata Meehani*—Nearly like the preceding, except the flowers are single and expand fully. This variety is being introduced as a novelty.

HIPPOPHAE. Sea Buckthorn

H. rhamnoides—4 ft. A plant that will attract attention because of its grayish white but not abundant foliage. Does well near salt water. 25c.

HYDRANGEA

H. arborescens—5 ft. An American shrub of erect habit, bearing in June white flowers in terminal cymes. 35c.

H. Hortensis—2 ft. Large dark green leaves; massive globular heads of rose colored and blue flowers. Not entirely hardy. 50c.

var. monstrosa—2 ft. A sort distinguished for its immense heads of bloom. The color of the flowers of *Hortensis* and its varieties is determined largely by soil and season. They range from nearly white to bright pink and intense blue. They are highly decorative plants in foliage and bloom. 50c.

var. Otaksa—2 ft. Foliage deep green; flowers rose colored in immense trusses in July. Requires protection in Winter. 50c.



HYDRANGEA HORTENSIS

H. paniculata—Panicked Hydrangea. 5 ft. A vigorous Japanese shrub, bearing long, loose panicles of white flowers in July. Conspicuous and beautiful. 50c.

var. grandiflora—5 ft. The well known and popular Hydrangea, bearing immense pyramidal panicles of flowers from August to frost. Flowers very lasting, at first white, changing to rose color with age. Prune severely in Winter. 30c. \$2.50 per 10.

H. quercifolia—Oak Leaved Hydrangea. 3 ft. A hardy native shrub, remarkable for its large leaves, which are lobed like those of the Oak, and downy beneath; flowers cream colored in medium sized panicles; August. Very desirable. 50c.

HYPERICUM. St. John's Wort

H. aureum—3 ft. An upright, hardy shrub bearing a great profusion of golden yellow flowers in latter Summer, which continue a long time. Very showy. 35c.

H. densiflorum—Shrubby St. John's Wort. 3 ft. A species with large clusters of yellow flowers appearing in July and continuing for a long time. 35c.

H. Moserianum—1½ ft. A shrub of dwarf habit, valuable for its persistent and beautiful bloom; flowers very large, rich yellow, from July to late Fall. Cut back severely in late Winter. 30c. \$2.50 per 10.

ITEA

I. Virginica—4 ft. A pretty native shrub; quite rare, bearing white flowers in June. Valuable for its rich coloring in Autumn. 35c. \$3.00 per 10.

JASMINUM

J. nudiflorum—3 ft. A small, slender shrub, bearing yellow flowers in March or April, or even earlier, if the weather is very mild. Of twining habit and will cover a trellis. 35c.

LESPEDEZA. Desmodium

L. Sieboldi—3 ft. A fine late September blooming shrub, bearing abundant sprays of rose colored flowers. A most showy plant at any time, but its late blooming qualities make it particularly desirable. 35c. \$3.00 per 10.

L. Japonica—3 ft. Similar to the preceding but with more delicate foliage and later pure white flowers. 35c.

LIGUSTRUM. Privet

L. Iboti—Japan Privet. 5 ft. Very highly recommended, and a distinct and valuable sort. Very hardy. 25c. \$2.00 per 10.

var. media—2 ft. A very compact, dwarf growing variety, especially suited for small places. 25c. \$2.50 per 10.

var. Regelianum—2 ft. A low, dense shrub, with almost horizontal spreading pendent branches. Leaves are oblong or obovate. 35c. \$3.00 per 10.

L. ovalifolium—California Privet. 10 ft. The well known variety so extensively used for hedging. Makes a fine, large specimen shrub, bearing white, odoriferous flowers. 25c. \$2.00 per 10, \$3.00 to \$10.00 per 100.

var. tricolor—3 ft. A variety of the above beautifully marked yellow, white and green. Colors permanent and very ornamental. 35c.

L. vulgare—European Privet. 5 ft. Leaves dark green and smaller than *Ovalifolium*. Habit more spreading. Makes a good hedge, although for this purpose inferior to the California Privet. 35c.

LONICERA. Bush Honeysuckle

L. Alberti—Siberian Honeysuckle. 1½ ft. Leaves very narrow and long, of a blue tint, borne on slender, drooping branches. Makes a small and pretty rounded plant of pendulous habit, crowned in latter June with a great profusion of delicate, exceedingly fragrant pink flowers. Rare and most desirable. 50c.

L. fragrantissima—5 ft. An irregular spreading shrub, bearing in great profusion cream white, exceedingly fragrant flowers very early in Spring. Nearly evergreen habit. 35c.



JAPAN HONEYSUCKLE

LONICERA—Continued.

- Lonicera Morrowi**—5 ft. A new sort from Japan, bearing cream white flowers, followed later by a great profusion of amber and red fruit, which is its crowning Autumn glory. 35c. \$3.00 per 10.
- L. Standishii**—5 ft. A native of China, with creamy white, fragrant flowers, blooming in May, before the leaves appear. 50c.
- L. Tatarica**—Upright Honeysuckle. 4 ft. In colors of pink, red and white; very handsome and attractive shrub in flower and fruit, and deserving more extensive use. 35c. \$3.00 per 10.

MYRICA. Bayberry

- M. cerifera**—Candleberry, or Wax Myrtle. 3 ft. A handsome, dense growing shrub of rounded habit, with rich, dark green, persistent foliage. A shrub thriving in the poorest soils and most exposed situations. 25c. \$2.00 per 10.

PAEONIA

- P. Moutan**—Tree Pæony. 3 ft. Of slow growth, but hardy and enduring; flowers rosy pink, large and attractive. Plant in rich soil. \$1.00. Named sorts \$1.50 and \$2.00.

PAVIA. Dwarf Horse Chestnut

For large growing Pavia, see Deciduous Trees.

- P. macrostachya**—7 ft. Irregular habit; from the apex of each shoot a panicle of white flowers is produced in July. Very attractive and ornamental. 50c.

PHILADELPHUS. Mock Orange.

The Syringa is a most valuable shrub. It is hardy, has good foliage and bears a profusion of flowers, nearly all of which have a marked and pleasing odor. Their season of bloom is just after the Diervillas and early Spiræas. Are suited for planting singly as specimens or in the shrubbery border.

Philadelphus coronarius—Mock Orange. 5 ft. Well known, and valuable for its sweet scented white flowers in June. 35c. \$3.00 per 10.

var. aureus—Golden Syringa. 3 ft. Habit dwarf and compact; foliage bright golden and enduring. Very desirable. 35c. \$3.00 per 10.

P. Gordonianus—7 ft. July. A very late bloomer, and valuable for this quality. Large, fragrant flowers. 35c.

P. grandiflorus—7 ft. A large flowered strong growing sort. 35c. \$3.00 per 10.

var. Keteleeri flore pleno—6 ft. Of the same general character as Grandiflora but bearing handsome double sweet scented flowers. 50c.

P. microphyllus—3 ft. Of dwarf slender habit, small leaves and flowers which are delightfully fragrant. A very distinct species. 30c. \$2.50 per 10.

POTENTILLA. Cinquefoil.

P. fruticosa—Shrubby Cinquefoil. 2 ft. A native shrubby species, of erect habit, very compact, and with long, silky, pubescent leaves. The flowers are pretty, of a bright yellow color, and are quite showy when the plants are massed together. 25c. \$2.00 per 10.

PRINOS. Black Alder

P. verticillata—5 ft. A fine native shrub of upright habit and dark colored bark, particularly attractive in late Autumn and early Winter on account of its abundant bright red berries. 30c. \$2.50 per 10.

PRUNUS. Plum

P. Pissardi—Purple Leaf Plum. 8 ft. The best purple leaved plant we have, the color being intense and enduring; flowers white, in April, followed later by edible fruit. Can be trained as a small tree if desired. 50c. \$4.00 per 10.

P. tomentosa—5 ft. A species from Japan. It has beautiful plaited leaves and pink flowers in May, followed by red fruit. A very handsome shrub. 50c.

P. triloba—Double Flowering Plum. 4 ft. This is planted for its large, double pink flowers, which are among the first in May. 35c.

For PTELEA, See Deciduous Trees

RHODOTYPUS

R. kerrioides—5 ft. A new shrub, bearing conspicuous white flowers on the ends of the twigs; blooms open about the middle of May, and continuously for a long time thereafter. Most desirable. 35c. \$3.00 per 10.

RHUS. Sumac

R. aromatica—Fragrant Sumac. 5 ft. Low spreading shrub with glossy, aromatic foliage. 35c.

R. copallina—Shining Sumac. 6 ft. Beautiful native shrub, glossy foliage which in the Fall is very brilliant. 35c.

R. cotinus—Purple Fringe. 8 ft. The well known Smoke Tree; of small size, round, glossy foliage. The seed vessels are of a reddish purple borne in great profusion. 50c.

var. atropurpurea—8 ft. Similar to the preceding except in the deeper color of the seed vessels. A decided novelty. 50c.

R. glabra laciniata—Cut Leaf Sumac. 3 ft. A beautiful shrub, with large leaves, deeply and finely cut, with a drooping, graceful habit. Leaves assume a gorgeous crimson color in Autumn. 50c.

RHUS—Continued.

- Rhus typhina**—Staghorn Sumac. 10 ft. A small shrubby tree of irregular form and conspicuous Autumn fruit and foliage. 50c.
- var. laciniata**—10 ft. Of the same character as the species but with delicately cut, almost fern-like, foliage. 50c.

RIBES. Currant

- R. aureum**—Yellow Flowering Currant. 5 ft. Flowers yellow, with pink stamens and sweet scented. Very good habit. Bears edible fruit. 35c. \$3.00 per 10.
- R. Gordonianum**—Gordon's Currant. 5 ft. A hybrid between aureum and sanguineum. A hardy and profuse blooming shrub, bearing crimson and yellow flowers on pendent branches in May. 35c. \$3.00 per 10.
- R. sanguineum**—5 ft. Blooms abundantly in May, bearing bright pink, almost carmine flowers. 35c. \$3.00 per 10.

ROSA. Rose

We class the wild Roses among shrubs since it seems they best fit in such place. They are used largely in shrubbery and hedge borders, where their generally good foliage, graceful habit, abundant bloom and bright fruit seem especially fitting.

- R. lucida**—3 ft. A native sort of rather dwarf habit. Bears rosy pink, single flowers in early June, and red fruit in the Fall. Showy in masses on the borders of a wood. 25c. \$2.00 per 10.
- R. multiflora, var. Thunbergiana**—6 ft. Of very robust habit, making long, arching canes. Covered in June with white fragrant flowers, followed by scarlet hips adherent all Winter. 25c. \$2.00 per 10.
- R. rubiginosa**—4 ft. The well known Sweetbrier. The whole plant exhales a delightful fragrance. 25c.
- R. rugosa**—Japan Rose. 4 ft. We class this among shrubs, for while it will adorn any location, we especially recommend it for the shrubbery border. Its vigorous, robust habit, handsome foliage and flowers, especially recommend it. The last possess a delightful fragrance, and are followed by large bright hips, that prolong the attraction of the plant well into the Winter. Hardy everywhere and should be planted by everybody. 35c. \$2.50 per 10, \$15.00 per 100.
- var. alba**—4 ft. Similar in all respects to the preceding except in color of flowers, which are pure white. 35c. \$3.00 per 10.
- R. setigera**—Prairie Rose. 5 ft. Of most vigorous growth and clean, healthy foliage, bearing in July a profusion of delicate pink single flowers, on long arching canes. 30c. \$2.50 per 10.
- R. Wichuraiana**—Memorial Rose. 2 ft. A creeping sort, with small, dark green and shining leaves. Flowers single, white, with prominent yellow stamens. Good for covering banks, rocks or similar places. 25c. \$2.00 per 10. (We offer, too, many hybrids of Wichuraiana.)

SAMBUCUS. Elder

- S. canadensis**—American Elder. 5 ft. Although a common wayside shrub, it is deserving a place in the larger cultivated plantations. The great cymes of snow white flowers are exceedingly showy and the Autumn display of deep purplish fruit is likewise attractive. 35c. \$2.00 per 10.

- Sambucus nigra aurea**—Golden Elder. 5 ft. Foliage bright golden yellow, much used for color effect in shrubberies, and very desirable. 35c. \$2.50 per 10.
- var. laciniata**—3 ft. The leaves are finely cut, making the plant very elegant and graceful. 35c.
- S. racemosa**—Red Berried Elder. 5 ft. Wood thicker than Canadensis and bark warty. Flowers and the red fruit borne on paniculate cymes, the latter ripening in June while the other varieties are still in flower. 35c.

SPIRAEA

- S. arguta**—3 ft. Of dwarf habit, with clear white flowers in early Spring. Foliage very attractive, and habit graceful. 25c. \$2.00 per 10.
- S. Billardi**—5 ft. Bright rosy pink flowers in terminal spikes, from July to October. 25c. \$2.00 per 10.
- S. Bumalda**—2 ft. Dwarf habit, bearing numerous flat heads of rosy pink flowers from June until Autumn is well advanced. To have good blooms cut away all fading flowers. 25c. \$2.00 per 10.
- var. Anthony Waterer**—2 ft. Identical in all respects with the preceding, except the flowers, which are deep pink, showy and attractive. Observation satisfies us that this is the best all Summer blooming dwarf shrub in cultivation. 25c. \$2.00 per 10.



ROSA RUGOSA

- S. callosa**—4 ft. Of upright habit, the terminal shoots and leaves having a rosy tint, and bearing flowers of similar color in flattened heads in July. 25c. \$2.00 per 10.
- var. alba**—2 ft. Similar in growth but more dwarf than the preceding; bearing pure white flowers. 25c.
- S. opulifolia**—6 ft. Vigorous, upright; white flowers in flat heads in latter May. 35c. \$2.50 per 10.
- var. aurea**—6 ft. A vigorous golden leaved variety, white flowers in flat heads in early June. Foliage attractive in early Summer. 35c. \$2.50 per 10.

SPIRÆA—Continued.

- Spiræa prunifolia*—Bridal Wreath. 4 ft. Bears handsome double white flowers all along the branches in early Spring before the leaves are expanded. Foliage colors finely in Autumn. 35c. \$2.50 per 10.
- S. Reevesiana*—4 ft. Bears beautiful white flowers in clusters about June 1. There is a single and double flowering variety. Both are desirable. 35c. \$2.50 per 10.
- S. rotundifolia*—4 ft. Of irregular form and spreading branches, dark green, nearly round leaves which are adherent until late in Autumn. Showy white flowers in umbel-like racemes in June. 35c., \$3.00 per 10.
- S. Thunbergii*—4 ft. Of dwarf habit; very graceful; single white flowers before the leaves expand in early Spring, distributed all over the plant. Autumnal coloring particularly good. 25c. \$2.00 per 10.



SPIRÆA VAN HOUTTE

- S. tomentosa*—3 ft. Midsummer blooming variety, bearing pink flowers in panicles. 35c.
- S. Van Houttei*—5 ft. Habit of plant graceful, bearing white flowers in great abundance in latter May. One of the best. 35c. \$2.50 per 10.

STEPHANANDRA

- S. flexuosa*—4 ft. A graceful shrub of compact growth, with small, hawthorn like leaves. Foliage of good color, delicate, bearing extremely pretty white flowers in June. 35c. \$2.00 per 10.

STUARTIA. American Camellia

- S. pentagyna*—6 ft. An exceedingly rare and beautiful shrub bearing in June lovely white flowers 2 in. or more in diameter. The flowers have wavy crenulate margins, white stamens and orange yellow anthers. The Autumnal coloring of the foliage is brilliant. 75c.

STYRAX

- S. Japonica*—8 ft. A shrub or small tree of elegant form and habit, bearing white bell shaped flowers all along the branches, and pendent on long pedicels. Very showy. 50c.

SYMPHORICARPUS. Snowberry

- S. racemosus*—Snowberry. 4 ft. Much valued for its white berries borne abundantly in Autumn. Especially conspicuous in masses. 25c. \$2.00 per 10.
- S. vulgaris*—Red Fruited Snowberry. 3 ft. Fruit not so large as the preceding, but more abundant. Habit of plant graceful. 25c. \$2.00 per 10.

SYRINGA. Lilac

The Lilac is a well known and deservedly popular shrub. Its thick leathery foliage and lovely sweet scented flowers commend it to all. There are no better sorts than the old fashioned purple and white varieties, but there are many whose bloom is as good and that are much more floriferous, and that bloom as soon as planted, while the old purple and white must attain size and age before flowering. We, therefore, heartily commend the other varieties listed here.

- S. Japonica*—Japan Tree Lilac. 12 ft. From Japan, where it attains the height and dignity of a tree 25 ft. or more. It is of upright growth with heavy strong branches. The foliage is abundant and of leathery texture. Flowers white, late, a month after other lilacs, in large terminal panicles. A most satisfactory shrubby tree. 50c. \$4.00 per 10.
- S. ligustrum*—5 ft. A variety blooming late and bearing creamy white flowers in spikes. Good foliage and habit. 35c.
- S. Pekinensis pendula*—Weeping Lilac. 6 ft. A form of distinct character, with long, pendent branches, bearing a profusion of white, fragrant flowers later than the common Lilac. Grafted high it is picturesque and beautiful. \$1.00.
- S. Persica*—Persian Lilac. 5 ft. Purple. A profuse and early blooming sort, bearing light purple flowers. 35c. \$2.50 per 10.

- var. alba*—5 ft. Same habit and form as the preceding, but almost white flowers. 35c. \$2.50 per 10.
- S. Rothomagensis*—5 ft. Beautiful, reddish purple, large, fine and free blooming. One of the best. 50c.
- S. villosa*—Hairy Leaved Lilac. 6 ft. One of the newer species quite distinct from the older Lilacs. Foliage large, not unlike that of the White Fringe. Flowers later than the others, rosy pink, and in large panicles. A very desirable species. 50c.
- S. vulgaris*—Purple Lilac. 6 ft. Known everywhere and valued for its abundant sweet scented flowers. 35c. \$2.50 per 10.
- var. alba*—White Lilac. 5 ft. The white flowering variety; not so strong a grower as the purple. 35c. \$2.50 per 10.
- var. Charles X*—5 ft. An old Lilac, but still in demand for its abundant large panicles of reddish purple flowers. 35c.
- var. Frau Bertha Dammann*—4 ft. Immense truss of pure white single flowers; one of the best. 50c.
- var. Madam Lemoine*—4 ft. Superb double white. 50c.
- var. Marie LeGraye*—5 ft. Large panicles of fragrant white flowers. 50c. \$4.00 per 10.

SYRINGA—Continued.

- Springa vulgaris var. rubra de Marly**—5 ft. Similar in growth to the Common Lilac, bearing purplish flowers. Used for forcing by the Parisian florists. 50c.
- var. Souvenir de la Spaeth**—4 ft. The most distinct and beautiful of all the Lilacs; panicles immense and very compact; florets very large, deep purplish red. 50c.
- var. Virginalis**—4 ft. Very large panicles of pure white flowers; new, and a decided acquisition. 50c.

TAMARIX. Tamarisk

Tall shrubs, native of the Eastern hemisphere, but generally hardy in America, especially near the sea, where they thrive exceptionally well. Leaves bright green in color, small and delicate. Flowers pink or rose colored, in panicles.

- T. Africana**—8 ft. Blooms in May; an upright grower. 25c. \$2.00 per 10.
- T. Gallica, var Indica**—8 ft. Pale rose colored flowers in August. Not entirely hardy. 35c.
- T. Odessana**—6 ft. A hardy sort not so upright in growth and with lighter colored foliage, almost silvery in aspect. Blooms latter part of August and September. 35c.

VIBURNUM. Snowball

- V. acerifolium**—Maple Leaved Arrow-Wood. 3 ft. A medium sized native shrub, with smooth slender branches and ovate, pubescent leaves, 3 lobed and coarsely toothed. The cymes of white flowers are conspicuous and handsome. 35c. \$3.00 per 10.
- V. cassinoides**—Withe Rod. 5 ft. Another native shrub of medium size, with erect grayish branches, thick ovate, shining leaves, and large cymes of small, white flowers. The large, fleshy drupe is pink, changing to blue at maturity. Grows mostly in low grounds but succeeds perfectly in high locations. 50c. \$4.00 per 10.
- V. dentatum**—Arrow-Wood. 6 ft. A tall native shrub, with slender branches and smooth twigs. Leaves ovate, coarsely toothed, smooth on both sides. Clusters of fruit very dark blue, almost black. Found in moist soil, but will succeed elsewhere. Grows rapidly. 35c. \$3.00 per 10.
- V. dilatatum**—From Japan. Low spreading habit, fine foliage, bearing in Autumn a wealth of bright scarlet berries. An especially handsome shrub. 50c.
- V. Lantana**—6 ft. Leaves heart shaped, covered with a mealy pubescence beneath. Flowers white in May, followed by pink, red and black fruit with the advancing season. 35c. \$3.00 per 10.
- V. Lentago**—6 ft. A large shrub bearing clusters of white flowers toward the end of May. 50c.
- V. molle**—5 ft. A native species, very similar to *V. dentatum*; but the foliage and fruit are larger, and it blooms about twenty days later. 35c.
- V. Opulus**—High Bush Cranberry. 6 ft. An attractive and showy shrub at all times, and particularly in the Fall, when covered with its large red berries. 35c, \$2.50 per 10.
- var. nana**—2 ft. Dwarf Guelder Rose. Makes a round, cushion like bush, not over two feet, and does not flower. Valued for its dwarf aspect. 25c. \$2.00 per 10.

- Viburnum opulus var. sterilis**—Common Snowball. 6 ft. A well known and highly prized shrub for its large balls or masses of sterile white flowers. 35c. \$2.50 per 10.
- V. tomentosum**—6 ft. Single Japan Snowball. A symmetrical handsome bush, with brown branches and beautifully ribbed foliage, green above and bronzy purple beneath. The pure white flowers are borne on large flat cymes, succeeded in late Summer by scarlet berries, turning to a blue black in color. 50c. \$3.50 per 10.
- var. plicatum**—Japan Snowball. 6 ft. Of upright bushy growth, entirely dark green leaves, and large heads of enduring white flowers; superior to the common sort. 50c. \$3.50 per 10.



VIBURNUM TOMENTOSUM VAR. PLICATUM

- V. Sieboldii**—6 ft. This shrub bears clusters of white flowers in May. The leaves are larger than any other Viburnum, heavy and dark green. A small tree. A desirable plant, especially when grown as a specimen shrub. 50c.

XANTHOCERAS

- X. sorbifolia**—15 ft. A rare and choice shrub bearing white flowers with crimson center in latter May. Foliage pinnate resembling the Mt. Ash. 50c.

XANTHORHIZA

- X. apiifolia**—Yellow Root. A native shrub of neat, dwarf habit, especially suited for banks and borders. Flowers plum colored, on racemes in May. 25c. \$2.00 per 10.

Shrubs Bearing Ornamental Fruits

Described in their respective places in the catalog.

BERBERIS. In variety.

CALLICARPA PURPUREA.

CHIONANTHUS VIRGINICA.

CORNUS (Dogwood). In variety.

ELAEAGNUS. In variety.

EUONYMUS. In variety.

LIGUSTRUM. In variety.

LONICERA. In variety.

PRINOS VERTICILLATA.

RHODOTYPUS.

RHUS (Sumac). In variety.

RIBES (Flowering Currant).

ROSA. In variety.

SAMBUCUS. In variety.

SYMPHORICARPUS (Red and white).

VIBURNUM. In variety.

Shrubs with Variegated Foliage

BERBERIS PURPUREA.

CORCHORUS VARIEGATA.

CORNUS. In variety.

CORYLUS PURPUREA.

DIERVILLA VARIEGATA.

ELAEAGNUS.

HIBISCUS VARIEGATUS.

LIGUSTRUM TRICOLOR.

PRUNUS PISSARDI.

SAMBUCUS NIGRA AUREA.

We cultivate a variety of shrubs in tree form, and in certain locations they produce a very good effect. Among the most satisfactory and best we name

ALTHEAS, HYDRANGEAS, LILAC; and PRIVET. 50c. to \$2.00.



A VIEW IN THE BLOODGOOD NURSERIES, FLUSHING, N. Y.

EVERGREENS

It is much to be regretted that the planting of evergreens is so much neglected. They aid materially in giving color to the landscape in Winter; are useful for making windbreaks and hedges, and especially for screening unsightly objects from view; and there is, by judicious selection, a fine opportunity to afford pleasing contrasts of color and habit. They are more difficult to transplant than deciduous trees; must be carefully handled, upon no account permitting the roots to become dry. Use water abundantly and tramp the earth on the roots firmly.

Figures after specific names indicate approximately the height of the plant when approaching maturity.

Prices noted are for trees of the usual size; 1 ft. for very dwarf to 4 ft. for the large growing and standard sorts. Larger and specimen plants at proportionate rates by agreement.

ABIES. Fir

- A. balsamea**—Balsam Fir. 40 ft. The well known native American fir; very attractive while young, but grows unsightly with age. 75c.
- A. Cephalonica**—Cephalonian Fir. 40 ft. Silvery colored leaves, very beautiful. A little tender while young, but when established entirely hardy, and a noble tree. \$1.00 to \$3.00.
- A. concolor**—Colorado Fir. 35 ft. One of the choicest evergreens, of distinct habit and color, which is a silvery green, and attractive. Rare. \$2.00 to \$4.00.
- A. Fraseri**—Fraser's Silver Fir. 40 ft. Much resembles Balsam Fir in general appearance, but the color is more pronounced, and it has the merit of enduring beauty. \$1.00.
- A. nobilis glauca**—Noble Silver Fir. 30 ft. Slow growing while young but ultimately attaining large size. Foliage of a pronounced bluish tint and of striking beauty. It does not, in this locality, grow satisfactorily. \$2.00 to \$4.00.



ABIES CONCOLOR. Colorado Fir



ABIES NORDMANNIANA. Nordmann's Fir

- A. Nordmanniana**—Nordmann's Fir. 30 ft. A rare and noble tree, with large leaves of a dark green color, maintained throughout the year. \$1.50 to \$3.00.
- A. pectinata**—European or Comb-like Silver Fir. 30 ft. A noble tree with spreading horizontal branches. Foliage broad and silvery. Young shoots somewhat tender. \$1.50.
- A. Veitchii**—Veitch's Silver Fir. 30 ft. A rare sort, combining the appearance of Nobilis and Nordmanniana. Small trees. \$2.00 to \$3.00.

BIOTA. Chinese Arborvitae

B. Orientalis—Chinese Arborvitae. 15 ft. The flat growth of the young branches and its bright green color makes it interesting and valuable. 75c.

var. aurea—Chinese Golden Arborvitae. 5 ft. Of conical or rounded form; foliage dense; bright golden green in color. \$1.00.

var. elegantissima—Rollinson's Golden. 10 ft. Of upright, torch-like form. Foliage golden in Summer, bronze in Winter. The foliage at either season is superb. \$1.00 to \$2.00.

var. nana aurea—Berckman's Arborvitae. 4 ft. A variety of recent introduction. Good authorities say it is of better form and habit and much more hardy than *B. semper aurea*, which it much resembles. One of the few evergreens that do well near the sea. \$1.00.

var. semper aurea—Always Golden. 3 ft. Dwarf, dense, conical habit. Color golden throughout the year. \$1.00.

CUPRESSUS

Cupressus—Evergreen Cypress. 5 ft. to 20 ft. These trees are among the most graceful of evergreens, and there are an infinite number of varieties in color and form, but unfortunately they are not entirely hardy. We usually have a number on hand for decorative purposes, in sizes from 2½ ft. to 4 ft. at \$1.00 to \$3.00.

ILEX. Holly

I. crenata—Japanese Holly. 8 ft. A much lauded and very attractive holly from Japan, bearing small, shining, myrtle-like leaves in great abundance. Is entirely hardy here and transplants readily. Small trees, \$1.00; larger to \$5.00.

I. opaca—American Holly. 25 ft. A beautiful evergreen, bearing red berries in great abundance, contrasting finely with the bright green leaves. \$1.00 to \$2.00.



A FIELD OF EVERGREENS IN THE BLOODGOOD NURSERIES, FLUSHING, N. Y.

CEDRUS. Cedar

C. Atlantica glauca—Blue Cedar. 30 ft. Vigorous, pyramidal and open growth. Foliage of a light glaucous tint, rivaling the Blue Spruce in color effect. \$1.50 to \$3.00.

C. Deodara—Deodar Cedar. 30 ft. Of upright pyramidal form and graceful silvery foliage, which is more abundant than either of the other sorts. When young it excels both in beauty and is entirely hardy here. \$1.50 to \$3.00.

C. Libani—Cedar of Lebanon. 40 ft. Vigorous, wide-spreading, horizontal branches; foliage dark green; very picturesque. Exceedingly rare and choice. \$2.00 to \$4.00.

JUNIPERUS. Juniper

J. Chinensis aurea—6 ft. A slow growing variety of semi-pyramidal form and pronounced golden color which is constant throughout the year. \$1.00.

J. communis Canadensis nana—Trailing Juniper. 3 ft. Our native prostrate or trailing Juniper, widely scattered over the temperate regions of America. Is of spreading irregular form, growing in rocky and nearly sterile soil in the most exposed situations. Is especially valuable for covering slopes and rock-work. 50c. to \$1.00.

var. Canadensis nana aurea—Douglas's Golden Juniper. 3 ft. Similar in habit and form to the preceding, but the foliage is beautifully tipped with

JUNIPERUS—Continued.

- golden color. It is very distinct and attractive. 50c. to \$1.00.
- J. communis, var. Hibernica**—8 ft. The Irish Juniper is of very dense and upright habit. Fine for columnar effects in landscape work. 50c. to \$1.00.
- var. Suecica**—Swedish Juniper. 6 ft. More hardy than the Irish Juniper but not so rapid in growth. Foliage of a yellowish green tint. 50c. to \$1.00.
- J. Japonica**—Japan Juniper. 5 ft. A very hardy and reliable sort, of upright rather irregular form. \$1.00.
- var. Japonica aurea**—Golden Japan Juniper. 3 ft. Like the preceding in ironclad hardiness; most distinct golden color which is constant and unchanging throughout the year. Quite dwarf and spreading. \$1.00 to \$2.00.
- J. Sabina**—Savin Juniper. 5 ft. A low, wide spreading, somber and thickly branched evergreen shrub. Desirable for borders of evergreen beds. 50c. to \$1.00.
- var. tamariscifolia**—2 ft. A most picturesque half procumbent variety of ironclad hardiness and most distinct character. A choice and rare tree. \$1.00.
- J. Virginiana**—Red Cedar. 25 ft. Form tapering, symmetrical; color good at all times, but its bronzy appearance in Fall and early Winter is very attractive. 50c. to 75c.
- var. glauca**—10 ft. The compact conical form of this variety, coupled with its light silvery foliage, make it very distinct and attractive. Like the Red Cedar, in all of its forms, it is of ironclad hardiness. \$2.00.
- var. globosa**—Globe Juniper. 2 ft. Makes a dense rounded ball of dark evergreen verdure. \$1.00 to \$2.00.
- var. pendula**—Weeping Juniper. 6 ft. A sort with distinctly pendent drooping branches. Very distinct and desirable. \$2.00.

PICEA. Spruce

- P. alba**—White Spruce. 25 ft. A medium sized native tree; close, pyramidal growth; foliage bluish gray. \$1.00 to \$2.00.
- P. Alcockiana**—Alcock's Spruce. 20 ft. Of medium size; pyramidal habit, with short leaves, dark green above, glaucous beneath. Rare and choice. \$1.50 to \$4.00.
- P. Engelmanni**—From Colorado. 20 ft. Slow growth; dense; form regular; leaves on the under side of light blue color. Quite rare. \$2.00 to \$3.00.
- P. excelsa**—Norway Spruce. 50 ft. A well known and widely distributed evergreen of rapid growth; symmetrical form. Hardy everywhere. Invaluable for windbreaks and hedges. 50c. to \$1.50.
- var. aurea**—40 ft. A variety of more dwarf habit and distinctly marked golden foliage. Very distinct and charming. \$1.50.
- var. Gregoriana**—Gregory's Spruce. 4 ft. Of dwarf, hemispherical form, dense habit and dark green foliage. For cemeteries and small places. \$1.00 to \$3.00.
- var. inverta**—Inverted Norway Spruce. 10 ft. Of curious and varied form, the branches growing downward. Foliage dense, hiding the stem. \$1.50 to \$3.00.
- P. nigra Doumetti**—6 ft. A dense and compact tree; needles small with a pronounced bluish tint; distinct and valuable. \$1.00.
- var. pumila**—5 ft. Another dwarf and very dense sort with dark foliage. Entirely hardy. \$1.00 to \$2.00.
- P. Orientalis**—Oriental Spruce. 40 ft. An erect growing symmetrical tree. Foliage finer and better than Norway Spruce, and in every way a superior tree. Does not grow so large. Most desirable. \$1.50 to \$3.00.
- P. polita**—Tiger's Tail Spruce. 25 ft. A slow grower, but distinct and valuable on account of its color and hardiness. Rare and invaluable. \$2.00.



COLORADO BLUE SPRUCE. *Picea pungens* var. *Kosteriana*

PICEA—Continued.

Picea pungens—Colorado Spruce. 20 ft. From the Rocky Mountains. A tree of great value; hardy in all locations; of good habit and form, and in color a cheerful tint of green. \$1.00 to \$2.00.

var. glauca—20 ft. The Colorado Spruce seedlings are variable in color, running from light green to intense steel blue. They are alike in form and habit. Here we place our carefully selected blue seedlings, some of which, in color rival the famous Koster's strain, and all surpass it in form and habit. \$2.00 to \$5.00.

var. Kosteriana—Koster's Blue Spruce. 20 ft. A strain of intense color and longer needles; preserved by grafting. They are uniformly reliable, and best for that reason. Small trees, 1½ ft. at \$2.00, to large and developed specimens, 4 to 5 ft., extra quality, at \$15.00; ordinary grades, \$2.00 to \$10.00.

var. pendula—Koster's Weeping Blue Spruce. 20 ft. This tree maintains the form and has the color of the type, but has in addition a most graceful and regular weeping habit, making it most interesting and desirable. \$5.00 to \$15.00.

PINUS. Pine

P. Austriaca—Austrian Pine. 25 ft. Well known and valuable for its hardiness and constant and intense green color. 40c. to \$1.00.



PINUS AUSTRIACA

Pinus Cembra—Swiss Stone Pine. 25 ft. Of dwarf habit and dense foliage, ultimately attaining good size. A desirable tree. \$1.00 to \$2.00.

P. excelsa—Bhotan Pine. 40 ft. Resembles the white pine, but with longer and pendulous leaves. Very graceful and attractive. \$1.00 to \$2.00.

P. Mughus—Dwarf Mountain Pine. 4 ft. Of low and spreading growth. 50c. to \$1.00.

P. parviflora glauca—15 ft. Imagine a white pine with foliage tint of a blue spruce or Deodar cedar and you will have a fair idea of the beauty of this tree. Exceedingly rare. \$3.00.

P. resinosa—Red Pine. 30 ft. A fine native species; rare and choice. Needles dark green, long, drooping and soft to the touch. \$1.00.

P. Strobus—White Pine. 50 ft. The American timber tree and well known. Hardy and reliable on dry, upland soil. 50c. to \$1.00.

var. nana alba—Dwarf White Pine. 4 ft. A very dwarf and irregular form of the preceding with light silvery foliage. \$1.00.

P. sylvestris—Scotch Pine. 30 ft. A rapid growing handsome tree especially when young. Foliage silvery green in color; good for windbreaks. 50c. to \$1.00.

PODOCARPUS. Japan Yew

P. Japonica—Japanese Yew. 10 ft. An erect, slow growing evergreen, much like the Irish Yew, but with broader leaves. Not reliably hardy. \$2.00 to \$3.00.

PSEUDOTSUGA

P. Douglasi—Douglas' Spruce. 60 ft. A Colorado evergreen, with soft and delicate foliage in varying tints of light green to steel blue in color. It is of rapid growth, and trees from Rocky Mountain seed are entirely hardy. A very sightly and satisfactory tree. \$1.50 to \$3.00.

RETINISPORA. Japan Cedar

Botanists include all Retinisporas in two species—*Obtusa* and *Pisifera*—but we classify them as received, and in accordance with general custom.

The whole family is especially desirable because of its varying forms, habit and character. Being of small and medium growth, they are especially adapted for small places and for use in evergreen beds. They will bear any amount of shearing, with consequent improvement in density of foliage, and change of form if desired. In addition to sorts here named, we offer a limited number of rare and valuable varieties.

R. filicoides—5 ft. Bright green, very dense and exquisitely fern-like foliage. \$2.00.

R. filifera—12 ft. A beautiful evergreen, with long, thread-like, pendent foliage. 50c. to \$2.00.

var. aurea—10 ft. Like the preceding, except in color, which is a bright golden. More dwarf in habit. \$1.00 to \$2.00.

R. obtusa—25 ft. The best Retinispora. Color green in Summer, turning to bronze in Winter. \$1.00 to \$2.00.

var. aurea—20 ft. Identical with the preceding, except in color, which is of a pronounced golden tint. This is a most desirable tree because of its color, form and habit. \$2.00.

var. gracillis—8 ft. A most graceful and hardy little tree of good form, habit and color. One of the best semi-dwarf trees known. \$1.00 to \$2.00.

RETINISPORA—Continued.

Retinispora obtusa var. nana—5 ft. A very compact, dwarf growing variety of the above. Very desirable where a small evergreen is wanted, or on borders of beds. \$2.00.

var. nana aurea—5 ft. A golden leaved form of the last. Rare and valuable. \$2.00.

R. pisifera—25 ft. Fine feathery foliage; branches glaucous underneath. A beautiful evergreen. \$1.00 to \$2.00.

var. aurea—25 ft. Of loose and open habit; decidedly pendulous. Color constant and good. A choice variety. \$1.00 to \$2.00.

R. plumosa—25 ft. A most desirable evergreen of compact growth and delicate glaucous green foliage. 50c. to \$2.00.

var. aurea—25 ft. Golden Retinispora. Widely known and popular, and while of great merit not so choice as those named. 50c. to \$2.00.

var. lutea—15 ft. A variegated variety; foliage silvery green and gold. Dwarf and dense habit. \$1.00.

R. squarrosa—20 ft. A most distinct and valuable sort; foliage of compact, tufted character; color steel gray. Grows quite large, but in common with all Retinisporas, bears shearing to almost any size or form. 50c. to \$2.00.

var. sulphurea—8 ft. A rather dwarf variety of Squarrosa, very dense and compact, having the same tufted appearance of foliage, but the color is very distinct, the tips of the leaves being of a pronounced sulphur color. 50c. to \$1.50.

SCIADOPITYS

S. verticillata—Umbrella Pine. 20 ft. A beautiful and hardy evergreen from Japan. Shining dark green foliage arranged in whorls of umbrella-like tufts. Of slow growth, but rare and desirable. \$2.00 to \$3.00.

TAXUS. Yew

T. baccata—English Yew. 10 ft. A most desirable dark green foliage plant, suited for single specimens, or will make a good hedge. \$1.00 to \$2.00.

var. aurea—Golden Yew. 8 ft. In habit similar to the preceding, though not of such robust growth. The young growth of a most lovely golden hue, and in its season the best golden evergreen. \$1.00 to \$2.00.

var. erecta—Erect Yew. 10 ft. An erect growing hardy sort, with slender branches densely clothed with small and dark green foliage. \$1.00.

var. glauca—8 ft. Vigorous in growth. Foliage of a distant bluish tint, keeping its color well through the season. \$1.00.

var. hibernica—10 ft. Irish Yew. Remarkably upright, distinct and handsome. Foliage of very deep color, and the plant resembles a dark green column. Specimens, \$1.00 to \$3.00.

var. semper aurea—4 ft. An entirely hardy golden Taxus of pronounced color through all the year. Of dwarf and somewhat irregular form. Unknown in most nurseries. \$2.00 to \$3.00.

var. repandens—4 ft. Spreading Yew. A low spreading tree or evergreen bush; very luxuriant,



TAXUS BACCATA REPANDENS. Prostrate Yew

TAXUS—Continued.

with intensely dark green foliage. Entirely hardy. A specimen in this village covers a circle 15 ft. in diameter, and is an object of great beauty. Unknown in most nurseries. \$1.00 to \$2.00.

T. Canadensis—Canadian Yew. 6 ft. Low spreading, bushy form; seldom grows more than 4 to 5 feet high, with shorter leaves, and the bark is of a darker hue than the common Yew. Has small, red berries. 75c.

T. cuspidata nana—8 ft. From Japan, and the hardest of all Yews. Branches somewhat ascending, with dark green foliage. Offered by many nurseries as *Taxus brevifolia*. \$1.00 to \$3.00.



THUYA OCCIDENTALIS AUREA

THUYA. Arborvitae

T. Occidentalis—American Arborvitae. 30 ft. A well known and very valuable evergreen for screens, wind-breaks and hedges. 25c. to \$1.00.

var. aurea—George Peabody. 15 ft. A most desirable Golden Arborvitae. Color pronounced and constant. 75c. to \$1.50.

var. compacta—Parson's. 8 ft. Form hemispherical; light green foliage. A good dwarf, hardy sort. 50c. to \$1.00.

var. conica densa—3 ft. Conical, with slender branches and bright colored leaves. 50c.

var. globosa—Globe Arborvitae. Globular form; foliage fine and delicate; habit dwarf. 50c.

var. Hoveyi—Hovey's Golden Arborvitae. 4 ft. More upright habit, with yellowish green foliage. 50c.

var. pyramidalis—Pyramidal Arborvitae. 15 ft. Of columnar shape; distinct light green, compact foliage. 50c. to \$1.00.

var. Queen Victoria—10 ft. Of pyramidal form; new growth tipped with white making the plant conspicuous and attractive all Summer. 75c. to \$1.00.

var. Vervæneana—10 ft. Of smaller form and denser habit than the type. Foliage handsomely variegated with yellow. 50c. to \$1.00.

var. Warreana—Siberian Arborvitae. 10 ft. Most hardy of all Arborvitæ. Foliage dark green and dense. A valuable sort and good for hedges. 50c. to \$1.00.

TSUGA. Hemlock

A small genus, frequently classed with the *Abies*, but botanically distinct. As a class they possess remarkable grace and beauty.

T. Canadensis—Hemlock Spruce. 40 ft. The well known tree of our American forests. Growth loose and open; habit extremely graceful. Bears shearing well, and makes the most ornamental evergreen hedge. 50c. to \$1.50.

var. Sargentii pendula—Sargent's Weeping Hemlock. 10 ft. Compact and spreading habit, with graceful spray-like pendulous branches. Permanent weeping habit, like an evergreen fountain. The choicest and most beautiful evergreen. \$2.00 to \$5.00.

T. Caroliniana—Carolina Hemlock. 40 ft. A new species from the Carolina mountains, not so stately, but more elegant and graceful than the common species. Small trees. 50c. to \$1.50.



TSUGA CANADENSIS VAR. SARGENTII PENDULA. Weeping Hemlock

List of Evergreens

With golden, variegated or otherwise attractive foliage described in their respective places in the catalog.

- | | |
|--|--|
| ABIES CONCOLOR. Silver green. | PICEA PUNGENS KOSTERI. Intense blue. |
| BIOTA ELEGANTISSIMA. Golden in Summer, bronze in Winter. | RETINISPORA FILIFERA AUREA. Golden. |
| BIOTA ORIENTALIS AUREA. Golden. | RETINISPORA OBTUSA. Green in Summer, bronze in Winter. |
| BIOTA SEMPER AUREA. Always golden. | RETINISPORA OBTUSA AUREA. Golden. |
| CEDRUS ATLANTICA GLAUCA. Steel blue. | RETINISPORA PISIFERA AUREA. Golden. |
| JUNIPERUS CHINENSIS AUREA. Golden. | RETINISPORA PLUMOSA AUREA. Golden. |
| JUNIPERUS COMMUNIS AUREA. Golden. | RETINISPORA SULPHUREA. Sulphur color. |
| JUNIPERUS JAPONICA AUREA. Golden. | RETINISPORA LUTESCENS. Variegated. |
| JUNIPERUS SABINA. Very dark color. | RETINISPORA SQUARROSA. Steel gray. |
| JUNIPERUS VIRGINIANA GLAUCA. Blue. | TAXUS BACCATA SEMPER AUREA. Always golden. |
| PICEA ALCOCKIANA. Green above, silvery beneath. | TAXUS ELEGANTISSIMA. Golden. |
| PICEA EXCELSA AUREA. Golden. | THUYA AUREA. Bright golden. |
| PICEA PUNGENS. Blue. | THUYA HOVEYI. Yellowish green. |
| | THUYA VERVAENEANA. Green and gold. |



A STRIKINGLY HANDSOME HEDGE OF AZALEA AMOENA

EVERGREEN SHRUBS

The great value and merit of evergreen shrubs is not sufficiently appreciated. They afford a cheerful prospect in Winter, while the Kalmias and Rhododendrons are most gorgeous in June with their great masses of bloom, at which season no other plants are comparable to them. Their use is rapidly extending and, in addition to the nursery grown and named varieties, we supply yearly, many carloads of collected plants in all sizes. We have never had a complaint from any who have used them. Reasonable rates per 100 and per carload. Correspondence invited.

ANDROMEDA

- A. floribunda**—Low round headed bush, bearing abundant spikes of one-sided racemes of pure white flowers in Spring. A peculiar characteristic of this and the next variety is their habit of developing their flower buds in Autumn, thereby giving an appearance of constant Winter bloom. Splendid ornament to the lawn. \$1.00 to \$2.00.
- A. Japonica**—A most desirable and attractive sort with the same general characteristics of the last, but rather more delicate and graceful, the terminal shoots and buds having a distinct coppery hue. \$1.00.

AZALEA

- A. amœna**—From China. Very dwarf and bushy foliage, which is abundant, becoming brownish bronze in Winter. Entirely covered in May with masses of small dark red flowers. An entirely hardy shrub of singular beauty at all times, but especially showy when in bloom. 50c. to \$1.00.

BERBERIS

- B. ilicifolia**—Holly Leaved Barberry. June. Very dark, spiny leaves like holly. A fine evergreen shrub. 50c.

BUXUS. Box

- B. sempervirens**—Common Tree Box. A large shrub or small tree with thick leathery dark green leaves. Bears shearing well and can be shaped in any form desired. With its numerous varieties a most important gardening plant. 50c.; specimens \$1.00 to \$5.00.

var. argentea variegata—A sort with pronounced silver variegation. A good, upright grower and hardy. \$1.50.

var. suffruticosa—Dwarf Box. The well-known Box used for edging, and invaluable for this purpose. It makes, too, a handsome ornamental bush. \$4.00 per 100, \$30.00 to \$35.00 per 1000.

DAPHNE

D. cneorum—Trailing Daphne. Very dwarf habit; small, narrow, abundant foliage. The spreading horizontal branches are covered in Spring with light pink, rosette-like flowers of most delicate fragrance. 50c.

EUONYMUS

E. Japonicus—An evergreen shrub, with broad, shining green leaves. Very beautiful, but not hardy. Protect from strong sunlight in Winter. 50c.

var. aurea—A variety with yellow variegated foliage, to be treated like the preceding one. 50c.

E. radicans—Creeping Euonymus. An invaluable plant for covering bare spots in borders. A self clinging vine or shrubby evergreen bush as desired. Hardy. 25c. \$2.00 per 10.

var. variegata—Variegated Creeping Euonymus. Very distinctly variegated with white, yellow and pink shades. An equally strong grower and very attractive on low walls. 25c. \$2 per 10.

ILEX. Holly

I. crenata—This charming little Holly of Japan has proven hardy, and we have in it one more handsome evergreen shrub for garden decoration. Its foliage is the size of the Box plant. The plant has a very bushy habit and forms pretty pyramids. \$1.00.

KALMIA. Laurel

K. angustifolia—Narrow Leaved Laurel. A beautiful native shrub, bearing bunches of rosy purple flowers in early June. 50c. to \$2.00.

Kalmia latifolia—Mountain Laurel. An evergreen of stronger growth and larger leaves than *K. angustifolia*. A magnificent plant, rivaling the Rhododendron in beauty. Flower buds of a delicate pink, changing to white as they expand and with advancing age. An abundant bloomer in June. It is a great evergreen plant for massing and will grow best in woodland or under a border of trees. Plants 50c. to \$2.00. Estimates given per 100 on per car load.

LEUCOTHOE

L. Catesbæi.—Long recurving branches, with ovate lanceolate leaves of a rich green in Summer, turning bronze in Winter; flowers white in early Spring. Especially useful in damp and shaded situations. 50c.

MAHONIA

M. aquifolia.—A valuable evergreen shrub having glossy green leaves and bearing yellow flowers in April. In Fall and Winter the foliage changes to a scarlet bronze color. 35c.

M. Japonica—A species from Japan, with very broad, spiny foliage, light green in color. Requires protection in New England. 50c.

YUCCA. Adam's Needle

Y. filamentosa—A desirable tropical looking evergreen plant, much used in ornamental gardening. Its large spikes of pendent cream white flowers in latter June add much to its value. 25c. to 35c.



KALMIA LATIFOLIA. A naturally disposed group

RHODODENDRONS

There has been much money and labor wasted in futile efforts to grow Rhododendrons. These failures are occasioned by a number of reasons. First, the effort to grow sorts that are not hardy in our climate; second, to planting in thin and barren soil, and in exposed situations, where the winds of Winter rapidly evaporate the moisture in the plant. Make your Rhododendron bed deep and rich, and never on any account more than scratch the surface of the soil after planting. The roots are near the surface and digging among them destroys many and exposes all more or less to the influence of drouth and cold. They are moisture loving plants, and a rich peaty, well drained soil suits them best. Mulch your plants well and use cow manure abundantly.

Rhododendrons make a grand show in Winter and Summer alike, with their dark shining evergreen foliage, but are particularly attractive in early Summer, when their great masses of bloom of various colors and shades attract the attention of all. Where practicable we urge their planting in masses, and a good plan is to have the foreground or border plants of Azaleas.

Plants with buds, \$1.00 to \$5.00, according to size.



RHODODENDRONS LINING A WALK

RHODODENDRON CATAWBIENSE HYBRIDS

ALBUM ELEGANS. White.
 ALBUM GRANDIFLORUM. Lavender white.
 BOULE DE NIEGE. Pure white, early and very hardy.
 CARACTACUS. Late; rich purplish crimson.
 CHAS. BAGLEY. Cherry red.
 CHAS. DICKENS. Dark scarlet.
 DELICATISSIMUM. Blush white.
 DR. TORREY. Rose color; early bloom.
 EVERESTIANUM. Rosy lilac; free bloomer and extra hardy.
 FLUSHING. Rosy scarlet.
 GIGANTEUM. Bright pink.
 GRANDIFLORUM. Dark red; fine grower; best.

H. H. HUNNEWELL. Very dark rich crimson.
 H. W. SARGENT. Crimson, enormous truss.
 KETTLEDRUM. Deep red; very late.
 MRS. MILNER. Red.
 PURPUREUM ELEGANS. Purple.
 ROSEUM ELEGANS. Vivid rose; beautiful.

R. MAXIMUM. Great Laurel.

Strong growing hardy plants, blooming profusely in July, long after the Catawbiense and its varieties are out of bloom. Flowers of good size, borne in dense trusses; color white sometimes shaded with shell pink, indeed some plants have decidedly pink shaded flowers. Largely used, in car load lots, for border and woodland planting. 50c. to \$3.00, according to size. Collected plants in quantity at very reasonable prices.

CLIMBING VINES

Those sorts that cling to smooth, perpendicular surfaces by little tendrils or roots we designate as self-climbers, and are the kinds suited to covering walls and buildings. The others require a trellis or support of some sort.

ACTINIDIA

- A. polygama**—A Japanese vine of rapid growth, with large leaves, and bearing white flowers with purple center. 50c.

AKEBIA

- A. quinata**—A beautiful, rapid growing vine, bearing curious plum colored, sweet scented flowers. 35c. \$3.00 per 10.

AMPELOPSIS

- A. quinquefolia**—Virginia Creeper. Self climber. A very useful and handsome climbing shrub, of vivid crimson color in Autumn. 25c.
- A. tricolor** or **Vitis heterophylla**—Variegated Grape. A very pretty vine with deeply lobed leaves like the grape, and marbled with white, pink and green. 50c.
- A. Veitchii**—Boston Ivy. Self climber. Of very delicate and graceful habit, and most desirable of all for covering buildings. Now well known. 25c. \$2.00 per 10. \$15.00 per 100.

ARISTOLOCHIA. Dutchman's Pipe

- A. Sipo**—A robust, vigorous plant, bearing curious pipe shaped flowers. 50c.

BIGNONIA. See Tecoma

CELASTRUS

- C. scandens**—Known as Staff Vine, Bitter Sweet, etc. A very vigorous grower. Its scarlet fruit, adherent nearly all Winter, is an object of much beauty. 35c.

CLEMATIS

Among climbing plants none equal the Clematis in the beauty of their flowers. There are an infinite number of varieties among the large flowering sorts, from which we select the most distinct and vigorous in habit and the most floriferous.

- C. coccinea**—Scarlet Clematis. Bears bell shaped crimson flowers more curious than valuable. 50c.
- C. flammula**—Sweet scented Clematis. Small, feathery white, sweet scented flowers. Hardy; desirable. 50c.
- C. Henryi**—Large flowering. Flowers white, large, handsome and abundant. The best white variety. 50c.
- C. Jackmanni**—Large, intense violet purple, remarkable for its velvety richness, free growth and abundant bloom. The best variety of its color. 50c.
- C. Madame Edouard Andre**—New, single, crimson; flowers of good size and borne in great profusion. Has been called the Crimson Jackmanni. 50c.
- C. paniculata**—From Japan. Panicles of small, pure white fragrant flowers borne in great profusion. Very desirable and entirely hardy. Blooms in late Summer. 35c.
- C. Virginiana**—American White Clematis. Growth vigorous, almost rampant, attaining a height of twenty feet, bearing in August an immense profusion of flowers. 35c.

EUONYMUS. See Evergreen Shrubs.

HEDERA. Ivy

- H. helix**—English Ivy. This is well known, and its broad, glossy, dark leaves retain their beauty all Winter if planted on the eastern and northern sides of buildings away from the sun. It is hardy here. 25c. \$2.00 per 10.

LONICERA. Honeysuckle

- L. Japonica var. aurea reticulata**—A variegated golden leaved variety; very attractive. 25c.
- var. Chinensis**—Chinese Evergreen Honeysuckle. A free growing, nearly evergreen sort; blooms in mid-Summer and again in September; flowers fragrant. 25c.
- var. Halleana**—Hall's Honeysuckle. Of robust growth; abundant foliage and good habit; blooms freely in June and intermittently afterwards. Flowers cream yellow and very fragrant; the most common and the best sort. 25c.
- L. Heckrottii**—An unusually rare variety and one which should be grown, as its large and showy flowers are most attractive. Flowers are rose color on the outside and yellow in the center. Blooms all Summer. 50c.
- L. Periclymenum var. Belgica**—Monthly Honeysuckle. Flowers pink in bud, cream color when expanded; produced sparingly all Summer. The growth of this plant is weak and straggling. 25c.
- L. sempervirens**—Red Coral. An American species, bearing bunches of scarlet trumpet shaped flowers in latter June. More beautiful, but not so free blooming as the others and without fragrance. 35c.

LYCIUM. Matrimony Vine

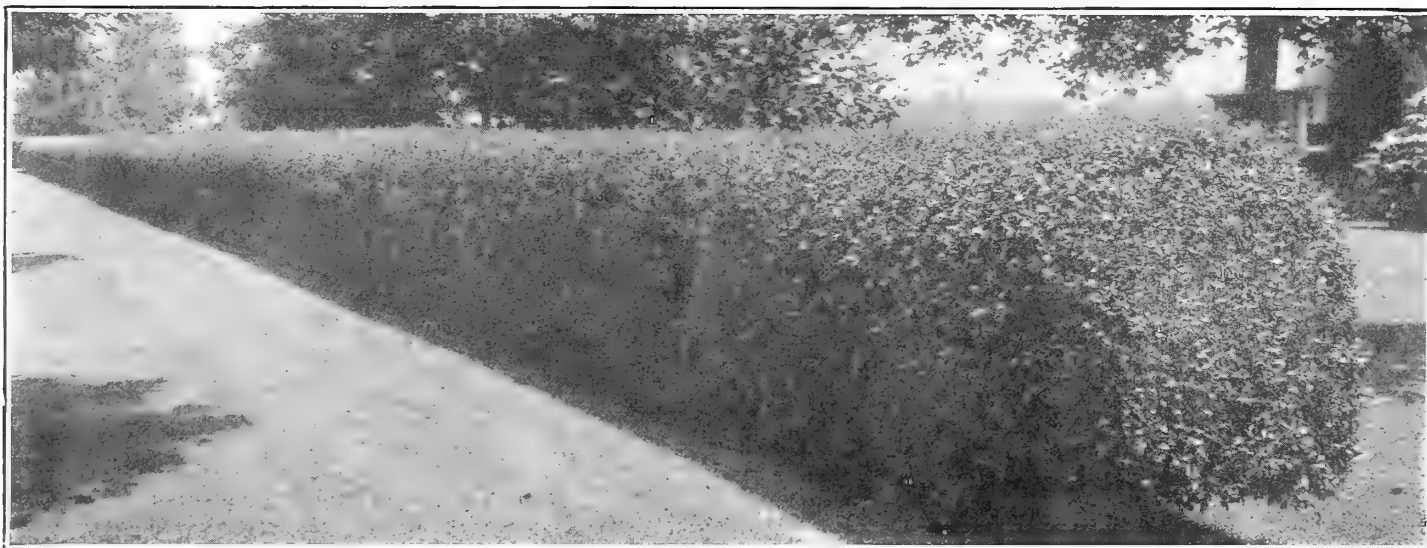
- L. vulgare**—A neat, half climbing plant, bearing small, light pink flowers, followed by scarlet fruit in Autumn, when it is exceedingly ornamental. 35c.

TECOMA. Trumpet Creeper

- T. grandiflora**—Much dwarfer than radicans and of nearly shrubby habit. It blooms when quite small, bearing yellowish scarlet flowers in great profusion. 50c.
- T. radicans**—Common Trumpet Vine. Self climber. Abundant flowers in July and August; a rampant grower; good for concealing unsightly objects. 50c.

WISTARIA

- W. sinensis**—Chinese Wistaria. The best Wistaria. Bears large and handsome racemes of light purple flowers in latter May. 50c.
- var. alba**—Pure white flowers. 50c.
- W. multijuga**—A Japan variety, with dark blue flowers. One of the best Wistarias. 75c.
- var. alba**—A strong grower when once established, bearing long racemes of white flowers. \$1.00.
- W. speciosa var. magnifica**—American Wistaria. A free growing vine bearing racemes 6 to 8 ins. long. Flowers lilac in color, appearing abundantly in May. 50c.



A BEAUTIFUL HEDGE OF CALIFORNIA PRIVET

HEDGE PLANTS

To screen unsightly objects from view, to mark lines or boundaries, hedges are most useful, and, with proper attention, very ornamental.

For permanent all-around effect evergreens are best, and the best sorts for the purpose are Hemlock Spruce, American Arborvitæ in variety, Norway and other Spruces. These can be allowed to grow at will or kept in any desired shape by shearing. The evergreen *Ilex crenata*, for those with abundant means and a desire to possess a good thing not common, is recommended. Evergreen hedges should be sheared in the Spring before the new growth commences. You can, by so doing, make them any form and keep them any size desired.

Among deciduous shrubs for ornamental hedges no plant equals the California Privet. It has foliage of unequalled beauty that permits shearing to an extent that would ruin most plants. But in certain situations and for certain uses there are other even better plants, among which we mention *Berberis Thunbergii* for a low and *Althea* for a high hedge, where its conspicuous late bloom will be appreciated.

We urge all intending to plant hedges to thoroughly prepare and enrich the soil if of poor quality, and in the meantime to advise us how many and what sort of plants are wanted. We grow large quantities of these standard plants and will make very reasonable quotations. We here name in detail some most desirable plants for hedging purposes:

HEDGE PLANTS

For ornamental hedges, the following shrubs are very effective, the Privet particularly being largely planted.

Berberis Thunbergii—An ideal plant for hedges. \$5.00 to \$20.00 per 100.

Fagus, Ferruginea* and *Sylvatica—American and English Beech. (See Deciduous Trees.)

Hibiscus—*Altheas*. Fine for its bloom. Trim after flowering. (See Shrubs.)

Ligustrum ovalifolium—Privet. Most highly prized. For best effect plant in double rows one foot apart each way, alternating the plants, and cut almost to the ground. \$3.00 to \$15.00 per 100.

Lonicera—Upright Honeysuckle. \$15.00 per 100.

Rosa Rugosa—Makes an excellent and highly ornamental hedge. \$15.00 per 100.

Spiræas—In variety. \$15.00 per 100.

Among Evergreens we mention the best and most popular:

Picea excelsa—Norway Spruce. A good growing evergreen that bears shearing well and makes an excellent hedge and windbreak. \$15.00 to \$50.00 per 100.

Buxus suffruticosa—Dwarf Box. Excellent for borders and where a low hedge is wanted. Of very slow growth. \$4.00 per 100 to \$30.00 and \$35.00 per 1000.

Thuya—Arborvitæ. Among the very best evergreen hedge plants are the American and Siberian Arborvitæ, bearing shearing well and becoming very dense and compact. The dwarf sorts are excellent for low hedges. \$10.00 to \$35.00 per 100.

Tsuga Canadensis—Hemlock Spruce. Makes the most graceful and elegant hedge of all. \$25.00 to \$50.00 per 100.



A WELL-DESIGNED HARDY HERBACEOUS BORDER

HARDY HERBACEOUS PLANTS

The great and increasing popularity of this class of plants has induced us to offer a select list, which we made upon the advice of one of the best authorities in America, concerning the most effective and desirable plants for lawns and gardens.

Our list, while not so extensive as many, is the very cream of all, and every sort described may be depended on to give entire satisfaction.

The ease of culture, and continuous and lasting bloom of this class of plants endeared them to our ancestors, whose artistic tastes were in most respects quite equal, if not superior, to our own.

Planted in the shrubbery border, or in beds alone, judiciously arranged, they will afford great satisfaction at much less cost than can be obtained by plants from the greenhouse that must be replaced annually. In truth, the one supplements the other, and the bright foliage and flowers of bedding plants, with the more enduring herbaceous ones, are both needed for the complete adornment of rural and suburban homes, but the last are the most essential and appeal most strongly to our affections, appearing annually as old friends to greet us in Spring, after their Winter sleep.

Figures after specific names indicate approximate height of the plants when in flower.

Plants in assortment, \$8.00 to \$12.00 per 100.

- Achillea Eupatorium**—2 to 3 ft. Deeply cut green leaves and broad flat heads of yellow flowers. July to September. 20c. \$1.50 per 10.
- A. ptarmica var. "Pearl"**—1 ft. Double white; very effective, good for cutting; blooms all Summer. 20c. \$1.50 per 10.
- Aconitum autumnale**—3 to 4 ft. Flowers blue, in panicles. A fine flower for cutting. September. 25c. \$2.00 per 10.
- A. Californicum**—2 to 3 ft. Flowers pale blue, veined with purple. A strong grower. September to October. 25c. \$2.00 per 10.
- Adonis vernalis**—6 to 12 in. One of the best early Spring flowering plants, of dwarf and compact habit; flowers yellow. 25c. \$2.00 per 10.
- Ajuga reptans**—3 to 6 in. Dwarf; fine for rock work; flowers blue. May. 25c. \$2.00 per 10.
- Althæa rosea**—Hollyhock. 4 to 5 ft. Of this old fashioned and popular flower we offer a good assortment of colors, including the newly introduced and improved Allegheny Hollyhock and the single flowering varieties. 25c. \$2.00 per 10.
- Alyssum saxatile**—1 ft. Golden yellow flowers, fragrant and showy. One of the best perennials. April and May. 25c. \$2.00 per 10.
- var. compactum**—Similar to Saxatile, except the plant is more dwarf and flowers more freely. 25c. \$2.00 per 10.
- Amsonia salicifolia**—2 ft. Smooth foliage; blue flowers in May. 25c. \$2.00 per 10.

- Anchusa Italica**—4 ft. A fine species blooming nearly all Summer. Clear blue flowers. 25c. \$2.00 per 10.
- Androsace sarmentosa**—Rock Jasmine. 4 in. Bright rose flower with white eye. May and June. 25c.
- Anemone Japonica**—2 ft. Rosy pink flowers in Sept. and October. 20c. \$1.50 per 10.
var. alba—2 ft. White; large flowers. September and October. 20c. \$1.50 per 10.
var. Whirlwind—Producing double white flowers in great profusion in September and October. 20c. \$1.50 per 10.
- Anthemis tinctoria**—1 to 2 ft. Flowers deep yellow. July to October. 20c. \$1.50 per 10.
- Aquilegia**—1 to 2½ ft. In colors; early Spring bloom. 20c. \$1.50 per 10.
- Arabis alpina**—Rock Cress. 6 to 8 in. Flowers white, in small racemes in early Spring. 25c. \$2.00 per 10.
- Armeria argentea**—4 in. Small white flowers, narrow foliage. July and August. 25c. \$2.00 per 10.
- A. maritima**—6 in. Pink to purple. May to August. 20c. \$1.50 per 10.
- Artemisia pontica**—1 to 2 ft. Handsome silvery foliage. 25c. \$2.00 per 10.
- Asclepias tuberosa**—2 ft. Orange colored flowers. July and August. 20c. \$1.50 per 10.
- Aster alpinus**—9 in. Purple flowers in July. 25c. \$2.00 per 10.
- A. Amelius**—2 ft. Pale blue flowers in August and September. 25c. \$2.00 per 10.
- A. Novæ Angliæ**—4 ft. Showy purple. September and October. 20c. \$1.50 per 10.
var. rosea—Rosy flowers; September and October. 25c.
- A. Tataricus**—5 ft. Light purple. October. 20c. \$1.50 per 10.
- Astilbe Japonica**—2 ft. Plumy spikes of pure white flowers; pleasing dark foliage. June. 20c. \$1.50 per 10.
- Baptisia australis**—2 to 3 ft. Deep blue flowers in June and July. 20c. \$1.50 per 10.
- Bocconia cordata**—Plume Poppy. 6 to 7 ft. White flowers. August. 25c. \$2.00 per 10.
- Boltonia asteroides**—4 ft. White flowers August and September. 20c. \$1.50 per 10.
- B. latisquama**—4 ft. Light Lilac. August and September. 20c. \$1.50 per 10.
- Calimeris incisa**—1½ ft. Purple flowers. July to September. 25c. \$1.50 per 10.
- Callirhoe involucrata**—8 to 12 in. Rosy crimson flowers and handsome cut leaf foliage. All Summer bloom. 20c. \$1.50 per 10.
- Campanula Carpatica**—9 in. A dwarf plant bearing blue flowers in June. 20c. \$1.50 per 10.
var. alba—9 in. White flowers. June and July. 25c. \$1.50 per 10.
- C. macrantha**—2 to 3 ft. Rich purple flowers. 25c. \$2.00 per 10.
- C. nobilis**—Flowers tinted purple. Broad foliage. June. 25c. \$2.00 per 10.
- C. persicifolia**—1½ ft. Flowers blue. June and July. 25c. \$2.00 per 10.
- C. pyramidalis**—3 ft. Pyramidal shaped, with large blue flowers. 25c. \$2.00 per 10.
- Centaurea macrocephala**—3 ft. Yellow. July. 25c. \$2.00 per 10.
- C. montana**—1 to 2 ft. Blue flowers in June. 25c. \$2.00 per 10.
- Centranthus ruber**—1 to 2 ft. Red flowers all Summer. 25c. \$2.00 per 10.
- Chrysanthemums**—1½ to 2½ ft. In colors. Autumnal blooming plants of much beauty and exceedingly profuse bloom. Hardy sorts only. 25c. \$2.00 per 10.
var. Shasta Daisy—1 to 2 ft. White flowers all Summer. 20c. \$1.50 per 10.
- C. uliginosum** (Pyrethrum). 2 ft. White; August and September. 20c. \$1.50 per 10.
- Clematis Davidiana**—2 to 3 ft. Very showy and fragrant blue flowers in August and September. 25c. \$2.00 per 10.
- Convallaria majalis**—Lily of the Valley. 4 to 8 in. White, pendent fragrant flowers in early Spring. Clumps. 25c. \$2.00 per 10.
- Coreopsis grandiflora**—1½ to 2 ft. Deep orange yellow; excellent for cutting. June and July. 20c. \$1.50 per 10.
- C. rosea**—1 ft. Flowers pink. June to September. 25c. \$2.00 per 10.
- Delphinium elatum**—3 to 4 ft. Blue flowers from June to August. 25c. \$1.50 per 10.
- D. formosum**—2 to 3 ft. The common Larkspur. Large dark blue flowers. June to August. 25c. \$2.00 per 10.
- D. grandiflorum**—2 to 3 ft. Delicate cut foliage with a profusion of bloom; white to deep blue. June to August. 25c. \$2.00 per 10.
- Dianthus barbatus**—1 ft. The old and deservedly popular Sweet William. Various colors mixed. 20c. \$1.50 per 10.
- D. plumarius**—Scotch Pink. 1 ft. Very fragrant double flowers. June and July. 25c. \$1.50 per 10.
var. Mrs. Sinkins—1 ft. Large white spicy flowers in June. 25c.
- Dicentra spectabilis**—Bleeding Heart. 1½ ft. Pink flowers in May. 25c. \$2.00 per 10.
- Dictamnus fraxinella**—Gas Plant. 2 ft. Flowers purple borne on upright stems in June. 25c.
- Digitalis**—Foxglove. 2 to 3 ft. An old and well known species bearing, on long spikes, an abundance of large and showy blossoms, varying from white to purple. July. 20c. \$1.50 per 10.
- Doronicum plantagineum**—2 ft. Yellow flowers in early Spring. 25c.
- Echinacea purpurea**—Cone Flower. 3 ft. Enduring rosy purple flowers. July to September. 25c. \$2.00 per 10.
- Eryngium amethystinum**—Sea Holly. 2 ft. Amethyst blue. July to September. 20c. \$1.50 per 10.
- Eupatorium purpureum**—5 to 6 ft. A strong growing plant with branching heads of purple flowers in late Autumn. 25c. \$2.00 per 10.
- Funkia lancifolia variegata**—1 ft. Handsome foliage distinctly margined with creamy white and yellow. Flowers light purple in July. 20c. \$1.50 per 10.
- F. Sieboldiana**—1 ft. Silvery gray foliage with pale lilac flowers. 25c.
- F. subcordata**—White Day Lily. 1 ft. Pure white trumpet shaped flowers and very fragrant. September. 25c. \$2.00 per 10.
- Gaillardia aristata**—2 ft. Large yellow flowers with maroon center. All Summer. 20c. \$1.50 per 10.
- Gypsophila paniculata**—2 ft. Small white flowers in great abundance. July to September. 20c. \$1.50 per 10.
- Helenium autumnale var. superbum**—4 ft. Flowers yellow, in profusion in September. 20c. \$1.50 per 10.
- Helianthus decapetalus var. multiflora**—Sunflower. 4 ft. Large double yellow flowers. July to October. 25c. \$2.00 per 10.

- Helianthus Maximiliana**—5 ft. A tall growing sort, bearing an abundance of yellow flowers. October. 20c. \$1.50 per 10.
- H. orgyalis**—6 ft. A graceful yellow sunflower bearing masses of bloom. September and October. 25c. \$2.00 per 10.
- Helleborus Orientalis var. atrorubens**—1 to 2 ft. Purplish red flowers in clusters. April. 40c.
- H. niger**—1 ft. Large white flowers. March and April. 40c.
- Hemerocallis aurantiaca var major**. 2½ ft. A robust growing sort bearing an abundance of large bright orange colored flowers in July. 25c. \$2.00 per 10.
- H. flava**—Yellow Day Lily. 2 ft. One of the best hardy plants, bearing yellow fragrant flowers in June. 20c. \$1.50 per 10.
- H. fulva var. Kwanso**—3 ft. Bears orange double flowers of enduring character. 25c.
- H. Thunbergii**—2 ft. Similar to flava, but is later in coming into flower. 25c. \$2.00 per 10.
- Hepatica triloba**—Liver Leaf. 6 in. Flowers generally blue or purple, sometimes white. Blooms very early in Spring. 25c. \$2.00 per 10.
- Heuchera sanguinea**—1½ ft. Flowers bright red borne on long stems projecting above the foliage. Blooms all Summer. 20c. \$1.50 per 10.
- Hibiscus Moscheutos**—3 ft. Pink flowers in July and August. 20c. \$1.50 per 10.
- var. albus**—Crimson Eye. White flowers with purple center. July and August. 20c. \$1.50 per 10.
- Iberis Gibraltarica**—1 ft. Evergreen. A handsome spreading carpet plant literally covered with pinkish white flowers. Not quite so hardy as sempervirens. 20c. \$2.00 per 10.
- I. sempervirens**—Evergreen Candytuft. 6 to 12 in. A hardy and attractive plant at all times but particularly when covered with its white flowers in April. 20c. \$1.50 per 10.

IRIS

This is the well known Flag of our meadows. Always a sightly plant in bloom, but recently much improved in size of flowers and in colors, which are, indeed, indescribable. They do best in deep, moist soil, but will reward the planter with abundant showy flowers in all situations.

- Iris Germanica**—1½ ft. Blooming in latter May and June. 20c. \$1.50 per 10.
- Delicata**—Light purple and yellow.
- Falcata**—Yellow tinged with blue.
- Florentina**—White; early.
- General**—Double yellow.
- Gypsy Queen**—Light chocolate.
- H. Cramer**—Light blue.
- Madam Chereau**—Purple and white; fine.
- Mrs. C. Wheeler**—Yellow standards, blue falls.
- Sappho**—Clear blue and indigo blended.
- Silver King**—Silvery white, distinct and fine.
- Iris Kämpferi**—Japan Iris. 2 ft. These are later blooming and, if possible, have more gorgeous colors and greater variety of bloom. Named varieties. 20c. \$1.50 per 10.
- Antelope**—Light lavender; a superb sort.
- Eclair**—White veined with blue.
- Exquisite**—Blue in light and deep shadings.
- Hector**—Light bronze stained with purple.
- Mrs. Saxton**—Double white; large and fine.
- Norma**—Deep purple, center lilac and yellow.
- Paragon**—Dark purple.

IRIS KAEMPFERI—Continued.

- Royal**—Mahogany red.
- Venus**—White.
- White Lady**—Large, full and fine.
- Wm. Tell**—Blue.
- I. Sibirica**—2 ft. Deep blue flowers in clusters. A fine bloomer. One of the best Iris. May. 20c. \$1.50 per 10.
- Liatris elegans**—1 ft. Bluish purple flowers. August. 25c. \$2.00 per 10.
- L. pumila**—8 in. Compact spikes of purple flowers in July. 25c. \$2.00 per 10.
- Lobelia cardinalis**—Cardinal Flower. 1½ ft. Scarlet. August and September. 20c. \$1.50 per 10.
- Lychnis Chalcedonica**—Scarlet Lychnis. 3 ft. Brilliant scarlet in large clusters. June. 20c. \$1.50 per 10.
- L. Flos cuculi**—6 to 12 in. Double pink flowers all Summer. 25c. \$2.00 per 10.
- L. viscaria**—1½ ft. Bears rosy pink flowers in masses on long spikes. Very brilliant and showy. June. 20c. \$1.50 per 10.
- Lysimachia clethroides**—1½ ft. White flowers. July to September. 20c. \$1.50 per 10.
- L. verticillata**—1 ft. Yellow flowers in July. 20c. \$1.50 per 10.
- L. vulgaris**—3 ft. A large growing sort. Yellow flowers in July. 20c. \$1.50 per 10.
- Lythrum salicaria var. roseum**—2 ft. Rosy purple flowers. Very showy. June and August. 20c. \$1.50 per 10.
- Monarda didyma**—Horse Mint. 2 ft. Scarlet. August and September. 20c. \$1.50 per 10.
- Myosotis palustris**—Forget-me-not. 6 in. Light blue flowers with yellow centers, blooming nearly all Summer. 20c. \$1.50 per 10.

PAEONIAS

No flower, old or new, is more rapidly or more deservedly advancing in reputation to-day than the Pæony. Its easy culture and its entire freedom from insects and disease would alone recommend it, but when, in addition, you consider its most attractive foliage, and more especially its immense double flowers in almost all shades of color, and generally their delightful perfume, you have a record of valuable points that no other flower can equal. You do not have to coddle them as you do the rose and many other plants, but if placed in good rich soil they will for years reward you annually without further toil or effort.

We have, in recent years, secured the best new varieties offered, which, together with our old stock, makes our collection of over fifty varieties very complete in all colors and shades. There are, it is true, a nearly innumerable number of varieties, most of which are so nearly like others as to possess little merit, except to the collector.

Full clumps, named, except where noted, 50c. \$4.00 per 10.

Divided, 25c. \$2.00 per 10.

Mixed clumps, 25c. \$2.00 per 10.

Our selection, named, strong divisions, 20c. \$1.50 per 10. \$12.00 per 100.

Pæonia albiflora—2 to 3 ft.

Agida—Red, large and full.

Andre Laurie—Deep rose; very late flower.

Beauty of Francois—Clear pink.

Canisto—Silvery rose (from Harrison of Nebraska).



ONE OF OUR PÆONIA FIELDS, BLOODGOOD NURSERIES, FLUSHING, N. Y.

PÆONIA ALBIFLORA—Continued.

- Delachi**—Dark purplish crimson; large and fine.
Duchess of Orleans—Rose with violet.
Emperor—Crimson.
Esperance—Bright pink (Harrison).
Faust—Soft rose.
Festiva—White; free blooming.
Festiva Maxima—White with carmine markings in center; extra large and fine. \$1.00.
Floral Treasure—Clear pink (Harrison). \$1.00.
Formosa—Light flesh color.
General Bertrand—Lilac rose, salmon center.
Golden Harvest—Light golden yellow, full and fine. 75c.
Grandiflora alba—White, very floriferous.
Grandiflora rubra—Red.
Humeyii—Pink, enormous size, late. 75c.
Lady Bramwell—Clear pink (Harrison).
Madam Ferard—Rosy purple.
Mathilde—Rose.
Pottsi—Red, free blooming and fine flower.
Queen Victoria—White; very lasting when cut.
Victoria tricolor—Lemon, pink and white.
P. officinalis rubra and alba—1½ ft. Early red and white.
 For Tree Pæonia, see **Shrubs**, page 22.

- Papaver nudicaule**—Iceland Poppy. 1 ft. A dwarf variety with deeply lobed leaves and yellow and white flowers. June to August. 20c. \$1.50 per 10.
P. orientale—Oriental Poppy. 2 ft. Orange and scarlet. June. 25c. \$2.00 per 10.
Pentstemon barbatus—Scarlet. June to August. 25c. \$2.00 per 10.

PHLOX

Phlox decussata or **paniculata**—1 to 2 ft. The varieties of these most satisfactory perennials have been greatly multiplied in recent years, but the sorts we offer run through nearly the whole range of color and shades, and will, in general effectiveness, be

quite as satisfactory as a hundred varieties. Of course, the collector and the enthusiast will only be satisfied with all, and he will enjoy the pursuit probably more than the possession. 20c. \$1.50 per 10. \$10.00 per 100.

Coquilicot—Fiery red flowers.

Eclaireur—Purple carmine, white center, large flower.

Independence—White, tinged pink.

Madam Langier—Salmon pink, dark eye.

Premier Minister—White, rose center, fine.

Richard Wallace—White, violet center.

Slocum—Vivid crimson.

Terra Neuva—Light lavender; a dwarf sort.

Thebiad—Light pink; dwarf; free flowering.

Wm. Ramsey—Very dark purple, magenta center.

Wm. Robinson—Pale salmon, rose center; fine.

Phlox maculata—A species much like the preceding, but the foliage is much better and the bloom in the two sorts named comes earlier and lasts longer; indeed, they bloom intermittently all Summer.

Miss Lingard—2 ft. White with pink eye.

Snowden—1 ft. Pure white; dwarf.

Phyostegia denticulata—4 ft. Faint rosy pink flowers. July and August. 20c. \$1.50 per 10.

Platycodon grandiflorum—1½ ft. Blue and white bell shaped flowers. June to September. 20c. \$1.50 per 10.

var. Japonica fl. pl.—1½ ft. Double deep blue flowers. June to October. 25c. \$2.00 per 10.

Plumbago Larpentæ—9 in. Purplish blue flowers in abundance. September and October. 20c. \$1.50 per 10.

Potentilla insignis—1½ ft. Light yellow. 25c. \$2.00 per 10.

P. Russelliana—2 ft. Deep red shaded with maroon. July and August. 25c. \$2.00 per 10.

Pyrethrum—1½ ft. A most valuable class of hardy plants bearing, on long stems, flowers in different shades of color, pink, white and red. Flowers are much like the double aster. Especially good for cutting, as the flowers are very lasting. Named varieties, 35c. \$2.50 per 10.

Rudbeckia fulgida—2 ft. Orange yellow with a dark purple center. July to September. 25c. \$2.00 per 10.

R. laciniata fl. pl.—Golden Glow. 5 ft. Very showy, well known and popular; late Summer. 20c. \$1.50 per 10. \$8.00 per 100.

Salvia azurea—2 ft. Blue flowers in July and August. 20c. \$1.50 per 10.

S. bicolor—2 ft. Blue and white flowers. 25c. \$2.00 per 10.

Sedum silksianum—1 to 1½ ft. Yellow flowers in late Summer. 25c.

S. spectabile—Showy Sedum. 2 ft. Rosy purple flowers in flat cymes in late Summer. 25c.

Solidago Canadensis—4 ft. Yellow. September and October. 20c. \$1.50 per 10.

S. lanceolata—3 ft. Yellow; August and September.

Spiræa lobata—2 ft. Rosy pink flowers in June. 25c. \$2.00 per 10.

Spiræa palmata elegans—3 ft. A choice sort, bearing large corymbs of white flowers with red anthers. June and July. 25c. \$2.00 per 10.

Stokesia cyanea—1 ft. Lavender blue. A free flowering handsome plant suitable for the border or rockery. July to October. 20c. \$1.50 per 10.

Tradescantia Virginica—1 ft. Blue flowers. June to September. 15c. \$1.00 per 10.

var. alba—1 ft. Like the preceding, except that the flowers are white. 15c. \$1.00 per 10.

Tritoma Pfitzeri (Kniphofia)—3 ft. Orange scarlet to salmon; an extremely profuse bloomer; good for bedding. July to October. 25c. \$2.00 per 10.

Vernonia Arkansana—5 ft. Dark purple flowers in September. 20c. \$1.50 per 10.

Veronica amethystina—1 ft. Blue flowers in May and June. 20c. \$1.00 per 10.

V. longifolia var. subsessilis—2 ft. Amethystine blue flowers; very fine. August to September. 20c. \$1.50 per 10.

Vinca minor—Periwinkle. 6 in. Blue flowers in May. 20c. \$1.50 per 10. \$8.00 per 100.

var. alba—6 in. White flowers in May. 20c. \$1.50 per 10.

The Periwinkles are valuable for covering bare spots under trees and on banks.

HARDY GRASSES

All the ornamental grasses are suitable for planting as single specimens, in masses or along the shrubbery border, and we highly recommend their use.

Arundo Donax—Giant Reed. 10 to 15 ft. A handsome tropical looking plant; very effective and striking. Needs protection in Winter. 50c.

var. variegata—6 ft. Exceedingly handsome variegation. Not entirely hardy. 50c.

Bambusa Metake—A Bamboo from Japan, growing 5 to 8 ft. high. Broad dark nearly evergreen leaves. Must be protected in Winter. 50c.

Erianthus Ravennæ—Plume Grass. 8 to 10 ft. Resembles the Pampas Grass, but blooms abundantly and is hardy. 25c.

Eulalia Japonica—5 to 6 ft. A beautiful hardy grass from Japan; foliage a deep green, surmounted in Autumn with long flower spikes, bearing purplish

flowers of very enduring character. Can be cut and dried for Winter decoration. 25c. \$2.00 per 10.

var. variegata—4 to 5 ft. Similar to the preceding in all respects except its leaves are beautifully variegated with white, and sometimes pink and yellow stripes. 25c. \$2.00 per 10.

var. gracillima univittata—5 to 6 ft. A fine hardy, ornamental grass; leaves narrow and dark green; silver white midrib; very handsome and attractive. 25c. \$2.00 per 10.

var. zebrina—4 to 5 ft. The leaves of this sort are marked with broad yellow bands at right angles, and are very striking and handsome. 25c. \$2.00 per 10.

ROSES

Under this grouping are arranged the Hybrid Perpetual, Moss and Climbing Roses. They are not as constant in bloom as the Teas and other tender sorts, but are of much more robust habit, bearing larger and finer flowers.

We include, too, a short and select list of Everblooming Roses.

For Roses the ground should be well prepared and enriched, and receive good cultivation and liberal treatment.

Old and decayed branches, and a large portion of the preceding year's growth, should be removed annually, except with climbers, which require very little pruning.

Protect your Roses in Winter with a good mulch, and if possible cover with evergreen boughs or similar material. If the exposure is very great lay down and cover with earth.

It is best generally to leave the selection to us. We will, in all cases, adhere as closely as possible to the wishes of the purchaser. There are many kinds of Roses almost identical, and if no substitution is permitted it must be so stated in the order.

AUSTRIAN ROSES

50c.

In Spring remove all dead wood and prune back the largest shoots, so as to induce more vigorous growth, but do not prune the lateral branches, as they bloom from terminal shoots of the old wood. We offer only budded plants, owing to the impossibility of growing them on their own roots.

Harrison's Yellow—A slender but vigorous grower, with distinct, golden yellow flowers. Blooms profusely, and is entirely hardy.

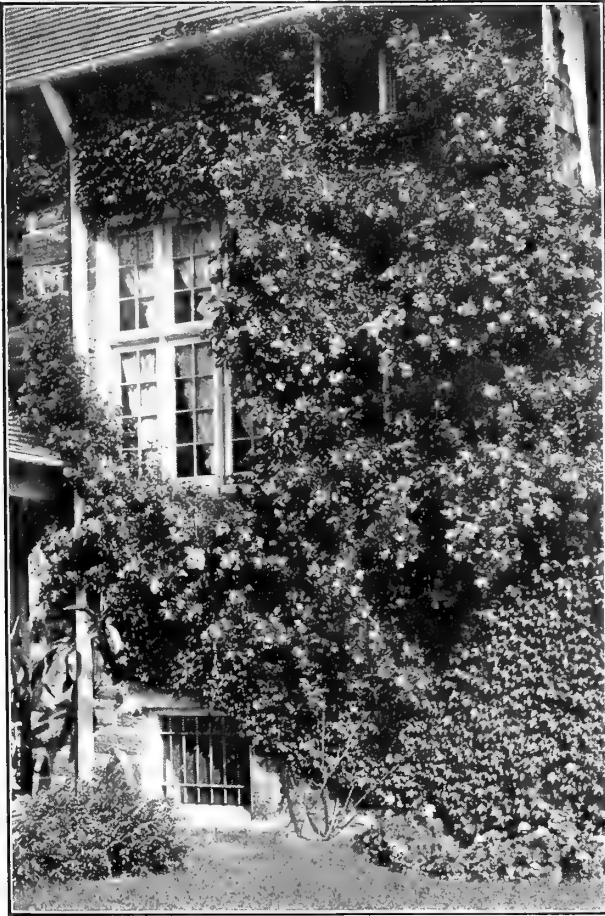
Persian Yellow—A free grower, producing long, slender shoots, with small, bright green foliage. Flowers medium size, double, and very attractive, blooming freely on the wood of the previous year.

CLIMBING ROSES

Recommended for hardiness and profusion of bloom. Are excellent for training against walls, fences, or anything unsightly, thus rendering them objects of beauty. We offer only hardy sorts. Further South the list can be greatly extended.

Crimson Rambler—A remarkable rose now well known; growth vigorous; flowers borne in pyramidal panicles; color a bright, vivid crimson. 35c. \$3.00 per 10.

We have also Pink, White and Yellow Rambler Roses, not materially differing in habit or character from the Crimson sort. Are very desirable for contrasts. 35c. \$3.00 per 10



CRIMSON RAMBLER

Baltimore Belle—Fine white, with blush center; very full and double. 35c. \$3.00 per 10.

Dorothy Perkins—A recently introduced pink climbing rose of very great merit. A cross between Crimson Rambler and Wichuraiana. Bears profusely, fragrant flowers in clusters. 35c. \$3.00 per 10.

Empress of China—A most popular climbing rose, with fragrant red flowers, fading to pink, borne at intervals all through the Summer. 35c.

Philadelphia Rambler—Differs from the Crimson Rambler in bearing flowers of deeper and more intense color and that are double to the center. 35c.

Prairie Rose—(Rosa setigera). A rampant growing, hardy climbing rose, bearing a great profusion of single deep pink or rose colored flowers in June. 25c. \$2.00 per 10.

Queen of the Prairies—A rampant climber. Bright rosy red. One of the best. 35c.

EVERBLOOMING ROSES

35c. \$3.00 per 10. Except where noted.

These are the only really constant blooming roses we have. They are of more delicate habit, not entirely hardy, but produce blooms almost at once and continuously until cold weather. Protection in Winter is imperative. They range through all shades of color, and the varieties are innumerable. We name a few of the most hardy.

Baby Rambler—We have in this recent introduction a great advance in hardy everblooming roses. The plant is of dwarf and compact habit, bearing all Summer, in clusters, a wealth of nearly crimson flowers. The foliage is good and abundant. Recommended for borders and beds. Hardy as Crimson Rambler. 50c. \$4.00 per 10. \$25.00 per 100.

Captain Christy—Delicate flesh color. A large finely formed flower.

Caroline Testout—A superb free flowering delicate pink rose.

Clothilde Soupert—Polyantha rose. Blooms in clusters; color variable, but generally pearl white.

Gruss an Teplitz—A most beautiful rich scarlet rose. In constant bloom all Summer.

Hermosa—Beautiful clear rose; flowers in clusters and is a constant bloomer. Most vigorous of its class and entirely hardy here.

Kaiserin Augusta Victoria. White or cream color. A magnificent rose.

Killarney—Large brilliant pink. Beautiful in bud. 50c. \$4.00 per 10.

La France—Clear pink, large and full.

Maman Cochet—Clear carmine rose shaded with salmon yellow. There is, too, a White Maman Cochet. Both are superb everblooming roses.



KILLARNEY

HYBRID PERPETUAL

35c. \$3.00 per 10. \$20.00 per 100.

In this class are included hardy roses that in June give a wealth of bloom unrivaled by any other flower. The name perpetual is a misnomer, since after the period mentioned they do not give many flowers, except some varieties which have a second Autumn period of bloom. Since they flower on new wood of same season's growth, high culture and severe pruning are imperative.

- Alfred Colomb**—Carmine red; superb rose.
American Beauty—Large, deep pink, shaded with carmine; delicate odor.
Anne de Diesbach—Very large; fresh rose color.
Baron de Bonstettin—Rich, velvety maroon; a splendid rose.
Baroness Rothschild—Light pink; symmetrical form; very beautiful; not of robust habit.
Baronne Prevost—Pure rose color, very large and full, fragrant and free blooming.
Caroline de Sansal—Clear, delicate flesh color; a magnificent rose of vigorous growth.
Clio—Large flowers of fine form; flesh color shaded in the center with rosy pink; one of the best roses.
Coquette des Blanches—Pure white; flowering in clusters.
Duke of Teck—Bright crimson, full, medium size.
Earl of Dufferin—One of the best roses of recent years. Rich, brilliant, velvety crimson; large and full, with a delightful fragrance.
Fisher Holmes—Brilliant scarlet; flowers large, but not very double; fine in bud.
Frau Karl Druschki—A pure white rose of perfect form and good substance. A vigorous grower and free bloomer. A superb rose.
Gen. Jacqueminot—Crimson scarlet; showy and effective. Well known and popular.
Gen'l. Washington—Bright red, shaded crimson; very full flower and a most profuse bloomer.
Giant of Battles—Deep, brilliant crimson.
Jean Liabaud—Velvety crimson; flowers large and full. Fine dark rose.
John Hopper—Rose color, with crimson center; large and elegant.
Jules Margottin—Light, brilliant crimson.
La Reine—Bright rosy pink; very large, double and sweet. One of the best.
Mabel Morrison—Pure white; flowers large, and of beautiful form.
Madame Plantier—Pure white; hardy and free blooming, but is being supplanted by Mabel Morrison and others.
Madame Gabriel Luizet—Pink; fine satin rose.
Magna Charta—Bright pink; suffused with carmine; robust habit; free bloomer.
Margaret Dickson—New; flowers white, with pale flesh center, extra large size and fine form.
Marshall P. Wilder—Cherry carmine; large and well formed. A superb rose.
Mrs. John Laing—Soft pink; very fragrant; large and fine form. One of the best; profuse bloomer; flowers large.
Paul Neyron—Deep rose; free bloomer; vigorous, desirable.
Perle des Blanches—Pure white; medium size, full.

Prince Camille de Rohan—Deep velvety crimson; large.
Ulrich Brunner—Cherry red; petals very large; fine buds; a magnificent bloomer. Used largely for forcing.

Victor Verdier—Bright rose with carmine center. A beautiful rose, but not so hardy as some varieties.



PRINCE CAMILLE DE ROHAN

MOSS ROSES

50c. \$4.00 per 10.

Require close pruning and high culture. Are admired for their beautiful buds, but are not so extensively planted as formerly. This is regrettable, and we urge their more extensive culture.

- Blanche Moreau**—Pure white; large, good form.
Crested Moss—Deep, pink colored buds, surrounded with a mossy fringe and crest. A fragrant, beautiful rose.
Princess Adelaide—Bright rosy pink; large.
Salet—Clear rose color; vigorous; free bloomer.

SWEETBRIER

35c. \$2.50 per 10. \$20.00 per 100

- Rosa rubiginosa**—Foliage of delightful fragrance; flowers single, delicate pink.
Lord Penzance Hybrid Sweetbriers—50c.
Amy Robsart—Lovely deep rose.
Anne of Gierstein—Dark crimson.
Flora M'Ivor—Blush white.
Lady Penzance—Soft tint of copper with a metallic lustre.

TREE, OR STANDARD ROSES

Of these we offer an extensive assortment in all colors, and while not recommending them for general culture, they will in many locations have particular value. 75c.

FRUIT DEPARTMENT

Our location precludes our growing fruit trees in any considerable quantity and we, therefore, greatly abridge our former lists, retaining what we believe are most desirable for limited plantings. We do not attempt here to give cultural directions, further than to state that all fruit trees delight in a good well drained soil. We advise enough pruning to admit air and light freely. In small gardens and yards we urge the advisability of using dwarf trees rather than standards, or if the last are used, that the heads be kept low. By doing so it will be much easier to treat the trees and to control the insect pests that are so generally distributed throughout the country.

Intending purchasers who propose planting in large quantity, are requested to correspond with us, naming number and sorts of trees wanted, when special quotations will be given.

Apples

First Class, 35c., \$2.50 per 10; extra, 50c., \$3.50 per 10, except where noted.

Apples. Dwarf, in variety. 50c.

Double extra and bearing age trees at special and proportionate prices.

The first fruit, both in importance and general culture, is the Apple. Its period, unlike that of other fruits, extends nearly or quite through the year. By planting judicious selections of Summer, Autumn and Winter sorts, a constant succession can be easily obtained of this indispensable fruit for family use.

SUMMER VARIETIES

Astrachan Red—Large, nearly covered with deep crimson, overspread with a thick bloom; rich, acid; August.

Early Harvest—Medium size, round; straw color; tender, sub-acid and fine; productive. August.

Sweet Bough—Large; pale greenish yellow; tender and sweet. August.

Yellow Transparent—A very early Russian apple of good quality. Color pale yellow; quality good. Last of July.

AUTUMN VARIETIES

Duchess of Oldenburg—Russian; medium to large size; skin yellow, streaked with red; flesh juicy and good, with a rich sub-acid flavor; productive. September.

Fall Pippin—Very large, yellow; tender, juicy and rich. October.

Gravenstein—Large, striped and beautiful; tender, juicy and high flavored; best. September and October.

Maiden's Blush—Large, oblate, smooth, regular, with a fine, red cheek on a clear, pale yellow ground; flesh white, tender, sprightly sub-acid flavor. September and October.

Rambo—Medium; yellowish, streaked with dull red and somewhat dotted; mild, tender, good and productive. October to December.

WINTER VARIETIES

Baldwin—Large, deep bright red; juicy, sub-acid, good flavor; very productive of fair, handsome fruit; one of the best and most popular Winter Apples. January to April.

Bellefleur—Yellow Bellflower. Large, irregular, oblong; rich yellow color; flesh tender, juicy, crisp, with a very sprightly flavor. November to March.

Ben Davis—New York Pippin, Kentucky Streak, etc. Large, handsome, striped and of fair quality; productive; a late keeper. December to March.

Bismarck—Remarkable for its habit of early bearing, trees two feet high and two years old being loaded. Fruit large and of brilliant color. An early Winter Apple recommended for pot culture and small gardens. 50c.

Fallwater—Very large, roundish; yellow, with generally a red cheek; mild sub-acid. November to February.

Fameuse—Snow Apple. Medium size; roundish; very handsome; deep crimson; flesh snowy white, tender, juicy, high flavored and delicious. November to March.

Greening, Rhode Island—Large, roundish; light greenish yellow; tender, rich and juicy; a crooked but vigorous grower. November to March.

Hubbardston Nonesuch—Large, striped yellow and red; tender, juicy and fine. November to May.

King—Tompkins County. Large and handsome; striped red and yellow; productive; one of the best. November to May.

Lady Apple—A beautiful little dessert fruit; flat; pale yellow, with a deep red cheek; juicy, rich and pleasant. November to May.

Mann—New; fruit medium to large; roundish oblate; skin deep yellow when fully ripe; flesh yellowish, juicy, mild, pleasant sub-acid; good to very good. January to June.

Northern Spy—Large, roundish, slightly conical, striped, with the sunny side nearly covered with purplish red; flesh white and tender, with a mild sub-acid, rich and delicious flavor. January to June.

Peck's Pleasant—Large; pale yellow; very tender and rich, with a Newtown Pippin flavor; fine bearer. November to March.

Russet, American Golden—Sheep Nose. Medium or rather small; yellowish russet; a remarkably high flavored, juicy variety, that keeps well. December to March.

Russet, Roxbury—Boston Russet. Rather large; greenish yellow, mostly covered with bright russet; pleasant sub-acid flavor. January to June.

Smith Cider—A handsome fruit, large, oblong; skin yellow, changing to red; flesh tender, juicy, with a pleasant sub-acid flavor. December to March.

Spitzenburg, Esopus—Medium to large; deep red; flesh yellow, crisp, sub-acid, high flavored. November to April.

Winesap—Medium; dark red; sub-acid, excellent; abundant bearer. December to May.

York Imperial—Medium, oblate; white, shaded with crimson; flesh firm, crisp, juicy and sub-acid; a good bearer and keeper. December to February.

Crab Apples

50c. \$3.50 per 10

As an ornamental fruit, and for jellies, preserving, etc., the Crab Apple is unequaled. All are hardy and prolific, come into bearing when young, and command a ready and profitable market.

Hyslop—Large, roundish ovate; dark red, with a blue bloom; flesh yellowish; excellent for cider; hardy.

Transcendent—Tree immensely productive. Fruit of good size. Color red and yellow.

Apricots

50c. \$4.00 per 10

Alexander—Russian. Tree hardy and prolific; fruit large size; yellow flecked with red. July 1.

Harris—Remarkable for size, beauty and productiveness; color rich golden yellow; free. July.

Moorpark—Very large; reddish orange; juicy, rich flavor and tender; a fine variety, and universally esteemed.

Cherries

First Class, 60c. \$5.00 per 10.

Extra, 75c. \$6.00 per 10.

The Cherry tree universally requires a dry soil, and is naturally a hardy tree, succeeding in the lightest soil or dryest situations. The Heart and Bigarreau varieties are of rapid growth, with large glossy leaves, forming fine, pyramid shaped heads, and producing large crops of luscious fruit: are well adapted for planting along the streets or in yards as shade trees. We especially recommend Cherry trees as most suitable and satisfactory for gardens and small yards in towns and villages.

HEART AND BIGARREAU CHERRIES

Plant 25 feet apart.

Black Eagle—Large; tender, juicy, rich and high flavored; productive. July.

Black Tartarian—Very large; excellent flavor. June.

Downer's Late Red—Large; light red; tender, juicy and delicious. July.

Gov. Wood—Light red; juicy, rich and delicious; tree healthy and a great bearer. June.

Napoleon Bigarreau—Very large; pale yellow or red; very firm, juicy and sweet. July.

Rockport Bigarreau—Large; pale amber, with clear red; good bearer. June.

Windsor—Fruit large, liver colored; flesh remarkably firm, sweet and of fine quality; tree hardy and very prolific. June.

Yellow Spanish—Large; pale yellow, with red cheek: one of the best light colored cherries. June.

DUKE AND MORELLO CHERRIES

These are for the most part round shaped trees: fruit generally acid, though some varieties have a very mild pleasant flavor. The trees are smaller than the preceding class, and well adapted for dwarfs. The Morellos are more slender and spreading in habit than the Dukes, which are of a stocky, upright growth. Both are more hardy than the Hearts and Bigarreaus.

English Morello—Medium to large; dark red; rich, acid; very productive. August.

Early Richmond—Medium size; dark red; sprightly acid flavor. This is one of the most valuable and popular of the acid cherries. June.

Late Duke—Large; light red; late and fine. July.

Large Montmorency—A large, red, acid cherry; larger than Early Richmond, and fully ten days later. June.

Mulberries

See Deciduous Ornamental Trees.

Nectarines

50c.

Boston—Best late freestone variety.

Early Violet—Best early freestone variety.

Nuts

CHESTNUTS

American—Our native species; sweet excellent nuts. 50c. \$4.00 per 10.

Japan—Nuts very large, often five in a burr; commences bearing at an early age. 75c. \$5.00 per 10.

Numbo—Very hardy and an immense bearer; nuts large and of good quality; ripens early, usually before frost, bears when young. \$1.00.

Paragon—A large variety of the Spanish Chestnut; hardy and very productive. \$1.00.

Spanish—A hardy tree, producing nuts of large size and good flavor. 75c. \$5.00 per 10.

FILBERT

English—The fruit of this being larger than our native species, gives it the preference for cultivation in localities where it will succeed. 35c.

SHELLBARK

Our trees are grown from extra fine thin-shelled nuts. 1½-3 ft. 25c. to 50c.

WALNUT

Black—The well known native species; hardy, prolific and valuable. The timber, in point of durability, is difficult to excel. 50c.

English—This rich and fine flavored nut is quite hardy with us, and makes a vigorous growth. 50c.

Peaches

First-class, 25c. \$2.00 per 10, \$10.00 per 100; second-class, 15c. \$1.00 per 10, \$8.00 per 100.

The Peach tree requires a well drained, moderately rich soil—a warm, sandy loam is best.

In order to preserve the continued healthy growth of the trees and the fine quality of the fruit, the trees should have the shoots and branches shortened every year, so as to preserve a round, vigorous head, with plenty of young wood.

Examine the trees carefully and extract or destroy the borer. Use potash manures liberally.

Alexander—Very early; rich and good in quality, with a vinous flavor; freestone. July.

Champion—Very hardy and productive; skin white, with a red cheek; freestone. Last of July.

Crawford's Early—Fruit very large, oblong; skin yellow, with a fine red cheek; flesh yellow, juicy, sweet and excellent. Last of August.

Crawford's Late—Fruit of the largest size; skin yellow, with dull red cheek; flesh yellow; one of the finest late sorts. Last of September.

Early York—Medium size; greenish white, covered in the sun with dull red; flesh white. Middle of August.

Elberta—Large. A beautiful color of red and yellow; flesh yellow and of good quality; a good shipper, and, all things considered, the best peach. August and September.

Foster—Large; deep orange red, becoming very dark red on sunny side; flesh yellow, very rich and juicy. Last of August.

Morris White—Medium; straw color, tinged with red; juicy and delicious. Middle of September.

Mountain Rose—Large; red; flesh white, juicy, rich and excellent; one of the best early peaches. First of August.

Old Mixon Free—Large; pale yellow, with deep red cheek; tender, rich and good. First to middle of September.

Stevens' Rare Ripe—Fruit resembles an enlarged Old Mixon Free, being of high color and beautiful. Last of September and first of October.

Stump the World—Very large; roundish; skin white, with a bright red cheek; flesh white. End of September.

Triumph—Earliest yellow flesh peach known, ripening with Champion. Sure and abundant bearer. Size medium, high quality. July.

Pears

First-class, 50c. \$4.00 per 10; extra, 75c. \$6.00 per 10, except where noted.

Standard Pear trees prefer a strong loam, but succeed well in a great variety of soils, and upon almost any land that will produce good crops of vegetables or grain. The fruit will keep longer and the flavor be greatly improved by picking before they are quite mature, and ripening them in the house. By a judicious selection of varieties their season can be extended from July to January.

Dwarf Pears are suited to garden culture, or where space is limited. Can be planted 8 or 10 feet apart, and deep enough to cover the union of the stock and scion, and be trained low by proper shortening of the terminal branches.

The letters "D" and "S" appended to the description of varieties, indicate favorable growth, either as "dwarfs" or "standards," or both. Those designated as "moderate growers" are usually smaller trees.

SUMMER VARIETIES

Bartlett—Large size; color beautiful; buttery, juicy and high flavored; bears early. D. and S. August and September. 75c.

Clapp's Favorite—Very large; yellowish green to full yellow when ripe, marbled with dull red in the sun; vinous, melting and rich. D. and S. August.

Osband's Summer—Medium; yellow, with red cheek; half melting, mild and pleasant. D. and S. August.

Wildor Early—Medium size, fine grained, tender; flavor sub-acid, sprightly; quality very good. S. August.

AUTUMN VARIETIES

Beurre Clairgeau—Large; skin yellow, shaded with orange and crimson; flesh juicy, with a sugary flavor. D. and S. October and November.

Beurre Bosc—A large, fine pear; russet yellow; flesh melting, juicy, sweet, perfumed; productive. S. September and October.

Beurre d'Anjou—Large; greenish, russet, sometimes shaded with dull crimson; flesh melting, with a high, rich, excellent flavor. D. and S. October to January.

Duchess d'Angouleme—Very large; dull greenish yellow; flesh white, buttery and very juicy, with a rich and excellent flavor; succeeds well as a dwarf. D. and S. October and November.

Howell—Large; light waxen yellow, with a fine red cheek; rich, sweet, melting; an early and profuse bearer; D. and S. September and October.

Idaho—Size large, nearly globular, obtusely ribbed; color light rich yellow, surface covered with many small dots; melting and rich. S. September and October.

Kieffer—A robust growing and handsome tree, practically immune from all insect attacks. Is a most prolific and early bearer of large and, when properly ripened, handsome fruit, of fair and sometimes very superior quality, the conditions of soil and treatment determining the last factor. For canning it is unrivaled. S. October and November.

Sheldon—Good size; yellow or greenish russet; flesh melting, juicy, with a brisk, vinous flavor; productive. S. October.

Seckel—Small; skin rich yellowish brown when fully ripe, with a deep brownish red cheek; flesh very fine grained, sweet; the richest and highest flavored pear known. D. and S. September and October.

WINTER VARIETIES

Lawrence—Rather large; yellow, covered with brown dots; flesh whitish, slightly granular, buttery, with a very rich aromatic flavor. S. November and December.

Vicar of Wakefield—Le Cure. Large, not first quality, but desirable for its productiveness; best on quince. D. and S. November to January.

Winter Nelis—Medium size; yellowish green and russet; fine grained, melting, rich and delicious. S. December. 75c.

Plums

First-class, 50c. \$4.00 per 10; extra, 75c. \$6.00 per 10, except where noted.

A heavy soil is undoubtedly best for the Plum. The ravages of the curculio have proven a great drawback to the culture of this delicious fruit. The most successful cultivators save their crops by spreading a sheet under the tree, and then by sudden jars the diseased fruit and insects will be shaken off; these should be carefully destroyed.

Abundance—Japan. An early bearer; fruit very large and tender, with a rich sweetness; has a small stone which parts readily from the flesh. First of August. 75c.

Bradshaw—European. Fruit very large; dark violet red; flesh yellowish green, juicy and pleasant. August.

Burbank—Japan. Crimson purple; very handsome and of good quality; hardy and productive. August.

Green Gage—European. Small; considered the standard of excellence for quality. August.

German Prune—European. A large, long, oval variety, much esteemed for drying; color dark purple, of very agreeable flavor. September.

Imperial Gage—European. Fruit large, oval, skin pale green; flesh juicy and sweet. August.

Lombard—European. Medium, rounded, oval; violet red; juicy, pleasant and good; adheres to the stone: a valuable market variety. August.

Moore's Arctic—European. Large, dark purple; flavor very fine both for preserving and dessert; a long keeper. September.

Willard—Japan. Similar in color and appearance to the Abundance, but ripens a month earlier. July. 75c.

Yellow Egg, or Magnum Bonum—European. Very large, oval; yellow, with white bloom; flesh yellow; sweet. Middle of August.

Quinces

50c. each, \$4.00 per 10.

Apple or Orange—Large; bright golden yellow; the most popular variety. October.

Champion—A prolific and constant bearer; fruit larger than Orange, and ripens later. October-November.

Blackberries

10c. each. 50c. per 10, \$3.00 per 100, except where noted.

Plant in good land, moderately manured. Rows seven feet by three feet for field culture. Cut away old, and cut back new wood in Winter. Form a hedge or tie to wire. Cultivate shallow.

Early Harvest—Very early and reliable; berries small but sweet and of the highest quality.

Erie—Early, hardy and productive. Fruit large and sweet.

Kittatinny—Ripens after Wilson Early. Best quality.

Lawton—Fruit very large and black; of excellent quality.

Lucretia—Dewberry. A trailing form of the blackberry, bearing large, beautiful, luscious fruit.

Rathbun—Berries extra large, jet black. Flesh juicy, high flavored. \$1.00 per 10.

Wilson's Early—Good size; very early; beautiful dark color; sweet, excellent flavor and productive. Ripens the whole crop together.

Currants

15c., \$1.00 per 10; \$8.00 per 100.

The currant worm is easily controlled by using white hellebore or Paris green in solution, and using it in season, before the bushes are defoliated. Cut out all old wood and as much new as may be necessary to give room for proper development of leaves and fruit. Currants and Gooseberries love a deep, moist soil, and a heavy mulch is excellent.

Black Naples—Very large; fine for jams or jellies.

Cherry—The largest of all the red currants. Plant vigorous and productive.

Fay's Prolific—Color deep red; an excellent and productive sort.

La Versailles—Very large; red; bunch long; of excellent quality.

Red Dutch—An old variety; excellent and well known.

White Grape—Large; yellowish white; mildly acid; excellent quality; the finest of the white sorts.

Gooseberries

Require the same treatment as Currants; good high culture, and a relentless warfare against the currant worm.

AMERICAN VARIETIES

Downing—Fruit large, roundish, light green, with distinct veins; juicy and very good; vigorous and productive. 15c. \$1.00 per 10. \$8.00 per 100.

Houghton's Seedling—Medium size, bears abundant and regular crops, never mildews; fruit smooth, red, tender and very good. 15c. \$1.00 per 10. \$8.00 per 100.

Red Jacket—A new gooseberry of high promise. 20c. \$1.50 per 10.

Triumph or Columbus—An American seedling of the English type; large golden yellow; hardy and an immense bearer. 25c. \$2.00 per 10.

GOOSEBERRIES—Continued.

ENGLISH VARIETIES

25c. \$2.00 per 10

The varieties of English Gooseberries are almost innumerable; the fruit large and handsome and of high quality. We offer only the sorts best adapted to our climate, most of them being unreliable because of mildew.

Crown Bob—Fruit large, oblong, hairy; flavor first-class.

Industry—Vigorous upright growth; very productive and a good market variety. Color dark red; of pleasant agreeable flavor.

White Smith—Fruit large, roundish, oblong; best quality.

Grapes

2 years, 25c. \$2.00 per 10, except where noted.

We urge everyone with a dooryard even to plant one or more Grape vines to supply their own table. No fruit is more easily grown or yields more abundantly of luscious and wholesome fruit. Soil should be warm and dry and good quality. Under such conditions the Grape will thrive in a very limited space.

BLACK GRAPES

Campbell's Early—An early black grape of good quality.

Concord—Well known and deservedly popular. It still heads the procession on its merits.

Eaton—Berries very large, covered with a heavy blue bloom.

Moore's Early—A seedling of Concord; ten days earlier than Hartford; and of good quality.

Wildner—Rogers' No. 4. Large; bunches greatly shouldered; flesh buttery, with a somewhat fibrous center.

Worden—A seedling of Concord, which it greatly resembles in appearance and flavor; but ripens several days earlier.

RED GRAPES

Agawam—Rogers' No. 15. Large; rich, high, peculiar aromatic flavor.

Brighton—Bunches large; berries of medium size, dark red; flesh sweet, tender, and of the highest quality.

Catawba—Bunches large and loose; berries large; of a coppery red color.

Delaware—One of the finest grapes; berries small; skin thin, light red; flesh very juicy; vine moderately vigorous and productive.

Salem—Rogers' No. 22. Berry large, of a light chestnut or Catawba color; thick skin; free from hard pulp; sweet and sprightly, with an exquisite aromatic flavor.

WHITE GRAPES.

Green Mountain—Vine hardy, vigorous and productive; fruit white, skin thin; pulp tender, rich; ripens early. 50c \$4.00 per 10.

Martha—A seedling of Concord, which it resembles in growth and hardiness; buttery, sweet and juicy. Ripens with Concord.

Moore's Diamond—Vine a vigorous grower, and prolific; bunches large, and compact; color delicate greenish white, with rich yellow tinge when fully ripe. Ripens before Concord.

Niagara—A strong grower and hardy; bunches very large and compact; berries as large as Concord; quality good, melting and sweet. Best all-around white grape.

Raspberries

50c. per 10. \$3.00 per 100, except where noted.

Cumberland—The best black cap raspberry yet introduced. Size large; very firm and of highest quality. 15c. \$1.00 per 10. \$4.00 per 100.

Cuthbert—Queen of the market. Red; very productive; good quality. The standard red raspberry.

Golden Queen—Hardy, vigorous, productive and of good quality.

Japan Wineberry—A most attractive and showy plant at all times, and worthy extensive planting for ornament alone. It bears large crops of fruit of exceptional value for jams and jellies.

Kansas—A superior blackcap; an improvement on Gregg.

Loudon—A seedling of Turner, crossed with Cuthbert, bearing large red berries, ripening at the same time as Cuthbert.

Miller's Early Red—A new and much lauded red raspberry; worthy extensive trial.

Superlative—A splendid foreign red raspberry; large and firm; of the best quality. 15c. \$1.00 per 10. \$5.00 per 100.

Strawberries

Layer Plants in April, October and November, \$1.00 per 100; \$5.00 per 1000.

Pot Grown Plants in August and September, \$3.00 to \$4.00 per 100.

Plant in March, April, September and October, in good ground, deeply worked and well manured. Set in rows 3 feet by 15 inches for field culture, and fifteen inches each way for garden, leaving a pathway at every third row. Cultivate clean, mulch late in the Fall, uncover crown early in the Spring. Make new plantations annually in rich, well prepared soil.

Those marked (P) have pistillate or imperfect flowers and must be planted near perfect flowering kinds, in order that the flowers may be fertilized to obtain fruit.

STRAWBERRIES—Continued.

Bubach—(P). Strong, rampant grower, like the Crescent; very productive of large, bright scarlet berries.

Charles Downing—Large; conical; deep scarlet; flesh firm, rich, sweet and good.

Gandy—One of the standard market berries; ripens late; firm and of good quality.

Lovett—Large bright red; uniform conical form and good quality. Reliable.

Marshall—An exceedingly handsome, high colored, very large berry of extra fine quality; ripens early.

Parker Earle—Uniformly large; conical; color bright scarlet; quality good; requires high cultivation.

Sharpless—One of the standard varieties. Large in size, delicious flavor, good bearer, bright color.

Asparagus

\$1.00 per 100. \$5.00 per 1000.

To make a good Asparagus bed, the plants may be set in the Fall or early Spring. Prepare a piece of fine, loamy soil, to which has been added a liberal dressing of manure. Select two year or strong one year plants, and for a garden set in rows 20 by 12 inches.

High authorities declare there is little or no difference as to quality and yield of different varieties of Asparagus.

We offer Barr's Mammoth, Conover's Colossal, Oyster Bay and Palmetto.

Rhubarb or Pieplant

25c. \$2.00 per 10.

This affords the earliest material for pies and tarts; continues long in use and is valuable for canning. Makes the border very rich and deep.

Early Scarlet—Rather small, but early and good. **Linnaeus**—Large, early, tender and fine. The best.



INDEX

	PAGE		PAGE		PAGE		PAGE
Abies	27	Cornus	8, 18	Laburnum	10	Rose, Moss	45
Acer	4, 5	Corylus	8, 18	Larch	10	“ of Sharon	20
Actinidia	37	Crataegus	8	Larix	10	“ Sweetbrier	45
Adam's Needle	35	Cupressus	28	Laurel	35	“ Tree	45
Aesculus	6	Currant, flowering	23	Lespedeza	21	Salisburya	14
Ailanthus	6	Cydonia	19	Leucothoë	35	Salix	14
Akebia	37	Cypress	14	Ligustrum	21	Sambucus	23
Alder	6	Daphne	19, 35	Lilac	24, 25	Sassafras	14
Almond, nowering	17	D-smodium	19	Lime	14	Sea Buckthorn	20
Alnus	6	Deutzia	19	Linden	14	Sciadopitys	31
Althæa	20	Diervilla	19, 20	Liquidambar	10	Shrubs, Deciduous	17-25
Amelanchier	6	Dogwood	8, 18	Liriodendron	10	Shrubs, Evergreen	34, 35
Ampelopsis	37	Dutchman's Pipe	37	Locust	13	Siberian Pea	18
Amygdalus	6, 17	Dwarf Horse Chestnut	22	Lonicera	21, 37	Silver Bell	10
Andromeda	6, 17, 34	Elaeagnus	20	Lycium	37	Snowball	25
Apple, flowering	13	Elder	23	Magnolia	11	Snowberry	24
Aralia	6	Elm	15	Mahonia	35	Snowy Mespilus	6
Arborvitæ	32	Empress Tree	11	Maiden Hair Tree	14	Sophora	14
“ Chinese	28	Euonymus	20, 35	Maple	4, 5	Sorbus	14
Aristolochia	37	Evergreens	27-36	Matrimony Vine	37	Sorrel Tree	6
Ash	9	Exochorda	20	Mock Orange	22	Spiræa	23, 24
Azalea	17, 34	Fagus	9	Morus	11	Spruce	29, 30
Baccharis	17	Fir	27	Mountain Ash	14	Stephanandra	24
Barberry	17	Forsythia	20	Mulberry	11	St. John's Wort	21
Bayberry	22	Fraxinus	9	Myrica	22	Strawberry Tree	20
Beech	9	Gleditschia	10	Nuts	47	Stuartia	24
Benzoin	6	Glyptostrobus	10	Oak	13	Styrax	24
Berberis	17, 34	Golden Bell	20	Oxydendrum	6	Sumac	22
Betula	7	Golden Chain	10	Pæonia	22, 41	Sweet Fern	18
Bignonia	37	Halesia	10	Paulownia	11	Sweet Gum	10
Biota	28	Hamamelis	20	Pavia	11, 22	Sweet Pepper Bush	18
Birch	7	Hardy Herbaceous		Peach, flowering	6	Sweet Shrub	18
Black Alder	22	Plants	39-43	Phellodendron	12	Sycamore	12
Bladder Senna	18	Hardy Grasses	43	Philadelphus	22	Symphoricarpus	24
Blue Spiræa	18	Hazel	8, 18	Phlox	42	Syringa	24, 25
Box	34	Hedera	37	Picea	29, 30	Tamarix	25
Bush Honeysuckle	21, 32	Hedge Plants	38	Pine	30	Taxodium	14
Buxus	34	Hemlock	32	Pinus	30	Taxus	31, 32
Callicarpa	17	Hercules' Club	6	Plane	12	Tecoma	37
Calycanthus	18	Hibiscus	20	Platanus	12	Thorn	8
Camellia, American	24	Hickory	7	Plum	22	Thuya	32
Caragana	18	Hippophæ	20	Podocarpus	30	Tilia	14
Carpinus	7	Holly	28, 35	Poplar	12	Tree of Heaven	6
Carya	7	Honeysuckle	37	Populus	12	Trees, Deciduous	4-16
Caryopteris	18	Hop Tree	13	Potentilla	22	Trees, Evergreen	27, 32
Castanea	7	Horse Chestnut	6, 11, 22	Prinos	22	Trumpet Creeper	37
Catalpa	7, 18	Hydrangea	21	Privet	21	Tsuga	32
Ceanothus	18	Hypericum	21	Prunus	22	Tulip Tree	10
Cedar	28	Ilex	28, 35	Pseudotsuga	30	Ulmus	15
“ Japan	30, 31	Iris	41	Ptelea	13	Varnish Tree	10
Cedrus	28	Itea	21	Pyrus	13	Viburnum	25
Celastrus	37	Ivy	37	Quercus	13	Vines	37
Cephalanthus	18	Japan Maple	5	Retinispora	30, 31	Walnut	10
Cerasus	7	“ Quince	19	Rhododendron	36	Weigela	19, 20
Cercidiphyllum	8	Jasminum	21	Rhodotypos	22	White Fringe	18
Cercis	8	Jersey Tea	18	Rhus	22	Willow	14
Cherry	7	Judas Tree	8	Ribes	23	Wistaria	37
Chestnut	7	Juglans	10	Robinia	13	Witch Hazel	20
Chinese Cork Tree	12	Juniper	28, 29	Rosa	23	Xanthoceras	25
Chinese Cypress	10	Juniperus	28, 29	Rose	23, 43-45	Xanthorhiza	25
Chionanthus	18	Kalmia	35	Rose, Austrian	43	Yellow Wood	8
Cinquefoil	22	Katsura	8	“ Climbing	44	Yew	30, 31, 32
Cladrastis	8	Kerria	18	“ Everblooming	44	Yucca	35
Clematis	37	Koelreuteria	10	“ Hyb. Perpetual	45		
Clethra	18						
Colutea	18						
Comptonia	18						
Corehorus	18						

A M E R I C A N NURSERY COMPANY

ANNOUNCEMENT

THE AMERICAN NURSERY COMPANY has acquired all the real estate, property, business and goodwill of the well-known F. & F. Nurseries, Springfield, N. J., The Bloodgood Nurseries, Flushing, L. I. (established 1790), Frederick W. Kelsey, New York City, and the New Jersey and Long Island Nurseries. These old established and successful concerns will hereafter be conducted as Branches of the Company under the same local management as heretofore. The Company with its extended Nurseries and complete assortments has now the largest facilities of any establishment in this country. With these advantages of economic production, of central location, and of unequalled facilities for distribution, and extended direct importations of Specimen Trees, Bay Trees, Boxwood, Trained

Fruit Trees, etc., the Company is in position to furnish all varieties of fine hardy planting material in wholesale or retail quantities on the most favorable terms. Every requisite for the complete planting and decoration of Country Estates, Parks, Municipal Street Plantings, Forestry Departments, Orchards, Lawns and Gardens, is thus available. Every effort will be made to insure the patrons of the former establishments the advantages these enlarged facilities provide. With hundreds of acres of well grown stock now ready for planting, new customers may be assured of liberal treatment. Inspection is invited. Also consultations regarding planting sketches; or estimates for plans and planting complete.

¶ The Officers of the Company are: Fred'k W. Kelsey, President; William Flemer, Vice-President and Treasurer; Theodore Foulk, Vice-President; P. H. Goodsell, Secretary.

Sales Department:
150 Broadway, New York.

February. 1908.

