

Historic, Archive Document

Do not assume content reflects current scientific knowledge, policies, or practices.

1908

PRICE LIST—1907-1908

A. MITTING

WHOLESALE FLORIST

SANTA CRUZ
CALIFORNIA

AND NURSERYMAN



U.S. DEPARTMENT OF AGRICULTURE
 LIBRARY
 Washington, D. C.

1 qt. of Raspberries

ABC

THE SUPERLATIVE RASPBERRY

PRICE LIST

1907-1908

In making this list of Plants and Seeds I take the cream of each variety of the greatest merit and the best varieties after a thorough test, adapted under a commercial standpoint for the Pacific Coast, having had thirty-two years experience in the Florist and Nursery Business as a specialist. I recommend the following list that can be depended upon to grow, on a small or a large scale. Thanking you for past favors, and soliciting your future favors.



The Superlative Raspberry

Too much can not be said in favor of the Superlative. It is a red, sweet berry, three times as large as any other variety of Raspberry to my knowledge, and is almost as large as the Red Logan in size. It is the largest cropper of any Raspberry in cultivation, being a continuous bearer from May until November. On one cane at one time I counted 472 berries of different sizes. Just think of a Sweet Raspberry as large as the Logan and a continual cropper! Do you know what it means? It means there will be a greater demand than the supply of plants and fruit. Every nurseryman and fruit-grower will want heavy shipments for their own planting. In all my experience I never saw such an opportunity to make money,—besides giving satisfaction both to the buyer and seller on the Pacific Coast for years to come. The berry is firm and a good shipper. I received from the introducer in Europe last spring 5,000 plants, and those that lived, as they were three months on the road, gave an abundance of fruit all summer. I shall also receive 5,000 more plants in December. My price is the lowest I can make it.

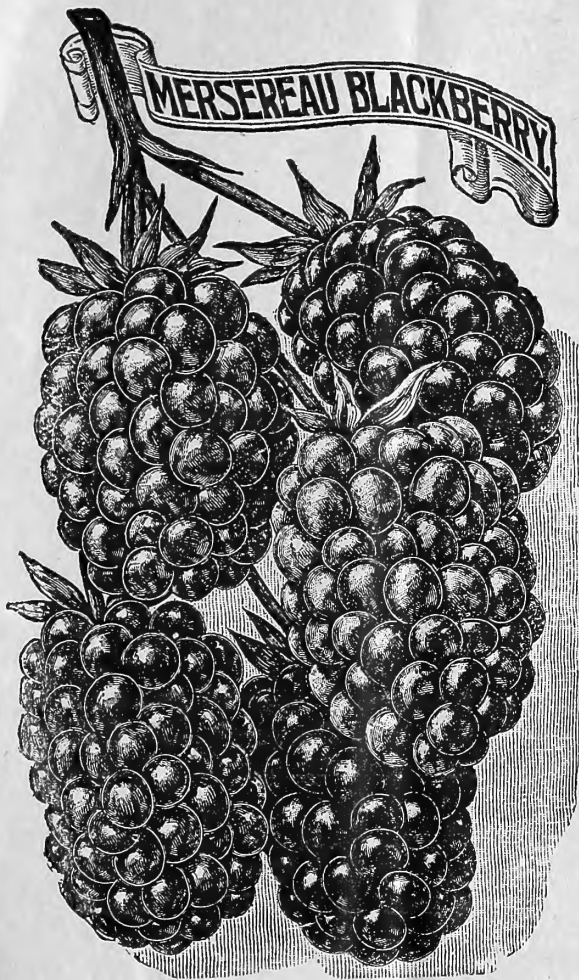
Superlative Raspberry, 2 years old, 50c each

\$5.00 per 12

\$35.00 per 100

A GUARANTEE WILL BE SENT WITH EACH SHIPMENT AS TO TRUENESS TO NAME

Mersereau Blackberry



The cardinal properties of the Mersereau are **great size, luscious flavor, great hardiness of cane and great productiveness**. But these are not its only merits. In hardiness it is doubtless without an equal among blackberries, having endured a temperature of twenty degrees below zero and was not injured in the least, even at the tips, although Snyder and Taylor's prolific were much damaged. Just how low a temperature it will withstand uninjured is not known. The berries are sparkling black throughout, and what adds great value to it as a market berry, **it remains black** after it is gathered. In quality it is so exceptionally sweet, rich, melting and luscious, being without core, and the seedy character of the Snyder and most other ironclad sorts also being absent, that a shortcake made of it, after the manner of strawberry shortcake, is even more delicious than any made from strawberries. As a shipper and keeper it is unsurpassed, being firm and does not "bleed" in handling. The canes are of exceedingly strong, upright habit, attaining, upon fairly good soil, a height of eight feet, if permitted to grow unchecked, and are so stout as to remain erect without staking. Foliage large, abundant, and entirely free from rust or blight. Its yield is simply enormous, affording heavy rich pickings from the first until the crop is all matured. Its season is early to midseason, ripening with the Snyder—in advance of the Kittatiny, Lawton, Taylor's Prolific or Erie.

One thousand dollars per acre per annum is the record of Mersereau; for it has yielded 12,000 quarts of berries per acre, which sold at an average of ten cents per quart. Allowing \$200 for picking and marketing, the returns were \$1,000 an acre.

Strong plants, 10c each; six for 50c; fourteen for \$1.00.

Per Hundred \$5.00; per Thousand, \$45.00.

The Texas Evergreen Blackberry

This is the favorite Blackberry proper of Santa Cruz, commencing to bear very early. Blooming in February it continues to bear fruit up to frost in the Fall. This berry should be planted in rows ten feet apart.

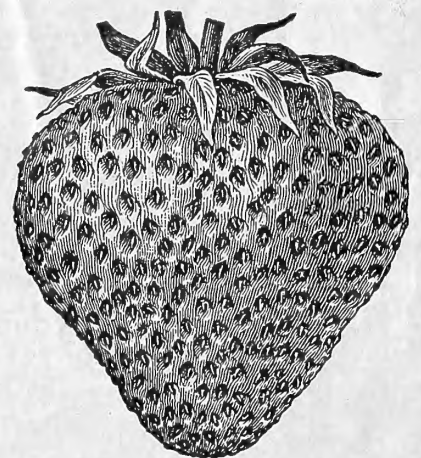
\$1.00 PER DOZEN; \$4.00 PER HUNDRED; \$30.00 PER THOUSAND.

The Dollar Berry

The Dollar Strawberry was raised from a Seedling Strawberry by a gentleman near Newcastle, Placer County California. It is the only berry now grown in Placer County and Sacramento County, Cal., Florin being the place where strawberries are most extensively grown for Sacramento and San Francisco; also shipping points east and north, some going over 1000 miles. If you write to any dealer in Rocklin, Loomis, Newcastle, Auburn, Sacramento, San Francisco or Florin, where hundreds of acres are grown, he will tell you **the Dollar Berry is the only berry**.

The berry is an upright grower, and a very heavy cropper. It makes very few runners. In color it is scarlet. Being very firm and sweet, it brings on the market ten cents more a crate than other varieties. Ready October and later.

50c PER DOZEN; \$1.50 PER HUNDRED; \$10.00 PER THOUSAND.



Black Hamburg Grapes

This is the finest and best-paying grape to grow for the Eastern market, and is becoming one, if not the best leader on the Pacific Coast. Strong plants grafted on Riparia and Rupestris, 101414. **Twenty-five Cents Each; \$2.00 per Ten; \$10.00 per Hundred; \$65.00 per Thousand.**

Muscat Hamburg, Flame Tokay.—Both of these grapes are leaders. Grafted on Rupestris St. George. **Twenty-five Cents Each; \$2.00 per Ten; \$10.00 per Hundred; \$65.00 per Thousand.**

Golden Drop Gooseberry

This Gooseberry is a dessert berry, being sweet, with a very thin skin. The flavor is delicious. The berry is a rich golden yellow about the size of a small walnut. This berry is a heavy cropper and well adapted for the Pacific Coast. Thing of taking crates of this rich-eating berry to the stores. The demand for the plants and fruit will be enormous as the years roll by. Plants can only be obtained from me or my agents this season.

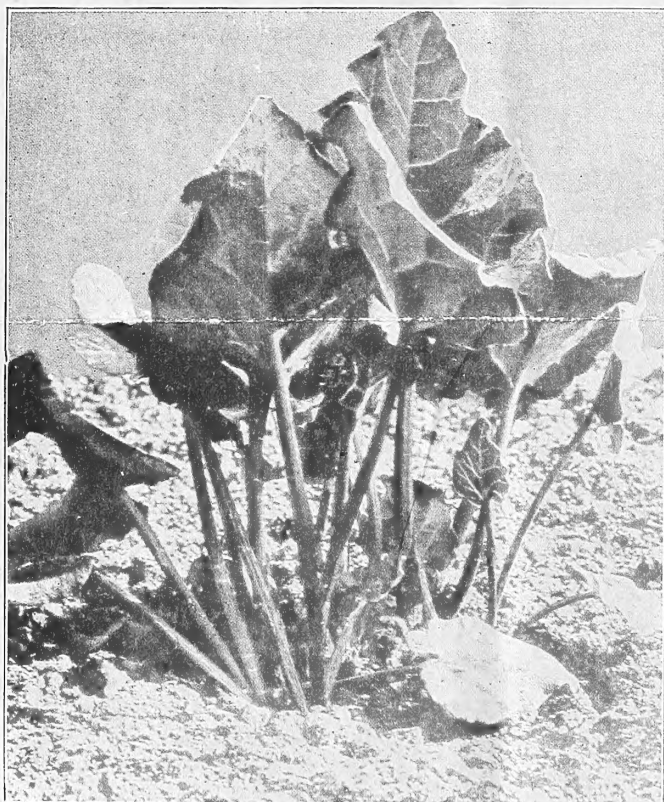
**TWO-YEAR-OLD PLANTS, \$1.00 EACH; \$10.00 PER DOZEN
IMPORTED FROM ENGLAND.**

New Black Currant BOSKOOP GIANT

There is not a heavy call for black currants. The English like the berry for jams and for puddings. The Boskoop Giant is the largest black currant grown, the fruit being as large as a grape.

**PRICE OF TWO-YEAR-OLD PLANTS, \$1.00 EACH; \$10.00 PER DOZEN.
IMPORTED FROM HOLLAND.**

Crimson Winter Rhubarb



Burbank says one of the most surprising facts which the careful observer notes is the great length of time required to familiarize growers of both fruits and vegetables with any new, epoch-making introduction.

CRIMSON WINTER Rhubarb, introduced in 1900, received the same slow recognition, though it proved all and more than was claimed for it. No vegetable introduced in the last 25 years has proved so unique.

Rhubarb is the first vegetable we have from the ground in spring. It has a host of friends who fully appreciate its merits, while those who have land and do not grow it are losing one of Nature's choicest and healthiest vegetables. It is the easiest plant to grow of all the perennials. A bed once established will last for 15 years. A half dozen plants will supply a large family during the season, which with CRIMSON WINTER, is 52 weeks each year. (Common sorts 12 weeks.)

The great value of Rhubarb as a vegetable lies mainly in its earliness. A vast amount of time and labor has been spent in efforts to originate a variety producing stalks even a few days in advance of other early sorts. These efforts have met with fullest reward, as CRIMSON WINTER Rhubarb will produce marketable stalks fully six months earlier than any other sort.

This valuable and wonderful plant was introduced by Luther Burbank of Santa Rosa, Cal.

CRIMSON WINTER starts to grow vigorously by October and produces stalks continually until after common varieties make their first appearance, some six months later. If kept moist it produces stalks abundantly at all seasons; it is, in fact, absolutely perpetual. Mr. Burbank considers this the greatest and most valuable novelty he has ever introduced.

\$1.00 PER DOZEN; \$5.00 PER HUNDRED; \$50.00 PER THOUSAND.

The Wonderful New Lemon Ponderosa

It is a true ever-bearing variety. On a plant six feet high no less than eighty-nine of these ponderous Lemons were growing at one time. It was a beautiful sight to see. The tree was blooming and at the same time had fruit in all stages of development, from the size of a pea up to the ripe fruit, showing it to be a true ever-bearer. It blooms and bears fruit when quite small and you do not have to wait four or five years to get fruit.

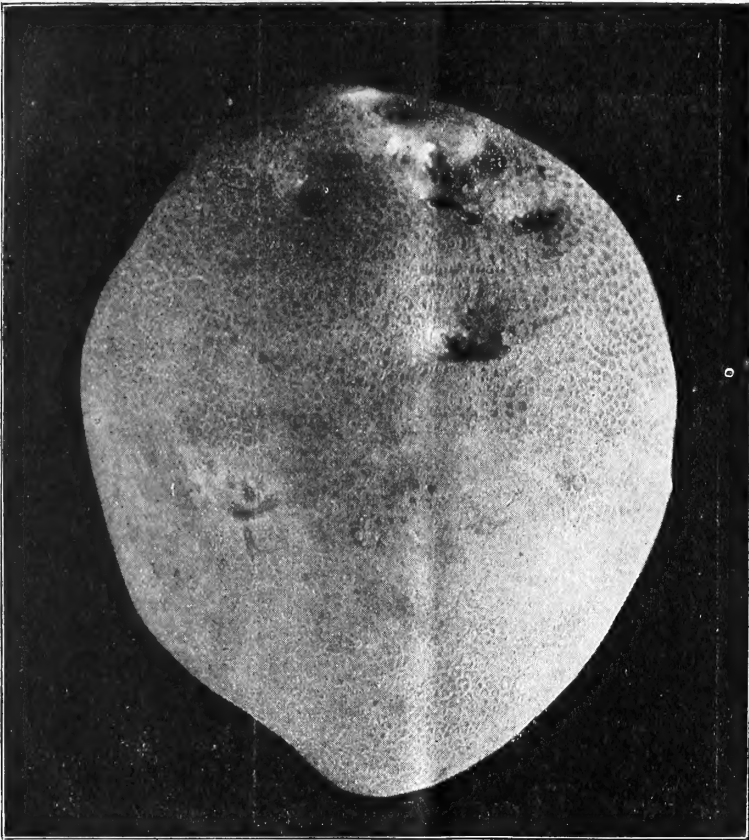
Fruit has been taken from this tree weighing over four pounds. The lemons will average two and one-half to three pounds. Now, this may seem to you like a fairy tale, but it is a fact that this is the largest lemon known. There is a lemon sold by nurserymen that goes under the name of Large Lemon, but Ponderosa is distinct from that variety.

STRONG PLANTS 20c EACH; THREE FOR 50c; SIX FOR \$1.00.

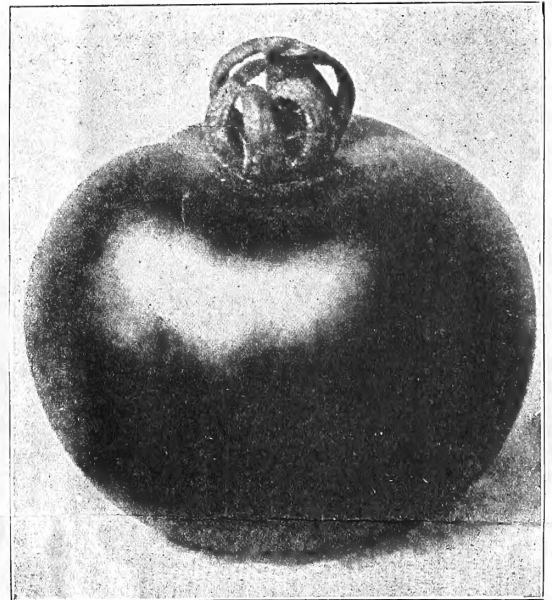
Gold Coin Potato

Gold Coin was cropped at the rate of over 300 sacks of potatoes in Santa Cruz the last two seasons. It is also the earliest potato in cultivation to my knowledge. It never is a small potato. When dug it is a white potato and one of the most mealy potatoes grown. Try five pounds and you will want more. In great demand. Stock limited.

**FIVE POUNDS FOR 75c, OR OVER FIVE POUNDS
10c PER POUND.**



Mitting's
Favorite



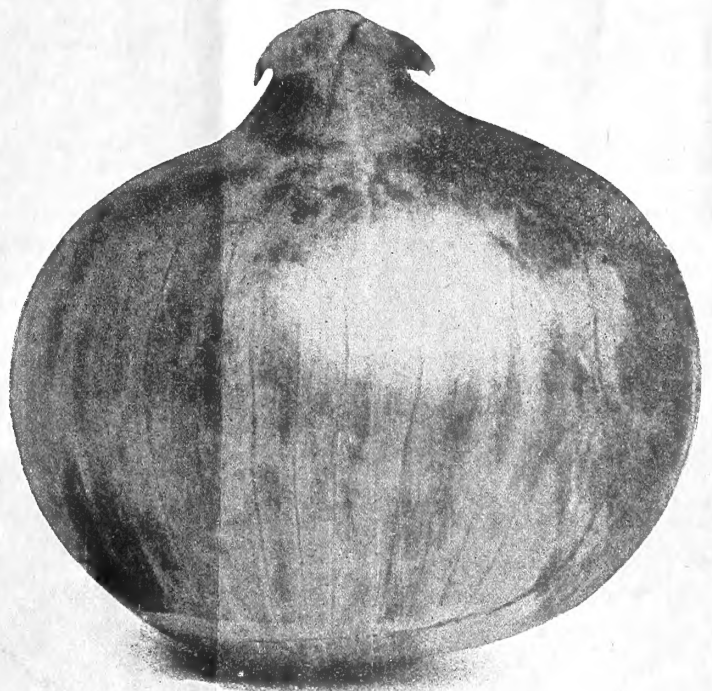
New Tomato

This Tomato is a seedling by my father in England. It is a heavy scarlet, smooth, round, fleshy, and colors uniform. A very early variety. Not very heavy foliage, but a mass of fruit in heavy clusters. Seed limited.

25c PER PACKAGE.

Australian Brown Onion

This onion was imported from Australia and has been grown in California the last three seasons, and proved itself the best keeping onion on the Pacific Coast. The seed is in great demand by seedmen and planters all over the United States. I have fifty pounds of choice heavy seed to offer, crop 1907, at the low price of 10c per package; \$2.50 per pound; ¼ lb. at 1-lb. rates.



Solanum Commersoni Violet

The New Blue Potato of Uruguay for Wet Soil

Obtained by Mr. Labergerie anno 1901 by special growth from the wild *Solanum Commersoni*, growing on the shores of the Mercedes River near Montevideo, and introduced in France, the first time anno 1767 by the French botanist Mr. Commerson. Very serious studies have been made with this new novelty by the **Societe Nationale d'Agriculture de France**, by the **Academie des Sciences de France**, by the **Laboratoire de l'Institut nationale agronomique**, by the first learned men like Messrs **Gaston Bonnier**, **Dr. Heckel**, **Schribaux**, **Blaringhem**, etc. They are unanimous to declare that this new potato is of a **sterling merit** and will render immense service to the agriculture. Its advantages can be briefly resumed as follows:

- 1° It is more productive than any other potato.
- 2° It is an excellent table variety, a sure and heavy cropper, of good flavor when cooked—baked or boiled.
- 3° It is specially adaptable for wet, very wet, and even for marshy, boggy soil. The wetter the soil the greater the yielding.
- 4° It resists all diseases, even cannot be attacked by the *Phytophthora*. Complete immunity.

Its richness in starch (*fecula*) is **17% to 18.40%**, and its yielding has been declared by trials made by the *Academie des Science* till **36 tons or 720 cwt. per acre**. Certain plants have produced more than 12 pounds of potatoes per foot.

ONE DOLLAR EACH.



Baby Rambler Rose

The Baby Rambler Rose is a dwarf border rose, nice for each side of a walk or driveway, or border for beds. Grows about eighteen inches high. A continual bloomer from early Spring to December.

TWO-YEAR-OLD PLANTS 25c EACH; \$15.00 PER HUNDRED.

Sweet Peas

I offer fifteen named varieties of the cream of Sweet Peas mixed, in the fifteen colors, at

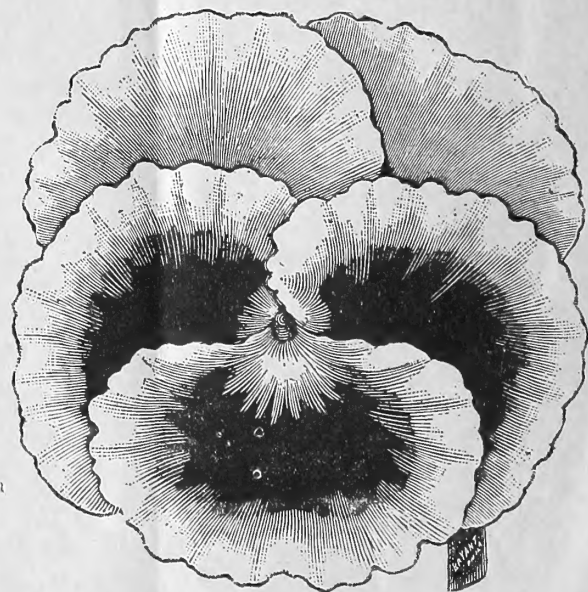
LARGE PACKAGE, 10c; POUND, 75c.



Pansy Plants

Mitting's Giant of California consists of twenty-two colors of the largest flowering fancies. Nice Transplanted plants ready from October to May.

**15c per Dozen; \$1.25 per Hundred;
\$10.00 per Thousand.**



New Cannas Never Before Catalogued

QUEEN OF BEAUTY

In this we offer the best Canna ever introduced. A rapid grower with the most beautiful dark green foliage, with tall flower spikes of large size. Blooms are nearly as large as the orchid type, but of the form of the crozy types and of the most brilliant scarlet color.

This is what is known as a self-trimmer,—all blooms drop from the spike, never leaving a discolored, ragged lot of dried flowers to mar the beauty of the plant. Grows five to six feet high and stands so far superior to any of the old sorts as to make it the most desirable new plant of recent introduction. Five to six feet.

We offer this on a new plan, making a uniform price of \$1.00 each, and no discount to any one whether they buy one or a hundred. Retail and wholesale prices will be identical.

As the stock is somewhat limited, we advise early orders, as the stock may become exhausted. We also announce that the price for this beautiful Canna will not be less than 50 cents each next year and as each plant will produce twenty to thirty or more goods plants, you can make money by buying a few of them this year, as the demand for them will be enormous when they are once seen and their wonderful beauty appreciated as it surely will be.

FAIRHOPE

A few of these were sent out last spring for trial as an improvement upon the popular Chas. Henderson. Another year's trial of it proves it to be worthy of a place in the front ranks of all the crimson colored Cannas. It is a little taller than Henderson and a shade darker in color. A very rapid grower making strong clumps and sending up a large number of spikes of beautiful, large crimson flowers. We anticipate an enormous demand for it this season as it is one of the best new sorts and no collection of fine sorts is complete without it. Four to five feet. Retail price, **40 cents each, or \$3.50 per dozen;** postpaid.

BEWARE of any dealer who offers this at a low price. No one but ourselves have but a very few to offer, and they must buy of us, or fill orders with false stock.

BIG SEVEN COLLECTION

This collection of new Cannas is especially adapted for groups where an early effect is required. All of these seven kinds are among the most rapid growers we have ever seen, often making a clump of ten to fifteen stalks before the season is half over, and on account of this strong luxurious growth, should have a place in every garden. Some prefer dwarf low-growing Cannas, but for our part, when we grow Cannas, we enjoy the kinds most that have a strong growth, giving one the idea of a tropical growth of broad leaves and towering luxuriance of foliage.

FLASHLIGHT

Beautiful light green foliage, leaves both long and broad. The bloom is rather small, but is in close clusters of bright flame-color, thus making a striking and distinct appearance. Especially recommended where a luxuriant growth is desired. Seven to eight feet. **Twenty-five Cents Each.**

MAJESTIC

Another striking foliage variety quite distinct from any variety in cultivation, foliage a bluish green lined and ribbed with bronze, blooms only of medium size, but borne in large fine clusters and of a brilliant red. Seven to eight feet. **Twenty-five Cents Each.**

BRONZE KING

A cross of Marechal Valliante on Coronet. An early and continuous bloomer, has large spikes of medium-sized light red flowers carried well above the very heavy leathery bronze foliage. Six to seven feet. **Twenty-five Cents Each.**

GIRAFFE

A bright green broad-leaved sort of magnificent size, with medium-sized blooms of bright yellow blotched and nearly covered with bright red. A very profuse bloomer that attracts immediate attention. Especially adapted for centers of beds where a tall stately variety is desired. Seven to eight feet. **Twenty-five Cents Each.**

MOONLIGHT

A seedling of Mont. Blanc. Bloom is only of medium size, but of a quite distinct light-cream color that does not fade to white as most of the light yellow shades do. The most rapid grower we ever saw; will make a fine large clump in two months from planting, larger than most kinds will in twice the time. Five to six feet. **Twenty-five Cents Each.**

BLUSHING BELLE

A very strong and rapid growing variety, foliage of a chalky shade of green, blooms profusely in tall spikes of a delicate shade of blush pink, narrowly edged with creamy yellow. Petals of good length, but narrow, gives a most striking effect; most continuous bloomer we have ever seen. Five to six feet. **Twenty-five Cents Each.**

SOUTHERN PRIDE

Another very rapid grower, making a clump several feet in diameter in a short time; foliage of a glossy green, edged with a narrow line of bronze, bloom of a salmon tinted red edged with light yellow; petals of good width and makes a very showy flower. Four to five feet. **Twenty-five Cents Each.**

ALABAMA

Four feet. A very bright, glowing, cardinal color that makes it very attractive, although the blooms are not as large as some kinds, the great abundance of them and its habit of constant flowering in great clusters induced us to give it the state name, believing it will win for itself a place in the front ranks. **Twenty-five Cents Each.**

MISSISSIPPI

A dwarf variety of peculiar habit; the foliage is very thick and leathery and never attacked by insects. Three feet high with large, bright, golden-yellow flowers with a few red specks in throat. **Twenty-five Cents Each.**

BUCATUNNA

A very peculiar flower with petals three-quarters to one and one-quarter inches in width, and three to four inches long, of a bright red color, blooming in large masses. They have an odd and very striking appearance. Three to four feet high. This variety always makes a bright line in our field, showing more bloom than many other kinds and no collection is complete without this odd and attractive variety. **Twenty-five Cents Each.**

GEN. KUROKI

A beautiful bronze foliage variety five feet high with a peculiar pink flower with shades of salmon and yellow mottled and shaded. This is a cross of the Crozy type upon the old bronze foliage type and combines a beautiful flower of rather above medium size with the beautiful foliage and rank growth of the bronze type. **Twenty-five Cents Each.**

A Few of the Newer Cannas of Recent Introduction

Alice Roosevelt.—Five feet. A bright rich crimson.

Black Warrior.—Four feet. A very dark crimson, claimed by the originator to be the darkest known variety.

California.—Four feet. A rich orange color.

Elizabeth Hoss.—Six feet. Color of Florence Vaughn, and the largest of all the yellow spotted class.

Indiana.—Five feet. This and Wyoming are the best of the new orchid flowered ones; beautiful orange flowers of heavy texture.

Jean Tissot.—Five to six feet. A beautiful scarlet of large size and strong sturdy growth.

King Humbert.—Six feet. An improved orchid type very distinct in foliage; a dark bronze with short, round, very heavy leaves and tall flower stalks carrying immense flowers of bright orange scarlet streaked with crimson.

Louisiana.—Seven feet. A much-praised new red orchid flowered kind; won grand prize at St. Louis.

Mons. Jarry Desloges.—Four feet. A very large flowered scarlet variety.

Papa Nardy.—Four feet. A distinct type of large flowered very brilliant red, veined with another shade, and overspread with a sheen of silky golden tint. We consider it the best.

Wyoming.—Seven feet. One of the best; with purple bronze foliage; with tall stalks of beautiful golden orange flowers of the orchid type, much heavier in texture than the older varieties.

Price of Above, 10c Each; \$1.00 per Dozen.

8968

Standard List of Cannas

ORCHID FLOWER TYPE

Allemannia.—Four to five feet. Best of type, orange red bordered with yellow.

Austria.—Four to five feet. Large yellow with small specks of dull red in throat.

America.—Five to six feet. Bronze foliage with large orange shaded red flowers.

Atalanta.—Six feet. Another good one very similar to Partenope and Mrs. Kate Grey.

Burbanks.—Four feet. Much like Austria; plant not quite as tall, leaves broader, with darker specks in throat.

Mount Etna.—Four feet. Bronze foliage with beautiful red flowers.

Pennsylvania.—Six feet. The first solid red among the orchid type and one of the best.

TEN CENTS EACH; ONE DOLLAR PER DOZEN.

FOLIAGE TYPE WITH SMALL TO MEDIUM SIZED BLOOM

Black Beauty.—Five to six feet. Very dark bronze foliage, small red flowers.

Pres. Carnot.—Five to six feet. An old standby among bronze foliage kinds, medium-sized bright red flowers.

TEN CENTS EACH; ONE DOLLAR PER DOZEN.

CROZY TYPE

Alba Rosea.—Four to five feet. A very beautiful and distinct variety, creamy-white shading to a rich peach blossom pink in center. Also known as Peachblow.

Alsace.—Four feet. Creamy white.

Beaute Poitevine.—Three to four feet. Crimson scarlet; constant bloomer and very attractive.

Beauty Des Marches.—Five to six feet. Long petals; salmon pink; very attractive.

Brandywine.—Four to five feet. A grand bronze foliage; wine red flowers dappled with deep crimson and sometimes edged with yellow.

Buttercup.—Three to four feet. One of the best; nearly a self-yellow; a constant bloomer and drops its flowers before they wilt.

Chas. Henderson.—Four feet. A standard crimson bedding variety.

Chas. Molin.—Four to five feet. A very large salmon flower streaked and edged with yellow.

Chicago.—Four feet. Vermillion scarlet, always has five petals and is a very distinct showy variety.

Coronet.—Four feet. A beautiful golden yellow.

Crimson Bedder.—Four to five feet. Bright crimson scarlet, very showy.

David Harum.—Three to four feet. Bronze foliage, scarlet red flowers dotted with darker spots.

Duke of Marlboro.—Four feet. A bluish green foliage with dark crimson flowers.

Eastern Beauty.—Five feet. A beautiful light salmon pink flower that is quite attractive on its bronze foliage.

Egandale.—Four to five feet. Bronze foliage constantly crowned with a mass of cherry red flowers.

Explorateur Crampbell.—Five to six feet. Bright cardinal red specked with a darker shade. Very dark green foliage.

Express.—Two to three feet. The dwarfest of all Cannas; with large drooping cluster of shining red flowers.

Florence Vaughan.—Five to six feet. A standard golden yellow spotted red.

F. R. Pierson.—Three feet. Scarlet crimson, with yellow center and occasionally streaked with yellow.

George Washington.—Four to five feet. A large flowered dark crimson.

Hiawatha.—Three feet. A light pink with bronze foliage.

J. C. Vaughan.—Three to three and one-half feet. Dark purplish bronze foliage with vermilion-orange red flowers of large size.

Mad. Crozy.—Three to four feet. Orange scarlet, edged with narrow yellow border.

Paul Marquant.—Three feet. Large flowers of a salmon color with a silvery sheen.

Queen Charlotte.—Three to four feet. Scarlet, widely bordered with deep yellow.

Souv. DeAnt. Crozy.—Three feet. Very bright scarlet crimson with broad border of golden yellow.

Striped Beauty.—Three feet. Very odd color; light yellow finely striped with narrow rays of bright crimson.

Triumph.—Three feet. A very large flower of bright red highly recommended for a dwarf.

FIVE CENTS EACH; FIFTY CENTS PER DOZEN; THREE DOLLARS PER HUNDRED.