

Historic, Archive Document

Do not assume content reflects current scientific knowledge, policies, or practices.

CHRYSANTHEMUMS
1908

U.S.P. OFFICE
WASHINGTON, D.C.
SEED INTRODUCTION
DISTRIBUTION
MAR 16 1908
RECEIVED
Agriculture



ONGAWA

Elmer D. Smith & Co.

Successors to Nathan Smith & Son

Adrian, Michigan

U. S. A.

TERMS AND GENERAL INSTRUCTIONS



IMPORTANT--Read Carefully Before Ordering.

REMITTANCE—Remit by any of the following forms: *Express Money Order, Post Office Money Order, Bank Draft, Registered Letter or Stamps.* The latter is very convenient with small orders. *Coin in unregistered letters is at your risk.*

ORDER SHEETS—You will materially assist in prompt delivery if order is placed on our Order Sheet. Extra copies on demand. *Whenever possible, order goods in rotation as catalogued, and keep a copy for comparison.*

IMPORTANT NOTICE—Every season we receive *unsigned orders, also lack complete address.* We are *unable to identify unless remittance consists of Money Orders.* To *obviate delays or loss, always give your name and complete address.* Do not mix letters with orders, as the latter are handled in shipping department. *Write on separate sheet and one side only.*

SHIPPING DIRECTIONS—*State definitely your preferred mode of shipment.* Give special attention to *signature, which should be plain, always signed alike; also Street Number, Post Office Box or Rural Route Number (if any), City, County and State, all plainly written.*

We cannot too strongly emphasize above instructions

EXPRESS SHIPMENTS are preferable in most cases and we *guarantee safe arrival.* For safe and quick delivery we know of none better, as full amount of loss may be collected. *We are always able to send much heavier and stronger stock and add a liberal amount of extras to help defray charges.* All our shipments are carried at the *Special Plant Rate, which is twenty per cent. less than merchandise.* In case of loss or damage in transit, *notify AT ONCE, so that we may promptly replace such items.*

MAIL SHIPMENTS are *practical only in small orders,* When requested, we forward by **MAIL,** postpaid, but must necessarily remove all soil from roots and send smaller plants. *We use only the latest improved methods in packing plants to insure safe arrival.* All seeds by **MAIL, postpaid.**

FILLING ORDERS—*All orders filled in strict rotation and, whenever possible, without delay* Otherwise they are immediately acknowledged. At times we are rushed and an unavoidable delay of several days occurs, especially in early Spring. *To facilitate shipment, order early and thereby avert such possible delays.*

GUARANTEE—While we exercise the utmost care in executing all orders to keep our stock true to name *we give no warranty, express or implied, and cannot guarantee to be in any way responsible for the crop either as to variety or product.* Should errors occur, do not fail to report **AT ONCE,** as we cannot entertain claims of long standing. *Any reasonable claim will be adjusted to your satisfaction. Our responsibility ceases with safe arrival of goods.*

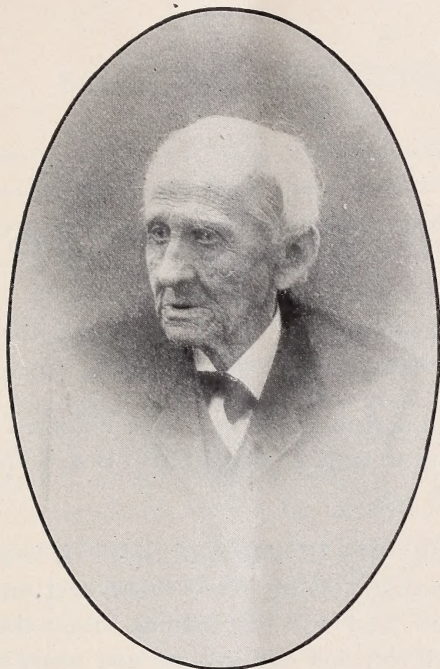
CHRYSANTHEMUMS

Illustrated
Catalogue & Price List
for 1908



ELMER D. SMITH & CO.
Adrian, Michigan

IN MEMORIAM



NATHAN SMITH

BORN SEPTEMBER 22, 1817; DIED MARCH 28, 1907

It is with the deepest sorrow that we are obliged to chronicle the death of the senior member of our firm, who passed away on Thursday, March 28, 1907, at the ripe old age of 89 years. Had he lived until Saturday, two days later, he and his estimable wife could have celebrated their sixty-fifth wedding anniversary. As it is, his companion of all these years is left in a house of mourning.

Being of a robust constitution, he had but little sickness during his long life, until last summer. Still he kept up all winter and took to his bed only March 26.

Mr. Nathan Smith was one of the oldest and most highly respected citizens in his city. Without doubt, up to the time of his death he was the oldest continuous resident of his state, removing to Michigan with his parents (who settled near Birmingham which is now nearly a suburb of Detroit) when but three years of age.

The father set to work making a home in the woods. Nathan Smith was the last one of a large family to go. As a lad, his playmates were the Indian children of the woods, and he learnt to speak their language quite fluently. He seldom saw a white child outside of his own family, and his education was picked up as best he could. He was a great reader, and kept up to date on all questions to a remarkable degree.

At the age of 17 he began learning the carpenters' trade, and was in the work quite extensively in Detroit. For many years he was in charge of the Department of Construction on the Michigan Central Railroad, his first work being on the first Michigan Central roundhouse at Detroit. Most of the first buildings along this road were erected under his supervision.

Mr. Smith was married March 30, 1842, in Southfield Township, Oakland County, Michigan, to Miss Helen A. Green, and she has proved a faithful and helpful companion through all the sixty-five years that have passed.

In the death of Mr. Smith there is the passing of a good man, having nothing in his heart but the best wishes of his fellow beings, and with kindly disposition and intelligent conception of things, has blessed the world for having lived in it.

TO OUR PATRONS

With due appréciation of the liberal patronage the past year, we present our Illustrated Catalogue for 1908.

As you will note, the firm name has been changed and hereafter all responsibilities of the firm of NATHAN SMITH & SON will be carried by ELMER D. SMITH & Co.

The successor (Son), MR. ELMER D. SMITH, has a world-wide reputation as a Chrysanthemist, having given this flower undivided attention for the Past Twenty Years, and will discontinue many lines formerly handled by the Old Firm and devote his entire time and energy to the Development and Improvement of the Queen of Autumn. ASTER SEEDS will also Receive Especial Attention during the summer months, with Improvement in view.

Your trade solicited, which will receive the same prompt and careful attention as in the past.

Yours respectfully,

ELMER D. SMITH & CO.

CHRYSANTHEMUMS

BRIEF CULTURE NOTES

In giving directions for growing Chrysanthemums to perfection in the limited space this catalogue will allow, it will be necessary to make them exceedingly brief and at best only outline this work.

The fundamental principle in Chrysanthemum culture is to establish vigorous activity, which should be maintained throughout the plant's existence.

There is no plant which responds more freely to generous treatment than the Chrysanthemum, and as they are gross feeders it is important that they be supplied at all times with sufficient material to satisfy their needs. If grown under glass, it is very important that all details, such as water and abundance of air, be carefully attended to, and later on staking and tying. At the same time constant vigilance against the depredations of all insects must be maintained. When the buds begin to form, disbudding and giving additional food will be important factors, especially if large exhibition blooms are the desire.

When the object is specimen plants, close attention will be necessary to such additional details as repotting, stopping, and before the buds are formed, staking and tying. It is also important to those who grow their plants out-of-doors to provide some means of protection against frosts and severe storms. The materials usually employed, are either glass, cloth or wax-paper, fastened to a frame-work that will protect them from all sides.

Successful Chrysanthemum culture necessitates a multiplicity of details, and when properly executed, form the stepping-stones to success. Hence it is important they be attended to at the proper time, rather than deferring for better opportunity. If allowed to want for water or sufficient food, we must not expect to be rewarded with superior quality. Eternal vigilance must be our watchword, and the closer we day by day attend to their needs, the greater will they manifest their appreciation by luxuriant foliage, and the final effort at the close of the season will be magnificent flowers to repay us for this extra attention.

To those who desire complete instructions in Chrysanthemum culture we recommend **Smith's Chrysanthemum Manual**, which is offered and fully described **on page 14**.

THE INTERNATIONAL SELECTS

The Latest Sensational Prize Winners from Australia, England and America.

ANNIE HAMILTON.—Very large, white Jap. of Morel form. Semi-dwarf, blooms showing exceptional depth; early bud. It excels Mme. Carnot in size.

DAKOMA.—Grand exhibition bronze of large size and beautiful form. Much admired the past fall.

DIRECTEUR GERARD.—An early golden bronze with chamois shadings; semi-dwarf; free and easy to grow; first bud.



Mrs. Geo Hunt



Mrs. A. T. Miller



Mrs. Henry Barnes



Ongawa



Pres. Loubet



Mrs. R. Hooper Pierson



Dakoma



Mrs. Walter Jinks



M. Loisseau-Rosseau

DUBUISSON-FOUBERT.—A valuable addition to the exhibition class; is very large in diameter, with large narrow petals; light yellow, marked with fine lines of bronzy red.

HENRY HUGHES.—A large exhibition variety; magenta, showing light lavender reverse. One of the best.

MISS CLAY FRICK.—White sport from Wm. Duchkam, possessing the same fine habit and producing blooms of the same quality.

MISS MIRIAM HANKEY.—Very large exhibition variety, but comes rather late. Jap. Inc.; mauve pink; dwarf, sturdy growth and easy to manage.

MISS MARY GODFREY.—Beautiful bright yellow; Jap. Inc.; early. Good habits.

Mlle. Suzanne Gauthier.—A very large Jap. flower; pure white; good stem and foliage; dwarf.

M. Loiseau-Rousseau.—One of the best French introductions of 1907, from the exhibition point of view. Flowers large, loosely incurved in a whirl; pale mauve.

Mrs. Henry Barnes.—Irregularly incurved Jap.; rosy terra-cotta with lighter reverse. Good stem and foliage; semi-dwarf.

Mrs. R. Hooper Pierson.—Very large exhibition bloom of bright yellow, slightly suffused bronze. Petals, long and hooking at the tips, twisting in a very graceful manner.

Mrs. Walter Jenks.—Reflexed dark violet or amaranth. A very distinct and striking color in the exhibition classes.

Mrs. A. H. Lee.—Upper surface of the petals, bright scarlet crimson, with amber reverse. This variety can be grown very large.

Mrs. A. T. Miller.—Broad petaled, pure white Jap. Inc., possessing a fine habit. Free to grow, with fine stem and foliage. A favorite wherever shown.

Mrs. Geo. Hunt.—Large soft yellow Jap. Inc. A good exhibition variety of dwarf robust growth. Beautiful form.

Nance O'Neil.—A very large spreading exhibition variety, gracefully reflexed. Bright yellow, suffused with bronze shadings toward the center; tall.

Onгава.—Excellent for exhibitions, being of large size with very wide petals and of fine incurved form. Reverse of the petals, golden chamois, which predominates. A few of the outer petals show the light crimson lining. Very easy to manage; fine stem and foliage and of medium height. None better.

Pres. Loubet.—One of the very largest; creamy white, broad outer petals reflexing and the center incurving. Growth vigorous, with heavy stem and foliage. An early bud to secure the best results.

Reginald Vallis.—An immense Jap.; plum color, with lighter reverse. Style of Morel, and can be grown to an enormous size with excellent finish; semi-dwarf.

Price, 20c Each; \$2.00 Per Dozen. Your Selection.

GILT EDGE COLLECTION

Embracing the Cream of Recent Blue Ribbon Winners in ENGLAND, FRANCE, AUSTRALIA and AMERICA. All marvels in their respective colors and have taken first place in this country.

NO CHOICE—ALL NE PLUS ULTRA.

Adrea.—Beautiful grower, and produces a large, loosely incurved flower. Color, bright clear pink, with beautiful lighter reverse, giving a frosty appearance.

Arthur Mileham.—An exhibition Jap.; soft violet with lavender reverse. Semi-dwarf.

Beatrice May.—A beautiful white of the largest size. In stem, foliage and dwarf stocky habit, this variety is unsurpassed. Has won many prizes this season.

Crocus.—A very light yellow of large size. Center petals incurving, outer ones reflexing; of the easiest culture; early, tall.

Chas. Weeks.—Bronzy lilac Jap.; center inclined to incurve, showing yellow reverse. Semi-dwarf.

Chrysanthemiste Montigny.—Very large, globular, incurving bloom of soft lemon yellow color. Good stem and foliage. A grand exhibition sort, being very prominent in many collections.

Dorothy S. Eady.—Rich apricot, with brilliant golden reverse; very distinct and striking in color; dwarf.

E. J. Brooks.—Grand variety in every respect. Will take the place of T. Carrington when better known. Color, rich purplish crimson.

LANONA.—An immense Jap. Inc. bloom of graceful outline; pure white, center slightly tinted rose. It often attains the diameter of 8 inches.

Marq. de Pierres.—A large Jap. Inc., coming rather late. Clear bright pink; vigorous and semi-dwarf in growth.

MARTHE LeSUEUR.—Beautiful reflexed Jap., of dwarf, sturdy growth. Ground color, white, with bright rose shadings.

M. Pechou.—A very large Jap. Inc.; clear canary yellow; tall; of easy culture.

Mlle. Angele Laurent.—Pure white, double Jap., of large size; dwarf habit and of the easiest culture.

Miss Alice Roosevelt.—Very closely incurved, of artistic finish, and of the purest white; fine growth; late; semi-dwarf.

Mme. L. H. Cochet.—A beautiful soft lilac pink. Dwarf; early.

MoneyMaker.—A pure white, of dwarf, sturdy growth, and easy to manage. Early.

Mrs. F. F. Thompson.—Very large, irregularly incurved bloom of artistic form, the petals twisting and curling in ostrich plum fashion. Center creamy white, lower petals tinted lilac. Was well shown at the exhibitions.

Mrs. Henry Partridge.—Almost identical with that grand old exhibition variety, NYANZA, its color being crimson, with true bronze reverse; closely incurving. It is of dwarf habit and of the easiest culture.

Mrs. R. F. Felton.—Rosy terra-cotta, reflexed, of large size. Especially adapted for collections. Vigorous and dwarf.

Mrs. A. S. Bott.—Large salmon buff Jap. Semi-dwarf.

Mrs. Louis Dupuy.—A large Jap. Inc.; outer petals tubular, with center incurved. Creamy white, sometimes tinted pale rose; tall.

PRES. ROOSEVELT.—One of the grandest of all American-bred Chrysanthemums, being nearest perfect in all of its habits. Very large Jap. Inc. blooms; dwarf habit, and foliage to the flower. Color, white ground, with light shell pink center and tips of petals, giving the entire bloom a light pink appearance. Especially attractive under artificial light. Can be grown as large as Merza.

VILLA DE PARIS.—Very dwarf and sturdy in growth; fine stem and foliage; large Jap. Inc. flowers, light rose, changing to pure white.



Mme. L. H. Cochet



Winnifred



Mrs. R. F. Felton



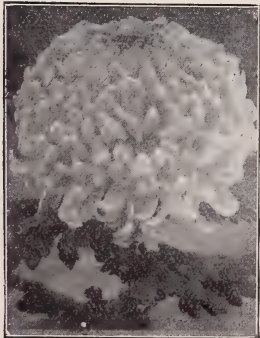
Marthe Le Suer



E. J. Brooks



Chrys'te Montigny



President Roosevelt



Beatrice May



Crocus

WINNIFRED.—A very large Jap. Inc. Color, rosy bronze; growth ideal, being dwarf and with exceedingly heavy foliage.

W. WELLS.—This variety has been a record breaker on the exhibition tables, mostly on account of its size and keeping qualities. From early crown bud, irregularly reflexed blooms are developed, hardly distinguishable from Mme. Carnot. Unlike the latter, it possesses an excellent stem. Color, pure white.

Price, 15c Each; \$1.50 Per Dozen. Your Selection.

THE BANNER COLLECTION.

To Successfully Compete you must select some from this collection, as it contains many that are indispensable and yearly found in list of winners, others are still among recent introductions.

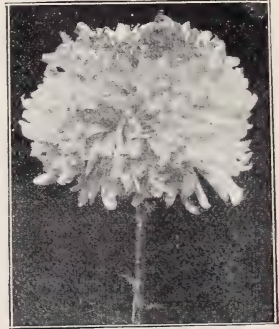
Three In One: Quantity, Variety and Quality.



Lily Mountford



Gen. Hutton



October Frost



Motron F. Plant



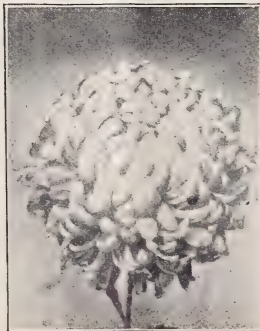
Fidelity



M. Antonin Marmontel



Guy Hamilton



Sunburst



Merza

A. J. BALFOUR.—Lovely shade of bright rose, similar to Perrin in color and form. Dwarf, short-jointed growth. Well adapted to exhibition pot culture.

CONVENTION HALL.—One of the best whites. Large incurving bloom of the purest color.

FIDELITY.—One of the most beautiful pure white varieties introduced in recent years. Very large Jap. Inc. blooms, of very artistic build, being closely but irregularly incurved, with lower petals gracefully drooping and still retaining their incurved habit. The mammoth blooms are poised on a medium stiff stem. The best white at the Chicago show, and won honors in many other places.

- GENERAL HUTTON.**—An enormous Australian yellow, of irregular reflexing form. It often measures 10 inches in diameter and depth; slightly tinged bronze from late buds.
- GEO. W. CHILDS.**—Bright crimson; the most popular of its color.
- GOLDMINE.**—Immense Jap. blooms, with whorled center; richest golden yellow.
- GOLDEN AGE.**—Intense yellow Jap. of large size; fine habits; excellent for bush plants.
- GOLDEN WEDDING.**—Old, but still a leader in yellows. Everybody wants it.
- GUY HAMILTON.**—Long, pure white, drooping petals, incurving towards tips. The bloom; when fully developed, presents one of the most beautiful and artistic among Chrysanthemums. One of the largest.
- HONESTY.**—An immense white Jap., outer petals tubular and reflexed, center loosely incurved. This variety has been very satisfactory throughout the south.
- LILY MOUNTFORD.**—Light rose pink Jap., with creamy white center. Highly esteemed in all exhibition collections.
- LORD HOPETOUN.**—A large red of fine form, and quite popular with many. Free grower.
- M. A. MARMONTEL.**—Very large Jap. blooms of exquisite finish; rosy crimson with lighter markings at maturity. Unrivalled for exhibitions.
- MARY ANN POCKETT.**—Dwarf Jap. Inc. Indian red, with bronze reverse. Very showy.
- MATCHLESS.**—Bright crimson, of medium size, inclined to come rather early; semi-dwarf.
- MERZA.**—An enormous pure white Jap. Inc., of perfect form and finish. Dwarf, robust grower. It again defied all competition at last season's exhibitions.
- MME. WALDECK-ROSSEAU.**—Rosy crimson, lighter reverse. Its very large size gives it a favorite position at the exhibitions.
- MODESTO.**—Rich yellow Jap. Inc., of large size. The standard for color.
- MORTON F. PLANT.**—A very large and showy variety for the exhibition tables. Color, dark pink; outer petals reflex, center incurve. Fine stem and foliage; best from early bud.
- MRS. W. MEASE.**—A most delicate cream colored sport from Mme. Carnot. Beautiful.
- MRS. SWINBURNE.**—Rather late Jap. Inc., of large size and fine incurved form. White; semi-dwarf.
- MRS. WM. DUCKHAM.**—Enormous Jap. blooms of great depth, and in color a brilliant yellow at maturity. Dwarf, sturdy grower. A prize winner wherever shown.
- MRS. E. D. SMITH.**—Especially adapted for single stemmed pot plants. Short jointed and dwarf. Larve incurved blooms. Color, very intense yellow.
- MRS. J. R. TRANTOR.**—An enormous reflexed bloom of great depth, when grown to single stem. It is also especially adapted for large specimen plants. Color, white, sometimes tinted pink.
- MRS. J. E. DUNNE.**—Salmon terra-cotta Jap. A splendid color and most effective. A very good dwarf grower. Has been successfully shown in this country and abroad.
- MRS. BISCHOFFSTEIN.**—A beautiful sport from LILY MONTFORD, being rich orange yellow, overlaid with rosy red and apricot shadings at the base. Distinct and charming.
- MRS. J. A. MILLER.**—One of the largest of recent novelties, and this was fully demonstrated at the exhibitions. It has won out in many of the best collections. Brick red, with lighter shadings. Dwarf, sturdy growth. Early crown bud.
- MRS. GEO. HEAUME.**—In this variety the exhibition class has a grand acquisition, especially for early shows. Color, unique salmon bronze; outer petals reflexed, center incurving, and forming blooms of great depth. Dwarf grower.
- MRS. GEO. MILEHAM.**—Outer petals long and broad, loosely drooping; center ones loosely incurving. Silvery mauve, with deep shadings.
- MRS. NATHAN SMITH.**—Pure glistening white Jap. Inc. blooms of wonderful substance. Of medium height and bushy habit. Truly an all-around white; useful for every purpose.
- OCTOBER FROST.**—The largest early white to date, perfecting its blooms by October 1. Large spreading blooms of excellent substance. Has become a favorite wherever grown this season.
- ORIZABA.**—A large Jap. Inc., of a pleasing shade of rose pink. None better for single stemmed pot plants. It also produces most effective blooms for early exhibitions.
- SUNBURST.**—A beautifully formed Jap. Inc., of large size. Color, intense yellow, with lighter reverse. A free, healthy grower. Is becoming very popular at the exhibitions.
- T. HUMPHREYS.**—Reflexed bright crimson, of the largest size. An exhibition red.
- WESTERN KING.**—A pure white Jap. Inc., of symmetrical form; rather late; semi-dwarf.

Price, 10c Each; \$1.00 Per Dozen. Your Selection.

EVERYBODY'S SECTION

In this collection are included only such Standard Varieties as have stood the test against the keen competition of the New Mammoth Australians and Other Foreigners. This is due to the presence of many older prize-winners that are still unequalled. The majority will be found at any First Class Exhibition. All the varied colors are represented.

ALICE BYRON.—An early incurved Jap., of medium size and dwarf habit. Purest white.

ARAB.—Long florets, flat and twisted. Indian red, shaded gold.

BEN WELLS.—Enormous drooping Jap. Color, bluish white; best from early crown buds. A leader in many of the prize winning collections.

BRIGHTHURST.—A beautiful reflexed Jap. of large size with high built, loosely incurved center. In color a clear, soft rose pink, with silvery luster. Tips of the petals loosely incurve. Excellent for single stemmed pots or exhibition blooms, being of dwarf, robust habit.

BLACK HAWK.—Dark crimson scarlet, style of Morel. An extra fine red for all purposes.



Mme. R. O'Burther



Ben Wells



Mrs. Harry Emmerton



Rosiere



Brighthurst



Col. D. Appleton



Dr. Enguehard



Mounier



F. S. Vallis

BRUTUS.—Handsome deep bronze of ideal dwarf growth. The best bronze for bush culture.

COL. D. APPLETON.—The most popular globular yellow yet introduced. XXX.

C. HOLST.—An early white; fine stem and foliage. Semi-dwarf.

CHELTONI.—Yellow sport from Nellie Pockett, producing massive blooms from early buds. One of the best for exhibition.

CLEMENTINE TOUSET.—A large early white, slightly tinted pink from late buds. Free, semi-dwarf.

DR. ENGUEHARD.—Jap. Inc. of fine form and a beautiful shade of bright pink from late buds. Vigorous and semi-dwarf in growth.

- EDGAR SANDERS.**—A large artistically formed dark bronze of smooth finish.
- F. S. VALLIS.**—Bright yellow reflexed blooms of enormous size. A seedling from Mme. Carnot. Always a winner in the exhibition collections.
- F. A. COBBALD.**—Handsome mauve pink, of reflexing form; dwarf. A prize winner.
- GOLDEN THEAD.**—Bright yellow florets, narrow and twisted. Very free.
- HARRISON DICK.**—A very deep flower of reddish terra-cotta and yellow. Dwarf.
- JOHN SHRIMPTON.**—Very dwarf Jap. Ref. Color, bright crimson; equally serviceable for exhibition blooms and specimen plants.
- MME. R. O'BERTHUR.**—Enormous blooms of pure white ribbon petals, reflexing gracefully and hooked at the tips. Early crown bud gives the best results. A popular white in the South.
- MRS. H. WEEKS.**—Broad petalled, pure white Jap. Inc. Dwarf. Grown by many.
- MRS. H. ROBINSON.**—Large, pure white, Jap. Inc. November 1. A general favorite.
- MRS. H. W. BUCKBEE.**—Pure white blooms, center slightly incurving, outer petals reflexing. A robust but dwarf grower, and well adapted to all purposes.
- MRS. O. P. BASSETT.**—Beautiful light yellow sport from Mrs. H. Robinson.
- MRS. W. C. EGAN.**—Large incurved, of the most perfect form. Varies somewhat in color, from creamy pink to bright pink, according to the bud and other conditions. Semi-early; tall.
- MRS. HARRY EMMERTON.**—A grand variety for exhibitions, owing to its exceedingly large size. Color, light yellow. Of easiest culture.
- MOUNIER.**—Late, semi-dwarf Jap. Ref.; bright yellow, slightly shaded bronze.
- MUTUAL FRIEND.**—Broad-petalled, spreading flowers of the purest white. Show blooms or pots.
- NELLIE POCKETT.**—Irregularly incurved Jap. The outer petals, which are narrow and twisted, reflex. Color, white. Semi-dwarf.
- NIVEUS.**—Center petals incurve and the broad outer ones reflex. Pure white; late and tall.
- OMEGA.**—The largest early yellow; Morel form; October 20. Grand for early exhibitions.
- OPAH.**—Large, reflexing flower of strong growth, perfecting its blooms September 25 and later. Pure white, tinted pink in the late blooms. The most popular large early white.
- ROSERIE.**—The largest among early pinks. Reflexed on the style of Vivian Morel, but true pink at all times. Has won popular favor everywhere.
- ROBT. HALLIDAY.**—A large, broad-petalled Jap. flower with perfect stem and heavy foliage. Excellent for bush plants. Color, bright yellow. October 20 to 25. Extensively grown out of doors.
- SILVER WEDDING.**—A very large spreading, reflexed flower of heavy, waxy texture and pure glistening white. Is one of the most popular of its color in the South, where it often outclasses all others.
- T. CARRINGTON.**—Enormous Jap. Inc. blooms of fine form and substance. Color, rich carmine rose, with silvery reverse. Should be in every exhibition collection.
- TIM. EATON.**—The most popular white of the Jap. Inc. form. Good habits.
- V. MOREL.**—Immense bright pink Jap. of perfect form. Everybody's pink.
- W. A. ETHERINGTON.**—Bright silvery mauve. Loosely incurved Jap. of perfect habits.
- W. H. LINCOLN.**—Especially adapted for large specimen plants, and for best results must be started early. Bright yellow.
- WHITE COOMBES.**—Pure white sport from the grand pink variety, MRS. COOMBES, having the same excellent habits and will be equally as useful.
- YELLOW EATON.**—Clear yellow sport from Tim. Eaton. Good for all purposes.

Price, 5c Each; 50c Per Dozen. Your Selection.

HAIRY SECTION

(Ostrich Plume)

The following varieties are very much admired for their curious, yet pretty petal decoration. The incurving form is best adapted to showing the numerous downy, hair-like filaments, which adorn the reverse side of the petals. We have selected only such varieties as are especially attractive.

F. J. TAGGART.—One of the most striking and novel varieties of this section. Very large, perfectly double flowers, completely covered with long, downy, hair-like appendages. Color, pure bright yellow. Very free grower and a favorite with everybody.

L'ENFANT (White Louis Boehmer).—A pure white sport from Louis Boehmer.

LEOCADIE GENTILES (Yellow Louis Boehmer).—A bright yellow sport from L'ENFANT des deaux Mondes.

LOUIS BOEHMER.—Magenta pink. This and its sports are excellent for bush culture.

R. M. GREY (Hairy Wonder).—Terra-cotta one of the most distinct and best.

WHITE SWAN.—A closely incurved pure white flower, very heavily plumed.



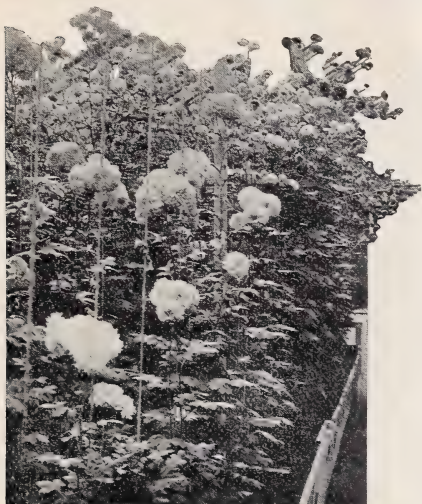
F. J. Taggart

Price, 10c Each; \$1.00 Per Dozen. Your Selection.

POMPONS

All pompons are suitable for bush plants. They are of the easiest culture, require very little training and yield flowers in abundance. Several years ago we undertook the cross fertilization of pompons with the large globular sorts, with most gratifying results. We now have established a strain of varieties in the various colors, which can be cut with stems two to two and one-half feet in length. These, arranged with large flowering sorts make most beautiful bouquets.

All 10c Plants are \$1.00 Per Dozen.



ACTO.—Incurving Dahlia-like petals; bright rose, with lighter reverse; 2½ feet.

ALENA.—A flat reflexed flower; ends of petals notched. Beautiful daybreak pink; 2½ feet high.

BABY.—The smallest pompon. Bright yellow; very late.

DELICATISSIMA.—Lower petals, daybreak Carnation color, center deep wine; attractive; 2½ feet.

ELVA.—Large, pure white globular bloom. 2½ feet. **10c each.**

EMO.—An exceedingly small flower of bright yellow color, perfectly double. 3½ feet. **10c each.**

GARDA.—Small flowering, pure white; dwarf. Fine for pot plants. 1½ to 2 feet.

ITZA.—Soft yellow center, shading to bronzy red toward the edge. Large; 2½ feet. **10c each.**

ILA.—Compact, bright yellow; small flowers, fimbriated petals; 2½ feet. **10c each.**

INGA.—Large early red, edged and tipped yellow. **10c each.**

JULIA.—Color, deep crushed strawberry red. Fringed edge. Early. 3 feet.

JULIA LAGRAVERE.—Deep red; best of its color. One of the latest; 2½ feet. edged pink. Fine in sprays or disbudded.

KLONDIKE.—Compact bloom, medium size, brilliant yellow; very useful. 2½ feet.

LIVAN.—Perfect, solid blooms; white, with lighter reverse. Dwarf; free. **10c each.**

LEO.—Light lavender pink color, with lighter shadings; large, perfect, globular blooms.

LULA.—Pure snow white, of medium size; of easy culture and very free. Late; dwarf.

MAGNIFICUS.—Pure white flowers of extra size and good form. Very late.

NITA.—Beautiful rose pink; extra fine double flowers of the large flowering type.

NIO.—Size and form like Snowdrop; soft pink and white at the center. 3 feet. **10c each.**

OREA.—Deep rose, with lighter shadings; large, perfect, globular blooms.

PANAMA.—Small flowering, bright red, very showy for bush plants. Dwarf. **10c each.**

QUINOLA.—Clear orange yellow, of excellent form and good size. One of the best.

ROSE MARGUERITE.—Anemone. Deep rose, bluish center. Very strong grower.

SKIBO.—Golden chamois; flower small, size Snowdrop; handsome sprays.

SNOWDROP.—Pure white, small flowers. Very profuse bloomer.

VIOLA.—Deep violet. A very distinct and showy flower.

WACO.—Creamy white, tipped yellow at the center. Large flowering. **10c each.**

Price, 5c Each, 50c Per Dozen, Except Those Noted.

EARLY HARDY POMPONS

While the foregoing varieties are hardy only South of the Ohio River, yet there are many sorts that can be successfully flowered both in the North and South, and are hardy with very little protection. Would recommend giving a slight covering in the North during flowering season.

ANASTASIO.—Bright lavender pink; small flowering. Fine.

BRONZE BRIDE.—Rosy bronze sport from Blushing Bride.

DUEL DE PERLE.—Bright yellow. Very dwarf.

FLORA.—Golden yellow. Very perfect flowers. A grand yellow.

FLETA.—Light yellow; small flowers. Dwarf.

LITTLE BOB.—Small red flowers. Very free and pretty. The earliest.

LITTLE CHRIS.—A true everblooming sort, being in flower every month in the year. Dwarf, bushy habit. Gives a large crop of pure white, semi-double flowers late in September.

LITTLE DOT.—Mahogany. A perfect bush and mass of tiny flowers.

MR. SELLEY.—Blush a perfect mass of bloom.

VEDA.—Bright yellow flowers; very perfect form; dwarf.

WHITE FLORA.—White sport from Flora. Very good.

ZODA.—Bright magenta pink; very dwarf and free flowering.

Price, 5c Each; 50c Per Dozen. Your Selection.

SINGLE SECTION

In the following varieties we have most useful decorative sorts. The Mizpah type is of very dwarf habit, seldom exceeding ten inches in height, and pot plants when in bloom present a most beautiful display of color. Extensively used in the East for decorating private conservatories.



Nancy Perkins

BELLE OF WEYBRIDGE.—Chestnut terra-cotta; fine grower.

CROWN JEWEL.—Rich bronzy yellow. A large and beautiful flower.

FELIX.—Crimson bronze; large flower. One of the best.

F. W. SMITH.—Rich pink; dwarf habit; very fine style.

GERTRUDE.—Pure white; disbud a little.

J. T. ANGUS.—Rosy cerise; very fine late variety.

LINTON.—Blush, on cream colored ground. A splendid thing.

LADYSMITH.—Rich pink; very free blomer. Dwarf habit.

MARY RICHARDSON.—Reddish salmon. One of the most distinct.

MIZPAH.—Daisy-like flowers; color, bright rose; height, 12 to 15 inches. Its dwarf habit suitable as a decorative plant. **5c each.**

MISS T. C. WARDEN.—Pure white; makes fine, long sprays.

NANCY PERKINS.—Purest white; perhaps the best of all whites.

PRETORIA.—Deep yellow, green center; very strong grower.

ROSINA.—Light rose pink. (PINK MIZPAH.) **10c each.**

REV. W. E. RENFREY.—Crimson maroon very striking.

Price, 15c Each, \$1.50 Per Dozen, Except Where Noted.

Smith's Revised Chrysanthemum Manual

A RELIABLE HELPER.

Written by Elmer D. Smith, the Noted Chrysanthemum Specialist.

The author, being aware that most of the works upon Chrysanthemum Culture were devoted to methods practical only to florists, has endeavored to meet the requirements of all.

The amateur, growing a few plants for pleasure and eager for better results, has been amply provided for.

In this Second Edition, many of the important Chapters have been revised and enlarged, giving more complete details, with additional illustrations.

PRICE within the reach of all. 100 Pages, ONLY 40c, Postpaid.



If you are a florist and entitled to our Wholesale Catalogue, same will be mailed on receipt of your Business Card, Letter Head, or other evidence.

COLLECTIONS

CHRYSANTHEMUMS

To those desiring a large collection of the choicest varieties at greatly reduced rates, we make the following special offers. We are confident these collections will please the most fastidious, not only in the selection but quality of stock. In considering these, do not overlook the fact that the Novelties included are not merely so called Novelties, but those approved by the best growers in this country and abroad. At times we have accumulations in some of the best Novelties, and desire to give you the benefit and secure these at a large reduction in price.

REMEMBER. Our usual fair business methods are backing these selections, assuring you of receiving the very best at our expense. Give us a trial order—you will not regret it. We know we can please you.

No. 1—15 International Selects, 12 Gilt Edge Collection, 15 Banner Collection, 22 Everybody's Collection, 6 from various other types; 70 Plants, all different varieties, postpaid, only.....	\$5 00
No. 2—10 International Selects, 8 Gilt Edge Collection, 9 Banner Collection, 18 Everybody's Collection, 5 various other types; 50 Plants, all different varieties, postpaid, only.....	3 50
No. 3—9 International Selects, 12 Gilt Edge Collection, 9 Banner Collection; 30 Plants, all different varieties, postpaid, only.....	3 00
No. 4—6 International Selects, 9 Gilt Edge Collection, 10 Banner Collection; 25 Plants, all different varieties, postpaid, only.....	2 50
No. 5—25 Best Exhibition Varieties, all colors, postpaid, for.....	1 00
No. 6—12 Best Exhibition Varieties, all colors, postpaid, for.....	50
No. 7—12 Best Varieties Pompons, assorted colors, postpaid for.....	50
No. 8—12 Best Varieties Hardy Pompons, assorted colors, postpaid for.....	50
No. 9—12 Best Singles, assorted colors, postpaid for.....	1 00

MISCELLANEOUS

No. 10—12 Best Dahlias, best varieties in assorted colors, postpaid for.....	75
---	-----------

NOTICE

The selection of varieties for above collections in all cases must be left to us.

The prices given are **Net Cash** with order. **No discount.** Always order by number.

CHRYSANTHEMUMS FOR SPECIAL PURPOSES

For the convenience of many of our patrons who are still unfamiliar with the bulk of the varieties catalogued, we offer the following. We have made these selections from our own experience, also notes of Specialists in various parts of the country. As the climatic conditions at place of residence cause much variance in time of development, also perfection of certain varieties, the selections given must not be taken as authentic.

FOR SINGLE STEM POTS

Annie Hamilton, Beatrice May, Brighthurst, Cheltoni, Dorothy S. Eady, E. J. Brooks, Geo. W. Childs, Honesty, Harrison Dick, Lanona, Miss Clay Frick, Merza, Martha LeSueur, Morton F. Plant, Moneymaker, Mrs. A. T. Miller, Mrs. Geo. Hunt, Mrs. Wm. Duckham, Mrs. Elmer D. Smith, Mrs. J. R. Trantor, Mrs. J. A. Miller, Mrs. H. Robinson, Mrs. O. P. Bassett, Nellie Pockett, Ongawa, Orizaba, Pres. Roosevelt, Winnifred.

FOR BUSH PLANTS

Adrea, A. J. Balfour, Arab, Brutus, C. Holst, Crocus, Convention Hall, Dakoma, Dr. Enguehard, Edgar Sanders, Golden Age, Geo. W. Childs, Honesty, Harrison Dick, John Shrimpton, M. A. Marmontel, Mrs. J. R. Trantor, Mrs. H. Weeks, Mrs. H. W. Buckbee, Mutual Friend, Robt. Halliday, Sunburst, T. Carrington, T. Humphreys, and W. H. Lincoln.

In addition to the foregoing, the variety Louis Boehmer and its sports L'Enfant and Leocadie Gentiles are noted Bush varieties. All Pompons and Singles are also excellent for Bush culture.

BEST VARIETIES FOR ALL-SAINTS' DAY (NOVEMBER 1)

As there is a very heavy demand for flowers for All-Saints' Day in the Southern States, we have made the following selections. The varieties mentioned will perfect their flowers in the North on or before November 1.

Director Gerard, Dubuison-Foubert, Miss Mary Godfrey, Mrs. A. T. Miller, Ongawa, Pres. Loubet, Beatrice May, Crocus, Lanona, Honesty, Mrs. Geo. Heaume, October Frost, Alice Byron, C. Holst, Clemantine Touse, Mme. R. O'Berthur, Mrs. H. Robinson, Mrs. O. P. Bassett, Mrs. W. C. Egan, Omega, Opah, Rosiere, Robt. Halliday and White Coombes.

SEED DEPARTMENT

To enable every one of our customers to have a beautiful Flower Garden, both Annuals and Perennials, we have decided to offer Only the Best Sorts of the Various Popular Types at PRICES THAT DEFY COMPETITION| NOTE THE REDUCED PRICES. We have not made the packets smaller, but all are full size and weight.

ASTERS

One of our SPECIALTIES, and have many unsolicited testimonials from satisfied customers. We do not offer the large collections, but only a few TRIED VARIETIES.

EARLY

The following varieties comprise the best early sorts, and if planted early, may be had in flower the first week in July:

EXPRESS.—One of the finest of the Comet type; large flowers on sturdy plants.

White, violet and pink. Per pkt., 10c.

QUEEN OF MARKET.—The old early standby; all double flowers. Separate colors, white, light pink, rose, lavender, purple or mixed. Per pkt., 5c.

MIDSEASON

The following varieties come into perfection immediately after the foregoing:

DAYBREAK.—Very light pink ball shaped; popular. Per pkt., 10c.

LAVENDER GEM.—Beautiful lavender Comet. Per pkt., 10c.

LATE

Most of the late flowering varieties belong to the BRANCHING SECTION, and are esteemed for their free flowering habit; large, full, fine formed flowers surmounted on long stems. If sown in succession, they will give abundance of flowers all through the late summer and fall.

LATE BRANCHING.—Separate colors, white, light pink, shell pink, rose, lavender and purple. Per pkt., 5c. Mixed, all colors, per pkt., 5c.

CARLSON'S BRANCHING.—A popular type in many localities. Pink, lavender, early white and late white. Per pkt., 5c.

VIOLET KING (New).—Has the branching habit, but distinct in form. Very large, full blooms; quilled petals; beautiful soft violet. A grand sort. Per pkt., 10c.

ROYAL PURPLE (New).—Another variety similar to the Branching type. Large, very double blooms, flat petals, slightly incurved. The name precisely describes the magnificent color. Extra fine. Per pkt., 10c.

MIXED.—All colors and types, Per pkt., 5c.

ANTIRRHINUM.—(Snapdragon.) A beautiful Annual which is fast gaining popularity. The latest improved Giant Flowering types, embrace many brilliant colors.

Giant Flowered.—In separate colors, white, yellow, light, pink and scarlet. Per pkt., 5c.

All Colors Mixed.—Per pkt., 5c.

AQUILEGIA.—(Columbine.) One of our Best Hardy Perennials, lately much improved.

Long Spurred.—In separate colors, yellow, purple, pink and white. Per pkt., 5c.

All Colors Mixed.—Per pkt., 5c.

Coeurulea.—(Rocky Mountain Columbine.) Sky blue and white. Per pkt., 5c.

ALYSSUM.—Very useful for carpet bedding and edging; delicate fragrance.

Little Gem.—Per pkt., 5c.

BALSAMS.—The ease of culture and profusion of flowers has placed the Balsam foremost among Annuals. They prefer a rich soil.

Camelia Flowered.—(Double.) Separate colors, white, scarlet, lavender, pink and apricot. Per pkt., 5c.

All Colors Mixed.—Per pkt., 5c.

BELLIS.—(Giant Double Daisy.) The present improved strains are admirably adapted for all sorts of bedding or edging.

Best Strain of Double, Mixed.—Per pkt., 5c.

CANDYTUFT.—Another well known border plant. An old favorite.

White Empress.—Per pkt., 5c.

All Colors Mixed.—Per pkt., 5c.

CANNAS.—Easily grown from seed, if properly started. Place the seeds in boiling hot water for a few moments before planting, then sow in shallow boxes indoors and transplant the seedlings about June 1st in the Northern States.

Mixed.—Including all colors and types. Per pkt., 5c.



Aquilegia

CALANDULA.—Free flowering plants of easiest culture, succeeding everywhere and continually in bloom.

All Colors Mixed.—Per pkt., 5c.

CAMPANULA.—(Canterbury Bell). A well-known Biennial, flowering the second year from seed. They produce a profusion of bell-shaped flowers.

Single.—Finest Mixed. **Per pkt., 5c.**

Double.—Finest Mixed. **Per pkt., 5c.**

CYPERUS.—(Umbrella Plant). Easily grown from seed. Keep moist. **Per pkt., 5c.**



Coreopsis

COREOPSIS.—One of the finest Hardy garden plants. Intense yellow, single florets on long stems.

Grandiflora.—**Per pkt., 5c.**

CELOSIA.—(Cockscomb). They never fail to please the grower with their masses of brilliant flowers.

Empress.—Dwarf Crimson. **Per pkt., 5c.**

Plumed Variety.—**Per pkt., 5c.**

CENTAUREA.—(Cornflower or Sweet Sultan). The new improved types embrace the colors from white, through the various shades and tints to deepest purple. Fine cut flower.

Imperialis.—Mixed. **Per pkt., 5c.**

Cyanus.—Mixed. **Per pkt., 5c.**

COSMOS.—The strain we offer is of the Dwarf Early Flowering, which begins to flower in June and at its best in August.

Dwarf Early Flowering.—Mixed. **Per pkt., 5c.**

DATURA.—Large, bell-shaped, showy flowers on tall, branching plants.

Fastuifl.—Mixed. **Per pkt., 5c.**

DAHLIAS.—Double and Single Dahlias can easily be grown from seed, flowering the first season.

Double Mixed.—**Per pkt., 5c.**

Single Mixed.—**Per pkt., 5c.**

DELPHINEUM.—(Larkspur). Well known to everyone as one of our most useful Hardy Perennials. The latest improvements range from 3-7 ft. in height.

All Colors Mixed.—**Per pkt., 5c.**

DIANTHUS.—Are prized for their beautiful colors and include a large family.

Snowball.—Double white, finely fringed. **Per pkt., 5c.**

Fireball.—Double crimson. **Per pkt., 5c.**

All Colors.—Double and single mixed. **Per pkt., 5c.**

Marguerite.—(Carnation). All colors Mixed. **Per pkt., 10c.**

DIGITALIS.—(Foxglove). Nothing better for Hardy Border, being of easy culture and the bell-shaped flowers rival in colorings the beautiful Gloxinia.

All Colors Mixed.—**Per pkt., 5c.**

ESCHSCHOLTZIA.—(California Poppy). Very attractive for edging and massing, producing a profusion of bloom from June until frost.

All Colors Mixed.—**Per pkt., 5c.**

In Separate Colors.—White, Cardinal and Yellow. **Per pkt., 5c.**

FORGET-ME-NOT.—Thrive best in a damp, shady situation and in almost any soil.

Alpestris.—Bright blue, biennial. **Per pkt., 5c.**

Palustris.—Hardy perennial; bright blue. **Per pkt., 5c.**

FOUR O'CLOCK.—(Marvel of Peru). A well-known, handsome, free flowering favorite. **Choicest Mixed, per pkt., 5c.**

GAILLARDIA.—One of the showiest in the Perennial Border, requiring no protection and thriving everywhere.

Grandiflora.—Mixed. **Per pkt., 5c.**

Lorenziana.—Finest Mixed. **Per pkt., 5c.**

HUMULUS.—(Hop). The foliage resembles that of the common hop, but is more dense. One of the best Porch Covering plants.

Japonica Variegata.—Variegated green and cream. **Per pkt., 5c.**

HELIOTROPE.—All Sorts Mixed.—**Per pkt., 5c.**

HELIOPSIS.—Beautiful deep golden yellow flowers about 2-in. in diameter; very useful for bedding.

Soliel d' Or.—**Per pkt., 5c.**

HOLLYHOCKS.—The most majestic of hardy plants.

Charter's Superb Double, Mixed.—**Per pkt., 5c.**

Alleghany Dwarf Single Fringed, Mixed.—**Per pkt., 5c.**



Cosmos

New Annual.—This is a very new type which flowers the first season from seed. If sown early and set out in May commence blooming in July, and those sown in May begin flowering in August.

All Colors Mixed.—Per pkt., 5c.

HIBISCUS.—If sown early, bloom the first year. Flowers beautifully colored and of large size.

Crimson Eye.—Large pure white with crimson center. Per pkt., 5c.

Milifaris.—Delicate flesh pink. Per pkt., 5c.

KOCHIA.—(Summer Cypress). Extensively used as a hedge; produces very symmetrical plants which assume a brilliant crimson color late in the season.

Scoparia.—Per pkt., 5c.

MARIGOLD.—Unsurpassed for effective garden display during the summer and autumn months.

Lemon Queen.—Tall growing, lemon yellow. Per pkt., 5c.

Prince of Orange.—Tall growing, bright orange. Per pkt., 5c.

Legion of Honor.—Dwarf French, brilliant gold, blotched maroon. Per pkt., 5c.

All of the Above Mixed.—Per pkt., 5c.

MORNING GLORIES.—We know of no better annual climber for covering piazza, arbor or tree.

Imperialis.—Japanese Giant, all colors mixed. Per pkt., 5c.

MIGNONETTE.—No garden complete without its bed of Mignonettes.

Allen's Defiance.—Per pkt., 5c.

NICOTIANA.—(Flowering Tobacco). One of the most showy and profuse flowering garden Annual, giving a continuous display of flowers throughout the summer and autumn.

Sanderae Hybrids.—All colors. Per pkt., 5c.

NASTURTIUMS.—Unexcelled for ease of culture, duration of bloom, brilliance in coloring and general excellence.

Tall or Climbing.—There is no better mixture offered, and in fact is equaled only by a few seed houses in this country. It is made up of the newer kinds, such as Butterfly, Croesus, Jupiter, Sunlight, Moonlight, Twilight, Midnight, Caprice, Mme. Gunter Hybrids and California Giants. Per pkt., 5c; ½ oz., 10c; 1 oz., 15c.

Dwarf or Tom Thumb.—This mixture contains ten of the best standard varieties. Per pkt., 5c; Per oz., 10c.

PANSIES.—Everyone who grows flowers is familiar with the Pansy and fully aware of its beauty and true worth, hence we consider elaborate description unnecessary.

Fine Mixture.—Composed of all the separate varieties. Per pkt., 5c.

Superb Mixture.—Containing only the finest Giant flowering varieties. Per pkt., 10c.

PENNISSETUM.—A magnificent ornamental grass, both in the long, graceful foliage and the large feather-like plumes.

LONGISTILUM.—Very graceful greenish-white plumes; 3 feet. Per pkt., 5c.

PYRETHRUM.—All colors, Mixed. Per pkt., 5c.

PLATYCODON.—(Japanese Bell Flower.) Bear a continual succession of bell-shaped flowers from June to October.

Grandiflora.—Blue. Per pkt., 5c.

PETUNIA.—Superb, Single, Large Flowered, Mixed.—Hand Hybridized. Per pkt., 10c.

Superb Double, Fringed and Plain Edge.—Hand Hybridized. Per pkt., 15c.

POPPY.—In recent years the improvement in Poppies has been very pronounced and the old types of the past do not compare with the Latest Improved Strains.

American Flag.—White with scarlet border. Per pkt., 5c.

Fairy Blush.—Pure white, fringed with rose. Per pkt., 5c.

Golden Gate.—Semi-double, great variety of colors. Per pkt., 5c.

Mikado.—Scarlet and white; curved petals, like Chrysanthemums. Per pkt., 5c.

All of the above Mixed.—Per pkt., 5c.

Miss Sherwood.—2½ feet high; satiny white, shading to rose. Per pkt., 5c.

Shirley Improved.—Purest white, ranging through all the shades of pink, rose and carmine, to the deepest crimson. Per pkt., 5c.

Silver Lining.—Cup-shaped; scarlet, spotted with black. Per pkt., 5c.

The Bride.—A beautiful variety; pure white. Per pkt., 5c.

All Above Varieties, Mixed.—Per pkt., 5c.

Oriental.—Large, showy flower, deep crimson. Per pkt., 5c.

Iceland, Mixed.—Shades from white to orange-scarlet. Per pkt., 5c.



Delphinium



Phlox



Rudbeckia Newmanii

PHLOX.—For a constant display of colors, Phlox are not excelled by any other Annual. The colors range from purest white to the deepest crimson.

Alba.—Large white. **Per pkt., 5c.**

Carna.—Pink. **Per pkt., 5c.**

Coccinea.—Scarlet. **Per pkt., 5c.**

All Colors, Mixed.—**Per pkt., 5c.**

Hardy Phlox saved from our superb collection. **Per pkt., 5c.**

RICINUS.—(Castor Oil Bean).. Everyone admires this stately plant on lawns.

Finest Mixed.—**Per pkt., 5c.**

RUDBECKIA.—(Coneflower). A very interesting group of Annual and Hardy Perennial flowers, all of which are exceedingly profuse bloomers.

Bicolor Superba.—Golden yellow with large brown spots at the base of each petal. **Per pkt., 5c.**

Newmanii.—Vivid yellow with brown center. **Per pkt., 5c.**

Triloba.—Very free flowering; bright yellow, black disc. **Per pkt., 5c.**

SWEET PEAS.

This most beautiful hardy Annual can be well grown on any good garden soil. The following varieties are among the very best of recent introduction and recognized as the best now in commerce. We take pleasure in offering them to our patrons.

NEW ORCHID FLOWERING.—This new race has the largest size of all Sweet Peas, while the colors are beautifully blended and the edges ruffled and fluted.

Countess Spencer.—A silvery white suffused with soft rose pink. **Per pkt., 10c; per oz., 15c.**

Florence Spencer.—Standards and wings are both delicate pink, deepening toward the edges. Flowers are enormous and borne on long stems. **Per pkt., 10c; per oz., 15c.**

Gladys Unwin.—Crinkled or waved standards with broad wings. Similar to **Countess Spencer**, but a lighter shade of pink. **Per pkt., 10c; per oz., 15c.**

Helen Lewis.—Flowers very large; orange-rose, exquisite blending. **Per pkt., 10c; per oz., 15c.**

John Ingman.—Gigantic size; rich carmine-rose. **Per pkt., 10c; per oz., 15c.**

One Pkt. each of Five Superb Orchid-flowering, 40c.

POPULAR STANDARD SORTS—Recognized as The Best.

Black Michael.—Reddish-maroon, almost a self color. Flowers large.

Helen Pierce.—Bright blue mottled pure white.

Romolo Piazzini.—A true violet-blue, self. Flowers of large size and great substance.

Scarlet Gem.—Bright clear dazzling scarlet, the best of its color.

Blanche Burpee.—Fine large flower; snow white.

Captain of the Blues.—A beautiful combination of purplish-mauve and lavender-purple.

Countess of Latham.—Soft cream shaded with flesh pink.

Dainty.—Beautiful form, opening white and quickly assuming a pink edge.

Earliest of All.—Extremely early; color of Blanche Ferry; pink and white.

Flora Norton.—A beautiful pure lavender.

Hon. Mrs. Kenyon.—A giant flower of beautiful primrose color.

Janet Scott.—A new shade of dark pink.

King Edward the VII.—One of the best scarlets. Very large and long stemmed.

Lord Roseberry.—A magnificent rose-carmine. Long stems.

Lovely.—A charming soft shell-pink. One of the best.

Mount Blanc.—Dwarf white; extremely early flowering.

Othello.—Very large deep maroon, self-color.

Royal Rose.—Crimson pink, deepening at center; wings white.

Marchioness of Cholmondeley.—Soft shade of cream edged with delicate shade of pink.

The Bride.—Flowers like the Blanche Burpee, but stems more slender and graceful.

PRICE: Any of the foregoing, or All Colors Mixed, 5c per pkt; 10c per oz.; 3 ozs., 25c.

HARDY SWEET PEA.—(Lathyrus). Grows much stronger than the Annual Sweet Pea; exceedingly free flowering in immense clusters. Excellent for covering stumps, etc.

In Choice Mixture, White to Deep Rose. Per pkt., 5c.

SALVIA.—Can be easily grown from seed and are unsurpassed for brilliant display.

Tall and Dwarf Mixed. Per pkt., 5c.



Scabiosa Maxima

Maxima.—Mixed. Per pkt., 5c. **VERBENAS.**—Everybody's favorite. **Mammoth Finest Mixed.**—Per pkt., 5c. **ZINNIAS.**—Unsurpassed for the garden and particularly attractive when massed. They flower throughout the season until cut down by severe frosts. **Dwarf Scarlet.**—Per pkt., 5c. **Dwarf Finest Mixed.**—Per pkt., 5c.

SALPIGLOSSIS.—Large Petunia-like flowers of blue, yellow and red, all of which are veined and netted with other colors; very beautiful in bouquets.

Emperor.—Finest Mixed. Per pkt., 5c.

STOCKS.—These highly fragrant flowers have been popular garden favorites for many years.

Dwarf German.—Finest Mixed. Per pkt., 5c.

SCHIZANTHUS.—The New Hybrids are compact in growth, only 1½-2 ft. high, and are completely covered with exquisite orchid-like flowers, in colors running through the shades from white to pink and deep purple.

New Hybrid.—Mixed. Per pkt., 5c.

STOKESIA.—An exceptionally meritorious newly improved Hardy Perennial, producing handsome, lavender-blue flowers, three to four inches in diameter.

Cyanea.—Per pkt., 5c.

SUNFLOWER.—(Red). This striking new hardy sunflower closely resembles Rudbeckia Purpurea, but is more robust; five to six feet high. The flowers are single five to six inches in diameter; violet red and produced in profusion.

Per pkt., 5c.

SWEET WILLIAM.—Extremely rich in their coloring and exceedingly fragrant.

Holburn.—(New). Extra large flowers. Mixed.

Per pkt., 5c.

SCABIOSA.—This old favorite has been greatly improved in the past few years, especially in color.

SEED COLLECTIONS

HERE'S YOUR OPPORTUNITY—UNEQUALLED

A.

FIFTEEN (15) 5c Packets; EIGHT (8) 10c Packets, or FIVE (5) 15c Packets.

Your Selection from ENTIRE COLLECTION, POSTPAID ONLY 50c.

B.

THIRTY-THREE (33) 5c Packets, or SEVENTEEN (17) 10c Packets.

Your Selection from ENTIRE COLLECTION, POSTPAID, ONLY \$1.00.

Seed Packets in above Collections are not filled scant for this purpose, but are selected from our Regular Stock of Large Sized Packets.



IMPORTANT ANNOUNCEMENT. Do not fail to read.

If **Not** interested in Asters and Chrysanthemums, we will deem it a favor if you will **Drop Us a Card** so that we will not bother you again with our Catalogue.

If any of our customers are interested in High Priced Chrysanthemum Novelties of the Present Year, we will, on request, furnish Complete Descriptions with Prices.

Whatever Hardy Stock is on hand, in Phlox, Paeonies, Iris, etc., will be disposed of at Most Favorable Terms. All Strong Field Clumps or Divisions. Early Spring Delivery.

NOTICE TO CHRYSANTHEMUM CLUBS

We will make a Special Price on Club Orders provided they are assembled and given at one time, for not less than five plants of a variety, nor aggregating less than 100 plants, to be shipped by express at purchaser's expense.

The Club taking charge of the division and distribution. Under above conditions, quotations will be promptly furnished upon receipt of List, stating quantity desired of each variety.

KILLS

**Sulpho-
Tobacco
Soap**

INSECTS

A Wonderful,
Inexpensive
Insecticide

Destroys cabbage-, squash- and potato-bugs, currant-worms, lice, green-fly, mealy bug, red spider, etc. Sure death to all plant-insects indoors and out-of-doors. Of special value for spraying shrubs, fruit-trees and vines. Produces luxuriant roses if bushes are sprayed liberally before blooming-time.

3-oz. Cake makes $1\frac{1}{2}$ gallons prepared solution. **10 cents. Mailed, postpaid, for 13 cents.**

8-oz. Cake makes 4 gallons prepared solution. **20 cents. Mailed, postpaid, for 28 cents.**

10-lb. Cake makes 80 gallons prepared solution. **By Express, \$3.00.**

Free with every order, "The Window Garden," a booklet by Eben E. Rexford, giving valuable information on the cultivation of plants and the extermination of insects.

