

## **Historic, Archive Document**

**Do not assume content reflects current scientific knowledge, policies, or practices.**



62141

LIBRARY,  
U. S. Department of Agriculture,  
Washington, D. C.

# BALDWIN'S FRUIT PLANTS

STRAWBERRY PLANTS  
A SPECIALTY



RECEIVED INTRODUCTION  
AND DISTRIBUTION.  
FEB 15 1909  
RECEIVED  
Answered .....

Strawberry, Raspberry  
Blackberry Plants,  
Currant, Gooseberry Bushes  
Grape Vines & Seed Potatoes

1 9 0 9

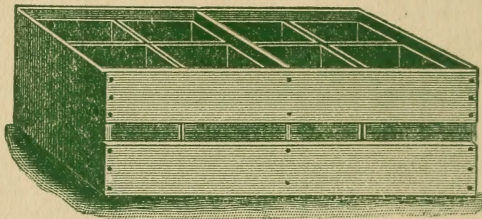
**BALDWIN'S**  
RAILROAD VIEW FRUIT PLANT FARMS  
BRIDGMAN, MICHIGAN



# BERRY CRATES BERRY BOXES

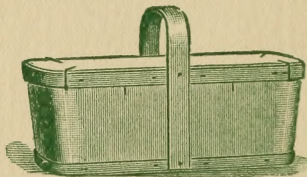
**BEST GOODS  
PRICES RIGHT**

*Goods Sent in the Flat or Made Up*



**Baskets for shipping Grapes and Peaches**

**All Kinds of Fruit and Vegetable Packages**



*Catalog Mailed Free on Application. Address*

**COLBY-HINKLEY CO.**  
BENTON HARBOR, MICH.

# 1909 GREETING 1909

Some of you have received our catalogue annually, for the past twenty years. Many have received copies for several seasons, but to many this catalogue is a comparatively new visitor.

We want to tell you something of what we have done, what we are doing, and what we hope to do.

O. A. E. Baldwin, whose picture appears at the left, started the nursery business in this part of the country by growing and selling a few hundred red raspberry plants. The following spring two hundred little price lists were issued (merely a sheet describing four varieties of fruit plants).

This was in 1889.

The nursery grounds then consisted of one-half acre. The packing-house used was an abandoned hen-house ten feet square. The proprietor and his wife did the work of growing, digging and packing all the plants.

This was the humble beginning.

The plant business at Baldwin's Railroad View Fruit Plant Farms has increased year by year (each year advancing far ahead of the previous one) until this season, we are issuing thirty thousand catalogues like this one.

Our nursery grounds have grown until we now have three hundred forty (340) acres.

**We grow plants by the million on our own ground, under our personal supervision and know what we are selling.**

We have just bought 160 acres of new ground (never having been plowed) which we are clearing and getting into shape for plants in the spring.

This farm is only three-fourths of a mile from Bridgman, and is extra fine plant land aside from having the advantage of being new.

We have recently completed a large new packing house and packing cellars containing freight elevator and all conveniences.

This gives us a packing house floor space of more than 5,000 square feet.

We now employ a small army of careful and experienced help; our pay roll for the year just closing reached a total of about \$5,000.00.

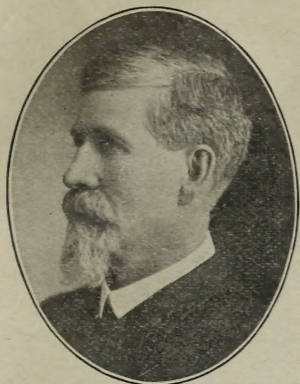
The death of O. A. E. Baldwin, founder of the business, occurred October 5, 1902, a little over six years ago. His request was that the nursery business be continued, if possible.

O. A. D. Baldwin, present proprietor of the business, was then nineteen years of age, leaving the McLaughlin Business University of Grand Rapids to take up the work where his father left it.

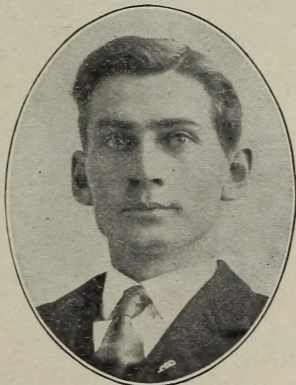
We believe whatever success we have attained is due to square dealing and strict attention to business.

We expect to remain in this business the rest of our lives, and hope to hand down to our growing up son as untarnished a name and reputation as was handed down to us.

To do this we have tried and shall continue to try to maintain the policy that has guided our business from nothing in 1889 to what it is to-day.



O. A. E. BALDWIN,  
Founder of the Business.



O. A. D. BALDWIN,  
Present Proprietor.



Our customers are acquiring a confidence in us that is worth more to us than any advertising we might do.

We publish in this catalogue a few of the many unsolicited testimonials received during the past year.

Please note that they are all printed with full address. They are not fakes, but genuine copies of letters received. Some may be your neighbors. Write to any of them before placing your order if you wish.

We try to consider the purchaser's side of each transaction, from the purchaser's point of view.

We confess, that we do this in part, from a selfish motive.

We treat our customers fairly and squarely because it is right that we should, and also because it pays.

We cannot afford to do otherwise.

## GREAT SCARCITY OF PLANTS FOR 1909.

**You probably know that all varieties of fruit plants are very scarce this season. There is not one-half a crop of plants the country over, owing to the drouth that was general, and in many places so severe that no plants could be raised at all. Owing to this shortage prices are somewhat higher than last year. We believe our prices will compare favorably with any reliable nursery. We do not wish to try to compete with other than responsible parties.**

None of our plants are allowed to fruit before digging, and when we dig we take up the whole row, thereby giving our customers the strongest stock that can be grown. All plants are carefully trimmed and tied in bunches of twenty-five. Small plants are thrown out. **Everything we ship will be as represented.**

## READ OUR GUARANTEE

**WE GUARANTEE ALL PLANTS TO BE FIRST-CLASS AND TRUE TO NAME, FRESH DUG FOR YOUR ORDER, PACKED TO REACH YOU IN GOOD GROWING CONDITION, (BY EXPRESS), AND PLEASE YOU IN EVERY WAY.**

If you are not already a customer of ours, give us a trial order this year.

Even should your order be small, it will receive just as careful attention, and this will give us an opportunity to get acquainted. One chance is all we ask.

If our acquaintance proves mutually pleasant and profitable, we will hear from you often in the future.

We believe the demand for plants this year will greatly exceed the supply. **We earnestly advise all to place their orders just as soon as possible, and especially urge our former customers and friends to order early that they may not be disappointed as we have been obliged to disappoint them sometimes in past years.**

May we hear from you soon? Do not be afraid to ask questions.

**Please remember that you are always welcome to any information we are able to give you.**

**AWAITING YOUR FAVORS WHICH WILL RECEIVE CAREFUL AND PROMPT PERSONAL ATTENTION, I AM,**

Very truly yours,

O. A. D. BALDWIN, BRIDGMAN, MICH.

## OUR LOCATION

We are located in Lake township, the **greatest strawberry township in the world.**

Lake township is in Berrien County, **the greatest strawberry county in Michigan.** Berrien County is in the "Famous Fruit Belt" of Michigan, known the world over. Here plant growth is as perfect as anywhere in the United States.

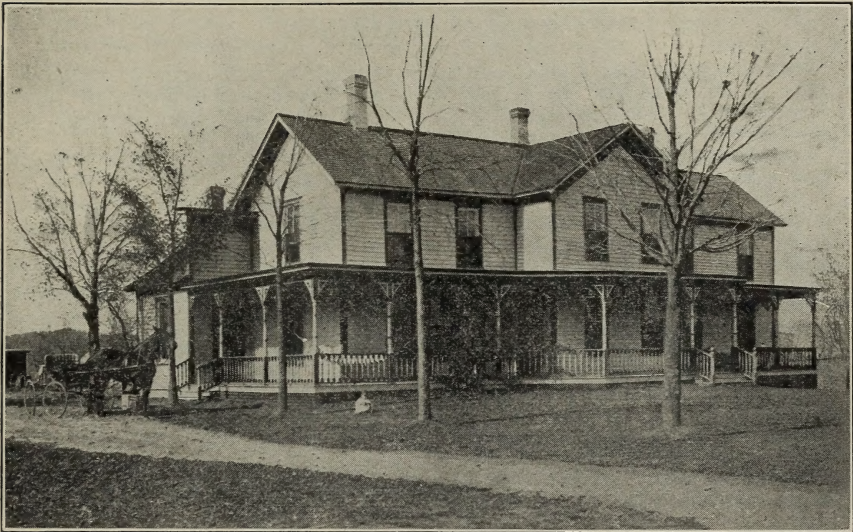


Thus our customers are favored with our location as to natural advantages. Plants grown in the cold, northern climate are strong and hardy, and when transplanted will grow and bear fruit.

Our shipping facilities are also **in your favor**. We are one and one-half miles from Lake Michigan on the Pere Marquette R. R., only a few miles from the great trunk lines like the Michigan Central, Big Four, Grand Trunk, Lake Shore & Michigan Southern, Nickle Plate, etc., etc., making quick connections to all parts of the United States. Only 77 miles from Chicago.

**BOXING AND PACKING.**—We make no charge for boxes, barrels and packing, which is done in best possible manner. We use thousands of light plant crates and handled baskets. We manufacture our own crates for shipping.

We pack with damp moss and straw. Each variety is carefully separated in crate and correctly labeled with printed wooden labels.



#### OUR HOME.

If you look carefully over the lawn, you will notice that in growing fine, healthy, young stock, we do not confine ourselves entirely to berry plants.

#### OUR INVITATION.

We invite all who can, to come and examine our growing plants. See how we dig and handle them. **Come in the spring** and watch us pack your bill of plants, or **come in the summer**, and see which varieties make the best shortcake.

**Come anytime**, and if you will notify us, we will meet you at the station and take you to our home.

**Remember our invitation. You are always welcome.**

#### METHODS OF SHIPMENT.

**BY EXPRESS.**—This is the safest and, all things considered, the cheapest way of shipping plants. Plants go for 20 per cent. less by express than merchandise. We have the United States Express Co. We guarantee satisfaction by express.

**BY FREIGHT.**—We ship considerable stock by freight, but not nearly so much as we used to. The difference in express and freight charges is so small that customers generally request express shipment.

Cane fruit plants often go through safely by freight when distance is not too great.



## SEASON FOR SHIPPING

We commence to ship the last of March or first of April, according to season, and will continue till all stock is gone (generally about May 10th to 15th).

We issue no fall catalogue, but send out some stock after October 1st. Plants in this latitude do not mature before this date and would not give satisfaction. They are full grown and heavy rooted by October 1st, and as some had rather plant in fall, we will ship what orders we receive then at prices quoted in this catalogue. Please do not ask us to ship plants until October.

## General Instructions

### READ CAREFULLY

When writing, please sign your name plainly. Be sure to give your post-office, county and state. Every year we receive letters with postoffice and state left off—many times no signature. Use order sheet and return envelope, fill out carefully and much delay and trouble will be avoided.

**SUBSTITUTION.**—We do not substitute one variety for another without your permission, unless order is received late in season.

It is sometimes a great help to us and also a good thing for our customer if we are allowed to substitute for some variety we may happen to be sold out of. We always substitute some variety of same season, sex and quality as that ordered, and generally give customers no cause for complaint should you give us the permission. We will not substitute, of course, unless it is absolutely necessary.

**TERMS.**—Cash with order, or part cash, balance any time before shipment. At our prices we cannot afford to do a credit business. We give references as to our reliability, etc., which all are at liberty to investigate.

**REFERENCES.**—As to our standing and reliability we refer, by permission, to the Postmaster or Express Agent of Bridgman, Bradstreet's Commercial Agency, or Commercial National Bank, of St. Joseph, Mich. In writing to above, please enclose stamp for reply.

**HOW TO SEND MONEY.**—By Chicago or New York draft, express money order, postoffice order or registered letter.

### TIME TO ORDER

**ORDER EARLY** by all means—the earlier the better. If anything more is needed it can be added later. If not prepared to send all the money, send a part when the order will be booked; the balance before shipment.

Orders are filled in rotation as received; hence it is to your advantage to have your order booked early.

### CARING FOR PLANTS UPON ARRIVAL

If the ground is not in condition when they arrive—too wet or not prepared—a very easy method can be used to keep them, which will be a great benefit to the plants as follows: Take each variety, a bunch at a time, cut string, and spread roots very thinly along the side of a shallow furrow, then cover roots with dirt not higher than the crown of the plants. Give partial shade and if ground is dry water roots only. In a few days they will have taken hold, or rather sent out little white fibrous roots, and will be in better condition for transplanting than at first.

**SOIL.**—Almost any soil that will grow good field crops will grow good berries—good, rich, well drained sandy loam preferred.

**DRAINAGE.**—See that your land is well drained. Tiling of sufficient size to carry off all surplus water is best and saves ground for you.



## FERTILIZING

The best fertilizer we ever found for fruit is stable manure. A crop of clover or other green crop plowed under is good, too. Fruit plants, like any other crop, need rich ground, and respond quickly to good care and fertilization.

If you have a good market, **you can make more clear money raising fruit than by any other branch of farming.** Let us start you in, in a small way, and prove the above statement.

## PREPARING GROUND

Ground for setting fruit plants should be plowed deep and harrowed till all lumps are smashed and it is loose and level. Then roll or float just before setting. We use common plank float which you can make at very little expense. We use a hand marker (home made) that marks three rows at once.

**SETTING PLANTS.**—Make holes with a spade by putting in ground five or six inches and pull toward you, then take out. Hold plant in hole with hand and close hole with foot and press firmly (with feet) on both sides.

This is the general way of planting strawberry plants and we recommend this method for raspberry and blackberry plants as well. Some plow a furrow and set cane plants in them, but unless soil is very moist there is danger of plants drying out.

## CULTIVATION

We recommend shallow cultivation as soon as plants are set or at least within a day or two. This levels the ground and holds the moisture in the ground where it will do the most good, not allowing the moisture to get away by evaporation through the pores in the ground.

Do not cultivate too close to the plants as you will disturb the roots.

Shallow cultivation should be kept up through the growing season.

Blossoms should be pinched off from all plants first season. This throws the strength into the roots and develops a strong healthy plant, that will give you a big crop of nice berries the following season. If you do not want a wide matted row (and we would not recommend matted rows for best fruit) you should cut off all runners that start up till about July 1st. There will then be plenty coming on later and your parent plant will be strong and vigorous.

## THE STRAWBERRY

**The Strawberry is our specialty.** We have a fine stock of all the standard and best new varieties, which we have listed **very low** and shall sell at prices quoted as long as the stock lasts. Almost all the newer varieties we obtained from the originators and introducers in the first place at a heavy expense, consequently our stock is pure. Many ask how we can sell such choice stock so low. Being situated in a section especially adapted to growing the finest plants and not being hampered with anything in the tree line, growing many of the standards by the hundred thousand on new, rich land that produces a heavy stock of extra fine plants, having our own moss for packing and being satisfied with a **small profit**, we can furnish choice stock very low. Growing plants in such large quantities we can, of course, make a discount on large bills. Thus nurseries in all sections of the country buy of us to sell again—many times selling through agents as high by the hundred as we charge by the thousand. Our low prices hold good while stock lasts. We have some varieties not listed here; if you want something not on this list, write us.

Varieties marked (P) are "Pistillate," and should have about every third row set to some staminate variety for fertilizer. Those marked (S) are "Staminate," and good fertilizers. Set early staminates with early pistillates and late with late, etc. All plants are trimmed and tied in bunches of 25.

Many new beginners ask what varieties are most profitable to grow for market, etc. Of course much depends on location and circumstances. The general favorites are the following:



**Bubach, Warfield, Senator Dunlap, Haverland, Beder Wood, Glenn Mary, Aroma, Sample, August Luther and Pocomoke.** These varieties range from very early to very late.

We recommend **August Luther** for early; **Baldwin's Pride of Michigan, Senator Dunlap, Pocomoke and Haverland** for main crop. **Aroma, Brandywine, Uncle Jim and Sample** for late.

**Senator Dunlap** is rapidly coming to the front as a **Money Maker** and we think it is now one of our most profitable market berries.

**Pocomoke** is extra profitable. This is a grand variety and we earnestly recommend it to our customers and friends as an extra good money maker.

### THE RASPBERRY

We have all the leading **black** and **red raspberry** plants. We recommend **Cumberland** as the best black cap. Although **Gregg** and **Kansas** are very profitable. **Gregg** is best late sort. Our new black cap "**Hoosier**" is very highly recommended and already well known through Indiana. **Cuthbert** and **Miller** are the standard varieties of red raspberry.

### THE BLACKBERRY

**Eldorado** still leads as a **money maker** all over the country. Last season our sale of **Eldorado** plants was greater than our sale of all other varieties of blackberry plants combined. We again returned orders for thousands of **Eldorado** after our stock was sold. Our stock is limited again this year. **Genuine Eldorado plants are scarce** and we advise ordering them soon. See description

We are listing **Mersereau**. This variety is yet quite new and not known in many parts of the country. **Mersereau** is what **blackberry growers** have been looking for for years past. **They are hardy as Snyder, fruit is as large and firm as Wilson** (selling for **Wilson** on the market) and **produce big crops**. Growth of cane is wonderful. Get this profitable variety started at once.

### WORTHLESS VARIETIES

There has always been too many worthless varieties offered to the plant buying public. You will notice that we have thinned out our list from seventy (70) varieties to less than thirty (30) varieties, and still we know we have too many kinds for any grower to have for most profitable results. We, of course, are obliged to handle many varieties which are profitable and bought largely in some localities, and almost worthless in other places. We list but a few of the newer introductions.

### LARGE ORDERS

**If you want a quantity of plants write us at once** for special discount. We can of course sell cheaper accordingly when filling a large order than a small one. Bills for low quotations **must be received early**, when stock is unbroken. Now is the time to write for special prices. Let us hear from you at once.

### SCARCITY OF SEED POTATOES.

You all know what a short crop of potatoes there was throughout the country this year.

Our stock is not large and of course will be sold early at prices quoted in this catalogue. We advise **all our friends and former customers** to place their orders for seed potatoes **just as soon as possible**, so that we may hold them for you.

Our stock is in fine shape in cellars and will be kept at even temperature till shipping season.

### OUR ADVERTISERS

We carry a few advertisements of articles that will interest you. All these people we believe to be **absolutely honest** and **reliable** and we **recommend their**



goods to our customers with the assurance that, should you patronize these people, you will get good goods and careful treatment. We have dealt with most of these parties for years. Colby-Hinkley Co. are well known and reliable fruit package manufacturers. As this catalogue will go to over two thousand fruit growers in Berrien County we want to call your attention to the ad. of the Commercial National Bank. The officials and employes are gentlemen with whom it is a pleasure to deal. Try them. They will use you right.

The seeders advertised by The Cyclone Seeder Co., of Urbana, Ind., are used on our farm. We have used them for four years for sowing nearly all kinds of grain and they are perfect machines. As most fruit farmers sow but little grain and grass seed we believe you will want a good hand seeder. Send to Cyclone Seeder Co., Urbana, Ind., for their catalogue, now.

The National Fruit Grower is an extra good all round fruit growers paper. You should all take a good live fruit paper. It will help you out more than you may think. Send for a sample copy of National Fruit Grower to St. Joseph, Mich.

### PLEASE NOTE OUR PREMIUM OFFERS

With every order amounting to \$3.00 or more at catalogue prices received before March 1st, customers may select stock to the amount of 25 cents free.

With every order amounting to \$5.00 or more at catalogue prices received before March 1st, customers may select stock to the amount of 50 cents free.

With every order amounting to \$10.00 or more at catalogue prices received before March 1st, customers may select stock to the amount of \$1.25 free.

If you want a large quantity of plants, you had better write us at once, enclosing a list of your wants. We sometimes have a surplus of some varieties and may be able to quote special discounts.

### FUMIGATION

All cane plants shipped, if requested, are fumigated with Hydro Cyanic Acid Gas of strength required by law. This process kills all insects.

No. 844.

#### CERTIFICATE OF NURSERY INSPECTION.

This is to certify that I have examined the Nursery Stock of O. A. D. BALDWIN, Bridgman, Michigan, and find them apparently free from dangerous insects and dangerously contagious tree and plant diseases.

This Certificate to be void after July 31, 1909.

L. E. TAFT,

State Inspector of Nurseries and Orchards.  
Agricultural College, Michigan, November 3, 1908.

Elk Falls, Kansas, November 23, 1908.

O. A. D. Baldwin:

Dear Sir:—You will see by this that I am heeding your advice and am ordering my plants early for spring setting. This is the third order for plants I have sent you within a year and you have given me complete satisfaction in each instance. I have not written you for special prices, for I know from past experience that I can rely on your liberality. Within, find money order for \$16.00 for the following: \* \* \* \* \*

I am,

Very respectfully yours,

S. E. SMITH.

**LIKES OUR CURRANT PLANTS.**

Cordova, Illinois, March 28, 1908.

O. A. D. Baldwin.

Dear Sir:—I'm happy to say the 500 Red Cross currants came today. All in good shape. Accept our thanks for same.

Yours very truly, H. C. TULLER & SON.

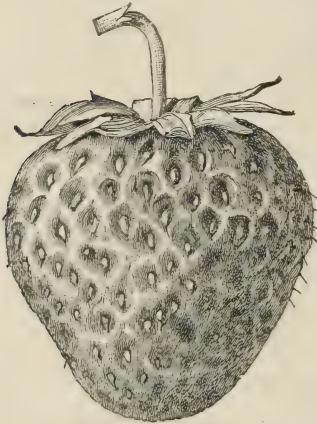
## Varieties of Strawberries

(FOR PRICE LIST SEE INSIDE OF BACK COVER.)

We set strawberry plants 16 inches apart in rows and rows four feet apart. This takes about 7,000 per acre.

### Extra Early Varieties

**AUGUST LUTHER—(S)**—We believe this to be the best early strawberry grown. We have tested nearly all the early varieties and recommend August Luther to be far ahead of any other early berry. It is very prolific, comes early and continues to bear till practically every berry reaches a good size. Fruit is very uniform in size and shape. Plants are healthy and make good row. The fruit is of good size, roundish, dark red, firm and very easily picked. It succeeds best on



AUGUST LUTHER.

rather light soil. The fact is we have found by experience that the early varieties do best on light soil. We would advise all our customers and friends to set August Luther for early berries. We will be sold out early. \$3.25 per thousand.



BEDER WOOD.

**MICHEL'S EARLY—(S)**—One of the earliest varieties grown. The plant is a very robust grower, strong and healthy, although plant is rather small; one of the best of the early fertilizers, as it blossoms early and late. Fruit is of medium size and good quality. Too well known to need much description here. Price, \$2.00 per thousand.

### Medium Early Varieties

**BEDER WOOD—(S)**—This variety was originated by Beder Wood, of Illinois. We have fruited it for many years and found it to be a very heavy bearer, of good sized roundish fruit (about as firm as Bubach), season early, a good staminate to fertilize early varieties like Crescent, Warfield, etc. M. Crawford says in his strawberry report: "This berry, all things considered, is the best berry that has ever been fruited with me. The plant is a good, healthy grower and sends out a number of large runners. Beder Wood is very deep rooted and will stand a drouth better than most varieties. Will consequently do extra well on a very dry or light piece of ground. We have cleared more money out of Beder Wood planted with Warfield than from any other variety." The call is hereby for this variety. Price, \$2.25 per thousand.



**LOVETT—(S)**—This berry has had a thorough test and we think there are other varieties that are better. It is a rank grower, hardy, and produces a quantity of fruit. We do not sell as many Lovett as we used to. It has a perfect blossom and bears heavily. The fruit is firm, medium to large size, conical, and of good quality. Season medium. Price, \$2.50 per thousand.

**HAVERLAND—(P)**—Exceedingly productive; fruit large and very fine; one of the most popular and well tested varieties; withstands the drouth better than most kinds; color light, season early. Considered throughout the United States as a



HAVERLAND.



BALDWIN'S PRIDE OF MICHIGAN.

money maker in most any climate. Demand has always been much larger than the supply. You will not miss it in buying some Haverland. They are a good sure berry. Bought largely for main crop all over the country. They make a good sized fruiting row and mature an immense amount of fruit which is very easy to pick, being plainly in sight. We cannot say too much in their favor. Try them and you will agree with us. Price, \$3.50 per thousand.

**BALDWIN'S PRIDE OF MICHIGAN—(S)**—"The best strawberry grown." We call this variety *Baldwin's Pride of Michigan* as there was a *Pride of Michigan* introduced by the Kellogg Company about the same time, that we knew nothing about when we named our berry. *Baldwin's Pride of Michigan* is, without doubt, the best and most profitable variety of strawberry ever introduced. This grand variety was introduced by us three years ago.

Plant is perfect and berry is perfect. Here are the qualities that make it a most valuable variety:

**PRODUCTIVENESS**—Will out yield any other strawberry.

**COLOR**—Dark glossy red (all through).

**SEASON OF RIPENING**—Second early (ripens with Senator Dunlap).

**SIZE**—About like *Haverland* and *Glen Mary*.

**SHIPPING QUALITY**—The best. Very tough skin, and a firm berry.

**SHAPE**—Rather oblong. Resembles *Haverland*, never misshapen. (See picture.)

**BLOSSOM**—Perfect. (A strong fertilizer.)

**PLANT**—Very vigorous and healthy. (A good plant maker.)

**FRUIT STEMS**—Are strong, stand up well and there are plenty of them.

**What more could one ask for in the way of qualifications of a perfect strawberry?**

Last year many of you were disappointed in not being able to get our Pride of Michigan. We were sold out early and could have sold twice as many. Our stock is again limited and will be sold early at \$8.00 per thousand.

**"We confidently recommend this new variety to our customers and friends."**

**HIGHLAND—(P)**—We are offering this new variety for the first time. We have not fruited it but bought a stock of plants last year and have grown some nice stocky plants. Introduced by M. Crawford Co.

From what we can learn of the Highland, we are sure it will pay lovers of the strawberry to get a start of it. The Ohio Experiment Station, which is a very reliable authority on new fruits has been growing it for four years and herewith we give you their report of it:

The Highland, this season, was the most prolific of the one hundred and forty-six varieties composing the station's test plats. Fruit medium to large, bluntly conical; color bright scarlet; flesh red clear through. Plants very large, strong and vigorous. Flowers imperfect and quite resistant to cold. Highland gives bright promise of being a great "business" berry and a money maker for even the small planter.

During the four years Highland has been upon the station ground, it has not failed to give very prolific crops. It seems strong and persistent in all its admirable points. A quart maker of bright, handsome berries of very acceptable quality.

Price, \$1.00 per doz.; \$5.00 per hundred; \$40.00 per thousand.



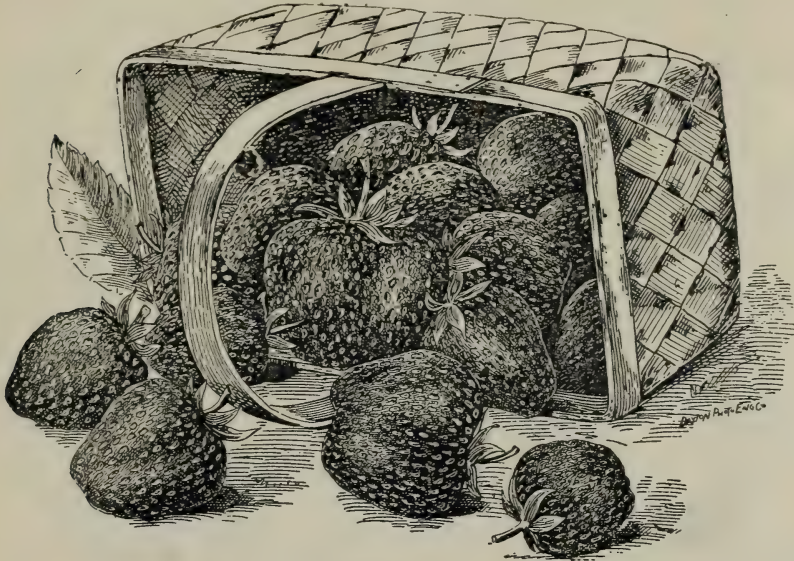
WARFIELD.

**WARFIELD—(P)**—This is the grand berry for main crop, both for home use and market. We recommend Warfield fertilized with Senator Dunlap for most profitable strawberry crop you can grow if you have a good market for medium early berries. Warfield is and has been the leader for years. Fruit is regular shape, dark red and a splendid shipper. We sell more plants of this than of any other variety, excepting Senator Dunlap. Resembles Wilson, but is a heavier bearer and better plant maker, and better shipper. Plants are small, more like Crescent; requires a strong staminate about every other row for best results. We recommend Warfield to all for profit. Price, \$250 per thousand.

**SENATOR DUNLAP—(S)**—This berry is of the Warfield type, has a perfect blossom, is hardy, productive, a splendid keeper and able to hold its own under culture to which it is likely to be subjected. Senator Dunlap is a very heavy bearer of good size even fruit of a very beautiful dark red color. It is a berry to grow for either home use or market. My opinion is that the fortunate ones will be those that get a start at the earliest opportunity. Mr. Crawford says: "The Senator Dunlap is now the greatest all around variety ever introduced." We would advise all to plant Senator Dunlap. I believe it will be our most profitable mid-season strawberry. We fruited one acre of this variety last season, and it was the **most profitable acre** we had to pick. This variety in our opinion will stay with us as one of the standards. **The sale of Senator Dunlap is wonderful** considering the time they have been before the people. We quote this variety very low and all should try them for main crop. We expect **Senator Dunlap to outsell all other varieties** for 1909 planting. Price, \$2.75 per thousand.



**CRESCENT—(Improved)—(P)**—The standard of productiveness all over the country; succeeds everywhere; stands neglect best of any, plant small, berries fair size, bright and attractive, not very firm. Many growers consider this the most profitable berry for market. A few years ago a new berry was introduced into this section, which proved to be an improved Crescent. We sell a great amount of this variety every year. We have a full stock of extra fine plants and quote them at \$2.50 per thousand.



SENATOR DUNLAP.

**SPLENDID—(S)**—We have fruited it several years and can offer it to our customers with great confidence. Plant is a healthy, luxuriant grower, sends out many runners and bears abundantly. The fruit is large and far above the average in quality and appearance. Desirable for either market or home use. This variety has been tested by many berry experts all over the country and has proved itself worthy of its name. Price, \$3.25 per thousand.

---

**OUR BLACKBERRY PLANTS DO WELL IN IOWA.**

O. A. D. Baldwin.

Alden, Iowa, April 11, 1908.

Dear Sir:—Please send plants as soon as possible. Will say the blackberry plants I bought of you are doing splendidly.

Thanking you for your fairness.

Yours truly,

GEO. ORPIN.

**OUR POTATOES ARE O. K.**

O. A. D. Baldwin.

Indiana, Pennsylvania, April 18, 1908.

Dear Sir:—Potatoes rec'd O. K. **They are fine.** Ship plants soon as possible by express.

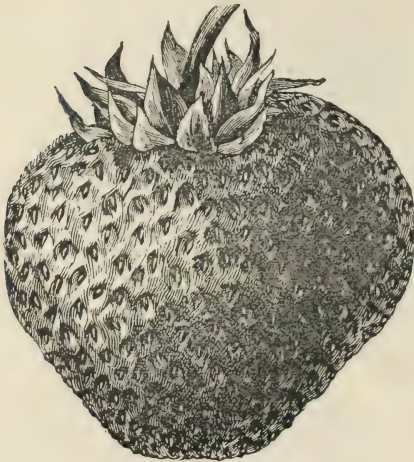
Very truly,

HARRY A. BORLAND.

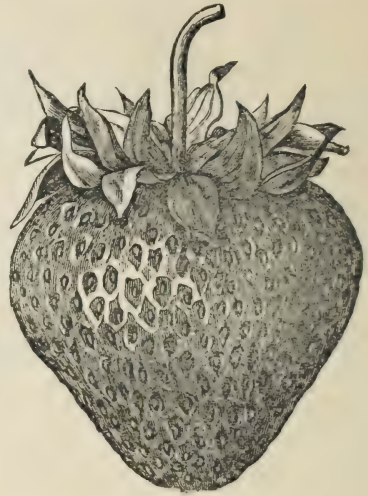
## Medium Late Varieties

**BUBACH—(P)**—This has been a very popular berry for years. We have always considered Bubach a profitable variety. The plant is very large and fine looking but a slow plant maker, the berry large and showy. If you have a nearby fancy market it will pay you to get a large fine looking berry. Bubach will fill the bill. Price, \$4.00 per thousand.

**UNCLE JIM—(S)**—(Sometimes called Dornan.)—Plants are large and free from rust. Berry is large, regular form and season is medium late. Uncle Jim is a comparatively new introduction, but it is one of our most profitable berries. We recommend Uncle Jim for profit. Goes nicely with Bubach. We have grown a good stock of extra heavy plants of this variety. Price, \$4.00 per thousand.



UNCLE JIM.



GLEN MARY.

**GLEN MARY—(S)**—Large and choice, very handsome, and of fine flavor; vigorous and productive. It is as large as the Sharpless and of superior quality. In productiveness it far surpasses the Crescent, not in number of berries, but quarts of berries. Many growers here consider this the most profitable of strawberries. Glen Mary is not only an extra good berry for fancy market, but a real money maker for any market. We believe one can pick as many quarts of good berries from Glen Mary as from any other variety and they will sell quickly at a good figure. We recommend this variety to our customers with perfect confidence that it will please them. Price, \$4.00 per thousand.

**CORSICAN—(S)**—This variety is in the heavy weight class. Not only are the berries large, but they are uniform in shape. The color is bright red. They are very firm and will sell for a fancy price in any market. The foliage is exceedingly vigorous and leathery, resisting fungus and drouth. It is both profitable and a pleasure to grow a fancy berry like the Corsican. This is the first time we have offered Corsican to our customers. We recommend them highly. Price, 5.00 per thousand.

**NICK OHMER—(S)**—This variety is a shy bearer in this section, but must do well in some places as we have a call for plants every year. Large and late, good shape, color and flavor. We have a few thousand nice stocky plants and will sell them at \$3.50 per thousand.



**POCOMOKE—(S)**—This variety was found growing where there had been some Wilson and Sharpless strawberries dumped and is supposed to be a seedling of the old Wilson crossed by the Sharpless. The berry is round, conical and resembles the old Wilson, but is much larger. One of the best varieties in existence, not only for its enormous productiveness, but on account of its beauty, adaptability to all soils, its foliage enduring the dry, hot weather, its large size,



POCOMOKE.

its deep color, its firmness and high flavor. The plant is a strong robust grower with deep roots and lots of them, perfect blossoms and is an enormous yielder of large red berries. It ripens evenly, and is one of the best shippers yet introduced. This variety is a good one and will be grown as one of our leading market berries. We guarantee entire satisfaction with Pocomoke. Try a few thousand. You will not be sorry. Price, \$4.00 per thousand.

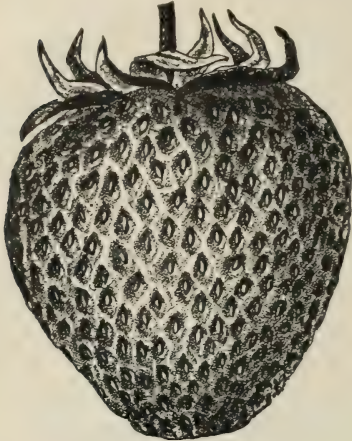
### Very Late Varieties

**GANDY—(S)**—This is one of the leading late varieties with fruit growers all over the country. The plant is a strong grower, fruit is large and firm, but does not yield as heavy as some; requires strong soil and fertilizers to do its best. It always brings top prices; it is very late and a big showy berry. Gandy is always quoted at the highest price in every market. It is the finest looking fruit and sells quickly and at top prices. Price, \$3.50 per thousand.

**AROMA—(S)**—This is our best and most profitable late strawberry (with the possible exception of Sample). We will guarantee the fruit of Aroma to please all who give it a fair trial. It cannot well be beaten for quantity of fruit produced, or in quality of fruit. Plants show no weakness of any kind. Fruit

very large, roundish, conical, rarely misshapen, glossy red, of excellent quality and produced in abundance. It produces twice as much as Gandy. We have grown a large stock of this valuable late variety. Price, \$3.75 per thousand.

**BRANDYWINE—(S)**—This fine late strawberry was introduced by Mr. Crawford. We bought a good stock of the plants of the introducer and now have a large stock of fine plants. Brandywine is late, good shape, good quality, good size, firm and productive. If you are looking for a No. 1 canning berry or for table use we would recommend Brandywine. It is extra dark in color, fine flavor, a good shipper and profitable market variety. Try them. We have a good stock of extra fine plants at \$3.50 per thousand.



GANDY.



AROMA.

**OSWEGO—(S)**—Sent out by L. J. Farmer, of Oswego County, N. Y., who says in his catalogue for 1907:

"This new strawberry is now introduced to the public for the first time. It is supposed to be a seedling of the Bubach, fertilized by Sharpless. It originated in an old family berry bed and attracted attention by its large size and ability to produce a large crop of berries under neglect. It was transferred to the family garden and grown there for years before it finally attracted the attention of commercial growers. The plants are large and vigorous, producing a sufficient number of young plants while the old parent plants tend to bunch up much like the old Parker Earle. It is very distinct in growth. The berries are very large, of a bright crimson color and ripen about the same time that Sample ripens. The blooms are very fertile and therefore good to pollenate pistillate varieties planted close by. It has the characteristic of bearing large crops under partial neglect. It is not a pet variety but a rough and ready berry that will please the average farmer."

Our stock is limited and will be sold early at \$1.00 per hundred; \$6.00 per thousand.

**SAMPLE—(P)**—Season very late. "The Sample strawberry is admired by every one who has seen it. No one who has seen it has been able to criticize it. We have now watched it with the greatest interest for four years and are not able to say that it has a single weak point. Large size and fine quality, quite firm; continues a long time in fruit; the berries are large to the last. It will yield as many berries as the Haverland and will average as large as the Bubach. Colors all over at once. There is no weak spot in it. Foliage perfect, fruit perfect. Needs no petting."

I think Sample is the best late strawberry we have (with the possible exception of Aroma). Get a few thousand Sample and fertilize them with Aroma and



we guarantee that you will have no kick coming. Our stock of Sample is large, but we will sell all of them at \$4.00 per thousand.



SAMPLE.

---

**A COMPLIMENT THAT WE APPRECIATE.**

Plymouth, Illinois, April 28, 1908.

O. A. D. Baldwin.

Dear Sir:—I have the honor to acknowledge the receipt of your favor of the 22nd inst. with U. S. express money order for \$1.75 enclosed.

While appreciating the promptness with which the complaint was settled, I appreciate still more the privilege of dealing with an honest business man. In the future, when wanting small fruit plants I shall consider it to my interest to deal with you. The main consideration is to have plants true to name, and as you doubtless know, buyers often get badly cheated buying cheap plants from those who do not know the demands of the trade.

Very respectfully yours, WESLEY COWES.

**RESULTS FROM OUR PLANTS.**

Paulding, Ohio, June 18, 1908.

O. A. D. Baldwin.

Dear Sir:—When a person is pleased with anything it is their desire to express their feelings in some way or other, and my friend, allow me to thank you for the most excellent strawberry plants you sent me in the spring of 1907.

The results are here now and they are certainly astounding. Everyone has a word of praise for them. Such berries are worth more for advertising, to you, than any amount of printer's ink.

Your honesty and liberality will go a long way with me in the future.

I am, Yours respectfully, SOL. G. CRAMER.

**THE KIND WE LIKE TO GET.**

Belding, Michigan, April 12, 1908.

O. A. D. Baldwin.

Dear Sir:—Accept my thanks for the extra nice cane plants you sent me, also for liberal count. Send strawberry plants when you think best.

Yours truly, WM. AUBILL.

## Black Raspberries

Twenty-five at 100, and 250 at 1,000 rates.

**INSTRUCTIONS**—Raspberries will grow and do well on any ground that will grow good field crops. Ground must be comparatively dry or well drained. Generally speaking, the richer the ground the better the crop. We generally set black caps about three and one-half feet apart in row and rows seven feet apart, or if you wish to cultivate both ways plant five feet each way. Either method requires 1,725 plants per acre.

**CUMBERLAND**—The "Business Black Cap." Largest black raspberry known. This new raspberry was placed upon the market after having been thoroughly tried for a long period of years. It is now offered with the full assurance that it is the most profitable and desirable market variety yet known, because of its immense size, firmness and great productiveness, well entitling it to the above designation, "The Business Black Cap."



CUMBERLAND.

Cumberland is very hardy having withstood a temperature of 16 degrees below zero without injury. Extra productive being the heaviest bearing variety now grown. Fruit is jet black and of extra fine quality. Ripens before Gregg. We bought our stock of plants of the introducers. Buy Cumberland for profit. Price, \$1.50 per hundred; \$11.00 per thousand.

### A Wonderful New Black Cap

**HOOSIER**—"The Dollar a Gallon Berry"—Last year we purchased a quantity of Hoosier plants and have grown a limited supply of extra heavy stocky plants. The plant is certainly a healthy, robust grower. We will plant heavily of this variety this year, but if any of our customers want a little start of this variety now we will sell them in small quantities. Below is the originator's description:

"The Hoosier raspberry originated with us eight years ago and has proven a wonder, surpassing all others in every point of excellence. Perfect, hardy and fully tested in every State in the Union and throughout Canada; does not winter-kill, and will mature a full crop even to the tip of the canes.



"This berry begins to ripen a full week ahead of the Cumberland and continues a week longer, is firmer and better flavored, averages 1,200 gallons per acre here and is a drouth resister, and is absolutely proof against anthracnose and other raspberry pests.

"The fruit sells for double the price of any other variety. It is a pocketbook filler.

"What we say is backed up by our local banks, newspapers, business men, county officers, and by prominent commission merchants of Chicago and other cities."

Chicago, July 26, 1907.

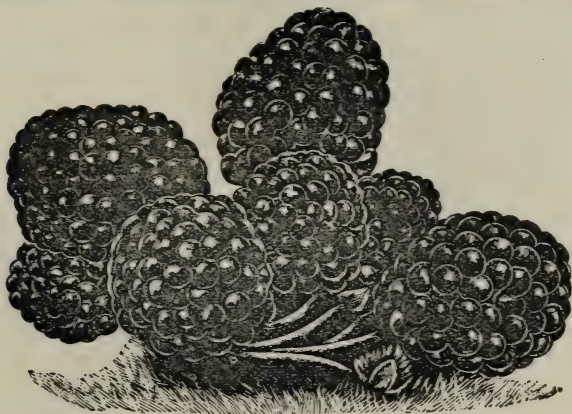
"Dear Sir:—The Hoosier is the very best black raspberry we ever handled, always arrive plump and sound, and sell at a premium over all others.

"We must say they are very superior and better flavored, and sell for nearly double the price of any other variety which comes to our market.

"Respectfully

"T. C. H. Wedgeforth & Co.,  
"Commission Merchants."

Price of Hoosier, \$1.00 per dozen; \$5.00 per hundred; \$40.00 per thousand.



**GREGG—(Cap)**—Fruit very fine and covered with bloom. Gregg has been the leading market variety all over the country, best for evaporating of any variety as it is said to give more pounds to the bushel than any other kind. A good all round late blackcap. Gregg will not disappoint you. Very well and favorably known in every fruit district. Gregg is by far the best late blackcap grown to-day. Try them and we will guarantee them to please you. Price, \$1.25 per hundred; \$9.00 per thousand.

**CONRATH—(Cap)**—This is a very profitable blackcap. Plant is very productive, fruit large, good flavor, firm, nearly coal black and parts readily from core. Although early it has a long season and holds its size well to the end. Price, \$1.00 per hundred; \$8.00 per thousand.

**EUREKA—(Cap)**—A fine blackcap in every particular. We have grown Eureka berries one inch in diameter. Unexcelled for fancy fruit. **We guarantee Eureka to please you.** It is of extra size, extra quality and extra early. Eureka is a money maker. Try them. Price, \$1.25 per hundred; \$10.00 per thousand.

**MUNGER—(Cap)**—A handsome, large, late blackcap. Not nearly so well known as Gregg, but much the same. Probably a more showy berry. Our stock is limited. We will sell what plants we have at \$1.50 per hundred; \$12.00 per thousand.

**EARLY OHIO—(Cap)**—A good early blackcap that does well in many localities. Not much demand for them generally. We have a few thousand and will sell them at \$1.00 per hundred; \$8.00 per thousand.

THE  
KANSAS



**KANSAS—**  
(Cap)—This variety is now a general favorite with growers all over the country. Ripens just after Souhegan; jet black, firm, handsome and of the best quality; bush a strong grower, holds its foliage until frost; stands drouth and cold, very productive. We find it even better than we expected. It is about as large as Gregg, early and very productive. Strong, healthy canes, makes plenty of strong tips. Price, \$1.00 per hundred; \$8.00 per thousand.

### Purple Raspberries

We want to say that we are setting large fields of Columbian, Haymaker, etc., and will set all the plants we have this year. They are money making varieties and we will quote them again next year if we can grow enough plants. We want it understood that we are not dropping purple caps, but only "quitting to get a better hold."

### Red Raspberries

Twenty-five at 100, and 250 at 1,000 rates.

We generally plant red raspberries three feet apart in row, with rows six feet apart. Requiring 2,425 plants per acre.



CUTHBERT.

**CUTHBERT**—Leading late market variety all over the country; strong grower, very productive, fruit firm, large size, and of best quality; season medium to late. If you want an all around late red raspberry, plant Cuthbert. We have made far more money from our patches of Cuthbert than from any other red raspberry. (We are speaking of the fruit, of course, not plants.) We advise our customers and friends to plant Cuthbert for market or home use. Price, 85 cents per hundred; \$7.00 per thousand.

**MILLER**—Is early, very hardy and does not winter-kill. This fine early red



raspberry is, for an **early berry**, what the Cuthbert is for a late one. **The very best there is.** Shipping qualities are perfect. Makes a healthy growth of canes. If you want the best early red raspberry, set Miller. You won't be sorry. Probably the strongest point in favor of the Miller is its splendid keeping qualities. They will hang on the bushes several days without becoming soft. This quality makes them very profitable to the grower. We strongly recommend Miller to all. Price, 75c per hundred; \$6.00 per thousand.

**KING**—This is a new red raspberry. Unites large size, beautiful color, firmness and high quality of fruit with productiveness. Vigorous growth and hardiness of cane. Its season is the earliest, its fruit of the brightest crimson. Cane very hardy. Our stock is limited and will be sold early. Better place your order soon. We believe it worthy of all that can be said in its favor. Price, \$1.50 per hundred; \$13.00 per thousand.

**LOUDON**—This raspberry ripens moderately early and holds out very late; it is highly productive, claiming to excel all other red raspberries in this respect. Firm as any other raspberry, a good shipper; large, of superior quality, and an attractive crimson color. The bush is thornless and hardy. We list it very low this year, viz: \$1.50 per hundred; \$12.00 per thousand.

**THE EATON**—"A new red raspberry that is entirely distinct from all other varieties. In character of growth, in size, color, firmness, quality, and yield of fruit, in length of season, and in all strong points of merit, it stands unequalled and alone. A variety that is at once healthy in root and foliage, and hardy, coming through our most severe winters in prime condition. A strong, not tall and slender, but a sturdy grower. Throwing out many laterals and fruiting to the tips, and from every lateral—a sight to see. An immense cropper, by far out-yielding any red raspberry we have ever seen, while the fruit is extraordinarily large and handsome, firm and of the finest quality.

"At first we tried to pick them before fully ripe, when bright red. They were so large and fine, but they pulled off hard and crumbled more or less. After that we picked only those that were a deeper red, still more beautiful and fully ripe, and they came off easily and whole and firm: When ripe to pick they hang on well and do not drop with every touch, but can be picked more rapidly and at less expense than any sort we know, chiefly because they are so large and so many of them."

The above is the introducer's description of Eaton. We fruited it for the first time this summer and liked it very much. Fruit should be left on till dark red. The Eaton is very early and a wonderfully heavy bearer of large berries. Price, \$1.50 per dozen; \$7.50 per hundred; \$50.00 per thousand.

#### LIKES OUR SEED POTATOES.

O. A. D. Baldwin.  
Champaign, Illinois, April 9, 1908.  
Dear Sir:—Potatoes received in good condition and are all right.  
Yours truly, N. B. TUCKER.

#### FATHER BOUGHT OF US FOR YEARS. SON NOW GETS HIS PLANTS OF US.

O. A. D. Baldwin.  
Washington, Indiana, March 28, 1908.  
Dear Sir:—Please send me the enclosed bill of plants by express. I enclose money order for \$48.75.  
Father sends you his best regards as you seem almost like a personal friend. He appreciates your kind treatment in the past and says he has a good prospect for some fine strawberries from the plants he got of you last year.  
FRED L. ALLISON.

#### OUR PLANTS THE BEST.

O. A. D. Baldwin.  
Union City, Michigan, March 29, 1908.  
Dear Sir:—Enclosed find \$13.75 for additional order. Please ship with former which you have already booked. I always find your plants to be the best. I have dealt with a good many nurserymen, but your plants always give me the best satisfaction. I am,  
Very truly yours,  
ERNEST WIEHL.

## Blackberries

Twenty-five at 100, and 250 at 1,000 rates.

Should be planted about four feet apart in row with rows six or seven feet apart, requiring about 1,800 plants per acre. Top the new canes when about twenty inches high.

**ELDORADO**—We place this variety ahead of all others without a moment's hesitation. It is the **greatest blackberry** in general cultivation to-day. Eldorado is as hardy as the Snyder, twice as large and of much better quality. When you get one like that you have a berry that cannot well be beaten. Eldo-



ELDORADO.

rado has never been known to winter-kill, even in northern Michigan and Wisconsin. For home and market use we recommend Eldorado above all others. We consider it the **best blackberry we ever fruited** in every way, and we have grown them all. Our Eldorado field is a sight to see in blossoming and fruiting time. The fruit is **good size**, firm and of the **very highest quality**. Very profitable, as it needs no protection in winter. We bought our first stock of the originator, consequently our stock is genuine. Our plants this year are the **finest we ever raised**, and our stock is the largest, but we expect to be sold out of this variety before shipping season commences.

We advise you to place your order for Eldorado as soon as possible. We have been obliged to return orders for this variety every year since their introduction (15 years ago). **Genuine Eldorado** are very hard to find. **We guarantee every plant to be true to name.** Price, \$2.00 per hundred; \$17.50 per thousand.

**EARLY KING**—An extra early blackberry, exceedingly hardy variety of great merit. Needs no winter protection, always producing large crops. Canes are of strong growth, as hardy as Snyder and very prolific. It is larger than Early Harvest, and its delicious sweetness renders it of special value for home use or market. It is also free of double bloom and other disease, will go



through hard spring frosts at blossoming time without injury. Those who have tried this variety are well pleased. **We recommend them highly for home use.** Price, \$1.50 per hundred; \$12.50 per thousand.

**WILSON'S EARLY**—One of the largest and most productive of the early sorts; produces fruit in large clusters, sweet as soon as black, holds its color well after picking, needs protection at the North. It is the best shipper there is. Very profitable. In spite of the fact that Wilson requires protection here in Michigan there are more than twice as many acres of them in bearing as any other variety of blackberry. It always sells at a premium over other blackberries in Chicago and is daily quoted higher. The berry is large, jet black, and holds its color, never turning red. Order some Wilson plants. They are money makers. Price, \$1.00 per hundred; \$7.50 per thousand.

**MERSEREAU**—This, we believe, will be a very profitable blackberry when first introduced to the fruit growing public.

Take notice of these qualities:

**As hardy as Snyder.**

**As good shipping quality as Wilson.**

**As large a berry as Wilson.**

**An extra heavy, stocky cane.**

**As productive as Snyder.**



MERSEREAU.

Mersereau is an early, mammoth, ironclad blackberry. It originated in northwestern New York, where the mercury falls from 15 to 25 degrees below zero, and where it has stood in open field culture for many years without the slightest protection, never being injured in the least. It has never had a leaf affected with orange rust, blight or other disease, or produced a double or "rose" blossom. In quality it is exceptionally sweet, rich, melting and luscious, being without core; the seedy character of Snyder and most other sorts is noticeably absent. As a shipper and keeper it is unsurpassed, remaining firm without "bleeding" in handling.

The canes are of exceedingly strong, upright habit, attaining upon fairly good soil a height of eight feet, if permitted to grow unchecked, and are so stout as to always remain erect; foliage large, deep green, and abundant. The yield is simply enormous, producing double the quantity of fruit per acre of the Snyder, Kittatinny or Taylor's Prolific, and affording heavy pickings from the first until the crop is all matured. Its season is early to mid-season, ripening with the Snyder.

Try **Mersereau**. They will please you and make you big money. Get them started this year. Price, \$2.25 per hundred; \$20.00 per thousand.

**MINNEWASKI**—(New)—Large, productive and quite hardy; fruit round and of very good quality; bush a rank grower; desirable for market or home use. Our stock is very limited. Extra nice plants. Price, \$2.00 per hundred; \$17.50 per thousand.

**EARLY HARVEST**—One of the earliest blackberries in cultivation; a compact dwarf grower, fruit rather small and of good quality, heavy bearer. Its extreme earliness makes it a profitable variety. Blossoms stand the spring freeze best of all. Price, 85 cents per hundred; \$7.00 per thousand.

**SNYDER**—This variety is rapidly losing in favor on account of its size of fruit. Too small—many other varieties much better. We have a few thousand good root cutting plants if any one wants Snyder. They are liked in some places. Extremely hardy and an extra heavy bearer. Price, \$1.50 per hundred; \$12.50 per thousand.

## Dewberries

Twenty-five at 100, and 250 at 1,000 rates.

Plant in rows six feet apart with plants three feet apart in the row, requiring 2,425 plants per acre.



LUCRETIA.

**LUCRETIA**—Claimed to be the best of the blackberry family. Berries are far larger and incomparably better than any blackberry; of unequalled excellence; soft, sweet and luscious throughout, of brightest glossy black color. The Lucretia Dewberry has received the endorsement and highest praise from the best horticulturists in the country. Its eminent success in all soils is somewhat phenomenal in small fruit culture. Its trailing habit renders it less liable to winter kill. Propagates from the tips.

Dewberries are very profitable fruit to have as they come into bearing before blackberry plants and bring a good big price. Price, \$1.00 per hundred; \$8.00 per thousand.

**PREMO**—Much like Lucretia, but a week or ten days earlier. Main crop off before Lucretia commences. Comes early, ahead of blackberries and brings a good price. Our stock is limited. Price, \$1.50 per hundred; \$12.50 per thousand.



## Currants.



Three at dozen,  
25 at 100, and 250  
at 1,000 rates.

A cool moist lo-  
cation is best for  
this fruit, and for  
this reason it does  
well when planted  
by a fence, being  
benefited by the  
partial shade.  
Plant in rows four  
feet apart and the  
plants three feet  
apart in the rows.  
Keep the ground  
mellow and free  
from weeds.

### LONDON MAR-

**KET** is the best  
red currant we  
have fruited. A  
fine, new variety,  
a strong grower,  
large fruit and  
very productive.  
Holds its foliage  
late and is not li-  
able to attack of  
worms and borers.  
London Market will  
please you. Try  
them in your gar-  
den.

### RED CROSS—

"Red Cross clus-  
ters are long and  
have well necked  
berries double the  
size of Victorias.  
Nothing will com-  
pare in quality  
with Red Cross but  
White Dutch,  
which is too small.  
Red Cross was first  
fruited in 1899. We  
have seen the fruit  
growing in such  
masses as to hide  
the upper branches  
from view. It is  
later than Cherry;  
the plant makes  
twice the growth  
of Cherry and  
yields two or three  
times as much  
fruit. We recom-  
mend it with con-  
fidence. We con-  
sider Red Cross  
one of the best of  
the new currants."

**FAY'S PROLIFIC**—A very popular red currant grown all over the country  
for home use and market. Color deep red; great bearer; stems longer than

Cherry, and berries hold their size to the end of the stem better; quality first class; not quite so acid as Cherry. Fay's Prolific is an extra fine red currant.

**PRICES ON CURRANT PLANTS.**

	1 yr. No. 1.			2 yr. No. 1.		
	Doz.	100.	1,000	Doz.	100	1,000
London Market .....	\$0.75	\$4.00	\$37.50	\$0.85	\$4.50	\$42.50
Red Cross .....	.85	4.50	42.50	1.00	5.50	52.50
Fay's Prolific .....	.75	4.00	37.50	.85	4.50	42.50

Currant plants are very scarce and high in price this year. Our prices are low.

## Gooseberries

Plant three feet apart in row, with rows five feet apart.



**DOWNING—**  
We have a fine stock of the most popular all around berry for both home use and market in the country to-day.

Downing is a yellowish green sort and of good size, being a strong growing bush and a very prolific bearer. Plants of all varieties of gooseberries are in light supply and in very good demand and the price is high.

Extra fine stocky plants, \$1.50 per dozen; \$8.00 per hundred.

## Grape Vines

Three at dozen; 25 at 100, and 250 at 1,000 rates. Plant grapevines for field culture eight by twelve feet, requiring about 435 plants per acre. Some set eight by sixteen feet.

**Grow Grapes and Make Money.**

The grape is a very satisfactory fruit to raise, as it can be put to so many different uses. It can be confined to a stake, bound to a trellis, trained over an arbor or to cover a large building, and under all conditions will yield its delicious fruit. No fruit will give better returns for close attention and kind care, and good returns can be had from soils that are unfit for any other crop. The side of a hill freely exposed to the sun and air is an ideal place for grape culture, whether the soil be sandy, clayey or loamy.

**There is big money in growing grapes** and many people are beginning to realize the fact. **The market cannot be overstocked** with this fruit.

They can quickly be made into juice for which there is a demand that always exceeds the supply and is something that will keep for years and years. **Get a grape vineyard started this year, sure.**

Grape vines will grow and do well on light sand or clay where it is hard to raise a crop of grain or other fruit.



## Black Grapes

**CONCORD**—A large, purplish black grape, ripening about the middle of September; vines remarkably vigorous and free from disease; the standard for productiveness and hardiness all over the country. We advise all who contemplate setting grapes, to plant Concord for main crop. **They are the best market grape we ever raised.** Our stock is extra large and thrifty and will please you. Our prices are very low on Concords.



CONCORD.

particularly adapts it to New England and the northern portion of the United States.

It is very nice to have a few grapes ripe and ready to eat before your neighbor. Moore's Early will please you.

**CAMPBELL'S EARLY**—A wonderful new grape of excellent quality and great productiveness.

"Campbell's Early vines are now being bought in large lots by careful, wide awake vineyardists who want a grape which will hang on the vines, will not crack and which will keep and can be marketed at advantageous times instead of having to be forced on the market on some special day to avoid cracking and shelling. As a good keeper and shipper it is believed to be unequalled by any other grape. Its early ripening is at same time as Moore's Early and at that time the quality of Campbell's Early is fully as good as Moore's Early; after that time the quality of Campbell's Early steadily improves for from two to six weeks, so its season is not only very early but is also medium and late."

In desert quality it is unrivaled by any of our present list of first early market grapes. It is, both as to cluster and berry, of large size, of a glossy black color, with a beautiful blue bloom, pulp sweet and juicy, free from foxiness, seeds small, few in number and part readily from the pulp.

They have been subjected to a temperature of 18 degrees below zero and have never been frozen in the least. Our stock is limited and will no doubt be sold early at prices quoted below.

**CLINTON**—Late. Desirable for wine or preserving. Bunch and berry small; very healthy and hardy. Fruit should hang on the vine until after first frost, to be thoroughly ripe.

**WORDEN**—In brief, an improved Concord; being larger in both bunch and berry, handsomer, nearly two weeks earlier and of better quality. Very choice and reliable. Worden will not yield like Concord and so are not planted so extensively for market. They are an **extra good grape for home use.** By far the best flavored black grape we have. Not our low prices on this valuable variety.

**MOORE'S EARLY**—Bunch large, berry round (as large as the Wilder or Rogers' No. 4); color black, with a heavy blue bloom; quality better than the Concord. Moore's Early has been exposed to a temperature of more than 20 degrees below zero without injury, and it has been entirely exempt from mildew or disease. Its earliness makes it desirable and more particularly

**CHAMPION**—Bunch medium to large, compact; berries medium, adhering to stem better than Hartford, which it resembles; skin thick; flesh sweet, juicy, somewhat pulpy, with foxy flavor; vine a very rank, vigorous grower; hardy, very healthy and productive. Ripens about with or a little before Moore's Early. Quality poor, but desirable for early market, generally bringing a good price.

## White Grapes

**NIAGARA**—This is the leading white grape throughout the country. Fruit is large and of fine quality. If you want a white grape we know of no other that equals Niagara. Occupies the same position among the white varieties as Concord among the black; most profitable market sort. Bunch and berries large, greenish white, changing to pale yellow when fully ripe; skin thin but tough. Every one should have a few white grapes.

## Red Grapes

**DELAWARE**—Bunch small, compact; sometimes shouldered; berries small; skin thin, but firm; flesh juicy, very sweet and refreshing, of best quality for both table and wine; ripens with Concord or a little before; vine hardy and productive.

Delaware is extra fine for eating fresh or home use grape. We had so much inquiry for them that we bought a stock, so we could list them this year. They are fine.

**CATAWBA**—Well known. Late; of best quality. Bunches large and loose; berries large, of a coppery red color, becoming purplish when well ripened.

### PRICES OF GRAPEVINES, 1909.

	1 yr. No. 1.			2 yr. No. 1.		
	Doz.	100.	1,000	Doz.	100	1,000
Concord .....	\$0.50	\$2.50	\$22.50	\$0.65	\$3.50	\$32.50
Worden .....	.65	3.50	32.50	.85	4.50	42.50
Moore's Early .....	.75	4.00	37.50	.95	5.00	47.50
Campbell's Early .....	1.25	8.00	75.00	1.50	10.00	90.00
Clinton .....	.65	3.50	32.50	.85	4.50	42.50
Champion .....	.50	2.50	22.50	.65	3.50	32.50
Niagara .....	.65	3.50	32.50	.75	4.00	37.50
Delaware .....	.85	4.50	42.50	.95	5.00	47.50
Catawba .....	.65	3.50	32.50	.85	4.50	42.50

### FROM ONE OF THE LARGEST FRUIT GROWERS IN OHIO.

Marion, Ohio, April 20, 1908.

O. A. D. Baldwin.

Dear Sir:—Please book and ship following order. My former order from you came in fine condition and we will have them all in the ground today.

Very truly yours, E. E. BUSH.

### ALWAYS GAVE SATISFACTION.

McGawsville, Indiana, April 20, 1908.

O. A. D. Baldwin.

Dear Sir:—Enclosed find order for plants. I have received many thousands of plants from you in the past ten years. They always gave good satisfaction.

Yours truly, etc., JONAS STINEMAN.

(Mr. Stineman sold nursery stock for years buying all his small fruit plants of us.)

### FINEST HE EVER SAW.

Wyoming, Illinois, April 24, 1908.

Dear Sir:—Plants came in fine shape. They are the finest plants I ever received and I have been in the berry business for 12 years.

Yours truly, JAMES I. DITMAN.

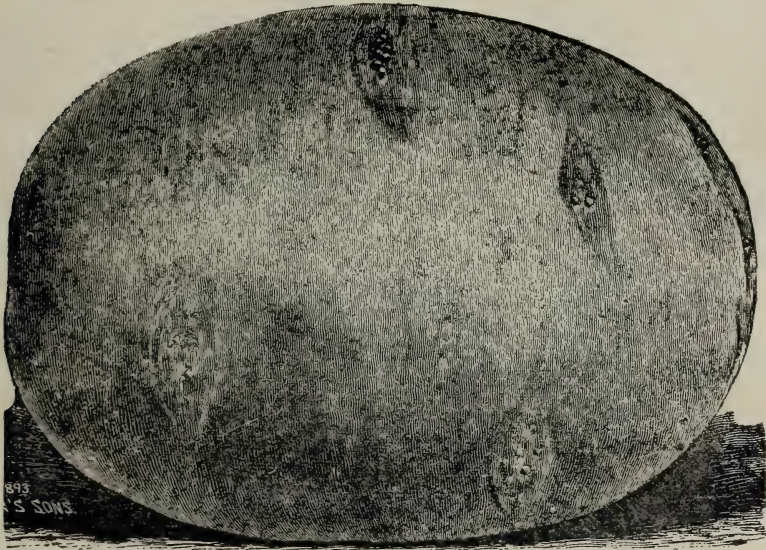


## Seed Potatoes

You all know how short the potato crop was this year. Only a little over one-half a crop in the United States.

Our stock of course is limited and will be sold soon. We advise ordering **at once**.

We have grown quite a stock of several varieties of seed potatoes and will sell them at prices quoted below until stock is gone. **Remember these prices are below those quoted in most all catalogues. These potatoes are strictly No. 1 seed, guaranteed absolutely pure and unmixed.** We will begin to ship early in March or as soon as weather permits us to ship with safety. Northern grown seeds are as much more desirable to plant than Southern grown, as Northern grown plants are more than those grown in the South. **They are hardy and free from disease** and will yield a big crop.



CARMEN NO. 3.

**Peck, 15 lbs.; Bushel, 60 lbs.; Barrel, 165 lbs.**

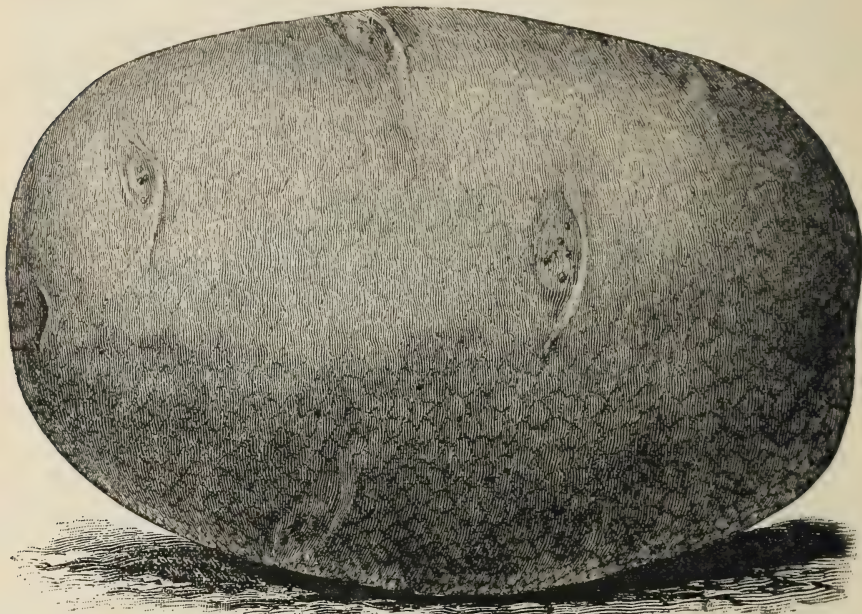
We will ship potatoes in sacks. Everything will be labeled and securely packed and delivered at the cars without extra charge for sacks.

**N. B.—If you prefer your potatoes shipped in boxes and barrels instead of sacks, add 10 cents per bushel or 25 cents per barrel to price herein quoted on each variety.**

**CARMEN NO. 3—This we consider the best potato grown. We advise all to plant Carmen No. 3 for main crop either for home or market purposes. It makes great yields of fine, large, smooth tubers even under the most unfavorable circumstances and can be relied on to bring in money. It grows a very strong, upright top with dark colored stalks and purple blossoms and is little affected by drouth, blight or bugs. It is of the Rural family and keeps as well as Rural New Yorker and is fine for eating just as soon as dug in the fall. Very heavy yielder. Try Carmen No. 3 and make money.**

Price, 50 cents per peck; \$1.50 per bushel; \$4.00 per barrel.

**SIR WALTER RALEIGH**—Cut below shows the shape of this fine new potato. Noted for its **yield, size, smoothness and handsome appearance**. It is a regular Rural New Yorker in type and sells for Rural in Chicago market; but it came out eight years later than that famous variety and has all that much advantage in strength and vigor. Good large size, hardly ever any small ones, nearly round in shape, but flattened, just what is most desired now; skin pure white, thin and transparent, eyes few and very shallow, potatoes never prongy and never scabby, almost blight proof, a sure yielder where others fail, in clay soils and all other soils. Sir Walter Raleigh is a good one and will not disappoint you. Price, 60 cents per peck; \$1.75 per bushel; \$4.75 per barrel.



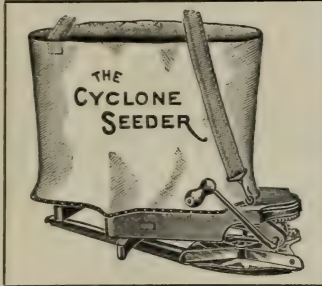
**SIR WALTER RALEIGH POTATO.**

**EARLY MAINE**—A fine new early potato of exceptional value. We have grown them three years and find them to be a fine looking, smooth potato, yielding a good big crop. Early Maine has been one of our best paying potatoes this summer. They are even shaped and handsome. They are about the color of Beauty of Hebron and are an extra heavy yielding early potato. Try Early Maine this year sure. We guarantee they will please you.

Our early potatoes nearly all drowned out in May this year. Early Maine withstood the wet weather and is by far the most profitable early potato we have tried to raise. Tubers run small, but are No. 1 seed. Price, 65 cents per peck; \$2.00 per bushel; \$5.25 per barrel.

**RURAL NEW YORKER**—Very well and favorably known all over the country. Planted largely for main crop on account of its keeping qualities. **A very late potato.** Characterized by a long rather spindling vine with dark colored stalks, dark green leaves and purple blossoms; **tubers nearly round, flattened, with very smooth, pure white skin, uniform in size, numerous in the hill, very attractive.** Better to eat in winter and spring than when first dug. One of the most profitable of market potatoes. A general favorite throughout the country on account of **productiveness, uniform size, color and keeping qualities.** If you buy a few barrels of Rural New Yorker for main crop you will never be sorry. Price, 50 cents per peck; \$1.50 per bushel; \$4.00 per barrel.





# The "Cyclone"

HAND BROADCAST SEED SOWER has stood every test of more than forty years exacting service. The workmanship and material used in its construction are of the best available. It will sow all varieties of farm seeds that can be thrown broadcast and with ease to the operator; five acres per hour is a fair average for the Cyclone.


The Cyclone differs materially and advantageously from all other sowers in having a patent, non-solder, double-flange distributing wheel; a slope feed-board and oblong hopper, which terminates in a metal edge on which edge oscillates a steel feed hopper, which does not allow the seed to become clogged, but makes a positive FORCE FEED and insures a uniform flow and even distribution of all farm seeds. The feed gauge can be adjusted closely for any kind of seed and opened or closed instantly and automatically without disturbing the adjustment. Full directions accompany each machine. Every one warranted. Price, \$1.50 each.

THE CHICAGO (BOW) SEEDER is run by a backward and forward movement of a steel bow through a swivel guide. Otherwise it is like the Cyclone in construction. Price, \$1.40 each.

THE LITTLE WONDER SOWER is practically and mechanically built, neatly finished and has the same automatic feed shut-off and agitating device as the Cyclone and Chicago machines. Anyone seeking a moderate price machine will find excellent value in the Little Wonder. Price, \$1.25 each.

These goods are sold by the trade generally, and if you cannot secure them from your dealer we will send you, upon receipt of price, any of the above machines BY PREPAID EXPRESS. Do not accept a substitute.

**CYCLONE SEEDER CO., Mfgs.**  
Urbana, Indiana, U. S. A.

 **NOTICE:** Having used the Cyclone Seeder on our farms, we can unhesitatingly recommend same to our patrons as a strictly accurate and high grade machine. With an order for nursery stock selected from this catalogue, at regular rates, we will include any one of the above Seeders for 25c less than price named, express not prepaid. **WE GUARANTEE SATISFACTION.** O. A. D. Baldwin.

JAMES M. BALL, Pres.

M. W. STOCK, Vice-Pres.

A. N. REECE, Cash.

The  
**Commercial National Bank**  
St. Joseph, Michigan

---

CAPITAL \$50,000.00  
SURPLUS AND UNDIVIDED PROFIT \$20,000.00

---

*Money to Loan at All Times at the  
Lowest Rates*

*Interest Paid on Certificates of Deposit*

SAFETY DEPOSIT BOXES FOR RENT

The patronage of FARMERS and FRUIT GROWERS is respectfully solicited

## We Are Giving Away

the Most Beautiful, Up-to-date, and Instructive  
Series of Maps that Have Ever Been Published.

This not only embraces the World, *your state*, and the United States, but a number of other maps of vital interest.

These maps are 22x28 inches in size, printed in six colors and are accompanied by a complete index of all towns of your state, list of express offices, railroads, etc. Also comparative population of the chief cities at three census periods, besides much other valuable information.

The regular price of this set of maps is \$1.25.

Send us 50 cents and we send you a set of maps and The National Fruit Grower for one year.

The National Fruit Grower is a paper giving you what you need in information on the proper manner of growing fruit. If you wish to see sample copy before sending your order, ask us for it. Address

**The National Fruit Grower** Dept. B. St. Joseph, Michigan









# Prices of Strawberry Plants for 1909

	Per 100	Per 1000
August Luther, (S) .....	\$0.50	\$3.25
Aroma, (S) .....	.60	3.75
Brandywine, (S) .....	.60	3.50
Beder Wood, (S) .....	.50	2.25
Bubach, (P) .....	.75	4.00
Crescent, (P) .....	.50	2.50
Corsican (S) .....	.85	5.00
Gandy, (S) .....	.60	3.50
Glen Mary, (S) .....	.75	4.00
Haverland, (P) .....	.60	3.50
Highland, (P) .....	5.00	45.00
Lovett, (S) .....	.50	2.50
Michel's Early, (S) .....	.50	2.00
Nic Ohmer, (S) .....	.60	3.50
Oswego, (S) .....	1.00	6.00
Pocomoke, (S) .....	.75	4.00
Pride of Michigan, (S) .....	1.00	8.00
Splendid, (S) .....	.50	3.25
Senator Dunlap, (S) .....	.50	2.75
Sample, (P) .....	.75	4.00
Uncle Jim, (S) .....	.75	4.00
Warfield, (P) .....	.50	2.50

We sell 25 at 100 and 250 at 1000 rates.

At 100 rates to go by mail, add 25 cents to each 100; at 100 and 1,000 rates to go by express or freight, charges to be paid by purchaser.

Varieties marked (P) are "Pistillate" and must have staminate varieties set near them. Those marked (S) are "Staminate" and fertilize themselves. They can be set in large patches alone with best of results.

We advise all to place their orders early and be sure of getting what you want. Please notice our premium offers in front part of Catalogue.


May we not hear from YOU before our rush comes?

Promising your orders our personal attention, I am,

Very truly yours,

**O. A. D. BALDWIN,**  
**BRIDGMAN, MICH.**

(Long Distance Telephone in our office.)



## *Our Guarantee*

*We guarantee all plants to  
be first-class and true to name,  
packed to reach you in good  
condition (by express) and to  
please you in every way.*