

Historic, Archive Document

Do not assume content reflects current scientific knowledge, policies, or practices.

FAIRFAX ROSES

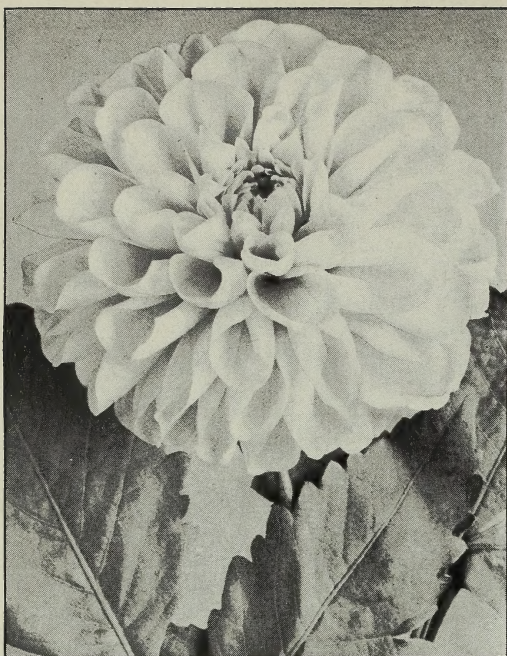
6289
LIBRARY,
U. S. Department of Agriculture,
Washington, D. C. for

1909

1909

W. R. GRAY

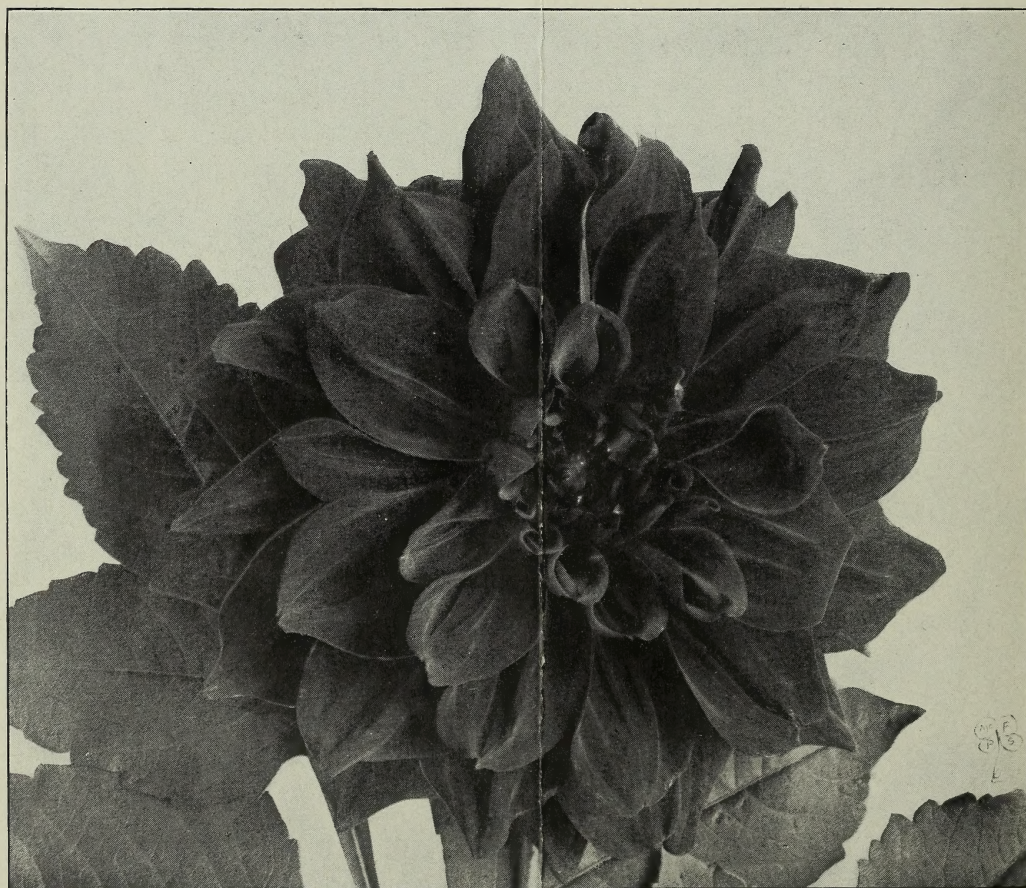
OAKTON, FAIRFAX COUNTY, VA.



Dahlia, Mrs. Roosevelt



Cactus Dahlia, Exquisite



Souvenir de Gustave Duzon. The largest Dahlia grown

NO. OF PLANTS

NAME OF VARIETY

DOLLARS

CTS.

ORDER SHEET (THIS SHEET please careful to fill the spaces correctly.) PARTIES IN ORDERING WILL OBLIGE US BY USING ONLY IN VERY SMALL

1200

W. R. GRAY, Oakton, Va.

1200

DO NOT WRITE YOUR LETTER ON THIS ORDER SHEET

DOLLARS

NAME OF VARIETY

CTS.

1200

1200

1200

Read the Following Instructions Carefully

The prices in this list are very low, and the money must accompany the order in all cases, as I cannot afford to credit any one at these prices.

I send out an inexpensive catalogue, with no impossible descriptions or untried novelties in it.

My plants will be found to be strong and well grown. They are not unnaturally forced, and are grown in cool temperature. This is a very important point for plants that are to be planted outdoors, as they are hardy, and will start to grow at once.

I pay postage on all plants by mail, and guarantee that all plants sent out will reach you in perfect condition.

My mailing size plants are strong and well grown, and will start to grow at once. But it is best, when possible, to have plants sent by express, as I can often send larger plants, and put in more plants gratis. All express companies allow a reduction of 20 per cent. from the regular merchandise rate.

A fair idea of the expressage on a box of plants or bulbs to your place may be formed from the following table. We can ship by express:

10 pounds to any point in state of Virginia for.....	\$0 25
20 pounds to Charleston, S. C., for.....	45
20 pounds to Richmond, Va., for.....	35
20 pounds to Savannah, Ga., for.....	50
20 pounds to Galveston, Texas, for.....	1 10
20 pounds to New Orleans, La., for.....	80
20 pounds to Philadelphia, Pa., for.....	35
20 pounds to New York, N. Y., for.....	35
20 pounds to Boston Mass., for.....	35
20 pounds to Pittsburg, Pa., for.....	35
20 pounds to Louisville, Ky., for.....	45

20 pounds to St. Louis, Mo., for.....	\$0 55
20 pounds to Chicago, Ill., for.....	45
20 pounds to Richmond, Ind., for.....	50
20 pounds to Topeka, Kans., for.....	1 00

Always name what express company has an office at your place. When possible it is best to have plants forwarded by Adams or Southern Express.

Errors—We use every precaution to guard against errors, but in the press of business they will sometimes occur, or something be omitted from the order. In any case, we wish to know of anything that is not satisfactory, so that we may correct the error.

Always use order sheet, as it enables us to fill orders with dispatch and accuracy.

SENDING MONEY—All remittances should be made by registered letter, express order, or post-office money order. Postoffice orders are the safest and best, and should be drawn on Oakton, Va., which is now a money order office. Please do not send stamps.

Checks will be received. Money sent loose in letter is at sender's risk.

No orders for plants will be received for less than 25 cents unless 10 cents is added to pay for packing.

I am only twelve miles from Washington, D. C., and have, therefore, direct connection with all railroad lines leading from Washington, and can insure quick transportation of all shipments to any point.

All our plants are grown on their own roots. We grow no budded or grafted plants, as such are very unsatisfactory to planters.

NOTICE

WHEN sending your order, if you will send the names of a few of your friends who are plant buyers, I will be pleased to send you something extra for your trouble.

Please be sure that the names are of people who buy plants, and send only a few, as I do not want long lists of names. I will send you many fine plants extra if you will get your friends' orders and send them with yours, so that all may go by express to you.

Large Roses for Immediate Effect

For general planting we recommend our ordinary size Roses, knowing that with fair treatment they will grow and bloom continuously through the season. But as many of our patrons prefer large Roses for immediate effect we wish to call special attention to the two-year-old plants offered, as they are very heavy, fine plants, and the prices are very low for such stock. We keep them in cold houses during winter—entirely dormant, so they are in best condition for immediate blooming. They are too large to be sent by mail and must be sent by express at purchaser's expense. However, if the order is small, we will send by mail if 5c per plant be added for postage.

VISITORS are always welcome. Greenhouses and office are within one hundred yards of Oakton Station on the Washington, Arlington and Falls Church Electric Road. Cars leave Washington every hour from Penn Avenue and Twelfth Street.

Preserve this Catalogue for Your Plant or Bulb Order Next Fall

New Roses of Special Merit

The following list of Roses will be found to contain the finest varieties in existence. The plants are strong and stocky, and will be carefully packed and sent by mail at the price given, except the two-year-old plants, which will be sent by express at purchaser's expense, or by mail, if 5 cents per plant be added for postage.

DIRECTIONS FOR PLANTING AND GROWING ROSES

Roses may be grown in any good garden soil, but will do much better in a rather heavy clay loam than in a light or sandy soil. They should not be planted near large trees, or in a shady location. The soil should be plowed or spaded deeply, and a good quantity of well rotted stable manure well mixed with it, but do not use any sand, chip dirt or other light material. An application of 5 pounds to the square yard of fine ground raw bone is very beneficial, and may be added each year if the soil is not very rich. Be sure to keep the soil stirred with a hoe constantly. Every week is not too often, and let no weeds or grass grow near the plant than two feet.

In planting see that the soil is firm about the roots. Keep well watered, and if the plants are the smaller sizes, shade from sun for a few days. Mailing size plants should not be planted till danger of frost is over, but the two-year size should be planted as early in spring as the ground can be prepared.

Hybrid Perpetual Roses are perfectly hardy in any part of the country. Hybrid Tea Roses are next in hardiness, being hardy with slight protection in any part of the country, and as they are all constant bloomers are the most useful of all roses.

Tea Roses with the exception of Cochet, and a few others, are quite tender and require protection in winter. Pine or any evergreen boughs make the best covering, but should be laid on rather loosely so the Roses may have plenty of air.

GOLDEN COCHET (or Helen Good). TEA.

This new Rose is the only true Cochet Rose known, except the old well known Pink and White Cochet, and after two years' trial in the garden we pronounce it as good if not better than any Rose for the garden ever sent out. The color is a delicate yellow, suffused with pink, each petal edged deeper, very chaste and beautiful. The color, with its immense size and exquisite form, makes it without question the greatest Tea Rose ever introduced. It much resembles the new Rose Wm. R. Smith, but we believe it to be a far better Rose. We think the name, Helen Good, to be unfortunate, as it sounds so much like Helen Gould, and looks so much like it when written as to cause confusion and likely many mistakes. We have therefore adopted the name Golden Cochet, which has been suggested by its slight color resemblance to Golden Gate. Price, 25 cents; three-inch, 35 cents; two-year, 50 cents.

MELANIE SOUPERT, H. T.

See illustration on cover of this catalogue. The buds average longer than those illustrated, and are truly immense in size, it being among the largest of Roses. The color is a deep, golden yellow. The plant is a splendid grower, strong and healthy, and we consider it one of the very best of the new Roses. Price 25 cents; three-inch, 35 cents; two-year, 50 cents.

Hardy Ever-Blooming Rose, CHERRY RIPE

An extraordinarily free-flowering Hybrid Tea Rose, branching in habit, vigorous and hardy, and as free-blooming as a Tea Rose. The flowers are medium in size, well formed, globular, light rosy crimson. Every shoot produces a bloom; one of the most promising new roses. Price, 15 cents; three-inch, 25 cents; two-year, 40 cents.

SOLEIL D'OR (Golden Sun)

The most unique Rose in cultivation, being the first of a new race, both in habit of growth and color of flower. A strong, robust grower, with straight branches, and heavy, deep green foliage. Very full, the expanded flowers being large and globular, the center petals being well incurved, forming a double flower. The color of a fully expanded flower is extraordinary, and is not found in any other variety in cultivation—a blending of reddish-gold, orange-yellow, nasturtium-red and pink, forming a combination that is well described when the Rose was named Golden Sun. A description is inadequate to describe the warmth of color, and no description can do justice to the peerless beauty of this wonderful new, hardy yellow Rose. It will prove hardy in all sections of the country. It has but one drawback to the propagator's mind, and that is that it does not succeed well on its own roots, and we, therefore, offer it in strong, low-budded plants, two-year-old stock only. 50 cents each.

BETTY

(H. T.) Sent out by the introducer of "Killarney." Color a coppery-rose overspread with golden-yellow. Its blooms are extremely large, fairly full, and of a glorious form. Its growth is extremely vigorous, erect and of very free branching habit, flowers all season and is deliciously perfumed. Price 25 cents; three-inch, 35 cents; two-year, 50 cents.



Golden Cochet (or Helen Good). Tea.

New Hardy Ever-Blooming Rose WM. R. SMITH

This magnificent variety is an American-raised, pedigree seedling. It inherits hardiness, constitution, fine habit, grand foliage and superb flowers. Where there are so many good qualities it is difficult to emphasize the leading one, but in this variety we would name its ability to resist disease. The color is a deep ivory white overlaid with a good, bright shade of pink. As a summer Rose we predict it will rank with the best if not actually surpass them. Price, 25 cents; three-inch, 35 cents; two-year, 50 cents.

NEW ROSES—Continued

MADAME JULES GROLEZ

Called by Some "Red Kaiserin."

One of the brightest and most pleasing Roses we have ever seen. An exceedingly free blooming variety, with very large, bright, finely formed flowers. Color, a distinct and charming shade of cherry-red. Price, 15 cents; three-inch, 25 cents; two-year, 40 cents.

New Hybrid Tea Rose, ETOILE DE FRANCE

In this new French variety we have a most valuable addition to our collection of Hardy Hybrid Tea Bedding Roses and a fitting companion to such high grade varieties as Killarney and La France. It is a strong, vigorous grower, with good dark foliage and flowers which are full and double and as beautiful in the bud as in the full blown flower, and borne on strong, upright shoots in the greatest profusion. In color it is distinct from all Roses in this class, being of a rich, velvety-crimson with vivid cerise-red center. Price, 15 cents; three-inch, 25 cents; two-year, 40 cents.

WINNIE DAVIS

(H. T.) This excellent Rose was raised from seed, being a cross between the famous Empress Augusta Victoria and the well known Belle Siebrecht. The color is apricot-pink, shading to a flesh tint at the base of petals, buds oblong and well formed; when fully expanded, resembles a sunburst, most peculiar and most strikingly beautiful. Its habits are vigorous and robust, very free blooming, each eye producing flowers; foliage leathery, reddish-green, glossy and very large; also has the disposition of throwing up vigorous shoots from the roots, producing three to eight blooms, its peculiar fragrance like luscious apricots. For the Middle and Southern states we claim the Winnie Davis to be an acquisition second to none introduced in recent years. Price, 15 cents; three-inch, 20 cents; two-year, 30 cents.

AURORA

(Hybrid Tea.)

One of the best varieties offered in this book. Vigorous growth. More like a Tea Rose than a Hybrid Tea Rose. Splendid foliage, free from disease. Grand flowers, large, full and imbricated. Center rich, bright pink, pale on the outside. A wonderful bloomer. Price, 15 cents; three-inch, 25 cents; two-year, 40 cents.

TAUSENSCHON, or THOUSAND BEAUTY

A climbing Rose that comes to us from Germany. The flowers upon first opening are the most delicate shade of pink ever seen in a Rose, might be described as a white delicately flushed pink changing to rosy-carmine. It gets its name from its many flowers and the variation in coloring; beautiful. Price, 15 cents; three-inch, 25 cents; two-year, 40 cents.

PERLE VON GODESBERG

(Hybrid Tea.)

Sent out from Germany as a yellow Kaiserin Augusta Victoria, but with us has failed to prove a true yellow. It is a splendid Rose, however, and well worthy of a trial. The color is rich canary-yellow, with light saffron shadings. Price, 15 cents, three-inch, 25 cents; two-year, 40 cents.

CARDINAL

New Hybrid Tea Rose. One of the really great new Roses. For forcing recommended as being better than Liberty, and in the open ground superior to Liberty or Meteor. A strong, robust grower, with large, massive crimson flowers, deliciously fragrant, full and double to the center. Extremely free flowering and of easy culture. A Rose that is destined to become a leading crimson Hybrid Tea. Price, 15 cents; three-inch, 25 cents; two-year, 35 cents.

J. B. CLARKE

(H. P.) Without doubt the largest Rose ever grown. The growth is strong and upright, very vigorous, making a large, handsome bush; the foliage is broad and stout; bronzy-green in the young state, changing to dark green. The blooms are very large and beautifully formed; the petals, which are very smooth, are of great size and depth; flower very full and long, with high pointed center, color unique, being intense scarlet shaded crimson-maroon, very dark and rich, strongly fragrant. Awarded gold medal of the National Rose Society. Seven and one-half inches in diameter by five inches deep. Many who saw this Rose at Dickson's were so impressed with its great beauty and worth that they bought plants and carried them on the steamers, taking care of them on the journey over, doing this so as to be sure not to lose them. Dickson classes this Rose as a Hybrid Tea; we class it as a Hybrid Perpetual. Price, 20 cents; three-inch, 30 cents; two-year, 50 cents.

SOUV. DE PIERRE NOTTING

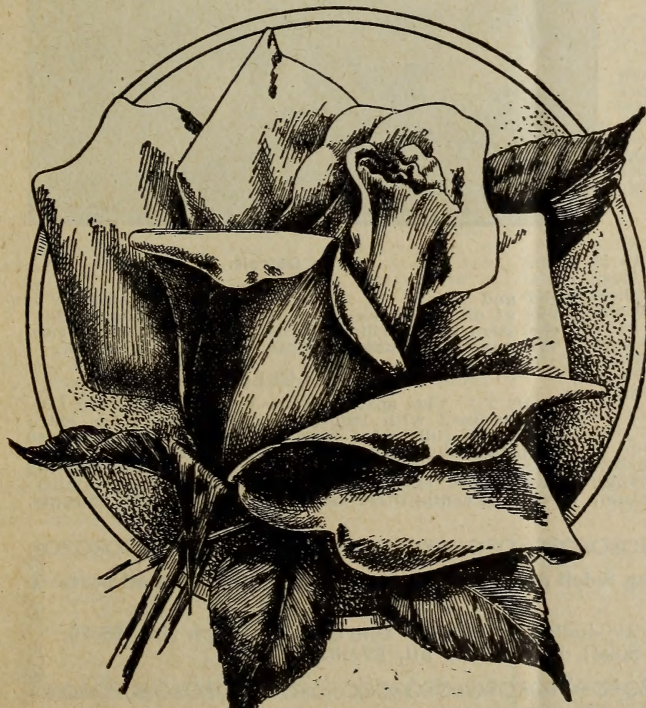
This beautiful new Tea Rose is an introduction of one of the foremost firms of France, and has not been exceeded in merit by any Rose yet sent out from that country. It is the result of a cross of Marechal Niel on Maman Cochet. Blooms very large, well filled and open easily; beautiful elongated bud. Color apricot-yellow tinged with golden; mixed with orange-yellow; edge of petals shaded beautiful carmine-rose; open flower is full and double and of good substance. Extremely free and one of the most beautiful blooms grown. Might easily be called a "Cochet," but not so hardy. Price, 15 cents; three-inch, 25 cents; two-year, 35 cents.

GENERAL McARTHUR

A new Hybrid Tea Rose. One of the brightest, vivid crimson-scarlet Roses in existence. Of free branching habit of growth; very vigorous and healthy. Every shoot produces a large, double, well-formed flower, which, combined with its fragrance and hardiness, makes this essentially one of the greatest red Roses for outdoor planting. The more we grow this Rose the better we like it. The fragrance cannot be excelled by any Rose in existence. It is very strong, yet delicate and entirely distinct, being different from any other Rose. Price, 15 cents; three-inch, 25 cents; two-year, 35 cents.

MARIGOLD

Beautiful yellow Tea Rose, with dark leathery foliage, resembles Kaiserin in growth and bloom—a better Rose than Perle von Godesburg, which it resembles. Price, 15 cents; three-inch 35 cents; two-year 40 cents.



Souv. De Pierre Notting.

NEW ROSES—Concluded

MAGNAFRANO

Magna Charta, a splendid Hybrid Perpetual Rose, crossed with Safrano, one of the most desirable Tea Roses, resulted in this beautiful Hybrid Tea Rose. It is a strong, upright grower and a constant and profuse bloomer, with extra large flowers, full, deep and double, and deliciously tea scented. The color is bright, deep, shining rose, rich and handsome. Price, 15 cents; three-inch 25 cents; two-year, 35 cents.

RICHMOND

This new Hybrid Tea Rose is one of the most valuable introductions of recent years, and reflects great credit on the diligent work of American hybridizers. It is as free blooming as Bridesmaid or Golden Gate, and its scarlet-crimson flowers are borne on fine long stems, which makes it specially valuable for cutting purposes. It is a strong competitor of Liberty and Meteor for forcing. We recommend it as a sterling novelty of unusual merit. Price, 15 cents; three-inch, 25 cents; two-year, 40 cents.

LA DETROIT

(H. T.) (Forcing.) The new Detroit Rose, which has been so largely exhibited and advertised. Shell-pink, shading to soft rose; reverse of outer petals cream colored; fragrance like that of old Bon Silene. In form it is large, cup-shaped; petals shell-like, Rich, glossy foliage; a rampant, vigorous grower, producing long shoots. We do not think this Rose has been rated high enough. We would place it at the top of the list of all pink roses. Fully equal in value to La France or Killarney. Price, 15 cents; three-inch, 25 cents; two-year, 40 cents.

AMERICAN BEAUTY

Largest, Sweetest and Best of All Hardy Roses.

This is perhaps the grandest and most beautiful Rose now known. It is a genuine hardy, ever-blooming Rose. For immensity in size, rich color, exquisite form and delicious fragrance it stands without an equal. It is a quick and bushy grower and a continuous bloomer, makes magnificent buds and large, deep, double flowers, and is valuable both for house and garden culture. Color is a rich rose-crimson, shaded and veined in the most charming fashion; fragrance is wonderfully sweet, not surpassed by any Rose we know. Price, 15 cents; three-inch, 25 cents; two-year, 35 cents.

FRAU KARL DRUSCHKI

Called by Some White Am. Beauty.

This new hardy Rose is of German origin, and has won many prizes and made many friends. It is unquestionably the Ideal Hardy White Rose. Its flowers, which are very large, are perfect in form and snow-white in color, with large shell-shaped petals, forming a beautiful flower. The plant is a strong, vigorous, healthy grower and remarkably free-flowering. Price, 15 cents; three-inch, 25 cents; two-year, 40 cents.

KILLARNEY

A phenomenal new Hybrid Tea Rose, especially as to the coloring, which is an exquisite shade of deep shell-pink, while the flowers in size are nothing short of enormous, the petals frequently measuring two and one-half inches deep. Wonderfully strong in habit of growth, throwing up heavy shoots crowned with long, heavy buds. It has created a sensation wherever seen. Free flowering and perfectly hardy. Price, 15 cents; three-inch, 25 cents; two-year, 40 cents.

MADAME LEON PAIN

(Hybrid Tea.)

Robust growth; smooth wood; handsome plum-colored foliage; flowers large, full and free in opening; silvery-salmon, center orange-yellow, reverse bright



La Detroit.

red and yellow. In our gardens the past summer it has at all times been a grand sight bearing a great profusion of exceedingly large brilliant Roses. Price, 15 cents; three-inch, 25 cents; two-year, 40 cents.

WELLESLEY

(H. T.) This splendid Rose is a seedling from Liberty crossed with Bridesmaid; the flowers are extra large and full; color bright, clear rose-pink, reverse of petals silver-rose; a vigorous grower, bearing its flowers on tall, stiff canes; very free bloomer and the flowers are of excellent substance and durability. Price, 15 cents; three-inch, 25 cents; two-year, 35 cents.

One each of the above Roses, not including Soleil d'Or, 24 plants, 2½ inch size, by mail post-paid for \$3.75.

BY EXPRESS—One each of the 24, in 2½-inch size, \$3.50. One each in 3-inch size, \$5.50. One each in 2-year size, including Soleil d'Or, 25 in all, \$9.00.

SPECIAL LIST OF THE FINEST AND MOST RARE VARIETIES OF Ever-Blooming Roses

PRICE, 10 CENTS EACH

From two and one-half inch pots, postpaid; from three-inch pots, postpaid, 15 cents; two-year-old, by express, 25 cents; by mail, 30 cents.

Our two-year-old plants are all kept dormant in cold houses during the winter and are in best possible condition to grow and bloom at once.

TIME FOR PLANTING.

Small roses should not be planted in spring till all danger of frost is over. But the two-year plants should be planted much earlier for the best results, as early in fact as the ground can be prepared for them.

WE GUARANTEE that all plants we send out shall reach their destination in good growing condition; if they do not, inform us by return mail and we will replace at once. When we deliver them to you in good order our responsibility ends.

MEDEA

A Rose of exquisite kind and color, ranked by many enthusiasts as the best yellow Tea Rose. The flowers are of large size, perfectly double to the center and perfect in shape, both in bud and blossom. The color is magnificent—deep, rich lemon yellow, with creamy-yellow center with tints of sulphur.

MME. CAROLINE TESTOUT

(Hybrid Tea.)

This is a wonderful Rose. Planted in the nursery rows with all the good Roses you can pick it out across a ten-acre field on account of its immense size and brilliant color. Probably no Rose stands higher in public estimation today than La France, and when we say this elegant new Rose is a far better Rose than La France, we have said about all that can be said. It is decidedly deeper and more brilliant in color and a larger flower, and is as good in other ways. It is a wonderful Rose. The petals are large, and of elegant La France form, exquisitely edged and bordered with clear silver rose. Both flowers and buds are extra large, and of very elegant form; color is brilliant satiny rose.

LA FRANCE

(Hybrid Tea.)

Accounts come to us from all quarters every year describing the great profusion of its bloom from June until frost, and extolling its fragrance and immense size. It is of superb form, and double as a Rose can be. No variety can surpass it in delicate coloring—silvery-rose shades, with pink. It has a satin sheen over all its petals. It is most universally regarded as the most useful of Roses, for it is hardy beyond question.

RED LA FRANCE

(Hybrid Tea.)

(Duchess of Albany.) A fine Rose of unusual merit, one that can survive, with slight protection, the winters of any locality. It is identical in every respect to La France, except in color, which is a pretty red when in bud form, but when open it changes to a carmine. A fine Rose for bedding.

CHRISTINE DE NOUE

A fine new French Rose. Very free bloomer, large handsome flowers and bright shining buds; color a deep glowing red. Very sweet. A good healthy grower and constant bloomer.

MME. DE WATEVILLE

(Tea.)

Stands in a class by itself as to color, a beautiful creamy-white tinged with rosy-blush, each petal having a bright crimson shaded border. A moderate grower, forces well.

METEOR

(Hybrid Tea.)

A velvety-red ever-blooming Rose, of the deepest glowing crimson. As fine as a Hybrid; flower of medium size, very double, and petals slightly recurving. A beautiful open Rose, a free bloomer, and promising well as a pot Rose. It has no tinge of violet or purple to mar its beauty. It promises to be a reliable ever-blooming Rose, free from bad qualities. The best rich red Rose that was ever introduced for florists' use.

LADY BATTERSEA

(Hybrid Tea.)

This variety has long, pointed buds of the largest size and very striking in form; the color is bright cherry-crimson, often approaching the shade of Liberty; the stems are stiff and extremely long; a vigorous grower and free in bloom.

KAISERIN AUGUSTA VICTORIA

(Hybrid Tea.)

One of the most beautiful of all Roses for open-ground culture; it is a strong, healthy grower, and as hardy as any of the Hybrid Perpetual Roses, while it blooms with unbroken continuity from early spring until severe frosts; in fact, it is as free-blooming as any Tea Rose. It is celebrated the world over for its elegant, large, pointed buds and large, full double flowers; color delicate creamy-white; deliciously fragrant. As a cut flower it stands without a peer.

SOUVENIR DE LA MALMAISON

(China.)

This grand old variety, when used as a bedding Rose in summer, has no equal, as it produces the most perfect flowers in the hottest weather. Its rich, flesh-colored flowers are of immense size, double to the center, are produced in abundance, and have the requisite form and substance to withstand our hot, dry summers. Exquisitely fragrant. A noble Rose.

PRINCE OF BULGARIA

(Hybrid Tea.)

Flesh, with yellow and crimson.

HELEN GOULD

(Tea.) This is probably the most beautiful and satisfactory Rose for general planting ever introduced in America. It has proved itself to be the strongest growing, freest blooming, largest flowering and hardiest Rose in existence. It is a better Rose for general planting than American Beauty—the dream and hope of every Rose grower for years past. The flowers are full and perfectly double, the buds beautifully made, long and pointed. The color of a ripe, red watermelon. It is as hardy as La France.

MME. WELCHE

(Tea.) A Beautiful Rose.

The flowers have great depth and substance, and are of fine globular form with broad, thick petals and large, finely-shaped buds. The color is a beautiful shade of soft amber-yellow, deepening towards the center to orange or coppery-yellow, delicately tinged and clouded with a pale ruddy crimson. Both flowers and buds are remarkably sweet. It is fine for the conservatory, and none better for the open ground.

UNCLE JOHN

Sport from Golden Gate; all the shades are deeper than those of the parent. A very pleasing constant blooming Rose; pretty buff-yellow flowers shading to white and pink; large, full and fragrant; a strong bushy grower, splendid for garden planting.

SOUV. DE PRESIDENT CARNOT

(Hybrid Tea.)

With all our admiration for the hosts of beautiful Roses, this variety is so fascinating that we believe it to be, everything considered, one of the greatest introductions of the last ten years. It is superb in every way. The flowers are large, full and double, exquisitely shaped, with heavy, thick, shell-like petals. The buds are wonderfully beautiful—long and pointed like Niphetos—perfection in every line. The color is a new, delicate rosy-blush, shaded a trifle deeper at center of flower. Fragrance delicious. Strong grower and free bloomer. Has no weak point.

EVER-BLOOMING ROSES—Continued

The Beautiful Yellow Tea Rose, PEARL OF THE GARDEN

(Perle des Jardins.) The one Tea Rose which you cannot possibly do without. It has absolutely no weak point, but it is a perfect and popular Rose. The color is faultless, whether the waxy petals show the rich cream tint of cool weather or take richer golden shades which a warmer sun gives them. The form of the bud is rich, rounded and luxuriant. It is only equaled in beauty by the open Rose, which is full to the center and large. It is no shy, creeping plant, but is fairly riotous of growth, sending out quantities of beautiful foliage, thick, glossy and dark, every branch being topped with the dark reddish-maroon of the young shoots, and bearing its buds high above the leaves.

ANTOINE RIVOIRE (Hybrid Tea.)

Here we have a Rose that can be talked about, and when you have said all in its favor that you can think of, you have still left something unsaid. It is a vigorous grower, with fine-shaped buds and flowers, colors salmon-flesh in center to the edge of its petals shading to a creamy-white, with a delicate pink tinge. No other Rose we know of is either like it in color or make-up—the color is so fresh and clean. It will last longer by far than any Rose cut from the field and retain its fresh, bright appearance.

SUNSET

This grand Rose is a great favorite wherever known; the color is a rich golden-amber or old gold elegantly shaded with dark ruddy crimson, resembling the beautiful tints seen in a summer sunset, hence its name; the flowers and buds are of extra large size, very full and finely formed and deliciously perfumed; it is a strong and vigorous grower and free bloomer, highly recommended both for open ground and house culture, making it a very desirable Rose.

MRS. ROBERT GARETT (Hybrid Tea.)

The size is enormous; indeed, the flowers are larger than any Tea Rose we have ever seen, while the form, both in bud and full blown flower, is most artistic and beautiful. The buds are unusually long and pointed; the open flowers full and double. The color is a pleasing soft pink, a little deeper than Daybreak Carnation, totally distinct and unlike anything yet seen in Roses. It is a strong, vigorous grower, producing its flowers on long, stiff stems.



Baby Rambler.

BABY RAMBLER

It is in bloom all the time, flowers in large clusters of brightest crimson. It grows to a height of eighteen inches and hides the plant with its bloom. A most wonderful Rose.

The Rambler Roses

PHILADELPHIA Crimson Rambler.

This splendid new variety differs from the old Crimson Rambler in having a brighter, deeper and more intense color and flowers that are perfectly double to the center, very durable and of excellent substance. It is a very profuse bloomer and a good, healthy grower, producing splendid clusters of perfectly double and intensely brilliant flowers, absolutely free from the faded appearance so frequently seen in flowers of the ordinary Crimson Rambler. Strong plants. Price, 10 cents; three-inch, 15 cents; two-year, 25 cents.

CRIMSON RAMBLER

This plant is of a very vigorous growth, making shoots from eight to ten feet during the season, rendering it a charming pillar Rose. It is also magnificent in bush form, and for covering buildings, trellises, etc., it cannot be excelled. One of the striking characteristics of this Rose is its remarkable color, which is of the brightest crimson, which remains undimmed to the end, showing none of the objectionable purplish tint so common in crimson Roses. The flowers are produced in great pyramidal panicles, or trusses, each carrying from thirty to forty blooms. Price, 5 cents each; 3-inch pots, 10 cents; two-year, 25c; three-year, heavy, 50 cents.

HELENE

The New Pink Rambler.

A seedling from Crimson Rambler, originated by a famous German rosarian, from whom we obtained our stock. Flowers larger than those of Crimson Rambler; nearly double, and borne in clusters of twenty to fifty. Color soft violet-rose, yellowish-white at base of petals. Anthers pure yellow and numerous. Habit fully as strong as Crimson Rambler, but more graceful. Foliage like Crimson Rambler. Hardy. Price, 8 cents; two-year, 25 cents.

THALIA

White Rambler.

This charming new Rose of the Rambler variety is a wonder. It climbs rapidly, is entirely hardy, produces immense clusters of pure white Roses, perfectly double, of delightful fragrance and of immaculate white. It is without question the best Climbing Rose extant. Price, 8 cents; two-year, 25 cents.

AGLAIA

Yellow Rambler.

The color is a decided yellow. The flowers are very sweet scented; habit of growth is very vigorous, well-established plants often making shoots of from eight to ten feet in height in a single season. Price, 5 cents; two-year, 25 cents.

LADY GAY

A most desirable new variety of remarkable, vigorous growth, with flowers of a delicate cerise-pink, passing to soft-tinted white. The effect of a plant in full bloom with the combination of the soft white flowers, cherry-pink buds, and the deep green of the foliage is indeed charming. Price, 15 cents; three-inch, 20 cents; two-year, 30 cents.

NEW RAMBLER ROSE TAUSENDSCHON

A German introduction which comes to us very highly recommended. It has the same vigorous habit of growth as the other Ramblers, making growths in a season of over 10 feet, which are almost devoid of thorns. It bears its flowers in immense clusters; in color a soft pink when first opening, changing to a carmine rose on the reverse as they fully expand. Price, 15 cents; three-inch, 25 cents; two-year, 40 cents.

GENERAL LIST OF Ever-Blooming Roses

PRICE 8 CENTS EACH

None but Good Goods Catalogued.

OUR ROSES FROM 2½-INCH POTS WILL BLOOM THIS SUMMER.

Price, from two and one-half inch pots, postpaid, 8 cents; from three-inch pots, postpaid, 12 cents; two-year-old, by express, 25 cents; by mail, 30 cents.

Our two-year-old plants are all kept dormant in cold houses during the winter and are in best possible condition to grow and bloom at once.

PINK MAMAN COCHET

(Tea.) The Queen of All Pink Garden Roses.

Such beauty and exquisite form as is possessed by this variety is well nigh marvelous, and cannot be seen in any other Rose we know. The buds are beautiful; large, full and firm and elegantly pointed; as they expand they show great depth and richness; sometimes measuring two and one-half inches from base to tip. Flowers superb when open, extra large, perfectly double and of splendid substance. Small pot plants will in the open ground quickly make large, strong bushes, and produce on long, stiff stems great numbers of perfect flowers that are enchanting in fragrance and delicate brightness. Perfectly hardy in all sections of the country. The color is clear, rich pink, changing to silvery-rose. As we see it one good Rose like any of the Cochet Roses is worth a whole collection of poor ones—at any price.

WHITE MAMAN COCHET

Or Priscilla—The Charming New White Tea Rose.

Another new American Rose. It belongs to the Tea class, being a child of that grandest of bedding or outdoor Roses, Maman Cochet, and is hardy in northern Ohio, with slight protection in winter. Its habit is exceedingly strong and upright, like its parent, and it possesses the same large, beautiful healthy foliage, and is a most profuse and constant bloomer. The flowers are of enormous size, remarkably round and full; pure, clear, snowy-white throughout, and are delightfully tea-scented. It is by far the finest and most reliable white bedding Rose yet produced. Anyone can have the very finest Roses for cutting all summer and autumn by planting a few plants of it. It is, without doubt, the largest white Rose, both in bud and flower.

TRIOMPHE DE PERNET PERE

(Hybrid Tea.)

The flowers are extra large, having broad, thick petals, and long, tapering buds, with delicious tea fragrance. Color a fine, clear magenta-red, sometimes passing to a bright crimson. Striking and beautiful.

WHITE LA FRANCE

(Hybrid Tea.)

(Augustine Guinoisseau.) Here we have a beauty indeed, one we recommend to all, whether for outdoor culture or for pots in the house in winter. If you were to ask us to select six of the very finest Roses for you, we would be sure to include it in the six. Do you know La France? If so, you know this elegant new Rose. It is identical with La France, except the color. It is pearly-white, sometimes tinted with fawn.

MADAME ABEL CHATENAY

(Hybrid Tea.)

Good grower. Fine in bud and flower; large and full. Petals recurved and of a beautiful creamy-rose, tinged with salmon. A wonderfully bright and pretty Rose. Splendid for forcing.

HELEN GAMBIER

(Hybrid Tea.)

Deep orange-yellow shading to coppery-yellow and then to almost white on the outside row of petals. Fragrance as strong and penetrating as a Sweetbriar. A very distinct and beautiful Rose.

ADMIRAL SCHLEY

A new and very beautiful Hybrid Tea Rose; color rich glowing velvety-scarlet, finely shaded with violet-crimson; very bright and handsome. Makes elegant buds and splendid large full flowers; delightfully sweet. The bush is a clean, healthy grower with bright green foliage, and blooms abundantly all through the season.

CATHERINE MERMET

(Tea.)

A beautiful, clear, rich color, with the same silvery luster seen in La France. Large, well-formed; very beautiful in bud. One of the most popular Roses for cut flowers.

RED CHATENAY

(Hybrid Tea.)

A new Hybrid Tea Rose, an offspring of that splendid variety Mme. Abel Chatenay. One of the most popular Roses in cultivation; it differs from the parent only in color, which is much deeper and richer, being a soft shade of red.

BON SILENE

A Grand Old Tea Rose.

It is superb in every way. Perhaps the most noted feature is the immense size and beauty of its buds, which cannot be surpassed for bouquets and decorative purposes. The color is deep rose, sometimes bright rosy-crimson, occasionally pale light rose.

STRIPED LA FRANCE

(Hybrid Tea.)

This variety combines all the good qualities of La France in growth, fragrance, shape of bud and flower. It is nicely striped, the markings being plain and distinct, the variegation a beautiful bright rose on a satin-pink ground. In the North, with a little protection, it will stand zero weather.

ETOILE DE LYON

Star of Lyon. (Tea.)

This magnificent Tea Rose is a rich golden-yellow, a strong, healthy and vigorous grower, immense bloomer, bearing flowers and buds early and late. The flowers are very deep, rich, and full, excellent substance, very sweet.

THE BRIDE

(Tea.)

The most popular white Rose for winter flowering. The flowers are very large and double on long, stiff stems of fine texture and substance, and last a long time in a fresh state after being cut, making it one of the best varieties for corsage wear or bouquets. During extreme hot weather it becomes a pinkish-white, at other times a beautiful pure white.

VIRGINIA

(Tea.)

This elegant new Rose is the result of a cross between Marechal Niel and Safrano. It is a vigorous grower, of bushy habit. The blooms are large, double, finely formed, lasting and of excellent substance, often remaining on the bush until dried up. Color light yellow, with a tinge of saffron at the center and reverse of petals a pinkish cast.

General List of Ever-Blooming Roses—Concluded

THE QUEEN

The Pure White Tea Rose.

The most charming Tea Rose. The offspring of that fine old Rose Souvenir d'un Ami, whose many good qualities it seems to possess in a remarkable degree. It is pure snow-white, makes good, finely formed buds. is quite full, showing the center but slightly when fully open.

PRINCESS BONNIE

One of the Brightest, Sweetest, Freest-Blooming Roses in Existence.

A grand new Rose that is the result of a cross between Bon Silene and W. F. Bennett. A tremendous bloomer, commencing to flower before the plant is three months old and continuing through the entire season. The flowers are large, with long pointed buds, and are produced on long, stiff stems. The color is a rich, solid crimson, the inside being streaked with white. The odor is a delicate, very delicious tea scent.

IVORY

(Tea.)

This exquisite new Rose resembles the beautiful Golden Gate in form and loveliness, but is pure ivory-white. It is an exceedingly free bloomer, sure to be covered with lovely buds and flowers the whole growing season; the buds are wonderfully beautiful and borne in great profusion, and the flowers are large, full and sweet. It is a healthy, vigorous grower and very handsome and desirable in every way; strong plants.

VIRGINIA R. COXE

Or Gruss an Teplitz (Hybrid Tea.)

Sweetest and most vivid crimson Rose in the world, and without question the best Hybrid Tea Rose of its color in existence. It grows to perfection in almost any situation, while its flowers in fragrance rival the finest Hybrid Perpetuals. For this Rose we will say that we doubt if there is a Rose of its color of any class that can surpass it. Perfectly hardy and always in bloom.

BRIDESMAID

(Tea.)

Color a bright, clear pink, a lovely shade; flowers very large, perfectly double. The buds are large and solid, with long, stiff stems and handsome glossy foliage. It has all the good qualities of a first-class winter-blooming Rose; a strong, healthy growth, free from disease; is easily grown and produces very freely; buds of the largest size, of a color that can be used to advantage on all occasions. It is also an excellent bedding variety for outside flowering in summer.

MADAME SCHWALLER

Blooms in large clusters; large globular flowers; fine salmon-rose, finely edged with violet-carmine; highly perfumed; a strong, healthy grower; a grand variety of that type which are far too few.

GOLDEN GATE

(Tea.)

A magnificent Rose, with large, full, finely formed flowers; buds long and beautiful. Color rich creamy-white, exquisitely tinged with golden-yellow and clear rose, making a flower of indescribable beauty. Blooms freely.

DEVONIENSIS

The Charming Magnolia Tea Rose

We doubt if there is scarcely any one who does not know of the beauty of this famous old favorite. There is no other variety like it, and none more beautiful or desirable. If there is one variety more than another that we are partial to it is Devoniensis. It is fine anywhere. Planted outdoors it gives an abundance of its beautiful flowers all through the season. The color is a lovely creamy-white with rosy centers, large, very full and double, and deliciously scented. This is the one Rose that should be seen in every garden.

MME. CECILE BERTHOD

(Tea.)

Most beautiful both in bud and flower, which is deep golden-yellow; in fact, the deepest yellow in color of any Rose we grow. The foliage is very bright. This is a Rose of magnificent size and color.

SOUVENIR D'UN AMI

Extra large, globular flowers, like Queen, except in color; very full and deliciously sweet; its color is a deep rosy-flesh, beautifully shaded with rich carmine; edges and reverse of petals silver-rose; a vigorous grower and profuse bloomer; for growing in open ground it is simply superb.

COMTESSE RIZA DU PARC

Coppery-rose, tinged and shaded with soft blush. This beautiful Rose has many admirers.

LA TOSCA

Beautiful silvery-pink, with deeper center; a very vigorous grower, with large, double flowers, and very free-flowering.

MADAME JOSEPH SCHWARTZ

Flowers very full and sweet; pure white, tinged and shaded with pale yellow and rosy blush.

SPECIAL COLLECTIONS

The following collections have been selected with great care with the idea that they shall contain absolutely the finest varieties of Roses in cultivation.

PIERRE NOTTING SET

For \$1.00 we will send one each of the following Roses by mail, postpaid: Souv. de Pierre Notting, Cardinal, White Cochet, Pink Cochet, Winnie Davis, Caroline Testout, Gen. McArthur, Climbing Kaiserin, Magnafano, Pernet's Triumph. For \$2.50 we will send one large two-year plant of each by express at purchaser's expense. Order as the "Pierre Notting Set."

LA FRANCE SET

For 50 cents we will send one each of the following seven Roses by mail, postpaid: Pink La France, White La France, Striped La France, Red La France, Gruss an Teplitz, Ivory and Helen Gould. For \$1.00 we will send one each in large two-year plants by express at purchaser's expense. Order as the "La France Set."

CUT FLOWER SET

The following seven Roses are those that succeed best for cut flowers and are most used for that purpose: Ivory, Bride, Bridesmaid, Uncle John, Golden Gate, Pierre Notting, Pearl of the Garden. One each by mail for 50 cents; one each in two-year size, by express, for \$1.00.

The Following Well-known Old Varieties are Splendid Kinds

 PRICE, 5 CENTS EACH 

None but Good Roses Catalogued.

OUR ROSES FROM 2½-INCH POTS WILL BLOOM THIS SUMMER.

Price, from 2½-inch pots, postpaid, 5 cents; from three-inch pots, postpaid, 10 cents; two-year-old from cold house, by express, 15 cents; by mail, 20 cents.

MARIE VAN HOUTTE

(Tea.)

Magnificent in the open ground. Extra large, full, double flowers. Canary-yellow, passing to creamy-white, shaded rose.

MRS. B. R. CANT

(Tea.)

A beautiful Rose on the style and color of Papa Gontier. It is a free grower and free bloomer. This is a Rose that will become a standard variety. We think very much of it.

CHAMPION OF THE WORLD

(China.)

It is quite hardy, and possesses that delicious old-fashioned rose fragrance so much sought after in an ever-blooming variety. For a pot Rose it has no equal.

THE RAINBOW

(Tea.)

Color a lovely shade of deep coral-pink, striped, mottled in most unique manner with intense carmine, elegantly colored with rich golden-amber at the center of base of petals; makes beautiful buds; flowers extra large, sweet, and of great depth and substance.

LA PRINCESS VERA

(Tea.)

Without doubt this is a grand Rose for general planting, particularly for bedding in the open ground. The color is rich ivory-white, shaded and veined with coppery-yellow, and delicately penciled with pale blush. A truly grand and beautiful Rose.

CLOTHILDE SOUPERT

This Rose originated with Messrs. Soupert & Notting, of Luxemburg, Belgium. It is a strong, vigorous grower. The flowers are large, double and beautiful in form, with style of the beautiful Rose Ball of Snow. They are borne in sprays, and the color blends from a soft shell-pink to a pure satiny-white. Roses with both these colors are borne on the same plant at the same time. No other Rose approaches it in flowering qualities.

MLLE. FRANZISCA KRUGER

A strikingly handsome Rose, one of the very best for open-ground culture. It would be hard to name a better or more satisfactory rose. It is especially adapted to bedding or massing. Holds its foliage under all sorts of adverse conditions. The flowers are deeply shaded coppery-yellow in color, and are of large size. A strong and vigorous grower and a good and constant bloomer.

DAVID PRADEL

Its habit is perfection, of strong upright growth with clean and healthy foliage. A very free bloomer with large fragrant flowers; color an exquisite blending of lilac and rose, with a delicate and rich crimson center. An exceptionally fine Rose.

MADAME DE VATRY

(Tea.)

Big, clean buds of great beauty; fine flowers; rich crimson-scarlet.

COUNTESS EVA STARHEMBERG

(Tea.)

The bud is long in form, opening a fine double flower of great beauty and heavy texture. Color creamy-yellow, shading to ochre at the center, borders of the petals touched with rose.

COQUETTE DE LYON

(Tea.) One of the Best Yellow Roses.

This exquisite variety is so well and favorably known that a detailed description is hardly required. It is unquestionably one of the finest yellow Tea Roses in cultivation for open ground culture. The color is a pure canary-yellow.

DUCHESS DE BRABANT

A bright China Rose, with coppery-yellow center, ends of petals suffused with carmine. A charming, beautiful combination of coloring, as each color blends nicely with the other. This variety ranks with the best, and is a Rose of decided merit.

PAPA GONTIER

(Tea.)

A fine forcing Rose, also fine for field planting. We sell immense quantities of this fine Rose. It has a fine bud, open flower, semi-double. Color dark carmine flushed crimson.

QUEEN'S SCARLET

(China.)

This is, without doubt, the very best of all red Roses for bedding. It can be planted anywhere, being entirely hardy. The flowers are of large size and of fiery scarlet, a color seldom seen in Roses. Indeed, a bed of this Rose produces a mass of red equal to a bed of Geraniums.

SNOWFLAKE

(Tea.)

Pure white; does not pink.

SAFRANO

A Fine Old Tea Rose.

This splendid old-time Rose has not been superseded by any newcomer of its class or color. It is a variety of great value, particularly for outdoor planting. It grows vigorously and has the vitality necessary to produce a continuous crop of flowers from early summer until late in autumn; quite hardy. It is valued very highly for its beautiful buds and handsome flowers. The color is a bright apricot-yellow, changing to orange and fawn, sometimes tinted with rose. Very fragrant.

WHITE BOUGER

(Tea.)

Blooms of great substance; pure white; strong stems and a great bloomer.

HERMOSA

(China.)

An old favorite. It is always in bloom and always beautiful. The flowers are cupped, finely formed and full. Color the most pleasing shade of pink, soft, but deep. The best market Rose grown.

MARION DINGEE

(Tea.)

A very good red Rose, but we think it has been much overrated.

VIRIDIFLORA

(Green China Rose.)

Moderately large, quite double; pure deep green, valuable as a curiosity.

BURBANK

A Perfect Hardy, Ever-Blooming Tea Rose.

This Rose is the only rival that the famous variety Champion of the World has. The color is cherry-crimson; it is, in other words, the very deepest and brightest pink Rose in cultivation. It is peculiarly adapted for both outdoor planting or for blooming indoors.

SOMBREUIL

(Tea.)

Beautiful white, tinged with delicate rose. A very strong growing border Rose; an old-time favorite.

PRINCESS SAGAN

A strong-growing Rose, with small, closely-set, dark foliage and medium-sized flowers of the brightest scarlet and velvety texture.

MARQUISE DE QUERHOENT

(Tea.)

Long pointed bud, stiff upright stem; color a beautiful China rose, copper, salmon and golden-yellow; extremely free.

Hardy Hybrid Perpetual Roses

OF SPECIAL MERIT

Hybrid Perpetuals are considered the most valuable of all hardy plants. They are distinguished by their vigorous, upright growth and large, bold flowers, frequently measuring five to six inches in diameter. They thrive and succeed in all localities and are entirely hardy in any part of the country.

Price (except where noted), from 2½-inch pots, postpaid, 8c; from 3-inch pots, postpaid, 15c; two-year-old by express, from cold house, 25c; by mail, 30c.

MARGARET DICKSON

Beyond question the finest white Hybrid Perpetual Rose yet introduced. Wherever exhibited it has received first honors. The flower is of magnificent form, very large in size, almost as large as Paul Neyron, the largest of Roses; the color is a pure waxy-white, without spot or blemish; petals are very large, well shaped and of great substance. They are prettily curled back or reflexed, giving the flower inimitable grace and charm. The buds are large and globular, particularly handsome. It is a strong, vigorous grower, with fine foliage, a free bloomer, and indeed it is a remarkably fine Rose. Should be included in every order. Price, 2½-inch pots, 15c; 3-inch, 25c; two-year, 40c.

GIANT OF BATTLES

This is still esteemed as the very best rich red Rose. Very large, double; full and sweet. Excellent.

GLOIRE DE LYONNAISE

This grand Rose is the only yellow Hybrid Perpetual we have. It cannot be called deep yellow, but rather a pale shade of chamois or salmon-yellow, deepest at the center, sometimes passing to a rich creamy-white, finely tinted orange and fawn.

GENERAL JACQUEMINOT

A rich, velvety-crimson, changing to scarlet-crimson. A magnificent Rose, equally beautiful in the bud state or open. This is the best known of all Hybrid Perpetuals, and is without a rival in fragrance and richness of color. It is moreover, as easy of cultivation as many of the more common varieties, and perfectly hardy.

MRS. JOHN LAING

A splendid, constant-blooming Hybrid Perpetual, perfectly hardy, with immense flowers, full and double, borne in great profusion on long, stiff stems, and exceedingly sweet. The color is a clear, bright, shining pink, exquisitely shaded. The buds are long and pointed.

DINSMORE

It is a vigorous, healthy Rose, of dwarf, branching habit, and is simply loaded with flowers, all summer long, being even more profuse than most of the tender ever-blooming Roses. The flowers are large, perfectly double, and of a dazzling scarlet-crimson color, and have the rich, spicy fragrance peculiar to the best Hybrid Roses.

BARON DE BONSTETTEN

Splendid large flowers, very double and full; color rich dark red, passing to deep velvety-maroon; highly scented and very beautiful.

PRESIDENT LINCOLN

A bright red Rose of the richest hues. Large, full and fragrant. Excellent.

ANNA DE DIESBACH

(Glory of Paris.) An offspring of the famous old favorite La Reine, and also the seed parent of that glorious variety Paul Neyron, which facts should be effective evidence of its good qualities. The color is of the most lovely brilliant carmine; long, pointed buds, and large, finely formed, compact flowers; very full and double, and delightfully sweet. A vigorous grower and a fine bloomer. One of the really good Roses.

BALL OF SNOW—Boule de Neige

A finely formed, pure white Rose; occasionally shows light flesh when first opening. Beautiful shell-shaped petals, evenly arranged. Flower of good size.

COUNTESS OF ROSEBRY

The color is satin-pink in the center and deepens to the outer petals to a bright rose. The feather shading gives it the appearance of two distinct colors. It has completely captivated us. Very free flowering and a good grower. Be sure and try it.

JUBILEE

This grand Rose was awarded the gold medal by the Massachusetts Horticultural Society, the only Rose to obtain that honor. It is the finest dark-red hardy garden Rose yet produced. A pure red in its deepest shading to deep crimson-red and velvety maroon-red in the depths of the petals. It fairly glows in its rich warmth of coloring, and has a rich, velvety finish of its own, containing the darkest color combined with pure color of which nature is capable. It is a hardy ever-bloomer, and an acquisition to any collection of Roses. Price, 15c; 3-inch, 20c; two-year, 30c.

ALFRED COLOMB

Justly celebrated as one of the very finest; extra large round flowers, very double and full; color clear cherry-red passing to bright, rich crimson; very fragrant.

HENRI MARTIN

A magnificent Moss Rose. Extra large and perfectly double. Color a deep, rosy-carmine, shaded a bright crimson; very mossy and fragrant, and one of the finest.

GLOIRE DE MARGOTTIN

This grand new Hybrid Perpetual Rose originated in Europe, and is believed to be one of the very finest varieties of recent years. The flowers are very large and of symmetrical form, somewhat globular, very full, and deliciously scented. The color is a clear, dazzling red. Certainly one of the most brilliant Roses ever seen. It is a free bloomer and vigorous grower, and is recommended for its great beauty and wonderful color.

BLACK PRINCE

Much sought after because of its splendid dark crimson flowers, which are shaded so deeply as to be almost black. Cupped, large, full, fine shape. Very hardy. Price, 15c; 3-inch, 25c; two-year, 40c.

PAUL NEYRON

We ask special attention to this grand Rose; the flowers are immense; probably the largest and finest Rose; bright shining pink, clear and beautiful; very double and full; finely scented; blooms the first season and all summer; no collection is complete without this magnificent variety.

COQUETTE DES ALPS

A lovely pure White Rose. Very full and free in flower. Delicious fragrance.

MME. CHARLES WOOD

Begins to bloom almost as soon as planted, and continues all through the season; the flowers are extra large, double, full and quite fragrant; color bright, fiery scarlet, passing to fine rosy-crimson, shaded with maroon; showy and handsome, and one of the best Roses for general planting.

CHESHUNT HYBRID

This Rose is growing in favor as it becomes known. A most beautiful deep rose or red.

CLIO

Two first-class certificates; award of merit, Royal Horticultural Society. This variety is of very vigorous growth, and has large, handsome foliage. The flowers are flesh color, shaded to the center with rosy-pink. They are very large, of fine globular form, and freely produced. A grand addition in the style of Baroness, and unquestionably the finest of all Roses for flowering in pots and forcing. Price, 15c; 3-inch, 20c; two-year, 35c.

VICK'S CAPRICE

This is the only hardy Rose that has any variegation. It is a vigorous grower, and bears large and fragrant flowers of bright rose, distinctly striped with a rich crimson. It is altogether a most unique and pretty variety. A Rose that is sure to attract attention. We always have a large sale for this Rose.

ROGER LAMBELIN

(Hybrid Perpetual. The New Hardy Variegated Rose.)

One of the most remarkable Roses yet offered. The petals are irregular on the edges like a double Petunia; the color is glowing crimson throughout except the edges of the petals, which are all distinctly marked with a white band, forming a sharp contrast and the most unique combination of colors known in Roses. The growth is free and vigorous, and the fragrance is delightful, equal to the finest of the hardy Roses. This is a "novelty" of the most striking order.

FRAU KARL DRUSCHKI

This new hardy Rose is of German origin, and has won many prizes and made many friends. It is unquestionably the Ideal Hardy White Rose. Its flowers, which are very large, are perfect in form and snow-white in color, with large shell-shaped petals, forming a beautiful flower. The plant is a strong, vigorous, healthy grower and remarkably free-flowering. Price, 15 cents; three-inch, 25 cents; two-year, 40 cents.

J. B. CLARKE

(H. P.) Without doubt the largest Rose ever grown. The growth is strong and upright, very vigorous, making a large, handsome bush; the foliage is broad and stout; bronzy-green in the young state, changing to dark green. The blooms are very large and beautifully formed; the petals, which are very smooth, are of great size and depth; flower very full and long, with high pointed center, color unique, being intense scarlet shaded crimson-maroon, very dark and rich, strongly fragrant. Seven and one-half inches in diameter by five inches deep. Dickson classes this Rose as a Hybrid Tea; we class it as a Hybrid Perpetual. Price, 20 cents; three-inch, 30 cents; two-year, 50 cents.

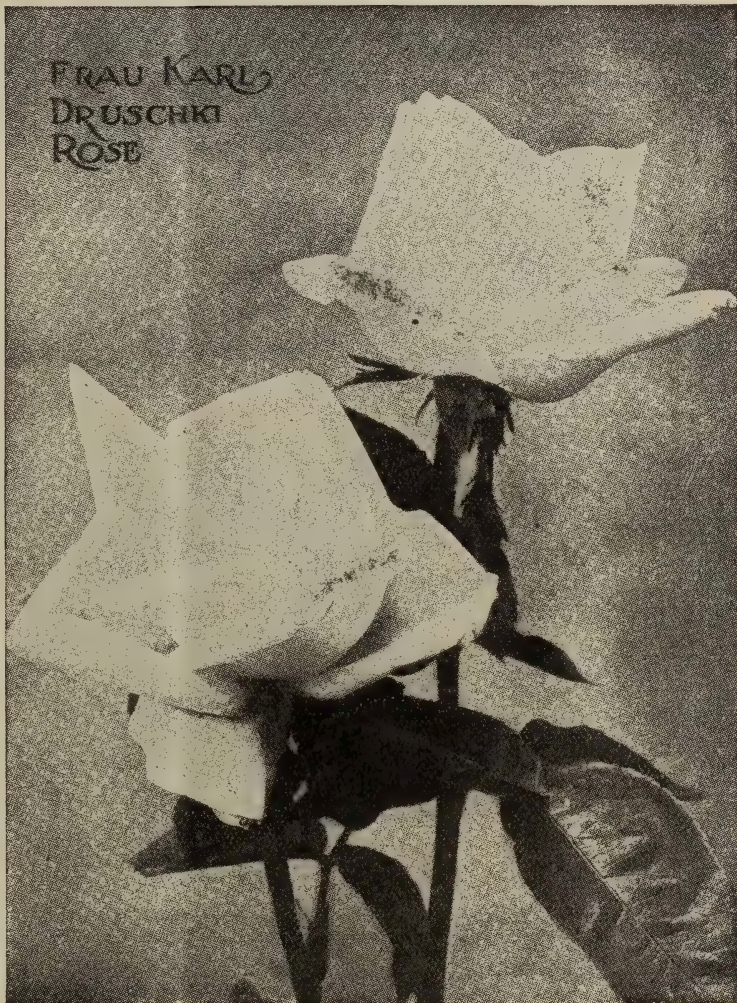
CONRAD F. MEYER

(Rugosa Hybrid Rose.)

A most valuable addition to the list of hardy free-blooming Roses. It surpasses all others of the type in fullness of flowers. The color is beautiful, a pure silvery pink. It is of ironclad hardness. Its beautiful foliage alone would recommend it as an ornamental shrub for the garden. For a flowering hedge it should eventually take front rank. The fragrance of the flowers is spicy and delightful. Price, 15 cents; three-inch, 25 cents; two-year old, 40 cents.

MME. MASSON

It may not be generally known among our customers that this is one of the really superb Roses, and fully the equal of any variety in this collection. We think it one of the very finest Roses in existence for garden cultivation; it is entirely hardy, blooms nearly all the time, bearing in profusion numbers of large, full, double flowers of unusual beauty and wonderful fragrance; color clear bright rose; distinct and charming. Price, 15c; 3-inch, 20c; two-year, 40c.



Our Excelsior Express Collections

GO BY EXPRESS AT PURCHASER'S EXPENSE.

COLLECTION A—Twenty-five ever-blooming Roses distinctly labeled, our selection of varieties; no two alike, all colors, for \$1.00.

COLLECTION B—Eighteen ever-blooming Roses from three-inch pots, labeled; no two alike, selected for a bed, \$1.00.

COLLECTION C—One hundred ever-blooming Roses, selected by us for a Rose bed, distinctly labeled, for \$3.75.

COLLECTION D—Ten two-year-old ever-blooming Roses, our selection, distinctly labeled; no two alike, all good sorts, for \$1.00.

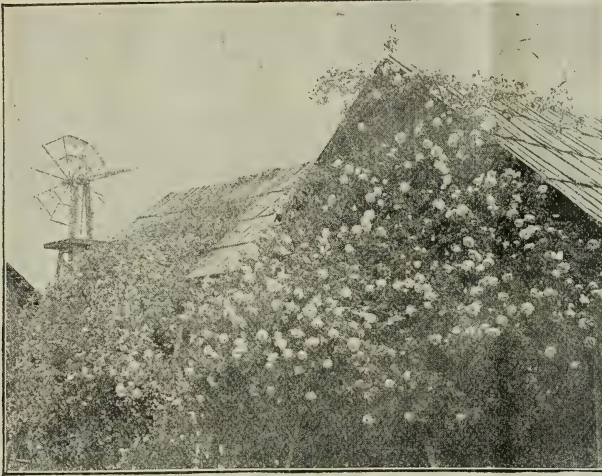
COLLECTION E—Seven two-year-old Hybrid Perpetuals; no two alike, our selection, all labeled; all good sorts, for \$1.00.

COLLECTION F—Thirty ever-blooming Roses; no two alike, not labeled; selected for a bed, for \$1.00.

Preserve this Catalogue for Your Plant or Bulb Order Next Fall

CLIMBING ROSES

Price (except where noted), from 2½-inch pots, postpaid, 8c; from 3-inch pots, postpaid, 12c; two-year-old, from Cold house, by express, 25c; by mail, 30c.



Grand New Velvety Red Rose.

Climbing Meteor is the acme of all red Climbing Roses. It is a free, persistent bloomer, and will make a growth from ten to fifteen feet in a season. In bloom all the time, as it is a true ever-bloomer. We do not hesitate to place it at the head of the list of all Roses for summer blooming, as it will make a strong growth, and is literally loaded with its deep, rich red flowers all the time. Price, 15 cents; three-inch, 20 cents; two-year, 35 cents.

MARY WASHINGTON

Its flowers are of medium size, pure white, perfectly double to the center, sweet, and borne in endless numbers in large clusters all summer. Vigorous and rapid grower. One plant of Mary Washington will produce more flowers and buds than a dozen ordinary Roses. Its fragrance is tinged with the old-fashioned musky flavor so much admired in olden times.

CLIMBING PAUL NEYRON

One of the very best of all Climbing Roses. An extremely free and continuous bloomer, of very large size and fine pink color. Much more like La France than Paul Neyron in color, shape and blooming qualities. Would have been better named Climbing La France. Price, 10 cents; three-inch pots, 15 cents; two-year-old, 25 cents.

CLIMBING MME. C. TESTOUT

(Climbing Hybrid Tea.) A most wonderful Rose, an exact counterpart of that grand Rose Mme. Caroline Testout, except that it is a vigorous climber, bright clear pink in color. Price, 15 cents; three-inch, 25 cents; two-year, 40 cents.

REVE D'OR

Golden Chain, or Climbing Safrano.

A beautiful pillar Rose, being a strong climber. Color orange-yellow or deep saffron; good size, full and sweet. Two and a half and three-inch only.

KEYSTONE

We have not tested this Rose, but the introducer describes it as a hardy, ever-blooming, yellow Climbing Rose. Price, 10 cents; two-year, 30 cents.

WHITE MICROPHYLLA

A well known old variety; a very strong climber, bearing large, pure white flowers. A very fine variety.

POLYANTHA ROSES

Price, 5 cents each; Two-year-old, by Express, 20 cents.

PAQUERETTE

We consider this variety the best of all the Polyantha Roses. The flowers are pure white, about one inch in diameter, flowering in clusters of from five to fifty blooms.

CLIMBING CLOTHILDE SOUPERT

In this climbing variety we have the vigorous constitution of Clothilde Soupert combined with the same wonderful freedom of bloom, and extreme hardness. This new variety in a single season, even in small plants, will grow fifteen to twenty-five feet, producing cluster after cluster of the finest formed flowers. In form they are distinct, large, round and flat, with beautifully imbricated petals; perfectly full and double and deliciously sweet. The color effect is magnificent—ivory-white, shading towards the center to silvery-rose. Throughout the entire growing season it is literally loaded down with its large, handsome flowers.

CLIMBING BRIDESMAID

It grows rapidly and strongly and blooms as freely as does its parent, Bridesmaid, which is practically all the time. The flowers are simply beautiful (identical with Bridesmaid), clear dark pink. In bud they are superb beyond anything we have ever seen. This is one of the most valuable additions to the Climbing Tea Roses made in recent years.

MRS. ROBERT PEARY

(Climbing Kaiserin.)

This is without doubt the grandest of all white Climbing Roses. It is the first and only white, hardy, ever-blooming Climbing Rose, and as such meets a demand that has never before been supplied. Small plants bloom continually the first season, just as the parent, Kaiserin Augusta Victoria, does. The flowers are something grand. They are the equal of the finest and most beautiful cut flower Roses. Of splendid substance. They are extra large, full, deep and double, and are produced on long, stiff stems like a forcing or cut flower Rose. The buds are long and pointed, exquisitely modeled and gracefully finished. Both in bud and flower it is truly beautiful. This is the greatest of all Climbing Roses. Price, 10 cents; three-inch pots, 15 cents; two-year, 25 cents.

EMPEROR OF CHINA

The Apple Blossom Rose.

This is a new hardy climber that possesses great merit. It is a strong, rampant grower, and a very free bloomer. Flowers of good size from pointed buds; soft red, turning lighter as it opens. It blooms from May to December in the open ground. It will, in our estimation, become a standard variety for florists' use to bloom in pots for market purposes, as it is such a free and persistent bloomer. Introduced from China.

The World-Renowned Rose,

MARECHAL NIEL

A beautiful deep sulphur-yellow; very full, very large and exceedingly fragrant. It is the finest yellow Rose in existence. It has a climbing habit, and where it is permitted to grow until it has attained a large size, as it will in a few years, it yields thousands of beautiful golden-yellow flowers. Especially desirable in the South.

CLIMBING WOOTTON

The Superb New Scarlet Rose.

This elegant new climbing Hybrid Tea Rose is one which promises to be a prime favorite wherever introduced. Everything good that can be said of the grand Rose Souvenir of Wootton can be said of this Rose, and more, too. The flowers are large and of a beautiful velvety-red color, and the perfume is elegant. Price, 10c; three-inch, 15c; two-year, 25c.

GLOIRE DE DIJON

This magnificent Rose is always scarce and difficult to obtain true. The flowers are large, perfectly double and delightfully tea-scented; color rich, creamy-amber tinted with blush; one of the most beautiful Roses we know. Price, 10 cents; three-inch pots, 15 cents; two-year, 25 cents.

MME. CECILE BRUNNER

Larger flowers than any of the others, perfectly double, and delightfully fragrant. Color a rosy-pink, on a rich creamy-white ground.

ETOILE DE MAI

Blooms in clusters, quite full, nankeen-yellow in bud passing to pale-yellow on opening. Very free.

DAHLIAS

The Dahlia is the people's flower. It makes a more gorgeous, dazzling display than any other outdoor-grown flower. Immense bloom can be had from our improved varieties, which in size, beauty and style rival the finest house-grown, single stem Chrysanthemums. We have a magnificent collection of the best sorts grown. The Dahlia is of the easiest possible culture. Plant in good soil in the full sunlight, and keep the ground well worked or mulched, and you will be repaid by showers of bloom. When the frost kills the top lift the roots and place in any cellar where they will not freeze. We offer strong, pot-grown plants that will bloom early and continuously, and be far more satisfactory than roots, which we do not sell.

FOUR NEW GIANT DAHLIAS

For size, coloring, form and vigor of growth, these varieties are in a class by themselves. Price, 25 cents each; the four for 75 cents.

SOUVENIR DE GUSTAVE DUZON

The most sensational Dahlia of the season; a decorative variety of mammoth proportions, which under ordinary cultivation will produce flowers six inches across, and can be grown to measure full nine inches. It is of free growth, remarkably profuse-flowering, and pure scarlet in color. This is the largest Dahlia ever grown.

CUBAN GIANT

An immense full, double quilled Dahlia, six to seven inches in diameter. Color dark, glowing crimson.

MRS. ROOSEVELT

Even larger than Cuban Giant. Decorative form, full and double. Color a delicate shade of soft pink.

PROFESSOR MANSFIELD

Flowers very large; golden-yellow, tipped white, sometimes golden-yellow, tipped red, and other times yellow, shading to red tipped white. Not only a most distinct and pleasing variety, but one of the largest, often measuring six inches in diameter. Strong plants.

SUPERB NEW CACTUS DAHLIAS



Kriemhilde.

KRIEMHILDE

The most popular Dahlia today. In color it is a brilliant pink, gradually shading lighter to the center, which is at first a creamy-white, changing to pure white, of sturdy habit, free growth, producing freely and continuously its exquisite blooms on long stems, making it an ideal flower for cutting. Price, 15 cents.

VICTOR VON SCHEFFEL

The color is a fresh delicate pink, shading to deep rose-pink, which is in the same general form as Kriemhilde, except the petals are narrower, more pointed and the color much softer. It is a strong, vigorous grower, extremely protuse bloomer, the flowers borne on erect stems. Price, 15 cents.

FLORENCE M. STREDWICK

Flowers are pure white, of most beautiful form, fully double to the center, but, unlike other varieties, have small petalettes at the base of each petal, giving it a most unique fringed appearance. Flowers very large; by far the finest of any white Cactus Dahlia. Price, 25 cents.

HARBOR LIGHT

Brilliant cochineal-red with a stripe of reddish-apricot through the center of each petal. The coloring is variable, sometimes the light, at others the dark color, predominating, but beautiful in either form. Price, 25 cents.

CLARA J. STREDWICK

A thoroughly up-to-date variety, with extremely long, narrow-pointed petals, flowers sometimes measuring seven inches across. Color salmon-flesh, shaded darker. One of the best, and the largest Cactus Dahlia grown. Price 15c.

Superb New Cactus Dahlias === Concluded

FLORADORA

Color dark velvety-crimson. Plant of medium height, branching habit and an extremely early and profuse bloomer, the plants being continually covered with the finely shaped blooms. The best dark crimson for cutting, as the flowers are borne on long erect stems and keep for a long time. Price, 25 cents.

WALTHARI

Among the light-colored varieties this is a perfect gem. The flowers, which are of good size, of an exquisitely graceful form, are of a light sulphur-yellow in the center, shading to nearly pure white at the edges. Price, 15 cents.

COUNTESS OF LONSDALE

A peculiar but pleasing blending of salmon-pink and amber, a color difficult to describe. This is the Dahlia for the millions. Flowers freely under all conditions. Price, 15 cents.

The Twelve by Mail, \$1.75; Express, \$1.60

BLANCHE KEITH

Rich canary-yellow, very large; long petals; a most beautiful variety. Price, 15 cents.

EXQUISITE

Pure orange-scarlet with salmon shadings; truly lovely. Remarkably free bloomer. Price, 15 cents.

GENERAL BULLER

The grandest fancy Cactus Dahlia, and very appropriately called the "Cactus Frank Smith." Color deep, rich velvety-maroon, tipped white. It is a very profuse bloomer; the flowers are borne on long, slender, stiff stems and will keep a long time after being cut. Price, 10 cents.

AUNT CHLOE

Dark maroon, shaded black. Flowers of medium size, perfect Cactus form, with narrow pointed petals. Price, 15 cents.

New Single Dahlias

TWENTIETH CENTURY

No Single Dahlia ever created such a sensation or was received with such popular favor as this, and it is well worthy of the praise bestowed upon it. It is entirely distinct from all others, and ranks high not only as a free-flowering plant for the garden, but as a cut flower, holding a place alongside the finest Roses. Color an intense rosy-crimson tipped with white and having a white band around the disc. As the season advances they become lighter, until they are almost a pure white suffused with soft pink. Price, 10 cents.

CRIMSON CENTURY

Deep, glowing crimson, shaded darker. Price, 10c.

CRIMSON BEAUTY

This Dahlia is a seedling of Twentieth Century, and is, if possible, a more profuse bloomer, being literally covered with immense brilliant crimson flowers the entire season. Price, 10 cents.

PRESIDENT VIGER

French Collarett Dahlia.

Most beautiful and striking. Rich deep blood-red, shading darker toward the base of the petals; with white color, occasionally suffused with rosy-crimson. The flowers are always perfect, with eight petals, and it is an extremely early and profuse bloomer. Price, 15 cents.

Seventeen Select Standard Cactus Dahlias

KEYNE'S WHITE

A finely formed pure white Cactus Dahlia; considered one of the very best. Price, 10 cents.

STANDARD BEARER

Brightest scarlet. Plant dwarf, of branching habit; extremely profuse bloomer, bearing the flowers well above the foliage. Price 10 cents.

MRS. BENNETT

Soft crimson. Price, 5 cents.

BRITANNIA

Deep shaded salmon-flesh. Very large, early and free. Price, 10 cents.

WINSOME

Flowers are very large, beautiful Cactus form, with twisted incurved petals and borne on long, erect stems, holding the flower up in marked contrast to other white Cactus Dahlias. Price, 10 cents.

GABRIEL

An exquisitely shaped Cactus flower, with long, twisted, incurved stag-horn petals, giving it a unique, fringed appearance. Color shades of scarlet and cinnamon; sometimes the petals are tipped white. Price, 5 cents.

ARACHNE

This name means "spider," and is appropriately applied to this variety, the flowers being much twisted and very irregular; the petals are a creamy-white, edged with crimson; the coloring, however, varies as much as its shape, there rarely being two flowers alike. Price, 5 cents.

LYNDHURST

One of the best bright scarlets, invaluable for cutting; large, perfectly full centers with long stems. Price, 10 cents.

ISLAND QUEEN

Soft lavender-pink, a popular and beautiful shade; flowers medium size and fine Cactus form; a good late bloomer. Price, 5 cents.

AUSTIN CANNELL

Deep crimson-rose, shading lighter toward the outer petals; long, narrow, tubular petals. Price, 10 cents.

STRAHLEIN KRONE

Intense cardinal-red, rich and glowing, with long, twisted petals; a very early and profuse bloomer. Price, 10 cents.

GALLIARD

The best scarlet-crimson Cactus Dahlia. Flowers large, of most perfect Cactus form. Price, 8 cents.

BRUNHILDE

Rich plum color, loosely arranged long petals; an exceptionally fine flower and very free. Price, 10 cents.

EARNEST CHEAL

One of the best crimson Cactus Dahlias; free bloomer. Price, 8 cents.

JEWEL

Coppery-yellow; long narrow petals. Price, 5 cents.

MRS. H. J. JONES

An immense perfect flower; rich bright scarlet with cream-colored edge, sometimes clear scarlet with no white; sometimes almost pure white. A strong grower, and immense bloomer. This variety will create a sensation anywhere. Price; 10 cents.

MARY SERVICE

Apricot, shaded orange, shading to purplish-rose at the tips; a well formed flower, and a free and continuous bloomer. Price, 10 cents.

The Above Seventeen Kinds by Mail, \$1.30; by Express, \$1.20

~New Paeony-Flowering Dahlias~

This new type of Dahlias originated in Holland, and promises to become very popular. The artistic flowers are very large, from 6 to 8 inches across, and are best compared to the semi-double Paeonies in general form. They all flower very freely, and are borne on long, strong stems, making excellent material for cutting, as well as for garden decoration.

GERMANIA

Brilliant strawberry-red, a very fluffy, artistic flower, standing well above the foliage, producing a very gay effect.

Price, 25c Each. The Set of Four for 80 Cents

GLORY OF BAARN.

Very large, loosely arranged flower of soft hortensia-rose color.

QUEEN EMMA

A magnificent sort that appears almost artificial; it is of a charming shade of mallow or Hollyhock pink, the inner petals banded with gold.

QUEEN WILHELMINA

Immense, fluffy flower of pure white with yellow center.

~Five Choice Fancy Dahlias~

OLYMPIA

One of the grandest Fancy Dahlias to date. The flowers are of immense size, measuring six to seven inches across, with full, high center. The color is deep rose-pink, striped and penciled with rich crimson. Price 10 cents.

PROGRESS

The greatest acquisition made in Fancy Dahlias for years. The color is a clear, soft rosy lake, beautifully penciled and spotted glowing crimson, the soft shade greatly predominating so as to give it a soft, rosy lake appearance in the field. Under artificial light it has a soft pink effect, rendering it very valuable as a cut flower. Price, 15 cents.

LUCY FAWCETT

A very large quilled bloom; sulphur-yellow; very lightly striped and blotched carmine, sometimes clear yellow. Price, 10 cents.

STRIPED BANNER

Cardinal-red, striped white. Price, 5 cents.

ELOISE

A new and charming variety, of medium to large size, full and regular. Ground color blush-pink, shading to white, while each petal is margined with deep, glowing crimson. Price, 10 cents.

WE DO NOT GUARANTEE that plants we send out will not be killed by drought, insects, accidents or frost after they are planted, but we do guarantee that all plants will reach you in good condition and we will replace free any that do not do so.

One Each of the Above Five Varieties, by Mail, 40c; by Express, 30c

Fourteen Choicest Decorative Dahlias

CATHERINE DUER

Flowers of immense size, measuring six to seven inches in diameter; opens out flat, and shows no center. The petals are broad and well formed; color the most beautiful glowing red. The plant is a strong, robust grower. It is the celebrated Dahlia that has repeatedly taken first prizes as the best red at the Newport, Rhode Island, flower shows. Price, 15 cents.

THE QUEEN

Pure snow-white; flowers of perfect shape, large size, with broad petals somewhat pointed. When given proper attention, the best pure white for cutting. Strong plants, 15 cents each.

LEMON GIANT

Flowers of immense size, pure lemon, without tint or streak. Strong-growing, free-blooming and always full to the center. Price, 15 cents.

BLUE OBAN

Rich lavender shading to blue. Price, 10 cents.

KING OF CACTUS

The name is misleading, as it is not a Cactus Dahlia; belongs to the decorative class. Color rich crimson, much like Catherine Duer. Price, 10 cents.

HENRY PATRICK

A superb pure white variety of large size, and borne on long stiff stems. Price, 8 cents.

CLIFFORD W. BRUTON

The best yellow; of immense size, perfect form, and of the finest canary-yellow. A tall, vigorous grower and extremely free bloomer. Should be in every collection. Price, 10 cents.

PERLE D'OR

The grandest white decorative Dahlia grown, about five inches in diameter; petals loose-shaped, like a Chrysanthemum. An early and profuse bloomer on long stems. Probably the very best white Dahlia for cut flowers. Price, 10 cents.

FRANK L. BASSETT

Entirely distinct in color, which is of a bright royal purple, shading to blue; the nearest approach to a blue Dahlia yet introduced, and an attractive, well formed flower. Price, 5 cents.

HOHENZOLLERN

A rich combination of gold and bronzy orange-red; fine. Price, 10 cents.

MATCHLESS

A grand variety; it is dwarf and branching, strong and vigorous. The flowers are large, rich glistening crimson overlaid dark velvety-maroon; an extremely early and profuse bloomer. Price, 10 cents.

PLUTON

A very fine lemon-yellow decorative sort. Price, 5 cents.

NYMPHAEA

The most delicately beautiful of the entire collection. Color clear, light shrimp-pink, tinting lighter toward the center. Price, 8 cents.

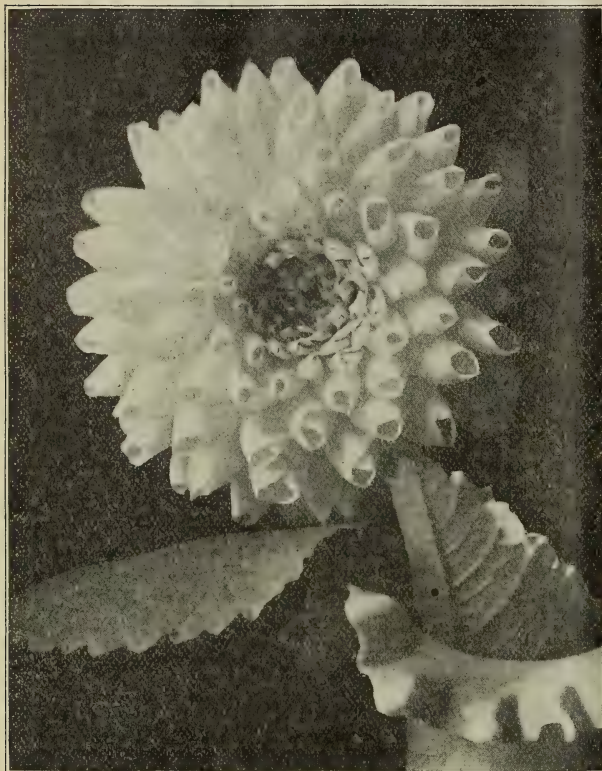
JOHN BRAGG

A strong grower; six feet high, and will produce more blooms than any variety grown; flowers very large, dark red—almost black. Price, 8 cents.

Our Dahlias are strong, growing pot plants—not dry roots.

The Above Fourteen Kinds, by Mail, \$1.15; by Express, \$1.00

Eighteen Superb Double-Quilled Dahlias



Grand Duke Alexis.

WHITE SWAN

Splendid pure white of good size and very free bloomer. Price, 10 cents.

SOUV. DE MME. MOREAU

Magnificent pink color of A. D. Livoni; free bloomer, and a very strong, vigorous habit. Price, 8 cents.

GEO. SMITH

Fine, large, of perfect form; crimson. Price, 8 cents.

CHAS. PERRY

Crimson maroon, perfect round ball of good size. Price, 10 cents.

GRAND DUKE ALEXIS

A magnificent flower of largest size and distinctly unique form, as the petals are rolled up so that the edges overlap each other. The color is pure white, distinctly tinged delicate pink. Price, 15 cents; two for 25 cents.

BLACK DIAMOND

Largest and best dark Dahlia yet introduced. Flowers of immense size, full, regular form, high, round center. Color rich, velvety-maroon, shaded jet-black. The plant is a strong, vigorous grower, with dark glossy foliage. An early and free bloomer, although the flowers are twice the size of other dark Show Dahlias. Price, 15 cents.

APPLE BLOSSOMS

A very pretty variety that combines all the shades found in apple blossoms, from red, pink and carmine to pure white. Price, 10 cents.

ETHEL

Extremely large pure yellow tipped with white. Price, 15 cents.

KAISER WILHELM

Very large, fine form; quilled petals; yellow, lightly tipped carmine. Price, 10 cents.

LADY MAUDE HERBERT

Pale yellow, shaded peach, tipped crimson. Price, 10 cents.

QUEEN VICTORIA

A quilled Dahlia, making a compact round ball of the deepest golden-yellow. Price, 10 cents.

QUAKER LADY

Old gold shaded bright rose. One of the most showy and attractive varieties. Price, 8 cents.

ELECTRIC

Extremely large, dark pink. Price, 10 cents.

ARABELLA

Very fine form. Color pale primrose, tipped and shaded old-rose and lavender. Price, 10c.

EMILY

One of the best; varies from rosy-lavender to white, suffused lavender. A large, beautiful and striking flower. Price, 10 cents.

GOLDEN AGE

Sulphur-yellow, the largest and best yellow. Price, 8 cents.

A. D. LIVONI

Beautiful clear pink, of perfect form and very free. Price, 8 cents.

PINK DANDY

Very free blooming pink variety. Price, 8 cents.

One Each of Above Eighteen Varieties by Mail, \$1.70; Express, \$1.50.

Pompon Dahlias

SNOWCLAD

One of the finest Pompons to date. A strong, vigorous grower, of branching habit, and such a profuse bloomer as to suggest the name; of perfect form and always full to the center. The petals are beautifully laced, and the flower has a fine finish. Price, 5 cents.

CATHERINE

The best pure yellow, of fine form, full to the center, and borne on long stems. Price, 5 cents.

LITTLE BESSIE

Cream-white, quilled petals. Price, 5 cents.

FAIRY QUEEN

Sulphur-yellow, edged deep peach. Price, 10 cents.

ZOAR

Bright red. Price, 5 cents.

ALLIE MOUREY

A very pretty Pompon, of fine form and good habit; pinkish-white, tipped deep pink, small, compact flowers. Price, 5 cents.

LITTLE HELEN

Extremely profuse; strong grower; white, suffused bluish. Price, 5 cents.

ROSALIA

Yellow, edged red. Price, 10 cents.

DARKNESS

Small; very dark red, sometimes black. Price, 5c.

SUNSHINE

Brilliant scarlet; fine form, full centers, long stems; largely used for cutting. Price, 5 cents.

The Best Flowering Begonias

A beautiful class of plants with free-blooming qualities which make them especially desirable. The foliage is attractive and odd, while the flowers are exceedingly graceful and beautiful.

MANICATA AUREA

One of the most beautiful variegated plants within our knowledge. The plain green Begonia Manicata is a very beautiful variety, clean and glossy, bearing the veil of pink bloom above, but when we find Manicata beautifully blotched with cream color, often pure snow-white, deepening into canary, no other plant that we know carries such bold markings, nor in so pleasing combination of colors. Everyone who sees it admires it the most of any foliage plant we grow. It has also a wonderfully fine bloom on a very long stem. Price 15 cents each.

THURSTONI

This Begonia is a cross between B. Metallica and B. Sanguinea, having the bright-red foliage and veining underneath the leaves, and bright metallic green, shading to red, in the younger growth on top, with the deep veinings of the Metallica and smooth glossy leaves and red stems of the Sanguinea; the flowers are a beautiful deep pink in bud, but when expanded become a beautiful shell pink. Price, 10 cents each.

METALLICA

This elegant variety has large glossy leaves, shaded with green, crimson and olive, with a peculiar metallic luster over all. Flowers large, dark pink in color, which increases the attractiveness of this excellent sort. Price, 10 cents.

HAAGEANA

Large flowers of a creamy-white, with just sufficient pink to give them a bright, cheerful glow; foliage bronzy-green above, red below. Price, 15 cents.

ALBA PICTA

Long, pointed, slender leaves, thickly spotted with silvery-white, foliage small and elegant, lovely pink flowers. Price, 5 cents.

The Ever-Blooming Begonia,

DEWDROP

This is a grand variety with white flowers. Price, 5 cents.

FOLIOSA

This is one of the most graceful of all the Begonias. The foliage is small and fleshy, has the smallest leaves of all the Begonias. Bright pink flowers. Price, 8 cents.

ALBA PERFECTA GRANDIFLORA

This variety closely resembles the well-known Begonia Rubra in foliage and growth, with beautiful pure white blossoms. Price, 5 cents.

MARGUERITE

Leaves bronzy-green, somewhat resembling Metallica; large trusses of light rose-colored flowers. Price, 5 cents.

McBETHII

Foliage fern-like, panicles of pure white flowers produced in the greatest profusion. Price, 10 cents.

BEGONIA CORALLINA LUCERNA

A superb new shrubby Begonia of the same type as the popular Coral Begonia, growing into shapely specimens 2 feet or more in height, and producing gigantic trusses of very large flowers of a bronzy-red color continuously from April to November. In the autumn the seed vessels assume a yellowish tint, which contrasts pleasantly with the red of the flowers. The foliage is very ornamental, being dotted with silvery-white, and with prettily serrated edges. Price, 25 cents each.

New Begonia, VERNON

This elegant new variety is of unusual merit as a bedding sort, flowering fully as freely when planted out as when grown as a pot plant. It begins flowering when first planted and continues throughout the whole season until stopped by frost. Foliage rich, glossy-green, often shaded deep bronze. Flowers at first opening are a deep red, changing to a beautiful clear rose in the fully open flower. It thrives everywhere and is destined to become one of the most popular of bedding plants. Price, 8 cents.

ARGENTEA GUTTATA

This beautiful sort has the silvery blotches of Alba Picta and the grace and beauty of growth of Olbia. It has purple-bronze leaves, oblong in shape, with silver markings, and is in every way a most beautiful Begonia. It produces white flowers in bunches on ends of growth stems. Price, 5 cents.

ROBUSTA

The flower is composed of two wide and two narrow petals, the wide ones are bright rose, the petals are almost pure white, a distinct pink stripe in the center of each enlivened with golden anthers. Borne in clusters, and with the coral-red buds forms a most elegant and chaste appearance. Price, 5 cents.

BEGONIA RUBRA

One of the best Begonias in cultivation. Its dark, glossy-green leaves, combined with its free-flowering habit, make it one of the very best plants for house or conservatory decoration. The flowers are a scarlet-rose color. Price, 8 cents.

PRESIDENT CARNOT

A remarkably strong-growing variety of stiff, upright habit, foliage large and somewhat in style of Begonia Rubra, but more than twice as large; upper side deep green, under side purplish-red; flowers beautiful coral-red, in large pendent panicles. Price, 10 cts.

SANDERSONII

(Coral Begonia.)

One of the best flowering Begonias. The flowers are of a scarlet shade of crimson, borne in profusion for months at a time, leaves slightly edged with scarlet. Price, 10 cents.

FUCHSIODES COCCINEA

Elegant free-blooming variety. It resembles Hybrid Multiflora in growth. Flowers a bright scarlet. Price, 5 cents.

WELTONIENSIS ALBA

Foliage similar to McBethii, only a little larger. Lovely white flowers and very abundant. An easy variety to grow. Price, 10 cents.

HYBRIDA MULTIFLORA

This beautiful plant makes handsome specimens with its graceful branches and pendulous flowers of bright rosy-pink. Very floriferous. Price, 5 cents.

ZEBRINA

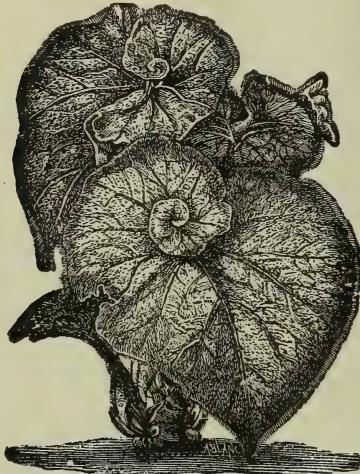
Long pointed leaves, dark green. Has the decorative value of a Rex; flowers white. Price, 10 cents.

DOUBLE TUBEROUS-ROOTED BEGONIAS SINGLE

These are among the very handsomest of our summer blooming plants, flowering throughout the season. Nothing can exceed the brilliancy of their colors, the delicacy of their tints, the richness of their waxy flowers, the gorgeousness of their effect in masses, or their graceful appearance in beds or borders. From the time the first blossom appears until all growth is stopped by frost, they are never out of bloom, and such blooms, great waxy flowers from three to five inches across, borne in such profusion that the rich glossy-green foliage is almost hidden underneath the wealth of blossoms. On the approach of cold weather they should be taken up and the bulbs stored away in a warm place until the spring, when they may be started in pots before planting in the garden. We have both double and single in five colors, red, white, orange, pink and yellow. Price, started in pots to bloom, single, 10 cents each; three for 25 cents; double, 15 cents each; two for 25 cents. Dry bulbs in mixed colors, five for 25 cents.

REX BEGONIAS

This class of Begonias is grown exclusively for the great beauty of their foliage, which is very large and beautifully variegated a peculiar silvery-metallic gloss. They dislike our dry, bright sunshine, and thrive best in a rather shady, warm and moist situation. We grow the most beautiful and desirable Rex Begonias in cultivation. Price, 10 cents, except where noted.



Countess Louise Erdody.

COUNTESS LOUISE ERDODY

The leaf has a metallic luster, dark-silvery in the center; shading to coppery-rose toward the margin. The striking peculiarity which distinguishes it from all other Begonias consists in the fact that the two lobes at the base of the leaf do not grow side by side, but one of them winds in a spiral-like way until in a full grown leaf there are four of these twists lying on top of the leaf nearly two inches high. Price, 15 cents each.

LESOUDSII

This is the finest and largest of any of the Rex family. It is impossible to describe in words the beautiful markings of this magnificent Begonia. It is a cross between Begonia Diadema and a Rex variety, but retains in a marked degree the Rex character. We consider this the finest of all the Rex family, both in size of leaf and rich coloring.

ANDELUSEA

Large leaf of a soft velvety texture, covered with red pile. The center of leaf is dark, with a band of silver, bordered with dark bronze. It is marked very much like the old King of Rex.

SPIRALIS

Much like Erdody except the color is a clear silver, without the coppery shade shown in Erdody. Price, 15 cents.

FEASTII

Leaves are dark green, reddish underneath, round and smooth; delicate pink blooms borne on upright stalks; very beautiful. Price, 15 cents.

DUCHESS OF BRABANT

One of the softest in color and texture, dark plum-green center and edge, with broad zone of silver, shading into bright green; red stem. Price, 10 cents each.

COUNTESS DE PERAULT

One of the best silver leaf varieties. Has a brilliant satin sheen with a reddish cast. Very fine, good grower.

MAGNIFICA

Immense leaf; very dark green, with silver markings.



Louise Closson.

LOUISE CLOSSON

One of the richest and most beautiful of the Rex family. The coloring is simply magnificent; center of leaf deep bronze with broad band of silvery-rose, edged bronze, giving the whole leaf a purplish tint. The oddest color of all the Rex. Price, 15 cents.

VAN DER HYDE

Leaf set on a long stem. Center green surrounded by a silver zone, edged green with silver spots.

QUEEN OF HANOVER

Leaf of a very soft, velvety texture, covered with red pile. Center and edge of soft-green velvet, the zone formed by tiny silver dots. Price, 15 cents.

MRS. E. BONNER

Fine upright grower; the leaf is a light silver-green, ribbed and edged with a reddish-metallic bronze.

MME. TREYVE

One of the upright-growing varieties, but of the distinct form and texture of the true Rex. Narrow edge of brownish-plum color about a very broad, soft-green zone.

CLEMENTINA

The color of the stem and the upper surface of the leaf is a beautiful bronze-green, ornamented with large silver spots, arranged parallel with the ribs of the leaf.

Nanticoke, Ont., Canada, June 16, 1908.

W. R. Gray:

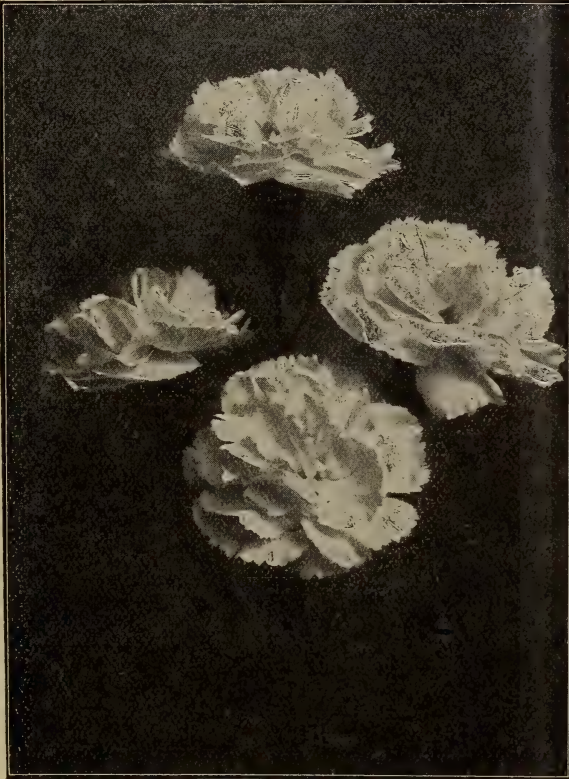
Dear Sir:—Plants arrived O. K. in splendid shape, as fine as when sent; not even wilted. Your system of packing is perfect. I will remember you when I require more plants.

Yours truly,

C. W.

CARNATIONS

Next to Roses, the most popular flower grown. For winter blooming, the young plants should be planted out in the open ground in May and kept well cultivated. Pinch back the young shoots till August. Take up in September and put in pots in a light, sunny window. With temperature at fifty they will give a profusion of blooms all winter.



Lady Bountiful.

ENCHANTRESS

One of the largest and most striking Carnations upon the market. Color very pleasing shade of flesh-pink, deepening toward the center. Blooms averaging three and one-half inches; center very full and high; strong calyx, does not burst; one of the best stems yet seen, averaging two to three feet in length, holding the flower perfectly erect. Strong, vigorous plant, very healthy; early and continuous bloomer. One of the best. Price, 15 cents.

GUARDIAN ANGEL

An improved Scott. Color a clear pink. Blooms large, very fragrant; calyx good, never bursts; long stem, which holds the flower erect. Its habit of growth is similar to Wm. Scott. Sturdy, vigorous and free. Price, 5 cents.

HARLOWARDEN

The largest and best of its color, a bright, dazzling crimson. Flowers often measure three inches in diameter, and are well-supported on long, stiff stems. A wonderfully, free bloomer, always full of buds. Price, 10 cents.

LADY BOUNTIFUL

Large, nicely filled flowers of purest white. Not only good for large sized blooms when given special care, but valuable for garden planting and pot culture. Very sweetly scented with that delightful, old-fashioned clove fragrance lacking in many of the newer Carnations. Price, 15 cents.

MRS. LAWSON

The grandest of pink Carnations—a true exhibition variety. Bloom large and spreading; stem stiff; a good grower. All newcomers will have to meet comparison with the Lawson. Very free for so large a flower. The Lawson is the queen of a class of her own, just as American Beauty is among Roses. No grower can afford to be without it. Price, 10 cents.

ROOSEVELT

The darkest colored Carnation grown. Deep, dark red, almost black; very large. A new kind, scarce and very fine. Price, 15 cents.

G. H. CRANE

Another early, continuous, all-season bloomer; three inches across; well formed flower and calyx; sixteen to eighteen-inch stem; color brilliant scarlet; habit good; robust grower. Price, 5 cents.

VARIEGATED LAWSON

A phenomenal variety. A sport from that famous variety Mrs. Thomas Lawson. Exceedingly beautiful and delicately fragrant. Color delicate carmine penciling on ivory-white ground. A tremendous bloomer. The best variegated Carnation introduced to date. Price, 20 cents.

W. R. Gray:

Dear Sir:—I received the Roses in good condition, and was much pleased with them.

Very respectfully,

MRS. A. K. L.,
Waikiki Road.

Honolulu, Hawaii, May 9.

QUEEN LOUISE

The plant is a healthy, clean grower, entirely free from rust or disease; of the easiest possible management, and wonderfully free in bloom. Flower of enormous size, of nice rounded form, highly clove-scented, and all borne on very long stems, making it an ideal variety for cut flowers. Good summer bloomer. White. Price, 5 cents.

RED SPORT

Originated and introduced by A. B. Davis & Son, of Purcellville, Va. This is one of the very finest brilliant red Carnations to date; extra fine. Price, 15 cents.

GENEVIEVE LORD

Color light pink. Large flowers. Early and profuse bloomer. Price, 5 cents.

ETHEL CROCKER

Good summer bloomer. Immense bright pink flowers of clove-like fragrance. One of the most popular new sorts. Price, 5 cents.

Cranford, N. J.

W. R. Gray:

Dear Sir:—The basket of plants reached me in good condition, and I am more than pleased with them. I expected small plants, and was much surprised and pleased to find them so large.

Very truly,

E. W.

St. Georges, Bermuda, May 29, 1907.

Mr. W. R. Gray, Oakton, Va.:

Dear Sir:—The box of Rose plants I received O. K. on the 28th of May in good order. I never received finer plants. The packing of them was fine, and came in splendid condition. I am more than pleased with them. You will hear from me again.

Yours truly,

R. R. S.

Chrysanthemums

Queen of Autumn Flowers

The immense perfect flower seen at the commercial florists can easily be grown by the amateur by the following method: In May or June prepare boxes four or five inches deep and of convenient size—1x3 or 4 feet—leaving ample cracks in the bottom for drainage. Fill the box with a compost—three parts decomposed sod or garden soil and one part cow manure, well rotted. Add one pint each of bone meal and wood ashes to each bushel of compost and mix well. Plant the boxes with two rows of young plants, eight or ten inches to each train to a single stem and stake when necessary. Place the box in a sunny position and give an abundance of water as needed. When the buds begin to develop in September, disbud all but one to each plant, being careful to leave a perfectly shaped bud. About this time give the box a light mulching of well rotted manure. It is very essential that the plants be kept healthy and growing vigorously, that neither too much nor too little water be given them. When there is danger of frost, place in a sunny window in a cool room with a night temperature of forty-five to fifty-five degrees. By going to a little trouble anyone can grow beautiful late mammoth flower Mums. We offer the cream of existing sorts at prices within the reach of all.

The following nine varieties are of the latest introductions, and are unexcelled in size or colors.

SUNBURST

Japanese incurved; a most beautifully formed flower of a striking color. The base of the petals is an intense yellow, gradually shading to pale yellow at the tips; enormous size. Price, 25 cents.

GEN. HUTTON

Four and one-half feet. Midseason. Yellow, shaded orange; easy doer, enormous. Seen in all the best entries in the last shows; indispensable. Price, 15 cents.

YELLOW, EATON

Bright yellow sport from Timothy Eaton. Especially valuable as the best in its color to follow Appleton. Foliage very beautiful; stem first-rate, and quite strong enough to hold up the monster blooms, which do not show the coarseness sometimes attributed to Eaton. For everybody's use, and for commercial purposes as well as for show, it is strictly A No. 1. Price, 15 cents.

DR. ENGUEHARD

Japanese incurved. One of the best introductions of recent years. Has been awarded highest honors wherever exhibited. Color a true pink, without the least trace of purple. Stem and foliage perfect. Equally valuable for exhibition or commercial purposes. Perfectly double. Every flower is perfect. Midseason variety. Size six and one-half inches. Price, 15 cents each.

MRS. W. B. CHAMBERLAIN

The most beautiful shade of pink yet produced in a large flower. Valuable for cut flowers. Price, 15 cents.

BRUTUS

Orange and red. Straight petals, forming a half globular flower. Good color. Nice for exhibition collections. 3 feet. Early midseason. Price, 15 cents.

CLEMENTINE TOUSET

(The "Early Chadwick")—The bloom is the largest obtainable white for the date, October 12. It is one of the most lasting varieties, either on or off the plants; has splendid stem and foliage. Price, 15 cents.

WHITE BONAFFON

Pure waxy white, identical with Major Bonaffon in every respect but color. Price, 15 cents.

WM. DUCKHAM

The sensational variety of the year. Color a deep clear pink, much darker shade than any other listed. Incurved with a broad petal. The flower is very large, measuring nine inches in diameter and supported by long stiff stems with good foliage. An exceedingly strong grower and comes in flower about November. Price, 15 cents.

One each of the above 9 giant kinds for \$1.20.

Varieties of Special Merit—10 Cents Each.

Timothy Eaton—The sensational novelty of the year. It is an enormous, globular, Japanese incurved variety, of perfect form and growth. Color a pure white—even whiter than its parent, Minnie Wanamaker. Timothy E. has captured every cup and prize for which it has been entered.

Mrs. Coombes—This is another foreigner which has gained prominence, both as a commercial and exhibition variety. An enormous reflexed flower with very broad petals; in color a beautiful shade of light rose.

Marie Liger—An extra large, globular, Japanese variety with broad petals; color pearl-pink, deepening to rosy-lavender at the base of the petals; stem and foliage perfect.

Golden Wedding—This is undoubtedly the grandest golden-yellow variety ever introduced, and is the marvel of the period. Nothing can exceed the richness of its color; it is unrivaled in this respect. It is a remarkably vigorous grower and has such strength of stem that it carries its great globular flowers erect, giving it a bold, majestic appearance.

Lavender Queen—An immense solid flower, very full and compact, outer petals reflexed, center petals erect forming a flower of great depth. It is a lovely color, soft silvery lavender-pink, decidedly distinct from any other pink. Of good growth, medium height, stiff stem and good foliage.

One each of the above 10 splendid kinds for 80 cents.

Major Bonaffon—Soft clear yellow, full in the center, eight inches in diameter and nearly as deep. In perfect form and finish; habit dwarf; keeping qualities excellent. It is entirely distinct in color and form from Eugene Dailedouze. It was awarded a World's Fair medal with the highest recommendations from the judges. Has won ten first prizes.

Nellie Pockett—An Australian of great beauty; a fine white of elegant form, incurving and reflexing, rather narrow petals. Fine for exhibition or commercial.

Alice Byron—This is a magnificent variety with every good quality. For size, finish and purity of color it leaves little to be desired. Color purest white, with clear, smooth florets. In some stages it resembles Mrs. H. Weeks, but as the florets expand the whole fall back and form into a deep, solid bloom. This will be found an extraordinary fine exhibition variety.

F. J. Taggart—The best of all the hairy or plumed section. A great advance over all the yellows in this class, being perfectly double and the hair-like filaments are more pronounced. Color light yellow. Flowers, eight inches in diameter. An exhibition variety of exceptional merit.

Ministre Olanesco (Bruant)—A very large flower, rosy-violet in color, heavily plumed; a fine novelty from France.

BULBS FOR FALL, 1909

Will be found listed in this Catalogue, and we request you to RETAIN THIS BOOK until you are ready to order your Fall Plants, as we will not issue a Fall Book. The prices given in this Catalogue, including all special offers, will be GOOD UNTIL JANUARY, 1910.

PLEASE DO NOT SEND STAMPS FOR MONEY;

They often come stuck together or stuck to the letter so that they cannot be taken out except by soaking the whole. Silver in small sums, if carefully wrapped, will carry just as safely, and is far more acceptable.

CHRYSANTHEMUMS

PRICE, 5 CENTS EACH.

Cullingfordii—Reflexed; exceedingly brilliant crimson, richly shaded with scarlet. Florets are of a beautiful, rich, velvety texture. One of the very distinct and noted sorts.

Mrs. Weeks—One of the most beautiful and decorative of all the white Chrysanthemums; incurving petals of purest white.

Robert Halliday—A large, broad-petaled Japanese flower with perfect stem and foliage. Dwarf habit. One of the finest second early yellows.

Glory of the Pacific—It is of magnificent size and depth, with broad petals which finally reflex, showing the clear pink color to excellent advantage. Very early.

Ivory—Pure white, globular formed flower. The most extensively grown white.

Mrs. O. P. Bassett—The finest of its color ever offered. It is a sport from the grand variety Mrs. Henry Robinson, and takes after its parent in all the fine qualities. The color is a fine canary-yellow of a soft texture. It is a large, flat, incurved variety with broad petals; outer petals drooping a little as the flower opens.

Pullman—Large, incurved yellow.

Minerva—One of the best large yellow flowers.

Murdock—Deep pink.

Pink Ivory—The pink sport from Ivory.

Mrs. H. Robinson—In actual beauty this variety is still unsurpassed. It will hold first place for many a day to come, though we shall have other types as good. From October 15th to November 1st it reigns supreme among whites.

Polly Rose—This is one of the prettiest of all the early varieties. Being a sport from Glory of the Pacific, it has all the parent's good qualities, together with a perfect color, pure paper white. Very easy to do; fine for pots.

Col. D. Appleton—Bright golden-yellow; one of the largest and best varieties ever introduced; four feet.

FOMPON VARIETIES

Perfectly hardy.

Price, 5 cents each.

Tisre—Medium size; pink.

Lebanah—Pink.

Price of Wales—Pure white; fine.

Bertha—Large, white open center.

Boston—Golden-bronze.

King Henry—Straw white.

Fair Haven—Pearl-pink.

Oban—Silvery-pink.

Success—Silver-rose.

Matilda—White.

FUCHSIAS

PRICE, 5 CENTS EACH, EXCEPT WHERE NOTED



Phenomenal.

PHENOMENAL

The finest, freest blooming, double large flowering Fuchsia in cultivation; flowers enormous, borne with great freedom; short tubes and sepals of bright crimson color; corolla bright violet-purple. Price, 10 cents.

DOUBLE WHITE FUCHSIA, ROSAINS PATRI

A variety unsurpassed among all the Fuchsias with white corolla. In fact, nearly perfection as to free growing and habit; strong and bushy; beginning to bloom quite early in the spring and continuing very late. Tube and sepals are brilliant deep scarlet, thick and leathery in texture; corolla is very large, double and pure white. Price, 10 cents.

GLOIRE DES MACHES

It is nearly perfection as to free growing and habit, being strong and bushy, beginning to bloom quite early in the season and continuing quite late. The tube and sepals are brilliant deep scarlet, thick and leathery in texture; the corolla is very large and double, and pure white. Price, 10 cents.

BLACK PRINCE

This is, without question, the very finest Fuchsia grown for the amateur to cultivate. It makes a shapely bush, is robust in growth, free from disease and insects, and is probably the freest in blooming; blossoms of a beautiful waxy-carmine or pink color. Certainly a plant of easy culture.

TROPHEE

One of the best dark purple Fuchsias grown; an easy grower and very free blooming. Double; buds quite round and beautiful deep-red color; open flower dark purple and very beautiful. One of the very finest.

SPECIOSA

A genuine ever-blooming. Elegantly shaped and of good substance. Orange-scarlet corolla and white sepals; calyx rose-carmine. One of the best in cultivation.

MME. VAN DER STRASS

Fine, large and elegant form; sepals long and reflexed; pure red; corolla large double white. The finest market double white Fuchsia.

MINISTER BOUCHER

An extra large, double rosy-purple flower; a free, strong grower. Very full, wide corolla.

TRAILING QUEEN

Splendid variety of trailing habit. Fine for pots and vases. Wine color, with bright carmine sepals. Price, 10 cents.

PURPLE PRINCE

A very beautiful flower and the best shaped plant of any.

The
Choicest
Orchid - Flowering
Varieties

CANNAS

Our Cannas are all
strong 3-inch pot
plants ready to
bloom - - -

Remarkable for large flowers of splendid substance and magnificent colors and immense plants, with heavy, healthy foliage.

PENNSYLVANIA

One of the best of the Italian type; the flowers, which measure fully six and one-half inches in diameter, are produced remarkably free in many-branched panicles, and are of an intense vermilion-scarlet, overlaid with an orange sheen; foliage rich green; six to seven feet.

ALEMANNIA

A gigantic flowering Canna producing flowers nothing short of marvelous in size. Outer petals scarlet with broad, golden-yellow border. Inside scarlet and dark red. Five to six feet.

MRS. KATE GRAY

The most robust growing Canna in our collection; the plant attains a height of six to seven feet, with broad and massive foliage of a bright glossy-green; very much like the Abyssinian Banana in size and substance, and forming a beautiful foil to the gigantic trusses of flowers, which are of a rich shade of orange-scarlet, overlaid with gold, and measure from six to seven inches across.

AUSTRIA

Giant flowers, five to six inches across, in large, bold, erect trusses, deep, golden-yellow, dotted with carmine. Strong, sturdy grower, with immense leaves. Five to six feet.

Price of these four kinds, 10 cents each; four by mail for 35 cents; by express, 25 cents.



Pennsylvania.

SELECTED LIST OF GOOD CANNAS

EDNA CORCORAN

A grand new seedling. Flowers are as large as those of C. Ehemanni, and dazzling scarlet; foliage deep bronze; a profuse bloomer. Price, 8 cents each.

BUTTERCUP

Real bright buttercup yellow, large handsomely formed flowers in fine open trusses; always clean and bright. It bleaches less in sunshine than any yellow Canna, and, like Philadelphia, it sheds the old flowers, thus leaving the trusses always bright and fresh. We can recommend it as the very best Yellow Canna. Price, 15 cents each.

CINNABAR

Red, edged with yellow. Four and one-half feet. Price, 8 cents.

ROBUSTA

A giant among Cannas, immense, tropical foliage. A single plant of this variety attracts instant attention, as it is without question the largest Canna grown, being fully eight feet high. Small blooms. Price, 8 cents each.

CHARLES HENDERSON

Standard dwarf crimson. Three feet. Price, 8 cents.

BOFFINGER

Bright orange-scarlet, one of the very best green leaf bedders. Very heavy truss of bloom. Four feet. Price, 8 cents each.

E. G. HILL

Clear scarlet, marbled with carmine; fine flowers, with broad reflex petals; vigorous grower. One of the best. Price, 8 cents.

J. D. EISELE

A magnificent vermilion-scarlet, overlaid with orange. It is a strong, free grower, attaining to a height of four feet. Price, 8 cents.

EXPLORATEUR CRAMPBEL

Light crimson, with darker markings. Four and one-half feet. Price, 8 cents.

CHILDSII

Three feet; rich golden-yellow, thickly spotted with bright red, one of the finest yellow-spotted kinds; constant bloomer. Price, 8 cents.

SECRETAIRE CHABANNE

Distinct and pleasing salmon. Four feet. Price, 8 cents.

CANNAS FOR BEDDING—BY EXPRESS

Our Cannas are all strong three-inch pot plants, ready to bloom. Cannas should be planted in good, rich garden soil with a good dressing of well rotted stable manure added. No chip dirt or other light material should be used. We recommend planting entire beds of one kind or color. In large grounds beds of from 12 to 20 feet in diameter are far more desirable than small beds. The plants should be placed 12 to 14 inches apart.

A bed 6 feet in diameter will require 20 plants.
A bed 8 feet in diameter will require 40 plants.
A bed 10 feet in diameter will require 60 plants.

A bed 12 feet in diameter will require 90 plants.
A bed 15 feet in diameter will require 170 plants.
A bed 20 feet in diameter will require 270 plants.

We will supply any of the following varieties by express at purchaser's expense for 50 cents per dozen; \$3.50 per hundred: Alemannia, Austria, J. D. Eisele, Robusta, E. G. Hill, Explorateur Crampbel.

GERANIUMS

The following six varieties are of the very latest introduction from France and England, where our finest varieties originate. Price, 25 cents each.

PRINCES ALEX—Single

The color is the most beautiful shade of rose salmon; upper petals feathered rose pink; flowers perfect, produced freely in grand trusses; foliage light green. A strong grower and as a pot plant it has no equal in its class.

COLOSSUS

This we believe to be one of the best dark crimson that we have; the color is that gorgeous, dark, rich velvety crimson which is such a favorite with the Geranium buying public. Flowers are of immense size; semi-double; gigantic trusses; foliage large and heavy texture; growth strong and robust; free flowering and of a good habit; strong constitution and stands the sun well.

FLEUVE BLANC

(Brt. 1905.) Color pure white; florets are very large and just semi-double enough to give them a fine finish; enormous trusses on long stems held well above the foliage. A profuse and constant bloomer. It possesses all the essential points that constitute an ideal Geranium, enabling it to withstand our trying summers, being one of the best of the magnificent Bruant or sun-proof type; very large, handsome, rich, green foliage, zoned with dark green; growth dwarf; vigorous and compact.

Price of above kinds, 25 cents each.

ALLIANCE

(Lemoine 1905.) A French hybrid between a zonal and ivy, which has retained all the good points of both parents, including the beautiful soft finish of the ivy and the hardy constitution of the zonal. It is, therefore, not an ordinary, but an extraordinary variety in all the good points that go to make up an attractive Geranium. Its color is the most exquisite shade of delicate lilac white; upper petals feathered and blotched bright crimson rose; flowers semi-double, abundantly produced in fine large trusses; foliage beautiful, clean and of a splendid leathery texture; habit excellent, robust, strong, close jointed. For vases or as a pot plant it is unequalled.

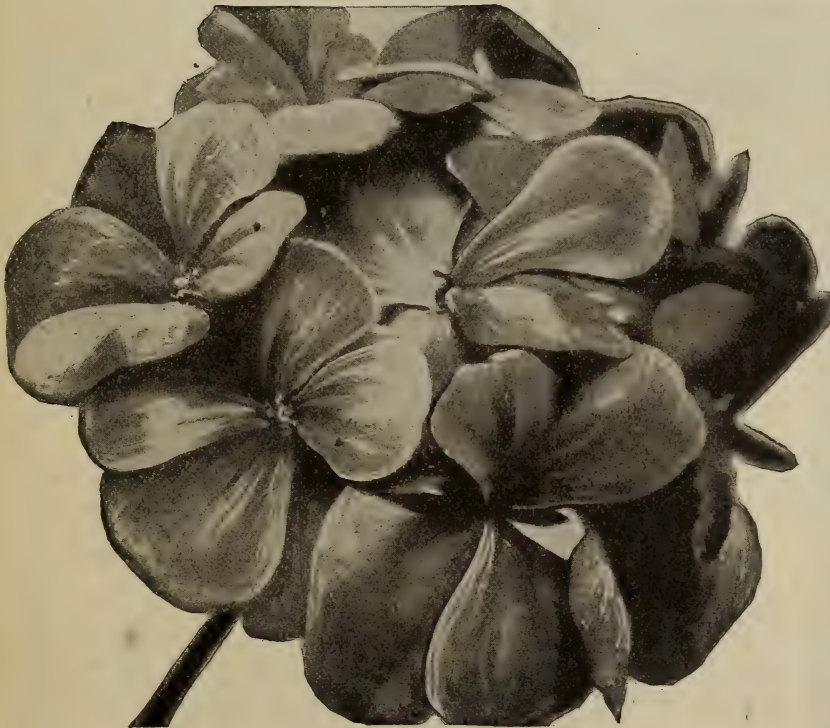
PAUL DESCHANEL

Single, bright, orange cerise with white eye. A very large, brilliant flower.

EUGENE SUE—Single

(Lem. 1905.) Magnificent, well formed flowers, produced in enormous trusses in the greatest profusion. The color is a most brilliant orange-scarlet; foliage large and of fine texture; habit splendid; luxuriant and branching; semi-dwarf and robust. A most desirable sort; one of the best in the class.

Price of above kinds, 25 cents each. One each of the six kinds for \$1.25.



Telegraph.

BEAUTE POITEVINE

A great favorite and conceded to be one of the best semi-double light salmon-pink bedders in existence; enormous flowers; aurora pink shading to bright salmon in center. Price, 8 cents.

JEAN VIAUD

Flowers semi-double, two to two and one-half inches in diameter, made up into trusses twelve to fifteen inches in circumference. Of a beautiful, clear, rosy-pink color with distinct white blotch at the center. The plant itself is a rapid, vigorous grower, yet compact and shapely. As near perfection as a Geranium can be, both in freedom of bloom and ease of cultivation. Price, 8 cents each.

TELEGRAPH

This variety is undoubtedly the most distinct introduction in this line for many years. It is a strong, vigorous grower, bearing immense trusses of single flowers of mammoth size; the color is a rich, deep orange cerise. Price, 10c.

PETER HENDERSON

A magnificent representative of the Bruant race. The color is of the most superb bright orange scarlet; extremely large semi-double florets, produced in enormous trusses in the greatest profusion on long stiff stems held well above the foliage; in growth it is robust, dwarf and compact, with a splendid constitution. Unsurpassed as a bedder, and will meet all the requirements of a pot plant. Price, 10c.

MME. LANDRY

(Double.) One of the choicest and most beautiful yet added to the Bruants. Very free and constant in bloom throughout the season. Trusses large and florets of the finest size and circular in form. Color clear salmon, center shading to copper, with a white eye. Very distinct and one of the best. Price, 10 cents each.

MADONNA

The finest Double White Geranium ever introduced. The perfect double flowers are unsurpassed for cut flowers. They are borne in large trusses, and are spotless, snowy-white, retaining this pure whiteness even in the heat of summer. Price, 8 cents.

SNOWDROP

Pure snow-white, borne in enormous trusses; perfectly formed round flowers, held well above the beautiful foliage. A resplendent bloomer and splendid pot plant; strong, healthy, semi-dwarf grower of excellent habit. A fine bedder. Single. Price, 10 cents.

GERANIUMS---Continued

MME. JAULIN

Semi-double. Very large florets compose a truss of grand size; center tender pink, surrounded by border of white. For freshness and beauty this color is without a parallel among outdoor bedding varieties, and is equally fine as a pot specimen. Price, 8 cents.

BRONZE BEDDER

Foliage bright golden-yellow, with a broad zone of a deep chestnut-brown, scarlet blossoms. This variety stands the sun exceedingly well. Price, 10 cents.

E. H. TREGO

This is the best scarlet Geranium yet produced. We have tested this variety for the past year, and can truly say it is the largest flower and brightest scarlet Geranium we have yet seen, and that it cannot be excelled for bedding purposes and an ideal pot variety. The color is a deep scarlet of exquisite shade; the florets are regular in form, more than semi-double, and about two and one-half inches in diameter. Trusses enormously large on long stems. Foliage and habit are all that could be desired. Price, 15 cents.

L'AUBE

Enormous-sized trusses, large, round florets pure snow-white, retaining its pureness the entire season. We believe this to be the very best single white up to date. Price, 10 cents.

MADAME SALLEROI

It makes a round, pretty plant, about one foot high and wide, foliage bright green, edged with pure white. Price, 10 cents each.

JACQUERIE

One of the largest of florets, longer than wide; very velvety in texture, and a magnificent shade of very dark crimson-scarlet. One of the finest of Single Geraniums, always in heavy demand. Price, 8 cents.

MARQUIS D. MONTMORT

Double, large bloom; a peculiar shade of carmine pink. Price, 10 cents.

MME. BUCHNER

Double snow-white, strong, vigorous grower, with broad, fluted foliage, slightly zoned. Extra large truss, produced abundantly, held well above the foliage. Large individual florets. A grand white bedder. Price, 6 cents.

GRANVILLE

Color the most beautiful shade of rose-pink, white blotches on base of upper petals; large florets borne in large trusses held well above the foliage. Habit all that could be desired, being strong, compact and beautiful. Stands the sun well as a bedder. Single. Price, 6 cents.



Cactus Geranium.

Hamilton, Ohio.

W. R. Gray:

Dear Sir:—Last spring I bought of you 20 small Roses together with a number of large bushes. Every one of them did fine. The small ones are fine, large bushes now, and have bloomed all summer. I have bought Roses from nearly every dealer, and yours are good enough for me.

Yours truly,

F. W. E.

FRANCIS PERKINS

The grandest bright pink bedding variety to date. Like a double Ben Schroder. A fine flower and stands the sun perfectly. Very free in bloom. Long stems hold the flowers well above the foliage. Price, 6 cents.

BRUANT

We consider this one of the best bedding Geraniums. Color of the flower is a bright vermilion-red of most striking shade. Price, 6 cents.

S. A. NUTT

Double, brilliant deep scarlet, with maroon shadings. Price, 6 cents each.

ALPHONSE RICARD

Semi-double Bruant; color bright vermilion-scarlet. Dwarf, very vigorous habit. Large trusses, measuring from four to seven and a half inches in diameter; floret large, sometimes exceeding two inches in diameter. The finest large-flowered scarlet Bruant that has been introduced, and we deem it the best bedding scarlet. The trusses are on strong footstalks, and so freely produced as to nearly conceal the foliage. It is a constant bloomer, almost every joint producing a flower stem. Price, 6 cents each.

RICHARD BRETT

Double. Brilliant scarlet; large truss; good grower; free bloomer. Price, 8 cents.

Cactus Flowering Geraniums

PRICE, 15 CENTS EACH.

A very unique and strikingly beautiful distinct type.

J. R. GREENHILL—Pleasing shade of soft pinkish lavender.

FIRE DRAGON—Bright scarlet crimson, exceptionally striking and showy.

MRS. J. BROWN—Dark scarlet; dwarf grower; free bloomer.

SALMON QUEEN—Delicate light salmon.

IVY-LEAVED GERANIUMS

CAESAR FRANCK

(Lemoine 1905.) This is unquestionably destined to become the most popular Ivy Geranium yet introduced. The color is a magnificent shade of soft rich crimson, with an exquisite shading of tender rose at the base of petals. The flowers are about as double as Crimson Rambler Rose, which they resemble, only much richer in color and finish, produced on long stems in enormous trusses. The foliage is a clean waxy rich green; habit vigorous, quick growing and pleasing, with a strong constitution. For baskets and vases it is all that can be desired—handsome, graceful, and strikingly beautiful and attractive. A novelty of the highest order. Price, 25 cents.

INCOMPARABLE

(Syn. Remarkable.) Trusses very large, florets immense and very regular in form; quite full; the color is an exquisite shade of rosy-carmine. Price, 10 cents.

GALILEE

An extra good variety of striking color, light rosy-pink veined with lilac. Price, 10 cents.

GARDEN'S GLORY

Fine bright scarlet; the best of its color, perhaps; bold, full flower, free grower and bloomer, and one of the best generally useful of Ivies. Price, 10 cents.

P. CROZY

A grand hybrid between the Zonals and Ivies, having the foliage of the former, but very heavy in texture, while the forms of truss and florets are found only among the Ivies. The color is soft bright scarlet. Price, 8 cents.

JOAN OF ARC

The flowers are perfectly double, white as snow, and literally cover the plant when in full bloom. The foliage is extremely handsome, the dense glossy-green leaves making a most effective background for the great cluster of snow-white flowers. Price, 15 cents.

SOUV. CHAS. TURNER

Florets two and a half inches in trusses six inches across. Color a deep bright pink, approaching scarlet in color, the upper petals feathered maroon; quite double. Price, 8 cents.

SWEET-SCENTED GERANIUMS

PRICE, 8 CENTS EACH.

Skeleton Leaf Rose-Scented. Rose. Nutmeg. Oak-Leaved. Balm. Lemon-Scented. Shrubland Pet.

APPLE GERANIUM, PRICE 10 CENTS.

Banning, Cal., Feb. 17, 1907.

The two packages received in good condition. Please accept thanks for the generous extras. We are pleased with the way the order was filled.

Respectfully, MRS. E. M.

Vancouver, B. C., Dec. 9, 1907.

W. R. Gray:

Dear Sir:—I take great pleasure in stating that the 15 Roses received from you about two weeks ago arrived in most excellent condition, and look splendid. Yours truly, MRS. C. H. W.

Pelargoniums

Or Lady Washington Geraniums.

VICTOR

This variety is grown by the tens of thousands for the New York market, and finds a ready sale. It is a bright, cherry-pink, white at base of petals. Petals are crimson-maroon. Price, 10 cents.

CAPT. RAIKES

Large, individual flowers of a brilliant crimson, beautifully marked and veined, fine handsome foliage and steady growth. We would heartily recommend this variety. Price, 10 cents.

MRS. ROBERT SANDIFORD

This grand double white variety is one of the finest novelties of the year. The flower is of large size, well doubled, beautifully ruffled along the edges of the petals and of glistening snowy-white color. Price, 15 cents.

Geraniums for Bedding by Express

We will supply any of the following varieties at purchaser's expense, by express, for 50 cents per dozen, \$3.50 per 100: S. A. NUTT, GRANVILLE, A. RICARD, F. PERKINS, M. BUCHNER, M. LANDRY JAULIN.

Sulpho-Tobacco Soap

For the sure, easy and immediate extermination of all insects on plants, trees and animals, Sulpho-Tobacco Soap is a matchless preparation. Being non-poisonous, it is absolutely safe to handle, and will not injure the most tender plant. In addition it is a splendid fertilizer. It dissolves readily in water.

Directions—Dissolve two ounces of soap to a gallon of water, and apply when cold to the foliage of the plants with a good sprinkler, one or two thorough applications being sufficient to destroy the most persistent insects.

PRICE—Three-ounce packages, sufficient for one and one-half gallons of solution, 13c each, postpaid; eight-ounce packages, sufficient for four gallons, 28c each, postpaid.

Rubber Bulb Plant Sprinkler

Is as essential to the success of your plants as the soil they grow in. With it you can, without injuring your plants or soaking the earth, quickly sprinkle them. It will render valuable aid in keeping the foliage fresh and healthy, and free from insects of all kinds. Throws a spray "just like rain." Its value is so apparent that, once secured, you will not be without it again. Postpaid by mail, 75c each.

Palms and Other Decorative Plants

LATANIA BORBONICA (Chinese Fan Palm.)

Broad, fan-shaped leaves, with pendent marginal segments; an admirable plant for almost any purpose. Price, 15 cents; three-inch, 25 cents; four-inch, by express, 50 cents.

KENTIA BELMOREANA

One of the grandest of all Palms. It is a strong, tall grower, and being of an exceedingly robust disposition thrives in almost any situation. It will remain uninjured by changes in temperature, while the splendid surface of its foliage enables it to stand the dry, hot air of the living room. The leaves are deep glossy-green, fan-shaped, split deeply into segments. This is one of the hardiest Palms we know. Makes a magnificent pot plant. Strong young plants, 15 and 25 cents; larger, by express, 35 and 50 cents.

KENTIA FORSTERIANA

The Kentias are among the best of the Palm species for general cultivation, being almost impregnable against diseases. This variety is one of the best in its class; graceful habit, bright green foliage, gracefully disposed; as a decorative plant for the window, dinner table or conservatory it scarcely has an equal. Price, small plants, 15 cents each; three-inch, 35 cents.

PANDANUS UTILIS

As an ornament for the window its glossy, dark green serrated foliage renders it unusually attractive, while as a vase plant or single specimen in greenhouse or conservatory, it cannot be surpassed. It is also largely used to decorate the halls in our private residences, and shows grandly on the lawn when grown to a sufficient size. Price, nice plants, 15 cents each; three-inch pots, 25 cents; four-inch pots, by express, 50 cents.

PHOENIX CANARIENSIS

One of the hardiest of the Date Palms, with dark green feathery foliage of strong growth, and is especially valuable for outdoor decoration, as it stands sun and wind without the least damage, even in exposed situations. Price, 15 cents; three-inch, 25 cents; four-inch, by express, 50 cents.

FERN S

NEPHROLEPIS WHITMANI A Gem Among Ferns.

This magnificent new fern is a sport from the Boston Fern, but unlike other sports of this variety, such as Piersoni, Barrowsii and Elegantiissima, it never reverts to the Boston type. Every frond is perfect. It is of the same feathery fronded type as the other varieties, but more dwarf and smaller in all its parts. The fronds are more dense and delicate than any other variety. It makes a beautiful symmetrical plant, even in small sizes, and large specimen plants are beautiful beyond description. Price of strong young plants, 25 cents each; three for 60 cents, postpaid.

We have entirely discarded Pierson Fern on account of its tendency to revert to the Boston type, which was very troublesome.

NEPHROLEPIS ELEGANTISSIMA

The New Tarrytown Fern.

This is an aristocrat among all the Nephrolepis and when well done unquestionably the finest of the lot; is a sport from the Pierson Fern, in which the plummy peculiarity of the original form is even more distinctly developed than in the original; the side pinnæ, being again subdivided and standing at right angles to the midrib, make both sides of the frond equally beautiful, while, at the same time, the plant is of much more compact habit, growing only one-half as tall, but with the frond nearly twice as wide, making it a much more desirable plant for all purposes. Price, 15 cents each; larger size, by express, 50 cents, \$1.00 and \$1.50.

BOSTON FERN

The best and most popular decorative plant now known. Forms an immense number of graceful, drooping fronds, varying in length from two to five feet, which arch over like plumes in every direction. Magnificent. Price, by mail, 10 cents to 15 cents; by express, 25 cents, 50 cents and \$1.00, according to size.

DRACENA INDIVISA

One of the best plants we have for general decorative purposes. Of graceful habit, an exceedingly rapid grower, and is not affected by sunshine, storm or drought. Forms a palm-like tree, and does equally well indoors or in the open ground, quickly attaining immense proportions. Strong plants, 15 cents.

GREVILLEA ROBUSTA

The Australian Silk Tree.

A magnificent plant for decorative purposes; quicker growing than a palm and equally effective; of easy growth; finely cut foliage, rivaling a rare Fern; attains magnificent proportions. The leaves are very fine for designs, and do not wilt. Price, 15 cents each; four for 50 cents.

CYPERUS ALTERNIFOLIUS

Umbrella Plant.

An ornamental grass, sending up stems about two feet high, surmounted at the top by a whorl of leaves, diverging horizontally. Splendid for the center of vases, or for use as a water plant. Price, 10 cents.

SANSEVIERA ZEYLANICA

Splendidly adapted for the decoration of drawing rooms and halls, as it stands drought and dust with impunity, and needs scarcely any water. The leaves grow to a length of three to four feet, striped crosswise with broad, white variegations on a dark-green ground. Price, 10 cents each; larger, by express, 25 and 50 cents.

FICUS ELASTICA—RUBBER TREE

A well known variety so familiar to flower lovers that a description is almost unnecessary. We have a splendid stock of this useful and ornamental plant, which we offer in two sizes as named below. It will flourish under the most unfavorable conditions and respond most readily to good treatment. Its thick glossy foliage is exceedingly attractive, and the plants are singularly free from insect pests. Strong plants by mail, 35 cents; by express, 25 cents. Extra size, 50 cents.



Fern Whitmani.

ADIANTUM CUNEATUM (Maiden Hair.)

The light, graceful fronds are of moderate size, and very beautiful in color. Price, 10 cents.

MISCELLANEOUS PLANTS

ABUTILONS

Rapid growing plants of easy culture. Flowers pendulous, bell-shaped and produced in great abundance. If taken up carefully before frost, they make good winter flowering plants.

THOMPSONII PLENA

Beautiful variegated foliage, green and gold, has perfectly double flowers resembling a double Hollyhock pendant; color rich orange, shaded with crimson. Price, 10 cents.

DRIVEN SNOW

Very large, wide open, pure white flower. The most effective white variety to date. Plant covered with bloom. Price, 10 cents.

SAVITZII

Leaves more deeply cut than *S. de Bonne*, and with more white in the variegation; of dwarf growth; a decorative variety. Price, 10 cents.

GOLDEN BELLS

A bright golden-yellow Abutilon of strong, vigorous habit and very free flowering. This is the finest yellow variety on the market and combines large size, fine form and depth of coloring. Price, 8 cents.

ASPARAGUS SPRENGERI

Used in decorations, as, for example, in the decoration of mantels, nothing can equal it. It is also a handsome thing for ferneries and hanging baskets. Price, 5 cents; three-inch pots, 10 cents.

BOUGAINVILLEA SANDERIANA

This beautiful free-flowering variety was introduced about three years ago, and on account of its free-blooming qualities has become very popular, especially as a plant for Easter decorations. It is of strong and rapid growth, and the brilliant rosy-crimson blossoms are produced from early in March until midsummer; in fact, a plant will frequently flower the greater part of the year. Altogether it is a most desirable subject for the conservatory or window garden. Price, 10 cents.

CALADIUM ESCULENTUM

Very effective and suitable either for single specimen plants on the lawn, masses in beds or margins of water. Its very distinct, apron-like leaves often attain the length of three feet by twenty inches wide, and have a rich, tropical effect. The growth is very rapid, and the ground must be made rich. Watering in dry seasons will help develop large leaves. Bulbs can be stored in dry sand in winter and kept from year to year. Extra large bulbs, by mail, 15 cents; by express, 10 cents. Medium, by mail, 10 cents; by express, 5 cents.

COLEUS

The Coleus will give more pleasure at less cost than any other plant. Their varied tints of crimson, gold, bronze and green, and richly blotched, veined or margined, produce a brilliancy of coloring unequalled. They are equally as desirable for pot plants as for bedding out. We grow ten of the most brilliant varieties. Price, by mail, 5 cents; 40 cents per dozen. By express, \$2.50 per 100.

PLATYCENTRA

(Cigar Plant.) Red tube with black ends, covered with flowers all summer. Price, 5 cents.

CALLA

(The White Calla.) Calla Ethiopica, or Lily of the Nile. Large, pure white flower; too well known to need description. Price, 10 cents and 20 cents each.

SOUVENIR DE BONNE

It is a strong, upright grower, with large, bright green foliage, distinctly edged with a broad band of creamy-white and yellow. Flowers very large on stems eight to nine inches in length. Color bright orange-red, very effective with its beautifully variegated foliage. Price, 8 cents.

ECLIPSE

Fine for baskets and vases, trailing in habit. Its foliage is very attractive, beautifully marked dark green and yellow. Flowers bright yellow, with crimson throat. Price, 8 cents each.

ENFANTA EULALIA

A green leaf variety, with orange-red flowers; a strong grower and the freest blooming variety grown. Price, 8 cents.

SPLENDENS

Free flowering bright-red. Price, 10 cents.

ASPARAGUS PLUMOSUS NANUS

One of the handsomest of our foliage plants. The leaves are a bright green, gracefully arched, and as finely woven as the finest silken mesh. Surpassing Maiden Hair Fern in grace, fineness of texture and richness of color. It is one of the finest decorative vines. Price, nice plants, 8 cents each; three-inch pots, 12 cents.

ALOYSIA CITRIODORA

Lemon Verbena.

A well known shrub; indispensable in the construction of bouquets, etc., on account of the delightful fragrance of its leaves. Price, 5 cents each; 50 cents per dozen.

HIBISCUS

Peachblow—This is one of the finest plant novelties offered in recent years. The flowers are double and from four to five inches in diameter; of a charming, rich clear pink color, with a small deep crimson center; an entirely new and most beautiful shade. We are confident it will give entire satisfaction to all who grow it, either in pots or planted out in the garden. It is also a good winter bloomer in the greenhouse or sunny window. Price, 10 cents.

Rubra—A very pretty double red Hibiscus. Flower deep cherry-red, very large and double. The finest red Hibiscus. Price, 10 cents.



Coleus

NEW COLEUS, DOCTOR ROSS

One of the brightest and richest colored Coleus ever seen; enormous leaves, rich, dark velvety-crimson, shaded and marbled with black, and showing a broad wedge of creamy-white and green in center; elegantly fringed, and bordered with green and gold. Price, 10 cents each; three for 25 cents.

MISCELLANEOUS PLANTS—Continued

IMPATIENS

Sultana (Sultan's Balsam.)

It is of a compact, neat habit of growth, with a good constitution, and a perpetual bloomer. The flowers are of a brilliant rosy-scarlet color, of a peculiarly distinct but most effective hue, about one and one-half inches in diameter. Price, 10 cents.

NEW IMPATIENS HOLSTII

The newest Balsam offered to date. It is a strong grower, quite distinct from any other Impatiens. The flowers measure from one to two inches across and are a brilliant vermilion color, a fine contrast to the dark green foliage. Price, 15 cents.

THE NIGHT-BLOOMING CERESUS

The most beautiful flower in the world. Its flowers are very large, of a pure satiny-white, with outside petals faintly tinged with reddish-brown. It is also deliciously fragrant. Price, 10 cents.



Salvia.

SALVIA SPLENDENS, or FLOWERING SAGE

One of the finest of fall blooming plants, being completely covered in autumn with long spikes of scarlet flowers, remaining in bloom until cut down by the frost. Some of the finest beds in the White House grounds at Washington are of this plant. Kept sheared down to make it thick, it is a wonderful sight. Price, by mail, 5 cents each, 50 cents per dozen; by express, \$3.50 per 100.

GROFF'S NEWEST HYBRID GLADIOLUS In Grand Mixture

A new strain of great merit has been evolved by Mr. Groff, who is widely known as an enthusiastic and successful hybridizer and grower of Gladiolus. His present strain is unsurpassable and now world-famous. Strong, vigorous-growing plants, with long, sturdy spikes. The flowers are extra large, of perfect form, splendid substance, and of the greatest beauty, embracing a range of diversified coloring with combinations of markings almost endless and undreamed of; there are red, scarlet, crimson and garnet shades of unexcelled brilliancy and intensity; whites, creams, yellows, rose, pinks, salmon, orange, etc.; stained, blotched, dotted, striped, watered and feathered in marvelous variety; rare blues, clematis, lilac and heliotrope shades, charmingly unique and to be found in no other strain of Gladiolus, insuring to purchasers many delightful surprises.

Price, Groff's Genuine, Newest Hybrid Gladiolus Bulbs, in Grand Mixture, large blooming size, 5 cents each; 50 cents per dozen.

GLADIOLI

Mixed—Our mixed Gladioli embrace a magnificent variety of beautiful colors, all the poorer sorts having been discarded when in flower. Price, extra fine mixture, of all colors, three for 10 cents; 30 cents per dozen, all blooming size.

TUBEROSES—NEW DOUBLE PEARL

Flowers nearly twice as large as those of the old variety and flower stems only eighteen inches to two feet high. Very fragrant. Large bulbs, started in pots, 8 cents each; 75 cents per dozen. Dry bulbs, four inches and upward in circumference, with perfectly sound centers, 3 cents each; nine for 25 cents, or 30 cents per dozen by express.

VINCA MAJOR

Variiegata

A beautiful variegated trailing plant, admirably adapted for hanging baskets and vases. The leaves are a glossy-green, broadly margined a creamy-white; flowers blue. Price, 5 cents.

VERBENAS

Price, 5 cents each; seven for 25 cents; fifteen for 50 cents. These are far better than seedling plants.

Mrs. McKinley—Very large flower; very strong grower. The finest mammoth pure white Verbena ever grown.

Glow Worm—Brilliant scarlet; perfect form.
Willie Desmond—Very large bright scarlet; large white eyes.

XX Scarlet—One of the best.
Swanger's Beauty—The finest striped variety, one of the best for market.

Antonio—Deep blue; extra.
Loadstar—Lavender, only one of its color.
Miss Arthur—Dazzling scarlet; very fine.

Shakespeare—Large purple, white eye.
Beauty of Oxford—Dark pink; immense size; very fine.

Francis—Pink, lighter and larger than Beauty of Oxford.

Negro—Black; fine.

VIOLETS

Swanley White—This is a sport of the popular and well known Violet Marie Louise, and is in every way equal to its parent, having the same growth, the same freedom of flowering, the same perfect perfume, and the individual flower equally as large and of the purest white. Price, 10 cents each.

New Single Violet, Princess of Wales—This variety is far ahead of any other Single Violet known. The grand single flowers, of a true violet-blue color that does not fade, are of round, symmetrical form, almost as large as Pansies, and of the richest, most delicious fragrance. Price, 8 cents; 60 cents per dozen.

Marie Louise—Bold, fine flowers, very fragrant and very prolific. The color is of a dark blue, flowers double. This is the favorite double-blue Violet that you see in the florists' windows. Price, 8c; 75c per dozen.

PETUNIAS—NEW DOUBLE

After devoting a great deal of time on Petunias, we have succeeded in getting the finest strain or set that we have ever offered. Unsurpassed in brilliancy of colors and the size of flowers. They include all the brightest shades of pink, purple, rose, white, crimson, etc. They have been carefully selected and the most of them are beautifully fringed. Price, 10 cents.

WANDERING JEW

Tradescantia Multicolor.

Nearly every one is acquainted with the Zebrina. The one now offered is the most beautifully variegated purple, scarlet and white. Price, 5 cents each.

MANETTIA BICOLOR

This is the most beautiful and desirable of all vines, as it can be grown either in the house or garden equally as well. In the house it can be trained about a window, forming a wreath of the most brilliant bloom, both summer and winter. The flowers are from an inch to an inch and a half in length, of a most intense scarlet, shading into flame, tipped with bright golden-yellow, and are covered with a thick scarlet moss. Price, 10 cents.

SAXIFRAGA SARMENTOSA

A handsome plant of low habit, leaves nearly round and striped freely with silver bands; blooms white, of great beauty and borne in spikes nearly twelve inches high; fine for hanging baskets, vases, etc. Price, 5c.

DOUBLE HOLLYHOCK

One of the most majestic of hardy plants, and a clump or line in any garden gives an effect not attainable with any other plant. For planting among shrubbery or forming a background for other flowers it is without equal. One-year-old plants, ready to bloom, separate colors, red, white, yellow, pink, 10 cents each, by mail.

MISCELLANEOUS PLANTS—Continued

HARDY PINKS

Price, 5 cents each.

The New Double White Pink, Her Majesty—We have much pleasure in drawing attention to this charming novelty, which is one that will hold its own as long as Pinks are cultivated. It has become one of the most "popular of the day," being grown by acres to supply the demand for cut flowers. By all means the best hardy Pink grown.

May Gray—Clear, bright pink.

Homer—Rich rosy-red, with dark center.

PONTERIA CRASSIPES MAJOR

(The Water Hyacinth.)

A very showy aquatic, bearing very freely flowers of a delicate lilac-rose in trusses like a Hyacinth. The individual blooms are two inches in diameter. It should be grown in about three inches of water, so that the ends of the roots can enter the soil. Very easily kept, increases rapidly. Price, 10 cents.

CALIFORNIA PRIVET

Of all ornamental hedge plants this is the most popular, and more of it is planted than all others combined. Its foliage is a rich dark green, and is nearly evergreen, remaining on the plant until midwinter. It is of free growth, and succeeds under the most adverse conditions, such as under dense shade of trees, where other plants would not exist. To form a dense hedge from the base up the plants should be severely pruned the first two seasons. Plant about twelve inches apart. Strong one-year plants, \$3.00 per 100.



Ponderosa Lemon.

AMERICAN WONDER or PONDEROSA LEMON

This truly wonderful variety was introduced some three years ago, and has proven itself one of the most valuable of the Citrus family. It is of strong, vigorous growth, producing freely flowers as large as a Tuberose and as fragrant as the orange blossom, followed by gigantic fruit, many weighing from one and one-half to two pounds each, which are useful for many domestic purposes. Good young plants, 10 cents each. Strong two-year-old plants of fruiting size, by express, 15 cents.

LANTANAS, or SHRUBBY VERBENAS

Very showy and fine for bedding. Colors, white, yellow, pink and rose. Price, 5 cents each.

WEeping LANTANA

A New Weeping Plant of Great Beauty.

One of the grandest basket plants grown. The plant has a most graceful, drooping habit, grows very rapidly and blooms continually summer and winter, producing large clusters of flowers of the most delicate lilac or rosy-pink; foliage a beautiful dark green. We know of nothing of recent introduction that is so easily grown and gives so much pleasure and satisfaction as this beautiful Lantana. Price, strong plants, 8c.

PANSIES

Royal Exhibition Pansies.

The plants here offered are grown from our own choicest strain of seed produced from the world's greatest Pansy specialist, and for size of bloom, richness of coloring and texture will be found unapproached by any other strain. Good strong plants, 50 cents per dozen; 5 cents each.

PANSY

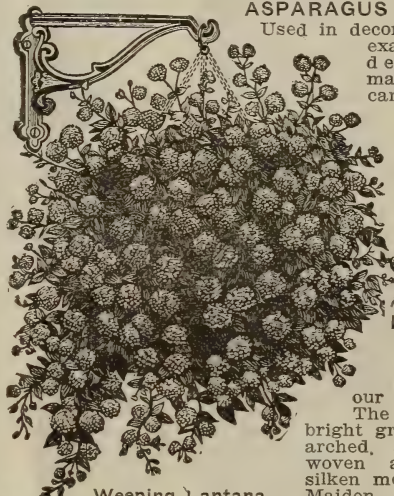
Very fine mixed. This is an excellent mixture, as good as you will buy anywhere. Price, 3 cents each; 25 cents per dozen.

RUSSELLIA ELEGANTISSIMA

(New). A very striking semi-trailing plant, especially adapted for hanging baskets, vases, or window boxes, where a delicate, graceful effect is sought. The plant is skeleton-like in growth, throwing long spikes of rush-like branching foliage, two to three feet long, which are literally covered with brilliant coral-red florets. Price, 10 cents.

ASPARGUS SPRENGERI

Used in decorations, as, for example, in the decorations of mantels, nothing can equal it. It is also a handsome thing for ferneries and hanging baskets. Price, 5 cents each; three-inch pots, 10 cents.



Weeping Lantana.

ASPARGUS PLUMOSUS NANUS

One of the handsomest of our foliage plants. The leaves are a bright green, gracefully arched, and as finely woven as the finest silken mesh, surpassing Maiden Hair Fern in grace, fineness of texture and richness of color. It is one of the finest decorative vines recently introduced. Price, nice plants, 8 cents each; three-inch pots, 12 cents.

HELIOTROPES

These plants are universal favorites on account of their delightful fragrance. They flower equally well as bedding plants in summer or as pot plants in the house during winter. Price, 50c per dozen; 5c each.

Florence Nightingale—Splendid market kind; healthy; flowers bright lavender, good truss.

Piccola—Rosy-violet, indeed almost red, with a distinct white center showing upright growth, producing immense heads of flowers well above the foliage.

Madame de Blonay—Fine, large, strong foliage, very large trusses of pure white flowers. Price, 10 cents.

Madame Bruant—Immense panicles of very large flowers, rich purple, with large white eye.

Czar—One of the best of the dark Heliotropes; very distinct in color and habit. Color deep purple, free bloomer and very fragrant.

HYDRANGEA

Otaksu—A Japanese variety used extensively for Easter decorations. Flowers large, bright pink, tinted with blue. Price, 10 cents.

GARDENIA FLORIDA

(Cape Jessamine.)

Beautiful greenhouse evergreen shrubs, with delightfully fragrant pure white waxy flowers, blooming from May to July. Price, by mail, two and one-half-inch pots, 15 cents.

NEW JASMINE—GRAND DUKE

This Jasmine is very easily grown, even small plants bear a profusion of very double creamy-white flowers, having a delicious perfume. It is a magnificent plant, and will become one of the most valuable and popular pot plants when it becomes better known. Price, 10c.

CLIMBING VINES

IPOMEA, or MOON FLOWER

Noctiflora Giganteum.

Immense white blooms; profuse bloomer. Large plants, 10 cents.

CHINESE WISTARIA

One of the best of all hardy climbers. When given a sunny situation and liberal manuring it grows rapidly, and presents when in bloom a magnificent appearance.

Sinensis—The favorite variety, producing thousands of pendulous clusters of delicate violet-blue blossoms, richly perfumed. **Strong plants, by mail, 25 cents.**

Alba—Of similar habit to *Sinensis*, with pure white flowers. **By mail, 35 cents.**

WISTARIA AMERICAN BLUE

(*Frutescens*.) An elegant climbing vine, hardy and vigorous, that blooms later than the other varieties; pretty violet purple flowers, borne in compact clusters and very fragrant. **Price, by mail, 15 cents.**

HARDY ENGLISH IVY.

This is a hardy ever-green climbing vine, with dark glossy green leaves. Much used for covering walls of churches, etc., and for cemetery work. Is a true evergreen; retains its bright green leaves all winter and always looks alive. **Price, good strong plants, 10c.**

IVY—GERMAN OR PARLOR Mikania

Scandens. A strong growing climber, with green foliage, suitable for large baskets and vases. **Price, 5 cents each.**

IPOMEA MAXIMA

The Great New Giant Moonflower,

A giant in growth and flowers and exquisitely fragrant. The flowers are more than twice the size of the old variety, selected flowers reaching seven and one-half inches. **Price, 25 cents.**

AMPELOPSIS VEITCHII (Boston or Japanese Ivy.)

A most satisfactory and beautiful climber; it is entirely hardy and can adapt itself to any locality or exposure; clings fast to stone, brick or wooden walls, and is extensively used on residences, churches, factories, etc., where in summer it covers all with a perfect mat of dark green leathery foliage, which changes as autumn approaches to brilliant crimson; the foliage serves as a great protection to buildings, the leaves lapping over like tiles on a roof, preventing effectually the rain from penetrating the walls. **Price, 10 cents.**

CLEMATIS PANICULATA

A Magnificent Hardy Climbing Vine.

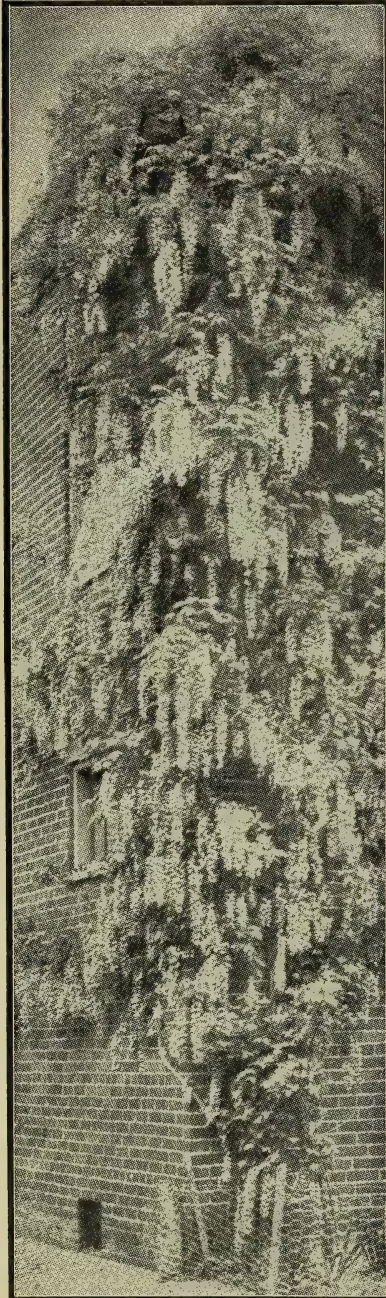
The flowers are pure white, and are borne in great panicles or clusters of bloom, fairly covering the plants so that it is a mass or sheet of fleecy-white. The fragrance is delicious, resembling the English Hawthorn blossom, and so subtle and penetrating that a large plant in bloom fills the air with its exquisite fragrance. It begins to bloom late in August or early in September, when other hardy climbers are out of bloom. Grows quickly and strongly, reaching a height of fifteen to twenty feet. Hardy in all sections of the country. There is no better hardy vine. **Price, 10 cents; two-year, by express, 25 cents; by mail, 30 cents.**

THE BEST HARDY ENGLISH CLEMATIS

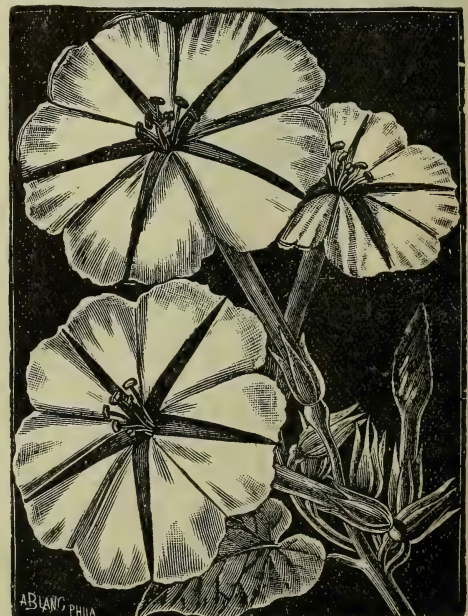
Plant rather deep. Give good, rich ground, and if damp and moist and partially shaded, so much the better. While perfectly hardy in all localities, it is desirable to place a thick coat of leaves or litter over the roots as a protection during the winter. They require support, such as a rod, pole, trellis or wire that they can twine around.

Jackmanni—Immense flowers, four to five inches across; borne in great masses; color exquisite deep royal purple. ~~One-year-old plants, 20 cents each; two-year-old, 40 cents each, postpaid.~~

Anderson Henryi—Extra large, creamy white, fine. ~~20 cents;~~ **two-year, 40 cents.**



Wistaria Sinensis.



Ipomea Maxima.

HARDY SHRUBS



Hydrangea Paniculata Grandiflora.

RUBDECKIA GOLDEN GLOW

It is a strong, robust grower, attaining a height of five to six feet, and produces masses of double golden-yellow Cactus Dahlia-like flowers from July to September. By mail, 15 cents.

SPIREA ANTHONY WATERER

A valuable and distinct variety; color bright crimson; it is of dwarf, dense growth, never exceeding thirty inches in height; in bloom the entire summer and fall. By mail, 15c; 2-year, by express, 30c.

SPIREA VAN HOUTTEI

The grandest of all the white Spireas; it is a beautiful ornament for the lawn at any season, but when in flower it is a complete fountain of white bloom, the foliage hardly showing. Clusters of twenty to thirty white florets make up the raceme, and are set close along the drooping stems. By mail, 15 cents; two-year, by express, 30 cents.

CALYCANTHUS FLORIDUS

(Sweet or Strawberry Shrub.) An old favorite, with double chocolate-colored strawberry-scented flowers. By mail, 15 cents; two-year by express, 25 cents.

YUCCA FILAMENTOSA

(Spanish Bayonet.) A low-growing, hardy evergreen plant with long, narrow leaves; almost tropical in appearance. The flower stalk is from two to four feet high, and rises from the center. It bears a profusion of creamy-white, bell-shaped flowers; will thrive in the poorest soil. Two-year, by express, 25 cents.

LILACS

Common—(Syringa Vulgaris). The common purple Lilac species. By mail, 15 cents; two-year, by express, 35 cents.

Common White—(S. Vulgaris Alba.) Flowers pure white, fragrant, beautiful. By mail, 15 cents; two-year, by express, 35 cents.

JAPONICUS

(Japan Quince.) A very showy and popular shrub, which blooms profusely in early spring; flowers dazzling scarlet; makes an excellent hedge. By mail, 15 cents; two-year, by express, 35 cents.

VIBURNUM PLICATUM

(Japan Snowball.) Healthy dark foliage; the perfect balls of pure white flowers borne in great profusion; a decided improvement on the old Snowball; very desirable. By mail, 15 cents; two-year, by express, 35 cents.

HYDRANGEA

Paniculata Grandiflora—This is one of the most hardy shrubs in cultivation. It attains a height of three or four feet, and is perfectly hardy in all parts of the country. The flowers are white, borne in immense pyramidal panicles nearly a foot in length. It commences flowering in July and continues until November. The plant should be cut back every spring at least one-half of the last season's growth, as the flowers are borne on new wood and are much finer when the plants are treated in this way. This is the finest flowering shrub for cemetery planting we know of. Price, mailing size, will bloom this year, 10 cents; two-year field grown, by express, 25 cents; by mail, 35 cents. Three-year, extra size, by express, 50 cents.

LAGERSTROEMIA

Crape Myrtle.)

This is one of the prettiest shrubs and, while hardy south of the Potomac, requires protection in the North. All, however, that is necessary is to winter the plants in a cellar or similar position, where they will be protected from very severe weather. Grown in large pots or tubs, specimens six to eight feet high can be produced with little difficulty, and which for two to three months in the summer will be covered with flowers. In three colors, pink, purple and crimson. Price, by mail, 20 cents.

THE TRUE RHODODENDRON CATAWBIENSE OF THE CAROLINA MOUNTAINS

THE HARDIEST RHODODENDRON KNOWN

We can unhesitatingly recommend the true native Catawbiense as the finest of all Rhododendrons for general use, withstanding successfully exposure and extremes of temperature where other Rhododendrons fail. The trusses are a bright red-purple, in marked contrast to the muddly purple of the semi-hardy half-breed imported variety. Strong nursery grown bushy plants, six to nine inches high, 40 cents each.

AZALEA

Lutea (calendulacea). Great Flame Azalea. The most regal of all the species, native or exotic, and a noble representative of our rich Carolina Mountain flora. Bartram, speaking of it in his "Travels," calls it the "fiery Azalea," and says: "This epithet Fiery I annex to this most celebrated species of Azalea as being expressive of the appearance of its flowers, which are in general of the color of the finest red lead, orange and bright gold as well as yellow and cream color. This is certainly the most gay and brilliant flowering shrub yet known." Strong plants, eight to twelve inches, 40 cents each.

SIMPLE RULES AND SURE RESULTS

For the successful Rhododendron and Azalea bed success is as simple and sure as with ordinary shrubs. It is a question of doing just the right thing, before, during and after planting. Rhododendrons and Azaleas grow naturally in shady, damp situations, being surface feeders with fine hairlike rootlets. Plainly, therefore, dry, hard ground or drought checks growth or kills outright; nature provides against this; yet how many gardeners do?

A deep, porous soil prevents droughts, so excavate two to three feet or more and see that in clay soils good drainage is provided for, so that water will not stagnate in the bottom and make "sour ground."

Rhododendrons live largely on vegetable mold and humus; therefore, fill in with a mixture of leaf-mold, rich loam, field sods, swamp muck or peat, with one-tenth sharp sand and one-tenth at least of well-rotted manure.

The Great Secret—Mulch, and yet mulch again, all the year round. This is the great Rhododendron secret. As soon as planted, cover the entire surface of the ground with a vegetable mulching—preferably hardwood leaves—to the depth of a foot when reasonably well packed.

Never remove this mulching, but let it remain the year round, and every fall add a new layer of similar depth.

CHOICE FLOWER SEEDS

All our seeds are purchased direct from W. A. Burpee & Co., of Philadelphia, in original packets.

SWEET PEAS

Blanche Burpee (ECKFORD'S)

A grand large flower of beautiful form; firm, lasting substance and snowy whiteness, having three of the extra large flowers on each long, stiff stem, and all facing one way. Vines are of strong growth, blooming profusely throughout the season. Packet, 5 cents.

COQUETTE

Flowers of a deep primrose, shaded with lavender in the standard. Large size with erect standard, beautifully hooded. Packet, 5 cents.

BURPEE'S BRILLIANT.

A very bright crimson-scarlet. Standard broad and slightly hooded; wings widely spreading. Packet, 5c.

ECKFORD'S "UP-TO-DATE"

This is Eckford's finest "gilt-edge" mixture, containing his most recent developments, and is equal to that supplied to his choicest home trade. The American grown seed is harder and gives better results than the imported stock. Per packet, 5 cents.

BURPEE'S "BEST MIXED" NEW GIANT

This is the finest mixture on this page, containing not only the most highly improved varieties from Eckford, but also many of the choicest varieties of other strains. Packet, 5 cents.

FIFTY CUPIDS IN MIXTURE

This new mixture alone contains most of the shades in the tall Sweet Peas. The flowers range in color from pure white and light pink to dark red and from light lavender to deep purple, while there are several attractive and unnamed striped varieties. Per packet, 10 cents.

TALL NASTURTIUMS

FAVORITE MIXTURE

This mixture is comprised of the most brilliant colorings, both of the Lobbianum Nasturtiums and tall-named varieties, including our New Giant-flowered Sunlight, Moonlight, French Chameleon and Hybrids of Madame Gunther. Per packet, 5 cents; per ounce, 15 cents.

MIXED TOM THUMB NASTURTIUMS

This includes many distinct and showy colors, having both light and dark types of foliage in mixture. It will give a wide range of flowers in beautiful colorings and is very effective when planted in mixture. Per packet, 5 cents; per ounce, 15 cents.

SUNFLOWERS

MANY FLOWERED DOUBLE

The handsome flowers are produced at the base of each leaf, which makes the whole plant most picturesque and highly ornamental. It grows erect about four feet in height, with only a single stalk, but at each leaf joint is a very short stem terminating in a fine double flower. Per packet, 5 cents.

MIGNONETTE

A quick-growing annual, highly esteemed for its delicate fragrance. Price, per packet, 5 cents.

ALL SEEDS ARE FRESH AND TESTED FOR GERMINATION.

ASTERS

NEW JAPANESE ASTERS

The beautiful flowers are of immense size, measuring from five to six inches across, with long petals curiously waved and curled, so as to give them a striking resemblance with the most disheveled Japanese Chrysanthemums. They grow fourteen inches high, are well branched, and produce a number of enormous flowers. We offer two beautiful colors—flesh-colored and rose, mixed. Per packet, 10 cents.

SEMPLER'S NEW BRANCHING ASTERS

All colors mixed of this favorite long-stemmed strain. Per packet, 10 cents.

NEW GIANT COMET ASTERS, MIXED

This new strain equals in feathery form and fine coloring the original Comet Asters, but the plants are of stronger growth, producing flowers of larger size and on longer stems. With good cultivation, flowers of this type frequently measure four inches across, and in their fine form, large size, and long stem approach in beauty the fine Chrysanthemums grown in the greenhouse during the late fall months. Per packet, 10 cents; three packets for 25 cents.

STOCK—TEN WEEKS

GIANT PERFECTION

A splendid race, growing two and a half feet high, with large spikes of perfectly double flowers. All colors mixed. Per packet, 10 cents.

ROYAL PRIZE PANSIES

This mixture contains all the choicest varieties, producing grand large flowers of the richest colorings and the most distinct markings. It includes the fancy striped spotted varieties, the large Trimardeau and boldly-spotted Cassier's Odier. Per packet, 10 cents.

PORTULACA

The Double Rose-flowered produces the finest double flowers in varied colors and markings. Price, double rose-flowered, mixed, per packet, 10 cents; finest single mixed, per packet, 5 cents.

HOLLYHOCK

One of the most majestic of hardy plants, and a clump or line in any garden gives an effect not attainable with any other plant. For planting among shrubbery or forming a background for other flowers it is without equal. The seeds offered have been saved from the finest double flowers. Per packet, 10 cents.

MARIGOLDS

The African varieties are stronger in habit and produce much larger flowers. Per packet, African double, mixed, all varieties, 5 cents.

COSMOS

(New Early Blooming.) This beautiful new strain produces lovely flowers of large size; pure white, pink and crimson in color. It can be had in bloom from July to November and grows freely everywhere. Price, per packet, 10 cents.

25-CENT MAIL COLLECTIONS

In ordering simply name numbers of collections desired. We will send ANY NINE COLLECTIONS BY EXPRESS, AT PURCHASER'S EXPENSE, FOR \$2.00. Every plant in them is guaranteed first class in every particular, labeled, except where noted, true to name, and every plant different, except where noted.

- | | | |
|---|--|---|
| 1—Six ever-blooming Roses, six colors. | 21—Six scarlet Geraniums for bed; not labeled. | 34—Six Fuchsias, single and double. |
| 2—Six red Roses. | 22—Six white Geraniums for bed; not labeled. | 35—Six Heliotropes. |
| 3—Three Tea Roses, three Climbing Roses. | 23—Six pink Geraniums for bed; not labeled. | 36—Eight Coleus; not labeled; all alike; any color. |
| 5—Six hardy Roses for bed. | 24—Six scented Geraniums; not labeled. | 37—Six flowering Begonias. |
| 6—Six white Roses for cemetery. | 25—Seven Chrysanthemums; not labeled. | 38—One Asparagus Plumosus Nanus, one Asparagus Sprengeri and 1 large Caladium bulb. |
| 7—Five cold frame ever-blooming Roses, three-inch pots. | 26—Three Rex Begonias. | 40—Six Cactus Dahlias. |
| 8—Six Roses for winter blooming. | 27—Six Lantanas. | 41—Six white Dahlias. |
| 9—Four Hybrid Perpetual Roses. | 28—Six Carnations; labeled. | 42—Six red Dahlias. |
| 10—Three Pelargoniums. | 29—Six Hardy Pinks; not labeled. | 43—Six Pompon Dahlias. |
| 11—Six Tuberous Begonias, mixed. | 30—Eight scarlet Verbenas; not labeled. | 44—Three Ferns. |
| 14—Six Double Geraniums. | 31—Eight Verbenas; not labeled. | 45—Eight Coleus; not labeled; all different. |
| 15—Three Palms. | 32—Six vines for baskets. | 46—Six Chrysanthemums; labeled. |
| 16—Six Dahlia plants, six sorts. | 33—Five Lemon Verbenas. | 47—One Asparagus Plumosus, one Palm, one Asparagus Sprengeri. |
| 19—Three Hibiscus. | | |
| 20—Six Single and Double Geraniums; labeled. | | |

We grow only the best sorts in large quantities, but make one invariable condition, that the selection of varieties must be left entirely to us. These collections are made up of FINE, STRONG PLANTS of the Best Varieties.

BULBS FOR FALL OF 1909

Preserve this Catalogue for your Bulb or Plant order next fall. Bulbs listed on this page will be ready for shipment September 15

FINEST HOLLAND-GROWN BULBS

NAMED HYACINTHS

Price, either Single or Double, 10 cts. each, 50 cts. for 7, \$1 for 15, by mail, postpaid

SINGLE

Alba superbissima. Pure white; very large; fine.
Baron van Thuyll, White. Large, early.
Baron van Thuyll, Blue. Very fine; early and large.
Grandeur a Merveille. Blush-white; large; one of the very best.
Amy. Bright scarlet; large and early.
Queen Victoria. Dark red.
Norma. Beautiful rosy pink.
Gigantea. Fine pink. Extra large.
Herman. Orange-yellow.

DOUBLE

Blocksberg. Finest light blue.
Chas. Dickens. Dark blue; one of the best.
Bouquet Royal. Bright rose; red center; very fine.
Bouquet Tendre. Dark red.
La Tour d'Auvergne. The earliest and finest pure white.
La Virginite. Blush-white; large.
Goethe. Large; pure yellow.
Ophir d'Or. Deep yellow; red center.

UNNAMED HYACINTHS

Either single or double, in the following separate colors. Pure White, Red and Pink, Blue Shades, Yellow Shades, All Colors Mixed. 6 cts. each, 60 cts. per doz.

ROMAN HYACINTHS

Fine house plants for winter-blooming. In separate colors, as follows: Pure and Blush-white, Light and Dark Blue, Red and Rose. 5 cts. each, 25 cts. for 6, 50 cts. for 14.

CROCUS

The earliest flowers of spring. Blue, Purple, White, Striped, Yellow, All Colors Mixed. 8 cts. per doz., 50 cts. per 100.

FREESIA REFRACTA ALBA

One of the best bulbs offered to the public in the fall. As to culture, it is sure to succeed and bloom for any one in any situation. The flowers are pure white, with lower petals touched with yellow. The fragrance is delightful. Four to six bulbs can be planted in a 5-inch pot, box or pan, and grown like other bulbs. By planting at intervals from September to November, a succession of flowers can be had throughout the winter. 3 cts. each, 15 cts. for 6, 25 cts. per doz., 50 cts. for 25.

NARCISSUS, or DAFFODIL

Single and double. Finest varieties, mixed. 30 cts. per doz., \$2 per 100, by express.

POLYANTHUS, or PAPER-WHITE NARCISSUS

Extensively used by florists for cut-flowers. Easily grown in the house as a winter bloomer. 5 cts. each, 40 cts. per doz.

TULIPS

Choice early Single and Double varieties, by mail, 4 cts. each, 25 cts. for 9, 50 cts. for 20, \$1 for 45

SINGLE

Artus. Bright scarlet; early; fine.
Chrysolora. The best of all yellows; rich golden yellow.
Cottage Maid. Superb carmine-pink; center feathered white.
Cardinal's Hat. Scarlet and yellow.
Crimson King. Fine clear scarlet.
Kaiserskroon. Bright red with brown; yellow edge; very large.
La Reine. Pure white; one of the best.
Standard Royal Silver. White, with cherry-crimson; extra-fine.
Yellow Prince of Orange. Fine yellow.

DOUBLE

Gloria Solis. Red; yellow border.
Tournesol. Red and yellow.
Rex rubrorum. Fine scarlet.
La Candeur. Pure white.

MIXED EARLY TULIPS

Either single or double. A complete mixture of the best varieties of single and double Tulips. By mail, 25 cts. per doz., \$1.50 per 100; by express, \$1.30 per 100.

PARROT TULIPS

A very distinct species, producing brilliantly colored flowers of great size and grotesque shape; larger than other kinds; all colors mixed. Price same as early mixed Tulips.

LATE-FLOWERING TULIPS

Mixed, either single or double. Price same as early mixed.

LILIES

Lilium auratum (The Golden-banded Lily). The flowers are of immense size, pure white; each petal banded golden yellow. 15 cts. each.

Lilium candidum. A fine, hardy, white Lily. 10 cts. each.

Lilium Harrisii (The Bermuda Easter Lily). Has pure waxy white flowers. 15 cts. each.

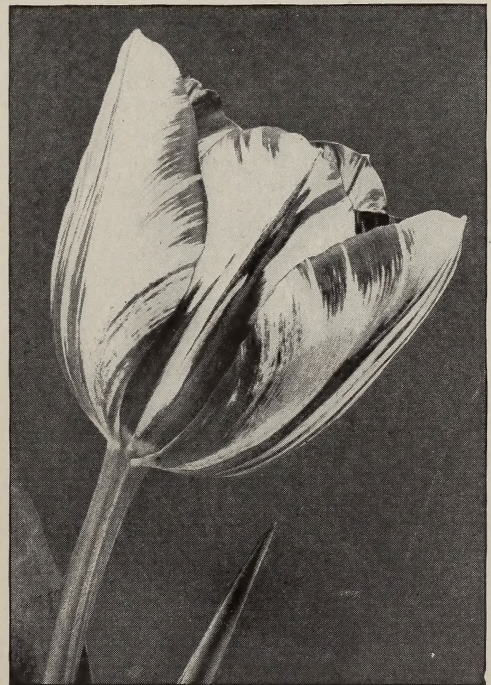
Lilium speciosum rubrum. Very large and fragrant. Color lovely rose and white, spotted crimson. 15 cts. each.

CHINESE SACRED LILY

Imported direct from China. This is one of the most popular winter-flowering bulbs; can be grown in soil or in a vessel of water with a little coarse sand at the bottom. Extra-large bulbs, 12 cts. each, 45 cts. for 4, \$1 for 10

OXALIS

Bermuda Buttercup. Bright golden yellow. 25 cts. per doz.
Grande Duchesse. The flowers of this variety are double the size of the ordinary grade. Bloom profusely; foliage bright green. In separate colors—White, Pink, Red and Yellow, 30 cts. per doz.



SINGLE TULIP



CACTUS DAHLIA
EXQUISITE