

Historic, Archive Document

Do not assume content reflects current scientific knowledge, policies, or practices.

62.67

Will H. Tracy

SPRING - TRADE LIST - 1909

THE PRICES IN THIS LIST CANCEL ALL PREVIOUS LISTS
THIS LIST HOLDS GOOD DURING JANUARY, FEBRUARY AND MARCH.



FOR
FLORISTS,
NURSERY-
MEN
AND
DEALERS
ONLY

THE
LARGEST
ROSE
GROWERS
IN THE
WORLD

The Champion City Greenhouses, = = = = Springfield, Ohio
THE GOOD & REESE CO., PROPRIETORS

WHY OUR ROSE TRADE IS BY FAR THE LARGEST IN THE WORLD

Because Our Roses Grow and Bloom

Under our method of propagation—which is a natural one—growing during the growing season and resting during the non-growing season, we produce a Rose that can have no superior. This is evidenced by our largely increasing trade. Once a customer always one. Sometimes a customer of ours will be led off by cheaper prices, but they invariably after the trial come back to us, our prices being as low as first-class Roses true to name and carefully packed can be produced and sold for. Cheaper prices than we quote always mean cheaper Roses. We invite correspondence on large orders. Mail us your list of needs, giving the varieties and quantities of each you will require, and we will give you the very best prices at which first-class stock can be sold.

OUR TERMS OF SALE

Conditions The plants named are offered at the rates quoted, provided that not less than ten of each variety are taken at the hundred rate, not less than 250 at the thousand rate, nor less than three at the dozen rate.

Terms Three per cent. discount for cash with order; two per cent. discount on all invoices paid within ten days. All bills subject to draft in thirty to sixty days, unless otherwise agreed upon.

Substitution Under no circumstances will we substitute unless privileged to do so by purchaser. Customers will save time to give second choice of any variety should we be out of their first choice.

Packing To far off points many customers have the soil removed from the roots of Roses and then wrapped in damp moss, thereby saving express charges. Customers who desire their Roses packed in this way will so state when they order. We will not be responsible for loss or damage in transit when so packed. We make no charge for packing.

Unknown Correspondents Orders from unknown correspondents must be accompanied by the cash, or satisfactory bank or business reference. Remember, it takes time to write your reference and get their reply. If ordered sent C. O. D., one-third the value of the stock called for must be remitted with the order. We make no deviation from this rule, as at the very low rate offered we cannot afford to run any risk. This rule will be strictly adhered to.

Complaints No complaints will be entertained unless made immediately on receipt of goods.

Remittance Should be made either in the form of Money Order, Bank Draft, Express Order or Registered Letter. Remittances in any other way are entirely at the sender's risk. Personal checks not accepted from unknown correspondents.

Shipping Facilities Having the rival express companies—Adams, American, National, Pacific, United States and Wells Fargo—these companies charge one through tariff rate over their own lines and have working arrangements with the Southern, Great Northern and Northern Pacific Express Companies, thus insuring you the lowest possible one through rate without the usual custom of charging two or more local rates where goods are handled by two or more express companies; thus we can reach almost any point in the United States by express at one rate, insuring our customers the lowest express charges.

Plants by Express All goods are sent by express unless otherwise ordered.

Plants by Freight We will not ship perishable goods by freight except under the following condition. You to give us in writing before goods are shipped, release from all loss or damage in transit.

New Low Express Rate The following notice goes on each shipment of plants where the expressage is to be collected from purchaser:

EXPRESS AGENTS—LIVE PLANTS

If not delivered upon arrival, notify both Consignee and Shipper. This package contains Plants, Bulbs and Seeds, and is carried under General Special Rate Scale N of Classification. The charges on this shipment to destination are.....

The amount of the expressage you will have to pay will be marked in the blank space on this notice. Whether it is or not and you think you have been overcharged, take a receipt for the payment you make and return to us, and if you have been overcharged, we will have the amount refunded to you at once, and we will collect from the agent at your end. All the trouble you will be to us to get a receipt and send it to us. The saving under Special Rate Scale N is from 20 to 33 per cent.

Plants Prepaid by Express To patrons in California and other far-off points we make a specialty of packing plants so as to make the expressage light, the expressage when prepaid being eight cents per pound. So, if you wish to avoid expressage, when the rate is high, add one-fifth additional to your remittance, and we will prepay same through to destination.

In Filling Your Orders We shall do our best to make every shipment satisfactory and profitable to you. In every case where we fail to do this from any cause, do not hesitate to report to us at once. We believe in liberal count, careful labeling and light, secure packing.

The Management Of our company is under the personal supervision of the Good Brothers, each of whom has been in the growing and shipping of Roses and Plants his entire life.

FRANK E. GOOD,
In charge of growing department,
JOHN M. GOOD,
In charge of sales department.
HARRY F. GOOD,
In charge of shipping department.

ADDRESS

THE GOOD & REESE COMPANY

(THE LARGEST ROSE GROWERS IN THE WORLD)

Champion City Greenhouses,

SPRINGFIELD, OHIO

GOOD & REESE ROSES AND THE OTHERS

YES, FORCING ROSES ARE RUNNING OUT and no wonder. From the time the cutting is taken until the plants are dug from the forcing benches and thrown out, the method pursued is absolutely wrong. There is not one iota that can be said in favor of the method—they are the others. GET GOOD & REESE SUMMER PROPAGATED WINTER RESTED OWN ROOT ROSES. Get them in March or April and pot into three-inch pots; they will supply their own legs to stand on without going to the grafting factory. You are in a rut, better get out. This means you. One grower from Chicago paid us a visit for Roses. He said something was the matter, the forcing Roses were running out. Just think of it, have to graft Brides and Maids. Isn't it preposterous on the face of it! Our advice: Try Good & Reese summer propagated own root Roses, and your troubles about weakness will be a thing of the past.

CERTIFICATE OF NURSERY INSPECTION

State of Ohio, Department of Agriculture,
Division of Nursery and Orchard Inspection,
Columbus, Ohio, August 29, 1908.

This is to certify that in accordance with the provisions of the Nursery and Orchard Inspection Law of the State of Ohio, the Nursery Stock for sale by THE GOOD & REESE CO., Springfield, Clark County, Ohio, has been inspected by a duly authorized inspector, and has been found apparently free from dangerously injurious insects and plant diseases.

Invalid after September 15, 1909.

(Signed) W. E. SHAW,
Chief Inspector.



ROSE NOVELTIES FOR 1909



And Some of the Newer Roses of Recent Introduction

All Prices are From 2½-inch Pots. If You Desire Prices on 4-inch Plants, Write Us.

ANNA MULLER—The New Pink Baby Rambler. The shining brilliant pink flowers are produced in great profusion, in large clusters, from June until late in the fall. Each individual floret measures two inches in diameter. The petals are twisted, making a charming effect. 50 cents per dozen; \$3.00 per hundred.

AURORA—One of the grandest of all Hybrid Tea Roses. Color clear, bright pink, full and double to the center. The most fragrant of all Roses; a gem. 60 cents per dozen; \$4.00 per hundred.

BLUMENSCHMIDT—Pure rich yellow; outer petals edged tender rose. A sport from Mademoiselle Franzisca Kruger, which it resembles in form. Winner of three first premiums. 15 cents each; \$1.75 per dozen.

BABY RAMBLER—It is in bloom all the time, flowers in large clusters of brightest crimson. It grows to a height of eighteen inches and hides the plant with its bloom. A most wonderful Rose. 50 cents per dozen; \$3.00 per hundred; \$25.00 per thousand.

BETTY (H. T.)—Odd coppery-yellow, overspread with golden-rose; not very full, but most profuse in bloom. A remarkable decorative variety. 15 cents each; \$1.00 per dozen; \$7.00 per hundred.

CHERRY RIPE—An extraordinary free flowering Hybrid Tea, branching in habit, vigorous and hardy, and as free as a Tea Rose. The flowers are medium in size, well formed, globular, light rosy-crimson almost the color of Alfred Colomb; as fragrant as the Hybrid Perpetuals which it much resembles in form; every shoot produces a bloom; one of the most promising Roses of the year. Should be tried by all. 60 cents per dozen; \$3.50 per hundred.

CATHERINE ZEIMET—The New Double White Baby Rambler Rose. This is surely a beauty and a grand addition to the Baby Ramblers. It grows to a height of twenty inches and produces double white flowers in abundance. It has a fragrance similar to Hyacinths. Of free, compact growth and very attractive. Produces a sheet of white color. It is in a class by itself and for potting up for forcing for Christmas and Easter sales has no equal. 50 cents per dozen; \$3.50 per hundred.

DEAN HOLE—An intense salmon-pink, with bud of extraordinary length opening into a mammoth bloom of splendid substance. An English gold medal Rose that is bound to rank with the very best. 75 cents per dozen; \$5.00 per hundred.

DR. CAMPBELL HALL—Coral-rose; suffused white; base of petals yellow; flowers large, full and perfectly formed; very free. A charming Rose. 75 cents per dozen; \$5.00 per hundred.

ETOILE DE FRANCE—The gold medal Rose of France, and claimed by the raiser, J. Pernet Ducher, of Lyons, France, to be the finest Rose he has ever sent out. We believe with him that it has no superior. The flowers are very large and borne on good, long, stiff stems; color a lovely shade of clear, red-crimson velvet; very fragrant and keeps well. In England, where it has been tried extensively during the past season, it has caused quite a sensation. Our opinion is that it will become as much of a favorite as La France. Keep your eye on this variety, as it is a stayer and altogether a grand variety. It is a good grower, a free bloomer, fine, rich color, deliciously fragrant. What more can be said of a Rose? 50 cents per dozen; \$3.50 per hundred.

FREIHERR VON MARSCHALL—As an outdoor Rose it has no superior. The flowers are large, beautifully shaped, double and full, borne in wonderful profusion all through the growing season. It is bright red, one of the brightest, if not the very best red Tea Rose in existence, fine, long, well-shaped buds. 50 cents per dozen; \$3.50 per hundred.

GENERAL McARTHUR—A new Rose that is already a fixture in many gardens. Color brilliant scarlet, a very bright-colored Rose of good size and double; very free blooming and fragrant. Many claim for this that it will rank with Helen Gould as a red Rose. It has certainly shown up well with us the past two seasons. We advise trying this Rose. 60 cents per dozen; \$3.50 per hundred.

GRUSS AN SANGERSHAUSEN — Flowers large, full and elegantly formed; color reddish-scarlet, center deeper; buds long and pointed; very free and continuous; foliage and habit excellent. This looks like the red Rose for the million. 75 cents per dozen; \$5.00 per hundred.

HELEN GOOD (Tea.)—This is a true Cochet Rose and after two years' trial in the garden we pronounce it as good if not better than any Rose for the garden ever sent out. We bought the entire stock of this Rose from the introducers, paying them \$1,000 for two plants, this being by far the highest recorded price ever paid for any Rose. The color is a delicate yellow, suffused with pink, each petal edged deeper, very chaste and beautiful. The color, with its immense size and exquisite form, makes it without question the greatest Tea Rose ever introduced and we are proud to have brought it out. Be sure and try it. A genuine Cochet. The complimentary letters from our customers about this Rose are bearing out our expectations in every respect as to its beauty and hardness. 50 cents per dozen; \$3.50 per hundred.

JOSEPH HILL—This fine new Rose produces a long pointed bud of the color of Austrian Copper, flushed bright red and rose. This is ranked as the best of the parti-colored Roses and will unquestionably have a future. 60 cents per dozen; \$4.00 per hundred.

KILLARNEY — Siebrecht, the great Fifth Avenue (New York) florist, claims that this is the finest pink Rose ever introduced. He used it almost exclusively during the past year for the great society decorations of New York. In coloring it is especially beautiful, being an exquisite shade of deep shell-pink, while the flowers are enormous in size, the petals being frequently two and one-half inches deep. 60 cents per dozen; \$4.00 per hundred.

LA DETROIT—The new Detroit Rose, which has been so largely advertised and exhibited. Shell-pink, shading to soft rose, reverse of petals cream colored, fragrance like that of old Bon Silene. In form it is large, cup-shape; petals shell-like; rich, glossy foliage; a rampant, vigorous grower, making fine plants, and is unexcelled for cutting. 50 cents per dozen; \$3.00 per hundred.

LADY BATTERSEA (The Red Kaiserin)—In the English gardens this Rose is very popular, its novelty and charm lying in its unusual coloring and its long and graceful buds. Called by many the Red Kaiserin. The buds are full and pointed and of a beautiful cherry-crimson, permeated with an orange shade. We recommend this as one of the easiest and best. 50 cents per dozen; \$3.00 per hundred.

LAURENT CARLE—Long buds borne on long stems opening into large flowers of perfect form, just full enough to open freely. Color brilliant carmine; very promising. 10 cents each; \$1.00 per dozen.

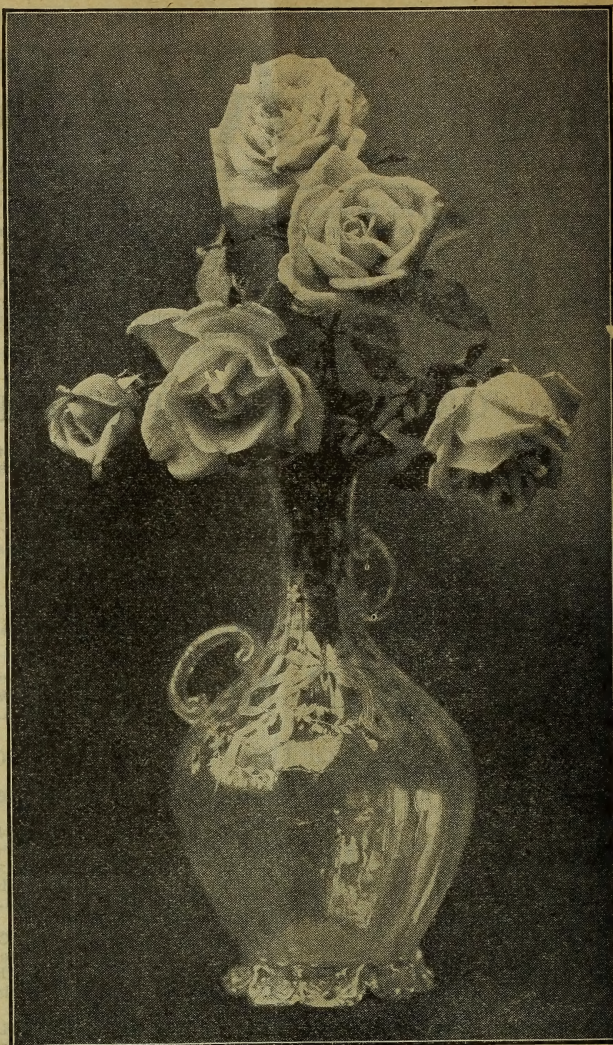
MADAME JENNY GILLEMOT—Buds long and pointed, deep saffron-yellow, opening canary with dark golden shadings; blooms large, petals immense; opens very freely; a fine upright grower of branching habit; exquisitely beautiful; very large in size, but very long and pointed. 50 cents per dozen; \$3.50 per hundred.

MADAME LEON PAIN—Robust growth; smooth wood; handsome plum-colored foliage; flowers large, full and free in opening; silvery-salmon, center orange-yellow, reverse bright red and yellow. The beautiful coloring almost baffles description. In our gardens the past summer it has at all times been a grand sight, bearing a great profusion of exceedingly large brilliant Roses. 50 cents per dozen; \$3.50 per hundred.

MME. CONSTANT SOUPERT—Enormous buds, sharply pointed and plump. Color deep golden-yellow tinted and shaded with rosy-peach. One of the finest of recent introduction. \$1.00 per dozen.

MME. MELAINE SOUPERT—Flowers very large, almost full and globular. Immense cupped petals. Color golden-yellow suffused bright pink. 5 cents per dozen; \$3.50 per hundred.

MAGNAFRANO—This Rose is becoming popular because of its splendid crimson-scarlet color and magnificent buds. The flowers are large, very regular, full and double, and deliciously sweet. 60 cents per dozen; \$3.50 per hundred.



Helen Good.

MAMAN LEVAVASSEUR—This is Baby Dorothy or the New Pink Baby Rambler. A grand New Pink Baby Rambler, producing enormous quantities of pure pink flowers. 50 cents per dozen; \$4.00 per hundred.

MRS. BENJAMIN R. CANT—A splendid new garden Rose of round, full form and solid color, clear, bright rosy-pink, large size, double and full, and quite fragrant. The most vigorous grower of all Tea Roses. It is an excellent garden Rose—has come to stay. 50 cents per dozen; \$3.00 per hundred.

O. A. SINGER—A fine garden Rose of clear carmine color, deepening to the center of the flower. It flowers very continuously and freely, especially fine in spring and autumn. This grand variety was sent out by Mr. Peter Lambert, the great German rosarian, and named by him in honor of Mr. A. Singer, the Oberhofgartner of Bad, Kissingen. 60 cents per dozen; \$3.50 per hundred.

PERLE VON GODESBURG (The Yellow Kaiserin)—This is identical with Kaiserin Augusta Victoria, the peer of any Rose except in color, being a pure white with a yellow center. Exquisitely beautiful. 60 cents per dozen; \$3.50 per hundred.

RHEA REID—This is the new red forcing Rose originated by E. G. Hill. Flower large and double. This is one of the new Roses that has come to stay; anyone can grow it and get results. It combines the quality of a fine forcer and good bedder. The winner of the France medal as best new Rose of the year. Very free blooming and exquisitely fragrant; rich, dark velvety-red. A grand Rose. \$1.50 per dozen; \$10.00 per hundred.

RICHMOND—It is our good fortune to have a fine stock of this grand Rose, which took the gold prize at the World's Fair at St. Louis for the best new Rose exhibited. There were hundreds of competitors for these great honors, and it at once stamps this Rose as a wonder, for the judges did not hesitate one moment in awarding it first prize and a gold medal. In color it is a deep, rich, velvety-crimson, both buds and flowers are large and handsome; extra fine. 50 cents per dozen; \$3.50 per hundred.

SOUVENIR OF WOOTTON (Hybrid Tea.) (Forcing.)—Color velvety-red, equal to Jacqueminot. It is a double Rose, and is good in bud, half open, or fully expanded. Full, open flowers, frequently six inches in diameter. A most excellent Rose. 50 cents per dozen; \$3.50 per hundred.

STRIPED REINE MARIE HENRIETTE—Everybody is familiar with that best of all climbing red Roses, Reine Marie Henriette. It is planted more largely in Philadelphia and south of that latitude than any other climbing Rose. This striped or variegated form is identical in every way except that the flowers are a bright red, distinctly striped with light pink. It will be planted as widely as any climbing Rose when Rose lovers know its beauty. 50 cents per dozen; \$3.00 per hundred.

SUNRISE (Tea.) (Forcing.)—In close bud form it shows the high, brilliant colors seen only in the Austrian Copper, scarlet and yellow. As it opens the color deepens, the scarlet turning darker red, the yellow to orange and copper, inside of petals golden-yellow. Large, perfectly double and of grand form. 60 cents per dozen; \$3.50 per hundred.

SUNSET (Tea.) (Forcing.)—The color is a remarkable shade of rich golden-amber, elegantly tinged and shaded with dark, ruddy copper, intensely beautiful and resembling in color a splendid "after-glow." 50 cents per dozen; \$3.50 per hundred.

TAUSENDSCHON, or THOUSAND BEAUTY—A climbing Rose that comes to us from Germany. The flowers upon first opening are the most delicate shade of pink ever seen in a Rose, might be described as a white delicately flushed pink changing to rosy-carmine. It gets its name from its many flowers and the variation in coloring; beautiful. 50 cents per dozen; \$3.50 per hundred.

TRIER—Semi-double, creamy-white, producing large clusters, free and continuous. Mr. Lambert's new Rambler. 50 cents per dozen; \$3.00 per hundred.

WM. R. SMITH, or MAIDEN'S BLUSH—Have you ever seen the blush of a beautiful maiden? If so, you will readily understand why this Rose has been so named. The soft blending of the salmon-pinks and the rose-pinks and the beautiful flesh tints in this Rose give a singular resemblance to the entrancing flush on a maiden's cheek. Grown by Shellum, the noted Philadelphia florist, a grand garden Rose. 60 cents per dozen; \$4.00 per hundred.

WELLESLEY—First shown by one of the Massachusetts growers. Wellesley has been awarded some of the best prizes at the Rose shows all over the country. The color is a beautiful shade of pink, the outside of the petals being very bright in color, with silvery reverse. 60 cents per dozen; \$4.00 per hundred.

ROSES

Roses of the type usually known as Ever-bloomers, embracing Teas, Hybrid Teas, Bourbons, Chinas, etc. Varieties suitable for forcing are so designated. We offer two sizes of most of the varieties of Roses, 2½-inch pots and 4-inch pots.

Price of all Roses under this head, 2½-inch pots, 50 cents per dozen, \$3.00 per hundred; 4-inch pots, \$1.25 per dozen, \$10.00 per hundred.

AGRIPPINA (China)—Free bloomer; color bright red.

ALLIANCE FRANCO-RUSSE (Tea.) — Beautiful shades of yellow, sometimes with pink.

ANTOINE RIVOIRE (H. T.)—Creamy-white with delicate pink tinge.

ANTOINE VERDIER (H. T.)—Glowing pink; shading to rich crimson.

ARCHDUKE CHARLES (Bourbon) — Opens red, changing to silvery-pink.

AUGUSTINE HALEM (H. T.)—Deep carmine-red.

BESSIE BROWN (H. T.)—Pure white, sometimes faintly tinged pink.

BON SILENE (Tea.)—Forcing; crimson-rose; good bloomer; fine buds.

BARBOU JOB (Hybrid Bourbon)—Of the deepest rich velvety-crimson.

BEAUTY OF STAPLEFORD (H. T.)—Rosy-crimson, shading to pink.

BOUGERE (Tea)—The best general purpose pink.

BRIDESMAID (Tea)—Forcing; a grand pink Rose for all purposes.

BURBANK (Bourbon) — Color cherry-rose; a great bloomer.

CAROLINE MARNIESSE (Bourbon) — Blush-white; free bloomer; hardy.

CATHERINE MERMET (Tea)—Forcing; one of the best pink Roses.

CHARLES RIVOLLI (Tea)—Fine bud and flower; flesh color.

CHAMPION OF THE WORLD (Bourbon)—Color same as Hermosa; larger.

CLARA WATSON (Tea)—Salmon-pink; very fine.

CHRISTINE DE NOUE (Tea)—Fine buds of rich red or rose; extra.

CLOTHILDE SOUPERT (H. Pol.)—Variable from pure white to pink.

COMTESSE RIZA DU PARC (Tea)—Coppery-rose, shaded soft blush.

COQUETTE DE LYON (Tea)—Free bloomer; light yellow.

CORNELIA COOK (Tea)—Forcing; a beautiful white Rose.

DEVONISIS (Tea)—This is called the Magnolia Rose.

DR. GRILL (Tea)—Coppery-yellow; popular.

DUCHESSE OF ALBANY (H. T.)—Lovely shade of deep rose.

DUCHESS DE BRABANT (Tea)—Light rose, shading to salmon.

ELISE HEYMANN (Tea)—Salmon-pink, center rosy-peach.

EMPRESS EUGENIE (Bourbon)—One of the sweetest of all pink Roses.

ENCHANTRESS (Tea)—Creamy-white, tinged with buff.

ETOILE DE LYON (Tea)—Best yellow bedder to date.

FRANCOIS DUBREUIL (Tea)—Vivid crimson with velvety shadings.

GEN. DE TARTAS—Bright china Rose; long pointed buds and an old favorite.

GEN. R. E. LEE (Tea)—Color deep orange-yellow.

GLADYS HARKNESS (H. T.)—A grand pink Rose.

GOLDEN GATE (Tea)—Forcing; shell-pink, shading to creamy-flesh.

GRUSS AN TEPLITZ (H. China)—Brightest scarlet, with velvety-crimson.

HELEN GOULD (H. T.)—Rosy-crimson; fine bedder.

HERMOSA (Bourbon)—A pleasing shade of bright pink.

HOMER (Tea)—Color variable, from light rose to deep rose.

ISABELLE SPRUNT (Tea)—Clear lemon-yellow.

IVORY (Tea)—Forcing; the white Golden Gate.

JULES FINGER (Tea)—Long buds of rosy-scarlet.

KAISERIN AUGUSTA VICTORIA (H. T.)—Pure white; extra fine.

LUCULLUS (China)—Beautiful dark crimson-maroon.

LA FRANCE (H. T.)—Forcing; the queen of pink Roses.

LA PRINCESSE VERA (Tea)—Light fawn, penciled with blush.

LA SYLPHIDE (Tea)—Blush, with fawn center.

LADY MARY CORRY (Tea)—Creamy-yellow; fine bud.

LE PACTOLE (Tea)—Light yellow, changing to almost white.

LOUIS PHILIPPE (China)—Brilliant fiery-red; the best red bedder.

LOUIS RICHARD (Tea)—Lovely peachblow-pink and salmon.

MADAME DE VATRY (Tea)—Rich red, changing to silvery-peach.

MADAME LOMBARD (Tea)—Red, flushed with silvery-pink.

Mlle. HELENE GAMBIE (Tea)—Orange-yellow, shading to coppery-yellow.

MME. E. DURANTHON (H. T.)—Yellow, tinged pink.

MADAME ERNEST PERRIN (Tea)—Deep apricot, shaded yellow.

MADAME ABEL CHATENAY (H. T.)—Forcing; creamy-rose and salmon.

MME. SCHWALLER (H. T.)—Bright pink; delightfully fragrant.

MME. CAROLINE TESTOUT (H. T.)—Forcing; brilliant satiny-rose.

MME. CAROLINE KUSTER (Tea)—Long buds, light yellow.

MME. CAMILLE (Tea)—Rosy-flesh with salmon shades.

MME. DE WATTEVILLE (Tea)—Forcing; white, tinged rosy-blush.

Mlle. FRANZISCA KRUGER (Tea)—Variable from yellow to rose.

MME. JULES GROLEZ (H. T.)—The red Kaiserin; extra.

Mlle. CECILE BERTHOD (Tea)—Deep golden-yellow.

MME. WELCHE (Tea)—Soft amber-yellow; extra.

MME. MARGOTTIN (Tea)—Citron-yellow, red center.

MME. JOSEPH SCHWARTZ (Tea)—White, flushed with pink.

METEOR (H. T.)—Forcing; velvety-red; a grand Rose.

MARIE GUILLOT (Tea)—Pure white; as perfect as a Camellia.

MARION DINGEE (Tea)—A fine, bright red.

MARIE LOUISE (Tea)—Profuse bloomer; color light blush.

MARIE DUCHER (Tea)—Beautiful light rose; very fine.

MARIE VAN HOUTTE (Tea)—Pale yellow, edged with rose.

MAURICE ROUVIER (Tea)—Color light rose; very free bloomer.

MAMAN COCHET PINK (Tea)—A grand pink Rose; extra.

MURIEL GRAHAM (Tea)—Forcing; creamy-white, edged pink.

MRS. DeGRAW (Bourbon)—Bright coral-pink.

MRS. ROBERT GARRETT (H. T.)—Shell-pink, deeper in center.

MOSELLA (H. Pol.)—Chrome-yellow and creamy-white.

MONTHLY CABBAGE (Bourbon)—Deep pink; a fine Rose.

MRS. BEN. R. CANT (Tea)—Dark carmine, flushed crimson.

PAPA GONTIER (Tea)—Forcing; carmine flushed crimson.



White Maman Cochet.

PERLE DES JARDINS (Tea)—Deep golden-yellow.

PRINCESS BONNIE (H. T.)—Fine bright red.

PRINCESS SAGAN (Tea)—Bright scarlet, velvety texture.

RAINBOW (Tea)—Forcing; carmine, striped with crimson.

QUEEN'S SCARLET—Bright fiery red; good bedder.

SAFRANO (Tea)—Forcing; apricot-yellow, with orange.

SOUVENIR DE PRES. CARNOT—Delicate fawn, deeper in center.

STRIPED LA FRANCE—Pink, striped white.

SANGUINEA (China)—A fine bedding red Rose.

SILVER KING (Bourbon)—A bright shell-pink; extra.

SNOWFLAKE (Tea)—Pure white; does not pink.

SUMBREUIL (Bourbon)—White, tinged delicate rose.

SOUV. DE CATHERINE GUILLOT (Tea)—Austrian copper, flushed rose.

SOUV. DE LA MALMAISON (Bourbon)—A grand flesh-colored Rose.

SOUV. d'ELISE VARDON (Tea)—A grand bedder; color apricot.

SOUV. D'UN AMI (Tea)—Delicate rose, shaded salmon.

SOUV. DE PIERRE NOTTING (Tea)—Yellow, flushed light peach.

THE BRIDE (Tea)—Forcing; a grand white Rose.

THE QUEEN (Tea)—Pure white; flowers produced freely.

TRIOMPHE DE PERNET PERE (H. T.)—Magenta-red passing to bright crimson.

VISCOUNTESS FOLKESTONE—White, suffused with fawn.

WHITE BOUGERE—Pure ivory-white.

WHITE MALMAISON—White, tinted lemon; extra.

WHITE MAMAN COCHET (Tea)—The great bedding white Rose.

WHITE LA FRANCE (H. T.)—A beautiful fawn-white.

POLYANTHA, OR FAIRY ROSES

- Price, two-and-one-half-inch pots, 50 cents per dozen, \$3.00 per hundred; four-inch pots, \$1.25 per dozen.
- GEORGE PERNET**—Bright rose, with touches of yellow.
- JEANNIE DRIVON**—Flesh, changing to white.
- Mlle. CECILE BRUNNER**—Rosy-pink on a rich creamy-white ground.
- MARIE PAVIE**—Rich creamy-white, flushed carmine-rose.
- MA PETITE ANDRE**—Bright, clear red.
- MIGNONETTE**—Clear pink, passing to white.
- PRINCESS MARIE ADELAIDE**—Pink; a gem in every way.
- PRIMULA**—China-rose, snow-white in the center.
- PERLE D'OR**—Coppery gold changing to fawn.
- PINK SOUPERT**—Charming pink bedding Rose.
- PAQUERETTE**—Pure white.
- SCHNEEWITCHEN**—A profuse-blooming white Polyantha.



Catherine Zelmet (White Baby Rambler). See description page 3.

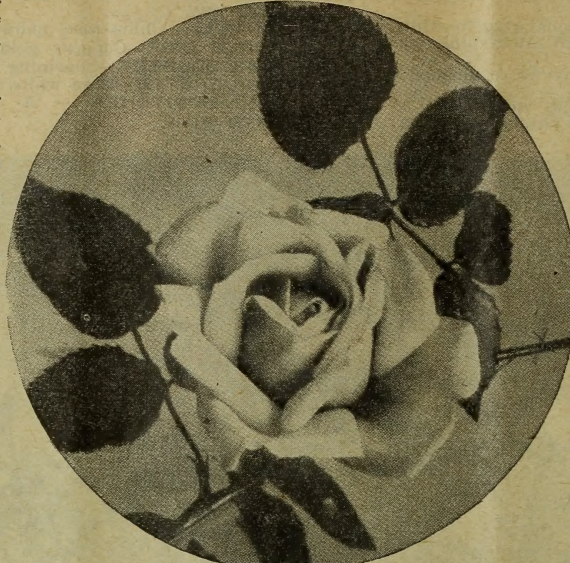
CLIMBING ROSES Including the Noisettes, Climbing Teas, Etc.

- Price, two-and-a-half-inch pots, 50 cents per dozen, \$3.00 per hundred; four-inch pots, \$1.25 per dozen, \$10.00 per hundred; except Marechal Niel, the four-inch pots, \$2.00 per dozen, \$15.00 per hundred.
- ALISTER STELLA GRAY**—Light yellow; always in bloom.
- AMERICA**—Creamy-yellow or fawn color.
- CLIMBING DEVONIENSIS**—Same as Devoniensis, except climber.
- CLIMBING CECILE BRUNNER**—Rosy-pink, with creamy-white.
- CLIMBING MALMAISON**—A beautiful flesh-colored climber.
- CLIMBING KAISERIN**—Pure white; a grand Rose.
- CLIMBING LA FRANCE**—A climbing form of La France.
- CLIMBING CLOTHILDE SOUPERT**—Identical with Clothilde Soupert, except it is a rapid climber.
- CLIMBING MARIE GUILLOT**—A grand pure white climber.
- CLIMBING WOOTTON**—Magenta-red and velvety crimson.
- CLIMBING METEOR**—A grand red Rose.
- CLIMBING PAUL NEYRON**—Fine, double, deep rose.
- CLIMBING PERLE DES JARDINS**—Golden-yellow.
- CLOTH OF GOLD**—A clear golden-yellow.
- ELIE BEAUVILLAIN**—A beautiful salmon-fawn.
- ESTELLE PRADEL**—See Zelia Pradel.
- GAINSBOROUGH**—Delicately tinted flesh, almost white and as lustrous as satin.
- GOLDEN CHAIN**—Orange-yellow or deep saffron.
- JAMES SPRUNT**—Deep cherry-red.
- LAMARQUE**—Pure white, in large clusters.
- MARECHAL NIEL**—The world-renowned yellow.
- MRS. ROBERT PEARY**—See Climbing Kaiserin.
- MARY WASHINGTON**—Pure white, perfectly double, in immense clusters.
- PILLAR OF GOLD**—Rosy-pink, with coppery-yellow; a grand, good Rose.
- REINE MARIE HENRIETTE**—The grandest of all red climbers.
- SOLFATARE**—Fine clear sulphur-yellow.
- WM. ALLEN RICHARDSON**—Deep orange-yellow.
- ZELIA PRADEL**—Lemon-yellow, changing to creamy-white.

HARDY CLIMBING ROSES Including the Ramblers

Two-and-one-half-inch pots, 50c per dozen; \$3.00 per 100; four-inch pots, \$1.25 per dozen; \$10.00 per 100.

BALTIMORE BELLE — Blush-white, in large clusters.
CLIMBING WHITE PET — Pure white flowers, immense clusters.
CRIMSON RAMBLER — The greatest of all climbing Roses.
CARMINE PILLAR — Color a delightful shade of carmine.
DEBUTANTE — Pure white, borne in clusters.
DOROTHY PERKINS — Beautiful shell-pink.
DUNDEE RAMBLER — White, tinged pink.
EVERGREEN GEM — Light yellow; vigorous grower.
EMPERESS OF CHINA — Bright pink, in large clusters.
GARDENIA — Double light yellow flowers.
KEYSTONE — Light yellow, changing to white.
JERSEY BEAUTY — Pale yellow; strong grower.
LADY GAY — Double deep pink; extra.
MANDA'S TRIUMPH — Large clusters of double white flowers.
PRAIRIE QUEEN — The old standby red climber.



Climbing Kaiserin.

PINK RAMBLER — Color deep pink; desirable.
PINK ROAMER — Bright, rich pink and orange-red.
PHILADELPHIA RAMBLER — Large flowers, and darker color than Crimson Rambler.
PSYCHE — Bright rose tinted salmon; grand.
RUSSEL'S COTTAGE — Dark red, double and full.
RUBIN — Rich ruby-red; a true Rambler.
S. O. PERFECTION — Soft blush, changing to white.
SEVEN SISTERS — Crimson to white, and all intermediate shades; extra.
TENNESSEE BELLE — Beautiful pink, free bloomer.
UNIVERSAL FAVORITE — Fine double rose-colored blooms.
WM. C. EGAN — A grand climber; rose-colored blooms.
WHITE RAMBLER — Double white, in clusters.
YELLOW RAMBLER — Sulphur-yellow; fine.

HYBRID PERPETUAL ROSES Our Hybrid Roses are Fine, Strong Plants, with Healthy Foliage and Bright Roots.

Price, 50c per dozen, \$3.50 per hundred (except where noted); four-inch pots, \$1.25 per dozen; \$10.00 per hundred.

ALFRED COLOMB — Cherry-crimson.
ANNA DE DIESBACH — Bright, deep, clear pink.
BLACK PRINCE — Splendid dark crimson flowers.
CONRAD F. MEYER — Deep rich rose; very bright, grand in every way. \$4.00 per hundred.
CAPTAIN CHRISTY — Delicate peachblow-pink.
CLIO — Flesh color, shading to rosy-pink.
CHESHUNT HYBRID — Beautiful bright red.
COQUETTE DES ALPES — Pure white, full and free.
COUNTESSES OF ROSEBERY — Satiny-pink, deepening to bright rose.
DINSMORE — Cherry-red.
DUKE OF EDINBURG — Bright red.
EARL OF DUFFERIN — Very dark red.
FRAU KARL DRUSCHKI — (New.) Pure white. 75 cents per dozen; \$5.00 per hundred.
FRANCOIS LEVET — Deep rose; extra fine.
GLOIRE DE L'EXPOSITION BRUXELLES — Dark maroon.
GEN'L JACQUEMINOT — Bright red.
GIANT OF BATTLES — A fine, rich red Rose.
GLOIRE DE MARGOTTIN — Deep rich red, semi-double.
GLOIRE LYONNAISE — Creamy-white; fine in bud.
JOHN HOPPER — Bright pink; very double.
J. B. CLARKE — (New.) Brightest red. 75 cents per dozen; \$6.00 per hundred.
JUBILEE — A pure crimson in its deepest tones.
LOUIS VAN HOUTTE — Dark velvety-maroon.
LADY HELEN STUART — Bright scarlet-crimson.

LA REINE — A beautiful clear bright rose.
MME. A. CARRIERE — White, flushed with rose.
MME. MARIE RADY — Deep cherry-red.
MME. CHAS. WOOD — Bright cherry-red; free bloomer.
MME. MASSON — Bright red; highly perfumed.
MME. PLANTIER — Pure white; fragrant.
MARGARET DICKSON — White, with pale flesh. 75 cents per dozen; \$4.50 per hundred.
MAGNA CHARTA — Large, deep rose.
MARCHIONESS OF LORNE — A fine, bright red.
MRS. JOHN LAING — Clear, bright shining pink. 75 cents per dozen; \$4.50 per hundred.
PRES. LINCOLN — A clear, bright red.
PRINCE C. DE ROHAN — Deepest crimson.
PAUL NEYRON — Deep shining rose; very large.
ROGER LAMBELIN — Glowing crimson; each petal marked with white. 60c per dozen; \$4.00 per hundred.
ROBT. DUNCAN — Bright crimson. 60 cents per dozen; \$4.00 per hundred.
ULRICH BRUNNER — Rich, glowing scarlet-crimson. 60 cents per dozen; \$5.00 per hundred.
VICK'S CAPRICE — Bright rose, striped lighter.

MOSS ROSES

2½-inch pots, 60 cents per dozen, \$4.00 per hundred; four-inch pots, \$1.50 per dozen, \$12.00 per hundred.

HENRI MARTIN — Light red; very vigorous.
MOUSSELINE — Pure white; extra.
PRINCESS ADELAIDE — Deep blush; one of the best.

MISCELLANEOUS ROSES

CHEROKEE — This is the famous Cherokee Rose of the South; hardy everywhere; creamy-white; single. 2½-inch pots, 50 cents per dozen; \$3.00 per hundred.
DOUBLE CHEROKEE — A beautiful hardy Rose, bearing double white flowers; very fine. 2½-inch pots, 50 cents per dozen; \$3.00 per hundred.
FORTUNE'S DOUBLE YELLOW (Beauty of Glasenwood) — Hardy; bronzed yellow or copper and fawn color. 2½-inch pots, 50 cents per dozen, \$3.00 per hundred; four-inch pots, \$1.25 per dozen.
MADAME GEORGES BRUANT (Hybrid Rugosa) — The Rugosa Roses are admired both for their handsome and distinct foliage and for their beautiful bloom. This variety is an ever-bloomer, pure paper-white in color; flowers semi-double; extra fine. 2½-inch pots, 50 cents per dozen, \$3.50 per hundred; four-inch pots, \$1.50 per dozen.
MICROPHYLLA ALBA — Vigorous grower; very hardy double flowers of a creamy-white. 2½-inch pots, 50 cents per dozen; \$3.00 per hundred.

NEW CENTURY (Hybrid Rugosa) — Beautiful pink in clusters; the ever-blooming Rugosa. 60 cents per dozen; \$4.00 per hundred.

SIR THOMAS LIPTON (Hybrid Rugosa) — Pure white. 60 cents per dozen; \$4.00 per hundred.

WHITE BANKSIA — Vigorous grower; small double pure white flowers in clusters; has the fragrance of the Violet. 2½-inch pots, 50 cents per dozen, \$3.00 per hundred; four-inch pots, \$1.50 per dozen.

WICHURAIANA — Does well under any conditions. The pure white single flowers appear in greatest profusion during the month of July, after the June Roses are all past. 2½-inch pots, 50 cents per dozen, \$3.00 per hundred; four-inch pots, \$1.25 per dozen.

YELLOW BANKSIA — Same as White Banksia except color of blooms is sulphur-yellow. 2½-inch pots, 50 cents per dozen, \$3.00 per hundred; four-inch pots, \$1.50 per dozen.

TREE ROSES.

The Tree Roses are grafted on hardy Rose stalks, about four feet high; are tree-shaped, and when in full bloom are objects of beauty, making handsome plants for a lawn or Rose border. We have them in

twenty-five of the choicest varieties in the different shades of pink, red, crimson and white. Fine, strong trees that will bloom nicely the first year, 50 cents each; \$5.00 per dozen; \$35.00 per hundred. Ready in November.

FIELD GROWN ROSES, SHRUBS, ETC., The Cost of Boxing or Bales to be Added

Grown in a section where they get enough cold weather to properly mature the wood and make them ideal plants for forcing or planting in the open ground. The following named Shrubbery and Roses are grown at Rich, Miss. We guarantee the varieties true to name and grade as indicated. Shipment will be made from that point.

XX Grade will carry four or more branches, and will be cut back to 36 inches of wood.

No. 1 Grade will carry three or more branches, and will be cut back to 24 inches of wood.

No. 2 Grade will carry three or more branches, and will be cut back to 18 inches of wood.

RAMBLERS.

	XX	No.1	No.2
Crimson Rambler			
Helene			
Gruss an Zabern			
Philadelphia			
Pink Rambler	7c	5c	3½c
Psyche			
Queen Alexandra			
Rubin			
White Rambler			
Lady Gay (Add 2c per plant.)			

HARDY COMMON

Anna Maria			
Baltimore Belle			
Prairie Queen	4c	3½c	2½c
Emp. of China			
Mme. Plantier			
Russel's Cottage			

MOSS ROSBS

Eugene de Savoie			
Double Red	8c	6c	4½c
Double Pink			
Henri Martin			

RUGOSAS

A. E. Carmen			
Belle de Poitevine			
Blanc de Coubert			
Calocarpa	9c	7c	5c
Conrad F. Meyer			
Hansa			
White Rugosa			

RUGOSA	XX	No.1	No.2
Red Rugosa			
Sir Thomas Lipton	9c	7c	5c
(Add 1c per plant to C. F. Meyer.)			

HYBRID PERPETUAL

Anna de Diesbach			
Baron Prevost			
Baroness de Rothschild			
Bernard Paul			
Cl. Captain Christy			
Cl. Victor Verdier			
Capt. Hayward			
Caroline de Sansel			
Clio			
Frau Karl Druschki			
Gloire de Lyonnaise	10c	8c	6c
John Hopper			
John Keynes			
Josaine Hanet			
Mme. Gabriele Louizet			
Mme. Charta			
Marchioness of Lorne			
Margaret Dickson			
Paeonia			
Paul Neyron			
Robert Duncan			
Vick's Caprice			

TEA, HYBRID TEA, ETC.

In No. 2 grade only; well branched, stocky, 12 to 15 inches of wood.

Duchesse de Brabant			
Elise Heymann			
Mme. J. Schwartz			
Mme. Lombard			
Mlle. F. Kruger			
Maurice Rouvier			7c
Maman Cochet			
Mrs. B. R. Cant			
White Cochet			
Agrippina			
China Purple			
Prince Eugene			

MISCELLANEOUS

Cl. White Pet		7c	
Cherokee		8c	
Dundee Rambler		8c	

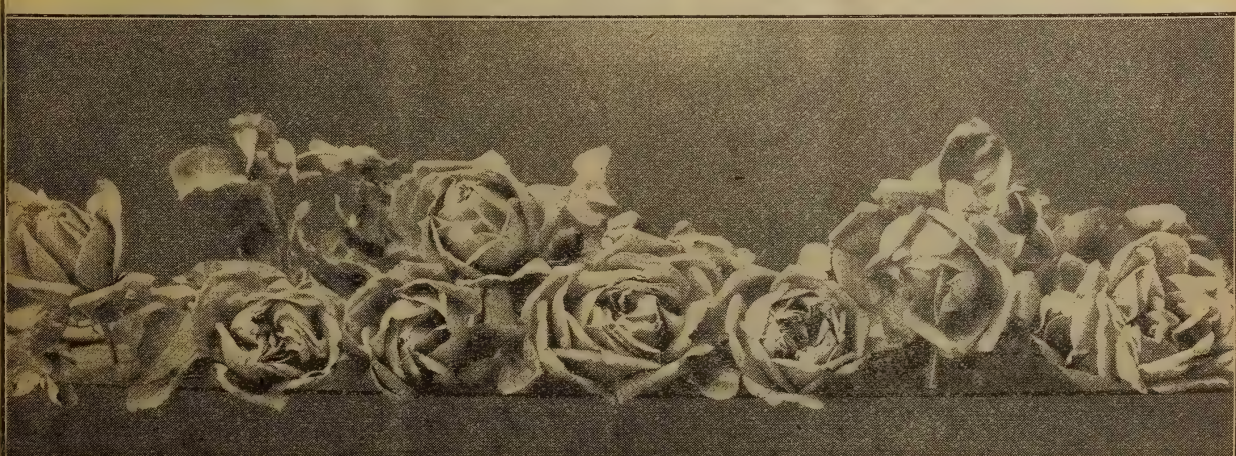
MISCELLANEOUS	XX	No.1	No.2
Rosa Bracteata		7c	
Rosa Moschata Nivea		9c	
River's Musk		9c	
Vivid		9c	
Persian Yellow		12c	
Harrison's Yellow		12c	
Maiden's Blush		8c	
George the Fourth		8c	
Cabbage		8c	

SHRUBS

2-yr. transplanted.	3-4 ft.	2-3 ft.	18-24 in.
Althea Bicolor			
Althea Boule de Feu			
Althea Double Red	7c	5c	3½c
Althea Fulcherrimus			
Althea Lady Stanley			
Althea Totus Albus			
Spiraea Anthony Waterer, heavy clumps			6c
Spiraea Billardi	4c	3c	2c
Spiraea Douglassi		5c	2c
Spiraea Van Houttei	7c	5c	
Spiraea Blue		6c	
Honeysuckle, Scarlet Trumpet	8c	4c	4c

ONE YEAR	Height, inches.	Per 1000.
Althea, assorted named	12-18	\$15.00
Calycanthus floridus	6-10	8.00
Forsythia viridissima	10-15	10.00
Honeysuckle, S. Trumpet	10-15	15.00
Philadelphus coronarius	12-18	15.00
Philadelphus coronarius	18-24	20.00
Ribes aureum	12-18	15.00
Spiraea Anthony Waterer	6-10	15.00
Spiraea Billardi	12-18	15.00
Spiraea Douglassi	12-18	12.50
Spiraea Van Houttei	12-18	15.00

California Privet, 2 year transplanted, very heavy, 4 to 5 feet	5c
California Privet, 2 year transplanted, very heavy, 3 to 4 feet	3½c
California Privet, 1 year, well branched, 2 to 3 feet	2c
California Privet, 1 year, well branched, 18 to 24 inches	1½c
California Privet, 1 year, well branched 12 to 18 in	1½c
Regel's Privet, 2 year transplanted, well branched, 18-24 inches	3c
Riegel's Privet, 2 year transplanted, well branched, 12 to 18 inches	2c



The King
of Flowers

Herbaceous Peonies *Hardy Everywhere*

We offer as choice a list of Peonies as you will find in this country. To the collector the varieties named will be attractive. To those who wish to increase their stock of desirable sorts this list will appeal, and to the nurseryman and dealers who buy to sell, there will be found a choice lot of varieties at moderate cost. The plants we offer are from division, two to five eyes, bloomed and tested. You will be pleased with the roots, our soil producing the best we have found anywhere. We are situated in the great Miami Valley of Ohio—no more fertile land than this in America. Our roots are free from disease. Look over our list, we have about all that you need or that is good. Our planting consists of one hundred and twenty-five thousand plants of the varieties here listed. TRY US FOR PEONIES. The list is an abridged one, giving you the benefit of sorts that will please all as to quality and range of color. We offer these for the florist who was so busy that he could not find time to plant in the fall. They have been placed in our cold storage cellar and are in prime condition for spring planting—sound and plump.

ACHILLE (Calot, 1855)—Fine, large five-inch bloom, very floriferous, opens light flesh-colored pink, finishing blush-white, with an occasional creamy spot; somewhat resembling an immense Carnation; an excellent variety for all purposes. 15 cents each; \$1.00 per dozen; \$7.00 per hundred.

ANDRE LAURIES (Crousse, 1881)—Rosy-red; very free late bloomer; an old well-known variety, considered very useful; probably the most widely planted of any Peony. 15 cents each; \$1.00 per dozen; \$7.00 per hundred.

CHARLEMAGNE (Crousse, 1880)—Creamy-white center, light lilac-flesh, shaded with chamois; immense bloom; late and exceptionally fine. 40c each; \$4.00 per dozen; \$25.00 per hundred.

DUCHESS DE NEMOURS (Calot, 1856)—Superb cup shaped; sulphur-white flowers with greenish reflex fading to pure white. In all Peonies there is nothing so exquisitely chaste and beautiful as this variety in the half open bud state; excels as a cut flower. Do not omit it. Late. 25 cents each; \$2.00 per dozen; \$15.00 per hundred.

EUGENE VERDIER (Calot, 1864)—This is one of the most exquisitely chaste and refined Peonies of the whole family. It combines every desirable feature. Immense size; globular shaped and literally packed with petals; color blush, delicately shading to pink towards the center; profuse bloomer, deliciously fragrant; very slow in opening, holding a long time either on or off the plant. As a cut flower and for decorative purposes this Peony is unexcelled by any Chrysanthemum ever grown. We place it first and foremost and challenge comparison. 75 cents each; \$8.00 per dozen; \$60.00 per hundred.

FELIX CROUSSE (Crousse, 1881)—All Peony enthusiasts are familiar with the fact that it is difficult to get a red Peony that is a self color, that is, a full, rich, even shade of red without being suffused with a shade of another color. Felix Crousse fills the bill; a rich, even, brilliant ruby-red; exceptionally fiery bright and effective. Very large, full shaped bloom. We place this in the front rank of all red Peonies. Nothing like it in color. We have the largest stock of this variety in the world. 50 cents each; \$5.00 per dozen; \$40.00 per hundred.

FESTIVA MAXIMA (Meilleux, 1851)—This is not only the finest white in existence, but in most quarters is regarded as the queen of all the Peonies. Mr. Harrison says: "This flower has reached the ultimate beyond which we cannot go." It combines enormous size with wondrous beauty, often seven to eight inches in diameter. Color snow-white, flecked with an occasional clear purple spot on edge of center petals. In addition it is very fragrant; a glorious flower impossible to describe; magnificent. 25 cents each; \$2.00 per dozen; \$15.00 per hundred.

FLORAL TREASURE (Rosenfield, 1900)—Very large and full; clear pink shading lighter at center; a splendid hemisphere of fragrance; long, strong stems to uphold the big blooms, sometimes six inches across; very vigorous and floriferous. 40 cents each; \$3.50 per dozen; \$25.00 per hundred.

GIGANTEA—This is one of the rarest and most sought after in cultivation. Ward calls it the finest of all Peonies for cut flower purposes. It is of the earliest to bloom, produces an enormous flower six to seven inches in diameter, on long stems; deliciously fragrant; fully as effective for decorative purposes as the finest Chrysanthemum. Gigantea is a ravishingly beautiful wild flower. \$1.00 each; \$10.00 per dozen; \$75.00 per hundred.



Festiva Maxima.

GRANDIFLORA RUBRA—Enormous globes of deep rich velvety-crimson. This variety took first prize at Chicago Peony show in 1905 over all comers in the red class. A showy brilliant Peony. 50 cents each; \$5.00 per dozen; \$40.00 per hundred.

HUMEI CARNEA (Guerin, 1856)—Very large, compact and striking cherry-pink flowers; among the very best; highly cinnamon scented; graceful in habit and grown very largely for cut flowers and valuable for landscape work. 15 cents each; \$1.00 per dozen; \$7.00 per hundred.

L'ECLITANTE (Calot, 1860)—Flowers large and full; deep carmine, tinged with velvety-crimson; very beautiful. 25 cents each; \$2.50 per dozen.

L'ESPERANCE (Calot, 1865)—Very lovely rose pink; fine form, full, high tufted center; very fragrant and one of the earliest to bloom; strong, hardy, vigorous and a profuse bloomer. 15 cents each; \$1.00 per dozen; \$7.00 per hundred.

MADAME BOLLET (Calot, 1867)—Large, very double flowers; clear rose with white reflex, linguated with carmine; late bloomer. 25 cents each; \$2.50 per dozen; \$20.00 per hundred.

MADAME CALOT (Meille, 1856)—This is the freest flowering of all Peonies. It is known in some places as the Glory of Boskoop. Flesh white shaded salmon; large convex flower; fine buds, extra for cut flowers. 50 cents each; \$5.00 per dozen; \$40.00 per hundred.

MADAME DE VERVEILLE (Crousse, 1885) — Exceedingly fine; full anemone shaped flower; broad outer guard petals sulphur-white; center rosy-white with an occasional spot of carmine; beautifully imbricated; has few equals; very early bloomer. 35 cents each; \$3.50 per dozen; \$25.00 per hundred.

MME. FOREL (Crousse, 1881)—The princess among Peonies; late; enormous; very full, ball-shaped bloom on very long stems; perfect shape and splendid habit; color glossy ash-colored pink with silvery reflex, with deeper rose center; splendid. 40 cents each; \$4.00 per dozen; \$30.00 per hundred.

MADMOISELLE LEONIE CALOT (Calot, 1861)—Synonym Mons. Chas. Leveque. Very full, compact, ball-shaped blooms; color soft salmon-flesh, occasional petals tipped carmine; very fragrant and one of the loveliest Peonies ever offered. 40 cents each; \$4.00 per dozen; \$30.00 per hundred.

MME. ROUSSEAU (Crousse, 1886)—Large, full flower; very fine shape; color sulphur-white, with flesh-colored center, shaded salmon; extra fine. We think this Peony, judging from its lovely flower, is worth at least \$3.00 each. 75 cents each; \$6.00 per dozen.

MARIE LEMOINE (Calot, 1869)—Enormous sulphur-white, massive, very double blooms; delicately shaded chamois with narrow carmine edge; has a very stout, erect stem of medium height; a sort the Peony enthusiast raves over, as well he may; blooms late. \$1.00 each; \$9.00 per dozen; \$65.00 per hundred.

MONS. CROUSSE—Deep dark rich red; comparatively early bloomer; it is one of the finest varieties on our place; in the cut flower market it is known as the American Beauty Peony, owing to its resemblance in color to the American Beauty Rose. 40 cents each; \$3.50 per dozen; \$25.00 per hundred.

MONS. JULES ELIE (Crousse, 1888)—The prince of Peonies; immense globular and very full flower, broad and overlapping petalage, forming one of the most perfect Peonies in existence; finest glossy flesh-pink, shading to deeper rose at the base. The entire bloom covered with a silvery reflex or halo; quite fragrant; very rare. A magnificent variety from every standpoint. \$1.00 each; \$10.00 per dozen; \$75.00 per hundred.

MONS. KRELAGE (Crousse, 1883)—Broad petals of bright currant or wine-red; brilliant amaranth center. This is in every way a grand red Peony. 40 cents each; \$4.00 per dozen; \$35.00 per hundred.

MONT BLANC—(Van Leeuwen, 1893)—Variety found without name in Mr. Van Leeuwen's very fine collection. It is called by some Solfatare. They are two quite distinct varieties. Solfatare has long, dull green foliage and very flat bud, while Mont Blanc has short, shiny foliage and the most pointed bud of all Peonies; twists up into a pencil point. This is the yellow Peony, broad, snow-white guard petals, center forming a very full high cushion; color sulphur-yellow, fading in time to pure white; produces an enormous crop of blooms on grand stems; has more yellow in it than any Peony we grow; a grand, glorious flower. Do not fail to plant it. Superb in every way. 50 cents each; \$4.50 per dozen; \$35.00 per hundred.

SOLFATARE (Calot, 1861)—Guard petals pure white; those of the center narrower and of a pure sulphur-yellow, changing to white; extra. Some growers list this as the same as Mont Blanc. They are two quite distinct varieties; one has long, dull green leaves, the other one shorter, shiny green leaves. One has the most pointed bud of any Peony, while the other one has the flattest bud of all Peonies. 40 cents each; \$4.00 per dozen; \$30.00 per hundred.

VICTORIA TRICOLOR (Van Houtte)—Deep pink guards; center yellowish flesh color tinted pink; a glorious flower. 15 cents each; \$1.00 per dozen; \$7.00 per hundred.

Collection of Choice Standard Phlox

Our list of this popular hardy flower embraces varieties that grow and produce results. There are sorts that are pretty to look at, but are such poor growers that they are practically worthless. The improvement made in this beautiful class of plants is, perhaps, more marked than in any other section of the hardy herbaceous family. Instead of the thin flowers, which were limited to lilac and white colors, we now have gorgeous flowers, combining all the different tints of rose, carmine, red and purple, to say nothing of the pure whites and salmons, with their distinct eyes. Perfectly hardy everywhere.

Price, strong, one-year-old field grown plants, 50 cents per dozen; \$3.00 per hundred; \$27.50 per thousand.

ALCESTE (Tall).—Deep violet, shading to almost blue.

ATHIS (Tall).—Deep, clear salmon; showy variety.

BERANGER (Dwarf).—Ground color white, delicately suffused with rosy-pink and distinct eye of same color; exquisitely marked.

BRIDESMAID (Medium).—Pure white, clear carmine eye; blooms in large, round heads; very attractive.

COQUELICOT (Medium).—The finest and brightest red of all the Phlox. The color is a bright orange-scarlet. Where this variety is ordered alone, \$4.00 per hundred.

CROSS OF HONOR (Dwarf).—Each petal evenly marked half with white and half with lavender.

DIPLOMAT (Tall).—Creamy-white; large red center; fine head.

ESCLARMONDE (Tall).—Clear rosy-lilac, deeper in the center; exquisitely rayed and shaded.

ECLAIREUR (Medium).—Clear rosy-magenta, with large, lighter rayed halo; large florets and magnificent bedder.

MRS. DWYER (Medium).—Enormous pure white flowers, with very large, showy, deep carmine eye or center; fine florets and trusses; extra.

INDEPENDENCE (Medium).—An excellent large flowering; early, pure white; none better.

JEANNE D'ARC (Tall).—Large pyramidal heads of immaculate-white; late.

KOSSUTH (Medium).—Clear rich purple.

LA VOGUE (Tall).—Pure mauve, with analine-red eye. One of the best Phlox in our collection.

LUMINEAUX (Dwarf).—Exceedingly large and strikingly brilliant; color rosy-pink; base of petals white, with rich carmine eye.

LA PERLE DU NORD (Medium).—Pure white; large deep distinct red eye; extra fine.

L'ESPERANCE (Dwarf).—Clear rosy-lilac or lavender; large white eye distinctly rayed, forming a star; large florets. A most beautiful variety.

LOTHAIR (Tall).—Clear; even carmine; deep crimson eye.

MADAME P. LANGIER (Medium).—Clear crimson, deeper eye. Considered one of the best.

MACULATA (Tall).—Many branched with huge pyramidal panicles of bright reddish almost royal lavender. The freest and showiest of all Phlox; a grand acquisition.

NIobe (Medium).—The deepest, darkest, richest colored of all Phlox; velvety violet-red with crimson hues; grand trusses.



Hardy Perennial Phlox, La Vogue.



Three Winners—Bridesmaid, Independence and R. P. Struthers.

- PEACHBLOW** (Medium.)—Delicate peachblow-pink. The most distinct colored Phlox ever introduced; large trusses; elegant.
- RICHARD WALLACE** (Medium.)—Pure white, with clear violet-rose eye; large flowers in immense panicles. Too much cannot be said of this variety.
- R. P. STRUTHERS** (Tall.)—In our estimation the very best Phlox grown today—it has no faults. Color clear cherry-red, suffused with salmon shades; deep red eye; fine large truss. The color is so clear and clean that each individual floret stands out as distinct as a cameo.

DAHLIAS

Within the last year or two a wonderful revival of interest in the Dahlia has resulted in their now being important rivals of those standard bedding plants, the Canna and the Geranium. This to a great extent is due to the introduction of the dwarf, profuse blooming varieties that a few years ago were unheard of. We offer a collection of the best Cactus, show, Pompon and decorative Dahlias. They are the cream of over five hundred varieties, selected after critical examination, and combining in a superlative degree purity of color, perfection of form, free and continuous flowering, and they succeed under the most ordinary garden culture. All the Dahlias offered are for strong, field grown roots to bloom this summer. Price, for strong field grown roots of Dahlias, 10 cents each, except where noted; 75 cents per dozen; \$6.00 per hundred.

SHOW AND FANCY DAHLIAS

- A. D. LIVONI**—Soft pink; extra fine.
- ARABELLA**—Sulphur and pink, edged white, free bloomer.
- APPLE BLOSSOM**—Its name denotes its color.
- GOLDEN AGE**—Large; pure sulphur-yellow.
- HECTOR**—Bright orange-scarlet.
- KEYSTONE**—Lilac, striped pink and crimson.
- METEOR**—Bright red, very large, fine and full.
- ORATOR**—Salmon-buff; large and full.
- PURITAN**—White, striped maroon.
- STORM KING**—The white cut flower Dahlia. 15 cents each; \$1.50 per dozen; \$10.00 per hundred.

CACTUS DAHLIAS

- DR. JAMESON**—Deep crimson; extra fine.
- EARL OF PEMBROKE**—Rich plum.

- ISLAND QUEEN**—Light mauve; extra fine form.
- MRS. CHAS. TURNER**—Clear soft yellow.
- P. W. TULLOCK**—Light salmon-red.
- STARLEIN KROME**—Intense cardinal-red; free.
- WM. AGNEW**—Bright clear red.

DECORATIVE DAHLIAS

- BEAUTY OF BRENTWOOD**—Plum striped maroon.
- CLIFFORD W. BRUTON**—Bright yellow.
- DOLLY** (or Sylvia)—Flesh color tipped deep pink.
- LYNDHURST**—Fiery scarlet.
- MAID OF KENT**—Cherry-red, tipped white.
- OBAN**—Mauve; fine.
- ZULU**—Very dark maroon.

POMPON DAHLIAS

- FAIRY QUEEN**—Sulphur, edged pink.
- FASCINATION**—Pink and lavender; sometimes blotched white.
- LITTLE BESSIE**—Creamy-white.
- PRINCE CHARMING**—Cream, tipped purple.
- STAR OF THE EAST**—Clear white; the best of this class.
- VIVID** (or Mars)—Bright fiery-scarlet; extra fine form.

CANNAS Premier Bedding Sorts

Our collection of this popular bedding plant embraces the following sorts:

- ALLEMANIA**—Giant orchid flowered; soft orange, gold border.
- AUSTRIA**—Giant orchid, golden-yellow.
- AMERICA**—Giant orchid, vivid orange-scarlet, dark bronze foliage.
- BEAUTE POITEVINE**—Crimson.
- CHAS. HENDERSON**—Rich crimson.
- COUNT DE SACHS**—Fiery scarlet.
- DAVID HARUM**—Bronze foliage; red flower.
- FAIRHOPE**—Rich scarlet.
- FLORENCE VAUGHAN**—Yellow, red spotted.
- GLADIATOR**—Golden-yellow, crimson spots; the best.
- KATE GRAY**—Large orange-vermilion.
- MAD. BERAT**—Best rose-pink bedder.
- NIAGARA**—Red, deep golden-yellow border.
- PREMIER BEDDER**—Rich red.
- PENNSYLVANIA**—Large, dark crimson.
- PROGRESSION**—Yellow, pale red spots.
- Started plants, 50 cents per dozen; \$3.00 per hundred; \$25.00 per thousand.

Foliage Sorts, for Tropical Effects in Bedding

- Discolor Gigantea**, **King of Bronzes**, **Musaefolia**, **Robusta**—75 cents per dozen; \$5.00 per hundred.



Canna America.

GENERAL COLLECTION OF PLANTS

A General Assortment of Plants for all Purposes—Decorative, Bedding, Vases, Baskets or Greenhouse Stock. All Plants Priced, where size is not mentioned, are from 2 1/4-inch Pots.



ACHILLEA, Hardy Plant

New Achillea, The Pearl—(The Great Cemetery Plant.) A plant will produce hundreds, and even thousands, of flowers the first summer, but when established the second year they have more than five thousand perfect flowers on a plant at the same time. It commences to bloom early in July, and is a perfect mass of beautiful flowers till frost, the same bloom keeping perfect two or three months. Its flowers are pure white, perfectly double, and produced in large sprays, making it one of the finest cut flowers for bouquets, vases, baskets, etc., or for any kind of decorations. For cemetery planting it is the most valuable of all flowers. 40 cents per dozen; \$2.50 per 100.

Achillea, The Pearl.

ACHILLEA MILLEFOLIUM—Fine heads of pink flowers. 40 cents per dozen; \$2.50 per hundred.

ARTILLERY PLANT

Pilea Muscosa

Graceful, fern-like foliage and immense numbers of very small flowers, which produce a snapping sound when sprinkled. Price, 40c per dozen; \$2.50 per 100.



Asparagus Plumosus Nanus.

ABUTILON

Chinese Bell Flower.

Except where noted, 40 cents per dozen; \$2.50 per hundred.

ABUTILON ERECTA — Delicate satin-pink.

ABUTILON ECLIPSE—Trailing variety. Fine for vases. Variegated foliage.

ABUTILON GOLDEN BELLS — Golden-yellow.

ABUTILON ARTHUR BELSHAM—Large red.

ABUTILON VESUVIUS—Rich red.

SOUVENIR DE BONNE—One of the most valuable novelties of recent years. Totally distinct. It is a very strong grower. The leaves, a beautiful green, are regularly banded with gold, the flower stem is eight to nine inches long, and the bloom very large and bright orange-red in color. A beautiful decorative plant, being of fine tree shape. 40 cents per dozen; \$3.00 per hundred.

AMPELOPSIS VEITCHII

(Hardy Climber)

Boston Ivy—This is one of the finest climbers we know for covering walls, as it clings firmly to the smoothest surface, covering it with overlapping leaves, which form a perfect mass of foliage. The color is a fresh, deep green in summer, changing to the brightest shades of crimson and yellow in autumn. It is quite hardy, and becomes more popular every year. Field grown plants, first size, three to four feet, \$2.50 per dozen; \$16.50 per hundred. Second size, eighteen to twenty-four inches, \$1.50 per dozen; \$12.00 per hundred.

ACHYRANTHES

2 1/4-inch pots, 30 cents per dozen; \$2.00 per hundred. Indispensable for bedding purposes either in massing or ribboning, their brilliant tinted leaves forming a marked contrast with all other plants, being much harder than Coleus. They are considerably preferable for massing or ribbon lines.

EMERSONII—Yellow and red foliage.

BIMULLERII—Bright red.

COLLINSII—Pink and red.

LINDENII—Dark red.

ALMOND

Double Flowering Hardy Shrub—A desirable class of early flowering shrubs. Double rose and double white. Strong field plants, 25c; \$2.00 per dozen.

ASTILBE JAPONICA

Lovely white flowers; fine for forcing. 50 cents per dozen; \$4.00 per 100.

ASTILBE GLADSTONE—Much finer than the above. 75 cents per dozen.

ASPARAGUS SPRENGERI

The Emerald Feather—A most desirable new species, especially useful to grow as a pot plant for decorative purposes, or for planting in suspended baskets. The fronds are frequently four feet long, of a rich shade of green, and most useful for cutting, retaining their freshness for weeks after being cut. It will make an excellent house plant, as it withstands dry atmosphere, and will succeed in almost any situation. 2 1/4-inch pots, 40 cents per dozen; \$2.00 per 100; \$18.00 per 1,000. Strong plants, three-inch pots, 75 cents per dozen; \$5.00 per 100. Four-inch pots, 15 cents each; \$1.50 per dozen.

ASPARAGUS PLUMOSUS NANUS

The Climbing Lace Fern—This graceful climber has to a great extent taken the place of the once popular Smilax in all fine decorations. It possesses the advantage of being much more graceful, its foliage being finer than that of the most delicate Fern, and will last for weeks after being cut, the whole plant being of a bright cheerful green. It is an excellent house plant, succeeding under almost any condition. Nice plants, 2 1/4-inch pots, \$3.00 per hundred; \$25.00 per thousand. Strong plants, three-inch pots, 75 cents per dozen; \$5.00 per hundred. Four-inch pots, \$1.25 per dozen; \$8.00 per hundred.

CHINESE AZALEAS

No plant has increased in popularity during recent years with such amazing rapidity as the Chinese Azaleas. A few years ago the annual importation of these from Belgium into the United States would hardly exceed twenty-five thousand. Today it reaches five hundred thousand. At Easter they are seen in every church and in the windows of our finest residences. The ease with which they can be grown, their diversity of color and freedom of flowering, will always keep them in public favor. The plants we offer are all set with buds and are beautifully trained specimens, and will flower in the springtime in any ordinary living room. We give their time of flowering, so you can have a succession of bloom. In summer set out of doors in the shade and keep moderately wet. 60 cents each; \$5.50 per dozen.

THE BEST AZALEAS

APOLLO—(Medium.) Crimson scarlet, best red.
MADAME VAN DER CRUYSSSEN—(Late.) Glossy rose, tinted with amaranth. By many thought to be the best of all.

SIGISMUND RUCKER—(Early.) Lilac-rose, bordered with white, blotched crimson.

SIMON MARDNER—(Early.) Intense velvety-rose; a grand variety.

SCHRIJVERIANA—(Late.) Very double, pink and white, with darker center; splendid.

AZALEA HEXE—This is the dwarf variety that blooms beautifully in pots. 35 cents each; \$3.00 per dozen.

AZALEA MOLLIS

(Hardy Shrub)

The most brilliant and showy of all hardy shrubs—exceeding even the Rhododendron—and entirely hardy without protection in all situations. The bloom, which varies in color from the intense rosy-crimson to lemon-yellow, literally covers the compact, spreading plant, forming a huge bouquet, and which remains in perfection for a long time in May and June. Massed they produce an effect that is actually brilliant and dazzling. 35 cents each; \$3.50 per dozen.



Araucaria Excelsa.



Acalypha Sanderii.

ACALYPHAS

ACALYPHA MARGINATA—A charming variety. Deep green foliage, with a distinct margin of crimson-bronze. 60 cents per dozen; \$4.00 per hundred.

ACALYPHA SANDERII—Goes under various names, such as "Chenille Plant," "Philippine Medusa," "Comet Plant," etc. The most sensational new plant introduced for years, and one of the most striking flowering ornamental plants. Strong, free growth with large dark green leaves, from each axil of which rope-like spikes of velvety-crimson flowers from one to two feet long and nearly one inch thick are gracefully suspended. 50 cents per dozen; \$3.00 per hundred; \$27.50 per thousand.

TRIUMPHANS—A beautiful plant, with large, highly colored leaves. Bright red with blotches of crimson-bronze. 60 cents per dozen; \$4.00 per hundred.

BICOLOR—A wonderful new variety with leaves of bright green, margined with a wide, irregular band of lemon-yellow, and having wide yellow bars running lengthwise of the leaf and also thickly dotted with yellow blotches. This is entirely distinct from all other Acalyphas and is a first-class plant for greenhouse decoration; but its most important feature is its wonderful qualification for bedding, as it will stand bedding out like a Coleus; in fact, in the sunniest places it produces the highest coloring. 50 cents per dozen; \$3.00 per hundred.

ACALYPHA TRICOLOR—A beautiful decorative sort; bronze, chocolate and red. 50 cents per dozen; \$3.00 per hundred.

ARAUCARIA EXCELSA

Norfolk Island Pine—Various names have been suggested for this grand plant to properly convey to the mind the appearance of it. Some have called it the "Christmas Tree Palm," from its resemblance to a Christmas tree; others have called it the "Star Palm," because the leaves are arranged to form a perfect star. But no descriptive name can give an adequate idea of its beauty. It has deep green, feathery foliage, arranged in whorls, rising one above the other at regular distances. Its symmetry of form, grace and beauty of foliage are unequalled in the vegetable kingdom. It is easily grown in the house, and is highly ornamental. It requires the same culture as the Palm. 15 inches high, three to four tiers of leaves, 75 cents each; \$9.00 per dozen.

ALOYSIA CITRIODORA

Lemon Verbena—This plant has the most fragrant foliage of any plant grown. The fragrance is that of the Lemon. One plant will scent a whole yard. Grows rapidly. Exquisite. 35 cents per dozen; \$2.50 per hundred.



Ageratum Princess Pauline.

AGERATUM PRINCESS PAULINE

A novel new variety of dwarf, compact habit, rarely exceeding eight inches in height. Its peculiarity consists of both blue and white being combined in the same flower, the body of the flower being white, while the stamens, forming an outer ring, are sky-blue, giving the flower a pretty variegated appearance. 30 cents per dozen; \$2.00 per hundred.

NEW AGERATUM STELLA GURNEY

It is a decided improvement in color, being the deepest blue yet introduced, and is exceptionally free flowering, not only in summer, but the year round. Ageratums are useful for borders, also for baskets and vases. These two varieties are grand. 30 cents per dozen; \$2.00 per hundred.

AGERATUM WHITE CAP

Dwarf white. 30 cents per dozen; \$2.00 per hundred.

ASPIDISTRA

This handsome plant, always a favorite, is at present one of the most popular greenhouse and parlor ornamental plants in cultivation, and well deserves the distinction it enjoys, few being equal to it in beauty of foliage, gracefulness of habit, thriftiness, hardiness and general adaptability.

LURIDA—Foliage dark green. 6 cents per leaf.

LURIDA VARIEGATA—Foliage striped white and green. 10 cents per leaf.

ALTERNANTHERAS

These are the little dwarf red and yellow plants that only grow a few inches high that are used to make letters, designs or borders for beds. We offer two kinds, red and yellow. 40 cents per dozen; \$2.50 per hundred.

AUCUBA, or SILVER SHRUB

A lovely half-hardy evergreen shrub, with laurel-like foliage of olive-green, spotted with silver spots. This is hardy in the far South, where it can be planted out. A grand decorative plant grown in pots for the porch and lawn. Strong plants, 15 inches high, 25 cents each; \$2.50 per dozen. 24 inches high, 40 cents each; \$3.50 per dozen.

AKEBIA QUINATA

(Hardy Climber)

A perfectly hardy, fast growing Japan vine with magnificent foliage, producing flowers in large clusters, of chocolate-purple color, possessing a most delicious perfume, unsurpassed for covering trellises and verandas, the foliage never being attacked by insects. 50 cents per dozen; \$3.00 per hundred.

AGAPANTHUS UMBRELLATUS

Blue African Lily or Lily of the Nile—A splendid ornamental plant, bearing clusters of bright blue flowers on long flower stalks and lasting a long time in bloom.

There is no finer plant for outdoor decoration, planted in large tubs on the lawn. 50 cents per dozen; \$4.00 per hundred.

AMARYLLIS

AMARYLLIS FORMOSISSIMA—(Jacobean Lily.) This grand bulb will flower either summer or winter. Keep dry during summer for winter blooming and reverse the order for summer bedding. The flowers are of the darkest scarlet, very rich and pure and produced freely. \$1.00 per dozen.

AMARYLLIS JOHNSONII—The old time favorite of this family. Large lily-like bloom. White stripe in center of each petal. Large blooming size bulbs, 20 cents each; \$2.25 per dozen; \$18.00 per hundred.

ANTIGONON LEPTOPUS

Mountain Beauty, Rosa de Montana, or Queen's Wreath—This is really a wonderful vine, which will excite the admiration of the amateur planter. Superb, brilliant flowers. 50 cents per dozen; \$3.00 per hundred.

ALYSSUM

Giant Double Flowered—A very great advance on the single Alyssum. It is indispensable as a cut flower, being a beautiful white and very fragrant. A very useful edging plant. Continues to bloom till November, as light frosts do not injure it. Also fine for winter blooming in the house. Elegant for baskets, vases or window boxes. 30 cents per dozen; \$2.00 per hundred.

ANTHERICUM

A lovely plant for vases and baskets, or as a pot plant it will enrich any collection. Deep green foliage, with broad, white stripes. Long stalks of white flowers. Very beautiful and scarce. 60 cents per dozen.

ALTHEA, OR ROSE OF SHARON

(Hardy Shrub)

Also known as the Tree Hollyhock, or Mallow. These are the most beautiful shrubs we have in our collection; flowers are of large size, very double and full, of various brilliant and striking colors. They bloom freely during August and September, when scarcely any other shrub is in bloom. Six varieties: Jean d' Arc, double white; Boul de Feu, double red; Duchesse de Brabant, double pink; Violet Claire, double violet; Bicolor Hybrida, double variegated; Snowdrift (Totus Albus), single, pure white—this is the best of all Altheas. Eighteen inches high, the set of six for 50 cents, or \$4.00 per hundred. Fine plants, two to three feet high, 75 cents per dozen; \$6.00 per hundred.



Brugmansia.

BRUGMANSIA, OR ANGEL'S TRUMPET

Here is a plant for the masses. It grows easily, blooms freely, and the flower is something to be proud of. The Brugmansia blooms indoors in winter and in the garden in summer. The plant has large, tropical leaves, with blooms eight inches long by six inches wide at the mouth, resembling a trumpet, hence the name "Angel's Trumpet." Pure white in color and very fragrant. 40 cents per dozen; \$2.50 per hundred. Strong three-inch pots, blooming size, 50 cents per dozen; \$3.50 per hundred.

BOX SEMPERVIRENS—Dwarf Ornamental

Hardy shrub for border. 50 cents per dozen; \$3.00 per hundred; \$25.00 per thousand.

BROWALLIA GIGANTEA

New. A charming new flowering plant that may be put to many useful purposes. The plant is a strong, compact, bushy grower, producing a profusion of florets about one to one and a half inches in diameter, of an intense indigo-blue, fully as intense as the Marie Louise or California Violet. It bids fair to supplant the Lobelia as a bedding plant, is invaluable for cut flowers, as it is never out of bloom, and may be grown as a flowering plant for Easter. 40 cents per dozen; \$2.50 per hundred.



Flowering Begonia.

FLOWERING BEGONIAS

50 cents per dozen; \$3.00 per hundred, except where noted.

ALBA GRANDIFLORA—Resembles Begonia Rubra except that it has white flowers.

ARGENTEA GUTTATA—Most lovely green foliage, with spots of silvery-white.

BERTHA DE CHATEAUROCHER—This is the freest-flowering Begonia we have. It blooms the year round, makes a handsome window plant, with its beautiful foliage and bright currant-red flowers.

DECORUS—The blush-pink Rubra.

DEWDROP—The ever-blooming white sort.

FOLIOSA—This is one of the most graceful of all the Begonias. The foliage is small and fleshy, has the smallest leaves of all the Begonias. Bright pink flowers.

FUCHSIODES COCCINEA—Elegant free-blooming variety. It resembles *Hybrida Multiflora* in growth. Flowers a bright scarlet.

HYBRIDA MULTIFLORA—This beautiful plant makes handsome specimens with its graceful branches and pendulous flowers of bright rosy-pink. Very floriferous.

INCARNATA ROSEA—Has lovely panicles of bright rose flowers.

MARGUERITA—Leaves bronzy-green, somewhat resembling *Metallica*; large trusses of light rose colored flowers.

McBETHII—Foliage Fern-like, panicles of pure white flowers, produced in the greatest profusion.

RUBRA—One of the finest Begonias in cultivation. Its dark, glossy-green leaves, combined with its free-flowering habit, make it one of the very best plants for house or conservatory decoration. The flowers are a scarlet-rose color. \$3.50 per hundred.

ROBUSTA—Bright rose and pure white. Coral-red buds. This is a very desirable variety.

SANDERSONI—(The Coral Begonia.) One of the best flowering Begonias. The flowers are of a scarlet shade of crimson, borne in profusion for months at a time. Resembles coral.

THURSTONII—A grand foliage Begonia like *Metallica*. \$3.50 per hundred.

VERNON—A fine bedder, clear rose flowers. \$3.50 per hundred.

ZEBRINA—Deep green foliage, striped lighter; very beautiful. 50 cents per dozen; \$4.00 per hundred.

SPECIAL OFFER

To show you the varieties, we offer one each of the above seventeen varieties for 75 cents.



Bougainvillea Sanderiana.

BOUGAINVILLEA SANDERIANA

This beautiful free-flowering plant was introduced recently, and on account of its free-blooming qualities has become very popular, especially as a plant for Easter decoration. It is of a strong, rapid growth, and the brilliant rosy-crimson blossoms in large racemes are produced from early March until midsummer. In fact, a well grown specimen will frequently flower the greater part of the year. Altogether a most desirable subject for the conservatory or window garden. Strong plants, from 2 1/2-inch pots, 60 cents per dozen; \$4.00 per hundred.

TUBEROUS-ROOTED BEGONIAS

GIANT-FLOWERED—The best we can procure in Europe. Large fine bulbs.

SINGLE—White, Yellow, Crimson, Rose, Scarlet, 75 cents per dozen; \$5.00 per hundred.

DOUBLE—In the same colors, \$1.25 per dozen; \$9.00 per hundred.

COLEUS

Our stock of Coleus has never been equal to the demand, but this year we have a larger stock than any previous year, and we think we can meet the wants of our customers. The varieties range in color from light yellow to the darkest crimson, including about twenty-five distinct sorts.

Standard Market
Sorts—A fine stock
of the best and most
distinct named kinds.
Price, 40 cents per
dozen; \$2.00 per hun-
dred; \$17.50 per
thousand.

**COLEUS
CHRISTMAS
GEM**

Has broad leaves
that often measure
eight inches across,
beautifully marked
with yellow and
brightest crimson.
The prettiest foliage
plant we know. Stock
in fine condition. 10
cents each; 60 cents
per dozen; \$4.00 per
hundred.



Coleus Christmas Gem.

CAMELLIA JAPONICA

This is the Famous "Japonica" of the South.

Leaves glossy-green, flowers of exquisite beauty and waxy texture. From pure white to crimson, in almost endless variegation, the pure white ones generally prized above the colored varieties. Culture nearly related to that of the Azalea, but their success is more certain. Requires shade and moisture throughout the hot season. Time of blooming is in winter and in early spring. Requires a moderate and uniform temperature with as little artificial heat as possible. When set with flower buds great care must be taken in watering—when left too dry the buds are sure to drop. We have a fine assortment in all colors. Large, strong plants, two to two-and-a-half feet high, 75 cents each; \$8.00 per dozen; \$60.00 per hundred.

CROTONS

The Crotons are among the finest foliage decorative plants known. As easy to grow as Coleus, and much brighter in their coloring. Our customers everywhere, especially in the South, should bed out Crotons. They can be lifted and potted in the fall and make handsome house plants. The leaves of all are more or less veined and margined, sometimes entirely variegated, with shades of yellow, orange and crimson. Some have long, narrow leaves, arching gracefully, fountain fashion; others are broad and short, oak-leaved; some recurve very much, others are twisted corkscrew like. Crotons love heat, sunshine and moisture. The Crotons are fast becoming one of our most beautiful bedding plants, and are also one of the handsomest house plants in pots. 10 cents each; 50 cents per dozen; \$3.50 per hundred.



Baroness Rothschild.

- PICTURATUM**—Long leaves of yellow, green and red; fine for bedding.
- SPIRALE**—Leaves twisted like a corkscrew; very pretty.
- WEISMANII**—Long leaves, mottled golden-yellow.

NEW AND SCARCE CROTONS

The following varieties of Crotons are quite an improvement over the older kinds, the foliage being more distinctly marked with brighter colors, therefore more attractive. 15 cents each; 75 cents per dozen; \$5.00 per hundred, except where noted; four for 50 cents; the set of ten for \$1.00.

- AUREA OVALIFOLIA**—Deep olive-green, yellow midrib; some leaves almost golden-yellow. 20 cents each.
- BARONESS ROTHSCHILD**—Broad leaves of bright crimson, yellow and green markings; a very desirable variety; fine bedder.
- DAY SPRING**—A fine variety that beds well. Irregular markings of yellow and red on subdued green background. As pretty as the highly colored autumn leaves; fine bedder. 20 cents each.
- DISRAELI**—Oak-shaped leaves with red, yellow and green colors nicely blended. 20 cents each.
- NESTOR**—Olive ground, pink midrib and green spots; finest of all Crotons; fine bedder. We have a fine stock of this superb Croton.
- QUEEN VICTORIA**—A very bright variety. A great favorite, and always hard to get. Medium long leaves, with brightest crimson, yellow and green markings; very desirable. 20 cents each.
- REX**—Long leaves; green, yellow and red.
- UNDULATUM QUERCUM**—A novel sort, ruffled edge; red spots.
- VEITCHII**—Yellow, green and crimson; one of the best. Always scarce and much sought after; fine bedder.
- VOLUTUM**—Green with yellow center; curled like a ram's horn; lovely. 20 cents each.

- We are, without doubt, the largest growers of Crotons in America.

FOUR INCH POT CROTON SPECIAL

We have grown a bench of the fancy sorts in four-inch pots for the florist who loves something fine for center pieces for vases. Have you ever tried them? Others do. While stock lasts at \$1.50 per dozen; \$10.00 per hundred.

CYPERUS ALTERNI-FOLIUS

(Umbrella Plant.) This plant is of the easiest culture, and a large specimen is as handsome as a Palm for decoration. It makes a handsome pot plant, or can be used in baskets or vases, making a charming effect. It will grow luxuriantly in water, and is, therefore, indispensable for aquariums. 50 cents per doz., \$3.00 per 100.



Umbrella Plant.

CINNAMON VINE

Hardy Climber)

Perfectly hardy vine, bearing very fragrant flowers. Fine one-year roots from field, 25 cents per dozen; 75 cents per hundred; \$4.50 per thousand.

CYCLAMEN PERSICUM GIGANTEUM

Persian Violet—This is a decided improvement over the old variety, being of a more robust habit, and stronger grower. Produces flowers on short stout stems, and of immense size, often measuring, on well-grown bulbs, two inches in diameter. The foliage is also beautiful. 50 cents per dozen; \$3.00 per hundred.

CARYOPTERIS MASTACANTHUS BLUE SPIREA

Hardy Plant—Extremely floriferous, plants from small pots blooming profusely and continuing to do so throughout the season. The dense flower heads are of a rich lavender-blue. 10 cents each; 50 cents per dozen; \$3.00 per hundred.

CACTUS, QUEEN OF NIGHT

Has beautiful flowers. 50 cents per dozen; \$3.00 per hundred.

CALADIUM ESCULENTUM, or Elephant's Ear

One of the most beautiful and startling ornamental foliage plants in cultivation, either for culture in large pots or tubs, or for planting out on the lawn. Will grow in any garden soil, and is of the easiest culture. When of full size it stands about five feet high, with immense leaves, often measuring four feet in length, by two and one-half in breadth. Smooth, of bright green color, beautifully veined and variegated with dark green. The roots should be preserved in dry sand in the cellar during winter, out of danger from frost. Good bulbs, 60 cents per dozen; \$4.00 per hundred. Fine large bulbs, four to five inches in diameter, \$1.00 per dozen.

CLERODENDRON BALFOURII

A highly meritorious novelty. Bears immense sprays of lovely red bloom, incased in a white calyx. Delicious fragrance. A truly beautiful plant. Fine for bedding. Much used in New Orleans and throughout the South for this purpose. 40 cents per dozen; \$3.00 per hundred.

CESTRUM PARQUI

The night-blooming Jasmine. White flowers. Very fragrant. 50 cents per dozen; \$3.00 per hundred.

CARNATIONS

The popularity of the Carnation is on the increase very rapidly. Next to Roses the Carnation is most sought after. The flower buyers have evidently learned to appreciate the many charms which the Carnation possesses. We offer a choice selection of the very best varieties, including such well known varieties as Enchantress, Lady Bountiful, Mrs. Lawson, The Queen, Cardinal, etc., fine plants from 2 1/4-inch pots, 50 cents per dozen; \$3.00 per hundred.

HARDY POMPON CHRYSANTHEMUMS

We offer ten choice colors, the very best named kinds, for 50 cents per dozen; \$3.00 per hundred.

CHRYSANTHEMUMS—A Choice Collection

- 40 cents per dozen; \$3.00 per 100; \$25.00 per 1,000. Our selection of varieties, \$2.50 per 100; \$20.00 per 1,000.
- AUSTRALIAN GOLD—Bright yellow; very free.
 - BLACK HAWK—Dark red. Fine for exhibition.
 - C. HOLST—Pure white. Has many admirers.
 - COL. D. APPLETON—Bright yellow. Extra fine.
 - CAMILLE d'ARVILLE—Grand white.
 - COL. BADEN-POWELL—Rosy-violet; splendid.
 - DR. ENGUEHARD—Color a true pink; extra.
 - ESTELLE—A fine early white.
 - EDA PRASS—One of the grandest pink Mums.
 - ENFANT DES DEUX MONDES—White Ostrich Plume. Fine.
 - FRANK THOMPSON—White, with a touch of pink.
 - F. A. COBBOLD—Reflexed flower of bright rose pink.
 - GOLDEN WEDDING—Exhibition yellow.
 - GLORY OF THE PACIFIC—Beautiful light pink; early.
 - GOLDEN WONDER—Best golden-yellow.
 - H. W. BUCKBEE—The brightest of all yellows.
 - IVORY—Grand globular white.
 - INVINCIBLE—Large incurved white, sometimes tinted pink.
 - JOHN K. SHAW—A commercial pink; early.
 - JOHN SHRIMPTON—A favorite red Mum.
 - LOUIS BOEHMER—Pink ostrich plume. Very fine.
 - MRS. HENRY ROBINSON—Incurved white; extra fine.
 - MRS. O. P. BASSETT—Soft canary-yellow.
 - MARIE LIGER—Color a pleasing shade of pearl-pink.
 - MRS. PERRIN—Still the brightest pink.
 - MRS. JEROME JONES—A beautiful glistening white.
 - MAJOR BONAFFON—Grand exhibition yellow.
 - MODESTO—Fine bright yellow. Very large.
 - MRS. COOMBES—Bright rose color.
 - MISS FLORENCE PULLMAN—A grand white variety.
 - MONARCH OF OSTRICH PLUMES—Deep yellow.
 - MRS. W. B. CHAMBERLAIN—Beautiful pink variety.
 - MONROVIA—Deep golden-yellow; early.
 - MRS. H. WEEKS—Incurved, of purest white.
 - NAGAYO—A fine late yellow.
 - PRES. WM. R. SMITH—A beautiful clear pink.
 - PINK IVORY—A sport from Ivory with pink flowers.
 - PERCY PLUMRIDGE—New butercup yellow.
 - SHILOWA—A beautiful crimson Japanese.
 - SILVER CLOUD—Yellow with touches of salmon.
 - V. H. HALLOCK—One of the best pink Chrysanthemums.
 - WHITE BONAFFON—Pure white; fine form.
 - WM. DUCKHAM—A Japanese incurved pink; extra.

CALLA LILIES

New Dwarf Calla Lily, NANA COMPACTA—The following facts will convince anyone of its great superiority over the old sort: Of dwarf habit, the same plant will grow and bloom for years without once ceasing, and the quantity of bloom which a good plant will produce is astonishing. A large plant is hardly ever without one or more flowers. All in all, it is one of the most desirable plants we have ever offered. 60 cents per dozen; \$4.00 per hundred.



Dwarf Calla, Nana Compacta.

flowers are shaped like those of the Calla, and are pure white, shaded with violet inside. Keep dry in winter and start in the spring like a Dahlia. The plant belongs to the same order as Calla Ethiopica. Blooming bulbs, 50 cents per dozen; \$4.00 per hundred.

CALLA AURATA—This is the yellow Calla. It is just like the others, only the flower is a lemon-yellow. It is very distinct, and will enrich any one's collection. \$1.50 per dozen.

CRAPE MYRTLE

Handsome shrubs when in bloom. The flowers cover the entire plant. Hardy in the South. We have three kinds in the following colors—pink, crimson and purple. 50 cents per dozen; \$3.00 per hundred.



Clematis Jackmanii, Henryii and Paniculata.

LARGE-FLOWERING CLEMATIS

Strong two-year-old imported pot-grown plants. These are much superior to field-grown roots, as the fatality after planting that occurs in field-grown roots does not occur with pot-grown Clematis. Price, for strong two-year roots, 25 cents each; \$2.50 per dozen; \$18.00 per hundred.

DUCHESS OF EDINBURG—This is without doubt the best of the double whites. Very free flowering, very fragrant.

JACKMANII—From four to six inches in diameter, intense violet-purple, with a rich, velvety appearance, and distinctly veined. The best.

HENRYI—Flowers are large, six to nine inches in diameter. Pure white. One of the best.

VILLE DE LYON—This beautiful Clematis is much sought after, but is very scarce. The color is a bright rosy-red, entirely distinct from any other sort. A grand variety. You should try it.

New Pink Clematis, MME. BARON VELLARD—A unique shade in Clematis. A pretty lavender-pink, a fine contrast to the strong-colored sorts. Rapid in growth, and slender, graceful habit.

SIEBOLDII—A lovely shade of lavender. Very beautiful and distinct.

CLEMATIS PANICULATA

Japanese Virgin's Bower—One of the most beautiful of our hardy flowering vines. The flowers are pure white, and are borne in large panicles or clusters of bloom, fairly covering the plant, so that it is a mass or sheet of fleecy white. The fragrance is delicious, resembling the English Hawthorn blossoms. It is a strong, rapid grower, quickly reaching a height of from fifteen to twenty feet, and spreading out when trained to wires or string. It is perfectly hardy in all sections of the country. 50 cents per dozen; \$3.00 per hundred; \$35.00 per thousand. Field-grown, one-year, 60 cents per dozen; \$4.50 per hundred.

DEUTZIAS

(Hardy Shrubs)

DEUTZIA GRACILIS—Covers itself with pure white bell-shaped flowers.

LEMOINII—Double. White. Very fine.

CRENATA—Fl. pl. A grand hardy shrub, flowers double white and tinged with rose.

PRIDE OF ROCHESTER—Double white flowers.

Price of Deutzias, field-grown plants, twelve to eighteen inches, 60 cents per dozen; \$4.00 per hundred. Eighteen to twenty-four inches, 75 cents per dozen; \$6.00 per hundred.

HARDY DOUBLE WHITE DAISY



Daisy Snowball.

Snow Crest,
or
Snowball

Entirely hardy everywhere. Most distinct, and an improvement on all existing sorts. May be forced for cut flowers under the same treatment as Violets. 40 cents per dozen; \$3.00 per hundred.

LARGE-FLOWERING DAISIES—Marguerites

Very profitable for cut flowers. Always in demand and so easily handled. Price, 40 cents per dozen; \$2.50 per hundred, except where noted.

WHITE—(France.) Free blooming; white, having a ray of white petals around a salmon disc. Splendid for cut flowers.

YELLOW—(Etoile d'Or.) Finest yellow, large flowers and deep color.

CARL POEHLMAN—(New.) A grand yellow Marguerite of the largest size. We think this cannot be beaten. 10 cents each; 50 cents per dozen.

NICHOLSON'S WHITE—(New.) A grand white Marguerite, by many claimed to be the best. 10 cents each; 50 cents per dozen.

MME. GAILBERT—The standard white. Grown for cutting.

SHASTA DAISIES

(New.) The Shasta Daisy is one of the most marvelous productions in the flower line that has ever been brought to the notice of floriculturists. It is the first of a new type, which has been obtained by hybridization and rigid selection through a series of years. Its first qualification is extreme hardiness. Second, it is perennial, blooming better and more abundantly each season. Third, it is not so particular as to soil. Fourth, it blooms for several months. Fifth, the flowers are extremely large and graceful, averaging about four inches in diameter, with petals of the purest glistening whiteness, which are borne on single, long, stiff, wiry stems. Sixth, the blooms when cut remain perfectly fresh and in good condition for two weeks or more. No other flower can compare with it for usefulness. One market gardener sold \$75.00 worth of bloom from a small patch of this Daisy. 50 cents per dozen; \$3.50 per hundred.

DICENTRA SPECTABILIS

Bleeding Heart—One of the most beautiful of hardy border plants. Flowers in the early spring with rose colored, heart shaped flowers hanging from the under side of branches their entire length. Perfectly hardy and easily cultivated; grows about two feet high. 75 cents per dozen.



Dracena Indivisa.

DRACENA INDIVISA

The plant so many use for vase centers. Strong 2 1/2-inch pots, 50 cents per dozen; \$3.00 per hundred. Fine four-inch, \$1.25 per dozen; \$8.50 per hundred.

DELPHINIUM FORMOSUM—Larkspur

(Hardy Plant.) The old favorite dark blue variety. Grows three to four feet high. Flowers from June until frost. 60 cents per dozen; \$4.50 per hundred.

EULALIAS

50 cents per dozen; \$3.00 per hundred.

GRACILLIMA UNIVITTATA—A beautiful ornamental grass, with narrow, graceful foliage. Very valuable.

VARIEGATA—Deep green foliage, broadly striped lengthwise of the leaf. Pure white. Very handsome.

ZEBRINA, Zebra-Striped Eulalia—One of the most beautiful of ornamental grasses. Foliage marked crosswise with band of white and green.

EUCHARIS AMAZONICA, or Eucharis Lily

A handsome bulbous plant that blooms during the winter indoors. Flowers in clusters, like an Amaryllis, pure white, and as fragrant as a Jasmine. This is rare and grand. Fine for forcing for Christmas. Fine bulbs, 25 cents each; \$2.50 per dozen.

FUCHSIAS

We are large growers of Fuchsias and can supply all the leading sorts in both double and single varieties, such as Riffard, Enfant Prodigy, Anna Neville, Henry Brooks, Speciosa, Esperance, Mrs. E. G. Hill, Rosains Patri, Trophee, Elm City, Arabella. 2 1/4-inch pots, 40 cents per dozen; \$2.50 per hundred.

FISCUS ELASTICA BELGICA

(India Rubber Plant)

Again this year we have to offer a fine lot of Rubber Plants, which we have grown the past spring and summer. They are now in four and five-inch pots, and all from top cutting, and well leaved from pot up. Fifteen to eighteen inches high, 35 cents each; \$3.00 per dozen; \$25.00 per hundred. Twenty-four inches high, 50 cents each; \$5.00 per dozen; \$35.00 per hundred.

FORSYTHIA

Hardy shrub with yellow flowers. Field plants, 50 cents per dozen; \$4.00 per hundred. Two-year field plants, 75 cents per dozen.

NEPHROLEPIS PIERSONII

This was the first of the Ostrich Plume type of Ferns sent out. The strongest growing of them all. 2 1/4-inch pots, 50 cents per dozen; \$3.00 per hundred. Four-inch pots, \$2.00 per dozen.

BOSTON FERN

(Nephrolepis Exaltata Bostoniensis)

This plant is so well known it needs no description. No other plant is used so extensively, and no other makes as fine a specimen plant. The drooping habit of the long, graceful fronds makes it an excellent plant to grow as a single specimen for the table or pedestal. 2 1/4-inch pots, 50 cents per dozen; \$3.00 per hundred. Four-inch pots, \$2.00 per dozen.

The Wonderful New Fern,

BABY'S BREATH

Nephrolepis Amerpohlii —

This is the newest and grandest of all Ferns. It is so delicately fine and fluffy in foliage that it has been given various names, among them "Baby's Breath," indicating that its fronds are so very fine and delicate that a baby's breath would set them in motion. Some call it the Philadelphia Lace Fern. Whatever name you call it by, it is a beauty. It was raised by a Mr. Amerpohl, of Janesville, Wisconsin, and named after himself. Our reputation for it, that it is the finest of all Ferns. No Ostrich Plume can compare with it in fluffiness. Fine plants, 2 1/2-inch pots, 8 cents each; 75 cents per dozen; \$5.00 per hundred. Four-inch pots, \$2.50 per dozen.



Piersonii.

THE NEW OSTRICH PLUME FERN, WHITMANII

(*Nephrolepis Whitmanii*)

This fine Fern received first award at the Society of American Florists. It is somewhat similar to the *Elegantissima*, but more compact, more sturdy in its growth, and seldom runs back to the old Boston leaf. Small plants, 2 1/4-inch pots, 50 cents per dozen; \$3.00 per hundred.

NEPHROLEPIS EXALTATA]

This is the old-fashioned Sword Fern, and many prefer it to the newer varieties. It may well be called the daddy of all the *Nephrolepis*, as it is the original variety. It is of upright growth, makes handsome specimens, and is the finest of all the *Nephrolepis* for planting in vases, etc. We sell many thousands of it for this purpose. 2 1/4-inch pots, 50 cents per dozen; \$3.00 per hundred. Three-inch pots, \$1.00 per dozen. Four-inch pots, \$2.00 per dozen.

NEPHROLEPIS DAVALLIODES FURCANS

(The Fish Tail Fern)

This is a lovely crested variety and is often called the Fish Tail Fern. Fine plants from 2 1/4-inch pots, 75 cents per dozen; \$5.00 per hundred.

PTERIS CUNEATUM

Fine for cut fronds. 2 1/4-inch pots, 50 cents per dozen; \$4.00 per hundred.

DWARE FERNS FOR FERN DISHES

We have grown a fine lot of the dwarf Ferns suitable for fern dishes, including *Adiantum Formosum*, *Aspidium Tsussimense*, *Cyrtomium Falcatum* (or Holly Fern), *Pteris Adiantoides*, *Pteris Cretica Alba Lineata*, *Pteris Gilbertii*, *Pteris Mayii*, *Pteris Nana Compacta*, *Pteris Wimsetti*. 2 1/4-inch pots, 40 cents per dozen; \$2.50 per hundred; \$20.00 per thousand.

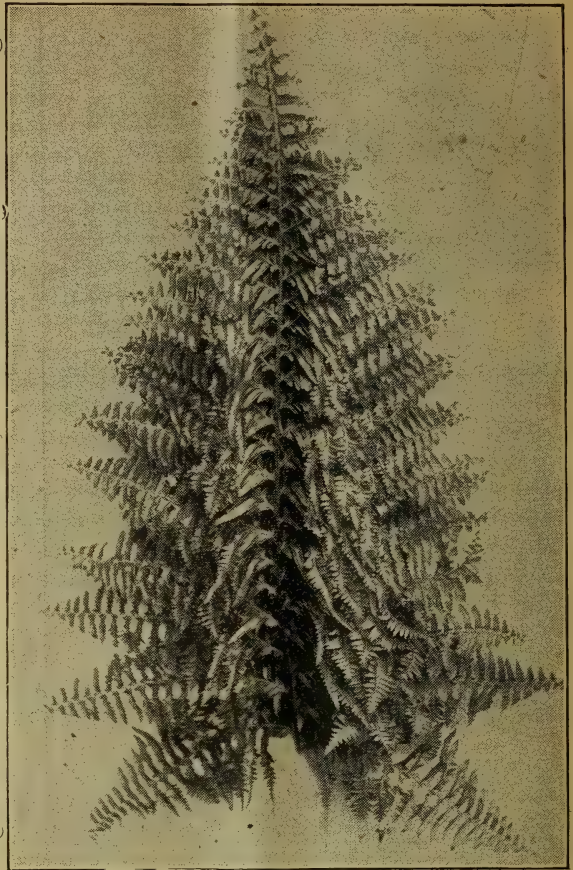
We are large growers of these beautiful sorts for dishes. They are used for table decorations and as birthday gifts all through the year.



Pteris Tremula.

PTERIS TREMULA

(Shaking Fern.) The foliage of the *Pteris* varieties is large, very graceful. The slightest movement of the air shakes the leaves of this kind, which we recommend more than any other for house culture, etc. It grows readily and very fast. Keep the leaves from dust and sprinkle slightly every warm day. 2 1/4-inch pots, 50 cents per dozen; \$3.00 per hundred.



The Ostrich Plume Fern, *Whitmanii*.

SELAGINELLA EMILLIANA

A new, upright growing moss, with numerous feathery stems branching from the base and forming a dense tuft. Well grown plants attain twelve to eighteen inches in height. We know of no moss superior to it. We put this moss with the page of Ferns, as the character is very much like the Fern and is used with them in ferneries. 50 cents per dozen.

FEVERFEW LITTLE GEM

This is the dwarf variety, bearing pure white double flowers. 40 cents per dozen; \$2.50 per hundred.



Funkia.

WHITE DAY LILY FUNKIA ALBA

The *Funkias* all make handsome, showy plants, and this is the best of its class. Beautiful, broad, ovate leaves, with large, lily-like, pure white, fragrant flowers. 75 cents per dozen. We also offer a variegated foliage Day Lily; leaves blotched white. Lovely. 50 cents per dozen.



Gladioli.

THE GRANDEST OF ALL GLADIOLI

Good & Reese's International Mixture.

Our International Mixture is the best in the world, and we want to say to you candidly that you have never seen Gladioli until you see these flowers. This Mixture includes all the new strains, such as "Gray's Inglesides," "Burbank's California Selects," "Childsii," and "Groff's Hybrids." It is difficult to describe flowers of such varied and peculiar beauty as these Gladioli. They are very tall and erect, often standing four or five feet high, with spikes of bloom over two feet in length. 50 cents per dozen; \$2.00 per hundred; \$15.00 per thousand.

GLADIOLI

Our mixed Gladioli are not the poor dull colors, old discarded red sorts and worthless seedlings usually sent out as mixtures. On the contrary they are made up from splendid named sorts, brightest and most varied colors, white, yellow, pink, rose, blush, intense

scarlet, carmine, violet, striped, blotched, variegated, etc. All old, common and poor sorts have been discarded, and this mixture is of the highest grades.

Mixed, All Colors, First Size—Extra large flowering bulbs. Per dozen, 20 cents; \$1.25 per hundred; \$10.00 per thousand.

Mixed, White and Light Varieties Only—First size, 30 cents per dozen; \$2.00 per hundred.

Mixed Pink Varieties Only—First size, finest pink colors. 30 cents per dozen; \$2.00 per hundred.

Mixed, Yellow Varieties Only—First size, finest yellow and orange shades. 50 cents per dozen; \$3.50 per hundred.

Mixed, Scarlet Varieties Only—First size, the finest scarlet sorts. 30 cents per dozen; \$1.75 per hundred.

GENISTA CARARIENSIS

A fine plant to force in pots. Golden-yellow flowers. 40 cents per dozen; \$3.00 per hundred.

GLOXINIAS

These are among the most beautiful of all our summer blooming plants. The rosette of velvety-green leaves is surmounted with a cluster of lovely, trumpet-shaped flowers as large as Gladioli blooms. The coloring is exquisite. The ground work of many is pure white, with throats of blue, scarlet, rose, crimson or velvety-purple, while others are beautifully flecked and striped with the brightest colors, and the tubes are of a bright color with white throat. The bulbs should be started in a warm place, greenhouse, hotbed or sunny window. They will bloom until late in summer, when they should be dried off, letting the leaves dry. The pots can be kept over winter in a cellar free from frost. They are very easily grown. Fine bulbs of choicest varieties, 50 cents per dozen; \$4.00 per hundred.



Gloxinia.

PELARGONIUMS, or LADY WASHINGTON GERANIUMS

A choice assortment of twelve varieties of the best double and single-flowered varieties. \$1.50 per dozen; \$10.00 per hundred.

SWEET-SCENTED GERANIUMS

Including Balm, Rose, two kinds, etc. 50 cents per dozen; \$3.00 per hundred.

IVY-LEAVED GERANIUMS

All the old standbys and new varieties in all colors. 50 cents per dozen; \$3.50 per hundred.

GERANIUMS

Fine assortment of standard sorts, Double and Single at 50 cents per dozen; \$3.00 per hundred, our selection.

Following peerless bedding sorts,

50 cents per dozen; \$3.00 per hundred.

- | | |
|--------------------|-----------------------|
| Beaute Poitevine | Jean Vlaud |
| Bertha de Presilly | La Favorite |
| Countess Harcourt | Montesquieu |
| Contraste | Madonna |
| Dr. Jacoby | Mrs. Hamilton |
| Emerson | Madame Bruant |
| E. H. Trego | Marquis de Castellane |
| Francois Arrago | Mary Hallock Foote |
| Francis Perkins | Margaret de Layes |
| Frie Brand | Mrs. E. G. Hill |
| Gen. Grant | Queen of the Fairies |
| Granville | S. A. Nutt |
| Gen. Leonard Wood | White Swan |
| Hoff Eichler | Wonder |
| John Doyle | |
| Julia Marlowe | |



Geranium E. H. Trego.

THE KING OF ALL SHRUBS

New Hydrangea Arborescens Alba Grandiflora or "Hills of Snow"

THE MOST VALUABLE HARDY SHRUB EVER INTRODUCED

The photograph from which this new American Hydrangea was taken is from a plant four years old. It commences to bloom in June and continues through August. The photograph was taken in June. The plant attains a height of five to six feet and grows into a symmetrical bush without pruning. When it is through blooming the bloom heads turn green, thus the bush always has a fine appearance. This is the most handsome of shrubs either in or out of bloom. Grows best in full sunlight, although will thrive in partial shade. It is by far the best of all shrubs. Nothing to compare with it; perfectly hardy everywhere. Forces well in pots. 2 1/4-inch pots, 60 cents per dozen; \$4.00 per hundred. We can supply twenty-five thousand plants in this size. Field-grown plants, ten to twelve inches high, \$1.00 per dozen, \$8.00 per hundred. Fifteen to eighteen inches high, \$2.50 per dozen; \$18.00 per hundred.



Photograph of Hydrangea Arborescens, four years old. It forces finely for Easter in pots.

GREVILLEA ROBUSTA

A splendid decorative plant, much quicker growing than a Palm, and very effective, with its long, drooping, silky foliage, deeply cut, like a large, growing Fern, or a pinnated-leaved Palm. Be sure and try it for your window. It cannot be excelled. 4 cents per dozen; \$2.50 per hundred.

HELIANTHUS MULTIFLORUS

Hardy Sunflower—This fine plant will live through our northern winters with protection, or can be wintered in the cellar. Height three to four feet, and bears a profusion of perfectly double, bright golden flowers, about the size and form of a nice Dahlia, for which it is sometimes mistaken. One of the really good things that should be in every garden. 40 cents per dozen; \$2.50 per hundred.

HYDRANGEA PANICULATA GRANDIFLORA

Field grown plants. Two feet high and over, \$1.50 per dozen; \$12.00 per hundred. One foot high, 75 cents per dozen; \$6.00 per hundred.

TREE-SHAPED HYDRANGEAS (Hardy Shrub)

These are specimen plants four and five years old trained to tree shape with about three feet of straight stem and nice shaped heads. Should bloom profusely the first year. Before shipping they are all trimmed the proper length for planting, so that they will make a better growth and larger flowers. By express only, 40 cents each; \$4.00 per dozen.

NEW PINK HIBISCUS "PEACHBLOW"



Hibiscus Peachblow.

This is a sport from the double red Hibiscus "Rosea Sinensis." The flowers are double and from four to five inches in diameter, and of a very charming, rich, clear pink color, with small, deep crimson center. It is one of the freest-flowering plant novelties recently offered. The color is an entirely new and beautiful shade, and it blooms abundantly and continuously during the summer and fall months. Large plants two or three years old make a

magnificent show. It will give general satisfaction to those who grow it, either in pots or planted out in the garden. It blooms well in the winter in the greenhouse or in the sunny window. 50 cents per dozen; \$3.00 per hundred. Three-inch, 75 cents per dozen.

HARDY HIBISCUS "CRIMSON EYE"

This magnificent Hibiscus is unequaled among hardy plants for gorgeous beauty. The flowers are immense in size, often measuring twenty-inches in circumference. The color is the purest white, with a large spot of deep velvety-crimson in the center of each flower. A well-developed plant will produce several hundred of these flowers in a season. We offer both seeds and roots. Good strong plants, to bloom this year, 50 cents per dozen; \$4.00 per hundred.

HOLLYHOCKS

In all colors; best double varieties, field roots, 60 cents per dozen; \$4.00 per hundred.

HONEYSUCKLES

Price, 50 cents per dozen; \$3.00 per hundred.

AUREA RETICULATA—(Golden-leaved.) A variety with beautiful, variegated foliage of yellow, pink and white.

CHINESE EVERGREEN—Blooms nearly all the season, deliciously fragrant, flowers buff, yellow and white.

HALL'S JAPAN—The most constant bloomer of the class, being literally covered all summer with beautiful yellow and white flowers.

SCARLET TRUMPET or Red Coral—A rapid grower, bright red, with trumpet-shaped flowers. This is the old, well-known variety.

YELLOW TRUMPET—Same as Scarlet Trumpet, only flowers are golden-yellow.

HYPERICUM MOSERIANIUM—Gold Flower

(Hardy Shrub)

Of a low, spreading, branching growth, with handsome leaves, the upper side much darker than the lower. As a pot plant it is very handsome with its clean, dark foliage as a background for the flowers—great, showy, yellow disks, as brilliant in their reflection as burnished gold. The flowers are from two to three inches across, of a very bright, shining golden-yellow, and bear numerous handsome stamens. On the approach of winter give it a covering of leaves to conserve its vigor, that it may make a strong growth at the start in spring. 50 cents per dozen; \$3.50 per hundred.

HYACINTHUS CANDICANS

An excellent bulbous plant for summer and autumn. Its white, pendent, bell-shaped flowers are produced on stalks three to four feet high, each stalk having from twenty to thirty flowers. 50 cents per dozen; \$3.00 per hundred.

HELIOTROPES

40 cents per dozen; \$3.00 per hundred; \$25.00 per thousand.

FLORENCE NIGHTINGALE—The best free-flowering light lavender.

MADAME DABUCHE—Color deepest violet-purple, large white eye, very fragrant. The plant is of vigorous habit, very floriferous.

SNOW WREATH—Superb large clusters of deliciously fragrant flowers of pure white.



Prince Charmet.

NEWER HELIOTROPES

50 cents per dozen; \$3.50 per hundred.

CZARINA—Another good one. Deep purple and fragrant.

BESSONS FLEUR—Pale lavender; large white eye.

PRINCE CHARMET—Lively blue; large eye.

CHAMELEON—Dark blue; fine.

GERB FLEUR—Giant white.

ENGLISH IVY (Hardy Vine)

This is the old hardy variety that clings to walls, trellises, etc. 50 cents per dozen; \$3.00 per 100.

IVY VARIEGATA—Same as English Ivy only the foliage is beautifully variegated. 50 cents per dozen; \$3.00 per 100.

IVY GERMAN, OR PARLOR IVY—Useful for baskets and vases. 40 cents per dozen; \$2.50 per 100.



English Ivy.



IMPATIENS

SULTANI—This makes a very shapely plant, and is in bloom continuously the year round, outdoors or indoors, even in the small plants three or four inches high. The bloom is bright pink and comes so profusely as to almost cover the entire plant. Very desirable. 40 cents per dozen; \$3.00 per hundred.

WHITE LADY—Same as above except pure white flowers, with deep crimson eye. 50 cents per dozen; \$4.00 per hundred.

PINK BEAUTY—Same as above except salmon-pink flowers, purple eye. 50 cents per dozen; \$3.00 per hundred.

HOLSTI—New. Same as above except the flowers are a lovely vermilion. 50 cents per dozen; \$3.00 per hundred.

New Impatiens, **JOSEPHINE**—Beautiful variegated foliage; pale salmon flowers. 10 cents each; 60 cents per dozen; \$4.00 per hundred.



Justicia.

JUSTICIA—Three Sorts

BRAZILIAN PLUME PLANT—Perhaps no plant has attracted so much attention in the last two years as the Justicia, or Brazilian Plume Plant. The plant is a strong, rapid grower, and throws up long stems, on which are produced fine, plume-like pink flowers, the ends of each petal drooping in a most charming manner. When the plants are but a few months old they are literally covered with their beautiful blossoms. It does equally well either for house or outdoor culture.

JUSTICIA CARNEA—Beautiful pink.

JUSTICIA SANGUINEA—Lovely salmon.

JUSTICIA FLAVA—Bright yellow.

50 cents per dozen; \$3.00 per hundred.

JASMINES

CAPE JASMINE—From 2½-inch pots, 50 cents per dozen; \$4.00 per hundred. Strong plants, twenty-four inches high, well branched, \$2.50 per dozen; \$20.00 per hundred.

MALAYAN—(*Rhynchospermum Jasminoides*.) Vine; white flowers. 50 cents per dozen; \$3.00 per hundred. Three-inch pots, strong, 75 cents per dozen; \$5.00 per hundred.

GRANDIFLORUM—(Catalonian Jasmine.) Flowers pure white, star-shaped, of exquisite fragrance. 40 cents per dozen; \$3.00 per hundred.

MAID OF ORLEANS—In this beautiful Jasmine there are combined some sterling qualities that place it a peer over existing sorts. Easy culture, fine grower, good bloomer, elegant fragrance, and double flowers of chaste and waxy-white appearance. Fine plants, 50 cents per dozen; \$3.00 per hundred.

REVOLUTUM—A strong climbing plant, with glossy leaves and single, deep yellow, fragrant blossoms. 50 cents per dozen; \$3.00 per 100.

POETICA—Beautiful grower, flowers borne in great clusters. 50 cents per dozen; \$3.00 per hundred.

GRAND DUKE—The finest of all Jasmines. 60 cents per dozen; three-inch pots, \$1.00 per dozen.



Lemon.

NEW LEMON, PONDEROSA

Nothing that has ever been brought to our notice in the plant line has caused half the commotion that this wonderful Lemon has. It is a true ever-bearing variety. On a plant six feet high no less than eighty-nine of these ponderous Lemons were growing at one time. It was a beautiful sight to see. The tree was blooming, and at the same time had fruit in all stages of development, from the size of a pea up to the ripe fruit, showing it to be a true ever-bearer. Fruit has been taken from this tree weighing over four pounds. The Lemons have very thin rind for such large fruit. It is the juiciest of all Lemons, makes delicious lemonade, and for culinary purposes cannot be excelled. It is not uncommon to make twelve Lemon pies from one Lemon. We have the entire stock of this ponderous Lemon, and guarantee the trees to produce the same large fruit. No budding or grafting necessary. Ponderosa Lemon is sure to become popular when it is known. It fruits when quite small, and makes a lovely house plant. Everybody can grow their own Lemons. It will fruit freely the second year. Thrifty young plants, 50 cents per dozen; \$3.00 per hundred. Large plants, four-inch pots, \$2.00 per dozen; \$15.00 per hundred.

MILK AND WINE LILY

Or *Crinum Fimbriatum*—A grand sort. The most beautiful of the Crinums. Its bulbs grow large, and its strong growing foliage is erect and sword-shaped. Flowers in umbels, very large and showy, three to four inches in diameter, striped with white and carmine, and very fragrant. Hardy in the South. Fine blooming bulbs, 25 cents each; \$1.00 per dozen; \$7.00 per hundred.

LILY OF THE VALLEY

The Lily of the Valley is one of those delicate, sweet little flowers that not only easily win our love, but keep it forever. Fine pips, \$1.25 per hundred; \$10.00 per 1,000.

HARDY LILIES

HEMEROCALLIS FLAVA—(The Lemon Lily.) This is entirely hardy, and bears flowers of a lemon-yellow color. Very desirable. 50 cents per dozen; \$3.50 per hundred.

LILIUM AURATUM—(Golden-Rayed Queen of Lilies.) This is the grandest Lily grown, and a never failing delight. The perfume is exquisite—light, yet penetrating. Also known as "Gold-banded Lily from Japan." \$1.00 per dozen; \$7.50 per hundred.

LILY EXCELSUM—Salmon in color and cinnamon scented; very fine. 25 cents each; \$2.75 per dozen.

TIGRINUM FLORA PLENA—(The Double Tiger Lily.) Bright orange, spotted black, and very double. \$1.00 per dozen; \$7.00 per hundred.

SPECIOSUM RUBRUM—A beautiful bright rose, spotted with a dark, velvety-crimson. \$1.00 per dozen; \$7.00 per hundred.

SPECIOSUM ALBUM—White, with green band. \$1.00 per dozen.

WEeping LANTANA

A Weeping Plant of Great Beauty—One of the grandest basket plants grown. The plant has a most graceful, drooping habit, grows very rapidly and blooms continually summer and winter, producing large clusters of the most delicate lilac or rosy-pink. 50 cents per dozen; \$3.00 per hundred; \$25.00 per thousand.

TWO NEW LANTANAS

LEO DEX—Opens orange-scarlet, changes to the darkest crimson. The finest Lantana to date. 50 cents per dozen; \$4.00 per hundred.

JAUNE d'OR—Cream and pink, a very fine sort, and the blending of color is beautiful. 50 cents per dozen; \$4.00 per hundred.



Lily of the Valley.

STANDARD SORTS LANTANAS

- M. SCHMIDT—Orange.
- COMTESSE DE BIENCOURT—Pink.
- ALBA PERFECTA—Pure white.
- LA PLUIE d'OR—Golden-yellow.
- HARKETT'S PERFECTION—Variegated foliage.
- GRAND SULTAN—Red and yellow.
- VERSICOLOR—Red, yellow and pink. Opens cream, changes to pink.
- SEVEN SORTS—40 cents per dozen; \$3.00 per hundred; \$25.00 per thousand.

LILACS

Hardy shrubs, both white and blue. Twelve to fifteen inches high, 60 cents per dozen; \$5.00 per hundred.

HARDY MAGNOLIAS

(Hardy Trees)

They soon grow into large trees, and make handsome specimens, bearing their large, fragrant magnolia blossoms. In the early spring they literally hide the tree. Very desirable. We offer three colors of Magnolias that are hardy in any climate—six of the best varieties, all distinct and entirely different. Strong plants, four feet high (except Halleana Stellata, which is two feet-high), 60 cents each; \$6.00 per dozen.

- ALEXANDRINA—Bright pink.
- SOULANGEANA—Deep rose.
- HALLEANA STELLATA—Pure white; double flowers; very fragrant.
- PURPUREA—Royal purple.
- LENNE—Bright red.
- SPECIOSA—Pure white.

CHINESE MATRIMONY VINE

Hardy—It is hardy everywhere. As a vine for permanent effect, or for shading a sunny window, covering an arbor or veranda, and for perfect hardness it cannot be excelled. Pale purple flowers and scarlet berries are constantly appearing from early in the spring till late in the fall. Do not confound this with the old sort. 40 cents per dozen; \$2.50 per hundred.

MADERIA VINE

Fine roots, 30 cents per dozen; \$2.00 per hundred.

MOON FLOWERS

The True Ever-Blooming Moon Flower, **IPOMEA GRANDIFLORA**—We have the true variety that blooms constantly. If planted out in rich ground, in a situation where it has full exposure to the sun, it will attain a height (if given a wire or string to twine on), of forty feet by October 15th, blooming abundantly the entire season. It is called "Moon Flower" from its rare peculiarity of blooming best at night, although it expands its flowers in dull days. The flowers are a pure white, from five to six inches in diameter, emitting a rich, Jasmine-like odor at night. 50 cents per dozen; \$3.00 per hundred.

MOON FLOWER LEARII, or Heavenly Blue—This makes a splendid companion plant to the white "Moon Flower." It is equally rapid in growth and as free blooming as the white variety, although blooming in the morning and dull days. The flowers are the most heavenly blue, with reddish-purple rays, and are six inches across. 50 cents per dozen; \$3.00 per hundred.

New Moon Flower, IPOMEA MAXIMA—This grand new Moon Flower is pure white. The flowers are fully three times the size of the old variety. If you only grow one Moon Vine, let it be a Maxima. 60 cents per dozen; \$4.00 per hundred.



(See Description on Page 26)

HARDY MOON VINE

Pure white flowers and entirely hardy. 10 cents each; 50 cents per dozen; \$3.50 per hundred.

MANETTIA BICOLOR

A handsome vine for pot culture, bearing bright red flowers with golden tips. 50 cents per dozen; \$3.00 per hundred.

BEAUTIFUL JAPANESE MAPLES

(Hardy Trées)

Make nice, bushy little trees, and are highly valued for yard and lawn planting on account of their brilliant colored foliage, which is blood-red, scarlet, purple, golden-yellow and deep green. They are exceedingly beautiful, both in the spring and fall, and though they are among the rarest and most handsome ornamental trees to be found they are only seen in the finest places. We have a fine stock this year, however, and offer six splendid varieties. 40 cents each; the six Maples for \$2.00.

FELICIFOLIUM—Green fern-leaved. Extra fine.

VERSICOLOR—Silver-variegated Maple.

ATROPURPUREUM—Purple leaved.

ROSEO MARGINATUM—Red striped. Foliage fine.

JAPONICUM AUREUM—Golden-yellow. Distinct.

DISSECTUM ATROPURPUREUM — Red-leaved Maple.

MAHERNIA, or HONEY BELLS

This is a fast-growing dwarf plant that bears bell-shaped yellow flowers freely, which are sweet as any flower we grow. 40 cents per dozen; \$2.50 per hundred.

NIEREMBERGIA

Fine for baskets and vases. Light blue flowers. 40 cents per dozen; \$2.50 per hundred.

OTAHEITE ORANGE

This valuable and distinct variety of the Orange family is a dwarf, compact grower, with glossy, deep green foliage, which has a decided odor of the Orange trees of Florida, and is exceedingly floriferous, producing a wonderful profusion of pure white flowers of the most delicious fragrance. Otaheite fruits immediately after flowering, bearing fruit about one-half the size of the ordinary Orange. As a pot plant this lovely dwarf Orange is one of the most novel and beautiful that can be grown. 50 cents per dozen; \$3.00 per hundred. Fine plants, from three-inch pots, 60 cents per dozen; \$5.00 per hundred; five-inch pots, 25 cents each, \$3.00 per dozen.

OLEANDERS

Price, 50 cents per dozen; \$3.00 per hundred.

OLEANDER ROSEA—Has double pink flowers. The old favorite. Very sweet.

LILIAN HENDERSON—Has double white flowers of the largest size. Fragrant like the old double pink. Scarce.

LUTEA PLENA—Double yellow flowers.

LUTEA—Single yellow.

ALBA—Single white.

POMEGRANATES

These make lovely ornaments for the lawn, growing into large, shapely shrubs, foliage is small, flowers double and very pretty. We offer three varieties—Double White, Double Scarlet and Double Variegated. 40 cents per dozen; \$3.00 per hundred.

PICEA PUNGENS GLAUCA

Hardy Evergreen (The Colorado Blue Spruce) — "Purest Blue Strain." The finest of all evergreens. Be sure and get this Spruce, it is a beauty. It will soon grow into a shapely tree. Fine plants, twelve inches high, 50 cents each; \$5.00 per dozen; eighteen inches high, \$1.00 each.

PANSIES

Our Pansies are the best the world produces. They combine the choicest large-flowered sorts, both of European and American growers. It has been our aim to make this the finest strain of this favorite flower in existence. 20 cents per dozen; \$1.00 per hundred.



Palm Cycas Revoluta.



Palms

ARECA LUTESCENS

Two and one-half inch pots, 60 cents per dozen; \$4.50 per hundred.

4 to 5 leaves. .12 to 15 in. high. \$2.00 per dozen

CYCAS REVOLUTA

(Sago Palm)

Leaves.	Height.	Per doz.
6 to 8	12 to 15 in., \$1.00 each.	\$10.00
8 to 10	18 to 20 in., \$1.50 each.	15.00
12 to 15	18 to 24 in., \$2.50 each.	24.00

YOUNG PLANTS FOR GROWING ON

From two-inch pots. Fine stock.

PHOENIX RECLINATA—60 cents per dozen; \$5.00 per hundred.

PHOENIX CANARIENSIS—50 cents per dozen; \$3.50 per hundred.

LATANIA BORBONICA—60 cents per dozen; \$4.00 per hundred.

ARECA LUTESCENS—50 cents per dozen; \$4.00 per hundred.

CORYPHA AUSTRALIS—50 cents per dozen; \$4.00 per hundred.

We have a fine lot of Kentias in seven-inch pots at 60 cents each. Larger sizes, \$1.00 to \$3.00 each. Also Phoenix Canariensis in ten-inch pots, at \$1.75 to \$3.00 each.

HARDY SCOTCH or SWEET MAY PINKS

These are the Pinks of our mothers' gardens. They are dwarfer than the Carnation, growing about one foot in height, the color being of the various shades of maroon, carmine and rose, beautifully laced and banded on white ground. The flowers are perfectly double, clove-scented, and the plants will stand out of doors year after year, being entirely hardy. Six choice sorts, including Her Majesty. 40 cents per dozen; \$3.00 per hundred.

PITTIOSPORUM TOBIRA

An elegant hard-wooded shrub. Makes handsome specimens, growing into a small tree in a few years. It bears small, white flowers in large bracts, or heads, which are so delicious in fragrance as to remind one of Orange blossoms. Hardy in the South, where it is very popular. \$1.00 per dozen.

MEXICAN PRIMROSE

A handsome plant, bearing large flowers of delicate shades; extra fine. 40 cents per dozen; \$3.00 per hundred.

PHILADELPHUS, MOCK ORANGE

(Hardy Shrub)

A most desirable hardy shrub. Beautiful and fragrant. Growing to a height of ten feet. We have both the double and single flowered.

PHILADELPHUS GRANDIFLORA (Mock Orange)

—Pure white, very fragrant.

PHILADELPHUS CORONARIUS (Mock Orange)—

Fragrant white flowers.

Price of above Philadelphus, twelve to eighteen inches, field grown, 60 cents per dozen; \$4.00 per hundred; Eighteen to twenty-four inches, \$1.00 per dozen; \$7.00 per hundred.

PRIMULA FORBESII

New Ever-Blooming Baby Primrose—This is the freest-blooming plant we know of, blooming continuously throughout the entire season. Plants in very small pots have from fifteen to twenty sprays of lovely light pink flowers on stems ten to twelve inches high at one time, and plants in four-inch pots often have from twenty-five to fifty at one time, lasting in bloom fully four weeks without fading, and continually sending up sprays all over the plant, making it one of the most desirable plants for the house ever introduced. 50 cents per dozen; \$2.50 per hundred.



PRIMULA OBCONICA

(Always in Bloom)

This is a charming plant for winter. In fact, we know of none that is better adapted to home culture than this one. It is not susceptible to changes of temperature that most plants are subject to. It bears its elegant panicles and sprays of bloom of a delicate pink and white in the greatest profusion. It is certainly elegant. We offer two varieties, rose and white flowered. 40 cents per dozen; \$3.00 per hundred.

PLUMBAGOS

PLUMBAGO CAPENSIS—The light blue flowering variety, excellent bedder. 60 cents per dozen; \$5.00 per hundred.

CAPENSIS FLORA ALBA—This is a splendid novelty. The exact counterpart of Plumbago Capensis except in color, which in this beautiful novelty is a clear white. We recommend this highly. 50 cents per dozen; \$3.00 per hundred.

LADY LARPENT—The hardy deep blue variety. 40 cents per dozen; \$3.00 per hundred.

PYRUS JAPONICA

Burning Bush or Japanese Quince

One of the most beautiful hardy flowering shrubs. A splendid lawn plant. The bright scarlet flowers, produced before the foliage, make a gorgeous display. 75 cents per dozen; \$6.00 per hundred.



Peperomia Muscosa.

PEPEROMIA MUSCOSA, or SILVER LEAVED BEGONIA

Here is a most beautiful plant for pot culture; easy to grow and thrives anywhere; leaves deep olive-green, distinctly marked with silvery-white. Thick and waxy-like; leaves distinct; variegated white and green, and have the appearance of being powdered with frosted silver. 10 cents each; 50 cents per dozen; \$3.50 per hundred.

PETUNIAS—Double Flowered

A fine assortment of all colors and shades. 50 cents per dozen; \$3.50 per hundred.

PASSIFLORA CONSTANCE ELLIOTT

Pure white flowers; entirely hardy; very fine. 50 cents per dozen; \$3.00 per hundred.

RUDBECKIA LACINIATA, "Golden Glow"

A hardy perennial plant, growing eight feet high, branching freely and bearing by the hundreds, on long, graceful stems, exquisite double blossoms of the brightest golden color, and as large as Cactus Dahlias. 40 cents per dozen; \$2.50 per hundred.

RUSSELIAS

(New Varieties)

LEMOINEI MULTIFLORA—The primary stems are strong and grassy. The flower panicles are extremely long, and are covered with tassels of flowers, one over the other. Color a grand coral-red. It is well named "The Many-Flowered." 50 cents per dozen; \$3.00 per hundred.

LEMOINEI ELEGANTISSIMA—The primary stems are wiry and nicely covered with foliage, very graceful and arching in their form. The bloom is so freely produced as to cover the plant. Flowers a bright, soft red. 50 cents per dozen; \$3.00 per hundred.

JUNCEA—This is the old Russelia, often called the Fountain Plant. It is a beauty, and very valuable for baskets and vases. 40 cents per dozen; \$2.50 per hundred.

RHUS COTINUS

(Hardy Shrub)

Purple Fringe—A beautiful, distinct and large hardy shrub. Much admired for its long, feathery flower stalks, which give the tree the appearance of being covered with a cloud of smoke. 75 cents per dozen; \$5.00 per hundred.



Rhododendron.
RHODODENDRON, ROSE BAY
(Parson's Hardy Varieties)

Hardy shrub. One of the most valuable of our hardy decorative plants. The leaves are broad, glossy and evergreen. In June, when the masses of rich glossy-green are surmounted with scarlet, purple and white clusters, each cluster large enough for a bouquet, the display is worthy of admiration. The plants we offer are twenty-four inches high, well established, well set with six to eight buds. Don't confound these plants with the cheap kinds offered by some, as they are not the same. \$1.00 each; \$9.00 per dozen.

- ALBUM GRANDIFLORUM—White.
 - CARACTACUS—Crimson.
 - FASTUOSUM—Lavender.
 - GENERAL GRANT—Rosy-scarlet.
 - GENERAL LEE—Dark purple.
 - GLORIOSA—Large bluish.
 - PRESIDENT LINCOLN—Deep rose.
 - ROSEUM ELEGANS—Bright pink.
- We have a smaller size Rhododendron, two to four buds, unnamed, at 50 cents each; \$5.00 per dozen.



Royal Purple.
ROYAL PURPLE

Strobilanthes Dyerianus—A new and very beautiful foliage plant from Singapore, which will become universally popular on account of the brilliant and exquisite coloring of its leaves, the beauty of its flowers and its extraordinary easy growth and usefulness as a decorative plant. It surpasses the finest Coleus in exquisite coloring of its leaves, besides which the long racemes of lovely violet blossoms with which the plant is covered in midwinter greatly enhance its value and beauty. 40 cents per dozen; \$2.50 per hundred.

SAXIFRAGA SARMENTOSA

A handsome plant of low habit, leaves nearly round and striped freely with silver bands, blooms nearly white, of great beauty and borne in spikes nearly twelve inches high. Fine for hanging baskets, vases, etc. 50 cents per dozen; \$2.50 per hundred.

STOKESIA CYANEA, or CORNFLOWER ASTER

(Hardy Plant)

"Has been the most universally admired flower on our grounds." "The plant grows from eighteen to twenty-four inches high, and produces the Centaurea-like lavender-blue flowers from four to five inches in diameter early in July until late in October, even after the frost has destroyed nearly all other outdoor flowers. It is of easiest culture, succeeding in any open, sunny position; not only is it desirable as a single plant in the mixed border, but it can also be used with good effect in large, solid masses, and at the same time is invaluable as one of the finest cut flowers. We have no hesitancy in saying that the Stokesia is the one most desirable hardy plant in our list." 50 cents per dozen; \$3.00 per hundred.

SPIREAS

(Hardy Shrubs)

VAN HOUTTE—Clusters of twenty to thirty flat, white florets make up the raceme. Perfectly hardy and an early bloomer.

New Crimson Spirea, **ANTHONY WATERER**—A bright crimson Spirea. It makes a low, compact bush fifteen to eighteen inches high, and is covered nearly the whole growing season with large umbels of deep crimson flowers.

SPIREA PRUNIFOLIA—The old-fashioned Peter's Wreath. 50 cents per dozen; \$4.00 per hundred.

Price, of above Spireas, fine plants, 60 cents per dozen; \$4.00 per hundred. Two-year-old plants, \$1.00 per dozen.

SMILAX

For using as a green with cut flowers it has no equal, its hard texture enabling it to keep for several days without wilting after being cut. It is also fine as a parlor or window plant. 35 cents per dozen; \$2.50 per hundred; \$20.00 per thousand.



Stokesia.



Sansevieria Zeylanica.

SANSEVIERIA ZEYLANICA

A. New Decorative Plant of Great Beauty and Value
 A beautiful plant, splendidly adapted for the decoration of drawing rooms or halls, as it stands drouth and dust with impunity, and requires scarcely any water. 50 cents per dozen; \$3.00 per hundred; \$25.00 per thousand.

SALVIAS

Price, 40 cents per dozen; \$2.50 per hundred.

New Dwarf Scarlet Salvia, **LE PRESIDENT**—The grandest addition to our list of bedding plants. It forms a compact bush completely covered with rich, scarlet flowers. We have had plants that by actual measurement were only fifteen inches high and two feet across. As a border or vase plant it will be indispensable, and as it will bloom abundantly in pots, it will be of the greatest value as a market plant for florists.

SPLENDENS—The standard sort for bedding. Flower spikes of the most brilliant scarlet.

ALBA—A white variety of Splendens. Identical in every respect except in color, which is pure white.

SPLENDENS VARIEGATA—White and red flowers, very evenly matched.

New Dwarf Scarlet Salvia, **MRS. PAGE**—This variety simply hides the foliage and is a sheet of brightest scarlet.

New Salvia, **AUDUBON**—The distinctive feature of this splendid novelty is its strikingly handsome spotted foliage. The leaves are rich, soft dark green with light sulphur or cream-colored spots of various sizes liberally sprinkled over them. The intense, bright scarlet flowers are very large; the plants are of neat, compact habit. This makes a desirable bedding plant, rivaling the most gorgeous Coleus, its bright spotted leaves and brilliant scarlet flowers making it a most effective bedder. 50 cents per dozen; \$3.00 per hundred; \$25.00 per thousand.

SOLANUM AZUREUM

The Blue Solanum—A pretty plant which inclines to a trailing or climbing habit, but can be pinched back to bush form. Large clusters of blue flowers, which are succeeded by scarlet berries which remain perfect a long time. 50 cents per dozen; \$3.50 per hundred.



Salvia Mrs. Page.

STEPHANOTIS FLORIBUNDA

Old-Time Favorite—Always scarce. This is, without doubt, the rarest of all hardwood vines. It makes a rapid growth, and bears large clusters of deliciously fragrant white flowers. Nothing can compare with it for beauty of bloom or for its exquisite fragrance. We have procured a good stock of it, and offer it very cheap. 2 1/2-inch pots, 75 cents per dozen; \$6.00 per hundred.

SAGE, HOLT'S MAMMOTH

The great leaved Sage of commerce. Useful as a culinary article; also a beautiful pot plant. 50 cents per dozen; \$3.00 per hundred.

TRITOMA PFITZERII

The best of the red hot poker plants. Three-inch pots, \$7.00 per hundred; \$1.00 per dozen.

DWARF EXCELSIOR PEARL TUBEROSE

We have procured the finest lot of Tuberoses it has ever been our pleasure to handle. Every bulb should throw an immense spike of bloom. 25 cents per dozen; \$1.00 per hundred; \$8.00 per thousand.



Vinca Major Variegata.

VINCA MAJOR VARIEGATA

This is a beautiful variegated trailing vine admirably adapted for hanging baskets and vases. The leaves are a glossy-green, broadly margined a creamy-white, flowers blue. More Vincas are employed in vase and basket work than all other vines combined. 40 cents per dozen; \$2.50 per hundred; \$20.00 per thousand. Three-inch pots, 75 cents per dozen; \$5.00 per hundred. Four-inch pots, \$1.00 per dozen; \$7.00 per hundred.

The Beautiful Iris Kaempferi

HARDY PLANT

It is perfectly hardy. Produces a dozen flower spikes three feet in height, each spike bearing from two to four enormous blossoms eight to ten inches across and of the most delicate and beautiful colors, markings and combinations.

GEKKA-NO-NAMI (Waves on Moonlight.) — Large double white, center gold and yellow.

KUMOMA-NO-SORA (Sky Amidst the Clouds.) — White, edged and flushed with blue, center banded yellow.

KUMO-NO-OBI (Band of Cloud) — Crimson amaranth, shaded lighter, lavender center with base of gold.

GEISHO-UI (Proper Name.) — Deep mahogany-red, base of petals lighter.

KUMA-FUNGIN (Excited Bear.) — Large deep violet-blue; very fine.

SENJO-NO-HORA (Air After Battle, Heavy with Smoke.) — Blotched and veined violet-red, center of purple and gold.

SHICHIUKWA (Flower in Wine.) — White, bordered reddish-amaranth, center flushed gold.

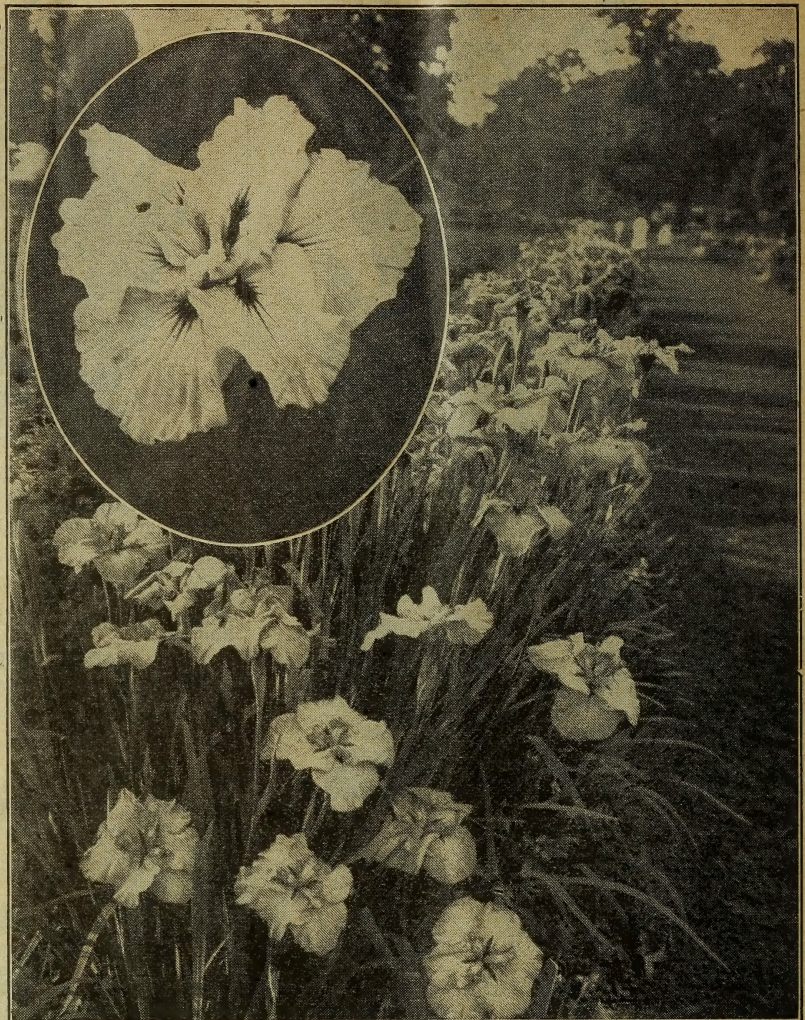
ISO-NO-NAMI (Shallow Waves.) — Fine porcelain-blue, blotched deeper, center rosy-lilac flushed with gold.

Note.—The above Japanese Iris are beautiful, grand.

\$1.00 per dozen; \$6.00 per hundred; \$50.00 per thousand.

GERMAN IRIS

In best colors, named. 40 cents per dozen; \$2.50 per hundred; \$20.00 per thousand.



A Row and Single Floret of Japanese Iris.



Violets.

BEAUTIFUL and FRAGRANT VIOLETS

NEW VIOLET PEACOCK—This is a charming variety and pleases everyone. It has lovely flowers of white, shaded with light blue. Try it. 60 cents per dozen; \$4.00 per hundred.

MARIE LOUISE—(Baby Blue.) To contrast with white we offer this double, deep, bluish-purple, sweet-

scented variety. Desirable for pots or gardens. Plants hardy and bloom freely. This variety is planted more largely by florists than any other. 40 cents per dozen; \$3.00 per hundred.

HARDY RUSSIAN—This is the hardiest of all Violets. Deep, rich blue in color. A strong grower. You will have no trouble to grow this variety, as it thrives everywhere. 40 cents per dozen; \$3.00 per hundred; \$25.00 per thousand.

LADY HUME CAMPBELL—A true ever-bloomer. This is the finest of all double blue Violets. It is simply wonderful the number of beautiful flowers it produces. In color it is a shade of the richest, intense blue. It is a charming contrast with the white variety. 40 cents per dozen; \$3.00 per hundred.

CALIFORNIA—This is the variety universally planted for single blue flowers. 40 cents per dozen; \$2.50 per hundred.

PRINCESS OF WALES—Probably the best all round single Violet for cut flower purposes; large, deep blue. 40 cents per dozen; \$3.00 per hundred.

SWANLEY WHITE—Double white flowers. 40 cents per dozen; \$3.00 per hundred.

VIBURNUM OPULUS—Snowball

(Hardy)

Attaining a height of eight feet. Produces its snow-white flowers in large balls or masses in June. 60 cents per dozen; \$5.00 per hundred.



Viburnum Plicatum.

VIBURNUM PLICATUM—Japan Snowball
(Hardy.)

A new variety of Snowball from Japan. Foliage olive-green through the summer, but towards fall it turns much darker and remains on the plants for some time after the first frost. Flowers four to six inches across. \$1.50 per dozen.



Wistaria.

WISTARIA

A Popular Hardy Vine—50 cents per dozen; \$4.00 per hundred.

WEIGELAS

(Hardy Shrub)

ROSEA—Flowers large and rose colored, borne in such profusion that the whole plant appears a mass of blooms.

ROSEA NANA VARIEGATA—Deep green leaves, broadly margined yellowish white.

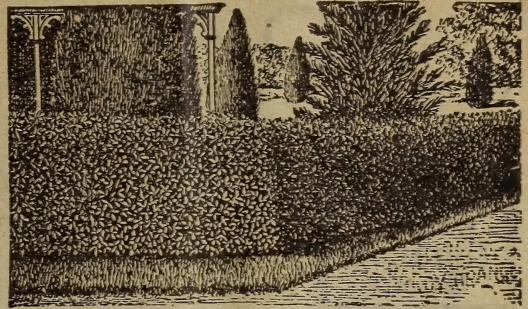
CANDIDA—Strong, erect, upright grower. Flowers pure white and produced in great profusion in June.

Price of above Weigelas, fine plants, 60 cents per dozen; \$5.00 per hundred. Two-year-old plants, \$1.00 per dozen.

YUCCA FILAMENTOSA, or Spanish Dagger

Strong plants, 75 cents per dozen; \$6.00 per hundred.

Beautiful Privet for Hedges



Privet.

PRIVET—Hardy Hedge Plant

California Privet—It is very hardy, easily and quickly pruned, and will grow almost anywhere. Fine for division hedges between city yards. Ten to fifteen inches, 50 cents per dozen; \$3.00 per hundred. Eighteen to twenty-four inches high, 60 cents per dozen; \$4.00 per hundred.

AMOR RIVER PRIVET

This magnificent Privet has smaller leaves than the old variety and possesses the quality of a more compact growth, making it the peer of all thornless hedge plants. Our stock is fine. Fifteen to eighteen inches, 50 cents per dozen; \$3.50 per hundred. Two to three feet, 75 cents per dozen; \$5.00 per hundred.

ECLIPSE
Glass Cutter

We have in this glass cutter the best in the market; cuts as good as a diamond. Do not confound the Eclipse with the common wheel cutter; will last twenty times as long. 25 cents each; \$2.50 per dozen.

Special Greenhouse
POTS

Packed F. O. B. Springfield, Ohio.

Diameter 1½ x depth 2 inch, net price per 1,000	\$3.00
Diameter 2 x depth 2½ inch, net price per 1,000	3.50
Diameter 2½ x depth 3 inch, net price per 1,000	4.00
Standards, 3 inch, net price per 1,000	5.00
Standards, 3½ inch, net price per 1,000	6.00
Standards, 4 inch, net price per 1,000	8.00
Standards, 5 inch, net price per 1,000	15.00
Standards, 6 inch, net price per 1,000	20.00
Standards, 7 inch, net price per 1,000	40.00
Standards, 8 inch, net price per 1,000	60.00
Standards, 10 inch, net price per 1,000	120.00
Standards, 12 inch, net price per 1,000	250.00
Standards, 15 inch, net price per 1,000	500.00

Fern Pans all sizes.

All orders for pots send direct to

THE SPRINGFIELD CLAY MFG. CO.,

Springfield, Ohio

SULPHO-TOBACCO SOAP

A WONDERFUL INSECT PEST EXTERMINATOR



Unsurpassed for quickly exterminating all insect life on plants and flowers in and out of doors. Excellent for Rose bushes, shrubs, etc. This popular insecticide never fails to give satisfaction, and is cheap, effective, clean, harmless, and non-injurious to the tenderest growth. It also acts as a valuable fertilizer, reviving plant life. For domestic purposes it

rids the house of cockroaches, and is a superior wash for dogs and all animals. Prevents poultry lice. You cannot afford to be without Sulpho-Tobacco Soap if you desire to be successful in plant culture. A trial will give highly gratifying results. Directions for use with each cake.

Three-ounce cake, sufficient for one and one-half gallons prepared solution, 10 cents each; 75 cents per doz. Eight-ounce cake, sufficient for four gallons prepared solution, 20 cents each; \$1.50 per dozen.

BOWKER'S AMMONIATED FOOD FOR FLOWERS



A new, odorless fertilizer for pot plants. Makes plants grow and bloom luxuriantly, and drives insects from the soil. It starts the plants at once into a healthy and vigorous growth, and abundant bloom. It drives worms and other troublesome insects from the soil. It has no disagreeable odor, and is the only artificial fertilizer which can be used without danger or injury to the plants. It takes the place of liquid manure, and is just the thing that has been wanted for a long time. We have sold tens of thousands of packages of it, and have yet to hear the first complaint. If your plants are doing poorly, get a package, and see

how quickly they will be benefited. It acts like a charm. The Ammoniated Food is put up in wooden boxes, with attractive wrappers. One package, sufficient for twenty-five ordinary-sized plants for one year, for 25 cents, \$2.50 per dozen.

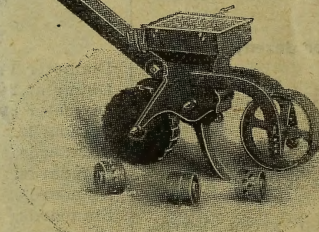
Something New

THE COLUMBIA GARDEN PLANTER

**FOR THE FARMER
THE TRUCK GARDENER
THE FLORIST
THE SEEDSMAN
AND THE
NURSERYMAN**

**A WONDERFUL
LITTLE
MACHINE**

A boy can run it. It plants all kinds of seeds from the smallest to the largest, including Lima Beans, Peanuts, etc.



It opens the furrow, drops and covers the seed and presses the soil over the seed all in one operation.

Write for illustrated circular today.

Built Upon Scientific and Mathematical Principles.

THE COLUMBIA PLANTER CO., Springfield, Ohio.