

## **Historic, Archive Document**

Do not assume content reflects current scientific knowledge, policies, or practices.



62,97

RECEIVED  
★ JUL 29 1920 ★  
U. S. Department of Agriculture

**FIFTY-FIFTH YEAR**

**SPRING 1909**



**PRICE LIST**

**KELLOGG'S NURSERY**

.....Successors to.....

**Geo. J. Kellogg & Sons**

**Janesville, Wisconsin**



# INDEX

---

	Page
Announcement .....	2
Apples—Crabs .....	5-8
Blackberries .....	14
Certificate of Inspection...back cover page	
Cherries .....	10-11
Claims .....	3
Clematis and Climbing Vines.....	19-20
Currants .....	9-11
Coupon .....	inside back cover
Dewberries .....	14
Evergreens .....	16
Gooseberries .....	11
Grapes .....	14-15
Guarantee .....	3
Garden Roots .....	15
Orders .....	3
Ornamental Trees .....	15
Packing Charges—Boxes—Bales.....	4
Pears .....	8
Plums .....	8-9
Poultry—White Wyandottes.....	
.....	inside back cover
Peonies—Dahlias .....	20
Raspberries—Red .....	11-13
Raspberries—Purple .....	13
Raspberries—Black .....	13
Roses .....	16-17
Shade Trees .....	15
Shrubs .....	17-18
Strawberries .....	20-24
Substitution .....	3
Terms .....	4

ESTABLISHED 1854

---

Retail  
Price List

---

SPRING

1909

**KELLOGG'S NURSERY**

Successors to  
Geo. J. Kellogg & Sons

**M. S. KELLOGG, Proprietor**

---

**Janesville, Wisconsin**



# ANNOUNCEMENT

---

**I**N PRESENTING this, our 55th Annual Price List, we do so believing that our efforts in the past have been appreciated in endeavoring to supply our customers with nursery stock of the best quality and at prices as low as is commensurate with No. 1 stock.

We have to announce a change in the personnel of the firm, Mr. L. L. Kellogg having retired. The business will be conducted along the same lines as we have followed in the past, viz: selling direct to the planter. We employ no agents. Anyone who states he is acting as agent for us (unless he is known in the territory he works in) is a fraud. Send your order direct to a reliable old established firm and save a large commission from the middleman.

We offer a large stock of trees, plants, etc., of the best standard varieties, well grown and thrifty, handled and packed under cover, with no exposure to sun or wind. Packing is done by experienced hands under our personal supervision.

We guarantee goods to arrive at destination in good order, after which our responsibility ceases.

We thank you for past favors and solicit your further orders, and all orders sent us will receive our most careful attention.

KELLOGG'S NURSERY,  
M. S. Kellogg, Prop.

**GUARANTEE**—We exercise the greatest care to have all stock true to name and grade and satisfactory in every way, but it is hereby agreed between the purchaser and ourselves that should any stock not prove true to name, on proper proof, we will replace it or refund the purchase price, but shall not be held for further damage.

**CLAIMS**—All claims for shortage, errors, etc., must be made within five days of receipt of stock, or same will not be allowed. Mistakes do occur; but we are always willing to do all we can to correct any errors for which we are responsible. But in making complaints be reasonable.

**ORDERS** are acknowledged at once upon receipt of same, and should you fail to receive an answer in ten days write us again. Always give your name and address and write same very plainly; also give full shipping directions.

Order early before the assortments are broken and thereby avoid disappointment and possible delay.

Orders are shipped in rotation, as far as possible, and late ones must take their turn.

**SUBSTITUTION**—When any variety or grade is exhausted we reserve the right to substitute, or to put in a smaller grade of trees, unless otherwise stated in the order, but in this case the true name will always be on such stock, and full value sent if smaller grades are used. We furnish 6 at dozen, 50 at hundred and 500 at thousand rates, and allow an assortment of varieties.



**TERMS — CASH** with order or before shipment.

**Plant with Care**, and see that the earth is packed firmly about the roots and that all trees planted are thoroughly wet down and well mulched. The ground should be well prepared before planting and given thorough cultivation afterwards.

On receipt of stock, dip roots in water and bury in moist ground, except strawberry and raspberry plants, which should not be wet, but open the bundles and spread out, packing the soil firmly to the roots. All stock should be set out as soon as possible.

To parties wishing same, a short list of instructions in regard to planting and cultivation of stock, spraying and formulas, will be mailed on request.

Any information not given in this list will be furnished on application.

**PACKING CHARGES**—Bales of less than 50 trees, 25c; 50 to 100 trees, 50c; 150 trees, 75c. Where more than 150 trees are ordered they will have to be boxed, in which case no charge will be made for packing except the cost of boxing, as follows: 30 by 30 inch heads, \$2.50; 24 by 24 inch, \$2.00; 18 by 18 inch, \$1.50; all 8 to 10 feet long. No charge for packing small fruit plants at the list price, or for cartage. We have United States and American Express Companies and C. & N. W. R. R. and C., M. & St. P. R. R. Companies.



## APPLE TREES.

In the propagation of this fruit we use as nearly all nurserymen do, the piece root graft, using a long cion and a short root. The experience of over half a century has demonstrated that such trees are better for the north than either whole root grafts or budded trees. When the long cion and short root is used the lower part of the cion (which is all below ground except the upper two inches) will nearly always start roots, and these being the same variety as the cion makes the tree hardier and longer lived. Our grafts are made here by experienced men under our personal direction.

Prices of grafts given on application.

	Each	Doz.	100
6 to 7 feet.....	\$ .35	\$2.75	\$16.00
5 to 6 feet.....	.25	2.00	12.00
4 to 5 feet.....	.20	1.50	7.00

Thousand rates quoted on application.

We have some varieties in stock not listed. Varieties marked thus \* are recommended for the extreme north.

### SUMMER VARIETIES.

**YELLOW TRANSPARENT** — (Russia) Medium, roundish conical, light yellow, juicy, sub-acid. One of the best early varieties. July-August.

\***DUCHESS**—(Russia) Large roundish, flattened, light yellow covered with stripes and splashes of dark crimson, firm, sub-acid. August-September.

\***IOWA BEAUTY**—(Iowa) Large, roundish, irregular, golden yellow, striped dark red, juicy, acid. September.

\***TETOFISKY**—(Russia) Medium size, roundish oblate, yellow striped with red, juicy, sprightly sub-acid. Very hardy. August.

### FALL VARIETIES.

**McMAHON** — (Wis.) Large, roundish, slightly flattened, light yellow to white, crisp, juicy, sub-acid. October.

**WOLF RIVER**—(Wis.) Very large, roundish, irregular, yellow, covered with dark crimson, coarse grained, juicy. October-December.

\***WEALTHY**—(Minn.) Medium to large, roundish oblate, striped, bright crimson to dark solid red. A very attractive fruit. Very juicy, sub-acid. October-January.

\***HIBERNAL**—(Russia) Large, roundish, flattened, green striped with red, juicy, firm, acid, (cooking). September-November. One of the hardiest varieties known.

\***PLUMBS CIDER**—(Wis.) Large, roundish, conical, green with red stripes, firm, juicy, fine grained, sub-acid. October-January.

**PEERLESS**—(Minn.) Medium to large, roundish, conical, greenish, striped with dull red, firm, sub-acid. October-January.

#### FALL AND WINTER.

\***LONGFIELD**—(Russia) Medium, roundish conical, light yellow with red blush, very juicy, sub-acid. October-December.

\***PATTEN'S GREENING**—(Iowa) Large, round, slightly flattened, yellowish green with bronze blush, sub-acid. October-January.

**FAMEUSE OR SNOW**—Medium, roundish, flattened, deep solid red, sometimes striped, juicy, fine grained, mild sub-acid. October-January.

**DOMINION WINTER**—(Can.) Medium size, yellow with fine black dots, fine grained, mild, sub-acid. October-January.

**BROUGHTON SWEET**—(Wis.), Large roundish, flattened, green and yellow with fine dots, firm, juicy sweet. October-January.

#### WINTER VARIETIES.

**PEWAUKEE**—(Wis.) Large, roundish, irregular, striped with dull red, mild sub-acid. December-February.

\***NEWELL**—(Wis.) Large, roundish, deep yellow with slight blush, juicy, sub-acid. January-March.



**TALLMAN SWEET** — Medium, round, whitish yellow, juicy, mild, sweet, January-March.

**FLUSHING SPITZENBURGH**—(N. E.) Medium to large, roundish, conical, greenish yellow with red splashes and stripes, juicy, crisp, nearly sweet. October-February.

**SALOME**—(Ill.) Medium size, roundish, conical, yellow with large light colored dots, mild sub-acid. Good. January-May.

\***MALINDA**—(Minn.) Large roundish, conical, green, firm, sweet. January-May.

\***SCOTTS WINTER** — (Vt.) Medium, roundish, oblate, red striped to dark red, juicy, sub-acid. February-April.

**WINDSOR (WINDSOR CHIEF)**—(Wis.) Medium, oblate, slightly conical, light greenish yellow covered with marbled dull red and russet, fine grained, spicy, sub-acid. Very good. December-May.

\***N. W. GREENING**—(Wis.) Large, roundish, oblong, regular, yellowish green, firm, mild sub-acid. February-May.

**BEN DAVIS**—Large, roundish, conical, light to dark red, striped, coarse grained, mild sub-acid. February-May.

\***WALBRIDGE**—(Ill.) Medium, roundish oblate, green yellow with pale red stripes, mild sub-acid. February-May.

## CRABS.

**HYSLOP**—Large, roundish, tapering dark solid red, acid. October.

\***SWEET RUSSET**—Large, roundish oblong, greenish yellow, mild, sweet. September.

\***VIRGINIA**—Medium, roundish, flattened, nearly solid red, very juicy, acid. September-November.

\***WHITNEY NO. 20**—Large, roundish, oblong, waxen yellow covered with dark red, juicy, mild sub-acid. August-September.

**MINNESOTA**—(Minn.) Large, roundish, conical, green and yellow, mild sub-acid. September.

**\*TRANSCENDENT**—A standard variety, large, roundish oblate, yellow with red blush, firm sub-acid. September-October. Fine for pickels and jelly.

## PEARS.

	Each	Doz.	100
5 to 7 feet.....	\$ .35	\$3.00	\$25.00

**DUCHESS DE ANGOULEME** — Very large, oblong, greenish yellow, juicy, good quality. July.

**BARTLETT**—Large, oblong, yellow, fine grained, juicy, sweet. September.

**FLEMISH BEAUTY**—Large, yellow with reddish brown tinge, juicy, sweet. September.

**CLAPP'S FAVORITE**—Large, ovate, pale yellow, juicy, melting. September.

**KIEFFER**—Large, oval, yellow with light blush, coarse grained, very hardy. October-December.

## PLUMS.

We propagate mainly of the native varieties (*Prunus Americana*) as we find they are much more reliable than the European or Japan sorts. A most satisfactory fruit, especially for exposed or unfavorable locations. Will grow anywhere, even on poor ground; fruits well even under neglect and is perfectly hardy.

	Each	Doz.	100
5 to 7 feet.....	\$ .35	\$3.50	\$20.00
4 to 5 feet.....	.25	2.50	15.00

**\*DESOTO**—Large, oval, light yellow to red, sometimes mottled, juicy, good quality. An early and regular bearer, producing large crops. September.

**\*FOREST GARDEN**—Large, roundish oblong, deep red with yellow tinge, firm, sub-acid. September.

**ACHEDA**—Medium to large, roundish oblong, mottled red, rich sweet. September.

**LOMBARD**—Large, oblong, slightly flattened, purplish red with blue bloom, flesh firm, meaty; mild sub-acid. September.



**ROLLINGSTONE** — Medium to large, slightly flattened, color mottled red to purple; flesh firm, sweet. September.

\***WYANT**—Large, oblong, flattened, purple, red, firm, meaty, good quality. One of the best American varieties. September.

\***SURPRISE**—Very large, roundish oval, bright crimson, sometimes mottled, vigorous upright grower, an early bearer and a very choice variety. Flesh firm, meaty, sweet. August.

## CHERRIES.

	Each	Doz.	100
4½ to 6 feet.....	\$ .50	\$4.50	\$30.00
3½ to 5 feet.....	.35	3.50	20.00

\***EARLY RICHMOND**—An early variety of extreme hardiness, bearing large annual crops of medium sized fruit, light to dark red, very juicy. Season June.

\***MONTMORENCY**—Large, bright crimson, very juicy, strong, upright grower and one of the best late varieties. Season July.

**WRAGG**—Large, dark crimson nearly black when ripe, firm, juicy. July.

**ENGLISH MORELLO**—Large, dark red, juicy, tree somewhat dwarf in growth. July.

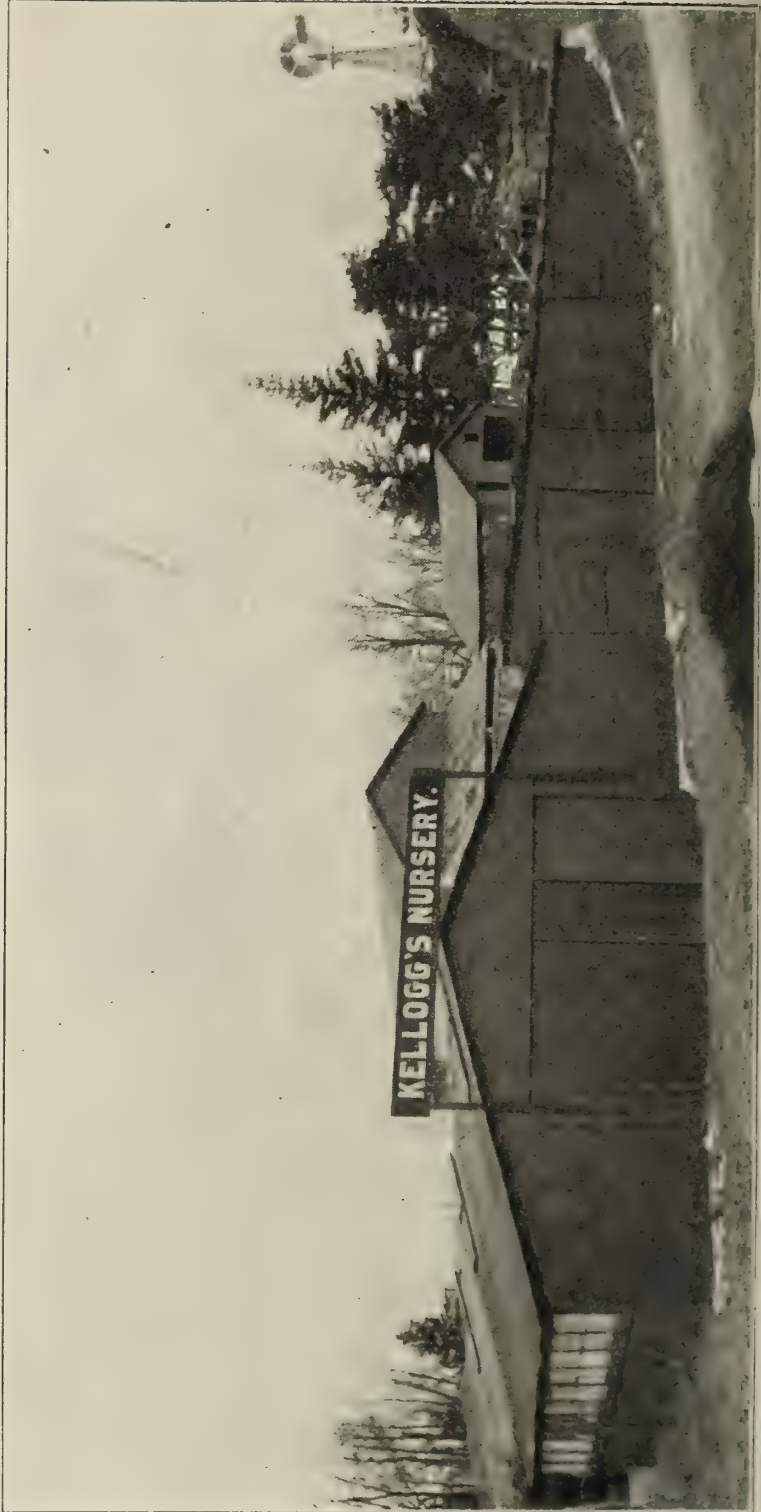
## CURRANTS—Two Years.

	Doz.	100	1000
<b>VICTORIA</b> —A standard market variety, always reliable, dark red, very productive, berry medium to large, good quality, season early. ....	\$ .75	\$3.50	\$30.00

**PRINCE ALBERT** — Large size, bright red, productive, ripens late.... .75 3.50 30.00

**NORTH STAR**—Strong, vigorous grower, medium size, bright red, season early. .... .75 3.50 30.00

**L. B. HOLLAND** — A medium sized late variety; a strong grower and very



**View of Main Cellar and Packing Sheds.**



prolific; bush attains to immense size; fruit light red, hanging in long clusters; acid. .... .75 3.50 30.00

**LONDON MARKET**—A strong vigorous grower, an early and abundant bearer, berry of large size and deep, rich crimson, fine quality; bunches long, mid-season to late..... .75 3.50 30.00

**WILDER**—A new variety largely grown for market, bush and berry very large, dark rich red and good quality. Always brings the top price..... 1.00 4.25 38.00

**POMONA**—A new early variety, very desirable, medium to large size, bright crimson, very productive, of good quality, a good shipper and a leading market sort. .... 1.00 4.25 38.00

**WHITE GRAPE** — A large sized standard white variety of finest quality.. 1.00 4.25

### GOOSEBERRIES.

	Doz.	100	1000
<b>DOWNING</b> —Strong upright, vigorous grower, very productive. Berries large size, bright green, and of first quality. The standard market variety..	\$1.25	\$8.00	

**PEARL** — Medium to large, roundish, light green with shadings of red. Quality very good to best. .... 1.25

### RASPBERRIES.

	Doz.	100	1000
* <b>LOUDON</b> —Large size, dark red, mid-season, up-			



**View of three year Plum Trees. Note size.**

right grower, very productive, a hardy market variety. ....	\$ .50	\$1.25	\$12.00
<b>CUTHBERT</b> — Strong vigorous grower, berries very large, conical, rich crimson, very fine, productive, late. ....	.25	.75	7.00
<b>RUBY</b> — Early, large, bright red, firm and of good quality. Vigorous grower. Seedling of Marlboro. ....	1.00		
<b>MILLER</b> — Very early, large size, bright red. Stout, vigorous grower. Very productive and firm enough to ship. ....	.25	.75	8.00
<b>COLUMBIAN</b> — Large, purple, firm, vigorous grower and productive, does not sprout.....	.50	2.00	
<b>*CUMBERLAND</b> — Very large, black, firm and of first quality. Strong vigorous grower and very productive. Early to mid-season. ....	.50	1.25	12.00
<b>GREGG</b> —Large size, late firm and of first quality. Strong grower. An old market variety, black.....	.25	1.25	10.00
<b>NEMAHA</b> — Similar to Gregg, but more vigorous in growth, very popular, late, black.....	.25	1.25	10.00
<b>*OLDER</b> —Large roundish, firm, early and a sure cropper, vigorous grower and very hardy black .....	.25	1.00	9.00
<b>*KANSAS</b> —Strong grower, productive, early, firm enough to ship, one of the best, black .....	.25	1.00	9.00



## BLACKBERRIES.

	Doz.	100	1000
<b>ANCIENT BRITON</b> — A standard market variety, fruit large, juicy, fine, strong grower, producing profitable crops. Season late. ....	\$ .50	\$1.50	\$12.00

<b>SNYDER</b> —Strong vigorous grower and very hardy, medium to large size, very productive, good quality, ripens early. ....	.50	1.50	10.00
---	-----	------	-------

<b>MERCEREAU</b> — Early, large to very large, strong, vigorous grower, hardy. Claimed to stand 20 degrees below zero with no protection. Very productive and of fair quality. ....	.50	1.50	
---	-----	------	--

## DEWBERRIES.

	Doz.	100	1000
<b>LUCRETIA</b> — Large to very large, strong grower, productive and of first quality. The only valuable dewberry. ....	\$ .50	\$1.25	\$ 9.00

## GRAPES.

### Strong 2-Year Vines.

	Each	Doz.	100
<b>*CONCORD</b> — An old standard variety, succeeds everywhere, very productive, berry large, juicy, deep glossy black, season September 10 to 25.....	\$ .10	\$1.00	\$ 4.00

<b>*WORDEN</b> — A choice early variety, large glossy black, very sweet, grows in large compact bunches. ....	.15	1.00	6.00
---	-----	------	------

**\*MOORE'S EARLY** — Large, juicy, fine quality,

bunch medium compact, black, two weeks earlier than Concord ..... .15 1.00 6.00

**BRIGHTON**—Medium to large, dark brownish red, rich sweet, early..... .15 1.00 6.00

**AGAWAM**—(Roger's No. 15), Large roundish oval, dark red, firm, late..... .15 1.00 6.00

**NIAGARA** — Large, yellowish white, firm, meaty, sweet, season same as Concord. .... .15 1.00 6.00

**DIAMOND** — (Moore's Diamond), Medium size, compact bunch, greenish white, juicy, tender, mid-season. .... .15 1.00 6.00

## GARDEN ROOTS.

	Doz.	100	1000
<b>ASPARAGUS</b> — Conover and Columbian—2 years..	\$.25	\$.50	\$ 4.00

<b>RHUBARB</b> —(Pie Plant) .....Each 10c	\$.75	\$3.50
--	-------	--------

## TREES.

### FOREST TREES—

	Each	Doz.	100
7 to 8 feet.....	\$.15	\$1.50	\$10.00
8 to 10 feet.....	.25	2.50	15.00

Box Elder, Elm, Soft Maple, Am. Linden, Catalpa, Native Birch, Carolina Poplar.

**ASH (White)** at one-half the above rates.

### BIRCH—

Cut Leaved Weeping, finest ornamental tree for lawn or cemetery, 6 to 8 feet. ....	1.00	10.00
--	------	-------

## EVERGREENS—

	Each	Doz.	100
Norway Spruce, 2 to 3 ft.	\$ .25	\$2.00	\$15.00
Norway Spruce, 12 to 18 inches .....	.15	1.50	10.00
Balsam Fir, 2 to 3 ft.....	.25	2.00	15.00
Am. Arborvitae, 2 to 3 ft.	.25	2.00	15.00
Am. Arborvitae, 18 to 24 inches .....	.15	1.25	8.00
Pines, 2 to 3 feet.....	.20	2.00	15.00

Other sizes of forest trees and evergreens priced on application.

## ROSES.

	Each	Doz.	100
2-Year Bushes .....	\$ .35	\$3.50	\$20.00

### HYBRID PERPETUALS.

**GEN. JACQUEMINOT**—Deep red, free bloomer, fragrant, large size, one of the finest.

**M. P. WILDER**—Deep red, one of the finest red roses. Large size and full. Free bloomer.

**ULRICH BRUNNER**—Bright red, large size, fragrant. Very fine.

**CLIO**—Pink, large, fine in form either as bud or open flower. Very free bloomer. The finest pink Hybrid Perpetual.

**JOHN HOPPER**—Pink, large and full and a free bloomer; fragrant.

**MADAM PLANTIER**—White, large size and very full, very hardy.

**COQUETTE DES BLANCHE**—White medium size and full. Blooms in clusters. One of the best.

**ANNA DE DIESBACH**—Brilliant rose, large and very fragrant. Vigorous grower and persistent bloomer.

**MAGNA CHARTA**—Bright pink suffused with carmine, large size. Strong upright grower, vigorous and healthy. One of the best.

**PAUL NEYRON**—The largest rose in cultivation, blooms often measure five inches in diameter; strong, vigorous grower. Pink. Very fresh and attractive.



**ROSA RUGOSA ALBA** — Bright shiny green foliage, flowers pure white, blooms in clusters. Very hardy; needs no winter protection.

#### **MOSS ROSES.**

**BLANCHE MOREAU**— Vigorous grower and hardy. Flowers white, large, full and perfect in form.

**LUXEBURG**—Bright crimson, large size and beautifully mossed.

#### **CLIMBING ROSES.**

**DOROTHY PERKINS** — Beautiful shell pink, full and double, large size for cluster rose. Closely resembles the Crimson Rambler.

**CRIMSON RAMBLER**—The most beautiful crimson climbing rose. Flowers in large pyramidal clusters of from 30 to 40 blooms, Strong grower and hardy.

**WHITE AND YELLOW RAMBLERS**— Similar to the Crimson Rambler.

**BALTIMORE BELLE**—Blush white changing to white, blooms in clusters, flowers large and full.

**QUEEN OF PRAIRIE**—Pink, large, full, vigorous grower and blooms freely.

#### **SHRUBS.**

2 to 3 ft.

25c Each. \$2.50 per Doz., Except as Noted.

**SPIREA VAN HOUTTI**—(Bridal Wreath) Large white flowers, early bloomer. "A snow bank of bloom." The finest of all the shrubs.

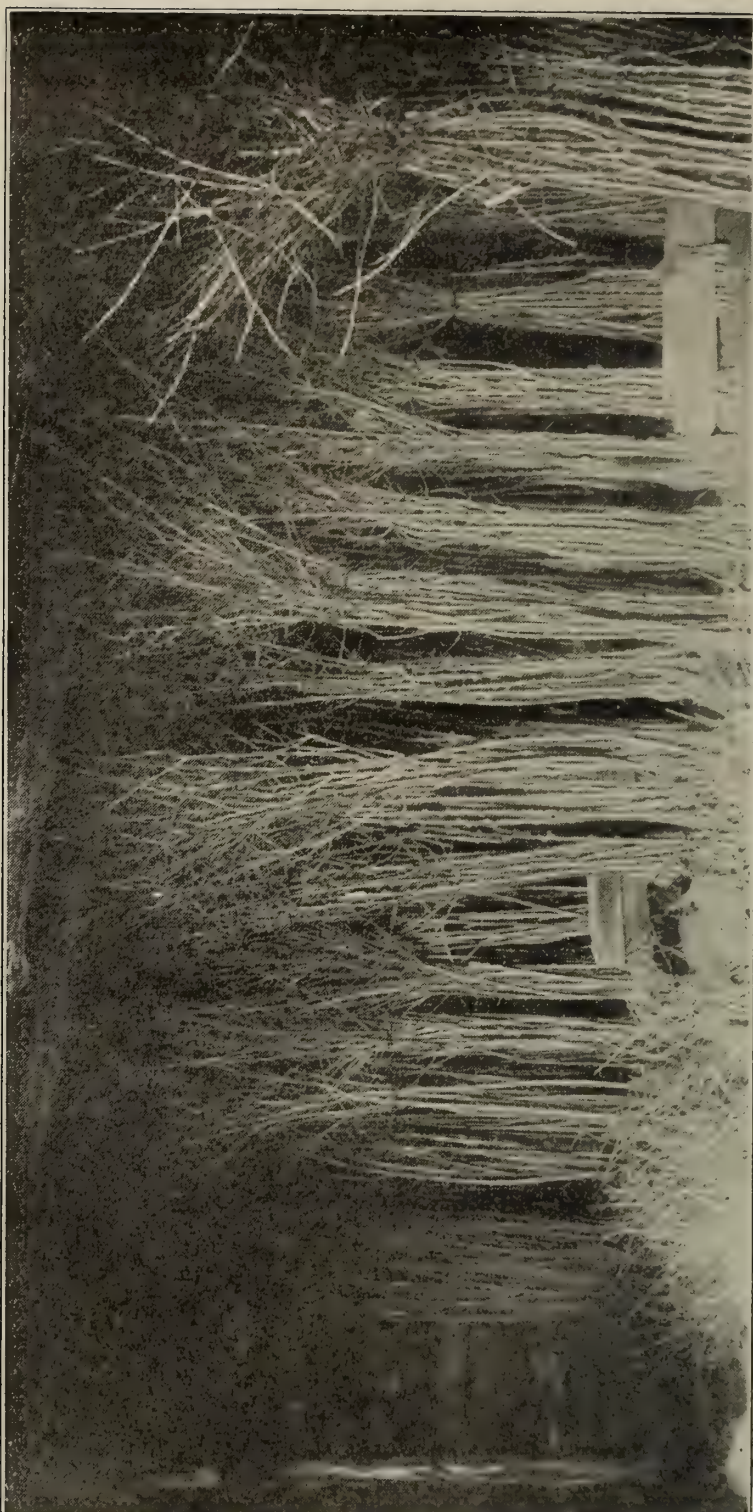
**SPIREA BUMALDA**—Dwarf but vigorous grower, blooms freely during mid-summer and autumn. Rose color. Very desirable.

**SPIREA SORBIFOLIA** — White, medium size, vigorous grower. August.

**SPIREA BILARDI** — Bright with dense panicles of rich pink flowers. July-August.

**GOLDEN ELDER** (Sambucus Aurea)— Beautiful golden yellow foliage, fine for single specimens or used in massing or alone with other shrubs.

**SNOWBERRY** (Symphoricarpos Alba)— vigorous and hardy. Berries white.



**View in Main Cellar. Tree Roots covered with moist soil.**

**INDIAN CURRANT** (*Symphoricarpos Rubra*) Similar to above, berries red in color.

**BERBERIS THUNBERGII**—Dwarf in growth with graceful drooping branches. Yellow bloom, scarlet fruit, foliage green changing to scarlet and gold in the fall.

**PURPLE LEAVED BARBERRY**—Very similar to the common barberry but differs in that the foliage is a rich purple.

**COMMON BARBERRY**—A hardy native shrub, strong, vigorous, upright grower, foliage green, fruit dark red.

**GOLDEN WILLOW, LAUREL LEAF WILLOW, JAPAN QUINCE**—Much used in massing shrubs and are valuable in this connection.

**WEGELIA ROSEA**—Blossoms in June, large trumpet shaped flowers of rose color that fade to nearly white. Very desirable.

**WEGELIA VARIEGATED**—Resembles *Wegelia Rosea*; has variegated green and white leaves. Very choice.

**WEGELIA Eva Rathka**—Similar to *W. Rosea* but has very fine dark rich red blossoms. Very choice. Each, 35c.

**HYDRANGEA P. G.**—A fine shrub, blooms August and September, large, white flowers, pyramidal shape, often a foot long. This can be pruned into tree form and will make a very large shrub, often upwards of eight feet in height.

**SYRINGA** (*Alba Grandiflora*)—A large vigorous, upright growing shrub. Flowers white, blooms very freely in June.

**LILACS**—Purple, white and variegated.

**SNOWBALL**—A well known shrub, large white flowers latter part of May.

**HONEYSUCKLE**—(Bush) Red and white. Blooms in June.

## **CLIMBING VINES.**

25c each; \$2.50 doz.

**SCARLET TRUMPET HONEYSUCKLE**—(Climbing) Red, strong, rapid grower, blooming all summer.

**BITTER SWEET**—One of the best native climbing vines, a vigorous grower and free bloomer, and very ornamental, even in late



fall with its bright red berries, which it retains all winter; needs no protection.

**JAPAN IVY**—One of the hardy climbers, clings to the smoothest surface.

**AMERICAN IVY**—(Virginia Creeper) Native climber too well known to need description.

## CLEMATIS.

2-Year, 35c each. \$3.00 per dozen.

**JAACKMANII**—Large, rich violet purple.

**HENRII**—Very large single white.

**MAD. E. ANDRE**—Crimson red, large free bloomer.

**PANICULATA**—Very rapid grower and profuse bloomer. Thrives anywhere. Blooms from summer 'till frost; flowers small, pure white. The most satisfactory of all the Clematis.

	Each	Doz.	100
<b>PEONIES</b> — Red, white and pink .....	\$.25	\$2.50	\$15.00

**RUBRA OFFICINALIS**—deepest crimson, early and free bloomer, choice peony. \$ .35

**DAHLIAS**—Red, white, lavender, variegated ..... .25

**GERMAN IRIS (Fleur de Lis)**—The iris thrives best in a moist soil. If this cannot be had water should be supplied generously while growing and blooming. Can supply in blue, bronze or straw color..... .25

## STRAWBERRIES.

To this department we give special attention and the plants we offer are equal to any grown, are carefully graded and no small, inferior ones sent out; they are fresh dug from new beds that have never fruited, and are shipped to our customers while in fresh, vigorous condition. They are not held in the packing house till half their vitality is gone. We ship in baskets or light boxes, and all plants are neatly trimmed and tied in bunches of 25. They are carefully packed

and we guarantee them to arrive in good condition when shipped by express; we do not recommend freight shipments with this class of stock.

Those varieties which are strong growers and make a heavy stand of plants are more reliable than those which only make a moderate growth. When we prove a variety to be inferior to the standards it is discarded, and while all varieties may not succeed the same as with us, we judge them by actual test in field culture grown with the object of marketing fruit at a profit.

We will furnish plants at the thousand rate in assortment of varieties not less than 250 of a variety. At the hundred rate we will furnish assortment not less than 25 of a variety. Special prices quoted on lots of 20,000 or more.

Plant two by four feet on thoroughly prepared ground, cultivate often and when you have a solid matted row two feet wide, restrict the growth, (don't let a weed grow) mulch in fall with straw or some coarse material free from weed seed, remove a part of it the following spring and place between the rows as mulch.

Varieties marked "Imp." are imperfect in blossom and must be set with "Per." perfect flowering kinds.

Varieties marked \* we especially recommend for general cultivation.

**NOTICE**—The prices below are for plants spring of 1909. To those needing plants the coming August or September we will quote prices after Aug. 1st.

We carry a stock of berry boxes and will quote prices on application.

Owing to the long continued and severe drouth the past summer, our stock of plants this season is limited; the stand is not more than one half as good as usual. Plants have gone into winter in fine shape, as we have had an abundant rainfall, but it came late in the season.

If you want the best plants, true to name, and properly handled, place your orders

with us. We guarantee satisfaction and will be pleased to have you visit our nursery and inspect the stock.

Doz. 100 1000

**AROMA**—Per Medium to large, roundish conical form, berry bright red and of good quality. Plant strong but not a free runner; moderately productive, season late. ....\$ .25 \$ .60 \$5.00

**\*BEDERWOOD**—Per. Medium size, roundish regular form, moderately firm, very productive and of good quality. An early variety of strong vitality and profitable for near market..... .25 .60 4.00

**\*CLYDE**—Per Large to very large roundish regular form, bright scarlet, moderately firm, good quality, mid-season to late. A strong plant but not a free runner, yet producing large crops of fine fruit which hold to the end of season Is one of the best all 'round varieties for home or market..... .25 .60 5.00

**CRESCENT**—Imp. Medium size, plant a vigorous grower and very productive. Berries run small at last picking but it is still largely grown. .... .25 .60 4.00

**CARDINAL**—Imp. Medium to large, nearly round, smooth and uniform, bright red and of good quality. Ripens evenly; no green tips. Flesh dark, firm, mid-summer to late. A new variety of undoubted merit. .75

**\*ENHANCE** — Per. Late, very productive, medium to large, irregular shape, a good shipper. .... .25 .60 4.00





holding well to end of season. A valuable variety... .25 .60 4.00

**\*PARSON'S BEAUTY** — Per. Medium to large, roundish, conical form, dark red, firm and a good shipper, mid-season. A large, strong plant and a free runner; produces large crops of fine fruit, berry holding size well to the end of season.. .25 .60 4.00

**\*SPLENDID** — Per. Very productive, firm, medium to large, roundish regular form and of first quality; a vigorous grower but inclined to rust, yet it is one of the good market varieties..... .25 .60 4.00

**\*SAMPLE**—Imp. Medium to large, roundish conical, dark red, very firm, quality good, a strong vigorous grower and very productive, season late, and a first-class market berry. One of the best pistillates we have... .25 .60 4.25

**\*SENATOR DUNLAP** — Per. Medium to large, conical, dark red, firm and of first quality, mid-season. A vigorous grower and usually makes too many plants for best results, unless growth is restricted. It is as productive as Warfield, berries are better colored and a third larger. One of the best market varieties and no list is complete without it..... .25 .60 4.00

**\*WARFIELD**—Imp. Medium size, roundish conical, dark red, very firm and a good shipper. A leading market variety; perhaps more largely grown than any other. This and Senator Dunlap make a fine pair... .25 .60 4.00



## WHITE WYANDOTTES.

We can supply eggs from this well known and popular breed for \$1.25 per 15.

Price of incubator eggs and fowls given on application.

---

---

AGRICULTURAL EXPERIMENT STATION  
Madison, Wis., October 1, 1908.

This Certifies that the Nursery Premises of  
**KELLOGG'S NURSERY**

M. S. Kellogg, Prop., Janesville, Wis.

Have been inspected by my agent, in accordance with Chap. 529, Laws of 1907, and have been found apparently free from the San Jose Scale, or other dangerously injurious insects or plant diseases.

This certificate is void after October 1, 1909, and in any case unless signed on the bottom line by the party to whom it is made out.

H. L. RUSSELL, Director.

We certify that the contents of this package have been officially inspected and pronounced apparently free from the above specified insects or plant diseases.

Signed.....

---

---

## **THIS COUPON WORTH 50c.**

**A FINE HORTICULTURAL PAPER FREE.**

On receipt of this coupon and an order amounting to \$10.00, we will furnish a year's subscription to the

### **FRUITMAN AND GARDENER**

a live, up-to-date horticultural monthly. The pointers you can get from this paper will be worth many dollars to anyone engaged in fruit growing or gardening. We will furnish the paper with a \$5.00 order for 25c, or one year for 50c. Send in your subscription.

---

---

**THIS COUPON WORTH 50c.**



Nurseries on Center Avenue,  
one and one-half miles south of  
depots, and one-half mile west  
of Interurban Line

---

LONG DISTANCE  
TELEPHONE

---

VISITORS ALWAYS  
WELCOME

---

REFERENCE:

Merchants and Mechanics Savings Bank  
of Janesville