

## **Historic, Archive Document**

Do not assume content reflects current scientific knowledge, policies, or practices.



K187

62137

# MANDA'S

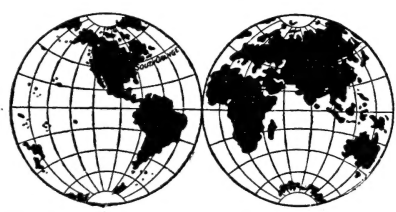
*Wholesale  
Catalogue*

LIBRARY  
RECEIVED  
★ AUG 2 1909 ★  
U.S. Department of Agriculture

FOR

# 1909

THE UNIVERSAL



HORTICULTURAL ESTABLISHMENT

## W. A. MANDA, Inc.

SOUTH ORANGE,  
NEW JERSEY

## TERMS UPON WHICH WE DO BUSINESS.



ALL correspondence pertaining to the business should be addressed to the firm and not to any of the employees.

**ALL ACCOUNTS ARE RENDERED MONTHLY.** Our patrons are requested to remit by Checks, Express or Post Office Money-Orders, or currency in Registered Letters. We will not be responsible for money sent in unregistered letters. From unknown correspondents either a remittance or reference is required with each order.

**WE SEND GOODS C. O. D.** when the order is accompanied by a remittance of at least 25 per cent. of its total value. This guarantees acceptance of goods upon arrival at destination.

**WE DO NOT GUARANTEE** delivery or safe carriage of goods. After the goods are delivered to the Transportation Company in good condition and receipted for by them, our responsibility ceases, as they are beyond our control, and become the property of the purchaser.

**PACKING.** All packing is charged for at cost.

**COMPLAINTS.** Any complaints arising should be made within 3 days after receipt of the goods, otherwise they cannot be considered.

**EARLY ORDERS.** Orders are solicited at as early a date as possible, that we may have ample time for their execution. Please write plainly name, post office, express office and any other necessary information as to the best method of forwarding; express is recommended.

**NON=WARRANTY.** Most of the failures with seeds, plants and bulbs are due to causes entirely beyond our control, such as unfavorable weather and soil conditions, too deep or too shallow planting, etc., which render it impossible for us to guarantee success. Although we take all possible care to supply only such stock as will, under proper conditions, produce satisfactory results, we still give no warranty as to description, quality or productiveness of any of the seeds, plants or bulbs we send out, and will not be in any way responsible for the crop or results, also if stock is exhausted when orders are filled, and every order will be accepted on these conditions only.

**ORDERS** placed and accepted cannot be cancelled except with our consent,

# Novelties and Specialties

FOR 1909.



**W. A. MANDA, Inc.**  
SOUTH ORANGE, - N. J.



**Dracaena Mandaiana.** (Manda) (*D. Yongii* x *D. terminalis*)  
Conceded by everyone as the finest Red Dracaena in cultivation. The plant grows 2 to 4 ft. in height; the stout foliage is of a dark red color at any stage of the growth but on maturing this color is much brightened by the centre leaves which are of the richest claret red color, under artificial light ruby red. An ideal Christmas plant and one of the most showy of all foliage plants in cultivation. It requires only moderate temperature to bring it to perfection. Fine plants, **\$1.00** each, large specimen plants, **\$2.50** to **\$7.50** each.

Winner of the Shaw's Gold Medal, St. Louis, Mo., Silver Gilt Medal and Certificate of Merit at the National Flower Show, First Class Certificate at Boston, and many other awards.



**Dracaena Rothiana.**

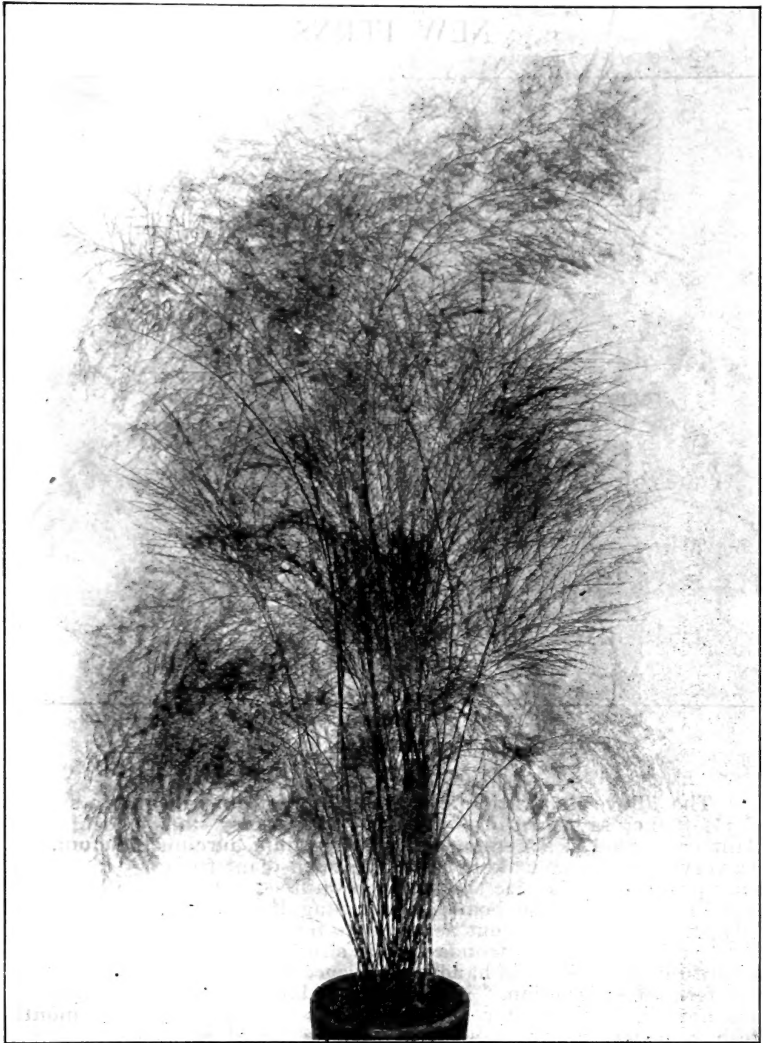
**Dracaena Rothiana.** Not a new but rare plant of which great merit of extreme hardiness has only now been discovered. As the plate shows it is of a compact growth with thick leathery foliage, green with narrow white margin. One of the best decorative plants for home, greenhouse or out-of-doors in the summer. Price, strong plants, **\$1.00** each, **\$10.00** per dozen. Extra large, **\$2.50** each.

**Dracaena Bronze Beauty.** (Manda) Another of my raising; a very hardy variety with broad foliage of bronze color, while the centre leaves have a beautiful combination of pink and red which brightens the plant very much. Strong plants, **\$1.00** each, extra strong **\$2.50** each.

**Dracaena Black Beauty Improved.** (Manda) A grand plant with long and broad arching leaves of rich red color, the centre leaves being bright pink. A very large growing plant. Awarded First Prize Silver Medal at Chicago for the best Foliage Plant. Strong Plants, **\$1.50** each, specimens **\$3.50** to **\$5.00** each.

**Dracaena Gracilis.** Old but good; a plant that should be extensively grown, as it can be used in small stages for centres of Fern dishes, later on for vases and other decorative work when large. As the name implies the habit is very graceful, the leaves are narrow dark bronze green, very hardy and beautiful. Nice plants, **25c.** each, **\$2.50** per dozen. Larger, **50c.** each, **\$5.00** per dozen.

**Begonia Bowringiana.** Catalogued by me formerly as "Sp. China." An upright variety growing one to two ft. in height and having large, beautiful velvety leaves. The markings of these are exceptionally fine, the body of the leaf is a rich, dark velvety green with bright, silvery zones. The midrib and veins are a dark, rich crimson. Price, **35c.** each, **\$3.50** per dozen.



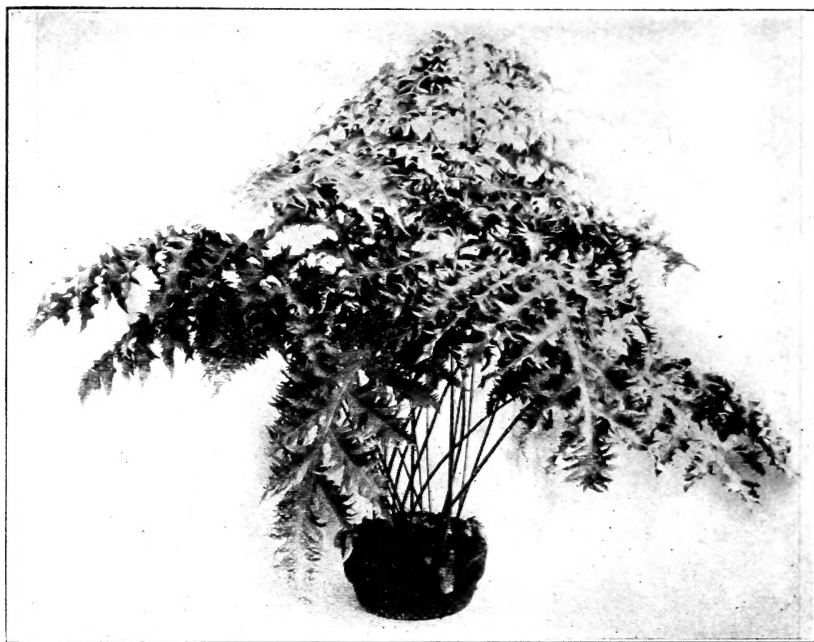
New Asparagus "Cut and Come Again"

**Asparagus Elongatus.** (Manda) Few years ago I have distributed few plants but now have propagated sufficient quantity for general distribution. An upright grower, sends out stems up to 8 ft. in height, terminating in a broad head of fine, dark green fluffy foliage, as seen by the photoengraving. This is most useful for cut green foliage, especially as it can be cut with straight stems 5 to 6 ft. long. The great advantage is that after the heads have been cut the stems will break out and produce a new crop ready to cut in a few weeks, thus can be recommended as the most prolific plant for cut green. It thrives best when planted in beds like other Asparagus. Strong plants, 35c. each, \$3.50 per dozen, \$25.00 per 100.

**Cyperus Vilmoreanus.** This is a distinct greenhouse ornamental grass with long, very narrow leaves with a white midrib gracefully arching. Price, 15c. each, \$1.50 per dozen.

**Ficus Pandurata.** (The Fiddle shaped Rubber Plant) A massive and imposing plant with large leathery and shiny deep green leaves. Fine house plant and very durable. Nice plants, 75c each, strong plants, \$1.75 each.

## NEW FERNS.



**Polypodium Mandaianum, in 8 in. pan.**

The above illustration shows a plant in 8 in. pan with a spread of  $3\frac{1}{2}$  ft. across grown in one season from a very small plant. The plant originated as a seedling from **Polypodium aureum glaucum**. It is a very free grower making a fine specimen plant from a 5 in. pot or pan up to the largest size that may be wanted. It can also be grown as a basket fern or on boards like a Stag Horn Fern and requires only an ordinary treatment as given to ferns with a temperature of 60 to 75 degrees. The fronds vary in size from 6 in. to 3 ft. in length beautifully fringed and of handsome, glaucous, blue color, distinct from any fern in cultivation. Not only as plants that we recommend this novelty but also for the cut fronds which will last a **month** fresh in water, and this account will be found most valuable for decorative purposes on account of its durability, beauty and distinct character rivaling the famous *Adiantum Farleyense*.

We are booking orders for future delivery which will be announced later. All orders filled in strict rotation as received. Price of plants, strong 3-in. pots, **50c.** each, **\$5.00** per dozen, **\$35.00** per 100; 4-in. pans, **75c.** each, **\$7.50** per doz., **\$55.00** per 100; specimens, **\$1.50** to **\$3.50** each.

**Nephrolepis Albertii.** (Manda) A sport of our own which recommends itself by its long drooping fronds irregularly crested giving the plant a fine and distinct appearance. Free grower and a plant well worthy alongside of the numerous sports now in cultivation. Fine plants, **\$1.00**; extra large, **\$2.50**; 3-inch, **50c.** each, **\$5.00** per dozen.

**Nephrolepis Scholzei.** The crested *N. Scottii* of dwarf and compact habit beautifully crested. Nice plants, **50c.** each, **\$5.00** per dozen.

**Nephrolepis Superbissima.** Another compact growing crested form of the Boston Fern, each, **75c.** **\$7.50** per dozen.

**Nephrolepis Elegantissima Compacta.** A very compact and dwarf form of *N. Elegantissima*. Nice plants, **75c.** each, **\$7.50** per doz.

**Pteris Tremula Cristata.** (Manda) Beautifully crested forms of the well known useful Fern, and one that can be used to advantage either in small or large size. Fine plants, **35c.** each, **\$3.50** per dozen.



## NEW FLOWERING PLANTS.



**Nicotiana Affinis Compacta Multiflora.** (Manda.)

**Nicotiana Affinis Compacta Multiflora.** (Manda) The photo-engraving of a single plant planted amongst Foxgloves will give you an idea of the beauty of this plant, with its thousands of large white, very fragrant flowers especially evenings. Very desirable for any purpose. Strong plants, 15c. each, \$1.50 per dozen, \$10.00 per 100.

**Moschosma Riparium.** Introduction from South Africa. The plant grows 2 to 4 ft. high and produces dense spikes of whitish flowers from December until Spring. Nice plants, 10c. each, \$1.00 per doz.

**Acacia Bailleyana.** New rare and beautiful species just as handsome as *A. pubescens*. The plant is of straight and upright growth, with a composite finely divided foliage of glaucous blue, a fine contrast to the bright yellow flowers which are produced in profusion from January to April. Only large plants in stock, \$2.50 to \$7.50 each.

**Acacia Semperflorens.** (Manda) Beautiful new plant in habit and growth near to *A. floribunda* but the great advantage is that this plant flowers continually winter and summer producing its bright golden yellow fragrant bloom. Only few fine specimens at, \$3.50 to \$7.50 each.

**Bougainvillea Lateritia.** A rare climber for planting out, it grows very rapidly and produces large masses of red bracts of uncommon shade. Plant very hard to propagate. Price, \$3.00 each.

**Bougainvillea W. K. Harris.** One of the most beautiful of variegated flowering plants. The foliage is freely marked with white, which makes a contrast to the rich color of the flowers. It is worth growing for the beauty of the leaves alone. Strong plants, 50c. each, \$5.00 per dozen. Specimens, \$2.00 to \$3.00 each.

**Jasminum Primulinum.** A plant of great merit introduced from North China. The habit is half climbing, spreading its arching branches which are clothed with dark green tri-lobed leaves, from which axils are produced numerous bright yellow semi-double flowers 1 in. across of delicate fragrance. This will make a grand Easter plant. It might prove hardy in sheltered situation. Strong plants, 35c. each, \$3.50 per dozen. Large plants \$1.00 each, \$10.00 per dozen.

**Lobelia Kathleen Mallard.** Beautiful little plant with profusion of deep blue double flowers. 10c. each, \$1.00 per dozen, \$6.00 per 100.

## NEW SEEDS.

## NEW SPENCER SWEET PEAS

Per pkt.

<b>Burpee's White Spencer.</b> Large, pure white flowers. Wings wide.	\$o 10
<b>Burpee's Primrose Spencer.</b> Same as above but pronounced primrose	10
<b>Bolton Pink.</b> Orange or salmon-pink, veined with rose.	10
<b>Countess Spencer.</b> Bright clear pink. Very large.	10
<b>Frank Dolby.</b> Pinkish lavender, large size; bold wavy standards.	20
<b>George Herbert.</b> Bright rose-carmine.	10
<b>Helen Lewis.</b> Crimson-orange standard; wings orange-rose.	10
<b>John Ingman.</b> Rose-carmine; gigantic fluted flowers.	10
<b>Mrs. Charles Mander.</b> Purplish magenta. Large wavy form.	15
<b>Mrs. Collier.</b> Deep primrose; extra large.	10
<b>Phenomenal.</b> White, shaded and edged lilac.	10
<b>Spencers.</b> Manda's Mixture, per lb. \$2.50; per oz. 25c.	10
<b>Cosmos Lady Lenox.</b> Large flower shell pink fine.	15

## NEW ASTERS

Per pkt.

<b>Aster Branching Crimson Ring.</b> Fine rich crimson.	\$o 15
<b>Aster Comet Crego White.</b> Large glistening white.	15
<b>Aster Comet Crego Shell Pink.</b> Delicate soft color.	15
<b>Aster Daybreak.</b> Large soft pink flower.	15
<b>Aster.</b> Branching white, pure white, free.	15
<b>Aster.</b> Branching pink, delicate shade of pink.	15
<b>Aster.</b> Branching Crimson, Rich crimson red flowers.	15
<b>Aster.</b> Branching Lavender, Soft shades.	15
<b>Aster.</b> Branching Manda's Mixture of all the above.	15
<b>Calliopsis Tiger Star.</b> Bizarre coloring of red and yellow.	15
<b>Cineraria hybrida Matador.</b> Bright scarlet flowers fine.	50
<b>Siberian Edelweiss.</b> ( <i>Leontopodium sibericum</i> ). Much larger than alpine.	25
<b>Scyphanthus elegans.</b> Dwarf climber golden yellow flowers.	20
<b>Medeola myrtifolia.</b> New fine leaved variety of <b>Smilax</b> .	25
<b>Salvia Zurich.</b> Very dwarf early flowering.	25
<b>Zinnia Red Riding Hood.</b> Very dwarf small double scarlet.	15
<b>Abutilon hybridum maximum.</b> Giant strain.	25
<b>Begonia Rex rubens.</b> Dark leaved beautiful varieties.	25
<b>Dimorphoteca aurantica.</b> Large bright yellow daisy-like flowers.	25
<b>Dianthus chinensis fl. pl. Tom Tom Brilliant.</b> Fine.	15
<b>Eschscholtzia The Mikado.</b> Bright orange crimson flowers.	15
<b>Dianthus plumarius diadematus.</b> Fine Single Scotch Pinks new.	25
<b>Dianthus plumarius nanus fl. pl. New type double flowers hardy.</b>	25
<b>Fuchsia New Hybrids.</b> Fine strain of this old favorite.	25
<b>Myosotis Ruth Fisher.</b> Giant floral <b>Forget-me-not</b> , blue.	25
<b>Myosotis alpestris Tom Thumb.</b> Very dwarf and compact.	15
<b>Petunia hybrida Pepita.</b> Deep carmine white edge.	25
<b>Petunia hybrida Norma.</b> White with blue edge.	25
<b>Poppy Painted Lady.</b> Beautiful rosy mauve color.	15
<b>Salpiglossis superbissima.</b> Grandest colors imaginable.	15
<b>Schizanthus hybridus grandiflorus.</b> Large mostly dark flowers.	15

## NEW BULBS

Each Doz.

<b>Gladiolus primulinus.</b> New rare species primrose yellow.	\$o 50	\$5 00
<b>Gladiolus primulinus hybrids.</b> Yellow, orange and crimson	25	2 50
<b>Dahlia Jack Rose.</b> Double flower of Gen. Jacq, rose color	75	7 50
<b>Dahlia Cuban Giant.</b> Very large double bright maroon	35	3 50
<b>Dahlia White Century.</b> Pure white single flower fine form.	35	3 50
<b>Dahlia La Colosse.</b> Very large double of red color.	50	5 00
<b>Dahlia Charles Lanier.</b> Very large rich deep yellow flower.	35	3 50
<b>Golden Yellow Calla.</b> ( <i>C. Elliottiana</i> ), large pure yellow	25	2 50
<b>Brazilian Fancy leaved Caladiums.</b> We have an importation of the finest varieties ever produced of this very showy plant, so grand in their coloring, so that it is impossible to give description that would do them justice; we will select the best and most distinct types.		
<b>Fine varieties of fine kinds.</b>	\$o.75 each.	\$ 7.50 for 12 distinct vars.
<b>Newer kinds richest color.</b>	1.50 each.	15.00 for 12 distinct vars.
<b>Latest introduction unsurpassable.</b>	3.50 each.	35.00 for 12 distinct vars.

## NEW HARDY PLANTS.



**Dianthus Plumarius "Fluffy Ruffles."** (Manda.)

**Dianthus Plumarius "Fluffy Ruffles."** (Manda) A grand improvement on the Hardy Clove or Scotch Pink. The plant is of very free growth forming large clusters of glaucous foliage, keeping the leaves during the winter. The flowers are produced in greatest profusion in May and June. As will be seen by the Photoengraving, the flowers are large, over 2 in. across, beautifully fringed, making a perfect ball of fluffy petals of pure white, and strongly clove-scented. Fine plant for cut-flower purposes, for beds or borders, or edging of beds. This plant should be in every garden. Price, **20c.** each, **\$2.00** per dozen.

**Dianthus Plumarius "Daybreak."** (Manda) A beautiful dwarf plant 6 to 9 in. high, forming dwarf compact tufts of evergreen foliage which in May and June is literally covered with delicate soft single flowers, delightfully fragrant. Price, **15c.** each, **\$1.50** per dozen.

**Arrhenatherum Bulbosum.** A beautiful hardy grass of dense habit, 8 in. high. The silvery variegation holding its lustre long after the frosts. It is especially valuable as a border or rock plant, and for massing in permanent foliage beds. Price, **15c.** each, **\$1.50** per dozen, **\$12.00** per 100.

**Boltonia Asteroides Nana.** (Manda) A grand novelty having all its good quality as regard to free growth and profusion of white flowers in Summer and Fall. The additional merit is its dwarf and compact growth only 2 to 2½ ft. in height and on that account, can be used for beds or dwarf borders, when the type on account of its height could not be used. Price, **25c.** each, **\$2.50** per dozen.



**Rudbeckia Mandaiana.** (Manda.)

**Rudbeckia Mandaiana.** (Manda) (*R. subtomentosa* x *R. Californica*) A beautiful plant with the habit of *R. subtomentosa*, growing 4 ft. or more in height, and producing in August and September a mass of large flowers, the rays being of rich gold color artistically twisted, giving the flower a unique appearance which is heightened by the pure yellow disc so unusual in the Rudbeckias. Perfectly hardy and free growing plant. Price, 25c. each, \$2.50 per dozen.

**Rudbeckia Californica maxima.** (Manda) A seedling of extraordinary size both as a plant or flower. The plant attains from 7 to 10 ft. in height and is covered with a mass of bright yellow flowers from August to November. The flowers are from 4 to 5 in. in diameter, of a rich yellow color with high yellow cone. A fine acquisition where high plants are required. Price, 25c. each, \$2.50 per dozen.

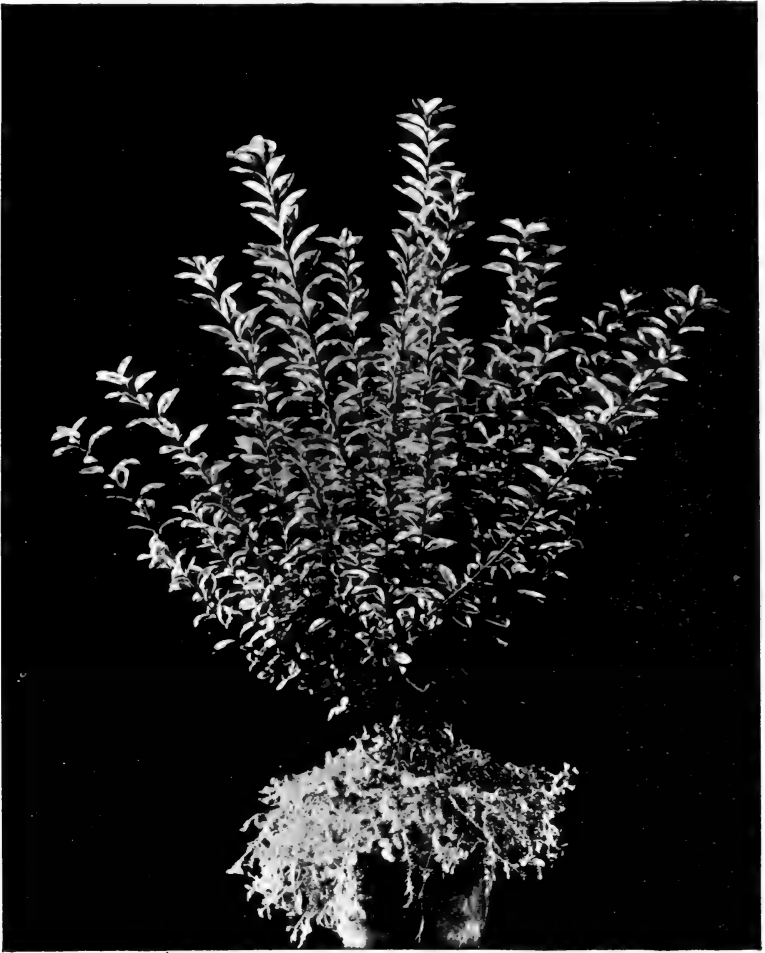
**Iris Siberica Alba.** One of the finest of all Irises. The pure white coloring of its flowers and the free habit makes it one of the best hardy plants. Price 35c. each, \$3.50 per dozen.

**Hibiscus Resplendens.** (Manda) (*H. moschentos*, x *H. militaris*) Grand plant of stately habit 5 to 8 ft. high with spear-shaped leaves, and producing in succession from August to November, large quantities of perfectly formed flowers 3 in. across of beautiful bright, soft pink with rich red coloring in the tube, which gives the flower a bright and distinct appearance. Price, 25c. each, \$2.50 per dozen.

**Hydrangea Arborescens Grandiflora.** Perfectly hardy shrub of American origin and one suited best to our climate. The flowers produced in large trusses are snow white and are in their glory from June until August when there are few shrubs in flower. A plant that should be in every garden. Strong plants, 35c. each, \$3.50 per dozen.

**Myosotis Palustris semperflorens Grandiflora.** (Manda) A superior seedling of the hardy perpetual flowering variety of **Forget-me-not**, of much larger and stronger growth and much larger flowers, which are produced from early spring until late fall. Specially adapted to grow in moist and shady situation. Price, 15c. each, \$1.50 per doz.

## MANDA'S GOLDEN PRIVET.



**Manda's Golden Privet.**

Almost an evergreen. This shrub is of such sterling merit that we must mention it here. The growth is free, bushy, and compact. The closely set green leaves are heavily margined with golden yellow, covering the greater part of them. The color holds remarkably well during the season. It does not bleach or burn in the hot sun, and is the only yellow foliated shrub which holds its perfect coloring in the fall. We do not hesitate to say that this is the finest colored foliage shrub in cultivation. It is perfectly hardy, and can be used for any purpose desired such as an isolated specimen or planted in close proximity to Red Japan Maples; this plant offsets and gives additional color and value to both. It produces a unique effect when planted as a hedge and can be kept to any size, either high or low. Silver medal awarded by the Massachusetts Horticultural Society, and numerous certificates wherever exhibited.

	Per 100
Young plants, $\frac{1}{2}$ to $\frac{3}{4}$ foot high.....	\$ 8.00
1 year old plants, 1 to $1\frac{1}{4}$ feet high.....	15.00
2 year old plants, $1\frac{1}{2}$ to 2 feet high.....	28.00
3 year old plants, 2 to $2\frac{1}{2}$ feet high.....	45.00
4 to 6 year old specimens, \$1.00 to \$3.50 each.	

**Spiraea Queen Alexandra.** Beautiful new variety with spikes of beautiful pink color. Fine as a hardy plant for forcing. Strong clumps, 35c. each, \$3.50 per dozen.

**Solanum Dulcamara variegata.** Fine hardy climber with beautiful variegated foliage which sets off well the purple flowers and red berries of the plant. Perfectly hardy in any situation. Price, 15c. each, \$1.50 per dozen.

## NEW CHRYSANTHEMUMS FOR 1909.

**New Chrysanthemums.** The following are the finest varieties as exhibited last autumn at the various Flower Shows. Price 50c. each, \$5.00 per dozen.

**President Taft.** Large incurved pure white mid-season.

**Pockett's Crimson.** Bright crimson on the gold reverse, late.

**Mrs. O. H. Kahn.** Large flower beautiful bronze color, mid-season

**Yellow Miller.** Yellow sport of Mrs. J. A. Miller, mid-season.

**Mrs. Charles H. Totty.** Large reflexed, pink, early.

**Charles H. Totty.** Reflexed, very large chestnut scarlet.

**Frank Payne.** Light pink reflexed, mid-season.

**Clara Wells.** Perfectly incurved pale yellow, mid-season.

**G. W. Polk.** Incurved, salmon terra cotta color, mid-season.

**W. T. Broch.** Incurved, light pink, very late.

**Pockett's Surprise.** Very large rosy crimson flower, late.

**George Mileham.** Bronze yellow, very early.

**Gloria.** Beautiful soft pink color, mid-season.

**Mrs. W. E. Kelly.** Bright rich yellow, mid-season.

**Fee Orientale.** Beautiful creamy color, very early.

**Mlle. Helen Prudhomme.** Rosy, white and lavender, very early.

**Plante Grenoblois.** Very large, pure white, very early.

**L'Argenteuillais.** Crimson and gold, very early.

**L'Africaine.** Very large velvety crimson, mid-season.

**Souv. de Vienne.** Large canary yellow flower, mid-season.

**Lilian Coppard.** Fine bright red, the earliest of its color.

Any other variety can be supplied. For standard sorts see Catalog.

## NEW CARNATIONS FOR 1909.

**Alvina.** An ideal variety for pot culture, forming a nice, shapely plant about 18 in. high, just the style of plant to supply to the amateur for window decoration. Flowers of good size, fully 5 in. in diameter and of a fine glowing pink color.

**Apple Blossom.** A gorgeous full white, with a delicate pink blending in the center, suggesting the name. Very fragrant, comes in early and in great profusion throughout the season.

**Delight.** An even, clear waxy shell-pink, with just a trace of salmon, which brightens and holds the color under all conditions. Full 3-in. flower of excellent form. A grand commercial variety.

**Georgia.** A fine, large, beautifully fringed white flower, long, stiff stems, an ideal grower and good keeper.

**Mrs. Chas. Knopf.** A beautiful shade of pink, slightly darker than Enchantress, holding its color well during hot weather. Size, 4 in. and over; flower built high and of good form, and an early and continuous bloomer.

**O. P. Bassett.** Claimed to be the best bright red of recent introduction; flowers extra large, averaging  $3\frac{1}{2}$  in. Commences to bloom in October, making a full crop for the holidays, and continues throughout the season. Never bursts and has a strong, stiff stem.

**Ruby.** Bright scarlet crimson, deeply fringed, good form, fine calyx, stiff, wiry stem and easy to grow.

**Wanoka.** A superb crimson, remarkably productive, long, stiff stems, never bursts; average size, 3 in.

**Bay State.** Fine variegated coloring of pink and white. Very free growing and flowering, with stout stems 3 ft. in length, and flowers nearly 4 in. across.

Prices of all above rooted cuttings, \$3.00 per dozen, \$12.00 per 100, \$100.00 per 1,000.



Carnation "Pink Pearl." (Manda.)

**Carnation "Pink Pearl" (Manda).** In this variety we have an ideal carnation for everybody. Plant of the easiest growth, freely producing the large flowers almost under any conditions. The flowers are 3 to 4 in. across, well built, of a beautiful rose pink color, with a bright glow same as in C. Joost which is one of its parents. The calyx never splits, while the stem of 2 to 3 ft. in length gracefully support the flowers. Delightful fragrance is another good point of the variety. "Pink Pearl" is grown by four prominent Carnation growers and will be sent out January 1st, 1910. Orders booked now and filled in rotation. Price rooted cuttings, \$3.00 per dozen, \$12.00 per 100, \$100.00 per 1,000.

**Novelties** are my specialty. If you wish either a **new**, up-to-date plant or an **old** and **rare** one, write to me. I can supply you.

In preparation—**Book on Landscape Work.** If you are interested send in your address and a copy of same will be mailed when ready.

**Specimens** of uncommon size and beauty, many unique plants of **Conifers, Boxwood, Rhododendrons** or other Hardy Plants as well as **Specimens of Palms, Orchids, Ferns, Foliage** or **Flowering Plants** in stock. Inspection invited, correspondence solicited.

## NEW ROSES.

**Rose South Orange Beauty.** (Manda) (Jersey Beauty and American Beauty) A beautiful hardy Rose, perpetual flowering during the whole summer. The habit is upright with foliage near to the American Beauty. The flowers are large, 4 to 5 inches across, double fragrant, of a beautiful satiny rose pink. Grand rose for bedding or as specimen in collection. Nice plants, **35c.** each, **\$3.50** per dozen. Large plants, **75c** each, **\$7.50** per dozen.

**Rose White Killarney.** This is a pure white sport of the now celebrated "Killarney" as one of the best and freest flowering rose either for summer or winter flowering. Strong plants, **50c.** each, **\$5.00** per dozen, **\$30.00** per 100.

**Rose Mrs. Jardine.** Free flowering Hybrid Tea Rose with well shaped and long lasting flowers of rose pink shading to salmon pink. Strong plants, **25c.** each, **\$2.50** per dozen, **\$15.00** per 100.

**Rose Queen Beatrice.** Fine variety very productive with colors near to Bridesmaid but freer grower. Price, **50c.** each, **\$5.00** per dozen, **\$15.00** per 100.

**Rose My Maryland.** Grand new Rose of American origin. Free grower in the large sweet flower of beautiful shade of clear soft rosy pink. Strong plants, **25c.** each, **\$2.50** per dozen, **\$18.00** per 100.

**Rose Rhea Reid.** Free growing variety with large rose cerise flower. Strong plants, **25c.** each, **\$2.50** per dozen, **\$12.00** per 100.

**Rose Wm. R. Smith.** Hybrid Tea of vigorous growth producing numerous large well formed white flowers from early summer till frost. One of the finest roses for American climates. Strong plants **25c.** each, **\$2.50** per dozen, **\$18.00** per 100.

**Rose Soleil d'Or.** (Golden Sun) Hardy free growing plant producing flowers of good size that combine the shades from gold to Nasturtium red. Strong plants, **25c.** each, **\$2.50** per dozen, **\$18.00** per 100.

**Rose Pink Baby Rambler.** (Anchen Muller) Fine companion to the Baby Rambler Rose, flowering as profusely, the flowers being even larger and of a satiny pink color. Extra strong plants, **25c.** each, **\$2.50** per dozen, **\$18.00** per 100.

**Rose White Baby Rambler.** (K. Zeimet) Another addition to this class with pure white flowers produced very freely all summer. Extra Strong, **25c.** each, **\$2.50** per dozen, **\$18.00** per 100.

**Rose Tausendschoen.** Distinct free growing climber with bright green foliage and literally covered with large trusses of flowers 3 in. in diameter and of a soft pink color. Plant that we can strongly recommend. Fine plants, **35c.** each, **\$3.50** per dozen, **\$25.00** per 100.

**Rose Bridal Wreath.** (Manda) (R. Manda's Triumph x R. multi-flora) Fine addition to the numerous class of climbing and trailing roses. This plant has more of an upright and bushy habit; the foliage is light green. The flowers are produced in such quantity so as to hide the foliage. They are semi-double and of the purest white. Young plants, **35c.** each, **\$3.50** per dozen. Two year strong plants, **\$1.50** each. Fine companion to Crimson Rambler Rose.

## NEW ORCHIDS.

**Lycaste Mandaiana.** (Manda) Unique plant which can be best described as *red L. Skinnerii*, having the same habit of growth and size of flower; which have the petals and sepals bright pink; an unique color. Price on application.

<p><b>Hybrid Cattleyas</b> <b>Hybrid Laelio-Cattleyas</b> <b>Hybrid Cypripediums</b></p>	}	<p>Of these beautiful and choice Orchids we have many registered or unregistered crosses, unflowered plants, that will be sure to produce some grand varieties. Price, <b>\$5.00</b> to <b>\$25.00</b> each.</p>
--	---	--

**Albino Forms** and rare and choice varieties of **Cattleyas Laelias** and other kinds. Price on application.



## FLOWERING PLANTS.

**Azaleas.** We import all the best varieties, such as are used by florists, and offer them at the following prices: 10 to 12 inches, \$0.35; 12 to 14 inches, \$0.45; 14 to 16 inches, \$0.55; 16 to 18 inches, \$0.90; 18 to 20 inches, \$2.00 each; 22 to 24 inches.....\$3.00

<b>Azalea mollis.</b> For forcing well budded plants.....	35c. to \$2.00
<b>Anthurium Andreanum hybrids.</b> Flowers, very lasting.....	50c. to \$2.00
<b>Begonia flowering varieties.....</b>	4 to 10c. each.
<b>Begonia Gloire de Lorraine</b> and its varieties, 2½ inch pots.....	15c. each.
<b>Allamanda.</b> In best variety, according to size.....	25c. to 50c.
<b>Acacia.</b> Large variety, all sizes, from.....	25c. to \$10.00
<b>Bougainvillea glabra Sanderiana.</b> From.....	15c. to \$2.00
<b>Camellia japonica.</b> Five varieties.....	75c. to \$5.00
<b>Clerodendron Balfourei.</b> Showy climber.....	25c. to 50c.
<b>Chorizema ilicifolia.</b> Profuse winter bloomer, 5 inch pots...\$	1.00
<b>Chrysanthemum frutescens.</b> Paris Daisy.....	5c. each.
<b>Daphne odorata.</b> White, fragrant flowers.....	50c.
<b>Erica.</b> In variety.....	25c. to \$2.00
<b>Eucharis amazonica.</b> White large flowers. Fine bulbs.....	15c.
<b>Fuchsia triphylla hybrida.</b> Bright scarlet flower; everblooming; 2 inch pots .....	8c.
<b>Gardenia, Veitch's variety.</b> The best variety to grow, 3 inch pots .....	18c.
<b>Gardenia, Veitch's variety.</b> The best variety to grow, 5 inch pots .....	75c.
<b>Hibiscus sienensis.</b> Three best varieties, strong, 3 inch pots...\$	1.00
<b>Imantophyllum miniatum.</b> Orange red flowers, strong; 6 and 7 inch pots .....	\$1.00
<b>Ixora coccinea.</b> Bright red, lasting flower, strong plants....	35c.
<b>Jasminum grandiflora.</b> Bright yellow.....	25c to \$1.00
<b>Jasminum primulinum.</b> New, large yellow flowers, strong...\$	50c.
<b>Orchids.</b> Large stock, prices from.....	\$1.00 to \$10.00
<b>Plumbago capense.</b> Free flowering, skyblue.....	15c.
<b>Passiflora.</b> In varieties.....	25c. to \$1.00
<b>Poinsettia pulcherrima.</b> Bright scarlet.....	10c.
<b>Ruellia macrantha.</b> Large purple flowers.....	25c.
<b>Rhynchospermum jasminioides.</b> White, fragrant.....	50c.
<b>Salvia.</b> In variety, strong plants.....	5c.
<b>Stigmatophyllum ciliatum.</b> Bright yellow Orchidlike flowers...\$	50c.
<b>Solanum jasminioides.</b> White, free flowering.....	25c.
<b>Solanum Wendlandii.</b> Large skyblue flowers.....	25c.

Many other varieties, price and size on application.

---

**Flowering Plants,** for special occasions, such as **Easter,**  
**Christmas.** Prices and kinds on application. Also **Orchid**  
**Plants in Bloom or Bud.**

## ORCHIDS.

These are undoubtedly the coming flowers, and every greenhouse or conservatory should have at least a few of these floral gems. They are of easy culture, and will grow in any ordinary greenhouse or conservatory, together with other common plants, such as Geraniums, Fuchsias, etc. Most of the varieties can be grown in baskets or on blocks, and suspended from the roof, thus not utilizing any bench room. Orchids, when in bloom and kept in cool places, will last from four to ten weeks in perfection, so that any one having a small collection of Orchids will have some plants in bloom all the year round. Amateurs intending starting to grow Orchids should write for list of such varieties as are best suitable for beginners. The following are a few cultural points. Orchids require a season of growth and a season of rest, corresponding with the wet and dry seasons of their native country. When they are making new growths, they should receive a liberal supply of water until the maximum is reached, when the new bulb is nearly full size; then it should receive just enough water to keep the bulbs from shriveling; as soon as it shows the sign of bloom, water it again until it has done flowering.

The prices quoted are for nice, thrifty, flowering size plants. Prices and sizes of various specimens will be cheerfully given to intending purchasers on application. Complete list of other Orchids on application.

### CATTLEYA.

The Cattleyas are among the most beautiful of the whole Orchid family.

The flowers are all large and elegant, and can not be surpassed for their sparkling richness and depth of color. They can be easily grown in baskets or pots, with a compost of fibrous peat and moss, with good drainage and a liberal supply of water while growing, but as soon as they have finished their growth, the supply must be greatly decreased.

	<i>Each</i>	<i>Per Doz.</i>
<b>Aurea.</b> Yellow and crimson, rare.....	\$1 50	\$45 00
<b>Bowringiana.</b> Rich purple, easily grown.....	2 00	20 00
<b>Gaskelliana.</b> Rosy lilac, free grower.....	2 00	20 00
<b>Gigas.</b> Rich, rosy, yellow eyes.....	2 25	22 00
<b>Gigas Sanderiana.</b> Rich crimson, yellow eyes.....	2 50	25 00
<b>Harrisoniae.</b> Lilac, easy growing plant.....	2 00	20 00
<b>Intermedia.</b> Rosy lilac, free flowering species.....	2 00	20 00
<b>Labiata (vera).</b> Rosy pink and crimson lip.....	1 50	15 00
<b>Mendellii.</b> White and rose, summer flowering.....	2 50	25 00
<b>Mossiae.</b> Rose to crimson red, and yellow.....	1 50	15 00
<b>Percivaliana.</b> Rose to crimson, winter flowering.....	1 50	15 00
<b>Schroderae.</b> Soft lilac, yellow throat.....	2 50	25 00
<b>Speciosissima.</b> Large, pink to crimson.....	2 00	20 00
<b>Trianae.</b> Lilac rose to crimson, the best.....	1 50	15 00

### CYPRIPEDIUM.

They are the easiest grown of all Orchids. Many of them have beautiful marked foliage as well as flowers, and on this account should have a place in every collection. To be grown to perfection they like abundance of moisture and plenty of drainage, being potted in peat fibre and sphagnum. The flowers last from four to sixteen weeks on a plant, and, when cut, two to four weeks.

	<i>Each</i>	<i>Per Doz.</i>
<b>Ashburtoniae.</b> Reddish brown and white.....	\$1 50	\$15 00
<b>Barbatum.</b> White and deep purple.....	1 00	10 00
<b>Boxallii.</b> Yellowish green, shaded purple, brown.....	2 00	20 00
<b>Cardinale.</b> White and rich crimson, choice.....	1 50	15 00
<b>Dauthieri.</b> Free flowering, reddish purple.....	1 50	15 00
<b>Grande.</b> Enormous flowers, 3 to 4 on a spike.....	2 00	20 00

	<i>Each Per Doz.</i>	
<b>Harrisianum.</b> Flowering several times a year.....	1 50	15 00
<b>Insigne.</b> Free growing and popular variety.....	1 00	10 00
<b>Lawrenceanum.</b> White and purple, striped flowers.....	2 00	20 00
<b>Leeanum.</b> Sepal white, dotted with pink.....	2 00	20 00
<b>Schroderae.</b> Very large, rosy crimson flowers.....	2 50	25 00
<b>Sedenii candidulum.</b> Soft rose, floriferous.....	1 50	15 00
<b>Spicerianum.</b> Lovely flower, with white dorsal sepal...	2 00	20 00
<b>Villosum.</b> Shiny surface, as if vanished.....	2 00	20 00

**LAELIA.**

This is a lovely genus, and one of the most valuable for cut-flower purposes. Most of the species are vigorous and compact in growth, with evergreen leaves much like the Cattleyas, to which they are strongly allied, and many are of equal beauty when in bloom. They do best in baskets or pots, with a compost of fibrous peat and good drainage.

	<i>Each Per Doz.</i>	
<b>Albida.</b> White, with lilac lip.....	\$1 00	\$10 00
<b>Anceps.</b> Rose to rich crimson, free grower.....	1 00	10 00
<b>Anceps alba.</b> Rare white variety of the former.....	5 00	50 00
<b>Arnoldiana.</b> Rose, flowers in autumn.....	2 50	25 00
<b>Autumnalis.</b> Rich rose, large flowers.....	1 50	15 00
<b>Perrinii.</b> Large flower, dark lip.....	2 00	20 00
<b>Purpurata.</b> Large white, crimson lip, grand.....	2 50	25 00

**DENDROBIUM.**

This is a very extensive as well as a magnificent genus of Orchids, with tall jointed stems, bearing racemes of handsome flowers, especially fine for cutting. They grow best in baskets, and while growing should never get dry, but during rest should be kept cool and dry.

	<i>Each Per Doz.</i>	
<b>Formosum giganteum.</b> White, waxy flower, large.....	\$2 00	\$20 00
<b>Heterocarpum.</b> Fine primrose, yellow sweet.....	2 00	20 00
<b>Jamesianum.</b> Pure white, fine.....	2 50	25 00
<b>Nobile.</b> Free grower, white and pink flowers.....	1 00	10 00
<b>Phalaenopsis Schroderae.</b> Large rose flowers.....	2 00	20 00
<b>Thyrsiflorum.</b> Bunches of white and yellow flowers....	3 00	30 00
<b>Wardianum.</b> Large white flowers, tipped with pink....	2 00	20 00

**ODONTOGLOSSUM.**

This genus contains some of the choicest and most useful Orchids in cultivation. Plant in pots or baskets, in rough, fibrous peat and moss, with good drainage, and give plenty of water.

	<i>Each Per Doz.</i>	
<b>Citrosimum.</b> Drooping spikes, white flowers.....	\$2 00	\$20 00
<b>Crispum.</b> White spotted, the best cool Orchid.....	2 00	20 00
<b>Grande (Baby Orchid).</b> Large, yellow, red brown.....	2 00	20 00
<b>Rossii majus.</b> Free grower, white and brown flowers....	1 00	10 00

**ONCIDIUM.**

This genus comprises some very showy plants, with long arching spikes of mostly yellow, often sweet-scented flowers. They grow best in baskets and blocks, in a temperate house, with plenty of air, and the resting period well marked.

	<i>Each Per Doz.</i>	
<b>Crispum.</b> Fine rich brown and yellow.....	\$2 00	\$20 00
<b>Oncidium Forbesii.</b> Red brown and yellow flowers.....	2 00	20 00
<b>Ornithorhynchum.</b> Covered with lilac, sweet flowers....	1 50	15 00

	<i>Each</i>	<i>Per Doz.</i>
<b>Papilio (Butterfly Orchid).</b> Large yellow and red.....	2 00	20 00
<b>Splendidum.</b> Large yellow and brown flowers.....	3 00	30 00
<b>Tigrinum.</b> Large yellow, sweet-scented species.....	2 00	20 00
<b>Varicosum.</b> Large yellow flowers, arching spikes.....	1 00	10 00
<b>Varicosum Rogersii.</b> Grand variety of the former.....	2 00	20 00

### VANDA.

This genus is composed of stately plants, with large massive foliage and fine showy flowers.

	<i>Each</i>	<i>Per Doz.</i>
<b>Coerulea.</b> Beautiful blue flowers, fine.....	2 50	25 00
<b>Suavis.</b> Large lilac and crimson flowers.....	3 50	35 00
<b>Tricolor.</b> Fine brown and purple flowers.....	3 50	35 00

### VARIOUS ORCHIDS.

	<i>Each</i>	<i>Per Doz.</i>
<b>Brassavola Digbyana.</b> White flowers, very large.....	2 50	25 00
<b>Brassavola glauca.</b> Large creamy flowers.....	1 00	10 00
<b>Brassia Verrucosa.</b> Long arching spikes.....	2 00	20 00
<b>Calanthe Regnerii.</b> Beautiful variety.....	2 00	20 00
<b>Calanthe Veitchii.</b> Rich pink flowers on long stems....	1 00	10 00
<b>Calanthe vestita.</b> Arching spikes of white flowers.....	1 00	10 00
<b>Chysis bracetescens.</b> White waxy flowers.....	1 50	15 00
<b>Coelogyne cristata.</b> Fine, winter flowering.....	1 00	10 00
<b>Coelogyne cristata alba.</b> White, useful, free grower....	2 00	20 00
<b>Cymbidium eburneum.</b> Large white, waxy flowers.....	2 00	20 00
<b>Cymbidium giganteum.</b> Green and brown flowers.....	2 00	20 00
<b>Cymbidium Lowii.</b> Pea green flowers on long spikes....	2 00	20 00
<b>Dendrochilum glumaceum.</b> Spikes of white flowers.....	2 00	20 00
<b>Epidendrum vitellinum majus.</b> Rich orange red.....	1 00	10 00
<b>Lycaste Skinnerii.</b> Light to deep rose, useful plant....	2 00	20 00
<b>Peristeria elata (Holy Ghost Plant).</b> Pure white.....	3 00	30 00
<b>Phaius grandifolius.</b> Terrestrial, white and brown.....	1 50	15 00
<b>Phalaenopsis amabilis.</b> Long stems, white flowers.....	3 50	35 00
<b>Phalaenopsis grandifolia.</b> Large white flowers.....	3 50	35 00
<b>Phalaenopsis Schilleriana.</b> Spikes of lilac flowers.....	5 00	50 00
<b>Zygopetalum Mackayii.</b> Sweet scented, free grower....	2 00	20 00
<b>Zygopetalum intermedium.</b> Large flower.....	3 00	30 00

Besides the above varieties we have in stock many choice and rare kinds; also large exhibition specimens of the above described varieties, and would be pleased to furnish special list on application. Do not purchase any Orchids before consulting us. Manda's Round Orchid Baskets and Orchid Peat and Moss of the best quality furnished.

### ORCHID CUT FLOWERS.

We can furnish this every day of the year in \$5.00, \$10.00, \$15.00 or \$20.00 boxes, and would be pleased to send you regular supply once a week or as often as desired.

**White Orchid Flowers** a Speciality.

## IMPORTED ORCHIDS.

We expect during the year of 1909 large importations of the following leading kinds of Orchids beside many others of which we would be pleased to give full particulars to any one interested on application. The following prices are for first class stock in good healthy condition.

**Cattleya Trianae, C. Mossiae, C. Percivaliana, C. Harrisoniae, C. Skinnerii, Dendrobium, Formosum giganteum, Oncidium, Rogersii.**

	<i>Each.</i>	<i>Per Doz.</i>
Nice plants,..... 5 to 7 Bulbs	\$0 75	\$7 50
Strong plants..... 8 " 11 "	1 50	15 00
Extra fine plants.. 12 " 15 "	2 50	25 00
Selected specimens 18 " 25 "	3 50	35 00

Cases of any above variety special low price on application.

**Cattleya Gigas, C. Gigas Sanderiana, C. Schroederiae, C. Mendellii, Laelia Purpurata, Dendrobium, Wardianum.**

	<i>Each.</i>	<i>Per Doz.</i>
Nice plants..... 5 to 7 Bulbs	\$1 25	\$12 00
Strong plants..... 7 " 9 "	2 50	25 00
Extra fine plants.. 9 " 12 "	3 50	35 00
Selected specimens 12 " 15 "	5 00	50 00

**Cattleya Warnerii, C. Aurea, C. Dowiana, C. Chrysotoxa.**

	<i>Each.</i>	<i>Per Doz.</i>
Nice plants..... 5 to 6 Bulbs	\$3 50	\$35 00
Strong plants..... 7 " 9 "	5 00	50 00
Selected specimens 10 " 15 "	7 50	75 00

**Cattleya Labiata, C. Speciosissima, C. Gaskelliana, Laelia Perrinii.**

	<i>Each.</i>	<i>Per Doz.</i>
Nice plants..... 5 to 7 Bulbs	\$1 00	\$10 00
Strong plants..... 7 " 9 "	1 75	17 00
Extra fine plants.. 9 " 12 "	2 75	27 00
Selected specimens 12 " 15 "	3 75	37 00

Cases of any of the above varieties low prices on application.

Please remember all our Orchids are cool grown. We have not nor ever had the dreaded Cattleya Fly or any other injurious insect.

### MATERIALS FOR ORCHID CULTURE.

	<i>Per Bbl.</i>
Fibrous Peat, picked, ready for use.....	\$4 50
Fibrous Peat, as collected.....	2 75
Sphagnum Moss, picked.....	4 50
Sphagnum Moss, as collected.....	2 75

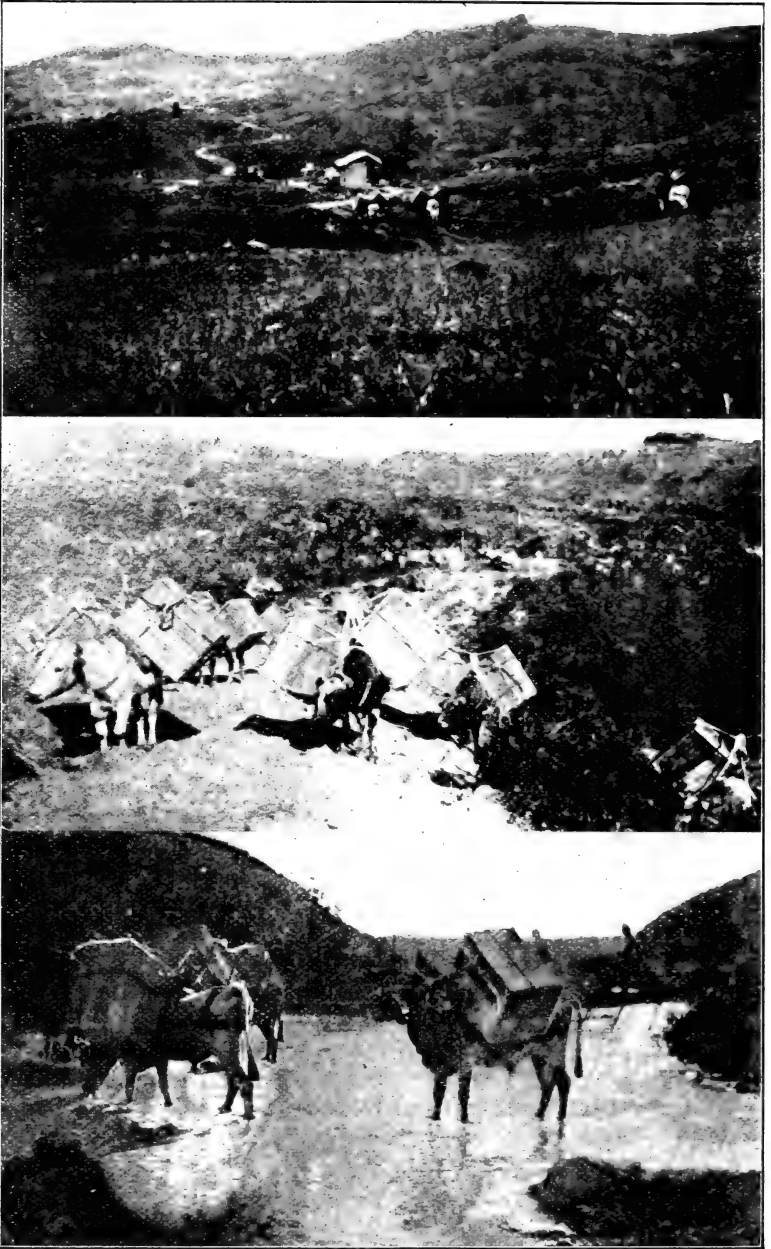
### MANDA'S NEW ROUND ORCHID BASKET.

Introduced by me and awarded 100 points for same at an exhibition, and now copied by many. (The sincerest form of flattery.) These baskets are best for Orchid culture. Made of round turned sticks of best oak and fastened by copper wire. Price per dozen, 4 inch \$1.65, 5 inch \$2.00, 6 inch \$2.50, 7 inch \$3.00, 8 inch \$3.50, 10 inch \$4.50, 12 inch \$5.00 per dozen.

### ORCHID CUT FLOWERS.

We can supply this any day of the year and would be pleased to send you Box of \$5.00, \$10.00 or \$15.00 weekly or whenever wanted. All our blooms are freshly cut from the plants.

At the First National Flower Show, Chicago, November, 1908, we took eleven premiums for Orchid plants and Orchid flowers. The largest of any Orchid exhibitor.



The above illustration shows the transportation of orchids from their native homes. After risking their lives in collecting same, the collectors have to cut down trees, saw out boards by hand, make boxes into which the plants are packed; and then, transported on the backs of men or animals sometimes hundreds of miles before reaching the coast where they are shipped to New York reaching South Orange, from where they are reshipped all over the country either in their dormant condition or after they have been established.

## PALMS.

	<i>Each.</i>
Cocos Weddelliana. Nice plants, 2¼ inch.....	\$ 10
Cocos Weddelliana. Fine plants, 3 inch pots.....	15
Areca lutescens. Fine plants. 3 plants in a 4 inch pot.....	45
Areca lutescens. Fine plants. 3 plants in a 6 inch pot.....	1 00
Areca lutescens. Fine plants. 3 plants in a 6 or 7 inch pot.....	1 50
Areca lutescens. Large specimens. 6 feet high; 14 inch pots..	8 00
Kentia Belmoreana. Nice plants. 2½ inch pots.....	10
Kentia Belmoreana. Nice plants. 3 inch pots.....	15
Kentia Belmoreana. Nice plants. 4 inch pots.....	35
Kentia Belmoreana. Fine plants. 6 inch pots.....	1 50
Kentia Belmoreana. Fine plants. 7 inch pots.....	2 50
Kentia Forsteriana. Strong plants. 5 inch pots.....	1 00
Kentia Forsteriana. Extra strong plants. 6 inch pots.....	1 50
Kentia Forsteriana. Extra strong plants. 7 inch pots.....	2 50
Latania Borbonica. Strong plants. 6 inch pots.....	75
Latania Borbonica. Extra strong plants. 9 inch pots.....	2 50

Many other varieties and sizes in stock. The above are in large quantity and mostly used by florists.

## FOLIAGE PLANTS.

This is our specialty and supply almost any variety or size used for decoration.

	<i>Each.</i>
Amomum Cardamomum. Bright green foliage, strong 4 inch pots. \$	25
Amomum Cardamomum. Bright green foliage, strong 5 inch pots.	40
Amomum Cardamomum. Bright green foliage, strong 6 inch pots.	60
Aspidistra elatior. Plants all sizes, sold at \$7.50 per 100 leaves.	
Aspidistra elatior fol. var. Plants all sizes, sold at \$12.50 per 100 leaves.	
Anthurium magnificum, crystallinum or regale. 50 leaves.....	2 50
Ardisia crenulata. Nice stock. 2 inch.....	8
Ardisia crenulata. Extra strong plants. 3 inch.....	18
Asparagus plumosus. Nice plants. 2½ inch pots.....	3
Asparagus plumosus. Nice plants. 3 inch.....	6
Asparagus plumosus. 5 and 6 inch pans, fine.....	30
Asparagus Sprengeri. Nice stock. 2¼ inch pots.....	3
Asparagus Sprengeri. Nice stock. 3 inch pots.....	6
Asparagus elongatus. (Cut and come again) 3 inch strong....	25
Begonia Rex. In variety. 3 inch pots.....	8
Bay Trees. Pyramids. 5 to 6 feet high.....	7 50
Bay Trees. Pyramids. 6 to 7 feet high.....	12 50
Bay Trees. Standards or Tree shaped crown, 2 ft. diam.....	6 00
Bay Trees. Standards or Tree shaped crown 2½ ft. diam.....	10 00
Bay Trees. Standards or Tree shaped crown, 3 ft. diam.....	12 50
Boxwoods. All sizes. See Hardy Stock, page 40.	
Caladiums. Fancy leaved, in best variety.....	50
Cissus discolor. Fine dark-leaved vine.....	10
Crotons. In best varieties, 3 inch.....	25
Crotons. In best varieties, 4 inch.....	35
Crotons. In best varieties, 5 inch.....	75
Cycas revoluta. Plants all sizes from 25c. to \$25.00 each.	
Cypress alternifolius. Nice stock, 3 inch.....	8
Cypress alternifolius. Nice stock, 4 inch.....	15
Cypress alternifolius. Nice stock, 5 inch.....	25
Cyperus gracilis. Dwarf compact variety. 4 inch pots.....	18
Dieffenbachias. In variety; nice plants.....	35c to \$1.00

## DRACAENA.

(This is our specially fine stock.)

	<i>Each.</i>
Dracaena Bronze Beauty. Hardy, bronze, white and pink, 4 inch.	75
Dracaena Bronze Beauty. Hardy, bronze, white and pink; 6 inch.	1 25
Dracaena Draco. Glaucous blue foliage, very hardy, 4 inch pots.	35

	<i>Each.</i>
Dracaena Gracilis. Narrow, graceful foliage, very hardy, 2 inch pots .....	12
Dracaena Gracilis. Narrow, graceful foliage, very hardy, 3 inch pots .....	18
Dracaena Gracilis. Narrow, graceful foliage, very hardy, 4 inch pots .....	35
Dracaena Ensifolia. Graceful green plant; very lasting; 3 inch pots .....	15
Dracaena Mandiana. The finest colored Dracaena known, 3 inch.	50
Dracaena Mandiana. The finest colored Dracaena known, 5 inch.	1 00
Dracaena Mandiana. The finest colored Dracaena known, 6 inch.	1 75
Dracaena Mandiana. The finest colored Dracaena. Specimens from .....	\$2.50 to \$5.00.
Dracaena Hybrids. Unnamed, all shades of red and pink; 3 inch.	25
Dracaena Hybrids. Unnamed, all shades of red and pink; 4 inch.	50
Dracaena Hybrids. Unnamed, all shades of red and pink, 5 inch.	75
Dracaena Hybrids. Unnamed, all shades of red and pink, 6 inch.	1 00
Dracaena Fragrans. Broad-leaved green, 4 inch.....	25
Dracaena Fragrans. Broad-leaved green, 6 inch.....	50
Dracaena Fragrans. Broad-leaved green. Specimens. \$1.00 to \$2.00.	
Dracaena Lindenii and Massangeana. Variegated forms of above; 5 inch pots .....	75
Dracaena Lindenii and Massangeana. Variegated forms of above; 6 inch pots.....	1 00
Dracaena Rothiana. Grand, hardy, best green variety; 4 inch pots.	75
Dracaena Rothiana. Grand, hardy, best green variety; 5 inch pots.	1 25
Dracaena Rothiana. Grand, hardy, best green variety; 6 inch pots.	2 00
Dracaena Rothiana. Grand, hardy, best green variety; specimens.	2 50
Dracaena Youngii. Large spreading dark-colored foliage; 5 inch pots .....	50
Dracaena Youngii. Large spreading dark-colored foliage; 6 inch pots .....	1 00
Dracaena Youngii. Large spreading dark-colored foliage; 7 and 8 inch pots.....	2 00
Dracaena Sanderiana. Nice plants. 3 inch pots.....	18
Hibiscus Cooperii. Beautiful white and pink foliage; 3 inch pots.	18
Hibiscus Cooperii. Beautiful white and pink foliage; 4 inch pots.	35
Isolepis gracilis. Graceful bright green grass; 3 inch pots....	8
Ficus pandurata. Fiddle-shaped foliage, fine; new, 1/2 to 3/4 foot.	60
Ficus pandurata. Fiddle-shaped foliage, fine; new, 1 foot high..	1 00

### FICUS ELASTICA.

(The well-known Rubber Plant.)

	<i>Each.</i>
Ficus elastica. 1 foot high.....	30
Ficus elastica. 1 1/2 feet high.....	50
Ficus elastica. 2 to 2 1/2 feet high.....	75
Ficus elastica. 3 feet high.....	1 00
Ficus elastica. Specimens in tubs, 5 to 6 feet high.....	1 75
Ficus repens. Hardy vine, small green foliage; 3 inch.....	12
Maranta Kerchoveana. Hardy plant, green purple blotches; 3 inch pots .....	10
Maranta Kerchoveana. Hardy plant, green purple blotches; 4 inch pots .....	15
Maranta Lietzei. Metallic bronze markings, five 3 inch pots.....	25
Maranta Lietzei. Metallic bronze markings, five 4 inch pots....	50
Ophiopogon japonicus. Very hardy, fine dark green foliage; 3 inch pots .....	18
Ophiopogon jaburan fol. var. Variegated foliage, blue flowers; 3 inch .....	25
Panicum variegatum. White and green vine; 3 inch pots.....	8
Pandanus Veitchii. Fine plants; 6 inch pots.....	1 00
Philodendron pertusum. Grand tropical foliage; hardy.....	1 00
Photos aureus. Hardy vine, with golden foliage; 3 inch.....	18
Reineckia carnea. Narrow green foliage, very hardy; 2 inch pots.	5
Reineckia carnea. Narrow green foliage, very hardy; 3 inch pots.	8



*Each.*

Reineckia carnea. Narrow green foliage, very hardy; 4 inch pots.	15
Reineckia carnea variegata. Beautiful white stripes, 2 inch pots.	8
Reineckia carnea variegata. Beautiful white stripes, 3 inch pots.	15
Reineckia carnea variegata. Beautiful white stripes, 4 inch pots.	25
Saxifraga sarmentosa. Green and white foliage, 3 inch.....	8
Schismatoglottis Roebelini. Large silvery foliage, hardy.....	50
Tradescantia. In four varieties, fine vines, 3 inch pots.....	8

**FERNS.**

	<i>Each</i>	<i>Per Doz.</i>	<i>Per 100</i>
Adiantum Farleyense. 3 inch pots.....	\$	\$3 50	\$25 00
Adiantum Farleyense. 4 inch pots.....		5 00	40 00
Adiantum Farleyense. 5 inch pots.....		9 00	70 00
Adiantum Farleyense. 6 inch pots.....	1 00		
Adiantum Farleyense. 8 inch pots.....	2 00		

*Per 100*

Adiantum c. v. imbricatum. The hardy Farleyense. 2 inch....	\$6 00
Adiantum c. v. imbricatum. The hardy Farleyense. 3 inch....	12 00
Adiantum O'Brienii, the hardiest variety. 2 inch.....	6 00
Adiantum O'Brienii, the hardiest variety. 3 inch.....	10 00
Adiantum O'Brienii, the hardiest variety. 4 inch.....	15 00

**CIBOTIUM SCHIEDEI.***Each.*

7 inch pots .....	\$ 2 50
Nephrolepis Alberti. See novelty portion.	

**NEPHROLEPIS AMERPOHLI.**

	<i>Each</i>	<i>Per Doz.</i>	<i>Per 100</i>
2¼ inch pots .....	\$	\$1 50	\$10 00
6 inch pots.....	75		

**NEPHROLEPIS BOSTONIENSIS. (The Boston Fern.)**

	<i>Each</i>	<i>Per Doz.</i>	<i>Per 100</i>
2¼ inch pots .....	\$	\$0 60	\$4 00
6 inch pots .....	50		
10 inch pans .....	2 00		

**NEPHROLEPIS CORDATA COMPACTA.***Per 100*

3 inch pots .....	\$8 00
-------------------	--------

**NEPHROLEPIS SCOTTII.**

	<i>Each</i>	<i>Per Doz.</i>	<i>Per 100</i>	<i>Per 1000</i>
2½ inch pots .....	\$	\$0 60	\$4 00	\$35 00
6 inch pots .....	50			

**NEPHROLEPIS WHITMANI.**

	<i>Each</i>	<i>Per Doz.</i>	<i>Per 100</i>
2¼ inch pots .....		\$0 75	\$5 00
6 inch pots .....	75		
8 inch pots .....	1 50		

*Per 100*

Selaginella Emilliana, fine, 3 inch pots.....	\$8 00
Selaginella Emilliana, fine, 4 inch pots.....	12 00
Selaginella Emilliana, fine, 6 inch pans.....	45 00

**ASSORTED COLLECTION OF FINE FERNS IN VARIETY.**

Cool grown and including many choice and rare kinds.

	<i>Per 100</i>
2 inch .....	\$5 00
3 inch .....	8 00
4 inch .....	15 00
5 inch .....	25 00
6 inch .....	45 00

**Tree Ferns.** Fine specimens, price on application.

### FERNS IN FLATS.

These flats contain about two hundred plants each.

Price 2.00 per flat.

Adiantum Cuneatum	Pteris Argyraea
Aspidium Tsussimense	Pteris Cretica Albo Lineata
Cyrtomium Fortunei	Pteris Cretica Magnifica
Cyrtomium Falcatum	Pteris Cretica Mayii
Lastrea Chrysoloba	Pteris Cretica Wimsetti
Lastrea Aristata Variegata	Pteris Cretica Wimsetti Multiceps
Pteris Hastata	Pteris Ouvrardi
Pteris Adiantoides and others	Pteris Wilsoni

### CHRYSANTHEMUMS.

Under this heading you will find a list of carefully selected varieties for exhibition or cut flower purposes. Most of them winners of prizes at the late shows. We have many other meritorious varieties too numerous to describe, and can supply you with any sorts in cultivation should you desire same. For description and prices of new varieties, see Novelty Catalogue.

Pot Plants, Per 100

A. J. Balfour. Fine pure pink flower.....	\$5 00
Ben Wells. Very large flower; soft flesh color.....	5 00
Black Hawk. Very deep crimson; distinct.....	5 00
Beatrice May. Splendid white variety.....	5 00
Col. D. Appleton. One of the best large yellow.....	5 00
Cheltoni. Pure yellow, graceful form.....	5 00
C. Montingny. Lemon-yellow, large flower.....	5 00
Chas. Weeks. Salmon and colors.....	5 00
D. Goldsmith. Bronzy-yellow; one of the largest flowers.....	8 00
Dr. Engelhardt. The best pure pink incurved.....	5 00
Dub Foubert. Deep yellow flower of unique form.....	5 00
F. S. Vallis. The largest yellow Chrysanthemum.....	5 00
Golden Glow. The finest early yellow variety.....	8 00
Grace Whitney. Enormous pink, dwarf grower.....	5 00
Glory of the Pacific. One of the best large early pink.....	5 00
Lady Hopetoun. Heliotrope pink; largest of its color.....	5 00
Lynnwood Hall. Pure white, large and fine.....	8 00
Mrs. H. Robinson. Fine, large white; very early.....	5 00
Mrs. A. H. Lee. Rich glowing crimson; free grower.....	5 00
Mrs. A. T. Miller. Pure white, large flower.....	5 00
Mrs. D. V. West. Very large exhibition white.....	5 00
Mrs. W. Duckham. Golden yellow, striped red.....	5 00
Mrs. John E. Dunne. Old rose, very large flowers.....	5 00
Mrs. Coombs. Fine early pink variety.....	5 00
Mrs. Geo. Beach. Fine, late yellow.....	5 00
Mrs. Norman Davis. Magnificent white flower.....	8 00
Maud Dean. Fine, late variety pink.....	5 00
Mary Mann. Pink of beautiful shape.....	5 00
Monrovia. One of the best early yellow.....	5 00
Major Bonnafon. Bright yellow, fine form.....	5 00
Mlle Nonin. Very late, pure white.....	8 00
Marion Henderson. Very early, bright yellow.....	5 00
Miss Clay Frich. Fine large midseason white.....	5 00
Miss M. Hankey. Very late deep pink.....	5 00
Merza. One of the best white in cultivation.....	5 00
Morton F. Plant. Very large, fine pink flower.....	5 00
Nagoya. Late, yellow, good.....	5 00
Nellie Pockett. Creamy white, large flower.....	5 00
October Frost. Very early, white variety.....	5 00
Virginia Poehlmann. Large, early, white five.....	8 00
Timothy Eaton. Very large, incurved white.....	5 00
Winter Cheer. Beautiful incurved pink.....	5 00
W. J. Crossley. Bright crimson.....	5 00
W. Duckham. Large incurved pink flower.....	5 00
Yellow Eaton. Large massive yellow.....	5 00
W. H. Chadwick. Late, large, white.....	5 00

## POMPON CHRYSANTHEMUMS.

These old-fashioned plants are again the favorites of the day on account of their great beauty in the late autumn, being the last flowers to brighten the garden long after the first frost has cut down all summer vegetation. For landscape effect they are very important, as the color of the flowers blends so well with the autumn tints of trees and shrubs. If wanted for house decoration, lift the plants early in September and pot same. After they are established they can be brought in the house. Price \$.60 per doz; \$4.00 per 100.

**Ada.** Deep clear yellow.

**Acto.** Bright rose, Dahlia-like petals.

**Aileen.** Deep lilac pink.

**Agnes C.** Light shaded bronze.

**Amelia.** Blush pink tipped with clear yellow.

**Angelique.** Pure white high built flower.

**Canova.** Deep orange bronze.

**Caritas.** Blush, shaded with deeper pink.

**Delicatissima.** Outer petals light pink, center wine color.

**Edna.** White, with pink shadings, yellow center.

**Elberta.** Deep clear yellow.

**Ethel.** Fine flower, blush white.

**Golden Circle.** Bright gold color.

**Golden Trevenna.** Soft yellow, very dwarf.

**Grace Darling.** Pink fringe, yellow center.

**Gallia.** Clear soft pink.

**Jeanevieve.** Blush pink, large flower.

**Jersey Beauty.** Fine clear yellow.

**Julia.** Deep reddish color.

**La Parance.** Delicate pink, one of the best.

**La Purite.** Pure White.

**Little Pet.** Deep orange yellow.

**Lune Fleuri.** Yellow button shaped.

**Magnificus.** Large pure white.

**Maid of Kent.** One of the best white varieties.

**Manila.** Anemone flowered, deep red yellow center.

**Mildred.** Anemone flowered, pure white, blush edges.

**Mizpah.** Daisy-like, bright rose color.

**Mr. Astie.** Bright yellow, quilled center.

**Mrs. Wyness.** Fine pink, quilled center.

**Oneita.** Bright clear yellow.

**Prosperity.** The finest pure white.

**Santiago.** Deep bronze red.

**St. Crouts.** Deep copper bronze.

## CARNATIONS.

Of this most popular flower of the day, we list only the very best favorites that combine good size of flower, fragrance, keeping qualities and productiveness. Even these vary considerably on account of soil and treatment they receive. We can supply any other variety not listed at market prices. For new Carnations, see our Novelty List, giving description and price. Price quoted is for strong rooted cuttings. Plants from 2 inch pot, \$2.00 per 100 more.

	<i>Per 100</i>
<b>After Glow.</b> Bright glistening pink.....	\$6 00
<b>Aristocrat.</b> Large flower, cerise pink color.....	3 50
<b>Beacon.</b> Bright scarlet, best of its color.....	3 50
<b>Enchantress.</b> The most beautiful soft pink variety.....	2 50
<b>Golden Beauty.</b> Clear, light yellow red markings.....	3 50
<b>Lawson.</b> Fine cerise pink, celebrated variety.....	2 50
<b>Mrs. Patten.</b> White variegated with pink.....	2 50
<b>Pres. Seelye.</b> Fine white variety.....	6 00
<b>Sarah Hill.</b> Very large, pure white.....	6 00
<b>Rose Pink Enchantress.</b> Fine sport, as its name implies.....	2 50
<b>Splendor.</b> Darker than Joost, free grower.....	6 00
<b>Winona.</b> Fine shade of pink color.....	6 00
<b>Windsor.</b> Beautiful silvery pink color.....	3 50
<b>White Enchantress.</b> White form of this celebrated sort.....	3 50
<b>White Perfection.</b> The largest and finest white variety.....	2 50

## CLIMBING, TRAILING, AND VARIOUS ROSES.

This class of Roses can be used for covering walls, trellises, trees, stumps, rocks, steep banks and other purposes in landscape work, adding beauty and grace, especially the Wichuraiana section, which is here enumerated, but more fully described on next pages, also illustrated. Besides the stock quoted, we have large pot-grown specimens for immediate effect. Good two-year-old plants, \$2.00 per doz.; \$15.00 per 100; our selection.

**Baltimore Belle.** Blush flowers in clusters.  
**Crimson Rambler.** Brilliant crimson clusters.  
**Evergreen gem.** Buff in bud, opening white trailing.  
**Gardenia.** Bright yellow to cream color.  
**Jersey Beauty.** Large single pale yellow flowers.  
**Manda's Triumph.** Pure white, borne in clusters.  
**Paul's Crimson Pillar.** Large single carmine flowers.  
**Pink Pearl.** Strong grower, double pearl pink.  
**Pink Roamer.** Rich pink, white center, single.  
**Psyche.** Delicate rosy pink.  
**Queen of the Prairies.** Deep rose, vigorous grower.  
**Reine Marie Henriette.** Rich cherry crimson.  
**Russell's Cottage.** Dark crimson, rapid grower.  
**Seven Sisters.** Crimson, changing to white.  
**Setigera.** Single shell pink flowers.  
**South Orange Perfection.** White, tipped with pink.  
**Universal Favorite.** Rose colored, vigorous grower.  
**Wichuraiana.** Pure white, single rose, trailing.

### VARIOUS ROSES.

**Crested Moss.** Rose colored, beautifully crested.  
**Harrison's Yellow.** Fine golden yellow.  
**Multiflora.** Single white, very floriferous.  
**Persian Yellow.** Yellow, semi-double.  
**Rugosa.** Deep rose, fine for hedges.  
**Rugosa alba.** Pure white variety of above.  
**Rugosa Madame Bruant.** Semi-double, white clusters.

### HARDY AND HYBRID PERPETUAL ROSES.

Selected from thousands of varieties as the best for the American climate, and embracing all the best known sorts. We offer extra strong two and three-year-old plants that give the best satisfaction, and should not be compared with cheap second class stock. Fine dormant stock, \$2.00 per doz.: \$15.00 per 100. Our selection.

**Alfred Colomb.** Bright, clear, red full flower.  
**Anne de Diesbach.** Clear rose, very free flowering.  
**Baron Bonstetten.** Dark maroon red.  
**Baroness Rothschild.** Fine flower, beautiful soft pink.  
**Clio.** Flesh color, shaded deeper in center.  
**Coquette des Alpes.** Pure white, tinged with pale blush.  
**Coquette des Blancches.** Pure white, shell shaped petals.  
**Duke of Edinburgh.** Bright scarlet crimson, shaded maroon.  
**Francois Levet.** Fine, bright, clear rose.  
**Fisher Holmes.** Rich velvety crimson.  
**General Jacqueminot.** Bright crimson.  
**General Washington.** Soft scarlet to glowing crimson.  
**John Hopper.** Bright rose pink, very free.  
**Jules Margotten.** Brilliant carmine.  
**Mabel Morrison.** Clear white, one of the best.  
**Madame Plantier.** Pure white, borne in clusters.  
**Magna Charta.** Bright rose color.  
**Margaret Dixon.** Grand white, flushed with pink.  
**Marshall P. Wilder.** Cherry carmine.  
**Merveille de Lyon.** White shaded, delicate pink.  
**Mrs. John Laing.** Clear pink.  
**Paul Neyron.** Very large, deep cerise maroon.  
**Prince Camille de Rohan.** Rich velvety maroon.  
**Ulrich Brunner.** Clear bright crimson.  
**Victor Verdier.** Bright rosy crimson.

## TEA, HYBRID TEA, AND EVERBLOOMING ROSES.

Under this heading are gathered such Roses as will give a fine show of flowers all summer, same as greenhouse roses, yet with good covering of leaves, straw or any other dry material and few green boughs, the roots are hardy, and, after a good, hard pruning in the spring, they will push their shoots and flower all summer. We have a fine stock of this class of Roses in two-year-old plants, and can furnish same at \$2.25 per doz.; \$18.00 per -100. Our selection.

- American Beauty.** Deep crimson color.  
**Balduin.** Intense carmine crimson.  
**Captain Christy.** Deep flesh color.  
**Clothilde Soupert.** Pearl white to rosy pink.  
**Corallina.** Deep coral red.  
**Duchess of Albany.** Rich, deep pink.  
**Etoile de Lyon.** Best of all yellow roses.  
**Gruss an Teplitz.** Bright scarlet, shaded crimson.  
**Hermosa.** One of the best pink bedding roses.  
**Kaiserin Augusta Victoria.** Creamy white, best outdoor variety.  
**La France.** Fine satiny rose, highly recommended.  
**Liberty.** Brilliant crimson.  
**Maman Cochet.** Deep rose pink, very double.  
**Marie Van Houtte.** Pale yellow, very floriferous.  
**Meteor.** Rich dark velvety crimson.  
**Madame Caroline Testout.** Brilliant satin rose.  
**Mrs. Robert Garrett.** Light shade of pink.  
**Mosella.** Canary yellow, shading to white.  
**Papa Gontier.** Deep coral red, very free.  
**Robert Scott.** Beautiful clear pink.  
**Soleil d'Or.** Orange yellow to reddish gold.  
**Souvenir de la Malmaison.** Creamy flesh color.  
**Souvenir de President Carnot.** Rosy, shading to white.  
**Snowball.** Pure white, very floriferous.  
**White Maman Cochet.** White, shading to blush.

## HARDY VINES AND CREEPERS.

On account of the habit of this class of plants, they are indispensable for covering posts, trellises, trees, stumps, walls, rocks, or banks; also for screens on piazzas. Besides the luxuriant foliage, they all have showy flowers, which add to their desirability for above purposes.

	<i>Per Doz.</i>	<i>Per 100</i>
<b>Actinidia polygama.</b> Flowers white, sweet scented..	\$4 00	\$30 00
<b>Akebia quinata.</b> Fine foliage, purple flowers.....	2 00	15 00
<b>Ampelopsis quinifolia (Virginia Creeper)</b> .....	1 50	10 00
<b>Ampelopsis Veithei (Boston Ivy).</b> Too well known....	1 50	10 00
<b>Aristolochia siphon (Dutchman's Pipe).</b> Large foliage....	4 00	30 00
<b>Bignonia radicans (Trumpet Creeper).</b> Scarlet flowers.	1 50	10 00
<b>Bignonia radicans grandiflora.</b> Flowers salmon-covered	3 00	20 00
<b>Celastrus scandens.</b> Yellow flowers, orange fruit.....	2 50	15 00
<b>Clematis coccinea (Virgin's Bower).</b> Flowers scarlet....	1 50	10 00
<b>Clematis flamula.</b> Flowers small, white, fragrant.....	1 50	10 00
<b>Clematis Henryi.</b> Large, creamy white flowers; free....	3 50	30 00
<b>Clematis Jackmannii.</b> Large violet-purple flowers.....	3 50	30 00
<b>Clematis Madame E. Andre.</b> Flowers bright red.....	3 50	30 00
<b>Clematis paniculata.</b> Flowers white and fragrant.....	1 50	10 00
<b>Clematis Virginiana.</b> White flowers in August.....	1 50	10 00
<b>Euonymus radicans.</b> A grand evergreen creeping plant	1 50	10 00
<b>Euonymus radicans variegata.</b> A variegated form.....	1 50	10 00
<b>Hedera canariensis (Ivy).</b> A well-known evergreen vine	2 00	15 00
<b>Jasminum humile.</b> Yellow flowers in early spring.....	1 50	10 00
<b>Jasminium nudiflorum.</b> Pale yellow flowers.....	1 50	10 00
<b>Lonicera Belgica (Honeysuckle).</b> Blooms all summer....	2 00	15 00
<b>Lonicera flava.</b> A well-known vine; yellow flowers.....	2 00	15 00
<b>Lonicera Halleana.</b> White flowers. Fragrant.....	1 50	10 00
<b>Lonicera reticulata aurea.</b> Foliage beautifully netted..	1 50	10 00

	<i>Per Doz.</i>	<i>Per 100</i>
<b>Lonicera sempervirens.</b> Brilliant scarlet flowers.....	2 00	15 00
<b>Periploca Graeca (Silk Vine).</b> A beautiful climber....	1 50	10 00
<b>Wistaria Sinensis.</b> Producing clusters; blue flowers.....	3 00	20 00
<b>Wistaria Sinensis alba.</b> Same as above; pure white....	4 00	30 00
<b>Wistaria fruticosa.</b> Pale blue, in short clusters.....	3 00	20 00
<b>Climbing Roses.</b> In many varieties. See Roses.		

Pot grown plants and large sized plants for immediate effect always in stock, at proportionate prices.

## BULBS FOR SPRING PLANTING.

There is no class of plants with which there can be made such a display (for so small an outlay) as with bulbs; while they hardly require any care to grow them to perfection. Below will be found a special low offer:

### BEGONIA, TUBEROUS-ROOTED.

Fine flowering plants for greenhouse or conservatory, also doing well when planted outside in a sheltered position. The flowers are single and double and of innumerable shades of color.

	<i>Per 100</i>
<b>Double varieties, mixed, fine strain extra.....</b>	<b>\$5 00</b>
<b>Double and Single, fine mixed.....</b>	<b>4 00</b>
<b>Single Yellow, Red, Rose, and White, very choice.....</b>	<b>3 50</b>

### VARIOUS BULBS.

	<i>Per 100</i>
<b>Caladium esculentum.</b> Massive.....	<b>\$1 00</b>
<b>Calla, White.</b> The white Calla Lily.....	<b>5 00</b>
<b>Calla, Spotted.</b> Variety with spotted leaves.....	<b>5 00</b>
<b>Dahlia.</b> Mixed varieties.....	<b>6 00</b>
<b>Gloxinia, fine bulbs.</b> Extra fine varieties.....	<b>4 50</b>
<b>Hyacinthus candicans.</b> White flower spikes.....	<b>2 00</b>
<b>Madeira Vine (Climbing Mignonette).....</b>	<b>2 00</b>
<b>Tigridia conchiflora (Mexican Shell Flower).</b> Yellow.....	<b>2 50</b>
<b>Tigridia graniflora alba.</b> White, yellow cup, spotted.....	<b>2 50</b>
<b>Tigridia grandiflora rosea.</b> Bright rose.....	<b>2 50</b>
<b>Tigridia Pavonia.</b> An extra fine variety.....	<b>2 50</b>
<b>Tuberose. Dwarf Pearl.</b> White double, \$4.00 per 100.....	<b>1 00</b>
<b>Tuberose. Variegated foliage.</b> Showy.....	<b>1 75</b>
<b>Tuberose. Albino.</b> Single branching.....	<b>2 00</b>
<b>Lily of the Valley.</b> Fine forcing pips, per 1,000 \$12.00.....	<b>1 50</b>
<b>Lilium auratum (The Golden Banded Lily of Japan).</b> Very fine bulbs.....	<b>8 00</b>
<b>Lilium Longiflorum.</b> Fine white.....	<b>4 00</b>
<b>Lilium speciosum.</b> Fine pink variety.....	<b>8 00</b>
<b>Lilium speciosum album.</b> Beautiful white form.....	<b>9 00</b>
<b>Lilium speciosum roseum.</b> Flowers deep rose.....	<b>8 00</b>
<b>Lilium tigrinum splendens.</b> Fine red flowers.....	<b>3 50</b>

## CANNAS.

The following list comprises the very best kinds in cultivation which are arranged to color to facilitate selection. Cannas are considered as the best tall bedding plants, either for solid beds, borders, isolated specimens or subtropical effects.

### RED FLOWERING VARIETIES.

	<i>Per 100</i>
<b>Alphonse Bouvier.</b> Five feet high, large panicles, deep crimson..	<b>\$4 00</b>
<b>Black Prince.</b> Four feet high, flowers very large, darkest red.	<b>6 00</b>
<b>Beaute Poitevine.</b> Three feet high, flowers rich, dark crimson..	<b>4 00</b>
<b>Crimson Bedder.</b> Three feet high, massive crimson scarlet.....	<b>5 00</b>

*Per 100*

<b>Chas. Henderson.</b> Four feet high, produces freely crimson-scarlet.	4 00
<b>Express.</b> Three feet high, fine bedder, scarlet-crimson flowers.	6 00
<b>Duke of Marlboro.</b> Five feet high, large grower, crimson-maroon.	4 00
<b>President McKinley.</b> Four feet high, fine bedder, crimson-scarlet.	5 00
<b>Secretary Chabance.</b> Four feet high, five trusses orange-scarlet.	4 00

**RED AND YELLOW FLOWERING CANNAS.***Per 100*

<b>Madame Crozy.</b> Three feet high, scarlet edged golden yellow....	\$4 00
<b>Premier.</b> Two feet high, crimson red bordered golden yellow....	4 00
<b>Sam Trelease.</b> Two feet high, bright scarlet, yellow markings..	4 00
<b>Niagara.</b> Three feet high, deep crimson, golden markings.....	5 00
<b>Queen Charlotte.</b> Three feet high, orange-scarlet bordered yellow.	

**YELLOW FLOWERING CANNAS.***Per 100*

<b>Buttercup.</b> Four feet high, pure yellow, very fine bedder.....	\$6 00
<b>Coronet.</b> Five feet high, bright yellow slightly spotted red.....	6 00
<b>Comte de Bouchard.</b> Four feet high, lemon spotted scarlet.....	5 00
<b>Florence Vaughan.</b> Four feet high, golden yellow spotted red...	4 00

**ORCHID FLOWERING CANNAS.***Per 100*

<b>Austria.</b> Six feet high, flowers pure canary yellow,.....	\$4 00
<b>Allemania.</b> Six feet high, flowers bright red, margined with yellow.....	4 00
<b>Burbank.</b> Five feet high, rich canary yellow, large flowers.....	4 00
<b>Italia.</b> Six feet high, flowers bright scarlet with yellow edge....	4 00
<b>King Humbert.</b> Five feet high, bronzy foliage orange-scarlet....	8 00
<b>Mrs. Kate Gray.</b> Seven feet high, scarlet overlaid with gold.....	8 00
<b>Pennsylvania.</b> Six feet high, flowers scarlet overlaid orange.....	5 00

**PINK FLOWERED CANNAS.***Per 100*

<b>Martha Washington.</b> Two feet high, flowers large rose.....	\$5 00
<b>Rosemawr.</b> Three feet high, flowers of exquisite pink.....	4 00
<b>Louise.</b> Five feet high, flowers large rose-pink streaked red....	4 00
<b>Paul Marquant.</b> Three feet high, flowers salmon changing to pink	4 00
<b>West Grove.</b> Four feet high, flowers large coral pink, glistening	6 00

**ORNAMENTAL FOLIAGE CANNAS.***Per 100*

<b>Black Beauty (Manda).</b> Four feet high, best dark-leaved variety.	\$10 00
<b>Bronze Queen.</b> Four feet high, red foliage, orange-scarlet flowers	6 00
<b>Egandale.</b> Four feet high, foliage maroon, flowers red.....	5 00
<b>Brandywine.</b> Four feet high, bronze foliage, red flowers.....	6 00
<b>Metallica.</b> Five feet high, foliage dark color, flowers scarlet....	4 00
<b>Robusta.</b> Eight feet high, broad metallic foliage, fine.....	4 00
<b>Shenandoah.</b> Four feet high, red foliage, flowers rose pink....	6 00

## DAHLIAS.

Following is the list of the best up-to-date varieties of the old-time favorites now again popular.

### SHOW AND FANCY DAHLIAS.

	<i>Per 100</i>
A. D. Lavoni. Soft pink, extra fine.....	\$8 00
Arabella. Sulphur and pink, edged white, free.....	10 00
Cuban Giant. Dark crimson, very large.....	15 00
Fascination. Rose pink, extra fine, large.....	8 00
Golden Age. Pure sulphur yellow large.....	8 00
Highland Mary. Pink and white, free; medium size.....	8 00
Imperial. Deep purplish maroon, extra fine.....	10 00
John Thorpe. Deep pink, very large.....	10 00
Lucy Faucett. Pale yellow, striped deep pink.....	10 00
Mrs. Dexter. Deep salmon, full.....	8 00
Miss Miller. Pale lemon, shaded darker.....	6 00
Meteor. Bright red, very large; fine and full.....	8 00
Margaret Bell. Deep pink.....	8 00
Orator. Salmon buff, large and full.....	6 00
Puritan. White, striped maroon.....	6 00
Princess Bonnie. Light Lemon, almost white.....	6 00
Queen Victoria. Canary yellow, extra.....	8 00
Storm King. Pure white, large.....	12 00

### CACTUS DAHLIAS.

	<i>Per 100</i>
Arab. Rich velvety maroon.....	\$8 00
Brumhilda. A rich deep plum, fine form.....	10 00
Beatrice. Pale rose; large, fine.....	10 00
Brightness. Bright, fiery scarlet, fine.....	12 00
Dr. Jameson. Deep crimson, extra fine.....	8 00
Island Queen. Light mauve, extra fine form.....	8 00
Keynes White. Pure white, fine.....	8 00
Kriemhilde. Beautiful pink and salmon; the best.....	10 00
Libelle. Clear magenta, an extra fine form.....	12 00
Mrs. Chas. Turner. Clear, soft yellow; large.....	8 00
Mrs. Barnes. Pale primrose.....	8 00
Mrs. Scrase Dickens. Rich golden yellow.....	10 00
Mary Service. Pinkish apricot, fine.....	10 00
Primrose Dame. A clear yellow, fine.....	8 00

### DECORATIVE DAHLIAS.

	<i>Per 100</i>
Catherine Duer. Beautiful, glowing red.....	\$8 00
Beauty of Brentwood. Purple, striped maroon.....	8 00
Clifford W. Bruton. Bright yellow.....	8 00
Countess of Pembroke. Pure lavender.....	8 00
Dolly. Flesh, tipped pink.....	8 00
Lockenkoff. Orange, veined vermilion.....	8 00
Lindhurst. Fiery scarlet, fine.....	8 00
Mary Hillier. Salmon.....	12 00
Maid of Kent. Cherry red, tipped white.....	8 00
Rayon D'or. Rich orange, tipped white.....	10 00
Wm. Agnew. Red, very large and showy.....	8 00

### POMPON DAHLIAS.

	<i>Per 100</i>
Alewine. Delicate pink, tinted lilac.....	\$10 00
Ariel. Orange buff.....	8 00
Bobby. Plum color.....	8 00
Fairy Queen. Sulphur, edged pink.....	8 00
Fascination. White, pink and lavender.....	8 00
Fashion. Bright orange.....	8 00



	<i>Per 100</i>
H. C. Winters. Pale fawn.....	8 00
Lady Blanche. Pure white.....	8 00
Little Bessie. Cream white, fine.....	8 00
Mable. Salmon pink.....	8 00
Pure Love. Pure lilac.....	8 00
Prince Charming. Cream, tipped purple.....	8 00
Red Indian. Deep coral red.....	8 00
Snow Clad. Small white, free.....	8 00
Star of the East. Clear white, long stems.....	8 00
Vivid. Scarlet.....	8 00
Century Single Dahlias. Five colors.....	10 00

## GLADIOLUS.

Indispensable for planting in Shrubberies or Rose Beds, as they are a mass of bloom long after the above have passed, thus livening up what would be a dull aspect.

	<i>Per 100</i>
Augusta. Pure white, with blue anthers.....	\$2 00
Brenchleyensis. Bright vermilion scarlet.....	1 50
Ceres. Pure white, spotted with purplish rose.....	1 50
Isaac Buchanan. Very fine yellow.....	5 00
John Bull. White, slightly tinged with sulphur.....	3 50
Lamarck (de). Cherry, orange red and white.....	3 00
May. A fine white flower flaked rosy.....	1 75
Octoroon. Salmon pink, with light purple blotches.....	4 00
Pactole. Beautiful yellow, tinged rose.....	6 00
Reine Blanche. Pure white; dark carmine blotch.....	4 00
Shakespeare. White, suffused carmine-rose.....	6 00

### GLADIOLUS CHILDSII.

	<i>Per 100</i>
Boston. Flaming orange scarlet, with large white throat.....	\$6 00
Bowdoin. Orange scarlet, with large white throat.....	7 00
Columbia. Light orange scarlet, blotched.....	3 00
Florida. Deep dark red, very early.....	3 00
Mrs. Beecher. Deep crimson, white throat.....	7 50
Mrs. W. N. Bird. Lilac rose, crimson-white mottlings.....	7 50
Nezinscott. Bright blood scarlet, velvety.....	7 50
Splendor. Rose, magenta stains.....	8 00

### GLADIOLUS LEMOINE'S HARDY HYBRIDS.

	<i>Per 100</i>
Admiral Pierre. Dark carmine, red and maroon purple.....	\$3 00
Edison. Combination of rich colors.....	3 50
Enfant de Nancy. Dark crimson.....	2 50
Entendard. Brick red, canary and crimson.....	4 00
F. Bergmon. Orange-pink with carmine stains.....	3 00
Incendiary. Fiery red, large blotch of crimson.....	3 00
Keteler. Salmon-scarlet, crimson and light lemon.....	3 50
Lafayette. Yellowish salmon, crimson blotches.....	3 00
Lamarck. Salmon, crimson and yellow spots.....	3 00
Mme. Lemoine. Pure white with lemon tints.....	2 00
Vashti. Creamy, white carmine blotches.....	2 50

### VARIOUS GLADIOLI.

	<i>Per 100</i>
Groff's Hybrids. A fine assortment of colors.....	\$1 50
Lemoine Seedlings. Saved from best varieties.....	1 50
Childsii Seedlings. Grown from best types only.....	2 00
Gandavensis Seedlings. Comprising all the best.....	1 50
Mixture red and crimson. All rich colors.....	1 50
Mixture white and light. Dainty soft colors only.....	1 75
Mixture yellow and orange. Bright colors.....	3 25
Mixture No. 1, Extra Choice, varieties only.....	1 00
Manda's Mixture of all sorts and colors; the best.....	1 50
Colvillei. Flowers fine pink color, early bloomer.....	1 00
Colvillei, The Bride. Fine white flower for forcing.....	1 00

## HARDY HERBACEOUS PLANTS.

These are the old-time favorites found in every old-fashioned garden—plants that have been neglected for a number of years, but which of late are receiving again the proper recognition due them on account of their many good qualities.

In the first place, they are inexpensive plants, not only in their original cost, but considering that when once planted they grow and increase from year to year, while the cost of maintenance is very slight.

With a good assortment of Hardy Perennials a continuous show of flowers can be kept from the early spring until the frost cuts down all vegetation. With a judicious selection of these plants, not only can flower beds and borders be made attractive, but when proper kinds are chosen the ponds and marshes can be turned into objects of admiration. Barren rocks and sand hills alike can be made beautiful, while, if planted in an informal, careless way, the pleasing effect of a wild garden is produced.

**CULTURE.**—The best time for planting Hardy Herbaceous Plants is from March to May, and from September to November. They require good, rich loam to grow them to perfection, while if the soil is perfectly drained, no protection is needed in the winter, with the exception of a slight cover to prevent the sudden thawing and freezing.

In the following list, only such varieties are given as we have found from long experience to be of real merit. To save our customers trouble, we have added numerous collections of our own selection for different purposes, and which we strongly recommend.

### ALL STRONG FIELD GROWN PLANTS.

	<i>Per Doz.</i>	<i>Per 100</i>
<i>Achillea millefolia rubra.</i> Pretty rose colored flowers..	\$0 80	\$6 00
<i>Achillea serrata plena.</i> "The Pearl." Pure white.....	60	5 00
<i>Althaea rosea.</i> Fine double varieties. All colors.....	80	6 00
<i>Althaea rosea</i> (Hollyhock). Single, extra fine varieties.	80	6 00
<i>Anemone Japonica.</i> Flowers beautiful rose, in autumn..	80	6 00
<i>Anemone Japonica alba.</i> A white form of the above....	80	6 00
<i>Anemone Japonica rosea.</i> A beautiful pink variety....	80	6 00
<i>Anemone Japonica Whirlwind.</i> Double white.....	80	6 00
<i>Anemone Pennsylvania.</i> Pretty white flowers.....	80	6 00
<i>Aquilegia Canadensis.</i> Scarlet and yellow, early.....	80	6 00
<i>Aquilegia chrysantha.</i> Bright primrose yellow.....	80	6 00
<i>Aquilegia hybrids,</i> finest assorted. The very best varieties	80	6 00
<i>Aquilegia vulgaris alba.</i> White flowers, useful.....	80	6 00
<i>Armeria maritima</i> (Sea Pink). Pretty rose flowers....	80	6 00
<i>Artemisia Abrotanum</i> (Old Man). Shrubby plant.....	1 00	8 00
<i>Artemisia pontica.</i> Well adapted for carpet bedding....	60	5 00
<i>Asclepias tuberosa</i> (Butterfly Weed). Orange red flowers	80	6 00
<i>Aster.</i> Many varieties for wild gardens. Best sorts only	90	7 00
<i>Baptisia australis.</i> Tall plant, blue flowers.....	1 00	8 00
<i>Bocconia cordata.</i> Large cordate leaves.....	80	6 00
<i>Boltonia asteroides.</i> Tall, mass of white flowers.....	80	6 00
<i>Boltonia latisquama.</i> Flowers of beautiful blue color....	80	6 00
<i>Campanula</i> (Harebell) <i>Carpatica.</i> Bluebell-shaped flowers	80	6 00
<i>Campanula persicifolia.</i> Flowers pale blue, useful.....	80	6 00
<i>Campanula persicifolia alba.</i> A white variety of above.	80	6 00
<i>Campanula pyramidalis.</i> An effective plant.....	1 00	8 00
<i>Cassia Marylandica</i> (Senna). Yellow flower.....	1 50	12 00
<i>Chrysanthemum, Hardy Garden,</i> in 25 varieties.....	60	4 00
<i>Convallaria majalis</i> (Lily of the Valley). Clumps.....	2 00	15 00
<i>Coreopsis delphinifolia.</i> Compact plant, yellow flowers.	1 00	8 00
<i>Coreopsis Harvest Moon.</i> Bright golden yellow.....	70	5 00
<i>Coreopsis lanceolata.</i> Bright golden flowers, excellent..	75	1 00
<i>Coreopsis rosea.</i> Flowers rose color, with yellow disc...	60	4 00
<i>Delphinium formosum</i> (Larkspur). Rich blue.....	1 00	8 00
<i>Delphinium Hybrid</i> (assorted varieties) extra fine sorts..	1 00	8 00
<i>Delphinium Sinense</i> (assorted varieties). Dwarf.....	1 00	8 00

	<i>Per Doz.</i>	<i>Per 100</i>
<i>Desmodium penduliflorum</i> . Late flowering plant.....	1 50	12 00
<i>Dianthus barbatus</i> (Sweet William).....	70	5 00
<i>Dianthus plumarius plenus</i> . Double, garden pink.....	1 00	8 00
<i>Dianthus plumaris albus</i> . White form.....	1 00	8 00
<i>Dianthus superbus</i> . A very handsome variety.....	1 00	8 00
<i>Dicentra eximea</i> . Rose colored flowers.....	80	6 00
<i>Dicentra spectabilis</i> (Bleeding Heart). Flowers early...	80	6 00
<i>Dictamnus Fraxinella alba</i> . White variety of above.....	1 50	10 00
<i>Dictamnus Fraxinella alba</i> . White variety of above.....	1 50	10 00
<i>Digitalis purpurea</i> (Foxglove). Ornamental, in varieties.	80	6 00
<i>Echinacea purpurea</i> . The purple cone flower.....	1 00	8 00
<i>Echinacea purpurea hybrida</i> . Fine varieties of above..	1 50	10 00
<i>Eryngium amethystinum</i> . A grand plant for shubberies.	1 00	8 00
<i>Eulalia Japonica fol. var.</i> Tall ornamental grass.....	1 50	12 00
<i>Eulalia Japonica Zebrina</i> . Small striped foliage.....	1 50	12 00
<i>Eulalia univittata (gracilis)</i> . Compact plant.....	1 50	12 00
<i>Euonymus radicans arboreus</i> . Upright form, desirable..	1 50	6 00
<i>Euonymus radicans</i> . Fine evergreen creeper.....	80	6 00
<i>Euonymus radicans arboreus</i> . Upright form, desirable..	1 50	12 00
<i>Euphorbia corollata</i> (Flowering Spurge). Fine for cutting	80	6 00
<i>Euonymus radicans fol. var.</i> Fine variegated form.....	80	6 00
<i>Festuca glauca</i> . Dwarf blue grass.....	1 00	8 00
<i>Funkia cordata</i> (Day Lily). Leaves ovate, flowers blue.	80	6 00
<i>Funkia grandiflora</i> . Flowers pure white, large.....	1 25	10 00
<i>Funkia Fortunei</i> . Large yellow and green foliage.....	1 00	8 00
<i>Funkia lanceolata</i> . Narrow leaves, white flowers.....	1 00	8 00
<i>Funkia undulata variegata</i> . Beautiful variegated leaves.	80	6 00
<i>Gaillardia grandiflora hybrida</i> . Flowers all summer....	80	6 00
<i>Glechoma hederacea variegata</i> . Trailing variegated plant	80	6 00
<i>Gypsophila paniculata</i> (Baby's Breath). White flowers..	80	6 00
<i>Helenium autumnale</i> . Large yellow flowers.....	1 00	8 00
<i>Helenium autumnale superbum</i> . Tall yellow flowers....	1 00	8 00
<i>Helianthus Maximilianus</i> . Fine, late variety.....	80	6 00
<i>Helianthus mollis grandiflorus</i> . Chrome yellow flower..	80	6 00
<i>Helianthus multiflorus</i> . Large yellow.....	80	6 00
<i>Helianthus multiflorus plenus</i> . Fine double flowers....	80	6 00
<i>Helianthus orgyalis</i> . Drooping leaves, very free.....	1 00	8 00
<i>Heliopsis laevis</i> (Ox Eye). Large yellow flowers.....	80	6 00
<i>Heliopsis Pitcherianus</i> . Free flowering plant.....	80	6 00
<i>Hemerocallis Dumortierii</i> . Flowers large, orange yellow.	80	6 00
<i>Hemerocallis flava</i> (Day Lily). Yellow, sweet scented.	80	6 00
<i>Hemerocallis fulva</i> . Common variety, tawny yellow....	80	6 00
<i>Hemerocallis graminifolius</i> . Dwarf grower, orange flowers	80	6 00
<i>Hemerocallis Kwanso fl. pl.</i> Fine, large red flowers....	80	6 00
<i>Hemerocallis rutilans</i> . Fine, yellow flowers.....	80	6 00
<i>Hemerocallis Thunbergii</i> . Fragrant, golden yellow; late.	80	6 00
<i>Hibiscus moscheutos</i> . A beautiful species.....	1 00	8 00
<i>Iberis sempervirens</i> . (Evergreen Candytuft).....	1 00	8 00
<i>Iris aurea</i> . Tall spikes of pure yellow flowers.....	1 00	8 00
<i>Iris cristata</i> . Very dwarf, lilac and yellow flowers.....	1 00	8 00
<i>Iris Germanica</i> (Fleur de Lis). 15 beautiful varieties...	80	6 00
<i>Iris Kaempferii</i> (Japan Iris). 50 very feautiful varieties.	1 50	12 00
<i>Iris ochroleuca</i> . Pure white Orchid-like flowers.....	2 00	16 00
<i>Iris Siberica sanguinea</i> . Large purple flowers, free....	1 00	8 00
<i>Lathyrus latifolius</i> (Everlasting Pea). Blooms freely... 1 50	1 50	12 00
<i>Lobelia cardinalis</i> (Cardinal Flower). Scarlet red.....	80	6 00
<i>Lychnis Chalcedonica</i> . Flowers, scarlet.....	80	6 00
<i>Lychnis Haageana hybrida</i> . Large flowers.....	80	6 00
<i>Monarda didyma</i> . Bright, red, showy flowers.....	80	6 00
<i>Monarda hybrida carminea</i> . Deep carmine flowers....	80	6 00
<i>Monarda hybrida lilacina</i> . Tall, free flowering plant....	80	6 00

	<i>Per Doz.</i>	<i>Per 100</i>
Monardo fistulosa. Flowers lilac-purple.....	80	6 00
Myosotis palustris semperflorens ( <b>Forget-Me-Not</b> ).....	60	4 00
Oenothera fruticosa ( <b>Evening Primrose</b> ). Yellow flowers	1 00	8 00
Pachysandra terminalis. Fine dwarf evergreen plant... 1	00	8 00
Paeonies herbaceous, assorted. In best varieties only..	1 00	6 00
Paeonies. Pink, extra fine variety.....	1 00	8 00
Paeonies. Pink and white, very beautiful.....	1 00	8 00
Paeonies. Red beautiful color.....	1 00	8 00
Paeonies. White, very fine.....	1 00	8 00
Papaver bracteatum. Blood-red flowers.....	80	6 00
Papaver involucreatum. Very fine, large-flowered.....	80	6 00
Papaver nudicaule. Excellent for cutting.....	80	6 00
Papaver Orientale. The finest perennial Poppy.....	80	6 00
Pardanthus chinensis. Lily-like flowers.....	80	6 00
Pentstemon barbatus. Deep, scarlet flowers.....	1 00	8 00
Pentstemon Digitalis. Tall, white flowered.....	1 00	8 00
Phalaris arundinacea fol. var. Ribbon grass.....	60	4 00
Phlox amoena. Favorite border plants, early.....	80	6 00
Phlox paniculata, in assorted varieties. The very finest	80	6 00
Phlox paniculata, in 20 varieties.....	1 00	8 00
Phlox paniculata. "The Pearl." Flowers, pure white... 1	00	8 00
Phlox subulata alba. A beautiful white form.....	80	6 00
Phlox subulata atropurpurea. Deep colored flowers....	80	6 00
Phlox subulata (Moss Pink). Very dwarf, early.....	80	6 00
Platycodon grandiflora. Large bells of blue color.....	80	6 00
Polemonium coeruleum album. White variety of above..	80	6 00
Polemonium coeruleum (Jacob's Ladder). Blue flowers..	80	6 00
Polygonum cuspidatum crispulum. Featherly white.....	1 00	8 00
Polygonum Sachalinense. Handsome bushy plant.....	1 00	8 00
Primula veris (English Primrose). Choice spring flowers	80	6 00
Pyrethrum roseum, in assorted varieties.....	1 00	8 00
Pyrethrum uliginosum (The Giant Daisy). White.....	80	6 00
Rudbeckia Californica. Fine, pure yellow.....	1 00	8 00
Rudbeckia fulgida. Orange yellow, disc dark purple....	1 00	8 00
Rudbeckia (Golden Glow). Double large flowers.....	60	4 00
Rudbeckia maxima (Cone-flower). Large yellow flowers. 1	50	10 00
Rudbeckia speciosa. Yellow, dark purple disc.....	1 00	8 00
Rudbeckia subtomentosa. Fine for borders.....	1 00	8 00
Sedum Spectabile. One of the best border plants.....	1 00	8 00
Sedum spurium splendens. Trailing yellow flowers....	80	6 00
Solidago (Golden Rod), many varieties for wild gardens.	80	6 00
Spiraea aruncus (Meadow Sweet). White long spikes... 1	00	8 00
Spiraea astilboides. Flowers white, graceful.....	80	6 00
Spiraea filipendula plena. White double flowers.....	80	6 00
Spiraea Japonica. Pure white flowers.....	80	6 00
Spiraea Japonica grandiflora. Larger and closer flowers.	80	6 00
Spiraea palmata. Brilliant crimson flowers.....	1 00	8 00
Spiraea ulmaria plena. Double white flowers.....	1 00	8 00
Statice latifolia. Blue flowers on large panicles.....	1 00	8 00
Thymus serpyllum. Trailing evergreen, pink flowers..	80	6 00
Tradescantia virginica. Blue flowers.....	80	6 00
Veronica longifolia sessilis. Deep rich blue.....	1 50	10 00
Veronica rupestris. Dark blue flowers.....	80	6 00
Veronica spicata. Bright blue flowers.....	80	6 00
Vinca minor (Periwinkle). Fine for growing under trees.	80	
Yucca filamentosa. Fine spikes of white flowers.....	1 50	10 00

Hundreds of other varieties, see General Catalogue.

## DECIDUOUS TREES.

This class embraces species growing from ten to over a hundred feet in height, and furnishes ample material for street and avenue planting, as well as for parks and home grounds, where, with their large, spreading branches, they give restful shade in summer. The various shapes and hues of the foliage, together with the profusion of flowers produced by many varieties, give a characteristic and imposing effect to the grounds.

<i>Acer dasycarpum</i> (Silver-leaved Maple). Grows rapidly.	\$0 50 to \$2 00
<i>Acer plantanoides</i> (Norway Maple). The most desirable.	50 to 2 00
<i>Acer polymorphum</i> (Japan Maple). This is the type.	75 to 2 00
<i>Acer polymorphum atropurpureum</i> . Foliage dark purple, deeply cut. Very hardy and ornamental.	1 00 to 2 00
<i>Acer polymorphum atropurpureum dissectum</i> . Weeping form, purple foliage; finely cut.	1 00 to 2 00
<i>Acer polymorphum aureum</i> . Beautiful yellow foliage.	1 00 to 2 00
<i>Acer polymorphum reticulatum</i> . Foliage light green.	1 00 to 2 00
<i>Acer polymorphum sanguineum</i> . Foliage crimson.	1 00 to 2 00
<i>Acer polymorphum</i> . Collection of 25 varieties.	1 00 to 2 00
<i>Acer negundo</i> (Ash-leaved Maple). Rapid growing.	50 to 2 00
<i>Acer saccharinum</i> (Sugar or Rock Maple).	50 to 3 00
<i>Aesculus hippocastanum</i> (White flowered Horse Chestnut)	50 to 1 00
<i>Aesculus hippocastanum plenum</i> . Double flowers.	1 00 to 2 00
<i>Betula alba</i> (White Weeping Birch). A graceful tree.	50 to 1 00
<i>Betula alba pendula</i> . A weeping form of the above.	50 to 1 00
<i>Betula alba pendula laciniata</i> . Delicately cut foliage.	50 to 1 00
<i>Betula alba atropurpurea</i> . Vigorous habit, purple foliage	1 00
<i>Catalpa Bungeii</i> dwarf. A small growing form from China. Foliage large and glossy.	50 to 1 00
<i>Catalpa Bungeii</i> standard. Umbrella-shaped tree.	1 00 to 2 00
<i>Catalpa speciosa</i> . Producing clusters of white flowers.	35 to 1 00
<i>Cercidophyllum Japonicum</i> . A Japanese tree.	50 to 1 00
<i>Cerasus Sieboldii alba plena</i> (Double flowering Cherry).	50 to 1 00
<i>Cerasus Sieboldii rosea plena</i> . Flowers, beautiful pink.	50 to 1 00
<i>Cercis Canadensis</i> (Judas Tree). Flowers early.	25 to 1 00
<i>Chionanthus Virginicus</i> (White Fringe). A dwarf tree.	35 to 75
<i>Cladrastis tinctoria</i> (Yellow Wood). Flowers white.	50 to 1 00
<i>Cornus florida</i> (Dogwood). A beautiful tree in spring.	25 to 50
<i>Cornus florida rubra</i> . Producing fine pink flowers.	50 to 1 00
<i>Cornus florida pendula</i> . A drooping variety.	1 00
<i>Crataegus oxycantha</i> (Hawthorn). English hedge plant.	18 to 35
<i>Crataegus oxycantha alba plena</i> . Flowers double white.	50 to 1 00
<i>Crataegus oxycantha rosea plena</i> . Flowers, rose.	50 to 1 00
<i>Crataegus oxycantha Paul's scarlet</i> . Flowers bright red	50 to 1 00
<i>Fagus ferruginea</i> (American Beech). One of the finest.	50 to 1 00
<i>Fagus sylvatica</i> (European Beech). A grand tree.	50 to 1 00
<i>Fagus sylvatica purpurea</i> . Foliage deep purple.	1 00 to 2 00
<i>Fagus sylvatica purpurea Riversii</i> . Foliage crimson.	1 00 to 2 00
<i>Fagus sylvatica tricolor</i> . Beautiful rose-margined leaves	1 00 to 2 00
<i>Fraxinus excelsior</i> (European Ash). A noble tree.	50 to 1 00
<i>Liquidambar staraciflua</i> (Sweet Gum). Moderate sized.	50 to 1 00
<i>Liriodendron tulipifera</i> (Tulip Tree). Tulip-like flowers	50 to 1 00
<i>Magnolia acuminata</i> . A beautiful pyramidal tree.	1 00
<i>Magnolia conspicua</i> . The flowers are large, pure white.	1 00 to 2 00
<i>Magnolia glauca</i> . White fragrant flowers.	50 to 1 00
<i>Magnolia Hypoleuca</i> . Rapid growing tree, large foliage	1 00
<i>Magnolia Kobus</i> . Blush white and fragrant flowers.	1 00 to 2 00
<i>Magnolia Lennei</i> . Foliage large, flowers dark purple.	2 00
<i>Magnolia macrophylla</i> . Leaves two feet in length.	1 00 to 2 00
<i>Magnolia obovata discolor</i> . White, reddish pink flowers	1 00
<i>Magnolia purpurea</i> . Medium sized flower, rose purple.	1 00
<i>Magnolia parviflora</i> . Rare Japanese variety. White.	1 00 to 2 00
<i>Magnolia Soulangeana</i> . Flowers white with purple.	1 00 to 2 00
<i>Magnolia stellata</i> . The earliest, pure white, fragrant.	1 00 to 2 00
<i>Magnolia tripetala</i> . Immense leaves; white flowers.	1 00

Morus Downings. A rapid growing tree; fine fruit.....	35 to	50
Morus Teas Weeping. The finest small weeping tree...	50 to	1 00
Paulownia imperialis. A tropical looking tree.....	50 to	1 00
Persica vulgaris alba fl. pl. (Flowering Peach). White..	25 to	50
Persica vulgaris coccinea pl. Flowers double bright red	25 to	50
Persica vulgaris rosea pl. Flowers double rose colored	25 to	50
Persica vulgaris rosaflora. Flowers double pink.....	25 to	50
Platanus orientalis (Sycamore). A grand tree.....		50
Populus alba (Poplar). Leaves green and white.....	25 to	50
Populus aurea. Fine yellow foliage.....	25 to	50
Populus monilifera (Carolina Poplar). Pyramidal.....	25 to	50
Ptelea trifoliata (Hop Tree). Small tree, vigorous grower	50 to	1 00
Ptelea trifoliata aurea. Beautiful, glossy, golden foliage	50 to	1 00
Prunus Pissrdii (Purple leaved Plum). Purple leaved tree	50 to	75
Pyrus spectabilis (Flowering Crab). Fine flowering tree	50 to	1 00
Pyrus spectabilis fl. alba pl. Double white, fragrant...	50 to	1 00
Pyrus spectabilis fl. rosea pl. Flowers rose color.....	50 to	1 00
Quercus coccinea (Scarlet Oak). Rapid grower, pyramidal	50 to	1 00
Quercus alba. Large, spreading tree.....	50 to	1 00
Quercus palustris (Pin Oak). A fine tree.....	50 to	1 00
Robinia hispida rosea (Locust). Rose-colored flowers	25 to	1 00
Salix Babylonica (Weeping Willow). Well-known willow	25 to	50
Salix laurifolia. Tree with large, shining leaves.....	25 to	50
Tilia Americana (Linden). A rapid large growing tree..	50 to	1 00
Tilia Europaea. Pyramidal tree with heavy foliage....	50 to	1 00
Tilia argentea. Very ornamental; silvery foliage.....		1 00
Ulmus Americana (Elm). The finest of our trees.....	50 to	1 00
Ulmus pendula. A fine and graceful weeping tree.....	1 00 to	2 00

Large specimen trees and varieties not listed in stock. Call at the Nurseries or write for particulars, stating your wants.

## CONIFERAE (Evergreen or Resinous Trees).

One of the grandest classes of vegetation, varying from dwarf prostrate shrubs, rising barely a foot above the ground, to the largest and most majestic trees known, growing to the height of three hundred and fifty feet. With two or three exceptions they are evergreen, and on that account are especially desirable where evergreen and massive effect is desired. Having such a large range of form and height, they can be used for almost any purpose, such as isolated specimens, groups, beds, hedges, and also as wind screens for sheltering and protecting half hardy plants, etc. They all emit a pleasant, resinous odor, which is known to be especially healthful.

	<i>Each.</i>
Abies concolor (Silver Fir of Colorado). Graceful habit, handsome foliage, bluish above, silvery beneath. 2 feet, \$1.00; 4 feet, \$3.00; 6 feet.....	\$5 00
Abies Canadensis (Hemlock Spruce). For hedging, massing, or single planting, none can equal it. 4 feet, .75; 5 feet, \$1.25; 6 feet.....	1 75
Abies Caroliniana (Carolina Hemlock). A beautiful medium-sized evergreen, upright habit, hardy. 4 feet.....	2 00
Abies Nordmanniana. The foliage is massive, shining dark green, 2 feet, \$1.00; 3 feet, \$2.00; 4 feet.....	3 00
Juniperus alpina aurea. Spreading golden foliage, 1 to 2 feet..	1 00
Juniperus Chinensis variegata. Dense dark glaucous green, interspersed with white, perfectly hardy. 2 feet, \$1.00; 3 feet, \$2.00; 4 feet.....	3 00
Juniperus communis hibernica (Irish Juniper). Resembling a pillar of green. 2 feet, .50; 4 feet.....	1 00
Juniperus Virginiana (Red Cedar). A well-known American tree of medium size. Varies much in habit and color of foliage. 3 feet, .50; 5 feet, \$1.00; 8 feet.....	1 50

	<i>Each.</i>
<b>Juniperus Virginiana glauca.</b> The glaucous foliage renders it very distinct and desirable. 2 feet, \$1.00; 3 to 4 feet.....	3 50
<b>Picea alba (White Spruce).</b> Medium height, pyramidal in form, foliage silvery gray. 3 feet, .75; 4 feet.....	1 00
<b>Picea Alcockiana.</b> Tree of dense habit. Foliage pale green, glaucous underneath. 2 feet, \$1.00; 4 feet.....	3 00
<b>Picea excelsa (Norway Spruce).</b> Extremely hardy; rapid pyramidal growth. 4 feet, .75; 5 feet, \$1.00; 6 feet, \$1.75; 8 feet..	3 00
<b>Picea excelsa pendula.</b> A pendulous variety of the Norway Spruce, bright foliage. 2 feet, \$1.50; 3 feet.....	2 50
<b>Picea orientalis.</b> A handsome tree, compact, graceful habit, and dark, slender foliage. 2 feet, \$1.00; 4 feet, \$2.50; 5 feet..	5 00
<b>Picea pungens glauca (Colorado Blue Spruce).</b> One of the hardiest and most beautiful evergreens. The foliage is heavy and of a rich bluish color. 2 feet, \$1.50; 3 feet, \$2.50; 4 feet, \$6.00; 5 feet.....	9 50
<b>Pinus Austriaca (Austrian Pine).</b> A noble tree, remarkably robust. Growth rapid. Very hardy. 3 feet, .75; 4 feet, \$1.00; 5 feet.....	1 50
<b>Pinus Cembra (Swiss Stone Pine).</b> Compact conical form. Foliage silvery. 3 feet, \$1.50; 4 feet \$2.50; 5 feet.....	2 50
<b>Pinus excelsa (Bhotan Pine).</b> A lofty, elegant tree, with long, drooping, silvery foliage. 4 feet.....	2 00
<b>Pinus mugho.</b> An upright, spreading, small pine. Form of a bush. 1 foot .....	75
<b>Pinus strobus (White Pine).</b> Foliage light, delicate green. flourishes in the poorest sandy soil. 3 feet, .75; 5 feet..	1 50
<b>Pinus sylvestris (Scotch Pine).</b> A noble, tall growing variety, with stout, erect shoots. 4 feet, .75; 5 feet, \$1.00; 6 feet.....	1 75
<b>Retinospora filifera.</b> Forms a cone of threadlike filaments, curving gracefully from the tips of the branches. 2 feet, .75; 3 feet, \$1.75; 4 feet.....	3 50
<b>Retinospora pisifera.</b> Upright pyramidal outline, with shining green foliage. 2 feet, .75; 3 feet, \$1.00; 6 feet.....	4 50
<b>Retinospora pisifera aurea.</b> Same habit, except the foliage, which is a beautiful golden color. 3 feet, \$1.00; 4 feet, \$2.50; 5 feet, \$4.50; 8 feet.....	7 50
<b>Retinospora plumosa.</b> Tree of pyramidal shape, with feathery, clear green foliage. 2 feet, .75; 4 feet, \$2.00; 6 feet.....	5 00
<b>Retinospora plumosa aurea.</b> A golden-leaved variety. The favorite evergreen. 2 feet, .75; 4 feet, \$2.00; 6 feet.....	5 00
<b>Retinospora squarrosa Veitchii.</b> A grand variety, having beautiful silvery foliage, extensively used. 2 feet, \$.75; 4 feet, \$2.50; 5 feet, \$3.75; 6 feet, \$5.00; 8 feet.....	7 50
<b>Sciadopitis verticillata.</b> The Umbrella Pine of Japan. Foliage a shining green. 2 feet, \$3.00; 3 feet, \$5.00; 4 feet.....	7 00
<b>Taxus baccata (English Yew).</b> A large bush of tree. It is densely branched and can be trimmed in any shape. 2 feet, \$.75; 3 feet, \$1.50; 4 feet.....	2 50
<b>Taxus hibernica (Irish Yew).</b> A very handsome, erect, resembling a dark green pillar. 2 feet, \$1.00; 3 feet.....	2 00
<b>Thuja occidentalis (Arbor Vitae).</b> Especially valuable for screens and hedges. 3 feet, \$.50; 5 feet.....	1 00
<b>Thuja occidentalis compacta.</b> Dwarf, compact habit, and deep green foliage. 1 foot, \$.50; 2 feet.....	1 00
<b>Thuja occidentalis George Peabody.</b> Foliage bright golden color. 3 feet, \$1.00; 4 feet, \$1.75; 5 feet.....	2 50
<b>Thuja occidentalis pyramidalis.</b> Upright, compact habit, like the Irish Juniper. 3 feet, \$.50; 6 feet.....	1 25
<b>Thuja orientalis compacta.</b> A very dwarf form of the above. 1 foot, \$.50; 2 feet, \$1.00; 2½.....	2 00

We have 200 varieties of evergreens in sizes from 3 inches to 15 feet in height. Prices on application.

## DECIDUOUS FLOWERING AND FOLIAGE SHRUBS.

This class is represented by a very large class of shrubs growing from two to ten feet in height. Producing a wealth of beautiful flowers at the different seasons, or a mantle of bright colored foliage, making an attractive mass from early spring to late fall. Indispensable for every garden, however small.

	<i>Each.</i>
<i>Amorpha fruticosa</i> . Dark violet purple.....	\$0 15
<i>Aralia spinosa</i> (Hercules Club). Tropical effects.....	15
<i>Andromeda arborea</i> . A fine native shrub.....	25
<i>Azalea mollis</i> . Flowers yellow to red.....	50
<i>Azalea pontica</i> . Fragrant orange and red flowers.....	50
<i>Azalea calendulacea</i> . The grandest of this family.....	50
<i>Azalea Vaseyii</i> . Flowers rosy pink.....	50
<i>Berberis vulgaris</i> (Barberry). A handsome shrub.....	10
<i>Berberis vulgaris purpurea</i> . Foliage and fruit violet purple....	12
<i>Berberis Thunbergii</i> . A dwarf variety, with small leaves.....	12
<i>Calycarpa purpurea</i> . Purplish blue berries in fall.....	20
<i>Calycanthus floridus</i> (Sweet scented Shrub).....	12
<i>Caryopteris mastacanthus</i> (Blue Spiraea).....	12
<i>Clethra alnifolia</i> (White Alder). White, flowers in August.....	10
<i>Cornus sanguinea elegantissima variegata</i> .....	18
<i>Cornus Spathii aurea</i> . A good companion for the above.....	18
<i>Corchorus Japonica</i> . Globular yellow flowers.....	12
<i>Corchorus Japonica fl. pl.</i> A double flowered variety.....	12
<i>Corchorus Japonica var.</i> Green foliage, edged with white.....	12
<i>Corylus avellana atropurpurea</i> . Foliage dark purple.....	25
<i>Corylus avellana laciniata</i> . Ornamental, deeply cut.....	25
<i>Cydonia Japonica</i> (Japan Quince). Flowers bright crimson...	10
<i>Deutzia crenata fl. pl. alba</i> . Flowers double white.....	10
<i>Deutzia crenata fl. pl. rosea</i> . Similar habit to above; flowers rose.	10
<i>Deutzia crenata</i> (Pride of Rochester). The finest.....	10
<i>Deutzia gracilis</i> . Dwarf species. Flowers white, early.....	10
<i>Exochorda grandiflora</i> . White flowers in May.....	25
<i>Forsythia Fortunei</i> (Golden Bell). Yellow flowers in spring...	10
<i>Forsythia suspensa</i> . The growths are drooping.....	10
<i>Forsythia viridissima</i> . Leaves and bark green.....	10
<i>Halesia tetraptera</i> (Silver Bell). White bell-shaped flowers....	25
<i>Hibiscus Syriacus Boule de Feu</i> . Double, violet red color.....	15
<i>Hibiscus Syriacus Duc de Brabant</i> . A fine double flowered variety	15
<i>Hibiscus Syriacus foliis variegatus</i> . Variegated foliage.....	15
<i>Hibiscus Syriacus totus albus simplex</i> . Single pure white. Fine	15
<i>Hibiscus Syriacus totus albus plenus</i> . Flowers double pure white	15
<i>Hibiscus Syriacus violaceus simplex</i> . Single purple flowers....	15
<i>Hibiscus Syriacus violaceus plenus</i> . Double purple flowers....	15
<i>Hydrangea paniculata</i> . Pyramidal panicles of white flowers...	18
<i>Hydrangea paniculata grandiflora</i> . One of the finest shrubs....	15
<i>Hypericum aureum</i> . Flowers a bright yellow, in profusion...	25
<i>Hypericum Moserianum</i> . Large yellow flowers during summer.	25
<i>Itea Virginica</i> . Racemes of pretty white flowers.....	25
<i>Ligustrum ovalifolium</i> (California Privet).....	5
<i>Ligustrum ovalifolium aureum</i> (Manda's Golden).....	25
<i>Lonicera tartarica alba</i> . White frgrant flowers.....	15
<i>Lonicera tartarica rubra</i> . Dark rose colored flowers.....	15
<i>Paeony arborea</i> (Tree Peony). Flowers very large.....	75
<i>Philadelphus coronarius</i> (Syringa or Mock Orange).....	15
<i>Philadelphus foliis aureus</i> . A medium-sized golden-leaved....	25
<i>Philadelphus Lemoinei</i> . Covered with small white flowers....	18
<i>Philadelphus inodorus</i> . Large white flowers.....	15
<i>Philadelphus grandiflorus</i> . Large showy flowers, slightly fragrant	15
<i>Prunus triloba</i> (Double flowered Plum). A delicate pink color..	25
<i>Rhodotypus kerrioides</i> . Single white flowers.....	15
<i>Rhus cotinus</i> (Purple Fringe or Smoke Tree).....	18
<i>Rhus glabra laciniata</i> . A striking plant, resembling fern.....	25
<i>Ribes aureum</i> . Shining leaves and yellow flowers.....	15



	<i>Each.</i>
<i>Sambucus nigra aurea</i> (Golden Elder). Golden yellow foliage..	12
<i>Spiraea Billardii</i> . Flowers nearly all summer.....	10
<i>Spiraea Bumalda</i> . A dwarf but vigorous variety.....	10
<i>Spiraea Bumalda Anthony Waterer</i> . Dark crimson flowers.....	10
<i>Spiraea opulifolia aurea</i> . Golden yellow foliage.....	12
<i>Spiraea prunifolia</i> pl. Pure white flowers.....	10
<i>Spiraea Reevesii</i> . Large clusters of pure white flowers.....	10
<i>Spiraea Reevesii</i> fl. pl. A double flowering variety.....	10
<i>Spiraea Thunbergii</i> . Flowers white. Early.....	10
<i>Spiraea Van Houtteii</i> . One of the best shrubs.....	10
<i>Syringa persica</i> (Persian Lilac). Purple flowers.....	25
<i>Syringa vulgaris</i> . The well-known lilac. Bluish purple.....	25
<i>Syringa vulgaris alba</i> . A white form of the above.....	25
<i>Syringa vulgaris alba grandiflora</i> . Large pure white trusses....	25
<i>Syringa vulgaris Charles X</i> . Purple flowers.....	25
<i>Syringa vulgaris Marie Legraye</i> . Large white panicles.....	25
<i>Styrax Japonica</i> . Snowdrop-like flowers.....	50
<i>Tamarix Africana</i> . Handsome foliage; upright habit.....	12
<i>Tamarix indica</i> . Delicate foliage of a lively green color.....	12
<i>Tamarix Germanica vera</i> . Foliage a glaucous green.....	12
<i>Viburnum opulus</i> . A fine ornamental shrub.....	15
<i>Viburnum plicatum</i> . Globular heads of pure white flowers.....	18
<i>Weigela amabilis</i> . Flowers light pink. Very free.....	15
<i>Weigela amabilis alba</i> . Pure white form of the above.....	15
<i>Weigela rosea</i> . Fine rose colored flowers.....	15
<i>Weigela variabilis</i> . Brilliant crimson. A vigorous grower.....	15
<i>Weigela foliis variegatus</i> . A grand variegated leaved shrub....	15
<i>Zanthorhiza apiifolia</i> . Good for shady situation.....	15

## EVERGREEN FOLIAGE AND FLOWERING SHRUBS.

A most desirable class of plants, with massive generally glossy foliage, which is evergreen through the winter, the foliage changing in many varieties to beautiful bronze purple and crimson hues, besides the fine and attractive flowers which are produced in spring and early summer, and on that account should be planted in every garden.

	<i>Each.</i>
<i>Abelia rupestris</i> . Dwarf shrub, with white flowers.....	\$0 25
<i>Andromeda Catesbaeii</i> . A grand, glossy-leaved plant.....	25
<i>Andromeda floribunda</i> . Compact habit, white flowers.....	50
<i>Andromeda Japonica</i> . Recurved sprays of white flowers.....	50
<i>Artemisia abrotanum</i> (Old Man or Southernwood).....	15
<i>Aucuba Japonica</i> . Fine bushes.....	25 to 2 00
<i>Azalea amoena</i> . A neat, low growing shrub. Red flowers.....	25 to 1 00
<i>Azalea indica alba</i> . Flowers pure white.....	1 00
<i>Azalea Oriental Hybrids</i> . In several colors.....	1 00
<i>Berberis aquifolium</i> (Mahonia). Glossy foliage, purple in winter .....	25 to 50
<i>Berberis fascicularis</i> . A variety of the above.....	25 to 50
<i>Berberis Neubertii</i> . A hybrid variety, with small, crenate foliage	25
<i>Calluna vulgaris alba</i> (Heather). Fine feathery foliage.....	25
<i>Cassandra calyculata</i> . Dwarf shrub, with white flowers.....	25
<i>Cotoneaster buxifolia</i> . Dwarf shrub, with small, glossy foliage.	18
<i>Cotoneaster Microphylla</i> . Dwarf variety, smaller foliage.....	18
<i>Euonymus Japonicus</i> . Glossy-leaved plant of upright habit.....	25
<i>Euonymus radicans arborescens</i> . Dwarf hardy shrub.....	25
<i>Ilex crenata</i> . A dwarf Japan Holly.....	25 to 50
<i>Leiophyllum buxifolium</i> . Small white flowers.....	25
<i>Leiophyllum buxifolium prostratum</i> . A prostrate variety.....	25
<i>Kalmia latifolia</i> (Mountain Laurel). Flowers in spring:..	50 to 1 00
<i>Rhododendron Catawbiense</i> . Hardy variety, lilac purple.....	1 00 to 2 00
<i>Rhododendron maximum</i> . The hardiest species.....	50 to 1 00
<i>Rhododendron hybrids</i> . Best twelve hardy varieties.....	1 00 to 2 00

## BOXWOOD.

One of the most beautiful of evergreen foliage plants which can be used in various ways to decorate the grounds or as a specimen in pots or tubs. We have the largest stock of boxwood in the country. Plants of all sizes, from 3 inches in height to large specimens centuries old, ten to fifteen feet high and as much in diameter. We have them in all shapes, pyramids, bush form, globular forms, standards, and some odd-looking specimens, beside thousands of dwarf Boxwood for edging flower beds and formal gardens. We have acres of Boxwood for you to select from and give prices on the following small sizes, and will be pleased to quote on the large specimens or quantity of ordinary sizes.

	<i>Each.</i>
Dwarf Boxwood, for edging. 3 inches high.....	\$0 03
Dwarf Boxwood, for edging. 4 inches high.....	04
Dwarf Boxwood, for edging. 6 inches high.....	10
Tree Boxwood, for larger edgings. 1 foot high.....	25
Tree Boxwood, for larger edgings. 1½ feet high.....	35
Tree Boxwood, for larger edgings. 2 feet high.....	65
Bush form, natural shaped plants. 2½ feet high.....	1 25
Bush form, natural shaped plants. 3 feet high.....	1 75
Bush form, natural shaped plants. 3½ feet high.....	2 50
Bush form, natural shaped plants. 4 feet high.....	3 50
Bush form, natural shaped plants. 5 feet high.....	5 00
Bush form, natural shaped plants. 6 feet high.....	7 50
Pyramids, well formed plants. 2½ feet high.....	1 50
Pyramids, well formed plants. 3 feet high.....	2 00
Pyramids, well formed plants. 3½ feet high.....	3 00
Pyramids, well formed plants. 4 feet high.....	4 00
Pyramids, well formed plants. 5 feet high.....	6 00
Pyramids, well formed plants. 6 feet high.....	8 00
Standards, fine specimen. 1 foot across head.....	1 25
Standards, fine specimen. 1½ feet across head.....	1 75
Standards, fine specimen. 2 feet across head.....	3 50
Standards, fine specimen. 2½ feet across head.....	5 00
Standards, fine specimen. 3 feet across head.....	7 50

## CUT BOXWOOD.

We are the acknowledged headquarters for this excellent greens so useful in the Florist's work or decorating. It is not only the most durable and most lasting greens known but it makes the handsomest wreath that we know of. The branches are from ½ to 1½ feet in length tied up in about 1 lb bunches and are put up in two sizes of boxes and can ship same from October 1 to April 15.

25 lb Box of Italian Boxwood for . . . . . \$4 00

50 lb Box of Italian Boxwood for . . . . . 7 50

Limited quantity of **Special Head Sprays**, 2 to 4 feet long, grand for decorative work.

25 lb Box of Special Boxwood for . . . . . \$6 25

## FLOWER SEEDS.

Very extensive list of the choicest strains of Flower Seeds will be found arranged under the following headings: Specialties in Leading Florist Flowers; General Collection of Flower Seeds, embracing everything worth growing, either annual, hardy perennial, greenhouse plants, vines and climbers, ornamental fruit, everlastings, grasses, etc., arranged alphabetically.

### SPECIALTIES IN LEADING FLORIST FLOWERS.

This department consists and includes all of the most important classes of plants, with their great variety, such as are or should be grown by every one.

The collections of such as Asters, Pansies, Sweet Peas, Nasturtiums, Balsams, Stock, etc., are complete, embracing every distinct and choice variety in cultivation. Under each heading we have given a short description and cultural directions for the various classes, also color of the varieties.

### MANDA'S MIXTURE.

This Mixture is composed of the choicest named varieties grown, in suitable proportions, and must not be compared with the cheap and common mixture generally offered, which is composed of very few and inferior varieties.

When you want the finest assortment, be sure and order Manda's Mixture.

### ALYSSUM (Sweet Alyssum).

	<i>Pkt.</i>	<i>Oz.</i>
Little Gem (Carpet of Snow). Very dwarf. Extra.....	\$0 10	\$0 30
Tom Thumb. Dwarf erect growth .....	10	25
Maritimum (Sweet Alyssum). White, trailing .....	10	15

### AMARANTHUS.

	<i>Pkt.</i>	<i>Oz.</i>
Caudatus (Love-lies-bleeding) .....	\$0 10	\$0 15
Cruentus (Prince's Feather). Dark red .....	10	15
Sunrise. A splendid bedding sort, brilliant carmine.....	30	3 00
Salicifolius (Fountain Plant) .....	10	25
Tricolor (Joseph's Coat). Red, yellow and green .....	10	15
Tricolor Splendens. An improved tricolor .....	15	40

### ANTIRRHINUM (Snapdragon).

	<i>Pkt.</i>	<i>Oz.</i>
Giant White. Tall growing, very large spikes and flowers.	\$0 20	60
Giant Garnet. Tall growing, very large spikes and flowers	20	60
Giant Pink. Tall growing, very large spikes and flowers.	20	60
Giant Scarlet. Tall growing, very large spikes and flowers	20	60
Giant Striped. Tall growing, very large spikes and flowers	20	60
Giant Yellow. Tall growing, very large spikes and flowers	20	60
Giant Mixed. Tall growing, very large spikes and flowers	15	40
Majus Mixed. An extra fine strain.....	10	20
Queen of the North. Beautiful pure white.....	15	50
Half-Dwarf. Mixed colors.....	10	30

### ASPARAGUS.

Plumosus nanus (true). 50 cents per 100 seeds; \$4.50 per 1000 seeds.  
Sprengeri. 25 cents per 100 seeds; \$2.00 per 1000 seeds.

## ASTERS.

	<i>Pkt.</i>	<i>Oz.</i>
Branching Paeony-flowered. Crimson.....	\$0 30	\$1 25
Branching Paeony-flowered. Dark blue.....	30	1 25
Branching Paeony-flowered. Peach-blossom pink.....	30	1 25
Branching Paeony-flowered. Pure White.....	30	1 25
Branching Paeony-flowered. Manda's Mixture.....	25	1 00
Comet, Giant. White, extra fine.....	30	1 25
Comet, Giant, The Bride. White, shading to rose.....	30	1 25
Giant Branching. (Manda's Mixture), long stems.....	30	1 25
Crown or Cocardeau. Mixed.....	30	1 25
Dwarf Chrysanthemum. Finest mixed.....	30	1 25
Paeony Perfection. Crimson.....	30	1 50
Paeony Perfection. Light blue.....	30	1 50
Paeony Perfection. Brilliant rose.....	30	1 50
Paeony Perfection. Purple.....	30	1 50
Paeony Perfection. Bright pink.....	30	1 50
Paeony Perfection. Pure white.....	30	1 50
Paeony Perfection. Finest mixed.....	25	1 25
Queen of the Market. White.....	20	60
Queen of the Market. Lavender.....	20	60
Queen of the Market. Pink.....	20	60
Queen of the Market. Bright rose.....	20	60
Queen of the Market. Purple.....	20	60
Queen of the Market. Crimson.....	20	60
Queen of the Market. Mixed.....	15	50
Victoria. Peach-blossom pink.....	40	2 00
Victoria. Dark scarlet.....	40	2 00
Victoria. Light blue.....	40	2 00
Victoria. Purple.....	40	2 00
Victoria. Pure white.....	40	2 00
Victoria. Rose, tinted white.....	40	2 00
Victoria. Finest mixed.....	30	1 75

## BALSAM.

	<i>Pkt.</i>	<i>Oz.</i>
White Perfection. Best double white.....	\$0 25	\$1 00
Scarlet. Very double.....	15	60
Violet. Very double.....	15	60
Solfernio. Spotted. Very double.....	15	60
Double Camellia-flowered. Mixed. Extra fine.....	15	40

## BEGONIA.

	<i>Pkt.</i>	<i>Oz.</i>
Semperflorens Vernon.....	\$0 25	
Semperflorens Vernon Grandiflora.....		25
Semperflorens Gracilis rosea.....		25
Semperflorens. Mixed varieties.....		25
Tuberous-rooted. Single mixed.....		50
Tuberous-rooted. Double.....		1 00
Rex Hybrids. 75 cents per 1000 seeds.		

## BELLIS PERENNIS (Double Daisy).

	<i>Pkt.</i>	<i>Oz.</i>
Longfellow. Double pink Daisy.....	\$0 40	\$2 00
Snowball. Fine double white Daisy.....	40	2 00
Giant Red. Various shades of red.....	40	2 00
Giant Rose. Mammoth flowers.....	17	
The Bride. The finest double white.....	50	3 00
Finest Mixed. Best quality obtainable.....	30	1 75

## CALCEOLARIA.

	<i>Pkt.</i>
Hybrida grandiflora. Finest mixed; all colors.....	\$1 00
Hybrida grandiflora Tigrina. Choicest spotted and tigered.....	1 00
Hybrida grandiflora Tigrina pumila. Dwarf spotted, etc.....	1 00

## CALENDULA.

	<i>Pkt.</i>	<i>Oz.</i>	$\frac{1}{4}$ <i>lb.</i>
Meteor. Yellow striped orange.....	\$	\$0 10	\$0 30
Prince of Orange. Somewhat darker than above..		10	30
Orange King. Dark orange.....		10	30
Pure Gold. Fine golden yellow.....		10	30
Sulphurea. Sulphur yellow.....		10	30
Pogeeii, fl. pl. Double white.....	10	15	
Pluvialis. (Cape Marigold). Single white.....	10	15	
Pluvialis. (Manda's Mixture). All the double sorts.		10	25
Manda's Mixture. All the double sorts.....		10	25

## CALLIOPSIS.

	<i>Pkt.</i>	<i>Oz.</i>
Coronata. Large flowering yellow.....	\$0 10	\$0 15
Drummondii. (Golden Wave). Golden yellow.....	10	15
Golden Ray. Yellow and brown, narrow petals.....	15	50
Hybrida superba. New Hybrids, mixed.....	15	50
Nigra speciosa. Deep crimson.....	10	15
Tinctoria. Yellow, maroon centre.....	10	15
Tinctoria, fl. pl. Double flowering.....	10	20

## CANDYTUFT.

Valuable for cutting, especially during the spring months.

	<i>Pkt.</i>	<i>Oz.</i>
Carmine. Very bright color.....	\$0 10	\$0 30
Crimson. Deep purplish crimson.....	10	15
Empress. The finest white, a select stock.....	10	20
White Rocket. A good white.....		10
White Fragrant. Small, sweet scented.....		10
Lavender. A good shade.....	10	15
Manda's Mixture.....		10
Tom Thumb. White. A pure dwarf sort.....	10	15
Tom Thumb. Mixed. Very dwarf, all colors.....	15	50

## CARNATION.

	<i>Pkt.</i>	<i>Oz.</i>
Marguerite. To color.....	\$0 25	\$1 00
Manda's Mixture.....	20	60
Giant Marguerite. Mixed. Very large flowering.....	30	1 50
Chabaud's Everblooming. Mixed colors, fine.....	30	1 50
Chabaud's Everblooming. Choicest double. Mixed.....	30	1 50
Choicest Double. Mixed.....	30	1 50

## CELOSIA.

	<i>Pkt.</i>	<i>Oz.</i>
Cristata, Glasgow Prize.....	\$0 25	\$1 00
Cristata, Empress. Dark purplish crimson.....	25	1 00
Cristata, Queen of Dwarfs. Dark crimson rose.....	25	1 00
Cristata. Mixed. Dwarf sorts.....	15	50
Plumosa, Golden Plume. Yellow.....	10	30
Plumosa, Thompsonii. (Triomphe de l'Exposition).....	15	50
Plumosa, Thompsonii Magnifica. Various colors.....	20	60

## CENTAUREA.

	<i>Pkt.</i>	<i>Oz.</i>
Candidissima. White leaved.....1000 seeds 25 cents.	\$	\$1 00
Gymnocarpa. White leaved.....1000 seeds 15 cents.		35
Rutifolia purpurea. White leaves, purple flowers.....	25	1 00
Imperialis. To color.....	15	50
Imperialis. (Manda's finest mixture).....	10	30
Suaveolens. (Yellow Sweet Sultan).....	10	25
Americana. Reddish lavender.....	15	40
Cyanus. Blue. (Corn Flower).....40 cents per ¼ lb.	10	15
Cyanus. White.....	10	15
Cyanus. Rose.....	10	15
Cyanus. Mixed. Various colors.....30 cents per ¼ lb.	10	15
Cyanus. Double mixed.....50 cents per ¼ lb.	10	15

## CHRYSANTHEMUM.

	<i>Pkt.</i>	<i>Oz.</i>
Coronarum. Yellow and white.....	\$0 10	\$0 15
Single Annual. Mixed colors.....	10	15
Inodorum plenissimum. Double white.....	15	50

## CINERARIA.

	<i>Oz.</i>	<i>Pkt.</i>
Hybrida. Tall.....		\$1 00
Hybrida. Dwarf.....		1 00
Stellata (Star Cineraria). Mixed.....		1 00
Maritima, candidissima. White leaved.....	20	10
Maritima, acanthifolia. White leaved.....	75	20

## COBAEA.

	<i>Pkt.</i>	<i>Oz.</i>
Scandens. Purple.....	\$0 10	\$0 30
Scandens, Alba. White.....	20	75

## CONVOLVULUS.

	<i>Pkt.</i>
Major, mixed (Morning Glory) 30 cents per lb.....	\$0 10
Major, double flowering.....	20
Minor, <i>Rosesus superbus</i> .....	10
Minor, mixed (Dwarf Morning Glory) 30 cents per lb.....	10

## COSMOS.

	<i>Pkt.</i>	<i>Oz.</i>
Extra Early, flowering, all colors.....	\$0 20	\$0 60
Mammoth Perfection, crimson.....	15	40
Mammoth Perfection, pink.....	15	40
Mammoth Perfection, white.....	15	40
Mammoth Perfection, finest mixed.....	10	25
Gigantic flowering, "Lady Lenox." (New).....	20	60

## CYCLAMEN.

	<i>Pkt.</i>
Persicum Giganteum, white.....	\$0 75
Persicum Giganteum, white with carmine eye.....	75
Persicum Giganteum, rose.....	75
Persicum Giganteum, blood-red.....	75
Persicum, Manda's finest mixed. Only the finest colors.....	60

## DIANTHUS.

	<i>Pkt.</i>	<i>Oz.</i>
<b>Chinensis</b> (China Pinks). Mixed.....	\$0 10	\$0 20
<b>Heddewigii</b> (Japan Pinks). Mixed, extra fine.....	15	60
<b>Heddewigii Nobilis.</b> (New Double Royal Pinks).....	20	75
<b>Heddewigii Snowball.</b> A beautiful double white.....	15	60
<b>Diadematus</b> (Diadem Pinks). Mixed.....	20	75
<b>Laciniatus</b> (Fringed Pinks). Mixed.....	15	50
<b>Imperialis</b> (Imperial Pinks). Mixed.....	15	40

## Single Flowering Sorts.

	<i>Pkt.</i>	<i>Oz.</i>
<b>Heddewigii, mixed.</b> A most beautiful type.....	15	50
<b>Heddewigii, "Crimson Belle"</b> .....	15	50
<b>Heddewigii, "Eastern Queen"</b> .....	15	50
<b>Laciniatus.</b> Mixed.....	15	40
<b>Laciniatus, Salmon Queen.</b> Bright salmon shades.....	15	50
<b>Laciniatus, Mephisto</b> (New).....	30	1 50
<b>Laciniatus, Punctatus.</b> Princess Pinks.....	30	1 25
<b>Laciniatus, Vesuvius.</b> Bright, geranium-red, fine.....	25	1 00

## DRACAENA.

	<i>Pkt.</i>	<i>Oz.</i>
<b>Australis.</b> Broad leaved variety.....	\$0 15	\$0 60
<b>Indivisa.</b> Narrow foliage. Very useful. $\frac{1}{4}$ -lb. \$1.00....	10	30

## ESCHSCHOLTZIA.

	<i>Pkt.</i>	<i>Oz.</i>
<b>Californica.</b> Bright yellow.....	\$0 10	\$0 15
<b>Californica Alba.</b> Pure white.....	10	15
<b>Californica Aurantiaca.</b> Orange.....	10	15
<b>Carmine King.</b> Purple carmine.....	20	75
<b>Dainty Queen.</b> Coral Pink.....	40	2 00
<b>Golden West.</b> Very large golden yellow.....	10	20
<b>Rose-cardinal.</b> White and rose.....	10	20
<b>Mandarin.</b> Orange and scarlet.....	10	20
<b>Single.</b> Mixed.....	10	15
<b>Double.</b> Mixed.....	10	15

## GAILLARDIA.

	<i>Pkt.</i>	<i>Oz.</i>
<b>Amblyodon.</b> Deep blood red.....	\$0 10	\$0 15
<b>Picta.</b> Crimson and orange.....	10	15
<b>Single Annual.</b> Mixed.....	10	15
<b>Lorenzia.</b> Double mixed.....	10	20
<b>Grandiflora.</b> Fine colors, hardy.....	10	20

## GLOXINIA.

	<i>Pkt.</i>	<i>Oz.</i>
<b>Hybrida Grandiflora.</b> Mixed.....	\$1 00	

## GODETIA.

	<i>Pkt.</i>	<i>Oz.</i>
<b>Duchess of Albany.</b> White.....	\$0 10	\$0 15
<b>Gloriosa.</b> Rich blood-red.....	10	25
<b>Rosamond.</b> Shell pink.....	10	25
<b>Mixed</b> .....	10	15

**HELIANTHUS. (Sunflower.)**

	<i>Pkt.</i>	<i>Oz.</i>
Globosus Fistulosus (Dahlia Sunflower).....	\$	\$0 10
Nanus fl. pl. (Globe of Gold).....	10	15
Cucumerifolius (Miniature Sunflower).....	10	15

**HELIOTROPE.**

	<i>Pkt.</i>	<i>Oz.</i>
Lemoine's Giant. Very large heads of bloom.....	\$0 40	\$2 00
Finest Mixed. The regular type.....	25	1 00

**HUMULUS.**

	<i>Pkt.</i>	<i>Oz.</i>
Japonicus. Green leaved .....	\$0 10	\$0 20
Japonicus Variegatus. Beautifully variegated.....	10	25

**IMPATIENS. (Sultan's Balsam.)**

	<i>Pkt.</i>	<i>Oz.</i>
Sultana .....	\$0 50	\$
Holstif Hybrids. Various colors.....	50	

**IPOMOEA.**

	<i>Pkt.</i>	<i>Oz.</i>	$\frac{1}{4}$ <i>lb.</i>
Bona nox (Evening Glory).....	\$	\$0 10	\$0 30
Coccinea (Star Ipomoea).....		10	30
Grandiflora (Moon Flower).....	15	40	1 25
Rubra Coerulea (Heavenly Blue).....	15	50	
Imperial Japanese. Finest quality.....		15	50

**KOCHIA.**

	<i>Pkt.</i>	<i>Oz.</i>
Trichophylla (Standing Cypress).....	\$0 10	\$0 25

**LARKSPUR.**

	<i>Pkt.</i>	<i>Oz.</i>
Dwarf Rocket. Mixed.....	\$	\$0 10
Tall Stock-flowered. Mixed.....	10	20

**LOBELIA.**

	<i>Pkt.</i>	<i>Oz.</i>
Crystal Palace Compacta.....	\$0 30	\$1 25
Emperor William. Dwarf, clear light blue.....	25	1 00
White Gem. White, compact .....	25	1 00
Gracilis. Light blue, trailing.....	15	40
Speciosa (Crystal Palace var.). Dark blue, trailing.....	15	50
Erinus compacta. All colors, mixed.....	15	50

**MARIGOLD.**

	<i>Pkt.</i>	<i>Oz.</i>
African. Double, mixed .....	\$0 10	\$0 15
African El Dorado. Very double, orange.....	10	25
African Lemon Queen. Lemon yellow.....	15	50
African Orange Prince. The finest golden orange.....	15	50
African Pride of the Garden. A dwarf golden yellow...	15	40
French, Double Dwarf. Mixed.....	10	15
French, Gold Striped . Extra fine.....	10	20
French, Legion d'honneur (Little Brownie).....	10	20



## MARVEL OF PERU.

	Oz.
Mixed (Four O'Clocks).....	\$0 10

## MATRICARIA. (Feverfew.)

	Pkt.	Oz.
Capensis, fl. pl. Double white, nice for cut flowers.....	\$0 10	\$0 25

## MAURANDIA.

	Pkt.	Oz.
A popular and graceful climber, used in baskets, vases, etc.		
Barclayana. Purple .....	\$0 25	\$1 25
Barclayana. Mixed. All colors.....	25	1 00

## MIMULUS.

	Pkt.	Oz.
Moschatus. (Musk Plant).....	\$0 25	\$1 25
Tigrinus. Mixed. (Monkey Flower).....	25	1 25

## MIGNONETTE.

	Pkt.	Oz.
Defiance. Very large spikes.....	\$0 15	\$0 40
Goliath. Giant spikes, extra fine.....	25	1 00
Golden Machet. Fine.....	15	50
Machet. True select stock of this fine sort.....	10	25
Miles Hybrid Spiral. A fine outdoor sort, ¼ lb., 40c....	10	15
Large-flowering Pyramidal, ¼ lb., 75 cents.....	10	25
Sweet Scented, large flowering, lb., 40 cents.....		10

## MYOSOTIS.

	Pkt.	Oz.
Alpestris. Blue .....	\$0 15	\$0 35
Alpestris Robusta Grandiflora. Blue, large.....	15	40
Alpestris Royal Blue. Upright grower, blue.....	20	75
Dissitiflora. Clear Blue. Early flowering.....	30	2 00
Palustris. True Forget-me-not.....	30	1 75
Palustris Semperflorens. Ever-blooming.....	30	1 25

## NASTURTIUMS.

## LOBB'S TALL.

	Oz.	¼ lb.	Lb.
Asa Gray. Cream white.....	\$0 10	\$0 20	\$0 60
Black Prince. Dark, velvety crimson, dark foliage	10	25	75
Brilliant. Bright scarlet.....	10	20	60
Cardinal. Intense geranium-red.....	10	20	60
Crown Prince of Prussia. Blood red.....	10	20	60
Roi des Noirs. (King of the Blacks.) Very dark.	10	20	60
Spitfire. Vermilion scarlet.....	10	20	60
Mixed. Lobb's varieties.....	10	15	45
Hybrids of Madame Gunter. Splendid.....	10	25	75

## TALL OR CLIMBING NASTURTIUMS.

	Oz.	¼ lb.	Lb.
Crimson. Very rich shade.....	\$0 10	\$0 20	\$0 50
King Theodore. Deep crimson maroon.....	10	20	50
Lemon Yellow .....	10	20	50
Pearl. Creamy white .....	10	20	50
Prince Henry. Cream spotted and tipped red...	10	20	50

## NASTURTIUM (Continued).

	Oz.	¼ lb.	Lb.
Purple. Purplish crimson.....	10	20	50
Rose. Fine color.....	10	20	50
Scarlet. Brilliant .....	10	20	50
Scarlet and Gold. Scarlet flowers, yellow foliage	10	20	50
Spotted. Yellow spotted crimson.....	10	20	50
Vesuvius. Salmon rose; dark leaved.....	10	20	50
Manda's Mixed. Best quality.....	10	15	35

## TOM THUMB OR DWARF NASTURTIUMS.

	Oz.	¼ lb.	Lb.
Aurora. Salmon and pink.....	\$0 10	\$0 20	\$0 50
Beauty. Yellow striped red.....	10	20	50
Cloth of Gold. Scarlet, yellow foliage.....	10	20	50
Crystal Palace Gem. Sulphur spotted maroon..	10	20	50
Empress of India. Bright crimson, dark leaved.	10	20	60
Golden King. Golden yellow.....	10	20	50
King of Tom Thumbs. Dark scarlet, dark leaved.	10	20	60
King Theodore. Deep maroon, dark leaved....	10	20	60
Pearl. Creamy white.....	10	20	50
Prince Henry. Creamy white spotted.....	10	20	50
Rose. Fine soft rose.....	10	20	50
Ruby King. Ruby rose.....	10	20	60
Spotted. Yellow spotted red.....	10	20	50
Vesuvius. Salmon rose, dark leaved.....	10	20	60
Mixed. Best quality, 10 lbs., \$3.50.....	10	15	40
Lilliput. Mixed, very dwarf.....	10	20	60

## NICOTIANA.

	Pkt.	Oz.
Affinis .....	\$0 10	\$0 20
Sylvestria .....	10	20
Sanderæ Hybrids. A mixture of all the colors.....	15	50

## PANSY.

	Pkt.	Oz.
Manda's Mixture. The finest.....	\$0 50	\$8 00
Cassier's Giant. A grand mixture.....	50	4 00
Mme. Perret. A beautiful strain.....	40	2 00
Giant Trimardeau. Of strong, robust growth.....	25	1 00
Giant Parisian. Of very large size.....	40	2 00
English Finest Mixed. Very fine.....	20	75
Good Mixed. All colors.....	15	50
Cardinal. The brightest red.....	25	1 00
Emperor William. Ultramarine blue.....	25	1 00
Faust or King of the Blacks. Black purple.....	25	1 00
Lord Beaconsfield. Purple shading to white.....	25	1 00
Mahogany Color .....	25	1 00
Peacock. Blue, claret and white.....	25	1 00
Snow Queen. Pure white.....	25	1 00
White, with dark eye.....	25	1 00
Yellow, with dark eye.....	25	1 00
Yellow Gem, pure yellow.....	25	1 00
Giant Trimardeau: Black.....	30	1 50
Giant Trimardeau Emperor William. Bright blue.....	30	1 50
Giant Trimardeau Fire King. Purple and gold, fine.....	30	2 50
Giant Trimardeau. Striped.....	30	1 50
Giant Trimardeau. White.....	30	1 50
Giant Trimardeau. Yellow.....	30	1 50

## PETUNIA

	<i>Pkt.</i>	<i>Oz.</i>
Double Fringed .....	\$1.00 per 1,000 seeds	
Single Fringed .....	\$0 50	\$
Dwarf Inimitable. Cherry red and white.....	30	1 25
Dwarf Snowball. Pure white.....	30	1 50
Brilliant. Carmine pink, fine bedder.....	30	2 00
Striped and Blotched. Finest mixed.....	20	75
Hybrida. Pure white. Good for massing.....	15	50
Fine Mixed. All colors.....	15	50

## PHLOX DRUMMONDI.

	<i>Pkt.</i>	<i>Oz.</i>
Drummondii. Finest mixed.....	\$0 10	\$0 30
Grandiflora. Large flowering. Snow white.....	20	75
Grandiflora. Large flowering. Shell-pink.....	20	75
Grandiflora. Large flowering. Deep rose.....	20	75
Grandiflora. Large flowering. Primrose.....	20	75
Grandiflora. Large flowering. Soft lilac.....	20	75
Grandiflora. Large flowering. Rich crimson.....	20	75
Grandiflora. Large flowering. Bright scarlet.....	20	75
Grandiflora. Manda's Finest Mixed.....	15	50
Large Flowering Dwarf White.....	30	1 25
Large Flowering Dwarf Bright rose.....	30	1 25
Large Flowering Dwarf Scarlet.....	30	1 25
Large Flowering Dwarf Mixed.....	25	1 00
Nana Compacta Snowball.....	30	1 50
Nana Compacta Fireball.....	30	1 50
Star of Quedlinburg. Mixed.....	20	60

## POPPY.

	<i>Pkt.</i>	<i>Oz.</i>
Danebrog. Scarlet with white spots.....	\$	\$0 10
Flag of Truce. Pure white.....	10	15
Glaucum (Tulip Poppy). Dazzling scarlet.....	15	50
Shirley. Finest mixed colors.....	10	20
The Bride. Very large pure white.....	10	15
Umbrossum. Vermilion with black spot.....	10	15
Mixed. All colors.....		10
American Flag. White and scarlet.....	10	15
Mikado. White and scarlet striped.....	10	15
Carnation-flowered. Mixed.....	$\frac{1}{4}$ -lb., 20 cts.	10
Paeony-flowered. Mixed.....	$\frac{1}{4}$ -lb., 20 cts.	10

## PORTULACA.

	<i>Pkt.</i>	<i>Oz.</i>
Single Large-flowering. Mixed.....	\$0 10	\$0 20
Double Large-flowering. Mixed .....	25	1 25

## PRIMULA.

## FRINGED CHINESE VARIETIES.

	<i>Pkt.</i>
Alba Magnifica. The finest white.....	\$1 00
Holborn Blue. An odd shade.....	1 00
Stellata. Fine decorative variety. Mixed colors.....	1 00
Fern-leaved. Mixed colors .....	1 00
Manda's Choicest Mixed. Made up of the finest named varieties; the best procurable.....	1 00
Manda's Double Mixed.....	1 00
Obconica grandiflora. Mixed colors .....	50
Floribunda. Yellow .....	50
Forbesi (Baby Primrose).....	50

## PYRETHRUM.

	<i>Pkt.</i>	<i>Oz.</i>
<b>Aureum</b> (Golden Feather). Yellow foliage.....	\$0 10	\$0 25
<b>Aureum Selaginoides</b> . Moss like yellow foliage.....	15	50

## RICINUS.

	<i>Oz.</i>	$\frac{1}{4}$ <i>lb.</i>	<i>Lb.</i>
<b>Borboniensis</b> . Green foliage. 15 feet.....	\$0 10	\$0 20	\$0 50
<b>Cambodgiensis</b> . Almost black. 6 feet.....	10	25	75
<b>Gibsoni</b> . Dark red, metallic lustre. 6 feet....	10	25	75
<b>Sanguineus</b> . Red stems, green foliage. 8 feet.	10	20	50
<b>Zanzibariensis</b> . The most tropical.....	10	20	50
<b>Mixed</b> . All sorts .....	10	15	40

## SALPIGLOSSIS.

	<i>Pkt.</i>	<i>Oz.</i>
<b>Improved large-flowering. Crimson</b> .....	\$0 20	\$0 75
<b>Improved large-flowering. Primrose</b> .....	20	75
<b>Improved large-flowering. Purple and Gold</b> .....	20	75
<b>Improved large-flowering. Rose and Gold</b> .....	20	75
<b>Improved large-flowering. Scarlet and Gold</b> .....	20	75
<b>Improved large-flowering. White and Gold</b> .....	20	75
<b>Improved large-flowering. Manda's finest mixed</b> .....	20	60
<b>Emperor</b> . Very large flowering, mixed colors.....	20	75

## SALVIA.

	<i>Pkt.</i>	<i>Oz.</i>
<b>Splendens</b> . "Scarlet Sage".....	\$0 25	\$1 00
<b>Splendens</b> . "Ball of Fire." New dwarf.....	50	4 00
<b>Splendens</b> . "Bonfire" (Clara Bedman).....	40	2 25
<b>Patens</b> . Blue Salvia .....	50	5 00

## SCABIOSA.

	<i>Pkt.</i>	<i>Oz.</i>
<b>Large-flowering. Azure Fairy</b> .....	\$0 15	\$0 40
<b>Large-flowering. Crimson</b> .....	10	25
<b>Large-flowering. Flesh-pink</b> .....	10	25
<b>Large-flowering. King of the Blacks</b> .....	15	40
<b>Large-flowering. Lilac</b> .....	10	25
<b>Large-flowering. Pompadour</b> .....	15	40
<b>Large-flowering. Purple, edged white</b> .....	10	25
<b>Large-flowering. Rose</b> .....	10	25
<b>Large-flowering. Tile red</b> .....	10	25
<b>Large-flowering. White</b> .....	10	25
<b>Large-flowering. Manda's mixed. All colors</b> .....	10	20

## SCHIZANTHUS. (Fringe Flower.)

	<i>Pkt.</i>	<i>Oz.</i>
<b>Dwarf Large-flowered. Mixed</b> .....	\$0 30	\$1 50
<b>Wisetonensis</b> . Fine for pots.....	50	

## SMILAX.

	<i>Pkt.</i>	<i>Oz.</i>
<b>Smilax</b> . (Myrsiphilum aspargoides) .....	\$0 10	\$0 30

## STOCKS.

	<i>Pkt.</i>	<i>Oz.</i>
<b>Wallflower-leaved</b> .....	\$0 50	\$7 50
<b>Beauty of Nice</b> . Delicate flesh-pink.....	50	2 50
<b>Empress Elizabeth</b> . Brilliant carmine-rose.....	50	5 00
<b>Queen Alexandra</b> . Rosy-lilac, fine for cutting.....	50	2 50
<b>Brompton</b> . Mixed .....	50	2 50

## CUT-AND-COME-AGAIN TEN WEEKS' STOCK.

	Pkt.	Oz.
Princess Alice. Snow-white.....	\$0 50	\$3 00
La France. Silvery rose .....	50	3 00
Brilliant. Fiery blood-red.....	50	3 00
Sapphire. Dark blue .....	50	3 00
Creole. Creamy yellow, extra fine.....	50	3 00
May Queen. A delicate shade of lilac.....	50	3 00
Finest Mixed. All colors .....	50	2 50

## LARGE-FLOWERING TEN WEEKS' STOCKS.

	Oz.	Lb.
Blood red .....	\$0 40	\$2 50
Canary yellow .....	40	2 50
Bright rose .....	40	2 50
Light blue .....	40	2 50
Purple .....	40	2 50
Pure white .....	40	2 50
Finest mixed .....	30	2 00

## SWEET PEAS.

	Oz.	Lb.
America. Blood red, striped white.....	\$0 05	\$0 25
Aurora. White flaked with orange salmon.....	5	25
Black Knight. Black maroon.....	5	25
Blanche Burpee. A fine large white.....	5	20
Blanche Ferry. Pink and white.....	5	20
Blanche Ferry, extra early. Pink and white.....	5	25
Coccinea. Rich cerise, very bright.....	5	25
Countess Cadogan. A rich bright blue.....	5	30
Countess of Lathom. Creamy pink.....	5	30
Countess of Radnor. Delicate lavender.....	5	20
Dainty. White, edged with pink.....	5	30
Dorothy Eckford. The latest and finest white..	5	30
Duke of Westminster. Clear purple violet.....	5	25
Earliest of all.....	5	35
Emily Eckford. Heliotrope.....	5	25
Emily Henderson. Purest white.....	5	20
Flora Norton. Bright blue.....	5	25
Henry Eckford. Clear orange yellow.....	5	50
Hon. F. Bouverie. One of the best pinks.....	5	25
Hon. Mrs. E. Kenyon. The finest primrose.....	5	25
Janet Scott. A large and bright pink.....	5	25
Katherine Tracy. Brilliant pink.....	5	25
King Edward VII. Rich deep crimson scarlet..	5	35
Lady Grisel Hamilton. Pale lavender.....	5	25
Lord Roseberry. Bright cherry-rose.....	5	25
Lottie Eckford. White suffused with lavender..	5	25
Lovely. Shell pink, extra fine.....	5	25
Modesty. Pale pink.....	5	25
Miss Willmott. Rich, deep orange pink.....	5	30
Mont Blanc. An early white.....	5	35
Mrs. George Higginson, Jr. Clear azure.....	5	25
Mrs. Walter Wright. Deep mauve.....	5	35
Navy Blue. Deep violet blue.....	5	25
Othello. Dark chocolate red.....	5	25
Prima Donna. Deep pink, fine.....	5	25
Prince of Wales. Deep rose.....	5	25
Queen Alexandra. Geranium red.....	5	50
Royal Rose. Deep rosy pink.....	5	50
Salopian. Rich deep scarlet.....	5	25
Shahzada. Maroon, shaded purple.....	5	25
Stella Morse. Cream, flushed pink.....	5	35
Venus. Salmon buff.....	5	25

	Oz.	Lb.
Manda's Orchid-flowered mixed.....	10	1 00
Double-flowering sorts. Mixed.....	5	30
Pink shades. Mixed.....	5	25
Red shades. Mixed.....	5	25
Lavender and blue shades. Mixed.....	5	25
Purple and maroon shades. Mixed.....	5	25
White and primrose shades. Mixed.....	5	25
Striped Shades. Mixed.....	5	25
Cupid or Dwarf. All colors mixed.....	5	25

## VERBENAS.

	Pkt.	Oz.
Mammoth, pink shades.....	\$0 30	\$1 25
Mammoth, purple shades.....	30	1 25
Mammoth, scarlet shades.....	30	1 25
Mammoth, striped shades.....	30	1 25
Mammoth, pure white.....	30	1 25
Mammoth, finest mixed. All colors.....	25	1 00
Hybrida. Extra choice mixed. A good grade.....	15	50
Lemon. (Aloysia Citriodora).....	25	1 00
Venosa. Purplish heliotrope. Fine bedder.....	10	25

## VINCA.

	Pkt.	Oz.
Rosea. Rose, with darker eye.....	\$0 15	\$0 50
Rosea Alba. White, with rose eye.....	15	50
Rosea Alba Pura. Pure white.....	15	50

## WALLFLOWER.

	Pkt.	Oz.
Single Goliath. Velvety brown.....	\$0 20	\$0 75
Single Extra Early Paris. Flowers the first season.....	10	25
Single mixed. All colors.....	10	15
Double mixed.....	30	2 00

## ZINNIA.

	Pkt.	Oz.
Improved Dwarf double. Canary.....	\$0 10	\$0 40
Improved Dwarf double. Flesh pink.....	10	40
Improved Dwarf double. Jacqueminot. Crimson scarlet.....	15	50
Improved Dwarf double. Orange.....	10	40
Improved Dwarf double. Purple-carmine.....	10	40
Improved Dwarf double. Scarlet.....	10	40
Improved Dwarf double. White.....	10	40
Improved Dwarf double. Salmon rose.....	10	40
Improved Dwarf double. Scarlet and Gold.....	15	50
Improved Dwarf double. Finest mixed.....	10	25
Curled and Crested. Mixed.....	10	30
Haageana. Double orange.....	15	50
Mammoth. Queen Victoria. White.....	15	50
Mammoth. Double, mixed.....	15	40
Tall double. Mixed.....	10	20
Tom Thumb. Double mixed.....	15	50
Single Flowering. Mixed.....	10	25

Any other variety of FLOWER SEEDS can be furnished at regular trade rates for best quality only.

## VEGETABLE SEEDS.

Of this useful and important article we carry a complete assortment and can supply any variety in any quantity of the *Best Quality* at regular wholesale prices.

## GRASS AND CLOVER SEEDS.

We beg to draw the special attention of our patrons to the Universal Lawn Grass Seed Mixture, which is prepared to give the best results for fine lawns; also to the cheap Pasture Grass Mixture for meadows. We would also be happy to supply grass and clover seed separate if desired.

### MANDA'S UNIVERSAL LAWN SEED MIXTURE.

This lawn grass mixture is composed entirely of the finest quality of fine-leaved dwarf-growing grasses, in such proportions as will enable it to withstand the extreme heat of our summers. The grasses which compose this mixture are extra well cleaned, so that all weeds are excluded, leaving nothing but the pure, clean seed.

We recommend four bushels to the acre. It is necessary to sow the seed very thickly to get the most pleasing result—that is a good lawn.

The best time to sow grass seed is in the spring or about the latter part of August. We prefer the spring. The success of establishing a good lawn depends much on the season and the condition of the ground at the time of sowing. A light raking in will protect the seeds greatly. Rolling, however, is at all times indispensable, and should any weeds appear, they should be eradicated.

### MANDA'S UNIVERSAL MIXTURE IS AS GOOD AS ANY AND BETTER THAN MANY.

	<i>Bushel</i>
Manda's Universal Lawn Seed Mixture.....	\$3 00
Central Park Lawn Grass Mixture.....	2 50
Pasture Grass Mixture.....	1 50
Golf Link Mixture .....	4 00

### GRASS AND CLOVER, ALSO CEREALS AND AGRICULTURAL SEEDS.

We keep a complete list of the finest varieties of these seeds, unequalled for purity and cleanliness.

Parties desiring large quantities would do well to get quotations from us before ordering elsewhere.

### PALM SEEDS.

Having to plant thousands of them ourselves every season, we are compelled to make large importations of these seeds yearly. They come from all quarters of the tropical world, such as New Zealand, Australia, the East and West Indies, South America, and Africa. Orders are booked beforehand, and will be filled in succession as the goods arrive. The seed is unexcelled as regards purity and germination. Price list on application.

### EVERGREEN AND DECIDUOUS TREE AND SHRUB SEEDS.

These are also imported from all parts of the world. Owing to the difficulty and great expense involved in securing these seeds, we will not offer quantities in less bulk than will cost 25 cents and upwards.

## THE FIRST NATIONAL FLOWER SHOW

Held at Chicago, November, 1908, gave the horticultural world a good opportunity to test their superiority of culture or extent of their collection. Well, we were there with the result that we carried away sixty-five premiums, mostly firsts, all the medals for new plants and also all the sweepstake prizes offered to the exhibitor taking the largest number of prizes, either as to number or value, and we had to ship our plants 1,000 miles in the middle of November to do it. See what the Horticultural Press says:

### HORTICULTURE.

The exhibits of W. A. Manda were the wonder of the show. His new fern *Polypodium Mandaianum*, not yet in commerce, won the gold medal, and as a climax to all his prizes takes the diamond pin for winning the greatest number of premiums.—Horticulture, Nov. 14.

### AMERICAN FLORIST.

In palms, ferns and other large plants, W. A. Manda, South Orange, N. J., practically swept the board of all the principal prizes. Some of his larger specimens were immense yet in perfect health, and they did yeoman service in rounding out the fine appearance of the hall as a whole. Notable were the giant kentias, *K. Forsteriana* and *K. Belmoreana* especially. The plants were large, healthy specimens and bore no traces of having been brought one thousand miles or so. All of Mr. Manda's exhibits were, in fact, notable for their freshness. In the classes for a collection of palms not over fifteen varieties, he showed neat, well finished specimens of *Phoenix Rœbelenii*, large, clean and finely grown; *Latania aurea*, a fine well grown specimen; nice healthy *Areca sapida* and a grand specimen of *A. Verschaffelti*, *Pritchardia macrocarpa*, *Rhapis humilis*, *Chamærops humilis* and *Cocos australis*, we also noted in fine shape. This noted exhibitor also had *Polypodium Mandaianum*, a new fern, in fine condition. This was raised by Mr. Manda as a seedling and is a grand fern, quite one of the surprises of the show. The large, deeply pinnated fronds give this newcomer almost the appearance of a todea. His orchids included a most interesting lot of cut *Cypripediums* and we noted *C. insigne Coulsoni*, a form very much like the Harefield Hall variety; Fine forms of the beautiful *C. Fairreanum*, recently introduced, well colored *C. Sanderae* and a pretty hybrid, called *C. Aschates*. This latter has evidently *insigne* blood in it as well as that of *C. Boxalli* and is a most interesting secondary hybrid.

The splendid exhibits of plants and blooms is most highly to be commended and don't wait until the men are dead before you tell it. W. A. Manda's exhibit especially may be mentioned as something uncommon in extent and this comes from the little State of sand, rock and mosquitoes called New Jersey, but great men are there.—American Florist, November 19, 1908.

### FLORISTS' REVIEW. *Splendid Decorative Plants.*

The quality of the decorative plants was especially noteworthy. It hardly would be possible to find finer specimens anywhere in the United States than were gathered together for this show. To W. A. Manda special mention is due, because of the quality, number and size of his exhibits. The only regret was that it seemed difficult to provide each one with space to show its perfect development. He had a number of palms which stood fifteen to twenty feet high and scores of large plants in tubs, specimens weighing many hundreds of pounds each. To transport them to Chicago he engaged a special express car at South Orange, N. J., and filled it with stock without wrapping. One of his special groups was of *Dracæna Mandaiana*. He also made an exhibit of landscape plans, which was the subject of much study by those interested in the matter.—Florists' Review, November 12, 1908.

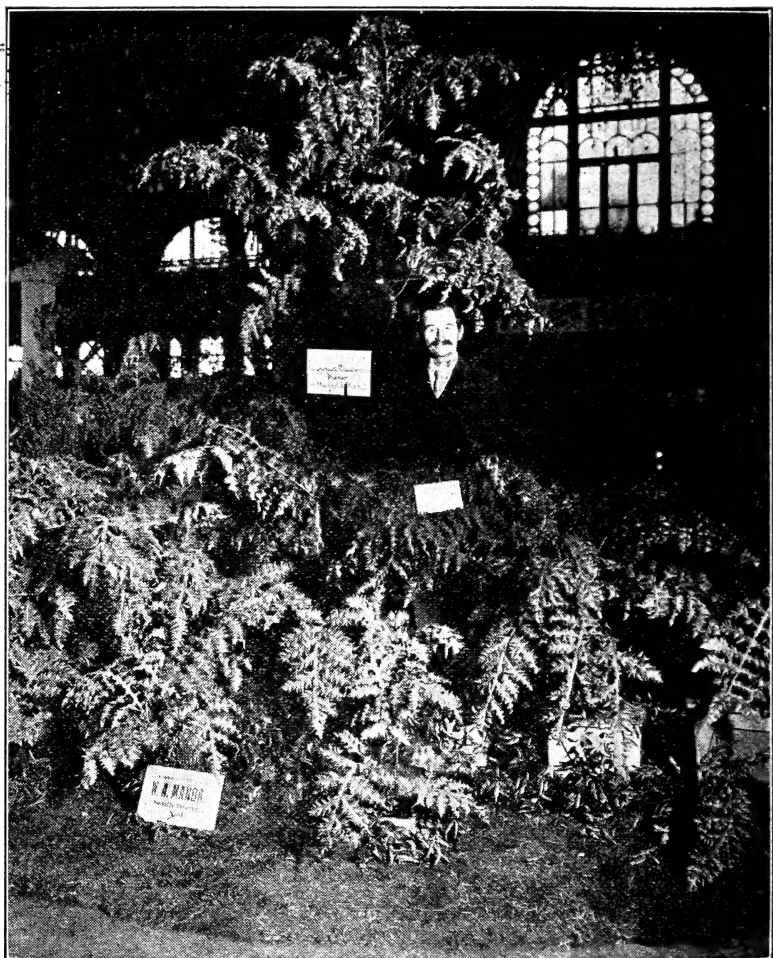


## VENI VIDI VICI.

The following is the result of one exhibition, and shows the awards and premiums we won at

**THE FIRST NATIONAL FLOWER SHOW, Chicago, Nov., 1908.**

Grand Gold Medal.....	Polypodium Mandaianum.
Silver Gilt Medal.....	Dracæna Mandaiana.
Silver Cup.....	Best flowering plant.
Silver Medal.....	Collection of water colors and Plans.
Silver Medal.....	Best Collection Cut Orchids.
Silver Medal.....	Kentia Mandaiana.
Silver Medal.....	Dracæna Black Beauty Improved.
Silver Medal.....	Polypodium Mandaianum.
Bronze Medal.....	Manda's Golden Privet.
Bronze Medal.....	Collection Economic plants.
Certificate of Merit.....	Dracæna Mandaiana.
Certificate of Merit.....	Anthurium Cuttingianum.
Certificate of Merit.....	Yucca Menandii.
First prize.....	Best 1 Palm.
First prize.....	Best 5 Palms, 5 varieties.
Third prize.....	Best Group arranged for effect.
First prize.....	Best collection of Palms.
First prize.....	Best 1 Foliage Plant never before exhibited.
First prize.....	Best 1 Foliage Plant not yet in commerce.
First prize.....	Best 1 Cycas.
First prize.....	Best 5 Crotons, 5 narrow leaf varieties
First prize.....	Best 5 Crotons, 5 broad leaf varieties.
First prize.....	Best 1 Dracæna.
First prize.....	Best 1 English Holly.
Second prize.....	Best 1 Conifer in tub.
First prize.....	Best 3 Conifers in tub, 3 varieties.
First prize.....	Best 1 Rhododendron.
First prize.....	Best 1 Azalea Amoena.
First prize.....	Best 1 Aucuba.
First prize.....	Best 1 Euonymus.
First prize.....	Best 1 Ficus.
First prize.....	Best 1 Aspidistra.
First prize.....	Best 1 any other succulent.
First prize.....	Best 1 Nepenthes.
First prize.....	Best 1 Musa.
First prize.....	Best 5 Fancy Caladiums.
First prize.....	Best group Stove and Greenhouse Plants.
First prize.....	Best 1 Fern.
First prize.....	Best 6 Cibotium Schiedei.
First prize.....	Best 1 Tree Fern.
First prize.....	Best 1 New Fern.
First prize.....	Best Collection of Ferns.
Second prize.....	Best 1 Adiantum.
Second prize.....	Best 1 Stag Horn Fern.
First prize.....	Best 1 Cypripedium Insigne in bloom
First prize.....	Best collection of Cypripediums.
Second prize.....	Best collection in bloom other than Cypripediums
Second prize.....	Best 1 Cypripedium in bloom.
Third prize.....	Best 1 Cattleya Labiata in bloom.
Third prize.....	Best 1 Cattleya.
Third prize.....	Best 1 Oncidium Rogersii in bloom.
Third prize.....	Best 1 Oncidium.
Third prize.....	Best 1 Orchid.
First prize.....	Best collection cut Orchids.
First prize.....	Best collection cut Cypripediums.
First prize.....	Best 1 plant Anthurium flowering variety.
First prize.....	Best 1 hanging basket flowering plants.
First prize.....	Best 1 hanging foliage plants.
First prize.....	Best 1 plant in bloom.
Second prize.....	Best 1 grafted specimen plant.
Second prize.....	Best 1 plant Gardenia.
Second prize.....	Best 1 plant Erica.
Sweepstake for largest number of prizes for pot plants taken, value.....	\$250.00
Sweepstake for greatest number of prizes taken.....	25.00
Guarantor's Final Sweepstake for largest amount of prizes taken in all classes....	250.00



**'Polypodium Mandaianum (Manda).**

**As Exhibited by W. A. Manda at National Flower Show, Chicago.**

The sensational plant of the First National Flower Show where it captured the first prize, a **Silver Medal**, as the **Best New Fern** not in commerce, and also the **Grand Gold Medal** for the **best plant** not yet an article of commerce, with the group as per above illustrations. Mr. John Thorpe, the veteran plantsman, states in the Christmas number of Florists' Exchange as follows: I will say that the most valuable plant, the most progressive plant, the plant which has gained the gold medal, is *Polypodium Mandaianum* and I have no hesitation in saying there will be as many forms of it as in the case of *Nephrolepis exaltata*. Fortunately all the polypodium family are good keepers under adverse circumstances. They will live where palms will not. For temporary decorations with cut flowers the polypodium will last as long as any of the asparagus. None of the polypodium are an exception to this rule. From a decorative standpoint the configuration of the plant, its adaptability, it is equal to any plant ever introduced.

We are booking orders for future delivery which will be announced later. All orders filled in strict rotation as received. Price of plants, strong 3-inch pots, **50c.** each, **\$5.00** per dozen, **\$35.00** per 100; strong 4-inch pans, **75c.** each, **\$7.50** per dozen, **\$55.00** per 100; fine specimens, **\$1.50** to **\$3.50** each.