

Historic, Archive Document

Do not assume content reflects current scientific knowledge, policies, or practices.

6257

GEORGE H. PETERSON

Rose and Peony Specialist

LIBRARY
RECEIVED
★ ★
U. S. Department of Agriculture.

The Flower Beautiful



1909

FAIR LAWN, NEW JERSEY,
U. S. A.

READ CAREFULLY

Why you should order early: Many peonies in the better grades are in limited supply and are over-sold yearly. The propagation of the Peony is slow, and we do not make varieties to order. If your order is not sent in promptly after catalogue is mailed, please name one or two possible substitutes or instruct us to return money if that is preferred. Where selection is left to my judgment, I always send greater value than remittance represents.

Roots may be shipped either by Express or Freight. By the former method I guarantee roots to reach destination promptly and in perfect condition. By freight, buyer must assume all risk. The roots will arrive in good condition, but there will often be vexatious delays. Under ordinary conditions, roots will stand a two months' journey without injury. They are packed lightly in moss, without soil, and are now entitled to a more favorable express rate than ever. To illustrate. The regular rate to St. Paul, Minn., is \$4.50 per 100 lbs. Plants now go under the "General Special" rate of \$3.00, and the charge for each parcel of plants is figured at this 100-lb. rate, with a minimum charge of 35 cents. Thus, a 15-lb. box or bundle of plants to St. Paul would cost three cents per pound, or 45 cents; whereas the same weight of ordinary merchandise would cost \$1.10, being sent under a graduated scale.

I can ship direct by Wells Fargo & Co. or U. S. Express, and via Erie; D., L. & W., or N. Y., Susquehanna & Western R. R. My nearness to New York City (16 miles) enables me to make quick connection with any shipping route.

No charge for packing except on large orders at special price. No charge in any case for delivery to Transportation Companies mentioned.

Substitutions. Please state what is to be done in case some variety is sold on receipt of your order; whether you wish money returned or some equally valuable variety substituted.

Remittances may be made by Bank Draft, Express or P. O. Money Order on Fair Lawn, N. J., Check, or Currency in Registered Letter; same to accompany order.

Open Accounts. Anyone desiring to open an account will please send financial references, which he should understand will take a few days to investigate. No account opened for an initial order of less than \$10.00.

Complaints, if made immediately on receipt of goods, will be investigated, and if due to any fault or negligence on my part, will be promptly satisfied.

Introduction

Compelling merit has at last placed the modern Peony at the forefront of all hardy garden flowers. This statement will be disputed only by those who have not yet beheld the wondrous beauty of the many improved varieties we now possess and, unfortunately for them, there are still many such. They have, however, a great treat in store for them.

"It seems strange that so noble a flower, rivaling the Rose in brilliancy of color and perfection of bloom and the Rhododendron in stately growth should be so neglected."

The above paragraph referring to the Peony, I recall first seeing some few years ago in a growers' catalog, and while this is yet true to some extent, it is only where the Peony of to-day is not known. No one who plants the finer sorts to-day ever regrets it, and nine times out of ten he becomes an enthusiast and like Oliver Twist, "wants more." The wonderful fascination this flower possesses for the flower lover is shown each year as the public come here to see the flowers in bloom, and the writer confesses to much interest and pleasure in witnessing the spontaneous admiration of a new-comer. A young woman was heard this season to say to her companion: "We can do without those lace curtains for the windows, but we *must* have some of these flowers for the garden," and this sentiment is expressed by many others in various ways.

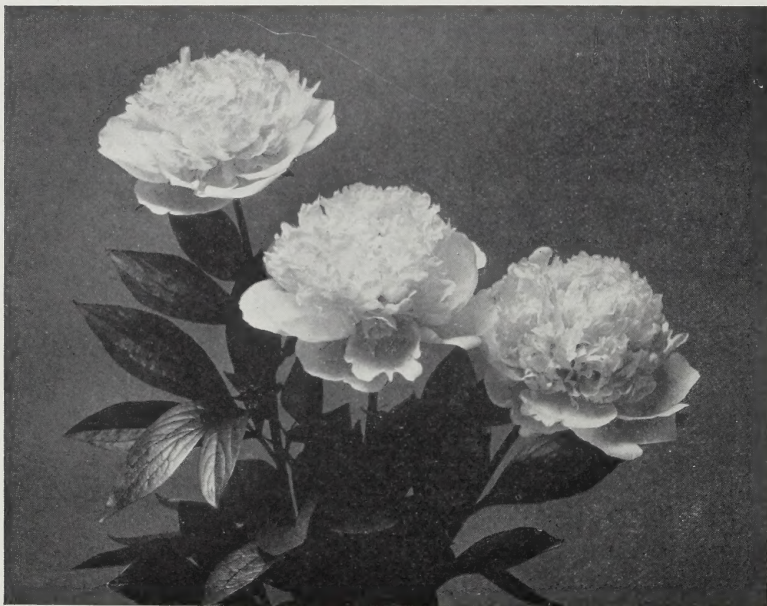
And the Peony well deserves all the attention that is to-day being bestowed upon it. Of the simplest culture and rejoicing in winter's severity, it lasts as long as the planter—and longer. Of robust and stately growth, its immense flowers are as delicate in petalage as the daintiest rose, and in range of color and perfume it equals or exceeds the "Queen of Flowers." Then, too, its freedom from disease and insect pests is most remarkable and unusual in flowering plants, and no matter how dry the summer may be the foliage remains to the end a most refreshing, glossy green.

My interest in this flower dates back to 1893, when, as an amateur, its wonderful possibilities attracted my attention and ever since I have closely followed its development and progress, until to-day this business in it stands unequalled for quality and reputation throughout our own, Canada and other foreign countries.

This is not a department of a general nursery delegated to some disinterested employe, nor do I run a grocery or other business and call myself a "Peony specialist," but to the Peony and Rose my entire personal time is devoted exclusively the year round. The results of such earnest and painstaking efforts is shown in the hundreds of enthusiastic letters of appreciation we annually receive from pleased patrons.

And so, dear reader, conscious of our ability and determination to keep this business at the top—unequaled for trueness and quality—I invite your valued patronage, and if the Peony—to-day's Peony—is unknown to you, my word for it, there is yet in store for you the greatest floricultural treat you have ever or probably will ever experience.

My aim has ever been to weed out similar and unworthy sorts, and out of many hundreds of varieties tested, to offer only those which are especially meritorious and distinct, and in this way aid the average planter to a satisfactory selection. The result of such efforts is reflected in the fact that at the big annual exhibition of the American Peony Society held this year at Queens, N. Y., my Peonies won (in addition to four others) first prize for the "best and most distinct varieties," and despite the fact that, in the matter of season, I was at a decided disadvantage as compared with my nearest competitor. We are always quite content to let the other fellow win out on the greatest number of varieties.



Mad. de Verneville

(See Section E)

Testimonials

I had hoped to be able, as usual, to print a few of the many warm letters of appreciation which have come in since last year concerning the superiority of our stock, but even after omitting "The History of the Peony" I find that the new cuts and additional detailed descriptions have taken up all the space. As it is, I have had to omit several new cuts and insert a smaller one on this page to tell you this. I appreciate deeply, however, the pains so many of you have taken, and will strive to give the best there is in me that the business may continue to deserve all the nice things you have said of it.

Planting and Cultivation

The Herbaceous Peony is of such simple culture, and so easy to grow, that but little instruction will be necessary in order that the beginner may produce the finest blooms. While it will grow and bloom under conditions in which most plants would perish, it will well repay, in largely increased size and beauty of bloom, a thorough preparation of soil.

Where such fancy blooms are wanted, it will be well to excavate the proposed beds to a depth of 2 to 2½ feet and fill in with good loam or garden soil which has been well pulverized and mixed with from 1-5 to 1-4 of its bulk with old, well-rotted manure. If only new manure is obtainable, it should be mixed well with the soil in bottom of trench up to within one foot of surface, and applied as a mulch on the surface after planting.

In preparing beds do not put the manure in layers and let it remain so, as many do. The manure should be made as fine as possible and thoroughly mixed with the soil—not merely turned over. A flat tined fork such as is used for digging potatoes is the implement needed here. The ordinary spade is of little use.

Should one decide in spring or summer to plant in fall, and only new manure is obtainable, the bed may at once be made and with a forking over every two weeks ideal conditions will be had by fall. In the heat of summer manure quickly disintegrates when handled thus. The object of the above is to give the root abundant plant food and yet prevent hunks or lumps of decaying manure to come into direct contact with root.

Character of Soil

Probably the very best soil for the Peony is one which is neither too heavy with clay nor too light with sand, one which might be termed a medium loam, and such as would make a good vegetable garden. Such a soil, mixed with manure, should be fairly retentive of moisture, and the Peony, being a strong grower, can absorb much water. In a dry season, watering before blooming time with a hose or otherwise will be beneficial, and if one's soil is not sufficiently rich, a weekly application of liquid manure will aid materially in bringing forth specimen blooms.

When to Plant

The best season for planting the Peony is in fall, after the roots are well ripened. In this latitude, this occurs in most varieties after mid-September, and is shown in the foliage becoming dry and yellow. Many nurserymen begin digging September 1st and before, but a glance at your peonies then will show the foliage still quite fresh and green. The roots, too, will suffer from shrivelling if dug and shipped while weather is hot.

This early digging, in many cases prompted by a desire to get

the Peony out of the way before other nursery stock can be handled, will, in my opinion, if long persisted in, weaken the plant and bring on some fatal disease, just as is to-day the case with the Easter Lily. Here, in order to get their flowers on the market first, the florists' demands upon the grower have brought on a disease which makes the growing of this bulb most difficult.

My older patrons will recall seeing the above warning paragraph in the earliest editions of this booklet. To-day my warning is justified, as there is scarcely a peony nursery in the land but that has a few varieties afflicted with an uncanny and seemingly hopeless fungous disease. This shows itself in usually small distorted roots which more often than otherwise have more than their share of eyes, which, however, are small and weak. In the spring numerous dwarf weak shoots appear but no flowers come, and this is repeated yearly. The root does not increase in size and yet the disease, while rendering the root useless, is apparently unable to destroy entirely the tenacious life of the Peony.

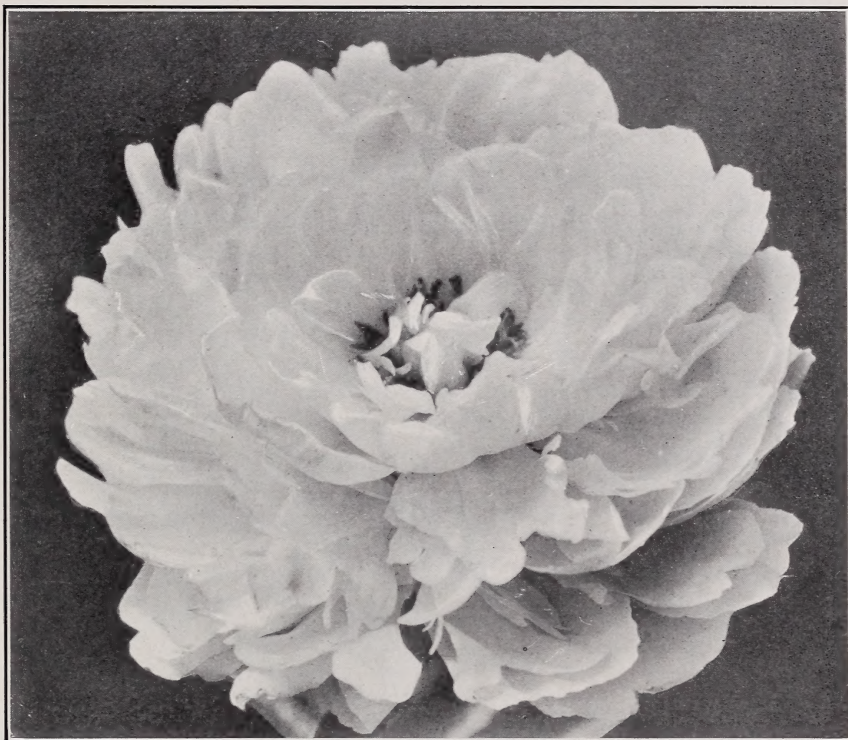
One encouraging and unusual phase or feature of this disease is that it does not communicate itself to nearby healthy stock and is increased only by propagation. To the credit of the American peony grower I believe it but fair to state that in my opinion what stock has been and is being sent out so affected is due to ignorance rather than intent. One of the most estimable growers in this country when I called his attention to some of his stock so affected, considered it at first nothing serious and thought it due to "over-liming of land." As this disease is not contagious the amateur planter need not worry but should realize the importance of getting his stock from a live specialist and one who thoroughly knows his business.

My own preference of time for planting is from September 20th to October 20th. We often plant in November, and one of the most successful of our plantings was made in last week of October. I have found that more depends upon preparation of soil and condition of root than upon an early planting. Planting may also be done in early spring, but the growth the first season will not be as strong, and but rarely will flowers be produced until the second year.

Uses

There is probably no other plant with such varied usefulness. For effective massing in landscape work it is unequaled. As an edging or facing for shrubbery, it is likewise good. Planted in beds, borders or as specimen plants on the lawn it is equally at home. It is particularly attractive when used to border a drive or walk.

An attractive use for the Peony is low, ornamental, lawn hedging. This, of course, applies where only ornament and not defense is required. The dark glossy-green foliage, untouched by disease or insects, is exceedingly attractive through the spring and hot summer months. And the cost, too, in some of the most desirable low-priced sorts, will be even less, when purchased by the hundred, than a hedge of Japanese Barberry, inasmuch as they may be planted two feet apart, and a single row is quite ample.



Mons. Dupont

(See Section E)

As a Cut Flower

It is hardly equaled. Cut as the bud is about to unfold and placed in water in a cool room, where the air is fresh night and day, most varieties will last several days. The blooms will then be superior to those left to open on the plant and exposed to the heat of the sun.

Set at once in a cold, dark cellar, the different varieties may be kept several days longer than their blooming period. Bring up as wanted.

Most Economical Plant to Buy

While its first cost may seem high, it is really the most economical plant one can buy, from the fact that it represents a *permanent* investment and one which pays annual dividends of increase of at least 100%. Almost every family, of even the most moderate means, spends annually quite a tidy little sum in Bulbs, Geraniums and

other bedding plants, and at the end of the year has nothing left to show for it. Plant the Peony and it will last as long as you do—and longer. Plantings may be left undisturbed from ten to twenty years or even longer if soil is occasionally enriched.

Wintering

So far as protection from cold is concerned, the Peony does not ask it in even the most severe climates. It is well, however, to remove the foliage when dead and in late fall apply a mulch of stable manure which may be quite new. The crown of the plant should not be covered deeply. Two inches of loose manure directly over the plant is sufficient, as the Peony is cold blooded and does not like to be smothered. If the ground is very rich omit mulching. If mulched, the manure should be removed from crown of plant as soon as frost is out and dug in surrounding soil, using care not to disturb root.

Disbudding

Most Peonies usually set three or more buds to a stem. (See cut.) All but the central (largest) bud should be pinched off as soon as they can be gotten hold of, if the finest individual blooms are wanted.



A Peony growth just after buds are formed

How the Peony is Sent to You

The Peony is sent out in the form of a root (see cut), from which, when dormant, will be seen protruding pinkish "eyes" or buds, the strongest of which will throw up next season's flowering shoots.

Depth and Distance to Plant

The root should be set so that the upper eyes are about three inches beneath the surface of the soil, and, if planted in permanent beds, should be about $2\frac{1}{2}$ to $3\frac{1}{2}$ feet apart, according to room at one's disposal. When planted in field for cut-flower purposes, the plants should be set three feet apart in row, and rows from 4 to 5 feet apart.



A Dormant Peony Root



General Bertrand

(See Section B)

The Plants I Send Out

"One-year" plants are those which have grown a full year since division. "Two-year" plants have grown two years since division, and, where the cost can be borne, are, of course, more desirable, as the immediate effect is greater. "Three-year" plants are very heavy clumps, and are well worth the price asked. They will make a large bushy clump at once.

Do not let the mere number of eyes claimed influence you too strongly, as a weak root with from six to ten small eyes may not flower for several years, while two or three good plump eyes, with strong roots behind them, will flower the first season. Even in one-year stock, I aim to send out only roots which will produce some bloom the first season, if well planted, and this we can invariably do if your order is received fairly early. When one-year roots are exhausted we send a full equivalent in generous divisions. All orders are numbered when received, and are filled in numerical order.

Quality of Our Roots

Our soil and most thorough system of cultivation produce the best peony root in the world. I have had them not only from all over our own country but from various parts of the world, and know whereof I speak. Our soil seems especially adapted to the development of a strong fibrous root which insures vigorous growth when transplanted.

Trueness

Desirable as it is to get fine strong roots, it is even of greater importance that stock be true to name, and it is in this phase of the business that I specially challenge comparison. During blooming season my personal time is devoted almost exclusively to proving stock, and we maintain trial and test gardens such as cannot be found elsewhere in this country. The pith of all this is well if briefly expressed in the enthusiastic statement of a patron, "If you get it of Peterson it's true."

When Shipment is Made

We usually begin digging about September 15th, and ship after that date, unless shipment is especially requested earlier.



Couronne d'Or

(See Section E.)

Can Be Shipped Safely Anywhere

The Peony in fall can stand without injury a journey of months if kept from prolonged heat, which would start it into growth. There is, in fact, no flower which can be transported over long distances with greater safety.

Why You Should Order Early

It will be to your interest to send in your order promptly on receipt of catalogue. This may save you disappointment, as some varieties are in very limited supply and cannot be obtained from reliable sources. Some varieties I can supply by the hundred. Early orders also get the strongest roots. The receipt of your order and remittance will be acknowledged by return mail.

Exhibition

Annually, in early June, we invite the flower-lover to visit our grounds. In our trial gardens will be found in alphabetical order two clumps of each variety we catalogue—and many more. This affords an unequalled opportunity to select such varieties as most appeal to the individual without going all over the different field plantings.

Peonies usually reach their height here about the beginning of the second week of June, but as the seasons vary, it is well for the intending visitor to have his name registered for notification.

Prices

Are net, as quoted, except as noted below, and are as low as a like quality can anywhere be obtained. The thorough cultivation given my Peonies, going over the fields with cultivator and hoe every ten days the entire season, and the extreme care exercised in handling, labeling and packing, I have never seen equaled elsewhere. And remember that a peony root quoted at a certain price may actually be worth two or three of same variety quoted for less money elsewhere.

Discounts

Orders amounting to \$10.00	5% off
“ “ “ 25.00	10% “
“ “ “ 50.00 and upward	15% “

Special prices quoted on large lists where not less than ten of one variety is wanted.

Herbaceous Chinese Peonies

(*Paeonia Albiflora*)

Section A

1 year, 35 cents; 2 year, 60 cents; 3 year, \$1.00 each.

Each variety can be supplied this year only in ages indicated by figures following description.

- ACHILLE (Calot).** Delicate flesh. Buds and half open flowers exquisitely beautiful. Foliage very distinct, and beautiful dark green with crimped edges. Fine habit. **1—2.**
- BUYCKII (Guerin).** Large flower, guard petals bright rose, center salmon pink with silvery reflex; stiff habit. **3.**
- DELECOURT VERHILLE (Delecourt Verhille).** Large flesh guard petals; center straw color. Good upright grower and very profuse, sure bloomer. **1—2.**
- DR. BRETONNEAU (Verdier).** Full globular bloom evenly formed. Beautiful even shade of bright soft pink. Very floriferous. Splendid for cutting and massing. Worth much more than it costs. **1—2.**
- EDULIS SUPERBA (Lemon).** Beautiful brilliant pink, silvery reflex; large, well-formed, full flower on strong stems. Blooms earlier than Festiva Maxima. Lasts well. Fragrant and good in every way. A much worthier sort than its price would seem to indicate. There is quite a stock of it in existence. **1—2—3.**
- NEC PLUS ULTRA (Miellez).** Fresh rose pink shaded with lively pink. Fine, large bloom on long stems. Good for cut flowers. **1.**
- RUBENS (Delache).** Deep brilliant crimson, flower moderately full, showing golden stamens in center, making beautiful and striking contrast. **1—2.**

Section B

1 year, 50 cents; 2 year, 85 cents; 3 year, \$1.25 each.

Each variety can be supplied this year only in ages indicated by figures following description.

- ALEXANDER DUMAS (Guerin).** A pretty shade of bright pink, with chamois, white and salmon intermingling; flowers large and full, coming in clusters. A very attractive and showy variety. **1—2.**
- ALICE DE JULVECOURT (Pele).** Well built, full flower; a combination of rose, blush and cream that is most charming; center petals beautifully edged carmine; flowers in early mid-season. Good stiff stems. **1—2—3.**
- CANARI (Guerin).** Outer petals fleshy white, with yellow center. Very tall grower, sweetly fragrant. **1—2.**
- COMTE DE PARIS (Guerin).** Pretty anemone-shaped flower; outer petals pink, center soft pink and salmon-yellow, with tuft of bright pink petals edged with crimson. A very pretty and floriferous sort. **1—2—3.**

- DELACHEI (Delache).** Large and full, deep, rich, purplish-crimson flower. Good grower and bloomer and fine for massing effects. Fragrant. Late midseason. The true sort is better than its price indicates. 1—2.
- DUCHESS D' ORLEANS (Guerin).** Large, carmine-pink guard petals, with center of soft pink, interspersed with salmon. Nice pointed bud. Tall grower. An exceedingly good, perfect bloomer and very pretty flower. One of the most desirable of the low cost sorts. 1—2.
- FESTIVA MAXIMA (Miellez).** Very large and full pure white flowers, with few center petals usually tipped with blood red spots. A very vigorous grower with massive foliage, flowers coming on long, stiff stems. Fragrant, early, and blooms most abundantly. Perhaps the very best all-around white we possess. It is certainly the most popular. 1—2—3.
- GENERAL BERTRAND (Guerin).** Deep rose-pink large guard petals; center well filled with small salmony-pink petals edged with whitish pink. Splendid habit and foliage, nice elongated bud; in all of which points it resembles Modeste Guerin and is sold, even by specialists, for that variety. It lacks, however, the solid color and firmness of guard petals found in Modeste Guerin. 1—2.
- HUMEI (Anderson).** Large, full flower. Guard petals delicate rose pink, center whitish pink with touches of carmine. Very late bloomer. 1—2.
- LOUIS VAN HOUTTE (Delache).** Fine violet-red bloom of dazzling effect. A well formed and free blooming sort. Good for massing and cut flowers. A standard variety. Late midseason. 1—2.
- MAD, LEBON (Calot).** Very large full blooms, tall erect grower. Petals broad; brilliant cherry pink, intermixed with narrow salmon petals; silvery reflex. Late midseason. 1—2.
- QUEEN VICTORIA (?).** Outer petals flesh white; center rosy white, shaded with salmon; center petals tipped with carmine. Good bloomer and habit. Popular as a florist's cut flower. Fine for massing. 1—2—3.
- ROSEA SUPERBISSIMA (?).** Medium sized, very full, rounded flower of silky texture, color silvery rose pink; graceful habit. Late bloomer. 3.

Section C

1 year, 60 cents; 2 year, \$1.00; 3 year, \$1.60 each.

Each variety can be supplied this year only in ages indicated by figures following description.

- AUGUSTE MIELLEZ (Guerin).** Large blooms in clusters, clear lilac and purple; center chamois and lilac. 3.
- CANDIBISSIMA (Calot).** Large, cream-white guard petals; center sulphur yellow with green heart, very full and compact. Habit somewhat drooping. The earliest of the white and yellow varieties to bloom. I sometimes think this flower is even more beautiful than *Solfatare*, which comes later and has a better stem. 1—2.
- CARNEA TRIUMPHANS (Guerin).** Large, full flower; guard petals broad, flesh-pink. Center well filled with pale yellow and flesh nicely fringed petals, blotched with crimson. Strong tall grower; fragrance very agreeable and refreshing. 1—2—3.

See discounts offered on page 10



Dr. Bretonneau (Verdier)

(See Section A)

- DUKE OF WELLINGTON (Calot).** Guard petals white, very broad; center petals sulphur white, narrow and very full. The large, finely formed flowers come on long, firm stems, making it an ideal sort for cutting. A good free bloomer; deliciously fragrant. Late midseason. 1-2-3.
- FESTIVA (Donkelaer).** Large, full, glossy cream-white flower, center spotted carmine. Not wholly unlike Festiva Maxima in fully developed flower, but blooms later and plant is dwarf. 1-2.
- FLORAL TREASURE (Rosenfeld).** Very delicate salmon pink with green heart. Rosy tinge on first opening. Good upright grower and bloomer. Flower large and full, foliage light green. A charming flower where delicacy of coloring is desired and very popular among the florists. 1-2-3.
- JEANNE D' ARC (Calot).** Soft pink, sulphur-white and rose; center spotted carmine. A unique and charming combination of colors. Moderately strong grower, but a sure and very free bloomer, flowers invariably coming perfect. The most popular of the tri-colored sorts. 1-2-3.
- LA TULIPE (Calot).** Flesh pink, shading to ivory white, center petals tipped and outer petals freely striped with carmine. Large, very fragrant, globular flower, borne on long, stiff stems; very strong grower. Very distinct and desirable. Late midseason. 1-2-3.



Mad. Calot

(See below)

MAD. CALOT (Miellez). Broad flesh guard petals, center crushed strawberry surrounded with small straw-white petals. Flower very full and superbly built. Growth and stems ideal. Very free bloomer. Whole effect fleshy-salmon-white, fading to white. Fragrant. Early midseason. An ideal peony for all purposes. 1-2.

SARAH BERNHARDT (Dessert). Broad guard petals, delicate rose pink. Center petals short, straw-yellow, with tufts of whitish pink. Habit ideal, flowers are borne on stiff upright stems. Fragrance delicate and agreeable. Blooms young and abundantly. The first of the Albiflora sorts to flower; usually in bloom here at Decoration Day. 1-2-3.

SULPHUREA (Lemon). Large, globular, sulphur-white bloom. Very chaste and beautiful flower, but stems are not firm enough to hold the large blooms up. 1-2-3.

VAN DYCK (Crousse). Large, convex, anemone shaped blooms; fresh salmon-pink, lighter center. 1-2.

VIRGO MARIA (Calot). Pretty ivory-white flower of medium height and size. 1-2-3.

Special collections offered on page 23

Section D

1 year, 75 cents; 2 year, \$1.25; 3 year, \$2.00 each.

Each variety can be supplied this year only in ages indicated by figures following description.

- ATROSANGUINEA (Calot).** Large, full, flat bloom. Color deep scarlet-purple, tinged with violet. Bright golden-yellow stamens showing through flower. Very brilliant and showy. Fragrant. 1—2—3.
- BELLE DOUAISIENNE (Calot).** Very large and full imbricated flat bloom. Flesh and chamois with markings of crimson. Drooping habit. Blooms late. 1—2.
- DUCHESS DE NEMOURS (Calot).** Guard petals white; center lemon-yellow with greenish reflex. Large, cup-shaped, full bloom. Among all peonies there is nothing so exquisitely chaste as this variety in a half-open state. A good, free, perfect bloomer; delicately fragrant. Splendid cut flower. 1—2.
- EDOUARD ANDRE (Mechin).** Deep, brilliant, crimson red, with metallic reflex, showing golden yellow stamens. A globular-shaped bloom of great effect. Earliest of the dark reds to bloom. 1—2—3.
- FELIX CROUSSE (Crousse).** Large, anemone, ball-shaped bloom. Color, brilliant, dazzling red with ruby-flamed center. Splendid grower and bloomer. An indispensable red sort. 1—2—3.
- MAD. BARILLET-DESCHAMPS (Calot).** Very tender pink, bordered with white and shaded with lively silvery tints. Golden stamens reflected throughout flower. An immense, full ball of silk and satin, very sweetly perfumed. Tall grower with very distinct broad foliage. 1—2.
- MAD. CHAUMY (Calot).** Large, very full and compact flower, beautifully formed. Silky petals, soft pink shaded with bright rose. Slightly drooping, graceful habit. Blooms late. 1—2—3.
- MAD. CROUSSE (Calot).** Extremely large and full flower. Snow white, edged in center with bright carmine. One of the most delightfully fragrant of peonies. Beautiful both in bud and open flower, and coming on good, strong stems, it is most valuable for cut and general purposes. Blooms late. 1—2—3.
- MARECHAL MAC MAHON (Calot).** Very large convex bloom. Broad guard petals, center petals narrow and built up close and high, ball shaped. Color very deep rich red. Strong grower with large, very dark, glossy foliage; stems very stiff. Very fine bud. Blooms late midseason. An indispensable peony. (See cut). 1—2—3.
- MARIE STUART (Calot).** Large, anemone-shaped bloom. Outer petals broad, soft pink; center pink and sulphur-white, sometimes touched with carmine. Sweetly fragrant. Very early. 1—2—3.
- MATHILDE DE ROSENECK (Crousse).** Exceedingly tall grower and good late bloomer. Flower extremely large and full. Color flesh pink, shaded with chamois and delicately edged carmine. 1—2—3.
- MONS. KRELAGE (Crousse).** Very full, enormous flower. Bright currant red with amaranth heart. Good prolific bloomer of fine habit. Very fragrant and late. 1—2—3.
- PHILOMELE (Calot).** Guard petals soft pink; center a real deep, golden yellow with center tuft of rose bordered carmine. Very distinct and sweet syringa-like fragrance. Possesses the deepest yellow to be found in peonies. Good lasting qualities. 1—2.

SOUV. DE L' EXPOSITION UNIVERSELLE (Calot). Light cherry red. Large full flower. 1—2—3.

ZOE CALOT (Mieliez). Very large and full globular bloom; soft pink shaded lilac. 1—2.

Section E

1 year, 85c.; 2 year, \$1.35; 3 year, \$2.00 each.

Each variety can be supplied this year only in ages indicated by figures following description.

BOULE DE NEIGE (Calot). Very large cup-shaped sulphur-white flower with golden reflections. Center petals freely bordered carmine. Buds marked and splashed carmine as in La Tulipe. Fine, strong, upright grower, stems long and stout. Fine dark foliage. Fragrance very strong and sweet. 1—2.

COURONNE D' OR (Calot). Very large and full imbricated flower of superb form. Color white, reflecting yellow; center petals bordered with carmine; golden stamens showing through and lighting up flower. Solidly and perfectly built from edge to center. Fragrant, a good grower and reliable bloomer; it is, in my opinion, the attainment of perfection in the Peony. Blooms moderately late, preceding Marie Lemoine. 1—2—3.

DE CANDOLLE (Verdier). Brilliant currant amaranth. Large, full, imbricated bloom. 2—3.

MAD. DE VATRY (Guerin). Large, perfectly formed blooms, outer petals clear flesh; yellowish center, changing to sulphur-white, marked with carmine. Fine. 2—3.

MAD. DE VERNEVILLE (Crousse). Exceedingly fine, full, anemone-shaped flower. Broad guard petals, sulphur-white; center rosy white, with an occasional edging of carmine, beautifully imbricated. Very sweet rose-like fragrance. Blooms early. 1—2—3.

MARIE JACQUIN. Glossy, flesh white with rosy tinge to bud. Exquisitely beautiful moderately-full cupped flower, retaining this form. Flowers on newly set plants and weak growths often come near single. With its wealth of golden stamens in center, this flower suggests our native pond lily. Fragrance very rich and langorous. Very distinct. Midseason. 1—2.

MEISSONIER (Crousse). Very brilliant crimson. Full flower, coming late midseason on very wiry stems. Foliage remarkably narrow. Color is wonderfully rich and brilliant, but habit is poor. 1—2—3.

MONS. DUPONT (Calot). Very large, cup-shaped, perfectly built flower; creamy white, center petals bordered with lively carmine, and lit up with golden stamens at base of petals. Exceedingly rich bloom and deliciously fragrant. Good tall grower. Blooms rather late, preceding Couronne d' Or. A truly royal flower. 1—2—3.

RUBRA SUPERBA (Richardson). Deep, rich, brilliant crimson. Large full flower, strong grower. Blooms very late. The very best late crimson sort we have. Blooms when nearly all other peonies are gone. Good bloomer on established plants, but does not do much the first year or two. 1—2—3.

SOUV. DU DR. BRETONNEAU (Dessert.) Brilliant red shaded with amaranth. Very showy. 1—2—3.



Marie Lemoine

(See Section F)

Section F

1 year, \$1.00; 2 year, \$1.60; 3 year, \$2.50 each.

Each variety can be supplied this year only in ages indicated by figures following description.

- ARMANDINE MECHIN (Mechin).** Large flower, very brilliant clear amaranth. **1—2.**
- CARNEA ELEGANS (Calot).** Beautiful, well-formed, clear glossy flesh. Full flower of striking freshness. **2—3.**
- LUTEA PLENISSIMA (Buyck).** Very full convex bloom; white and sulphur yellow with tufts of white in center, whole flower fading to white. Blooms early. **1—2.**
- MAD. BUCQUET (Dessert).** Very pretty, perfectly shaped bloom; color dark velvety amaranth. One of the darkest peonies in cultivation. Good upright habit. **1—2.**

MAD. DUCEL (Mechin). Very large, wonderfully built flower. Broad guard petals, center ball shaped, very full and compact. The closely set small petals are beautifully curled as in a chrysanthemum. Whole flower solid color of silvery, lilac pink. Foliage very fresh dark green. Very distinct and floriferous. Blooms early. Indispensable. 1-2-3.

MAD. EMILE GALLE (Crousse). Large, cup-shaped, imbricated flower, soft lilac; center shaded soft flesh and cream, fading to rosy white. Very fresh coloring. Foliage very distinct dull green. Late. Extra. 1-2-3.



Marechal MacMahon

(See Section D)

- MARIE LEMOINE (Calot).** Enormous, sulphur-white, full flower, delicately shaded chamois, with narrow carmine edge. The massive bloom comes late on a very stout, erect stem of medium height. A sort the peony enthusiast raves over, as well he may. (See cut). 1—2.
- MATHILDE MECHIN (Mechin).** Very pretty anemone ball-shaped bloom, perfectly built; fleshy pink mixed with small salmon petals. Very profuse bloomer and lasting flower. One of the first in bloom. 1—2.
- MODELE DE PERFECTION (Crousse).** Immense, well and evenly formed flower. Color flesh pink, marbled with bright rose deepening in center. Flower opens cup shaped, then develops to high pointed center which afterward opens up making a very high built-up flower. Good erect habit, strong stems and a prodigious bloomer. Very distinct and desirable. Blooms late. 1—2—3.
- MODESTE GUERIN (Guerin).** Very large, anemone, ball-shaped bloom, perfectly built. Bright lilac carmined pink, solid color. Splendid habit and foliage. Very fine elongated bud. This is a superb and distinct peony, very superior to one offered under this name by other growers. 1—2.
- ROSE D' AMOUR (Calot).** Large, full flower. Soft fleshy pink, very fresh and delicate. Exquisite variety. 1—2—3.
- SOLFATARE (Calot).** Guard petals pure white, center petals narrow, sulphur yellow. Large, full, fragrant flower on long upright stems. Exquisitely beautiful. The true Calot variety of this name is one of the most valuable peonies we possess. In my opinion it leads all of that most charming class—white and yellow. 1.
- TRIOMPHE DE L' EXPOSITION DE LILLE (Calot).** Large, full and beautifully imbricated flower of perfect form. Soft fleshy-pink with white reflex; petals exquisitely dotted and marbled with carmine. Very good free bloomer. I consider the true variety to be one of the very best sorts for general planting. 1—2—3.
- VILLE DE NANCY (Calot).** Very large, anemone, ball-shaped bloom, full and tight. Very brilliant violet-red. A grand flower. 1—2.

Section G

1 year, \$1.25; 2 year, \$2.00; 3 year, \$3.50 each.

Each variety can be supplied this year only in ages indicated by figures following description.

- ALBERT CROUSSE (Crousse).** Large, very full, evenly formed bloom; fresh pink; center shaded with clear pink. A remarkable variety. Blooms late. 1—2—3.
- ALFRED DE MUSSET (Crousse).** Well formed, large fleshy-white flower, shaded pale salmon, with rosy center. Very fresh coloring. A rarely beautiful and choice sort. 1—2—3.
- LIVINGSTONE (Crousse).** Bears same relation to late pinks as Marie Lemoine does to the whites—peerless. Very large, full evenly formed and shaded bloom. Color beautiful soft pink. Good erect grower and bloomer. Stems tall and stout. Reliable, young bloomer. 1—2—3.
- MAD. DE GALHAU (Crousse).** Very large, imbricated bloom; very soft, glossy, flesh pink, shaded with transparent salmon. Very late bloomer. 1—2—3.

MAD. LOISE MERE (Calot). Large, flesh pink, changing to fleshy white. Large petals of great substance, few in center delicately bordered carmine. Flower lit up with small bright yellow petals. Very stiff erect stems. Late. 1—2—3.

MLLE. MARIE CALOT (Calot). Centifolia rose shape, fine fleshy pink; glossy background lighted with silvery tints. Late. 1—2.

MONS. JULES ELIE (Crousse). Immense, globular, very full flower, glossy, fresh pink, deeper at base of petals; silvery reflex on whole bloom. Erect habit; glossy light green foliage. 1—2.

OCTAVIE DEMAY (Calot). Very large and full well-built flower. Rosy white with occasional coloring of carmine in center. Color of exceeding freshness. Plant is dwarf, but bears regularly and prolifically its very large flowers on stiff upright stems. Early bloomer. Fragrant. One of the most admired in our winning set of best twelve varieties at the Queens, L. I., exhibition. 1—2—3.

VICTOR HUGO (Crousse). Very full flower of largest size and fine form. Very brilliant deep red. Good bloomer. 1—2.

Section H

1 year, \$1.50; 2 year, \$2.50; 3 year, \$4.00 each.

Each variety can be supplied this year only in ages indicated by figures following description.

ADOLPH ROSSEAU (Dessert). Deep brilliant red with metallic reflex. Flower very large on tall stiff stems. Ideal habit. A great peony. 1—2.

CAMERON (Crousse). Large, imbricated flower; brilliant violet-red shaded with velvety hue. Blooms late. 1—2.

CONSTANT DEVRED (Calot). The last of all peonies to bloom. Very large full and evenly formed violet-pink flower, coming on fine, strong, upright stems. 1—2—3.

EUGENE VERDIER (Calot). Very large cup-shaped flower; flesh pink, shaded yellow and salmon. Good, strong, erect grower. An exceedingly fine late sort. 1—2.

GROVER CLEVELAND (Terry). Brilliant crimson, very large, full and finely fringed globular flower. Color peculiarly rich and glowing. An American production of very great merit. 1—2.

PETITE RENEE (Dessert). Very odd carmined-pink, beautiful and airy flower. A new and exceptionally distinct variety. 1.

See discounts offered on page 10

Section I

A few rarely beautiful things for the connoisseur.

BARONESS SCHROEDER (Kelway). Large, full, creamy-white flower largely advertised as a very great novelty. Fine habit. 1 year, \$3.50.

CLAIRE DUBOIS (Crousse). Very large globular flower, very full. Convex, tufted; petals lacinated and incurved. Color of the finest original pink, glossy reflex. A real gem. Late bloomer. 1 year, \$2.00.

GRANDIFLORA NIVEA PLENA (Lemon). Superb, large and full flower; white, tinted delicate sulphur with carmine stripes at center. One of the first in bloom and the true sort is of exceptional value and beauty. 1 year, \$3.00.

MARGUERITE GERARD (Crousse). Immense, flat, full flower. Flesh, changing to soft flesh-white, with creamy white center. Rare variety. 1 year, \$2.00.

MONS. MARTIN CAHUZAC (Dessert). Large to very large, full and well formed flower. A solid ball of very deep maroon with blackish lustre. Good erect habit and bloomer. A new variety of surpassing merit and by far the darkest peony yet produced. Every plant we offer is absolutely true and very strong—not such as are usually sent out in high priced novelties. 1 year, \$5.00.



Mad. Barillet-Deschamps

(See Section D)

Extra Large 4 and 5 Year Clumps

Achille (Sec. A)	\$1.50	Each
Dr. Bretonneau (Sec. A)	1.75	"
Edulis Superba (Sec. A)	1.50	"
Alexander Dumas (Sec. B)	2.00	"
Duchess d' Orleans (Sec. B)	1.75	"
Festiva Maxima (Sec. B)	2.00	"
General Bertrand (Sec. B)	2.00	"
Queen Victoria (Sec. B)	1.50	"
Floral Treasure (Sec. C)	2.50	"
Jeanne d' Arc (Sec. C)	2.50	"
La Tulipe (Sec. C)	2.75	"
Duchess de Nemours (Sec. D)	3.00	"

Mixed Peonies

We offer these in strong divisions only. They are made up from named varieties where the labels have been lost and such sorts as have been on test and found either to resemble too closely already existing varieties or not sufficiently good to find a place in our limited and select collection. There is not an unnamed seedling, such as usually are used in "mixed" lots, among them. Planted where color effect is not important, they will prove most useful for quantities of cut blooms.

\$10.00 per 100; \$5.00 per 50; \$3.00 per 25.

Miscellaneous Peonies

- P. tenuifolia FLORA PLENA.** Very full, bright crimson-red. A superb sort. (The Tenuifolia species is the first peony to bloom; is a dwarf grower, with very delicate fern-like foliage). 1 year, 60c.; 2 year, \$1.00.
- P. tenuifolia SIMPLEX.** Very showy, bright crimson, single flowers. 1 year, 35c.; 2 year, 60c.
- P. officinalis RUBRA PLENA.** Large, full, globular, bright crimson bloom. The flower of our grandmothers' gardens. Blooms here in late May, following the Tenuifolia and preceding the Albiflora classes. Used very largely on Decoration Day. 1 year, 25c.; 2 year, 50c.
- P. officinalis ROSEA.** Same as preceding one, except in color, which is a bright pink. 2 year, 60c.; 3 year, \$1.00.
- P. officinalis ALBA PLENA.** A white form of above. 2 year, \$1.00; 3 year, \$1.50.

Peony Collections

These are made up from our best stock and are especially recommended to anyone desiring a small collection and who is unacquainted with the merits of the different sorts. The Standard Collection embraces the best among the low-cost sorts. The Royal Collection is made up of gems of the first water, and will make a Peony enthusiast of anyone possessing an appreciation of the beautiful in nature.

STANDARD COLLECTION.

	1 Year	2 Year
Candidissima60	1.00
Comte de Paris50	.85
Delachei50	.85
Dr. Bretonneau (Verdier)35	.60
Duchess d' Orleans50	.85
Edulis Superba35	.60
Festiva Maxima50	.85
General Bertrand50	.85
Queen Victoria50	.85
Rubens35	.60
	4.65	7.90
The set for	4.00	7.00

ROYAL COLLECTION.*

	1 Year	2 Year
Couronne d' Or85	1.35
Duke of Wellington60	1.00
Felix Crousse75	1.25
Festiva Maxima50	.85
Jeanne d' Arc60	1.00
La Tulipe60	1.00
Mad. Calot60	1.00
Mad. Duclot	1.00	1.60
Marie Lemoine	1.00	1.60
Modele de Perfection	1.00	1.60
Mons. Dupont85	1.35
Mons. Krelage75	1.25
	9.10	14.85
The set for	7.50	12.50

*I have added two peonies to this set this year without increasing price.

Law Offices of Phillips and Avery

City Hall Square

New York, Sept. 26, 1908.

The Peony roots arrived yesterday in good order, and I thank you. A horticulturist of long experience who happened to be visiting at my place (Sparta, N. J.) pronounced the stock to be by far the finest he had ever seen sent out by anyone.

FRANK M. AVERY.

Tree Peonies

This is a remarkable species developed from *P. Moutan*, a native of China and Japan. In habit of growth it is not unlike a deciduous shrub. The growths are short and stocky, the plant, slow of growth, eventually attains a height of four or more feet and of large circumference. The foliage is quite distinct, and the immense flowers, which usually appear some two weeks ahead of the Chinese Herbaceous class, are most remarkable for their superb size and gorgeous colorings. Splendid for grouping or as specimen plants on lawns. While a hardy plant, it will be found desirable to give it some protection in very cold latitudes.

It may safely be said that in all floriculture there is nothing so impressive as a well developed bush of the Tree Peony in full bloom.

Plant so that buds are above ground, and protect with litter.

All shoots springing from the root should be rubbed off.

Varieties

I offer only a few varieties, embracing the cream of those in cultivation to-day.

All 2 Year Stock.

BIJOU DE CHUSAN. Very large bloom, transparent glossy white, very lightly shaded purple; silky petals, mixed with golden stamens. \$1.50 each.

CAROLINA D' ITALIE. Very large, full bloom, fine form; very fresh flesh, nankin color, salmon reflex. Very floriferous and one of the very best of its color. \$1.25.

COMTESSE DE TUDER. Very large, full bloom; bright salmon, with satiny white border. Very floriferous. \$1.00.

JEANNE D' ARC. Very pretty imbricated flower, chamois and salmon, with bright copper colored reflex. Very good bloomer \$1.50.

MADAME STUART-LOW. Large cup-shaped flower; bright, rich salmon-red, with broad silvery border and golden stamens. Color of exceptional brilliance. Very floriferous. \$1.50.

MILE. MARIA CLOSON. Large, full bloom of perfect shape; broad petals, glossy white, lightly shaded clear violet. \$1.25.

REINE ELISABETH. Very large, full bloom; bright salmon-pink of exceptional brilliance. Vigorous and very floriferous. The Queen of all Tree Peonies. \$1.25.

SOUVENIR DE DUCHER. Large, full, globular bloom; fine dark violet, with velvety purple reflex. Vigorous and floriferous. A superb sort. \$2.00.

SOUVENIR DE MAD. KNORR. Large flower, soft flesh, slightly tinted salmon, border of petals frequently shaded and marbled with purple. \$1.50.

George H. Peterson, Fair Lawn, N. J.

PLEASE USE THIS ORDER SHEET

DATE SENT.....

NAME

No.

P. O.
ADDRESS

REC'D

EXPRESS (If different
ADDRESS (from above)

SHIPPED

SHIP VIA

EXPRESS

Amount
Enclosed

BY

Quantity

VARIETIES WANTED

PRICE

(OVER)

ORDER SHEET

PLEASE USE THIS SIDE OF SHEET

DATE SENT

NAME

ADDRESS

EXPRESS (if desired)

SHIP VIA

No.

REC'D

SHIPPED

BY

AMOUNT

EXPRESS

PRICE

VARIETIES WANTED

Varieties

I am enclosing herewith a check for the amount of \$10.00 for the purchase of the following varieties of seeds:

- 1. 10 lbs. of No. 1 Yellow Corn
- 2. 10 lbs. of No. 2 Yellow Corn
- 3. 10 lbs. of No. 3 Yellow Corn
- 4. 10 lbs. of No. 4 Yellow Corn
- 5. 10 lbs. of No. 5 Yellow Corn
- 6. 10 lbs. of No. 6 Yellow Corn
- 7. 10 lbs. of No. 7 Yellow Corn
- 8. 10 lbs. of No. 8 Yellow Corn
- 9. 10 lbs. of No. 9 Yellow Corn
- 10. 10 lbs. of No. 10 Yellow Corn

The above varieties are all of the best quality and are guaranteed to be pure and true. I am enclosing herewith a check for the amount of \$10.00 for the purchase of the above varieties of seeds.

Yours very truly,
 George H. Peterson

“A Little Book About Roses”

is the title of my annual Rose catalogue, published February 1st. It is a unique and beautiful booklet which has found a warm place in the hearts of thousands of rose-lovers the world over. It represents a business that, for quality, stands alone, and which increases yearly beyond our anticipation and preparation.

My entire time the year round is devoted to the study, cultivation and shipping to various parts of the world these two flowers, and if the enthusiastic testimony of thousands of successful amateurs is a fair criterion, this little book is fulfilling its mission beyond all my fondest hopes.

It is sent free to intending purchasers—to anyone on receipt of 10 cents in coin or stamps.

The present edition is exhausted, but we will be glad to enter your name for 1910.

MARIE
JACQUIN

