

Historic, Archive Document

Do not assume content reflects current scientific knowledge, policies, or practices.

62.73 ✓

1910 ✓

ANDORRA NURSERIES

U. S. DEPARTMENT OF AGRICULTURE
BUREAU OF PLANT INDUSTRY
Washington, D. C.

Chestnut Hill
Philadelphia, Pa.

Price List of

Specimen Trees

Shrubs & Roses

and Fruit

SPRING : 1910

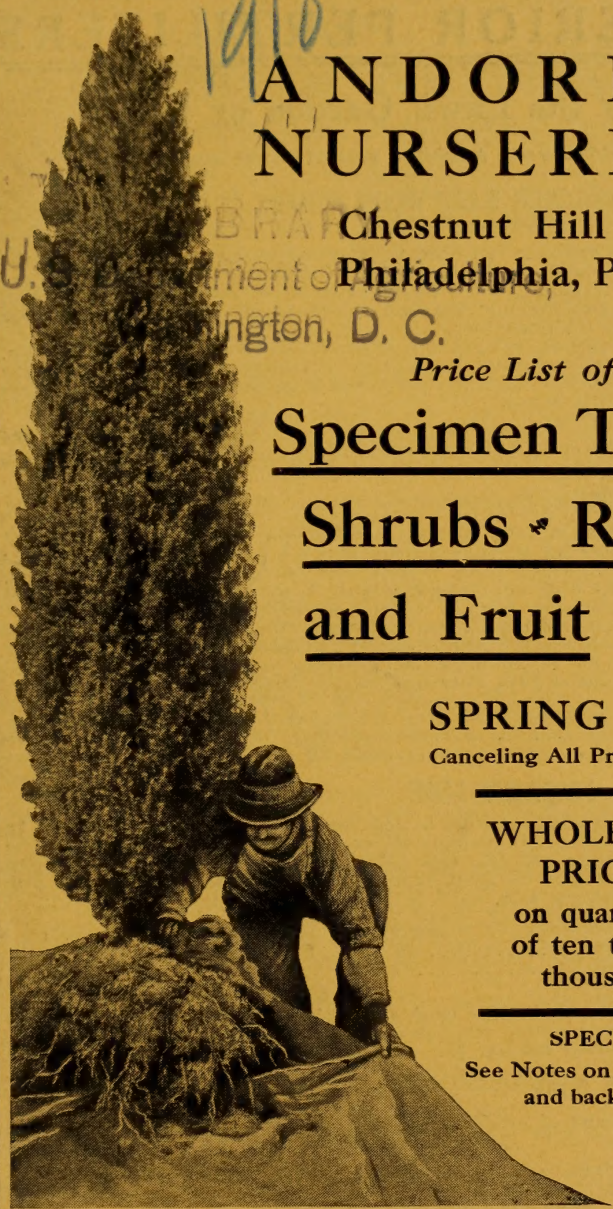
Canceling All Previous Lists

WHOLESALE PRICES

on quantities
of ten to one
thousand

SPECIAL :

See Notes on pages 20, 64
and back cover



SUPERIOR FERTILIZERS

For the Lawn, Garden or Farm

(The Name ANDORRA guarantees the quality)

CANADA UNLEACHED HARD-WOOD ASHES (ANDORRA BRAND)

Are a complete fertilizer, replenishing worn-out soils, and, for the lawn or pasture, are economical and valuable. For the lawn, they are easy to handle, produce no offensive odors, are not unsightly, and, quickly leaching into the soil, the chemical properties are at once available for plant food.

Our ashes are selected only from the hard-wood districts of Canada, are carefully screened, and put in convenient packages. Apply at the rate of 1,000 to 1,500 lbs. per acre for top-dressing, or 2,000 to 2,500 lbs. for new lawns.

	50-lb. bag	100-lb. bag	200-lb. bbl.	Ton	Cars, 15 to 20 tons
F. O. B. cars.....	\$0 85	\$1 25	\$2 00	\$18 00	At special
By wagon.....	1 00	1 50	2 50	20 00	prices.

PREPARED LIME

Where soils, from constant applications of manure, are sour and need a fertilizer to sweeten them, lime is a valuable agent. It quickly puts the soil in condition to assimilate plant-food. It frees the potash, phosphoric acid and nitrogen already in the soil, and turns the nitrogen into the rich nitrates valuable for plant use.

Our prepared lime is fresh from the kilns, clean, well burnt, thoroughly decarbonized and especially prepared, so that it will go three times as far as the lump lime generally used, and is fine enough to run through a drill. Use 500 lbs. per acre.

	100-lb. bag	Ton	Cars, 12 to 25 tons
F. O. B. cars.....	\$1 00	\$11 00	\$9 per ton.
By wagon.....	1 25	13 00	

POTASH AND PREPARED LIME

Where potash is needed in addition to lime, this preparation will be found valuable. It contains 4% actual potash, equal to 8% of sulphate of potash, the prepared lime being used as a filler, and makes a valuable top-dresser for lawn, pasture, or grass lands. Apply at the rate of 500 lbs. per acre.

	100-lb. bag	Ton	Cars, 12 to 25 tons
F. O. B. cars.....	\$1 25	\$13 50	\$11 50 per ton.
By wagon.....	1 50	15 50	

PEAT We have on hand a stock of carefully selected peat, suitable for potting or planting Rhododendrons and shrubs that need such soil. Sack of about 100 lbs., \$1. In sacks, \$15 per ton.

PURE GROUND BONE

A brand of excellent quality. Analysis on request.

	200-lb. bag	Ton	Cars, 15 to 30 tons
F. O. B. cars	\$3 50	\$30 00	Special price
By wagon.....	3 75	32 50	

Andorra Nurseries

CHESTNUT HILL, PHILADELPHIA, PA.

OUR NURSERIES are extensive, covering six hundred acres, of which over three hundred are planted with trees and shrubs. They are easy of access, as Chestnut Hill is the terminus of branches of the Pennsylvania and the Philadelphia & Reading railroads, and the Chestnut Hill (City Line) trolley runs from the stations to within three minutes' walk of the Nurseries.

QUALITY.—The trees and shrubs offered are grown in open, unsheltered ground, in a very exposed situation, which insures their hardiness, and on soil admirably adapted for forming robust plants having an abundance of roots. Special attention is called to the fact that our stock is grown a good distance apart in the rows, insuring heavier trees and shrubs than are generally offered.

SHIPPING SEASON opens about March 1 in the spring and August 15 in the fall.

INSPECTION AND FUMIGATION.—Our stock is regularly inspected and certificate will be sent with each shipment. Stock will be fumigated when requested or when the State laws require it.

TERMS AND CONDITIONS

ORDERS.—All orders are accepted subject to the following terms and conditions. Write plainly and give explicit directions as to address and mode of shipment.

STOCK SELECTED by customers at the Nurseries will be charged according to the value of the trees chosen.

QUANTITY.—Lots of 5 and 50 will be furnished at the 10 and 100 rates respectively.

PACKING.—All goods are thoroughly packed, thus avoiding risk, if delayed in transit. **Packing charges are made at actual cost.**

FORWARDING.—Shipments will be forwarded exactly as directed; but when without instructions, we will use our best judgment and forward by shortest and safest route. We recommend all herbaceous plants be shipped by express.

RISK.—All goods are at purchaser's risk after they are delivered to the forwarding companies and we receive their receipt for the shipment in good condition.

CLAIMS for damage while in transit must be made to the delivering company. Have delivering agent note the damaged condition on the freight bill and present your claim through him promptly.

GUARANTEE AND CLAIMS.—All goods are guaranteed true to name, full count, up to grade, and in good condition when shipped. Any plant proving untrue to name will be replaced. Claims to receive consideration must be made within **five days** after receipt of goods. **We give no guarantee of the life of stock.**

TERMS, CASH WITH ORDER, except to persons who satisfy us as to their responsibility.

Address all orders to

ANDORRA NURSERIES

WM. WARNER HARPER, Prop.

CHESTNUT HILL, PHILADELPHIA, PA.

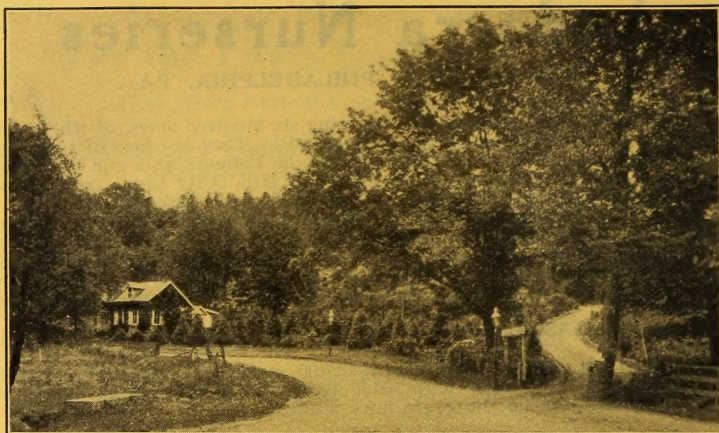
*Local and Long
Distance Telephone*

Telegraphic Address

CHESTNUT HILL, PHILADELPHIA

Cable Address

"ANDORRA," PHILADELPHIA



Nursery Entrance and Office.

EVERGREEN TREES

	Each	10
ABIES balsamea. Balsam Fir. 3 to 4 ft.	\$2 00	\$17 50
4 to 5 ft.	3 00	27 50
5 to 6 ft.	3 50	32 50
Canadensis. See <i>Tsuga Canadensis</i> .		
concolor. White Fir. 3 to 3½ ft.	3 50	
3½ to 4 ft.	5 00	
4 to 4½ ft.	6 00	
4½ to 5 ft.	7 50	
5 to 6 ft.	\$10 to 12 50	
6 to 9 ft.	\$12.50 to 15 00	
nobilis, var. glauca. Noble Silver Fir. 3½ to 4 ft. ...	4 50	
4 to 4½ ft.	6 00	
5 to 6 ft.	\$7.50 to 10 00	
Nordmanniana. Nordmann's Fir. 3 ft.	3 50	
3 to 3½ ft.	4 50	42 50
3½ to 4 ft.	6 00	57 50
4 to 4½ ft. Specimens	7 50	70 00
4½ to 5 ft. Specimens	10 00	85 00
5 to 5½ ft. Specimens	\$10 to 15 00	
6 to 12 ft. Fine specimens. Prices on application.		
pectinata. European Silver Fir. 4 to 5 ft.	2 50	20 00
5 to 6 ft.	3 50	32 50
6 to 8 ft.	\$4 to 7 50	
BIOTA orientalis. Oriental Arborvitæ. 5 to 6 ft.	3 00	27 50
6 to 7 ft.	4 00	37 50
6 to 7 ft. Very heavy	6 00	55 00
7 to 9 ft.	6 00	55 00
7 to 9 ft. Very heavy	\$7.50 to 10 00	

PRICE LIST FOR SPRING OF 1910

5

	Each	10
BIOTA orientalis, var. aurea. 3½ to 4 ft.	★ \$3 50	
orientalis, var. aurea nana. 15 to 18 in.	2 00	\$17 50
orientalis, var. aurea pyramidalis.		
3 to 4 ft.	3 50	32 50
4 to 5 ft.	5 00	
5 to 7 ft.	★\$5 to 7 50	
orientalis, var. compacta. Compact Chinese Arborvitæ. 3 to 3½ ft.	3 50	30 00
3½ to 4 ft.	4 00	35 00
4 to 5 ft.	5 00	45 00
5 to 6 ft.	7 50	70 00
orientalis, var. conspicua. 5 to 6 ft.	★ 5 00	
6 to 7 ft.	7 50	70 00
orientalis, var. elegantissima. Rollinson's Golden Arborvitæ. 3 to 3½ ft.	3 50	
3½ to 4 ft.	4 00	
4 to 6 ft.	★\$5 to 7 50	
orientalis, var. filiformis; syn., Japonica. Thread-branched Arborvitæ. 2½ to 3 ft.	2 50	22 50
3 to 3½ ft.	3 50	
4 to 5 ft.	★\$6 to 7 50	
orientalis, var. semperaurescens. Ever-golden Arborvitæ. 2 to 2½ ft.	★ 2 50	
2½ to 3 ft.	★ 3 50	
CEDRUS Atlantica, var. glauca. Mt. Atlas Silver Cedar—		
5 to 6 ft.	4 50	42 50
6 to 7 ft.	6 00	55 00
7 to 8 ft.	7 50	70 00
8 to 10 ft.	10 00	
Deodara. Deodar, or Indian Cedar. 2½ to 3 ft.	3 50	
Libani, var. Sargenti pendula. 2½ to 3 ft.	★ 3 00	
CEPHALOTAXUS Fortunei. Fortune's Yew. 3 to 4 ft.	3 50	
4 to 4½ ft.	4 00	
5 to 6 ft. Very broad and heavy	7 50	
pedunculata. 5 to 6 ft.	7 50	
CRYPTOMERIA Japonica elegans. 5 to 6 ft.	★ 5 00	
6 to 7 ft.	★ 7 50	
Japonica, var. Lobbi compacta. 3 to 3½ ft.	2 50	
6 to 7 ft.	6 00	
7 to 8 ft.	7 50	
ILEX opaca. American Holly. 2 to 2½ ft.	2 50	22 50
2½ to 3 ft.	3 00	27 50
3 to 4 ft.	★\$3.50 to 5 00	
JUNIPERUS Canadensis. Spreading Canadian Juniper—		
10 to 12 in. spread.per 100, \$60..	1 00	9 00
15 to 18 in. spread.	1 50	12 50
18 to 24 in. spread.	2 00	
Canadensis, var. aurea; syn., Douglasi. Douglas' Golden Juniper. 12 to 15 in. spread. ..	1 00	8 50
15 to 18 in. spread.	1 50	12 50
18 to 24 in. spread. Heavy	2 00	
2 ft. spread. Heavy	2 50	
2 x 2½ ft. spread. Heavy	★ 3 50	
3 x 3½ ft. spread.	★ 5 00	
Canadensis, var. prostrata. Trailing Canadian Juniper. 12 to 15 in.	1 25	
15 to 18 in.	2 00	

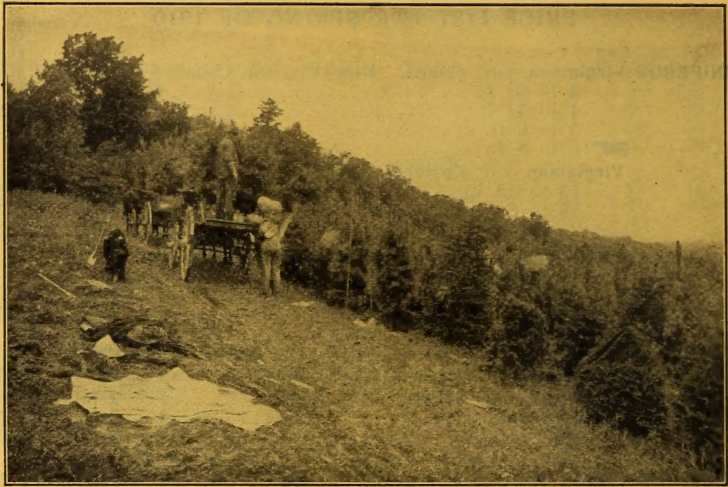
ANDORRA NURSERIES

	Each	10
JUNIPERUS Chinensis. Chinese Juniper. 3 ft.	\$2 00	\$17 50
3½ to 4 ft.	3 50	32 50
4½ to 5 ft.	5 00	45 00
5 to 6 ft.	6 00	55 00
6 to 7 ft.	7 50	70 00
Chinensis, var. argentea marginata. A grand hardy variety. 2½ to 3 ft.	3 00	27 50
3½ to 4 ft.	4 50	42 50
4 to 4½ ft.	5 00	
5 to 6 ft.	\$6 to	7 50
6 to 8 ft. Specimens	\$7.50 to	15 00
Chinensis, var. aurea. Golden Chinese Juniper—		
2½ to 3 ft.	2 50	
3 to 3½ ft.	3 50	
4 to 5 ft.	5 00	
Chinensis, var. femina Reevesii. 3½ to 4 ft.	3 50	
Chinensis, var. Pfitzeriana. 3 ft.	3 00	
communis. Common Upright Juniper—		
3 to 3½ ft.	2 50	
5 to 6 ft.	3 50	
6 to 7 ft.	5 00	
communis, var. oblonga. 5 ft.	3 50	
communis, var. Suecica. Swedish Juniper—		
3 to 3½ ft.	2 50	22 50
3½ to 4 ft.	3 50	32 50
Fortunei. 3½ to 4 ft.	3 50	32 50
4 to 4½ ft.	4 00	37 50
Japonica. 3 to 3½ ft.	3 50	
4 to 5 ft.	\$5 to	6 00
Japonica, var. aurea. Golden Japan Juniper—		
1½ to 2 ft.	1 50	13 50
2 to 2½ ft.	2 50	22 50
2½ to 3 ft.	3 50	32 50
3 to 3½ ft.	4 00	37 50
3½ to 4 ft.	5 00	47 50
4 to 5 ft.	\$7.50 to	10 00
5 to 5½ ft.	\$10 to	12 50
recurva. 2 to 2½ ft.	2 50	22 50
recurva, var. squamata. Scaly-leaved—		
2 to 2½ ft. spread.	2 50	
2½ to 3 ft. spread.	3 50	
3 to 4 ft. spread.	\$4 to	5 00
rigida. 7 to 10 ft.	\$7.50 to	10 00
Sabina. Savin Juniper. 12 to 15 in.	1 00	9 00
18 to 24 in.	2 00	18 50
2 to 2½ ft.	2 50	22 50
3 to 3½ ft.	3 50	32 50
Sabina, var. aurea variegata. Savin's Golden Juniper. 1½ to 2 ft.	1 50	12 50
2 to 2½ ft.	3 50	32 50
Sabina, var. tamariscifolia. 1½ to 2 ft.	1 50	13 50
2 to 2½ ft.	2 50	22 50
2½ to 3 ft.	3 00	27 50
Virginiana. Red, or Virginia Cedar. 3 to 3½ ft.	1 50	13 50
3½ to 4 ft.	2 50	22 50
4½ to 5 ft.	3 50	32 50
5 to 8 ft.	\$4 to	7 50

PRICE LIST FOR SPRING OF 1910

7

	Each	10
JUNIPERUS Virginiana, var. glauca. Blue Virginia Cedar—		
3 to 3½ ft.	♦.. \$2 50	
4 to 4½ ft.	♦.. 3 50	\$32 50
5 to 6 ft.	♦.. 4 00	
6 to 8 ft.	♦.. \$7.50 to 10 00	
Virginiana, var. Kosteri. Spreading—		
15 to 18 in.	♦.. 1 50	13 50
18 to 24 in.	♦.. 2 50	23 50
2 to 2½ ft.	♦.. 3 00	27 50
Virginiana, var. Leei elegantissima. Golden Virginian Cedar—		
3 ft.	♦.. 2 50	20 00
3 to 3½ ft. Extra heavy	♦.. 3 50	32 50
4½ to 5 ft. Extra heavy	♦.. 5 00	
5 to 7 ft. Extra heavy	♦.. \$7.50 to 10 00	
Virginiana, var. pendula. 3½ to 4 ft.	♦.. 3 50	32 50
Virginiana, var. Schotti. 3 to 3½ ft.	♦.. 2 50	20 00
4 to 5 ft.	♦.. 3 50	32 50
5 to 6 ft.	♦.. 5 00	45 00
6 to 7 ft.	♦.. \$6 to 7 50	
PICEA alba. White Spruce. 2½ to 3 ft.		
3 to 3½ ft.	♦.. 1 50	12 50
3½ to 4 ft.	♦.. 2 00	17 50
4 to 5 ft.	♦.. 2 50	20 00
5 to 6 ft.	♦.. 3 50	30 00
6 to 9 ft. Very fine specimens	♦.. \$7.50 to 15 00	
Alcockiana. Alcock's Spruce. 3 to 3½ ft.	♦.. 3 50	
4 to 5 ft.	♦.. 5 00	
Engelmanni. Engelmann's Spruce—		
4 to 7 ft.	♦.. \$5 to 10 00	
excelsa. Norway Spruce. 3 to 3½ ft.	♦.. 2 00	18 50
3½ to 4 ft.	♦.. 2 50	22 50
4 to 4½ ft.	♦.. 3 00	27 50
4½ to 5 ft.	♦.. 3 50	32 50
5 to 6 ft. Specimens	♦.. 5 00	45 00
6 to 7 ft. Specimens	♦.. 6 00	57 50
7 to 9 ft. Specimens	♦.. 7 50	60 00
9 to 12 ft.	♦.. \$10 to 25 00	
excelsa, var. aurea. Golden Norway Spruce—		
6 to 7 ft.	♦.. 5 00	
excelsa, var. inverta. Weeping Norway Spruce—		
3 ft.	♦.. 4 00	
4 to 5 ft.	♦.. \$5 to 6 00	
7 to 9 ft.	♦.. \$7.50 to 15 00	
excelsa, var. Remonti. 3 to 3½ ft.	♦.. 3 50	32 50
orientalis. Eastern Spruce. 2 to 2½ ft.		
3 to 3½ ft.	♦.. 2 50	22 50
3½ to 4 ft. Specimens	♦.. 3 50	32 50
4½ to 5 ft. Specimens	♦.. 5 00	45 00
5 to 8 ft. Specimens	♦.. \$7.50 to 10 00	
5 to 8 ft. Specimens	♦.. \$10 to 20 00	
pinsapo. Spanish Fir. 2½ to 3 ft.		
3 to 3½ ft.	♦.. 2 50	22 50
3½ to 4 ft.	♦.. 3 50	32 50
polita. Tiger Tail Spruce. 5 to 7 ft.		
5 to 7 ft.	♦.. \$5 to 10 00	



Loading White Pines

		Each	10
PICEA pungens.	Colorado Spruce. 2½ to 3 ft.	♦..\$3 00	
	3 to 3½ ft.	♦.. 4 00	\$37 50
	3½ to 4 ft.	♦.. 5 00	45 00
	4 to 5 ft.	♦.. 7 50	
	6 to 8 ft.	♦.. \$7.50 to 15 00	
	pungens, var. glauca. Blue Colorado Spruce—		
	2 to 2½ ft. Selected color	♦.. 3 00	
	2½ to 3 ft. Selected color	♦.. 3 50	32 50
	3 to 3½ ft. Selected color	♦.. \$5 to 7 50	
	3½ to 4 ft. Selected color	♦.. \$7.50 to 10 00	
	5 to 8 ft. Selected color	♦.. \$12.50 to 35 00	
	pungens, var. Kosteriana. Koster's Blue Colorado Spruce. 2 to 2½ ft.	♦.. 3 50	32 50
	2½ to 3 ft. Specimens	♦.. \$5 to 7 50	
	3 to 3½ ft. Specimens	♦.. \$7.50 to 10 00	
	3½ to 4 ft. Specimens	♦.. \$10 to 12 50	
	4 to 5 ft. Specimens	♦.. \$12.50 to 15 00	
	6 to 7 ft. Grand specimens	♦.. \$15 to 35 00	
	pungens, var. pendula. Weeping Blue Colorado Spruce—		
	4 to 4½ ft. Fine specimens	♦.. 10 00	
	5 to 5½ ft. Fine specimens	♦.. 15 00	
PINUS Austriaca.	Austrian Pine. 2 to 2½ ft.	1 50	12 50
	3½ to 4 ft.	3 00	27 50
	4 to 4½ ft.	3 50	32 50
	4½ to 5 ft.	5 00	47 50
	5 to 8 ft.	\$6 to 12 50	
Cembra.	Swiss Stone Pine. 2 to 2½ ft.	2 50	22 50
	2½ to 3 ft.	3 50	32 50
	3 to 3½ ft.	4 00	37 50
	3½ to 4 ft.	5 00	47 50
	4 to 4½ ft.	7 50	
	5 to 6 ft.	♦.. 10 00	

PRICE LIST FOR SPRING OF 1910

9

	Each	10
PINUS excelsa. Bhotan Pine. 2½ to 3 ft.	\$2 50	\$22 50
3 to 3½ ft.	3 50	32 50
4 to 4½ ft.	4 00	37 50
5 to 7 ft.	5 00	47 50
montana. Mountain Pine. 1½ to 2 ft.	1 50	13 50
2 to 2½ ft.	2 00	17 50
Mughus. Dwarf Mountain Pine. 12 to 15 in. ...	♦ 1 50	12 50
15 to 18 in.	♦ 2 00	17 50
18 in.	♦ 2 50	
24 in.	♦ 3 50	
ponderosa. Bull Pine. 3 to 4 ft.	♦ 3 50	32 50
5 to 7 ft.	♦ \$4 to 6 00	
rigida. Pitch Pine. 6 to 7 ft.	5 00	
7 to 8 ft.	\$6 to 7 50	
Strobus. White Pine. 15 to 18 in. ...per 100, \$25..		
1½ to 2 ft.	75	4 00
2 to 2½ ft.	{ ♦..per 100, \$35 } ..	6 00
2½ to 3 ft.	{ ♦..per 100, \$50 } ..	8 50
3 to 3½ ft.	{ ♦..per 100, \$75 } ..	12 50
3½ to 4 ft.	{ ♦..per 100, \$108 } ..	17 50
4 to 4½ ft.		20 00
4½ to 5 ft.		27 50
5 to 6 ft.		32 50
6 to 7 ft.		5 00
7 to 9 ft.	\$7.50 to 15 00	
The finest and best rooted stock in this country.		
sylvestris. Scotch Pine. 2 to 2½ ft.	1 50	12 00
3 to 3½ ft.	3 00	25 00
4 to 5 ft.	3 50	32 50
5 to 6 ft.	4 00	37 50
6 to 8 ft.	\$.5 to 7 50	
Tanyosho (Dwarf Japanese variety)—		
1½ to 2 ft.	♦ 3 50	
2 to 2½ ft.	♦ 5 00	
PODOCARPUS Japonica. Japanese Yew. 2 to 2½ ft.	2 50	22 50
2½ to 3 ft.	3 50	32 50
PSEUDOTSUGA Douglasi. Douglas' Spruce. 3 to 4 ft.	1 75	15 00
4 to 4½ ft.	2 50	22 50
4½ to 6 ft.	\$.3.50 to 5 00	
RETINOSPORA ericoides. Heath-like Japan Cypress—		
1½ to 2 ft.	1 25	10 00
3 to 3½ ft.	2 50	22 50
3½ to 4 ft.	3 50	32 50
filifera. Thread-branched Japan Cypress—		
1½ ft.	1 00	8 50
2½ to 3 ft.	3 50	32 50
3 to 3½ ft.	5 00	
3½ to 4 ft. Specimens	♦ 7 50	
4 to 6 ft. Specimens	♦ \$7.50 to 10 00	
6 to 8 ft. Specimens	♦ \$10 to 25 00	
filifera, var. aurea. Golden Thread-branched Japan Cypress. 1 x 1½ ft.	♦ 2 50	
2 x 2 ft.	♦ 3 50	
2 x 2½ ft.	♦ 5 00	
2½ x 3 ft.	♦ 7 50	

	Each	10
RETINOSPORA leptoclada. Thuya-like Japan Cypress—		
2½ to 3 ft.	♦. \$2 50	\$22 50
3 to 3½ ft.	♦. 3 00	27 50
3½ to 4 ft.	♦. 3 50	32 50
lycopodioides. Club-moss Japan Cypress—		
2½ ft.	♦. 2 50	
3 to 4 ft.	♦. \$3.50 to 5 00	
4 to 5 ft.	♦. \$5 to 7 50	
obtusa. Obtuse-leaved Japan Cypress—		
2 to 2½ ft.	2 00	18 50
2½ to 3 ft.	2 50	22 50
3½ to 4 ft.	3 50	32 50
4½ to 5 ft.	5 00	47 50
5 to 8 ft.	♦. \$6 to 15 00	
obtusa, var. compacta. Compact Obtuse-leaved Japan Cypress. 2½ to 3 ft. ...	3 50	
4 to 5 ft.	\$5 to 7 50	
obtusa, var. gracilis. Graceful Obtuse-leaved Japan Cypress. 2 to 2½ ft.	2 50	22 50
2½ to 3 ft.	3 50	32 50
3 to 3½ ft.	5 00	47 50
4 to 5 ft.	\$7.50 to 10 00	
obtusa, var. nana. Dwarf Obtuse-leaved Japan Cypress. 1 ft.	♦. 1 50	13 50
1½ ft.	♦. 2 00	17 50
2 ft.	♦. 2 50	22 50
2½ ft.	♦. 3 00	27 50
3 ft.	♦. \$5 to 7 50	
3½ ft.	♦. \$7.50 to 15 00	
4 to 5 ft. Specimens	♦. \$15 to 20 00	
obtusa, var. nana aurea. Dwarf Golden Obtuse-leaved Japan Cypress—		
1½ ft.	♦. 2 50	
2 to 2½ ft.	♦. \$3 to 4 00	
4 to 5 ft. Specimens	♦. \$5 to 10 00	
pisifera. Pea-fruited Japan Cypress. 2 to 2½ ft. ...	2 50	22 50
3 to 3½ ft.	3 50	32 50
4 to 4½ ft.	5 00	47 50
4½ to 5 ft.	6 00	55 00
5 to 6 ft.	7 50	70 00
6 to 8 ft. Specimens	♦. \$7.50 to 15 00	
pisifera, var. aurea. Golden Pea-fruited Japan Cypress. 1½ to 2 ft.	1 50	
2 to 2½ ft.	2 00	18 00
2½ to 3 ft.	3 00	27 50
3 to 3½ ft.	3 50	30 00
3½ to 4 ft.	4 00	37 50
4 to 4½ ft.	5 00	47 50
5 to 6 ft. Specimens	♦. \$7.50 to 12 50	
6 to 10 ft. Specimens	♦. \$12.50 to 25 00	
plumosa. Plume-like Japan Cypress. 1½ ft. ..	1 00	9 00
1½ to 2 ft.	1 50	13 50
2 to 2½ ft.	2 50	22 50
2½ to 3 ft.	3 50	32 50
3 to 3½ ft.	4 00	37 50
3½ to 4 ft. Specimens	♦. \$5 to 7 50	
4 to 8 ft. Specimens	♦. \$7.50 to 20 00	

PRICE LIST FOR SPRING OF 1910

11

	Each	10
RETINOSPORA plumosa, var. argentea. 1½ to 2 ft.	\$1 00	\$9 00
2 to 2½ ft.	2 50	22 50
3 to 4 ft.	3 50	32 50
5 to 6 ft.	7 50	70 00
plumosa, var. aurea. Golden Plume-like		
Japan Cypress, 12 in.	50	4 00
12 to 18 in.	75	6 00
2 to 2½ ft.	2 50	22 50
2½ to 3 ft.	3 50	32 50
3 to 3½ ft.	4 00	37 50
3½ to 4 ft. Specimens	5 00	45 00
4 to 4½ ft. Specimens	6 to 7 50	
5 to 10 ft. Specimens	\$7.50 to 35 00	
plumosa, var. flavescens. 2½ to 3 ft.	3 50	
3 to 3½ ft.	5 to 7 50	
plumosa, var. sulphurea. 3 to 3½ ft.	5 00	
3½ to 4 ft.	6 00	
4 to 5 ft.	7 50	
squarrosa. Squarrose-leaved Japan Cypress—		
1½ to 2 ft.	1 50	13 50
2 to 2½ ft. Sheared; heavy	2 50	22 50
2½ to 3 ft. Sheared; heavy	3 50	30 00
3 to 3½ ft. Sheared; heavy	5 00	45 00
3½ to 4 ft. Heavy specimens	7 50	70 00
4 to 4½ ft. Heavy specimens	10 00	90 00
4½ to 5 ft. Heavy specimens	\$12.50 to 15 00	
5 to 10 ft.	\$15 to 35 00	
This is excellent stock; exceptionally broad, bushy and low-branched.		
SCIADOPITYS verticillata. Umbrella Pine. 2 to 2½ ft.	3 50	
3 to 3½ ft.	5 00	
4 to 5 ft.	7.50 to 10 00	
5 to 6 ft.	15 to 20 00	
TAXUS baccata. English Yew. 2 ft.	1 50	12 50
2 to 2½ ft.	2 00	17 50
2½ to 3 ft.	2 50	22 50
3 to 3½ ft.	3 50	32 50
3½ to 4 ft. Specimens	5 00	47 50
4 to 4½ ft. Specimens	7 50	
4½ to 7 ft. Specimens	7.50 to 15 00	
baccata, var. aurea. Golden English Yew—		
2 to 2½ ft.	2 50	
2½ to 3 ft.	3 50	
baccata, var. Cheshuntensis. 4 to 4½ ft.	5 00	
baccata, var. Dovostoni. Dovaston's Yew—		
2 to 2½ ft.	2 75	25 00
2½ to 3 ft.	3 50	32 50
3 to 4 ft.	5 to 7 50	
5 to 6 ft. Specimens	10 to 15 00	
baccata, var. Dovostoni aurea. Dovaston's Golden Yew. 3 to 3½ ft.	4 00	
3½ to 4 ft. Specimens	5 to 12 50	
5 to 6 ft. Specimens	15 to 20 00	
baccata, var. elegantissima. Elegant English Yew—		
3 to 3½ ft.	4 00	
3½ to 4 ft.	5 to 7 50	
4 to 4½ ft.	7.50 to 12 50	

	Each	10
TAXUS baccata, var. erecta. Erect English Yew—		
2 to 2½ ft.♦	\$2 50	
2½ to 3 ft.♦	3 50	\$32 50
4 to 4½ ft.♦	\$5 to 7 50	
baccata, var. erecta aurea. Erect Golden English Yew. 2 to 2½ ft.♦	2 75	
baccata, var. erecta, Overeynder. (Form similar to Fastigiata.) 5 to 6 ft.♦	\$7.50 to 12 50	
baccata, var. fastigiata. Irish Yew. 1½ ft.♦	1 50	13 50
3 ft.♦	3 50	
3½ ft.♦	7 50	
4 to 6 ft. Specimens♦	\$10 to 15 00	
baccata, var. fastigiata aurea. Golden Irish Yew—		
2 ft.♦	2 50	22 50
2½ ft.♦	3 50	32 50
3½ to 4 ft.♦	\$7.50 to 10 00	
4 to 5 ft.♦	\$10 to 15 00	
 baccata, var. gracilis pendula. 3 to 3½ ft.♦	3 50	
4 to 5 ft. { NEW }♦	\$6 to 7 50	
5 to 7 ft. { NEW }♦	\$7.50 to 15 00	
baccata, var. repandens. Spreading English Yew—		
6 to 8 in.; 4-yr.♦	1 50	
baccata, var. Washingtoni aurea. Washington's Golden English Yew. 2½ to 3 ft.♦	3 50	
3 to 3½ ft.♦	\$5 to 7 50	
3½ to 4 ft.♦	\$7.50 to 10 00	
Canadensis, var. aurea. Golden Canadian Yew—		
2 to 2½ ft.♦	3 50	32 50
3 ft.♦	5 00	47 50
3½ to 5 ft.♦	\$7.50 to 12 50	
cuspidata. Abrupt-leaved Japan Yew. 12 to 15 in.♦	2 00	18 50
1½ ft.♦	2 50	
2 ft.♦	3 50	
2½ ft.♦	5 00	
cuspidata, var. brevifolia. 12 to 15 in.♦	2 00	18 50
1½ ft.♦	2 50	
2 ft.♦	3 50	
2½ ft.♦	5 00	
cuspidata, var. capitata. 2 ft.♦	3 50	
2½ ft.♦	5 00	
3 ft.♦	7 50	
THUJOPSIS borealis; syn., Cupressus Nutkaensis. Yellow or Sitka Cypress—		
3 to 4 ft.♦	3 50	
5 to 7 ft. Specimens♦	\$10 to 15 00	
borealis, var. latifolia glauca. Glaucous Sitka Cypress. 3½ to 4 ft.♦	3 50	32 50
4 to 4½ ft. Specimens♦	5 00	
5 to 6 ft. Specimens♦	7 50	
borealis, var. pendula. Drooping Sitka Cypress—		
4 to 5 ft.♦	3 00	
6 to 7 ft.♦	6 00	
Standishi. Standish's Sitka Cypress—		
8 to 9 ft. Specimens♦	15 00	

PRICE LIST FOR SPRING OF 1910

THUYA occidentalis. American Arborvitæ—		Each	10
2½ to 3 ft.	♦ per 100, \$75.	\$1 00	\$8 00
3 to 3½ ft.	♦ per 100, \$80.	1 25	10 00
3½ to 4 ft.	♦ per 100, \$100.	1 50	13 50
4 to 4½ ft.; very heavy	per 100, \$175.	2 00	19 00
4½ to 5 ft.; very heavy		2 50	22 50
5 to 5½ ft.; very heavy		3 00	27 50
5½ to 6 ft.; very heavy		3 50	32 50
6 to 7 ft.; very heavy		4 00	37 50
7 to 8 ft.; very heavy		4 50	42 50
8 to 9 ft. Specimens	♦ \$5 to	7 50	
occidentalis, var. aurea. George Peabody's Arborvitæ—			
2½ to 3 ft.	♦	1 50	
3 to 3½ ft.	♦	2 50	
4 to 5 ft.	♦	4 00	37 50
5 to 6 ft.	♦	5 00	45 00
7 to 10 ft. Specimens	♦ \$7.50 to	15 00	
occidentalis, var. Douglasi. 3 to 3½ ft.		♦	3 00
3½ to 4 ft.	♦	3 50	
4 to 5 ft.	♦	4 00	37 50
5 to 6 ft.	♦	5 00	45 00
6 to 7 ft.	♦	7 50	70 00
occidentalis, var. globosa. Globe Arborvitæ—			
15 to 18 in.	♦	1 50	13 50
1½ to 2 ft.	♦	2 50	22 50
2 to 2½ ft.	♦	3 50	32 50
occidentalis, var. Hoveyi. Hovey's Golden Arborvitæ—			
2 ft.	♦	1 50	13 50
2½ to 3 ft. Very heavy	♦	2 50	22 50
3 to 3½ ft. Very heavy	♦	3 50	
occidentalis, var. Lobbi. Lobb's Arborvitæ. 4½ to 5 ft.		♦	3 50
5 to 7 ft.	♦ \$5 to	7 50	
occidentalis, var. Lobbi aurea. 4 to 5 ft.		♦	3 00
5 to 6 ft.	♦	3 50	32 50
6 to 7 ft.	♦	4 50	42 50
occidentalis, var. pyramidalis. Pyramidal Arborvitæ—			
3 to 3½ ft.	♦	1 50	
3½ to 4 ft.	♦	2 00	17 50
4 to 5 ft.	♦	2 50	22 50
5 to 6 ft.	♦	3 50	32 50
6 to 8 ft.	♦ \$4 to	6 00	
occidentalis, var. recurva nana. 2½ to 3 ft.		♦ \$3.50 to	5 00
3 to 3½ ft.	♦ \$6 to	7 50	
occidentalis, var. Vervæneana. Vervæne's Arborvitæ—			
3 to 3½ ft.	♦	3 50	32 50
3½ to 4 ft.	♦	4 00	37 50
4½ to 5 ft.	♦	4 50	42 50
5 to 6 ft.	♦	5 00	47 50
6 to 7 ft. Heavy specimens	♦	7 50	70 00
7 to 8 ft. Heavy specimens	♦	10 00	
8 to 9 ft. Heavy specimens	♦	15 00	
occidentalis, var. Wareana. Siberian Arborvitæ—			
2 to 2½ ft.	♦ per 100, \$150.	2 50	22 50
3 to 3½ ft.	♦ per 100, \$250.	3 50	32 50
4 ft.	♦	4 00	37 50
4½ ft.; very heavy	♦	5 00	47 50
5 ft.; very heavy	♦	6 00	57 50
5 to 5½ ft.; very heavy	♦	7 50	70 00
5½ to 6 ft.; very heavy	♦	10 00	

ANDORRA NURSERIES

		Each	10
THUYA occidentalis, var. Wareana aurea.	2½ ft.	\$2 50	\$22 50
	3½ to 4 ft.	3 00	28 00
	4½ to 5 ft.	4 50	42 50
	5 to 6 ft.	5 00	47 50
TSUGA Canadensis, Hemlock.	1½ to 2 ft.	75	4 00
	2 to 2½ ft.	1 00	7 50
	2½ to 3 ft.	♦ per 100, \$90..	1 25 10 00
	3 to 3½ ft.	♦ per 100, \$125..	1 50 13 50
	3½ to 4 ft.	2 00	17 50
	4 to 4½ ft.	2 25	20 00
	4½ to 5 ft.	♦ 2 50	22 50
	5 to 5½ ft.	♦ 3 00	27 50
	5½ to 6 ft.	♦ 3 50	32 50
	6 to 10 ft. Heavy specimens	♦ \$4 to 15 00	
	The finest and largest stock offered.		
Canadensis, var. Sargenti pendula.	Weeping Hemlock—		
	2 to 5 ft. Specimens	♦ \$3.50 to	15 00
Caroliniana.	Southern Hemlock. 3 to 3½ ft. ♦ 3 50		
	6 to 7 ft. Specimens	♦ 15 00	
Hookeriana.	Alpine Hemlock. 2½ to 3 ft. 2 50		
	3 to 3½ ft.	3 00	
	4 to 4½ ft.	4 00	
	5 to 6 ft.	\$5 to	7 50
Sieboldi.	Japanese Hemlock. 4 to 5 ft. ♦ 5 00		
	5 to 7 ft.	\$6 to	7 50



Showing fibrous roots of Hemlock.



A Block of Box Bush and Evergreens.

EVERGREEN SHRUBS

	Each	10
ANDROMEDA <i>Catesbæi</i> . See <i>Leucothoë</i> .		
<i>floribunda</i> . 12 in.	♦ \$1 50	\$13 50
12 to 15 in.	♦ 1 75	16 00
2 to 2½ ft. Specimens	♦ \$10 to 15 00	
<i>Japonica</i> . 12 in.	♦ 1 25	10 00
12 to 15 in.	♦ 1 50	12 50
15 to 18 in.	♦ 2 00	18 50
18 to 24 in.	♦ 2 50	20 00
AZALEA <i>amœna</i> . 12 to 15 in.	♦ 1 00	8 50
15 to 18 in. Bushy	1 50	12 50
1½ ft. Bushy	2 00	17 50
2 ft. Bushy	2 50	22 50
2½ ft. Specimens	3 50	
<i>amœna</i> , var. <i>Hinondigiro</i> . Bright carmine—		
10 to 12 in.	1 00	7 50
18 in.	♦ 1 50	13 50
<i>Indica alba</i> . Pure white. 18 to 20 in.	♦ 2 50	22 50
20 to 22 in.	♦ 3 50	32 50
22 to 24 in.	♦ 5 00	47 50
BUXUS <i>Japonica</i> ; syn., <i>Fortunei</i> . Japanese Box. 1 to 1½ ft.	♦ 1 50	12 50
1½ to 2 ft.	♦ 2 00	17 50
<i>Japonica</i> , var. <i>aurea</i> . Golden Japanese Box—		
12 to 15 in.	1 00	9 00
15 to 18 in.	1 50	12 50
1½ ft.	1 75	15 00
2 ft.	2 50	22 50
2½ ft.	3 50	32 50
<i>sempervirens</i> . Common Box. Ball-shaped—		
15 x 15 in.	♦ 2 00	
1½ x 1½ ft.	♦ 2 50	
2 x 2 ft.	♦ 3 50	

ANDORRA NURSERIES

		Each	10
BUXUS sempervirens.	1 ft. Andorra-grown..per 100, \$40..	\$0 75	\$6 00
	1½ ft.; light Andorra-grown..per 100, \$50..	1 00	7 50
	2 ft.; Andorra-grown.....	1 50	13 50
	2½ ft.; Andorra-grown.....	2 50	22 50
	3 ft.; Andorra-grown. Specimens.♦..	4 50	40 00
	3½ ft.; Andorra-grown. Specimens.♦..	6 00	54 00
	4 ft.; Andorra-grown. Specimens.♦..	7 50	67 50
	4½ ft.; Andorra-grown. Specimens.♦..	10 00	90 00
	5 to 5½ ft.; Andorra-grown. Specimens		
	♦..\$12.50 to 25 00		
sempervirens. Pyramids—			
	2½ ft.; Andorra-grown. Specimens.....♦..	3 00	
	3 ft.; Andorra-grown. Specimens.....♦..	4 50	40 00
	3½ ft.; Andorra-grown. Specimens.....♦..	6 00	54 00
	4 ft.; Andorra-grown. Specimens.....♦..	7 50	70 00
	4½ ft.; Andorra-grown. Specimens.....♦..	10 00	90 00
	5 ft.; Andorra-grown. Specimens.....♦..	12 50	112 50
	5½ ft.; Andorra-grown. Specimens.....♦..	15 00	125 00
sempervirens. Standards—			
	2 ft. stems; 18 in. head. Andorra-grown...♦..	3 50	
	2 to 2½ ft. stems, 22 to 24 in. head. Andorra-grown.....♦..	5 00	
	2 to 2½ ft. stems, 24 to 26 in. head. Andorra-grown.....♦..	7 50	
sempervirens, var. angustifolia.	12 to 18 in.♦..	1 50	13 50
sempervirens, var. arborescens.	Tall Tree Box—		
	2½ to 3 ft.♦..	3 50	32 50
	3 to 3½ ft.♦..	5 00	47 50
sempervirens, var. argentea marginata.	Silver-tipped Box. 1½ to 2 ft.♦..	1 50	13 50
sempervirens, var. decussata.	4½ to 5 ft.♦..	3 50	
	5 to 5½ ft.♦..	5 00	
sempervirens, var. Handsworthi.	3 to 3½ ft.♦..	4 00	37 50
	4 to 4½ ft.♦..	5 00	42 50
sempervirens, var. Japonica; syn., latifolia—			
	2 to 2½ ft.♦..	2 50	22 50
	2½ to 3 ft.♦..	3 50	32 50
	3 to 3½ ft.♦..	5 00	42 50
	3½ to 4 ft.♦..	\$5 to 7 50	
sempervirens, var. myrtifolia.	Myrtle Leaf—		
	3 to 3½ ft.♦..	4 50	42 50
	4 to 5 ft.♦..	\$5 to 10 00	
sempervirens, var. suffruticosa.	Dwarf Box Edging—		
	3 to 4 in.♦..per 100, \$5; per 1,000, \$40..		75
	4 to 5 in.♦..per 100, \$10; per 1,000, \$60..	25	1 50
	6 to 7 in.♦..per 100, \$15; per 1,000, \$90..	35	2 00
CERASUS Laurocerasus Caucasica.	Caucasian Laurel—		
	1 to 1½ ft.♦..	1 00	
	2 to 2½ ft.♦..	2 50	22 50
	2½ to 3 ft.♦..	3 50	32 50
	Laurocerasus, var. Schipkaensis. 1½ to 2 ft.♦..	2 00	17 50
	2 to 2½ ft.♦..	2 50	22 50
CHAMÆDAPHNE calyculata.	Leather Leaf—		
	12 to 18 in.♦..per 100, \$35..	50	4 00
COTONEASTER microphylla.	10 to 12 in.	75	6 00

PRICE LIST FOR SPRING OF 1910

17

	Each	10
CRATÆGUS <i>Pyracantha</i> . Evergreen Thorn. 2 ft.	\$0 75	
<i>Pyracantha</i> , var. <i>Lelandi</i> . Leland's Evergreen Thorn. 2 ft.	75	
DAPHNE <i>Cneorum</i> . 3-yr.	75	\$6 00
EUONYMUS <i>radicans</i> and <i>variegata</i> . See Trailing Plants.		
<i>Japonica</i> . Japan Euonymus—		
3 to 3½ ft.♦..\$50 per 100..	1 00	7 50
<i>Japonica</i> , var. <i>aurea</i> . Golden-leaved Japan Euony- mus. 2 to 2½ ft.♦..per 100, \$35..	75	6 00
ILEX <i>Aquifolium</i> . Common English Holly—		
3 to 4 ft.\$3.50 to 5 00		
<i>crenata</i> . Japanese Holly. Box-leaved—		
1½ ft.	1 50	12 50
2 ft.	2 00	17 50
2½ ft.	3 50	32 50
3 ft.	5 00	40 00
<i>crenata</i> , var. <i>latifolia</i> . Broad-leaved Japanese Holly—		
2½ to 3 ft.	2 00	17 50
3 to 3½ ft.	2 50	22 50
3½ to 4 ft.	3 50	32 50
4 to 4½ ft.	5 00	47 50
<i>crenata</i> , var. <i>microphylla</i> . Small-leaved Japanese Holly—		
12 to 15 in. Bushy♦..per 100, \$50..	1 00	8 50
15 to 18 in. Bushy♦..per 100, \$60..	1 25	10 00
1½ to 2 ft. Bushy♦..per 100, \$100..	1 75	15 00
2 to 2½ ft.♦..per 100, \$175..	2 50	22 50
3 to 3½ ft. Heavy specimens.\$3.50 to 5 00		
4 to 5½ ft. Heavy specimens.\$7.50 to 12 50		
KALMIA <i>latifolia</i> . Mountain Laurel. 2 ft.♦..	1 00	8 50
3 ft.♦..	2 50	22 50
3 to 3½ ft.♦..	3 00	27 50
1½ ft. Heavy clumps♦..	1 50	12 50
2 ft. Heavy clumps♦..	2 00	17 50
2½ ft. Heavy clumps♦..	2 50	22 50
2½ to 3 ft. Heavy clumps♦..	3 00	28 50
3 to 3½ ft. Heavy clumps♦..	3 50	32 50
3½ to 4 ft. Heavy clumps♦..	5 00	
LAURELS . See <i>Cerasus Laurocerasus</i> .		
LEUCOTHOE <i>Catesbæi</i> . Drooping Andromeda—		
12 to 15 in. Clumps.♦..per 100, \$60..	1 00	8 50
15 to 18 in. Clumps.♦..per 100, \$75..	1 50	12 50
MAHONIA <i>Aquifolium</i> . Holly-leaved—		
12 to 15 in.per 100, \$25..	50	4 00
15 to 18 in. Heavyper 100, \$35..	75	7 00
18 to 24 in.per 100, \$60..	1 00	9 00
24 to 30 in.	1 50	13 50
<i>Japonica</i> . Japanese Mahonia—		
1½ to 2 ft.♦..	1 50	12 50
2 to 2½ ft.♦..	2 50	18 50
OSMANTHUS <i>ilicifolia</i> . 1½ to 2 ft.♦..	2 00	18 50
2 to 2½ ft.♦..	2 50	22 50
2½ to 3 ft.♦..	3 50	
PHILLYREA <i>Vilmoriniana</i> . 2 to 2½ ft.♦..	1 25	10 00



Rhododendrons at Andorra.

RHODODENDRONS

HYBRID VARIETIES — ANDORRA GROWN

RHODODENDRONS. Catawbiense Hybrids Assorted.		Our selection of varieties—	Each	10
15 to 18 in.	◆	per 100, \$80..	\$1 25	\$10 00
1½ to 2 ft.	◆	per 100, \$125..	1 50	13 50
2 to 2½ ft.	◆	per 100, \$175..	2 50	20 00
✦ A large stock of fine, heavy plants, 3 to 5 ft. Prices on application.				
Abraham Lincoln.		Rosy crimson—		
1½ to 2 ft.			1 75	15 00
2 to 2½ ft.			2 50	
Album elegans.		White—		
2 to 2½ ft.			2 00	17 50
3 to 3½ ft.			3 50	
3½ to 4 ft.		\$3.50 to	5 00	
Album grandiflorum.		White. 2 to 2½ ft.	2 00	17 50
2½ to 3 ft.			3 00	
3½ to 4 ft.		\$3.50 to	7 50	
Atrosanguineum.		Dark scarlet—		
15 to 18 in.			1 75	15 00
1½ to 2 ft.			2 00	17 50
Betsy Parsons.		Reddish purple—		
4 to 4½ ft.		\$6 to	7 50	
Blandyanum.		Rosy crimson. 1½ to 2 ft.	2 00	17 50
2 to 2½ ft.			2 50	
2½ to 3 ft.			5 00	
3 to 4 ft. Specimens		\$5 to	15 00	

PRICE LIST FOR SPRING OF 1910

19

	Each	10
RHODODENDRONS, Boule de Neige. White. 1½ to 2 ft.	\$1 75	\$15 00
B. W. Elliott. Deep rose. 1½ to 2 ft.	2 00	17 50
2½ to 3 ft.	\$3.50 to 5 00	
Candidissimum. White. 1½ to 2 ft.	1 75	15 00
2 to 2½ ft.	2 00	17 50
Caractacus. Purplish crimson. 1½ to 2 ft.	2 00	17 50
2 to 2½ ft.	2 50	22 50
2½ to 3 ft.	\$3.50 to 5 00	
Charles Bagley. Bright red. 1½ to 2 ft.	2 00	17 50
Charles Dickens. Scarlet. 1½ ft.	2 00	17 50
Delicatissimum. White. 1½ to 2 ft.	1 50	13 50
2 to 2½ ft.	2 50	22 50
2½ to 3 ft.	\$3.50 to 5 00	
Duchess of Bedford. Crimson. 2 to 2½ ft.	2 50	22 50
Everestianum. Rosy lilac. 1½ ft.	1 75	15 00
2 ft.	2 50	22 50
2½ ft.	3 50	32 50
3 ft.	\$5 to 7 50	
General Grant. Red. 1½ to 2 ft.	2 00	17 50
2 to 2½ ft.	2 50	22 50
Giganteum. Rosy crimson. 1½ to 2 ft.	1 75	15 00
H. W. Sargent. Scarlet. 1½ to 2 ft.	2 00	17 50
2 to 2½ ft.	2 50	22 50
H. H. Hunnewell. Dark crimson—		
15 to 18 in.	2 00	17 50
18 to 24 in.	2 50	22 50
J. Marshall Brooks. Scarlet. 1½ to 2 ft.	2 00	17 50
John Spencer. Rose. 1½ to 2 ft.	1 75	15 00
John Walter. Rich crimson. 1½ ft.	2 00	17 50
2 ft.	2 50	22 50
2½ ft.	3 50	32 50
John Waterer. Carmine. 1½ to 2 ft.	2 00	17 50
2 to 2½ ft.	3 00	27 50
Lady Armstrong. Pale rose. 1½ to 2 ft.	2 00	17 50
2 to 2½ ft.	2 50	22 50
Lady Clermont. Rosy scarlet—		
3½ to 4 ft.	\$5 to 7 50	
Luciferum. Clear white. 2 to 2½ ft.	2 50	22 50
2½ to 3 ft.	\$3.50 to 5 00	
3 to 3½ ft.	\$5 to 7 50	
Michael Waterer. Scarlet-crimson—		
1½ to 2 ft.	2 00	17 50
Minnie. White. 3 to 3½ ft.	3 50	32 50
Mrs. Milner. Crimson. 1½ ft.	2 00	17 50
1½ to 2 ft.	2 50	22 50
Old Port. Plum. 1½ ft.	1 50	13 50
2 to 2½ ft.	2 50	22 50
Parson's gloriosum. Blush. 1½ to 2 ft.	1 50	12 50
2 to 2½ ft.	1 75	15 00
2½ to 3 ft.	2 50	22 50
3 to 3½ ft.	3 50	32 50
4 to 5 ft.	\$5 to 7 50	
Parson's grandiflorum rubrum. Bright Pink—		
1½ to 2 ft.	2 00	17 50
2 to 2½ ft.	2 50	22 50
Perspicum. 2½ to 3 ft.	3 50	32 50
President Lincoln. 3 to 3½ ft.	5 00	47 50
3½ to 4 ft.	\$5 to 7 50	

ANDORRA NURSERIES

	Each	10
RHODODENDRONS, <i>purpureum crispum</i>. Purple. Crimped—		
1½ to 2 ft.	\$1 75	\$15 00
<i>purpureum elegans</i> . Purple. 1½ to 2 ft. . .	1 75	15 00
<i>purpureum grandiflorum</i> . Purple—		
4 to 5 ft.	5 00	
<i>roseum elegans</i> . Good rose. 1½ to 2 ft. . .	2 00	17 50
2 to 2½ ft.	2 50	22 50
2 to 2½ ft. Specimens	3 50	30 00
2½ to 3 ft. Specimens	5 00	47 50
3 to 4 ft. Specimens	\$7.50 to 15 00	

NATIVE VARIETIES—ANDORRA GROWN

RHODODENDRON <i>Catawbiense</i>. 2 to 2½ ft.	\$2 00	\$17 50
2½ to 3 ft.	\$2.50 to 3 50	
3 to 3½ ft.	\$3.50 to 6 00	
3½ to 4 ft.	\$6 to 7 50	
<i>Catawbiense grandiflora</i> . 3 to 4 ft.	\$3.50 to 5 00	
<i>maximum</i> . Great Laurel. 15 to 18 in. . . .	1 00	7 50
1½ to 2 ft.	1 25	11 00
2 to 2½ ft.	2 00	17 50
2½ to 3 ft.	3 50	25 00
3 to 4 ft.	5 00	40 00
4 to 5 ft.	7 50	60 00

We have an excellent stock of larger specimens; prices on application. Having good facilities for collecting *Rhododendron maximum*, we offer them by the carload, in sizes from 2 to 7 feet, at special prices.

DWARF VARIETIES—ANDORRA GROWN

RHODODENDRON <i>Hammondi</i>. 1½ ft.	\$2 00	\$17 50
2 ft.	2 50	22 50
<i>Hirsutum</i> . 12 to 15 in.	1 50	13 50
<i>odoratum</i> . Fragrant. 12 to 15 in.	2 00	17 50
15 to 18 in.	2 50	20 00
24 in.	3 00	25 00
<i>punctatum</i> . Dotted. 15 to 18 in.	1 50	13 50
18 to 24 in.	2 50	20 00
<i>Wilsonianum</i> . 12 to 15 in.	1 75	15 00
YUCCA <i>filamentosa</i>. Adam's Needle. 3-yr.	35	2 00
4-yr.	50	3 00
Heavy clumps	\$1.50 to 2 50	

DECIDUOUS TREES

Measurements are given as follows: Height is taken before digging, from the surface of the ground to the top branches where they round off to form the top; diameter of stem, or caliper, is taken above the collar.

	Each	10
ACER <i>campestris</i>. European Cork Maple. 4 to 5 ft.	\$0 75	\$6 00
5 to 6 ft.	1 00	8 50
7 to 8 ft.	1 50	12 50
8 to 10 ft.	1 75	15 00
<i>colchicum</i> , var. <i>rubrum</i> . Red Colchicum Maple—		
10 to 12 ft.; 2½ in. cal.	1 75	15 00
12 to 14 ft.; 2¾ to 3 in. cal.	3 50	32 50



Straight Norway Maples in Wide Rows.

	Each	10	100
ACER dasycarpum. Silver Maple—			
12 to 14 ft.; 2 to 2½ in.....	\$2 00	\$15 00	
12 to 14 ft.; 2½ to 3 in.....	2 50	22 50	
12 to 14 ft.; 3 to 3½ in.....	3 50	30 00	
4 to 6 in. Specimens	\$5 to 15 00		
A rapid grower for immediate effects.			
dasycarpum, var. Wierii laciniatum. Wier's			
Cut-leaved Silver Maple—			
10 to 12 ft.; 1¾ to 2 in.	1 50	13 50	
12 to 14 ft.; 2½ in.	3 50	32 50	
12 to 14 ft.; 2½ to 3 in.	\$3.50 to 5 00		
Negundo. Ash-leaved Maple—			
8 to 10 ft.; 1½ to 2 in.....	1 00	8 50	
10 to 12 ft.; 2 to 2½ in.....	1 50	10 00	
12 to 14 ft.; 2½ to 3 in.	2 50	20 00	
Pennsylvanicum. 6 to 7 ft.	1 50		
platanoides. Norway Maple—			
8 to 10 ft.; 1½ in.	1 50	12 50	\$100 00
10 to 12 ft.; 1¾ to 2 in.	1 75	15 00	135 00
10 to 12 ft.; 2 to 2¼ in.	2 00	20 00	175 00
12 ft.; 2¼ to 2½ in.	2 50	22 50	225 00
12 to 14 ft.; 2½ to 2¾ in.	3 00	27 50	250 00
12 to 14 ft.; 2¾ to 3 in.	3 50	32 50	275 00
14 to 16 ft.; 3¼ to 3½ in.	4 00	35 00	325 00
14 to 16 ft.; 3½ to 3¾ in.	4 50	42 50	400 00
14 to 16 ft.; 3¾ to 4 in.	5 00	47 50	450 00
14 to 16 ft.; 4 to 4¼ in.	\$5 to 10 00		
14 to 16 ft.; 4¼ to 8 in.	\$12.50 to 25 00		

SPECIMEN NORWAYS. 14 to 20 feet in height and of heavy caliper; clean, well headed. Prices on application.

	Each	10	100
ACER platanoides, var. purpurea. Schwedler's Purple			
Maple. 8 to 10 ft.; 1 $\frac{3}{4}$ to 2 in.	\$2 50		
10 to 12 ft.; 2 $\frac{1}{2}$ to 2 $\frac{3}{4}$ in.	3 50	\$32 50	
12 to 14 ft.; 2 $\frac{3}{4}$ to 3 in.	4 00	37 50	
14 to 16 ft.; 3 $\frac{1}{2}$ to 4 in.	\$5 to 7 50		
16 to 20 ft.; 5 to 10 in.	\$20 to 75 00		
Broad-headed specimen trees.			
platanoides, var. Reitenbachi. Reitenbach's			
Purple Maple. 8 to 10 ft.	2 00	17 50	
10 to 12 ft.; 2 $\frac{1}{2}$ to 2 $\frac{3}{4}$ in.	3 00	27 50	
pseudo-platanus. European Sycamore Maple—			
6 to 8 ft.	75	6 00	
8 to 10 ft.	1 50	12 50	
10 to 12 ft.; 2 to 2 $\frac{1}{2}$ in.	2 00	17 50	
12 to 14 ft.; 2 $\frac{1}{2}$ to 3 in.	2 50	22 50	
14 to 16 ft. Specimens	\$5 to 25 00		
pseudo-platanus, var. purpurea. Purple Sycamore Maple. 10 to 12 ft.	2 00	17 50	
12 to 14 ft.; 2 $\frac{1}{2}$ in.	2 50	22 50	
12 to 14 ft.; 3 to 5 in.	\$3.50 to 15 00		
Broad-headed specimen trees.			
rubrum. Red or Scarlet Maple. 6 to 7 ft.	1 00	8 50	
8 to 10 ft.; 1 $\frac{3}{4}$ to 2 in.	1 50	12 50	
10 to 12 ft.; 2 to 2 $\frac{1}{4}$ in.	2 00	17 50	
12 to 14 ft.; 2 $\frac{1}{2}$ to 3 $\frac{1}{2}$ in.	\$2.50 to 5 00		
saccharinum. Sugar Maple. 8 to 10 ft.	1 50	10 00	
10 to 12 ft.; 1 $\frac{1}{2}$ to 1 $\frac{3}{4}$ in.	1 75	15 00	125 00
10 to 12 ft.; 1 $\frac{1}{2}$ to 1 $\frac{3}{4}$ in.	2 00	17 50	150 00
12 to 14 ft.; 2 to 2 $\frac{1}{4}$ in.	2 50	22 50	200 00
12 to 14 ft.; 2 $\frac{1}{2}$ to 2 $\frac{3}{4}$ in.	3 50	32 00	275 00
12 to 14 ft.; 2 $\frac{3}{4}$ to 3 in.	5 00	45 00	
14 to 16 ft.; 3 to 3 $\frac{1}{4}$ in.	\$5 to 10 00		
14 to 16 ft.; 3 $\frac{1}{2}$ to 4 in.	\$12.50 to 35 00		
Specimen low-branched trees of heavy caliper and good tops. Prices on application.			
spicatum. Mountain Maple. 2 to 3 ft.	50	4 00	30 00
3 to 4 ft.	75	6 00	40 00
4 to 5 ft.	1 00	8 50	60 00
5 to 6 ft.	1 50	10 00	75 00
Tataricum, var. Ginnala. Tartarian Maple—			
2 ft.	50	3 50	
3 to 4 ft. Bushy.....	75	6 50	35 00
4 to 5 ft. Bushy.....	1 00	9 00	50 00
6 to 8 ft. Bushy.....	1 25	10 00	60 00
Most brilliant of the fall-coloring trees. Superb for mass planting.			

JAPANESE MAPLES

	Each	10	100
ACER polymorphum. 3 to 4 ft.	\$1 50	\$13 50	
polymorphum, var. atropurpureum. Blood-leaved Japan Maple. 1 $\frac{1}{2}$ ft. ...	1 50	13 50	
2 ft.	2 50	22 50	
2 $\frac{1}{2}$ ft.	3 50	30 00	
2 $\frac{1}{2}$ to 5 ft. Specimens, bushy and well furnished	\$7.50 to 25 00		

PRICE LIST FOR SPRING OF 1910

23

	Each	10	100
ACER polymorphum, var. atropurpureum dissectum.			
Weeping Cut-leaf Blood-leaved—			
1½ ft.♦	\$2 50	\$22 50	
2 to 2½ ft. Specimens.....♦	\$3.50 to 7 50		
polymorphum, var. aureum. Golden Japan			
Maple. 1½ ft.♦	1 50	13 50	
polymorphum, var. dissectum. Cut-leaf Weeping Japan Maple.			
1½ ft.♦	2 50	22 50	
2 to 2½ ft.♦	\$3.50 to 7 50		
polymorphum, var. filicifolium. 2½ ft.♦	3 50		
polymorphum, var. scopendifolium rubrum.			
2½ to 3 ft.♦	\$3.50 to 7 50		
ÆSCULUS Hippocastanum. European Horse-chestnut—			
7 to 8 ft.	2 00	17 50	
7 to 8 ft.; 2 in.	2 50	22 50	
8 to 10 ft.; 2½ in.♦	3 50	32 50	
10 to 12 ft.; 3 to 3½ in.	\$5 to 10 00		
Specimens; 4 to 5 in. cal.	\$12.50 to 25 00		
Hippocastanum, var. alba flore pleno—			
Double White-Flowered Horse-Chestnut. 8 to 9 ft.; 2 in.	2 50	22 50	
9 to 10 ft.; 2½ in.	3 50	32 50	
10 to 11 ft.; 3 in.♦	\$5 to 7 50		
11 to 12 ft.; 3¼ to 3½ in.	\$7.50 to 10 00		
Specimens; 4 to 5 in.	\$12.50 to 25 00		
Hippocastanum, var. Bujotii—			
10 to 12 ft.; 2½ to 3 in.♦	\$3.50 to 5 00		
10 to 12 ft.; 3 to 3½ in.♦	\$5 to 6 00		
Hippocastanum, var. rubicunda. Red-flowered Horse-Chestnut—			
8 to 10 ft.; 2 in.	2 50	22 50	
10 ft.; 2 to 2½ in.	3 50	32 50	
10 ft.; 2¼ to 2½ in.	4 00	37 50	
12 ft.; 3 to 4 in.♦	\$5 to 15 00		
parviflora. See <i>Shrubs</i> .			
AILANTHUS glandulosa. Ailanthus, or Tree of Heaven.			
8 to 10 ft.	1 25	10 00	
10 to 12 ft.	1 50	12 50	\$100 00
ALNUS glutinosa. European, or Black Alder—			
7 to 8 ft.	1 00	5 00	35 00
10 to 12 ft.	1 50	12 50	
incana. 8 to 10 ft.	1 50	12 50	100 00
AMELANCHIER Botryapium. Dwarf Juneberry. See Shrubs.			
ANDROMEDA. See Oxydendron.			
ARALIA. Chinese Angelica Tree—			
elata, var. foliis argentea marginata.			
6 to 8 ft.	1 00	9 00	
8 to 10 ft.	1 50	13 50	
Japonica. 4 to 5 ft.	75	6 00	
6 to 8 ft.	1 00	8 00	
8 to 10 ft.	1 50	12 50	
pentaphylla; syn., Acanthopanax spinosa. See <i>Shrubs</i> .			
spinosa. 5 to 6 ft.	75	6 00	
9 to 10 ft.	1 25		

	Each	10	100
BETULA alba. European White Weeping Birch—			
8 to 10 ft.	\$1 25		
10 to 12 ft.; 1½ to 2 in.	2 00		
12 to 14 ft.; 2 to 2½ in.	2 50		
16 to 18 ft.; 3 to 4 in.	\$5 to 7 50		
alba, var. fastigiata. Pyramidal White Birch. 10 to 12 ft.	2 50		
12 to 14 ft.	3 50		
alba, var. laciniata pendula. Weeping Cut-leaved White Birch. 6 to 7 ft.	1 50		
lenta. Sweet Birch. 6 to 7 ft.	1 00	8 50	
lutea. Yellow Birch. 6 to 8 ft.	1 00	8 50	
8 to 10 ft.; specimens	1 50	13 50	
papyrifera. Paper, or Canoe Birch—			
5 to 6 ft.	1 25		
8 to 10 ft.	1 50		
nigra; syn., rubra. Red Birch. 7 to 8 ft..	1 00	8 50	\$60 00
8 to 10 ft.	1 50	13 50	115 00
10 to 12 ft.	2 00	17 50	
BROUSSONETIA papyrifera. Paper Mulberry—			
6 to 8 ft.	1 50	12 50	
CARPINUS Americana; syn., Caroliniana. American Hornbeam. 3 to 4 ft.	75	5 00	30 00
4 to 5 ft. Bushy	1 00	7 50	50 00
5 to 6 ft. Bushy	1 50	10 00	75 00
6 to 7 ft. Bushy	2 00	13 50	85 00
7 to 9 ft. Bushy	2 50	20 00	150 00
9 to 10 ft. Bushy	3 50	27 50	
Betulus. European Hornbeam. 2 to 3 ft..	35	3 00	22 50
3 to 4 ft. Bushy	50	4 00	30 00
4 to 5 ft. Bushy	75	6 00	40 00
5 to 6 ft. Bushy	1 50	13 50	75 00
6 to 7 ft. Bushy	2 00	18 50	100 00
8 to 10 ft. Bushy	3 50	30 00	
Carya alba. (Hickory). 8 to 10 ft.	1 50	12 50	
CASTANEA Americana. American Chestnut—			
7 to 8 ft.	1 00	7 50	50 00
8 to 9 ft.	1 25	9 00	60 00
9 to 10 ft.; 1½ to 2 in.	1 50	10 00	75 00
10 to 12 ft.; 2 to 2½ in.	1 75	12 50	100 00
12 to 14 ft.; 3 in.	2 00	17 50	150 00
Japonica. Japan Chestnut. 4 to 5 ft..	1 00	7 50	
vesca. Spanish Chestnut. 4 to 5 ft..	1 00	7 50	
CATALPA bignonioides. 12 to 14 ft.	2 50	22 50	
bignonioides, var. aurea. Golden Catalpa—			
4 to 5 ft.	1 00	7 50	
Bungei. Bunge's Catalpa. Standards. 7 ft.	3 50		
Kämpferi. Japanese Catalpa. 6 to 8 ft..	1 50	12 50	
speciosa. Western Catalpa. 6 to 8 ft..	1 00	7 50	
8 to 10 ft.; 1½ to 2 in.	1 50	13 50	
CEDRELA Sinensis. Chinese Cedrela—			
8 to 10 ft.	1 50		

PRICE LIST FOR SPRING OF 1910

25

	Each	10	100
CELTIS occidentalis. Nettle Tree. 6 to 7 ft.	\$1 25	\$10 00	\$75 00
7 to 8 ft.	1 50	12 50	90 00
8 to 10 ft.	2 00	17 50	
CERASUS Padus. European Bird Cherry. 4 to 5 ft.	75	6 00	
serotina. Wild Black Cherry. 10 to 12 ft.	1 50	12 50	
Avium, var. alba plena. Double White-flowering Cherry. 5 to 6 ft.	1 50	13 50	
Avium, var. rosea plena. Double Pink-flowering Cherry. 4 to 6 ft. . .	1 50		
Avium, var. rosea pendula. Pink Weeping Japan Cherry. 6 ft.	3 50		
Sieboldi, var. rubra plena. 4 to 5 ft.	1 50	12 50	
CERCIS Canadensis. Red Bud, American Judas—			
3 to 4 ft.	50	4 00	30 00
4 to 5 ft.	75	6 00	45 00
5 to 6 ft.	1 00	7 50	50 00
6 to 8 ft.	1 50	10 00	60 00
8 to 10 ft.	1 75	12 50	85 00
Japonica. See <i>Shrubs</i> .			
CERCIDIPHYLLUM Japonicum. 5 to 6 ft.	1 50	12 50	
7 to 8 ft.	2 00	17 50	
8 to 9 ft.	2 50	22 50	
CLADRASTIS tinctoria (<i>Virgilia lutea</i>). Yellow Wood. 8 to 10 ft.	1 50	13 50	100 00
10 to 12 ft.	2 00	17 50	150 00
CORNUS. See, also, <i>Shrubs</i> .			
florida. White Dogwood. 2 to 2½ ft. . .	50	4 00	
3½ to 4 ft.; very fine	1 00	7 50	
4 to 5 ft.; very fine	1 25	10 00	60 00
5 to 6 ft.; very fine	1 50	12 50	70 00
6 to 7 ft.; very fine	1 75	15 00	80 00
7 to 8 ft.; very fine	2 50	22 50	100 00
8 to 10 ft.; very fine	3 00	27 50	
Very low-branched, heavy stock.			
florida, var. flore rubro. Red-flowered Dogwood. 3 to 3½ ft. Bushy.	1 75	15 00	
3½ to 4 ft. Bushy.	2 00	18 50	
4 to 5 ft. Bushy.	2 50	22 50	
6 to 8 ft. Bushy.	5 00		
florida, var. pendula. Weeping Dogwood—			
5 to 6 ft. Rare	3 50		
6 to 7 ft. Rare	5 00		
7 to 10 ft. Rare	6 to 10 00		
One of the most beautiful of weeping trees, combining spring flowers, summer berries and brilliant autumn foliage.			
CRATÆGUS Carrieri. 2½ to 3 ft.	75		
3 to 4 ft.	1 00	7 50	
4 to 5 ft.	1 25	10 00	
coccinea. 5 to 6 ft.	1 25	10 00	
6 to 7 ft.	1 50	12 50	
cordata. Washington Thorn—			
4 to 5 ft.	1 00	8 50	
6 to 8 ft.; very heavy	2 50		
8 to 10 ft.; very heavy	3 50		

ANDORRA NURSERIES

	Each	10	100
CRATÆGUS Crus-galli. Cocksbur Thorn—			
5 to 6 ft.	\$1 00	\$7 50	\$50 00
6 to 8 ft.	1 25	10 00	75 00
8 to 10 ft.	1 50	13 50	
mollis. Scarlet Haw. 5 to 6 ft.	1 00	7 50	60 00
Oxyacantha. English Hawthorn—			
3 to 4 ft.	50	3 50	
4 to 5 ft.	75	5 00	
5 to 6 ft.	1 00	6 00	
Oxyacantha, var. alba flore pleno. Double White Hawthorn. 4 to 6 ft.	1 00	9 00	
Oxyacantha, var. coccinea flore pleno. Paul's Double Scarlet—			
4 to 6 ft.	1 00	9 00	
10 to 12 ft. Standards	5 00	45 00	
Oxyacantha, var. rosea flore pleno. Double Pink Hawthorn—			
4 to 5 ft.	1 00	9 00	
punctata. 3½ to 4 ft.	75	5 00	35 00
CYTISUS Laburnum. Golden Chain. 3 to 4 ft.	50	4 00	
4 to 5 ft.	75	6 00	
5 to 6 ft.	1 50	13 50	
DIOSPYROS Virginica. Persimmon. 6 to 8 ft.	1 00		
8 to 10 ft.	1 50	13 50	
FAGUS ferruginea. American Beech. 3 to 4 ft.	1 50	13 50	
5 to 6 ft.	2 50	22 50	
6 to 8 ft.	\$3.50 to 5 00		
sylvatica. European Beech. 3 to 4 ft.	75	6 00	
4 to 5 ft.	1 00	7 50	
5 to 6 ft.	1 75	15 00	
6 to 7 ft.	3 50	32 50	
7 to 8 ft.	\$3.50 to 5 00		
8 to 10 ft. Specimens	\$5 to 15 00		
sylvatica, var. asplenifolia. Fern-like Beech—			
3 to 4 ft.	1 50		
sylvatica, var. pendula. Weeping Beech—			
6 to 8 ft.	3 50		
8 to 10 ft.	\$5 to 7 50		
14 to 16 ft.; 2 to 3½ in. Specimens	\$15 to 25 00		
All recently transplanted.			
sylvatica, var. purpurea. Purple Beech—			
4 to 5 ft.	1 50	12 50	
5 to 6 ft.	2 50	22 50	
6 to 7 ft.	3 50	32 50	
7 to 8 ft.	5 00	47 50	
9 to 10 ft.	6 00	55 00	
11 to 12 ft.	7 50	70 00	
12 to 14 ft. Specimens	\$10 to 35 00		
8 to 16 ft. Sheared specimens.	\$10 to 35 00		
sylvatica, var. purpurea major. Large Leaf—			
5 to 6 ft.	2 50	22 50	
7 to 8 ft.	5 00	47 50	
9 to 10 ft.	6 00		
sylvatica, var. Riversi. Rivers' Blood-leaved Beech. 6 to 7 ft.	3 50		
7 to 8 ft.	5 00		
8 to 9 ft.	7 50		



An Avenue of Sweet Gums (Liquidambar), at Andorra.

	Each	10	100
FRAXINUS Americana. White Ash. 6 to 8 ft....	\$1 00	\$7 50	
8 to 10 ft.	1 25	10 00	
10 to 12 ft.; 2 to 2½ in.	1 50	12 50	\$100 00
12 to 14 ft.; 2½ to 2¾ in.	2 50	22 50	
14 to 16 ft.; 2¾ to 3 in.	3 00	27 50	
excelsior. European Ash—			
6 to 8 ft.	1 00		
8 to 10 ft.	1 50		
Ornus. Flowering Ash—			
8 to 10 ft.	1 50	12 50	
10 to 12 ft.; 2 in.	2 50	22 50	
GLEDITSCHIA aquatica. Water Locust. 8 to 10 ft..	1 50	10 00	85 00
10 to 12 ft.	2 50	20 00	150 00
triacanthos. Honey Locust. 7 to 8 ft..	1 25	7 50	60 00
GLYPTOSTROBUS. See <i>Taxodium</i> .			
GYMNOCLADUS Canadensis. Kentucky Coffee Tree—			
8 to 10 ft.	2 50	20 00	
JUGLANS nigra. Black Walnut. 7 to 8 ft.....	1 00	8 50	75 00
8 to 10 ft.	1 50	12 50	100 00
KÆLREUTERIA paniculata. Varnish Tree—			
5 to 6 ft.	1 50	12 50	
8 to 10 ft.	2 50		
LARIX Europæa. European Larch. 5 to 6 ft. ...	1 00	7 50	
6 to 8 ft.	1 25	10 00	
8 to 10 ft.	1 50	13 50	85 00
leptolepis. Japanese Larch. 6 to 8 ft.	1 25	10 00	
10 to 12 ft.	2 00	15 00	

		Each	10	100
LIQUIDAMBAR.	Sweet Gum. 6 to 7 ft. Fine ...	\$1 50	\$12 50	\$85 00
	7 to 8 ft.; 2½ in. Fine.	2 50	22 50	
	8 to 9 ft.; 2½ to 2¾ in. Fine.	3 50	32 50	
	10 to 12 ft.; 3 to 3½ in.	5 00	45 00	
LIROIDENDRON	Tulipifera. Tulip Tree. 8 to 9 ft..	1 50	10 00	
	9 to 10 ft.	1 75	16 50	
	10 to 12 ft.; very heavy	2 00		
	12 to 14 ft.; very heavy	2 50		
	Tulipifera, var. fastigiata. A beautiful pyramidal form of the well-known Tulip tree.			
	8 to 10 ft.	2 00		
	10 to 12 ft.	2 50		
	12 to 14 ft.	3 50		
MAGNOLIA.	Native Sorts—			
	acuminata. Cucumber Tree. 4 to 5 ft. ...	1 00	7 50	
	glauca. Sweet or Swamp Magnolia—			
	2 to 2½ ft.	1 50	13 50	
	grandiflora. Evergreen Magnolia—			
	2 to 2½ ft.	2 50		
	macrophylla. Great-leaved Magnolia—			
	4 to 5 ft.	3 50		
	tripetala. Umbrella Tree. 6 to 8 ft..	1 25	9 00	
	8 to 10 ft.	1 50	12 50	
	10 to 12 ft.	2 00	18 50	
	12 to 14 ft.	2 50	22 50	
	Chinese Sorts—			
	Alexandriana. 5 to 6 ft.	\$3.50 to 5 00		
	6 to 7 ft.	7 50		
	conspicua. Pure white—			
	2½ to 3 ft.	2 50	22 50	
	3 to 3½ ft.	3 50	32 50	
	3½ to 4 ft.	5 00	45 00	
	Kobus. 2 to 2½ ft.	1 50		
	3 to 3½ ft.	3 50		
	Lennei Hybrid. Lenne's Magnolia—			
3 to 4 ft.	\$2.50 to 3 50			
4 to 6 ft.	\$3.50 to 7 50			
Specimens. 12 to 15 ft. Prices on application.				
Norbertiana Hybrid. Norbert's Magnolia—				
6 to 7 ft.	5 00			
purpurea; syn., obovata. Purple Magnolia—				
3 to 3½ ft.	2 50	22 50		
4 to 5 ft.	3 50	30 00		
Soulangeana Hybrid. Soulange's Magnolia—				
3 to 4 ft.	2 50			
4 to 5 ft.	3 50			
5 to 6 ft.	\$5 to 7 50			
Larger specimens. Prices on application.				
speciosa. 4½ to 5 ft.	\$3.50 to 5 00			
stellata; syn., Halleana. Hall's Japanese Magnolia. 2 ft.	2 50	22 50		
2½ ft.	3 50	32 50		
3 to 4 ft. Specimens.	\$5 to 10 00			
superba alba. 4 to 5 ft.	\$3.50 to 5 00			
7 to 8 ft.	\$7.50 to 10 00			



An Avenue of "Andorra-grown" Oriental Planes. (See page 30).

		Each	10
MORUS <i>alba</i> .	White Mulberry. 8 to 10 ft.	\$1 00	\$6 00
	<i>alba</i> , var. <i>Tatarica alba</i> . White-fruited Russian		
	Mulberry. 6 ft.	75	
	<i>alba</i> , var. <i>Tatarica rubra</i> . Red Russian Mulberry.		
	6 ft.	75	
	<i>alba</i> , var. <i>Tatarica pendula</i> . Teas' Weeping Mul-		
	berry. 2-yr. heads	2 50	
NEGUNDO .	See <i>Acer</i> .		
NYASSA <i>sylvatica</i> .	Sour Gum. 3 to 4 ft.	1 50	
OSTRYA <i>Virginica</i> (Ironwood).	2 to 3 ft.	35	
OXYDENDRUM <i>arboreum</i> ; syn., <i>Andromeda arborea</i> .	Sorrel		
	Tree. 2 to 3 ft.	1 00	9 00
	3 to 4 ft.	1 50	13 50
	4 to 5 ft.	2 00	18 50
	5 to 6 ft.	2 50	22 50
	6 to 7 ft.	3 00	27 50
	7 to 8 ft.	3 50	
PARROTIA <i>Persica</i> .	Persian Iron Tree. 5 to 6 ft.	2 50	
	10 to 12 ft.	3 50	
PAULOWNIA <i>imperialis</i> .	10 to 12 ft.	3 50	
PERSICA <i>vulgaris</i> , var. <i>alba plena</i> .	Double White-flowering		
	Peach. 4 to 5 ft.	1 00	7 50
	<i>vulgaris</i> , var. <i>sanguinea plena</i> . Double Red-flowering		
	Peach. 4 to 5 ft.	1 00	7 50
PHELLODENDRON <i>Amurense</i> , Chinese Cork Tree—			
	8 to 10 ft.	1 50	
	10 to 12 ft.	2 00	

	Each	10	100
PLATANUS occidentalis. American Buttonwood—			
8 to 10 ft.	\$1 00	\$8 50	
10 to 12 ft.; 1 $\frac{3}{4}$ to 2 in.	1 50	12 50	\$100 00
14 to 16 ft.; 2 $\frac{3}{4}$ to 3 in.	3 00	27 50	
14 to 16 ft.; 3 to 3 $\frac{1}{2}$ in.	3 50	32 50	
orientalis. Oriental Plane, or European			
Buttonwood. 6 to 8 ft.	1 00	7 50	50 00
8 to 10 ft.; 1 $\frac{1}{4}$ to 1 $\frac{1}{2}$ in.	1 25	11 50	85 00
10 to 12 ft.; 1 $\frac{3}{4}$ to 1 $\frac{3}{4}$ in.	1 50	12 50	115 00
12 to 14 ft.; 1 $\frac{3}{4}$ to 2 in.	1 75	16 00	150 00
12 to 14 ft.; 2 $\frac{1}{2}$ to 3 in.	3 50	32 50	
14 ft.; 3 to 4 in. Specimens.	\$5 to 10 00		
POPULUS alba, var. Bolleana. Bolle's Poplar—			
8 to 10 ft.	1 50	13 50	
12 to 14 ft.	2 50	20 00	
16 to 18 ft.; 3 to 3 $\frac{1}{2}$ in.	3 50		
monilifera; syn., Carolinensis. Carolina			
Poplar. 8 to 10 ft.	1 00	7 50	
10 to 12 ft.; 1 $\frac{1}{2}$ to 2 in.	1 50	10 00	
nigra, var. fastigiata. Lombardy Poplar—			
8 to 10 ft.	1 25	10 00	
10 to 12 ft.; 1 $\frac{1}{2}$ to 2 in.	1 50	13 50	125 00
12 to 14 ft.; 2 to 2 $\frac{1}{4}$ in.	2 00	18 50	150 00
14 to 16 ft.; 2 $\frac{1}{2}$ in.	2 50		
Transplanted several times.			
PRUNUS. See <i>Cerasus</i> .			
PTELEA trifoliata. Hop Tree. 4 to 6 ft.	35	3 00	
6 to 7 ft.	50	4 50	30 00
7 to 9 ft.	75	5 00	
trifoliata, var. aurea, Golden Hop Tree—			
4 to 5 ft.	35	3 00	
5 to 6 ft.	50	4 50	
PTEROSTYRAX hispida (<i>Halesia hispida</i>).			
8 to 10 ft.	1 50	12 50	
10 to 12 ft.	2 50	20 00	
PYRUS. See, also, <i>Shrubs</i> .			
atrosanguinea. 6 to 7 ft.	1 50	12 50	
baccata. Siberian Flowering Crab Apple—			
4 to 5 ft.	75	6 00	
5 to 6 ft.	1 00	8 50	
coronaria. Sweet-scented Crab. 4 to 5 ft. .	75	6 00	
floribunda. Flowering Crab. 4 to 5 ft. .	1 00	7 50	
lænsis, var. Bechtel. Bechtel's Double-			
flowering Crab. 3 to 4 ft. .	1 50	12 50	
Parkmani; syn., Halliana. Parkman's Crab—			
4 to 5 ft.	1 00	7 50	
spectabilis. Chinese Double-flowering Crab—			
3 to 4 ft.	1 00	7 50	
spectabilis, var. alba flore pleno. Double			
Rose-flowering Crab. 3 to 4 ft. .	1 00	7 50	
QUERCUS alba. White oak. 5 to 6 ft.	1 25		
6 to 7 ft.	1 50		
7 to 8 ft.	1 75	16 00	
8 to 10 ft.	2 50	22 50	
10 to 12 ft.	3 50	32 50	

PRICE LIST FOR SPRING OF 1910

31

	Each	10	100
QUERCUS bicolor. Swamp White Oak. 6 to 7 ft.	\$1 25	\$10 00	
7 to 8 ft.	1 50	12 50	
8 to 9 ft. Heavy	2 50	22 50	\$200 00
10 to 12 ft. Specimens	..\$3.50 to 5 00		
coccinea. Scarlet Oak. 6 to 7 ft.	1 25	10 00	
7 to 8 ft.	1 50	13 50	125 00
8 to 9 ft.; 1 $\frac{3}{4}$ to 2 in.	2 00	17 50	160 00
9 to 10 ft.; 2 to 2 $\frac{1}{4}$ in.	2 50	22 50	200 00
10 to 12 ft.; 2 $\frac{1}{2}$ to 2 $\frac{3}{4}$ in.	..\$2.75 to 5 00		
imbricaria. Laurel Oak. 7 to 8 ft.	2 50		
8 to 10 ft.	3 50		
10 to 12 ft.; 2 to 2 $\frac{1}{2}$ in.	5 00		
macrocarpa. Mossy Cup Oak—			
8 to 9 ft.; 1 $\frac{1}{2}$ to 1 $\frac{3}{4}$ in.	2 00		
10 to 12 ft.	2 50	22 50	
12 to 14 ft. Specimens	..\$3.50 to 5 00		
palustris. Pin Oak—			
6 to 7 ft. Low-branched	1 00	8 50	
7 to 8 ft. Low-branched	1 25	10 00	85 00
8 to 9 ft.; 1 $\frac{1}{2}$ to 1 $\frac{3}{4}$ in. Low-branched	1 50	13 50	125 00
9 to 10 ft.; 1 $\frac{3}{4}$ to 2 in. Low-branched	2 00	17 50	150 00
10 to 12 ft.; 2 to 2 $\frac{1}{2}$ in. Low-branched	2 50	22 50	185 00
10 to 12 ft.; 2 $\frac{1}{4}$ to 3 in.	3 50	30 00	275 00
Extra heavy specimens. 3 $\frac{1}{2}$ to 4 $\frac{1}{2}$ in. cal., well-rooted and good tops,	\$7.50 to 15 00		
Phellos. Willow Oak. 6 to 7 ft.	2 50	22 50	
7 to 8 ft.	3 50	32 50	
Prinus. Rock Chestnut Oak. 7 to 8 ft.	1 25	10 00	
8 to 10 ft.	1 50	13 50	
10 to 12 ft.; 2 to 2 $\frac{1}{4}$ in.	2 00	18 50	150 00
12 to 14 ft.; 2 $\frac{1}{2}$ to 2 $\frac{3}{4}$ in.	2 50	22 50	175 00
Excellent for street planting.			
Robur, English Oak. 6 to 8 ft.	1 00	8 50	
8 to 10 ft.	1 50	12 50	
10 to 12 ft.; 2 to 2 $\frac{1}{4}$ in.	2 00	17 50	125 00
12 to 14 ft.; 2 $\frac{1}{2}$ to 3 in.	2 50	22 50	200 00
Specimens. 3 $\frac{1}{2}$ to 4 $\frac{1}{2}$ in. cal.	..\$3.50 to 10 00		
Robur, var. fastigiata. Pyramidal English Oak. 7 to 8 ft.	2 50		
8 to 10 ft.	3 50	32 50	
rubra. Red Oak. 7 to 8 ft.	1 50	13 50	100 00
8 to 10 ft.; 2 to 2 $\frac{1}{4}$ in.	2 00	17 50	150 00
10 to 12 ft.; 2 $\frac{1}{2}$ to 2 $\frac{3}{4}$ in.	3 00	27 50	
12 to 14 ft. Specimens	..\$3.50 to 10 00		
velutina, var. tinctoria. Black Oak—			
6 to 8 ft.	1 25	10 00	
8 to 10 ft.; 1 $\frac{3}{4}$ to 2 in.	1 75	15 00	125 00
10 to 12 ft.; 2 to 2 $\frac{1}{4}$ in.	2 00	18 50	150 00
12 to 14 ft.; 2 $\frac{1}{2}$ to 2 $\frac{3}{4}$ in.	2 50	22 50	200 00
Specimens, 3 to 3 $\frac{1}{2}$ in.	3 00	27 50	
RHUS glabra. Smooth Sumac. 4 to 5 ft.	50	4 00	35 00
5 to 6 ft.	75	6 00	50 00
7 to 8 ft.	1 00	8 50	75 00
glabra, var. laciniata. Cut-leaved Sumac—			
1 $\frac{1}{2}$ to 2 ft.	75	5 00	40 00
3 to 3 $\frac{1}{2}$ ft.	1 00		

	Each	10	100
RHUS Osbecki. 3 to 4 ft.	\$0 50		
6 to 7 ft.	1 00	\$8 50	
typhina. Staghorn Sumac. 3 to 4 ft.	35	3 00	\$15 00
5 to 6 ft.	50	4 00	30 00
6 to 8 ft.	75	6 00	50 00
8 to 10 ft.	1 00	8 50	
ROBINIA pseudacacia. 12 to 14 ft.	3 50	32 50	
pseudacacia, var. foliis aureis. Golden-leaved Locust. 6 to 8 ft.	1 00		
8 to 10 ft.	1 50		
SALISBURIA adiantifolia. Ginkgo, or Maidenhair Tree. 6 to 7 ft.	1 00	8 50	
7 to 8 ft.	1 25	10 00	
8 to 9 ft.	1 50	13 50	125 00
9 to 10 ft.	2 00	17 50	150 00
10 to 12 ft.	2 50	22 50	200 00
SALIX alba. White Willow. 6 to 8 ft.	75	5 00	
8 to 10 ft.	1 50	12 50	35 00
Babylonica. Weeping Willow. 6 to 8 ft. ..	75	6 00	
8 to 10 ft.	1 00	8 50	
Babylonica, var. dolorosa. Wisconsin Weeping Willow. 8 to 10 ft.	1 00	8 50	
caprea. Pussy Willow. 3 to 4 ft.	50	4 00	35 00
5 to 6 ft.	1 00	8 50	
incana. Rosemary Willow. 2 ft.	50	3 00	20 00
lutea. Golden Willow. 8 to 10 ft.	1 50	12 50	
10 to 12 ft.	2 00	17 50	
lutea, var. pendula. Golden Weeping Willow—			
8 to 10 ft.	1 50		
10 to 12 ft.	2 50		
12 to 14 ft.	\$3.50 to 5 00		
pentandra. Laurel Leaf Willow. 5 to 6 ft. .	1 00	7 50	
6 to 8 ft.	1 50	10 00	
viminalis. 3 to 4 ft.	50	3 00	
vitellina, var. Britzensis. Salmon-barked Willow. 10 to 12 ft.	2 00	17 50	
SOPHORA Japonica. Japanese Sophora—			
3 to 3½ ft.	1 00	8 50	
Japonica, var. pendula. Weeping Sophora—			
7 to 8 ft. Specimens... ♦	\$3.50 to 5 00		
SORBUS Americana. American Mountain Ash—			
7 to 8 ft.	1 50		
aucuparia. European Mountain Ash—			
7 to 8 ft.	1 50		
aucuparia, var. fruticosa lutea. Yellow-fruited. 7 to 8 ft.	1 50		
aucuparia, var. quercifolia. Oak-leaved Mountain Ash. 6 to 7 ft.	1 50		
TAXODIUM distichum. Deciduous Cypress—			
4 to 5 ft. ♦	1 50	12 50	
TILIA Americana. American Linden, or Basswood—			
8 to 10 ft.	2 00	17 50	
10 to 12 ft.; 2 to 2½ in.	2 50	22 50	
10 to 12 ft.; 2¼ to 2¾ in.	3 50		
10 to 12 ft.; 2½ to 3 in. ♦	\$4.00 to 5 00		
12 to 14 ft.; 3 to 4 in. ♦	\$5 to 10 00		

PRICE LIST FOR SPRING OF 1910

	Each	10
TILIA argentea; syn., tomentosa. Silver-leaved Linden—		
6 to 8 ft.	\$1 50	\$12 50
8 to 10 ft.; 2 $\frac{1}{4}$ to 2 $\frac{3}{8}$ in.	2 00	18 50
10 to 12 ft.; 2 $\frac{3}{8}$ to 2 $\frac{3}{4}$ in.	3 50	32 50
vulgaris; syn., Europæa. European Linden—		
8 to 10 ft.; 1 $\frac{1}{2}$ to 2 in.	1 50	12 50
10 to 12 ft.; 2 to 2 $\frac{1}{2}$ in.	2 50	
12 to 14 ft.; 3 to 4 in.	\$3.50 to 7 50	
vulgaris, var. pyramidalis laciniata. Pyramidal Cut-leaf. 10 to 12 ft.	2 00	15 00
ULMUS Americana. American Elm—		
8 to 10 ft.	1 00	7 50
10 to 12 ft.	1 50	13 50
12 to 14 ft.; 2 to 2 $\frac{1}{4}$ in.	2 50	20 00
12 to 14 ft.; 2 $\frac{1}{4}$ to 2 $\frac{3}{8}$ in.	2 75	25 00
12 to 14 ft.; 2 $\frac{3}{8}$ to 2 $\frac{3}{4}$ in.	3 00	27 50
14 to 15 ft.; 3 to 6 in. Specimens	\$5 to 25 00	
campestris. English Elm. 8 to 10 ft.	1 50	13 50
10 to 12 ft.; 2 $\frac{1}{2}$ to 2 $\frac{3}{4}$ in.	2 75	25 00
12 to 14 ft.; 2 $\frac{3}{4}$ to 3 in.	3 50	32 50
Specimens	\$5 to 7 50	
campestris, var. latifolia; syn., major. Broad-leaved English Elm. 10 to 12 ft.; 2 to 2 $\frac{1}{2}$ in.	2 00	
12 to 14 ft.; 2 $\frac{1}{2}$ to 2 $\frac{3}{4}$ in.	2 75	
12 to 14 ft.; 2 $\frac{3}{4}$ to 3 in.	3 50	32 50
16 to 18 ft.; 3 to 4 in.	\$5 to 7 50	
campestris, var. Wheatley's (Cornish) Elm—		
10 to 12 ft.	2 50	22 50
12 to 14 ft.	3 50	32 50
scabra; syn., montana. Scotch, or Wych Elm—		
8 to 10 ft.; 1 $\frac{1}{2}$ to 2 in.	1 50	13 50
scabra, var. Huntingdoni. Huntingdon Elm—		
12 to 14 ft.; 2 $\frac{1}{2}$ to 2 $\frac{3}{4}$ in.	2 50	22 50
14 to 16 ft.; 3 to 3 $\frac{1}{4}$ in.	\$3.50 to 7 50	
scabra, var. pendula. Camperdown Elm—		
6 ft.	1 50	
scabra, var. purpurea. Purple Wych Elm—		
8 to 10 ft.	1 50	13 50
10 to 12 ft.; 2 to 2 $\frac{1}{4}$ in.	2 00	17 50
12 to 14 ft.; 3 to 3 $\frac{1}{2}$ in.	2 50	22 50

DECIDUOUS SHRUBS

	Each	10	100
ABELIA rupestris. 1 to 1 $\frac{1}{2}$ ft.	\$0 50	\$4 50	\$25 00
1 $\frac{1}{2}$ to 2 ft.	75	6 50	30 00
2 to 2 $\frac{1}{2}$ ft.	1 00	7 50	50 00
ACANTHOPANAX spinosa (Aralia pentaphylla)—			
3 to 4 ft.	35	3 00	20 00
4 to 6 ft. Heavy.	50	4 00	30 00
ÆSCULUS parviflora; syn., Pavia macrostachya—			
1 $\frac{1}{2}$ ft.	1 00	8 50	75 00
2 ft.	1 50	13 50	100 00
2 $\frac{1}{2}$ ft.	2 00	17 50	
ALTHEA. See <i>Hibiscus.</i>			
AMELANCHIER Botryapium. 2 $\frac{1}{2}$ to 3 ft.	35	3 00	25 00
3 to 4 ft.	50	4 00	30 00



Partial View of Nursery Grounds from Top of Main Nursery.

	Each	10	100
AMORPHA canescens. 2 ft.	\$0 35	\$2 50	\$15 00
fragrans. 3 to 4 ft.	35	3 00	25 00
fruticosa. 2 to 3 ft.	25	2 00	
3 to 4 ft.	35	3 00	20 00
4 to 5 ft.	50	4 00	25 00

AMYGDALUS (Almond). See *Prunus*.

NATIVE AZALEAS.—Andorra Grown

Clean, bushy, transplanted stock.

	Each	10	100
AZALEA arborescens. Fragrant White Azalea—			
12 to 15 in. Bushy	\$1 00	\$9 00	
15 to 18 in. Bushy	1 50	13 50	\$125 00
1½ to 2 ft. Bushy	2 00	18 50	150 00
2 to 2½ ft. Bushy	2 50	22 50	200 00
2½ to 3 ft. Bushy	3 50	30 00	
calendulacea. Flame Azalea. 12 to 15 in.	1 00	9 00	
15 to 18 in. Bushy	1 50	13 50	125 00
18 to 24 in. Bushy	1 75	15 00	135 00
2 to 2½ ft. Bushy	2 50	22 50	
Canadensis (Rhodora). 1 ft. Bushy ...	1 00	8 50	75 00
1½ to 2 ft.	2 00	18 50	150 00
nudiflora. 12 to 15 in.	1 00	9 00	
15 to 18 in.	1 50	13 50	
1½ to 2 ft. Bushy	1 75	15 00	
2 to 2½ ft. Bushy	2 50		
Vaseyi. Southern Azalea. 12 to 15 in.	1 00	9 00	
15 to 18 in.	1 50	13 50	
1½ to 2 ft. Bushy	2 00	18 50	150 00
2 to 2½ ft. Bushy	2 50	22 50	
2½ to 3 ft. Bushy	3 50	30 00	
viscosa. White Azalea—			
15 to 18 in. Bushy	1 50	13 50	
1½ to 2 ft. Bushy	2 00	18 50	
2 to 2½ ft. Bushy	2 50	22 50	

MOLLIS and GHENT AZALEAS

	Each	10	100
AZALEA mollis. 1½ ft.	\$1 25	\$10 00	\$90 00
2 ft. Bushy	1 50	13 50	125 00
2½ ft. Bushy	2 00	17 50	
All very heavy stock, lifting with good balls.			
Pontica (Ghent). 1½ ft. Named sorts...	1 25	10 00	90 00
2 ft. Bushy. Named sorts	1 50	12 50	120 00
2½ to 3 ft. Bushy	2 50	22 50	
3 to 3½ ft. Bushy	\$2.50 to 3 50		
Heavy stock, lifting with good balls.			
BACCHARIS halimifolia. Groundsel Shrub—			
4 to 5 ft.; heavy	75		
Desirable for late bloom.			
BENZOIN odoriferum. Spice Bush. 2 to 2½ ft....	35	3 00	
3 to 3½ ft.	50	4 00	
3½ to 4 ft.	75	6 00	
BERBERIS (Barberry) Asiatica. 3 to 3½ ft....♦..	75	6 00	
ilicifolia. Holly-leaved. 15 to 18 in...	35	3 00	27 50
1½ to 2 ft.	50	4 00	35 00
2 to 2½ ft.	75	6 00	40 00
Japonica (not Mahonia). 2 to 2½ ft..	50	4 50	
3 to 4 ft.	75	5 00	
Sinensis. Chinese Barberry. 2 to 2½ ft.	35		
2½ to 3 ft.; very heavy	50		
3 to 3½ ft.	75		
Thunbergii. 12 to 15 in.	25	1 75	12 50
15 to 18 in.	35	2 50	15 00
1½ ft.; broad and very heavy ...	50	3 50	20 00
1¾ to 2 ft.; broad and very heavy	60	4 50	25 00
2½ ft.; broad and very heavy	75	6 00	
3 to 3½ ft.; broad and very heavy	1 00		
vulgaris. Common Barberry—			
1½ to 2 ft.	35	3 00	15 00
2 to 2½ ft.	50	3 50	20 00
2½ to 3 ft.	60	5 00	25 00
vulgaris, var. purpurea. 2 to 2½ ft....	35	3 00	17 50
2½ to 3 ft.	50	3 50	25 00
3 to 3½ ft.	60	4 00	35 00
3½ to 4 ft.	75	6 00	50 00
CALLICARPA purpurea. Beauty Fruit. 2 to 2½ ft.	35	3 00	25 00
2½ to 3 ft.	50	4 50	30 00
3 to 4 ft.	75	6 00	35 00
CALYCANTHUS floridus. Allspice, or Sweet Shrub—			
3 to 3½ ft.	50	4 00	30 00
4 to 5 ft.	75	6 00	35 00
CARAGANA arborescens. Siberian Pea—			
2½ to 3 ft.	25	2 00	17 50
3 to 3½ ft.	35	3 00	25 00
3½ to 4 ft.	50	4 00	
CARYOPTERIS Mastacanthus. Blue Spirea—			
1½ ft.	35	2 50	15 00

	Each	10	100
CEANOTHUS Americanus. Jersey Tea. 1½ to 2 ft..	\$0 25	\$2 00	
2 to 2½ ft.	35	3 00	
2½ to 3 ft.	50	4 00	
Americanus, var. Fendleri—			
2 to 2½ ft.	75		
CEPHALANTHUS occidentalis—			
3½ to 4 ft.	35	3 00	\$25 00
4 to 5 ft.	50	4 00	30 00
CERCIS. See, also, <i>Deciduous Trees.</i>			
Japonica. Japan Judas—			
3 to 3½ ft.	75	6 00	
Exceptionally fine stock.			
CHIONANTHUS Virginica. White Fringe. 2 to 2½ ft.	35	3 00	
2½ to 3 ft. Bushy	50	4 50	40 00
3 to 4 ft. Bushy	75	7 00	50 00
4 to 5 ft. Bushy	1 00	8 50	75 00
5 to 6 ft.	1 50	13 50	100 00
CLETHRA alnifolia. Sweet Pepperbush—			
2 to 2½ ft.	35	2 50	17 50
2½ to 3 ft. Broad and bushy	50	3 00	20 00
3 to 3½ ft. Broad and bushy	60	4 00	25 00
4 to 4½ ft. Bushy	75		
COLUTEA arborescens. Bladder Senna. 2 to 3 ft..	35	2 50	
3 to 3½ ft.	50	4 00	20 00
4 to 5 ft.	75	6 00	25 00
COMPTONIA asplenifolia. Sweet Fern. 1½ to 2 ft.	35	3 00	25 00
2 to 2½ ft.	50	4 00	30 00
CORCHORUS Japonicus. Single Globe Flower—			
2 to 2½ ft.	50	3 50	
Japonicus, var. variegata. (Variegated Leaves). 2 to 2½ ft.	50		
CORNUS. See, also, <i>Trees.</i>			
alba. Siberian Red-twigged Dogwood—			
2 to 2½ ft.	25	2 00	15 00
2½ to 3 ft.; very heavy	35	3 00	20 00
3 to 3½ ft.; very heavy	50	4 00	25 00
3½ to 4 ft.; very heavy	75	6 00	30 00
5 to 6 ft.	1 00	7 50	
alba; syn., Siberica, var. aurea variegata—			
1½ to 2 ft.	50	4 00	
3 to 4 ft.	75	5 00	
alba, var. elegantissima. Golden-leaved—			
2 to 3 ft.	35	3 00	
3 to 4 ft.	75	6 00	
alternifolia. 3 to 4 ft.	50	4 00	30 00
4 to 5 ft.	75	5 00	40 00
5 to 6 ft.	1 00	6 00	50 00
Mas. Cornelian Cherry. 1½ to 2 ft..	25	2 00	15 00
2 to 2½ ft.	35	3 00	20 00
2½ to 3 ft.	50	3 50	30 00
4½ to 5 ft.; very heavy	75	6 00	
5 to 6 ft.	1 00	7 50	
6 to 10 ft. Specimens. ♦. \$1.50 to	2 50		
paniculata. 2½ to 3 ft.	35	3 00	
3 to 3½ ft.	50	4 00	
4 to 5 ft.	75	5 00	

PRICE LIST FOR SPRING OF 1910

37

	Each	10	100
CORNUS sanguinea. European Osier Dogwood—			
2 to 2½ ft. Fine.....	\$0 25	\$2 00	\$15 00
3½ to 4 ft. Fine.....	35	3 00	25 00
4 to 5 ft. Fine.....	50	4 00	30 00
5 to 6 ft. Fine.....	75	5 00	35 00
sanguinea, var. elegantissima variegata—			
2½ to 3 ft.	50		
3 to 4 ft.	75		
sericea. Silky Dogwood. 3 to 3½ ft. ...	35	3 00	20 00
3½ to 4 ft.	50	4 00	30 00
4 to 5 ft.	75	6 00	35 00
6 to 7 ft.	1 00	7 50	50 00
stolonifera. Native Red Osier—			
2½ to 3 ft.	35	3 00	20 00
3 to 3½ ft.	50	4 00	25 00
3½ to 4 ft.	60	5 00	30 00
4 to 5 ft.	75	6 00	35 00
6 to 7 ft.	1 00	7 50	50 00
stolonifera, var. aurea. Golden-barked—			
2 to 2½ ft.	35	3 00	20 00
2½ to 3 ft.	50	3 50	25 00
3 to 3½ ft.	75	5 00	35 00
CORYLUS Americana. American Hazel—			
3½ to 4 ft.	50	3 50	
Avellana, var. laciniata. Cut-leaved Hazel—			
6 to 8 ft.	1 00	7 50	
maxima, var. purpurea. Purple Hazel—			
2 to 2½ ft.	35	3 00	20 00
2½ to 3 ft.	50	4 50	30 00
COTONEASTER frigida, var. bacillaris—			
2 to 2½ ft.	35		
4 to 4½ ft.	50	4 00	25 00
CRATÆGUS. See <i>Trees.</i>			
CYDONIA Japonica. Japan Quince. 2 to 2½ ft....	35	3 00	
CYTISUS scoparius. Scotch Broom. 4 to 5 ft....	50	4 50	30 00
DESMODIUM penduliflorum. See <i>Lespedeza Sieboldi.</i>			
DEUTZIA candidissima (Double White). 3 to 3½ ft.	35	3 00	
3½ to 4 ft.	50	4 00	25 00
5 to 6 ft.	75	5 00	35 00
crenata. 3½ to 4 ft.	50	3 50	30 00
crenata, var. Pride of Rochester—			
3 to 3½ ft.	50	3 50	
4 to 5 ft.	75	5 00	35 00
crenata, var. Watercr. 3 ft.	35	3 00	
3½ to 4 ft.	50	3 50	25 00
4 to 5 ft.	60	4 00	30 00
5 to 6 ft.	75	6 00	35 00
crenata, var. Wellsi. 3 to 4 ft.	50	3 00	20 00
4 to 5 ft.	75	5 00	25 00
gracilis. Dwarf Deutzia. 12 to 15 in... ..	35	3 00	15 00
15 to 18 in.; very heavy	50	4 00	25 00
18 to 24 in.	75	6 00	30 00
24 to 30 in.	1 00	7 50	40 00
gracilis, var. carminea. 15 to 18 in.....	50	4 00	25 00
18 to 24 in.	75	6 00	30 00
24 to 30 in.	1 00	7 50	40 00

ANDORRA NURSERIES

	Each	10	100
DEUTZIA gracilis , var. rosea . 1½ to 2 ft.	\$0 50	\$4 00	\$25 00
2 to 2½ ft.	75	6 00	30 00
2½ to 3 ft.	1 00	7 50	35 00
Lemoinei . 2 to 2½ ft.; very heavy	35	3 00	20 00
3 to 3½ ft.; heavy	50	4 00	30 00
4 to 5 ft.; heavy	75	6 00	35 00
Lemoinei , var. compacta . 2½ to 3 ft.	50	4 00	25 00
3 to 3½ ft.	75	5 00	35 00
4 to 5 ft.	1 00	7 50	50 00
parviflora . 2 to 2½ ft.	50	4 00	
scabra . 3 to 3½ ft.	35	3 00	15 00
4 to 5 ft.	50	4 00	20 00
5 to 6 ft.	75	6 00	30 00
DIERVILLA (Weigela) florida , var. amabilis . 5 to 6 ft.	75	5 00	40 00
florida ; syn., rosea . 2½ to 3 ft.	35	2 50	
3 to 4 ft.	50	4 00	20 00
4 to 5 ft.	75	5 00	30 00
florida , var. candida . 3 to 3½ ft.	35	3 00	
4 to 5 ft.	50	4 00	30 00
5 to 6 ft.	75	5 00	40 00
florida nana , var. aurea variegata —			
2½ to 3 ft.	50	4 00	30 00
florida , var. Sieboldi alba . 4 to 5 ft.	75	6 00	
floribunda Lavaliei . 3 to 3½ ft.	35	3 00	
3½ to 4 ft.	50	4 00	30 00
5 to 6 ft.	75	6 00	40 00
Japonica (syn., hortensis), var. floribunda , 3 to 3½ ft.	35	2 00	15 00
3½ to 4 ft.	50	4 00	25 00
5 to 6 ft.	75	5 00	
Japonica , var. Eva Rathke . 2 to 2½ ft. ♦ ..	35	3 00	20 00
2½ to 3 ft. ♦ ..	50	3 50	25 00
4 to 5 ft. ♦ ..	75	6 00	30 00
Japonica , var. nivea . White. 2½ to 3 ft.	50	4 00	
3½ to 4 ft.	75	5 00	
Japonica , var. rubra . 4 to 4½ ft.	50	4 00	30 00
5 to 6 ft.	75	5 00	35 00
Grønewegeni . 4 to 5 ft.	50	4 00	30 00
5 to 6 ft.	75	6 00	40 00
Grønewegeni , var. Mad. Contourier . (Hybrid). 3 to 3½ ft.	35	3 00	
3½ to 4 ft.	50	4 00	25 00
5 to 6 ft.	75	5 00	30 00
Grønewegeni , var. Steltzneri . 3 to 3½ ft.	50	4 00	
3½ to 4 ft.	60	5 00	30 00
5 to 6 ft.	1 00	7 50	50 00
Grønewegeni , var. Van Houttei —			
3 to 3½ ft.	35	3 00	
4 to 4½ ft.	50	4 00	
5 to 6 ft.	75	6 00	40 00
Verschaffelti . 3 to 3½ ft.	35	3 00	
4 to 5 ft.	50	4 00	30 00
5 to 7 ft.	1 00	7 50	40 00
sessilifolia . 2 to 3 ft.	25	2 00	
3 to 3½ ft.	50	3 50	25 00
4 to 5 ft.	75	5 00	35 00
trifida . 2 to 2½ ft.	35	3 00	20 00
3 to 4 ft.	50	4 00	25 00

PRICE LIST FOR SPRING OF 1910

	Each	10	100
ELÆAGNUS angustifolia. Oleaster. 4 to 5 ft.	\$0 35	\$3 00	
5 to 6 ft.	50	4 00	
6 to 8 ft.	75	6 00	
longipes; syn., edulis. Japanese Oleaster. 2 to 2½ ft.	35	3 00	
2½ to 3 ft. Bushy.....	50	4 00	\$25 00
3 to 4 ft. Bushy.....	1 00	6 00	30 00
4 to 5 ft. Bushy.....	1 50	10 00	50 00
5 to 6 ft.	2 00	17 50	
parvifolia. 6 to 7 ft.	1 00	7 50	
EUONYMUS alatus. Cork-barked. 2 to 2½ ft.	1 50	13 50	
2½ to 3 ft.	2 50	22 50	
3 to 3½ ft.	3 50		
One of the most ornamental of flowering and fruiting shrubs. Berries are bright carmine.			
Americana. Strawberry Bush—			
3 to 4 ft.	35	3 00	25 00
4 to 5 ft.	50	4 00	30 00
Europæus. Spindle Tree. 3 to 4 ft. ..	35	3 00	20 00
4 to 5 ft.	50	3 50	25 00
5 to 6 ft.	75	4 00	30 00
EXOCHORDA grandiflora. Pearl Bush. 3 to 3½ ft.	50	3 50	25 00
3½ to 4 ft.	75	4 00	30 00
4 to 5 ft.	1 00	5 00	35 00
FORSYTHIA (Golden Bell) Fortunei. 2½ ft.	35	2 50	
3 to 4 ft.	50	3 50	25 00
4 to 5 ft.; very heavy	75	4 00	30 00
5 to 6 ft.	1 00	5 00	35 00
intermedia. 3 to 3½ ft.	35	2 50	20 00
3½ to 4 ft.; very heavy	50	4 00	25 00
4 to 5 ft.	75	5 00	30 00
5 to 6 ft.	1 00	7 50	40 00
suspensa. 3 to 3½ ft.	35	3 00	20 00
3½ to 4 ft.	50	4 00	25 00
4 to 5 ft.	75	6 00	30 00
5 to 7 ft.; very heavy	1 00	7 50	50 00
viridissima. 2 to 3 ft.	25	2 00	
3 to 4 ft.; very heavy; extra....	35	3 00	25 00
4 to 5 ft.; very heavy; extra....	50	4 00	30 00
5 to 6 ft.; very heavy; extra....	75	6 00	50 00
HALESIA tetraptera. 7 to 8 ft.	1 00	8 50	
HAMAMELIS Japonica. Japanese Witch Hazel—			
3 to 3½ ft.	50		
Virginiana. Witch Hazel. 2 to 2½ ft.	35	3 00	
3 to 4 ft.	50	4 00	
4 to 5 ft.	75	6 00	50 00
5 to 6 ft.; heavy	1 00	7 50	60 00
HIBISCUS Syriacus. Althæa; Rose of Sharon—			
Boule de Feu. 4 to 5 ft.	50	4 00	25 00
Comte de Flandre. 4 to 5 ft.	50	4 00	25 00
Jeanne d'Arc. 3 to 3½ ft.	35	3 00	20 00
3½ to 4 ft.	50	4 00	25 00
Lady Stanley. 3 to 3½ ft.	50	4 00	
4 to 5 ft.	75	5 00	
Leopoldi. 4 to 5 ft.	50	4 00	30 00

	Each	10	100
HIBISCUS <i>purpureus folis argentea marginata</i> —			
3 to 3½ ft.	\$0 35	\$3 00	\$20 00
4 to 4½ ft.	50	4 00	25 00
totus albus. 2½ to 3 ft.	35	3 00	20 00
3 to 3½ ft.	50	4 00	25 00
3½ to 4 ft.	75	5 00	30 00
HIPPOPHAE <i>rhamnoides.</i> See <i>Buckthorn.</i>			
3½ to 4 ft.	50	2 50	20 00
HYDRANGEA <i>arborescens.</i> 1½ to 2 ft.	50	3 50	20 00
Hortensis, var. Imperatrice Eugenie —			
1½ ft.; 4-in. pot.	75		
Hortensis, var. Otaska. 3-year	75		
Hortensis, var. Japonica. 1 ft.	75		
paniculata. 2½ to 3 ft.	35	3 00	
3½ to 4 ft.; very heavy	50	4 00	30 00
4 to 5 ft.	75	6 00	40 00
5 to 6 ft.	1 00	7 50	50 00
paniculata grandiflora. 2½ to 3 ft.	35	3 00	
3 to 3½ ft.	50	4 00	25 00
3½ to 4 ft.	75	6 00	35 00
4 to 4½ ft.; an extra heavy lot.	1 00	7 50	50 00
4½ to 5 ft.; bushy	1 50	12 50	60 00
quercifolia. Oak-leaved—			
1½ to 2 ft.	1 00	7 50	50 00
HYPERICUM <i>azureum.</i> 3 to 3½ ft.	35	3 00	25 00
calcinum. Aaron's Beard. 2 ft.	50	4 00	
hircinum. 1 to 1½ ft.	35	2 50	
Moserianum hybridum. Gold-Flower—			
10 to 12 in.	50	2 50	20 00
prolificum. 2½ to 3 ft.	35	3 00	20 00
3 to 3½ ft.	50	3 50	25 00
4 to 4½ ft.	75	5 00	
ILEX <i>verticillata.</i> Winter Berry. 1½ to 2 ft.	25	2 00	17 50
2 to 2½ ft.	35	3 00	25 00
2½ to 3 ft.	50	4 00	
ITEA <i>Virginica.</i> 1½ to 2 ft.	35	2 00	15 00
2 to 2½ ft.	50	3 00	25 00
2½ to 3 ft.	75	6 00	30 00
JASMINUM <i>nudiflorum.</i> Yellow Jasmine—			
2 to 2½ ft.	50	3 50	25 00
officinale. Hardy White Jasmine—			
2 to 2½ ft.	50	3 50	
KERRIA. See <i>Corchorus.</i>			
LESPEDEZA <i>bicolor.</i> 2½ to 3 ft.	35	2 50	20 00
3 to 4 ft.	50	4 00	25 00
Sieboldi; syn., Desmodium Japonicum —			
Heavy clumps	35	3 00	
Sieboldi, var. alba. Heavy clumps—	50	4 00	
LIGUSTRUM <i>Amurense.</i> Amoor Privet—			
6 to 8 ft.	1 00	8 50	
8 to 9 ft.	\$1.50 to 2 50		
ciliatum. Sold by many for <i>Ibota.</i>			
2 to 2½ ft.	25	1 50	
2½ to 3 ft. Broad and heavy	35	2 50	20 00
3 to 3½ ft. Broad and heavy	50	3 50	25 00
3½ to 4 ft. Broad and heavy	60	4 00	30 00
4 to 5 ft. Broad and heavy	75	5 00	35 00

PRICE LIST FOR SPRING OF 1910

	Each	10	100
LIGUSTRUM <i>ibota</i> . The true upright form—			
2 to 2½ ft.	\$0 25	\$2 00	\$12 50
2½ to 3 ft.	35	3 00	15 00
3 to 3½ ft.	50	3 50	20 00
4 to 5 ft. Heavy	60	4 00	30 00
6 to 7 ft.	75	6 00	50 00
<i>ibota</i> , var. <i>Regelianum</i> . Regel's—			
2 to 2½ ft.	50	4 00	20 00
2½ to 3 ft.	75	6 00	25 00
4 to 4½ ft.	1 00	7 50	35 00
4½ to 5 ft.	1 25	10 00	60 00
<i>media</i> . 4 to 5 ft.	75	5 00	30 00
<i>ovalifolium</i> . California Privet—			
2 to 2½ ft.; bushy } 1,000, \$40+ }	25	1 00	7 50
2½ to 3 ft.; bushy } 1,000, \$60+ }	35	1 50	10 00
3 to 3½ ft.; bushy+ }	50	2 50	15 00
3½ to 4 ft.; bushy	60	4 00	20 00
4 to 5 ft.; bushy	75	5 00	35 00
5 to 6 ft.; bushy	1 00		
Grand stock, all transplanted; a great deal of Privet offered by nurseries has never been trans- planted. Ours have all been. We find it gives better results.			
<i>Sinensis</i> . Chinese Privet. 2 to 2½ ft..	35	2 50	20 00
3 to 3½ ft.	50	3 50	25 00
3½ to 4 ft.	75	4 00	30 00
<i>vulgaris</i> . Common Privet. 2½ to 3 ft.	35	3 00	15 00
3 to 3½ ft.	50	4 00	20 00
LONICERA <i>fragrantissima</i> . Chinese Fragrant Bush			
Honeysuckle. 2 to 3 ft.	25	2 00	
3 to 4 ft.	35	3 00	25 00
4 to 5 ft.; heavy	50	4 00	30 00
5 to 6 ft.; heavy	75		



A Portion of the Propagating Grounds at Andorra.

	Each	10	100
LONICERA Morrowi. Japanese Bush Honeysuckle—			
3 to 3½ ft.	\$0 50	\$3 50	\$25 00
3½ to 4 ft.	75	5 00	35 00
4 to 5 ft.	1 00	6 00	40 00
Ruprechtiana. 2 to 3 ft.	50	3 50	25 00
3 to 4 ft.	75	6 00	
Standishi. Standish's Honeysuckle—			
3 to 4 ft.	75	6 00	
Tatarica, assorted. 3 to 3½ ft.	35	2 50	
3½ to 4 ft.	50	3 00	25 00
5 to 6 ft.	75	5 00	
6 to 8 ft.; heavy	1 00	6 00	
Tatarica (rubra). 2½ to 3 ft.	50	3 50	
3½ to 4 ft.	75	5 00	30 00
Tatarica, var. alba. 2 to 2½ ft.	35	3 00	
3 to 4 ft.	50	3 50	30 00
4 to 5 ft.; heavy	1 00	8 50	
Tatarica, var. bella albida. 3 to 4 ft.	50	4 00	25 00
4 to 5 ft.	75	5 00	30 00
5 to 6 ft.	1 00	7 50	35 00
Tatarica, var. gracilis. 3 to 4 ft.	50	4 00	25 00
4 to 5 ft.	75	6 00	30 00
Tatarica, var. Chrysanthera. 2 to 2½ ft. ..	35	3 00	15 00
3 to 4 ft.	50	3 50	25 00
4 to 5 ft.	75	5 00	30 00
Tatarica, var. splendens. 2 to 2½ ft.	35	3 00	
3 to 4 ft.	50	4 00	
LYCIUM Chinense. Matrimony Vine. 2½ to 3 ft. ..	35	2 50	20 00
3 to 3½ ft.	50	4 00	25 00
MYRICA cerifera. Wax Myrtle. 1 to 1½ ft.	35	3 00	
2 to 2½ ft.	50	4 00	
cerifera, var. pumila. 1 to 1½ ft.	50	4 00	
PAVIA parviflora. See <i>Æsculus</i> , under Shrubs.			
PHILADELPHUS coronarius. Mock Orange—			
2 to 2½ ft.	35	3 00	
3 to 4 ft.	50	4 00	30 00
4 to 5 ft.	75	6 00	
coronarius, var. aureus. Golden			
Mock Orange. 2½ to 3 ft.	50	4 00	
grandiflorus. 3 to 4 ft.	50	4 00	25 00
4 to 5 ft.	75	6 00	30 00
5 to 6 ft.	1 00	7 50	35 00
6 to 8 ft.	1 50	12 50	60 00
Lemoinei. (Hybrid). 2 to 2½ ft.	35	3 00	
3 to 3½ ft.	50	4 00	25 00
Lemoinei, var. erectus. 2½ to 3 ft.	35	3 00	20 00
3 to 3½ ft.	50	4 00	25 00
Mt. Blanc. 2½ to 3 ft.	50	3 50	25 00
Zeyheri, var. speciosissimus—			
3 to 3½ ft.	50	4 00	25 00
5 to 6 ft.	75	6 00	
POTENTILLA fruticosa. Shrubby Cinquefoil—			
2 to 2½ ft.	35	3 00	20 00
2½ to 3 ft.	50	3 50	25 00
3 to 3½ ft.	75	4 00	
PRUNUS amygdalus communis. Flowering Almond—			
2 to 2½ ft.	75	5 00	
amygdalus communis, var. rosea. 2 to 2½ ft.	75	5 00	

PRICE LIST FOR SPRING OF 1910

43

	Each	10	100
PYRUS arbutifolia. Chokeberry. 2 to 3 ft.	\$0 35	\$3 00	
3½ to 4 ft.	50	4 00	\$25 00
4 to 5 ft.	75	5 00	30 00
RHAMNUS cathartica. Buckthorn. 3 to 4 ft.	35	3 00	15 00
4 to 5 ft.	50	3 50	20 00
5 to 6 ft.	75	4 00	25 00
RHODOTYPUS kerrioides. White Kerria. 2 to 2½ ft.	25	2 00	15 00
2½ to 3 ft.	35	3 00	25 00
3½ to 4 ft.	50	4 00	30 00
4 to 4½ ft.	75	6 00	40 00
4½ to 5 ft.	1 00	7 50	50 00
RHUS aromatica. Fragrant Sumac. 2 to 2½ ft. ..	50	4 00	35 00
2½ to 3 ft.	75	6 00	40 00
3 to 3½ ft.	1 00	7 50	50 00
copallina. Shining Sumac. 2 to 2½ ft.	35	3 00	20 00
2½ to 3 ft.	50	4 00	35 00
4 to 5 ft.	75	6 00	
Cotinus. Mist, or Smoke Tree. 3 to 3½ ft. ..	35	3 00	25 00
3½ to 4 ft.	50	4 00	30 00
5 to 6 ft.	75	6 00	35 00
6 to 8 ft.	1 00	7 50	40 00
Cotinus, var. atropurpurea. Purple Mist—			
2½ to 3 ft.	50	4 00	
3 to 3½ ft.	75	6 00	
3½ to 4 ft.	1 00	7 50	
RIBES aureum. Golden Currant. 3 to 4 ft.	35	3 00	17 50
4 to 5 ft.	50	4 00	20 00
5 to 6 ft.	75	5 00	25 00
Gordonianum. 2½ to 3 ft.	35	3 00	20 00
3 to 3½ ft.	50	4 00	30 00
sanguineum. 2 to 2½ ft.	35	3 00	
ROBINIA hispida. Rose Acacia. 2 to 2½ ft.	25	2 00	
RUBUS Canadensis. 3 to 4 ft.	35	2 00	12 50
odoratus. 2½ to 3 ft.	25	2 00	15 00
3 to 4 ft.	35	3 00	20 00
SAMBUCUS Canadensis. 1½ to 2 ft.	25	1 50	10 00
Melanocarpus. 4 to 5 ft.	75	6 00	
nigra, var. aurea. Golden Elder—			
3 to 4 ft.	50	3 50	25 00
4 to 5 ft.	60	4 00	35 00
5 to 6 ft.	75	5 00	40 00
nigra, var. laciniata. Cut-leaved Elder—			
2½ to 3 ft.	35	3 00	20 00
3 to 4 ft.	50	4 00	30 00
racemosa. Red-fruited. 2 to 3 ft. ..	35	3 00	
3 to 4 ft.	50		
5 to 6 ft.	1 00		
SPIRÆA arguta. 4 to 4½ ft.	35	2 50	20 00
5 to 5½ ft.; heavy	50	3 50	25 00
Billardii. 3 to 3½ ft.	35	3 00	20 00
5 to 6 ft.	50	3 50	25 00
Bumalda. 2 ft.	35	3 00	
2½ ft.; heavy	50	4 00	
3 ft.	75	6 00	

	Each	10	100
SPIRÆA Bumalda, var. Anthony Waterer—			
1½ to 2 ft.	\$0 25	\$2 00	
2 to 2½ ft.; heavy	35	3 00	\$20 00
2½ to 3 ft.; heavy	50	4 00	30 00
3 to 3½ ft.; heavy	75	6 00	50 00
callosa, Fortune's Spirea. 3 to 4 ft. . .	50	3 50	25 00
callosa, var. alba. 2 to 2½ ft.	35	3 00	20 00
2½ to 3 ft.	50	4 00	25 00
Japonica, var. Fortunei rosea. 2 to 3 ft..	50	3 50	
Lindleyana. 4 to 5 ft.	50	3 50	25 00
Hyb. Margarite. 2½ to 3 ft.	35	3 00	25 00
3 to 3½ ft.	50	4 00	30 00
opulifolia. 2 to 3 ft.	25	2 00	15 00
3 to 4 ft.	35	3 00	25 00
4 to 5 ft.	50	4 00	30 00
6 to 7 ft.; heavy	75	6 00	50 00
opulifolia, var. aurea. Golden-leaved—			
1½ to 2 ft.	25	2 00	
3 to 4 ft.	50	4 00	25 00
4 to 5 ft.; heavy	75	6 00	
prunifolia flore pleno. Bridal Wreath—			
3 to 4 ft.	35	3 00	
4 to 4½ ft.	50	4 00	
Reevesiana. 2 to 2½ ft.	35	3 00	20 00
2½ to 3 ft.	50	4 00	30 00
3 to 4 ft.	75	6 00	35 00
rotundifolia; syn., bracteata. 5 to 5½ ft..	1 00	7 50	
sorbifolia. 3 to 4 ft.	50	3 50	30 00
4 to 5 ft.	75	6 00	
Thunbergii. Thunberg's Spirea—			
2 to 2½ ft.	35	3 00	25 00
2½ to 3 ft.; very heavy	50	4 00	30 00
3½ to 4 ft.; very heavy	75	6 00	40 00
Van Houttei. 2 to 2½ ft.	35	3 00	
2½ to 3 ft.	50	4 00	
3 to 3½ ft. . . { FINE }	75	6 00	30 00
4 to 5 ft. . . { FINE }	1 00	7 50	40 00
5 to 6 ft. . . { FINE }	1 50	10 00	50 00
STAPHYLEA Colchica. Bladder Nut. 3 to 3½ ft..	35	3 00	
3½ to 4 ft.	50	4 00	35 00
4 to 5 ft.	75	6 00	40 00
5 to 6 ft.	1 00	7 50	60 00
STEPHANANDRA flexuosa. 2 to 2½ ft.	35	3 00	
2½ to 3 ft.; heavy	50	4 00	
3 to 4 ft.	75	6 00	40 00
4 to 5 ft.	75	6 00	50 00
STYRAX Japonica. 3½ to 4 ft.			
SYMPHORICARPUS racemosus. Snowberry—			
2 to 2½ ft.	35	3 00	
2½ to 3 ft.	50	3 50	25 00
3 to 4 ft.	75	6 00	50 00
vulgaris. Coral Berry—			
2 to 3 ft.	35	3 00	15 00
3 to 3½ ft.	50	4 00	20 00
3½ to 4 ft.; heavy	75	6 00	25 00
4 to 5 ft.	1 00	7 00	30 00
SYRINGA Chinensis; syn., Rothomagensis. Rouen			
Lilac. 3 to 3½ ft.	50	3 50	25 00
Japonica. 5 to 6 ft.	1 00	8 50	

PRICE LIST FOR SPRING OF 1910

45

	Each	10	100
SYRINGA Josikæa. 2½ to 3 ft.	\$1 00	\$7 50	
Josikæa, var. <i>eximia</i> . 4 to 5 ft.	1 00		
Josikæa, var. <i>H. Zabel</i> . 2½ to 3 ft.	75	6 00	
Pekinensis. 2½ to 3 ft.	75		
Persica, 4 to 4½ ft.	50	4 00	
Persica, var. <i>alba</i> . 2 to 2½ ft.	50	4 00	\$20 00
4 to 5 ft.	75	6 00	25 00
Persica, var. <i>laciniata</i> . 2½ to 3 ft.	35	3 00	
<i>villosa</i> . 3 to 3½ ft.	50	4 00	35 00
3½ to 4 ft.	75	6 00	50 00
<i>villosa</i> , var. <i>Emodi</i> . 3 to 4 ft.	1 00	8 50	
<i>vulgaris</i> . Common Lilac. 2½ to 3 ft. ...	35	3 00	
3 to 3½ ft.	50	4 00	
3½ to 4 ft.; very heavy	1 00	9 00	
4 to 4½ ft.; very heavy	2 50	22 50	
5 to 6 ft.	3 50		
<i>vulgaris alba</i> . 2½ to 3 ft.	75	4 50	35 00
3 to 3½ ft.	1 00	6 00	
<i>vulgaris</i> , named varieties—			
<i>alba grandiflora</i> . Single, white—			
3 to 3½ ft.	75	6 00	
<i>Charles X.</i> Single, reddish purple—			
2 to 2½ ft.	35	3 00	25 00
3 to 3½ ft.	75	6 00	
3½ to 4 ft.	1 00	8 50	
<i>Frau Bertha Dammann</i> . Single, white—			
2 to 2½ ft.	50	4 00	
<i>La Tour d'Auvergne</i> . Double, violet-purple. 2 to 3 ft.			
	75	6 00	
<i>Le Gaulois</i> . Double, peach. 3 to 4 ft.	1 00	7 50	
<i>Lovaniensis</i> . Single, pink. 3½ to 4 ft.	1 50		
<i>Mad. Lemoine</i> . Double, white. 2 to 2½ ft.			
2½ to 3 ft.	50	4 00	25 00
3 to 4 ft.	75	6 00	30 00
	1 50	7 50	60 00
<i>Marie LeGraye</i> . Single, white. 2 to 2½ ft.			
2½ to 3 ft.	50	4 00	30 00
3 to 3½ ft.	75	6 00	40 00
	1 00	8 50	
<i>Marc Micheli</i> . Double, lilac-blue—			
3½ to 4 ft.	1 50	13 50	
<i>Michael Buchner</i> . Double, pale lilac—			
1½ to 2 ft.	50	4 00	
2½ to 3 ft.	75	6 00	
3 to 3½ ft.	1 00	8 50	
3½ to 4 ft.	1 50	13 50	
<i>Matthew de Dombasle</i> . Double, mauve—			
2½ to 3 ft.	75	6 00	
3 to 3½ ft.	1 00	8 50	
<i>President Carnot</i> . Double, light lilac—			
2 to 2½ ft.	75	6 00	
<i>President Loubet</i> . Double, red—			
2½ to 3 ft.	1 00		
<i>Rubra de Marley</i> . Single, reddish purple—			
2 to 2½ ft.	50	4 00	
3 to 3½ ft.	75	6 00	40 00
4 to 4½ ft.	1 00	7 50	60 00
5 to 6 ft.	\$1.50 to 2 50		
<i>Senator Volland</i> . Double, red—			
3 to 4 ft.	1 00	8 50	

	Each	10	100
SYRINGA Souvenir de Ludwig Späth. Single red—			
3 to 3½ ft.	\$0 75	\$6 00	
3½ to 4 ft.	1 00	7 50	
4 to 4½ ft.	1 50	12 50	
Verschaffelt. Single, dark red—			
3½ to 4 ft.	1 50		
TAMARIX Africana; syn., parviflora. 2½ to 3 ft....	35	3 00	\$17 50
3 to 4 ft.	50	4 00	20 00
4 to 5 ft.	75	6 00	25 00
6 to 7 ft.	1 00	7 50	30 00
Gallica. 3 to 4 ft.	35	3 00	15 00
4 to 5 ft.	50	4 00	20 00
Gallica, var. Indica. 3 to 4 ft.	50	4 00	15 00
5 to 6 ft.	75	6 00	25 00
Japonica plumosa. 2 to 3 ft.	35	3 00	20 00
3 to 4 ft.	50	4 00	25 00
5 to 6 ft.	75	5 00	30 00
VACCINIUM corymbosum. Swamp Huckleberry—			
3 to 3½ ft.	50	4 00	25 00
VIBURNUM acerifolium. 2 to 2½ ft.	50	3 00	20 00
2½ to 3 ft.	75	5 00	30 00
cassanoides. White Rod. 2 to 2½ ft..	35	3 00	
2½ to 3 ft.	50	4 50	
3 to 3½ ft.	75	6 00	35 00
4 to 4½ ft.	1 00	7 50	50 00
dentatum. Arrow-wood. 2½ to 3 ft..	50	4 00	25 00
3½ to 4 ft.	75	6 00	30 00
4 to 5 ft.; heavy	1 00	8 50	40 00
5 to 6 ft.	1 50	10 00	60 00
Lantana. Wayfaring Tree. 1½ to 2 ft.	25	2 00	
3 to 3½ ft.	35	3 00	25 00
3½ to 4 ft.; heavy	50	4 00	30 00
4 to 5 ft.; heavy	75	6 00	35 00
5 to 6 ft.; very heavy	1 00	8 50	40 00
6 to 8 ft.; very heavy	1 50	13 50	50 00
Lentago. Sheep-berry. 2½ to 3 ft. .	35	3 00	25 00
3 to 3½ ft.	50	4 00	30 00
4 to 5 ft.	75	6 00	40 00
5 to 6 ft.	1 00	7 50	50 00
molle. 3 to 3½ ft.	50	4 00	
4 to 5 ft.	75	6 00	40 00
5 to 6 ft.	1 00	7 50	50 00
Opulus. High Cranberry Bush—			
1½ to 2 ft.	35	3 00	20 00
2 to 2½ ft.	50	3 50	30 00
3 to 4 ft. Fine	50	4 00	35 00
4 to 5 ft. Fine	75	6 00	50 00
5 to 6 ft. Fine	1 00	8 50	75 00
Opulus, var. sterile. Guelder Rose—			
2 to 3 ft.	35	3 00	15 00
3 to 3½ ft.	50	4 00	25 00
4 to 5 ft.	75	6 00	40 00
5 to 6 ft.	1 00	7 50	50 00
plicatum. Japanese Snowball—			
2½ to 3 ft.	75	5 00	
4 to 5 ft.	1 00		

PRICE LIST FOR SPRING OF 1910

47

	Each	10	100
VIBURNUM plicatum , var. tomentosum . Single Japan			
Snowball. 4 to 5 ft.; extra fine.	\$0 75	\$5 00	\$35 00
5 to 6 ft. Specimens. Fine.....	1 00	7 50	60 00
6 to 8 ft. Specimens. Fine.....	2 50	20 00	150 00
A beautiful shrub, deserving extensive planting.			
prunifolium . Black Haw.—			
2 to 2½ ft.♦..	35	3 00	
3 to 3½ ft.♦..	50	4 00	
3½ to 4 ft.♦..	75	6 00	
4 to 6 ft.♦..	\$1 to 2 50		
Sieboldi . 1½ to 2 ft.♦..	75	5 00	
2½ to 3 ft.♦..	1 00	7 50	
3½ to 4 ft.♦..	1 50	12 50	
VITEX Agnus-castus . Chaste Tree. 3 to 4 ft....	35	3 00	20 00
XANTHOCERAS sorbifolia . 2½ to 3 ft.♦..	50	4 00	
3 to 3½ ft.♦..	75	6 00	
3½ to 4 ft.♦..	1 00	7 50	
XANTHORRHIZA apiifolia . Shrub Yellow Root—			
5 to 6 in. In clumps	35	2 50	15 00
6 to 8 in. In clumps	50	3 50	20 00

REEDS and GRASSES

	Each	10
ARUNDO Donax . Clumps	\$0 50	\$3 50
BAMBUSA Metake	50	3 50
ELYMUS glaucus	25	1 50
ERIANTHUS Ravennæ	50	3 50
EULALIA Japonica , and vars. variegata , gracillima univittata , zebrina . Clumps	50	3 50
FESTUCA glauca . 3-in. pots	25	1 50
PHALARIS arundinacea , var. variegata . Ribbon Grass	25	1 50
UNIOLA latifolia	25	1 50

VINES, CLIMBING and TRAILING PLANTS

	Each	10
ACTINIDIA polygama . 5-in. pots	\$0 50	\$3 50
6-in. pots; heavy	1 00	7 50
AKEBIA quinata . From 5-in. pots	50	3 50
AMPELOPSIS quinquefolia . Virginia Creeper. 4-in pots....	35	3 00
3-year, field-grown; heavy	25	2 00
quinquefolia , var. Engelmanni . 5-in. pots; heavy	35	3 00
3-year, field-grown; heavy	25	2 00
tricuspidata ; syn., Veitchi . Japan, or Boston Ivy. 4-in. pots; heavy	35	3 00
2-year, field-grown; heavy..per 100, \$15...	25	2 00
ARISTOLOCHIA Sipho . Dutchman's Pipe Vine. 5-in. pots...	75	6 00
6-in. pots	1 00	7 50
BIGNONIA grandiflora . 5-in. pots	35	3 00
2 to 3 ft.; field-grown	35	2 00
radicans . Scarlet Trumpet Vine. 5-in. pots....	35	3 00
2 to 3 ft.; field-grown	25	2 00
CELASTRUS scandens . False Bitter-sweet—		
2 to 3 ft.per 100, \$15..	50	3 50
3 to 5 ft.; heavy; field-grown	75	5 00

	Each	10
CLEMATIS <i>coccinea</i> . 4-in. pots	\$0 35	\$3 00
Flammula . Sweet Clematis. 4-in. pots.....♦	75	6 00
graveolens ; syn., <i>orientalis</i> . 4-in. pots.....	35	3 00
Large-flowering varieties .—Fairy Queen, Gem, Henryi, Jackmani, Jackmani var. alba, Jeanne d'Arc, Duchess of Edinburgh, Ker- mesina, Lady Caroline Neville, Lilacina flori- bunda, Madame Van Houtte, Miss Bateman, President	50	4 00
paniculata . 2-year; heavy per 100, \$15..	30	2 50
5-in. pots; fine	50	3 50
DOLICHOS . See <i>Pueraria</i> .		
EUONYMUS <i>radicans</i> . 1 ft.; field-grown.....per 100, \$10..	25	1 75
1½ to 2 ft.; field-grownper 100, \$15..	35	2 50
HEDERA <i>Helix</i> . English Ivy. 4-in. pots.....per 100, \$15..	25	2 00
5-in. pots..... per 100, \$35..	50	4 00
LATHYRUS <i>latifolius</i> . Everlasting Pea	35	2 50
LONICERA <i>Japonica</i> . Honeysuckle. 4 in. pots	35	2 50
3-year; field-grown	35	3 00
Japonica , var. <i>brachypoda</i> ; syn., <i>flexuosa</i> . Field- grown	35	3 00
Japonica , var. <i>aurea reticulata</i> . 4-in. pots.....	35	3 00
Japonica , var. <i>Chinensis</i> . Purplish green foliage— 4-in. pots	25	2 00
Heavy field-grown	35	3 00
Japonica , var. <i>Halleana</i> . 4-in. pots.....	25	2 00
5-in. pots	35	3 00
3-year-old, field-grown	35	3 00
sempervirens , var. <i>fuchsioides</i> . Scarlet Trumpet— 5-in. pots	50	3 50
PERIPLOCA <i>Græca</i> . Silk Vine. Field-grown	35	3 00
5-in. pots	50	4 00
6-in. pots	50	4 00
PUERARIA <i>Thunbergiana</i> ; syn., <i>Dolichos Japonicus</i> . Kudzu Vine. In pots	1 00	7 50
TECOMA . See <i>Bignonia</i> .		
VITIS <i>æstivalis</i> . Summer Grape. 5-in. pots	75	6 00
<i>heterophylla</i> , var. <i>variegata</i> . 5-in. pots	75	6 00
<i>Labrusca</i> . Fox Grape. 5-in. pots	50	4 00
WISTARIA <i>Chinensis</i> . Chinese Wistaria— 2 to 3 ft.; field-grown	75	6 00
3 to 4 ft.; field-grown	1 00	7 50
4 to 6 ft.; field-grown	♦ \$1.50 to 3 50	
Chinensis , var. <i>alba</i> . Field-grown	\$1 50 to 2 50	
frutescens . 3 to 4 ft.	1 00	
4 to 6 ft.	♦ \$1.50 to 2 50	
magnifica . 5 to 6 ft.; field-grown	\$1.50 to 2 50	
multijuga . 2 to 3 ft.; field-grown	75	5 00
3 to 4 ft.; field-grown	1 00	7 50
4 to 6 ft.; field-grown	\$1.50 to 3 50	
multijuga , var. <i>alba</i> . Field-grown	75	6 00
3 to 4 ft.	1 00	7 50
4 to 6 ft.	\$1.50 to 3 50	

FRUIT DEPARTMENT

	Each	10
APPLES, Summer —Early Harvest, Golden Sweet, Red Astrachan, Summer Rambo, Sweet Bough, Benoin, Yellow Transparent.		
Autumn —Fall Pippin, Gravenstein, Maiden's Blush, Smokehouse, Wealthy.		
Winter —Baldwin, Belle-fleur, Fallwater, King of Tompkins County, Northern Spy, Rhode Island Greening, Styman's Winesap, York Imperial.		
5 to 7 ft.; $\frac{3}{4}$ to 1 in. cal.	\$0 75	\$6 00
Crab —Hyslop, Large Red Siberian, Large Yellow Siberian, Transcendent. 5 to 7 ft.	75	6 00
CHERRIES, Sour (Dukes and Morellos) —Early Richmond, Empress Eugenie, May Duke, Late Duke, Montmorency. 5 to 6 ft.	1 00	8 50
Large Sweet (Hearts and Bigarreaus) —Black Tartarian, Governor Wood, Napoleon Bigarreau, Schmidt's Bigarreau, Windsor. 5 to 6 ft.	1 00	8 50
NUTS, American Sweet Chestnut. See under <i>Deciduous Trees.</i>		
Spanish Chestnut. See under <i>Deciduous Trees.</i>		
Hybrid Chestnut. Paragon, Numbo. 4 to 5 ft.	1 50	12 50
Japan Chestnut. 3 to 4 ft.	1 00	
Walnut, Black. See <i>Juglans nigra</i> , under <i>Deciduous Trees.</i>		
PEACHES —Belle of Georgia, Fitzgerald, Fox's Seedling, Crawford's late, Elberta, Mountain Rose, Morris White, Oldmixon Free, Stump the World, Susquehanna, Troth's Early, Wheatland. 5 to 6 ft. per 100, \$30..	50	3 50
PEARS, Summer —Bartlett, Clapp's Favorite, Doyenne d'Ete.		
Autumn and Winter —Beurre d'Anjou, Buffum, Duchesse d'Angouleme, Howell, Kieffer's Hybrid, Lawrence, Rutter, Seckel, Sheldon, Worden-Seckel. 5 to 6 ft.	1 00	8 50
6 to 8 ft.	2 00	15 00
PLUMS, Japanese —Abundance, Burbank, Chabot, Satsuma. 5 to 6 ft.	1 00	7 50
European —Giant Prune, Imperial Gage, Lombard.		
QUINCES —Champion, Orange. 3 to 4 ft.	75	6 00

SMALL FRUITS

BLACKBERRIES —Eldorado, Erie, Kittatinny, Rathbun, Snyder, Wilson Junior. per 100, \$3..	50	
CURRANTS, Red —Cherry, Fay's Prolific; White —White Grape; Black —Lee's Prolific.	25	2 00
GOOSEBERRIES, Red —Houghton, Industry; Green —Downing, Smith's Improved.	25	2 00
GRAPES, Black —Concord, Moore's Early, Warden; Red —Brighton, Catawba, Delaware; White —Green Mountain, Niagara, Pocklington, 2-year.	25	2 00
Extra heavy.	50	3 00
RASPBERRIES, Black —Gregg; Red —Cuthbert, Columbian Ruby; Yellow —Golden Queen, per 100, \$3..		50

	Each	10
STRAWBERRIES, Early —Bederwood, Marshall; Medium —Bubach, Glen Mary, Sharpless, Late —Brandywine, Gandy, Runners, per 100, \$2; per 1,000, \$7.50. Potted plants, per 100, \$3 to \$4.		

ESCULENT ROOTS

ASPARAGUS —Barr's Mammoth. Per 100, \$1.50; per 1,000, \$7.50.
RHUBARB —Best varieties. Per 10, \$1.50; per 100, \$10.

ROSES

N. B.—Potted unless noted. Special prices per hundred.

	Each	10
AUSTRIAN BRIERS —Harrison's Yellow and Persian Yellow..	\$0 40	\$3 50
SWEETBRIER — <i>Rosa rubignosa</i>	40	3 50
HYBRIDS Penzance Briers —Amy Robsart, Anne of Geierstein, Brenda, Flora McIvor, Lady Penzance, Lord Penzance, Meg Merrilies, Minna	50	4 50
BUSH —Blanda, Carolina, canina, lucida, lucida var. alba, multiflora, nitida, rubrifolia, field-grown.....	35	3 00
CLIMBING —Baltimore Belle, The Dawson, Dorothy Perkins, Lady Gay, Prairie Queen	50	3 50
Setigera, Prairie Rose, 2 to 2½ ft.; field grown..	35	3 00
Ramblers —Crimson, White, Pink and Yellow, The Dawson (carmine)	40	3 50
EVERBLOOMING Hybrid Teas —Bessie Brown, creamy white; Betty, ruddy gold; Captain Christy, flesh; Caroline Testout, rose; Countess of Caledon, carmine; Duchesse of Albany, deep pink; Gladys Harkness, salmon-pink; Gruss an Teplitz, crimson; Kaiserine Auguste Victoria, primrose; Killarney, pink; La France, rose; Madame Ravary, yellow; Souvenir du President Carnot, flesh-rose; Viscountess Folkestone, creamy pink..	50	4 50
EVERBLOOMING, Miscellaneous —Clothilde Soupert (Polyantha), rosy white; etoile de Lyon (Tea), yellow; Francisca Kruger (Tea), yellow-peach; Francis Dubreuil (Tea), crimson; Harry Kirk, deep sulphur yellow; Maman Cochet (Tea), rosy white; Souvenir de la Malmaison (Bourbon), flesh; White Maman Cochet (Tea), white.....	50	4 50
HYBRID Perpetual —Alfred K. Williams, carmine-red; Baroness Rothschild, rose; Captain Hayward, carmine-crimson; Clio, flesh; Eugene Verdier, rose-flesh; Frau Karl Druschki, white; General Jacqueminot, scarlet; Lady Helen Stewart, crimson-scarlet; Louis Van Houtte, red-crimson; Magna Charta, rose; Madame Gabriel Luizet, silvery pink; Margaret Dickson, white; Mrs. R. G. Sharman-Crawford, rose-pink; Mrs. John Laing, pink; Paul Neyron, deep rose; Prince Camille de Rohan, deep crimson; Ulrich Brunner, cherry crimson.....	50	4 00
MOSS —Blanche Moreau, white; Crimson Globe, deep crimson; Zenobia, rose.....	50	4 00

RUGOSA ROSES

	Each	10	100
ROSA rugosa , 2 to 2½ ft	\$0 35	\$3 00	\$20 00
2½ to 3 ft.	50	4 00	35 00
3 to 3½ ft.	75	6 00	50 00
rugosa , var. alba , 2 to 2½ ft.	50	4 00	25 00
2½ to 3 ft.	75	6 00	50 00
rugosa Hybrids atropurpurea —Blanc Double de Coubert, Conrad F. Meyer, Madame Georges Bruant, Madam Charles Worth, Mrs. A. Waterer. Pot-grown.....	50	4 00	

WICHURAIANA ROSES

ROSA Wichuriana , The Trailing Rose, 2 to 3 ft. .	25	2 00	
2 to 3 ft. In 4-in. pots.	35	3 00	25 00
Hybrids —Evergreen Gem, Gardenia, Manda's Triumph, Pink Roamer, South Orange Perfection, Universal Favorite. In pots.	50	3 50	
SINGLE ROSES , Dickson's Hybrids —New Irish Beauty, Irish Glory, Irish Modesty, Irish Brightness	75	6 00	

HARDY HERBACEOUS PLANTS

	Each	10	100
ACHILLEA filipendulina (Noble Yarrow). July. Golden yellow. 2 ft.	\$0 15	\$1 25	\$10 00
millefolium roseum (Rosy Milfoil). July to September. Pink. 1½ ft.	15	1 25	
Ptarmica , The Pearl. All summer. White. 2 ft.	15	1 25	10 00
tomentosum (Woolly Yarrow). June, Yellow. 1 ft.	25	2 00	
ACONITUM Fischeri (Monkshood). September and October. Blue. 3 ft.	35	2 50	15 00
Lycotomum (Wolf's-bane). June to September. Yellow. 3 ft.	35	2 50	
ACANTHUS mollis (Bear's Breech). August and September. Rose. 3 ft.	35	2 50	
AJUGA Genevensis . May. Bright blue. 6 in.	25	1 50	12 50
reptans rubra (Bugle). May. Purplish blue. 6 in.	25	1 50	12 50
ALTHÆA rosea (Hollyhock). July. Various colors. 4 to 6 ft.	25	1 50	12 50
rosea , var. Allegheny Fringed	25	1 50	12 50
ALYSSUM rostratum . June and July. Golden Yellow. 1 ft.	35	2 50	
saxatile compactum (Golden Tuft). May and June. Yellow. 1 ft.	25	1 50	12 50
ANCHUSA Italica , var. Dropmore . New (Alkanet). May and June. Blue. 3 to 4 ft.	75	6 00	
ANEMONE (Windflower) Japonica . September. Red. 2 to 3 ft.	25	1 50	12 50
Japonica , var. alba . Fall. White. 2 to 3 ft. .	25	1 50	12 50
Japonica , var. Queen Charlotte . Fall. Rose. 2 to 3 ft.	25	2 00	15 00
Japonica , var. Lady Ardilaun . Fall. White. 2 to 3 ft.	25	2 00	15 00



Partial view of Herbaceous Plantations

	Each	10	100
ANEMONE Japonica , var. Whirlwind. Fall. Pure white. 2 to 3 ft.....	\$0 25	\$2 00	\$15 00
Pennsylvanicum . June and July. White. 1 to 2 ft.	25	1 50	12 50
Pulsatilla (Pasque Flower). May. Violet-purple. 9 in.....	25	1 50	12 50
syvestris . May. Pure white. 1 to 1½ ft.....	25	1 50	12 50
ANTHEMIS tinctoria (Chamomile). June to September. Golden Yellow. 2 ft.....	25	1 50	10 00
AQUILEGIA baicalense . May to July. Blue and white. 18 in.....	25	1 50	12 50
Canadensis . (Common Columbine). May to July. Scarlet and Yellow. 1 to 2 ft.....	25	1 50	10 00
Chrysantha . May to August. Golden Yellow. 3 ft.	25	2 00	12 50
cærulea (Rocky Mountain Columbine). May to July. Blue. 18 in.....	25	2 00	12 50
flabellata , var. nana alba . April to June. White. 1 ft.....	25	2 00	
nivea grandiflora . April to June. White. 2 to 3 ft.....	25	2 00	12 50
vulgaris fl. pl. May to July. White to blue. 1½ to 2 ft.....	25	2 00	12 50
truncata . May and June. Scarlet. yellow-tipped. 2 ft.....	25	2 00	12 50
ARABIS alpina (Rock Cross). April and May. White. 4 in.....	25	1 50	10 00
alpina fl. pl. Double.....	35	2 50	
ARENARIA montana , var. grandiflora (Sandwort). May and June. White. 6 in.....	25	1 50	12 50

PRICE LIST FOR SPRING OF 1910

53

	Each	10	100
ARMERIA <i>maritima</i> , var. <i>alba</i> (Thrift). Summer. White. 9 in.....	\$0 25	\$1 50	\$10 00
<i>maritima</i> , var. <i>splendens</i> . Summer Rose. 9 in.....	25	1 50	12 50
ARTEMISIA <i>abrotanum</i> (Old Man). Silvery white foliage. 2 ft.....	25	1 50	10 00
<i>Stelleriana</i> (Old Woman). Silvery foliage. 2 ft.....	25	1 50	10 00
ASCLEPIAS <i>tuberosa</i> (Butterfly Weed). July and August. Orange. 2 ft.....	25	1 50	10 00
ASTER <i>alpinus</i> . June and July. Purple. 9 in....	25	1 50	10 00
<i>Amellus elegans</i> . September and October. Blue. 1½ ft.....	25	1 50	10 00
ASTER (Michaelmas Daisy) <i>amethystinus</i> . September and October. Amethyst. 3 to 4 ft....	25	1 50	10 00
<i>grandiflorus</i> . October and November. Violet-blue. 2 ft.....	35	2 50	20 00
<i>Lady Trevelyan</i> . September and October. White. 3 ft.....	25	1 50	10 00
<i>Madonna</i> . September and October. White. 4 ft.....	25	1 50	10 00
<i>Novæ Angliæ</i> . September and October. Purple. 4 ft.....	25	1 50	10 00
<i>Novæ Angliæ</i> , var. <i>rubra</i> . September and October. Bright rose. 4 ft.....	25	1 50	10 00
<i>ptarmicoides</i> . August and September. White. 1½ ft.....	25	1 50	10 00
<i>Robert Parker</i> . September and October. Lavender. 4 ft.....	25	1 50	10 00
<i>Tataricus</i> . October and November. Purple. 5 ft.....	25	1 50	10 00
<i>Trinervius</i> . October and November. Violet-purple. 2½ ft.....	25	1 50	10 00
<i>White Queen</i> . September and October. White. 4 ft.....	25	1 50	10 00
ASTILBE <i>Japonica</i> (Spirea). June. White. 1½ ft.....	25	1 50	10 00
ASTRANTIA <i>major</i> (Masterwort). June and July. Pale pink. 1 ft.....	25	2 50	20 00
AUBRETIA <i>Hendersoni</i> (False Wall Cress). April. Purplish violet. 4 in.....	25	1 50	12 50
BAPTISIA <i>australis</i> (False Indigo). June and July. Dark blue. 2 ft.....	25	1 50	10 00
<i>tinctoria</i> . June and July. Bright yellow. 2 to 3 ft.....	25	1 50	10 00
BELEMCA <i>ND</i> <i>Chinensis</i> ; syn., <i>Pardanthus</i> . June. Orange-red. 4 ft.....	25	1 50	10 00
BELLIS <i>perennis</i> (English Daisy) May. White and pink. 6 to 8 in.....	25	1 50	10 00
BETONICA . See <i>Stachys</i> .			
BOCCONIA <i>cordata</i> (Plume Poppy). July and August. White. 5 ft.....	25	1 50	12 50
BOLTONIA <i>asterioides</i> (False Chamomile). August and September. White. 4 ft.....	25	1 50	10 00
<i>latisquama</i> . August and September. Light lilac. 4 ft.....	25	1 50	10 00
CALIMERIS <i>incisa</i> (Starwort). July to September. Light blue. 18 in.....	25	1 50	10 00

	Each	10	100
CALLIRHOË involucrata (Poppy Mallow). All summer. Rosy crimson. 1 ft.....	\$0 25	\$1 50	\$10 00
CAMPANULA Carpatica (Carpathian Harebell). June to September. Blue. 9 in.....	25	1 50	10 00
Carpatica, var. alba. June to September. White. 9 in.....	25	1 50	10 00
Mørheimi. May to July. White. 2 to 2½ ft..	35	2 50	
persicifolia (Peach Bells). June and July. Blue. 18 in.....	25	1 50	10 00
persicifolia alba. June and July. White. 18 in..	25	1 50	10 00
pyramidalis (Chimney Bellflower). August and September. Blue. 2 ft.....	25	1 50	10 00
CENTAUREA montana (Perennial Cornflower). June and July. Dark purple. 1½ ft.....	25	1 50	
CERASTIUM tomentosum. June and July. White. 6 in.....	25	1 50	12 50
CERATOSTIGMA plumbaginoides (Plumbago). October and November. Blue. 6 in.....	25	2 00	15 00
CHELONE Lyoni (Turtlehead). August and September. Rose-purple. 2 ft.....	35	2 50	
obliqua, var. alba (Shell-flower). August and September. White. 2 ft.....	35	2 50	
CHRYSANTHEMUM leucanthemum hybridum (Shasta Daisies). Alaska, California, Westralia. All summer. White. 2 ft.....	35	2 50	15 00
maximum, var. Triumph (Moonpenny Daisy). July to October. White. 2 ft.....	25	1 50	12 50
Nipponicum. September and October. White. 2 ft.....	35	2 50	
Pompon Varieties. Fall. All colors. 1½ to 2 ft.	25	1 50	10 00
Pompon Varieties, Heavy Stock.	25	2 00	15 00
uliginosum. September. White. 2½ ft.....	25	1 50	10 00
CHRYSOGONUM Virginianum (Golden Joint). June. Yellow. 1 ft.....	25	1 50	12 50
CHRYSOPSIS villosa (Golden Aster). September. Yellow. 2 ft.....	25	2 00	15 00
CIMICIFUGA acerinum. August and September. White. 2½ ft.....	35	2 50	
Dahurica (Bugbane). August and September. White. 2 to 3 ft.....	35	2 50	15 00
racemosa (Snakeroot). July. White. 3 to 5 ft.	25	1 50	12 50
CINERARIA. See <i>Artemisia</i> .			
CLEMATIS crispa (Leather-flower). June to September. Lavender. 3 to 4 ft.....	25	1 50	12 50
Davidiana. August and September. Blue. Fragrant. 3 ft.....	25	1 50	12 50
recta. June to August. White. Fragrant. 2 to 3 ft.....	25	1 50	12 50
CONOCLINIUM cœlestinum (Mist-flower). September and October. Deep blue. 18 in.....	25	1 50	12 50
CONVALLARIA majalis (Lily-of-the-Valley). May and June. White. 6 to 9 in.....	25	2 00	15 00
COREOPSIS lanceolata (Tickseed). June to October. Golden yellow. 2 ft.....	15	1 25	10 00
CORONILLA varia (Crown Vetch). June and October. Pink. 1 to 2 ft.....	25	1 50	12 50

PRICE LIST FOR SPRING OF 1910

55

	Each	10	100
DELPHINIUM Chinense (Larkspur). July to September. Blue. 1½ ft.....	\$0 25	\$1 50	\$10 00
Chinense, var. album. July to September. White. 1½ ft.	25	1 50	10 00
elatum (Bee Larkspur). June to August. Blue. 4 ft.....	25	1 50	10 00
formosum (Larkspur). June to September. Deep blue. 4 ft.....	25	1 50	10 00
DIANTHUS barbatus (Sweet William). May to July. Mixed colors. 1½ ft.	25	1 50	10 00
deltoides (Maiden Pink). June. Pink. 4 in..	25	1 50	10 00
latifolius. June. Red. 1 ft.....	25	1 50	10 00
plumarius (Hardy Pinks). May and June. 1 ft.	25	2 00	15 00
VARIETIES :			
<i>Delicata.</i> Rose, with fringed petals.			
<i>Laura Wilmer.</i> White, with maroon center.			
<i>Her Majesty.</i> White.			
<i>Mrs. Sinkins.</i> White.			
<i>Stanislaus.</i> Violet-rose, with crimson center.			
DICENTRA eximia (Seal-flower). June to August. Pink. 1 ft.....	25	1 50	10 00
spectabilis (Bleeding-heart). May and June. Pink. 2 to 3 ft.....	25	2 00	12 50
DICTAMNUS fraxinella (Gas Plant). June. Purple. 3 ft.....	35	2 50	15 00
fraxinella, var. alba. June. White. 3 ft....	35	2 50	15 00
DIGITALIS ambigua (Foxglove). July and August. Pale yellow. 3 ft.	25	2 00	15 00
purpurea (Common Foxglove). June and July. Mixed colors. 4 to 5 ft.....	25	1 50	10 00
purpurea, var. gloxiniaeflora. June and July. Mixed colors. 4 to 5 ft.....	25	1 50	10 00
DORONICUM Austriacum. April and May. Yellow. 2 ft.....	35	2 50	15 00
plantagineum, var. excelsum. April to June. Yellow. 2 ft.	35	2 50	15 00
ECHINACEA purpurea (Purple Cone-flower). July to September. Rosy purple. 3 ft.....	25	2 00	15 00
ERIGERON speciosus (Fleabane). June to August. Violet-blue. 1½ to 2 ft.....	25	2 00	15 00
ERYNGIUM amethystinum (Sea Holly). July to September. Amethyst-blue. 2 ft.....	35	2 50	
EUPATORIUM ageratoides (White Snakeroot). September and October. White. 3 ft.....	25	1 50	12 50
cælestinum. Fall. Light blue. 2 ft.....	25	1 50	
EUPHORBIA corollata (Spurge). July to September. White. 1½ ft.....	25	1 50	12 50
FEVERFEW, Little Gem. June to October. White. 15 in.....	25	1 50	10 00
FUNKIA Fortunei (Day Lily). July to August. Blue. 1½ to 2 ft.....	25	1 50	12 50
ovata. July to August. Deep blue. 1½ to 2 ft.	25	1 50	12 50
subcordata, var. grandiflora. September. White. Fragrant. 2 ft.....	25	2 00	15 00
undulata, var. media picta variegata. July and August. Lilac. 1 ft.....	25	1 50	12 50

	Each	10	100
GAILLARDIA grandiflora (Blanket-flower). June to November. Yellow. 1½ ft.....	\$0 25	\$1 50	\$10 00
GALEGA officinalis (Goat's Rue). July and August. Blue. 2 ft.....	25	1 50	10 00
officinalis , var. alba . July and August. White. 2 ft.....	25	1 50	10 00
GERANIUM sanguineum (Cranesbill). June to September. Red. 1½ ft.....	25	1 50	
GEUM coccineum (Avens). June and July. Scarlet. 1½ ft.....	25	2 00	15 00
Heldreichi . June. Orange. 18 in.....	25	2 00	15 00
montanum . June and July. Yellow. 18 in..	25	2 00	15 00
GILLENIA trifoliata (Bowman's Root). Rose and white. July. 3 ft.....	35	2 50	
GYPSOPHILA paniculata (Baby's Breath). July. White. 2 to 3 ft.....	25	1 50	12 50
HELENIUM, pumilum (Sneezewort). July to October. Yellow. 1½ ft.....	25	1 50	10 00
autumnale , var. superbum . July to October. Yellow. 4 ft.....	25	1 50	10 00
grandicephalum , var. striatum . August to October. Orange. 3 ft.....	25	2 00	15 00
Hoopesi . All summer. Orange-yellow. 2 ft..	25	2 00	15 00
HELIANTHUS (Perennial Sunflowers) giganteus . August to October. Pale yellow. 6 to 10 ft.	25	1 50	10 00
Maximiliana . September. Deep yellow. 6 to 8 ft.	25	1 50	10 00
mollis . September and October. Golden yellow. 4 ft.....	25	1 50	10 00
multiflorus fl. pl. July and August. Golden yellow. 4 ft.....	25	1 50	10 00
orgyalis . September and October. Golden yellow. 6 ft.....	25	1 50	10 00
rigidus . July to October. Golden yellow. 3 ft.	25	1 50	10 00
rigidus , var. Miss Mellish . September and October. Golden yellow. 6 ft.....	25	1 50	10 00
rigidus , var. Wolly Dodd . September. Deep yellow. 3 ft.....	25	1 50	10 00
HELIOPSIS Pitcheriana . June to October. Orange-yellow. 3 ft.....	25	1 50	10 00
HELLEBORUS niger (Christmas Rose). March. White. 6 in.....	35	3 00	
niger , var. atrorubens . March. Purple. 9 in..	35	3 00	
HEMEROCALLIS Dumortieri (Yellow Day Lily). June and July. Orange-yellow. 2 ft.....	25	1 50	12 50
flava . June. Yellow. 2 ft.....	25	1 50	12 50
fulva (Tawny Day Lily). July and August. A tawny yellow. 2½ ft.....	25	1 50	12 50
fulva , var. Kwanso fl. pl. (Double Orange Lily). July and August. Coppery yellow. 2½ ft....	25	1 50	12 50
fulva , var. Thunbergii . August and September. Lemon-yellow. 2½ ft.....	25	1 50	12 50
HEPATICA trifloba (Liverleaf). April. White and blue. 6 in.....	25	1 25	10 00
HEUCHERA sanguinea (Alumroot). June to September. Coral-red. 18 in.....	25	2 00	15 00
sanguinea , var. alba . June to September. White. 18 in.....	25	2 00	



A field of Japanese Iris at Andorra

	Each	10	100
HIBISCUS militaris. June to September. Buff-yellow.			
18 in.	\$0 25	\$2 00	
Moscheutos (Mallow). July to September.			
Rose, 5 ft.	25	1 50	\$10 00
Moscheutos , var. Crimson Eye. July to September. White. 5 ft.	25	1 50	10 00
HOLLYHOCKS. See <i>Althæa rosea</i> .			
IBERIS sempervirens (Candytuft). April and May.			
White, 6 in.	25	1 50	10 00
corifolia. April and May. White, 9 in.	25	1 50	10 00
INULA Britannica (Fleabane). July to September.			
Light yellow, 2 ft.	25	1 50	12 50
IRIS. For Special Descriptive Lists, consult Calendar of Hardy Perennials.			
atroviolacea. May. Dark violet, 2 to 2½ ft. .	35	3 00	
cristata. April and May. Light blue, 6 in. .	25	1 50	12 50
Florentina. May. Tinted white. Fragrant. 1½ ft. .	25	2 00	
Germanica. May. Named varieties, 1½ to 2½ ft. .	25	1 50	10 00
lævigata ; syn., Kæmpferi (Japanese Iris). June and July. Our selection, all colors. 2½ to 4 ft. .	25	2 00	15 00
Customer's selection ♦	35	3 00	25 00
Pallida , var. Dalmatica. June. Light blue. 3 ft. .	35	3 00	25 00
Pallida , var. speciosa. June. Indigo-blue. 2 to 3 ft.	35	3 00	25 00
Pseudacorus. June. Yellow, 2 to 3 ft.	25	2 00	15 00
pumila nova. May. Various colors, 8 to 10 in. .	25	1 50	12 50
Sibirica. May and June. Bright blue, 1½ ft. .	25	1 50	10 00
Sibirica , var. alba. June. White, 2 ft. Rare. ♦ . .	35	3 00	25 00
Sibirica , var. orientalis. May. Deep blue, 1½ ft. .	25	1 50	10 00
tectorum. May. Bright lilac, 1 ft.	25	2 00	15 00

	Each	10	100
KNIPHOFIA aloides (Red-hot Poker). August and September. Crimson. 3 ft.....	\$0 25	\$1 50	\$12 50
obelisque . July and August. Saffron-yellow. 3 to 4 ft.....	35	2 50	15 00
Pfitzerii (Flame Flower). July to October. Orange-scarlet. 3 to 4 ft.....	35	2 50	15 00
LATHYRUS latifolius , var. albus (Hardy White Pea). Summer. Climbing.....	25	2 00	
latifolius , var. roseus . Summer. Rose. Climbing.....	25	2 00	
latifolius , var. splendens . Summer. Climbing..	25	2 00	15 00
latifolius , var. Pink Beauty . Summer. Bright pink. Climbing	25	2 00	15 00
LAVENDULA spica (Lavender). 15 to 18 in.....	25	1 50	12 50
vera (Lavender). 15 to 18 in.....	25	1 50	12 50
LIATRIS graminifolia (Blazing Star). August and September. Rosy purple. 2 ft.....	25	1 50	12 50
pycnostachya (Kansas Gay Feather). September. Rosy purple. 4 to 5 ft.....	25	1 50	12 50
spicata (Gay Feather). August and September. Deep purple. 3 to 4 ft.....	25	1 50	12 50
LILIUM Canadense (Meadow Lily). July. Shades of yellow. 2 to 4 ft.....	25	1 50	12 50
Philadelphicum (Wood Lily). July and August. Orange-scarlet. 2 to 4 ft.....	25	2 00	15 00
speciosum , var. roseum (Japan Lily). July and August. Rosy white. 2 to 4 ft.....	25	2 00	15 00
tigrinum (Tiger Lily). August. Salmon-red. 3 to 4 ft.....	25	1 50	12 50
LINUM Austriacum (Austrian Flax). June to August. Bluish purple. 18 in.....	25	1 75	
perenne (Perennial Flax). June to September. Clear blue. 18 in.....	25	1 75	
LOBELIA cardinalis (Cardinal Flower). August and September. Scarlet. 2 to 3 ft.....	25	1 50	12 50
syphilitica (Blue Lobelia). August and September. Deep blue. 2 ft.....	25	1 50	
LYCHNIS Chalcedonica (London Pride). July to September. Vermilion. 2 to 3 ft.....	25	1 50	12 50
coronaria (Rose Campion). June and July. Crimson. 1½ to 2 ft.....	25	1 25	10 00
coronaria , var. alba . June and July. White. 1½ to 2 ft.....	25	1 25	10 00
Haageana . June and July. Orange-scarlet. 1½ ft.	25	1 50	
vespertina , var. alba plena (White Campion). May to September. White. 1 ft.....	25	1 50	12 50
viscaria (Catchfly). June and July. Red. 1½ ft.	25	1 50	12 50
viscaria , var. splendens . (German Catchfly). June and July. Pink. 15 in.....	25	1 50	12 50
LYSIMACHIA clethroides (Loosestrife). July to September. White. 1½ ft.....	25	1 25	10 00
nummularia (Moneywort). June to August. Yellow. Creeping.....	25	1 50	10 00
LYTHRUM roseum superbum (Rose Loosestrife). July to September. Rose. 3 ft.....	25	1 50	12 50
MERTENSIA pulmonarioides (Virginia Cowslip). May and June. Blue. 2 ft.....	25	1 50	10 00

PRICE LIST FOR SPRING OF 1910

59

	Each	10	100
MONARDA didyma (Oswego Tea). July and August. Scarlet. 2½ ft.....	\$0 25	\$1 50	\$10 00
didyma , var. Cambridge Scarlet . July and August. Scarlet. 2 ft.....	25	1 50	10 00
didyma var. splendens . July and August. Crimson-scarlet. 2 ft.....	25	1 50	10 00
MYOSOTIS alpestris , var. Victoria . May and June. Light blue. 6 to 9 in.....	25	1 50	10 00
palustris (Forget-me-not). May and June. Light blue. Spreading.....	25	1 50	10 00
NEPETA glecoma , var. variegata (Ground Ivy). May. Purple. 6 in.....	25	1 50	10 00
ŒNOTHERA fruticosa , var. major (Sundrops). July. Yellow. 1½ ft.....	25	2 00	15 00
fruticosa , var. Youngi (Young's Primrose). June. Lemon. 1½ to 2 ft.....	25	1 50	12 50
Frazeri . June. Rich yellow. 1½ ft.....	25	2 00	15 00
Missouriensis (Large Evening Primrose). June and July. Yellow. 1 ft.....	25	2 00	15 00
speciosa (White Primrose). June and July. White. 1½ ft.....	25	1 50	10 00
OPHIPOGON Jaburan , var. aureus variegatus (Snake's Beard). September. Blue. 6 in..	50	3 50	
PACHYSANDRA procumbens (Mountain Spurge). March to May. White or purple. Spreading.	25	1 50	12 50
terminalis . May and June. White. 8 in.....	25	1 50	12 50
PÆONIA . See our Calendar of Hardy Perennials for Special List.			
Chinensis, Double Varieties . Our selection. May and June	35	3 00	25 00
Chinensis, Heavy Clumps . Our selection.....	1 50	12 50	
Chinensis, Single Varieties . Our selection.....	35	3 00	25 00
corallina . May. Single. Reddish purple.....	35	3 00	25 00
Moutan (Tree Peony). May and June. Different colors	1 00	9 00	
officinalis , var. rubra plena . Early April. Double; deep crimson.....	50	4 00	35 00
officinalis , var. rosea plena . Early April. Double; pink.....	1 00	9 00	
tenuifolia . Early April. Single; deep maroon.	50	4 00	
tenuifolia , var. plena . Early April. Double; maroon	50	4 00	
trifernata . April. Single. Bright red.....	35	3 00	25 00
PAPAVER bracteatum . June. Blood-red. 4 ft....	25	2 00	12 50
nudicaule (Iceland Poppy). All summer. Many colors. 1 ft.	25	1 50	10 00
orientale (Oriental Poppy). June. Orange-scarlet. 2 ft.	25	2 00	12 50
PARDANTHUS . See <i>Belemcanda</i> .			
PENTSTEMON barbatus , var. Torreyi (Torrey's Beard Tongue). June to August. Scarlet. 3 to 4 ft.....	25	1 50	10 00
grandiflorus . June to August. Purplish blue. 2 to 2½ ft.....	25	2 00	15 00
lævigatus , var. Digitalis . July and August. White. 3 ft.....	25	2 00	
ovatus . July and August. Purplish blue. 2 to 3 ft.....	25	2 00	

	Each	10	100
PHLOX amœna. May. Bright pink. 3 to 4 in.	\$0 25	\$1 50	\$10 00
Carolina. May and June. Rosy red. 1 ft.	25	1 50	
divaricata (Wild Sweet William). May and June. Lavender. 1 ft.	25	1 50	12 50
paniculata ; syn., decussata (Perennial Phlox). See the Calendar of Hardy Perennials for Special List. All colors.	25	2 00	15 00
subulata (Mountain Pink). May and June. Rose. Creeping	25	1 50	10 00
subulata , var. alba. May and June. White. Creeping	25	1 50	10 00
subulata , var. atropurpurea. May and June. Purple. Creeping	25	1 50	
subulata , var. lilacina. May. Lilac. Creeping.	25	1 50	12 50
subulata , var. Nelsoni. May and June. Pure white. Creeping	25	1 50	10 00
subulata , var. Model. May and June. Rosy white. Creeping	25	1 50	10 00
PHYSOSTEGIA Virginiana (False Dragonhead). August. Deep rose. 3 ft.	25	1 50	
Virginiana , var. alba. August. White. 3 ft.	25	1 50	10 00
Virginiana , var. speciosa. August. Pink. 3 ft.	25	1 50	10 00
PLATYCODON grandiflorum (Balloon-flower). July. Blue. 1½ ft.	25	1 50	
grandiflorum , var. album. July. White. 1½ ft.	25	1 50	
grandiflorum , var. Mariesi. June to October. Blue. 1 ft.	25	1 50	12 50
POLEMONIUM cœruleum (Jacob's Ladder). May to July. Deep blue. 1½ ft.	25	2 00	15 00
cœruleum , var. album. May to July. White. 1½ to 2 ft.	25	2 00	
PRIMULA acaulis (Primrose). May. Yellow. 6 to 9 in.	25	1 50	12 50
capitata (Primrose). Deep lilac. 9 in.	25	1 50	12 50
suaveolens (Cowslip). May. Yellow and orange. 1 ft.	25	1 50	12 50
veris (Polyanthus). May. Yellow and orange-crimson. 6 to 9 in.	25	1 50	12 50
vulgaris (English Primrose). May. Yellow. 6 to 9 in.	25	1 50	12 50
PYRETHRUM roseum (Feverfew). June and July. White, pink and red. 1½ to 2 ft.	25	1 50	10 00
roseum fl. pl. Named varieties. 1½ to 2 ft.	35	3 00	
RANUNCULUS aconitifolius fl. pl. (Crow's-foot). June. White. 1½ to 2 ft.	25	1 50	
acris fl. pl. (Yellow Bachelor's Buttons). June. Yellow. 2 ft.	25	1 50	
repens (Double Buttercup). May to July. Yellow. 1 ft.	25	1 50	10 00
ROSMARINUS officinalis (Rosemary). Scented foliage	25	1 50	
RUDBECKIA laciniata , var. Golden Glow. July to September. Yellow. 8 ft.	25	1 25	10 00
Newmani. August and September. Yellow. 1½ ft.	25	1 50	10 00
nitida (Cone-flower). August and September. Pale yellow, 5 ft.	25	1 50	10 00

PRICE LIST FOR SPRING OF 1910

61

	Each	10	100
SALVIA argentea. June. White, white foliage. 2 ft.	\$0 25	\$1 50	\$10 00
Caucasicum. July and August. Reddish purple.			
3 ft.	25	1 50	10 00
pratensis (Meadow-sage). June to September.			
Deep blue. 2 to 3 ft.	25	1 50	10 00
SANGUINARIA Canadensis (Bloodroot). White.			
April. 6 in.	25	1 50	10 00
SANTOLINA incana (Lavender Cotton). July.			
Deep yellow. 1 ft.	25	1 50	10 00
SAXIFRAGA cordifolia (Rockfoil). April to June.			
Rosy purple. 15 in.	25	2 00	15 00
SCABIOSA Caucasica (Mourning Bride). Lavender-blue. June. 15 to 18 in.	35	2 50	15 00
SEDUM acre (Golden Moss). May and June. Yellow. Spreading.	25	1 25	10 00
album. July. White. 4 to 6 in.	25	1 25	10 00
Rhodiola. August. Light pink. 1 ft.	25	1 25	10 00
sexangulare (Stoncrop). June and July. Yellow. 6 in.	25	1 25	10 00
spectabile (Brilliant Stoncrop). September and October. Rose. 12 to 15 in.	25	2 00	15 00
spectabile, var. atropurpurea. September and October. Purplish crimson. 15 in.	25	2 00	15 00
telephoides. July and August. Pink. 1 ft.	25	2 00	15 00
SENECIO clivorum. Summer. Yellow. 3 ft.	35	2 50	15 00
pulcher (Groundsel). July to October. Rosy purple. 1½ to 2 ft.	25	1 50	
SILENE Pennsylvanicum (Wild Pink). April and May. Rose or white. 9 in.	25	1 25	10 00
SMILACINA racemosa (False Solomon's Seal). April. White. 1½ ft.	25	1 50	
SPIRÆA (Goat's Beard, or Meadowsweet) aruncus. June and July. White. 4 to 5 ft.	35	2 50	15 00
filipendula fl. pl. June and July. White. 2 ft.	25	1 50	12 50
lobata. July. Pink. 3 to 4 ft.	25	2 00	15 00
palmata. June and July. Deep crimson. 2 ft.	25	2 00	15 00
palmata, var. elegans. June and July. White; crimson anthers. 3 ft.	25	2 00	
Ulmaria. June and July. White. 3 ft.	25	2 00	
venusta. June and July. Deep pink. Fragrant. 3 ft.	25	2 00	
STACHYS Betonica; syn., Betonica rosea. July and August. Rose. 1 ft.	25	1 50	12 50
STATICE Tatarica (Sea Lavender). June to August. Red. 15 to 18 in.	25	1 50	10 00
latifolia (Great Sea Lavender). July and August. Deep blue. 2 ft.	25	1 50	10 00
STOKESIA cyanea (Stokes' Aster). July to October. Lavender. 1½ ft.	25	2 00	15 00
cyanea, var. alba. July to October. White. 1½ ft.	50	3 50	
TANACETUM globiferum (Tansy). August. Golden yellow. 3 ft.	25	1 50	10 00

	Each	10	100
THALICTRUM adiantifolium (Meadow Rue). June.			
Yellow. 18 in.	\$0 25	\$1 50	\$10 00
aquilegifolium (Feathered Columbine). June.			
White. 2 to 4 ft.	25	1 50	
polygamum (Tall Rue). June. White. 3 to 4 ft.	25	1 50	
purpurascens . June to August. Purple. 3 to 4 ft.	25	1 50	
THERMOPSIS Caroliniana . June. Yellow. 3 to 4 ft.	25	1 50	
mollis . May to July. Yellow. 2 to 3 ft.	25	1 50	
THYMUS montanus , var. coccineus (Scarlet Thyme).			
May. Bright red. 4 in.	25	1 50	
vulgaris (Common Thyme). May. Lilac. 1 to 2 ft.	25	1 25	
TRADESCANTIA Virginiana (Spiderwort). June to October. Purple. 2 ft.	25	1 50	12 50
Virginiana , var. alba . June and July. White. 2 ft.	25	1 50	12 50
TRILLIUM erectum (Wake Robin). March and April. Purple. 9 to 12 in.	25	1 50	
grandiflorum (Wood Lily). March and April. White. 9 to 12 in.	25	1 50	
TROLLIUS Europæus (Globe-flower). May to August. Yellow. 2 ft.	25	1 50	12 50
VALERIANA coccinea (Valerian). June to October. Reddish. 2 ft.	25	1 50	10 00
officinalis (Hardy Heliotrope). June and July. Rose-pink. 2 ft.	25	1 50	10 00
rubra . June to October. Red. 2 ft.	25	1 50	10 00
VERBASCUM Olympicum (Mullein). July to September. Yellow. 6 ft.	25	1 50	12 50
VERNONIA Arkansana (Ironweed). August to October. Red. 5 ft.	25	2 00	
Baldwini . August to October. Purple. 4 ft. .	25	2 00	
VERONICA longifolia , var. rosea (Speedwell). July to October. Rose. 1½ ft.	25	1 50	
longifolia , var. subsessilis . August to November. Deep blue. 1½ to 2 ft.	25	2 00	15 00
rupestris (Rock Speedwell). June and July. Blue Spreading	25	1 50	10 00
spicata . June to September. Bright blue. 1½ ft.	25	1 50	10 00
Virginica . August to September. White. 4 ft.	25	1 50	10 00
VINCA minor (Periwinkle). May. Bright blue. Spreading	25	1 50	10 00
VIOLA pedata , var. bicolor (Bird's-foot Violet).			
May. Purple and White. 4 in.	25	1 50	12 50
Mixed	25	1 25	10 00

A CALENDAR OF PERENNIALS

This booklet, in a revised edition, with monthly lists, and special lists of Phlox, Iris, Peonies and Chrysanthemums, will be found valuable in arranging hardy gardens.

FERNS

- ADIANTUM pedatum** (Maidenhair Fern). 1 to 2 ft. Moist, shaded positions.
ASPIDIUM acrostichoides (Christmas Fern). 1 to 2 ft. Evergreen. Dry or moist soils in shady places.
Felix-mas (Male Fern). 2 ft. Semi-shaded positions, dry or moist soils.
Goldianum. 2 to 4 ft. Semi-shaded positions, dry or moist soils.
marginale. Evergreen. 1 to 2 ft. Shaded positions, dry or moist soils.
ASPLENIUM Filix-fœmina (Lady Fern). 2 to 3 ft. Open or shaded positions, in moist or dry soils.
BOTRYCHIUM Virginianum (Moonwort). 6 to 12 in. Shaded positions, moist or dry soils.
DICKSONIA punctilobula (Boulder Fern). 2 to 3 ft. For open positions; forms large plantations.
ONOCLEA sensibilis (Sensitive Fern). 1 to 2 ft. For open planting and wet soils.
Struthiopteris (Ostrich Fern). 2 to 4 ft. For open positions, dry or moist soils.
OSMUNDA gracilis (Flowering Fern). 2 to 4 ft. Open or shaded positions, and moist soils.
Claytoniana. 2 to 5 ft. For open plantings, dry or moist soils.
cinnamomea (Cinnamon Fern). 2 to 5 ft. For open or shaded positions, in wet soils.
WOODSIA obtusa. 6 to 12 in. Shady places, in moist soil.
WOODWARDIA angustifolia (Chain Fern). 1 ft. Open or shaded positions, in moist soils.
 The above varieties, 25 cts. each, \$2 per 10, \$15 per 100.
 The above collection, 15 varieties, \$3.
 100 in 5 varieties, our selection, \$12.50.

HEDGE PLANTS

We shall be pleased to name special prices for plants in quantity for hedging purposes.

EVERGREEN TREES

	SEE PAGE		SEE PAGE
Biota orientalis	4	Thuja occidentalis	13
Picea excelsa	7	occidentalis Wareana	14
Retinospora plumosa	10	Tsuga Canadensis	14
Retinospora plumosa aurea	11		

DECIDUOUS TREES

Carpinus Americana	24	Cratægus Oxyacantha	26
Betulus	24	Fagus sylvatica	26
Cratægus Crus-galli	26		

EVERGREEN SHRUBS

Azalea amœna	15	Ilex crenata microphylla	17
Buxus sempervirens	15	Mahonia aquifolia	17
sempervirens suffruticosa	16	Japonica	17

DECIDUOUS SHRUBS

Acanthopanax spinosa	33	Hippophae rhamnoides	40
Berberis Thunbergi and vulgaris	35	Ligustrum Ibotata, Regelianum,	
Elæagnus longipes	39	ovalifolium, vulgare	41
Forsythia viridissima	39	Lonicera Tatarica	42
Hibiscus Syriacus	39	Rhamnus cathartica	43

OUR CATALOGS

THE ANDORRA HANDBOOK. Planters who desire a complete descriptive list will be supplied with our Handbook of Trees and Plants for 50 cents, which will be credited upon their first purchase amounting to \$5.

ANDORRA'S HANDBOOK will serve as a standard guide, being up-to-date in nomenclature, and containing conservative descriptions of a vast list of trees and plants, with hints on planting, pruning and caring for them. It is illustrated and fully indexed.

PRICE-LISTS are issued semi-annually. Owing to our large output, and the changes in sizes of stock by reason of each season's growth, frequent revisions of the **PRICE-LIST** are necessary, to keep customers thoroughly posted on the stock we offer. You are always sure your order will be filled if you find the items in the current season's **PRICE-LIST**.

MORE SPECIALTIES, a booklet of 32 pages, describing and illustrating a large number of very choice things for the country home. A great help in deciding upon just the right thing to plant.

BEAUTIFUL LAWNS, BOOKLET No. 27. This little pamphlet treats of Lawn Fertilizing, and its eight pages should be carefully read by all interested in having a good lawn.

BOXWOOD, BOOKLET No. 28. For formal gardens and in connection with architectural effects, **BOXWOOD** is now absolutely necessary. This booklet shows the different forms we offer.

HINTS FOR SUCCESSFUL PLANTING, BOOKLET No. 30. Does not aim to cover every point that may arise, but it gives the principles in such a way that any one, by following its directions, can secure the best results.

A CALENDAR OF HARDY PERENNIALS, BOOKLET No. 33-26, with special lists of Iris, Phlox, Peonies and Chrysanthemums. This little booklet gives a complete list of Perennials, and shows in tabulated form their height, color, and months of bloom; invaluable to those planning herbaceous gardens.

MEASURING TREES AND SHRUBS

All trees and shrubs are measured as they stand in the Nursery before digging. In evergreen trees and in evergreen and deciduous shrubs the height is taken from the ground to the top of the plant.

Deciduous trees are measured from the ground to the top of the head, and the caliper or diameter of the trunk is taken above the collar. Measurements are expressed thus: 10 to 12 ft. (height), $2\frac{1}{2}$ to $2\frac{3}{4}$ in. (caliper).

DEPARTMENTS

	PAGE		PAGE
Fertilizers	2	Vines and Climbing Plants.....	47
General Instructions and Terms...	3	Fruit and Small Fruits.....	49, 50
Evergreen Trees.....	4	Roses	50
Evergreen Shrubs.....	15	Herbaceous Plants.....	51
Deciduous Trees.....	20	Ferns	63
Deciduous Shrubs.....	33	Hedge Plants.....	63
Reeds and Grasses.....	47	Catalogs	64

INDEX

	PAGE		PAGE
Aaron's Beard.....	40	Baby's Breath.....	56
Abelia	33	Baccharis	35
Abies	4	Bambusa	47
Acanthus	51	Baptisia	53
Acanthopanax	33	Barberry	35
Acer	20-22	Basswood	32-33
Achillea	51	Beard Tongue.....	59
Aconitum	51	Bear's Breech.....	51
Actinidia	47	Beauty-fruit	35
Adam's Needle.....	20	Beech	26
Adiantum	63	Belemcanda	53
Aesculus	23, 33	Bell-flower	54
Ailanthus	23	Bellis	53
Ajuga	51	Benzoïn	35
Akebia	47	Berberis	35
Alder	23	Betonica. See Stachys.	
Allspice, or Sweet Shrub	35	Betula	24
Alnus	23	Bignonia	47
Althaea (see, also, Hi- biscus)	39, 40, 51	Balloon-flower	60
Alum Root.....	56	Biota	4-5
Alyssum	51	Birch	24
Amelanchier	23, 33	Bittersweet	47
Amorpha	34	Black Alder.....	23
Ampelopsis	47	Blackberries	49
Amygdalus. See Prunus.		Black Haw	47
Anchusa	51	Black Walnut.....	27
Andromeda (see, also, Oxydendrum)	15, 23	Bladder Nut	44
Anemone	51, 52	Bladder Senna.....	36
Anthemis	52	Blanket-flower	55
Apples	49	Blazing Star.....	58
Aquilegia	52	Bleeding Heart.....	55
Arabis	52	Blue Spirea.....	35
Aralia	23	Bocconia	53
Arborvitæ	4, 5, 13	Boltonia	53
Arenaria	52	Botrychium	63
Aristolochia	57	Box	15-16
Armeria	53	Bridal Wreath.....	44
Aronia. See Pyrus.		Broussonetia	24
Arrow-wood	46	Buckthorn	43
Artemesia	53	Butterfly Weed.....	53
Arundo	47	Buttonwood	30
Asclepias	53	Buxus	15-16
Ash	27, 32	Callimeris	53
Asparagus	50	Callicarpa	35
Aspidium	63	Callirhoe	54
Asplenium	63	Calycanthus	35
Aster	53	Campanula	54
Astilbe	53	Candytuft	57
Astrantia	53	Caragana	35
Aubrietia	53	Cardinal-flower	58
Azalea	15, 34, 35	Carpinus	24
		Caryopteris	35
		Castanea	24
		Catalpa	24
		Ceanothus	36
		Cedar	5, 7
		Cedrela	24
		Cedrus	5
		Celastrus	47
		Celtis	25
		Cephalanthus	36
		Cephalotaxus	5
		Cerastium	54
		Cerasus	16, 25
		Ceratostigma	54
		Cercidiphyllum	25
		Cercis	25, 36
		Chamædaphne	16
		Chamomile	52
		Chaste Tree.....	47
		Chelone	54
		Cherries	49
		Cherry	25
		Chestnut	24, 49
		Chinese Angelica Tree.....	23
		Chinese Arborvitæ	5
		Chinese Cork Tree.....	29
		Chionanthus	36
		Chokeberry	43
		Christmas Rose.....	56
		Chrysanthemum	54
		Chrysogonum	54
		Chrysopsis	54
		Cimicifuga	54
		Cineraria. See Arte- misia.	
		Cinquefoil	42
		Cladrastris	25
		Clematis	48, 54
		Clethra	36
		Columbine	52, 62
		Colutea	36
		Comptonia	36, 37
		Cone-flower	55, 60
		Conoclinium	54
		Convallaria	54
		Coral Berry.....	44
		Corchorus	36
		Coreopsis	54
		Cornus	25, 36, 37
		Corylus	37
		Cotoneaster	16, 37
		Crab Apples	30
		Cranberry Bush.....	46
		Cratægus	17, 25, 26
		Cryptomeria	5
		Cucumber Tree.....	28

	PAGE		PAGE		PAGE
Cupressus	12	Ginkgo	32	Kniphofia	58
Currant	43, 49	Gleditschia	27	Kœreuteria	27
Cydonia	37	Globe-flower	36	Kudzu Vine	48
Cypress	9, 12, 32	Goat's Beard	61	Larch	27
Cytisu	27, 37	Gold-flower	40	Larix	27
Daisy	53	Golden Bell	39	Larkspur	55
Day Lily	55-56	Golden Chain	26	Lathyrus	48, 58
Daphne	17	Golden Tuft	51	Laurel	16-17
Deciduous Shrubs	33-47	Glyptostrobus. See Tax-		Lavandula	58
Deciduous Trees	20-33	odium.		Lavender	58
Delphinium	55	Gooseberries	49	Lavender-cotton	61
Desmodium. See Les-		Grapes	48-49	Lespedeza	40
pedeza	37	Groundsel Shrub	35, 61	Liatris	58
Deutzia	37, 38	Guelder Rose	46	Ligustrum	40-41
Dianthus	55	Gymnocladus	27	Lilac	44
Dicentra	55	Gypsophila	56	Lilium	58
Dicksonia	63	Halesia	39	Lily-of-the-valley	54
Dictamnus	55	Hamamelis	39	Linden	32-33
Diervilla	38	Hardy Roses	50-51	Linum	58
Digitalis	55	Hawthorn	26	Liquidambar	28
Diospyros	26	Hazel	37-39	Liriodendron	28
Dogwood	25, 36-37	Hedera	48	Liver Leaf	56
Dolichos. See Pueraria.		Hedge Plants	63	Lobelia	58
Doronicum	55	Helenium	56	Locust	27, 32
Dutchman's Pipe	47	Helianthus	56	London Pride	58
Echinacea	55	Heliopsis	56	Lonicera	41, 42, 48
Elæagnus	39	Helleborus	56	Loosestrife	58
Elder	43	Hemerocallis, or Day		Lychnis	58
Elm	33	Lily	56	Lycium	42
Elymus	47	Hemlock	14	Lysimachia	58
English Primrose	60	Hepatica	56	Lythrum	58
English Ivy	48	Herbaceous Plants	51-62	Maclura	28
Erianthus	47	Heuchera	56	Magnolia	28
Erigeron	55	Hibiscus	39, 40, 57	Mahonia	17
Eryngium	55	High Cranberry Bush	46	Maidenhair Tree	32
Esculent Roots	59	Hippophae	40	Maple	20-23
Eulalia	47	Holly	17	Matrimony Vine	42
Euonymus	17, 39, 48	Hollyhocks (see, also,		Meadow Rue	61
Eupatorium	55	Althæa)	51	Meadow Sweet	61
Euphorbia	55	Honey Locust	27	Mertensia	58
Evening Primrose	59	Honeysuckle	41, 48	Mint-flower	54
Evergreen Shrubs	15-20	Hop Tree	30	Mist, or Smoke Tree	43
Evergreen Thorn	17	Hornbeam	24	Mock Orange	42
Evergreen Trees	4-15	Horse-chestnut	23	Monarda	59
Everlasting Pea	48	Hydrangea	40	Moneywort	58
Evochorda	39	Hypericum	40	Monkshood	51
Fagus	26	Iberis	57	Morus	29
Ferns	63	Ilex	5, 17, 40	Mountain Ash	32
Festuca	47	Inula	57	Mourning Bride	61
Feverfew	55, 60	Iris	57	Mulberry	24, 29
Fir	4	Iron Weed	62	Myosotis	59
Flame-flower	58	Itea	40	Myrica	42
Flowering Almond	43	Jacob's Ladder	60	Negundo. See <i>Acer Ne-</i>	
Flowering Crab	30	Japanese Maples	22-23	gundo.	
Forget-me-not	59	Japan, or Boston Ivy	27	Nepeta	59
Forsythia	39	Japan Cypress	9	Nettle Tree	25
Foxgloves	55	Japan Judas	36	Nuts	49
Fox Grape	48	Japan Quince	37	Nyssa	29
Fraxinus	27	Japanese Snowball	46	Oak	30-31
Fruit	49	Jasmine	40	Oenothera	59
Funkia	55	Jasminum	40	Old Man	53
Gaillardia	56	Jersey Tea	36	Old Woman	53
Galega	56	Judas Tree	25	Oleaster	39
Gas Plant	55	Juglans	27	Onoclea	63
Geranium	58	Juneberry	23	Ophiopogon	59
German Catchfly	56	Juniperus	5-6-7	Oriental Plane	30
Geum	56	Kalmia	17	Oriental Poppy	59
Gillenia	56	Kentucky Coffee Tree	27	Osage Orange	28
		Kerria. See <i>Corchorus</i>	43	Osmanthus	17

PRICE LIST FOR SPRING OF 1910

	PAGE		PAGE		PAGE
Osmunda	63	Ribbon Grass	47	Sweet Shrub	35
Oswego Tea, or Fragrant Balm	59	Ribes	43	Sycamore	30
Oxydendrum	29	Robinia	32, 43	Symphoricarpos	44
Pæonia	59	Rock Cress	52	Syringa	44
Pachysandra	59	Rockfool	61	Tanacetum	61
Papaver	59	Rose Acacia	43	Tamarix	46
Pardanthus. See Bel-emcanda.		Rose Campion	58	Taxodium	32
Parrotia	29	Rosemary	60	Taxus	11-12
Paulownia	29	Rose of Sharon	39, 40	Tecoma. See Bignonia.	
Pavia. See Esculus.		Roses	50-51	Thalictrum	62
Peaches	29, 49	Rosmarinus	60	Thermopsis	62
Pearl Bush	39	Rosy Milfoil	51	Thorn	25-26
Pears	49	Rubus	43	Thorn, Evergreen	17
Pentstemon	59	Rudbeckia	60	Thrift	53
Periploca	48	Rugosa Roses	51	Thuya	13-14
Periwinkle	62	Salisburya	32	Thujopsis	12
Persian Iron Tree	29	Salix	32	Thymus	62
Persica	29	Salvia	61	Tickseed	54
Persimmon	26	Sambucus	43	Tiger Lily	58
Phalaris	47	Sandwort	52	Tilia	32-33
Phellodendron	29	Sanguinaria	61	Tradescantia	62
Philadelphus	42	Santolina	61	Tree of Heaven	23
Phillyrea	17	Saxifraga	61	Trillium	62
Phlox	60	Scotch Broom	37	Trollius	62
Phyostegia	60	Scabiosa	61	Trumpet Vine	47
Picea	7-8	Sciadopitys	11	Tsuga	14
Pine	8-9, 11	Sea Buckthorn	40	Tulip Tree	28
Pinks	60	Sea Holly	55	Ulmus	33
Pinus	8-9	Sea Lavender	61	Umbrella Tree	28
Plane	30	Senecio	61	Vaccinium	46
Platanus	30	Sedum	61	Valeriana	62
Platycodon	60	Sheepsberry	46	Valerian	62
Plumbago	54	Shrub Yellow Root	47	Varnish Tree	27
Plums	49	Shrubby Cinquefoil	42	Verbascum	62
Podocarpus	9	Silene	61	Vernonia	62
Polemonium	60	Silk Vine	48	Veronica	62
Poplar	30	Small Fruits	49	Viburnum	46-47
Populus	30	Smilacina	61	Vinca	62
Poppy	53, 59	Snakeroot	55	Vines and Climbing Plants	47, 48
Potentilla	42	Snowball	46	Viola	62
Primrose	59-60	Snowberry	44	Virgilia	25
Primula	60	Sophora	32	Virginia Creeper	47
Privet	40-41	Sorbus	32	Vitex	47
Prunus. See, also, Cerasus	30, 42	Speedwell	62	Vitis	48
Pseudotsuga	9	Spice Bush	35	Walnut	27-49
Ptelea	30	Spiderwort	62	Wax Myrtle	42
Pterostyrax	30	Spindle Tree	39	Wayfaring Tree	46
Pueraria	48	Spiræa	43, 44, 53, 61	Weigela	38
Purple Mist	43	Spruce	7, 8, 9	White Fringe	36
Pyrethrum	60	Stachys	61	White Rod	46
Pyrus	30, 42	Staphylea	44	Wolf's-bane	51
Quercus	30, 31	Statice	61	Willow	32
Quinces	37, 49	Stephanandra	45	Windflower	51-52
Ranunculus	60	Stokesia	61	Winola	47
Raspberries	50	Stokes' Aster	61	Winter Berry	40
Red Bud, or Judas	25	Stoncrop	61	Wistaria	48
Reeds and Grasses	47	Strawberries	50	Witch Hazel	39
Retinospora	9-11	Strawberry Bush	39	Woodsia	63
Rhamnus	43	Styrax	44	Woodwardia	63
Rhododendron	18	Sumac	31-32, 43	Xanthoceras	47
Rhodotypos	43	Sunflower	56	Xanthorrhiza	47
Rhubarb	50	Swamp Huckleberry	46	Yarrow	51
Rhus	31-32, 43	Sweet Fern	36	Yellow Wood	25
		Sweet Gum	28	Yew	5, 9, 11, 12
		Sweet William	54, 60	Yucca	20
		Sweet Pepper Bush	36		

Plant for Immediate Effect

Not for Future Generations

Start with large stock—it has taken years of special preparation to grow such Trees and Shrubs as we offer you.

We have done the long waiting—you can secure at once specimens that will give immediate and permanent results.

AS AN EXAMPLE

Note in this Price-List, page 21, Norway Maples, 14 to 20 ft. in height with trunks 4 to 10 in. in diameter. Specimen trees with broad tops and a system of fibrous roots that makes transplanting successful—trees that are sure to grow. Such trees simply “make your place.”

AN IMPORTANT POINT

These specimen Trees and Shrubs are Andorra-Grown—they are here at our Nurseries where you may inspect them and reserve such as suit your purpose.

ANDORRA-GROWN MEANS QUALITY
QUALITY IN TREES MEANS SUCCESSFUL PLANTING