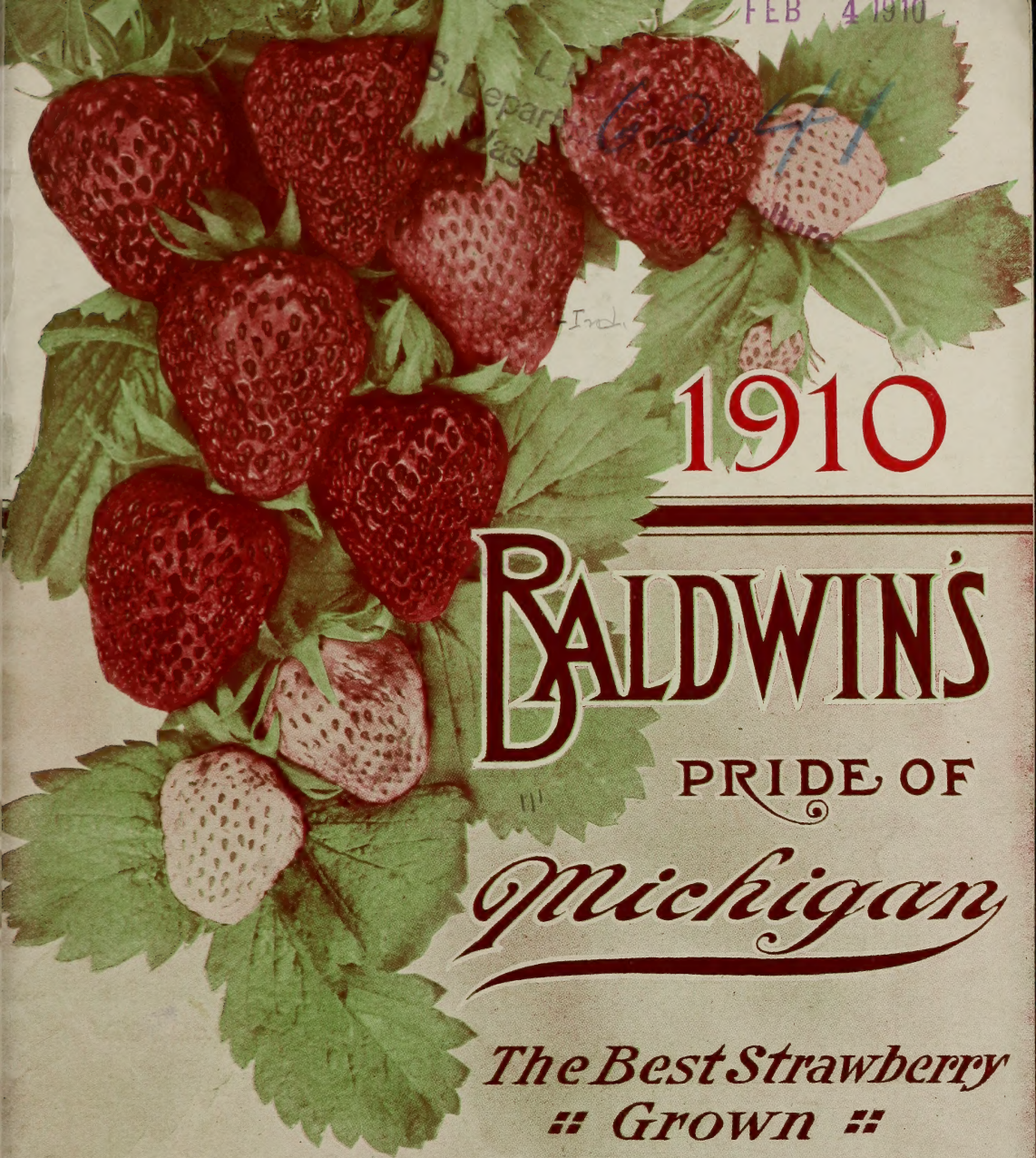


Historic, Archive Document

Do not assume content reflects current scientific knowledge, policies, or practices.

FEB 4 1910



1910

BALDWIN'S
PRIDE OF
Michigan

The Best Strawberry
GROWN

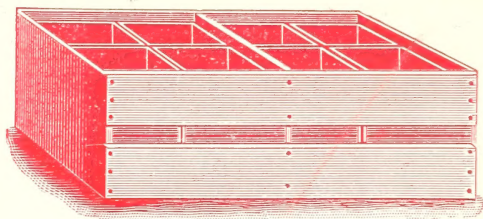
BALDWIN'S

RAILROAD VIEW FRUIT PLANT FARMS
Bridgman, Michigan

**BERRY CRATES
BERRY BOXES
BERRY BASKETS**

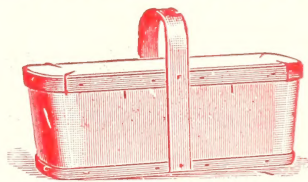
**BEST GOODS
PRICES RIGHT**

Goods Sent in the Flat or Made Up.



Baskets for shipping Grapes and Peaches

All Kinds of Fruit and Vegetable Packages



Catalog Mailed Free on Application. Address

COLBY-HINKLEY CO.

BENTON HARBOR, MICHIGAN



1910 Greeting 1910

In preparing copy for our twenty-first annual catalogue we want to thank our many customers and friends for their patronage and to assure you all that your orders are appreciated.

The reason our business has grown so rapidly, we believe, is because we have always tried to please each customer, to give him full value for every dollar sent us, and you may be sure that we are going to continue this policy.

We cannot afford to do otherwise. **We want your order this year** and are in a position to take care of it to your entire satisfaction. Last season was a record breaker for us.

The demand for plants of all kinds so far exceeded the supply, that we were practically sold out of all stock by March 15th and were obliged to return unfiled orders amounting to over \$10,000.00.

Notwithstanding this shortage our business was double what it had ever been before. We were sorry to disappoint so many of our regular customers, and suggest that you **place your orders as soon as you can** so we can reserve the stock for you.

All varieties of small fruit brought extra high prices this summer and we look for the heaviest demand for plants the coming spring we ever had.

At this writing (Nov. 1st), we have sold more than twice as much stock as we had sold last year at this date.

We are far better prepared to meet this demand than ever before, as we **have grown the largest and best stock of plants we ever produced.**

We grow our plants by the million on our own ground and know what we are selling.

All our strawberry plants are grown on new ground (never having been plowed till last March) and they are large, heavy-rooted, and free from disease.

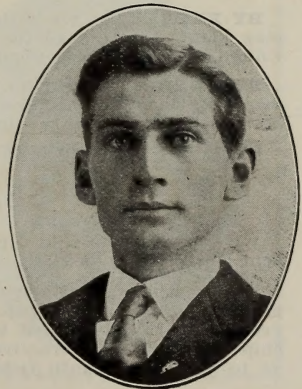
Certificate of inspection goes with every shipment.

Plants of this kind are certainly worth more to you than small, inferior stock, grown on old run-out land. We charge you no more for our plants, however, thus giving our customers the benefit of this important difference in quality.

We are equipped with modern packing houses and cellars with all conveniences for handling stock rapidly and where it is **always protected from all wind, sun and frost.** Your plants go into crates, boxes, etc., freshly dug and in first-class condition.

Our customers are acquiring a confidence in us that is worth more to us than any advertising we might do.

We publish in this catalogue a few of the many unsolicited testimonials received during the past year. Please note that they are all printed with full address. They are not fakes, but genuine copies of letters received. Some may be your neighbors. Write to any of them before placing your order if you wish.



GREAT SCARCITY OF PLANTS FOR 1910.

While we have been favored with a good growing season, we find there is a marked scarcity of plants in the Southwestern, Southern and Eastern portions of the United States.

The dry weather in many sections has cut the plant crop to less than one-half and we believe the demand will exceed that of 1909.

At our prices we expect to be sold out of all stock before shipping season is over.

We believe our prices will compare favorably with those of any other reliable nursery. We do not wish to try to compete with other than responsible parties.

None of our plants are allowed to fruit before digging, and when we dig we take up the whole row, thereby giving our customers the strongest stock that can be grown. All plants are carefully trimmed and tied in bunches of twenty-five. Small plants are thrown out. **Everything we ship will be as represented.**

READ OUR GUARANTEE.

"EVERY PLANT WE SHIP IS GUARANTEED TO BE FIRST-CLASS AND TRUE TO NAME, PACKED TO REACH YOU IN GOOD GROWING CONDITION (BY EXPRESS) AND PLEASE YOU, OR YOUR MONEY BACK.

If you are not already a customer of ours, give us a trial order this year.

Even should your order be small, it will receive just as careful attention, and this will give us an opportunity to get acquainted. One chance is all we ask. It will be easier for us to sell you plants another year.

We believe the demand for plants this year will greatly exceed the supply. **We earnestly advise all to place their orders just as soon as possible, and especially urge our former customers and friends to order early** that you may not be disappointed as we have been obliged to disappoint you sometimes in past years.

Look at our special premium offers on page six.

If there is anything you want explained more fully, please write us at once.

Remember, you are always welcome to any information we are able to give you.

AWAITING YOUR FAVORS WHICH WILL RECEIVE CAREFUL AND PROMPT PERSONAL ATTENTION, I AM,

Very truly yours,

O. A. D. BALDWIN,
'Bridgman, Mich.

OUR INVITATION

We invite all who can, to come and examine our growing plants. See how we dig and handle them. **Come in the spring** and watch us pack your bill of plants, or come in the summer and see the different varieties in fruit. We are always glad of a chance to show our growing plants and believe our stock equals any grown anywhere.

Remember our invitation. You are always welcome to our home.

METHODS OF SHIPMENT

BY EXPRESS—This is the safest and all things considered, the cheapest way of shipping plants. Plants go for 20 per cent less by express than merchandise. We have the United States Express Company. We guarantee satisfaction by express.

BY FREIGHT—We ship considerable stock by freight, but not nearly so much as we used to. The difference in express and freight charges is so small that customers generally request express shipment.

Cane fruit plants often go through safely by freight when distance is not too great.

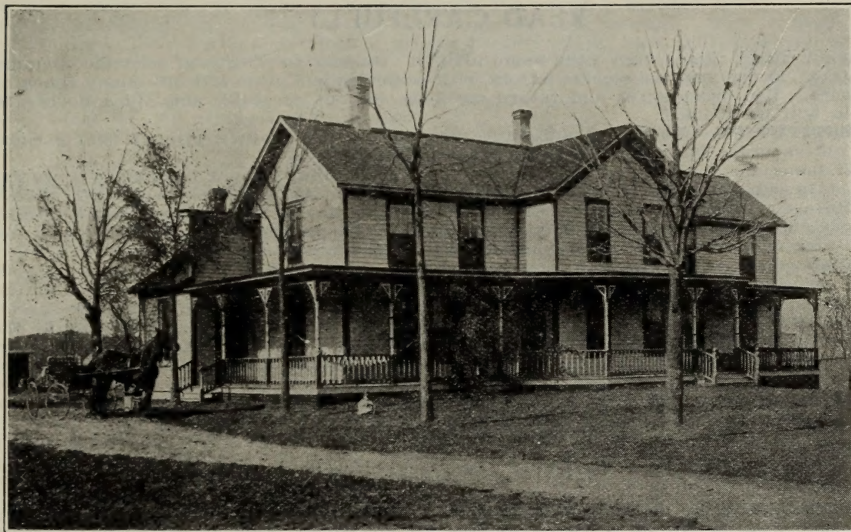
SEASON FOR SHIPPING

We commence to ship the last of March or first of April, according to season, and will continue till all stock is gone (generally about May 10th to 15th).

We issue no fall catalogue, but send out some stock about October 1st. Plants in this latitude do not mature before this date and would not give satisfaction. They are full grown and heavily rooted by October 1st, and as some had rather plant in fall, we will ship what orders we receive then at prices quoted in this catalogue. Please do not ask us to ship plants until October.

OUR LOCATION.

We are located in Lake township, the **greatest strawberry township in the world.** Lake township is in Berrien County, the **greatest strawberry county in Michigan.** Berrien County is in the "Famous Fruit Belt" of Michigan, known the world over. Here



OUR HOME.

plant growth is as perfect as anywhere in the United States. Thus our customers are favored with our location as to natural advantages. Plants grown in the cold, northern climate are strong and hardy, and when transplanted will grow and bear fruit.

Our shipping facilities are also **in your favor.** We are one and one-half miles from Lake Michigan on the Pere Marquette R. R., only a few miles from the great trunk lines like the Michigan Central, Big Four, Grand Trunk, Lake Shore & Michigan Southern, Nickle Plate, Baltimore & Ohio, Pennsylvania Lines, etc., etc., making quick connections to all parts of the United States. Only 77 miles from Chicago.

BOXING AND CRATING—We make no charge for boxes, barrels and packing, which is done in best possible manner. We use thousands of light plant crates and handled baskets. We manufacture our own crates for shipping.

We pack with damp moss and straw. Each variety is carefully separated in crate and correctly labeled with printed wooden labels.

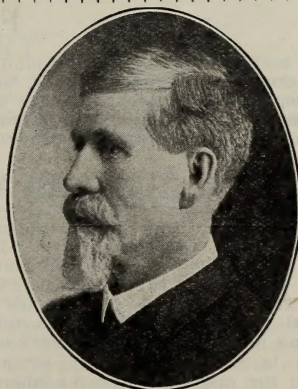
O. A. E. BALDWIN

Who established the business in 1889

His Motto was

"Good Goods Honestly Counted and Packed."

- We believe our present customers, many of whom were his customers, will bear out the statement that his policy is being carefully maintained.



GENERAL INSTRUCTIONS

READ CAREFULLY

When writing, please sign your name plainly. Be sure to give your postoffice, county and state. Every year we receive letters with postoffice and state left off—many times no signature. Use order sheet and return envelope, fill out carefully and much delay and trouble will be avoided.

SUBSTITUTION—We do not substitute one variety for another without your permission, unless order is received late in season.

It is sometimes a great help to us and also a good thing for our customers if we are allowed to substitute for some variety we may happen to be sold out of. We always substitute some variety of same season, sex and quality as that ordered, and generally give customers no cause for complaint should you give us the permission. We will not substitute, of course, unless it is absolutely necessary.

TERMS—Cash with order, or part cash, balance any time before shipment. At our prices we cannot afford to do a credit business, we give references as to our reliability, etc., which all are at liberty to investigate.

REFERENCES—As to our standing and reliability we refer, by permission to the Postmaster or Express Agent of Bridgman, Bradstreet's Commercial Agency, or Commercial National Bank of St. Joseph, Mich. In writing to above, please enclose stamp for reply.

HOW TO SEND MONEY—By Chicago or New York draft, express money order, post-office order or registered letter.

TIME TO ORDER

ORDER EARLY by all means—the earlier the better. If anything more is needed it can be added later. If not prepared to send all the money, send a part when the order will be booked; the balance before shipment. Orders are filled in rotation as received; hence it is to your advantage to have your order booked early.

CARING FOR PLANTS UPON ARRIVAL

If the ground is not in condition when they arrive—too wet or not prepared—a very easy method can be used to keep them, which will be a great benefit to the plants, as follows: Take each variety, a bunch at a time, cut string, and spread roots very thinly along the side of a shallow furrow, then cover roots with dirt not higher than the crown of the plants. Give partial shade and if ground is dry, water roots only. In a few days they will have taken hold, or rather sent out little white fibrous roots, and will be in better condition for transplanting than at first.

SOIL—Almost any soil that will grow good field crops will grow good berries—good, rich, well drained sandy loam preferred.

DRAINAGE—See that your land is well drained. Tiling of sufficient size to carry off all surplus water is best and saves ground for you.

FERTILIZING

The best fertilizer we ever found for fruit is stable manure. A crop of clover or other green crop plowed under is good, too. Fruit plants, like any other crop, need rich ground, and respond quickly to good care and fertilization. If you have a good market, **you can make more clear money raising fruit than by any other branch of farming. Let us start you in, in a small way, and prove the above statement.**

PREPARING GROUND

Ground for setting fruit plants should be plowed deep and harrowed till all lumps are mashed and it is loose and level. Then roll or float just before setting. We use common plank float which you can make at very little expense. We use a hand marker (home made) that marks three rows at once.

SETTING PLANTS—Make holes with a spade by putting in ground five or six inches and pull toward you, then take out. Hold plant in hole with hand and close hole with foot and press firmly (with feet) on both sides.

This is the general way of planting strawberry plants and we recommend this method for raspberry and blackberry plants as well. Some plow a furrow and set cane plants in them, but unless soil is very moist there is danger of plants drying out.

CULTIVATION

We recommend shallow cultivation as soon as plants are set or at least within a day or two. This levels the ground and holds the moisture in the ground where it will do the most good, not allowing the moisture to get away by evaporation through the pores in the ground. Do not cultivate too close to the plants as you will disturb the roots.

Shallow cultivation should be kept up through the growing season.

Blossoms should be pinched off from all plants first season. This throws the strength into the roots and develops a strong healthy plant, that will give you a big crop of nice berries the following season. If you do not want a wide matted row (and we would not recommend matted rows for best fruit) you should cut off all runners that start up till about July 1st. There will then be plenty coming on later and your parent plant will be strong and vigorous.

THE STRAWBERRY

The Strawberry is our specialty. We have a fine stock of all the standard and best new varieties, which we have listed **very low** and shall sell at prices quoted as long as the stock lasts. Almost all the newer varieties we obtained from the originators and introducers in the first place at a heavy expense, consequently our stock is pure. Many ask how we can sell such choice stock so low. Being situated in a section especially adapted to growing the finest plants and not being hampered with anything in the tree line, growing many of the standards by the million on new, rich land that produces a heavy stock of extra fine plants, having our own moss for packing and being satisfied with a **small profit**, we can furnish choice stock very low. Growing plants in such large quantities we can, of course, make a discount on large bills. Thus nurseries in all sections of the country buy of us to sell again—many times selling through agents as high by the hundred as we charge by the thousand. Our low prices hold good while stock lasts. We have some varieties not listed here, if you want something not on this list, write us.

Varieties marked (P) are "Pistillate," and should have about every third row set to some staminate variety for fertilizer. Those marked (S) are "Staminate" and good fertilizers. Set early staminates with early pistillates and late with late, etc. All plants are trimmed and tied in bunches of 25.

Many new beginners ask what varieties are most profitable to grow for market, etc. Of course much depends on location and circumstances. The general favorites are the following:

Warfield, Senator Dunlap, Haverland, Beder Wood, Glen Mary, Aroma, Sample, August Luther and Pocomoke. These varieties range from very early to very late.

We recommend August Luther for early; Baldwin's Pride of Michigan, Senator Dunlap, Pocomoke and Haverland for main crop. Aroma, Brandywine, Uncle Jim, Sample and Steven's Late Champion for late.

Senator Dunlap is rapidly coming to the front as a **Money Maker** and we think it is now one of our most profitable market berries.

Pocomoke is extra profitable. This is a grand variety and we earnestly recommend it to our customers and friends as an extra good money maker.

THE RASPBERRY

We have all the leading **black and red raspberry plants.** We recommend Cumberland as the best black cap. Although Gregg and Kansas are very profitable. Gregg is best late sort. Our new black cap "Hoosier" is very highly recommended and already well known through Indiana. Cuthbert and Miller are the standard varieties of red raspberry.

Cuthbert leads all other reds.

THE BLACKBERRY

Eldorado still leads as a money maker all over the country. Last season our sale of Eldorado plants was greater than our sale of all other varieties of blackberry plants combined. We again returned orders for thousands of Eldorado after our stock was sold. Our stock is limited again this year. **Genuine Eldorado plants are scarce** and we advise ordering them soon. See description.

We are listing Mersereau. This variety is yet quite new and not known in many parts of the country. **Mersereau is what blackberry growers have been looking for for years past. They are hardy as Snyder, fruit is as large and firm as Wilson** (selling for Wilson on the market) and **produce big crops.** Growth of cane is wonderful. Get this profitable variety started at once.

WORTHLESS VARIETIES

There has always been too many worthless varieties offered to the plant buying public. You will notice that we have thinned out our list of strawberry plants to less than thirty (30) varieties, and still we know we have too many kinds for any grower to have for most profitable results. We, of course, are obliged to handle many varieties which are profitable and bought largely in some localities, but are almost worthless in other places. We list but a few of the newer introductions.

SEED POTATOES AND OATS

We have grown about 1,000 bushels of very nice seed potatoes of the leading varieties, and a few hundred bushels of the celebrated Regenerated Swedish Select Oats. We guarantee entire satisfaction with our seeds and have put our prices down where our stock will be sold early.

First come, first served.

See description and prices of potatoes and oats in back part of this catalog.



PLEASE NOTE OUR PREMIUM OFFERS

With every order amounting to \$3.00 or more at catalogue prices received before March 1st, customers may select stock to the amount of 25 cents free.

With every order amounting to \$5.00 or more at catalogue prices received before March 1st, customers may select stock to the amount of 50 cents free.

With every order amounting to \$10.00 or more at catalogue prices received before March 1st, customers may select stock to the amount of \$1.25 free.

LARGE ORDERS

If you want a quantity of plants write us at once for special discount. We can of course sell cheaper accordingly when filling a large order than a small one. Bills for low quotations must be received early, when stock is unbroken. Now is the time to write for special prices. Let us hear from you at once.

No. 943

CERTIFICATE OF NURSERY INSPECTION

This is to certify that I have examined the Nursery Stock of O. A. D. BALDWIN, Bridgman, Michigan, and find them apparently free from dangerous insects and dangerously contagious tree and plant diseases.

This Certificate to be void after July 31, 1910.

L. R. TAFT,

State Inspector of Nurseries and Orchards.

Agricultural College, Michigan, October 1st, 1909.

All cane plants shipped, if requested, are fumigated with Hydro Cyanic Acid Gas of strength required by law. This process kills all insects.

Varieties of Strawberries

(FOR PRICE LIST BY HUNDRED SEE PAGE 30 OF THIS CATALOGUE.)

We set strawberry plants 16 inches apart in rows and rows four feet apart. This takes about 7,000 per acre.

EXTRA EARLY VARIETIES

AUGUST LUTHER—(S)—We believe this to be the best early strawberry grown. We have tested nearly all the early varieties and recommend August Luther to be far ahead of any other early berry. It is very prolific, comes early and continues to bear till practically every berry reaches a good size. Fruit is very uniform in size and shape.



AUGUST LUTHER

Plants are healthy and make good row. The fruit is of good size, roundish, dark red, firm and very easily picked. It succeeds best on rather light soil. The fact is we have found by experience that the early varieties do best on light soil. We would advise all our customers and friends to set August Luther for early berries. We expect to be sold out early at \$3.00 per thousand.

MICHEL'S EARLY—(S)—One of the earliest varieties grown. The plant is a very robust grower, strong and healthy, although plant is rather small; one of the best of the early fertilizers, as it blossoms early and late. Fruit is of medium size and good quality. Too well known to need much description here. Price, \$2.00 per thousand.

MEDIUM EARLY VARIETIES

BEDERWOOD—(S)—This variety was originated by Beder Wood, of Illinois. We have fruited it for many years and found it to be a very heavy bearer, of good sized roundish fruit (about as firm as Bubach), season early, a good staminate to fertilize early varieties like Crescent, Warfield, etc. The plant is a good healthy grower and sends out a number of large runners. Beder Wood is very deep rooted and will stand a drouth better than most varieties. Will consequently do extra well on a very dry or light piece of ground. The call is heavy for this variety. Price, \$2.25 per thousand.

SENATOR DUNLAP—(S)—This berry is of the Warfield type, has a perfect blossom, is hardy, productive, a splendid keeper and able to hold its own under any "rough and tumble" methods of culture to which it is likely to be subjected. Senator Dunlap is a very heavy bearer of good size even fruit of a very beautiful dark red color. It is a berry to grow for either home use or market. My opinion is that the fortunate ones will be those that get a start at the earliest opportunity. Mr. Crawford says: "The Senator Dunlap is now the greatest all around variety ever introduced." We would advise all to plant Senator Dunlap. I believe it will be our most profitable mid-season strawberry. We fruited one acre of this variety last season, and it was the most profitable acre we had to pick. This variety in our opinion will stay with us as one of the standards. **The sale of Senator Dunlap is wonderful** considering the time they have been before the people. We quote this variety very low and all should try them for main crop. We expect **Senator Dunlap to outsell all other varieties** for 1916 planting.

On account of our immense stock we have reduced the price of Senator Dunlap to \$2.50 per thousand.

LOVETT—(S)—This berry has had a thorough test and we think there are other varieties that are better. It is a rank grower, hardy, and produces a quantity of fruit. We do not sell as many Lovett as we used to. It has a perfect blossom and bears heavily. The fruit is firm, medium to large size, conical, and of good quality. Season medium. Price, \$2.50 per thousand.

BALDWIN'S PRIDE OF MICHIGAN—(S)—"The best strawberry grown." See picture in natural colors on front cover. This picture was taken from a photograph. We call this variety **Baldwin's Pride of Michigan** as there was a Pride of Michigan introduced by the Kellogg Company about the same time, that we knew nothing about when we named our berry. **Baldwin's Pride of Michigan is, without doubt, the best and most profitable variety of strawberry ever introduced.** This grand variety was introduced by us four years ago.

Plant is perfect and berry is perfect. Here are the qualities that make it a most valuable variety.

PRODUCTIVENESS—Will out-yeild any other strawberry.

COLOR—Dark glossy red (all through.)

SEASON OF RIPENING—Second early (ripens with Senator Dunlap).

SIZE—About like Haverland and Glen Mary.

SHIPPING QUALITY—The best. Very tough skin, and a firm berry.

SHAPE—Rather oblong. Resembles Haverland, never mis-shapen. (See picture on front cover.)

PLANT—Very vigorous and healthy.

BLOSSOM—Perfect (a strong fertilizer.)

FRUIT STEMS—Are strong, stand up well and there are plenty of them.

What more could one ask for in the way of qualifications for a perfect strawberry? "We confidently recommend this new variety to our customers and friends."

Last year many of you were disappointed in not being able to get our Pride of Michigan. We were sold out early and could have sold twice as many if we could have filled the orders received. This season we have grown nearly one million fine, stocky plants of this celebrated variety and have reduced our price to \$5.00 per thousand.



SENATOR DUNLAP
Two-thirds natural size.
(One of our Best Commercial Berries.)

HVERLAND—(P)—Exceedingly productive; fruit large and very fine; one of the most popular and well tested varieties; withstands the drouth better than most kinds; color light, season early. Considered throughout the United States as a money maker in most any climate. Demand for plants has always been much larger than the supply. You will not miss it in buying some Haverland. They are a good sure berry. Bought largely for main crop all over the country. They make a good sized fruiting row and mature an immense amount of fruit which is very easy to pick, being plainly in sight. We cannot say too much in their favor. Try them and you will agree with us.

Price, \$3.50 per thousand.

WARFIELD—(P)—This is the grand berry for main crop, both for home use and market. We recommend Warfield fertilized with Senator Dunlap for most profitable strawberry crop you can grow if you have a good market for medium early berries. Warfield is and has been the leader for years. Fruit is regular shape, dark red and a splendid shipper. We sell more plants of this than of any other variety, excepting Senator Dunlap. Resembles Wilson, but is a heavier bearer and better plant maker, and better shipper. Plants are small, more like Crescent; requires a strong staminate about every other row for best results. We recommend Warfield to all for profit.

Price, \$2.50 per thousand.

HIGHLAND—(P)—We are offering this new variety for the first time. We have not fruited it but bought a stock of plants last year and have grown some nice stocky plants. Introduced by M. Crawford Co.

From what we can learn of the Highland, we are sure it will pay lovers of the strawberry to get a start of it. The Ohio Experiment Station, which is a very reliable authority on new fruits has been growing it for four years and herewith we give their report of it:



HIGHLAND

The Highland, this season, was the most prolific of the one hundred and forty-six varieties composing the station's test plats. Fruit medium to large, bluntly conical; color bright scarlet; flesh red clear through. Plants very large, strong and vigorous. Flowers imperfect and quite resistant to cold. Highland gives bright promise of being a great "business" berry and a money maker for even the small planter.

During the four years Highland has been upon the station ground, it has not failed to give very prolific crops. It seems strong and persistent in all its admirable points. A quart maker of bright, handsome berries of very acceptable quality.

Price, \$6.00 per thousand.

BISEL—(P)—Introduced several years ago in southern Illinois, where it is very popular. Plant is strong and able to carry its immense load of fruit to maturity. Berries are large, of regular conical shape, bright red, fairly firm with seeds but slightly imbedded. Color rather light. Ripens with Crescent but continues longer in bearing.

Price, \$3.00 per thousand.

NORWOOD—(S)—This is the genuine "Norwood" you have read so much about. We bought our plants of the introducer and have grown a good stock of extra nice, large plants.

Found on the grounds of Mr. N. B. White or Norwood, Mass. It is supposed to be a cross between Marshall and Corsican. We quote Mr. White's description: "The plant is strong and healthy, making a liberal but not excessive number of strong runners. The berry is conic and regular in shape; not a cockscombed berry was found this season. The quality is unsurpassed, and the size unequalled, some attaining the enormous size of three inches in diameter. Four such strawberries would fill a box and be crowded.



Color bright red all the way through, growing darker with age; firm, a good keeper, and will ship well. Holds its size well through the season and remains in bearing a long time."

Two years ago the entire stock of Norwood plants was purchased by J. L. Farmer, and the retail selling price was ten dollars a dozen.

This is the berry advertised so extensively last year by Mr. Farmer. **Genuine Norwood at \$1.00 per dozen; \$5.00 per hundred.**

CRESCENT—(Improved)—(P)—The standard of productiveness all over the country; succeeds everywhere; stands neglect best of any, plant small, berries fair size, bright and attractive, not very firm. Many growers consider this the most profitable berry for market. A few years ago a new berry was introduced into this section, which proved to be an Improved Crescent. We sell a great amount of this variety every year. We have a full stock of extra fine plants and quote them at \$2.50 per thousand.

SPLENDID—(S)—We have fruited it several years and can offer it to our customers with great confidence. Plant is a healthy, luxuriant grower, sends out many runners and bears abundantly. The fruit is large and far above the average in quality and appearance. Desirable for either market or home use. This variety has been tested by many berry experts all over the country and has proved itself worthy of its name.

Price, \$3.00 per thousand.

MEDIUM LATE VARIETIES

BUBACH—(P)—This has been a very popular berry for years. We have always considered Bubach a profitable variety. The plant is very large and fine looking, but a slow plant maker, the berry large and showy. If you have a nearby fancy market it will pay you to get a large fine looking berry. Bubach will fill the bill.

Price, \$4.00 per thousand.



GLEN MARY

GLEN MARY—(S)—Large and choice, very handsome, and of fine flavor; vigorous and productive. It is as large as the Sharpless and of superior quality. In productiveness it far surpasses the Crescent, not in number of berries, but quarts of berries. Many growers here consider this the most profitable of strawberries. Glen Mary is not only an extra good berry for fancy market, but a real money maker for any market. We believe one can pick as many quarts of good berries from Glen Mary as from any other variety and they will sell quickly at a good figure. We recommend this variety to our customers with perfect confidence that it will please them.

Price, \$4.00 per thousand.

BARTON'S ECLIPSE—(P)—This is an extra profitable variety and seems to be but little known in most fruit sections. A very heavy bearer of large, evenly shaped berries of good color and quality. Fruit is very firm, having a tough skin and is a very good commercial or market variety. Barton's Eclipse will not disappoint you.

Price, \$3.00 per thousand.

Dollar Mark—(S)—A native of Indiana. We quote from Mr. Gray's description: "A rank grower and good plant maker; succeeds everywhere. The roots run deep and withstand both drouth and freezing. Berries large, perfectly formed, pointed and glossy, bright rich red color, and the finest flavored, as well as the solidest, best shipper ever introduced. Each plant has from three to six fruit stems that stand up well for such an enormous load. It is the best pollenizer we have ever grown. Its foliage is light green and never shows any rust or spots. It possesses the good qualities of all our old varieties without their faults."

We bought our stock of the introducer and our plants are genuine. Our stock is limited and will be sold early at \$8.00 per thousand.

POCOMOKE—(S)—This variety was found growing where there had been some Wilson and Sharpless strawberries dumped and is supposed to be a seedling of the old Wilson crossed by the Sharpless. The berry is round, conical and resembles the old Wilson, but is much larger. One of the best varieties in existence, not only for its enormous productiveness, but on account of its beauty, adaptability to all soils, its foliage enduring the dry, hot weather, its large size, its deep color, its firmness and high flavor. The plant is a strong robust grower with deep roots and lots of them, perfect blossoms and is an enormous yielder of large red berries. It ripens evenly, and is one of the best shippers yet introduced. This variety is a good one and will be grown as one of our leading market berries. We guarantee entire satisfaction with Pocomoke. Try a few thousand. You will not be sorry. Price, \$4.00 per thousand.

CORSICAN—(S)—This variety is in the heavy weight class. Not only are the berries large, but they are uniform in shape. The color is bright red. They are very firm and will sell for a fancy price in any market. The foliage is exceedingly vigorous and leathery, resisting fungus and drouth. It is both profitable and a pleasure to grow a fancy berry like the Corsican. This is the second time we have offered Corsican to our customers. We recommend them highly. Price, \$5.00 per thousand.

CLYDE—(S) — A strong growing, healthy plant with light green leaves. Exceedingly productive, fruit large, not extra quality, and of a light color. Price, \$4.00 per thousand.

HERITAGE—(S)—This is a new seedling strawberry originated by Mr. J. E. Heritage, Marlton, N. J., and this is his description of it:

"The plant is very large, of extremely heavy texture, some single crown plants carrying foliage with a spread of 20 or 22 inches. Deep rooted and extremely free in fruiting, beginning to ripen its fruit about early mid-season and continuing to very late. Another prominent feature is that the fruit stems continue to shoot so late that during the early picking season there are many blossoms, which feature indicates to the experienced grower their long season of productiveness. The berry is dark, shiny crimson to the center. Has a perfect blossom. Carries an unusually heavy green calyx (adding decidedly to its market value.) Extremely large from the first picking to much above the average for the main crop, and continues large after the better known varieties are gone."

POCOMOKE

U. S. Department of Agriculture—Bureau of Plant Industry—Pomological Collections.
Mr. J. E. Heritage, Marlton, N. J. Washington, D. C., June 10, 1908.

Dear Sir:—Yours of the 2nd instant, and the box containing specimens of your "HERITAGE" Strawberry were duly received. The fruit came in fairly good condition, so we were able to get paintings and descriptions made from some of the best specimens. If at any time I can be of service to you please feel free to command me.

Yours very truly,

G. B. BRACKETT, Pomologist.

Mt. Laurel, N. J., July 2, 1908.

I visited the Heritage farm in early June and saw 171 32-quart crates that were picked in 6½ hours by 38 pickers. The berries were large and as fine as I ever saw. I was well pleased with them and expect to plant them extensively next year.

We have not fruited Heritage yet, so can only tell you what the introducer told us, above. Price, while our stock holds out, \$5.00 per thousand.

GEO. L. WURST.

VERY LATE VARIETIES

GANDY—(S)—This is one of the leading late varieties with fruit growers all over the country. The plant is a strong grower, fruit is large and firm, but does not yield as heavy as some; requires strong soil and fertilizers to do its best. It always brings top prices; it is very late and a big showy berry. Gandy is always quoted at the highest price in every market. It is the finest looking fruit and sells quickly and at top prices. Price, per thousand, \$3.50.



AROMA

AROMA—(S)—This is our best and most profitable late strawberry (with the possible exception of Sample). We will guarantee the fruit of Aroma to please all who give it a fair trial. It cannot well be beaten for quantity of fruit produced or in quality of fruit. Plants show no weakness of any kind. Fruit very large, roundish, conical, rarely misshapen, glossy red, of excellent quality and produced in abundance. It produces twice as much as Gandy. We have grown a large stock of this valuable late variety. Price, \$3.75 per thousand.

UNCLE JIM—(S)—(Sometimes called Dornan)—Plants are large and free from rust. Berry is large regular form and season is medium late. Uncle Jim is a comparatively new introduction, but it is one of our most profitable berries. We recommend Uncle Jim for profit. Goes nicely with Bubach. We have grown a good stock of extra heavy plants of this variety. Price, \$4.00 per thousand.

BRANDYWINE—(S)—This fine late strawberry was introduced by Mr. Crawford. We bought a good stock of the plants of the introducer, and now have a large stock of fine plants. Brandywine is late, good shape, good quality, good size, firm and productive. If you are looking for a No. 1 canning berry or for table use we would recommend Brandywine. It is extra dark in color, fine flavor, a good shipper and profitable market variety. Try them. We have a good stock of extra fine plants at \$3.50 per thousand.

SAMPLE—(P)—Season very late. The Sample strawberry is admired by everyone who has seen it. No one who has seen it has been able to criticise it. We have now watched it with the greatest interest for four years and are not able to say that it has a single weak point. Large size and fine quality, quite firm; continues a long time in fruit; the berries are large to the last. It will yield as many berries as the Haverland and will average as large as the Bubach. Colors all over at once. There is no weak spot in it. Foliage perfect, fruit perfect. Needs no petting.

I think Sample is the best late Strawberry we have (with the exception of Aroma). Get a few thousand Sample and fertilize them with Aroma and we guarantee that you will have no kick coming. Our stock of Sample is large, but we will sell all of them at \$4.00 per thousand.



SAMPLE

STEVENS' LATE CHAMPION—(S)—This is a good all around late strawberry. Plant growth extra good. The fruit is large, showy and of fine flavor. Ripens with Gandy and Aroma. A good fertilizer for Sample, etc. Widely and very favorably known in the South and Southwest. We were surprised and delighted with the fruit of Stevens' Late Champion last season. It is an extra fine late berry and we believe it will please you in every way.

We have an extra large stock, heavy rooted plants, and have reduced the price to \$3.50 per thousand.

SHOWS WHAT OUR PLANTS WILL YIELD

O. A. D. Baldwin.

Cartersville, Ill., Feb. 7, 1909.

Dear Sir:—I feel like I ought to thank you for the purple caps (Haymaker and Cardinal). I bought 50 plants of each variety of you in 1904 and last summer I picked and sold 13 cases. We canned three cases, to say nothing about what the chickens picked and what we used on the table.

I must say that I am proud to know that I can buy honest berry plants at the right prices. You will always get my orders hereafter.

I am a berry grower of seven years' experience, and I would not lay the work down for anything else.

Respectfully yours,

GEO. W. GREATHOUSE.

BLACK RASPBERRIES

25 at 100, and 250 at 1,000 rates.

INSTRUCTIONS—Raspberries will grow and do well on any ground that will grow good field crops. Ground must be comparatively dry or well drained. Generally speaking, the richer the ground the better the crop. We generally set black caps about three and one-half feet apart in row and rows seven feet apart, or if you wish to cultivate both ways plant five feet each way. Either method requires 1,725 plants per acre.



CUMBERLAND

CUMBERLAND—The "Business Black Cap." Biggest black raspberry known. This new raspberry was placed upon the market after having been thoroughly tried for a long period of years. It is now offered with the full assurance that it is **the most profitable and desirable market variety yet known**, because of its **immense size, firmness and great productiveness**, well entitling it to the above designation, "**The Business Cap.**"

Cumberland is very hardy having withstood a temperature of 16 degrees below zero without injury. Extra productive, being the heaviest bearing variety now grown. Fruit is jet black and of extra fine-quality. Ripens before Gregg. We bought our stock of plants of the introducers. Buy Cumberland for profit.

Owing to the fact that we have a very large stock of this valuable variety we have reduced the prices of Cumberland. \$1.25 per 100; \$10.00 per 1,000.

A Wonderful New Blackcap

HOOSIER—"The Dollar a Gallon Berry"—Two years ago we purchased a quantity of Hoosier plants and have grown a limited supply of extra heavy stocky plants. The plant is certainly a healthy, robust grower. Below is the originator's description:

"The Hoosier raspberry originated with us eight years ago and has proven a wonder, surpassing all others in every point of excellence. Perfect, hardy and fully tested in every State in the Union and throughout Canada; does not winter-kill, and will mature a full crop even to the tip of the canes.

"This berry begins to ripen a full week ahead of the Cumberland and continues a week longer, is firmer and better flavored, averages 1,200 gallons per acre here and is a drouth resister, and is absolutely proof against anthracnose and other raspberry pests."

OUR PLANTS THE BEST.

Union City, Mich., March 29, 1908.

O. A. D. Baldwin.

Dear Sir:—Enclosed find \$13.75 for additional order. Please ship with former which you have already booked. I always find your plants to be the best. I have dealt with a good many nurserymen, but your plants always give me the best satisfaction. I am,

Very truly yours, ERNEST WIEHL.

The above, as we said before, is the introducer's description. We were somewhat disappointed with our crop of Hoosier this summer, but they were as good as Kansas and Conrath. We looked for something better. It was dry here when we picked them and they were on a very dry piece of ground.

We would suggest that you try them in a small way, say by the hundred. See what they will do for you.

Price reduced to \$1.50 per hundred; \$12.00 per thousand.

GREGG—Fruit very fine and covered with bloom. Gregg has been the leading market variety all over the country, best for evaporating of any variety as it is said to give more pounds to the bushel than any other kind. A good all around late black cap. Gregg will not disappoint you. Very well and favorably known in every fruit district. Gregg is by far the best late black cap grown today. Try them and we will guarantee them to please you.

Price, \$1.00 per hundred; \$8.00 per thousand.

CONRATH—This is a very profitable black cap. Plant is very productive, fruit large, good flavor, firm, nearly coal black and parts readily from core. Although early it has a long season and holds its size well to the end.

Price, \$1.00 per hundred; \$8.00 per thousand.

EUREKA—A fine black cap in every particular. We have grown Eureka berries one inch in diameter. Unexcelled for fancy fruit. **We guarantee Eureka to please you.**

It is of extra size, extra quality and extra early. Eureka is a money maker. Try them.

Price, \$1.25 per hundred; \$10.00 per thousand.

KANSAS—This variety is now a general favorite with growers all over the country. Ripens just after Souhegan; jet black, firm, handsome and of the best quality; bush a strong grower, holds its foliage until frost; stands drouth and cold, very productive. We find it even better than we expected. It is about as large as Gregg, early and very productive. Strong, healthy canes, makes plenty of strong tips.

Price, 85c per hundred; 7.00 per thousand.

MUNGER — A handsome, large, late black cap. Not nearly so well known as Gregg but much the same. Probably a more showy berry. Our stock is limited. We will sell what plants we have at \$1.25 per hundred; \$10.00 per thousand.

EARLY OHIO—A good early black cap that does well in many localities. Not much de-

mand for them generally. We have a few thousand and will sell them at 85 cents per hundred; \$7.00 per thousand.

OUR BLACKBERRY PLANTS DO WELL IN IOWA.

O. A. D. Baldwin.

Dear Sir:—Please send plants as soon as possible. Will say the blackberry plants I bought of you are doing splendidly.

Yours truly,

Alden, Iowa, April 11, 1908.

GEO. ORPIN.

THE KIND WE LIKE TO GET.

O. A. D. Baldwin.

Dear Sir:—Accept my thanks for the extra nice cane plants you sent me, also for liberal count. Send strawberry plants when you think best.

Belding, Michigan, April 20, 1908.

WM. AUBILL.



PURPLE RASPBERRIES

INSTRUCTIONS—(Same as for black raspberries).

This year we can furnish plants of the two most popular varieties of purple raspberries: Columbian, which is the best of all purple varieties, and Haymaker, an extra good one.

COLUMBIAN—(Purple Cap)—The Columbian is a variety of the Shaffer type, of remarkable vigor and productiveness. It is very hardy and propagates from tips. Fruit very large, often an inch in diameter, shape somewhat conical; color, dark red, bordering on purple; adheres firmly to the stem; seeds small and deeply imbedded in a rich, juicy pulp with a distinct flavor of its own, making it a delicious table berry. We have an extra fine stock of this variety. We consider it much better than Shaffer on account of its hardiness and vigor of cane, and will dry on the bush if not picked.

Price, \$2.00 per hundred; \$17.50 per thousand.

THE HAYMAKER—(Purple Cap)—Not so dark as the Columbian or Shaffer, and much firmer than either of those varieties, never crumbles and stands up well in shipping. Sample crates have been shipped to distant points with entire satisfaction. It is a berry to grow for either home use or market. The originator has found it the **most profitable berry** ever raised for market, and has never yet been able to supply the local demand. So much a favorite has the Haymaker become that local growers have said that it has ruined the sale of other varieties. Very popular as a canning berry.

Crawford writes: "I have had every opportunity to become acquainted with the **Haymaker Raspberry**, having fruited it on my own place several years, in addition to careful examinations on the originator's place. Besides being a **vigorous grower, perfectly hardy, and free from any appearance of disease**, it is the **most productive variety I ever saw**. It is of good size and equal to any of the purple varieties in flavor. I expect it to be a great favorite with those who grow raspberries for profit."

It certainly has four points of superiority, viz: **Vigorous growth, hardiness, productiveness and quality**. I believe Haymaker is a **good thing** to have and we expect the demand will be very heavy.

Our stock is very limited and will be gone early at \$2.00 per hundred; \$17.50 per thousand.

FRUIT TWICE AS LARGE FROM OUR PLANTS.

Brazil, Ind., Feb. 20, '09.

O. A. D. Baldwin.

Dear Sir:—Enclosed find my first order for strawberry plants.

I bought currant plants from you four years ago and must say they are the finest I ever saw. **The fruit is twice as large as any ever seen around here.**

G. W. DAVIS.



COLUMBIAN

OUR PLANTS FOR 12 YEARS—ALWAYS SATISFACTORY.

O. A. D. Baldwin.

Glenmont, N. Y., Feb. 4, 1909.

Dear Sir:—I have dealt with your firm for the past twelve years, and my plants have **always been true to name and first-class in every way.**

Trusting enclosed order will receive your personal attention, I remain,

Very truly yours,

J. J. LEEDINGS.

ALWAYS GAVE SATISFACTION.

O. A. D. Baldwin.

McGawsville, Indiana, April 20, 1908.

Dear Sir:—Enclosed find order for plants. I received many thousands of plants from you in the past ten years. They always gave good satisfaction.

Yours truly, etc.,

JONAS STINEMAN.

(Mr. Stineman sold nursery stock for years buying all his small fruit plants of us.)

RED RASPBERRIES

Twenty-five at 100, and 250 at 1,000 rates.

We generally plant red raspberries three feet apart in row, with rows six feet apart. Requiring 2,425 plants per acre.

CUTHBERT—Leading late market variety all over the country; strong grower, very productive, fruit firm, large size, and of best quality; season medium to late. If you want an all around late red raspberry, plant Cuthbert. We have made far more money from our patches of Cuthbert than from any other red raspberry. (We are speaking of the fruit, of course, not plants.) We advise our customers and friends to plant Cuthbert for market or home use.

Price, 85c per hundred; \$7.00 per thousand.

MILLER—Is early, very hardy and does not winter-kill. This fine early red raspberry is, for an early berry, what the Cuthbert is for a late one. **The very best there is.** Shipping qualities are perfect. Makes a healthy growth of canes. If you want the best early red raspberry, set Miller. You won't be sorry. Probably the strongest point in favor of the Miller is its splendid keeping qualities. They will hang on the bushes several days without becoming soft.

This quality makes them very profitable to the grower. We strongly recommend Miller to all.

Price, 75c per hundred; \$6.00 per thousand.

KING—This is a new red raspberry. Unites large size, beautiful color, firmness and high quality of fruit with productiveness. Vigorous growth and hardiness of cane. Its season is the earliest, its fruit of the brightest crimson. Cane very hardy. Our stock is limited and will be sold early. Better place your order soon. We believe it worthy of all that can be said in its favor.

Price, \$1.25 per hundred; \$10.00 per thousand.

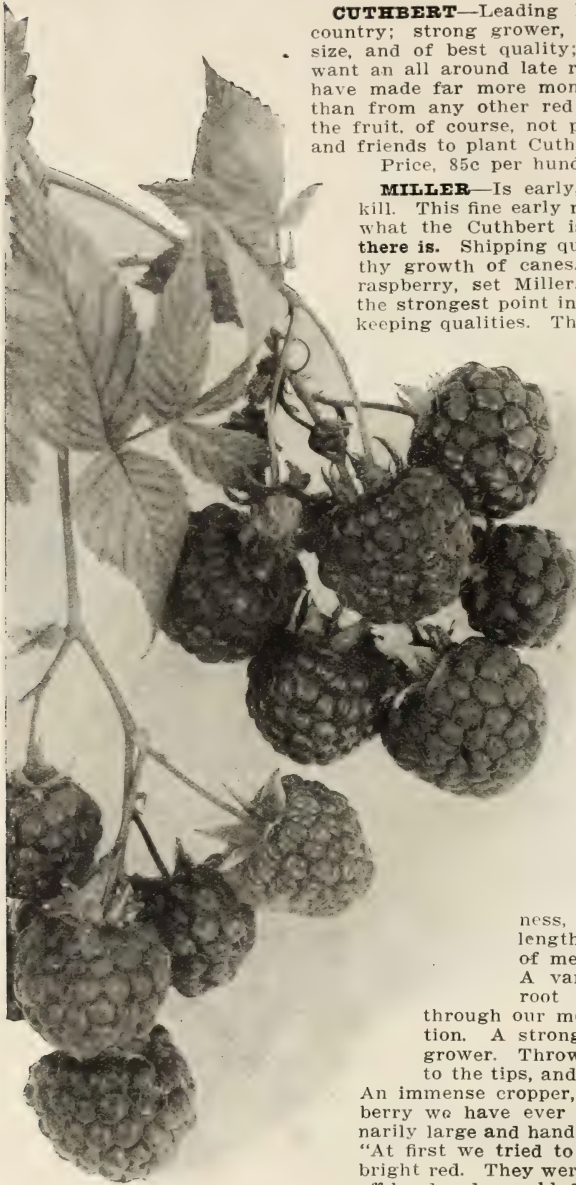
THE EATON—“A new red raspberry that is entirely distinct from all other varieties. In character of growth, in size, color, firmness, quality and yield of fruit, in length of season, and in all strong points of merit, it stands unequaled and alone.

A variety that is at once healthy in root and foliage, and hardy, coming through our most severe winters in prime condition. A strong, not tall and slender, but sturdy grower. Throwing out many laterals and fruiting to the tips, and from every lateral—a sight to see.

An immense cropper, by far out-yielding any red raspberry we have ever seen, while the fruit is extraordinarily large and handsome, firm and of the finest quality. “At first we tried to pick them before fully ripe, when bright red. They were so large and fine, but they pulled off hard and crumbled more or less. After that we picked only those that were a deeper red, still more beautiful and fully ripe, and they came off easily and whole and

firm. When ripe to pick they hang on well and do not drop with every touch, but can be picked more rapidly and at less expense than any sort we know, chiefly because they are so large and so many of them.”

The above is the introducer's description of Eaton. We fruited it for the second time this



KING

summer and liked it very much. Fruit should be left on till dark red. The Eaton is very early and a wonderful heavy bearer. \$1.50 per doz; \$7.50 per hundred.

THOMPSON'S EARLY PROLIFIC—(This variety is extra profitable.)—We do not understand why Thompson's Early plants do not sell more readily. The fruit is extra good quality and comes very early bringing top prices. Thompson's Early are being set very extensively in this locality for Chicago market. We recommend this variety to all who can get a good price for early red raspberries. Look at our prices.

Price, 75 cents per hundred; \$5.00 per thousand.

BLACKBERRIES

Twenty-five at 100, and 250 at 1,000 rates.

Should be planted about four feet apart in row with rows six or seven feet apart, requiring about 1,800 plants per acre. Top the new canes when about twenty inches high.

ELDORADO—We place this variety ahead of all others without a moment's hesitation. It is the greatest blackberry in general cultivation today. Eldorado is as hardy as the Snyder, twice as large and of better quality. When you get one like that you have a berry that cannot well be beaten. Eldorado has never been known to winter-kill, even in northern Michigan and Wisconsin. For home and market use we recommend Eldorado above all others. We consider it the best blackberry ever fruited in every way, and we have grown them all. Our Eldorado field is a sight to see in blossoming and fruiting time. The fruit is good size, firm and of the very highest quality. Very profitable, as it needs no protection in winter. We bought our first stock of the originator, consequently our stock is genuine. Our plants this year are the finest we ever raised, and our stock is the largest, but we expect to be sold out of this variety before shipping season commences.

We advise you to place your order for Eldorado as soon as possible. We have been obliged to return orders for this variety every year since their introduction (15 years ago). Genuine Eldorado are very hard to find. We guarantee every plant to be true to name.

Price, \$2.00 per hundred; \$17.50 per thousand.

WILSON'S EARLY—One of the largest and most productive of the early sorts; produces fruit in large clusters, sweet as soon as black, holds its color well after picking, needs protection at the North. It is the best shipper there is. Very profitable. In spite of the fact that Wilson requires protection here in Michigan there are more than twice as many acres of them in bearing as any other variety of blackberry. It always sells at a premium over other blackberries in Chicago and is daily quoted higher. The berry is large, jet black, and holds its color, never turning red. Order some Wilson plants. They are money makers.

Price, \$1.00 per hundred; \$7.00 per thousand.

MINNEWASKI—(New)—Large, productive and quite hardy; fruit round and of very good quality; bush a rank grower; desirable for market or home use. Our stock is very limited. Extra nice plants.

Price, \$2.00 per hundred.

EARLY HARVEST—One of the earliest blackberries in cultivation; a compact dwarf grower, fruit rather small and of good quality, heavy bearer. Its extreme earliness makes it a profitable variety. Blossoms stand the spring freeze best of all.

Price, \$1.00 per hundred; \$7.00 per thousand.



ELDORADO

MERSEREAU—Here is what all fruit growers have been looking for. We fruited two acres of this grand new blackberry and we can highly recommend them. Take notice of these qualities:

- As hardy as Snyder.**
- As good shipping quality as Wilson.**
- As large a berry as Wilson.**
- An extra heavy, stocky cane.**
- As productive as Snyder.**

Mersereau is an early, mammoth, iron-clad blackberry. It originated in northwestern New York, where the mercury falls from 15 to 25 degrees below zero, and where it has stood in open field culture for many years without the slightest protection, never being



MERSEREAU

injured in the least. In quality it is exceptionally sweet, rich, melting and luscious, being without core, the seedy character of Snyder and most other sorts is noticeably absent. As a shipper and keeper it is unsurpassed, remaining firm without "bleeding" in handling.

The canes are of exceedingly strong, upright habit, attaining upon fairly good soil a height of eight feet, if permitted to grow unchecked, and are so stout as to always remain erect; foliage large, deep green, and abundant. The yield is simply enormous, producing double the quantity of fruit per acre of the Snyder, Kittatiny or Taylor's Prolific, and affording heavy pickings from the first until the crop is all matured. Its season is early to mid-season, ripening with the Snyder.

Try Mersereau. They will please you and make you big money. Get them started this year.

Price, \$2.25 per hundred; \$20.00 per thousand.

RESULTS FROM OUR PLANTS.

Paulding, O., June 18, 1908.

O. A. D. Baldwin.

Dear Sir:—When a person is pleased with anything it is their desire to express their feelings in some way or other, and my friend, allow me to thank you for the most excellent strawberry plants you sent me in the spring of 1907.

The results are here now and they are certainly astounding.

Everyone has a word of praise for them. Such berries are worth more for advertising, to you, than any amount of printer's ink.

Your honesty and liberality will go a long way with me in the future. I am,

Yours respectfully, SOL. G. CRAMER.

DEWBERRIES

Twenty-five at 100, and 250 at 1,000 rates.

Plant in rows six feet apart with plants three feet apart in the row, requiring 2,425 plants per acre.



LUCRETIA

LUCRETIA—Claimed to be the best of the blackberry family. Berries are far larger and incomparably better than any blackberry; of unequaled excellence; soft, sweet and luscious throughout, of brightest glossy black color. The Lucretia Dewberry has received the endorsement and highest praise from the best horticulturists in the country. Its eminent success in all soils is somewhat phenomenal in small fruit culture. Its trailing habit renders it less liable to winter-kill. Propagates from the tips.

Dewberries are very profitable fruit to have as they come into bearing before blackberry plants and bring a good price.

Price, \$1.00 per hundred; \$8.00 per thousand.

PREMO—Much like Lucretia, but a week or ten days earlier. Main crop off before Lucretia commences. Comes early, ahead of blackberries and brings a good price. Our stock is limited.

Price, \$1.50 per hundred; \$12.50 per thousand.

OUR POTATOES ARE O. K.

Indiana, Pa., April 18, 1908.

O. A. D. Baldwin.

Dear Sir:—Potatoes rec'd O. K. **They are fine.** Ship plants soon as possible by express. Yours truly, HARRY A. BORLAND.

THE "PEDIGREE" PLANT BUSINESS HAS BEEN PRETTY WELL AIRED, BUT HERE IS ANOTHER SAMPLE OF WHAT WE RECEIVE NEARLY EVERY DAY.

Hudson, Ill., March 3, 1909.

O. A. D. Baldwin.

Dear Sir:—Enclosed find order for plants. The 1,200 strawberry plants I bought of you two years ago did fine, were good plants in every respect, and yielded an enormous crop last summer of very fine berries.

They were fully as nice in every particular as I ever obtained from the so-called pedigreed plants which I have tried. W. E. SNAVELY, Prop, Edgewood Poultry Yard.

RED CURRANTS

Three at dozen, 25 at 100, and 250 at 1,000 rates.

Hardy, easily cultivated, standing neglect well, and liberally responding to cultivation and generous treatment; indispensable for jellies, table use, etc. No garden is complete without them, and large quantities are required for market. Set four feet apart in rich ground, cultivate well, or mulch heavily; prune out old wood so that each remaining shoot will have room to grow. If the currant worm appears, dust with helebore.

LONDON MARKET is the best red currant we have fruited. A fine, new variety, a strong grower, large fruit and very productive. Holds its foliage late and is not liable to attack of worms and borers. London Market will please you. Try them in your garden.

RED CROSS—“Red Cross clusters are long and have well necked berries double the size of Victoria. Nothing will compare in quality with Red Cross but White Dutch, which is too small. Red Cross was first fruited in 1899. We have seen the fruit growing in such masses as to hide the upper branches from view. It is later than Cherry; the plant makes twice the growth of Cherry and yields two or three times as much fruit. We recommend it with confidence. We consider Red Cross one of the best of the new currants.

FAY'S PROLIFIC—A very popular red currant grown all over the country for home use and market. Color deep red; great bearer; stems longer than Cherry, and berries hold their size to the end of the stem better; quality first class; not quite so acid as Cherry. Fay's Prolific is an extra fine red currant.

CHERRY—A very popular red currant grown all over the country for home use and market. The berry and bunch are very large and there is always a good crop of fruit every year. They are most too well known to need much of a description here.



London Market Currant

BLACK CURRANTS

LEE'S PROLIFIC—This is the leading variety of black currant. Very heavy bearer of large bunches of fruit. Extra quality. Valuable for home use.

PRICES ON CURRANT PLANTS.

	1 yr. No. 1.			2 yr. No. 1.		
	Doz.	100	1,000	Doz.	100	1,000
London Market—	\$0.75	\$4.00	\$37.50	\$0.85	\$4.50	\$42.50
Red Cross, .85	4.50	42.50	1.00	5.50	52.50	
Fay's Prolific—	.75	4.00	37.50	.85	4.50	42.50
Cherry, .85	4.50	42.50	1.00	5.50	52.50	
Lee's Prolific—	1.00	5.50	52.50	1.25	6.50	62.50

GOOSEBERRIES

Plant three feet apart in row, with rows five feet apart.

DOWNING—We have a fine stock of the most popular all around berry for both home use and market in the country today.

Downing is a yellowish green sort and of good size, being a strong growing bush and a very prolific bearer. Plants of all varieties of gooseberries are in light supply and in very good demand and the price is high. Extra fine stocky plants.

\$1.50 per dozen; \$8.00 per hundred.

HOUGHTON—An enormously productive and always reliable old sort; of vigorous yet rather slender, spreading growth, not subject to mildew. Fruit of medium size, smooth, pale red; tender and good.

Houghton is a very profitable gooseberry. Strong, well rooted plants.

\$1.50 per dozen; \$8.00 per hundred.



GRAPE VINES

Three at dozen, 25 at 100, and 250 at 1,000 rates.

Plant grapevines for field culture eight by twelve feet, requiring about 435 plants per acre. Some set eight by sixteen feet.

Grow Grapes and Make Money.

The grape is a very satisfactory fruit to raise, as it can be put to so many different uses. It can be confined to a stake, bound to a trellis, trained over an arbor or to cover a large building, and under all conditions will yield its delicious fruit. No fruit will give better returns for close attention and kind care, and good returns can be had from soils that are unfit for any other crop. The side of a hill freely exposed to the sun and air is an ideal place for grape culture, whether the soil be sandy, clayey or loamy.

There is big money in growing grapes and many people are beginning to realize the fact. **The market cannot be overstocked with this fruit.**

They can quickly be made into juice for which there is a demand that always exceeds the supply and is something that will keep for years and years. **Get a grape vineyard started this year, sure.**

Grape vines will grow and do well on light sand or clay where it is hard to raise a crop of grain or other fruit.

BLACK GRAPES

CONCORD—A large, purplish black grape, ripening about the middle of September; vines remarkably vigorous and free from disease; the standard for productiveness and hardness all over the country. We advise all who contemplate setting grapes, to plant Concord for main crop. **They are the best market grape we ever raised. Our stock is extra large and thrifty** and will please you. Our prices are very low on Concord.

Worden—In brief, an improved Concord; being larger in both bunch and berry, handsomer, nearly two weeks earlier and of better quality. Very choice and reliable. Worden will not yield like Concord and so are not planted so extensively for market. They are an **extra good grape for home use**. By far the best flavored black grape we have. Note our low prices on this valuable variety.

MOORE'S EARLY—Bunch large, berry round (as large as the Wilder or Rogers' No. 4); color black, with a heavy blue bloom; quality better than the Concord. Moore's Early has been exposed to a temperature of more than 20 degrees below zero without injury,

and it has been entirely exempt from mildew or disease. Its earliness makes it desirable and more particularly adapts it to New England and the northern portion of the United States.

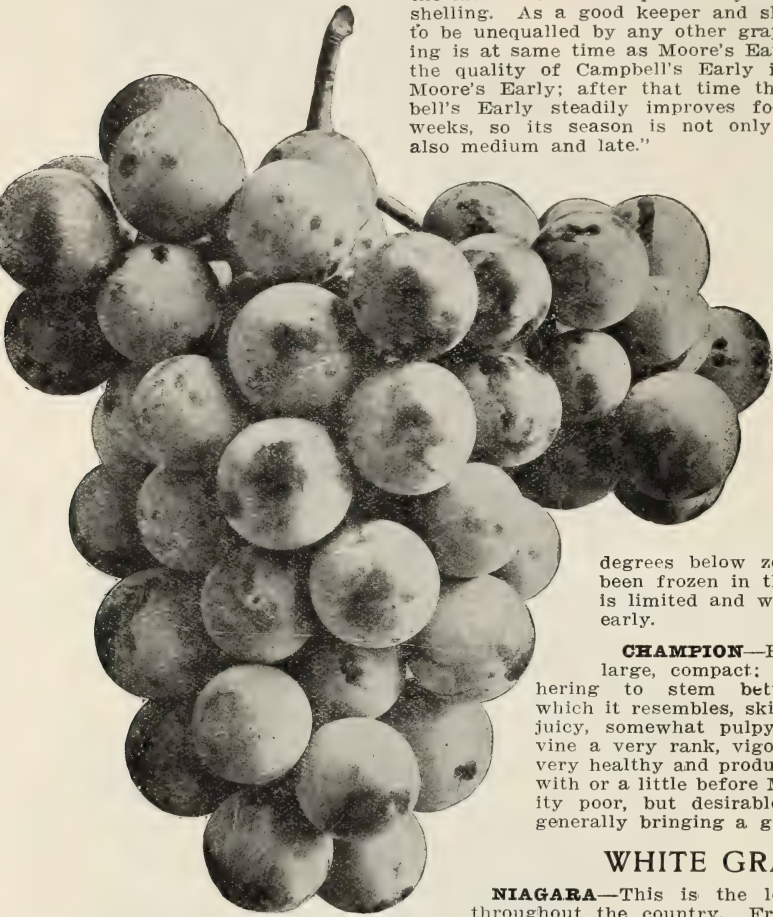
It is very nice to have a few grapes ripe and ready to eat before your neighbor.

It is always the early grapes that bring in the money.

You can get your grapes off a few days ahead of the main market varieties and get from three to five cents per basket more for your crop. **Try Moore's Early.**

CAMPBELL'S EARLY—A wonderful new grape of excellent quality and great productiveness.

"Campbell's Early vines are now being bought in large lots by careful, wide awake vineyardists who want a grape which will hang on the vines, will not crack and which will keep and can be marketed at advantageous times instead of having to be forced on the market on some special day to avoid cracking and shelling. As a good keeper and shipper it is believed to be unequalled by any other grape. Its early ripening is at same time as Moore's Early and at that time the quality of Campbell's Early is fully as good as Moore's Early; after that time the quality of Campbell's Early steadily improves for from two to six weeks, so its season is not only very early, but is also medium and late."



MOORE'S EARLY

same position among the white varieties as Concord among the black; most profitable market sort. Bunch and berries large, greenish white, changing to pale yellow when fully ripe; skin thin but tough.

Every one should have a few white grapes.

RED GRAPES

DELAWARE—Bunch small, compact, sometimes shouldered; berries small; skin thin, but firm; flesh juicy, very sweet and refreshing, of best quality for both table and wine; ripens with Concord or a little before; vine hardy and productive.

Delaware is extra fine for eating fresh or for home use. We had so much inquiry for

In desert quality it is unrivaled by any of our present list of first early market grapes. It is both as to cluster and berry, of large size, of a glossy black color, with a beautiful blue bloom, pulp sweet and juicy, free from foxiness, seeds small, few in number and part readily from the pulp.

They have been subjected to a temperature of 18 degrees below zero and have never been frozen in the least. Our stock is limited and will no doubt be sold early.

CHAMPION—Bunch medium to large, compact; berries medium, adhering to stem better than Hartford, which it resembles, skin thick; flesh sweet, juicy, somewhat pulpy, with foxy flavor; vine a very rank, vigorous grower; hardy, very healthy and productive. Ripens about with or a little before Moore's Early. Quality poor, but desirable for early market, generally bringing a good price.

WHITE GRAPES

NIAGARA—This is the leading white grape throughout the country. Fruit is large and of fine quality. If you want a white grape we know of no other that equals Niagara. Occupies the

them that we bought a stock, so we could sell them this year. All should have a few red grapes for home use.

BRIGHTON—Perhaps the best red grape in cultivation. Bunch large and compact, a strong grower and very productive; quality good. Bright red berry and makes a handsome appearance on the vine or on the table.

PRICES OF GRAPEVINES

	1 yr. No. 1.			2 yr. No. 1.		
	Doz.	100	1,000	Doz.	100	1,000
Concord	\$0.50	\$2.50	\$22.50	\$0.65	\$3.50	\$32.50
Worden65	3.50	32.50	.85	4.50	42.50
Moore's Early75	4.00	37.50	.95	5.00	47.50
Campbell's Early	1.50	9.00	80.00	1.75	11.00	100.00
Champion75	4.00	37.50	.85	4.50	42.50
Niagara75	4.00	37.50	.85	4.50	42.50
Delaware85	4.50	42.50	.95	5.00	47.50
Brighton75	4.00	37.50	.85	4.50	42.50

SPECIAL OFFER

We will send you by mail postpaid **one vine of each variety mentioned above,**
FOR ONLY \$1.00.

Eight grape vines, early and late, "Red, White and Blue," just what you want for your garden or for covering your grape arbor. **Order them now.**

Eight vines delivered to your door for \$1.00.

A COMPLIMENT THAT WE APPRECIATE.

Plymouth, Illinois, April 28, 1908.

O. A. D. Baldwin.

Dear Sir:—I have the honor to acknowledge the receipt of your favor of the 22nd inst, with U. S. express money order for \$1.75 enclosed.

While appreciating the promptness with which the complaint was settled, I appreciate still more the privilege of dealing with an honest business man. In the future, when wanting small fruit plants I shall consider it to my interest to deal with you. The main consideration is to have plants true to name, and as you doubtless know, buyers often get badly cheated buying cheap plants from those who do not know the demands of the trade.

Very respectfully yours,

WESLEY COWES.

FINEST HE EVER SAW.

Wyoming, Illinois, April 24, 1908.

Dear Sir:—Plants came in fine shape. They are the finest plants I ever received and I have been in the berry business for 12 years.

Yours truly,

JAMES I. DITMAN.

OUR PLANTS ALWAYS SATISFACTORY.

3424 R. St., Lincoln Nebr., Mar. 4th, 1909.

O. A. D. Baldwin.

Dear Sir:—Enclosed find my order for plants. All the things I ever got of you have been **extra good.**

Very truly,

PAULINE BECKER.

OUR PLANTS VS. PEDIGREED PLANTS.

Sycamore, Ohio, Dec. 29th, 1909.

O. A. D. Baldwin.

Dear Sir:—The plants I received from you last season did fine. I had a perfect stand and don't think I lost 20 plants out of the 1,500 I got from you.

Previous to last year I had always bought my plants at Three Rivers, but I lost nearly one-third of them.

Very respectfully,

H. C. HAWKINS.

FINEST PLANTS HE EVER SAW.

Pekin, Ind., Apr. 23rd, 1909.

O. A. D. Baldwin, Bridgman, Mich.

Dear Sir:—I received the plants April 19th, all in good condition. They are the finest plants I ever saw.

Yours truly,

C. M. TURNER.

SEED POTATOES

We advise all to place their orders as soon as possible as we have but a small stock and expect to sell our early.

We have grown some of the most popular varieties and will sell them at prices quoted below until stock is gone. **Remember these prices are below those quoted in most all catalogues. These potatoes are strictly No. 1 seed, guaranteed absolutely pure and unmixed.** We will begin to ship early in March or as soon as weather permits us to ship with safety. Northern grown seeds are much more desirable to plant than those grown in the South. **They are hardy and free from disease and will yield a big crop.**

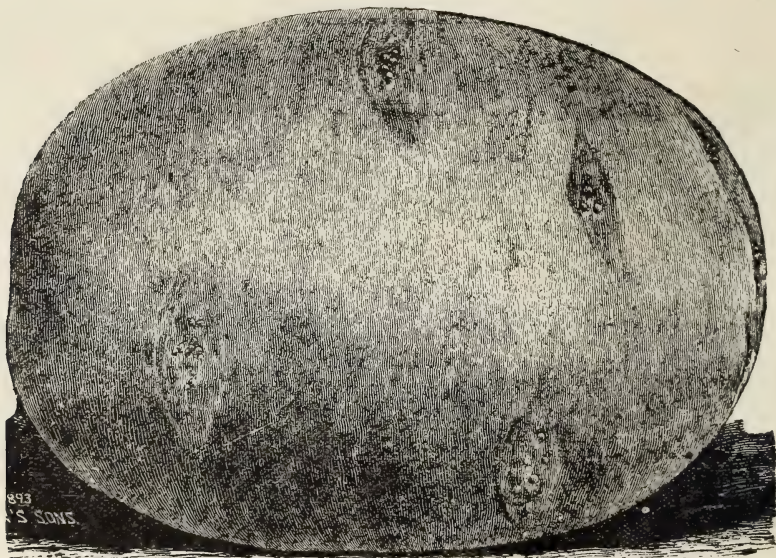
Peck, 15 lbs.; Bushel, 60 lbs.; Barrel, 165 lbs.

We will ship potatoes in sacks. Everything will be labeled and securely packed and delivered at the cars without extra charge for sacks.

N. B.—If you prefer your potatoes shipped in boxes and barrels instead of sacks, add 10 cents per bushel or 25 cents per barrel to price herein quoted on each variety.

LATE VARIETIES

CARMEN NO. 3—This we consider the best potato grown. We advise all to plant Carmen No. 3 for main crop either for home or for market purposes. It makes great yields of fine, large, smooth tubers even under the most unfavorable circumstances and can be relied on to **bring in money.** It grows a very strong, upright top with dark colored stalks



CARMEN NO. 3

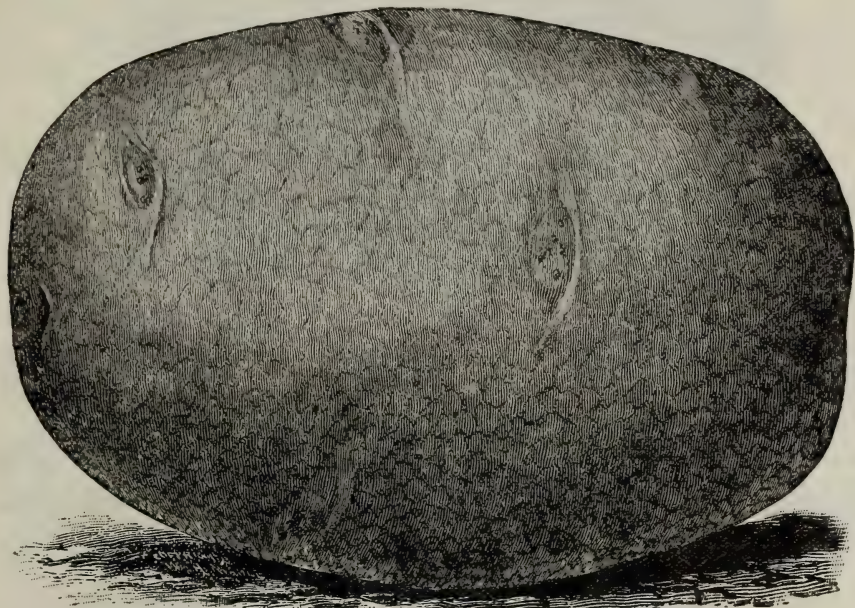
and purple blossoms, and is little affected by drouth, blight or bugs. It is of the Rural family and **keeps as well as Rural New Yorker** and is fine for eating just as soon as dug in the fall. **Very heavy yielder. Try Carmen No. 3 and make money.**

Price, 40 cents per peck; \$1.25 per bushel; \$3.25 per barrel.

RURAL NEW YORKER—Very well and favorably known all over the country. Planted largely for main crop on account of its keeping qualities. **A very late potato.** Characterized by a long rather spindling vine with dark colored stalks, dark green leaves and purple blossoms; tubers nearly round, flattened, with very smooth, pure white skin, uniform in size, numerous in the hill, very attractive. Better to eat in winter and spring than when first dug. One of the most profitable of market potatoes. A general favorite throughout the country on account of **productiveness, uniform size, color and keeping qualities.** If you buy a few barrels of Rural New Yorker for main crop you will never be sorry.

Price, 40 cents per peck; \$1.25 per bushel; \$3.25 per barrel.

SIR WALTER RALEIGH—Cut below shows the shape of this fine new potato. Noted for its **yield, size, smoothness and handsome appearance**. It is a regular Rural New Yorker in type and sells for Rural in Chicago market; but it came out eight years later than that famous variety and has all that much advantage in strength and vigor. Good large size, hardly ever any small ones, nearly round in shape, but flattened, just what is most desired now; skin pure white, thin and transparent, eyes few and very shallow, potatoes never prongy and never scabby, almost blight proof, a sure yielder where others fail, in clay soils and all other soils. Sir Walter Raleigh is a good one and will not disappoint you. Price, 50 cents per peck; \$1.50 per bushel; \$4.00 per barrel.



SIR WALTER RALEIGH POTATO.

EARLY VARIETIES

EARLY MICHIGAN—This we consider the **best early potato** on the market. We find Early Michigan to be a **heavy yielding, smooth, white potato** that produces a **big crop very early**.

The tubers are about the shape of Beauty of Hebron, but are clear white and have a smoother surface and are very uniform in size.

In nearly all sections there is big money to be made in growing a good early potato. **Early Michigan will do the business**, because they will yield a **good crop of good sized, white potatoes** and mature them as **early as the earliest**. We recommend this variety to our customers.

Price, while they last, 60 cents per peck; \$1.75 per bushel; \$4.75 per barrel.

EARLY MAINE—A fine new early potato of exceptional value. We have grown them three years and find them to be a fine looking, smooth, potato, yielding a good big crop. Early Maine has been one of our best paying potatoes this summer. They are even shaped and handsome. They are about the color of Beauty of Hebron and are an extra heavy yielding early potato. Try Early Maine this year sure. We guarantee they will please you.

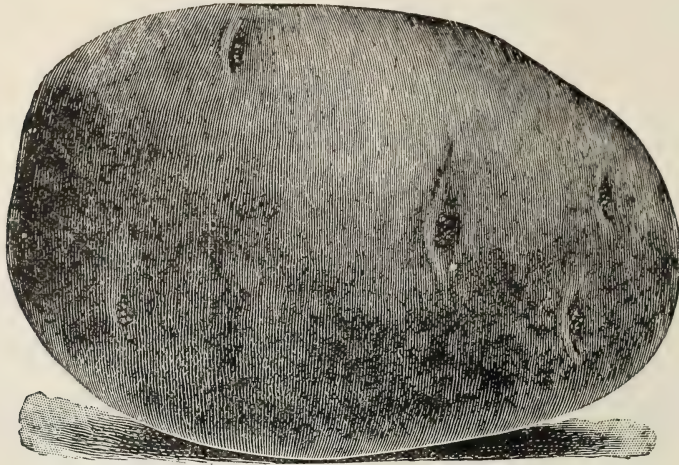
Our early potatoes nearly all drowned out in May, this year. Early Maine withstood the wet weather extra well.

Price, 50 cents per peck; \$1.50 per bushel; \$4.00 per barrel.

WHITE EARLY OHIO—A genuine Ohio with a white skin. Identical in every way with Early Ohio except in color which is a fine white or nearly so. The great demand in every market now is for a white potato and even the good old Ohio, the standard for extra early, often has to suffer because of its skin. Here we have a **genuine Early Ohio** with a quick, compact growth of that well known variety, and withal a white skin. Furthermore it is a better yielder than the old Ohio.

Our stock of White Early Ohio is limited.

Price, 60 cents per peck; \$1.75 per bushel; \$4.75 per barrel.



EARLY MICHIGAN

EARLY OHIO is without doubt the **most popular early potato** in the country. Every one knows what it is and knows that it can be relied on for an early market variety in almost every locality. You will no doubt have to have a new stock of seed this year. Our Early Ohio are nice, but our stock is very limited. Better place your order at once.

Price, 60 cents per peck; \$1.75 per bushel; \$4.75 per barrel.

CALIFORNIA WONDER—A good sized early potato. Color nearly white, of Rural shape, and will keep nearly as long as that late variety.

We recommend this early potato for its rare keeping qualities seldom found in an early potato.

Price, 50 cents per peck; \$1.50 per bushel; \$4.00 per barrel.



EARLY OHIO

LIKES OUR SEED POTATOES.

Champaign, Illinois, April 9, 1908.

O. A. D. Baldwin,

Dear Sir:—Potatoes received in good condition and are all right.

Yours truly,

N. B. TUCKER.

SEED OATS

SWEDISH SELECT OATS—(Regenerated)—“Best American Oat.”—U. S. Department of Agriculture.

We have grown a few hundred bushels of this most popular of all oats, and will sell them at price quoted below. Everyone who has seen Swedish Select Oats wants to get the seed and the demand has always far exceeded the supply.

No wonder they have been in demand, when the Experiment Stations and the U. S. Department of Agriculture commend them so highly. Prof. Carleton at Washington, says: “Now probably the best American oat.” Prof. Moore of Wisconsin, who has been largely responsible for their introduction, found them the most satisfactory of thirty-six varieties after testing them four years.

The fact of the matter is, Swedish Oats fill the bill nearly everywhere. They seem to be just what is wanted in a first-class oat—pure white in color, very plump, short and thick, with thin hull, medium early in season, very strong and vigorous in growth, unusually heavy in weight and the best of yielders.

To sum up briefly, the following are reasons why Swedish Select Oats are “the best.”

FIRST—They outyield all others. Nearly every one who tries them testifies to this.

SECOND—They are very heavy; 36 to 42 pounds per bushel is the way they run.

THIRD—Fine appearance. They are pure white in color, large, thick and plump. None handsomer. The heads are large, upright and bushy.

FOURTH—Great root development. “This characteristic of the Swedish Oats, which enables them to resist drouth better than any other variety tested.” So says Prof. Moore. Prof. Shepard, of the South Dakota Station, says: “They are the best drouth resister of all our new plants.”

FIFTH—Earliness. They are the earliest, we think, of all large, heavy-yielding oats.

SIXTH—Freedom from rust and smut. They are less liable to smut and rust than most any other.

Our seed is extra heavy, clean and bright, and we guarantee it to please you in every way.

Price, for No. 1 seed sacked, F. O. B. cars, 35 cents per peck; \$1.10 per bushel; 10 bushels or over, \$1.00 per bushel.



SWEDISH OATS

SWEDISH SELECT OATS DO WELL IN MICHIGAN.

Three Oaks, Mich., Sept. 1st, 1909.

O. A. D. Baldwin, Bridgman, Mich.

Dear Sir:—Last spring I put out ten acres of Swedish Select Oats, also several acres of common oats. Although the Swedish Select Oats were on the poorest piece of ground and also where it was so wet that part of the crop was drowned, still they far outyielded the common seed. They are the finest looking oats I ever saw. Being extra white and very plump.

They weigh considerably heavier than the common seed oats I have been growing and I will sow the Swedish Select extensively hereafter.

Respectfully,

OTIS WIRTH.

Prices of Strawberry Plants

	Per 100	Per 1000
August Luther, (S)	\$0.50	\$3.00
Aroma, (S)60	3.75
Baldwin's Pride of Michigan, (S)75	5.00
Brandywine, (S)60	3.50
Beder Wood, (S)50	2.25
Bubach, (P)60	4.00
Bisel, (P)50	3.00
Barton's Eclipse, (P)50	3.00
Crescent, P)50	2.50
Corsican, (S)75	5.00
Clyde, (S)60	4.00
Dollar Mark, (S)	1.00	8.00
Gandy, (S)60	3.50
Glen Mary, (S)60	4.00
Haverland, (P)60	3.50
Highland, (P)85	6.00
Hermitage75	5.00
Lovett, (S)50	2.50
Michel's Early, (S)50	2.00
Norwood, (S) (Genuine)	5.00	45.00
Pocomoke, (S)60	4.00
Splendid, (S)50	3.00
Stevens' Late Champion, (S)60	3.50
Senator Dunlap, (S)50	2.50
Sample, (P)60	4.00
Uncle Jim, (S)60	4.00
Warfield, (P)50	2.50

We sell 25 at 100 and 250 at 1,000 rates. Write for special prices on larger lots.

Varieties marked (P) are "Pistillate" and must have staminate varieties set near them. Those marked (S) are "Staminate" and fertilize themselves. They can be set in large patches alone with best of results.

We advise all to place their orders early and be sure of getting what you want. PLEASE NOTICE OUR PREMIUM OFFERS IN FRONT PART OF CATALOGUE. Page 6.

May we not hear from YOU before our rush comes?

Promising your orders our personal attention, I am,

Very truly yours,

O. A. D. BALDWIN,

Bridgman, Mich.

(Long Distance Telephone in our office.)

If you are sure some of your neighbors would appreciate our Catalogue, will you please write their names and addresses below? We will include a few extra plants for your trouble.

Rose Comb Rhode Island Reds

EXCLUSIVELY

For Size, Vigor and Eggs, Hard to Beat



The Fowl for the Farmer or Fancier

I have some fine Birds this season, all from my prize winning stock.

Fine Cockerels and Pullets for sale, right prices.
Write me stating your wants.

Eggs from Prize Winners\$2.50 per 15
Eggs from Good Utility Stock,\$1.50 per 15
Satisfaction or Your Money Back.

If you want the best all round farm fowls get started with Rhode Island Reds. I can please you and save you some money.

LEWIS STANARD, (R. F. D. No. 1) Bridgman, Mich.

NOTICE.—The poultry advertised by Mr. Stanard is certainly first class. He has the finest Reds we have ever seen. We know him to be perfectly reliable and recommend his stock to our customers and friends.—O. A. D. BALDWIN.

AMES M. BALL, Pres.

M. W. STOCK, Vice-Pres.

A. N. REECE, Cash.

The Commercial National Bank

St. Joseph, Michigan

Capital	\$50,000.00
Surplus and Undivided Profits	\$22,000.00

MONEY TO LOAN at All Times at the Lowest Rates
INTEREST PAID ON CERTIFICATES OF DEPOSIT
Safety Deposit Boxes for Rent

The patronage of FARMERS and FRUIT GROWERS is respectfully solicited

Ladies are cordially invited to call and see Rest Room
Fitted up for their Exclusive Use

Our Guarantee

Every plant we ship is guaranteed to be first class and true to name, packed to reach you in good growing condition (by express) and to please you or your money back.

O. A. D. Baldwin, Bridgman, Mich.