

Historic, Archive Document

Do not assume content reflects current scientific knowledge, policies, or practices.

62.13

Mr. Ricker
LIBRARY,
U. S. Department of Agriculture,
Washington, D. C.

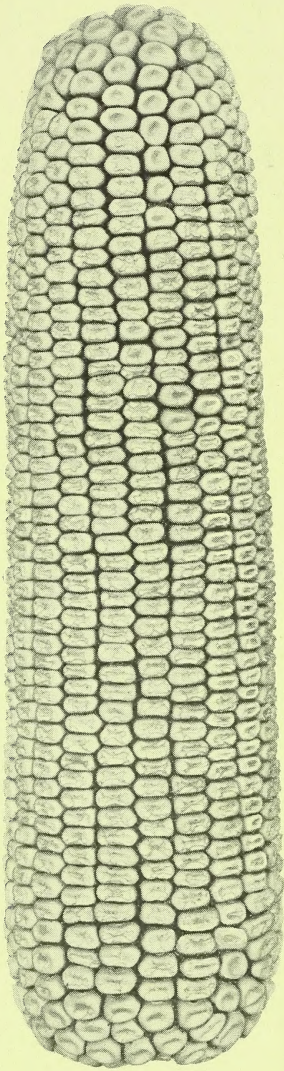
Brewer's Corn Manual AND CATALOGUE OF VARIETIES

1910



N. HOWARD BREWER

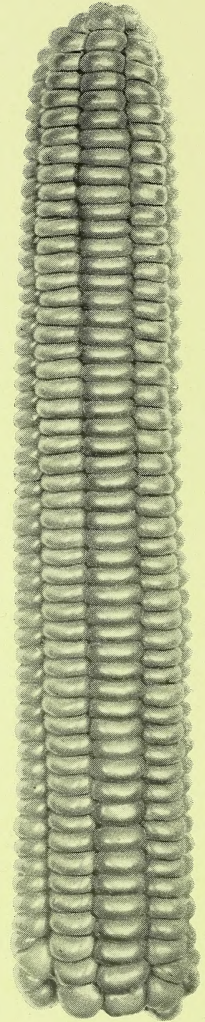
HOCKANUM, CONN.



VARIETIES OF

Brewer's Pedigreed Seed Corn.

**Brewer's Yellow Dent,
Brewer's Eight-Rowed Yellow Flint,
Brewer's Early Crosby Sweet,
Brewer's Early Malakhof Sweet
Golden Bantam Sweet,
Transparent Rice Pop.**



THE RECORD OF BREWER'S YELLOW DENT.

NAME	DATE	Yield Bu. per acre Shelled Corn	BREEDER
Reid's Yellow Dent	1847 to 1903		J. L. Reid, III.
" " "	1904	12 ears	N. H. Brewer
" " "	1905	8 bu.	" "
Brewer's Yellow Dent	1906	122 1/2 "	" "
" " "	1907	70 "	" "
" " "	1908	133 1/3 "	" "
" " "	1909	127 1/4 "	" "

BREWER'S PEDIGREED SEED.

***Largest Yield
Strong Vitality
Early Maturity
Improved Quality***

Grown and Bred by

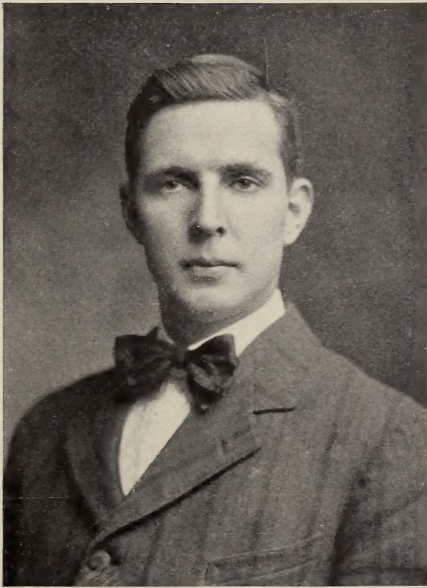
N. H. BREWER, HOCKANUM, CONN.

I wish here to thank and express my appreciation of the assistance in my work of the Bureau of Plant Industry of the U. S. Dept. of Agriculture and of the various New England Colleges of Agriculture and experiment stations.



HUSKING PARTY ON BREWER FARM Oct. 7, 1909.

Yield of test acre on wagon ready for weighing.



*To everyone interested in corn culture
in New England:—*

I cordially invite everyone interested in corn culture in New England to visit me and inspect my seed corn, methods of curing, storage, warehouses, my fields and farm at any time, at your convenience. Take the Glastonbury trolley car at City Hall, Hartford and get off at Station 22½. Telephone number—Charter 1223-12 Hartford Division, and if convenient, please call me up on the 'phone, so that I may be ready to meet you without loss of time. To any who may not be able to call personally, I would be glad to answer any questions to the best of my knowledge by correspondence regarding corn culture. I am anxious to do all in my power to promote the interests of agriculture in New England. I sincerely hope that this corn manual and catalogue may be of real service in this regard.

Yours very sincerely,

N. H. BREWER.

State Vice President National Corn Association.
President New England Corn Exposition.
Member Connecticut State Board of Agriculture.
Member of Grange.



A load of Brewer's Yellow Dent Ears ready for the curing room in my seed corn warehouse.

CORN CULTURE IN NEW ENGLAND.

PREVIOUS CULTIVATION.

The land on which I have raised my corn has been under constant cultivation for the past sixty years, following several different rotations. It has always been our aim to continually supply the soil with humus in the form of sod or cover crop of rye or vetch.

PLOWING.

Land is plowed deep to a depth of eight inches. Where it is possible a cover crop is plowed under of some leguminous crop to supply the nitrogen and fill the soil with humus, then by decomposition of this vegetable matter other forms of plant food are made available, such as phosphorous and potash.

PREPARATION OF SEED BED.

Soon after the plowing is done and before the ground has dried out and formed hard lumps it is thoroughly harrowed and cross harrowed with a scratch tooth harrow and when in a suitable condition it is smoothed with a plank. It is very important that the seed bed should be properly prepared, for if we have a poor seed bed and the best of seed our results will not be satisfactory and vice versa.

PLANTING.

I plant in hills $3 \times 3\frac{1}{2}$ feet four kernels in the hills. later thinning according to weather and soil conditions, about the middle of May.

The reasons why I like to plant in hills are these; easier to handle. An ear to properly develop in a low position should have all the sunlight possible. Now when planted in a hill it has sunlight on all sides. If planted in drill the foliage interferes with the sunlight reaching the ears. I plant only dry seed in planter covering from $\frac{1}{2}$ to 1 inch according to the moisture in the soil.

CULTIVATION.

Three or four days after planting a weeder is started, going both ways of the field until the corn is three inches high. The cultivator is run the first time three to four inches deep as close to the plants as possible. Where the soil is foul with many weeds it is necessary to cultivate every week or ten days. As the corn grows the cultivator is run more shallow and not so near the plants. When the weather conditions are very dry, continuous cultivation is given not over $\frac{1}{2}$ inch deep until corn is earing out. The more of a dust mulch we can have on the surface the more capillary attraction we will have, the crop thus being better developed. I practice level cultivation.

HARVESTING.

I cut and shock all of my corn 30 hills in a shock. No husking is done until it has cured 4 to 6 weeks.

FERTILIZING.

At the time corn is planted I apply from 300 to 500 lbs. of fertilizer mainly of fish and potash. At the last cultivation I also apply the same quantity.



Curing and Storage Warehouse, N. H. Brewer, Hockanum, Conn.



Curing room for Sweet Corn and system of ventilation during late summer.

The side picture represents one of my sweet corn curing houses thoroughly ventilated. The above cut shows my large seed corn warehouse where all of my flint and dent corn is dried and made ready for shipment. Everything is thoroughly up to date in regard to cleaning, sorting, shelling, etc. The ventilators can be closed in stormy weather and seed corn is thoroughly protected from all unfavorable weather conditions.

The corn is all placed on racks, and a circulation of warm dry air is forced through by an arrangement of pipes and a number 13 Ensilage blower. My seed corn was all perfectly dry before freezing weather arrived. When corn is taken from the racks, about 5% is specially selected and packed in tight boxes for shipment. The next grade from 15 to 20% is packed in crates and sold as selected seed corn.

The third grade of corn I shell using in all about 40% of my entire crop. The ears which are shelled are carefully examined and injured kernels removed, and each ear tipped and butted so that the corn which is shelled is uniform in size, and is as good as I sell on the ear. Germination tests are made. The remainder is sold for feeding purposes, or utilized on the farm.

SELECTION OF SEED.

In order to select seed intelligently, it is necessary to study the corn field carefully, observe the difference in the growth of the plants during the entire season. To breed corn, I believe that the breeder must have a natural liking for the crop, and for this character of work. To those who do not have the time to devote to this study, or the special aptitude for it, I believe that the most practical and economical policy is to buy the seed corn annually from the specialist.

I believe an ideal corn plant should be as large as the season will mature with an abundance of leaves, and strongly built so that it will withstand storms or other injuries. Above all, it should produce at least one large heavy ear, the writer preferring the ear to hang down the stalk in a drooping position. The stalk should bear the ear about three feet from the ground in a convenient position for husking. The entire field should be thoroughly searched for such plants, as but little is known about the conditions which produce them, and they are apt to be found in unexpected places. Above all, the plant must mature its ear before frost, early maturity being of fundamental importance. As soon as fully matured, the ear should be picked and cured.

CORN JUDGING.

About one dozen ears of dent corn will plant an acre, thirty ears of flint, and forty ears of sweet varieties are necessary for planting an acre. For dent varieties we select the heaviest matured ears with deep wedged shaped kernels bearing large germs. The rows of kernels should be straight with the cob, the size shape and color uniform, and with consistent color of cob. The tips and butts should be well filled over, the butt covering being vastly more important than the tip. The ears should be sound, with little or no spaces between the tops or bottoms of the rows of kernels or between the tips of the kernel (see description of Brewer's Yellow Dent Ears). I hope that the New England corn growers will make a systematic study of ears, using proper score cards as guides, and I will be glad to suggest score cards, if desired.

CORN CURING.

After husking, the seed ears should be cured or dried as quickly as possible. I have originated a plan of curing, which I use in curing my seed corn, and which I will be glad to show and explain to visitors. I force out all excess moisture from the ears, preserving the seed through the winter in perfect condition, ensuring strong vitality. For a small amount of seed, I would advise hanging the ears separately in a dry, open room, near a chimney, or in an open attic, until thoroughly dry.

SEED TESTING.

I test all my stock seed in a seed corn germinator, and by this means it enables me to eliminate the ears of poor vitality. This plan insures a perfect stand of strong hardy plants, and, correspondingly a large yield. I make germination tests of all shelled corn I send out, and in shelling the corn, each ear is carefully tipped and butted, and all undesirable kernels are discarded.

VARIETIES.

My object is to place on the market for your use, pedigreed seed, bred for yield and quality of all of the best varieties of corn adapted to New England. I spare no expense in testing varieties, and will, so far as my ability permits, grow and breed the best varieties for New England. My list of varieties include, I believe, the best that any one can obtain anywhere, and I feel that I can recommend them as the best that can be obtained. These varieties are acclimated and adapted to our New England conditions, and my entire time, ability and my favorable farm conditions are adapted to giving you the best seed corn, and at reasonable prices. I do not charge excess prices, as I want to put my seed in reach of all, and I am in this business, for as long as I live.



A BUSHEL OF BREWER'S YELLOW DENT.

The foundation stock from which this variety has been developed by breeding and seed selection, was the Reid's Yellow Dent. The Reid's Yellow Dent was originated by Mr. J. F. Reid of Illinois in 1847, which he has now bred for 53 years, and we introduced a select type in Connecticut in 1904, from which we have bred the Brewer's Yellow Dent. The record yields of this variety from 1904 to the present are given on the inside of the front cover, and constitute a world's record in yield. The Brewer's Yellow Dent has taken national and state prizes of great importance and value, both for highest yield per acre, and for show samples. I will be glad to furnish this list of prizes to all who desire it.

The Brewer's Yellow Dent is the earliest high yielding variety of corn in existence, to my knowledge. It is a yellow dent, the plant growing from nine to ten feet high, producing a large amount of leaves. The ears will average about ten inches in length, and 7½ inches in circumference, and bear about 22 rows of kernels with about 50 kernels in a row. The kernels are deep, with large heart or germ, and chemical analysis shows them to be very high in protein and oil content. The cob is red of medium size, and the ears are well filled over the butts and tips. I cannot too strongly recommend this variety for feeding purposes in every respect, and is specially recommended for silos and other means of preparing the plant for dairy, or fat cattle, horses, sheep and poultry, in fact, all farm animals or fowls on account of its yield per acre of seed and fodder, its high quality and digestibility.

As I was compelled last year to refuse orders for this variety to the amount of hundreds of bushels on account of lack of enough seed to fill the orders, I urge your immediate attention to sending me your order.

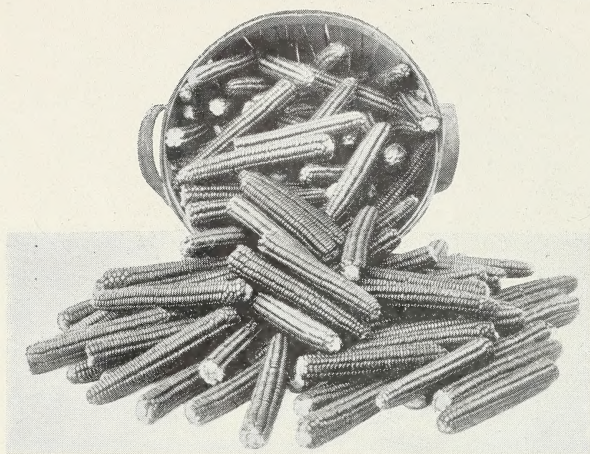
PRICES.

	Bu.	½ Bu.	Peck	Ear by mail	Lots 5 bu. or more
Specially Selected Ears	\$5.00	\$2.75	\$2.00	\$0.25	\$4.75
Carefully Selected Ears	3.50	2.00	1.00	.25	3.25
Shelled Corn	2.50	1.25	.75	qt. .25	2.25

One bushel of this variety will plant from 5 to 6 acres.

Note—This variety and all others listed in this catalogue is grown, cured, and shipped by me, and every detail has my immediate personal supervision.

BREWER'S EIGHT-ROWED YELLOW FLINT,



A bushel of my Yellow Flint Seed Corn.

This variety has been grown by my grandfather, father and myself on our farm for over sixty years. It is one of the earliest types grown in New England. We have improved the variety by careful seed selection, and have developed a very uniform and productive variety of Flint corn. I can recommend it wherever Flint Seed Corn is desired. The plants are large, leafy, tender, and the ears are of a beautiful golden color. The plants will average 8½ feet in height, and the ears are about 11 inches in length, 6¼ inches in circumference. The ears bear eight rows of kernels, and about 50 kernels in the row.

PRICES.

	Bu.	½ Bu.	Peck	Ear by mail	Lots 5 bu. or more
Specially Selected Ears	\$4.00	\$2.25	\$1.25	\$0.25	\$3.75
Carefully Selected Ears	2.50	1.35	.75	.25	2.25
Shelled Corn	1.75	1.00	.50	qt. .25	1.50

One bushel will plant from 4 to 5 acres.

BREWER'S EARLY CROSBY SWEET CORN.



A bushel of seed ears of my strain of Early Crosby Sweet Corn.

I consider this the best variety of sweet corn for home planting or canning purposes in existence. We have been scientifically breeding this variety for five years testing our breeding stock for sugar content by chemical analyses and other tests, and propagating the higher yielding ears, with highest sugar content. It is very uniform early, and produces an extremely eatable and delicious table corn. By planting a few hills, a week apart, from May 15th to June 15th, a succession of tender, sweet and nourishing table corn can be had all summer. I would like to see every lover of high grade table corn, plant a quart of this seed or more.

PRICES.

	Bu.	½ Bu.	Peck	Ear by mail
Specially Selected Ears	\$6.00	\$3.50	\$2.00	\$0.15
Carefully Selected Ears	5.00	3.25	1.75	.10
Shelled Corn	4.00	2.25	1.50	qt. .35

A NEW VARIETY

The Earliest and Sweetest Corn in Existence.

58 DAY MALAKHOF



An ear of Malakhof Sweet Corn in edible condition.

This variety of sweet corn we have developed from a small quantity of seed which was secured from the seed introduction division of the Bureau of Plant Industry of the U. S. Dept. of Agriculture.

I do not know of any variety that compares with it for earliness, high quality, flavor, tenderness, and desirability for early table use. As I have only a limited supply of seed as yet, I hope you will order early and secure some of it for trial. In order to supply as many people as possible, with this splendid variety, I will sell only in small quantities to any one individual. I take great pride in presenting this variety to the public, and consider it is a triumph in our work of breeding.

Prices by mail post paid:

1 pint shelled, 25c.

1 quart shelled, 40c.

GOLDEN BANTAM.

We have bred this variety systematically for 5 years. It is bright yellow in color and is very tender and has a flavor that is found in no other sweet corn. It is also very sweet.

PRICES.

	Bu.	½ Bu.	Peck	Ear by mail
Specially selected ears	\$6.00	\$3.50	\$2.00	\$0.15
Carefully selected ears	5.00	3.25	1.75	.10
Shelled corn	4.00	2.25	1.50	qt. .20

Quart by mail 35c.

STOWELL'S EVERGREEN

This variety of sweet corn has also been very systematically bred by us for the past five years. I recommend it as a heavy yielder of ears and stover, ripens late in the season and is an excellent corn for market. With its large ears filled with deep tender kernels it is a good seller being a leading variety for edible purposes and canning.

PRICES.

	Bu.	½ Bu.	Peck	Ear by mail
Specially selected ears	\$6.00	\$3.50	\$2.00	\$0.15
Carefully selected ears	5.00	3.25	1.75	.10
Shelled corn	4.00	2.25	1.50	qt. .20

Quart by mail 35c.

To any one ordering a quart or more of all these 4 varieties I will make a cash discount of 25%.

These 4 varieties will supply one with a continuous yield of corn all summer till frost time. First by planting the Malakhof following with the Golden Bantam, Early Crosby and Evergreen. Sweet corn requires good soil in a warm situation. I plant 4 kernels in hills 3 ft. x 3 ft. covering ½ to 1 in. according to the moisture in the soil. One quart will plant about 500 hills.

TRANSPARENT RICE POP-CORN.

A very productive medium-sized ear, rice type of pop corn. This seed is a Connecticut strain of a western grown variety which is the most highly prized and valuable variety grown in the U. S. It is a particularly fine popping corn and I can recommend it for general planting in New England. Prices: shelled seed from carefully selected ears, per bush., \$5.00; per lb., 10c.



Brewer's Broadleaf Tobacco Seed.

This variety of tobacco has been improved by seed selection and is extremely uniform in shape, size and texture of leaves and in the habit of growth of the plants. The seed has been saved under bag, separated so that all light, undesirable seed has been eliminated, and is of the best quality. This variety has been bred four years and is adapted to conditions favorable for the production of the broadleaf type of tobacco.

Prices: carefully selected, bagged and separated seed, per lb., \$5.00; per oz., 50c.

ACCLIMATED HAIRY VETCH.

This valuable legume has been acclimated by five years of growing and seed selection in Connecticut. It is especially recommended as a cover crop for tobacco lands or other soils, and it has been proved that it adds about one hundred pounds of nitrogen per acre to the soil when so used. In addition to its fertilizing value, it prevents soil washing, adds to the humus, and improves the tilth and condition for succeeding crops, and is the most valuable cover crop known. See photo on back cover.

A limited amount of this acclimated seed will be ready for delivery about Aug. 1, 1910. Price \$5.00 per bushel, or 10c. per pound. 40 to 60 pounds per acre of this seed should be sowed for cover crop purposes.

A FEW TYPICAL OF THE MANY LETTERS of appreciation from our customers. We present them merely to show how the growers of my seed corn appreciate efforts in their behalf.

COLLINSVILLE, Conn., Dec. 2, 1909.

MR. BREWER,

Dear Sir:—After giving your dent corn a trial in a very unfavorable season, I am satisfied that with a little education of the public as to the proper fertilization, it will become one of the best varieties for the east.

Respectfully yours,

L. S. WHITE.

MERIDEN, Conn., Nov. 27, 1909.

MR. N. HOWARD BREWER,
Hockanum, Conn.

Dear Sir:—I am very well satisfied with the results I obtained from planting "Brewer's Yellow Dent" seed corn I purchased of you last Spring. Although planted two weeks later than usual and rather thick, intending it for ensilage, it eared very heavy and I husked 550 bu. of ears, besides about as much more went into the silo with the stalks from about six acres. It is certainly an excellent corn for ensilage, the stalk growing from 10 to 12 feet high, and, if planted early, I am sure it will mature nicely for husking purposes in Connecticut.

Yours respectfully,

WALTER L. YALE.

GUILFORD, Conn., Jan. 1, 1910.

MR. N. HOWARD BREWER,
Hockanum, Conn.

Dear Mr. Brewer:—I am exceedingly well pleased with the crop of corn—"Brewer's Yellow Dent"—grown from shelled seed I purchased from you last season. It was fun to pick it, large handsome ears with small cobs and butts, which broke off easily, and there was scarcely room for another kernel on a cob, and I think it will shell more corn to the ear, and as much if not more to the acre than any I ever grew.

Perhaps it will please you as it did me, to know I was awarded first premium for best ten ears of this class and division at the corn exposition of the State Board of Agriculture in New Haven this winter, also first premium for the best single ear of this class in Connecticut. I also received second premium on "Early Crosby Sweet" and "Transparent Rice" Pop Corn grown from seed purchased of you. It is hardly necessary for me to say I shall try to grow more of these varieties the coming season.

Very truly yours,

JOHN B. HUBBARD.

THE F. C. BUSHNELL CO.,
Wholesale Grocers.

221-223 Water St., NEW HAVEN, Conn., Oct. 26, 1909.

MR. N. HOWARD BREWER,
Hockanum, Conn.

Dear Sir:—In answer to how I like your Yellow Dent Corn, I wish to say I shall in the future use no other, shall plant six or seven acres next year. This year it came up fine and has produced more ears than I ever saw before. I am much pleased with it.

Respectfully yours,

F. C. BUSHNELL.

THE J. H. HALE CO.
Growers of Fruit and Nursery Stock.

SOUTH GLASTONBURY, Conn., Jan. 25, 1910.

N. H. BREWER,
Hockanum, Conn.

Dear Mr. Brewer:—We had very good success the past season with your "Brewer's Yellow Dent" Corn, grown side by side in the same field with a white dent that we have grown and considered A No. 1 for some years, it husked out practically 50% more bushels of ears per shock.

As the season with us didn't mature corn to its best this year we shall in all probability need some more seed next Spring.

Yours truly,

STANCLIFF HALE.

F. M. PATTINGTON, Nurseryman.

SCIPIOVILLE, N. Y., Nov. 18, 1909.

N. H. BREWER,

Dear Sir:—Yours received. I take pleasure in saying that your corn "Reid's Yellow Dent" (Brewer's Strain) when grown under proper conditions is a very excellent corn, almost every stalk producing an ear, and a large one at that.

Respectfully,

F. M. PATTINGTON.

SUNDERLAND, Mass., Dec. 17, 1909.

MR. N. HOWARD BREWER,
Hockanum, Conn.

Dear Sir:—Yours of the 14th in regard to your seed corn received. In reply would say that, early in September the four acre which I planted to your corn did not look as if it would get ripe so I used $3\frac{1}{2}$ acres of it for silage. The growth was very heavy and filled up the silo almost twice as fast as some other varieties which I had. It was also very well eared out, and I am getting now very superior feeding results from it in comparison with other kinds of ensilage. The $\frac{1}{2}$ acre which I left standing got almost ripe and produced as much grain and twice the fodder as an adjoining acre of ordinary dent corn.

You are very welcome to use any data which my letter contains. Your corn has made me some money.

Yours truly,

RICHARD GRAVES.

WEST HARTFORD, Conn., Jan. 24, 1910.

MY DEAR MR. BREWER:—I have planted the Brewer Dent Corn for the past three years, and with unvarying success. I have made the raising of corn my specialty, and have never found a corn which produces so many ears and of such large size as yours. I have used it all for the silo, excepting one acre this Fall. I considered this the poorest acre on the farm, yet it husked out 163 baskets of corn. I shall want my seed of you for the 1910 crop.

Yours very truly,

F. E. DUFFEY.

SILVER LANE, Conn., Jan. 25, 1910.

MR. N. HOWARD BREWER,
Hockanum, Conn.

Dear Sir:—I have grown the Brewer's Yellow Dent corn for the past three years. I planted it first in 1907 and although the season was very unfavorable for corn I harvested 20 bu. more of corn from a piece of $\frac{3}{4}$ of an acre of light sandy soil than I did the year before which was a good corn year when it was planted with 8 row yellow flint. I have had equally as good success each year since. Wishing you the best of success, I am

Yours very truly,

J. G. HARVEY.



ORDER BLANK.

N. HOWARD BREWER,
Breeder and Shipper of Pure Bred Seed Corn.
Hockanum, Hartford County, Conn.

Every order, large or small, will receive my careful personal attention.
Telephone call, Hartford Division, Charter 1223-12.

Post Office..... 191

Dear Sir :

You will find enclosed \$..... for which you will ship
the following seed :

No. bu.	Specially Selected Ears	Selected Ears	Shelled	KIND OF CORN WANTED	PRICE
				Brewer's Yellow Dent	
				“ Eight-rowed Flint	
				“ Early Crosby Sweet	
				“ Early Golden Bantam	
				“ Late Stowell's Evergreen	
				“ Extra Early Malakhof	
				Transparent Rice Pop Corn	

Please fill out the following. Write plainly.

Please ship corn about.....^{When}.....

Name.....

Post Office..... State.....

What R. R. is your freight station on?.....

Freight Station..... R. F. D. No.....

County..... Ship by.....

Freight or Express

We send by freight unless otherwise ordered.



Our field of Acclimated Hairy Vetch grown for seed with rye. After harvest the rye seed was all separated from the vetch seed with a special vetch seed separator.