

# **Historic, Archive Document**

Do not assume content reflects current scientific knowledge, policies, or practices



1910  
BLUE JAY



Washington State Library,  
Department of Agriculture,  
**The**  
**Flower**  
**Superb**



**GLADIOLUS**

Grown and  
Selected by

**ARTHUR COWEE**

*Meadowvale Farm*

BERLIN, N. Y.



Cowee's Superb Dollar Collection. See page 9

# The Flower Superb

## GLADIOLUS (*The Twentieth Century Flower*)

GROFF'S HYBRIDS AND  
OTHER VARIETIES OF MERIT



As selected and grown by

**ARTHUR COWEE**

*Meadowvale Farm* : BERLIN, N. Y.





Gladiolus Field at Meadowvale in Bloom

## *Cowee's 1910 Offerings of Gladioli*



ANOTHER year's experience with the Gladiolus has added to my love and admiration for the flower. That it is coming into its own with flower-loving people generally is shown by the fact that my business last spring was much larger than ever before,—more patrons, and increased orders from satisfied customers.

I believe one mighty important factor in this business of mine is its foundation in my love of Gladioli. Most of my patrons know that Meadowvale Farm, and the flowers that have made it famous, are very close to my heart, and that of all my varied business interests this one is my hobby.

When I first began to grow Gladioli, I did so purely as an amateur, with love of this splendid flower and desire for recreation as my guiding motives. The wonders of the Gladiolus and the great possibilities of its development got hold of me, however, until I gave its culture so much of my time that they got to calling me "The Gladiolus Crank," which my friends have modified to the Gladiolus Specialist. I suspect I am both.

For this flower has qualities well calculated to make one an enthusiast about it, and it deserves all the attention that I have given as a specialist in its culture. No other member of the floral kingdom has so many qualities which recommend it for general planting, and no other has responded so generously to the loving care of hybridists and disseminators.

My last year's book told you, in the words of a frequent visitor to Meadowvale Farm, of the care and diligence we exercise in our work with the *Gladiolus*. Years of observation, study and experience are behind the methods we pursue—and all our efforts date back to my amateur interest in the flower. I started from the same place you are starting, kind patron, and the reason you find my *Gladioli* bulbs so satisfactory is that I have studied and grown this flower just as you will study and grow it, and know the kind of bulbs you need for best results.

Encouraged by the warm words of praise for the quality of the bulbs supplied them from hundreds of new customers, as well as by more and larger orders from former customers than in any preceding year, I have larger faith than ever in the future of the *Gladioli*, and in the service to lovers of the flower that I can render by growing and selling quality bulbs. I shall continue to send out only first-quality bulbs, therefore, always of blooming size, and invite attention to the following pages, as containing detailed information regarding the latest and the best that can be offered in *Gladioli*.



Peace. (See Page 6)

## THE GLADIOLUS, AND HOW TO GROW IT

I wish I could find a writer equal to the task of properly describing the Gladioli. They are so lovely, so beautiful, so surpassingly gorgeous, that I feel they deserve some fitting tribute in words. To write it is quite beyond me, however, nor have I found a pen picture of the flower that begins to do it justice.

The best I can do is to show you a few spikes of these wonderful flowers, in their natural colors,—reproduced by the new French color photography,—and ask you to imagine as well as you can the effect of countless shades and combinations of these rare colorings. Every year we add to our collections a number of new varieties, which excel any of our old kinds, in some respects, and the blooming of Gladioli from Meadowvale Farm will always give you joy by the beauties of which you have never dreamed.

In Northern New York, the best time to plant Gladioli is from the middle of April to the middle of May. As we go south, however, earlier planting is advisable. Gladioli bloom with us without interruption from the end of July until frost. In the more southern latitudes, where earlier planting is required, the period of blooming is correspondingly advanced.

From the time that the bulbs are harvested, we are planning for next year. The amateur grower will find it equally important to start the fall before to “get ready.” Any fairly rich garden soil will grow this flower to advantage; but it should be thoroughly prepared and manured the preceding fall, and respaded in the spring. If the soil is stiff and hard to work, fill the drill with a sandy loam.

You cannot make up and forward your orders for Gladioli to me too soon. The earlier in the season they are received, the better attention it will be possible for me to give them, and you will also be sure of getting just the kinds you most wish.

Gladioli should have full exposure to the sun. Plant in single or double rows, two inches apart in the drill; two, three or four inches deep, according to size; single rows should be put about twelve inches apart, double rows about eighteen inches. This method of planting is best when it is intended to grow cut blooms for indoor opening.

For general culture, mass planting in square, oblong or round beds will be found highly desirable. When planted in beds, the bulbs may be set from four to six inches apart, in each direction. To secure a succession of bloom, make two plantings—the first with the bulbs eight inches apart in each direction, and the second, two or three weeks later, with the bulbs between those first planted.

Elaborate tools and a large amount of labor are not required. When the soil for Gladioli has been properly prepared, and the bulbs have been planted as directed herein, the plants will be found to require very little attention. They have no exacting cultural requirements. Water should be applied when necessary, during the early stage of growth, and again when the buds show color. Before it seems possible, the plants will be blooming profusely.



For cut-flower purposes the *Gladiolus* is unequalled. It lasts longer than any other flower after cutting, and the absence of pronounced fragrance renders it ideal for the sick-room, dining-room, banquet-hall, church, school decorations, etc. Gladioli present their real beauty most fully as the flower opens, developing the splendid spikes in water to greater size than elsewhere.

During the blooming season I sell immense quantities of cut spikes of superior colors (shall be glad to quote prices on application), and those magnificent Gladioli are in great demand for the best and biggest hotels of the country. The photograph reproduced on page 17 is of the dining-room of the International Cataract Hotel at Niagara Falls.

My selections include only those kinds which I have proved to possess the necessary vitality to produce characteristic flowers. The amateur just beginning the culture of Gladioli will find my bulbs dependable, and experienced growers will readily recognize the increase year by year in value and quality of the sections and strains I offer. It is but simple justice to myself to assert that in this book are presented the most valuable kinds, collections and mixtures of Gladioli ever offered.

I have over 15,000 varieties of Gladioli. There have been remarkably few duplicates in the very large quantities of bulbs shipped to many of my customers,—a fact made possible only by the enormous range of stock. Do not pick out the largest bulbs from a collection or mixture and take it for granted that they are of the best quality. Some of the best kinds never produce large bulbs.

NOTE—The illustrations in this book are all from photographs of scenes at Meadowvale Farm or of Cowee's Gladioli grown elsewhere, made especially for this purpose. The color pictures are reproduced directly from autochromes, or color photographs made by the wonderful French process.



Planting Gladioli at Meadowvale Farm

## Cowee's "Imperial" Two Dollar Collection

See Pictures in Colors on Pages 3 15, 19 and 1st and 4th cover

The six fine new Gladioli included in this collection represent the acme of perfection in this magnificent flower. As these are the very largest and finest kinds, they are far ahead of any of the older sorts as regards every point of merit. One extra-choice bulb each of these superior new introductions will be sent by mail, postpaid, for only \$2. No greater value in a Gladiolus collection can be given.

**PEACE.** The grandest white variety ever offered in the world. Flowers are large, of good form, correctly placed on a heavy straight spike. Beautiful white, with pale lilac feathering on inferior petals.

**LA LUNA.** A remarkable flower. The large heavy buds open as a pale yellow, which passes to a pleasing white when the flowers are fully expanded. These are relieved by a small brown marking in the throat, and have few equals in point of substance. Flowers are almost perfectly rounded and overlapping. The plant grows over three feet.

**DAWN.** Strong, straight and vigorous plant over four feet high. Flowers large, of a delicate salmon, shading to white inside when bloomed, small claret stain on inferior petals.

**BLUE JAY.** The best blue variety offered in the world, its colors and markings being a striking resemblance to the beautiful bird from which it has been named. Plant exceptionally vigorous, often attaining a height of six feet; flowers large, and are of the most pronounced blue color ever introduced, relieved by white shadings. The picture on the first cover gives some idea of its wonderful beauty.

La Luna



Gladiolus Fields During the Growing Season

**VICTORY.** Flowers of medium size, well arranged on a strong, straight spike, and many open at the same time. Delicate sulphur-yellow, lower petals shaded deeper. Without doubt, the best yellow.

**FAUST.** Flowers of large size, well arranged on a spike about four feet high. Deep velvety crimson; lighter shading on two lower petals, slightly suffused with white.

## Cowee's "Novelty" Dollar Collection

See Color Plate in the Center of this Book

In order more widely to introduce the Gladiolus, I make a specialty of dollar collections, composed of six fine sorts, covering a rich range of color, mailed postpaid for the small sum of \$1. Every person who has planted one of these dollar collections has been surprised and charmed with the profusion of bloom, and it is always the case that a person who favors me with a trial order for a dollar collection becomes a convert to the merits of my favorite flower and a regular customer thereafter.

**BERLINA.** Beautiful shell-pink, marked with a strong carmine. Flowers extra-large.

**ELDORADO.** Deep clear yellow, lower petals spotted with maroon and black; medium-sized flowers.

**GENERAL DE NANSOUTY.** Rich bluish purple, marked with vivid crimson and lemon-yellow. Flower-stalk unusually long, bearing eighteen to twenty buds.

**MEADOWVALE.** A very fine white, tinged in the throat with crimson, and lower petals slightly marked with faint pink. Stalk strong and vigorous.

**NILREB.** Dainty pink, blending almost to white, marked with a strong shade of same color. Flowers large and stalks vigorous.

**TACONIC.** Bright pink, flecked and striped with shades of same color, markings of lower petals deep crimson, running into pale lemon-yellow.

## Silver Trophy Strains

*Groff's "World's Best" New Hybrid Seedlings*

1. **NEWEST REDS, SCARLETS AND CRIMSONS.** The world's commercial strains offer few equal to and none better than these. They should be largely planted.

By mail 25 bulbs \$1 postpaid, 50 bulbs \$1.75 postpaid, \$3 per 100 by express collect.

No orders accepted for less than 25 bulbs. If by express, 25 at 100 rate.

2. **NEW WHITE, LIGHT AND YELLOW.** All shades of white, cream and yellow, in many combinations, relieved by stains and blotches of rich colors in most pleasing contrasts.

By mail 25 bulbs \$1.25 postpaid, 50 bulbs \$2.25 postpaid, \$4 per 100 by express collect.

No orders accepted for less than 25 bulbs. If by express, 25 at 100 rate.

3. **RARE BLUES, IN CLEMATIS, LILAC AND HELIOTROPE SHADES.** New hybrids of *Papilio Major*, practically unknown. No such seedlings offered elsewhere in the world.

By mail 25 bulbs \$1.50 postpaid, 50 bulbs \$2.75 postpaid, \$5 per 100 by express collect. No orders accepted for less than 25 bulbs. If by express, 25 at 100 rate.

Large-blooming bulbs, the only size offered. Possible variation in colors as above classified, due to out-crosses, will be covered by extra count in filling orders.

---

Warehouse Point, Conn.,  
February 13, 1909.

I find but one fault with your Gladioli, i.e., the more one has, the more one wants. Your little booklet says not one word too much in praise of those sumptuous blossoms.

Miss C. H. S.

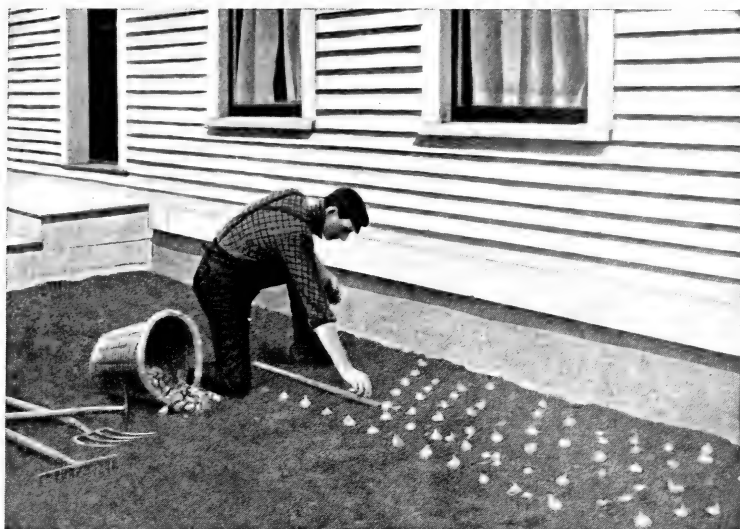
Wayne, Pa.,  
January 22, 1909.

The bulbs I purchased from you four years ago are still in commission, and flowered most gorgeously last summer. Every one who saw them was struck by their great beauty.

C. M. A.



Silver Trophy Strain, Section One



Planting Gladioli in the Home Garden

## Cowee's Superb Dollar Collection

See Illustration on Inside of Front Cover

This assortment of six splendid kinds covers a rich range of colors from white and violet to dark rich red. These sorts have been thoroughly tested and found to be all right in every way. For one dollar I will mail, postpaid, one strong-blooming bulb of each of these six fine Gladioli.

**BARON HULOT.** Good-sized flower, well arranged on straight spike ; color dark violet bordering on blue.

**GIANT PINK.** Large flowers of rich and clear pink, three lower petals marked with dark red.

**JANE DIEULAFOY.** Flowers creamy white, lower petals stained maroon. Continues in bloom a long time.

**MEPHISTOPHELES.** Flowers of large size, dark red stained with black and yellow. Very attractive.

**ROSELLA.** Fine, large, well-opened flowers, beautiful shade of light rose, stained purple and white.

**SCARSDALE.** Tall grower, with large, pink-lavender colored flowers, shading to a rich dark rose.

---

Norfolk, Va., January 21, 1909.

Those (bulbs) I had from you last year, with what I had, form the nucleus of a nice collection. Your bulbs are all and more than you claim for them. F. A. G.





COWEE'S "NOVELTY" DOLLAR COLLECTION OF GLADIOLI. See page 7  
1. Berlinia. 2. General de Nansouty. 3. Taconic. 4. Meadowvale. 5. Eldorado. 6. Nitreb



The Wealth of Bloom Gladioli Produce

## Ten Named Gladioli for 50 Cents

See Illustration on Inside of Back Cover

Thousands of pleased purchasers will testify to the fact that this is indeed a bargain—that, notwithstanding the low price, the Gladioli in this collection are choice and desirable. I will send the entire collection for 50 cents, postpaid. It is impossible for me to make any change in the kinds listed—the collection must be sent out just as it stands.

**AUGUSTA.** Lovely pure white with blue anthers. Strong, straight spikes.

**SENATOR VOLLAND.** Pure blue, dark violet blotch with a yellow stain, striped blue.

**BRENCHLEYENSIS.** Vermilion-scarlet; an old variety of brilliant color.

**EUGENE SCRIBE.** Medium-sized, well-opened flower; tender rose, blazed carmine-red.

**GIL BLAS.** Early-flowering plant of dwarf habit; flowers salmon-rose with a red blotch on primrose.

**GEORGE PAUL.** Large flowers, deep crimson; slightly stained yellow, spotted with purple.

**PROPHETESSE.** Large, round, pearly white blooms with a conspicuous crimson throat.

**MAY.** Lovely, pure white flowers, finely flaked bright rosy crimson; strong spike.

**MRS. BEECHER.** Beautiful deep rosy crimson. Large, well-opened flower, with white throat freely marked.

**SNOWBANK.** Fine spike of well-formed flowers, pure white, save for a slight stain of red at base.



## Cowee's World's Fair Collection

*Groff's New and Rare Gladioli*

No such collection can be obtained for the money elsewhere. It is made up of expensive named varieties, without regard to cost. Many high-class novelties of recent introduction, including meritorious named varieties, are included. The few hundred varieties which it contains are especially selected from the cream of high-quality Gladioli, to meet the demand for a limited number of extra-choice type. The intensity of color, combined with unusual markings, consisting of blotches, stains, mottlings, etc., in the World's Fair Collection, defies description. There are shades of red, scarlet, crimson, cerise, yellow, blue and light colors, of the purest quality. The flowers are exceptional in size and beauty.

By mail, 25 bulbs \$5.25 postpaid, 50 bulbs \$10.25 postpaid, \$20 per 100 by express collect. No orders accepted for less than 25 bulbs. If by express, 25 at 100 rate.

## Cowee's Gold Medal Collection

*Groff's Extra-Select Pan-American Exposition Gladioli*

The choice new varieties in this collection were first exhibited at Buffalo, 1901. The most critical grower could wish for no better value. In the preparation of this collection over 600 named varieties were discarded. Every desirable section is represented—Gandavensis, Lemoine, Nanceianus, Blues and Hybrids. The flowers are of the largest size in their respective types, the spikes of correct form, and the plants have great vigor and vitality. The Gold Medal Collection is offered in lots of 25, 50, 75 and 100 bulbs or upwards. Every collection is separately prepared, and so great is the diversity of the selections that purchasers of 1,000 or more bulbs will receive very few duplicates.

By mail, 25 bulbs \$3.25 postpaid, 50 bulbs \$6.25 postpaid, \$12 per 100 by express collect. No orders accepted for less than 25 bulbs. If by express, 25 at 100 rate.

## The Gold Medal Collection in Color Sections

These are especially select collections for new hybrids, prepared from the cream of the world's named introductions: Gandavensis, Lemoine, and Nanceianus. In making up these selections, several hundred named varieties were discarded, though possessing many elements of merit.

1. **SELECTED NEW DARK HYBRIDS.** All shades and combinations of red, scarlet and crimson, of highest quality. By mail, 25 bulbs \$2.75 postpaid, 50 bulbs \$5.25 postpaid, \$10 per 100 by express collect. No order accepted for less than 25 bulbs. If by express, 25 at 100 rate.

2. **SELECTED NEW WHITE, LIGHT AND YELLOW HYBRIDS.** No equal value offered elsewhere or otherwise obtainable. By mail, 25 bulbs \$3.25 postpaid, 50 bulbs \$6.25 postpaid, \$12 per 100 by express collect. No orders accepted for less than 25 bulbs. If by express, 25 at 100 rate.

3. **SELECTED NEW BLUE HYBRIDS.** Not offered elsewhere in the world (no smoky or slate blues). By mail, 25 bulbs \$4 postpaid, 50 bulbs \$7.75 postpaid, \$15 per 100 by express collect. No orders accepted for less than 25 bulbs. If by express, 25 at 100 rate.

## Cowee's Special Collections and Mixtures

### COWEE'S MIDWAY COLLECTION

This collection is especially prepared as an intermediate or midway section between the Gold Medal and Silver Trophy strains of Pan-American celebrity and those of a popular character following, all in high types of commercial value. It is prepared from all sections in new named varieties of European origin, which until the introduction of the Gold Medal and Silver Trophy strains, at Buffalo, have led the world; also a few of the earlier introductions of Groff's hybrids.



Armfuls of Bloom

American hybrids and named Childsi. By mail, 25 bulbs 90 cents postpaid, 50 bulbs \$1.50 postpaid, \$2.50 per 100 by express collect. No orders accepted for less than 25 bulbs. If by express, 25 at 100 rate.

By mail, 25 bulbs \$1.50 postpaid, 50 bulbs \$2.75 postpaid, \$5 per 100 by express collect. No orders accepted for less than 25 bulbs. If by express, 25 at 100 rate.

### COWEE'S "NIAGARA" STRAIN

This mixture is prepared for the use of those who need large quantities at reasonable prices. It contains named white, light, yellow and variegated types of

### GROFF'S HYBRID SEEDLINGS

The original introductions of Mr. Groff were awarded certificate of merit by The Society of American Florists, New York, 1900, where they defeated the whole Childsi section exhibited in competition by the introducer. Also certificate of merit at Buffalo 1901, and at Asheville, S. C., 1902. In this section I control over 75 per cent more of the varieties comprising this strain than any other grower; in fact, the whole of this important introduction is in my hands.

	Per 100	1,000
Large-blooming bulbs . . . . .	\$1 50	\$12 00
Second-size bulbs . . . . .	1 00	8 50
Small bulbs, 3-8 to 5-8 inches diameter . . . . .	60	4 25

NOTE. Much stock which never originated with Mr. Groff is being offered as his hybrids. For the buyer's protection, I would suggest that he insist upon Meadowvale-grown bulbs only. One comparison by blooming any of such offered by the side of mine will convince him that my advice is good.



### Miscellaneous Mixtures

**MEADOWVALE MIXTURE.** Including the largest number of the most magnificent varieties of any popular mixture of com- merce. First size, per 1,000, \$12; second size, per 1,000, \$9.

**COWEE'S GANDAVENSIS MIX- TURE.** Embracing a wide range of colors and types, prepared to meet the demand for a cheap but good mixture of Gandavensis types. Per 1,000, \$8.

**LEMOINE HYBRIDS.** Embraces hundreds of the more modern colors and many novelties. Extra-fine mixed, per 1,000, \$15; fine mixed, per 1,000, \$10.

**NANCEIANUS.** Per 100, \$2.50; per 1,000, \$20.

**CHILDSI.** Per 100, \$1.75; per 1,000, \$15.

#### Mixtures to Colors

	Per 1,000
Extra White and Light Shades . . .	\$15 00
White and Light Shades . . . . .	12 00
Extra Pink and Rose Shades . . . . .	12 00
Pink and Rose Shades . . . . .	10 00
Extra Scarlet and Red Shades . . . . .	11 00
Scarlet and Red Shades . . . . .	9 00
Extra Orange and Yellow Shades . . . . .	40 00
Orange and Yellow Shades . . . . .	30 00
Striped and Variegated . . . . .	18 00
Botanical Hybrids . . . . .	per 100, \$2. 15 00

If by mail, add 25 cents for packing and postage if either 25 or 50 are desired.

If by express, 25 bulbs at 100 rate, 250 at 1,000 rate.

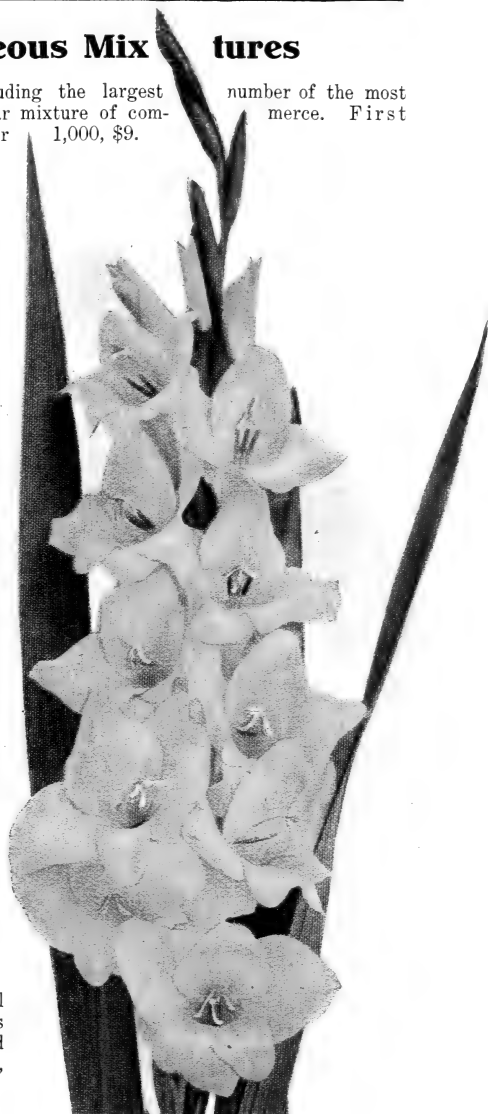
Royal Botanic Gardens,  
Kew, England,  
September 13, 1909.

To Mr. H. H. GROFF:

Your Gladioli have been and are still very much admired here. The yellows and blues are exceptionally good, and the Named varieties, Blue Jay, Dawn, La Luna and Peace, are superb.

Signed,

W. WATSON, Curator.



Victory. (See page 7)

## Select Named Gladioli

If by mail, add 25 cents for packing and postage if either 25 or 50 are desired. If by express, 25 bulbs at 100 rate, 250 at 1,000 rate.

- Afterglow (Groff's).** Tall upright plant from five to six feet to top of spike when well grown. Flowers large and wide open, of a salmon-fawn shade, with a light violet-blue center. \$1 each, \$9 per doz.
- America.** Spikes two to three feet long, upon which flowers of good size are well arranged; color, soft lavender-pink, almost a tinted white. \$5 per 100, \$40 per 1,000.
- Attraction.** Deep, dark rich crimson with a very conspicuous, large, pure white center and throat. \$6 per 100.
- Augusta.** Lovely pure white with blue anthers. Strong, straight spike often having two and three branches. \$2 per 100, \$15 per 1,000.
- Baron Hulot.** Good-sized flower, well arranged on straight spike; color dark violet bordering on blue. \$15 per 100.
- Berlinia.** (500). Beautiful shade of shell-pink, flaked with spots of a darker shade, the throat and three lower petals brilliantly marked with strong carmine. \$20 per 100.
- Blue Jay (Groff's).** The best blue variety offered, its color and markings bearing a striking resemblance to the beautiful bird from which it has been named. Plant exceptionally vigorous, often attaining a height of six feet; flowers large, and are of the most pronounced blue color ever introduced, relieved by white shadings that give them the pleasing and effective contrast so decided and striking in the beautiful bird referred to. 50 cts. each, \$5 per doz. See colored illustrations, first page of cover.
- Brenchleyensis.** Vermilion-scarlet; an old variety, but much wanted on account of brilliant color. \$1.50 per 100, \$10 per 1,000.
- Butterfly.** Medium flowers of mauve color, shaded lighter toward base of petals. The two lower petals of garnet with a clear canary spot. \$15 per 100.
- California.** (1005.) Large flowers of deep lavender-pink, with prominent white throat-marking; flowers well arranged on tall, straight spike. \$20 per 100.
- Canary Bird.** Fine light yellow; strong spike. \$7 per 100.
- Ceres.** White, spotted with purplish rose; flowers often appear opposite each other on the spike. \$1.50 per 100, \$10 per 1,000.
- Contrast.** Flowers of good substance, with a compact spike of perfect form; color intense scarlet with a large pure white center. A most striking variety. \$20 per 100.
- Cracker Jack.** (336.) Large flowers of rich, velvety dark red; throat spotted with yellow and dark maroon, a most beautiful variety. \$20 per 100.
- Cremilda.** Fine spike of good-sized flowers well arranged; delicately tinted pink on a creamy white background. \$15 per 100.
- Dawn (Groff's).** Strong, straight and vigorous plant, four feet high. Flowers large, of a delicate salmon, shading to white inside when bloomed, a small claret stain on the inferior petal. 75 cts. each, \$7.50 per doz. See colored illustration, page 17.
- Dimmock, A.** Grand variety, spike about four feet high, groundwork of a delicate salmon, throat marked with deeper salmon, strong vigorous plant. \$20 per 100.
- Eldorado.** Medium-sized flower. Deep clear yellow, lower petals spotted with maroon and black. Very attractive and an early bloomer. \$15 per 100.



Cowee's Gladioli in Dining-room of a Famous Hotel

**SELECT NAMED GLADIOLI, continued**

- Emma Thursby.** White ground, carmine stripes through petals; blotch on the lower division. \$3 per 100.
- Eugene Scribe.** Medium-sized, well-open flowers; tender rose, blazed carmine-red. \$4 per 100.
- Evolution (Groff's).** So named on account of the vine-like character of the spike and its twisting and twining; this peculiarity adds to the value for vase decoration. Plant is strong and from three to four feet high. Flowers are almost perfectly round, with no distinct markings on the petals, which are of a delicate rose color, shaded darker. An exceptional and valuable variety. 50 cts. each, \$5 per doz.
- Faust.** Flowers of large size, well arranged on a spike about four feet high. Color deep velvety crimson, with a lighter shading on the two lower petals, which are slightly suffused with white. 50 cts. each, \$5 per doz. See colored illustration, fourth cover page for a hint of the richness of this variety.
- General de Nansouty.** Rich bluish purple, with throat and three lower petals marked with strong, vivid crimson and flecked slightly with spots of lemon-yellow. \$20 per 100.
- George Paul.** Large flowers, deep crimson, slightly stained yellow, spotted with purple. \$10 per 100.
- Giant Pink.** Large flowers, dark pink shade, with brilliant throat marking of dark red; tall strong grower. \$10 per 100.
- Gil Blas.** Early-flowering; flowers salmon rose, with a fire-red blotch on primrose ground. \$10 per 100.
- Hollandia.** Flower-spike attains a height of about four feet. Charming pink shade, tinted yellow. \$7.50 per 100.
- Independence.** Light scarlet of a very pleasing shade. Flowers are large, borne on strong spikes. \$5 per 100, \$40 per 1,000.
- Intensity. (335.)** Strong spike bearing large flowers of a rich light scarlet shade. The three lower petals being spotted with white, with a deep scarlet vein through the center. A very attractive variety. \$20 per 100.
- Jane Dieulafoy.** Flowers creamy white, lower petals stained maroon. This variety has many points of excellence to commend it. It especially remains in bloom a long time; an excellent bedding variety. \$15 per 100.

**SELECT NAMED GLADIOLI, continued**

**Klondyke.** Strong, vigorous plant, blooming early; flower round, well opened, of a clear primrose-yellow with blotch of vivid crimson-maroon. \$10 per 100.

**Lady Howard de Walden.** Bright clear yellow, the inferior petals flaked with carmine, vigorous plant of dwarf habit. A very showy variety. \$20 per 100.

**La Luna (Gross's).** The large heavy buds open as pale yellow flowers; white

when fully expanded. These are relieved by a small brown marking in the throat, and have few equals in point of substance. Flowers are almost perfectly round, the superior petals being broad, well-rounded and overlapping. Plant three feet high; sturdy. 50 cts. each, \$5 per doz. See colored illustration, page 6.

**La Marck.** Color cherry, lightly tinted with orange, blazed with red. Center lighted with white stain. \$1.50 per 100.

**May.** Lovely pure white, finely flaked bright rosy crimson; strong spike; good for forcing. \$2 per 100, \$16 per 1,000.

**Madam Lemonier.** Sometimes called the Easter Gladiolus, on account of its early blooming. Medium-sized flower, white with lemon tinge. \$2 per 100, \$15 per 1,000.

**Madam Monneret.** Delicate rose; late bloomer. \$2.50 per 100.

**Meadowvale.** One of the purest whites; in the throat is a touch of vivid crimson; the three lower petals are marked with faint pink. \$15 per 100.

**Mephistopheles.** Flowers of large size, dark red stained with black and yellow, very attractive. \$15 per 100.

**Mrs. Beecher.** Beautiful deep rosy crimson; large, well-opened flowers, with pure white throat, freely marked and spotted. \$5 per 100.

**Nilreb.** (D. X.) Daintiest shade of pink, blending almost to white; the markings are a stronger shade of the same color, flowers large and stalk vigorous. \$20 per 100.

**1900.** Good-sized bloom of rich red, with prominent white spots on three lower petals. \$2.50 per 100, \$20 per 1,000.



Silver Trophy Strain, Section Two



**SELECT NAMED GLADIOLI, continued**

**Octoroon.** A beautiful salmon-pink; very distinct.  
\$4 per \$100.

**Pacha.** Magnificent flower of nasturtium-orange shade; throat spotted with red on a sulphur ground. \$10 per 100.

**Pactole.** Beautiful yellow, slightly tinged with rose at the edges, blotch of dark maroon. \$8 per 100.

**Peace (Groff's).** The grandest white ever offered in the world. Flowers are large, of good form, correctly placed on a heavy straight spike. Color beautiful white with a pale lilac feathering on the inferior petals. 75 cents each, \$7.50 per doz. See colored illustration, page 3.

**Philadelphia.** (401.) Flowers of good size, well arranged on a tall spike often 6 feet high. Color dark pink, ends of petals slightly suffused with white. \$15 per 100.

**Princeps.** Rich crimson with intense shadings in the throat; broad white blotches across the lower petals. \$15 per 100.

**Princess Altieri.** Flowers of medium size. Color a clear white shaded with carmine. \$15 per 100.

**Prophetesse.** Large, round, pearly white blooms with a conspicuous crimson throat. Healthy grower, good multiplier and early bloomer. \$10 per 100.

**Rosella.** Large flower, light rose, stained purple and white. \$15 per 100.

**Salem.** Fine salmon-pink, maroon blotches. \$4 per 100.

**Scarsdale.** Tall grower with large, pink-lavender colored flowers, shaded to dark rose. \$10 per 100.

**Scribe.** Large, well-open flower, tall straight spike, color similar to Eugene Scribe, tinted white, freely striped with carmine. \$20 per 100.

**Senator Volland.** Large flowers, pure blue, dark violet blotch with a yellow stain, striped blue. \$15 per 100.

**Shakespeare.** Pure white, slightly suffused with carmine-rose, large rosy blotch. Good for forcing. \$8 per 100, \$60 per 1,000.



Dawn. (See page 6)

**SELECT NAMED CLADIOLI, continued**

**Snowbank.** Fine spike of well-formed flowers; white, with a slight stain of red at base of petals. \$5 per 100.

**Sulphur King.** Beautiful clear sulphur yellow, flowers arranged on a straight spike. A strong grower. \$20 per 100.

**Taconic.** (605.) Bright lively pink, flecked and striped with shades of the same color, the petals lightening to the faintest blush in the throat. The markings on the lower petals are deep crimson, running into a thin stripe of pale lemon-yellow. Plant vigorous, and flowers large, 10 to 12 being in bloom the same time. \$20 per 100.

**Victory.** Flowers of medium size, well arranged on a strong straight spike

and many open at the same time. Color delicate sulphur-yellow, lower petals shaded a deeper yellow. Without doubt the best yellow variety yet introduced. \$20 per 100. See colored illustration, page 15.

**White Cloud.** Strong, tall graceful spike bearing many flowers, pure white (except in a very hot season). The lower petals shaded cream color. A branching variety. \$10 per 100.

**Witch.** (100+.) A most peculiar variety, medium flowers mottled red, the three inferior petals stained with white with a vein of old gold through the center. \$10 per 100.

If by mail, add 25 cents for packing and postage if either 25 or 50 are desired. If by express, 25 bulbs at 100 rate, 250 at 1,000 rate.

**DIRECTIONS FOR ORDERING**

**ORDER EARLY.**—Every season, orders reach us too late to be properly executed, on account of the required early planting of some very late-flowering varieties.

In filling orders, no substitutions will be made unless we are so instructed. Bulbs for greenhouse forcing can be shipped in the autumn after the bulbs are thoroughly cured.

In order to encourage large plantings, all prices quoted are practically wholesale, taking quality into consideration. Excepting the Imperial, Novelty Dollar Collection, the Superb Dollar Collection, and the Fifty-cent Special Collection, I do not accept orders for less than 25 bulbs, which may be selected from as many Mixtures or Named Varieties as desired, and at the price per 100 for shipment via express, charges collect. Upon orders for more than 50 bulbs by mail, eight cents postage for each additional 25 bulbs should be included in remittance. Although our mailing size is much larger than is ordinarily used, I advise that in all cases possible shipment be made via express, which will permit the sending of larger bulbs. Shipments via express take advantage of my special rate of 20 per cent below the merchandise tariff.

Special discount to seedsmen, or to those ordering in lots of five thousand or more.

Remittances should accompany all orders from unknown purchasers, and may be made by post-office order, express order, New York draft, or cash by registered letter. Postage stamps accepted as cash.

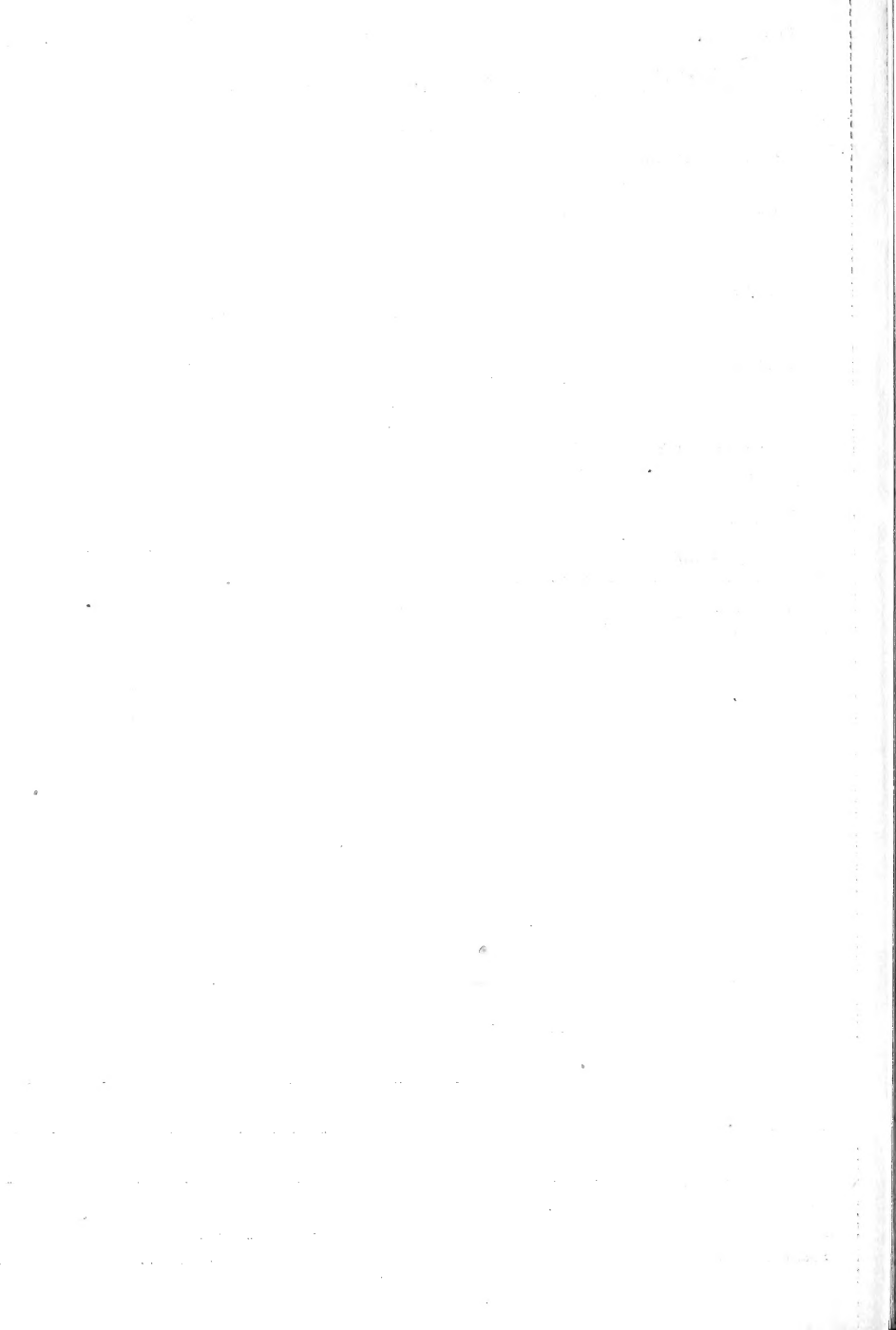
Carefully sign your NAME, giving POST-OFFICE, COUNTY and STATE.

Address all orders to

**ARTHUR COWEE, Proprietor**  
**Meadowvale Farm, - - Berlin, N. Y.**









Cowee's Fifty Cent Collection. See page 12

*The McFarland Publicity Service, Harrisburg, Pa.*

# COWEE'S SPECIAL

Faust  
(See page 7)

## GLADIOLI

## COLLECTIONS

### *"Imperial"* **\$2 Collection**

Six fine new Gladioli. One extra choice bulb each, post-paid, only \$2. See page 6.

### *"Novelty"* **Dollar Collection**

Six fine sorts, covering wide range of color. Six post-paid by mail, \$1. See color plate in center of book.

### *Superb* **Dollar Collection**

Six splendid kinds all thoroughly tested, one strong blooming bulb of each. \$1. See inside of front cover.

### **Ten Named Gladioli for 50c.**

All choice and desirable sorts, affording a great bargain at the unusually low price of 50c. postpaid. See illustration back inside cover.

**ARTHUR COWEE**

*Meadowvale Farm, BERLIN, N. Y.*

