

Historic, Archive Document

Do not assume content reflects current scientific knowledge, policies, or practices.

6267

LIBRARY, U.S. Department of Agriculture
Washington, D.C.

1910



Field Investigations in Pomology
RECEIVED
MAR 31 1910

ERNST'S NURSERIES

FRUIT TREES AND VINES
ORNAMENTAL SHRUBS
MOSCOW, OHIO., U. S. A.

Barred Plymouth Rocks

This is the the fourth year we are offering to the public our fine strain of Barred Rocks. We have tried all kinds and find the Barred Rock the best. We have bred these up for the last 18 years. Having spared neither pains nor expense in selecting the best blood and strains, we now have a flock of birds unsurpassed. We think the Barred Rocks the best and most popular fowl raised by any. They are one of the best layers and lay larger eggs than most others, and are ready for the frying pan first of all. They demand the highest prices



Copyrighted 1905

in market at all times. They do not fly high fences, or scratch and destroy the garden or crops planted near the house, as do many others. Do not ask us for other breeds, as we have only the one breed, and you are sure of getting the best strain only.

Eggs for setting, \$1.00 per 15; \$5.00 per 100.

Cocks and Cockerels . . . \$3.00 and \$5.00 each.

Hens \$2.00 and 3.00 each.

Owing to bone and markings.

We will guarantee our stock pure or refund money less express charges.

ERNST'S NURSERIES, MOSCOW, OHIO

Catalogue of ERNST'S NURSERIES

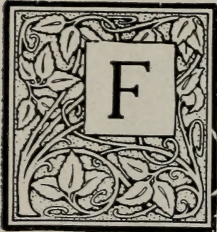
MOSCOW, OHIO

Best Tested Fruits for Profit

1910

Established 1870

1910



FOR THIRTY-NINE YEARS we have been selling Nursery Stock to the public. During all this period we have endeavored to serve our patrons faithfully. The fact that our business has shown a steady growth, each year adding many new names to our list of customers, besides retaining the old ones, is, we believe, convincing evidence of our standing among the fruit growers of the country. You may send your orders to us, having the fullest confidence that they will be filled with honest, thrifty stock, true to label, grown under favorable circumstances, by experienced men, carefully packed; and that prices are as low as good stock can be bought for, and lower than some nurserymen charge for stock not so good as we offer. Our location on the Ohio River, near

Cincinnati, is favorable both for the growing and shipping of nursery stock. It is far enough north to insure the vitality and hardiness which is only found in northern grown stock, and far enough south to insure a long season for growth and ripening. Our river location and nearness to Cincinnati give us exceptional shipping advantages and low rates.

References—Moscow State Bank; any merchant or business firm in Moscow; First National Bank of New Richmond, Ohio.

Our Liability—We use the greatest care in packing and labeling. Our help is experienced and mistakes are rare. However, should any plants or trees prove untrue to label we will cheerfully refund the purchase price or replace the stock, on proper proof; but in no case shall we be liable for a greater sum than the invoice price of the stock.

Order as Early as Possible—The sooner the better. All orders will be filled and shipped in rotation as received. Look this catalogue over carefully, make out your order and send it in at once. Don't put it off.

Our Packing is done in the best manner by experienced people. The roots are packed in moss and plants and trees are packed in boxes or bales and are further protected by straw. They will reach customers in first-class condition, no matter how great the distance. Do not hesitate on account of distance. You will save money to buy direct from the grower, and you may depend on stock reaching you in prime condition, especially if ordered early.

Use the Order Sheet in making out your order. Fill out carefully, being particular about your name, postoffice, express and freight office.

Remittance by postoffice or express money order, registered letter or draft.

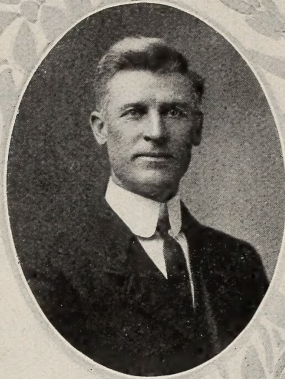
If above directions are carefully observed, we guarantee stock to reach you in good condition. Our stock is as good as can be grown. We are ready to put up a guarantee of \$100 that our grades and varieties are the equal of any, no matter what prices are charged or what agents may say about their stock.

If you have friends or neighbors who would be interested in our catalogue send us their names and addresses.

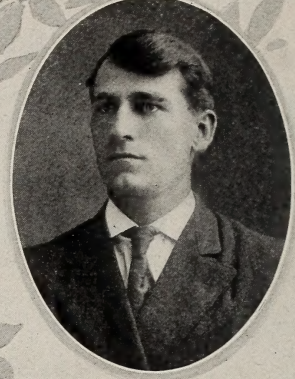
We want to thank you for your past patronage. We hope to receive your order for this year.

Sincerely,

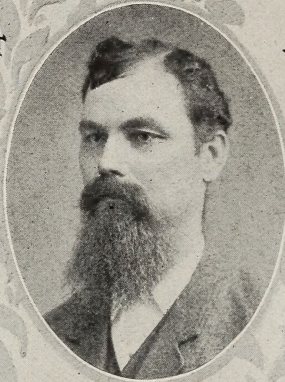
ERNST'S NURSERIES,
Moscow, Ohio.



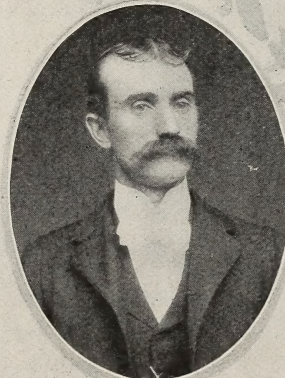
CHAS. E. ERNST



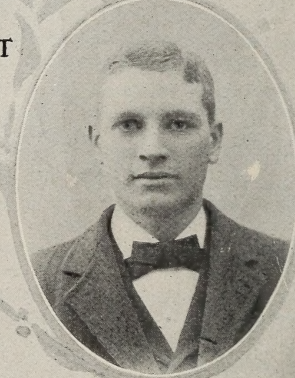
JOHN J. ERNST



CHAS. ERNST



GEO. KELLER



WM. F. ERNST

OUR ORGANIZATION

CHARLES ERNST established the Ernst Nurseries at Moscow, Ohio, in 1870. He died in 1887, leaving the business to his wife and sons.

CHAS. E. ERNST, General Manager of the Ernst Nurseries.

JOHN J. ERNST, Salesman and Superintendent of Shipping Department.

GEO. KELLER, General Superintendent. An expert in the growing and digging of nursery stock.

WM. F. ERNST, Superintendent of propagating, planting, budding and grafting.

APPLES

While various other fruits have been crowded upon the attention of fruit growers during the last decade, yet among progressive orchardists the apple easily holds its position as the King of Fruits, and with intelligent treatment will return as great profit to grower as any fruit grown in the temperate zone. Most other fruits are in condition to use but a very short time, varying from one day to a few weeks. But by making a judicious selection of summer, autumn and winter apples, one can provide himself with apples the whole year through. They can be eaten at the home fireside or shipped to the uttermost parts of the earth without being injured or in any wise losing their flavor.

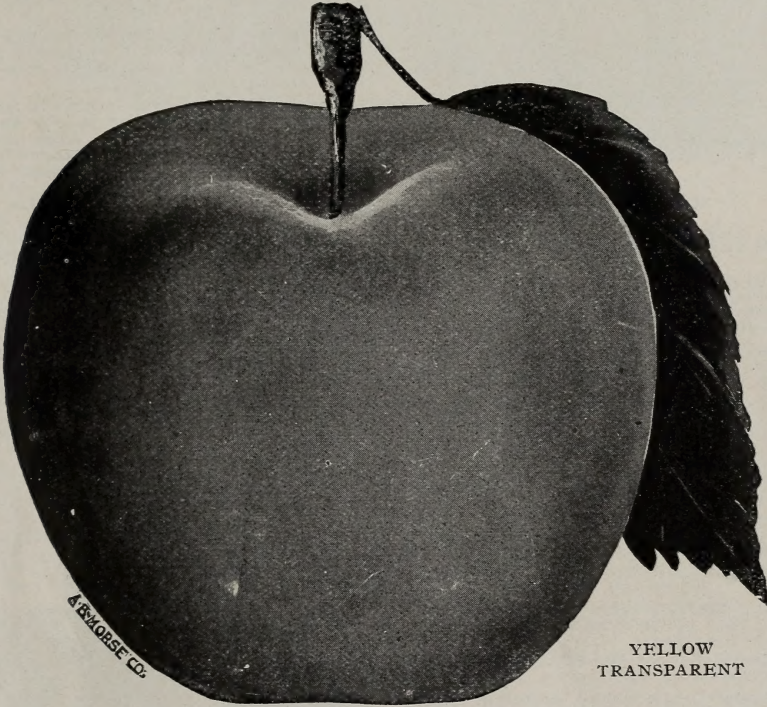
Our stock of Apple Trees for the present year is not large; thoroughly sound and exceptionally

varieties. All stock is straight, smooth, and well rooted. Very scarce.

1st class, 2 to 3 feet, each, 8c; per 100, \$6.00.
 1st class, 3 to 4 feet, each, 15c; per 100, 10.00.
 1st class, 4 to 5 feet, each, 20c; per 100, 15.00.
 1st class, 5 to 7 ft., extra, ea., 25c; per 100, 20.00.

For Greenville or Winter Maiden Blush, Bismarck, Rome Beauty, Opalescent, Duchess, Fameuse, McIntosh Red, Banana, add 5 cents per tree to above prices.

Banana apple trees are very scarce and a little higher in price than last year, but you will find our prices lower than most nurseries for good trees. Our varieties are of the best selection.



YELLOW
TRANSPARENT

fine and comprises the most approved varieties in cultivation.

In the following described list, however, we have enumerated a select list of varieties, generally approved for cultivation, and much superior to the general run. This will aid you in making a correct selection for your orchards.

For a family orchard we would not recommend the planting of many varieties. A few of the best sorts is quite sufficient, if judiciously selected, to afford a succession of fruit throughout the year, for home use and market.

Persons selecting trees for transplanting will find it to their interest to choose small, thrifty trees, two or three years old and from five to seven feet high; as such are more safely transplanted, and with more satisfactory results than older and larger trees.

We present only a general list of the best va-

SUMMER APPLES

Early June—Medium size; red; flesh white, tender, juicy, sub-acid; an abundant bearer; moderate grower. July.

Early Harvest—Medium to large; pale yellow; fine flavor. Tree a moderate, erect grower and a good bearer. Middle to end of August.

Sweet June—An old variety, highly prized at the West and South. Medium size, round; color beautiful yellow; flesh very sweet and pleasant; good. Tree hardy and productive. August.

Astrachan, Red—Large, roundish; nearly covered with deep crimson, overspread with a thick bloom; juicy, rich, acid, beautiful. The trees is a vigorous grower, with large foliage and a good bearer. August.

Yellow Transparent—A new Russian variety imported in 1870, through the Agricultural Department. Pronounced as "the most valuable early apple ever introduced." Tree an upright grower and a very early and abundant bearer. Fruit of good size; skin clear white, turning to a pale yellow; flavor acid and very good. Ripens five days to two weeks earlier than Early Harvest. July.



NORTHERN SPY

AUTUMN APPLES

Alexander—(Emperor)—Of Russian origin. Large, deep red or crimson; flesh yellowish-white, crisp, tender, with pleasant flavor. Very hardy. October.

Duchess of Oldenburg—Of Russian origin. Large size, roundish, streaked with red and yellow; flesh whitish, juicy; flavor sprightly, sub-acid; tree a vigorous grower, very hardy; very early and abundant bearer. While it is indispensable in the North, it is almost equally so in the South. We confidently recommend it for the orchard as one of the most valuable sorts for market or in the garden for domestic use. September.

Maiden Blush—Medium size, flat, quite smooth and fair; pale yellow, with beautiful red cheek; tender, sprightly, pleasant, acid flavor. Fair grower and good bearer. September and October.

Autumn Strawberry—Medium; streaked, tender, juicy, fine, productive and desirable. September and October.

Fall Pippin—One of the best. Juicy, tender, crisp, delicious. An old favorite.

Gravenstein—Large, striped, beautiful, tender, juicy, and highly flavored. Trees vigorous and productive. September and October.

Rambo—Medium size, greenish yellow, striped with carmine, overspread with grayish bloom; flesh firm, crisp, tender, juicy, sub-acid, good. October and November.

Munson Sweet—Large, pale yellowish, with red cheek, tender, rich and good. Fine grower and bearer. October to December.

Red Beitheimer—A rare German variety, very recently introduced. Fruit large to very large; skin pale green color, mostly covered with purplish crimson; flesh white, firm, sub-acid, with a brisk, pleasant flavor. Tree a moderate grower, an abundant bearer and as hardy as a crab. This is one of the largest and handsomest of apples, and promises to be extensively cultivated. September and October.

Wealthy—A native of Minnesota, where it has proved perfectly hardy, vigorous and productive; fruit of large size; red streaked with white;

quality good. One of the most valuable market apples grown. November to January.

Jonathan—Beautiful, brilliant red with pale yellow patches. Medium size, hardy, productive, flesh whitish yellow, sometimes tinged with red, firm, crisp, tender, aromatic, sprightly sub-acid, good. November to February.

WINTER APPLES

Arkansas Black—Tree very hardy and thrifty; an early and uniform bearer; the apple is large, smooth and round, black dotted with whitish specks, the flesh is yellow, very juicy, and delicious flavor, one of the best keeping apples. Specimens have been kept until August the following year.

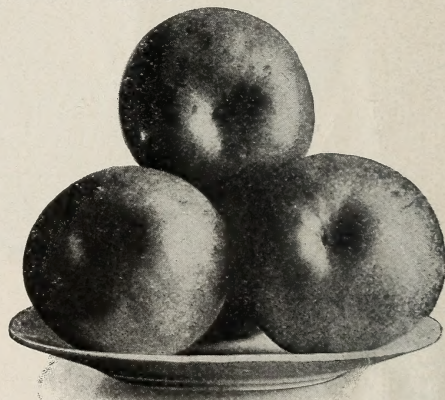
Baldwin—Large, roundish, deep, bright red; juicy, sub-acid, good flavor. Tree vigorous, upright and very productive of fair, handsome fruit; one of the best and most popular winter apples. January to April.

Ben Davis—A large, handsome striped apple of fair quality; tree very hardy, vigorous and productive; a late keeper, highly esteemed in the West and Southwest.

Banana—Fruit large size, perfect in form, golden yellow, and beautifully shaded and marbled with bright crimson red. Flesh lemon yellow, fine grained, sub-acid, rich, aromatic flavor, and of the highest quality. A good keeper. Tree a strong grower and will thrive in any climate. Its early bearing is something simply wonderful, as it generally produces a fine crop of fruit the second year. A valuable market variety. November to May. 5c per tree higher on all grades.

Bismarck—Stocky grower, making a small, low tree which sends out fruiting spurs and buds at a very early age. A large, handsome apple of greenish yellow ground streaked with crimson. Excellent for cooking. October to January.

Fallwater—(Tulpehocken)—Very large, globular; yellowish green, dull red cheek; juicy crisp, pleasant, sub-acid flavor; tree a strong grower, very productive, even while young. November to January.



YORK IMPERIAL

Fameuse—(Snow Apple)—Medium size, roundish, handsome, deep crimson; flesh snowy white, tender, juicy, highly flavored and delicious. Productive and hardy. October to January.

Gano—Tree very healthy, vigorous, hardy, having stood 32° below zero without injury. A rapid grower, large and spreading in orchard, fruit spurs numerous, shoots long and smooth,



GRIME'S GOLDEN

brown, with protuberances on the limbs like the Ben Davis. An early, annual and prolific bearer; fruit of fair quality. Foliage large and dark. February to May.

Gideon—Raised in Minnesota from crab seed by Mr. Gideon. An upright grower; medium to large; color yellow, with vermilion blush on sunny side; mild acid; quality good. Tree one of the hardiest. December to March.

Golden Russet—Medium size; dull russet with a tinge of red on exposed side; flesh generally crisp, juicy and high flavored; tree a vigorous grower and great bearer. December to May.

Grimes' Golden—(Grimes' Golden Pippin)—An apple of the highest quality; medium to large size; yellow; tree hardy, vigorous, productive. November to March.

Green Newton—One of the very best apples as to quality; tree a light grower while young; very juicy, crisp and highly delicious flavor; fine keeper. December to May.

Greenville—(Downing's Winter Maiden Blush)—New, from seed of the popular Fall Maiden Blush, which it closely resembles in size, color, flavor and productiveness, but it is a better grower and keeps all winter. We have been growing it for several years and are well pleased with it.

Hubbardston—(Nonesuch)—Large, striped yellow and red; tender, juicy and fine; strong grower and good bearer. December to May.

King—Large and handsome; striped red and yellow; tree vigorous and productive; one of the best. November to March.

Missouri Pippin—Large, oblong, bright red, with numerous gray dots, very handsome, and of fair quality; an early and very abundant bearer, and very profitable orchard fruit; vigorous. December to March.

Mann—Fruit medium to large; roundish oblate; nearly regular; skin deep yellow when fully ripe; flesh yellowish, half fine, half tender; mild, pleasant, sub-acid. The tree grows straight and symmetrical and makes a large tree in the orchard. It is an early and annual bearer. One of the latest keepers.

McIntosh—Medium size, nearly covered with dark red; flesh white, fine, very tender, juicy and refreshing. A good annual bearer of fair, handsome fruit. Resembles the Fameuse, but larger and more hardy, and fully equal in qual-

ity to the standard sort. Tree a poor grower. November to February.

Mammoth Black Twig—Very large, dark red, nearly black. Tree hardy and very productive. Very valuable market variety in the West. November to April.

Northwestern Greening—Large, yellow and rich; exceedingly hardy, and claimed to be an extra long keeper. New.

Northern Spy—Large, roundish, slightly conical, somewhat ribbed striped, with the sunny side nearly covered with purplish red; flesh white and tender, with a mild sub-acid, rich and delicious flavor; tree is a strong grower and forms a very compact head; should be kept open by pruning, so as to admit the air and light freely. Begins to bear late.

Opalescent—Large to very large; light in color, shaded to dark crimson; flesh yellowish, slightly tinged with red; juicy and extra good, with exquisite taste and aroma.

Ontario—Large, resembling Spy, pale yellow, striped with brownish red and carmine, coated with whitish bloom. Flesh firm, moderately fine, very juicy, sprightly sub-acid, good.

Pewaukee—Origin, Pewaukee, Wis. Raised from the seed of Oldenburg. Fruit medium to large, roundish, oblate; skin bright yellow, striped and splashed with dark red; flesh white, tender, juicy, sub-acid.

Paradise Winter Sweet—Large, yellowish-white, blushing in the sun, flavor very sweet; quality excellent; productive. December to March.

Rawle's Janet—Medium, roundish, ovate; greenish yellow, striped with red; crisp, rich and juicy; one of the best in the South and Southwest. January to March.

Rhode Island Greening—Large; greenish-yellow; tender, juicy and rich, with rather an acid flavor; a spreading irregular grower and an abundant bearer. December to April.

Rolfe—New, originated in Maine. Fruit large; of magnificent appearance; color dark red; an abundant and annual bearer, quality prime, both for eating and cooking. November to January.

Rome Beauty—Large, yellow, shaded with bright red; flesh yellowish, tender, juicy, sub-acid. A popular market sort in many sections. November to February.

CRAB APPLES

Salome—Flesh whitish yellow, half fine, tender, mild, slight aromatic, good; its hardness, long keeping, good quality, uniform size, retention of its flavor quite late, even into summer, will no doubt make it valuable for the West and Northwest. The tree is as hardy as any of the Siberian Crabs. January to May.

Sutton Beauty—Originated in Massachusetts where it is now the leading market apple; has proven one of the best in western New York. **Medium** to large, roundish, handsome waxen yellow, striped crimson; flesh tender, juicy, sub-acid, good quality, keeps well. Tree a moderate grower and productive. November to April.

Scott's Winner—From Vermont. One of the best, long keeping, very hardy varieties. Vigorous grower, hardy as Wealthy, color bright red, flesh white with some stains of red; crisp, spicy and of a brisk acidity. A long keeper, being at its best in April and May.

Stark—A long keeper and a valuable market fruit. Fruit large, roundish, oblong, skin greenish yellow, much shaded with light and dark red and sprinkled with brown dots; flesh yellowish, juicy, mild, sub-acid. January to May.

Talman Sweet—Medium; pale yellow, slightly tinged with red; firm, rich and very sweet; the most valuable baking apple; vigorous and productive. November to April.

Wagener—Medium to large; deep red in the sun; flesh firm, sub-acid and excellent; very productive; bears very young. December to February.

Staymen's Winesap—The best of the Winesap class. Medium to large, greenish yellow, sometimes dull red, faintly striped; flesh firm, fine grained, tender, crisp, juicy, aromatic, pleasant, good.

Walbridge—Medium size; striped with red, vigorous grower and productive; very hardy. March to June.

Twenty Ounce—(Cayuga Red Streak)—Very large, nearly round; yellow striped with red; quality good; vigorous and good bearer. November to December.

Wolf River—Tree very hardy and productive; fruit large and handsome; red color; flesh white and of fine quantity, sub-acid. November to January.

York Imperial—Medium to large, irregular shape; yellow nearly covered with bright red; firm, crisp, sub-acid and good. Vigorous and productive; one of the best. Sells in English market as red Newton Pippin. November to February.

Within the past few years much attention has been given to improving this class of fruit, because of their adaptability to cold sections where only a few varieties of apples can be successfully grown. These efforts have been attended with marked success. Crab apples succeed equally well in all sections, and are valuable for preserving, jelly, ornament, and some of the improved sorts are excellent for eating.

General Grant—Tree an erect, vigorous grower; fruit in dense clusters, quality very fine. October to December.

Hughes' Virginia—Although small, the tree is a prodigious bearer and very hardy. Fruit nearly round, about one and one-half inches in diameter. Color dull red, dotted with white specks and obscurely streaked with greenish yellow. Makes a very high flavored dry cider. This is the apple known for making cider. We have the exclusive sale of this fine variety. Price for trees, 3 to 5 feet high, only 20c each.

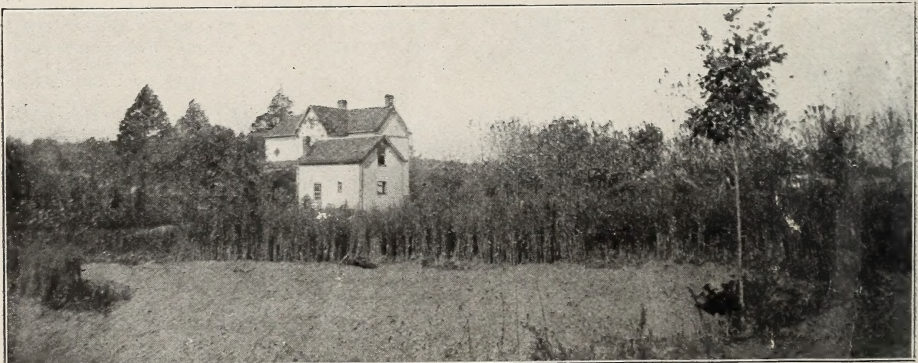
Hyslop—Fruit large; produced in clusters; roundish ovate; dark, rich red; covered with thick bloom; stalk long and slender; tree very hardy and vigorous grower.

Martha—Gideon's new seedling No. 5, from Minnesota. Striped. October. Immensely vigorous, hardy, productive every year, and in five years here in the nursery not a trace of blight. Mr. Gideon says: "For sauce surpasses any apple we ever grew." A most glorious tree, and great acquisition.

Transcendent—All things considered, this is one of the most valuable varieties of crab apples grown. Tree remarkably vigorous growing to a good size, and immensely productive. Comes into bearing the second or third year, bearing every year after and producing good crops by the fourth year. Fruit very large, from one and one-half to two inches in diameter, being large enough to quarter and core for preserving and drying. Excellent for sauce and pies, both green and dried. The best of its size for cider, being juicy and crisp, and is also, by many, considered a good eating apple. Skin yellow, striped with red. The best for wine. September and October.

Whitney—Large, averaging one and one-half to two inches in diameter; skin smooth, glossy green, striped, splashed with carmine; flesh firm, juicy and rich. Said to be a great bearer and very hardy. Tree a vigorous, handsome grower. Has no superior. Splendid for wine.

Yellow Siberian—Large, beautiful golden yellow. Hardy and prolific.



OUR HEELING-IN GROUNDS

Trees of all kinds are stored here by the hundred thousand. This photograph was taken October 20th, 1909.

PEACHES *Sold*

The peach is a general favorite, both on account of its eating and canning qualities and from the fact that it yields the largest and quickest returns to the grower of any of the tree fruits. Owing to the introduction during the last few years of the newer "Iron Clad" varieties, peaches are now successfully grown over a wide area of the United States.

Our peaches are budded on the best seedlings. We procure seed from the mountain regions of

Tennessee and North Carolina. We have a fine list of varieties, and stock that cannot be surpassed. They are thrifty and show a splendid growth. Trees are free from disease and true to name. Note our low prices.

	Each	Per 100
2 to 3 feet.....	6c	\$4.00
3 to 4 feet.....	8c	6.00
4 to 5 feet.....	10c	9.00
5 to 6 feet.....	15c	12.00

We also have a few thousand 2 to 3 feet trees, all budded and will label true to name. Varieties to be selected by us at \$3.00 per 100. We will guarantee the trees and fruit to please you. Do not think because our prices are lower than others, our stock is not as good as the best. All we ask is, try us and be convinced. If you want a large lot we will be pleased to send samples. We only want what is right and treat you as we want to be treated. These 2 to 3 feet trees will make you a fine orchard.



ELBERTA

VARIETIES

Admiral Dewey—(New)—A perfect freestone peach, ripening with Triumph, but has better form, brighter color on the surface, is equally hardy and productive. The flesh is uniform color and texture to the pit. The tree is a strong, symmetrical grower and a very promising new variety.

Alexander—Medium size; skin greenish white, nearly covered with rich, red; flesh melting, juicy, sweet; tree vigorous and productive; ripens three weeks earlier than Crawford Early. Cling. July.

Bronson—Large; yellow, with handsome red cheek; flesh sweet, rich; fine flavor; tree hardy and a good bearer. Middle of September.

Banner—A Canadian origination, considered

one of the most profitable varieties ever produced. Fruit large, round and very handsome. Tree hardy and an abundant bearer. Season October first.

Beers' Smock—Large size; yellow, shaded with red; rich; tree hardy and very productive. One of the most valuable market varieties. A good shipper. Last of September to first of October.

Crawford's Early—A magnificent, large yellow peach of good quality. Tree vigorous and productive, although tender in fruit bud. Its fine size and beauty make it one of the most popular sorts. No other variety has been so extensively planted. First of September.

Crawford's Late—Fruit of large size; skin yellow or greenish yellow, with dull red cheek; flesh yellow; tree vigorous and productive; one of the best late sorts. Last of September.

ERNST'S NURSERIES, MOSCOW, OHIO, U. S. A.

Chair's Choice—Of largest size; deep yellow with red cheek; flesh very firm; five days earlier than Smock; strong grower and a heavy bearer. September.

Crosby—Fruit medium size, roundish, slightly flattened, with a distinct seam; color bright orange yellow, with a very bright red cheek; flesh yellow, mild and pleasant. Tree unusually hardy. Middle of September.

Champion—Many specimens measure ten inches in circumference. Flavor delicious, sweet, rich, juicy; creamy white skin, with red cheek, very handsome. Hardy, prolific, a good shipper.

Carman—(New)—Large, resembles Elberta in shape; color creamy white or pale yellow with deep blush; skin very tough, flesh tender, fine flavor and quite juicy. Ripens with Early Rivers. One of the hardest in bud; shipping qualities and freedom from rot it is unsurpassed. Promises to stand at the head for a general, long distance, profitable market variety, in quality ranking superior to anything ripening at the same time. August.

in Canada and Michigan has proven one of the hardest. Fruit large, brilliant color, bright yellow, suffused with red; small pit; flesh deep yellow, best quality. Last of August.

Globe—Fruit large, globular in form; flesh firm, juicy, yellow, shaded with reddish toward the pit; quality good. Last of September and first of October.

Gold Mine—Originated at Paw Paw, Mich. Originator says of it: Cross between the Honest John and Late Crawford; equal to Hill's Chili or Crosby for hardiness, and excelling Late Crawford in size, color, quality and firmness of flesh. Ripens with Late Crawford.

Greensboro—The largest and most beautifully colored of all the early varieties. Nearly double the size of Alexander, ripening at same time; parts clear from seed when fully ripe. Flesh white, juicy and good. July.

Graves—A fine, large, early, yellow freestone; one of the best early sorts.



YELLOW ST. JOHN

Early Barnard—Medium size, popular peach; yellow, with red in the sun; flesh yellow and very good; tree vigorous and good bearer. One of the hardest. First of September.

Engle's Mammoth—Large, round, oval, suture slight; yellow with red cheek; stone small, free; sweet, rich, juicy. Early September. A good market sort.

Elberta—Large, yellow with red cheek; flesh yellow, firm, juicy, of high quality. Exceedingly prolific, sure bearer and hardy. Is doing well in all peach sections North and South. One of the leading market varieties. September 10th to 15th.

Foster—Large; deep orange red, becoming very dark on the sunny side; flesh yellow, very rich and juicy, with sub-acid flavor. Ripens with Early Crawford. Handsome.

Fitzgerald—An improved Early Crawford, being fully equal to it in size, quality and color;

Hill's Chili—Large, downy, tame yellow, with slight blush, flesh yellow, luscious and well flavored, pit small. Tree hardy and productive. Bears large crops when most other sorts fail. Late September. Favorite sort for canning. The Michigan peach king.

Heath Kling—Very large, creamy white, with delicate blush; white flesh, juicy and tender. Good keeper. October.

Kalamazoo—Medium size; slightly oblong; yellow, shaded with red; juicy, rich, melting; highly esteemed in Michigan. Middle of September.

Lemon Free—Almost lemon shape, pointed at the apex; color a pale lemon yellow when ripe. It is of large size, of excellent quality; a valuable market sort. Ripens after Late Crawford.

Lewis—Medium size, melting and rich, hardy and productive; white with red cheek. Last of August.

Mountain Rose—Large, skin whitish, richly splashed with light and dark red; flesh white and very delicious; it ripens early, right after Hale's Early. First of August.

Mathew's Beauty—A new variety, originated at Cuthbert, Georgia. Considered the greatest acquisition of any peach ever originated in Georgia; ripens two weeks later than Elberta, is better in quality, and larger in size. It is of the Smock strain, quality the best; vinous, juicy, very large; color deep yellow, streaked with red; flesh very thick and firm, very rich and yellow; freestone.

Moore's Favorite—Fruit large, roundish. Skin white, with a broad, bright blush. Flesh white, fine, juicy, of a rich vinous flavor. Freestone. Tree hardy and vigorous. September 1st to 15th.

Niagara—A new variety which might be called the New Elberta as it has all the desirable qualities and none of the defects of that peach. Niagara is remarkably free from leaf curl and yellows and its fruit quality is superb and far superior to Elberta. Niagara ripens one week earlier than Elberta.

Old Mixon Free—Large, pale yellow, with a deep red cheek; tender, rich and good; one of the best. First to middle of September.

Picquet's Late—Very large, yellow, with red cheek; flesh yellow, rich, sweet, high-flavored. October.

Prolife—A popular market variety of the present day. Fruit large, golden yellow, with rich crimson cheek; flavor very rich and spicy; flesh golden yellow from pit to skin, firm and unusually thick; freestone. Ripens just before Late Crawford.

Reeves' Favorite—Large, round, red cheek; flesh yellow, juicy, melting, with vinous flavor; a favorite and hardy variety. September.

Stump the World—A beautiful red and white peach of good size and flavor. Very productive. Late September.

Salway—Fruit large, roundish; deep yellow with a dull red cheek; flesh yellow, firm, juicy, and rich; one of the very best late peaches where it will ripen. October.

Sneed—The earliest peach of all, ripening 8 or 10 days before Alexander, and very profitable on this account. Of medium size, creamy white, with a pretty blush, and of good flavor. Productive. July.

Triumph—Widely advertised as the earliest yellow fleshed peach, ripening with Alexander, and as good for eating and shipping. The tree blooms late and bears annual, abundant crops of handsome fruit. Freestone when fully ripe. July.

Wager—Of fair size and good quality, brilliantly colored with red and yellow. The tree is healthy, hardy and long lived, yielding good crops when other sorts fail. Valuable for canning. Ripens a week later than Crawford's Early.

Wheatland—Large, roundish, golden yellow with crimson blush; juicy, sweet, firm fleshed, shipping well. Tree strong and healthy. Ripens between the two Crawfords.

Wonderful—A seedling of Smock and similar to it in every way. Late September.

Yellow St. John—A superfine early yellow freestone, nearly as large as Crawford, as finely colored and of even better flavor. Its round, showy fruits always attract attention and sell well. A fine dessert peach. The tree bears while still small, and abundantly afterward. August.

Ward's Late—A large, white meated peach with red cheek on sunny side. Ripens about the first of October.

Our list of peaches consists of the very best early, medium and late varieties. Order at once, if only one dozen trees or one thousand, and get ahead of the rush.

APRICOTS AND NECTARINES

APRICOTS

	Each	Per 12
First Class, 3 to 4 feet.....	15c	\$1.50
First Class, 4 to 5 feet.....	20c	2.00



APRICOT

VARIETIES

Alexander—An immense bearer. Fruit yellow, flecked with red; very beautiful. July.

Catherine—Vigorous and productive. Medium sized, yellow, mild, sub-acid. July.

Moorpark—One of the largest and finest apricots; yellow with a red cheek, flesh orange, sweet, juicy and rich, parts from the stone. Very productive.

Early Golden—(Dubois)—Small; pale orange; juicy and sweet; hardy and productive. First of July.

NECTARINES

Same prices as Apricots.

Boston—Fruit large and handsome.

Downton—Large, pale greenish yellow, with purplish cheek. Quality very fine.

PEARS

The pear very justly ranks as one of the most delicious fruits of modern times. It has been placed first by nearly all modern amateurs, on account of its fine, juicy texture, exquisite flavor and aroma. Of late years great attention has been given to the cultivation of this favorite fruit, and those who have entered upon its cultivation for the market intelligently, have found it to be one of the most profitable occupations. Those varieties marked with a star are on dwarf stock only.

Forms a shapely, vigorous tree, bears early and abundantly. Late August.

Tyson—Rather large, bright yellow with brown cheek; melting, sweet and delicious. August.

Wilder—Very early, resembling Summer Doyenne; claimed to be a good shipper for an early pear. Small. First of August.

AUTUMN VARIETIES

STANDARD PEAR TREES

On the Best French Roots.

	Each	Per 100
First Class, 3 to 4 feet.....	20c	\$15.00
First Class, 4 to 5 feet.....	25c	20.00
First Class, 5 to 6 feet.....	30c	25.00

On Bartlett, Worden Seckel and Seckel, add 5 cents each to above prices.

On Kieffer Pear we quote at 5 cents less per tree than above prices.

DWARF PEAR

First Class,	Each	Per 100
2 to 3 ft....	15c	\$10.00
3 to 4 ft....	20c	12.00

SUMMER VARIETIES

Bartlett — Large size, often with a beautiful blush next the sun; buttery, very juicy and high flavored. Tree a strong grower, bearing early and abundantly; very popular. Last of August and first of September.

Clapp's Favorite—A large, fine pear, resembling the Bartlett, but without its musky flavor; pale lemon yellow, with red cheeks; fine texture, melting, buttery, juicy, with a rich, sweet, delicate vinous flavor. Tree hardy and very productive, very desirable in all sections, and especially so where other varieties fail. August and September.

Early Harvest—Fruit is large golden yellow, with a fine red cheek; flavor poor, but it sells well in the market because of its size and color and earliness in ripening; ripens one month before Bartlett.

Koonce—Originated in southern Illinois, has been largely planted and is a very successful early market pear in that and other sections. A strong, upright grower; hardy; has produced crops when all other varieties were killed by frost. Fruit medium, yellow with carmine cheek, ripens with the earliest. July and August.

Margaret—Of medium size, golden green with russet cheek; so rich and delicious as to be generally pronounced the finest pear of its season.



BARTLETT

Duchess D'Angouleme—Among the largest of all our really good pears. Greenish yellow, splashed with russet; flesh white, juicy, rich flavored. It succeeds well as a standard, but grown as a dwarf is the most profitable and luscious of all market varieties. We recommend it highly also for the home garden. October and November.

Buerre D'Anjou—A large greenish pear, shaded with russet crimson; the flesh is high flavored, rich and vinous; the tree very productive either as dwarf or standard. For late fall and very early winter use, we have no better variety. October to January.

Clairgeau—The fine size and exceeding beauty of this pear render it most valuable for market. The smooth yellow skin is shaded with orange and scarlet; the flesh is yellow, juicy, aromatic and somewhat granular. The tree bears early and abundantly. October and November.

Columbia — A Bartlett-Seckel seedling, combining valuable qualities of each. Of good size, handsome, high-colored and rich flavored. The hardy, vigorous tree produces well. September and October.

Flemish Beauty—This fine old pear is still one of the hardiest and most generally successful over a wide range of country, producing good annual crops of large, handsome fruit that is exceptionally good in quality. September and October.

Garber—One of the Japan Hybrids; earlier and larger than Kieffer. The tree is hardy, bears young and in heavy crops. Valuable as a market variety. September and October.

Howell—Large, waxen yellow, sprinkled with minute russet dots; flesh whitish, juicy, brisk and vinous; vigorous grower; prolific bearer. September.

Seckel—Small; rich yellowish brown; one greenish yellow, with a bright red cheek; juicy, buttery and melting; excellent; very productive; a fine grower of the best and highest flavored pears known; productive. September and October.

ERNST'S NURSERIES, MOSCOW, OHIO, U. S. A.

Lawrence—Medium to large; golden yellow, with melting aromatic flesh; unsurpassed as an early winter pear. Tree hardy, healthy and productive, bearing large crops annually. November to December.

Rossney—Medium to large; fine grained, melting, juicy, very sweet; excellent keeper and shipper. Tree is much stronger than Kieffer, and the fruit is thought by many to be the equal of the Bartlett. October. Same price as Seckel.

Kieffer's Hybrid—Tree a remarkable grower, with so vigorous a constitution that it rarely if ever blights. Fruit of fine size, rich color and good quality. Brings high prices in competition with other varieties. Best when picked at maturity and house ripened. October and November.

Sheldon—Fruit rather large; roundish, yellowish, nearly covered with light russet; slightly shaded with red; flesh very juicy, melting and delicious; tree hardy, vigorous and good bearer. One of the best varieties. Has never been known to blight. October.

Louise Bonne—Good size, greenish yellow, with a bright red cheek. September and October.

President Drouard—This French variety comes highly commended for its rich flavor and great keeping qualities. The fruit is large, handsome, melting, juicy, highly aromatic; the tree is vigorous, healthy and a prolific bearer. February to March.

Vermont Beauty—A beautiful new seedling pear; medium size, roundish obovate, yellow; nearly covered with carmine; flesh melting,

sprightly, fine quality, tree healthy, hardy and productive. October.

Easter—Large, roundish oval, yellow with dull red cheek; quality excellent. One of the best winter pears. Succeeds best on the quince. December to February.

Worden Seckel—Originated in Oswego County, N. Y. It is a seedling of the Seckel, and is equally as good in quality as that variety, and more juicy with an aroma equally as rich and inviting, while in size, color, form and appearance it is decidedly superior. The color is yellow with light red on the sunny side. The tree is very hardy and an enormous bearer, and the fruit is ripe just after the Seckel. All lovers of good pears should have trees of this variety.

SPECIAL LIST OF PEARS

For Cultivation on the Quince.

The following varieties are particularly recommended for cultivation on the quince for dwarf varieties. All are vigorous and handsome growers, hardy and bear well. We might add many others which appear to succeed well on the quince with fair treatment. The following, however, cannot fail to make durable and satisfactory trees:

Summer—Andre Desportes, Bartlett, Clapp's Favorite, Margaret.

Autumn—Angouleme, Hardy, Howell, Louise Bonne of Jersey, Superfin.

Winter—Anjou, Easter Beurre, Lawrence, Josephine of Malines.



FLEMISH BEAUTY

PLUMS

The plum tree, like the pear and other finer fruits, attains its greatest perfection on our heavy soil, being entirely free from disease. Plums are hardy and grow vigorously in nearly all sections, succeeding best on heavy soil or in soils in which there is a mixture of clay. There is no difficulty in protecting the crop of plums from the attacks of the curculio, by giving it a little extra care. This should be done as follows: Immediately after the trees have done blossoming, and when the fruit is in the first stages of growth, make the ground clean and smooth under each tree, and spread a sheet upon it, so that it will extend as far as the outer branches and then suddenly jar the tree, so as to shake down all the stung fruits and insects, which should be destroyed. If this operation be carried on daily for a short time, it will insure a full crop of this delicious fruit, and will repay the little daily attention given it. It is very important that this should be done early in the morning.

Plum trees are budded on imported plum seedlings. Plum trees are very low in price now, too low to make money for the grower and your opportunity to get a good orchard for little money is at hand. Special prices for large lots on application. Nothing pays better for proper care and spraying than a plum orchard.

First class, 3 to 4 ft., 15c each; \$1.50 per doz.; \$12.00 per 100.

First class, 4 to 5 ft., 20c each; \$2.00 per doz.; \$15.00 per 100.

First class, 5 to 6 ft., 25c each; \$2.50 per doz.; \$18.00 per 100.

EUROPEAN VARIETIES

Archduke—A large, dark purplish plum, so firm fleshed as to be excellent for shipping; hangs well to the tree. A good late market sort. Early October.

Bradshaw—Very large; dark violet-red; flesh yellow, juicy, good. A productive, valuable market sort. Middle of August.

Diamond—A superb and showy plum of enormous size; dark purple, with thick bloom. Vigorous, hardy, productive. September.

Gueii—Blue Magnum Bonom—Large, deep bluish purple, with thick bloom; flesh yellow, coarse but sweet and good. While still young the trees are loaded with enormous crops, most of which they carry to maturity; vigorous and hardy, growing fast. Profitable for market. Early September.

German Prune—A valuable plum of fair quality for dessert, but most esteemed for drying and preserving. Large, long oval, purple with a thick blue bloom; flesh firm, sweet and pleasant, separating from the stone. Moderate to vigorous in growth. September.

General Hand—Very large, deep yellow; flesh coarse but sweet and good, parting from the stone. Tree stocky, producing heavily. Early September.

Grand Duke—A valuable late plum, with large and showy violet-red fruits that are entirely free from rot; of fine quality. Grows moderately and produces well. A good sort for home or market. Late September.

Imperial Gage—Above medium size, oval, golden green; flesh juicy, rich, delicious, free from stone. Tree of good growth and habit, productive. One of the very best plums and very popular in some sections of the country. Mid-August.

Lombard—Medium to large; dark red; flesh yellow, of pleasant flavor. The tree is unusually vigorous, succeeding well even on light soils, and produces heavy annual crops. More largely planted than any other plum and most valuable as a market variety. Late August.

Mary—A very beautiful plum of the highest quality. Of medium size, golden yellow, with a delicate white bloom; flesh thick, sweet and delicious. Of sturdy, spreading habit, with glossy foliage; really ornamental. Bears annual and heavy crops. August.

Monarch—Tree very thrifty, hardy, healthy and handsome. Fruit largest size; often six inches in circumference; dark purple nearly round. Flesh pale yellow, parts freely from stone, pleasant, juicy and first rate quality. An early and regular bearer.

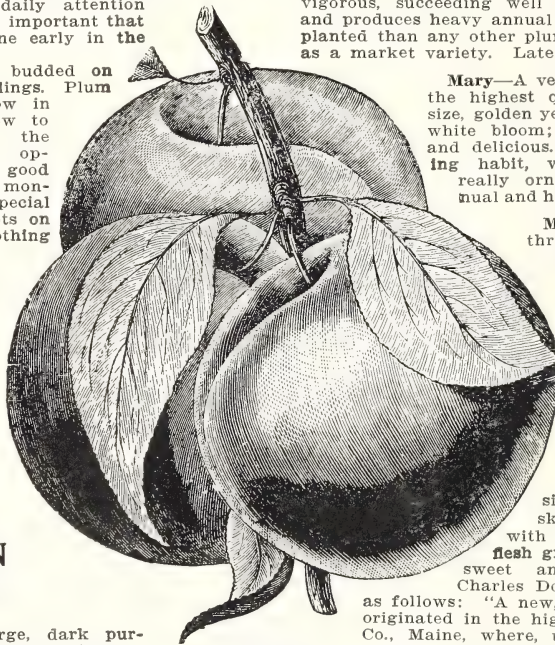
Moore's Arctic size medium or below; skin purplish black, with a thin blue bloom; flesh greenish-yellow, juicy, sweet and pleasant flavor. Charles Downing speaks of it as follows: "A new, hardy plum, which originated in the highlands in Aroostook Co., Maine, where, unprotected and exposed to cold, it has for many years borne immense crops."

Pond—A very large and showy English plum of oval shape; light red changing to violet; the yellow flesh is sugary, but rather coarse. Trees are vigorous and fruitful. September.

Shippers' Pride—Quite large and showy, frequently two inches in diameter, oval, dark purple, of Damson type. The flesh is sweet and firm, keeping and shipping very long distances well. September.

Italian Prune—(Fellenberg)—A fine, late plum; oval, purple; flesh juicy and delicious; parts from the stone; fine for drying. Tree very productive. September.

Sugar Prune—A seedling of the French Prune grown by Luther Burbank. The fruits are very large, twice the size of French Prunes, dark purple, with thick white bloom; flesh yellow, tender, sugary. Superior to French Prune also in growth, form and productiveness or tree. August. Five cents each extra.



Reine Claude de Bavay—Large; green yellow, spotted with red; firm, sugary and of fine quality; very productive. September.

Shropshire Damson—(Prune Damson)—An English variety of great merit for preserving. Large, and much more desirable than the common Damson. Tree vigorous grower, very free from attacks of curculia; hardy, and an abundant bearer. October.

Peter's Yellow Gage—Above medium size, oval, bright marbled yellow; very juicy and rich fleshed. The tree grows and bears well, and is hardy in fruit and bud. August.

JAPAN PLUMS

Abundance—(Botan)—Large to very large, oblong, amber, nearly covered with bright red and overspread with a thick bloom; flesh orange yellow, juicy, melting and of delicious sweetness; stone small and flesh readily parts from it. Tree strong grower and an early and profuse bearer. Ripens in advance of other plums. Valuable for canning and market. This variety has attracted much attention throughout the country, and is highly recommended.

America—Larger than the average Japan plum, and much larger than our popular native sort; golden yellow, with pink blush and white bloom; the flesh is moderately firm and of good flavor, keeping well. Tree bears young.

Apple—A superb deep reddish purple plum in shape and size like a medium sized apple; flesh red, firm, delightful, keeping and shipping remarkably well. Strong growing, with large foliage. Ripens after Burbank.

Burbank—The Burbank plum stands at the

head of the celebrated Japanese varieties. It is proving remarkably successful the country over. No other plum ever became so popular in so short a time. This is because it is practically curculio proof and is very free from block knot. It has been fruited from seven to nine years in this country, and is perfectly hardy (said to stand 30 degrees below zero), ripens in August. It seems to succeed on any soil, sand, clay or loam. It can be picked green, and will ripen and color up perfectly and will not lose its flavor. Will keep fully two weeks in perfect condition after ripening. Abundant yearly bearer, fruit large, roundish, dark red or purplish, with thin lilac bloom, flesh amber yellow, melting, juicy, with rich sugary flavor, stone small and free, bears second year after planting.

Chabot—Medium to large; cherry red, flesh yellow, sweet, of excellent quality; very prolific; one of the best of Japan plums. Early September.

Red June—Recommended as "by all odds the best Japanese plum, ripening before Abundance." One of the vigorous upright growers; productive; fair size, vermilion red; pleasant quality. Ripens after Williard, a week before Abundance. August.

Satsuma—(Blood)—Large, globular, with sharp point. Color purple and red with blue bloom, flesh firm, juicy, dark red or blood color, fine quality; pit very small. Hardy and vigorous grower. August.

Wickson—Fruit remarkably handsome, very large, long heart shaped, color deep maroon red covered with white bloom; flesh firm and meaty, yellow, rich and aromatic; cling; pit small. Tree an upright, vigorous grower. Excellent keeper and shipper, is being planted largely for market. Early September.

PERSIMMONS

	Each
3 to 4 foot trees.....	.25c
5 to 6 foot trees.....	.50c

American—A pretty, small tree with glossy foliage; perfectly hardy as far north as central Ohio. The fruit, after frost, is delicious and much liked.

SEEDLINGS FOR GRAFTING AND BUDDING

	Per 100	Per 1,000		Per 100	Per 1,000
Apple seedlings	\$2.00	\$15.00	Plum, imported seedlings.....	\$2.00	\$15.00
Peach seedlings	1.00	5.00	Quince, imported seedlings.....	2.00	15.00
Cherry, imported seedlings.....	2.00	15.00	Pear, imported seedlings.....	2.00	15.00

Black Locust and Catalpa Speciosa seedlings, 12 to 18 inches high, \$10.00 per 1,000.



ANOTHER VIEW OF OUR HEELING-IN GROUNDS

Hardy varieties are stored in this way. Besides these we have many thousands of the more tender kinds of trees and shrubs stored in cellars constructed for this purpose.

CHERRIES



GOVERNOR WOOD

SWEET VARIETIES

First Class—Budded on Best French Roots.

5 to 7 ft., 40c ea.;	\$4.00 per 12;	\$30.00 per 100.
4 to 6 ft., 30c ea.;	3.00 per 12;	18.00 per 100.
3 to 4 ft., 25c ea.;	2.50 per 12;	15.00 per 100.

SOUR VARIETIES

First Class—Budded on Best French Roots.

5 to 6 ft., 30c ea.;	\$3.50 per 12;	\$20.00 per 100.
4 to 5 ft., 25c ea.;	2.75 per 12;	18.00 per 100.
3 to 4 ft., 20c ea.;	2.00 per 12;	15.00 per 100.
2 to 3 ft., 15c ea.;	10.00 per 100.	

If 100 or more 2 to 3 ft. trees are ordered a few sweet cherry trees will be added to your order if requested, selection to be left with us. The varieties will be of those named in this catalogue, which are the best grown. Our stock is not large on these so order at once.

SWEET VARIETIES

Allen—Of fine size and appearance, glossy crimson black; meaty, firm, sweet and delicious, it sells for the highest price paid for cherries in the market. Part of the fruit frequently ripens late and is marketed in August; so far it has been free from all rot and disease. Late July and early August.

Black Eagle—Large, red-black, with tender, rich and juicy flesh of high flavor. Early August.

Black Tartarian—This fine old variety produces immense crops of very large, purplish-black fruits of mild, sweet, jelly-like consistency. The tree makes a beautiful, erect growth. Late June and early July.

Governor Wood—A rich and delicious, large, light red cherry that hangs well on the tree. Very popular. June.

Napoleon—Of fine appearance and the very largest size; yellow and amber, with bright red blush; flesh firm, juicy, delicious. Profitable for market; finds a ready sale both for canning and dessert. Forms a grand tree that ripens its heavy crops in July.

Rockport—Large, light red and amber! half tender, sweet and good. Late June and early July.

Schmidt's Bigarreau—Heavily clustered fruits of largest size, deep crimson-black; tender, juicy, well flavored. July.

Windsor—New seedling originated at Windsor, Canada. Fruit large, liver colored, quite distinct; flesh remarkably firm and of fine quality. Tree hardy and very prolific. The most valuable late variety for market or family use. July.

Yellow Spanish—Large, pale yellow, with light red cheek; firm, juicy and delicious. Late July.

DUKES AND SOUR VARIETIES

Early Richmond—(English Pie Cherry)—An exceedingly productive and reliable old variety, with dark red fruits of medium size and sprightly acid flavor. Unsurpassed for cooking. June.

Late Duke—This fine late cherry has large, light red fruits. Of strong upright growth. Last of July.

Large Montmorency—Larger and finer than Early Richmond, and one of the finest flavored cherries in this class. The strong, hardy tree makes rapid growth and bears enormous crops. Valuable for canning and preserving. One of our best cherries. Late June.

Louis Philippe—Large and beautiful fruits of blackish red; flesh tender, mildly acid, good to best. Mid-July.

Pyehouse—Partakes of both the Duke and Morello in wood and fruit; a very early and sure bearer; ripens a week before Early Richmond, of better quality and quite as productive.

May Duke—Large, dark red, juicy, rich; a superior and productive old sort. June.

Reine Hortense—A French cherry of great merit; the large, handsome bright red fruits are the mildest and sweetest in this class. Tree vigorous, bearing good crops.

Wragg—This is a sturdy grower and an immense bearer of large, handsome, dark colored fruit, which ripens early in July. A fine, healthy, hardy tree.

Ostheimer—Large, heart shaped, nearly black when ripe, juicy and rich; fine for dessert and cooking; unsurpassed for market. Trees bloom

late and bear fruit quite young. One of the most productive of all cherries.

Large English Morello Cherry—Without doubt one of the most valuable of this class. Easily grown, generally producing a heavy crop. Fruit dark red, quality good, with a rich, acid flavor; late. Tree very hardy and recommended for extremely cold latitudes.

We have a fine lot of the Early Richmond and Large Montmorency 2 to 3 foot trees at \$12.00 per 100. They are fine. 50 at 100 rates when ordered with other stock. Can you not get up a club order in your neighborhood?



QUINCES

The quince is of late attracting a good deal of attention as a market fruit. Scarcely any fruit will pay better in the orchard. The tree is hardy and compact in growth, requiring but little space, productive, gives regular crops, and comes early into bearing. The fruit is much sought after for canning for winter use. When put up in the proportion of about one quart of quinces to four quarts of other fruit, it imparts a delicious flavor.

It flourishes in any good garden soil, which should be kept mellow and well enriched.

	Each	Per 12
3 to 4 feet.....	35c	\$4.00
2 to 3 feet.....	25c	2.75

Angers—Somewhat later than Orange; fruit rather more acid, but cooks well. Tree a thrifty grower and an abundant bearer.

Champion—A prolific and constant bearer, fruit averaging larger than the Orange, more oval in shape, quality equally fine; bears ex-

trremely young, producing fine fruit on two year trees in nursery row; can be kept in good condition until January. Tree a vigorous grower and prolific bearer; one of the best for sections not subject to early frosts.

Orange—Large, roundish; bright golden yellow; cooks tender, and is of very excellent flavor. Valuable for preserves or flavoring; very productive; the most popular and extensively cultivated of the old varieties. October.

Rea—(Rea's Mammoth)—A seedling of the Orange quince; one-third larger; of the same form and color; fair, handsome, equally as good and said to be as productive.

Angers—Special Price—We have a few thousand of this variety and wish to clear the ground where they are growing and we offer them very cheap.

	Each	Per 100
3 to 4 feet.....	.15c	\$10.00
2 to 3 feet.....	.10c	6.00



GRAPES

Grape Vines 2 Year Old, No. 1.

	Each	Per 12	Per 100
Agawam	.10c	\$1.00	\$4.00
Brighton	.10c	1.00	6.00
Catawba	.10c	1.00	5.00
Campbell's Early	.20c	2.00	8.00
Champion	.15c	1.25	6.00
Concord	.10c	1.00	4.00
Delaware	.15c	1.50	6.00
Diamond	.15c	1.50	5.00
Early Ohio	.20c	2.00	—
Eaton	.20c	2.00	10.00
Empire State	.15c	1.25	6.00
Green Mountain	.25c	2.50	—
Ives' Seedling	.10c	1.00	4.00
Martha	.15c	1.25	5.00
Moore's Early	.15c	1.50	6.00
McPike	.25c	2.50	—
McKinley	.25c	2.50	—
Niagara	.10c	1.00	5.00
Pocklington	.15c	1.25	5.00
Salem	.15c	1.25	6.00
Virgennes	.15c	1.50	6.00
Worden	.15c	1.25	5.00
Woodruff	.20c	2.00	7.00
Wyoming	.15c	1.50	6.00

BLACK VARIETIES

Campbell's Early—This superb new grape is fulfilling the promises made for it remarkably well. It forms large and handsome clusters thickly set with large round berries, covered with a light purple bloom; these are firm fleshed enough to keep and ship admirably, but the tender pulp parts readily from the few small seeds, a quality that is now greatly appreciated; the flavor is rich, sweet and delightful. The clusters ripen very early and hold their berries well, keeping in fine condition for a month or more. The vine is vigorous and bears abundantly. Should be widely planted.

Concord—The fine old market leader, with large, handsome clusters of large, luscious grapes. Entirely hardy, productive and reliable;

succeeds well over a great extent of country. One of the best known grapes grown. September.

Eaton—So large in both cluster and berry as to be very showy. Its clusters sometimes weigh thirty ounces and its berries measure an inch in diameter. They are round, thick skinned, covered with a fine purple bloom, very juicy, with some pulp.

Champion—Valuable where the seasons are short, chiefly for its earliness. Of medium size in grape and cluster; skin thick, poor quality.

Early Ohio—A profitable early market grape, with excellent shipping qualities; has strong, thrifty, hardy vines.

Ives' Seedling—Long bunch, medium to large, medium size berries, thick, tough skin, flesh sweet, pulpy, somewhat foxy. Colors before fully ripe. Highly esteemed for red wine.

McPike—This mammoth black grape has been exhibited in all parts of the country, its great size, fine flavor, and beauty creating quite a sensation. It is a seedling of Worden and has many of the good qualities of both Worden and Concord. The bunches are large, even and compact; the berries sometimes three inches in circumference, covered with a rich bloom; they are of delightful consistency, ripening evenly and keeping well when shipped long distances. The vine is very strong and thrifty in growth, with great, leathery leaves. Ripens before Concord.

Moore's Early—Clusters of medium size; berries large, round, black with heavy blue bloom. Desirable for market on account of its earliness; well suited to Canada and northern portions of the United States by its hardiness; succeeds admirably in the South also.

Worden—A seedling from the Concord, which it greatly resembles in color and appearance. It is, however, several days earlier; much more delicious and melting and has a flavor that is equalled by no other grape known. Berries and clusters are very compact; vine is fully as hardy as the Concord and more productive. It is a sure bearer. We consider this variety the most profitable for market.

RED VARIETIES

Agawam—Berries quite large, with thick skin, compactly set upon a large bunch; soft, sweet and sprightly; ripens early. Grows and bears well.

Brighton—Bunches large and well formed; berries medium to large, of good flavor and quality. An excellent grape, ripening with Delaware.



MOORE'S EARLY

Catawba — This excellent table and wine grape, has large, round berries, rather loosely set on clusters of good size; when fully ripe they are a deep copper color, with a sweet, rich, musky flavor. Requires long season.

Delaware—A choice native grape of free and hardy but slender growth, that deserves a place in every vineyard or garden. Bunches and berries are small but compactly set, light red, with violet bloom. Sugary and delicious. A favorite dessert grape; one of the earliest to ripen.

Salem—This is regarded as the best of Mr.

Rogers' hybrids. Bunch large; berry large, round; flesh tender; juicy, with a rich aromatic flavor; slight pulp; a good keeper.

Vergennes—Originated at Vergennes, Vt. The originator says of it: "Clusters large, berries large; color light amber; flavor rich and delicious; ripening here fully as early as Hartford Prolific. Its keeping qualities are superior."

Woodruff—A handsome, profitable market sort; vine vigorous, productive; iron clad constitution; bunch and berry large, attractive; ripens early; fair quality, long keeper, good shipper.

Wyoming—Vines very hardy healthy and robust, with thick, leathery foliage; color of berry similar to Delaware, but brighter, being one of the most beautiful of the amber or red grapes, and in size nearly double that of the Delaware; flesh tender, juicy, sweet, with a strong native aroma. Ripens before Delaware.

WHITE VARIETIES

Diamond—This handsome and valuable new grape is a seedling of Concord, has the same sturdy qualities of vine, and ripens its fruit several weeks earlier. Its berries are about the same size, smooth, with no brown dots and few seeds; they are juicy, sweet and almost free from pulp. One

of the best of recent introductions.

Empire State — Healthy strong grower, and very hardy; clusters large and shouldered; berry medium, nearly round, white, with a slight tinge of yellow, with a heavy white bloom; quality medium.

Green Mountain—Bunch medium to large, shouldered; greenish white; thin, tough skin; tender pulp with few seeds, excellent quality; very early.

Martha—Of medium size in bunch and berry; flesh somewhat pulpy, a little foxy, but good. Hardy and productive. Earlier than Concord.

Niagara—Home and market growers seem to agree that this is the most valuable of all the white grapes. Its clusters are large and handsome, compactly filled with large berries having a thin but tough skin. When fully ripe they are a fine pale yellow, with a thin white bloom, and the foxy aroma of an earlier stage has almost disappeared; the flesh is slightly pulpy, tender, sweet and delightful. The vine is remarkably vigorous and productive. Ripens with Concord.

McKinley—A new early white grape. A cross between Niagara and Moore's Early. Strong grower, healthy, robust foliage, equal to Niagara. Bunches large, compact and handsome; berries large, nearly round, green at first, turning to yellow when fully ripe, very sweet, extra quality; a good shipper, remarkable keeper, will hang on vines sound and perfect for weeks after ripe.

Pocklington—Clusters and berries large, light golden yellow when fully ripe; sweet and tender, with little pulp. Thoroughly hardy and healthy; bears well in favorable seasons and locations. Ripens after Concord.

GOOSEBERRIES

As to soil, cultivation, etc., all we have said concerning the currant applies to the gooseberry. Who, that is acquainted with its different uses and knows the delights of a good gooseberry pie, would ever again willingly be without this most healthful of all fruits? Plants are two years old.

	Each	Per 12.	Per 100
Downing	15c	\$1.50	\$10.00
Houghton	15c	1.00	7.00
Industry	20c	1.75	15.00
Smith's Imp.	15c	1.50	10.00
Pearl	15c	1.50	10.00

Downing—Originated at Newburg, N. Y. Fruit much larger than Houghton; roundish, light green, with distinct veins; skin smooth; flesh soft, juicy and very fine flavored. Vigorous

and productive. The most valuable American sort.

Houghton—A vigorous American sort; very productive, free from mildew. Fruit medium, roundish, smooth, of a pale red color; tender, sweet and of a delicious flavor; very profitable for canning and catsup.

Industry—Very large, red; of fine quality and excellent flavor. New and very desirable if kept free from mildew, as it is the largest grown.

Smith's Improved—Large, oval, light green, with bloom; flesh moderately firm, sweet and good; vigorous grower.

Pearl—Similar to Downing, but with fruits a little larger; it is also even more robust and fruitful in habit.

RASPBERRIES



MILLER

The plan most commonly recommended for laying out the raspberry plantation is to plant in rows from six to eight feet apart and two or three or more feet in the row; but recent experience has convinced us that there is a much better plan: We now plant raspberries in hedge rows; plant one foot apart in row and rows twelve feet apart. The dense hedge row smothered out all weeds in and near the row, rendering cultivation easier and quicker; keep this space between the rows well and frequently cultivated. It is a well known fact that raspberries are always larger, finer and sweeter if grown partially in the shade; the hedge row furnishes this condition. It also stays the young canes against the wind twisting and breaking them, resulting in more and better canes, more and finer fruit, and rendering easier and quicker cultivation. Give this plan a trial and you will soon be convinced of its advantages over the old way.

Red Varieties.

	Per 12	Per 100	Per 1000
Cuthbert	20c	\$1.00	\$8.00
Columbian	25c	1.75	15.00
Golden Queen	25c	1.75	—
Marlboro	25c	1.25	10.00
Loudon	25c	1.00	8.00
Miller	20c	1.00	7.00
King	25c	1.50	14.00
Ruby	35c	2.50	20.00
Haymaker	25c	1.50	14.00

Black Caps.

Kansas	20c	\$1.00	\$10.00
Gregg	25c	1.00	10.00
Cumberland	25c	1.00	12.00
Palmer	25c	1.00	10.00
Gault	25c	1.50	14.00
Black Diamond	25c	1.25	12.00

Special.

Eaton, New	50c	4.00	—
------------------	-----	------	---

RED AND YELLOW VARIETIES

Cuthbert—A remarkably strong, hardy variety; stands the northern winters and southern summers better than any other variety. Berries very large, conical, rich crimson, very handsome and so firm they can be shipped hundreds of miles by rail in good condition; flavor is sweet, rich and luscious. The leading market variety for main crop.

Columbian—An improvement on Shaffer's, which it resembles, but the berry is firmer, adheres to the bush much longer and retains its shape better, both on the market and for canning. Bush a strong grower; attaining a very large size. One of the hardiest and wonderfully prolific. Unexcelled for productiveness, stands at head for canning, making jam, jelly, etc. Should be planted two feet farther apart than any other variety.

Marlboro—Large size; light crimson color; good quality and firm. Vigorous and productive. One of the best large early berries for the north.

Miller's—Bright red color, which it holds after picking. Stout, healthy, vigorous grower. Berries large, hold their size to end of season, round, bright red; core small; do not crumble; firmest and best shipper; rich fruity flavor. Commences to ripen with the earliest.

Golden Queen—This variety is a seedling of the Cuthbert, but the color of the fruit is a rich golden yellow. The flavor is of the highest quality. Its size is equal to the Cuthbert; immensely productive; a very strong grower, and hardy enough even for extreme northern latitudes, having stood uninjured even when the Cuthbert suffered. The desire for a yellow raspberry of a high quality, combined with vigor and perfect hardiness, is believed to be fully met in this variety.

Haymaker—(New)—The most vigorous grower of all raspberries. Very hardy. Fruit very large, conical; color bright red and very attractive; flavor superb; delicious for table use and splendid for canning. It is a prodigious bearer, of long season; fruit of fine texture; does not drop from the bush. A superb shipper.

King—Originated in Northern Ohio seven years ago; has been well tested both North and South, and is pronounced the best early Red Raspberry by many of the leading horticulturists. Plant a strong grower, very hardy and productive. Berry is firm, a good shipper; large size; beautiful scarlet color; ripens with the earliest. Prof. W. J. Green, of Ohio Experiment Station, says: "King has proved the best early Red Raspberry. It is large, bright red, quite firm, and of good quality."

Loudon—A seedling of Turner crossed with Cuthbert. A valuable new sort; color red; hardy and productive; begins to ripen with Cuthbert, but continues during a longer season.

Ruby—Seedling of the Marlboro, originated at Marlboro, N. Y., has fruited for seven years, is shipped daily from there to the Boston market

through the season. Ripens with the earliest, continues a long season. Fruit large, bright red, exceedingly firm, excellent quality. Strong grower, large, hardy canes. At Marlboro the most profitable early commercial sort among the bright red sorts, and should be tried everywhere.

BLACKCAPS

Black Diamond—Berries large, very sweet and pulpy, yet fine for shipping and evaporating. Canes strong and fruitful. Early.

Cumberland—A mammoth mid-season black-cap that loads its stout, stocky canes with handsome fruit. Its great, glossy berries outsell all others of their season, are firm enough to ship well, and of good quality. In hardiness and productiveness, among the best.

Cumberland is very hardy having withstood a temperature of 16 degrees below zero without injury. Extra productive being the heaviest bearing variety now grown. Fruit is jet black and of extra fine quality. Ripens before Gregg. We



CUMBERLAND

bought our stock of plants of the introducers. Buy Cumberland for profit.

Gault—A chance seedling from Ohio. Canes thrifty and hardy. The first crop ripens about with Gregg, is more abundant and continues in bearing for three or four weeks, by which time the new canes begin to fruit and continue until checked by the frost. This latter crop does not consist of a few scattering berries, but immense clusters, often numbering 100 berries on a single stalk. Fruit large size and delicious flavor.

Gregg—For many years the leading black-cap for market. Its large showy berries are produced in great abundance, are firm, and ship finely. Mid-season.

Kansas—Plant is a strong grower; fruit jet black, as large or larger than Gregg, a splendid yielder and hardy. One of the very best. Ripens before Gregg.

Palmer—This black cap is the first raspberry to ripen, yet its berries are of good size and flavor. The canes are wonderfully fruitful and quite hardy. Being so early, it always commands good prices in market.

BLACKBERRIES

For garden culture, plant 4 feet apart in rows 5 feet apart; for field culture, plant 3 feet apart in rows 6 feet apart. Pinch back canes when 3 or 4 feet high, and allow but three canes to the hill. Give about the same treatment as raspberries.

Blackberry plants are nearly all fine root cutting plants.

	Per 12	Per 100	Per 1000
Ancient Britton	30c	\$1.50	—
Early Harvest	25c	1.50	\$10.00
Erle	30c	1.50	12.00
Eldorado	35c	2.00	16.00
Snyder	25c	1.25	10.00
Taylor	30c	1.50	12.00
Kittatinny	30c	1.50	12.00
Rathbun	30c	2.00	18.00
Mersereau	35c	2.00	18.00
Blowers	50c	3.00	28.00
Ward	40c	2.00	18.00
Wilson's Early	25c	1.50	10.00
Minnewaski	40c	2.00	18.00

good quality. The canes are strong, with heavy foliage, hardy, free from rust, supporting heavy crops of fruit. Ripens between Early Harvest and Wilson.

Kittatinny—Large, fine berries of good quality; canes strong, erect, fruitful.

Mersereau—For years we have been looking for a blackberry that was hardy enough to stand our winters without protection and at the same time be of good size and firm enough to ship to distant markets with success. Mersereau fills the bill. Fruit is as large, glossy and firm as Wilson. Stands shipping as well and sells for Wilson on any market. More productive than Wilson. Will outyield all other blackberries in quarts per acre. A wonderful cropper.

Rathbun—Of very large size, resembling Wilson, and fully its equal, adding iron clad hardness to its good qualities. The berries are sweet, luscious, have no core, and are firm enough to ship and handle well. The canes make a strong, erect growth, yielding fine crops.



MERSEREAU

Ancient Britton—Well adapted by its great hardness for planting in all sections subject to severe winters. The strong, healthy canes are heavily laden with sweet, melting berries of medium size. Markets well.

Early Harvest—Dwarf, very early, quite productive of sweet, medium sized berries. Needs protection in the North.

Eldorado—The vines are very hardy and vigorous, enduring the winters of the far Northwest without injury, and their yield is enormous. The berries are large, jet black, borne in large clusters and ripen well together; they are very sweet, melting, have no hard core and keep for eight or ten days after picking with quality unimpaired. Perhaps the most valuable sort in cultivation.

Erle—Berries large and nearly round, appearing thus even larger than they really are; of

Snyder—Berries of medium size, sweet, melting. Very hardy and wonderfully productive. Leads where hardness is a consideration. Early.

Taylor—A good succession for Snyder in cold climates. Ripens its large, luscious berries some weeks later. Vigorous, hardy, fruitful.

Wilson—A very superior, large, early berry, of sweet and excellent quality. Strong growing, amazingly fruitful, very early to ripen.

Ward—Undoubtedly a seedling of the Kittatinny, which it resembles, having all of its qualities and none of its defects. A healthy, strong grower with sturdy canes producing fine large fruit, black throughout, without core, and of excellent quality. Has never suffered from winter injury in New Jersey. An exceedingly prolific sort, the bushes being covered with its fine fruit, producing as many bushels per acre as the Wilson in its prime.

Blower—Originated in the celebrated small fruit belt of Chatauqua County, N. Y., where it has been thoroughly tested for several seasons. Claimed to be the hardiest, most productive, the finest quality and to bring on the market the highest price of all blackberries. Has produced 2,694 berries on one bush, 2,720 quarts on one-third acre. Large size, jet black, good shipper, best quality, unexcelled productiveness are the main characteristics of this splendid new sort.

DEWBERRIES

Plant in rows six feet apart three feet distant in the row. Keep the soil mellow and clean.
25c per 12; 75c per 100; \$7.00 per 1,000.

Lucretia—The best black variety. Large, jet black, melting, delicious. Earlier than Early Harvest blackberry and larger than Erie.

STRAWBERRIES



SAMPLE

	Per 12	Per 100	Per 1000
Aroma	25c	50c	\$4.00
Beder Wood	25c	50c	3.00
Bismarck	25c	50c	4.00
Bubach	25c	50c	4.00
Crescent	25c	50c	3.00
Clyde	25c	50c	3.50
Excelsior	25c	50c	3.00
Gandy	25c	50c	4.00
Haverland	25c	50c	3.50
Jessie	25c	50c	4.00
Marshall	25c	50c	4.00
Mitchell's Early	25c	50c	3.00
Nick Ohmer	25c	50c	4.00
Klondike	25c	50c	4.00
Sample	25c	50c	4.00
Senator Dunlap	25c	50c	4.00
Splendid	25c	50c	4.00
Uncle Jim	25c	50c	4.50
Warfield	25c	50c	3.00
Pride of Michigan	50c	80c	7.00

Our strawberry plants are all taken from young beds that have never borne. We use only strong and well rooted plants, and all small plants with few roots are thrown out.

These plants are worth much more than plants taken from bearing beds as soon as plants are dug. We tie 25 in a bunch nicely and pack roots in damp moss; so they are ready for shipment when ordered, and will reach you anywhere in perfect condition, if sent by express. Strawberry plants should always be sent that way.

No one owning a home, or for that matter having one rented for a term of years, can put a little money to better use than to buy three or four hundred plants of the standard varieties of strawberry. Give them the proper care and a good sized family will hardly use all the fruit they will produce the next season after planting. Nothing will bring quicker and greater satisfaction to the planter, more keen delight to his children or lessen the burdens of his good wife in providing for the table than a well kept strawberry bed. The best time to plant strawberries is in early spring and on fertile new soil, or old land brought to a high state of cultivation. If horses are to be used in cultivating, plant in rows three and one-half to four feet apart, and one to three feet in the row; but for hand culture, one by two feet will answer.

Aroma—This is our best and most profitable late strawberry. It cannot be beaten for quantity of fruit produced, or in quality of fruit. Plants show no weakness of any kind. Fruit very large, roundish conical rarely misshapen, glossy red, of excellent quality, and produced in abundance. Same season as Gandy.

Beder Wood—This variety was originated by Beder Wood of Illinois. We have fruited it for many years, and found it to be a very heavy bearer, of good size, roundish fruit. Does well on nearly all soils. Season early, a good staminate to fertilize early varieties like Crescent, Warfield, etc. The plant is a good, healthy grower, and sends out a number of large runners. Beder Wood is very deep rooted and will stand drouth better than most varieties.

Bubach—By far more plants of this variety are used than any other sort. Its large and uniform size, fine form and color, unsurpassed productiveness, and great vigor, combine to make it the leading market sort. The plant is very large and fine looking, but a slow plant maker.

Bismarck—Needs a strong soil to mature its crops of large, luscious berries. Seedling of Bubach with perfect blossom, larger, equally as productive, better in shape, color and quality; holds up well in shipping. Well tested, will please everyone that gives it a rich soil and good culture.

Clyde—Perfectly healthy, vigorous grower, making strong plants with bright, clean foliage and heavy root system; enormously productive. Fruit large, firm, never varies from its regular conical shape; holds its size to the end of the season. Light scarlet color; beauties in every way.

Crescent—Medium size, vigorous and productive. An old, well known variety.

Excelsior—The berry is dark red, nearly as dark as Warfield; of good size; one of the best shippers, does not get soft when ripe, will stand as much handling as the old Wilson without bruising. It is a good plant maker, medium in size and perfectly healthy; blossom perfect.

Gandy—A reliable late variety, berries bright crimson, very uniform in size and shape, large and firm; plants vigorous and healthy.

Haverland—A fine grower, very productive. One of the leading early market sorts. Berries uniform, long, medium size and quality.

Jessie—On moist soil it is a robust, healthy plant; long, stout fruit stalk; holds the fruit well up from the ground; berries of the largest size, medium to dark red color all the way

through; firm and solid, and of the most excellent quality; very few small berries and none of the largest ones of irregular shape. Season medium.

Nick Ohmer—Very large and stocky, sending out plenty of very strong runners, probably not surpassed in healthy, vigorous growth and productiveness by any variety. The fruit is of the largest size, never misshapen. Its only departure from the regular roundish conical form is when, under high culture, it is somewhat triangular. is dark, glossy red, firm and of excellent flavor.

Michel's Early—Long been known as the extra early berry. It should always be grown in hedge row, when it is very productive. It makes runners very freely and many have propagated in beds so thickly that light was excluded and thus it lost its tendency to form fruit buds. Berries medium size cone shape and a good shipper.

Marshall—Season late. Berries deep blood red to center; flavor very much like the wild berry. Foliage large and vigorous. While it will not, perhaps, yield as many quarts to the acre as some medium sized berries, yet it is the best extra large berry. It makes comparatively few runners in hills to get largest berries.

Klondike—The plant is of moderate size, vigorous, free from rust, and a good plant maker. The fruit is large, regular conical form, dark red, red clear through. In productiveness it surpasses the Gandy and equals it in size and in the lateness of the last berries. It is a very profitable Southern berry.

Sample—A strong plant that succeeds well on nearly all soils and yields astonishing crops of uniformly large, fine berries, pointed, conical, rich scarlet, firm and of fair quality. A money maker for the market man and destined to become one of the standard sorts for all sections. It is being planted in immense quantities.

Splendid—Originated at Sterling, Ill. Plant a vigorous grower, equal to Warfield in this respect. Blossoms perfect. Berries are borne on tall fruit stalks and are large, firm, and of fine color. Ripens evenly all over, globular, very productive. Few, if any, blanks. No mistake can be made in using this variety to pollenize Warfield, Crescent and other pistillates. Early to mid-season.

Warfield—Great beauty, firmness, earliness, productiveness and vigor make this berry most popular. Ripens with Crescent and is superseding it for canning, distant shipments and general marketing.





This is one of our blocks of Strawberry plants taken in June also. This is a clay and sandy soil and grows well rooted plants, not the hairy rooted kind that stand no drouth, but the coarse rooted kind that are the best and stand more drouth and give you a better stand than any others. Strawberry plants are very scarce this season so to be sure and get what you want send your orders in early—the earlier the better.

ASPARAGUS



This earliest and finest of spring vegetables is among the easiest cultivated and most profitable. A bed once planted suffers no deterioration for thirty years or more, if it is properly attended to and well manured. 1 year old, 50c per 100; \$4.00 per 1,000. 2 year old, 75c per 100; \$6.00 per 1,000.

Conover's Colossal—This variety is much superior in size and quality to any of the old common sorts, being remarkably tender and fine flavored.

Columbian Mammoth White—Produces numbers of great, thick white shoots. Most attractive and profitable for canning.

Giant Argenteuil—A new French variety that makes crowns strong enough for cutting before any other sort and yields enormous crops of mammoth, tender stalks.

Palmetto—Until recently we believed that the Conover's Colossal was the best sort known, but we are now forced to concede that the Palmetto is earlier and a better yielder, and more even and regular in its growth, and that it will eventually supercede the old favorite. It has been tested both North and South, and has proven entirely successful in every instance.

PEACH BLOW POTATOES

We offer for the first time, a fine lot of Genuine White Peach Blow Potatoes, one of the best potatoes for late spring use, also a great yielder; will yield from 200 to 350 bushels per acre. Plant from the first to middle of June. We have grown these for three years, and have so much call for them around home, as they are scarce, and we have just 200 bushels to offer to our customers. So as long as they last, offer them as follows:

Large size .per peck, 35c; bu., \$1.30. Small size .per peck, 30c; bu., 1.00.

RHUBARB

10c each; 75c per 12; \$4.00 per 100.

Linnaeus—Leaf stalks large, tender, juicy, produced quite early.

Queen—The extra large, tender stalks are a decided pink color, and delicious for canning or cooking. A very strong growing sort.

SAGE

Holt's Mammoth—Plants of strong growth. Leaves very large, borne well above the ground, are of unusual substance, strong flavor and superior quality. Each 10c; 75c per 12.

HORSERADISH SETS

10c per 12; 50c per 100.



CAMPERDOWN ELM—\$1.00 EACH

	Each	
Catalpa Bungei, 6 to 8 feet.....	\$1.00	
Catalpa Speciosa, 6 to 8 feet.....	.40	
Catalpa Speciosa, 3 to 4 feet.....	.15	
Carolina Poplar, 4 to 6 feet.....	.15	
Carolina Poplar, 8 to 10 feet.....	.25	
Elm, American White, 8 to 10 feet.....	.25	
Horse Chestnut, 5 to 6 feet.....	.75	
Linden, American, 6 to 8 feet.....	.75	
Magnolia, Acuminata, 3 to 4 feet.....	.50	
Magnolia, Soulangeana, 3 to 4 feet.....	1.00	
Magnolia, Purpurea, 2 to 3 feet.....	1.00	
Maple, Soft or Silver, 4 to 6 feet.....	.15	
Maple, Soft or Silver, 6 to 8 feet.....	.25	
Maple, Sugar, 6 to 8 feet.....	.40	
Maple, Sugar, 8 to 10 feet.....	.50	
Oak, Red or White, 8 to 10 feet.....	.50	
Ash, Mountain, 8 to 10 feet.....	.50	
Sycamore, 8 to 10 feet.....	.75	

Weeping Trees

	Each
Kilmornock Willow, 2 year heads.....	\$0.75
Tea's Weeping Mulberry.....	1.00

Bungei Catalpa—(Chinese Catalpa)—A curious dwarf form that grows only 3 or 4 feet high and twice as broad. It is very useful in formal work when grafted on stems 5 to 8 feet high,

forming a pretty, dome shaped head of great, soft, heavy leaves. The flowers are borne in large clusters a foot long; the leaves are laid with shingle like precision. Hardy, strong growing, unique. Besides the tall form, we can supply specimens worked low, forming handsome dwarf specimens.

Catalpa Speciosa—(Western Catalpa)—A fine hardy sort, well adapted for forest and ornamental planting. The coarse grained, soft wood is very durable and useful for railroad ties, fence posts, etc. Blooms earlier than the others.

Carolina Poplar—Unexcelled for quick growth and effect, its rapid growth giving an air of luxuriance to places where other trees appear starved. Showy and cherry from the constant movement of its glossy, silver lined leaves, yet always casting a dense, cool shade. If well pruned back during the first few seasons it makes a strong, durable tree. Is yearly planted in great numbers, and is one of the most popular street trees. In some cities it is planted almost exclusively when opening new streets in residence sections.

American White Elm—A magnificent, stately tree, with wide, spreading head and elegant drooping branches. A very hardy native tree, highly esteemed for avenue planting and park decoration. Valuable for timber.

White Flowering Horse Chestnut—A very beautiful well-known tree, with round, dense head, dark green foliage, and an abundance of showy flowers in early spring. A slow grower.

Magnolia Acuminata—(Cucumber Tree)—A beautiful, pyramidal growing native species, growing to a height of 50 or 60 feet, with large glossy leaves; flowers yellow, tinted with bluish purple.

Magnolia Soulangeana—A French hybrid; a rather irregular grower; foliage large, glossy and massive; flowers very large, three to five inches in diameter, white and purple. Very effective.

Magnolia Purpurea—Of dwarf habit; very showy in May and June, when its great purple flowers are open.

American Linden—A rapid growing, beautiful native tree, with large leaves and fragrant flowers. One of the best for lawns, parks and avenues.

Sugar or Rock Maple—The well known native variety, valuable both for the production of sugar and as an ornament in lining unpaved streets and avenues. A stately form and fine, rich foliage render it justly popular as a shade tree.

Silver Leaved Maple—(Dasy-carpum)—Of exceedingly rapid growth and most desirable for planting on high-ways.

White Oak—Grandest of its genus and of our American trees. A spreading, towering species, with rugged, massive trunk and branches. The deeply lobed leaves change to dark crimson in fall.

Red Oak—A large tree, unusually large in leaf and quick in growth. The young shoots and leaf stems are red, the foliage purplish crimson in autumn. A most beautiful, majestic object on the lawn.

Tulip Tree—(Whitewood)—One of the grandest of our native trees. Of tall pyramidal habit, with broad glossy fiddle shaped leaves, and beautiful tulip like flowers.

Ash—(European Mountain)—A fine, hardy tree; head dense and regular. Covered from July until winter with clusters of bright red berries.

Sycamore, European—(Platanus Orientalis, Oriental Plane)—A lofty, wide spreading tree; heart shaped leaves; valuable for its handsome foliage and free growth; not as subject to disease as our native species. Entirely free from worms or insects. One of the oldest cultivated

trees known. One of the best and most popular for street and avenue planting. A lofty, wide spreading tree, with large, leathery, clear cut leaves that turn yellow in fall.

Kilmarnock Weeping Willow—An exceedingly graceful tree, with large, glossy leaves; very hardy.

Teas' Weeping Russian Mulberry—A weeping variety of the now well-known Russian Mulberry; perfectly hardy in summer and winter; withstands extreme heat and cold, and grows naturally in a very graceful form. One of the best weeping trees.

Elm, Camperdown—Its vigorous, irregular branches, which have a uniform weeping habit, overlap so regularly that a compact roof-like head is formed. Leaves are large, glossy, dark green. A strong vigorous grower. The finest Weeping Elm and one of the best weeping trees.



TULIP TREE OR WHITEWOOD

NUT TREES

Almonds, Hard and Soft Shell, 3 to 4 ft., 50c each.

Butternuts, 3 to 4 ft., 30c each.

Chestnut, Am. Sweet, 3 to 4 ft., 30c each.

Chestnut, Japanese, 3 to 4 ft., 50c each.

Chestnut, Spanish, 3 to 4 ft., 40c each.

Filbert, or Hazelnut, 3 to 4 ft., 35c each; 2 to 3 ft., 25c each.

Pecan, 12 to 18 inches, 30c each.

Walnut, Black, 3 to 4 ft., 30c each.

Almond, Hard-shell—A fine hardy variety, with a large, plump, sweet kernel; tree very showy and ornamental in blossom. The hull cracks when ripe, permitting the nut to drop out.

Almond, Soft or Papershell—This is more desirable than the hardshell, wherever it will succeed, but is not

quite as hardy. Kernel large, sweet and rich.

Butternut, or White Walnut—A fine native tree, producing a large, longish nut, which is prized for its sweet, oily, nutritious kernel.

Chestnut, Spanish—A handsome, round headed tree, producing abundantly very large nuts that find a ready market at good prices. Not as sweet as the American and tree not quite as hardy.

Chestnut, American Sweet—A valuable native tree, both useful and ornamental; timber is very durable and possesses a fine grain for oil finish. Nuts sweet, of delicate flavor, and are a valuable article of commerce. No farm should be without its grove of nut trees, and the chestnut should be foremost wherever the soil is adapted to its growth.

Chestnut, Japan—Very distinct from all others, dwarf grower, productive, commence bearing when two and three years old. Nuts very large, and far surpassing all other kinds; of good quality.

Black Walnut—This is the most valuable of all our timber trees for planting; a rapid grower, producing a large nut. The timber enters more largely into the manufacture of furniture and cabinet ware than almost any other, and is prized almost with mahogany.

Pecan—This is a native nut belonging to the (Carya) Hickorynut family. The tree is of tall growth and bears abundantly. The shell is very thin, the kernel sweet and delicious.

and, for its beauty and hardihood, is a general favorite.



SILVER-LEAF MAPLE

Filbert, English—This is of easiest culture, growing 5 to 8 feet high, entirely hardy and one of the most profitable and satisfactory nuts to grow, succeeding on almost all soils, bearing early and abundantly; nuts nearly round, rich and of excellent flavor.

EVERGREEN

2 to 3 feet, 50c each; 3 to 4 feet, \$1.00 each.

American Arbor Vitae—(Occidentalis) — A very beautiful native tree, with flat foliage. A rapid, erect grower, and quite hardy; highly prized for screens and hedges.

Golden Arbor Vitae—A distinct, compact, hardy American seedling; dense and conical, with light golden green foliage.

Balsam or American Silver Fir—(Balsamea)—A very symmetrical tree, leaves dark green above and silvery beneath. Grows rapidly, and is very hardy.

Irish Juniper—(Hibernica)—Very erect and tapering in its growth, forming a column of deep green foliage. A pretty little tree or shrub



NORWAY SPRUCE

White Pine—(Strobus)—One of the most beautiful and delicate of the native pines; leaves light green, in clusters of five.



IRISH JUNIPER

Norway Spruce—(Excelsa)—An elegant, lofty and graceful tree, with drooping branches, bright green foliage, and quite pyramidal. It is decidedly the most hardy ornamental and interesting of the evergreen tribe.

SHRUBS

Very fine, 2 year old, strong and well rooted plants, 50c each; 1 year old, 25c each.

Althea or Rose of Sharon—(Hibiscus)—The Altheas are fine, free growing, flowering shrubs, of very easy cultivation. Desirable on account of flowering in August and September, when nearly every other tree or shrub is out of bloom. Tender in some localities.

We have eight sorts or varieties: Ardens, Bi-color, Boule-de-feu, Duc-de-Brabant, Jean-de-Arc, Totus Albus, Variegated.

Calycanthus—(Sweet Scented Shrub)—Flowers purple, very double and deliciously fragrant; remains in bloom for a long time; very desirable.

Deutzias—Small flowered shrubs noted for their freedom of bloom and rapid growth. Through their blooming season entire limbs are thickly studded with flowers.

Purple Fringe—A beautiful, distinct, large shrub, much admired for its long, feathery flower stalks, which give the tree the appearance of being covered with a cloud of smoke.

Lilac—(Syringa)—Common or Old Fashioned Lilac—The familiar species of all fine old gar-

dens, with dense panicles of lilac flowers, still the most fragrant of any.

Lilac, Common White—Pure white, very fragrant flowers.

Snowball, Common—(Viburnum)—A well known favorite shrub of large size, with globular clusters of pure white flowers in the latter part of May.

Spirea—An indispensable class of medium sized shrubs, of easy cultivation in all soils. They embrace a wide range of foliage, habit of growth, color of flowers; their season of blooming extends for three months in the different varieties.

Varieties of Spirea: Opulifolia Aurea, Reeves Fl. Pl. Thunbergii, Van Houtell, Billardi, Callosa Alba, Rosea, Douglassi Rosea.

Hydrangea, Large Clustered—(Paniculata Grandiflora)—A fine shrub of recent introduction, flowers pure white, large, showy and very profuse, quite hardy, and altogether one of the most desirable shrubs. Blooms through August and September.

Same in tree form, 3 to 4 feet, 50c each; 2 to 3 feet, 35c each; these are fine.



A block of Shrubbery in bloom in the month of June at Ernst's Nurseries. On the left of this shrubbery is a fine block of Raspberry and Blackberry plants which cannot be seen much of in this picture. You need not fear ordering from us, as you buy direct, you get the best that can be grown at reasonable prices. If you doubt us write our bank, or any business house here as to our reliability. What you see here and much more that we cannot show you this time belongs to Ernst's, and you need not be afraid to order. But order at once.

CLIMBING VINES



CALIFORNIA PRIVET

HEDGE PLANTS

California Privet—A pretty shrub with smooth shining leaves. A vigorous, hardy plant, the best there is for low hedges. Fine close growing habit. The illustration shows how thick and fine it grows. Makes a beautiful ornamental hedge. 1 year, 5c each; \$3.00 per 100. 2 year, 10c each; \$5.00 per 100.

Osage Orange—In South and Southwest the

Osage Orange is in great favor and wherever it can be grown without winter killing it is a very efficient hedge. 1 year, 75c per 100; \$5.00 per 1,000.

Berberry, Purple Leaved—A very handsome shrub, growing from five to seven feet high, with violet-purple leaves and fruit. Makes a fine ornamental hedge. 10c each; \$5.00 per 100.

CLEMATIS

A beautiful class of climbers, many of the varieties with flowers five to seven inches in diameter. Excellent for pillars or trellises; or when used for bedding running over rock work or an old tree or stump they make an excellent show. They delight in a rich soil, a sunny situation, and are perfectly hardy.
35c each; 3 for \$1.00.

Henry—Fine, large, creamy white flowers. A strong grower and very hardy, one of the best of the white varieties; a perpetual bloomer.

Mad. Ed. Andre—This is the nearest approach to a bright red Clematis and has been called the Crimson Jackman. The plant is a strong, vigorous grower and very free in bloom. Color a distinct crimson red; a very pleasing shade and entirely distinct from all other varieties.

Ramona—A strong, rampant grower and very hardy. A free and perpetual bloomer; flowers large; color a deep sky blue.

Mad. Baron Viellard—Flowers very large; light rose with lilac shadings; very distinct.

Jackmani Alba—Fine, large, pure white flowers.

Jackmani—The flowers, when fully expanded, are from four to six inches in diameter; intense violet purple, with a rich velvety appearance, distinctly veined. It flowers continually from July until cut off by frosts.

Paniculata—(Sweet Scented Japan Clematis)—Of very rapid growth, quickly covering trellises and arbors with handsome, clean, glossy foliage. The flowers are of medium size, fragrant, pure white, borne in immense sheets in September, when very few other vines are in bloom.

Ampelopsis—**American Ivy or Virginia Creeper**—(Quinquefolia)—A very rapid grower, having beautiful, dark green foliage, which assumes rich crimson hues in Autumn. Like the Ivy and Trumpet vines, it throws out tendrils and roots at the joints, by which it fastens itself to anything it touches. One of the finest vines for covering walls, verandas, etc. 25c each.

Honeysuckle—(Lonicera)—**Chinese Twining**—(Japonica)—A well known vine, holding its foliage nearly all winter. Blooms in July and September and is very sweet. 25c each.

Wisteria—**Chinese Purple**—(Sinensis)—A most beautiful climber of rapid growth, and producing long, pendulous clusters of pale blue flowers. When well established it makes an enormous growth; it is very hardy and one of the most superb vines ever introduced. 25c each.

Chinese Matrimony Vine—A vigorous growing, hardy climbing vine that may be used anywhere that a vine is needed for training to trellis, fence or wall. Every new shoot becomes filled with small purple flowers which are remarkably handsome, and are followed by brilliant scarlet berries nearly an inch long. 25c each.

The Wonderful Lemon—Ponderosa

A Fine Pot Plant.

Nothing that has even been brought to our notice in the plant line has caused half the commotion that this wonderful Lemon has. It is a true ever-bearing variety. On a plant six feet high no less than eighty-nine of the ponderous lemons were growing at one time. It was a beautiful sight to see. The tree was blooming and at the same time had fruit in all stages of development, from the size of a pea up to the ripe fruit, showing it to be a true ever-bearer. Fruit has been taken from this tree weighing over four pounds. The Lemons have very thin rind for such large fruit. It is the juiciest of all lemons, makes delicious lemonade and for culinary purposes cannot be excelled. It is not uncommon to make twelve lemon pies from one lemon. We have the entire stock of this ponderous lemon and guarantee the trees to produce the same large fruit. No budding or grafting necessary. Ponderosa Lemon is sure to become popular when it is known. It fruits when quite small, and makes a lovely house plant. Everybody can grow his own lemons; it will fruit freely each year.

OTAHEITE ORANGE

As a pot plant this lovely Dwarf Orange is one of the most novel and beautiful that can be grown. With a couple of plants of it you can have an abundance of the far famed fragrant orange blossoms, and we recommend it to our friends as a novelty of sterling worth and merit. Small sized plants of the Orange or Lemon, 25c each; large size plants, about one foot high, at 50c each, or \$5.00 per 12.

Last spring we had a big run on this Lemon and gave away hundreds. Here is a chance for you to get one or both FREE. On an order of \$5.00 or more we will present you with either. With an order of \$10.00 or more will include one of each if claimed with your order, and order is sent to us before March 15th.

CLEMATIS JACKMANI



RHODODENDRONS

This, where known, is universally acknowledged to be the most showy, magnificent, hardy evergreen shrub that grows.

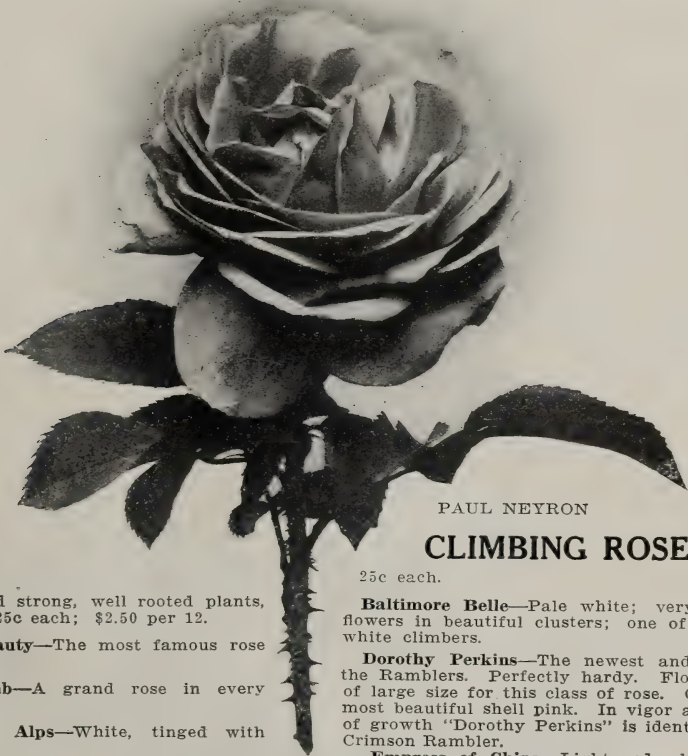
The broad, thick evergreen foliage with its glossy richness would alone entitle it to a place foremost in the rank of evergreen shrubs, but when in June this mass of luxuriant foliage is

almost hidden by the magnificent array of beautiful flowers in clusters, it is simply grand.

A protection of leaves and brush during the first winter will be beneficial. The plants we offer are strong and bushy, well set with flower buds, and will flower nicely the first year.

Choice grafted sorts, 2 ft. high, each, \$1.50.

ROSES



PAUL NEYRON

CLIMBING ROSES

25c each.

Extra large and strong, well rooted plants, two years old, 25c each; \$2.50 per 12.

American Beauty—The most famous rose ever grown.

Alfred Columb—A grand rose in every way.

Coquette des Alps—White, tinged with blush.

Fisher Holmes—Finely shaped flowers, dark velvety crimson.

Gen. Jacqueminot—Brilliant crimson. The most popular rose.

Harrison—Yellow.

John Hopper—Large bright rose of highest order. Carmine center.

La France—Peach blossom finish; the model rose.

Magna Charta—Bright, rosy pink, flushed with carmine, very large, full and double, fragrant.

Marshall P. Wilder—Cherry carmine, long, late bloomer. Considered one of the very finest.

Paul Neyron—Lovely dark pink, very large.

Baltimore Belle—Pale white; very double, flowers in beautiful clusters; one of the best white climbers.

Dorothy Perkins—The newest and best of the Ramblers. Perfectly hardy. Flowers are of large size for this class of rose. Colored a most beautiful shell pink. In vigor and habit of growth "Dorothy Perkins" is identical with Crimson Rambler.

Empress of China—Light red, changes to pink when fully expanded. A free and continuous bloomer; medium size.

Seven Sisters—Vary in color from blush to crimson; blooms in large clusters.

Queen of the Prairie—Bright, rosy red, striped with white; large and cupped; most beautiful and valuable of the class.

MOSS ROSES

Crested—Deep pink buds with mossy fringe. Very beautiful, and free from mildew.

TREE ROSES

Very fine—grown in Holland. White, Pink, Crimson and Red. 3 to 4 feet high, 75c each; \$7.50 per 12.

Club Offers.

If you need only a few trees or plants and have no room for as many as \$5.00 or \$10.00 worth of trees or plants, and will call and see all your neighbors and show them this catalogue you will have no trouble to secure orders. If you will send in club orders amounting to over \$10.00, we will allow you 10 per cent. in stock or money for your trouble, besides the Wonderful Lemon—Ponderosa and Otaheite Orange. Or with a small order for less than \$5.00 and the names of ten good fruit growers and land owners, we will send one of them with the order. Try and send us a good big club order. You will find it pleasant as well as profitable.

SPECIAL OFFER NO. 1—\$5.00.

This orchard for \$5.00. In three years will be worth \$100.00 if cared for. We want to sell only one hundred of these. If you want a bargain order at once. Satisfaction guaranteed or money refunded; so don't delay.

This is the best and most liberal offer ever made. The best varieties of everything for home use or market, but varieties must be left with us for selection.

- 25 choice Apple trees, $\frac{3}{4}$ feet, 5 best kinds.
- 25 choice Peach trees, $\frac{2}{3}$ feet, 5 best kinds.
- 12 choice Cherry trees, $\frac{2}{3}$ feet, 4 best kinds.
- 12 choice Plum trees, $\frac{3}{4}$ feet, 4 best kinds.
- 6 choice Pear trees, $\frac{3}{4}$ feet, 3 best kinds.
- 5 Angers Quince trees, $\frac{2}{3}$ feet.
- 1 new Wonderful Lemon.
- 1 Hardy Hydrangea Grandiflora.

These will be nicely packed so will reach any point in the United States in good order, and should be sent by express. Better order today and be sure as we have only a limited number of these trees. Address,

ERNST'S NUSERIES,
Moscow, Ohio.



*Our Guarantee is just as big and broad
as YOU choose to make it*

“SCALECIDE”

applied to your fruit trees will absolutely kill SAN JOSE SCALE and all Fungous troubles controllable in the dormant season. Five years of proofs.

Mr. C. W. Cochran, Proprietor Clover Leaf Fruit Farm, Frankfort, Ohio, May 21, 1909 writes:—“My trees look better now than they did when I used Sulphur and Lime, and the fruit at this time of the year looks far superior than at any time since I have been in the fruit business. I give all the credit and glory to ‘SCALECIDE’.”

On October 8th, 1909, he writes:—“This year I won first prize at the State Fair and had more apples than any orchard in this whole County. That is the result of using ‘SCALECIDE’.”

PRICES:—In barrels and half-barrels, 50c per gallon; 10 gallon cans, \$6.00; 5 gallon cans, \$3.25; 1 gallon cans, \$1.00.

PRATT'S

“SULFOCIDE”

SOLUBLE SULPHUR SPRAY

A New Substitute For Bordeaux Mixture

Far surpassing it in effectiveness, durability and ease of application, at one-half the cost or less.

The most powerful, non-poisonous fungicide for plant life—for rust, mildew, scab, canker, brown rot, etc.

PRICES:—In barrels and half-barrels, \$1.00 per gallon; 10 gallon kegs, \$12.50; 5 gallon kegs, \$7.50; 1 gallon cans, \$2.00; 1 quart cans, 75c; 1 pint cans, 50c. On orders for 10 gallons or over, we prepay the freight.

B. G. Pratt Company

Manufacturing Chemists

ERNST'S NURSERIES, Agents,

MOSCOW, OHIO

SPRAY PUMPS

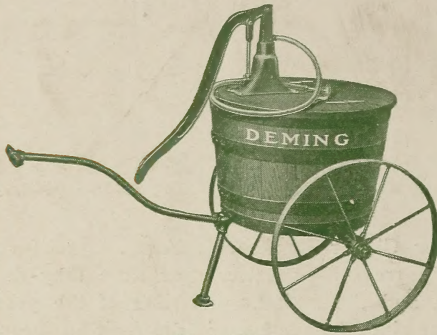


Fig. 651.

The "Gardener's Choice" spray pump, Fig. 651, is very light and easy to work; is well made and strong.

The frame is largely wrought iron pipe and the twenty-four gallon tank is hard wood, well hooped. The wrought iron wheels are 24 inches in diameter, with a tire width of 1 1/4 inch. The extreme distance from hub to top of tank is 33 inches and 30 inches from the ground to top of tank. No axle is used, the wheels being attached to the tank by trunions.

The pump used in this outfit has a 1 1/4 inch brass cylinder, and 4 inch stroke, and has six feet of hose and our Bordeaux nozzle. Shipping weight of Fig. 651 complete, crated, is about 120 pounds.

Price, \$12.00 net.



Fig. 645.

The "Perfect Success" bucket pump, Fig. 689, has brass air chamber and working parts, handle and foot rest being of malleable iron. Regularly fitted with Bordeaux nozzle, and 3 ft. 3/8-inch hose.

Price.....\$4.15 net.

"Universal Success" spray pump and whitewasher, Fig. 662. Same pump as Fig. 689, but with galvanized tank, removable strainer, and sliding cover. Different attachments make it a Fire protector, plumber's force pump, whitewasher, buggy and auto washer and window washer.

Price, Galvanized Tank.....\$6.75 net.

Brass Tank.....9.25 net.

The "Century" barrel sprayer Fig. 645, is 44 inches high. Has large air chamber located within barrel. 2 1/4 inch cylinder is submerged and constantly primed.

Pump only.....\$10.00 net.

Add \$2.50 for each 12 1/2 ft. section of hose, with nozzle, pole holder and couplings.

Hand and Power
Pumps
for ALL uses.

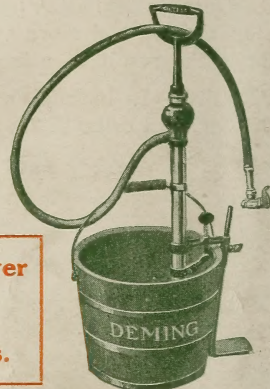


Fig. 659.



Fig. 662.

The Deming Co., Salem, Ohio

A. B. Morse Company, St. Joseph, Mich.