

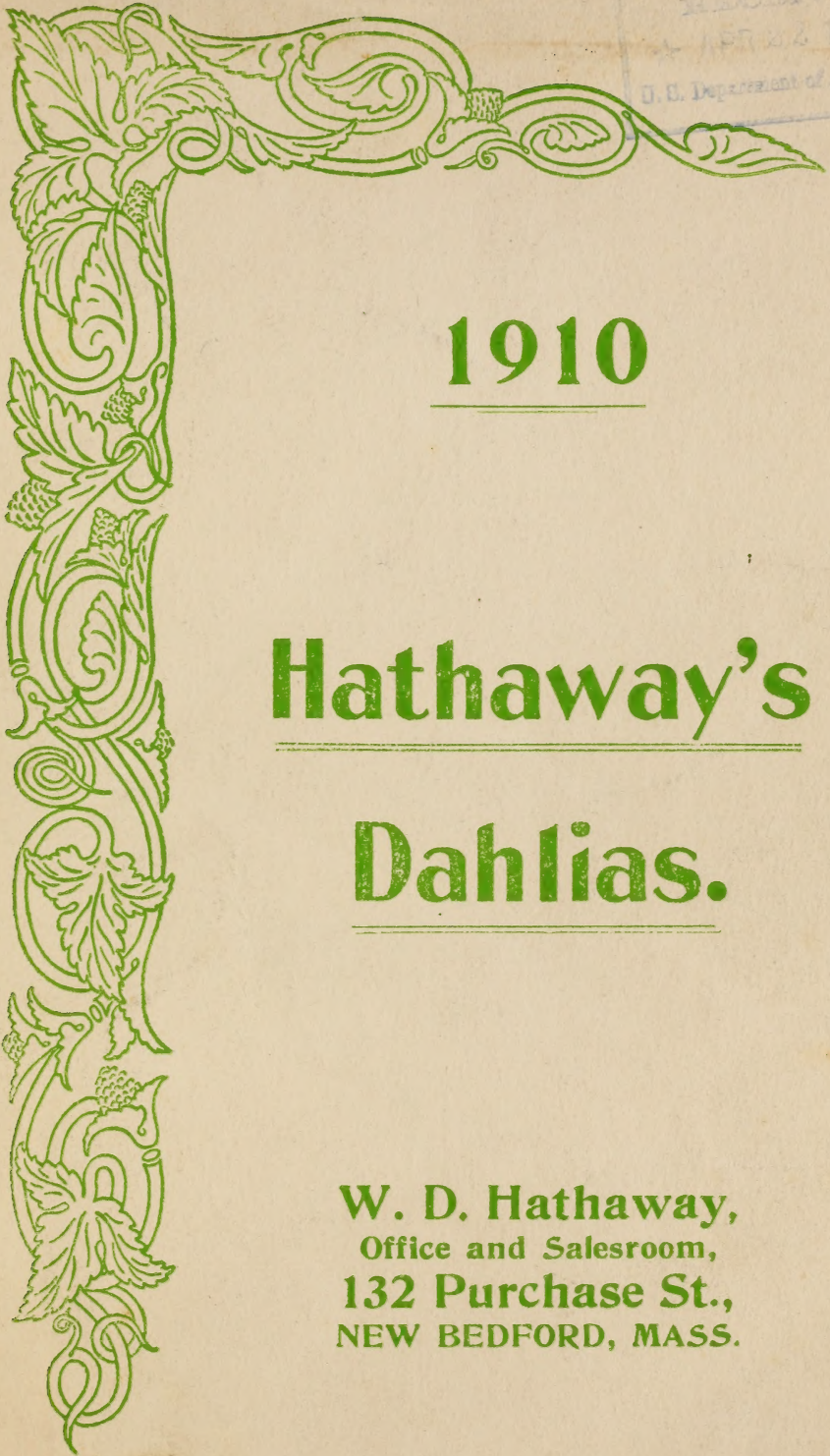
Historic, Archive Document

Do not assume content reflects current scientific knowledge, policies, or practices.



62.39

RECEIVED
MAY 2 1921
U. S. Department of Agriculture

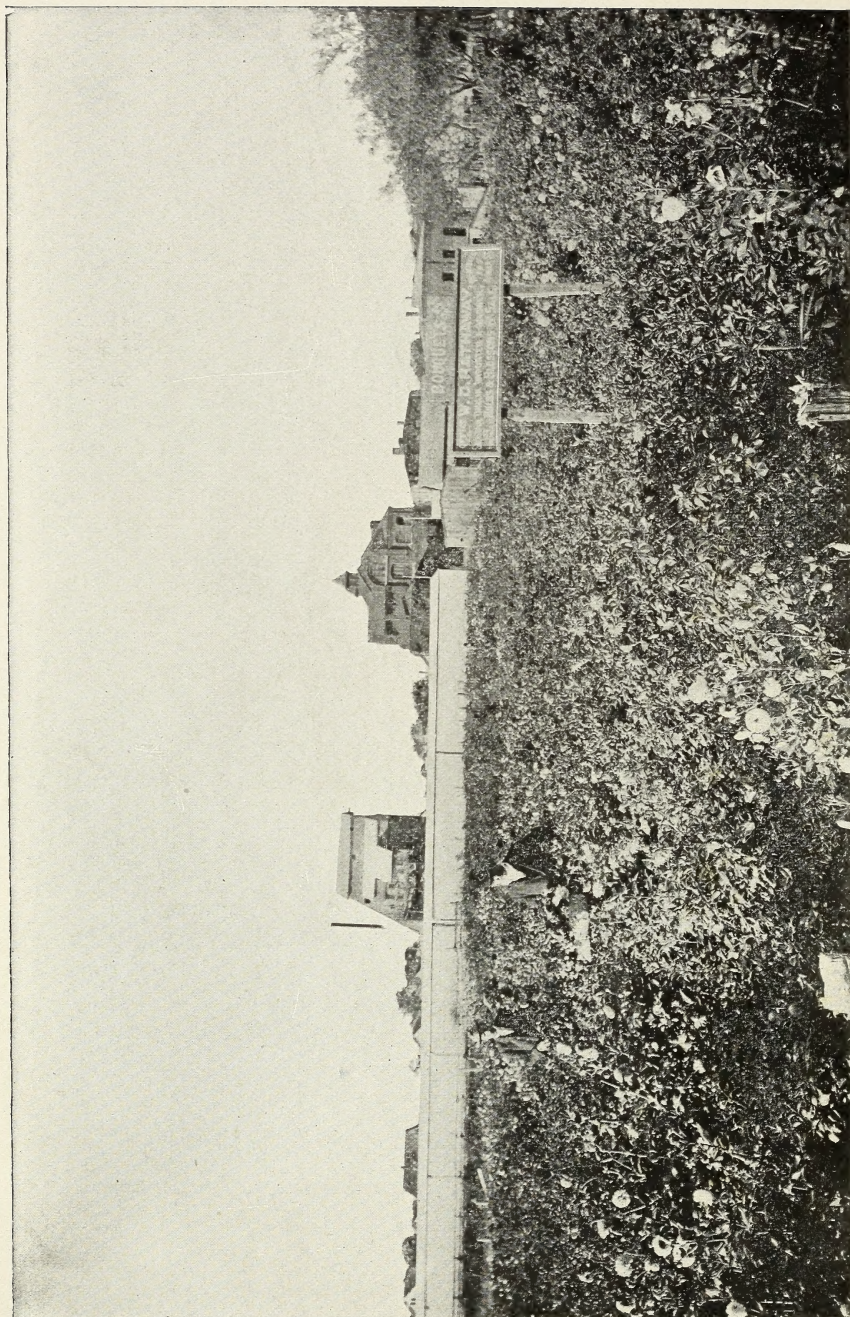


1910

Hathaway's

Dahlias.

W. D. Hathaway,
Office and Salesroom,
132 Purchase St.,
NEW BEDFORD, MASS.



A PORTION OF ONE OF MY FIELDS TAKEN IN OCTOBER.



DAHLIAS

GROWN AND
IMPORTED BY

W. D. HATHAWAY,

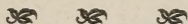
NEW BEDFORD, MASS.

GARDENS: 191 197 NORTH ST.
AND 77 SHAWMUT AVE.

OFFICE AND SALESROOM:
132 PURCHASE ST.

Prizes Awarded in Open Competition in 1904, 1905, 1906, 1907, 1908 and 1909.

Silver Cup and 124 Certificates



DAHLIAS are divided into Shows, Fancies, Pompons, Decorative and Cactus. **SHOW DAHLIAS** include all large, close flowering varieties of a single color and those in which the ground color is of a lighter shade than the edges.

FANCY DAHLIAS include all striped, large flowering varieties and those in which the ground color is darker than the edges or tips.

POMPON DAHLIAS include all small flowering varieties.

DECORATIVE DAHLIAS include all large, loose flowering varieties.

CACTUS DAHLIAS are known by their long, pointed and twisted petals.

MY STOCK consists of pot roots and field grown roots only; I do not send out any green plants.

ALL BULBS sent out by me have from one to three eyes and are guaranteed true to name and to give satisfaction.

ORDER EARLY as stock is limited on some of the varieties.

WHERE STOCK IS EXHAUSTED I do not substitute, but return money, unless otherwise ordered.



SPECIAL ORDERS

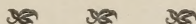
FOR \$1.00 I will send 18 named varieties, my selection no two alike.

FOR \$2.00 I will send 36 named varieties, my selection no two alike.

FOR \$5.00 I will send 24 choice Cactus, 12 Decoratives, 12 Shows and Fancies and 12 Pompons, my selection no two alike.

In planting, stir the ground thoroughly, mixing the fertilizer well with the earth.

Plant about four inches deep, three or more feet apart, allow but one stock to grow in a place.



HOW TO ORDER, ETC.

1—The cash must accompany the order.

2—Remittances may be sent by express money order, P. O. money order, bank draft or registered letter.

3—Goods wanted C. O. D. must be accompanied by 25 per cent of the amount of the order.

4—Goods wanted by mail, add 2c on the price of each bulb for postage.

DAHLIA BLOSSOMS 15c and 25c a doz. Bouquets 25c.

CACTUS DAHLIAS

These are by far the most popular of all the Dahlias for exhibition and Garden Decoration. My stock consists of the very newest and finest varieties also the best of the older sorts.

ADVANCE. Bright scarlet with yellow at base. Large flowers of incurved form. A most reliable variety for exhibition. 75c.

Ajax. Orange, salmon and buff, large. 10c.

Albion. Pure white, good. 25c.

Alexander. Dark crimson, flushed maroon, of the finest quality. 25c.

Alfred Morgan. The blooms are of a deep purple crimson. The form is incurved. 25c.

Alpha. White, speckled and striped purple. 25c.

Ambassador. Pure white, yellow green center; good. 25c.

Amber. Orange with vermilion, large. 15c.

AMI BETHIER. Flowers of large exhibition size. The color is scarlet red, shaded yellow, tinted wine color at tips. 50c.

Amos Perry. Velvety crimson. 25c

Antelope. The color is best described as yellow, and the basal florets suffused with salmon. 25c.

ARMIGO. This is the best yellow Cactus variety in existence; a lovely large flower with long incurved petals, color clear chrome yellow. A magnificent exhibition flower. \$1.00.

ASCHENBRODEL. The flowers are orange-pink with delicate yellow tips and center. 25c,

ASKANIA. Vermilion scarlet. Extra large. 50c.

AURORA. One of the finest dahlias in cultivation, a cream colored center shading to amber and then through tints of pink to white tips, very large, fine for exhibition. 75c.

Beatrice.—Pale rose, large. 35c.

BLANCHE DE SOMMER. A magnificent variety, a very large and refined flower, of wonderful beauty. Color creamy white. 75c.

Blush Queen. Bright rosy pink, creamy white center, the admiration of everyone. 25c.

Brilliant. Rich bright, glowing scarlet. 35c.

Britannia. Soft salmon peach, 25c.

Brunhilde. Rich plum color. 10c.

Charm. Yellow and red, tips white 25c.

CHARLES GRIMLEY. This variety is of the largest size, and attracted great attention where ever exhibited. Color, fine crimson, shaded darker, and the petals are twisted and incurved in a most pleasing manner, flowers of great depth. 75c.

Citizen.—Deep maroon, shaded purple; erect grower, blooming well above foliage; a striking variety. 25c.

Clarence Webb, Bronze-red. 25c,

CACTUS DAHLIAS = Continued.

- Clara G. Stredwick.** Bright salmon shading to yellow, long twisted petals. 25c.
- CLINCHER.** A gigantic Cactus, producing its enormous blooms with ease but on pendent stems. Although so large the flowers are of the best Cactus character, the petals being incurved, narrow and exceedingly numerous, the blooms being of great depth and substance. The color is the prettiest imaginable, outer florets being heliotrope, which towards the center gradually lightens till almost white. \$1.00.
- COOKATCO.** An approved variety of the cactus type, with lemon-yellow colored petals, and the florets with pinkish-amber color. The florets are well formed. 50c.
- Columbia.** Vermilion, white tips, 15c.
- Comet.** Silvery rose, speckled crimson. 25c.
- Coronation.** Very bright crimson scarlet. 10c.
- Countess of Lonsdale.** Rich salmon red. 20c.
- Crepuscle.** Yellow shading to amber-yellow. The blooms are excellent for exhibition purposes. 50c.
- C. E. Wilkins.** This variety won the President's Silver Medal, offered for best bunch of Cactus in professional classes at the National Dahlia Society's Show. The coloring is simply perfect, being an exquisite shade of bright clear salmon-pink overlaying yellow. \$1.50
- Dainty.** Yellow shading to white. 25c.
- Daisy.** A curious and pleasing combination of colors, the ground is yellow but the florets are rose-pink for a third of their distance from their apices. 50c.
- Daydream.** The color at the bases of the florets is identical with the color of well-ripened wheat-straw, and the outer extremities and centres of the florets are flushed with a faint lavender. 35c.
- Demon.** Very dark maroon, crimson centre. 25c.
- DIRECTEUR QUENNEC.** Very prolific, fawn colored with copper shades and a few white spotted petals. \$1.00.
- Doric.** Varying in color from pale to dark pink. 15c.
- DOROTHY.** Lovely silvery pink color, effectively brightened by the showing of the tiny white tips of the reverse of the petals. The flowers are of good size, deep, and well formed: good habit. \$1.50
- Dorothy Vernon.** Crushed strawberry. 15c.
- DREADNOUGHT.** Glowing crimson, deepening to maroon in the centre, with a metallic sheen thrown over; very long curving florets exquisitely pointed. It is a flower of great size, 9 to 10 inches in diameter, grand form and centre, with splendid stiff stems. An early bloomer, it will be much wanted for exhibition. 50c.
- DR. G. G. GRAY.** The color is magnificent, a fiery crimson-scarlet without shading; very free flowering and of upright growth; very novel and distinct. \$1.00.
- Earl of Pembroke.** Royal plum.

CACTUS DAHLIAS = continued.

- 10c.
- Edith Groom.** A pure white variety, the petals are long and the blooms elegantly formed. 25c.
- Edward Drury.** A handsome yellow variety with large much incurving florets, each floret being tipped with white. 25c.
- Effective.** Amber with rose centre. 25c.
- Ella.** Rich apricot, heavily shaded and suffused vermilion. 15c.
- Ella Kraemar.** A beautiful variety of a clear rosy-pink, suffused with a delicate rose. The florets are long, narrow, and slightly incurved and the blooms being large are grand for exhibition. 25c.
- Eise.** Salmon pink, slightly suffused yellow; very free blooming. 25c 25c.
- ERBPRINZESSIN REUSS.** Blood red. 25c.
- Etna.** Lilac shaded violet, base of petals yellow, fine flower. 25c.
- ETRURIA.** It is a fine exhibition Cactus, color, reddish russety apricot, which brightens considerably, towards the center of the flower; stems are of good length; a good exhibition variety. \$1.00.
- Eva.** White, very fine pointed petals. 15c.
- FAIKY.** A white flower with long florets, narrower than those of any other cactus dahlia, and most incurved. 50c.
- FAUNUS** Soft yellowish-buff tipped salmon. The finest quality for exhibition. 50c.
- Favorite.** Dark orange. Speckled crimson. 25c.
- F. H. Chapman.** Yellow, overlaid deep orange. 25c.
- FLAG OF TRUCE.** A pure white variety of the finest form, the florets being long and narrow, ending in a neat spear-like point. The flowers are wonderfully deep, the petals continuing to unfold until the very center is reached. 75c.
- FLIEDER.** The color is most pleasing and absolutely distinct. It is a pale lilac. A large refined flower. 50c.
- FLORA.** The ideal white cactus dahlia with a purity of color and finish not found in any other white sort. 50c.
- Floradora.** Wine crimson, a fine one. 15c.
- Florence M. Stredwick.** Finest of whites. 25c.
- Frankfortia.** Dark crimson, maroon. 15c.
- FRAU HERMINE MARX.** A good and profuse bloomer. Flowers medium. Of the same color as La France rose. 25c.
- Fred Cobbold.** Crimson scarlet. 15c.
- Gabriel.** Creamy white, edged crimson. 10c.
- GAZELLE.** Rosy mauve, with a white centre that shades into the mauve coloring. 50c.
- Gen. Buller.** Cardinal red, white tips. 10c.
- George Gordon.** Yellow and orange bronze. 35c.
- GOLIATH.** Yellow and salmon, very large. 50c.
- Harbour Light.** Yellow ground, deeply edged ruby-crimson; a bright and effective variety 15c.

CACTUS DAHLIAS-Continued.

- HAVEL.** Absolutely distinct in formation of flower resembling very much a pond lily. Even the petals are of the same make-up. Color, a cream, variety remarkably vigorous. 25c.
- HELENE.** The outer petals are most delicate pink, gradually changing to cream-yellow in the center. Flowers are borne on enormous long stems of wiry stiffness, and are produced in great abundance. 25c.
- HAROLD PEERMAN.** A deep pure yellow; flowers of large size and good depth; slightly incurved; good habit and free bloomer. \$1.25.
- HENRI CAYEUX.** A huge Cactus dahlia, under special cultivation will grow from 7 to 8 inches in diameter. Color, coppery yellow shaded cream, variety remarkably vigorous. \$1.00
- HENRI LEMOINE.** Color, rich ruby red, tinted rose, every floret tipped with pure white. Flowers enormous, of good form, well above the foliage. 50c.
- Herzblattchen.** Carmine. 10c.
- H. F. Robertson.** Deep pure yellow, beautiful. 25c.
- H. G. ALFORD.** This variety is quite unique in its colouring, being a very pale yellow, edged and shaded amber and pink, habit erect and sturdy; immense flower with long pointed petals, flower nicely incurved. 75c.
- H. J. JONES.** Delicate primrose in center, beautifully shading off to sweetest rosy pink. Blooms large and composed of the longest of petals, which are narrow from extreme tip to base. 25c.
- Hofgartner Glatt.** Lilac with white center. 10c.
- H. Shoosmith.** A rich glowing crimson with long narrow petals, an exquisite flower with every good property. 35c.
- IANTHE.** Yellow, buff ground edged and tipped with pale salmon-rose, the center deep salmon-rose. 25c.
- IBIS.** Bright orange. 25c.
- Iceberg.** Fine ivory white. 10c.
- Ida.** Deep pure yellow. 10c.
- IGNEA.** One of the best scarlet Cactus Dahlia; exhibition size; the flowers are perfect, extremely double and the clearest shade of scarlet known in Dahlias; the shape of plant is more vine-like and distinct; this should be in every collection. \$2.00.
- Imperator.** Ruby red, large flower, 15c.
- IMPERIAL.** A monster Cactus, many of the blooms measuring over eight inches in diameter. The color is very striking indeed, a disc of yellow near the center, quickly changing to reddish carmine. The plants are strong in growth and flower early. \$1.00.
- INGRES.** Flower of large dimension, centre petals cream-white, rose-striped, exterior petals are tender rose and darker striped. Early and prolific. \$1.50
- IVANHOE.** The plants are dwarf and produce exhibition blooms freely. The color is a deep yet bright straw color, long narrow raking petals and large size of

CACTUS DAHLIAS - Continued.

- flowers. 35c.
- IVERNIA.** Large flower of good form; the plants are of good habit, being black wooded, with dark green foliage and flower stems which carry the blooms right away from the leafage; color, an art shade of bright salmon-fawn, with lighter centre. 75c.
- J. B. Bryant.** Rich primrose, occasionally tipped pink fawn. 15c.
- J. B. Riding.** A large refined flower of a rich yellow at base, shading to a deep orange color, with an eye somewhat lighter. 25c.
- J. C. Quinzel.** Cerise with coral pink shadings. 25c.
- Jealousy.** Clear yellow, good. 15c.
- Jeanne Cayeux.** Color soft pearly pink and light lilac heliotrope, flowers well above the foliage. 50c.
- J. H. Jackson.** Crimson maroon, very large. 25c.
- John Gilpin.** Orange and buff. 15c.
- J. Weir Fife.** Purple, fine bloomer. 15c.
- J. W. Wilkinson.** Rosy crimson. 15c.
- Juliet.** Rosy pink, base of florets lighter, pretty. 25c.
- Khaki.** Orange and Fawn. 25c.
- Kriemhilde.** Pink and white, very nice. 15c.
- Lauretta.** Yellow ground edged rosy red. 25c.
- Laverstock Beauty.** Soft red 15c.
- Libelle.** Magenta, very beautiful. 15c.
- Lord Roberts.** Creamy white. 15c.
- Loyalty.** Bright coral red, incurved petals. 15c.
- LUCIFER.** Deep orange red, long incurved florets, an enormous flower, free, and very early. 50c.
- Mabel Needs.** Coral-red, large. 50c.
- Mabel Tullock.** Clear rosy pink. 15c.
- MAD HENRI CAYEUX.** This is one of the finest Cactus Dahlias yet introduced. The flowers are of the largest size, with long narrow florets, which incurve, forming a bloom of magnificent form. The color is a rich pink heavily tipped white. A grand reliable exhibition variety. \$2.00.
- MADAME MARTIN CAHUZAC.** Flowers carmine, purple tint and heliotrope. Large grand blossoms. 50c.
- Madeline Le Clerc.** Flower and form perfect, color pure white tinted in the center. Magnificent. 25c.
- Manifesto.** Purest white, of exquisite form, very constant and good. It is quite distinct from the whites now in commerce and flowers early. 25c.
- MARJORIE CASELTON.** A very pleasing variety, outer petals rose-pink, tips and central florets pure white; free-flowering, with good erect habits. 35c.
- Mary Service.** Heliotrope. 15c.
- MASTER CARL.** Bright colored amber, 50c.
- Max Schenkendorff.** A large pink flower, with white center. 10c.
- MEMORIAE MARGARITAE.** Flowers enormous, from 6 to 7 inches across. Flowers are well above the foliage on stiff erect stems. Color beautiful blood red, shaded purple. 50c.
- MERCURY.** Fancy Cactus, the ground colour being deep yellow

CACTUS DAHLIAS - Continued.

- at the base to lighter yellow at tips, the whole thickly striped, splashed, and speckled with crimson; habit, dwarf. \$1.00.
- Minnie West.** Clear yellow, shading off to white tips; a large and finely formed flower. 25c.
- MIRIFIQUE.** Fine Cactus Dahlia, wine color, center white tipped, covered with violet lilac. Color distinct. Under special culture the flowers grow from 6 to 7 inches in diameter. Splendid for exhibition. \$1.00.
- Miss Constance Farmer.** Violet purple. 15c
- Miss Dorothy Oliver.** Primrose yellow at base, gradually fading to white at the ends of the long narrow petals, which are tipped green. 15c.
- MISS LENA ASHWELL.** A lovely tomato red with amber shadings; of immense size; will be much appreciated on account of its artistic combination of colors. \$1.00.
- Modesty.** Pale lavender shading off to white center, a large flower with good habit. 15c.
- MONSIEUR GUSTAVE BEER.** Immense flower of 8 inches in diameter, current red shaded yellowish copper. Free flowering with erect habit. \$2.00.
- MONT BLANC.** A white variety, having fluted florets and very narrow tips. 25c.
- Mr. Keith.** Deep blood crimson, narrow petals. 25c.
- Mr Seagrave.** Purplish rose, 25c.
- Mrs. A. Peart.** Creamy white. 10c.
- Mrs. D. B. Crane.** Pure white, good. 10c.
- Mrs. De Luca.** Yellow and orange, good large flower, fine. 25c.
- Mrs. E. Mawley.** Yellow, good late bloomer. 15c.
- MRS. F. GRINSTEAD.** A deep rich crimson with just a suspicion of purplish shading. Petals incurved, flowers of large exhibition size. 50c.
- MRS. GEO. STEVENSON.** Blooms large with very long and narrow petals, color a sparkling bright yellow. 50c.
- Mrs. Geo Caselton.** Color a blackish maroon, often shaded with purple, blooms are of fine form and size. 25c.
- Mrs. H. J. Jones.** Scarlet edged or am. 25c.
- Mrs. H. L. Brousson.** Salmon with pale yellow. 15c.
- Mrs. James Bailey.** Ruby fine. 10c.
- Mrs. J. Harrison.** Fine crimson. 15c.
- Mrs. J. W. Wilkinson.** This lovely kind produces very large, deep rosy pink flowers. The florets are long and curved. 35c.
- MRS. MACMILLAN.** A large flower of pink color, with white center. A grand exhibition variety. 50c.
- MRS STRANACK GASKILL.** A delicate and beautiful shade of pink, it is of good form, large size and finely petalled. 75c.
- MRS. T. G. BAKER.** Color a rich deep orange, gradually shading to yellow near the base of the petals. The blooms are very large, petals long and narrow, and never come shallow. A most reliable variety for exhibition or garden decoration. 50c.

CACTUS DAHLIAS = Continued.

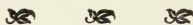
- Mrs. W. Marshall.** Soft pink, base of florets deeper in tint, large creamy white centre; a great acquisition for the exhibition board or the garden. 50c.
- Nelly Hemsley.** Deep maroon with white tips, petals long and straight. 25c.
- NELSON.** The flowers are large and free, petals long and very narrow, color rich crimson, shading to bright magenta. 50c.
- Night.** Intense dark maroon. 25c.
- Northern Star.** Deep crimson; good garden variety. 15c.
- O. F. TROTT.** A large flower. Color creamy white with a suffusion of green in the centre, free flowering and good habit. 25c.
- Oliver Twist.** The most incurved variety we have seen, and of large size. The petals are very finely twisted, very novel and distinct; colour rich crimson scarlet. 35c.
- Osprey.** Yellow, striped scarlet. 10c.
- Peace.** White, good for cut flowers. 10c.
- Pearl.** The colour is rosy pink, tipped with pearly white. 25c.
- PHINEAS.** Crimson, scarlet, very large flowers. 25c.
- Pickwick.** A really good Cactus kind, producing coral and rose-coloured flowers. 35c.
- PINK PEARL.** One of the most showy varieties that we have ever exhibited, the flowers being a pretty shade of rich rose pink, whilst the extreme tips of the florets are blush-white. 35c.
- PINK PERFECTION.** A lovely rose pink flower of large size, with very long narrow petals, a color that is much wanted. 25c.
- Purple Friar.** Purplish magenta, large grand blossoms. 15c.
- Princess.** Deep lilac pink. 25c.
- Prince of Orange.** Yellow shaded orange, fine. 15c.
- Progenitor.** Bright carmine, notched petals. 15c.
- Purity.** Pure white. 15c.
- REV. ARTHUR BRIDGE.** Colour is exceedingly beautiful, being a bright clear yellow, heavily tipped and suffused with bright, yet deep rose-pink; erect flowers, standing up well above the foliage. \$1.25.
- REV. ARTHUR HALL.** The flowers are of the largest size, and the long petals incurve and intermingle, more especially in the older blooms; colour ruby-crimson, relieved at the points of the petals by showing the lighter tinge of the reverse colouring. 75c.
- Radium.** A most pleasing color, being deep orange suffused with rose, and the extreme base of the florets are bright yellow. 25c.
- RAINBOW.** This deserves to be included in every collection, the color being a beautiful soft pink, with a lighter disc. 25c.
- RELIABLE.** A combination of yellow, brick-red and salmon; whilst the bases of the florets being yellow, and tips of a lighter shade, at once mark this kind as a novel and distinct variety. 50c.
- REMBRANDT.** Flowers of large dimension. Large petals with curved ends, cherry-red shaded carmine. \$1.00.
- RENEE MILLOT.** Flowers exquisite and form magnificent. The

CACTUS DAHLIAS - Continued.

- combination of rose-pink, white, yellow and heliotrope produces one of the most taking colours and very much admired. Splendid for exhibition. 75c.
- Rev. D. R. Williamson.** Maroon-crimson, occasionally marked black and magenta. 25c.
- Richard Dean.** Vermilion scarlet tipped white. 15c.
- ROLAND VON BERLIN.** Undoubtedly the best scarlet Cactus Dahlia. Bushes grow 2 and one half feet high and throw their brilliant scarlet flowers at least a full foot above the foliage. 40c.
- Rother.** The best dark red grown. 25c.
- Royal Scarlet.** Huge scarlet blooms, one of the best; early flowering, dwarf plants. 50c.
- Ruth Forbes.** Clear mauve pink, good for garden decoration. 50c.
- Sambo.** A welcome addition to dark colored Cactus Dahlias being a very dark maroon. 25c.
- SATURN.** White at base, deepening to pink at tips, the whole striped, speckled and splashed with vermilion-scarlet; flowers narrow, incurving, and pointed; good habit; the best of the light colored fancies. \$1.25.
- Schneewitchen.** Very fine white. 25c.
- SCHWAN.** In this variety we have by far the best white Cactus Dahlia yet on the market, very narrow elegant petals, with habit of growth all that can be desired. throwing blossoms well above the foliage on long stiff stalks. 35c.
- Serpentine.** Variegating from a rose white to a dark carmine. 25c.
- Shamrock.** Orange scarlet, fine. 25c.
- Sir A. Lamb.** The color of this variety is very distinct being crimson tinged with purple, with light magenta at tips and purple at base of florets. 25c.
- Sirius.** Yellow and scarlet. 25c.
- Sonnenstrahlen.** Canary yellow, 10c.
- STAR.** Color a bright bronze and yellow, the blooms are born on good hard stiff stems, petals slightly incurved. 25c.
- Stern.** The star shaped flowers are made up of long raking petals of the purest canary yellow. Very large 35c.
- Sybil Green.** Ivory white. It is recommended for exhibition being of large build. 25c.
- T. G. BAKER.** A magnificent flower, with long horn-shaped petals, color a beautiful bright yellow, of good size, and splendid exhibition form. 50c.
- THE PILOT.** The color is a bright terra-cotta with yellow at the base the florets are incurved and born on stout stems well above the foliage. One of the best ever introduced. 35c.
- The Queen.** Pure snow white. 25c.
- Thomas Parkin.** A light terra-cotta of the most refined form. The florets are very narrow and very incurved. 50c.
- THOS. WILSON.** A flower of large size, and a perfect model in elegance of form. It flowers profusely and every flower is good. Color soft reddish fawn suffused with

CACTUS DAHLIAS = Continued.

- amber the outer florets being salmon pink. 50c.
- Thuringia.** Light orange red, large. 25c.
- Tricolor.** A Cactus flower of three distinct colors. The ground color is yellow, and white, and it is thickly speckled and striped with claret color. 15c.
- Vesta.** Pretty pink, white center. 15c.
- Victorian.** The finest fancy Cactus yet introduced. The ground color is pinkish white, freely striped and speckled with deep crimson and purple. 75c.
- Violetta.** Violet rose, flushed with crimson. 15c.
- Voiker.** Lemon yellow, free bloomer. 15c.
- W. E. Dickson.** A very bright crimson of good form. 15c.
- W. HOPKINS.** Blackish maroon, handsome. 25c.
- Winsome.** Pure white nice flower. 10c.
- WM. MARSHALL.** A flower of gigantic dimensions, finest possible form and petals. The color is rich orange with bright yellow in the centre. 50c.
- Yellow Gem.** Bright yellow, fine. 25c.
- YVONNE CAYEUX.** Good form, narrow and well disposed petals. Color, immaculate white. \$1.00



DECORATIVE DAHLIAS.

We have observed during the last two seasons a growing tendency on the part of the public who frequent Horticultural Exhibitions to favour the exhibits of huge decorative varieties. This impressed us so much that we decided to grow all the introductions, and to select therefrom those which pleased us in regard to habit of growth—particularly the way in which the flowers were produced upon the plants—floriferousness and general effectiveness in the garden. In size they cannot be equaled and for decorative purpose they are unexcelled.

- A. E. J.** Buff ground striped and speckled with bright crimson. An enormous flower, every good quality. 40c.
- Alphonse Isore.** Rich shade of garnet; backs of petals violet. Very large. 50c.
- ANNELLIE DUFOUR.** Vermilion and fiery red. White tips. 25c.
- ARMANDINE DESLIENS.** Bright pink with a mixture of yellow, large pointed petals, \$1.00.
- Augusta Weber.** Golden yellow, a large full flower of good shape. 25c.

Decorative ~~CACTUS~~ DAHLIAS - Continued.

- Auguste Nonin.** Clear scarlet, very large elegant flower. 50c.
- BEAUTE LYONNAISE.** White edged red, grand flower, perfect stems. 50c.
- Blue Oban.** Lavender blue. 10c.
- BOISDUVAL.** Color, a brilliant violet-red, rich and glowing, producing its flowers on erect stout stems. 50c.
- Catherine Duer.** Bright crimson scarlet color, which lights up especially bright when used in decorations under artificial light. 15c.
- Clarabell.** Very large, splendid flowers, a very pleasing shade of royal purple. 10c.
- Clifford W. Bruton.** A clear rich yellow, perfectly double. 10c.
- COMMANDANT RIVOIRE.** Purple red, white tips. A fine flower, \$1.50.
- Comtesse de Rambuteau.** Plant has stiff erect stems, flower is very large, color yellow 15c.
- COMTE Ph. de SCHRIECH.** Apricot yellow, ground with carmine shadings. 50c.
- ELICE.** Bright pink suffused with a lavender pink, flowers perfect. 50c.
- Domino.** Orange buff, often fuzzy pure white. 25c.
- Duke of Krotzitz.** Very large flower; light shade of pink with silvery tips. 50c.
- ESMERALDA.** White ground, shaded and tipped with pinkish violet. 40c.
- ETOILE ROANNAISE.** Orange yellow, splashed with scarlet; brilliant colors. 50c.
- Feuerregen.** (Fire Rain). A bright scarlet flower borne on long erect stems, most valuable for cutting or garden decoration. 10c.
- Frederic Spittel.** Terra-cotta red and velvety vermilion suffused and tipped white. 25c.
- Gabriel Delaon.** Color a velvety blackish maroon. Extra large. 50c.
- Gigantea.** Gigantic and massive in form. The individual petals are short and it requires many to form such a monstrous flower. Color, a soft sulphur-yellow, distinct and attractive. 40c.
- Gorgeous.** Scarlet, very large. 10c
- Grand Duke Alexis.** Large massive flowers, quilled petals, color ivory-white tinged lavender. 20c.
- Henry F. Michell.** Orange-red and yellow; large and fine. 50c.
- Honoris.** Pale amber, large flowers 10c.
- Jacques Welker.** Magnificent magenta fading into lilac at center; well developed; very prolific. 40c.
- Jean Burel.** Velvety fiery scarlet, flowers colossal. \$1.00.
- MANNE CHARMET.** A seedling from Mme Van den Dael, the flowers measure eight inches across and are borne on long and wiry stems; the exquisite colors are pink, lilac at the edges, pure white towards the center, and light yellow at the margins; each ligula is edged with a Picotee-edge of deep violet red; a remarkable novelty, very free. 35c.
- JOHN R. BALDWIN.** A remarkably handsome variety that will not suffer by comparison with many of the finest imported va-

DECORATIVE DAHLIAS - Continued.

- rieties. The flowers are uniformly large, very compact and with full high center. The color is a yellow-buff, with the outer half of each petals delicately suffused with red in a manner impossible to describe with justice to the flower. 75c.
- Jumbo.** The flowers are deep crimson, elegant in form and most decorative in a vase. 10c.
- Kaiserin Auguste Victoria.** Pure white very rich blooming. 35c.
- King of Cactus.** Coral red, very large. 10c.
- LA FRANCE.** Brilliant rose pink, very large and beautiful blooms. 50c.
- LE COLCSSE.** A gigantic flower, of a reddish color. 75c.
- LE GEANT.** Flowers enormous of a nice dark velvety red. 50c.
- LE GRAND MANITOU.** Flowers enormous, large white petals striped violet red. \$1.50.
- Les ARIÉES.** Very grand flower, cream white, striped and variegated rose and purple. 35c.
- Le Siam.** White variegated purple. 25c.
- LOUIS HARICT.** Lemon-yellow. The flowers are gigantic. Excellent for exhibition purposes. 50c.
- LUCY FEVRIER.** One of the most showy varieties that we have ever exhibited the flowers being a pretty shade of rich rose pink. A magnificent variety for exhibition. 75c.
- MADAME AUGUSTE NONIN.** Lilac shading to clear violet. Flowers enormous. 50c.
- Madame Burel.** The ground color is rose white striped with carmine. 50c.
- Madame Delaux.** Cerise tinted, violet and yellow at center. 35c.
- Mme Hawkins.** Yellow, shaded rose 10c.
- Madame Leroux.** Salmon. 15c.
- Madame L. Guillot.** Orange salmon speckled white towards tips of petals. 40c.
- Madame Louis Tillier.** Salmon shaded bright yellow and copper, edges of a lighter shade. 40c.
- MADAME MARY COLLETT.** The flowers are enormous, of a copper color, changing to different shades of golden yellow. 50c.
- MADEMOISELLE ANDREE PAQUE** Color, pure white, border delicate rose, petals incurved, splendid variety. 25c.
- Maid of Kent.** Crimson and white. 10c.
- MARROCO.** Velvety red and maroon with white points. 50c.
- Minos.** Blackish velvety maroon, good. 15c.
- MILLE E. E. RISSER.** A pure white variety of the finest form, the florets being quilled like the Grand Duke Alexis. 50c.
- MILLE LAURENCE CHABANNE.** Soft rose striped and spotted with crimson, fringed petals. 75c.
- Mistress Douglas.** Soft pink, shaded chamois and copper, Grand flowers. 15c.
- Mlle. Hélène Charvet.** A seedling from that pretty and much admired garden variety Mme Van den Dael, only flowers are much larger and florets of enormous width.

DECORATIVE DAHLIAS - Continued.

- pure white; good vigorous habit. Grand variety for church decoration. 75c.
- Mlle. Lorton.** Canary-yellow, deeper at center. Magnificent blooms. 35c.
- MILLE. MARGUERITE DES BLANC**
An enormous white flower with cream center. Very large petals. 50c.
- MILLE. MARIE HOSTE.** Lilac heliotrope, shaded and lined pure white. 25c.
- Mme A. Lumière:** Unique coloring pure white with violet-red points; a fine contrast of colors; distinct. 35c.
- Mme Aymard.** Very fine shade of mauve. Extra good variety. 75c.
- MME F. MOLLARD.** Pure white, quilled petals form of Grand Duke Alexis. \$1.50.
- MME. GAUTHIER.** White ground shading out to a rose lilac quilled petals. Large. 50c.
- MME. KELLER.** Orange ground, marbled with a fiery red, shaded with violet-varmine; very interesting coloring; large. 40c.
- Mme Louis Perrier.** Carmine, edges white, yellow at center. 75c.
- MME. VERCRUYSSSEN.** A first class garden decorative variety and producing in great abundance fine double flowers, deep yellow ground, distinctly striped and marked a clear and effective red. 50c.
- MME. VICTOR VASSIER.** Bright clear yellow, a very large flower. One of the best. \$1.00.
- MME. MARZE.** A very large and beautiful pure white flower. A fine flower for cutting. 75c.
- Mme Van den Dael.** Soft rose with deeper markings, shading to creamy white in the center, a fine flower for cutting. 35c.
- M. Octave Lemaître.** Clear rose apricot, delicate gold points. 75c.
- Monsieur Burel.** Apricot yellow ground with dark center. 50c.
- MONSIEUR HENRI MENIER** Fiery carmine red. 50c.
- Monsieur Hoste.** Carmine vermilion. 50c.
- MONSIEUR LE CLERC.** Golden yellow, a seedling from Grand Duke Alexis. 25c.
- Mrs. Chas. Turner.** Bright yellow, fine. 10c.
- Mrs. Geo. Reed.** Rose fringed petals. 10c.
- MRS. ROCSEVELT.** Delicate silvery rose, free bloomer, long stems, flowers from 4 to 6 inches across. 35c.
- Mrs. Winters.** A finely formed snow white, the best white grown. 15c.
- Mrs. Woodbridge.** Pure lavender, bronze shadings, large and very free bloomer. 10c.
- Nymphaea.** Color, rich ruby red, shaded rose. 50c.
- Olympia.** Flowers 5 to 6 inches across of a bright rose pink, striped and spotted with crimson. 15c.
- Orientalis.** Violet shading to white large flowers. 10c.
- PAPA CHARMET.** Brilliant coral red, overlaid with darker shade of velvety crimson maroon. Flowers very large. 50c.

DECORATIVE DAHLIAS - Continued.

- Pape Victor.** Maroon, shaded velvety purple and clear violet, rich colors. 40c.
- Papa Treyve.** Brilliant orange-scarlet. The brilliancy of these large flowers, which appear in great abundance on rather dwarf plants, attracts the eye immediately. 75c.
- PERLE DE LYON.** Magnificent variety, flowers, pure white. 75c.
- Perle de la tête d'Gr.** White notched petals. 10c.
- PRESIDENT FELIX FAURE.** Crimson-maroon, very large flowers with large petals. 75c.
- Princessin Louise Victoria.** Giant flowers appear on a dwarf bushy plant early and often. Color rose-pink suffused with white. 25c.
- PROFESSOR MANSFIELD.** A grand "fancy" Dahlia. It is an immense "decorative", seven to eight inches across. The color is a rich yellow with clear white tips, and a slight marking of rosy-red towards the center. 25c.
- SANTA CRUZ.** Clear canary yellow, tipped carmine. Flowers often measure 7 inches in diameter. \$1.50.
- Source de feu.** Deep orange, splashed and streaked with vermilion. A dazzling colouring. 50c.
- SOUVENIR DE GUSTAVE DOUZON.** The flowers produced by this variety as regards size are quite a rival to the sun flower; color of a pleasing and attractive shade of orange red; a sensationnal novelty. 15c.
- Souvenir de M. Silvent.** Yellow lined and striped carmine. 35c.
- SYLVIA.** Soft blue lilac. A grand flower, large petals. 50c.
- The Queen.** Magnificent variety flowers, flushed with pink, quilled petals. 75c.
- Terpille.** White ground striped and speckled with crimson. 35c.
- Ville de Lyon.** Very large white flowers, flushed with pink, quilled petals. 75c.
- YELLOW COLOSSE.** For the decoration of the park, garden, large borders, carriage drives, and other similar positions, those varieties having noble flowers of distinctive colours are absolutely essential to produce the desired effect. It is, therefore, with much pleasure we offer this grand novelty, feeling sure it will be thoroughly appreciated wherever grown. Large double flowers of brightest yellow. Freely produced well above the foliage. Good compact habit. \$1.00



New Gigantic Type of Dahlias Decorative Pæony - Flowered

New Varieties for 1910, 75c. each.

- Baroness de Turckheim.** A beautiful rosy-lilac of splendid form.
- Codsall Gem.** Deep yellow at base of petals, shading to primrose towards the edges of florets. Undoubtedly the best yellow in this section.
- Col. J. St. G. Wolseley.** A rosy-lilac with the points of petals almost white.
- Countess of Lonsdale.** Deep crimson maroon; a lovely flower.
- Hon. Mrs. Howard.** A bright crimson, prettily shaded with maroon.
- John E. Faire.** Maroon, tipped with plum at the end of the petals.
- Lady K. Drummond.** Yellow, changing at the tips of petals to buff, shaded salmon. A really charming flower.
- Lady Muriel Paget.** A beautiful pure white of distinct habit and form.
- Lady Norman.** A pretty shade of apricot, suffused with rose.
- Lady Cleeve.** A beautiful shade of yellow, tinged with pale mauve.
- Lady Savile.** Rich orange scarlet petals tipped buff and slightly reflexed. A really gorgeous flower.
- Lord Elphinstone.** A lovely deep magenta shaded with maroon. A magnificent flower of great substance.
- Miss G. Keeling.** Pale rose prettily shaded lilac. Exceptionally floriferous.
- Mrs. A. McKellar.** A distinct and lovely terracotta, shaded salmon. Although not one of the largest, it is, without doubt, the most beautiful of all, and attracted great attention when exhibited.
- Mrs. A. Worsey.** Rich deep crimson. An immense flower.
- Mrs. Carter Lewis.** A pale lilac, prettily suffused with rose.
- Mrs. G. Drummond.** Apricot, suffused with salmon, distinct and lovely shade. A great acquisition.
- Mrs. H. C. Holder.** A bright crimson scarlet, with broad petals. Very showy.
- Mrs. R. Cooke.** A beautiful rosy carmine, the petals being edged a pale rose.
- Mrs. T. G. Baker.** An immense pure white. A superb variety.
- Mrs. W. E. Whineray.** Rosy-lilac, with yellow at base of petals. A magnificent flower of largest type.
- Mrs. W. Kerr.** A pale pink, suffused rose. A lovely flower of immense size.
- The Tatler.** A wonderfully pretty rosy-crimson, with yellow centre. Very effective.
- Viscountess Wolverhampton.** Charming cerise with yellow at base of petals. A very pleasing flower.
- W. H. Morter.** Scarlet and gold. The brightest and most effective of all.

New Gigantic Type of Dahlias Decorative Paeony-Flowered-Continued.

25c Each

<p>Andenken an Franz Liszt. Rose lilac with white ground, extra large.</p> <p>Baron de Grancy. Beautiful white.</p> <p>Glory of Baarn. Soft pink, very large often 7 inches across.</p>	<p>Konigin Emma. Delicate rose, dark rose maroon, strong stems.</p> <p>Plus X. Deep primrose yellow, very showy yellow.</p> <p>Wilhelm Petzold. Rose lilac with white ground and purple spots.</p>
--	---



SHOW AND FANCY DAHLIAS

"THE FINE LARGE OLD-FASHIONED DOUBLE DAHLIAS".

Notwithstanding the aesthetic tastes of the times and the demands of the fashionable world for Cactus Dahlias, these grand triumphs of the Florists' labours—the Show and Fancy Dahlias—still hold a warm place in the hearts of the people.

My collection contains all the choicest and finest varieties in cultivation.

<p>ACQUISITION. Dark shade of lilac, rich color. 35c.</p> <p>A. I. Livoni. Sea shell pink. 10c.</p> <p>Agnes Little. Purple and white. 10c.</p> <p>Arrabella. Sulphur, tipped pink. 10c.</p> <p>Amazon. Yellow, edged red. 10c.</p> <p>Bijou. White. 10c.</p> <p>Black Hawk. Dark purplish maroon. 10c.</p> <p>BRIDE. Flesh shaded rose lilac. 10c.</p> <p>Burgundy. Dark puce and purple. 35c.</p> <p>Caroline. Flesh shaded rose. 10c.</p> <p>Champion Rollo. Dark orange, a large well-built flower. 20c.</p> <p>Chieftain. Purplish-pink, quite distinct, large size, splendid form. 25c.</p>	<p>Chorister. Fawn color, striped with crimson and rose, extra. 35c.</p> <p>Claire de Lune. Straw-yellow, white tips. 20c.</p> <p>Colonist. Chocolate and fawn. 10c.</p> <p>COLONIST. (English.) Chocolate and fawn, distinct color. 25c.</p> <p>Comedian. Orange, flaked and speckled crimson, tipped white. 20c.</p> <p>Condor. Buff, shaded orange. 10c.</p> <p>Crown Prince. Buff, very fine. 10c.</p> <p>CUBAN GIANT. Dark crimson maroon flowers from 4 to 6 inches across, long stiff stems, a fine flower. 15c.</p> <p>Dandy. Lilac and maroon. 10c.</p>
---	---

Show and Fancy Dahlias-continued.

- DANDY.** (English.) Orange, striped crimson. large. 25c.
- Daniel Cornish.** Terra-cotta red, does not require very severe thinning, distinct and useful flower, large. 35c.
- David Johnson.** A grand Snow Dahlia, quite a new color, salmon shaded rose, fine form and habit. 25c.
- Daydawn.** Combination of buff pink and white. 10c.
- Delicate.** French white. 10c.
- Dorothy.** Fawn, flaked and striped deep maroon. 15c.
- DREER'S WHITE.** Its flowers are of large size, frequently measuring six inches across, and are borne on stout, stiff stems, and while in form it resembles in a general way the popular Grand Duke Alexis, it is of a much more refined and perfect build, and never shows a trace of any color, always being of a pure glistening white. 75c.
- Dr. J. P. Kirtland.** Dark crimson, large. 10c.
- Dr. Keynes.** Fine reddish buff; fine for exhibition. 35c.
- Duchess of Albany.** Pale yellow, striped crimson. 50c.
- ECLIPSE.** Vermillion, striped yellow; very large flowers. \$1.50.
- Edward Schulze.** Blackish purple, large, very good. 15c.
- Elinor Perry.** Terra-cotta red, sometimes sporting streaks of golden yellow. 25c.
- Emily.** White, rose lilac edge. 20c.
- Emperor.** Crimson and white, 10c.
- Eric Fisher.** Buff, striped scarlet 25c.
- ESMOND.** Yellow, large size, a magnificent back-row flower. 35c.
- Ethel Maul.** Pure glistening white, One of the finest in its class. 25c.
- Eugene Mezard.** Dark yellow with scarlet tips and centre very large, extra. 50c.
- Fannie Purchase.** Bright yellow. 10c.
- Fern Leaf Beauty.** Cream white stripes and splashings of deep red. 10c.
- Florence Tranter.** Blush-white, edged rosy-purple; a good refined flower, every flower fit for show. 25c.
- FRANK SMITH.** Dark crimson, pink tips. 20c.
- Flachard.** Intense red, splendid variety. 20c.
- Gaiety.** Yellow, striped red, tipped white. 15c.
- Gem of the Dwarfs.** Dark red and white. 10c.
- General Grant.** Orange, striped chocolate, a noble flower. 25c.
- Gettysburg.** A bright rich pure scarlet, of fine form. 10c.
- Gloire de Lyon.** Very fine and large, pure white, the best grown, 20c.
- GLOIRE DE PARIS.** Deep red, shading to purple tips, immense flowers, the largest of Dahlias, \$1.00.
- GOLDFINDER.** Yellow, tipped red. Very large. 35c.
- GOLD MEDAL.** Bright canary yellow, regularly marked with fine stripes and splashings of deep red. 35c.
- GRACCHUS.** Bright orange-buff, good outline and petals, high cen-

Show and Fancy Dahlias=Continued.

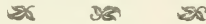
- ter and very constant; a new variety of great merit. 35c.
- Grand Sultan.** Buff, red stripes, rough at times. 10c.
- Henry Glasscock.** Buff, striped crimson, fine variety. 25c.
- Henry Walton.** Yellow edged vermilion, a most perfect exhibition flower indispensable. 25c.
- Hercules.** Yellow ground, striped and speckled with bright crimson. An enormous flower, every good quality. 50c.
- Hero.** Lilac, distinctly striped deep maroon, a noble exhibition flower one of the very best. 50c.
- Imperial d'Australie.** Clear yellow, good. 20c.
- Ivanhoé (V.).** Flesh color, with white center. An enormous flower. 50c.
- JOHAN DOEHLER.** Buff, speckled and striped with crimson, very large and fine. 50c.
- James Bennett.** Yellow, edged crimson. 10c.
- J. Cooper.** White, striped and flaked beautiful lake, a most noble exhibition flower. Extra. 25c.
- John N. Keynes.** A grand yellow. 20c.
- J. R. Tranter.** Magnificent new variety, of a rich terra-cotta color, quite a new shade; one of the finest exhibition flowers ever raised. 35c.
- John Thorp.** White, edged pink, free flowering. 10c.
- John Wyatt.** Scarlet, large and beautiful. 25c.
- Kaiser Wilhelm.** Of Immense size deep yellow, tipped with cherry red. 25c.
- Kanarienvogel.** Large citron yellow flowers. 20c.
- Keystone.** Luac, striped crimson. 10c.
- Lottie Eckford.** White, striped crimson. 10c.
- LUCY FAWCETT.** Sulphur, striped crimson. 10c.
- Mabel.** Lilac, striped crimson; very large, without coarseness, the best of its color. 25c.
- MADAME HEINE.** The largest pure white snow Dahlia grown. The blooms being large are grand for exhibition, and are always deep and good in the center. 50c.
- Mad. Heine Furtado.** Pure white, very large, fine for exhibition. 50c.
- Madame Moreau.** A nice shade of rose pink, very large, beautiful flowers. 20c.
- MME. MARIKA ANAGNOSTAKI.** White ground, shading out to a beautiful rose-pink. A fine large exhibition flower. \$1.00.
- Mandarin.** Yellow, striped and mottled purple-crimson. 25c.
- MARINER.** Deep fawn, edged scarlet; fine. 25c.
- Mary D. Hallock.** Yellow quilled. 10c.
- Matthew Campbell.** Bright buff striped with crimson. Extra. 35c.
- METEOR.** A large crimson colored flower, measuring from 5 to 6 inches across. 10c.
- Miss Browning.** Yellow, tipped white. 10c.
- Miss Cannell.** Cream, heavy edged purple, still in the very front rank for exhibition, first-class. 50c.

Show and Fancy Dahlias—Continued.

- Miss. Miller.** Lemon shading to white. 10c.
- MME LILY LARGE.** Yellow, striped and speckled vermilion. Very large flower. 50c.
- MME. ED. NOEL.** Cerise striped crimson. Extra fine. 50c.
- MME. HENRIETTA SCALABRE.** The ideal white Show Dahlia. Grand flower, centre well up. sturdy erect habit, fine long stems superb for cutting. 75c.
- Modesty.** Blush, light center. 10c.
- MONSIEUR BURREL.** Large flower, pure violet. 50c.
- Mont Blanc.** Pure white, extra large 20c.
- Mr. Chamberlain.** Rich purple maroon. A fine large exhibition flower. 25c.
- Mr. CONSTANT VARIN.** Violet maroon, white tips, large. 25c.
- Mrs. Campbell.** Pale yellow, shaded fawn, backs of florets tipped and streaked rosy purple. 35c.
- Mrs. Chas. Noyes.** Light fawn. 10c.
- Mrs. Gladstone.** Delicate blush, the finest show Dahlia raised. 25c.
- Mrs. Humphries.** White, tipped rose very large and fine. 15c.
- Mrs. Langtry.** Yellow, edged crimson. 10c.
- Mrs N. Halls.** Bright scarlet, tipped white. 25c.
- Mrs Saunders.** Yellow tipped white. 10c.
- Mrs. Wm. Treseder.** Creamy yellow heavily edged with rosy-pink. 15c.
- Muriel.** Large clear yellow. 20c.
- Muriel Hobbs.** Yellow. 20c.
- XANSEN.** Scarlet, ground shading to deep orange at tips. 50c.
- NORMA.** Orange shading to buff. The colorings are very beautiful. large. 20c.
- Nugget.** Deep orange, tipped and veined scarlet, high centre, large size, one of the best exhibition flowers. 15c.
- Optata.** Large pure white flowers, good. 10c.
- Ovid.** Large and handsome violet purple flowers. 20c.
- PAUL DAVID.** The largest pure red show Dahlia grown, in the very front rank for exhibition, first-class. \$1.50.
- Peacock.** Dark maroon, tipped white. 20c.
- Penelope.** White, edged lavender. 10c.
- Penelope.** (English.) Fawn, shaded amber, and tinted yellow, good petals, large. 10c.
- Perfection.** Orange buff, good petal and outline. 20c.
- Peri.** White, tinged purple. 15c.
- PERRY.** White with violet points, large and beautiful. 25c.
- Pink Dandy.** Pink, good. 25c.
- Pioneer.** Very dark maroon. 10c.
- Pleasance.** Bright crimson scarlet, a very fine variety. 35c.
- President Brogniart.** Ivory color with lighter edge, very large. 15c.
- Professor Fawcett.** Dark lilac, chocolate stripes. 25c.
- QUEEN OF THE BELGIANS.** Cream and pink, grand large exhibition flower; quite indispensable. 25c.
- Queen Messenger.** Purple violet with light violet edge. 10c.
- Rebecca.** Lilac, striped crimson, shell petal. 25c.

Show and Fancy Dahlias-continued

- Rev. J. B. M. Camm.** Red and buff sport. 10c.
- Robin Adair.** Terra-cotta. 10c.
- L. Ch. Georges Wyatt.** Large scarlet flowers, with orange ground. 15c.
- Schah Von Persien.** Citron yellow with purple spots and white points and purple with white points. 15c.
- SIDNEY HUMPHRIES.** Clear lilac in color; with good petal and outline; good center; first rate back row flower. 25c.
- SIR RICHARD WALLACE.** Flowers very grand. Color violet maroon, intense and velvety. 50c.
- S. Mortimer.** Pink ground, flaked crimson, often self. 15c.
- Snow White.** Very clear white. 10c
- Southern Queen.** Lilac, shaded and pencilled deep pink. 25c.
- Startler.** Purple and white. 10c.
- Statesman.** Purplish maroon. 15c.
- Sunset.** Yellow flaked and striped scarlet. 25c.
- SURPASSE COLOSSE.** Color, scarlet-carmine; flowers large; form same as Gloire de Paris. \$1.00
- Thos. Hobbs.** Purplish rose or magenta. 15c.
- T. W. Girdlestone.** Lilac, flaked deep crimson. 25c.
- Victor.** Dark maroon, of the finest build and outline, noble exhibition bloom. 35c.
- Victor Duflot.** Very dark purple. An immense flower. 75c.
- Virginalis.** Pure white, nice flower. 10c.
- Watchman.** Golden yellow, striped bright crimson. 25c.
- W. H. WILLIAMS.** Brilliant scarlet, large flower of splendid form, every good point, quite indispensable to exhibitors; extra fine. 15c.
- Wizard.** Fawn, striped maroon, tipped white. 10c.
- W. P. Laird.** Delicate rose mauve, most distinct and pleasing color, of finest exhibition form. 15c.
- W. W. RAWSON.** The color is pure white overlaid with amethyst-blue; this wonderful combination gives it the appearance of a delicate lavender. Flowers often measure 7 inches in diameter and are borne on stiff erect stems. 75c.



POMPON DAHLIAS

These are superb for cutting, producing flowers in enormous quantities, and being small and compact they last a long time when cut. When in full bloom they have a telling effect in the garden, and are such profuse bloomers that each plant resembles a huge bouquet of most brilliant flowers.

The following list is most complete and select:

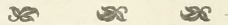
- Admiral Dott.** Pale rose. 10c.
- Alewine.** Bush white, lavender tips. 10c.
- Amber Queen.** Rich clear amber, shaded apricot, good habit. 10c.
- Archilles.** Pinkish lilac. 10c.

Pompon Dahlias - Continued.

- Bacchus.** Bright scarlet, perfect in form, petal and outline, indispensable to exhibitors. 15c.
- Beauty Inconstant.** Light orange and white. 10c.
- Bell of Springfield.** Red, smallest grown. 10c.
- Blumenfalter.** Lilac, close quilled. 10c.
- Blarka.** Soft rosy-mauve. 10c.
- Blutroschen.** Dark blood red with rose points, very beautiful. 15c.
- Brunette.** Carmine and white. 10c.
- Catherize.** Lemon yellow. 10c.
- Cohamet.** Rose and white. 10c.
- Darkest of All.** Almost black. 10c.
- Darkness.** Dark maroon. 10c.
- Distinction.** Cerise crimson, flushed with magenta 10c.
- Dora.** Pure white, good. 15c.
- Dr. Jim.** Purple, shaded white, 10c.
- E. F. Junker.** Pale amber, suffused rose, still one of the very best for exhibition or garden. 20c.
- Elaine.** Pure white, a perfect snow-ball, small perfect bloom. 25c.
- Ernest Harper.** Coral red, dwarf and floriferous. 25c.
- Eurydice.** Blush tipped purple. 10c.
- Fashion.** Orange, fine. 10c.
- Florence.** Deep lilac shade, fine. 10c.
- Geo. Brinckman.** Pure white. 10c.
- Gypsy.** Rich plum, very dwarf. 10c.
- Golden Gem.** Pure yellow. 15c.
- Gold Pearl.** Crimson, gold tips. 10c.
- Grauserwein.** Crushed strawberry. 10c.
- Gretchen Heine.** Blush white with light rose tips. 15c.
- Guiding Star.** White notched petals. 10c.
- Hedwig.** Reddish golden brown. 10c.
- Iolanthe.** Orange buff, often blotched white. 15c.
- Irene.** Rosy purple tipped white. 15c.
- Jessica.** Amber, edged red. 10c.
- Joseo.** Dark blood red. 20c.
- Kl. Christine.** Rose white, with scarlet edge, very beautiful. 10c.
- Klein Domiter.** Orange buff. 10c.
- Kleine Martha.** Lilac and white. 10c.
- La Petite Barber.** White, fine. 10c.
- Leuchstern.** Dark yellow with bright scarlet edge. 10c.
- Liebe Kleine.** Delicate rose lilac with white centre, good. 10c.
- Little Herman.** Maroon and white. 10c.
- Little Mabel.** Amber. 10c.
- Locket.** White, clouded crimson. 10c.
- Lydia.** Rose white, with violet purple spots and stripes. 10c.
- Marguerite.** Deep rose. 10c.
- Mary Kirk.** Soft yellow, perfect form for exhibition. 15c.
- Minnie.** Rose amber, quilled. 25c.
- Mlle. Valentine Faconet.** White, splashed and striped rosy lake. 10c.
- Mrs. Cleveland.** White with rose tint. 10c.
- Orpheus.** Yellow, free flowering. 10c.
- Palmira.** Very dark crimson maroon. 10c.
- Pauline.** Rosy lilac. 15c.
- Princesse Rosine.** Salmon pink. 10c.
- Phoebe.** Orange and scarlet. 10c.
- Raphael.** Dark maroon. 10c.
- Red Indian.** Deep coral red. 10c.
- Revenge.** Rich mauve and purple lake. 15c.
- Rosea.** Dark rosy cerise, grand for exhibitors. 15c.

Pompon Dahlias - Continued.

Rose Bud. Rose, lilac and white. 10c.	Thalia. Rose pink, with well defined eyes of ivory white. 10c.
Rosettchen. Delicate rose, very rich. 10c.	Tullia. Purple carmine. 10c.
Sappho. Maroon and white. 10c.	White Button. White, edged lilac. 10c.
Snow Clad. White, free bloomer. 10c.	Zitronenfalter. Golden yellow. 20c.
Sunshine, Geranium scarlet. 10c.	Zoe. Yellow, white tips. 10c.



MIXED DAHLIAS BULBS.

I have a lot of bulbs which have got mixed which I will sell for

50c a Doz'n. \$3 00 a Hundred.

All Lovers of Dahlias

will find it of benefit to join

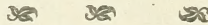
THE NEW ENGLAND DAHLIA SOCIETY

DUES \$1.00 PER YEAR.

Apply to

LORING M. BATES, Secretary,

WEST BRIDGEWATER, MASS.



To all Local Lovers of Flowers

I would recommend

THE NEW BEDFORD HORTICULTURAL SOCIETY

MEMBERSHIP FEE \$1.00.

WM. H. RICHARDSON, Secretary,

281 PARK ST., NEW BEDFORD, MASS.

