

Historic, Archive Document

Do not assume content reflects current scientific knowledge, policies, or practices.

62.23

Seed catalog

1910

Annual =
DESCRIPTIVE
Catalogue

Telephone
86



Coles County

SEED FARM

JAMES O. TOLAND

PROPRIETOR

HUMBOLT, ILL.

INTRODUCTION



THE years have rolled quickly by since we commenced our seed business in a modest way. The first issue of a catalogue was two pages, giving a list and prices of seed sold. Since that time my catalogue has grown each year until it has reached its present dimensions. My steady endeavor has always been for constant improvement, both in the methods of my business and quality of my seeds. The best evidence that I have succeeded in this is my large and constantly growing trade. I now take pleasure in presenting my Annual Descriptive Seed Catalogue, and thank my friends and patrons for their liberal patronage which has resulted in a steady and constant increase in my business. I appreciate this, and assure my customers that I shall always endeavor to merit their patronage and support by supplying them with the best possible seed at as reasonable prices as first class seed can be sold.

Hoping the new year will bring an increasing measure of happiness to all my customers, I am,

Yours sincerely,

JAMES O. TOLAND.

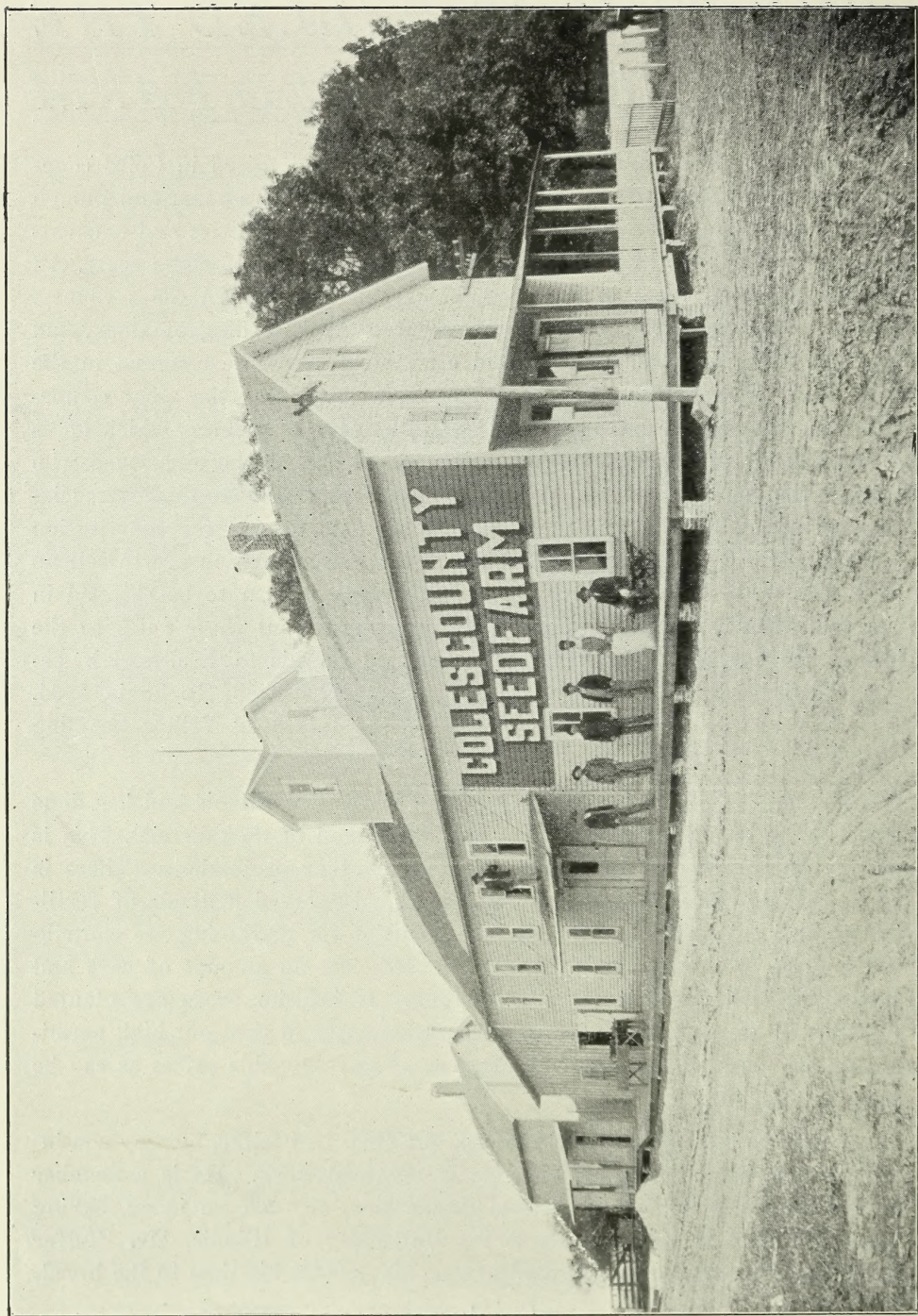
Humboldt, Ill., Jan. 1, 1910.

WHY THIS IS CALLED THE COLES COUNTY SEED FARM

The proprietor, James O. Toland, was born and raised in Coles county and was one of the youngest boys that ever handled a team and plough in the county. He drove an ox team to break the wild prairies and cultivated corn with a horse hitched to a bar plough at the age of eight years. All his life has been spent in the deep, black soil of northern Coles county. Having experienced the great improvement of the breeding of stock, and so little attention given to corn and other field seeds, he emerged in the seed business about fourteen years ago; notwithstanding the great competition in this field he has succeeded in building up a business which holds a front rank for honest, efficient work. He is one of the eight men who framed the constitution and by-laws of the Seed Corn Breeders' Association at Springfield, Ill., 1900, and the fourth man to sign the constitution and by-laws. Some of the chief features of this association are to sell no seed corn only that grown by the breeder, and all corn to be shipped in the ear unless otherwise ordered. He has carried out these rules to the letter. He has been very honorably rewarded for his faithful work by being awarded the Gold Medal at the Louisiana Exposition, St. Louis, 1904, for the varieties of corn which he breeds, the Improved Yellow Leaming and Boone County White.

He has one of the largest seed houses in Central Illinois and has done more to the breeding of corn than any other man in that district. This is an age of progress in farming as well as in other professions. There is an increasing demand for better field seeds. Improved methods of fertilization and cultivation and multiplied facilities for marketing are contributing much to satisfy this demand. Nevertheless no amount of care and cultivation will count if you start wrong. If inferior seeds are planted failure will be the outcome. His aim is constantly to turn out high germinating and pure bred seeds to the farmer at as reasonable prices as can be sold for the quality.

I wish to introduce to my patrons, Mr. Geo. L. Pfeifer, Jr., my son-in-law, who is in co-operation with me in my seed work. He is a member of the Illinois Seed Corn Breeders' Association, also a corn judge, having been a student in Agriculture at the University of Illinois. Mr. Pfeifer is interested in seed corn and seed grass. He devotes his time to the breed-



One of the Largest and Best Equipped Seed Houses in Illinois for Curing Field Seeds

ing of our Ried's Yellow Dent Variety, having the honor of continuing Mr. Reid's own Breed Plot in connection with Illinois Experimental Station. He also manages our branch warehouse at Arcola, Ill.

I Prepay Shipping Charges

On all garden seeds, except when it exceeds four pounds of beans, corn, peas, also field seeds. In such instances as you order field seeds of any quantity I reserve the privilege of inclosing in the bags or crates such small packets as may be ordered, as it does not increase the transportation charges and in consideration of this I will add enough extra seeds to fully repay customers for this favor. This prepayment applies to the United States only.

SHIPPING CONDITIONS.

All seed corn to be shipped in the ear unless otherwise ordered.

PRICES IN THIS CATALOGUE are subject to market changes.

Goods are shipped by freight F. O. B. cars at Humbolt unless otherwise ordered.

There is charge for bags on all amounts of seed over one-half bushel. We furnish new cotton bags at the lowest possible rate, 25 cents each, holding two and one-half bushels.

When corn is shipped in the ear it is put in crates holding one bushel, for these we charge 25 cents each, the actual cost of same.

Send draft, express order or postoffice orders.

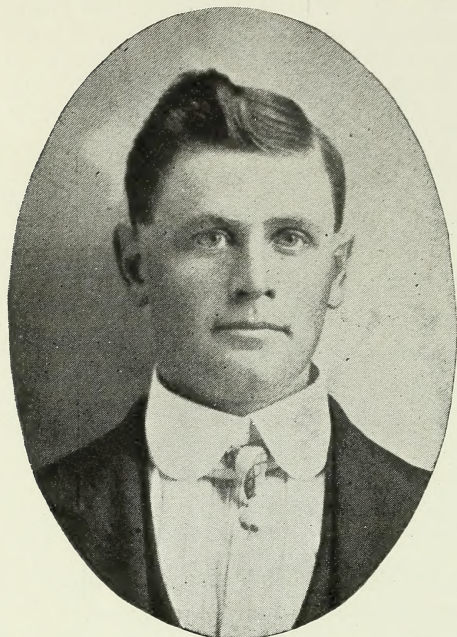
I sell no amount of seed corn, in ear less than a bushel. The reason for this is that a satisfactory test of seed corn cannot be made when small amounts are planted as it has been tested and found to degenerate.

I will furnish any amount shelled and graded as small as one-eighth of a bushel. We shell no less than ten bushels at a time, so it is thoroughly mixed and there is no danger of it degenerating.

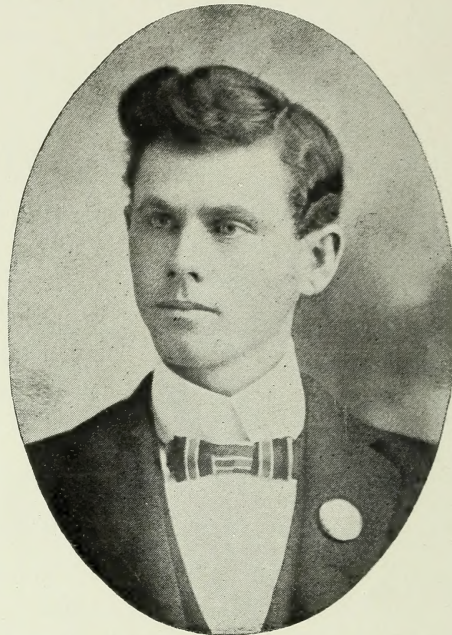
My terms are cash with order. Every order will be acknowledged when received. I will notify you when shipment is made.

Guarantee. While we exercise great care to have all seeds pure and reliable, WE GIVE NO WARRANTY express or implied. If the seeds are not fully satisfactory they must be returned to us AT ONCE at our expense and the money will be refunded.

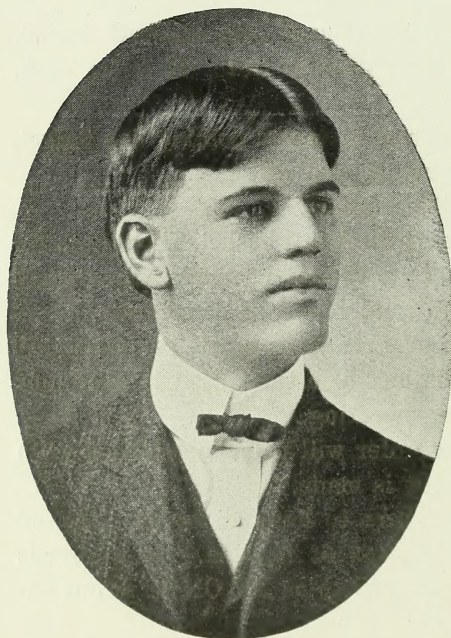
*Some of the Men who have Rendered Good Service in the Growing and Car-
ing for Field Seeds for the Coles County Seed Farm*



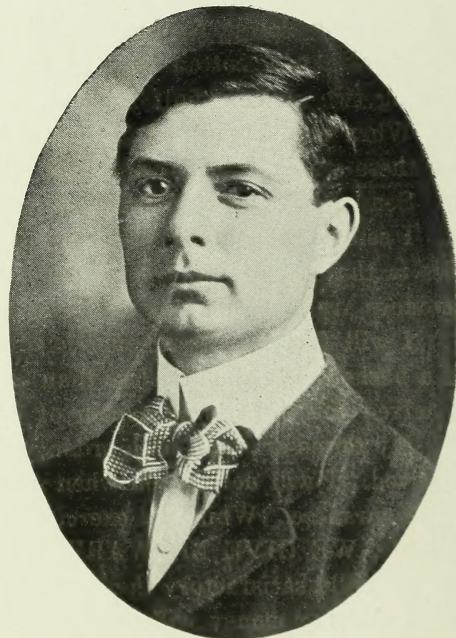
CHARLES B. TOWNSEND



ROBERT L. TOWNSEND



GEORGE L. PFEIFER, Jr.

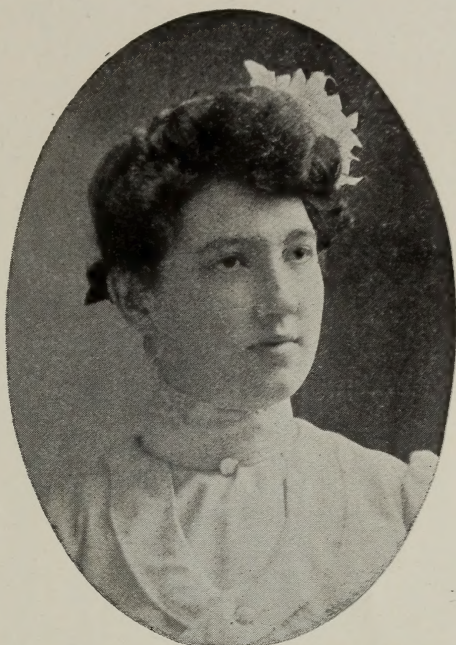


JACOB REITZ

*Some Ladies who have faithfully Cared for Correspondence and Orders of
Patrons of the Coles County Seed Farm*



MISS JOSEPHINE M. MURPHY



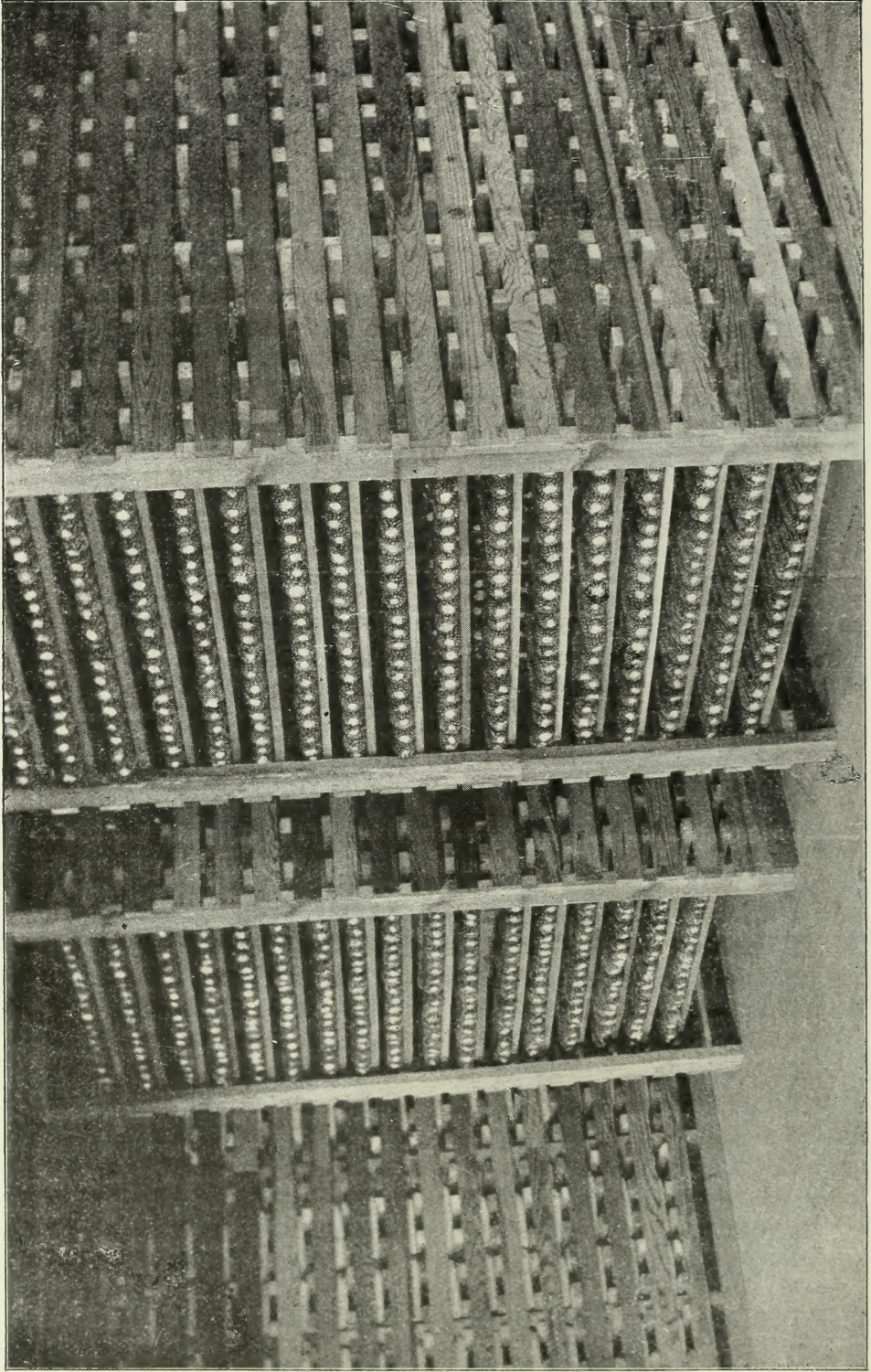
MRS. NELLE TOLAND PFEIFER



MRS. NELL C. HARRINGTON GRANT



MISS MARY HARRINGTON



How Seed Corn is Cured on the Coles County Seed Farm

TOLAND'S IMPROVED SEED CORN.

I breed only three varieties of seed corn, the Boone County White, Improved Yellow Leaming and Ried's Yellow Dent. The greatest care is exercised in the cultivation and selection of my seed corn. All barren and defective stalks are cut out when it is growing, leaving only those bearing good ears. As the husking wagons come in from the fields the seed is selected and placed on separate tiers in racks as illustrated on another page. There are windows at each end of the rack, which can be opened on bright, dry days, and on cold, damp days the house is heated to prevent freezing and moisture. In this way the vitality of the seed cannot be destroyed.

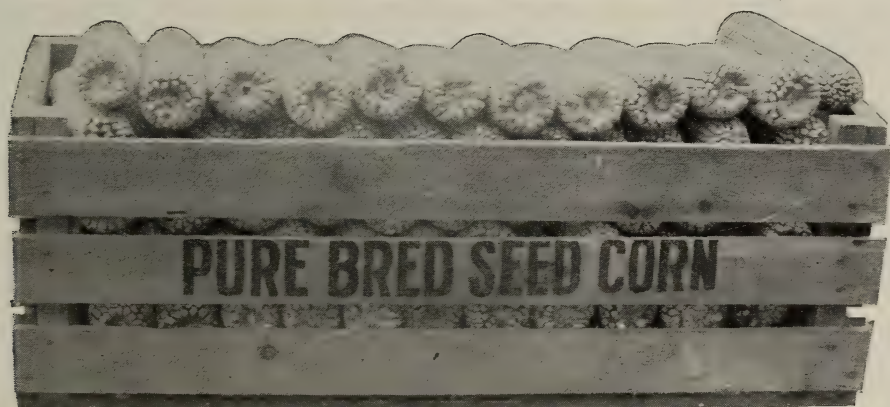
The corn is all very carefully re-sorted before it is shipped and put in crates made expressly for the purpose, holding one bushel or 70 pounds net.

The great demand for my farm seeds is the best evidence of their quality. I was unable to supply the demand last year, and returned to my customers more money than my sales amounted to.

BOONE COUNTY WHITE.

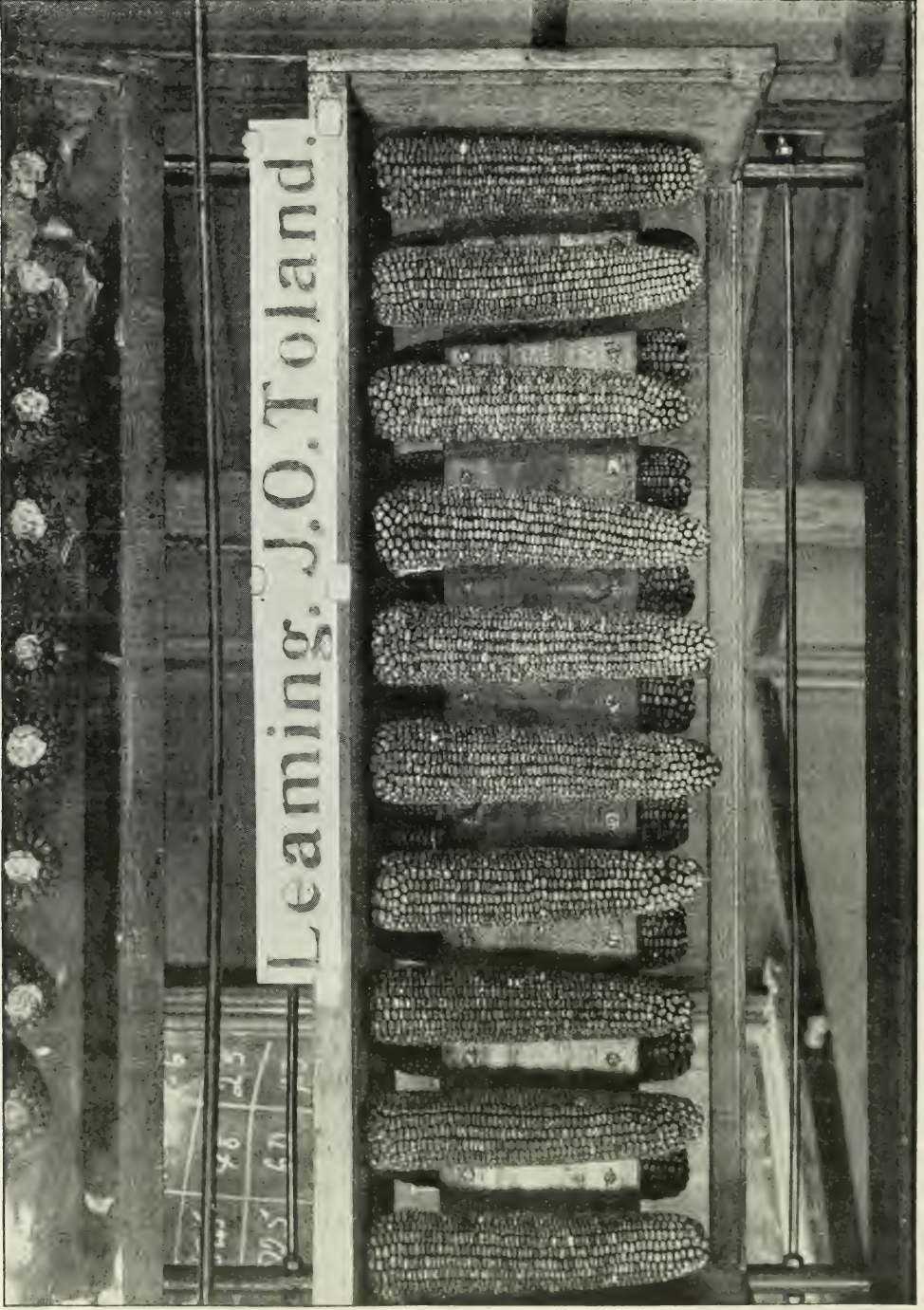
A standard variety of white corn that has held a high place in the list of white ear corn ever since its introduction.

I have made a specialty of breeding Boone County White Seed Corn



BOONE COUNTY WHITE

for years and have experimented with eight other varieties, but have found the Boone County White superior to all others. Why? On account of its fine quality and large yield. It is famous because of the large amount



Sample of Toland's Yellow Leaming at the University of Illinois



1908



1909

GEORGE TOLAND PFEIFER, "The Youngest Seedsman," Grandson of Jas. O. Toland



THE JUNIOR SEED INSPECTOR

of protein it contains, which is so necessary in raising young stock and feeding work horses.

Boone County White has been tested in Ohio, Indiana, Illinois and Kansas with splendid results. It makes a strong and vigorous growth, making it valuable for ensilage. Under favorable conditions it matures in about one hundred and ten to one hundred and fifteen days. No other variety of white corn has shown like results and we most heartily recommend it to the farmer and stock raiser. Price per bushel - - - - \$2.50

One-half bushel, \$1.50; one-fourth bushel, 75c; one-eighth bushel, 50c. Shelled and graded; crates and bags free.

DESCRIPTION OF TOLAND'S IMPROVED YELLOW LEAMING.

I have bred this variety for 12 years, and it is universally recognized as being one of the best varieties bred. It is a variety rich in oil and protein, produces more fat than any other variety of yellow corn. Leading all other varieties in this respect. it is most valuable for feeding purposes.

It is a rich, deep, golden yellow color, and slightly tapering ears. The ears are from 9 to 11 inches in length, and 16 to 24 rows around. The grains are very deep and has a medium sized cob. It is a medium early variety. Price, per bushel - - - - - \$2.50

RIED'S YELLOW DENT CORN.

Ried's Yellow Dent is a medium early variety, a medium size ear with a bright yellow color, having a deep grain and very small red cob. It has from 18 to 22 rows of kernels, and cobs are nearer filled at both ends than any other variety. This variety is adapted to soil and climate conditions as far north as Iowa. In the last four years it has been one of the best yielding varieties of yellow corn. Price, per bushel - \$2.50

TOLAND IS THE LARGEST BROOMCORN SEED GROWER IN THE WORLD, GROWING ONLY THE STANDARD VARIETIES. HE HAS MADE A SPECIALTY OF BROOMCORN SEED FOR THIRTY YEARS, SELLING NO SEED EXCEPT HIS OWN GROWING, CLEANING ALL SEED AND PREPARING IT FOR PLANTING BEFORE SENDING OUT.

BROOMCORN CULTURE.

Broomcorn is a tropical plant. adapted to hot, dry weather, much as sugar cane or sorghum is. It is produced with good results on any good



TOLAND TREATING SEED FOR SMUT.

Toland has been experimenting with smut in broomcorn for many years, but in the last three years he has found the most satisfactory preparation which frees it almost entirely from smut. It has been brought to our notice that fields planted from inferior seed were full of smut, while a field adjoining which was planted from our seed remained free from smut, the other field having no effect upon it throughout the entire season. There is a great deal of misunderstanding as to how Toland treats his seed for smut. He uses three chemicals in a liquid form. The seed is put in boxes and planted immediately, not even allowed to stand over noon. This entirely frees the Broomcorn seed from smut, and very little or any smut appears in the next crop. Occasionally there are some smut heads when it is planted in a field where there has been corn or oats which had smut in it.

corn land, the quality of the brush depending mainly on the soil and climate.

The preparation of the soil should have careful attention; all stalks and other field rubbish should be removed; the ground should be broken up as soon as the field is in proper condition; plow the same as for Indian corn; let it stand until about the 20th of May, then disc and give vigorous harrowings; if it is cloddy, roll until it is fine and well broken up. It should be in the same condition as soil for a seed bed for wheat.

The seed should be thoroughly cleaned, using one bushel to twenty acres. Adjust the planter three feet, four inches wide and drill from 60

TOLAND'S
EXHIBIT

AT THE

LOUISIANA
PURCHASE
EXPOSITION

St. Louis

1904

WHICH WAS AWARDED
THE

GOLD MEDAL

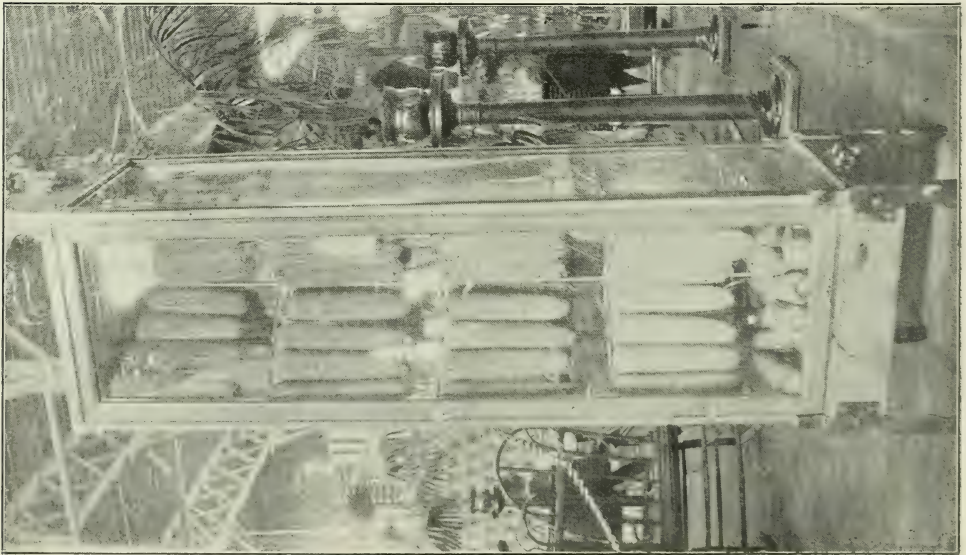
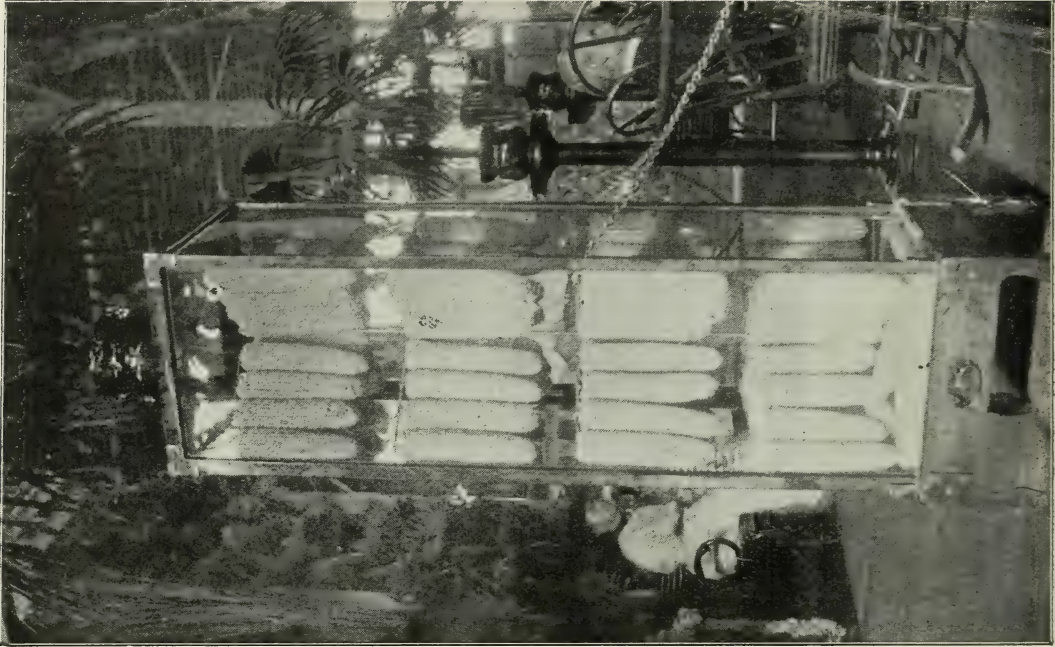
BOONE COUNTY

WHITE

AND

YELLOW
LEAMING

CORN



Shed No. 1 shows the manner in which the broomcorn seed is shelved for curing. After it is thoroughly cured it is seeded and placed in bags, in our seed house. The bags are arranged in such a manner separately so the air may pass around and about them.

to 65 seeds to the rod in the row. It should be planted from one and one-half to two inches in depth.

Surface cultivators are generally used, but in case the surface is damp use Eagle Claw or three shovel cultivator.

NOTICE.

Owing to the increasing demand for my broom corn seed, it is all sold for this season. I wish to thank my patrons for their esteemed favors and will gladly appreciate your orders for 1911.

TENNESSEE EVERGREEN.

The most popular variety in the market is the Tennessee Evergreen. The seed was obtained from Tennessee, then bred and climated thus making the brush of better quality. In growing it all imperfect stalks are cut out and the brush is raised and cultivated especially for seed.

Price, per one-half bushel, \$3.00; per bushel - - - \$5.00

AUSTRIAN BROOMCORN SEED.

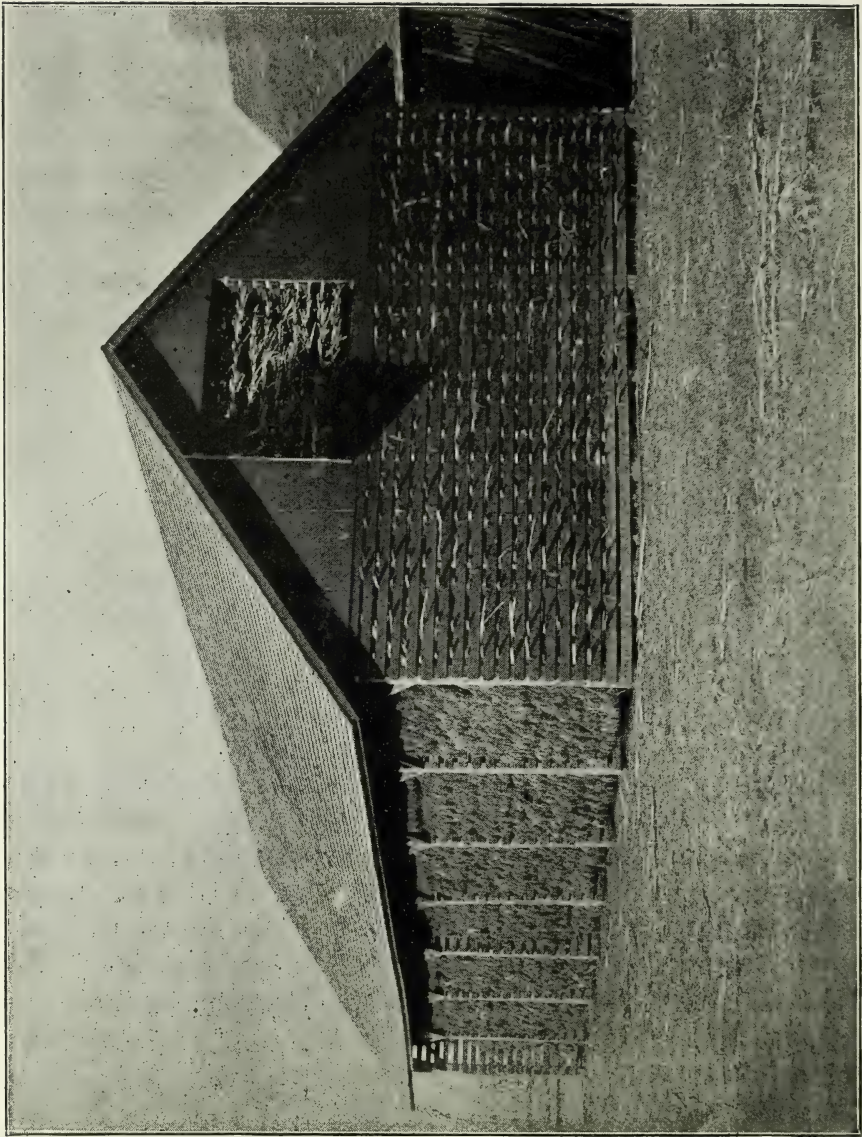
Toland introduced the Austrian variety eight years ago. In the last three years it has given excellent satisfaction. It is most desirable for hurl, as it produces long brush of a fine green color. Toland cut five acres of this variety for brush this year and it produced 1047 pounds per acre of nice hurl brush.

Price, per one-half bushel, \$3.00; per bushel - - - \$5.00

REFERENCES: Thomas Lyons & Co., Arcola, Ill., President of the Arcola State Bank; A. J. Wesch & Co., Arcola, Ill.; W. M. Checkley, Mattoon, Ill., Postmaster; Geo. Harryman & Bros., Charleston, Ill., also Wichita, Kan. These men are all large dealers in Broom Corn Seed with many years experience.

SEED OATS.

Owing to the demand for good seed oats we have purchased an extra select stock of Silvermine Oats to offer our customers. These oats were grown in Wisconsin. A change of oats is very important. It will pay you to renew your seed this year by sowing some of our improved varieties and thus increase your yield.



Shed No. 1

SILVERMINE.

A very popular variety. A fine white oats, perfect in growth and yield, well adapted to the different soils and climates. Produces a stiff straw. The grain is heavy, plump and has a very thin hull. Very valuable for feeding purposes. Wisconsin grown, price, re-cleaned, 1 bushel \$1.00; 10 bushels or more, 80 cents per bushel. Home grown, price, re-cleaned, 1 bushel 75 cents; 10 bushels or more, 65 cents per bushel. Extra charges for bags.

BIG FOUR.

Big Four oats are a standard variety and have long been a favorite with many. They are a large, heavy, white oat, with thin hull and coarse, stiff straw, medium, early in season, and a good yielder.

TEXAS RED OATS.

Red Texas rust proof oats are very popular throughout the south and especially preferred for low grounds or in situations where other oats are much inclined to rust. They are of especially early maturity and one of the greatest oats to "stand up" under all conditions we have ever raised.

Prices, 1 bushel, 75c; 10 bushels or more - - - - - 65c

POULTRY FOOD.

This is comprised of small grains of corn, oats, rye, soja beans, millet, sunflower and broomcorn seed. This is absolutely free from grit or dirt; thoroughly cleaned. Excellent for poultry.

Prices on application.

GERMAN MILLET.

THERE IS NOTHING LIKE MILLET FOR SOWING TO COVER SHORTAGE IN YOUR HAY CROPS.

The true millet when properly grown and handled, makes an enormous yield, and without impoverishing the soil to any great extent. To get these results, however, German Millet must be sown thickly, one bushel to the acre, and the crop cut while in bloom, before the seed hardens in the head. Sow when weather gets warm in May or any time during the summer until the first of July. Prices on application.

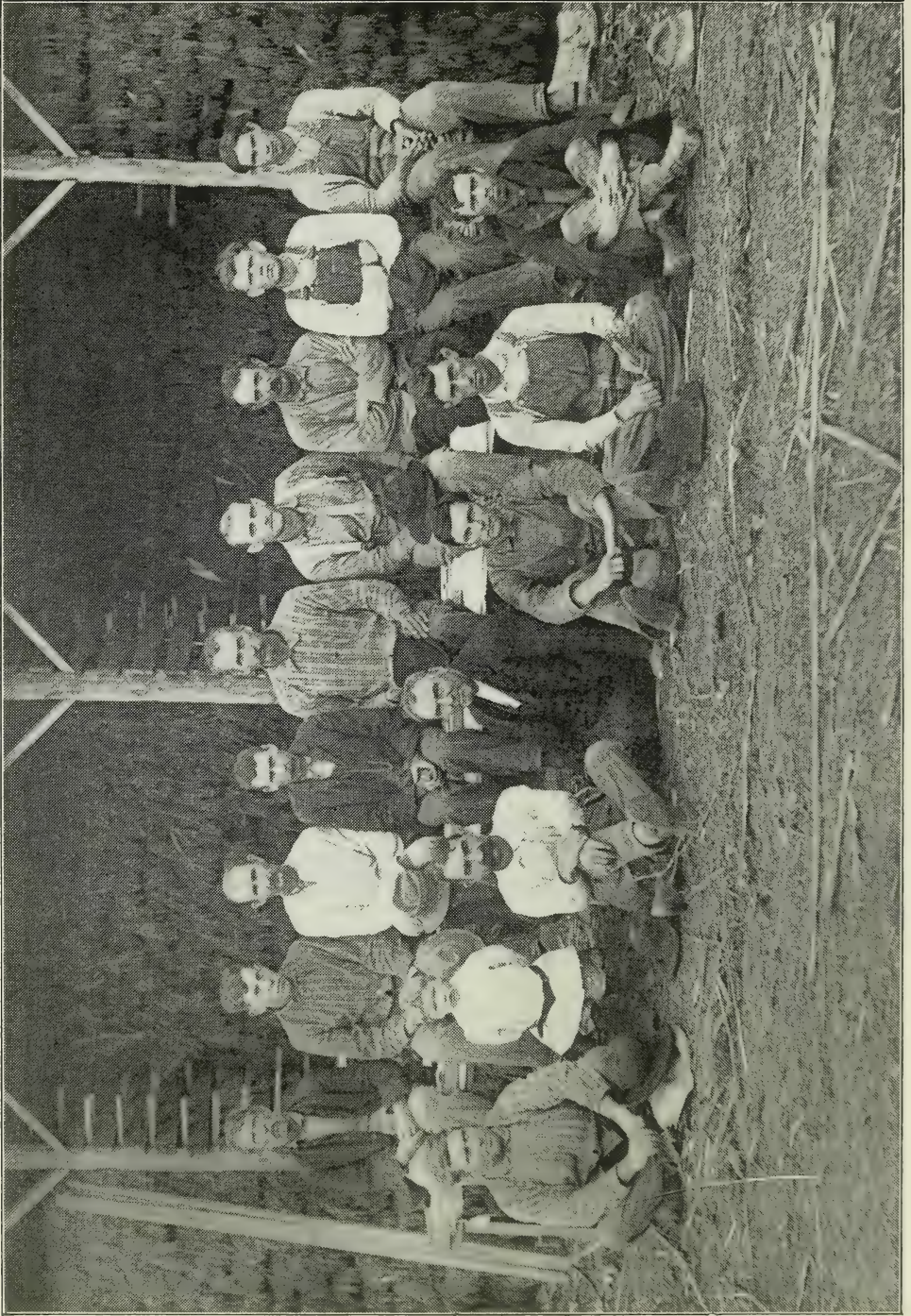
JAPANESE MILLET (BILLION DOLLAR GRASS).

Originally from Japan; truly a marvelous grower and a luxuriant stooler. Grows about four feet in height. Excellent for feeding horses, cattle and sheep. It pays to sow Japanese Millet. Prices on application.

BLUE GRASS SEED—EXTRA FANCY KENTUCKY.

An excellent pasturage and lawn grass, succeeding best on limestone land, but does well on stiff or clay and medium soils. It is rather sensitive to heat but not to cold and on this account does best in the fall, winter or spring. It grows slowly at first, forms a very compact turf, making a very fine pasturage when once established.

Price, per lb., 25c postpaid; per 1-2 bushel, \$1.50; per bushel, \$2.60



Shed No. 2

Shed No. 2 shows our harvesters, who are select, faithful men, many who have been, with me for years in this work, at the close of another broomecorn seed harvest, on the evening of October 5th, 1908. The men are all tired from the long harvest, and Mr. Pfeifer took this view of them just as the sun was setting. Geo. Toland Pfeifer, the junior member of the firm, is also on the scene to see that all things are well done. While this picture was being taken, there was also a busy scene in the culinary department of the Seed Farm; the mistress preparing the "annual send-off" for the faithful harvesters, of oysters, roast fowl, fruits, and all the good eatables such men deserve.

TIMOTHY.

Timothy makes one of the most popular, nutritious and salable of hay grasses. It is best adapted for sowing on clays or heavy loams, low lands, or in mountainous districts, although it will do well on any good, stiff, loamy soil, provided the moisture is abundant.

The stand of timothy will be injured if grazed or cut too closely. The yield of hay on good ground is from one and one-half to three tons per acre. The practice of sowing common red clover with timothy is not advisable as they do not ripen together, the clover being ready two or three weeks before the timothy, thus either one or the other must be cut at a stage which will not give the best results.

Timothy sown by itself requires to be sown at a rate of one bushel to six acres.

Will quote prices on request.

DWARF ESSEX RAPE SEED.

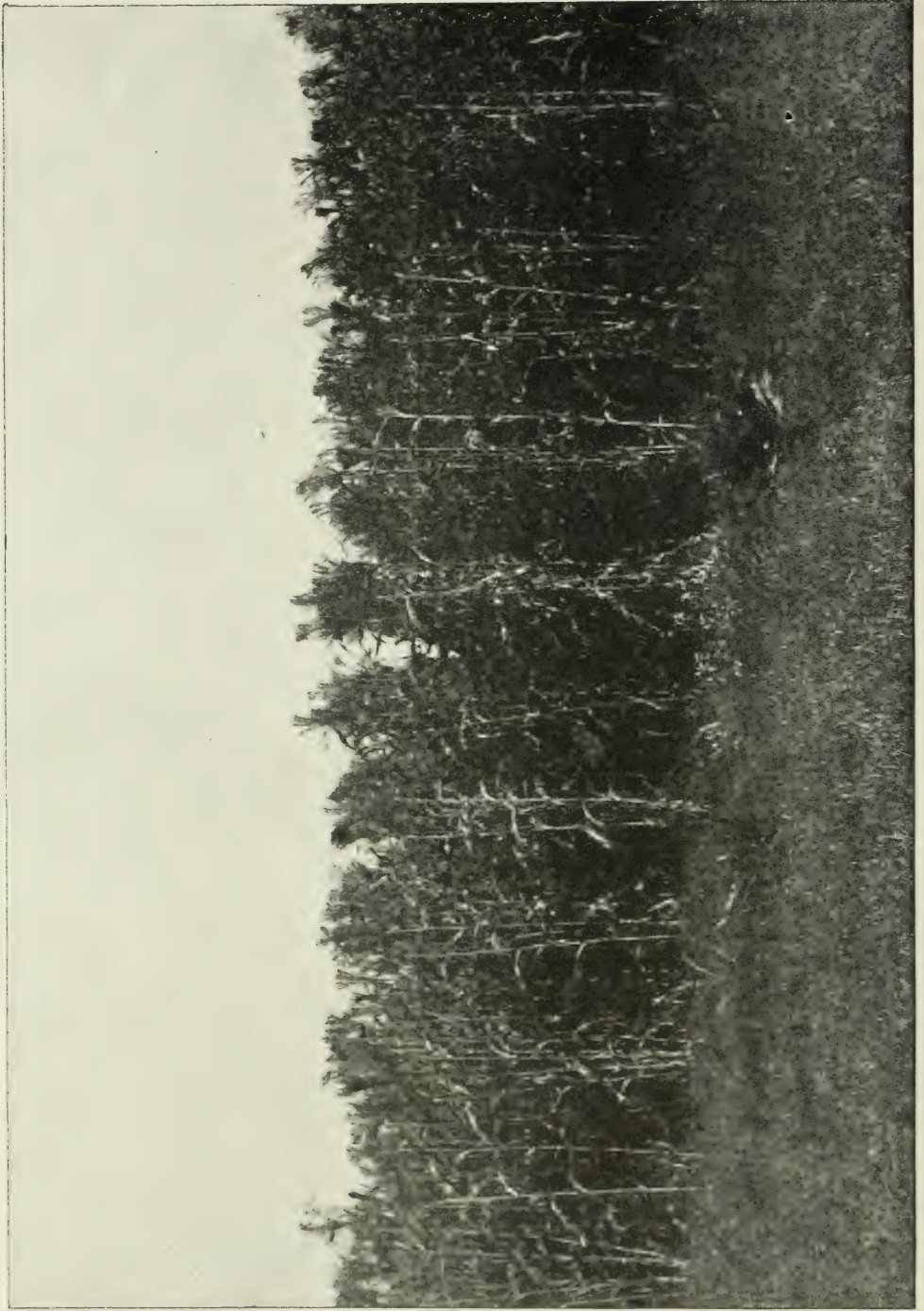
A very quick growing variety of rape which makes excellent grazing for stock. It can be sown at any season of the year, but it is not quite so satisfactory to use in mid-summer as in the cooler months of the year. It may be sown broadcast at the rate of 8 pounds per acre and raked in, or in drills fifteen inches apart, when 4 or 5 pounds will be sufficient. It will be ready for use eight weeks from planting if the weather is favorable. It is hardy and will stand any amount of cold. It will be found a cheap, effective food.

Price, per lb., 10c; per hundred lbs - - - - - \$6.00

RYE

Rye and Dwarf Essex Rape sown together makes a fine early pasture. Sow as soon as the ground is warm in the spring. Toland sows it in his orchard every year for young calves and chickens. It is also fine for other stock. Sow one bushel rye and six pounds rape per acre.

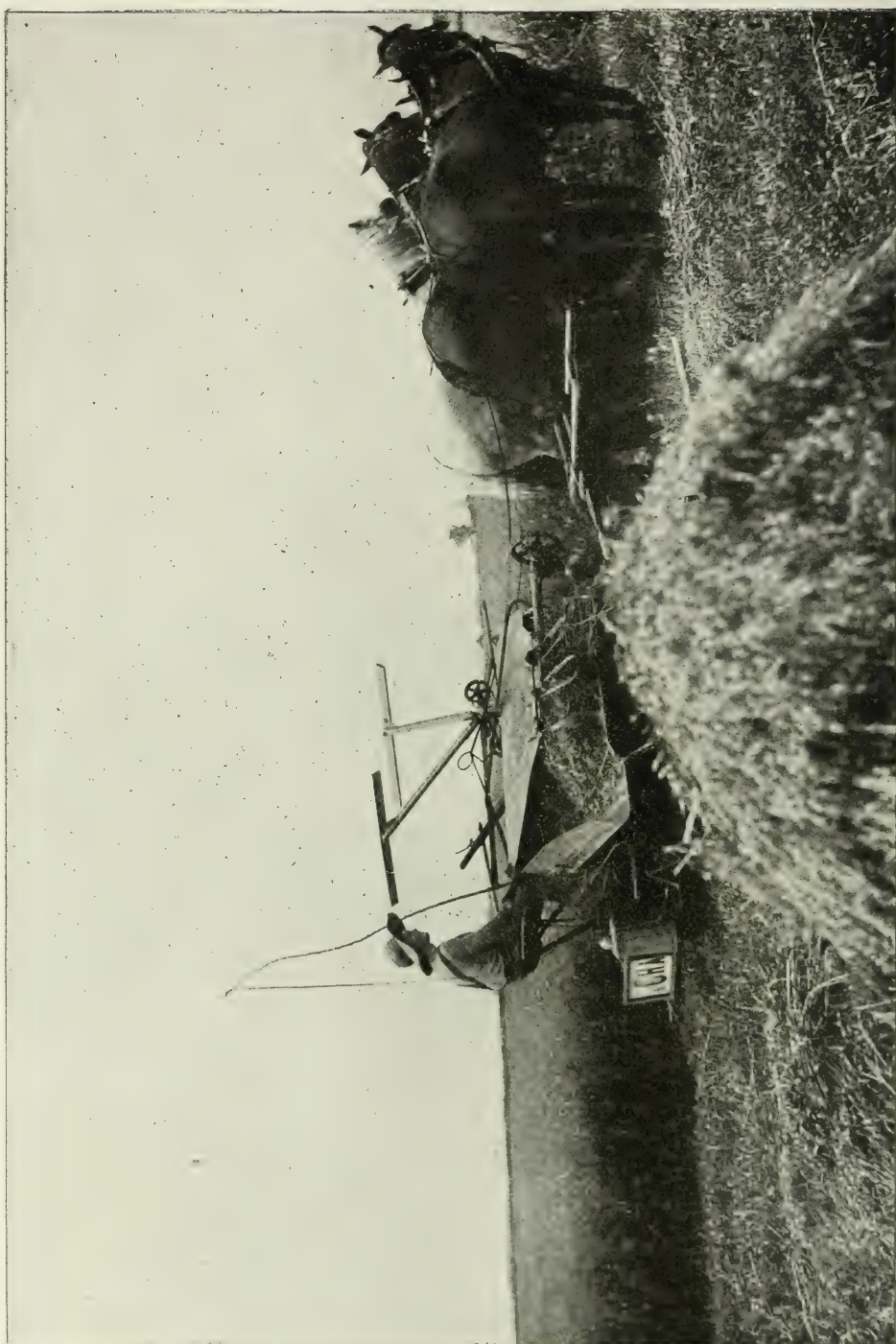
Rye, per bushel - - - - - \$1.00



Field of Broomcorn on Coles County Seed Farm



Harvesting Scene of Broomcorn on Coles County Seed Farm



Oats Field on Coles County Seed Farm



Field of German Millet on Coles County Seed Farm

RED TOP.

Well known and valuable pasture grass; also makes excellent hay. Grows on almost all soils, but does best on moist lands. Should be included in all mixtures for seeding down wet or marsh land (14 pounds to a bushel). Prices on application.

RED CLOVER.

One of the most valuable of farm crops; is largely used for pasturage and hay and as an improver of the soil. Red Clover on good land will yield two cuttings a year. The first crop makes rich feed, and is the most valuable for hay. The roots penetrate deeply, drawing from the subsoil, thus acting as a soil improver and not only increasing the productiveness



A Field of Boone County White Corn on the Coles County Seed Farm

of the land, but putting it in better condition than before. Clover, intelligently used, is the farmer's best friend, not only furnishing nutritious feed, but restoring fertility to worn out lands. It is strongly to be recommended, however, that clover be used in a rotation of crops and not grown successively on the same fields. When sown by itself, sow one bushel to 8 acres.

Prices fluctuate; will quote prices at any time upon request.

MAMMOTH CLOVER.

This clover is claimed by many of our best farmers that it is easier to get a "catch" with Mammoth Clover on sandy soils than with any other. For hog pasture and hog fattener it has no equal and is far superior to the Red Clover for that purpose, and is claimed does not freeze out so easy, and is therefore better adapted to fall sowing.

Prices on application.

ALFALFA.

All classes of stock are fond of it. The roots are long and grow very deep, frost can not heave or throw them out in the winter. One sowing will stand a number of years, and instead of impoverishing the soil, it enriches it. Grows on the thinnest, sandy soil and thrives on greatest drought. Sow broadcast.

Prices on application.

ALSIKE.

Unexcelled for hay and is a true perennial in producing a good crop the first year and every year thereafter, and the field improves each season. Highly valued also as a permanent pasture. It is hardy even in northern Minnesota and will produce a good crop in the low wet land. It also adapts itself to high upland soils, and withstands droughts well. Height 18 to 24 inches and half round pink or flesh colored heads. Seed is small.

Prices on application.

SOJA BEANS—MEDIUM YELLOW.

This valuable forage plant has attracted increasing attention yearly. It is unquestionably the richest and most nutritious forage and feed crop grown, making the "Balanced Feed" for hogs, dairy cows and fattening stock. It also makes a splendid soil improver and is unequaled as a drought resisting crop.

When sown broadcast for forage and soil improving crop, the soja



A Field of Soja Beans on the Coles County Seed Farm

beans should be sown at the rate of one bushel to the acre.. Sowing them thickly will prevent the stalk from getting too coarse and enable them to be cut and turned under to better advantage. Sowing for ensilage it is better to sow in drills with corn at the rate of about one peck to the acre, and cultivated. Or they may be sown by themselves in drills three feet apart at the rate of one to one and one-half pecks to the acre and cultivated. They will make the largest yield of beans put in this way.

Price, per bushel	- - - - -	\$2.50
Medium Yellow	- - - - -	\$2.50
Mature about two weeks later than, the Extra Early Yellow.		

COW PEAS.

THE GREAT SOIL IMPROVER, MAKES POOR LAND RICH, AND GOOD LAND MORE PRODUCTIVE, ALSO MAKES A SPLENDID AND NUTRITIOUS GREEN FODDER AND HAY CROP AND ENRICHES THE SOIL EVEN WHEN THE CROP IS CUT OFF.

Cow Peas make one of the largest yielding and most nutritious forage crops grown. There is also no surer or cheaper means of improving and in-

creasing the productiveness of our soils than by sowing cow peas. It makes an enormous growth, enabling the farmer to put plenty of nitrogenous vegetable matter into the soil at a small cost, and so very largely enables him to dispense with nitrogenous or ammoniated fertilizers.

Prices upon application.

SORGHUM SEED.

Many leading feeders of Illinois regard Sorghum as the best of all fodder plants. It can be easily grown on any good common ground, is sweet and tender and makes a splendid feed for cattle, horses and hogs. It also makes a splendid mixture for ensilage. The early amber is the best variety and the most used. Market price.

SWEET CORN—STOWELL'S LARGE EVERGREEN.

Stowell's Evergreen is the best variety of sweet corn for any purpose. It is large eared, productive and remains in a suitable condition for cooking purposes a long while. It is especially fine for feeding young hogs for the market. It matures in about ninety days, and is ready for use earlier than the ordinary field corn. It is very closely jointed, has large broad blades, grows about 7 feet high, and affords an abundance of ensilage which is much better than Indian corn.

Price, per pint, 15c; quart, 20c; peck, \$1.25; bushel - - \$5.00

SUNRISE SWEET CORN.

New Early Sunrise Sweet Corn; ears large, grains of great depth; exceedingly tender and sweet.

Price, per pint, 20c; quart, 30c; bushel - - - - - \$5.00

EARLY MINNESOTA.

A standard variety that has held a high place in the list of sweet corn ever since its introduction. Ears are medium size well flavored and of the best cooking qualities. Valuable for either private or market use.

Price, pint, 15c; quart, 20c; peck - - - - - \$1.25

COUNTRY GENTLEMAN.

This variety has a small white cob, densely covered with irregular rows of very long, slender white grains, which are of excellent quality. Stalks are from six and one-half to seven feet in height. By many it is regarded as the best of late varieties.

Price, per pint, 15c; quart, 20c; peck, \$1.25; bushel - - \$5.00

POPCORN—RICE SNOWBALL.

Finest white variety in existence; fine yielder; beautiful shape and best popper.

Price, per pound - - - - - 5c

GOLDEN QUEEN.

One of the best and most prolific varieties grown. Its quality and handsome appearance when popped are very noticeable. It pops perfectly white.

Price, per pound - - - - - 5c

GARDEN SEEDS

These seeds are all fresh northern grown, tested and reliable. Read Shipping Directions carefully.

PUMPKINS—PURE GOLD.

The best of all field pumpkins, either for growing with corn or in fields by itself. Excels for feeding stock, and best of all, makes the most delicious pumpkin pie. Deep, rich color, flesh fine grained and excellent flavor.

Price, packet, 5c; ounce, 10c; 1 pound - - - - - 25c

SUGAR OR PIE PUMPKIN.

A particularly fine orange colored sort, remarkably sweet, fine grained and dry. Keeps well and cannot be beaten for table use. Always gives the best satisfaction.

Packet, 3c; ounce, 8c; 2 ounces, 14c; one-fourth pound - - - 20c

LARGE SWEET.

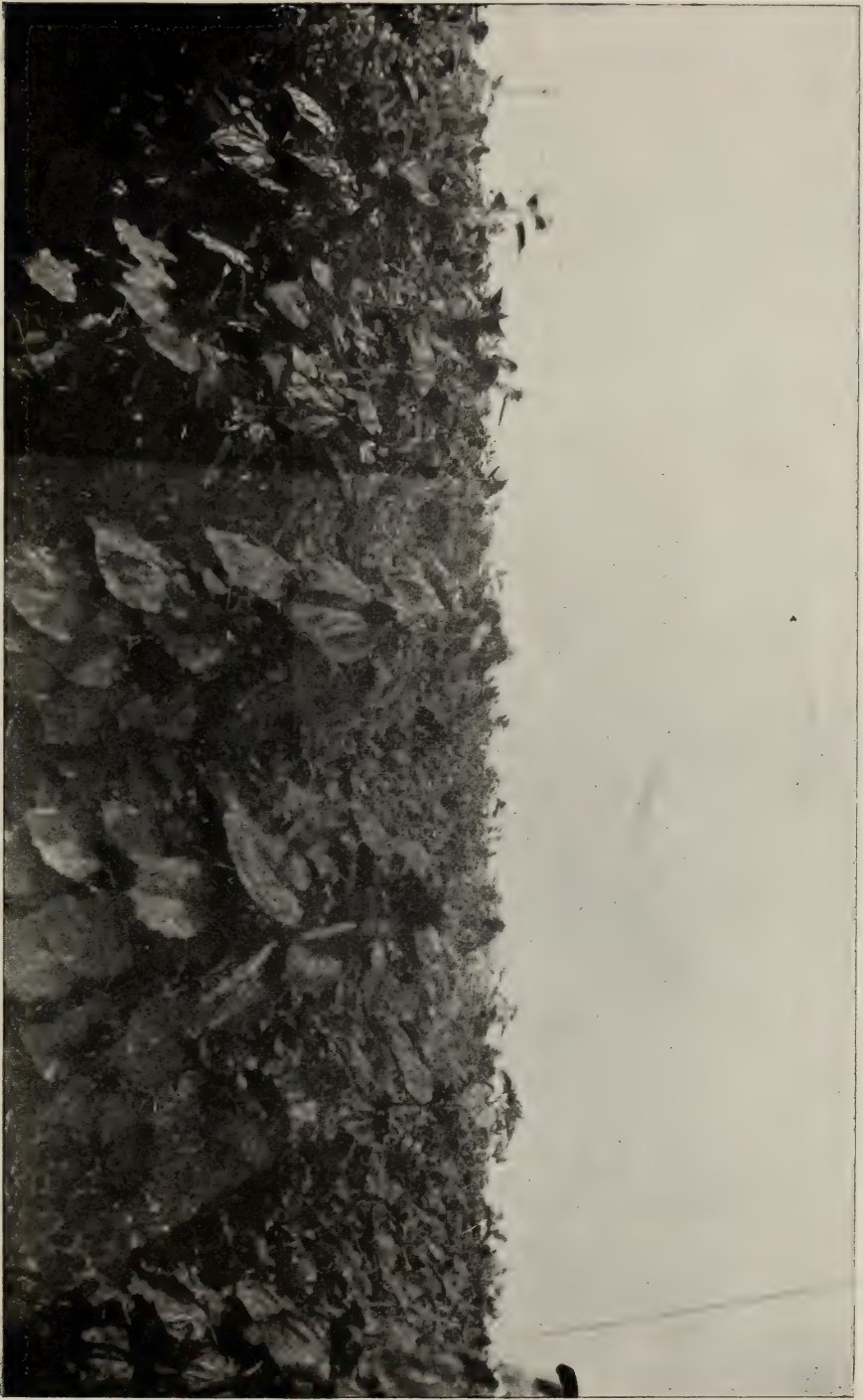
Shape round and oblong, light yellow color; cooks soft and tender and is the best of keepers. Very vigorous and immensely productive.

Price, packet, 5c; ounce, 10c; 2 ounces - - - - - 15c

SQUASH, BLUE HUBBARD OR MARBLEHEAD.

The best fall and winter variety. Flesh bright creamy yellow; fine grained, very dry, sweet and delightfully flavored.

Price, packet, 5c; ounce, 10c; 2 ounces - - - - - 15c



A Field of Sunflowers on the Coles County Seed Farm

SUN FLOWERS.

SUN FLOWERS ARE WITHOUT DOUBT THE MOST PROFITABLE SEED THAT CAN BE RAISED FOR POULTRY.

MAMMOTH RUSSIAN.

It is grown for its seeds, which are valuable food for stock, particularly poultry; also for parrots. It is considered the best egg producing food known. Poultry eat it greedily, fatten on it, obtain a bright lustrous plumage, and strong, healthy condition, that illustrates the benefits from its use. It can be raised as cheaply as corn, yields well. Single heads measure twelve to twenty-two inches across and contain an immense quantity of seed. Can be sown any time to the middle of July.

Price, per pound, 15c; 100 pounds - - - - - \$5.00

WHITE BEAUTY.

Another popular variety; yields well, and is excellent for stock and poultry; has large heads, which are well filled with seeds.

Price, per pound, 15c; 100 pounds - - - - - \$6.00

ONION SETS.

Indispensable for early onions for bunching, as in a very few weeks they are ready for the table. While it is much cheaper to grow onions from the seed, still it is considerable work to keep them weeded and many of our customers who have only a small garden prefer to grow them from the sets and gardeners plant sets for the early market.

RED BOTTOM SETS.

Are a dark red color. Early cropper; mature quickly, very hardy; excellent quality.

Price, per pound, 25c; 100 pounds - - - - - \$7.00

WHITE BOTTOM SETS.

Like red except in color; more used than any other kind.

Price, per pound, 25c; 100 pounds - - - - - \$7.00

ONION SEED—LARGE WEATHERFIELD.

This is a standard variety and a favorite onion in the east where immense crops are grown for shipment.

Bulb large, somewhat flattened, oval shaped; skin deep purple red; flesh purplish white; moderately fine grained and rather strong flavored;

very productive; the best keeper and one of the most popular for general use.

Price, pkt., 5c; oz., 15c; 2 oz., 25c; 1-4 lb., 60c; lb. - - \$2.00

CUCUMBERS—MONARCH WHITE SPINE.

This is a very early pickle, extremely productive; quite hardy and retains its light green color after it has been pickled. Always of delicious flavor and unusually tender and crisp. Superior for pickling purposes.

Price, pkt., 5c; oz., 10c; 2 oz., 15c; 1-4 lb., 25c; lb. - - 70c

EARLY CLUSTER.

Vine vigorous, producing the bulk of the crop near the root, and in clusters. Fruit short with uniformly thick ends, dark green but paler at blossom end. A very productive sort.

Price, pkt., 5c; oz., 10c; 1-4 lb., 25c; lb. - - - - - 90c

ROCKFORD PICKLE.

Without a doubt the culminating triumph of cucumber introduction. It is unquestionably the best cucumber for pickles, and is used almost exclusively by pickle factories throughout the country. The fruit is of medium size, wonderfully even in growth, slightly pointed at both ends.



“Four Onions Make a Foot.”—Red Weatherfield.

Extra early, and the whole crop can be depended upon to make fine shaped pickles. Begins to set its fruit when quite young.

Price, pkt., 10c; oz., 15c; 1-4 lb., 45c; lb. - - - - \$1.50

IMPROVED LONG GREEN.

Vine vigorous and productive; forming fruit fit for the table nearly as early as the shorter sorts; fruit grows long, firm and crisp. Excellent for pickles. When matured is sometimes used for making sweet pickles.

Price, pkt., 5c; oz., 15c; 2 oz., 25c; lb. - - - - \$1.50

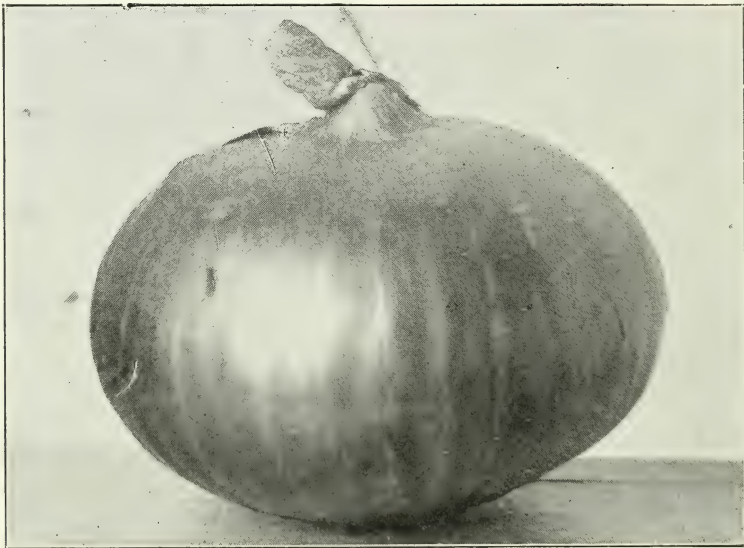
BISMARCK.

A late variety producing long, very dark green fruit, pointed at each end, very constant in form and color; flesh crisp and tender; excellent either for pickles or slicing. It can be depended upon to produce very symmetrical, handsome, dark green fruits which will hold their color better than those of any other kind.

Price, pkt., 5c; oz., 20c; 1-4 lb., 60c; lb. - - - - \$2.00

LETTUCE—HANSON.

Plant large, forming a large flat head, resembling that of cabbage, and slow to form seed stalks. Outer leaves bright green with prominent light



Grown from Red Weatherfield Onion Seed

green veins; inner leaves white, usually curved and twisted. Very tender and sweet.

Price, pkt., 5c; oz., 15c; 2 oz., 25c; lb. - - - - - \$1.25

MAMMOTH BLACK SEEDED BUTTER.

A strain of large leaved head lettuce, forming a very large solid cabbage-like head of thick brittle leaves, the inner ones beautifully blanched, very crisp, tender and of fine flavor.

Price, pkt., 5c; oz., 15c; 2 oz., 20c; lb. - - - - - \$1.00

BLACK SEEDED SIMPSON.

For those who like a large, thin, exceedingly tender leaf rather than a solid head, this is one of the best varieties. Plant forms a large, loose head, light yellowish in color. Leaves large, thin, slightly ruffled and blistered, even the large outer ones being quite tender. Excellent quality and continues a long time in condition for use.

Price, pkt., 5c; oz., 10c; lb. - - - - - \$1.00

TILTON'S WHITE STAR.

Grows large and rapidly; leaves are broad and thick; frilled at edge. It forms a large, loose head, blanches well, and is of excellent quality. The plants remain long in condition for use before running to seed.

Price, pkt., 5c; oz., 10c; 2 oz., 20c; lb. - - - - - \$1.00

BIG BOSTON.

Very popular with those wanting a large heading, forcing sort, and also for outdoor winter culture. Plants large, very hardy and vigorous, with broad, comparatively smooth, thin, very bright green leaves, quite tender.

Price, pkt., 5c; oz., 10c; 2 oz., 15c; 1-4 lb., 25c; 1-2 lb., 40c; lb - 70c

PEPPERS—CORAL GEM.

The single fruit is rather small and are so thickly set on the dwarf plant as to give each plant the appearance of a "Bouquet of Coral."

Price, pkt., 5c; oz., 30c; 1-4 lb. - - - - - \$1.00

CHINESE GIANT.

Double the size of the Ruby King and equally as mild. The compact plants produce four or more extra large peppers at the base, very early in the season, which ripen while the second crop is setting on the branches. Very vigorous, hardy grower.

Price, large pkt., 10c; oz., 30c; 2 oz., 50c; 1-4 lb. - - - - - 90c

GOLDEN DAWN OR QUEEN.

Plants quite dwarf, but very prolific. Fruit medium size and of an inverted bell shape; rich golden yellow color, with very thick, sweet, mild flavored flesh.

Price, pkt., 5c; 2 oz., 22c; 1-4 lb. - - - - - 40c

RUBY KING.

An improved American sort, reaching the largest size. It is a very bright color and has a sweet, mild flavor.

Price, pkt., 10c; oz., 15c; 2 oz. - - - - - 25c

SWEET MOUNTAIN.

Plants very vigorous and productive. Fruit large, long, very smooth and handsome. When green it is of a bright green color and when ripe very red. Flesh very thick, sweet and mild flavored. Well suited to use for stuffed pickles or mangoes.

Price, pkt., 10c; oz., 15c; 2 oz. - - - - - 25c

LONG RED CAYENNE.

A long, slim, pointed pod and when ripe of a bright red color. Extremely strong.

Price, pkt., 10c; oz., 15c; 2 oz. - - - - - 25c

TURNIPS—EARLY PURPLE TOP STRAP LEAVED.

This is an early variety and a great favorite for table use; form is flat and medium size. Color purple above ground; white below. Flesh white, fine grained and tender.

Price, pkt., 5c; oz., 10c; lb. - - - - - 50c

PURPLE TOP WHITE GLOBE.

A variety that is globular. A beautiful appearance and the white flesh is of the most excellent quality, equally desirable for table or stock. It keeps well and is fine market sort.

Price, pkt., 5c; oz., 10c; lb. - - - - - 50c

BEETS—CROSBY'S EGYPTIAN.

A very early variety, also very attractive, not only in beet as pulled, but after they have been cooked. Very excellent sort, becoming ready for use sooner than any other variety.

Price, pkt., 5c; oz., 10c; lb. - - - - - 65c

DETROIT DARK RED TURNIP.

Very valuable for canning, making a strikingly handsome product, much superior to that obtained from any other variety. Flesh bright red zoned with a darker shade; very crisp, tender and sweet and remaining so for a long time.

Price, pkt., 5c; oz., 10c; lb. - - - - - 65c

SPINACH.

An improved round seeded strain of excellent merit, having all the good qualities of the ordinary sorts, and continuing in good condition for use much longer. The leaves are very smooth and very dark, rich green.

Price, pkt., 5c; oz., 10c; 1-2 lb., 25c; - - - - - 40c

LONG DARK BLOOD.

A standard late variety and keeps well through the winter. It is of good size, long and smooth. Flesh dark red, very tender and sweet.

Price, pkt., 5c; oz., 10c; lb. - - - - - 65c

RADISHES—NEW ROCKFORD MARKET.

An early radish. The shape is smooth, medium long. It is a bright scarlet color, and tipped at the ends with white. Crisp, tender and juicy.

Price, pkt., 5c; oz., 10c; 1-4 lb. - - - - - 20c

LONG WHITE VIENNA OR LADY FINGER.

A very excellent white variety, with long, very smooth white roots, which are crisp and tender and are very beautiful, particularly in contrast with the Early Long Scarlet. The two varieties mature at so nearly the same season that they may often be had together, though the White Vienna is later, large and remains in condition longer. This variety is often sold under other names, but we retain the old name.

Price, pkt., 5c; oz., 10c; 1-4 lb., 20c; lb. - - - - - 50c

ROCKFORD BEAUTY.

Very early, deep scarlet color, with dainty white tips. Flesh crystal white, tender and crisp.

Pkt., 5c; oz., 10c; 1-4 lb., 25c; lb. - - - - - 75c

RAPID FORCING.

The quickest of all. Quick growth is one of the main essentials for a crisp and tender radish. This remarkable and world renowned variety generally matures in about 14 days, makes it one of the most valuable sorts for forcing or outdoor culture.

Price, pkt., 5c; oz., 10c; 2 oz., 15c; 1-4 lb., 25c; 1-2 lb., 40c; lb - 75c

MAMMOTH CELESTIAL.

An enormous and distinctly fine radish of quick growth and superior quality; fine for use during the fall and early winter. Skin and flesh pure paper white; very tender, crisp, juicy and mild.

Price, pkt., 5c; oz., 10c; 1-4 lb., 15c; 1-2 lb., 25c; lb. - - 45c

TOMATOES—EARLY ACME.

One of the earliest and handsomest varieties. Medium size; perfectly smooth and regular; very solid fruit. Dark red with purplish tint.

Price, pkt., 5c; oz. - - - - - 25c

EARLY MICHIGAN.

An early sort. Vines continue to bear for a long time. Vines large, with dark green leaves, vigorous and wonderfully productive, being under high culture a very heavy cropper; fruit medium sized to large, and unlike most varieties, it produces larger fruits as the season advances, perfectly smooth, solid, but without a hard core; deep, rich, red color, and of excellent flavor. This kind is admirably adapted to canner's use.

Price, pkt., 5c; oz. - - - - - 25c

STONE.

This is the heaviest and most solid fruit of the large tomatoes of good quality. Vines vigorous and productive. Fruit round, large very deep red in color and astonishingly heavy.

BEEFSTAKE TOMATOES.

Something new in the line of tomatoes. Nothing in the way of a tomato creation has achieved, in so short a time, the tremendously excellent reputation that has come to the Beefstake Tomato. Matures early, hardy grower, handsome color; the best keeper, and large size.

Price, pkt., 5c; 1-2 oz., 35c; oz. - - - - - 60c

EGG PLANT—LARGE NEW YORK PURPLE.

Large, round or oval, of excellent quality, highly esteemed in market.

Price, pkt., 5c; oz. - - - - - 15c

NEW EARLY QUEEN CABBAGE.

Unquestionably the finest, earliest, most solid early cabbage grown; unexcelled in flavor and unequalled in quality.

Price, pkt., 5c; oz., 30c; 2 oz., 50c; lb. - - - - - 90c

ALL HEAD EARLY.

A first class novelty. Earliest of all cabbages. While it has the name of being an early variety, it is also valuable for winter use. For winter sow seed in July and set out plants about the middle of August.

Price, pkt., 5c; oz., 12c; 2 oz., 23c; lb. - - - - - \$1.60

XMAS KING.

One of the best winter cabbages that grows. It produces heads sound, solid and the most delicious flavor; crisp and white. It never bursts, has but few outside leaves, and is the best winter keeper.

Price, pkt., 5c; oz., 30c; 2 oz., 50c; lb. - - - - - \$1.60

EARLY JERSEY WAKEFIELD.

The earliest and hardiest heading of extra early cabbages. Most gardeners depend upon it for the bulk of their extra heavy crop. Heads conical, very compact, solid and of excellent quality. The stout, thick leaves and compact habit make it the best sort of wintering over or for very early setting.

Price, pkt., 5c; oz., 20c; 2 oz. - - - - - 35c

HOUSEMAN LATE FLAT DUTCH.

The largest and best of the late, flat sort. A strain of late cabbage in which the plants are very vigorous and hardy. The leaves are very large and broad; the stem of moderate height; the head large and very solid. A solid and very sure heading sort. Always forms large handsome heads which keep better than those of most kinds. Particularly desirable for those who wish to raise cabbages for fall shipment.

Price, pkt., 10c; 1 ounce - - - - - 25c

GREAT DANE.

Excellent winter variety. Heads are almost round as a ball, of good size, perfectly solid, very fine grained and best quality.

Price, pkt., 5c; oz., 30c; 1-4 lb., 90c; 1-2 lb., \$1.60; lb. - \$3.00

CARROTS—SELECT DANVERS.

The best carrot for general crop; it is of a rich orange color, a very heavy yielder and splendid keeper. It is a first class carrot for all kinds of soils, valuable for both table and stock use.

Price, pkt., 5c; oz., 10c; 1-4 lb., 20c; lb. - - - - - 60c

CAULIFLOWER—EXTRA EARLY CHIEF.

It is of very compact growth, with short stalks. They can be planted very closely together, and the leaves growing upward naturally protect the heads, which to say the least, are handsome beyond description. The heads being so extremely solid and deep, weigh heavier than any early variety.

Price pkt., 5c; 1-4 oz., 80c; oz. - - - - - \$3.00

CELERY—WHITE PLUME.

It is too widely known to need extended description. This is an early variety having a good flavor and is crisp and tender. Combined with these important points are its self-blanching qualities which render it one of the most valuable sorts.

Price, pkt., 5c; 1 oz., 15c; 2 oz. - - - - - 25c

NEW KALAMAZOO

This celery is creamy white color, ideal size and perfect shape. It is alike profitable for either market or family use. There is no waste in preparing it for the table.

Price, pkt., 5c; 1 oz., 15c; 2 oz. - - - - - 25c

GOLDEN SELF BLEACHING.

This is the best celery for early use. Plants of a yellowish green color when young, but as they mature the inner stems and leaves turn a beautiful golden yellow, which adds much to their attractiveness and makes the work of bleaching much easier.

Price, pkt., 5c; oz., 20c; 1-4 lb., 60c; 1-2 lb., \$1.10; lb. - \$2.00

BEANS—STRINGLESS GREEN PODS.

A variety giving universal satisfaction. The plant is dwarf, large and very vigorous and matures a heavy yield. Seed oval; color, chocolate brown.

RUST PROOF GOLDEN WAX.

A general favorite. The pods are large; handsome appearance, being of a dark, rich yellow color and of perfect shape. No better variety for market gardeners or private families.

Price, pkt., 10c; 1 pt., 15c; 1 qt. - - - - - 20c

RED SPECKLED—CUT SHORT OR CORN HILL.

A popular variety to plant in the corn, and thus furnishing a good

crop without the use of poles. Vines medium and never known to twist tightly. Leaves smooth and dark colored; blossoms white. Pods short and tender. Beans oblong, or nearly so; and cut off diagonally at the ends; white, covered with reddish brown.

Price, pkt., 5c; 1-2 pt., 12c; pt. - - - - - 22c

FAMOUS KENTUCKY WONDER.

This splendid variety has vigorous vines, climbing well and very productive, bearing its pods in large clusters; blossoms white; pods green; very long, often reaching 9 or 10 inches, nearly round when young, and very crisp, continuing in use for an extended season.

Price, pkt., 5c; 1-2 pt., 12c; pt., 20c; qt. - - - - - 40c

NEW EARLY PROLIFIC GERMAN OR IMPORTED BLACK WAX.

This is, without doubt, the best Black Wax Bean grown. The vines are of medium size, very vigorous and extremely hardy. The pods are fleshy and of a clear waxy-white color. The beans are small, oblong and jet black.

Price, pkt., 10c; 1 pt., 15c; 1 qt. - - - - - 20c

NEW LAZY WIFE.

Pods wonderfully broad, thick and entirely stringless. They surpass any other variety. The way they cling to the poles and every bean grower will at once acknowledge this is the most important question. Pods flatish oval shape and when full grown, are from 4 to 6 inches long; exceedingly rich and buttery and fine flavored when cooked. They are hardy, easily grown and most productive. They are also good for a winter day bean.

Price, pkt., 5c; 1-2 pt., 12c; pt. - - - - - 22c

DAVIS' WAX.

An exceptionally hardy, productive, white seeded, wax-podded sort. Pods very long, white, straight and handsome. The most hardy and productive bush wax pod bean. Vine rustless and vigorous. When young the pods are very brittle, crisp and tender. The dry beans are kidney shaped, clear white and are excellent for baking.

Price, 1-2 pt., 12c; pt. - - - - - 20c

BURPEE'S BUSH LIMA.

The bushes grow from 18 to 20 inches high, branching out so that each plant develops into a magnificent circular bush from 2 to 3 feet in diam-

eter. Handsome large pods being filled with very large beans, identical in size.

Price, pkt., 10c; pt., 15c; qt. - - - - - 20c

SEIBERT'S EARLY LIMA.

A most desirable pole lima. It combines the good qualities of other varieties from the very first to the last of the season, so that although the pods rarely contain more than four beans, the total yield is enormous. The green beans are more easily shelled than most Limas and are of immense size, and very superior flavor. The seed having shrunk in, drying, is about the size of the Large White Lima.

Price, pkt., 10c; pt., 25c; 1 qt. - - - - - 35c

GARDEN PEAS—NOTT'S EXCELSIOR.

The best early dwarf pea. It combines the good qualities of other varieties. The peas in sweetness and quality are unsurpassed. Seed wrinkled and green in color. A most desirable sort for market or home gardener.

Price, pkt., 10c; pt., 25c; qt. - - - - - 40c

LITTLE GEM.

A little dwarf, green, wrinkled variety, growing about eighteen inches high. When green is very large, sweet and delicious flavor.

Price, pkt., 10c; pt., 25c; qt., 35c; bu. - - - - - \$6.50

BLISS' EVERBEARING.

A variety continuing a long time in bearing. Vine stout, about twenty inches high, bearing at the top six to ten broad pods. If these are removed as they mature and the season and soil favorable, the plant will throw out its branches bearing pods which will mature in succession, thus prolonging the season. The peas are large and wrinkled, cook very quickly, are tender and are preferred by many to any other sort.

Price, pkt., 10c; pt., 15c; qt. - - - - - 25c

ABUNDANCE.

One of the very best standard medium early varieties. Vigorous in growth, producing good sized pods in great abundance. Grows 20 inches in height and does not require sticking.

Price, pkt., 10c; pt., 15c; qt. - - - - - 25c

CASTOR BEANS.

Tall, majestic plants for lawn, with leaves of glossy green, brown or bronzed metallic hue and long spikes of scarlet or of green prickly fruit. Makes a rapid, vigorous growth in rich soil.

Price, per pkt. - - - - - 5c

MUSK MELONS—ROCKY FORD.

This is an improved strain of netted gem, growing a little more oblong in shape. The fruit is oval, and slightly ribbed, and densely covered with fine netting. It has thick flesh, very sweet and finely flavored. They will grow very uniform in shape and color. Very productive.

Price, pkt., 5c; oz., 10c; 2 oz. - - - - - 15c

NEW IDEA.

This is the verdict of every one who has tried this magnificent sort. Good keeper, exceedingly thin skin. The flesh is of a rich salmon color, of a sweet, pleasant and delicious flavor. It will please you for all purposes.

Price, pkt., 5c; oz., 10c; 2 oz., 15c; 1-4 lb. - - - - - 25c

OSAGE OR MILLER'S CREAM.

This melon has made a great record and is highly prized by those who like an exceedingly sweet and highly flavored melon. It is medium sized, oval, slightly ribbed, dark green in color, covered more or less with shallow netting. The flesh is deep salmon color and very thick, there being but a small cavity in the center of even the largest fruit.

Price, pkt., 5c; oz., 10c; 2oz., 15c; 1-4 lb. - - - - - 25c

NEW PROLIFIC NUTMEG.

The finest of all nutmeg melons. Fruit of medium size, slightly ribbed, globular. Skin dark green, becoming yellow when overripe, and nearly covered with broad, shallow netting. Flesh thick and of fine flavor. This variety is in universal demand.

Price, pkt., 5c; oz., 8c; 2 oz., 15c; 1-4 lb. - - - - - 25c

WATER MELON—MONTE CRISTO.

The best water melon ever introduced. A large early melon. It has a firm, solid rind, not too thick, yet will stand the most severe handling. The outside skin is of a rich, dark green color, shaded with faint stripes of a somewhat lighter color.

Price, pkt., 10c; 1 oz., 15c; 2 oz. - - - - - 25c

SWEET HEART.

An early, large, handsome melon of a bright color and best quality. The flesh is bright, red, firm, solid and very sweet and tender. A good keeper.

Price, pkt., 5c; 1 oz., 10c; 2 oz. - - - - - 15c

SEED POTATOES.

Owing to numerous requests from our patrons for Northern grown seed potatoes, we have purchased an extra select stock of the following varieties, to offer our customers: Early Ohio, Early Acme and Red River Six Weeks. This choice stock of seed potatoes were grown in the Red River Valley, Wisconsin. They are smooth, clean and free from prongs and scab. You will, no doubt, have to have a new stock of seed this year, so you had better decide to have the best and send in your order for some of our Red River grown seed potatoes.

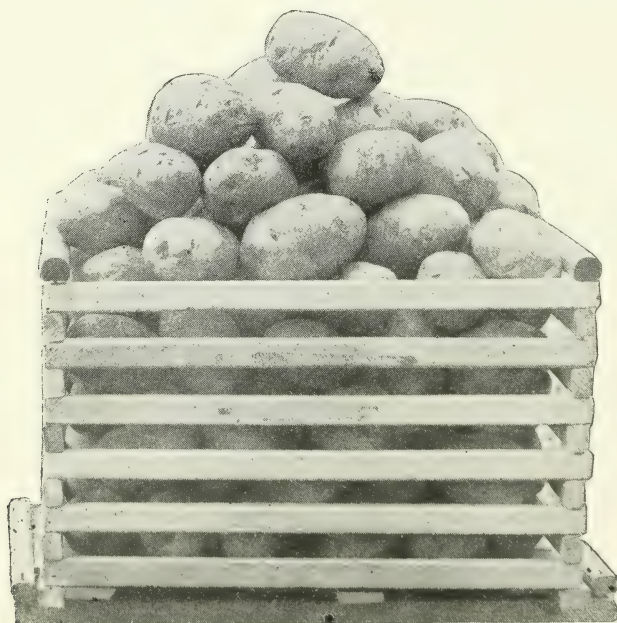
EARLY OHIO.

Early Ohio is without doubt the most popular early potato in the country. Everyone knows what it is and knows that it can be relied upon for an early market variety in almost every locality.

Prices upon application.

RED RIVER ACME.

Very similar to Early Ohio but a little earlier and perhaps a little more productive. It has the advantage of being a newer blood. It originated



Grown from Red River Acme

from a seed ball of Snowflake growing between Early Ohio and Early Rose. It grows strong, upright vines, tubers compact in the hill like the Ohios; flesh very white and of high quality.

Prices upon application.

RED RIVER SIX WEEKS.

We prefer to say that this is an extra early potato, a little earlier even than the Early Ohio. It has become immensely popular, and is much sought after, especially by farmers so that they may have early eating potatoes at a time when they are usually high to buy. This potato grows very rapidly and yields well.

Prices on application.

On all heavy articles, in line of garden seeds, such as beans, peas and sweet corn, extra charges for postage.



GAZETTE
PRESS
Mattoon, Ill.



