

Historic, Archive Document

Do not assume content reflects current scientific knowledge, policies, or practices.



6275

J. A. Heine

1910

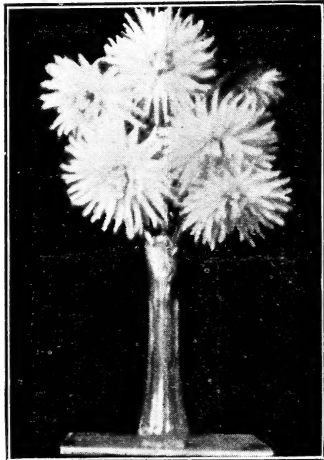
Issued Annually in January

LIBRARY,
U.S. Department of Agriculture
Washington, D.C.

CATALOGUE AND PRICE LIST

... OF ...

DAHLIAS



YVONNE CAYEUX

Grown by

GEORGE L. STILLMAN

WESTERLY, - - - RHODE ISLAND

RESIDENCE, 23 Granite Street.

Telephone No. 137.

OFFICE, Coggswell Street.

Telephone No. 114.



INTRODUCTION.

DEAR READER:

It is evident that you are interested in dahlias, or at least in flowers, or you would never have been in possession of this catalogue.

I wish I could sit down and have a good long talk with you on the subject of growing dahlias, the one flower of which I have made a study for years, and which I grow exclusively, and of the pleasure and pastime derived from their care, from the time they are planted until the harvesting of the bulbs in the fall.

First the new plant appears above the ground, the leaves begin to unfold, and the plant begins to take on the shape of a small tree.

In an amazingly short time a bud will be seen. Then your interest and curiosity will increase as you daily watch the growth of the bud, the unfolding of the petals as they open to view, a most marvelous combination of bright and glowing colors, that no plant except the dahlia has ever produced. As the plant increases in size branches appear, and buds will be seen on every branch, and branches from branches start, and more and more buds grow and more flowers, until the whole plant, nearly as high as your head, (and sometimes higher,) is covered with the beautiful symmetrical flowers.

No description on paper, or imagination has ever fully pictured the beauty of the flowers of the dahlia or the combination of colors brought out in the new creations of this popular flower.

I have endeavored to give a few hints as to the most important points in dahlia cultivation, which will be found on page four of this catalogue, and I assure my many friends and customers that their orders, without regard to size, from one bulb to one thousand, will receive my careful and personal attention.

It would be greatly appreciated if the person receiving this catalogue would, by postal card or otherwise, acknowledge receipt of same.

I send **Field Grown Roots** (or bulbs) only. **No Plants**, (or slips) of any kind sent out.

No matter what the distance may be, bulbs go safely by mail at the low rate of two ounces for one cent.

A cordial invitation is extended to all dahlia admirers to visit my gardens during the flowering season.

LOCATION OF GARDENS:

No. 1. 23 Granite Street.

No. 3. 20 Newton Avenue.

No. 2. Farm on Potter Hill Road

No. 4. 20 Greenman Avenue.

WESTERLY, R. I.

DAHLIAS ARE MY SPECIALTY.

I grow no flowers except Dahlias, and give my whole attention to the cultivation of the very choicest varieties obtainable of this most popular flower.

There are no plants that can be grown entirely in the open that produce as many large and exquisite flowers, and of so many beautiful shades and varied colors as the Dahlia.

They not only bloom freely but bloom continually until killed by frost.

Dahlias are especially adapted to landscape gardening, and on large estates, where an endless variety of styles and colors can be grown. For table, house and church decorations dahlias stand preeminent.

Since the introduction of the new Cactus dahlias, the miniature Pompons, the massive giant Decorative and Show dahlias, the dahlia has increased rapidly in favor and popularity wherever once introduced, until now they are the most desirable and most popular flower. They are produced in almost every color imaginable, even a bright green.

During the season of 1909 I exhibited dahlias at only four exhibitions, and won 12 Firsts, 2 Specials, only 1 second, and no third premiums. They were awarded as follows: 5 Firsts and 2 Specials at American Institute, New York City; 1 First, at the Big Hartford Fair, (the only prize offered on dahlias.) First and Second at Vermont State Fair, and 5 Firsts at Washington County Fair.

Those who saw my exhibits at any of the above mentioned places can testify to the superior quality of my dahlias.

HERE IS A POINT WORTH CONSIDERING. Why not buy your dahlias of the person who makes a specialty of dahlias and who grows them exclusively?

I receive numerous inquiries every year as to the best fertilizer for dahlias, and where it can be obtained.

From my own personal experience I find that manure from the cow stable is the best, and in order to make it convenient for my customers to obtain this kind of fertilizer, I have procured a supply direct from the stock yards. It is absolutely pure and thoroughly kiln dried and pulverized, and all germs of grass or weeds are destroyed in the process. It is put up perfectly dry in 100 lb. bags, which is the most convenient form for shipping and handling. It is so dry that it is odorless and easily handled. Price \$1.50 per bag; 5 bags, \$6.75; 10 bags, \$12.50.

GENERAL INSTRUCTIONS.

FIRST OF ALL. Send me your order as soon as you receive my catalogue, as the demand for some varieties often exceeds the supply, and those who order early are less liable to disappointment than if they waited till the rush at the time of planting. Order early.

If you do not want to spare all of the money to send with the order, send the order along together with one-quarter of the amount as a guarantee of good faith, and the balance can be remitted when you receive notice that your order is ready to ship.

Customers who are not personally known will be notified when to remit the amount of their bill.

Bulbs are shipped from about April 15th to May 10th, unless otherwise specified

When sending orders it is well to mention a few varieties that you are willing to have substituted in case some of those selected are all sold out. Or, if requested, I will select such varieties as will substitute to best advantage. Otherwise, money sent for such bulbs will be returned to the sender.

I guarantee all bulbs to be true to name and sure to grow at the time that they are sent out, but **I Cannot Guarantee** bulbs to grow if kept in a dry place a long time before planting.

HOW TO ORDER.

Orders to be sent a long distance and handled by more than one Express Company will go much cheaper by mail, as bulbs are carried by mail at a special rate of two ounces for one cent.

A large order can be packed in any number of packages not to exceed four pounds each. Four pounds will go anywhere in the United States by mail for 32 cents. **Two Cents** per bulb is as near as can be estimated for the postage, and this should be remitted with the price of bulbs, and if it is not all used the surplus will be returned to the sender.

If not otherwise specified bulbs will be sent by express.

If ordered sent by express C. O. D. one-quarter of the amount of the order must be sent in advance with the order.

The best way to send money is by registered letter, money order or express order.

DO NOT Hesitate to send small orders. An order for one bulb will be as carefully filled as an order for one thousand.

TERMS: Cash invariably in advance except as noted in above instructions.

Do not delay ordering until the time to plant, as many varieties may be sold out before that time. Order early.

If bulbs are received before it is convenient to plant them, they should be covered with moist earth until planted.

I use the utmost care to prevent errors in labelling and packing, but if an error does occur, kindly notify me, that it may be rectified immediately.

CLASSIFICATION OF DAHLIAS.

Cactus Dahlias are distinguished by their long twisted or pointed petals.

Decorative Dahlias include all loose flowering varieties and those with large flat petals.

Show Dahlias apply to those varieties producing large, well formed flowers, showing only solid colors, but many frequently have shaded tips.

Fancy Dahlias include nearly all variegated varieties, although the lines are not definitely drawn between the Show and Fancy varieties.

Pompon Dahlias. This class embraces the small miniature Dahlias, the plants of which are generally of the dwarf habit.

Paeony Flowered are of immense size and have two or three rows of petals.

Single Dahlias have but a single row of petals.

NOTE—There are different opinions about the division of some classes and the above rules apply in general terms.

POINTERS ON GROWING DAHLIAS.

Any good garden soil is suitable for dahlias, and a light loam with a good liberal supply of fertilizer will give much better results than a very rich soil.

The soil should be spaded or plowed to a depth of from 8 to 10 inches.

An abundant supply of fertilizer from the stable should be well mixed with the soil. That from the cow stable is best, but a mixture of other kinds will do to spread broadcast.

When the soil has been properly prepared and the hole dug in which to plant the bulb, a pint or more of well pulverized cow manure should be put into the bottom and well mixed with the soil.

Then the bulbs should be laid down **Flat**, and covered to a depth of four inches. **Never** stand the bulb on end.

Do not plant them less than three feet apart; four or five is better.

Give them plenty of room, and plant where they will have plenty of sun. Dahlias like a sunny place but there are locations where the extreme heat of the summer, without a circulation of air, will destroy the flowers before they mature.

Keep the ground well cultivated and free from weeds. A frequent stirring of the surface is very beneficial. An application of some standard fertilizer raked into the surface of the soil two or three times during the season will be very helpful to the development of the flowers.

Never leave more than one or two stalks in a hill. You will have better plants and larger flowers if you will allow only one sprout to grow.

Stakes may be used to advantage to prevent plants from breaking down.

For early flowering they may be planted as soon as all danger from frost is passed—from May 10th to 30th. Some growers plant as late as June 30th.

Some people have an idea that the larger the bulb the better plant it will make, but this is not the case. A small bulb is just as good, and in many cases better, than a large one.

To keep bulbs in winter, care should be taken to keep them dry, but not dry enough to shrivel them, and where they will not freeze.

Remember, if bulbs are received before you are ready to plant them, cover them with moist earth to keep them from drying up.

CACTUS DAHLIAS.

DO NOT HESITATE about ordering dahlias on account of distance, for they go safely by mail or express to any part of the world.

ADVANCE. Light red. This dahlia is one of the largest of the cactus varieties. The flowers are very full to the center and the best of form. Price \$1.00.

ADMIRAL TOGA. Bright vermilion flowers of a good size and of a fine cactus shape. Price \$1.00. *320*

ALBION. Pure white. Large flowers, with long, narrow, straight petals. Very attractive and a free bloomer. Price 25c.

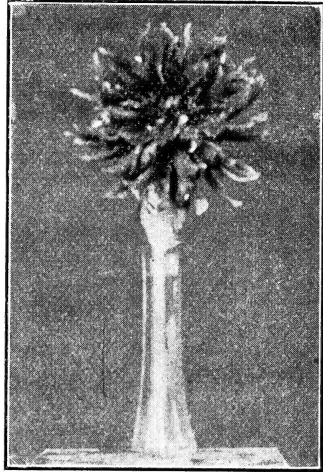
ALFRED VACEY. Reddish amber, edged with pink. A very free bloomer. Rather an unusual color and showy. Price 15c.

ASKANIA. Rich glowing crimson. Extremely large, often measuring 8 inches in diameter. Florets very broad, but nicely rolled and twisted at points. A splendid flower in every respect, and very desirable. Price 50c.

AUNT CHLOE. Very dark maroon, nearly black. Medium size and an abundant bloomer. Price 15c.

ARTUS. Orange buff. Medium size and a very desirable color. Price 25c.

AMI BETHIER. Light carmine red, almost orange red. Very large, with long incurved petals. Points sharp and finely twisted. Very fine and desirable flower. Price 75c.



ASKANIA.

ALPHA. White ground, striped and splashed with purple. A very peculiar combination of colors for a dahlia. Large flowers, showy and very desirable. This dahlia should be in every collection. Price 35c.

AQUILLA. Light canary yellow. Especially rich, beautiful shade. Unusually free bloomer and very fine. Very large. Price \$1.00.

AMOS PERRY. Bright scarlet. Very long, incurved, twisted petals. This is one of the most desirable cactus dahlias. With proper care it produces a very large, exceptionally attractive flower and blooms freely. Price 50c.

ASCHENBRODEL. Reddish pink, tinged with orange, petals tipped with yellowish pink. This dahlia has often been compared to a summer sunset, because of its rare coloring. Much incurved petals, slightly twisted. Medium size and exceedingly attractive.

Price 35c.

AJAX. Orange, suffused salmon and buff. Large flower and a very desirable color.

Price 25c.

AURORA. Soft, lovely light pink, center shading to golden yellow. Very large. Long, twisted, incurved petals. Very fine.

Price 75c.

BEATRICE. Soft rose. Medium size, good form and a striking color. Large flowers.

Price 15c.

BRITANNIA. Salmon pink. Flowers very large and with long, narrow petals. A rather unusual shade, and a great favorite wherever grown. Blooms profusely.

Price 25c.

BLANCHE, 1908. Pale, creamy yellow. Flowers good size and with long, well rounded petals. Free bloomer. An exceedingly desirable cactus dahlia.

Price \$1.50.

BRIGHTNESS. Fiery scarlet. Large flowers, a very free bloomer. When all buds are allowed to bloom, the plant presents the appearance of one solid mass of fiery red flowers.

One of the most showy cactus dahlias grown.
Price 35c.

BELOIT. Dark violet, one of the largest cactus dahlias. Flowers very full and deep.

Price \$2.00.

BRUNHILDE. Rich, deep magenta. Tapering petals, loosely arranged. A very good flower and a free bloomer.

Price 10c.

CYCLE. Red, slightly of a pinkish shade, tips of petals tinged with a shading of white. With plenty of fertilizer, this dahlia will produce magnificent flowers. Although it sells for a very low price, it is an exceptionally desirable dahlia.

Price 15c.

CANNEL'S GEM. Light salmon red. Medium size, fine formed flower and has free blooming qualities.

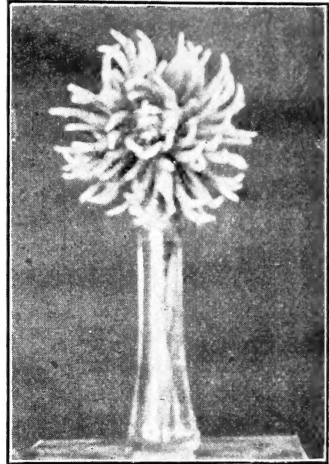
Price 10c.

CANNEL'S CREST. Deep velvety crimson. Petals wide and pointed. Extremely large flower and very attractive.

Price 50c.

CITIZEN. Dark maroon, large flower, shaded purple. Grows very strong and erect, and is free flowering.

Price 50c.



AURORA.

- CLARA G. STREDWICK.** Clear, bright salmon, shading yellow at base of petals. Large flowers, with long, slim, twisted petals. Very attractive and free. **Price 25c.**
- CLINCHER.** Heliotrope and white, one of the largest cactus dahlias and a most beautiful color. Florets are narrow and much incurved, making a very deep flower of great substance. **Price \$1.00.**
- CONNIE.** A lovely pale pink, shading to white at the tips of petals. **Price 75c.**
- CONRAD.** Terra-cotta red. Slightly streaked with yellow. A flower of large size and beautiful shape with long narrow petals. **Price \$1.00.**
- CREPUSCULE.** Pale orange yellow, the outer petals deepening to deep amber buff; refined flower of beautiful shape, large, extremely early and very free blooming, excellent for exhibitions. **Price 50c.**
- COLUMBIA.** Vermilion, tipped and striped with white. Long, narrow petals. The plants make very little foliage and the flowers are carried well above it. It blossoms profusely, and with its variety of coloring it presents a most striking appearance. **Price 25c.**
- COMET.** Deep lavender. Striped and splashed with deep red. Large flowers with long, incurved, twisted petals. The flowers are noted for their exquisite beauty and lasting qualities. **Price 25c.**
- COUNTESS OF LONSDALE.** Red, slightly shaded salmon. Flowers very freely and is nicely formed. A very desirable dahlia for cutting. **Price 15c.**
- CAPSTAN.** Soft light red, tinted apricot. A very full flower with finely twisted petals. A fine cactus dahlia. **Price 20c.**
- COUSIN JONATHAN.** Plum. Medium size. **Price 10c.**
- DAINTY.** The name Dainty aptly describes this charming novelty. It is a novelty in the greatest sense of the word. The ground color is lemon yellow, which becomes paler with age and is more intense, almost approaching canary yellow at base of petals. Half way from the base of petals one notices the beautiful rose pink, while the tips are golden. This is regarded as a superior dahlia, both in form and color. Good size, with long stems. **Price 35c.**
- DAISY STAPLES.** Color, bright mauve pink, center good, stems long and wirelike, free flowering and reliable. **Price \$1.00.**
- DEBONAIR.** Cinnamon at base of petals, while tips are of a deep copper color. Petals are very narrow, and flowers of fine form. Quite a free bloomer and strong grower. **Price 35c.**
- DIABOLO.** Color very unique, the ground color being yellow and white at base, the upper portion of petals suffused with rose, while it is thickly speckled with chocolate. Of splendid habit. **Price \$1.50.**
- DR. BRUCHET.** Rich salmon red. Large size and unusually fine shade and form. **Price \$1.00.**

- DR. MENE.** Amber and yellow. A free blooming variety and good size flowers. Price \$1.50.
- DREADNAUGHT.** Beautiful, velvety wine color. Long, slim, pointed petals, twisted at tips. Extremely large flowers. Very attractive. Price \$1.00.
- DIE FEE.** Silvery pink. Long, narrow petals. A fine cheap dahlia. Price 15c.
- DOROTHY VERNON.** Crushed strawberry. This is entirely different from any other dahlia, having all the shades of crushed strawberry. The flowers are of a beautiful form and very attractive. Price 15c.
- EARNEST GLASSE.** Purple magenta. Blooms very freely. Good size flowers. Price 10c.
- EARL OF PEMBROKE.** Dark purple. Flowers large and fluffy, of fine form. The petals are very long and slim. Although sold at a very low price it is a beautiful flower. Try a few. Price 10c.
- ELLA KRAMER.** Clear rosy pink, lighter at base of petals, a large flower of excellent form, free flowering and distinct shading. Price 25c.
- EMPEROR.** Plum color, pale yellow at base of petals. A very desirable dahlia. Price 25c.
- ELSE.** Salmon pink, slightly suffused yellow. Blooms very freely. A most beautiful shade. Price 35c.
- EVA.** Purest of white. Medium size with good stems, and blooms very freely. Price 25c. ^{B 20}
- ERICKA BORNEMANN.** Light rosy pink, growing lighter toward the center. Small size flower. Very abundant bloomer, and extremely dainty color. Fine for buttonairs. Price 25c.
- ETNA.** Lilac, with violet shading. The base of petals is light yellow. The flowers are very large and hold their size well through the season. A strong grower, and is much admired by all who see it. Price 25c.
- EXQUISITE.** Reddish apricot. Large flowers, blooms freely and very attractive. Price 15c.
- FLORENCE M. STEDWICK.** Pure white. Medium size and blooms very freely. Price 25c.
- FLAMINGO.** Clear flame color. Large fine formed flowers, with long, twisted, incurved petals. This is one of the best shades of red and a very attractive dahlia. Long stems. Price 25c.
- FAIRY.** Pure ivory white. The blossoms of this exceptionally beautiful dahlia present the most delicate appearance of any of the white varieties. The florets are slender and round the entire length, and the flowers are full and perfectly formed. Price 50c.

FAUNUS. One of the best. Color soft yellowish buff, tipped salmon. Large flowers. Price 40c.

FLAG OF TRUCE. Pure white of good size with slim pointed petals and quite free bloomer. Price 75c.

FLIEDER. Pink and white. A very large flower of unusual beauty both in color and shape. Price 75c.

FIREBRAND. Velvety crimson. A very rich color. Medium size. Price 20c.

F. H. CHAPMAN. Orange red. A very large flower of exceptionally fine shape. It is one of the freest blooming cactus dahlias, and a most desirable one for cut flowers. Price 25c.

GABRIEL. Bright vermilion, tipped with white. Flowers are good size with long, curly petals, which are sometimes nearly white, while some are tipped white and others solid red, all on the same plant. A beautiful, free blooming dahlia. Price 20c.

GLADIATOR. Deep apricot, shading to salmon pink. Florets very long and small, sharply pointed and full. An exquisitely attractive, noble looking flower. Price 25c.

GEN. BULLER. Rich, velvety crimson, variegated. This beautiful dahlia should be seen to be appreciated. The rich crimson flowers, with their white tips, together with some that are nearly all white, and some all red, present a most striking appearance. Price 20c.

GOLIATH. Apricot, tinted rose pink, shading to canary yellow at base of petals. A rare and striking combination of color. Flowers extremely large and noble in appearance, often measuring $6\frac{1}{2}$ to 8 inches across. Long, straight petals, very desirable. Price 35c.

GONDOLA. Clear rosy pink. A very free bloomer of good size and fine shape. Price \$1.50.

G. W. CHILDS. Deep garnet, with rich velvety appearance. Very large and full, with long twisted petals. One of the best garnet dahlias and blooms profusely. Price 35c.

GLORIOSA. Glowing scarlet. Large flowers, with long petals and good stems. Very attractive. Price 15c.

GENISTA. Amber, passing to golden yellow. A fine shaped flower and a free bloomer. The color of this dahlia is very much admired. Price 20c.

HAMLET. Deep red. These flowers are extra large and produced on good stems. A fine dahlia. Price \$2.00.

H. G. ALFORD. Color, pale yellow edged and shaded amber and pink, an immense flower. Price 75c.

H. W. SILLEM. Vermilion scarlet, large and good form, and a beautiful color. Price 25c.

- H. F. ROBERTSON.** Deep yellow. A very desirable yellow cactus dahlia of good size. Free bloomer. Price 25c.
- HETTY DEAN.** Lively amber, overlaid with orange. Flowers are of extra fine shape. Long, well curved florets. It has long stems; flowers well above the foliage, making a most attractive appearance. Price 25c.
- H. SHOESMITH.** Dark carmine, of a very rich shade. Long, slim petals finely rolled. Very large flower. One of the most beautiful deep red dahlias grown. Price 50c.
- H. J. JONES.** Light yellow, slightly tinted pink. Flowers large. Long, well rolled petals. Very beautiful. Price 25c.
- HAZER KIND.** Lavender pink. Undoubtedly this is one of the most profusely flowering cactus dahlias in cultivation. The flowers are medium size, fine form and simply beautiful. Price 25c.
- H. J. HARE.** Crimson. A beautiful glowing shade of red. The edges and base of florets deepening to a dark velvety garnet shade. An exquisite combination of colors. A very full, perfectly shaped flower. Blooms freely. Price 25c.
- IGNEA.** Scarlet. Extra large and full to center, of superior merit. Price \$1.00.
- ISLAND QUEEN.** Light mauve, shading toward a light blue. A beautifully formed medium size flower. A distinct color by itself, and one that is admired by all who see it. Blooms full and free. Price 15c.
- IDA.** A beautiful shade of yellow. Good size, with long petals. A very free blooming early variety. Has long stems and flowers well above the foliage. Showy and attractive. Price 20c.
- IVANHOE.** Salmon pink, with pale yellow center. Very round, long straight petals, closely and finely twisted. Large full flower. Very effective coloring. Price 35c.
- IANTHE.** Apricot, tips shaded to deep pink. Petals long and straight. Flowers very large and a great bloomer. Very effective shading. Price 35c.
- ICEBERG.** Ivory white. Petals long and narrow. Much admired as an individual flower. Price 25c.
- INNOVATION.** Crimson tipped with white. One of the much admired variegated dahlias. Price 10c.
- IMPERATOR.** Bright crimson. A beautiful color and good size flower. Good long stems and very desirable. Price 25c.
- J. H. JACKSON.** This is one of the best black cactus dahlias. Its velvety black maroon shade is very striking. The flowers are very large with long stems and stand out well from the foliage. Every lover of dahlias should plant a J. H. Jackson. Price 25c.

JEALOUSY. Canary yellow. This is one of the very beautiful shades of canary yellow. Curly petals, fine form, and much admired.

Price 15c.

JULIET. Magnificent rose, tinted pink. A very distinct flower.

Price 35c.

J. WEIR FIFE. Dark maroon, sometimes shading to bright purple. A beautifully formed, free blooming dahlia.

Price 20c.

KATHLEEN BRYANT. Dark maroon. Large flower of a beautiful maroon shade and fine form.

Price \$2.00.

KRIEMHILDE. Light pink with white center. Large flowers with very curly petals, and one of the most attractive cactus dahlia. This dahlia should be in every collection.

Price 15c.

KEYNES WHITE. Pure white. Blossoms very freely and of medium size.

Price 10c.

KING OF SIAM. A very rich dark purple. Blooms very freely, and has good stems. Very desirable.

Price 25c.

LADY FAIR. Primrose tinged pink. This is a new and most unusual color and formed dahlia. The petals are finely and deeply serrated, giving the flower an extremely feathery appearance.

Price \$2.00.

LIBELLE. A clear, deep magenta. Flowers are large and well formed, and present a beautiful appearance. A very desirable rich color. Blooms very freely.

Price 25c.

LOADSTONE. Light flame color. Very claw shaped twisted petals. A strong grower and a free bloomer.

Price 25c.

LIBERTY. Exquisite shade of deep carmine red. Each petal edged with darker shade of rich velvety garnet. A very full flower with clear circular outlines. Good size. Points of each petal so claw shaped and twisted as to give the flower a reversed appearance. Superb coloring.

Price 50c.

LAURETTA. Apricot, shading to deep blush pink at tips. Small well rounded petals much incurved. Large blossoms and finely shaped.

Price 35c.

LOVELY ENSFORD. A clear shade of golden amber. Very large and free. Petals wide at base and very pointed and curly at tips. This dahlia attracts the eye of everyone.

Price 25c.

LORD MINTO. Very light salmon pink, with delicate lemon yellow shading in center. Petals finely twisted and incurved. Points evenly and finely serrated. Flowers freely produced.

Price 75c.

MISS CONSTANCE FARMER. Dazzling magenta. Very large flower, with long slim petals, much claw shaped and twisted. An elegant flower and most desirable in every garden.

Price 25c.

MAD. HENRI MARTINET. Sulphur yellow shaded pink. A profuse bloomer and a beautifully formed flower of good size. Price \$1.50.

MARGUERITE BOUCHON. A beautiful shade of light pink with lighter center. The largest pink cactus dahlia known. The petals are long and slim, and are produced in unlimited numbers. A most wonderful production in cactus dahlias. Price \$2.00.

MABEL TULLOCK. Rose pink. A beautiful color. Flowers of good size. Very curly, slim incurved petals. Blooms freely. Price 20c.

MARY FARNSWORTH. White, slightly shaded light yellow at base. A very incurved variety. Price 15c.

MASTER CARL. Deep, rich butter yellow. This dahlia is a winner in every way. The flowers are immense, often measuring from $6\frac{1}{2}$ to $7\frac{1}{2}$ inches in diameter. Very full. Their beautiful, bright color attracts the eye of all who see them. Price 50c.

MRS. WM. MARSHALL. Beautiful flower of exquisite delicate silvery pink. Petals long and curled. Flowers very large sized, full and well formed. Most desirable in every way. Price 75c.

MARY SERVICE. Rich salmon pink. Petals curly and pointed. A very free blooming variety, and flowers stand well above the foliage. One of the best for bouquets and for a showy plant. Try at least one of these. Price 15c.

MAYOR TUPENNY. Light orange, shaded fawn, yellow center. Large, with curly incurved petals. Flowers very freely. Price 15c.

MRS. DICKSON. A beautiful shade of pink. Flowers freely and of medium size. With care this dahlia can be made to produce an exquisitely beautiful pink flower. Try it. Price 10c.

MAD. CLEMENT LEMOUINE. Beautiful shade of light vermilion red, with rich tinge of apricot at base of petals. Very finely curled florets. Blossoms of good size. Very fine. Price 75c.

MABEL NEEDS. Rich cherry red. Very claw shaped, twisted petals. Good size flowers. Generous bloomer. Price 35c.

MRS. DeLUCA. Golden yellow, tipped with orange. Large, bold flowers, with very curly, incurved petals. A very attractive dahlia. Free bloomer. Price 25c.

MRS. M. A. HOLBROKE. Velvety crimson. Flowers of good size and stand well above the foliage. Very free. Price 15c.

MRS. H. J. JONES. Scarlet, edged cream. Variegated flowers mixed with nearly solid color petals. Price 20c. B 21

MRS. CLINTON. Clear salmon pink, of a beautiful and attractive shade. Petals well rolled and slightly incurved. Very large. Price 50c.

- MRS. HOBART.** Pale orange and yellow, beautifully blended together. Good size. Petals long and narrow, and very showy. Fine for lawns. **Price 25c.**
- MRS. MURREY IND.** Bright rose. Large flowers, fine form and full to center. A fine exhibition flower. **Price 20c.**
- MRS. D. B. CRANE.** Pure white. Flowers of medium size and free blooming. **Price 20c.**
- MRS. E. MAULEY.** Clear yellow. Fine formed, large flowers with long curly petals. One of the best yellow cactus dahlias. A beautiful shade and very desirable in every way **Price 35c.**
- MRS. J. P. CLARKE.** Buff and rose peach. This is a very nice combination, and one of the finest cactus dahlias of the yellow shade. It has perfect flowers, and blossoms freely. **Price 25c.**
- MRS. H. SHOESMITH.** White. This is an entirely new dahlia and without doubt is the largest white cactus variety. Perfectly shaped petals. **Price 75c.**
- MRS. STEPHEN CLARKE.** Pink and white. Variegated. Good size and free. **Price 25c.**
- MR. MOORE.** Dark velvety maroon. Very curly and medium size. **Price 10c.**
- MRS. MOORE.** Deep carmine. Very full and fine form. Long stems and blossoms freely. **Price 20c.**
- MRS. MORTIMER.** Rich terra cotta and red. Petals finely twisted. Large, full and beautiful flowers. Very attractive. **Price 25c.**
- MRS. A. PEART.** White. Petals shaded to cream at base. Large flowers, and with good culture produces exceptionally nice blossoms. **Price 15c.**
- METEOR 1908.** White, striped and splashed cerise. Small well rounded petals, very claw shaped. Very good bloomer. A striking combination. **Price \$1.00.**
- M. PODERE RESTELLI.** Light flame red. Large bold flower. Long pointed petals. Free bloomer. Very attractive. **Price 50c.**
- MR. J. B. BRYANT.** Light sulphur yellow. Long curly petals, finely twisted. Very good. **Price 35c.**
- MRS. J. MACE.** Blush pink. Very large, fine formed flower of an exquisite color. The finest shade of pink yet produced. A strong grower. **Price 50c.**
- MAD. HENRI CAYEUX.** Beautiful light rose pink, center fading to nearly white. Petals very long and small. Finely curled. Very attractive. **Price \$1.00.**

MARXMAN. Reddish apricot. Very novel shade. Medium sized flowers. Very abundant bloomer. Good circular outline. Very distinct. **Price 35c.**

MAID OF HONOR. Deep pink, shaded peach. This is a beautiful combination and an exquisitely fine dahlia. Flowers good size, with long, incurved petals. Free bloomer **Price 25c.**

METEOR. Rich, bright crimson. Large, bold flowers, with wide pointed petals. Rich coloring and very desirable. **Price 25c.**

MARROKO. Beautiful shade of very dark pink, changing to purple. Medium size, very rich in appearance and most desirable. **Price 75c.**

MRS. CHAS. TURNER. Bright canary yellow. Flowers very large with slightly curled petals. This is probably the largest canary yellow dahlia grown, often measuring from 7 to 9 inches in diameter. For a low priced dahlia this surpasses anything for size and beauty of coloring. Try a few of these and you will never regret it. **Price 15c.**

MAD. POUILLIEN. Pure white. Very free bloomer. Petals much twisted. Good size. **Price 20c.**

MR. KEITH. Very dark garnet. Extremely velvety petals, making a very beautiful flower. Large blossoms. Generous bloomer. **Price 35c.**

MONS. A. LUMIER. Exquisite blood red. Very distinct. Extremely large and perfect flowers. Very attractive and beautiful. **Price 50c.**

MRS. WINSTANLEY. Yellow disk, deeply edged with soft scarlet. Flowers large, with long, very curly petals and good stems. One of the free blooming varieties. **Price 25c.**

MISS WEBSTER. Ivory white. Very large, full, and perfectly formed. This is one of the very best pure white dahlias. Blooms profusely and has long stems. **Price 35c.**

MIKADO. Deep rich red. Very long, slim claw shaped petals. Large blossoms. Very rich and effective both in shape and color. **Price 50c.**

MAYFIELD BEAUTY. Pink, shaded to yellow. A very unusual shade and one that attracts attention everywhere. A very desirable, medium size, low priced dahlia. **Price 15c.**



MONS. A. LUMIER.

MARION. Old gold in center, passing to a lovely swamp pink; the middle of petals being veined and suffused with old gold, while the reverse of petals is a rich carmine pink, making it a most lovely combination of colors. The blossoms are large and produce very freely.
Price \$1.50.

M. H. RICHARDSON. The flower exceeds six inches in diameter, with true cactus petals of a deep salmon, the center being primrose, veined salmon, the reflexed side of the outer petals being crimson.
Price \$2.00.

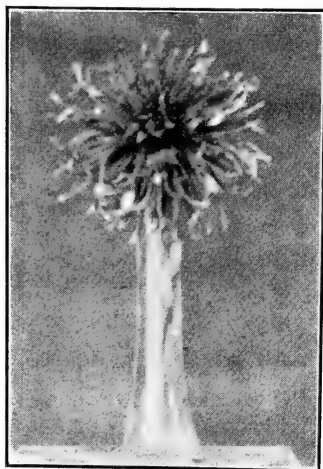
M. POL VARIN. Bronzy yellow. Unique form and a shade of rather unusual and yet desirable.
Price \$1.00.

MR. J. HARRISON. Crimson. Fine form. A beautiful dahlia, that catches the eye of every observer.
Price 75c.

MRS. MacMILLAN. Pink, large flower with white center, a grand exhibition flower.
Price 50c.

MRS. F. GRINSTED. Rich crimson and purple. Flowers much incurved, and of large size. A most beautiful dahlia.
Price 50c.

MRS. T. G. BAKER. Color a rich deep orange, gradually shading to yellow near the base of the petals. The blooms are very large, petals very long and narrow, and never come shallow. A most reliable variety for exhibition or garden.
Price 50c.



NELSON.

NELLIE HEMSLEY. Deep maroon, tipped white. A beautiful flower, and of superior form.
Price 40c.

NELSON. Deep rich crimson, shaded magenta; flowers of largest size, and interlacing florets; one of the finest Cactus Dahlias.
Price 50c.

NERO. Deep plum. Very desirable dahlia of good form and size. Finely curled petals and quite free.
Price 25c.

OPHIR. Soft apricot. Very curly petals, much incurved. This beautiful dahlia possesses a very striking individuality of color seen in no other variety. Very desirable.
Price 25c.

OLIVER TWIST. Bright orange red. Long spike like petals, well incurved. A very striking and beautiful variety.
Price 35c.

OCTOPUS. Very light pink, shading to creamy white in center. Large flowers. Very attractive and desirable dahlia.
Price 50c.

PINK PERFECTION. A lovely rose pink, flowers large, with long narrow petals.
Price 40c.

- P. W. TULLOCK.** Light salmon red, tinted purple. A very showy, free bloomer. Petals much incurved and resemble the chrysanthemum very closely. **Price 25c.**
- PRINCESS CHRISTIAN.** Crimson red. Large bold flowers and quite free. A fine color. **Price 10c.**
- PROGENATOR.** Deep rich carmine. Florets slightly serrated at points. A very full flower and an abundant bloomer. The rich coloring and finely serrated points make this one of the most desirable medium sized dahlias grown. **Price 25c.**
- PEARL.** Rosy pink, tipped nearly white. A large flower with fine curly petals. The blending of colors is extremely wonderful. **Price 50c.**
- PRIMROSE.** The name of this dahlia aptly describes its color, for it is a true primrose. Flowers are very large and perfectly formed. **Price 50c.**
- PRIMROSE DAME.** Canary yellow. A beautiful shade of yellow. Good size flowers and a profuse bloomer. **Price 20c.**
- ROSINE.** Beautiful shade of rose. Large and full. **Price 25c.**
- REINE CAYEUX.** Rich glowing blood red. This dahlia should be seen to be appreciated. The plants grow about 3½ feet high, and have very little foliage. The flowers are produced in great abundance well above the foliage, on good stems, making almost a solid bunch of dazzling red flowers. **Price 50c.**
- REV. ARTHUR HALL.** Ruby crimson. Fine form and large size. Very desirable. **Price \$1.00.**
- ROTHER.** Rich, glowing dark red. Very soft, velvety appearance. Petals broad and well curled toward the back. Large flowers. A very desirable dahlia. An early bloomer. **Price 35c.**
- RELIABLE.** Exquisite shade of light salmon pink, shading to a delicate lavender hue on tips. Very striking flower. Greatly admired by everyone. Abundant bloomer and very desirable. **Price 50c.**
- RUFUS.** Scarlet. Flowers very large and fine formed. **Price 25c.**
- REV. DR. WILLIAMSON.** Very dark velvety maroon. Long curly petals, with claw shaped points. Flowers very large, often measuring 6½ inches in diameter. The very best maroon cactus dahlia yet produced. **Price 50c.**
- STANDARD BEARER.** Rich light carmine. A standard variety of superior merit. An excellent color and a very free flowering variety. **Price 25c.** *B 20*
- STARLIEN KRONE.** Intense cardinal red. Fine appearance and attractive. Very free bloomer. **Price 15c.**

- SERPENTINE.** Variegated. Flowers varying from a blush pink to dark carmine. This is a medium size, exquisitely marked flower. A general favorite wherever introduced. Price 25c.
- STARLIEN KRONE.** Intense cardinal red. Fine appearance and attractive. Very free bloomer. Price 15c.
- SCHWAN.** Pure snow white. Extremely claw shaped petals. A true cactus type. Superior quality. Large, effective flower. Price 75c.
- SANDY.** Golden orange and fawn. A flower of great substance and desirable in every way. Price \$1.50.
- SARDIGNA.** Dark purple, very large flower of a rich shade. Full to center and free bloomer. Price 50c.
- SHERIFF HENDERSON.** Rosy salmon. Flowers large, full and very attractive. Blooms freely and is very desirable. Price \$1.00.
- SUNSHINE.** A lovely variety, color deep rosy carmine at points, passing to almost white in the center, the unopened florets being tipped white, giving a pretty effect to the flower. Price 60c.
- SIRIUS.** Golden yellow, distinctly striped with red. Large perfectly formed flowers and admired by everyone. Price 50c.
- STARFISH.** Clear scarlet. Large, fine formed flowers, borne well above the foliage, making a very showy and attractive plant. This is a very desirable dahlia, although sold at a low price. Try a few of this variety. Price 20c.
- SYBARIS.** Pure white, with small twisted, interlaid florets. Very fine and desirable. Price 50c.
- SCHONE ELSE.** Clear snow white. Medium size. Good form. Very free bloomer. Price 35c.
- SWEET NELL.** Pink, shading to lighter pink at center. Large flowers, finely curled petals. A beautiful harmony of colors. Price 25c.
- SPITFIRE.** Clear, bright scarlet. Backs of petals light orange. A very curly claw shaped flower. A beautiful shade. Blossoms freely. Price 50c.
- STERN.** Canary yellow. The flowers are very large, with long pointed petals of the purest canary yellow. An extra fine dahlia, and should be in every collection. Price 35c.
- STELLA.** Vivid crimson. Large, fine formed flowers. This is a rich color that is very much admired. Price 25c.
- SPOTLESS QUEEN.** Pure white. A very abundant bloomer of medium size. Price 15c.
- SCHNEEWITCHEN.** White. A new dahlia of superior merit. Long, slim florets, slightly incurved. Price 35c.
- THE FONDLING.** A beautiful shade of dark red, shaded purple. Large flowers of fine form. Price 25c.

THE PILOT. Deep apricot, center slightly shaded yellow. Very fine. Exceedingly attractive dahlia. Colors are combined in such a way as to make an exquisite flower. Fine form. Price 35c. ^{E 20}

THE PRINCE. Color clear rich plum without shading. Flowers are large, freely produced, and the stems are long and wiry, giving the blooms good support. Price \$1.00.

TORPILLE. Dark reddish pink, striped with white. Very odd. Full, well shaped blossoms. Desirable as a novelty. Price 75c.

TRICOLOR. Yellow background, striped and splashed pinkish red. Tips of petals light pink. Very odd combination of colors. Price 25c.

THURINGIA. Light flame color, with deep orange tints. Long straight petals. Very large blossoms borne on long stems. Price 50c.

T. G. BAKER. Very fine clear canary yellow. A magnificent large flower and very free bloomer. Very desirable. Price 50c.

UNCLE TOM. Dark maroon, nearly black. Medium size and quite free. Price 10c.

VISCOUNTESS SHEARBROKE. Reddish terra cotta. Large and free. Very showy. Price 20c.

VESTA. Beautiful shade of delicate light pink. Large full flowers borne on long stems. Very good. Price 15c.

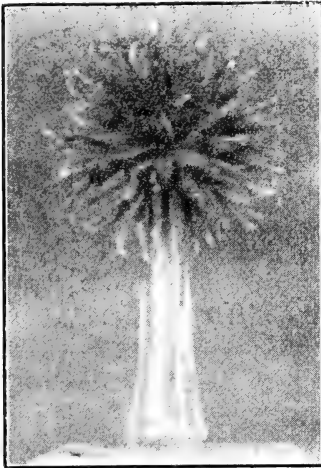
VICTORIAN. Pinkish white. Ground color freely striped and speckled with crimson. Very large flowers with long, narrow, incurved florets. Price 75c.

VENEZIA. Purple. Petals serated at points making a very unusual appearance. Very desirable in every way. Price 50c.

VIOLETTA. Violet-rose, flushed with crimson. A large flower, with petals narrow and tapering. Price 50c.

VICTOR VON SCHEFFEL. Exquisite, delicate light pink, shading to pure white in center, somewhat resembles Kriemhilde in color. Blossoms medium size, and borne on long stems. Very dainty. Price 20c.

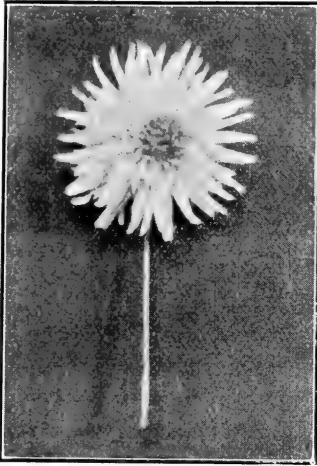
VESUVIUS. Yellow, profusely streaked with light red. Very odd. Medium size flowers. Price 30c.



THURINGIA.

WM. F. BALDING. Salmon and yellow. Clear yellow center, with salmon shading toward the tips. Petals very much incurved and claw shaped. Fine form and very free. A very attractive color.

Price 35c.



YVONNE CAYEUX.

WINSOME. Pure white. Florets very much twisted and incurved. Very desirable.

Price 25c.

WM. MARSHALL. Orange, shaded to yellow in the center. Flowers of immense size with long very slim petals. One of the largest and finest cactus dahlias yet produced.

Price 50c.

YVONNE CAYEUX. Pure ivory white. Long, straight, narrow petals, evenly curled. Generous bloomer. Without doubt this is the finest white cactus dahlia in existence.

Price \$1.00.

ZEPHYR. Pink. A beautiful shade of dark pink, fine formed flowers. A superior exhibition dahlia.

Price 15c.

ADDITIONAL CACTUS VARIETIES.

COCKATOO. White and cream variegated. This is one of the most perfectly formed cactus dahlias. The flowers are large. Some are pure white, some clear yellow, while others are part white and part yellow, all on the same plant. A very free bloomer and most desirable.

Price 35c.

ELLY. Silvery rose. Fine form and large size. A good substantial garden variety.

Price \$1.00.

FREIBIGKEIT. Scarlet. Overlaid crimson. Flowers are medium size and produced freely on good stems. Fine for cutting.

Price 75c.

SINGLE CACTUS DAHLIAS.

- ABBOTSFORD.** Fiery orange scarlet. Flowers of good form and very striking in appearance. **Price 20c.**
- CAPTIVATION.** Rich crimson maroon. Long narrow petals and large flower. **Price 20c.**
- LAMBOURNE.** Rose ground color, striped and spotted maroon. Quite distinct from any other of this class. **Price 20c.**
- LORD GOFF.** Pearly white, passing to soft rose at tips. Extra long, closely rolled petals. An exquisitely beautiful flower. **Price 35c.**
- QUEEN MARY.** Pure white, with pale yellow disc, deep golden center. Very attractive and free bloomer. **Price 25c.**
- TALISMAN.** Velvety dark crimson. Beautifully incurved flowers of good size. **Price 25c.**
- THE DOMINIE.** Reddish orange, flushed with salmon. Florets twisted and incurving. **Price 20c.**
- WAVERLY.** Rich, deep yellow flowers of an incurving shape. The best yellow single cactus. Very showy and attractive. **Price 25c.**
- WOODSTOCK.** Yellow, ground tipped with bronzy violet, slightly incurved. **Price 20c.**

DECORATIVE, FANCY, SHOW, SINGLE, PAEONY FLOWERED, AND POMPON DAHLIAS.

Do not hesitate about ordering dahlias on account of distance, for they go safely by mail or express to any part of the world.

- ALBA.** Single. Nearly white. Price 10c.
- ARIEL.** Pompon. Buff tinted orange. Very desirable. Price 10c.
- ADMIRAL DOTT.** Pompon. Pink, with lavender tinge. Very free bloomer. Round, perfect blossoms. Price 10c.
- ATALANTA.** Decorative. Almost white, softly shaded with lavender. Blossoms somewhat resemble the cactus variety. Flowers freely. Price 10c.
- A. D. LAVONI.** Show. Delicate pink. Well formed flowers with long stems. Very desirable for cutting. This is an old standard dahlia which every dahlia grower has retained from its introduction, on account of its exquisitely beautiful color and perfectly round ball shaped flower. One of the freest blooming dahlias in cultivation. Try a half dozen of these. Price 10c.
- AMERICA.** Show. Light slate, with vivid crimson stripe. Often a solid colored flower on same stalk. Much admired. Price 20c.
- APPLE BLOSSOM.** Beautiful pink, showing the many shades of the real apple blossom, from faintest blush pink to a deep rose color. Very round, nicely shaped flowers. Price 10c.
- BEAUTE LYONNAISE.** Decorative. White, edged red, grand flower, perfect form. Price 50c.
- BELLE OF SPINGFIELD.** Pompon. Very pretty shade of light red. The smallest dahlia known. Very round and regularly formed blossoms of diminutive size. Price 10c.
- BLACK SMITH.** Show. Almost entirely black in color. Good form and of medium size. Closely resembling Frank Smith except that it is a solid color. Price 15c.
- BLEUTROSCHEN.** Pompon. Dark maroon, tipped light pink. Each small petal is evenly serrated, making a very dainty little flower. Price 20c.
- BRIDE.** Show. Beautiful light lavender edged heliotrope. Petals exquisitely quilled. Flowers very round and good. Clear, distinct outline. Price 15c.
- BLACKBIRD.** Single. Deep maroon, nearly black. Large and attractive. Price 10c.

- BLUE OBAN.** Decorative. Lavender, with a beautiful tint of blue. Very desirable on account of its peculiar color, perfect form and free blooming qualities. **Price 15c.**
- BLUSH CENTURY.** Single. Clear white, slightly overcast with delicate shade of pink. **Price 10c.**
- CANARY GIRL.** Pæony Flowered. This is one of the newest novelties in Pæony Flowered dahlias. The color is a delicate canary yellow. The flowers are large, with broad slightly twisted petals, and borne on graceful stems. This exquisitely attractive new novelty was the admiration of all who saw it the past season. It is a very prolific grower and free bloomer. Its lasting qualities and superior coloring make it very desirable for decorative purposes. **Price \$1.50.**
- CATHERINE.** Pompon. Light buttercup yellow. Excellent for cutting. Very showy. **Price 10c.**
- CATHERINE DUER.** Decorative. Vivid scarlet. One of the most brilliant shades in decoratives. Blossoms large, abundant and of fine form. A great favorite at Newport, with the summer residents. **Price 15c.**
- CHALLENGE.** Pompon. White and dark maroon. A variegated novelty, attracting much attention. **Price 10c.**
- CHIEFTAIN.** Show. Rich, deep pink. Very distinct. Large and very ball shaped flowers. A very desirable variety. One of the very best pink show dahlias, and admired by everyone. **Price 35c.**
- CLIFFORD W. BRUTON.** Decorative. Canary yellow. Has extra long stems and blooms freely. **Price 15c.**
- COUNTESS OF PEMBROKE.** Decorative. A beautiful shade of lilac. Flowers resemble the Oban in appearance. Free Bloomers. **Price 10c.**
- CRIMSON GIANT.** Decorative. Deep crimson flowers, and produced very freely on tall plants. **Price 25c.**
- CROWN PRINCE.** Show. Buff, deep rich color. Good formed blossoms. A very desirable ball shaped flower. **Price 10c.**
- CUBAN GIANT.** Show. Dark, reddish maroon. Flowers of great size, measuring six inches across. Stands erect, on very long stems well above the foliage. The immense number of large, richly hued flowers present a magnificent appearance. **Price 15c.**
- DAWN OF DAY.** Show. Buff, tipped amber. A striking color, and free bloomer. **Price 15c.**
- DANISH CROSS.** Single. Light scarlet, striped with white. A beautiful, showy flower excellent for decorating purposes. Blooms profusely. Try a half dozen. **Price 10c.**

- DANIEL CORNISH.** Show. Rich dark red. Excellent color. One of the freest and best of its kind. Price 10c.
- DARKNESS.** Pompon. Deep solid maroon, nearly black. Price 10c.
- DELICE.** Decorative. Dark rosy pink. This flower is much admired because of its striking color, which is distinctly different from any other dahlia. Extremely beautiful and has long stems. Price 25c.
- DOROTHY.** Fancy. Delicate fawn color, striped and flaked with dark maroon. Very showy and novel in appearance. A peculiar combination of colors and a fine formed flower. Price 15c.
- DREER'S WHITE.** Show. A clear snow white. This beautiful show dahlia is a new introduction, is very large, fine formed and beautifully quilled. It flowers very freely and is by far one of the very best pure white show dahlias. Price \$1.00.
- DR. KEYNES.** Show. Buff, shaded red, very large fine flower; one of the best. Price 35c.
- DUCHESS OF CAMBRIDGE.** Show. Pink, tipped purple. A beautiful variegated show dahlia of good size. Price 20c.
- ELOISE.** Decorative. Blush pink forms the foundation color of this exquisite dahlia. This is softly shaded to white, each petal being clearly marked with rich flowing crimson. This is an unusually beautiful flower and greatly admired by everyone. Blooms abundantly. Price 10c.
- EMILY.** Show. Delicate lavender, overspread with white. The daintily blended colors make this an exceptionally beautiful dahlia. Long stiff stems. Price 10c.
- ENGLISH DANDY.** Show. Deep amber splashed with rich red. Backs of evenly quilled petals colored with red. Unusual and very attractive. Price 25c.
- ENGLISH BLACK PRINCE.** Decorative. Dark, velvety maroon, closely shading to black. Flowers unusually large and perfect in form. Very long stems. One of the finest black decoratives. Price 10c.
- ENGLISH PENELOPE.** Show. Fawn, delicately shading to amber and yellow. Good form. One of the largest and most desirable show dahlias. Price 35c.
- ERIC FISHER.** Show. Buff, striped scarlet. Flowers are large and beautifully formed, and very attractive. Price 35c.
- ESMERELDA.** Decorative. White ground, with pinkish-violet petals. A fine combination of colors. Price 75c.

- ESMOND.** Show. Large blossom of a clear, bright yellow. Perfect form and very desirable. **Price 25c.**
- EURYDICE.** Pompon. Light pink, edged and tipped deep rich carmine. Very fine combination and very desirable. **Price 10c.**
- FALCON.** Single. Reddish purple, with white disc around the center; a large flower, in which the color contrast is both striking and beautiful. **Price 20c.**
- FASCINATION.** Show. White suffused lavender pink. Large size and a beautiful free blooming dahlia. **Price 20c.**
- FLORA RODENS.** Pompon. Bright cherry red. Round good form flower. **Price 10c.**
- FRANK SMITH.** Fancy. Dark rich red. Petals tipped with pinkish white. A beautiful mixture of color and universally admired. Fine form. Stands well above the foliage. Very showy. One of the most pleasing fancy dahlias grown. **Price 15c.**
- FREDERIC SMITH.** Show. Purple and lilac. **Price 10c.**
- FREDERICK SPITTAL.** Decorative. Terra cotta red and velvety vermilion suffused and tipped. A very attractive dahlia. **Price 50c.**
- GETTYSBURG.** Decorative. A heavy flower of bright, deep vermilion scarlet. **Price 25c.**
- GLORIA DE LYON.** Show. White. A very fine flowering dahlia. **Price 20c.**
- GOLD MEDAL.** Fancy. Bright lemon yellow, regularly striped dark crimson. A bold and striking flower, very effective in appearance. Full and round. Blooms abundantly. **Price 25c.**
- GRAND DUKE ALEXIS.** Show. This is one of the most delicately beautiful show dahlias. The color is pure white, softly bordered with lavender. The flowers are very large and decidedly pleasing in effect, being especially distinguished for their dainty coloring. **Price 15c.**
- GRETCHEN HEINE.** Pompon. Blush white with light rose tips. **Price 15c.**
- GRUSS AU WEIN.** Pompon. This is one of the finest shaped pompon dahlias ever offered. It is a strong grower with dwarf habit, the flowers are of extra fine form, and very compact. The color is a crushed strawberry. **Price 25c.**
- HELEN CHARVET.** Decorative. Pure white with an occasional tint of pink. Of enormous size. Florets very broad. Excellent for church decoration. Free bloomer. Very attractive. **Price 75c.**
- H. HORNSVELD.** Paeony. The pride of the paeony dahlias. Enormous large flowers of very elegant form; soft salmon color. **Price \$1.00.**

HILDA SEARLE. Pompon. Rich glowing shade of light orange. Flowers very round and free blooming. Price 10c.

HIMMLICHE. Decorative. Bluish lavender of an almost indescribable shade. This is undoubtedly one of the oddest dahlias grown on account of its peculiar bluish color. Very desirable as a novelty. Price 15c.

HOLLANDIA. Paeony flowered. Delicate, light rosy pink. Flowers very large. Petals extremely broad and flat. Good bloomer. Price 75c.

JAMES SERVICE. Decorative. Black maroon. Flowers almost black. Very round and full to the stem. Price 10c.

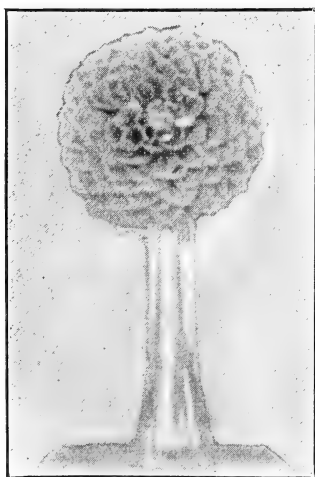
JAMES COCKER. Show. A most beautiful rich purple. Fine form, abundant bloomer. Very closely laid florets and full to the stem. The lasting qualities of this dahlia are unsurpassed. Price 10c.

JAMES ASHBY. Show. Light brick red. Very round flowers, full to the stem. Perfect form. Price 10c.

JESSICA. Pompon. Buff, slightly speckled with red. Very attractive. Free bloomer. Price 10c.

JOHN SLADEN. Show. Dark maroon. A large compact flower, almost black. Price 20c.

KAISERIN AUGUSTA VICTORIA. Decorative. Pure white, of exquisite clearness and form. A very free bloomer, and desirable for every garden. Price 25c.



LE CLOSSE.

KEYSTONE. Fancy. Lilac, with pink shading. Regular stripes of glowing crimson on each petal. A unique combination of color, very bold and striking. Blooms profusely. Price 10c.

LeCLOSSE. Show. Soft, deep orange red. This dahlia is especially distinguished for its enormous size, being one of the largest grown. Very free, fine bloomer. One of the very largest show dahlias. Long, strong stems. Price 75c.

LITTLE BESSIE. Pompon. Pure white. Good form. Abundant bloomer. Price 10c.

LYDIA. Pompon. White, striped and mottled red. Very round, full flower. Extra good. Price 15c.

LITTLE MABEL. Pompon. Light creamy buff. Flowers very round. Blooms freely. Price 10c.

- LUCY FEVRIER.** Decorative. Beautiful shade of rich rose pink, shaded to deeper tone of the same color. Broad petals. Exquisite flower. Very large and desirable. **Price 50c.**
- LEUCHSTERN.** Pompon. Orange, richly shading to deep orange red. Very fine. **Price 15c.**
- LADY MILDRED.** Single. Pure white and entirely new. Now and then shows a very faint pink tinge. Flowers large and perfect. Extremely graceful, and one of the most desirable white single dahlias. **Price \$1.00.**
- LUCY FAUCETT.** Fancy. Light canary yellow, with stripings of clear magenta. Large and very free. **Price 10c.**
- LaFAVORITE.** Single. White, suffused rose. Striped with rich purple. An exquisitely dainty flower. Large, and blossoms freely. **Price 20c.**
- MARCHIONESS OF BUTE.** Decorative. Pure white. Tips of petals rose pink. An effective contrast of color very pleasing in appearance. Medium size. **Price 10c.**
- MABEL.** Fancy. Soft lilac. Striped crimson, very attractive flower, and of fine form. **Price 35c.**
- MAD. L. TILLIER.** Decorative. Deep salmon. Shaded down to light yellow at tips. A beautiful combination of colors. **Price 50c.**
- MARGARET PERKINS.** Single. One of the most beautiful varieties of recent introduction. The flowers are very large, have rather pointed petals, are wide but not overlapping, and are borne on very long stiff stems. The color is pure white with about one-half of each petal tipped light pink; first flower being tipped cerise-pink and like Twentieth Century, of which it is a seedling, growing steadily lighter as the season advances, becoming a clear soft pink late. **Price 50c.**
- MLLE. MARIE COLLETT.** Decorative. Copper color. The flowers are of enormous size, changing to different shades of golden yellow. **Price 50c.**
- MRS. WINTERS.** Decorative. Clear, snow white. This is undoubtedly one of the most exquisite white dahlias of this class. The blossoms are of unusual size and very distinct form. Greatly admired. **Price 25c.**
- MLLE. MARGUERITE DES BLANC.** Decorative. White. Very large, full fluffy flower of clear white. An elegant variety and extremely desirable. **Price 75c.**
- MISS HUMPHRIES.** Show. Delicate lavender, shading to exquisite purple in center. Large, round, ball shaped blossoms, very perfect. Petals very regularly quilled. Exceedingly attractive. **Price 20c.**

- MISS EMMA.** Single. Dark salmon yellow with light center. Very large and attractive. **Price 35c.**
- MRS. GEORGE REID.** Decorative. White, deeply tipped pink. Edge of petals evenly notched. Good size. Flowers freely. **Price 10c.**
- MRS. ROOSEVELT.** Decorative. Delicate, light pink, shading to soft rose toward the center. An exceptionally large and elegantly formed flower, measuring from 5 to 7 inches across. Greatly admired by all. Large, strong stems. Abundant bloomer. **Price 35c.**
- Mlle. MARIE HOSTE.** Decorative. Dark, glowing pink, each petal tinted with magenta. Large, full flower. Strikingly beautiful in appearance. **Price 50c.**
- MADAME HEINE FURTADO.** Show. Pure, waxy white, perfectly formed flower. Very large and wonderfully beautiful. A free bloomer, and one of the most desirable white show dahlias ever produced. Unsurpassed for quality in every respect. **Price 75c.**
- MRS. C. E. BORDEN.** Decorative. Bright, glowing red. Full, well formed blossoms. Profuse bloomer. This beautiful dahlia begins to bloom early, and produces an abundance of showy flowers continually until killed by frost. Very desirable for cutting. **Price 15c.**
- MABLE C.** Single. An entirely new single dahlia of unusual merit. The color is a lavender pink, with an amethyst shading at base of petals. Flowers large and graceful. **Price \$1.00.**
- MISS BROWNING.** Fancy. Light yellow, tipped clear white. Bold and striking flower. Blooms freely. **Price 25c.**
- MADAME A. LUMIER.** Decorative. One of the most beautiful imported decorative dahlias in existence. The color is white, the broad petals being deeply tipped with rich scarlet. A rare and very effective combination of color, that sets this flower apart as one of the most desirable varieties. **Price 50c.**
- MADAME VAN DEN DAEL.** Decorative. Delicate silvery pink, fading to creamy white in center. Broad, perfect petals. An exceedingly attractive and beautiful dahlia. **Price 35c.** ¹⁸²⁵
- MADAME E. POLLETTE.** Show. Light fawn, shading to pinkish red in center. Very showy. Beautifully blended colors. Full, round flower. Generous bloomer. **Price 20c.**
- MADAME JEANNE CHARMET.** Decorative. One of the best decorative dahlias yet produced. Soft, light pink, bordered with red. Large flowers, borne on long graceful stems. Free bloomer. **Price 75c.**
- METEOR.** Show. Bright, ruby red, shading to purple. A large striking flower and very desirable color. Extremely large, growing from 5 to 6 inches across. Profuse bloomer. **Price 35c.**

- MERCEDES.** Show. Rose and white. Full, well rounded blossoms. good sturdy growth. **Price 20c.**
- MAID OF KENT.** Decorative. Rich cherry red. Splashed and blotched with pure white. A variegated dahlia with unusually peculiar markings. The center half of some of the flowers is white, while the other half is rich ruby red. Attractive. **Price 10c.**
- MONS. HOSTE.** Decorative. Rose carmine. A beautifully formed large flower borne on stiff stems. **Price 50c.**
- MRS. EVANS.** Single. White flushed pink, finely striped and spotted crimson. **Price 30c.**
- MRS. N. HALLS.** Show. Bright scarlet, tipped white. Large ball shaped flower. **Price 25c.**
- NORMA.** Show. Beautiful butter yellow, overspread with reddish tinge. Very round. Fine. **Price 25c.**
- OBAN.** Decorative. Mauve, shaded to fawn. This is a very odd shade for a dahlia, but also very attractive. When cut for bouquets of solid color, this dahlia presents an exquisitely effective appearance. The flowers should be seen to be appreciated. At the price at which this dahlia is sold, all lovers of flowers should have a good supply of them. **Price 10c.**
- ORIENTALIS.** Decorative. Beautiful violet color, shading to white. Flowers very large and attractive. **Price 50c.**
- PAPA CHARMET.** Decorative. A magnificent large flower of a deep, velvety coral-red, overlaid with a much darker shade, giving the flower a rich crimson-maroon effect. The very best decorative dahlia of its color. **Price 60c.**
- PEARL.** Show. White, deeply bordered rose. An extremely dainty blending of colors. Very round and full back to stem. An immense flower, supported on very long stems. One of the best. **Price 15c.**
- PAULINE.** Pompon. Clear lavender of a beautiful shade. Round perfect flower, very fine. **Price 20c.**
- PROF. MANSFIELD.** Fancy Decorative. A remarkably large fancy dahlia. Flowers grow from 7 to 8 inches across, and are of sparkling yellow, with clear white tips. A tinge of rosy red is noticeable toward the center. This peculiar combination of colors makes an exceptionally attractive flower. Strong growth and free bloomer. **Price 50c.**
- PINK CENTURY.** Single. Delicate coral pink. Large and graceful flowers. One of the best single dahlias and one of the most durable for cut flowers. Excellent for decorating. **Price 25c.**
- PROF. FAWCETT.** Fancy. Deep lilac, striped with chocolate. A very odd combination of colors. Desirable as a novelty. **Price 35c.**

- PRES. VIGER.** Single. Rich carmine red. A collarette dahlia, having a collar of small, pure white, very curly petals inside. Very odd and attractive. Price 15c.
- PERLE DE LATÈTE D'OR.** Decorative. White. Flowers are borne on long, stout stems, and present a beautiful feathery appearance, slightly like a paeony in form. Good size; free bloomer. Very desirable. Price 25c.
- QUEEN VICTORIA.** Show. Lemon yellow. Flowers unusually full and round. Strong stems and fine for cutting. Price 10c.
- REINE EMMA.** Paeony flowered. Light pink, with tinge of golden yellow on inside of petals. Very large and so perfect it almost has the appearance of being artificial. Very fine. Price 50c.
- ROYALTY.** Show. Deep soft fawn color. Flowers very large and attractive. Full, well rounded blossoms. Very unusual shade and extremely desirable. Price 10c.
- REINE WILHELMINA.** Paeony flowered. Pure white. Full, fluffy flowers of immense size, measuring from 6 to 7 inches. One of the very desirable paeony flowered varieties. Price 75c.
- REVIVAL.** Show. Clear dark red. Well rounded blossoms, very ball shaped. Evenly quilled petals. Price 10c.
- SOUVENIR DE GUSTAVE DOUZON.** Decorative. This is a decided novelty because of its gigantic size, closely resembling the sunflower in this respect. It is the largest decorative dahlia grown. Color is a pleasing shade of orange red. On account of its extraordinary size and elegance of form and color, this is a very attractive dahlia. Flowers full to center and often measures 9 inches in diameter. Price 35c.
- SOURCE DeFEU.** Decorative. A brilliant orange red, striped and splashed with lemon yellow at base of petals. On the tip of each petal are three deep saw tooth points. A dazzling combination of color. Very striking. Price \$1.00.
- SUNBURST.** Show. Color salmon. Fine form and a beautiful shade. Price 15c.
- THOMAS WHITE.** Show. Almost black and fine form. Price 15c.
- TWENTIETH CENTURY.** Single. Pure white at base and tip, with center of petals a beautiful rose pink. A very popular dahlia and worthy of the highest praise. Flowers freely. Price 15c.
- UNCERTAINTY.** Decorative. Red and white, very harmoniously blended. Seldom has two flowers alike, some blossoms being almost clear white, while others are nearly a solid red. A beautiful dahlia of fine form. Admired by everyone. Price 10c.

- VICTOR VELVET.** Decorative. A deep velvety cardinal red. An extremely soft rich shade. Extra large, graceful flowers, with full loose petals. The great abundance of large magnificent blossoms makes this one of the most showy and most desirable decorative dahlias. **Price 35c.**
- VIRIDI FLORA, THE GREEN DAHLIA.** Pompon. The most unique novelty of dahlia culture. The entire flower is a rich, verdant green, same shade as the foliage. **Price 10c.**
- VIRGINIA MAULE.** Decorative. A beautiful shade of light pink. Flowers of large size and are greatly admired for their coloring when grown for cut flowers. **Price 50c.**
- W. W. RAWSON.** Decorative. This popular new novelty has been the admiration of all, wherever exhibited, the past season. The massive, perfect flowers, often measuring 6 inches across, are borne on stiff stems about 15 inches long. The entire flower is absolutely perfect in outline and formation. The color is pure white, overlaid with amethyst blue. This wonderful combination gives it the appearance of a delicate lavender, and is exquisitely beautiful for decoration. **Price 75c.**
- YELLOW COLOSSE.** Decorative. Canary yellow. An immense full flower of the most exquisite shade of canary yellow. Very desirable in every way. **Price 75c.**

ORDER EARLY.

SPECIAL OFFERS.

For the benefit of those who are not familiar with the names, colors, and characteristics of the dahlia, and wish to have the selection made for them, I make the following special priced collections:

- NO. 1 COLLECTION.** fifteen extra fine, named varieties, several classes, my own personal selection, no two alike, and each one labelled. . . **\$1.00**
- NO. 2 COLLECTION.** fifteen extra fine, higher priced varieties, my own personal selection, no two alike, and each one labelled. . . . **\$2.00**
- NO. 3 COLLECTION.** contains \$7.00, or more, worth of extra nice assorted varieties, very carefully selected by myself, no two alike, all labelled. **\$5.00**
- NO. 4 COLLECTION.** contains twenty-five bulbs, without labels, that have become mixed in handling. They are all standard varieties, but labels have accidentally become detached. **Price \$1.00** while they last. The supply for this collection is limited.

BULBS BY THE DOZEN.

One dozen any 10c dahlias, alike or assorted, your selection.....	\$1.00
One dozen any 15c dahlias, alike or assorted, your selection.....	\$1.50
One dozen any 20c dahlias, alike or assorted, your selection.....	\$2.00
One dozen any 25c dahlias, alike or assorted, your selection.....	\$2.50
One dozen any 35c dahlias, alike or assorted, your selection.....	\$3.50

If your order amounts to \$5 at regular single bulb prices, you may select **\$1.00** worth of bulbs free. (But this does not apply where you buy at dozen rates, or the special collections.)

If it amounts to \$10.00, **\$2.00** worth free.

If it amounts to \$15.00, **\$3.00** worth free.

If it amounts to \$20.00, **\$4.00** worth free.

If it amounts to \$25.00, **\$5.00** worth free.

REMEMBER, I send FIELD GROWN ROOTS (or bulbs) only, NO PLANTS (or slips,) of any kind sent out.

CUT FLOWERS FOR SALE in their season, **25c** to **50c** per dozen, at the gardens.

For the benefit of persons living at a distance from my gardens, and who would like to see samples of my dahlias, I will send a sample box containing 50 blossoms of different kinds, all labelled with their names, for **\$1.00** to pay for labelling and packing.

Or, for decorating purposes I will send 100 extra nice, short stemmed blossoms, not labelled, nicely packed and delivered to the Express Company, for **\$1.00**. Customer to pay expressage in both cases.

Orders for bulbs will be booked for spring delivery any time in the year.

NOTE--Have you read instructions, carefully, about ordering and the best way to send money, and the way to have bulbs sent ?

TESTIMONIALS.

March 8, 1909, a gentleman in Dayton, Ohio, writes: "I am in receipt of your 1909 catalogue in which I am very much interested, and most heartily congratulate you on the thoroughness and the manner in which it is gotten up. If it makes one-tenth the impression on the average person receiving it as it has on me, you will certainly be repaid for all the money and time you have put into it. I notice your No. 4 collection seems rather attractive, and as an experiment I think I shall buy a number of these, so please enter my order, and save for later shipment seven of your No. 4 collections. As you have much better facilities for caring for these bulbs, please keep them for me until such time as I write you."

April 28, 1909, a lady from Union Center, N. Y., writes: "Received dahlia bulbs in good condition yesterday noon, (April 27.) Thank you very much for your kindness and promptness."

April 30, 1909, a lady from Greenpoint, L. I., writes: "I received the dahlias by mail all right, and am very much pleased with them. I thank you very much for the extra ones."

May 3, 1909, a lady from Leonard Bridge, Conn., writes: "The dahlia bulbs came all right and are in perfect condition."

May 7, 1909, a lady from Leavenworth, Kan., writes: "I received the dahlia bulbs and am very much pleased with them. Please accept thanks for prompt delivery of my order, and for the extra bulb you so kindly sent me."

May 8, 1909, a lady from Pen Yan, N. Y., writes: "The dahlia bulbs were received yesterday in first class condition, and are all fine bulbs."

May 13, 1909, a lady from Eureka, California, writes: "The dahlias came yesterday in fine shape. I have them planted. Thank you for the extra one."

May 29, 1909, a lady from La Plata, Missouri, writes: "My dahlia bulbs came today in fine condition. Please accept my thanks for prompt attention, also for the extra dahlia. I am very much pleased with my order."

September 8, 1909, a gentleman from the Grand Central Palace, New York city, writes: "The dahlias were a grand success. We have had a great deal of pleasure out of them all summer, and I have no doubt you will receive some very good orders from these samples. Kindly send two of your catalogues, each with a list of the dahlias I had, to Mr. —, Waterbury, Conn. He and a friend of his will undoubtedly send you an order."

September 9, 1909, a gentleman from Lancaster, Pa., writes: "I thought I would drop you a few lines and let you know how my dahlias came around. Well, they are simply great, some people almost got a fit over them. They all bloomed except the Souvenir de Gustave Douzon and that has buds on it now, but this summer was a hard one on flowers in this section. The Reine Wilhemina is a wonder. The dahlia that came in place of Mad. Clement Lemouine is very pretty, it is between a pink and light red, each petal is cut on the ends and has long stems. It is very pretty."

October 14, 1909, a lady from Cincinnati, Ohio, writes regarding a box of sample flowers: "I never before saw such full dahlias or such beautiful colorings. They were without any doubt the handsomest and largest specimens I ever saw. Everyone here greatly admired them. I cannot thank you enough for the dahlias and for the pleasure they gave each of us, as we are very fond of flowers, and it is not often that one can look on such beauties as these were."

May 18, 1909, a lady from Olympia, Washington, writes: "The one dozen bulbs received in excellent condition. It was all right to send part small bulbs, as our more experienced growers have learned that a small bulb gives quite as good results, and I think better, if not too dry when received."

March 10, 1909, a lady from Schenectady, N. Y., writes: "The dahlia bulbs I ordered of you reached me today in good condition, moist and plumb, also your letter with enclosures. Thank you for the list of dahlias ordered, also for receipt for money paid. I enclose stamps for postage that you so kindly advanced. I think your careful way of filling orders and sending out a letter with the filled order is a good thing to do."

April 30, 1909, a lady from Harrison, Idaho, writes: "Dahlia bulbs received yesterday (they had been misssent to Harrington, Wash.) and they seem to be in fine condition. All have a plump little sprout or eye, but one (James Cocker) and I suppose that will start."

May 6, 1909, a lady from Decatur, Alabama, writes: "The dahlia roots came in splendid condition. Thank you for the promptness and the extra roots which you so kindly sent."

May 1, 1909, a gentleman from New London, Wisconsin, writes: "The bulbs received today in good shape. Will order more next spring."

May 28, 1909, a lady from Montreal, Quebec, writes: "Bulbs arrived in good condition."

April 4, 1909, a lady from Lexington, South Carolina, writes: "The dahlia bulbs received in good condition. Thank you for the promptness."

April 28, 1909, a gentleman from South Egremont, Mass., writes: "The dahlia roots, as per your invoice of the 26th, duly received, and I appreciate the generous manner in which you filled my order."

May 18, 1909, a lady from Wampum, Wisconsin, writes: "Dahlias received in good condition. Thank you for your kindness."

May 10, 1909, a lady from Olney, Maryland, writes: "The dahlia roots arrived safely, and am very much pleased with them."

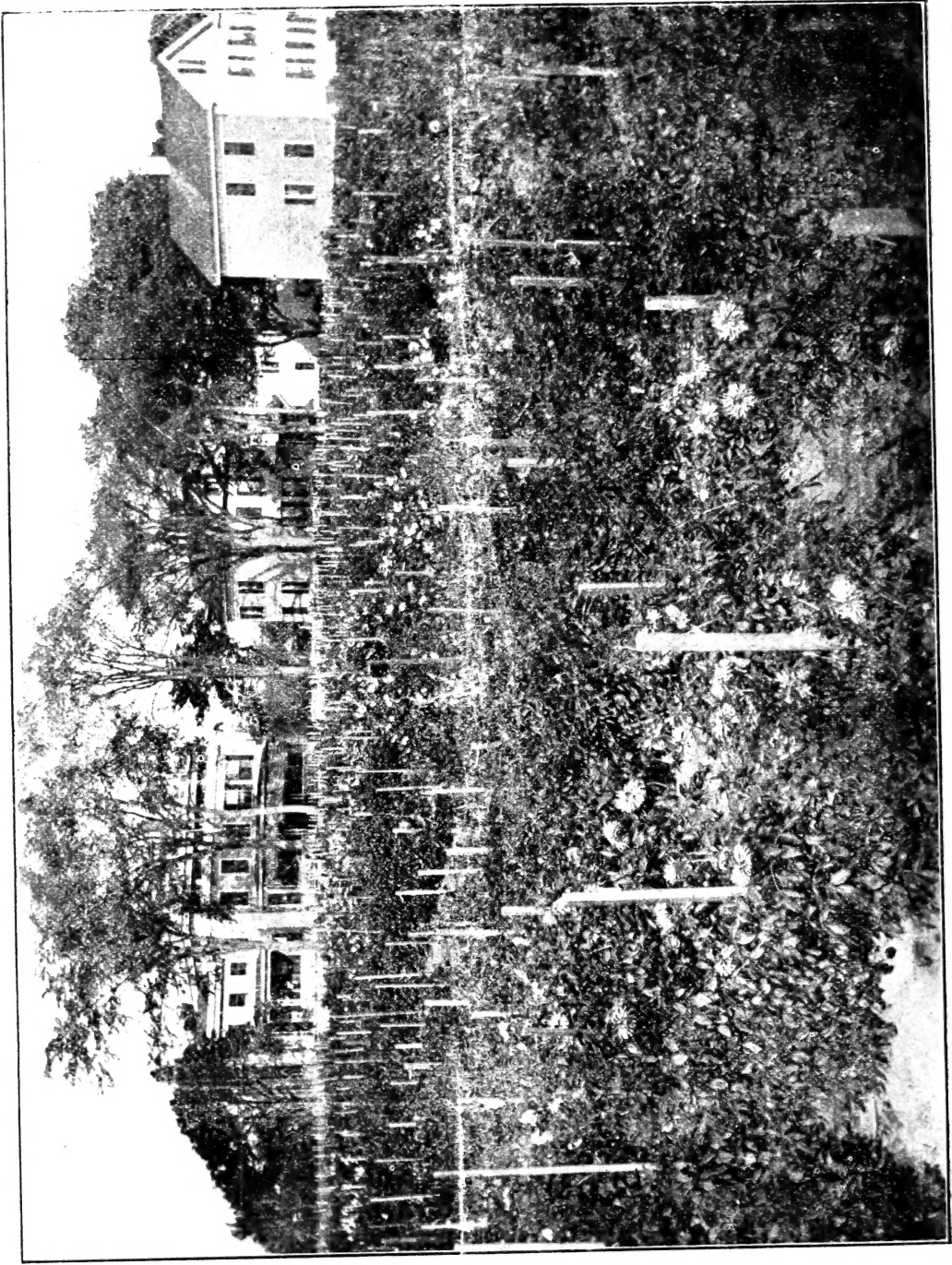
[From the *Florists' Review*, Chicago, September 30, 1909.]

"George L. Stillman, of Westerly, has just returned from New York, where he had an exhibit of dahlias at the American Institute, at which he was awarded first on best twenty-five blooms of dahlias, first on best collection of cactus dahlias, first on best collection of single cactus dahlias, first on twenty-five blooms of yellow cactus shown in one vase, a special on fifty blossoms in one collection, and a special on a growing plant of Dahlia Viridi Flora, the green dahlia. He was also awarded first on a collection of dahlias and second on a collection of cut flowers at the Vermont State fair, at White River Junction."

[From the *Westerly Daily Sun*, September 12, 1909.]

"George L. Stillman, the dahlia grower, has returned from Hartford, Conn., where he exhibited about 300 varieties of dahlias at the Connecticut State Fair, taking first prize on his collection, in competition with many exhibitors from all over the state."





A Partial View of One of My Dahlia Fields, Westerly, R. I.