

Historic, Archive Document

Do not assume content reflects current scientific knowledge, policies, or practices.

62.31

Dealers' Wholesale Catalogue

JANUARY 18, 1910

LIBRARY
★ JAN 22 1927 ★
U.S. Department of Agriculture

BLUE RIBBON Vegetable Seeds

IN BULK AND PACKETS



*Onion Sets, Lawn Grass, Flower Seeds, Summer Flowering Bulbs,
Stock Foods, Insecticides, Sundry Implements, Etc.*

WOOD, STUBBS & CO.

INCORPORATED

SEEDSMEN

219-221 East Jefferson Street

LOUISVILLE, KY.



WOOD, STUBBS & CO.'S FAMOUS BLUE RIBBON SEEDS

Wood, Stubbs & Co.'s Blue Ribbon Seeds are recognized by all leading planters everywhere as the best and most reliable. They were awarded Gold Medal at St. Louis World's Fair in 1904, and the products have received first prizes at State and County Fairs wherever exhibited.

Quality and Quantity both are assured in the use of Blue Ribbon Seeds. Once used they are popular favorites.

Our packets are large, well filled, and the most handsomely lithographed packets ever sent out in this country. The colors are natural, drawn by a skilled artist, and are true to type as was possible to produce. Blue Ribbon Seeds in packets will sell where others will become shop-worn, being combined with attractiveness, cultural information, and quality which is unexcelled.

TERMS OF SALE.

This list cancels all previous quotations.

Owing to short crops in many varieties, prices are subject to change and orders binding only when accepted, and stocks offered here are subject to being unsold.

Unless otherwise specified we give 90 days from date of invoice, or 4 per cent. discount for cash in 10 days, or 1 per cent. discount per month. All bills, however, purchased prior to June 1st are due on June 1st.

WE DO NOT PLACE SEEDS ON COMMISSION. All seeds are sold outright, and all bills are payable to Wood, Stubbs & Co., at Louisville, Ky., direct, and not to any agent, unless he has our written authority to collect accounts.

Bags, Barrels, and Boxes are charged at cost, and not subject to return for credit.

We deliver all goods F. O. B. Louisville to Depots or Express Offices, but are not responsible, after we have a signed bill of lading in good order from the transportation company, for delays, accidents, or loss of goods in transit.

10 pounds will be supplied at 100 pound rate.

One-half pound and one-half bushel at pound and bushel rate.

Smaller quantities will be charged at higher rates.

TELEGRAPH CODES. American Seed Trade Association; A-B-C; 5th Edition; Robinson's and Baker's.

About Warranting Seeds

Wood, Stubbs & Co. give no warranty, express or implied regarding description, quality, productiveness, or any other matter connected with the goods they send out, and will not be in any way responsible for the crop. If the purchaser does not accept the goods on these terms, they are to be returned at once and any money that has been paid for them will be refunded. Every order received for articles in this catalogue will be executed on these conditions only.

A FEW REASONS WHY YOU SHOULD SELL BLUE RIBBON SEEDS EXCLUSIVELY.

Blue Ribbon Seeds are the Best Seeds in America.

The Most Beautiful Packets ever sent out.

The Most Reasonable Prices, considering Quality.

Lower Freight Rates.

The Most Up-to-Date and Best Equipped Seed House in the United States.

WE SUPPLY DEALERS WHO HANDLE

Blue Ribbon Vegetable Seeds

With a Supply of

LITHOGRAPHED HANGERS, CATALOGUES, AND OTHER ADVERTISING MATTER
FREE.

Blue Ribbon Vegetable Seeds in Packets

Put up in handsomely lithographed packages showing pictures of varieties in natural colors drawn by a skilled artist, and with full cultural instructions on the back. All varieties of vegetable seeds in packets, with the exception of Cauliflower and one or two unimportant sorts not suited for general trade, retail at 5 cents each.

WHOLESALE PRICE OF VEGETABLE SEEDS IN 5c PACKETS.

Including Peas, Beans, and Corn.

Per dozen packets	\$0.25	Per 1000 packets	\$15.00
Per 100 packets	1.75	In 5000 and over, per 1000	12.50
50 at 100 rates; 500 at 1,000 rates.			

Collections in Cabinets of Wood, Stubbs & Co.'s Blue Ribbon Seeds, in Packets.

These are put up in three different sized collections in an attractive display cabinet and price includes the cabinet.

We supply catalogues, beautifully lithographed hangers, and other advertising matter free.

COLLECTION A Contains 200 Mammoth Packets of the best and most salable varieties, in proportion about two-fifths of the sorts shown under Collection C (see next page). Can be supplied with or without Peas, Beans, and Corn.

Retails for \$10.00. Our Net Wholesale Price, including Cabinet, \$3.50.

COLLECTION B Contains 300 Mammoth Packets of the best and most salable varieties, in proportion about three-fifths of the sorts shown under Collection C (see next page). Can be supplied with or without Peas, Beans, and Corn.

Retails for \$15.00. Our Net Wholesale Price, including Cabinet, \$5.00.

COLLECTION C See list of varieties next page. Contains 500 Mammoth Packets.

Retails for \$25.00. Our Net Wholesale Price, including Cabinet, \$7.50.

COLLECTION D Contains 106 1/2-pt. Packages of Beans, Corn, and Peas. Retails for \$10.60. Wholesale price, including Box, \$5.00. **Net Profit, \$5.60.**

Contents of Collection D.

BEANS.

- 20 pkts. Imp. Ey. Red Valentine.....
- 8 pkts. Giant Stringless Green Pod.....
- 8 pkts. Ey. Yellow Six Weeks.....
- 1 pkt. Black Wax
- 1 pkt. Golden Wax
- 10 pkts. Imp. Ky. Wonder
- 1 pkt. Cutshort or Cornfield
- 1 pkt. Wood's Prolific Bush
- 1 pkt. Burpee's Bush Lima
- 2 pkts. Large Pole Lima Beans.....

CORN.

- 6 pkts. Adams Early
- 6 pkts. Country Gentleman
- 6 pkts. Stowell's Evergreen

PEAS.

- 6 pkts. W. S. & Co.'s Express.....
- 6 pkts. Early Alaska
- 5 pkts. McLean's Little Gem.....
- 3 pkts. Nott's Excelsior
- 3 pkts. Summer Queen
- 3 pkts. Champion of England
- 3 pkts. Large White Marrowfat

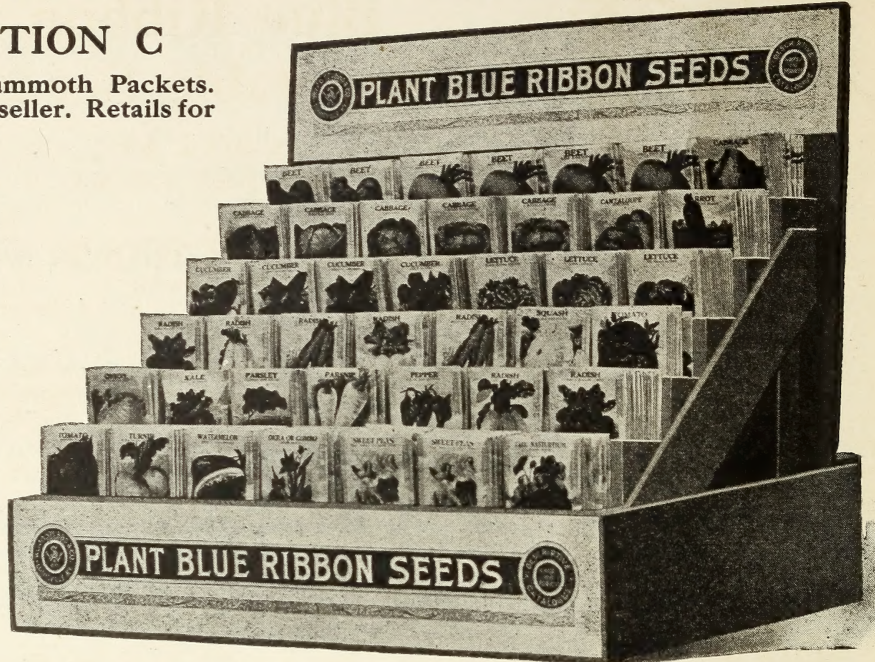
TURNIP.

- 6 pkts. Purple Top Strap Leaf.....

COLLECTION C

Contains 500 Mammoth Packets. Every one a good seller. Retail for \$25.00. Wholesale price, including Standing Cabinet, \$7.50. Net Profit, \$17.50

If desired, we can leave out Peas, Beans, and Corn, substituting therefor other seeds in proportion as they sell best. If Collection C, as it appears below, is wanted, simply order "Collection C." If desired to leave out Peas, Beans, and Corn, order "Collection C-a."



List of Best Selling Varieties of Blue Ribbon Seeds. Collection C.

BEANS.

- 5 Pkts. Imp'd Early Valentine Beans.
- 5 " Giant Stringless Green Pod.
- 5 " Ey. Yellow Six Weeks.
- 3 " Black Wax.
- 2 " Golden Wax.
- 5 " Imp'd Kentucky Wonder Pole.
- 5 " Wood's Prolific Bush.
- 5 " Burpee's Bush Lima.

BEETS.

- 12 " Extra Early Eclipse.
- 30 " Early Blood Turnip.

CABBAGE.

- 10 " Large York.
- 10 " Charleston Wakefield.
- 15 " Early Flat Dutch.
- 15 " All Seasons.
- 20 " P. H. Late Flat Dutch.
- 10 " Large Late Drumhead.

CANTALOUPE.

- 5 " Rocky Ford.
- 5 " Extra Early Hackensack.

CARROT.

- 5 " Early Scarlet Horn.
- 5 " Improved Long Orange.

CORN.

- 5 " Adams Early.
- 5 " Country Gentleman.
- 5 " Stowell's Evergreen.

CUCUMBER.

- 10 " Improved White Spine.
- 20 " Improved Long Green.
- 13 " Early Cluster.

LETTUCE.

- 30 " Black Seeded Simpson.
- 15 " Large Cabbage.
- 10 " Cal. Cream Butter.
- 5 " Improved Hanson.

ONION.

- 3 Pkts. White Silver Skin.
- 2 " Yellow Danvers.
- 5 " PARSLEY—Moss Curled.
- 10 " PARSNIP—Sugar.

PEAS.

- 5 " W. S. & Co.'s Express.
- 5 " Early Alaska.
- 5 " Summer Queen.
- 5 " Champion of England.

PEPPER.

- 3 " Bell or Bull Nose.
- 2 " Long Red Cayenne.
- 2 " PUMPKIN—Tenn. Sweet Potato.

RADISH.

- 10 " French Breakfast.
- 25 " Early Scarlet Turnip.
- 10 " White Strasburg.
- 10 " Early White Turnip.
- 15 " Brightest Long Scarlet.

- 5 " SALSIFY—Mam. Sand. Island.
- 3 " SQUASH—Early Bush.
- 2 " " Hubbard.

TOMATO.

- 10 " Livingston's Beauty.
- 10 " New Stone.
- 10 " Improved Trophy.

TURNIP.

- 5 " Ey. Red or Purple Top Strap Leaf.
- 5 " White Flat Dutch.
- 5 " Early Purple Top Globe.

WATERMELON.

- 5 " Kleckley's Sweets.
- 5 " Georgia Rattlesnake.

FLOWER SEEDS.

- 13 " Sweet Peas, Finest Mixed.
- 10 " Nasturtium, Finest Mixed.

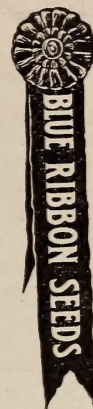
Blue Ribbon Vegetable Seeds

IN BULK AT ;
LOW NET PRICES

WOOD, STUBBS & CO.
(Incorporated)

Seedsman,

Louisville, Ky.



NOTE—Varieties in black-faced type are the only ones which can be supplied in Lithographed Packets. They are the leading sorts and best sellers in packets.

	Per lb.
ARTICHOKE, Large Globe	\$2.00
ASPARAGUS, Columbian Mammoth White30
Conover's Colossal25
Palmetto30
Giant Argentuil30
Asparagus Roots, per 100, 60c; per 1,000, \$5.00.	

BEANS—Finest Stocks

Dwarf Green Podded Sorts.		Per bush.
Taylor's Green Pod		\$4.50
Giant Stringless Green Pod		5.00
New Stringless Green Pod (Burpee's)		5.25
Improved Earliest Red Valentine		5.00
Extra Early Refugee		3.75
Early Yellow Six Weeks		3.75
Dwarf Horticultural		5.50

BEANS, Wax Podded.	Per bush.
Davis White Wax	\$4.75
Wardwell's Kidney Wax	4.25
Dwarf German Black Wax	4.50
Dwarf Golden Wax	4.50
Keeney's Rustless Golden Wax	4.50

BEANS, Lima Pole.	
Ford's Mammoth Podded Pole	5.25
Jersey Extra Early	5.25
King of the Garden	5.25
Large White Lima	5.00
Small Lima, or Butter Beans	5.00

BEANS, Lima Dwarf.	Per bush.
New Wonder Bush	\$5.50
Wood's Prolific Bush	5.50
Henderson's Bush	5.50
Burpee's Bush	5.50

BEANS, Pole or Cornfield.	
Imp. Kentucky Wonder	4.75
Cut Short or Corn Field	4.50
Lazy Wife Pole	6.75
Horticultural Pole	5.00
Fat Horse or White Creaseback	4.50

BEANS, Dwarf or Shelled.	
Royal Dwarf White Kidney	3.75
French Red Kidney	3.50
Dwarf White Navy	2.85
Dwarf White Marrow	3.25

BEETS—For Table Use

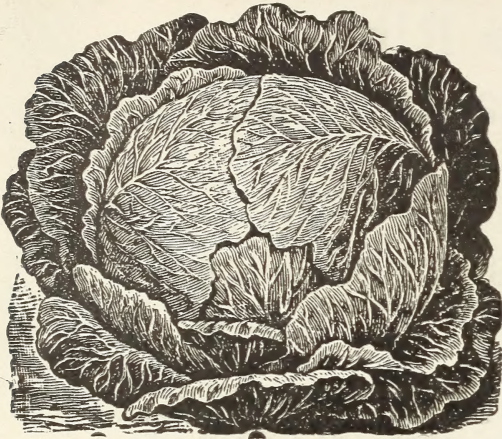
	Per lb.
Crosby's Imp'd Early Egyptian	\$0.40
Detroit Dark Red35
Extra Early Eclipse35
Extra Early Egyptian30
Imp'd Early Blood Turnip30
Edmand's Early Blood Turnip30
Bastian's Early Blood Turnip30
Extra Early Bassano, or Sugar30
Half Long Blood25
Long Smooth Blood20

Swiss Chard	Per lb.
Swiss Chard	\$0.25

BEETS, for Stock.	Per lb.
Mam. Prize Long Red Mangel	\$0.15
Yellow or Orange Globe Mangel15
Golden Tankard Mangel15
Silesian Sugar15
Lane's Imperial Sugar15

BROCCOLI, White Cape	2.00
----------------------------	------

BRUSSELS SPROUTS, Perfection ..	.80
---------------------------------	-----

**SOLID SOUTH CABBAGE.**

One of the best early flat heading sorts grown.

CABBAGE

Finest American Grown Stocks

EARLIEST VARIETIES. Per lb.

W., S. & Co.'s Selected Early Jersey Wakefield	\$1.00
Large or Charleston Wakefield	1.00
Early Winningstadt75
Large York60
Early Spring	1.00

MEDIUM EARLY OR SUMMER.

Solid South	1.00
Henderson's Early Summer90
Early Flat Dutch70
All-Head Early70
All Seasons70
Henderson's Succession	1.00
Early Drumhead70

LATE OR AUTUMN VARIETIES.

Danish Ball Head or Hollander	1.00
Louisville Drumhead (Home grown)	2.50
Lou. Drumhead (Northern grown)	1.00
Surehead90
Amer. Perfection Drumhead, Savoy90
Prize Head Late Flat Dutch70
Large Late Drumhead70
Mammoth Rock Red	1.00

CARROT.

Early Scarlet Horn40
Chantenay40
Oxheart, or Guerande40
Scarlet Intermediate40
Half Long Scarlet (Stump)40
Half Long Danvers40
Improved Long Orange35
Large White Belgian25

CAULIFLOWER.

	Per oz.	
Blue Ribbon Snowball	\$1.50	\$20.00
Earliest Snowball	1.25	15.00
Extra Early Erfurt	1.25	15.00

**PRIZE HEAD LATE FLAT DUTCH.**

A sure heading late sort of finest quality

CELERY**CELERY.**

Per lb.

Improved White Plume	\$1.25
Golden Rose, sold out	
Winter Queen80
Perle le Grand80
Fin de Seclé	1.00
Giant Pascal75
Pink Plume	1.00
Golden Self Blanching, sold out	
Crawford's Half Dwarf75
Celeriac or Turnip Rooted Celery75

COLLARDS.

True Georgia45
North Carolina Short Stem60

CORN**EARLIEST SORTS.**

Per bush.

Extra Early Adams	2.25
Early Adams	2.00
Early Northern White Field	1.60
Red Driver, sold out	

SWEET OR SUGAR CORNS.

Mammoth White Cory (Sugar)	2.75
Black Mexican	2.75
Crosby's Early Sweet,	2.75
Country Gentleman,	2.75
Stowell's Evergreen,	2.25
Early Evergreen	2.50
Late Mammoth,	2.75

CORN—Pop.

Mapledale Prolific	2.25
White Rice	2.25
Queen's Golden	2.25

Per lb.

CORN SALAD, Large Seeded\$0.30

CRESS, Curled20
" Water	1.75

Blue Ribbon Gem Cantaloupe

The finest of all of the Netted Gem type, being about one-fourth larger than Rocky Ford, ten days earlier, equally prolific, and one of the finest flavored melons grown. Excellent for home use or market.



CANTALOUPE.	Per lb.
Blue Ribbon Gem75
Wood's Perfection75
Rocky Ford, Colorado Grown40
Netted Gem40
Long Island Beauty80
Paul Rose80
Emerald Gem80
Extra Early Hanover70
Champion Market60
Large Hackensack, or Turk's Cap65
Banana	1.25
Tip-Top	1.25
Extra Early Hackensack65
Osage, or Miller's Cream60
Baltimore, or Acme65
Jenny Lind40
Glass Melon	1.25

CUCUMBER.	
Cumberland	\$0.50
Improved Early White Spine60
Arlington White Spine60
Davis Perfect60
Klondyke65
Early Cluster50
Early Frame50
Green Prolific50
Improved Long Green70
Chicago Pickling50
Jersey Pickling50
Gherkin, or Bur	1.00

DANDELION, French

EGG PLANT, New York Imp'd	2.50
" " Imp'd. Spineless	2.50
" " Black Beauty	2.75

ENDIVE, Green Curled65
" Large Green Curled75

HERBS.	Per oz.	
Anise	\$0.05	\$0.50
Basil, Sweet08	.75
Bene08	.75
Borage06	.60
Caraway05	.35
Dill05	.35
Fennel05	.40
Lavender08	.80
Marjoram, Sweet06	.60
Sage08	.80
Summer Savory05	.45
Thyme, B'd Leaved English10	1.40

KALE.	Per lb.
Dwarf Curled Siberian, Northern..	\$0.30
Home Grown, Siberian25
Dwarf German Greens30
Dwarf Green Curled Scotch.....	.45
Spring, or Smooth07

KOHL RABI.	
Early White Vienna	1.10

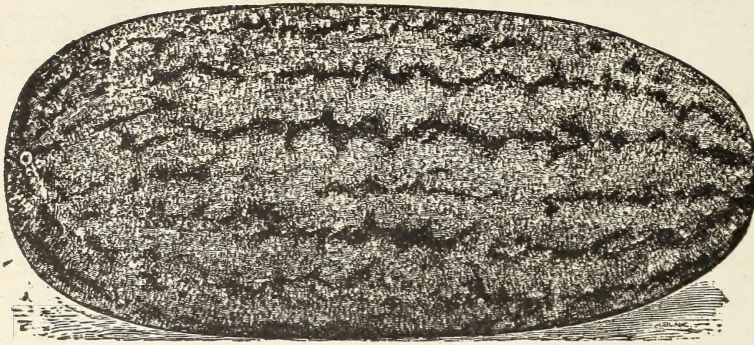
Leek.	
Large Flag55
Musselburgh70

LETTUCE, 10 lb @ 10c per lb less.	
Black Seeded Simpson50
Tilton's White Star50
Grand Rapids50
Early Curled Simpson50
Denver Market50
Imperial Cabbage	1.00
Shotwell's Brown Head70
Iceberg50
Large Cabbage50
Big Boston75
Blue Ribbon Big Boston90
California Cream Butter50
Market Gardener's Private Stock50
Salamander50
Improved Hanson50
Deacon Cabbage50
Boston Market50
May King60
Trianon Cos50
Henderson's New York50



**CALIFORNIA CREAM BUTTER
LETTUCE.**

One of the best heading sorts for Spring and Summer.



Florida Favorite Watermelon

One of the Sweetest
and Best Sorts for
Family Use.

WATERMELON

	Per lb.
Temple Gray	\$0.60
Harris' Earliest40
Kleckley's Sweets60
Florida Favorite35
Halbert's Honey60
Watson60
Triumph25
McIver's Wonderful Sugar35
Georgia Rattlesnake35
Peerless35
Sweetheart35
Dixie25
Kolb's Gem25
Dark Icing35
Jordan's Gray Monarch30

MUSHROOM SPAWN.

English (100 lb. \$6.00)10
--------------------------------	-----

MUSTARD.

White12
Black12
Southern Giant Curled30

OKRA.

Perkins Mam. Pod25
White Velvet25
Improved Dwarf Prolific20
Tall20

ONION.

Silver Skin	1.25
Yellow Danvers40
Red Wethersfield	1.00
Extra Early White Pearl	1.25
Prize-Taker, or Spanish King	1.00
Mammoth Silver King	1.00

PARSLEY.

Plain20
Champion Moss Curled30

PARSNIP.

	Per lb.
Sugar, or Hollow Crown20
Improved Hollow Crown20

PEAS. Crops Short.

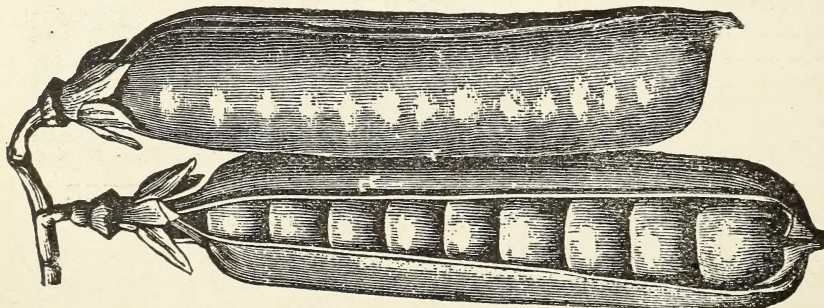
	Per bush.
New Claudit	\$5.00
W. S. & Co.'s Express	5.25
Blue Ribbon Chieftain	6.00
Alaska	5.00
First and Best	5.00
Philadelphia Extra Early	5.00
Early May	5.00
Tom Thumb	5.00
Gradus, or Prosperity	6.00
American Wonder	5.50
McLean's Little Gem	5.50
Premium Gem	5.50
Nott's Excelsior	5.50
Summer Queen	6.00
Heroine	5.50
Imp'd Pride of the Market	6.50
Stratagem	5.50
Champion of England	3.50
Improved Telephone	6.00
Large White Marrowfat	2.50
Black-Eyed Marrowfat	2.50

PEPPER.

	Per lb.
Chinese Giant	3.50
Coral Gem Bouquet	2.50
Ruby King	1.50
Mammoth Golden Queen	1.25
Sweet Spanish Mammoth	1.25
Bell, or Bull Nose	1.25
Long Red Cayenne	1.25
Red Chili	1.25
Red Cherry	1.25

PUMPKIN.

Kentucky Mammoth85
Cashaw, or Crookneck35
Large Cheese25
Tennessee Sweet Potato35
Kentucky Field (100 lbs., \$10.00) ..	.15



Wood, Stubbs
& Co.'s

EXPRESS PEAS

One of the Finest
Early Sorts for
Market or Home Use



Early White Tip Scarlet Radish

One of the best for early use.



Livingston's Beauty Tomato

RADISH

	Per lb.
Extra Early White Tip Forcing	\$0.35
Extra Early White Box	.35
New White Icicle	.35
Round Scarlet China	.40
Chartier Long Scarlet	.30
Early White Tip Scarlet Turnip	.30
French Breakfast	.30
Early Red or Scarlet Turnip	.25
Early White Turnip	.25
Mixed Turnip	.25
Long White Naples	.30
Brightest Long Scarlet	.30
Wood's Early Frame	.30
White Strasburg	.30
Giant White Stuttgart	.30
Golden Globe Summer	.25
Rose China Winter	.35
Round Black Spanish	.35
Long Black Spanish	.30
Long White Spanish	.30

RHUBARB, Myatt's Victoria55

SALSIFY, Mam. Sandwich Island60

SPINACH.

New Victoria	.12
Round Thick-Leaved	.12
Bloomsdale Savoy	.12
Long Standing	.12

SQUASH or CYMLING

Early White Bush	.35
Mammoth White Bush	.35
Golden Summer Crookneck	.35
Boston Marrow	.35
Hubbard	.40

TOMATO

	Per lb.
Blue Ribbon Pioneer	\$3.00
Spark's Earliana	1.75
June Pink	2.00
Dwarf Champion	1.75
Dwarf Stone	2.00
Matchless	1.25
Buckeye State	1.50
Livingston's Beauty	1.25
Acme	1.25
Trucker's Favorite	1.50
Stone	1.25
Improved Trophy	1.25
Ponderosa	2.50
Crimson Cushion	2.25
Golden Queen	1.40
Yellow Pear-Shaped	1.50
Yellow Plum	1.50

TURNIP. Finest American Stocks

E'y Red or Purple Top Strap Leaf	.22
Early White Flat Dutch	.20
W. S. & Co.'s Imp. Red Top Globe	.25
Southern Snow White Globe	.20
Pomeranian White Globe	.20
Large White Norfolk	.20
Ex. E'y Purple or Red Top Milan	.40
Early White Egg	.20
Early White Cowhorn	.20
Southern Prize	.30
Seven Top or Winter Greens	.30
Yellow Aberdeen	.20
Amber or Yellow Globe	.20
W. S. & Co.'s Imp'd Purple Top	.20
Yellow Ruta-Baga	.20

FINE TOBACCO SEEDS

SAVED FROM BEST TYPES AND CROWN SHOOTS ONLY

	Per lb.	100-lbs.
White Burley	Sold out	
Red Burley	Sold out	
Vuelta de Abajo	\$3.00	\$2.75
Choice Havana	3.00	2.75
Connecticut Seed Leaf	2.00	1.75
Imp'd Yellow Pryor	2.00	1.75
" " Oronoko	2.00	1.75

	Per lb.	100-lbs.
Kentucky Yellow	2.00	1.75
One Sucker	2.00	1.75
Big Oronoko	2.00	1.75
Sweet Oronoko	2.00	1.75
Blue Pryor	2.00	1.75
Broad Leaf Gooch	2.00	1.75

BLUE RIBBON FLOWER SEEDS

Stocks of finest quality in beautifully lithographed packages with cultural instructions. Packets liberally filled and ready sellers. Display Boxes free.

BLUE RIBBON FLOWER SEEDS, IN PACKETS.

5c Packets	per doz., 20c; per 100, \$1.50; per 1,000, \$12.50	
10c "	per doz., 40c; per 100, 3.00; per 1,000, 25.00	

BLUE RIBBON FLOWER SEEDS, IN BULK.

½ oz. supplied at oz. rates; ½ lb. at lb. rates.

	oz.	lb.		oz.	lb.
Argeratum, Mexicanum, Light Blue	\$0.15	\$1.50			
Alyssum, Sweet15	1.00			
Amarantus					
Caudatus (Love Lies Bleeding)10	.50			
Tricolor (Joseph's Coat)15	1.50			
Antirrhinum (Snap Dragon).					
Majus, mixed colors20	2.00			
Picturatum, mixed colors25	2.50			
Aquilegia (Columbine).					
Double, mixed colors15	1.25			
Asters.					
Semple's Branching, mixed60	6.00			
Victoria, all colors mixed	1.00	10.00			
Peony Flowers Perfection, mixed colors80	10.00			
German Quilled (China Aster), choice mixed25	2.50			
Balsam, Double, mixed30	3.50			
Calendula, mixed colors10	.50			
Calliopsis or Coreopsis, mixed10	.60			
Lanceolata (Perennial)30	3.00			
Candytuft, Empress White15	1.50			
Mixed colors10	.50			
Canterbury Bells, Single mixed15	1.25			
Celosia or Cockscomb, Glasgow Prize	1.00				
Carnations. Marguerite, mixed75	7.50			
Mixed colors60	6.00			
Centaurea.					
Gymnocarpa (Dusty Miller)35	3.50			
Cyanus (Corn Flower), mixed colors10	.70			
Coleus, mixed colors, ¼ oz. 50c.					
Cosmos.					
Early Flowering, mixed35	3.50			
Mammoth Perfection, mixed20	2.00			
Delphinium (Perennial Larkspur.)					
Elatum Hybridum20	2.00			
Dianthus or Pinks.					
Chinensis fl. pl., Double China20	2.00			
Heddewigii fl. pl., Double Japan45	4.50			
Heddewigii, Single Japan35	3.50			
Escholtzia, California Poppy, mixed colors10	1.00			
Forget-Me-Not, Myosotis35	3.50			
Gaillardia, mixed10	.80			
Globe Amaranth, Bachelor's Buttons, mixed colors10	.75			
Heliotrope, mixed colors	1.00	10.00			
Lemoine's Giant, ¼ oz. 75c.					
Hollyhock, Double, mixed colors60	6.00			
Lobelia, Crystal Palace (blue)80				
Marigold. Eldorado, mixed15	1.50			
French Gold Striped15	1.50			
Mignonette.					
Machet	\$0.30	\$3.00			
Sweet10	.40			
Nasturtiums.					
Large Dark Crimson05	.50			
Tall, mixed05	.35			
Dwarf, mixed05	.35			
Pansies.					
Wood, Stubbs & Co.'s Imperial, ¼ oz., \$1.50	5.00				
Large Flowering, mixed50	5.00			
Petunia, mixed colors40	4.00			
Phlox Drummondii.					
Star and Fringed, mixed60	6.00			
Large Flowering, mixed30	3.00			
Poppies. Oriental Scarlet85				
Iceland, mixed50	5.00			
Tulip35	3.50			
Shirley, mixed20	2.00			
Cardinal Scarlet10	.75			
Peony Flowered, mixed10	.50			
Portulaca. Single, mixed20	2.00			
Double mixed	2.00				
Ricinus (Castor Oil Plant).					
Zanzibariensis10	.50			
Mixed varieties10	.40			
Salvia, Splendens (Scarlet Sage)	1.25	15.00			
Scabiosa, mixed10	.75			
Stocks, Dwarf German, mixed75	7.00			
Sweet William.					
Single and Double, mixed ..	.20	2.00			
Sunflower.					
Double California20	2.00			
Verbena.					
New Mammoth, mixed	1.00	10.00			
Mixed colors60	6.00			
Vinca, mixed colors60				
Violets, mixed—75				
Wallflower, Single15	1.50			
Zinnias, Large Flowering					
Double, mixed25	2.50			

General List of Climbers

Balloon Vine, Love in a Puff ..	.10	.75
Balsam Pear20	2.00
Coboea Scandens35	3.50
Cypress Vine, mixed colors ..	.15	1.50
Dolichos, mixed colors10	.65
Gourds, small sort, mixed15	1.50
Morning Glories.		
Imperial Japanese20	2.25
Brazilian35	3.50
Mixed05	.30
Evening Glory or Moonflower.		
Improved Hybrida50	5.00

Sweet Peas

FINEST
QUALITY
STOCKS

Our List Includes the
Best and Most Popular
Sorts.

SWEET PEAS IN MIXTURES

10 lbs. at the 100 lb. rate.

Wood, Stubbs & Co.'s Special Mixed. The finest quality obtainable. Made up of named sorts in pleasing proportions of colors. Per lb., 25c; 100 lbs., \$20.00.

Mixed Sweet Peas. A fine mixture of commoner sorts. Per lb., 20c; 100 lbs., \$18.00

Countess Spencer or Orchid Flowered Sweet Peas. Choicest mixed colors. Pound, 50c.

SWEET PEAS IN PACKAGES.

Wood, Stubbs & Co.'s Special Mixed used exclusively. 5c. packets per doz., 20c; 100, \$1.50. 10c. packets contain 1 oz. Per doz., 40c; 100, \$3.00.

NAMED SORTS.

Including the most desirable kinds, embracing all shades.

	Per lb.
Admiration , very light rosy lavender	\$0.25
Blanche Burpee , Eckford's largest white.....	.25
Blanche Ferry , the popular pink and white variety25
Blanche Ferry, Extra Early , similar to the above; 10 days earlier.....	.25
Celestial , delicate azure blue, very pretty.....	.25
Countess of Radnor , pale maroon or lavender very popular25
Dainty , white changing to white with pink edge25
Emily Eckford , standard reddish mauve, wings blue25
Emily Henderson , fine white, blooms very early25
Fire-Fly , a deep, brilliant scarlet, one of the best25
Golden Queen , deep primrose yellow, fine form.....	.25
Her Majesty , bold flowers of the most beautiful rose color25
Katherine Tracy , soft brilliant pink, vigorous and free blooming25
Lady Grisel Hamilton , standard light lavender, azure wings25
Lady Penzance , standard orange pink, wings pure pink25
Lottie Eckford , white suffused with lavender blue25
Mars , Eckford's large bright scarlet.....	.25
Miss Willmott , rich orange pink, delicately shaded rose25
Monarch , standard maroon purple, tinged indigo25
Mrs. Eckford , beautiful shaded primrose yellow25
Mrs. Joseph Chamberlain , white ground heavily striped and flaked with rose.....	.25
Navy Blue , largest size, deep violet blue.....	.25
Othello , one of the best deep maroons.....	.25
Prima Donna , the most lovely shade of dark pink25
Prince of Wales , deep rose tinted flowers, beautifully hooded25
Sadie Burpee , pure white, large size (white seeded)25
Stella Morse , true apricot shade.....	.25
Triumph , standard orange pink, wings white, veined with carmine25
Venus , lovely blending of delicate rose, salmon, and buff25





Wood, Stubbs & Co.'s Fine Lawn Grass Seeds

Are endorsed everywhere as the Finest Qualities of Lawn Grass offered to-day.

The various varieties are adapted for all Climates, Soils, and Locations.

Full Directions for Sowing on Package.

BLUE RIBBON BRAND (Evergreen). The finest Lawn Grass Seed offered, for general purposes. This is put in beautifully lithographed cartons, and makes an attractive display package.

	Per doz.
1 qt. pkgs. retail \$0.15.....	\$1.10
1 qt. " " .25.....	2.00

Bushel (20 lbs.), \$3.25.

W. S. & CO.'s SHADY GREEN.
For damp and wet situations and under trees.

	Per doz.
1 pt. pkgs. retail \$0.15.....	\$1.20
1 qt. " " .30.....	2.40
4 qt. " " 1.05.....	9.00
1 pk. bags " 1.50.....	13.50

Bushel (20 lbs.), \$5.00.

KENTUCKY BLUE GRASS. Our stock of this is strictly new seed, heavy weight, carefully and finely cleaned, and not to be compared with the ordinary cheap and light grade of seed so commonly offered. It is one of the best lawn grasses, though starts slowly, and not so suitable for all classes of soil as our Blue Ribbon Evergreen.

Per bushel (14 lbs.), \$1.90.

RED TOP. Very largely used in some sections for lawn purposes. Per 100 lbs., \$12.00.

CREEPING BENT GRASS. A fine short-growing grass that suits sandy or loamy soils better than most other grasses. Per 100 lbs., \$25.00.

WHITE CLOVER. Best new crop seed, free of weeds. 10 lbs. at 23c; per 100 lbs., \$21.00.

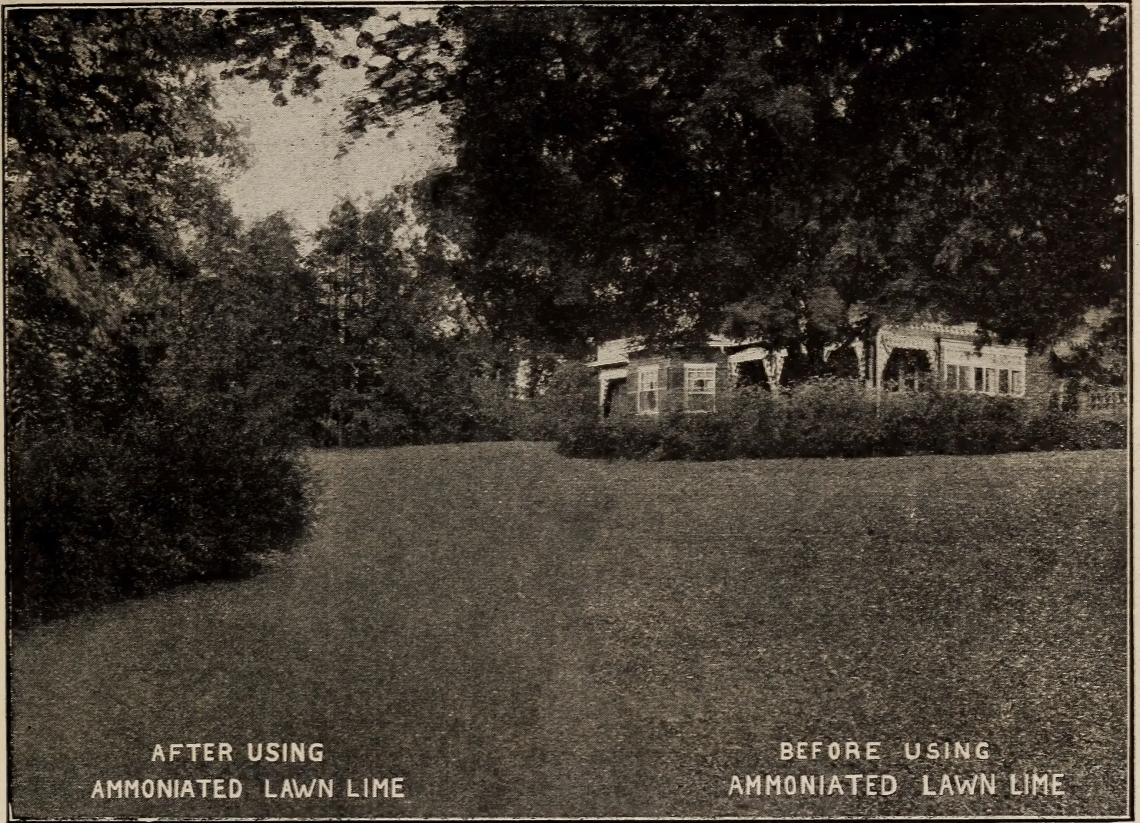
	Per doz.
4 qt. pkgs. retail \$0.90.....	\$6.50
1 pk. bags " 1.25.....	12.00

W. S. & CO.'s DIXIE VELVET.
For hot dry soils and climates.

	Per doz.
1 pt. pkgs. retail \$0.15.....	\$1.25
1 qt. " " .30.....	2.40
4 qt. " " 1.00.....	9.00
1 pk. bags " 1.75.....	16.00

Bushel (20 lbs.), \$5.25.

5 bush. and over, per bush., \$5.00.



Ammoniated Lawn Lime

An Effective Weed Eradicator and Lawn Restorer. Kills all Flat Growing Weeds, such as DANDELION, DAISY, PLANTAIN, DOCK, SORREL, CHICKWEED, etc., and makes the lawn grasses grow luxuriantly.

Ammoniated Lawn Lime is a scientific chemical compound, which, when applied as a Lawn Dressing, adheres to the flat leaves of weeds, absorbing their juices and burning them up, in most cases killing leaf, bud, and root. The narrow leaves of the grasses do not retain much of the material on their surfaces, and it gets shaken or washed off to the roots, where it is immediately converted into a splendid fertilizer, stimulating and producing a luxuriant growth of grass, besides eradicating practically every weed. A single application usually destroys every coarse growing weed in the lawn, and in three or four weeks the difference in the grass where Ammoniated Lawn Lime was used can be distinctly seen fifty to one hundred feet away, as it is so much greener and richer in appearance.

ABOUT USING. Ammoniated Lawn Lime is a dry, very finely ground powder, which is odorless, does not easily pack, and can be spread by hand or a sifter. The best time to apply is when the weather is settled and moderately dry, from March to November. Forty-eight hours of dry weather after applying is sufficient to destroy most weeds, and in a week they will be almost effectually cleaned out.

Where lawns are extremely weedy, apply at the rate of one pound to forty square feet, one hundred pounds to four thousand square feet. An acre with a moderate amount of weeds will only require about one or two hundred pounds, and if applied judiciously will effectively clean out all of the weeds.

It is better to apply three or four days after grass is cut, or three or four days before cutting, and if the weather is very dry, water the lawn thoroughly the evening before the Lawn Lime is applied.

We are local agents for Ammoniated Lawn Lime, and it is guaranteed to give satisfaction, or money will be refunded, as the manufacturers, the Superior Chemical Co., Louisville, Ky., absolutely guarantee it to give satisfactory results when applied according to directions, and providing there is no rain within forty-eight hours to wash it off.

Retail Prices: 2-lb. tin, 25c, 5-lb. tin, 50c; 25-lb. bag, \$2.00, 50-lb. bag, \$3.50; 100-lb. bag, \$6.00, 1,000-lb. lots and over at 5c per lb.

WHOLESALE PRICES.

Case, 50 2-lb. tins; retail, \$12.50.....	Net, \$9.25
Case, 20 5-lb. tins, retail, \$10.00.....	Net, 7.50
On larger size bags—20% discount from retail prices.	



Summer Flowering Bulbs

	25 at 100 rate; 250 at 1,000 rate.	Per 100	Per 1000
TUBEROSES. Excelsior Pearl, first size,	\$1.00	\$8.00	
“ “ “ second size,	.75	5.00	
GLADIOLUS. Scarlet and Crimson	1.10	9.00	
“ White and Light	1.75	15.00	
“ Striped and Variegated ...	2.00	17.50	
“ Yellow	2.50	22.50	
“ Mixed Superfine Quality....	1.25	10.00	
“ Mixed Ordinary Quality....	1.00	7.50	
CALADIUMS OR ELEPHANT'S EARS.			
Circumference 6 to 8 inches.....		6.00	
“ 9 to 11 inches.....		8.00	
MADEIRA VINE ROOTS	1.50	12.50	

Onion Sets

Prices subject to Market Changes.

This is one of the largest markets on Onion Sets in the world, and Louisville sets are shipped to all parts of the United States. Large buyers can get the very lowest market prices from us.

The following prices are for different dates of shipment, but orders must reach us by January 20th, otherwise prices will be subject to quotations only.

Yellow Danvers Onion Sets, bushel of 32 lbs., bags included.

FOR JANUARY 24TH SHIPMENT.

	Per bush.		Per bush.
1 bushel.....	\$1.60	10 bushels.....	\$1.50
2 “	1.55	100 “	1.40

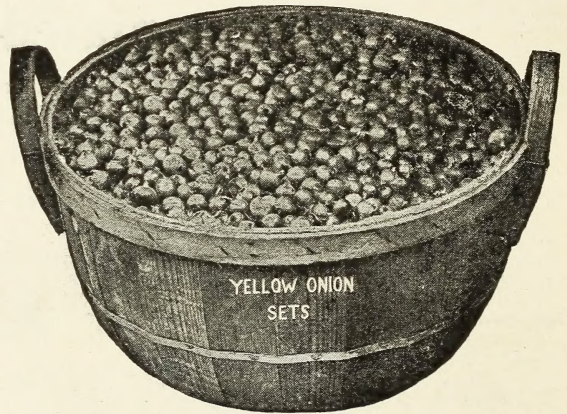
FOR FEBRUARY 1ST SHIPMENT.

1 bushel.....	\$1.85	10 bushels.....	\$1.75
2 “	1.80	100 “	1.65

FOR FEBRUARY 15TH SHIPMENT.

1 bushel.....	\$2.00	10 bushels.....	\$1.85
2 “	1.90	100 “	1.80
5 bushels at 10-bushel price; 25 bushels at 100-bushel price.			

Car lots quoted on application. Write for current prices at any time.



White Onion Sets

Stock very scarce. Price on application.

INSECTICIDES, ETC.

PARIS GREEN. Strictly pure. Prices subject to market changes

Bbls. (about 250 lbs.)	} Ask for Prices
Buckets, 25 lbs.	
Packages, 5 lbs.	
“ 2 lbs.	
“ 1 lb.	
“ 1/2 lb.	

ARSENATE OF LEAD.	Per 100 lbs.
1 lb. cans	\$20.00
5 lb. cans	17.00
100 lbs. bulk	15.00

HAMMOND'S SLUG SHOT. Per 100 lbs.

1 lb. cartons, doz.	\$1.15	\$8.00
5 lb. packages, per lb.		.04 1/4
Barrel lots, in bulk03 1/2

TOBACCO DUST. 1,000 lb. lots.
Best Grade, per 100

	\$2.25	\$2.50
--	--------	--------

ROSE LEAF, EXTRACT OF TOBACCO.

	Doz.
Pint cans	\$2.75
Quart cans	4.75
Gallon, each \$1.10	12.00
5 gallons, each \$4.00	

SULPHUR. 10 lbs. 40 cents; 100 lbs. \$3.00

POULTRY FOOD, BIRD SEEDS, ETC.

PRICES ARE NET. NO DISCOUNT.

Subject to Market Changes.

BLUE RIBBON CHICK FOOD. A complete food for young chicks, combining all elements for growth and development. Combined from corn, wheat, kaffir corn, oats, millet, bone, and charcoal. 100 lb. bag \$2.15; 1,000 lbs. \$20.00.

BLUE RIBBON DEVELOPING FOOD. A combination of grains and seeds free from grit, shells, and low priced material. Made from corn, wheat, barley, oats, buckwheat, sunflower, oil cake, and charcoal. 100 lb. bag \$2.00; 1,000 lbs. \$18.50.

BLUE RIBBON SCRATCH FOOD. A very superior food for general feeding, combining diversity of grains without grit, shell, or cheap ingredients. Combined from corn, wheat, barley, oats, and kaffir corn. 100 lb. bag \$2.00; 1,000 lbs. \$18.00.

PIGEON FOOD. A combination of grain, peas, and seeds. The finest, most perfect food on the market. 100 lbs. \$2.25.

SHORT CUT ALFALFA. A standard green food invaluable for egg production. Can be fed either with mashed food, used in the trough by itself, and is excellent to scatter in brooders, or where young chicks run. 100 lbs. \$1.50.

CRUSHED OYSTER SHELL. Every raiser of poultry, whether large or small, should have a supply of oyster shells and use it freely either in poultry yards or where fowls run, as it is absolutely necessary to the development of both bone and for egg production. 100 lb. sack, 60 cents; 1,000 lbs. \$5.00.

MICA CRYSTAL GRIT. This is the standard grit of America; recognized by breeders as the best. Three grades, fine, medium, and coarse. 100 lbs. 65 cents; 1,000 lbs. \$6.00.

FAUST'S HEALTH GRIT. Stands pre-eminently alone as the only high class grit to the breeder of high class pigeons. 100 lbs. \$1.80.

CRUSHED OR GRANULATED BONE. Supplies the lime for shell and other ingredients necessary in the composition of eggs. Scatter about the poultry yard. 100 lbs. \$2.00.

FINE BONE MEAL. Excellent to aid in increasing egg production, and a splendid feed for young chicks. Should be fed wet, mixed with cornmeal or bran. 100 lbs. \$2.25.

GROUND BEEF SCRAPS. To be mixed with wet feed. Fine for keeping poultry in healthy, thriving condition, and to aid in increasing egg production. 100 lbs. \$3.00.

GROUND MEAT MEAL. A valuable preparation for mixing with wet feed, supplying nitrogenous and fatty ingredients, especially in winter and spring. 100 lbs. \$3.00

WOOD, STUBBS & CO'S FINE MIXED BIRD SEED. A combination of the best and highest quality seeds in proper proportions. Cuttlefish with each pound. 100 lbs. \$4.00.

CANARY. (Recleaned Sicily.) 100 lbs. \$4.00.

HEMP. (Imported Russian.) For parrots, pigeons, etc. 100 lbs. \$4.50.

RAPE. (Imported.) Not the common article usually sold. 100 lbs. \$4.00.

SUNFLOWER. (Mammoth Russian.) For parrots, pigeons, etc. 100 lbs. \$5.00.

CANADA PEAS. For pigeons. Per bushel \$1.65.

MILLET. For young chicks and song birds. 100 lbs. \$2.50.

BUCKWHEAT. For poultry, pigeons, etc. Per bushel \$1.20.

POULTRY REMEDIES, STOCK FOODS, ETC.

International Poultry Food.	Per doz.
25 cent size	\$2.00
50 cent size	4.00
International Stock Food.	25 cent size 2.00
50 cent size	4.00
\$1.00 size	8.00
25 lb. buckets, each	\$2.75
International Lice Killer.	25 cent size 2.00
International Hoof Ointment.	\$1.00
size	8.00
International Colic Cure.	50 cent size 4.00
International Gall Cure.	25 cent size 2.00
International Worm Powder.	
25 cent size	2.00
International Distemper Cure.	
50 cent size	4.00
Pratt's Poultry Food.	25 cent size .. 2.00
50 cent size	4.00
12 lb. pails, each	\$1.00

Pratt's Stock Food.	Per doz.
Animal Regulator, 25 cent size	\$2.00
Stock Food, 50 cent size	4.00
25 lb. Pails, each	2.50
Pratt's Lice Powder.	25 cent size ... 2.00
Pratt's Roup Powder.	25 cent size ... 2.00
Pratt's Gall Cure.	25 cent size
Rust's Egg Producer.	1 lb. package 2.00
2½ lb. package	4.00
6 lb. "	8.00
Rust's Climax Condition Powders.	
25 cent size	2.00
50 cent size	4.00
\$1.00 size	8.00
Rust's Roup Pills.	Dozen boxes
Knox Nest Eggs (Medicated),	dozen .60
Hammond's Cattle Comfort.	
1 qt. can, retail 40 cents	4.00
2 qt. can, retail 70 cents	6.25
1 gal. can, retail \$1.25	12.00

Implements, Seed Sowers, Sprayers, Etc.

PRICES NET. NO DISCOUNT.

Catalogue giving Descriptions and Illustrations of these on request.

Implements

PLANET JR. IMPLEMENTS. 20 per cent. discount from the Planet Jr. catalogue prices where less than 6 implements are ordered during the year. More than this 25 per cent. discount will be allowed.

TOBACCO PLANT BED SEEDER. Sows accurately in all sorts of weather. Each\$7.50

HOLMES' WIRE ROPE SEEDER. Each
Plain 5.25
Combined 6.25

CAHOON BROADCAST SEEDER. .. 2.75

PREMIER BROADCAST SEEDER. One of the most compact, well made and generally satisfactory seeders for grain or grass seeds. Each, \$1.00; per dozen \$10.00.

CYCLONE BROADCAST SEEDER. Each, \$1.00; per dozen, \$10.00.

TROWELS, DIBBLES, ETC.
Forged Steel Trowels, plate and Per
shank of one piece of steel, doz.
5 inch\$3.00
6 inch 3.50
Solid Steel Trowels, 6 inch 2.25
Ordinary Garden Trowels, 6 inch75
Sweet Potato Trowels 6.00
Iron Dibbles with wooden handles 3.25

Sprayers

Auto Spray, galvanized, each\$3.40
Auto Spray, copper, each 5.10
Auto Pop Attachment, each 1.00

MYER'S SPRAY PUMPS.

Myer's Double Acting Barrel
Spray Pump, No. 300, each 6.50
Improved Brass Barrel Spray
Pump, No. 305, each 5.75
O. K. Barrel Spray Pump11.50
Perfect Bucket Spray Pump, each 3.75
Lever Bucket Spray Pump, No.
324, each 3.75
Imperial Brass Spray Pump, No.
325, each 2.90
Little Giant Brass Spray Pump,
No. 327, each 2.75
8 ft. iron pipe extensions, each40
8 ft. Bamboo extensions, each25
Extra Bordeaux Nozzles, each60

Per doz.
Cyclone Sprayers, tin\$4.00
Cyclone Sprayers, brass 8.00
Small Tin Sprayers, has double
spray openings 2.00
Lowell Sprayers, with glass reser-
voir 4.50
Lowell Dry Powder Sprayers 6.50

Dry Powder Guns, Bellows, Etc.



BEEBLE FOUR-ROW POTATO DUSTER (Horse Power). Descriptive Circular on application.

Price \$60.00

LEGGETT'S CHAMPION DRY POWDER GUNS. An invaluable distributor of insecticides in the orchard, vineyard, garden and field.

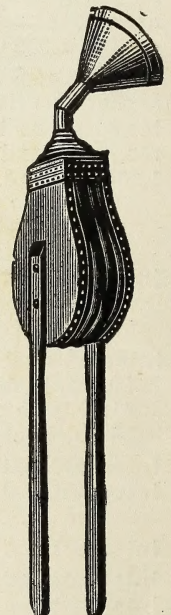
Each \$6.75
Per dozen 80.00

LITTLE GIANT DUSTER. The principle of its operation is about the same as the Champion Gun, though there is a difference in the gearing. It does about the same work as the Champion Gun, though for general work we would recommend the Champion Gun.

Each \$4.75
Per dozen 56.00

ACME BELLOWS. Simple and practical for applying insecticides on tobacco, potatoes, etc.

Single, per dozen \$7.00
Double, per dozen 13.50



Acme Single Bellows

WOOD, STUBBS & CO., Seedsmen,
219-221 EAST JEFFERSON ST., LOUISVILLE, KY.