

Historic, Archive Document

Do not assume content reflects current scientific knowledge, policies, or practices.

62, 61

1910



LIBRARY
RECEIVED
 ★ ★
 U. S. Department of Agriculture.

WOODLAWN
NURSERIES
ALLEN L. WOOD
ROCHESTER, N. Y.



7-2-1910

Our Special Salesman

WE WISH to tender thanks for past favors and present herewith the 1910 edition of our catalogue. It has been carefully revised and corrected and we solicit a continuance of your valued patronage.

PLEASE ORDER AS EARLY AS POSSIBLE:—

For the benefit of our customers who order early we will allow a discount of 5 per cent on all orders reaching us before March 1st. This gives you big interest.

"ABOUT PAYMENT:"—Procure a money order at your postoffice or express office, or draft from nearest bank, or send cash by express or registered letter. **Send payment with the order.** This saves all delay and extra writing and is best for all concerned. Orders to be sent C. O. D. must go by express and should always be accompanied by at least one-fourth of the amount of bill.

PACKING:—We make no charge for boxing and packing.

SHIPPING:—EXPLICIT and PLAIN shipping directions are requested. If omitted, we will forward according to our best judgment.

If **errors** or **omissions** occur we desire immediate notice, that we may correct them. The time to make complaint is on receipt of goods, not months afterward.

WE GUARANTEE that all trees, plants or other stock shall reach our customers **safely** and in **good** condition.

Six at dozen, fifty at hundred and five hundred at thousand rates.

Hardy, Healthy, Clean and Thrifty

No trace of San Jose Scale has ever been found in or near our nurseries. An official certificate of inspection will accompany each shipment.

TREES and PLANTS

FINEST GROWN:—APPLES, PEARS, PLUMS, CHERRIES, PEACHES, etc., and all **small fruits.** We are offering a fine line of these. Our **ORNAMENTAL TREES, ROSES,** and **SHRUBS** are all field grown, with **extra fine roots.**

FOR THIRTY-FOUR YEARS we have directed our efforts toward building a direct trade between the growers and the planters by straightforward, honest illustrations and reasonable priced stock of the **highest** grade and known value to increase our trade and make **permanent** customers of all who favor us with their orders.

Our method of selling trees has **saved** thousands of dollars for those who have dealt with us, for not only do they get stock at very low prices but they secure the **best,** true to name and of **superior** quality.

It is an established and well known fact that in no other part of this country do fruit trees attain the **perfection** of those grown in Rochester. The soil in this vicinity is **particularly** adapted and is best suited to produce the **healthiest conditions of growth,** that solid, firm texture of wood, with **abundant** fibrous roots so necessary to successful transplanting. Our trees are in every way **superior** and of the **finest** quality, so that we have to offer the choicest nursery stock to planters with entire confidence.

Yours very truly,

ALLEN L. WOOD.

WOODLAWN NURSERIES

Corner Garson Ave. and Culver Road
Phones: Bell 487 Chase; Rochester 3989

ROCHESTER, N. Y.

WORLD'S
CHERRY COLLECTION

SIX FINEST VARIETIES



**THIS
COLLECTION**
In XXX Size.....\$1.75
In XX Size..... 1.25
In X Size..... .75

- 1—NAPOLEON BIGARREAU—Sweet; one of our best yellow sorts; productive, early June.
- 2—LARGE MONTMORENCY—Sour; clear red; fruits young; very hardy. Last of June.
- 3—DYEHOUSE—Sour, very early; sure bearer; ripens before Early Richmond.
- 4—BLACK TARTARIAN—Best sweet; black sort. Last of June.
- 5—EARLY RICHMOND—Most popular sour sort. Can't be beat. June.
- 6—WINDSOR—Sweet; fruits early and heavily; very hardy. July

SIX TREES OF ONE VARIETY OR ASSORTED AS YOU WISH

WINTER—Continued

N. W Greening—Originated in Wisconsin. Tree a straight, thrifty grower, very hardy and an early and continuous bearer. Fruit large, smooth, yellowish green and attractive. A great bearer and very desirable. Nov. to May.

Tolman Sweet—Medium, pale whitish yellow; fine grained; very hardy and productive. Nov. to March.

Walbridge—Medium, striped red; crisp, tender, juicy; sub-acid; productive. Jan. to May.

Wolf River—Very large, yellow shaded with crimson; acid, juicy. Dec. to Feb.

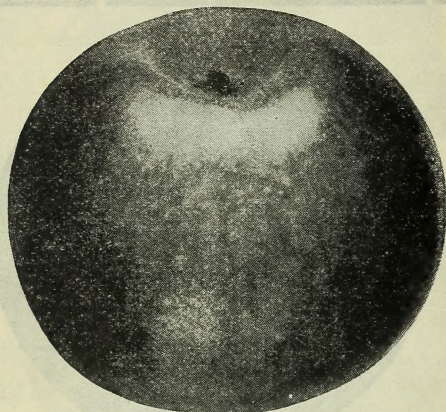
York Imperial—Medium, whitish shaded crimson; firm, crisp, juicy, mild, sub-acid. Nov. to Feb.



Wealthy

Wealthy—Hardy and productive. Fruit large size, skin smooth, splashed with dark red; flesh white, sub-acid. Nov. to Jan.

We have these additional varieties: **Arkansas Black, Caroline Red June, Cranberry Pippin, Hibernial, Longfield, Monmouth Pippin, Patton's Greening, Peter, Plumb's Cider, Pound Sweet, Rawle's Jeanette, Ribston Pippin, Seek-no-further, Smokehouse and Utter's Red.**



Stayman's Winesap

Stayman's Winesap—Similar to Winesap except larger, better quality and more productive. Dec. to May.

CRAB APPLES

Hyslop—Large, dark red, flesh yellow, sub-acid; productive, hardy and popular. Oct.

Transcendent—Large, yellow with rich crimson cheek. An improved Siberian Crab. Sept.

Whitney—Large, greenish striped with carmine; flesh firm, juicy, rich. Last of August.

Special Bargains in Trees

All packed and delivered to Railroad Station or Express Office at this place

8 Apple Trees, 4 to 5 ft., our choice of varieties,	\$1.00
6 Pear Trees, 4 to 5 ft., " " "	1.00
6 Plum Trees, 5 to 6 ft., " " "	1.00
8 Cherry Trees, 3 ft., " " "	1.00
12 Peach Trees, 3 ft., " " "	1.00

Bargain No. 1 for \$3.00

3 Apple Trees, 4 to 5 ft.,	\$.45
3 Pear Trees, 4 to 5 ft.,	.60
3 Plum Trees, 5 to 6 ft.,	.60
6 Cherry Trees, 3 ft.,	.90
6 Peach Trees, 3 ft.,	.60
3 Quinces, 3 ft.,	.90
	\$4.05

Bargain No. 2 for \$5.00

6 Apples Trees, 4 to 5 ft.,	\$.90
6 Pear Trees, 4 to 5 ft.,	1.20
6 Plum Trees, 5 to 6 ft.,	1.20
6 Cherry Trees, 3 ft.,	.90
6 Peach Trees, 3 ft.,	.60
6 Quince Trees, 3 ft.,	1.80
	\$6.60

STANDARD PEARS

STANDARD PEARS prefer a strong loam, but succeed well in a great variety of soils, and upon almost any land that will produce good crops of vegetables or grain. Pears will keep longer and their flavor be greatly improved by picking before they are quite mature and ripening them in a dark room.

PRICES OF STANDARD PEARS

Except otherwise noted.

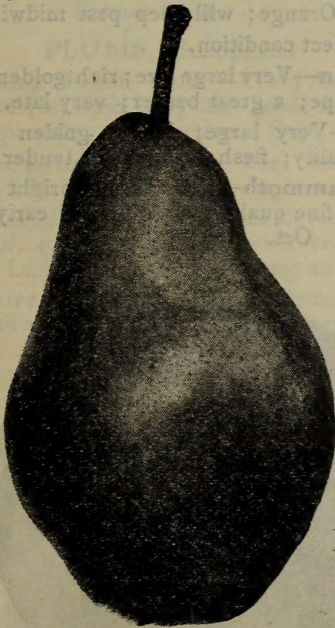
	Each	Dozen	100
6 to 7 ft. (Extra) XXX	35c.	\$3.50	\$25.00
5 to 6 ft. (First class) XX	25c.	2.50	20.00
4 to 5 ft. (Medium) X	20c.	2.00	12.00

SUMMER

Bartlett—Large size, rich, melting, delicious; everywhere successful. Blossom sterile, requiring other varieties planted near by to insure fertilization. Sept.

PRICES OF BARTLETT

6 to 7 ft., XXX, each, 40c; dozen, \$4.00; hundred, \$30.00; 5 to 6 ft., XX, each, 30c; dozen, \$3.25; hundred, \$25.00; 4 to 5 ft., X, each, 20c; dozen, \$2.00; hundred, \$15.00.



Bartlett—Most Profitable Market Pear

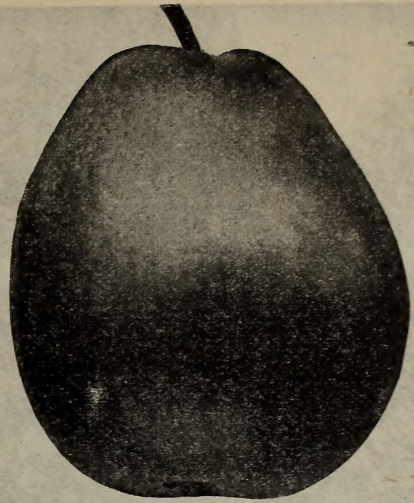
Clapp's Favorite—Very large and showy, golden yellow with red cheek; very productive. Ripens a week before Bartlett. Aug.

Koonce—Fruit large, crimson cheek; sweet, very early. Same prices as Kieffer.

Wilder—Medium size, yellow with carmine shading; fine grained, tender, sub-acid. Aug.

AUTUMN

Duchess de Angouleme—Very large, greenish yellow, tender, melting, buttery and juicy; does best as a dwarf. Oct.



Flemish Beauty

Flemish Beauty—Large, sweet, melting; very productive, very hardy. Sept.

Kieffer—Very large, deep yellow with russet dots; immensely productive; very early bearer. Fine for canning.

PRICES OF KIEFFER

6 to 7 ft., each, 25c; dozen, \$2.50; hundred, \$20.00, 5 to 6 ft., each, 20c; dozen, \$2.00; hundred, \$15.00.

Louise Bonne De Jersey—Large size. A profitable market variety. Sept. and Oct.

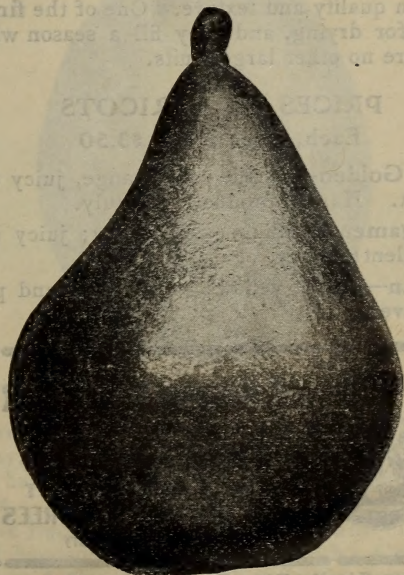
Rossney—Medium to large size; fine grained, melting, juicy, very sweet; excellent keeper and shipper. Same prices as Bartlett.

Seckel—Small, finest flavor; excellent for pickling and dessert; very productive. Same prices as Bartlett. Sept. and Oct.

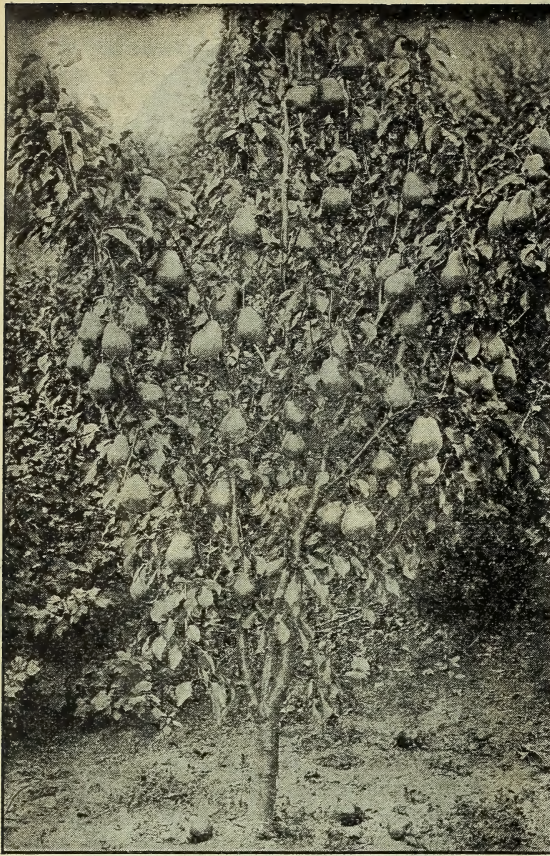
Sheldon—Medium size, round, russet and red. Fine for dessert; keeps well. Oct.

WINTER

Beurre De Anjou—A grand pear; large, handsome, buttery, melting, rich; yellow when ripe. The finest pear grown. Oct. to Jan. The same prices as Bartlett.



Rossney



Dwarf Duchess

DWARF PEARS

PROFIT—It is claimed that there is more money in Dwarf Pears at \$1.00 per barrel than in Apples at \$2.00.

PRICES OF DWARF PEARS

	Each	Doz.	100
3 to 4 ft., XXX	25c.	\$2.50	\$15.00
2 to 3 ft., XX	20c.	2.00	12.00

BEST DWARF VARIETIES

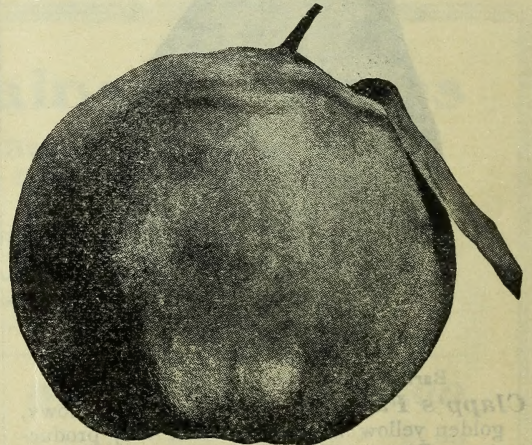
- Bartlett—Summer.
- Beurre de Anjou—Winter.
- Clapp's Favorite—Very early.
- Duchess—Late Fall, fine.
- Howell—Early Fall.
- Seckel—Late Fall.

QUINCES

	Each	Doz.	100
3 to 4 ft., XXX	35c.	\$3.75	\$30.00
2 to 3 ft., XX	30c.	\$3.00	20.00

Bourgeat—A French variety. Very productive, healthy and thrifty. It grows in tree form like Pears or Plums. The fruit is very large, smooth, golden yellow, of the best quality, tender; ripens just after the Orange; will keep past midwinter in perfect condition.

- Champion**—Very large size; rich, golden yellow when ripe; a great bearer; very late. Nov.
- Orange**—Very large; bright golden yellow, fine quality; flesh firm, cooks tender. Oct.
- Rea's Mammoth**—Very large, bright golden yellow, fine quality; ripens very early; very prolific. Oct.



Orange

APRICOTS

Apricots are a rich, delicious fruit, coming between Cherries and Peaches; very much like the Peach in outward appearance, but like the Plum in quality and texture. One of the finest fruits for drying, and they fill a season when there are no other large fruits.

PRICES OF APRICOTS

Each, 35c.; Doz., \$3.50

- Early Golden**—Small, pale orange, juicy and sweet. Hardy, productive. July.
- Montgamet**—Medium size, early; juicy and excellent; hardy. July.
- Russian**—Small, yellow; very hardy and productive. July.

1909

NEW YORK STATE FAIR

Syracuse

FIRST PRIZE

FRUIT DEPARTMENT
BEST GROWN FRUIT TREES

S. C. SHAVER, Secretary



Fac-Simile Blue Ticket, First Prize

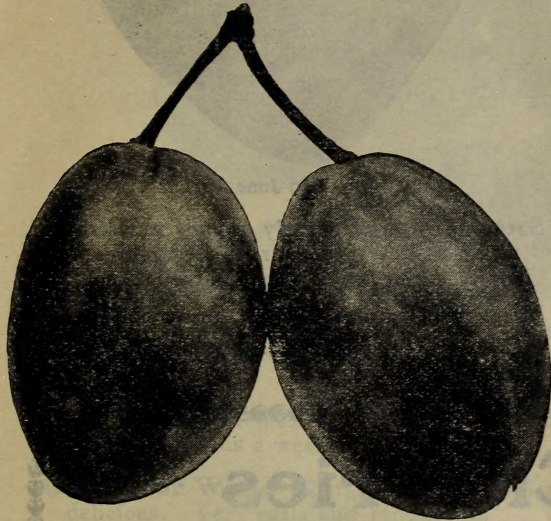
We won the **FIRST PRIZE** at the New York State Fair, 1909, for the **Best Grown Fruit Trees.**

SELECT PLUMS

The Plum attains its Perfection on strong clay soil

PRICES OF PLUMS

	Each	Doz.	100
6 to 7 ft.; XXX	25c.	\$2.50	\$18.00
5 to 6 ft., XX	20c.	2.00	15.00



German Prune

PLUMS (European)

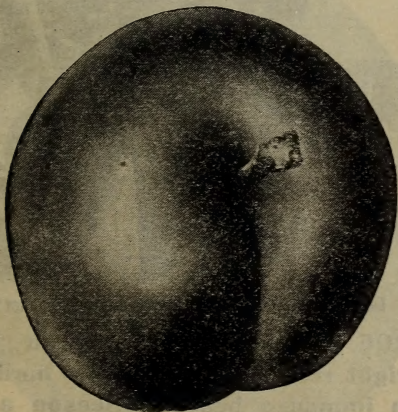
Fellemburg (Italian Prune)—Very large, rich dark purple, flesh juicy and good, freestone; trees spreading; productive. Sept.

German Prune—Medium size, dark blue, juicy, rich. Tree upright, vigorous. Sept.

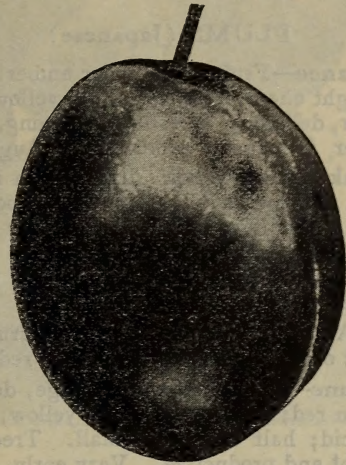
Reine Claude—Very large, fine flavor; roundish-oval, greenish marked with red in the sun. Last of Sept. Hangs long on the tree.

Shropshire Damson (Prune Damson)—An English variety of great merit for preserving. Large and much more desirable than the Common Damson. Tree vigorous grower, hardy, and an abundant bearer. Oct.

Yellow Egg—Very large, golden yellow, fine quality; very productive. August.



Burbank



Bradshaw

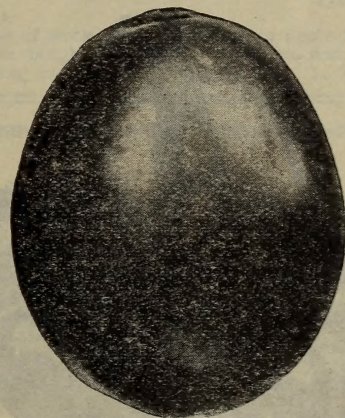
PLUMS (American)

Bradshaw—Very large, purple, juicy, fine quality. Tree erect and vigorous. August.

Gueii—Very large, deep purple; flesh yellowish, sweet; early and prolific bearer; hardy. Sept.

Imperial Gage—Medium size, yellow, juicy, rich, delicious, productive; strong grower. August.

Lombard—Medium, violet red, juicy. Adapts itself to any locality; extremely hardy, producing good crops where many varieties will not even grow. A strong growing tree, exceedingly productive; fruit usually hangs so thick that by thinning out one half it will make remaining larger and better fruit. Sept.



Lombard

Moore's Arctic—Medium; skin purplishblack; juicy, sweet and pleasant flavor; claimed to be the hardiest Plum grown and free from black knot. August.

Purple Egg or Red Magnum Bonum—Large and handsome; flesh greenish with a pleasant sub-acid flavor, separating freely from the stone. Season medium.

SELECT PLUMS—Continued

Shipper's Pride—Very large, dark purple, juicy, sweet, fine quality. Hardy, productive. Sept.

Tatge—Evidently a seedling of the Lombard. Claimed to be the hardiest, most productive and longest-lived plum known. Sept.

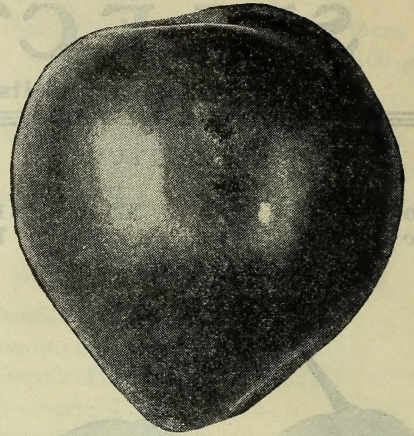
PLUMS (Japanese)

Abundance—Fruit large, color amber, turning to bright cherry red, flesh light yellow; juicy, tender, delicious, freestone. Strong, upright grower, immensely productive. August.

Burbank—Flesh yellow, firm, tender and very juicy, rich sweet and aromatic. Blooms late. Tree spreading. Unsurpassed for beauty, productiveness and great hardiness of tree. Very best of Japan Plums. One of the best market varieties. Late Aug.

Hale—An upright, compact grower; fruit large, bright orange mottled with cherry red. Sept.

Red June—Fruit medium to large, deep vermilion red; flesh light lemon yellow, slightly sub-acid; half cling, pit small. Tree hardy, upright and productive. Very early.



Red June

Satsuma—Large, nearly round, purplish-red, pit small. Will keep from one to three weeks after picking. Very productive. Aug.

Wickson—Large; carmine, heavy white bloom; stone small, flesh sugary and delicious. Sept.

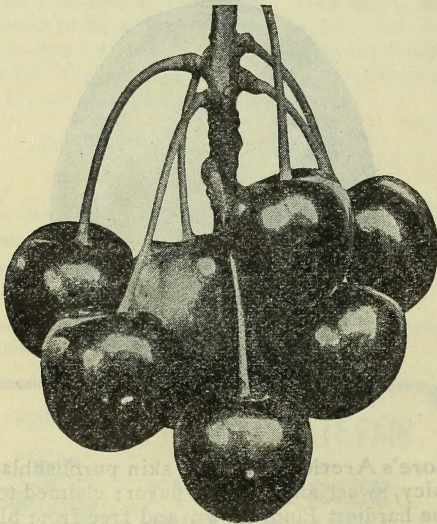
Also Monarch and Pond's Seedling.

Select Cherries

The Cherry thrives best in a sandy or gravelly soil, and there attains its highest perfection; but will do well in almost any situation except a wet one. Our lighter grades are fine, well rooted, splendid trees.

PRICES OF CHERRIES

	Each	Doz.	100
Extra, XXX	35c.	\$3.50	\$25.00
First Class, XX	25c.	2.50	18.00
Medium, X	15c.	1.50	8.00



Black Tartarian

Black Tartarian—Fruit very large, heart shape. Dark purple, tender, rich; very prolific. June and July.



Large Montmorency—Most Profitable Hardy Market Cherry

LARGE MONTMORENCY Fruit large, bright red, fine flavor; very hardy and an immense bearer. Season a little later than Early Richmond.

SELECT CHERRIES - Continued



Early Richmond

EARLY RICHMOND—Medium size, bright red, acid, very hardy and productive. Trees fruit very young. June.

Dyehouse—Medium size; like Early Richmond but ripens a week earlier. June.

Governor Wood—Large, light red, tender, delicious. Very early and productive.

Louis Phillippe—Extra hardy; a vigorous grower and very productive; large size; rich, dark red; flesh red, tender, juicy, with mild, sub-acid flavor. July.

Napoleon—The largest size, yellow with red cheek. Very firm, juicy, sweet. Very valuable for market and shipping; enormously productive. July.

Yellow Spanish—Large, early, yellow with bright red cheek. Heart shaped; firm, juicy, high flavored; makes a large tree; much grown for market. End of June.

Windsor—Very large, liver colored, finest quality; very vigorous and productive. Firm and excellent for shipping. Very late.

English Morello—Medium size, dark red, acid, late; very hardy. Tree an early bearer. July.

May Duke—Large, dark red; juicy, sub-acid. Ripens over a long period. Middle of June.

Also Bing, Lambert, Olivet and Ostheime

Linwood, Md.

Dear Sir;

I received the trees and wish I had ordered more, as they were the best I ever got.

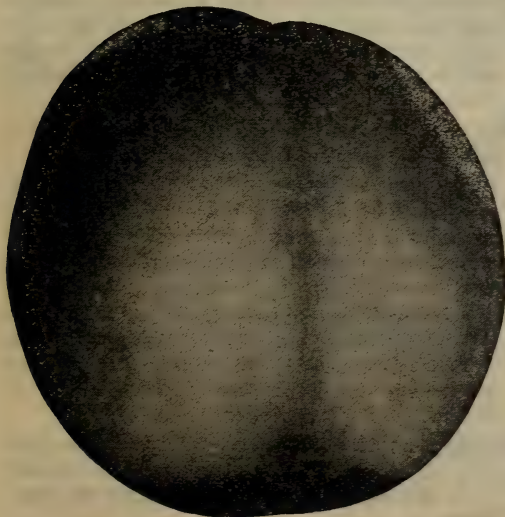
Ira C. Otto.

Flint, Mich.

Dear Sir:

The box of stock received and are as fine a lot of trees as we ever bought. All in fine condition, and the boxing and packing could not be excelled.

L. T. Curtis.



Alpha

Select Peaches

The ease with which PEACH TREES may be cultivated, their comparative *freedom from disease*, the short period before they become productive, with the *immense* demand for the fruit, make Peach growing *extremely* profitable. The small grades are *fine*, *well rooted* and *nicely branched* trees. Used altogether by orchard planters.

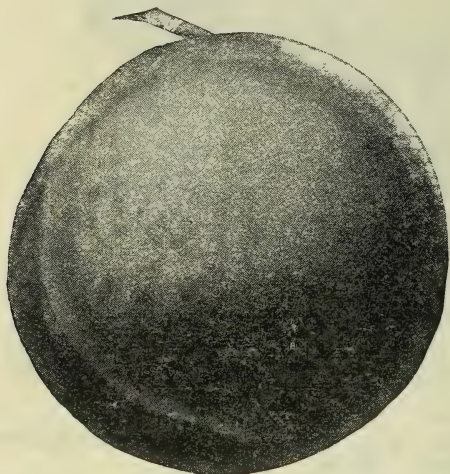
Alpha—A chance seedling found growing in Rochester, N. Y. Two weeks earlier than Early Crawford and much larger; flesh white, red at pit; juicy, highest quality; freestone. Tree vigorous, strong. Each 35c., Doz., \$3.00.

PEACHES - Continued

PRICES OF PEACH TREES

Except otherwise noted.

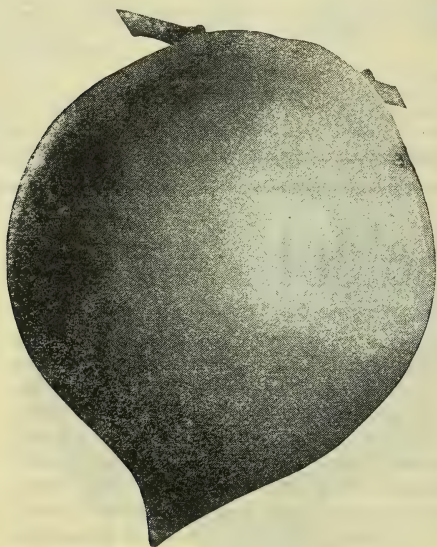
	Each	Doz.	100
4 to 5 ft., XXX	20c.	\$2.00	\$12.00
3 to 4 ft., XX	15c.	1.50	9.00
2 to 3 ft., X	10c.	1.00	6.00



Lamonte

Lamonte—Magnificent large yellow, freestone Peach of good quality; tree vigorous and productive. No other variety is so free from fungus diseases. Its season is nearly two weeks later than Elberta. **Price, 4 to 5 ft., each, 35c.; Doz., \$3.00; 100, \$20; 3 to 4 ft., each, 25c.; Doz., \$2.50; 100, \$15.00.**

Mountain Rose—Large, red; flesh white; excellent. Should be in every collection. First of Aug. Free stone.



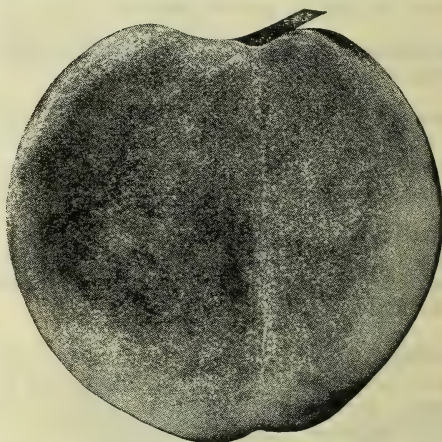
Elberta

Elberta—Among Peaches Elberta takes the lead for beauty, size and quality. It is one of the hardiest. Larger than Crawford's Early and fully its equal in beauty and flavor. One of the finest yellow freestone Peaches. Ripens later than Crawford's Early.



Fitzgerald

Fitzgerald—A native seedling, larger than Crawford; freestone, the very best quality. A heavy bearer, fruiting very young, almost invariably the second year after planting. Very hardy. Ripens after Crawford's Early.



Triumph

Triumph—Ripens with Alexander; a sure and abundant bearer. The fruit is of large size, with a very small pit. Flesh bright yellow, free when fully ripe, and of excellent flavor.

Willett—One of the largest and finest Peaches grown; flesh yellow, juicy, rich and excellent; skin yellow, covered with dark red. Last of Sept. Free.

Smock—Large size; light orange yellow with red cheek; flesh yellow, juicy and rich. Free. Oct.

Steven's Rareripe—Quite large, yellowish white, deep red cheek; flesh white and juicy. Commences to ripen immediately after Late Crawford and continues three or four weeks. Free. Sept. and Oct.

Stump of the World—Very large, roundish; skin white with a bright red cheek; flesh white, juicy and good. End of Sept. Free.

PEACHES—Continued

Belle of Georgia—Large, skin white with red cheek; flesh white, firm and of excellent flavor; tree a rapid grower, very prolific; fine shipper: ripens with Early Crawford. Free.

Carman—New, hardy, rot-proof Peach; almost as large as Elberta; skin pale yellow with blush on sunny side; by far the finest early Peach in cultivation; ships well. Aug.

Champion—A white freestone, ripening about Sept. 1st. It is hardy, productive, early, largest size and highest flavor.

Crawford Early—Very large; yellow, rich, sweet; free. Late Sept.

Crawford Late—Very hardy, large, yellow, rich, sweet; free. Late Sept.

Also, **Alexander, Bokara, Carman, Foster, Francis, Globe, Hill's Chili, Iron Mountain, Mathews' Beauty, Niagara, Old Mixon Free and Wheatland.**

See the low prices on Peaches. Your own selection of varieties as low as \$6.00 per 100.

Choice Strawberry Plants

We are greatly pleased to offer our customers this year some new Strawberries of merit. An improvement over many kinds being offered by other dealers and growers. You must grow good varieties to succeed. Get the best; costs no more. *Strawberry Plants by Mail.*

At dozen rates we pay postage, at hundred rates you add 20c per 100



World's Wonder

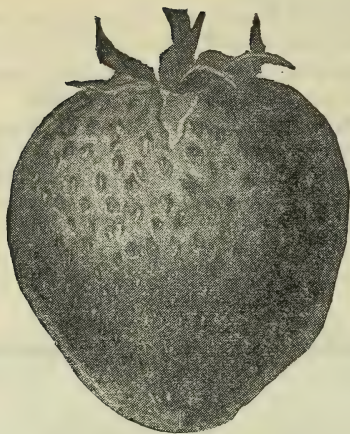
Brandywine, Per.—A late and firm berry; a good shipper and canner; very productive. Price, 30c. per 12; 65c. per 100; \$4.00 per 1,000;

Early Beauty, Per.—Originated in Iowa. The fruit is medium to large, about the size and shape of Haverland and fully as productive. The best early variety that we have ever fruited. Price, 35c. per 12; \$1.00 per 100; \$6.00 per 1,000.

Echo, Per.—Introduced by us. This great table berry has the flavor of the natural wild Strawberry. Very productive. Price, 35c. per 12; \$1.00 per 100; \$6.00 per 1,000.

World's Wonder, Per.—This great Strawberry is as productive as the Haverland, but twice as large. Fruit is a bright red color and does not turn dark after being picked. Ripens early and brings an extra fancy price on the market. Will produce a large crop on either high or low land. The fruit is so firm and its keeping qualities so excellent that it does not need to be picked more than once in three days. Price, 35c. per 12; \$1.00 per 100; \$6.00 per 1,000.

STRAWBERRIES—Continued



'Abington

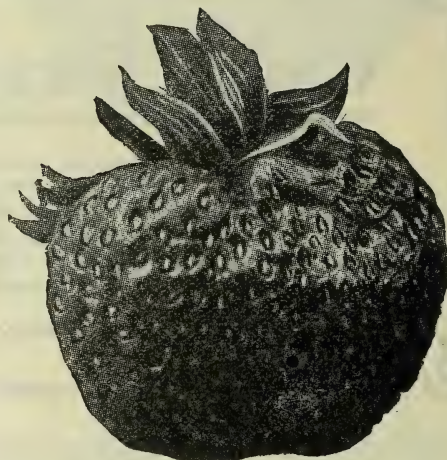
Abington, Per.—Large, bright red, firm and good, holding its color well and making a long season. An improvement on Bubach. Price, 35c. per 12; 75c. per 100; \$5.00 per 1,000.

Climax, Per.—This new berry has become very popular; size of fruit rather above medium, productiveness simply immense. Price, 30c. per 12; 65c. per 100; \$4.00 per 1,000.

Oak's Early, Per.—New. It is three times more productive than the Michael's Early and also a strong grower. Fruit large and brings a fancy price on the market. Price, 35c. per 12; 75c. per 100; \$5.00 per 1,000.

Steven's Late Champion, Per.—A late money-making variety, yielding enormous crops of large, beautiful and good berries that ship well very late in the season after all other varieties have ripened and disappeared. Price, 35c. per 12; 75c. per 100; \$5.00 per 1,000.

William Belt, Per.—A handsome variety that is giving remarkable satisfaction as a large productive berry for market or home use. Ripens all over without green tips; good quality; carries well to market and brings highest price. Price, 30c. per 12, 65c. per 100, \$4.00 per 1,000.



Sample

Senator Dunlap, Per.—Season early to medium. Popular market sort. It withstands all conditions of weather beyond the average. Very productive; dark red all through. Price, 30c. per 12; 65c. per 100; \$4.00 per 1,000.

Additional varieties that are too well known to require separate description. Price, 30c. per 12; 65c. per 100; \$4.00 per 1,000. Crescent, Glen Mary, Sample, Michael's Early, Wilson.

1909 NEWYORK STATE FAIR
Syracuse
FIRST PRIZE
FRUIT DEPARTMENT
Best Grown Strawberries
and Largest Assortment
S. C. SHAVER, Secretary



Fac-Simile Blue Ticket, First Prize

Great Bargains in Plants and Vines

BY MAIL

WE PAY POSTAGE

100 Strawberry Plants, Best Varieties,	\$.75
12 Wood's Improved Cuthbert Raspberries,	.50
12 Columbian Raspberries,	.50
6 Concord Grape Vines, 2 years,	.50
6 Roses, Field Grown, 2 years,	1.50
4 Climbing Roses, Field Grown, 2 years,	1.00
4 Spirea Van Houttei Shrubs,	1.00

The ENTIRE List above for \$5.00 Express Paid

BARGAIN NO. 3 for \$1.00

By Mail or Express, Prepaid

6 Columbian Raspberries,	\$.25
6 Kansas Raspberries,	.25
12 Concord Grapes, 2 years,	1.00

BARGAIN NO. 4 for \$2.00

By Mail or Express, Prepaid

12 Concord Grapes, 2 years,	\$1.00
4 Climbing Roses, 2 years,	1.00
4 Spirea Van Houttei, 2 years,	1.00

Red Raspberries

NOTE—If you want Raspberries sent by mail, prepaid, add one cent per plant



Columbian Red Raspberry

COLUMBIAN—For canning purposes it is undoubtedly the very best Raspberry in cultivation, yielding as high as 8,000 quarts per acre. Perfectly hardy and grown largely for evaporating, retaining color, form and flavor remarkably. Price, 40c per dozen; \$1.50 per 100; \$10.00 per 1,000.

GROSS YIELD \$285.14 AN ACRE

Sodus, Aug. 24 Isaac Vandermill, from less than three acres of land, has sold 11,006 quarts of Columbian Raspberries, receiving for them \$770.42, that being at the rate of \$285.14 an acre of land used. His net profit will be more than he paid for the land.

Cuthbert (Wood's Improved Red)—It is the leading market variety all over the country. Flavor sweet, rich, luscious. Price, 40c. per 12; \$1.50 per 100; \$10.00 per 1,000.

Herbert. (Iron-Clad variety.) New. Out classes all in hardiness. Fruit is bright red, somewhat oblong in shape. Largest of all red Raspberries; sweet and juicy. Very best for table use. Enormously productive, outbears the Cuthbert and is a week earlier. Holds its size well to the end of the season. Price, 2 for 25c.; \$1.25 per 12; \$7.00 per 100.

Marlboro—Large size; light crimson color; good quality and firm. Price, 40c. per 12; \$1.50 per 100; \$12.00 per 1,000.

Ruby (New)—In the Ruby we have hardiness, vigor, earliness, large size and great productiveness. It has proven itself to be the most profitable early variety, wherever tried. Price, 50c. per 12; \$2.00 per 100; \$15.00 per 1,000.

Schaffer—It is very vigorous, large and productive. It picks easier than the Columbian, but is not as firm. Price, 40c. per 12; \$1.50 per 100; \$12.00 per 1,000.



WOOD'S IMPROVED CUTLBERT—Most Profitable Market Raspberry


Black Raspberries


Black Diamond—It is the leading variety for market and home use. Berries are about the size of Gregg; ripen early; sweetest berry known; fine flavor, with few seeds; firm and good shipper. For drying and evaporating it excels all others. **Price, 40c. per 12; \$1.50 per 100; \$12.00 per 1,000.**

Cumberland—Plants vigorous, hardy and productive in most places; fruit large. Midseason. **Price, 40c. per 12; \$1.50 per 100; \$12.00 per 1,000.**

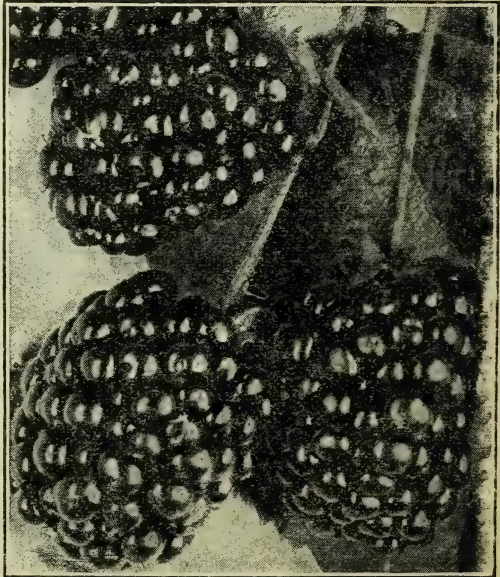
Gregg—Plants vigorous, hardy and productive; fruit above medium to very large. **Price, 40c. per 12; \$1.50 per 100; \$12.00 per 1,000.**

Kansas—It is of the largest size, strong, vigorous grower, standing extremes of drought and cold, and bearing immense crops. Berries size of Gregg, of better color; presents a handsome appearance and brings highest price on the market. **Price, 40c. per 12; \$1.50 per 100; \$10.00 per 1,000.**

Ohio—An old, well-known variety. **Price, 40c. per 12; \$1.50 per 100; \$10 per 1,000.**

BLACKBERRIES

If you want Blackberries sent by mail, prepaid, add one cent per plant.



RATHBUN, largest of all Blackberries
Rathbun—The fruit is large and handsome, jet black, high polish, without any hard core; juicy, highly flavored. **Price, 50c. per 12; \$2.00 per 100.**

BLACKBERRIES — Continued



Branch of Blowers Blackberry

Blowers—"The giant of all Blackberries." An upright, mammoth grower; very hardy and enormously productive. A single plant produced over 2600 berries. It commences to ripen about the middle of July and bears about two months. Price, 4 for 25c.; 60c. per 12; \$3.50 per 100; \$25.00 per 1,000.

Taylor—It is so extremely hardy as to have stood 30 degrees below zero unharmed. Berries large and of the highest quality. One of the best for garden. Price, 40c. per 12; \$1.50 per 100; \$12 per 1,000.

Wilson's Early—Very large size, oblong oval, black, quite firm, rich, sweet and good. Ripens early and matures its fruit rapidly; retains its color well after picking. Price, 40c. per 12; \$1.50 per 100; \$12.00 per 1,000.

Snyder—Plants vigorous, healthy, canes large, upright, hardy. Fruit medium, roundish. Price, 40c. per 12; \$1.50 per 100; \$12.00 per 1,000.

Minnewaski—One of the largest and most productive. Early. Price, 50c. per 12; \$2.00 per 100; \$15.00 per 1,000.

Eldorado—One of the hardiest; fruit medium to large, sweet, juicy, good color. Price, 50c. per 12; \$2.00 per 100; \$15.00 per 1,000.



CURRANTS

If you want Currants sent by mail, prepaid, add one cent per plant.

Fay's Prolific—Extra large stems and berries uniform in size. Easy to pick. Exceedingly productive. Bush vigorous, but not as strong a grower as some varieties. Price, 10c. each; 75c. per 12, \$5.00 per 100.

White Grape—The largest and most productive white Currant grown. Flavor sweet and fine for table. Price, 10c. each; 75c. per 12; \$6.00 per 100.



Red Cross

Red Cross—much superior to Fay's in every respect. It is the most vigorous grower of all currants we have tested. Price, each 10c.; 75c. per 12; \$6.00 per 100.

CURRANTS—Continued



Perfection

Perfection—In color it is a beautiful bright red, and of a size larger than the Fay; the clusters average longer and the size of the berries is maintained to the end of the bunch. It is one of the most productive Currants we have ever known and in quality it is superior to anything in the market, being of a rich, mild, sub-acid flavor and having plenty of pulp with few seeds. **Price, each 15c.; \$1.50 per doz.; \$12.00 per 100.**

Wilder—It is one of the strongest growers and very productive. Bunches of berries very large, bright, attractive red color, and hang on bushes longer than any other variety. **Price, each 10c.; 75c. per 12; \$5.00 per 100.**

Cherry—Strong grower, fruit very large. **Price, each 10c.; 75c. per 12; \$5.00 per 100.**

Lee's Prolific (Black)—One of the best Black Currants. Fruit large, produces abundantly. **Price, each 10c.; 75c. per 12; \$6.00 per 100.**

Also, **BLACK NAPLES, LONDON MARKET and VICTORIA.**

TREE CURRANTS

CHERRY, FAY'S, RED CROSS and WILDER. Each. 25c.; Doz., \$2.50.



Pearl Gooseberries

GOOSEBERRIES

Gooseberries sent by mail, add one cent per plant.

Downing—Large, handsome, pale green, of splendid quality for both cooking and table use. **Price, 15c. each; \$1.50 per 12; \$10.00 per 100.**

Houghton—A very productive hardy berry, of medium size, and for general purposes one of the best. **Price, 15c. each; \$1.50 per 12; \$10.00 per 100.**

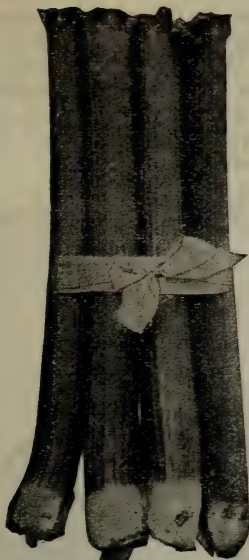
Pearl—Best American variety; very hardy, free from mildew, superior in size and quality and more productive than Downing. **Price, 15c. each; \$1.50 per 12; \$10.00 per 100.**

Red Jacket—An American seedling of large size; smooth, prolific and hardy, of best quality. A Wonderful cropper. **Price, 20c. each; \$2.00 per 12; \$12.00 per 100.**

Industry—Fruit is large size, color dark red. The best of all English varieties in this country. **Price, 20c. each; \$2.00 per 12; \$12.00 per 100.**

RHUBARB

Rhubarb (or Pie Plant)—For family or market. Have you a bed of Rhubarb in your garden? If not, do not fail to start one this Spring.



Rhubarb—Myatt's Linneaus

Myatt's Linneaus—Early, tender and very large, known as the sweetest pieplant. Price, 10c. each; 60c. per 12; \$4.00 per 100. Extra large plants for forcing in greenhouses; 15c. each; \$1.00 per 12; \$5.00 per 100.

1909 NEW YORK STATE FAIR
Syracuse
FIRST PRIZE
FRUIT DEPARTMENT
Best Grown Small Fruit
and Largest Assortment
S. C. SHAVER, Secretary



Fac-Simile Blue Ticket, First Prize

ASPARAGUS

This earliest and finest of Spring vegetables is among the easiest cultivated and most profitable. A bed once planted suffers no deterioration for thirty years or more, if it is properly attended to and well manured.



Asparagus—Barr's Mammoth

PRICE OF ASPARAGUS

25c. per 25; 75c. per 100; \$5.00 per 1000.

Barr's Mammoth—Robust and vigorous and throws large shoots and they remain white above ground as long as they are fit for cutting.

Conover's Colossal—This variety is remarkably tender and fine flavored.

Palmetto—An early and great yielder and very even and regular in its growth. It has been tested both North and South and has proved entirely successful in every instance.

Select Grapes

The Grape is the *most healthful* of all fruits and the *most esteemed* for its many uses. It can be grown by anyone who has a garden, a yard or a wall.

Agawam (Rogers' No. 15) (Red)—Berries very large, thick skin; pulp soft, sweet; very vigorous, ripens early. Price, 2 for 25c.; \$1 per doz.; \$4 per 100.

Alice (New Red Grape)—Ripens with Concord. Keeps all Winter plump and fresh; strong grower, free from mildew or disease; immense yielder; rich in sugar. Price, each, 25c.; Doz., \$2.50.

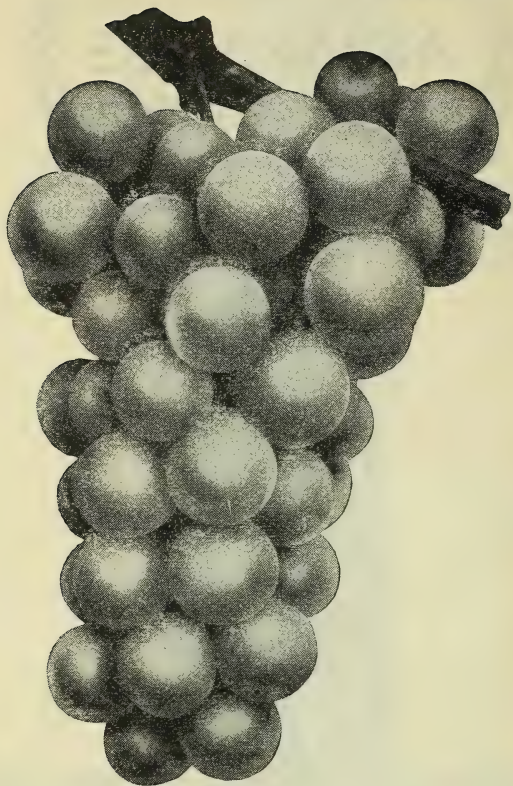
Brighton—The best flavored Red Grape in cultivation. Price, 2 for 25c.; Doz., \$1.50; 100, \$5.

Campbell's Early (Black)—Strong grower, with large, healthy foliage; its keeping qualities are equaled by no other early Grape. Price, each 20c.; Doz., \$2.

Catawba—Berries, large, round; when fully ripe of a dark copper color. Price, 2 for 25c.; Doz., \$1.50; 100, \$5.

Delaware—Red, finest flavor. Bunch and berry small; requires good soil. Price, 2 for 25c.; Doz., \$1.50; 100, \$5.

GRAPES - Continued



Brown's Seedling

Brown's Seedling (New Black)—An early Grape of exceptionally good quality. The large, black, sweet berries grow in big, thick clusters. It is perfectly hardy. It is a most prolific bearer; ripens evenly and adheres to the stem firmly. It has no equal as an early market variety. **Price, 2 Years, each, 25c.; Doz., \$2.50.**

Charles Downing, one of the best (if not the best) authorities on fruit in the United States says it is hardy, very prolific, sweet, good and worthy of propagation.

The *Rural New-Yorker* had specimens of Champion and Brown's Seedling. Champion well colored but not fit to eat: Brown's Seedling thoroughly ripe and sweet.

Orange County Farmer awarded it first premium, and said, "As early as Champion and 100% better."

Has been exhibited at at least twenty-five fairs and has always received first prize.

Diamond—Leading early white Grape, ripening before Moore's Early. **Price, 2 for 25c.; Doz., \$1.50; 100, \$5.**

Lindley (Rogers' No. 9)—Berries medium to large. Red. **Price, 2 for 25c.; Doz., \$1.50; 100, \$5.**

McKinley Early (New white)—Strong grower; bunches large, compact and handsome; berries large and oval like Malaga Grapes; green at first, turning to yellow when fully ripe; very sweet. Extra quality; a good shipper; remarkable keeper; will hang on vines sound and perfect for weeks after ripe. Ten days earlier than Niagara with the richest flavor of any Grape on the market. **Price, each 25c.; Doz., \$2.50.**

McPike—Mammoth black Grape, with fine flavor. Ripens with Worden. **Price, each 20c.; Doz., \$2.**

Moore's Early (Black)—Bunch and berry large, round with heavy blue bloom; vine exceedingly hardy. **Price, 2 for 25c.; Doz., \$1.50; 100, \$5.**

Niagara—Occupies the same position among white Grapes as Concord among black; leading profitable market variety. **Price, 2 for 25c.; Doz., \$1.; 100, \$4.**

Pocklington, or "Golden Pocklington"—Largest and most showy white Grape of the Concord type. **Price, 2 for 25c.; Doz., \$1.50; 100, \$5.**

Salem (Rogers' No. 53) (Red)—Bunch large, compact. **Price, 2 for 25c.; Doz., \$1.50. 100, \$5.**

Worden (Black)—Larger than Concord, better quality and earlier. **Price, 2 for 25c.; Doz., \$1.50; 100, \$5.**



Concord

Concord—Decidedly the most popular Grape in America. There are more Concords planted by vineyardists than all other varieties combined. Bunch large, shouldered, compact; berries large, covered with a rich bloom; skin tender, but sufficiently firm to carry well to distant markets. For general cultivation the most reliable and profitable variety. **Price, 3 for 25c.; Doz., 75c.; 100, \$3; 1000, \$25.**

Try a few of the **NEW Brown's Seedling.**

Roses

REMEMBER—All our Roses are strong, hardy, out-door plants. They will bloom this year.

Each, 25c; 6 for \$1.30; Doz., \$2.50.
Except otherwise noted.

NOTE—Roses by mail, add 5c for each plant

THE FINEST OF THE OLD SORTS

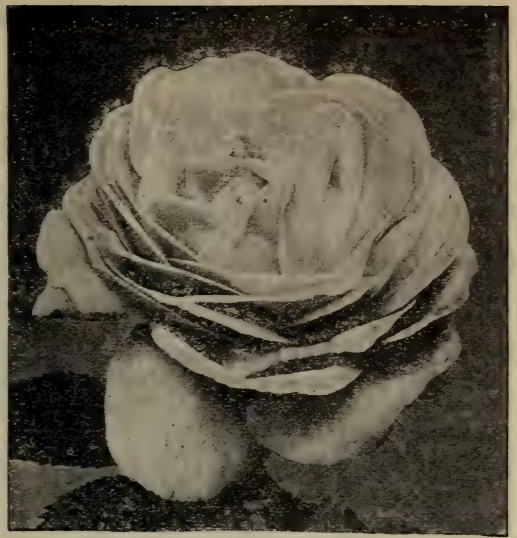
Alfred Colomb—Bright crimson; very large.



American Beauty

American Beauty—Large, deep rose; very double; with a delightful fragrance.

Black Prince—Rich, dark red.



Coquette Des Alps

Coquette Des Alps—One of the finest pure white Roses; hardy and beautiful.

Gen. Jacqueminot—Crimson; rich and fine.

John Hopper—Bright, clear pink.

La Reine—Beautiful pink.

Madam Alfred Carrier—Carmine.

Madam Gabriel Luizet—Silvery pink, fine form, fragrant and free bloomer.

Magna Charta—Bright clear pink.

Marshall P. Wilder—Bright cherry-carmine; fragrant; vigorous, fine form.

Paul Neyron—Deep rose; very large.

Persian Yellow—Golden yellow; hardy.

Prince Camille De Rohan—Deep velvety crimson. A splendid rose.



Frau Karl Druschki

Frau Karl Druschki or Snow Queen. An exquisite new Rose, absolutely pure white.



Earl of Dufferin

Earl of Dufferin—Rich, brilliant velvety crimson; delightfully fragrant.

ROSES — Continued

THE BEST OF THE NEW ROSES

Clio—Flesh color. Perfection in form and growth; fine broad petals; delicate texture; prolific bloomer.

Duc De Cazes—Bright red.

Gruss En Teplitz—Large, rich scarlet; fragrant, and flowers in great abundance all Summer.

Marchioness of Londonderry—Ivory white; perfectly formed and borne at the end of the branches, making it very desirable for cutting.

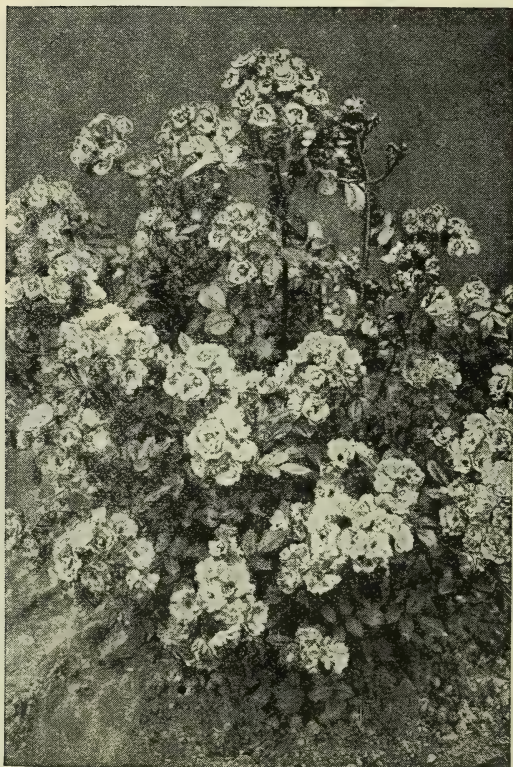
Margaret Dickson—White, with pale flesh center; petals very large, shell shaped; fragrant; a very strong grower.

Mrs. John Laing—Delicate salmon-pink; fine form, very fragrant; blooms continuously through the Summer.

MOSS ROSES

Crested—Pale pink buds; very beautiful.

Red—Beautiful buds. **Salet**—Red; an old favorite. **White**—Very fine flowers.



Baby Rambler—4 years old.

Baby Rambler—A dwarf (bush not climbing). **Everblooming.** Will bloom continuously through the Summer. Has the same bright crimson color as the climbing Crimson Rambler and blooms in clusters of 20 to 40 flowers at one time.



Tree Rose

TREE ROSES

The **Tree Roses** are grafted on hardy rose canes four to five feet high, are **tree** shaped, and when in full bloom are objects of beauty, making handsome plants for the lawn. They need Winter protection.

We can supply **White, Red, Pink, Yellow** and **Crimson** colors, very fine, strong trees that will bloom the first year. **Each, 50c.; Doz., \$5.**

The Tree Baby Rambler. **Each, 75c.; Doz., \$7.50.**

CLIMBING ROSES

Strong field grown, all two years old.

Special price, **Each, 25c.; 6 for \$1; Doz., \$2.**

Baltimore Belle—White, tinged with blush; very double; flowers in clusters.

Pink Rambler, White Rambler and **Yellow Rambler** are similar in growth to the **Crimson**, but not quite as rampant growers, but very pretty used in combination with it.

Queen of Prairie—Rosy red; flowers large and compact. Very popular.

Seven Sisters—Crimson changing to white.

Fort Wayne, Ind.

In the Spring of 1905 I purchased of you for \$12.00 a bargain collection. Well! I have just sold the acre containing this fruit at an advance of \$500 over what acres in this same addition are selling for without any fruit. The \$12.00 seems to have been a pretty good investment and I am going to stock another acre this fall.

THEO. HARDENDORF.

Dorothy Perkins—This Rose is of the same strong habit of growth as the Crimson Rambler; sweetly scented and of a beautiful shell-pink color. Absolutely hardy.

Ornamental Shrubs



Althea, or Rose of Sharon

Althea (Rose of Sharon)—One of the most showy flowering shrubs, strong, erect growing, with large bell-shaped flowers of striking colors, borne abundantly in August and September, when most other shrubs are out of bloom. Colors, **Pink, Purple, Red and White.** Price, each, 25c.

Calycanthus (Sweet scented shrub)—Very desirable; fragrant; foliage rich, flowers of a rare chocolate color; blossoms in June and at intervals thereafter. Price, 25c.



Deutzia—Pride of Rochester

Deutzia, Pride of Rochester—Very large double white flowers. It excels in size of flower, profuse bloom and vigorous growth; nearly a week earlier than Deutzia Crenata. Price, each, 25c.



Crimson Rambler

Crimson Rambler—A beautiful climbing Rose from Japan, bearing large clusters of growing crimson flowers. The plant is a vigorous grower.

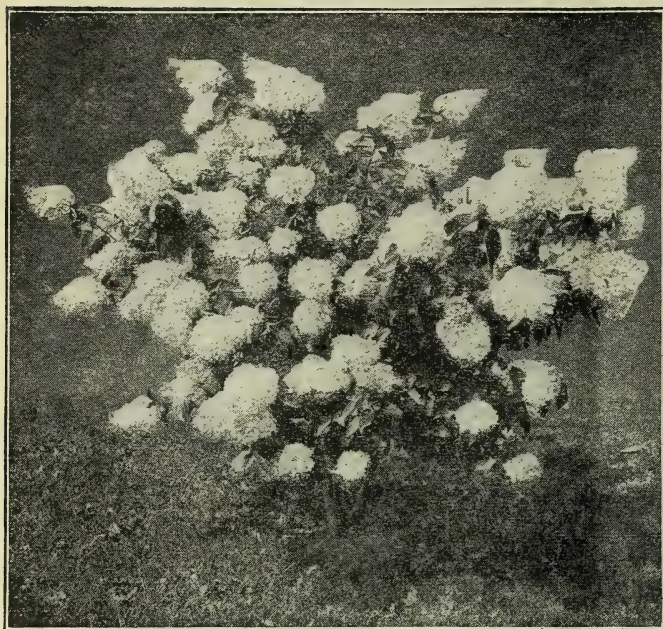
Our Crimson Ramblers and Dorothy Perkins are Extra Strong Plants; Sure to Bloom This Season.

Davenport, Iowa.

Received my Rose plants in fine shape. I was very much pleased and will recommend your plants wherever I have a chance. Thanking you kindly for your trouble, I am,

TILLIE STEINBERG.

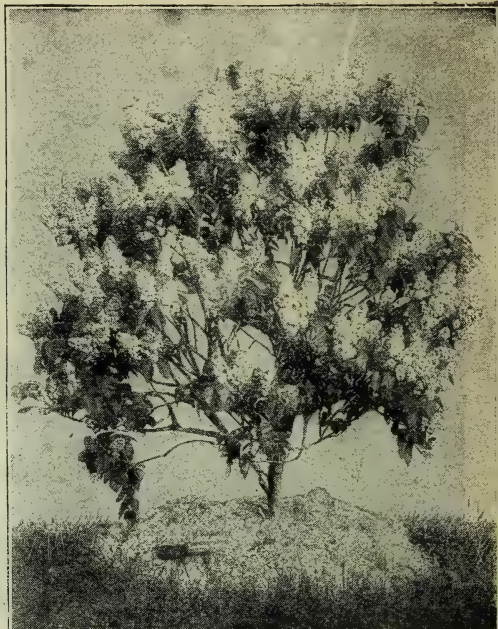
ORNAMENTAL SHRUBS - Continued



Hydrangea Paniculata Grandiflora

Hydrangea Paniculata Grandiflora—Hardy.

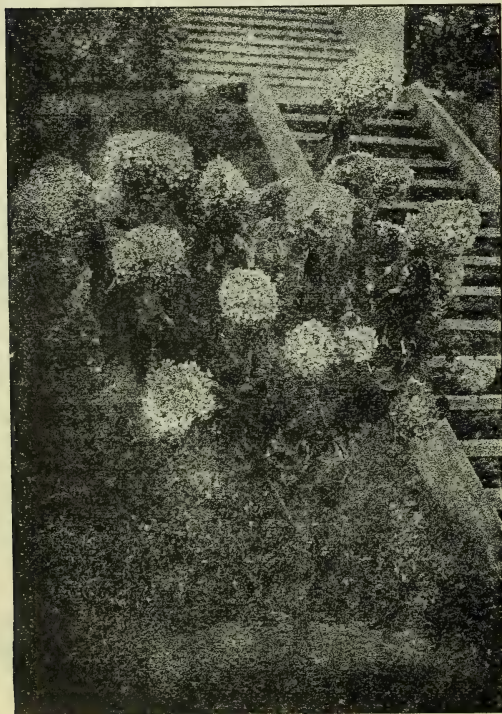
The flowers are immense, greenish-white when first open, changing to pure white and turning pink with age. Commences to flower in July and remains in flower until November. **Price, each, 25c. 5 for \$1**



Lilac White

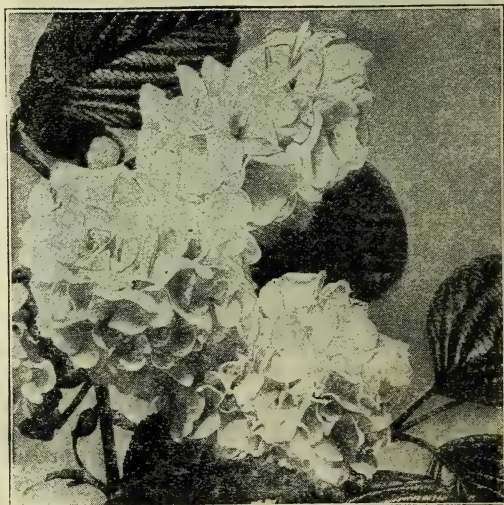
Lilac, White—Cream colored flowers; very fine. **Price, each, 25c.**

Lilac, Purple—Bluish-purple flowers, standard variety; always good. **Price, each, 25c.**



Tree Hydrangea

Hydrangea P. G., Tree Form—Same as bush, but grown in tree form with single stem. Very desirable. **Each, 50c.; Dozen, \$5.**



Japan Snowball

Snowball, Japan (*Viburnum Plicatum*)—An erect, compact shrub, blooming in June, the plants being completely covered with large balls of flowers as white as snow. The foliage is a dark green. **Price, each, 35c.**

Snowball, Common—A general favorite on account of its large clusters of white flowers in June. **Price, each, 25c.**

Kerria Japonica (Globe Flower)—A neat small shrub, with green, pointed leaves and yellow blossoms. **Price, each, 25c.**

ORNAMENTAL SHRUBS—Continued



Spirea, Van Houttei

Spirea Van Houttei—Finest of the Spireas, giving a complete mass of drooping white bloom. **Each, 25c.; 5 for \$1.**

Spirea, Aurea (Golden)—This is one of the most effective shrubs for lawn. Foliage green, bordered with a rich golden yellow. In June the branches are covered with a double white flower. **Price, each, 25c.; 5 for \$1.**

Spirea, Prunifolia (Bridal Wreath)—Double, daisy-like, pure white flowers in great profusion. **Price, each, 35c.**



Eva Rathke

Weigela, Eva Rathke—A charming new variety; flower brilliant crimson, a beautiful, distinct, clear shade. Flowers twice in one season. **Price, each, 25c.**

Weigela, Rosea—A hardy and beautiful shrub, bearing in May a profusion of rose-colored flowers. **Price, each, 25c.**

Weigela, Variegated—Fine, variegated foliage and lasts the entire season; contrasts finely with its rose colored flowers. **Price, 25c.**

Elder, Golden (Sambucus Aurea)—A beautiful shrub, with golden-green foliage when planted in the sun. Very valuable. **Price, each, 25c.**

Barberry Purple—Very handsome, growing from 3 to 5 ft. high, with violet-purple leaves and fruit. Very effective in groups. **Price, each, 25c.; 5 for \$1.**

Barberry Thunbergii—Dwarf habits; small foliage, changing to red in the Fall. Very pretty, 18-24 inch, **each, 25c.; 5 for \$1.**

Forsythia (Golden Bell)—A Medium size shrub, with drooping yellow flowers early in the Spring before the leaves. Very fine. **Each 25c.**

Fringe, Purple (Smoke Tree)—A beautiful distinct shrub, with large bunches of feathery flowers which give the tree the appearance of being covered with a cloud of smoke. **Price, each, 35c.**

Honeysuckle (Upright or Tartarian)—Beautiful red or white flowers in June. **Price, each, 25c.**

Prunus Triloba (Double flowering Plum)—Flowers delicate pink, thickly set on branches in May. **Price, each, 25c.**

Quince Japonica—Large, brilliant blossoms appear early in the Spring in great profusion. Foliage bright green and glossy all through the Summer; a very handsome, hardy ornamental. **Price, each, 25c.; 5 for \$1.**

Clethra Alnifolia (Sweet pepper bush)—A handsome little shrub, delightfully fragrant in September when covered with long, showy wands of white flowers. **Each, 25c.**

Cornus—Dark green foliage, marked with silver and red; a beautiful and attractive free flowering shrub. **Price, each, 25c.**

Deutzia Crenata—Very beautiful and desirable; flowers double white tinged with rose. **Price, each, 25c.**

Deutzia Gracilis—Dwarf; white flowers in June. Very beautiful. **Price, each, 35c.**



Phlox

Phlox—Very fine; perfectly hardy; beautiful plants. Colors, purple, lilac, white and pink. **Price, each, 15c; Doz., \$1.50.**

ORNAMENTAL SHRUBS — Continued



Lily of the Valley

Lily of The Valley will thrive in any kind of soil and throw up its beautiful, modest, fragrant white bells. **Each, 10c.; Doz, 50c; 100, \$3. Deduct 25c. per 100 if sent by express.**



Rhododendron

Rhododendron or Rosebay — Magnificent flowering, evergreen shrubs. They do best in a peaty soil, somewhat shaded, and require winter protection in exposed situations. Colors, pink, purple, red, white. **Price, each, \$1.**

AZALEAS

Azalea (Mollis)—A beautiful species from Japan, with large flowers of fine shape; perfectly hardy. **Each, 40c.**

Azalea, (Ghent) — A hardy variety with delightful perfume, blossoming during May and June. **Price, each, 65c.**

CHINESE PAEONIES

Fine hardy plants, rivalling the Rose in perfection of bloom and coloring and requiring little extra care, as they thrive and do well in any soil. Colors, **blush, crimson, purple, pink, red, variegated, white and yellow.** **Price, each, 25c; Doz. \$2.50.**

Paeonia, Fringe-Leaved — Beautiful foliage in thread-like filaments; flowers very double, of dark satiny crimson color. Rare and exquisitely lovely. **Price, each, 35c.**



Chinese Paeonies, White

Climbing Vines

NOTE—By Mail, add 5c per plant



Birthwort

Birthwort, or Dutchman's Pipe—A rapid growing vine, with magnificent foliage and curious pipe-shaped brown flowers. Price, each, 35c.; 3 for \$1.

Forest Tree Seedlings

6 to 12 in. 12 to 24 in. 2 to 3 ft.

	1000	1000	1000
Box Elder,	\$5.00	\$10.00	\$15.00
Catalpa Speciosa,	6.00	12.00	15.00
Maple, Silver Leaf,	5.00	10.00	15.00
Elm,	6.00	12.00	
Golden Willow,			25.00
Poplar, Carolina,			35.00

Twelve years ago a gentleman planted about five hundred acres of Catalpa trees on a farm near Hutchinson, Kansas.

He has sold nearly \$30,000 worth of fence posts from the thinnings alone and has approximately that amount for sale, while the forest yet remains.

They should be planted six feet apart, and this will take 120 to the acre.

Cultivate the ground for the first three years, after that they require no attention.

Thin them between the seventh and tenth year and you get an abundant supply of fence posts. In twenty years your trees will average twenty inches in diameter.

CLEMATIS



Clematis Paniculata

Paniculata—Single. White, of extremely rapid growth, with shining green foliage, and a profusion of flowers which are small but borne in large panicles. Very popular. Price, each, 25c. 5 for \$1. See cut.

Henryii—Single. The finest white Clematis. Very large, fine flowers; grows rapidly. Blooms freely during Summer and Autumn. Price, each, 35c.; 3 for \$1.

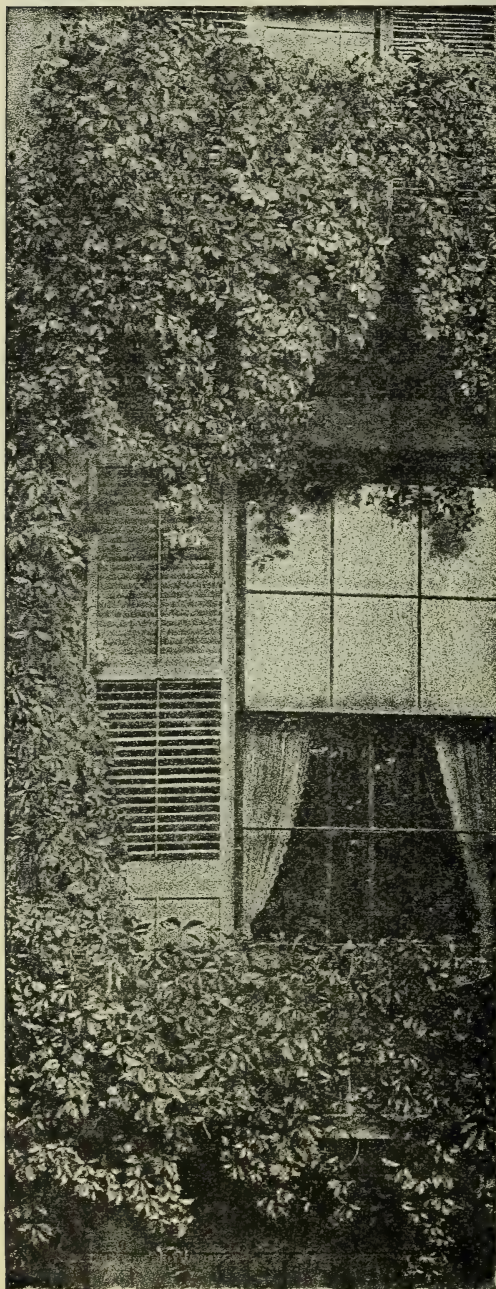
Jackmanni—Single. Very large; deep purple; forms a perfect mass of the richest bloom. Price, each, 35c.; 3 for \$1.

Mme. Ed. Andre—Flowers medium size, deep crimson-red; velvety; very free flowering. Price, each, 35c.; 3 for \$1.

The Best of the Climbing Vines

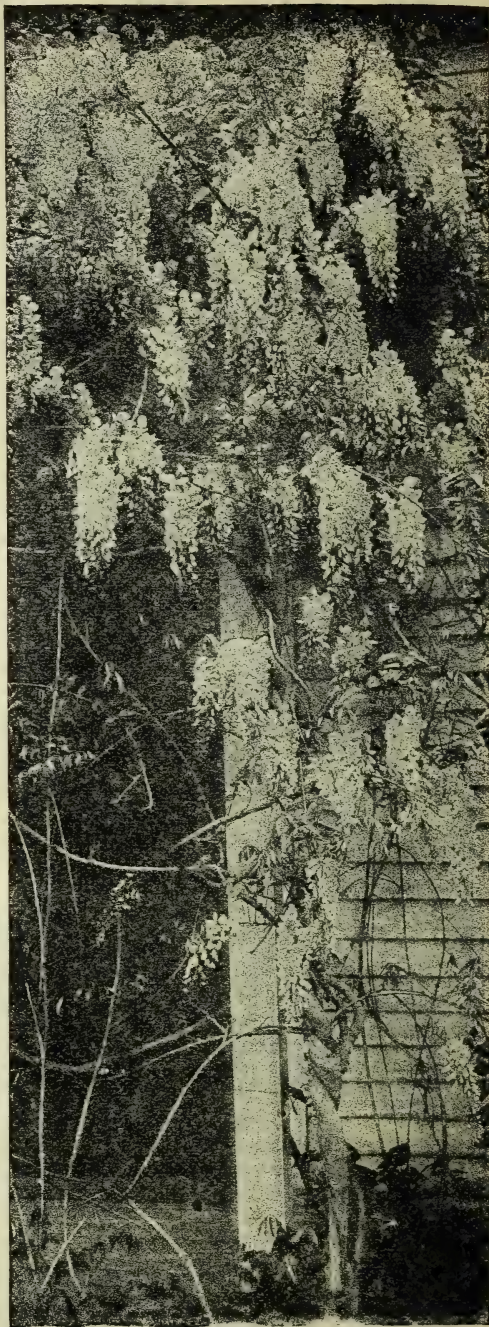
Ampelopsis Veitchii (Japan Ivy)—For covering buildings of brick or stone: **clings tightly to the smoothest surface.** Bright green leaves, changing to brilliant colorings in Autumn. **Price, each, 25c.; 5 for \$1.**

Honeysuckle (Hall's Japan)—Almost ever-green, with pure white flowers, turning to yellow: very fragrant: vigorous, covered with flowers from July to December. **Price, each, 25c.; 5 for \$1.**



American Ivy

Ivy, American—Well known climbing vine. **Price, each 25c.**



Wistaria

WISTARIA CHINESE PURPLE—

One must see this plant in bloom to appreciate its magnificence. Perfectly hardy; it flowers in spring in long drooping racemes; very beautiful. **Price, each, 25c.; 5 for \$1.**

Chinese Matrimony Vine—A vigorous and hardy climber. Flowers bright purple, succeeded by scarlet berries nearly one inch long. Excellent for trellises. **Each, 25c.; 5 for \$1.**

ORNAMENTAL TREES

Mountain Ash (European)—A fine, hardy tree; head dense and regular, covered from July to Winter with great clusters of bright red berries. **7 to 8 ft., 50c.**

Mountain Ash, Oak-Leaved—Similar to European with oak-shaped leaves. Smooth and clean. **7 to 8 ft., 50c.**

Plum, Purple-Leaved (Pissardi)—Perfectly hardy; the leaves are rich purple, retaining their bright color through the entire season. Profusion of white blossoms in May, followed by small, purplish, edible fruit. **5 to 7 ft., 50c.**

Elm, American White—A noble, drooping, spreading tree; one of the grandest of park and street trees. **8 to 10 ft., 75c.**

Horse Chestnut—The well known species; has magnificent spikes of white flowers. **6 to 8 ft., 50c.; 8 to 10 ft., 75c.**

Linden, American (Basswood)—Rapid growing, with large leaves and fragrant flowers. **7 to 8 ft., 75c.**

Linden, European—Fine pyramidal tree, smaller in all parts than the American; more valuable for lawn planting. **7 to 8 ft., 75c.**



Cut-Leaf Birch

Birch, Cut-Leaf Weeping—Its tall, slender, yet vigorous growth, graceful, drooping habit, silvery-white bark and delicately cut foliage present a combination of attractive characteristics rarely met with in a single tree. **5 to 6 feet, 50c; 6 to 8 feet, 75c.**

Beech, Purple-Leaf—A beautiful lawn tree, with purple foliage. **3 to 4 feet, 50c**

Thorn, Paul's Double Scarlet—Flowers deep crimson, with scarlet shade; very double. **3 to 4 ft.; 50c.**

Willow Babylonica—Well known weeping variety; requires plenty of room. **6 to 8 ft., 50c.**



Catalpa

Catalpa, Bungeii (Umbrella Tree)—Chinese origin; compact, spreading head of large, glossy green leaves 7 inches long by 6 inches wide; has a decidedly tropical appearance, making a marked contrast with all other lawn trees. Two year heads, **\$1 each.**

Catalpa, Speciosa—One of the most beautiful lawn or street trees, producing magnificent flowers early in the Spring; very rapid growing; beautiful. **8 to 10 ft., each, 50c.**



Norway Maple

Maple, Norway—A distinct foreign variety, with large, broad leaves of the deepest green. It retains its leaves long after other trees are bare. **8 to 10 ft., \$1.**

ORNAMENTAL TREES - Continued

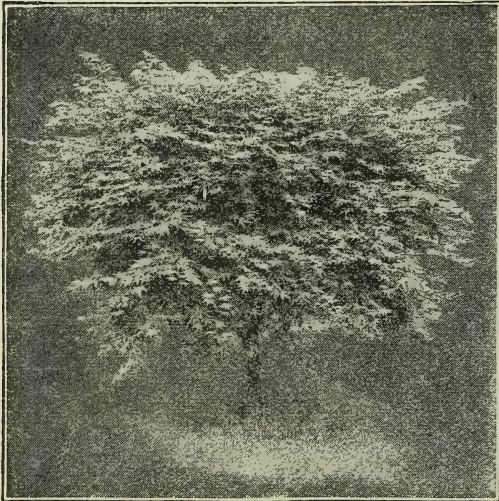


Silver Maple

Maple, Silver-Leaved—An excellent shade tree of rapid growth; desirable for quick effects. **8 to 10 ft., 50c.; 10 to 12 ft., 75c.**

Maple, Weir's Cut Leaf—Remarkable and beautifully dissected foliage; shoots slender and drooping, giving it a very graceful appearance. **8 to 10 ft., 75c.**

Maple, Ash-Leaved—A fine rapid-growing variety; very hardy and excellent for avenues. **7 to 8 ft., 50c.; 8 to 10 ft., 75c.**



Maple, Japan Blood-Leaved

Maple, Japan Blood-Leaved—One of the most striking and beautiful of the Japan Maples. **2 to 3 ft., \$1.50.**

Magnolia, Alexandria—Flowers cup-shaped, crimson-purple outside and pearl-colored within. **4 to 5 ft., \$2.**

Magnolia, Speciosa—Flowers smaller than Soulangiana, blooms later; hardy and desirable. **4 to 5 ft., \$2.**

Mulberry, Downing—A beautiful lawn or street tree. **Each, 50c.; Doz., \$5.**

Mulberry, New American—Similar to Downing, hardier. **Each, 50c.; Doz., \$5.**

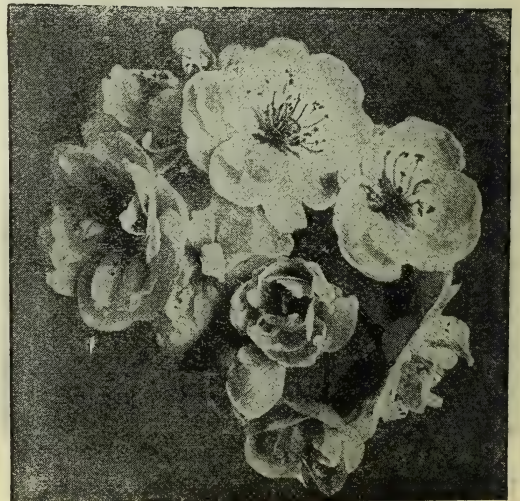
Mulberry, Russian—Very hardy; much used for hedges and wind breaks. **5 to 7 ft., 50c.**

Mulberry, Teas' Weeping—Perfectly hardy, forming a natural umbrella-shaped top or head; foliage handsome; a fine ornamental tree for lawn. **Each, \$1.50.**



Carolina Poplar

Poplar, Carolina—A native tree of rapid growth, with large glossy leaves; valuable for park or street planting; a fine shade tree. Used extensively as a wind break. **6 to 8 ft., 35c.; 8 to 10 ft., 50c.**



Bechtel's Double-Flowered Crab

Crab, Bechtel's Double Flowered—Tree medium size, covered in early Spring with beautiful double pink fragrant flowers that look like Roses at a distance. **Each, 50c.; Doz., \$5.**

HEDGING—DECIDUOUS

BARBERRY THUNBERGII—

Dwarf habit; small foliage; changing to red in the fall; very pretty. 8 to 10 inches, Doz., \$1; 100 for \$3. 12 to 18 inches, Doz., \$1.00; 100 for \$8; 18 to 24 inches, each, 25c.; Doz., \$2; 100 for \$12.

Barberry Thunbergii



California Privet

California Privet—This is the most glossy leaved and rapid growing of all the half-evergreen plants used for low hedges around private lawns, and is the universal favorite. Adapted to all parts of the country. 2 to 3 ft., each 15c.; Doz., \$1; 100 for \$6. 18 to 24 inches, each 10c.; Doz., 75c.; 100 for \$3; 12 to 18 inches, 100 for \$2.



Colorado Blue Spruce

Spruce, Colorado Blue—The finest of evergreens. One of the most beautiful and hardy of spruces; foliage a rich sky blue, very handsome. 2 ft., each, \$2; 18 to 24 inches, each, \$1.25.

Spruce, Norway—Of rapid growth and graceful drooping habit; one of the best for hedges and screens. 18 to 24 inches, 5 for \$1; 100 for \$15.

Hedging Evergreens

Arbor Vitae—This is the finest of all evergreens, valuable for hedges; hardy, easily transplanted. 18 to 24 inches, each 20c.; Doz., \$2; 100 for \$15. 2 to 3 ft., each 35c.; 3 for \$1.



Retinospora Plumosa Aurea

Fancy Imported Evergreens

Imported especially for landscape work.

These beautiful plants are about 3 feet high and shipped with ball of earth on roots. This practically insures them. They can be planted in tubs and boxes and used for piazza decoration.

Japan Cypress



Retinospora Plumosa

Retinospora Plumosa (Plume-like Japan Cypress)—Useful for specimens or hedges; foliage light green and plume-like; extensively planted. **Each, \$2.50.**

Retinospora Pisifera Aurea (Golden Pea-fruited Japan Cypress)—a fine pyramidal, bright golden form. popular and graceful. **Each, \$2.**

Retinospora Plumoso Aurea (Golden Plume-like Japan Cypress)—Widely known, popular and of great merit. Deep golden color. **Each, \$2.50.**

Thuja Siberica Wareana (Siberian Arbor Vitæ)—A very hardy variety with heavy bluish-green foliage. Low growing. **Each, \$2.**

Boxwood



Boxwood Pyramidal

Buxus, Boxwood—An evergreen shrub, with close-growing, oval, dark shining foliage; stands pruning very well; thrives in almost any well-drained soil and best in a partially shaded position.

Pyramidal

Fine handsome plants, 3 to 3½ ft., **ea., \$2.00;**
3½ to 4 ft., **ea., \$2.50.**

Standard

Stems 2 ft. high and heads 15 to 18 in., **\$2.50**

NUT TREES



Japan Walnut

WALNUTS

Walnut, Japan—Perfectly hardy, rapid-growing, handsome form, immense fern-like leaves, making one of the finest ornamental trees; bears young and abundantly. Worthy of extensive planting. Each, 50c.; Doz., \$5.

A. Y. Cathcart, Bristol, Ind., says: "I have been raising the Japan Walnut for eighteen years and am more than pleased with them. They are very hardy and do well in Maine, Minnesota and Canada, as they have stood 30 degrees below zero without injury. The trees come into bearing young; I have trees three years old that bore nuts this season; eighteen years old, each have three to four bushels. In quality the nuts resemble the Butternut, being much richer than the English Walnut. Trees grow very fast and make a fine shade."

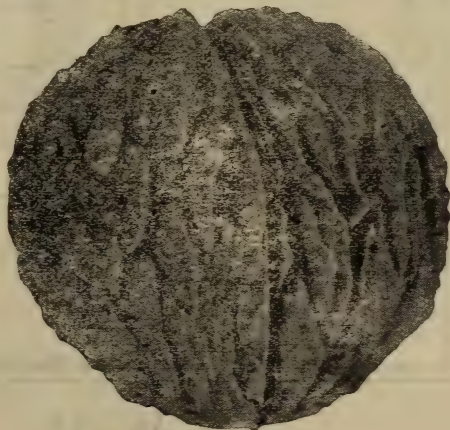


American Chestnut

CHESTNUTS

American Sweet—Nut sweet, delicate flavor. Each, 50c.; Doz., \$5.

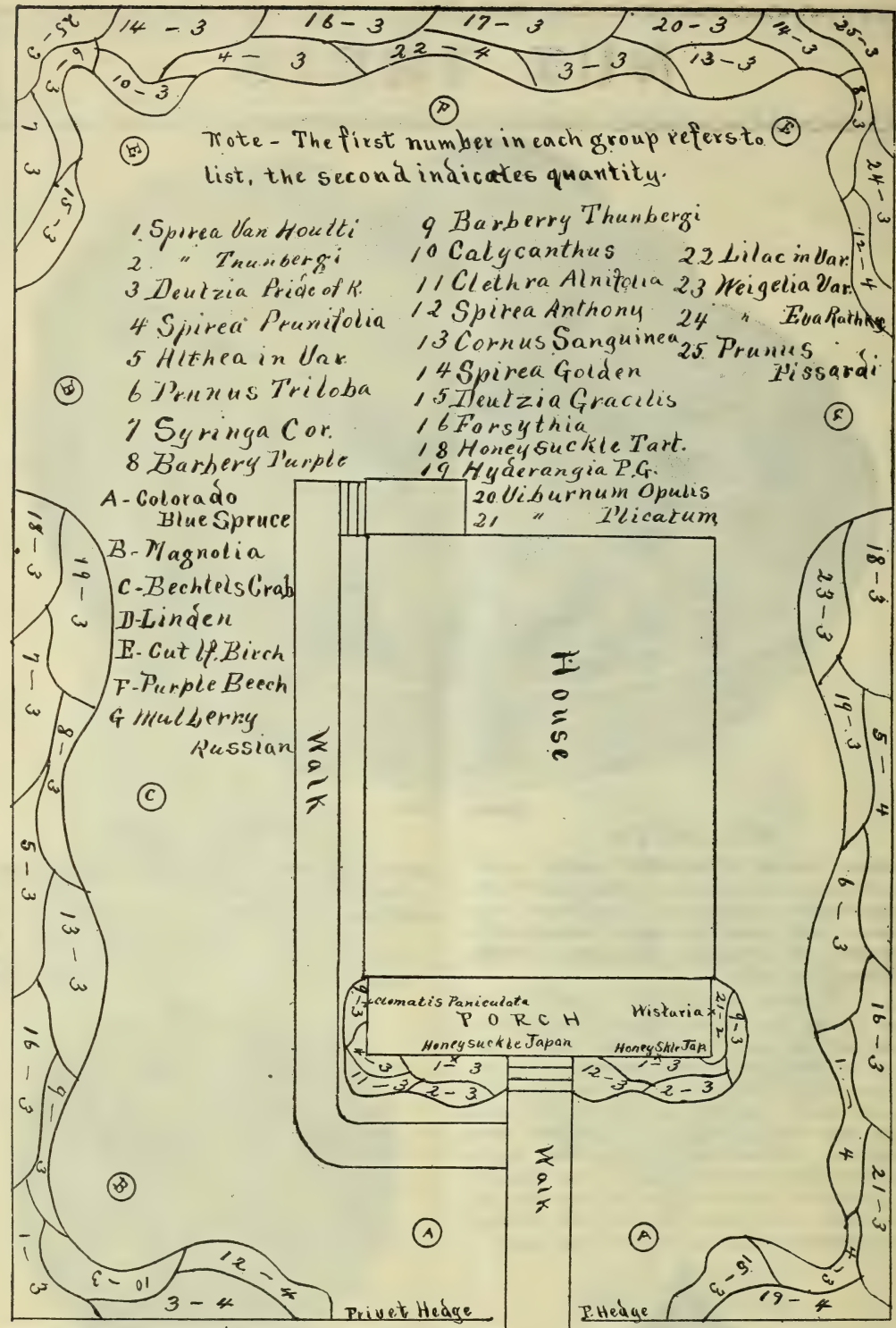
Japanese—They bear at three years old and are very productive. Nuts large, four inches around and two to three on a burr. Ripens Sept. 10th to 20th, without frost. Each, 75c.



Black Walnut

Walnut, Black—A native tree of large size and majestic form. The most valuable of all trees for its timber. Tree a rapid grower, producing a large, round nut of excellent quality. Each, 50c.; Doz., \$5.

Butternut—A native tree, valuable for timber and bearing an oblong, thick-shelled nut of delicious flavor. Each, 50c.; Doz., \$5.



J. Faerber
L. Architect

The above selection of Flowering Shrubs will give you continuous bloom from Spring until late Fall. This may be changed in any way to suit your grounds. The nine ornamental trees and 150 shrubs can be furnished for \$45.00, including blue print and full planting plan. A NEW plan from a rough sketch and your measurements, showing location of buildings, will be furnished for \$5.00. Then on receipt of order for the nursery stock required we credit this amount to your account, so that in dealing with us plans cost you nothing.

Name Contest on Peach No. 49

We are pleased to say that we heard from thousands of our customers wherein they suggested a name for our new peach. These we submitted to three disinterested judges and they have decided on the name "ALPHA." This name was given to us early in the season by Henry Clarke, to whom we have sent the \$20.00 gold piece, and we append herewith his receipt.

Fond du Lac, Wis., Dec. 12, 1909.

I herewith acknowledge receipt of the \$20.00 you sent me as my prize for naming your new Peach.

I thank you very much and wish you every success with the "Alpha."

Respectfully yours,

Henry Clarke.

Premium Offers

Hydrangea Paniculata	25 cts.
Spirea Van Houttei	25 cts.
Crimson Rambler Rose	25 cts.
Dorothy Perkins Rose	25 cts.
Two Concord Grape Vines	25 cts.

On an order of \$3.00 to \$5.00, your choice of one of above.

On an order of \$5.00 to \$8.00, your choice of two of above.

On an order of \$8.00 to \$12.00, your choice of three of above.

On an order of \$12.00 to \$15.00, your choice of four of above.

On an order of \$15.00 to \$20.00, your choice of five of above.

You have your choice of one of each or all of one, or in fact any way that you may select.

On all orders of \$25.00 or over we will repay freight East of the Mississippi River.

These premiums do not apply on bargain offers.

Suitable Distance for Planting

Apples, Standard	30 to 40 feet
Apples, Dwarf	8 to 10 feet
Pears, Standard	18 to 20 feet
Pears, Dwarf	10 feet
Peaches	16 to 18 feet
Nectarines and Apricots	16 to 18 feet
Cherries, Sweet	18 to 20 feet
Cherries, Sour	15 to 18 feet
Plums	16 to 20 feet
Quinces	10 to 12 feet
Grapes	8 by 10 feet
Currants	3 by 5 feet
Gooseberries	3 by 5 feet
Raspberries, Red	3 by 6 feet
Raspberries, Black	3 by 6 feet
Blackberries	5 by 7 feet
Strawberries, rows	1 by 3½ feet
Strawberries, in beds	1½ by 1½ feet
Asparagus, in beds	1 by 1½ feet
Asparagus, in field	1 by 3 feet

Number Trees or Plants on an Acre

2 feet each way	10,890
3 feet each way	4,840
4 feet each way	2,723
5 feet each way	1,742
6 feet each way	1,210
8 feet each way	680
10 feet each way	430
12 feet each way	302
15 feet each way	194
18 feet each way	135
20 feet each way	110
25 feet each way	70
30 feet each way	48
33 feet each way	40
40 feet each way	28

To ascertain the number of plants required to the acre at any given distance, divide the number of square feet (43,560) in an acre by the number of square feet you desire to devote to each plant. For instance, in strawberries planted 1½ by 3 feet, each hill will occupy 4½ square feet, making 9,680 plants to the acre.

No. 18

STATE OF NEW YORK

Department of Agriculture

Certificate of Inspection of Nursery Stock

This is to Certify that the stock in the nursery of ALLEN L. WOOD, of Rochester, County of Monroe, State of New York, was duly examined in compliance with the provisions of Section 305 of the Agricultural Law and was found to be apparently free from any contagious or infectious disease or diseases, or the San Jose scale or other dangerously injurious insect pest or pests.

R. A. PEARSON,
Commissioner of Agriculture.

