

## **Historic, Archive Document**

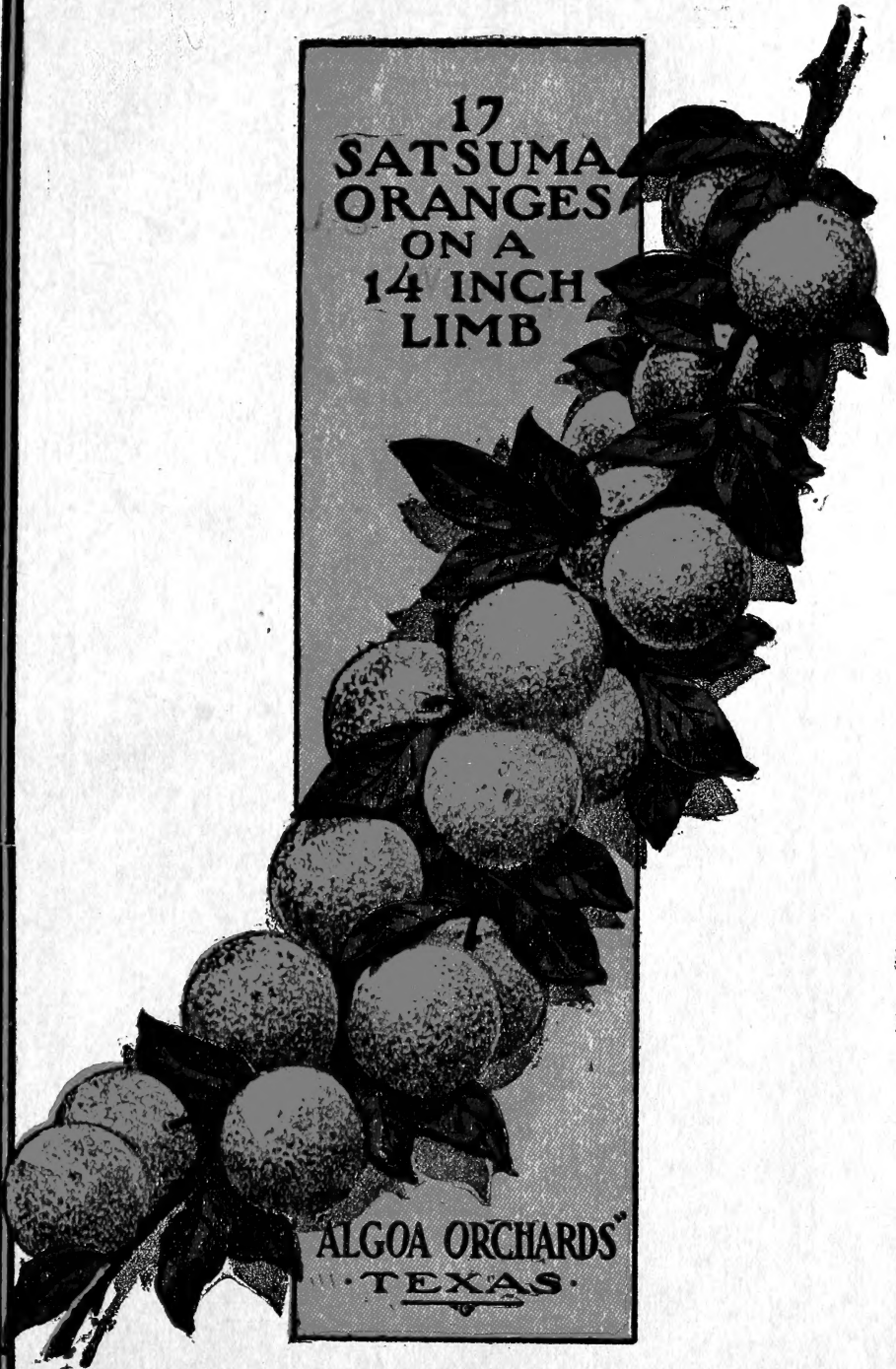
Do not assume content reflects current scientific knowledge, policies, or practices.



6283

1911

17  
SATSUMA  
ORANGES  
ON A  
14 INCH  
LIMB



ALGOA ORCHARDS<sup>SM</sup>  
• TEXAS •

## TO OUR FRIENDS AND PATRONS:

We wish to thank all our friends for the liberal patronage received in the past and to assure them of the same prompt and careful attention to their future orders.

Increased business gives increased facilities, and we are now better able than ever before to serve you.

### **BUSINESS BRIEFS.**

Shipping season opens about November 20th and continues till March 1st.

Safe arrival of goods guaranteed, but with the condition that complaint be made at once upon receipt of the goods.

While we guarantee all goods to be true to name and just as represented, it is distinctly understood that we will not be responsible for an amount greater than the cost of the tree or plant. Unless the goods are accepted on these terms they must be returned at once.

We don't employ agents. In this age of railroads and quick mails, it is unnecessary for planters to pay big prices to agents for goods, and when you buy from an agent you must pay big prices or get poor goods. It costs an agent at least \$5.00 per day for expenses, and you may be sure the nurseryman don't pay this unless he gets it back by adding it to the cost to the planter.

Directions for shipping should be very plain.

Shipping facilities here are the best; rush orders are, as a rule, shipped day received.

Remittances should be made by postoffice money order on Galveston, Texas, or express money order or by draft on New York, Houston or Galveston. However, where it is not convenient to secure these forms of exchange, we will accept personal checks.

We are the largest growers of Satsuma Oranges and Magnolia Figs in the United States. Nearly eight hundred acres in orchards and nurseries.

**Wholesale Orders.**—We have to offer over five million trees and plants and make a specialty of supplying dealers and large planters. If you wish over 300 trees send list, showing varieties and grades wanted, and we will give you lowest prices.

Prices herein quoted are subject to change at any time.

# Algoa Fruit and Nursery Company

Algoa, Galveston County, Texas

INCORPORATED

CAPITAL, FULLY PAID, . . . . \$50,000.00

No. 156

STATE OF TEXAS

Department of Agriculture

Certificate of Inspection of Nursery Stock

This is to Certify that in accordance with the provisions of the Orchard and Nursery Inspection Law of the State of Texas, the nursery stock grown for sale, exhibited and held for sale, by the **Algoa Fruit and Nursery Co.**, R. H. Bushway, Manager, at Algoa, Texas, has been inspected by J. B. Wolfe, a duly authorized agent of this Department, and at the time of the inspection said nursery stock was found apparently free from dangerous insect pests and dangerously contagious tree and plant diseases.

A printed copy of this certificate on any shipping tag attached to any shipment of nursery stock is authority to any freight or express agent in Texas to accept said shipment for transportation.

— This Certificate is void after July 1, 1911.

Austin, Texas, Aug. 19, 1910.

SAM H. DIXON,

Chief Inspector of Orchards and Nurseries.

ED. R. KONG,

Commissioner of Agriculture.

ORIGINAL

[SEAL]

**R. H. BUSHWAY,**  
General Manager

# INFORMATION FOR GROWERS AND PLANTERS

It is given to no one man to know absolutely just what each tract of land is composed of, and just what is best for your farm; however, there are certain general conditions that careful study and investigation reveal, and we know there is no man in the Orchard and Nursery business in South Texas who is as well qualified to advise you as is our Manager, Mr. R. H. Bushway, who has spent eighteen years continuously studying, experimenting and investigating.

The results of his efforts enable us to start you right in your work. Let us hear from you fully as to your local conditions; your letter will have Mr. Bushway's personal attention, and undoubtedly he knows better than any other man the conditions throughout the Gulf Coast country of Texas and Louisiana.

Write us, or, better still, pay us a visit and personally inspect our stock.

ALGOA FRUIT & NURSERY CO.,  
Algoa, Texas.



*R. H. Bushway*

THE OLDEST ESTABLISHED NURSERY IN THE COAST  
COUNTRY.

(See back pages for general information.)

# CITRUS FRUITS

## THE SATSUMA ORANGE ON CITRUS TRIFOLIATA STOCK

For nineteen years we have carried on extensive experiments with this fruit, and the enormous development now taking place in this line proves that our labor has not been in vain.

We are builders of ALGOA ORCHARDS, conceded by all to be the finest in the Gulf Coast country—800 acres now under our charge. COME and SEE THEM.



*Five-Year-Old Satsuma Orange Trees at Algoa in December*

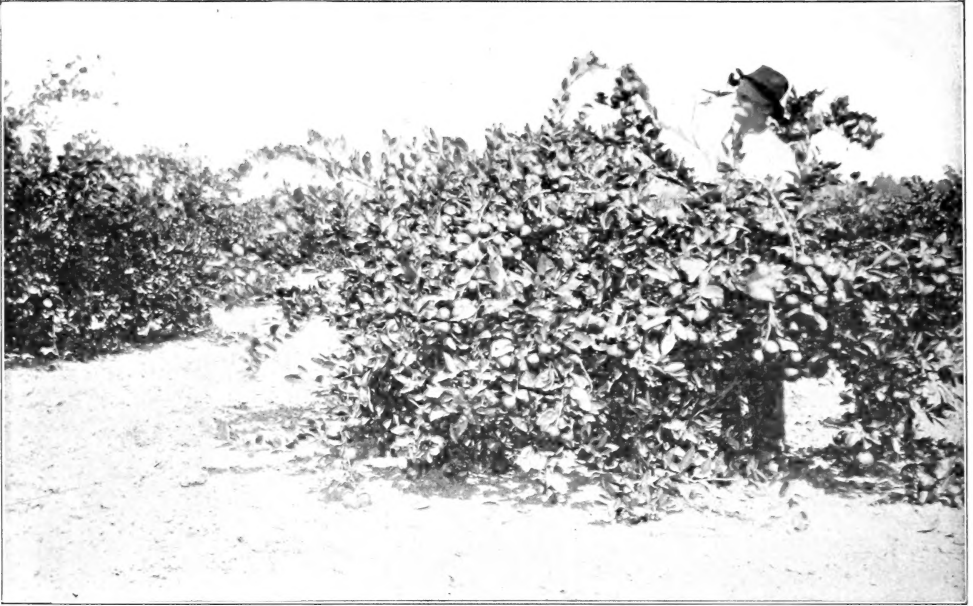
### OUR EXPERIENCE YOUR CAPITAL.

**USE IT**—We have issued in pamphlet form a treatise on Orange Culture in Texas for profit. Send for one. They are free.

**STOCK**—Don't buy poor trees at any price; they would be dear as a gift. Fight shy of trees that must be brought from a long distance; they won't do well, as the orange is an evergreen and must be fresh dug and quickly transplanted.

Secure trees only from an established nursery in the heart of the Orange Belt—trees that are GROWN RIGHT, GRADED RIGHT and PRICED RIGHT.

## ALGOA FRUIT AND NURSERY CO.



*This Tree in 1908 Bore 1,800 Oranges, Bringing the Owner, Mr. N. E. Stout, \$37.50. Note How the Trees are Bent With Fruit. You Can See This Same Tree in Full Bearing From the Middle of October to the Middle of December*

The Satsuma is budded on the hardy Citrus Trifoliata stock. This is the only deciduous citrus stock known in the world. (By "deciduous" is meant that it sheds its foliage during the winter season.) This plant came to the United States from Japan, and was originally planted as hedges in the South, and not until recently was it discovered to have value as a stock upon which to grow the sweet orange.

This stock is perfectly hardy and imparting, as it does, this characteristic to the Satsuma Orange, enables it to stand 10° to 15° more cold than any other kind of orange.

In February two days of weather unusually cold for this region were experienced, the first in ten years, and the heavy crop this year shows how easily and perfectly the Satsuma Orange stood the test.

As a matter of fact, Florida has had more serious orange losses by cold than Texas. The South Texas Rain Belt seldom sees more than a light frost any winter, and roses are in bloom the year round.

### **RIPENS IN OCTOBER.**

This juicy, rarely-flavored orange ripens as early as October 10th, and is sweet as soon as it turns yellow. This early ripening makes it the first new orange on the market by thirty to sixty days. Think what that means! Satsuma oranges from Texas reach the markets in October, while Florida and California fruit does not arrive until late in the winter when the prices drop.



## ALGOA, TEXAS

At the present time the local markets are so eager for the Texas orange crop at good prices that it has not been necessary to ship many to outside markets. The few which have found their way to the East and North, however, have met with a warm welcome, and there is a ready demand for all that can be grown.

### PRICES.

#### ORANGES, GRAPE FRUIT AND LEMONS ON TRIFOLIATA ROOTS.

	Each	Ten	100
One-year Tops, Three-year Roots, 12 to 18 inches.....	\$.50	\$4.50	\$30.00
“ “ “ “ 18 to 24 inches.....	.65	6.00	40.00
“ “ “ “ 24 to 36 inches.....	.75	7.00	50.00
Two-year Tops, 4 to 5-year Roots, heavy, branched.....	1.00	9.00	100.00

### DESCRIPTION OF GRADES.

**2 to 3 ft. Trees**—This stock is grown to a single standard trunk from 8 to 12 inches above the ground; at this height they are branched, and each tree will have from 4 to 7 well-balanced branches. All this grade will be extra-heavy-caliper, strong, stocky trees that will give you a great advantage.

**1 1/2 to 2 ft. Trees**—These will be same standard body as above, but will have fewer branches and smaller-caliper bodies—the best grade for large commercial planters.

**1 to 1 1/2 ft. Trees**—Those that are straight-stemmed or only slightly branched. With special care after planting they will make fine orchards.

Stocks have all been transplanted the past season, and the root system is the finest possible.

**We guarantee this stock to be on Citrus Trifoliata stocks, free from disease, full grade as to root and branch, and growing in our nurseries at Algoa, Texas.**

### DESCRIPTION OF VARIETIES.

**SATSUMA**—The finest fruit ever grown; flesh is fine-grained, tender, juicy and delicious, with a flavor all its own. Bears in our nursery rows, and at two years of age will bear a good crop. Fruit is medium size, rind easily removed, meat sweet and seedless. Should be planted by every farmer in South Texas. Trees very scarce.

**DUGAT**—A good, round orange of the Louisiana sweet type. As the trees attain age they stand much more cold than when young; we consider this sort worthy of more extended commercial planting, and no home is complete without a few trees.

**TANGERINE**—The common kid-glove variety. They do well and a few should be set; prices same as Satsuma and Dugat.

We have other varieties of oranges in our experimental plots, but are not prepared to recommend their planting until they are well proven.

## ALGOA FRUIT AND NURSERY CO.

ARTESIA WELLS, TEXAS, March 26, 1910.

Algoa Fruit & Nursery Co.:

DEAR SIRs:—The trees which I bought of you arrived in first-class condition. Allow me to express my appreciation of your thorough packing and prompt delivery. When I need more I know where to go.

Very truly yours,

R. C. MAXWELL.

### GRAPE FRUIT---POMELO

Success with the Grape Fruit in the Gulf Coast country is now assured. They have proven hardy, prolific and profitable. Our "Marsh Seedless" went through 18° above zero the past season without injury, and are now full of fruit.

#### VARIETIES.

**MARSH SEEDLESS**—We consider this the best sort—large, of fine appearance, almost seedless, a good keeper and shipper.

**DUNCAN**—Large and hardy; an upright and vigorous grower.

### LEMONS

**PONDEROSA**—A freak, more ornamental than useful; larger than Grape Fruit. Good for pies; plant a few.

**GENOA**—A standard commercial sort; very fine; not as hardy as the orange.

### KUMQUATS---JAPANESE KIN-KIN

A cross between a lemon and orange, and the sweetest morsel ever eaten. Hardy, and will fruit outdoors in the South. Makes a fine pot-plant, the yellow fruit hanging on the bush all winter. Should be in every yard in the lower South. We grow only the oblong variety, NAGAME.

#### PRICES.

	Each	Ten	100
Small Grade—Branched .....	\$.50	\$4.50	\$40.00
Medium Grade—Branched .....	.75	6.00	50.00
Heavy Grade—Branched .....	1.00	8.00	75.00

### MAGNOLIA FIGS

Here is a fruit that is little short of a wonder. It is a freak among fruits, being practically skinless and seedless. Four or five-year-old trees pay \$150.00 to \$300.00 per acre, and the yield increases 33 1/3 per cent. yearly thereafter, up to the tenth year, when it remains nearly stationary. In its native home it is an inferior fruit, but when transplanted to the Texas Gulf Coast country it changes its type and characteristics entirely.

## ALGOA, TEXAS

One peculiarity of the Magnolia Fig is that it bears only on new wood, or the tips of the wood of the last year's growth.

By our method of pruning (known as the Bushway method) the trees will produce twenty-five to thirty limbs by the fourth year, each bearing about one and one-half pounds of fruit, bringing an average of \$1.00 per tree, or \$193.00 per acre. The fruit begins to ripen in July and continues for about three months.

Commercially, the Magnolia Fig is a comparatively new fruit, but it is no longer an experiment. It is a quick grower and a steady producer, with a constantly increasing yield.



*A Two-Year-Old Magnolia Fig Tree in Our Orchards at Algoa*

Like Satsuma Oranges, this is one of our specialties. We have the largest orchards of Magnolia Figs in the United States and our stock is pure and fine. Whether you want trees for home planting or a commercial orchard, get only the best. We have them.

The supply of trees is very short this year and stocks will be cleaned up early—order NOW.

### PRICES AND GRADES ON FIG TREES.

	Each	Ten	100
Small Grade, 2 to 3 ft.....	\$.017 ½	\$1.60	\$13.50
Medium Grade, 3 to 4 ft.....	.20	1.75	15.00
Large Grade, 4 to 5 ft.....	.25	2.00	17.50
Extra Large 5 to 6 ft.....	.35	3.00	20.00

# ALGOA FRUIT AND NURSERY CO.

## DESCRIPTION OF OTHER SORTS.

**BRUNSWICK**—Large, purple, strongly-ribbed and prolific.

**BLUE CELESTE (Sugar Fig)**—Small, violet; handsome tree, bears full and is fine for yard planting.

## PECANS

Pecans, the greatest long-time investment crop known. Since the development of true strains of special merit and known bearing qualities the pecan is fast becoming a staple for market. Plant them around the outside of your fields, in the yard, in the fence corners—they will repay you a thousand-fold. We offer only the best budded and grafted sorts.

**CENTENNIAL**—Large, oblong, pointed at both ends; one of the first named sorts, and still one of the best.

**FROTSCoER**—Thin shell and very large; nuts often measure over 1½ inches long; kernel full, plump and of extra fine flavor.

**STUART**—Larger than Frotscher; strong grower and prolific bearer; does well over a wide range of the South.



*Irrigating the Bald Spot*

**VAN DEMAN**—Probably largest of all; splendid symmetrical grower; bears full crops of extra fine fruit.

**SCHLEY**—Very thin shell; meat sweet and of best quality.

We can furnish several other good sorts.

## PRICES.

### BUDEDDED PECANS.

	Each	Ten	100
1 to 2 ft.....	\$.60	\$5.00	\$45.00
2 to 3 ft.....	.80	7.50	65.00
3 to 4 ft.....	1.00	8.50	75.00
4 to 5 ft.....	1.50	12.00	90.00

### SEEDLINGS FROM SELECTED SEED.

2 to 3 ft.....	.30	2.50	20.00
3 to 4 ft.....	.40	3.00	25.00
4 to 5 ft.....	.50	4.00	35.00

## ALGOA, TEXAS

You don't buy horses or mules, lands or clothing "sight unseen"—come to Algoa and make a personal inspection of the 800 acres of orchards and nurseries we have under cultivation. Whether you are a fruit-grower or just planting for home use and pleasure, we believe the trip will prove profitable to you. Come and see the fruits on the trees—the roses and flowering



*A Fine December Morning Stroll Through a Satsuma Orange Orchard*

shrubs in bloom; inspect the growing stock of trees; see the immense equipment in the way of buildings, implements, mules, etc., all devoted to the growing of trees and plants for your use.

We want to meet you, to shake your hand, to talk to you about subjects of common interest—**COME, YOU WILL BE MADE WELCOME.**

### PEARS

Prune off all broken roots and cut the tops back to about twenty-four inches, set in well prepared soil 20x20 feet, tramping the earth firmly around the roots. We list only the best, but will be pleased to have your orders for any that may have special value in your section.

**GARBER**—Somewhat resembles Kieffer in size, but is more round and not so good as a shipper. Very juicy and fine for sauce. Ripens just after Le Conte.

**KIEFFER**—Best commercial pear in the South; very prolific, regular bearer of large fruits that stay on the trees till frost. Hard and will ship anywhere. Fine for home use and as a money maker for market.

**LE CONTE**—Really the only one of the Chinese strain of pears having value as a fruit to be eaten from the tree. Large to very large; pyriform in shape; skin smooth and pale yellow when ripe.

Among the other varieties we can supply are: **Alamo, Bartlett, Magnolia, Early Harvest** and many others.  
Order early.

## ALGOA FRUIT AND NURSERY CO.

### PEACHES

After the Texas girl, the Texas peach is the finest thing in the world. While there are many hundreds of varieties of peaches, in the following list will be found the cream of the lot. Plant 20x20 feet, on well prepared land and give clean culture. Remove all branches and cut back to about twenty-four inches. Date of ripening is about the average in the Texas peach belt.

**ALEXANDER**—May 20th to 25th. Probably the most reliable early peach. Large, very highly colored and juicy.

**ARP BEAUTY**—Ripens just ahead of Elberta. In appearance is much the same. Commercial fruit growers are planting it in quantities. Free.

**AMELIA**—Very large, light yellow, shaded with crimson. Sweet, juicy and melting. Free. Ripens July 1st.

**BELL'S OCTOBER**—Large, yellow, freestone, with red cheek. Originated in Texas. October 1st.

**CARMAN**—Prolific bearer and profitable for market. Creamy white with deep blush. A freestone that all should plant. Early July.



*Gathering Figs. Note How the Fruit is Growing on the New Wood of This Season's Growth*

**CHINESE CLING**—Probably the best large clingstone we have in July. Very large, white with sometimes a little red. Rich and vinous.

**CRAWFORD'S EARLY**—One of the good old standbys; ripens early in July and should be more largely planted for home use.

Plant only the best.

**CRAWFORD'S LATE**—Ripens late in July. Large, yellow fleshed and highly colored. Both the Crawfords are freestones.

## ALGOA, TEXAS

---

**ELBERTA**—The peach that is making Texas famous. Ripens from late June to middle of July. Very large, yellow fleshed freestone. Bright red cheek.

**EMMA**—Just after Elberta. Carries well and has special market value.

**FAMILY FAVORITE**—A fine, red cheeked freestone that bears full crops nearly every year. Very prolific and should be in every orchard. July 1st.

**GOVERNOR HOGG**—Like its namesake, large with red cheeks and very popular with the people. Free, and ripens early in July.

**GENERAL LEE**—One of the best clings we have. Fruit large, creamy white, with just a little red. Quality the best. July 10th.

**GREENSBORO**—Very early for so fine a peach, ripening June 1st. Prolific and valuable for home use and local market.

**GUINN**—A new sort that is attracting much attention and promises to be valuable for commercial planting. June 15th.

**GIBBONS OCTOBER**—One of the few late peaches it will pay to plant in the South. Ripens late in September. Tree very vigorous, fruit free and good.

**HEATH**—A late August cling well known to all old Texans. Plant a few.

**HONEY**—A favorite still and will remain so. The sweetest peach in the world. Free and ripens in June.

**JAPAN DWARF BLOOD**—An early blood freestone that has great merit in the Western and Southwestern country. Of good quality and ripens with or before Alexander.

**MAMIE ROSS**—Semi-cling, free when fully ripe. One of the most valuable sorts for market and home. Bears regular and full and will please you. July 20th.

**MIXON FREE**—One of the finest eating peaches we have. July 15th.

**MIXON CLING**—Except that it's a cling, it's just like Mixon Free, and ripens at the same time.

**MOUNTAIN ROSE**—Prolific freestone, ripening late in June. Valuable.

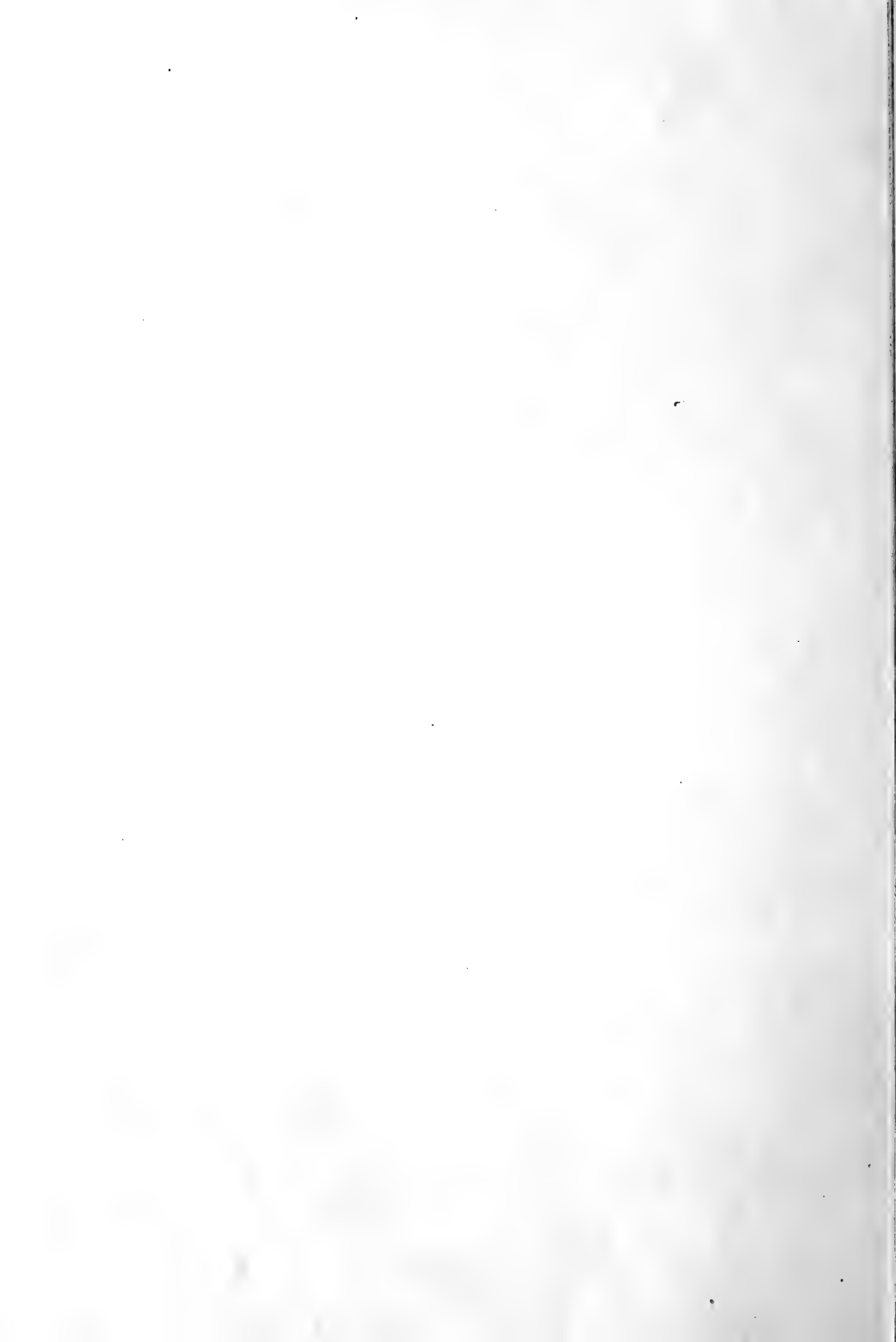
**RIVERS**—Large, red-cheeked freestone, ripening the middle of June. Prolific and regular bearer.

**SLAPPY**—Of great promise for commercial planting in the South. Earlier than Elberta.

**THURBER**—Medium-sized white peach, with red cheek. Very sure bearer and should be planted in every family orchard. Free. July 10th.

**TRIUMPH**—Very prolific, early freestone, with deep red skin. Bears full every year, and fruit has fine flavor. May 20th.

See our experimental peach orchards.







A Three-Year-Old Satsuma Orange Tree

## ALGOA FRUIT AND NURSERY CO.

### SPECIAL LIST OF PEACHES FOR SOUTH AND SOUTHWEST TEXAS.

✓ **CABLER'S INDIAN**—An attractive, mottled fruit of medium size with a rich, acid flavor. Cling. July 10th.

**ONDERDONK**—A reliable freestone that it will pay to plant. July 15th.

**PALLAS**—Most valuable of the Honey seedlings. Bears in nursery row every year. Medium size, round freestone. Finest flavored peach we have except Honey. Don't fail to include some in your order. June 5th.

**WALDO**—Except that it ripens two weeks earlier, this peach is much like the Pallas; both are vigorous growers and never fail to fruit. Waldo and Pallas should be in every orchard in the lower country.

In addition to the above list, we have an assortment that includes almost every sort grown in the South. Write for what you want, if not in the above list.

### PLUMS

Plant same as peaches and give careful culture. While there are hundreds of varieties of plums, the long lists only serve to confuse the planter. There are a few varieties so far ahead of all others that it is needless to consider more. All you want is the best, and they will be found in the following list:

**ABUNDANCE**—June 5th. Strong, rapid grower, bearing full crops of large, red fruit with a delicious flavor.

**BOTAN**—Same as above.

**BURBANK**—Surest bearer of all the Japan plums. Tree of spreading habit and hard to keep in shape. Firm, deep, red fruit; larger than Abundance. June 25th. Don't fail to order some Burbank plums.

**EL PASO**—A medium-sized red plum of great value, owing to its being a sure and regular bearer. July 1st.

**EXCELSIOR**—One of the best on the coast. Large purple fruit with sweet meat.

We can help you to select good varieties.

**GOLDEN BEAUTY**—Small, yellow, prolific, sure bearer. Very attractive. August 20th.

**GONZALES**—Introduced by Mr. F. T. Ramsey. The Gonzales is proving one of the best plums we have. A regular and sure bearer of fine, highly colored fruit, with extra fine flavor. Valuable for home and market. June 15th.

**KELSEY**—Probably the most attractive of the Japans. Very large, heart-shaped and red when ripe. August 15th.

**WICKSON**—Finest flavored plum we ever grew; delicious as a drop of nectar. Tree upright, vigorous grower, and even without the fruit would be valuable as an ornament. Bears full every year. July 20th.

We have about forty other varieties, and will care for your orders.

## ALGOA, TEXAS

### APRICOTS

**CLUSTER**—Of Texas origin. The best for all sections. Ripens in June.

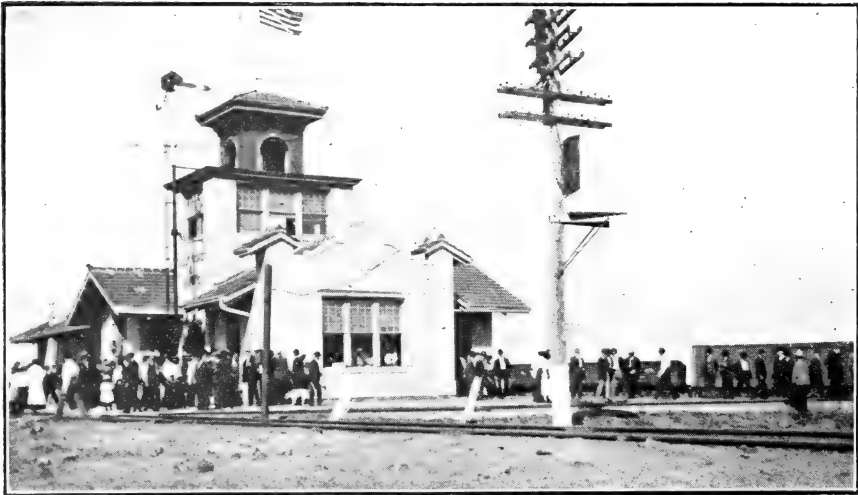
**MOORPARK**—Large and productive. June.

### APPLES

The growing of apples is fast assuming commercial importance in this State and the territories. We have a large stock of fine trees, and are prepared to supply the demand in small or large lots.

**ARKANSAS BLACK**—Vigorous growing tree, bearing large, deep red fruit.

**ASTRACHAN**—A standard. Large, bright red. June 25th.



*Union Depot, Algoa, Texas*

**BEN DAVIS**—Too well known to need description from us. A money maker for commercial planting. September to October.

Plant more fruit for home use.

**EARLY HARVEST**—Large, yellow, juicy. Plant some. July.

**JONATHAN**—One of the most valuable market sorts. Fine eating. September.

**HORSE**—A large striped apple having great value in Southern sections.

**RED JUNE**—Grows in clusters and bears well. June 15th.

In addition to the above list, we can supply all commercial sorts in any quantities.

## ALGOA FRUIT AND NURSERY CO.

### CHERRIES

Grown mostly for the wholesale trade farther north; so far they have failed to do well in South Texas.

Varieties—Early Richmond, English Morello, Montmorency and others.

Plant roses—beautify your home.

### JAPAN PERSIMMONS

10,000 TREES GRAFTED ON NATIVE ROOTS.

**COSTATA**—Hangs on the tree till frost; keeps well after being pulled. Yellow fleshed and nearly seedless. Fine when fully ripe.

**HACHIYA**—Very large, oblong with sharp point. Color reddish yellow with dark blotches. Vigorous, shapely tree and good regular bearer.

**HYAKUME**—Extra large, almost round, yellow skin and dark brown; sweet, crisp meat. One of the best market sorts.

**OKAME**—Very sure, prolific bearer of medium to large fruits.

**TRIUMPH**—Distinct in growth and appearance of wood; tomato shaped, medium sized and of the best quality.

**TANE**—Nashi. Very large, round, with smooth skin, which is bright red when fully ripe; yellow seedless flesh, and the best of all when fully ripe.

**ZENGI**—Smallest and best; fruits all the time and every time; round.

### QUINCE

Very valuable for use in preserving, and should be in every orchard.

Varieties—Meech and Orange.

### GRAPES

This fruit should be planted much more extensively than it is. While we offer many varieties, we only describe a few of the best.

**CONCORD**—The standard for many years; successful over a wider range of territory than any other. Large, compact bunches of blue-black grapes with a flavor all their own. July.

**HERBEMONT**—Rapid growing, long-lived vine, bearing large clusters of medium-sized black grapes that are fine when fully ripe. July.

**MOORE'S EARLY**—Best early grape we have; ripens in June; large black fruit.

**NIAGARA (White Concord)**—Large white fruit of good quality. Succeeds where others fail. Plant some without fail.

### JAPAN WALNUTS

The Japan Walnut is a fine, symmetrical tree, and after the fourth year produces regular crops of nuts. They are valuable for home use or commercial planting.

## ALGOA, TEXAS

### BLACKBERRIES AND DEWBERRIES

**DALLAS BLACKBERRY**—The best there is; very prolific; sure bearer and of fine flavor; planted for home use and commercial crops.

**AUSTIN DEWBERRY**—Very large, but not a good shipper.

**ROGERS' EARLY**—The most profitable dewberry ever introduced; bears full annual crops of fine, well flavored fruit that will carry farther than any other dewberry. During the past few days we have sold hundreds of thousands of the plants for commercial uses.

### STRAWBERRIES

For home use plant Michel's Early; for long-distance markets plant Klondyke, Excelsior and Lady Thompson.

### HARDY SHRUBS AND CLIMBING VINES

**ALTHEAS**—This is one of the most attractive flowering shrubs for Southern planting. They bloom the first year, and are loaded with beautiful flowers throughout the summer. They may be planted either as individual plants or



*Picking Strawberries When it is Zero Weather in the North. These Strawberries are Shipped Before the First of March, and Bring Highest Prices.*

in the form of hedges. We cannot recommend them too strongly. We offer a fine assortment of imported and domestic varieties. Note a description of a few of them, as follows: Ardens, double lavender, prolific bloomers; Totus Albus, pure white, single; Totus Albus, the same as above, only double; Ball of Fire, very deep red, beautiful; La France, double, white, dainty; Pearl, cream colored, double blooms; Meteor, bright red; Leopoldi, large double red and the very best of color; Duc de Brabant, extra large double red flowers. In addition to the above, we can supply about 15 other varieties.

## ALGOA FRUIT AND NURSERY CO.

**ALTHEA** (Rose of Sharon)—This is one of the most desirable shrubs for hedge or for individual plants. Profuse bloomer all summer; large pink, white and striped flowers.

**CRAPE MYRTLE**—Produces large clusters of purple flowers; very ornamental.

**WISTARIA**—Chinese climbing; valuable for training on outbuildings, summer houses, etc.; very rank grower.

**HONEYSUCKLE**—In the far South an evergreen; rapid grower and continually bears clusters of fragrant flowers.

**OLEANDER**—One of the South's favorite flowers; rapid grower and blooms the first year. The red flowers are preferred.

Our Altheas are superb.

## ROSES

Over 100 varieties, all field grown. The finest in the world, and not to be compared with cheap greenhouse stuff. We only describe a few of the best.

**AMERICAN BEAUTY**—Rapid growing bush. Brilliant red flowers.

**BON SALENE**—Free blooming, vigorous. Deep rose color.

**BRIDE**—White, with faint blush. One of the best white teas.

**CLOTHILDE SOUPERT**—Large, pure white with pink center. Very double and continuous bloomer.

**CATHERINE MERMOT**—About the finest and most popular pink rose.

**DUCHESS DE BRABANT**—Beautiful shell pink with exquisite perfume makes this one of the best for Southern planting. Buds extra fine.

**GENERAL JACQUIMINOT**—One of the best of the brilliant red roses.

**KAISERIN AUGUSTA VICTORIA**—Perfect buds, bloom snow white; rich perfume.

**LA FRANCE** (White)—Unexcelled for beauty and fragrance.

**LA FRANCE** (Red)—Deep red; regular bloomer.

**LOUIS PHILLIPPE**—Rich, velvety crimson; large, vigorous bush that blooms all the time and will please you.

**METEOR**—Dark red, free bloomer; extra fine.

**PERLE DE JARDINS**—One of the finest yellow roses. Free bloomer; fine flowers.

**WINNIE DAVIS**—Queen of the South. Finest pink buds we have ever seen; bears almost every day in the year.

**PAUL NEYRON**—Superior to American Beauty for outdoor planting in the South; deep red blooms of immense size, rich dark foliage and long stems—you want this rose, sure.

Come and see our roses in bloom.

## ALGOA, TEXAS

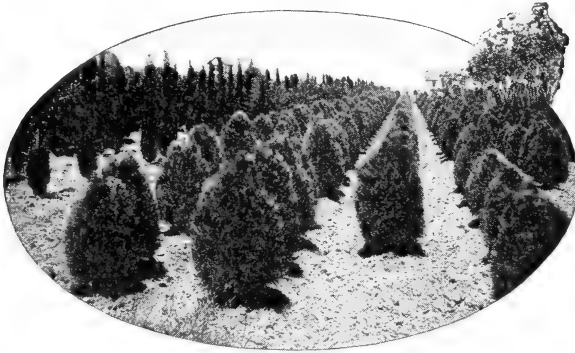
### CLIMBING ROSES

**MARECHAL NEIL**—Deep yellow; very double; finest perfume; blooms the year round. We consider this the finest rose grown.

**CLIMBING METEOR**—Vigorous climber; deep red flowers; blooms all the time. Best of the red climbing roses.

**CLIMBING KAISERIN AUGUSTA VICTORIA**—Beautiful snow white, large and fragrant blossoms. Free and rapid grower.

**CRIMSON RAMBLER**—For bunch effect this rose gives grand results; its rich growth of glossy foliage makes it an ornament without the profuse clusters of deep red flowers that adorn it for about six weeks each year.



*A Corner of the Nurseries, Showing Some of the Ornamental Trees  
—Arbor Vitae, Etc.*

### SHADE TREES

Nothing adds so much to the appearance of the home as well cared for shade trees.

**ASH**—Too well known to need describing.

**COTTONWOOD**—One of the best rapid growing trees we have.

**LOMBARDY POPLAR**—Rapid grower; tall, pyramidal; admired greatly.

**TEXAS UMBRELLA**—Finest shade tree known. With care the tree will make a spread of fifteen feet in three years. A most beautiful shaped tree, making a very compact head without pruning.

**MULBERRY**—Valuable for chicken yards and shade.

**HICKS**—This is the most valuable sort and makes the quickest growth.

**SYCAMORE, ELM, MAPLE, HACKBERRY, Etc.**

# ALGOA FRUIT AND NURSERY CO.



*Let Us Take You For a Tour of Inspection Through the  
Algoa Orchards and Nurseries.*

## PRICE LIST

**Of Trees Other Than Oranges, Lemons, Grape-Fruit, Kumquats,  
Figs, and Pecans—For Prices on the Above,  
See Under Proper Headings.**

### PEACHES.

	Each	Ten	100
One Year, 2 to 3 ft.....	\$.12	\$1.00	\$ 8.50
“ “ 3 to 4 ft.....	.15	1.25	10.00
“ “ 4 to 6 ft.....	.20	1.50	15.00
Two Year, 4 to 6 ft.....	.25	2.00	20.00

### PEARS.

One Year, 2 to 3 ft.....	.15	1.25	12.00
“ “ 3 to 4 ft.....	.20	1.60	15.00
“ “ 4 to 5 ft.....	.25	2.00	17.50
Two Year, 4 to 6 ft.....	.35	3.00	25.00

### GRAPES.

One Year, Strong Vines .....	.15	1.00	7.50
Two Year, Extra Strong Vines.....	.20	1.50	12.00

### PLUMS.

One Year, 2 to 3 ft.....	\$.15	\$1.25	\$10.00
“ “ 3 to 4 ft.....	.20	1.50	12.50
“ “ 4 to 5 ft.....	.25	2.00	17.50
Two Year, 4 to 6 ft.....	.35	3.00	22.50



## ALGOA, TEXAS

### APPLES.

	Each	Ten	100
One Year, 2 to 3 ft.....	.15	1.25	10.00
“ “ 3 to 4 ft.....	.20	1.50	12.50
“ “ 4 to 5 ft.....	.25	2.00	17.50
Two Year, 4 to 6 ft.....	.30	2.50	20.00



*A December Photograph. Trees Loaded With Money-Making Oranges.*

### JAPANESE PERSIMMONS.

	Each	Ten	100
One Year, 3 to 4 ft.....	.25	2.00	17.50
“ “ 4 to 6 ft.....	.35	3.00	22.50
Two Year, 5 to 6 ft.....	.45	4.00	30.00

### QUINCE.

One Year, 3 to 4 ft.....	.25	2.00
Two Year, 4 to 6 ft.....	.35	3.00

### APRICOTS.

One Year, 3 to 4 ft.....	.20	1.50
Two Year, 4 to 6 ft.....	.30	2.00

### CHERRIES.

One Year, 3 to 4 ft.....	.25	2.25	20.00
Two Year, 4 to 6 ft.....	.35	3.00	25.00

## ALGOA FRUIT AND NURSERY CO.

### JAPAN WALNUTS.

	Each	Ten
One Year, 1 to 2 ft.....	\$ .25	\$2.00
Two Year, 2 to 3 ft.....	.35	3.00

### BLACKBERRIES, DEWBERRIES, STRAWBERRIES.

	Each	Ten	100
Blackberries, Rooted Canes.....	.07	.50	2.00
Dewberries, " ".....	.07	.50	2.00
Strawberries.....	.05	.40	1.00

### ARBOR VITAE.

American, 1 to 2 ft.....	.25	2.00
Rosedale, 1 to 2 ft.....	.50	4.00
" 2 to 3 ft.....	.75	6.00
Chinese Golden, 1 to 2 ft.....	.50	4.00
" " 2 to 3 ft.....	.70	6.00

### ROSES.

One Year, No. 1.....	.25	2.00
Two Year, No. 1.....	.30	2.50

### JASMINE.

One Year, Branched.....	.25	2.00
Two Year, ".....	.35	3.00

### MAGNOLIA GRANDA FLORA.

Two Year, 2 to 3 ft.....	.50	4.00
Three Year, 3 to 5 ft.....	.75	6.00

### ALTHEA (ROSE OF SHARON).

	Each	Ten
One Year, 2 to 3 ft., Branched.....	\$ .20	\$1.25
Two Year, 3 to 4 ft., Branched.....	.25	1.50

### SHADE TREES.

One Year, 3 to 5 ft.....	.20	1.50
Two Year, 5 to 7 ft.....	.35	3.00
Three Year, 7 to 9 ft.....	.50	4.00

### CALIFORNIA PRIVET.

One Year, 1 to 2 ft.....	.12	1.00
Two Year, 2 to 3 ft.....	.15	1.25

## HARDY SHRUBS

### CRAPE MYRTLE, OLEANDER.

One Year, 3 to 4 ft.....	.25	2.00
Two Year, 4 to 6 ft.....	.35	3.00

We can supply shade trees, flowering shrubs and hardy ornamentals in carload lots for park planting. Send in your list for prices.

## ALGOA, TEXAS

### STOCKS FOR HEDGES AND WINDBREAKS

The question of wind-breaks is now receiving well-merited attention from fig and orange growers, and plants suitable for this use are in demand. Up to date nothing definite has been decided upon as best; however, there are several low-growing, dense shrubs which are being largely planted, and which have proven valuable over a wide range.

**AFRICAN TAMARIX**—A very dense grower, suited to most of our soils; in fact, it will grow where other trees will not. It is almost evergreen here at Algoa, is quick-growing, often reaching a height of 6 feet the first summer. We recommend its use.

While we have the rooted trees, they are expensive to handle, and in view of the fact that every cutting set in late February and early March will grow, we offer only the cuttings.

PRICE—10-inch cuttings, fresh cut and packed, \$7.50 per 1,000.

**CITRUS TRIFOLIATA**—The foundation of our citrus industry; when well cultivated the tree is a rapid grower and makes a dense hedge, impenetrable to stock and wind alike.

#### PRICES—ONE YEAR SEEDLINGS.

	100	1,000
12 to 18 inches.....	\$4.00	\$25.00
18 to 24 inches.....	\$5.00	\$35.00

### MAGNOLIA FIG CUTTINGS

There are many planters who desire to grow their own fig trees, and to supply this demand we offer a few thousand cuttings taken from our bearing orchards.

PRICE—Packed for shipment, \$10.00 per 1,000.

## GENERAL INFORMATION

**THE TEXAS CITRUS GROWERS' ASSOCIATION**—This organization is composed of most of our large growers and will be of benefit to those who are now in the business or who expect to enter it. Join us; we need your help and co-operation.

**A GULF COAST FARMERS' PAPER**—We are often asked if there is a paper of value to the South Texas farmer. Unfortunately, until quite recently we have been compelled to answer, "No." Now, however, the field is being fully covered by "Southwestern Farmer" of Houston, Texas. Its editor, Mr. Frank Putnam, is probably the best posted writer on fruit subjects in this field, and he makes each number worth the price of a year's subscription. Subscription price is \$1.00 per year. Send it direct to the above address.

## ALGOA FRUIT AND NURSERY CO.

### PROPER DISTANCE FOR PLANTING

There is a considerable difference of opinion on this subject. The following table is compiled from over eighteen years' experience in this work, and we consider it correct.

Variety of Fruit	Distance	Number Per Acre
Satsuman Oranges .....	15x15 ft.	193
Kumquats .....	15x15 ft.	193
Other Citrus Fruits.....	20x20 ft.	108
Pecans .....	40x40 ft.	27
Plums and Peaches.....	20x20 ft.	108
Pears and Apples.....	20x20 ft.	108
Figs .....	15x15 ft.	193

Don't work two acres of land to get one acre of results.

#### CARE OF TREES ON ARRIVAL.

Don't allow them to remain in the sun or wind.

Don't put them in water.

If they are to be planted at once, water well; otherwise, unpack and put in moist, loamy soil, taking care to see that the dirt is well packed around the roots.

# NO AGENTS

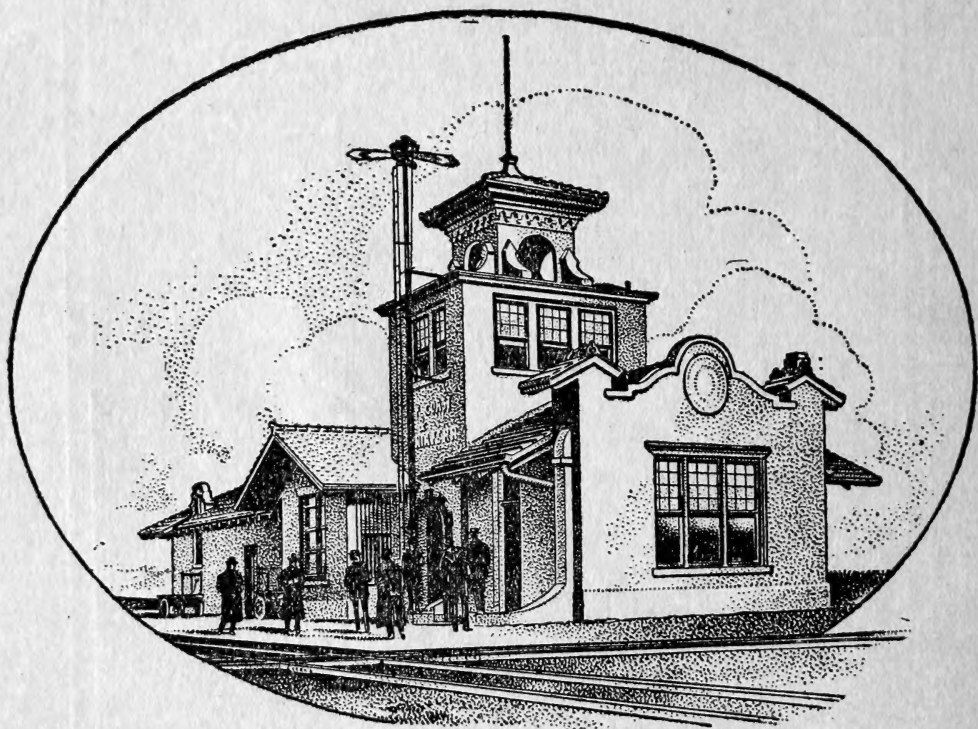
## Buy Trees Direct and Save Money

---

**S**OMEbody pays the Tree Agent's expenses and for his time. The Nursery that employs him doesn't pay it. *Do You?* You do if you pay more for stock than prices herein given. Don't buy from agents. You may never see them again. We have been here 19 years and won't be hard to find at any time.

*Did You Know?* We are the largest growers of *Magnolia Figs and Satsuma Orange* trees in the South. That we are the only large nursery that has been in business in South Texas all the time for the past 19 years. That we have carried on extensive experiments, demonstrating what fruits and flowers are best adapted for home use and market. That we invite inspection—indeed, we urge you to visit us at any time and personally inspect our 800 acres of nurseries and orchards. It will pay you.

## Union Station at Algoa



The Santa Fe and St. Louis, Brownsville & Mexico Railways show their confidence in the future of Algoa by building the finest Union Station in the Texas Gulf Coast Country. Algoa is the Terminus of the St. Louis, Brownsville & Mexico Railway and on the Main Line of the Santa Fe, 25 Miles from Galveston and 29 from Houston.