

Historic, Archive Document

Do not assume content reflects current scientific knowledge, policies, or practices.

6225
1910
LIBRARY,
U.S. DEPARTMENT OF AGRICULTURE,
WASHINGTON, D. C.
Planters Wholesale
Price List

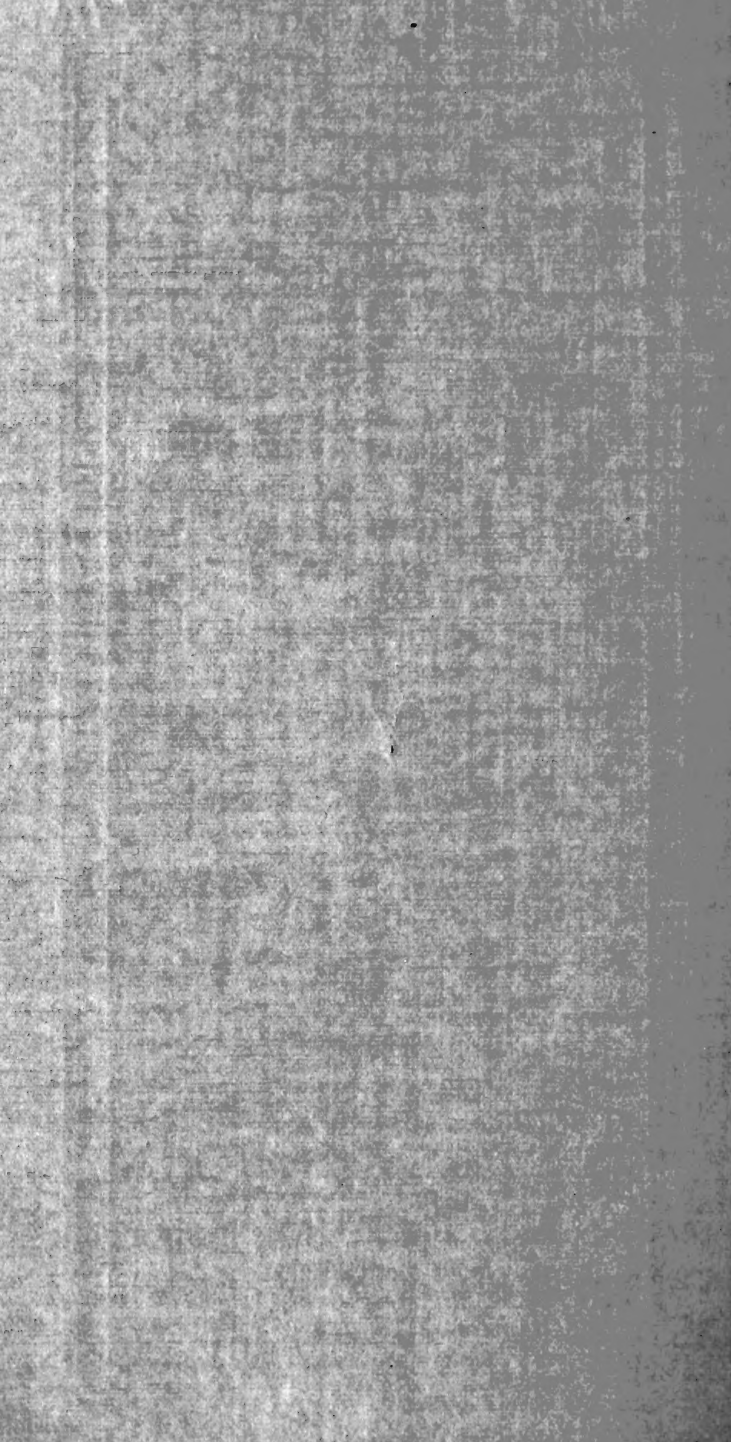


NUMBER 44

Augustine & Co.

NURSERYMEN

NORMAL, ILLINOIS



**PLANTERS
WHOLESALE
PRICE LIST**

NUMBER 44



AUGUSTINE & COMPANY

NURSERYMEN

NORMAL, ILLINOIS

Greeting and Announcement

In presenting our forty-fourth Annual Price List, we desire to thank our patrons for their liberal patronage in the past, and to assure all that, as heretofore, **QUALITY** with us is the first consideration. Our line of stock is very complete and we have every modern facility to execute your orders carefully and well. If you are in need of anything not mentioned in this List, please correspond with us. We have not catalogued some three hundred varieties of fruit and ornamental plants that we grow, mostly rare and seldom called for varieties.

LANDSCAPE GARDENING

We are prepared to do all kinds of landscape work, furnish full plans and specifications. We have associated with us in this work one of the best Landscape Architects in the country, and are certain we can please you in thoroughly artistic and up to date work.

Guarantee of Genuineness—We exercise the greatest of care to have all stock pure and true to label, but in the press of the packing seasons errors sometimes occur, and we hold ourselves in readiness at all times to replace the stock that may prove untrue to label, or refund the money paid, when promptly notified, but it is mutually understood, and agreed, between ourselves and the purchaser, that our guarantee of genuineness shall in no case make us liable for any sum greater than that originally received for said trees or plants.

Responsibility—Our responsibility extends only to those purchasing direct from us. We are employing no agents to sell general nursery stock, and dealers purchasing stock from us sell upon their own responsibility. We have agents selling our **SUDDUTH PEAR**, but every authorized **SUDDUTH PEAR** salesman carries a certificate of agency.

Prices—Prices herein given are subject to change without notice. Five will be furnished at 10 rate; fifty at 100 rate; 500 at 1,000 rates.

Claims—For shortage, damage in transportation, or otherwise we must be notified at once in order that same may be adjusted while details are fresh in mind.

Terms of Payment—Cash with order unless otherwise arranged. Remit by New York, Chicago or St. Louis draft; Postoffice or Express Money Order, made payable to Augustine & Co., or by Registered Letter. Goods will be sent C.O.D. when one-half the amount is sent with the order.

Substituting—Should the supply of a variety be exhausted (which will occasionally occur in all establishments, especially when the packing season is about over) it is our custom to substitute a sort, giving correct name, of equal or better value than the variety ordered, and when such is not in stock the number will be left unfilled and the money returned. It is mutually agreed, between ourselves and the purchaser, that when the words "No Substitution" are not written on the face of the order, permission to substitute is granted.

Packing—At the prices quoted no charge will be made for packing, baling or boxing, nor for delivery to the Carriers at freight depots or express offices.

Shipping—After delivering goods to the forwarders in perfect condition our control ceases, also our responsibility. When explicit directions are not given as to route and manner in which goods are to be shipped we use our best judgment in selecting a route, but in no case can we be responsible for losses thereby. But all orders lost or

spoiled in transit we refill free. Small packages should be shipped by express. The Illinois Central, Chicago & Alton, Lake Erie & Western, and Big Four railroads, radiating as they do in ten different directions, and making direct connections with nearly every important trunk line in the country, afford the very best shipping facilities. Four pounds may be sent in a single package by mail. We can ship by express to all points, at 20 per cent reduction from the merchandise rate. The expense of shipping by express, on medium sized orders is seldom more than by freight and often less.

The Spring Packing Season—Begins about March 1, and continues through April and into May. The fall season begins about October 1, and continues until cold weather sets in. We can ship by express to Southern points any time during the winter months.

Shipping by Mail—We have had so many orders and inquiries for stock to be sent by mail that we make a special mailing price on all kinds of trees and plants that can be shipped by mail.

Ordering—Order early by all means. There are many advantages to be gained by ordering early, besides the discounts. Nothing is to be gained by ordering late and then early orders find full stock. Please use order sheet. Write name plainly; give Post Office, County and State, be particular to state how the goods are to be shipped, whether by mail, freight or express, and give route. Keep a copy of the order and check off the trees, plants, etc., when they arrive.

DISCOUNTS

Allowed on all Orders Amounting to \$5.00 or Over.

8 per cent on orders placed during February.

5 per cent on orders placed during March.

Cash must accompany order for the full amount when discounts are allowed. The discount we allow is usually more than enough to pay the cost of freight, and saves us expense in bookkeeping.

FREEDOM FROM DISEASE.

Of Great Value to the Planter, is the fact that we have our nurseries and surrounding grounds examined each year by the department of Entomology at Champaign and a certificate of health accompanies every shipment we make. No San Jose scale or other injurious pest or disease has ever been discovered in our nurseries.

Yours very truly,

AUGUSTINE & CO.,

Normal, Illinois.

Descriptive List of Fruit

* Apples

Price

	Each	10	100
Mailing size, prepaid	\$0.20	\$1.80	\$16.00
3 to 4 feet, 1 or 2 years.....	.20	1.50	11.00
4 to 5 feet, 2 years25	2.00	14.00
4 1-2 to 6 feet, 2 years.....	.30	2.50	20.00
6 to 7 feet, heavy40	3.50	30.00

Mailing size apple trees are strong, one year old trees, about 2 1-2 to 3 feet in height.

We are pleased to note the increased tendency of planters to plant one and two year old trees, instead of overgrown 3 and 4 years trees. It means better and healthier orchards.

APPLES—Summer.

- *Red Astrachan—Large, beautiful deep crimson. Sub-acid.
- *Early Harvest—Medium, pale yellow, tender juicy.
- *Duchess of Oldenburg—Good size, yellow, streaked red, juicy, rich, sub-acid, productive, one of the best.
- *Yellow Transparent—Early white, tender, juicy, sprightly, sub-acid, medium size. Sometimes trees blight.
- *Benoni—Medium, yellow, streaked with red, productive, juicy, rich
- *Red June—Medium, early, an old favorite.
- *Yellow Horse—Large, yellow, does exceptionally well in Southern Illinois and southern states, an excellent all purpose apple.

Autumn

- *Maiden's Blush—Large, beautiful blush check, sub-acid.
- *Fameuse (Snow)—Medium, deep crimson, flesh white, of best quality, hardy.
- *Wealthy—Medium to large, red, sub-acid, hardy and productive, none better.
- *Autumn Strawberry—Medium size, striped, highest quality, juicy, yields well.
- *Fall Pippin—Large, somewhat oblong, good quality, keeps till December.
- *Chenango Strawberry—Large, oblong, yellow, striped red, very handsome and high quality, productive.

Winter

- Aiken's Red—Originated in the Northwest, an excellent apple of high quality, medium size, abundant yielder.
- Arkansas Black—Large, dark red, strong grower, high quality.
- *Ben Davis—Large, handsome, striped, valuable commercially, long keeper.
- .Baldwin—Large, bright red, crisp, juicy, rich, adapted to the east.
- Dominie—Similar to Rambo, but long keeper and better, flat, medium size, high quality, prodigious, early bearer, juicy.
- *Gano, or Improved Ben Davis—Beautiful deep red, excellent.
- *Grimes' Golden—Good size, yellow, of highest quality, very productive.

*Recommended by the Illinois State Horticultural Society.

- *Jonathan—Medium to large, red, highest quality, one of the best.
- Kinnards Choice—Medium yellow, nearly covered with red, rich, sub-acid, early and annual bearer.
- *Minkler—Large, red, solid, productive, hardy, but a little slow to bear.
- Milam—An old variety highly prized by some, medium, red, handsome, productive, good quality.
- Mammoth Black Twig—Large, dark red, vigorous, good quality.
- Northwest Greening—Large, hardy, yellow, long keeper.
- Pewaukee—Large, mottled red, hardy, productive, good quality.
- Rambo—Medium, good quality, greenish, an old variety.
- Rawles Janet—Medium to small, long keeper, productive, good quality.
- *Rome Beauty—Large, yellow, shaded red, sub-acid.
- *Stayman's Winesap—Larger and an improvement on Winesap.
- *Salome—Medium to large, long keeper, productive, hardy, shaded red, good quality.
- Stark—Large, striped light and red, juicy, mild sub-acid.
- *Talman Sweet—Medium, yellow and red, rich.
- Wagner—Good size, deep red in the sun; flesh firm, sub-acid, excellent.
- *Walbridge Medium—Striped red, hardy, good quality.
- *Wine Sap—Medium, dark red, crisp, sub-acid, an old standard.
- *Willow Twig—Large, striped red, hardy, heavy yielder, extra long keeper, valuable commercially and for home use.
- *York Imperial—Medium to large, flattened, yellow, shaded red, high quality.

CRAB APPLES.

Price Same as Apples.

- *Transcendent—Productive, bright red, good. September.
- Florence—Large, productive, becoming very popular. October.
- Hyslop—Large, deep red, beautiful good. October—November.
- Martha—One of the best, yellow, fine quality, enormous yielder.

RUSSIAN APRICOTS

Price

	Each	10	100
Mailing size, prepaid	\$0.30	\$2.50	\$.....
4 to 6 feet25	2.25	20.00
4 to 5 feet20	1.60	12.00
3 to 4 feet16	1.40	10.00

Alexander, Alexis and J. L. Budd—These are quite distinct from the European varieties, hardier, and will produce fruit when other apricots fail. They are all early bearers and productive.

CHERRIES

Compass—A hybrid of the cherry and plum, half cherry and half plum, hardy prolific and valuable, bears young.

This new fruit has attracted a great deal of attention and is becoming very popular. Trees are somewhat dwarfish in growth and quite ornamental, bearing enormous quantities of fruit. Also valuable in the far north where it is perfectly hardy.

Prices

	Each	10	100
Compass Cherry, 2 to 3 feet	\$0.30	\$2.50	\$.....

*Recommended by the Illinois State Horticultural Society.



A BRANCH OF COMPASS CHERRY

	Other Varieties	Each	10	100
Mailing size, prepaid	\$0.35		\$3.00	\$27.50
5 to 6 feet, stocky35		3.00	25.00
4 to 5 feet, stocky30		2.50	20.00
3 to 4 feet, branched25		2.00	15.00

***Early Richmond**—Medium size, dark red, juicy, rich, sub-acid. The old standard, nothing better. June.

May Duke—Large, early, dark red, delicious, not a sure bearer but a fine cherry, best of the Duke type.

***Montmorency, O.**—Larger than Ey Richmond, two weeks later, productive and next best to Ey Richmond. June—July.

Northwest—A valuable new variety, ripens before Early Richmond, but hangs on later becoming almost black. Does not bear quite as well as Early Richmond.

Ostheim—Hardy, productive, large, dark red fruit, dwarfish growth, valuable, quite late. July—August.

MULBERRIES

Russian—A very hardy and strong grower, leaves suitable for feeding silk worms, fruit medium in size, varying from black to white, very sweet. The hardy Mulberry. If you want something new and up to date in an ornamental hedge, try the Russian Mulberry. Treat it just as you would privet.

Russian Weeping—See weeping trees.

*Recommended by the Illinois State Horticultural Society.

Downing Everbearing—Very large fruit, black, sweet, rich, high quality.

Prices

	Each	10	100
Downing Everbearing, 4 to 6 feet....	\$0.50	\$4.00
Russian, 5 to 7 feet30	2.50
Russian, 2 to 3 feet15	1.00	8.00
Russian, mailing size, prepaid15	1.25

PEACHES

We make a specialty of growing peach trees in large quantities. We have a large stock of beautiful well-rooted trees, in perfect condition, of all the leading sorts. There is probably no one fruit that has given so much returns as the peach for the past five years in Central Illinois, some trees having produced from \$5.00 to \$7.00 worth of fruit per year. We shall be pleased to correspond with those desiring larger quantities than quoted.

Prices

Special New Varieties

Very valuable—See descriptions. Mailing size prepaid same price as 3 to 4 feet.

	Each	10	100
Quaker, 4 to 6 feet	\$0.40	\$3.00	\$20.00
Quaker, 3 to 4 feet30	2.00	15.00
Sill, 4 to 6 feet50	4.00	30.00
Sill, 3 to 4 feet45	3.50	25.00
Mayflower, 4 to 6 feet50	4.00	30.00
Mayflower, 3 to 4 feet40	3.00	20.00

Standard Varieties.

	Each	10	100
Mailing size, prepaid	\$0.12	\$1.00	\$ 9.00
4 to 6 feet, strong30	1.75	15.00
4 to 5 feet,15	1.20	10.00
3 to 4 feet13	1.00	7.00
2 to 3 feet, branched09	.70	5.00
1 to 2 feet07	.50	4.00

SPECIAL NEW VARIETIES

Sill—This new peach originated here at Normal and is a cross between Elberta and Mixon. The tree is an ideal commercial grower, being stocky, and vigorous, and very large dark green leaves.

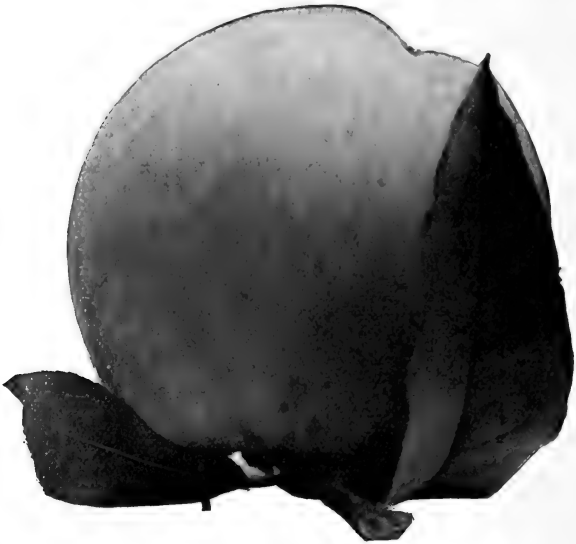
The fruit in appearance resembles Elberta, averaging nine inches in circumference, with a little more red and a higher color generally, very large and remarkably uniform size and perfect fruit. A perfect free stone. In quality the Sill is superior to Elberta, the flesh is more solid, finer grained and a better keeper. Ripening a week to ten days after Elberta.

On September 3, we sent samples of the Sill to J. H. Hale, of South Glastonbury, Conn., the best authority and largest grower of peaches in the United States. October 10, he wrote "Yours of October 3 and the seedling peach came promptly by mail. I tested two of them and found them of fine texture and of about the same quality as Elberta. The other two specimens I left on top of my desk through the entire month of September, and they were still sound at the end of the month, although greatly shriveled. On the 9th of October I threw them away and they were perfectly sound. This would indicate it has good keeping qualities. I shall now watch my tree here with great interest."

After watching and testing the Sill peach for the past six years we believe it is destined to become one of the great commercial peaches of this country. The Horticulturists who have been watching the Sill for the past few years pronounced it beyond question the most promising peach ever grown in Central Illinois.

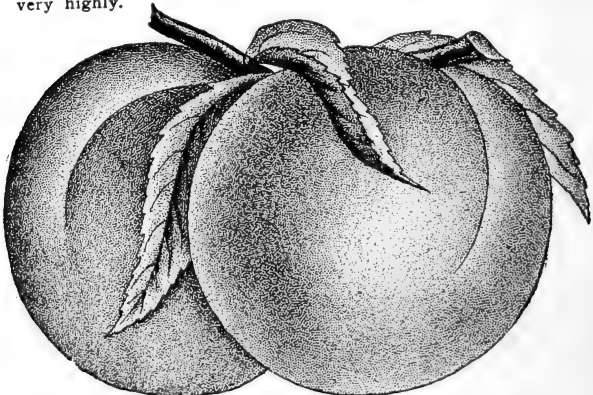
We have this year been able to propagate a large stock of Sill peach, so that we can cut the price to 1-2 of last year's prices. The demand for the Sill has been very heavy but we hope to be able to fill all orders this year.

*Recommended by the Illinois State Horticultural Society.



SILL PEACH

Quaker—Some ten years ago, Col. Milton L. Haney, of this place, while visiting in the northwest portion of Iowa, had his attention attracted to a remarkably hardy peach seedling growing in a Quaker settlement, this variety being the only one that would stand the extreme cold of that section. He brought us some buds from which we grew a few trees. These we tested and placed in a number of places and have grown the Quaker here at Normal. The Quaker has stood the test of hardiness, having borne several years when every other peach bud in this section was killed. The fruit is not as large as some, but large enough for every purpose, and of very good quality. The trees usually set too much fruit and for best results should be severely thinned. Where hardiness in tree and bud is of principal value, we recommend it very highly.



MAY FLOWER PEACH

Mayflower—This new Peach is claimed to be the earliest ripening peach ever introduced. Is yellow fleshed, with beautiful red

*Recommended by the Illinois State Horticultural Society.

check, and excellent quality, being a much better keeper and shipper than other early sorts. Although we have not yet fruited the Mayflower, we feel safe in recommending it on account of the strong endorsements it has received.

STANDARD VARIETIES

- *Alexander—Medium, greenish white, nearly covered with beautiful red, sweet, juicy, rich, early. July.
- Admiral Dewey—New, medium to large, one of the earliest, hardy and productive, highly recommended. July.
- *Beer's Smock—Large, yellow flesh, prolific, a good commercial sort, last of September.
- Bokara—Very hardy, abundant bearer, medium size, fair quality, middle of September.
- Belle—(Belle of Georgia)—Very large, skin white with red cheek; flesh white firm and of excellent flavor. Tree a rapid grower, very prolific, fine shipper. Ripens with Crawford's Early.
- *Champion—A large, handsome early variety, creamy white with red cheek, sweet, rich and juicy. Hardy and productive. The best and hardiest white peach. August.
- *Crawfords Early—A magnificent large yellow peach of good quality. Early in September.
- Crawford's Late—A superb, large yellow peach. One of the best. Last September.
- *Carman—Large, resembles Elberta in shape; color creamy, white or pale yellow with deep blush; skin very tough, flesh tender, fine flavor and quite juicy; one of the hardiest. Ripens two or three weeks before Elberta. The best of its season.
- Engle's Mammoth—Large, yellow; resembles late Crawford. More productive. September.
- *Elberta—Large, yellow, with red cheek; flesh yellow, firm, juicy. Exceedingly prolific, sure bearer and hardy. The leading market variety. Follows Early Crawford.
- Emma—Similar to Elberta but two weeks later.
- *Foster—Large, deep orange red, flesh yellow; very rich and juicy. Last of August.
- Fitzgerald—An improved Ey. Crawford equaling it in size, quality and color, hardy, large bright yellow with red cheek. August—September.
- *Greensboro—The largest and most beautifully colored of all the early varieties. Double the size of Alexander, ripening a few days later. Flesh white juicy, and good. July.
- Gen. Lee—A cling of good size and quality, fine for preserving. September.
- Hill's Chili—Medium dull yellow. Extra hardy and productive. Last September.
- *Heath Cling—Very large, flesh white, juicy and melting. Good keeper and shipper. The best white flesh cling. October.
- *Lemon Cling—Large, yellow, lemon shape, red cheek. September.
- *Mountain Rose—Large, red, flesh white, juicy, hardy and one of the best. August.
- *Old Mixon Free—Large, pale yellow, deep red cheek, flesh white, tender and rich. September.
- Smock—One of the old standard yellow peaches, delicious quality and excellent in every way. A little later than Elberta.
- Sneed—The earliest, medium size, cling, white and red cheek. Rots in some seasons but valuable on account of earliness.
- *Stump the World—Medium to large, white flesh with a bright red cheek. Same season as Elberta.
- Triumph—Ripens with Alexander, a few days after Sneed. The earliest yellow flesh peach, good size, handsome and fair quality, vigorous grower.
- Waddell—Medium size to large, hardy and abundant bearer, flesh white, with red cheek, a good shipper for an early variety, ripens with Carmen.

*Recommended by the Illinois State Horticultural Society.

* Sudduth Pear

The Original Sudduth Pear Tree is now 90 years old and although every one of the original limbs has been broken off by heavy loads of fruit and storms of late years, yet it promises to round out a century of most remarkable history.

Nearly a hundred years and never failed a single season to bear a good crop of fruit, often as high as eighty bushels.

Never a blighted branch.

As hardy as an Oak, and, until broken, as handsome in form and foliage as a Sugar Maple.

The trunk of the tree is more than 10 feet in circumference, and looks as clean and healthy as a ten year old tree.

The fruit is classed as medium in size, excellent in quality, and ripens from the middle to the latter part of October.

The fruit is almost seedless, unless the blossoms are highly fertilized by other varieties of pear near by. There is no woody or gritty substance in the core but meat all the way through with no tough covering of the seeds, hence it is an excellent dessert fruit and without question the most valuable canning or preserving pear known, the peculiar formation of the fruit making it as easy to peel by machinery as an apple, with no core to remove.

The seed of the original Sudduth Pear Tree was brought from Xenia, Ohio, by Thos. Constant when he came west to Illinois, and was planted in the spring of 1820, before grafted fruits could be obtained. This seed was planted on Thos. Constant's farm that he entered from the Government, a year previous to the time Illinois was admitted to the Union as a State. Sixty-five years ago 9 grafts were made of the Sudduth, and planted on nearby farms, and later other grafts were made and planted. These grafts, as well as the younger trees propagated of late years, have all the characteristics of the original Sudduth Pear Tree; in growth, hardiness, and fruits, as well as the habit of annual bearing and the entire freedom from blight and disease.

We first had our attention called to the Sudduth Pear about 20 years ago by Mr. Titus Sudduth, who owned the farm on which the original tree stood, having purchased it from Judge Logan, Abraham Lincoln's law partner, in 1862. Mr. Sudduth had known the tree since 1835, and fearing that something would happen to destroy the tree got us to make some grafts from it.

The beautiful growth, hardiness and early bearing of these grafts was what first opened our eyes to its value. We then went down to Williamsville, Sangamon Co., Illinois, to see the tree, and talked with all the old settlers in that vicinity, and came to the only conclusion possible, that The Sudduth Pear, though up to that time overlooked, was undoubtedly the most valuable and wonderful variety of fruit we had ever known. We immediately took steps to control all the wood of the then existing trees with the intention of propagating it, and determined to have the name trademarked and registered.

*Recommended by the Illinois State Horticultural Society.

also to send out each tree with this registered trademark in the form of a lead seal attached to every tree sold. This was done to protect the public from unscrupulous tree men, who, we know would soon sell Sudduth Pear without authority, and attempt to substitute an inferior or cheaper tree.

Send for our 34-page illustrated History of the Sudduth Pear, the most interesting history of any fruit ever introduced. Free, for the asking.

None genuine without our lead seal attached by a copper wire.



WHY THE SUDDUTH PEAR HAS BECOME FAMOUS

The Sudduth Pear has been highly indorsed by more prominent fruit men than any new fruit ever introduced.

A number of pears called blight proof have come, are gone and forgotten, but the Sudduth Pear has withstood the blight for nearly a century.

As handsome in form as a hard maple.

Hardy in the far north.

Does well in the south.

Attains great size.

Very long lived.

Bears abundantly.

Bears annually.

Fruit of highest quality.

The greatest canning pear known.

The Sudduth Pear has a History that is a History, extending over a period of ninety years, free for the asking.

Price of Sudduth Pear.

Five to seven feet, first-class trees.

\$1.50 for a single tree; \$6.00 for five; \$1.00 each for ten or more trees. Mailing size, prepaid, same price.

OTHER VARIETIES OF PEARS.

*Bartlett—Large, buttery, juicy and high flavored, very popular where blight is not too bad. August and September.

*Flemish Beauty—Large, juicy and rich, hardy and moderately free from blight. September—October.

*Garber—A Japanese Hybrid, earlier and larger than Keiffer, and of better quality, though not as long a keeper. Plant with Keiffer as a fertilizer. Quite free from blight.

*Keiffer—Large size and handsome, with remarkable keeping qualities, though not of the highest quality is excellent for culinary purposes, and one of the most profitable and sure bearers. Plant either Garber, Mikado or Duchess Dwarf with it for fertilizer. Quite free from blight. September to January.

*Sheldon—Medium size, yellow with red cheek, a splendid pear though a little coarse and reasonably free from blight, hardy and abundant bearer.

*Seckle—A small russet pear of the highest quality. September—October.

*Recommended by the Illinois State Horticultural Society.

***Lincoln**—Introduced by us twenty years ago, originated at Lincoln, Illinois. For many years we sent it out under our seal. A large yellow, sweet, juicy pear of high quality, resembling Bartlett but not as subject to blight and of higher quality. We received a bronze medal for Lincoln pears at the Buffalo Exposition.

Prices

	Each	10	100
Mailing size, prepaid	\$0.25	\$2.00	\$16.00
5 to 7 feet35	3.00	25.00
4 to 6 feet30	2.50	22.00
3 to 4 feet20	1.75	15.00

Lincoln Pears, 5 cents per tree more than above prices.

DWARF PEARS

***Duchess**—(Angouleme) very large, rich, juicy, excellent. The best dwarf pear grown. October.

	Each	10	100
Price: 4 to 5 feet	\$0.30	\$2.50	\$20.00

PLUMS

Wilson—The Wilson plum came to us among a lot of seedlings from Iowa about 14 years ago, and was planted in our experimental orchard. It came into bearing quite early and from the first attracted attention on account of the superior quality of the fruit.

The fruit is very large for a native sort, flesh solid and meaty, quality rich, sweet, with no bitter taste to skin. Color a bright red, with a touch of yellow on lower side, form slightly oval and ripens a little after the Wild Goose.

As we further tested the Wilson we found that it was not only a superior fruit but a very heavy bearer and in the eleven years we have fruited it, we have gotten nine good crops, one slight crop and one failure, caused by a heavy freeze in May that killed all the fruit in the orchard.

We have gotten from the Wilson at least 4 bushels of fruit to one of any other variety.

While every variety tested has been seriously affected with both Curculio and Rot, we have never found a wormy plum in the Wilson, nor has the fruit ever been attacked by the Rot.

So far as this section of the country is concerned, at least, we unhesitatingly place the Wilson at the top of the list, both for home use and commercial purposes.



WILSON PLUM

*Recommended by the Illinois State Horticultural Society.

Wilson

Prices

	Each	10	100
Mailing size, prepaid	\$0.75	\$6.50
4 to 6 feet, strong trees80	7.00	\$60.00
3 to 4 feet, well branched65	5.50	40.00

Japan, Native and European.

Prices

	Each	10	100
Mailing size, prepaid	\$0.20	\$1.60	\$15.00
5 to 6 feet35	3.00	25.00
4 to 5 feet25	2.20	20.00
3 to 4 feet20	1.50	14.00
2 to 3 feet15	1.20	11.00

The Three Best Japanese Varieties

- ***Abundance**—One of the best known Japanese varieties, hardy and productive, fruit large, yellow, overlaid with red. Good. August.
- ***Burbank**—Another Japanese variety, ripening two weeks after. Abundance, larger and heavy bearer, ships well, tree sprawling, vigorous grower, good, August.
- ***Red June**—The best Japanese plum to ripen before Abundance, medium size, cherry red, good quality, heavy bearer, one of the best and most profitable, very free from rot.

Improved Native Plums.

- ***De Soto**—Medium, bright red, very hardy, an abundant and sure yielder, profitable. September.
- America**—A new hardy native plum, red, of large size and good quality. September.
- ***Miner**—An old standard native plum, large, juicy, sweet, reddish cast with yellow dots, a splendid plum, sometimes overlooked for newer varieties not nearly so good. September.
- ***Wolf**—Large, free stone, fine as a dessert fruit, very popular and hardy. August.
- ***Wild Goose**—Fruit medium to large, dark red, and a standard commercial sort, sure bearer and excellent quality. July.
- Milton**—Similar to Wild Goose, larger, very hardy and a splendid variety, originated in Iowa, earlier than Wild Goose.
- Chas. Downing**—Another Iowa plum that has done splendidly, red and yellow, of excellent quality. Three weeks later than Milton.

European Plums.

- ***Damson**—Small blue plums that are enormous yielders and much sought after for canning and preserving. September.
- Lombard**—A well known large blue plum, very hardy and abundant bearer, quality good. September.
- ***Shipper's Pride**—Resembles Lombard in color and quality, is much esteemed on account of its market qualities.

QUINCE

- ***Champion**—A prolific and heavy bearer, more oval in shape than Orange, long keeper, quality fine, late.
- ***Orange (Apple)**—Fruit large, bright yellow, excellent flavor.
- Meech's Prolific**—Strong grower, very productive, fruit large, orange color and very fragrant. Excellent.
- Rea**—A seedling of the Orange of same color and shape but larger.

Prices

	Each	10
3 to 5 feet, well branched	\$0.40	3.25

*Recommended by the Illinois State Horticultural Society.

BLACKBERRIES

***Snyder**—The hardiest and best all purpose blackberry. We introduced it to the west over thirty years ago and it still holds its place at the top of the list for hardiness, yield and quality.

***Ey. Harvest**—Very valuable where it is not too cold, needs protection in the north. Two weeks earlier than Snyder and fruit not quite so large. Solid and a good shipper.

La Grange—A new hardy blackberry, said to be of Russian origin, a vigorous grower, canes measuring 12 to 14 feet if not trimmed. Later and larger than Snyder, and a heavy yielder, remarkably free from rust and disease, highly recommended and a very promising new berry. Stock limited.

Our Berry plants are as good as can be grown.

Prices

By mail prepaid, add 1c per plant.

	Each	10	100	1000
Snyder	\$0.05	\$0.40	\$2.00	\$16.00
La Grange15	1.20	10.00
Early Harvest05	.40	2.00	15.00

DEWBERRIES

Lucretia—A low growing or trailing blackberry, larger and juicier than blackberries, perfectly hardy, fruit ripens ten days before blackberries and is often one and a half inches long and one inch in diameter. Mulch to keep berries off the ground; an enormous yielder, and no fruit garden is complete without them.

	Each	10	100	1000
Price	\$0.06	\$0.50	\$4.00

RASPBERRIES

***Columbian, (Purple)**—This variety has given the best results of its class here, fruit purplish red, enormous size berries, and strongest growing canes of any variety. A wonderful producer.

***Cumberland (Black)**—Fruit is larger than any other black cap, quality excellent, a firm berry, jet black, splendid shipper, very desirable for market or home use, being very vigorous and productive.

***Gregg (Black)**—A well known standard commercial sort, fruit very large, solid, enormous yielder, a very reliable sort.

***Kansas (Black)**—A well known standard sort, much used by commercial growers, an enormous producer, fruit large and high quality. None better.

***Cuthbert (Red)**—Undoubtedly the best of the reds, strong grower, fruit large, firm, high quality and very prolific, extensively planted for home use and market.

Prices

By mail, prepaid, 2c extra per plant.

	Each	10	100
Columbia, Purple	\$0.08	\$0.50	\$2.50
Cumberland, Black08	.50	2.00
Cuthbert, Red08	.50	2.00
Gregg, black08	.50	2.00
Kansas, Black08	.50	2.00

JUNE BERRIES—Dwarf.

Service, or Shadberry—These valuable garden berries are being used more and more, very similar to blue or huckle berries, borne in profusion, very fine for serving fresh or canning. Succeed everywhere.

Each 15c; per 10\$1.25

*Recommended by the Illinois State Horticultural Society.

CURRENTS

One of the easiest to grow and one of the most valuable fruits of the garden.

***Perfection**—A new variety, recently introduced, and well named, Perfection. Hardy, abundant bearer, highest quality, fruit as large or larger than Fay's. Pronounced by experimental stations and leading horticulturists everywhere, the finest red currant ever introduced. Has taken more medals and awards than any other currant.

Black Naples—A very strong, vigorous grower, probably the best of the black currants, prolific and large fruit.

***Cherry**—Well named, berries very large, bunches short, plant vigorous and productive, a standard and hard to beat.

***Red Dutch**—An old variety and still very popular, and though not as large as some, the quality and yield make up for that, hardy, vigorous, excellent.

Versailles—Very large, red, long bunch of great beauty and high quality. One of the best.

London Market—A bright red currant, long bunches, good size, and a splendid currant.

Fay's Prolific—One of the largest currants grown. Bunches medium length, quality very fine, an excellent market sort.

***Red Cross**—With us the Red Cross has thus far proven superior to every other variety in yield, size, quality and hardiness, as well as vigor of growth. You will make no mistake in planting the Red Cross.

***White Grape**—A very large golden white currant, sweet, fine flavor, fine for table use, very thrifty and vigorous, the best white currant.

Prices

By mail, prepaid, 2c extra per plant.

	Each	10	100
Fay's Prolific, 2 years	\$0.12	\$0.90	\$7.50
Red Cross, 2 years10	.80	6.00
North Star, 2 years10	.80	6.00
Perfection, 2 years30	2.50	20.00
Other varieties, 2 years10	.75	5.00
Other varieties, 1 year08	.60	4.00

GOOSEBERRIES

One of the most valuable commercial fruits grown.

***Downing**—A native variety, large, pale green, handsome, and fine quality, free from mildew, bush a vigorous grower and heavy yielder.

***Houghton**—Smaller than Downing, pale red when ripe, of highest quality, and an enormous yielder, free from mildew, one of the best.

Industry—Plants imported from England, a very large berry, excellent flavor and less subject to mildew than most foreign varieties. Seldom successful.

Prices

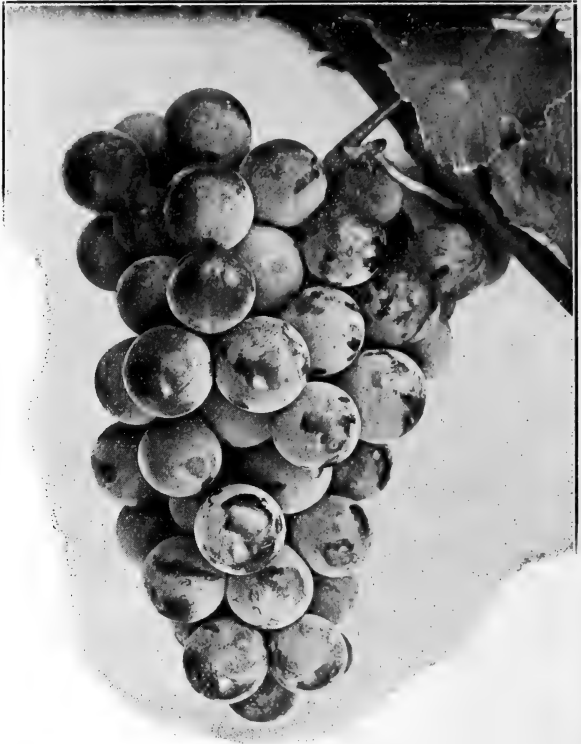
By mail, prepaid, 2c extra per plant.

	Each	10	100
Houghton, 2 years	\$0.12	\$1.10	\$10.00
Downing, 2 years12	1.10	10.00
Industry, Imported, 3 years20	1.90	17.50

*Recommended by the Illinois State Horticultural Society.

GRAPES

There is scarcely a yard so small, either in country or city, that room for one to a dozen or more grapevines cannot be found. They do admirably trained up to the side of any building, or along the garden fences, occupying but little room and furnishing an abundance of the healthiest of fruit. Make the soil mellow, and plant the vines somewhat deeper than they stood in the nursery. Plant about 8 feet apart, by the fence or building. For vineyards, make rows 8 feet apart, 6 to 10 feet in rows.



MOORE'S EARLY GRAPE

By mail, prepaid, 2c extra per plant.

Extra strong, 2 year Plants.

	Each	10	100
Brighton, Red	\$0.15	\$1.25	\$9.00
Concord, Black08	.70	5.00
Delaware, Red10	.90	8.00
Goethe, Pink25	1.85	16.00
Golden Pocklington12	1.00	8.00
Ives, Black10	.80	7.00
Moore's Liament, White10	.80	7.00
Moore's, Early, Black12	1.00	8.00
Niagara, White10	.80	7.00
Worden, Black12	1.00	8.00
Woodruff, Large, Red20	1.75	15.00

*Recommended by the Illinois State Horticultural Society.

Black.

- ***Concord**—The well known standard variety, succeeds wherever grapes will grow.
- ***Moore's Early**—Bunch large, berry large round, with heavy bloom, vine exceedingly hardy. Its earliness makes it desirable for an early market. Its hardiness particularly adapts it to Canada and northern portions of the United States; succeeds admirably in the south. The early grape.
- ***Worden**—A splendid grape of the Concord type, large, better quality and earlier. Vine vigorous; hardy and productive.
- ***Ives**—Bunch long, compact, medium size berry and bunch, hardy, abundant yielder, quality medium, a little foxy, excellent for culinary purposes.

Red or Amber.

- ***Brighton**—Bunch large, well formed; berries above medium to large round; excellent flavor and quality; one of the earliest in ripening.
- Delaware**—Bunches small, compact, shouldered; berries rather small, round; skin thin, light red; flesh very juicy, sweet, spicy and delicious.
- ***Woodruff**—A handsome, profitable sort; vine vigorous, productive; iron-clad constitution. Bunch and berry large, attractive; ripens early; fair quality, long keeper, good shipper.

White.

- ***Goethe**—Greenish yellow, red tinge, berry large, bunch medium, abundant, excellent flavor, tender and sweet; an excellent hardy grape.
- ***Moore's Diamond**—A leading early white grape, ripening before Moore's Early. White, with rich yellow tinge; juicy, few seeds, almost free from pulp, excellent quality; above medium size, adheres freely to stem. Vine like Concord in growth, hardiness and foliage. Fine variety for both market and home garden.
- ***Golden Pocklington**—Bunch and berries large, when fully ripe a light golden yellow; juicy, tender, sweet, with little pulp. Vine thoroughly hardy, strong grower, free from mildew; productive. One of the most satisfactory white varieties.
- ***Niagara**—This white grape is justly regarded as one of the very best known; very fine quality for a table grape; very prolific, hardy and of fine flavor. Fruit keeps well, if carefully handled; one of our favorite sorts.

STRAWBERRIES

Strawberries will succeed in any soil that is suited to ordinary garden or farm crops. There is nothing that will give more returns or greater enjoyment for a little trouble than strawberries, and every family can have a good supply all through the season at less expense than buying a few poor berries now and then at the market.

Varieties marked (P.) have an imperfect blossom and must have a variety not so marked planted by them for fertilizer.

- ***3-W.**—This is a chance seedling strawberry found growing along the railroad a few years ago. We have fruited the 3-W for three years on our grounds, and it has been tested by many of the leading berry growers in this and adjoining states. The berries are very large and uniform in shape, it has a perfect blossom, needing no other berry for fertilizer. It is a rich red all the way through, very solid, holding up well and making an excellent shipper. Quality excellent, and sweet.

Commence to bear early, and continues clear through the season, holding up well in size and quality. The 3-W is one of the heaviest yielders we have ever seen, setting enormous crops that ripen up perfectly.

*Recommended by the Illinois State Horticultural Society.

The 3-W took the silver medal at the St. Louis Exposition after having been shipped 500 miles and were on the exhibition tables for 10 days, as hard a test as could have been given. One plant has given as much as a quart of berries at a picking. The plants are the strongest growers, with the largest roots we have ever seen, with heavy long fruit stems nearly as large as a lead pencil. The 3-W is highly endorsed by the Illinois Experiment stations, in some instances for exceeding all other varieties.

- ***Brandywine**—A fine, large, late, handsome, productive berry of excellent quality, regular, conical form; dark glossy red, extending to the center. Plant healthy and vigorous, abundant producer. An extra good sort for all purposes.
- Bubach's No. 5 (P)**—By far more plants of this variety are used than any other sort. Its large and uniform size, fine form and color, unsurpassed productiveness and great vigor combining to make it the leading market sort.
- ***Gandy**—A reliable late variety, berries bright crimson, very uniform in size and shape, large and firm, plants vigorous and healthy.
- ***Haverland (P)**—A fine grower, very productive, one of the leading early market sorts. Berries uniform, long, medium size and quality good.
- ***Senator Dunlap**—A well tested, wonderfully productive variety, one of the safe sort to plant everywhere. Has taken a high place among the prominent standard sorts. Plant resembles Warfield, rampant runner, should be restricted in its production of plants; fully equal to Crescent and Warfield in its ability to succeed under all circumstances. Fruit good size, regular form, beautiful bright red, glossy, firm, splendid keeper and shipper, excellent quality, one of the best for canning. Ripens early and continues a long time. It stands at the head in its wonderful ability to ripen a good crop under almost any condition of doubt or neglect. The best.
- ***Warfield (P)**—Its great beauty, firmness, earliness, good flavor, productiveness and vigor make it exceedingly popular. Ripens with Crescent, and is superseding that variety for a reliable market sort.
- Capt. Jack**—An old standard sort much used as a fertilizer. A good berry for home use and market.
- ***Crescent Seedling (P)**—Another old standard that has been planted more extensively for market than any other one variety. Too well known to need a description.
- Clyde**—Large, abundant yielder, medium to late, good foliage, a good berry.

Price

	10	100	1000
3-W, special	\$0.50	\$1.75	\$15.00
Other varieties15	.75	6.00

GARDEN ROOTS

ASPARAGUS

Conover's Colossal—The standard variety used by market gardeners everywhere. We have grown five different varieties, and all the difference that could be detected was in the name. Under like treatment they are identical.

Strong roots, per hundred	75c
Mail prepaid, 50	60c

RHUBARB OR PIE PLANT

Linnaeus and Victoria—Both excellent standard sorts, should be in every garden.

Each 8c, per 10	60c
Each, mail prepaid	10c

*Recommended by the Illinois State Horticultural Society.

HORSE RADISH

Each .05, per 1060c
 By mail, prepaid, each7c

NUT TREES

*Japanese Walnuts, Cordiformus and Sieboldiana—Two varieties from Japan of great value. Trees make beautiful shade trees and commence bearing quite young, enormous crops of delicious nuts, resemble butter nuts in size and shape, but with thinner shells; perfectly hardy and desirable in every way, and certain to become one of our most popular trees.

Almonds—Hard Shell—A very ornamental tree and bears plump rich nuts.

Soft shell, not quite so hardy as hard shell.

Price

	Each	10	100
Almonds, hard shell or soft shell, 4 to 6 feet	\$0.35	\$3.00
Walnuts, Japan, 4 to 5 feet45	4.00	\$35.00
Walnuts, Japan, 2 to 3 feet25	2.25	20.00

PERSIMMONS

The American Persimmon is hardy in Central Illinois. The top may kill back a little while young, but they make handsome trees as they grow older, yielding quantities of delicious fruit. Well worth planting.

Price

4 to 5 feet, each 35 cts, per 10	\$3.00
3 to 4 feet, each 25 cts., per 10	2.00
2 to 3 feet, each 15 cts., per 10	1.25

Flowering Shrubs

No lawn or yard, whether large or small is either complete, attractive or homelike without a certain amount of flowering shrubs.

Properly arranged they in no way encroach upon the lawn. They not only add beauty and adornment but at the same time can be used as screens to cover unsightly objects or fences, and break the foundation line of the house. They are indispensable, besides lending a cheerful homelike effect. A few dollars spent in shrubs will often add more value to a property than hundreds of dollars spent in other ways.

Following each name is the height the variety attains, together with time of blossoming.

ALMOND FLOWERING, (Prunus Japonica)

Four feet. April and May

Produces a solid mass of double flowers before foliage appears. One of the most beautiful early flowering shrubs.

Price

18 to 24 inches, each 20c, per 10	\$.75
2 to 3 feet, each 25c, per 10	2.00
3 to 4 feet, each 30c, per 10	2.50

ALTHEA, OR ROSE OF SHARON, (Hybiscus Syracuse)

Seven to Ten Feet. August to October

One of the most valuable late summer blooming shrubs. We have the finest budded sorts in both double and single flowers, named varieties. Colors white, blue, rose red, and purple.

Price

2 to 3 feet, each 20c, per 10	\$1.80
-------------------------------------	--------

*Recommended by the Illinois State Horticultural Society.

BARBERRY (Berberis)

The Barberries compose some of our most valuable shrubs. They are not only beautiful for foliage and flower, but the bright red fruit remaining until late winter adds another rare charm. They are valuable for informal hedge but should not be trimmed.

Red Fruited, (Vulgaris) 5 to 6 feet—Foliage bright green, yellow blossoms in May, densely covered with red fruit, hanging on till late winter.

Purple Leaved, (Vulgaris. Foliis Purpureis)—Five feet—Similar to the red fruited except purple foliage.

***Thunberg's (or Japanese, Thunbergii)**—Four feet—The finest of all the Barberries, grows in compact form, spiney stems, foliage fine and dense, changing to brilliant red in fall, the clusters of red berries hanging on all winter. Much used for hedge and borders. Considered by many to be the most valuable shrub grown. Not only because of its beauty, but is also adapted to so many uses and perfect hardiness.

Price**Red Fruited and Purple Leaved.**

10 to 12 inches, each 10c; per 10.....	\$0.25
12 to 18 inches, each 15c; per 10.....	1.00
18 to 24 inches, each 20c; per 10.....	1.50

Japanese.

6 to 12 inches, each 10c; per 10.....	\$0.75
12 to 18 inches, each 15c; per 10.....	1.25
18 to 24 inches, bushy, each 20c; per 10.....	1.75
2 to 3 feet, bushy, each 25c; per 10.....	2.25

CORALBERRY, (See Snowberry)

***CRANBERRY, (High bush.)**—See Snowball

CURRENT, (Flowering Ribes Aureum)**Six Feet**

The golden flowering currant, blooms in April and May, followed by large black berries, fragrant and showy, thrives everywhere, in any soil, red leaves in autumn. An excellent shrub for massing in background in poor soil.

Price

18 to 24 inches, each 20c; per 10.....	\$1.75
--	--------

CALYCANTHUS, Floridus (Spice Bush)**Six Feet.**

Sweet scented shrub, wood and flowers have a delightful fragrance, blooms in profusion, flowers size of double tuberoses, dark brown or purple. May. A refined and choice shrub.

Price

	Each	10
12 to 18 inches25	2.00
18 to 24 inches30	2.50
2 to 3 feet35	3.00

DOGWOOD, (Cornus).

***Siberian or Red Barked, (Siberica Alba)** Eight feet.—Brilliant scarlet bark, fine for winter effect and a showy summer shrub.

***Stolonifera**—The finest native red barked dogwood, perfectly hardy and one of the best.

Florida—The white flowered dogwood, attains the height of small tree 15 to 20 feet. A profusion of white blossoms in May, followed in the fall by red berries and brilliant foliage. An excellent variety.

Price

Siberian and Stolonifera

	Each	10
18 to 24 inches20	1.75
2 to 3 feet25	2.00

Florida

2 to 3 feet25	2.00
3 to 4 feet35	3.00

DEUTZIA

Three to Four Feet

Our assortment of Deutzia compose some of the most beautiful summer flowering shrubs we have, perfectly hardy. Their charming bell shaped flowers borne in profusion in May and June make them valuable for either massing or single specimens.

Crenata—In both double white and rose color, gives a wealth of bloom in May and June.

Pride of Rochester—A very popular sort, pure white double, large blossom and cluster. May and June.

Lemoine—Single white—Not quite as heavy a grower as Crenata but refined, and blossoms in profusion.

Price

	Each	10
18 to 24 inches20	1.75
2 to 3 feet25	2.00

ELDER

Ten Feet

***Golden Elder**—(Sambucus Aurea)—A brilliant golden leaved variety, very useful for contrasts and striking effects, becoming very popular.

Cut Leaved—(Sambucus Laciniata)—The fern-like foliage, and drooping habit make it a valuable and artistic shrub. Always attracts attention.

Variegated—(Sambucus Variegata)—A very pretty and distinct variety, leaves green with white edges.

Price

	Each	10
2 to 3 feet20	1.75

FILBERT, Purple, (Corylus Purpurea).

Seven Feet

Purple Leaved Hazel—One of the few good shrubs to plant for strong contrasting colors. The foliage gives a very pretty effect with other shrubs.

Price

	Each	10
18 inches20	1.50

GOLDEN BELL, (Forsythia)

Six to Seven Feet

The Golden Bell, the first flowers of spring, with their brilliant color, that bloom before the buds of other shrubs have swelled, are great favorites.

*Recommended by the Illinois State Horticultural Society.

Suspensa—A profuse bloomer and an attractive charming plant, with its long slender drooping branches.

Viridissima—Dark green, and upright habit of growth, also a profuse bloomer.

	Price	
	Each	10
2 feet20	1.75

FALSE INDIGO (*Amorpha Fruticosa*)

Four to Six Feet

Another excellent native shrub, covered with great quantities of spikes of indigo colored flowers. Much used for massing.

	Price	
	Each	10
2 to 3 feet20	1.75
3 to 4 feet25	2.25

*HYDRANGEA

Paniculata Grandiflora. Six feet.—Undoubtedly the most popular shrub grown. The flowers come in late summer and last till heavy frost. They are borne in great panicles, changing from pure white to rose and bronze. Can be trained in bush or tree form.

Arborescens Sterilis. Six feet.—Sometimes called "Hills of snow," a new variety of decided merit, similar in many respects to *Paniculata* but commences to bloom in June and lasts till September, flowers finally changing from pure white to green. New and rare.

	Price	
	Each	10
Paniculata Grandiflora		
2 to 3 feet20	1.80
18 to 24 inches15	1.25

Arborescens Sterilis

18 to 24 inches40	3.00
12 to 18 inches30	2.50

*HONEYSUCKLE, (Upright) *Lonicera*

Six to seven feet.—The upright honeysuckle are among the best of our shrubs, grows strong, with beautiful flowers and foliage, very sweet scented and ornamental, useful as specimen plants, clumps or hedge, flowers followed by colored fruit.

Tartarian—White, pink and red. May.

Morrowi—A valuable Japanese variety; white changing to yellow.

	Price		
Tartarian Upright			
2 to 3 feet25	2.00
3 to 4 feet30	2.50
4 to 5 feet35	3.00
Morrowi, 2 to 3 feet30	2.50

*KERRIA, JAPONICA, (Globe flower).

Flora Plena—Double yellow. One of the most beautiful and attractive shrubs from Japan. Wood and leaves a brilliant green, flowers double, yellow, rose form, blooms early in April, continuing till frost. A perfect gem.

Rhodotypus Kerriodes—Single white, flowers in May, very ornamental.

*Recommended by the Illinois State Horticultural Society.

	Price	Each	10
Flora Plena, 18 to 24 inches		\$0.25	\$2.00
Flora Plena, 2 to 3 feet30	2.50
Rhodotypus, white, 18 to 24 inches25	2.00

***LILAC, (Syringa)**

Since the introduction of the new French varieties of budded lilacs the lilac has become more popular than ever. They now compose some of the grandest shrubs we have. The budded varieties do not sucker and blossom while quite young. If you have not grown these newer sorts of lilac you have missed something. They are so perfectly hardy and of easy culture. The varieties we grow are valuable for cut flowers, remaining fresh a long time and are very profitable commercially.

Common Purple, Vulgaris, and Common White, Vulgaris Alba—The old fashioned garden sorts.

Persian Purple—Probably the most popular of all lilacs. Great loose panicles of delightfully fragrant flowers that cover nearly the entire bush. A beautiful plant for its foliage as well, which is refined and graceful.

Alfonse Lavalle—Double, immense panicles, blue lilac.

Frau Damman—Single, great trusses, of medium sized flowers pure white.

Madame Lemoine—A superb double white.

Princess Alexandra—Single, large panicles, one of the finest whites.

Souvenir De Ludwig Spaeth—Single, long panicles, large flowers, dark purplish red, one of the best.

	Price	Each	10
Common Purple			
18 to 24 inches15	1.00
2 to 3 feet20	1.50
3 to 4 feet25	2.00
Common White			
12 to 18 inches20	1.75
18 to 24 inches25	2.00
Persian			
2 to 3 feet25	2.00
3 to 4 feet30	2.50
Named Varieties, Budded			
18 to 24 inches30	2.50
2 to 3 feet40	3.50

MAHONIA, Aquafolia

Four Feet

A form of barberry with large holly-like leaves, nearly evergreen, one of the most valuable shrubs, dark blue berries. This is an exceedingly beautiful and effective shrub, give a sheltered position if possible. Will become very popular when its value is appreciated.

	Price	Each	10
8 to 12 inches15	1.00
12 to 18 inches20	1.50

PLUM, (Prunus Triloba).

Six to Eight Feet.

Beautiful double flowers, rose-like, which come just before leaves unfold in spring, perfectly hardy. This shrub assumes a tree shape and the blossoms completely cover the branches. The finest early spring bloomer we have.

*Recommended by the Illinois State Horticultural Society.

	Price	
	Each	10
2 to 3 feet25	2.00
3 to 4 feet30	2.50
4 to 5 feet35	3.00

PRIVET, (*Ligustrum*)

Five to Six Feet

The dark green rich foliage of the privets make them valuable as individual specimens or for foliage effect. They make the finest formal hedge of any plant grown. Blossoms are fragrant, attractive, resembling the lilac.

***Amoorensis, (North)**—The best for hedge in the north, has stood twenty degrees below zero, upright growth.

***California Ovalifolium**—The variety generally used for hedging, brilliant and glossy green foliage.

***Ibota**—A Japanese variety, very hardy, more drooping in habit than California or Amoorensis. A beautiful distinct variety.

Regals—A grand hardy variety that has a weeping habit at ends of branches, make beautiful specimen plants, one of the hardiest.

Price

Amoor River North, Amoorensis

	10	100
12 to 18 inches, branched	1.00	6.00
18 to 24 inches, branched	1.25	7.50
2 to 3 feet, heavy	1.40	10.00

California Ovalifolium

	10	100	1000
12 to 18 inches, branched50	4.00	30.00
18 to 24 inches, branched75	5.00	40.00
2 to 3 feet, 2 years, heavy	1.00	8.00

Regals, Regilianum

	10	100
18 to 24 inches	1.25	10.00
2 to 3 feet	2.00	15.00

Ibota

3 years, 2 to 3 feet	2.00	15.00
----------------------------	------	-------

RUSSIAN OLIVE, (*Elaeagnus Angustifolia*)

Ten to Fifteen Feet

A unique flowering tall growing shrub, resembles the olive in wood and its silver leaves, fruit bright yellow, with silver spots, very ornamental.

Price

	Each	10
2 to 3 feet20	1.75
4 to 5 feet30	2.50

SILVER THORN, (*Elaeagnus Longipes*)

Four to Five feet.

Thick leaves, underside bright silver which contrast beautifully with the bright brown of its branches. A beautiful shrub, bearing a quantity of large red berries, fine for jelly.

Price

	Each	10
12 to 18 inches20	1.50
18 to 24 inches25	2.00

*Recommended by the Illinois State Horticultural Society.



THE BEAUTIFUL JAPAN QUINCE, PYRUS JAPONICA
 *QUINCE, (Japanese flowering)

Pyrus Japonica—Six to eight feet—One of the finest shrubs to bloom in early spring, sometimes called “burning bush,” from the profuse crimson flowers. An old garden favorite.

Price

	Each	10
18 to 24 inches20	1.50
2 to 3 feet25	2.00
3 to 4 feet30	2.50

*Recommended by the Illinois State Horticultural Society.

SNOW BALL, (*Viburnum*)

Common Snow Ball—Ten feet—The snow balls have always been admired. No shrub is better known, blossoming in May and June.

***Cranberry**, (High bush—*Viburnum Opulus*)—Seven feet—A most valuable shrub, thrives everywhere. The profuse flat clusters of white flowers change to beautiful red berries, similar to the common cranberry, and hangs on all winter. Foliage turns yellow and scarlet in autumn.

***Japanese**—*Viburnum Plicatum*—Six to seven feet—A new variety from Japan, superior to the common in foliage and flower, blooms later and lasts longer than the common. More dwarfish and compact.

Wayfaring Tree, (*Viburnum Lantana*)—Large dense heads of white flowers followed by bright red berries, gradually changing to darker color.

	Price	
	Each	10
Common Snowball		
12 to 18 inches15	1.00
18 to 24 inches20	1.50
4 to 5 feet35	3.00
Cranberry, High Bush		
12 to 18 inches15	1.25
18 to 24 inches20	1.75
Japanese Snowball		
2 to 3 feet40	3.25
Wayfaring Tree		
12 to 18 inches15	1.25
18 to 24 inches20	1.75

*SYRINGA, (*Philadelphia*)

Coronarius—**Mock Orange**—Five to seven feet—These deliciously fragrant old fashioned shrubs are as popular as ever. The great clusters of snow white blossoms fill the air with perfume during June.

Avalanche—More slender and graceful than the above. The long arching of branches almost covered their entire length with a profusion of snow white flowers.

Zeyheri—A hybrid of *Coronarius*, fragrant, more spreading, branches drooping somewhat, flowers large. A very attractive and charming shrub.

	Price	
	Each	10
Coronarius		
12 to 18 inches15	1.00
18 to 24 inches20	1.75
2 to 3 feet25	2.00
3 to 4 feet30	2.50
Avalanche and Zeyheri		
12 to 18 inches30	1.75
18 to 24 inches30	2.50

SPIREAS, (*Meadow Sweet*).

Of all the summer blooming shrubs probably none are more used than the *Spireas*, some of the varieties giving bloom from early spring till frost.

***Anthony Waterer**, **Bumaldi**—Three feet—Crimson, profuse bloomer, flowers all summer.

*Recommended by the Illinois State Horticultural Society.



THE DAINTY BRIDAL WREATH, SPIREA VAN HOUTEI

Billardii—Commences to bloom in June and lasts till September. Beautiful pink spikes in profusion. An old time favorite.

Callosa Alba—Two feet—Pure white, with beautiful masses of flowers all summer.

Multiflora Arguta—Similar to **Thunbergii**, though a little more delicate in growth.

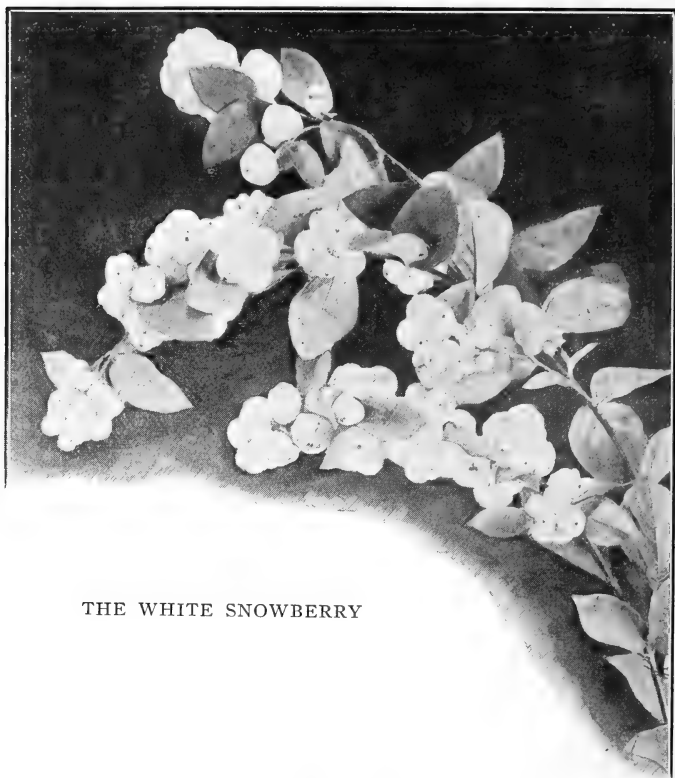
Opulifolia Aurea—Four to five feet. The golden leaved spirea blossoming in June, is one of the most charming of the group, both for its golden foliage and the clusters of flat blossoms—very ornamental and deserves its popularity.

Reevesii—Beautiful white flowers in early spring.

Thunbergii—Three feet—The fine, delicate, slender leaves and branches of the **Thunbergii**, with its profuse blossoms in early May makes it especially valuable for planting at base of the taller shrubs—one of the best.

Van Houttei, Bridal Wreath—Three to four feet—The most popular of the spireas, when in bloom one of the most charming shrubs in existence. The drooping branches are a mass of white bloom to the tips, foliage also very pretty.

	Price	Each	10
Anthony Waterer's-Bumaldi, 12 to 18 inches	.25		\$2.00
Billardi, 2 to 3 feet.....	.20		1.50
3 to 4 feet.....	.25		2.00
Callosa Alba, 10 to 14 inches.....	.25		2.00
Multiflora Arguta, 12 to 18 inches20		1.50
Opulifolia Aurea, 18 to 24 inches.....	.25		2.00
2 to 3 feet.....	.30		2.50
Revesii, 12 to 18 inches.....	.20		1.50
Thunbergii, 12 to 18 inches20		1.50
18 to 24 inches.....	.25		2.00
Van Houttei, 2 to 3 feet.....	.25		2.00
3 to 4 feet.....	.30		2.50



THE WHITE SNOWBERRY

SUMACH, (Rhus)

*Fern Leaved, *Rhus Typhina Laciniata*—One of the few tropical looking shrubs reminding one of a small fern tree. No plant we have has attracted more attention. Turns to golden in fall.

Staghorn, *Typhina*—Eight to ten feet—A grand striking plant, with its great panicles of highly colored fruit, and foliage in autumn.

Price

Fern Leaved, 2 to 3 feet, each 30 cts., per 10.....	\$2.50
3 to 4 feet, each 40 cts., per 10.....	3.50
Staghorn, 18 to 24 inches, each 25 cts., per 10.....	1.50
2 to 3 feet, each 25 cts., per 10.....	2.00

SNOW BERRY (*Symphoricarpus*)

Three to four feet.

There is probably no plant that will continue to do its part to beautify the surroundings under adverse conditions better than the Snowberries, and when winter comes their beauty is even enhanced with their drooping branches loaded with bright berries.

Racemosus, White Snowberry—Beautiful in foliage, flowering in clusters through the summer and followed by quantities of large white berries. Very effective.

*Recommended by the Illinois State Horticultural Society.

Vulgaris, Coral Berry—Similar to the above except the blossoms are followed by small red berries. Valuable for shady places.

Price

Racemosus, 12 to 18 inches, each 20 cts., per 10.....	\$1.50
18 to 24 inches, each 25 cts., per 10...	2.00
2 to 3 feet, each 30 cts., per 10.....	2.50
Vulgaris, 18 to 24 inch, each 20 cts., per 10.....	1.50
2 to 3 feet, each 25 cts., per 10.....	2.00

***TAMARISK, (Tamarix).**

Gallica and Indica—Eight to ten feet—Beautiful shrubs with feathery asparagus like foliage, pinkish white blossoms in June and July, decidedly picturesque.

Price

	Each	10
2 to 3 feet25	\$2.00
3 to 4 "30	2.50

WEIGELIA. (Diervilla).

Six Feet.

Rosea—Beautiful, well known shrub with rose colored flowers, coming in May and June. Strong growing graceful spreading branches.

Candida—White. One of the most deservedly popular of all the Weigelias, with its large tubular shaped white flowers, in long sprays during July.

Pres. Duchartre—An improved form of Rosea of French origin.

Price

Rosea, 18 to 24 inch, each 25 cts., per 10.....	\$2.00
2 to 3 feet, each 30 cts., per 10.....	2.50
Candida, 18 to 24 inches, each 25 cts., per 10.....	2.00
2 to 3 feet, each 35 cts., per 10.....	3.00
Pres. Duchartre, 18 to 24 inches, each 30 cts., per 10	2.50

Hardy Vines

BITTER SWEET, STAFF VINE, (Celastrus Scandens).

One of the best of our native vines, a strong grower, beautiful foliage, and in the fall covered with orange red berries.

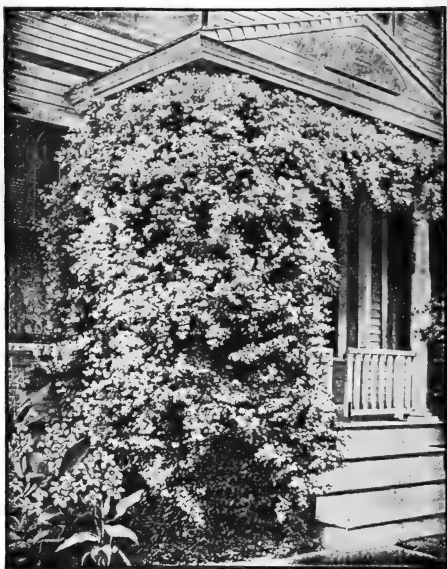
Price, strong plants, each 25 cts., per 10.....\$2.00

CLEMATIS

***Japanese Paniculata**—Deservedly one of the most popular vines grown. Is rapid growing, dense foliage of brilliant green. In September is completely covered with a profusion of dainty star shaped, white blossoms that are deliciously fragrant.

Virgin's Bower, Virginiana—The popular native sort, large leaves, robust grower, blossoms a month earlier than Paniculata and similar to it. An old time favorite.

*Recommended by the Illinois State Horticultural Society.



CLEMATIS PANICULATA

LARGE FLOWERING CLEMATIS

Admired by all and very popular, strong field grown plants.

*Jackmanii—Large showy purple, single the best.

Henrii—Large single white, the best white.

Price

All strong, 2 and 3 year plants.

	Each	10
Paniculata25	\$2.00
Virginiana25	2.00
Jackmanii35	3.00
Henrii45	4.00

HONEYSUCKLES, (Lonicera).

Still remain favorites and as popular as ever. Excellent for covering porches, trellis or fences.

Chinese, Sinensis—Foliage reddish dark green color, flowers and buds red and white inside, all summer, evergreen foliage.

*Hall's Japan, Halliana—Almost an evergreen, and a very popular variety. The fragrant white and yellow blossoms borne in profusion all summer.

Monthly Fragrant, Belgica—A beautiful type, bearing flowers all summer.

*Scarlet Trumpet, Sempervirens—Sometimes called the coral honey-honeysuckle. A handsome vine, large showy leaves, long scarlet flowers, borne in profusion all summer.

Yellow Trumpet—Identical to Scarlet Trumpet except the blossoms are yellow. One of the best of the honeysuckles.

*Recommended by the Illinois State Horticultural Society.

Price

Field grown, strong two year vines.

	Each	10
Chinese, Sinensis35	\$3.00
Halliana, Japapese25	2.00
Monthly Fragrant30	2.50
Scarlet Trumpet20	1.50
Sempervirens20	1.50
Yellow Trumpet20	1.50

IVY, (Ampelopsis).

*Boston Ivy, Ampelopsis Veitchii—The most popular and beautiful vine for covering stone or brick building, clinging tenaciously, beautiful shades of green in summer, changing to crimson and gold in autumn.

*Virginia Creeper or Woodbine, Ampelopsis Quinquefolia—Clings to trees and walls, very pretty for trellises and natural effects. One of the good native vines.

MATRIMONY VINE.

Lycium Barbarum—Can be used either as a vine or a shrub. Handsomer in the latter form, producing a close compact rounded clump. Will grow in shade or poorest soil. Produces a profusion of large scarlet berries in the fall. A valuable plant not sufficiently known or appreciated.

Price

Strong plants.

Each 20 cts., per 10.....	\$1.50
---------------------------	--------

TRUMPET VINE.

Bignonia, Radicans—The well known trumpet vine with its large scarlet trumpet shaped blossoms. Very picturesque, with its gorgeous display of brilliant flowers in July and August. Excellent for covering stumps and dead trees.

Price

Each 25 cts., per 10.....	\$2.00
---------------------------	--------

WISTERIA.

*Chinese Purple, Sinensis—One of the most charming and beautiful of vines, with great pendulous racemes of purple flowers.

*Chinese White, Sinensis Alba—The white form of the above, a little slower in growth, profuse bloomer.

Price

	Each	10
Purple, Sinensis40	\$3.50
White, Sinensis Alba60	5.00

TENDER VINES.

Madeira Vine—A rapid growing vine giving dense shade the first year. Beautiful light green foliage. Lift roots in fall and treat like potatoes.

Price

Each 10 cts., per 10 60 cts., per 100.....	\$4.00
--	--------

Roses

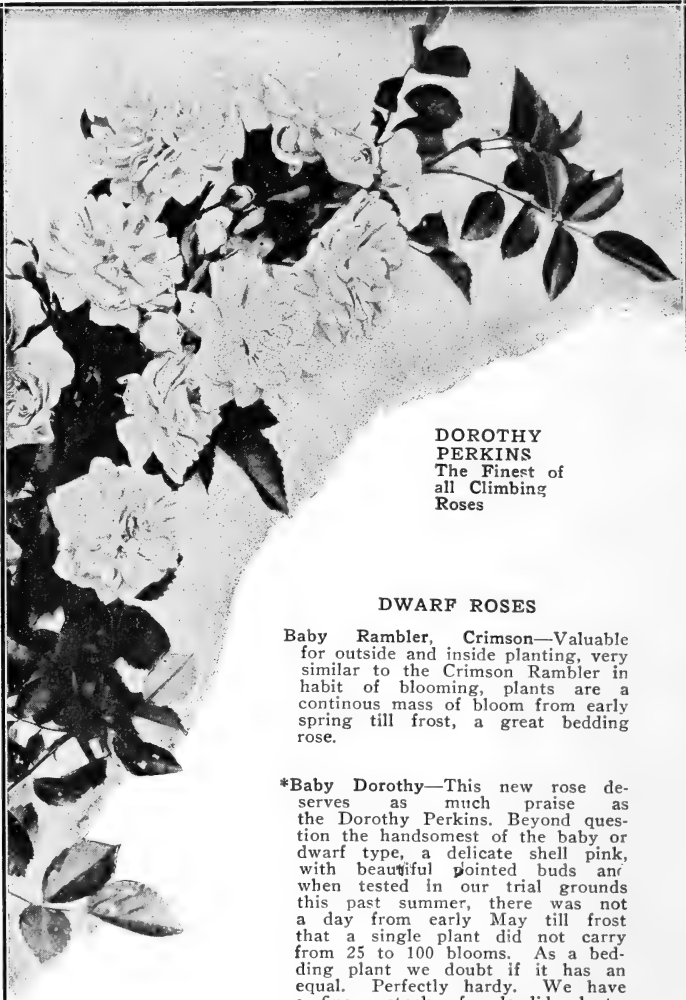
CLIMBING ROSES.

*Crimson Rambler—Although not an old rose has become very popular and well known. The deep crimson flowers are produced in profusion, in great clusters and remain in perfect condition for about two weeks, strong growing, excellent for pillar or porch.

*Recommended by the Illinois State Horticultural Society.

Dorothy Perkins—Of more recent introduction than the Crimson Rambler, and in our opinion the grandest climbing rose ever introduced. Awarded the prize by the National Rose Society of England as the best climbing rose. Plant makes the most vigorous growth of any climber, foliage leathery and beautiful light green, blossoms a delicate shell pink, double fragrant, and borne in great clusters, completely covering the plant. Perfectly hardy.

Seven Sisters—An old garden favorite, giving a profusion of crimson bloom, changing to white in different shades.



DOROTHY PERKINS
The Finest of
all Climbing
Roses

DWARF ROSES

Baby Rambler, Crimson—Valuable for outside and inside planting, very similar to the Crimson Rambler in habit of blooming, plants are a continuous mass of bloom from early spring till frost, a great bedding rose.

***Baby Dorothy**—This new rose deserves as much praise as the Dorothy Perkins. Beyond question the handsomest of the baby or dwarf type, a delicate shell pink, with beautiful pointed buds and when tested in our trial grounds this past summer, there was not a day from early May till frost that a single plant did not carry from 25 to 100 blooms. As a bedding plant we doubt if it has an equal. Perfectly hardy. We have a fine stock of splendid plants, imported from France.

*Recommended by the Illinois State Horticultural Society.

HYBRID PERPETUAL AND MISCELLANEOUS ROSES.

- *Gen. Jacqueminot—A deep cherry red, free bloomer all summer.
- Harrison's Yellow—The old favorite hardy yellow rose, blooms early in spring.
- *Killarney—A beautiful pink rose, profuse bloomer all summer. Give slight protection in winter.
- *Kaiserin Augusta Victoria—Pure white with cream center, splendid outdoor bloomer, slight protection.
- *La France—A well known free blooming silver pink rose, very fragrant, slight protection.
- Maman Cochet—One of the most beautiful hybrid roses grown, beautiful bright pink, slight protection.
- *Paul Neyron—Large, free blooming pink rose, very desirable.
- *Rugosa, Rubra—A very ornamental single red rose from Japan, foliage brilliant green, seed balls large red, hanging on till late winter.
- *Moss Rose—There is no rose grown which brings fonder memories than those old fashioned favorites. They are perfectly hardy and flowers in profusion, covering a long period in early summer. No garden is complete without a few of them. We have a large stock are offering them at a very low price, till surplus is reduced.

Prices

Strong Two-Year Field Grown Plants.

Climbers

	Each	10
Crimson Rambler, Red25	2.00
Dorothy Perkins25	2.00
Seven Sisters25	2.00

Dwarf or Baby Roses.

Baby Rambler, red30	2.50
Baby Dorothy, pink40	3.50

Other Hardy Roses.

Kaiserin Augusta Victoria	General Jacqueminot
Maman Cochet	Harrison's Yellow
Paul Neyron	Killarney
Rugosa Rubra	La France
30 cts. each, 10	2.50

Moss Rose.

	Each	10	100
Pink10	.90	8.50
White20	1.75	15.00

Hardy Herbaceous Perennials

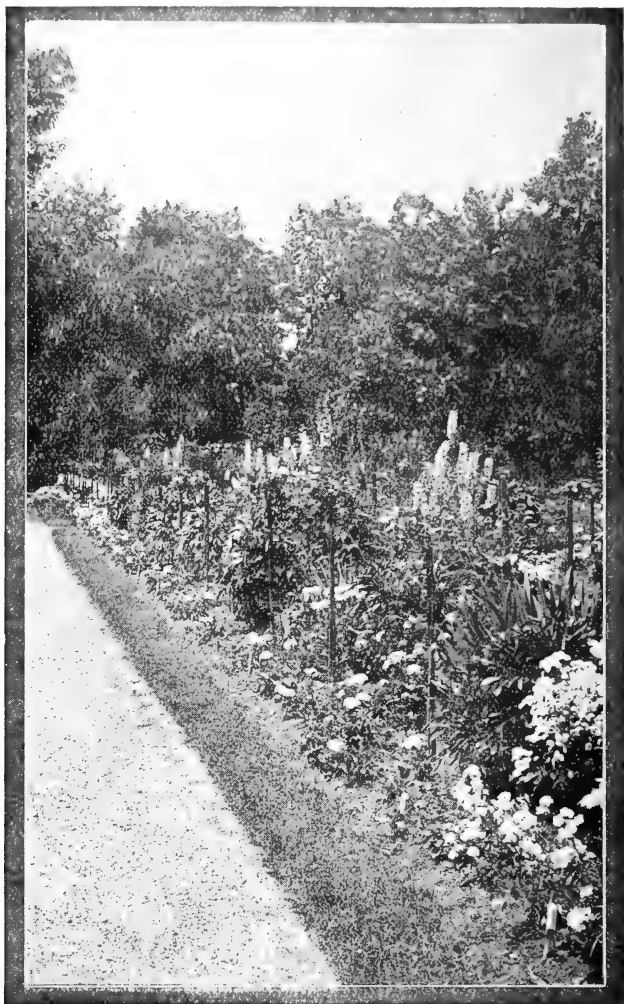
There is probably no class of plants that has grown so rapidly into popularity of recent years as the hardy perennials. Why these old fashioned flowers that our Grandmothers prized so highly have been for a time neglected is hard to say, but be that as it may they are being appreciated now as never before.

They are perfectly hardy, of the easiest culture, and by selection, beautiful flowers suitable for the garden or cut flowers can be had with but little expense or trouble from early spring till after frost.

The Perennial Garden or Border is indispensable to the home like grounds.

We shall be pleased to assist you in making selections, or assist you to plan the border or formal garden. We have in our gardens over 500 varieties of perennials, practically everything of value in this climate. Some varieties that are valuable elsewhere are worthless in the Mississippi valley.

*Recommended by the Illinois State Horticultural Society.



WHAT IS MORE BEAUTIFUL THAN A WELL CHOSEN
PERENNIAL BORDER

We have not space in this catalogue to list more than a few of the varieties we are growing. Another year we hope to issue a special perennial catalogue.

Achillea—Yarrow—12 to 18 inches.

The Pearl—Blooms in profusion all summer, and the pure white flowers are excellent for cutting. One of the finest bedding plants we have. Perfectly hardy. Price: each 10c; per 10, 90c.

Millefolium Roseum—The flowers are a beautiful pink and the fine feathery foliage makes it very attractive. Blooms all summer. Price: each 15c; per 10, \$1.50.

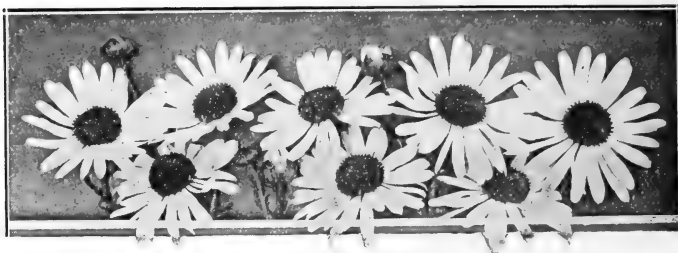


COREOPSIS LANCEOLATA

Egyptica—Identical to *Millefolium Roseum* except the flowers are a bright yellow. Price: each, 20c; per 10, \$1.50.

*Adams Needle, or Spanish Bayonet. *Yucca Filamentosa*—An ever-green, tropical looking plant, resembling the century plant somewhat. Large white waxy, bell-shaped blossoms borne on branches from a tall central spike six feet high. A very showy and valuable plant. Price: each, 10c; per 10, \$1.25.

*Recommended by the Illinois State Horticultural Society.



SHASTA DAISY

Aster—Michaelmas Daisies—One of the grand fall flowers, remain in blossom a long time, very profuse bloomers. Good for cutting. *Novae Angliae*—Four feet. Large purple, each 15c; per 10, \$1.25.

White Queen—Three feet. Medium sized, white profuse. Each, 20c; per 10, \$1.50.

Tartaricus—Three to four feet. Mauve, very large blossoms, strong grower, later than the above, excellent. Price, each 20c; per 10, \$1.50. ...

Laevis—Light heliotrope, three feet, large flower. Each 20c; per 10, \$1.50. ..

Paniculata—A beautiful white, three feet. Each 20c; per 10, \$1.50.

Boltonia.

These daisy like flowers are borne in the greatest profusion in the early fall. They are very valuable for cut flowers and decoration. Three to four feet. ..

Asteroides—Asterlike, beautiful white. Each 15c! per 10, \$1.25.

Latisquam—This is a charming pink variety and will attract attention anywhere. One of the finest of the autumn blooming plants. Each, 20c; per 10, \$1.50.

Coreopsis—Tickseed.

If you like brilliant yellow flowers plant coreopsis. Bloom in greatest profusion all summer, long stems, excellent for cutting and decoration.

Grandiflora—Larger flower than the following but probably the best. Two feet. Each, 15c; per 10, \$1.25.

Lanceolata—One of the most popular border plants grown. Two feet. Each, 10c; per 10, 90c. ..

Dianthus Barbatus, (Sweet William).

Holborn Glory Strain—This strain with its wealth of colors is undoubtedly the finest strain of this old garden favorite. Each, 10c; per 10, 90c. Smaller plants per 10, 50c.

Daisy, Shasta. (18 inches).

This is probably the most valuable plant for this part of the country that Luther Burbank has given us. Large beautiful daisies four inches across in great profusion all summer. We have the California, Alaska, and Westralia. We have tested plants from a number of the principal growers, and can not find any reason yet for giving any distinguishing names. Each, 15c; per 10, \$1.25.

Giant Daisies, Pyrethrum Uliginosum—Two to three feet. Large daisy like flowers, white with yellow center, with long stems in August and September. One of the few valuable late white flowers. Excellent for cutting. Each, 15c; per 10, \$1.25.

Gaillardia—Blanket Flower. 18 inches.

Grandiflora Compacta—The finest strain of this wonderful bedding plant. Petals orange with red base. Valuable for cut flowers and blooms continuously from early spring till frost. Each 15c; per 10, \$1.25.



**DIANTHUS BARBATUS, THE POPULAR OLD FASHIONED
SWEET WILLIAM IN ALL COLORS**

Golden Glow—See Rudbeckia.

Day Lily—*Hermerocallis Kewanso*—Two feet. The well known Golden Day Lily, blooms in July and August. An old favorite and deserving. Each, 10c; per 10, 80c.
We have in limited quantities 10 other varieties of *Hermerocallis*, 15c to 50 c each.

Helianthus—Hardy Sunflowers.

Multiflora Plena—Large double, a grand flower, four feet. Each, 15c; per 10, \$1.25.

Mollis Grandiflorus—Medium size, single, five feet. Each 10c; per 10,, 90c.

Orgallis—Small, single flowers in great profusion, odd and very handsome in flower and leaf. Each 15c; per 10, \$1.25.

Heliopsis—Similar to sunflower, six feet.

Pitcherina—Single small flowers and *Sparsifolia*, larger single. Each, 15c; per 10, \$1.25.

Lychnis Chalcedonica—Ragged Robin—An old time garden flower, suitable for cutting, all summer. Crimson. Also the white form, Alba. Each, 10c; per 10, 90c.

Pinks—Hardy—Her Majesty, pure white double, the finest white and one of the most beautiful garden flowers. All summer. Each 15c; per 10, \$1.25.

Penstemon.

Torreyii—The most showy of its class. Tall spikes four to five feet covered with brilliant scarlet flowers. June till August. Each, 15c; per 10, \$1.25.

Physostegia—American Heather—Three feet.

Virginica—Tall spikes of pink flowers, profuse bloomer and an old time favorite. Fine for cutting.

Virginica Alba—Same as the above but white. Price: each, 10c; per 10, 90c.

Phlox—Of all the hardy flowers there is nothing except the peonies to compare with the newer strains of hardy phlox. By selection a continuous supply of bloom can be had from early summer till frost. With their wealth of color they are probably the most valuable of all decorative perennials. We have in stock one of the largest and most desirable assortments possible to collect. We herewith list only a few but can supply in a limited way 100 of the best garden sorts.

Coquelicot—Pure scarlet, deep carmine eye. One of the brightest.

F. Y. Von Lassburg—Immense trusses of pure white tall growing. Large individual flowers.

Flora Horning—Immense blossoms, outer edge of petals, white with a crimson eye. The most handsome phlox grown.

Jeanne de Arc—Pure white, blossoms medium size but trusses very large. Very fine and showy.

Hermine—Very dwarf and compact, pure white, fine.

Mrs. A. Baker—Free flowering, light crimson.

Miss Linguard—The earliest of all. Pure white, profuse bloomer and considered by many the finest of all phloxes.

Tapis Blanc—A new rare dwarf white. In our opinion the finest phlox grown. Immense pure white blossoms in large solid panicles.

Each 15c; per 10, \$1.25; except Tapis Blanc and Flora Horning—add 10c each per plant to these prices.

Rudbeckia—Brilliant Cone Flower.

Lanceolata—The well known Golden Glow. Each, 10c; per 10, 75c.

Newmanii—Black Eyed Daisy—Two feet. One of the showiest of all the hardy flowers. Profuse bloomer from July till frost. Large yellow daisy like flowers with dark brown center. Fine for cutting and last a long time. Each 15c; per 10, \$1.25.

Paeonia, Peonies—Undoubtedly one of the finest of all hardy garden flowers, succeeding everywhere, and excellent for cut flowers. We are giving a great deal of attention to peonies, and are growing 150 varieties, including the best of the Japanese, European and American varieties, many of these deliciously fragrant. We catalog only a few sorts and will be glad to correspond with persons interested.

Prices

	Each	10
Mixed Varieties10	.90
Festiva Maxima, finest white50
Queen Victoria, white40
Papiviflora40
Officianalis Rubra, early, red35
Golden Harvest, golden40
Fragrans, rose fragrant30
Sinensis Rubra, dark red35
Humeii, rose30
Floral Treasure, pink40
140 other varieties from 40c to \$2.00 each. Write for list and prices.		

Mallow, Crimson Eye—These magnificent thrifty plants bear a profusion of very large flowers from five to seven inches across, pure white with a crimson eye, highly decorative from July to September. Price: each, 20c; per 10, \$1.50.

Iris—The German Fleur de Lis, and the gorgeous Japanese varieties, especially the newer introductions have made this old time favorite more popular than ever. We have one of the finest collections in this country, consisting of seventy-five varieties. We will gladly assist those desiring to plant a collection of these popular favorites.

Price

	Each	10
Germanica, Assorted15	1.25
Japanese, assorted25	2.00

Lily of the Valley—These delicate sweet scented lilies, coming in the month of May, well deserve their popularity.

Price

	Each	10
Clumps15	1.00

Dahlias—Fine standard varieties of decorative Dahlias mixed colors. Dry roots. Each 10c; per 10, 90c.

Tube Roses—Double Dwarf Pearl—These delicate and sweet scented flowers are now so cheap that there is no excuse in not having a good supply. Extra large strong bulbs. Price: each, 5c; per 10, 40c.

Tritoma—Pfitzerii—Flame Flower—This new type of tritoma is more like a stalk of flame than anything else. Throws up a stalk two feet tall surmounted by a great mass of flaming crimson and orange colored flowers, from early September till frost, making the grandest show imaginable. Price: each, 20c; per 10, \$1.75.

Grasses—Ornamental

Erianthus Ravennae—Plume Grass—Grows from 9 to 12 feet high, very ornamental, hardy Pampas Grass.

	Each	10
Clumps15	1.25

Eulalia—Gracilis Univitata—This is a most graceful plant with long, slender leaves four to five feet.

	Each	10
Clumps15	1.25

Eulalia Japonica—Plain Green, very pretty.

	Each	10
Clumps15	1.25

Eulalia Japonica Variegata—A variegated form of the above, long narrow leaves striped with white.

	Each	10
Clumps20	1.50

Eulalia Zebrina—Zebra Grass—Leaves crossed every two or three inches with a band of yellow half an inch wide, very odd.

	Each	10
Clumps20	1.50

Phalaris—Arundinacea Variegata—A low growing variegated ribbon grass. Very useful for bordering beds and walks. One of the most popular grasses.

	Each	10
Clumps10	.90

Shade and Ornamental Trees

We have a very complete assortment of shade trees and give descriptions of those varieties not so generally known. Our trees are all nursery grown transplanted stock with good roots.

Birch—American and European White—The most charming and graceful shade trees grown.

	Price	Each	10
5 to 7 feet40	3.50	
4 to 5 feet30	2.50	
3 to 4 feet20	1.75	

For Cut Leaved Weeping Birch, see weeping trees.

Catalpa Speciosa—We grow large quantities of these, and gather the seed ourselves from genuine Speciosa trees. Makes a beautiful flowering tree, upright growth and large round leaves. The genuine Speciosa Catalpa is very rapid in growth, and without question is the most valuable hardy timber tree that we can grow. Planted very extensively for railroad ties and posts. The most durable of any timber known for that purpose. Makes a fine finishing lumber. Our stock is the genuine hardy Speciosa. We have a large quantity of very fine small seedlings.

	Price	Each	10	100
10 to 12 feet50	4.00	35.00	
8 to 10 feet40	3.00	25.00	
6 to 8 feet30	2.50	18.00	
5 to 7 feet25	2.00	14.00	

	Seedlings	10	100	1000
1 year, 2 to 3 feet, strong50	4.00	35.00	
1 year, 18 to 24 inches, stocky30	2.00	17.00	
1 year, 12 to 18 inches, stocky20	1.50	12.50	
1 year, 6 to 12 inches, stocky10	.90	8.00	

Bungei—Globe Headed Catalpa—Grafted on C. Speciosa 6 feet above the ground making an umbrella or globe shaped head. These trees have many ornamental merits.

	Price	Each	10
Strong 2 year heads	1.50	12.50	

Elm—American White—The finest all around shade and street tree grown. We have a fine stock of these.

	Price	Each	10	100
10 to 12 feet50	4.50	
8 to 10 feet40	3.50	
6 to 8 feet30	2.50	20.00	
5 to 7 feet25	2.00	17.00	
4 to 6 feet20	1.75	15.00	
		10	100	1000
1 year seedlings40	3.00	20.00	

Hackberry—A valuable shade tree for trying places.

Price

	Each	10
5 to 6 feet25	2.00
4 to 5 feet20	1.75

*Horse Chestnut—A most ornamental tree for both flowers and foliage. One of the very desirable trees.

Price

	Each	10
3 to 4 feet50	4.00
2 to 3 feet35	3.00

*Judas Tree or Red Bud—A dwarfish growing hard wood tree, with peculiar round leaves. In early spring a perfect mass of brilliant red bloom, a very striking and beautiful tree.

Price

	Each	10
4 to 5 feet35	3.00
3 to 4 feet25	2.00

Kentucky Coffee Tree—Probably no tree we grow gives a more charming tropical effect than the Kentucky Coffee tree with its beautiful long fern-like leaves. Very fine for shade and ornamental planting.

Price

	Each	10
5 to 6 feet45	4.00
4 to 5 feet35	3.00

Larch—European Larch—The European larch is much hardier in this climate than the American, making a much handsomer tree as well. There is probably no more beautiful tree than the larch, with its fine feathery foliage. They are very rapid growers and are not planted nearly as much as they should be.

Price

	Each	10
3 to 4 feet35	3.00
2 to 3 feet25	2.00

Linden—American and European—Splendid trees, quick growing, and the sweet blossoms in June attract the bees.

Price

	Each	10
6 to 8 feet60	5.00
5 to 7 feet40	3.00
3 to 4 feet20	1.50
2 to 3 feet10	.80

Maple—Box Elder—One of the hardiest trees grown.

Price

	Each	10
8 to 10 feet40	3.00
6 to 8 feet30	2.00
5 to 6 feet15	1.25

Soft or Silver Maple—Very quick growers and a popular tree.

Price

	Each	10
6 to 8 feet20	1.75
5 to 7 feet15	1.25
4 to 5 feet10	.80

*Norway Maple—Similar to the Sugar or Hard Maple, most rapid in growth, and more uniform in shape. A magnificent shade and street tree.

Price

	Each	10
4 to 6 feet40	3.50
6 to 8 feet60	5.00

*Recommended by the Illinois State Horticultural Society.

Mountain Ash—American and European Mountain Ash—The finely cut foliage of the mountain ash together with their clusters of blossoms in the early summer, and great quantities of brilliant orange colored berries in the fall make them a very ornamental and pleasing tree for the yard.

	Price	
	Each	10
8 to 10 feet50	4.50
6 to 8 feet40	3.50
4 to 6 feet25	2.00
3 to 4 feet15	1.25

Mulberry—Russian (see fruits)—Since ornamental hedges are becoming so popular the Russian Mulberry will be much used for this purpose. It makes an excellent hardy hedge which can be trimmed to any desired shape.

Weeping Russian—See Weeping Trees.

Poplar—Carolina Poplar—The most rapid grower of all shade trees and much in demand. Valuable for quick and temporary shade in street or yard. It seems to be fashionable for some people to denounce the Carolina Poplar. Still there are more of these trees sold probably than any other shade tree. They are a valuable tree if properly used. Plant them for quick shade interspersed with other kinds for permanent shade. Then cut them out when they crowd.

	Price	
	Each	10
10 to 12 feet, 1 3-4 to 2 inch stems55	5.00
10 to 12 feet, 1 1-4 to 1 3-4 inch stems45	4.00
8 to 10 feet35	3.00
6 to 8 feet25	2.00

Special prices on large quantities.

Silver Poplar—Excellent for quick and contrasting effect of foliage.

	Price	
	Each	10
10 to 12 feet60	5.00
8 to 10 feet45	3.75
6 to 8 feet35	3.00
5 to 7 feet25	2.00

Plum—Prunus Pissardi—Purple leaved plum—Very ornamental, deep purple foliage, a striking and handsome tree.
2 to 3 feet. Price: each 30c.

Prunus Triloba—See flowering shrubs.

Sycamore—A valuable native tree, much used for tree planting and shade. Its light colored bark making a pleasant contrast.

	Price	
	Each	10
6 to 8 feet35	3.00
5 to 7 feet25	2.00
4 to 5 feet15	1.25

Tulip Tree—Liriodendron Tulipifera—In the early summer the delightful fragrant blossoms of the Tulip tree lasting several weeks together with its strong upright growth and beautiful dark green foliage make this one of the grandest of our native trees. We have a large stock of splendid trees.

	Price	
	Each	10
10 to 12 feet75	6.00
8 to 10 feet45	4.00
6 to 8 feet30	2.50

Willow—Cromwell—The well known and prized pussy willow so attractive in early spring.

	Price	Each	10
5 to 7 feet30	2.50
3 to 5 feet20	1.50

Golden—The brilliant golden bark and beautiful foliage make this a decidedly attractive tree in both summer and winter.

	Price	Each	10
5 to 7 feet30	2.50
4 to 5 feet25	2.00
3 to 4 feet20	1.50

WEeping TREES.

***Cut Leaved Weeping Birch—**Forty feet—As a specimen tree for the lawn with its fine feathery foliage and drooping habit together with its clean white bark, makes this a very popular tree.

	Price	Each	10
5 to 7 feet80	7.50



NAPOLION WEEPING WILLOW, THE FINEST IN ITS CLASS

***Recommended by the Illinois State Horticultural Society.**

Russian Mulberry—Eight feet—These trees are not only ornamental but bear large quantities of fruit that is much liked by the birds as well as most people. A very distinct tree, with its long slender branches that sweep the ground. Can be trained over a seat or wall and makes a beautiful effect.

	Price	Each	10
2 year heads		1.25	10.00

Willow.

Kilmarnock—Eight feet—These trees are grafted about 6 or 7 feet high and the trailing branches reach to the ground. Unique little trees for special purposes.

	Price	Each	10
2 year heads75	6.00

Napoleon—Forty feet—This variety came to us from a neighbor, Fathern Sherman, who received it direct from Napoleon's grave on the Island of St. Helena, through a missionary friend returning from Africa. Probably no trees in the world were ever more famous than these weeping willows. Perfectly hardy, and the long streamers often 20 feet in length and no larger than a lead pencil, make them one of the most charming and striking trees grown.

	Price	Each	10
6 to 8 feet75	6.00
5 to 6 feet60	5.00
4 to 5 feet45	4.00

EVERGREENS.

The secret of transplanting evergreens successfully lies in never allowing the roots to become the least bit dry. A few minutes exposure to wind or sun, will dry up the small fibrous roots changing the sap to a hard resinous substance, and no amount of care and attention will ever make them grow after this happens.

They can be shipped around the world with safety however if they are not allowed to ever become dried. We dig evergreens when so ordered with a ball of earth attached to the roots, and burlap them in this way at an extra charge of 10c each. We use every precaution in digging and hauling evergreens to keep them always moist.

All two and three times transplanted.

Aborvitae—American—Flat leaved ornamental, suitable also for hedge.

	Price	Each	10
12 to 18 inches20	1.50
18 to 24 inches30	2.50

Austrian Pines—Strong growing, rather coarse, long heavy needles, one of the best.

	Price	Each	10
12 to 18 inches20	1.50
18 to 24 inches30	2.50

Scotch Pine—Similar to Austrian but more compact, a splendid hardy tree. ...

	Price	Each	10
12 to 18 inches20	1.50
18 to 24 inches30	2.50

White Pine—One of the most graceful and refined of all the tall growing evergreens.

	Price	Each	10
12 to 18 inches25	2.00
18 to 24 inches35	3.00

Mahonia Aquafolia—See shrubs.

Larch—See ornamental trees.

Spruce—American White—This is another of our native trees that is especially desirable. Branches clear to the ground and one of the most ornamental of all evergreens.

Price

	Each	10
18 to 24 inches45	4.00
12 to 18 inches30	2.50

Taxus—Yew—English Yew—A decidedly picturesque and charming dwarfish growing tree. Very ornamental.

Prices

	Each	10
12 to 18 inches50	4.00

WEIGHT OF PLANTS OR TREES PACKED.

- 100 Fruit Trees, 5 to 7 feet, weigh from 125 to 200 pounds.
- 100 Fruit Trees, 4 to 5 feet, weigh from 50 to 100 pounds.
- 100 Grape Vines, Currants, Gooseberry or Raspberry Plants, weigh from 10 to 40 pounds.

WHAT TO DO WHEN YOUR PLANTS COME

As soon as you receive the stock it should be unpacked, and the roots puddled. If the trees are dried or shriveled in the least, place them in water at once, allowing them to be completely covered for twelve to twenty-four hours. In case you should not want to plant out as soon as unpacked, heel-in in moist soil; never allowing the roots to become dry or failure will likely result.

Remove all broken or extra long roots with a sharp knife, cutting from below outwards. One-year old peaches and apple trees should be cut back to a naked stem, but do not cut off buds next to body. Two-year old trees should have their branches cut back at least half their length, the lower less than those above.

Care should be taken to have ground thoroughly plowed and subsoiled to a depth of at least fifteen inches. The holes should be sufficiently broad and deep so that the roots can be straightened to their natural position without cramping. Two inches or more of fresh surface dirt should be placed in the bottom of the hole in which to bed the roots; set the tree two or three inches deeper than it stood in the nursery row, allowing it to lean a considerable to the southwest; fill in among the roots with mellow soil and pack down firmly with the foot. When the hole is about half full, if the ground is dry, pour in enough water to thoroughly moisten the earth, fill the hole with dirt, pressing firmly, especially around the stem. Leave the surface smooth and mellow and keep well pulverized during the growing season. Never pour water on top of the ground, but dig trenches around the tree or insert a tile, about fifteen inches from the stock, slanting towards the roots, and fill with water every evening until the ground is thoroughly saturated below the roots. Partial surface watering during a dry spell does more injury to young transplanted stock than good. We strongly advise mulching for winter protection. Be sure to loosen the wire label before planting.

AUGUSTINE & CO., Normal, Ill.

DISTANCE FOR PLANTING.

	Feet Apart
Standard Apples	18 to 30
Standard Pears and Cherries	16 to 20
Dwarf Pears and Cherries	10 to 12
Peaches and Plums	16 to 20
Apricots, Nectarines, etc.	12 to 18

	Rows Apart	Plants Apart
Blackberries	6 to 8 ft.	2 to 3 ft.
Raspberries	6 to 7 ft.	2 ft.
Strawberries	3 ft.	1 to 1 1-2 ft.
Currants	5 ft.	4 ft.
Gooseberries	5 ft.	4 ft.
Grapes	8 ft.	8 ft.

NUMBER OF TREES TO AN ACRE

12 feet apart each way.....	300	3 feet apart each way..	4,840
15 feet apart each way.....	205	4 feet apart each way..	2,723
18 feet apart each way.....	135	5 feet apart each way..	1,742
20 feet apart each way.....	110	6 feet apart each way..	1,210
25 feet apart each way.....	70	8 feet apart each way..	680
30 feet apart each way.....	50	10 feet apart each way..	435

RULE—Multiply the distance in feet between the rows by the distance the plants are apart in the rows and the product will be the number of square feet for each plant or hill, which, divided into the number of feet in an acre (43560), will give the number of trees to the acre.





**OFFICE OF THE ILLINOIS STATE
ENTOMOLOGIST**

Urbana, Ill., October 6, 1910

THIS IS TO CERTIFY, That the growing Nursery Stock and premises of Augustine & Co., situated at Normal, Illinois, have been inspected by W. P. Flint, J. G. France and J. C. Rundles, duly appointed inspectors of this office, according to the provisions of an Act to prevent the introduction and spread in Illinois of the San Jose scale and other dangerous insects and contagious diseases of fruits, in force July 1, 1907, and that said Nursery and Premises are apparently free from the San Jose scale and other dangerous insects and other dangerous plant diseases.

This applies only to the conditions of this Nursery for the year ending July 8, 1911.

S. A. FORBES,

State Entomologist.

No. 87

