

Historic, Archive Document

Do not assume content reflects current scientific knowledge, policies, or practices.

62.11

LIBRARY
U. S. Department of Agriculture
Washington, D. C.

D A L I A S

1910

AWARDED BRONZE MEDAL
ALASKA-YUKON
EXPOSITION 1909

W. W. WILMORE
DENVER, COLO.

W. W. WILMORE

DAHLIA SPECIALIST



SPRING
1910

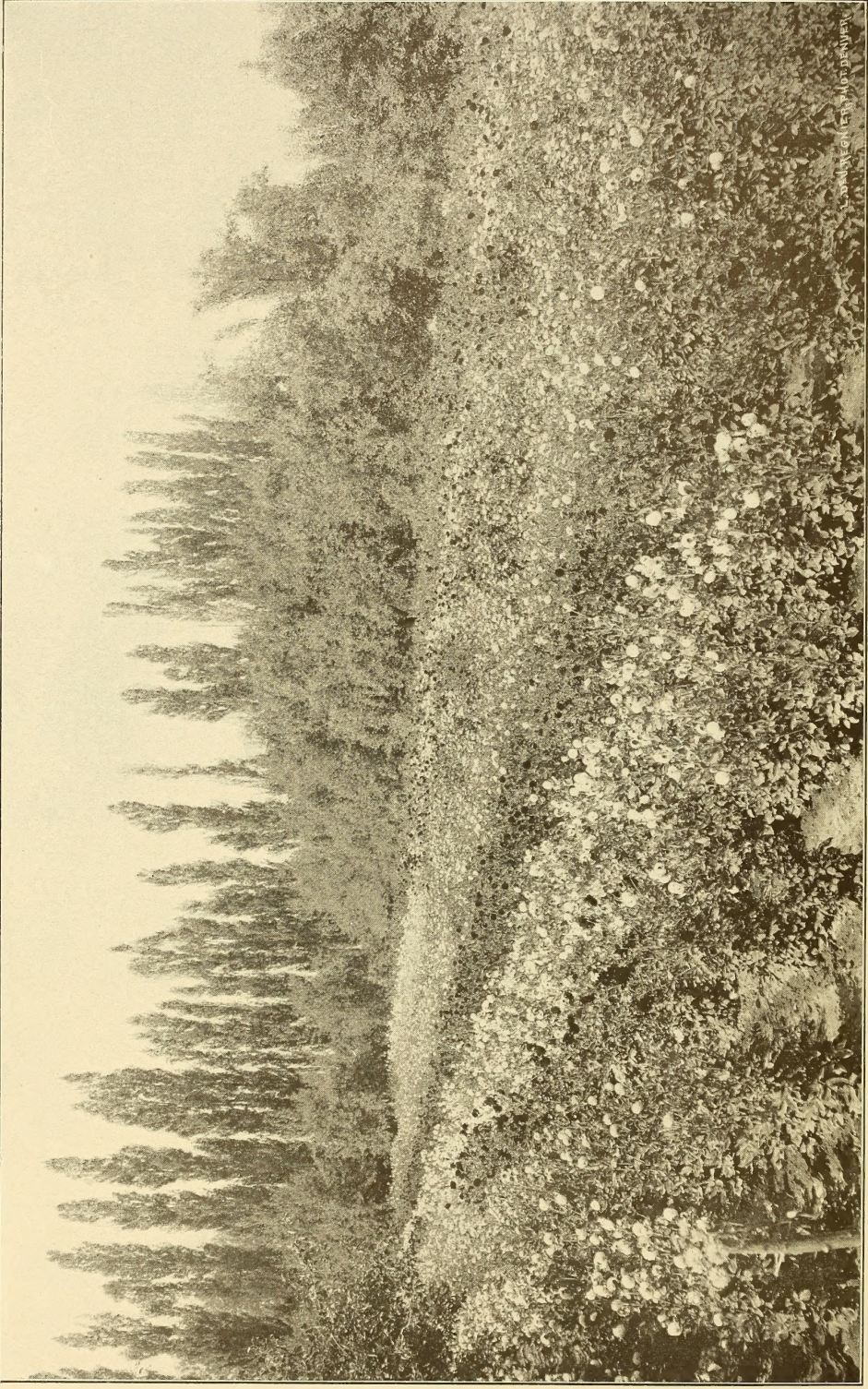
BOUQUET OF CHARLES CLAYTON

Established 1886

Telephone Walnut 622

P. O. BOX 382

Gardens, corner Wadsworth and West 38th Avenue
One and One-half Miles West of the City
DENVER, COLO.



Field of Dahlias in Full Bloom

A New Book--"The Dahlia"

By W. W. WILMORE

This new work should be in the hands of every Dahlia grower, whether amateur or professional. It is a handsomely illustrated manual, written as a souvenir edition commemorating my twentieth year as a commercial grower.

Failure in growing Dahlias, nine times out of ten, is directly traceable to improper treatment or troubles that could easily be removed if their causes were known and understood. It was largely with this aim in view that I prepared this manual. The price is a mere trifle, and no grower should run the risk of failure when reliable knowledge is within easy reach of all.

The work covers briefly the practical questions of Dahlia culture, methods of propagation, winter storage, etc. This work will be sent postpaid for 25 cents, or, if requested, it will be sent in addition to regular premiums with all orders amounting to \$2.00.

Read What Others Say of this Work

(A FEW OF THE MANY TESTIMONIALS.)

"It is an up-to-date and good all-round guide. The knowing how to place the tubers more than repays its cost."
MRS. H. B. HEDGES.

"I have read this little book with much interest, and find it to be the most complete work on the dahlia that I have seen. I envy you your knowledge of this flower."
W. T. SHELTON,
Superintendent of Indian School.

"It is hard to get such pointers as you so freely bestow in your book. Thank you in the name of the many lovers of this beautiful flower."
THEO. W. MOSES.

"Your treatise on Dahlia Culture is the best I have ever seen. It is the most edifying book to date. You deserve great credit for the cultural instructions."
D. M. VAN NAME.

"Your Dahlia Manual received. It is brim full of practical instruction to both amateur and professional, and shows the results of years of study and experience."
NATHAN A. MILLER.

"My ordering another Manual will convince you that I think highly of it. It is the best book on the subject I have read. Those having no knowledge of dahlias would understand growing them by reading the book."
FRANK E. DUFFY.

"I have read your Dahlia Manual and think it is the best work on the culture of the dahlia I have seen."
F. R. EATON.

"The Dahlia Manual at hand; it is certainly an up-to-date and valuable piece of work. We wish to congratulate you on same. If you intend to put this book on the market would like you to make us prices. We have not as yet discovered any book containing as much valuable information as yours."
PORTLAND SEED CO.

"Your Dahlia Manual is right to the point, and very neatly gotten up. Any one who will follow the plain general cultural directions you give can hardly fail in a region where dahlias will grow at all."
PROF. HARSHBARGER,
Washburn College.

"I desire to express my appreciation of the Dahlia Manual. It supplies a real need in literature on the dahlia."
J. W. McNARY.



Classification of Dahlias

Class 1. Cactus.—This class embraces the long, narrow-petaled varieties, the petals of which are generally pointed or twisted.

Class 2. Decorative.—This class is an intermediate form, having broad, flat petals.

Class 3. Fancy.—This class takes in all variegated varieties.

Peony Flowered.—A semi-double of the decorative form.

Class 4. Pompon.—This class embraces the small, round Dahlias.

Class 5. Show.—The name Show applies to those varieties producing large, well formed flowers, showing only solid colors, but may frequently have shaded tips.

Class 6. Single.—Too well known to require a description.

Twenty-nine Years Among Dahlias

To my many thousands of Patrons, Greetings :



With the dawn of the year 1910 I have reached the quarter century mark as a commercial grower of dahlias. The four earliest years were passed as an amateur grower. So far as known, I am by far the oldest specialist in dahlia culture in this country, and issued the first exclusive dahlia catalogue in the United States. These many years of practical experience among the dahlias places me in position to pass intelligently upon the dahlia, its habits, needs and qualities.

Throughout all these years the dahlia has steadily and rapidly grown in public favor. At the first it was confined largely to the amateur and private garden, but in later years it has become a very important item in the cut flower trade in all large cities, and scores of persons and firms are now specializing in dahlias and many hundreds of acres are planted to dahlias annually; and still the demand for many of the popular varieties is in excess of the supply. Newer forms with better colors and habits are constantly being introduced to supplant the older and inferior varieties. The varieties listed in the following pages are the best that money and skill could bring together—the cream selected from thousands of varieties tested in past years. My aim has been to combine quality rather than quantity. In my dealings with the public I have tried to treat each order as coming from a personal friend. This will explain in part the wonderful success which has attended my efforts. Each year I originate many new varieties and select only the best, and of these none are sent out until they have been tested for three years. To those who have never tested my stock I solicit a trial order, feeling confident my stock will give entire satisfaction.



PRICES. I do not claim that my prices are the lowest; nor have I ever coveted the reputation of running a "cheap place." Nevertheless, my prices will be found quite reasonable and even lower than others. **REMEMBER ALSO THAT I SEND OUT STRONG TUBERS, NOT WEAKLY GREEN PLANTS.** Special attention of patrons is called to the list of Hardy Herbaceous Plants. They thrive almost anywhere that a weed would grow, requiring only reasonable care the first year to get them well established.

How to Order

It would be well for each purchaser, when making out an order, to name several varieties as a second choice, for the reason that some of the varieties wanted may be out of stock when the order reaches me; or if not familiar with varieties I will gladly make selections for you if you will mention the colors and forms wanted. Long experience places each variety before me as an open book.

Terms Upon Which I Do Business

FIRST—The cash must accompany the order.

SECOND—Remittances may be sent in any way most convenient to the purchaser, but where remittances are made by P. O. order, extra stock will be given to recompense for the extra cost. If personal checks are sent, add 15 cents extra for exchange.

THIRD—Prices quoted include postage or express charges to all railway points in the United States, when purchased at retail, except where noted.

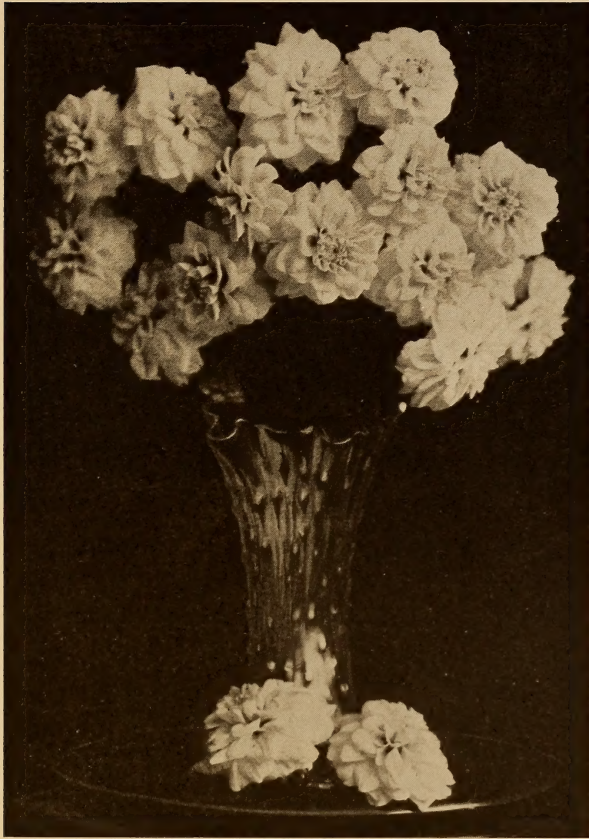
FOURTH—Club Terms: In lots of five dozen or over to one address, those varieties priced at \$1.50 per dozen will be sent for \$1.25; all other stock in proportion.

FIFTH—One-half dozen may be ordered at dozen rates. An "Extra" is sent with all dahlia orders amounting to 75c or over.

SIXTH—Non-Warranty: I guarantee the safe arrival of goods by mail or express and will continue to use the same careful, painstaking methods in filling orders with stock of known vitality and of superior merit, but will not be responsible for future results or failures. Errors should be reported at once.

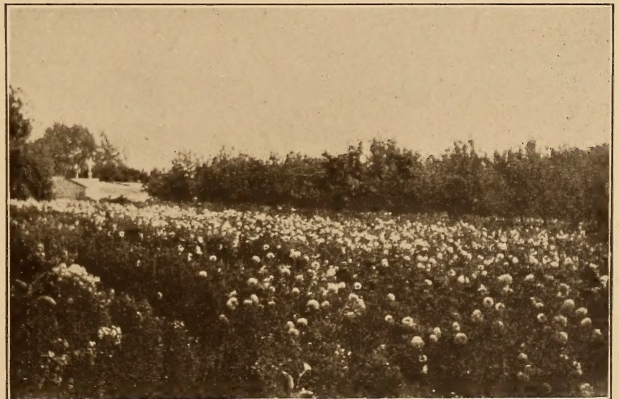
Note.—If you fail to find some old favorite listed in the following pages, it is because a newer and better variety has taken its place.

Novelties and Dahlias of Special Merit



Corona.

CORONA. 1910. (The Carnation Dahlia.) A miniature decorative form, fully double and of purest white. Its wonderful freedom of bloom, pure color and chaste form places it at once at the head of the list as a florist's flower. At a little distance it would be pronounced a carnation, which it resembles both in size and form. This graceful decorative type will undoubtedly supersede the rounded formal white Pompons. Last spring I sent some stock of this variety to an Eastern specialist—Nathan A. Miller—for trial, and he makes this report: "The White Pompon, Corona, sent for trial was superior to anything in its class for design work, and later in the season attracted much attention as a buttonhole flower." Strong tubers, 50c each; \$5.00 per doz.



Partial View Taken in August.

(Varieties I here offered for the first time are indicated by date)

CHARLES CLAYTON. 1909. (The subject of the Frontispiece.) This wonderful Cactus Dahlia was introduced last season at \$2.00 each and has given the best of satisfaction everywhere. I consider Charles Clayton my best introduction. The strongest words of praise are not extravagant when applied to this wonderful new Cactus. It is the ideal in color, form, length of stem and general good habits. Beyond which it would seem little could be hoped for. A glance at the illustration is convincing of its perfect form. Stems are long, throwing the flowers well above the foliage. The color is a most intense red, so vivid as to dazzle the eye. Flowers are large in size and are produced freely. Plant grows to a height of 4 feet. Price, strong tubers, \$1.00 each; \$10.00 per doz.

BADENIA. (Cactus.) Color, a clear, bright orange, striped and flecked with bright red. Petals are very long, and curved towards the center. Height, 4 feet. Strong tubers, 20c each; \$2.00 per doz.

CONGO. 1910. A decorative form. A dark velvety maroon color. Produced on long, erect stems. 50c each; \$5.00 per doz.

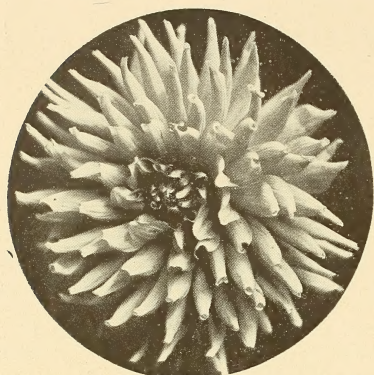
Springfield, Mo., March 16, 1909.

Your shipment of bulbs arrived a few days ago in good condition. I have just unpacked two shipments from Eastern growers, and I must say yours appear to be in better condition than any I have purchased elsewhere.

J. E. L.

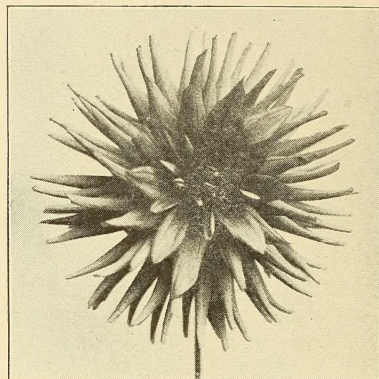
Branford, Conn., Oct. 23, 1909.

I found the New Cactus Dahlia, Charles Clayton, fully up to recommendation in every way, holding its flowers well when cut, and showing well on the plant. I consider it the best in its class and bound to become a leader. N. A. M.

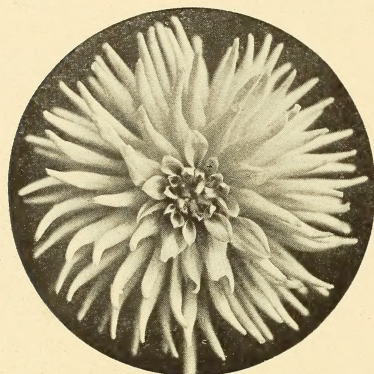


Country Girl.

COUNTESS OF LONSDALE. The freest-flowering Cactus Dahlia in the collection, and perfect in form. Color, an exquisite shade of rich salmon, with just a suspicion of apricot at the base of the petals. Towards the tips the color deepens gradually to the softest carmine pink. Height, 3 feet. Strong tubers, 20c each; \$2.00 per doz.



Countess of Lonsdale.

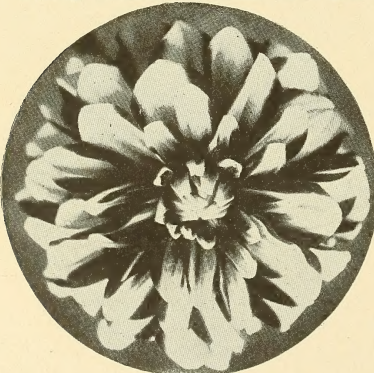


Dainty.

ESPANOLA. 1909. (Cactus.) Bright canary yellow. Petals twisted, curving forward. Stems are long and flowers borne erect above the foliage. Plant vigorous and robust in habit. A valuable addition to the yellows. Height, 4 feet. Price, 25c each; \$2.50 per doz.

EXQUISITE. (Cactus.) Pure orange-scarlet. A superb form, with long pointed petals. Produces a mass of flowers, which are held well above the foliage. Height, 3 feet. Strong tubers, 20c each; \$2.00 per doz.

FLOREADORA. (Cactus.) A most valuable addition to the cactus list. A marvel of productiveness and of exquisite form. Deep blood red; very early. Height, 3 feet. Strong tubers, 20c each; \$2.00 per doz.



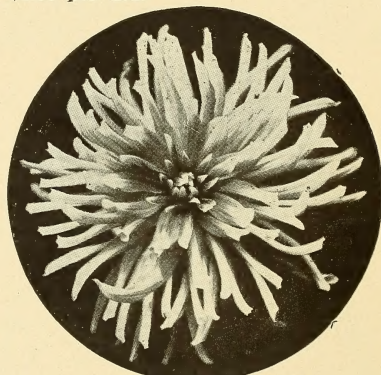
Eloise.

CHARM. Petals long and regular, delicate salmon rose, changing to pale pink; often pink edged with salmon rose. Very fine both in color and form. Height, 3 feet. Strong tubers, 25c each; \$2.50 per doz.

CORNUCOPIA. (Cactus.) A superb variety; petals very long and regular in form. Deep vermilion, shading darker. Flowers large and produced in profusion. Height, 3 feet. Strong tubers, 20c each; \$2.00 per doz.

CORA GILBERT. A show Dahlia. In form a perfect model, rounded and full with a high center; petals beautifully quilled. Color, creamy pink, beautifully shaded. Stems very long. Height, 4 feet. Strong tubers, 25c each; \$2.50 per doz.

COUNTRY GIRL. (Cactus.) Base of petals golden yellow suffused with salmon rose, a bright and pleasant combination of color, difficult to describe. Flowers are very large and perfect in form. An exceptionally fine Dahlia. Height, 3½ feet. Price, 25c each; \$2.50 per doz.



Charm.

FRUTE. (Cactus.) Peaches and cream describes the color of this beauty; a pleasing soft rose-pink passing to a cream center. Height, 3 feet. Strong tubers, 25c each; \$2.50 per doz.

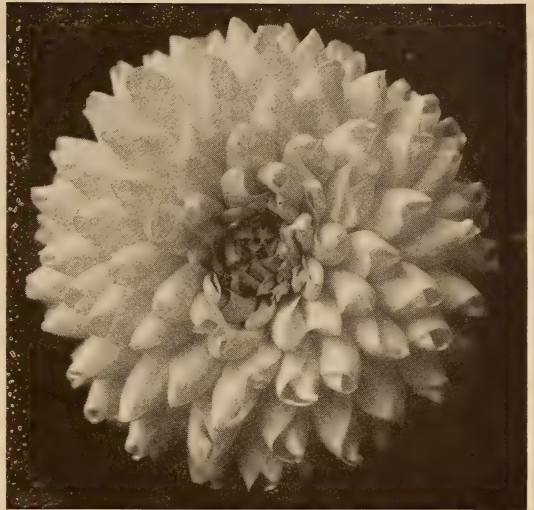
GLEN EYRIE. 1908. (Decorative.) A superb new lemon yellow. A large, finely formed flower, borne on good, stout stems. Some of the flowers show tips of white. Will undoubtedly become one of the popular yellows of the future. Height, 4 feet. Strong tubers, 25c each; \$2.50 per doz.

GOLD MEDAL. Golden yellow streaked and dotted with red. A large, rounded flower. 35c each; \$3.50 per doz.

GOLD OF OPHIE. Flowers extra large of the decorative form and always full to the center. Height, 4 feet. Strong tubers, 25c each; \$2.50 per doz.

GRAND DUKE ALEXIS. A magnificent Dahlia of the largest size. Its petals are beautifully quilled, giving it a very unique appearance. Its color is pure white, if slightly shaded, but over-spread with delicate lavender when grown in bright sunlight. Undoubtedly one of the best of the snow varieties. Height, 4 feet. Strong tubers, 20c each; \$2.00 per doz.

GRACE STEPHENS. A bold decorative form. An erect grower with long stems, holding its flowers well above the foliage. Color, lavender pink, showing reddish purple on reverse of petals. Large and full. Height, 3 feet. Strong tubers, 20c each; \$2.00 per doz.



Grand Duke Alexis.



Gen. Buller.

GEN. BULLER. Cardinal with crimson shading. Each petal tipped with pinkish white. Stems long. An extra fine Dahlia. Height, 4 feet. Strong tubers, 20c each; \$2.00 per doz.

GABRIEL. A fancy Cactus of exquisite form, very large and full. Color varies from rich scarlet to creamy white, often striped scarlet and white. Height, 4 feet. Strong tubers, 20c each; \$2.00 per doz.

HARBOR LIGHT. (Cactus.) A handsome variety, with large, fine form; petals long and narrow, dark red with shading of apricot in the center. Height, 3 feet.

ICEBERG. (Cactus.) A delicate, medium sized flower, borne on long erect stems. Color, pure white shading to greenish white at the base of the petals. Flower very regular in outline. Height, 3 feet.

Strong tubers, 25c each; \$2.50 per doz.

IOLA. A form between the decorative and show varieties; flowers medium to large. Rich, rosy pink. An early and very free bloomer.

Strong tubers, 25c each; \$2.50 per doz.

INGEBORG EGELAND. A strong grower with bright green foliage, presenting a picture of wonderful richness when combined with the large mass of deep scarlet blooms. Flowers are borne well above the foliage on strong, medium length stems. Height, 3 feet.

Strong tubers, 25c each; \$2.50 per doz.

JUANITA FORD. (Show.) 1908. Flowers very large and of exquisite form, borne on long stems. Plant an upright grower, with strong, healthy foliage. Color, deep cardinal red. An excellent variety for cutting. Height, 4 feet. Strong tubers, 25c each; \$2.50 per doz.



Gabriel.

J. H. JACKSON. (Cactus.) A tall growing variety, producing its finely formed flowers on long stems. Color, brilliant crimson maroon.

Height, 5 feet.

Strong tubers, 25c each; \$2.00 per doz.

JEANNE CHARMET. A new decorative variety of exquisite form and color. Flowers are very large and stems exceptionally long. Color, a shading of pink lilac, each petal edged with white. Very fine. 50c each; \$5.00 per doz.

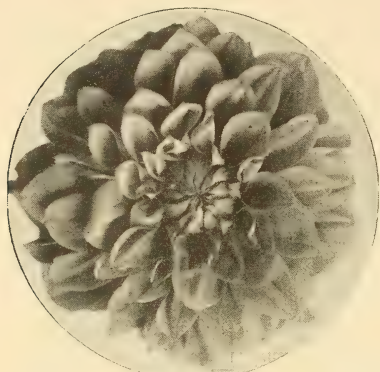
KRIEMHILDE. An exquisite shell pink shading to white in the center. Undoubtedly the finest and most perfect pink Cactus Dahlia to date, and as a cut flower superseding all the other pink sorts. Height 4 ft. Strong tubers, 20c each; \$2.00 per doz.



Kriemhilde.



Ingeborg Egeland.



Manitou.

and narrow, curving forward and irregular in formation, giving a claw-like effect to the flower. Color, a pleasing orange scarlet. A decided acquisition. Height, 4 feet.

Strong tubers, 50c each; \$5.00 per doz.

MARY SERVICE. (Cactus.) A flower of exquisite form and unique coloring; purplish rose shading to heliotrope. Fine for cutting. Height, 4 feet.

Strong tubers, 25c each; \$2.50 per doz.

MRS. H. J. JONES. A beautiful large Dahlia with long claw-like petals curving forward. Color, bright, vivid red, tipped and edged with pure white. Sometimes solid red, at others bluish white. One of the best to date. Height, 5 feet.

Strong tubers, 25c each; \$2.50 per doz.

MRS. HANNAH MUIR. 1909. (Cactus.) Salmon pink, sometimes marked with white. Petals long and curved, drawing to a sharp point. Stems medium in length. Height, 4 feet.

Strong tubers, 25c each; \$2.50 per doz.



Mrs. Hannah Muir.

MRS. T. F. DE WITT. Clear canary yellow. An exceptionally fine decorative form. The best of all decorative yellows. Height, 4 feet.

Strong tubers, 25c each; \$2.50 per doz.

MANZANOLA. 1910. In this new decorative Dahlia we have one of the most intense vivid reds of the dahlia family. Flowers are large and finely formed, showing well above the foliage. A strong, healthy plant. Height, 4 feet.

Strong tubers, 50c each; \$5.00 per doz.

MRS. ISABEL J. SEWALL. 1910. A new decorative variety of a beautiful fawn shade. Flowers large and full. A very unique and attractive color, suggesting the rich shading of silk. Distinct from all other dahlias in this type. Height, 5 feet.

Strong tubers, 50c each; \$5.00 per doz.

MANITOU. 1908. The illustration shows the flower much reduced in size. Its flowers are uniformly even in outline and always full to the center. Immense size—often eight inches in diameter. The color is pleasing, being an amber bronze with a distinct shading of pink. Not suitable for cutting, as the flower is too large and the stems rather short. Height, 4 feet.

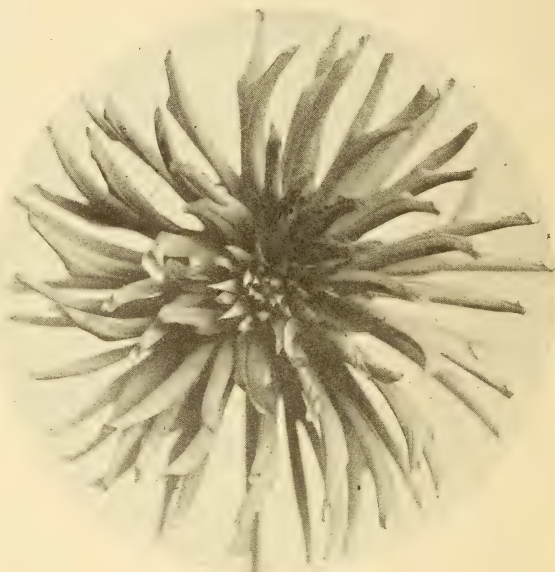
Strong tubers, 50c each; \$5.00 per doz.

MRS. CORFMAN. (Decorative.) 1908. A fine vermilion scarlet flower, borne on long stems well above the foliage. An interesting feature of this variety is its stems and branches, which are not green like the foliage, but a waxy pink almost transparent in appearance. Fine for either garden or cutting purposes. Height, 2 feet.

Strong tubers, 25c each; \$2.00 per doz.

MRS. W. K. JEWETT. 1908. A large, finely formed flower, combining all qualities of a first-class flower. Petals long and narrow, curving forward and irregular in formation, giving a claw-like effect to the flower. Color, a pleasing orange scarlet. Very long stems, making it fine for cutting. A decided acquisition. Height, 4 feet.

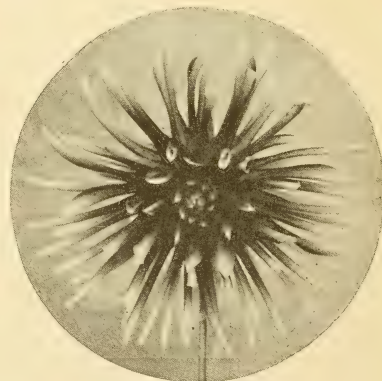
Strong tubers, 50c each; \$5.00 per doz.



Mrs. W. K. Jewett.

MAD. DAEL. (Mad. Van Den Dael.) An immense decorative Dahlia that has proven a favorite with all and is justly entitled to first place among all the shell pinks. It is very large, and yet is chaste in form. Stems are exceptionally long and wiry, bringing the immense flowers above the foliage. Color, soft shell pink. A noble Dahlia. Height, 4 feet.

Strong tubers, 25c each; \$2.50 per doz.



Mrs. H. J. Jones.



View Showing a Portion of a Bed of Mrs. Winters on the Right.

MONROVIA. A new decorative Dahlia of fine form. Color, rich fawn shading to bronze, while the reverse of the petals show light purple, giving the flower the rich shading seen in changeable silk. A color hitherto unknown among Dahlias. Height, 3 feet. Strong tubers, 20c each; \$2.00 per doz.

MRS. WINTERS. This superb white Dahlia is now so generally and favorably known that an extensive description is not necessary. Next to Charles Clayton, I look upon this Dahlia as my best introduction. Always reliable, always satisfactory. As a white it has neither superior nor equal. Height, 3 feet. Strong tubers, 20c each; \$2.00 per doz.

NEDRA. 1909. (Cactus.) A soft mauve pink; a unique color in the dahlia family and one hard to describe. Petals long but irregular in formation, often showing funnel form at the tip. Stem rather short. Height, 4 feet. Strong tubers, 25c each; \$2.50 per doz.



Nedra.



Navajo.

NAVAJO. For richness of color this new decorative Dahlia has no equal. Its bold, rich flowers were the admiration of all who visited the grounds the past two seasons. A most intense red, with violet shading. Height, 4 feet. Strong tubers, 25c each; \$2.50 per doz.

OPAL QUEEN. A new decorative Dahlia. Strong, erect grower with good stems. A color as difficult to describe as the opal itself. In a general way it may be said to be a light sulphur, overspread and shaded with a tinge of pink, but giving varying hues according to light; a pleasing color. Height, 3 feet. Strong tubers, 20c each; \$2.00 per doz.

OLIVE TRACY. 1910. Clear canary yellow, a delicate color. Produced on long stems, making it a valuable variety for cutting. A very attractive flower. 50c each; \$5.00 per doz.



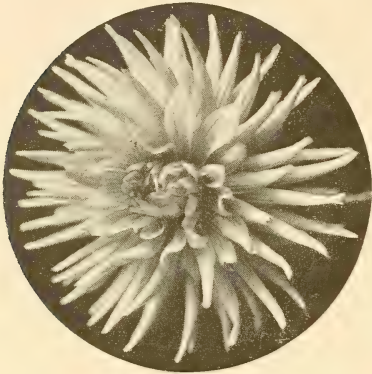
Olive Tracy.

Spokane, Wash., Nov. 19, 1909.
I have wanted to write you, praising the Dahlias you sent me. They all grew and produced beautiful flowers and were admired by all.
S. J. M.

Halifax, N. S., April 28, 1909.
Just a line to tell you that the Dahlia tubers sent last season turned out well—made fine plants covered with buds and bloom. MRS. G. E. F.

Roswell, N. M., March 16, 1908.
The Dahlias sent us last year were so satisfactory that we are pleased to hand you this order.
R. H. K.

Amana, Iowa, March 3, 1908.
The Dahlias I had from you last spring were the finest and best tubers I ever had, and flowers were admired by every one who saw them.
H. S.



Princess Yetive.

well above the foliage on long stems. Height 5 feet, Strong tubers, 20c each; \$2.00 per doz.

SOUVENIR DOUZON. (Decorative.) An immense flower with broad, flat petals and full to the center. This one is undoubtedly the best red in the decorative section. Height, 5 feet.

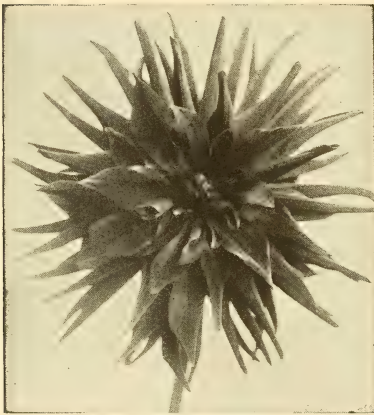
Strong tubers, 20c each; \$2.00 per doz.

THE BARON. (Fancy.) 1908. A strong, robust grower, producing bright yellow flowers, sometimes tipped with white. In form the flower is nearly round. Stems long. An excellent variety for cutting. Height, 3 feet.

Strong tubers, 25c each; \$2.50 per doz.

UNCLE TOM. Dark maroon, almost approaching black. Fine shaped flower with good stem. Height, 3 feet.

Strong tubers, 20c each; \$2.00 per doz.



Uncle Tom.

graceful formed varieties in our collection. 25c each, \$2.50 per doz.

Five Fine Single Dahlias

CORONATA. Light scarlet. Stems remarkably long. Its chief distinctive feature lies in the fact that it is really fragrant, during the heat of the day.

PRES. VIGEE. (Collerette.) Carmine red, yellow disc surrounded by a fringe of pure white miniature petals. Very attractive. Height, 3 feet.

SCARLET CENTURY. Bright vivid scarlet on very long stems, petals broad and evenly arranged. The best of all the red singles. Height, 5 feet.

TWENTIETH CENTURY. Now so well known as to require but little description. Intense rosy-crimson tipped with white and having a white band around the disc.

WHITE CENTURY. Similar to the two foregoing, except as to color, which is of the purest white. Nothing equal to it among the whites. Height, 4 feet.

Price of any of the above singles, strong tubers, 20c each; \$2.00 per doz.; set of 5 postpaid, \$1.00.

PRINCESS YETIVE. 1910. Delicate pink shading to amber; a blending of colors too delicate to describe by word. Flower is medium in size; plant a robust, healthy grower. Strong tubers, 50c each; \$5.00 per doz.

PINK PEARL. Mellow pink at the base of the petals, shading off gradually to white at the tips, the effect being a soft, rosy pink. Fine for cutting. Strong tubers, 25c each; \$2.50 per doz.

PROF. ZACHARIAS. (Cactus.) Clear lemon yellow petals, long and straight; flowers well above the foliage. Height, 4 feet. Strong tubers, 25c each; \$2.50 per doz.

PROF. MANSFIELD. (Decorative.) Flowers very large, but stem rather short. Color, a combination of yellow, bronze and red, sometimes producing solid flowers of one color. Height, 4 feet. Strong tubers, 25c each; \$2.50 per doz.

PROGENITOR. Bright carmine or crimson lake, petals being furcated on the end like a staghorn, forming several points, each division having a fluted termination. Height, 3 feet. Strong tubers, 20c each; \$2.00 per doz.

RICHARD DEAN. (Cactus.) Rich vermilion scarlet, each petal tipped with white. Flowers held A vigorous grower.



Progenitor.

UMATILLA. (Decorative.) Another grand Dahlia of superior merit, either for garden or home decoration, to which it is especially adapted by reason of its remarkably long stems and splendid keeping qualities. Color, deep blood red with neither shading or variation. Height, 5 feet. Strong tubers, 25c each; \$2.50 per doz.

VICTOR VON SCHEFFEL. (Cactus.) This new introduction is similar in both form and color to the well-known Kreimhilde, but is much freer of bloom and more delicate in color. Shell pink shading to white. Height, 4 feet. Strong tubers, 20c each; \$2.50 per doz.

VENTURA. 1910. (Cactus.) Yellow shading to amber and pink. A very free bloomer. Stem rather short, but in all other respects first-class. Strong tubers, 25c each; \$2.50 per doz.

Walthari. Light sulphur-yellow in the center, shading to almost pure white on the tips; one of the most exquisitely



Twentieth Century.

Standard Cactus Dahlias

Strong Tubers. Price 15c each; \$1.50 per doz. postpaid.



Cactus Form.

Ft. High
Approximate

- | | |
|---|---|
| ALABASTER. Pure white. A small, finely formed flower. Fine for cutting | 3 |
| ESTELLA. Color, variable ground varying from blush to dark pink, heavily streaked and marked with red, sometimes producing a half of the flower solid red..... | 3 |
| EARL OF PEMBROKE. Deep purple maroon. Fine form.. | 3 |
| FLORA. Pure white. Produced on stout stems..... | 3 |
| GYPSY MAID. Orange scarlet petals long and pointed. Exquisite finish | 3 |
| GAZELLE. Rich purple flowers, medium in size, petals long and pointed | 4 |
| GLORIOSA. Bright scarlet, long curved petals. One of the best | 4 |
| GENESTA. Rich orange bronze. A fine autumn shade..... | 3 |
| JEALOUSY. Clear bright yellow. Fine form and good stem | 4 |
| LITTLE VALENTINE. Blush shading to rosy pink. Small but finely finished..... | 3 |
| MRS. BENNETT. Soft crimson, large and well formed, petals broad and pointed | 4 |
| MRS. BARNES. A beautiful primrose color. Flower well formed and a free bloomer. Stems rather short for cutting..... | 4 |
| MRS. PEART. Color a delicate creamy white.. | 3 |
| MATCHLESS. Another grand Cactus Dahlia. Petals long and even. Dark maroon. Old but fine | 3 |
| MRS. CHAS. TURNER. Extra large, with long, pointed petals and perfect in form. Bright lemon yellow | 3 |
| MRS. ALVORD. A fine salmon pink with long regular petals | 3 |
| MRS. LESLIE. Deep glowing red, good form form and habit | 2 |
| MRS. LONG. Creamy white. Fine form..... | 3 |
| MRS. Intense scarlet shading to orange at the base of the petals..... | 3 |
| MRS. CLINTON. Deep amber shading to rosy pink | 3 |
| PRINCE OF ORANGE. A beautiful form. In color a blending of apricot and bronze. Very free | 3 |
| PRINCE OF YELLOWS. Rich canary yellow. Medium size. A free bloomer | 3 |
| QUEEN ALEXANDER. Orange bronze, shading to amber. Of perfect form..... | 3 |
| STANDARD BEARER. Rich fiery scarlet, one of the very best..... | 3 |
| SPOTLESS QUEEN. Purest white, an excellent variety for cutting purposes..... | 4 |
| SILVER QUEEN. Light silvery pink. Petals long and pointed | 3 |
| THE ANTLERS. Rich purple maroon with dark violet shading. Petals curving forward in the form of a deers antlers..... | 3 |
| WINSOME. Pure white, good form..... | 3 |
| ZEPHYR. A light feathery cactus form of unique coloring, rosy pink shading to heliotrope | 3 |

Pompon or Bouquet List

Price 15c each; \$1.50 per doz., postpaid.

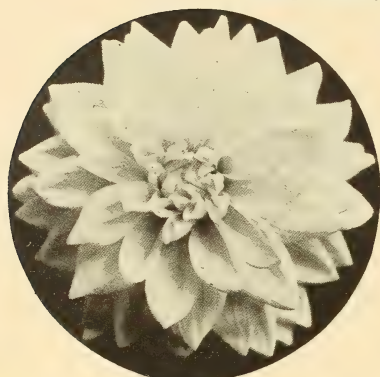
Ft. High
Approximate

- | | |
|---|---|
| BACCHUS. Clear bright red. Rounded and full | 4 |
| COCHINEAL ROSE. Deep Cochineal red, of perfect form | 3 |
| CATHERINE. Bright yellow. Good form and stem | 3 |
| DARKNESS. Very dark maroon. Extra fine... | 3 |
| HEDWIG POLWIZ. Very free. Color, red and white | 3 |
| ISABEL. Vermillion. Very fine..... | 4 |
| LITTLE PRINCE. Quite small. Widely varied in color from deepest red to pinkish white.... | 3 |
| PURITY. Pure white. Well rounded and full, A prolific bloomer..... | 3 |
| PURE LOVE. Beautiful lilac | 4 |
| SCARLET GEM. Each part of the name is correctly descriptive | 3 |
| STAR OF THE EAST. Purest white. A free bloomer. Excellent for cutting..... | 3 |
| WHITE ASTER. (Guiding Star.) Pure white. Excellent for cutting. Petals fringed..... | 4 |

Sixteen Standard Decorative Dahlias

Strong Tubers. Price, 15c each; \$1.50 per doz., postpaid.

Ft. High
Approximate.



Decorative Form.

- AMERGEONE.** A very large flower. Deep plum purple. 3
- A. F. BISHOP.** A rich, clear lilac—a color hitherto unknown in this type. 3
- BLACK PRINCE.** Very large. Dark velvety maroon. 4
- DR. GATES.** Beautiful shell pink, shading to blush at base of petals, stems long. An excellent variety for cutting. 5
- DR. MUIR.** Apricot, shaded to bronze. An early and free bloomer. 3
- EUGENE TEELE.** A very fine deep scarlet produced on long stems; valuable for cutting. 5
- FIRE RAIN.** Flowers on long stems in clusters or sprays. Color, intense scarlet; early and free. 4
- GRAND MOGUL.** Scarlet tipped and streaked pure white. 4
- HENRY PATRICK.** Pure white. Flowers are very large and pure in color. 6
- LYNDHURST.** Scarlet or vermillion. A noble flower. 4
- LAVENDER BEAUTY.** A clear, soft lavender shade. Petals deeply serrated. 4
- MINNIE WEST.** Pale lemon shaded to white. 3
- MAID OF KENT.** Intense scarlet, variegated with pure white; frequently a solid scarlet. 4
- MRS. HARTONG.** Very large and exquisite form. Color, light fawn, suffused with pink. Very handsome. 5
- MRS. LINDER.** Blush pink, fine in color and form. Early and free. Fine for cutting. 4
- WM. AGNEW.** Deep crimson. Flower very large. Good stem and form. 4

Thirty-two Show and Fancy Dahlias

Strong Tubers. Price 15c each; \$1.50 per doz., postpaid.

Ft. High
Approximate



Fancy Type.

- ANNIE MOORE.** A fine variegated flower of medium size. Color, a beautiful combination of cherry, pink and white. 3
- A. L. CHASE.** Creamy white, streaked with purple; sometimes solid purple. 3
- A. D. LIVONI.** Rich pink. Finely formed. A very handsome flower. 3
- ARABELLA.** A large perfect form. Pale lemon, shading to primrose at the tips. 3
- ALTUS.** Rich purple tipped with white. 4
- BON TON.** A fine ball-shaped flower of a deep garnet red. An extra fine Dahlia. 4
- BON MAZA.** (Uncertainty.) An old Dahlia, but one of the best. White ground, streaked and marbled in a curious manner with bright red. 4
- FRANK SMITH.** Rich dark maroon; sometimes tipped with pure white, shaded into pink. One of the best. 5
- FIRE BALL.** A most intense dark red, with long stem. 4
- FLORAL PARK JEWEL.** Rich purple red, tipped and striped with white. Sometimes solid color. Very early and free. 3
- GLORI DE LYON.** Pure white. The largest white Dahlia in cultivation; round as a ball. 3
- GOLDEN TREASURE.** A beautiful burnt orange color. Flower large, well formed and full to the center. 3
- GLENCOE.** Bright scarlet. Flowers almost as round as a ball. A fine variety for cutting. 5
- MISS RUTH.** Lemon yellow, tipped with pure white; sometimes clear yellow. 3
- ORINE EMERSON.** A very handsome flower, borne on long stems. Color, rich, dazzling red. 3
- PIONEER.** The nearest approach to a black Dahlia of any yet introduced. For combined excellence it has no superior. 4
- PURPLE GEM.** Rich royal purple, clear and constant. This variety is a decided improvement over the old varieties. A first-class flower. 4
- QUEEN OF YELLOWS.** Fine, clear yellow. 3
- SNOW.** A beautiful pure white, long stem. Excellent for cutting. 4
- SALMON QUEEN.** Buff salmon, rounded and full. 4
- THE CHIEF.** Deep garnet red. Fine for cutting. 4
- VERIDIFLORA.** A natural curiosity. Its flowers are as green as the foliage, and are produced in profusion. 2½
- IGNACIO.** A remarkably healthy, strong-growing plant, with long stems and large, full flowers. A deep, clear red. 4
- JOHN LAMONT.** Maroon, shading to almost black. Very fine. 3
- KATE HASLAM.** A beautiful soft pink. Petals beautifully quilled. 3
- KAISER WILHELM.** One of the grandest flowers in cultivation. Of immense size and perfect form. Deep yellow, tipped and shaded with cherry red. 4
- LADY MILDMAJ.** A very beautiful flower. White ground shaded to pale lilac. Very large and full. A free bloomer. 3
- LAURA SPANGLER.** Rich dark purple, sometimes tipped with white, rounded and full. 4
- LUCY FAWCETT.** Sulphur yellow streaked and flecked with crimson. Fine. 5
- MINGO.** Deep garnet red, sometimes marked with pure white. 3
- MISS DODD.** Purest yellow, of exquisite form and color. A remarkably handsome flower. 3
- MRS. BRYAN.** Light lavender, tinged pink. 4

Gladiolus



Groff Gladioli.

Among the summer flowering bulbs the Gladiolus has but few, if any, equals. They are easily satisfied, both as to soil and location, doing equally well in beds, rows or interspersed among shrubbery. Good cultivation is desired, but heavy fertilizing should be avoided.

The following two strains will be found very satisfactory, mixed colors giving a wide range of color.

GROFF'S STRAIN.

1st size, 5c each; 50c per doz.; \$3.00 per 100
2nd size, 3c each; 30c per doz.; \$2.00 per 100
3rd size, 2c each; 20c per doz.; \$1.50 per 100

AMERICAN HYBRIDS

A strain ranging lighter in color than the Groff strain furnished at same prices.

SPECIAL MIXTURE IN PACKAGES OF 50 FOR 60 CENTS.

A fancy mixture of either of the above strains that will produce one good spike of bloom from each bulb—my favorite planting size. Try one of these packages.

Peonies

Fine, hardy plants, rivaling the rose in perfection of bloom, color and fragrance. They are at home in any climate or soil, but thrive best in a deep, rich, well-drained loam. They make a gorgeous display planted in beds, on the lawn, or planted singly along a walk or herbaceous border. The Paeony is perfectly hardy and generally able to care for itself, but it does not follow that they enjoy neglect. Give them ample room in which to grow, keeping them free from weeds and grass and they will amply repay all the care given. A word to beginners: Don't be alarmed when you see your newly set Paeonies begin to turn brown in July and appear to be quite dead by August. This is natural. They will be on hand again in the spring.

The following varieties embrace a wide range of color and will be found very satisfactory:

Prices, except where noted, 25c each; \$2.50 per doz.

DORCHESTER. (Richardson's Pink.) Clear light pink. 50c each.

DUKE OF WELLINGTON. Ivory white with creamy white center. Very large.

EARLY ROSE. An early pink, blooms in clusters; very fragrant.

MAD. BREON. Flesh and lemon, changing to white.

MAD. LEBON. Fine cherry red.

MARIE LEMOINE. Late flowering creamy white tipped rose. 50c each.

MODEL DE PERFECTION. Silver pink. Large and sweet.

OFFINALIS RUBRA. (Old Red.) Flowers of a bright crimson, quite double and globular. Very early, rare and fine.

POTTSI. Dark purple red. Very long stem. Medium quality.

QUEEN VICTORIA. A good sized flower; outside pure white, center creamy white; inner petals usually tipped carmine.

RUBRA GRANDIFLORA. Blood red. Extra large size. A fine late variety. 50c each.

ROSEA SUPERBA. Fine, full rosy pink. Extra choice flower. Very free bloomer.

VICTORIA TRI-COLOR. Outer petals pale rose, mottled with pink. Center ones yellowish-white.

SPECIAL OFFER. One each of the above. 21 for \$5.50.

FESTIVA MAXIMA. A rare variety of great beauty. Exceedingly showy and of large size. Pure, snowy white flaked with small crimson spots at center. Finest white in cultivation. 50c each.

GRANDIFLORA ALBA. Large, pure white, Blooms late. 50c each.

GOLDEN HARVEST. Silver pink changing to white. Center yellow.

GOLDEN CENTER. This is not a large Paeony, but is a very good one. Pure white, pale yellow center.

HUMEL. Rosy pink. Very large and full. Should be mulched heavily to bring its flowers to perfection.

LA TULIP. Softest blush, with streaks of carmine. Tulip-like markings on the edges of the petals. Delightfully fragrant. Fine in both form and stem. 50c each.

LATE ROSE. Similar to Early Rose, only it blooms later in the season. It is a fine rose-scented flower.

LADY LENORA BEAMWELL. Very large and sweet. Silver rose.

Hardy Herbaceous Plants

Prices, except where noted, 10c each; \$1.00 per doz.

For Permanent Planting in Garden, Borders Cemetery Plots, Etc.

STRONG FIELD-GROWN PLANTS.

No flower garden is complete without a collection of these most valuable plants. With a little care they may be selected so as to give a continuous supply of flowers from early spring to autumn's frosts. They require far less care than the annuals or bedding plants, and may be used to good advantage to fill odd corners, along fences, and to screen unsightly objects. They are perfectly hardy, and yet for winter they should have a slight covering of leaves or other litter. Care should also be taken to prevent pools of water standing on them during winter. I will

gladly make selections for those not familiar with hardy plants if they will inform me as to space to be filled. In this way I can send thirteen distinct varieties, postpaid, for \$1.00.

ARCHILLEA.

(Milfoil, or Yarrow.)

"THE PEARL." Flowers borne in greatest profusion the entire summer on strong, erect stems, two feet high, of the purest white. As a summer cut-bloom it is of great value.

ARCHILLEA ROSEUM. (Rosy Milfoil.) Finely cut deep green foliage. Flowers pink in dense

heads. Eighteen inches high and flowers all summer. Well worth growing, both as a border plant and for cutting.

BOLTONIA ASTEROIDES. (False Camomile.) Aster-like flowers. Pure white and very showy. Grows to a height of four and five feet. One of the best hardy perennials.

BLEEDING HEART. (*Dielytra Spectabilis.*) A hardy perennial plant producing graceful sprays of heart-shaped pink and white flowers. Price, 25c each; \$2.50 per doz.

BACONIA-CORDATA. (Flume Poppy.) A rank growing plant, suitable for large grounds or for screening unsightly objects. Ornamental silvery foliage, producing large sprays of creamy white flowers. Grows to a height of 7 feet.

CARNATIONS. (Hardy.) Too well known to require description. Mixed colors from pure white to dark red.

COREOPSIS LANCEOLATA. A beautiful, hardy border plant. Grows 30 inches high, and produces its bright golden-yellow flowers in great profusion the entire season. It makes a handsome vase flower when cut, and should be grown in quantity whenever flowers are wanted for table decoration.



Columbine Coerulea.

COLUMBINE.
(*Aquilegia.*)

COERULEA. The beautiful native species of the the Rocky Mountains. Very broad flowers, three inches or more in diameter. The outer sepals and long spurs are deep blue. Center of flower creamy white. Grand for cutting or border work. Thrives best in the shade. Price, 15c each; \$1.50 per doz.

CHRYSANTHA. (Golden Spurred Columbine.) Grows two and a half feet high, forming a bush two to three feet across, which is covered for two months with golden yellow flowers with long spurs. One of the most distinct of the family.

MIXED COLORS. The old garden Columbine. Single and double flowers. Giving wide range of color.

CANTERBURY BELLS. Fine, showy plants, producing a profusion of bell-shaped flowers in white, pink and various shades of blue. Fine for massing.

GYPSOPHILA PANICULATA. (Baby's Breath.) A beautiful perennial. When in bloom it forms a symmetrical mass two to three feet in height, of minute pure white flowers, forming a beautiful gauze-like appearance. For cutting purposes it is exquisite, especially in combination with high colored flowers.

GYPSOPHILA FL. PL. A double form of the above. Blooms two weeks later. Each floret is densely double. The most valuable introduction in recent years. Price, 35c each; \$3.50 per doz.

GAILLARDIA. (*Grandiflora.*) Beginning to flower in June, they continue one mass of bloom the entire summer. Flowers three inches in diameter. Center dark reddish-brown. Petals vary from scarlet-orange to crimson.

GOLDEN ROD. A strong growing plant, producing rich golden yellow bloom in July and August.

HARDY ASTERS. (Michaelmas Daisies, or Star-worts.) These are among the showiest of our late-flowering hardy plants, giving a wealth of bloom at a season when most other hardy flowers are past. I offer three colors only—blue, white and light lavender.

HARDY MARGUERITE. A well known hardy daisy, growing about three feet high. Flowers pure white with bright yellow center.

HELIANTHUS.
(Hardy Sunflowers.)

MULTIFLORUS MAXIMUS. A gigantic single variety, growing from five to six feet high, producing immense single golden-yellow flowers.

MULTIFLORUS FL. PL. Double dahlia-like Golden yellow flowers.

HOLLYHOCKS. (Double Strong Field Roots.) As a background in large borders or beds of the lower herbaceous plants there is nothing better. For planting in rows or groups on the lawn, or interspersing among shrubbery they are invaluable. The flowers, which are elegant in shape as a *Camelia*, form perfect rosettes of the most lovely shades. Separate colors.

Red	Yellow
White	Blush
Pink	Maroo

HOLLYHOCKS. (*Allegheny* or *Everblooming.*) An entirely new departure, which has much to commend it. The mammoth flowers are wonderfully formed of loosely arranged fringed petals, which look as if made from the finest China silk. A wide range of colors in mixture only.

HARDY PINKS. (*Dianthus Chinensis.*) This old-time favorite is well deserving of a place in every garden. They occupy but little space, and yet produce a profusion of richly hued flowers of delightful fragrance.

HEMEROCALLIS. (*Lemon Lily.*) **FLAVA.** A most useful variety, growing about two feet high, with clusters of lily-like flowers of a rich yellow; very sweet.

THUNBERGII. Similar to the above, only it blooms a full month later and is more sturdy in growth. Stems, from three to four feet long.

HELENIUM. (*Sneeze-wort.*) A fine late blooming plant, producing flowers of various colors of yellow and bronze, with brown center. Continues in bloom after severe frost.

HARDY POMPON CHRYSANTHEMUMS. The hardy Chrysanthemums are becoming more and more the queen of autumn. They continue to bloom long after all other flowers have died away, and even "the last rose of summer" has faded and gone. The following are among the best colors:

Red	White	Yellow
Pink	Purple	Bronze

HIBISCUS. (*Crimson Eye.*) An immense white flower with a crimson eye. Perfectly hardy. Blooms freely from mid-summer until killed by frost.

IRIS. (*Germania.*) Large flowering varieties. Excellent for either borders or massing. I carry the following colors:

Blue	Lavender	Bronze Purple
Bronze	Purple and White	Wine Purple
Creamy White	Orange Yellow	

LYSIMACHIA. (*Loose-strife.*) A fine hardy plant, about two feet high, with long, dense recurved spikes of pure white flowers from July to September.

LYCHNIS. (*Lamp Flower.*) A hardy perennial, growing to the height of two and one half to three feet, and producing fine heads of bright scarlet flowers.

LILIE TIGRINUM. (*Tiger Lily.*) Orange red spotted dark purple.

MONARDIA. Showy plants. Aromatic foliage producing spikes of bright scarlet flowers. Blooms in July and August. Two feet high.

ORIENTAL POPPY. This poppy is perfectly hardy. Its large orange scarlet flowers make it one of the most showy of all plants.

PYRETHEUM. A very pretty and useful class of plants giving a profusion of bloom in June. Its range of color is wide, but is especially rich in reds, purples and scarlets. Thrives well in any soil and lasts a long time after being cut. Mixed colors.

PLATYCODON GRANDIFLORA. (*Chinese Bell Flower.*) Blooms freely from July to September. Flowers are bell-shaped and dark blue in color. Quite hardy.



Hardy Phlox, Alaska Daisies to the Right.

- PARDANTHUS.** (Blackberry Lily.) Lily-like flowers of a bright orange color, followed in September with seeds which resemble blackberries.
- PENTSTEMON.** (Barbatus.) A hardy native pentstemon, producing brilliant scarlet flowers on spikes three feet long. Fine for any location.
- PHYSOSTEGIA.** (False Dragon Hood.) Soft pink, forming dense bushes three to four feet high, bearing spikes of delicate pink flowers.
For List of Peonies See Page 13.

Perennial Phlox

PERENNIAL PHLOX. Among the hardy perennial plants no class is of more importance than the Phloxes. They are of the easiest culture, flowering well in almost any soil or location. They embrace a wide range of color and produce a wealth of flowers from early summer until late in the fall. For best results the clump should be divided and reset after the third year. The following list contains the most desirable colors:

Newer Phloxes of Special Merit

Price, 15c each; set of 7 for \$1.00

- BOUQUET FLOWER.** Pale pink with crimson eye. Each branch a perfect bouquet.
- BERANGER.** White delicately suffused with rosy pink.
- COUQUELICOT.** Pure scarlet with deeper eye. Best of the scarlets.
- F. G. VON LUSBURG.** The largest and finest white in cultivation. Florets fully double the size of any other white.
- HERMINE.** Very dwarf, never growing above 10 inches in height. Pure white. A gem.
- LA VAGUE.** Pure mauve with aniline red eye.
- MRS. JENKINS.** An early-flowering pure white, forming an immense panicle. One of the best.

Standard Varieties of Phloxes

Price, 10c each; \$1.00 per dozen.

- ANDRES HOFFER.** Dwarf, white. Very early.
- ESPERENCE.** Fine large pink, light eye.
- ECLIPS.** Dark purple red.
- ECLAIREUR.** Brilliant rosy magenta with large lighter halo. An excellent variety.
- EDMOND ROSTAND.** Reddish violet, shading brighter towards the center of petals, with an exceptionally large, white star-shaped center.
- HENRY MURGER.** Pale pink shading to crimson.
- IRIS.** Violet purple shading to blue.
- JOSEPHINE GERBAUX.** Blush, pale pink eye.
- LAVENDER.** Pure lavender. A late bloomer.

- FLUTON.** Deep wine red.
- PEARL.** Pure white. Tall grower.
- PANTHEON.** Clear pink with dark eye.
- ROBT. WEENE.** Deep blush, bright pink eye.
- RICHARD WALLACE.** Pure white, violet eye.
- R. P. STEUTHEES.** Rosy carmine with claret-red eye. One of the best Phlox in cultivation.
- THEBAIDE.** Carman-lake with red eye.
- WM. ROBINSON.** Rich salmon scarlet. Fine.

- RUBBECKIA.** (Golden Glow.) The plant is compact, growing six to eight feet high, producing numerous stems which are laden with double golden-yellow flowers.
- RUBBECKIA TOMENTOSA.** A densely branched variety, growing about three feet high and completely covered through the summer with brilliant small lemon-colored flowers, with purple cone.
- SWEET WILLIAM.** Too well known to require description. A general favorite with all. Mixed colors, only strong plants.
- SPIREA FILIPENDULA.** (Double Drop Wert.) A very hardy plant, with fern-like foliage, throwing up numerous flower stems, literally covered with miniature double white flowers. Very graceful.
- SHASTA DAISIES** (Burbanks.) Alaska. Immense snow white flowers four inches in diameter. Blooms through the season. The best daisy in the list. (See cut.)
Price of the above, 15c each; \$1.50 per doz.
- SHASTA.** The original Shasta Daisy. Pure white flowers, three inches in diameter. Second only in quality to Alaska.
- ST. BRUNO'S LILY.** A beautiful plant, with narrow, grass-like foliage and long spikes of white, fragrant lily-like flowers in May and June.
- VALERIANA COCCINEA.** A popular old favorite producing a mass of showy heads of bright pink flowers, from June to October. Excellent for edging, as it grows but 18 inches high.
- VALERIANA OFFICINALIS.** (Hardy Heliotrope.) A tall variety, producing fine heads of pale pink flowers in June and July, with a strong heliotrope odor. A fine plant.

Hardy Roses and Vines

Note.—Articles in this department marked * are sent by express only at purchaser's cost. Where as many as eight plants are ordered to one address, I will pay express charges. Plants not so marked will go by mail without extra cost.

BEGONIA. (Trumpet Creeper.) A rapid growing hardy vine with trumpet-shaped orange scarlet flowers.
Price, 25c each.

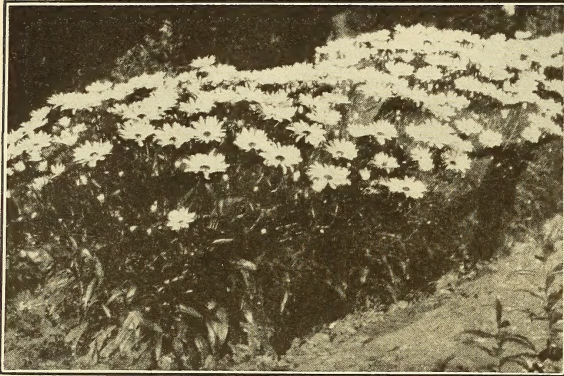
CLEMATIS PANICULATA. A vine of very rapid growth, quickly covering trellises and arbors with handsome, clean, glossy green foliage. Flowers are of medium size, pure white, borne in immense sheets and of a most delicious and penetrating fragrance. The flowers appear in September, at a season when few other vines are in bloom. Should be provided with a trellis or something to climb on as soon as it starts its growth.

Price, 2 years old, 25c; extra size, 3 years old 35c.

CLEMATIS JACKMANI. This variety, with its strong, healthy growth, hardy nature, and rich, deep velvety-purple flowers, is the most satisfactory of its class. Blooms with astonishing profusion. Should be pruned early in spring. Price, 75c each.

HONEYSUCKLE. (Halleana.) A vigorous grower. Flowers yellowish-white. Exceedingly fragrant and freely produced. Price, 25c each.

EUROPEAN SWEET SCENTED. A fine old Honeysuckle. Very sweet. Blooms in large clusters. Price, 25c each.



Bed of Alaska Daisies.

***POLYGONUM BALDSCHUANICUM.** (Bride's Veil.) A hardy climber of recent introduction from the mountains of Turkestan. It is of rapid growth, frequently attaining a height of ten to twelve feet in one season. The stems are twining and cling for support to any object within reach. Every branchlet terminates in a panicle of white, foamy flowers, which are produced during August and September. Strong plants. (See illustration.) Two-year-old, price, 60c each.

SCARLET TRUMPET. A rapid growing Honeysuckle with clusters of trumpet-shaped flowers. Price, 25c each.

***WISTARIA.** A very rapid climber, producing long sprays of purple flowers. Two-year-old roots, 25c; one-year-old, 15c.

Hardy Roses

(Two Year Old Cut Back.)

***CRIMSON RAMBLER.** Too well known to require description. Everyone is familiar with its large clusters of crimson flowers. Price, 35c each; extra size, 50c.



Polygonum Baldschuanicum.

***DOROTHY PERKINS.** Soft shell pink. Blooms profusely in clusters. An excellent companion to plant with the above. Price, 35c each.

***ALFRED COLOMB.** Bright, clear, cherry, red, shaded with crimson; globular, full and very sweet. Price, 35c each.

***GEN. JACQUEMINOT.** One of the most popular dark red roses. Price, 35c each.

***PAUL NEYRON.** Very large. Deep rose, shading to rich pink. Price, 35c each.



