

Historic, Archive Document

Do not assume content reflects current scientific
knowledge, policies, or practices

Chrysanthemums

Cannas

= Begonias



1875

OFFERED FOR SALE BY

GEORGE ATKINSON

SUCCESSOR TO T. H. SPAULDING

Greenhouses, Orange, N. J.

Box 995, ORANGE, N. J.

ANNOUNCEMENT.

I take the pleasure of presenting this catalogue to you for careful perusal, soliciting a trial order, confident of my ability to please and retain your custom, having been associated with Mr. T. H. Spaulding for the past ten years as general manager, and now being his successor.

Considering the great improvement the past few years, I have been compelled to weed out the inferior as well as many heretofore considered good varieties, in order to keep up to the times in novelties and recent introductions of this country and Europe.

Any person receiving this catalogue can make selections from this list with the utmost confidence that he will obtain only varieties which, if well grown, will produce the finest exhibition plants and blooms, and will prove a credit and reward him for his labor.

The customers of Mr. Spaulding may rest assured also that their orders will receive the same careful attention as has been bestowed in the past.

Respectfully yours,

GEO. ATKINSON.

NEW, CHOICE AND RARE.

Chrysanthemums

Offered for Sale by

GEORGE ATKINSON,

Successor to T. H. SPAULDING.

Box 995, ORANGE, N. J.

Greenhouses, - - - Orange, N. J.

TERMS: Cash, Unless by Special Agreement.

Packages will be delivered at Orange free of cost, after which they are at the risk and expense of the purchaser, and in case of loss or delay, the buyer must look to the forwarding companies. Orders accepted only on these conditions.

If Chrysanthemums are desired by mail, postage and packing must be added; for 50 plants or under, 15c.; 50 to 100, 25c.

Orange is reached by United States, or Wells, Fargo Companies. Please make your selection.

All novelties ready for distribution, March 1st.

Novelties for 1898.

T. H. Spaulding. (Ward). Color deep wine, self. Form Japanese incurved, with broad petals, forming a huge wine-colored ball showing no centre, $6\frac{1}{2}$ to $7\frac{1}{2}$ in. in diameter. Stem as stiff and erect as any variety grown, $3\frac{1}{2}$ to 4 ft. high. Foliage fully equal to Major Bonnaffon, completely covering the stem from the ground clear up to the bloom. It holds its color, is evenly colored throughout and is a splendid keeper and shipper, unquestionably the best late dark variety produced to date. 35 cts. each; \$3.50 per dozen; \$25.00 per 100.

Alice F. Carey. (Carey.) A beautiful light shade of pink, reflex, having excellent keeping qualities, with extra good foliage and stem $3\frac{1}{2}$ ft.; terminal buds. *Certificate C. S. A.* 40 cts. each; \$3.50 per dozen; \$25.00 per 100.

Chempwec. (May.) Clear bright yellow sport from Silver Cloud, large flower with good stiff stem and foliage well up to the flower. An extra good shipping commercial variety of good vigorous constitution. In season 1st to 15th of November; crown or terminal buds. $3\frac{1}{2}$ to 4 ft. 40 cts. each; \$3.50 per doz.; \$25.00 per 100.

Dolores. (May.) 84 points. A massive incurved deep yellow with broad petals of the largest size with exceedingly stiff stems and foliage close up to the flower. One of the best and strongest growers he has ever raised; $4\frac{1}{2}$ ft. This is a late variety not fit to cut before the 20th to the 25th of November. Crown or terminal buds. 40 cts. each; \$3.50 per dozen; \$25.00 per 100.

Minnewaska. (May.) 81 points. Bold heavy flower almost globular in form, straight and strap petals, of a distinct shade of deep pink. As a late exhibition variety this will prove very valuable; also a good pot variety. 3 feet. 40 cts. each; \$3.50 per dozen; \$25.00 per 100.

Miss Gladys Vanderbilt. (May.) Certificate 92 points. Pearl white with lemon shaded center. An exceedingly fine thing and decided novelty both in form and general build, and an extra good commercial or exhibition flower. In season 1st to 15th of

November. Crown or terminal buds, 3½ to 4 ft. 50 cts. each; \$3.50 per dozen; \$25.00 per 100. See cut page 5.

Robert G. Carey. (Carey.) A very beautiful globular incurved white of good substance and good keeping qualities. An extra fine exhibition or commercial variety; will be a standard variety for all purposes; 4½ feet; best on terminal buds. In season 15th to 20th November. *Certificate C. S. A.* 40 cts. each; \$3.50 per dozen; \$25.00 per 100.

Spottswood. (Carey.) A beautiful high built incurved light yellow somewhat in the style of Bonnaffon. This variety will certainly make a reputation for itself both as an exhibition and commercial flower. An extra good keeper; 4 ft. Crown or terminal buds. *Certificate C. S. A.* 40 cts. each; \$3.50 per dozen; \$25.00 per 100.

Wm. H. Chadwick. A phenomenal seedling, the grandest novelty of the year. A star production. Certificated at Chicago, Boston, New York and Philadelphia. An immense graceful bloom, waxy white, occasionally tinted pink. Growth, habit, stem and foliage simply perfect. Anybody can grow it satisfactorily. It cannot be praised too highly. Midseason or later. Per plant \$1.00; \$6.00 per dozen. See cut page 27.

Madeline Pratt. Certificated 1896. Named for the sweet little Miss on the Chrysanthemum Society's Certificate. High built incurved snowy white bloom. A very beautiful flower. Best from terminal, grown cool. Early midseason, 35 cts. each; \$2.00 per dozen.

Mrs. C. H. Peirce. (Dorner.) A soft deep yellow that appeals to the eye and at once becomes a favorite. Of robust habit, model strength of stem, heavy beautiful cut foliage up to the flower, its even growth, uniform size of flowers that are made up of well developed petals, giving it the greatest substance. Its proof against burning and its excellent shipping qualities will rank it with the best of commercial varieties. Height, 3½ ft. The large full flowers of globular form with straight petals curved in at the tip, produce are equal to Major Bonnaffon, of a deeper yellow and nearly reverse in style of petal. Take first bud. At its best November 6th to 25th. Recommended for *N. C. S.* Certificate by committees at Boston, Philadelphia, Cincinnati, and Chicago. 35 cts. each; \$3.50 per dozen; \$25.00 per 100. See cut page 19.

Snow Queen. (Dorner.) A first-class commercial variety, a large, nicely finished snow-white flower of rounded form, full to center, slightly curved pointed petals, and of good substance, good strong stem with foliage nearly up to the flower, good keeper and shipper. Height 3 to 3½ feet. At its best October 20th to November 5th. Received *N. C. S. Certificate*. 50 cts. each; \$5.00 per dozen; \$35.00 per 100.

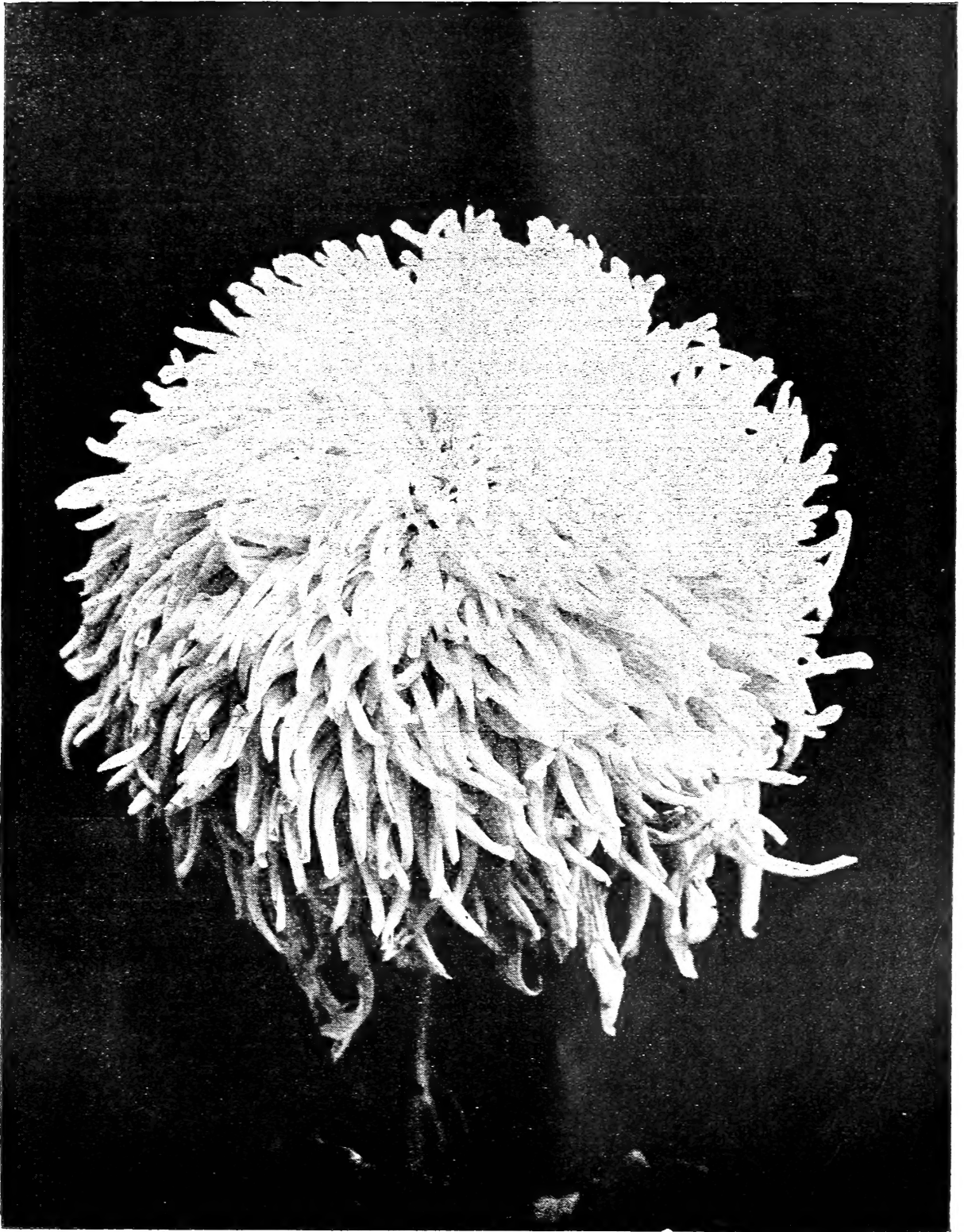
Merry Christmas. (Dorner.) The best and latest of all whites. Height 4½ ft. Good stiff stem. A well formed flower of purest white, in style of Mutual Friend, but far greater in substance and full to the centre. The latest of all Chrysanthemums, being at its best December 20th to January 1st. 35 cts. each; \$3.50 per dozen; \$25.00 per 100.

Autumn Glory. (Hill.) A grand commercial pink, and unsurpassed as an exhibition variety. There is nothing like it in color, which is a deep reddish salmon upon opening, and gradually changes to a soft shrimp-pink when fully finished; the flower is of the general shape of V. Morel, is of the largest size, and takes on great depth. A very easy doer; has no troublesome peculiarities. Has attracted marked attention wherever shown. This variety has no touch of lavender in its color, but is a decided and new shade that is very beautiful. 4½ to 5 ft. high. In season Nov. 5th. Terminal bud. *A. C. S. Certificate*.

Boundless Snow. (Hill.) Requires no staking, very large, and of Inter-Ocean type; color white, flushed pink, gradually becoming pure white. Comes in about same date as Mrs. Robinson, Oct. 15th. Nearly 3 ft. in height. First crown bud.

Black Hawk. (Hill.) Largest and most beautiful dark crimson-scarlet yet raised; looks like-crimson velvet, and does not show a trace of the reverse color, being of V. Morel form; the very color long desired among reds; as with all the reds beware of late feeding, and use a quantity of charcoal in the soil. Use late cuttings, either bud. First prize at Chicago for 10 blooms best red-tested seedling. Also *C. S. A. Certificate*. Height, 5 ft. In bloom Nov. 5.

H. W. Longfellow. (Hill.) A finely rounded incurving white variety, with broad petals, and of large size; stiff stems, though



Miss Gladys Vanderbilt.

slender; very beautiful foliage; carried well up to the flower; sometimes the bloom is flushed with pearl pink. Height, 5 ft. In bloom Oct. 25th. 1st crown bud.

Quito. (Hill.) Awarded Certificate fall of 1896. Very valuable as a late dwarf pink; foliage very beautiful, carried close up to the flower; the color is deep pink within, lighter pink without. In form and style much like Maud Dean. Promises to be very valuable from its height, foliage and color, coming as it does, after other pink varieties are gone, and being quite first-class. Nearly 3 ft. in height. In bloom Nov. 20th. Use 2d bud. *C. S. A. Certificate.*

Solar Queen. (Hill.) Heavily foliated from the ground up to the flower; an extra fine variety for single stem pot plant; brings a very large bloom, with a height of 20 inches; color golden-yellow, shading lighter; flower of extra size, averaging 10 inches across by 3 in depth. Very valuable as an early yellow, and can be had in grand shape for the early exhibitions. Height, 3 ft. In bloom Oct. 15th. Use 1st crown bud. *C. S. A. Certificate.*

Arline. (Smith.) Incurved pure white dwarf, upright habit with excellent stem. Splendid for single stem or pot plants. Flowers medium size, closely incurving. Midseason. *C. S. A. Certificate.* 50 cts. each.

Thornden. (Smith.) (Jap.) A bright yellow under all conditions, even surpassing Modesto in this respect. This variety possesses so many good points that it will at once take first place among the many yellows. Height, 3 ft. Short stout stem; form reflexed with centre petals somewhat erect; color the most intense yellow we have seen. Midseason. *C. S. A. Certificate.* Also certificate from Central New York Horticultural Society. 50 cts. each.

Merza. (Smith.) (Jap. Inc.) In habit more dwarf than Ivory, yet in no way weak in constitution, producing pure white flowers of the largest size which rest upon its foliage. For single stem pot plants this will make a record breaker. Those benched July 20th only attained 10 and 12 in. in height. A seedling from H. L. Sunderbruch and Mrs. H. McK. Twombly. The flower is a white Sunderbruch, only higher built and more closely incurved, with nearly twice the number of petals. Midseason. *C. S. A. Certificate.* 50 cts. each.

Rustique. (Smith.) (Jap. Inc.). Quite distinct in color, being neither yellow nor bronze. Best described as brundore or golden-brown. A bold incurved flower of the largest size. Specially meritorious for exhibition purposes. Height, 3 ft.; good stem and foliage; best from terminal buds. Midseason. 50 cts. each; \$5.00 per dozen; \$35.00 per 100.

Pennsylvania. (Graham.) Deep primrose-yellow sport of Philadelphia. Identical with Philadelphia in every respect save its color, which is a great improvement. A grand market variety and unexcelled for exhibition purposes. Height, 3½ to 4 ft. Stem and foliage perfect, and flower of largest size and most perfect form. This variety may be characterized as immense. Each, 50 cts.; \$5.00 per dozen; \$35.00 per 100. See cut, back cover.

Frank Hardy. Magnificent extra large midseason white, of foreign origin, coming immediately after Mrs. Robinson. Flower of the largest size and of perfect close form, petals incurving and gracefully enfolding, giving the flower a unique appearance. A deep solid well built up flower bearing the longest shipments without injury. Height, 4½ ft.; stem extra strong and stiff, clothed with a rich mantle of foliage completely covering the neck of the flower. Scored as follows: New York, 95; Boston, 94; Chicago, 93; Philadelphia, 89. A grand and valuable variety both for market and exhibition. 50 cts. each; \$3.00 per dozen; \$20.00 per 100; \$150.00 per 1000.

Yellow Fellow. Winner of the \$100 high grade Stearn Bicycle in a strong competition. It gives a large graceful bloom under ordinary treatment and can be grown a whopper for exhibition. Bud tinted bronze, maturing rich bright yellow. Constitution ironclad. Midseason variety. 50 cts. each; \$3.00 per dozen.

Plants can be had at very low prices of some dealers, but good plants, true to name, will always cost a fair price.

California and Japanese Importations.

This list contains the best and most distinct varieties imported. It is a grand collection, noted for its exhibition qualities and mammoth size. Single plants, 10 cts., except where otherwise quoted.

Golden Globe. Magnificent solid and large flower of great substance, flaming bronze, a grand exhibition variety. 15 cts.

Golden Plume. Deep lemon yellow, petals incurve and reflex, making a deep built flower; fine for exhibition. 15 cts.

F. T. Donioto. Beautiful silvery pink, inside deep rose, incurved flower, a grand exhibition or commercial bloom. 15 cts.

Golden Coronet. Grand, clear butter-yellow, cupping and incurving petals, solid high flower, magnificent for all purposes. 15 cts.

Pride of Japan. Deep rose-pink bloom of great substance, very dwarf, with foliage up to the flower. 15 cts.

Arctic. Mammoth glistening white, one of the largest.

Admiral Ito. Enormous brilliant yellow, of great substance.

Bankok. Rich brilliant yellow, large broad petals.

Buff Globe. Enormous yellow sport, "Good Gracious," grand.

Dragoon's Blood. Dark blood-red, a wonderful variety.

Dragoon's Fire. Full, large, deep red, almost black.

Fugi Snow. Mammoth white sport from "Good Gracious."

Golden Palace. Immense ball, golden-yellow, early.

G. S. Yoshiike. White seedling from "The Queen."

Imperial Crown. Style "Good Gracious," golden-yellow, extra.

King of Chrysanthemums. Immense size, best maroon variety.

Morocco. Dark velvety maroon, mammoth flower.

Marshall Oyama. Immense high flower, grandest white.

Morning Crow. Rich dark crimson, reverse silver.

Mabel Clare. Pure glistening white, early.

Mrs. P. Rothenbush. Magnificent pink, style "Kioto."

Oriental Glory. Enormous shrimp pink, grand shade.

Pride of California. Rich yellow, enormous flower.

Pearl Palace. Perfect form, broad petals, pure white, early.

Queen of Buffs. Grand, solid bloom, delicate chrome.

Rose Yoshiike. Cameo-pink, bordered rose, magnificent.

- Rokka-Sen.** Immense pink, beautifully incurved.
Sophie Sievers. Best snow-white of recent importation.
Snow Peak. Large, pure white, high, elevated centre.
Snow Capped. Purest snow-white, double and hairy.
Tokio Souvenir. Creamy white, incurved, hairy.
White Swan. Pure snow-white, magnificent and hairy.

European Collection.

This selection contains some grand varieties, which no one should be without.

Boule d'Or. Rich bronzy yellow, broad petals, long and drooping. 15 cts.

Edith Tabor. Bright golden-yellow, with fine stem and foliage. 25 cts.

Mrs. H. B. Ironsides. A lovely incurved Japanese variety of beautiful pale, flesh-tinted color. 25 cts.

Mrs. R. C. Kingston. A fine incurved bloom of large size, florets soft lilac pink, lined white on back. 15 cts.

Mrs. John Shrimpton. Golden buff, shaded and striped crimson. 25 cts.

Mrs. W. H. Lees. White, with tinge of pink on the under florets, a good grower of medium height; blooms have been grown 9 inches across, and the same in depth, 25 cts.

Phœbus. Most lovely clear shade of yellow; petals long, broad and recurving; flowers large and solid; very showy and beautiful foliage right up to the flower. 35 cts.

Rose Owen. Magnificent, extra large, clear bright self pink of perfect form, opening last in September; a grand early commercial variety. 25 cts.

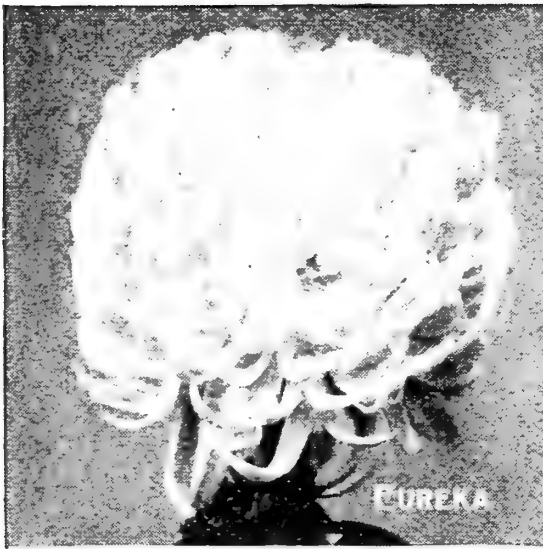
Mlle. Ernest Favre. Extra early, clear pink, form and color similar to V. Morel, large size and perfect form, one of the best early commercial varieties. 25 cts.

Bonnie Dundee. Large, golden-bronze, Chinese. 25 cts.

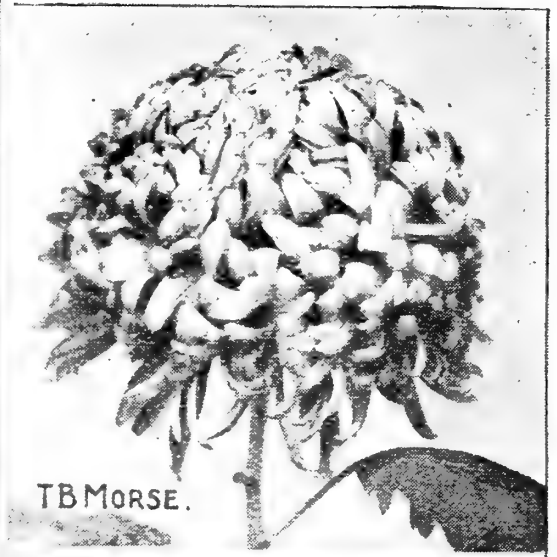
J. W. Richardson. Grand yellow, slightly hairy. 25 cts.

Admiral Avellan. Mammoth, extra fine yellow. *Awarded three certificates.* 20 cts.

C. Harman Payne. Immense flower, petals broad and long, dark purple. *Awarded three certificates.* 20 cts.



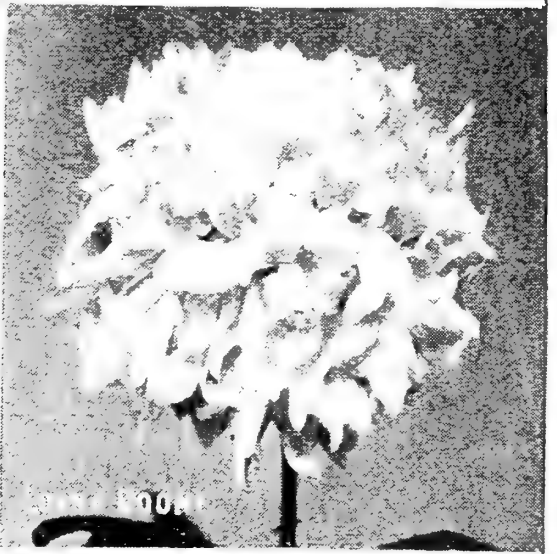
EUREKA



TB MORSE.



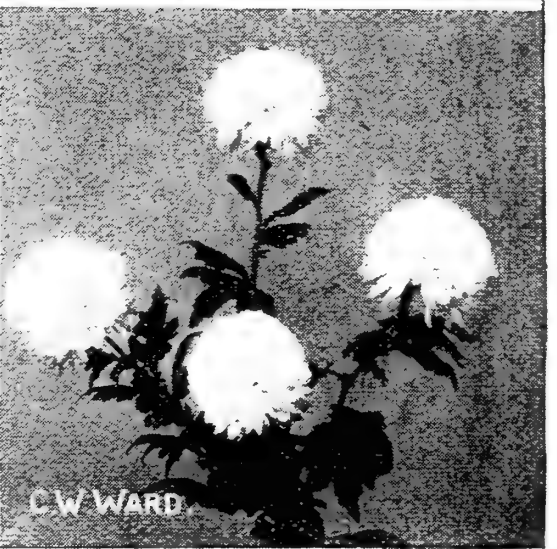
GOLD STANDARD



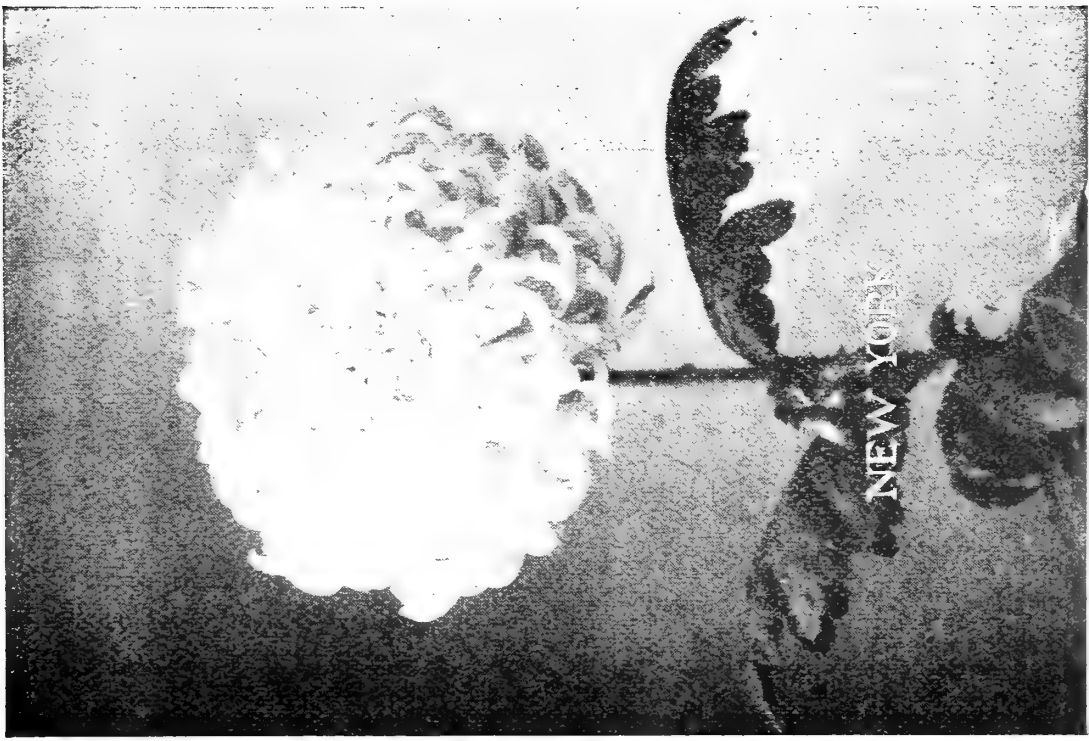
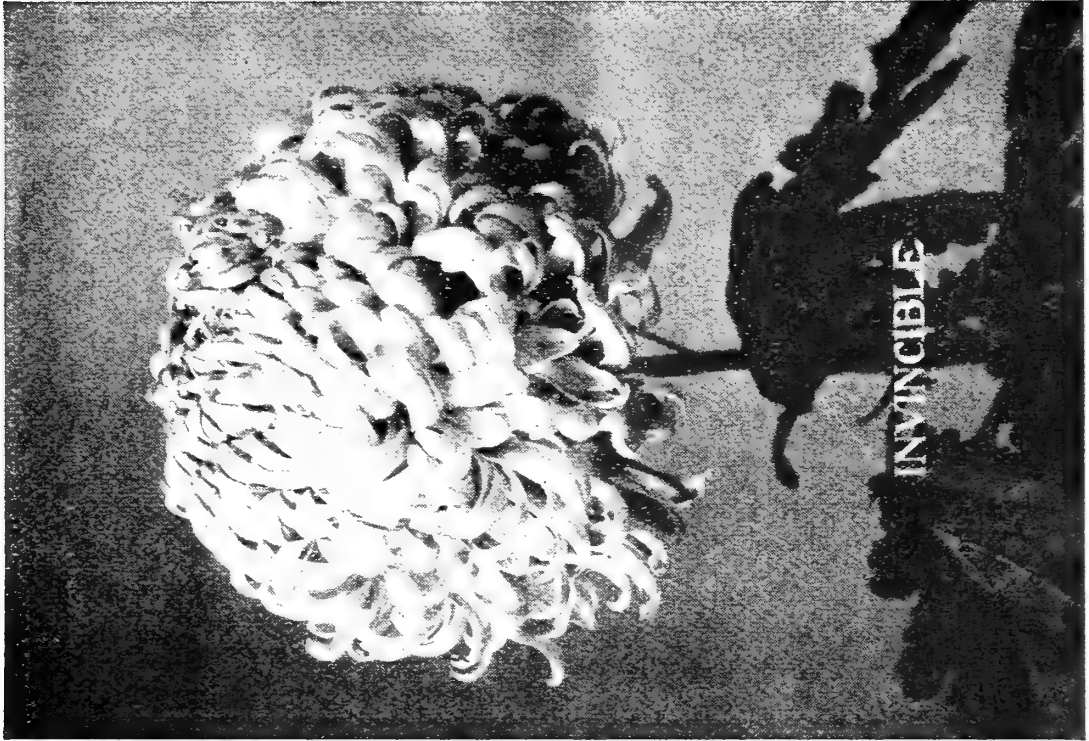
MISS MOON



G. ATKINSON



C. W. WARD



Directeur Tisserand. Extra large golden-yellow, middle crimson-red. *Certificated.* 20 cts.

L'Amethyste. Magnificent, extra large, deep purple, round and compact. *Certificated.* 20 cts.

M. R. Ballantine. Mammoth bloom, deep lilac, shaded carmine, silvery reverse. *Certificated.* 20 cts.

Mme. E. Capitant. Enormous reflexed bloom, deep red. *Certificated.* 15 cts.

M. Chenon de Leche. Enormous reflexed Japanese, deep rose. *Awarded two certificates.* 20 cts.

M. J. Allemand. Magnificent rose, immense size. *Awarded two certificates.* 20 cts.

Reine d'Angleterre. A magnificent and wonderful reflexed Japanese clear silvery pink. *Awarded four certificates.* 20 cts.

Pres. Carnot. Extra large reflexed Japanese, dark yellow reverse lighter. *Certificated.* 15 cts.

D. de J. Ferry. Rich maroon, extra fine. *Certificated.* 15 cts.

Dr. Allard. Very large, fine crimson, shading maroon. 15 cts.

Le Colosse Grenoblois. Immense white, shaded pink. 15 cts.

M. Richard Dean. Very bright clear pink, extra, commercial variety. *Certificated.* 15 cts.

M. C. Molin. Rich orange-yellow, striped red, immense size. *Certificated.* 15 cts.

Mlle. Lea Leveque. One of the finest incurved pinks. 15 cts.

Globe d'Or. Large perfect globe, golden-bronze. 15 cts.

Mrs. Cox. Beautiful rich crimson, dwarf. 15 cts.

Pride of Medford. Very dark, large and solid. 15 cts.

Lady Esther Smith. Large clear white, with cupped petals, closely incurved. 25 cts.

Abbe Crozilles. Very dark red, extra large, grand. 20 cts.

Mrs. C. Meyers. The earliest of all the whites, large size, good commercial bloom. 20 cts.

Milky White. A grand thing, large pure white, style May-flower. 20 cts.

C. H. Curtiss. One of the grandest Chinese, large golden yellow. 15 cts.

Beaty of Teignmouth. Grand, extra dark red. 15 cts.

Duchess of York. Large spreading yellow. *Certificated.* 15 cts.

Duke of York. Deep pink, extra size. *Certificated.* 15 cts.

Pride of Exmouth. Very large blooms. full and deep, the outer florets drooping in a charming manner, color white, shaded with a clear bright pink. Plants strong and robust. 35 cts.

ANEMONES.

Freaks and Oddities.

Surprise. The largest and grandest clear pink anemone. 20 cts. each.

Pauline Freuch. Solid, incurved, hairy, centre clear yellow, outside flesh-pink. 20 cts.

Virginia Earle. Silvery pink anemone; large high centre, grand, 20 cts.

Mrs. C. B. Freeman. Clear yellow hairy sport from L. Boehmer. 15 cts.

Black Prince. Dark velvety red, ribbon-like balls. 10 cts.

Buff Hairy. Large solid deep buff, very hairy. 10 cts.

Gen. Nodzu. Beautiful ball of twisted golden ribbons. 10 cts.

Midnight. Enormous solid Japanese, red bloom, densely covered with hairs. 15 cts.

Belle of Pacific. Deep rose, long cupped petals, a full flower, thickly covered with hairs. 15 cts.

Emerald Gem. This is the greatest of all the novelties or freaks, petals long, flat and narrow, clear green color, flower solid and double, an oddity long to be remembered. 25 cts.

Delicacy. Very large, pure white flower of great substance and depth, fine for any purpose. "This is the edible variety used in Japan as a salad." 20 cts.

Russia. Large white, with fimbriated petals, twisting and curling like shavings. 20 cts.

Vernal Falls. Immense deep pink, tipped old gold, centre light pink, three distinct colors. 20 cts.

Dancing Maid. Delicate self pink, forming a round ball with twisted petals. 20 cts.

Mrs. M. Carbone. A pure snow-white, identical with Mrs. Hardy in every respect except habit, which is strong and perfect. 25 cts.

Alps. Pure snow-white, petals broad and large, incurving and twisting, forming a ball similar to a large bunch of shavings. 15 cts.

Great Scott. Extra large double pink, magnificent color and form, solid and hairy. 10 cts.

Grace Darling. Magnificent bronze anemone, dotted and splashed red. 10 cts.

Caledonia. Extra large, spreading anemone, purest white. 10 cts.

John Bunyan. Grand yellow anemone. 10 cts.

Latest Fad. Wonderful curiosity, ribbon-like petals, eight inches and upwards in length, gracefully falling around the stem, rich yellow. 10 cts.

Mrs. Higinbotham. Perfection among the hirsutes, clear pink. immense size. 10 cts.

Mrs. Bassett. Magnificent cream anemone, center tinted carmine. 10 cts.

Owens Perfection. Large blush-pink anemone. 10 cts.

Queen Elizabeth. Best white anemone, large size. 10 cts.

Rider Haggard. Mammoth pink anemone, perfect form. 10 cts.

Ruch Abundance. Beautiful bronze anemone. 10 cts.

Ruche Toulousaine. Silvery guards, yellow centre, anemone. 10 cts.

Satisfactio. Grand yellow anemone, intermingled crimson. 10 cts.

Tasmania. Dark crimson, intermingled with snow-white stripes. A startling departure and striking freak. 15 cts.

American Eagle. Very large white anemone, rose center. 10 cts.

Enterprise. Magnificent rose anemone. 10 cts.

Garza. Broad ray petals, white anemone. 10 cts.

Golden Hairs. Immense deep hairy bronze. 10 cts.

Judge Hoit. Largest of all anemones, clear pink. 10 cts.

J. Carbone. Anemone, deep pink guards, cream center. 10 cts.

L. Boehmer. Exquisite silvery ostrich plume. 10 cts.

Mrs. F. Gordon Dexter. Immense crimson and yellow anemone. 10 cts.

Pitcher & Manda. Japanese, center yellow, outside white. 10 cts.

Partridge. Terra cotta anemone. 10 cts.

Red Robin. Clear rose anemone. 10 cts.

Rhodia. Clear pink anemone, white center. 10 cts.

Silver Bill. Large pure white anemone. 10 cts.

San Joaquin. Mammoth white anemone. 10 cts.

- Tanager.** Purple and orange anemone. 10 cts.
Titmouse. Large white, tinted pink, anemone. 10 cts.
Toucon. Broad rays, reddish buff, anemone. 10 cts.
Yoshino. Cream white, large ribbon-like ball. 10 cts.

25 freaks, my selection, \$2.00.

INTRODUCTIONS OF 1897.

Single plants 10 cents each. Positively no less than 5 of one variety at 100 rates.

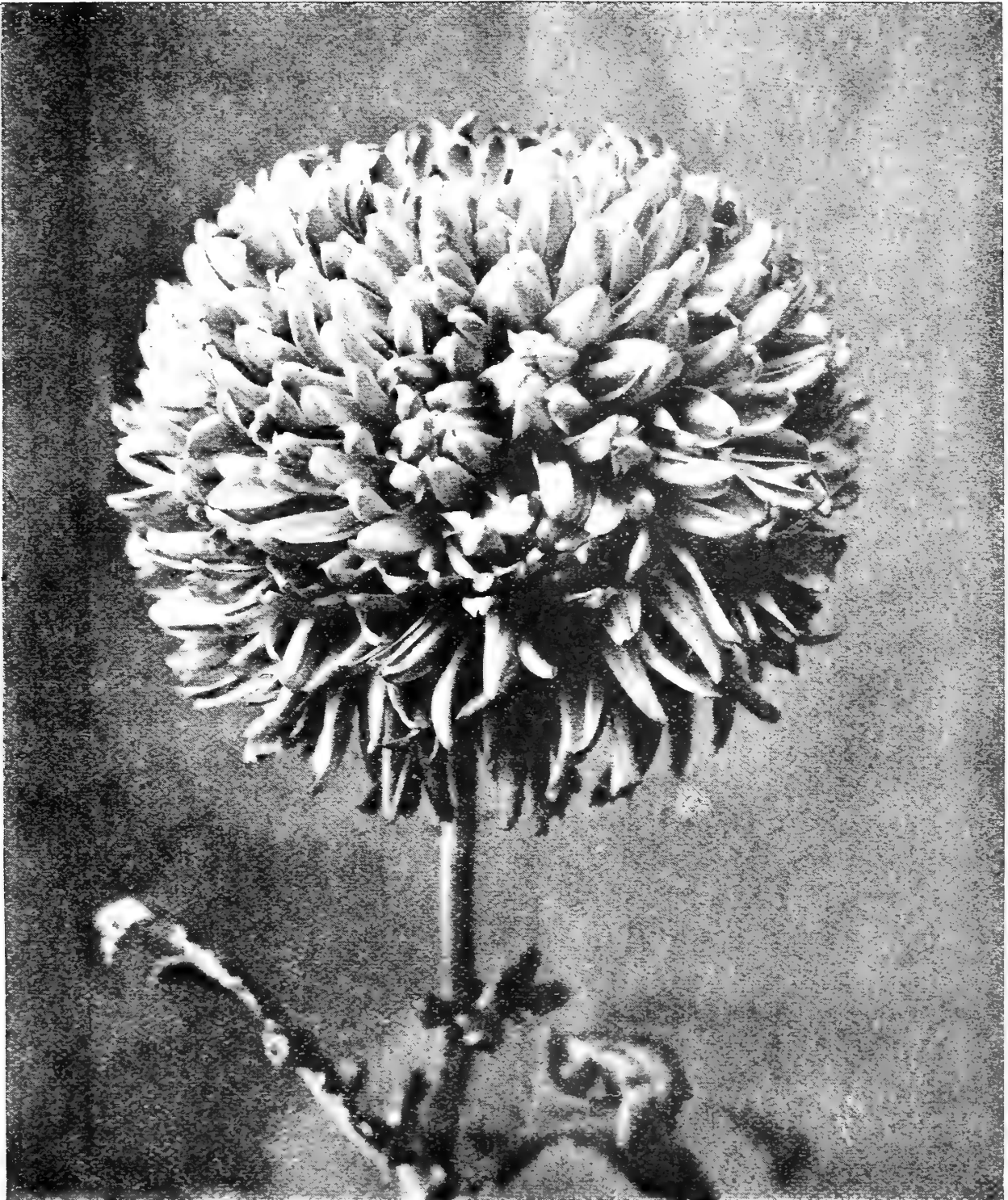
	Per 100
Maud Adams. A grand incurved, magnificent clear yellow Japanese; petals cup and interlace, forming a globular ball of great substance and largest size; one of the best late yellows. Terminals, 4½ feet. <i>Certificated</i>	\$6 00
Belle of Castlewood. A rich enamelled shell-pink, broad petaled incurving Japanese, a distinct and pleasing shade, bloom of large size, solidly set on a grand stem with good foliage; extra early. Crown buds, 3 feet. <i>Certificated</i>	6 00
C. W. Ward. Extra large, snow-white Chinese of globular and solid form, perfection as regards form, stem and foliage. <i>Certificated</i>	6 00
President McKinley. Ox blood red, reverse bright gold, petals large and broad, outer rows reflex, inner ones incurve, showing the colors in strong contrast.....	5 00
Gold Standard. A mammoth bloom sixteen inches across, form and color of Golden Wedding, but more intense and deeper shade, petalage the most profuse possible; one of the largest reflexed yellows. Habit strong and robust. Extra early. <i>Certificated</i>	6 00
J. H. Woodford. A beautiful large shell-pink, shaded to centre, high globular bloom with heavy broad incurving petals, strong stem and fine foliage. Extra early. <i>Certificated</i>	6 00
Marsia Jones. Immense snow-white anemone of finest form extant, solid rows of guards, with high cushioned centre of clearest white. <i>Certificated</i>	6 00
Mrs. R. D. Douglas. Very large incurved bloom, measuring twelve inches across, bright yellow when first opening; with age, petals occasionally show a pleasing bronze. Early. <i>Certificated</i>	6 00

	Per 100
G. F. Atkinson. A beautiful clear shell-pink, high-built globular bloom of great substance and large size. Stem stiff and foliage up to the flower. Extra early....	6 00
Eureka. An extra high-class porcelain-white, size and form similar to Philadelphia. Foliage very abundant and well set. Shipping and keeping qualities first-class. <i>Certificated</i>	6 00
Mrs. E. F. Hyde. A beautiful early clear lemon of great size and incurved form, petals broad, outer rows reflex, inner ones incurve to centre, forming a deep-built bloom.....	5 00
Sundew. Extra fine largesun-colored bronze of great substance, petals heavy, broad and firm, cupped and incurved, making a full flower. The best early of this shade. <i>Certificated</i>	6 00
Dorothy Devens. Magnificent pure snow-white, broad cupping petals, closely incurved, largest size, globular in form, stem and foliage; the best. In perfection December 1st to 10th. The very best late white in commerce; 3½ ft. Crown buds. <i>Certificated</i>	6 00
Gladys. Very fine, closely incurved, ball shaped flower, centre purest white, outer rows of petals shaded delicate shell-pink, a striking and pleasing combination....	5 00
Mrs. J. Withers. Exquisite true Japanese, clear distinct yellow, petalage of great substance, very abundant and evenly distributed. Incurving slightly to centre. <i>Certificated</i>	6 00
Golden Wonder. Mammoth old gold yellow, shading deeper to centre, petals reflexed, broad blooms of immense size, fourteen to sixteen inches in diameter, stem and foliage perfect. <i>Certificated</i>	6 00
Mrs. R. McArthur. Magnificent clear snow-white, solid petals, incurved and cupped, hemispherical in form, stem and foliage perfect. <i>Certificated</i>	6 00
Halcyon. Fine white anemone, extra large size, broad, heavy guard petals, high-built centre, crowns with age, shading pink. One of the best of this class. <i>Certificated</i>	6 00
T. B. Morse. One of the clearest bright early golden yellows in commerce, petals broad and incurving to centre, flower of great substance and high built, stem and foliage perfect. <i>Certificated</i>	6 00
Lorna Doone. Mammoth size, purest snow-white, broad, heavy and deep flower, measuring twelve to fourteen inches, habit extra dwarf, hardly attaining 2½ feet. Foliage and stem perfection. <i>Certificated</i>	6 00

	Per 100
Brian Boru. A beautiful large, broad, solid bloom, with full centre, petalage very heavy, and firm color, similar to Silver Cloud, its parent, delicate salmon-pink, shading very deep to centre.....	5 00
The Harriott. Deep rose, silvery reverse, evenly arranged petals, making a well balanced flower, bloom of large size and great substance. As the latest commercial pink, has great value, being at its best December 15th to 20th. Strong stem and foliage, 3 feet. <i>Certificated.</i>	6 00
King Cole. A large, bright, flaming bronze, slightly cupped, flower of great substance, with stiff stem and magnificent foliage.....	5 00
Elvena. Beautiful soft silvery pink. The most valuable early pink.....	5 00
Elainora. Deep pink, reverse clear rose, large, bold, handsome incurved flower.....	5 00
Evangeline. Pure white, similar to Kioto, but larger and more graceful.....	5 00
Loantika. Bright clear red, very early and large, reflexed, but very full, an extra good keeper and packer; does not burn.....	5 00
Leonidas. Amaranth, shaded maroon, very large, with straight petals, forming a bold reflexed flower.....	5 00
Symphonia. A beautiful shade of carmine-pink, reverse soft, silvery pink, incurved and very compact. As a bench variety this will prove valuable, as it only grows eighteen to twenty-four inches.....	5 00
Merula. Dwarf, semi-early pink, a beautiful shade, light pink, very double, stem and foliage good.....	5 00
Chito. A fine flower for exhibition; yellow ground, with fine red stripes, giving it a bronzy appearance.....	5 00
Mrs. Martin A. Ryerson. Large, pure white, from crown bud, is reflexed, from terminal centre builds up with interlacing, incurved petals.....	5 00
Sunstone. Robust habit, like "The Queen," light straw reverse; upper surface bright yellow, shading to red at the base.....	5 00
Western King. An incurved flower with outer petals slightly reflexing, pure white. Stem and foliage excellent.....	5 00
The Times. A large bold flower, deep pink at base, shading to silvery pink at tips.....	5 00
Allegro. Beautiful early variety of Wheeler type.....	5 00
Kentucky. Extra large, graceful flower of globular shape, pure shrimp-pink.....	5 00

	Per 100
Pendennis. Pure chaste white, of extra large size and elegant shape, incurved on opening, but reflexed when fully matured.....	5 00
Henry Nanz. Golden sport of the well known variety, Mrs. Jerome Jones. In every way identical except color, which is golden-yellow.....	5 00
Adelaide. Very fine, compact, white flower, especially recommended for commercial purposes.....	5 00
Thanksgiving. Large Japanese, color delicate self pink, medium height, good habit, and stem, fine keeper and shipper.....	5 00
Pride of Exmouth. Grand exhibition variety, of largest size, broad petals, deeply incurved, soft pink, with deeper suffusion.....	5 00
Lorelei. Solid incurved flowers, strong stem and foliage, white, shading at base to pink.....	\$5 00
Mrs. T. F. Beckert. An incurved bloom of fine form, clear, light self pink, without shading.....	5 00
West Newton. Magnificent, bright nankeen-yellow, Japanese, of largest size, habit and stem perfect, scented; quite noticeable in this respect.....	5 00
Defender. Large, reflexed Japanese flower, rich, dark crimson; seedling of G. W. Childs x Mrs. Drexel, fine stem and foliage.....	5 00
G. S. Kalb. Extra early Japanese, ready to cut October 2d, pure white; seedling of Mme. Bergmann x Kate Brown, magnificent stem and foliage, the best early white in commerce.....	5 00
Yellow Monarch. A yellow sport from Merry Monarch, identical except in color. The earliest large flowering yellow chrysanthemum to date.....	5 00
Lawn Tennis. Japanese reflexed, deep mauve, petalage unsurpassed, foliage large and up to flower.....	5 00

I make it my business to make it to your profit to deal with me. Give me the opportunity and I will prove this statement.



Mrs. C. H. Peirce.

GENERAL AND STANDARD COLLECTION.

Single plants 10 cents each. Positively no less than five plants of a kind at 100 rates.

	Per 100
Apollo. Immense reflexed amber, extra large. Style of Andes.....	\$5 00
Amber Ada Spaulding. Duplicate of A. S., beautiful, shaded bronze.....	3 00
A. H. Fewkes. Large rich yellow.....	4 00
Autumn Bride. Pure white, incurved, very closely resembling the Queen in form and size, showing no centre.	5 00
Betty Bock. Style of Ada Spaulding, clear self-pink.....	4 00
Black Pearl. Grand showy dark red, one of the finest....	5 00
Bonnie Marjorie. Grand primrose-yellow.....	3 00
Brigand. Magnificent deep crimson. World's Fair medal.	4 00
Columbine. Very early incurved Japanese of fine rounded form. Interior scarlet-red, exterior rich bronze.....	5 00
Constance Terrell. Fine Japanese yellow, type of V. Morel, dwarf. Midseason variety.....	4 00
Consuela. Very early large reflexed Japanese. Delicate pink.....	4 00
Chebeague. Extra large flesh or salmon-pink.....	4 00
Constance. Mammoth solid yellow, incurving.....	4 00
C. d'Arville. Large, round, white, salmon centre.....	4 00
Crystallina. Snow-white, early.....	4 00
Copper King. Solid bloom, deepest golden-bronze.....	5 00
Daydawn. Creamy white, with deeper centre.....	5 00
Daybreak. Delicate, soft shrimp-pink, very large.....	4 00
Dean Hole. Very large, incurved, soft delicate pink.....	4 00
Eminence. Deep golden-chrome, magnificent.....	4 00
Esther Heacock. Rich yellow, sport of Ada Spaulding...	4 00
Edith Smith. Extra early, large, incurving, ivory-white.	4 00
E. L. Jamieson. Rich crimson, immense bloom, ten inches.	5 00
F. L. Atkins. Reflexed Japanese, large pearly white.....	3 00
Fisher's Torch. A wonderful shade, bright fiery red.....	4 00
Gov. Matthews. Pale pink, turning to white, fine size.....	4 00
Gov. Rudd. Self-colored bright cream Japanese, very showy.....	4 00
Gretchen Buettner. Extra large, massive pure snow-white.....	4 00

	Per 100
Gismonda. Deep crimson-red, similar to Childs.....	4 00
Georgie Crompton. Magnificent pure deep, self-yellow....	4 00
Gold Dust. Fine golden-yellow, full and plummy	3 00
Gold Lode. Early yellow, style and color of Lincoln. One of the best early yellows.....	4 00
Glory of Pacific. Magnificent rose-pink of perfect form. The first and best commercial pink	4 00
Henry Hurrell. Closely incurved yellow Japanese, very large. Unsurpassed as an early dwarf-growing variety.	4 00
His Excellency. Magnificent extra late yellow.....	4 00
Helen Bloodgood. Meritorious true pink, largest size.....	4 00
H. W. Rieman. Grand yellow, deep golden shade.....	4 00
Halloween. Immense exhibition bloom, bright pink.....	4 00
Invincible. Mammoth, extra large white, with magnifi- cent heavy foliage, blooms ten to twelve inches in diameter.....	5 00
Indiana. Grand incurving bright pink, large, late.....	4 00
Infatuation. Clear white, distinct type, perfect globe.....	4 00
Jeannie Falconer. Enormous deep, solid, bright yellow..	4 00
J. H. Troy. Very early white of fine form.....	3 00
J. E. Lager. Very early yellow, reflexed Japanese.....	3 00
Katherine Leech. Extra early, clear self salmon-pink.....	3 00
Liberty. Deep golden-yellow, habit dwarf but robust, foliage and stem perfect. December 10th and later.....	4 00
Lenawee. Pure white Japanese, resembling the Queen.....	4 00
Marion Cleveland. Immense, high, round, solid bloom with broad, massive cupping petals. Ivory-white shad- ing delicate lemon. Very early.....	4 00
Mrs. W. P. Raynor. Bright clear white Japanese, early to midseason. One of the best commercial whites.....	4 00
Mrs. R. Crawford. Extra large, clear white, of most exquisite form, shape like "Ivory," but much larger, flowering Thanksgiving to December.....	5 00
Mrs. H. H. Battles. Large incurved Japanese, full centre and high, round form; white, shading blush at base, extra dwarf, very late.....	5 00
Mrs. Perrin. Rose-pink. The brightest shade yet pro- duced.....	4 00
Modesto. The finest yellow for exhibition or trade, intense in color, unsurpassed in size	5 00
Mrs. W. C. Egan. Large, Ada Spaulding type, crimson- pink.....	4 00

	Per 100
Miss Helen Wright. Pure ivory-white, broad, massive incurved petals, forming a large symmetrical flower.....	4 00
Mrs. J. Peabody. Large pure white. blooms measure eight to nine inches through, and six to seven inches deep, fine build and finish.....	4 00
Miss L. Magee. Early incurved Japanese, beautiful light pink.....	4 00
Miss M. Lear. Fine Japanese, incurved, full and double; maroon-red, does not fade.....	4 00
Mrs. Harry Toler. Extra large, Japanese, flesh-pink, slightly hairy. Midseason.....	4 00
Mrs. E. Buettner. Clear lemon-yellow, deep flower, fine commercial variety.....	4 00
Miss Gladys Spaulding. Magnificent snow-white Chinese	3 00
Mrs. J. H. White. Immense deep crimson, large size.....	3 00
Mrs. S. T. Murdock. Best pink, large size, finely formed..	3 00
Millbrook. Large bloom, salmon-red.....	3 00
Miss E. O. Farrell. Reflexed bloom, salmon-rose	3 00
Mrs. W. H. Hurley. Extra early, deep orange-yellow.....	3 00
Mrs. H. Robinson. The best of all the early whites.....	3 00
Miss Georgiana Pitcher. Incurved bloom, canary-yellow	3 00
Miss M. M. Johnson Extra early, deep golden-yellow....	3 00
Miss L. D. Black. Rich orange-yellow, solid	3 00
Nanshon. Magnificent white, larger than "Ivory"	4 00
Nemesis. Very eary, Daybreak pink	3 00
Oakland. Clear terra cotta. An ideal bloom	3 00
Olympus. Large, solid, round, white.....	3 00
Pride of Castlewood. Pure snow-white Chinese, of the largest size.....	4 00
Pink Ivory. Sport from "Ivory." Beautiful shell-pink....	3 00
Pluto. Clear, bright red, reverse bright gold. Bold flower	4 00
Philadelphia. Immense, large, round, white, tipped green.	3 00
Red Warrior. Style and color of W. W. Coles, perfectly double.....	4 00
Riverside. Early, clear, deep canary-yellow, reflexed	4 00
Robert F. Hibson. Extra large, early, reflexed, white Japanese.....	4 00
Ruth Ellis. Fine shell-pink. Grand commercial variety..	4 00
Reliance. High, solid, white, perfect ball.....	3 00
Radiance. Deep yellow, shade of "Golden Wedding".....	3 00

	Per 100
Signal Light. Pale yellow, lower petals tipped red bronze, fine built flower.....	4 00
Superior. Large and extra double, deep red.....	4 00
Violescent. Magnificent white, lower petals tinged lavender.....	4 00
Wenonah. Solid, rich, deep bronze, of largest size.....	4 00
W. B. Dinsmore. Incurved, golden-yellow.....	3 00
Yanoma. Reflexed, late, white.....	4 00
Zipangi. Massive bloom, crimson lining, reverse rich buff.	3 00
Ada Spaulding. Rich deep pink, shading to pearl.....	3 00
A. Ladenburg, J. H. Cliff, W. Simpson (Syn.). Pink.....	3 00
Beau Ideal. Large, bright, rose-pink.....	3 00
Baron Hirsh. Magnificent incurved orange.....	3 00
Beauty of Exmouth. Purest white. <i>Nine Certificates</i>	3 00
Black Diamond. Deepest crimson, grand for specimens..	3 00
C. Shrimpton. Immense bright crimson.....	3 00
Conqueror. Extra early, solid bronze, largest size.....	3 00
Col. W. B. Smith. Immense golden bronze.....	3 00
C. B. Whitnall. Deep maroon, very dark.....	3 00
Dorothy Toler. Warm rose, tipped red, perfect ball....	3 00
Dorothy Shea. Rich terra cotta, extra large and early....	3 00
E. Dailedouze. Glowing bright yellow, grand flower.....	3 00
E. Addison. Massive, broad petals, rich plum color.....	3 00
Erminilda. Pure rose pink, grand commercial.....	3 00
E. Ladenburg. Deepest crimson, approaching black.....	4 00
E. Hatch. Soft lemon, shaded pink, immense.....	3 00
Eda Prass. Delicate salmon, grand.....	3 00
Frank Thompson. Grand white.....	3 00
Georgienne Bramhall. Early, clear yellow, distinct.....	3 00
Golden Wedding. Richest golden yellow, immense.....	3 00
Good Gracious. Solid, delicate self-pink.....	3 00
G. W. Childs. Deep, velvety, crimson, best dark.....	4 00
H. L. Sunderbruck. Brightest golden-yellow, early.....	4 00
Inter-Ocean. Glistening pearly white.....	3 00
Ivory. Best commercial white.....	3 00
J. Schrimpton. Deep velvety crimson, gold reverse.....	3 00
Kioto. Large, deep yellow ball.....	3 00
Laura Cushing. Clearest golden-yellow, magnificent.....	3 00
Lady Playfair. Pearly pink. very early.....	3 00

	Per 100
Lillian Russell. Large, early, clear silvery pink.....	4 00
Mrs. E. O. Wolcott. Incurved ball, beautiful silvery pink.	3 00
Mrs. G. A. Magee. Large exhibition bloom, silvery pink.	3 00
Mrs. G. M. Pullman. Large, reflexed, deepest yellow.....	3 00
Mrs. Geo. West. Largest deep rose in cultivation.....	3 00
Marion Henderson. Early clear yellow.....	3 00
Mayflower. Magnificent incurved white.....	3 00
Minerva. Massive, incurved, vivid yellow.....	3 00
Marie Louise. Grand early, snow white.....	3 00
Mlle. T. Rey. Cream-white, superb.....	3 00
Major Bonnaffon. Grand, full bright yellow.....	3 00
Mutual Friend. Mammoth snow-white.....	3 00
M. B. Spaulding. Largest and grandest golden-yellow...	3 00
Mrs. H. F. Spaulding. Pure snow-white, extra late.....	3 00
Mlle. E. Rey. Deep pink, large and early.....	3 00
Mrs. F. L. Ames. Immense commercial late yellow.....	3 00
Mrs. R. Craig Fine snow-white Chinese.....	3 00
M. Wanamaker. Largest and finest white.....	3 00
Maud Dean. Extra large, fine pink.....	3 00
Mrs. F. Bergman. Earliest pure white, extra fine.....	3 00
Mrs. J. Jones. Snow-white, large, incurved, late.....	3 00
Mrs. J. G. Whilden. Clearest yellow, extra early.....	3 00
Niveus. Grandest snow-white.....	3 00
President W. R. Smith. Purest large self-pink.....	3 00
Silver Cloud. Enormous flower, delicate salmon	3 00
The Queen. Best white in cultivation, late.....	3 00
Wm. Falconer. Exquisite flesh pink, hairy.....	3 00
Wm. Seward. Deep crimson, almost black	3 00
Yellow Queen. Extra early, large, clear yellow.....	3 00

CARNATIONS.—Rooted Cuttings.

Ten cents each, except when quoted, no less than 25 of a variety at 100 rates; 250 at 1000 rates. If desired by mail postage and packing must be added; for 50 plants and under, 15 cts.; 50 to 100, 25 cts.

New York. (Ward.) Bright cerise pink, resembling Bridesmaid; strong vigorous habit. One of the best and most constant bloomers thus far grown. Magnificent color under gas or electric light. Price, \$2 per doz.; \$10 per 100; \$75 per 1000.

Mrs. James Dean. (Ward.) Clear, silvery pink; strong vigorous habit; large bloom on a long, wiry stem; free and constant bloomer. The ideal light pink. Winner of first prize at Philadelphia, for the best American seedling. Price, \$2 per doz.; \$10 per 100; \$75 per 1000.

John Young. (Ward.) Very double, snow white flower, deeply fringed, strong clove fragrance, on long stiff stem. Strong vigorous habit; free, constant bloomer. Exceptionally healthy plant. The nearest to Scott in habit of any white thus far grown. A first class commercial carnation. Price, \$2 per doz.; \$10 per 100; \$75 per 1000.

White Cloud. (Dorner) (Daybreak x E. A. Wood.) White, habit same as Daybreak, but stronger, taller, and more vigorous, and an earlier and much freer bloomer. Strong growth; long, strong stems, large fragrant flower, of a full pleasing form, without bursting, and of good substance, making it the most desirable acquisition to the rather small list of good whites. *Certificated.* Price, \$2 per doz.; \$10 per 100; \$75 per 1000.

Bon Ton. (Raised by F. A. Blake, Rockdale, Mass.) Bright warm scarlet; large, deeply fringed, very fragrant flower; on a very stiff stem. Requires no staking. Price, \$2 per doz.; \$10 per 100; \$75 per 1000.

Gold Nugget. (Dorner.) The first real rival of Buttercup in color, and in all other respects far ahead of that celebrated variety. Price, \$2 per doz.; \$10 per 100; \$75 per 1000.

Painted Lady. (Hill.) A large, very full flower, with perfect calyx and extra stiff stems. Color brilliant cherry pink, at times laced, lighted pink about the edge. One of the most profuse bloomers in the family. Price, \$2 per doz.; \$10 per 100; \$75 per 1000.

Psyche. (Hill.) White, flaked scarlet, flower of extra size, but not crowded with petals; long, stiff stem; a very profuse bloomer; may be described as an improved and easily managed Helen Keller—bringing a much greater number of blooms to the plant. Price, \$2 per doz.; \$10 per 100; \$75 per 1000.

Fred. Cody. White, striped carmine red, very showy and a free bloomer. Habit identical with Lizzie McGowan. Price, \$1 per doz.; \$5 per 100.

Scarlet Tidal Wave. A sport from Tidal Wave, identical in habit with that variety. This is one of the most profitable scarlet carnations that has yet been introduced. Leech Bros., have grown it for the New York market for three years, and find it all that can be desired as a commercial scarlet. Price, \$3 per 100; \$25 per 1000.

Pink Varieties.

	Per 100	Per 1000
Bridesmaid. Clear color, best of all.....	\$3 00	\$25 00
Wm. Scott. Best commercial color.....	2 00	15 00
Pink Jewel. Solid, salmon pink.....	5 00	35 00
Aibertini. Deep pink, very large.....	2 00	15 00

White Varieties.

Alaska. Grand flower.....	2 00	15 00
Puritan. Fine and large.....	3 50	30 00
Lizzie McGowan. One of the best.....	2 00	15 00

Crimson Variety.

Meteor. The finest crimson.....	3 00	25 00
--	------	-------

Variegated Varieties.

Helen Keller. White, striped blood red.....	2 50	20 00
Armazindy. White, pencilled red	4 00	30 00

Yellow Varieties.

Eldorado, Fine in every way.....	5 00	45 00
Kitty Clover. Striped red	5 00	45 00



William H. Chadwick.

CANNAS.

Ten cents each, except when quoted; 25 of one kind at 100 rates, or 100 in 10 varieties, same rates. **If by mail 5c. per bulb extra.**

	Per 100
President McKinley. (Raised by Jas. Dean.) Color brilliant crimson, with bright scarlet shading. Foliage deep green with marked chocolate margin. Plant is dwarf, 2½ to 3 feet in rich soil. One of the earliest bloomers, coming into flower when 14 to 18 inches high, and continuing thereafter. This is undoubtedly the king of all crimson bedders. <i>Certificated.</i> Price, 60 cts. each; \$5 per dozen.....	\$40 00
Defender. (Raised by Jas. Dean.) Color clear yellow, striped with bright scarlet. Foliage clean, distinct, and a good grower. Height, 3 to 3½ feet. Habit somewhat resembling Columbia. Price, 60 cts. each; \$5 per dozen.....	40 00
Austria. Yellow, tall grower, large flower.....	4 00
Italia. Yellow, scarlet throat.....	5 00
Mme. Crozy. Orange-scarlet, bordered gold.....	3 00
Paul Marquant. Rosy carmine.....	3 00
Yellow Queen. Dwarf, almost pure yellow.....	4 00
Baron de Sandrons. Orange, shading to yellow.....	3 00
Florence Vaughan. Grand yellow, dotted red.....	4 00
Chas. Henderson. Vermillion red.....	3 00
J. D. Cabos. Apricot or rosy bronze.....	3 00
Paul Seigert. Claret, gold band.....	4 00
Sunbeams. Magnificent clear yellow.....	5 00
L. Bally. Yellow, slightly spotted.....	3 00
A. Bouvier. Cardinal red, grand.....	3 00
Eldorado. Finest of all yellows, 25 cts. each.....	15 00
Sophie Buchner. Orange-scarlet.....	3 00
Secretary Stewart. Richest deep red.....	4 00
Sarah Hill. Deep crimson.....	3 00
Francois Crozy. Light orange, like Mme. Crozy.....	3 00
Paul Braunt. Large intense scarlet.....	3 00
Sen. Montefiore. Orange, pink-shaded.....	4 00
Maurice Mussy. Largest crimson-scarlet.....	4 00
Alice Lefebvre. Richest crimson.....	3 00

	Per 100
Chas. Moore. Bright yellow, spotted.....	3 00
Col. Dodds. Rosy salmon.....	3 00
Ed Mieg. Rich vermillion-scarlet.....	3 00
Cronstadt. Orange, flaked carmine.....	3 00
Explorateur Crampel. Orange-crimson.....	3 00
20 varieties, 5 of each, my selection, \$2.50. A grand collection.	

Set Of Hardy Out-door Pompons. Set \$2.00.

Emily Roebottom,	White.
Mme. des Granges,	White.
Little Pet,	Bronze.
Viscount de Vere,	Pink.
Bob,	White-bronze.
Caresse de Sobiel,	Yellow.
Jersey Beauty,	Yellow.
Elmon,	Bronze.
L. Fleuris,	Red-Bronze.
Victorine,	Red.
Percy Seedling,	Yellow.
Mr. Aster,	Yellow.
Snowdrop,	White.
Model of Perfection,	Dark pink.
Roi des Precous,	Red.
Strathmeath,	Pink.
Mme. La Count de Frenchen de Canel,	Bronze.
Jules Largrave,	Red.
Mlle. Martha,	White.
Grunnenad,	Pink.
Golden Cedo Mule,	Yellow.
Rose Trevane,	Pink.
Lourie Mellane.	White.
Blushing Bride,	Pink.
Marie,	Pink.
General Cernrolurt,	Yellow.
Bronze Bride,	Bronze.
Souv. de Jersey,	Yellow.
La Vogue,	Yellow.

Two Unparalleled Collections.

Collection A, 50 plants, \$4.00.

Belle of Castlewood, Gold Standard, G. F. Atkinson, Maud Adams, Pres. McKinley, King Cole, West Newton, Halcyon, Sundew, Gladys, The Harriott, Mrs. R. McArthur, Golden Wonder, Brian Boru, Mrs. E. F. Hyde, Invincible, Riverside, Signal Light, H. H. Battles, Adelaide Loomis, Pink Ivory, Gov. Matthews, Autumn Bride, Amaranth, Miss L. Magee, J. H. Troy, Latest Fad, Gladys Spaulding, W. A. Bryant, L. D. Black, Oakland, Olympus, C. Shrimpton, Mrs. Geo. West, Mrs. J. G. Ills, M. B. Spaulding, Niveus, Pitcher & Manda, Glory of Pacific, Kioto Pink, Genl. Nodzu, Buff Hairy, C. H. Payne, M. R. Ballantine, Surprise, Buff Globe, Duke of York, Pres. Smith, Golden Wedding, Mrs. H. Robinson.

Collection B, 25 plants, \$2.00.

Pres. McKinley, G. F. Atkinson, Gold Standard, C. W. Ward, J. H. Woodford, J. M. Gifford, Dorothy Devens, Halcyon, Eureka, Mrs. R. Crawford, Nanshon, Red Warrior, M. Cleveland, Indiana, Yanoma, Helen Wright, Miss M. Lear, Dean Hole, Gold Dust, H. W. Reiman, Jennie Falconer, K. Leech, S. T. Murdock, Silver Cloud, J. E. Larger.

Or 75 plants, the two Collections, \$5.00.

100 Choice, Rare Novelties and Prize Varieties, all Different.
My Selection, \$3.00.

A CHARMING COLLECTION.

Of 20 Elegant Tuberous Begonias for \$1.00, Post Paid.

In all the fascinating shades of this wonderful plant. They will give you a mass of bloom from June until frost.

THE PRIZE CHRYSANTHEMUM SET.

Twenty Prize Winners for \$1.00, Post Paid.

This collection includes the most desirable varieties that brought prizes at the different shows in November, and goes over the entire range of color, form and size. If you desire to be up to date in chrysanthemums, try it.

5 collections, all different, \$4.00.

Special Chrysanthemum Seed.

Direct from Japan, extra choice.

Raised by one of the most noted growers and carefully hybridized by his secret methods (unknown outside of the kingdom), which have resulted in so many well-known, magnificent and startling departures. Original sealed packets, 75 cts.; two for \$1; six for \$2.

Hand hybridized Chrysanthemum Seed.

The best grown in America.

Single packets, 50 cts.; three packets, \$1; twelve packets, \$3.

Choice Hybridized Seed.

Single packets, 25 cts.; five packets, \$1; twelve packets, \$2.

Three Packets, one of each, \$1.00.

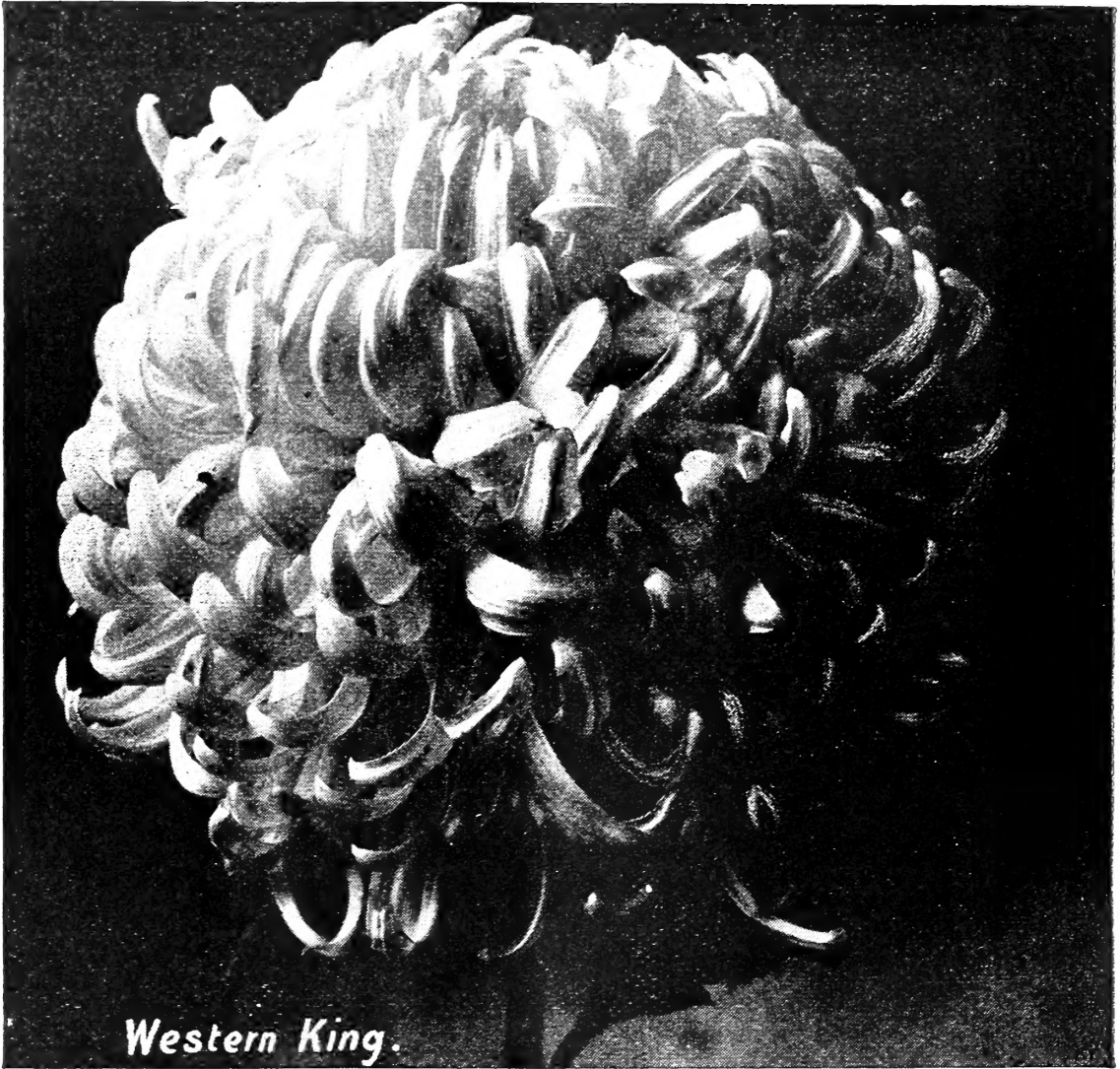
Great Prize Winning Set of Chrysanthemums.

20 prize winners, by mail, for \$1.00.

In all the colors and forms of this charming flower.

Five sets, all different, \$4.00.

NOTE:—See special collection on page 30, and inside back cover.



Western King.

..BEGONIAS..

Giant-Flowered Tuberos Rooted

THE FINEST IN AMERICA.

BULBS OF SINGLE VARIETIES.

Atkinson's Extra Mammoth, brilliant red, rose, white, pink, dark red, orange, yellow, 15 cts. each; \$1.00 per 12; \$2.00 per 25; \$3.50 per 50; \$5.00 per 100.

20 of each 140 bulbs.....\$7.00
100 Extra Choice, mixed 5.00

Special Collection, No. 1.

75 Choice Chrysanthemums, my selection..... }
50 " Begonias, Atkinson's Mammoth..... } \$5.00
50 Cannas, mixed, my selection..... }

Special Collection, No. 2.

50 Choice Chrysanthemums, my selection..... }
25 " Begonias, Atkinson's Mammoth..... } \$3.00
25 Cannas, mixed, my selection.. .. }

GREAT PRIZE WINNING SET OF

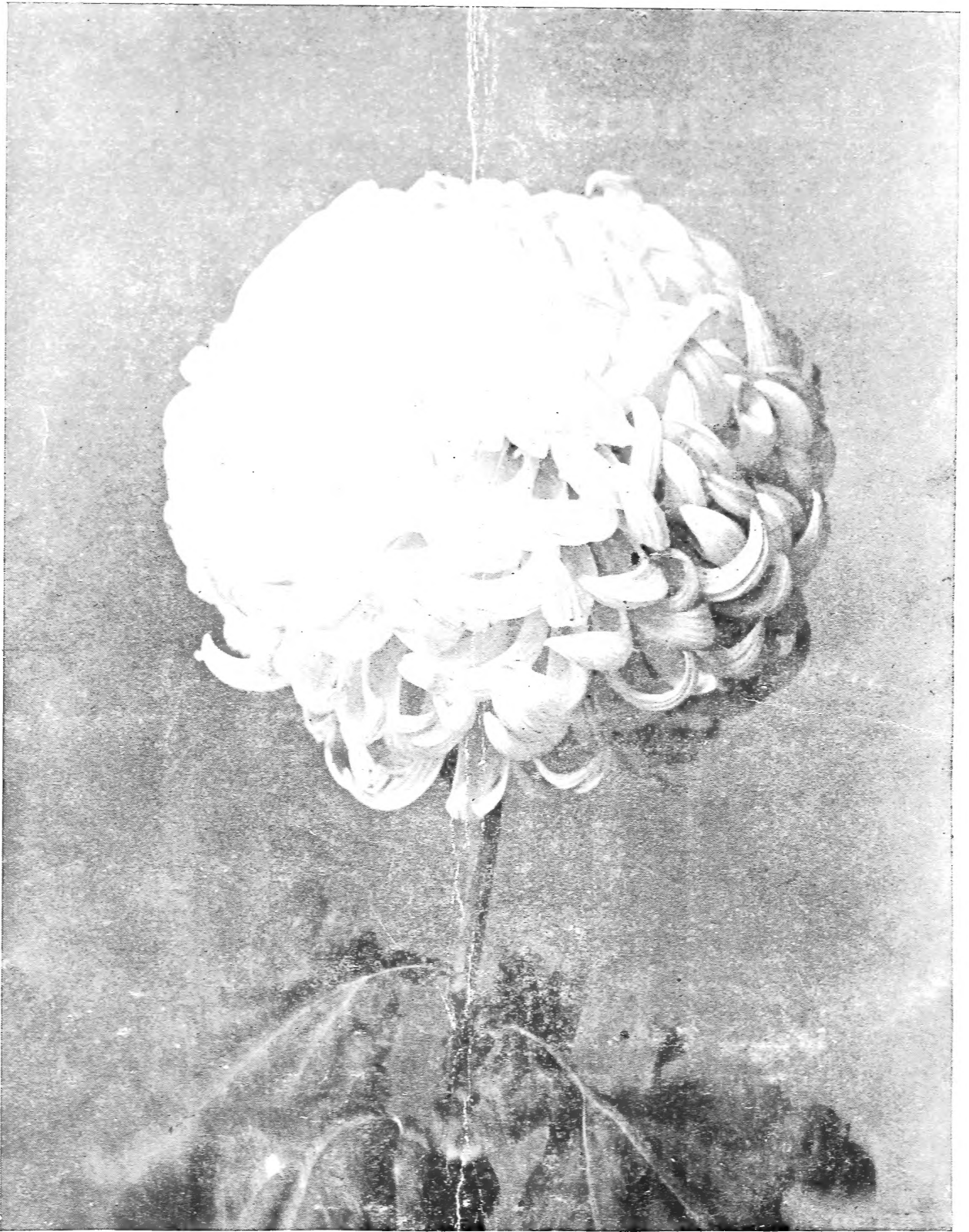
CHRYSANTHEMUMS.

20—Prize Winners by mail for \$1.00—20

In all the Colors and Forms of this Charming Flower.

FIVE COLLECTIONS, ALL DIFFERENT, \$4.00.

Note front page of cover—Imported Japanese Chrysanthemum Seed:



PENNSYLVANIA.